

Data Path : Z:\svoasrv\HPCHEM1\BNA_F\Data\BF062525\
 Data File : BF142855.D
 Acq On : 26 Jun 2025 00:12
 Operator : RC/JU
 Sample : Q2403-03 20X
 Misc :
 ALS Vial : 23 Sample Multiplier: 1

Instrument :
 BNA_F
 ClientSampleId :
 LAW-25-0093

Quant Time: Jun 26 01:22:40 2025
 Quant Method : Z:\svoasrv\HPCHEM1\BNA_F\Methods\8270-BF061925.M
 Quant Title : ASP BNA STANDARDS FOR 5 POINT CALIBRATION
 QLast Update : Tue Jun 24 05:28:21 2025
 Response via : Initial Calibration

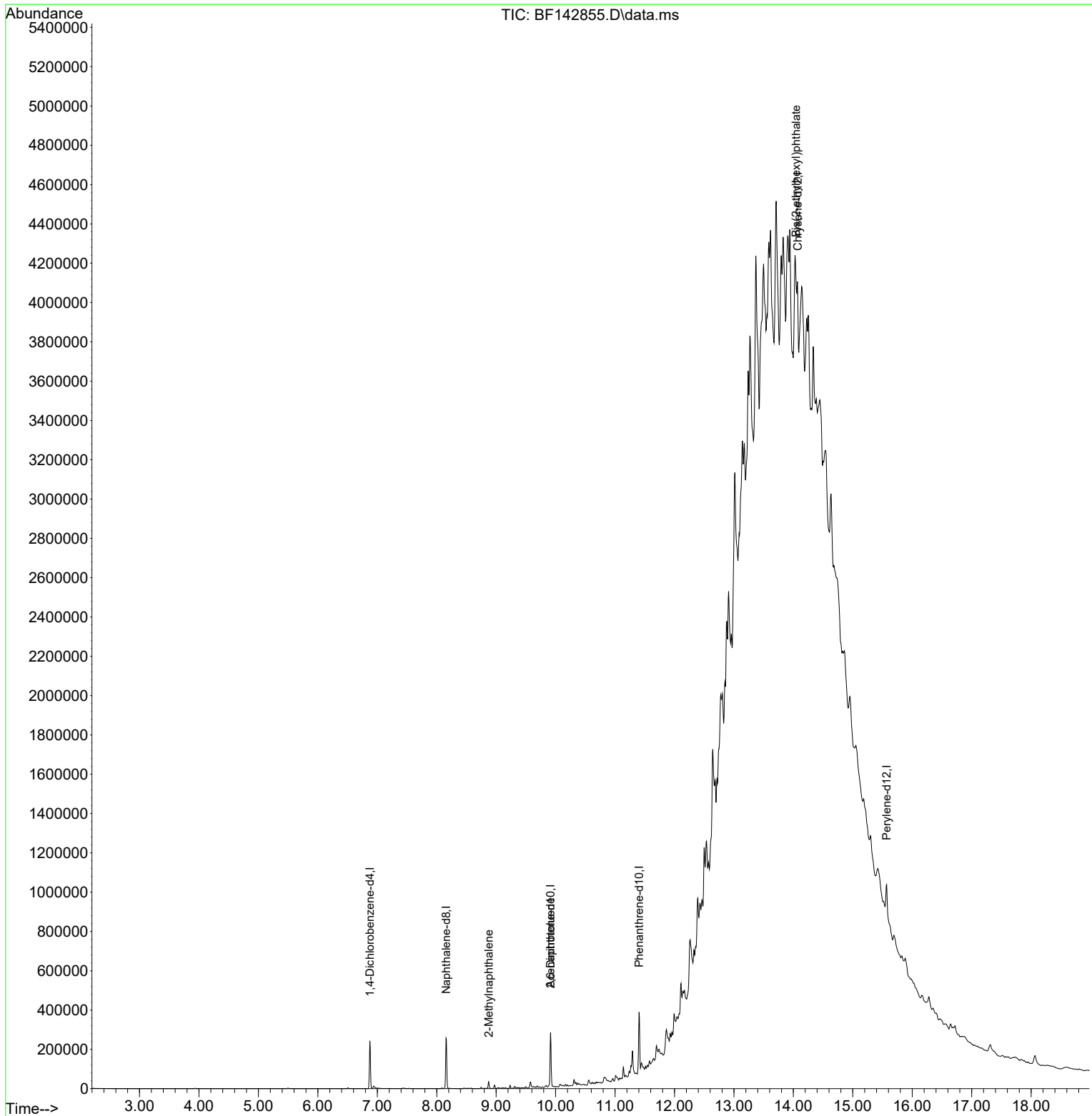
Compound	R.T.	QIon	Response	Conc	Units	Dev(Min)
Internal Standards						
1) 1,4-Dichlorobenzene-d4	6.875	152	53692	20.000	ng	0.00
21) Naphthalene-d8	8.157	136	171136	20.000	ng	-0.01
39) Acenaphthene-d10	9.916	164	79909	20.000	ng	0.00
64) Phenanthrene-d10	11.404	188	160529	20.000	ng	0.00
76) Chrysene-d12	14.074	240	118338	20.000	ng	0.02
86) Perylene-d12	15.568	264	88726	20.000	ng	0.02
System Monitoring Compounds						
5) 2-Fluorophenol	5.498	112	1948	0.604	ng	0.00
7) Phenol-d6	6.510	99	2724	0.716	ng	0.00
23) Nitrobenzene-d5	7.439	82	1744	0.559	ng	0.00
42) 2,4,6-Tribromophenol	10.710	330	1519	1.847	ng	0.00
45) 2-Fluorobiphenyl	9.233	172	8033	1.321	ng	-0.01
79) Terphenyl-d14	12.998	244	11097	1.296	ng	0.00
Target Compounds						
37) 2-Methylnaphthalene	8.875	142	13799	2.657	ng	97
51) 2,6-Dinitrotoluene	9.916	165	11023	9.704	ng	# 26
84) Bis(2-ethylhexyl)phtha...	14.045	149	30847	6.663	ng	# 67

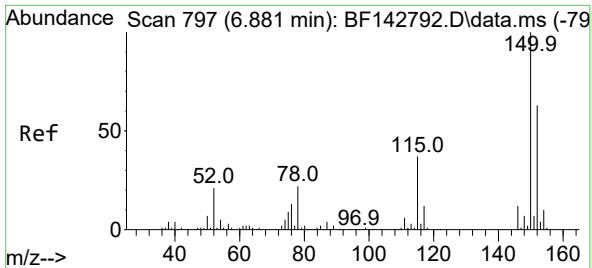
(#) = qualifier out of range (m) = manual integration (+) = signals summed

Data Path : Z:\svoasrv\HPCHEM1\BNA_F\Data\BF062525\
 Data File : BF142855.D
 Acq On : 26 Jun 2025 00:12
 Operator : RC/JU
 Sample : Q2403-03 20X
 Misc :
 ALS Vial : 23 Sample Multiplier: 1

Instrument :
 BNA_F
 ClientSampleId :
 LAW-25-0093

Quant Time: Jun 26 01:22:40 2025
 Quant Method : Z:\svoasrv\HPCHEM1\BNA_F\Methods\8270-BF061925.M
 Quant Title : ASP BNA STANDARDS FOR 5 POINT CALIBRATION
 QLast Update : Tue Jun 24 05:28:21 2025
 Response via : Initial Calibration

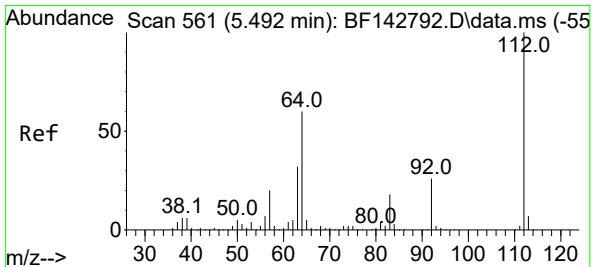
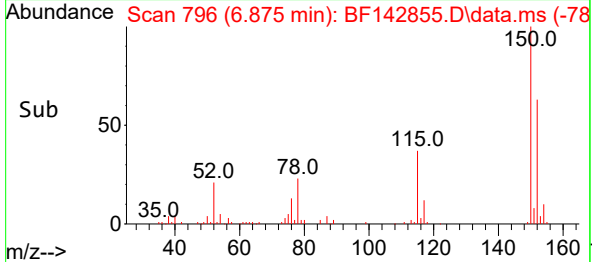
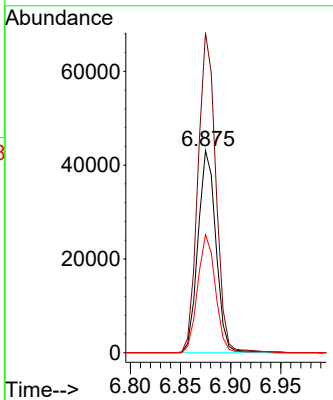
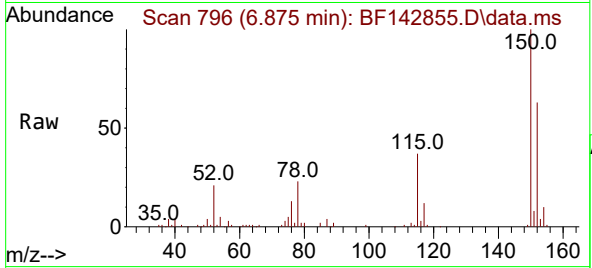




#1
 1,4-Dichlorobenzene-d4
 Concen: 20.000 ng
 RT: 6.875 min Scan# 79
 Delta R.T. -0.006 min
 Lab File: BF142855.D
 Acq: 26 Jun 2025 00:12

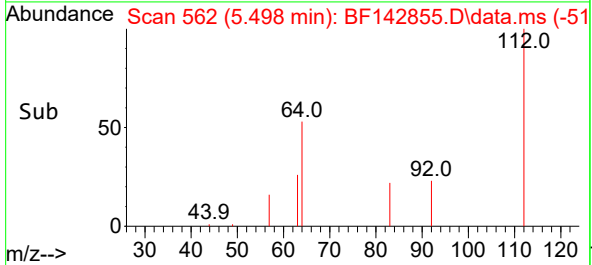
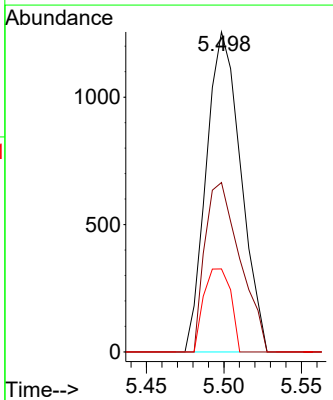
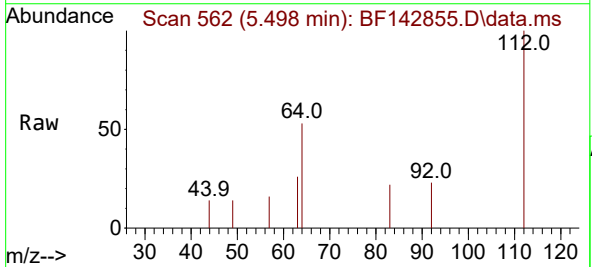
Instrument :
 BNA_F
 ClientSampleId :
 LAW-25-0093

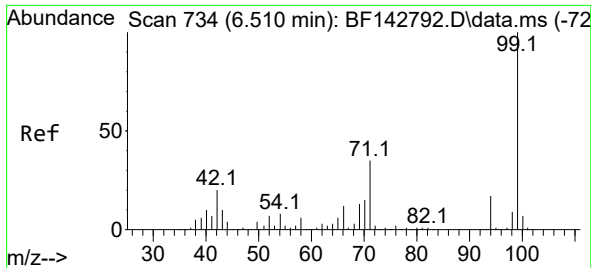
Tgt Ion:152 Resp: 53692
 Ion Ratio Lower Upper
 152 100
 150 158.3 127.2 190.8
 115 58.4 46.6 69.8



#5
 2-Fluorophenol
 Concen: 0.604 ng
 RT: 5.498 min Scan# 562
 Delta R.T. 0.006 min
 Lab File: BF142855.D
 Acq: 26 Jun 2025 00:12

Tgt Ion:112 Resp: 1948
 Ion Ratio Lower Upper
 112 100
 64 52.9 48.2 72.2
 63 26.0 25.7 38.5



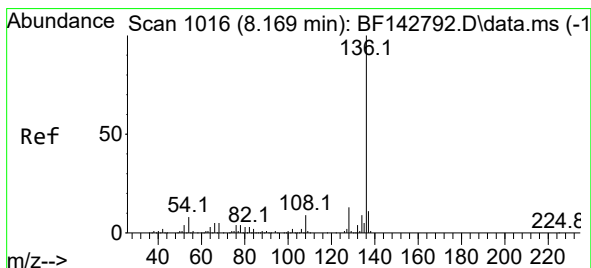
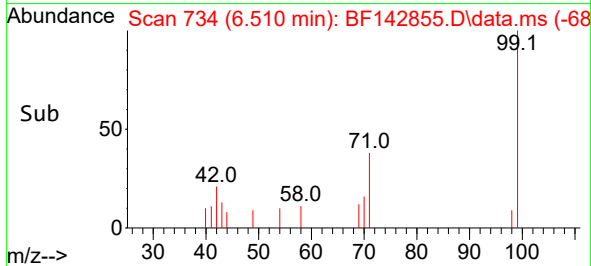
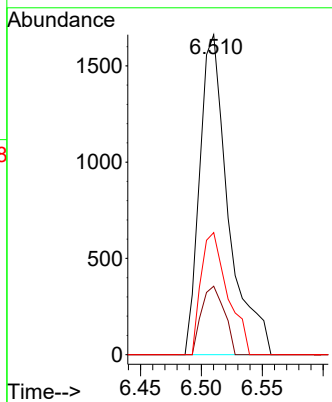
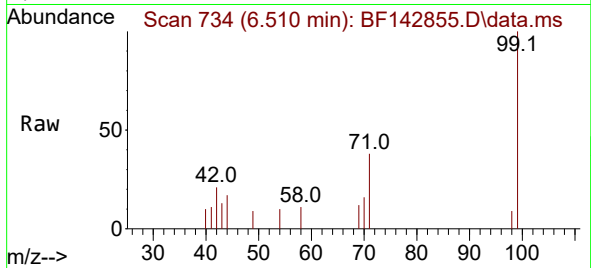


#7
 Phenol-d6
 Concen: 0.716 ng
 RT: 6.510 min Scan# 71
 Delta R.T. 0.000 min
 Lab File: BF142855.D
 Acq: 26 Jun 2025 00:12

Instrument :
 BNA_F
 ClientSampleId :
 LAW-25-0093

Tgt Ion: 99 Resp: 2724

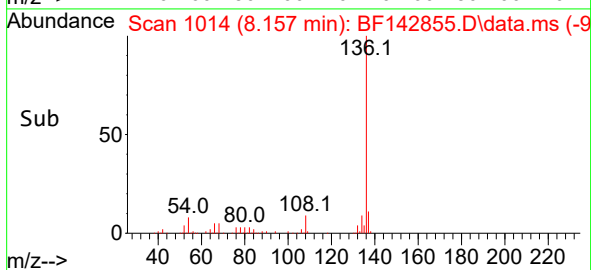
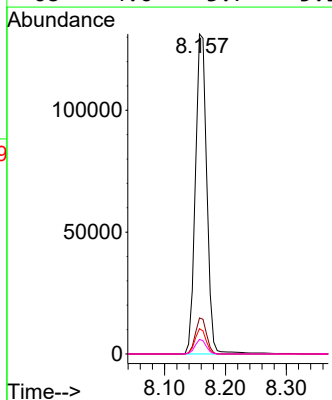
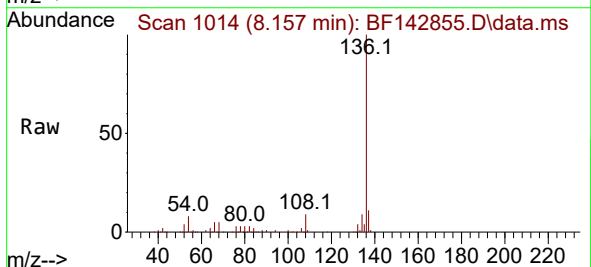
Ion	Ratio	Lower	Upper
99	100		
42	21.4	15.9	23.9
71	38.1	27.8	41.8

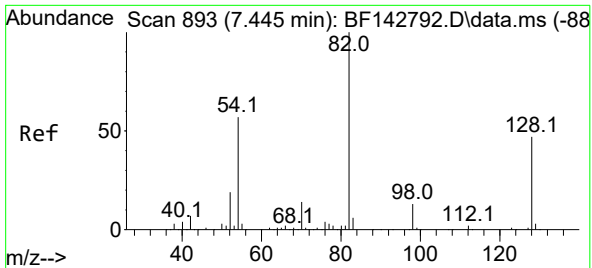


#21
 Naphthalene-d8
 Concen: 20.000 ng
 RT: 8.157 min Scan# 1014
 Delta R.T. -0.012 min
 Lab File: BF142855.D
 Acq: 26 Jun 2025 00:12

Tgt Ion: 136 Resp: 171136

Ion	Ratio	Lower	Upper
136	100		
137	11.2	8.4	12.6
54	7.9	6.3	9.5
68	4.6	3.7	5.5



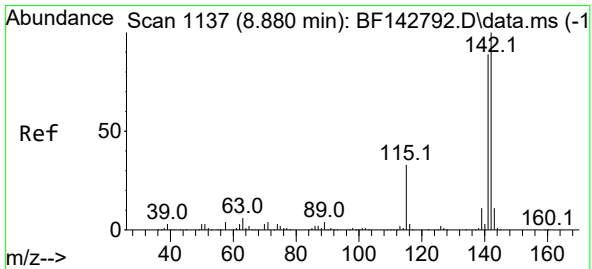
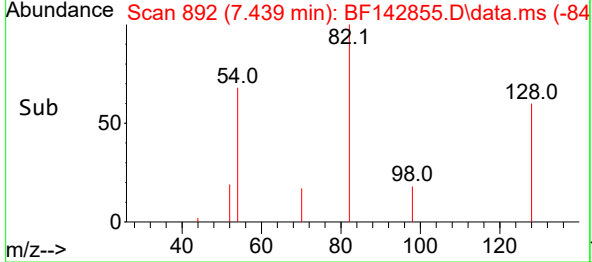
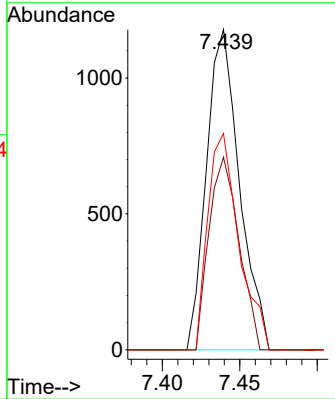
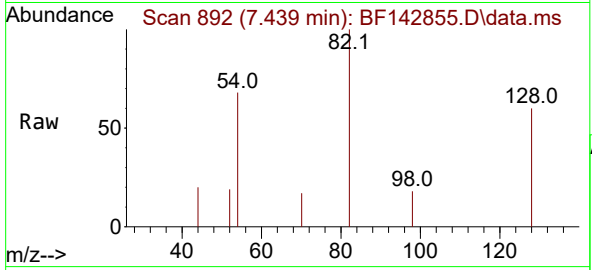


#23
 Nitrobenzene-d5
 Concen: 0.559 ng
 RT: 7.439 min Scan# 891
 Delta R.T. -0.006 min
 Lab File: BF142855.D
 Acq: 26 Jun 2025 00:12

Instrument : BNA_F
 ClientSampleId : LAW-25-0093

Tgt Ion: 82 Resp: 1744

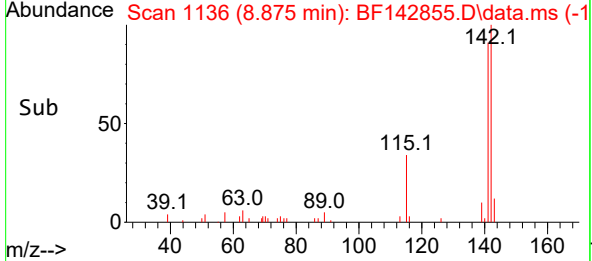
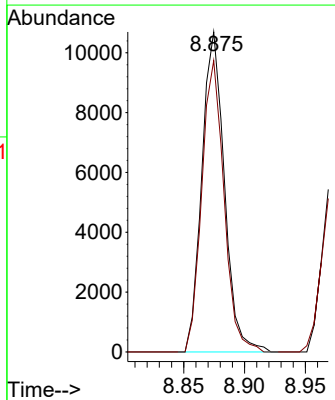
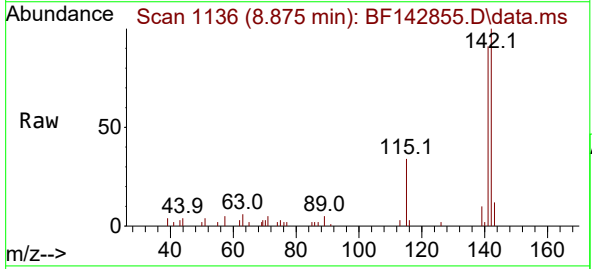
Ion	Ratio	Lower	Upper
82	100		
128	60.1	37.7	56.5#
54	67.6	45.7	68.5

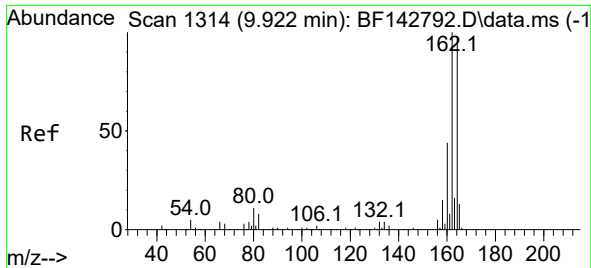


#37
 2-Methylnaphthalene
 Concen: 2.657 ng
 RT: 8.875 min Scan# 1136
 Delta R.T. -0.006 min
 Lab File: BF142855.D
 Acq: 26 Jun 2025 00:12

Tgt Ion: 142 Resp: 13799

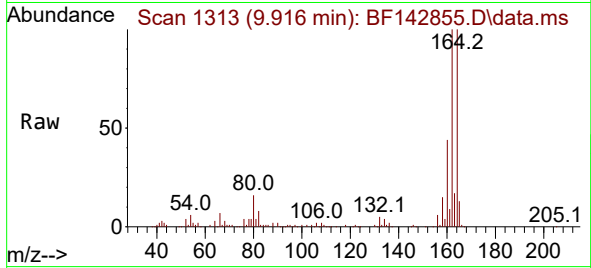
Ion	Ratio	Lower	Upper
142	100		
141	91.1	70.9	106.3



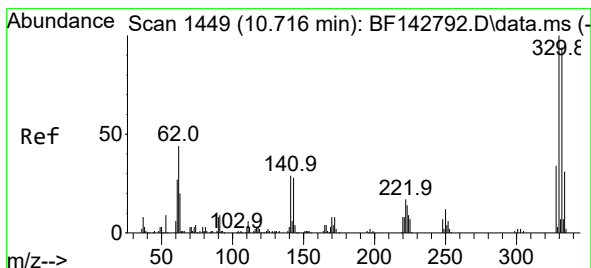
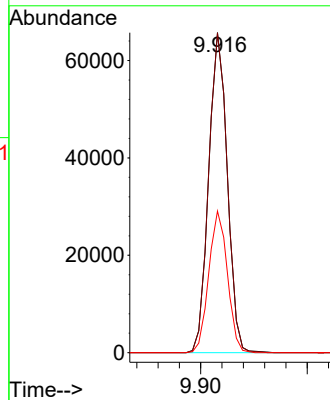
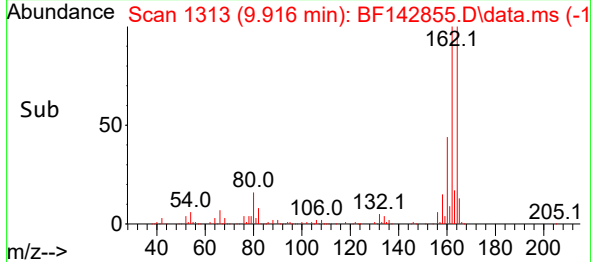


#39
 Acenaphthene-d10
 Concen: 20.000 ng
 RT: 9.916 min Scan# 11
 Delta R.T. -0.006 min
 Lab File: BF142855.D
 Acq: 26 Jun 2025 00:12

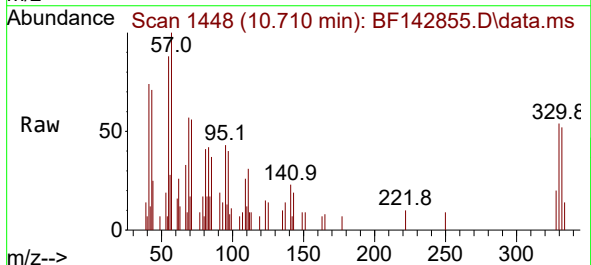
Instrument :
 BNA_F
 ClientSampleId :
 LAW-25-0093



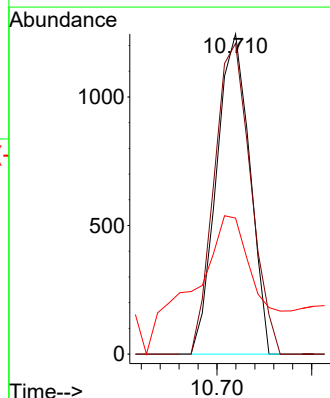
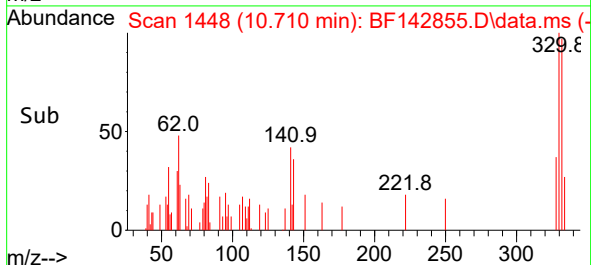
Tgt Ion:164 Resp: 79909
 Ion Ratio Lower Upper
 164 100
 162 100.0 81.8 122.8
 160 44.2 36.0 54.0

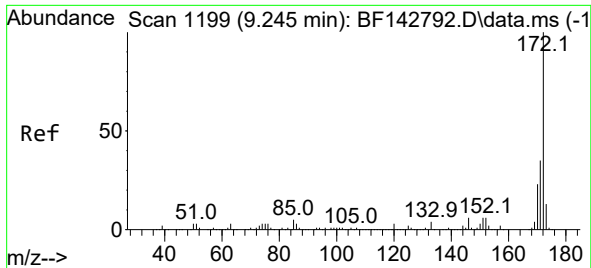


#42
 2,4,6-Tribromophenol
 Concen: 1.847 ng
 RT: 10.710 min Scan# 1448
 Delta R.T. -0.006 min
 Lab File: BF142855.D
 Acq: 26 Jun 2025 00:12



Tgt Ion:330 Resp: 1519
 Ion Ratio Lower Upper
 330 100
 332 106.6 75.0 112.6
 141 81.8 25.3 37.9#





#45
 2-Fluorobiphenyl
 Concen: 1.321 ng
 RT: 9.233 min Scan# 1197
 Delta R.T. -0.012 min
 Lab File: BF142855.D
 Acq: 26 Jun 2025 00:12

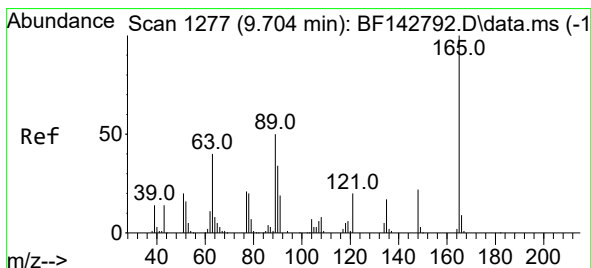
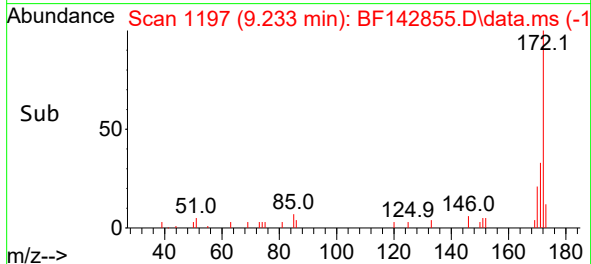
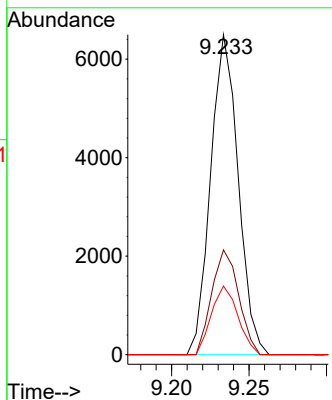
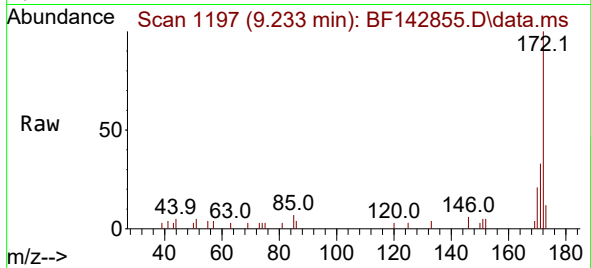
Instrument :

BNA_F

ClientSampleId :

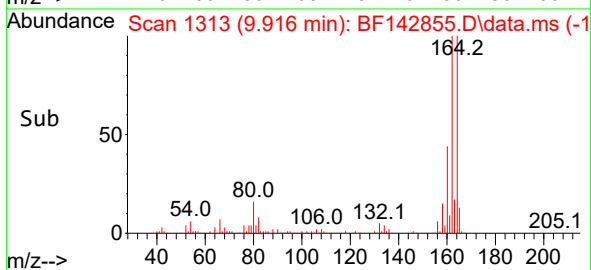
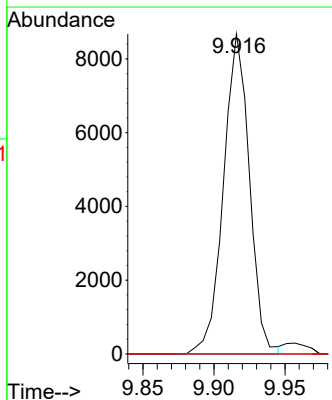
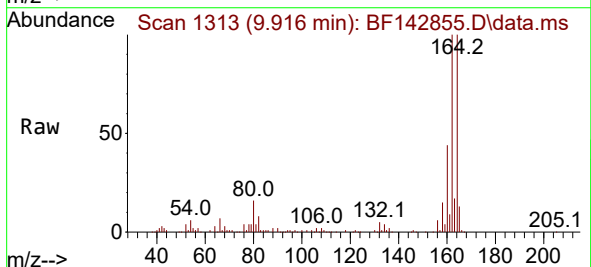
LAW-25-0093

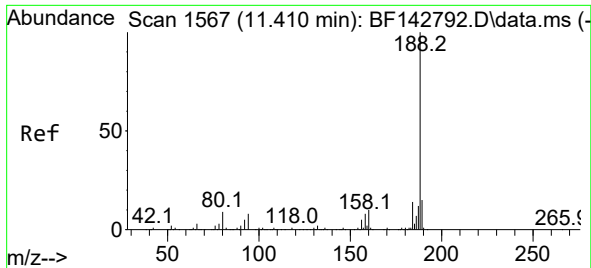
Tgt Ion:172 Resp: 8033
 Ion Ratio Lower Upper
 172 100
 171 32.7 28.2 42.4
 170 21.4 18.5 27.7



#51
 2,6-Dinitrotoluene
 Concen: 9.704 ng
 RT: 9.916 min Scan# 1313
 Delta R.T. 0.212 min
 Lab File: BF142855.D
 Acq: 26 Jun 2025 00:12

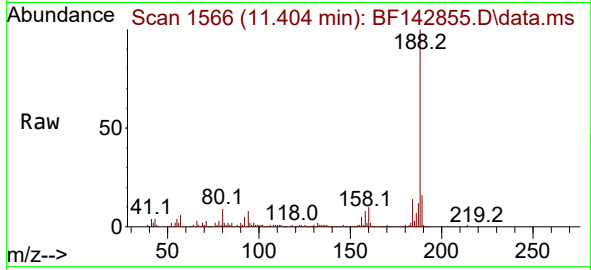
Tgt Ion:165 Resp: 11023
 Ion Ratio Lower Upper
 165 100
 63 0.0 44.2 66.4#
 89 0.0 39.8 59.8#





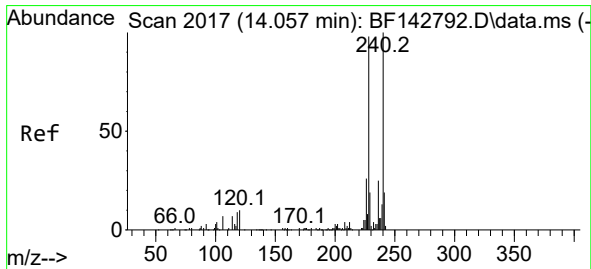
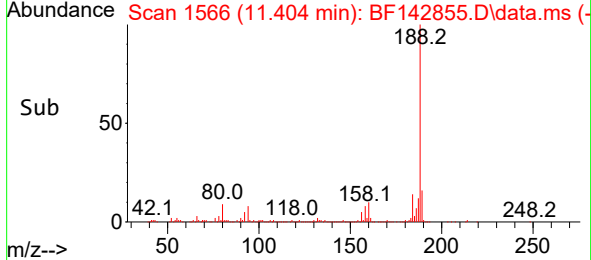
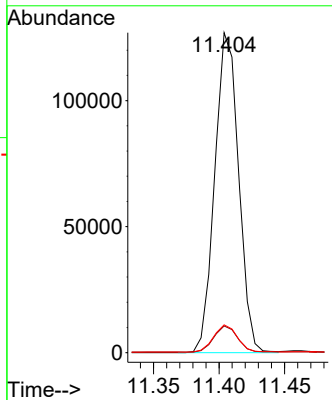
#64
 Phenanthrene-d10
 Concen: 20.000 ng
 RT: 11.404 min Scan# 111
 Delta R.T. -0.006 min
 Lab File: BF142855.D
 Acq: 26 Jun 2025 00:12

Instrument : BNA_F
 ClientSampleId : LAW-25-0093



Tgt Ion:188 Resp: 160529

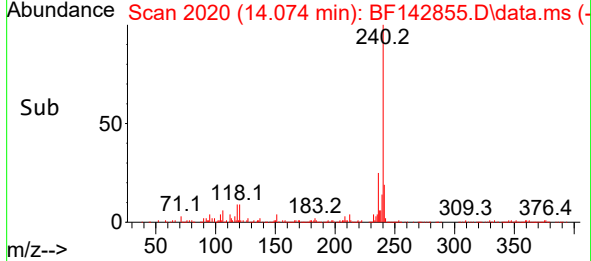
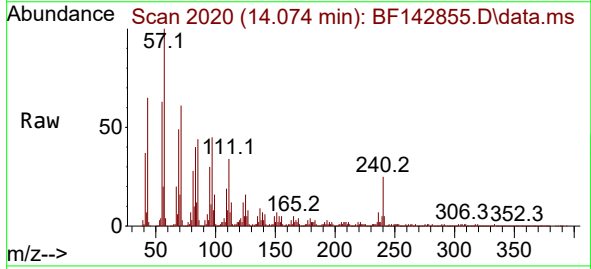
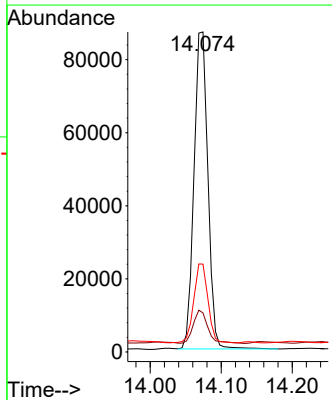
Ion	Ratio	Lower	Upper
188	100		
94	8.4	6.7	10.1
80	8.7	6.9	10.3

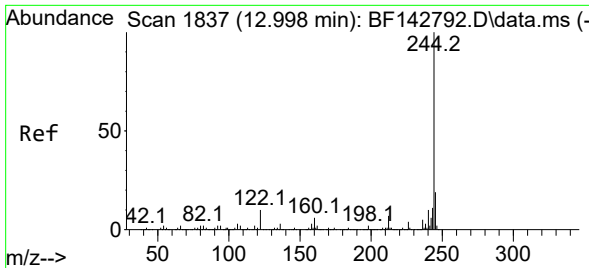


#76
 Chrysene-d12
 Concen: 20.000 ng
 RT: 14.074 min Scan# 2020
 Delta R.T. 0.018 min
 Lab File: BF142855.D
 Acq: 26 Jun 2025 00:12

Tgt Ion:240 Resp: 118338

Ion	Ratio	Lower	Upper
240	100		
120	12.2	8.2	12.2
236	27.5	19.8	29.8

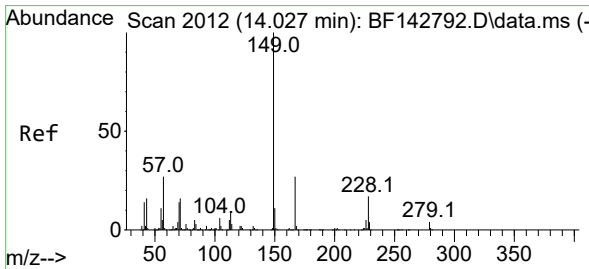
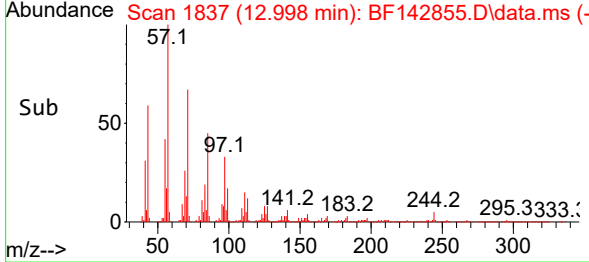
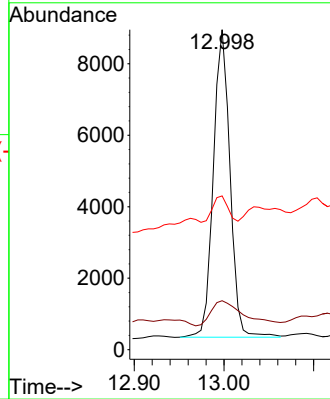
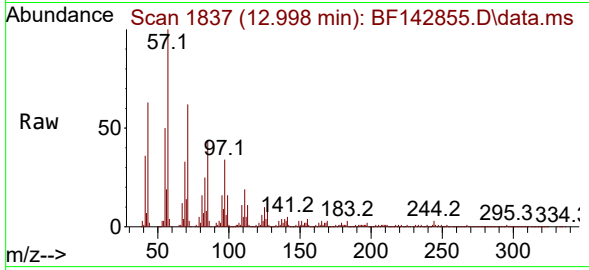




#79
 Terphenyl-d14
 Concen: 1.296 ng
 RT: 12.998 min Scan# 11
 Delta R.T. -0.000 min
 Lab File: BF142855.D
 Acq: 26 Jun 2025 00:12

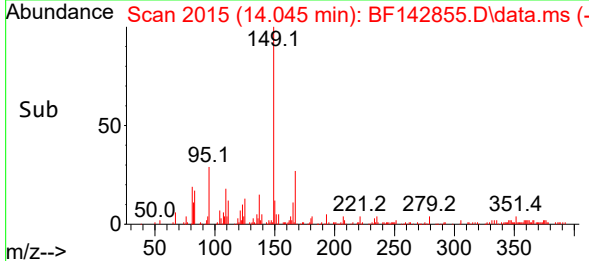
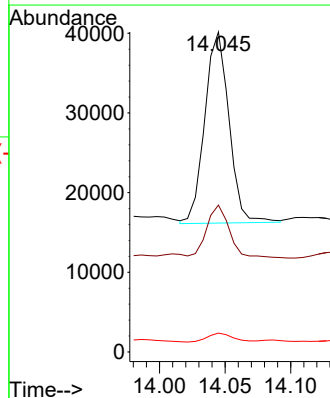
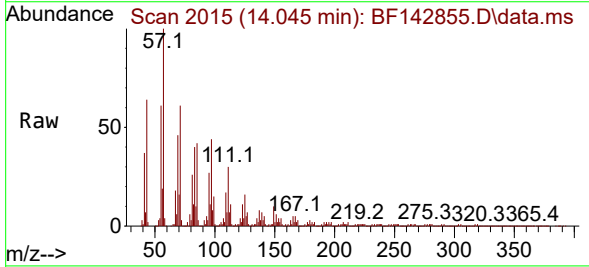
Instrument :
 BNA_F
 ClientSampleId :
 LAW-25-0093

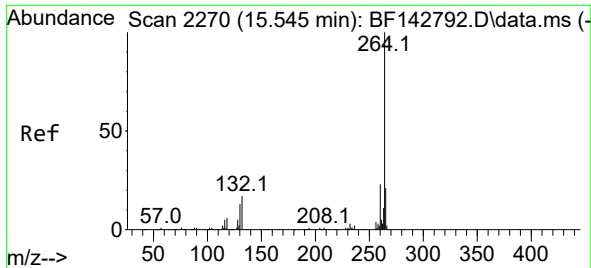
Tgt Ion	Resp	Lower	Upper
244	100		
212	15.3	5.4	8.0#
122	48.1	8.2	12.2#



#84
 Bis(2-ethylhexyl)phthalate
 Concen: 6.663 ng
 RT: 14.045 min Scan# 2015
 Delta R.T. 0.018 min
 Lab File: BF142855.D
 Acq: 26 Jun 2025 00:12

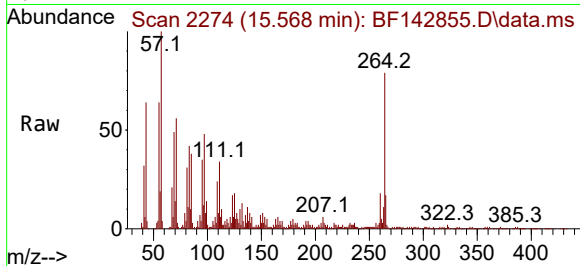
Tgt Ion	Resp	Lower	Upper
149	100		
167	45.9	21.4	32.0#
279	5.9	3.0	4.6#





#86
 Perylene-d12
 Concen: 20.000 ng
 RT: 15.568 min Scan# 21
 Delta R.T. 0.024 min
 Lab File: BF142855.D
 Acq: 26 Jun 2025 00:12

Instrument :
 BNA_F
 ClientSampleId :
 LAW-25-0093



Tgt Ion:264 Resp: 88726

Ion	Ratio	Lower	Upper
264	100		
260	22.6	18.1	27.1
265	21.9	16.6	25.0

