

Data Path : Z:\svoasrv\HPCHEM1\BNA\_F\Data\BF062625\  
 Data File : BF142880.D  
 Acq On : 26 Jun 2025 21:02  
 Operator : RC/JU  
 Sample : Q2419-01 2X  
 Misc :  
 ALS Vial : 25 Sample Multiplier: 1

Instrument :  
 BNA\_F  
 ClientSampleId :  
 EO-3-6-25-2025

Quant Time: Jun 27 01:22:30 2025  
 Quant Method : Z:\svoasrv\HPCHEM1\BNA\_F\Methods\8270-BF061925.M  
 Quant Title : ASP BNA STANDARDS FOR 5 POINT CALIBRATION  
 QLast Update : Tue Jun 24 05:28:21 2025  
 Response via : Initial Calibration

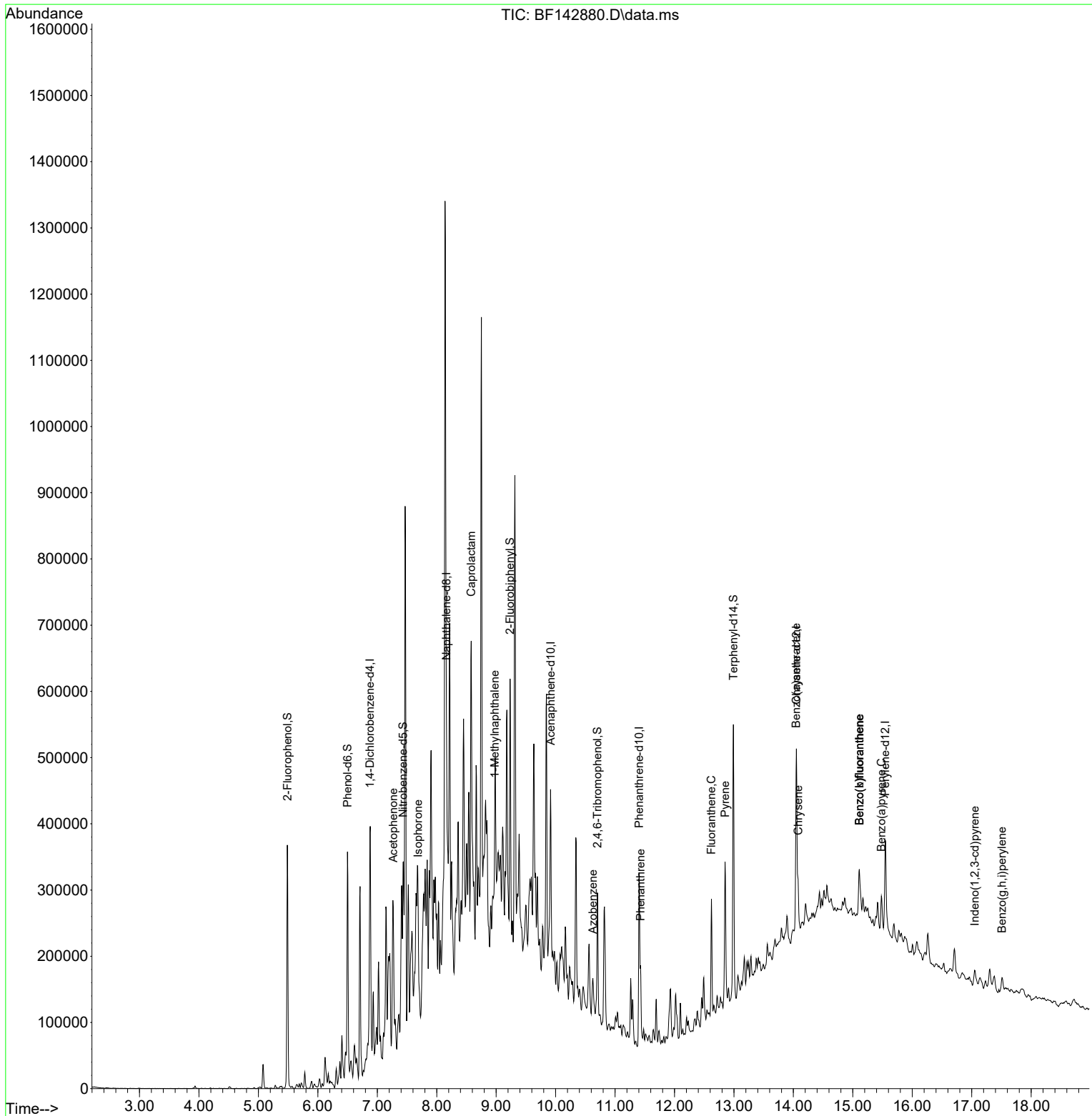
Compound	R.T.	QIon	Response	Conc	Units	Dev(Min)	
Internal Standards							
1) 1,4-Dichlorobenzene-d4	6.875	152	55299	20.000	ng	0.00	
21) Naphthalene-d8	8.163	136	175723	20.000	ng	# 0.00	
39) Acenaphthene-d10	9.916	164	76021	20.000	ng	0.00	
64) Phenanthrene-d10	11.404	188	134858	20.000	ng	0.00	
76) Chrysene-d12	14.051	240	104981	20.000	ng	0.00	
86) Perylene-d12	15.545	264	80183	20.000	ng	0.00	
System Monitoring Compounds							
5) 2-Fluorophenol	5.487	112	140489	42.298	ng	0.00	
7) Phenol-d6	6.498	99	155356	39.646	ng	-0.01	
23) Nitrobenzene-d5	7.434	82	96438	30.103	ng	-0.01	
42) 2,4,6-Tribromophenol	10.704	330	31720	40.547	ng	-0.01	
45) 2-Fluorobiphenyl	9.234	172	177100	30.604	ng	-0.01	
79) Terphenyl-d14	12.992	244	201451	26.514	ng	0.00	
Target Compounds							
22) Acetophenone	7.269	105	36201	9.342	ng	#	49
25) Isophorone	7.687	82	10727	2.087	ng	#	1
35) Caprolactam	8.581	113	15299	23.370	ng	#	1
38) 1-Methylnaphthalene	8.975	142	13108	2.375	ng		92
63) Azobenzene	10.628	77	12183	2.825	ng	#	1
71) Phenanthrene	11.428	178	59021	8.079	ng		97
75) Fluoranthene	12.622	202	97527	14.067	ng		99
78) Pyrene	12.851	202	119412	12.135	ng		98
81) Benzo(a)anthracene	14.045	228	45529	6.429	ng	#	85
83) Chrysene	14.080	228	44469	7.037	ng	#	95
87) Indeno(1,2,3-cd)pyrene	17.051	276	16399	2.685	ng	#	91
88) Benzo(b)fluoranthene	15.110	252	52288	11.270	ng	#	85
89) Benzo(k)fluoranthene	15.110	252	52288	12.046	ng	#	85
90) Benzo(a)pyrene	15.480	252	29012	6.473	ng	#	88
92) Benzo(g,h,i)perylene	17.510	276	17653	3.567	ng		93

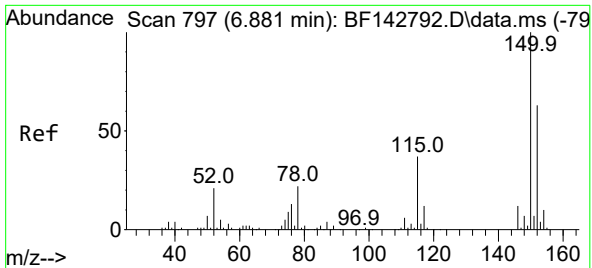
(#) = qualifier out of range (m) = manual integration (+) = signals summed

Data Path : Z:\svoasrv\HPCHEM1\BNA\_F\Data\BF062625\  
 Data File : BF142880.D  
 Acq On : 26 Jun 2025 21:02  
 Operator : RC/JU  
 Sample : Q2419-01 2X  
 Misc :  
 ALS Vial : 25 Sample Multiplier: 1

Instrument :  
 BNA\_F  
 ClientSampleId :  
 EO-3-6-25-2025

Quant Time: Jun 27 01:22:30 2025  
 Quant Method : Z:\svoasrv\HPCHEM1\BNA\_F\Methods\8270-BF061925.M  
 Quant Title : ASP BNA STANDARDS FOR 5 POINT CALIBRATION  
 QLast Update : Tue Jun 24 05:28:21 2025  
 Response via : Initial Calibration

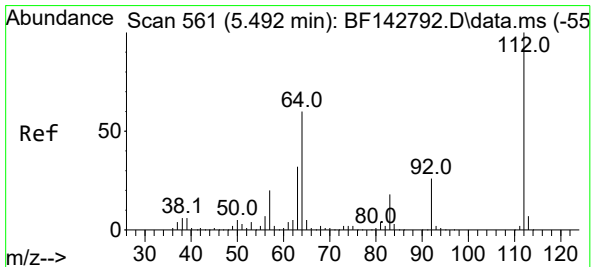
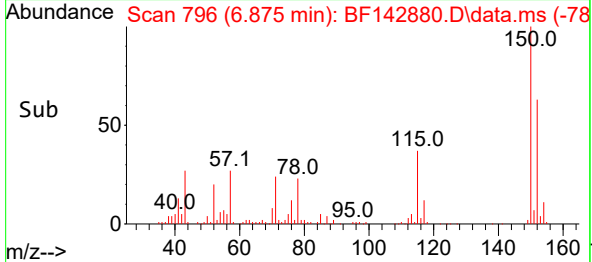
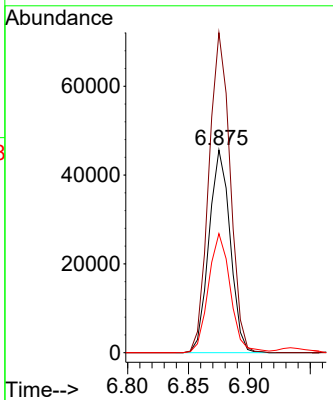
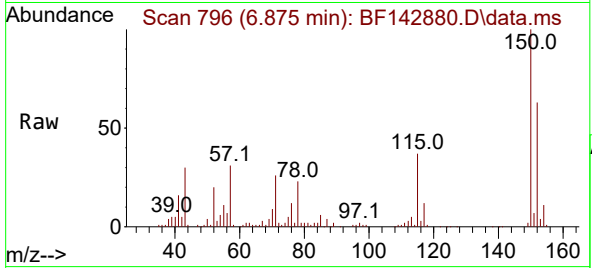




#1  
 1,4-Dichlorobenzene-d4  
 Concen: 20.000 ng  
 RT: 6.875 min Scan# 79  
 Delta R.T. -0.006 min  
 Lab File: BF142880.D  
 Acq: 26 Jun 2025 21:02

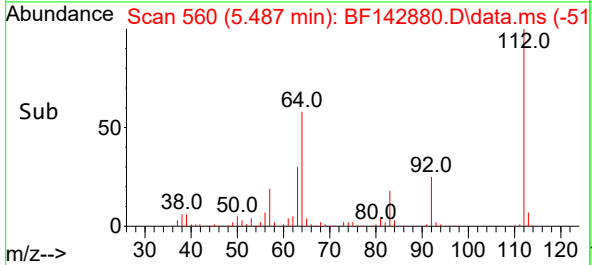
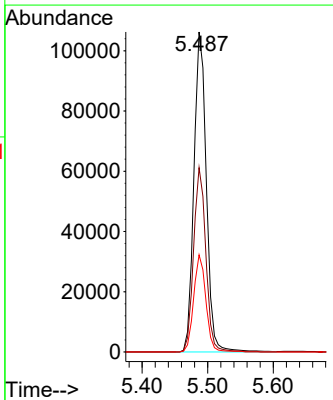
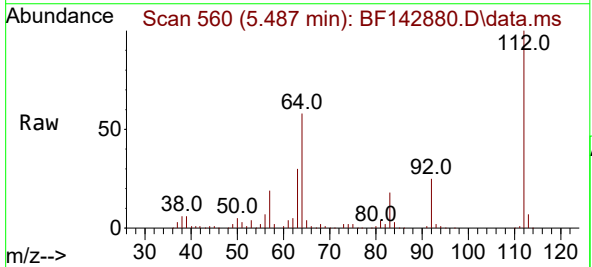
Instrument :  
 BNA\_F  
 ClientSampleId :  
 EO-3-6-25-2025

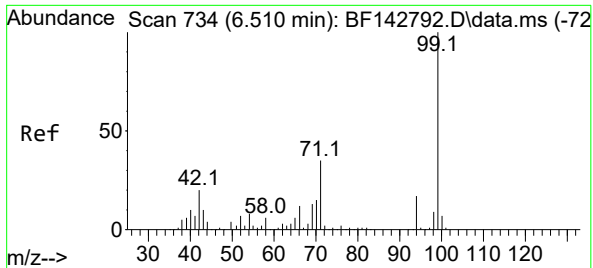
Tgt Ion:152 Resp: 55299  
 Ion Ratio Lower Upper  
 152 100  
 150 157.8 127.2 190.8  
 115 58.7 46.6 69.8



#5  
 2-Fluorophenol  
 Concen: 42.298 ng  
 RT: 5.487 min Scan# 560  
 Delta R.T. -0.005 min  
 Lab File: BF142880.D  
 Acq: 26 Jun 2025 21:02

Tgt Ion:112 Resp: 140489  
 Ion Ratio Lower Upper  
 112 100  
 64 57.6 48.2 72.2  
 63 30.3 25.7 38.5

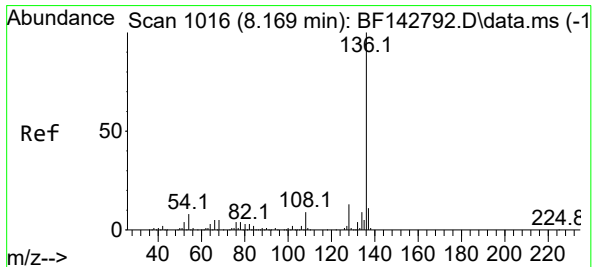
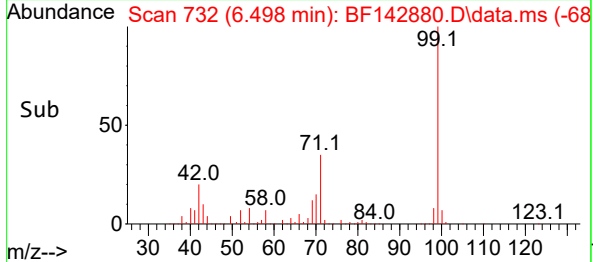
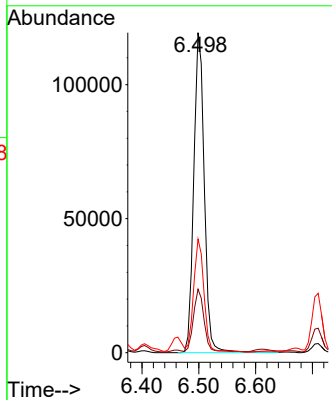
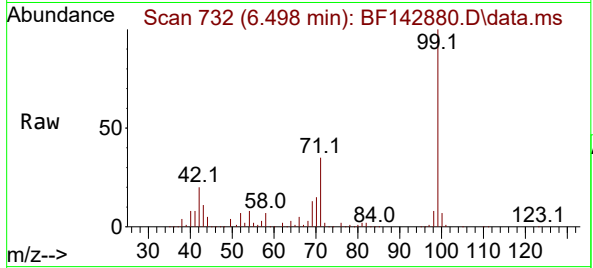




#7  
 Phenol-d6  
 Concen: 39.646 ng  
 RT: 6.498 min Scan# 71  
 Delta R.T. -0.012 min  
 Lab File: BF142880.D  
 Acq: 26 Jun 2025 21:02

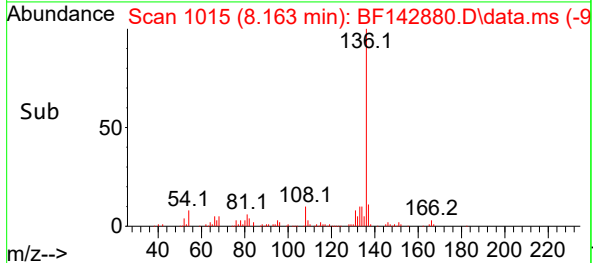
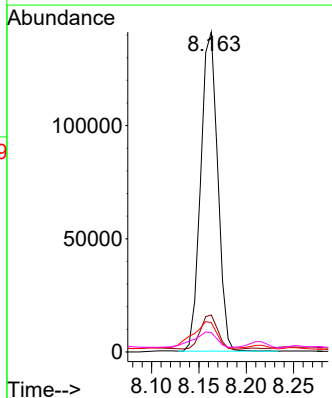
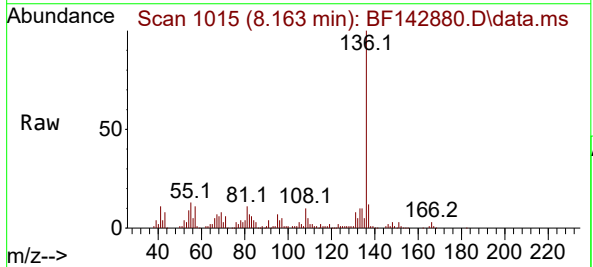
Instrument : BNA\_F  
 Client Sample Id : EO-3-6-25-2025

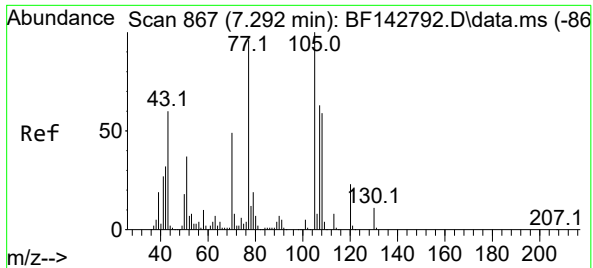
Tgt Ion	Resp	Lower	Upper
99	155356		
42	19.9	15.9	23.9
71	35.5	27.8	41.8



#21  
 Naphthalene-d8  
 Concen: 20.000 ng  
 RT: 8.163 min Scan# 1015  
 Delta R.T. -0.006 min  
 Lab File: BF142880.D  
 Acq: 26 Jun 2025 21:02

Tgt Ion	Resp	Lower	Upper
136	175723		
137	11.5	8.4	12.6
54	9.2	6.3	9.5
68	6.1	3.7	5.5



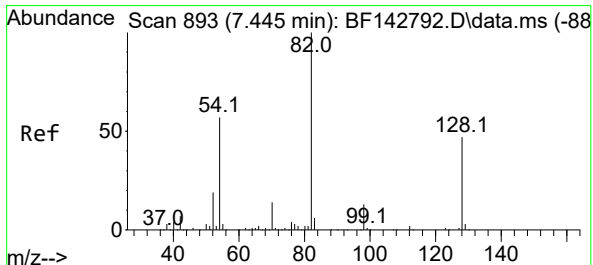
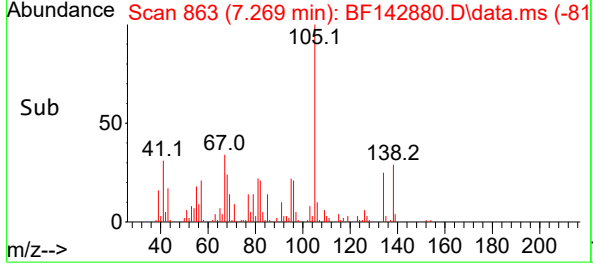
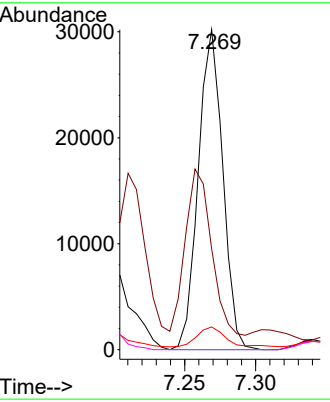
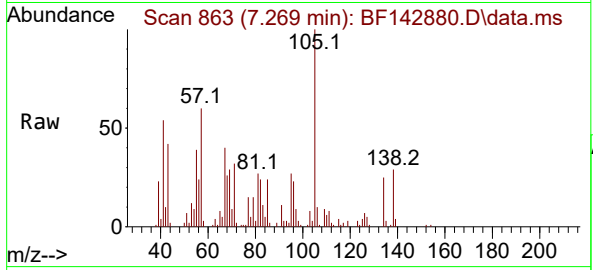


#22  
 Acetophenone  
 Concen: 9.342 ng  
 RT: 7.269 min Scan# 80  
 Delta R.T. -0.023 min  
 Lab File: BF142880.D  
 Acq: 26 Jun 2025 21:02

Instrument : BNA\_F  
 ClientSampleId : EO-3-6-25-2025

Tgt Ion: 105 Resp: 36201

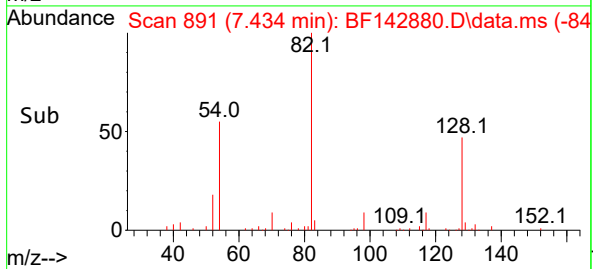
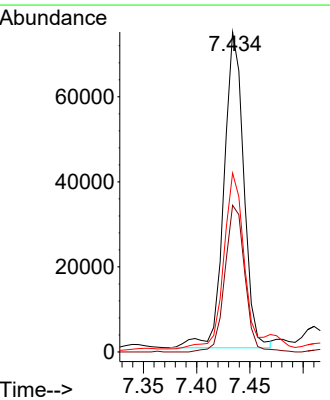
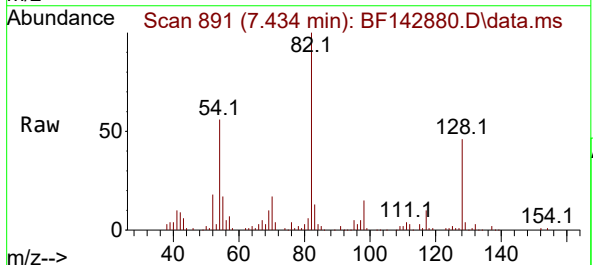
Ion	Ratio	Lower	Upper
105	100		
71	31.5	6.5	9.7#
51	7.1	29.8	44.8#
120	0.0	18.2	27.2#

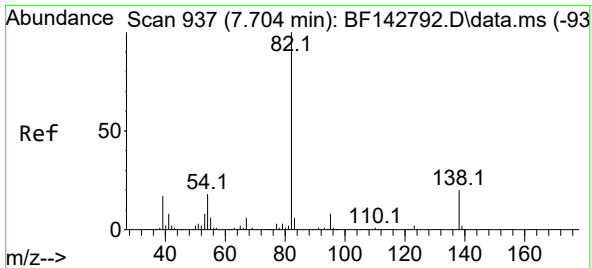


#23  
 Nitrobenzene-d5  
 Concen: 30.103 ng  
 RT: 7.434 min Scan# 891  
 Delta R.T. -0.011 min  
 Lab File: BF142880.D  
 Acq: 26 Jun 2025 21:02

Tgt Ion: 82 Resp: 96438

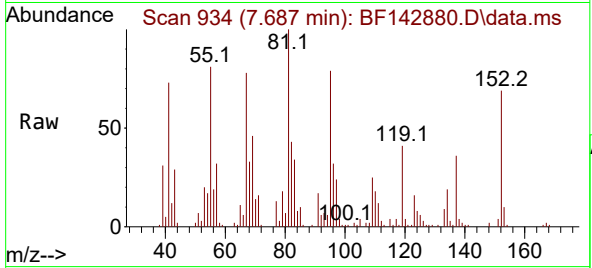
Ion	Ratio	Lower	Upper
82	100		
128	45.9	37.7	56.5
54	55.9	45.7	68.5



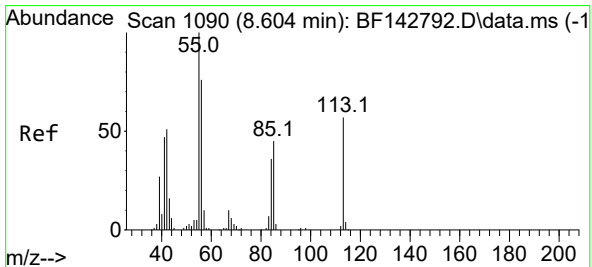
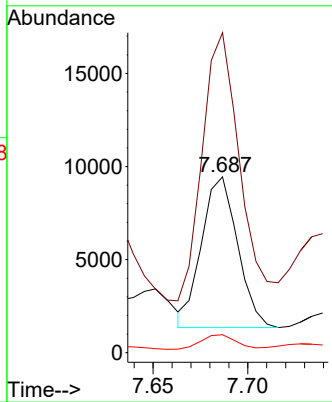
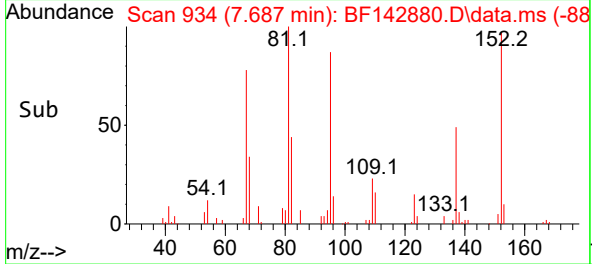


#25  
 Isophorone  
 Concen: 2.087 ng  
 RT: 7.687 min Scan# 91  
 Delta R.T. -0.017 min  
 Lab File: BF142880.D  
 Acq: 26 Jun 2025 21:02

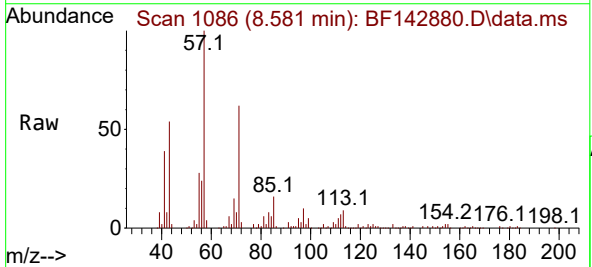
Instrument :  
 BNA\_F  
 ClientSampleId :  
 EO-3-6-25-2025



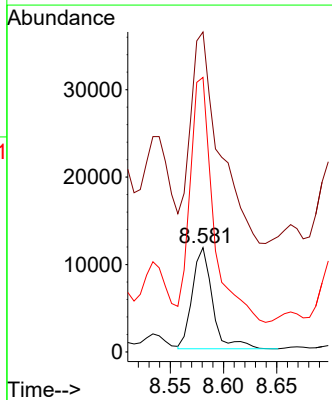
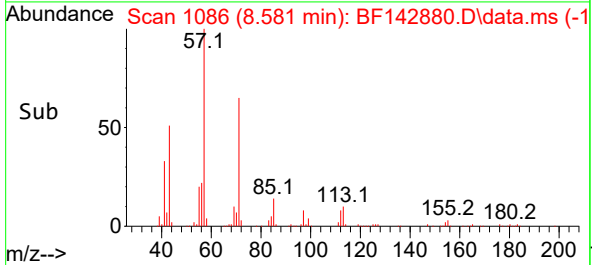
Tgt Ion: 82 Resp: 10727  
 Ion Ratio Lower Upper  
 82 100  
 95 182.0 6.2 9.2#  
 138 10.2 16.2 24.4#

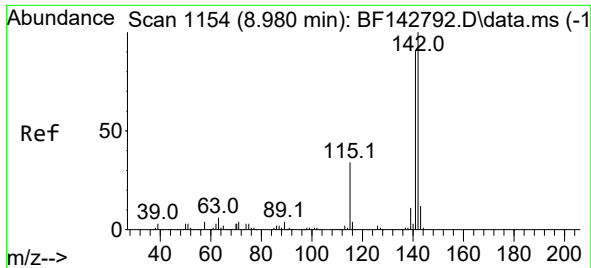


#35  
 Caprolactam  
 Concen: 23.370 ng  
 RT: 8.581 min Scan# 1086  
 Delta R.T. -0.023 min  
 Lab File: BF142880.D  
 Acq: 26 Jun 2025 21:02



Tgt Ion: 113 Resp: 15299  
 Ion Ratio Lower Upper  
 113 100  
 55 306.5 154.4 194.4#  
 56 263.0 112.1 152.1#

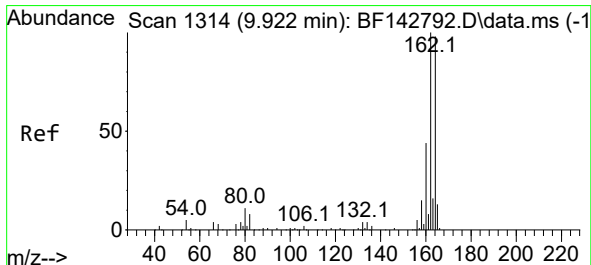
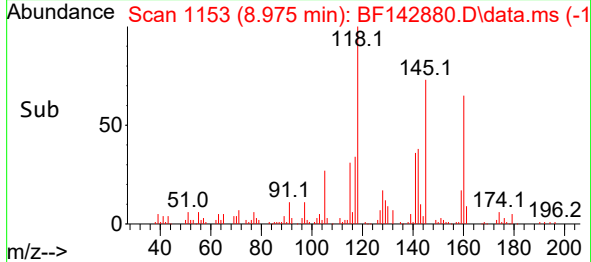
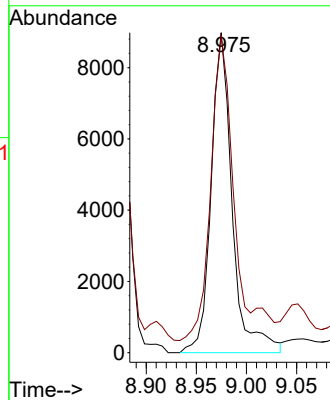
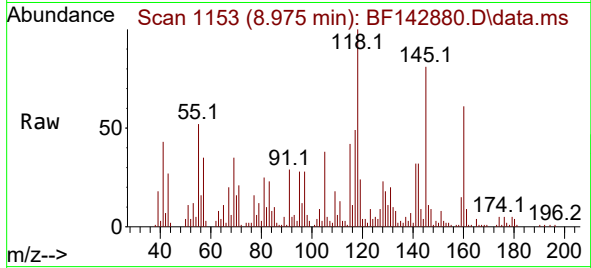




#38  
 1-Methylnaphthalene  
 Concen: 2.375 ng  
 RT: 8.975 min Scan# 1153  
 Delta R.T. -0.006 min  
 Lab File: BF142880.D  
 Acq: 26 Jun 2025 21:02

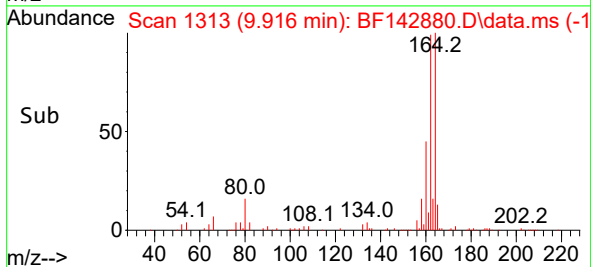
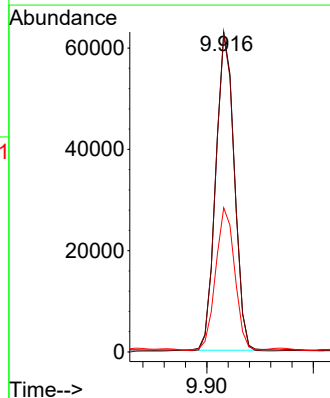
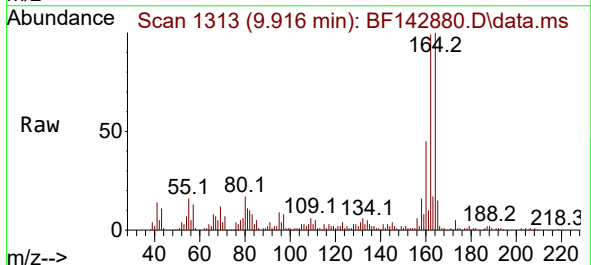
Instrument : BNA\_F  
 ClientSampleId : EO-3-6-25-2025

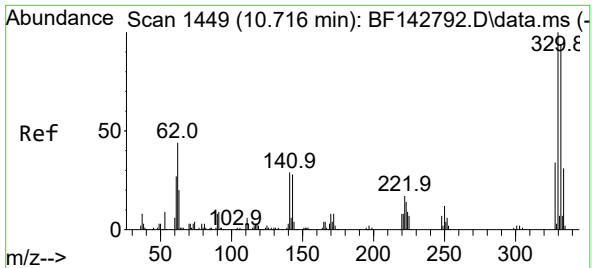
Tgt Ion:142 Resp: 13108  
 Ion Ratio Lower Upper  
 142 100  
 141 98.9 73.0 109.4



#39  
 Acenaphthene-d10  
 Concen: 20.000 ng  
 RT: 9.916 min Scan# 1313  
 Delta R.T. -0.006 min  
 Lab File: BF142880.D  
 Acq: 26 Jun 2025 21:02

Tgt Ion:164 Resp: 76021  
 Ion Ratio Lower Upper  
 164 100  
 162 99.0 81.8 122.8  
 160 45.0 36.0 54.0



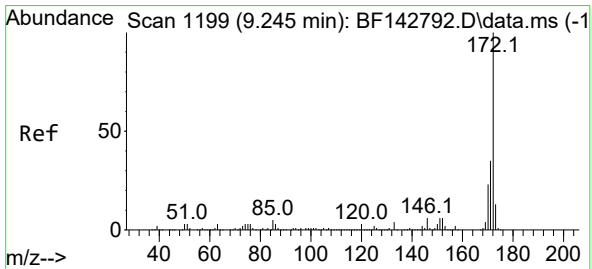
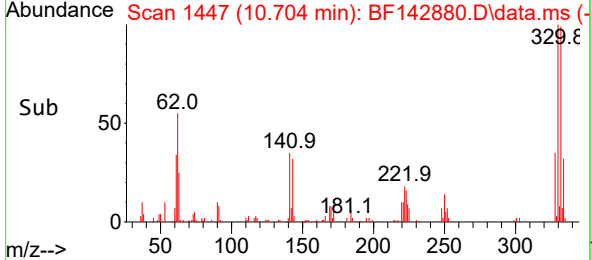
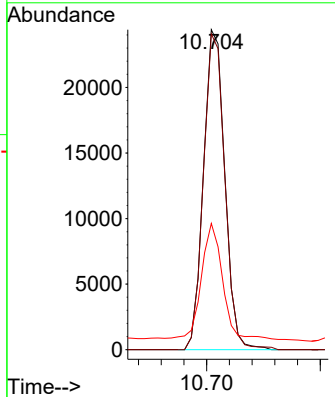
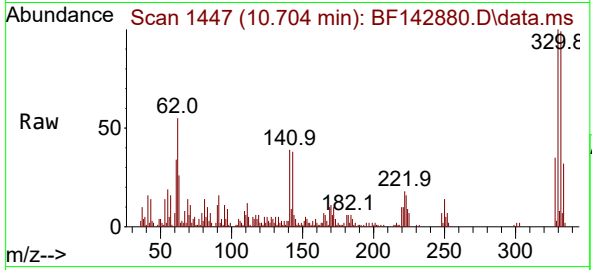


#42  
 2,4,6-Tribromophenol  
 Concen: 40.547 ng  
 RT: 10.704 min Scan# 1447  
 Delta R.T. -0.012 min  
 Lab File: BF142880.D  
 Acq: 26 Jun 2025 21:02

Instrument : BNA\_F  
 ClientSampleId : EO-3-6-25-2025

Tgt Ion:330 Resp: 31720

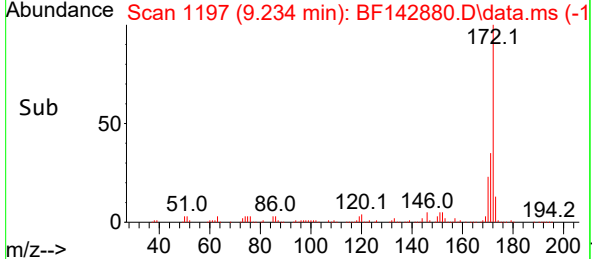
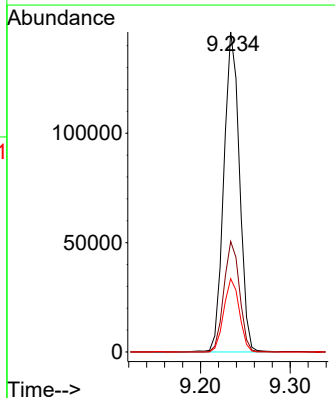
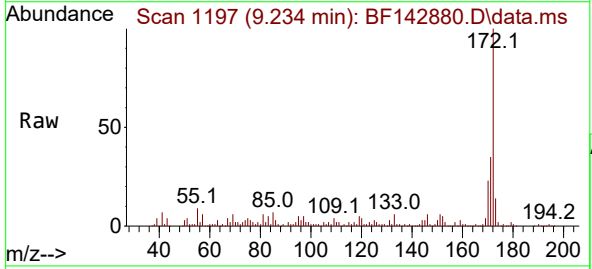
Ion	Ratio	Lower	Upper
330	100		
332	99.0	75.0	112.6
141	38.8	25.3	37.9#



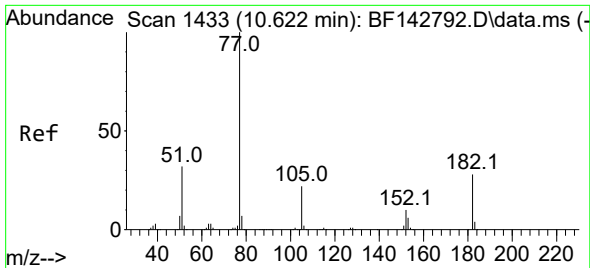
#45  
 2-Fluorobiphenyl  
 Concen: 30.604 ng  
 RT: 9.234 min Scan# 1197  
 Delta R.T. -0.011 min  
 Lab File: BF142880.D  
 Acq: 26 Jun 2025 21:02

Tgt Ion:172 Resp: 177100

Ion	Ratio	Lower	Upper
172	100		
171	34.6	28.2	42.4
170	22.9	18.5	27.7



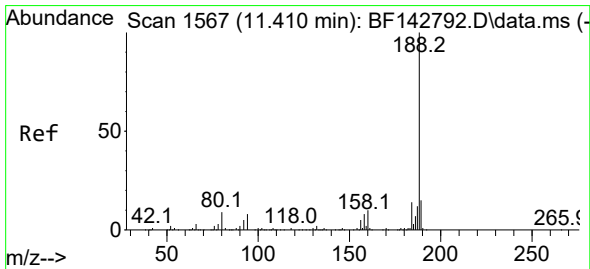
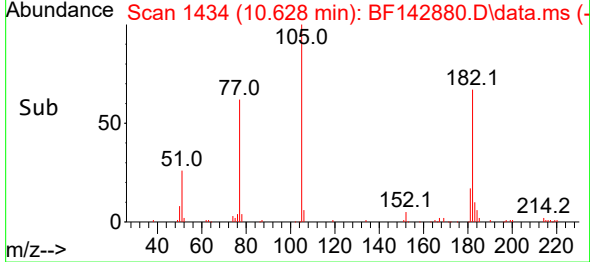
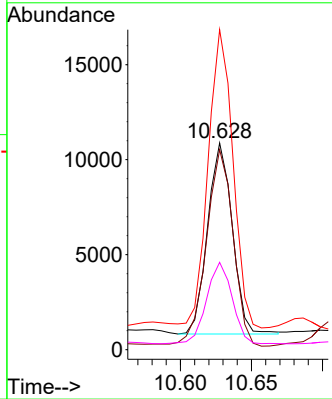
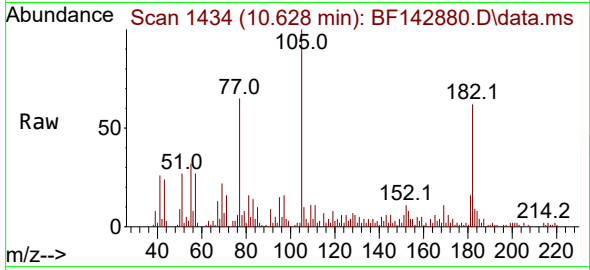




#63  
 Azobenzene  
 Concen: 2.825 ng  
 RT: 10.628 min Scan# 14  
 Delta R.T. 0.006 min  
 Lab File: BF142880.D  
 Acq: 26 Jun 2025 21:02

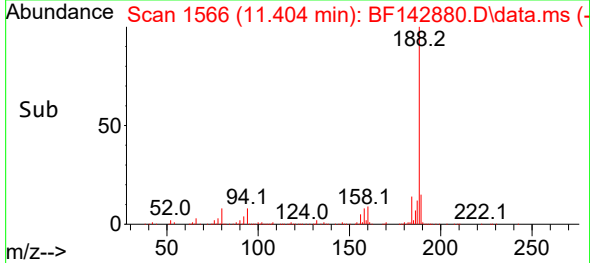
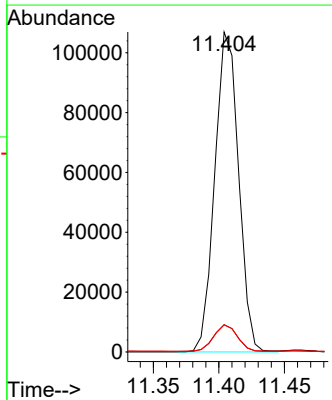
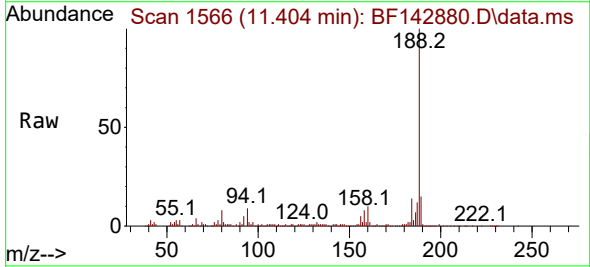
Instrument : BNA\_F  
 ClientSampleId : EO-3-6-25-2025

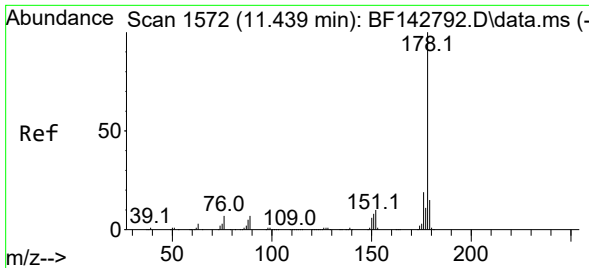
Tgt Ion	Resp	Lower	Upper
77	12183		
77	100		
182	96.7	7.7	47.7#
105	154.8	1.9	41.9#
51	42.3	13.3	53.3



#64  
 Phenanthrene-d10  
 Concen: 20.000 ng  
 RT: 11.404 min Scan# 1566  
 Delta R.T. -0.006 min  
 Lab File: BF142880.D  
 Acq: 26 Jun 2025 21:02

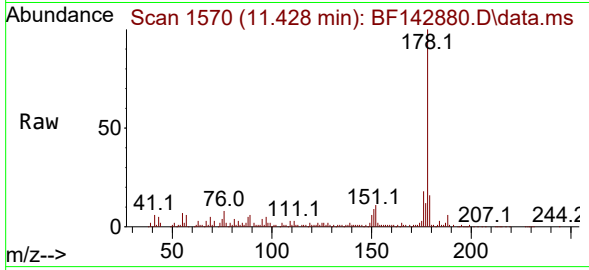
Tgt Ion	Resp	Lower	Upper
188	134858		
188	100		
94	8.5	6.7	10.1
80	8.5	6.9	10.3



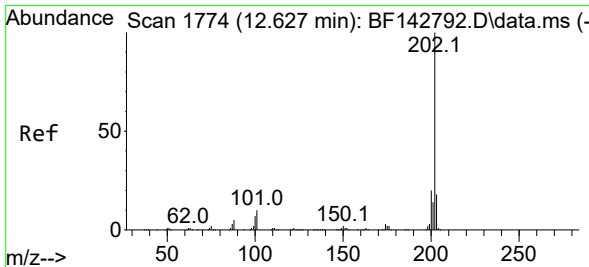
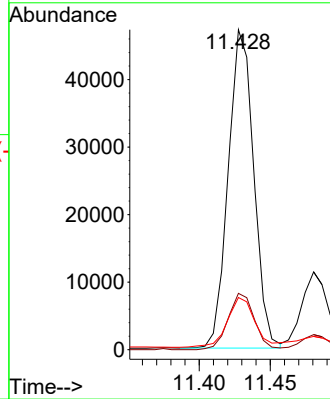
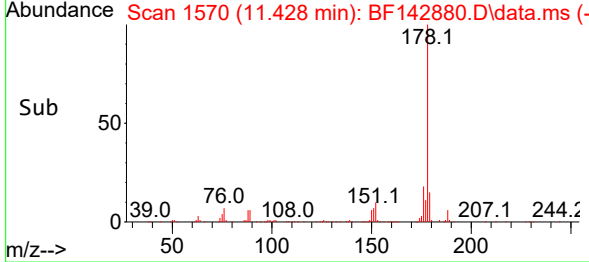


#71  
 Phenanthrene  
 Concen: 8.079 ng  
 RT: 11.428 min Scan# 11  
 Delta R.T. -0.012 min  
 Lab File: BF142880.D  
 Acq: 26 Jun 2025 21:02

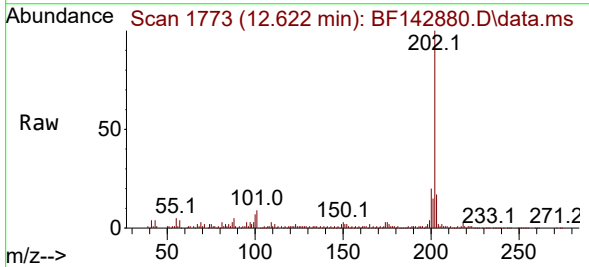
Instrument :  
 BNA\_F  
 ClientSampleId :  
 EO-3-6-25-2025



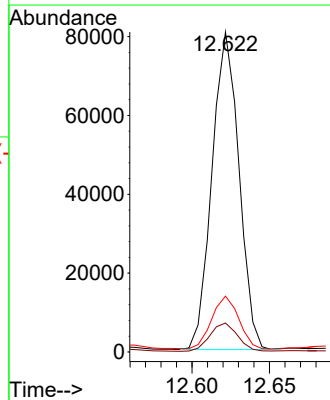
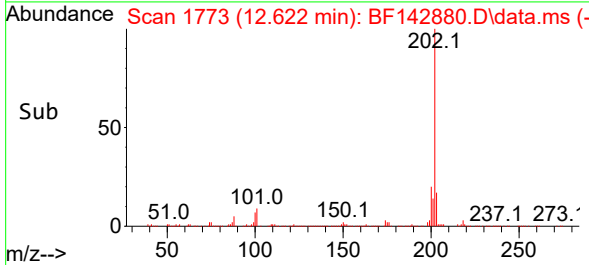
Tgt Ion:178 Resp: 59021  
 Ion Ratio Lower Upper  
 178 100  
 176 17.6 15.1 22.7  
 179 16.3 12.0 18.0

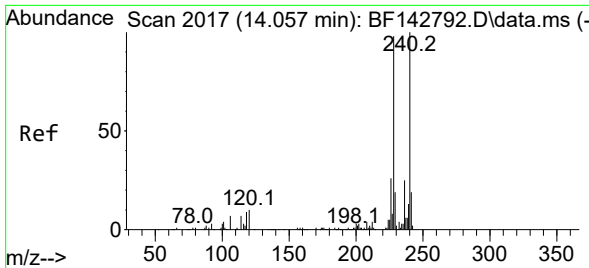


#75  
 Fluoranthene  
 Concen: 14.067 ng  
 RT: 12.622 min Scan# 1773  
 Delta R.T. -0.006 min  
 Lab File: BF142880.D  
 Acq: 26 Jun 2025 21:02



Tgt Ion:202 Resp: 97527  
 Ion Ratio Lower Upper  
 202 100  
 101 9.1 0.0 29.7  
 203 17.5 0.0 37.5



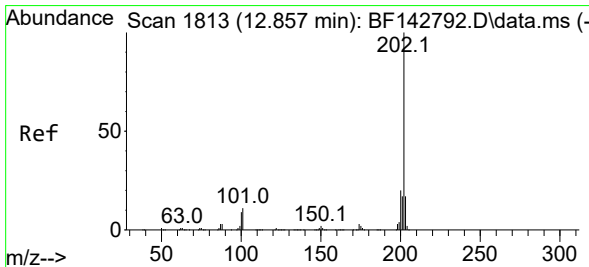
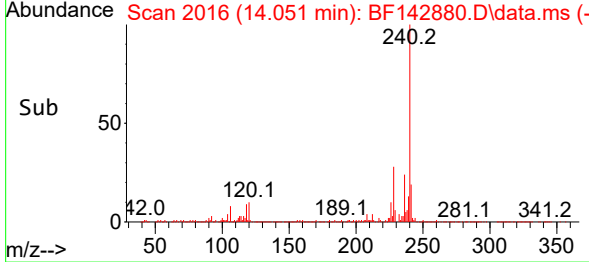
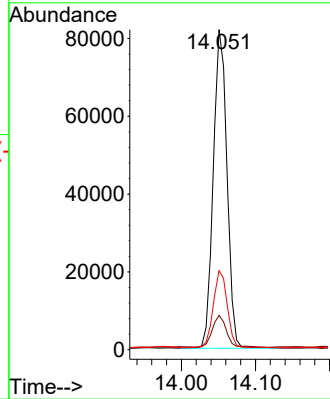
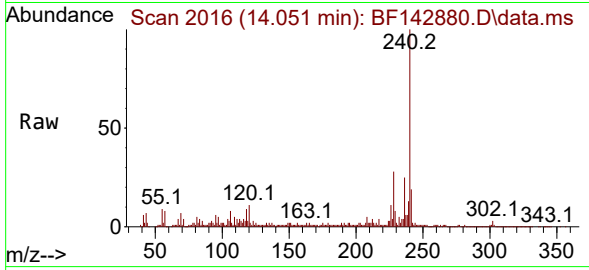


#76  
 Chrysene-d12  
 Concen: 20.000 ng  
 RT: 14.051 min Scan# 2016  
 Delta R.T. -0.006 min  
 Lab File: BF142880.D  
 Acq: 26 Jun 2025 21:02

Instrument : BNA\_F  
 ClientSampleId : EO-3-6-25-2025

Tgt Ion:240 Resp: 104981

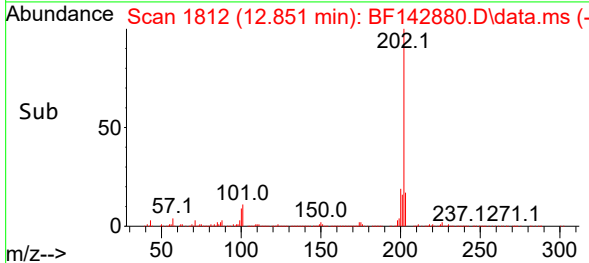
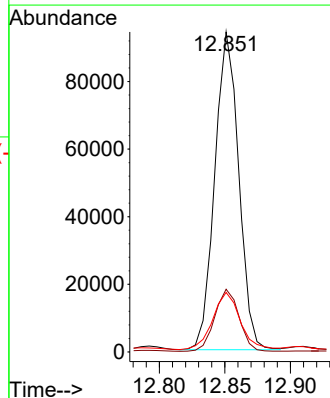
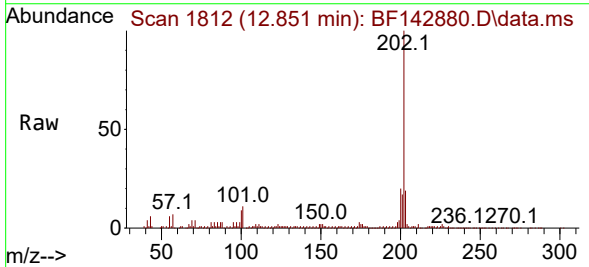
Ion	Ratio	Lower	Upper
240	100		
120	10.7	8.2	12.2
236	24.7	19.8	29.8

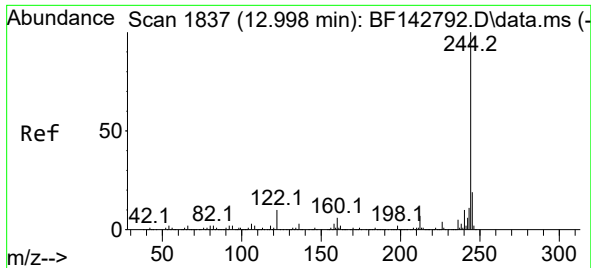


#78  
 Pyrene  
 Concen: 12.135 ng  
 RT: 12.851 min Scan# 1812  
 Delta R.T. -0.006 min  
 Lab File: BF142880.D  
 Acq: 26 Jun 2025 21:02

Tgt Ion:202 Resp: 119412

Ion	Ratio	Lower	Upper
202	100		
200	19.6	15.7	23.5
203	18.6	13.8	20.6



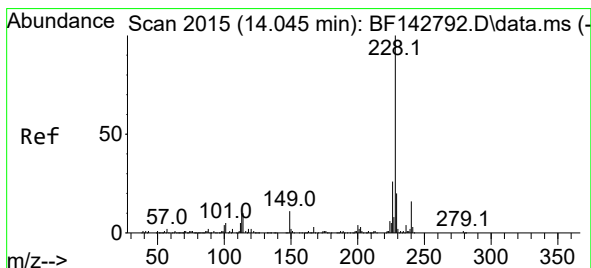
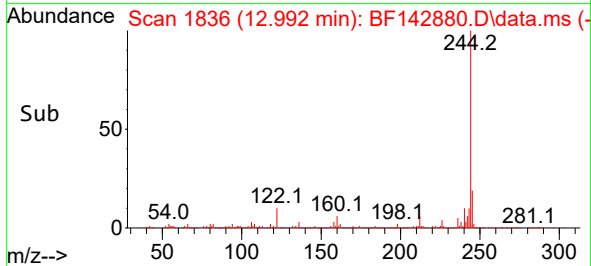
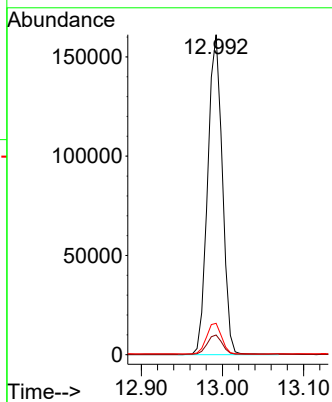
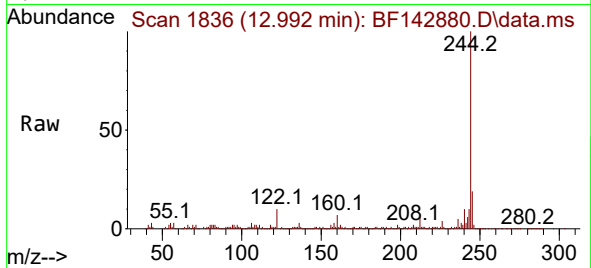


#79  
 Terphenyl-d14  
 Concen: 26.514 ng  
 RT: 12.992 min Scan# 1836  
 Delta R.T. -0.006 min  
 Lab File: BF142880.D  
 Acq: 26 Jun 2025 21:02

Instrument : BNA\_F  
 ClientSampleId : EO-3-6-25-2025

Tgt Ion:244 Resp: 201451

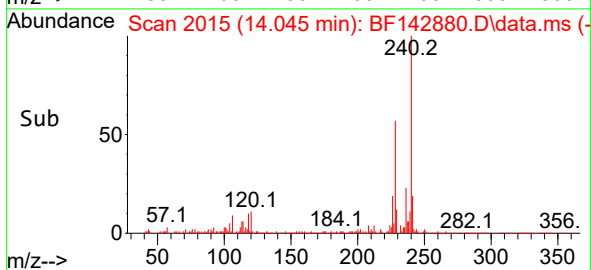
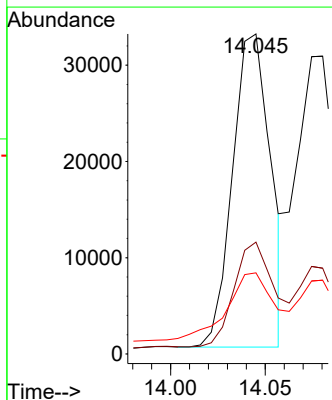
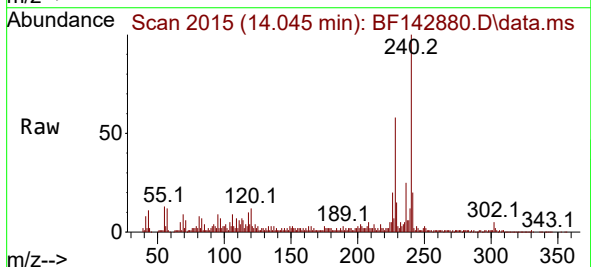
Ion	Ratio	Lower	Upper
244	100		
212	6.2	5.4	8.0
122	9.8	8.2	12.2

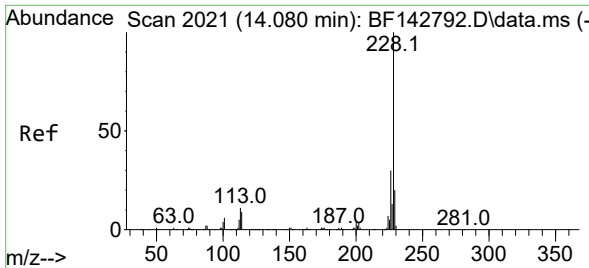


#81  
 Benzo(a)anthracene  
 Concen: 6.429 ng  
 RT: 14.045 min Scan# 2015  
 Delta R.T. 0.000 min  
 Lab File: BF142880.D  
 Acq: 26 Jun 2025 21:02

Tgt Ion:228 Resp: 45529

Ion	Ratio	Lower	Upper
228	100		
226	35.0	21.2	31.8#
229	25.3	15.6	23.4#

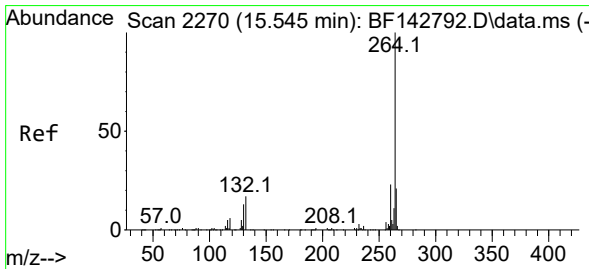
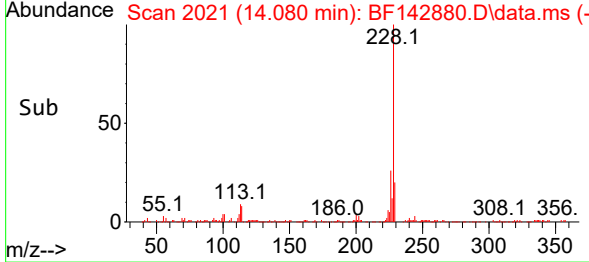
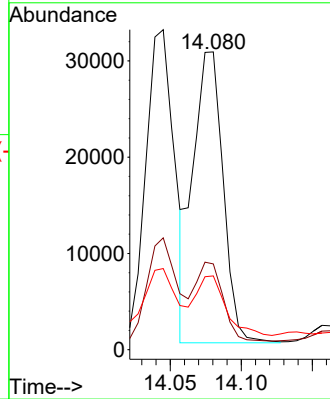
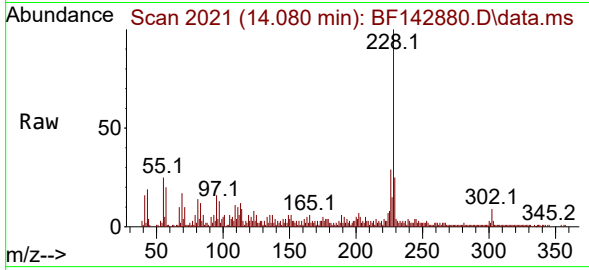




#83  
 Chrysene  
 Concen: 7.037 ng  
 RT: 14.080 min Scan# 20  
 Delta R.T. 0.000 min  
 Lab File: BF142880.D  
 Acq: 26 Jun 2025 21:02

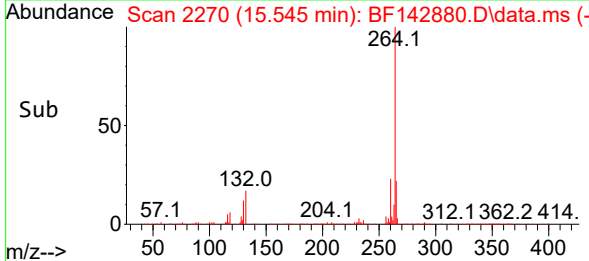
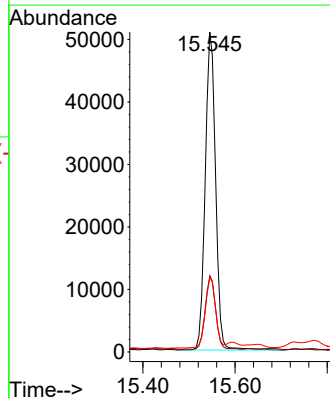
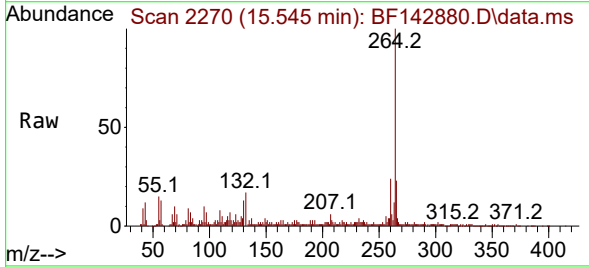
Instrument : BNA\_F  
 ClientSampleId : EO-3-6-25-2025

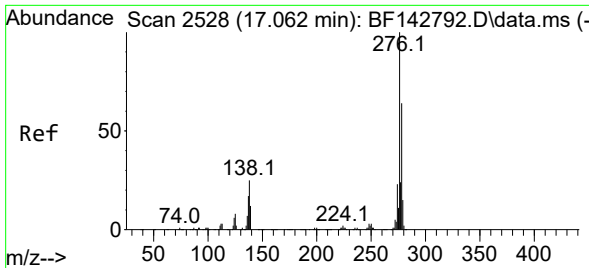
Tgt Ion	Resp	Lower	Upper
228	44469	100	100
226	28.8	23.7	35.5
229	24.8	15.7	23.5



#86  
 Perylene-d12  
 Concen: 20.000 ng  
 RT: 15.545 min Scan# 2270  
 Delta R.T. 0.000 min  
 Lab File: BF142880.D  
 Acq: 26 Jun 2025 21:02

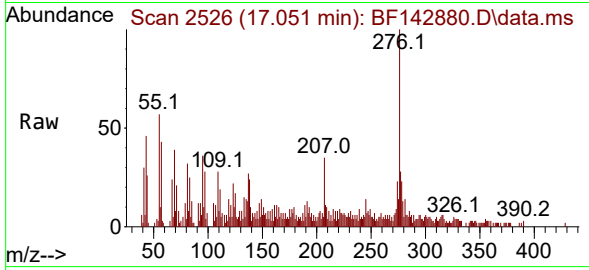
Tgt Ion	Resp	Lower	Upper
264	80183	100	100
260	23.8	18.1	27.1
265	23.3	16.6	25.0



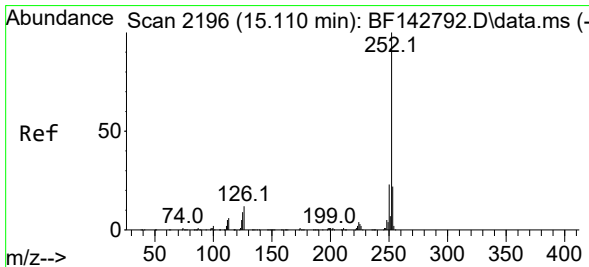
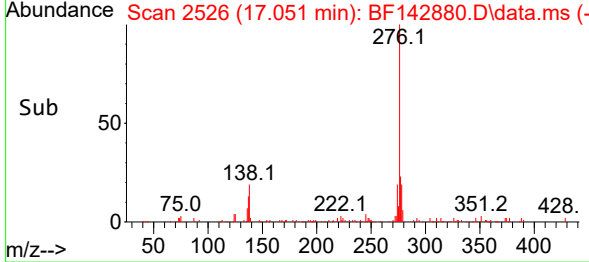
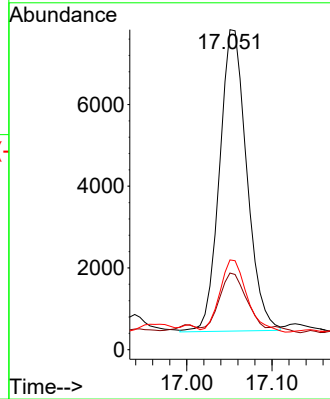


#87  
 Indeno(1,2,3-cd)pyrene  
 Concen: 2.685 ng  
 RT: 17.051 min Scan# 2111  
 Delta R.T. -0.012 min  
 Lab File: BF142880.D  
 Acq: 26 Jun 2025 21:02

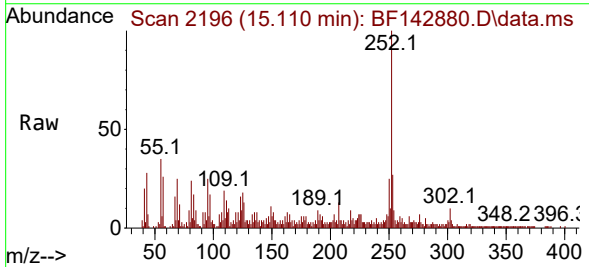
Instrument : BNA\_F  
 ClientSampleId : EO-3-6-25-2025



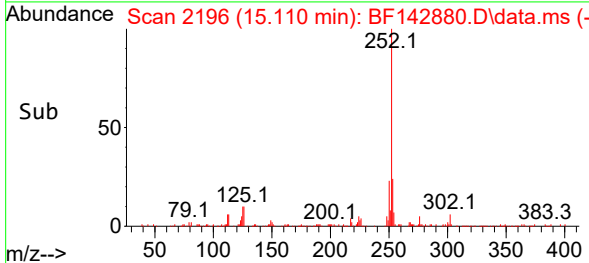
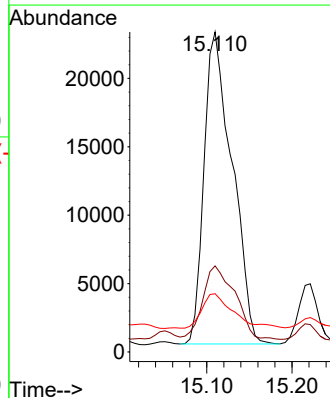
Tgt Ion: 276 Resp: 16399  
 Ion Ratio Lower Upper  
 276 100  
 138 17.5 20.2 30.4#  
 277 23.8 19.8 29.6

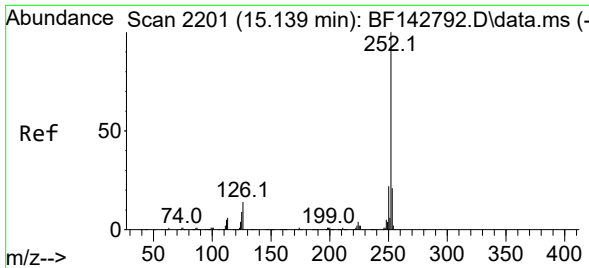


#88  
 Benzo(b)fluoranthene  
 Concen: 11.270 ng  
 RT: 15.110 min Scan# 2196  
 Delta R.T. 0.000 min  
 Lab File: BF142880.D  
 Acq: 26 Jun 2025 21:02



Tgt Ion: 252 Resp: 52288  
 Ion Ratio Lower Upper  
 252 100  
 253 26.9 17.5 26.3#  
 125 18.2 7.4 11.0#

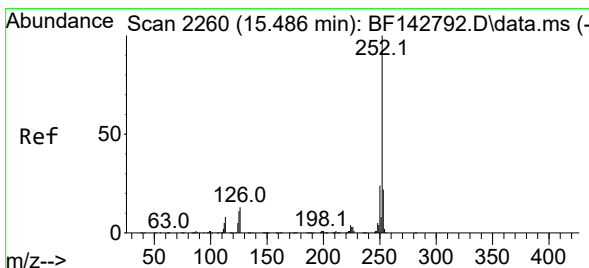
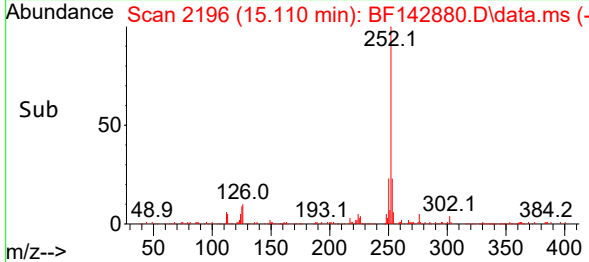
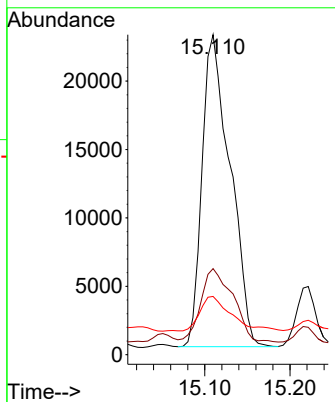
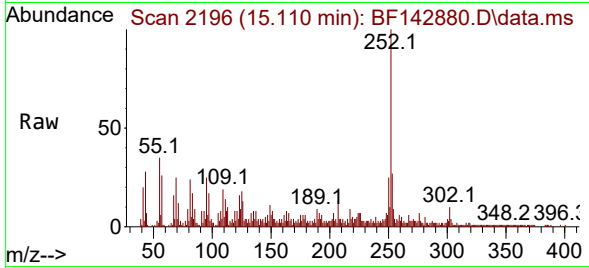




#89  
 Benzo(k)fluoranthene  
 Concen: 12.046 ng  
 RT: 15.110 min Scan# 2196  
 Delta R.T. -0.029 min  
 Lab File: BF142880.D  
 Acq: 26 Jun 2025 21:02

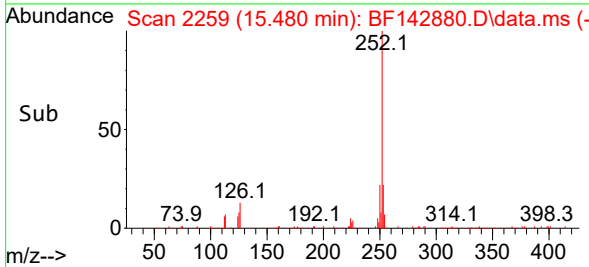
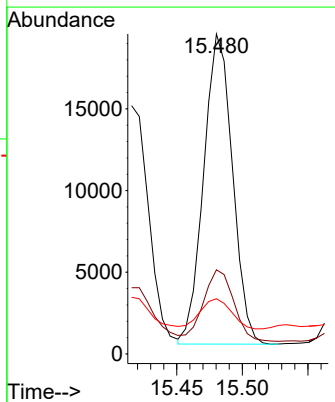
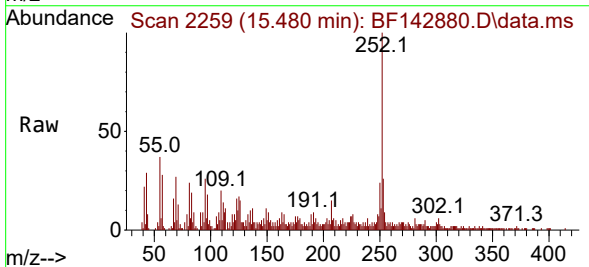
Instrument : BNA\_F  
 ClientSampleId : EO-3-6-25-2025

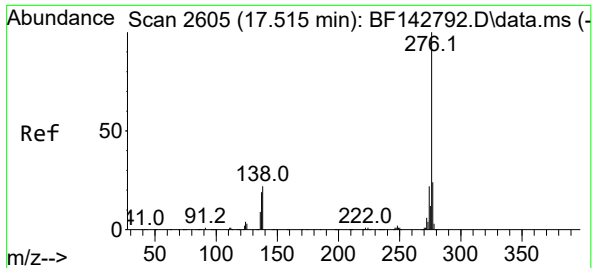
Tgt Ion	Resp	Lower	Upper
252	100		
253	26.9	17.2	25.8#
125	18.2	7.4	11.2#



#90  
 Benzo(a)pyrene  
 Concen: 6.473 ng  
 RT: 15.480 min Scan# 2259  
 Delta R.T. -0.006 min  
 Lab File: BF142880.D  
 Acq: 26 Jun 2025 21:02

Tgt Ion	Resp	Lower	Upper
252	100		
253	26.3	17.5	26.3
125	17.2	8.6	12.8#





#92  
 Benzo(g,h,i)perylene  
 Concen: 3.567 ng  
 RT: 17.510 min Scan# 20  
 Delta R.T. -0.006 min  
 Lab File: BF142880.D  
 Acq: 26 Jun 2025 21:02

Instrument :  
 BNA\_F  
 ClientSampleId :  
 EO-3-6-25-2025

Tgt Ion: 276 Resp: 17653

Ion	Ratio	Lower	Upper
276	100		
277	26.3	18.8	28.2
138	25.8	17.6	26.4

