

Data Path : \\74.0.250.170\SVOASRV\HPCHEM1\BNA\_F\DATA\BF062717\  
 Data File : BF096227.D  
 Acq On : 27 Jun 2017 20:21  
 Operator : SJ/MA  
 Sample : I3920-03 5X  
 Misc :  
 ALS Vial : 11 Sample Multiplier: 1

Instrument :  
 BNA\_F  
 ClientSampleId :  
 OB-3

Integration Parameters: rteint.p  
 Integrator: RTE  
 Smoothing : ON  
 Sampling : 1  
 Start Thrs: 0.2  
 Stop Thrs : 0

Filtering: 5  
 Min Area: 3 % of largest Peak  
 Max Peaks: 100  
 Peak Location: TOP

If leading or trailing edge < 100 prefer < Baseline drop else tangent >  
 Peak separation: 5

Method : Z:\HPCHEM1\BNA\_F\Methods\8270-BF062717.M  
 Title : ASP BNA STANDARDS FOR 5 POINT CALIBRATION

Signal : TIC

peak #	R.T. min	first scan	max scan	last scan	PK TY	peak height	corr. area	corr. % max.	% of total
1	4.963	485	489	498	rVB	234048	234890	6.51%	0.429%
2	5.381	556	560	564	rBV	1418626	1218145	33.76%	2.225%
3	6.398	729	733	736	rBV	1473823	1227851	34.03%	2.243%
4	6.539	753	757	761	rBV	1328004	1212786	33.61%	2.216%
5	6.781	794	798	801	rBV	1385318	1132605	31.39%	2.069%
6	6.933	820	824	828	rBV	1075023	846492	23.46%	1.546%
7	7.333	887	892	895	rBV	821686	693898	19.23%	1.268%
8	8.063	1011	1016	1018	rBV	1617342	1641156	45.48%	2.998%
9	8.080	1018	1019	1022	rVB	682791	394048	10.92%	0.720%
10	8.769	1132	1136	1139	rBV	321379	277714	7.70%	0.507%
11	8.869	1147	1153	1157	rVB	243684	195261	5.41%	0.357%
12	9.133	1194	1198	1201	rBV	1256887	947353	26.26%	1.731%
13	9.392	1239	1242	1247	rVV	107800	137442	3.81%	0.251%
14	9.469	1251	1255	1258	rVV	187478	183087	5.07%	0.334%
15	9.498	1258	1260	1262	rVV	125601	94411	2.62%	0.172%
16	9.527	1262	1265	1268	rVV	188542	159205	4.41%	0.291%
17	9.586	1272	1275	1282	rVV	100819	113727	3.15%	0.208%
18	9.669	1286	1289	1292	rVV	192149	161033	4.46%	0.294%
19	9.810	1308	1313	1316	rBV2	1613086	1419612	39.34%	2.593%
20	9.839	1316	1318	1321	rVB	591504	520061	14.41%	0.950%
21	10.016	1344	1348	1351	rVB	482830	448333	12.43%	0.819%
22	10.222	1378	1383	1387	rVV6	56798	100912	2.80%	0.184%
23	10.357	1402	1406	1409	rBV	720184	630954	17.49%	1.153%
24	10.445	1419	1421	1423	rVV	106547	86872	2.41%	0.159%
25	10.516	1430	1433	1438	rVB	172284	177870	4.93%	0.325%
26	10.592	1442	1446	1450	rVV2	732328	716799	19.87%	1.309%
27	10.721	1462	1468	1474	rVB4	67392	103004	2.85%	0.188%
28	10.904	1491	1499	1501	rBV3	148057	214329	5.94%	0.392%
29	11.033	1516	1521	1522	rBV3	79466	103444	2.87%	0.189%
30	11.092	1528	1531	1536	rVB	182325	187005	5.18%	0.342%
31	11.145	1536	1540	1543	rBV3	100696	163441	4.53%	0.299%
32	11.186	1543	1547	1550	rVB	270324	236402	6.55%	0.432%
33	11.292	1560	1565	1566	rBV	1141923	1036435	28.72%	1.893%
34	11.316	1566	1569	1572	rVV	3575362	3344519	92.69%	6.110%

Data Path : \\74.0.250.170\SVOASRV\HPCHEM1\BNA\_F\DATA\BF062717\  
 Data File : BF096227.D  
 Acq On : 27 Jun 2017 20:21  
 Operator : SJ/MA  
 Sample : I3920-03 5X  
 Misc :  
 ALS Vial : 11 Sample Multiplier: 1

Instrument :  
 BNA\_F  
 ClientSampleId :  
 OB-3

Integration Parameters: rteint.p  
 Integrator: RTE  
 Smoothing : ON  
 Sampling : 1  
 Start Thrs: 0.2  
 Stop Thrs : 0

Filtering: 5  
 Min Area: 3 % of largest Peak  
 Max Peaks: 100  
 Peak Location: TOP

If leading or trailing edge < 100 prefer < Baseline drop else tangent >  
 Peak separation: 5

Method : Z:\HPCHEM1\BNA\_F\Methods\8270-BF062717.M  
 Title : ASP BNA STANDARDS FOR 5 POINT CALIBRATION

35	11.363	1572	1577	1580	rVV	1185287	1088265	30.16%	1.988%
36	11.398	1580	1583	1586	rVB3	134918	140743	3.90%	0.257%
37	11.516	1597	1603	1606	rBV2	479558	530042	14.69%	0.968%
38	11.792	1644	1650	1652	rBV	497492	468698	12.99%	0.856%
39	11.821	1652	1655	1659	rVB	679372	645015	17.88%	1.178%
40	11.863	1659	1662	1665	rBV	302254	285531	7.91%	0.522%
41	11.904	1665	1669	1671	rBV	770513	817243	22.65%	1.493%
42	11.921	1671	1672	1676	rVB	316342	232960	6.46%	0.426%
43	12.086	1697	1700	1702	rBV	313828	290885	8.06%	0.531%
44	12.104	1702	1703	1707	rVB2	202857	112934	3.13%	0.206%
45	12.233	1720	1725	1728	rBV	124513	146547	4.06%	0.268%
46	12.286	1732	1734	1737	rVB	107711	93424	2.59%	0.171%
47	12.339	1737	1743	1746	rBV	279434	337120	9.34%	0.616%
48	12.374	1746	1749	1751	rVV2	141393	166147	4.60%	0.304%
49	12.421	1755	1757	1762	rVB4	162546	209054	5.79%	0.382%
50	12.504	1766	1771	1774	rBV	3364929	3316411	91.91%	6.059%
51	12.551	1774	1779	1783	rBV3	77220	106183	2.94%	0.194%
52	12.651	1794	1796	1800	rVB	130067	125479	3.48%	0.229%
53	12.727	1803	1809	1815	rBV2	2791289	3608258	100.00%	6.592%
54	12.774	1815	1817	1823	rVB2	180659	234463	6.50%	0.428%
55	12.845	1826	1829	1831	rBV	242504	202522	5.61%	0.370%
56	12.868	1831	1833	1840	rVB2	699341	803425	22.27%	1.468%
57	12.945	1840	1846	1849	rBV2	254876	447368	12.40%	0.817%
58	12.968	1849	1850	1853	rVB	141936	92120	2.55%	0.168%
59	13.004	1853	1856	1858	rBV2	93306	99712	2.76%	0.182%
60	13.027	1858	1860	1862	rVV	172327	189240	5.24%	0.346%
61	13.051	1862	1864	1867	rVB	617967	572761	15.87%	1.046%
62	13.121	1872	1876	1878	rBV	543599	467122	12.95%	0.853%
63	13.157	1878	1882	1885	rVV	398665	396567	10.99%	0.724%
64	13.251	1895	1898	1900	rVB	177118	163043	4.52%	0.298%
65	13.280	1900	1903	1907	rBV2	188415	208443	5.78%	0.381%
66	13.351	1912	1915	1924	rVB6	93874	135063	3.74%	0.247%
67	13.457	1925	1933	1935	rBV7	150978	292647	8.11%	0.535%
68	13.557	1943	1950	1955	rBV2	218670	398690	11.05%	0.728%
69	13.668	1965	1969	1972	rBV2	334846	438292	12.15%	0.801%
70	13.698	1972	1974	1976	rVV	326360	286384	7.94%	0.523%
71	13.721	1976	1978	1982	rVV2	256397	358176	9.93%	0.654%

Data Path : \\74.0.250.170\SVOASRV\HPCHEM1\BNA\_F\DATA\BF062717\  
 Data File : BF096227.D  
 Acq On : 27 Jun 2017 20:21  
 Operator : SJ/MA  
 Sample : I3920-03 5X  
 Misc :  
 ALS Vial : 11 Sample Multiplier: 1

Instrument :  
 BNA\_F  
 ClientSampleId :  
 OB-3

Integration Parameters: rteint.p  
 Integrator: RTE  
 Smoothing : ON Filtering: 5  
 Sampling : 1 Min Area: 3 % of largest Peak  
 Start Thrs: 0.2 Max Peaks: 100  
 Stop Thrs : 0 Peak Location: TOP

If leading or trailing edge < 100 prefer < Baseline drop else tangent >  
 Peak separation: 5

Method : Z:\HPCHEM1\BNA\_F\Methods\8270-BF062717.M  
 Title : ASP BNA STANDARDS FOR 5 POINT CALIBRATION

72	13.762	1982	1985	1993	rVB2	256720	341156	9.45%	0.623%
73	13.839	1993	1998	2001	rBV	90624	137814	3.82%	0.252%
74	13.915	2004	2011	2014	rVV3	2217988	3227532	89.45%	5.896%
75	13.945	2014	2016	2022	rVV	1564823	1612289	44.68%	2.945%
76	14.027	2024	2030	2033	rVV2	339239	383398	10.63%	0.700%
77	14.057	2033	2035	2037	rVV	88975	89254	2.47%	0.163%
78	14.104	2041	2043	2045	rVV2	235959	189234	5.24%	0.346%
79	14.139	2045	2049	2053	rVV2	239306	281977	7.81%	0.515%
80	14.239	2062	2066	2069	rBV3	126801	130319	3.61%	0.238%
81	14.268	2069	2071	2073	rBV	112732	106939	2.96%	0.195%
82	14.304	2073	2077	2080	rVV	351104	399737	11.08%	0.730%
83	14.339	2080	2083	2086	rVB	212341	191461	5.31%	0.350%
84	14.398	2090	2093	2096	rVV3	185306	243245	6.74%	0.444%
85	14.427	2096	2098	2100	rVV3	201431	173967	4.82%	0.318%
86	14.451	2100	2102	2105	rVB2	211063	194717	5.40%	0.356%
87	14.498	2105	2110	2114	rVB4	125398	237241	6.57%	0.433%
88	14.598	2124	2127	2130	rBV2	93768	129157	3.58%	0.236%
89	14.780	2152	2158	2166	rBV3	128536	266629	7.39%	0.487%
90	14.845	2166	2169	2172	rBV4	87533	104938	2.91%	0.192%
91	14.939	2180	2185	2188	rBV	1165775	1888282	52.33%	3.450%
92	15.039	2199	2202	2210	rVB	340703	348918	9.67%	0.637%
93	15.227	2230	2234	2240	rVB	716439	930847	25.80%	1.701%
94	15.286	2240	2244	2249	rBV	1072776	1230346	34.10%	2.248%
95	15.345	2249	2254	2257	rBV	682561	872793	24.19%	1.594%
96	15.374	2257	2259	2268	rVB2	315224	414772	11.50%	0.758%
97	16.733	2484	2490	2498	rVB2	373887	757814	21.00%	1.384%
98	17.145	2555	2560	2571	rVB	279518	562790	15.60%	1.028%
99	17.368	2594	2598	2606	rVB2	76966	146610	4.06%	0.268%
100	19.268	2919	2921	2937	rVB9	80299	276132	7.65%	0.504%

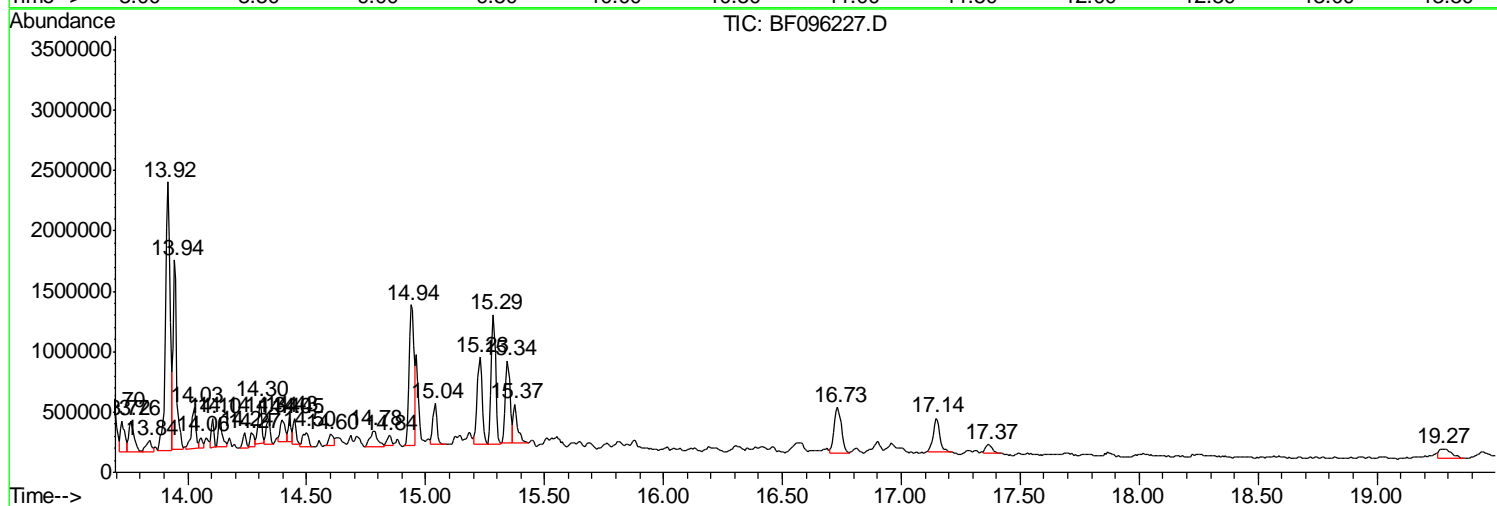
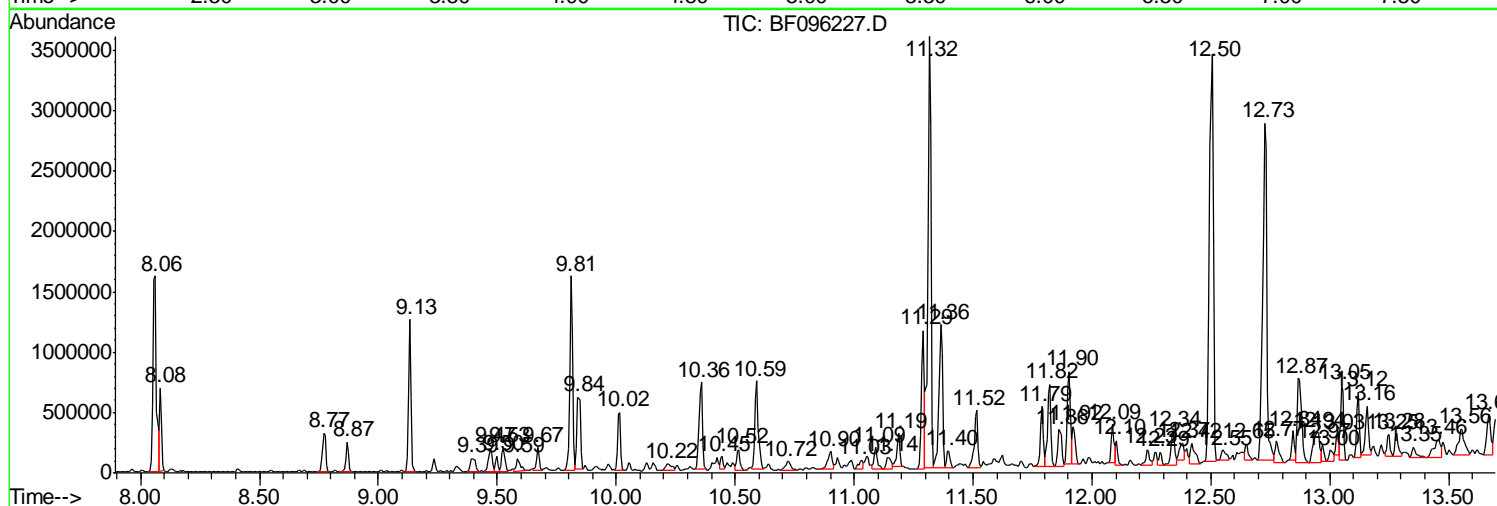
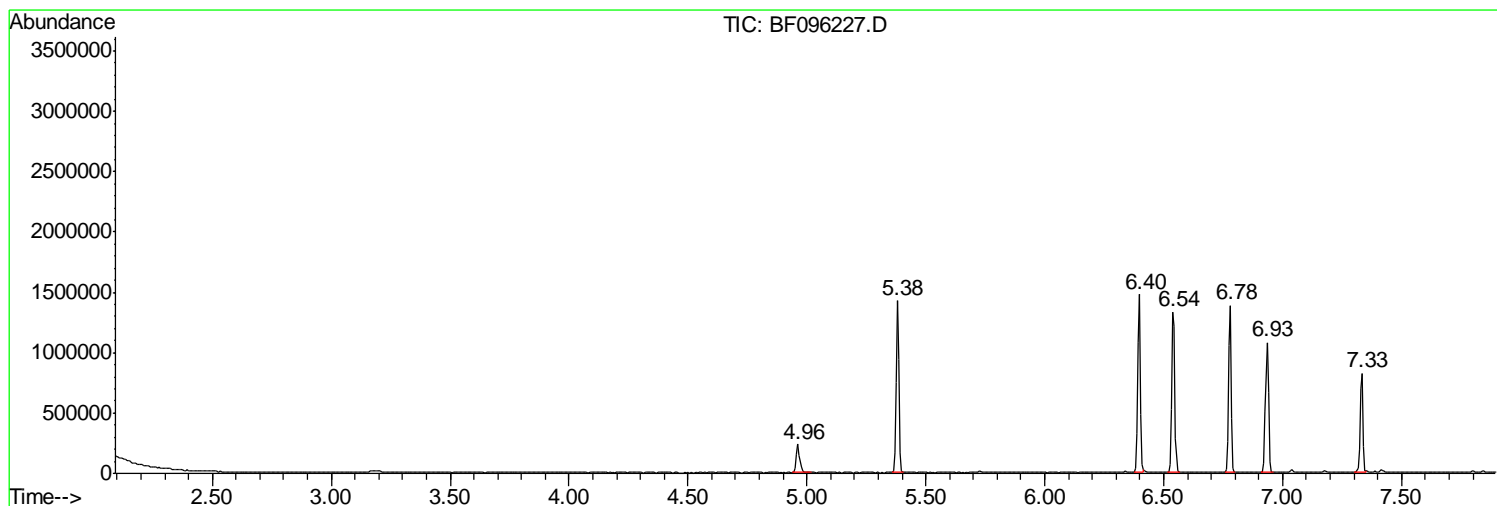
Sum of corrected areas: 54738381

Data Path : \\74.0.250.170\SVOASRV\HPCHEM1\BNA\_F\DATA\BF062717\  
 Data File : BF096227.D  
 Acq On : 27 Jun 2017 20:21  
 Operator : SJ/MA  
 Sample : I3920-03 5X  
 Misc :  
 ALS Vial : 11 Sample Multiplier: 1

**Instrument :**  
 BNA\_F  
**ClientSampleId :**  
 OB-3

Quant Method : Z:\HPCHEM1\BNA\_F\METHODS\8270-BF062717.M  
 Quant Title : ASP BNA STANDARDS FOR 5 POINT CALIBRATION

TIC Library : C:\DATABASE\NIST11.L  
 TIC Integration Parameters: LSCINT.P



Data Path : \\74.0.250.170\SVOASRV\HPCHEM1\BNA\_F\DATA\BF062717\  
 Data File : BF096227.D  
 Acq On : 27 Jun 2017 20:21  
 Operator : SJ/MA  
 Sample : I3920-03 5X  
 Misc :  
 ALS Vial : 11 Sample Multiplier: 1

Instrument :  
 BNA\_F  
 ClientSampled :  
 OB-3

Quant Method : Z:\HPCHEM1\BNA\_F\METHODS\8270-BF062717.M  
 Quant Title : ASP BNA STANDARDS FOR 5 POINT CALIBRATION

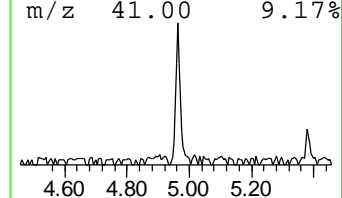
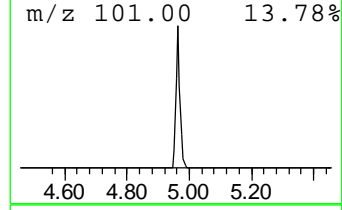
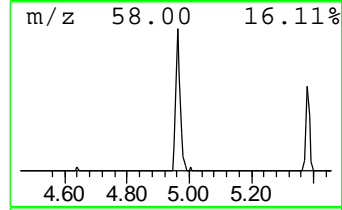
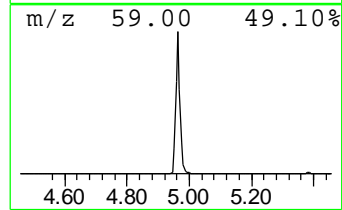
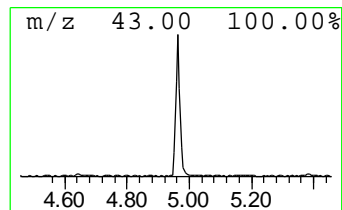
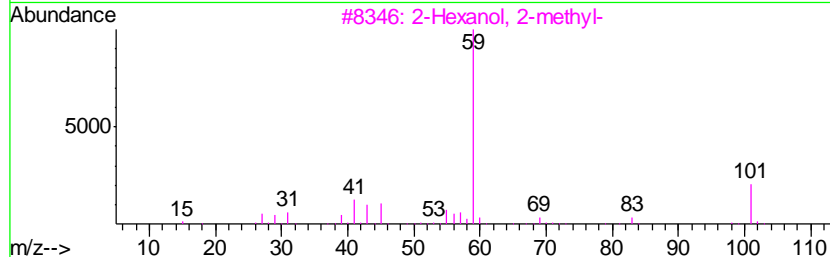
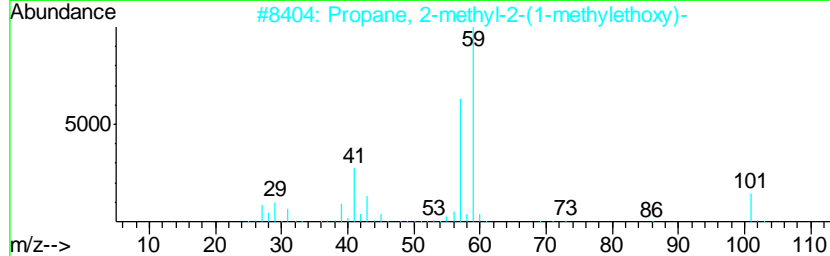
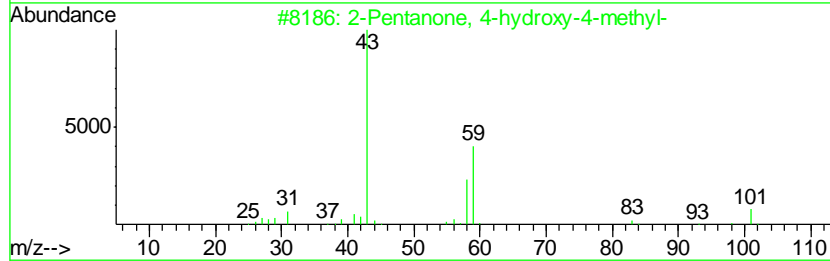
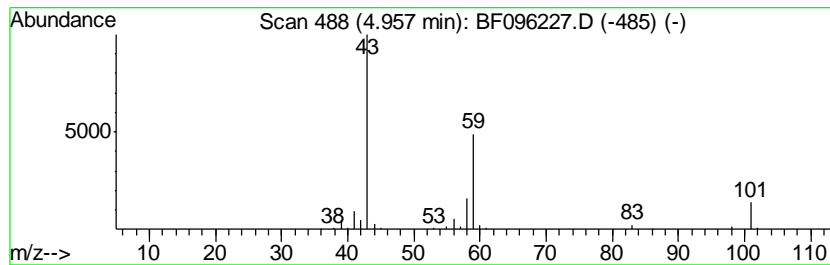
TIC Library : C:\DATABASE\NIST11.L  
 TIC Integration Parameters: LSCINT.P

\*\*\*\*\*  
 Peak Number 1 2-Pentanone, 4-hydroxy-4-me... Concentration Rank 15

R.T.	EstConc	Area	Relative to ISTD	R.T.
4.96	4.15 ng	234890	1,4-Dichlorobenzene-d4	6.78

Hit#	of	Tentative ID	MW	MolForm	CAS#	Qual
1	5	2-Pentanone, 4-hydroxy-4-methyl-	116	C6H12O2	000123-42-2	64
2		Propane, 2-methyl-2-(1-methyleth...	116	C7H16O	017348-59-3	36
3		2-Hexanol, 2-methyl-	116	C7H16O	000625-23-0	33
4		3-Octanol	130	C8H18O	000589-98-0	33
5		3-Hexanol, 4-methyl-	116	C7H16O	000615-29-2	33



Data Path : \\74.0.250.170\SVOASRV\HPCHEM1\BNA\_F\DATA\BF062717\  
 Data File : BF096227.D  
 Acq On : 27 Jun 2017 20:21  
 Operator : SJ/MA  
 Sample : I3920-03 5X  
 Misc :  
 ALS Vial : 11 Sample Multiplier: 1

Instrument :  
 BNA\_F  
 ClientSampleID :  
 OB-3

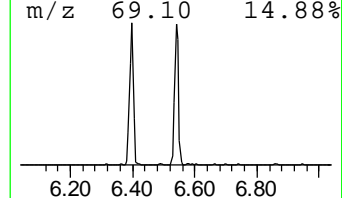
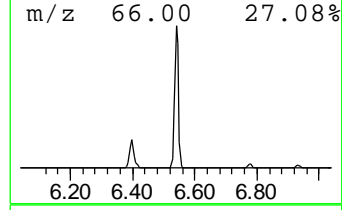
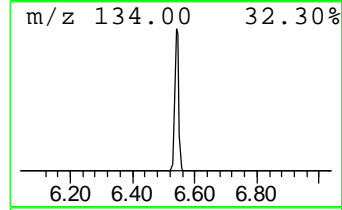
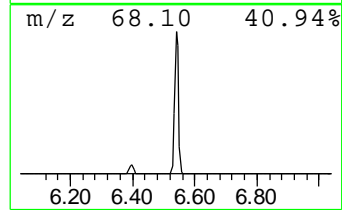
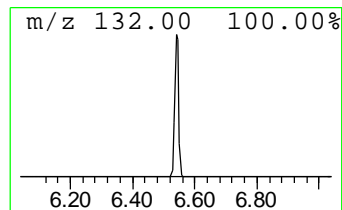
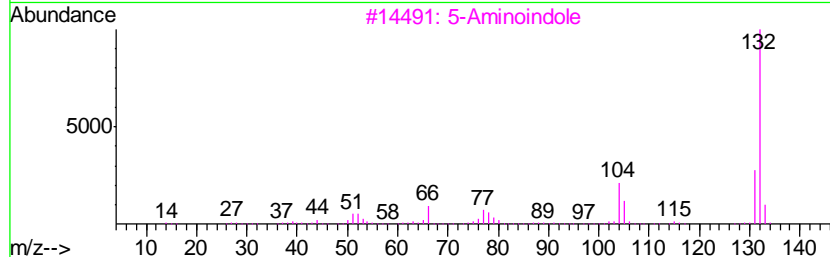
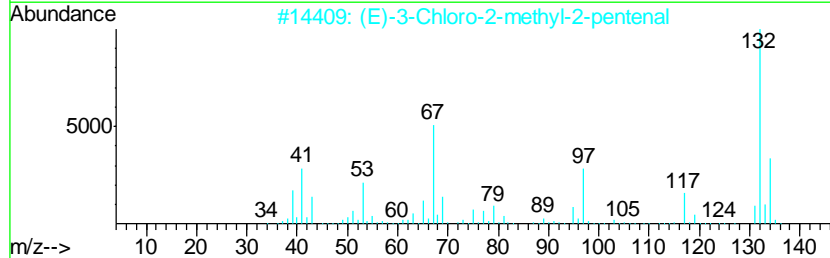
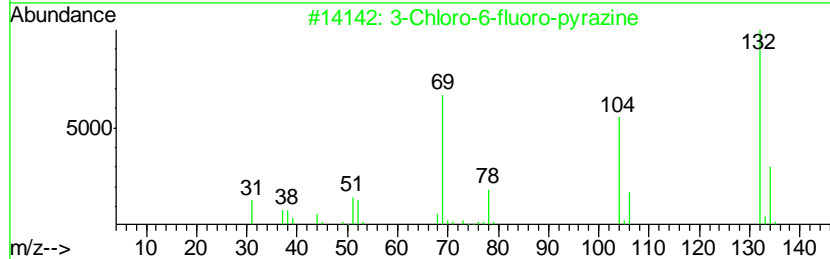
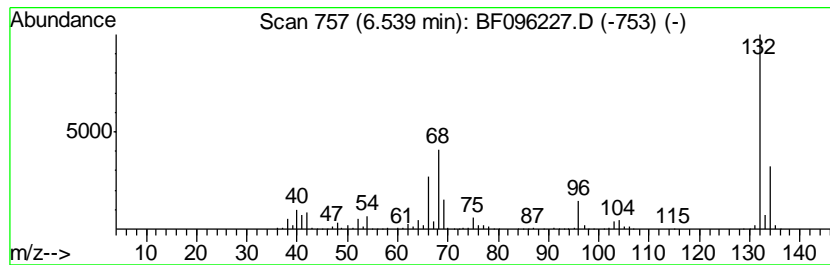
Quant Method : Z:\HPCHEM1\BNA\_F\METHODS\8270-BF062717.M  
 Quant Title : ASP BNA STANDARDS FOR 5 POINT CALIBRATION

TIC Library : C:\DATABASE\NIST11.L  
 TIC Integration Parameters: LSCINT.P

\*\*\*\*\*  
 Peak Number 2 unknown6.54 Concentration Rank 1

R.T.	EstConc	Area	Relative to ISTD	R.T.
6.54	21.42 ng	1212790	1,4-Dichlorobenzene-d4	6.78

Hit#	of	Tentative ID	MW	MolForm	CAS#	Qual
1	5	3-Chloro-6-fluoro-pyrazine	132	C4H2ClFN2	1000146-10-7	16
2		(E)-3-Chloro-2-methyl-2-pentenal	132	C6H9ClO	031357-76-3	16
3		5-Aminoindole	132	C8H8N2	005192-03-0	12
4		Amphetaminil	250	C17H18N2	017590-01-1	10
5		Tranlylcypromine-propionyl	189	C12H15NO	1000123-86-3	10



Data Path : \\74.0.250.170\SVOASRV\HPCHEM1\BNA\_F\DATA\BF062717\  
 Data File : BF096227.D  
 Acq On : 27 Jun 2017 20:21  
 Operator : SJ/MA  
 Sample : I3920-03 5X  
 Misc :  
 ALS Vial : 11 Sample Multiplier: 1

Instrument :  
 BNA\_F  
 ClientSampleId :  
 OB-3

Quant Method : Z:\HPCHEM1\BNA\_F\METHODS\8270-BF062717.M  
 Quant Title : ASP BNA STANDARDS FOR 5 POINT CALIBRATION

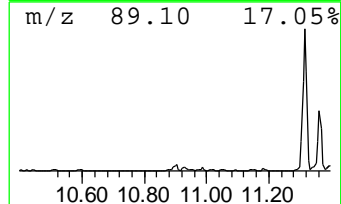
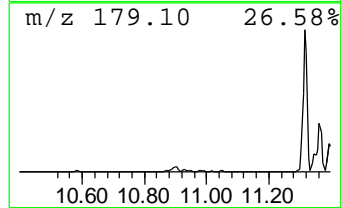
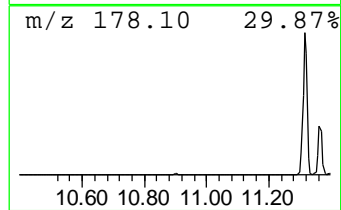
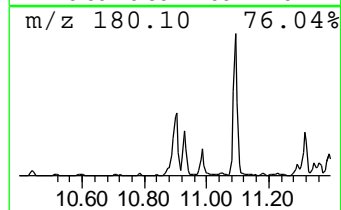
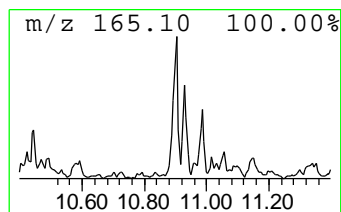
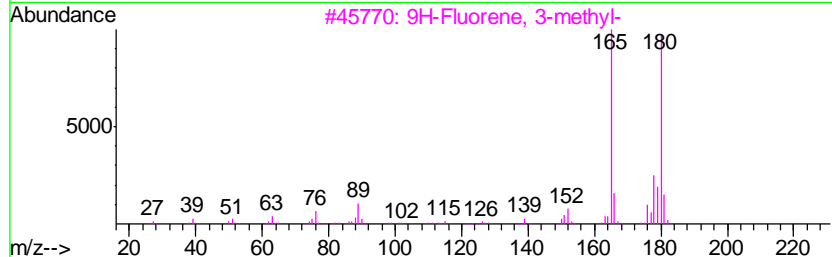
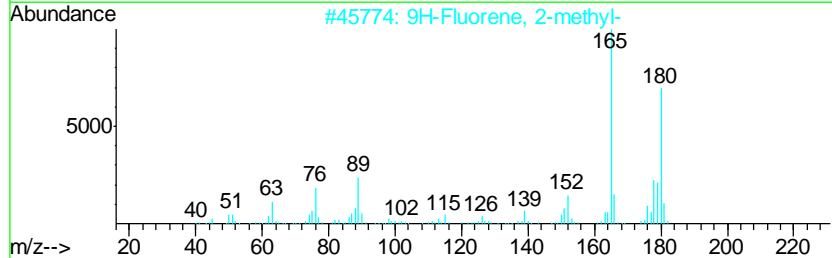
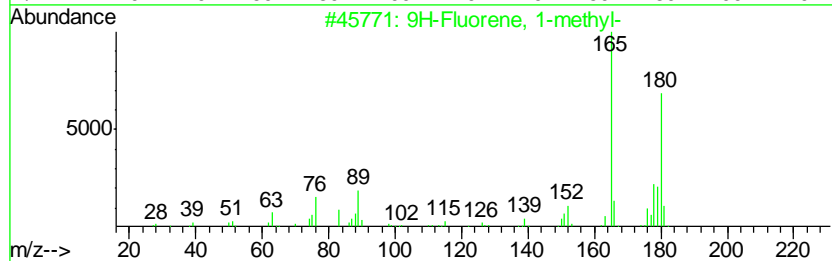
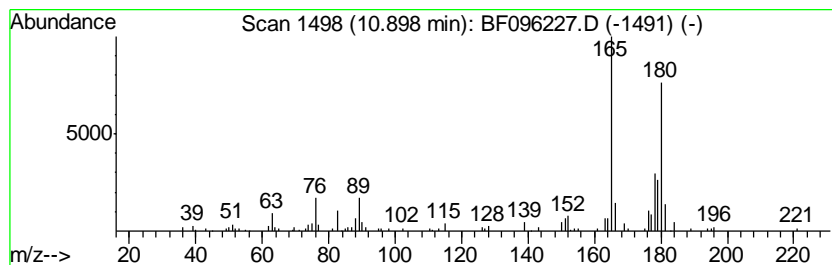
TIC Library : C:\DATABASE\NIST11.L  
 TIC Integration Parameters: LSCINT.P

\*\*\*\*\*  
 Peak Number 4 9H-Fluorene, 1-methyl- Concentration Rank 16

R.T.	EstConc	Area	Relative to ISTD	R.T.
10.90	4.14 ng	214329	Phenanthrene-d10	11.29

Hit#	of	Tentative ID	MW	MolForm	CAS#	Qual
1	5	9H-Fluorene, 1-methyl-	180	C14H12	001730-37-6	97
2		9H-Fluorene, 2-methyl-	180	C14H12	001430-97-3	96
3		9H-Fluorene, 3-methyl-	180	C14H12	002523-39-9	93
4		9H-Fluorene, 4-methyl-	180	C14H12	001556-99-6	90
5		9H-Fluorene, 9-methyl-	180	C14H12	002523-37-7	81



Data Path : \\74.0.250.170\SVOASRV\HPCHEM1\BNA\_F\DATA\BF062717\  
 Data File : BF096227.D  
 Acq On : 27 Jun 2017 20:21  
 Operator : SJ/MA  
 Sample : I3920-03 5X  
 Misc :  
 ALS Vial : 11 Sample Multiplier: 1

Instrument :  
 BNA\_F  
 ClientSampled :  
 OB-3

Quant Method : Z:\HPCHEM1\BNA\_F\METHODS\8270-BF062717.M  
 Quant Title : ASP BNA STANDARDS FOR 5 POINT CALIBRATION

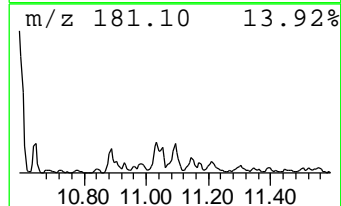
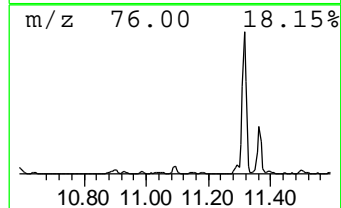
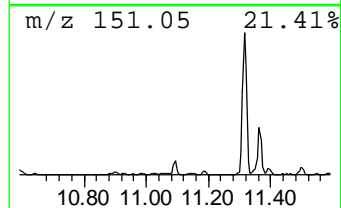
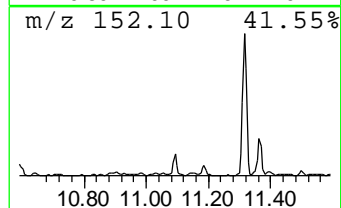
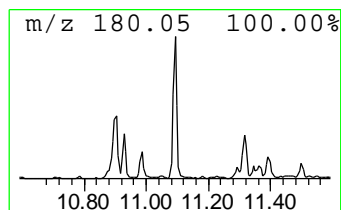
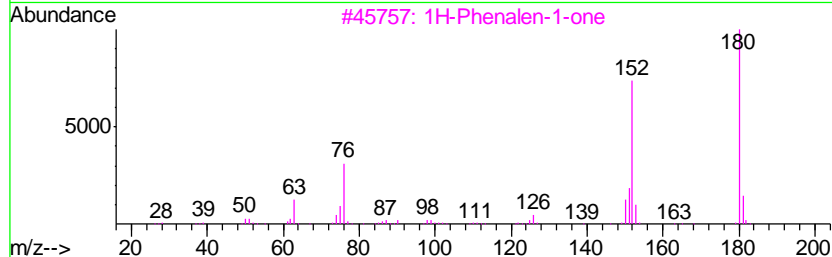
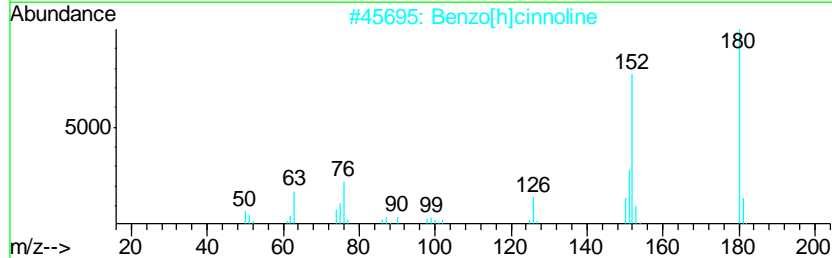
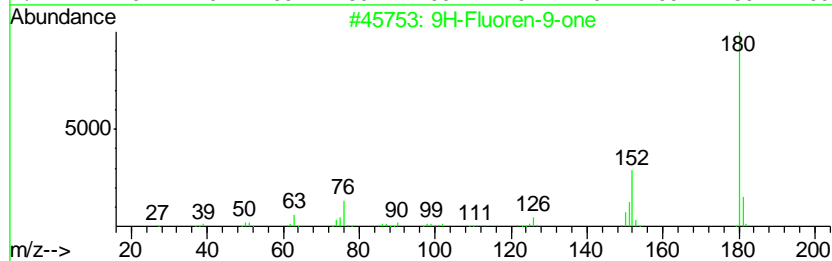
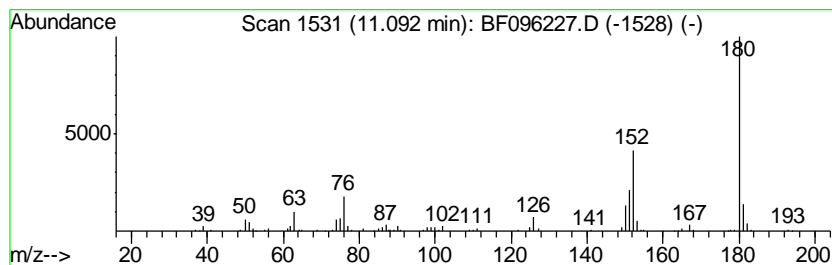
TIC Library : C:\DATABASE\NIST11.L  
 TIC Integration Parameters: LSCINT.P

\*\*\*\*\*  
 Peak Number 5 9H-Fluoren-9-one Concentration Rank 18

R.T.	EstConc	Area	Relative to ISTD	R.T.
11.09	3.61 ng	187005	Phenanthrene-d10	11.29

Hit#	of	Tentative ID	MW	MolForm	CAS#	Qual
1	5	9H-Fluoren-9-one	180	C13H8O	000486-25-9	94
2		Benzo[h]cinnoline	180	C12H8N2	000230-31-9	94
3		1H-Phenalen-1-one	180	C13H8O	000548-39-0	53
4		2-Benzothiazolamine, 4-methoxy-	180	C8H8N2OS	005464-79-9	50
5		1,3-Diazaphenanthrene	180	C12H8N2	000229-75-4	47





Data Path : \\74.0.250.170\SVOASRV\HPCHEM1\BNA\_F\DATA\BF062717\  
 Data File : BF096227.D  
 Acq On : 27 Jun 2017 20:21  
 Operator : SJ/MA  
 Sample : I3920-03 5X  
 Misc :  
 ALS Vial : 11 Sample Multiplier: 1

Instrument :  
 BNA\_F  
 ClientSampleId :  
 OB-3

Quant Method : Z:\HPCHEM1\BNA\_F\METHODS\8270-BF062717.M  
 Quant Title : ASP BNA STANDARDS FOR 5 POINT CALIBRATION

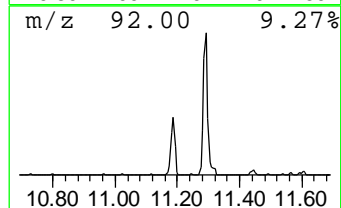
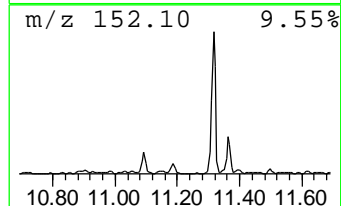
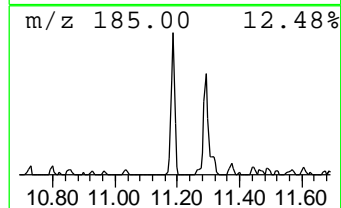
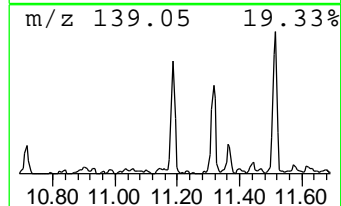
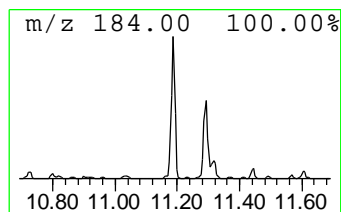
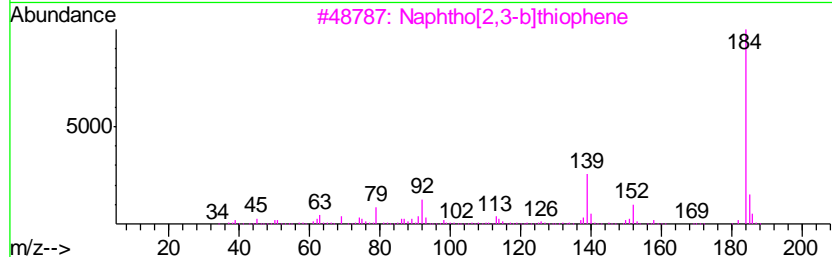
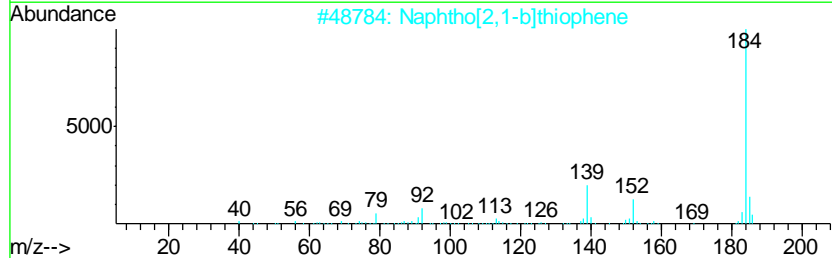
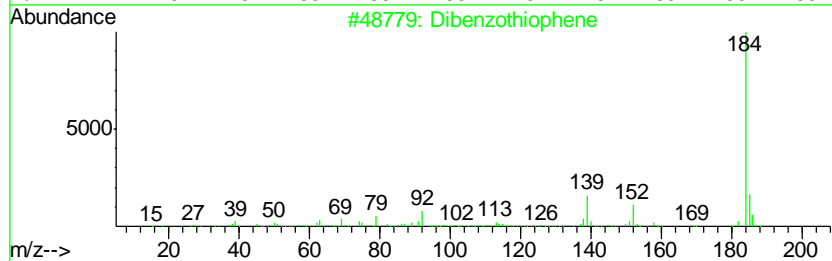
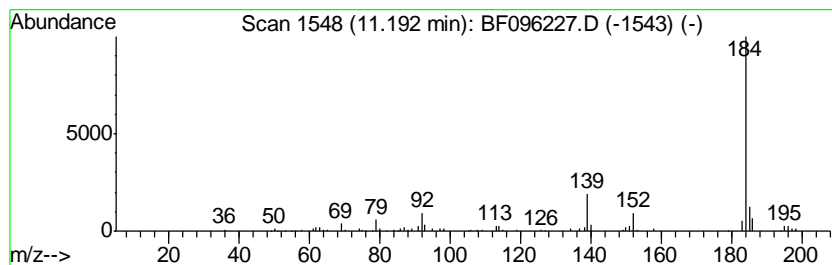
TIC Library : C:\DATABASE\NIST11.L  
 TIC Integration Parameters: LSCINT.P

\*\*\*\*\*  
 Peak Number 6 Dibenzothiophene Concentration Rank 13

R.T.	EstConc	Area	Relative to ISTD	R.T.
11.19	4.56 ng	236402	Phenanthrene-d10	11.29

Hit#	of	Tentative ID	MW	MolForm	CAS#	Qual
1	5	Dibenzothiophene	184	C12H8S	000132-65-0	97
2		Naphtho[2,1-b]thiophene	184	C12H8S	000233-02-3	96
3		Naphtho[2,3-b]thiophene	184	C12H8S	000268-77-9	94
4		Azuleno(2,1-b)thiophene	184	C12H8S	000248-13-5	91
5		Naphtho[1,2-b]thiophene	184	C12H8S	000234-41-3	86



Data Path : \\74.0.250.170\SVOASRV\HPCHEM1\BNA\_F\DATA\BF062717\  
 Data File : BF096227.D  
 Acq On : 27 Jun 2017 20:21  
 Operator : SJ/MA  
 Sample : I3920-03 5X  
 Misc :  
 ALS Vial : 11 Sample Multiplier: 1

Instrument :  
 BNA\_F  
 ClientSampleID :  
 OB-3

Quant Method : Z:\HPCHEM1\BNA\_F\METHODS\8270-BF062717.M  
 Quant Title : ASP BNA STANDARDS FOR 5 POINT CALIBRATION

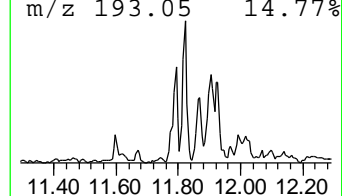
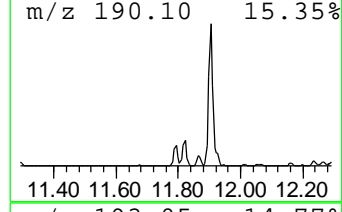
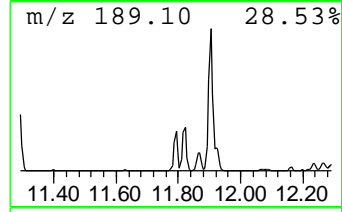
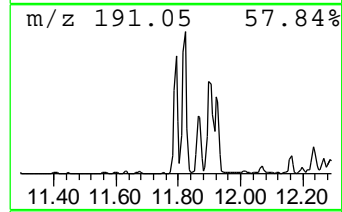
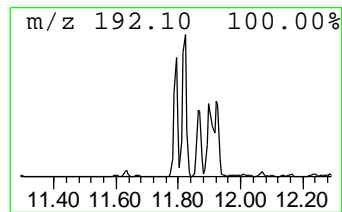
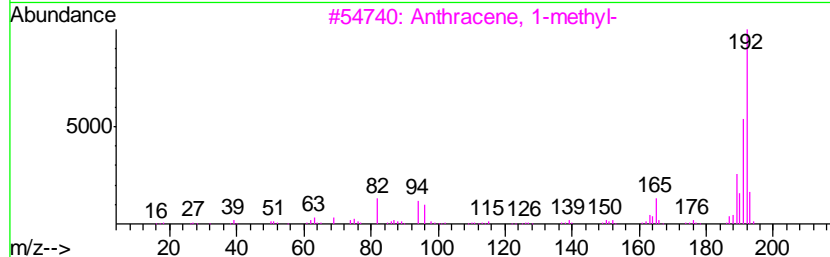
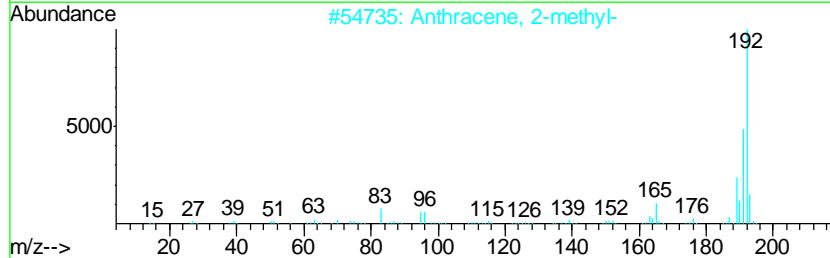
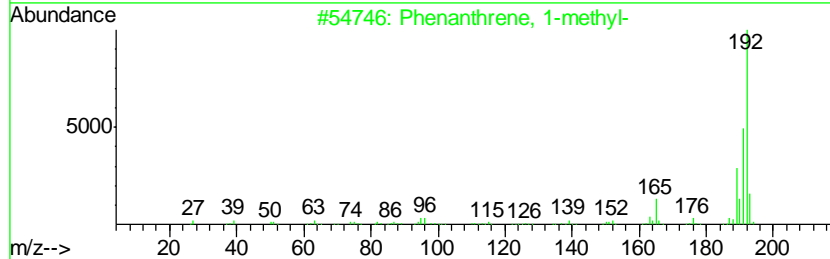
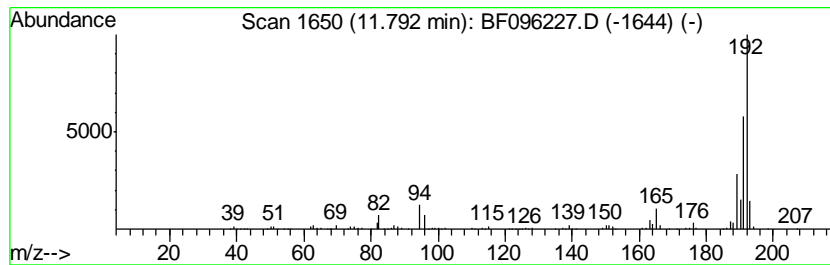
TIC Library : C:\DATABASE\NIST11.L  
 TIC Integration Parameters: LSCINT.P

\*\*\*\*\*  
 Peak Number 7 Phenanthrene, 1-methyl- Concentration Rank 6

R.T.	EstConc	Area	Relative to ISTD	R.T.
11.79	9.04 ng	468698	Phenanthrene-d10	11.29

Hit#	of	Tentative ID	MW	MolForm	CAS#	Qual
1	5	Phenanthrene, 1-methyl-	192	C15H12	000832-69-9	96
2		Anthracene, 2-methyl-	192	C15H12	000613-12-7	96
3		Anthracene, 1-methyl-	192	C15H12	000610-48-0	96
4		Phenanthrene, 2-methyl-	192	C15H12	002531-84-2	95
5		Anthracene, 9-methyl-	192	C15H12	000779-02-2	94



Data Path : \\74.0.250.170\SVOASRV\HPCHEM1\BNA\_F\DATA\BF062717\  
 Data File : BF096227.D  
 Acq On : 27 Jun 2017 20:21  
 Operator : SJ/MA  
 Sample : I3920-03 5X  
 Misc :  
 ALS Vial : 11 Sample Multiplier: 1

Instrument :  
 BNA\_F  
 ClientSampled :  
 OB-3

Quant Method : Z:\HPCHEM1\BNA\_F\METHODS\8270-BF062717.M  
 Quant Title : ASP BNA STANDARDS FOR 5 POINT CALIBRATION

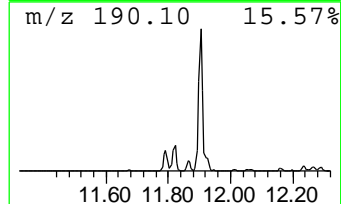
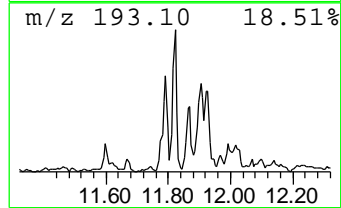
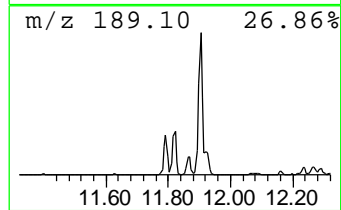
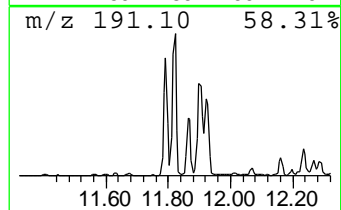
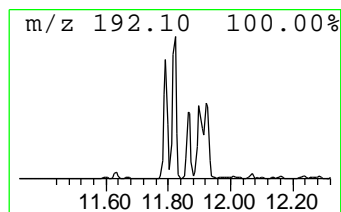
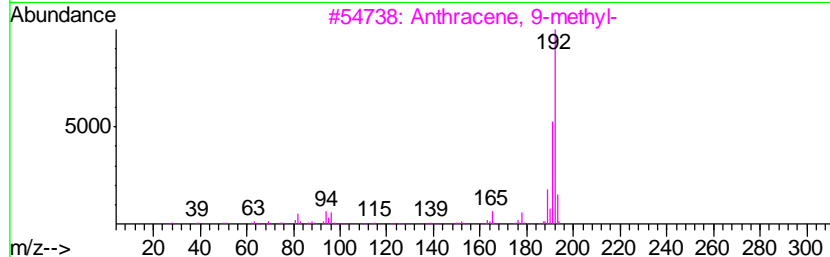
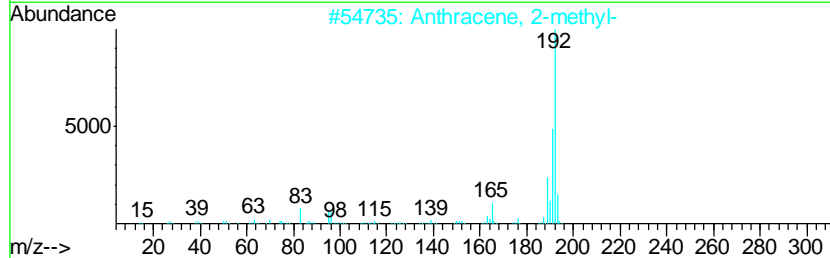
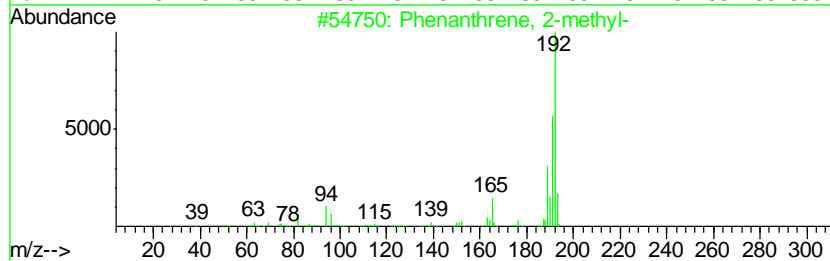
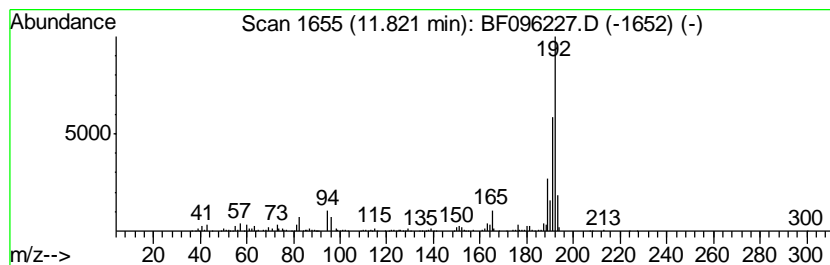
TIC Library : C:\DATABASE\NIST11.L  
 TIC Integration Parameters: LSCINT.P

\*\*\*\*\*  
 Peak Number 8 Phenanthrene, 2-methyl- Concentration Rank 5

R.T.	EstConc	Area	Relative to ISTD	R.T.
11.82	12.45 ng	645015	Phenanthrene-d10	11.29

Hit#	of	Tentative ID	MW	MolForm	CAS#	Qual
1	5	Phenanthrene, 2-methyl-	192	C15H12	002531-84-2	98
2		Anthracene, 2-methyl-	192	C15H12	000613-12-7	96
3		Anthracene, 9-methyl-	192	C15H12	000779-02-2	94
4		Phenanthrene, 1-methyl-	192	C15H12	000832-69-9	91
5		Anthracene, 1-methyl-	192	C15H12	000610-48-0	90



Data Path : \\74.0.250.170\SVOASRV\HPCHEM1\BNA\_F\DATA\BF062717\  
 Data File : BF096227.D  
 Acq On : 27 Jun 2017 20:21  
 Operator : SJ/MA  
 Sample : I3920-03 5X  
 Misc :  
 ALS Vial : 11 Sample Multiplier: 1

Instrument :  
 BNA\_F  
 ClientSampled :  
 OB-3

Quant Method : Z:\HPCHEM1\BNA\_F\METHODS\8270-BF062717.M  
 Quant Title : ASP BNA STANDARDS FOR 5 POINT CALIBRATION

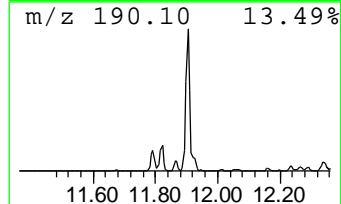
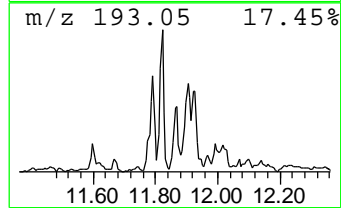
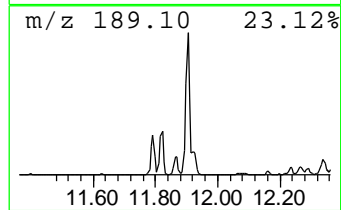
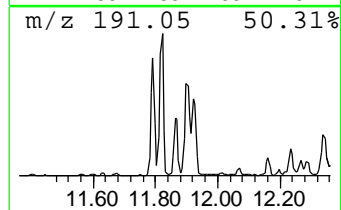
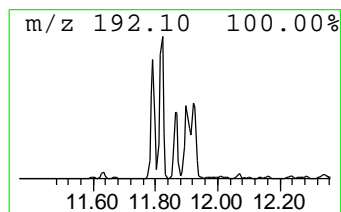
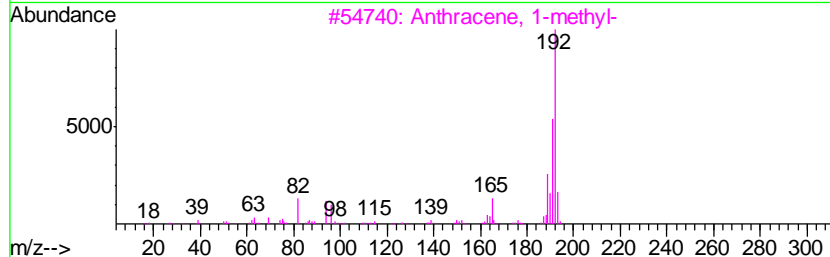
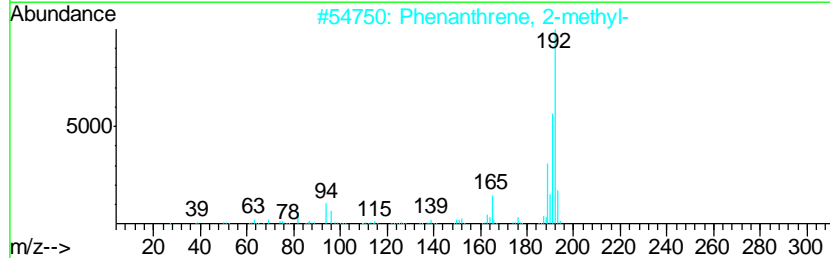
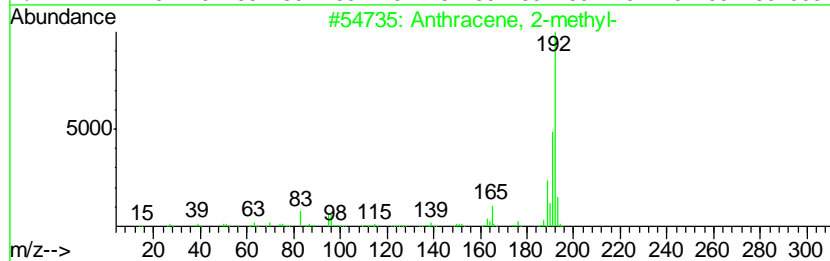
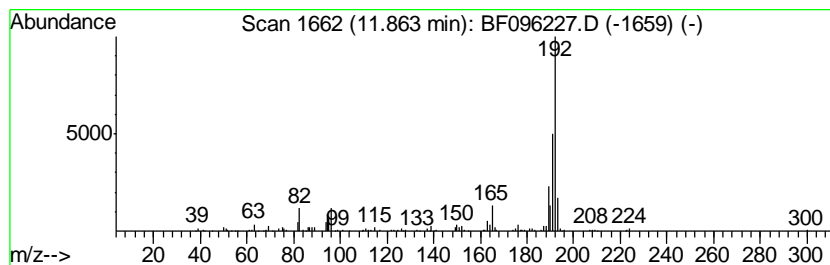
TIC Library : C:\DATABASE\NIST11.L  
 TIC Integration Parameters: LSCINT.P

\*\*\*\*\*  
 Peak Number 9 Anthracene, 2-methyl- Concentration Rank 12

R.T.	EstConc	Area	Relative to ISTD	R.T.
11.86	5.51 ng	285531	Phenanthrene-d10	11.29

Hit#	of	Tentative ID	MW	MolForm	CAS#	Qual
1	5	Anthracene, 2-methyl-	192	C15H12	000613-12-7	97
2		Phenanthrene, 2-methyl-	192	C15H12	002531-84-2	97
3		Anthracene, 1-methyl-	192	C15H12	000610-48-0	97
4		Phenanthrene, 1-methyl-	192	C15H12	000832-69-9	96
5		1H-Cyclopropa[1]phenanthrene, 1a, ...	192	C15H12	000949-41-7	96



Data Path : \\74.0.250.170\SVOASRV\HPCHEM1\BNA\_F\DATA\BF062717\  
 Data File : BF096227.D  
 Acq On : 27 Jun 2017 20:21  
 Operator : SJ/MA  
 Sample : I3920-03 5X  
 Misc :  
 ALS Vial : 11 Sample Multiplier: 1

Instrument :  
 BNA\_F  
 ClientSampleID :  
 OB-3

Quant Method : Z:\HPCHEM1\BNA\_F\METHODS\8270-BF062717.M  
 Quant Title : ASP BNA STANDARDS FOR 5 POINT CALIBRATION

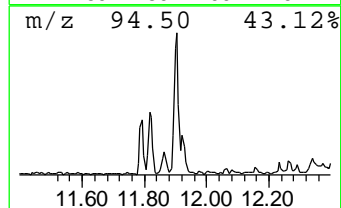
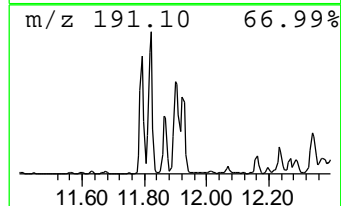
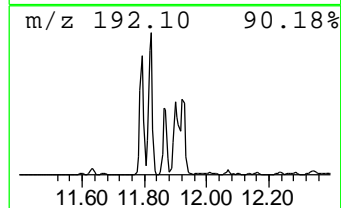
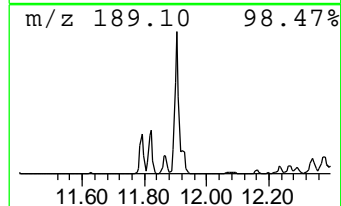
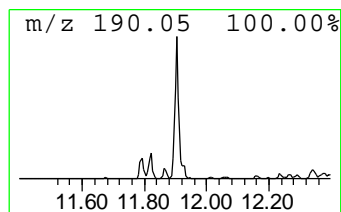
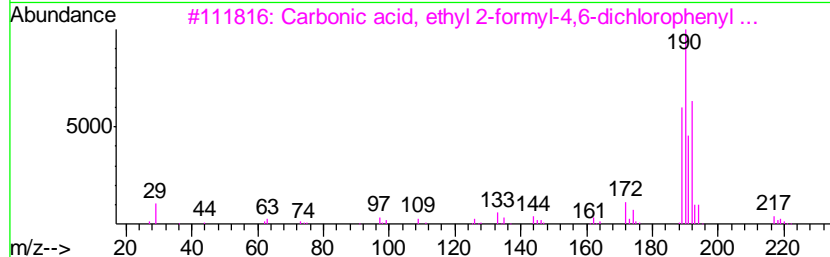
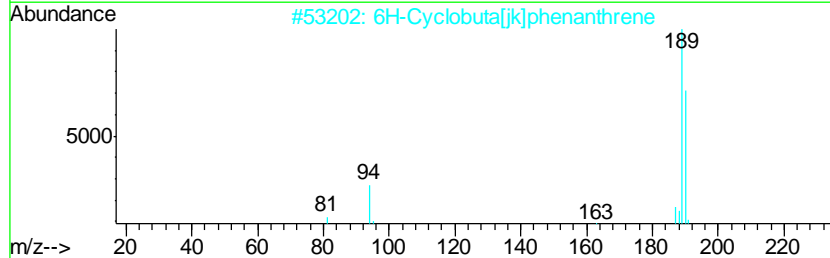
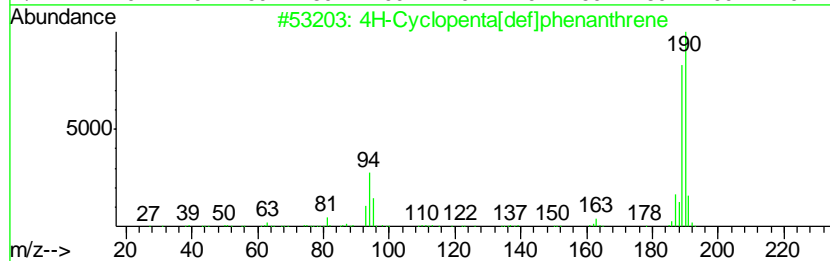
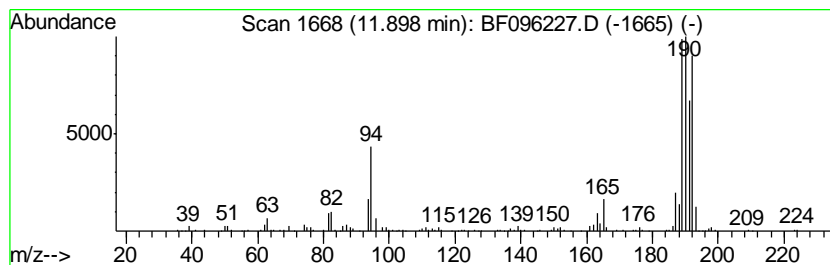
TIC Library : C:\DATABASE\NIST11.L  
 TIC Integration Parameters: LSCINT.P

\*\*\*\*\*  
 Peak Number 10 4H-Cyclopenta[def]phenanthrene Concentration Rank 3

R.T.	EstConc	Area	Relative to ISTD	R.T.
11.90	15.77 ng	817243	Phenanthrene-d10	11.29

Hit#	of	Tentative ID	MW	MolForm	CAS#	Qual
1	5	4H-Cyclopenta[def]phenanthrene	190	C15H10	000203-64-5	70
2		6H-Cyclobuta[jk]phenanthrene	190	C15H10	083469-43-6	50
3		Carbonic acid, ethyl 2-formyl-4,...	262	C10H8Cl2O4	1000331-34-4	50
4		Benzaldehyde, 3,5-dichloro-2-hyd...	190	C7H4Cl2O2	000090-60-8	40
5		2,2'-Bis(4,5-dimethylimidazole)	190	C10H14N4	069286-06-2	23



Data Path : \\74.0.250.170\SVOASRV\HPCHEM1\BNA\_F\DATA\BF062717\  
 Data File : BF096227.D  
 Acq On : 27 Jun 2017 20:21  
 Operator : SJ/MA  
 Sample : I3920-03 5X  
 Misc :  
 ALS Vial : 11 Sample Multiplier: 1

Instrument :  
 BNA\_F  
 ClientSampled :  
 OB-3

Quant Method : Z:\HPCHEM1\BNA\_F\METHODS\8270-BF062717.M  
 Quant Title : ASP BNA STANDARDS FOR 5 POINT CALIBRATION

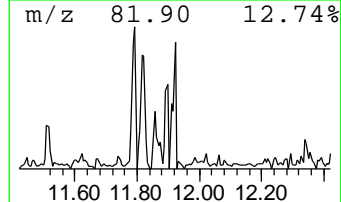
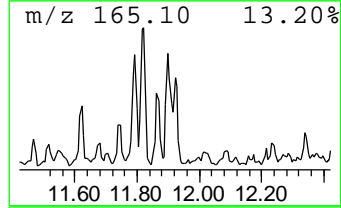
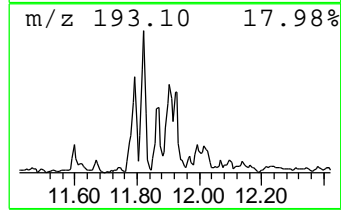
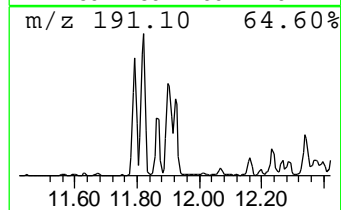
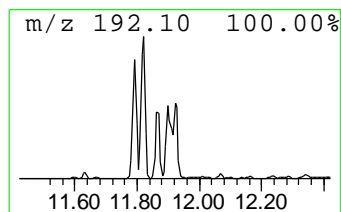
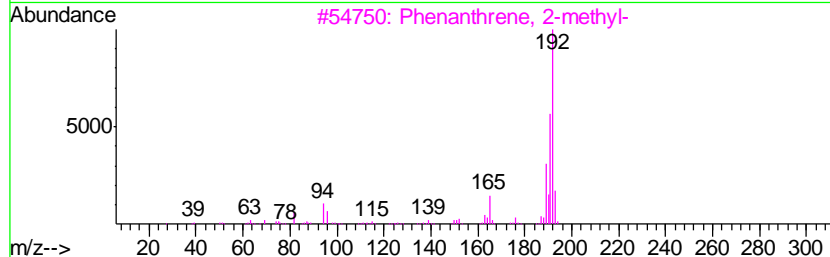
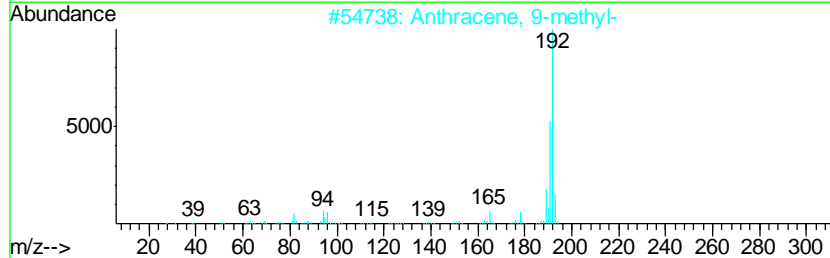
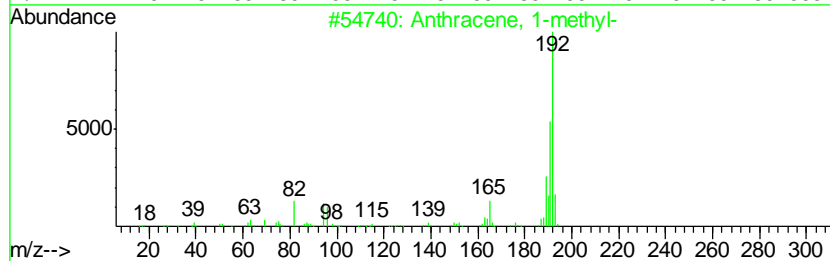
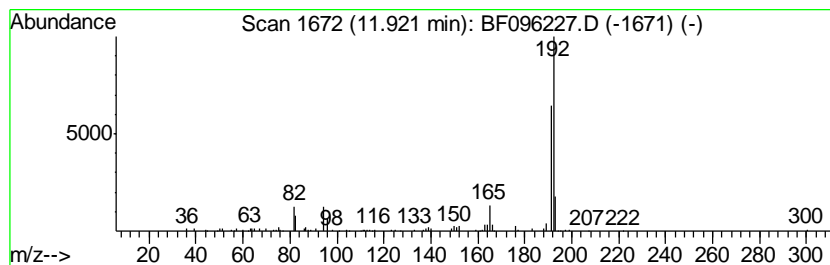
TIC Library : C:\DATABASE\NIST11.L  
 TIC Integration Parameters: LSCINT.P

\*\*\*\*\*  
 Peak Number 11 Anthracene, 1-methyl- Concentration Rank 14

R.T.	EstConc	Area	Relative to ISTD	R.T.
11.92	4.50 ng	232960	Phenanthrene-d10	11.29

Hit#	of	Tentative ID	MW	MolForm	CAS#	Qual
1	5	Anthracene, 1-methyl-	192	C15H12	000610-48-0	90
2		Anthracene, 9-methyl-	192	C15H12	000779-02-2	87
3		Phenanthrene, 2-methyl-	192	C15H12	002531-84-2	87
4		5H-Dibenzo[a,d]cycloheptene	192	C15H12	000256-81-5	81
5		Phenanthrene, 4-methyl-	192	C15H12	000832-64-4	81



Data Path : \\74.0.250.170\SVOASRV\HPCHEM1\BNA\_F\DATA\BF062717\  
 Data File : BF096227.D  
 Acq On : 27 Jun 2017 20:21  
 Operator : SJ/MA  
 Sample : I3920-03 5X  
 Misc :  
 ALS Vial : 11 Sample Multiplier: 1

Instrument :  
 BNA\_F  
 ClientSampleID :  
 OB-3

Quant Method : Z:\HPCHEM1\BNA\_F\METHODS\8270-BF062717.M  
 Quant Title : ASP BNA STANDARDS FOR 5 POINT CALIBRATION

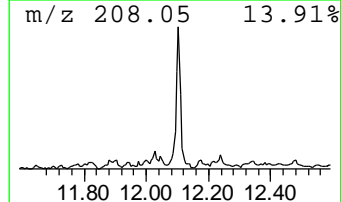
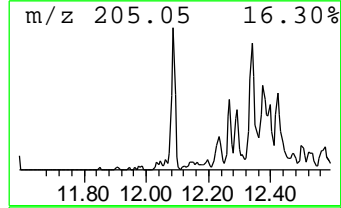
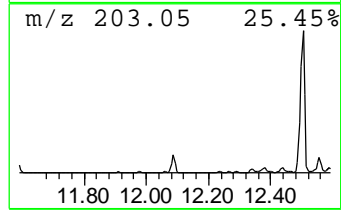
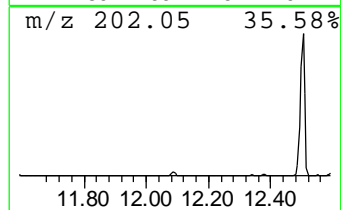
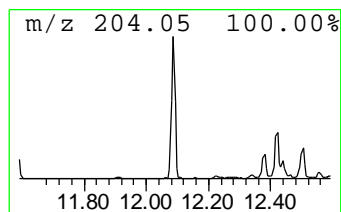
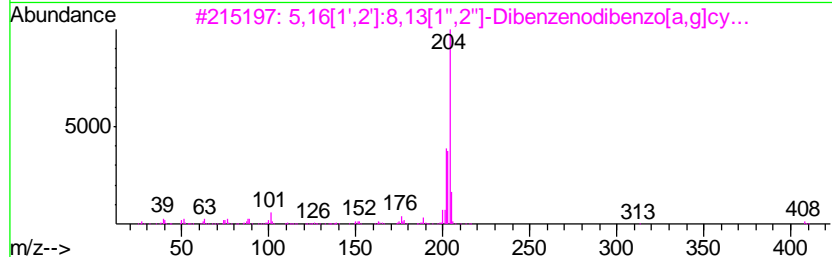
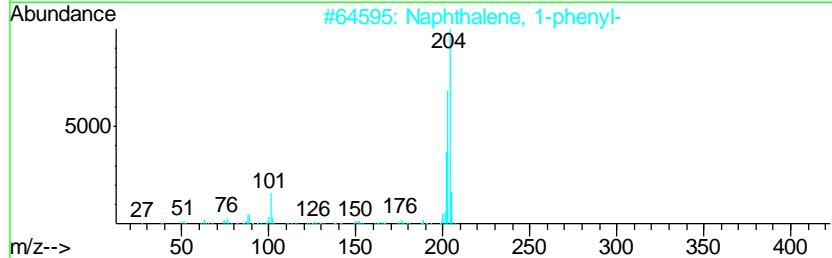
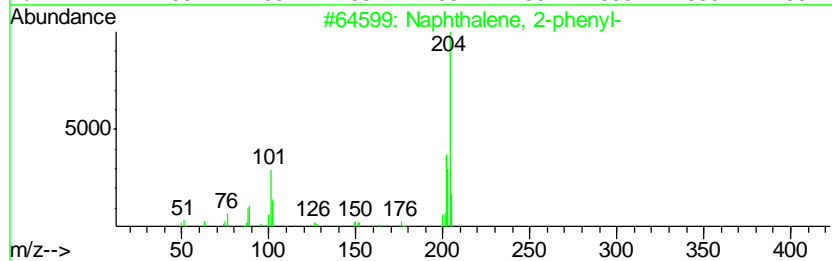
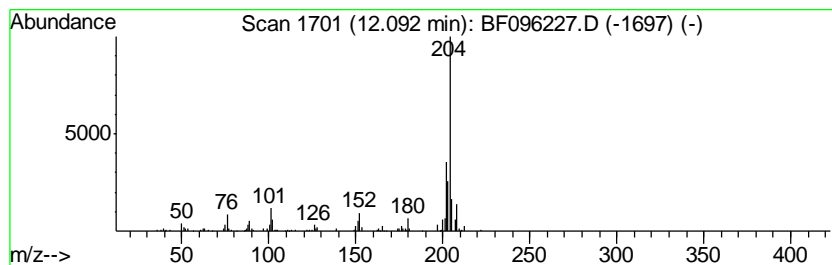
TIC Library : C:\DATABASE\NIST11.L  
 TIC Integration Parameters: LSCINT.P

\*\*\*\*\*  
 Peak Number 12 Naphthalene, 2-phenyl- Concentration Rank 11

R.T.	EstConc	Area	Relative to ISTD	R.T.
12.09	5.61 ng	290885	Phenanthrene-d10	11.29

Hit#	of	Tentative ID	MW	MolForm	CAS#	Qual
1	5	Naphthalene, 2-phenyl-	204	C16H12	000612-94-2	90
2		Naphthalene, 1-phenyl-	204	C16H12	000605-02-7	86
3		5,16[1',2']:8,13[1'',2'']-Dibenz...	408	C32H24	005672-97-9	86
4		Tricyclo[8.2.2.2(4,7)]hexadeca-2...	204	C16H12	006572-60-7	64
5		[1,1'-Biphenyl]-2-ol, 5-chloro-	204	C12H9ClO	000607-12-5	58



Data Path : \\74.0.250.170\SVOASRV\HPCHEM1\BNA\_F\DATA\BF062717\  
 Data File : BF096227.D  
 Acq On : 27 Jun 2017 20:21  
 Operator : SJ/MA  
 Sample : I3920-03 5X  
 Misc :  
 ALS Vial : 11 Sample Multiplier: 1

Instrument :  
 BNA\_F  
 ClientSampleID :  
 OB-3

Quant Method : Z:\HPCHEM1\BNA\_F\METHODS\8270-BF062717.M  
 Quant Title : ASP BNA STANDARDS FOR 5 POINT CALIBRATION

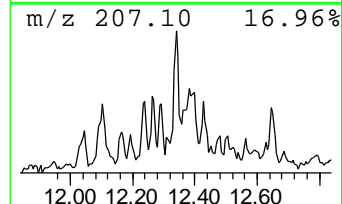
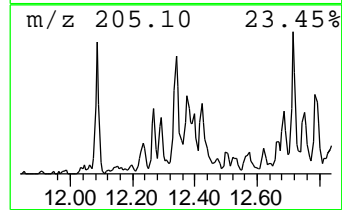
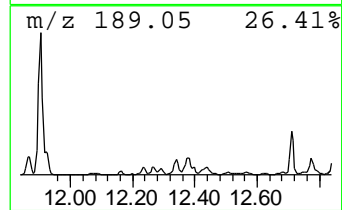
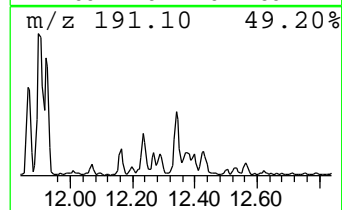
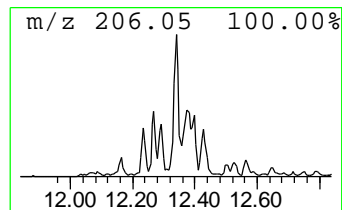
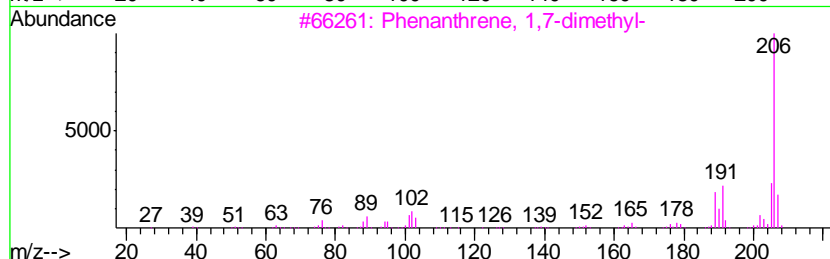
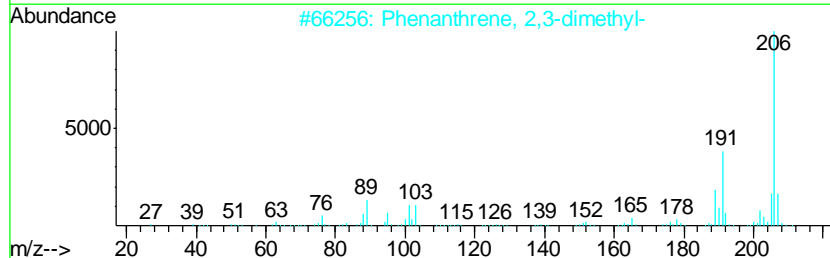
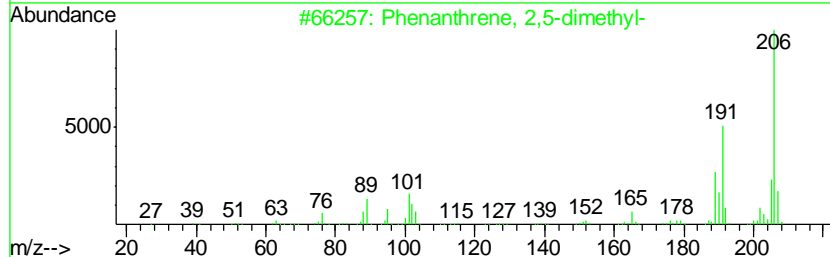
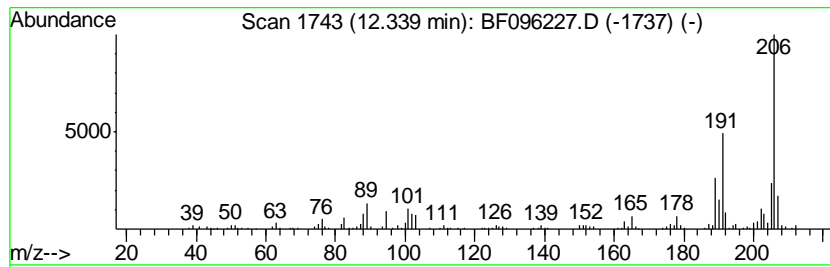
TIC Library : C:\DATABASE\NIST11.L  
 TIC Integration Parameters: LSCINT.P

\*\*\*\*\*  
 Peak Number 13 Phenanthrene, 2,5-dimethyl- Concentration Rank 8

R.T.	EstConc	Area	Relative to ISTD	R.T.
12.34	6.51 ng	337120	Phenanthrene-d10	11.29

Hit#	of	Tentative ID	MW	MolForm	CAS#	Qual
1	5	Phenanthrene, 2,5-dimethyl-	206	C16H14	003674-66-6	98
2		Phenanthrene, 2,3-dimethyl-	206	C16H14	003674-65-5	93
3		Phenanthrene, 1,7-dimethyl-	206	C16H14	000483-87-4	93
4		Phenanthrene, 3,6-dimethyl-	206	C16H14	001576-67-6	93
5		9,10-Dimethylanthracene	206	C16H14	000781-43-1	91





Data Path : \\74.0.250.170\SVOASRV\HPCHEM1\BNA\_F\DATA\BF062717\  
 Data File : BF096227.D  
 Acq On : 27 Jun 2017 20:21  
 Operator : SJ/MA  
 Sample : I3920-03 5X  
 Misc :  
 ALS Vial : 11 Sample Multiplier: 1

Instrument :  
 BNA\_F  
 ClientSampleID :  
 OB-3

Quant Method : Z:\HPCHEM1\BNA\_F\METHODS\8270-BF062717.M  
 Quant Title : ASP BNA STANDARDS FOR 5 POINT CALIBRATION

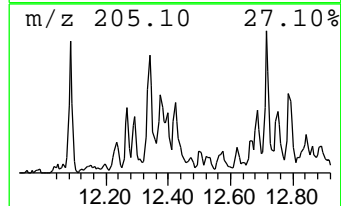
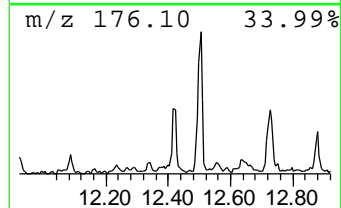
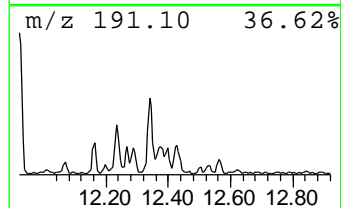
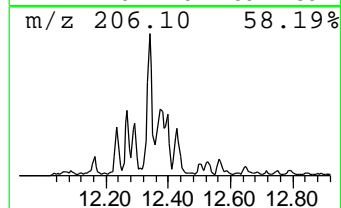
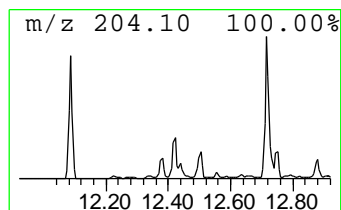
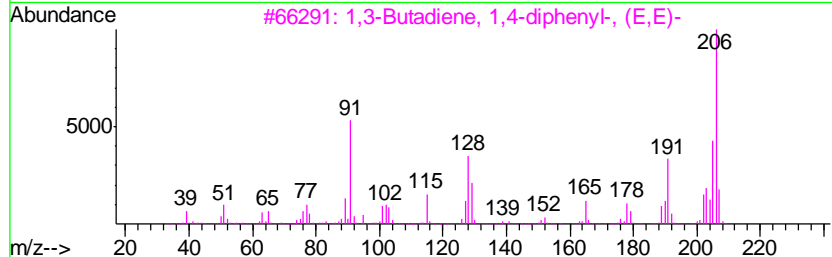
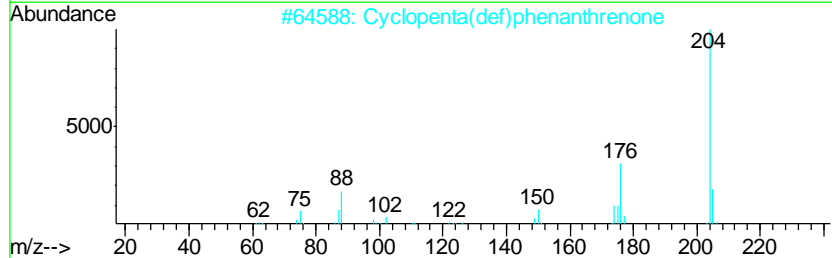
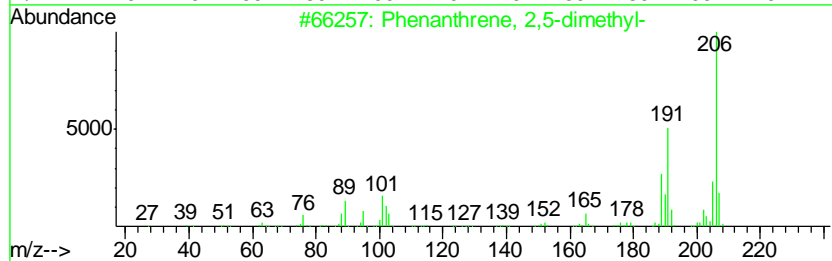
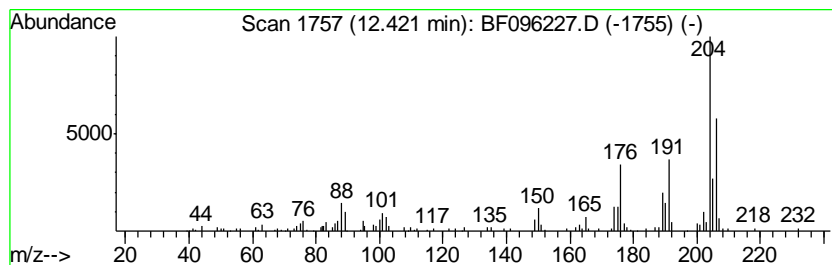
TIC Library : C:\DATABASE\NIST11.L  
 TIC Integration Parameters: LSCINT.P

\*\*\*\*\*  
 Peak Number 14 Cyclopenta(def)phenanthrenone Concentration Rank 17

R.T.	EstConc	Area	Relative to ISTD	R.T.
12.42	4.03 ng	209054	Phenanthrene-d10	11.29

Hit#	of	Tentative ID	MW	MolForm	CAS#	Qual
1	5	Phenanthrene, 2,5-dimethyl-	206	C16H14	003674-66-6	52
2		Cyclopenta(def)phenanthrenone	204	C15H8O	005737-13-3	50
3		1,3-Butadiene, 1,4-diphenyl-, (E...	206	C16H14	000538-81-8	46
4		Phenanthrene, 2,3-dimethyl-	206	C16H14	003674-65-5	42
5		9,10-Dimethylanthracene	206	C16H14	000781-43-1	42



Data Path : \\74.0.250.170\SVOASRV\HPCHEM1\BNA\_F\DATA\BF062717\  
 Data File : BF096227.D  
 Acq On : 27 Jun 2017 20:21  
 Operator : SJ/MA  
 Sample : I3920-03 5X  
 Misc :  
 ALS Vial : 11 Sample Multiplier: 1

Instrument :  
 BNA\_F  
 ClientSampled :  
 OB-3

Quant Method : Z:\HPCHEM1\BNA\_F\METHODS\8270-BF062717.M  
 Quant Title : ASP BNA STANDARDS FOR 5 POINT CALIBRATION

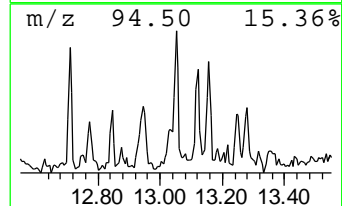
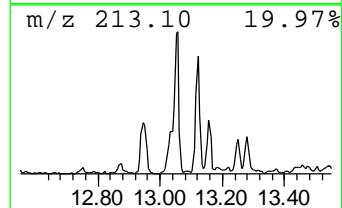
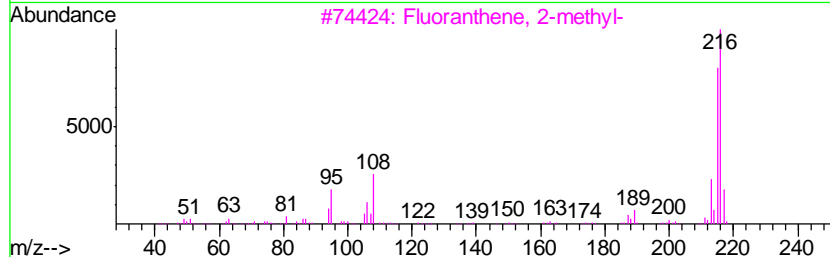
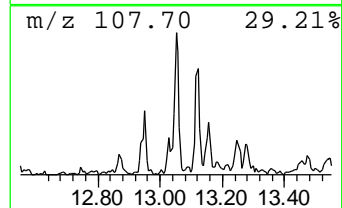
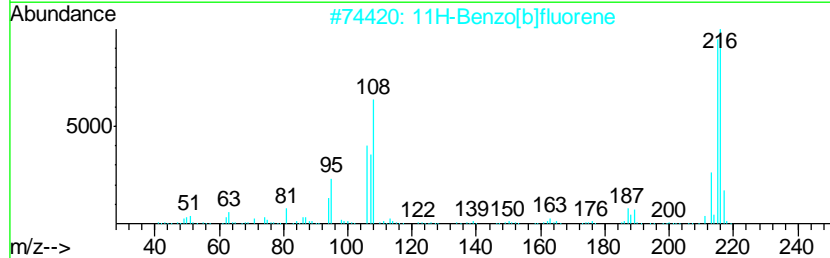
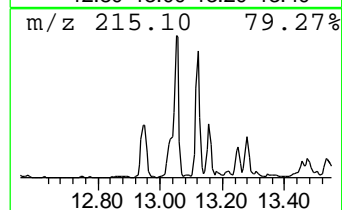
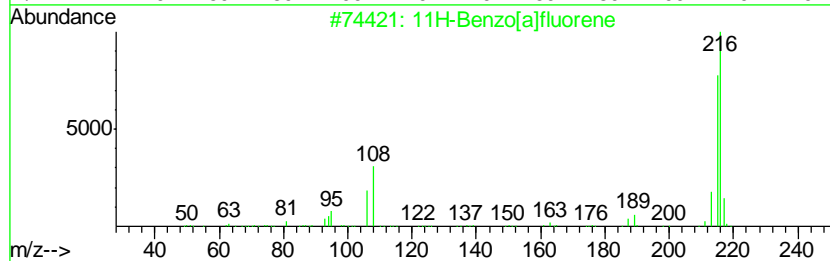
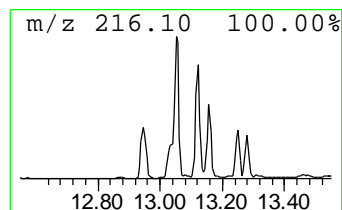
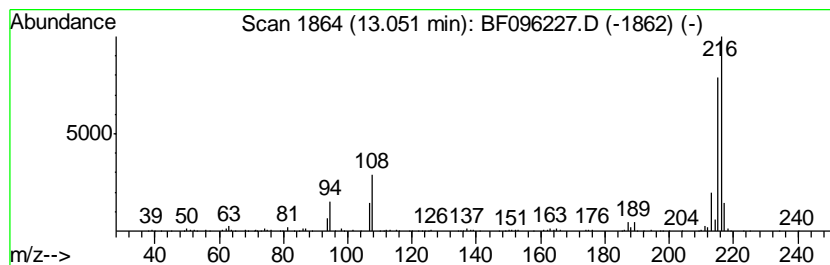
TIC Library : C:\DATABASE\NIST11.L  
 TIC Integration Parameters: LSCINT.P

\*\*\*\*\*  
 Peak Number 15 11H-Benzo[a]fluorene Concentration Rank 19

R.T.	EstConc	Area	Relative to ISTD	R.T.
13.05	3.55 ng	572761	Chrysene-d12	13.92

Hit#	of	Tentative ID	MW	MolForm	CAS#	Qual
1	5	11H-Benzo[a]fluorene	216	C17H12	000238-84-6	91
2		11H-Benzo[b]fluorene	216	C17H12	000243-17-4	90
3		Fluoranthene, 2-methyl-	216	C17H12	033543-31-6	80
4		Pyrene, 2-methyl-	216	C17H12	003442-78-2	68
5		7H-Benzo[c]fluorene	216	C17H12	000205-12-9	59



Data Path : \\74.0.250.170\SVOASRV\HPCHEM1\BNA\_F\DATA\BF062717\  
 Data File : BF096227.D  
 Acq On : 27 Jun 2017 20:21  
 Operator : SJ/MA  
 Sample : I3920-03 5X  
 Misc :  
 ALS Vial : 11 Sample Multiplier: 1

Instrument :  
 BNA\_F  
 ClientSampled :  
 OB-3

Quant Method : Z:\HPCHEM1\BNA\_F\METHODS\8270-BF062717.M  
 Quant Title : ASP BNA STANDARDS FOR 5 POINT CALIBRATION

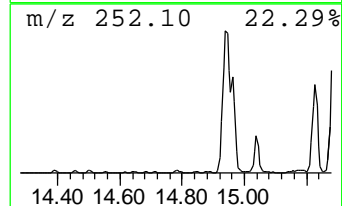
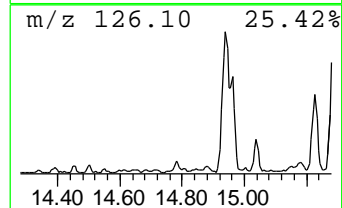
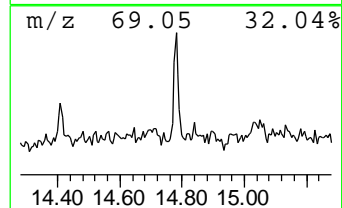
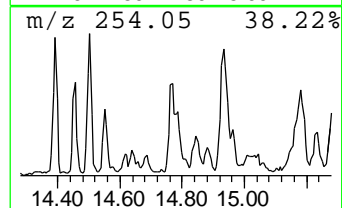
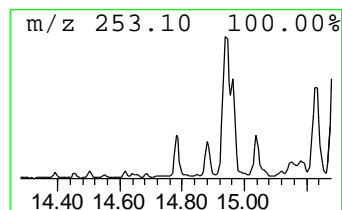
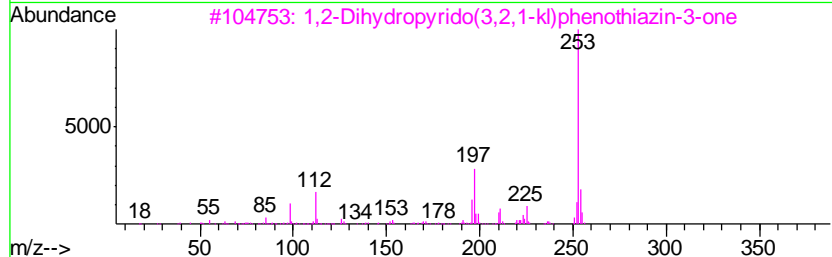
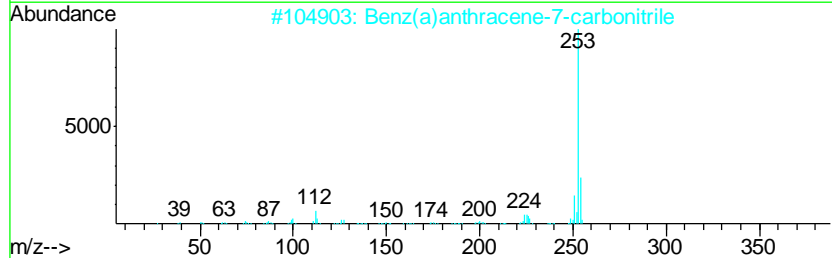
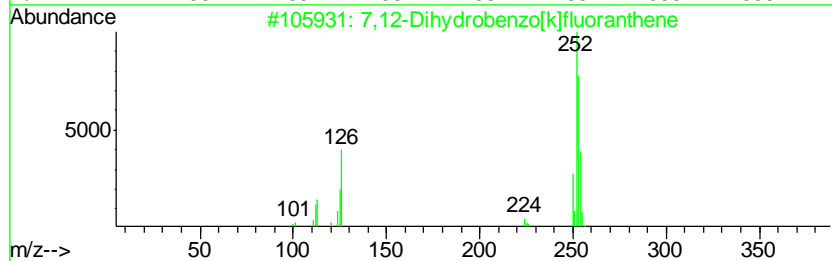
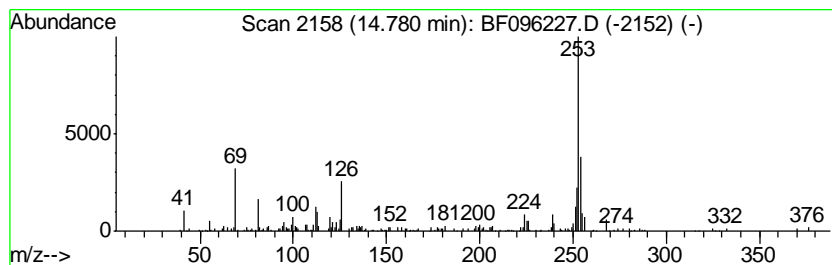
TIC Library : C:\DATABASE\NIST11.L  
 TIC Integration Parameters: LSCINT.P

\*\*\*\*\*  
 Peak Number 16 7,12-Dihydrobenzo[k]fluoran... Concentration Rank 10

R.T.	EstConc	Area	Relative to ISTD	R.T.
14.78	6.11 ng	266629	Perylene-d12	15.34

Hit#	of	Tentative ID	MW	MolForm	CAS#	Qual
1	5	7,12-Dihydrobenzo[k]fluoranthene	254	C20H14	1000080-17-7	81
2		Benz(a)anthracene-7-carbonitrile	253	C19H11N	007476-08-6	50
3		1,2-Dihydropyrido(3,2,1-kl)pheno...	253	C15H11NOS	069513-42-4	46
4		4,6'-Biazulenyl	254	C20H14	094154-49-1	46
5		4,4'-Biazulenyl	254	C20H14	094053-54-0	46



Data Path : \\74.0.250.170\SVOASRV\HPCHEM1\BNA\_F\DATA\BF062717\  
 Data File : BF096227.D  
 Acq On : 27 Jun 2017 20:21  
 Operator : SJ/MA  
 Sample : I3920-03 5X  
 Misc :  
 ALS Vial : 11 Sample Multiplier: 1

Instrument :  
 BNA\_F  
 ClientSampled :  
 OB-3

Quant Method : Z:\HPCHEM1\BNA\_F\METHODS\8270-BF062717.M  
 Quant Title : ASP BNA STANDARDS FOR 5 POINT CALIBRATION

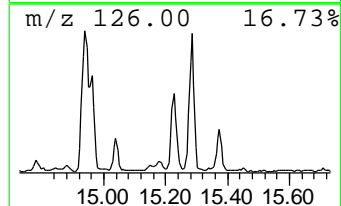
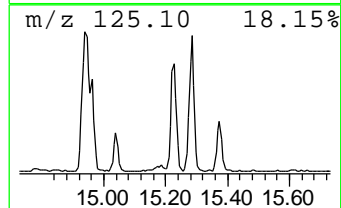
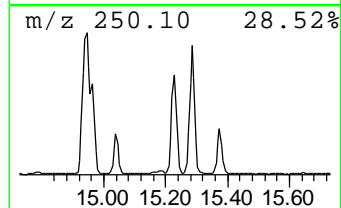
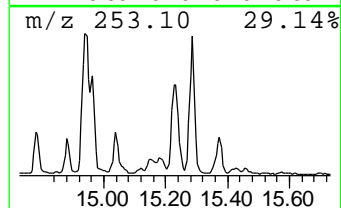
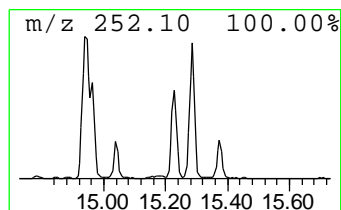
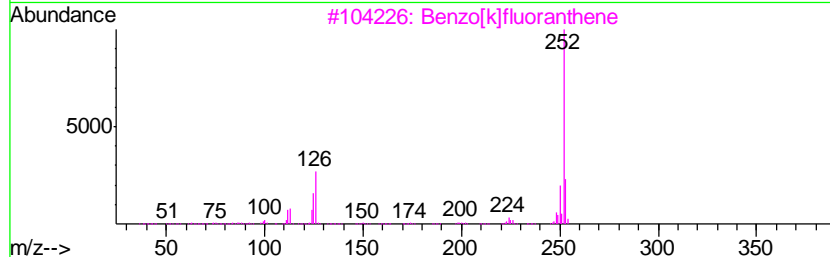
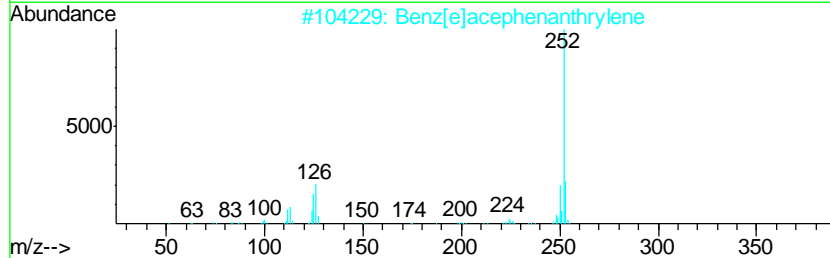
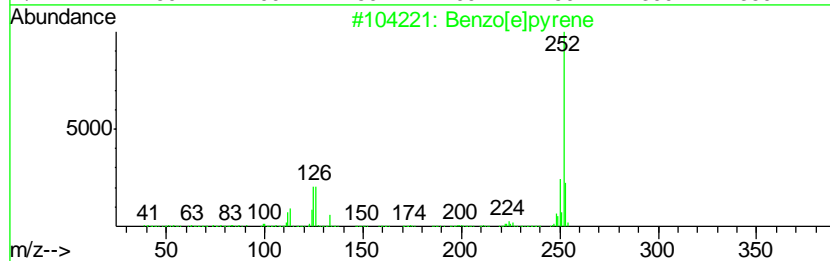
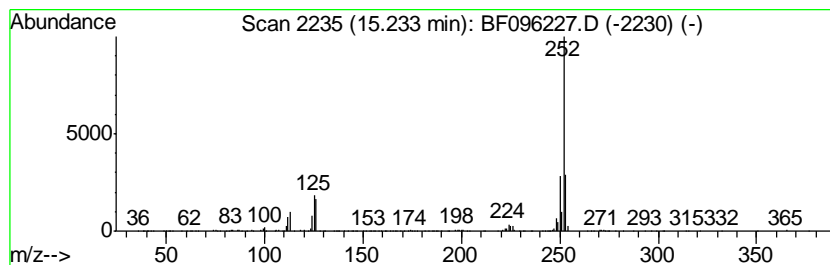
TIC Library : C:\DATABASE\NIST11.L  
 TIC Integration Parameters: LSCINT.P

\*\*\*\*\*  
 Peak Number 18 Benzo[e]pyrene Concentration Rank 2

R.T.	EstConc	Area	Relative to ISTD	R.T.
15.23	21.33 ng	930847	Perylene-d12	15.34

Hit#	of	Tentative ID	MW	MolForm	CAS#	Qual
1	5	Benzo[e]pyrene	252	C20H12	000192-97-2	98
2		Benz[e]acephenanthrylene	252	C20H12	000205-99-2	98
3		Benzo[k]fluoranthene	252	C20H12	000207-08-9	97
4		Benzo[a]pyrene	252	C20H12	000050-32-8	97
5		Benzo[j]fluoranthene	252	C20H12	000205-82-3	97



Data Path : \\74.0.250.170\SVOASRV\HPCHEM1\BNA\_F\DATA\BF062717\  
 Data File : BF096227.D  
 Acq On : 27 Jun 2017 20:21  
 Operator : SJ/MA  
 Sample : I3920-03 5X  
 Misc :  
 ALS Vial : 11 Sample Multiplier: 1

Instrument :  
 BNA\_F  
 ClientSampleID :  
 OB-3

Quant Method : Z:\HPCHEM1\BNA\_F\METHODS\8270-BF062717.M  
 Quant Title : ASP BNA STANDARDS FOR 5 POINT CALIBRATION

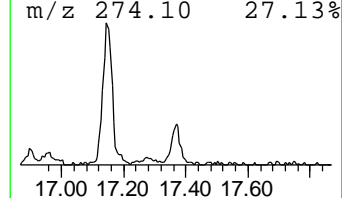
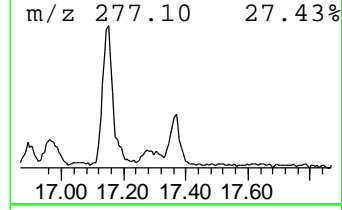
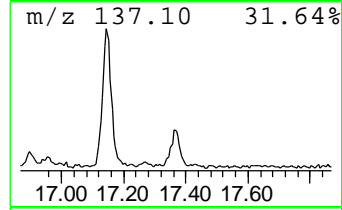
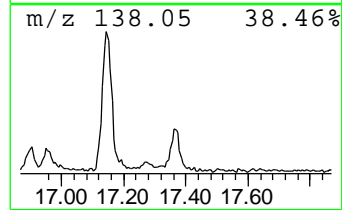
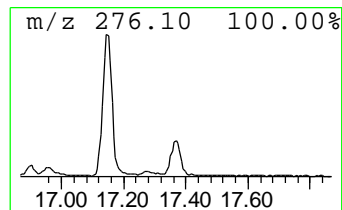
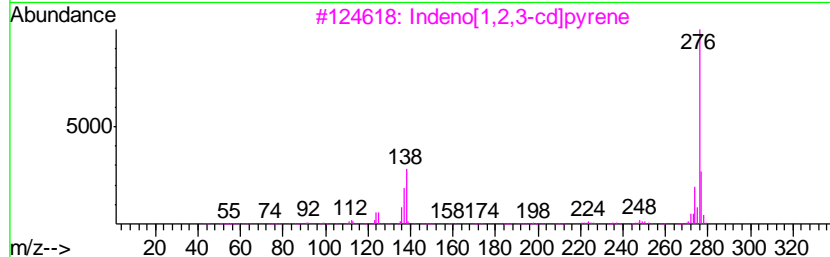
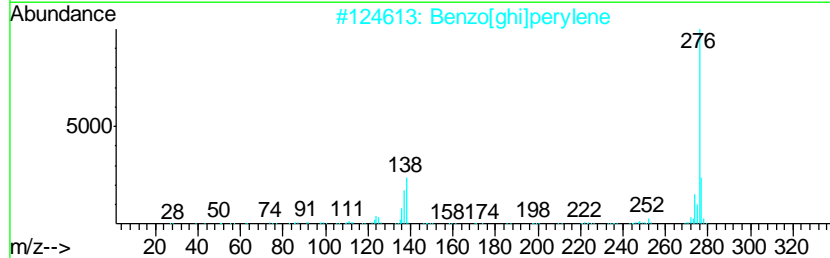
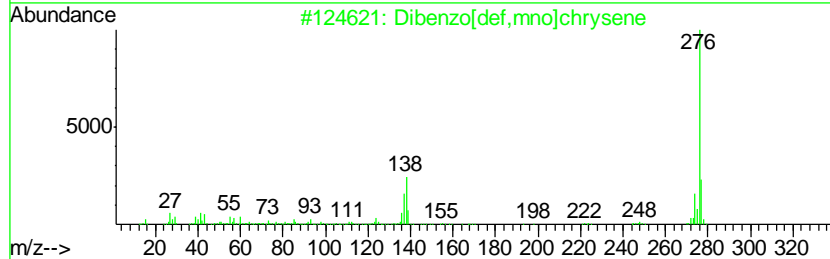
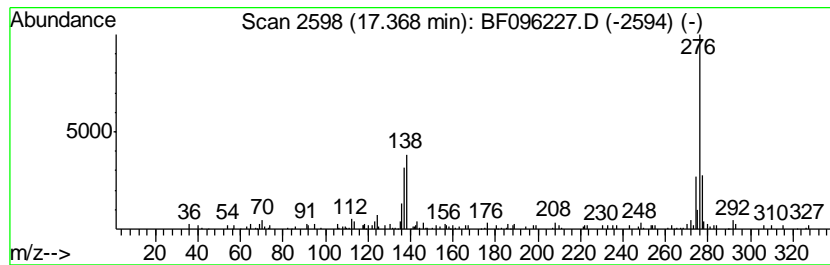
TIC Library : C:\DATABASE\NIST11.L  
 TIC Integration Parameters: LSCINT.P

\*\*\*\*\*  
 Peak Number 19 Dibenzo[def,mno]chrysene Concentration Rank 20

R.T.	EstConc	Area	Relative to ISTD	R.T.
17.37	3.36 ng	146610	Perylene-d12	15.34

Hit#	of	Tentative ID	MW	MolForm	CAS#	Qual
1	5	Dibenzo[def,mno]chrysene	276	C22H12	000191-26-4	93
2		Benzo[ghi]perylene	276	C22H12	000191-24-2	91
3		Indeno[1,2,3-cd]pyrene	276	C22H12	000193-39-5	83
4		Indeno[1,2,3-cd]fluoranthene	276	C22H12	000193-43-1	74
5		1H-Cyclopenta[4,5]pyrido[1,2-a]b...	276	C17H16N4	329707-31-5	43



Data Path : \\74.0.250.170\SVOASRV\HPCHEM1\BNA\_F\DATA\BF062717\  
 Data File : BF096227.D  
 Acq On : 27 Jun 2017 20:21  
 Operator : SJ/MA  
 Sample : I3920-03 5X  
 Misc :  
 ALS Vial : 11 Sample Multiplier: 1

Instrument :  
 BNA\_F  
 ClientSampled :  
 OB-3

Quant Method : Z:\HPCHEM1\BNA\_F\METHODS\8270-BF062717.M  
 Quant Title : ASP BNA STANDARDS FOR 5 POINT CALIBRATION

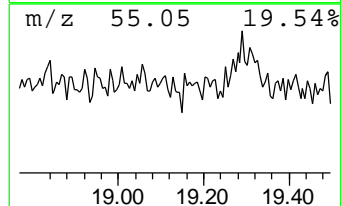
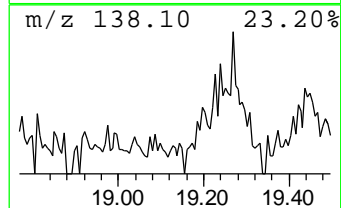
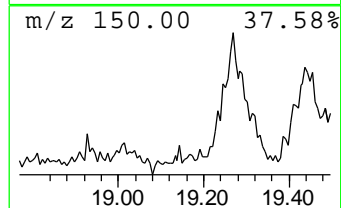
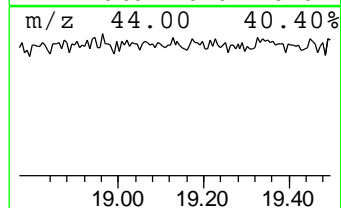
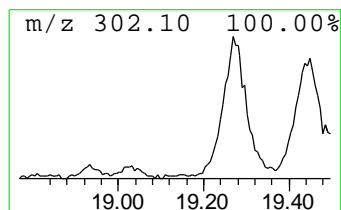
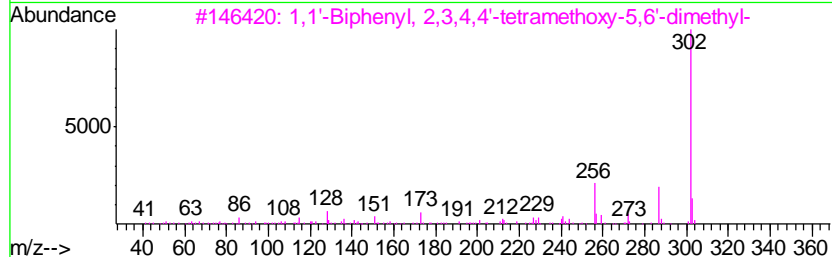
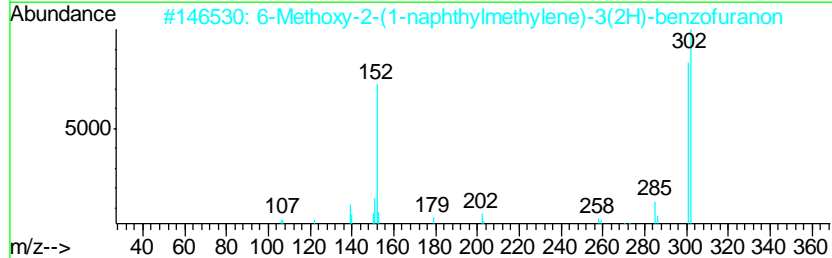
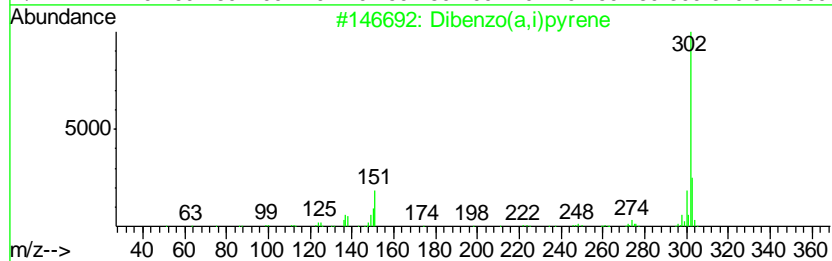
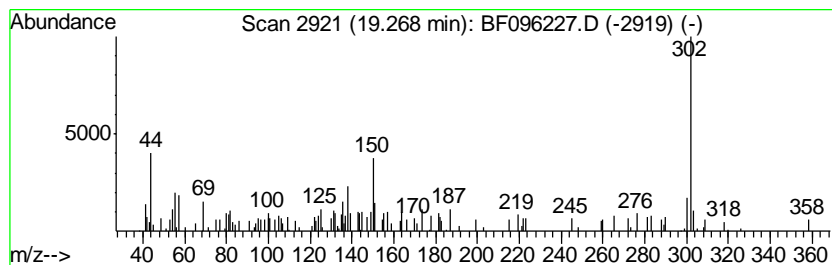
TIC Library : C:\DATABASE\NIST11.L  
 TIC Integration Parameters: LSCINT.P

\*\*\*\*\*  
 Peak Number 20 unknown19.27 Concentration Rank 9

R.T.	EstConc	Area	Relative to ISTD	R.T.
19.27	6.33 ng	276132	Perylene-d12	15.34

Hit#	of	Tentative ID	MW	MolForm	CAS#	Qual
1	5	Dibenzo(a,i)pyrene	302	C24H14	000189-55-9	37
2		6-Methoxy-2-(1-naphthylmethylene...	302	C20H14O3	077764-97-7	35
3		1,1'-Biphenyl, 2,3,4,4'-tetramet...	302	C18H22O4	123705-88-4	27
4		Estra-1,3,5(10)-triene-3,17-diol...	302	C19H26O3	000362-07-2	25
5		Dibenzo[fg,op]naphthacene	302	C24H14	000192-51-8	25



Data Path : \\74.0.250.170\SVOASRV\HPCHEM1\BNA\_F\DATA\BF062717\  
 Data File : BF096227.D  
 Acq On : 27 Jun 2017 20:21  
 Operator : SJ/MA  
 Sample : I3920-03 5X  
 Misc :  
 ALS Vial : 11 Sample Multiplier: 1

Instrument :  
 BNA\_F  
 ClientSampleId :  
 OB-3

Quant Method : Z:\HPCHEM1\BNA\_F\METHODS\8270-BF062717.M  
 Quant Title : ASP BNA STANDARDS FOR 5 POINT CALIBRATION

TIC Library : C:\DATABASE\NIST11.L  
 TIC Integration Parameters: LSCINT.P

TIC Top Hit name	RT	EstConc	Units	Response	--Internal Standard--			
					#	RT	Resp	Conc
2-Pentanone, 4-hy...	4.96	4.2	ng	234890	1	6.78	1132610	20.0
unknown6.54	6.54	21.4	ng	1212790	1	6.78	1132610	20.0
9H-Fluorene, 1-me...	10.90	4.1	ng	214329	4	11.29	1036440	20.0
9H-Fluoren-9-one	11.09	3.6	ng	187005	4	11.29	1036440	20.0
Dibenzothiophene	11.19	4.6	ng	236402	4	11.29	1036440	20.0
Phenanthrene, 1-m...	11.79	9.0	ng	468698	4	11.29	1036440	20.0
Phenanthrene, 2-m...	11.82	12.4	ng	645015	4	11.29	1036440	20.0
Anthracene, 2-met...	11.86	5.5	ng	285531	4	11.29	1036440	20.0
4H-Cyclopenta[def...	11.90	15.8	ng	817243	4	11.29	1036440	20.0
Anthracene, 1-met...	11.92	4.5	ng	232960	4	11.29	1036440	20.0
Naphthalene, 2-ph...	12.09	5.6	ng	290885	4	11.29	1036440	20.0
Phenanthrene, 2,5...	12.34	6.5	ng	337120	4	11.29	1036440	20.0
Cyclopenta(def)ph...	12.42	4.0	ng	209054	4	11.29	1036440	20.0
11H-Benzo[a]fluorene	13.05	3.5	ng	572761	5	13.92	3227530	20.0
7,12-Dihydrobenzo...	14.78	6.1	ng	266629	6	15.34	872793	20.0
Benzo[e]pyrene	15.23	21.3	ng	930847	6	15.34	872793	20.0
Dibenzo[def,mno]c...	17.37	3.4	ng	146610	6	15.34	872793	20.0
unknown19.27	19.27	6.3	ng	276132	6	15.34	872793	20.0