

Data Path : \\74.0.250.170\SVOASRV\HPCHEM1\BNA\_F\DATA\BF062717\  
 Data File : BF096229.D  
 Acq On : 27 Jun 2017 21:17  
 Operator : SJ/MA  
 Sample : I3898-01  
 Misc :  
 ALS Vial : 13 Sample Multiplier: 1

Instrument :  
 BNA\_F  
 ClientSampleId :  
 A6987MDW

Integration Parameters: rteint.p  
 Integrator: RTE  
 Smoothing : ON  
 Sampling : 1  
 Start Thrs: 0.2  
 Stop Thrs : 0

Filtering: 5  
 Min Area: 3 % of largest Peak  
 Max Peaks: 100  
 Peak Location: TOP

If leading or trailing edge < 100 prefer < Baseline drop else tangent >  
 Peak separation: 5

Method : Z:\HPCHEM1\BNA\_F\Methods\8270-BF062717.M  
 Title : ASP BNA STANDARDS FOR 5 POINT CALIBRATION

Signal : TIC

peak #	R.T. min	first scan	max scan	last scan	PK TY	peak height	corr. area	corr. % max.	% of total
1	2.434	54	59	65	rBV	622679	1021553	2.74%	0.426%
2	3.681	265	271	275	rVV2	272823	572427	1.53%	0.239%
3	3.740	275	281	289	rVV	2251282	4191177	11.22%	1.747%
4	4.381	385	390	399	rBV3	282098	516302	1.38%	0.215%
5	4.734	442	450	459	rBV	983608	1790567	4.79%	0.746%
6	4.822	459	465	470	rVV3	220211	459011	1.23%	0.191%
7	4.969	485	490	496	rBV3	258295	491932	1.32%	0.205%
8	5.034	496	501	507	rBV	1132848	1839332	4.92%	0.767%
9	5.146	516	520	524	rBV	561843	878828	2.35%	0.366%
10	5.251	533	538	544	rBV	3283734	4698170	12.58%	1.958%
11	5.304	544	547	551	rVB2	384166	621390	1.66%	0.259%
12	5.363	552	557	558	rBV	4209940	5140199	13.76%	2.143%
13	5.551	586	589	594	rVV3	327776	659549	1.77%	0.275%
14	5.657	594	607	611	rVV2	10347503	37351076	100.00%	15.569%
15	5.704	612	615	622	rVB	2990503	2766290	7.41%	1.153%
16	5.781	625	628	630	rBV	434941	461700	1.24%	0.192%
17	5.816	631	634	637	rVB	749687	769267	2.06%	0.321%
18	5.863	637	642	648	rBV6	523340	1037788	2.78%	0.433%
19	5.951	653	657	661	rVB2	1078305	1263256	3.38%	0.527%
20	5.998	661	665	670	rBV3	341630	596480	1.60%	0.249%
21	6.045	670	673	679	rBV2	2065889	2603781	6.97%	1.085%
22	6.104	679	683	685	rBV	486107	526662	1.41%	0.220%
23	6.193	693	698	701	rVB	1510590	1629168	4.36%	0.679%
24	6.245	702	707	710	rBV2	1009277	1396651	3.74%	0.582%
25	6.298	710	716	718	rBV	3211322	4227676	11.32%	1.762%
26	6.322	718	720	723	rVB3	1799766	2023507	5.42%	0.843%
27	6.393	729	732	734	rBV	2440397	2941767	7.88%	1.226%
28	6.428	734	738	743	rVV3	2864090	4584605	12.27%	1.911%
29	6.475	743	746	747	rVV	1487519	1389976	3.72%	0.579%
30	6.516	747	753	756	rVV2	8849176	15530754	41.58%	6.474%
31	6.557	756	760	762	rVV2	4031573	4130371	11.06%	1.722%
32	6.575	762	763	765	rVV	782897	625817	1.68%	0.261%
33	6.622	768	771	772	rVV	3938974	3587465	9.60%	1.495%
34	6.640	772	774	780	rVB	5912685	5988836	16.03%	2.496%

Data Path : \\74.0.250.170\SVOASRV\HPCHEM1\BNA\_F\DATA\BF062717\  
 Data File : BF096229.D  
 Acq On : 27 Jun 2017 21:17  
 Operator : SJ/MA  
 Sample : I3898-01  
 Misc :  
 ALS Vial : 13 Sample Multiplier: 1

Instrument :  
 BNA\_F  
 ClientSampleId :  
 A6987MDW

Integration Parameters: rteint.p  
 Integrator: RTE  
 Smoothing : ON  
 Sampling : 1  
 Start Thrs: 0.2  
 Stop Thrs : 0

Filtering: 5  
 Min Area: 3 % of largest Peak  
 Max Peaks: 100  
 Peak Location: TOP

If leading or trailing edge < 100 prefer < Baseline drop else tangent >  
 Peak separation: 5

Method : Z:\HPCHEM1\BNA\_F\Methods\8270-BF062717.M  
 Title : ASP BNA STANDARDS FOR 5 POINT CALIBRATION

35	6.745	787	792	794	rBV3	1091133	1509424	4.04%	0.629%
36	6.787	797	799	802	rBV2	1411411	1112786	2.98%	0.464%
37	6.822	802	805	807	rBV2	3558107	3269918	8.75%	1.363%
38	6.857	807	811	815	rBV3	3431553	4605938	12.33%	1.920%
39	6.916	818	821	822	rBV3	1985743	2196694	5.88%	0.916%
40	6.945	822	826	829	rVB2	2923396	4077494	10.92%	1.700%
41	7.045	836	843	844	rBV5	1786220	2864169	7.67%	1.194%
42	7.075	844	848	851	rVV2	4632503	7136045	19.11%	2.975%
43	7.116	851	855	858	rVV2	5458825	7478270	20.02%	3.117%
44	7.145	858	860	864	rVV	3031792	3545982	9.49%	1.478%
45	7.192	864	868	874	rVV3	5086612	8017959	21.47%	3.342%
46	7.240	874	876	877	rVV	941057	808398	2.16%	0.337%
47	7.263	877	880	882	rVV2	2688668	3098591	8.30%	1.292%
48	7.287	882	884	888	rVB	2488622	2232677	5.98%	0.931%
49	7.334	888	892	896	rBV3	7226577	12003405	32.14%	5.003%
50	7.369	896	898	901	rVV3	2988888	3752107	10.05%	1.564%
51	7.404	901	904	908	rVB	4959405	5076159	13.59%	2.116%
52	7.451	908	912	915	rBV3	2746218	3201138	8.57%	1.334%
53	7.481	915	917	920	rVB	1856201	1445833	3.87%	0.603%
54	7.522	920	924	928	rBV2	2726815	3563503	9.54%	1.485%
55	7.569	929	932	934	rBV2	2149239	2281530	6.11%	0.951%
56	7.598	934	937	942	rVB2	4461467	6004709	16.08%	2.503%
57	7.645	943	945	949	rVB5	1322207	1444270	3.87%	0.602%
58	7.681	949	951	953	rBV2	949275	927130	2.48%	0.386%
59	7.704	953	955	957	rBV2	1282268	1103422	2.95%	0.460%
60	7.745	958	962	964	rBV4	1904136	2275668	6.09%	0.949%
61	7.816	969	974	976	rBV3	2890576	4118822	11.03%	1.717%
62	7.892	983	987	992	rBV2	3473660	5877521	15.74%	2.450%
63	8.069	1014	1017	1019	rBV2	2492821	3069588	8.22%	1.280%
64	8.445	1078	1081	1082	rVB	1652095	1352546	3.62%	0.564%
65	8.469	1082	1085	1090	rBV3	2164702	3862596	10.34%	1.610%
66	8.628	1106	1112	1118	rBV2	1950245	6525875	17.47%	2.720%
67	10.375	1407	1409	1410	rBV2	2159517	1749875	4.68%	0.729%

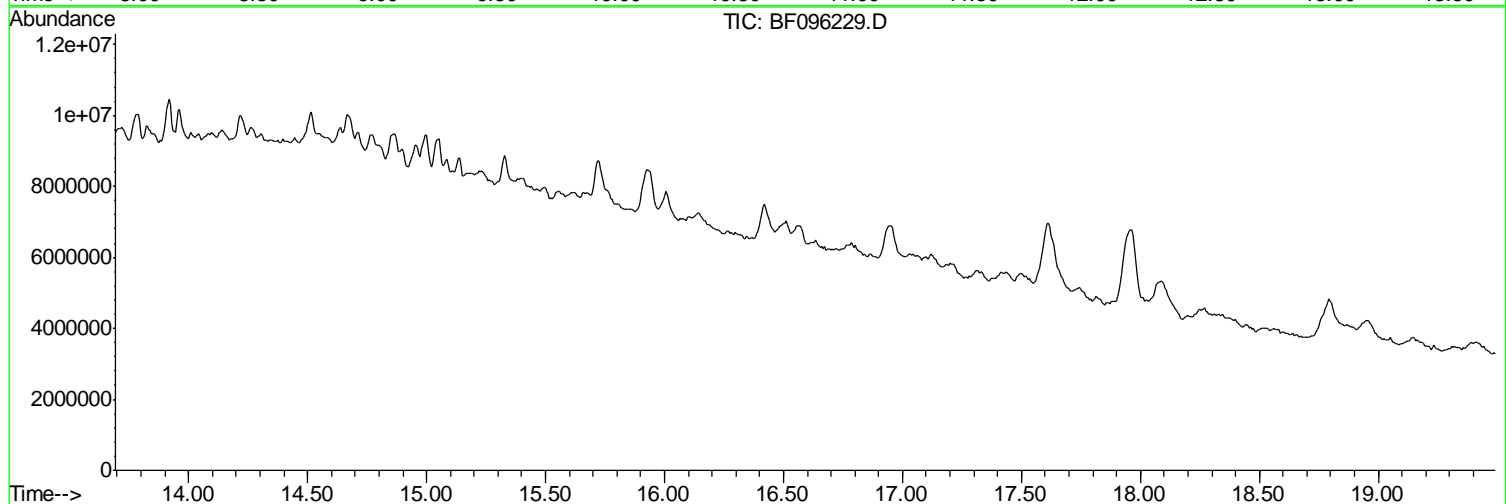
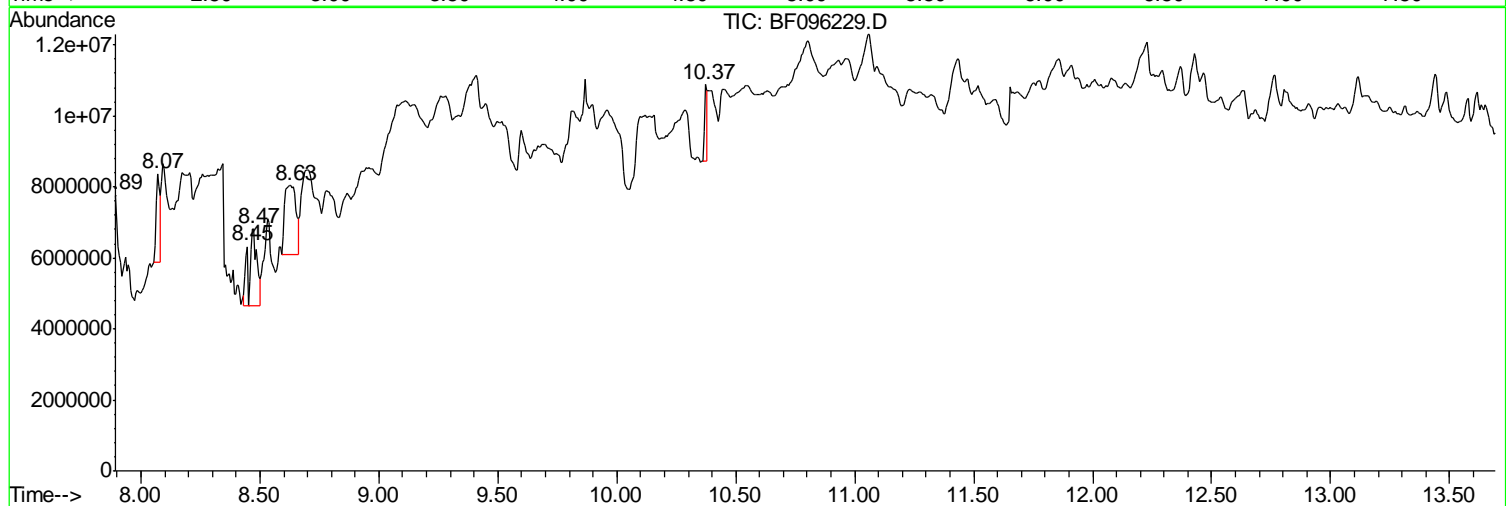
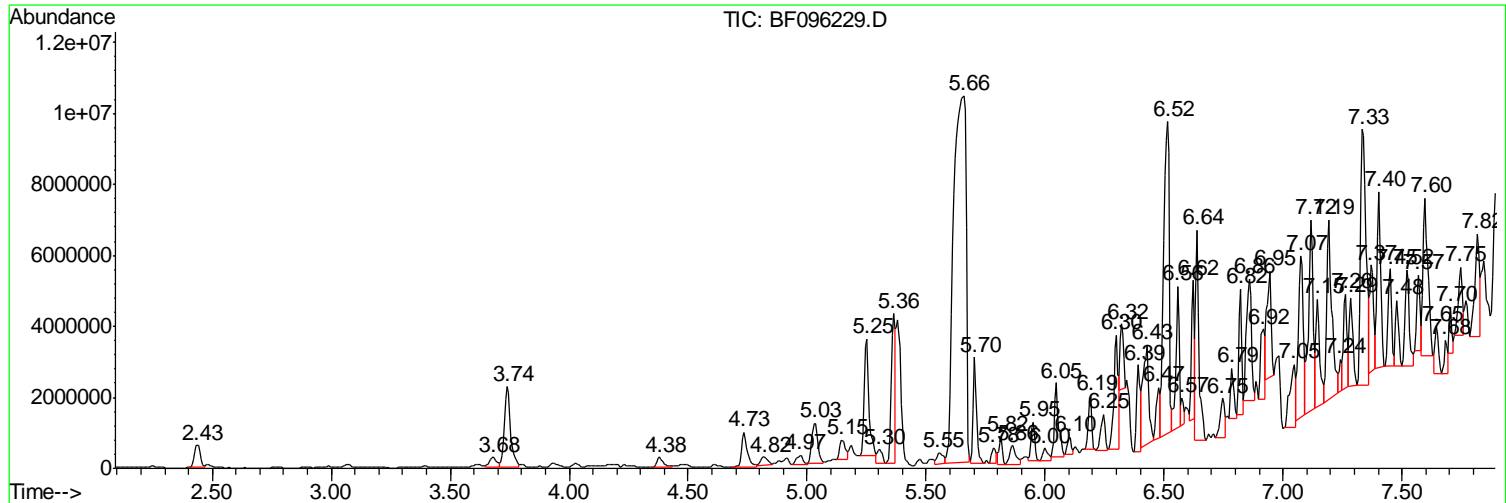
Sum of corrected areas: 239903372

Data Path : \\74.0.250.170\SVOASRV\HPCHEM1\BNA\_F\DATA\BF062717\  
 Data File : BF096229.D  
 Acq On : 27 Jun 2017 21:17  
 Operator : SJ/MA  
 Sample : I3898-01  
 Misc :  
 ALS Vial : 13 Sample Multiplier: 1

Instrument :  
 BNA\_F  
 ClientSampled :  
 A6987MDW

Quant Method : Z:\HPCHEM1\BNA\_F\Methods\8270-BF062717.M  
 Quant Title : ASP BNA STANDARDS FOR 5 POINT CALIBRATION

TIC Library : C:\DATABASE\NIST11.L  
 TIC Integration Parameters: LSCINT.P



Data Path : \\74.0.250.170\SVOASRV\HPCHEM1\BNA\_F\DATA\BF062717\  
 Data File : BF096229.D  
 Acq On : 27 Jun 2017 21:17  
 Operator : SJ/MA  
 Sample : I3898-01  
 Misc :  
 ALS Vial : 13 Sample Multiplier: 1

Instrument :  
 BNA\_F  
 ClientSampleID :  
 A6987MDW

Quant Method : Z:\HPCHEM1\BNA\_F\Methods\8270-BF062717.M  
 Quant Title : ASP BNA STANDARDS FOR 5 POINT CALIBRATION

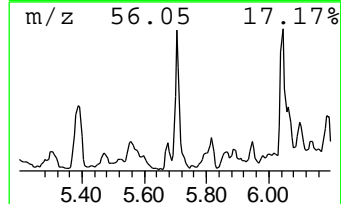
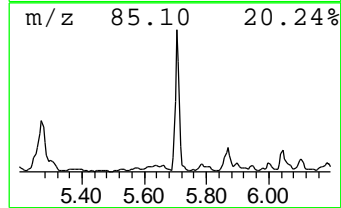
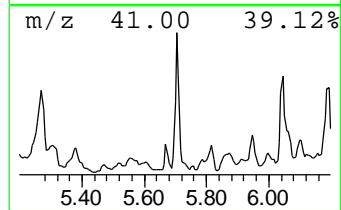
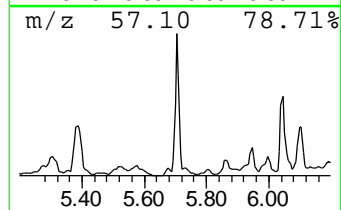
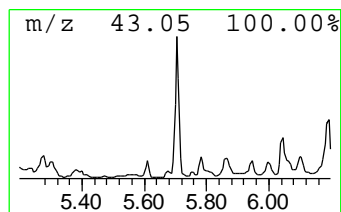
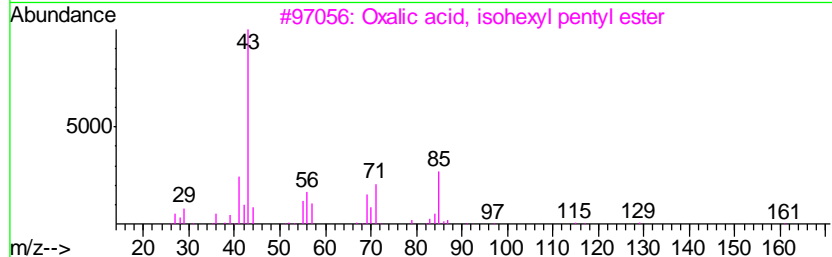
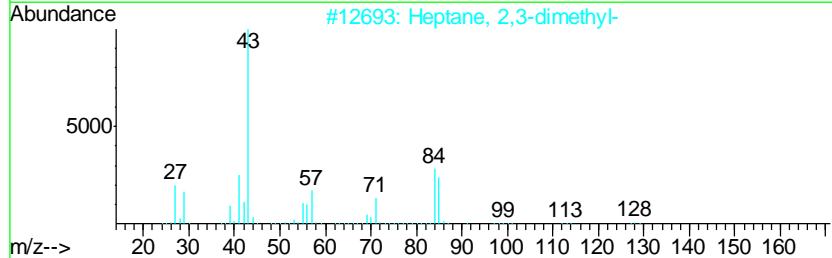
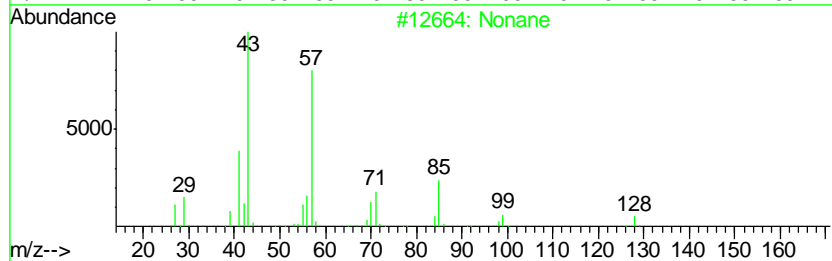
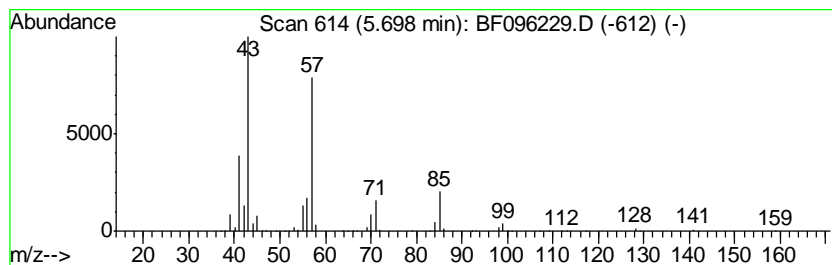
TIC Library : C:\DATABASE\NIST11.L  
 TIC Integration Parameters: LSCINT.P

\*\*\*\*\*  
 Peak Number 4 Nonane Concentration Rank 16

R.T.	EstConc	Area	Relative to ISTD	R.T.
5.70	49.72 ng	2766290	1,4-Dichlorobenzene-d4	6.79

Hit#	of	Tentative ID	MW	MolForm	CAS#	Qual
1	5	Nonane	128	C9H20	000111-84-2	83
2		Heptane, 2,3-dimethyl-	128	C9H20	003074-71-3	64
3		Oxalic acid, isohexyl pentyl ester	244	C13H24O4	1000309-32-8	64
4		Heptane, 4-ethyl-	128	C9H20	002216-32-2	64
5		Octane	114	C8H18	000111-65-9	64



Data Path : \\74.0.250.170\SVOASRV\HPCHEM1\BNA\_F\DATA\BF062717\  
 Data File : BF096229.D  
 Acq On : 27 Jun 2017 21:17  
 Operator : SJ/MA  
 Sample : I3898-01  
 Misc :  
 ALS Vial : 13 Sample Multiplier: 1

Instrument :  
 BNA\_F  
 ClientSampleID :  
 A6987MDW

Quant Method : Z:\HPCHEM1\BNA\_F\Methods\8270-BF062717.M  
 Quant Title : ASP BNA STANDARDS FOR 5 POINT CALIBRATION

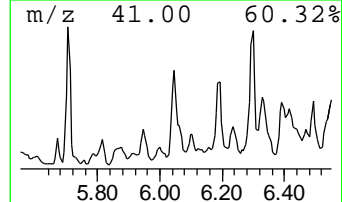
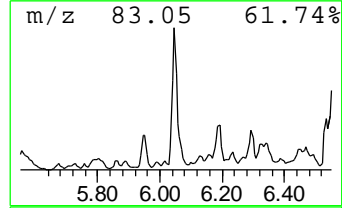
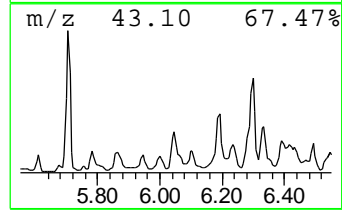
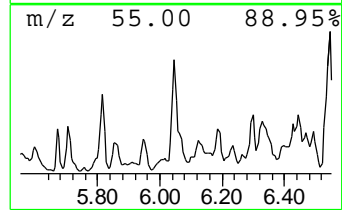
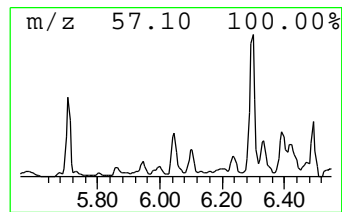
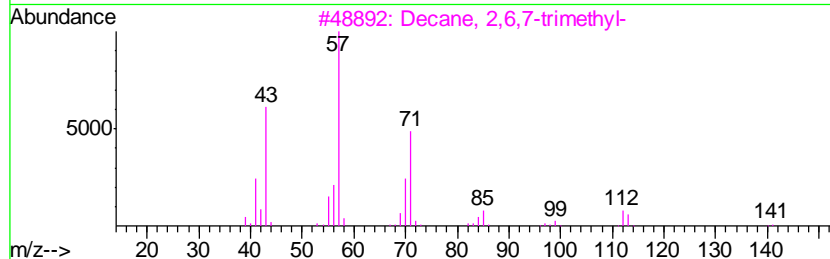
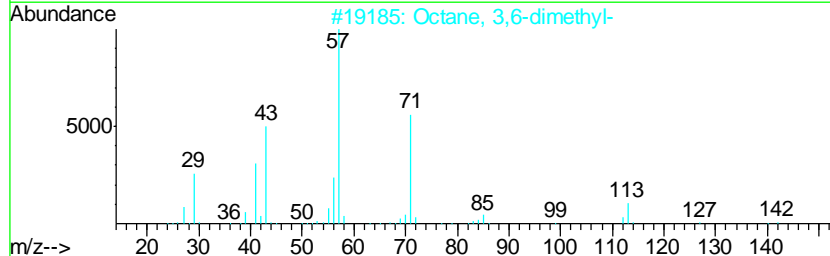
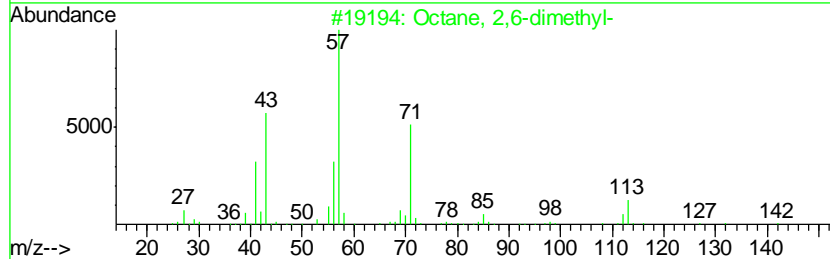
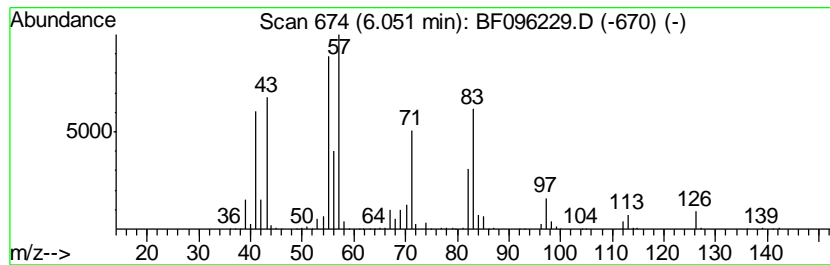
TIC Library : C:\DATABASE\NIST11.L  
 TIC Integration Parameters: LSCINT.P

\*\*\*\*\*  
 Peak Number 5 unknown6.05 Concentration Rank 17

R.T.	EstConc	Area	Relative to ISTD	R.T.
6.05	46.80 ng	2603780	1,4-Dichlorobenzene-d4	6.79

Hit#	of	Tentative ID	MW	MolForm	CAS#	Qual
1	5	Octane, 2,6-dimethyl-	142	C10H22	002051-30-1	43
2		Octane, 3,6-dimethyl-	142	C10H22	015869-94-0	27
3		Decane, 2,6,7-trimethyl-	184	C13H28	062108-25-2	27
4		1-Heptene, 3-methyl-	112	C8H16	004810-09-7	27
5		1-Hexene, 5,5-dimethyl-	112	C8H16	007116-86-1	25



Data Path : \\74.0.250.170\SVOASRV\HPCHEM1\BNA\_F\DATA\BF062717\  
 Data File : BF096229.D  
 Acq On : 27 Jun 2017 21:17  
 Operator : SJ/MA  
 Sample : I3898-01  
 Misc :  
 ALS Vial : 13 Sample Multiplier: 1

Instrument :  
 BNA\_F  
 ClientSampleID :  
 A6987MDW

Quant Method : Z:\HPCHEM1\BNA\_F\Methods\8270-BF062717.M  
 Quant Title : ASP BNA STANDARDS FOR 5 POINT CALIBRATION

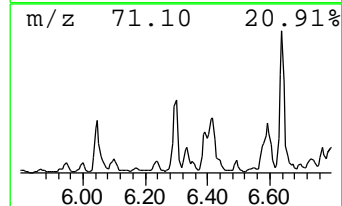
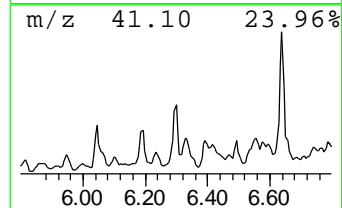
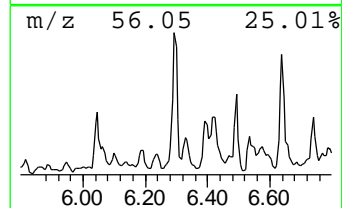
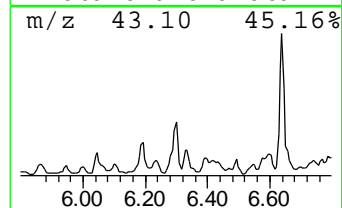
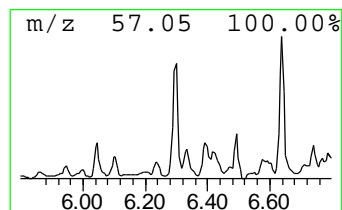
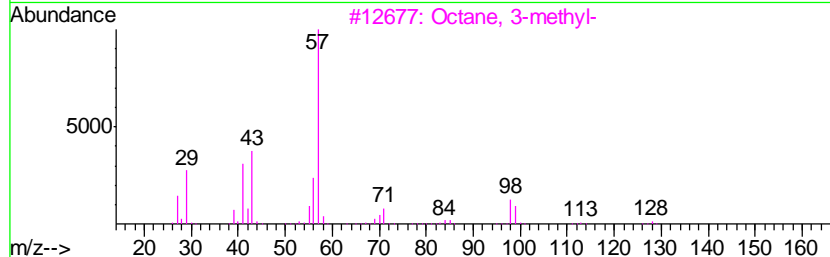
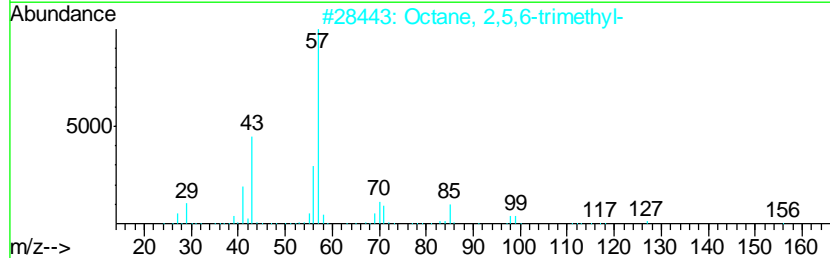
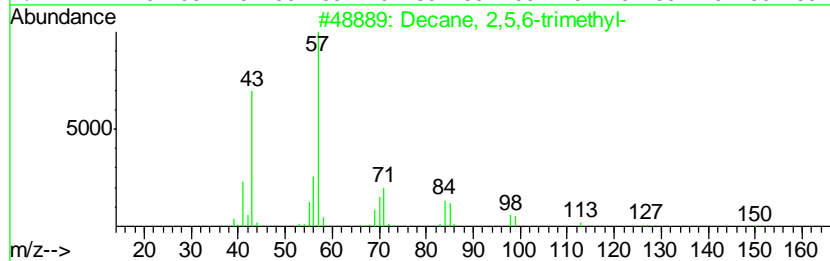
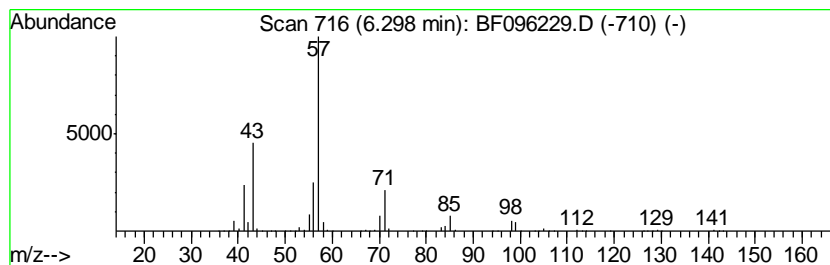
TIC Library : C:\DATABASE\NIST11.L  
 TIC Integration Parameters: LSCINT.P

\*\*\*\*\*  
 Peak Number 6 Decane, 2,5,6-trimethyl- Concentration Rank 9

R.T.	EstConc	Area	Relative to ISTD	R.T.
6.30	75.98 ng	4227680	1,4-Dichlorobenzene-d4	6.79

Hit#	of	Tentative ID	MW	MolForm	CAS#	Qual
1	5	Decane, 2,5,6-trimethyl-	184	C13H28	062108-23-0	64
2		Octane, 2,5,6-trimethyl-	156	C11H24	062016-14-2	64
3		Octane, 3-methyl-	128	C9H20	002216-33-3	59
4		Heptane, 3-ethyl-2-methyl-	142	C10H22	014676-29-0	53
5		Heptane, 2,5-dimethyl-	128	C9H20	002216-30-0	53



Data Path : \\74.0.250.170\SVOASRV\HPCHEM1\BNA\_F\DATA\BF062717\  
 Data File : BF096229.D  
 Acq On : 27 Jun 2017 21:17  
 Operator : SJ/MA  
 Sample : I3898-01  
 Misc :  
 ALS Vial : 13 Sample Multiplier: 1

Instrument :  
 BNA\_F  
 ClientSampled :  
 A6987MDW

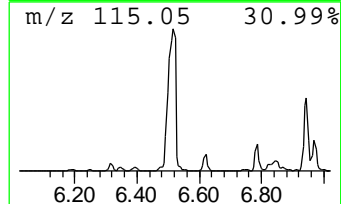
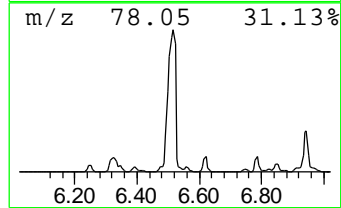
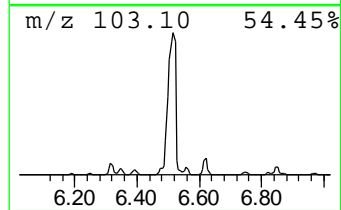
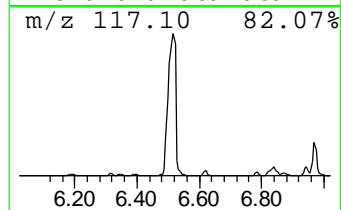
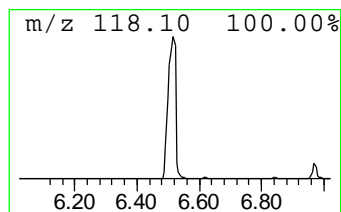
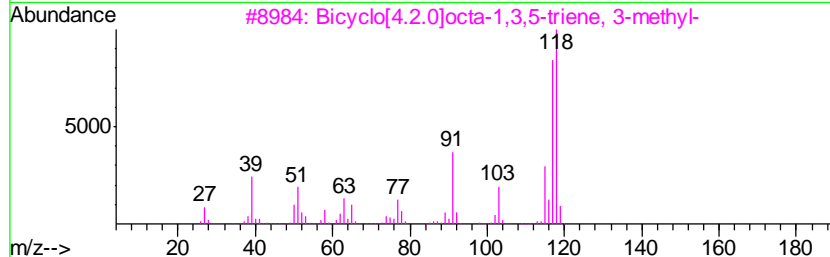
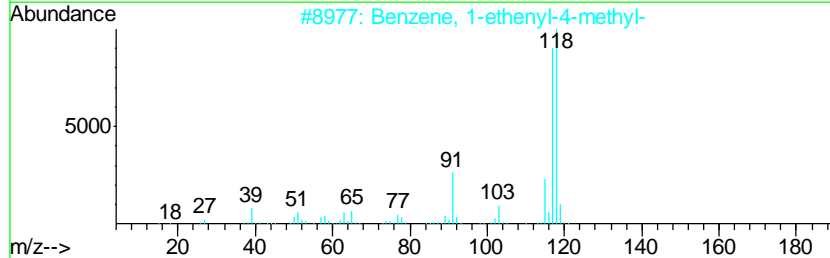
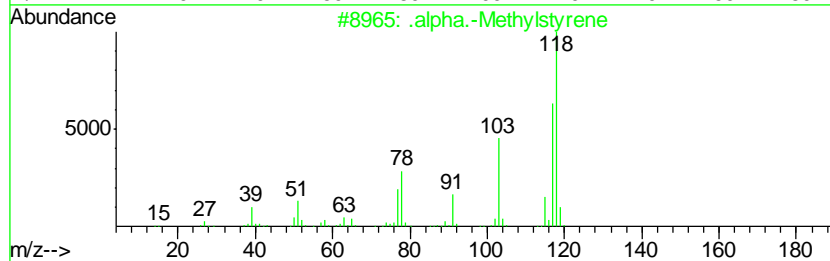
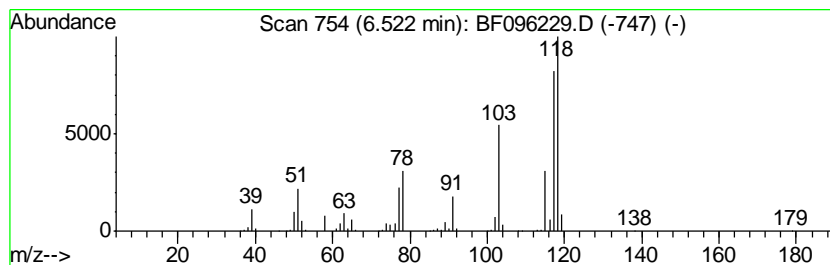
Quant Method : Z:\HPCHEM1\BNA\_F\Methods\8270-BF062717.M  
 Quant Title : ASP BNA STANDARDS FOR 5 POINT CALIBRATION

TIC Library : C:\DATABASE\NIST11.L  
 TIC Integration Parameters: LSCINT.P

\*\*\*\*\*  
 Peak Number 7 .alpha.-Methylstyrene Concentration Rank 2

R.T.	EstConc	Area	Relative to ISTD	R.T.
6.52	279.13 ng	15530800	1,4-Dichlorobenzene-d4	6.79

Hit#	of	Tentative ID	MW	MolForm	CAS#	Qual
1	5	.alpha.-Methylstyrene	118	C9H10	000098-83-9	95
2		Benzene, 1-ethenyl-4-methyl-	118	C9H10	000622-97-9	53
3		Bicyclo[4.2.0]octa-1,3,5-triene,...	118	C9H10	022250-74-4	50
4		Benzene, 1-ethenyl-3-methyl-	118	C9H10	000100-80-1	49
5		Benzene, 1,1'-(1-ethenyl-1,3-pro...	222	C17H18	061141-97-7	43



Data Path : \\74.0.250.170\SVOASRV\HPCHEM1\BNA\_F\DATA\BF062717\  
 Data File : BF096229.D  
 Acq On : 27 Jun 2017 21:17  
 Operator : SJ/MA  
 Sample : I3898-01  
 Misc :  
 ALS Vial : 13 Sample Multiplier: 1

Instrument :  
 BNA\_F  
 ClientSampleID :  
 A6987MDW

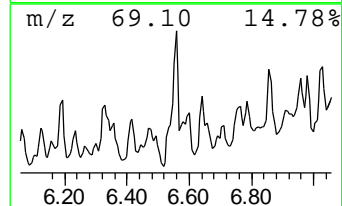
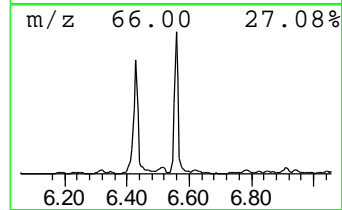
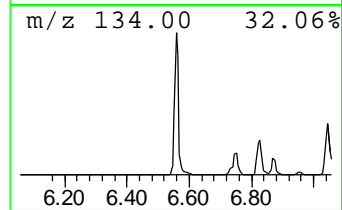
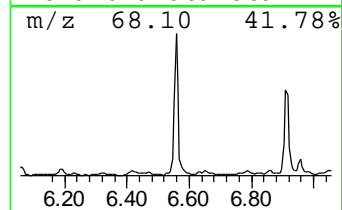
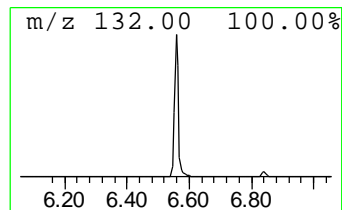
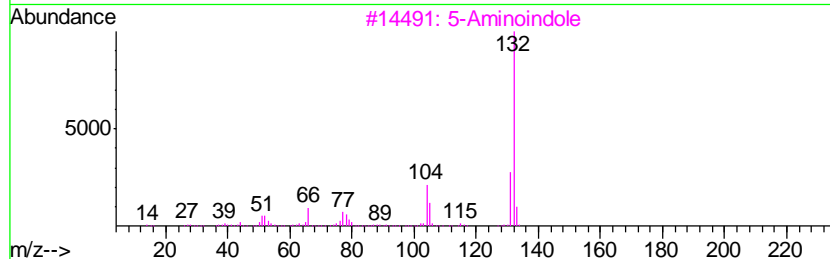
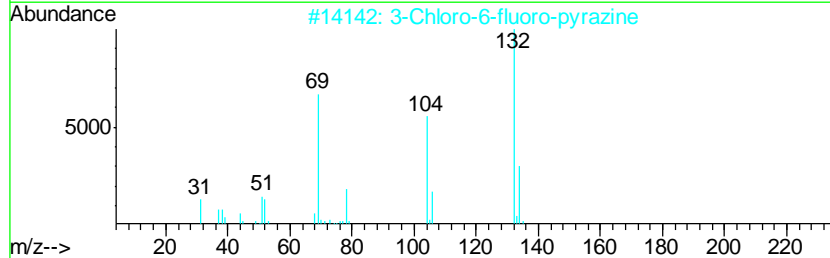
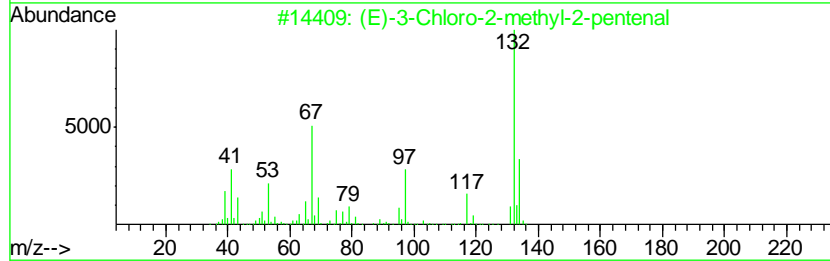
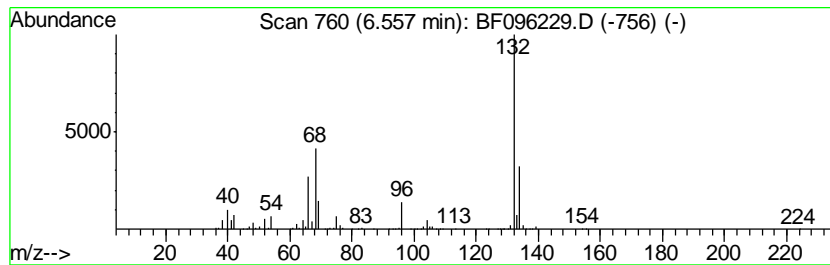
Quant Method : Z:\HPCHEM1\BNA\_F\Methods\8270-BF062717.M  
 Quant Title : ASP BNA STANDARDS FOR 5 POINT CALIBRATION

TIC Library : C:\DATABASE\NIST11.L  
 TIC Integration Parameters: LSCINT.P

\*\*\*\*\*  
 Peak Number 8 unknown6.56 Concentration Rank 11

R.T.	EstConc	Area	Relative to ISTD	R.T.
6.56	74.23 ng	4130370	1,4-Dichlorobenzene-d4	6.79

Hit#	of	Tentative ID	MW	MolForm	CAS#	Qual
1	5	(E)-3-Chloro-2-methyl-2-pentenal	132	C6H9ClO	031357-76-3	30
2		3-Chloro-6-fluoro-pyrazine	132	C4H2ClFN2	1000146-10-7	27
3		5-Aminoindole	132	C8H8N2	005192-03-0	22
4		1,3-Cyclopentanedione, 2-chloro-	132	C5H5ClO2	014203-19-1	17
5		Tranylcypropine-propionyl	189	C12H15NO	1000123-86-3	10





Data Path : \\74.0.250.170\SVOASRV\HPCHEM1\BNA\_F\DATA\BF062717\  
 Data File : BF096229.D  
 Acq On : 27 Jun 2017 21:17  
 Operator : SJ/MA  
 Sample : I3898-01  
 Misc :  
 ALS Vial : 13 Sample Multiplier: 1

Instrument :  
 BNA\_F  
 ClientSampleID :  
 A6987MDW

Quant Method : Z:\HPCHEM1\BNA\_F\Methods\8270-BF062717.M  
 Quant Title : ASP BNA STANDARDS FOR 5 POINT CALIBRATION

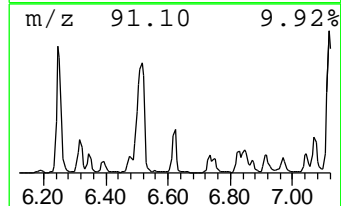
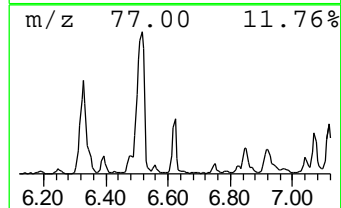
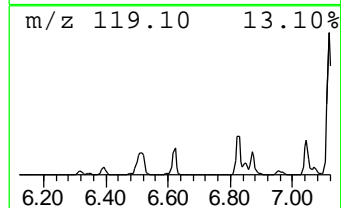
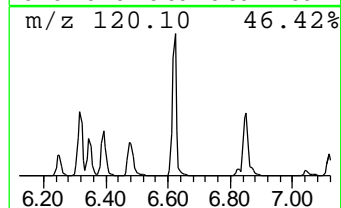
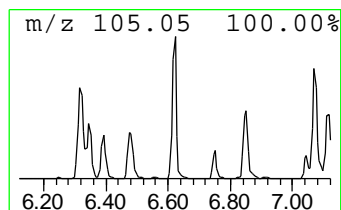
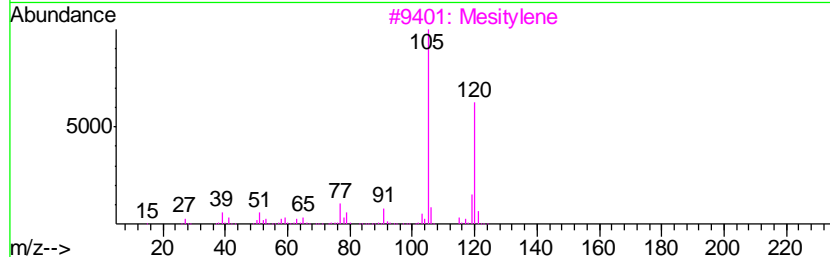
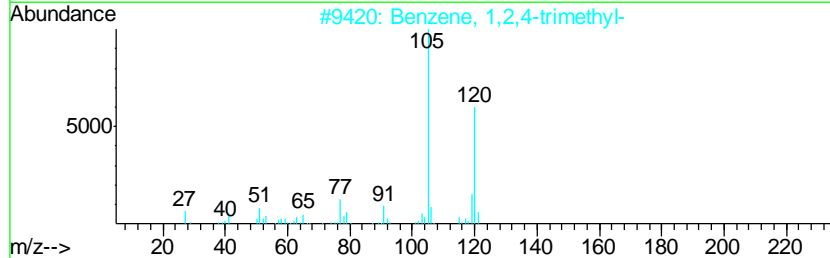
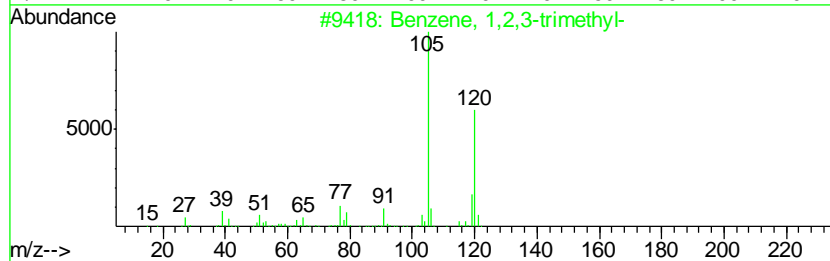
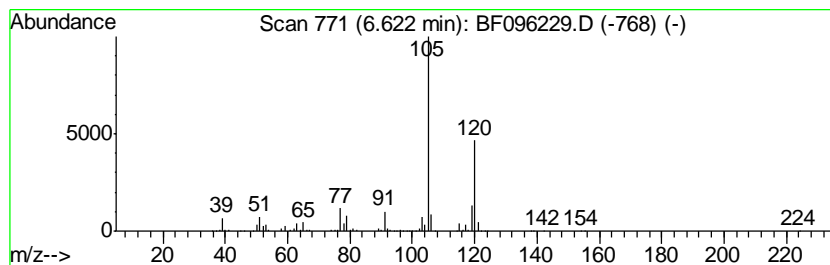
TIC Library : C:\DATABASE\NIST11.L  
 TIC Integration Parameters: LSCINT.P

\*\*\*\*\*  
 Peak Number 9 Benzene, 1,2,3-trimethyl- Concentration Rank 13

R.T.	EstConc	Area	Relative to ISTD	R.T.
6.62	64.48 ng	3587470	1,4-Dichlorobenzene-d4	6.79

Hit#	of	Tentative ID	MW	MolForm	CAS#	Qual
1	5	Benzene, 1,2,3-trimethyl-	120	C9H12	000526-73-8	97
2		Benzene, 1,2,4-trimethyl-	120	C9H12	000095-63-6	95
3		Mesitylene	120	C9H12	000108-67-8	95
4		Benzene, 1-ethyl-3-methyl-	120	C9H12	000620-14-4	90
5		Benzene, 1-ethyl-2-methyl-	120	C9H12	000611-14-3	90



Data Path : \\74.0.250.170\SVOASRV\HPCHEM1\BNA\_F\DATA\BF062717\  
 Data File : BF096229.D  
 Acq On : 27 Jun 2017 21:17  
 Operator : SJ/MA  
 Sample : I3898-01  
 Misc :  
 ALS Vial : 13 Sample Multiplier: 1

Instrument :  
 BNA\_F  
 ClientSampleID :  
 A6987MDW

Quant Method : Z:\HPCHEM1\BNA\_F\Methods\8270-BF062717.M  
 Quant Title : ASP BNA STANDARDS FOR 5 POINT CALIBRATION

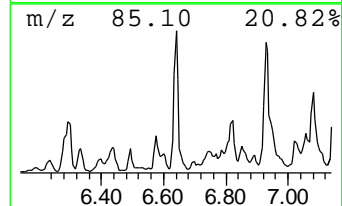
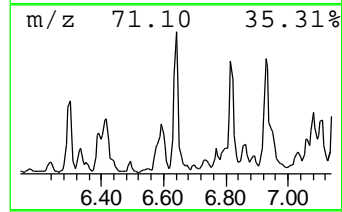
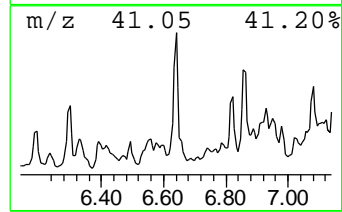
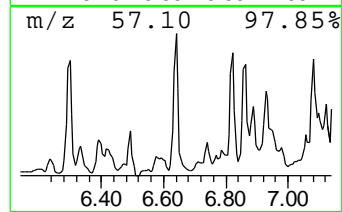
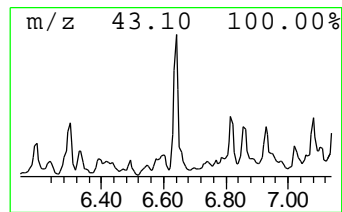
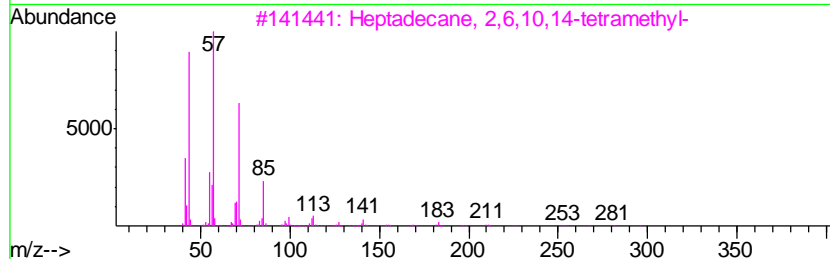
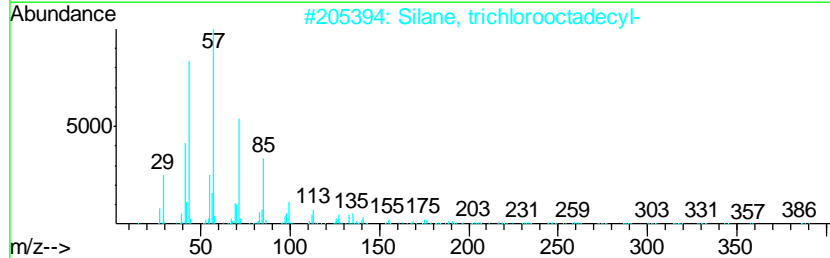
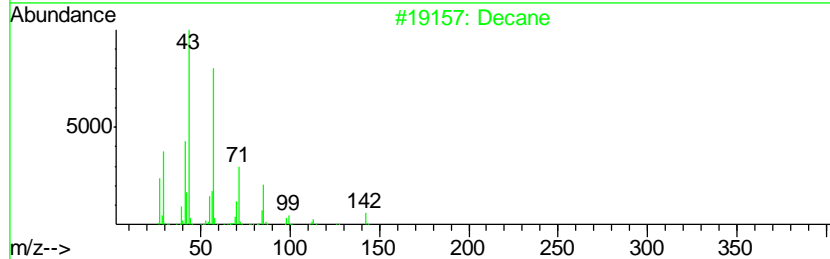
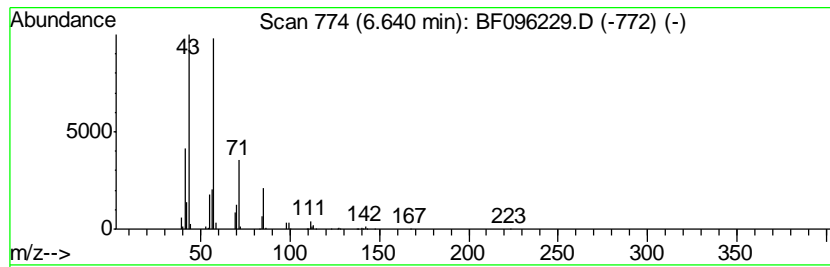
TIC Library : C:\DATABASE\NIST11.L  
 TIC Integration Parameters: LSCINT.P

\*\*\*\*\*  
 Peak Number 10 Decane Concentration Rank 5

R.T.	EstConc	Area	Relative to ISTD	R.T.
6.64	107.64 ng	5988840	1,4-Dichlorobenzene-d4	6.79

Hit#	of	Tentative ID	MW	MolForm	CAS#	Qual
1	5	Decane	142	C10H22	000124-18-5	83
2		Silane, trichlorooctadecyl-	386	C18H37Cl3Si	000112-04-9	72
3		Heptadecane, 2,6,10,14-tetramethyl-	296	C21H44	018344-37-1	72
4		Nonane	128	C9H20	000111-84-2	72
5		Octane	114	C8H18	000111-65-9	72



Data Path : \\74.0.250.170\SVOASRV\HPCHEM1\BNA\_F\DATA\BF062717\  
 Data File : BF096229.D  
 Acq On : 27 Jun 2017 21:17  
 Operator : SJ/MA  
 Sample : I3898-01  
 Misc :  
 ALS Vial : 13 Sample Multiplier: 1

Instrument :  
 BNA\_F  
 ClientSampleID :  
 A6987MDW

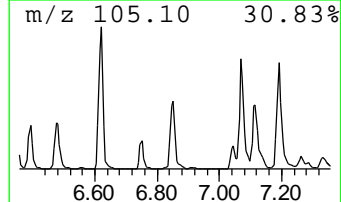
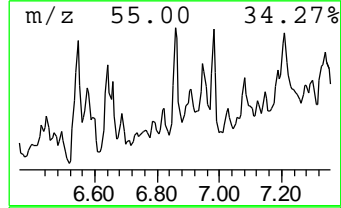
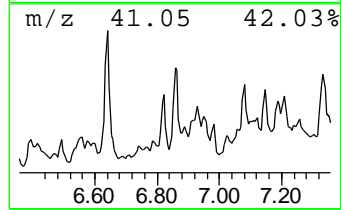
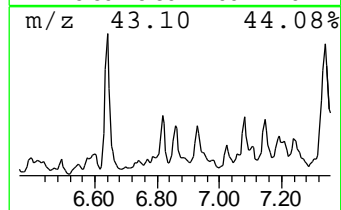
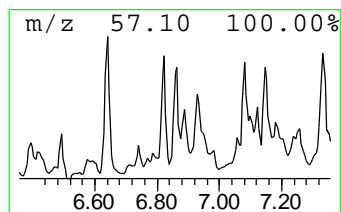
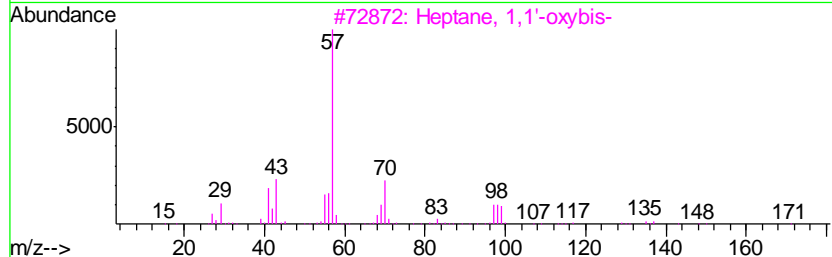
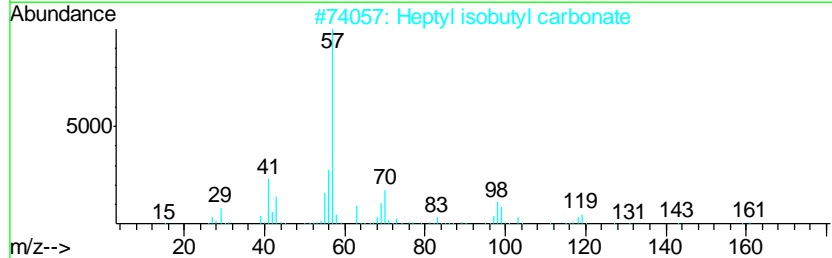
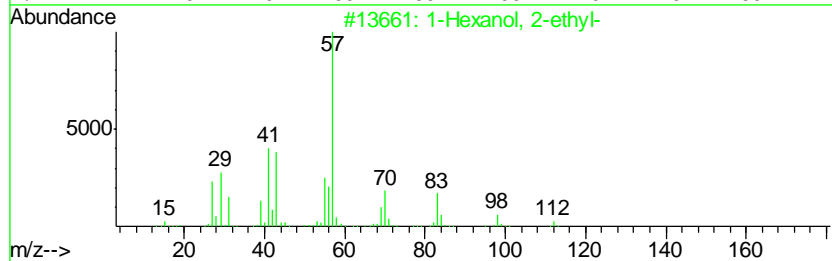
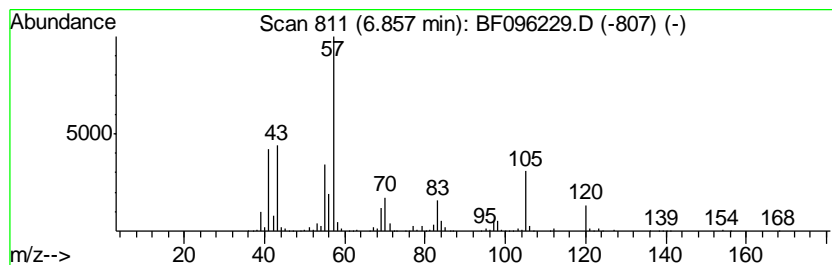
Quant Method : Z:\HPCHEM1\BNA\_F\Methods\8270-BF062717.M  
 Quant Title : ASP BNA STANDARDS FOR 5 POINT CALIBRATION

TIC Library : C:\DATABASE\NIST11.L  
 TIC Integration Parameters: LSCINT.P

\*\*\*\*\*  
 Peak Number 11 1-Hexanol, 2-ethyl- Concentration Rank 8

R.T.	EstConc	Area	Relative to ISTD	R.T.
6.86	82.78 ng	4605940	1,4-Dichlorobenzene-d4	6.79

Hit#	of	Tentative ID	MW	MolForm	CAS#	Qual
1	5	1-Hexanol, 2-ethyl-	130	C8H18O	000104-76-7	53
2		Heptyl isobutyl carbonate	216	C12H24O3	959068-08-7	47
3		Heptane, 1,1'-oxybis-	214	C14H30O	000629-64-1	47
4		Hexane, 1-(hexyloxy)-5-methyl-	200	C13H28O	074421-19-5	47
5		Oxalic acid, isobutyl nonyl ester	272	C15H28O4	1000309-37-4	47



Data Path : \\74.0.250.170\SVOASRV\HPCHEM1\BNA\_F\DATA\BF062717\  
 Data File : BF096229.D  
 Acq On : 27 Jun 2017 21:17  
 Operator : SJ/MA  
 Sample : I3898-01  
 Misc :  
 ALS Vial : 13 Sample Multiplier: 1

Instrument :  
 BNA\_F  
 ClientSampled :  
 A6987MDW

Quant Method : Z:\HPCHEM1\BNA\_F\Methods\8270-BF062717.M  
 Quant Title : ASP BNA STANDARDS FOR 5 POINT CALIBRATION

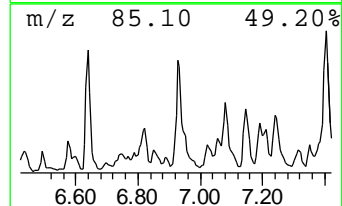
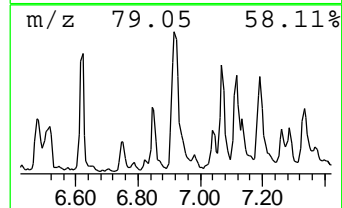
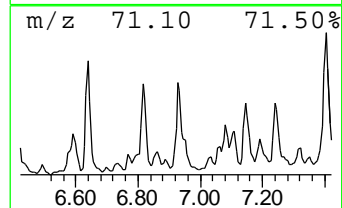
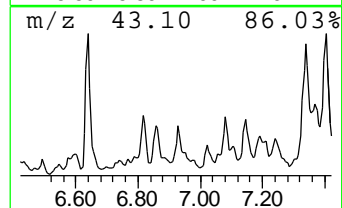
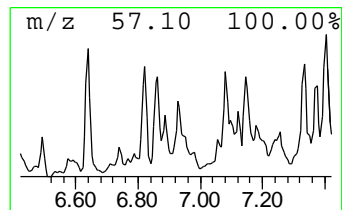
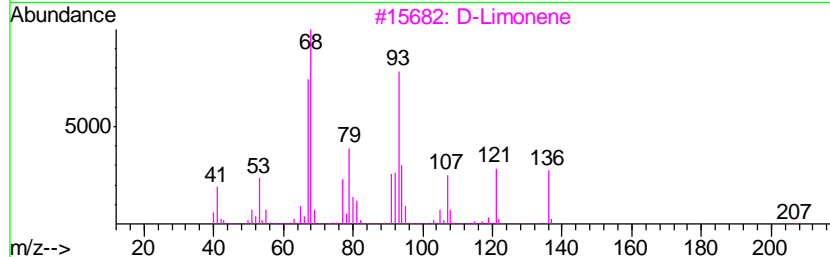
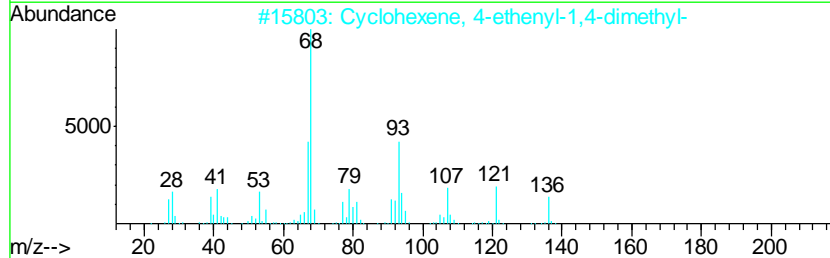
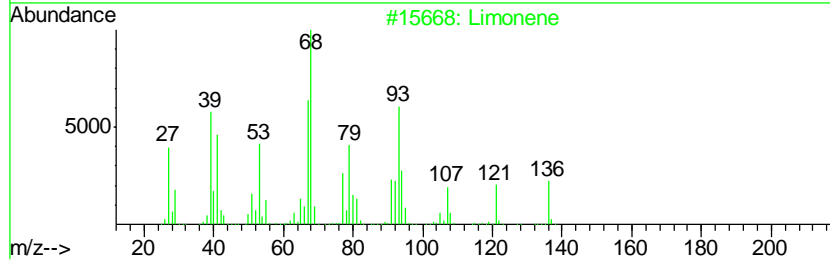
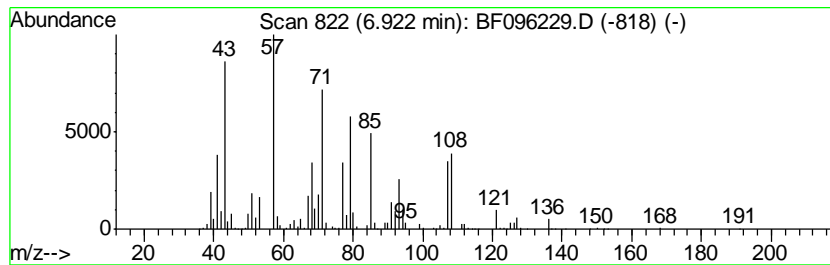
TIC Library : C:\DATABASE\NIST11.L  
 TIC Integration Parameters: LSCINT.P

\*\*\*\*\*  
 Peak Number 12 Limonene Concentration Rank 20

R.T.	EstConc	Area	Relative to ISTD	R.T.
6.92	39.48 ng	2196690	1,4-Dichlorobenzene-d4	6.79

Hit#	of	Tentative ID	MW	MolForm	CAS#	Qual
1	5	Limonene	136	C10H16	000138-86-3	91
2		Cyclohexene, 4-ethenyl-1,4-dimet...	136	C10H16	001743-61-9	87
3		D-Limonene	136	C10H16	005989-27-5	87
4		Cyclohexene, 1-methyl-4-(1-methy...	136	C10H16	005989-54-8	81
5		1,5-Cyclooctadiene, 1,5-dimethyl-	136	C10H16	003760-14-3	76



Data Path : \\74.0.250.170\SVOASRV\HPCHEM1\BNA\_F\DATA\BF062717\  
 Data File : BF096229.D  
 Acq On : 27 Jun 2017 21:17  
 Operator : SJ/MA  
 Sample : I3898-01  
 Misc :  
 ALS Vial : 13 Sample Multiplier: 1

Instrument :  
 BNA\_F  
 ClientSampled :  
 A6987MDW

Quant Method : Z:\HPCHEM1\BNA\_F\Methods\8270-BF062717.M  
 Quant Title : ASP BNA STANDARDS FOR 5 POINT CALIBRATION

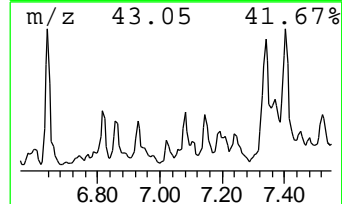
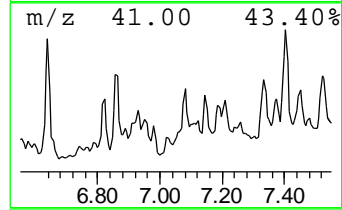
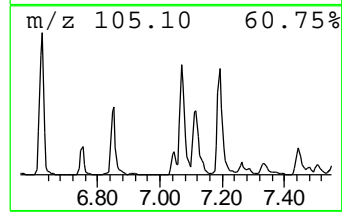
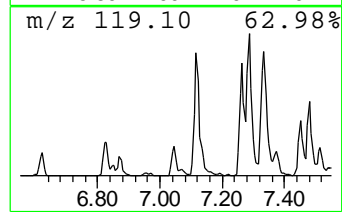
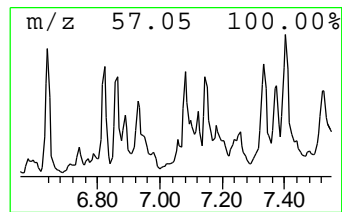
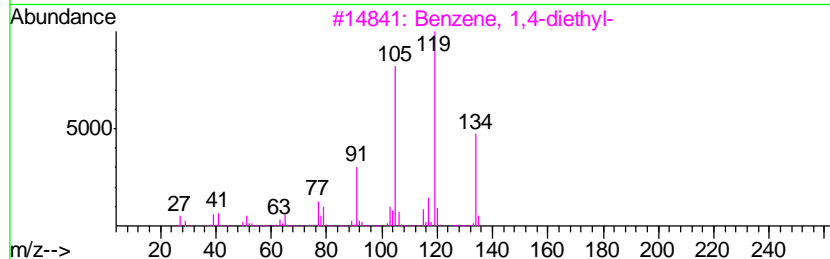
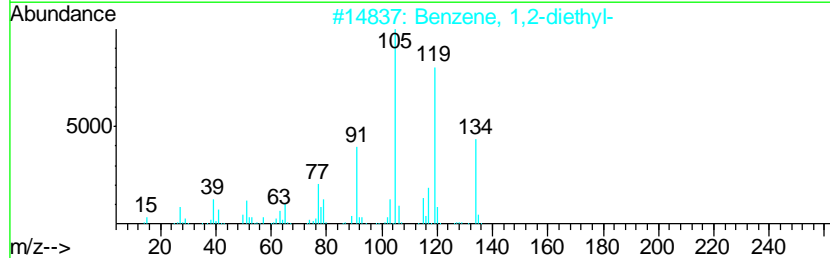
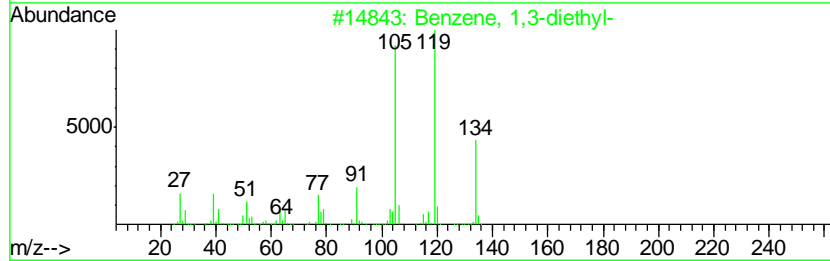
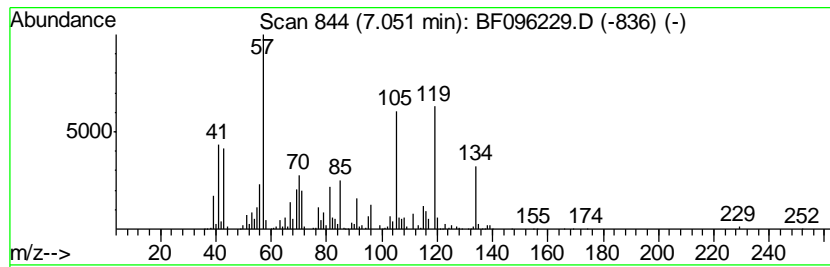
TIC Library : C:\DATABASE\NIST11.L  
 TIC Integration Parameters: LSCINT.P

\*\*\*\*\*  
 Peak Number 14 Benzene, 1,3-diethyl- Concentration Rank 15

R.T.	EstConc	Area	Relative to ISTD	R.T.
7.05	51.48 ng	2864170	1,4-Dichlorobenzene-d4	6.79

Hit#	of	Tentative ID	MW	MolForm	CAS#	Qual
1	5	Benzene, 1,3-diethyl-	134	C10H14	000141-93-5	95
2		Benzene, 1,2-diethyl-	134	C10H14	000135-01-3	90
3		Benzene, 1,4-diethyl-	134	C10H14	000105-05-5	90
4		Benzene, 1-ethyl-3,5-dimethyl-	134	C10H14	000934-74-7	74
5		Benzene, 1,2,4,5-tetramethyl-	134	C10H14	000095-93-2	64



Data Path : \\74.0.250.170\SVOASRV\HPCHEM1\BNA\_F\DATA\BF062717\  
 Data File : BF096229.D  
 Acq On : 27 Jun 2017 21:17  
 Operator : SJ/MA  
 Sample : I3898-01  
 Misc :  
 ALS Vial : 13 Sample Multiplier: 1

Instrument :  
 BNA\_F  
 ClientSampleID :  
 A6987MDW

Quant Method : Z:\HPCHEM1\BNA\_F\Methods\8270-BF062717.M  
 Quant Title : ASP BNA STANDARDS FOR 5 POINT CALIBRATION

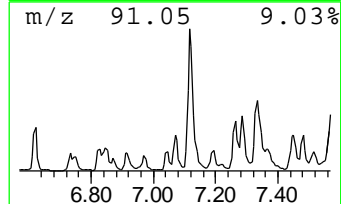
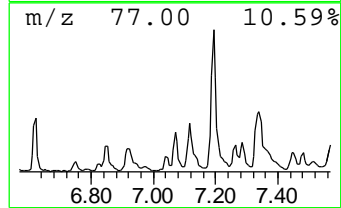
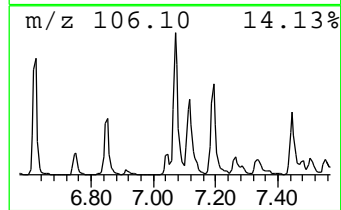
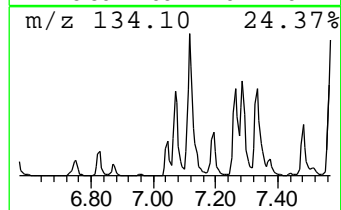
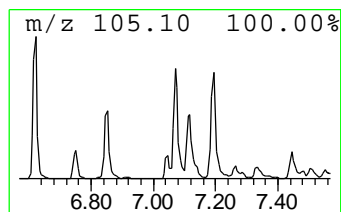
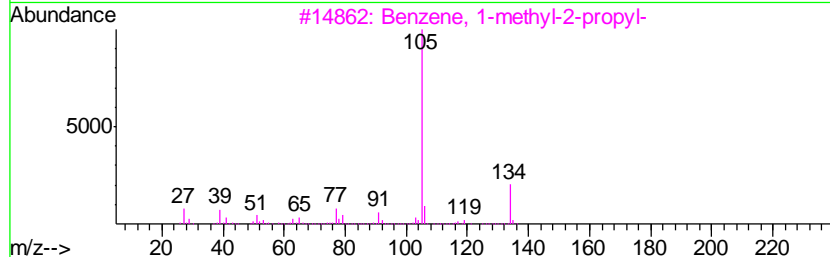
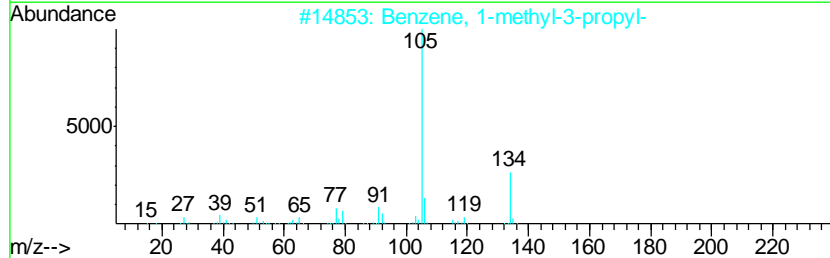
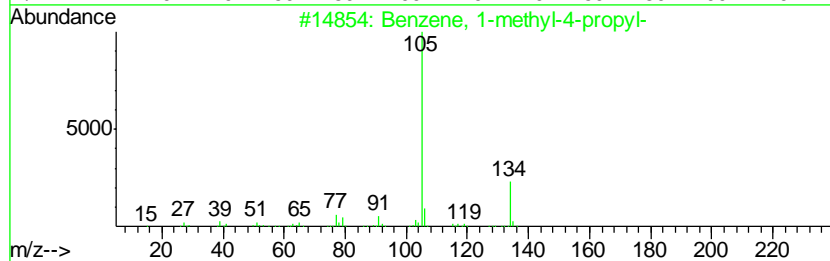
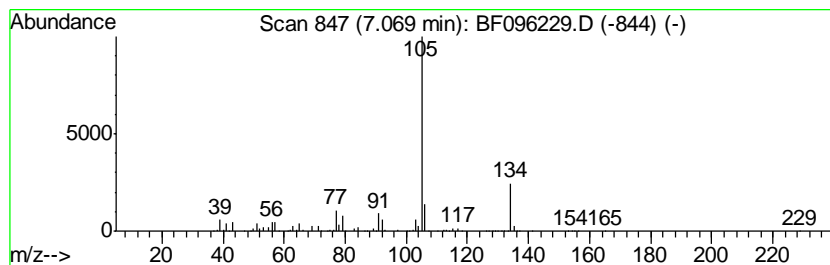
TIC Library : C:\DATABASE\NIST11.L  
 TIC Integration Parameters: LSCINT.P

\*\*\*\*\*  
 Peak Number 15 Benzene, 1-methyl-4-propyl- Concentration Rank 4

R.T.	EstConc	Area	Relative to ISTD	R.T.
7.07	128.26 ng	7136050	1,4-Dichlorobenzene-d4	6.79

Hit#	of	Tentative ID	MW	MolForm	CAS#	Qual
1	5	Benzene, 1-methyl-4-propyl-	134	C10H14	001074-55-1	60
2		Benzene, 1-methyl-3-propyl-	134	C10H14	001074-43-7	60
3		Benzene, 1-methyl-2-propyl-	134	C10H14	001074-17-5	53
4		2-Tolyloxirane	134	C9H10O	002783-26-8	43
5		2-Indanol	134	C9H10O	004254-29-9	35



Data Path : \\74.0.250.170\SVOASRV\HPCHEM1\BNA\_F\DATA\BF062717\  
 Data File : BF096229.D  
 Acq On : 27 Jun 2017 21:17  
 Operator : SJ/MA  
 Sample : I3898-01  
 Misc :  
 ALS Vial : 13 Sample Multiplier: 1

Instrument :  
 BNA\_F  
 ClientSampleID :  
 A6987MDW

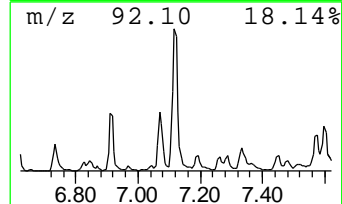
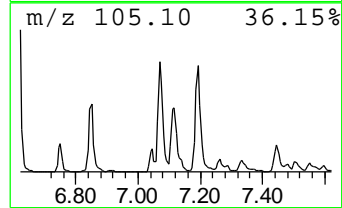
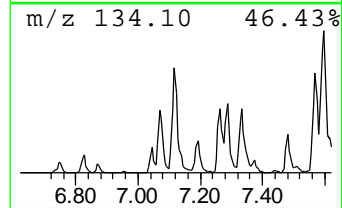
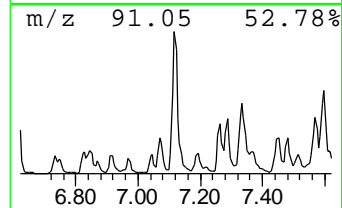
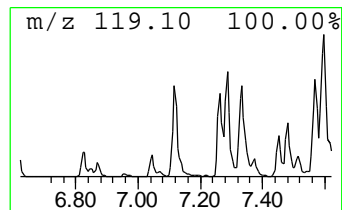
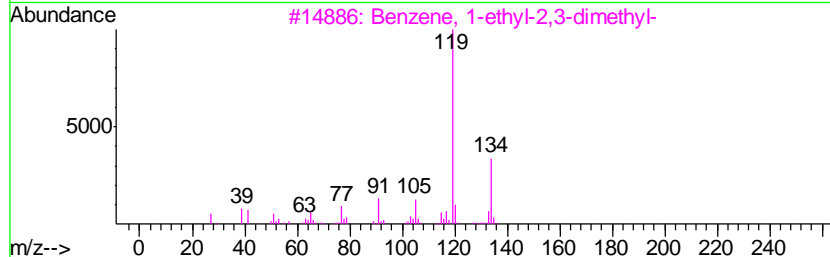
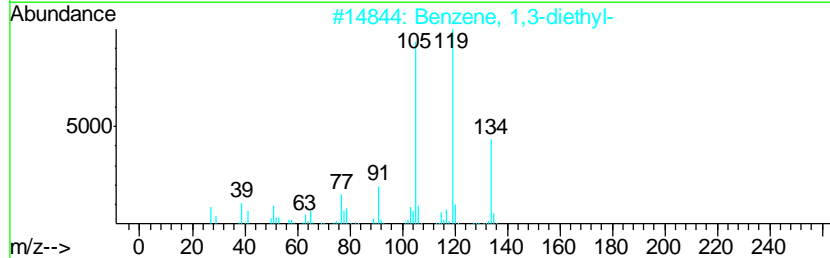
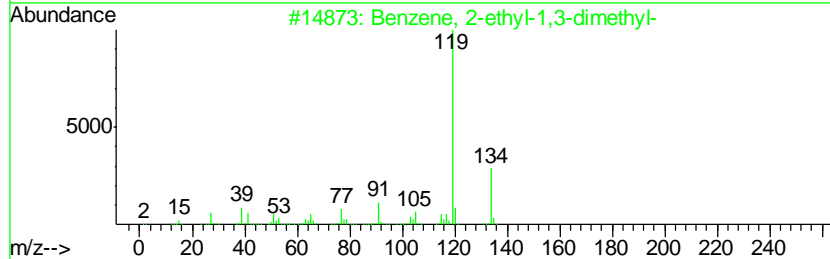
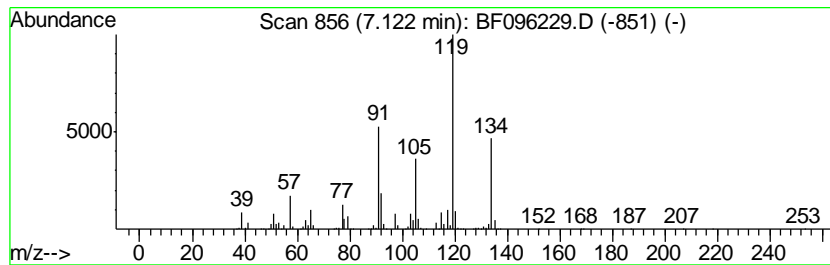
Quant Method : Z:\HPCHEM1\BNA\_F\Methods\8270-BF062717.M  
 Quant Title : ASP BNA STANDARDS FOR 5 POINT CALIBRATION

TIC Library : C:\DATABASE\NIST11.L  
 TIC Integration Parameters: LSCINT.P

\*\*\*\*\*  
 Peak Number 16 Benzene, 2-ethyl-1,3-dimethyl- Concentration Rank 3

R.T.	EstConc	Area	Relative to ISTD	R.T.
7.12	134.41 ng	7478270	1,4-Dichlorobenzene-d4	6.79

Hit#	of	Tentative ID	MW	MolForm	CAS#	Qual
1	5	Benzene, 2-ethyl-1,3-dimethyl-	134	C10H14	002870-04-4	91
2		Benzene, 1,3-diethyl-	134	C10H14	000141-93-5	91
3		Benzene, 1-ethyl-2,3-dimethyl-	134	C10H14	000933-98-2	91
4		Benzene, 1-ethyl-3,5-dimethyl-	134	C10H14	000934-74-7	91
5		Benzene, 1,2,3,4-tetramethyl-	134	C10H14	000488-23-3	91



Data Path : \\74.0.250.170\SVOASRV\HPCHEM1\BNA\_F\DATA\BF062717\  
 Data File : BF096229.D  
 Acq On : 27 Jun 2017 21:17  
 Operator : SJ/MA  
 Sample : I3898-01  
 Misc :  
 ALS Vial : 13 Sample Multiplier: 1

Instrument :  
 BNA\_F  
 ClientSampleID :  
 A6987MDW

Quant Method : Z:\HPCHEM1\BNA\_F\Methods\8270-BF062717.M  
 Quant Title : ASP BNA STANDARDS FOR 5 POINT CALIBRATION

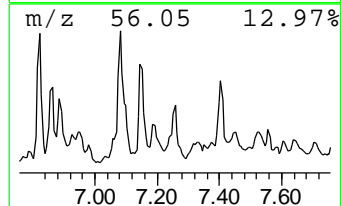
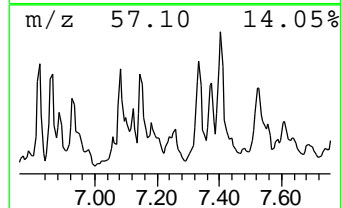
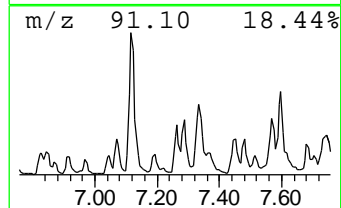
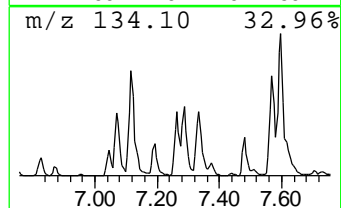
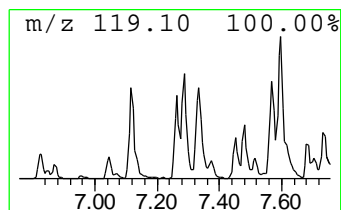
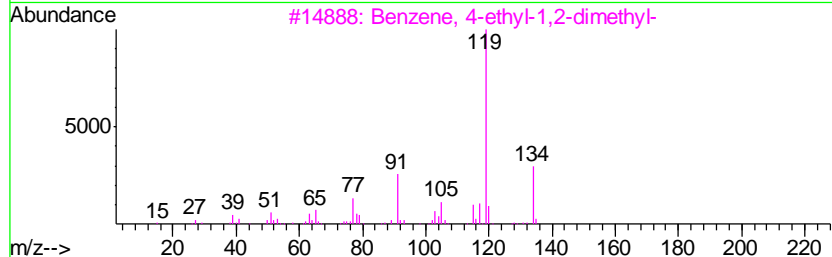
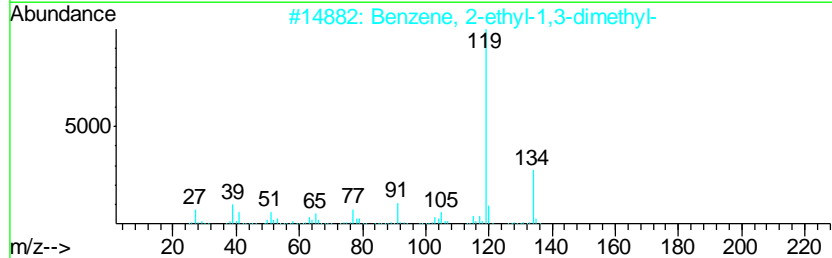
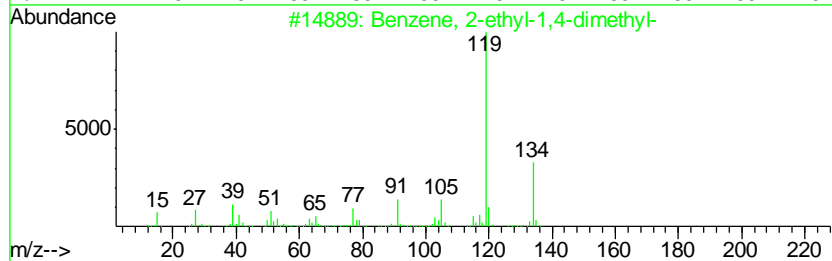
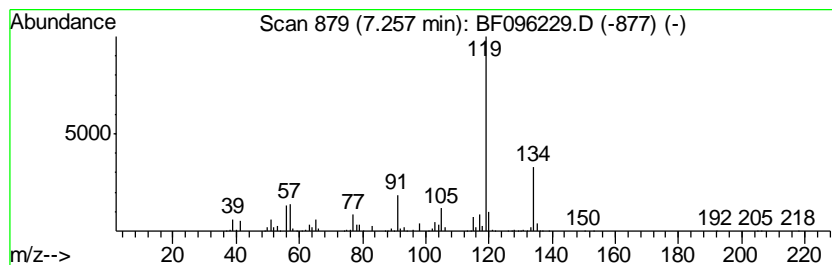
TIC Library : C:\DATABASE\NIST11.L  
 TIC Integration Parameters: LSCINT.P

\*\*\*\*\*  
 Peak Number 17 Benzene, 2-ethyl-1,4-dimethyl- Concentration Rank 14

R.T.	EstConc	Area	Relative to ISTD	R.T.
7.26	55.69 ng	3098590	1,4-Dichlorobenzene-d4	6.79

Hit#	of	Tentative ID	MW	MolForm	CAS#	Qual
1	5	Benzene, 2-ethyl-1,4-dimethyl-	134	C10H14	001758-88-9	95
2		Benzene, 2-ethyl-1,3-dimethyl-	134	C10H14	002870-04-4	95
3		Benzene, 4-ethyl-1,2-dimethyl-	134	C10H14	000934-80-5	95
4		Benzene, 1-methyl-3-(1-methyleth...	134	C10H14	000535-77-3	94
5		p-Cymene	134	C10H14	000099-87-6	93





Data Path : \\74.0.250.170\SVOASRV\HPCHEM1\BNA\_F\DATA\BF062717\  
 Data File : BF096229.D  
 Acq On : 27 Jun 2017 21:17  
 Operator : SJ/MA  
 Sample : I3898-01  
 Misc :  
 ALS Vial : 13 Sample Multiplier: 1

Instrument :  
 BNA\_F  
 ClientSampled :  
 A6987MDW

Quant Method : Z:\HPCHEM1\BNA\_F\Methods\8270-BF062717.M  
 Quant Title : ASP BNA STANDARDS FOR 5 POINT CALIBRATION

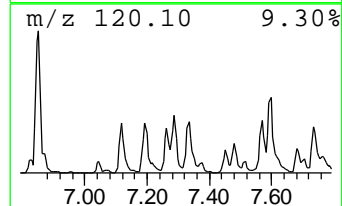
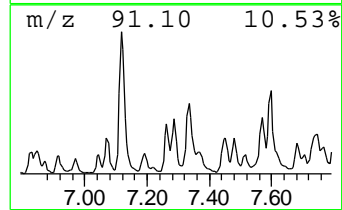
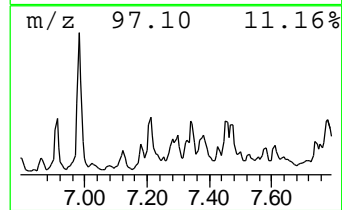
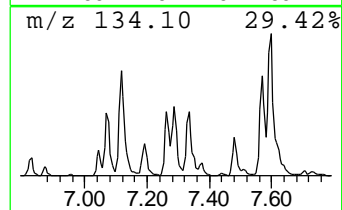
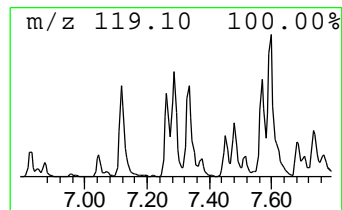
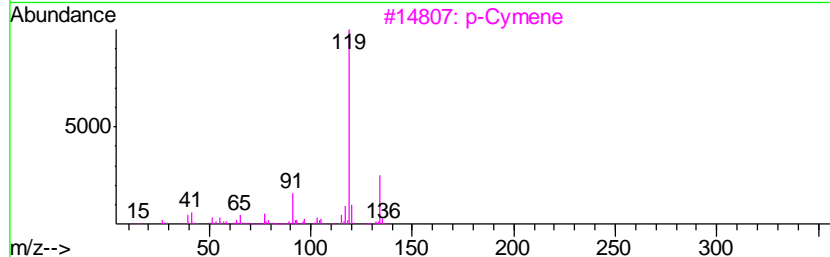
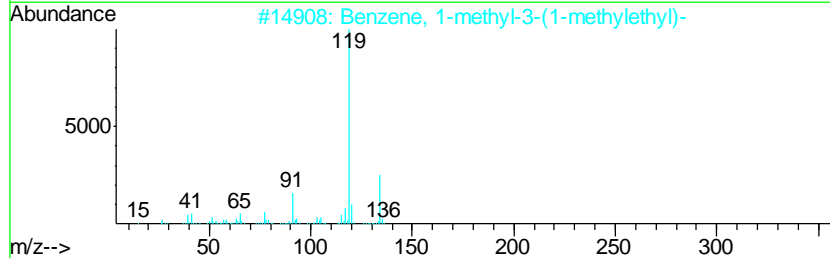
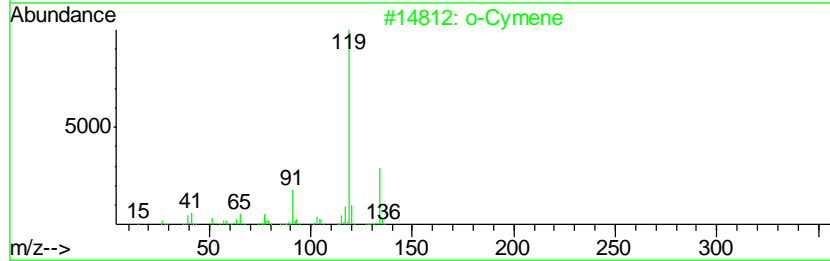
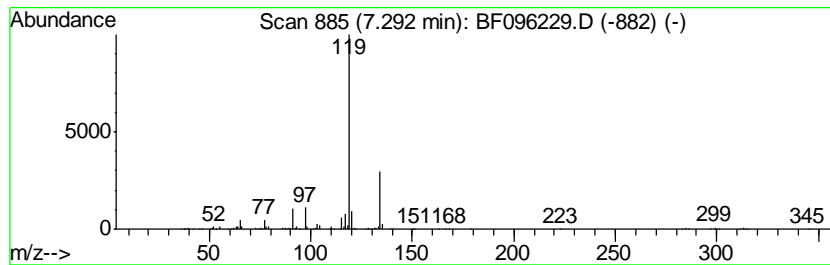
TIC Library : C:\DATABASE\NIST11.L  
 TIC Integration Parameters: LSCINT.P

\*\*\*\*\*  
 Peak Number 18 o-Cymene Concentration Rank 19

R.T.	EstConc	Area	Relative to ISTD	R.T.
7.29	40.13 ng	2232680	1,4-Dichlorobenzene-d4	6.79

Hit#	of	Tentative ID	MW	MolForm	CAS#	Qual
1	5	o-Cymene	134	C10H14	000527-84-4	95
2		Benzene, 1-methyl-3-(1-methyleth...	134	C10H14	000535-77-3	95
3		p-Cymene	134	C10H14	000099-87-6	94
4		Benzene, 1-ethyl-2,3-dimethyl-	134	C10H14	000933-98-2	91
5		Benzene, 2-ethyl-1,3-dimethyl-	134	C10H14	002870-04-4	91



Data Path : \\74.0.250.170\SVOASRV\HPCHEM1\BNA\_F\DATA\BF062717\  
 Data File : BF096229.D  
 Acq On : 27 Jun 2017 21:17  
 Operator : SJ/MA  
 Sample : I3898-01  
 Misc :  
 ALS Vial : 13 Sample Multiplier: 1

Instrument :  
 BNA\_F  
 ClientSampleID :  
 A6987MDW

Quant Method : Z:\HPCHEM1\BNA\_F\Methods\8270-BF062717.M  
 Quant Title : ASP BNA STANDARDS FOR 5 POINT CALIBRATION

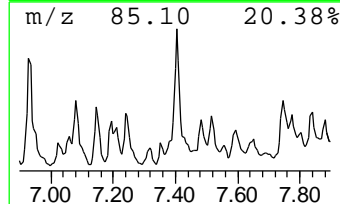
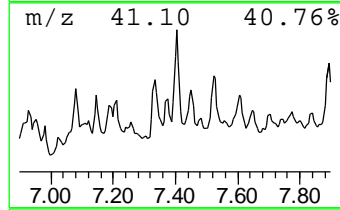
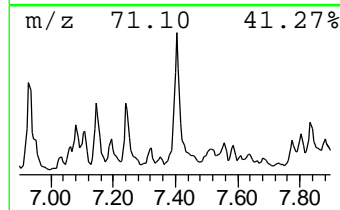
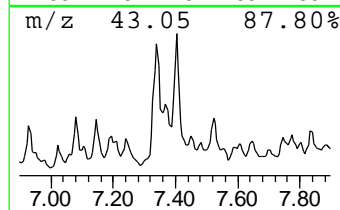
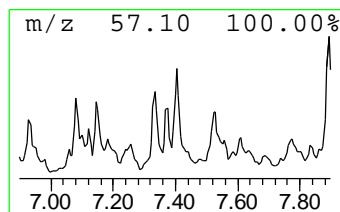
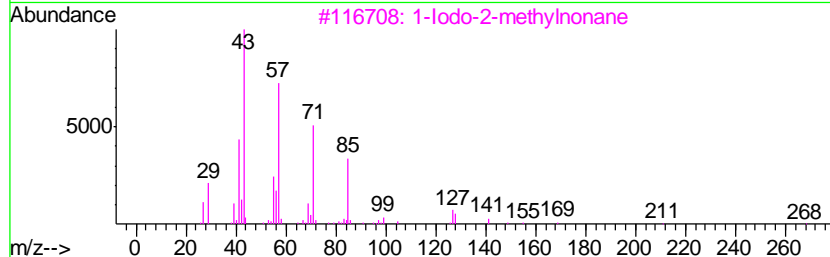
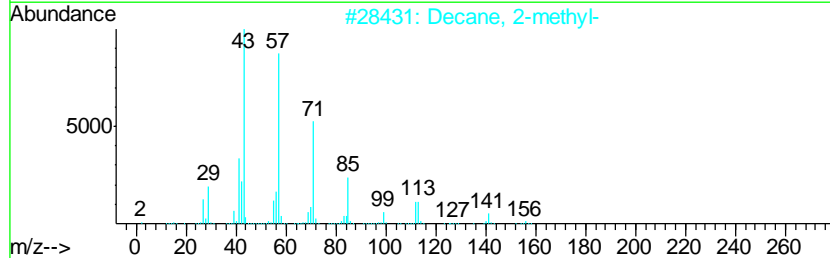
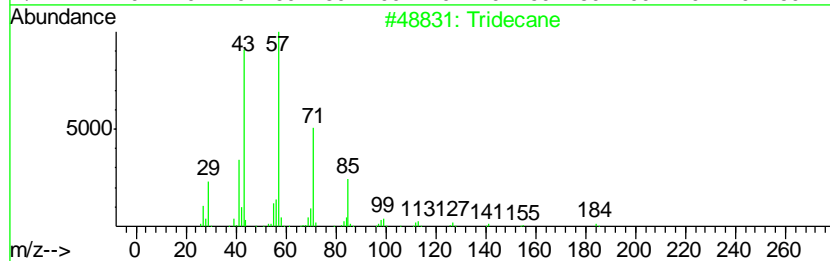
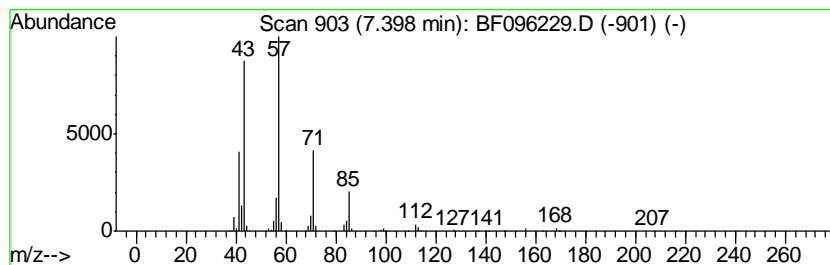
TIC Library : C:\DATABASE\NIST11.L  
 TIC Integration Parameters: LSCINT.P

\*\*\*\*\*  
 Peak Number 19 Tridecane Concentration Rank 6

R.T.	EstConc	Area	Relative to ISTD	R.T.
7.40	91.23 ng	5076160	1,4-Dichlorobenzene-d4	6.79

Hit#	of	Tentative ID	MW	MolForm	CAS#	Qual
1	5	Tridecane	184	C13H28	000629-50-5	83
2		Decane, 2-methyl-	156	C11H24	006975-98-0	80
3		1-Iodo-2-methylnonane	268	C10H21I	1000101-47-9	72
4		Sulfurous acid, hexyl octyl ester	278	C14H30O3S	1000309-13-0	72
5		Hexadecane	226	C16H34	000544-76-3	72



Data Path : \\74.0.250.170\SVOASRV\HPCHEM1\BNA\_F\DATA\BF062717\  
 Data File : BF096229.D  
 Acq On : 27 Jun 2017 21:17  
 Operator : SJ/MA  
 Sample : I3898-01  
 Misc :  
 ALS Vial : 13 Sample Multiplier: 1

Instrument :  
 BNA\_F  
 ClientSampleID :  
 A6987MDW

Quant Method : Z:\HPCHEM1\BNA\_F\Methods\8270-BF062717.M  
 Quant Title : ASP BNA STANDARDS FOR 5 POINT CALIBRATION

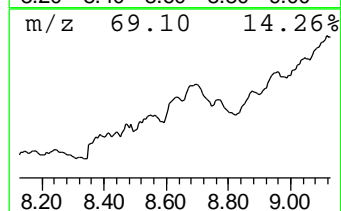
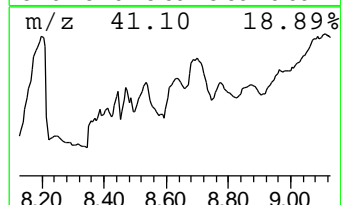
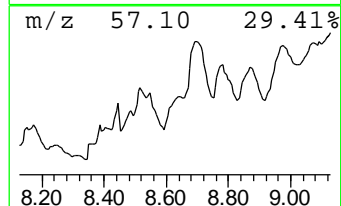
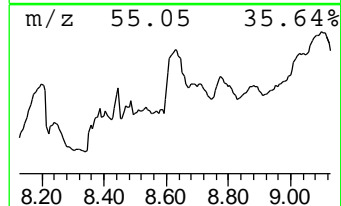
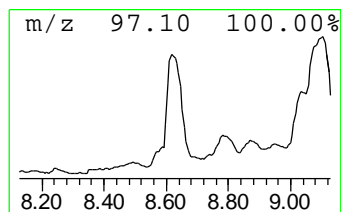
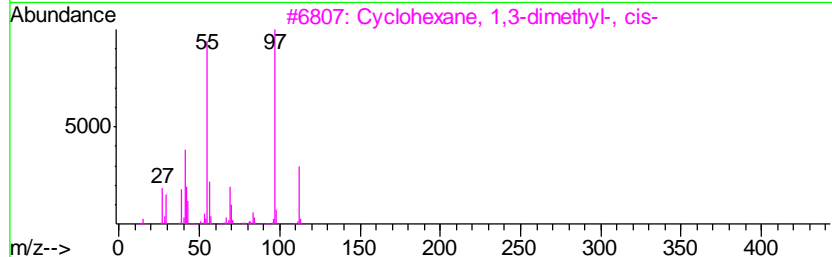
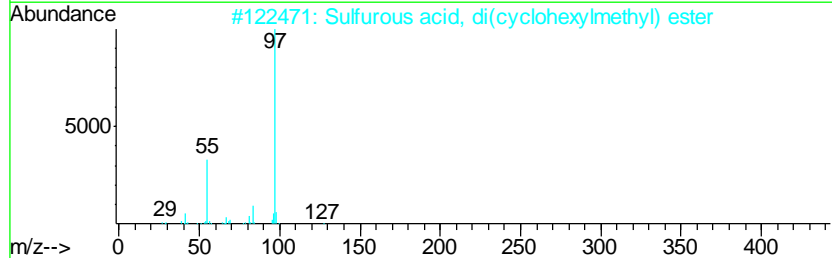
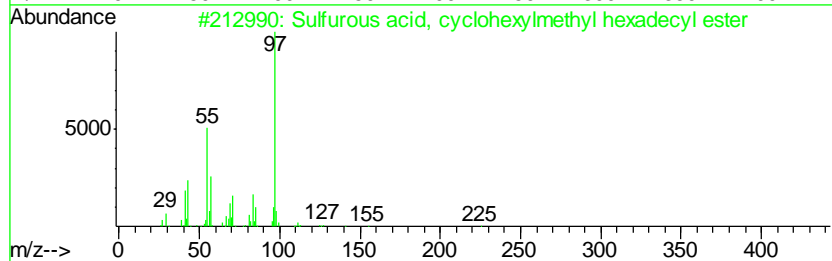
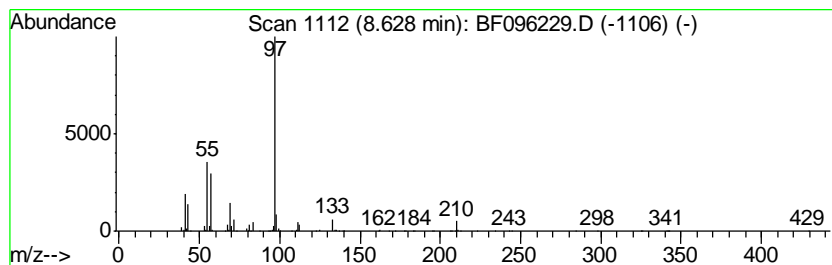
TIC Library : C:\DATABASE\NIST11.L  
 TIC Integration Parameters: LSCINT.P

\*\*\*\*\*  
 Peak Number 20 Sulfurous acid, cyclohexylm... Concentration Rank 18

R.T.	EstConc	Area	Relative to ISTD	R.T.
8.63	42.52 ng	6525880	Naphthalene-d8	8.07

Hit#	of	Tentative ID	MW	MolForm	CAS#	Qual
1	5	Sulfurous acid, cyclohexylmethyl...	402	C23H46O3S	1000309-22-4	59
2		Sulfurous acid, di(cyclohexylmet...	274	C14H26O3S	1000309-22-7	53
3		Cyclohexane, 1,3-dimethyl-, cis-	112	C8H16	000638-04-0	50
4		Isoxazole, 3,5-dimethyl-	97	C5H7NO	000300-87-8	45
5		Sulfurous acid, cyclohexylmethyl...	332	C18H36O3S	1000309-21-9	42



Data Path : \\74.0.250.170\SVOASRV\HPCHEM1\BNA\_F\DATA\BF062717\  
 Data File : BF096229.D  
 Acq On : 27 Jun 2017 21:17  
 Operator : SJ/MA  
 Sample : I3898-01  
 Misc :  
 ALS Vial : 13 Sample Multiplier: 1

Instrument :  
 BNA\_F  
 ClientSampleId :  
 A6987MDW

Quant Method : Z:\HPCHEM1\BNA\_F\Methods\8270-BF062717.M  
 Quant Title : ASP BNA STANDARDS FOR 5 POINT CALIBRATION

TIC Library : C:\DATABASE\NIST11.L  
 TIC Integration Parameters: LSCINT.P

TIC Top Hit name	RT	EstConc	Units	Response	--Internal Standard--			
					#	RT	Resp	Conc
Nonane	5.70	49.7	ng	2766290	1	6.79	1112790	20.0
unknown6.05	6.05	46.8	ng	2603780	1	6.79	1112790	20.0
Decane, 2,5,6-tri...	6.30	76.0	ng	4227680	1	6.79	1112790	20.0
.alpha.-Methylsty...	6.52	279.1	ng	15530800	1	6.79	1112790	20.0
unknown6.56	6.56	74.2	ng	4130370	1	6.79	1112790	20.0
Benzene, 1,2,3-tr...	6.62	64.5	ng	3587470	1	6.79	1112790	20.0
Decane	6.64	107.6	ng	5988840	1	6.79	1112790	20.0
1-Hexanol, 2-ethyl-	6.86	82.8	ng	4605940	1	6.79	1112790	20.0
Limonene	6.92	39.5	ng	2196690	1	6.79	1112790	20.0
Benzene, 1,3-diet...	7.05	51.5	ng	2864170	1	6.79	1112790	20.0
Benzene, 1-methyl...	7.07	128.3	ng	7136050	1	6.79	1112790	20.0
Benzene, 2-ethyl-...	7.12	134.4	ng	7478270	1	6.79	1112790	20.0
Benzene, 2-ethyl-...	7.26	55.7	ng	3098590	1	6.79	1112790	20.0
o-Cymene	7.29	40.1	ng	2232680	1	6.79	1112790	20.0
Tridecane	7.40	91.2	ng	5076160	1	6.79	1112790	20.0
Sulfurous acid, c...	8.63	42.5	ng	6525880	2	8.07	3069590	20.0