

Data Path : Z:\svoasrv\HPCHEM1\BNA_F\Data\BF062725\
 Data File : BF142882.D
 Acq On : 27 Jun 2025 09:51
 Operator : RC/JU
 Sample : SSTDCCC040
 Misc :
 ALS Vial : 2 Sample Multiplier: 1

Instrument :
 BNA_F
 ClientSampleId :
 SSTDCCC040

Quant Time: Jun 27 11:46:40 2025
 Quant Method : Z:\svoasrv\HPCHEM1\BNA_F\Methods\8270-BF061925.M
 Quant Title : ASP BNA STANDARDS FOR 5 POINT CALIBRATION
 QLast Update : Tue Jun 24 05:28:21 2025
 Response via : Initial Calibration

Compound	R.T.	QIon	Response	Conc	Units	Dev(Min)	
Internal Standards							
1) 1,4-Dichlorobenzene-d4	6.875	152	70500	20.000	ng	0.00	
21) Naphthalene-d8	8.163	136	264550	20.000	ng	0.00	
39) Acenaphthene-d10	9.922	164	140000	20.000	ng	0.00	
64) Phenanthrene-d10	11.410	188	234291	20.000	ng	0.00	
76) Chrysene-d12	14.057	240	139168	20.000	ng	0.00	
86) Perylene-d12	15.545	264	151209	20.000	ng	0.00	
System Monitoring Compounds							
5) 2-Fluorophenol	5.493	112	357569	84.443	ng	0.00	
7) Phenol-d6	6.510	99	415394	83.149	ng	0.00	
23) Nitrobenzene-d5	7.445	82	477762	99.057	ng	0.00	
42) 2,4,6-Tribromophenol	10.710	330	121734	84.497	ng	0.00	
45) 2-Fluorobiphenyl	9.239	172	998745	93.716	ng	0.00	
79) Terphenyl-d14	12.998	244	871106	86.486	ng	0.00	
Target Compounds							
2) 1,4-Dioxane	2.628	88	68061	40.186	ng		99
3) Pyridine	3.405	79	171908	40.487	ng		99
4) n-Nitrosodimethylamine	3.352	42	88749	40.420	ng		99
6) Aniline	6.540	93	276214	41.552	ng		97
8) 2-Chlorophenol	6.663	128	193634	42.392	ng		97
9) Benzaldehyde	6.428	77	105877	35.722	ng		99
10) Phenol	6.522	94	228233	41.099	ng		95
11) bis(2-Chloroethyl)ether	6.610	93	163774	41.264	ng		98
12) 1,3-Dichlorobenzene	6.816	146	213093	41.714	ng		99
13) 1,4-Dichlorobenzene	6.893	146	220329	42.749	ng		99
14) 1,2-Dichlorobenzene	7.045	146	205480	42.033	ng		99
15) Benzyl Alcohol	7.022	79	152439	42.208	ng		100
16) 2,2'-oxybis(1-Chloropr...	7.151	45	252551	39.605	ng		97
17) 2-Methylphenol	7.134	107	144657	41.790	ng		98
18) Hexachloroethane	7.387	117	76850	42.629	ng		99
19) n-Nitroso-di-n-propyla...	7.293	70	121595	41.849	ng		97
20) 3+4-Methylphenols	7.287	107	180389	41.797	ng		95
22) Acetophenone	7.287	105	242192	41.515	ng		98
24) Nitrobenzene	7.463	77	180776	41.412	ng		99
25) Isophorone	7.704	82	322599	41.696	ng		99
26) 2-Nitrophenol	7.781	139	103609	43.570	ng		97
27) 2,4-Dimethylphenol	7.816	122	174240	42.301	ng		99
28) bis(2-Chloroethoxy)met...	7.910	93	205343	41.746	ng		99
29) 2,4-Dichlorophenol	8.022	162	156473	41.895	ng		100
30) 1,2,4-Trichlorobenzene	8.104	180	170514	41.519	ng		99
31) Naphthalene	8.187	128	540387	41.731	ng		99
32) Benzoic acid	7.928	122	88699	42.249	ng		96
33) 4-Chloroaniline	8.234	127	221895	42.142	ng		97
34) Hexachlorobutadiene	8.298	225	104342	41.536	ng		99
35) Caprolactam	8.604	113	45431	46.097	ng		96
36) 4-Chloro-3-methylphenol	8.716	107	157062	42.314	ng		99
37) 2-Methylnaphthalene	8.875	142	333334	41.521	ng		99
38) 1-Methylnaphthalene	8.975	142	347469	41.811	ng		100
40) 1,2,4,5-Tetrachloroben...	9.039	216	169797	41.104	ng		99
41) Hexachlorocyclopentadiene	9.028	237	85906	36.646	ng		98
43) 2,4,6-Trichlorophenol	9.157	196	110019	40.872	ng		99

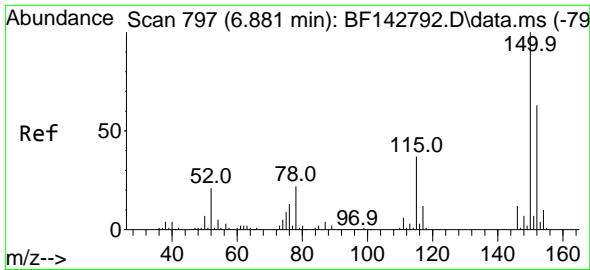
Data Path : Z:\svoasrv\HPCHEM1\BNA_F\Data\BF062725\
 Data File : BF142882.D
 Acq On : 27 Jun 2025 09:51
 Operator : RC/JU
 Sample : SSTDCCC040
 Misc :
 ALS Vial : 2 Sample Multiplier: 1

Instrument :
 BNA_F
 ClientSampleId :
 SSTDCCC040

Quant Time: Jun 27 11:46:40 2025
 Quant Method : Z:\svoasrv\HPCHEM1\BNA_F\Methods\8270-BF061925.M
 Quant Title : ASP BNA STANDARDS FOR 5 POINT CALIBRATION
 QLast Update : Tue Jun 24 05:28:21 2025
 Response via : Initial Calibration

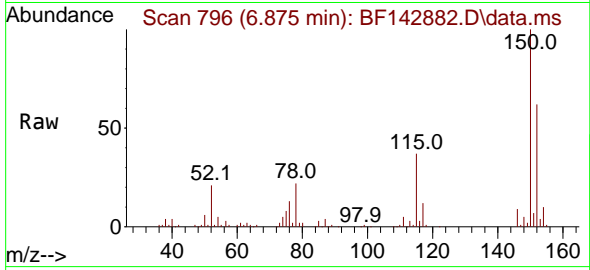
Compound	R.T.	QIon	Response	Conc	Units	Dev(Min)
44) 2,4,5-Trichlorophenol	9.198	196	117411	41.435	ng	99
46) 1,1'-Biphenyl	9.339	154	453330	40.991	ng	100
47) 2-Chloronaphthalene	9.369	162	337318	40.645	ng	99
48) 2-Nitroaniline	9.463	65	98089	42.158	ng	97
49) Acenaphthylene	9.781	152	561931	41.130	ng	99
50) Dimethylphthalate	9.639	163	385972	42.591	ng	100
51) 2,6-Dinitrotoluene	9.704	165	83923	42.169	ng	98
52) Acenaphthene	9.957	154	345883	41.495	ng	99
53) 3-Nitroaniline	9.875	138	93460	42.653	ng	99
54) 2,4-Dinitrophenol	9.986	184	40658	40.800	ng	93
55) Dibenzofuran	10.128	168	489849	40.981	ng	99
56) 4-Nitrophenol	10.034	139	60360	40.238	ng	96
57) 2,4-Dinitrotoluene	10.110	165	114910	43.469	ng	99
58) Fluorene	10.469	166	387127	41.470	ng	100
59) 2,3,4,6-Tetrachlorophenol	10.245	232	95093	41.633	ng	96
60) Diethylphthalate	10.339	149	383081	43.114	ng	100
61) 4-Chlorophenyl-phenyle...	10.457	204	186438	41.853	ng	98
62) 4-Nitroaniline	10.486	138	90481	45.151	ng	98
63) Azobenzene	10.622	77	324727	40.890	ng	97
65) 4,6-Dinitro-2-methylph...	10.522	198	60921	42.988	ng	99
66) n-Nitrosodiphenylamine	10.581	169	332341	40.929	ng	100
67) 4-Bromophenyl-phenylether	10.951	248	110475	41.431	ng	98
68) Hexachlorobenzene	11.022	284	120962	40.826	ng	98
69) Atrazine	11.104	200	95659	45.621	ng	99
70) Pentachlorophenol	11.216	266	58852	39.862	ng	98
71) Phenanthrene	11.433	178	517710	40.792	ng	99
72) Anthracene	11.486	178	532425	40.904	ng	99
73) Carbazole	11.639	167	469739	41.819	ng	99
74) Di-n-butylphthalate	11.963	149	532302	45.490	ng	100
75) Fluoranthene	12.622	202	503645	41.814	ng	100
77) Benzidine	12.745	184	213892	40.907	ng	99
78) Pyrene	12.857	202	500872	38.396	ng	99
80) Butylbenzylphthalate	13.469	149	172705	45.642	ng	97
81) Benzo(a)anthracene	14.045	228	386926	41.213	ng	99
82) 3,3'-Dichlorobenzidine	14.004	252	130270	42.779	ng	99
83) Chrysene	14.080	228	343961	41.058	ng	100
84) Bis(2-ethylhexyl)phtha...	14.027	149	245032	45.007	ng	99
85) Di-n-octyl phthalate	14.639	149	429047	41.794	ng	99
87) Indeno(1,2,3-cd)pyrene	17.063	276	444330	38.579	ng	98
88) Benzo(b)fluoranthene	15.110	252	369007	42.174	ng	99
89) Benzo(k)fluoranthene	15.139	252	345320	42.185	ng	99
90) Benzo(a)pyrene	15.486	252	353665	41.840	ng	99
91) Dibenzo(a,h)anthracene	17.074	278	362287	38.714	ng	98
92) Benzo(g,h,i)perylene	17.521	276	357781	38.341	ng	98

(#) = qualifier out of range (m) = manual integration (+) = signals summed

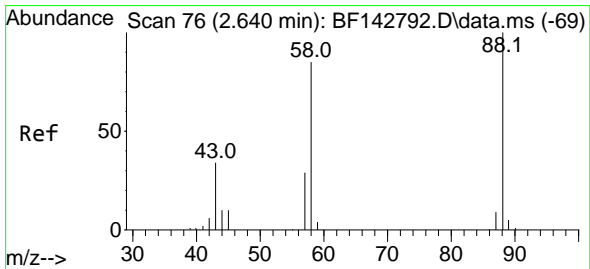
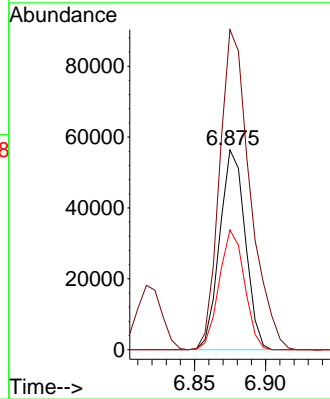
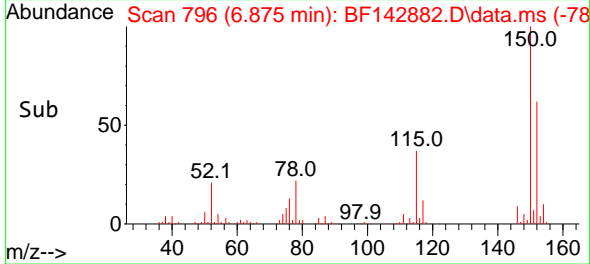


#1
 1,4-Dichlorobenzene-d4
 Concen: 20.000 ng
 RT: 6.875 min Scan# 74
 Delta R.T. -0.006 min
 Lab File: BF142882.D
 Acq: 27 Jun 2025 09:51

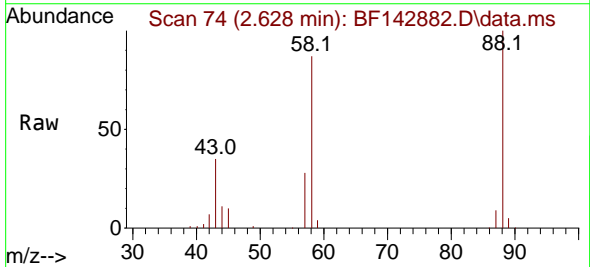
Instrument :
 BNA_F
 ClientSampleId :
 SSTDCCC040



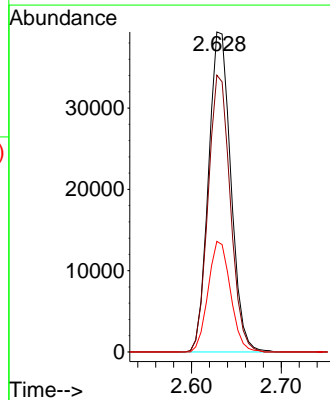
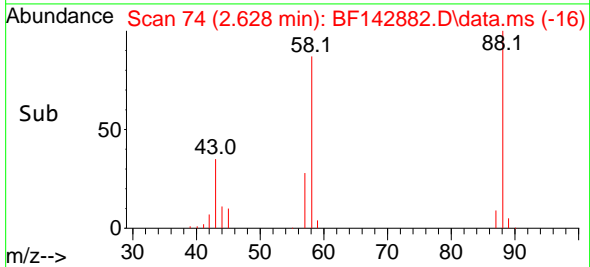
Tgt Ion:152 Resp: 70500
 Ion Ratio Lower Upper
 152 100
 150 160.2 127.2 190.8
 115 59.9 46.6 69.8

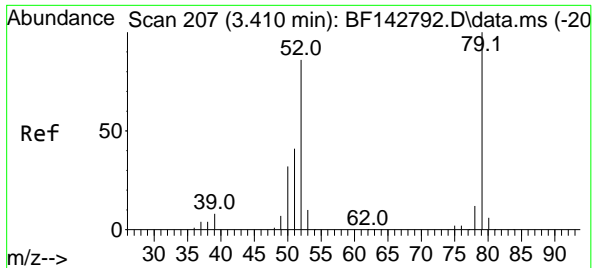


#2
 1,4-Dioxane
 Concen: 40.186 ng
 RT: 2.628 min Scan# 74
 Delta R.T. -0.012 min
 Lab File: BF142882.D
 Acq: 27 Jun 2025 09:51



Tgt Ion: 88 Resp: 68061
 Ion Ratio Lower Upper
 88 100
 58 85.8 69.1 103.7
 43 34.6 27.4 41.2



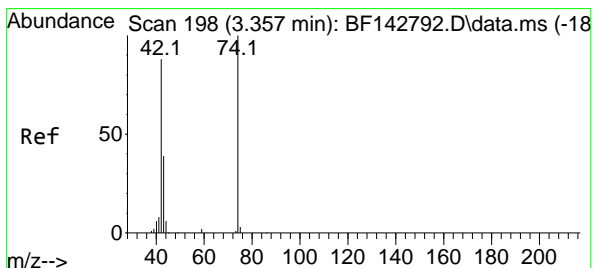
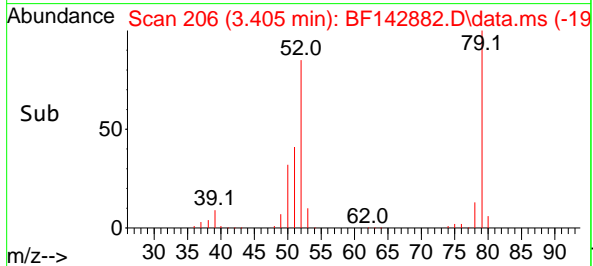
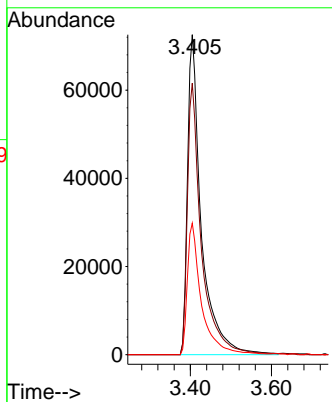
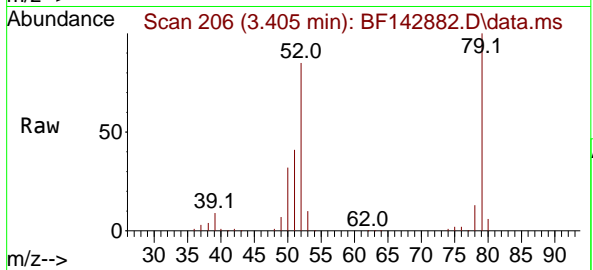


#3
 Pyridine
 Concen: 40.487 ng
 RT: 3.405 min Scan# 20
 Delta R.T. -0.006 min
 Lab File: BF142882.D
 Acq: 27 Jun 2025 09:51

Instrument : BNA_F
 ClientSampleId : SSTDCCC040

Tgt Ion: 79 Resp: 171908

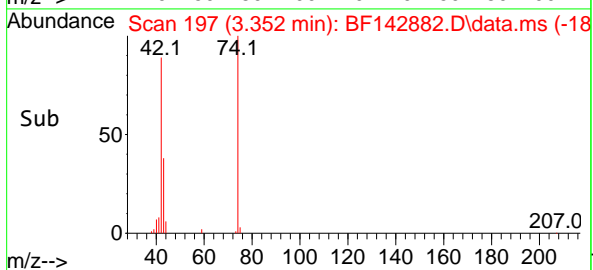
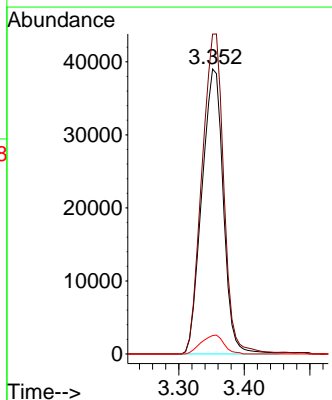
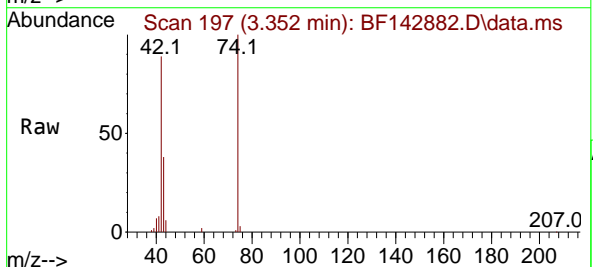
Ion	Ratio	Lower	Upper
79	100		
52	84.8	69.2	103.8
51	41.1	33.2	49.8

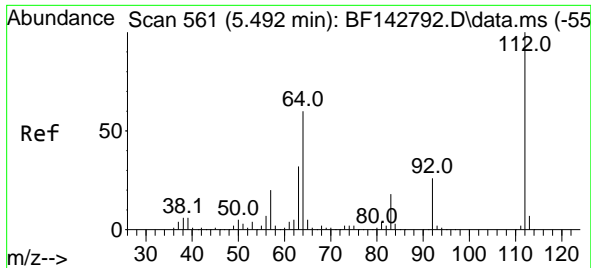


#4
 n-Nitrosodimethylamine
 Concen: 40.420 ng
 RT: 3.352 min Scan# 197
 Delta R.T. -0.006 min
 Lab File: BF142882.D
 Acq: 27 Jun 2025 09:51

Tgt Ion: 42 Resp: 88749

Ion	Ratio	Lower	Upper
42	100		
74	112.3	90.9	136.3
44	6.5	5.8	8.6





#5
 2-Fluorophenol
 Concen: 84.443 ng
 RT: 5.493 min Scan# 50
 Delta R.T. 0.001 min
 Lab File: BF142882.D
 Acq: 27 Jun 2025 09:51

Instrument :

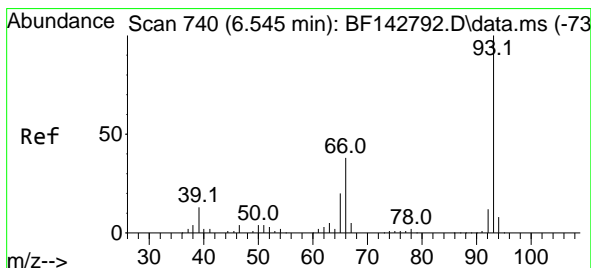
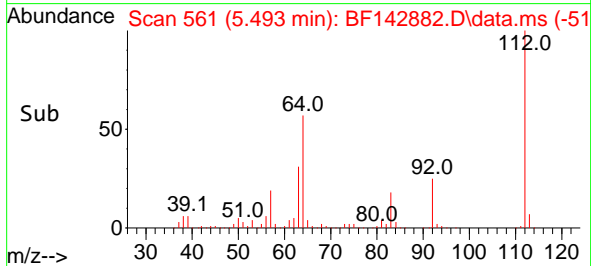
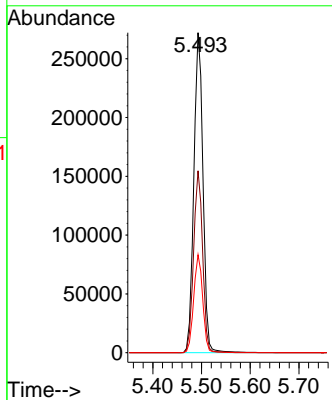
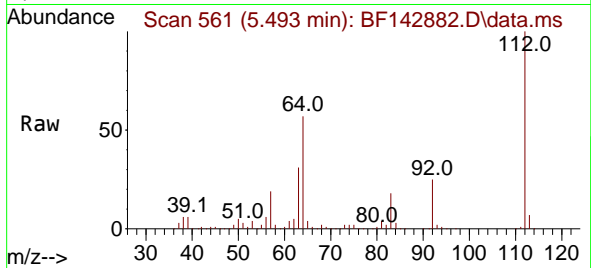
BNA_F

ClientSampleId :

SSTDCCC040

Tgt Ion:112 Resp: 357569

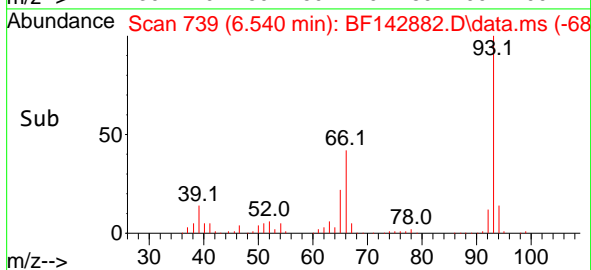
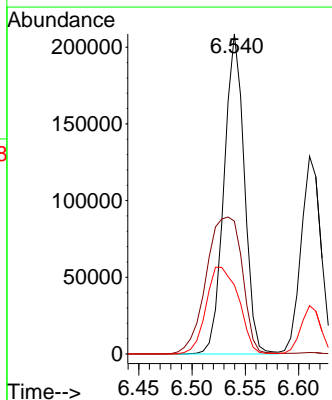
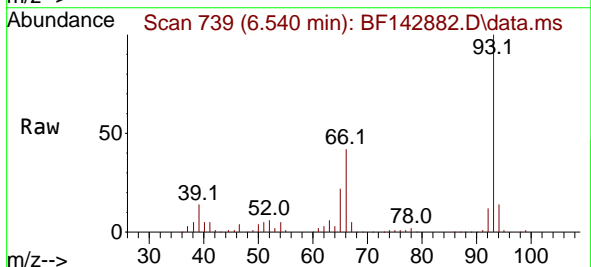
Ion	Ratio	Lower	Upper
112	100		
64	56.8	48.2	72.2
63	30.6	25.7	38.5

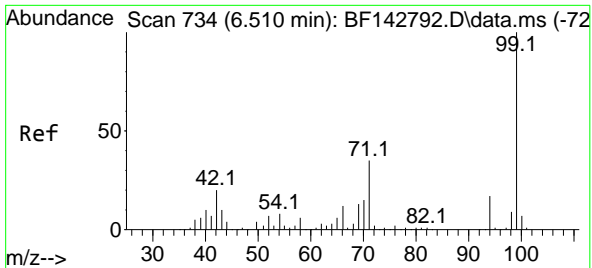


#6
 Aniline
 Concen: 41.552 ng
 RT: 6.540 min Scan# 739
 Delta R.T. -0.006 min
 Lab File: BF142882.D
 Acq: 27 Jun 2025 09:51

Tgt Ion: 93 Resp: 276214

Ion	Ratio	Lower	Upper
93	100		
66	41.5	31.8	47.6
65	21.6	16.2	24.2



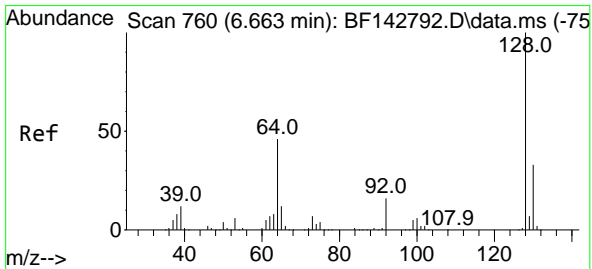
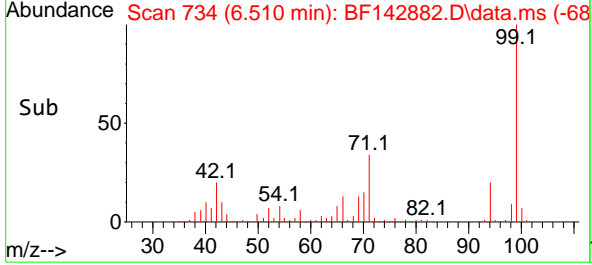
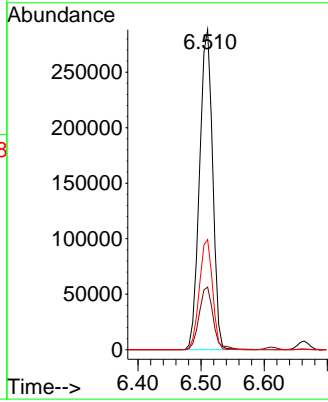
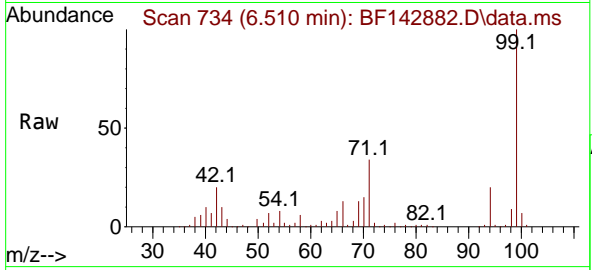


#7
 Phenol-d6
 Concen: 83.149 ng
 RT: 6.510 min Scan# 71
 Delta R.T. 0.000 min
 Lab File: BF142882.D
 Acq: 27 Jun 2025 09:51

Instrument : BNA_F
 ClientSampleId : SSTDCCC040

Tgt Ion: 99 Resp: 415394

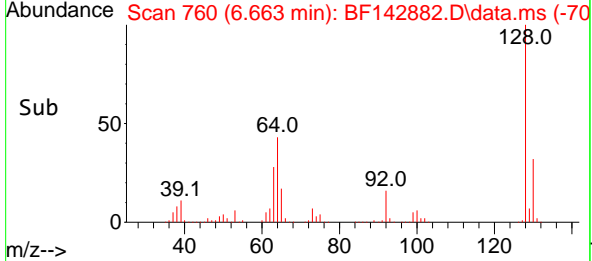
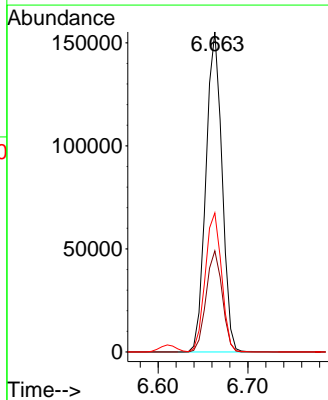
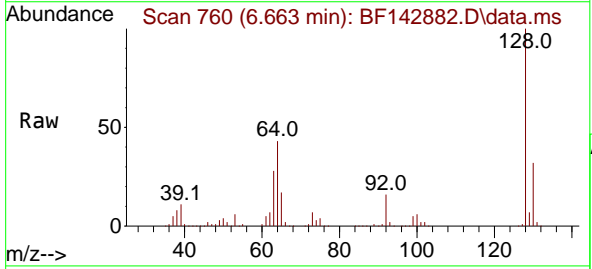
Ion	Ratio	Lower	Upper
99	100		
42	19.5	15.9	23.9
71	34.4	27.8	41.8

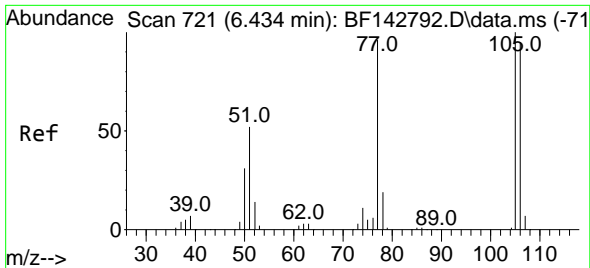


#8
 2-Chlorophenol
 Concen: 42.392 ng
 RT: 6.663 min Scan# 760
 Delta R.T. 0.000 min
 Lab File: BF142882.D
 Acq: 27 Jun 2025 09:51

Tgt Ion: 128 Resp: 193634

Ion	Ratio	Lower	Upper
128	100		
130	31.6	12.7	52.7
64	43.5	26.5	66.5



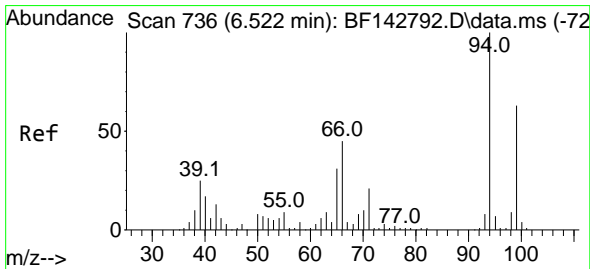
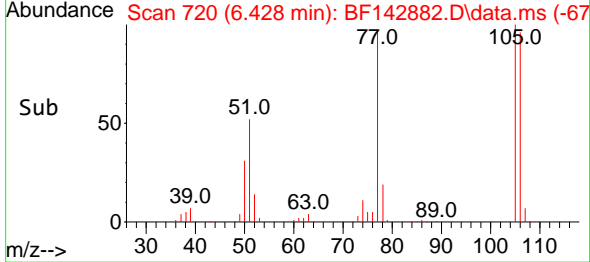
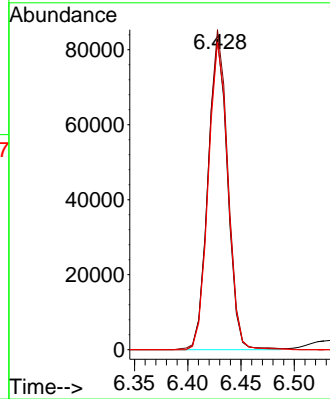
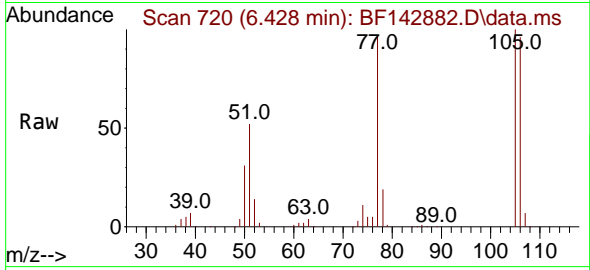


#9
 Benzaldehyde
 Concen: 35.722 ng
 RT: 6.428 min Scan# 720
 Delta R.T. -0.006 min
 Lab File: BF142882.D
 Acq: 27 Jun 2025 09:51

Instrument :
 BNA_F
 ClientSampleId :
 SSTDCCC040

Tgt Ion: 77 Resp: 105877

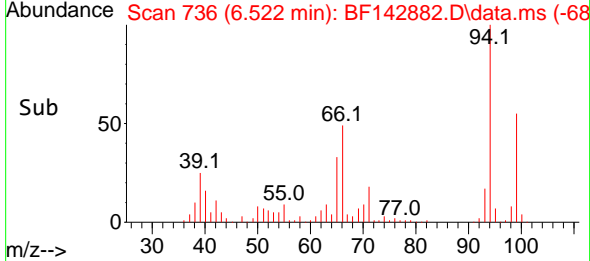
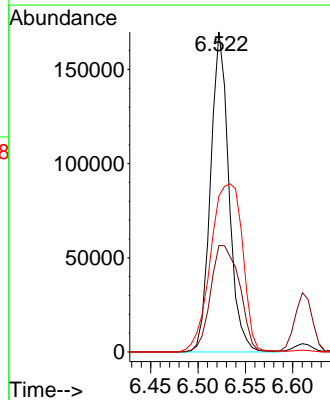
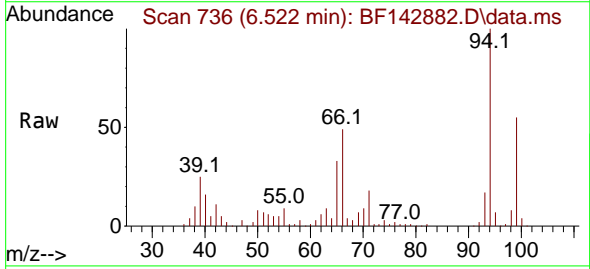
Ion	Ratio	Lower	Upper
77	100		
105	103.1	83.8	123.8
106	99.2	78.7	118.7

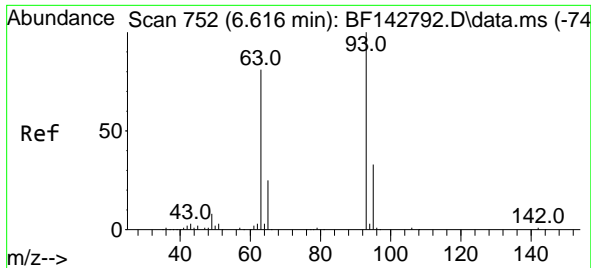


#10
 Phenol
 Concen: 41.099 ng
 RT: 6.522 min Scan# 736
 Delta R.T. 0.000 min
 Lab File: BF142882.D
 Acq: 27 Jun 2025 09:51

Tgt Ion: 94 Resp: 228233

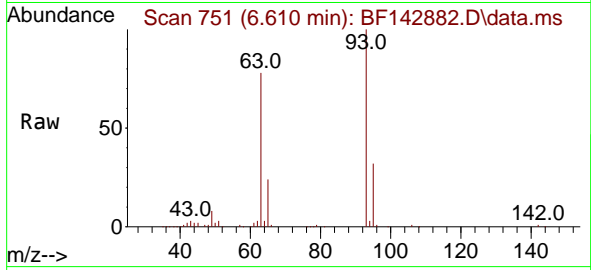
Ion	Ratio	Lower	Upper
94	100		
65	33.3	11.3	51.3
66	48.8	24.9	64.9



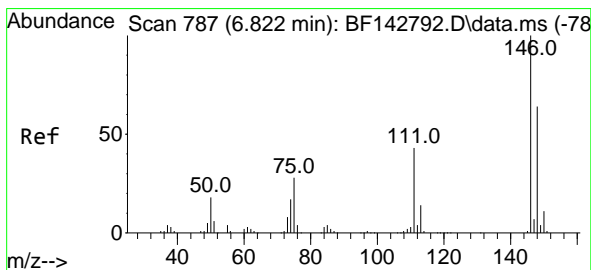
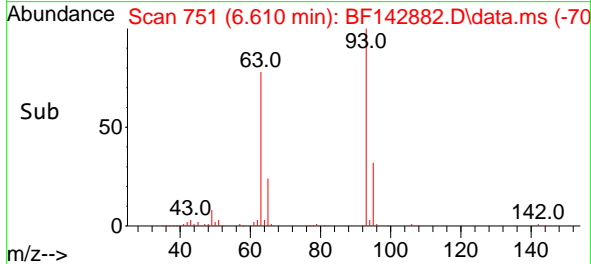
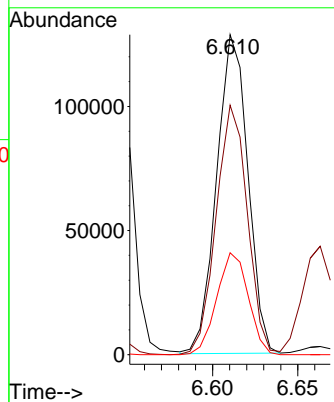


#11
 bis(2-Chloroethyl)ether
 Concen: 41.264 ng
 RT: 6.610 min Scan# 711
 Delta R.T. -0.006 min
 Lab File: BF142882.D
 Acq: 27 Jun 2025 09:51

Instrument : BNA_F
 ClientSampleId : SSTDCCC040

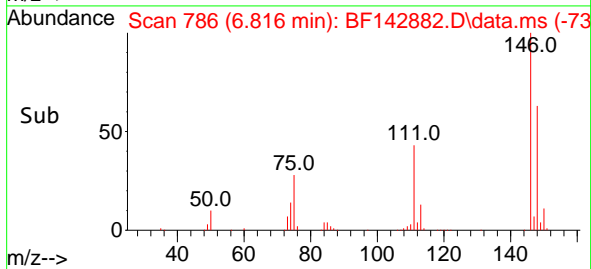
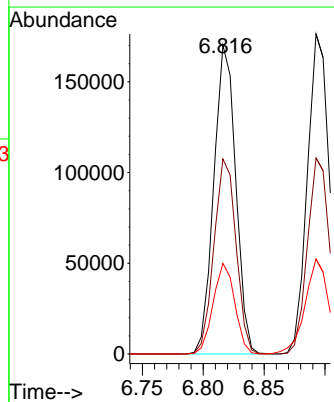
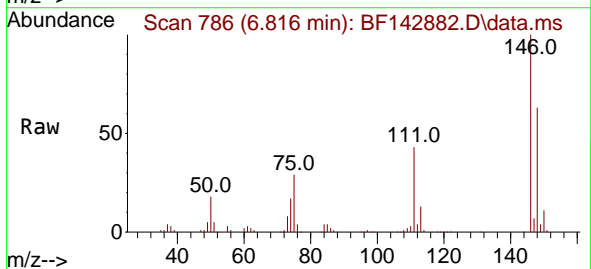


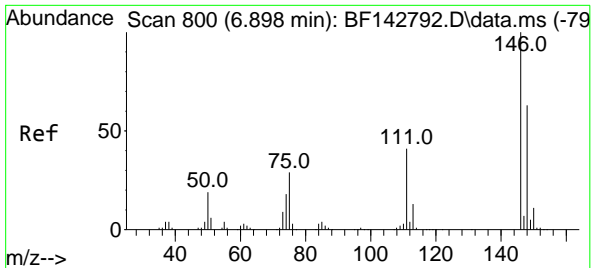
Tgt Ion: 93 Resp: 163774
 Ion Ratio Lower Upper
 93 100
 63 78.0 60.3 100.3
 95 31.9 12.5 52.5



#12
 1,3-Dichlorobenzene
 Concen: 41.714 ng
 RT: 6.816 min Scan# 786
 Delta R.T. -0.006 min
 Lab File: BF142882.D
 Acq: 27 Jun 2025 09:51

Tgt Ion:146 Resp: 213093
 Ion Ratio Lower Upper
 146 100
 148 63.1 51.1 76.7
 75 29.3 22.7 34.1

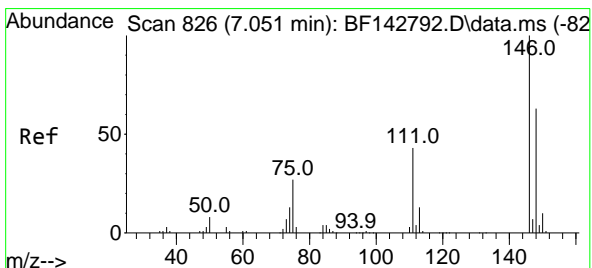
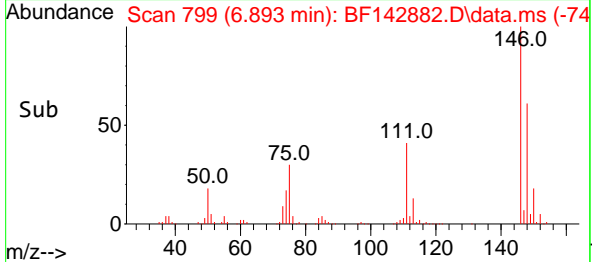
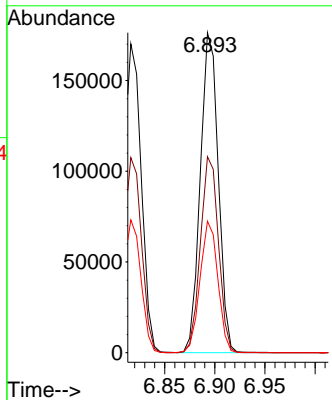
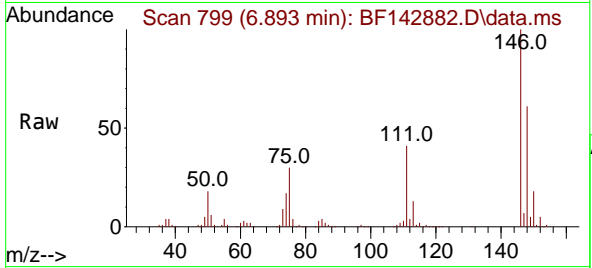




#13
 1,4-Dichlorobenzene
 Concen: 42.749 ng
 RT: 6.893 min Scan# 74
 Delta R.T. -0.006 min
 Lab File: BF142882.D
 Acq: 27 Jun 2025 09:51

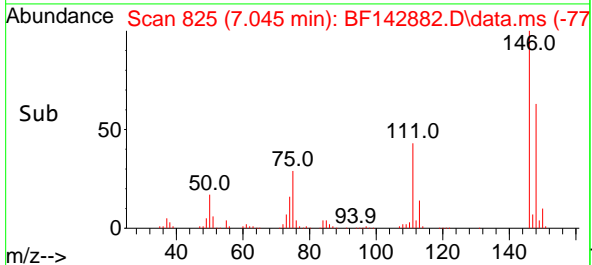
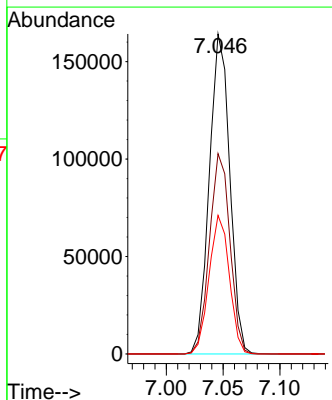
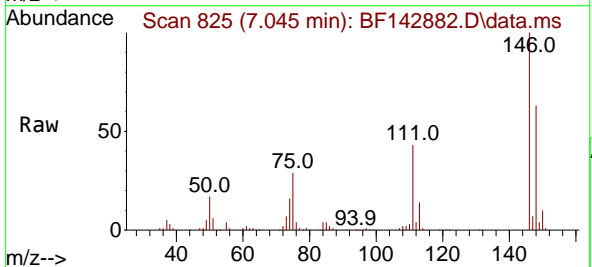
Instrument :
 BNA_F
 ClientSampleId :
 SSTDCCC040

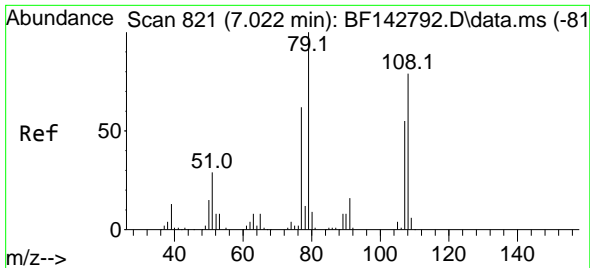
Tgt Ion:146 Resp: 220329
 Ion Ratio Lower Upper
 146 100
 148 61.3 50.2 75.2
 111 41.1 33.2 49.8



#14
 1,2-Dichlorobenzene
 Concen: 42.033 ng
 RT: 7.045 min Scan# 825
 Delta R.T. -0.006 min
 Lab File: BF142882.D
 Acq: 27 Jun 2025 09:51

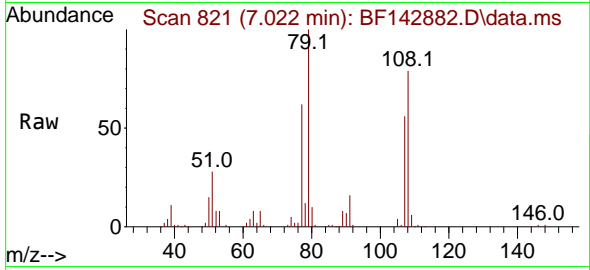
Tgt Ion:146 Resp: 205480
 Ion Ratio Lower Upper
 146 100
 148 62.6 50.4 75.6
 111 43.3 34.1 51.1





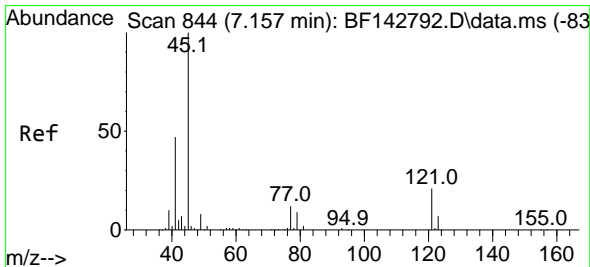
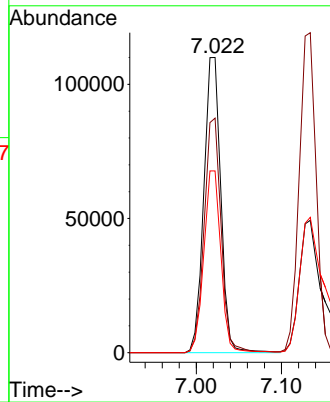
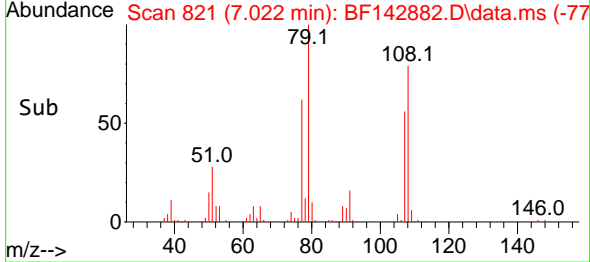
#15
 Benzyl Alcohol
 Concen: 42.208 ng
 RT: 7.022 min Scan# 81
 Delta R.T. 0.000 min
 Lab File: BF142882.D
 Acq: 27 Jun 2025 09:51

Instrument :
 BNA_F
 ClientSampleId :
 SSTDCCC040

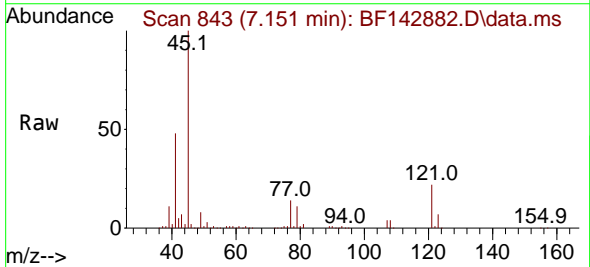


Tgt Ion: 79 Resp: 152439

Ion	Ratio	Lower	Upper
79	100		
108	79.5	63.4	95.0
77	61.6	49.5	74.3

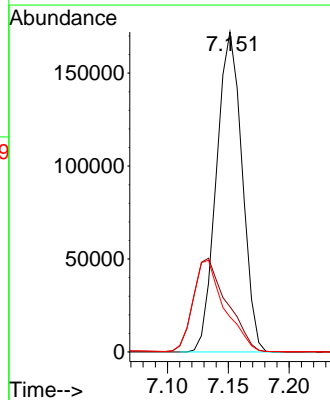
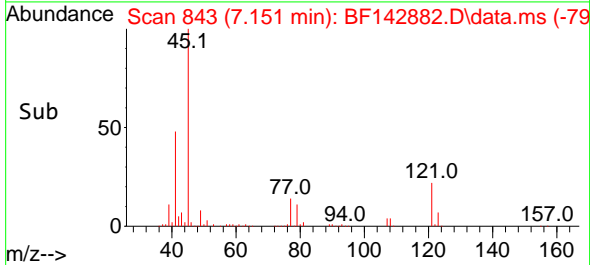


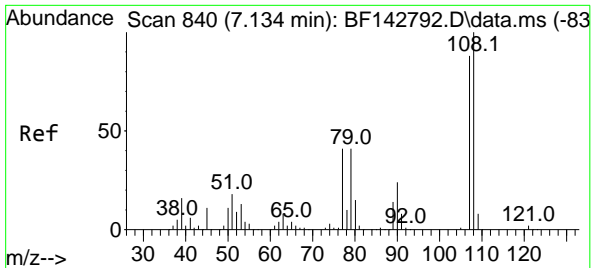
#16
 2,2'-oxybis(1-Chloropropane)
 Concen: 39.605 ng
 RT: 7.151 min Scan# 843
 Delta R.T. -0.006 min
 Lab File: BF142882.D
 Acq: 27 Jun 2025 09:51



Tgt Ion: 45 Resp: 252551

Ion	Ratio	Lower	Upper
45	100		
77	14.2	0.0	32.8
79	10.9	0.0	29.8



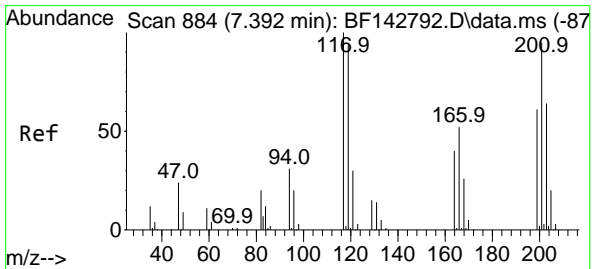
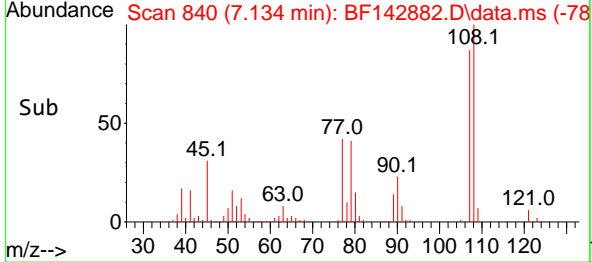
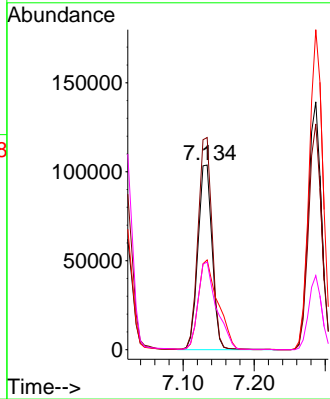
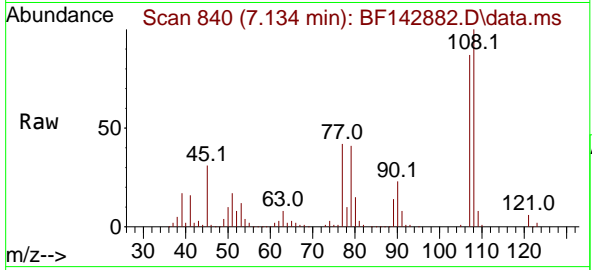


#17
 2-Methylphenol
 Concen: 41.790 ng
 RT: 7.134 min Scan# 84
 Delta R.T. 0.000 min
 Lab File: BF142882.D
 Acq: 27 Jun 2025 09:51

Instrument : BNA_F
 ClientSampleId : SSTDCCC040

Tgt Ion:107 Resp: 144657

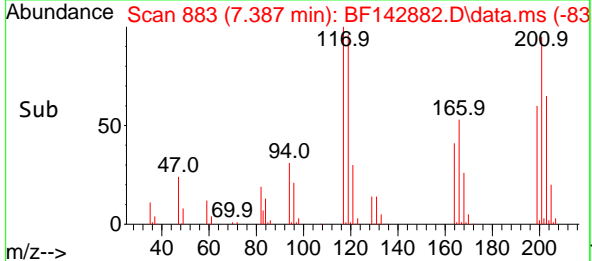
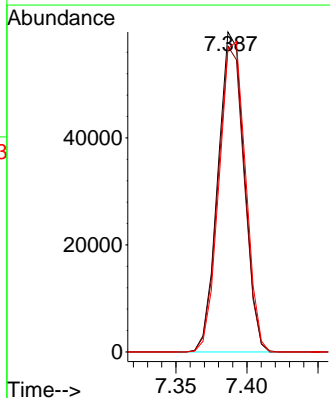
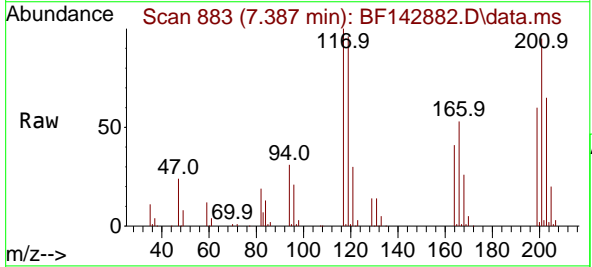
Ion	Ratio	Lower	Upper
107	100		
108	114.9	90.9	136.3
77	48.6	37.3	55.9
79	47.5	37.2	55.8

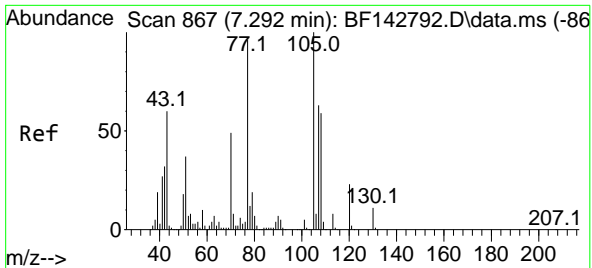


#18
 Hexachloroethane
 Concen: 42.629 ng
 RT: 7.387 min Scan# 883
 Delta R.T. -0.006 min
 Lab File: BF142882.D
 Acq: 27 Jun 2025 09:51

Tgt Ion:117 Resp: 76850

Ion	Ratio	Lower	Upper
117	100		
119	95.5	75.4	113.0
201	94.7	75.9	113.9



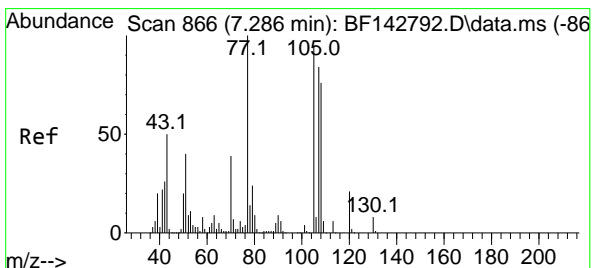
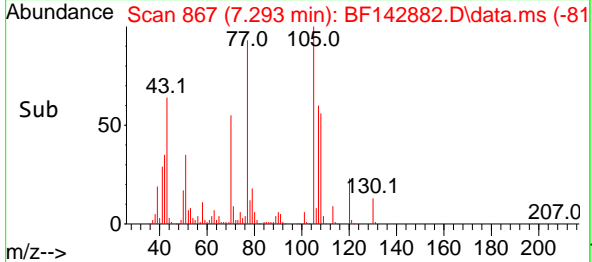
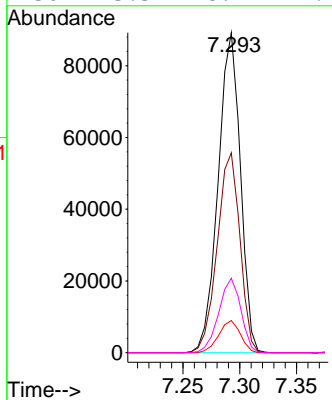
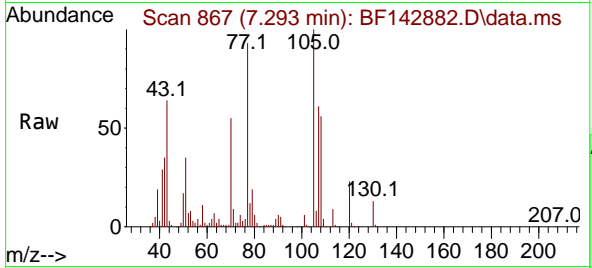


#19
 n-Nitroso-di-n-propylamine
 Concen: 41.849 ng
 RT: 7.293 min Scan# 80
 Delta R.T. 0.000 min
 Lab File: BF142882.D
 Acq: 27 Jun 2025 09:51

Instrument :
 BNA_F
 ClientSampleId :
 SSTDCCC040

Tgt Ion: 70 Resp: 121595

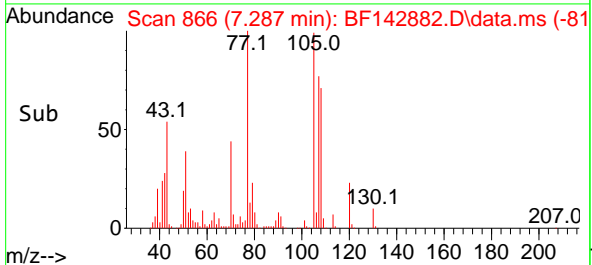
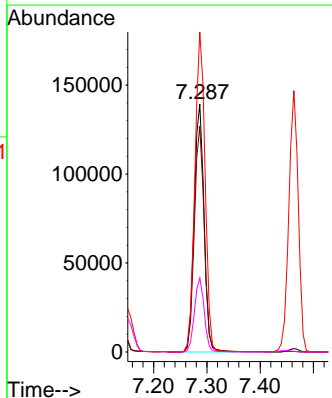
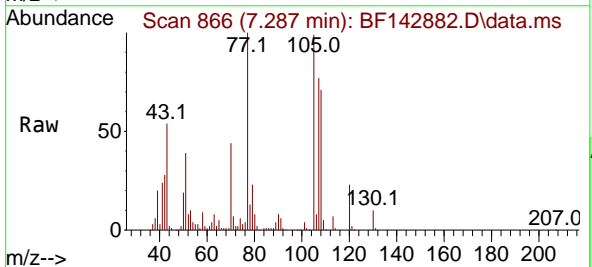
Ion	Ratio	Lower	Upper
70	100		
42	62.4	52.1	78.1
101	10.0	8.2	12.2
130	23.3	18.2	27.2

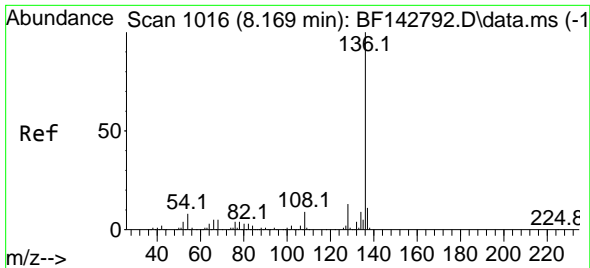


#20
 3+4-Methylphenols
 Concen: 41.797 ng
 RT: 7.287 min Scan# 866
 Delta R.T. 0.000 min
 Lab File: BF142882.D
 Acq: 27 Jun 2025 09:51

Tgt Ion: 107 Resp: 180389

Ion	Ratio	Lower	Upper
107	100		
108	91.0	70.0	110.0
77	129.1	98.5	138.5
79	29.9	8.8	48.8



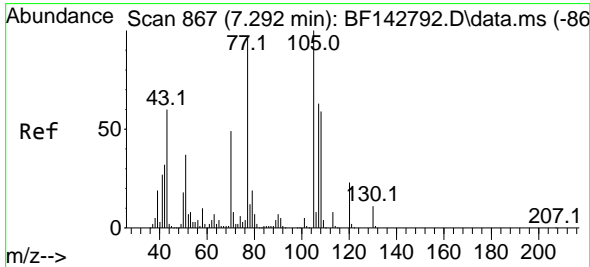
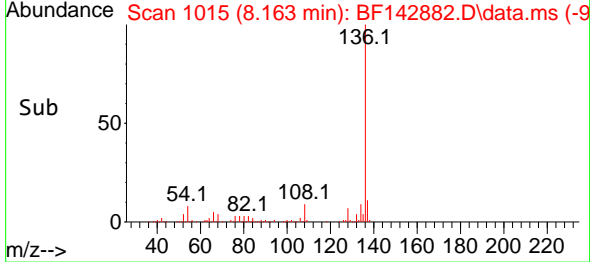
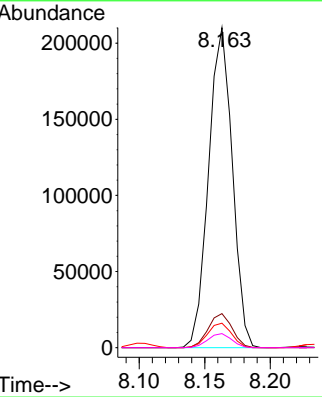
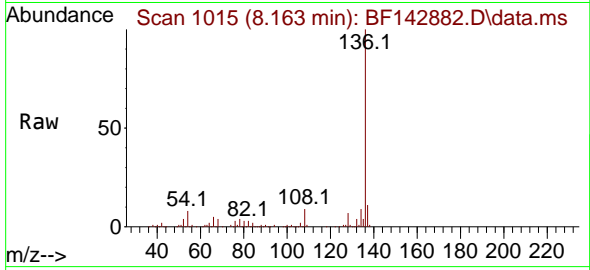


#21
 Naphthalene-d8
 Concen: 20.000 ng
 RT: 8.163 min Scan# 1015
 Delta R.T. -0.006 min
 Lab File: BF142882.D
 Acq: 27 Jun 2025 09:51

Instrument : BNA_F
 ClientSampleId : SSTDCCC040

Tgt Ion:136 Resp: 264550

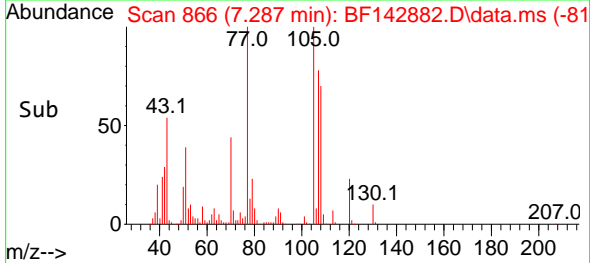
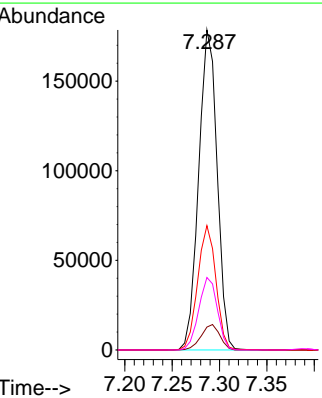
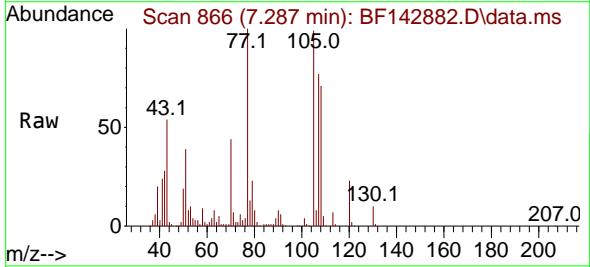
Ion	Ratio	Lower	Upper
136	100		
137	10.7	8.4	12.6
54	7.7	6.3	9.5
68	4.4	3.7	5.5

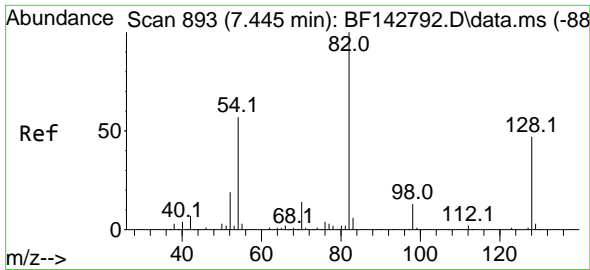


#22
 Acetophenone
 Concen: 41.515 ng
 RT: 7.287 min Scan# 866
 Delta R.T. -0.006 min
 Lab File: BF142882.D
 Acq: 27 Jun 2025 09:51

Tgt Ion:105 Resp: 242192

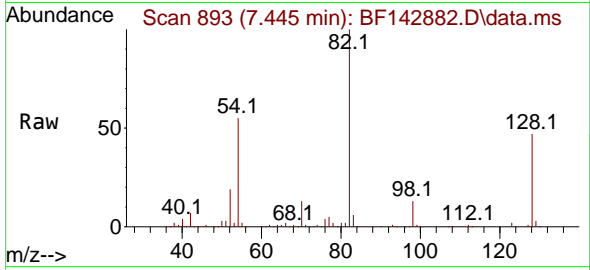
Ion	Ratio	Lower	Upper
105	100		
71	7.1	6.5	9.7
51	38.9	29.8	44.8
120	22.7	18.2	27.2



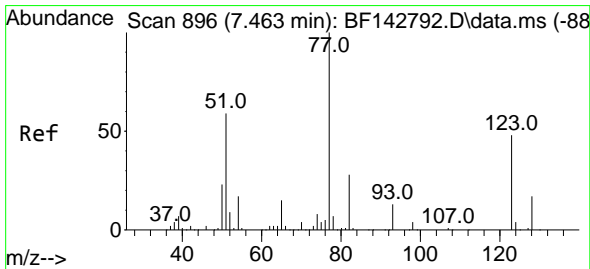
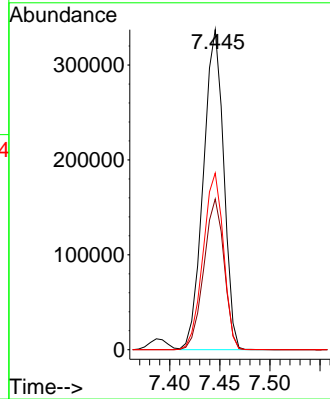
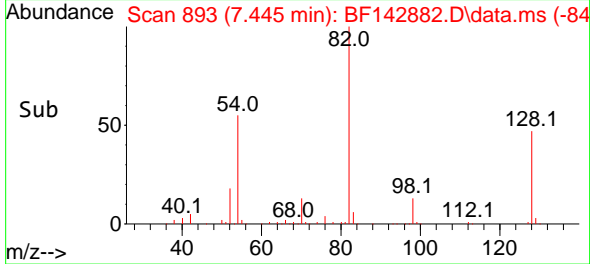


#23
 Nitrobenzene-d5
 Concen: 99.057 ng
 RT: 7.445 min Scan# 893
 Delta R.T. 0.000 min
 Lab File: BF142882.D
 Acq: 27 Jun 2025 09:51

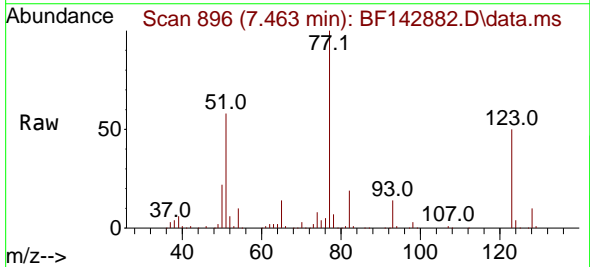
Instrument : BNA_F
 ClientSampleId : SSTDCCC040



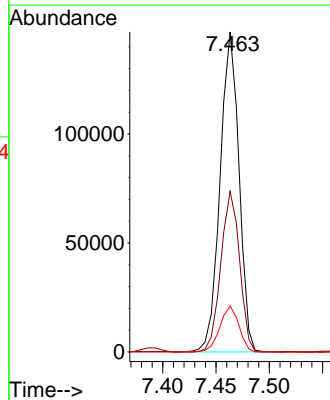
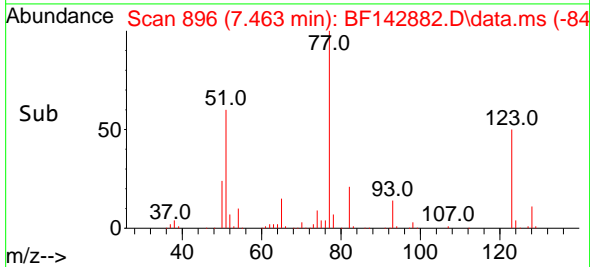
Tgt Ion: 82 Resp: 477762
 Ion Ratio Lower Upper
 82 100
 128 47.1 37.7 56.5
 54 55.2 45.7 68.5

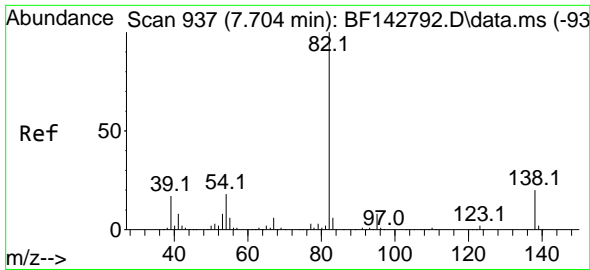


#24
 Nitrobenzene
 Concen: 41.412 ng
 RT: 7.463 min Scan# 896
 Delta R.T. 0.000 min
 Lab File: BF142882.D
 Acq: 27 Jun 2025 09:51



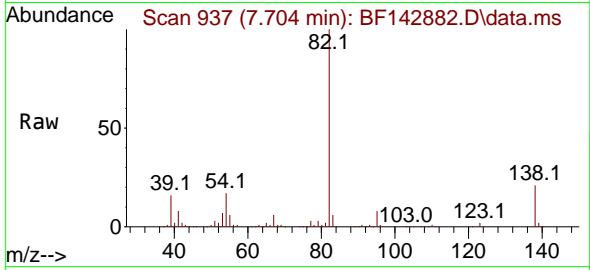
Tgt Ion: 77 Resp: 180776
 Ion Ratio Lower Upper
 77 100
 123 50.2 39.2 58.8
 65 14.3 11.6 17.4



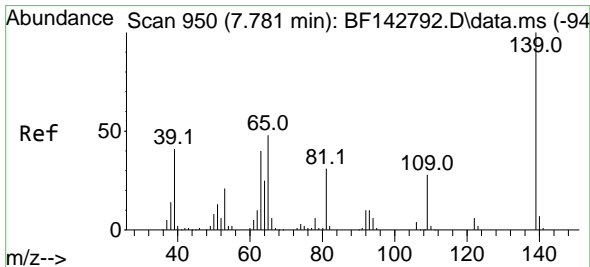
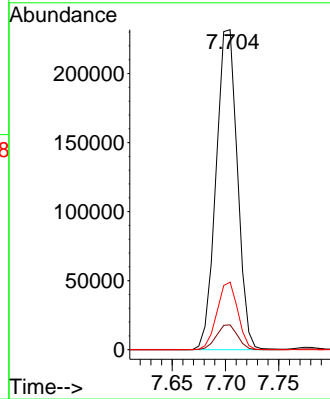
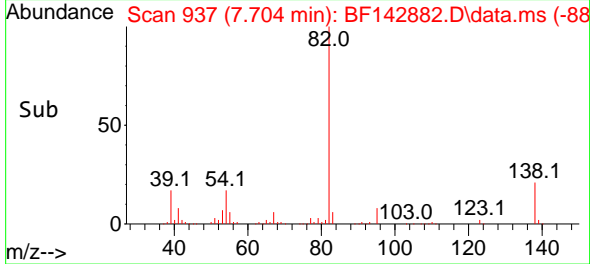


#25
 Isophorone
 Concen: 41.696 ng
 RT: 7.704 min Scan# 91
 Delta R.T. 0.000 min
 Lab File: BF142882.D
 Acq: 27 Jun 2025 09:51

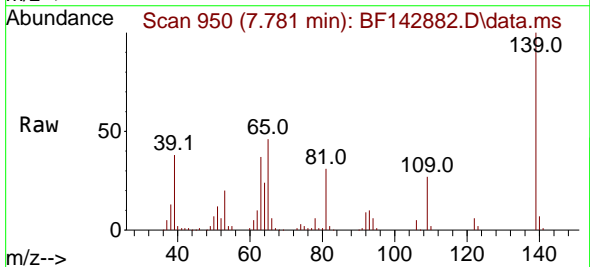
Instrument :
 BNA_F
 ClientSampleId :
 SSTDCCC040



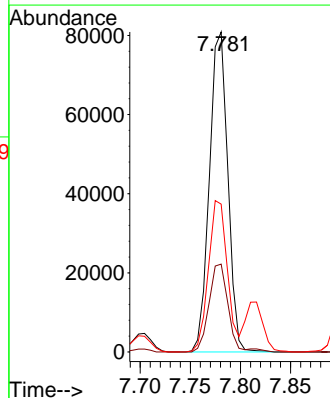
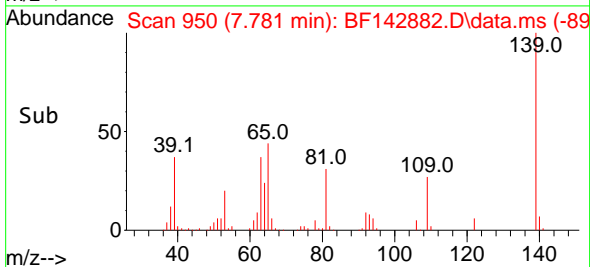
Tgt Ion: 82 Resp: 322599
 Ion Ratio Lower Upper
 82 100
 95 7.7 6.2 9.2
 138 21.1 16.2 24.4

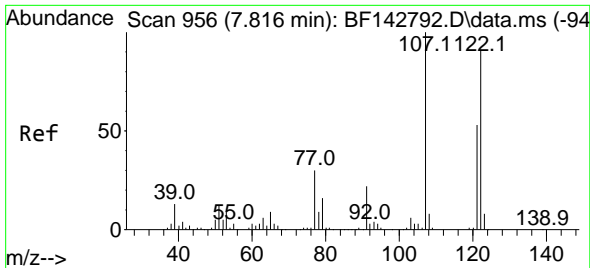


#26
 2-Nitrophenol
 Concen: 43.570 ng
 RT: 7.781 min Scan# 950
 Delta R.T. 0.000 min
 Lab File: BF142882.D
 Acq: 27 Jun 2025 09:51



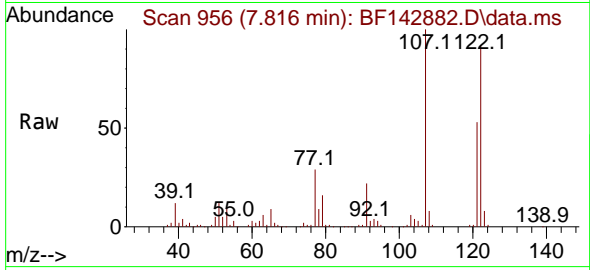
Tgt Ion: 139 Resp: 103609
 Ion Ratio Lower Upper
 139 100
 109 27.4 22.7 34.1
 65 46.2 38.6 58.0





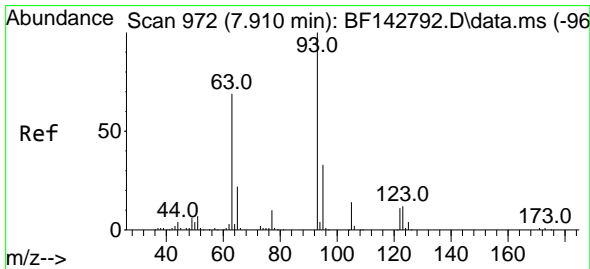
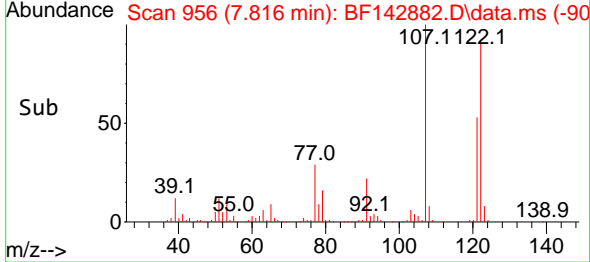
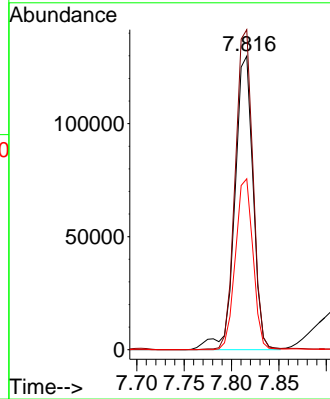
#27
 2,4-Dimethylphenol
 Concen: 42.301 ng
 RT: 7.816 min Scan# 91
 Delta R.T. 0.000 min
 Lab File: BF142882.D
 Acq: 27 Jun 2025 09:51

Instrument :
 BNA_F
 ClientSampleId :
 SSTDCCC040



Tgt Ion:122 Resp: 174240

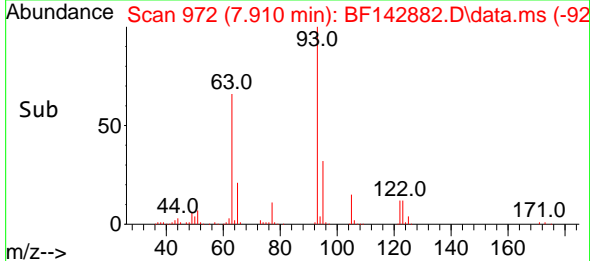
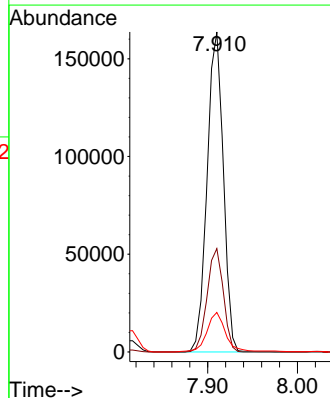
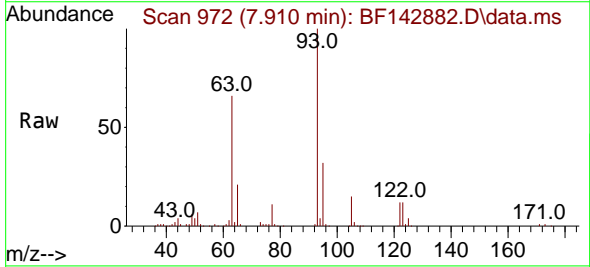
Ion	Ratio	Lower	Upper
122	100		
107	109.0	88.0	132.0
121	58.2	46.3	69.5

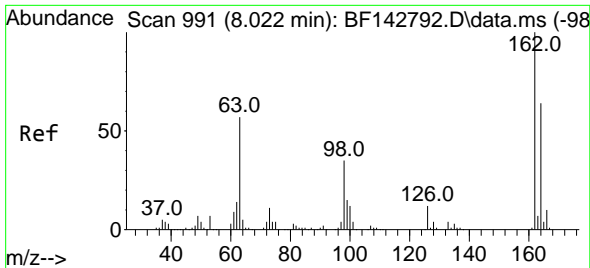


#28
 bis(2-Chloroethoxy)methane
 Concen: 41.746 ng
 RT: 7.910 min Scan# 972
 Delta R.T. 0.000 min
 Lab File: BF142882.D
 Acq: 27 Jun 2025 09:51

Tgt Ion: 93 Resp: 205343

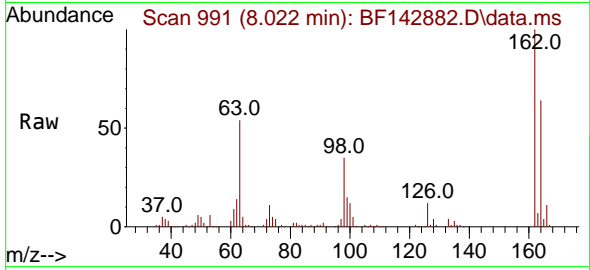
Ion	Ratio	Lower	Upper
93	100		
95	32.3	26.2	39.2
123	12.4	9.9	14.9





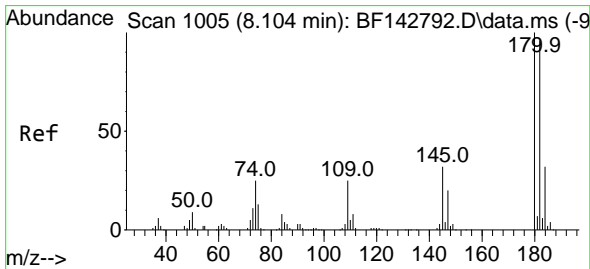
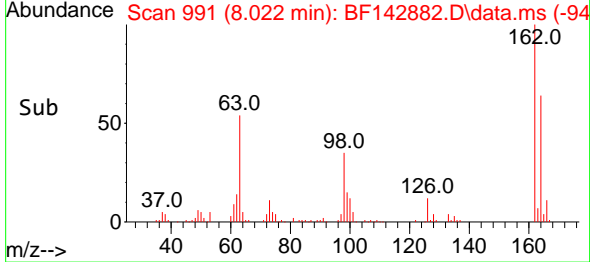
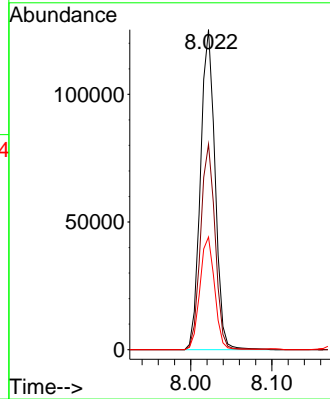
#29
 2,4-Dichlorophenol
 Concen: 41.895 ng
 RT: 8.022 min Scan# 991
 Delta R.T. 0.000 min
 Lab File: BF142882.D
 Acq: 27 Jun 2025 09:51

Instrument : BNA_F
 Client Sample Id : SSTDCCC040



Tgt Ion:162 Resp: 156473

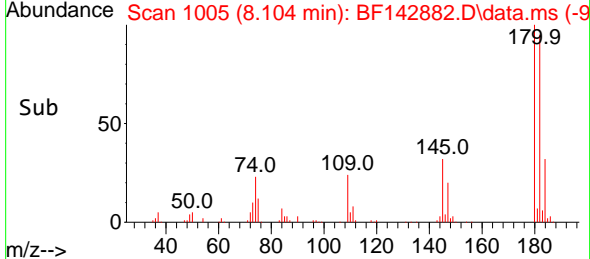
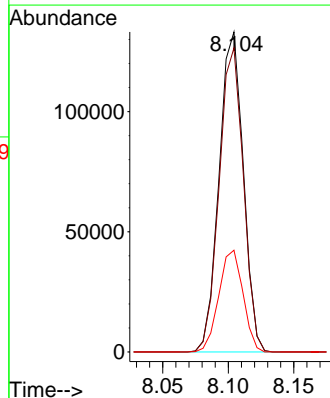
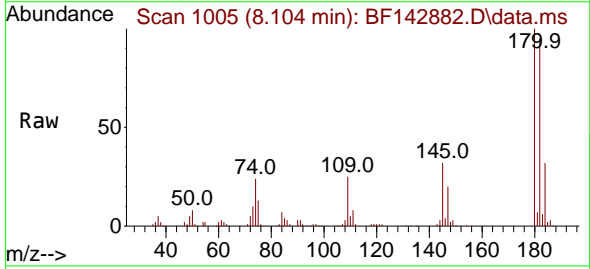
Ion	Ratio	Lower	Upper
162	100		
164	64.2	44.0	84.0
98	35.2	15.4	55.4

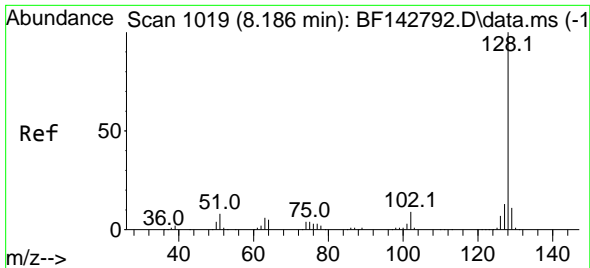


#30
 1,2,4-Trichlorobenzene
 Concen: 41.519 ng
 RT: 8.104 min Scan# 1005
 Delta R.T. 0.000 min
 Lab File: BF142882.D
 Acq: 27 Jun 2025 09:51

Tgt Ion:180 Resp: 170514

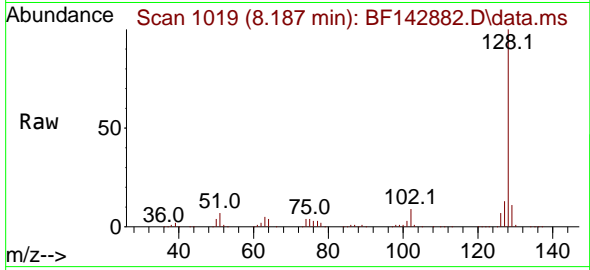
Ion	Ratio	Lower	Upper
180	100		
182	95.0	76.4	114.6
145	31.8	25.8	38.8



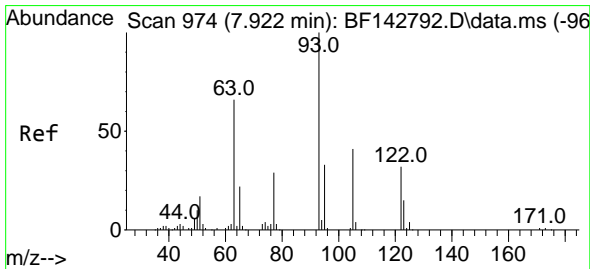
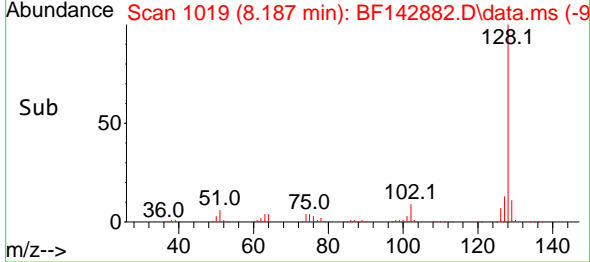
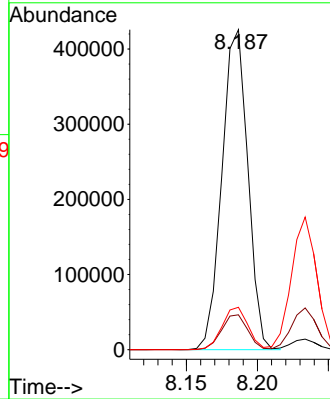


#31
 Naphthalene
 Concen: 41.731 ng
 RT: 8.187 min Scan# 1019
 Delta R.T. 0.000 min
 Lab File: BF142882.D
 Acq: 27 Jun 2025 09:51

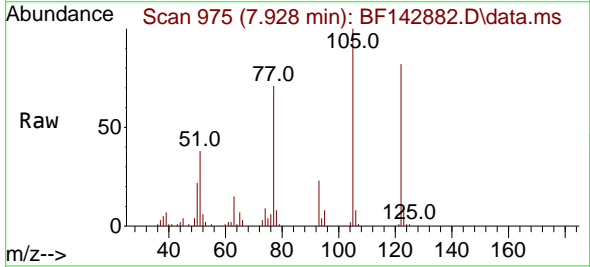
Instrument : BNA_F
 ClientSampleId : SSTDCCC040



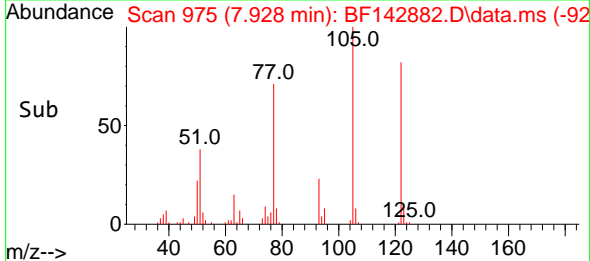
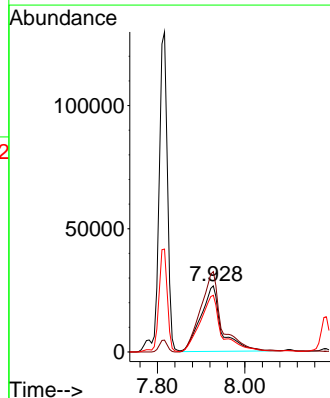
Tgt Ion:128 Resp: 540387
 Ion Ratio Lower Upper
 128 100
 129 10.9 8.9 13.3
 127 13.3 10.4 15.6

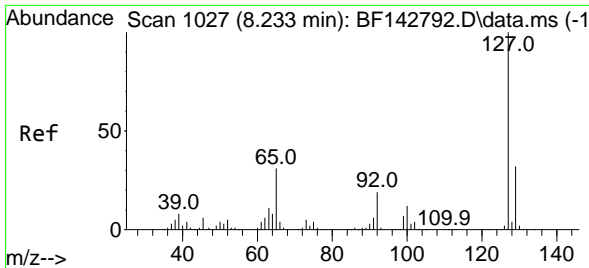


#32
 Benzoic acid
 Concen: 42.249 ng
 RT: 7.928 min Scan# 975
 Delta R.T. 0.006 min
 Lab File: BF142882.D
 Acq: 27 Jun 2025 09:51



Tgt Ion:122 Resp: 88699
 Ion Ratio Lower Upper
 122 100
 105 121.4 104.7 144.7
 77 85.7 70.2 110.2



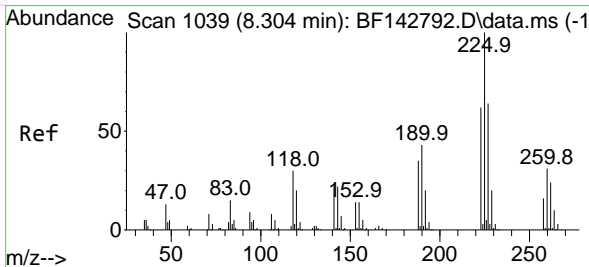
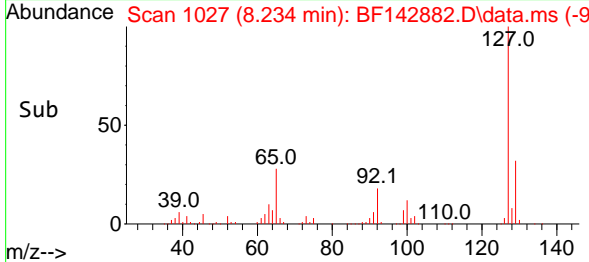
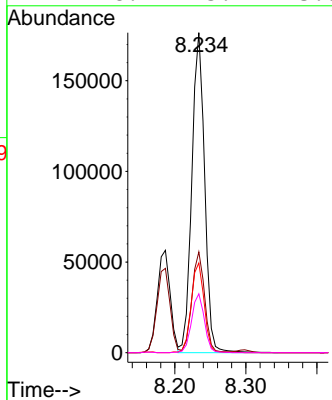
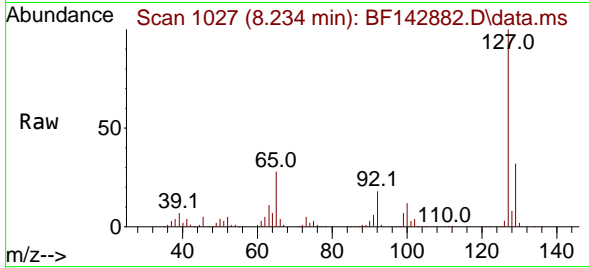


#33
 4-Chloroaniline
 Concen: 42.142 ng
 RT: 8.234 min Scan# 1027
 Delta R.T. 0.000 min
 Lab File: BF142882.D
 Acq: 27 Jun 2025 09:51

Instrument : BNA_F
 ClientSampleId : SSTDCCC040

Tgt Ion:127 Resp: 221895

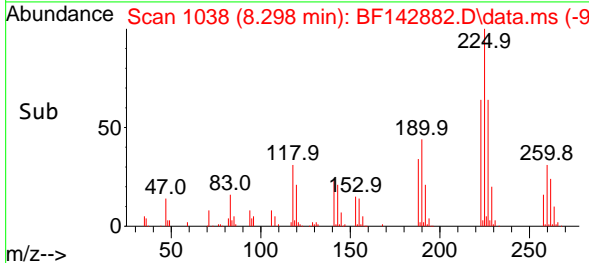
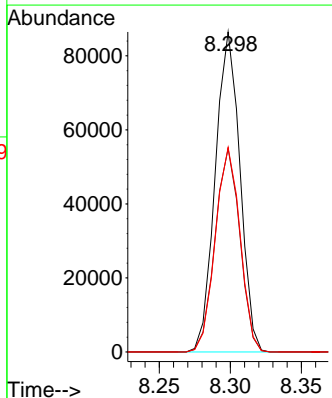
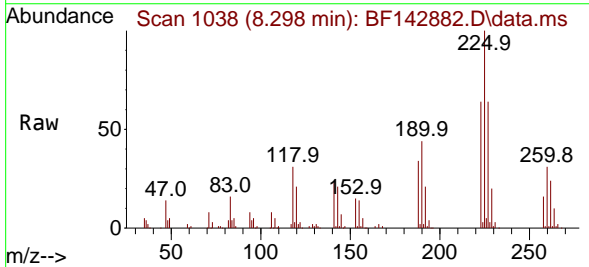
Ion	Ratio	Lower	Upper
127	100		
129	31.5	25.9	38.9
65	28.1	24.6	36.8
92	18.4	15.4	23.0

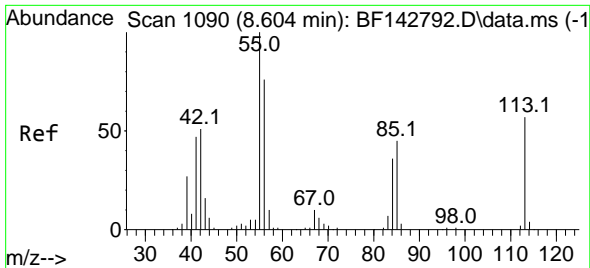


#34
 Hexachlorobutadiene
 Concen: 41.536 ng
 RT: 8.298 min Scan# 1038
 Delta R.T. -0.006 min
 Lab File: BF142882.D
 Acq: 27 Jun 2025 09:51

Tgt Ion:225 Resp: 104342

Ion	Ratio	Lower	Upper
225	100		
223	63.5	49.9	74.9
227	63.9	51.4	77.0



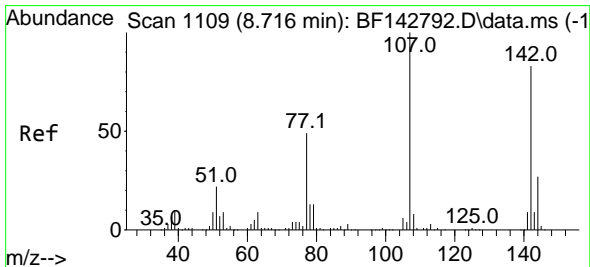
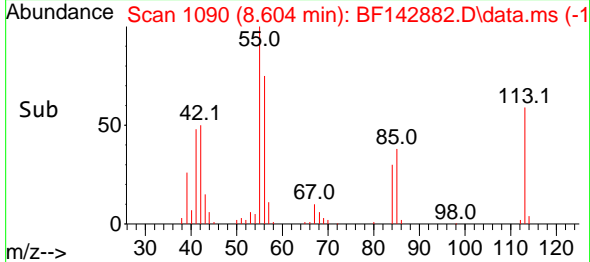
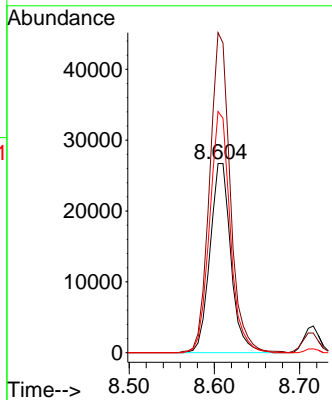
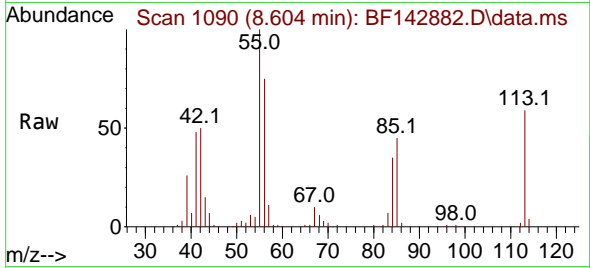


#35
 Caprolactam
 Concen: 46.097 ng
 RT: 8.604 min Scan# 1090
 Delta R.T. 0.000 min
 Lab File: BF142882.D
 Acq: 27 Jun 2025 09:51

Instrument : BNA_F
 ClientSampleId : SSTDCCC040

Tgt Ion:113 Resp: 45431

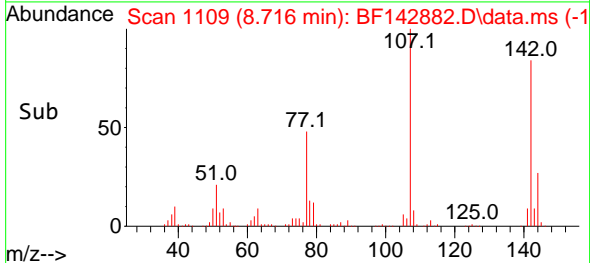
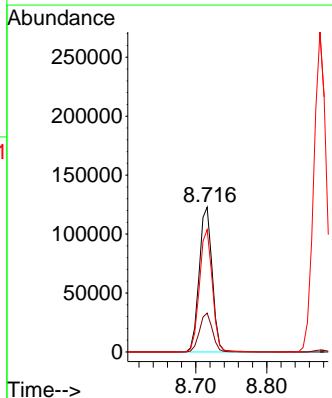
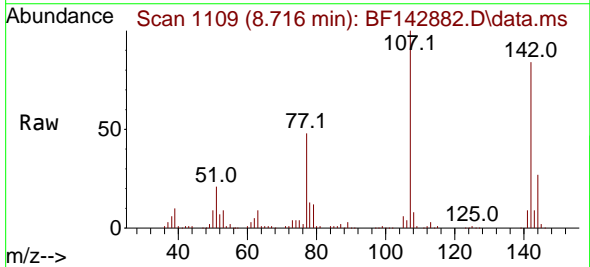
Ion	Ratio	Lower	Upper
113	100		
55	169.2	154.4	194.4
56	127.4	112.1	152.1

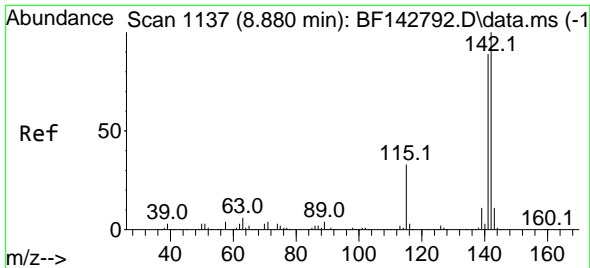


#36
 4-Chloro-3-methylphenol
 Concen: 42.314 ng
 RT: 8.716 min Scan# 1109
 Delta R.T. 0.000 min
 Lab File: BF142882.D
 Acq: 27 Jun 2025 09:51

Tgt Ion:107 Resp: 157062

Ion	Ratio	Lower	Upper
107	100		
144	26.9	21.3	31.9
142	84.5	66.6	100.0

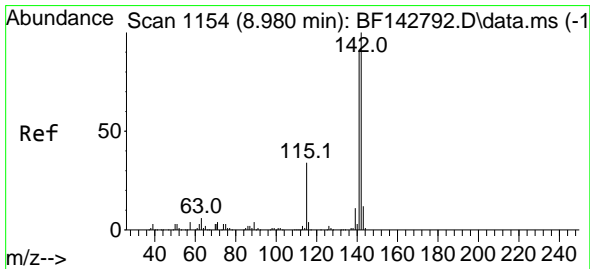
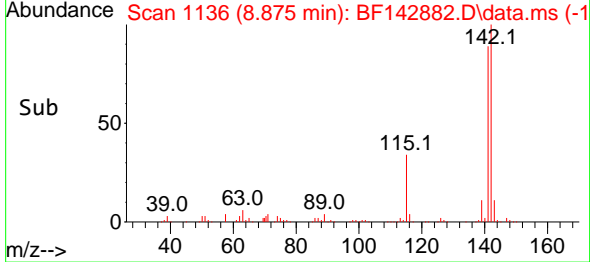
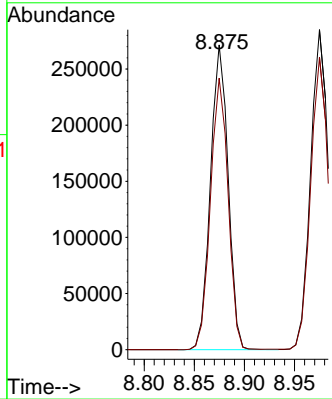
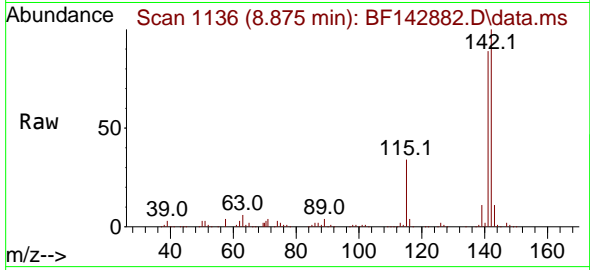




#37
 2-Methylnaphthalene
 Concen: 41.521 ng
 RT: 8.875 min Scan# 1136
 Delta R.T. -0.006 min
 Lab File: BF142882.D
 Acq: 27 Jun 2025 09:51

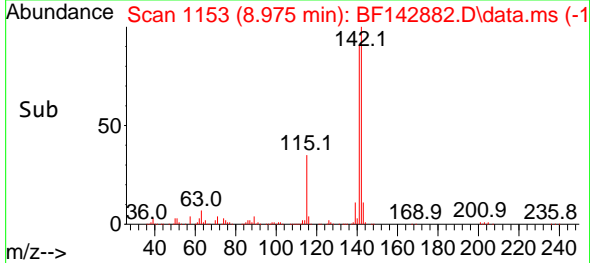
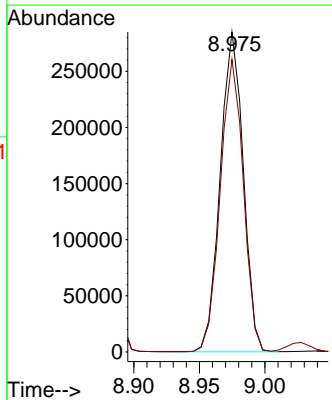
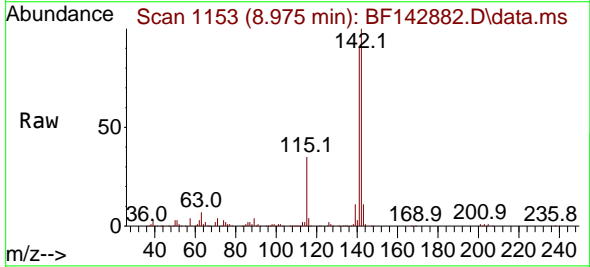
Instrument :
 BNA_F
 ClientSampleId :
 SSTDCCC040

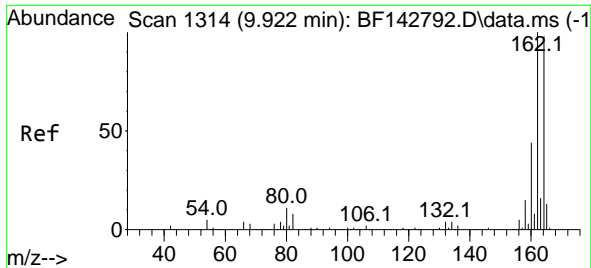
Tgt Ion:142 Resp: 333334
 Ion Ratio Lower Upper
 142 100
 141 89.1 70.9 106.3



#38
 1-Methylnaphthalene
 Concen: 41.811 ng
 RT: 8.975 min Scan# 1153
 Delta R.T. -0.006 min
 Lab File: BF142882.D
 Acq: 27 Jun 2025 09:51

Tgt Ion:142 Resp: 347469
 Ion Ratio Lower Upper
 142 100
 141 91.4 73.0 109.4



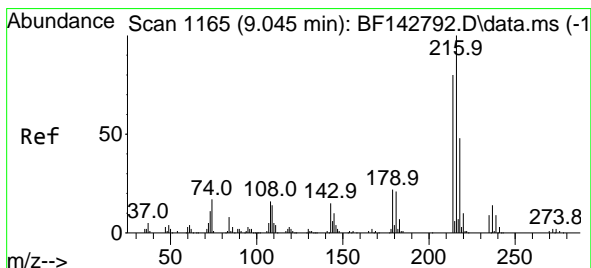
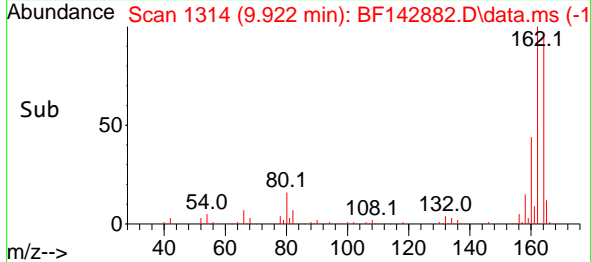
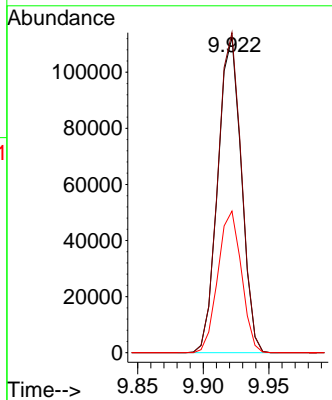
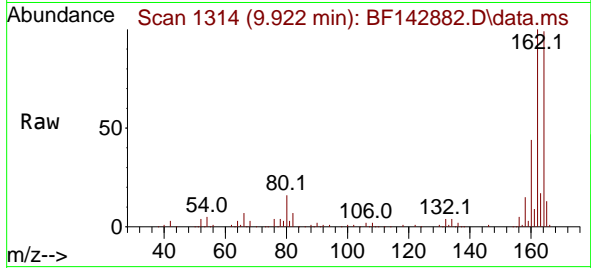


#39
 Acenaphthene-d10
 Concen: 20.000 ng
 RT: 9.922 min Scan# 1164
 Delta R.T. 0.000 min
 Lab File: BF142882.D
 Acq: 27 Jun 2025 09:51

Instrument : BNA_F
 Client Sample Id : SSTDCCC040

Tgt Ion:164 Resp: 140000

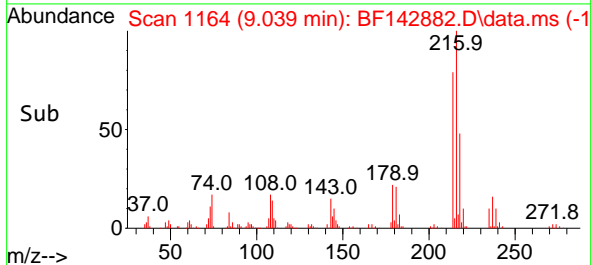
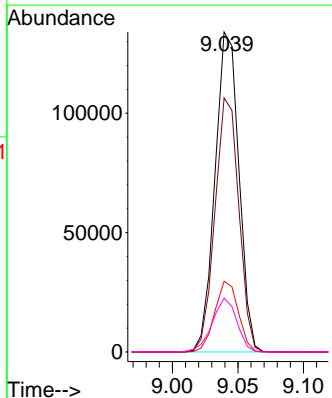
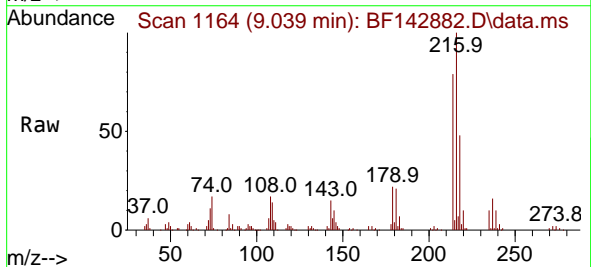
Ion	Ratio	Lower	Upper
164	100		
162	101.5	81.8	122.8
160	44.9	36.0	54.0

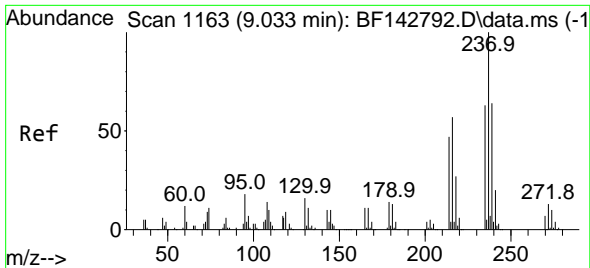


#40
 1,2,4,5-Tetrachlorobenzene
 Concen: 41.104 ng
 RT: 9.039 min Scan# 1164
 Delta R.T. -0.006 min
 Lab File: BF142882.D
 Acq: 27 Jun 2025 09:51

Tgt Ion:216 Resp: 169797

Ion	Ratio	Lower	Upper
216	100		
214	79.2	63.7	95.5
179	21.8	17.6	26.4
108	17.3	14.3	21.5



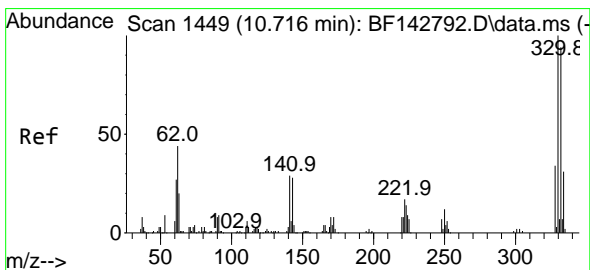
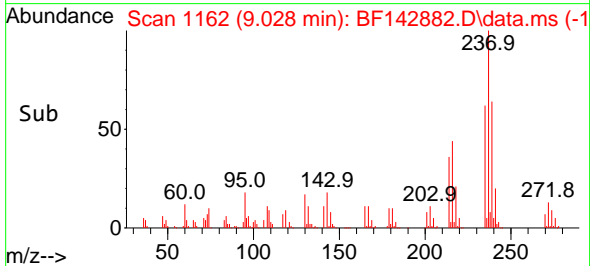
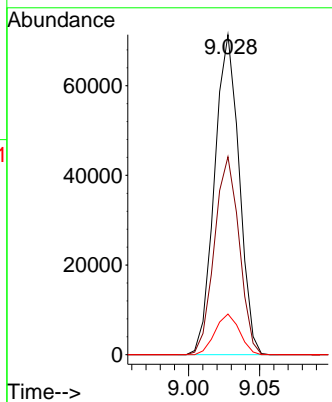
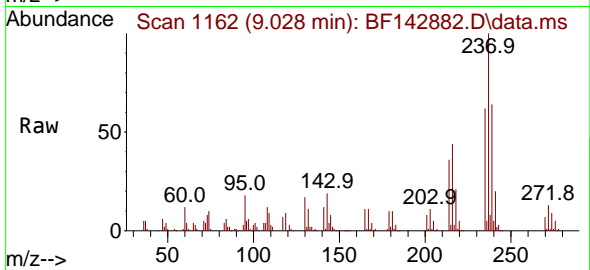


#41
 Hexachlorocyclopentadiene
 Concen: 36.646 ng
 RT: 9.028 min Scan# 1162
 Delta R.T. -0.006 min
 Lab File: BF142882.D
 Acq: 27 Jun 2025 09:51

Instrument :
 BNA_F
 ClientSampleId :
 SSTDCCC040

Tgt Ion:237 Resp: 85906

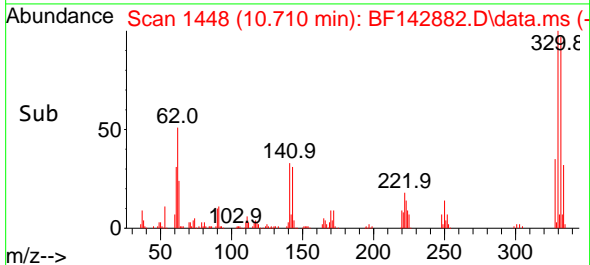
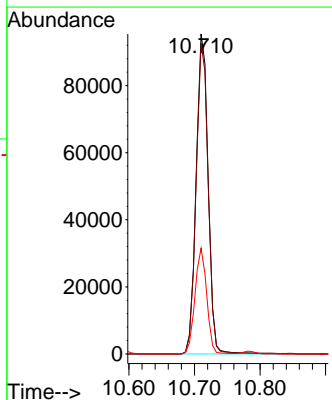
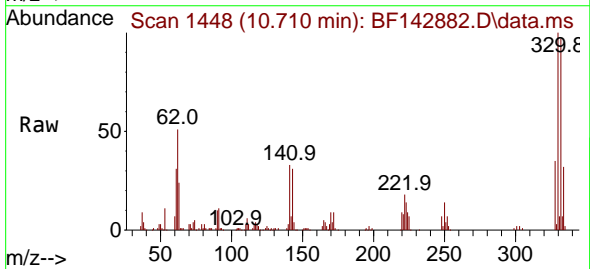
Ion	Ratio	Lower	Upper
237	100		
235	61.8	43.4	83.4
272	12.7	0.0	32.7

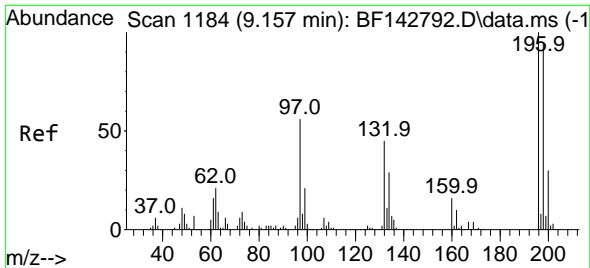


#42
 2,4,6-Tribromophenol
 Concen: 84.497 ng
 RT: 10.710 min Scan# 1448
 Delta R.T. -0.006 min
 Lab File: BF142882.D
 Acq: 27 Jun 2025 09:51

Tgt Ion:330 Resp: 121734

Ion	Ratio	Lower	Upper
330	100		
332	97.4	75.0	112.6
141	32.2	25.3	37.9

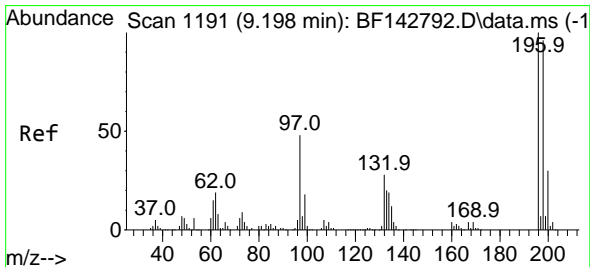
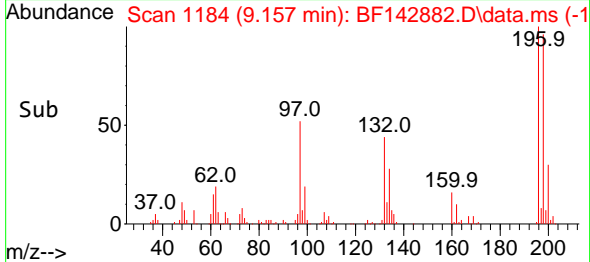
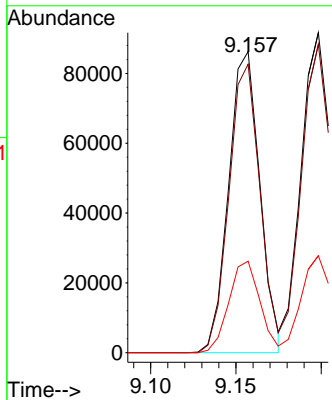
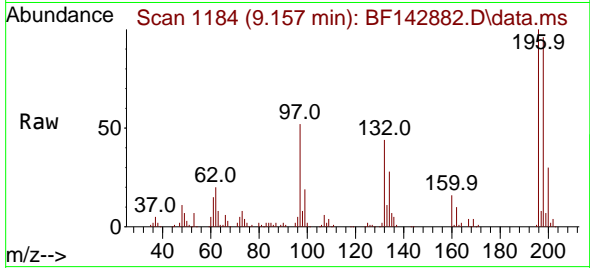




#43
 2,4,6-Trichlorophenol
 Concen: 40.872 ng
 RT: 9.157 min Scan# 1184
 Delta R.T. 0.000 min
 Lab File: BF142882.D
 Acq: 27 Jun 2025 09:51

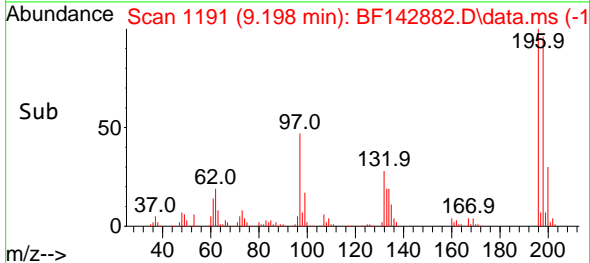
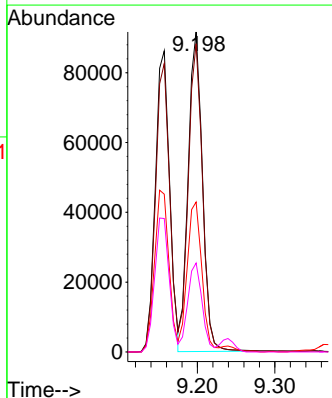
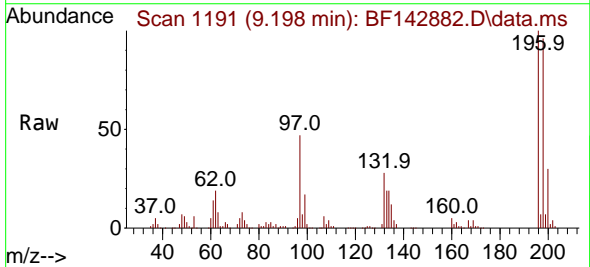
Instrument : BNA_F
 ClientSampleId : SSTDCCC040

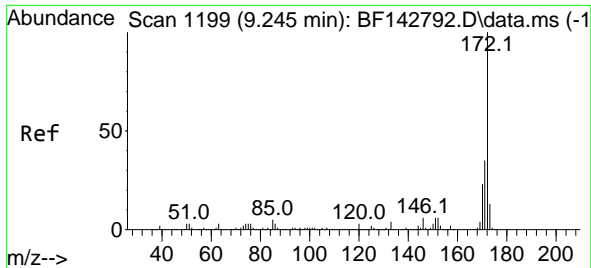
Tgt Ion:196 Resp: 110019
 Ion Ratio Lower Upper
 196 100
 198 95.8 76.2 114.2
 200 30.4 24.1 36.1



#44
 2,4,5-Trichlorophenol
 Concen: 41.435 ng
 RT: 9.198 min Scan# 1191
 Delta R.T. 0.000 min
 Lab File: BF142882.D
 Acq: 27 Jun 2025 09:51

Tgt Ion:196 Resp: 117411
 Ion Ratio Lower Upper
 196 100
 198 96.3 76.6 115.0
 97 46.9 38.2 57.2
 132 27.8 23.4 35.0





#45
 2-Fluorobiphenyl
 Concen: 93.716 ng
 RT: 9.239 min Scan# 1198
 Delta R.T. -0.006 min
 Lab File: BF142882.D
 Acq: 27 Jun 2025 09:51

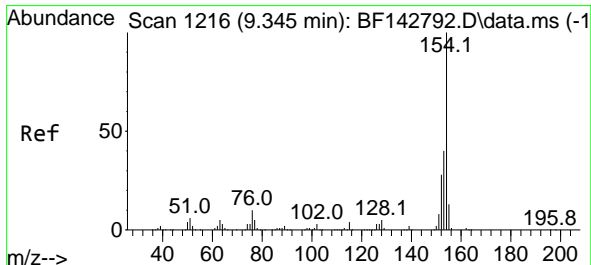
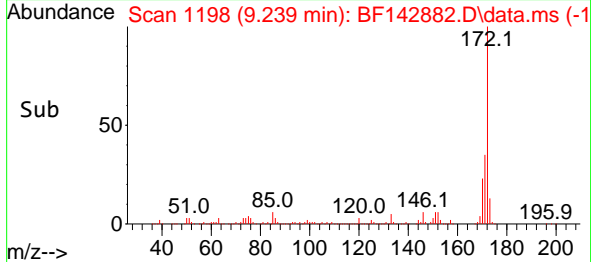
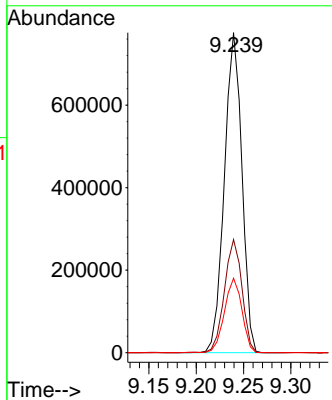
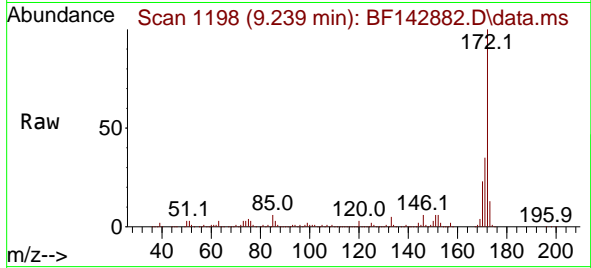
Instrument :

BNA_F

ClientSampleId :

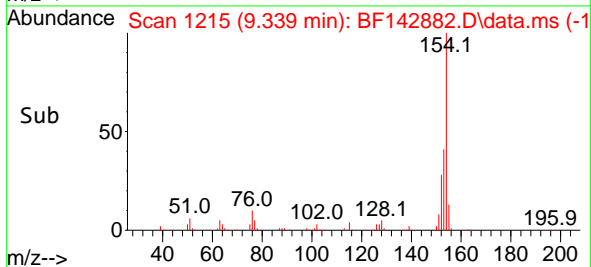
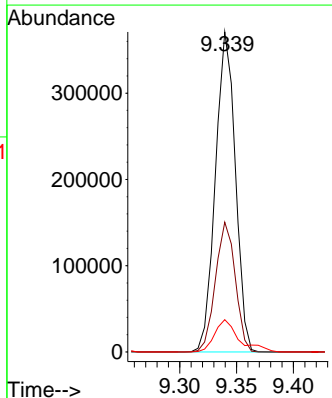
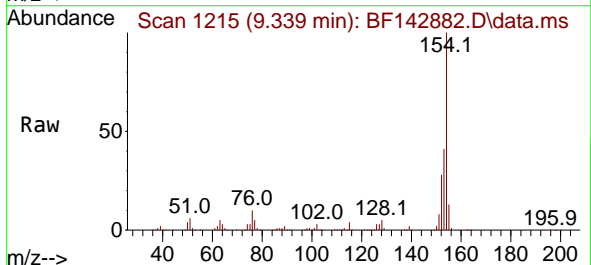
SSTDCCC040

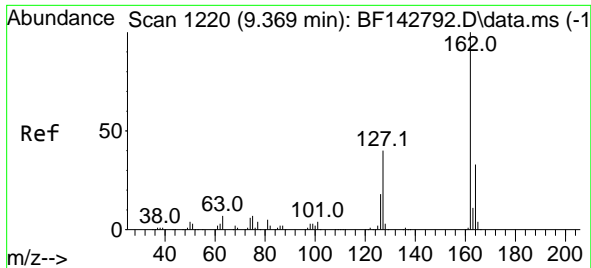
Tgt Ion:172 Resp: 998745
 Ion Ratio Lower Upper
 172 100
 171 35.4 28.2 42.4
 170 23.3 18.5 27.7



#46
 1,1'-Biphenyl
 Concen: 40.991 ng
 RT: 9.339 min Scan# 1215
 Delta R.T. -0.006 min
 Lab File: BF142882.D
 Acq: 27 Jun 2025 09:51

Tgt Ion:154 Resp: 453330
 Ion Ratio Lower Upper
 154 100
 153 40.5 20.3 60.3
 76 10.1 0.0 30.3



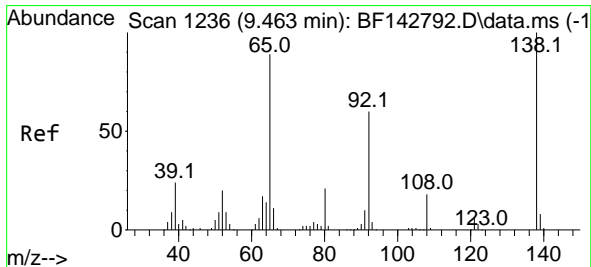
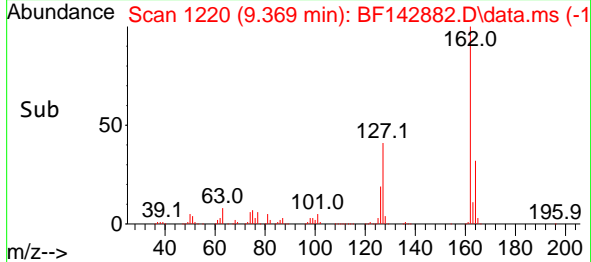
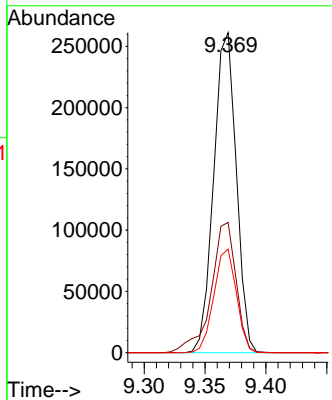
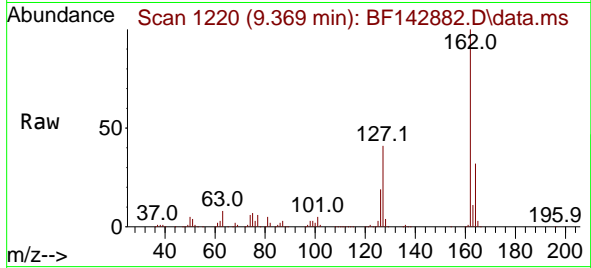


#47
 2-Chloronaphthalene
 Concen: 40.645 ng
 RT: 9.369 min Scan# 11
 Delta R.T. 0.000 min
 Lab File: BF142882.D
 Acq: 27 Jun 2025 09:51

Instrument :
 BNA_F
 ClientSampleId :
 SSTDCCC040

Tgt Ion:162 Resp: 337318

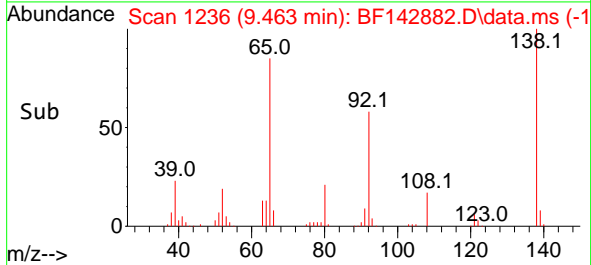
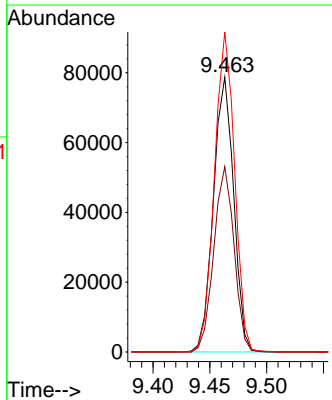
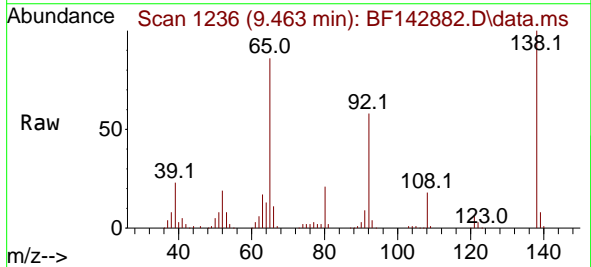
Ion	Ratio	Lower	Upper
162	100		
127	40.7	32.2	48.2
164	32.4	26.1	39.1

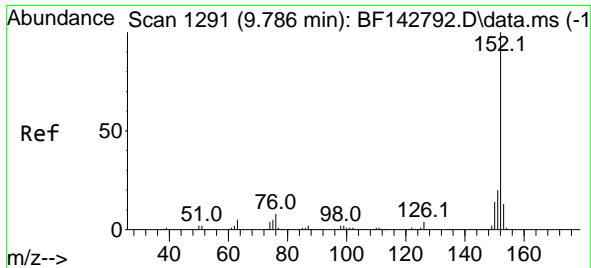


#48
 2-Nitroaniline
 Concen: 42.158 ng
 RT: 9.463 min Scan# 1236
 Delta R.T. 0.000 min
 Lab File: BF142882.D
 Acq: 27 Jun 2025 09:51

Tgt Ion: 65 Resp: 98089

Ion	Ratio	Lower	Upper
65	100		
92	67.4	53.8	80.6
138	116.5	89.6	134.4





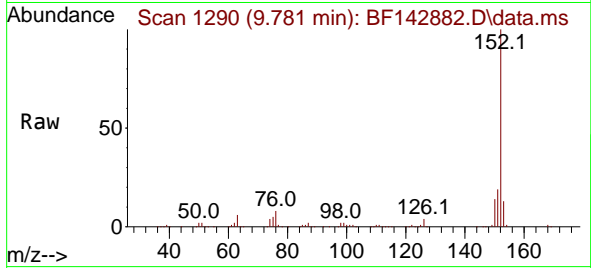
#49
 Acenaphthylene
 Concen: 41.130 ng
 RT: 9.781 min Scan# 11
 Delta R.T. -0.006 min
 Lab File: BF142882.D
 Acq: 27 Jun 2025 09:51

Instrument :

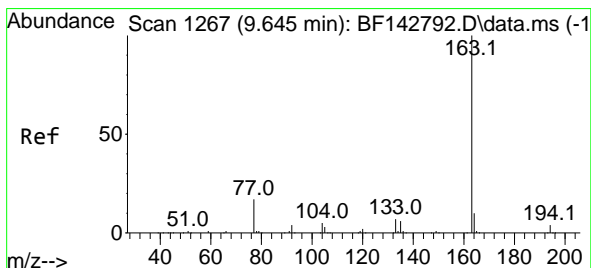
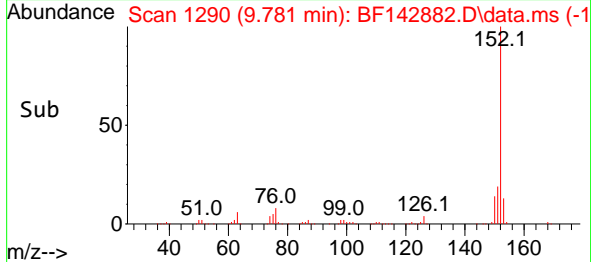
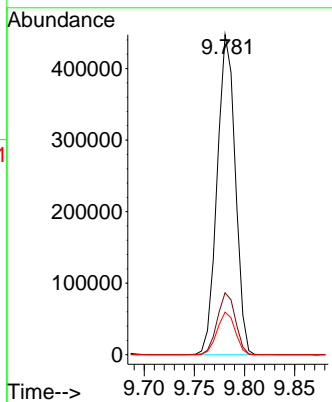
BNA_F

ClientSampleId :

SSTDCCC040

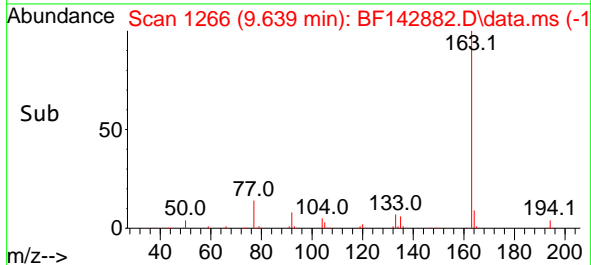
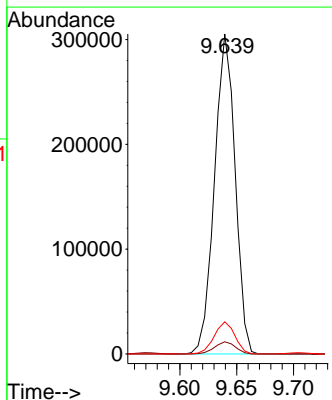
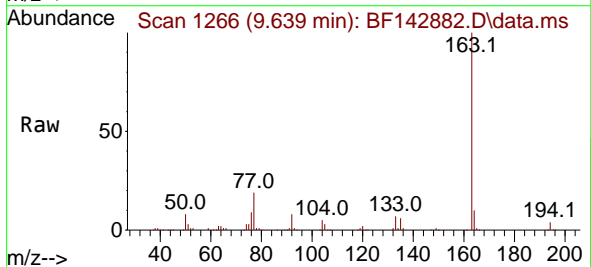


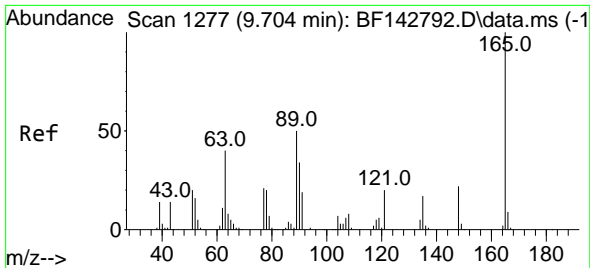
Tgt Ion:152 Resp: 561931
 Ion Ratio Lower Upper
 152 100
 151 19.4 16.1 24.1
 153 13.3 10.4 15.6



#50
 Dimethylphthalate
 Concen: 42.591 ng
 RT: 9.639 min Scan# 1266
 Delta R.T. -0.006 min
 Lab File: BF142882.D
 Acq: 27 Jun 2025 09:51

Tgt Ion:163 Resp: 385972
 Ion Ratio Lower Upper
 163 100
 194 3.8 3.3 4.9
 164 10.1 8.0 12.0





#51
 2,6-Dinitrotoluene
 Concen: 42.169 ng
 RT: 9.704 min Scan# 11
 Delta R.T. 0.000 min
 Lab File: BF142882.D
 Acq: 27 Jun 2025 09:51

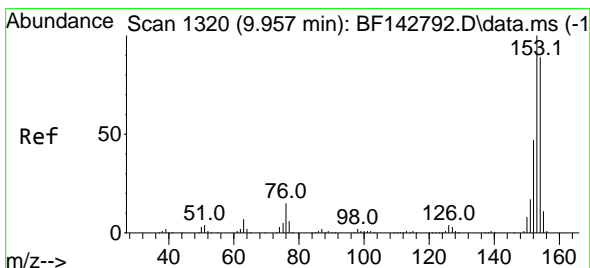
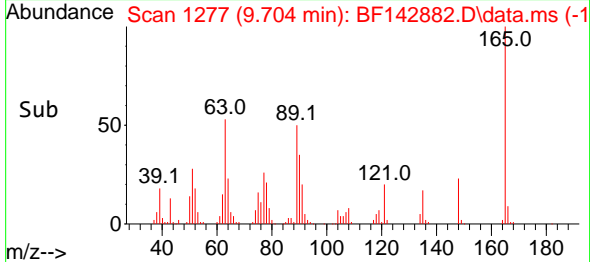
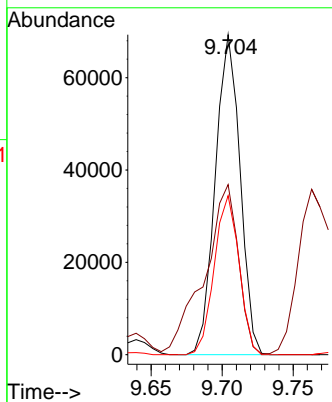
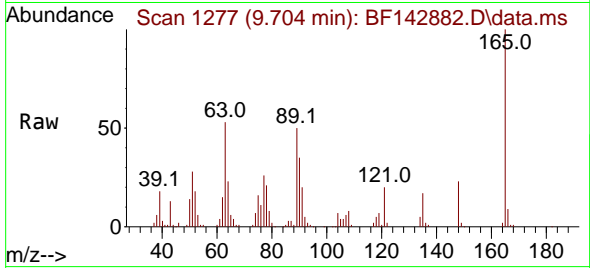
Instrument :

BNA_F

ClientSampleId :

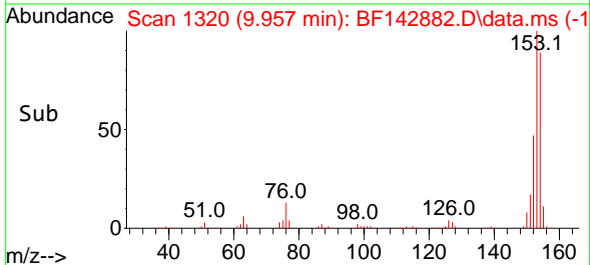
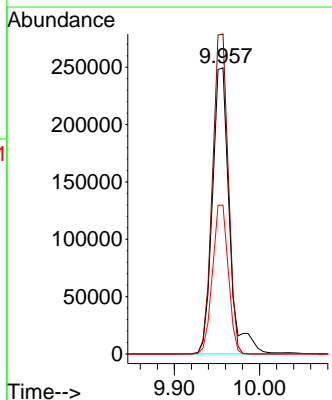
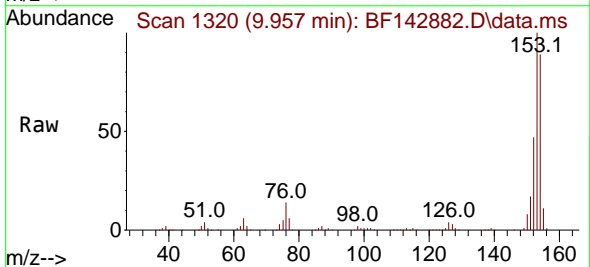
SSTDCCC040

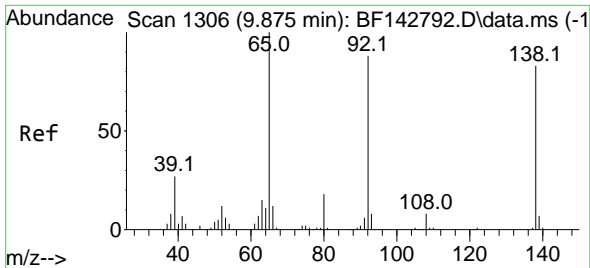
Tgt Ion:165 Resp: 83923
 Ion Ratio Lower Upper
 165 100
 63 53.2 44.2 66.4
 89 49.7 39.8 59.8



#52
 Acenaphthene
 Concen: 41.495 ng
 RT: 9.957 min Scan# 1320
 Delta R.T. 0.000 min
 Lab File: BF142882.D
 Acq: 27 Jun 2025 09:51

Tgt Ion:154 Resp: 345883
 Ion Ratio Lower Upper
 154 100
 153 111.9 90.0 135.0
 152 52.0 41.9 62.9

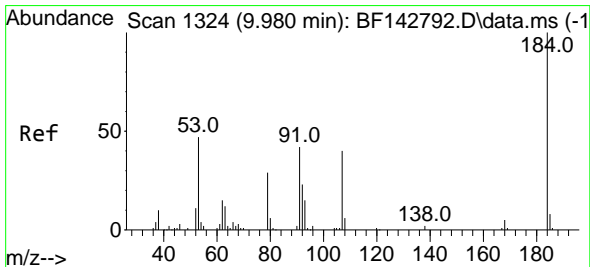
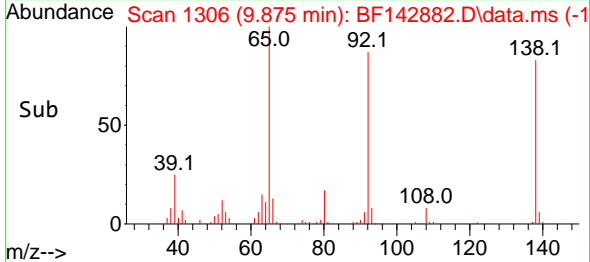
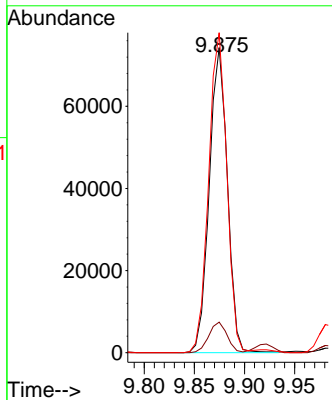
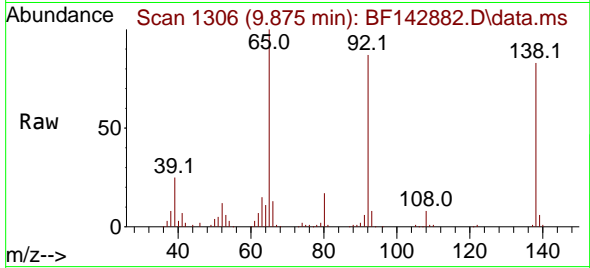




#53
 3-Nitroaniline
 Concen: 42.653 ng
 RT: 9.875 min Scan# 11
 Delta R.T. 0.000 min
 Lab File: BF142882.D
 Acq: 27 Jun 2025 09:51

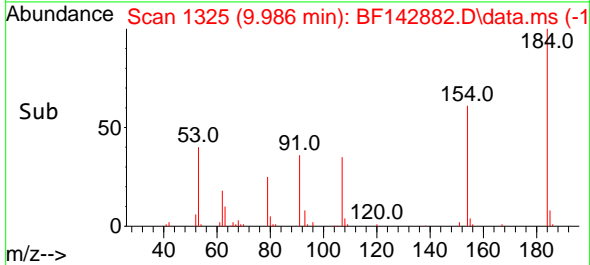
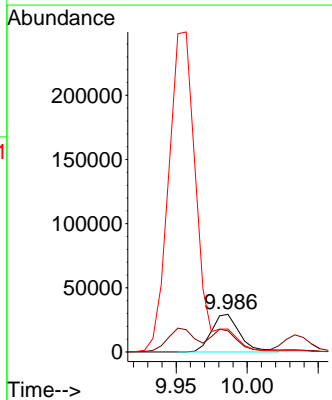
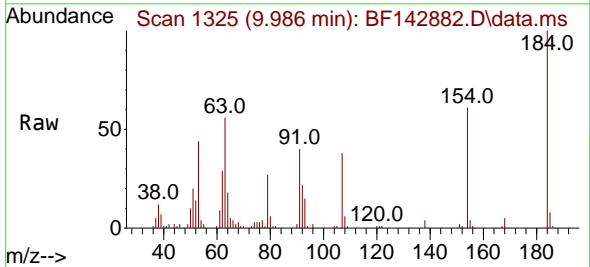
Instrument : BNA_F
 ClientSampleId : SSTDCCC040

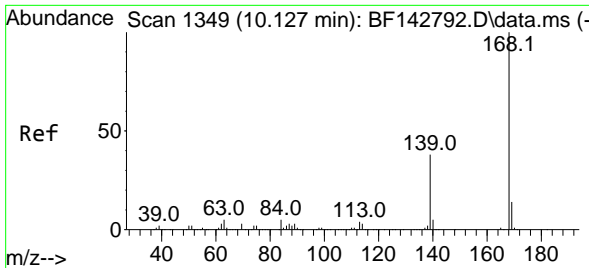
Tgt Ion	Resp	Lower	Upper
138	100		
108	10.0	8.1	12.1
92	104.9	85.1	127.7



#54
 2,4-Dinitrophenol
 Concen: 40.800 ng
 RT: 9.986 min Scan# 1325
 Delta R.T. 0.006 min
 Lab File: BF142882.D
 Acq: 27 Jun 2025 09:51

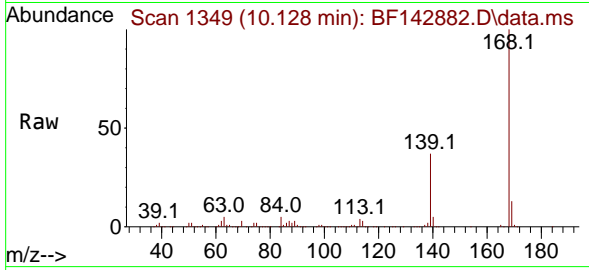
Tgt Ion	Resp	Lower	Upper
184	100		
63	56.1	50.6	75.8
154	60.6	51.8	77.8



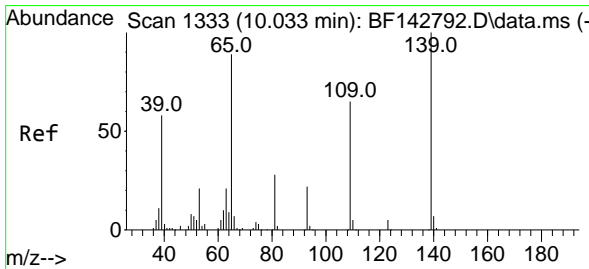
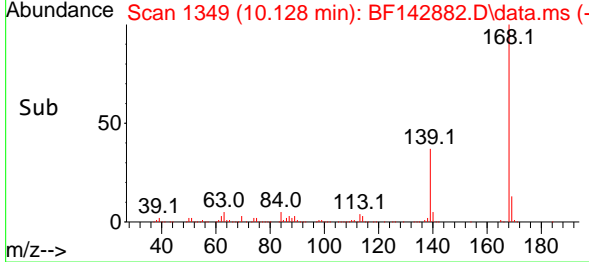
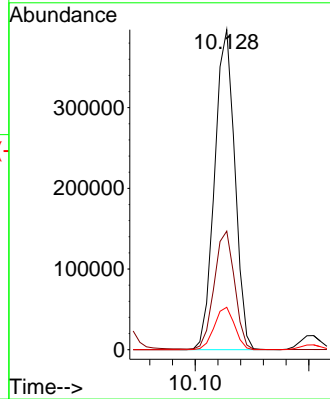


#55
 Dibenzenofuran
 Concen: 40.981 ng
 RT: 10.128 min Scan# 11
 Delta R.T. 0.000 min
 Lab File: BF142882.D
 Acq: 27 Jun 2025 09:51

Instrument :
 BNA_F
 ClientSampleId :
 SSTDCCC040

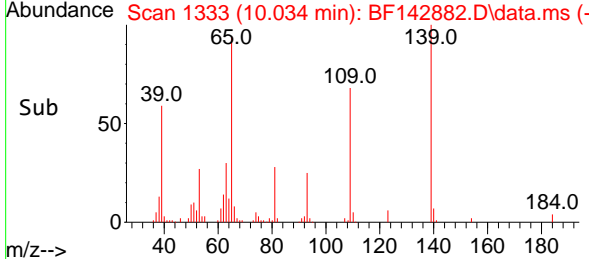
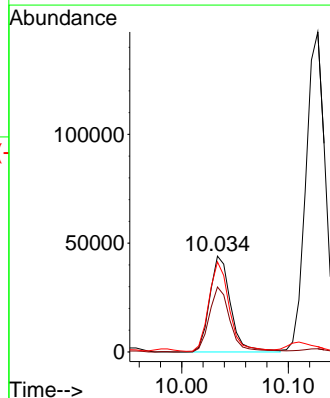
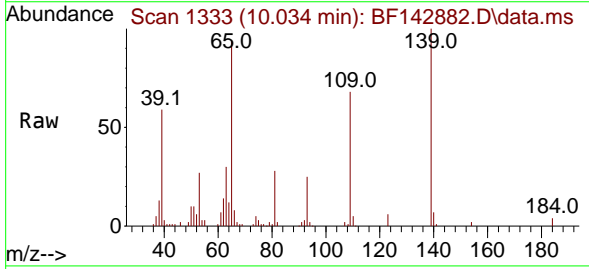


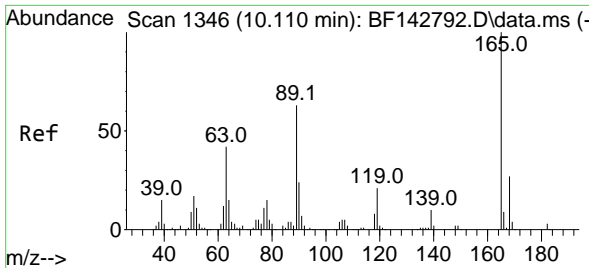
Tgt Ion:168 Resp: 489849
 Ion Ratio Lower Upper
 168 100
 139 37.1 30.2 45.4
 169 13.3 10.8 16.2



#56
 4-Nitrophenol
 Concen: 40.238 ng
 RT: 10.034 min Scan# 1333
 Delta R.T. 0.000 min
 Lab File: BF142882.D
 Acq: 27 Jun 2025 09:51

Tgt Ion:139 Resp: 60360
 Ion Ratio Lower Upper
 139 100
 109 67.8 44.7 84.7
 65 94.0 69.8 109.8





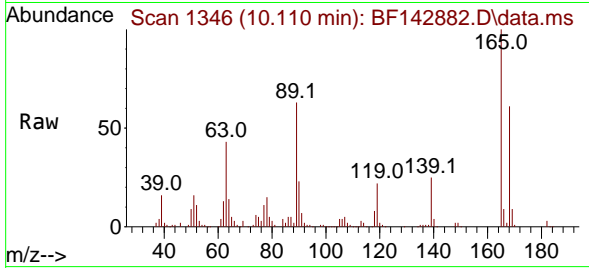
#57
 2,4-Dinitrotoluene
 Concen: 43.469 ng
 RT: 10.110 min Scan# 11
 Delta R.T. 0.000 min
 Lab File: BF142882.D
 Acq: 27 Jun 2025 09:51

Instrument :

BNA_F

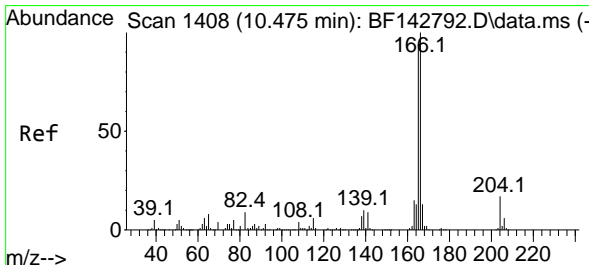
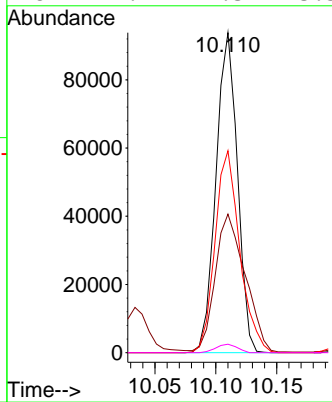
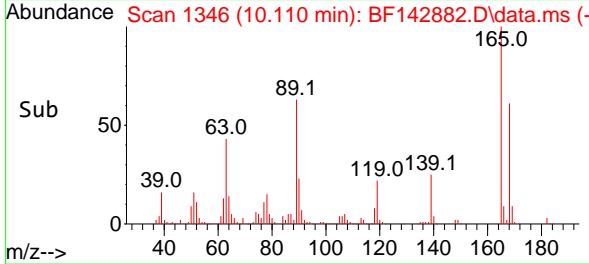
ClientSampleId :

SSTDCCC040

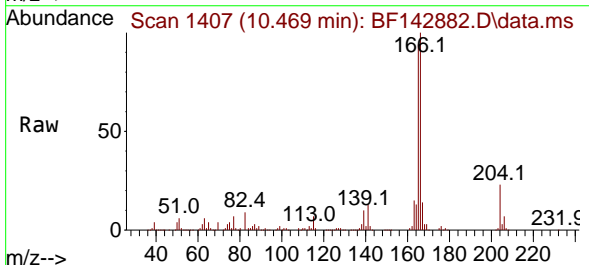


Tgt Ion:165 Resp: 114910

Ion	Ratio	Lower	Upper
165	100		
63	43.3	33.9	50.9
89	63.1	50.6	75.8
182	2.7	2.3	3.5

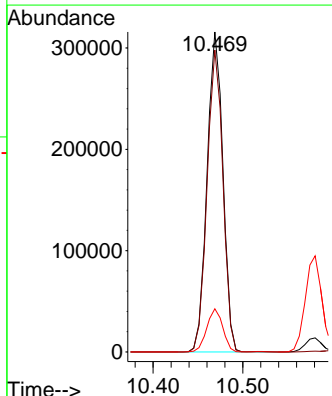
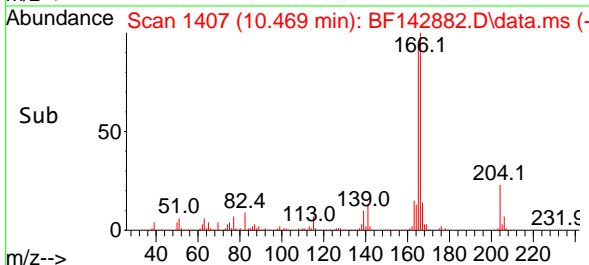


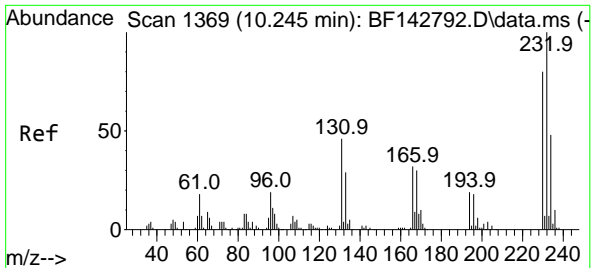
#58
 Fluorene
 Concen: 41.470 ng
 RT: 10.469 min Scan# 1407
 Delta R.T. -0.006 min
 Lab File: BF142882.D
 Acq: 27 Jun 2025 09:51



Tgt Ion:166 Resp: 387127

Ion	Ratio	Lower	Upper
166	100		
165	94.3	75.2	112.8
167	13.5	10.6	15.8



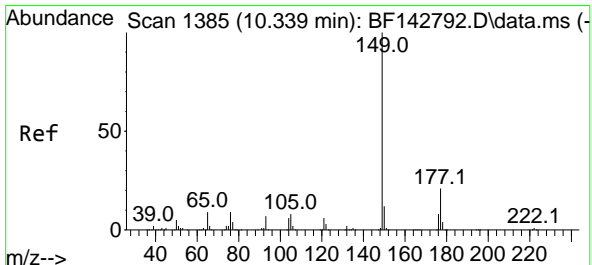
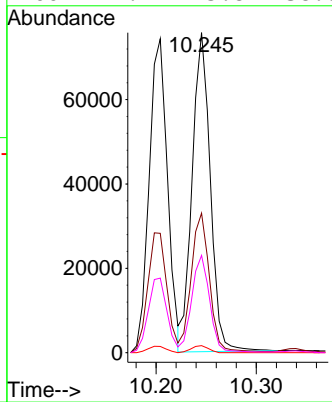
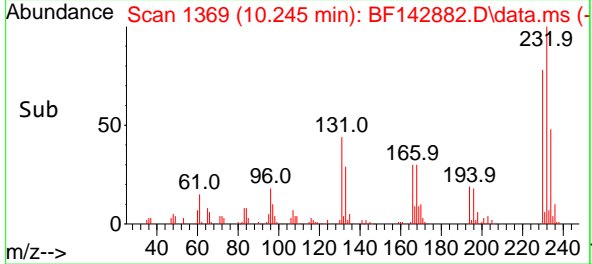
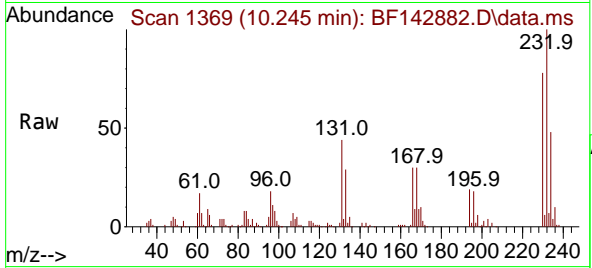


#59
 2,3,4,6-Tetrachlorophenol
 Concen: 41.633 ng
 RT: 10.245 min Scan# 1369
 Delta R.T. 0.000 min
 Lab File: BF142882.D
 Acq: 27 Jun 2025 09:51

Instrument : BNA_F
 ClientSampleId : SSTDCCC040

Tgt Ion: 232 Resp: 95093

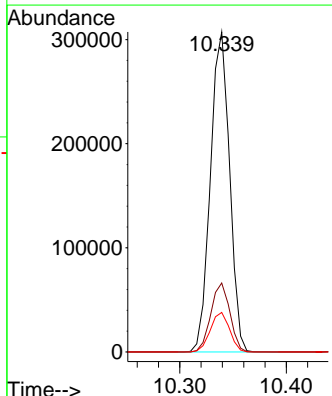
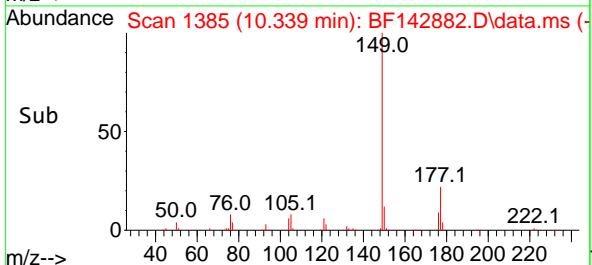
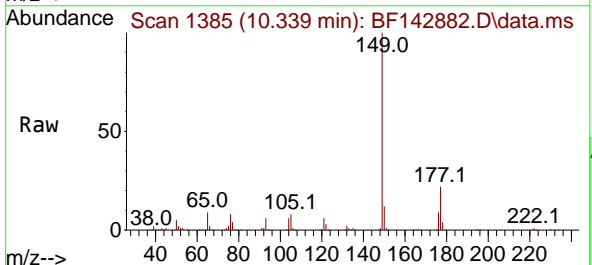
Ion	Ratio	Lower	Upper
232	100		
131	44.7	37.6	56.4
130	2.1	1.7	2.5
166	29.7	25.8	38.6

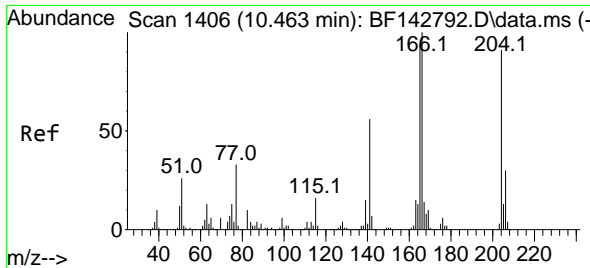


#60
 Diethylphthalate
 Concen: 43.114 ng
 RT: 10.339 min Scan# 1385
 Delta R.T. 0.000 min
 Lab File: BF142882.D
 Acq: 27 Jun 2025 09:51

Tgt Ion: 149 Resp: 383081

Ion	Ratio	Lower	Upper
149	100		
177	21.5	17.0	25.6
150	12.3	9.8	14.6



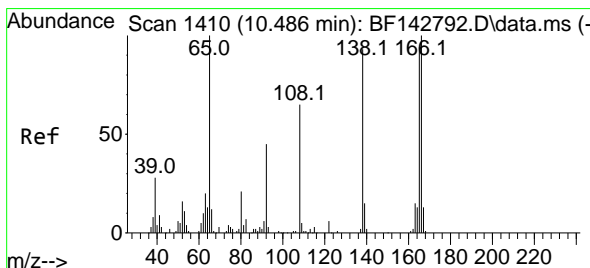
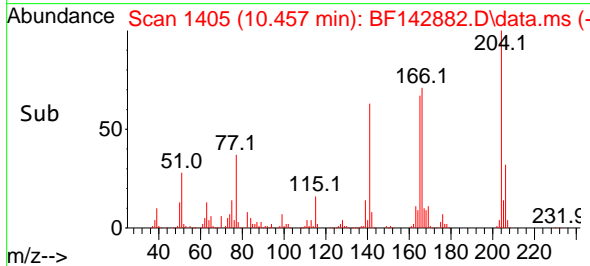
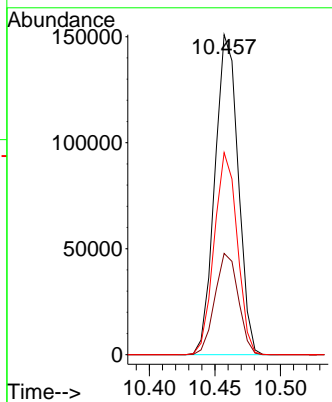
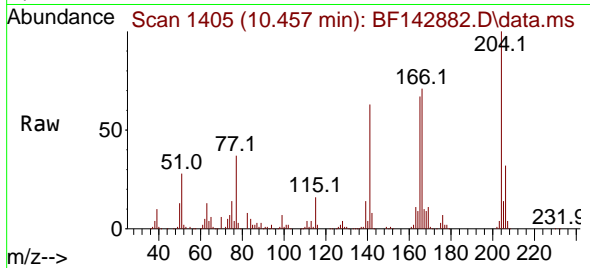


#61
 4-Chlorophenyl-phenylether
 Concen: 41.853 ng
 RT: 10.457 min Scan# 1405
 Delta R.T. -0.006 min
 Lab File: BF142882.D
 Acq: 27 Jun 2025 09:51

Instrument :
 BNA_F
 ClientSampleId :
 SSTDCCC040

Tgt Ion: 204 Resp: 186438

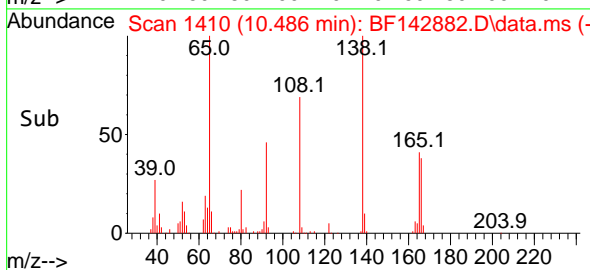
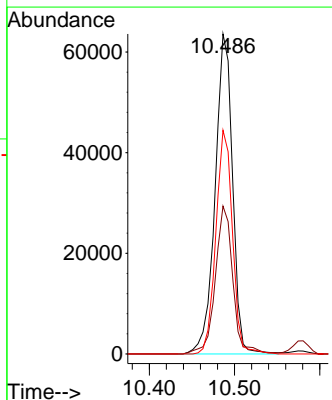
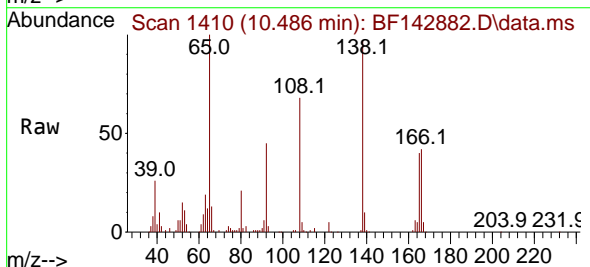
Ion	Ratio	Lower	Upper
204	100		
206	31.7	26.3	39.5
141	63.2	49.1	73.7

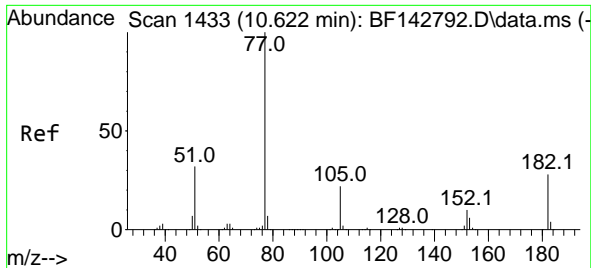


#62
 4-Nitroaniline
 Concen: 45.151 ng
 RT: 10.486 min Scan# 1410
 Delta R.T. 0.000 min
 Lab File: BF142882.D
 Acq: 27 Jun 2025 09:51

Tgt Ion: 138 Resp: 90481

Ion	Ratio	Lower	Upper
138	100		
92	46.2	28.4	68.4
108	69.9	50.2	90.2

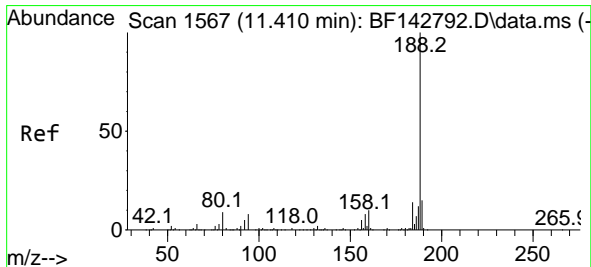
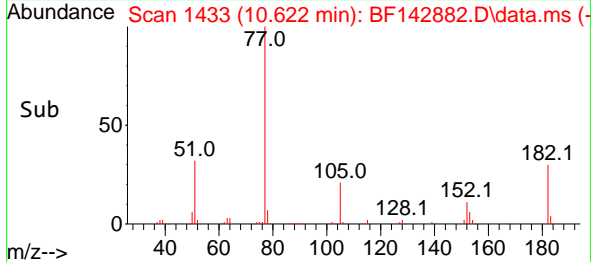
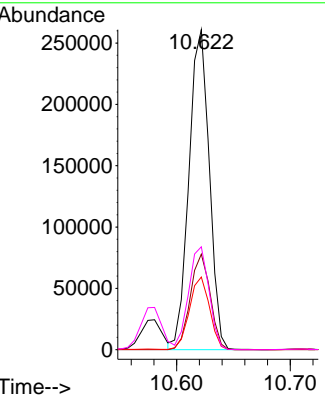
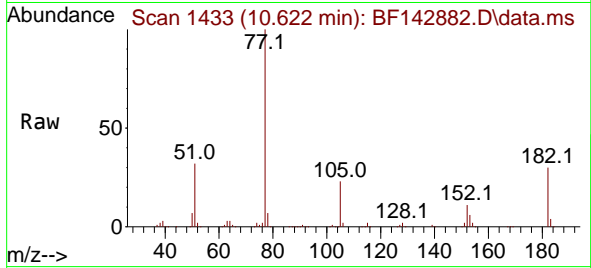




#63
 Azobenzene
 Concen: 40.890 ng
 RT: 10.622 min Scan# 14
 Delta R.T. 0.000 min
 Lab File: BF142882.D
 Acq: 27 Jun 2025 09:51

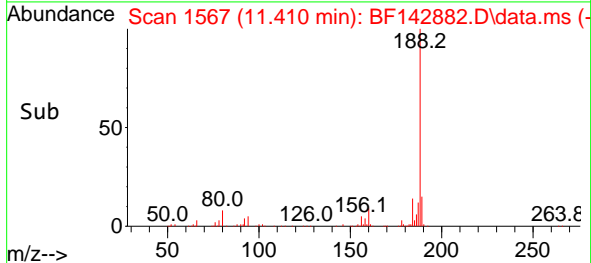
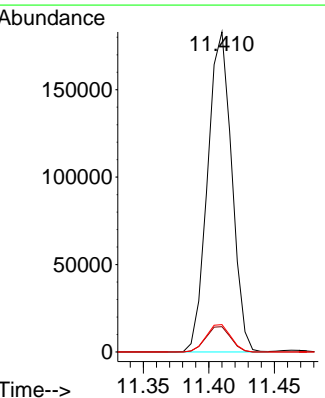
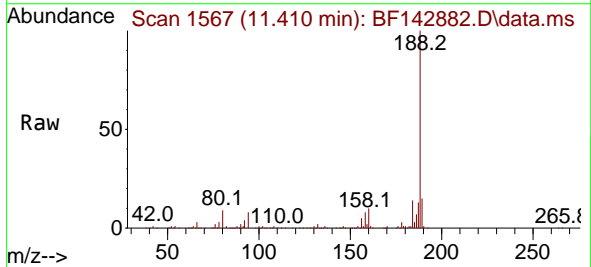
Instrument : BNA_F
 Client SampleId : SSTDCCC040

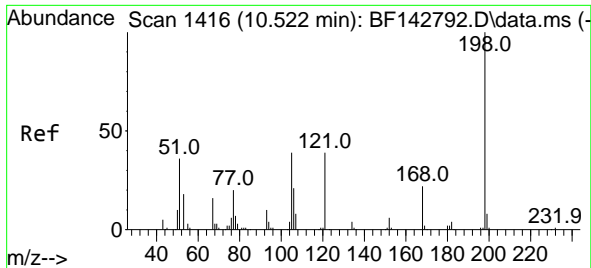
Tgt Ion	Resp	Lower	Upper
77	100		
182	29.8	7.7	47.7
105	22.7	1.9	41.9
51	32.2	13.3	53.3



#64
 Phenanthrene-d10
 Concen: 20.000 ng
 RT: 11.410 min Scan# 1567
 Delta R.T. 0.000 min
 Lab File: BF142882.D
 Acq: 27 Jun 2025 09:51

Tgt Ion	Resp	Lower	Upper
188	100		
94	7.9	6.7	10.1
80	8.6	6.9	10.3



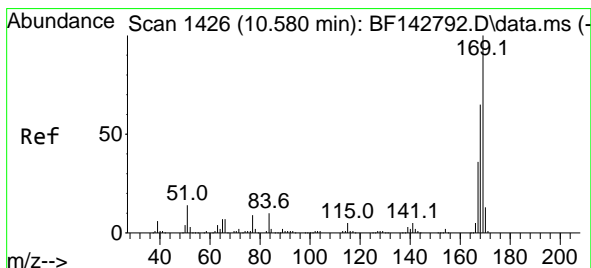
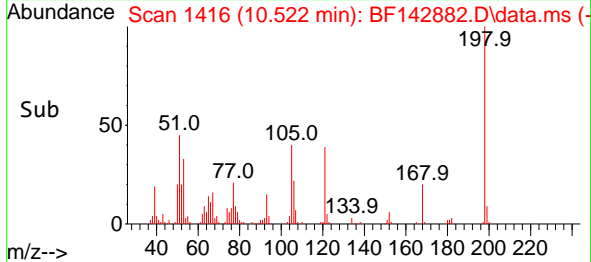
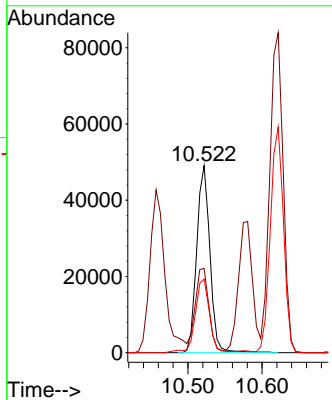
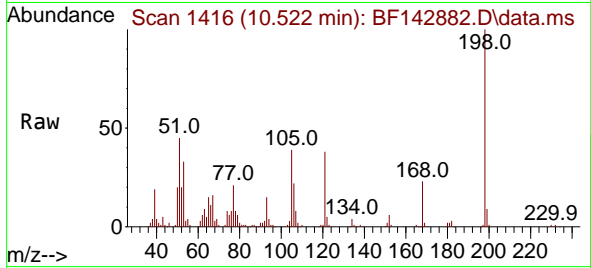


#65
 4,6-Dinitro-2-methylphenol
 Concen: 42.988 ng
 RT: 10.522 min Scan# 1416
 Delta R.T. 0.000 min
 Lab File: BF142882.D
 Acq: 27 Jun 2025 09:51

Instrument : BNA_F
 ClientSampleId : SSTDCCC040

Tgt Ion:198 Resp: 60921

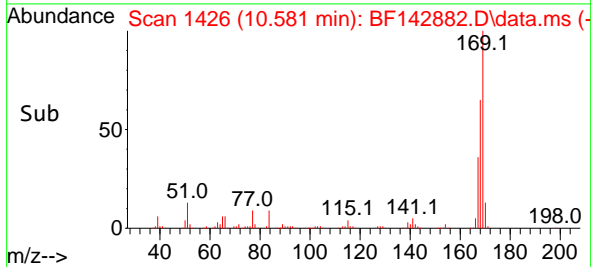
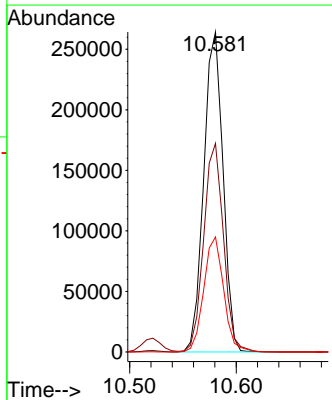
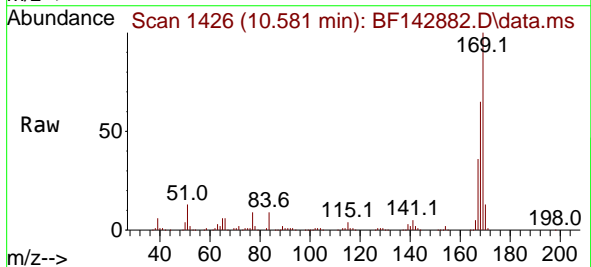
Ion	Ratio	Lower	Upper
198	100		
51	44.9	25.4	65.4
105	39.4	20.4	60.4

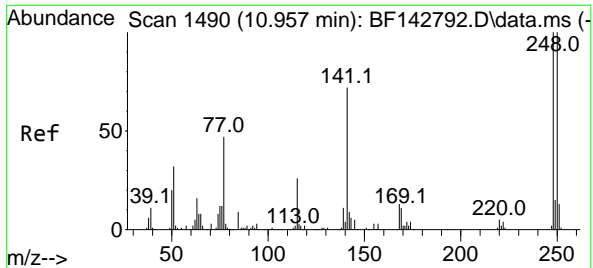


#66
 n-Nitrosodiphenylamine
 Concen: 40.929 ng
 RT: 10.581 min Scan# 1426
 Delta R.T. 0.000 min
 Lab File: BF142882.D
 Acq: 27 Jun 2025 09:51

Tgt Ion:169 Resp: 332341

Ion	Ratio	Lower	Upper
169	100		
168	65.2	51.9	77.9
167	35.9	28.5	42.7



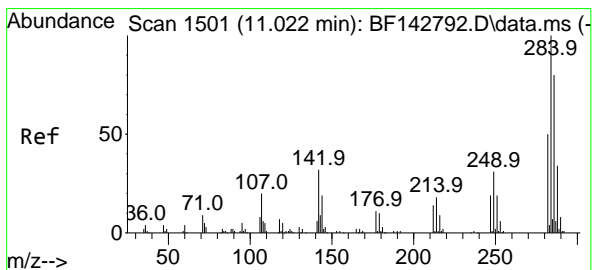
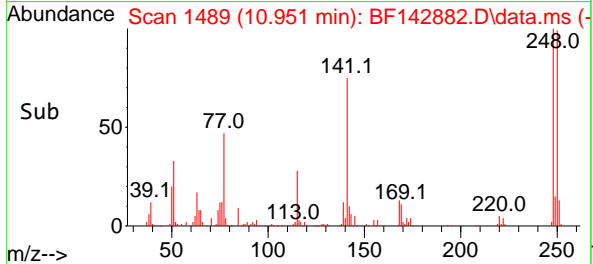
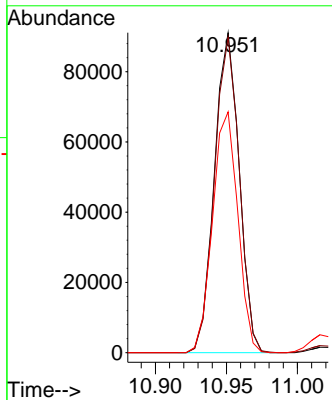
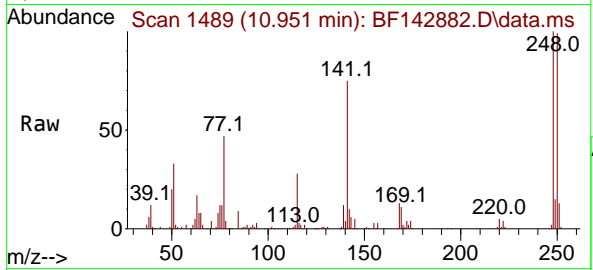


#67
 4-Bromophenyl-phenylether
 Concen: 41.431 ng
 RT: 10.951 min Scan# 1490
 Delta R.T. -0.006 min
 Lab File: BF142882.D
 Acq: 27 Jun 2025 09:51

Instrument :
 BNA_F
 ClientSampleId :
 SSTDCCC040

Tgt Ion:248 Resp: 110475

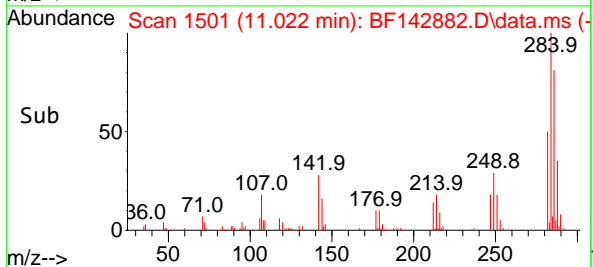
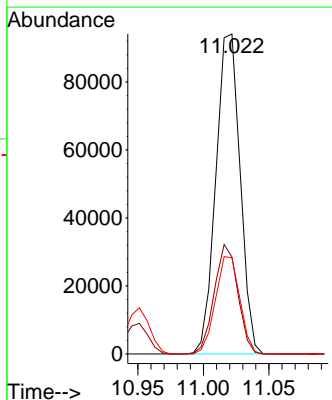
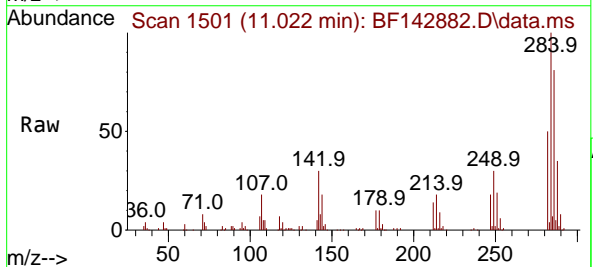
Ion	Ratio	Lower	Upper
248	100		
250	98.6	79.8	119.8
141	75.3	57.8	86.6

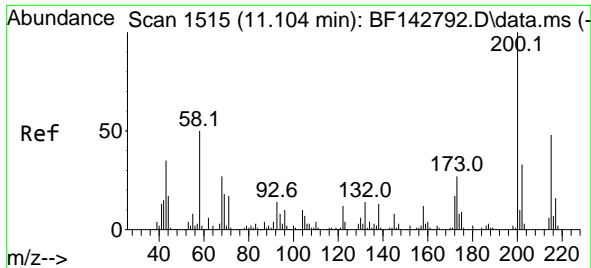


#68
 Hexachlorobenzene
 Concen: 40.826 ng
 RT: 11.022 min Scan# 1501
 Delta R.T. 0.000 min
 Lab File: BF142882.D
 Acq: 27 Jun 2025 09:51

Tgt Ion:284 Resp: 120962

Ion	Ratio	Lower	Upper
284	100		
142	30.3	25.5	38.3
249	30.1	24.9	37.3





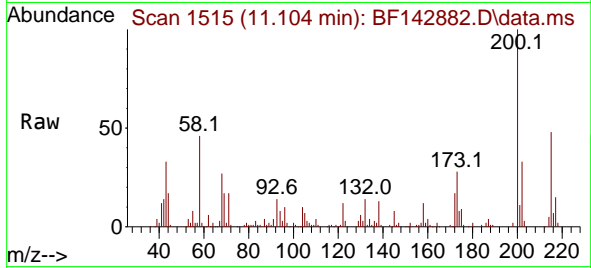
#69
 Atrazine
 Concen: 45.621 ng
 RT: 11.104 min Scan# 1111
 Delta R.T. 0.000 min
 Lab File: BF142882.D
 Acq: 27 Jun 2025 09:51

Instrument :

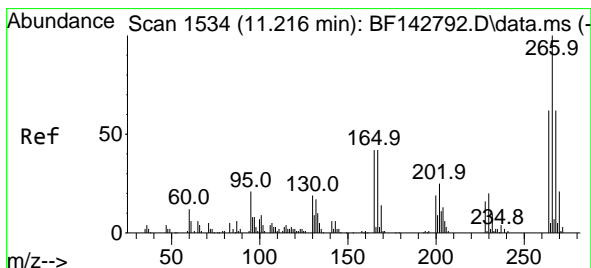
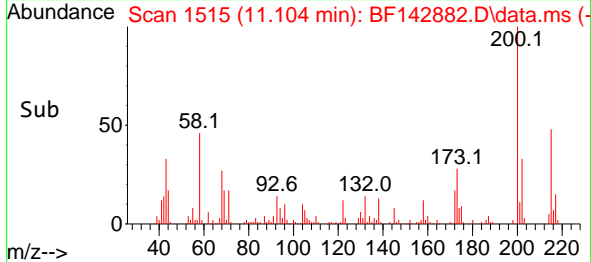
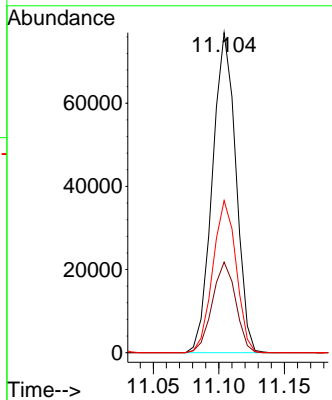
BNA_F

ClientSampleId :

SSTDCCC040

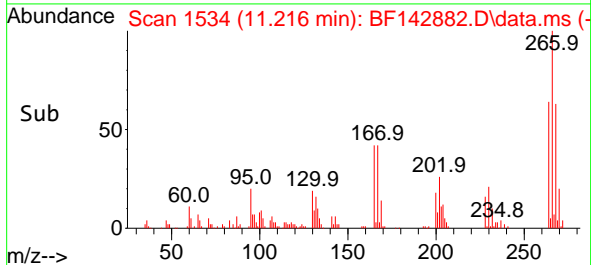
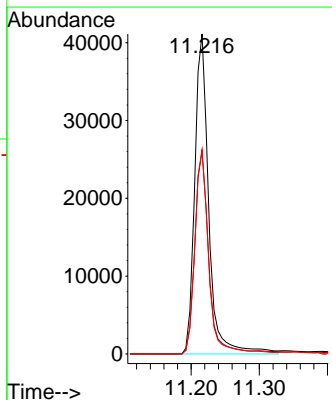
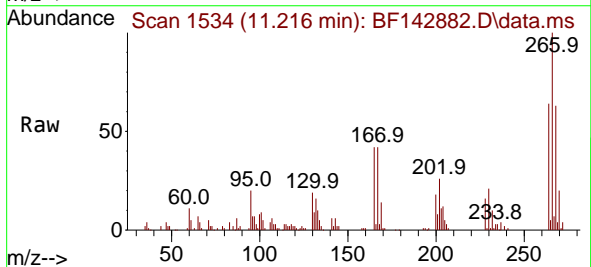


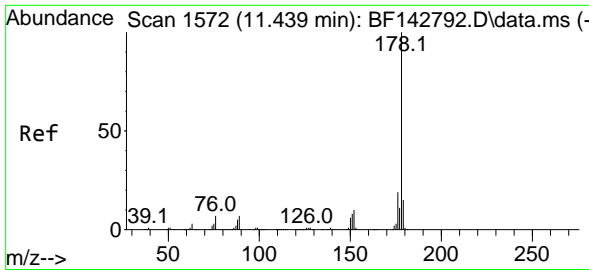
Tgt Ion:200 Resp: 95659
 Ion Ratio Lower Upper
 200 100
 173 28.3 7.4 47.4
 215 47.6 28.4 68.4



#70
 Pentachlorophenol
 Concen: 39.862 ng
 RT: 11.216 min Scan# 1534
 Delta R.T. 0.000 min
 Lab File: BF142882.D
 Acq: 27 Jun 2025 09:51

Tgt Ion:266 Resp: 58852
 Ion Ratio Lower Upper
 266 100
 268 63.4 49.8 74.8
 264 63.8 49.9 74.9



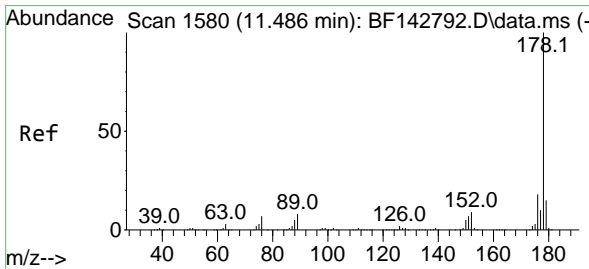
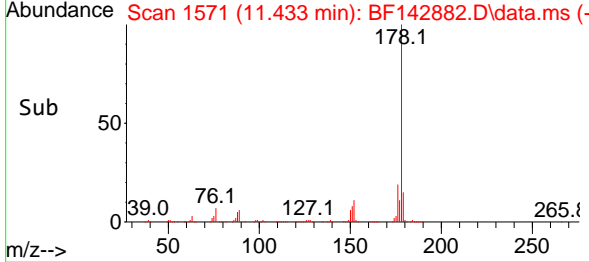
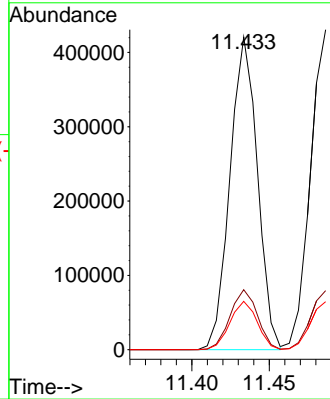
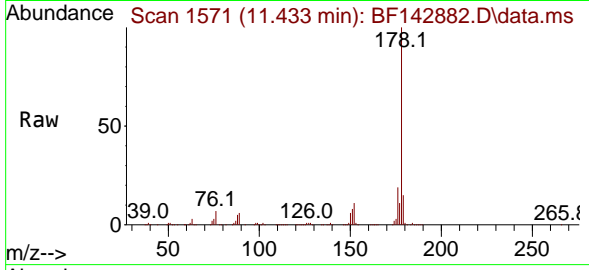


#71
 Phenanthrene
 Concen: 40.792 ng
 RT: 11.433 min Scan# 11433
 Delta R.T. -0.006 min
 Lab File: BF142882.D
 Acq: 27 Jun 2025 09:51

Instrument : BNA_F
 ClientSampleId : SSTDCCC040

Tgt Ion:178 Resp: 517710

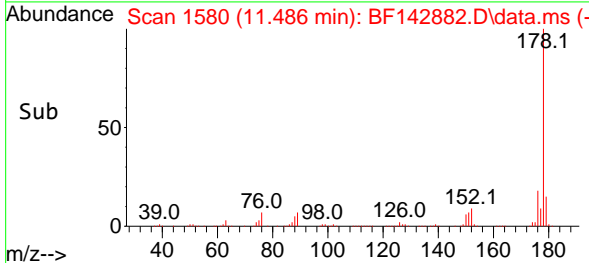
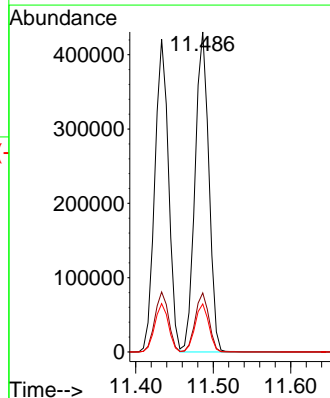
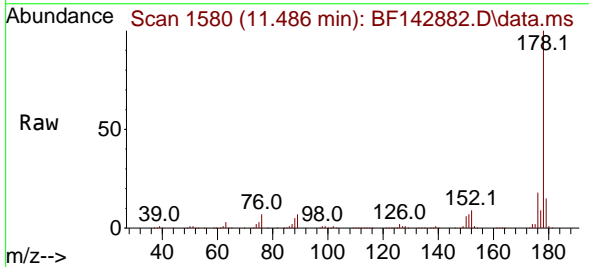
Ion	Ratio	Lower	Upper
178	100		
176	19.2	15.1	22.7
179	15.5	12.0	18.0

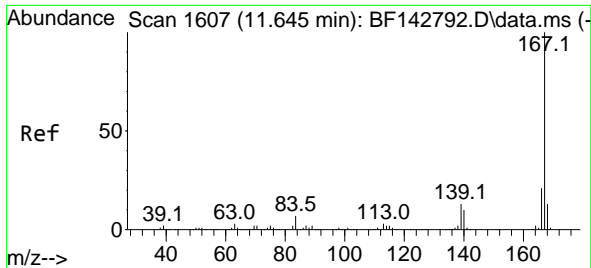


#72
 Anthracene
 Concen: 40.904 ng
 RT: 11.486 min Scan# 1580
 Delta R.T. 0.000 min
 Lab File: BF142882.D
 Acq: 27 Jun 2025 09:51

Tgt Ion:178 Resp: 532425

Ion	Ratio	Lower	Upper
178	100		
176	18.4	14.6	21.8
179	15.0	12.4	18.6



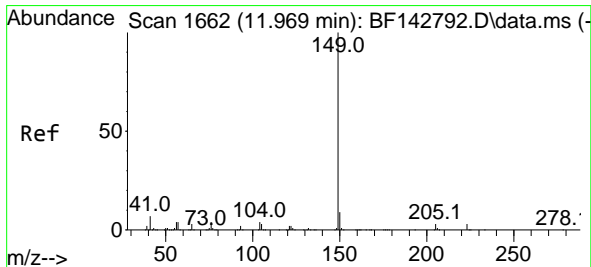
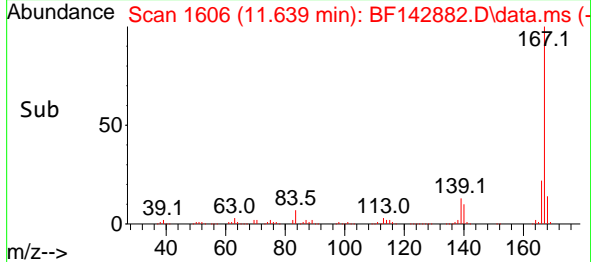
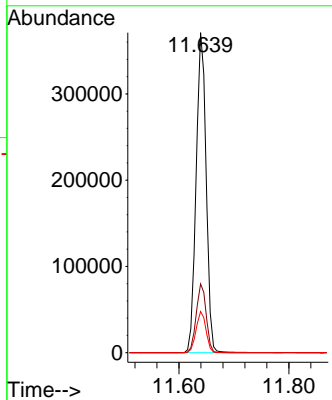
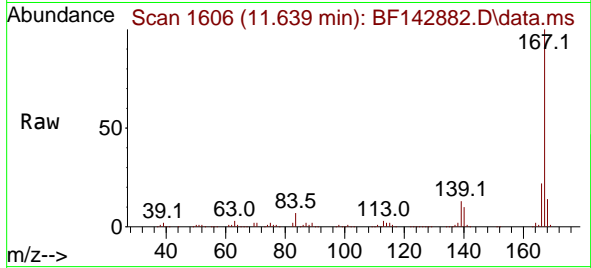


#73
 Carbazole
 Concen: 41.819 ng
 RT: 11.639 min Scan# 1606
 Delta R.T. -0.006 min
 Lab File: BF142882.D
 Acq: 27 Jun 2025 09:51

Instrument : BNA_F
 ClientSampleId : SSTDCCC040

Tgt Ion:167 Resp: 469739

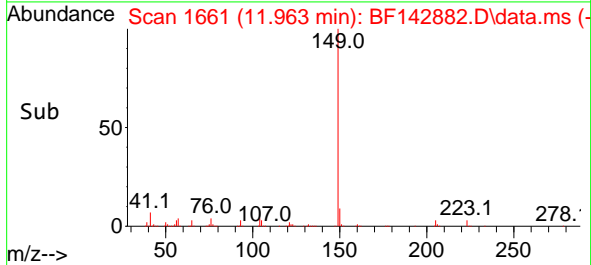
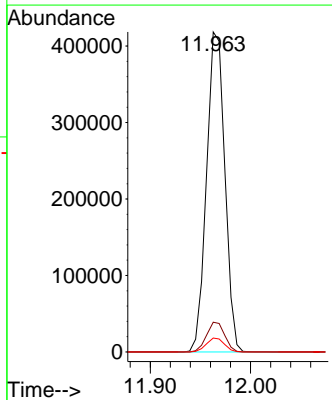
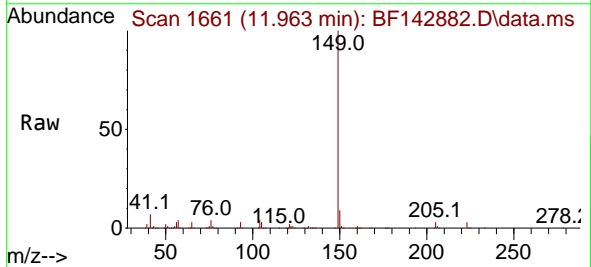
Ion	Ratio	Lower	Upper
167	100		
166	21.5	17.0	25.4
139	12.9	10.2	15.2

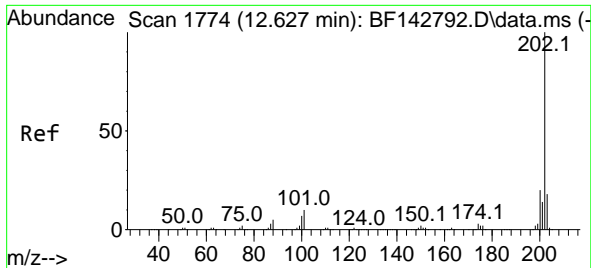


#74
 Di-n-butylphthalate
 Concen: 45.490 ng
 RT: 11.963 min Scan# 1661
 Delta R.T. -0.006 min
 Lab File: BF142882.D
 Acq: 27 Jun 2025 09:51

Tgt Ion:149 Resp: 532302

Ion	Ratio	Lower	Upper
149	100		
150	9.3	7.4	11.0
104	4.3	3.5	5.3





#75
 Fluoranthene
 Concen: 41.814 ng
 RT: 12.622 min Scan# 1773
 Delta R.T. -0.006 min
 Lab File: BF142882.D
 Acq: 27 Jun 2025 09:51

Instrument :

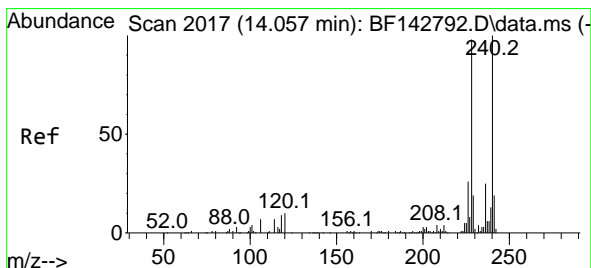
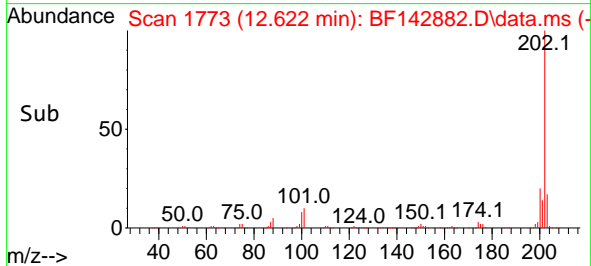
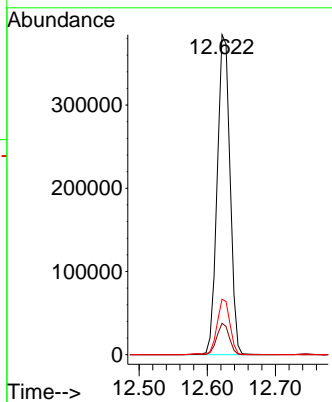
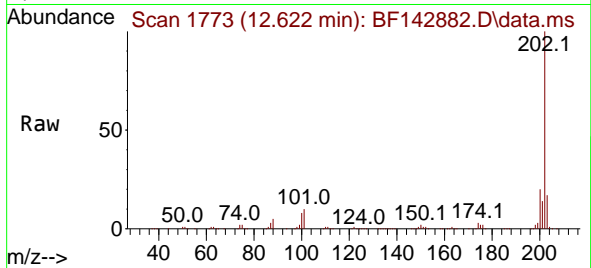
BNA_F

ClientSampleId :

SSTDCCC040

Tgt Ion: 202 Resp: 503645

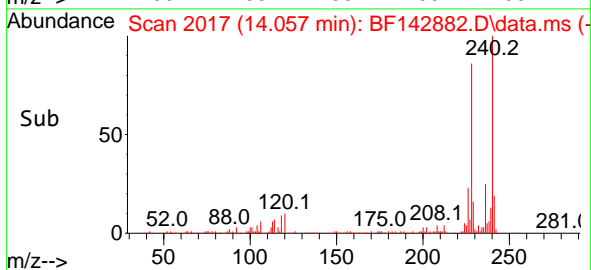
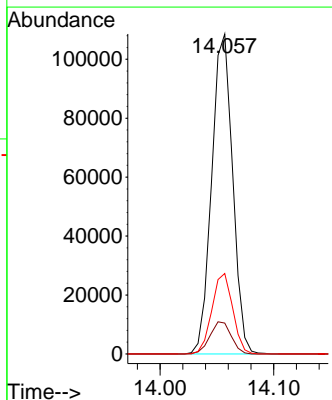
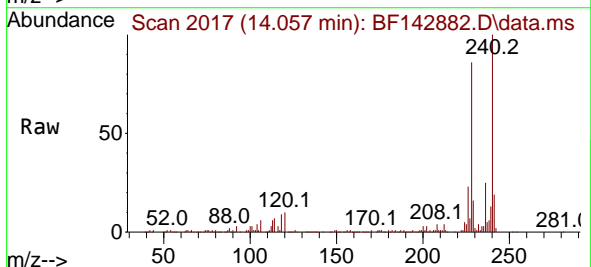
Ion	Ratio	Lower	Upper
202	100		
101	9.8	0.0	29.7
203	17.4	0.0	37.5

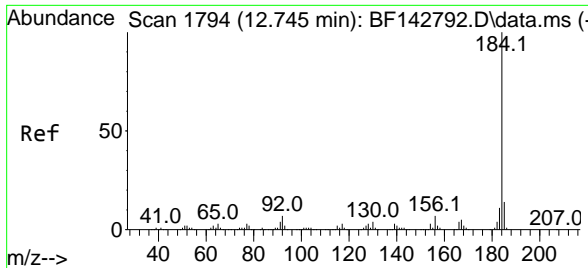


#76
 Chrysene-d12
 Concen: 20.000 ng
 RT: 14.057 min Scan# 2017
 Delta R.T. 0.000 min
 Lab File: BF142882.D
 Acq: 27 Jun 2025 09:51

Tgt Ion: 240 Resp: 139168

Ion	Ratio	Lower	Upper
240	100		
120	9.6	8.2	12.2
236	25.2	19.8	29.8



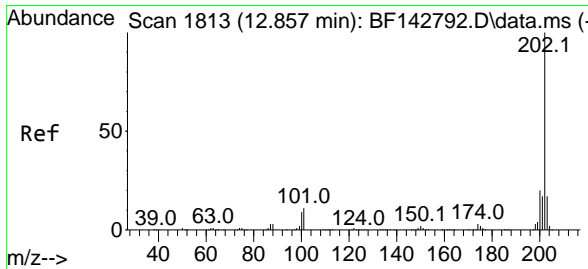
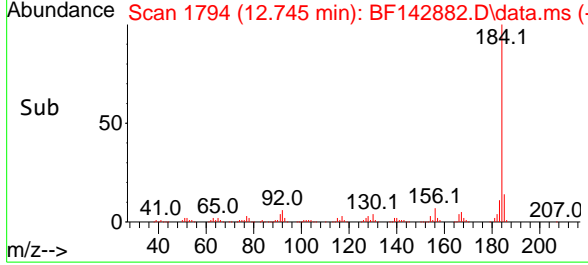
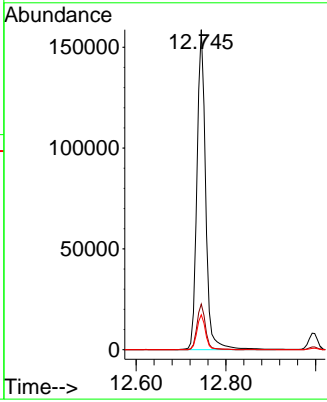
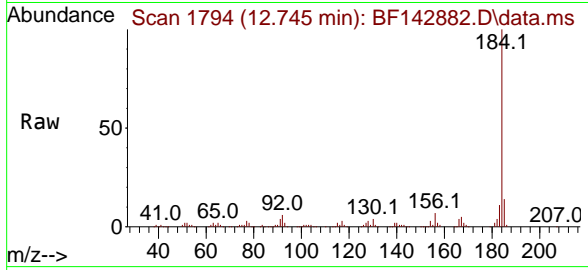


#77
 Benzidine
 Concen: 40.907 ng
 RT: 12.745 min Scan# 11
 Delta R.T. 0.000 min
 Lab File: BF142882.D
 Acq: 27 Jun 2025 09:51

Instrument : BNA_F
 ClientSampleId : SSTDCCC040

Tgt Ion:184 Resp: 213892

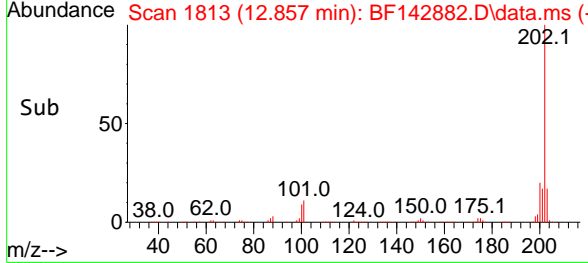
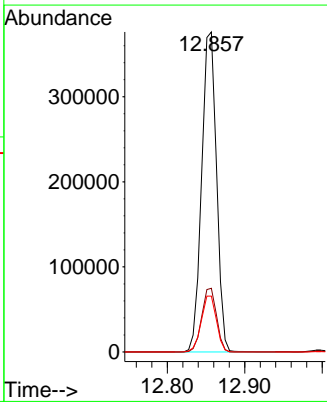
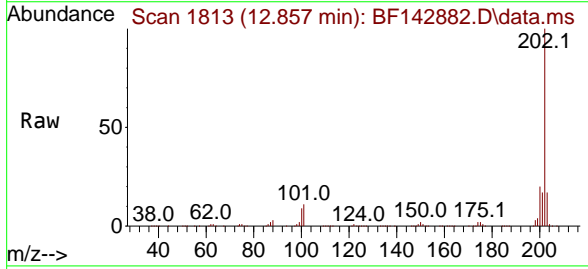
Ion	Ratio	Lower	Upper
184	100		
185	14.2	11.5	17.3
183	10.9	9.0	13.4

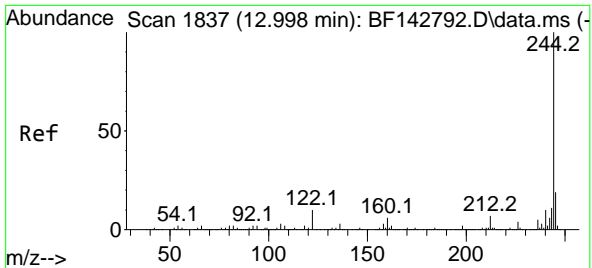


#78
 Pyrene
 Concen: 38.396 ng
 RT: 12.857 min Scan# 1813
 Delta R.T. 0.000 min
 Lab File: BF142882.D
 Acq: 27 Jun 2025 09:51

Tgt Ion:202 Resp: 500872

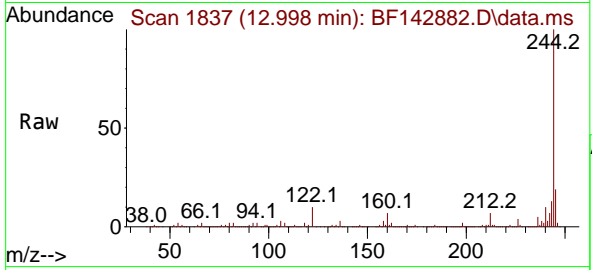
Ion	Ratio	Lower	Upper
202	100		
200	19.9	15.7	23.5
203	17.4	13.8	20.6





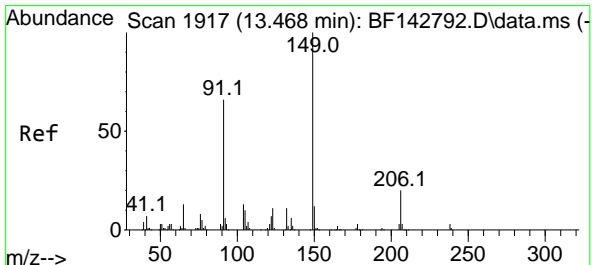
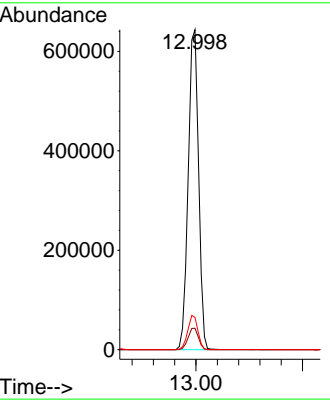
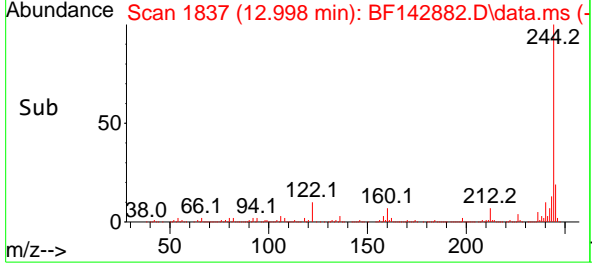
#79
 Terphenyl-d14
 Concen: 86.486 ng
 RT: 12.998 min Scan# 11
 Delta R.T. 0.000 min
 Lab File: BF142882.D
 Acq: 27 Jun 2025 09:51

Instrument : BNA_F
 ClientSampleId : SSTDCCC040

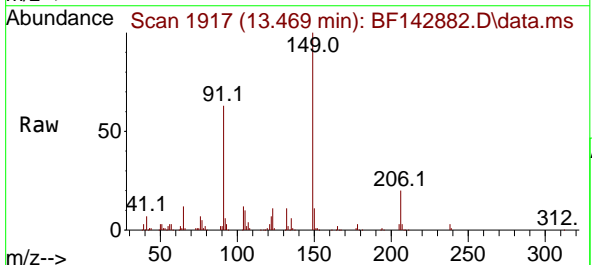


Tgt Ion:244 Resp: 871106

Ion	Ratio	Lower	Upper
244	100		
212	6.7	5.4	8.0
122	10.1	8.2	12.2

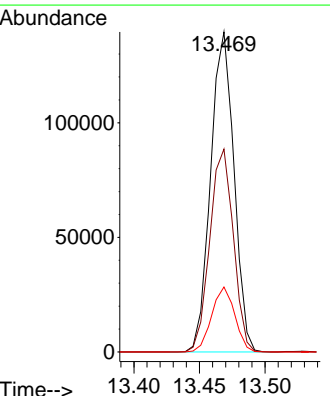
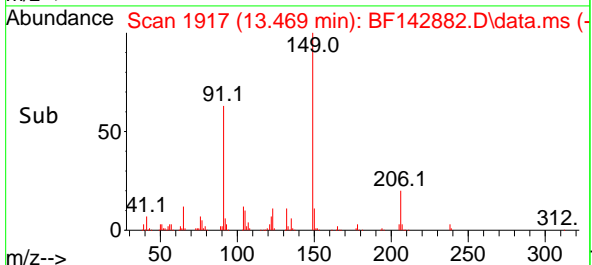


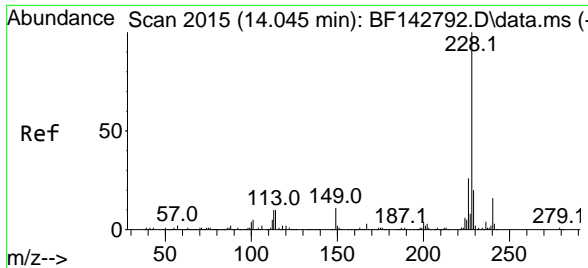
#80
 Butylbenzylphthalate
 Concen: 45.642 ng
 RT: 13.469 min Scan# 1917
 Delta R.T. 0.000 min
 Lab File: BF142882.D
 Acq: 27 Jun 2025 09:51



Tgt Ion:149 Resp: 172705

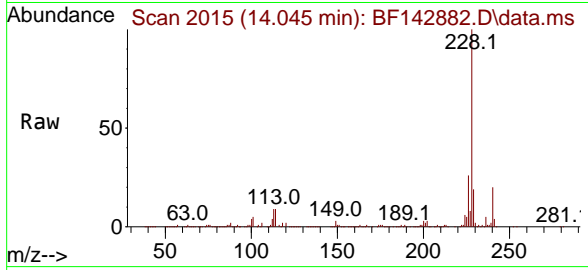
Ion	Ratio	Lower	Upper
149	100		
91	63.4	52.9	79.3
206	20.3	16.3	24.5



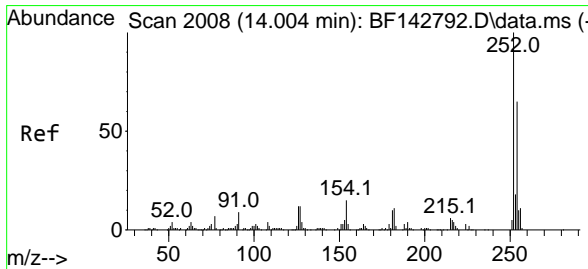
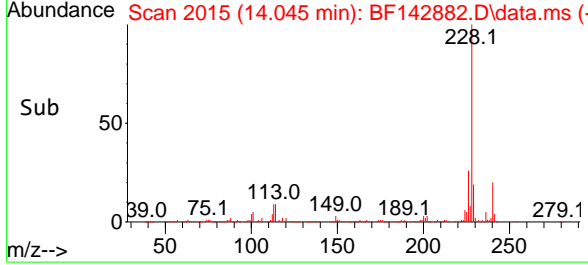
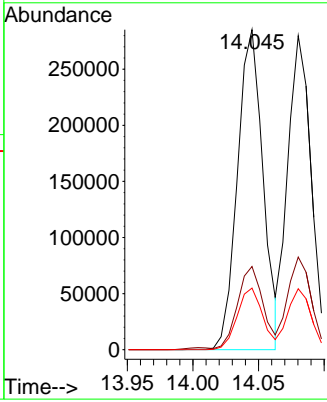


#81
 Benzo(a)anthracene
 Concen: 41.213 ng
 RT: 14.045 min Scan# 2008
 Delta R.T. 0.000 min
 Lab File: BF142882.D
 Acq: 27 Jun 2025 09:51

Instrument : BNA_F
 ClientSampleId : SSTDCCC040

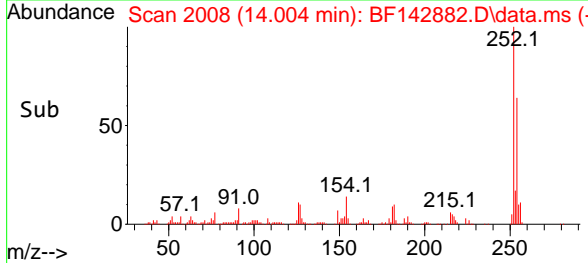
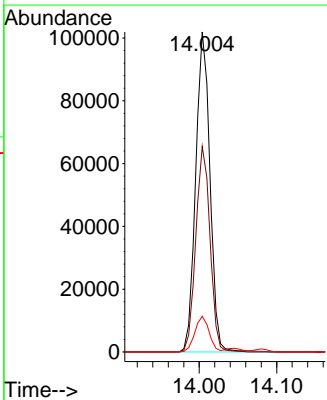
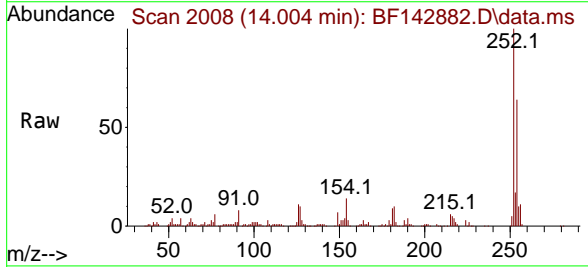


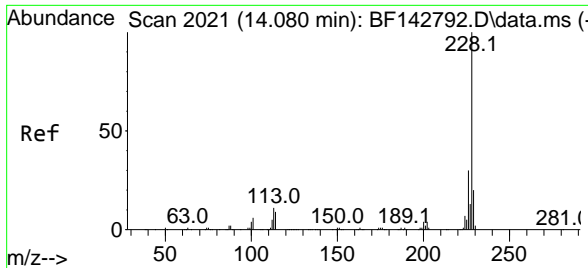
Tgt Ion:228 Resp: 386926
 Ion Ratio Lower Upper
 228 100
 226 26.0 21.2 31.8
 229 19.3 15.6 23.4



#82
 3,3'-Dichlorobenzidine
 Concen: 42.779 ng
 RT: 14.004 min Scan# 2008
 Delta R.T. 0.000 min
 Lab File: BF142882.D
 Acq: 27 Jun 2025 09:51

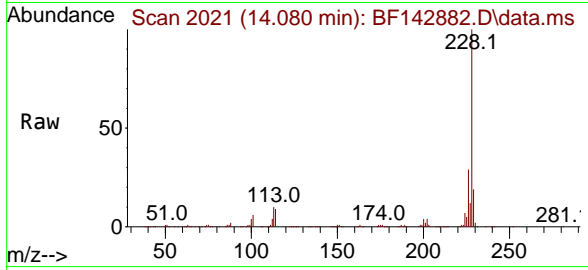
Tgt Ion:252 Resp: 130270
 Ion Ratio Lower Upper
 252 100
 254 64.3 51.7 77.5
 126 11.2 9.4 14.2





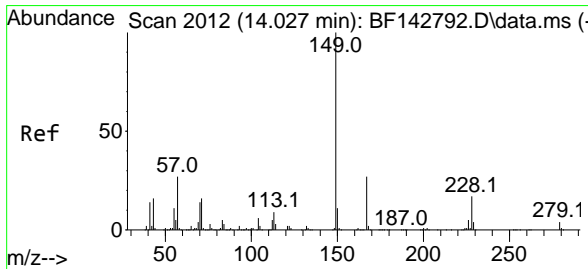
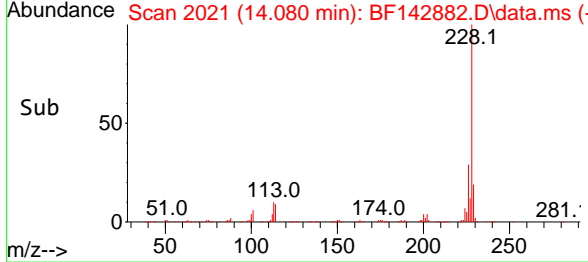
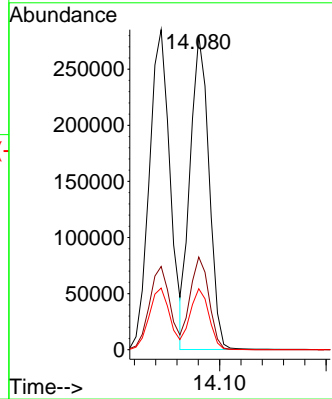
#83
 Chrysene
 Concen: 41.058 ng
 RT: 14.080 min Scan# 2021
 Delta R.T. 0.000 min
 Lab File: BF142882.D
 Acq: 27 Jun 2025 09:51

Instrument : BNA_F
 ClientSampleId : SSTDCCC040



Tgt Ion: 228 Resp: 343961

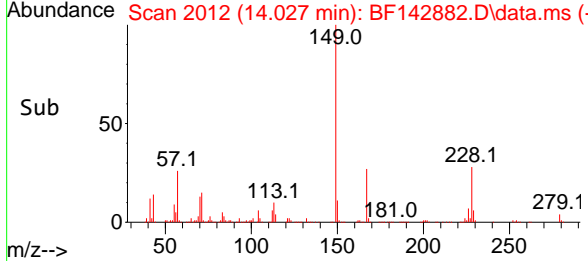
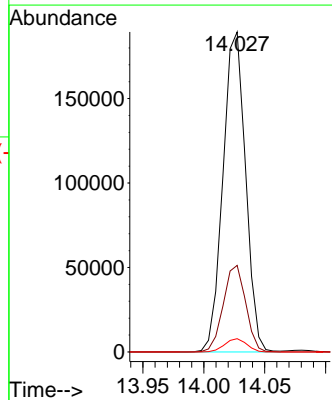
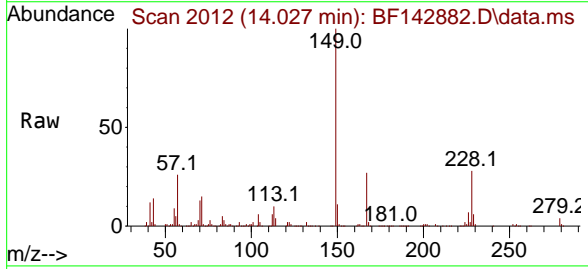
Ion	Ratio	Lower	Upper
228	100		
226	29.5	23.7	35.5
229	19.4	15.7	23.5

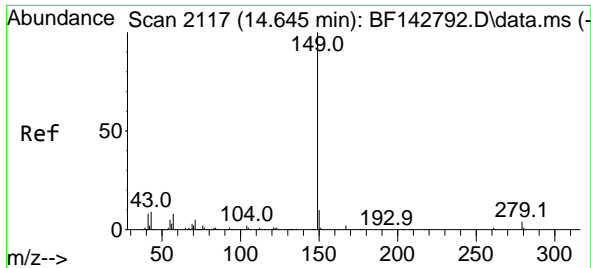


#84
 Bis(2-ethylhexyl)phthalate
 Concen: 45.007 ng
 RT: 14.027 min Scan# 2012
 Delta R.T. 0.000 min
 Lab File: BF142882.D
 Acq: 27 Jun 2025 09:51

Tgt Ion: 149 Resp: 245032

Ion	Ratio	Lower	Upper
149	100		
167	27.1	21.4	32.0
279	4.2	3.0	4.6





#85
 Di-n-octyl phthalate
 Concen: 41.794 ng
 RT: 14.639 min Scan# 2117
 Delta R.T. -0.006 min
 Lab File: BF142882.D
 Acq: 27 Jun 2025 09:51

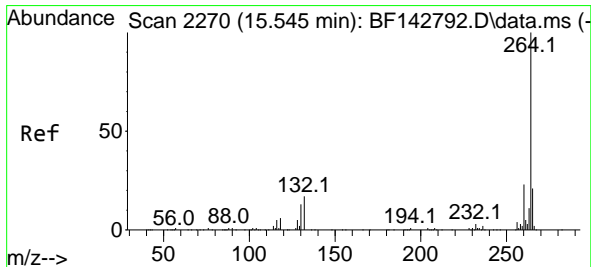
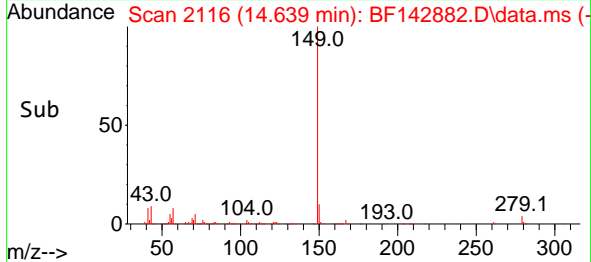
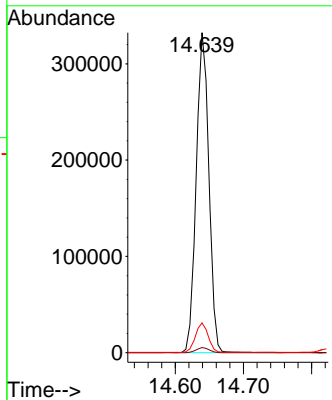
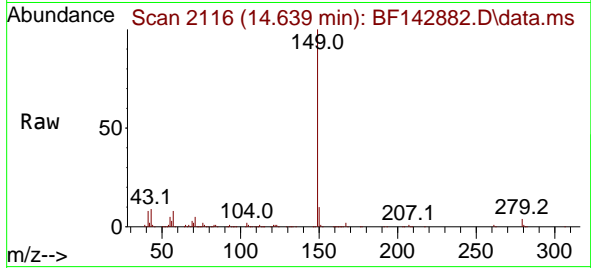
Instrument :

BNA_F

ClientSampleId :

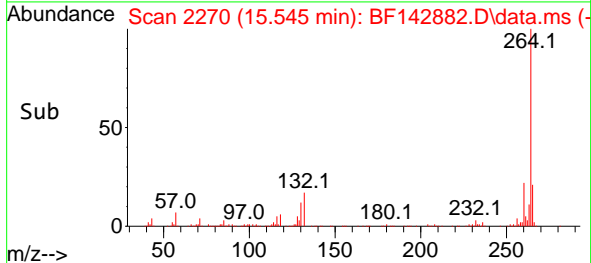
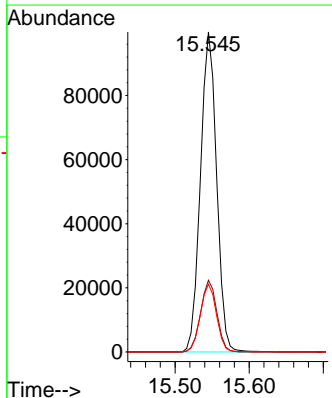
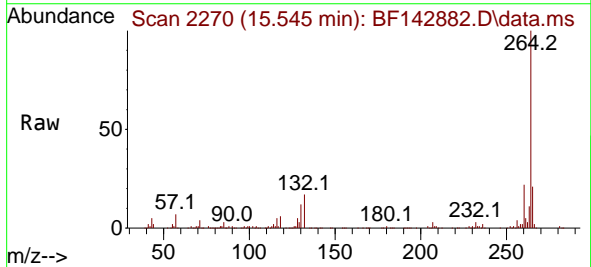
SSTDCCC040

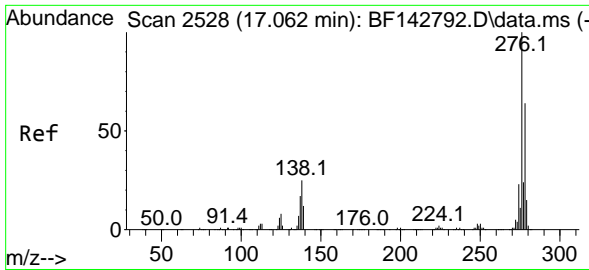
Tgt Ion:149 Resp: 429047
 Ion Ratio Lower Upper
 149 100
 167 1.6 1.3 1.9
 43 9.2 7.6 11.4



#86
 Perylene-d12
 Concen: 20.000 ng
 RT: 15.545 min Scan# 2270
 Delta R.T. 0.000 min
 Lab File: BF142882.D
 Acq: 27 Jun 2025 09:51

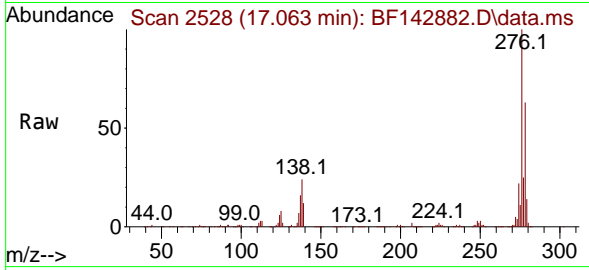
Tgt Ion:264 Resp: 151209
 Ion Ratio Lower Upper
 264 100
 260 22.4 18.1 27.1
 265 21.2 16.6 25.0



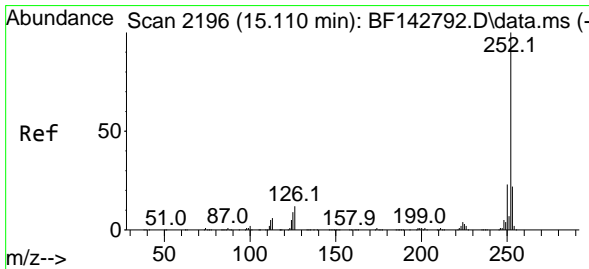
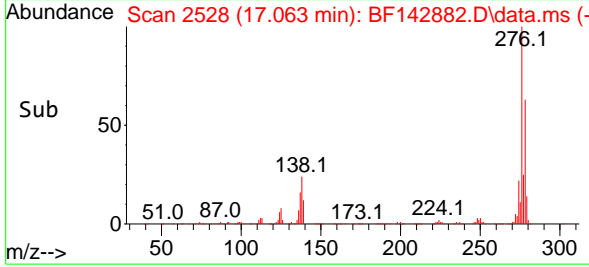
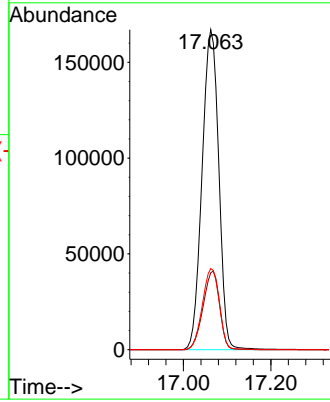


#87
 Indeno(1,2,3-cd)pyrene
 Concen: 38.579 ng
 RT: 17.063 min Scan# 2196
 Delta R.T. 0.000 min
 Lab File: BF142882.D
 Acq: 27 Jun 2025 09:51

Instrument :
 BNA_F
 ClientSampleId :
 SSTDCCC040

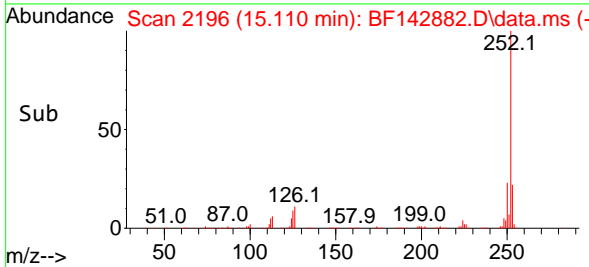
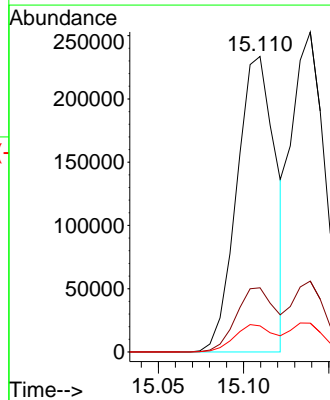
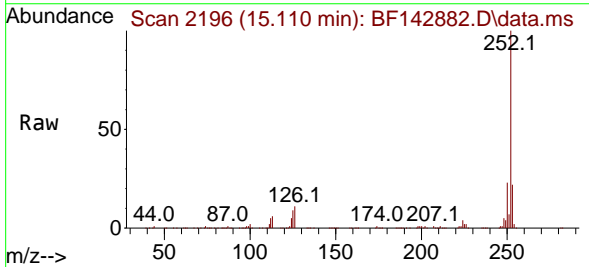


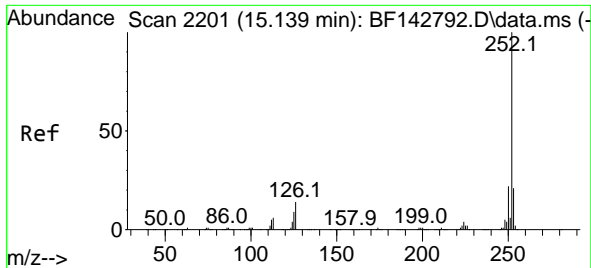
Tgt Ion:276 Resp: 444330
 Ion Ratio Lower Upper
 276 100
 138 24.4 20.2 30.4
 277 25.6 19.8 29.6



#88
 Benzo(b)fluoranthene
 Concen: 42.174 ng
 RT: 15.110 min Scan# 2196
 Delta R.T. 0.000 min
 Lab File: BF142882.D
 Acq: 27 Jun 2025 09:51

Tgt Ion:252 Resp: 369007
 Ion Ratio Lower Upper
 252 100
 253 21.7 17.5 26.3
 125 8.8 7.4 11.0





#89
 Benzo(k)fluoranthene
 Concen: 42.185 ng
 RT: 15.139 min Scan# 21
 Delta R.T. 0.000 min
 Lab File: BF142882.D
 Acq: 27 Jun 2025 09:51

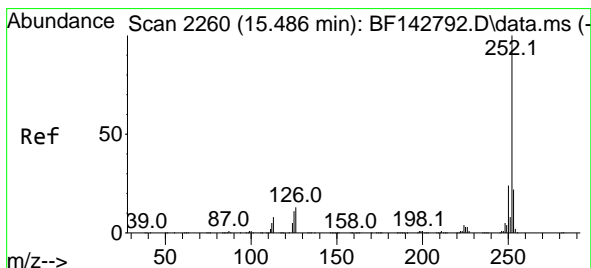
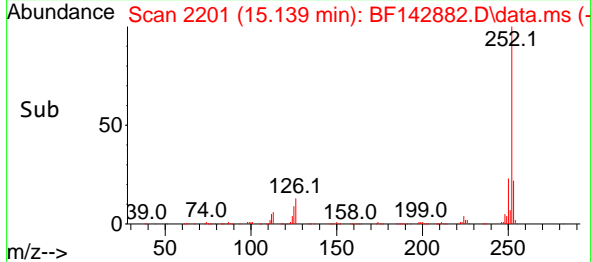
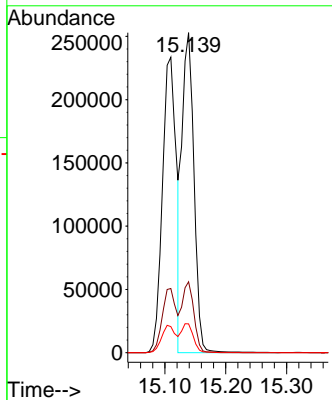
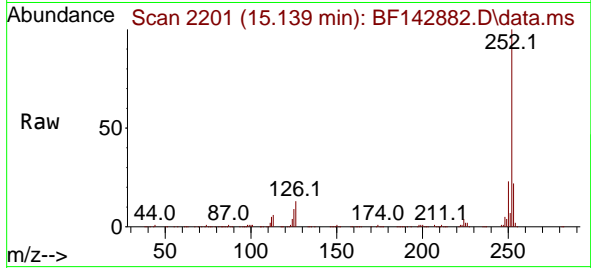
Instrument :

BNA_F

ClientSampleId :

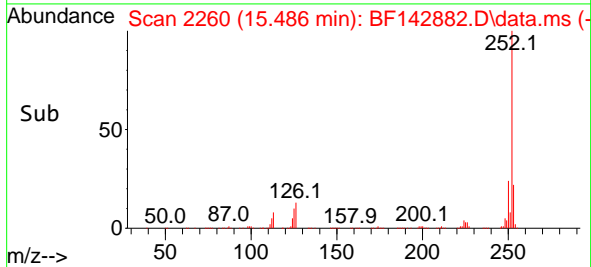
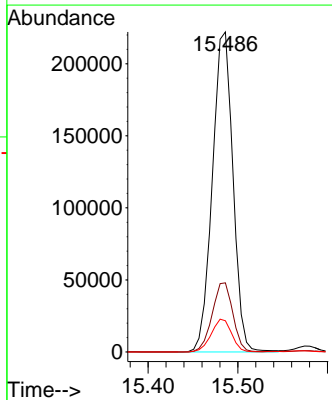
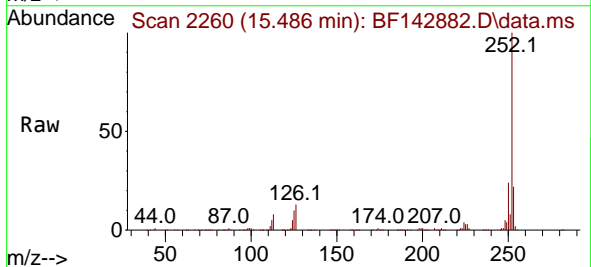
SSTDCCC040

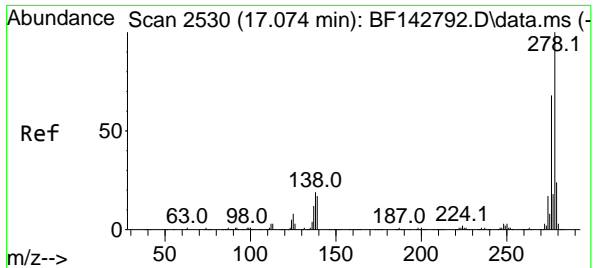
Tgt Ion:252 Resp: 345320
 Ion Ratio Lower Upper
 252 100
 253 22.2 17.2 25.8
 125 9.0 7.4 11.2



#90
 Benzo(a)pyrene
 Concen: 41.840 ng
 RT: 15.486 min Scan# 2260
 Delta R.T. 0.000 min
 Lab File: BF142882.D
 Acq: 27 Jun 2025 09:51

Tgt Ion:252 Resp: 353665
 Ion Ratio Lower Upper
 252 100
 253 21.6 17.5 26.3
 125 9.8 8.6 12.8



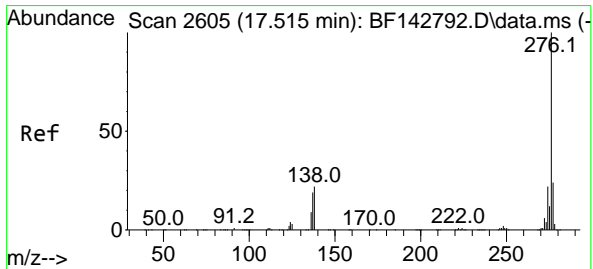
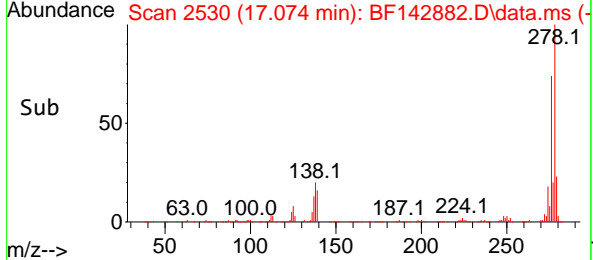
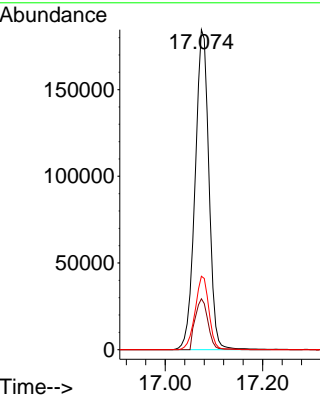
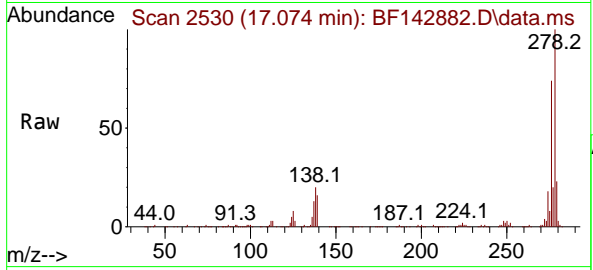


#91
 Dibenzo(a,h)anthracene
 Concen: 38.714 ng
 RT: 17.074 min Scan# 21
 Delta R.T. 0.000 min
 Lab File: BF142882.D
 Acq: 27 Jun 2025 09:51

Instrument : BNA_F
 ClientSampleId : SSTDCCC040

Tgt Ion:278 Resp: 362287

Ion	Ratio	Lower	Upper
278	100		
139	15.9	13.5	20.3
279	23.0	18.8	28.2



#92
 Benzo(g,h,i)perylene
 Concen: 38.341 ng
 RT: 17.521 min Scan# 2606
 Delta R.T. 0.006 min
 Lab File: BF142882.D
 Acq: 27 Jun 2025 09:51

Tgt Ion:276 Resp: 357781

Ion	Ratio	Lower	Upper
276	100		
277	24.0	18.8	28.2
138	20.2	17.6	26.4

