

Data Path : Z:\HPCHEM1\BNA\_F\DATA\BF063015\  
 Data File : BF080257.D  
 Acq On : 1 Jul 2015 3:12  
 Operator : TP/IZ  
 Sample : G2838-05  
 Misc :  
 ALS Vial : 25 Sample Multiplier: 1

Instrument :  
 BNA\_F  
 ClientSampled :  
 TEC-B7

Manual Integrations  
 APPROVED

apatel  
 7/1/2015 4:17:35 PM

Quant Time: Jul 01 18:18:50 2015  
 Quant Method : Z:\HPCHEM1\BNA\_F\METHODS\8270-BF061715.M  
 Quant Title : ASP BNA STANDARDS FOR 5 POINT CALIBRATION  
 QLast Update : Wed Jul 01 18:15:00 2015  
 Response via : Initial Calibration

| Internal Standards          | R.T.  | QIon | Response | Conc   | Units | Dev(Min) |
|-----------------------------|-------|------|----------|--------|-------|----------|
| 1) 1,4-Dichlorobenzene-d4   | 7.28  | 152  | 33550    | 20.00  | ng    | 0.00     |
| 21) Naphthalene-d8          | 8.57  | 136  | 135550   | 20.00  | ng    | 0.00     |
| 38) Acenaphthene-d10        | 10.34 | 164  | 69453    | 20.00  | ng    | 0.00     |
| 63) Phenanthrene-d10        | 11.85 | 188  | 138046   | 20.00  | ng    | 0.00     |
| 75) Chrysene-d12            | 14.79 | 240  | 154289   | 20.00  | ng    | 0.03     |
| 86) Perylene-d12            | 16.64 | 264  | 158780   | 20.00  | ng    | 0.05     |
| System Monitoring Compounds |       |      |          |        |       |          |
| 5) 2-Fluorophenol           | 5.90  | 112  | 325745   | 171.87 | ng    | 0.01     |
| 7) Phenol-d6                | 6.89  | 99   | 447609   | 177.47 | ng    | 0.00     |
| 23) Nitrobenzene-d5         | 7.84  | 82   | 254680   | 109.38 | ng    | 0.00     |
| 41) 2,4,6-Tribromophenol    | 11.14 | 330  | 107489   | 158.27 | ng    | 0.00     |
| 44) 2-Fluorobiphenyl        | 9.65  | 172  | 465734   | 95.63  | ng    | 0.00     |
| 78) Terphenyl-d14           | 13.53 | 244  | 563560   | 85.31  | ng    | 0.02     |
| Target Compounds            |       |      |          |        |       |          |
| 48) Acenaphthylene          | 10.21 | 152  | 58452    | 7.64   | ng    | 98       |
| 49) Dimethylphthalate       | 10.04 | 163  | 49764    | 9.53   | ng    | # 97     |
| 51) Acenaphthene            | 10.38 | 154  | 10965    | 2.34   | ng    | # 81     |
| 57) Fluorene                | 10.89 | 166  | 17718    | 3.36   | ng    | 96       |
| 70) Phenanthrene            | 11.88 | 178  | 270472   | 32.36  | ng    | 98       |
| 71) Anthracene              | 11.92 | 178  | 92678    | 11.52  | ng    | 99       |
| 74) Fluoranthene            | 13.13 | 202  | 801211   | 90.01  | ng    | 89       |
| 77) Pyrene                  | 13.38 | 202  | 688331   | 72.46  | ng    | 95       |
| 80) Benzo(a)anthracene      | 14.78 | 228  | 511465   | 54.41  | ng    | 93       |
| 82) Chrysene                | 14.83 | 228  | 360246   | 41.56  | ng    | 92       |
| 85) Indeno(1,2,3-cd)pyrene  | 18.46 | 276  | 156895   | 14.35  | ng    | # 88     |
| 87) Benzo(b)fluoranthene    | 16.12 | 252  | 477446m  | 49.66  | ng    |          |
| 88) Benzo(k)fluoranthene    | 16.15 | 252  | 146723m  | 14.99  | ng    |          |
| 89) Benzo(a)pyrene          | 16.57 | 252  | 297536   | 32.59  | ng    | # 84     |
| 90) Dibenzo(a,h)anthracene  | 18.48 | 278  | 40132    | 4.29   | ng    | # 79     |
| 91) Benzo(g,h,i)perylene    | 19.01 | 276  | 155415   | 16.47  | ng    | # 80     |

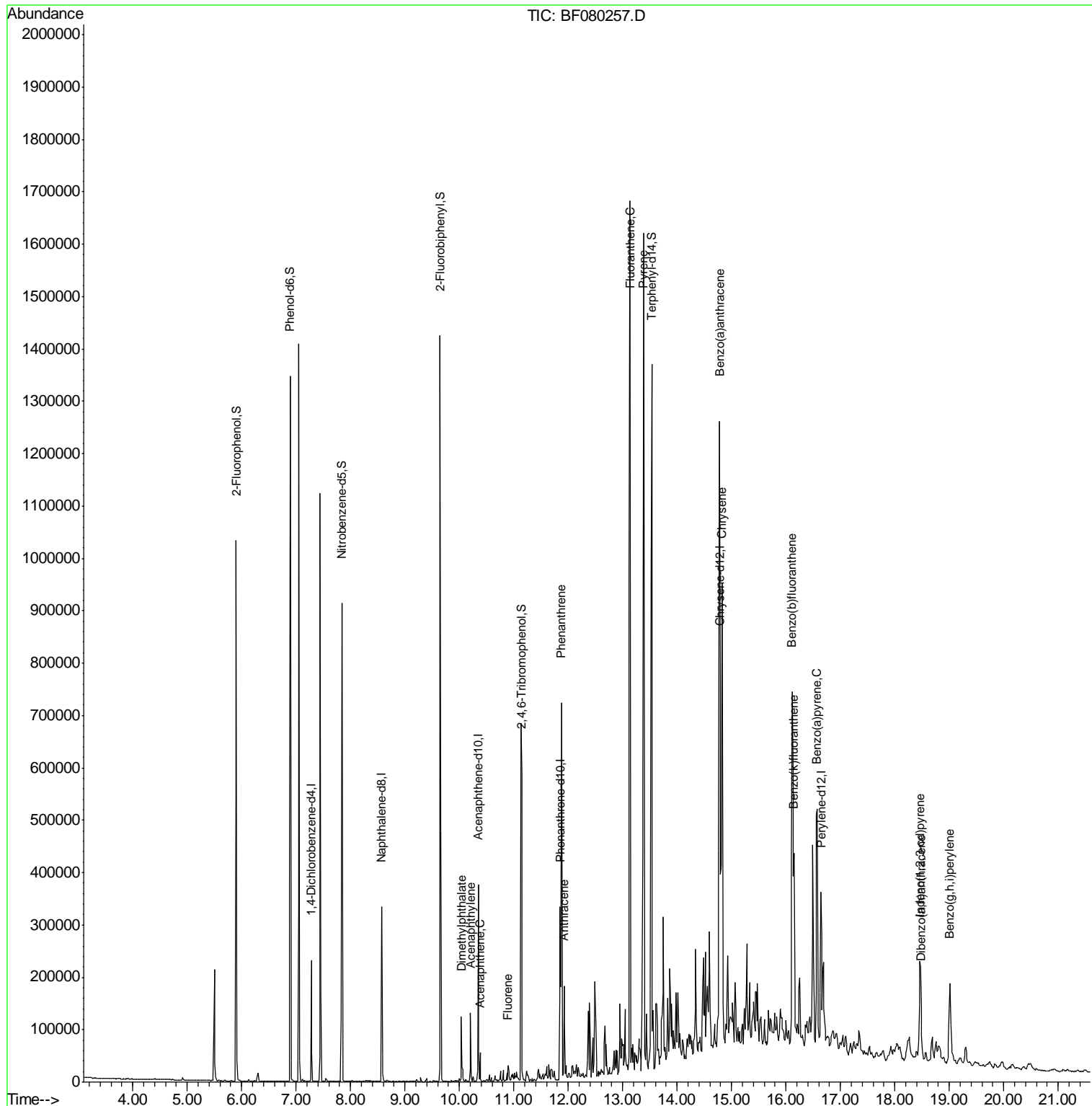
(#) = qualifier out of range (m) = manual integration (+) = signals summed

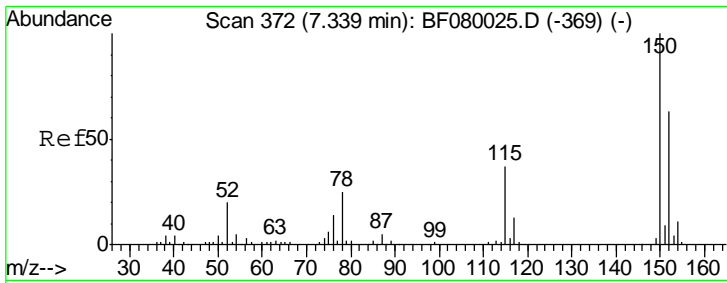
Data Path : Z:\HPCHEM1\BNA\_F\DATA\BF063015\  
 Data File : BF080257.D  
 Acq On : 1 Jul 2015 3:12  
 Operator : TP/IZ  
 Sample : G2838-05  
 Misc :  
 ALS Vial : 25 Sample Multiplier: 1

Instrument :  
 BNA\_F  
 Client Sampled :  
 TEC-B7

Manual Integrations  
 APPROVED  
 apatel  
 7/1/2015 4:17:35 PM

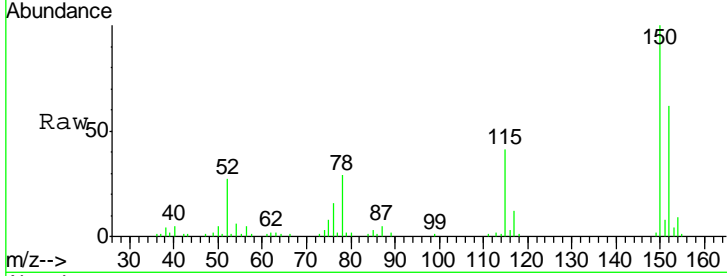
Quant Time: Jul 01 18:18:50 2015  
 Quant Method : Z:\HPCHEM1\BNA\_F\METHODS\8270-BF061715.M  
 Quant Title : ASP BNA STANDARDS FOR 5 POINT CALIBRATION  
 QLast Update : Wed Jul 01 18:15:00 2015  
 Response via : Initial Calibration





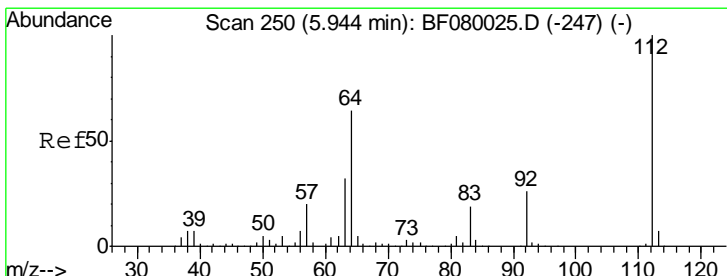
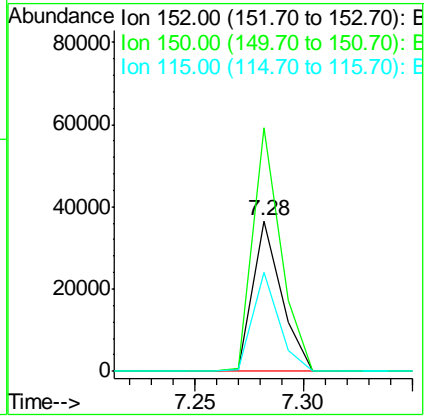
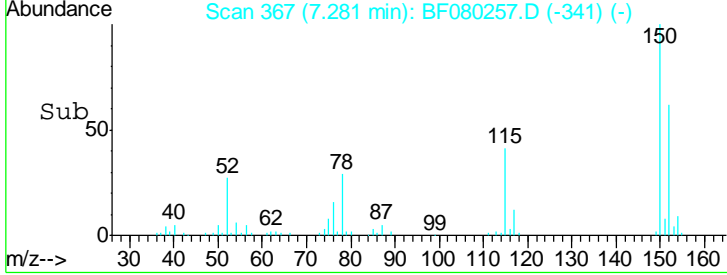
#1  
 1,4-Dichlorobenzene-d4  
 Concen: 20.00 ng  
 RT: 7.28 min Scan# 367  
 Delta R.T. -0.00 min  
 Lab File: BF080257.D  
 Acq: 1 Jul 2015 3:12

**Instrument :**  
 BNA\_F  
**ClientSampled :**  
 TEC-B7

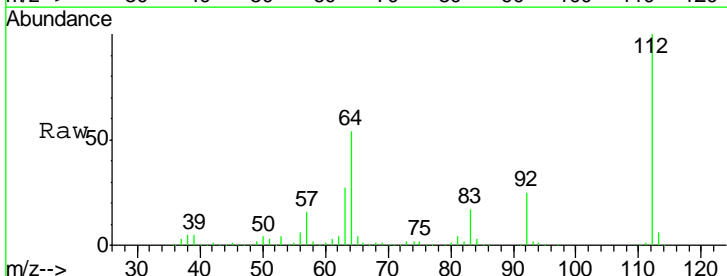


| Tgt Ion | Resp  | Lower | Upper |
|---------|-------|-------|-------|
| 152     | 33550 |       |       |
| 152     | 100   |       |       |
| 150     | 161.7 | 124.7 | 187.1 |
| 115     | 65.8  | 39.0  | 58.4# |

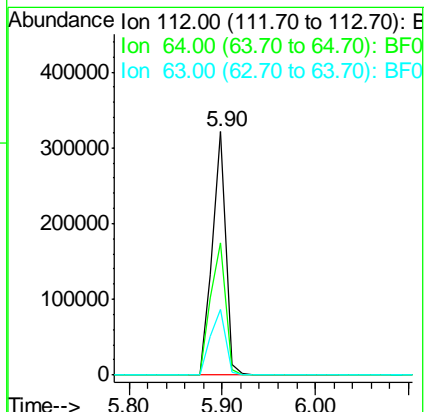
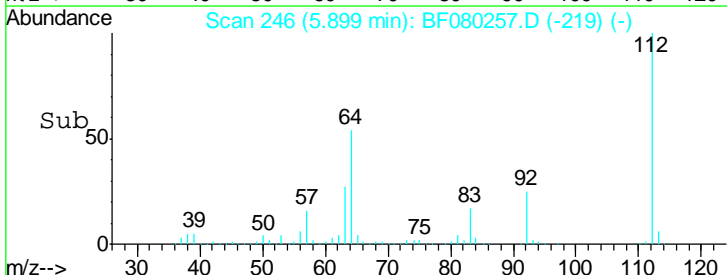
**Manual Integrations**  
**APPROVED**  
 apatel  
 7/1/2015 4:17:35 PM

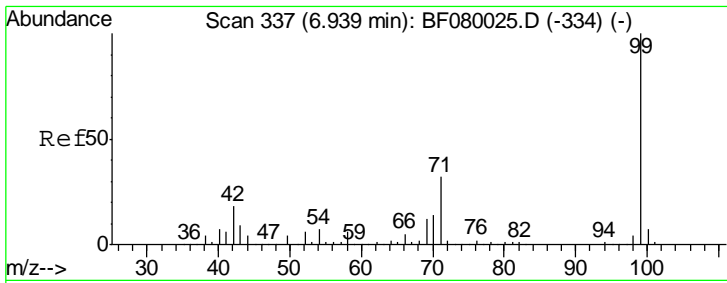


#5  
 2-Fluorophenol  
 Concen: 171.87 ng  
 RT: 5.90 min Scan# 246  
 Delta R.T. 0.01 min  
 Lab File: BF080257.D  
 Acq: 1 Jul 2015 3:12



| Tgt Ion | Resp   | Lower | Upper |
|---------|--------|-------|-------|
| 112     | 325745 |       |       |
| 112     | 100    |       |       |
| 64      | 54.4   | 39.7  | 59.5  |
| 63      | 27.2   | 17.4  | 26.0# |



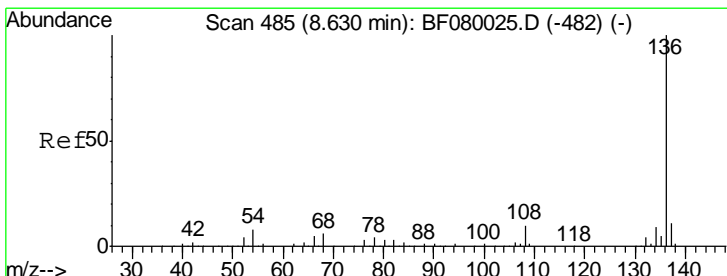
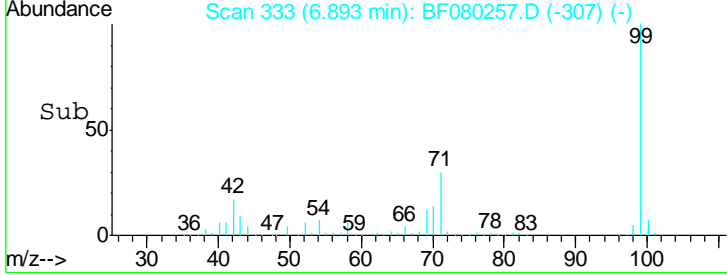
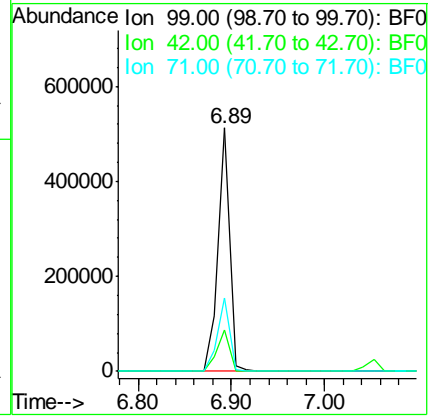
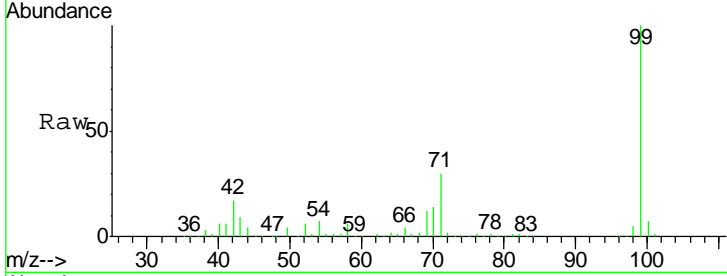


#7  
 Phenol-d6  
 Concen: 177.47 ng  
 RT: 6.89 min Scan# 333  
 Delta R.T. -0.00 min  
 Lab File: BF080257.D  
 Acq: 1 Jul 2015 3:12

Instrument :  
 BNA\_F  
 ClientSampled :  
 TEC-B7

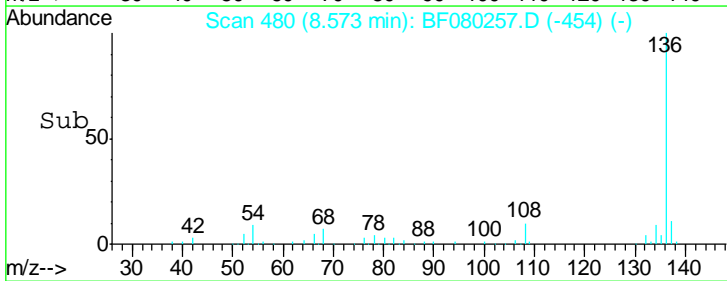
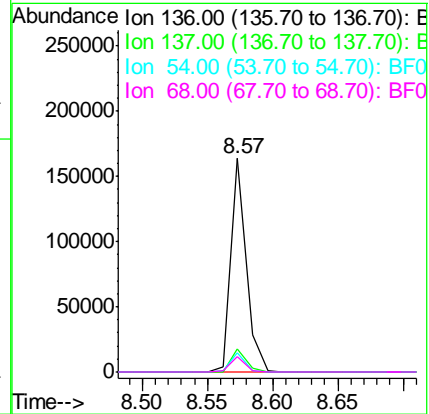
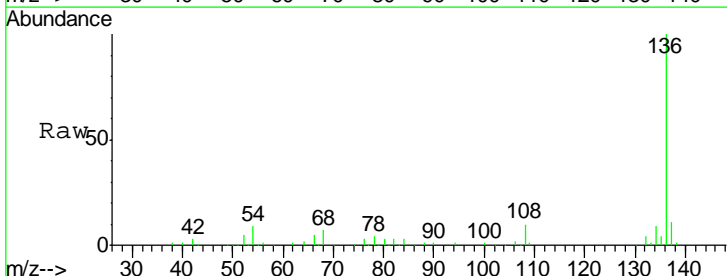
| Tgt Ion | Resp   | Lower | Upper |
|---------|--------|-------|-------|
| 99      | 447609 |       |       |
| 99      | 100    |       |       |
| 42      | 16.8   | 13.7  | 20.5  |
| 71      | 30.3   | 14.2  | 21.2  |

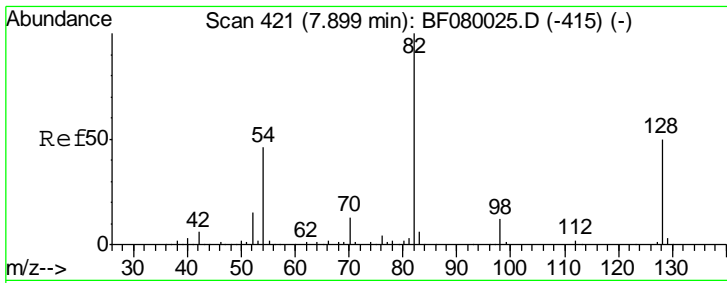
Manual Integrations  
 APPROVED  
 apatel  
 7/1/2015 4:17:35 PM



#21  
 Naphthalene-d8  
 Concen: 20.00 ng  
 RT: 8.57 min Scan# 480  
 Delta R.T. -0.00 min  
 Lab File: BF080257.D  
 Acq: 1 Jul 2015 3:12

| Tgt Ion | Resp   | Lower | Upper |
|---------|--------|-------|-------|
| 136     | 135550 |       |       |
| 136     | 100    |       |       |
| 137     | 10.8   | 9.0   | 13.6  |
| 54      | 9.2    | 8.2   | 12.2  |
| 68      | 7.0    | 5.8   | 8.6   |





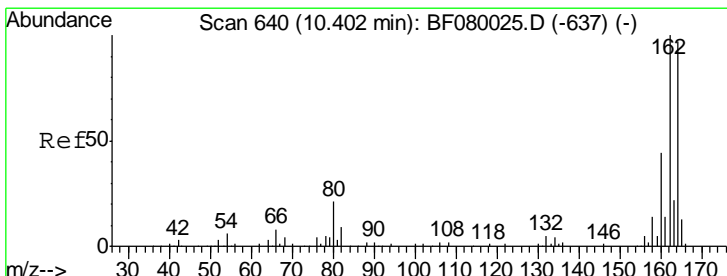
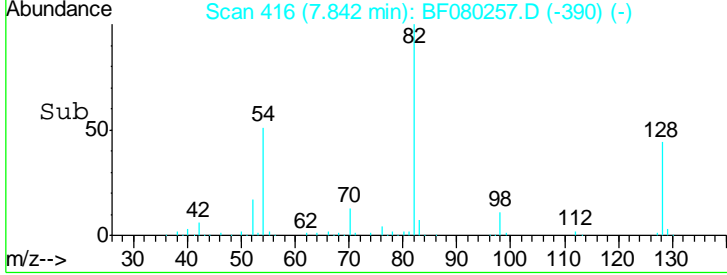
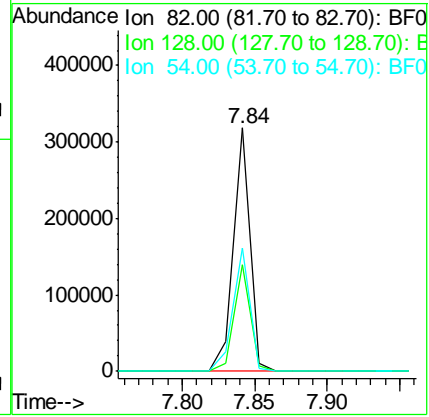
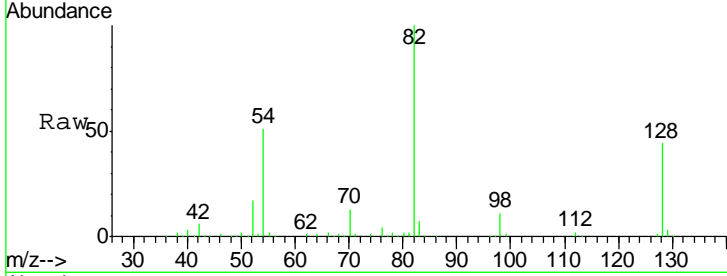
#23  
 Nitrobenzene-d5  
 Concen: 109.38 ng  
 RT: 7.84 min Scan# 416  
 Delta R.T. -0.00 min  
 Lab File: BF080257.D  
 Acq: 1 Jul 2015 3:12

Instrument :  
 BNA\_F  
 ClientSampled :  
 TEC-B7

Tgt Ion: 82 Resp: 254680

| Ion | Ratio | Lower | Upper |
|-----|-------|-------|-------|
| 82  | 100   |       |       |
| 128 | 43.6  | 51.0  | 76.6# |
| 54  | 50.8  | 47.5  | 71.3  |

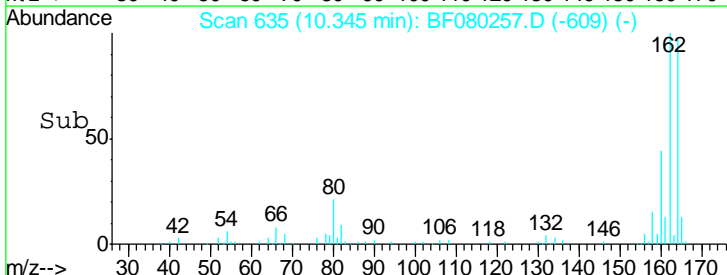
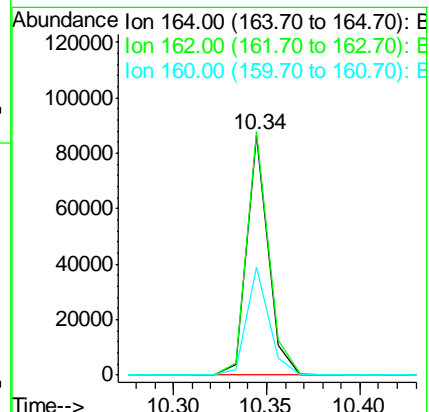
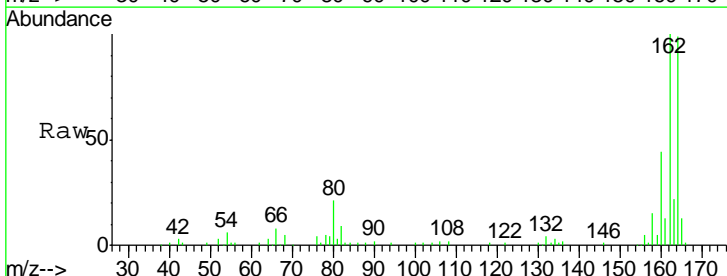
Manual Integrations  
 APPROVED  
 apatel  
 7/1/2015 4:17:35 PM

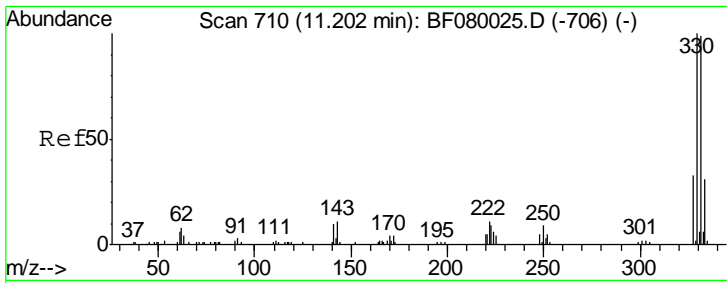


#38  
 Acenaphthene-d10  
 Concen: 20.00 ng  
 RT: 10.34 min Scan# 635  
 Delta R.T. -0.00 min  
 Lab File: BF080257.D  
 Acq: 1 Jul 2015 3:12

Tgt Ion: 164 Resp: 69453

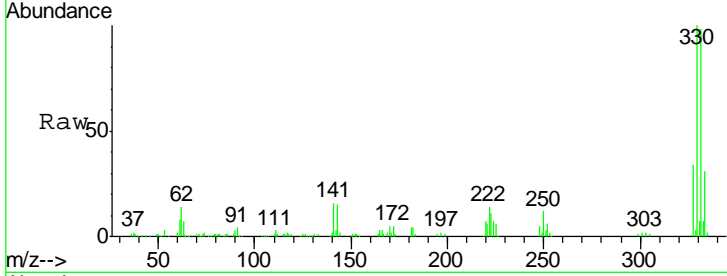
| Ion | Ratio | Lower | Upper |
|-----|-------|-------|-------|
| 164 | 100   |       |       |
| 162 | 101.5 | 75.2  | 112.8 |
| 160 | 44.8  | 31.5  | 47.3  |





#41  
 2,4,6-Tribromophenol  
 Concen: 158.27 ng  
 RT: 11.14 min Scan# 705  
 Delta R.T. -0.00 min  
 Lab File: BF080257.D  
 Acq: 1 Jul 2015 3:12

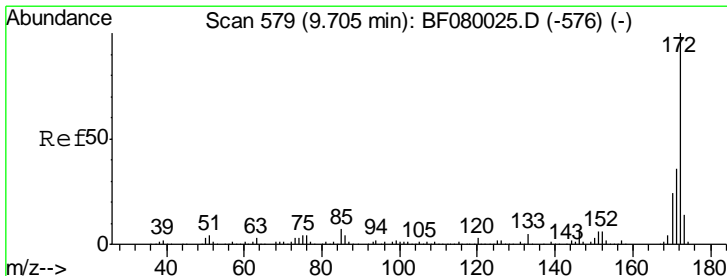
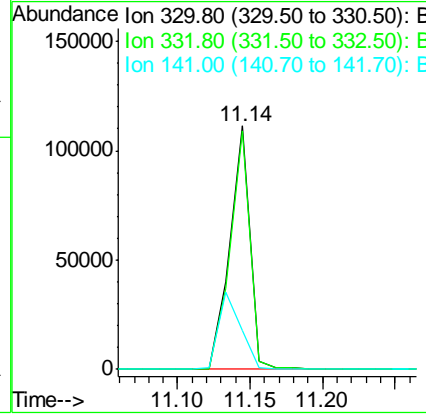
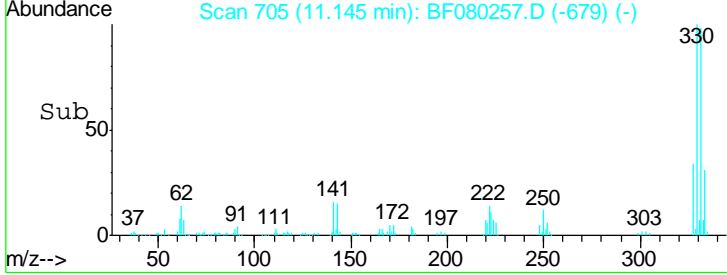
Instrument :  
 BNA\_F  
 ClientSampled :  
 TEC-B7



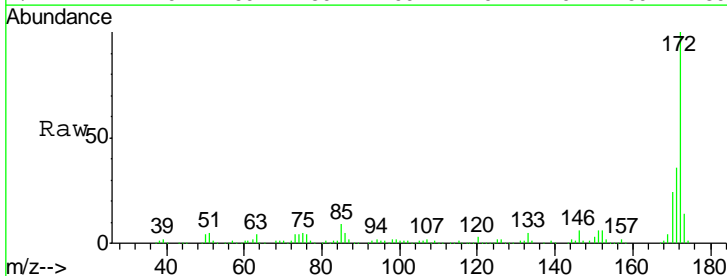
| Tgt Ion | Resp   | Lower | Upper |
|---------|--------|-------|-------|
| 330     | 107489 |       |       |
| 332     | 96.9   | 76.6  | 114.8 |
| 141     | 35.0   | 29.7  | 44.5  |

Manual Integrations  
 APPROVED

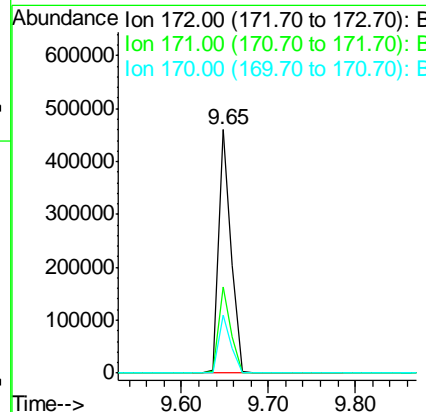
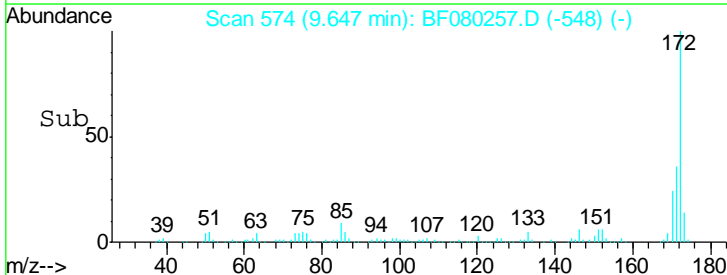
apatel  
 7/1/2015 4:17:35 PM

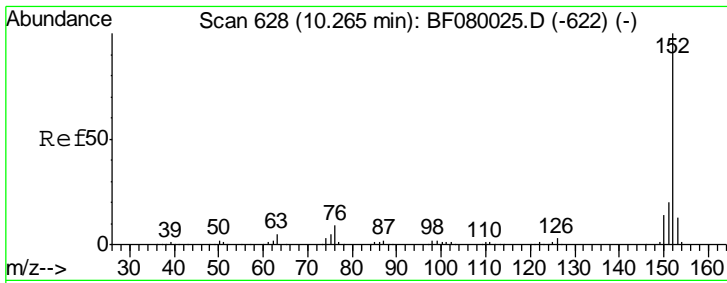


#44  
 2-Fluorobiphenyl  
 Concen: 95.63 ng  
 RT: 9.65 min Scan# 574  
 Delta R.T. -0.00 min  
 Lab File: BF080257.D  
 Acq: 1 Jul 2015 3:12



| Tgt Ion | Resp   | Lower | Upper |
|---------|--------|-------|-------|
| 172     | 465734 |       |       |
| 171     | 35.6   | 26.1  | 39.1  |
| 170     | 23.8   | 17.4  | 26.2  |



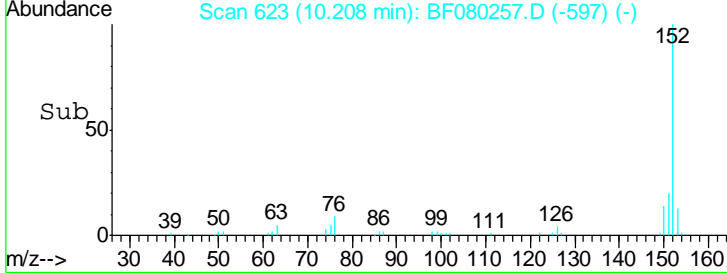
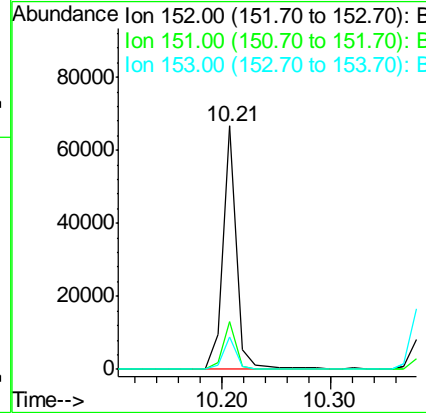
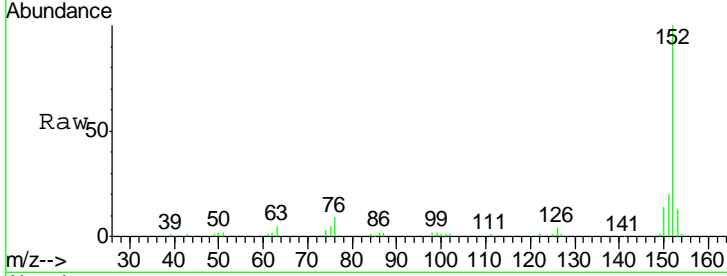


#48  
 Acenaphthylene  
 Concen: 7.64 ng  
 RT: 10.21 min Scan# 623  
 Delta R.T. -0.00 min  
 Lab File: BF080257.D  
 Acq: 1 Jul 2015 3:12

Instrument :  
 BNA\_F  
 ClientSampled :  
 TEC-B7

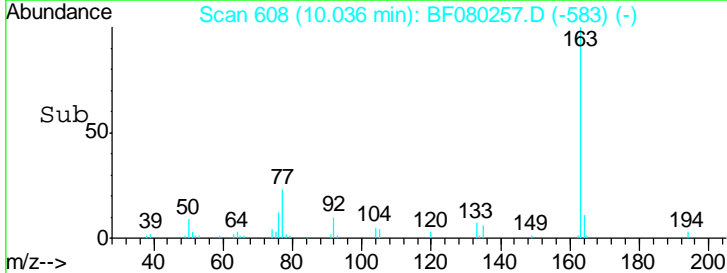
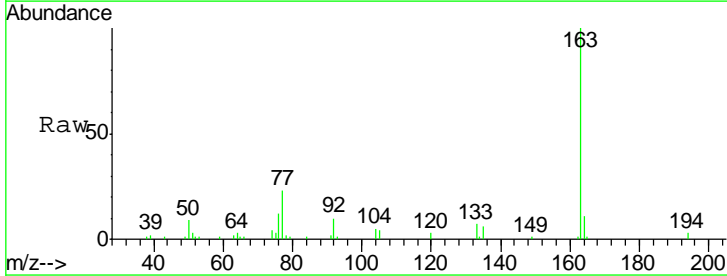
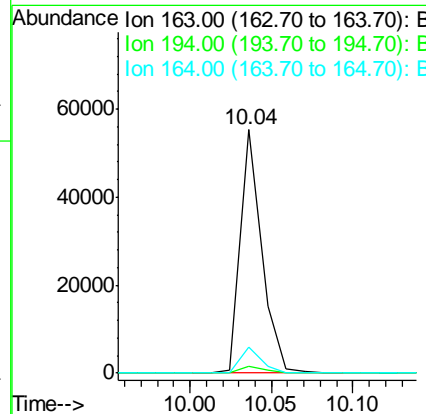
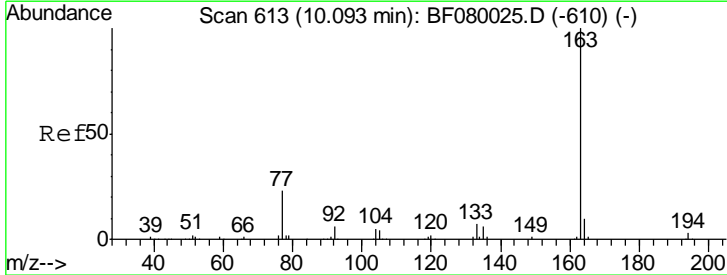
| Tgt Ion | Resp | Lower | Upper |
|---------|------|-------|-------|
| 152     | 100  |       |       |
| 151     | 19.7 | 14.6  | 22.0  |
| 153     | 13.2 | 10.3  | 15.5  |

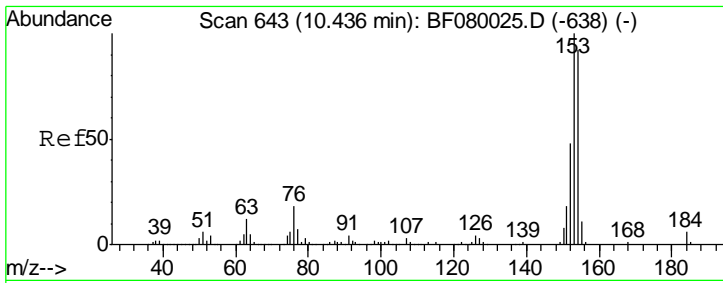
Manual Integrations  
**APPROVED**  
 apatel  
 7/1/2015 4:17:35 PM



#49  
 Dimethylphthalate  
 Concen: 9.53 ng  
 RT: 10.04 min Scan# 608  
 Delta R.T. -0.01 min  
 Lab File: BF080257.D  
 Acq: 1 Jul 2015 3:12

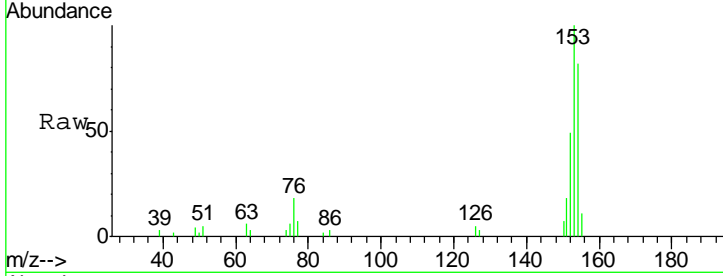
| Tgt Ion | Resp | Lower | Upper |
|---------|------|-------|-------|
| 163     | 100  |       |       |
| 194     | 3.1  | 4.4   | 6.6#  |
| 164     | 10.7 | 8.3   | 12.5  |





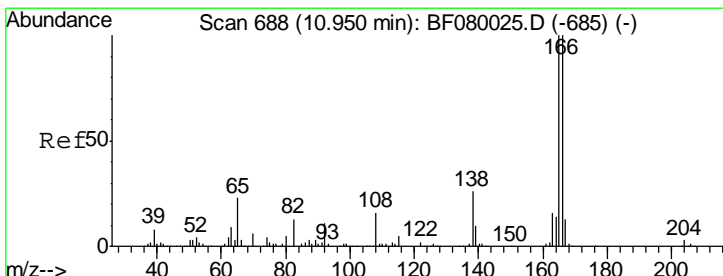
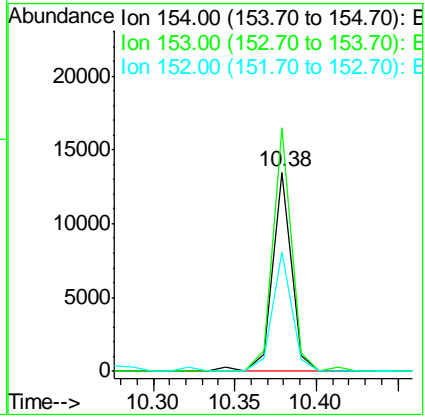
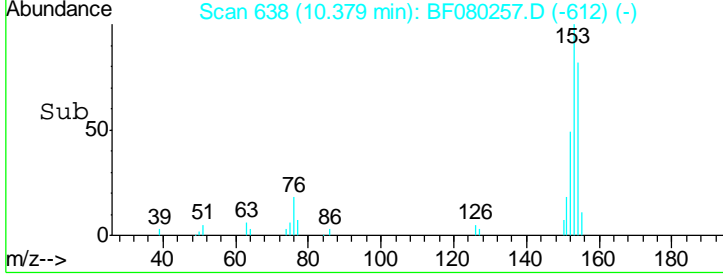
#51  
 Acenaphthene  
 Concen: 2.34 ng  
 RT: 10.38 min Scan# 638  
 Delta R.T. -0.00 min  
 Lab File: BF080257.D  
 Acq: 1 Jul 2015 3:12

Instrument :  
 BNA\_F  
 ClientSampled :  
 TEC-B7

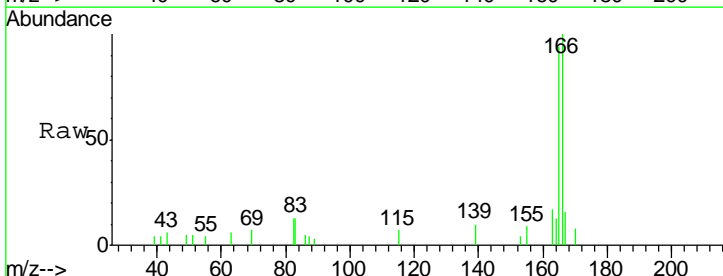


Tgt Ion:154 Resp: 10965  
 Ion Ratio Lower Upper  
 154 100  
 153 122.2 82.1 123.1  
 152 60.0 37.9 56.9#

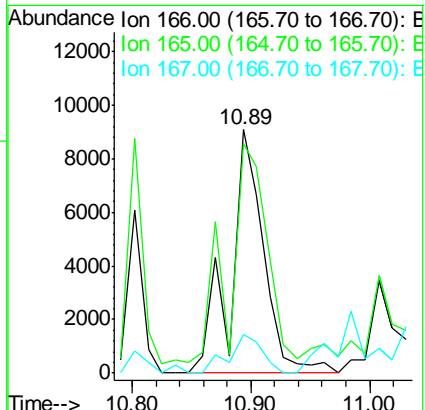
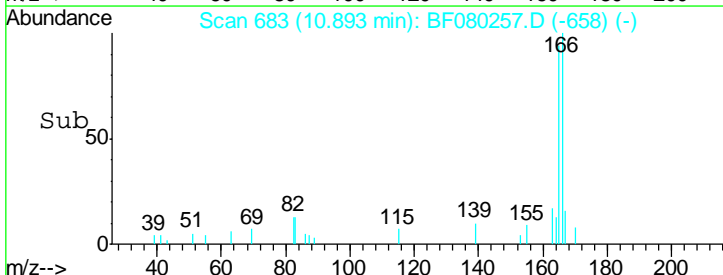
Manual Integrations  
 APPROVED  
 apatel  
 7/1/2015 4:17:35 PM



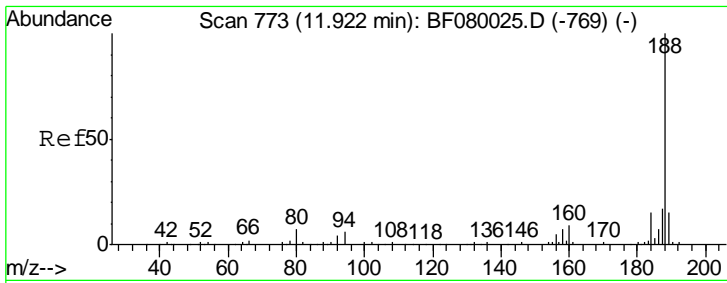
#57  
 Fluorene  
 Concen: 3.36 ng  
 RT: 10.89 min Scan# 683  
 Delta R.T. -0.01 min  
 Lab File: BF080257.D  
 Acq: 1 Jul 2015 3:12



Tgt Ion:166 Resp: 17718  
 Ion Ratio Lower Upper  
 166 100  
 165 94.1 72.6 109.0  
 167 15.7 10.6 16.0

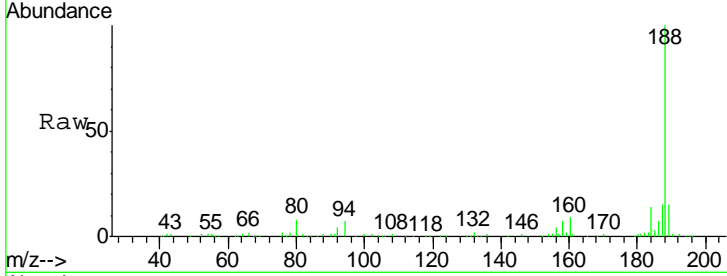






#63  
 Phenanthrene-d10  
 Concen: 20.00 ng  
 RT: 11.85 min Scan# 767  
 Delta R.T. -0.00 min  
 Lab File: BF080257.D  
 Acq: 1 Jul 2015 3:12

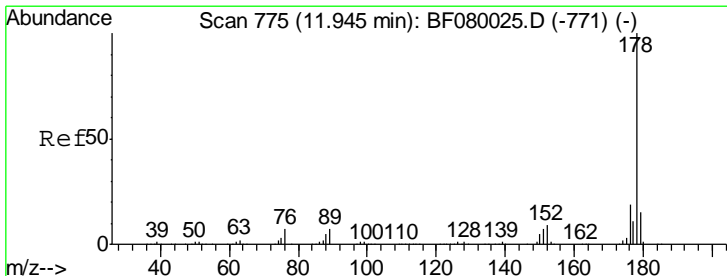
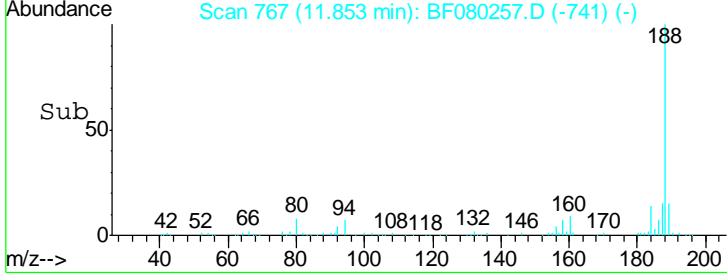
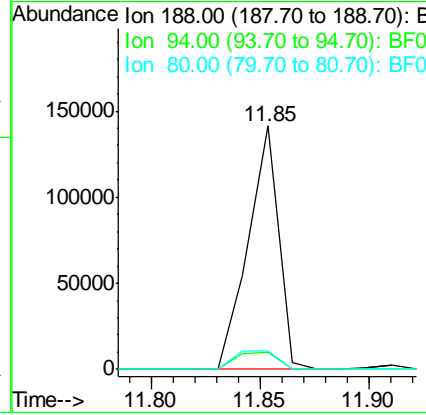
Instrument :  
 BNA\_F  
 ClientSampled :  
 TEC-B7



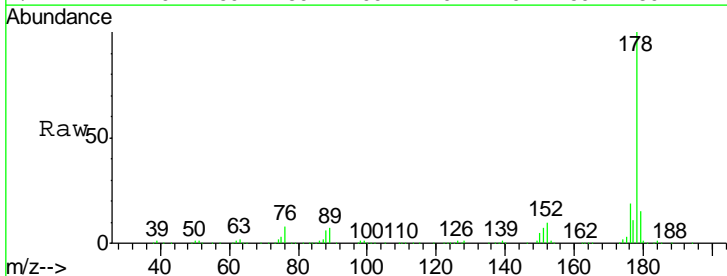
Tgt Ion:188 Resp: 138046

| Ion | Ratio | Lower | Upper |
|-----|-------|-------|-------|
| 188 | 100   |       |       |
| 94  | 7.2   | 11.1  | 16.7# |
| 80  | 7.6   | 11.0  | 16.4# |

Manual Integrations  
 APPROVED  
 apatel  
 7/1/2015 4:17:35 PM

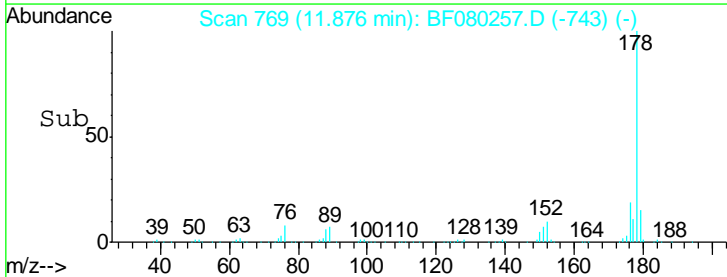
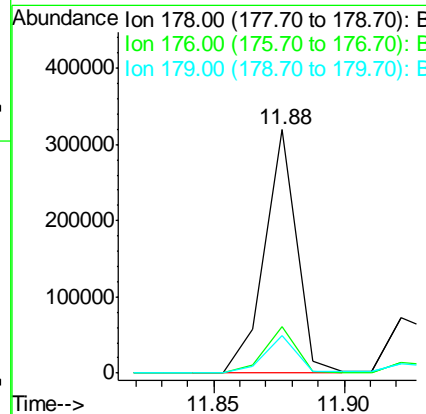


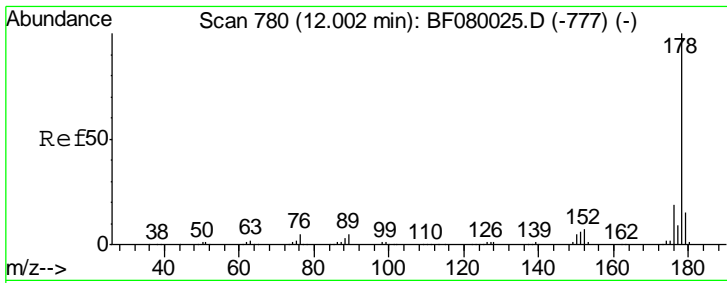
#70  
 Phenanthrene  
 Concen: 32.36 ng  
 RT: 11.88 min Scan# 769  
 Delta R.T. -0.00 min  
 Lab File: BF080257.D  
 Acq: 1 Jul 2015 3:12



Tgt Ion:178 Resp: 270472

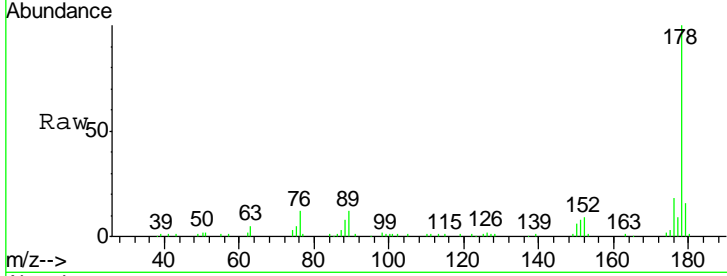
| Ion | Ratio | Lower | Upper |
|-----|-------|-------|-------|
| 178 | 100   |       |       |
| 176 | 19.2  | 13.8  | 20.8  |
| 179 | 15.4  | 12.2  | 18.2  |





#71  
 Anthracene  
 Concen: 11.52 ng  
 RT: 11.92 min Scan# 773  
 Delta R.T. -0.00 min  
 Lab File: BF080257.D  
 Acq: 1 Jul 2015 3:12

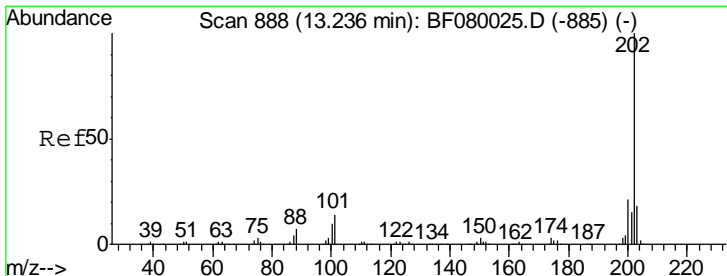
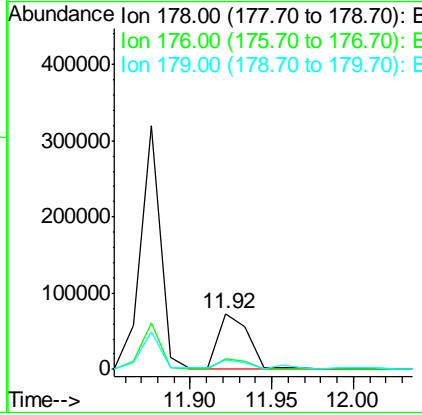
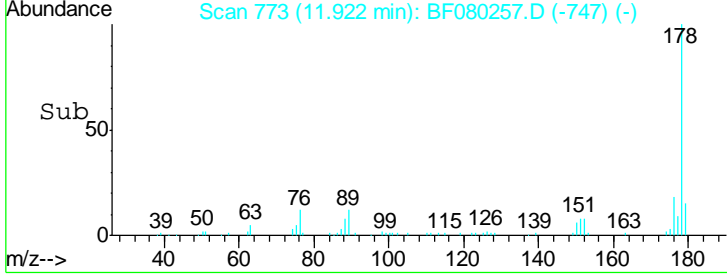
Instrument :  
 BNA\_F  
 ClientSampled :  
 TEC-B7



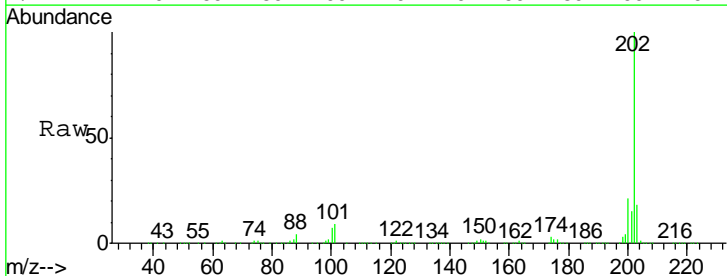
Tgt Ion: 178 Resp: 92678

| Ion | Ratio | Lower | Upper |
|-----|-------|-------|-------|
| 178 | 100   |       |       |
| 176 | 18.2  | 14.1  | 21.1  |
| 179 | 15.7  | 12.2  | 18.2  |

Manual Integrations  
 APPROVED  
 apatel  
 7/1/2015 4:17:35 PM

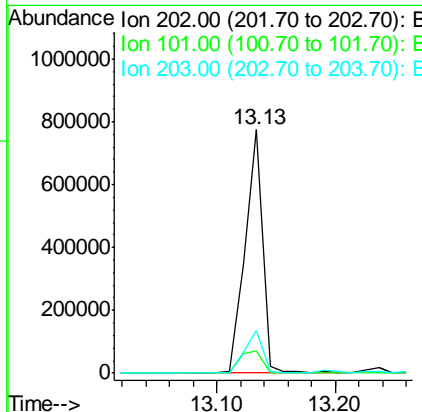
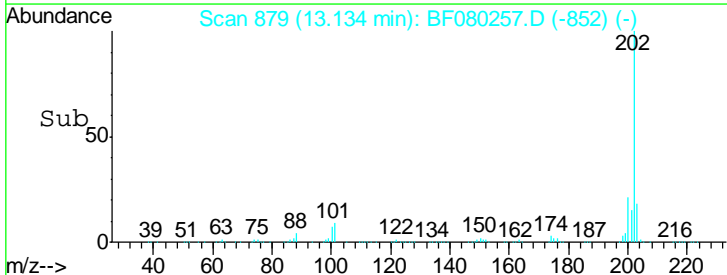


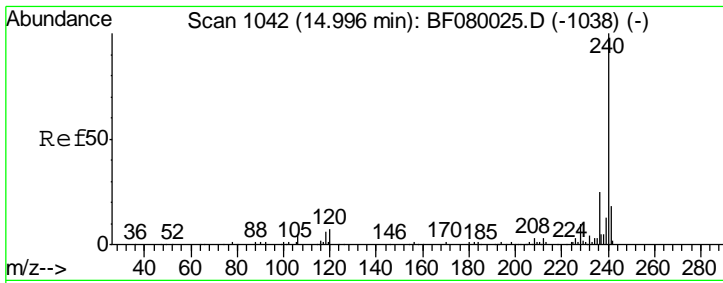
#74  
 Fluoranthene  
 Concen: 90.01 ng  
 RT: 13.13 min Scan# 879  
 Delta R.T. 0.01 min  
 Lab File: BF080257.D  
 Acq: 1 Jul 2015 3:12



Tgt Ion: 202 Resp: 801211

| Ion | Ratio | Lower | Upper |
|-----|-------|-------|-------|
| 202 | 100   |       |       |
| 101 | 9.3   | 0.0   | 38.3  |
| 203 | 17.8  | 0.0   | 37.3  |



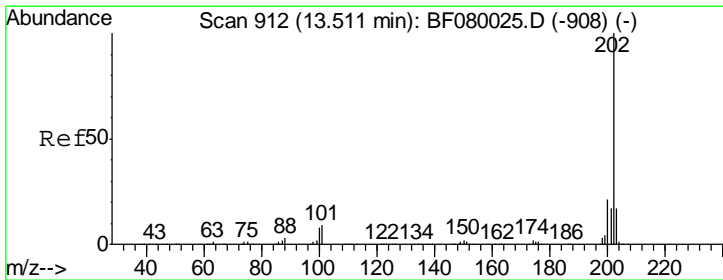
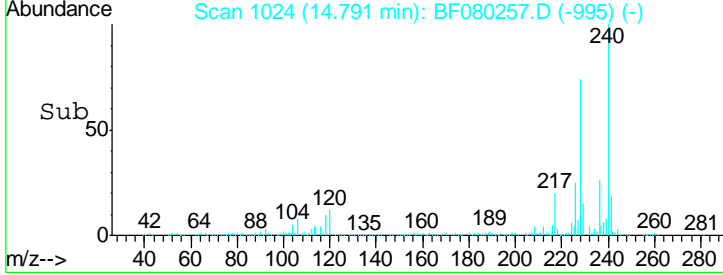
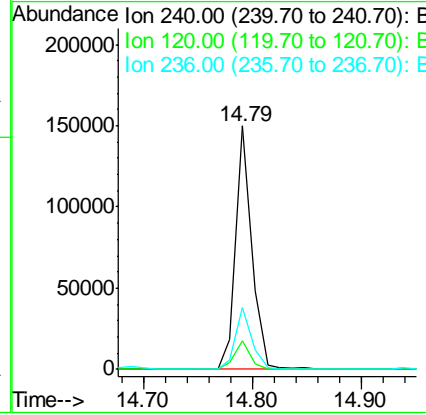
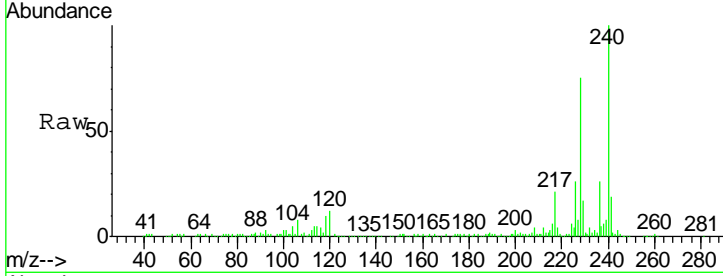


#75  
 Chrysene-d12  
 Concen: 20.00 ng  
 RT: 14.79 min Scan# 1024  
 Delta R.T. 0.03 min  
 Lab File: BF080257.D  
 Acq: 1 Jul 2015 3:12

**Instrument :**  
 BNA\_F  
**ClientSampled :**  
 TEC-B7

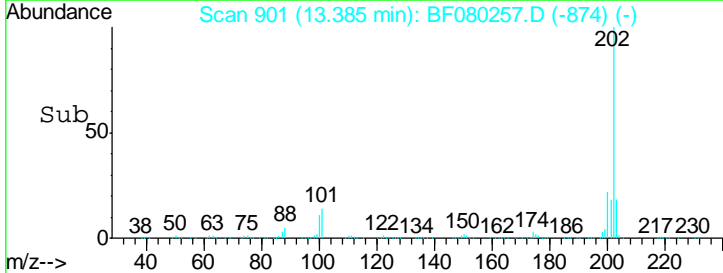
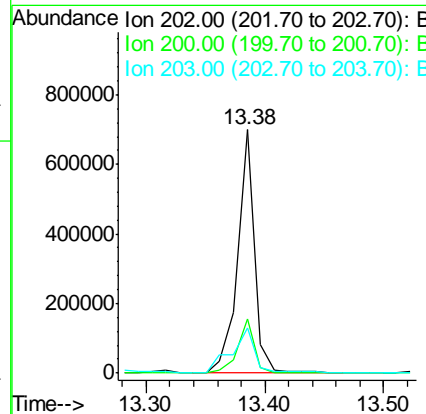
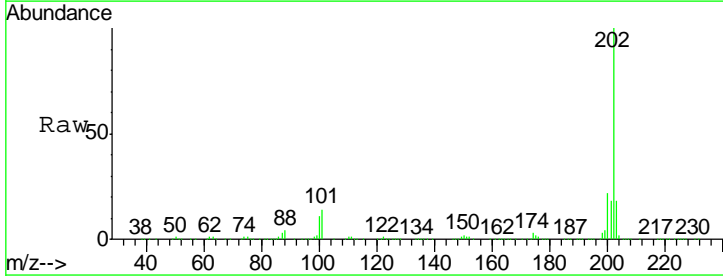
| Tgt Ion | Resp   | Lower | Upper |
|---------|--------|-------|-------|
| 240     | 154289 |       |       |
| 240     | 100    |       |       |
| 120     | 11.6   | 16.2  | 24.2# |
| 236     | 25.6   | 18.4  | 27.6  |

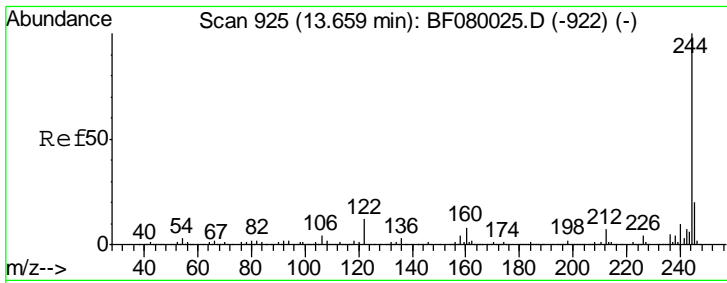
**Manual Integrations**  
**APPROVED**  
 apatel  
 7/1/2015 4:17:35 PM



#77  
 Pyrene  
 Concen: 72.46 ng  
 RT: 13.38 min Scan# 901  
 Delta R.T. 0.01 min  
 Lab File: BF080257.D  
 Acq: 1 Jul 2015 3:12

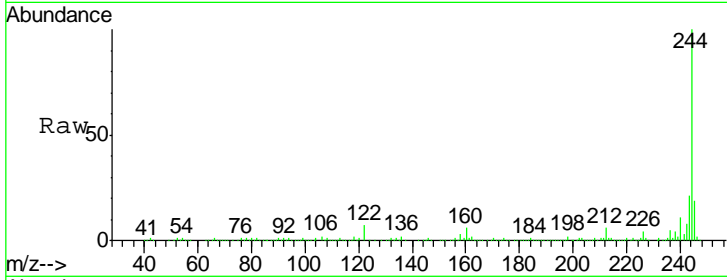
| Tgt Ion | Resp   | Lower | Upper |
|---------|--------|-------|-------|
| 202     | 688331 |       |       |
| 202     | 100    |       |       |
| 200     | 22.1   | 15.0  | 22.4  |
| 203     | 18.4   | 14.1  | 21.1  |





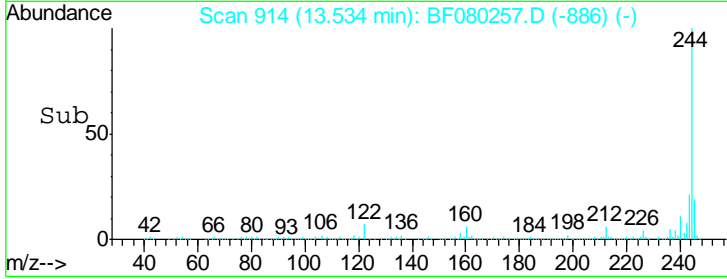
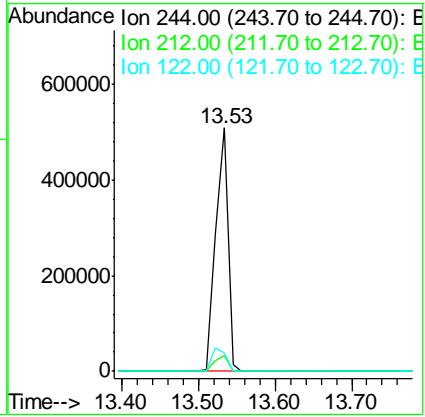
#78  
 Terphenyl-d14  
 Concen: 85.31 ng  
 RT: 13.53 min Scan# 914  
 Delta R.T. 0.02 min  
 Lab File: BF080257.D  
 Acq: 1 Jul 2015 3:12

**Instrument :**  
 BNA\_F  
**ClientSampled :**  
 TEC-B7

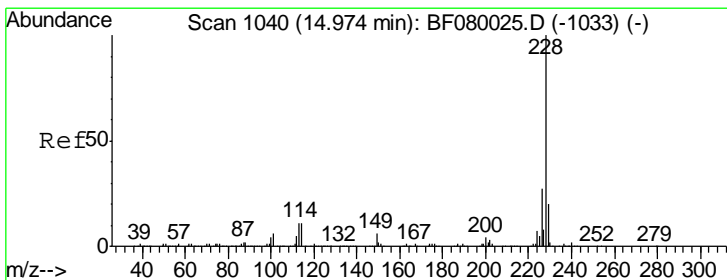


| Tgt Ion | Ratio | Lower | Upper |
|---------|-------|-------|-------|
| 244     | 100   |       |       |
| 212     | 6.4   | 4.3   | 6.5   |
| 122     | 7.4   | 17.4  | 26.2# |

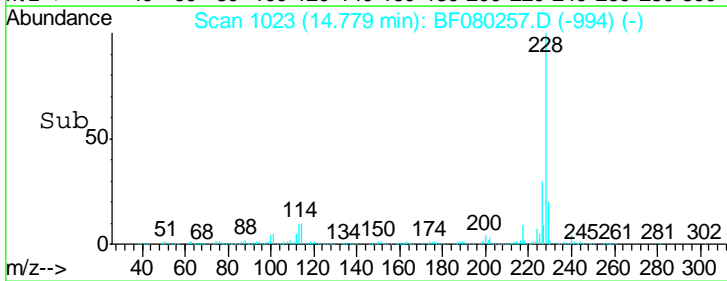
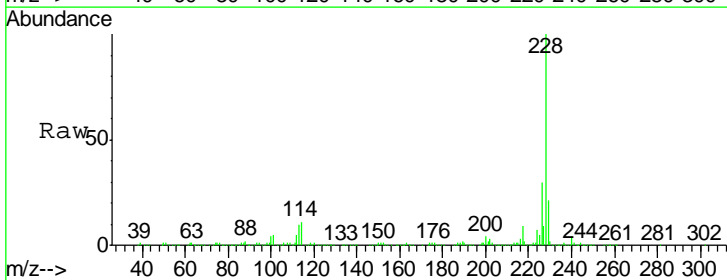
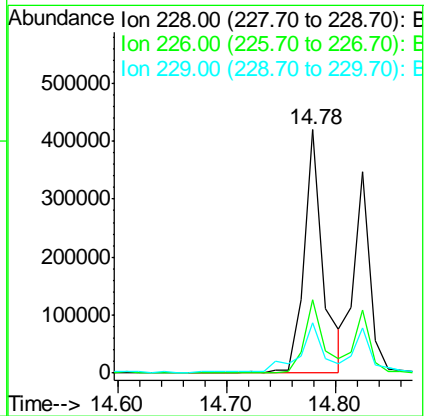
**Manual Integrations**  
**APPROVED**  
 apatel  
 7/1/2015 4:17:35 PM

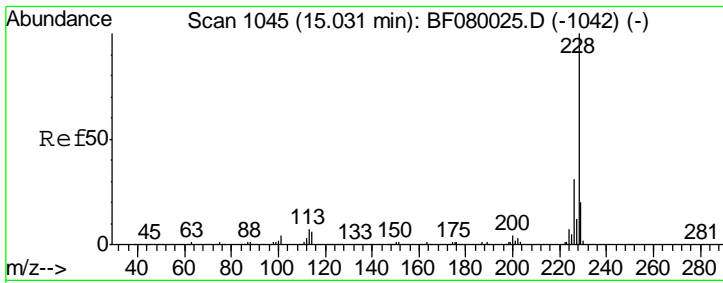


#80  
 Benzo(a)anthracene  
 Concen: 54.41 ng  
 RT: 14.78 min Scan# 1023  
 Delta R.T. 0.03 min  
 Lab File: BF080257.D  
 Acq: 1 Jul 2015 3:12



| Tgt Ion | Ratio | Lower | Upper |
|---------|-------|-------|-------|
| 228     | 100   |       |       |
| 226     | 30.0  | 20.0  | 30.0  |
| 229     | 20.6  | 15.4  | 23.2  |



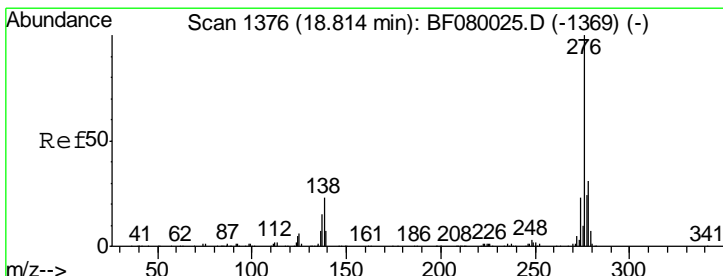
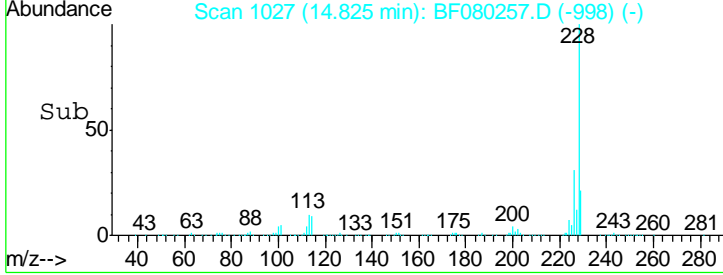
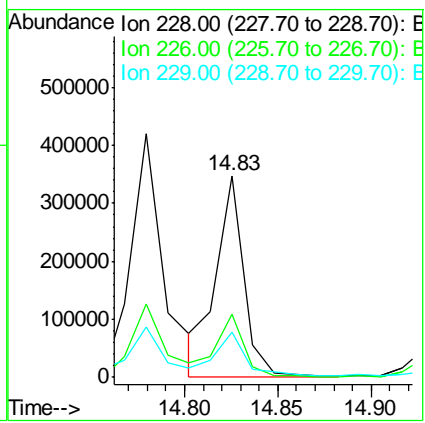
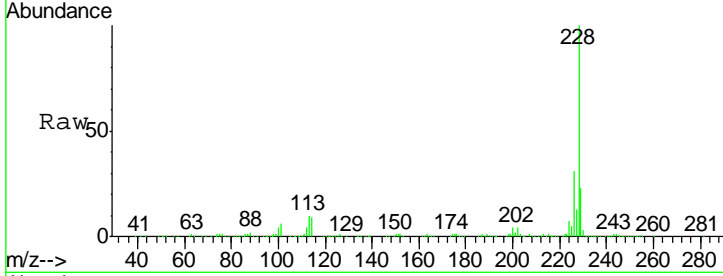


#82  
 Chrysene  
 Concen: 41.56 ng  
 RT: 14.83 min Scan# 1027  
 Delta R.T. 0.03 min  
 Lab File: BF080257.D  
 Acq: 1 Jul 2015 3:12

Instrument :  
 BNA\_F  
 ClientSampled :  
 TEC-B7

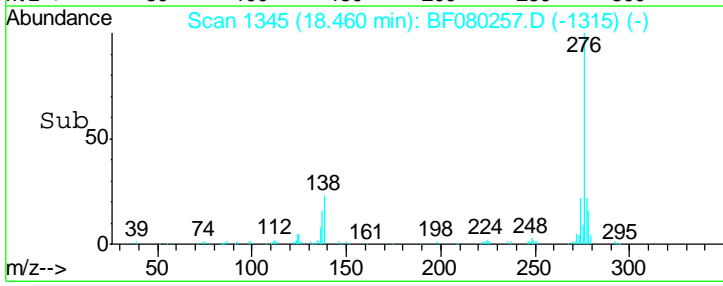
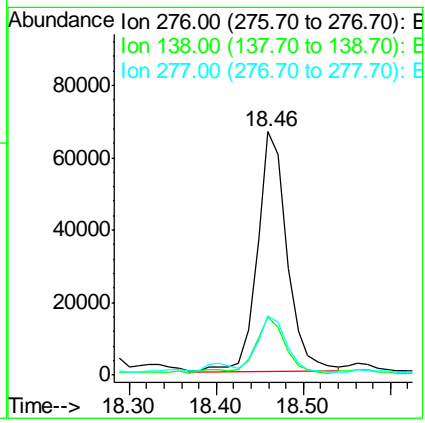
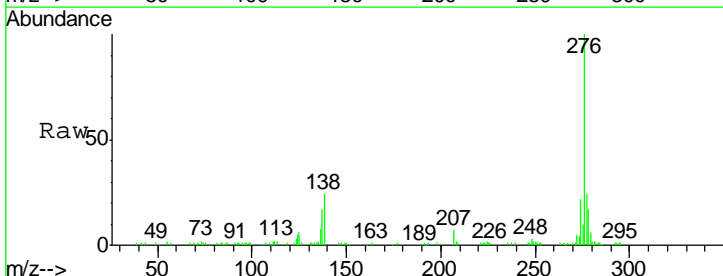
| Tgt Ion | Resp | Lower | Upper |
|---------|------|-------|-------|
| 228     | 100  |       |       |
| 226     | 31.0 | 21.0  | 31.4  |
| 229     | 22.5 | 15.6  | 23.4  |

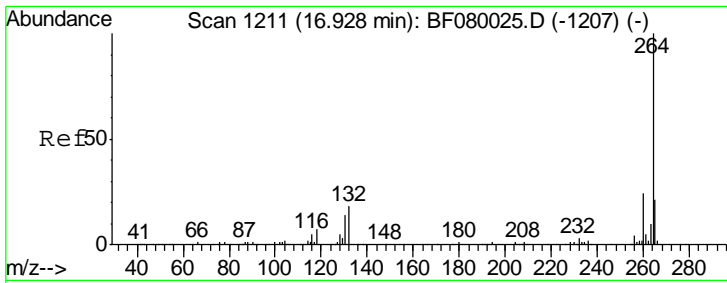
Manual Integrations  
**APPROVED**  
 apatel  
 7/1/2015 4:17:35 PM



#85  
 Indeno(1,2,3-cd)pyrene  
 Concen: 14.35 ng  
 RT: 18.46 min Scan# 1345  
 Delta R.T. 0.05 min  
 Lab File: BF080257.D  
 Acq: 1 Jul 2015 3:12

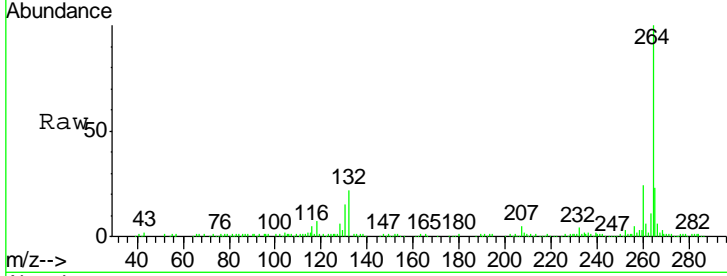
| Tgt Ion | Resp | Lower | Upper |
|---------|------|-------|-------|
| 276     | 100  |       |       |
| 138     | 24.0 | 25.7  | 38.5# |
| 277     | 23.0 | 15.6  | 23.4  |





#86  
 Perylene-d12  
 Concen: 20.00 ng  
 RT: 16.64 min Scan# 1186  
 Delta R.T. 0.05 min  
 Lab File: BF080257.D  
 Acq: 1 Jul 2015 3:12

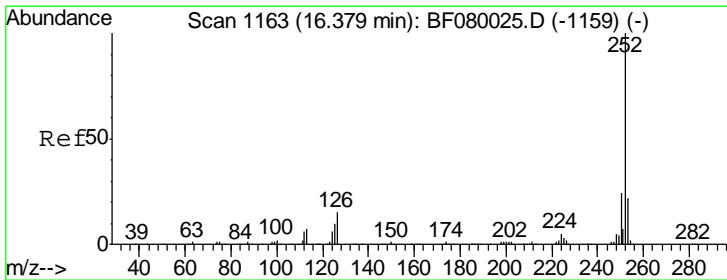
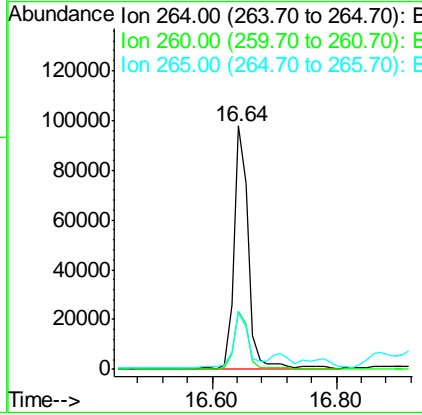
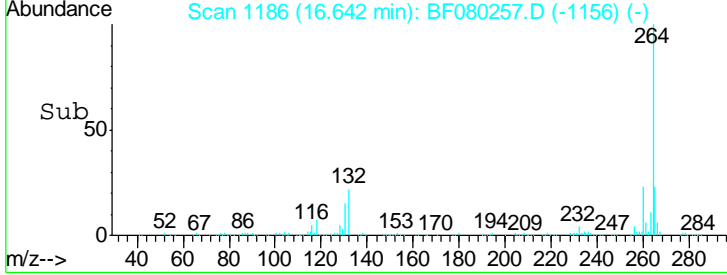
Instrument :  
 BNA\_F  
 ClientSampled :  
 TEC-B7



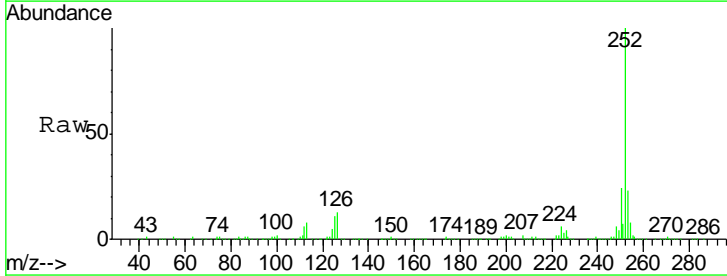
Tgt Ion: 264 Resp: 158780

| Ion | Ratio | Lower | Upper |
|-----|-------|-------|-------|
| 264 | 100   |       |       |
| 260 | 23.7  | 16.7  | 25.1  |
| 265 | 23.4  | 17.2  | 25.8  |

Manual Integrations  
 APPROVED  
 apatel  
 7/1/2015 4:17:35 PM

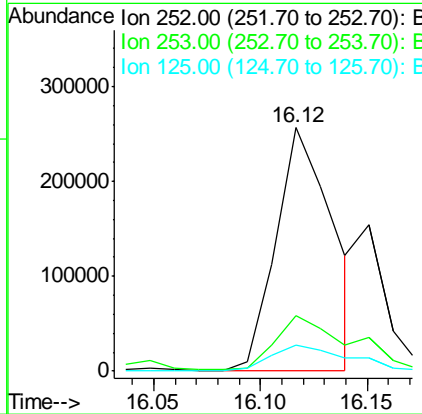
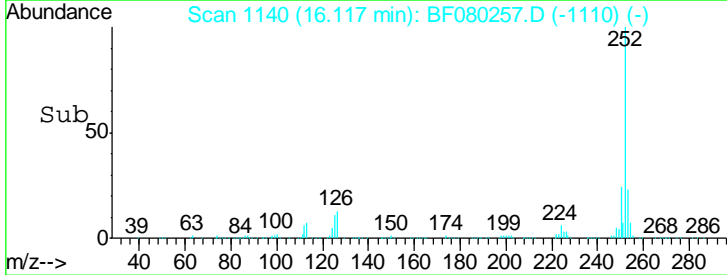


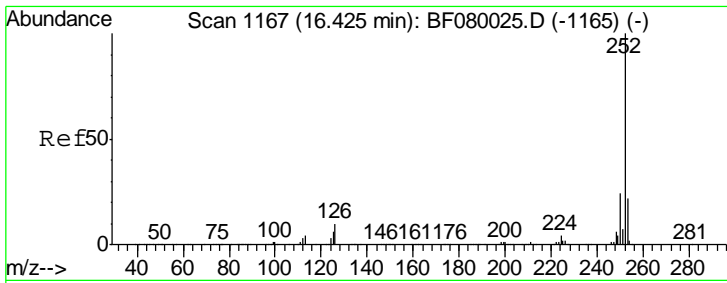
#87  
 Benzo(b)fluoranthene  
 Concen: 49.66 ng m  
 RT: 16.12 min Scan# 1140  
 Delta R.T. 0.05 min  
 Lab File: BF080257.D  
 Acq: 1 Jul 2015 3:12



Tgt Ion: 252 Resp: 477446

| Ion | Ratio | Lower | Upper |
|-----|-------|-------|-------|
| 252 | 100   |       |       |
| 253 | 23.0  | 17.5  | 26.3  |
| 125 | 10.7  | 17.1  | 25.7# |



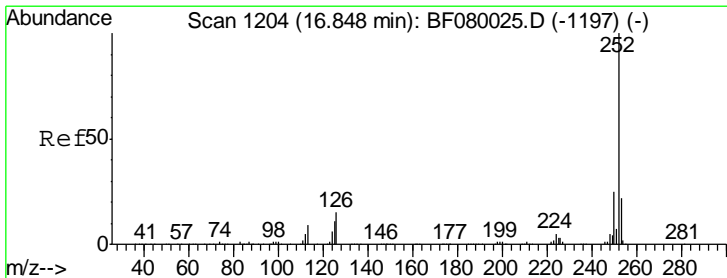
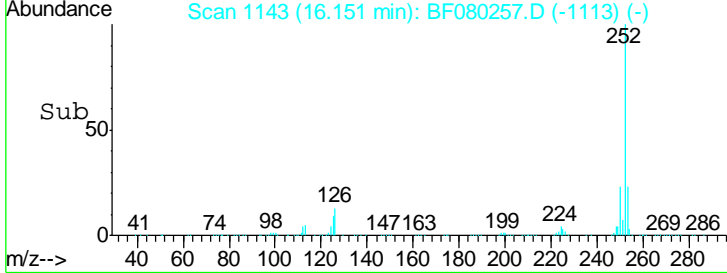
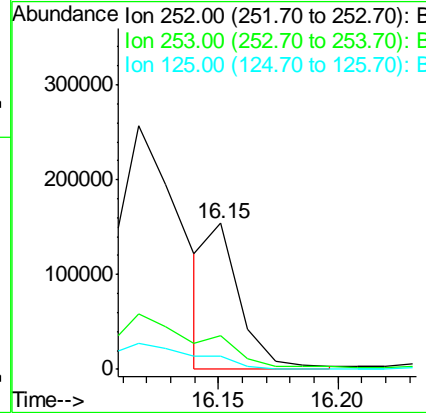
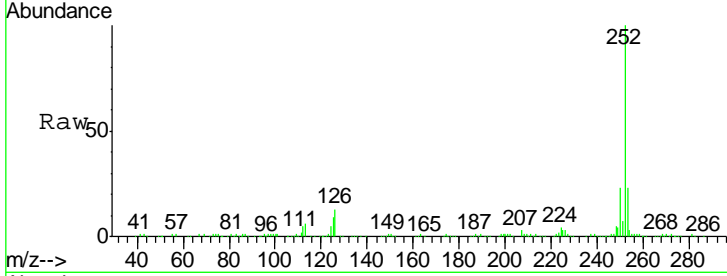


#88  
 Benzo(k)fluoranthene  
 Concen: 14.99 ng m  
 RT: 16.15 min Scan# 1143  
 Delta R.T. 0.05 min  
 Lab File: BF080257.D  
 Acq: 1 Jul 2015 3:12

Instrument :  
 BNA\_F  
 ClientSampled :  
 TEC-B7

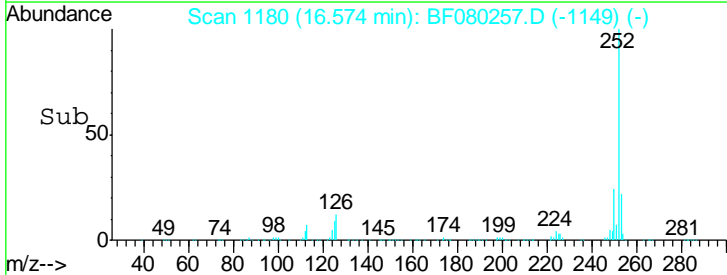
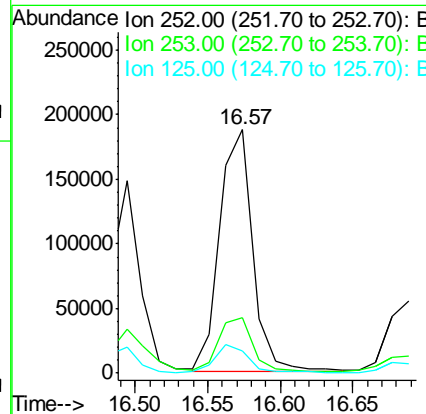
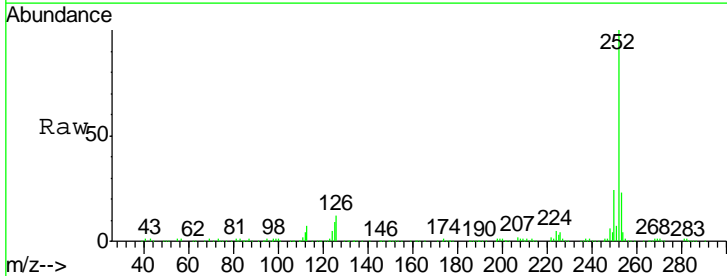
| Tgt Ion | Resp   | Lower | Upper |
|---------|--------|-------|-------|
| 252     | 146723 |       |       |
| 253     | 23.4   | 17.0  | 25.4  |
| 125     | 9.0    | 16.0  | 24.0# |

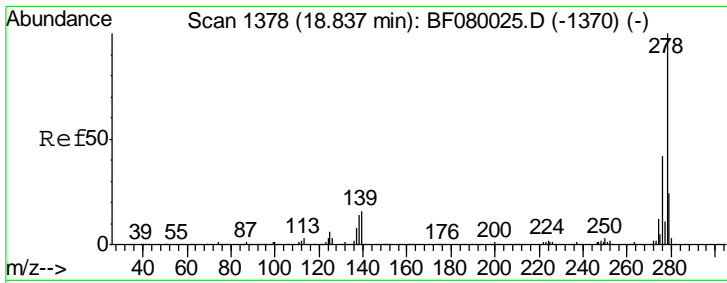
Manual Integrations  
 APPROVED  
 apatel  
 7/1/2015 4:17:35 PM



#89  
 Benzo(a)pyrene  
 Concen: 32.59 ng  
 RT: 16.57 min Scan# 1180  
 Delta R.T. 0.06 min  
 Lab File: BF080257.D  
 Acq: 1 Jul 2015 3:12

| Tgt Ion | Resp   | Lower | Upper |
|---------|--------|-------|-------|
| 252     | 297536 |       |       |
| 253     | 22.7   | 17.2  | 25.8  |
| 125     | 8.9    | 18.0  | 27.0# |



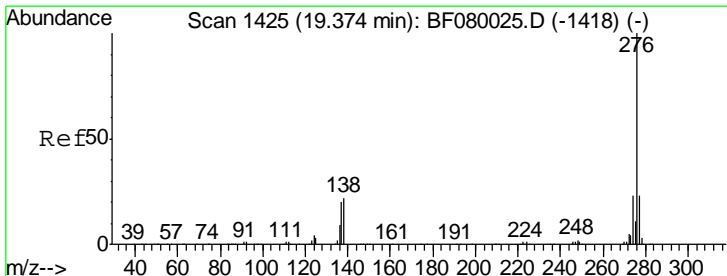
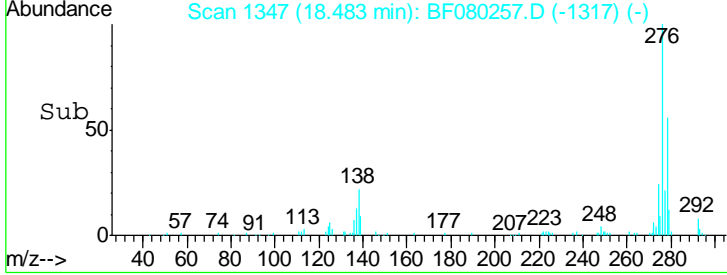
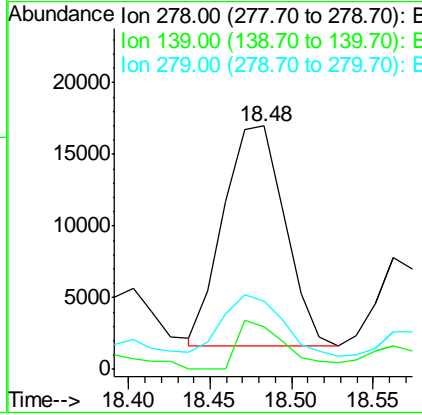
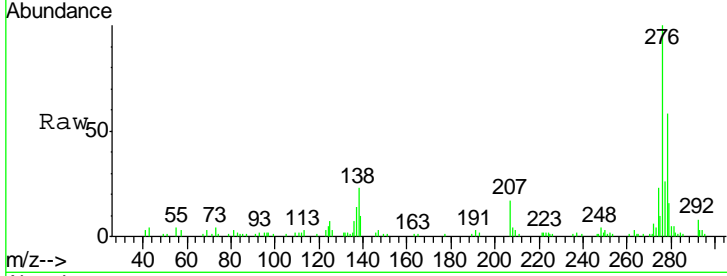


#90  
 Dibenzo(a,h)anthracene  
 Concen: 4.29 ng  
 RT: 18.48 min Scan# 1347  
 Delta R.T. 0.05 min  
 Lab File: BF080257.D  
 Acq: 1 Jul 2015 3:12

Instrument :  
 BNA\_F  
 ClientSampled :  
 TEC-B7

| Tgt Ion | Resp  | Lower | Upper |
|---------|-------|-------|-------|
| 278     | 40132 |       |       |
| 139     | 17.3  | 26.3  | 39.5# |
| 279     | 28.2  | 18.2  | 27.4# |

Manual Integrations  
 APPROVED  
 apatel  
 7/1/2015 4:17:35 PM



#91  
 Benzo(g,h,i)perylene  
 Concen: 16.47 ng  
 RT: 19.01 min Scan# 1393  
 Delta R.T. 0.05 min  
 Lab File: BF080257.D  
 Acq: 1 Jul 2015 3:12

| Tgt Ion | Resp   | Lower | Upper |
|---------|--------|-------|-------|
| 276     | 155415 |       |       |
| 277     | 24.5   | 17.8  | 26.6  |
| 138     | 25.5   | 34.6  | 51.8# |

