

Data Path : Z:\HPCHEM1\BNA F\DATA\BF063016\  
 Data File : BF088561.D  
 Acq On : 1 Jul 2016 6:38  
 Operator : UM/SJ  
 Sample : H3747-08  
 Misc :  
 ALS Vial : 32 Sample Multiplier: 1

**Instrument :**  
 BNA\_F  
**Client Sampled :**  
 C8-B4(0-4.5)C

**Manual Integrations**  
 APPROVED  
 SOHIL  
 7/1/2016 8:06:40 AM  
 7/1/2016 8:06:40 AM

Quant Time: Jul 01 07:09:26 2016  
 Quant Method : Z:\HPCHEM1\BNA F\METHODS\8270-BF063016.M  
 Quant Title : ASP BNA STANDARDS FOR 5 POINT CALIBRATION  
 QLast Update : Fri Jul 01 01:58:49 2016  
 Response via : Initial Calibration

7/1/2016 8:06:40 AM

Internal Standards	R.T.	QIon	Response	Conc	Units	Dev(Min)
-----						
1) 1,4-Dichlorobenzene-d4	6.82	152	145327	20.00	ng	0.01
21) Naphthalene-d8	8.10	136	570099	20.00	ng	0.00
38) Acenaphthene-d10	9.85	164	238963	20.00	ng	0.00
63) Phenanthrene-d10	11.32	188	381271	20.00	ng	0.00
75) Chrysene-d12	13.95	240	270732	20.00	ng	0.00
86) Perylene-d12	15.36	264	275598	20.00	ng	0.01
System Monitoring Compounds						
5) 2-Fluorophenol	5.42	112	850338	87.69	ng	0.01
7) Phenol-d6	6.46	99	1292622	103.17	ng	0.01
23) Nitrobenzene-d5	7.38	82	715710	65.79	ng	0.00
41) 2,4,6-Tribromophenol	10.64	330	191695	86.39	ng	0.00
44) 2-Fluorobiphenyl	9.18	172	1131598	74.80	ng	0.00
78) Terphenyl-d14	12.91	244	688599	56.65	ng	0.00
Target Compounds						Qvalue
49) Dimethylphthalate	9.58	163	74188	4.36	ng	97
70) Phenanthrene	11.35	178	46694	2.24	ng	97
74) Fluoranthene	12.54	202	103636	4.90	ng	97
77) Pyrene	12.76	202	100614	4.38	ng	98
80) Benzo(a)anthracene	13.94	228	58803	3.37	ng	97
82) Chrysene	13.98	228	43420m	2.52	ng	
87) Benzo(b)fluoranthene	14.96	252	56746m	3.28	ng	
89) Benzo(a)pyrene	15.30	252	43280	2.96	ng	98
-----						

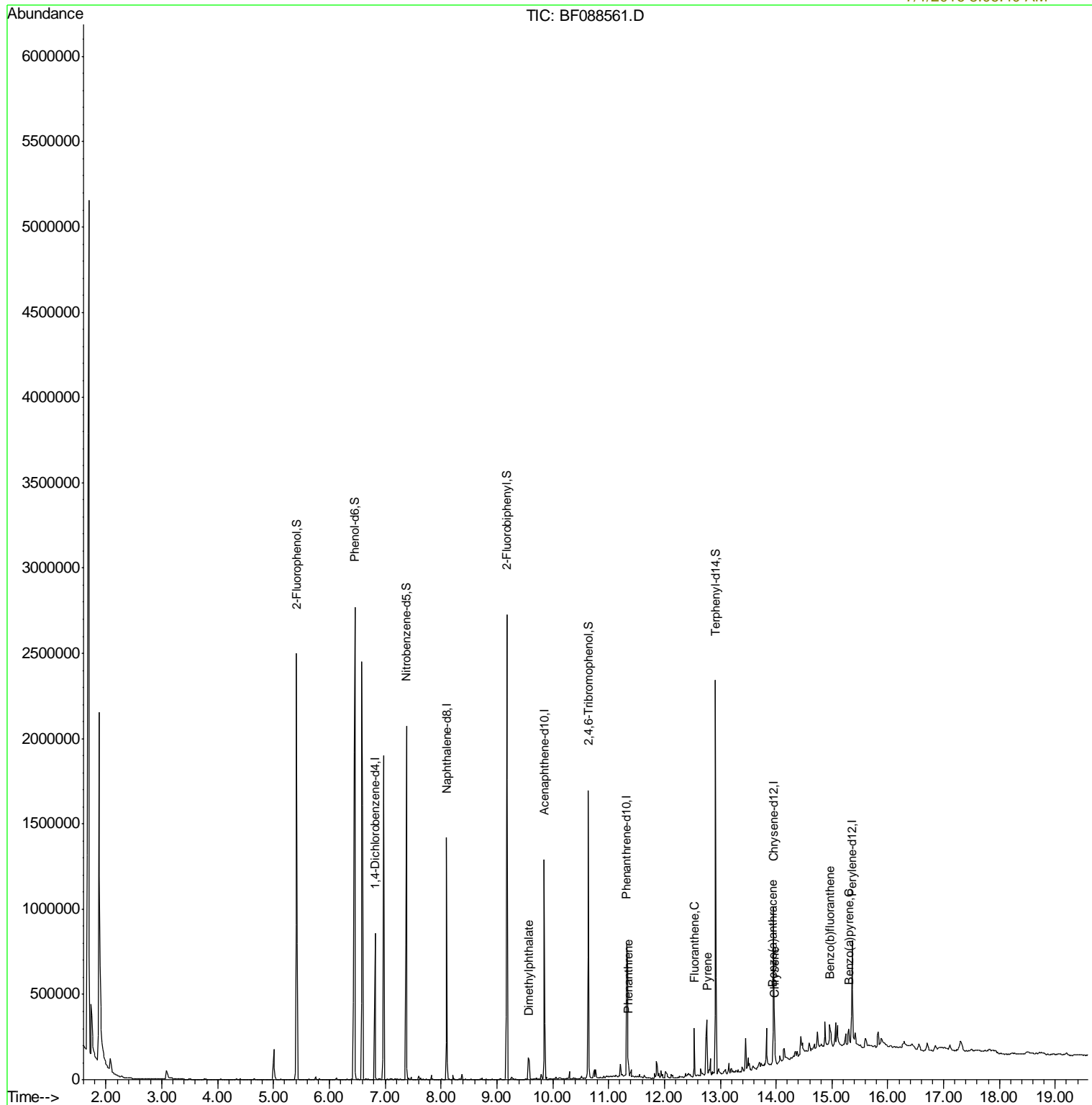
(#) = qualifier out of range (m) = manual integration (+) = signals summed

Data Path : Z:\HPCHEM1\BNA F\DATA\BF063016\  
 Data File : BF088561.D  
 Acq On : 1 Jul 2016 6:38  
 Operator : UM/SJ  
 Sample : H3747-08  
 Misc :  
 ALS Vial : 32 Sample Multiplier: 1

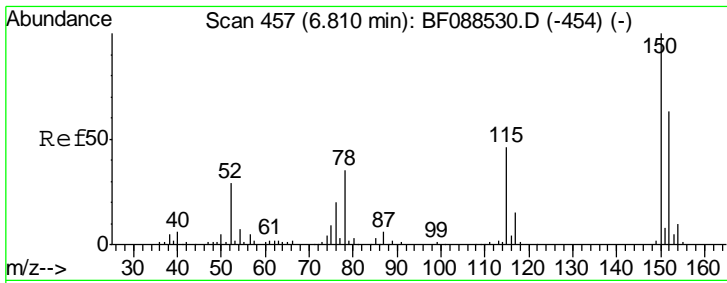
Instrument :  
 BNA\_F  
 Client Sampled :  
 C8-B4(0-4.5)C

Manual Integrations  
 SOHIL  
 7/1/2016 8:06:40 AM  
 7/1/2016 8:06:40 AM

Quant Time: Jul 01 07:09:26 2016  
 Quant Method : Z:\HPCHEM1\BNA F\METHODS\8270-BF063016.M  
 Quant Title : ASP BNA STANDARDS FOR 5 POINT CALIBRATION  
 QLast Update : Fri Jul 01 01:58:49 2016  
 Response via : Initial Calibration

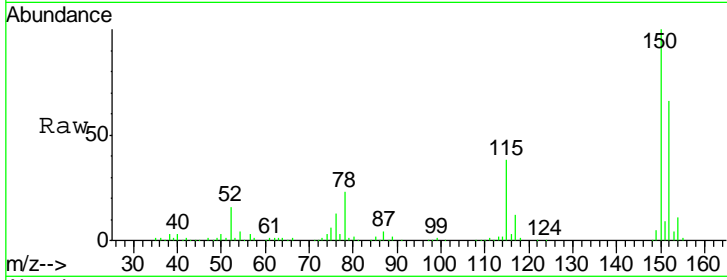


7/1/2016 8:06:40 AM



#1  
 1,4-Dichlorobenzene-d4  
 Concen: 20.00 ng  
 RT: 6.82 min Scan# 458  
 Delta R.T. 0.01 min  
 Lab File: BF088561.D  
 Acq: 1 Jul 2016 6:38

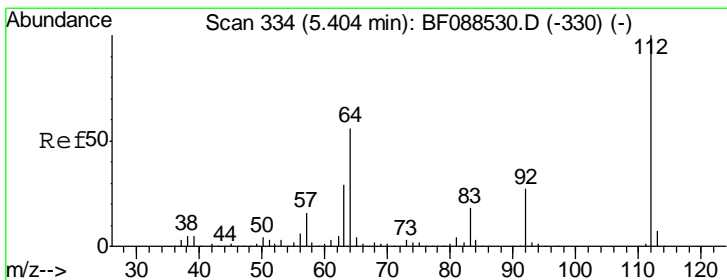
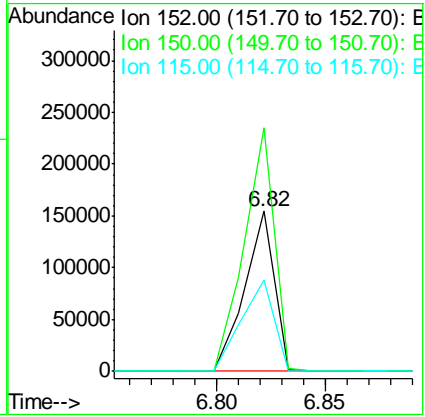
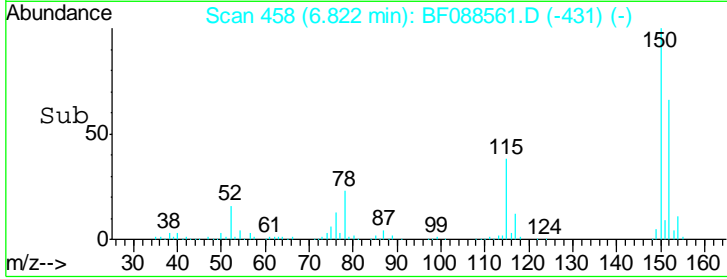
**Instrument :**  
 BNA\_F  
**ClientSampled :**  
 C8-B4(0-4.5)C



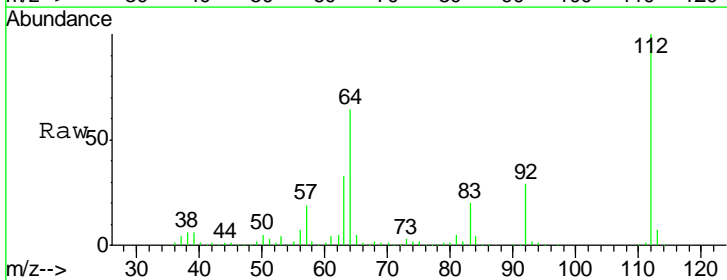
Tgt Ion:152 Resp: 145327

Ion	Ratio	Lower	Upper
152	100		
150	152.3	123.8	185.6
115	57.4	39.6	59.4

**Manual Integrations**  
 APPROVED  
 SOHIL  
 7/1/2016 8:06:40 AM  
 7/1/2016 8:06:40 AM

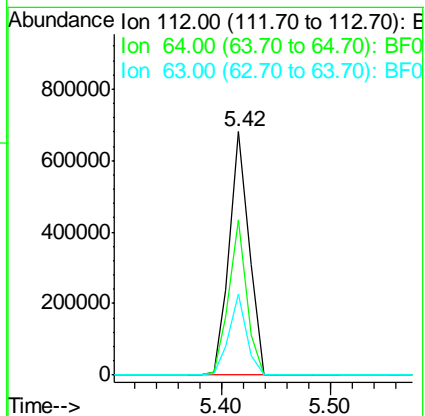
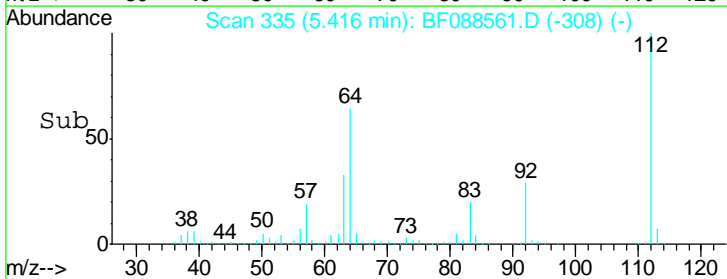


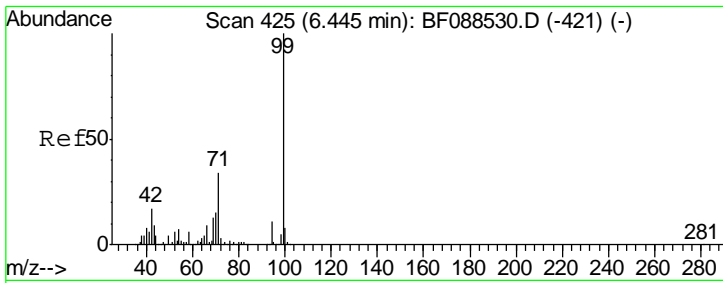
#5  
 2-Fluorophenol  
 Concen: 87.69 ng  
 RT: 5.42 min Scan# 335  
 Delta R.T. 0.01 min  
 Lab File: BF088561.D  
 Acq: 1 Jul 2016 6:38



Tgt Ion:112 Resp: 850338

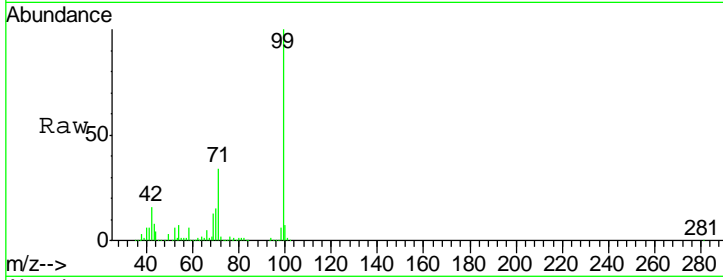
Ion	Ratio	Lower	Upper
112	100		
64	63.9	42.2	63.2#
63	33.2	21.8	32.8#





#7  
 Phenol-d6  
 Concen: 103.17 ng  
 RT: 6.46 min Scan# 426  
 Delta R.T. 0.01 min  
 Lab File: BF088561.D  
 Acq: 1 Jul 2016 6:38

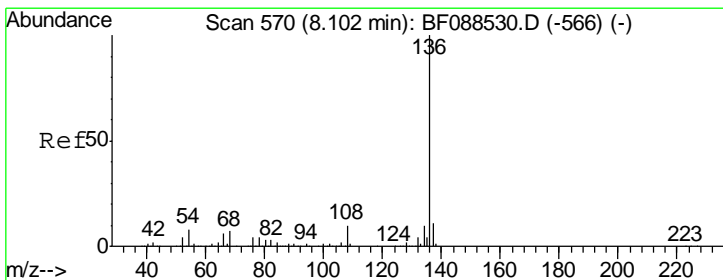
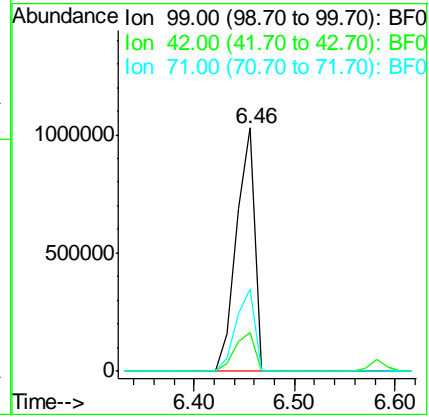
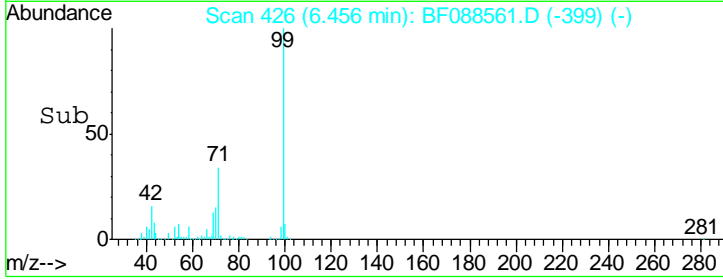
**Instrument :**  
 BNA\_F  
**ClientSampled :**  
 C8-B4(0-4.5)C



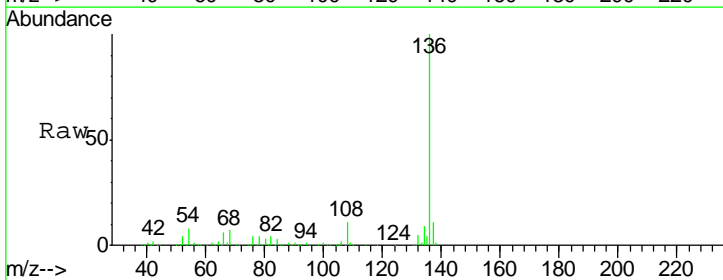
Tgt Ion: 99 Resp: 1292622

Ion	Ratio	Lower	Upper
99	100		
42	15.9	12.2	18.2
71	34.0	23.4	35.0

**Manual Integrations**  
 APPROVED  
 SOHIL  
 7/1/2016 8:06:40 AM  
 7/1/2016 8:06:40 AM

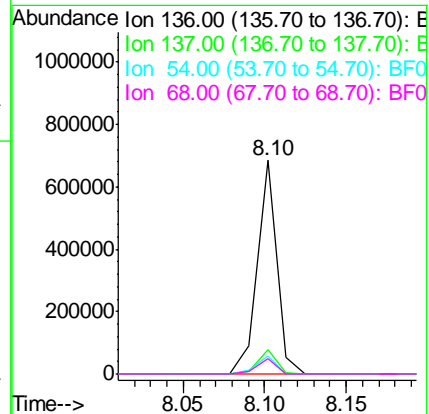
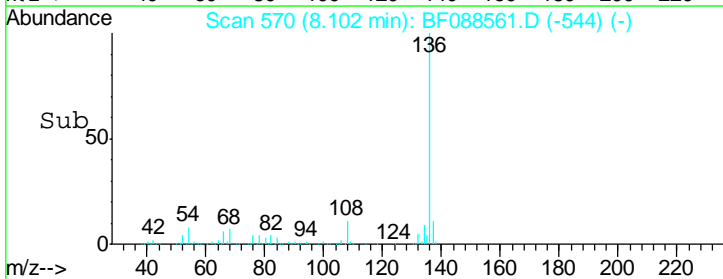


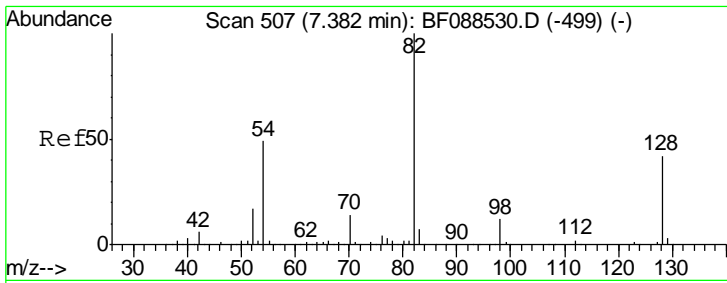
#21  
 Naphthalene-d8  
 Concen: 20.00 ng  
 RT: 8.10 min Scan# 570  
 Delta R.T. -0.00 min  
 Lab File: BF088561.D  
 Acq: 1 Jul 2016 6:38



Tgt Ion: 136 Resp: 570099

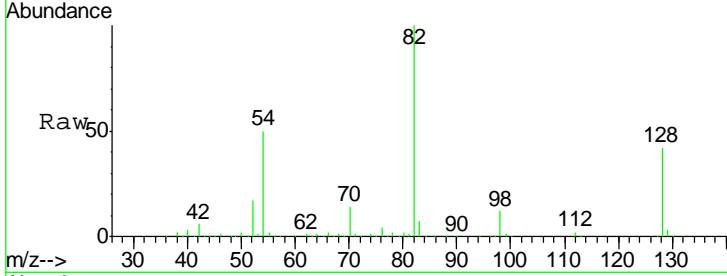
Ion	Ratio	Lower	Upper
136	100		
137	11.2	9.1	13.7
54	8.4	6.6	10.0
68	7.2	5.1	7.7





#23  
 Nitrobenzene-d5  
 Concen: 65.79 ng  
 RT: 7.38 min Scan# 507  
 Delta R.T. -0.00 min  
 Lab File: BF088561.D  
 Acq: 1 Jul 2016 6:38

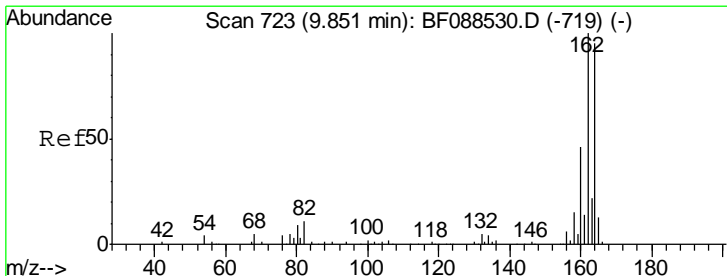
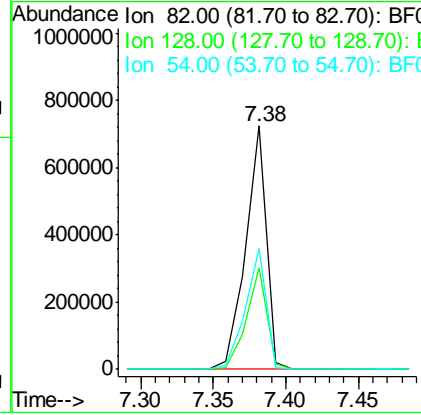
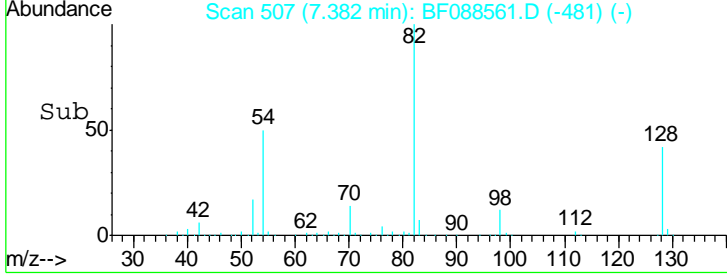
**Instrument :**  
 BNA\_F  
**ClientSampled :**  
 C8-B4(0-4.5)C



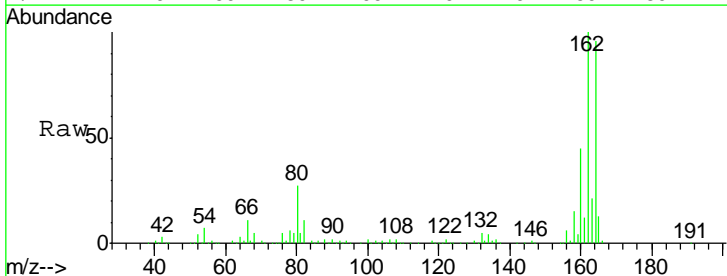
Tgt Ion: 82 Resp: 715710

Ion	Ratio	Lower	Upper
82	100		
128	41.5	35.9	53.9
54	49.6	40.9	61.3

**Manual Integrations**  
 APPROVED  
 SOHIL  
 7/1/2016 8:06:40 AM  
 7/1/2016 8:06:40 AM

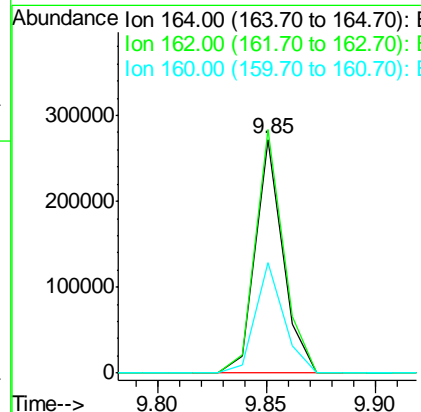
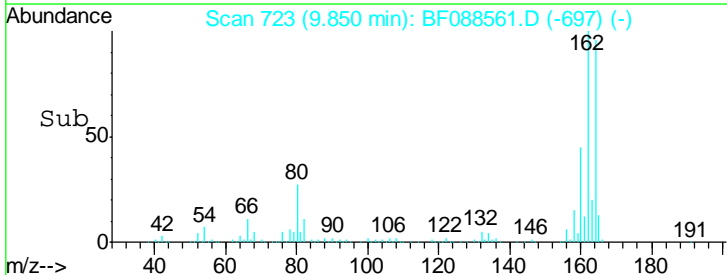


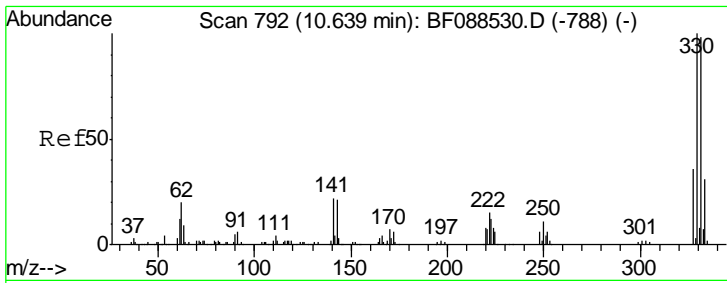
#38  
 Acenaphthene-d10  
 Concen: 20.00 ng  
 RT: 9.85 min Scan# 723  
 Delta R.T. -0.00 min  
 Lab File: BF088561.D  
 Acq: 1 Jul 2016 6:38



Tgt Ion: 164 Resp: 238963

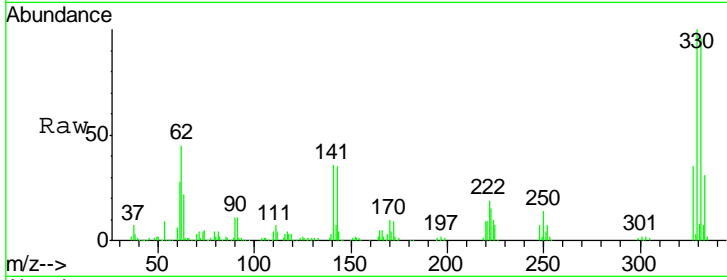
Ion	Ratio	Lower	Upper
164	100		
162	104.2	85.4	128.2
160	47.1	39.5	59.3





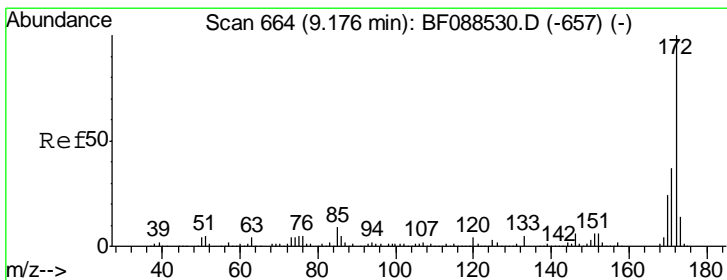
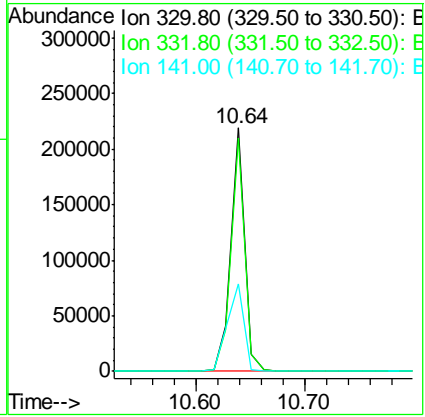
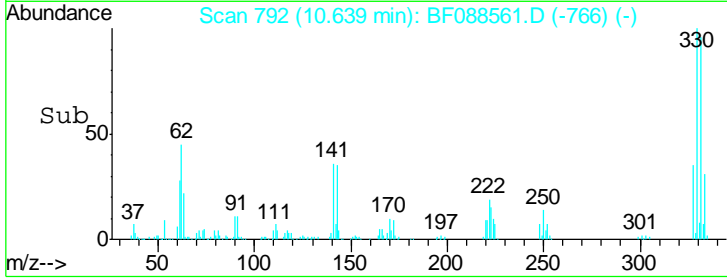
#41  
 2,4,6-Tribromophenol  
 Concen: 86.39 ng  
 RT: 10.64 min Scan# 792  
 Delta R.T. -0.00 min  
 Lab File: BF088561.D  
 Acq: 1 Jul 2016 6:38

**Instrument :**  
 BNA\_F  
**ClientSampled :**  
 C8-B4(0-4.5)C

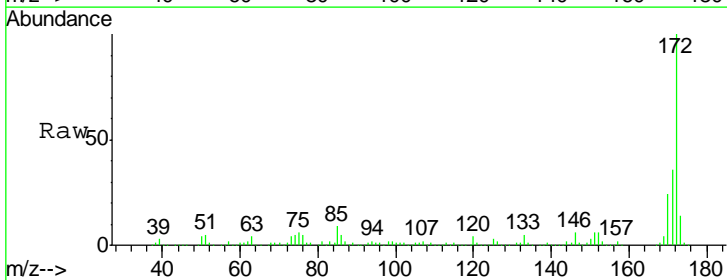


Tgt Ion	Resp	Lower	Upper
330	100		
332	95.4	0.0	0.0#
141	43.2	0.0	0.0#

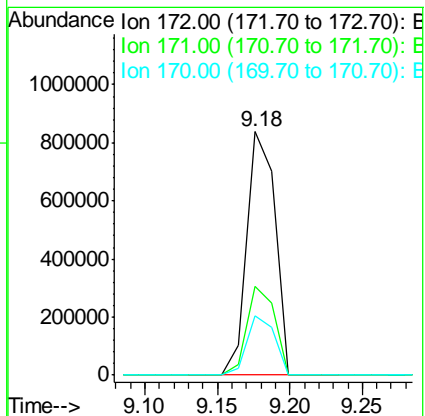
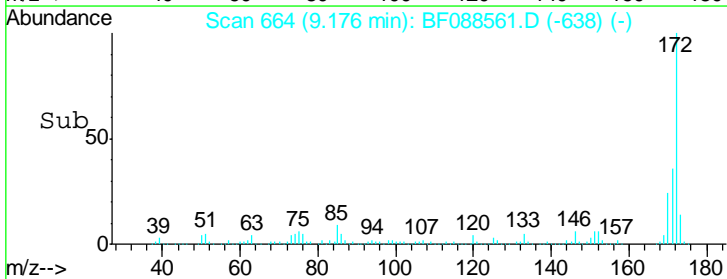
**Manual Integrations**  
 APPROVED  
 SOHIL  
 7/1/2016 8:06:40 AM  
 7/1/2016 8:06:40 AM

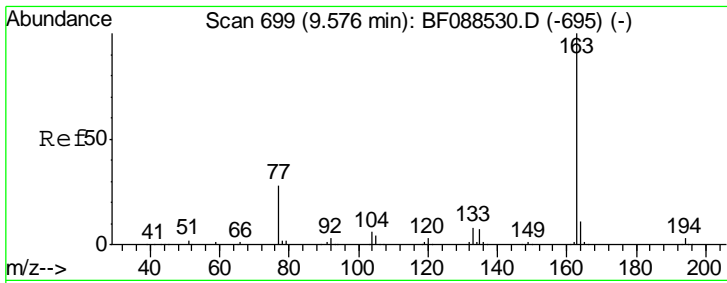


#44  
 2-Fluorobiphenyl  
 Concen: 74.80 ng  
 RT: 9.18 min Scan# 664  
 Delta R.T. -0.00 min  
 Lab File: BF088561.D  
 Acq: 1 Jul 2016 6:38



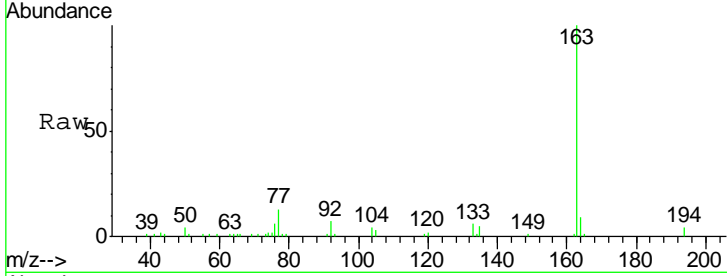
Tgt Ion	Resp	Lower	Upper
172	100		
171	36.5	28.6	43.0
170	24.3	19.2	28.8





#49  
 Dimethylphthalate  
 Concen: 4.36 ng  
 RT: 9.58 min Scan# 699  
 Delta R.T. -0.00 min  
 Lab File: BF088561.D  
 Acq: 1 Jul 2016 6:38

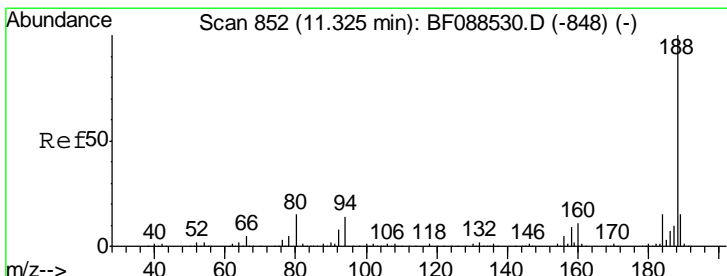
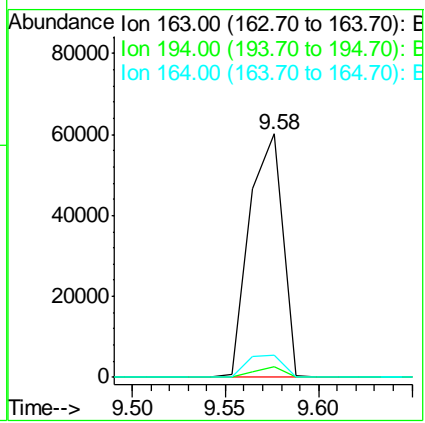
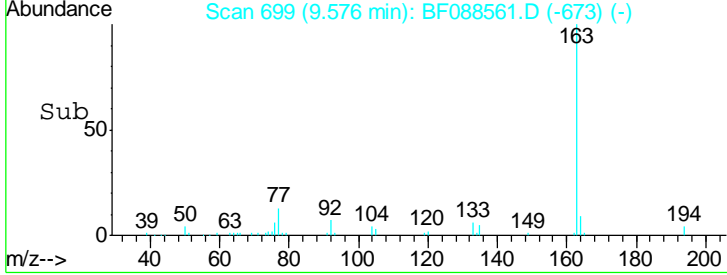
Instrument :  
 BNA\_F  
 Client Sampled :  
 C8-B4(0-4.5)C



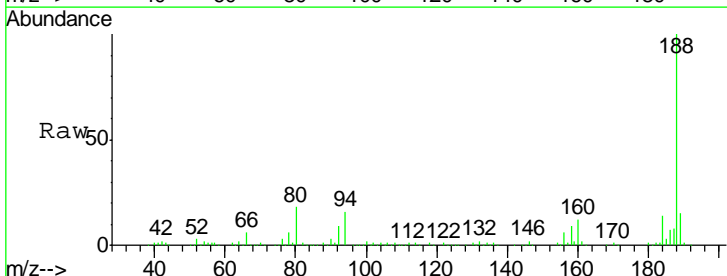
Tgt Ion: 163 Resp: 74188

Ion	Ratio	Lower	Upper
163	100		
194	4.1	2.8	4.2
164	9.3	8.3	12.5

Manual Integrations  
 APPROVED  
 SOHIL  
 7/1/2016 8:06:40 AM  
 7/1/2016 8:06:40 AM

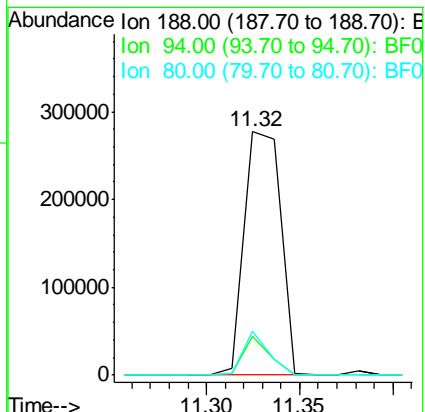
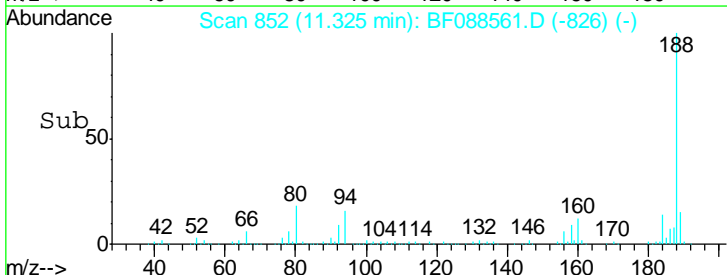


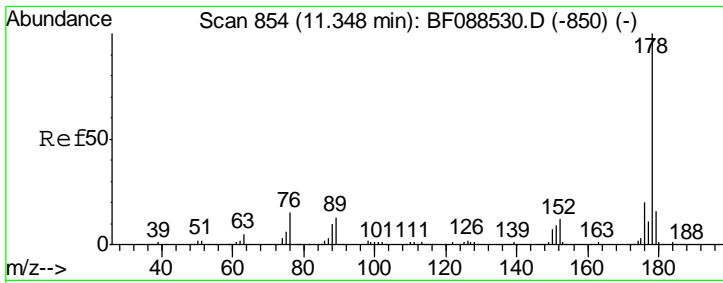
#63  
 Phenanthrene-d10  
 Concen: 20.00 ng  
 RT: 11.32 min Scan# 852  
 Delta R.T. -0.00 min  
 Lab File: BF088561.D  
 Acq: 1 Jul 2016 6:38



Tgt Ion: 188 Resp: 381271

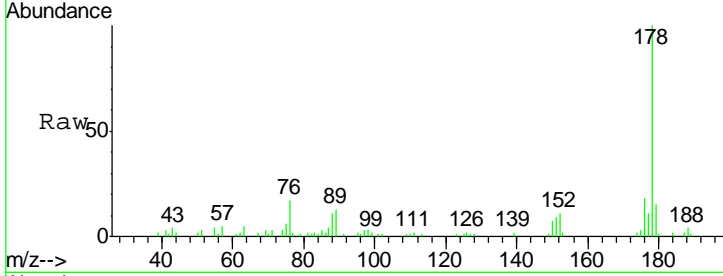
Ion	Ratio	Lower	Upper
188	100		
94	15.8	9.0	13.6#
80	18.0	10.0	15.0#





#70  
 Phenanthrene  
 Concen: 2.24 ng  
 RT: 11.35 min Scan# 854  
 Delta R.T. -0.00 min  
 Lab File: BF088561.D  
 Acq: 1 Jul 2016 6:38

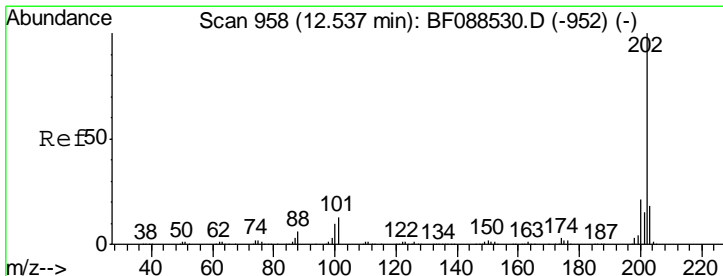
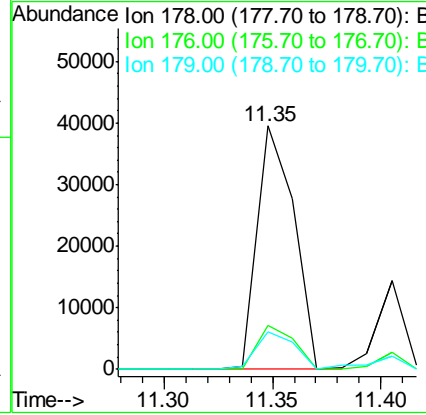
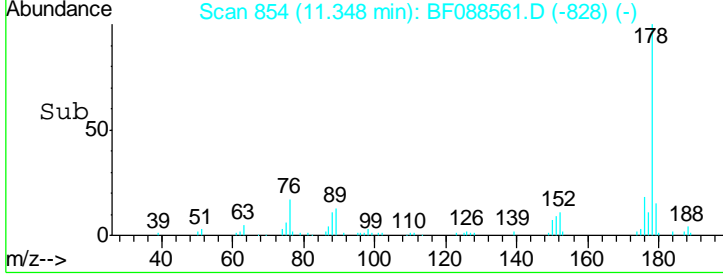
Instrument :  
 BNA\_F  
 ClientSampled :  
 C8-B4(0-4.5)C



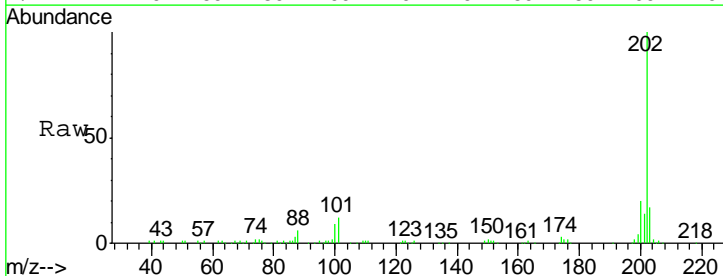
Tgt Ion: 178 Resp: 46694

Ion	Ratio	Lower	Upper
178	100		
176	17.9	15.8	23.6
179	15.3	13.0	19.4

Manual Integrations  
 APPROVED  
 SOHIL  
 7/1/2016 8:06:40 AM  
 7/1/2016 8:06:40 AM

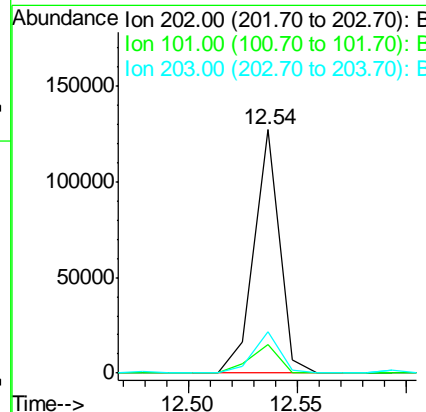
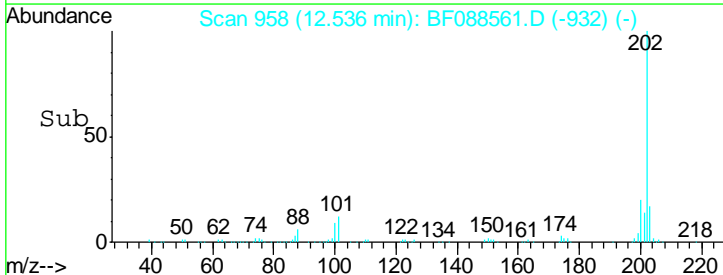


#74  
 Fluoranthene  
 Concen: 4.90 ng  
 RT: 12.54 min Scan# 958  
 Delta R.T. -0.00 min  
 Lab File: BF088561.D  
 Acq: 1 Jul 2016 6:38

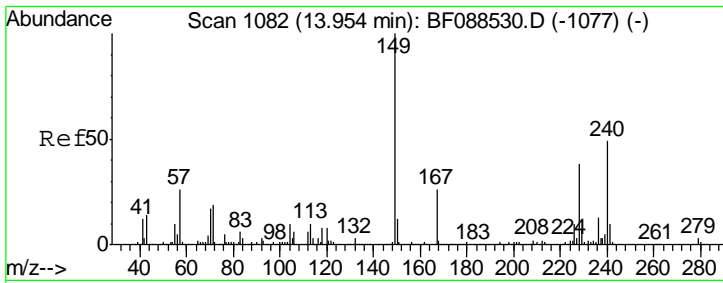


Tgt Ion: 202 Resp: 103636

Ion	Ratio	Lower	Upper
202	100		
101	11.6	0.0	33.1
203	17.0	0.0	38.1

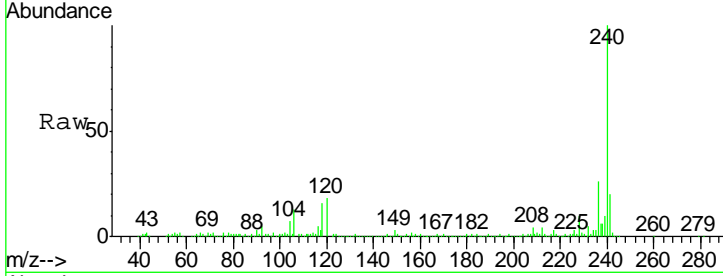






#75  
 Chrysene-d12  
 Concen: 20.00 ng  
 RT: 13.95 min Scan# 1082  
 Delta R.T. -0.00 min  
 Lab File: BF088561.D  
 Acq: 1 Jul 2016 6:38

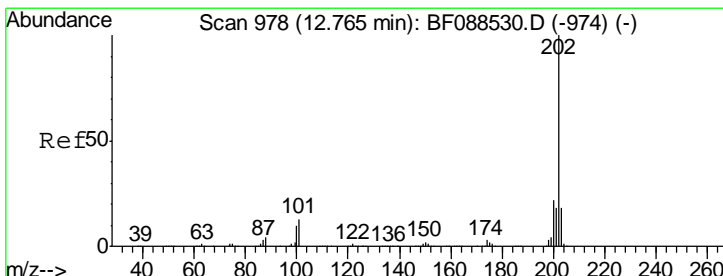
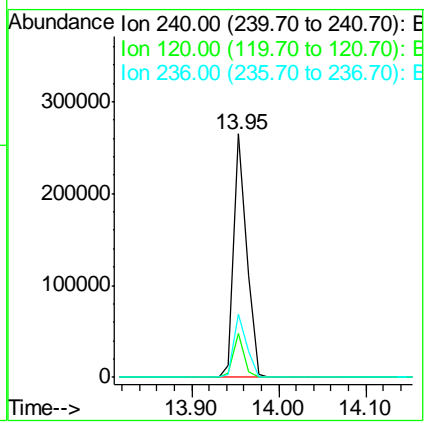
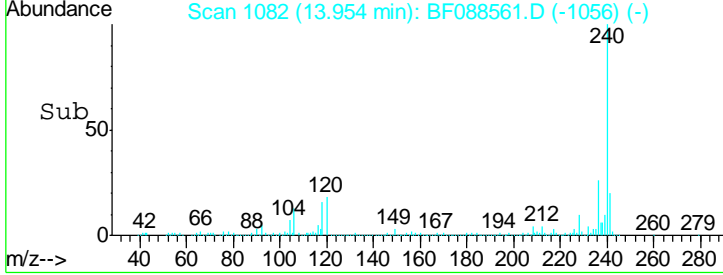
**Instrument :**  
 BNA\_F  
**Client Sampled :**  
 C8-B4(0-4.5)C



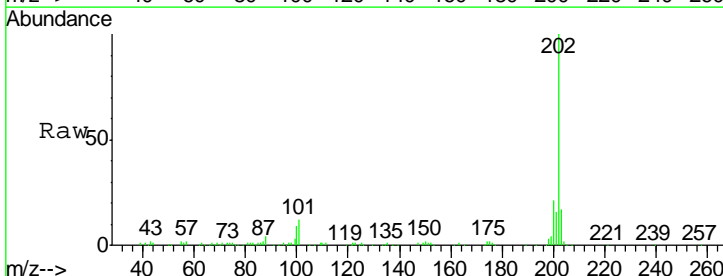
Tgt Ion: 240 Resp: 270732

Ion	Ratio	Lower	Upper
240	100		
120	18.1	6.8	10.2
236	25.9	20.2	30.2

**Manual Integrations**  
 APPROVED  
 SOHIL  
 7/1/2016 8:06:40 AM  
 7/1/2016 8:06:40 AM

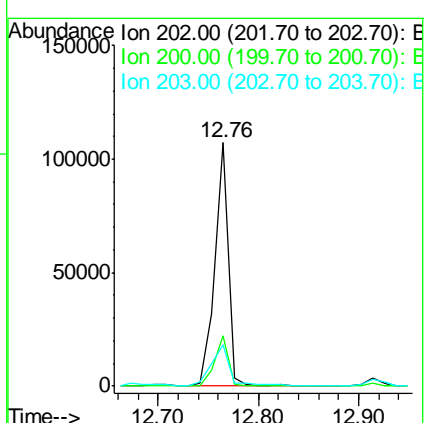
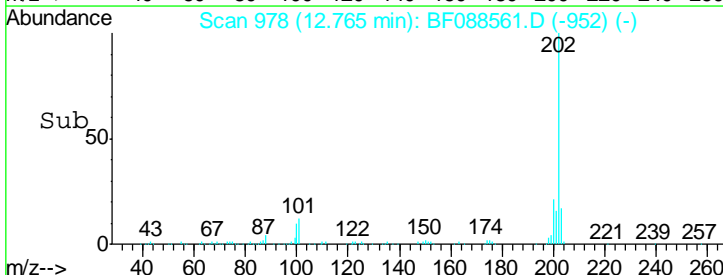


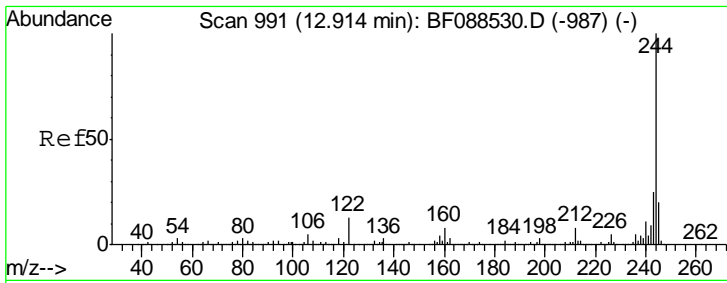
#77  
 Pyrene  
 Concen: 4.38 ng  
 RT: 12.76 min Scan# 978  
 Delta R.T. -0.00 min  
 Lab File: BF088561.D  
 Acq: 1 Jul 2016 6:38



Tgt Ion: 202 Resp: 100614

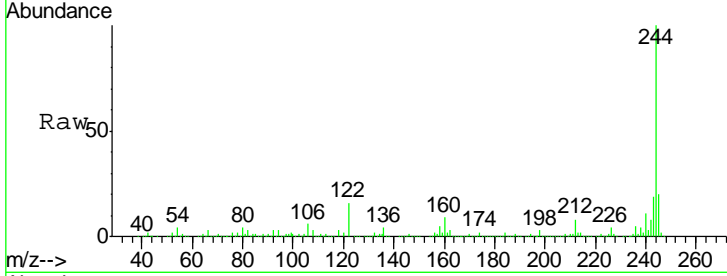
Ion	Ratio	Lower	Upper
202	100		
200	20.5	17.4	26.2
203	17.1	14.5	21.7





#78  
 Terphenyl-d14  
 Concen: 56.65 ng  
 RT: 12.91 min Scan# 991  
 Delta R.T. -0.00 min  
 Lab File: BF088561.D  
 Acq: 1 Jul 2016 6:38

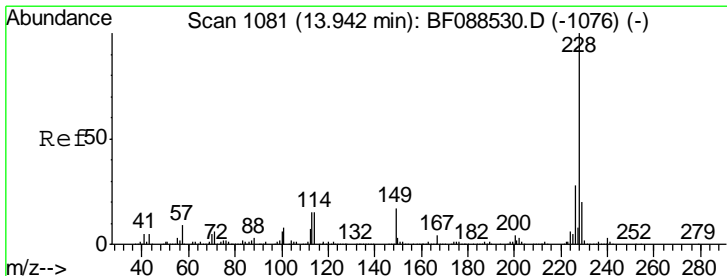
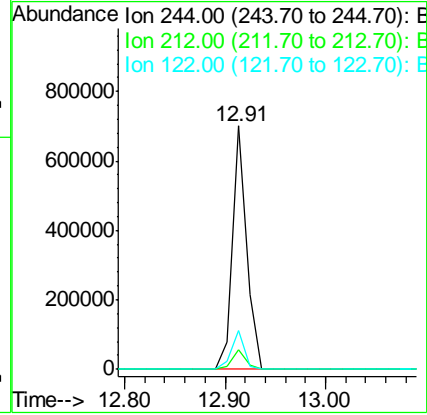
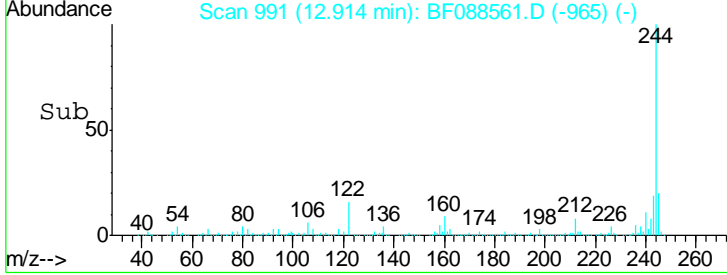
**Instrument :**  
 BNA\_F  
**ClientSampled :**  
 C8-B4(0-4.5)C



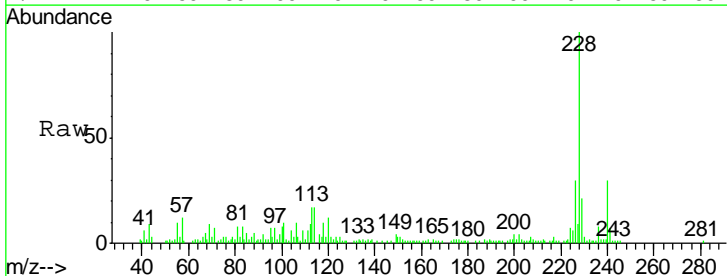
Tgt Ion: 244 Resp: 688599

Ion	Ratio	Lower	Upper
244	100		
212	7.9	6.0	9.0
122	16.1	11.2	16.8

**Manual Integrations**  
 APPROVED  
 SOHIL  
 7/1/2016 8:06:40 AM  
 7/1/2016 8:06:40 AM

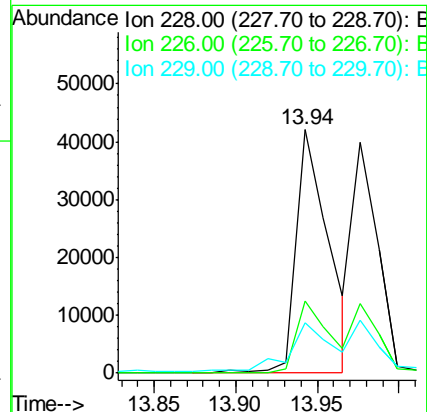
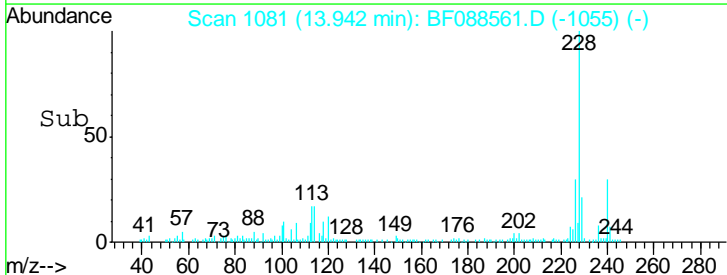


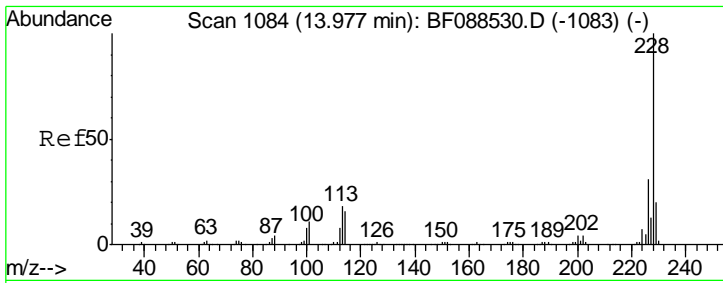
#80  
 Benzo(a)anthracene  
 Concen: 3.37 ng  
 RT: 13.94 min Scan# 1081  
 Delta R.T. -0.00 min  
 Lab File: BF088561.D  
 Acq: 1 Jul 2016 6:38



Tgt Ion: 228 Resp: 58803

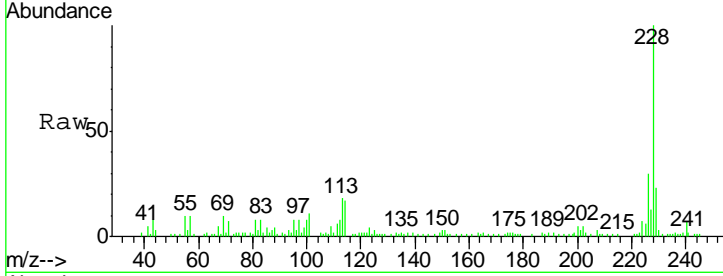
Ion	Ratio	Lower	Upper
228	100		
226	29.8	22.3	33.5
229	20.6	16.0	24.0





#82  
 Chrysene  
 Concen: 2.52 ng m  
 RT: 13.98 min Scan# 1084  
 Delta R.T. -0.01 min  
 Lab File: BF088561.D  
 Acq: 1 Jul 2016 6:38

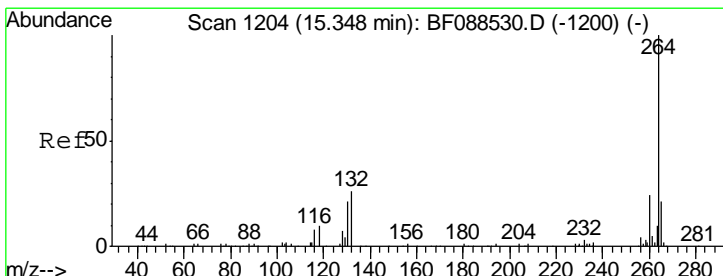
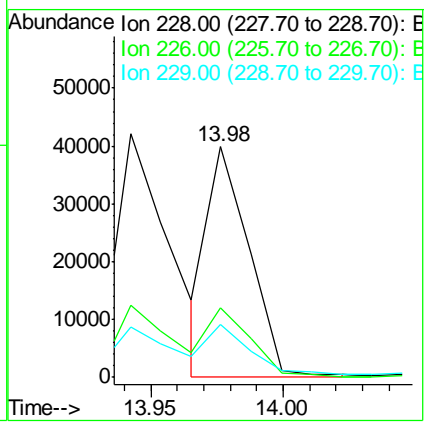
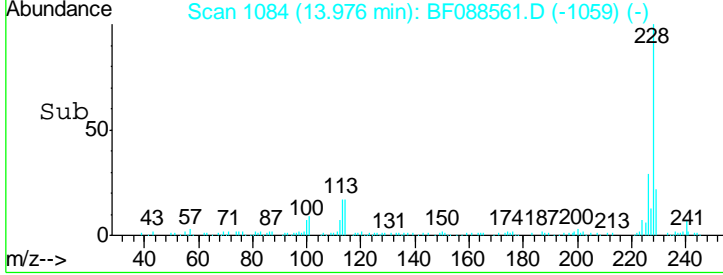
**Instrument :**  
 BNA\_F  
**Client Sampled :**  
 C8-B4(0-4.5)C



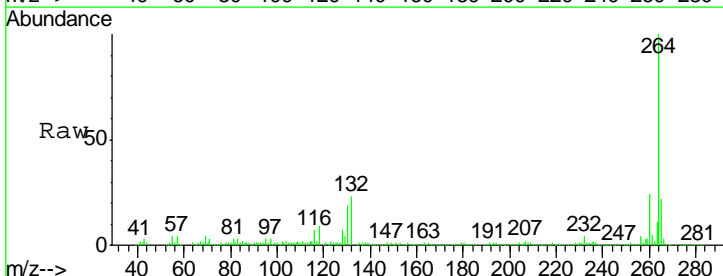
Tgt Ion: 228 Resp: 43420

Ion	Ratio	Lower	Upper
228	100		
226	30.2	25.4	38.2
229	23.2	16.3	24.5

**Manual Integrations**  
 APPROVED  
 SOHIL  
 7/1/2016 8:06:40 AM  
 7/1/2016 8:06:40 AM

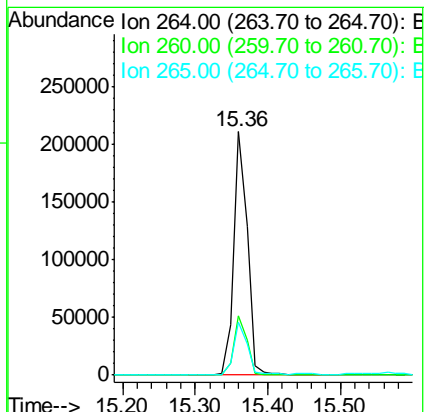
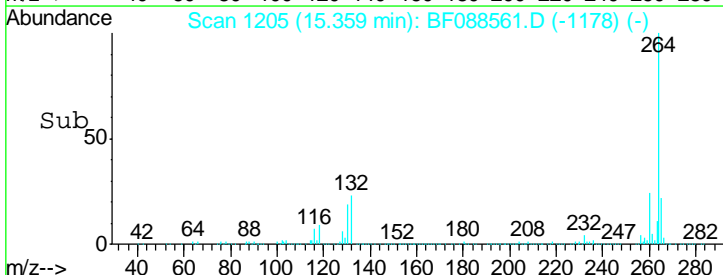


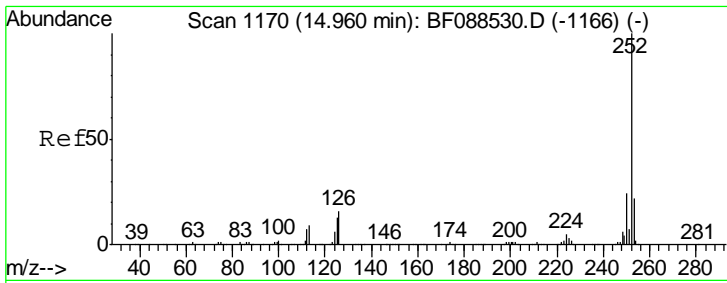
#86  
 Perylene-d12  
 Concen: 20.00 ng  
 RT: 15.36 min Scan# 1205  
 Delta R.T. 0.01 min  
 Lab File: BF088561.D  
 Acq: 1 Jul 2016 6:38



Tgt Ion: 264 Resp: 275598

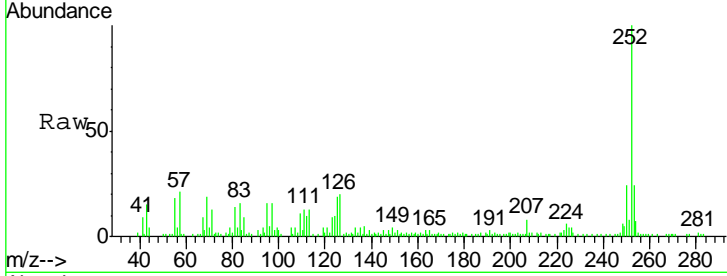
Ion	Ratio	Lower	Upper
264	100		
260	24.3	19.2	28.8
265	21.7	16.9	25.3





#87  
 Benzo(b)fluoranthene  
 Concen: 3.28 ng m  
 RT: 14.96 min Scan# 1170  
 Delta R.T. -0.00 min  
 Lab File: BF088561.D  
 Acq: 1 Jul 2016 6:38

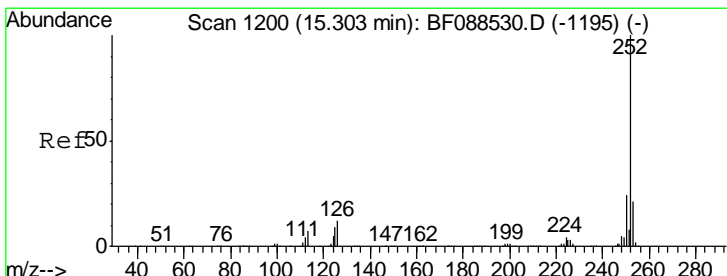
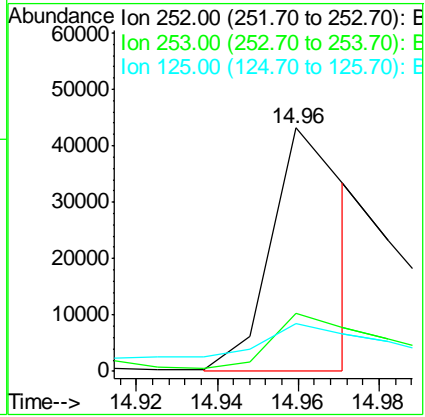
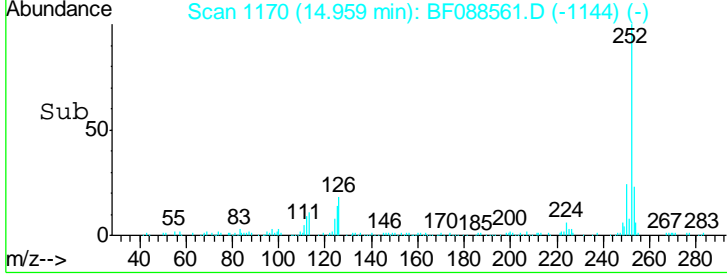
Instrument :  
 BNA\_F  
 ClientSampleId :  
 C8-B4(0-4.5)C



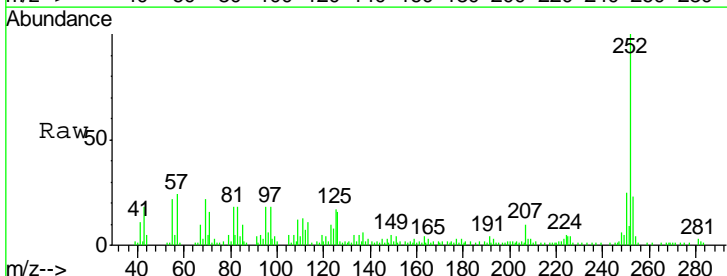
Tgt Ion: 252 Resp: 56746

Ion	Ratio	Lower	Upper
252	100		
253	24.0	17.4	26.2
125	19.5	7.1	10.7

Manual Integrations  
 APPROVED  
 SOHIL  
 7/1/2016 8:06:40 AM  
 7/1/2016 8:06:40 AM



#89  
 Benzo(a)pyrene  
 Concen: 2.96 ng  
 RT: 15.30 min Scan# 1200  
 Delta R.T. -0.00 min  
 Lab File: BF088561.D  
 Acq: 1 Jul 2016 6:38



Tgt Ion: 252 Resp: 43280

Ion	Ratio	Lower	Upper
252	100		
253	23.1	17.9	26.9
125	17.3	12.5	18.7

