

Data Path : Z:\HPCHEM1\BNA F\DATA\BF063016\
 Data File : BF088553.D
 Acq On : 1 Jul 2016 2:46
 Operator : UM/SJ
 Sample : H3630-04
 Misc :
 ALS Vial : 24 Sample Multiplier: 1

Instrument :
 BNA_F
 ClientSampleId :
 B1409-TP01E-1224

Integration Parameters: rteint.p
 Integrator: RTE
 Smoothing : ON
 Sampling : 1
 Start Thrs: 0.2
 Stop Thrs : 0

Filtering: 5
 Min Area: 3 % of largest Peak
 Max Peaks: 100
 Peak Location: TOP

If leading or trailing edge < 100 prefer < Baseline drop else tangent >
 Peak separation: 5

Method : Z:\HPCHEM1\BNA F\METHODS\8270-BF063016.M
 Title : ASP BNA STANDARDS FOR 5 POINT CALIBRATION

Signal : TIC

peak #	R.T. min	first scan	max scan	last scan	PK TY	peak height	corr. area	corr. % max.	% of total
1	1.747	12	14	23	rVB	205574	392176	6.24%	0.250%
2	1.873	23	25	37	rVV	2078603	3545699	56.42%	2.257%
3	2.033	37	39	46	rVB2	100032	202074	3.22%	0.129%
4	4.924	286	292	296	rBV3	191464	427707	6.81%	0.272%
5	4.993	296	298	303	rBV	588467	893397	14.22%	0.569%
6	5.199	314	316	318	rBV	269569	326058	5.19%	0.208%
7	5.416	332	335	337	rVB	3342403	4265469	67.87%	2.715%
8	5.576	347	349	351	rBV	277746	377800	6.01%	0.240%
9	5.622	351	353	354	rVB	317716	324737	5.17%	0.207%
10	5.656	354	356	361	rVB2	196852	374742	5.96%	0.238%
11	5.827	368	371	373	rVB2	424430	650348	10.35%	0.414%
12	5.884	373	376	381	rBV3	251647	652095	10.38%	0.415%
13	5.964	381	383	386	rVB	746954	800460	12.74%	0.509%
14	6.022	386	388	390	rBV2	292620	479125	7.62%	0.305%
15	6.067	390	392	395	rVB	1725741	1850382	29.44%	1.178%
16	6.124	395	397	398	rBV	841926	778249	12.38%	0.495%
17	6.262	406	409	411	rBV2	916025	1256757	20.00%	0.800%
18	6.319	413	414	416	rBV	393903	701097	11.16%	0.446%
19	6.353	416	417	421	rVB3	702118	1008038	16.04%	0.642%
20	6.456	421	426	428	rBV	3305829	4803832	76.44%	3.057%
21	6.490	428	429	431	rVB2	298091	214818	3.42%	0.137%
22	6.593	433	438	442	rBV2	3224715	6284429	100.00%	4.000%
23	6.685	442	446	447	rBV2	490250	766475	12.20%	0.488%
24	6.730	447	450	451	rBV3	137103	318994	5.08%	0.203%
25	6.765	451	453	455	rBV2	339449	743716	11.83%	0.473%
26	6.822	455	458	459	rBV	1060707	1277242	20.32%	0.813%
27	6.845	459	460	462	rVB	1847535	1691592	26.92%	1.077%
28	6.890	462	464	465	rBV	796420	944430	15.03%	0.601%
29	6.947	465	469	470	rBV3	770127	1220424	19.42%	0.777%
30	6.982	470	472	474	rVB	3113189	3773721	60.05%	2.402%
31	7.062	476	479	481	rBV2	702625	1503173	23.92%	0.957%
32	7.096	481	482	485	rVB2	747764	1036311	16.49%	0.660%
33	7.142	485	486	487	rVB	378788	259849	4.13%	0.165%
34	7.176	487	489	491	rBV2	398767	607902	9.67%	0.387%

Data Path : Z:\HPCHEM1\BNA F\DATA\BF063016\
 Data File : BF088553.D
 Acq On : 1 Jul 2016 2:46
 Operator : UM/SJ
 Sample : H3630-04
 Misc :
 ALS Vial : 24 Sample Multiplier: 1

Instrument :
 BNA_F
 ClientSampleId :
 B1409-TP01E-1224

Integration Parameters: rteint.p
 Integrator: RTE
 Smoothing : ON
 Sampling : 1
 Start Thrs: 0.2
 Stop Thrs : 0

Filtering: 5
 Min Area: 3 % of largest Peak
 Max Peaks: 100
 Peak Location: TOP

If leading or trailing edge < 100 prefer < Baseline drop else tangent >
 Peak separation: 5

Method : Z:\HPCHEM1\BNA F\METHODS\8270-BF063016.M
 Title : ASP BNA STANDARDS FOR 5 POINT CALIBRATION

35	7.222	491	493	494	rBV	1238546	1181175	18.80%	0.752%
36	7.256	494	496	499	rVB4	362736	606541	9.65%	0.386%
37	7.370	502	506	508	rBV2	2427052	5452527	86.76%	3.470%
38	7.473	513	515	517	rVB2	1455579	2314325	36.83%	1.473%
39	7.542	517	521	523	rBV	1104242	2657813	42.29%	1.691%
40	7.599	523	526	527	rBV2	757466	1343313	21.38%	0.855%
41	7.633	527	529	531	rVB2	1900465	2608989	41.52%	1.660%
42	7.668	531	532	534	rBV2	332056	528410	8.41%	0.336%
43	7.736	534	538	542	rBV6	1985021	4708010	74.92%	2.996%
44	7.793	542	543	545	rBV	314982	434797	6.92%	0.277%
45	7.850	546	548	549	rBV	554197	473431	7.53%	0.301%
46	7.942	553	556	558	rBV3	921330	1390681	22.13%	0.885%
47	7.988	558	560	561	rBV	720075	1312468	20.88%	0.835%
48	8.068	564	567	568	rBV2	1344999	2538978	40.40%	1.616%
49	8.102	568	570	573	rVV3	2185744	3409881	54.26%	2.170%
50	8.159	573	575	576	rVV2	948398	1657982	26.38%	1.055%
51	8.193	576	578	581	rVV2	2742457	4208116	66.96%	2.678%
52	8.285	583	586	588	rBV3	1004582	2084857	33.17%	1.327%
53	8.319	588	589	593	rVB3	586016	1029653	16.38%	0.655%
54	8.410	593	597	599	rBV4	2399956	3987675	63.45%	2.538%
55	8.468	601	602	603	rVV	747563	554230	8.82%	0.353%
56	8.502	603	605	607	rVV3	720079	972269	15.47%	0.619%
57	8.548	607	609	614	rVB2	3055580	5999428	95.46%	3.818%
58	8.616	614	615	617	rVB2	593682	709383	11.29%	0.451%
59	8.662	617	619	622	rBV4	800770	1783315	28.38%	1.135%
60	8.719	622	624	626	rVV2	977378	2230899	35.50%	1.420%
61	8.810	630	632	634	rVB3	2089905	2876972	45.78%	1.831%
62	8.868	634	637	638	rBV3	568093	1023854	16.29%	0.652%
63	8.925	640	642	643	rVV2	1576600	1835604	29.21%	1.168%
64	8.959	643	645	647	rVB3	386807	531598	8.46%	0.338%
65	8.993	647	648	649	rBV	596936	729770	11.61%	0.464%
66	9.028	649	651	653	rVB2	1886518	2196505	34.95%	1.398%
67	9.153	659	662	663	rBV	3172026	3646487	58.02%	2.321%
68	9.188	663	665	667	rVB	2888111	2901403	46.17%	1.847%
69	9.279	670	673	675	rBV	1450293	3071261	48.87%	1.955%
70	9.325	675	677	681	rVB4	901198	2142447	34.09%	1.363%
71	9.393	681	683	685	rVB2	941334	1157082	18.41%	0.736%

Data Path : Z:\HPCHEM1\BNA F\DATA\BF063016\
 Data File : BF088553.D
 Acq On : 1 Jul 2016 2:46
 Operator : UM/SJ
 Sample : H3630-04
 Misc :
 ALS Vial : 24 Sample Multiplier: 1

Instrument :
 BNA_F
 ClientSampleId :
 B1409-TP01E-1224

Integration Parameters: rteint.p
 Integrator: RTE
 Smoothing : ON
 Sampling : 1
 Start Thrs: 0.2
 Stop Thrs : 0

Filtering: 5
 Min Area: 3 % of largest Peak
 Max Peaks: 100
 Peak Location: TOP

If leading or trailing edge < 100 prefer < Baseline drop else tangent >
 Peak separation: 5

Method : Z:\HPCHEM1\BNA F\METHODS\8270-BF063016.M
 Title : ASP BNA STANDARDS FOR 5 POINT CALIBRATION

72	9.451	685	688	691	rBV2	1407284	2771735	44.10%	1.764%
73	9.531	691	695	696	rBV2	1887352	3710834	59.05%	2.362%
74	9.599	698	701	703	rBV2	3287932	5499910	87.52%	3.500%
75	9.782	715	717	718	rVB	840913	985362	15.68%	0.627%
76	9.862	721	724	725	rBV3	1369119	2279481	36.27%	1.451%
77	9.976	732	734	735	rVB2	769809	1021843	16.26%	0.650%
78	10.033	735	739	740	rVV3	368912	953992	15.18%	0.607%
79	10.056	740	741	743	rVV	1011929	1347017	21.43%	0.857%
80	10.102	743	745	746	rVV	838151	916377	14.58%	0.583%
81	10.182	750	752	753	rVV2	395782	610243	9.71%	0.388%
82	10.228	755	756	757	rBV	226672	267851	4.26%	0.170%
83	10.262	757	759	761	rVV3	349187	662417	10.54%	0.422%
84	10.296	761	762	763	rVB	523683	359247	5.72%	0.229%
85	10.353	765	767	769	rVB2	400927	491000	7.81%	0.312%
86	10.399	769	771	772	rBV2	281633	310698	4.94%	0.198%
87	10.514	779	781	783	rVB	1136521	1291293	20.55%	0.822%
88	10.559	783	785	787	rVB2	202038	336759	5.36%	0.214%
89	10.639	790	792	794	rVB2	1686738	1742513	27.73%	1.109%
90	10.788	801	805	807	rVV2	977445	1759925	28.00%	1.120%
91	10.834	808	809	814	rVB5	151878	278719	4.44%	0.177%
92	11.245	843	845	848	rVB	709893	681521	10.84%	0.434%
93	11.325	850	852	856	rBV2	749450	930688	14.81%	0.592%
94	11.588	873	875	877	rBV2	185629	313253	4.98%	0.199%
95	11.794	891	893	895	rBV3	124795	239903	3.82%	0.153%
96	11.874	897	900	902	rVV3	272356	410957	6.54%	0.262%
97	12.331	938	940	942	rBV	362789	422663	6.73%	0.269%
98	12.548	957	959	960	rBV	265353	423322	6.74%	0.269%
99	12.582	960	962	965	rVV2	328230	604712	9.62%	0.385%
100	12.925	989	992	994	rBV	1951644	2459903	39.14%	1.566%

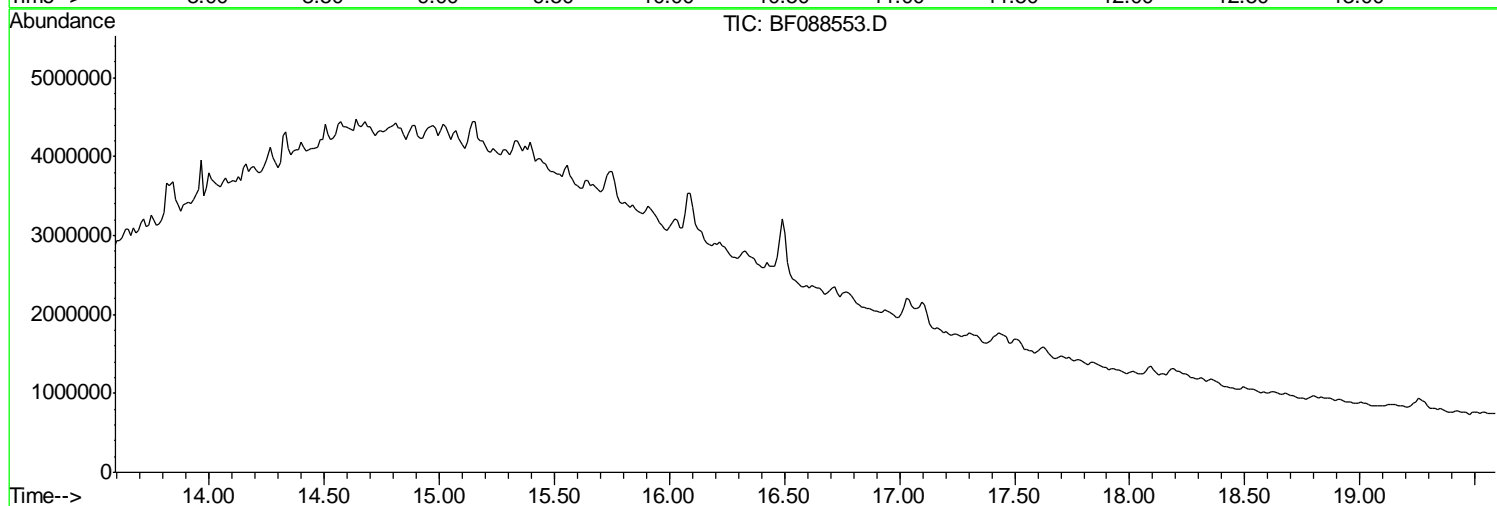
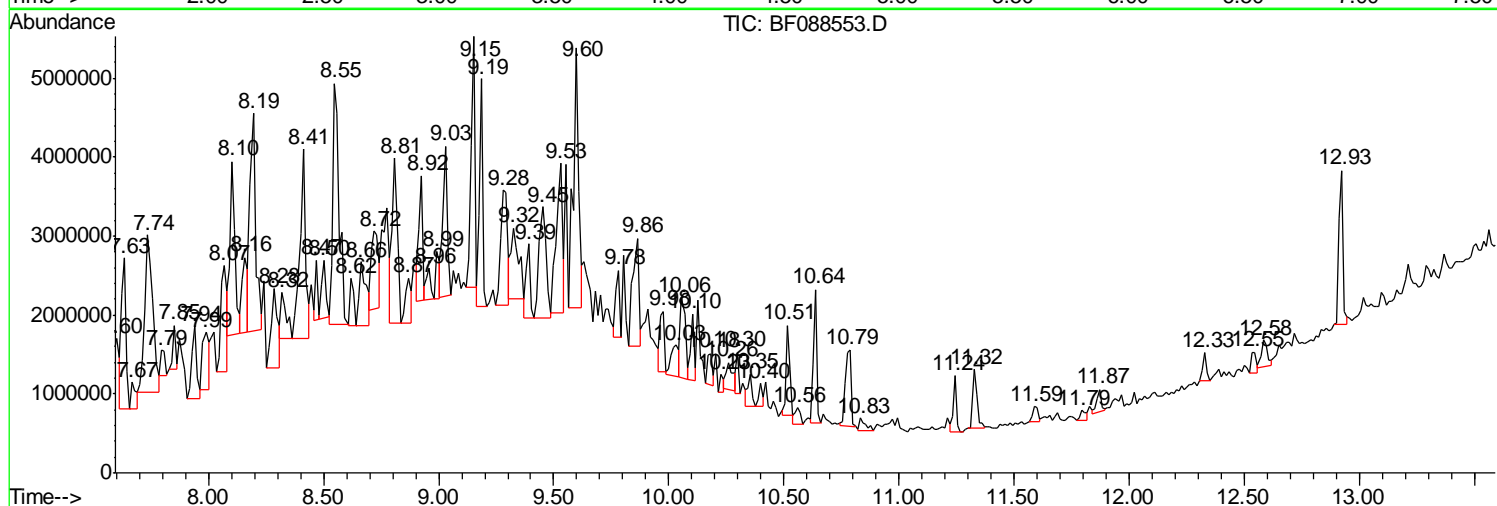
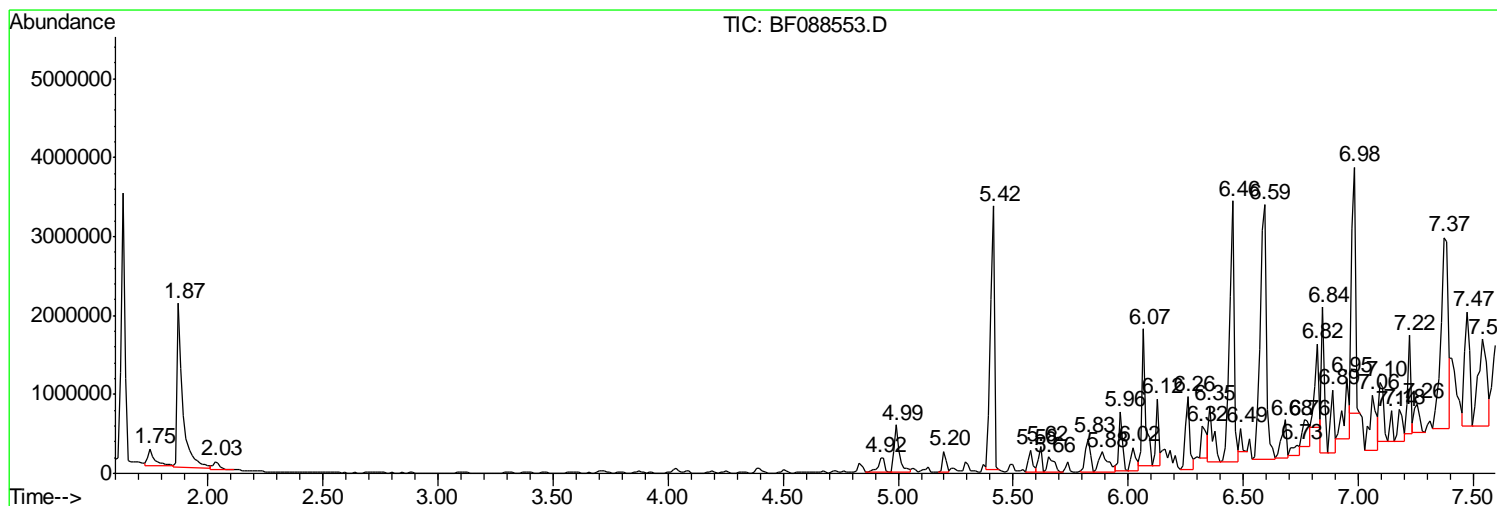
Sum of corrected areas: 157129585

Data Path : Z:\HPCHEM1\BNA F\DATA\BF063016\
 Data File : BF088553.D
 Acq On : 1 Jul 2016 2:46
 Operator : UM/SJ
 Sample : H3630-04
 Misc :
 ALS Vial : 24 Sample Multiplier: 1

Instrument :
 BNA_F
 Client Sampled :
 B1409-TP01E-1224

Quant Method : Z:\HPCHEM1\BNA F\METHODS\8270-BF063016.M
 Quant Title : ASP BNA STANDARDS FOR 5 POINT CALIBRATION

TIC Library : C:\Database\NIST11.L
 TIC Integration Parameters: LSCINT.P



Data Path : Z:\HPCHEM1\BNA F\DATA\BF063016\
 Data File : BF088553.D
 Acq On : 1 Jul 2016 2:46
 Operator : UM/SJ
 Sample : H3630-04
 Misc :
 ALS Vial : 24 Sample Multiplier: 1

Instrument :
 BNA_F
 ClientSampleId :
 B1409-TP01E-1224

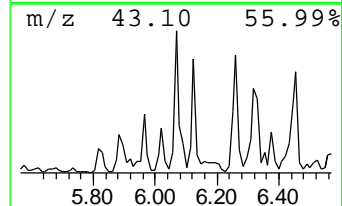
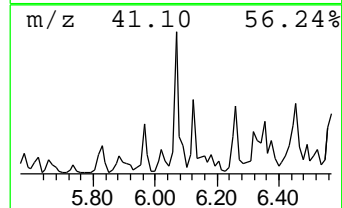
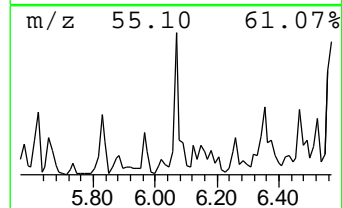
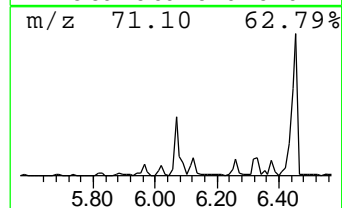
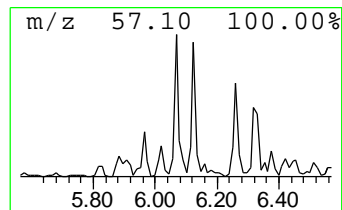
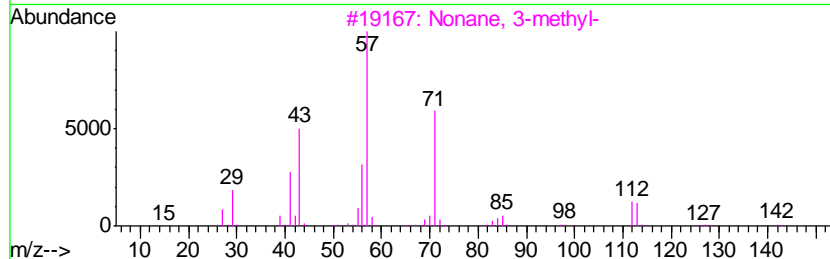
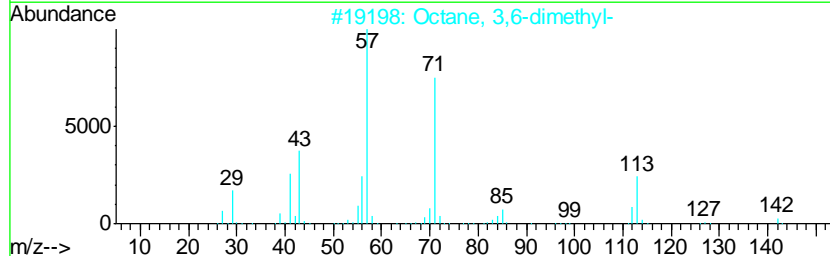
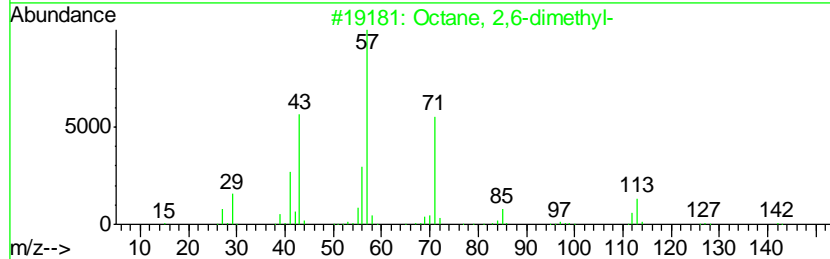
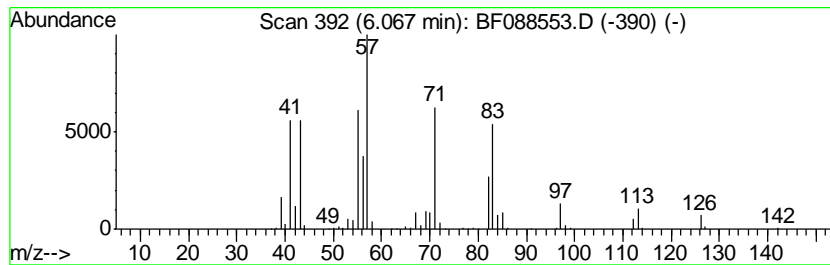
Quant Method : Z:\HPCHEM1\BNA F\METHODS\8270-BF063016.M
 Quant Title : ASP BNA STANDARDS FOR 5 POINT CALIBRATION

TIC Library : C:\Database\NIST11.L
 TIC Integration Parameters: LSCINT.P

 Peak Number 2 unknown6.07 Concentration Rank 6

R.T.	EstConc	Area	Relative to ISTD	R.T.
6.07	28.97 ng	1850380	1,4-Dichlorobenzene-d4	6.82

Hit#	of	Tentative ID	MW	MolForm	CAS#	Qual
1	5	Octane, 2,6-dimethyl-	142	C10H22	002051-30-1	46
2		Octane, 3,6-dimethyl-	142	C10H22	015869-94-0	46
3		Nonane, 3-methyl-	142	C10H22	005911-04-6	46
4		Butane, 2,2-dimethyl-	86	C6H14	000075-83-2	35
5		Sulfurous acid, 2-ethylhexyl hex...	278	C14H30O3S	1000309-20-2	35



Data Path : Z:\HPCHEM1\BNA F\DATA\BF063016\
 Data File : BF088553.D
 Acq On : 1 Jul 2016 2:46
 Operator : UM/SJ
 Sample : H3630-04
 Misc :
 ALS Vial : 24 Sample Multiplier: 1

Instrument :
 BNA_F
 ClientSampleID :
 B1409-TP01E-1224

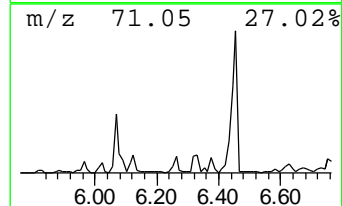
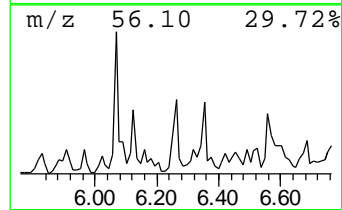
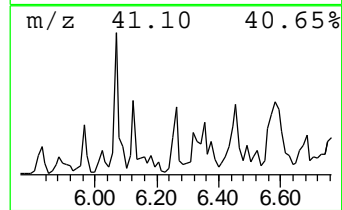
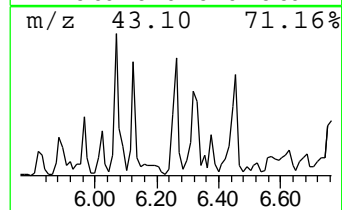
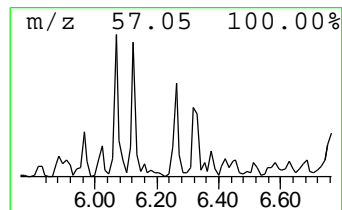
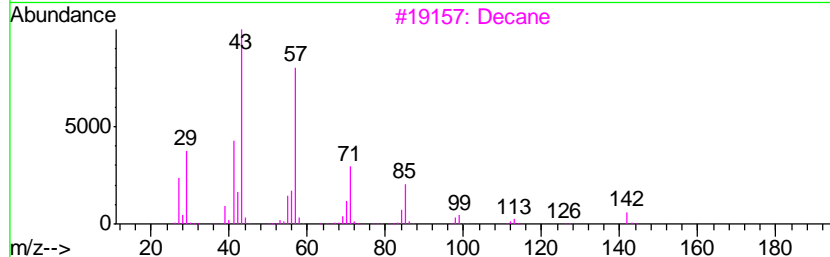
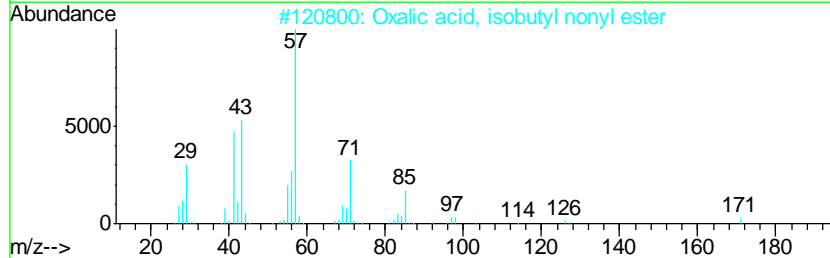
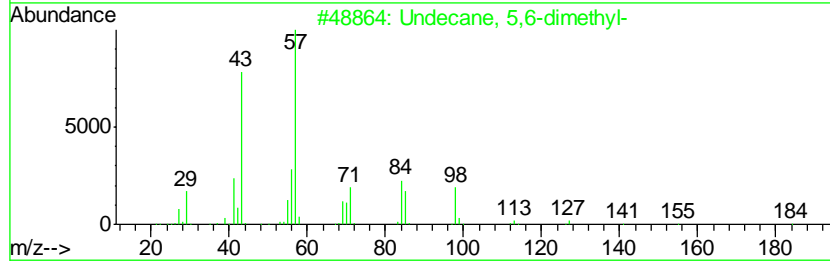
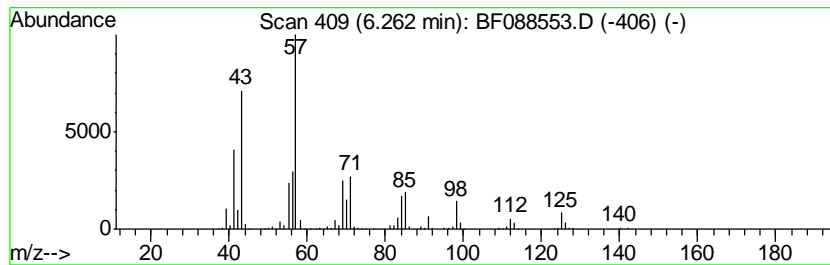
Quant Method : Z:\HPCHEM1\BNA F\METHODS\8270-BF063016.M
 Quant Title : ASP BNA STANDARDS FOR 5 POINT CALIBRATION

TIC Library : C:\Database\NIST11.L
 TIC Integration Parameters: LSCINT.P

 Peak Number 3 Undecane, 5,6-dimethyl- Concentration Rank 13

R.T.	EstConc	Area	Relative to ISTD	R.T.
6.26	19.68 ng	1256760	1,4-Dichlorobenzene-d4	6.82

Hit#	of	Tentative ID	MW	MolForm	CAS#	Qual
1	5	Undecane, 5,6-dimethyl-	184	C13H28	017615-91-7	64
2		Oxalic acid, isobutyl nonyl ester	272	C15H28O4	1000309-37-4	53
3		Decane	142	C10H22	000124-18-5	50
4		Hexane, 2,4-dimethyl-	114	C8H18	000589-43-5	50
5		Decane, 3,8-dimethyl-	170	C12H26	017312-55-9	50



Data Path : Z:\HPCHEM1\BNA F\DATA\BF063016\
 Data File : BF088553.D
 Acq On : 1 Jul 2016 2:46
 Operator : UM/SJ
 Sample : H3630-04
 Misc :
 ALS Vial : 24 Sample Multiplier: 1

Instrument :
 BNA_F
 ClientSampleId :
 B1409-TP01E-1224

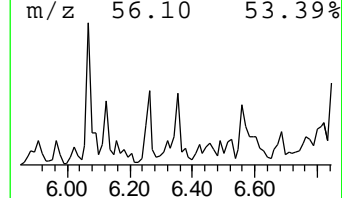
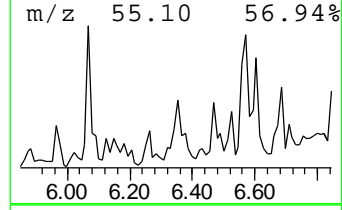
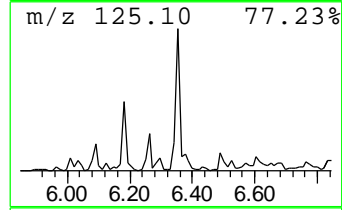
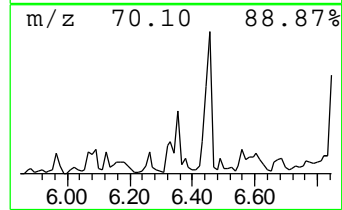
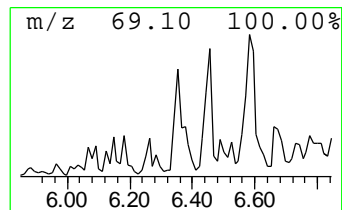
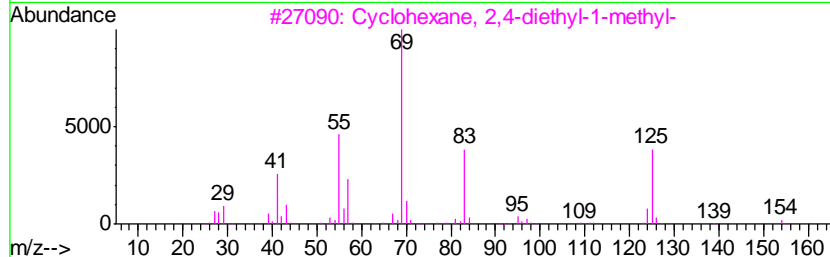
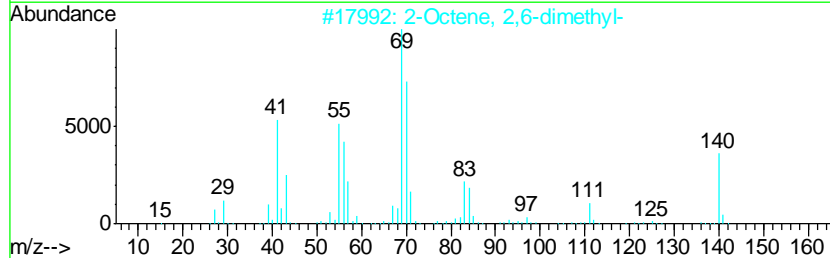
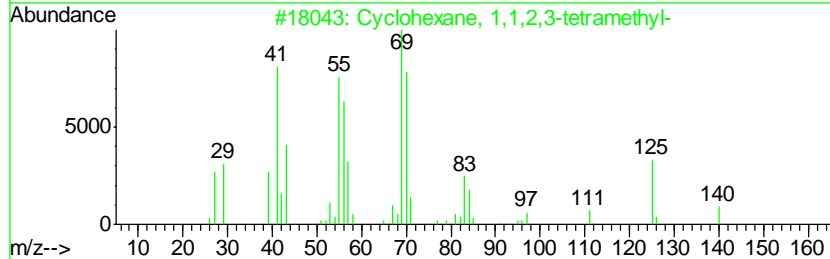
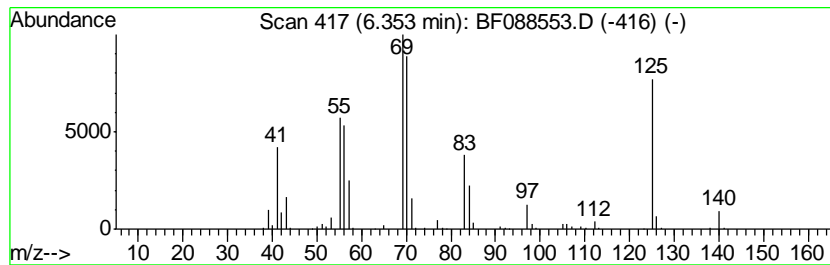
Quant Method : Z:\HPCHEM1\BNA F\METHODS\8270-BF063016.M
 Quant Title : ASP BNA STANDARDS FOR 5 POINT CALIBRATION

TIC Library : C:\Database\NIST11.L
 TIC Integration Parameters: LSCINT.P

 Peak Number 4 Cyclohexane, 1,1,2,3-tetram... Concentration Rank 19

R.T.	EstConc	Area	Relative to ISTD	R.T.
6.35	15.78 ng	1008040	1,4-Dichlorobenzene-d4	6.82

Hit#	of	Tentative ID	MW	MolForm	CAS#	Qual
1	5	Cyclohexane, 1,1,2,3-tetramethyl-	140	C10H20	006783-92-2	72
2		2-Octene, 2,6-dimethyl-	140	C10H20	004057-42-5	52
3		Cyclohexane, 2,4-diethyl-1-methyl-	154	C11H22	061142-70-9	43
4		4-Octene, 2,6-dimethyl-, [S-(E)]-	140	C10H20	062960-76-3	43
5		Cyclopentane, propyl-	112	C8H16	002040-96-2	38



Data Path : Z:\HPCHEM1\BNA F\DATA\BF063016\
 Data File : BF088553.D
 Acq On : 1 Jul 2016 2:46
 Operator : UM/SJ
 Sample : H3630-04
 Misc :
 ALS Vial : 24 Sample Multiplier: 1

Instrument :
 BNA_F
 ClientSampleID :
 B1409-TP01E-1224

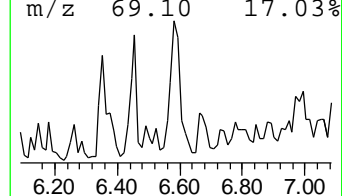
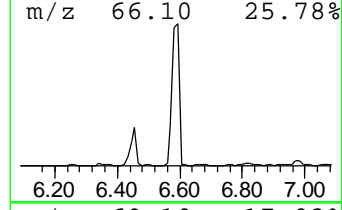
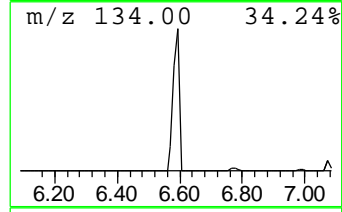
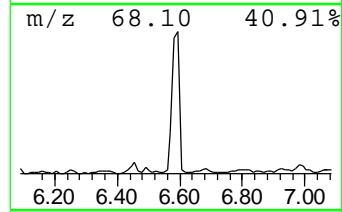
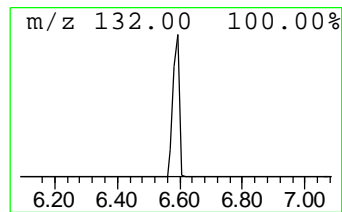
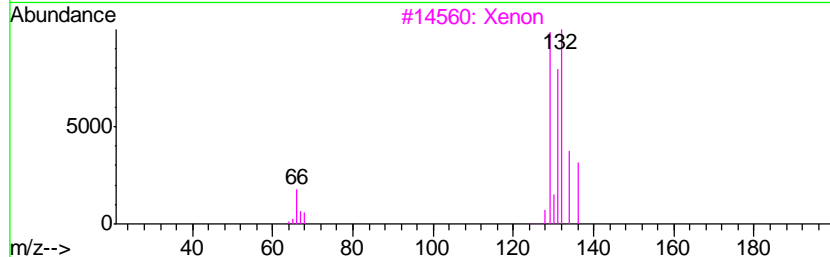
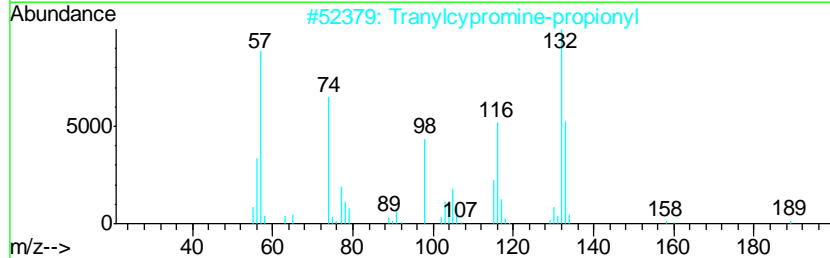
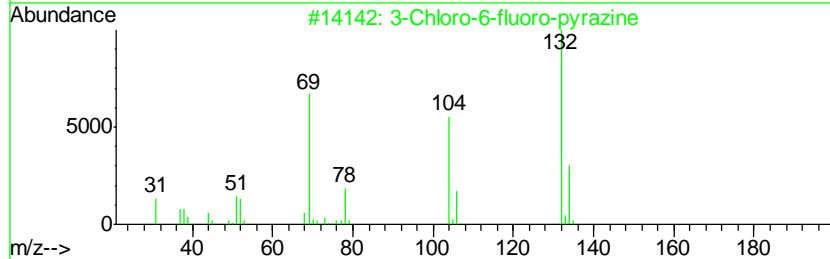
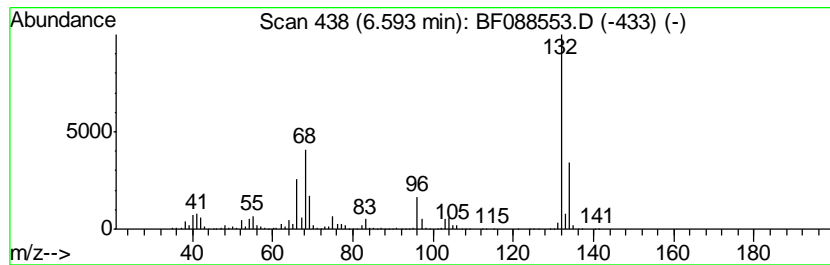
Quant Method : Z:\HPCHEM1\BNA F\METHODS\8270-BF063016.M
 Quant Title : ASP BNA STANDARDS FOR 5 POINT CALIBRATION

TIC Library : C:\Database\NIST11.L
 TIC Integration Parameters: LSCINT.P

 Peak Number 5 unknown6.59 Concentration Rank 1

R.T.	EstConc	Area	Relative to ISTD	R.T.
6.59	98.41 ng	6284430	1,4-Dichlorobenzene-d4	6.82

Hit#	of	Tentative ID	MW	MolForm	CAS#	Qual
1	5	3-Chloro-6-fluoro-pyrazine	132	C4H2ClFN2	1000146-10-7	27
2		Tranlycypromine-propionyl	189	C12H15NO	1000123-86-3	12
3		Xenon	132	Xe	007440-63-3	9
4		1,3,5-Trifluorobenzene	132	C6H3F3	000372-38-3	9
5		Bicyclo[4.2.0]octa-1,3,5-triene,...	132	C10H12	028749-81-7	9



Data Path : Z:\HPCHEM1\BNA F\DATA\BF063016\
 Data File : BF088553.D
 Acq On : 1 Jul 2016 2:46
 Operator : UM/SJ
 Sample : H3630-04
 Misc :
 ALS Vial : 24 Sample Multiplier: 1

Instrument :
 BNA_F
 ClientSampled :
 B1409-TP01E-1224

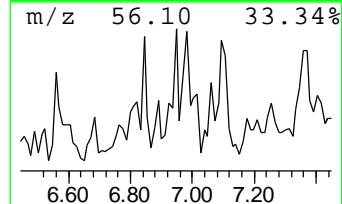
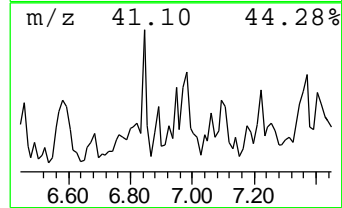
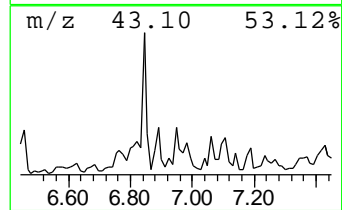
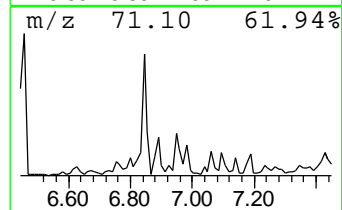
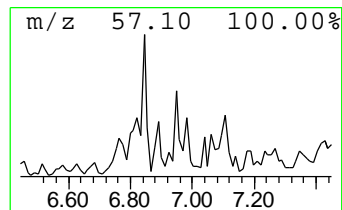
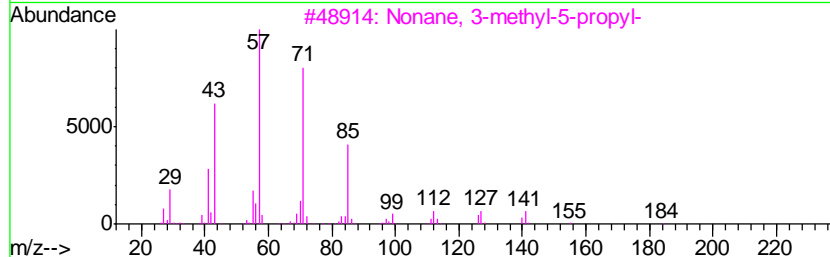
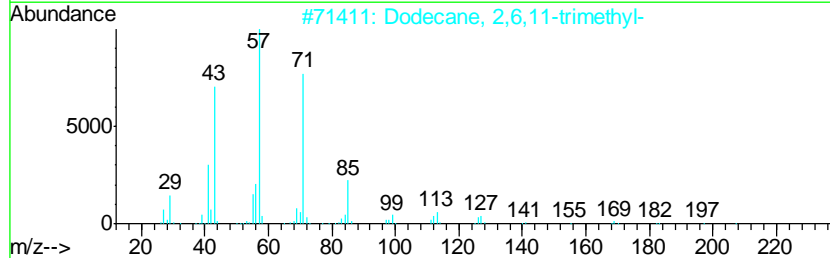
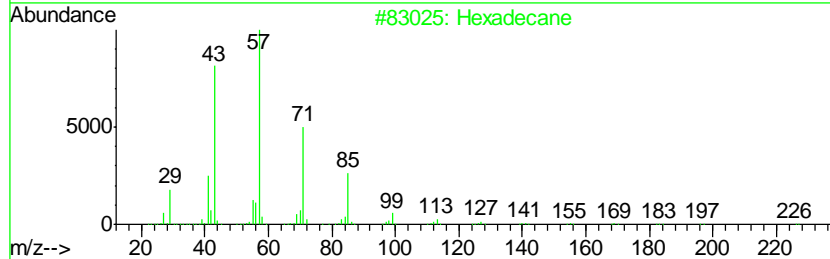
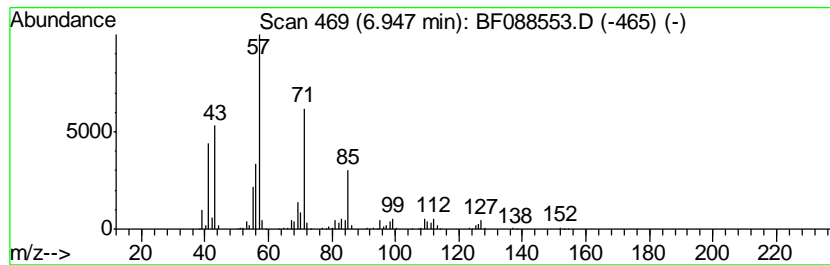
Quant Method : Z:\HPCHEM1\BNA F\METHODS\8270-BF063016.M
 Quant Title : ASP BNA STANDARDS FOR 5 POINT CALIBRATION

TIC Library : C:\Database\NIST11.L
 TIC Integration Parameters: LSCINT.P

 Peak Number 6 Hexadecane Concentration Rank 15

R.T.	EstConc	Area	Relative to ISTD	R.T.
6.95	19.11 ng	1220420	1,4-Dichlorobenzene-d4	6.82

Hit#	of	Tentative ID	MW	MolForm	CAS#	Qual
1	5	Hexadecane	226	C16H34	000544-76-3	64
2		Dodecane, 2,6,11-trimethyl-	212	C15H32	031295-56-4	59
3		Nonane, 3-methyl-5-propyl-	184	C13H28	031081-18-2	53
4		Decane, 2,3,5-trimethyl-	184	C13H28	062238-11-3	53
5		Undecane, 3-methyl-	170	C12H26	001002-43-3	50



Data Path : Z:\HPCHEM1\BNA F\DATA\BF063016\
 Data File : BF088553.D
 Acq On : 1 Jul 2016 2:46
 Operator : UM/SJ
 Sample : H3630-04
 Misc :
 ALS Vial : 24 Sample Multiplier: 1

Instrument :
 BNA_F
 ClientSampleId :
 B1409-TP01E-1224

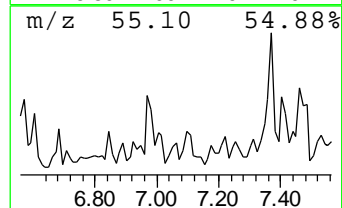
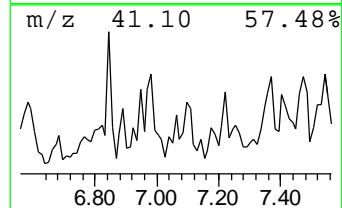
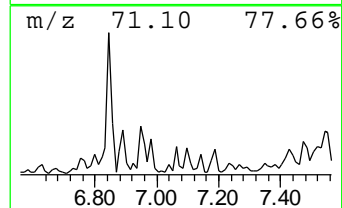
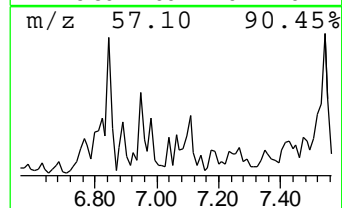
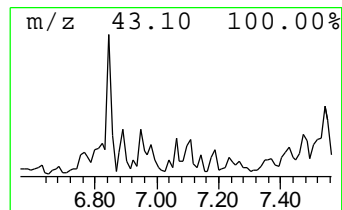
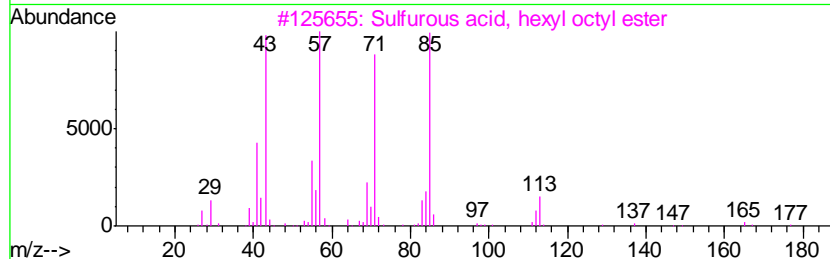
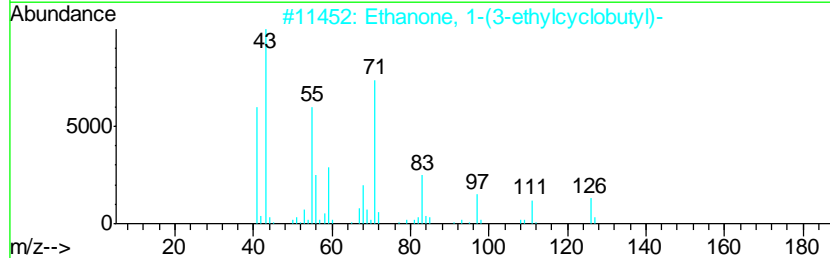
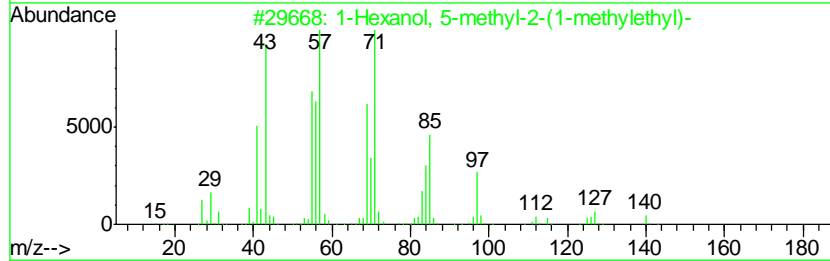
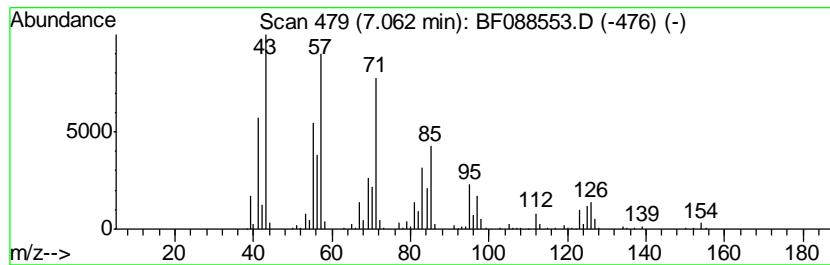
Quant Method : Z:\HPCHEM1\BNA F\METHODS\8270-BF063016.M
 Quant Title : ASP BNA STANDARDS FOR 5 POINT CALIBRATION

TIC Library : C:\Database\NIST11.L
 TIC Integration Parameters: LSCINT.P

 Peak Number 8 1-Hexanol, 5-methyl-2-(1-me... Concentration Rank 11

R.T.	EstConc	Area	Relative to ISTD	R.T.
7.06	23.54 ng	1503170	1,4-Dichlorobenzene-d4	6.82

Hit#	of	Tentative ID	MW	MolForm	CAS#	Qual
1	5	1-Hexanol, 5-methyl-2-(1-methyle...	158	C10H22O	002051-33-4	59
2		Ethanone, 1-(3-ethylcyclobutyl)-	126	C8H14O	056335-71-8	46
3		Sulfurous acid, hexyl octyl ester	278	C14H30O3S	1000309-13-0	38
4		Nonane, 1-iodo-	254	C9H19I	004282-42-2	35
5		Hexane, 2,4-dimethyl-	114	C8H18	000589-43-5	25



Data Path : Z:\HPCHEM1\BNA F\DATA\BF063016\
 Data File : BF088553.D
 Acq On : 1 Jul 2016 2:46
 Operator : UM/SJ
 Sample : H3630-04
 Misc :
 ALS Vial : 24 Sample Multiplier: 1

Instrument :
 BNA_F
 ClientSampleId :
 B1409-TP01E-1224

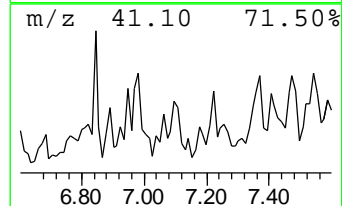
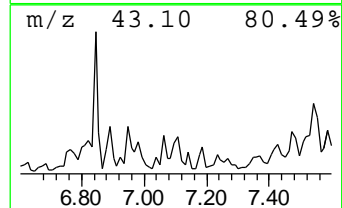
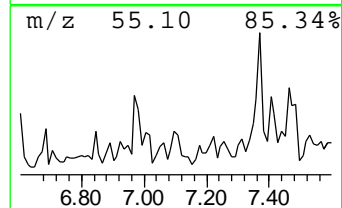
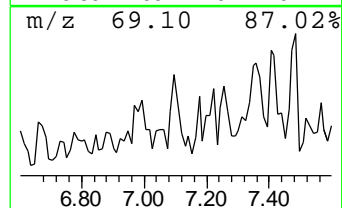
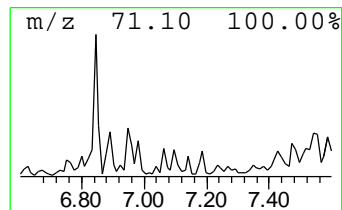
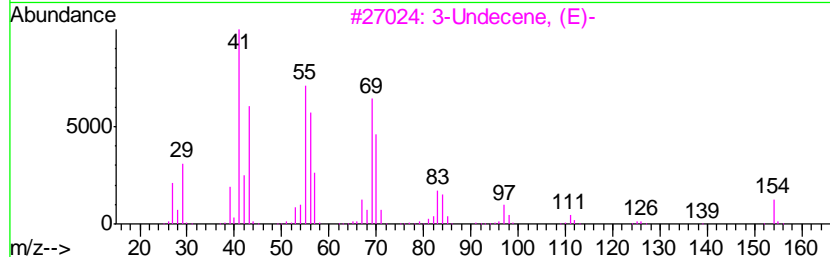
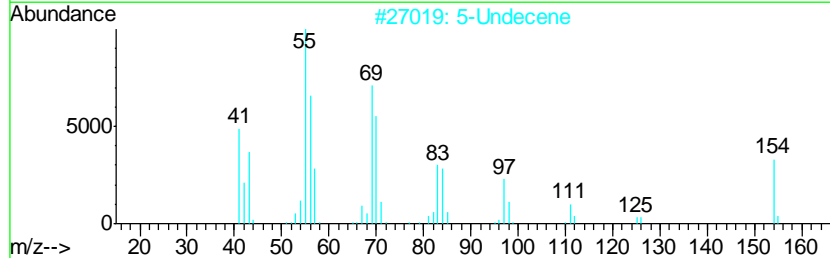
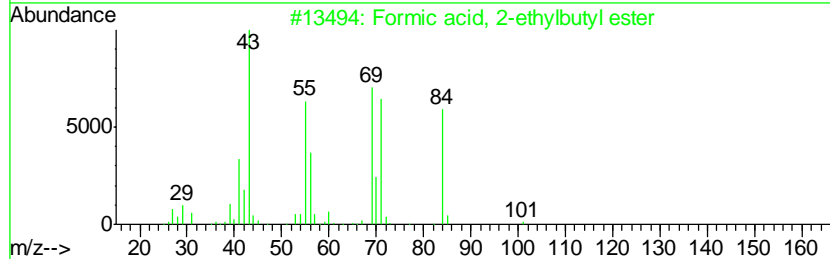
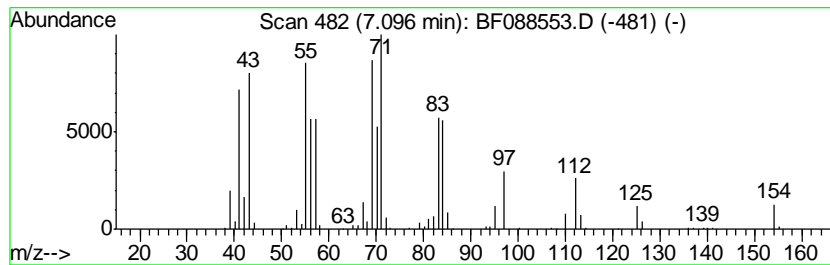
Quant Method : Z:\HPCHEM1\BNA F\METHODS\8270-BF063016.M
 Quant Title : ASP BNA STANDARDS FOR 5 POINT CALIBRATION

TIC Library : C:\Database\NIST11.L
 TIC Integration Parameters: LSCINT.P

 Peak Number 9 Formic acid, 2-ethylbutyl e... Concentration Rank 18

R.T.	EstConc	Area	Relative to ISTD	R.T.
7.10	16.23 ng	1036310	1,4-Dichlorobenzene-d4	6.82

Hit#	of	Tentative ID	MW	MolForm	CAS#	Qual
1	5	Formic acid, 2-ethylbutyl ester	130	C7H14O2	1000367-92-2	52
2		5-Undecene	154	C11H22	004941-53-1	52
3		3-Undecene, (E)-	154	C11H22	001002-68-2	49
4		4-Isopropyl-1,3-cyclohexanedione	154	C9H14O2	062831-62-3	46
5		Cyclopropane, 1-butyl-1-methyl-2...	154	C11H22	041977-34-8	43



Data Path : Z:\HPCHEM1\BNA F\DATA\BF063016\
 Data File : BF088553.D
 Acq On : 1 Jul 2016 2:46
 Operator : UM/SJ
 Sample : H3630-04
 Misc :
 ALS Vial : 24 Sample Multiplier: 1

Instrument :
 BNA_F
 ClientSampled :
 B1409-TP01E-1224

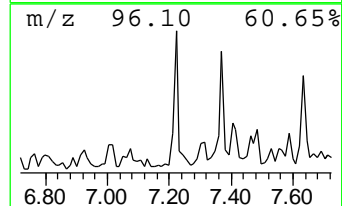
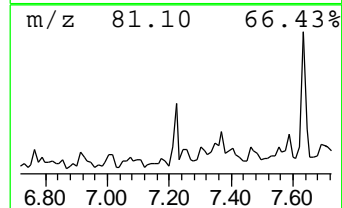
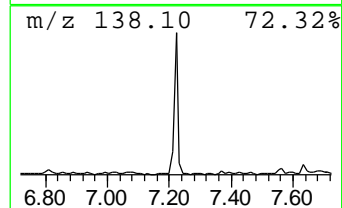
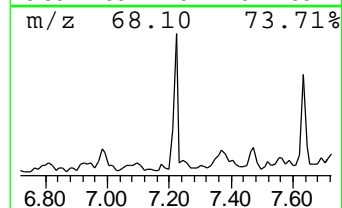
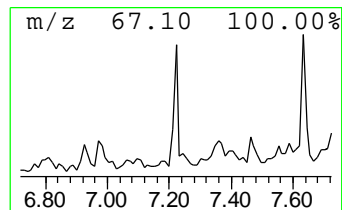
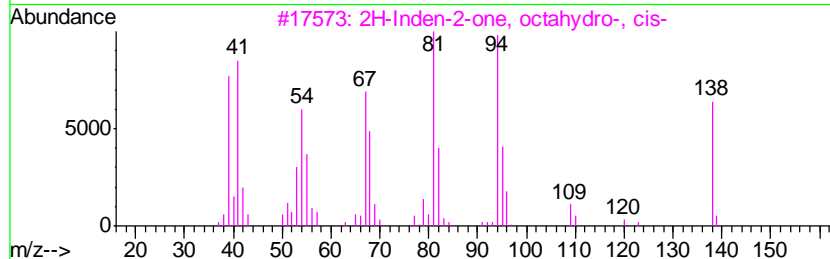
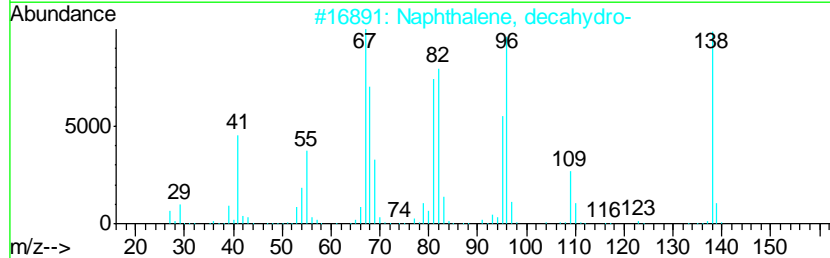
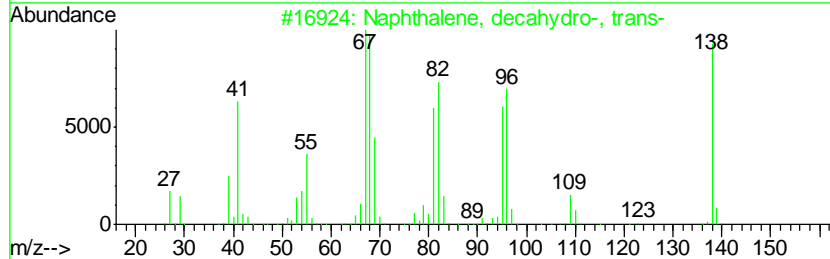
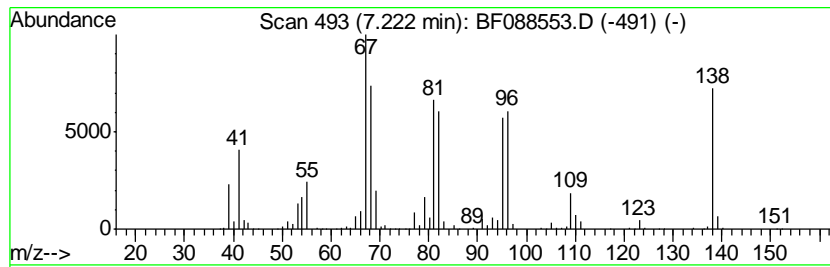
Quant Method : Z:\HPCHEM1\BNA F\METHODS\8270-BF063016.M
 Quant Title : ASP BNA STANDARDS FOR 5 POINT CALIBRATION

TIC Library : C:\Database\NIST11.L
 TIC Integration Parameters: LSCINT.P

 Peak Number 10 Naphthalene, decahydro-, tr... Concentration Rank 17

R.T.	EstConc	Area	Relative to ISTD	R.T.
7.22	18.50 ng	1181180	1,4-Dichlorobenzene-d4	6.82

Hit#	of	Tentative ID	MW	MolForm	CAS#	Qual
1	5	Naphthalene, decahydro-, trans-	138	C10H18	000493-02-7	94
2		Naphthalene, decahydro-	138	C10H18	000091-17-8	90
3		2H-Inden-2-one, octahydro-, cis-	138	C9H14O	005689-04-3	86
4		Cyclohexene, 1-methyl-4-(1-methy...	138	C10H18	001195-31-9	68
5		Naphthalene, decahydro-, cis-	138	C10H18	000493-01-6	64



Data Path : Z:\HPCHEM1\BNA F\DATA\BF063016\
 Data File : BF088553.D
 Acq On : 1 Jul 2016 2:46
 Operator : UM/SJ
 Sample : H3630-04
 Misc :
 ALS Vial : 24 Sample Multiplier: 1

Instrument :
 BNA_F
 ClientSampleId :
 B1409-TP01E-1224

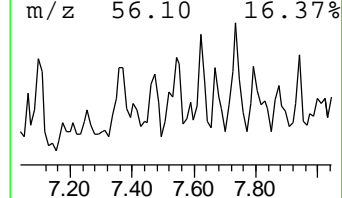
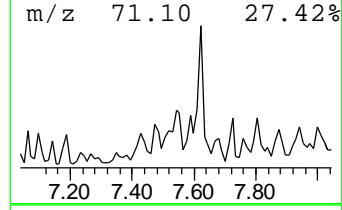
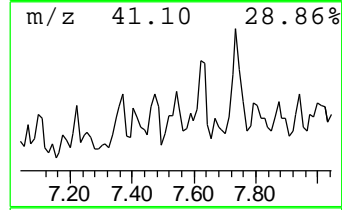
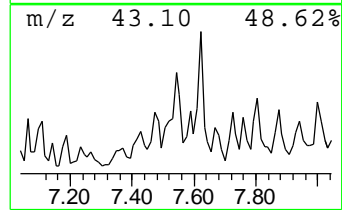
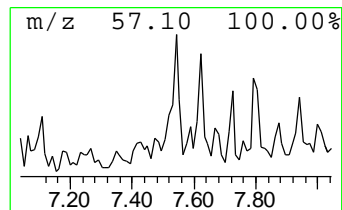
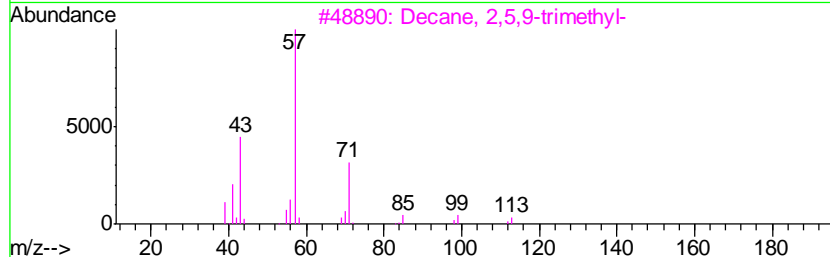
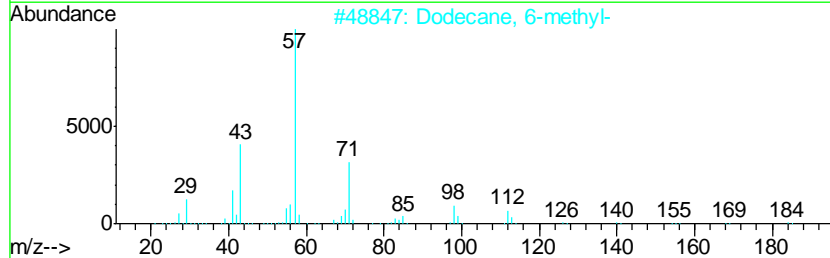
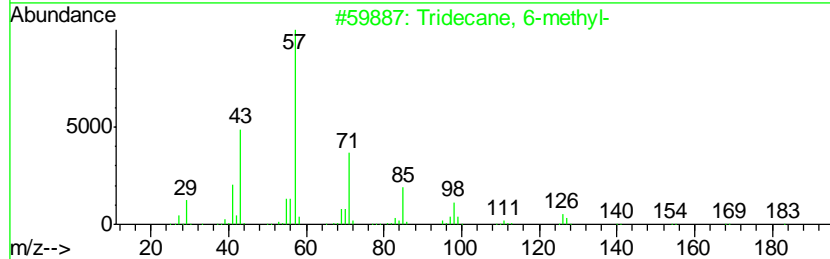
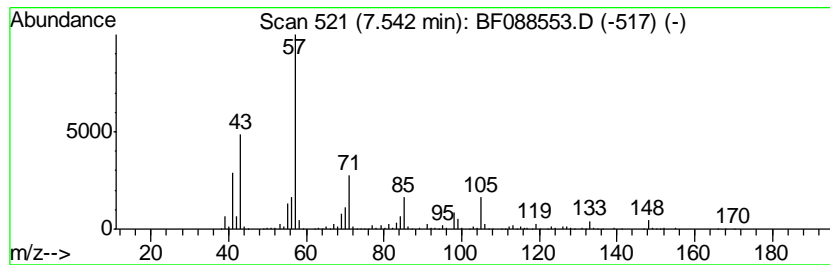
Quant Method : Z:\HPCHEM1\BNA F\METHODS\8270-BF063016.M
 Quant Title : ASP BNA STANDARDS FOR 5 POINT CALIBRATION

TIC Library : C:\Database\NIST11.L
 TIC Integration Parameters: LSCINT.P

 Peak Number 11 Tridecane, 6-methyl- Concentration Rank 20

R.T.	EstConc	Area	Relative to ISTD	R.T.
7.54	15.59 ng	2657810	Napthalene-d8	8.10

Hit#	of	Tentative ID	MW	MolForm	CAS#	Qual
1	5	Tridecane, 6-methyl-	198	C14H30	013287-21-3	59
2		Dodecane, 6-methyl-	184	C13H28	006044-71-9	50
3		Decane, 2,5,9-trimethyl-	184	C13H28	062108-22-9	50
4		Undecane, 3-ethyl-	184	C13H28	017312-58-2	47
5		1-Iodo-2-methylundecane	296	C12H25I	073105-67-6	47



Data Path : Z:\HPCHEM1\BNA F\DATA\BF063016\
 Data File : BF088553.D
 Acq On : 1 Jul 2016 2:46
 Operator : UM/SJ
 Sample : H3630-04
 Misc :
 ALS Vial : 24 Sample Multiplier: 1

Instrument :
 BNA_F
 ClientSampleID :
 B1409-TP01E-1224

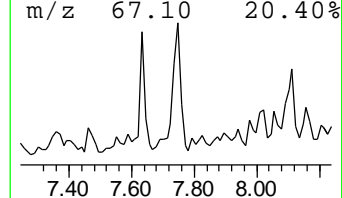
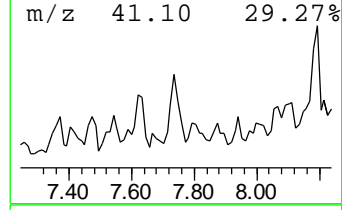
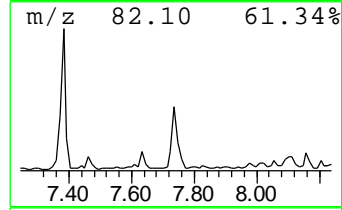
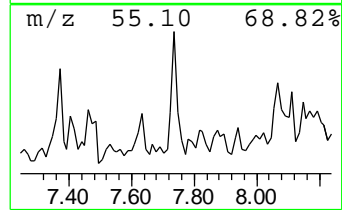
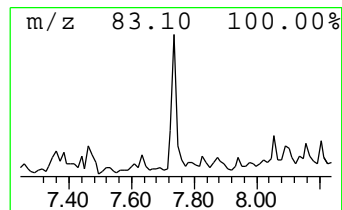
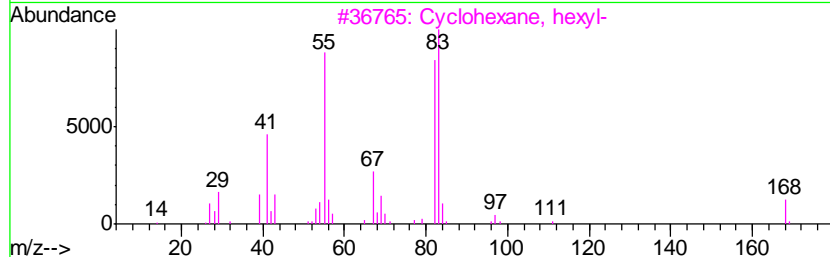
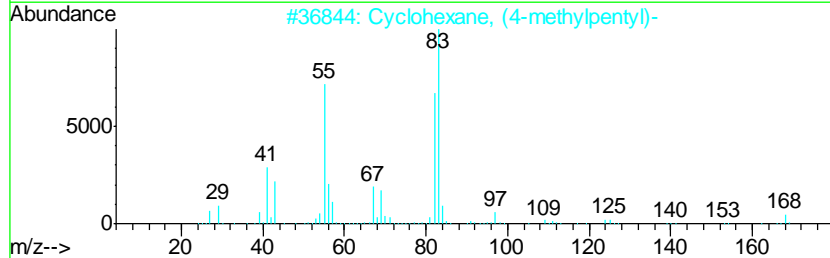
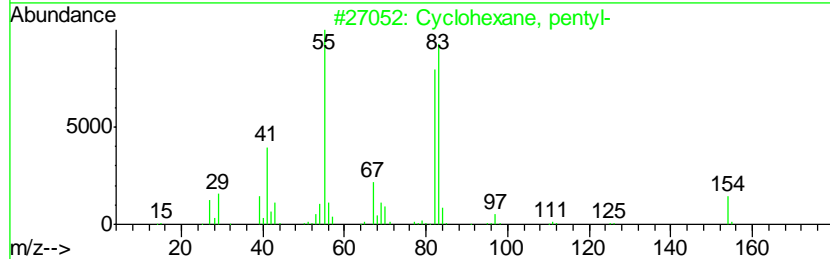
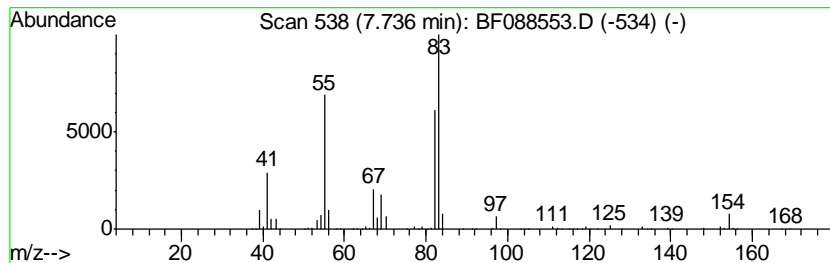
Quant Method : Z:\HPCHEM1\BNA F\METHODS\8270-BF063016.M
 Quant Title : ASP BNA STANDARDS FOR 5 POINT CALIBRATION

TIC Library : C:\Database\NIST11.L
 TIC Integration Parameters: LSCINT.P

 Peak Number 12 Cyclohexane, pentyl- Concentration Rank 7

R.T.	EstConc	Area	Relative to ISTD	R.T.
7.74	27.61 ng	4708010	Naphthalene-d8	8.10

Hit#	of	Tentative ID	MW	MolForm	CAS#	Qual
1	5	Cyclohexane, pentyl-	154	C11H22	004292-92-6	91
2		Cyclohexane, (4-methylpentyl)-	168	C12H24	061142-20-9	86
3		Cyclohexane, hexyl-	168	C12H24	004292-75-5	83
4		Cyclohexane, octyl-	196	C14H28	001795-15-9	83
5		Cyclohexane, propyl-	126	C9H18	001678-92-8	83



Data Path : Z:\HPCHEM1\BNA F\DATA\BF063016\
 Data File : BF088553.D
 Acq On : 1 Jul 2016 2:46
 Operator : UM/SJ
 Sample : H3630-04
 Misc :
 ALS Vial : 24 Sample Multiplier: 1

Instrument :
 BNA_F
 ClientSampleID :
 B1409-TP01E-1224

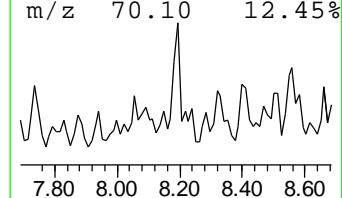
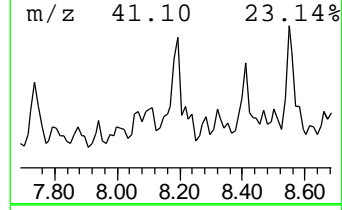
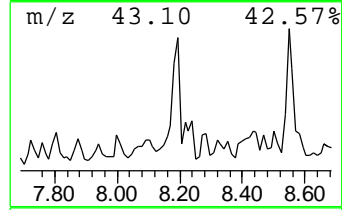
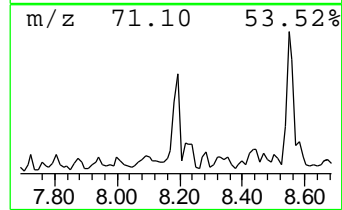
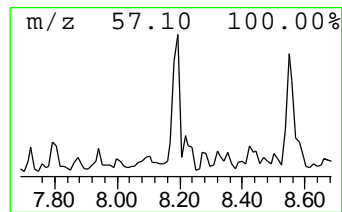
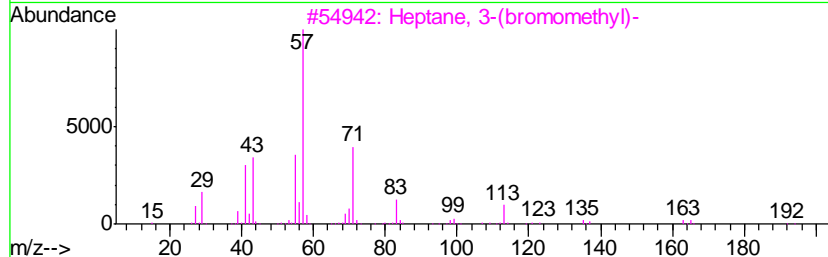
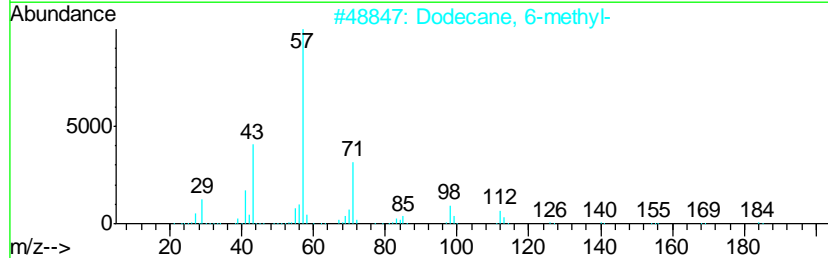
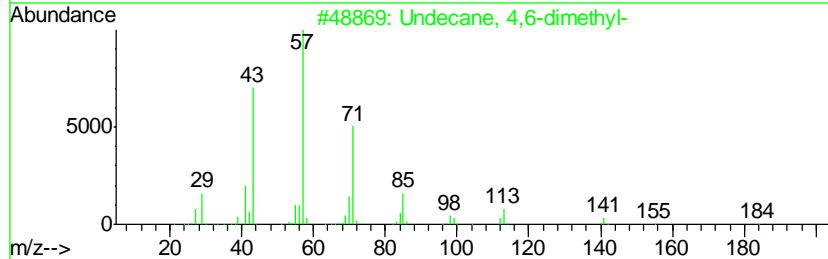
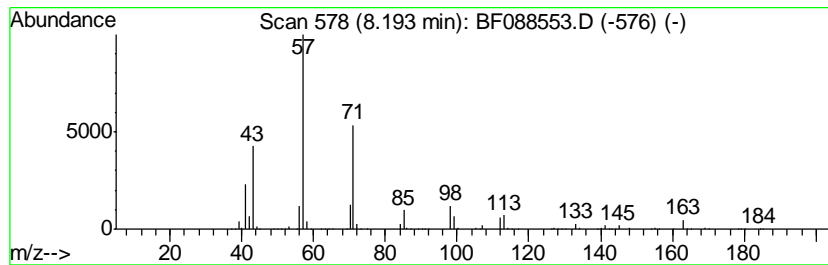
Quant Method : Z:\HPCHEM1\BNA F\METHODS\8270-BF063016.M
 Quant Title : ASP BNA STANDARDS FOR 5 POINT CALIBRATION

TIC Library : C:\Database\NIST11.L
 TIC Integration Parameters: LSCINT.P

 Peak Number 13 Undecane, 4,6-dimethyl- Concentration Rank 9

R.T.	EstConc	Area	Relative to ISTD	R.T.
8.19	24.68 ng	4208120	Naphthalene-d8	8.10

Hit#	of	Tentative ID	MW	MolForm	CAS#	Qual
1	5	Undecane, 4,6-dimethyl-	184	C13H28	017312-82-2	64
2		Dodecane, 6-methyl-	184	C13H28	006044-71-9	62
3		Heptane, 3-(bromomethyl)-	192	C8H17Br	018908-66-2	59
4		Octane, 2,3,6-trimethyl-	156	C11H24	062016-33-5	53
5		Sulfurous acid, butyl octyl ester	250	C12H26O3S	1000309-17-5	53



Data Path : Z:\HPCHEM1\BNA F\DATA\BF063016\
 Data File : BF088553.D
 Acq On : 1 Jul 2016 2:46
 Operator : UM/SJ
 Sample : H3630-04
 Misc :
 ALS Vial : 24 Sample Multiplier: 1

Instrument :
 BNA_F
 ClientSampleId :
 B1409-TP01E-1224

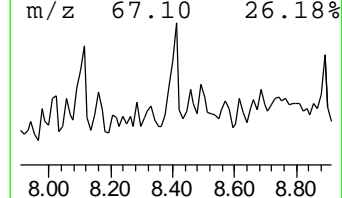
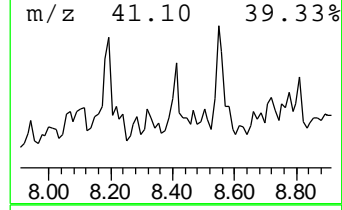
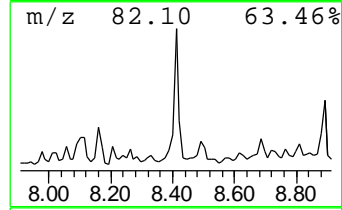
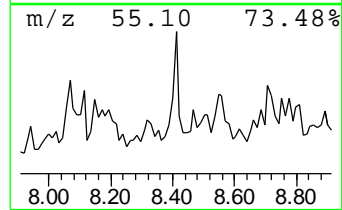
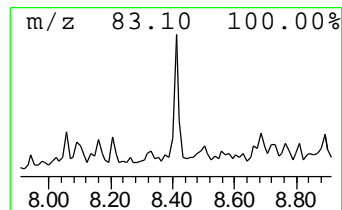
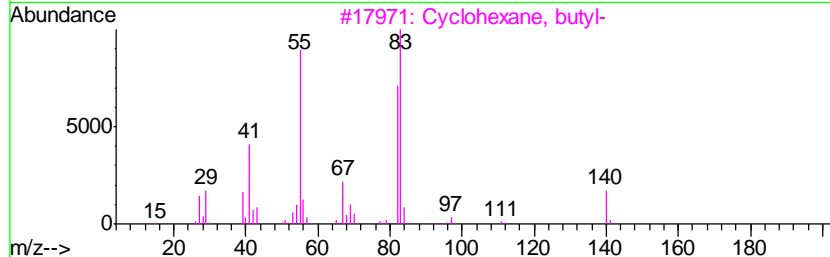
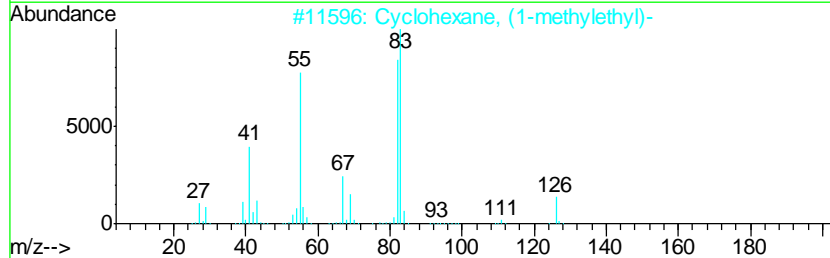
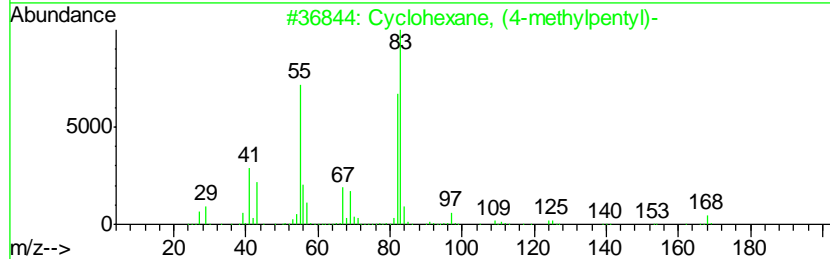
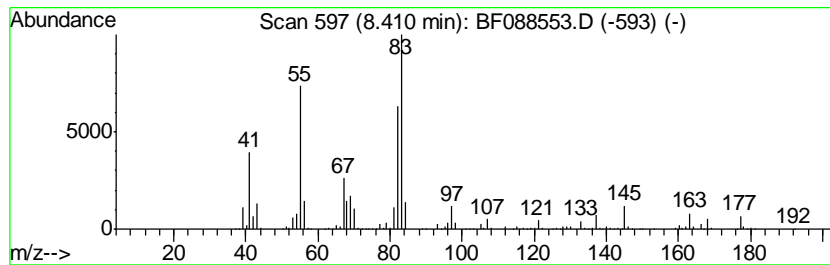
Quant Method : Z:\HPCHEM1\BNA F\METHODS\8270-BF063016.M
 Quant Title : ASP BNA STANDARDS FOR 5 POINT CALIBRATION

TIC Library : C:\Database\NIST11.L
 TIC Integration Parameters: LSCINT.P

 Peak Number 14 Cyclohexane, (4-methylpentyl)- Concentration Rank 12

R.T.	EstConc	Area	Relative to ISTD	R.T.
8.41	23.39 ng	3987680	Naphthalene-d8	8.10

Hit#	of	Tentative ID	MW	MolForm	CAS#	Qual
1	5	Cyclohexane, (4-methylpentyl)-	168	C12H24	061142-20-9	86
2		Cyclohexane, (1-methylethyl)-	126	C9H18	000696-29-7	74
3		Cyclohexane, butyl-	140	C10H20	001678-93-9	72
4		Cyclohexane, hexyl-	168	C12H24	004292-75-5	72
5		Cyclohexane, propyl-	126	C9H18	001678-92-8	64



Data Path : Z:\HPCHEM1\BNA F\DATA\BF063016\
 Data File : BF088553.D
 Acq On : 1 Jul 2016 2:46
 Operator : UM/SJ
 Sample : H3630-04
 Misc :
 ALS Vial : 24 Sample Multiplier: 1

Instrument :
 BNA_F
 ClientSampleId :
 B1409-TP01E-1224

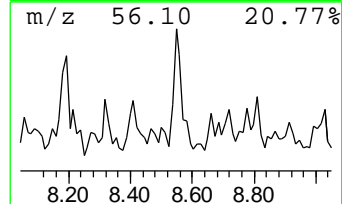
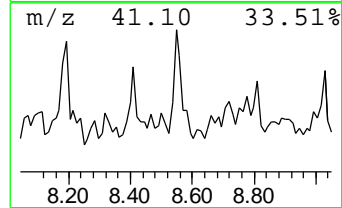
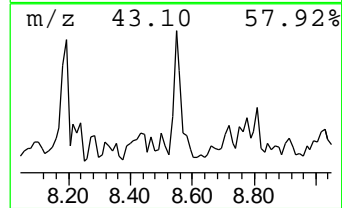
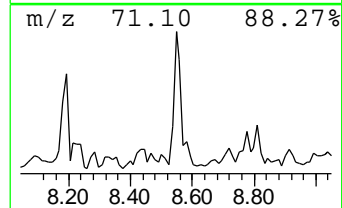
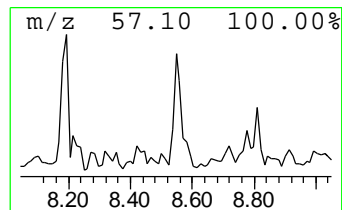
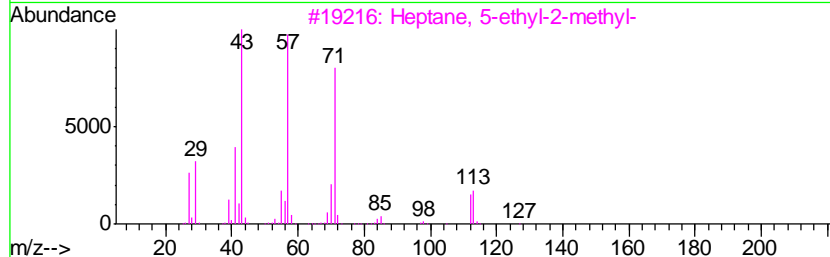
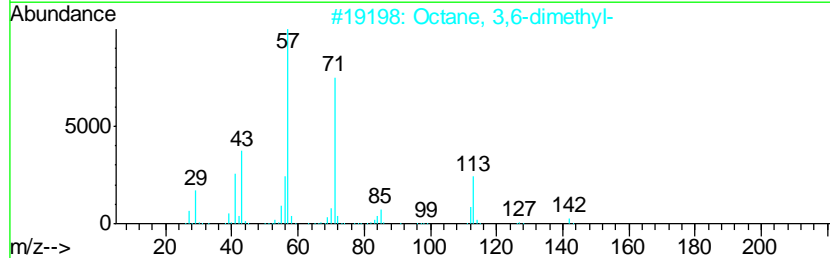
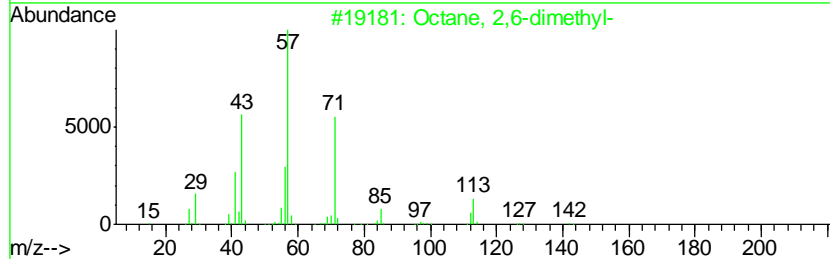
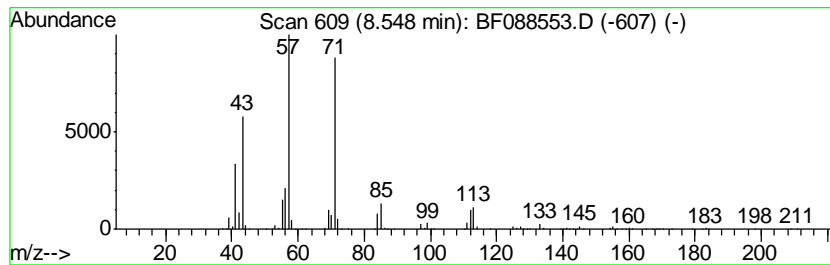
Quant Method : Z:\HPCHEM1\BNA F\METHODS\8270-BF063016.M
 Quant Title : ASP BNA STANDARDS FOR 5 POINT CALIBRATION

TIC Library : C:\Database\NIST11.L
 TIC Integration Parameters: LSCINT.P

 Peak Number 15 Octane, 2,6-dimethyl- Concentration Rank 5

R.T.	EstConc	Area	Relative to ISTD	R.T.
8.55	35.19 ng	5999430	Naphthalene-d8	8.10

Hit#	of	Tentative ID	MW	MolForm	CAS#	Qual
1	5	Octane, 2,6-dimethyl-	142	C10H22	002051-30-1	90
2		Octane, 3,6-dimethyl-	142	C10H22	015869-94-0	83
3		Heptane, 5-ethyl-2-methyl-	142	C10H22	013475-78-0	72
4		Decane, 5,6-dipropyl-	226	C16H34	119209-20-0	72
5		Oxalic acid, bis(2-ethylhexyl) e...	314	C18H34O4	1000309-39-0	64



Data Path : Z:\HPCHEM1\BNA F\DATA\BF063016\
 Data File : BF088553.D
 Acq On : 1 Jul 2016 2:46
 Operator : UM/SJ
 Sample : H3630-04
 Misc :
 ALS Vial : 24 Sample Multiplier: 1

Instrument :
 BNA_F
 ClientSampleId :
 B1409-TP01E-1224

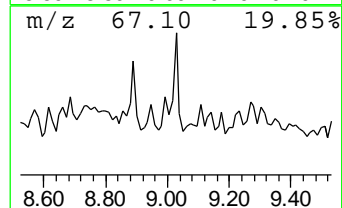
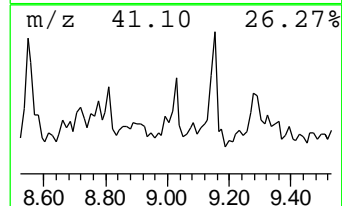
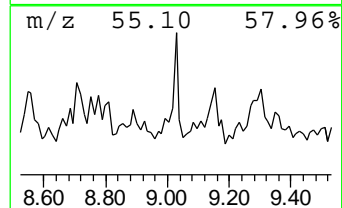
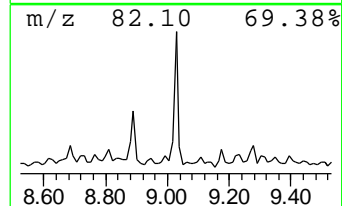
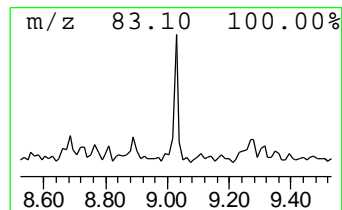
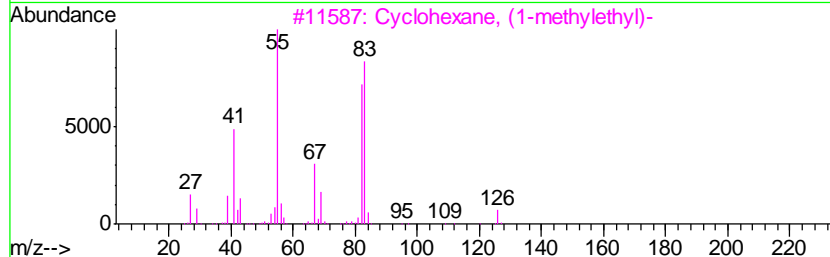
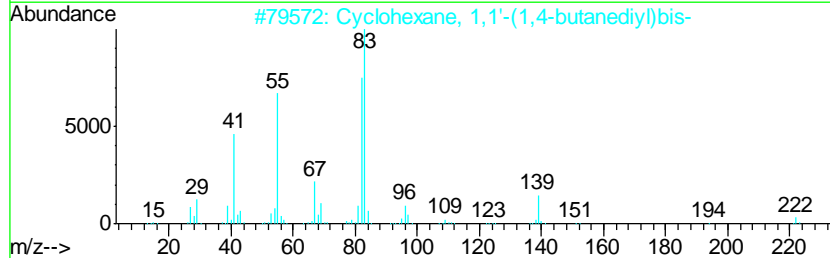
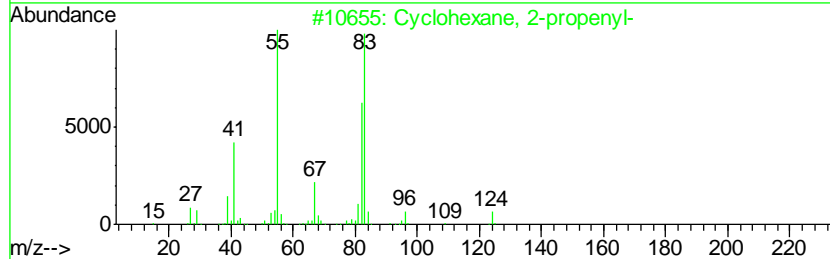
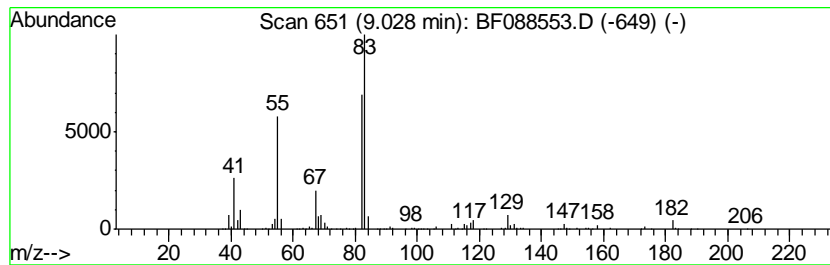
Quant Method : Z:\HPCHEM1\BNA F\METHODS\8270-BF063016.M
 Quant Title : ASP BNA STANDARDS FOR 5 POINT CALIBRATION

TIC Library : C:\Database\NIST11.L
 TIC Integration Parameters: LSCINT.P

 Peak Number 16 Cyclohexane, 2-propenyl- Concentration Rank 14

R.T.	EstConc	Area	Relative to ISTD	R.T.
9.03	19.27 ng	2196510	Acenaphthene-d10	9.86

Hit#	of	Tentative ID	MW	MolForm	CAS#	Qual
1	5	Cyclohexane, 2-propenyl-	124	C9H16	002114-42-3	72
2		Cyclohexane, 1,1'-(1,4-butanediyl)...	222	C16H30	006165-44-2	72
3		Cyclohexane, (1-methylethyl)-	126	C9H18	000696-29-7	72
4		Cyclohexane, pentyl-	154	C11H22	004292-92-6	64
5		Oxalic acid, cyclohexyl propyl e...	214	C11H18O4	1000309-30-3	47



Data Path : Z:\HPCHEM1\BNA F\DATA\BF063016\
 Data File : BF088553.D
 Acq On : 1 Jul 2016 2:46
 Operator : UM/SJ
 Sample : H3630-04
 Misc :
 ALS Vial : 24 Sample Multiplier: 1

Instrument :
 BNA_F
 ClientSampleId :
 B1409-TP01E-1224

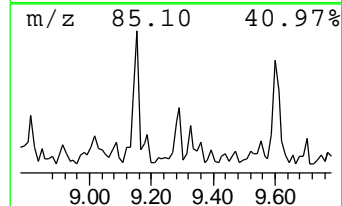
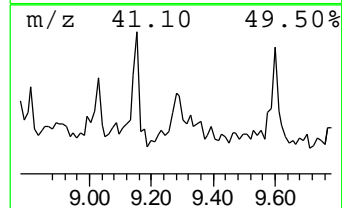
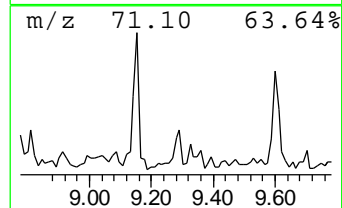
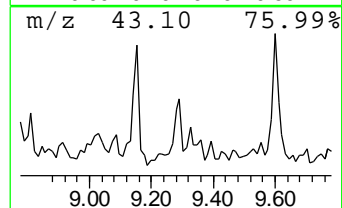
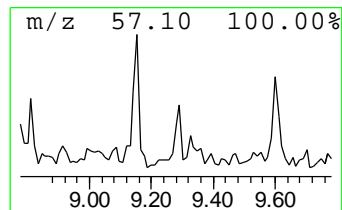
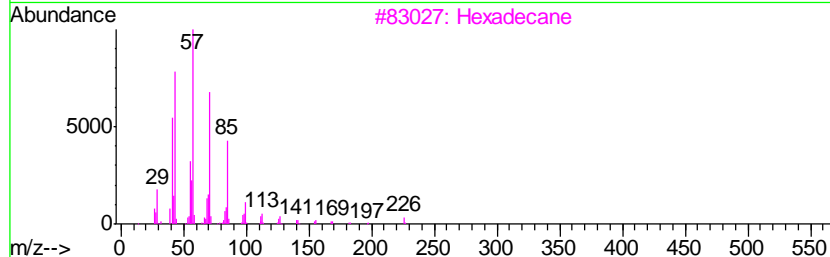
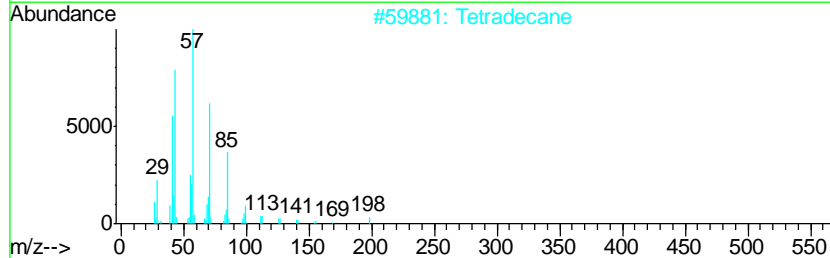
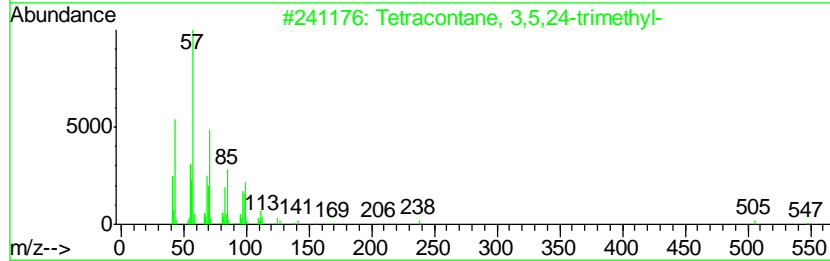
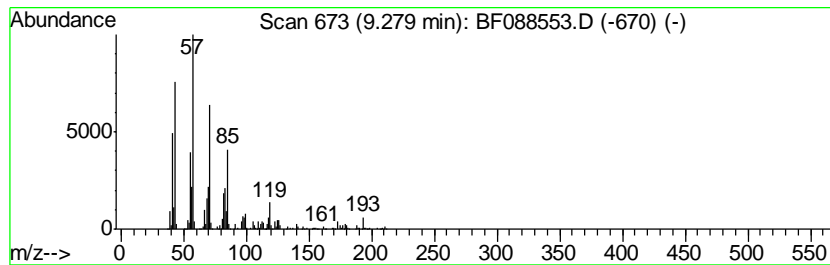
Quant Method : Z:\HPCHEM1\BNA F\METHODS\8270-BF063016.M
 Quant Title : ASP BNA STANDARDS FOR 5 POINT CALIBRATION

TIC Library : C:\Database\NIST11.L
 TIC Integration Parameters: LSCINT.P

 Peak Number 17 Tetracontane, 3,5,24-trimet... Concentration Rank 8

R.T.	EstConc	Area	Relative to ISTD	R.T.
9.28	26.95 ng	3071260	Acenaphthene-d10	9.86

Hit#	of	Tentative ID	MW	MolForm	CAS#	Qual
1	5	Tetracontane, 3,5,24-trimethyl-	605	C43H88	055162-61-3	64
2		Tetradecane	198	C14H30	000629-59-4	58
3		Hexadecane	226	C16H34	000544-76-3	58
4		Dodecane	170	C12H26	000112-40-3	53
5		10-Methylnonadecane	282	C20H42	056862-62-5	52



Data Path : Z:\HPCHEM1\BNA F\DATA\BF063016\
 Data File : BF088553.D
 Acq On : 1 Jul 2016 2:46
 Operator : UM/SJ
 Sample : H3630-04
 Misc :
 ALS Vial : 24 Sample Multiplier: 1

Instrument :
 BNA_F
 ClientSampleId :
 B1409-TP01E-1224

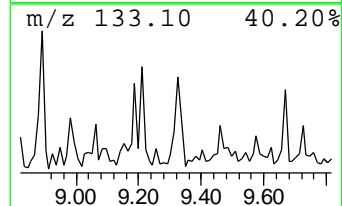
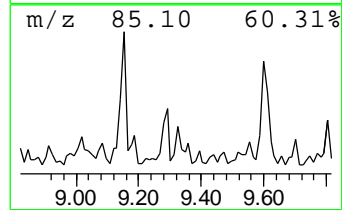
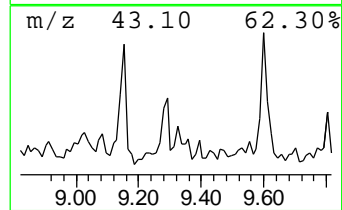
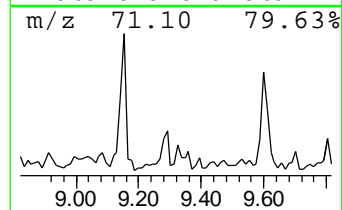
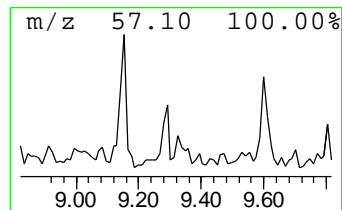
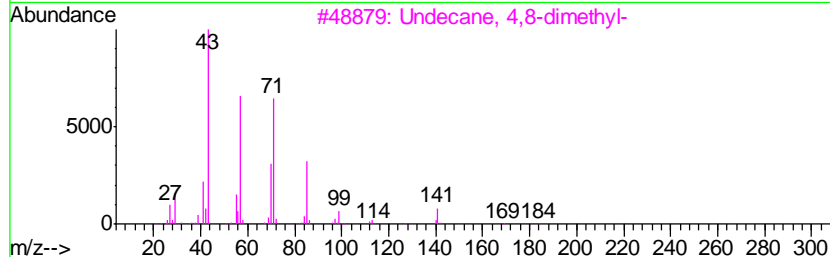
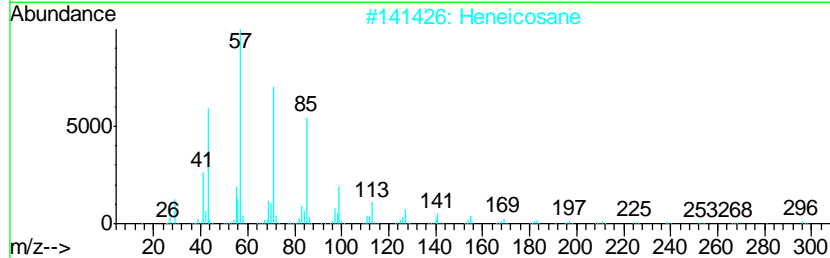
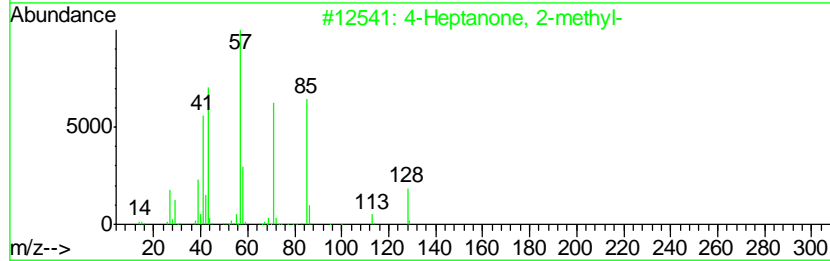
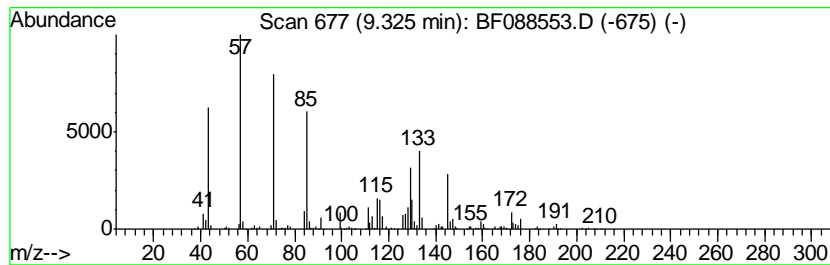
Quant Method : Z:\HPCHEM1\BNA F\METHODS\8270-BF063016.M
 Quant Title : ASP BNA STANDARDS FOR 5 POINT CALIBRATION

TIC Library : C:\Database\NIST11.L
 TIC Integration Parameters: LSCINT.P

 Peak Number 18 unknown9.32 Concentration Rank 16

R.T.	EstConc	Area	Relative to ISTD	R.T.
9.32	18.80 ng	2142450	Acenaphthene-d10	9.86

Hit#	of	Tentative ID	MW	MolForm	CAS#	Qual
1	5	4-Heptanone, 2-methyl-	128	C8H16O	000626-33-5	38
2		Heneicosane	296	C21H44	000629-94-7	38
3		Undecane, 4,8-dimethyl-	184	C13H28	017301-33-6	35
4		Undecane, 5,7-dimethyl-	184	C13H28	017312-83-3	35
5		Decane, 2,4,6-trimethyl-	184	C13H28	062108-27-4	35



Data Path : Z:\HPCHEM1\BNA F\DATA\BF063016\
 Data File : BF088553.D
 Acq On : 1 Jul 2016 2:46
 Operator : UM/SJ
 Sample : H3630-04
 Misc :
 ALS Vial : 24 Sample Multiplier: 1

Instrument :
 BNA_F
 ClientSampled :
 B1409-TP01E-1224

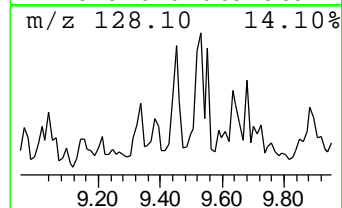
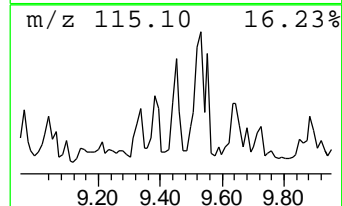
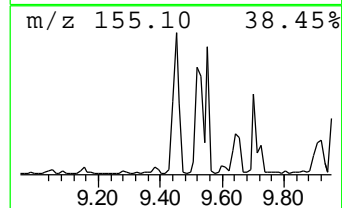
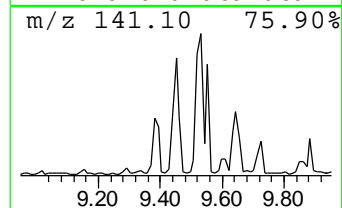
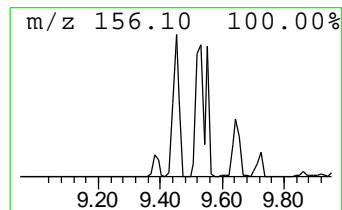
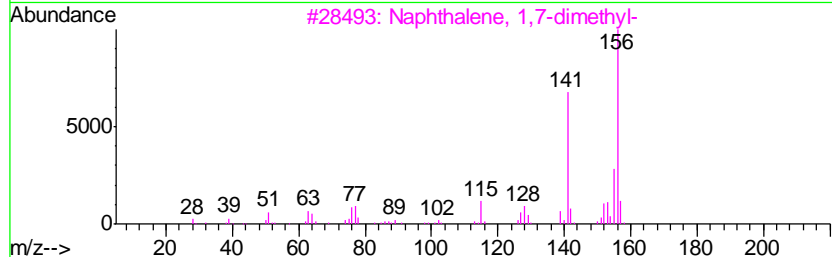
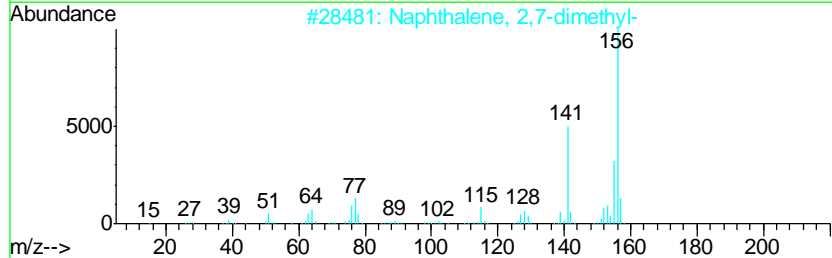
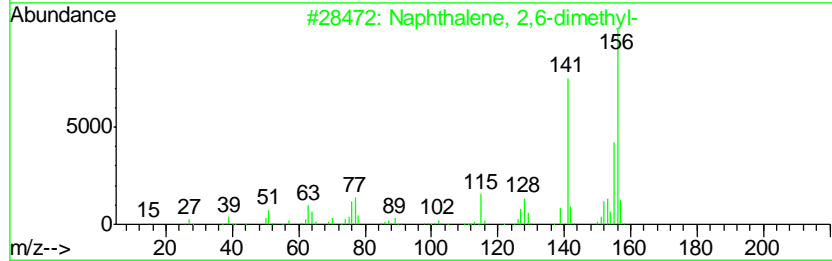
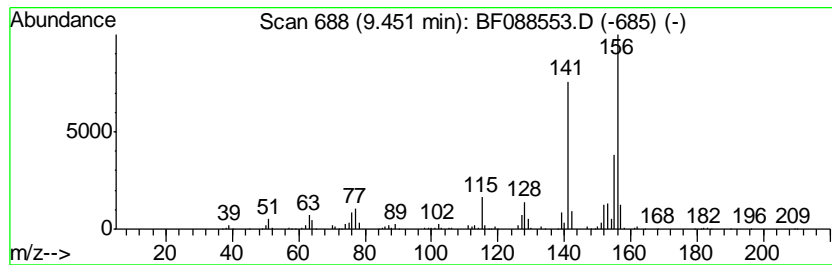
Quant Method : Z:\HPCHEM1\BNA F\METHODS\8270-BF063016.M
 Quant Title : ASP BNA STANDARDS FOR 5 POINT CALIBRATION

TIC Library : C:\Database\NIST11.L
 TIC Integration Parameters: LSCINT.P

 Peak Number 19 Naphthalene, 2,6-dimethyl- Concentration Rank 10

R.T.	EstConc	Area	Relative to ISTD	R.T.
9.45	24.32 ng	2771740	Acenaphthene-d10	9.86

Hit#	of	Tentative ID	MW	MolForm	CAS#	Qual
1	5	Naphthalene, 2,6-dimethyl-	156	C12H12	000581-42-0	98
2		Naphthalene, 2,7-dimethyl-	156	C12H12	000582-16-1	97
3		Naphthalene, 1,7-dimethyl-	156	C12H12	000575-37-1	97
4		Naphthalene, 1,5-dimethyl-	156	C12H12	000571-61-9	97
5		Naphthalene, 1,6-dimethyl-	156	C12H12	000575-43-9	97



Data Path : Z:\HPCHEM1\BNA F\DATA\BF063016\
 Data File : BF088553.D
 Acq On : 1 Jul 2016 2:46
 Operator : UM/SJ
 Sample : H3630-04
 Misc :
 ALS Vial : 24 Sample Multiplier: 1

Instrument :
 BNA_F
 ClientSampleId :
 B1409-TP01E-1224

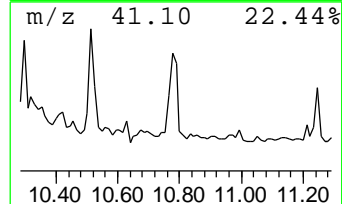
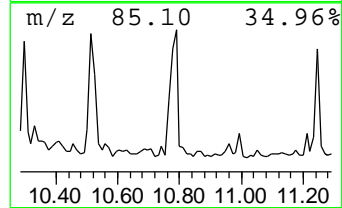
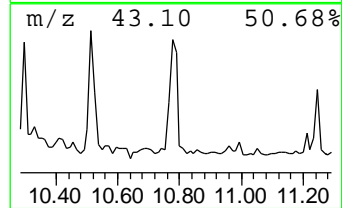
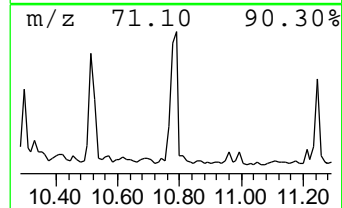
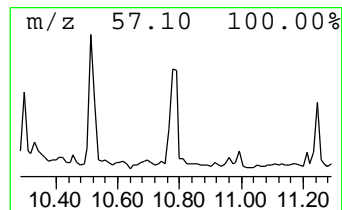
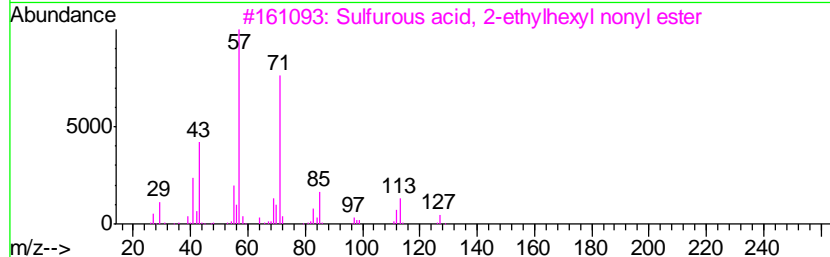
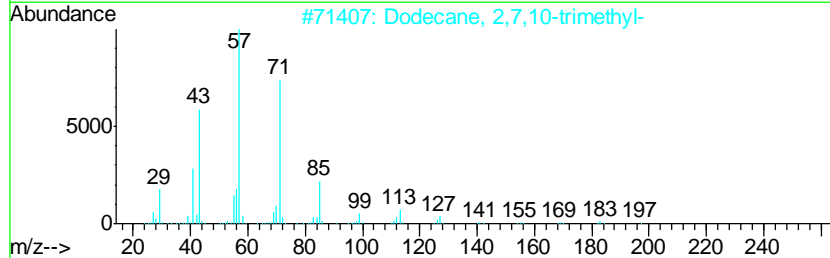
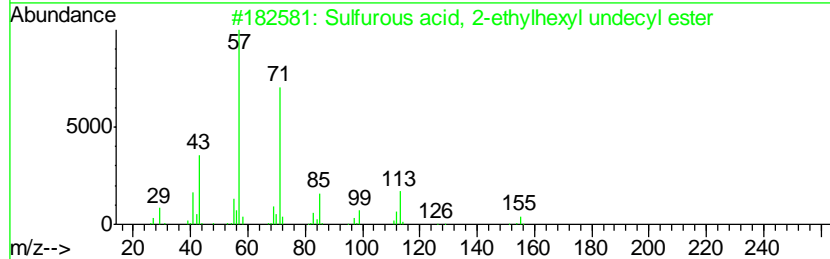
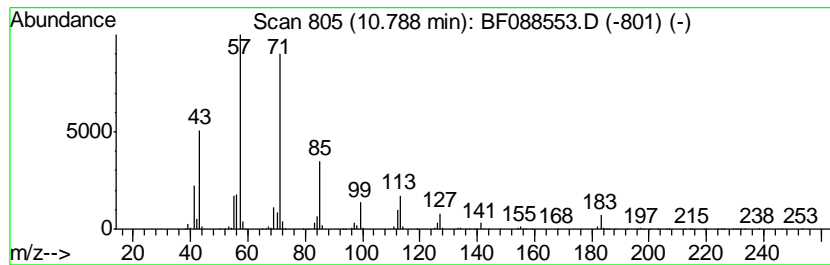
Quant Method : Z:\HPCHEM1\BNA F\METHODS\8270-BF063016.M
 Quant Title : ASP BNA STANDARDS FOR 5 POINT CALIBRATION

TIC Library : C:\Database\NIST11.L
 TIC Integration Parameters: LSCINT.P

 Peak Number 20 Sulfurous acid, 2-ethylhexy... Concentration Rank 4

R.T.	EstConc	Area	Relative to ISTD	R.T.
10.79	37.82 ng	1759930	Phenanthrene-d10	11.32

Hit#	of	Tentative ID	MW	MolForm	CAS#	Qual
1	5	Sulfurous acid, 2-ethylhexyl und...	348	C19H40O3S	1000309-19-4	80
2		Dodecane, 2,7,10-trimethyl-	212	C15H32	074645-98-0	72
3		Sulfurous acid, 2-ethylhexyl non...	320	C17H36O3S	1000309-19-2	72
4		Undecane, 6-ethyl-	184	C13H28	017312-60-6	72
5		Nonane, 3,7-dimethyl-	156	C11H24	017302-32-8	68



Data Path : Z:\HPCHEM1\BNA_F\DATA\BF063016\
 Data File : BF088553.D
 Acq On : 1 Jul 2016 2:46
 Operator : UM/SJ
 Sample : H3630-04
 Misc :
 ALS Vial : 24 Sample Multiplier: 1

Instrument :
 BNA_F
 ClientSampleId :
 B1409-TP01E-1224

Quant Method : Z:\HPCHEM1\BNA_F\METHODS\8270-BF063016.M
 Quant Title : ASP BNA STANDARDS FOR 5 POINT CALIBRATION

TIC Library : C:\Database\NIST11.L
 TIC Integration Parameters: LSCINT.P

TIC Top Hit name	RT	EstConc	Units	Response	--Internal Standard--			
					#	RT	Resp	Conc
unknown6.07	6.07	29.0	ng	1850380	1	6.82	1277240	20.0
Undecane, 5,6-dim...	6.26	19.7	ng	1256760	1	6.82	1277240	20.0
Cyclohexane, 1,1,...	6.35	15.8	ng	1008040	1	6.82	1277240	20.0
unknown6.59	6.59	98.4	ng	6284430	1	6.82	1277240	20.0
Hexadecane	6.95	19.1	ng	1220420	1	6.82	1277240	20.0
1-Hexanol, 5-meth...	7.06	23.5	ng	1503170	1	6.82	1277240	20.0
Formic acid, 2-et...	7.10	16.2	ng	1036310	1	6.82	1277240	20.0
Naphthalene, deca...	7.22	18.5	ng	1181180	1	6.82	1277240	20.0
Tridecane, 6-methyl-	7.54	15.6	ng	2657810	2	8.10	3409880	20.0
Cyclohexane, pentyl-	7.74	27.6	ng	4708010	2	8.10	3409880	20.0
Undecane, 4,6-dim...	8.19	24.7	ng	4208120	2	8.10	3409880	20.0
Cyclohexane, (4-m...	8.41	23.4	ng	3987680	2	8.10	3409880	20.0
Octane, 2,6-dimet...	8.55	35.2	ng	5999430	2	8.10	3409880	20.0
Cyclohexane, 2-pr...	9.03	19.3	ng	2196510	3	9.86	2279480	20.0
Tetracontane, 3,5...	9.28	26.9	ng	3071260	3	9.86	2279480	20.0
unknown9.32	9.32	18.8	ng	2142450	3	9.86	2279480	20.0
Naphthalene, 2,6-...	9.45	24.3	ng	2771740	3	9.86	2279480	20.0
Sulfurous acid, 2...	10.79	37.8	ng	1759930	4	11.32	930688	20.0