

Data Path : Z:\HPCHEM1\BNA F\DATA\BF063017\
 Data File : BF096338.D
 Acq On : 30 Jun 2017 15:39
 Operator : SJ/MA
 Sample : I3883-14 5X
 Misc :
 ALS Vial : 17 Sample Multiplier: 1

Instrument :
 BNA_F
 ClientSampleId :
 G40-1.5-3

Integration Parameters: rteint.p
 Integrator: RTE
 Smoothing : ON
 Sampling : 1
 Start Thrs: 0.2
 Stop Thrs : 0

Filtering: 5
 Min Area: 3 % of largest Peak
 Max Peaks: 100
 Peak Location: TOP

If leading or trailing edge < 100 prefer < Baseline drop else tangent >
 Peak separation: 5

Method : Z:\HPCHEM1\BNA F\METHODS\8270-BF062717.M
 Title : ASP BNA STANDARDS FOR 5 POINT CALIBRATION

Signal : TIC

peak #	R.T. min	first scan	max scan	last scan	PK TY	peak height	corr. area	corr. % max.	% of total
1	4.951	485	487	491	rBV	18769	20482	1.61%	0.281%
2	5.375	555	559	563	rBV	161706	140449	11.05%	1.927%
3	6.392	729	732	740	rVB	174679	148436	11.68%	2.036%
4	6.534	753	756	760	rBV	160281	142960	11.25%	1.961%
5	6.775	793	797	800	rBV	1093385	955730	75.19%	13.112%
6	6.928	820	823	827	rVB	142553	109579	8.62%	1.503%
7	7.322	885	890	894	rBV	85622	79112	6.22%	1.085%
8	8.057	1011	1015	1018	rBV	1431908	1271059	100.00%	17.439%
9	8.357	1058	1066	1069	rBV6	7233	16108	1.27%	0.221%
10	8.492	1085	1089	1093	rBV2	16226	22368	1.76%	0.307%
11	8.657	1114	1117	1120	rBV	19053	15836	1.25%	0.217%
12	9.086	1188	1190	1194	rVB	17205	16431	1.29%	0.225%
13	9.128	1194	1197	1203	rVB	185625	144014	11.33%	1.976%
14	9.222	1208	1213	1217	rBV3	31597	38035	2.99%	0.522%
15	9.522	1262	1264	1266	rBV	33238	27849	2.19%	0.382%
16	9.545	1266	1268	1273	rVV2	25604	24225	1.91%	0.332%
17	9.616	1276	1280	1286	rVB7	10716	19117	1.50%	0.262%
18	9.751	1301	1303	1307	rVB2	26179	20532	1.62%	0.282%
19	9.810	1308	1313	1319	rBV	1150555	1134104	89.23%	15.560%
20	10.251	1385	1388	1390	rVB	27854	20860	1.64%	0.286%
21	10.469	1421	1425	1430	rVB	30354	31192	2.45%	0.428%
22	10.586	1442	1445	1449	rBV	77474	64377	5.06%	0.883%
23	10.739	1465	1471	1473	rBV2	59400	84285	6.63%	1.156%
24	11.045	1519	1523	1527	rVB6	11089	17624	1.39%	0.242%
25	11.169	1541	1544	1546	rBV2	39067	34417	2.71%	0.472%
26	11.198	1546	1549	1552	rVB	41268	41138	3.24%	0.564%
27	11.286	1560	1564	1568	rBV	1115814	931252	73.27%	12.776%
28	11.551	1606	1609	1613	rVB5	13955	17206	1.35%	0.236%
29	11.598	1613	1617	1619	rBV	38455	38998	3.07%	0.535%
30	11.816	1652	1654	1657	rVB4	20493	16520	1.30%	0.227%
31	11.892	1664	1667	1670	rBV4	18519	23114	1.82%	0.317%
32	12.004	1683	1686	1688	rBV	41428	33572	2.64%	0.461%
33	12.286	1731	1734	1737	rBV4	29018	27791	2.19%	0.381%
34	12.392	1749	1752	1754	rVB	38511	34692	2.73%	0.476%

Data Path : Z:\HPCHEM1\BNA_F\DATA\BF063017\
Data File : BF096338.D
Acq On : 30 Jun 2017 15:39
Operator : SJ/MA
Sample : I3883-14 5X
Misc :
ALS Vial : 17 Sample Multiplier: 1

Instrument :
BNA_F
ClientSampleId :
G40-1.5-3

Integration Parameters: rteint.p
Integrator: RTE
Smoothing : ON Filtering: 5
Sampling : 1 Min Area: 3 % of largest Peak
Start Thrs: 0.2 Max Peaks: 100
Stop Thrs : 0 Peak Location: TOP

If leading or trailing edge < 100 prefer < Baseline drop else tangent >
Peak separation: 5

Method : Z:\HPCHEM1\BNA_F\METHODS\8270-BF062717.M
Title : ASP BNA STANDARDS FOR 5 POINT CALIBRATION

35	12.498	1767	1770	1773	rBV2	36654	46357	3.65%	0.636%
36	12.763	1812	1815	1817	rBV2	38753	38331	3.02%	0.526%
37	12.868	1830	1833	1836	rBV	142723	143876	11.32%	1.974%
38	13.921	2008	2012	2015	rBV	864626	826563	65.03%	11.340%
39	15.351	2252	2255	2258	rVB	436000	470213	36.99%	6.451%

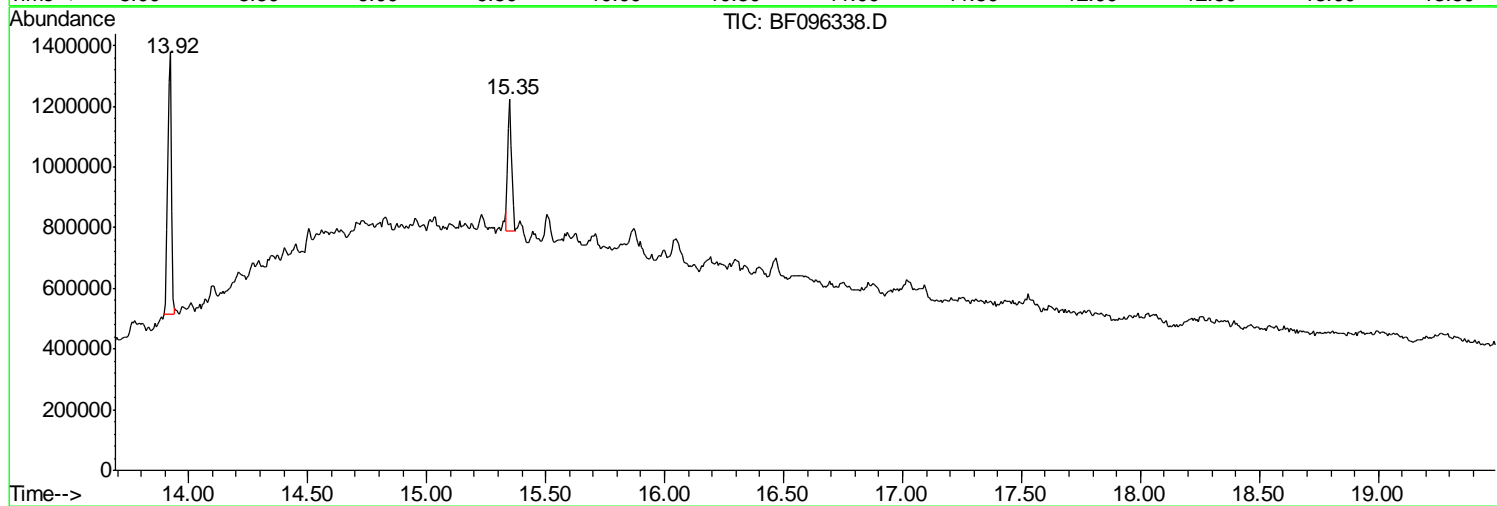
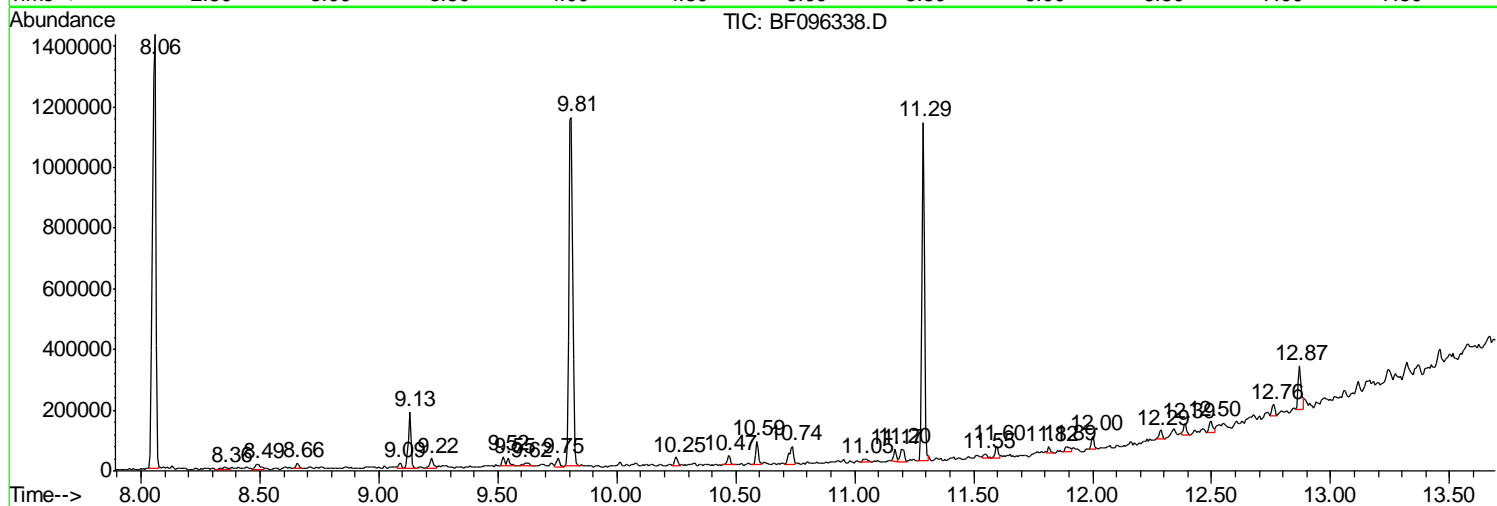
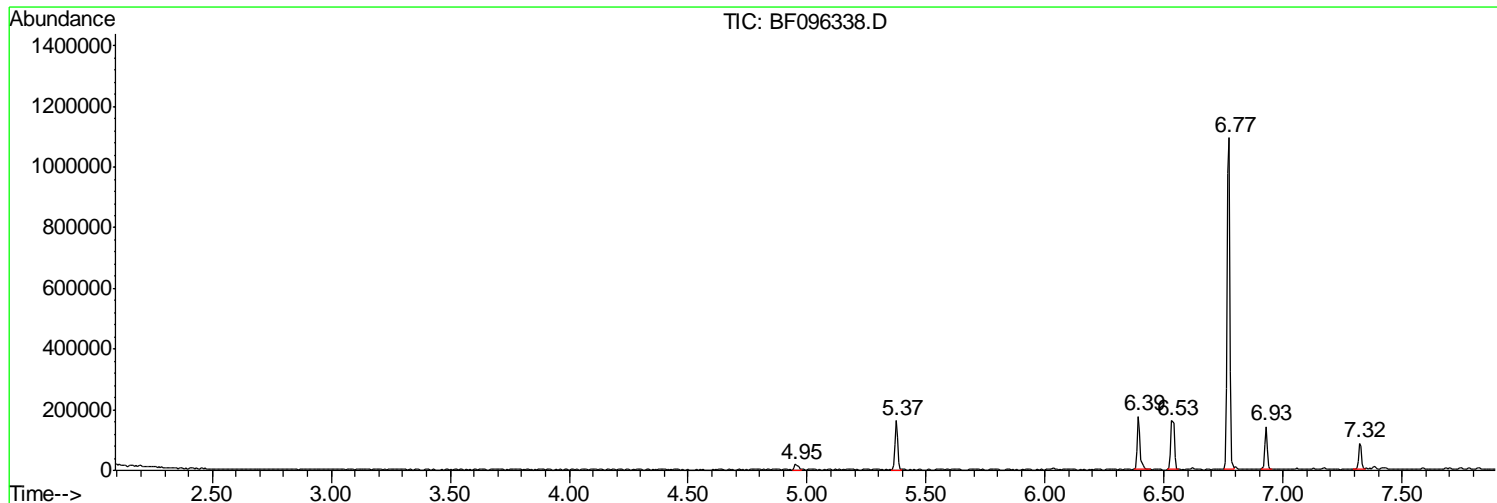
Sum of corrected areas: 7288804

Data Path : Z:\HPCHEM1\BNA F\DATA\BF063017\
 Data File : BF096338.D
 Acq On : 30 Jun 2017 15:39
 Operator : SJ/MA
 Sample : I3883-14 5X
 Misc :
 ALS Vial : 17 Sample Multiplier: 1

Instrument :
 BNA_F
 ClientSampleId :
 G40-1.5-3

Quant Method : Z:\HPCHEM1\BNA F\METHODS\8270-BF062717.M
 Quant Title : ASP BNA STANDARDS FOR 5 POINT CALIBRATION

TIC Library : C:\DATABASE\NIST11.L
 TIC Integration Parameters: LSCINT.P



Data Path : Z:\HPCHEM1\BNA F\DATA\BF063017\
 Data File : BF096338.D
 Acq On : 30 Jun 2017 15:39
 Operator : SJ/MA
 Sample : I3883-14 5X
 Misc :
 ALS Vial : 17 Sample Multiplier: 1

Instrument :
 BNA_F
 ClientSampled :
 G40-1.5-3

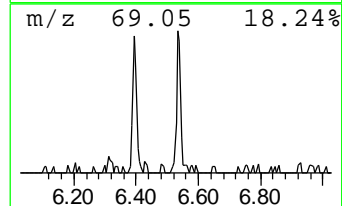
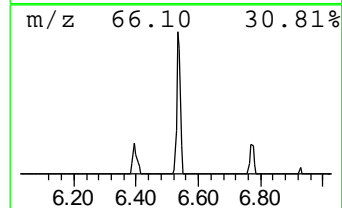
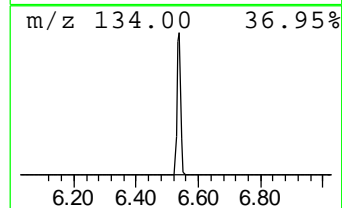
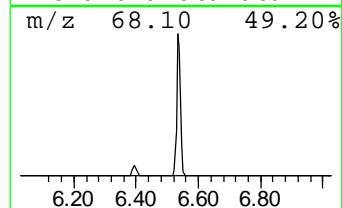
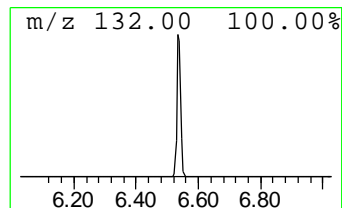
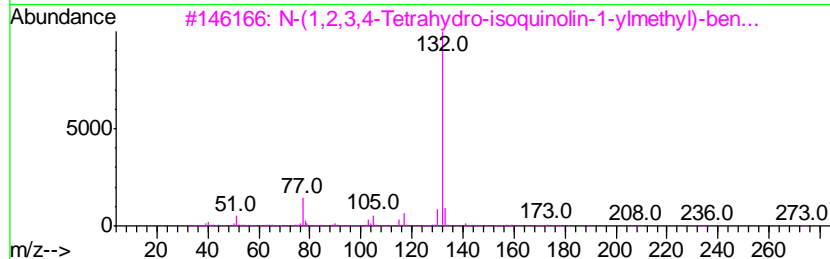
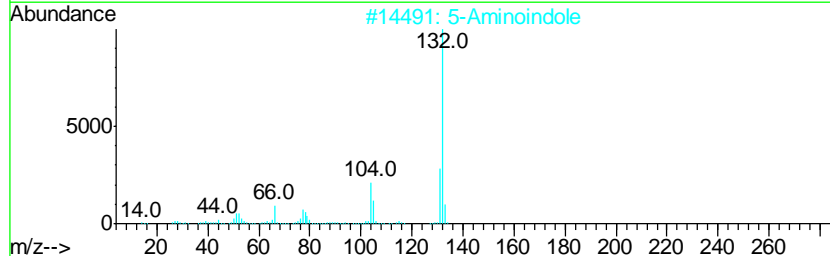
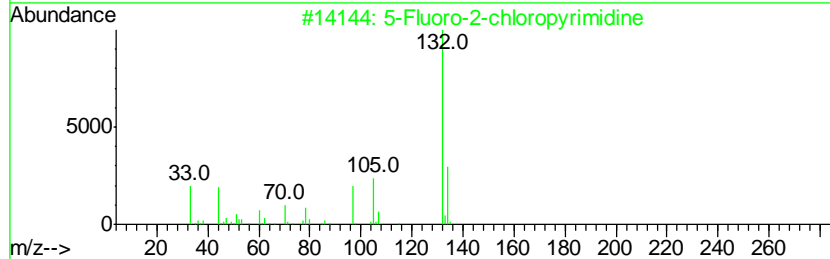
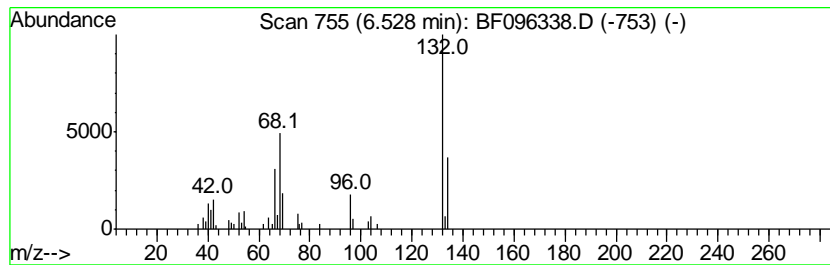
Quant Method : Z:\HPCHEM1\BNA F\METHODS\8270-BF062717.M
 Quant Title : ASP BNA STANDARDS FOR 5 POINT CALIBRATION

TIC Library : C:\DATABASE\NIST11.L
 TIC Integration Parameters: LSCINT.P

 Peak Number 1 unknown6.53 Concentration Rank 1

R.T.	EstConc	Area	Relative to ISTD	R.T.
6.53	2.99 ng	142960	1,4-Dichlorobenzene-d4	6.77

Hit#	of	Tentative ID	MW	MolForm	CAS#	Qual
1	5	5-Fluoro-2-chloropyrimidine	132	C4H2ClFN2	062802-42-0	27
2		5-Aminoindole	132	C8H8N2	005192-03-0	12
3		N-(1,2,3,4-Tetrahydro-isoquinoli...	302	C16H18N2O2S	1000274-62-8	10
4		Amphetaminil	250	C17H18N2	017590-01-1	10
5		1,3,5-Trifluorobenzene	132	C6H3F3	000372-38-3	10



Data Path : Z:\HPCHEM1\BNA_F\DATA\BF063017\
Data File : BF096338.D
Acq On : 30 Jun 2017 15:39
Operator : SJ/MA
Sample : I3883-14 5X
Misc :
ALS Vial : 17 Sample Multiplier: 1

Instrument :
BNA_F
ClientSampleId :
G40-1.5-3

Quant Method : Z:\HPCHEM1\BNA_F\METHODS\8270-BF062717.M
Quant Title : ASP BNA STANDARDS FOR 5 POINT CALIBRATION

TIC Library : C:\DATABASE\NIST11.L
TIC Integration Parameters: LSCINT.P

TIC Top Hit name	RT	EstConc	Units	Response	--Internal Standard--			
					#	RT	Resp	Conc
unknown6.53	6.53	3.0	ng	142960	1	6.77	955730	20.0