

Data Path : Z:\svoasrv\HPCHEM1\BNA_F\Data\BF070125\
 Data File : BF142954.D
 Acq On : 01 Jul 2025 17:29
 Operator : RC/JU
 Sample : Q2458-07
 Misc :
 ALS Vial : 15 Sample Multiplier: 1

Instrument :
 BNA_F
 ClientSampleId :
 TP-62

Quant Time: Jul 01 17:49:40 2025
 Quant Method : Z:\svoasrv\HPCHEM1\BNA_F\Methods\8270-BF061925.M
 Quant Title : ASP BNA STANDARDS FOR 5 POINT CALIBRATION
 QLast Update : Tue Jun 24 05:28:21 2025
 Response via : Initial Calibration

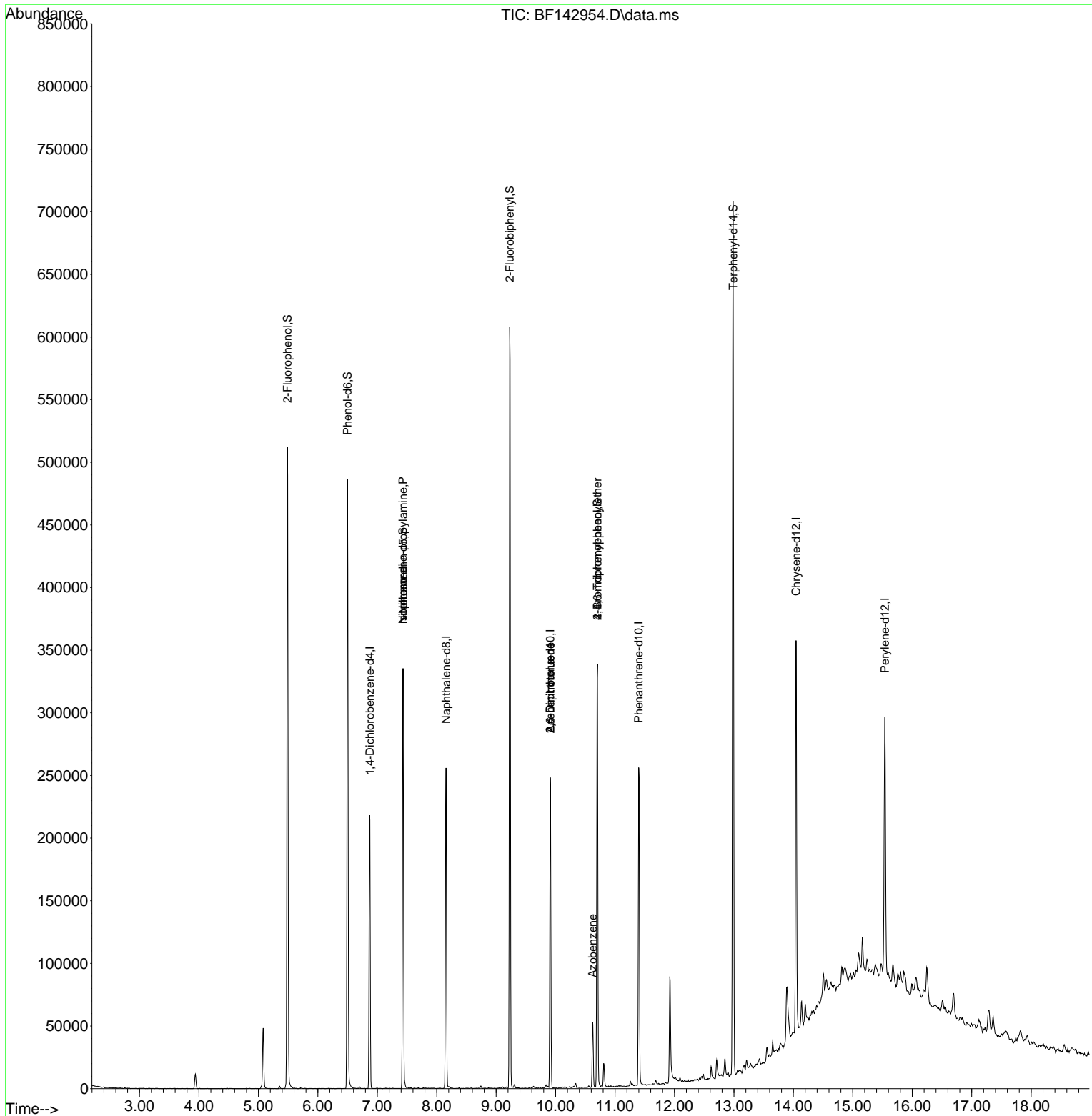
Compound	R.T.	QIon	Response	Conc	Units	Dev(Min)
Internal Standards						
1) 1,4-Dichlorobenzene-d4	6.875	152	50422	20.000	ng	0.00
21) Naphthalene-d8	8.157	136	167358	20.000	ng	-0.01
39) Acenaphthene-d10	9.910	164	75314	20.000	ng	-0.01
64) Phenanthrene-d10	11.398	188	137885	20.000	ng	-0.01
76) Chrysene-d12	14.045	240	148822	20.000	ng	-0.01
86) Perylene-d12	15.539	264	117407	20.000	ng	0.00
System Monitoring Compounds						
5) 2-Fluorophenol	5.487	112	198796	65.642	ng	0.00
7) Phenol-d6	6.498	99	217893	60.983	ng	-0.01
23) Nitrobenzene-d5	7.434	82	137581	45.092	ng	-0.01
42) 2,4,6-Tribromophenol	10.704	330	59306	76.521	ng	-0.01
45) 2-Fluorobiphenyl	9.228	172	275617	48.075	ng	-0.02
79) Terphenyl-d14	12.986	244	325214	30.194	ng	-0.01
Target Compounds						
19) n-Nitroso-di-n-propyla...	7.434	70	18045	8.683	ng	# 76
25) Isophorone	7.434	82	137580	28.109	ng	# 62
51) 2,6-Dinitrotoluene	9.910	165	9577	8.945	ng	# 26
57) 2,4-Dinitrotoluene	9.910	165	9577	6.734	ng	# 26
63) Azobenzene	10.622	77	13021	3.048	ng	# 1
67) 4-Bromophenyl-phenylether	10.704	248	3781	2.409	ng	# 1

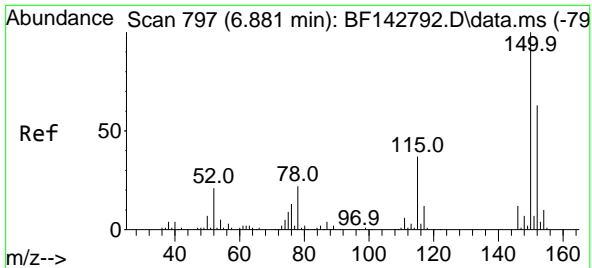
(#) = qualifier out of range (m) = manual integration (+) = signals summed

Data Path : Z:\svoasrv\HPCHEM1\BNA_F\Data\BF070125\
 Data File : BF142954.D
 Acq On : 01 Jul 2025 17:29
 Operator : RC/JU
 Sample : Q2458-07
 Misc :
 ALS Vial : 15 Sample Multiplier: 1

Instrument :
 BNA_F
 ClientSampleId :
 TP-62

Quant Time: Jul 01 17:49:40 2025
 Quant Method : Z:\svoasrv\HPCHEM1\BNA_F\Methods\8270-BF061925.M
 Quant Title : ASP BNA STANDARDS FOR 5 POINT CALIBRATION
 QLast Update : Tue Jun 24 05:28:21 2025
 Response via : Initial Calibration

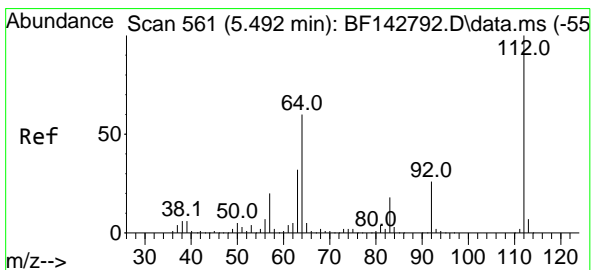
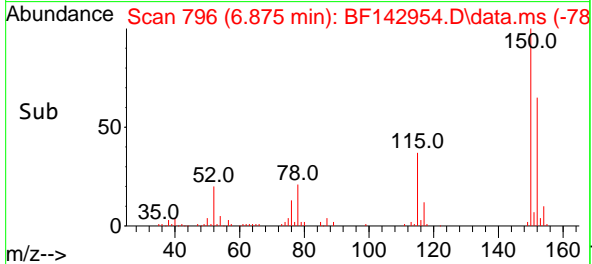
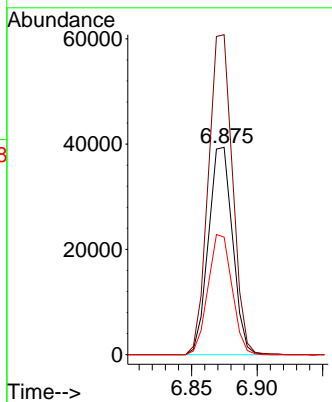
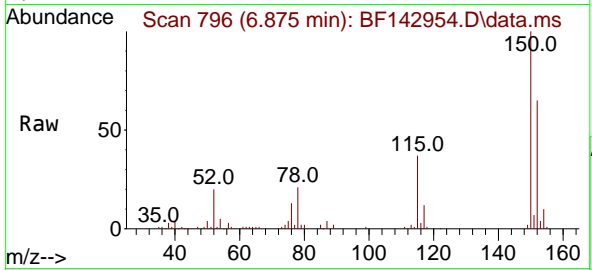




#1
 1,4-Dichlorobenzene-d4
 Concen: 20.000 ng
 RT: 6.875 min Scan# 79
 Delta R.T. -0.006 min
 Lab File: BF142954.D
 Acq: 01 Jul 2025 17:29

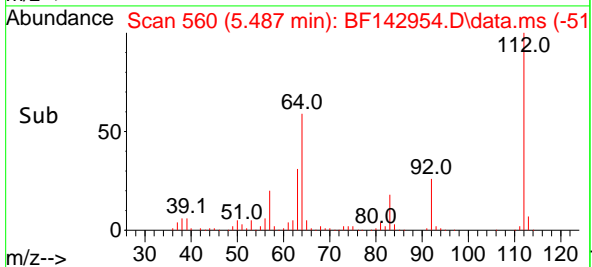
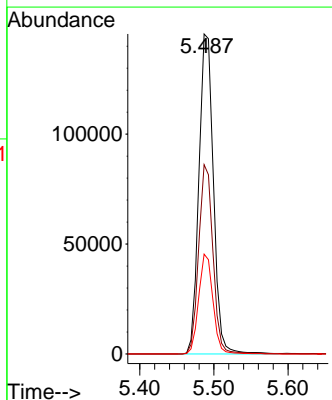
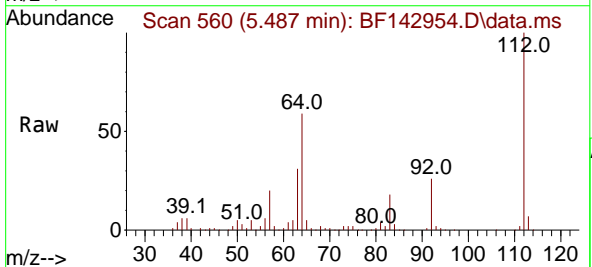
Instrument :
 BNA_F
 ClientSampleId :
 TP-62

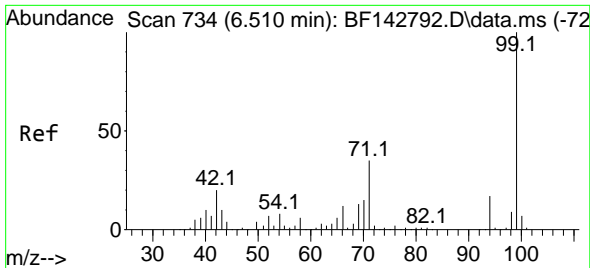
Tgt Ion:152 Resp: 50422
 Ion Ratio Lower Upper
 152 100
 150 154.4 127.2 190.8
 115 56.7 46.6 69.8



#5
 2-Fluorophenol
 Concen: 65.642 ng
 RT: 5.487 min Scan# 560
 Delta R.T. -0.005 min
 Lab File: BF142954.D
 Acq: 01 Jul 2025 17:29

Tgt Ion:112 Resp: 198796
 Ion Ratio Lower Upper
 112 100
 64 59.2 48.2 72.2
 63 31.2 25.7 38.5



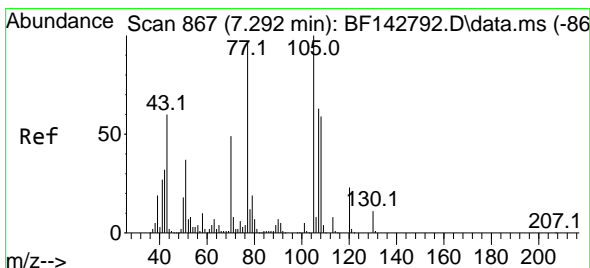
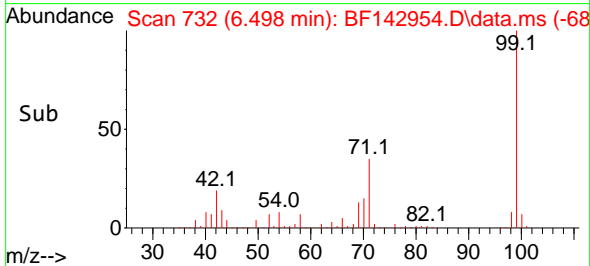
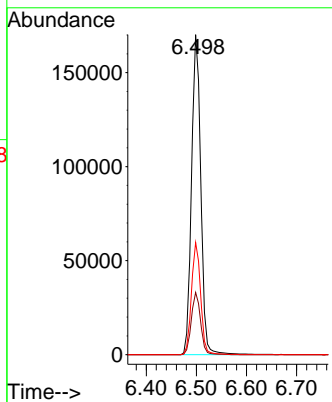
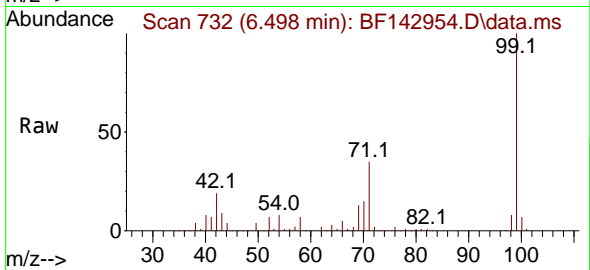


#7
 Phenol-d6
 Concen: 60.983 ng
 RT: 6.498 min Scan# 71
 Delta R.T. -0.012 min
 Lab File: BF142954.D
 Acq: 01 Jul 2025 17:29

Instrument :
 BNA_F
 ClientSampleId :
 TP-62

Tgt Ion: 99 Resp: 217893

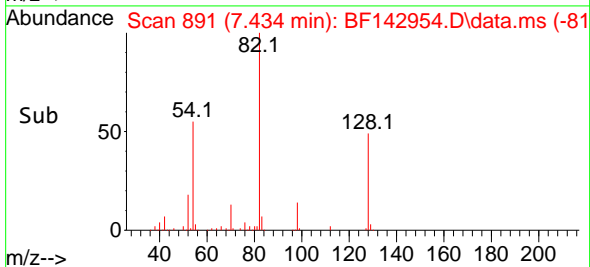
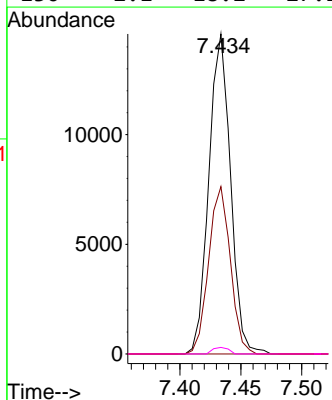
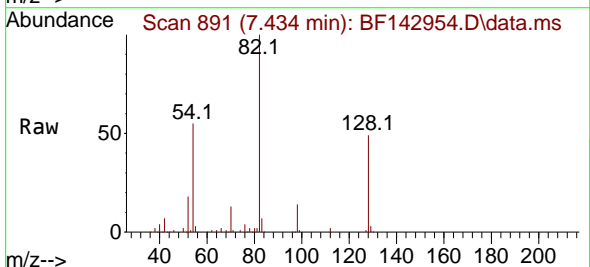
Ion	Ratio	Lower	Upper
99	100		
42	19.5	15.9	23.9
71	35.0	27.8	41.8

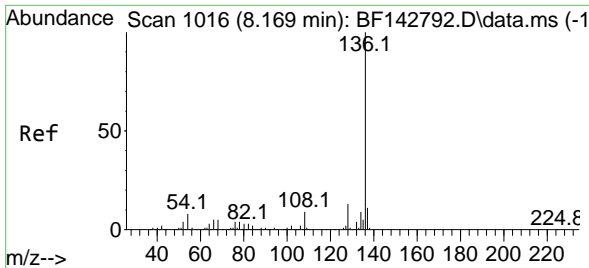


#19
 n-Nitroso-di-n-propylamine
 Concen: 8.683 ng
 RT: 7.434 min Scan# 891
 Delta R.T. 0.141 min
 Lab File: BF142954.D
 Acq: 01 Jul 2025 17:29

Tgt Ion: 70 Resp: 18045

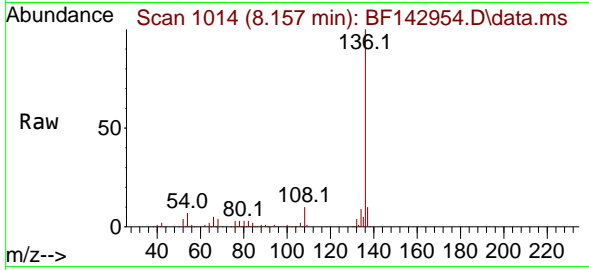
Ion	Ratio	Lower	Upper
70	100		
42	52.3	52.1	78.1
101	0.0	8.2	12.2#
130	2.1	18.2	27.2#



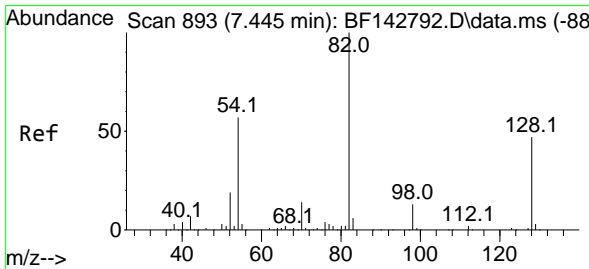
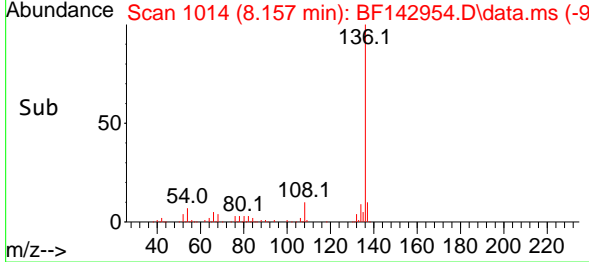
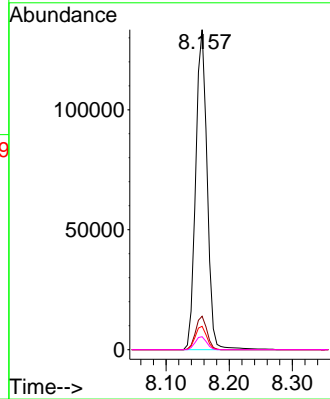


#21
 Naphthalene-d8
 Concen: 20.000 ng
 RT: 8.157 min Scan# 1016
 Delta R.T. -0.012 min
 Lab File: BF142954.D
 Acq: 01 Jul 2025 17:29

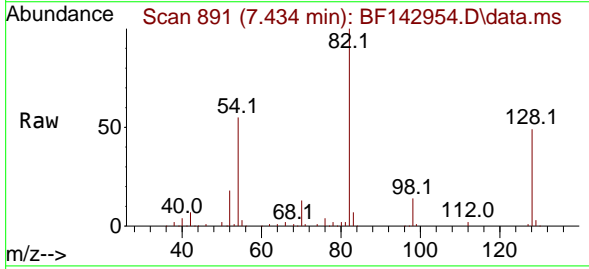
Instrument :
 BNA_F
 ClientSampleId :
 TP-62



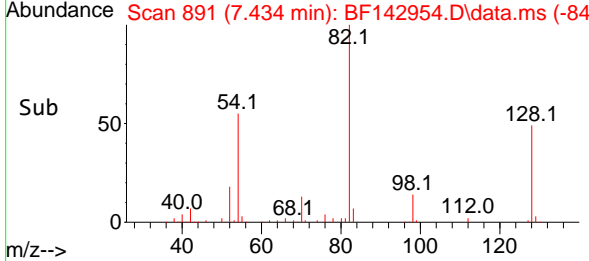
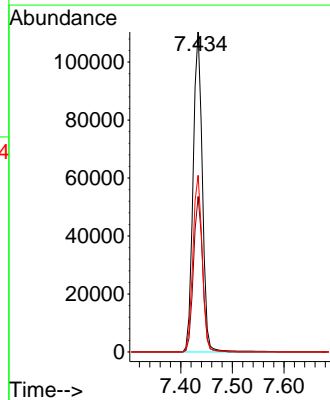
Tgt Ion:136 Resp: 167358
 Ion Ratio Lower Upper
 136 100
 137 10.5 8.4 12.6
 54 7.3 6.3 9.5
 68 4.1 3.7 5.5

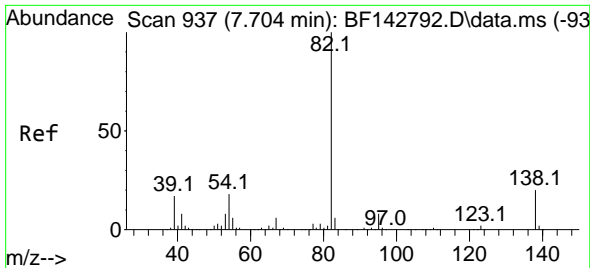


#23
 Nitrobenzene-d5
 Concen: 45.092 ng
 RT: 7.434 min Scan# 891
 Delta R.T. -0.011 min
 Lab File: BF142954.D
 Acq: 01 Jul 2025 17:29



Tgt Ion: 82 Resp: 137581
 Ion Ratio Lower Upper
 82 100
 128 48.6 37.7 56.5
 54 55.2 45.7 68.5



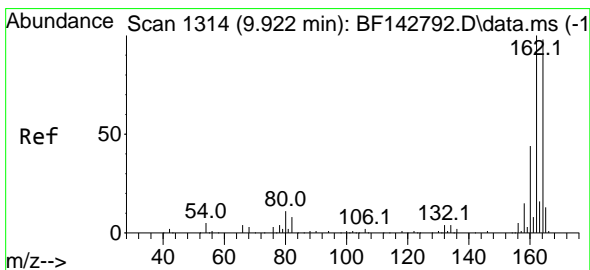
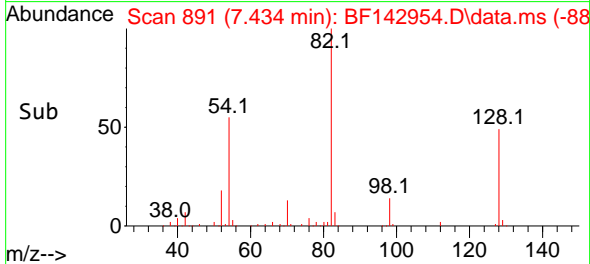
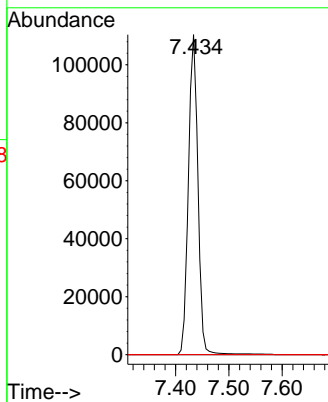
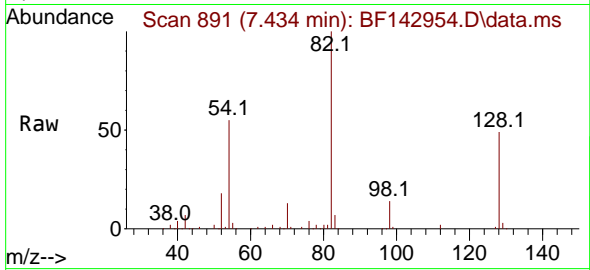


#25
 Isophorone
 Concen: 28.109 ng
 RT: 7.434 min Scan# 891
 Delta R.T. -0.270 min
 Lab File: BF142954.D
 Acq: 01 Jul 2025 17:29

Instrument : BNA_F
 ClientSampleId : TP-62

Tgt Ion: 82 Resp: 137580

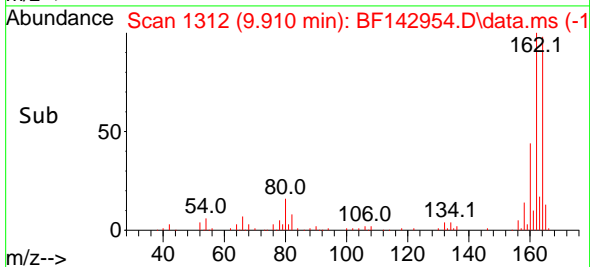
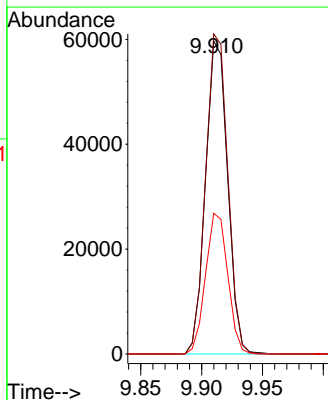
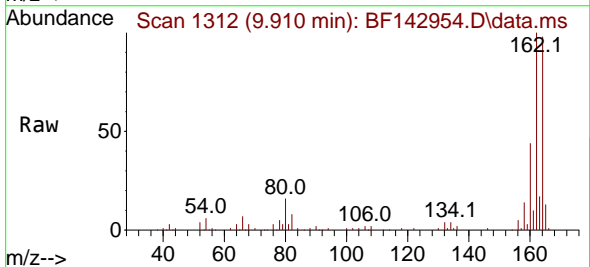
Ion	Ratio	Lower	Upper
82	100		
95	0.0	6.2	9.2#
138	0.0	16.2	24.4#

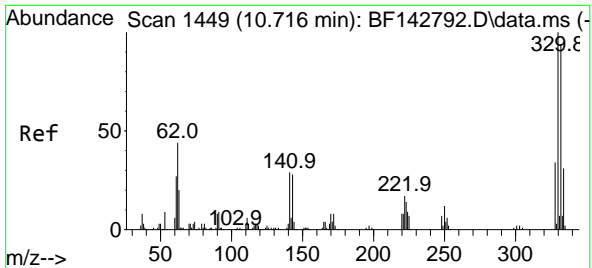


#39
 Acenaphthene-d10
 Concen: 20.000 ng
 RT: 9.910 min Scan# 1312
 Delta R.T. -0.012 min
 Lab File: BF142954.D
 Acq: 01 Jul 2025 17:29

Tgt Ion: 164 Resp: 75314

Ion	Ratio	Lower	Upper
164	100		
162	102.3	81.8	122.8
160	44.9	36.0	54.0

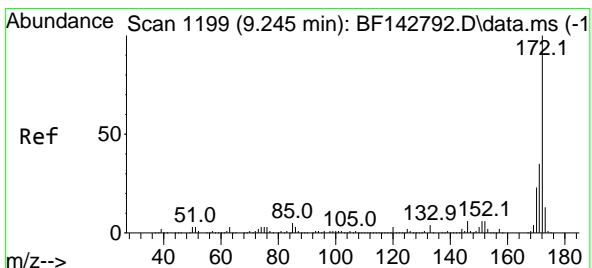
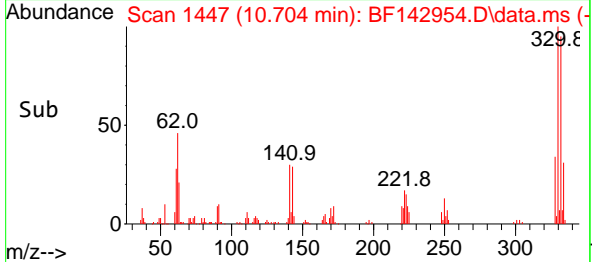
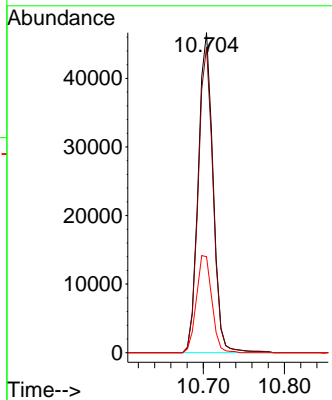
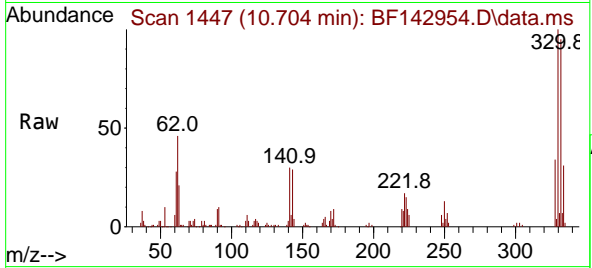




#42
 2,4,6-Tribromophenol
 Concen: 76.521 ng
 RT: 10.704 min Scan# 1447
 Delta R.T. -0.012 min
 Lab File: BF142954.D
 Acq: 01 Jul 2025 17:29

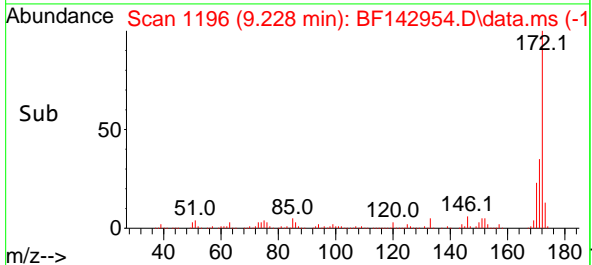
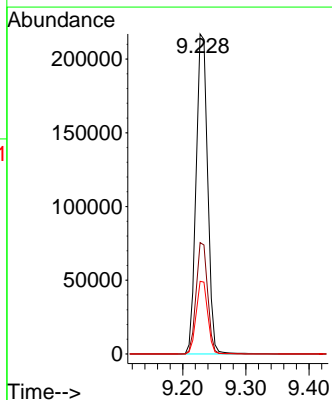
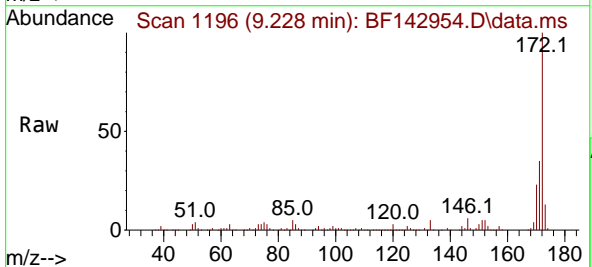
Instrument :
 BNA_F
 ClientSampleId :
 TP-62

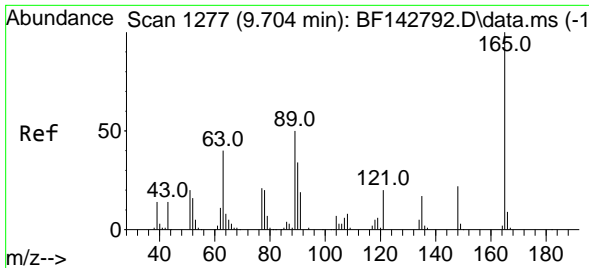
Tgt Ion:330 Resp: 59306
 Ion Ratio Lower Upper
 330 100
 332 95.6 75.0 112.6
 141 31.6 25.3 37.9



#45
 2-Fluorobiphenyl
 Concen: 48.075 ng
 RT: 9.228 min Scan# 1196
 Delta R.T. -0.017 min
 Lab File: BF142954.D
 Acq: 01 Jul 2025 17:29

Tgt Ion:172 Resp: 275617
 Ion Ratio Lower Upper
 172 100
 171 34.8 28.2 42.4
 170 22.7 18.5 27.7

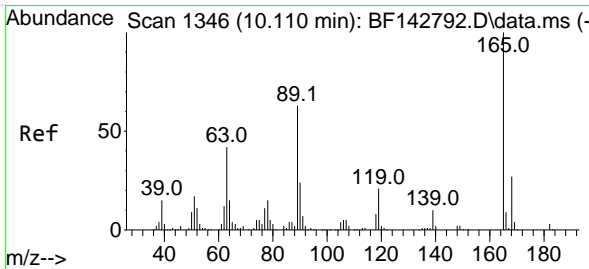
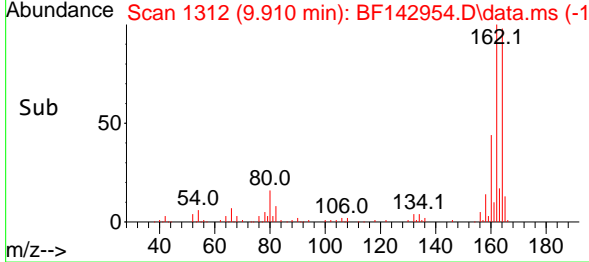
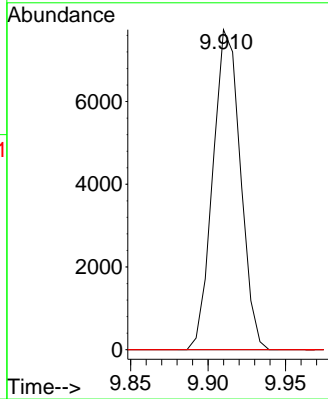
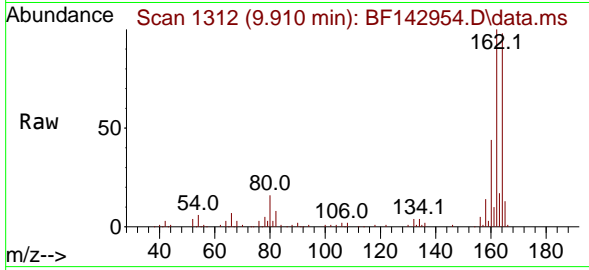




#51
 2,6-Dinitrotoluene
 Concen: 8.945 ng
 RT: 9.910 min Scan# 1312
 Delta R.T. 0.206 min
 Lab File: BF142954.D
 Acq: 01 Jul 2025 17:29

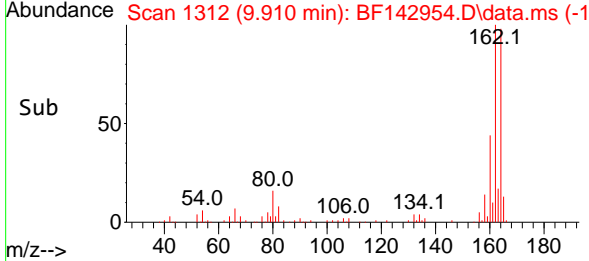
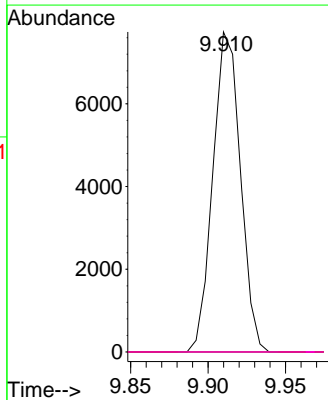
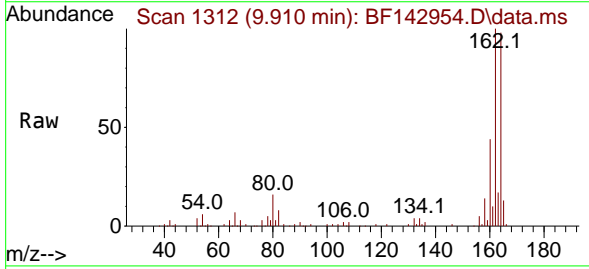
Instrument :
 BNA_F
 ClientSampleId :
 TP-62

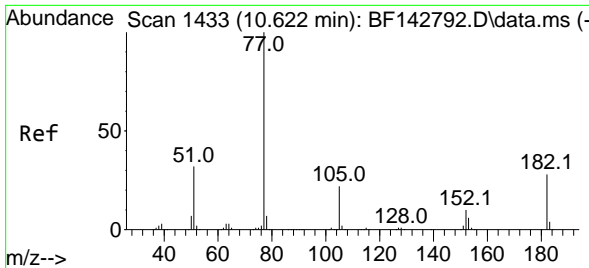
Tgt Ion	Resp	Lower	Upper
165	100		
63	0.0	44.2	66.4#
89	0.0	39.8	59.8#



#57
 2,4-Dinitrotoluene
 Concen: 6.734 ng
 RT: 9.910 min Scan# 1312
 Delta R.T. -0.200 min
 Lab File: BF142954.D
 Acq: 01 Jul 2025 17:29

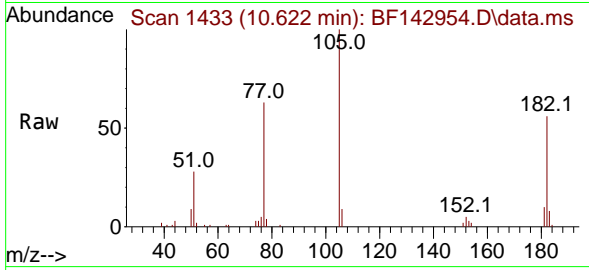
Tgt Ion	Resp	Lower	Upper
165	100		
63	0.0	33.9	50.9#
89	0.0	50.6	75.8#
182	0.0	2.3	3.5#



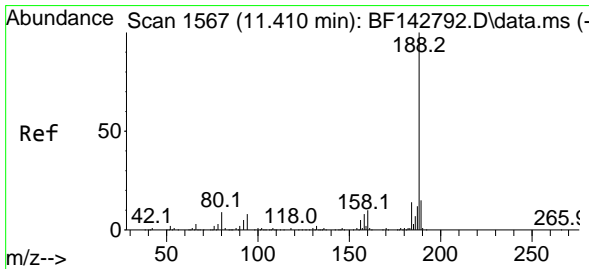
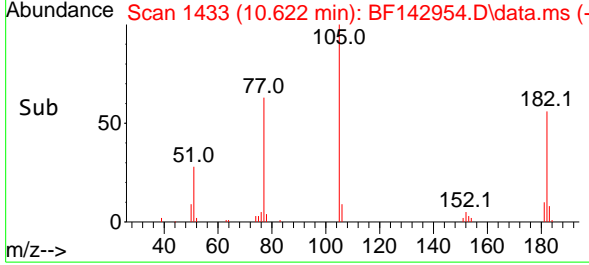
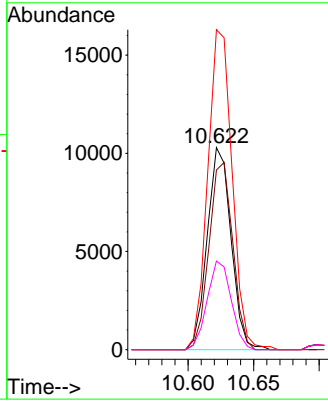


#63
 Azobenzene
 Concen: 3.048 ng
 RT: 10.622 min Scan# 14
 Delta R.T. 0.000 min
 Lab File: BF142954.D
 Acq: 01 Jul 2025 17:29

Instrument :
 BNA_F
 ClientSampleId :
 TP-62

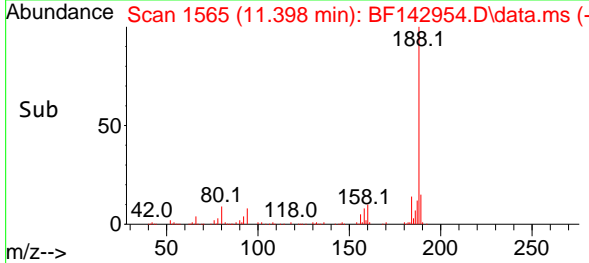
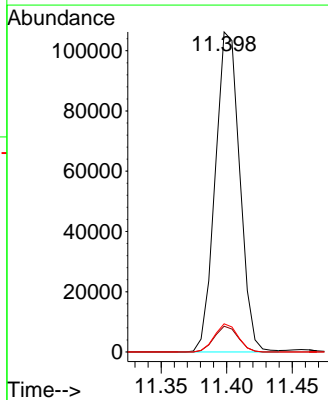
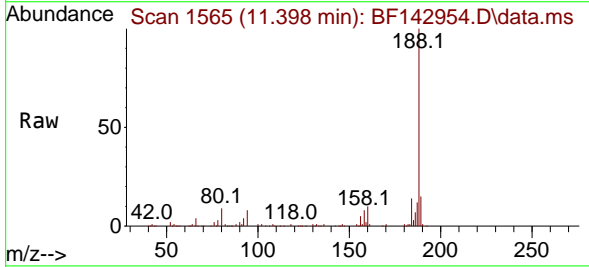


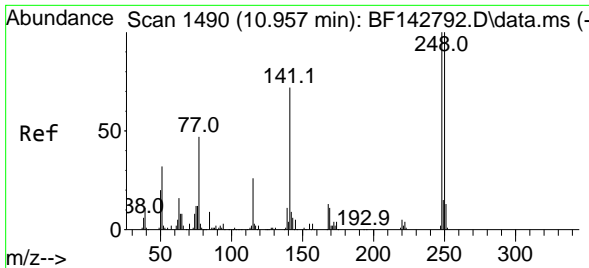
Tgt Ion: 77 Resp: 13021
 Ion Ratio Lower Upper
 77 100
 182 88.9 7.7 47.7#
 105 158.4 1.9 41.9#
 51 43.8 13.3 53.3



#64
 Phenanthrene-d10
 Concen: 20.000 ng
 RT: 11.398 min Scan# 1565
 Delta R.T. -0.012 min
 Lab File: BF142954.D
 Acq: 01 Jul 2025 17:29

Tgt Ion: 188 Resp: 137885
 Ion Ratio Lower Upper
 188 100
 94 8.0 6.7 10.1
 80 8.8 6.9 10.3

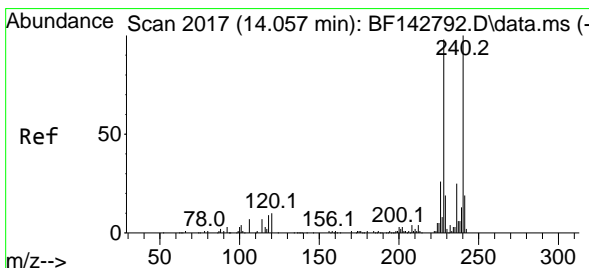
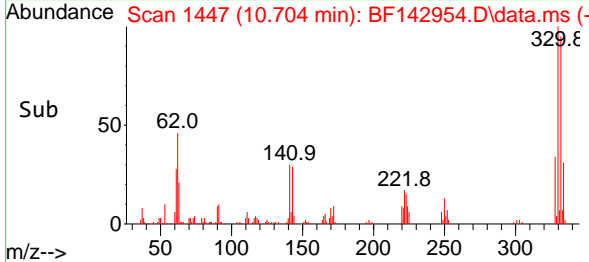
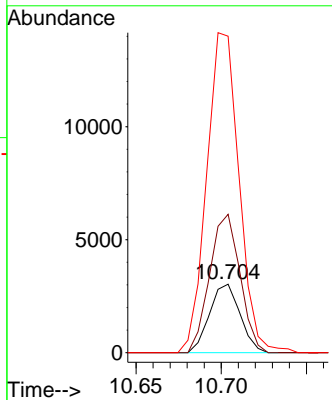
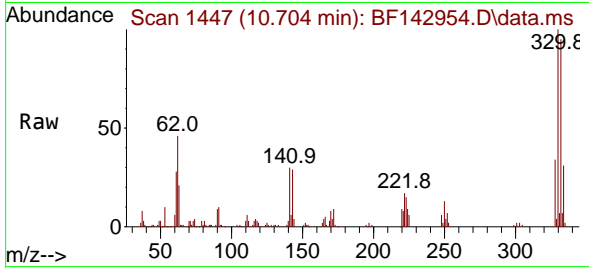




#67
 4-Bromophenyl-phenylether
 Concen: 2.409 ng
 RT: 10.704 min Scan# 14
 Delta R.T. -0.253 min
 Lab File: BF142954.D
 Acq: 01 Jul 2025 17:29

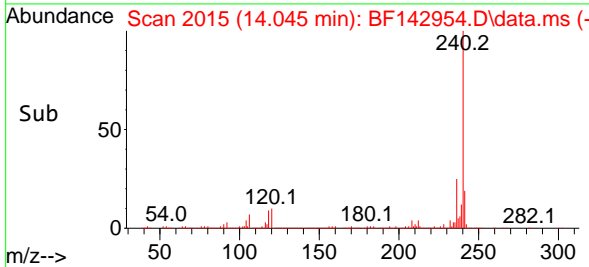
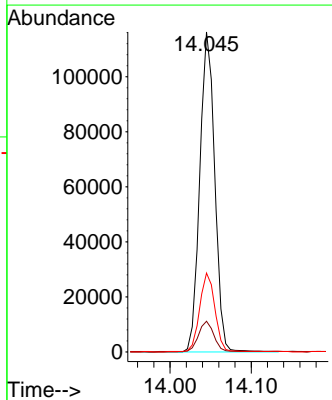
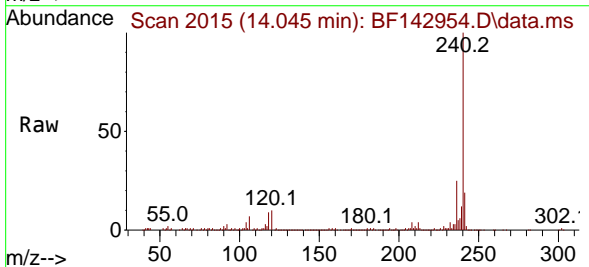
Instrument :
 BNA_F
 ClientSampleId :
 TP-62

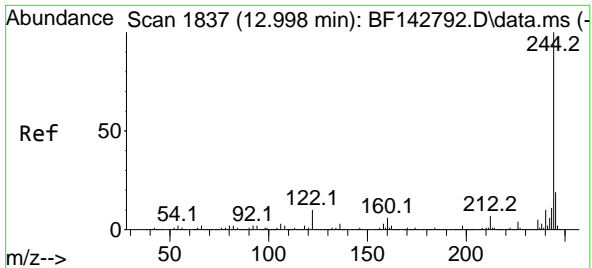
Tgt Ion:248 Resp: 3781
 Ion Ratio Lower Upper
 248 100
 250 202.2 79.8 119.8#
 141 462.1 57.8 86.6#



#76
 Chrysene-d12
 Concen: 20.000 ng
 RT: 14.045 min Scan# 2015
 Delta R.T. -0.012 min
 Lab File: BF142954.D
 Acq: 01 Jul 2025 17:29

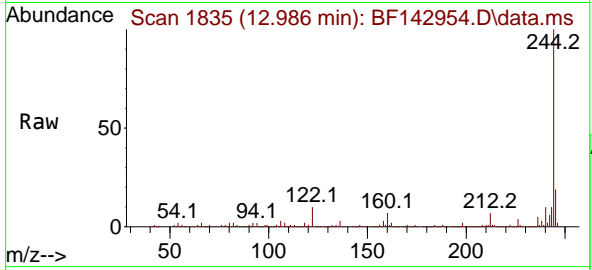
Tgt Ion:240 Resp: 148822
 Ion Ratio Lower Upper
 240 100
 120 9.6 8.2 12.2
 236 24.7 19.8 29.8



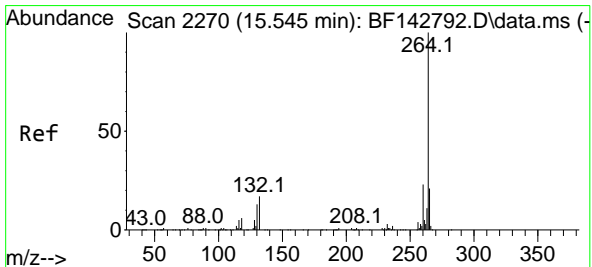
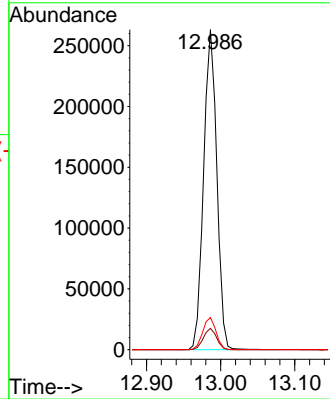
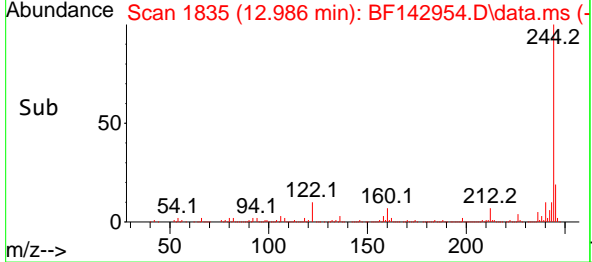


#79
 Terphenyl-d14
 Concen: 30.194 ng
 RT: 12.986 min Scan# 11
 Delta R.T. -0.012 min
 Lab File: BF142954.D
 Acq: 01 Jul 2025 17:29

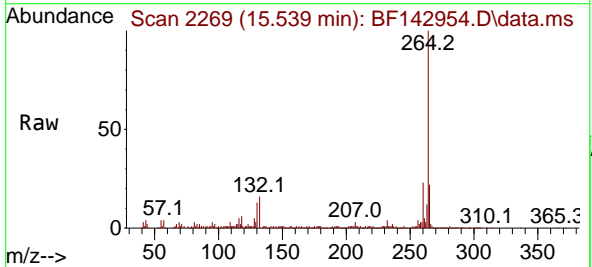
Instrument :
 BNA_F
 ClientSampleId :
 TP-62



Tgt Ion:244 Resp: 325214
 Ion Ratio Lower Upper
 244 100
 212 6.7 5.4 8.0
 122 10.1 8.2 12.2



#86
 Perylene-d12
 Concen: 20.000 ng
 RT: 15.539 min Scan# 2269
 Delta R.T. -0.006 min
 Lab File: BF142954.D
 Acq: 01 Jul 2025 17:29



Tgt Ion:264 Resp: 117407
 Ion Ratio Lower Upper
 264 100
 260 22.6 18.1 27.1
 265 21.8 16.6 25.0

