

Data Path : Z:\svoasrv\HPCHEM1\BNA_F\Data\BF070225\
 Data File : BF142974.D
 Acq On : 02 Jul 2025 16:49
 Operator : RC/JU
 Sample : Q2469-04
 Misc :
 ALS Vial : 12 Sample Multiplier: 1

Instrument :
 BNA_F
 ClientSampleId :
 WC-1

Quant Time: Jul 02 17:10:49 2025
 Quant Method : Z:\svoasrv\HPCHEM1\BNA_F\Methods\8270-BF061925.M
 Quant Title : ASP BNA STANDARDS FOR 5 POINT CALIBRATION
 QLast Update : Tue Jun 24 05:28:21 2025
 Response via : Initial Calibration

Compound	R.T.	QIon	Response	Conc	Units	Dev(Min)
Internal Standards						
1) 1,4-Dichlorobenzene-d4	6.875	152	54858	20.000	ng	0.00
21) Naphthalene-d8	8.157	136	213292	20.000	ng	-0.01
39) Acenaphthene-d10	9.910	164	115512	20.000	ng	-0.01
64) Phenanthrene-d10	11.404	188	207760	20.000	ng	0.00
76) Chrysene-d12	14.045	240	126161	20.000	ng	-0.01
86) Perylene-d12	15.539	264	120352	20.000	ng	0.00
System Monitoring Compounds						
5) 2-Fluorophenol	5.498	112	376126	114.153	ng	0.00
7) Phenol-d6	6.504	99	410354	105.561	ng	0.00
23) Nitrobenzene-d5	7.433	82	306316	78.773	ng	-0.01
42) 2,4,6-Tribromophenol	10.704	330	164511	138.396	ng	-0.01
45) 2-Fluorobiphenyl	9.233	172	679474	77.274	ng	-0.01
79) Terphenyl-d14	12.992	244	758964	83.121	ng	0.00

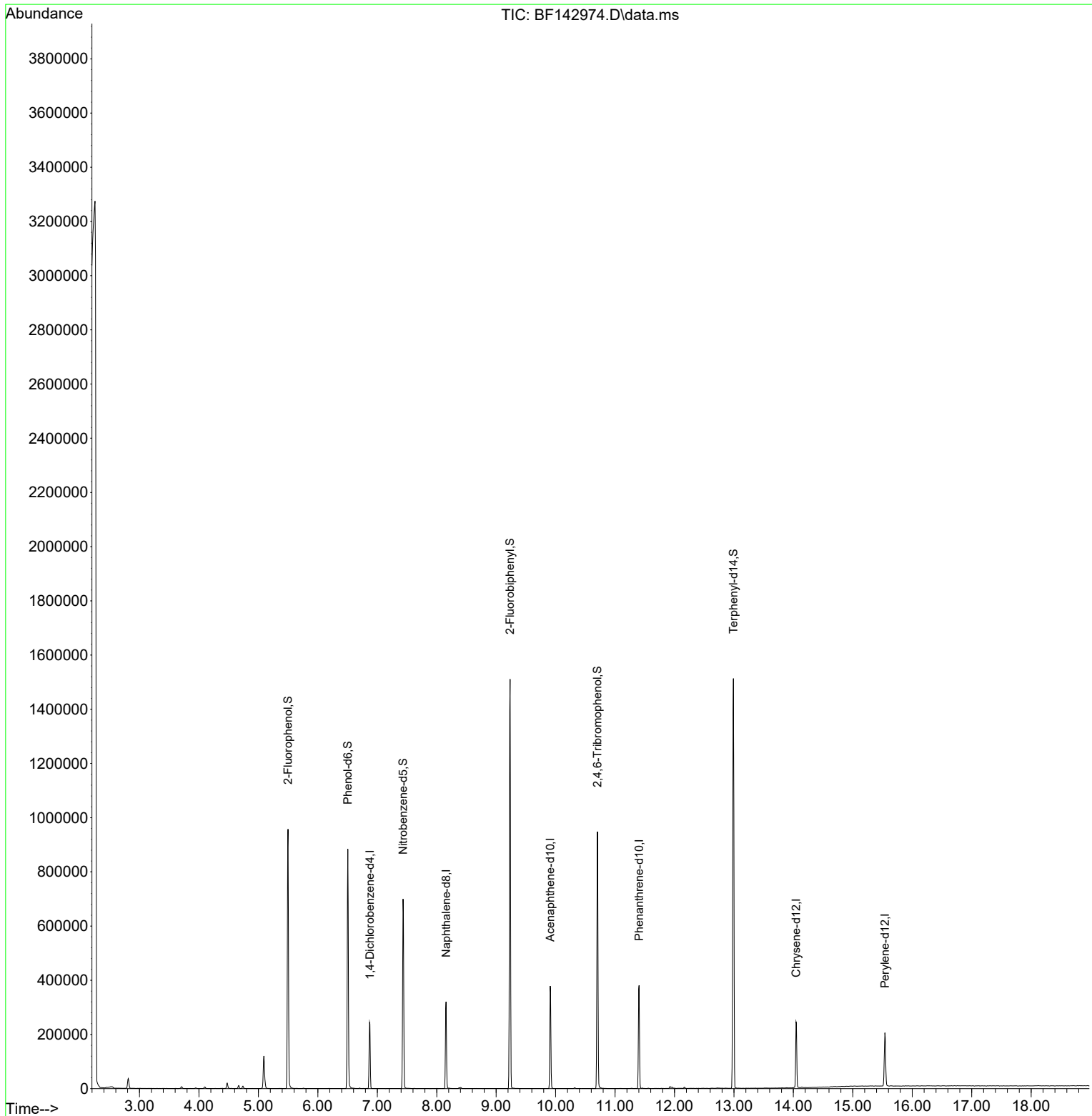
Target Compounds Qvalue

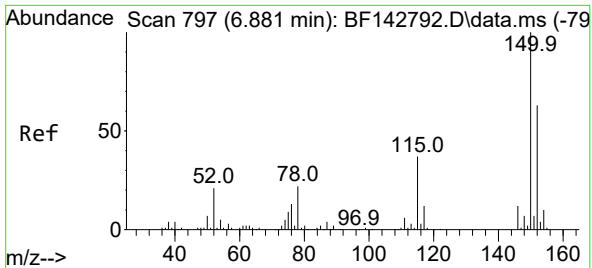
(#) = qualifier out of range (m) = manual integration (+) = signals summed

Data Path : Z:\svoasrv\HPCHEM1\BNA_F\Data\BF070225\
 Data File : BF142974.D
 Acq On : 02 Jul 2025 16:49
 Operator : RC/JU
 Sample : Q2469-04
 Misc :
 ALS Vial : 12 Sample Multiplier: 1

Instrument :
 BNA_F
 ClientSampleId :
 WC-1

Quant Time: Jul 02 17:10:49 2025
 Quant Method : Z:\svoasrv\HPCHEM1\BNA_F\Methods\8270-BF061925.M
 Quant Title : ASP BNA STANDARDS FOR 5 POINT CALIBRATION
 QLast Update : Tue Jun 24 05:28:21 2025
 Response via : Initial Calibration

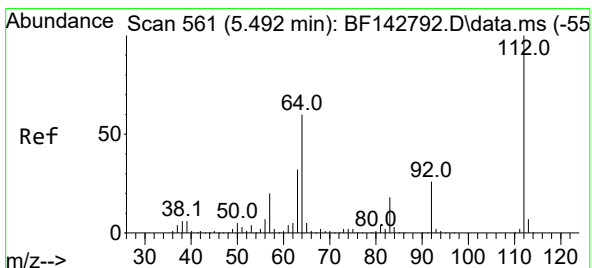
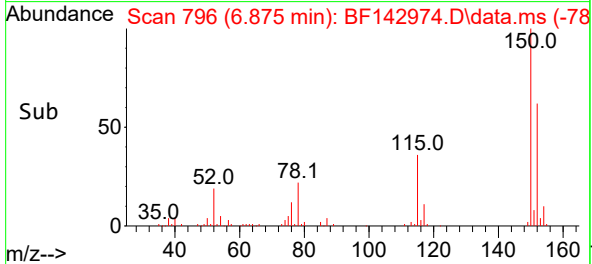
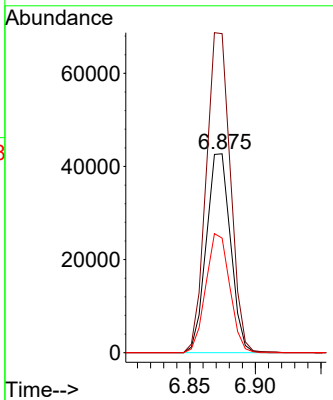
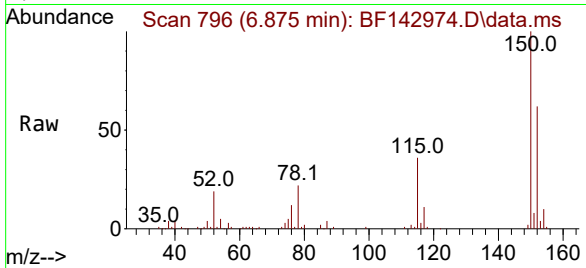




#1
 1,4-Dichlorobenzene-d4
 Concen: 20.000 ng
 RT: 6.875 min Scan# 79
 Delta R.T. -0.006 min
 Lab File: BF142974.D
 Acq: 02 Jul 2025 16:49

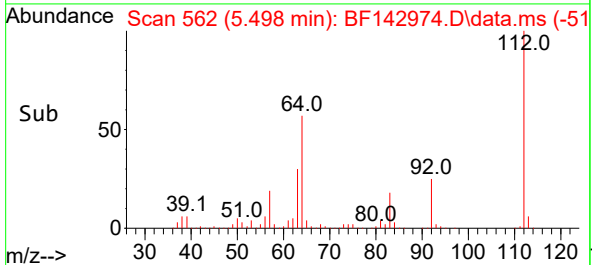
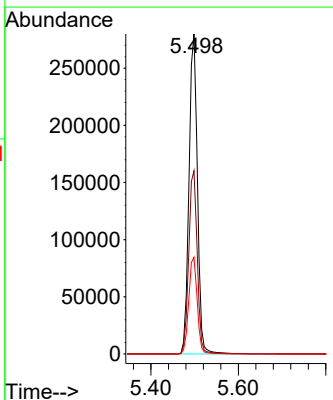
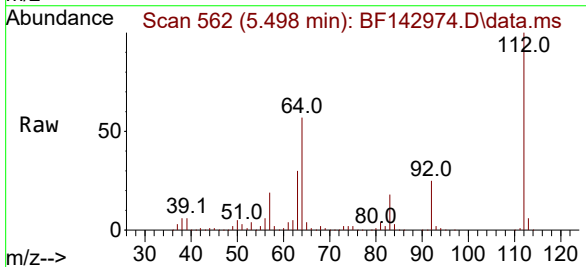
Instrument :
 BNA_F
 ClientSampleId :
 WC-1

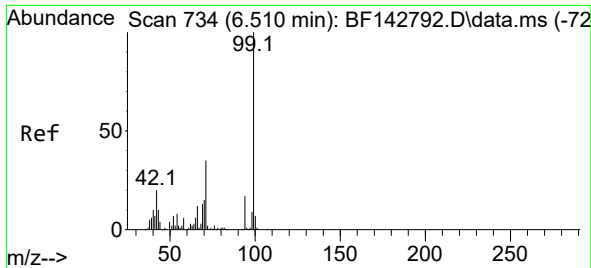
Tgt Ion	Resp	Lower	Upper
152	54858		
100	100		
150	160.4	127.2	190.8
115	57.6	46.6	69.8



#5
 2-Fluorophenol
 Concen: 114.153 ng
 RT: 5.498 min Scan# 562
 Delta R.T. 0.006 min
 Lab File: BF142974.D
 Acq: 02 Jul 2025 16:49

Tgt Ion	Resp	Lower	Upper
112	376126		
100	100		
64	57.3	48.2	72.2
63	30.3	25.7	38.5

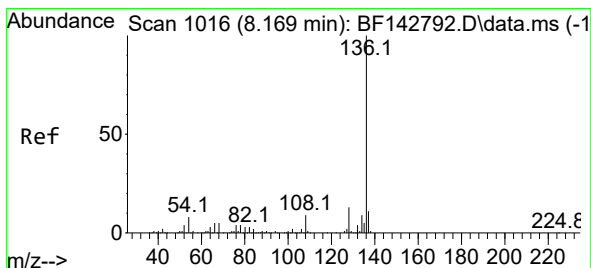
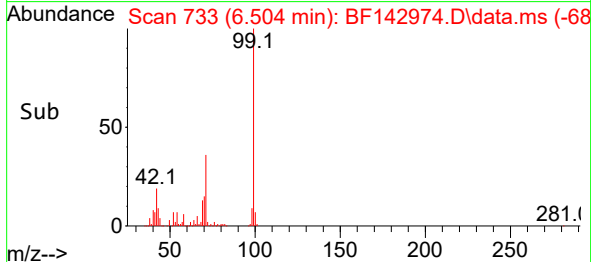
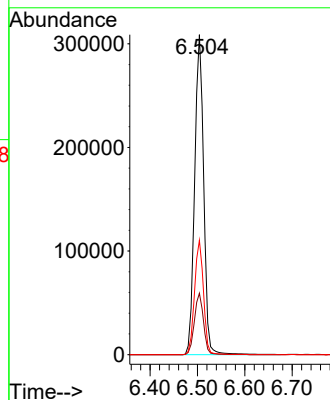
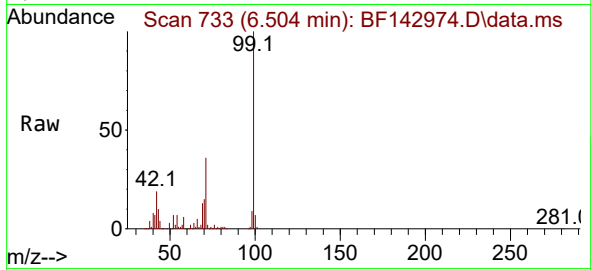




#7
 Phenol-d6
 Concen: 105.561 ng
 RT: 6.504 min Scan# 71
 Delta R.T. -0.006 min
 Lab File: BF142974.D
 Acq: 02 Jul 2025 16:49

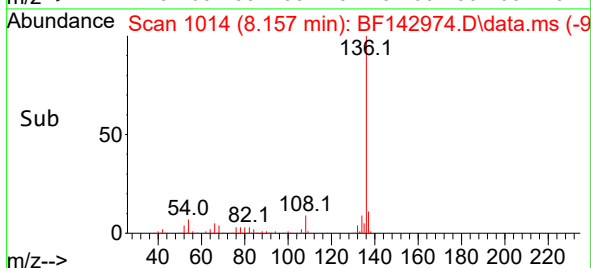
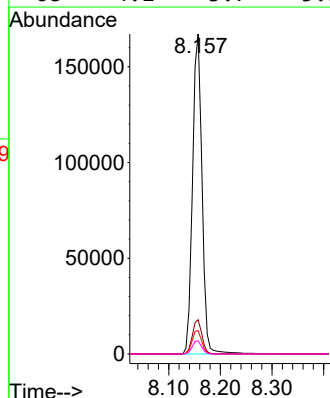
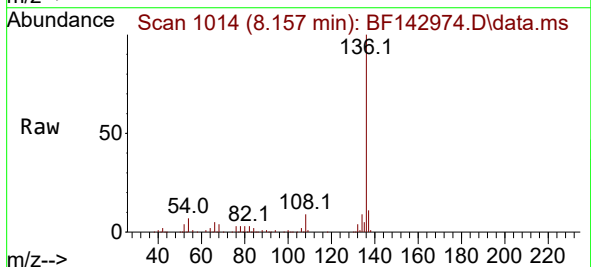
Instrument :
 BNA_F
 ClientSampled :
 WC-1

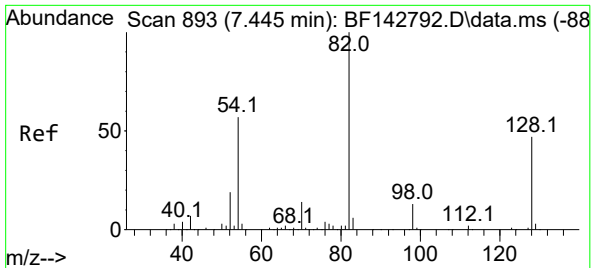
Tgt Ion: 99 Resp: 410354
 Ion Ratio Lower Upper
 99 100
 42 19.2 15.9 23.9
 71 35.7 27.8 41.8



#21
 Naphthalene-d8
 Concen: 20.000 ng
 RT: 8.157 min Scan# 1014
 Delta R.T. -0.012 min
 Lab File: BF142974.D
 Acq: 02 Jul 2025 16:49

Tgt Ion: 136 Resp: 213292
 Ion Ratio Lower Upper
 136 100
 137 10.7 8.4 12.6
 54 7.3 6.3 9.5
 68 4.1 3.7 5.5



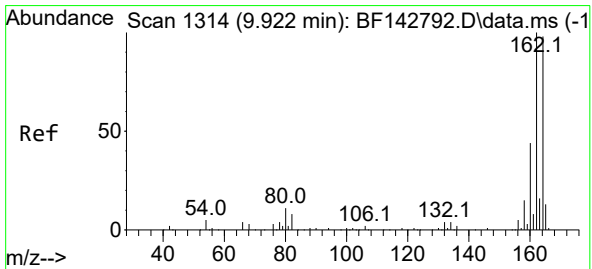
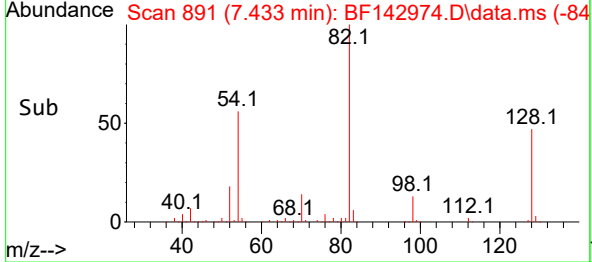
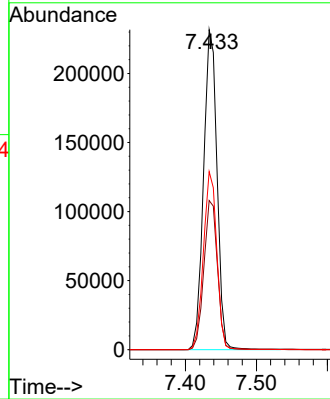
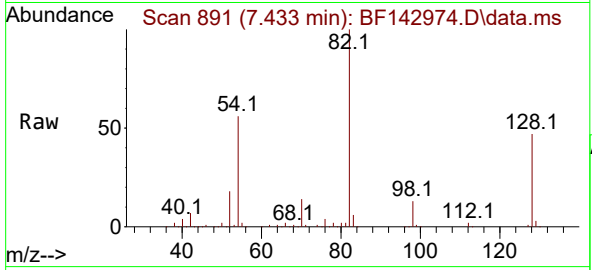


#23
 Nitrobenzene-d5
 Concen: 78.773 ng
 RT: 7.433 min Scan# 891
 Delta R.T. -0.012 min
 Lab File: BF142974.D
 Acq: 02 Jul 2025 16:49

Instrument :
 BNA_F
 ClientSampleId :
 WC-1

Tgt Ion: 82 Resp: 306316

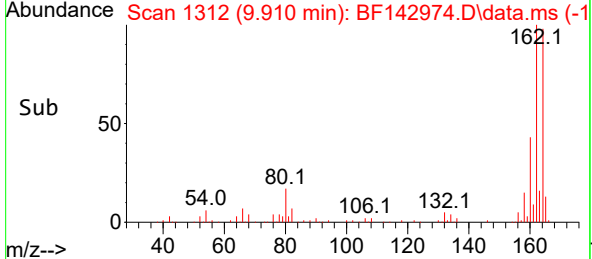
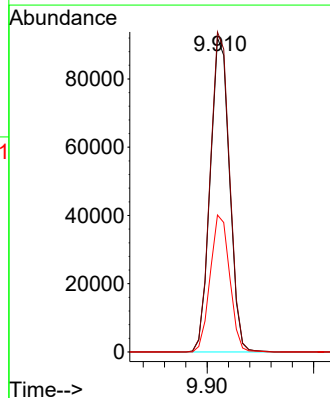
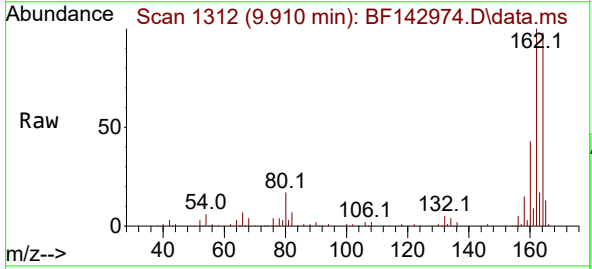
Ion	Ratio	Lower	Upper
82	100		
128	46.6	37.7	56.5
54	55.7	45.7	68.5

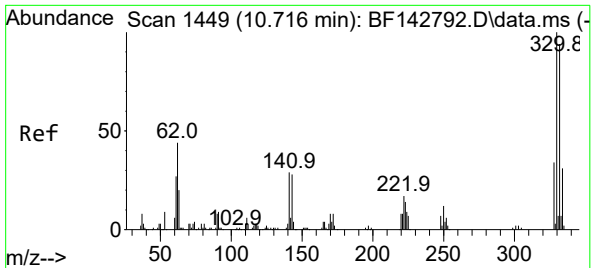


#39
 Acenaphthene-d10
 Concen: 20.000 ng
 RT: 9.910 min Scan# 1312
 Delta R.T. -0.012 min
 Lab File: BF142974.D
 Acq: 02 Jul 2025 16:49

Tgt Ion: 164 Resp: 115512

Ion	Ratio	Lower	Upper
164	100		
162	101.9	81.8	122.8
160	43.6	36.0	54.0



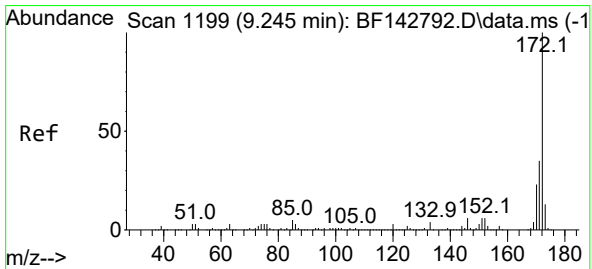
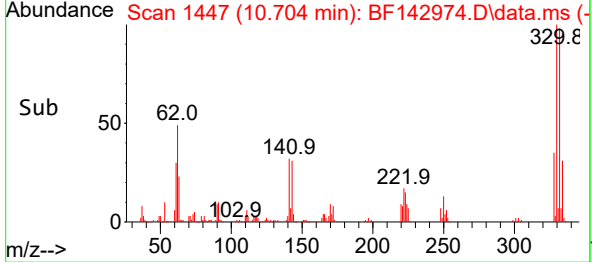
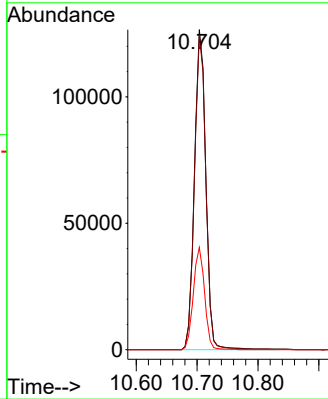
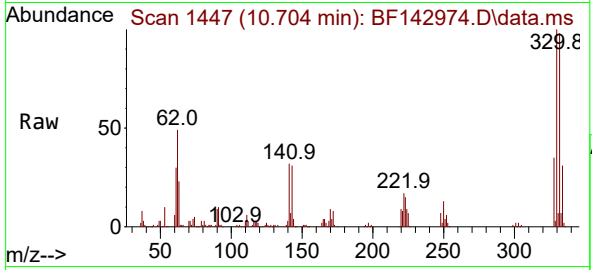


#42
 2,4,6-Tribromophenol
 Concen: 138.396 ng
 RT: 10.704 min Scan# 1447
 Delta R.T. -0.012 min
 Lab File: BF142974.D
 Acq: 02 Jul 2025 16:49

Instrument :
 BNA_F
 ClientSampleId :
 WC-1

Tgt Ion:330 Resp: 164511

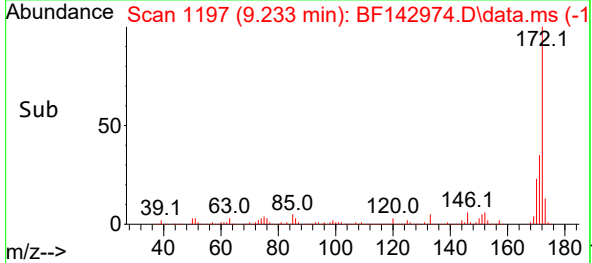
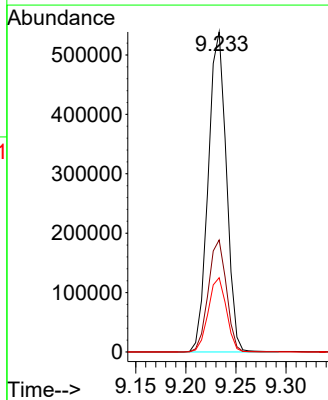
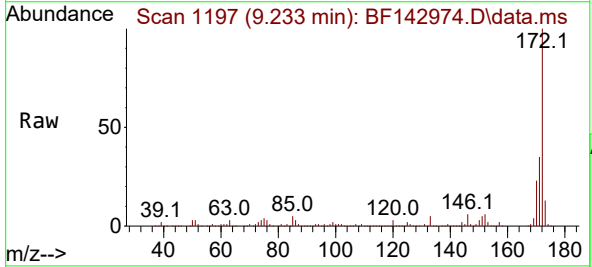
Ion	Ratio	Lower	Upper
330	100		
332	97.8	75.0	112.6
141	31.6	25.3	37.9

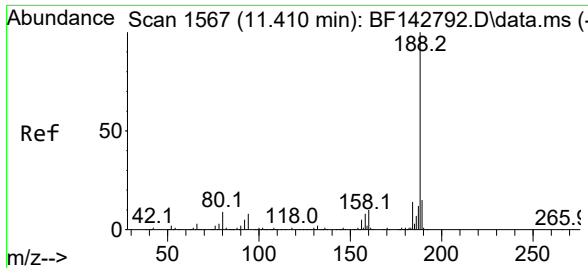


#45
 2-Fluorobiphenyl
 Concen: 77.274 ng
 RT: 9.233 min Scan# 1197
 Delta R.T. -0.012 min
 Lab File: BF142974.D
 Acq: 02 Jul 2025 16:49

Tgt Ion:172 Resp: 679474

Ion	Ratio	Lower	Upper
172	100		
171	35.0	28.2	42.4
170	23.2	18.5	27.7



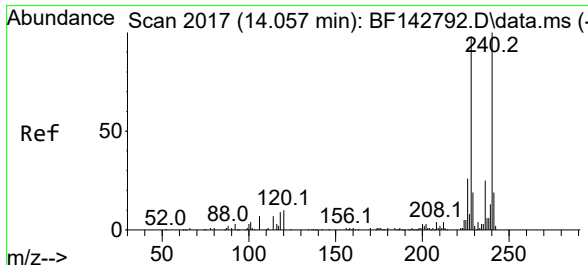
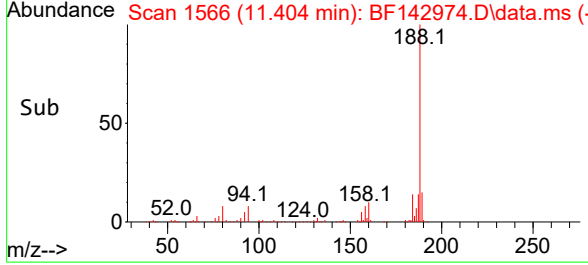
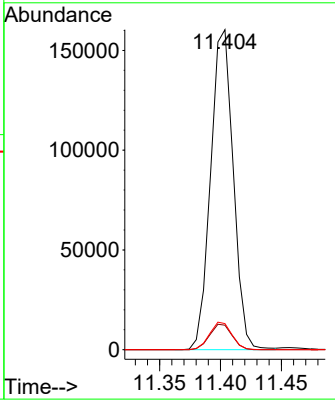
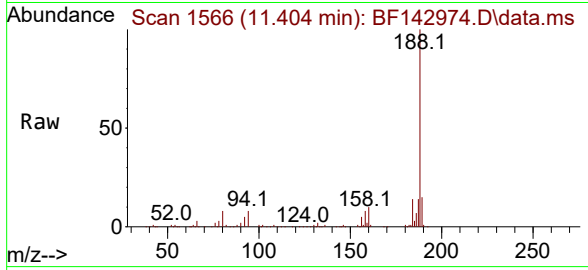


#64
 Phenanthrene-d10
 Concen: 20.000 ng
 RT: 11.404 min Scan# 11
 Delta R.T. -0.006 min
 Lab File: BF142974.D
 Acq: 02 Jul 2025 16:49

Instrument : BNA_F
 ClientSampleId : WC-1

Tgt Ion:188 Resp: 207760

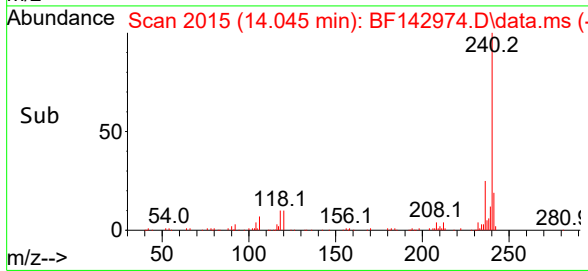
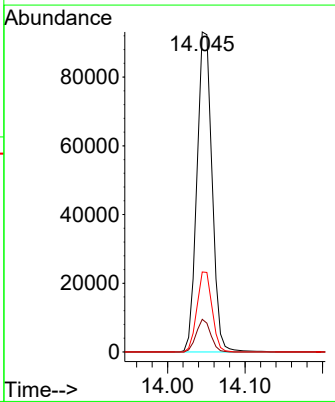
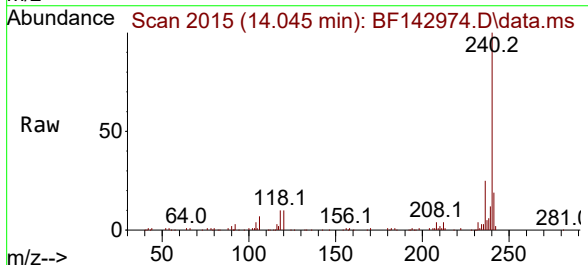
Ion	Ratio	Lower	Upper
188	100		
94	7.6	6.7	10.1
80	8.1	6.9	10.3

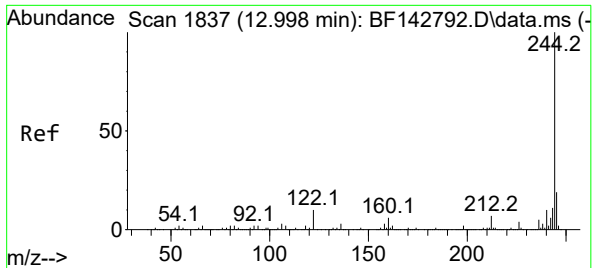


#76
 Chrysene-d12
 Concen: 20.000 ng
 RT: 14.045 min Scan# 2015
 Delta R.T. -0.012 min
 Lab File: BF142974.D
 Acq: 02 Jul 2025 16:49

Tgt Ion:240 Resp: 126161

Ion	Ratio	Lower	Upper
240	100		
120	10.2	8.2	12.2
236	25.0	19.8	29.8



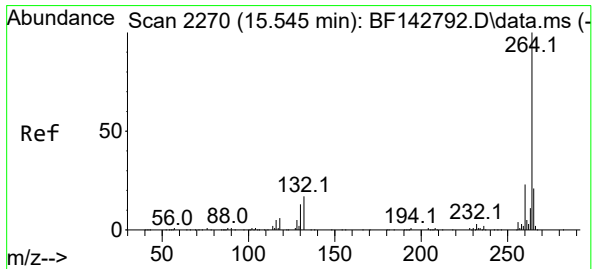
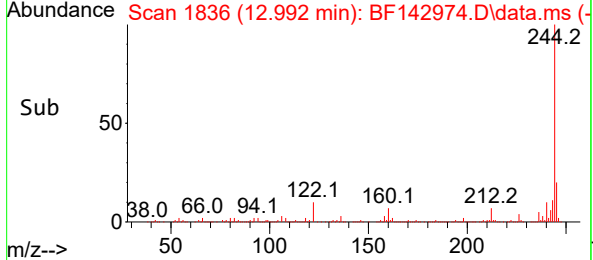
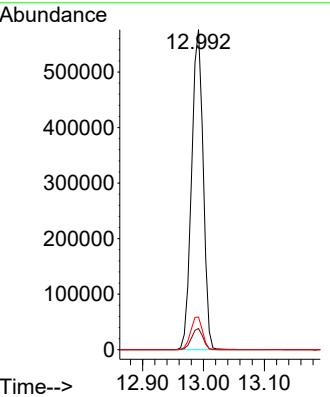
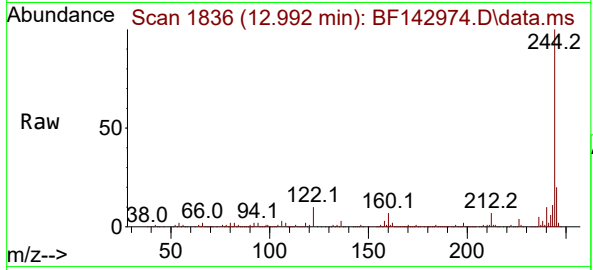


#79
 Terphenyl-d14
 Concen: 83.121 ng
 RT: 12.992 min Scan# 1836
 Delta R.T. -0.006 min
 Lab File: BF142974.D
 Acq: 02 Jul 2025 16:49

Instrument : BNA_F
 ClientSampleId : WC-1

Tgt Ion: 244 Resp: 758964

Ion	Ratio	Lower	Upper
244	100		
212	6.6	5.4	8.0
122	10.2	8.2	12.2



#86
 Perylene-d12
 Concen: 20.000 ng
 RT: 15.539 min Scan# 2269
 Delta R.T. -0.006 min
 Lab File: BF142974.D
 Acq: 02 Jul 2025 16:49

Tgt Ion: 264 Resp: 120352

Ion	Ratio	Lower	Upper
264	100		
260	23.2	18.1	27.1
265	21.5	16.6	25.0

