

Data Path : Z:\HPCHEM1\BNA_F\DATA\BF070317\
 Data File : BF096438.D
 Acq On : 3 Jul 2017 13:51
 Operator : SJ/MA
 Sample : I3908-08 5X
 Misc :
 ALS Vial : 9 Sample Multiplier: 1

Instrument :
 BNA_F
 ClientSampleId :
 G-59-1.5-3

Integration Parameters: rteint.p
 Integrator: RTE
 Smoothing : ON
 Sampling : 1
 Start Thrs: 0.2
 Stop Thrs : 0

Filtering: 5
 Min Area: 3 % of largest Peak
 Max Peaks: 100
 Peak Location: TOP

If leading or trailing edge < 100 prefer < Baseline drop else tangent >
 Peak separation: 5

Method : Z:\HPCHEM1\BNA_F\METHODS\8270-BF070117.M
 Title : ASP BNA STANDARDS FOR 5 POINT CALIBRATION

Signal : TIC

peak #	R.T. min	first scan	max scan	last scan	PK TY	peak height	corr. area	corr. % max.	% of total
1	2.269	27	31	41	rVB3	109012	166397	19.21%	1.212%
2	2.752	107	113	119	rVB3	20558	36474	4.21%	0.266%
3	3.693	266	273	280	rBV	60337	92221	10.65%	0.672%
4	4.328	375	381	387	rBV4	17023	26627	3.07%	0.194%
5	4.857	467	471	474	rBV2	16645	20213	2.33%	0.147%
6	4.898	474	478	486	rVB	107136	137725	15.90%	1.003%
7	5.298	541	546	547	rBV	55396	57695	6.66%	0.420%
8	5.328	547	551	554	rVB	821385	795259	91.81%	5.794%
9	5.557	583	590	596	rBV2	50348	63049	7.28%	0.459%
10	5.634	600	603	607	rBV	17560	22002	2.54%	0.160%
11	5.881	642	645	649	rVB3	24074	26636	3.07%	0.194%
12	5.981	659	662	664	rBV2	26998	22218	2.56%	0.162%
13	6.263	706	710	715	rVB3	25072	41721	4.82%	0.304%
14	6.351	722	725	729	rVV	1038080	834893	96.38%	6.083%
15	6.487	744	748	752	rBV	909291	759978	87.73%	5.537%
16	6.551	756	759	761	rBV	58224	46652	5.39%	0.340%
17	6.722	784	788	791	rBV	881130	699820	80.79%	5.098%
18	6.751	791	793	796	rVB2	27688	21804	2.52%	0.159%
19	6.787	796	799	803	rBV3	26774	29663	3.42%	0.216%
20	6.875	811	814	818	rBV	748212	637948	73.65%	4.648%
21	7.051	840	844	846	rBV2	19491	20190	2.33%	0.147%
22	7.122	852	856	860	rBV2	36245	37614	4.34%	0.274%
23	7.275	876	882	886	rBV	523397	449918	51.94%	3.278%
24	7.334	889	892	895	rVV	36358	29233	3.37%	0.213%
25	7.375	895	899	903	rVB3	19457	21812	2.52%	0.159%
26	8.004	1002	1006	1008	rBV	1071163	866233	100.00%	6.311%
27	8.022	1008	1009	1012	rVB	110195	83770	9.67%	0.610%
28	8.445	1075	1081	1084	rBV	37577	33091	3.82%	0.241%
29	8.610	1106	1109	1112	rBV	43094	34490	3.98%	0.251%
30	8.716	1121	1127	1132	rVB	150909	119273	13.77%	0.869%
31	8.816	1140	1144	1147	rVB	99747	77669	8.97%	0.566%
32	9.039	1179	1182	1185	rVB2	23555	21867	2.52%	0.159%
33	9.081	1185	1189	1192	rBV	881776	739563	85.38%	5.388%
34	9.175	1202	1205	1209	rBV2	60757	54071	6.24%	0.394%

Data Path : Z:\HPCHEM1\BNA_F\DATA\BF070317\
 Data File : BF096438.D
 Acq On : 3 Jul 2017 13:51
 Operator : SJ/MA
 Sample : I3908-08 5X
 Misc :
 ALS Vial : 9 Sample Multiplier: 1

Instrument :
 BNA_F
 ClientSampleId :
 G-59-1.5-3

Integration Parameters: rteint.p
 Integrator: RTE
 Smoothing : ON
 Sampling : 1
 Start Thrs: 0.2
 Stop Thrs : 0

Filtering: 5
 Min Area: 3 % of largest Peak
 Max Peaks: 100
 Peak Location: TOP

If leading or trailing edge < 100 prefer < Baseline drop else tangent >
 Peak separation: 5

Method : Z:\HPCHEM1\BNA_F\METHODS\8270-BF070117.M
 Title : ASP BNA STANDARDS FOR 5 POINT CALIBRATION

35	9.275	1219	1222	1226	rVB	18481	20005	2.31%	0.146%
36	9.345	1230	1234	1238	rBV2	35458	51337	5.93%	0.374%
37	9.416	1243	1246	1248	rBV	60274	51608	5.96%	0.376%
38	9.439	1248	1250	1253	rVB	47634	43171	4.98%	0.315%
39	9.475	1253	1256	1258	rBV	84873	72193	8.33%	0.526%
40	9.533	1262	1266	1268	rBV2	35779	30933	3.57%	0.225%
41	9.616	1275	1280	1282	rBV2	52498	51220	5.91%	0.373%
42	9.663	1282	1288	1292	rVV4	20024	43061	4.97%	0.314%
43	9.704	1292	1295	1298	rVB	53151	42018	4.85%	0.306%
44	9.757	1298	1304	1307	rBV	911095	820137	94.68%	5.975%
45	9.786	1307	1309	1313	rVB3	21451	21834	2.52%	0.159%
46	9.957	1335	1338	1342	rVB	62159	55712	6.43%	0.406%
47	9.998	1342	1345	1347	rVV	22008	19680	2.27%	0.143%
48	10.033	1347	1351	1353	rVV3	19030	20878	2.41%	0.152%
49	10.075	1353	1358	1360	rVV3	21223	22330	2.58%	0.163%
50	10.163	1369	1373	1377	rBV4	29356	42543	4.91%	0.310%
51	10.204	1377	1380	1382	rVB	48408	42010	4.85%	0.306%
52	10.298	1393	1396	1398	rBV2	45088	34768	4.01%	0.253%
53	10.422	1413	1417	1419	rBV2	26001	29456	3.40%	0.215%
54	10.457	1419	1423	1429	rVB2	31901	41042	4.74%	0.299%
55	10.539	1433	1437	1441	rVB	380231	363086	41.92%	2.645%
56	10.586	1441	1445	1450	rVB4	15826	19854	2.29%	0.145%
57	10.675	1454	1460	1461	rBV2	69175	78793	9.10%	0.574%
58	10.686	1461	1462	1466	rVB	63825	47601	5.50%	0.347%
59	10.875	1491	1494	1497	rVB5	19451	21360	2.47%	0.156%
60	11.039	1520	1522	1527	rVB2	16993	18926	2.18%	0.138%
61	11.086	1527	1530	1533	rVV4	18132	23094	2.67%	0.168%
62	11.122	1533	1536	1539	rVV3	51978	57511	6.64%	0.419%
63	11.151	1539	1541	1546	rVB4	24433	22896	2.64%	0.167%
64	11.233	1551	1555	1557	rVV	737826	598895	69.14%	4.363%
65	11.257	1557	1559	1562	rVV	199952	152094	17.56%	1.108%
66	11.310	1563	1568	1571	rVB	62699	65661	7.58%	0.478%
67	11.345	1571	1574	1576	rBV3	18067	21750	2.51%	0.158%
68	11.545	1604	1608	1610	rBV2	33684	36703	4.24%	0.267%
69	11.733	1638	1640	1643	rBV	50893	50373	5.82%	0.367%
70	11.763	1643	1645	1650	rVB2	97802	94691	10.93%	0.690%
71	11.810	1650	1653	1656	rBV3	26904	26135	3.02%	0.190%

Data Path : Z:\HPCHEM1\BNA_F\DATA\BF070317\
 Data File : BF096438.D
 Acq On : 3 Jul 2017 13:51
 Operator : SJ/MA
 Sample : I3908-08 5X
 Misc :
 ALS Vial : 9 Sample Multiplier: 1

Instrument :
 BNA_F
 ClientSampleId :
 G-59-1.5-3

Integration Parameters: rteint.p
 Integrator: RTE
 Smoothing : ON Filtering: 5
 Sampling : 1 Min Area: 3 % of largest Peak
 Start Thrs: 0.2 Max Peaks: 100
 Stop Thrs : 0 Peak Location: TOP

If leading or trailing edge < 100 prefer < Baseline drop else tangent >
 Peak separation: 5

Method : Z:\HPCHEM1\BNA_F\METHODS\8270-BF070117.M
 Title : ASP BNA STANDARDS FOR 5 POINT CALIBRATION

72	11.845	1656	1659	1661	rBV	76144	78828	9.10%	0.574%
73	11.869	1661	1663	1666	rVB	48626	38517	4.45%	0.281%
74	11.951	1675	1677	1680	rBV	26609	24707	2.85%	0.180%
75	12.027	1687	1690	1692	rBV	38507	35259	4.07%	0.257%
76	12.051	1692	1694	1702	rVB6	26154	34768	4.01%	0.253%
77	12.233	1723	1725	1728	rVB3	27166	20581	2.38%	0.150%
78	12.286	1731	1734	1737	rBV	64586	66361	7.66%	0.483%
79	12.339	1741	1743	1745	rVB	49594	32296	3.73%	0.235%
80	12.363	1745	1747	1753	rVB3	26881	33058	3.82%	0.241%
81	12.439	1757	1760	1764	rVB	271093	247577	28.58%	1.804%
82	12.492	1766	1769	1774	rBV6	24459	36828	4.25%	0.268%
83	12.669	1793	1799	1802	rBV	271416	280363	32.37%	2.043%
84	12.710	1804	1806	1809	rVV2	21136	23242	2.68%	0.169%
85	12.792	1817	1820	1821	rBV2	24161	25493	2.94%	0.186%
86	12.816	1821	1824	1828	rBV	515677	437517	50.51%	3.187%
87	12.892	1833	1837	1839	rBV3	35370	43056	4.97%	0.314%
88	12.945	1844	1846	1849	rBV3	21556	30816	3.56%	0.225%
89	12.974	1849	1851	1852	rVV2	36149	30049	3.47%	0.219%
90	12.998	1853	1855	1858	rVB	51482	49163	5.68%	0.358%
91	13.063	1864	1866	1869	rVB	46092	41951	4.84%	0.306%
92	13.098	1869	1872	1875	rBV	50547	54766	6.32%	0.399%
93	13.192	1885	1888	1891	rVB	34953	33416	3.86%	0.243%
94	13.221	1891	1893	1896	rBV	35086	32539	3.76%	0.237%
95	13.304	1904	1907	1914	rVB	133825	129537	14.95%	0.944%
96	13.498	1938	1940	1946	rVB	27728	46398	5.36%	0.338%
97	13.863	1998	2002	2005	rBV2	639660	715098	82.55%	5.210%
98	13.886	2005	2006	2010	rVB	131843	100464	11.60%	0.732%
99	14.874	2171	2174	2182	rBV	119151	220242	25.43%	1.605%
100	15.274	2239	2242	2246	rVB	352580	400015	46.18%	2.914%

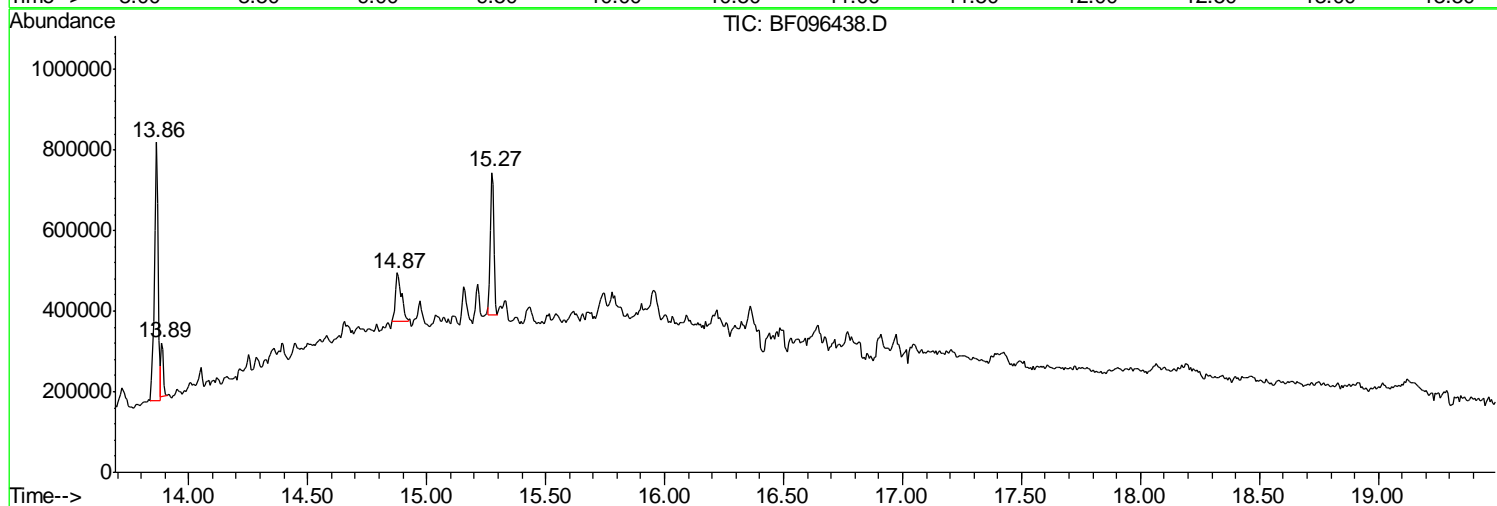
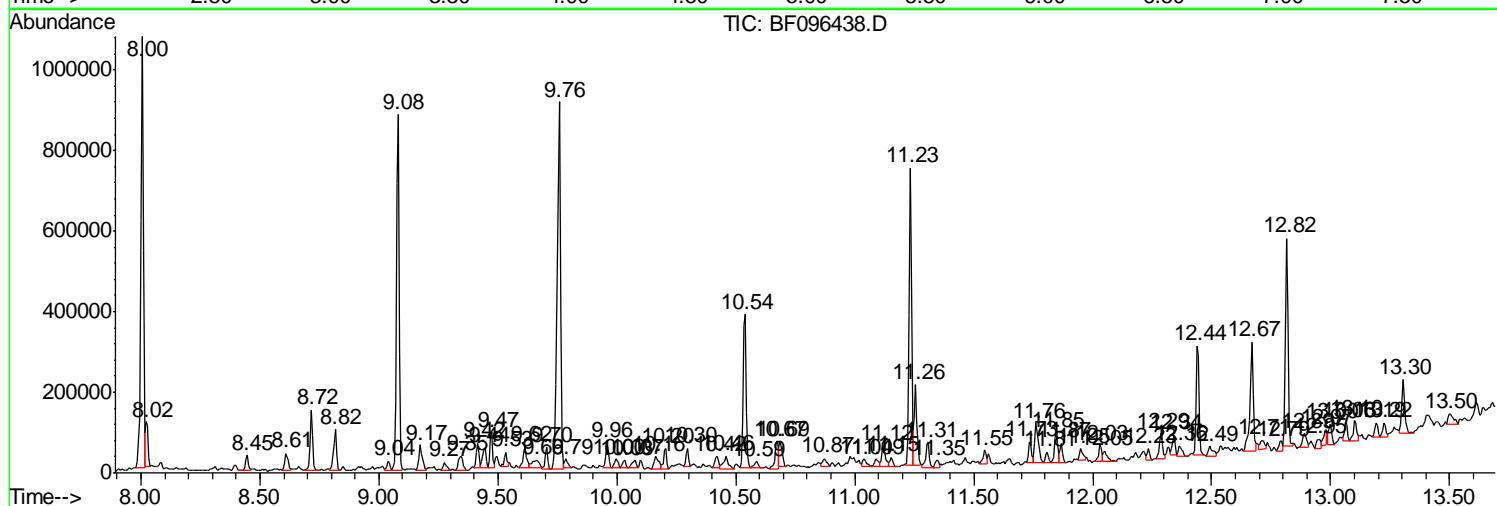
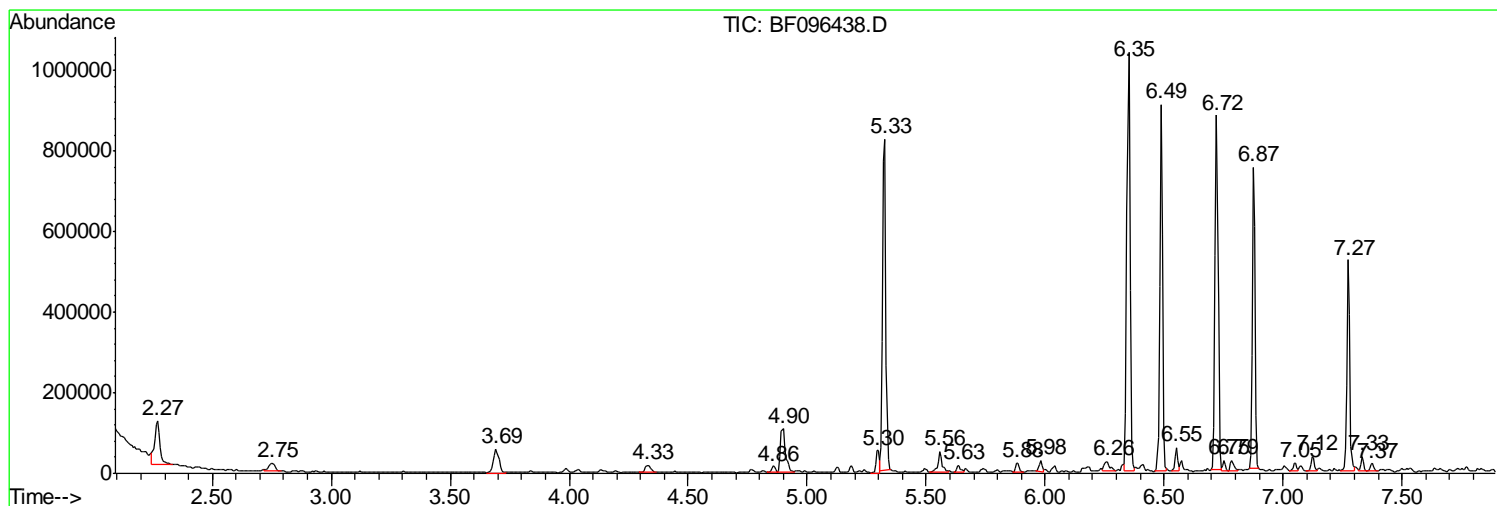
Sum of corrected areas: 13726053

Data Path : Z:\HPCHEM1\BNA_F\DATA\BF070317\
 Data File : BF096438.D
 Acq On : 3 Jul 2017 13:51
 Operator : SJ/MA
 Sample : I3908-08 5X
 Misc :
 ALS Vial : 9 Sample Multiplier: 1

Instrument :
 BNA_F
 Client Sampled :
 G-59-1.5-3

Quant Method : Z:\HPCHEM1\BNA_F\METHODS\8270-BF070117.M
 Quant Title : ASP BNA STANDARDS FOR 5 POINT CALIBRATION

TIC Library : C:\DATABASE\NIST11.L
 TIC Integration Parameters: LSCINT.P



Data Path : Z:\HPCHEM1\BNA_F\DATA\BF070317\
 Data File : BF096438.D
 Acq On : 3 Jul 2017 13:51
 Operator : SJ/MA
 Sample : I3908-08 5X
 Misc :
 ALS Vial : 9 Sample Multiplier: 1

Instrument :
 BNA_F
 ClientSampled :
 G-59-1.5-3

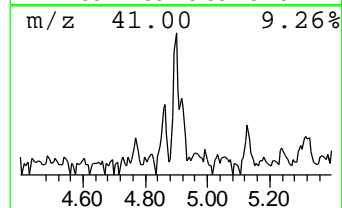
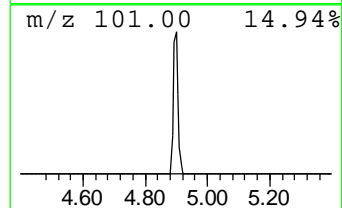
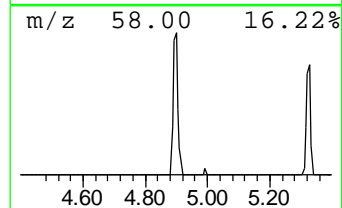
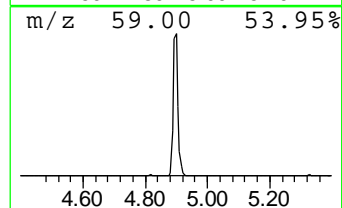
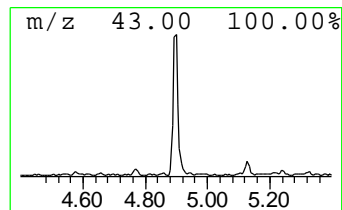
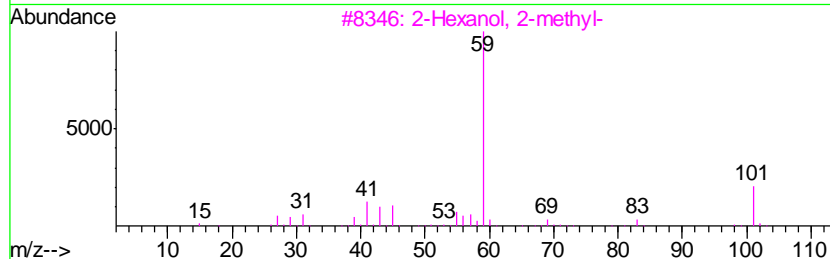
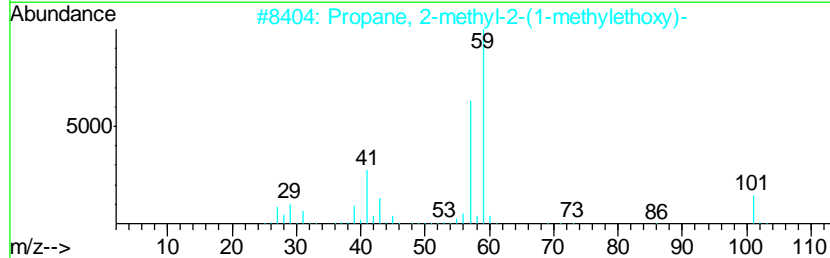
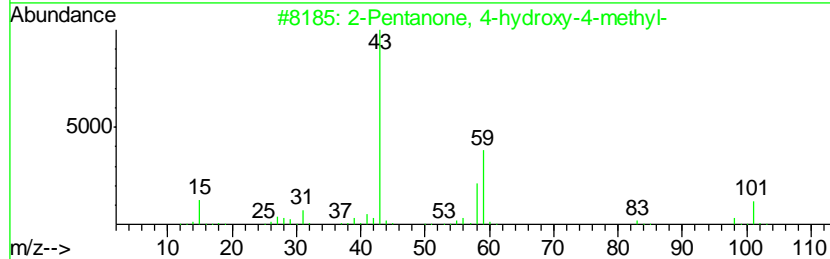
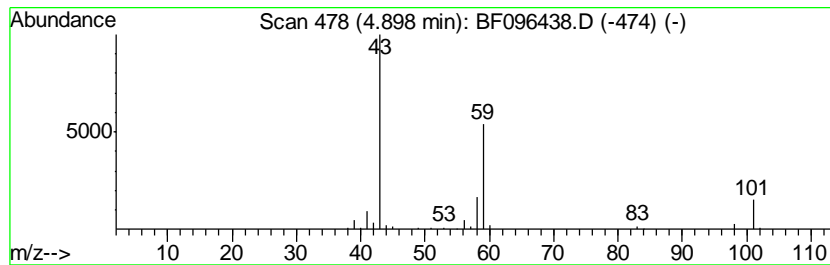
Quant Method : Z:\HPCHEM1\BNA_F\METHODS\8270-BF070117.M
 Quant Title : ASP BNA STANDARDS FOR 5 POINT CALIBRATION

TIC Library : C:\DATABASE\NIST11.L
 TIC Integration Parameters: LSCINT.P

 Peak Number 3 2-Pentanone, 4-hydroxy-4-me... Concentration Rank 4

R.T.	EstConc	Area	Relative to ISTD	R.T.
4.90	3.94 ng	137725	1,4-Dichlorobenzene-d4	6.72

Hit#	of	Tentative ID	MW	MolForm	CAS#	Qual
1	5	2-Pentanone, 4-hydroxy-4-methyl-	116	C6H12O2	000123-42-2	50
2		Propane, 2-methyl-2-(1-methyleth...	116	C7H16O	017348-59-3	36
3		2-Hexanol, 2-methyl-	116	C7H16O	000625-23-0	28
4		2,3-Butanedione, monooxime	101	C4H7NO2	000057-71-6	10
5		Acetone	58	C3H6O	000067-64-1	9



Data Path : Z:\HPCHEM1\BNA_F\DATA\BF070317\
 Data File : BF096438.D
 Acq On : 3 Jul 2017 13:51
 Operator : SJ/MA
 Sample : I3908-08 5X
 Misc :
 ALS Vial : 9 Sample Multiplier: 1

Instrument :
 BNA_F
 ClientSampleID :
 G-59-1.5-3

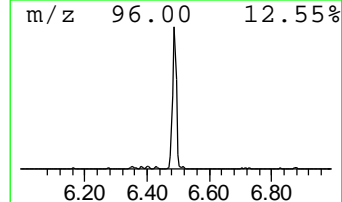
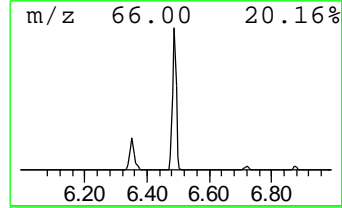
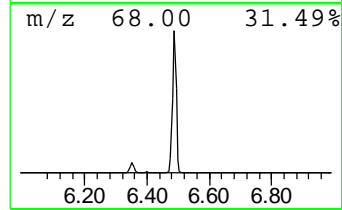
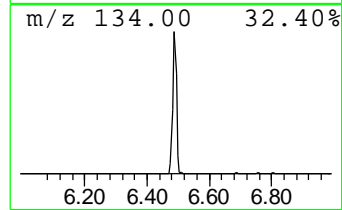
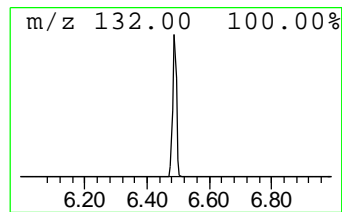
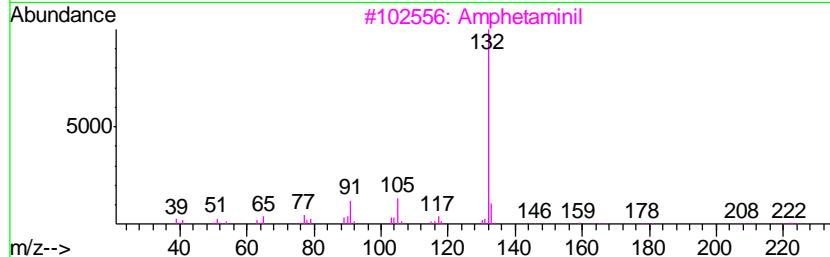
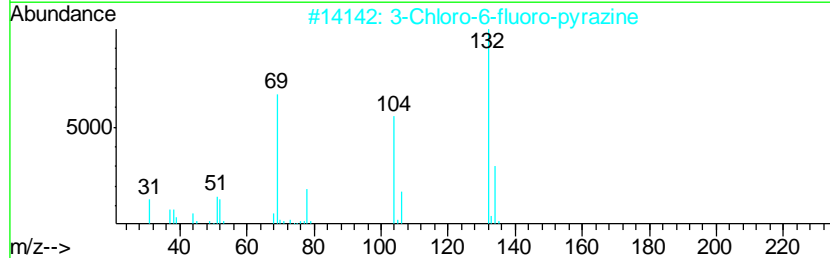
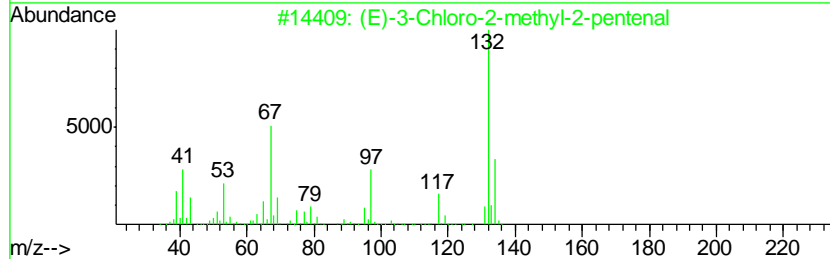
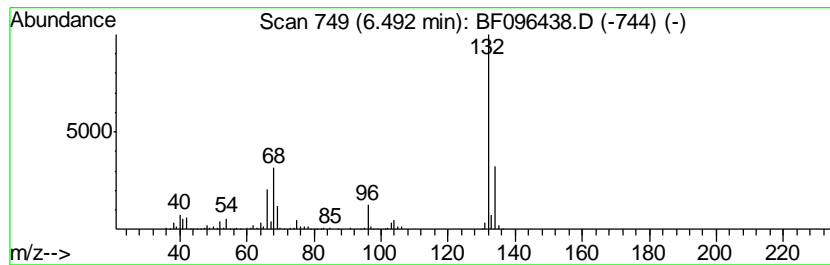
Quant Method : Z:\HPCHEM1\BNA_F\METHODS\8270-BF070117.M
 Quant Title : ASP BNA STANDARDS FOR 5 POINT CALIBRATION

TIC Library : C:\DATABASE\NIST11.L
 TIC Integration Parameters: LSCINT.P

 Peak Number 4 unknown6.49 Concentration Rank 1

R.T.	EstConc	Area	Relative to ISTD	R.T.
6.49	21.72 ng	759978	1,4-Dichlorobenzene-d4	6.72

Hit#	of	Tentative ID	MW	MolForm	CAS#	Qual
1	5	(E)-3-Chloro-2-methyl-2-pentenal	132	C6H9ClO	031357-76-3	25
2		3-Chloro-6-fluoro-pyrazine	132	C4H2ClFN2	1000146-10-7	25
3		Amphetaminil	250	C17H18N2	017590-01-1	12
4		Tranylcypramine-propionyl	189	C12H15NO	1000123-86-3	12
5		5-Fluoro-2-chloropyrimidine	132	C4H2ClFN2	062802-42-0	9



Data Path : Z:\HPCHEM1\BNA_F\DATA\BF070317\
 Data File : BF096438.D
 Acq On : 3 Jul 2017 13:51
 Operator : SJ/MA
 Sample : I3908-08 5X
 Misc :
 ALS Vial : 9 Sample Multiplier: 1

Instrument :
 BNA_F
 ClientSampleID :
 G-59-1.5-3

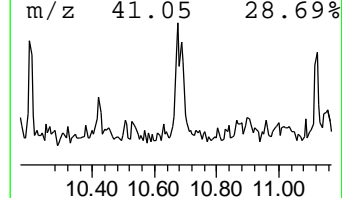
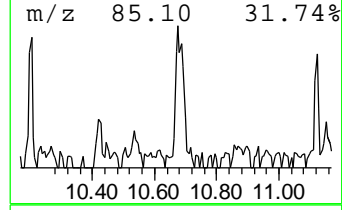
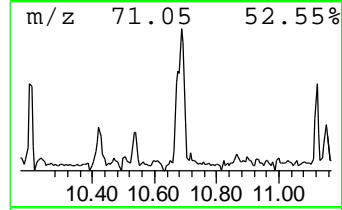
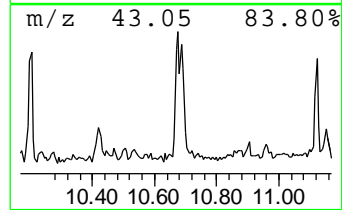
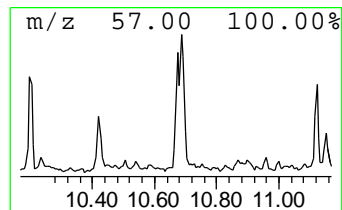
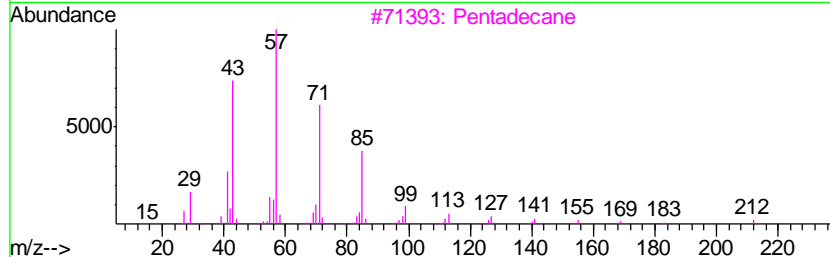
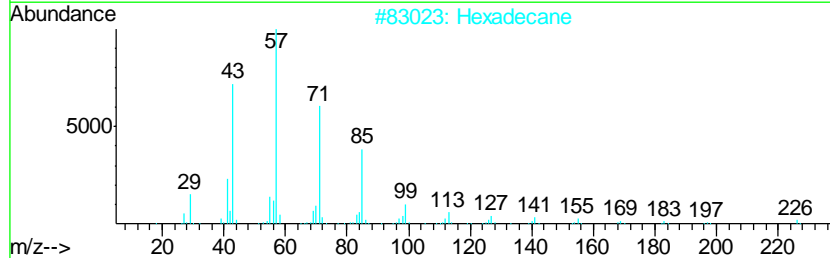
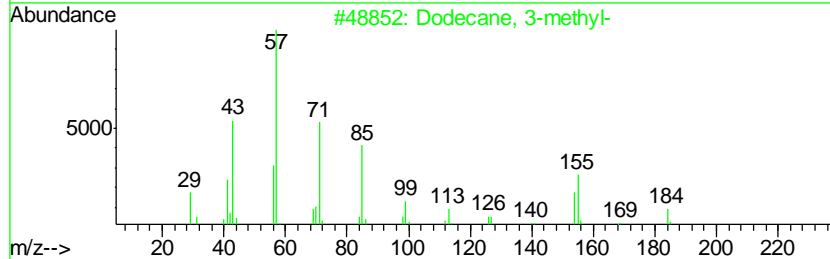
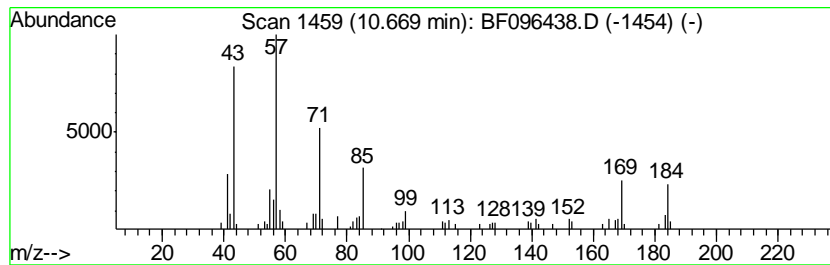
Quant Method : Z:\HPCHEM1\BNA_F\METHODS\8270-BF070117.M
 Quant Title : ASP BNA STANDARDS FOR 5 POINT CALIBRATION

TIC Library : C:\DATABASE\NIST11.L
 TIC Integration Parameters: LSCINT.P

 Peak Number 6 Dodecane, 3-methyl- Concentration Rank 9

R.T.	EstConc	Area	Relative to ISTD	R.T.
10.67	2.63 ng	78793	Phenanthrene-d10	11.23

Hit#	of	Tentative ID	MW	MolForm	CAS#	Qual
1	5	Dodecane, 3-methyl-	184	C13H28	017312-57-1	68
2		Hexadecane	226	C16H34	000544-76-3	64
3		Pentadecane	212	C15H32	000629-62-9	64
4		Tetradecane, 1-iodo-	324	C14H29I	019218-94-1	64
5		Dodecane	170	C12H26	000112-40-3	58



Data Path : Z:\HPCHEM1\BNA_F\DATA\BF070317\
 Data File : BF096438.D
 Acq On : 3 Jul 2017 13:51
 Operator : SJ/MA
 Sample : I3908-08 5X
 Misc :
 ALS Vial : 9 Sample Multiplier: 1

Instrument :
 BNA_F
 ClientSampled :
 G-59-1.5-3

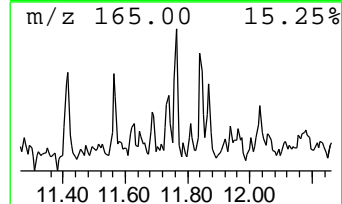
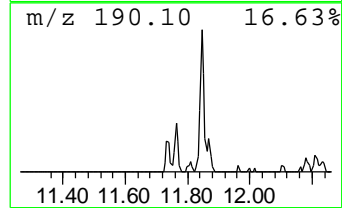
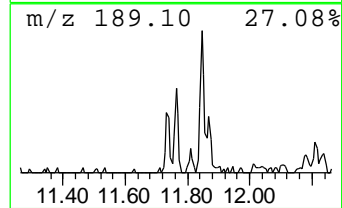
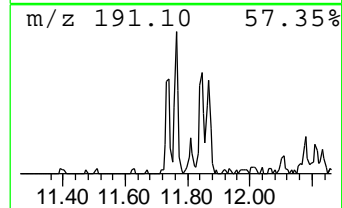
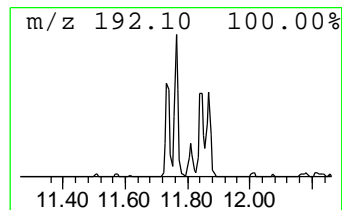
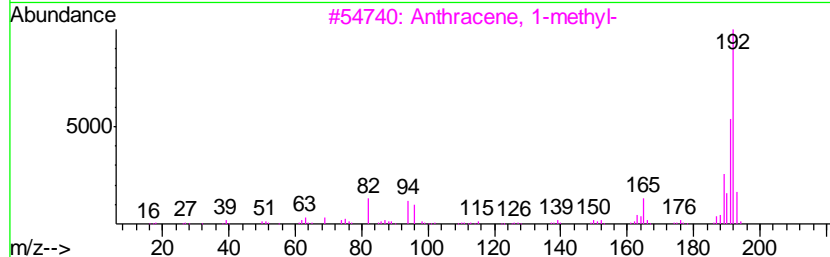
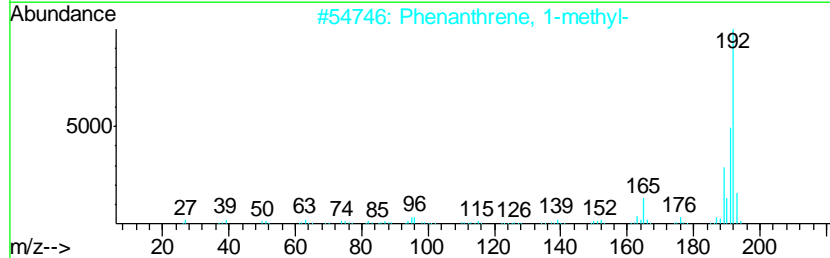
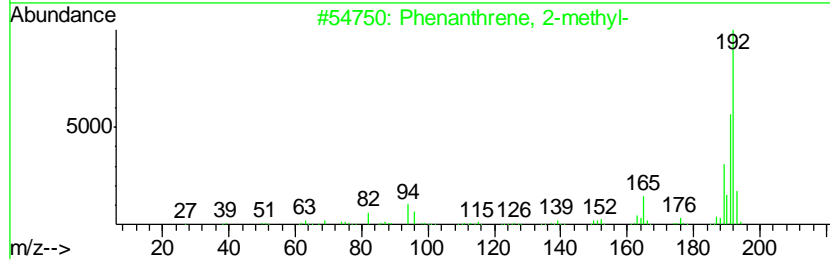
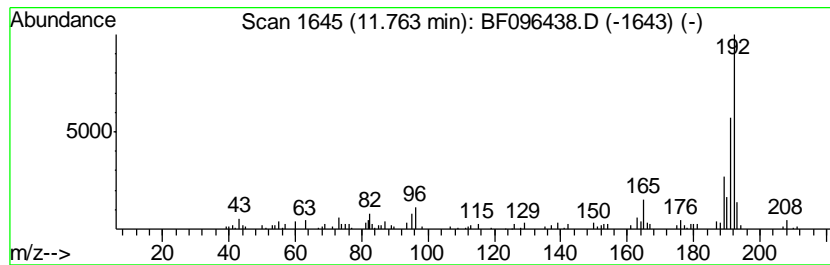
Quant Method : Z:\HPCHEM1\BNA_F\METHODS\8270-BF070117.M
 Quant Title : ASP BNA STANDARDS FOR 5 POINT CALIBRATION

TIC Library : C:\DATABASE\NIST11.L
 TIC Integration Parameters: LSCINT.P

 Peak Number 8 Phenanthrene, 2-methyl- Concentration Rank 6

R.T.	EstConc	Area	Relative to ISTD	R.T.
11.76	3.16 ng	94691	Phenanthrene-d10	11.23

Hit#	of	Tentative ID	MW	MolForm	CAS#	Qual
1	5	Phenanthrene, 2-methyl-	192	C15H12	002531-84-2	96
2		Phenanthrene, 1-methyl-	192	C15H12	000832-69-9	96
3		Anthracene, 1-methyl-	192	C15H12	000610-48-0	95
4		1H-Cyclopropa[1]phenanthrene, 1a, ...	192	C15H12	000949-41-7	95
5		Anthracene, 2-methyl-	192	C15H12	000613-12-7	94



Data Path : Z:\HPCHEM1\BNA_F\DATA\BF070317\
 Data File : BF096438.D
 Acq On : 3 Jul 2017 13:51
 Operator : SJ/MA
 Sample : I3908-08 5X
 Misc :
 ALS Vial : 9 Sample Multiplier: 1

Instrument :
 BNA_F
 ClientSampleID :
 G-59-1.5-3

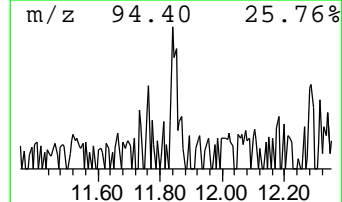
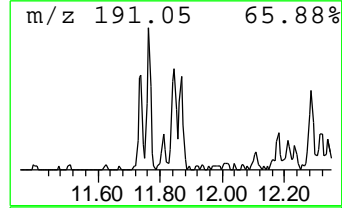
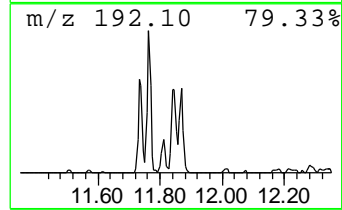
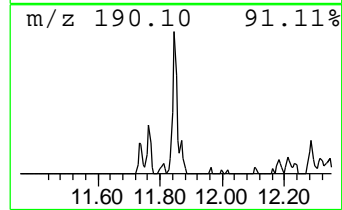
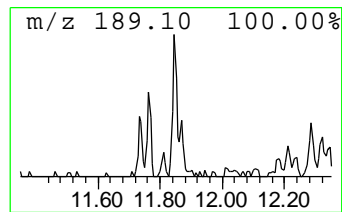
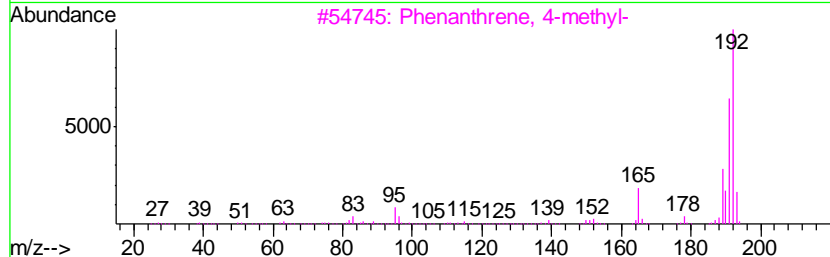
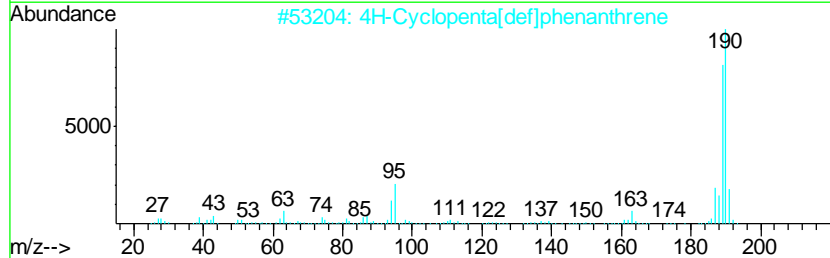
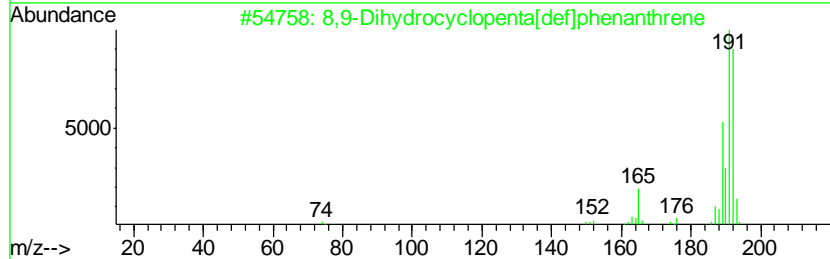
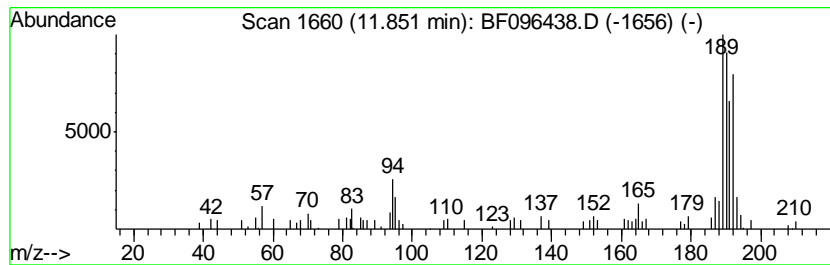
Quant Method : Z:\HPCHEM1\BNA_F\METHODS\8270-BF070117.M
 Quant Title : ASP BNA STANDARDS FOR 5 POINT CALIBRATION

TIC Library : C:\DATABASE\NIST11.L
 TIC Integration Parameters: LSCINT.P

 Peak Number 9 unknown11.85 Concentration Rank 8

R.T.	EstConc	Area	Relative to ISTD	R.T.
11.85	2.63 ng	78828	Phenanthrene-d10	11.23

Hit#	of	Tentative ID	MW	MolForm	CAS#	Qual
1	5	8,9-Dihydrocyclopenta[def]phenan...	192	C15H12	027410-55-5	47
2		4H-Cyclopenta[def]phenanthrene	190	C15H10	000203-64-5	46
3		Phenanthrene, 4-methyl-	192	C15H12	000832-64-4	45
4		6H-Cyclobuta[jk]phenanthrene	190	C15H10	083469-43-6	43
5		Naphtho[1,2-b]norbornadiene	192	C15H12	1000210-14-8	43



Data Path : Z:\HPCHEM1\BNA_F\DATA\BF070317\
 Data File : BF096438.D
 Acq On : 3 Jul 2017 13:51
 Operator : SJ/MA
 Sample : I3908-08 5X
 Misc :
 ALS Vial : 9 Sample Multiplier: 1

Instrument :
 BNA_F
 ClientSampled :
 G-59-1.5-3

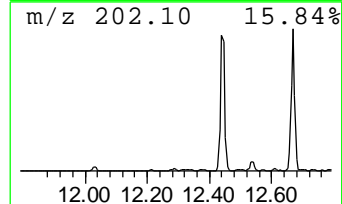
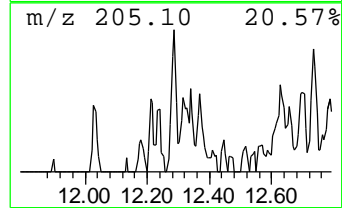
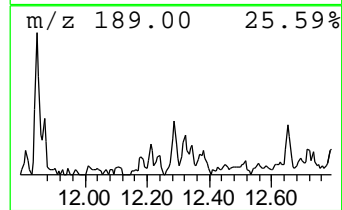
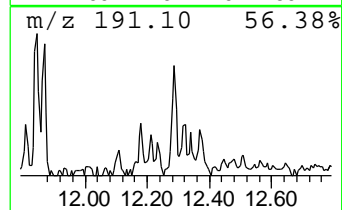
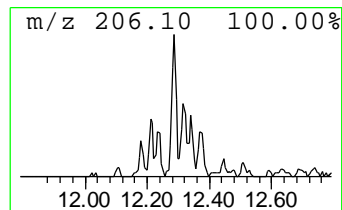
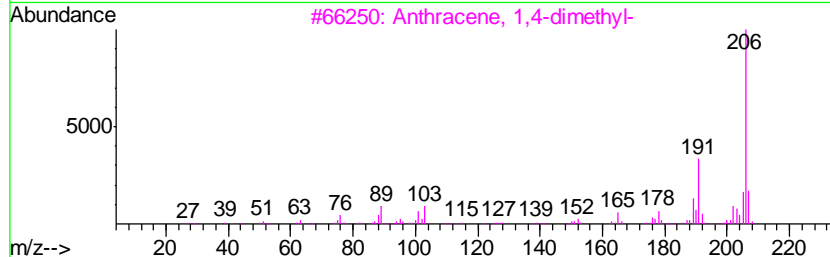
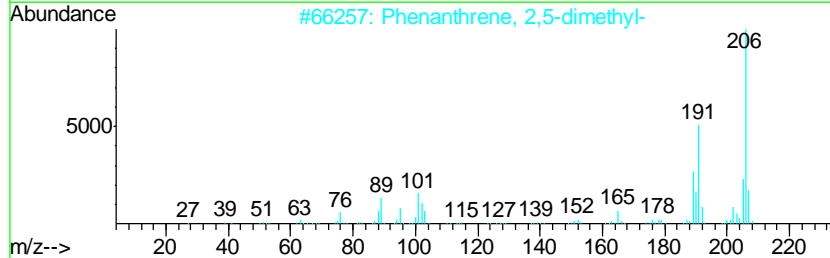
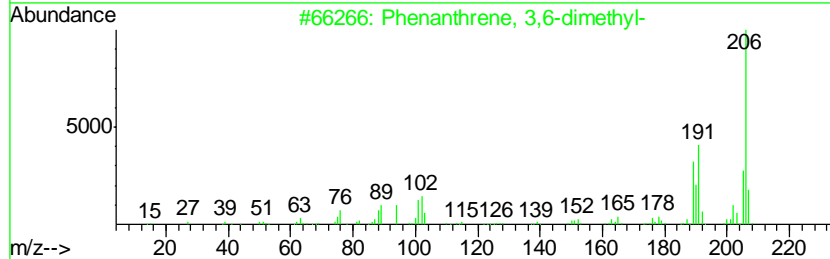
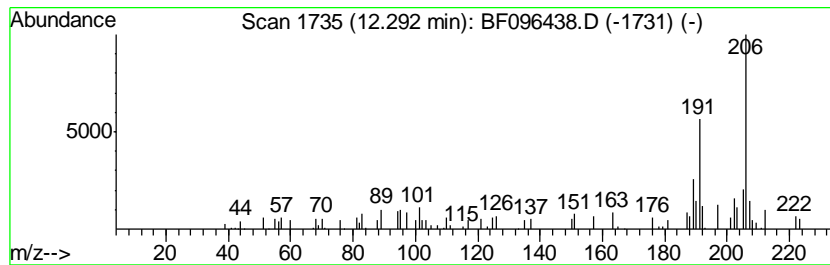
Quant Method : Z:\HPCHEM1\BNA_F\METHODS\8270-BF070117.M
 Quant Title : ASP BNA STANDARDS FOR 5 POINT CALIBRATION

TIC Library : C:\DATABASE\NIST11.L
 TIC Integration Parameters: LSCINT.P

 Peak Number 10 Phenanthrene, 3,6-dimethyl- Concentration Rank 10

R.T.	EstConc	Area	Relative to ISTD	R.T.
12.29	2.22 ng	66361	Phenanthrene-d10	11.23

Hit#	of	Tentative ID	MW	MolForm	CAS#	Qual
1	5	Phenanthrene, 3,6-dimethyl-	206	C16H14	001576-67-6	93
2		Phenanthrene, 2,5-dimethyl-	206	C16H14	003674-66-6	93
3		Anthracene, 1,4-dimethyl-	206	C16H14	000781-92-0	86
4		di-p-Tolylacetylene	206	C16H14	002789-88-0	81
5		9,10-Dimethylantracene	206	C16H14	000781-43-1	76



Data Path : Z:\HPCHEM1\BNA_F\DATA\BF070317\
 Data File : BF096438.D
 Acq On : 3 Jul 2017 13:51
 Operator : SJ/MA
 Sample : I3908-08 5X
 Misc :
 ALS Vial : 9 Sample Multiplier: 1

Instrument :
 BNA_F
 ClientSampleID :
 G-59-1.5-3

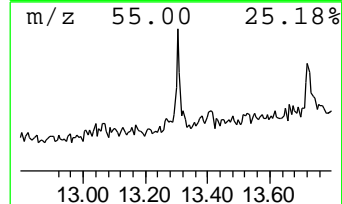
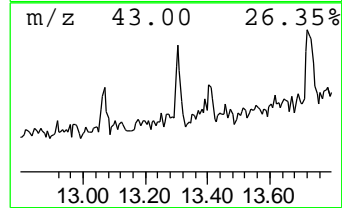
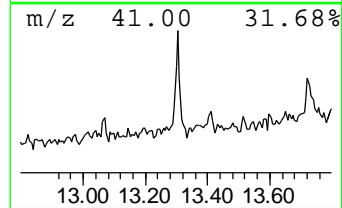
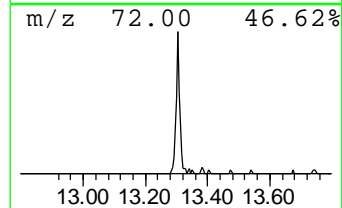
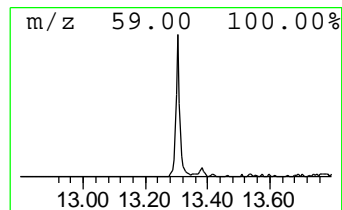
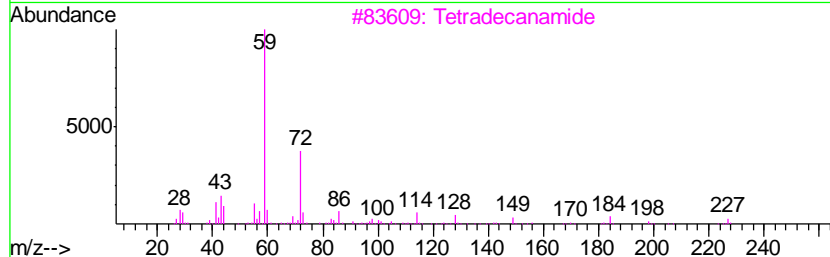
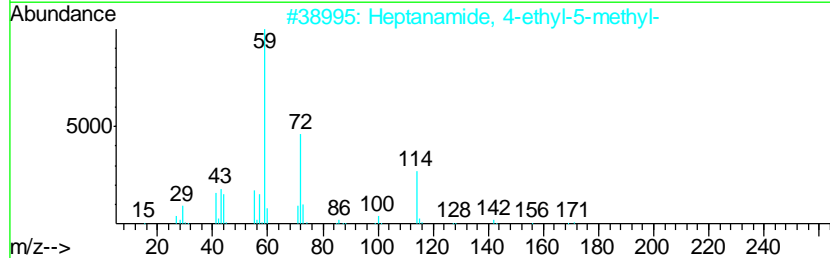
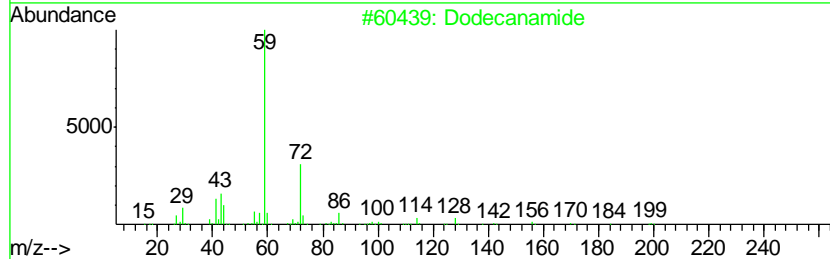
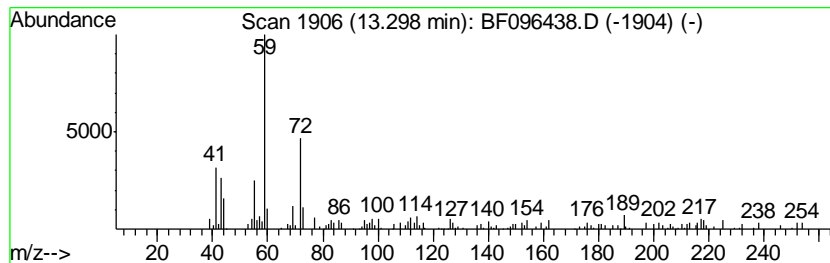
Quant Method : Z:\HPCHEM1\BNA_F\METHODS\8270-BF070117.M
 Quant Title : ASP BNA STANDARDS FOR 5 POINT CALIBRATION

TIC Library : C:\DATABASE\NIST11.L
 TIC Integration Parameters: LSCINT.P

 Peak Number 11 Dodecanamide Concentration Rank 5

R.T.	EstConc	Area	Relative to ISTD	R.T.
13.30	3.62 ng	129537	Chrysene-d12	13.86

Hit#	of	Tentative ID	MW	MolForm	CAS#	Qual
1	5	Dodecanamide	199	C12H25NO	001120-16-7	72
2		Heptanamide, 4-ethyl-5-methyl-	171	C10H21NO	054789-40-1	72
3		Tetradecanamide	227	C14H29NO	000638-58-4	64
4		9-Octadecenamide, (Z)-	281	C18H35NO	000301-02-0	58
5		Benzeneethanamine, 2-fluoro-.bet...	229	C11H16FNO3	061338-98-5	56



Data Path : Z:\HPCHEM1\BNA_F\DATA\BF070317\
 Data File : BF096438.D
 Acq On : 3 Jul 2017 13:51
 Operator : SJ/MA
 Sample : I3908-08 5X
 Misc :
 ALS Vial : 9 Sample Multiplier: 1

Instrument :
 BNA_F
 ClientSampleId :
 G-59-1.5-3

Quant Method : Z:\HPCHEM1\BNA_F\METHODS\8270-BF070117.M
 Quant Title : ASP BNA STANDARDS FOR 5 POINT CALIBRATION

TIC Library : C:\DATABASE\NIST11.L
 TIC Integration Parameters: LSCINT.P

TIC Top Hit name	RT	EstConc	Units	Response	--Internal Standard--			
					#	RT	Resp	Conc
2-Pentanone, 4-hy...	4.90	3.9	ng	137725	1	6.72	699820	20.0
unknown6.49	6.49	21.7	ng	759978	1	6.72	699820	20.0
Dodecane, 3-methyl-	10.67	2.6	ng	78793	4	11.23	598895	20.0
Phenanthrene, 2-m...	11.76	3.2	ng	94691	4	11.23	598895	20.0
unknown11.85	11.85	2.6	ng	78828	4	11.23	598895	20.0
Phenanthrene, 3,6...	12.29	2.2	ng	66361	4	11.23	598895	20.0
Dodecanamide	13.30	3.6	ng	129537	5	13.86	715098	20.0