

Data Path : Z:\svoasrv\HPCHEM1\BNA_F\Data\BF070825\
 Data File : BF143027.D
 Acq On : 08 Jul 2025 11:54
 Operator : RC/JU
 Sample : PB168716BS
 Misc :
 ALS Vial : 4 Sample Multiplier: 1

Instrument :
 BNA_F
 ClientSampleId :
 PB168716BS

Quant Time: Jul 08 12:19:40 2025
 Quant Method : Z:\svoasrv\HPCHEM1\BNA_F\Methods\8270-BF061925.M
 Quant Title : ASP BNA STANDARDS FOR 5 POINT CALIBRATION
 QLast Update : Tue Jun 24 05:28:21 2025
 Response via : Initial Calibration

Compound	R.T.	QIon	Response	Conc	Units	Dev(Min)	
Internal Standards							
1) 1,4-Dichlorobenzene-d4	6.875	152	58507	20.000	ng	0.00	
21) Naphthalene-d8	8.163	136	224473	20.000	ng	0.00	
39) Acenaphthene-d10	9.922	164	117882	20.000	ng	0.00	
64) Phenanthrene-d10	11.410	188	196389	20.000	ng	0.00	
76) Chrysene-d12	14.063	240	99574	20.000	ng	0.00	
86) Perylene-d12	15.557	264	114876	20.000	ng	0.01	
System Monitoring Compounds							
5) 2-Fluorophenol	5.504	112	449592	127.940	ng	0.01	
7) Phenol-d6	6.516	99	538555	129.899	ng	0.00	
23) Nitrobenzene-d5	7.439	82	335535	81.989	ng	0.00	
42) 2,4,6-Tribromophenol	10.716	330	167248	137.870	ng	0.00	
45) 2-Fluorobiphenyl	9.239	172	738017	82.244	ng	0.00	
79) Terphenyl-d14	12.998	244	631084	87.570	ng	0.00	
Target Compounds							
2) 1,4-Dioxane	2.716	88	49703	35.362	ng		Qvalue 99
3) Pyridine	3.481	79	139256	39.520	ng		97
4) n-Nitrosodimethylamine	3.434	42	78804	43.248	ng		97
6) Aniline	6.539	93	186649	33.834	ng	#	80
8) 2-Chlorophenol	6.663	128	172485	45.502	ng		98
9) Benzaldehyde	6.428	77	65208	26.511	ng		98
10) Phenol	6.528	94	201070	43.630	ng		79
11) bis(2-Chloroethyl)ether	6.610	93	150682	45.747	ng		97
12) 1,3-Dichlorobenzene	6.816	146	189258	44.642	ng		99
13) 1,4-Dichlorobenzene	6.892	146	192803	45.076	ng		99
14) 1,2-Dichlorobenzene	7.045	146	182783	45.054	ng		100
15) Benzyl Alcohol	7.022	79	140107	46.745	ng		99
16) 2,2'-oxybis(1-Chloropr...	7.145	45	220882	41.739	ng		69
17) 2-Methylphenol	7.134	107	132355	46.074	ng		97
18) Hexachloroethane	7.386	117	67694	45.248	ng		97
19) n-Nitroso-di-n-propyla...	7.287	70	111074	46.064	ng		99
20) 3+4-Methylphenols	7.287	107	170879	47.709	ng		96
22) Acetophenone	7.287	105	228983	46.259	ng		98
24) Nitrobenzene	7.463	77	167633	45.257	ng		97
25) Isophorone	7.698	82	301651	45.949	ng		100
26) 2-Nitrophenol	7.775	139	97023	48.085	ng		98
27) 2,4-Dimethylphenol	7.816	122	153326	43.869	ng		100
28) bis(2-Chloroethoxy)met...	7.904	93	190115	45.551	ng		100
29) 2,4-Dichlorophenol	8.022	162	146741	46.304	ng		99
30) 1,2,4-Trichlorobenzene	8.098	180	156650	44.953	ng		100
31) Naphthalene	8.181	128	502748	45.756	ng		100
32) Benzoic acid	7.945	122	79001	44.348	ng		96
33) 4-Chloroaniline	8.233	127	133370	29.852	ng		98
34) Hexachlorobutadiene	8.292	225	96733	45.382	ng		100
35) Caprolactam	8.610	113	29220	34.942	ng		91
36) 4-Chloro-3-methylphenol	8.722	107	150432	47.763	ng		100
37) 2-Methylnaphthalene	8.875	142	311283	45.697	ng		100
38) 1-Methylnaphthalene	8.975	142	327419	46.432	ng		99
40) 1,2,4,5-Tetrachloroben...	9.045	216	161961	46.563	ng		99
41) Hexachlorocyclopentadiene	9.028	237	151208	76.605	ng		99
43) 2,4,6-Trichlorophenol	9.157	196	103502	45.665	ng		99

Data Path : Z:\svoasrv\HPCHEM1\BNA_F\Data\BF070825\
 Data File : BF143027.D
 Acq On : 08 Jul 2025 11:54
 Operator : RC/JU
 Sample : PB168716BS
 Misc :
 ALS Vial : 4 Sample Multiplier: 1

Instrument :
 BNA_F
 ClientSampleId :
 PB168716BS

Quant Time: Jul 08 12:19:40 2025
 Quant Method : Z:\svoasrv\HPCHEM1\BNA_F\Methods\8270-BF061925.M
 Quant Title : ASP BNA STANDARDS FOR 5 POINT CALIBRATION
 QLast Update : Tue Jun 24 05:28:21 2025
 Response via : Initial Calibration

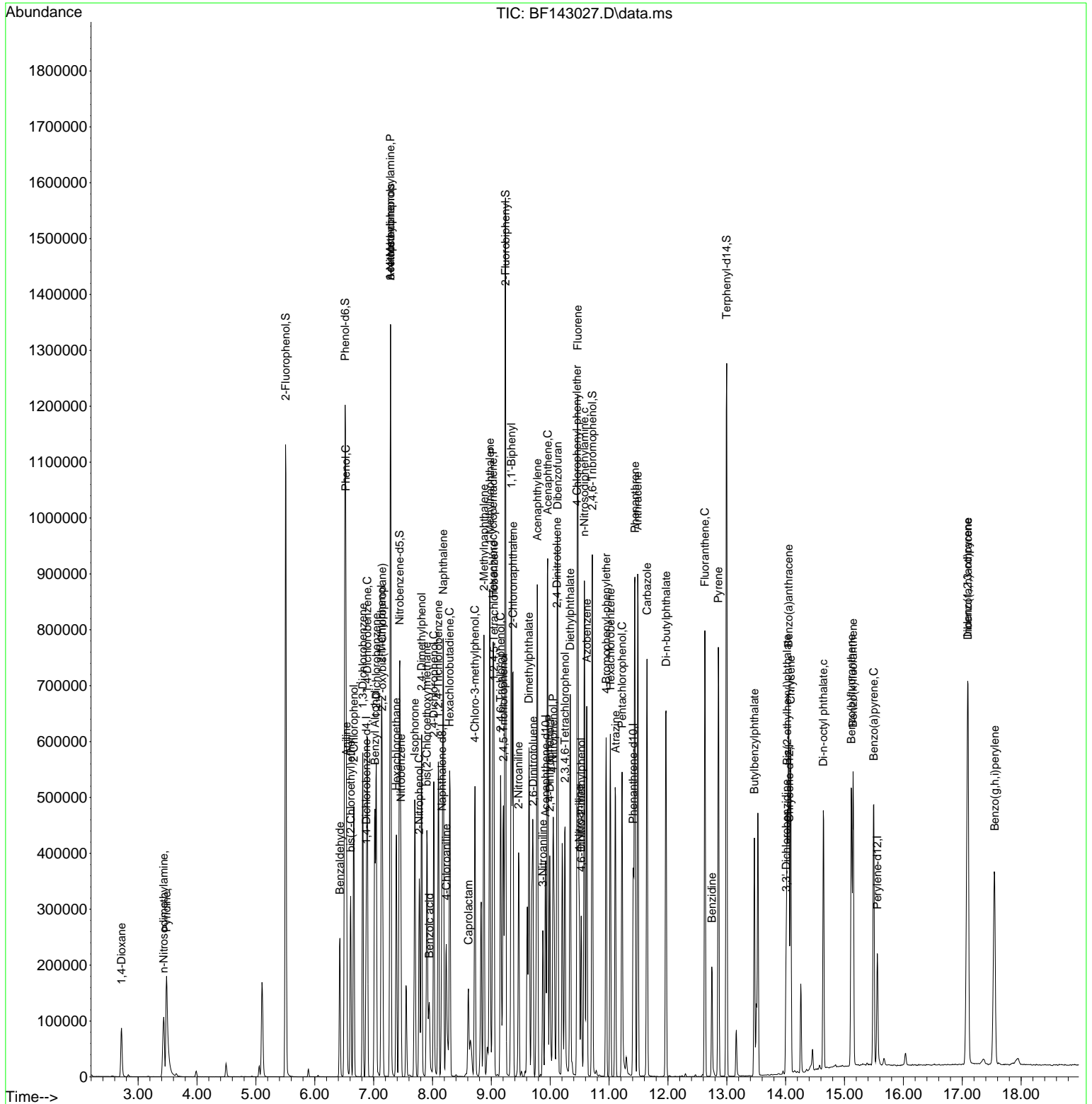
Compound	R.T.	QIon	Response	Conc	Units	Dev(Min)
44) 2,4,5-Trichlorophenol	9.204	196	108629	45.529	ng	99
46) 1,1'-Biphenyl	9.339	154	437747	47.009	ng	100
47) 2-Chloronaphthalene	9.369	162	322065	46.088	ng	99
48) 2-Nitroaniline	9.463	65	92748	47.342	ng	96
49) Acenaphthylene	9.780	152	535374	46.539	ng	99
50) Dimethylphthalate	9.639	163	371441	48.678	ng	99
51) 2,6-Dinitrotoluene	9.710	165	80447	48.007	ng	96
52) Acenaphthene	9.957	154	312708	44.553	ng	99
53) 3-Nitroaniline	9.875	138	60810	32.959	ng	100
54) 2,4-Dinitrophenol	9.992	184	83921	100.016	ng	97
55) Dibenzofuran	10.127	168	467906	46.490	ng	100
56) 4-Nitrophenol	10.051	139	102931	81.491	ng	99
57) 2,4-Dinitrotoluene	10.116	165	108038	48.537	ng	92
58) Fluorene	10.469	166	376316	47.875	ng	99
59) 2,3,4,6-Tetrachlorophenol	10.251	232	90547	47.081	ng	94
60) Diethylphthalate	10.339	149	367095	49.066	ng	100
61) 4-Chlorophenyl-phenyle...	10.457	204	179485	47.852	ng	98
62) 4-Nitroaniline	10.492	138	79314	47.004	ng	99
63) Azobenzene	10.622	77	312072	46.670	ng	98
65) 4,6-Dinitro-2-methylph...	10.527	198	57251	48.195	ng	97
66) n-Nitrosodiphenylamine	10.580	169	323529	47.533	ng	99
67) 4-Bromophenyl-phenylether	10.951	248	110051	49.238	ng	97
68) Hexachlorobenzene	11.022	284	118285	47.627	ng	99
69) Atrazine	11.110	200	92438	52.593	ng	100
70) Pentachlorophenol	11.222	266	101472	81.994	ng	98
71) Phenanthrene	11.439	178	503153	47.296	ng	100
72) Anthracene	11.486	178	516037	47.297	ng	99
73) Carbazole	11.645	167	439384	46.666	ng	100
74) Di-n-butylphthalate	11.969	149	504874	51.473	ng	99
75) Fluoranthene	12.627	202	468974	46.450	ng	99
77) Benzidine	12.745	184	114984	30.735	ng	99
78) Pyrene	12.857	202	462608	49.564	ng	100
80) Butylbenzylphthalate	13.468	149	143577	53.032	ng	96
81) Benzo(a)anthracene	14.051	228	324635	48.328	ng	100
82) 3,3'-Dichlorobenzidine	14.010	252	55773	25.598	ng	98
83) Chrysene	14.086	228	280502	46.797	ng	99
84) Bis(2-ethylhexyl)phtha...	14.027	149	181490	46.592	ng	100
85) Di-n-octyl phthalate	14.639	149	327797	44.628	ng	98
87) Indeno(1,2,3-cd)pyrene	17.092	276	404380	46.215	ng	99
88) Benzo(b)fluoranthene	15.115	252	334813	50.369	ng	100
89) Benzo(k)fluoranthene	15.145	252	270562	43.506	ng	100
90) Benzo(a)pyrene	15.498	252	304589	47.431	ng	99
91) Dibenzo(a,h)anthracene	17.098	278	325775	45.822	ng	99
92) Benzo(g,h,i)perylene	17.551	276	328768	46.375	ng	98

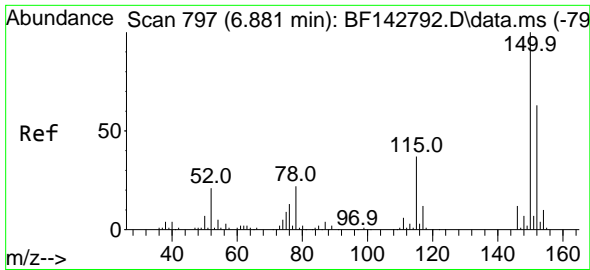
(#) = qualifier out of range (m) = manual integration (+) = signals summed

Data Path : Z:\svoasrv\HPCHEM1\BNA_F\Data\BF070825\
 Data File : BF143027.D
 Acq On : 08 Jul 2025 11:54
 Operator : RC/JU
 Sample : PB168716BS
 Misc :
 ALS Vial : 4 Sample Multiplier: 1

Instrument :
 BNA_F
 ClientSampleId :
 PB168716BS

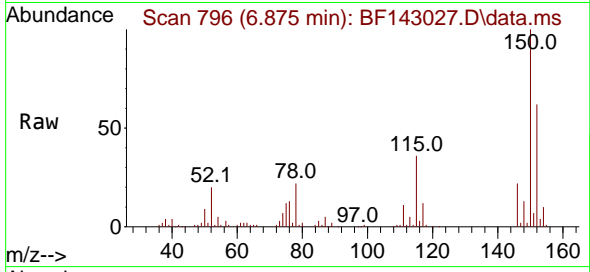
Quant Time: Jul 08 12:19:40 2025
 Quant Method : Z:\svoasrv\HPCHEM1\BNA_F\Methods\8270-BF061925.M
 Quant Title : ASP BNA STANDARDS FOR 5 POINT CALIBRATION
 QLast Update : Tue Jun 24 05:28:21 2025
 Response via : Initial Calibration



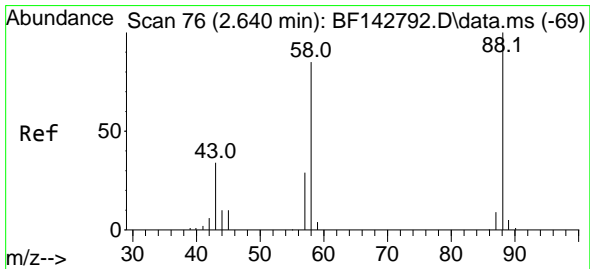
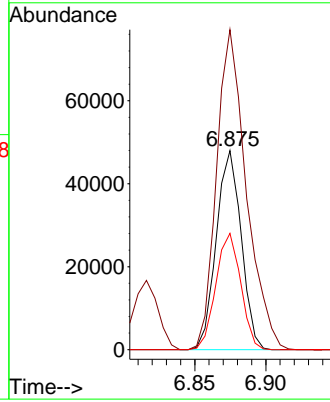
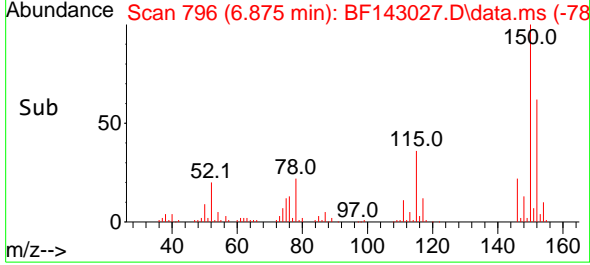


#1
 1,4-Dichlorobenzene-d4
 Concen: 20.000 ng
 RT: 6.875 min Scan# 79
 Delta R.T. -0.006 min
 Lab File: BF143027.D
 Acq: 08 Jul 2025 11:54

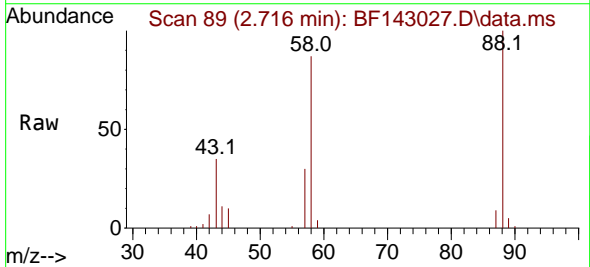
Instrument :
 BNA_F
 ClientSampleId :
 PB168716BS



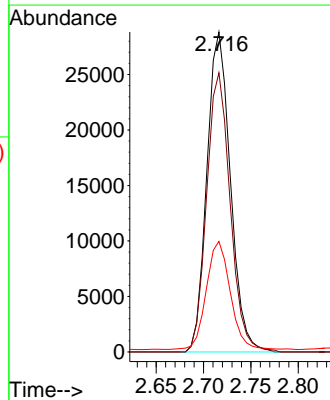
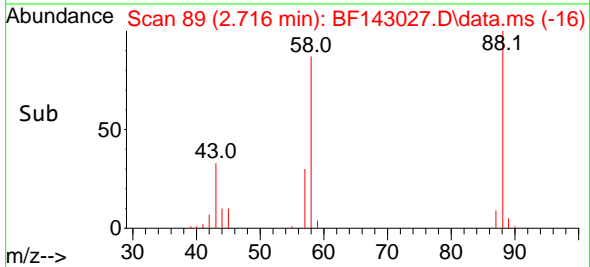
Tgt Ion:152 Resp: 58507
 Ion Ratio Lower Upper
 152 100
 150 160.8 127.2 190.8
 115 58.5 46.6 69.8

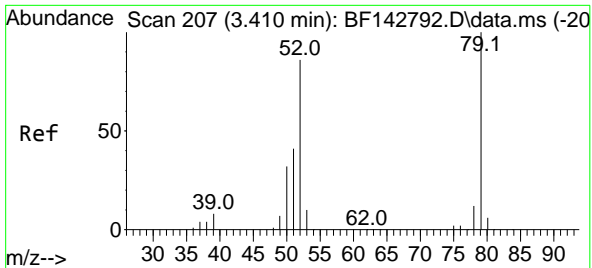


#2
 1,4-Dioxane
 Concen: 35.362 ng
 RT: 2.716 min Scan# 89
 Delta R.T. 0.076 min
 Lab File: BF143027.D
 Acq: 08 Jul 2025 11:54



Tgt Ion: 88 Resp: 49703
 Ion Ratio Lower Upper
 88 100
 58 87.4 69.1 103.7
 43 34.4 27.4 41.2



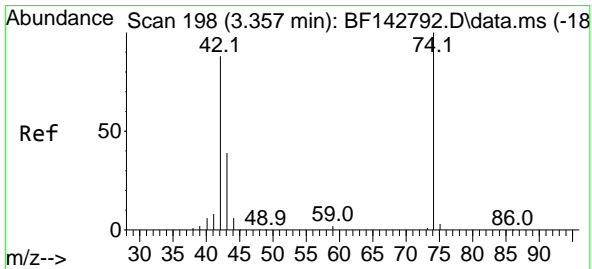
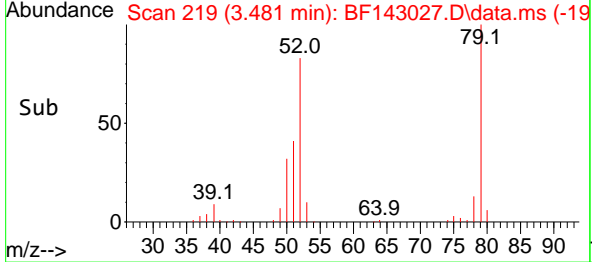
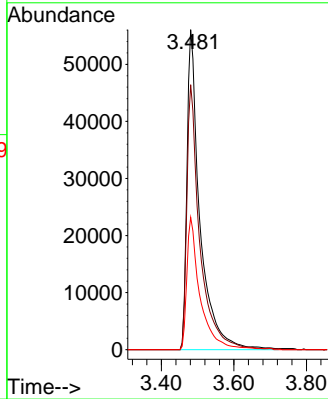
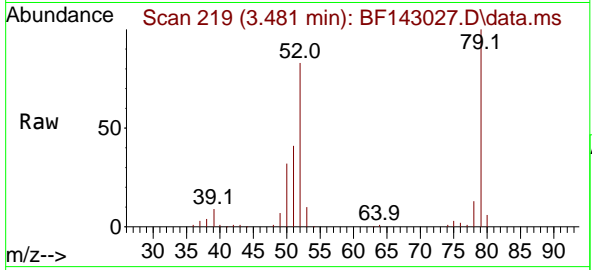


#3
 Pyridine
 Concen: 39.520 ng
 RT: 3.481 min Scan# 211
 Delta R.T. 0.071 min
 Lab File: BF143027.D
 Acq: 08 Jul 2025 11:54

Instrument : BNA_F
 ClientSampleId : PB168716BS

Tgt Ion: 79 Resp: 139256

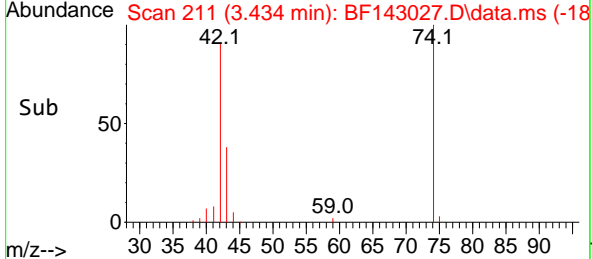
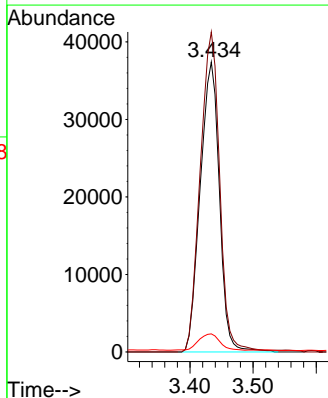
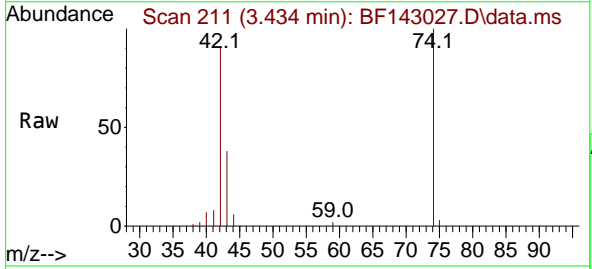
Ion	Ratio	Lower	Upper
79	100		
52	82.8	69.2	103.8
51	41.3	33.2	49.8

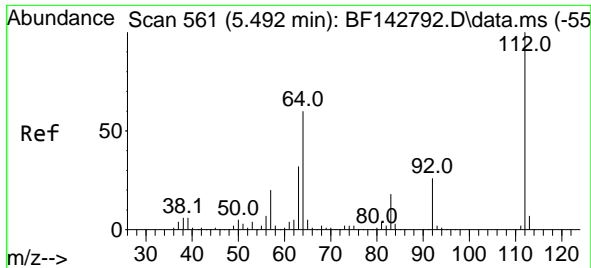


#4
 n-Nitrosodimethylamine
 Concen: 43.248 ng
 RT: 3.434 min Scan# 211
 Delta R.T. 0.076 min
 Lab File: BF143027.D
 Acq: 08 Jul 2025 11:54

Tgt Ion: 42 Resp: 78804

Ion	Ratio	Lower	Upper
42	100		
74	110.4	90.9	136.3
44	6.2	5.8	8.6



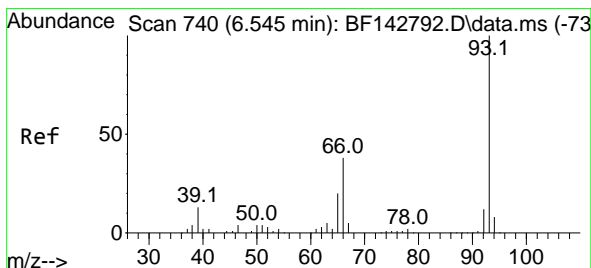
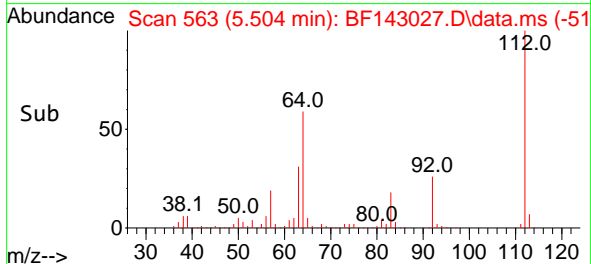
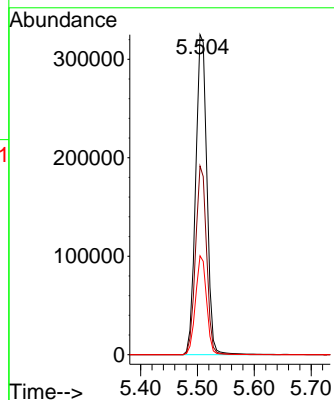
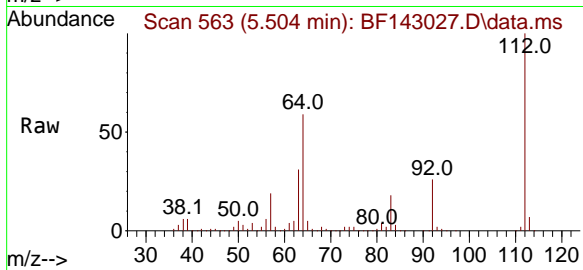


#5
 2-Fluorophenol
 Concen: 127.940 ng
 RT: 5.504 min Scan# 50
 Delta R.T. 0.012 min
 Lab File: BF143027.D
 Acq: 08 Jul 2025 11:54

Instrument :
 BNA_F
 ClientSampleId :
 PB168716BS

Tgt Ion:112 Resp: 449592

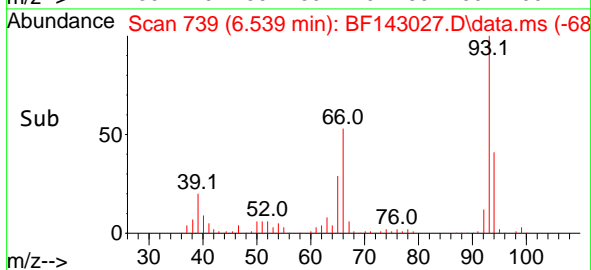
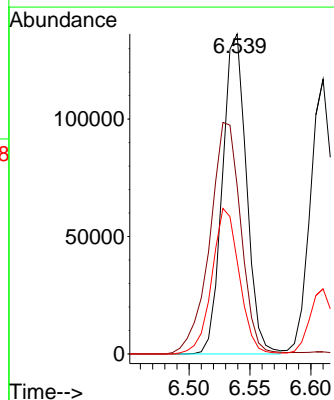
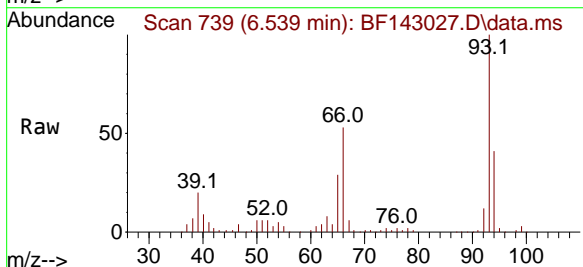
Ion	Ratio	Lower	Upper
112	100		
64	59.0	48.2	72.2
63	30.9	25.7	38.5

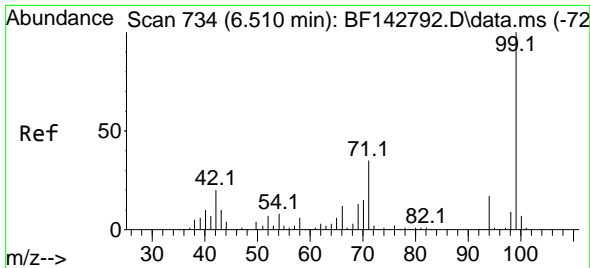


#6
 Aniline
 Concen: 33.834 ng
 RT: 6.539 min Scan# 739
 Delta R.T. -0.006 min
 Lab File: BF143027.D
 Acq: 08 Jul 2025 11:54

Tgt Ion: 93 Resp: 186649

Ion	Ratio	Lower	Upper
93	100		
66	52.5	31.8	47.6#
65	29.0	16.2	24.2#

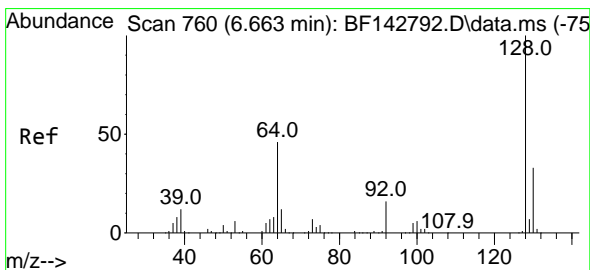
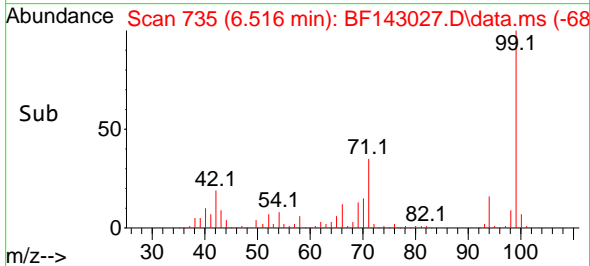
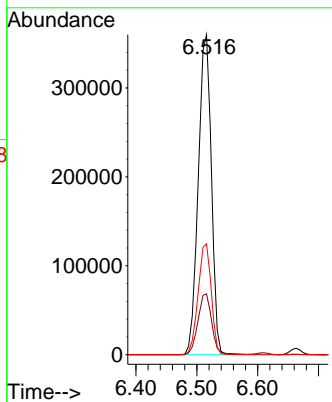
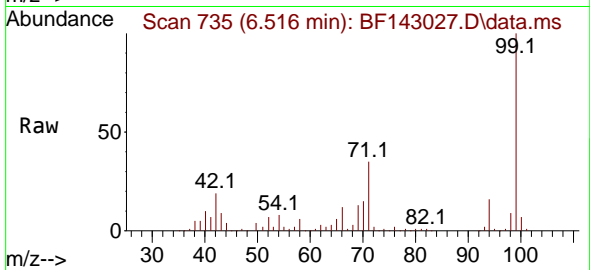




#7
Phenol-d6
Concen: 129.899 ng
RT: 6.516 min Scan# 71
Delta R.T. 0.006 min
Lab File: BF143027.D
Acq: 08 Jul 2025 11:54

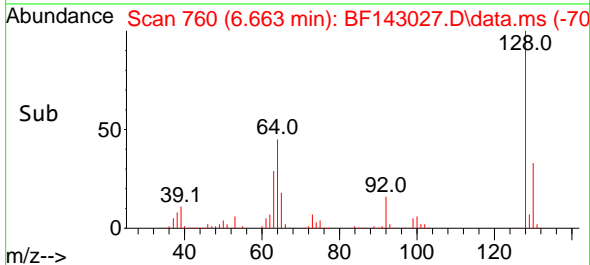
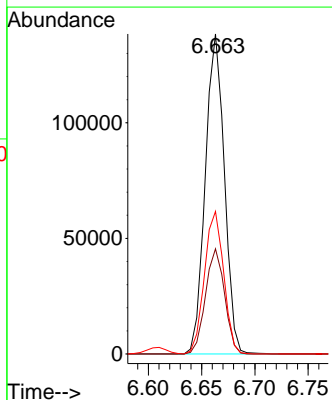
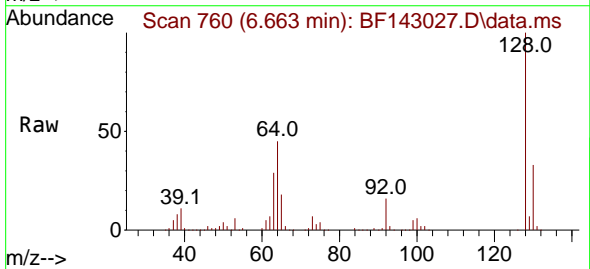
Instrument :
BNA_F
ClientSampleId :
PB168716BS

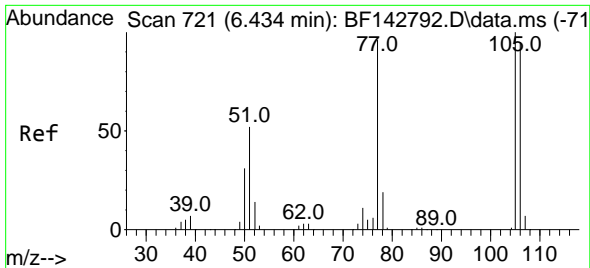
Tgt Ion	Resp	Lower	Upper
99	538555		
42	19.0	15.9	23.9
71	34.7	27.8	41.8



#8
2-Chlorophenol
Concen: 45.502 ng
RT: 6.663 min Scan# 760
Delta R.T. 0.000 min
Lab File: BF143027.D
Acq: 08 Jul 2025 11:54

Tgt Ion	Resp	Lower	Upper
128	172485		
130	32.9	12.7	52.7
64	44.6	26.5	66.5



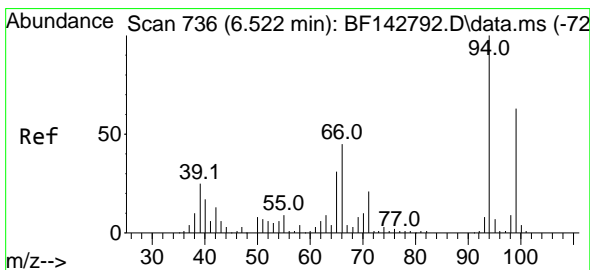
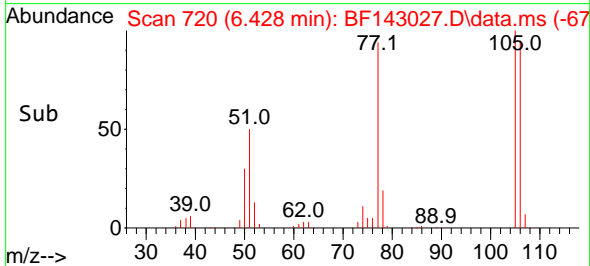
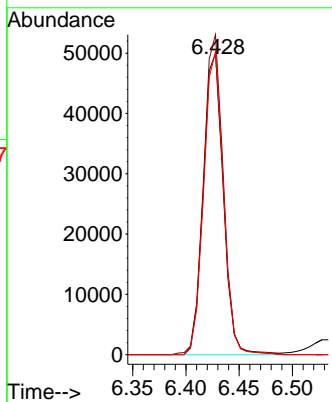
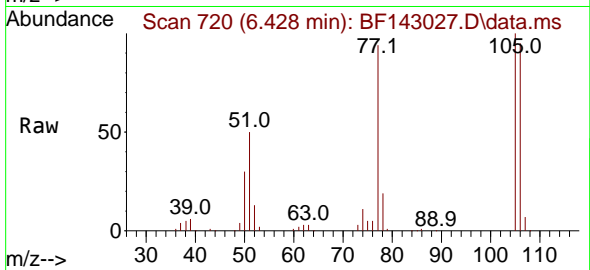


#9
 Benzaldehyde
 Concen: 26.511 ng
 RT: 6.428 min Scan# 71
 Delta R.T. -0.006 min
 Lab File: BF143027.D
 Acq: 08 Jul 2025 11:54

Instrument : BNA_F
 ClientSampleId : PB168716BS

Tgt Ion: 77 Resp: 65208

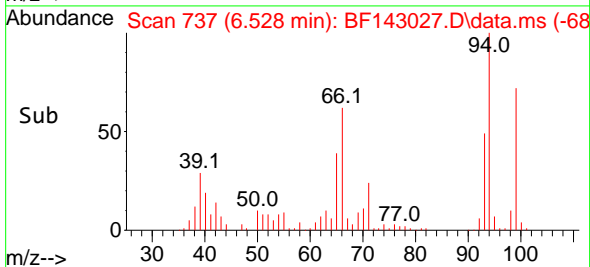
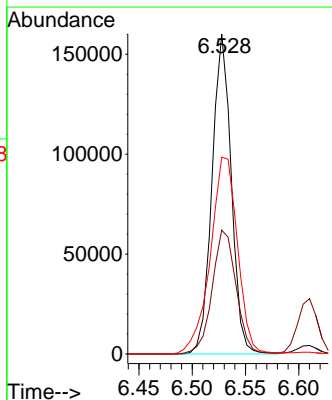
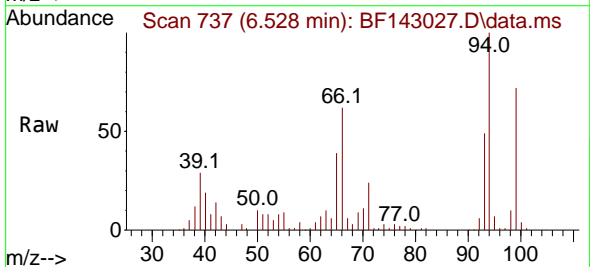
Ion	Ratio	Lower	Upper
77	100		
105	106.2	83.8	123.8
106	100.5	78.7	118.7

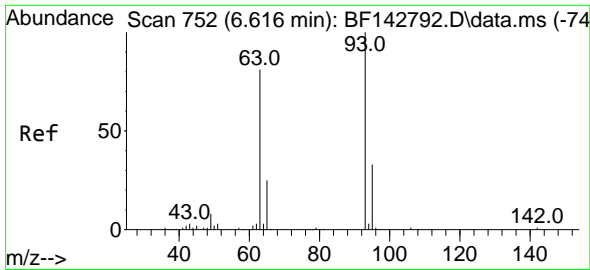


#10
 Phenol
 Concen: 43.630 ng
 RT: 6.528 min Scan# 737
 Delta R.T. 0.006 min
 Lab File: BF143027.D
 Acq: 08 Jul 2025 11:54

Tgt Ion: 94 Resp: 201070

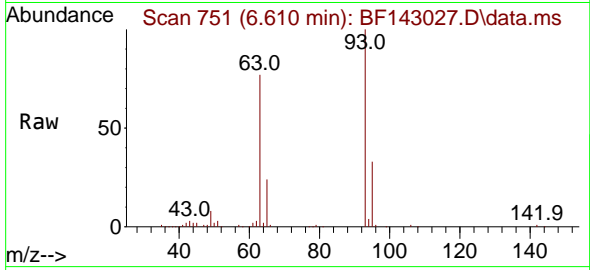
Ion	Ratio	Lower	Upper
94	100		
65	38.7	11.3	51.3
66	61.5	24.9	64.9



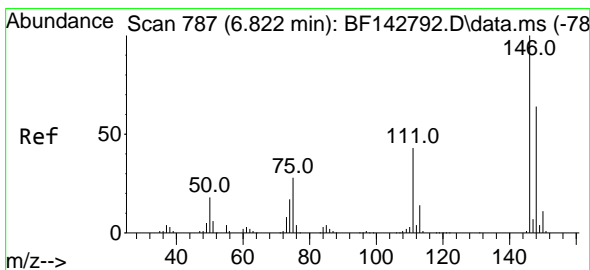
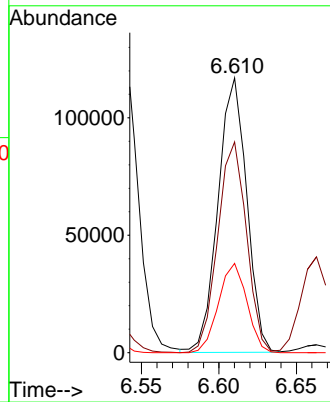
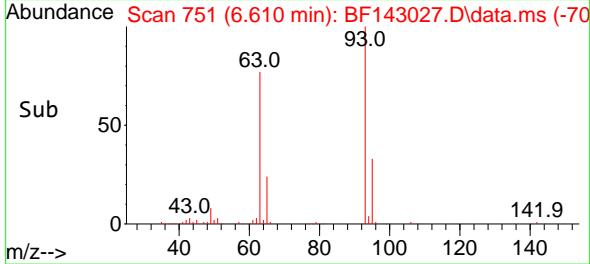


#11
 bis(2-Chloroethyl)ether
 Concen: 45.747 ng
 RT: 6.610 min Scan# 710
 Delta R.T. -0.006 min
 Lab File: BF143027.D
 Acq: 08 Jul 2025 11:54

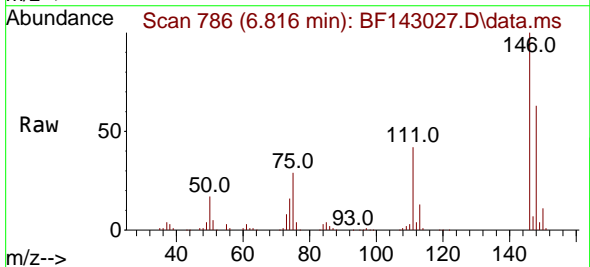
Instrument :
 BNA_F
 ClientSampleId :
 PB168716BS



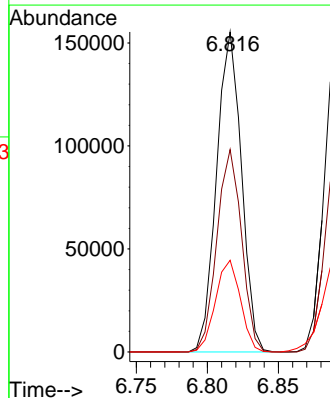
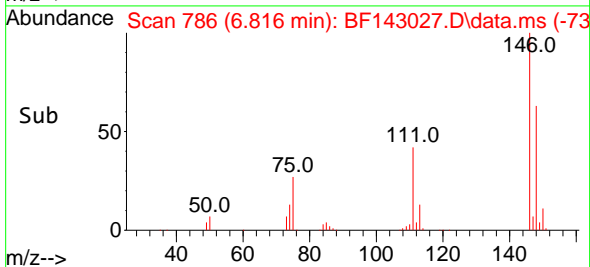
Tgt Ion: 93 Resp: 150682
 Ion Ratio Lower Upper
 93 100
 63 76.7 60.3 100.3
 95 32.5 12.5 52.5

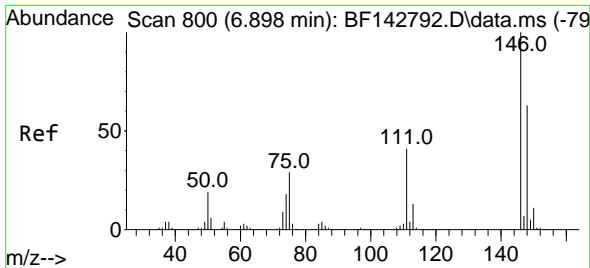


#12
 1,3-Dichlorobenzene
 Concen: 44.642 ng
 RT: 6.816 min Scan# 786
 Delta R.T. -0.006 min
 Lab File: BF143027.D
 Acq: 08 Jul 2025 11:54



Tgt Ion: 146 Resp: 189258
 Ion Ratio Lower Upper
 146 100
 148 63.3 51.1 76.7
 75 28.6 22.7 34.1

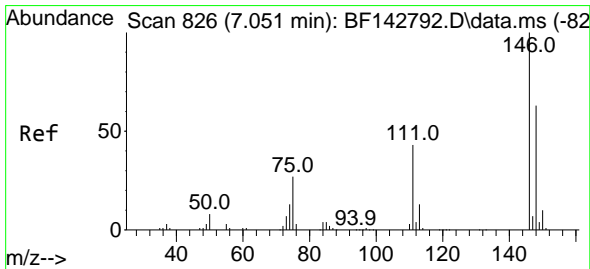
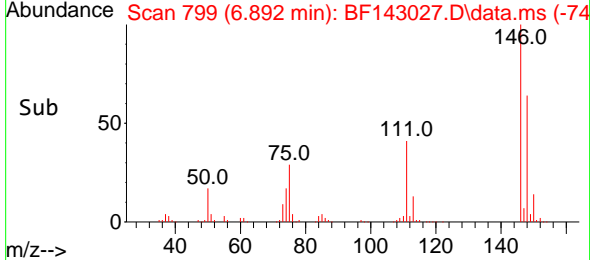
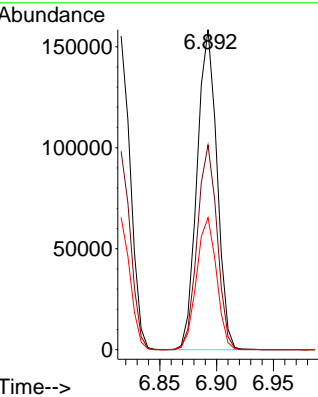
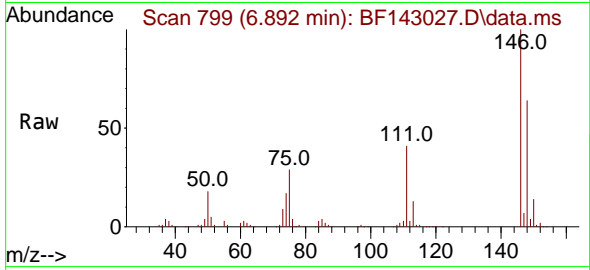




#13
 1,4-Dichlorobenzene
 Concen: 45.076 ng
 RT: 6.892 min Scan# 74
 Delta R.T. -0.006 min
 Lab File: BF143027.D
 Acq: 08 Jul 2025 11:54

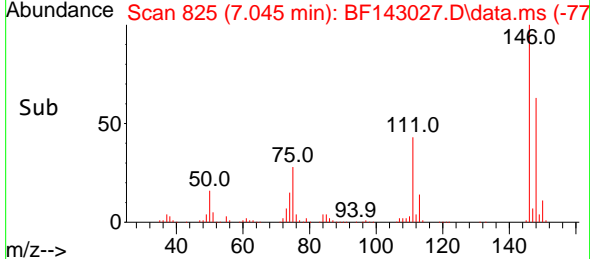
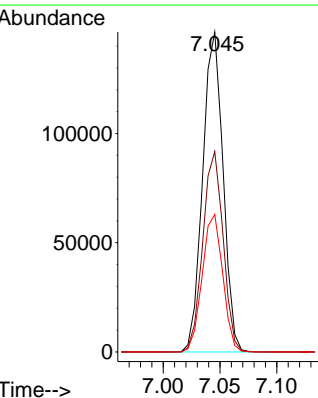
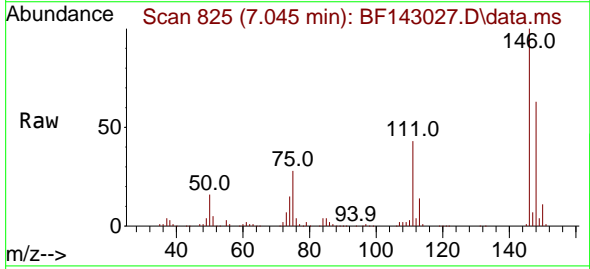
Instrument :
 BNA_F
 ClientSampleId :
 PB168716BS

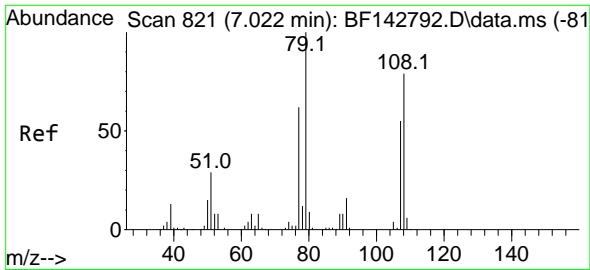
Tgt Ion:146 Resp: 192803
 Ion Ratio Lower Upper
 146 100
 148 64.0 50.2 75.2
 111 41.3 33.2 49.8



#14
 1,2-Dichlorobenzene
 Concen: 45.054 ng
 RT: 7.045 min Scan# 825
 Delta R.T. -0.006 min
 Lab File: BF143027.D
 Acq: 08 Jul 2025 11:54

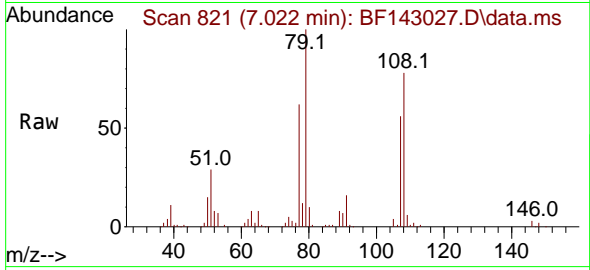
Tgt Ion:146 Resp: 182783
 Ion Ratio Lower Upper
 146 100
 148 62.7 50.4 75.6
 111 42.9 34.1 51.1





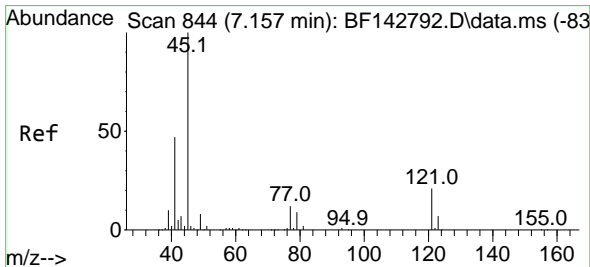
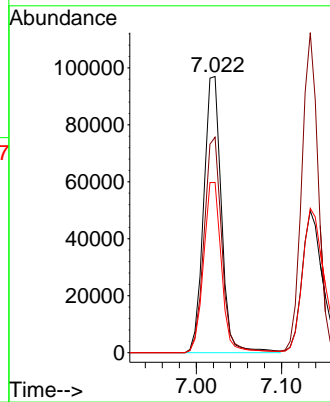
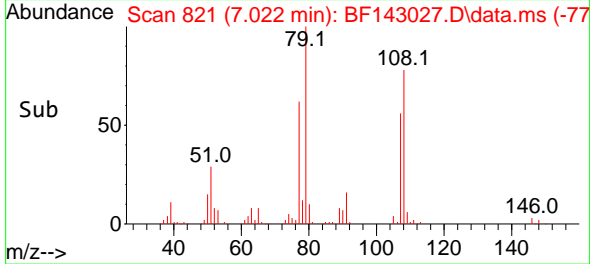
#15
 Benzyl Alcohol
 Concen: 46.745 ng
 RT: 7.022 min Scan# 81
 Delta R.T. 0.000 min
 Lab File: BF143027.D
 Acq: 08 Jul 2025 11:54

Instrument :
 BNA_F
 ClientSampleId :
 PB168716BS

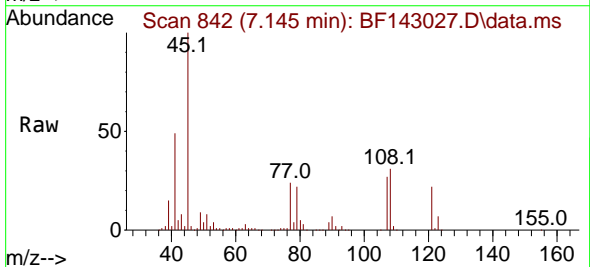


Tgt Ion: 79 Resp: 140107

Ion	Ratio	Lower	Upper
79	100		
108	78.0	63.4	95.0
77	61.6	49.5	74.3

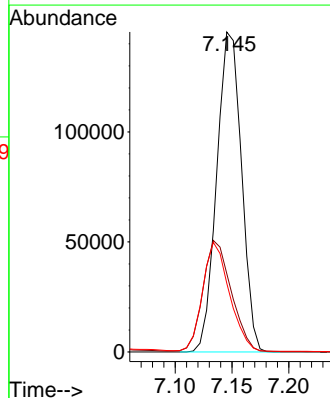
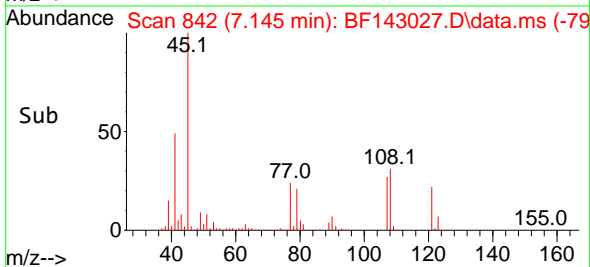


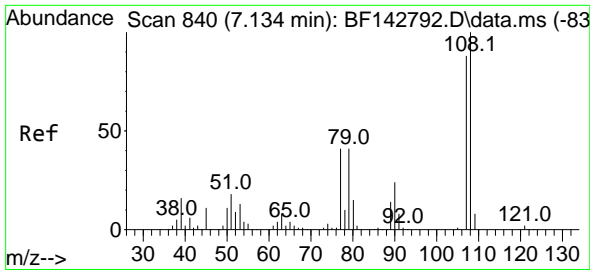
#16
 2,2'-oxybis(1-Chloropropane)
 Concen: 41.739 ng
 RT: 7.145 min Scan# 842
 Delta R.T. -0.012 min
 Lab File: BF143027.D
 Acq: 08 Jul 2025 11:54



Tgt Ion: 45 Resp: 220882

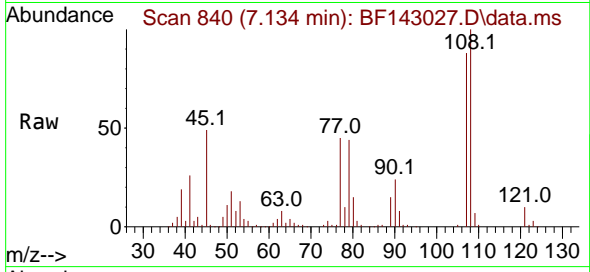
Ion	Ratio	Lower	Upper
45	100		
77	24.5	0.0	32.8
79	21.5	0.0	29.8



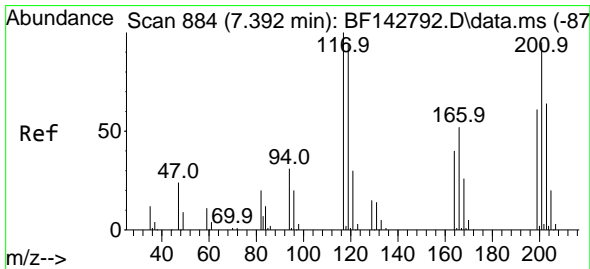
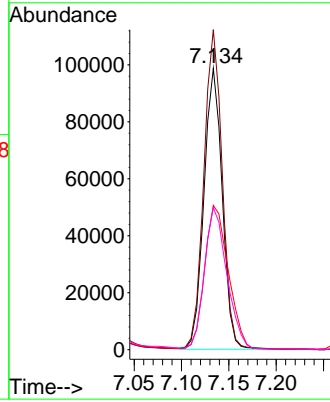
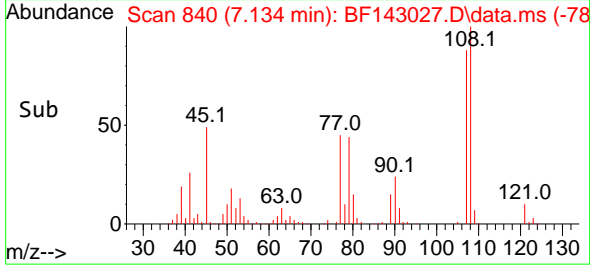


#17
 2-Methylphenol
 Concen: 46.074 ng
 RT: 7.134 min Scan# 840
 Delta R.T. 0.000 min
 Lab File: BF143027.D
 Acq: 08 Jul 2025 11:54

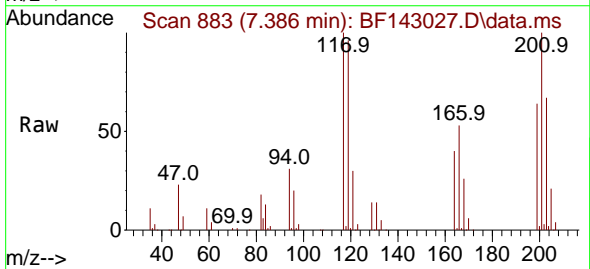
Instrument :
 BNA_F
 ClientSampleId :
 PB168716BS



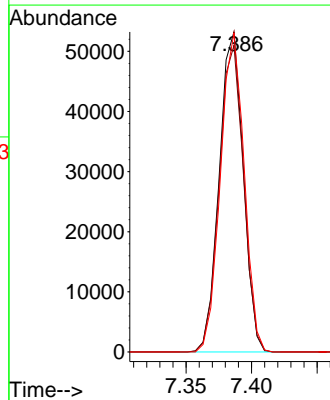
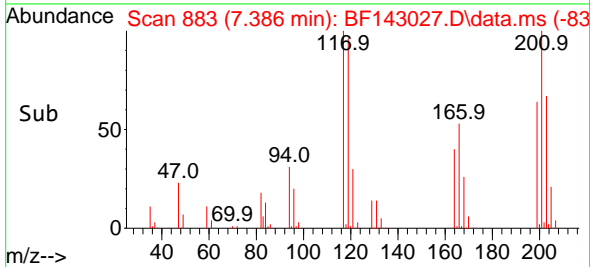
Tgt Ion:107 Resp: 132355
 Ion Ratio Lower Upper
 107 100
 108 113.7 90.9 136.3
 77 51.3 37.3 55.9
 79 50.4 37.2 55.8

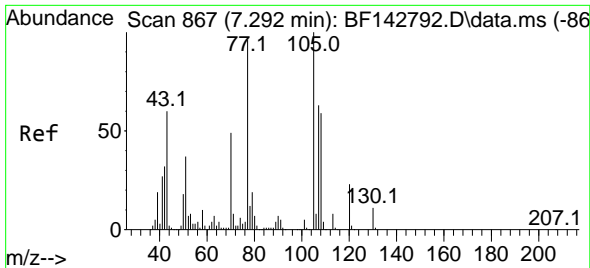


#18
 Hexachloroethane
 Concen: 45.248 ng
 RT: 7.386 min Scan# 883
 Delta R.T. -0.006 min
 Lab File: BF143027.D
 Acq: 08 Jul 2025 11:54



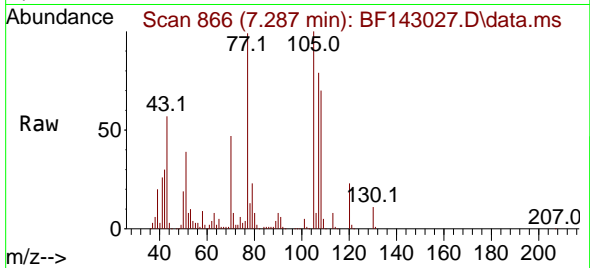
Tgt Ion:117 Resp: 67694
 Ion Ratio Lower Upper
 117 100
 119 95.8 75.4 113.0
 201 99.7 75.9 113.9



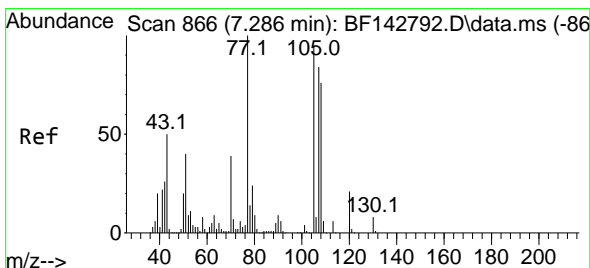
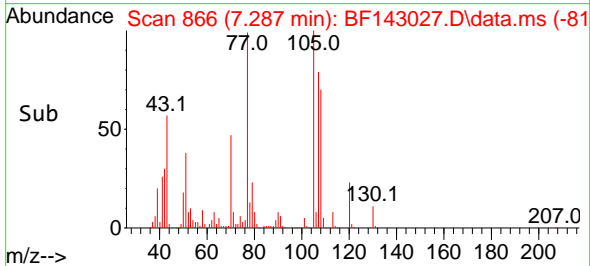
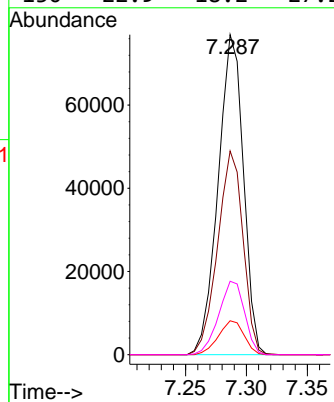


#19
 n-Nitroso-di-n-propylamine
 Concen: 46.064 ng
 RT: 7.287 min Scan# 806
 Delta R.T. -0.006 min
 Lab File: BF143027.D
 Acq: 08 Jul 2025 11:54

Instrument :
 BNA_F
 ClientSampleId :
 PB168716BS

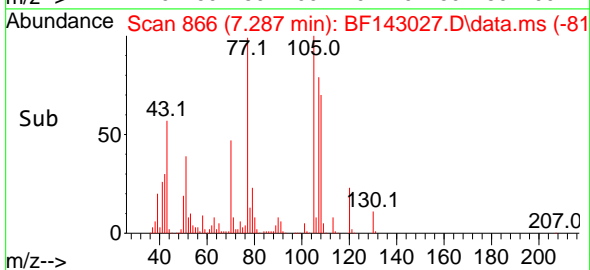
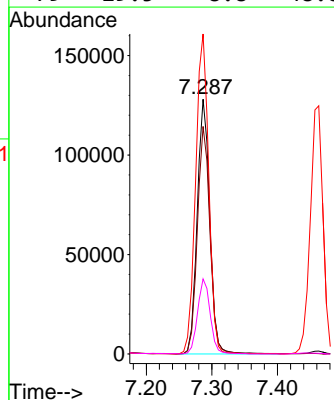
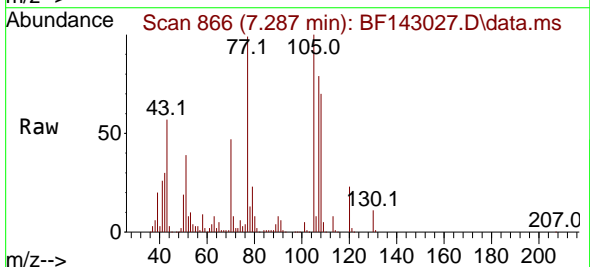


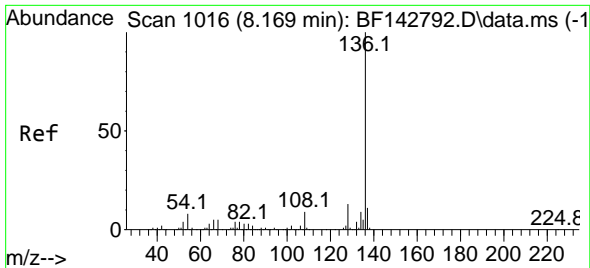
Tgt Ion: 70 Resp: 111074
 Ion Ratio Lower Upper
 70 100
 42 63.7 52.1 78.1
 101 10.6 8.2 12.2
 130 22.9 18.2 27.2



#20
 3+4-Methylphenols
 Concen: 47.709 ng
 RT: 7.287 min Scan# 866
 Delta R.T. 0.000 min
 Lab File: BF143027.D
 Acq: 08 Jul 2025 11:54

Tgt Ion:107 Resp: 170879
 Ion Ratio Lower Upper
 107 100
 108 89.3 70.0 110.0
 77 125.7 98.5 138.5
 79 29.5 8.8 48.8



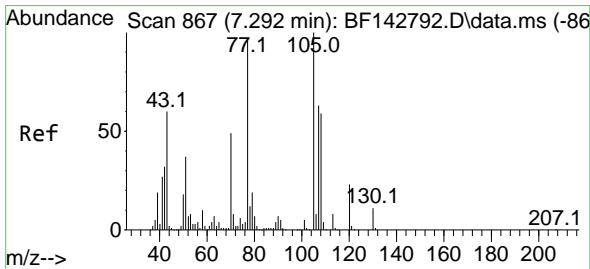
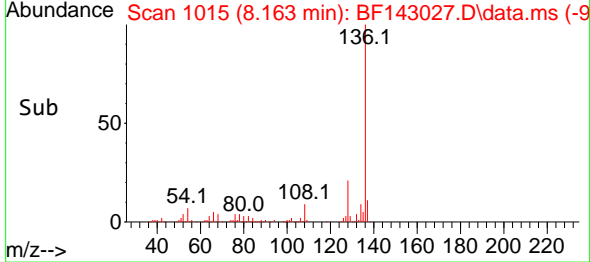
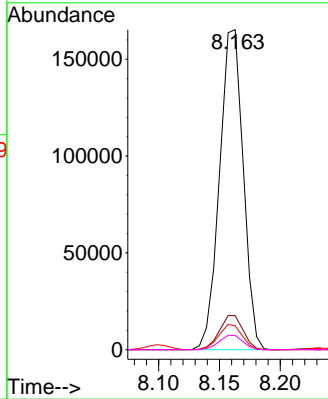
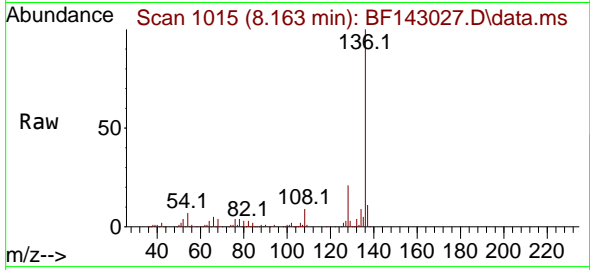


#21
 Naphthalene-d8
 Concen: 20.000 ng
 RT: 8.163 min Scan# 1015
 Delta R.T. -0.006 min
 Lab File: BF143027.D
 Acq: 08 Jul 2025 11:54

Instrument : BNA_F
 Client Sample Id : PB168716BS

Tgt Ion:136 Resp: 224473

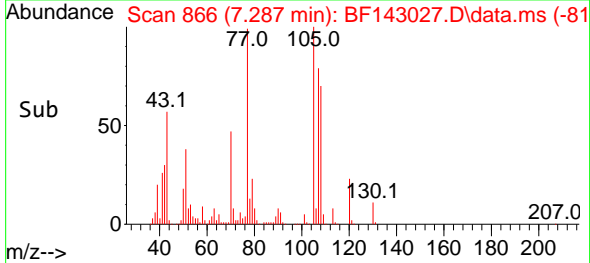
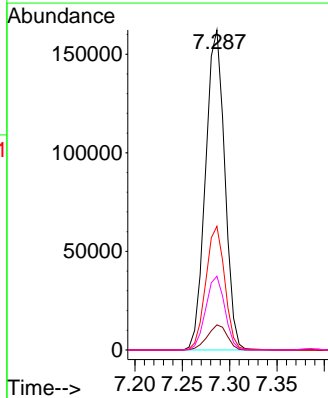
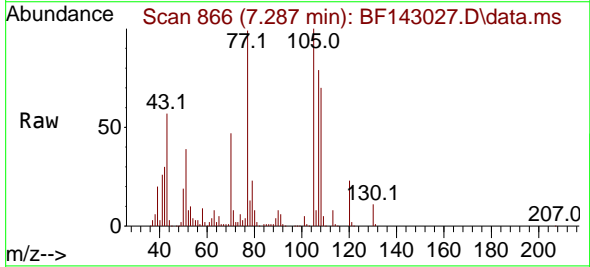
Ion	Ratio	Lower	Upper
136	100		
137	10.6	8.4	12.6
54	7.5	6.3	9.5
68	4.4	3.7	5.5

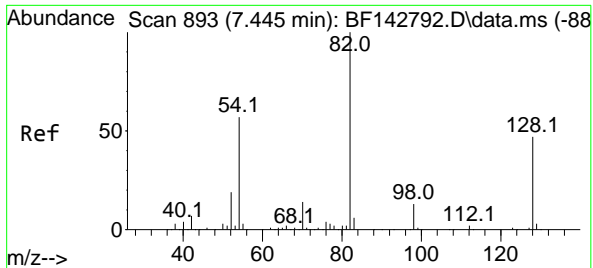


#22
 Acetophenone
 Concen: 46.259 ng
 RT: 7.287 min Scan# 866
 Delta R.T. -0.006 min
 Lab File: BF143027.D
 Acq: 08 Jul 2025 11:54

Tgt Ion:105 Resp: 228983

Ion	Ratio	Lower	Upper
105	100		
71	7.9	6.5	9.7
51	38.6	29.8	44.8
120	23.0	18.2	27.2





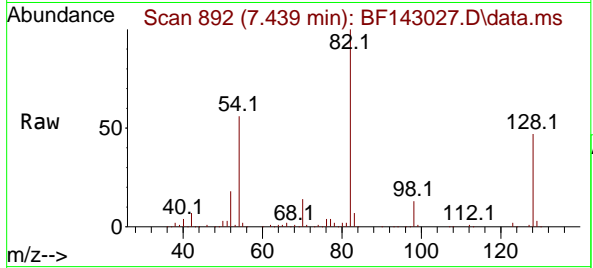
#23
 Nitrobenzene-d5
 Concen: 81.989 ng
 RT: 7.439 min Scan# 892
 Delta R.T. -0.006 min
 Lab File: BF143027.D
 Acq: 08 Jul 2025 11:54

Instrument :

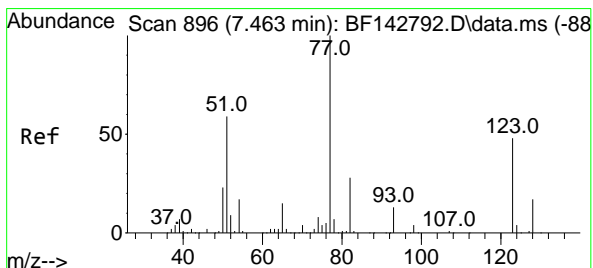
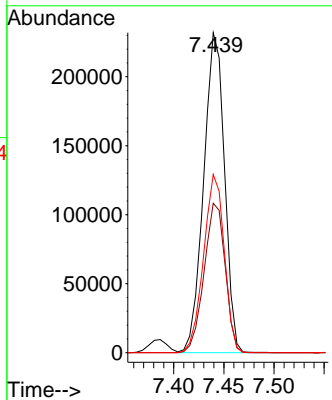
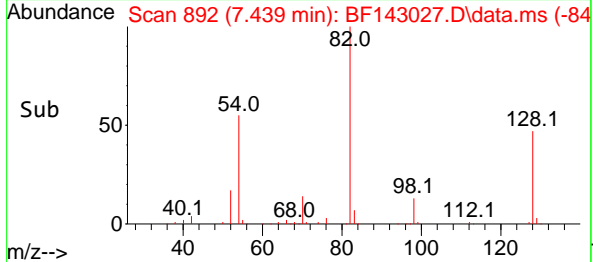
BNA_F

ClientSampleId :

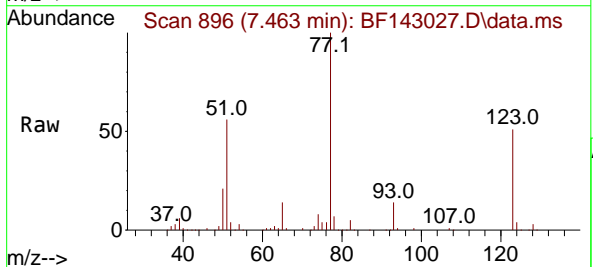
PB168716BS



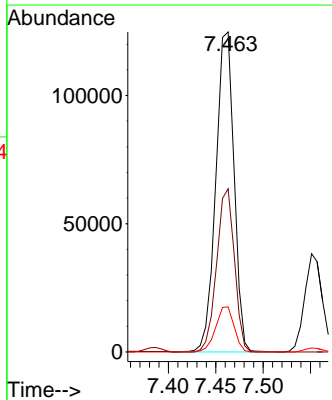
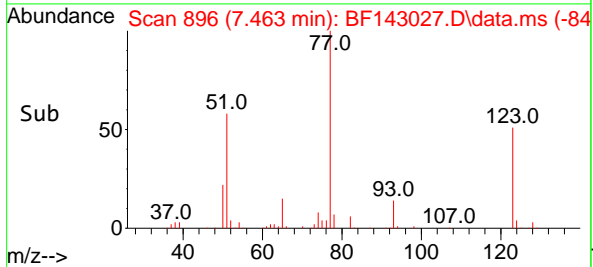
Tgt Ion: 82 Resp: 335535
 Ion Ratio Lower Upper
 82 100
 128 46.7 37.7 56.5
 54 55.7 45.7 68.5

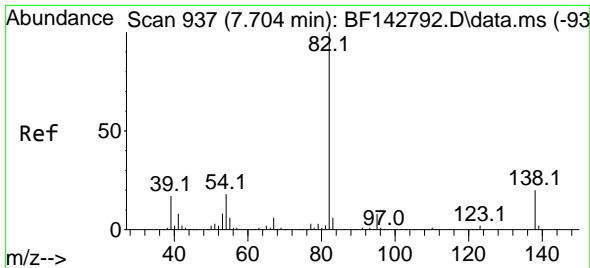


#24
 Nitrobenzene
 Concen: 45.257 ng
 RT: 7.463 min Scan# 896
 Delta R.T. 0.000 min
 Lab File: BF143027.D
 Acq: 08 Jul 2025 11:54



Tgt Ion: 77 Resp: 167633
 Ion Ratio Lower Upper
 77 100
 123 51.0 39.2 58.8
 65 14.1 11.6 17.4



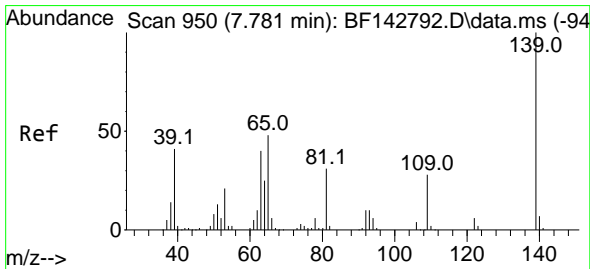
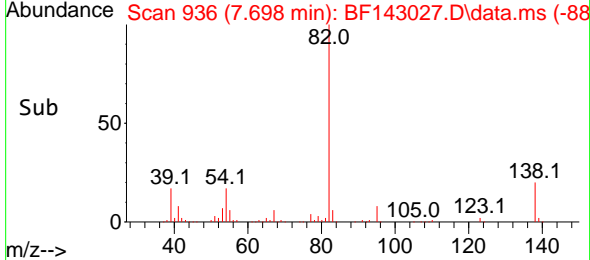
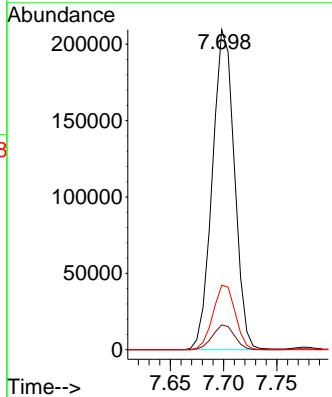
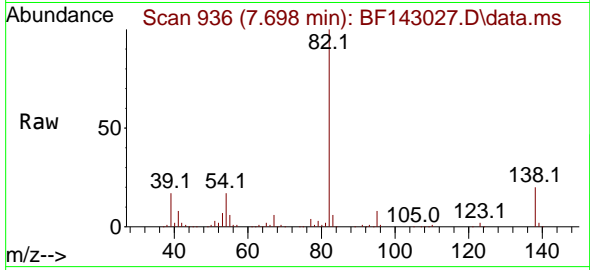


#25
 Isophorone
 Concen: 45.949 ng
 RT: 7.698 min Scan# 911
 Delta R.T. -0.006 min
 Lab File: BF143027.D
 Acq: 08 Jul 2025 11:54

Instrument : BNA_F
 ClientSampleId : PB168716BS

Tgt Ion: 82 Resp: 301651

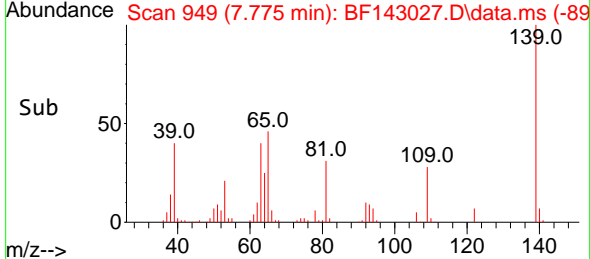
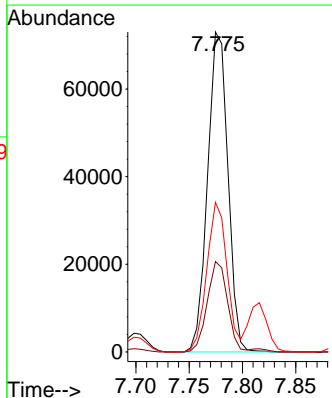
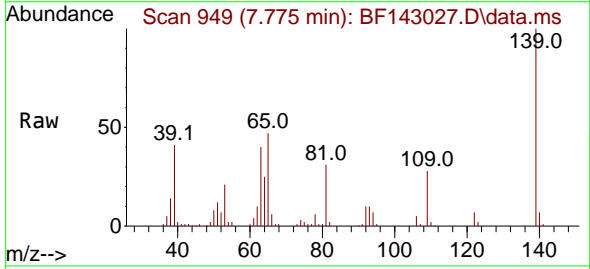
Ion	Ratio	Lower	Upper
82	100		
95	7.7	6.2	9.2
138	20.2	16.2	24.4

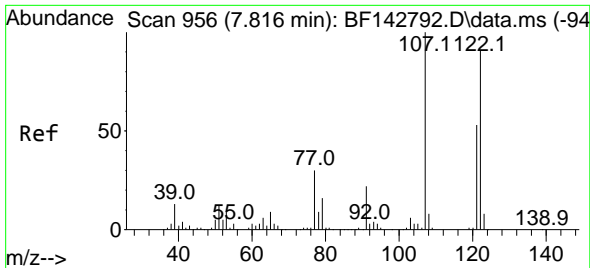


#26
 2-Nitrophenol
 Concen: 48.085 ng
 RT: 7.775 min Scan# 949
 Delta R.T. -0.006 min
 Lab File: BF143027.D
 Acq: 08 Jul 2025 11:54

Tgt Ion: 139 Resp: 97023

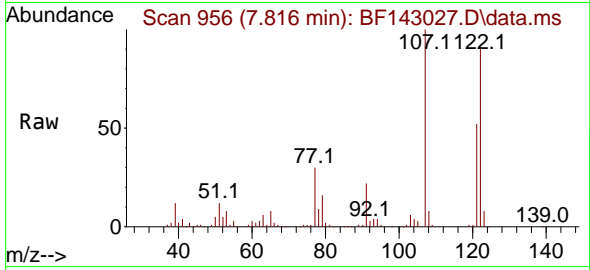
Ion	Ratio	Lower	Upper
139	100		
109	28.3	22.7	34.1
65	46.8	38.6	58.0



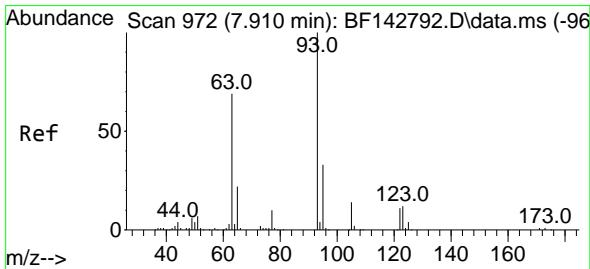
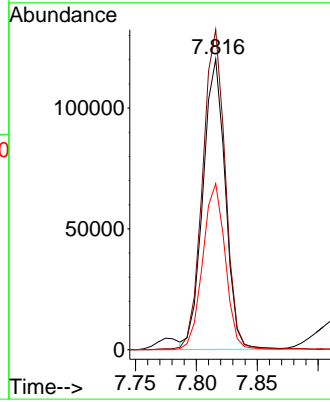
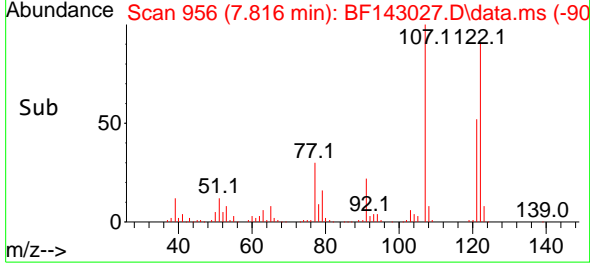


#27
 2,4-Dimethylphenol
 Concen: 43.869 ng
 RT: 7.816 min Scan# 91
 Delta R.T. 0.000 min
 Lab File: BF143027.D
 Acq: 08 Jul 2025 11:54

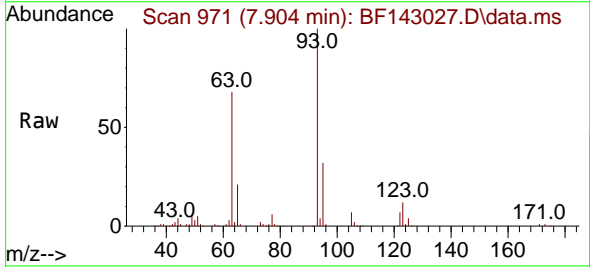
Instrument :
 BNA_F
 ClientSampleId :
 PB168716BS



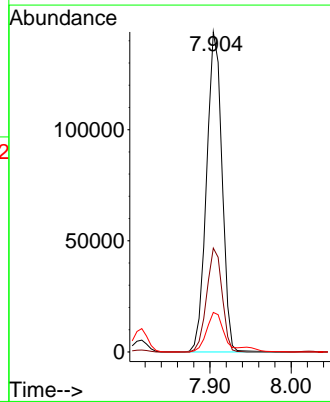
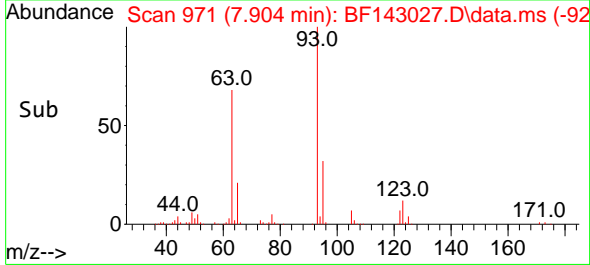
Tgt Ion:122 Resp: 153326
 Ion Ratio Lower Upper
 122 100
 107 110.1 88.0 132.0
 121 57.2 46.3 69.5

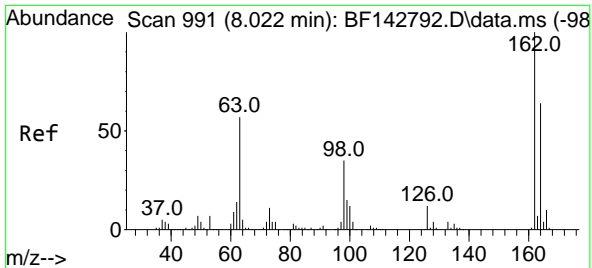


#28
 bis(2-Chloroethoxy)methane
 Concen: 45.551 ng
 RT: 7.904 min Scan# 971
 Delta R.T. -0.006 min
 Lab File: BF143027.D
 Acq: 08 Jul 2025 11:54



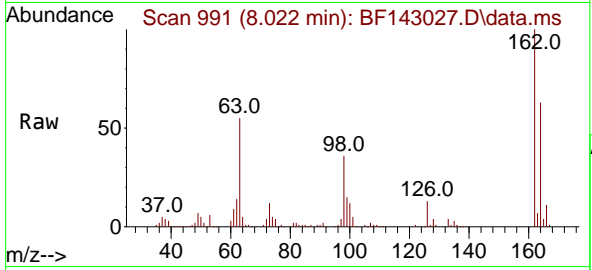
Tgt Ion: 93 Resp: 190115
 Ion Ratio Lower Upper
 93 100
 95 32.4 26.2 39.2
 123 12.4 9.9 14.9



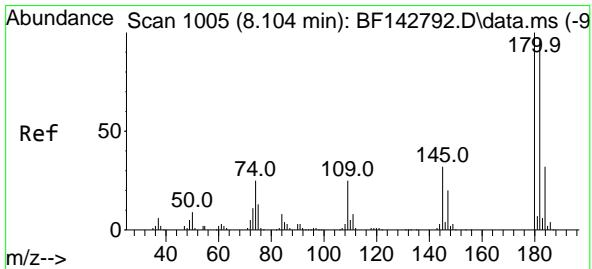
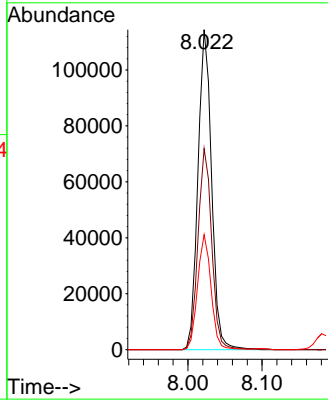
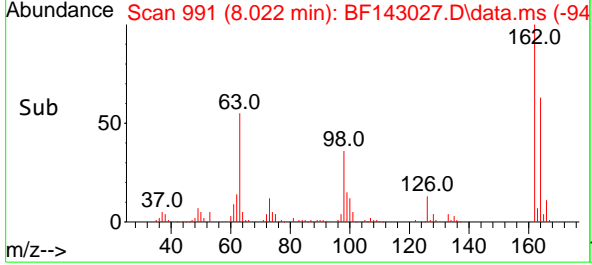


#29
 2,4-Dichlorophenol
 Concen: 46.304 ng
 RT: 8.022 min Scan# 991
 Delta R.T. 0.000 min
 Lab File: BF143027.D
 Acq: 08 Jul 2025 11:54

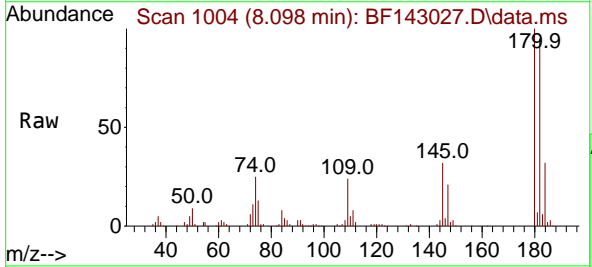
Instrument :
 BNA_F
 ClientSampleId :
 PB168716BS



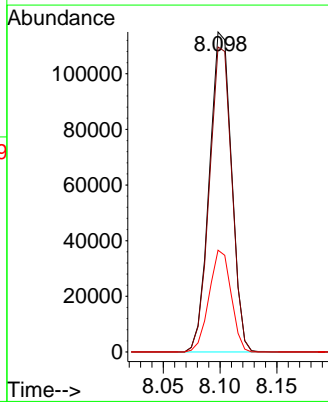
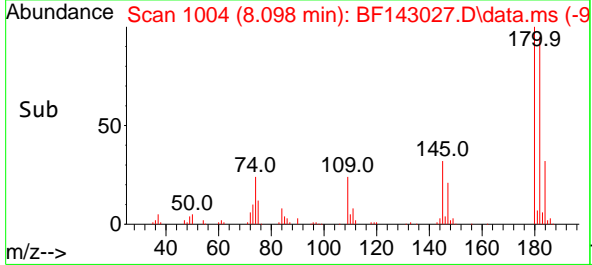
Tgt Ion:162 Resp: 146741
 Ion Ratio Lower Upper
 162 100
 164 62.8 44.0 84.0
 98 35.9 15.4 55.4

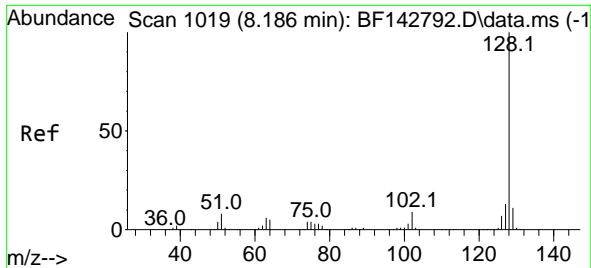


#30
 1,2,4-Trichlorobenzene
 Concen: 44.953 ng
 RT: 8.098 min Scan# 1004
 Delta R.T. -0.006 min
 Lab File: BF143027.D
 Acq: 08 Jul 2025 11:54



Tgt Ion:180 Resp: 156650
 Ion Ratio Lower Upper
 180 100
 182 95.3 76.4 114.6
 145 31.8 25.8 38.8





#31
 Naphthalene
 Concen: 45.756 ng
 RT: 8.181 min Scan# 1019
 Delta R.T. -0.006 min
 Lab File: BF143027.D
 Acq: 08 Jul 2025 11:54

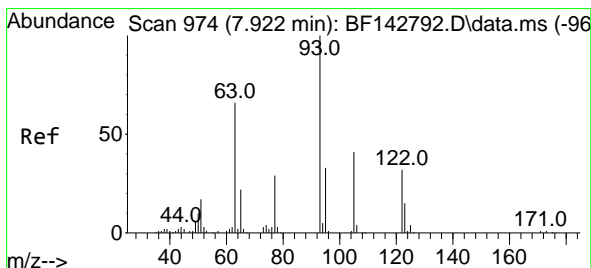
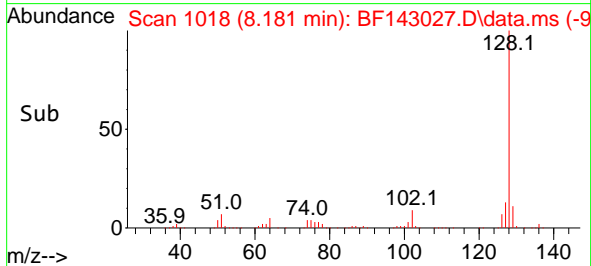
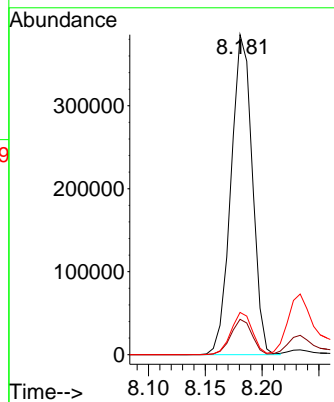
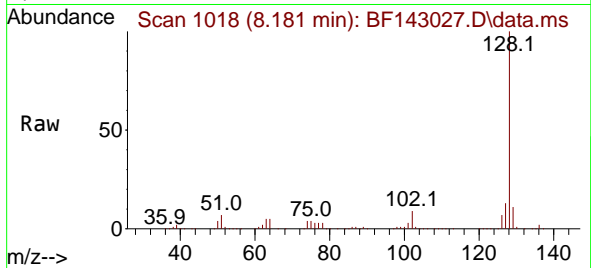
Instrument :

BNA_F

ClientSampleId :

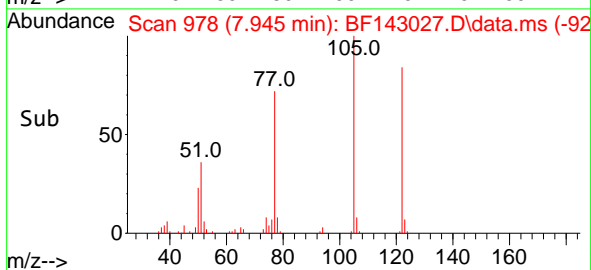
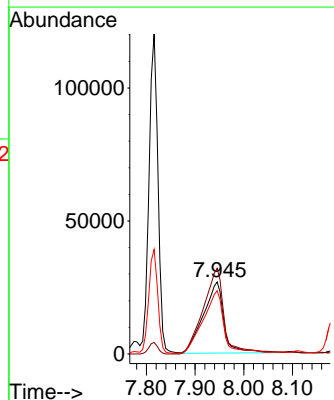
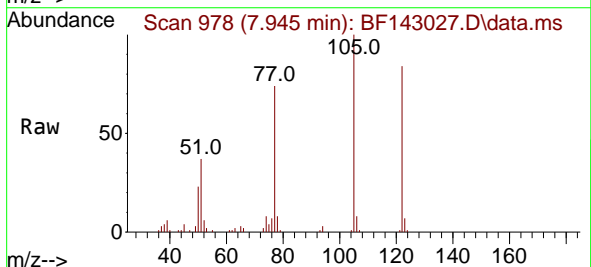
PB168716BS

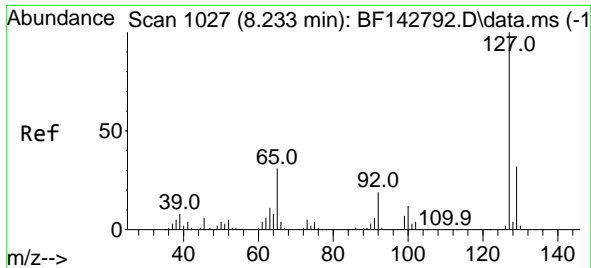
Tgt Ion:128 Resp: 502748
 Ion Ratio Lower Upper
 128 100
 129 11.1 8.9 13.3
 127 13.2 10.4 15.6



#32
 Benzoic acid
 Concen: 44.348 ng
 RT: 7.945 min Scan# 978
 Delta R.T. 0.024 min
 Lab File: BF143027.D
 Acq: 08 Jul 2025 11:54

Tgt Ion:122 Resp: 79001
 Ion Ratio Lower Upper
 122 100
 105 119.3 104.7 144.7
 77 87.8 70.2 110.2





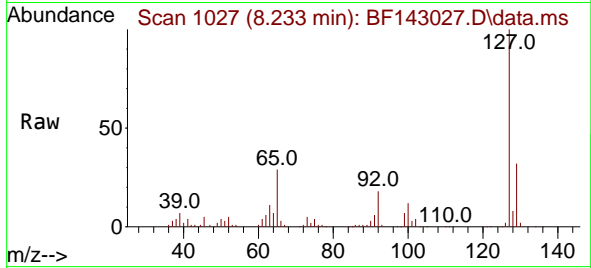
#33
 4-Chloroaniline
 Concen: 29.852 ng
 RT: 8.233 min Scan# 1037
 Delta R.T. 0.000 min
 Lab File: BF143027.D
 Acq: 08 Jul 2025 11:54

Instrument :

BNA_F

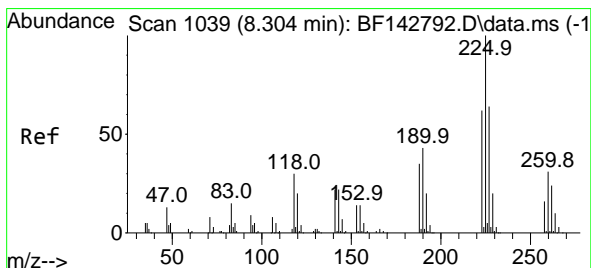
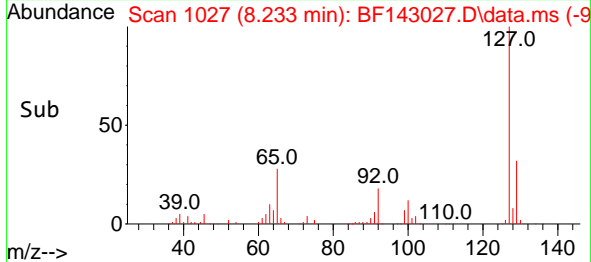
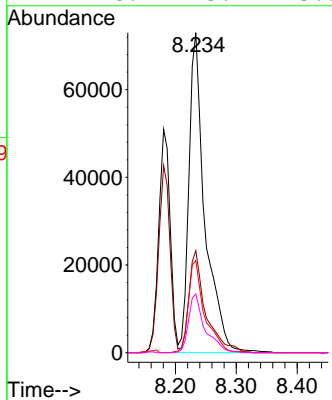
ClientSampleId :

PB168716BS



Tgt Ion:127 Resp: 133370

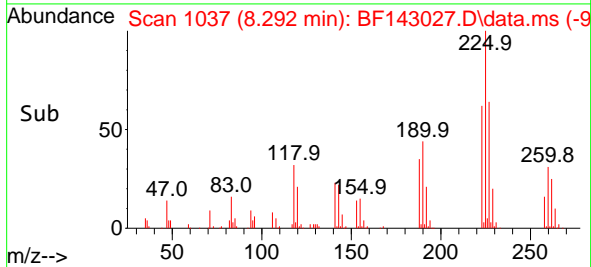
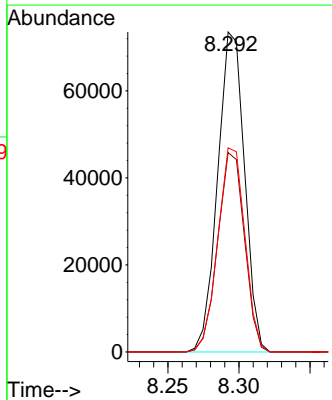
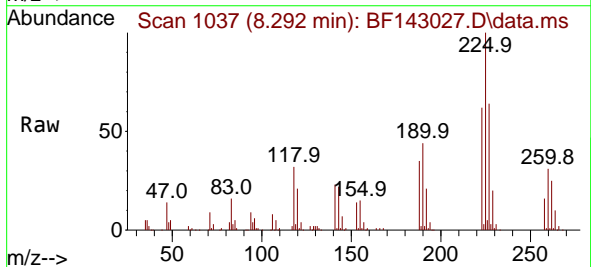
Ion	Ratio	Lower	Upper
127	100		
129	31.9	25.9	38.9
65	28.8	24.6	36.8
92	18.4	15.4	23.0

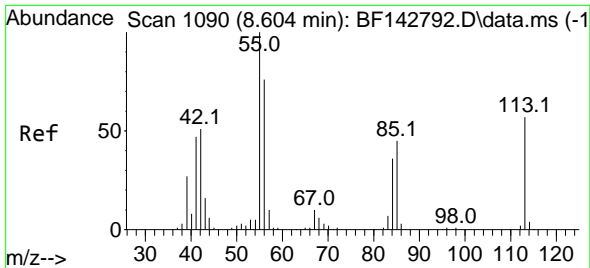


#34
 Hexachlorobutadiene
 Concen: 45.382 ng
 RT: 8.292 min Scan# 1037
 Delta R.T. -0.012 min
 Lab File: BF143027.D
 Acq: 08 Jul 2025 11:54

Tgt Ion:225 Resp: 96733

Ion	Ratio	Lower	Upper
225	100		
223	62.3	49.9	74.9
227	63.8	51.4	77.0



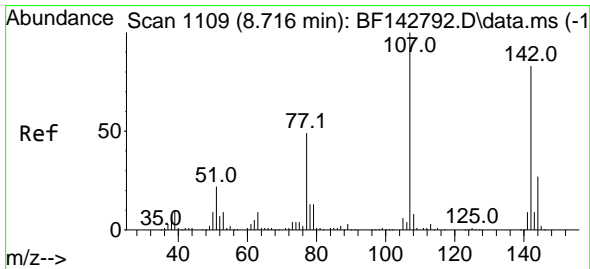
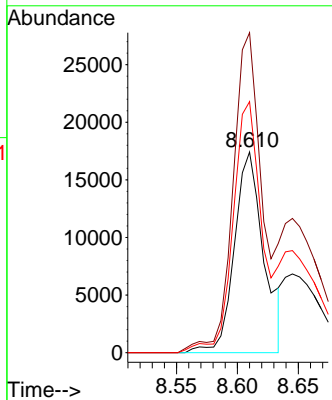
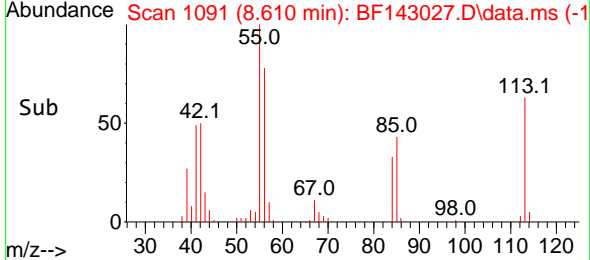
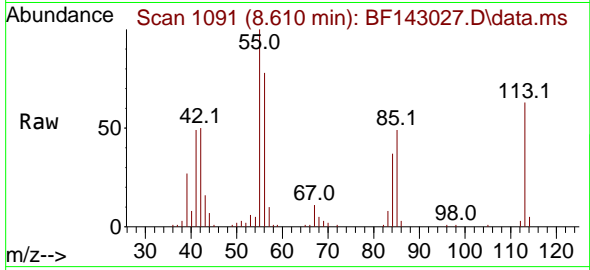


#35
 Caprolactam
 Concen: 34.942 ng
 RT: 8.610 min Scan# 1109
 Delta R.T. 0.006 min
 Lab File: BF143027.D
 Acq: 08 Jul 2025 11:54

Instrument : BNA_F
 Client Sample Id : PB168716BS

Tgt Ion: 113 Resp: 29220

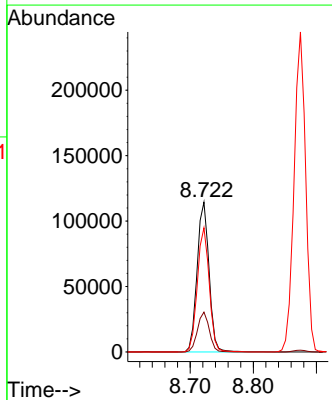
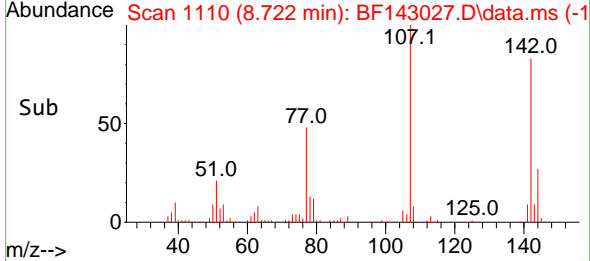
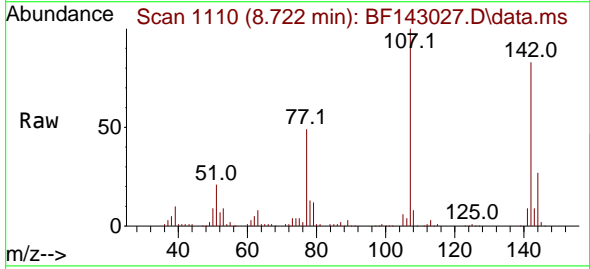
Ion	Ratio	Lower	Upper
113	100		
55	159.5	154.4	194.4
56	125.1	112.1	152.1

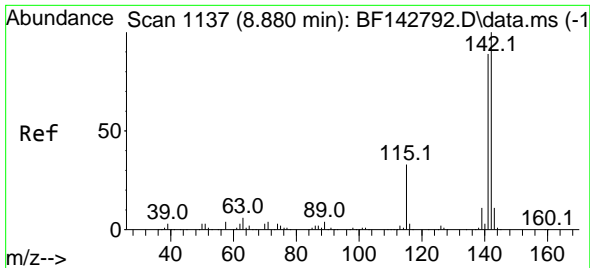


#36
 4-Chloro-3-methylphenol
 Concen: 47.763 ng
 RT: 8.722 min Scan# 1110
 Delta R.T. 0.006 min
 Lab File: BF143027.D
 Acq: 08 Jul 2025 11:54

Tgt Ion: 107 Resp: 150432

Ion	Ratio	Lower	Upper
107	100		
144	26.6	21.3	31.9
142	82.9	66.6	100.0

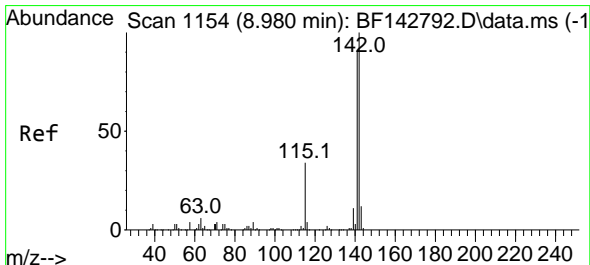
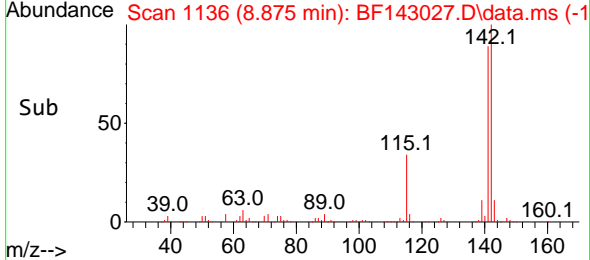
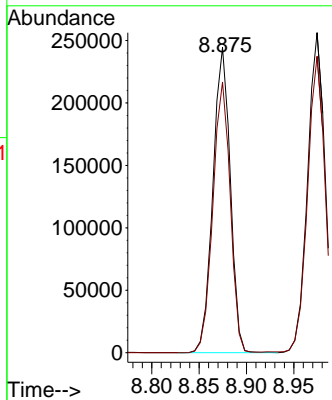
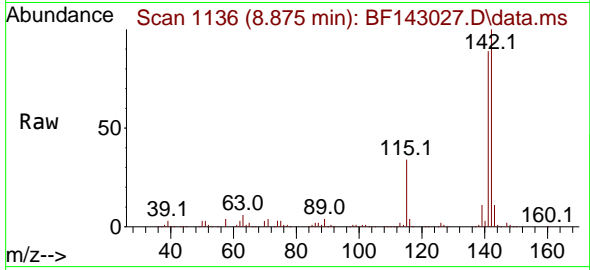




#37
 2-Methylnaphthalene
 Concen: 45.697 ng
 RT: 8.875 min Scan# 1113
 Delta R.T. -0.006 min
 Lab File: BF143027.D
 Acq: 08 Jul 2025 11:54

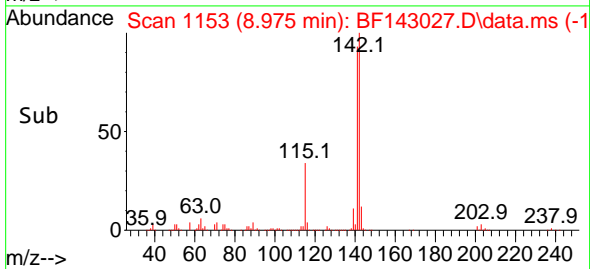
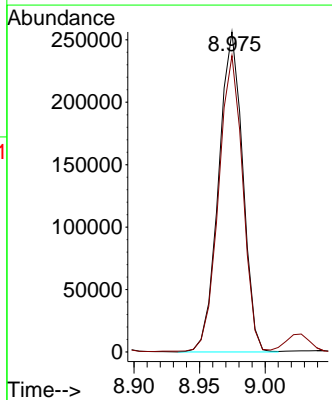
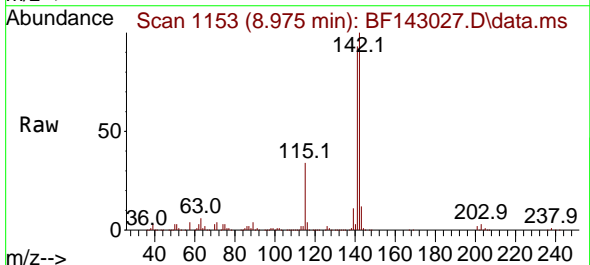
Instrument : BNA_F
 ClientSampleId : PB168716BS

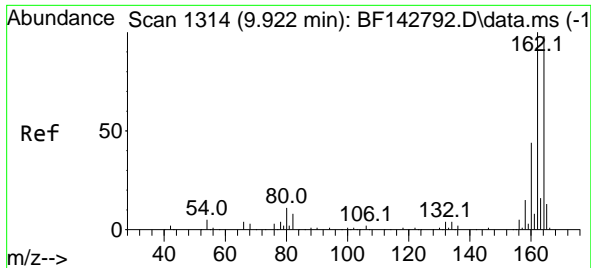
Tgt Ion:142 Resp: 311283
 Ion Ratio Lower Upper
 142 100
 141 88.7 70.9 106.3



#38
 1-Methylnaphthalene
 Concen: 46.432 ng
 RT: 8.975 min Scan# 1153
 Delta R.T. -0.006 min
 Lab File: BF143027.D
 Acq: 08 Jul 2025 11:54

Tgt Ion:142 Resp: 327419
 Ion Ratio Lower Upper
 142 100
 141 92.6 73.0 109.4



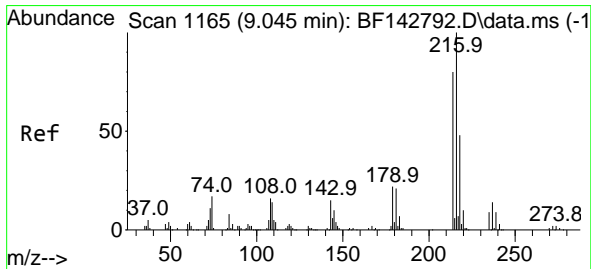
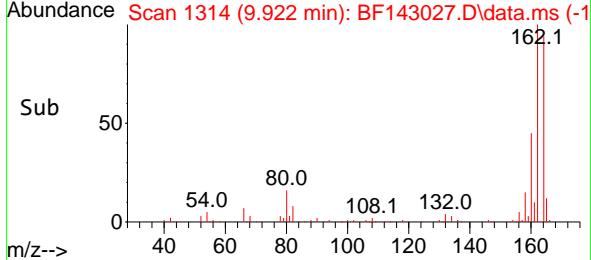
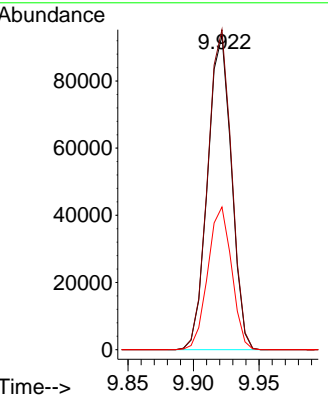
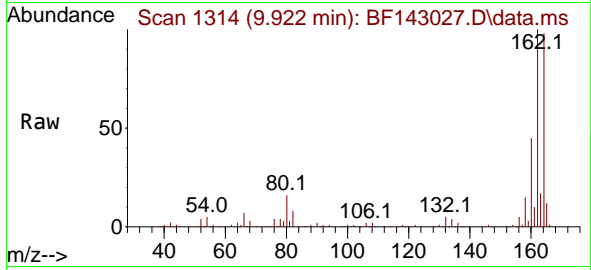


#39
 Acenaphthene-d10
 Concen: 20.000 ng
 RT: 9.922 min Scan# 111
 Delta R.T. 0.000 min
 Lab File: BF143027.D
 Acq: 08 Jul 2025 11:54

Instrument : BNA_F
 Client Sample Id : PB168716BS

Tgt Ion:164 Resp: 117882

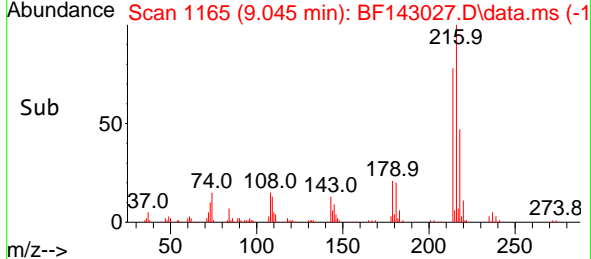
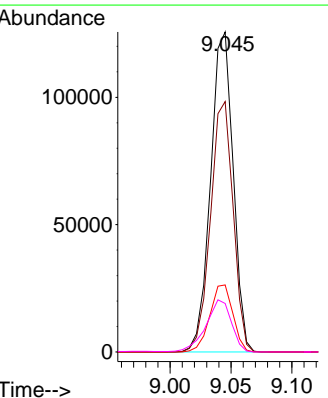
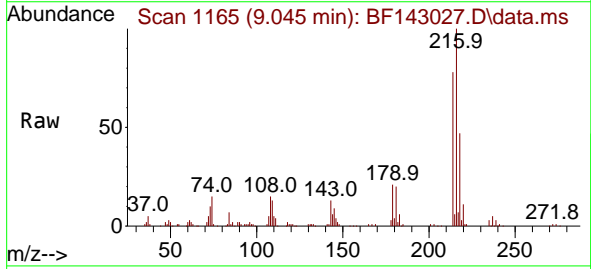
Ion	Ratio	Lower	Upper
164	100		
162	101.9	81.8	122.8
160	45.5	36.0	54.0

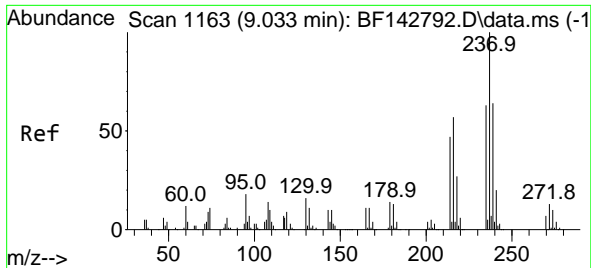


#40
 1,2,4,5-Tetrachlorobenzene
 Concen: 46.563 ng
 RT: 9.045 min Scan# 1165
 Delta R.T. 0.000 min
 Lab File: BF143027.D
 Acq: 08 Jul 2025 11:54

Tgt Ion:216 Resp: 161961

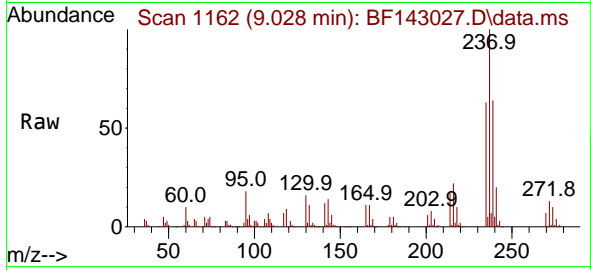
Ion	Ratio	Lower	Upper
216	100		
214	78.5	63.7	95.5
179	21.4	17.6	26.4
108	18.5	14.3	21.5



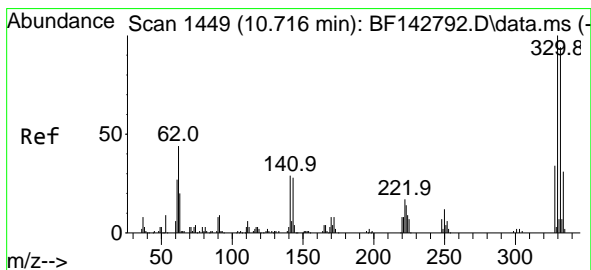
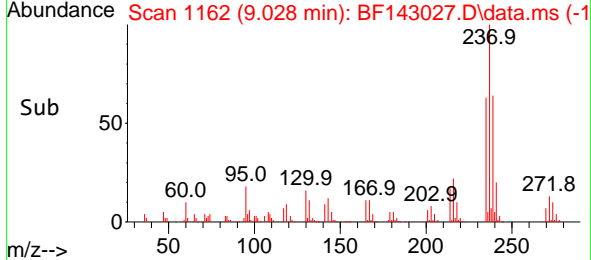
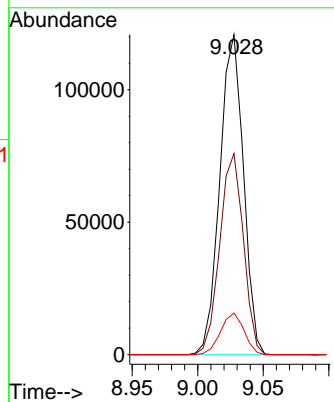


#41
 Hexachlorocyclopentadiene
 Concen: 76.605 ng
 RT: 9.028 min Scan# 1162
 Delta R.T. -0.006 min
 Lab File: BF143027.D
 Acq: 08 Jul 2025 11:54

Instrument :
 BNA_F
 ClientSampleId :
 PB168716BS

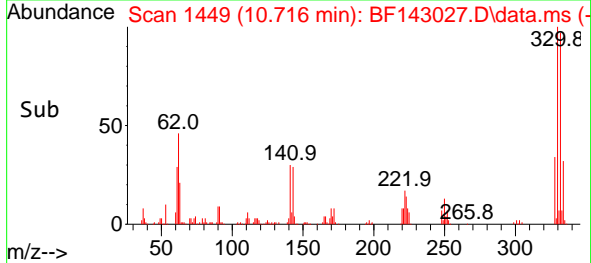
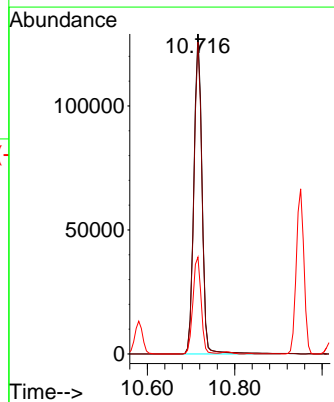
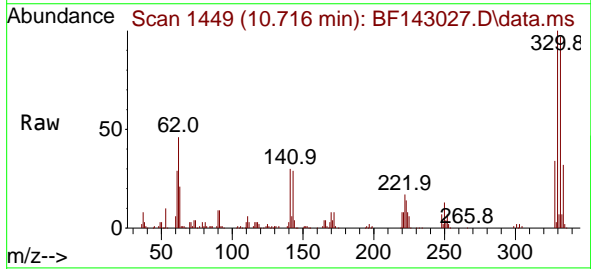


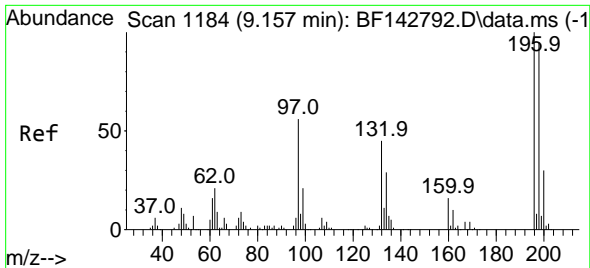
Tgt Ion:237 Resp: 151208
 Ion Ratio Lower Upper
 237 100
 235 62.9 43.4 83.4
 272 13.0 0.0 32.7



#42
 2,4,6-Tribromophenol
 Concen: 137.870 ng
 RT: 10.716 min Scan# 1449
 Delta R.T. -0.000 min
 Lab File: BF143027.D
 Acq: 08 Jul 2025 11:54

Tgt Ion:330 Resp: 167248
 Ion Ratio Lower Upper
 330 100
 332 96.9 75.0 112.6
 141 30.5 25.3 37.9

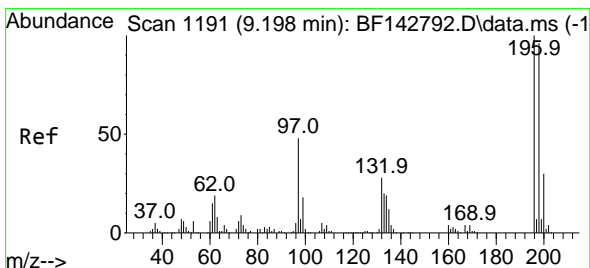
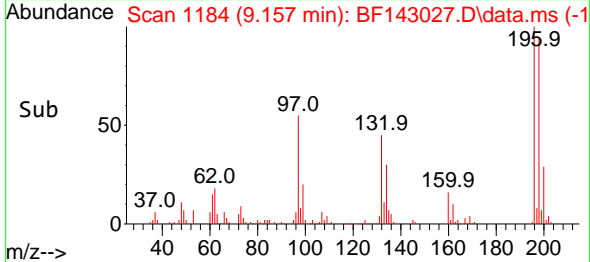
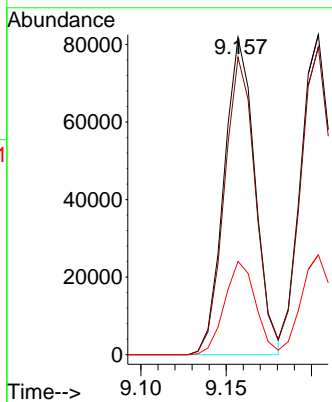
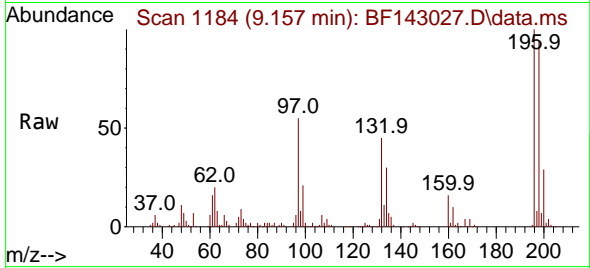




#43
 2,4,6-Trichlorophenol
 Concen: 45.665 ng
 RT: 9.157 min Scan# 1184
 Delta R.T. 0.000 min
 Lab File: BF143027.D
 Acq: 08 Jul 2025 11:54

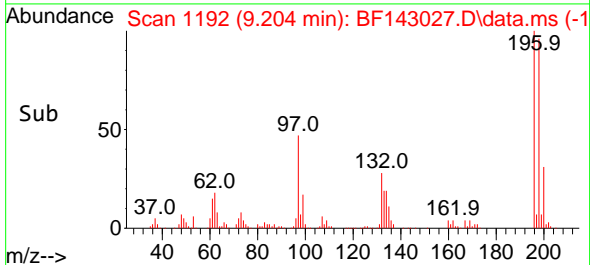
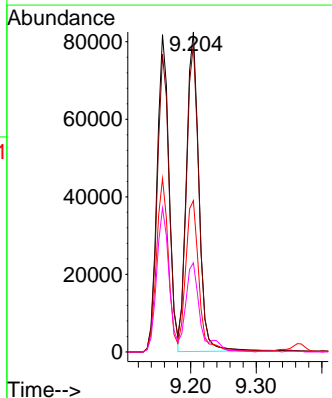
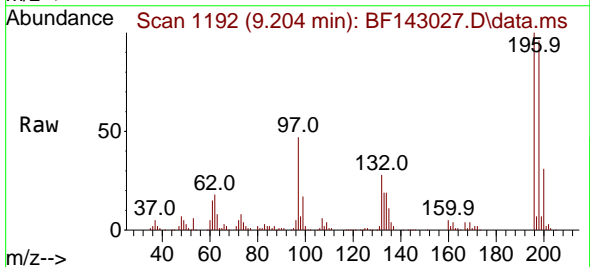
Instrument :
 BNA_F
 ClientSampleId :
 PB168716BS

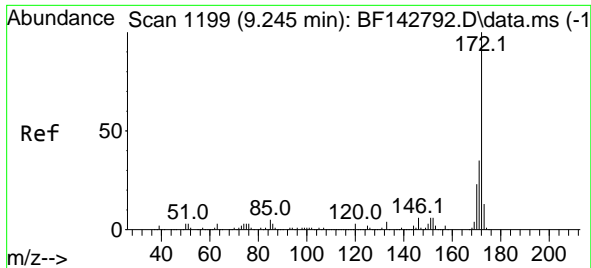
Tgt Ion:196 Resp: 103502
 Ion Ratio Lower Upper
 196 100
 198 93.7 76.2 114.2
 200 29.4 24.1 36.1



#44
 2,4,5-Trichlorophenol
 Concen: 45.529 ng
 RT: 9.204 min Scan# 1192
 Delta R.T. 0.006 min
 Lab File: BF143027.D
 Acq: 08 Jul 2025 11:54

Tgt Ion:196 Resp: 108629
 Ion Ratio Lower Upper
 196 100
 198 96.2 76.6 115.0
 97 47.3 38.2 57.2
 132 27.9 23.4 35.0



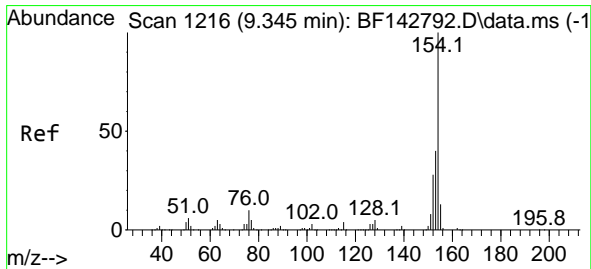
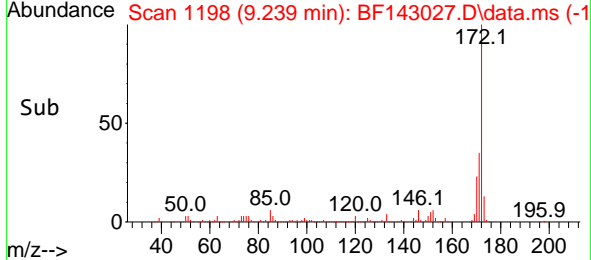
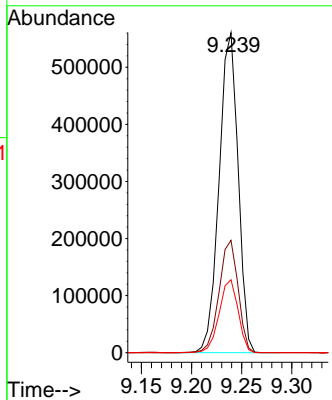
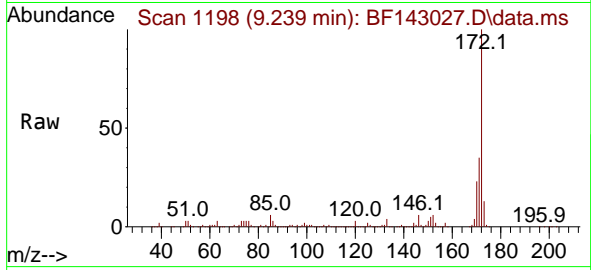


#45
 2-Fluorobiphenyl
 Concen: 82.244 ng
 RT: 9.239 min Scan# 1198
 Delta R.T. -0.006 min
 Lab File: BF143027.D
 Acq: 08 Jul 2025 11:54

Instrument : BNA_F
 Client Sample Id : PB168716BS

Tgt Ion:172 Resp: 738017

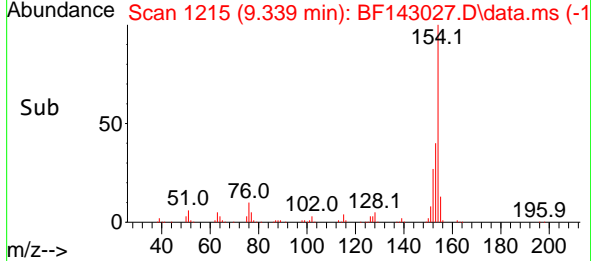
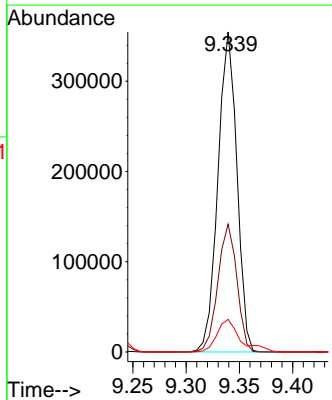
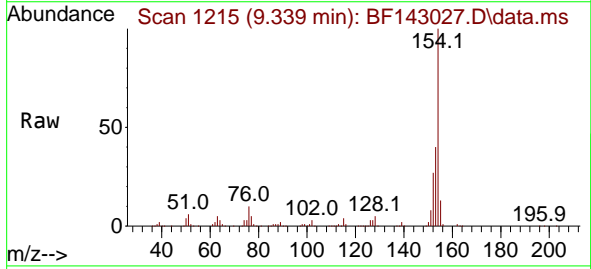
Ion	Ratio	Lower	Upper
172	100		
171	35.1	28.2	42.4
170	22.8	18.5	27.7

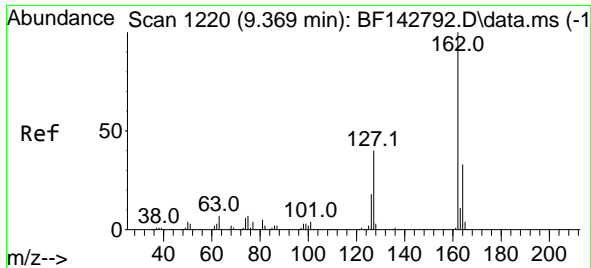


#46
 1,1'-Biphenyl
 Concen: 47.009 ng
 RT: 9.339 min Scan# 1215
 Delta R.T. -0.006 min
 Lab File: BF143027.D
 Acq: 08 Jul 2025 11:54

Tgt Ion:154 Resp: 437747

Ion	Ratio	Lower	Upper
154	100		
153	39.9	20.3	60.3
76	10.2	0.0	30.3



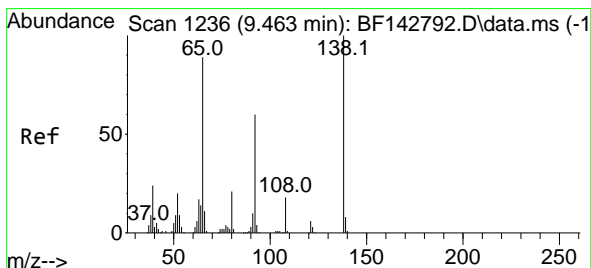
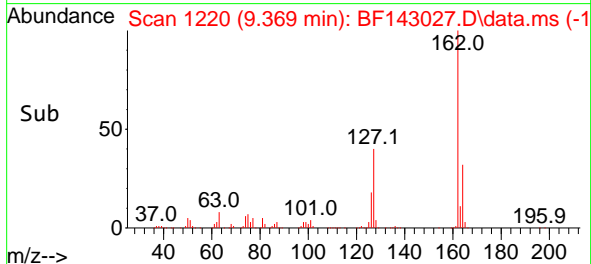
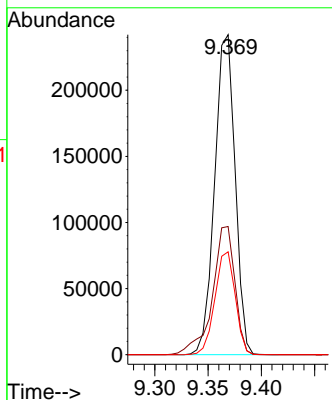
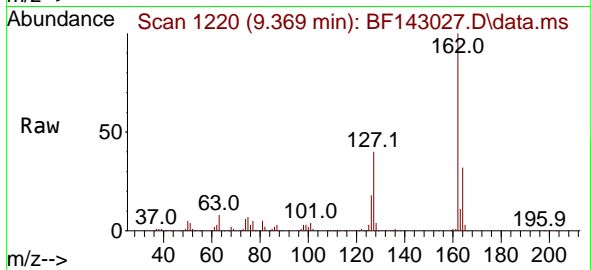


#47
 2-Chloronaphthalene
 Concen: 46.088 ng
 RT: 9.369 min Scan# 11
 Delta R.T. 0.000 min
 Lab File: BF143027.D
 Acq: 08 Jul 2025 11:54

Instrument :
 BNA_F
 ClientSampleId :
 PB168716BS

Tgt Ion:162 Resp: 322065

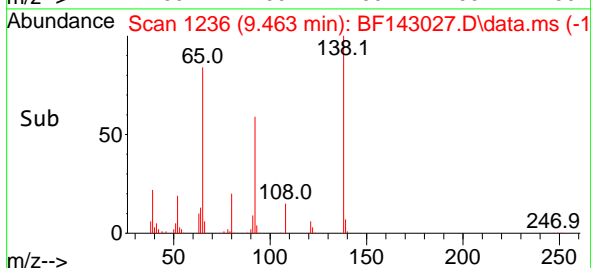
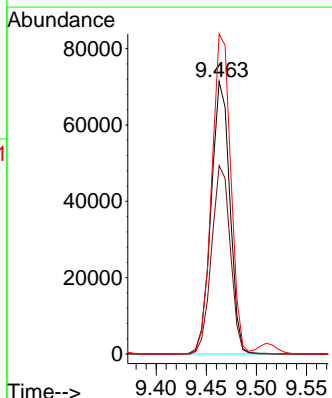
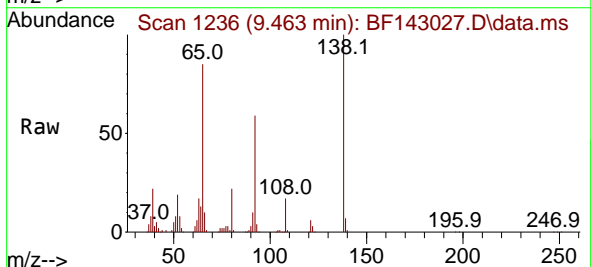
Ion	Ratio	Lower	Upper
162	100		
127	40.1	32.2	48.2
164	32.1	26.1	39.1

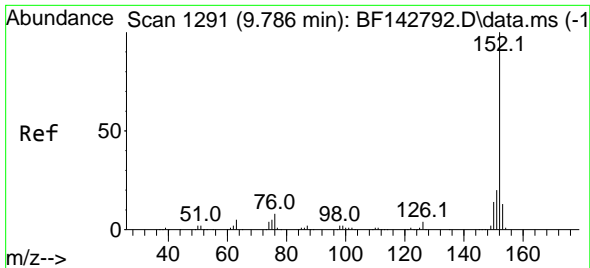


#48
 2-Nitroaniline
 Concen: 47.342 ng
 RT: 9.463 min Scan# 1236
 Delta R.T. 0.000 min
 Lab File: BF143027.D
 Acq: 08 Jul 2025 11:54

Tgt Ion: 65 Resp: 92748

Ion	Ratio	Lower	Upper
65	100		
92	69.1	53.8	80.6
138	117.4	89.6	134.4





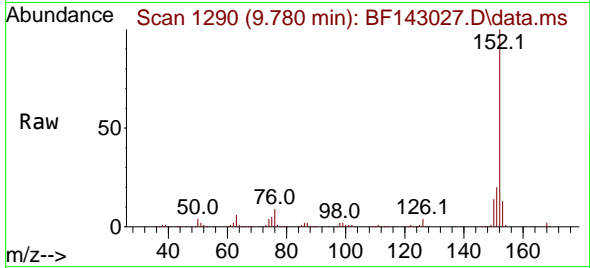
#49
 Acenaphthylene
 Concen: 46.539 ng
 RT: 9.780 min Scan# 11
 Delta R.T. -0.006 min
 Lab File: BF143027.D
 Acq: 08 Jul 2025 11:54

Instrument :

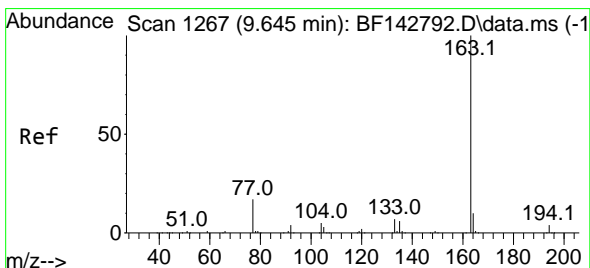
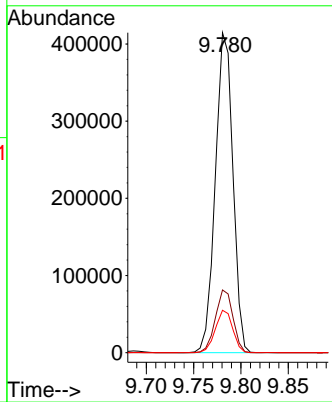
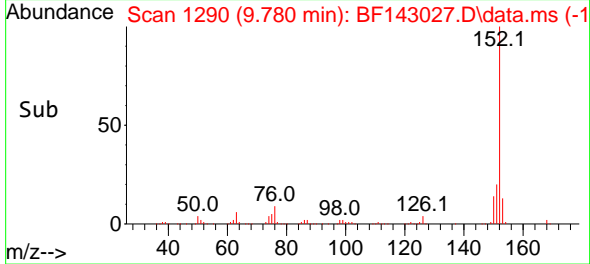
BNA_F

Client Sample Id :

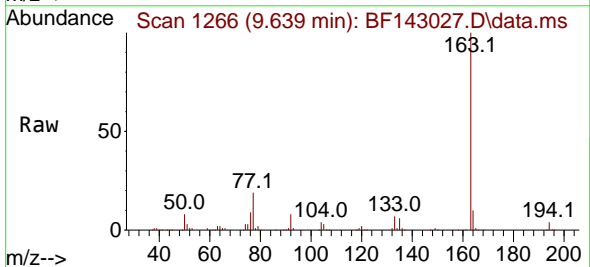
PB168716BS



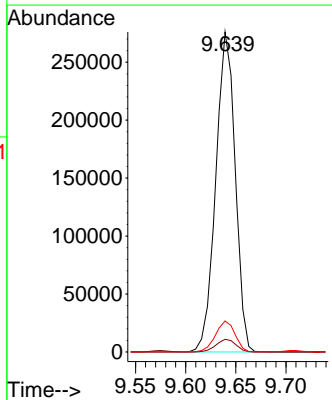
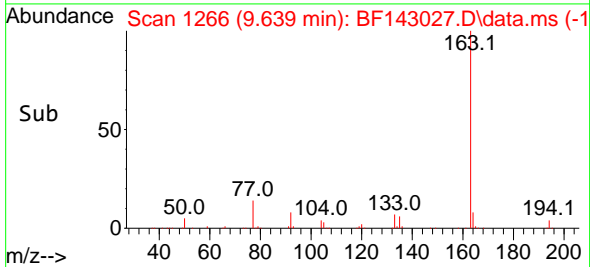
Tgt Ion:152 Resp: 535374
 Ion Ratio Lower Upper
 152 100
 151 19.6 16.1 24.1
 153 13.2 10.4 15.6

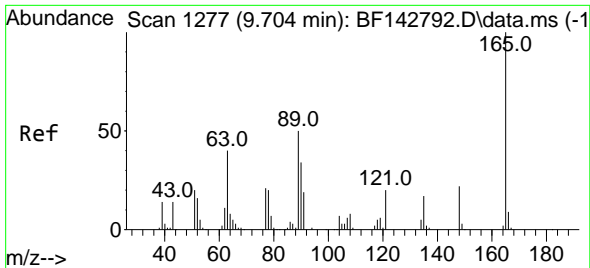


#50
 Dimethylphthalate
 Concen: 48.678 ng
 RT: 9.639 min Scan# 1266
 Delta R.T. -0.006 min
 Lab File: BF143027.D
 Acq: 08 Jul 2025 11:54



Tgt Ion:163 Resp: 371441
 Ion Ratio Lower Upper
 163 100
 194 4.0 3.3 4.9
 164 9.7 8.0 12.0

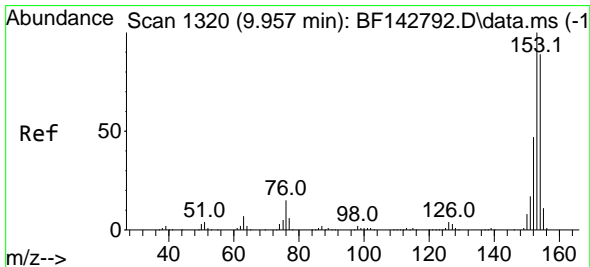
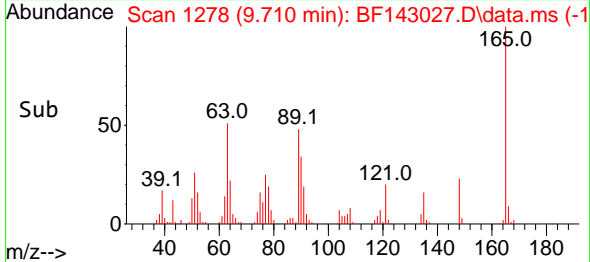
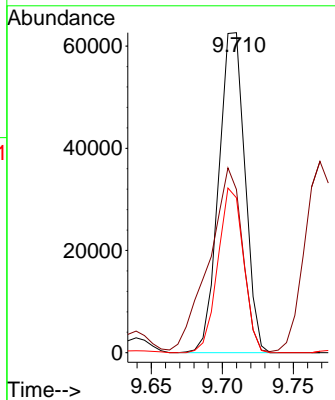
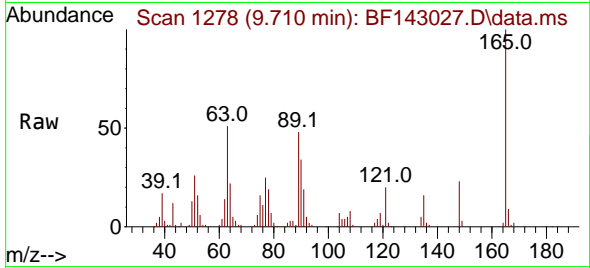




#51
 2,6-Dinitrotoluene
 Concen: 48.007 ng
 RT: 9.710 min Scan# 11
 Delta R.T. 0.006 min
 Lab File: BF143027.D
 Acq: 08 Jul 2025 11:54

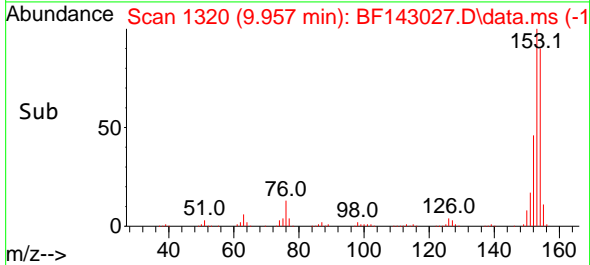
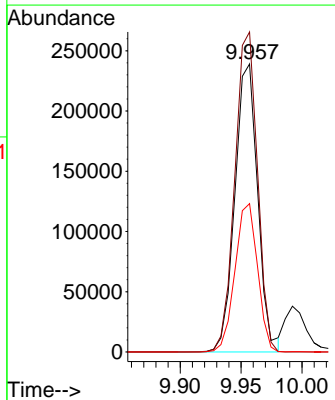
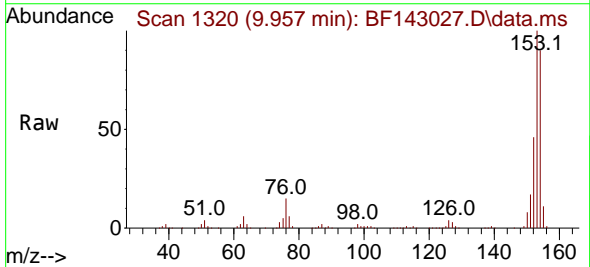
Instrument :
 BNA_F
 ClientSampleId :
 PB168716BS

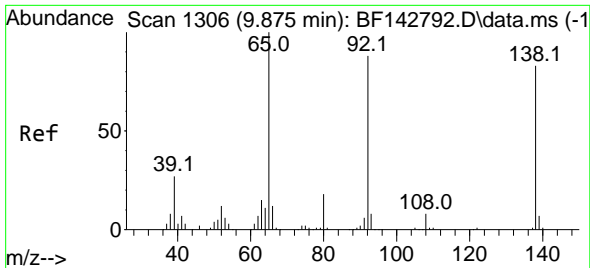
Tgt Ion:165 Resp: 80447
 Ion Ratio Lower Upper
 165 100
 63 51.0 44.2 66.4
 89 48.4 39.8 59.8



#52
 Acenaphthene
 Concen: 44.553 ng
 RT: 9.957 min Scan# 1320
 Delta R.T. 0.000 min
 Lab File: BF143027.D
 Acq: 08 Jul 2025 11:54

Tgt Ion:154 Resp: 312708
 Ion Ratio Lower Upper
 154 100
 153 111.1 90.0 135.0
 152 51.5 41.9 62.9



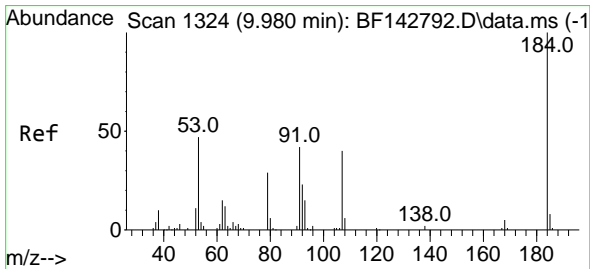
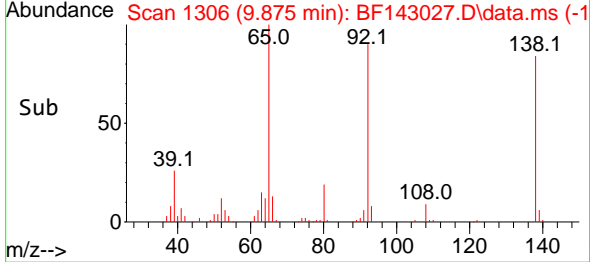
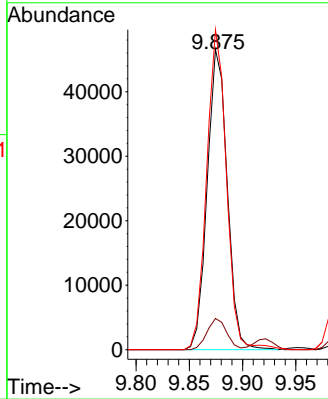
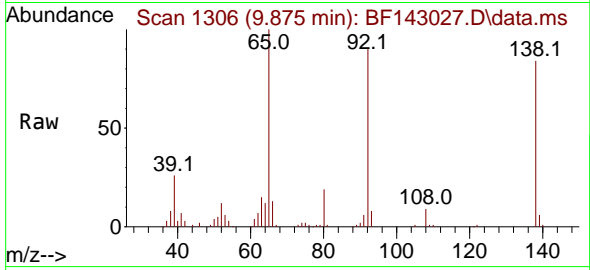


#53
 3-Nitroaniline
 Concen: 32.959 ng
 RT: 9.875 min Scan# 11
 Delta R.T. 0.000 min
 Lab File: BF143027.D
 Acq: 08 Jul 2025 11:54

Instrument : BNA_F
 ClientSampleId : PB168716BS

Tgt Ion:138 Resp: 60810

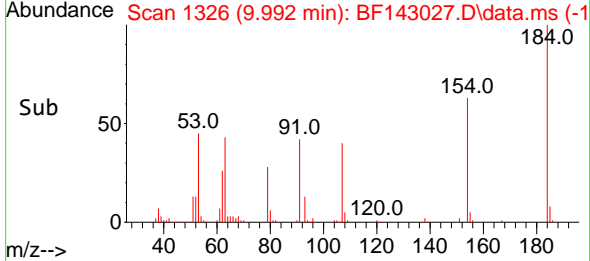
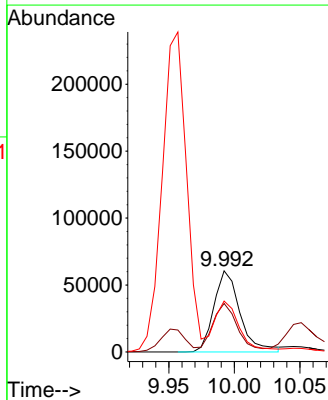
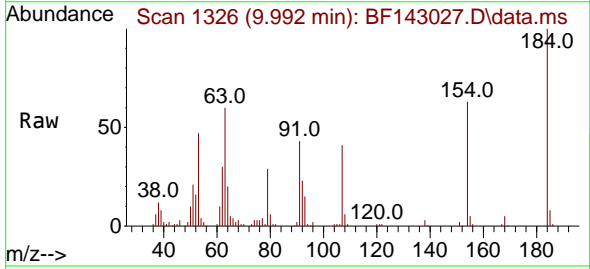
Ion	Ratio	Lower	Upper
138	100		
108	10.4	8.1	12.1
92	106.6	85.1	127.7

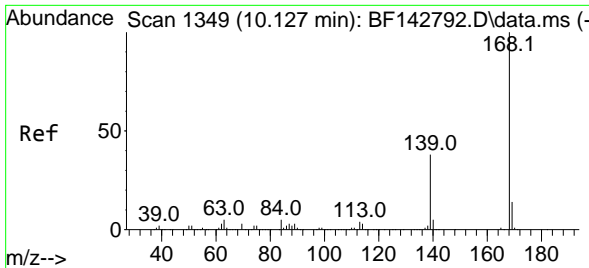


#54
 2,4-Dinitrophenol
 Concen: 100.016 ng
 RT: 9.992 min Scan# 1326
 Delta R.T. 0.012 min
 Lab File: BF143027.D
 Acq: 08 Jul 2025 11:54

Tgt Ion:184 Resp: 83921

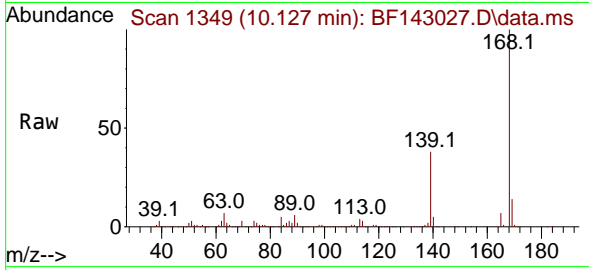
Ion	Ratio	Lower	Upper
184	100		
63	59.8	50.6	75.8
154	62.8	51.8	77.8



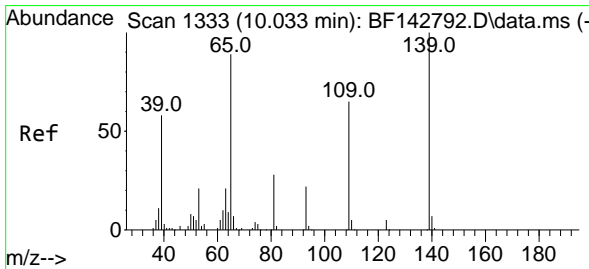
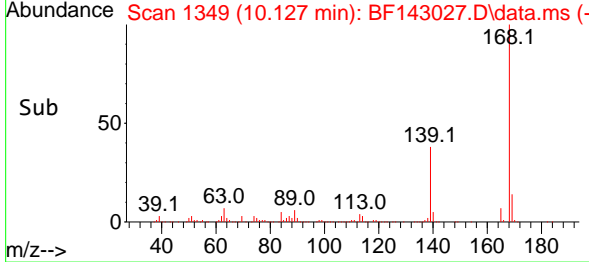
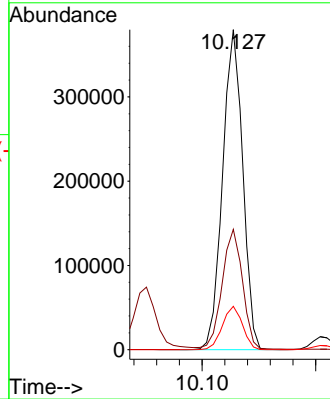


#55
 Dibenzofuran
 Concen: 46.490 ng
 RT: 10.127 min Scan# 11
 Delta R.T. 0.000 min
 Lab File: BF143027.D
 Acq: 08 Jul 2025 11:54

Instrument :
 BNA_F
 ClientSampleId :
 PB168716BS

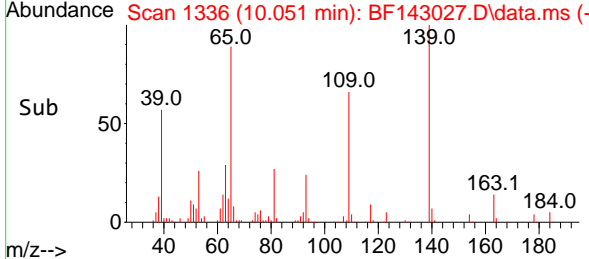
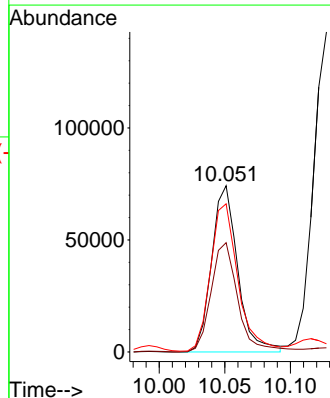
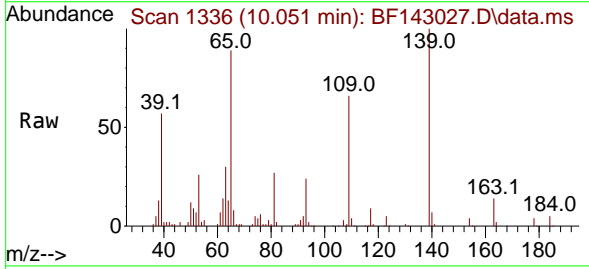


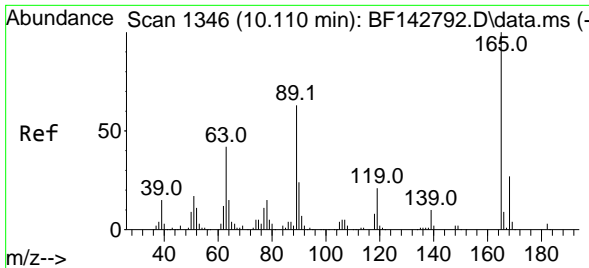
Tgt Ion:168 Resp: 467906
 Ion Ratio Lower Upper
 168 100
 139 37.6 30.2 45.4
 169 13.5 10.8 16.2



#56
 4-Nitrophenol
 Concen: 81.491 ng
 RT: 10.051 min Scan# 1336
 Delta R.T. 0.018 min
 Lab File: BF143027.D
 Acq: 08 Jul 2025 11:54

Tgt Ion:139 Resp: 102931
 Ion Ratio Lower Upper
 139 100
 109 65.8 44.7 84.7
 65 89.1 69.8 109.8

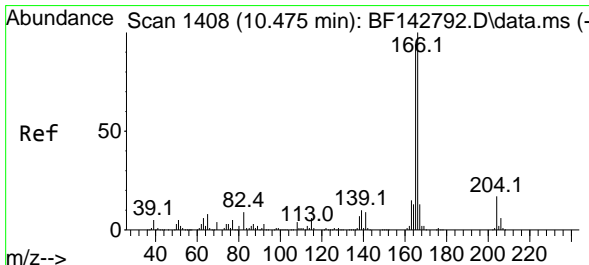
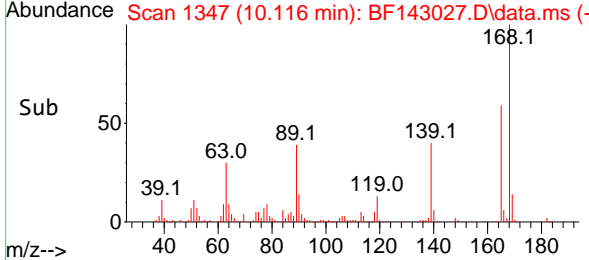
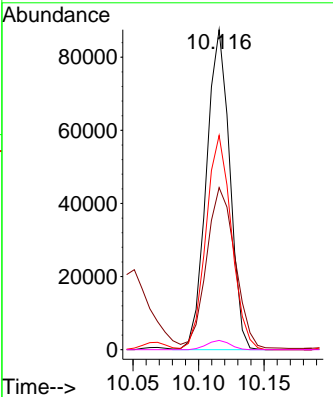
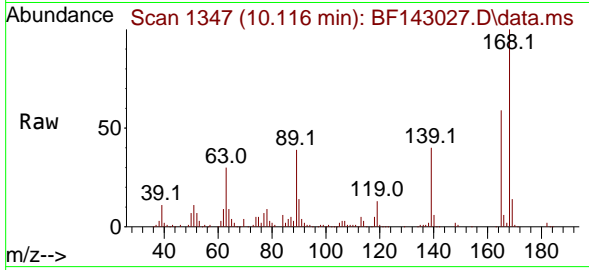




#57
 2,4-Dinitrotoluene
 Concen: 48.537 ng
 RT: 10.116 min Scan# 11
 Delta R.T. 0.006 min
 Lab File: BF143027.D
 Acq: 08 Jul 2025 11:54

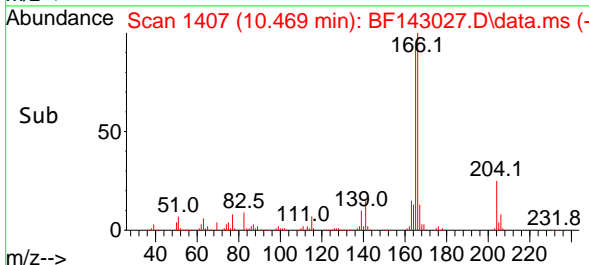
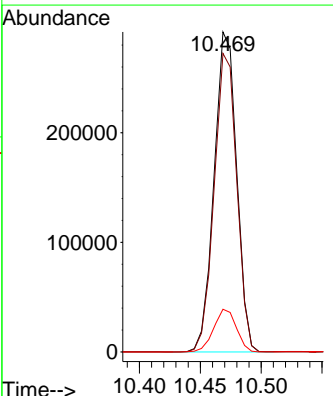
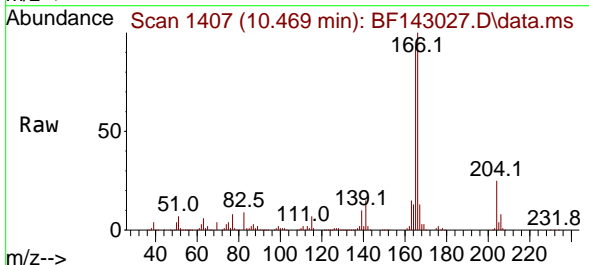
Instrument : BNA_F
 ClientSampleId : PB168716BS

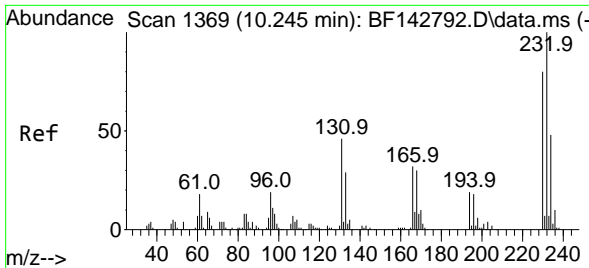
Tgt Ion	Resp	Lower	Upper
165	108038		
63	50.6	33.9	50.9
89	67.0	50.6	75.8
182	2.9	2.3	3.5



#58
 Fluorene
 Concen: 47.875 ng
 RT: 10.469 min Scan# 1407
 Delta R.T. -0.006 min
 Lab File: BF143027.D
 Acq: 08 Jul 2025 11:54

Tgt Ion	Resp	Lower	Upper
166	376316		
165	93.3	75.2	112.8
167	13.3	10.6	15.8

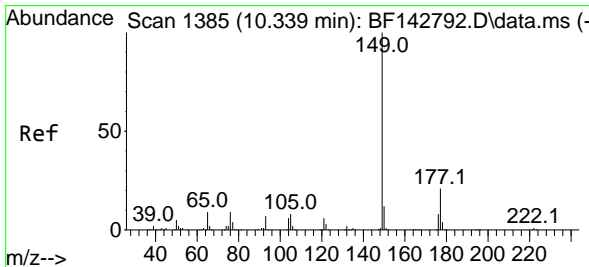
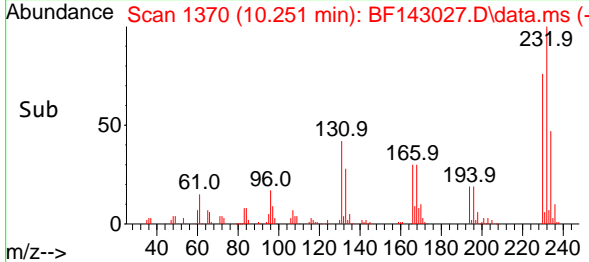
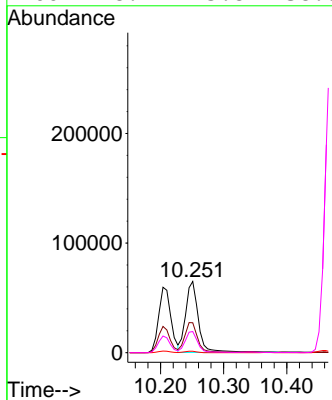
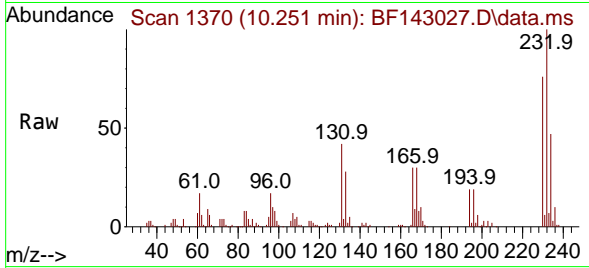




#59
 2,3,4,6-Tetrachlorophenol
 Concen: 47.081 ng
 RT: 10.251 min Scan# 1370
 Delta R.T. 0.006 min
 Lab File: BF143027.D
 Acq: 08 Jul 2025 11:54

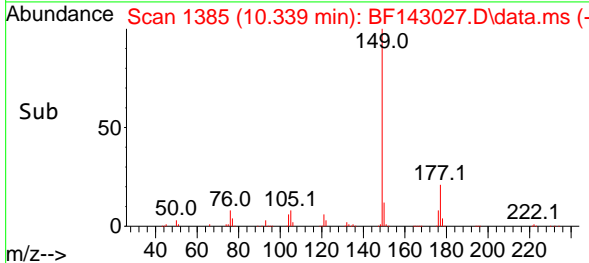
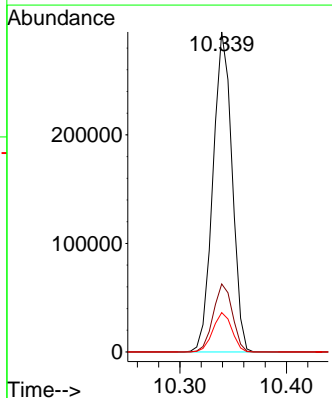
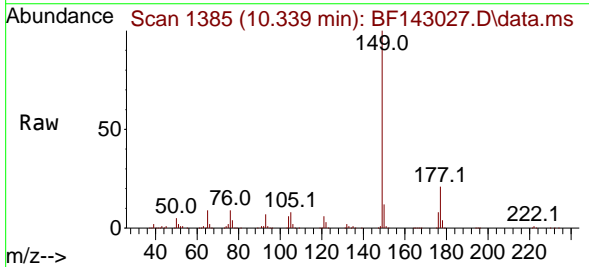
Instrument :
 BNA_F
 ClientSampleId :
 PB168716BS

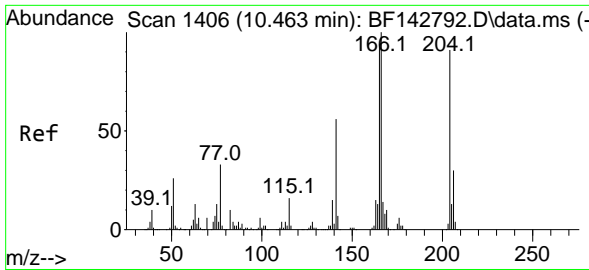
Tgt Ion:232 Resp: 90547
 Ion Ratio Lower Upper
 232 100
 131 43.1 37.6 56.4
 130 2.0 1.7 2.5
 166 28.4 25.8 38.6



#60
 Diethylphthalate
 Concen: 49.066 ng
 RT: 10.339 min Scan# 1385
 Delta R.T. 0.000 min
 Lab File: BF143027.D
 Acq: 08 Jul 2025 11:54

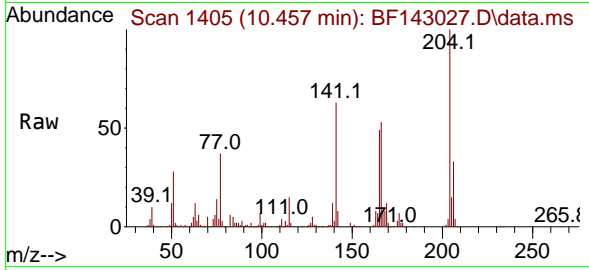
Tgt Ion:149 Resp: 367095
 Ion Ratio Lower Upper
 149 100
 177 21.3 17.0 25.6
 150 12.3 9.8 14.6



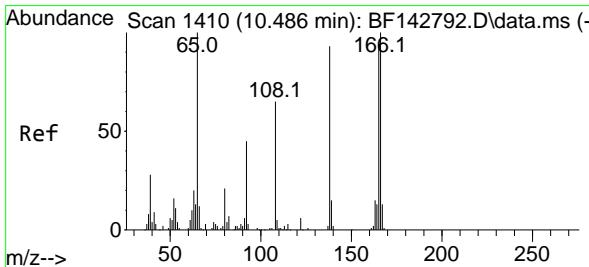
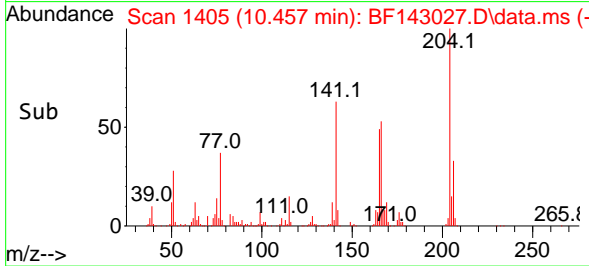
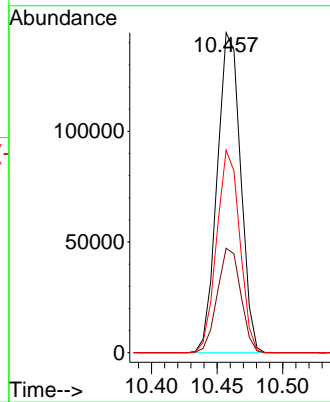


#61
 4-Chlorophenyl-phenylether
 Concen: 47.852 ng
 RT: 10.457 min Scan# 1405
 Delta R.T. -0.006 min
 Lab File: BF143027.D
 Acq: 08 Jul 2025 11:54

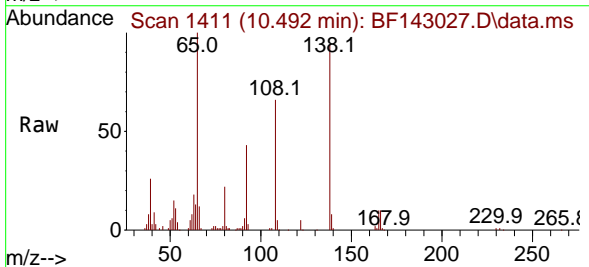
Instrument :
 BNA_F
 ClientSampleId :
 PB168716BS



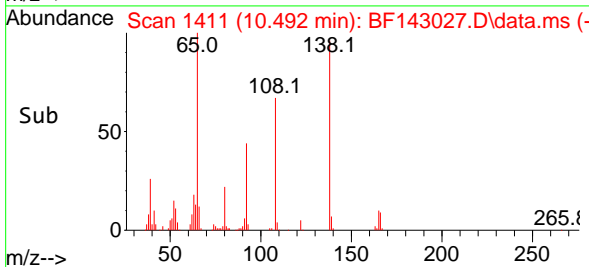
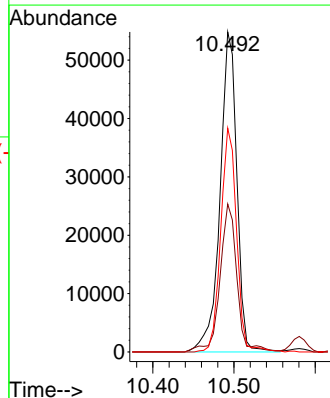
Tgt Ion:204 Resp: 179485
 Ion Ratio Lower Upper
 204 100
 206 32.6 26.3 39.5
 141 63.3 49.1 73.7

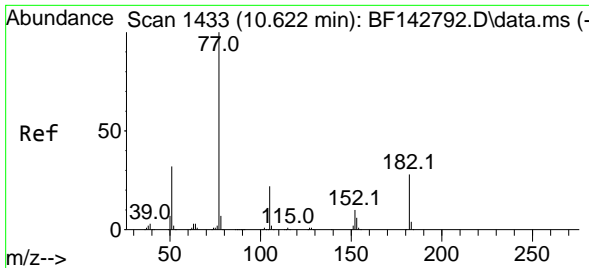


#62
 4-Nitroaniline
 Concen: 47.004 ng
 RT: 10.492 min Scan# 1411
 Delta R.T. 0.006 min
 Lab File: BF143027.D
 Acq: 08 Jul 2025 11:54



Tgt Ion:138 Resp: 79314
 Ion Ratio Lower Upper
 138 100
 92 46.2 28.4 68.4
 108 69.9 50.2 90.2



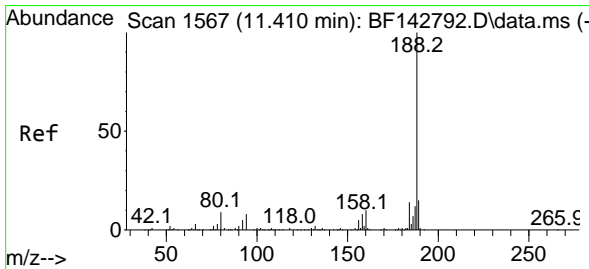
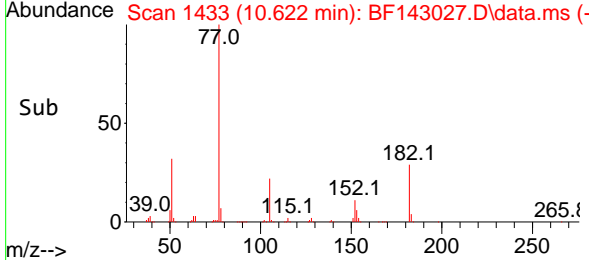
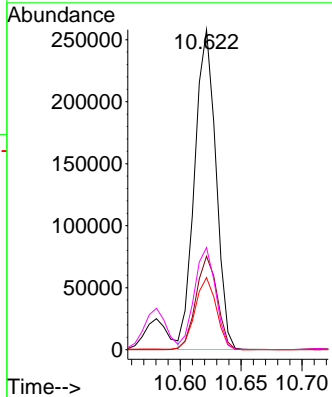
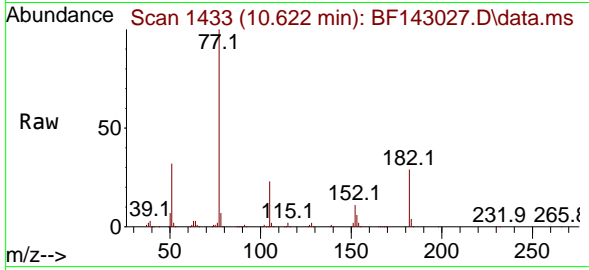


#63
 Azobenzene
 Concen: 46.670 ng
 RT: 10.622 min Scan# 1433
 Delta R.T. 0.000 min
 Lab File: BF143027.D
 Acq: 08 Jul 2025 11:54

Instrument : BNA_F
 ClientSampleId : PB168716BS

Tgt Ion: 77 Resp: 312072

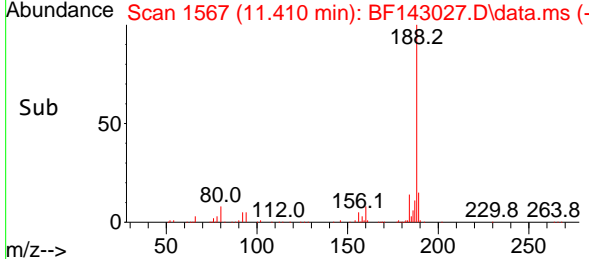
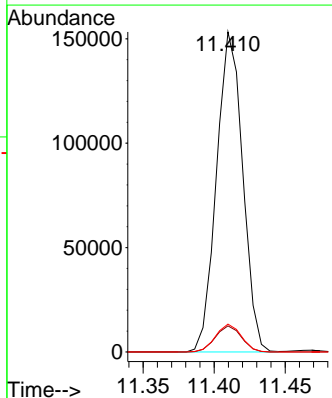
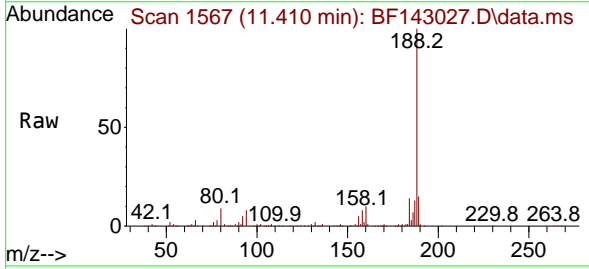
Ion	Ratio	Lower	Upper
77	100		
182	29.2	7.7	47.7
105	22.5	1.9	41.9
51	31.9	13.3	53.3

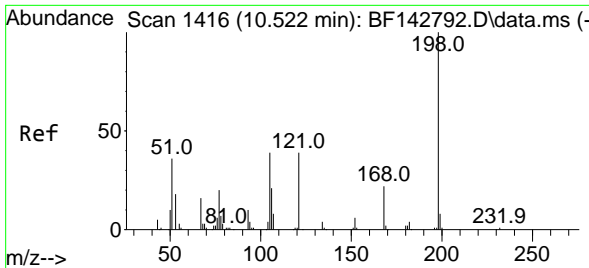


#64
 Phenanthrene-d10
 Concen: 20.000 ng
 RT: 11.410 min Scan# 1567
 Delta R.T. 0.000 min
 Lab File: BF143027.D
 Acq: 08 Jul 2025 11:54

Tgt Ion: 188 Resp: 196389

Ion	Ratio	Lower	Upper
188	100		
94	8.2	6.7	10.1
80	8.7	6.9	10.3

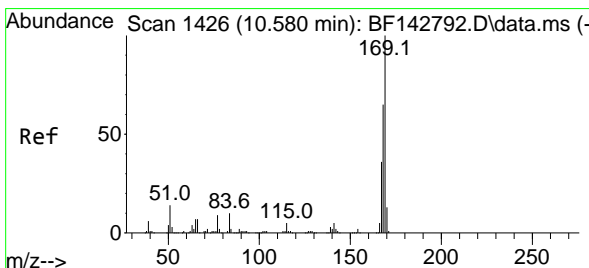
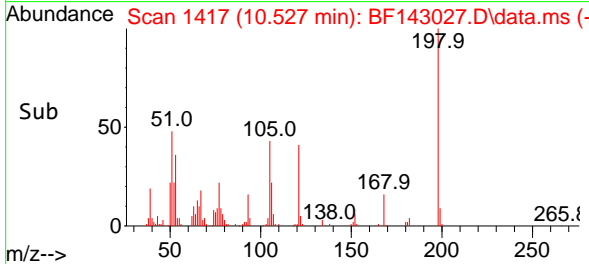
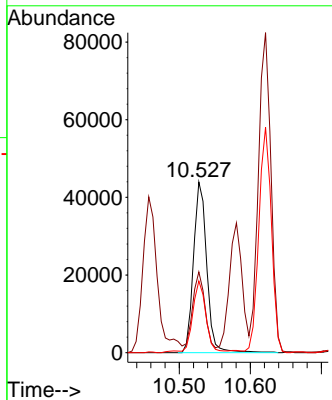
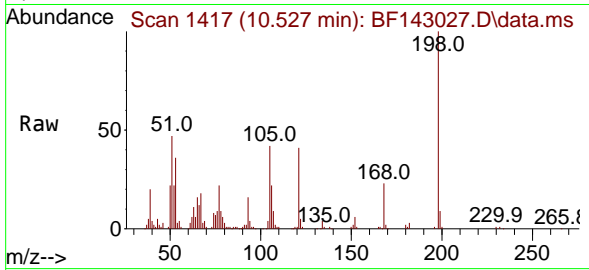




#65
 4,6-Dinitro-2-methylphenol
 Concen: 48.195 ng
 RT: 10.527 min Scan# 1416
 Delta R.T. 0.006 min
 Lab File: BF143027.D
 Acq: 08 Jul 2025 11:54

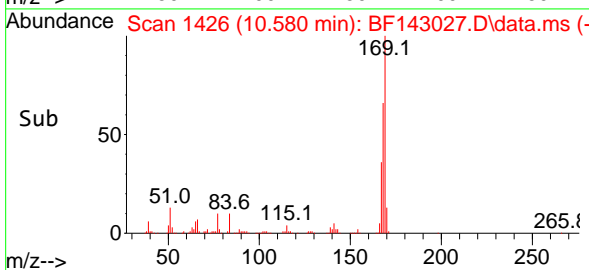
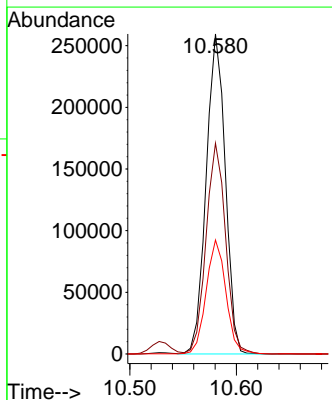
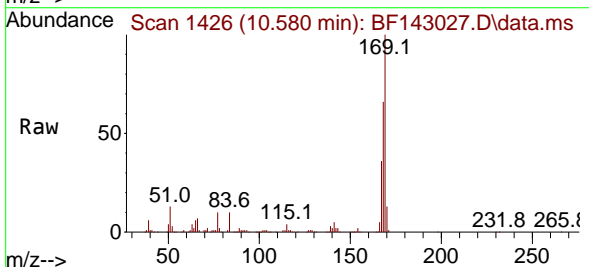
Instrument :
 BNA_F
 ClientSampleId :
 PB168716BS

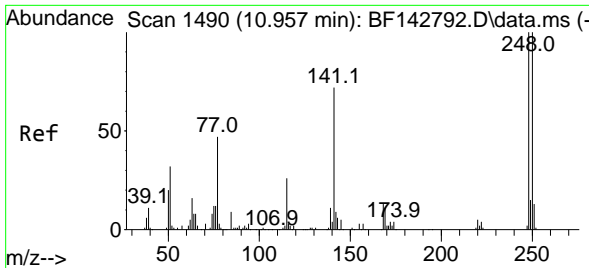
Tgt Ion	Resp	Lower	Upper
198	100		
51	47.3	25.4	65.4
105	42.0	20.4	60.4



#66
 n-Nitrosodiphenylamine
 Concen: 47.533 ng
 RT: 10.580 min Scan# 1426
 Delta R.T. 0.000 min
 Lab File: BF143027.D
 Acq: 08 Jul 2025 11:54

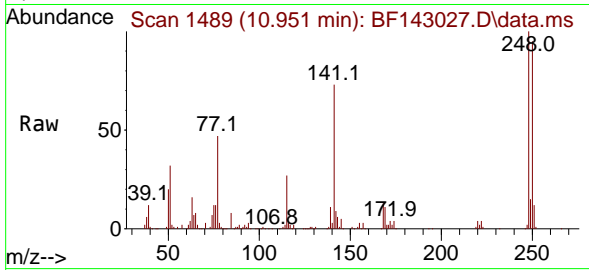
Tgt Ion	Resp	Lower	Upper
169	100		
168	65.9	51.9	77.9
167	35.6	28.5	42.7



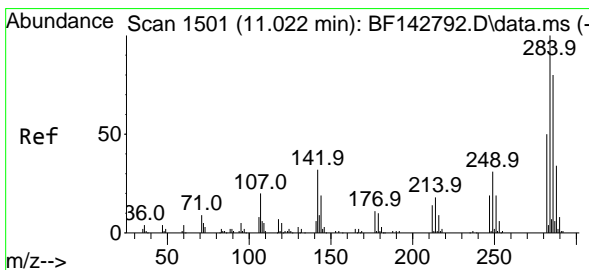
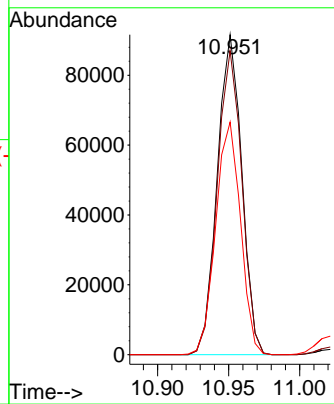
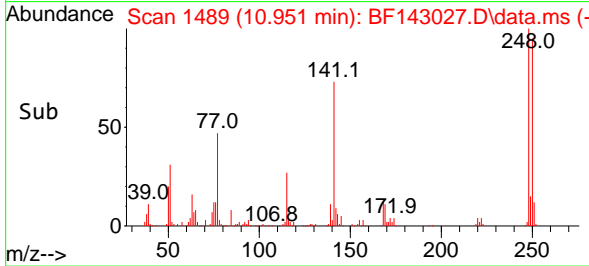


#67
 4-Bromophenyl-phenylether
 Concen: 49.238 ng
 RT: 10.951 min Scan# 1490
 Delta R.T. -0.006 min
 Lab File: BF143027.D
 Acq: 08 Jul 2025 11:54

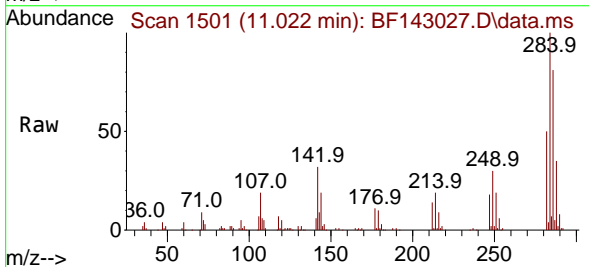
Instrument :
 BNA_F
 ClientSampleId :
 PB168716BS



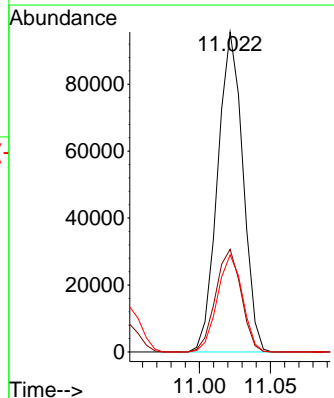
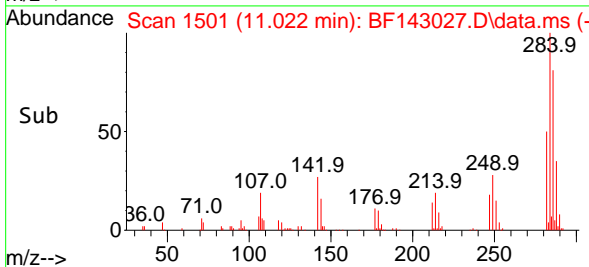
Tgt Ion:248 Resp: 110051
 Ion Ratio Lower Upper
 248 100
 250 95.0 79.8 119.8
 141 72.7 57.8 86.6

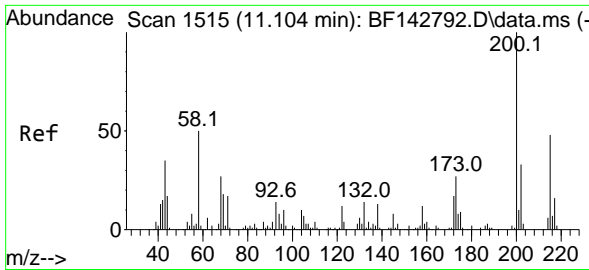


#68
 Hexachlorobenzene
 Concen: 47.627 ng
 RT: 11.022 min Scan# 1501
 Delta R.T. 0.000 min
 Lab File: BF143027.D
 Acq: 08 Jul 2025 11:54



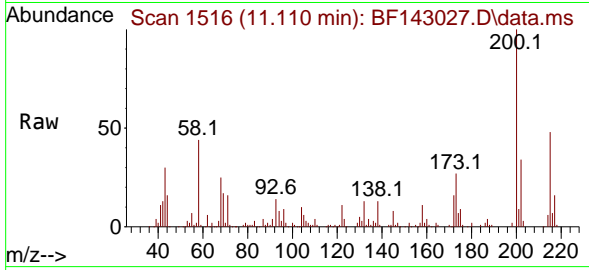
Tgt Ion:284 Resp: 118285
 Ion Ratio Lower Upper
 284 100
 142 32.1 25.5 38.3
 249 30.3 24.9 37.3



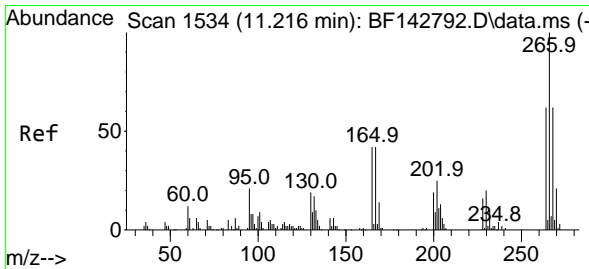
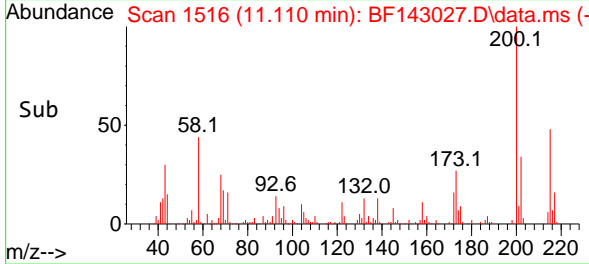
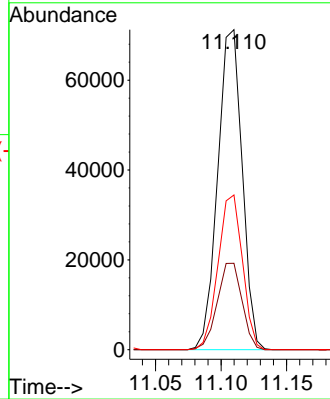


#69
Atrazine
 Concen: 52.593 ng
 RT: 11.110 min Scan# 11
 Delta R.T. 0.006 min
 Lab File: BF143027.D
 Acq: 08 Jul 2025 11:54

Instrument :
 BNA_F
Client Sample Id :
 PB168716BS

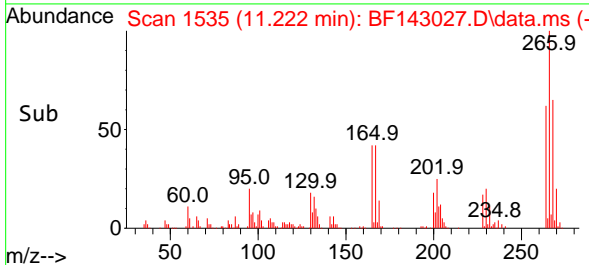
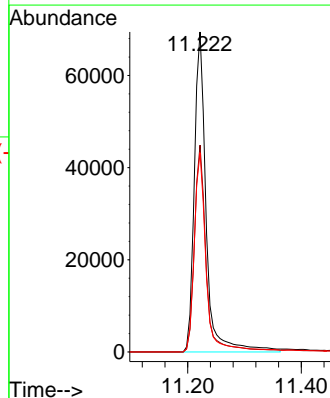
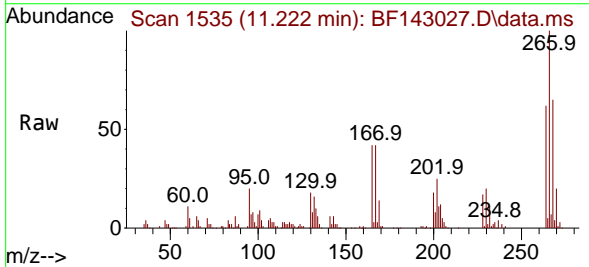


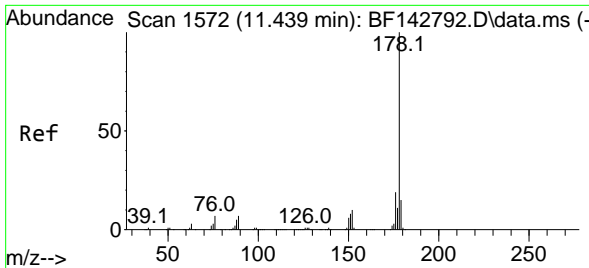
Tgt Ion:200 Resp: 92438
 Ion Ratio Lower Upper
 200 100
 173 27.0 7.4 47.4
 215 48.4 28.4 68.4



#70
Pentachlorophenol
 Concen: 81.994 ng
 RT: 11.222 min Scan# 1535
 Delta R.T. 0.006 min
 Lab File: BF143027.D
 Acq: 08 Jul 2025 11:54

Tgt Ion:266 Resp: 101472
 Ion Ratio Lower Upper
 266 100
 268 64.7 49.8 74.8
 264 62.3 49.9 74.9





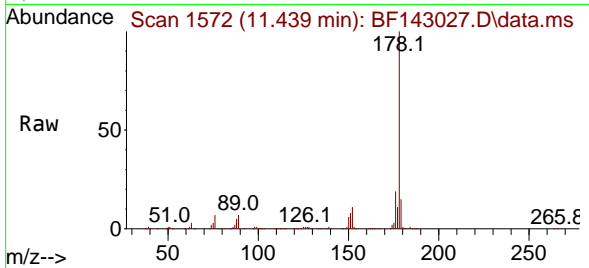
#71
 Phenanthrene
 Concen: 47.296 ng
 RT: 11.439 min Scan# 11439
 Delta R.T. 0.000 min
 Lab File: BF143027.D
 Acq: 08 Jul 2025 11:54

Instrument :

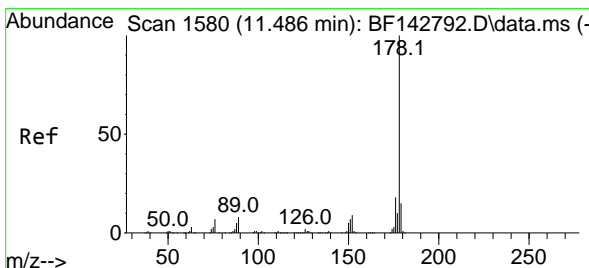
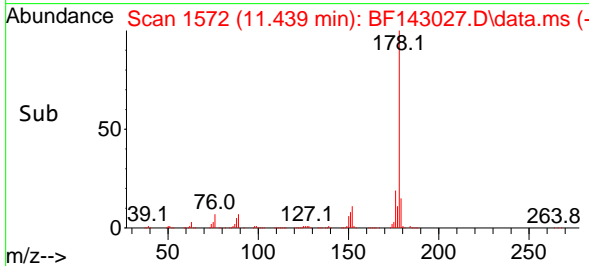
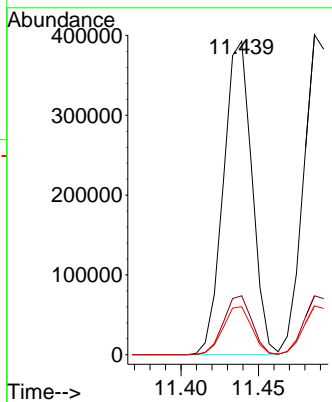
BNA_F

Client Sample Id :

PB168716BS

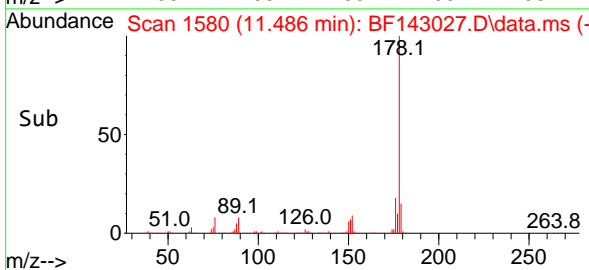
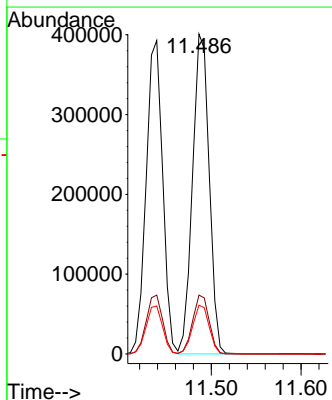
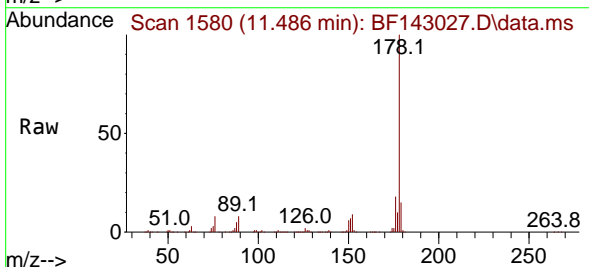


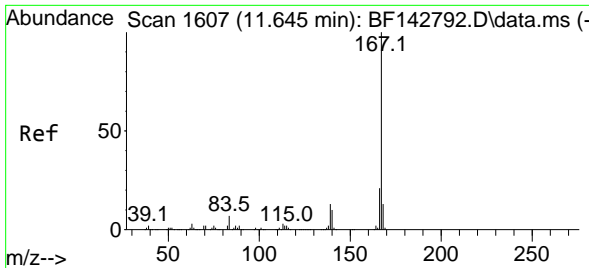
Tgt Ion:178 Resp: 503153
 Ion Ratio Lower Upper
 178 100
 176 18.8 15.1 22.7
 179 15.3 12.0 18.0



#72
 Anthracene
 Concen: 47.297 ng
 RT: 11.486 min Scan# 1580
 Delta R.T. 0.000 min
 Lab File: BF143027.D
 Acq: 08 Jul 2025 11:54

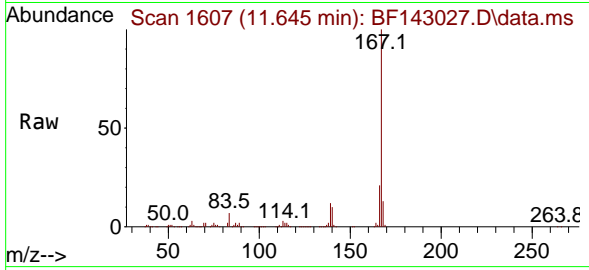
Tgt Ion:178 Resp: 516037
 Ion Ratio Lower Upper
 178 100
 176 18.4 14.6 21.8
 179 15.3 12.4 18.6



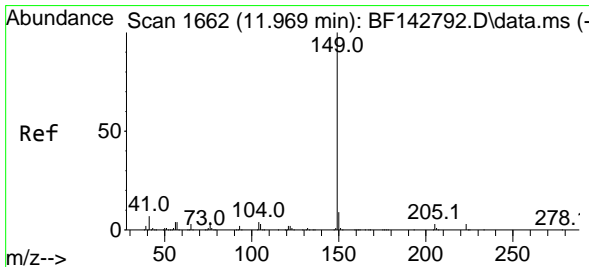
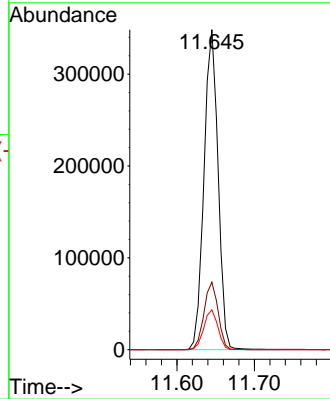
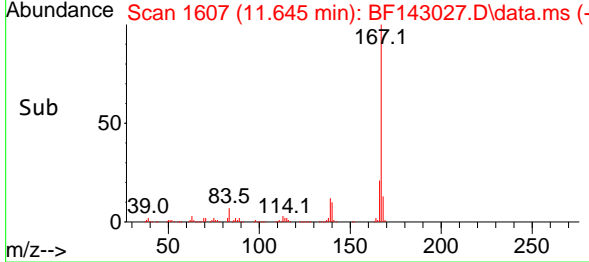


#73
 Carbazole
 Concen: 46.666 ng
 RT: 11.645 min Scan# 1607
 Delta R.T. 0.000 min
 Lab File: BF143027.D
 Acq: 08 Jul 2025 11:54

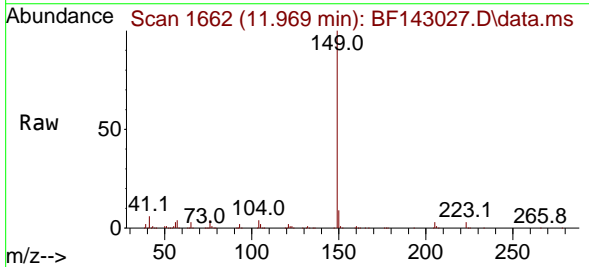
Instrument : BNA_F
 ClientSampleId : PB168716BS



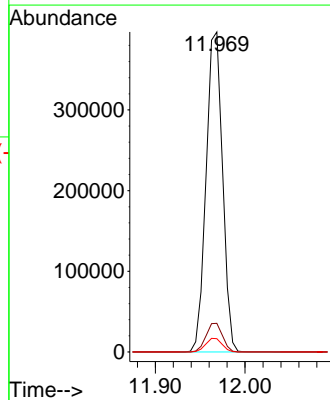
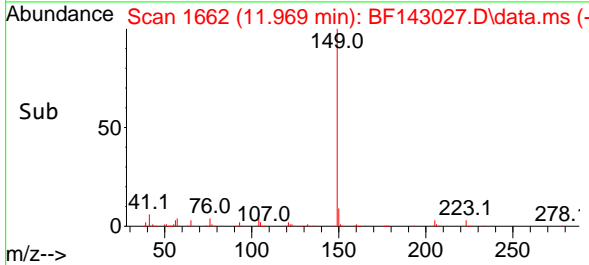
Tgt Ion:167 Resp: 439384
 Ion Ratio Lower Upper
 167 100
 166 21.1 17.0 25.4
 139 12.5 10.2 15.2

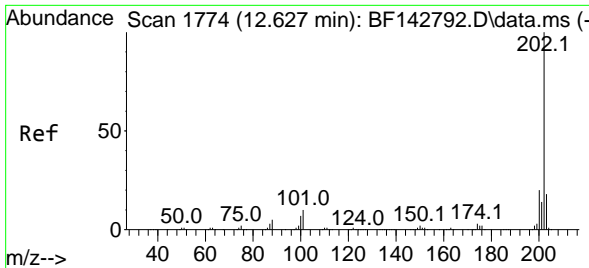


#74
 Di-n-butylphthalate
 Concen: 51.473 ng
 RT: 11.969 min Scan# 1662
 Delta R.T. 0.000 min
 Lab File: BF143027.D
 Acq: 08 Jul 2025 11:54



Tgt Ion:149 Resp: 504874
 Ion Ratio Lower Upper
 149 100
 150 9.0 7.4 11.0
 104 4.2 3.5 5.3

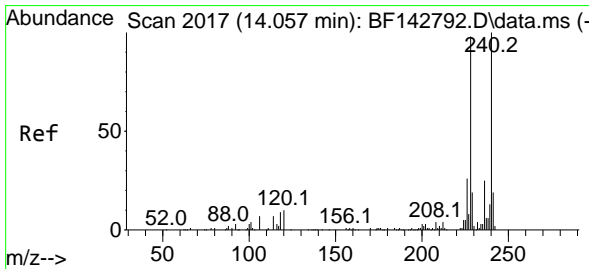
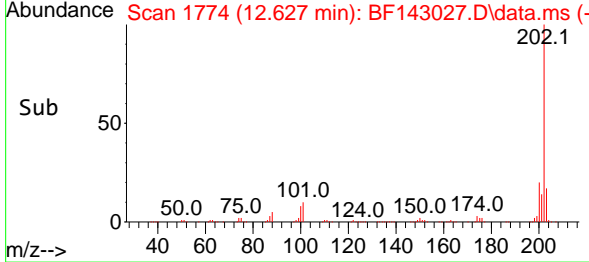
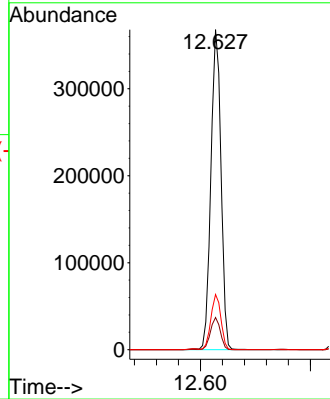
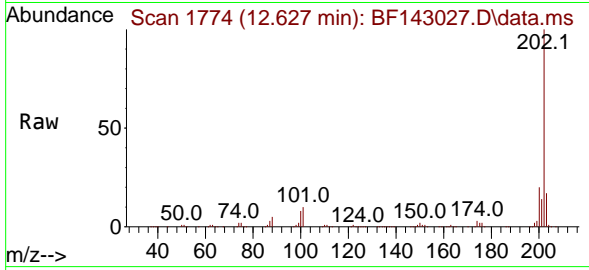




#75
 Fluoranthene
 Concen: 46.450 ng
 RT: 12.627 min Scan# 11
 Delta R.T. 0.000 min
 Lab File: BF143027.D
 Acq: 08 Jul 2025 11:54

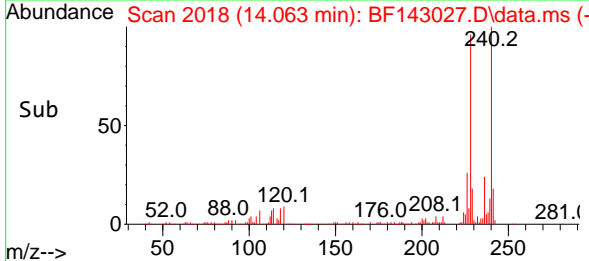
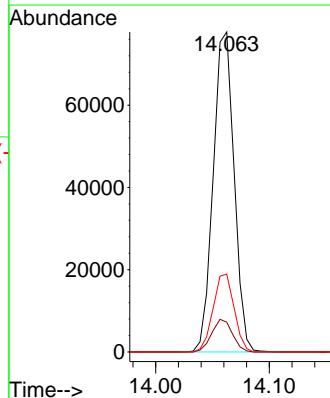
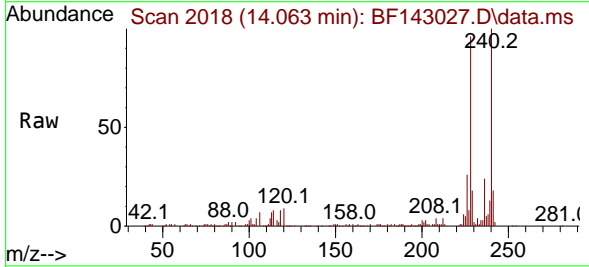
Instrument :
 BNA_F
 ClientSampleId :
 PB168716BS

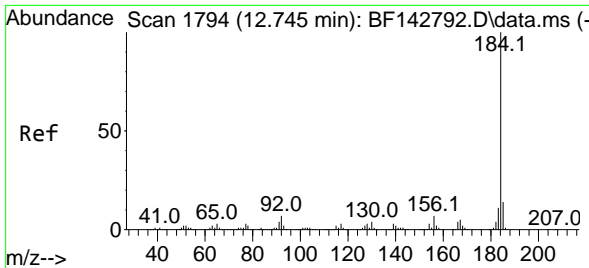
Tgt Ion	Resp	Lower	Upper
202	100		
101	10.0	0.0	29.7
203	17.3	0.0	37.5



#76
 Chrysene-d12
 Concen: 20.000 ng
 RT: 14.063 min Scan# 2018
 Delta R.T. 0.006 min
 Lab File: BF143027.D
 Acq: 08 Jul 2025 11:54

Tgt Ion	Resp	Lower	Upper
240	100		
120	9.3	8.2	12.2
236	24.3	19.8	29.8



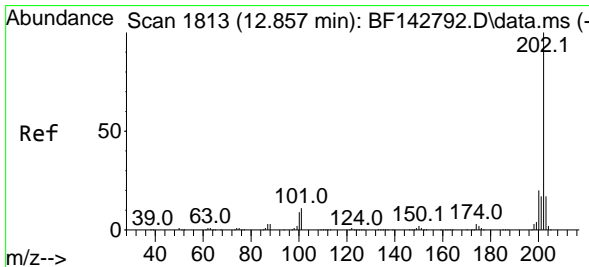
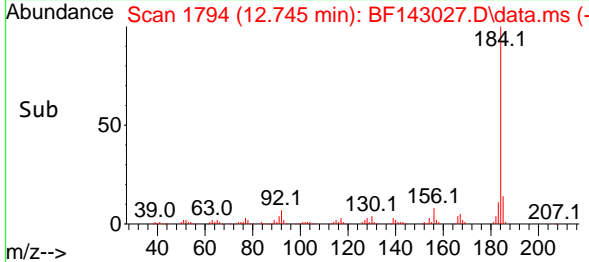
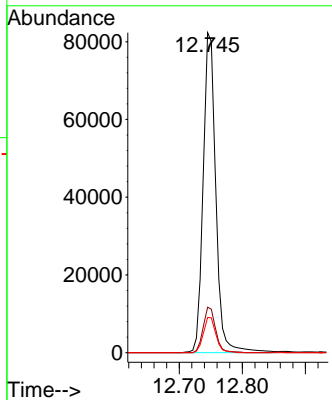
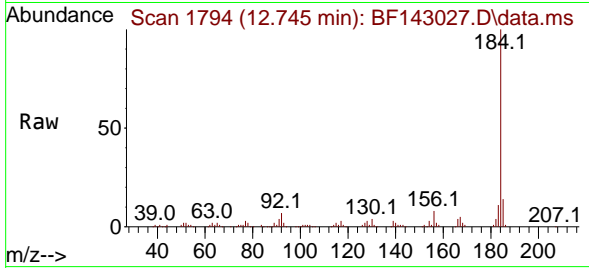


#77
 Benzidine
 Concen: 30.735 ng
 RT: 12.745 min Scan# 11
 Delta R.T. 0.000 min
 Lab File: BF143027.D
 Acq: 08 Jul 2025 11:54

Instrument : BNA_F
 Client Sample Id : PB168716BS

Tgt Ion:184 Resp: 114984

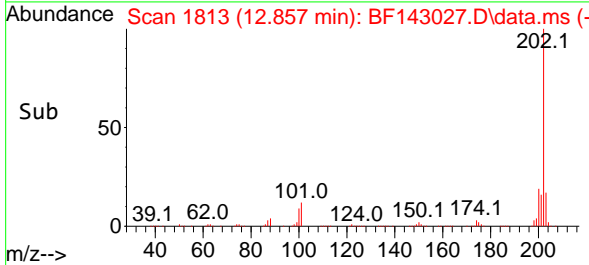
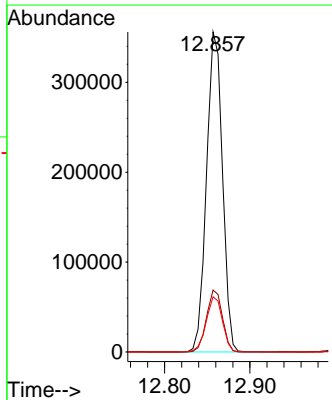
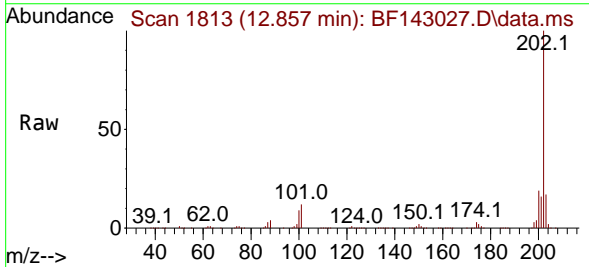
Ion	Ratio	Lower	Upper
184	100		
185	14.2	11.5	17.3
183	11.0	9.0	13.4

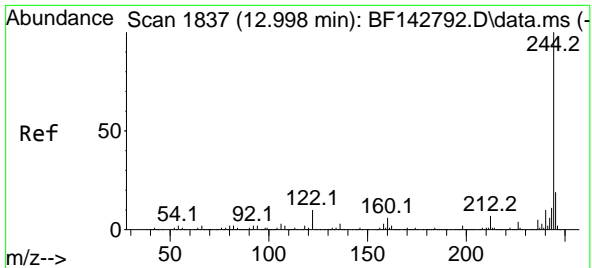


#78
 Pyrene
 Concen: 49.564 ng
 RT: 12.857 min Scan# 1813
 Delta R.T. 0.000 min
 Lab File: BF143027.D
 Acq: 08 Jul 2025 11:54

Tgt Ion:202 Resp: 462608

Ion	Ratio	Lower	Upper
202	100		
200	19.4	15.7	23.5
203	17.2	13.8	20.6



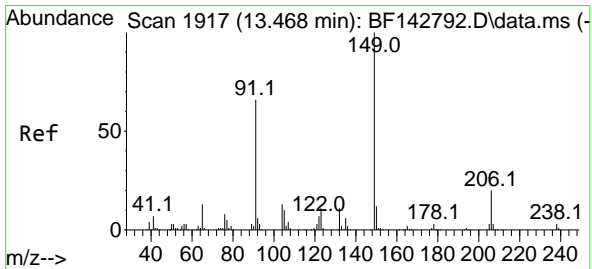
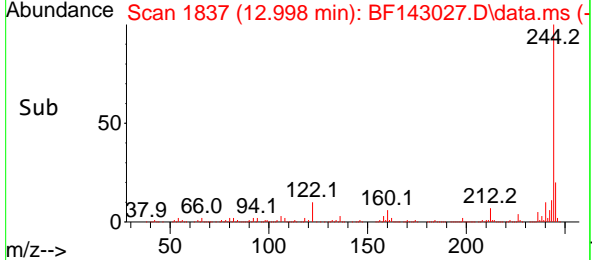
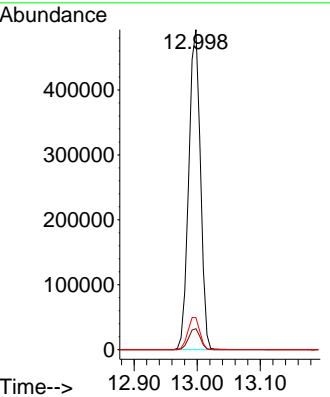
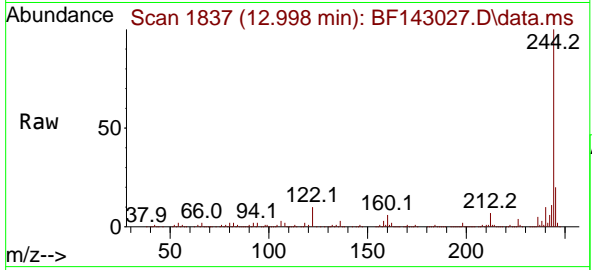


#79
 Terphenyl-d14
 Concen: 87.570 ng
 RT: 12.998 min Scan# 11
 Delta R.T. -0.000 min
 Lab File: BF143027.D
 Acq: 08 Jul 2025 11:54

Instrument : BNA_F
 Client Sample Id : PB168716BS

Tgt Ion: 244 Resp: 631084

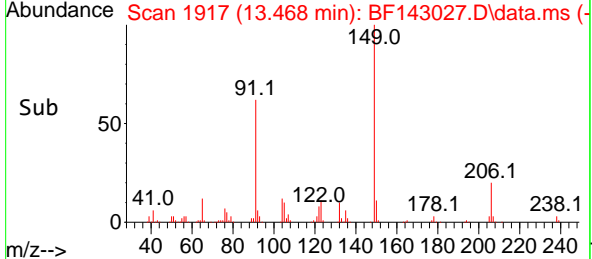
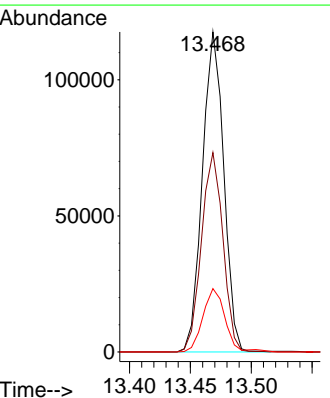
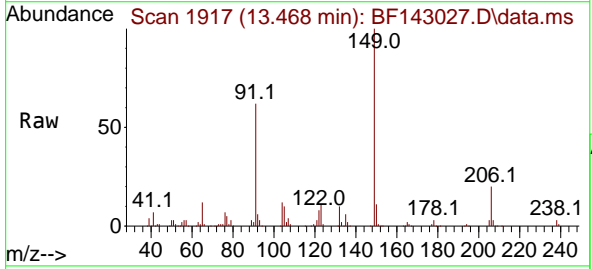
Ion	Ratio	Lower	Upper
244	100		
212	6.6	5.4	8.0
122	10.0	8.2	12.2

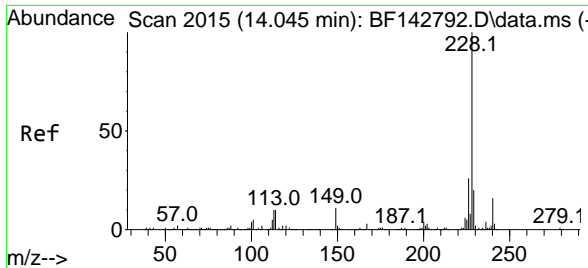


#80
 Butylbenzylphthalate
 Concen: 53.032 ng
 RT: 13.468 min Scan# 1917
 Delta R.T. 0.000 min
 Lab File: BF143027.D
 Acq: 08 Jul 2025 11:54

Tgt Ion: 149 Resp: 143577

Ion	Ratio	Lower	Upper
149	100		
91	62.3	52.9	79.3
206	19.8	16.3	24.5



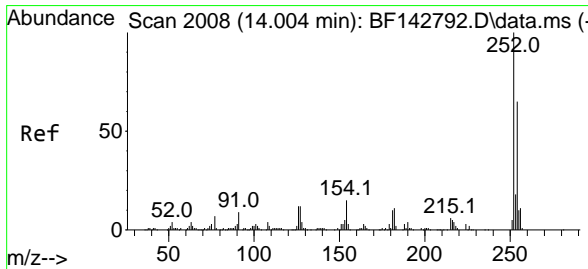
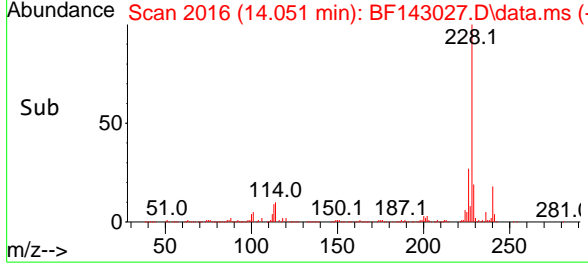
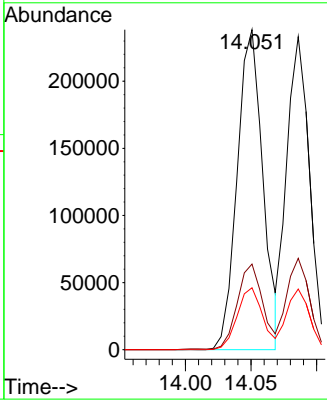
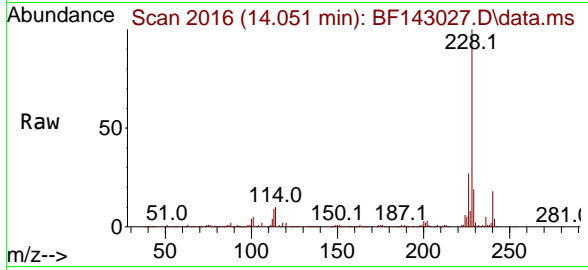


#81
 Benzo(a)anthracene
 Concen: 48.328 ng
 RT: 14.051 min Scan# 2015
 Delta R.T. 0.006 min
 Lab File: BF143027.D
 Acq: 08 Jul 2025 11:54

Instrument : BNA_F
 ClientSampleId : PB168716BS

Tgt Ion:228 Resp: 324635

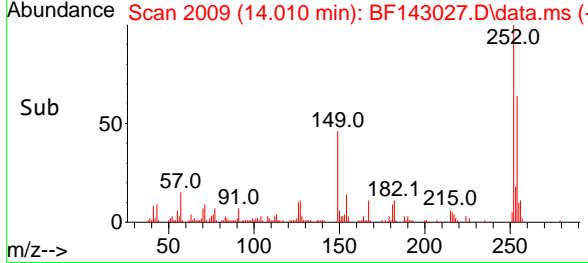
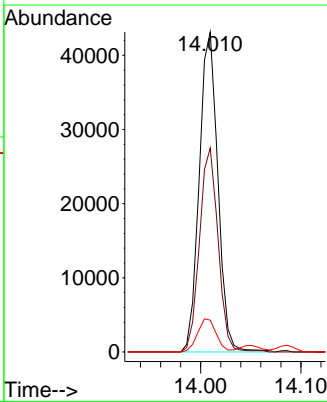
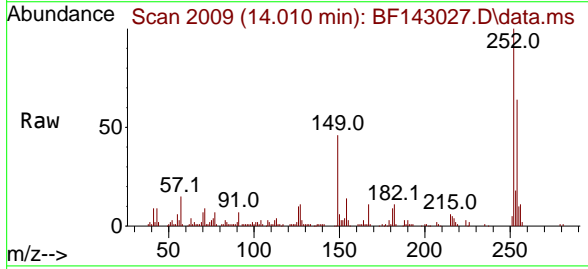
Ion	Ratio	Lower	Upper
228	100		
226	26.7	21.2	31.8
229	19.3	15.6	23.4

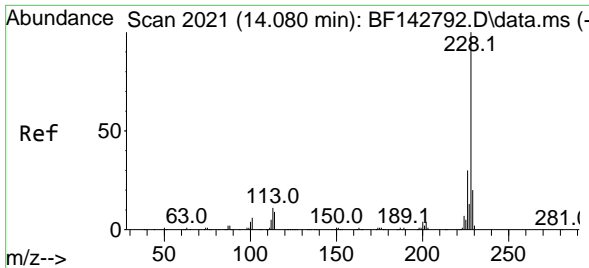


#82
 3,3'-Dichlorobenzidine
 Concen: 25.598 ng
 RT: 14.010 min Scan# 2009
 Delta R.T. 0.006 min
 Lab File: BF143027.D
 Acq: 08 Jul 2025 11:54

Tgt Ion:252 Resp: 55773

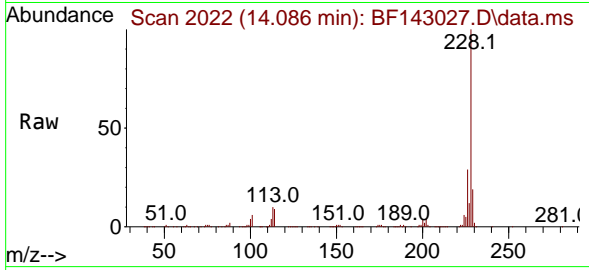
Ion	Ratio	Lower	Upper
252	100		
254	63.8	51.7	77.5
126	10.0	9.4	14.2



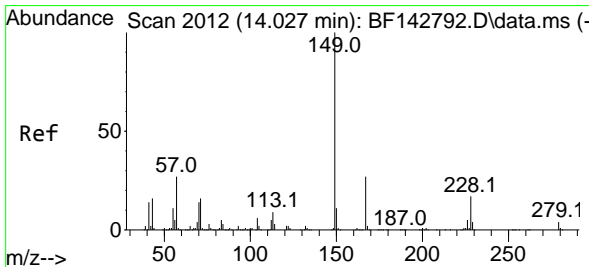
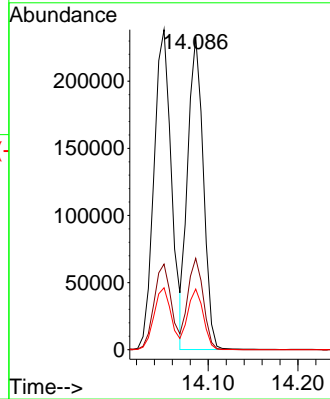
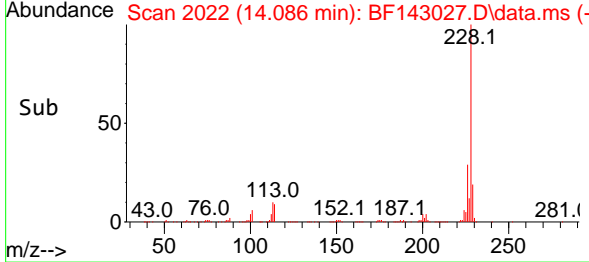


#83
 Chrysene
 Concen: 46.797 ng
 RT: 14.086 min Scan# 2021
 Delta R.T. 0.006 min
 Lab File: BF143027.D
 Acq: 08 Jul 2025 11:54

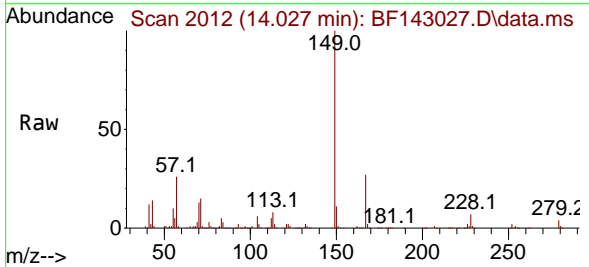
Instrument : BNA_F
 ClientSampleId : PB168716BS



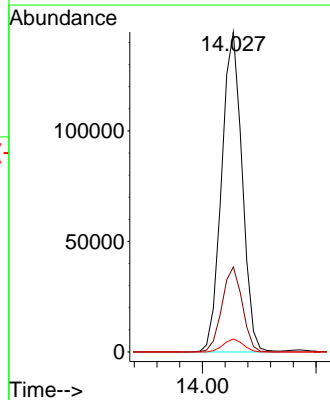
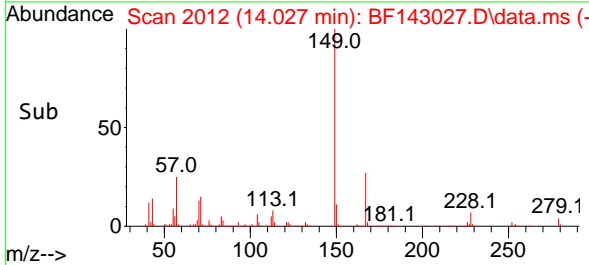
Tgt Ion:228 Resp: 280502
 Ion Ratio Lower Upper
 228 100
 226 29.2 23.7 35.5
 229 19.4 15.7 23.5

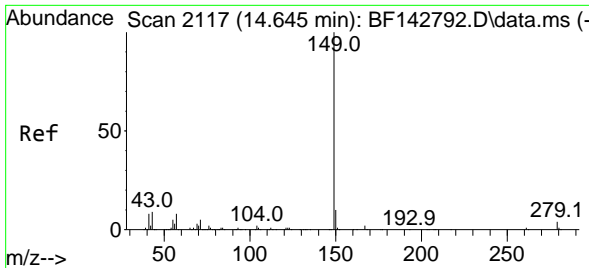


#84
 Bis(2-ethylhexyl)phthalate
 Concen: 46.592 ng
 RT: 14.027 min Scan# 2012
 Delta R.T. 0.000 min
 Lab File: BF143027.D
 Acq: 08 Jul 2025 11:54



Tgt Ion:149 Resp: 181490
 Ion Ratio Lower Upper
 149 100
 167 26.5 21.4 32.0
 279 4.0 3.0 4.6



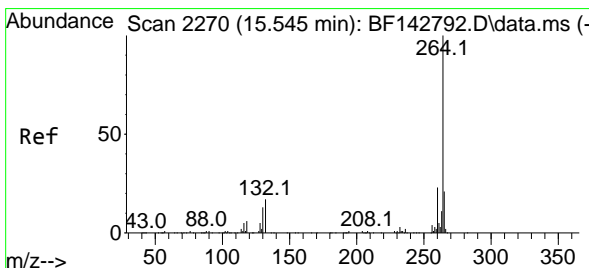
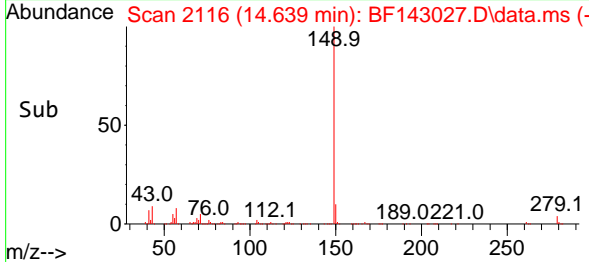
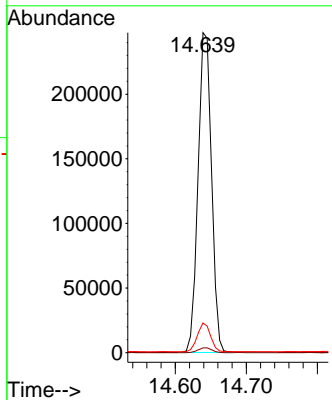
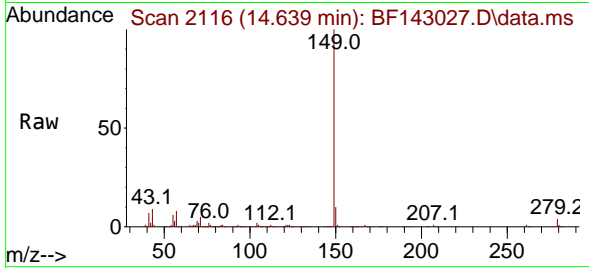


#85
 Di-n-octyl phthalate
 Concen: 44.628 ng
 RT: 14.639 min Scan# 2116
 Delta R.T. -0.006 min
 Lab File: BF143027.D
 Acq: 08 Jul 2025 11:54

Instrument :
 BNA_F
 ClientSampleId :
 PB168716BS

Tgt Ion:149 Resp: 327797

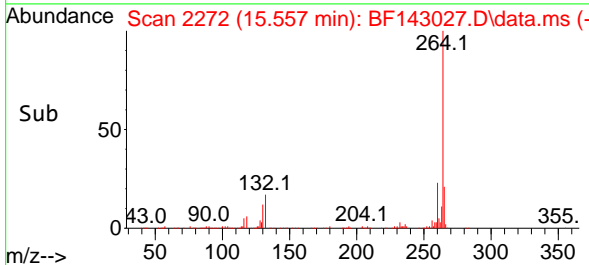
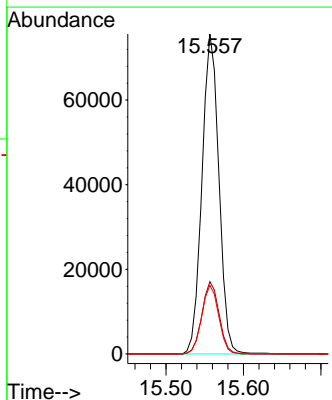
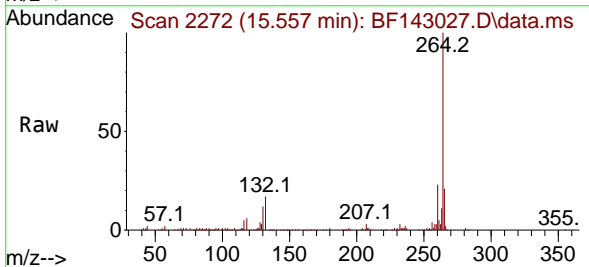
Ion	Ratio	Lower	Upper
149	100		
167	1.6	1.3	1.9
43	8.8	7.6	11.4

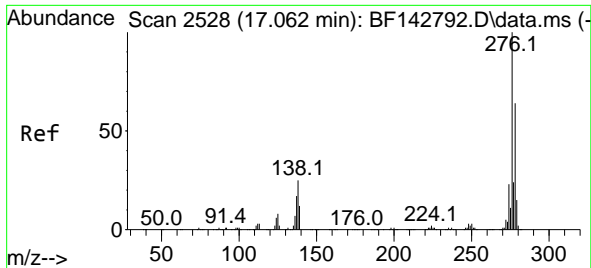


#86
 Perylene-d12
 Concen: 20.000 ng
 RT: 15.557 min Scan# 2272
 Delta R.T. 0.012 min
 Lab File: BF143027.D
 Acq: 08 Jul 2025 11:54

Tgt Ion:264 Resp: 114876

Ion	Ratio	Lower	Upper
264	100		
260	22.6	18.1	27.1
265	21.4	16.6	25.0





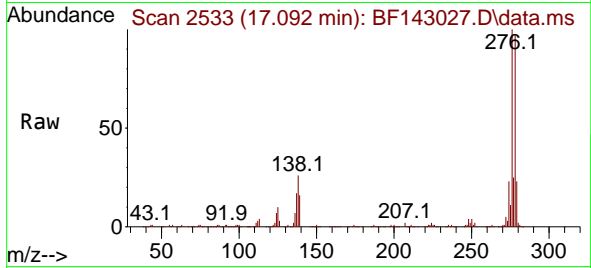
#87
 Indeno(1,2,3-cd)pyrene
 Concen: 46.215 ng
 RT: 17.092 min Scan# 2197
 Delta R.T. 0.029 min
 Lab File: BF143027.D
 Acq: 08 Jul 2025 11:54

Instrument :

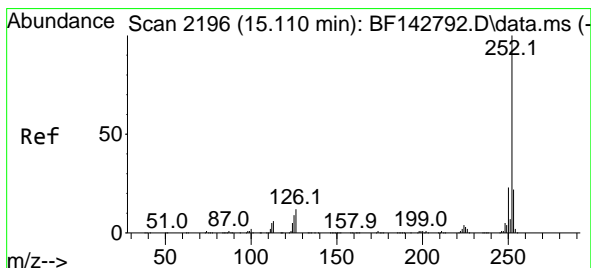
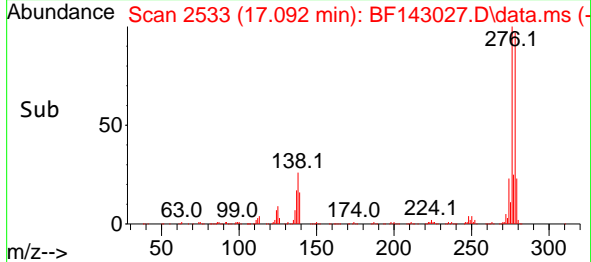
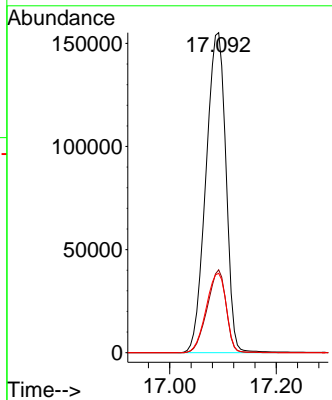
BNA_F

Client Sample Id :

PB168716BS

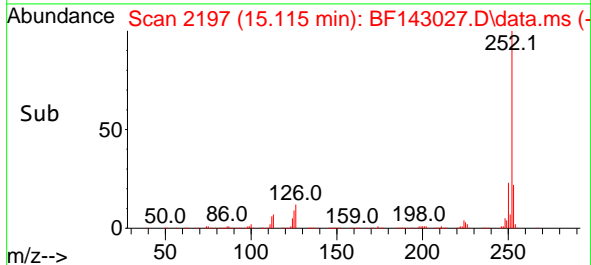
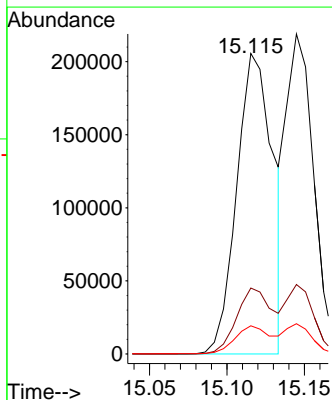
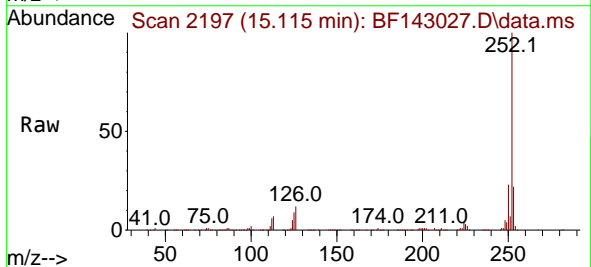


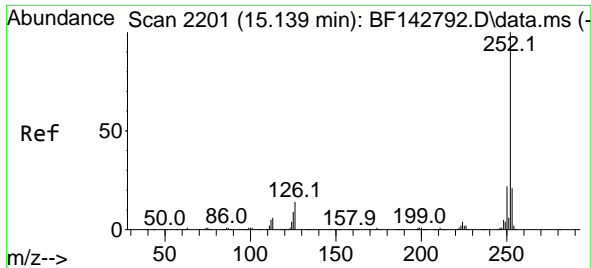
Tgt Ion: 276 Resp: 404380
 Ion Ratio Lower Upper
 276 100
 138 24.5 20.2 30.4
 277 25.0 19.8 29.6



#88
 Benzo(b)fluoranthene
 Concen: 50.369 ng
 RT: 15.115 min Scan# 2197
 Delta R.T. 0.006 min
 Lab File: BF143027.D
 Acq: 08 Jul 2025 11:54

Tgt Ion: 252 Resp: 334813
 Ion Ratio Lower Upper
 252 100
 253 21.9 17.5 26.3
 125 9.4 7.4 11.0

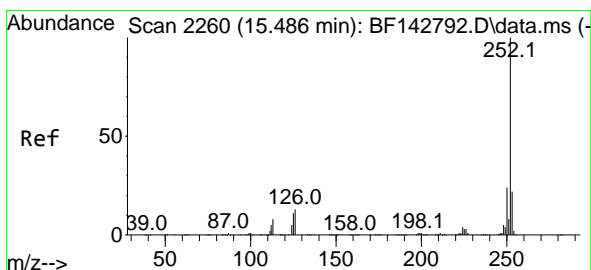
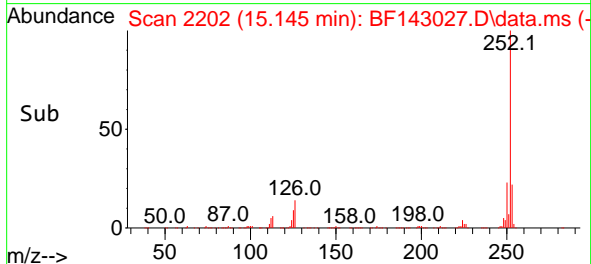
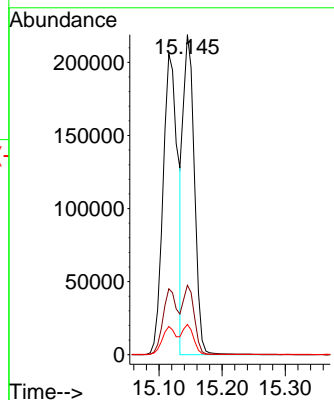
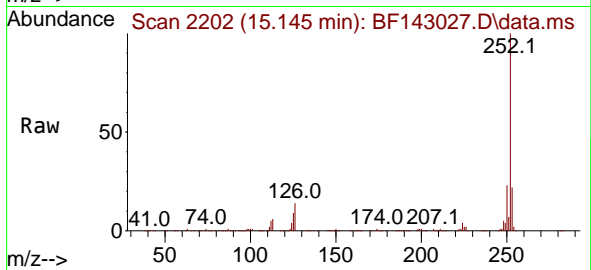




#89
 Benzo(k)fluoranthene
 Concen: 43.506 ng
 RT: 15.145 min Scan# 21
 Delta R.T. 0.006 min
 Lab File: BF143027.D
 Acq: 08 Jul 2025 11:54

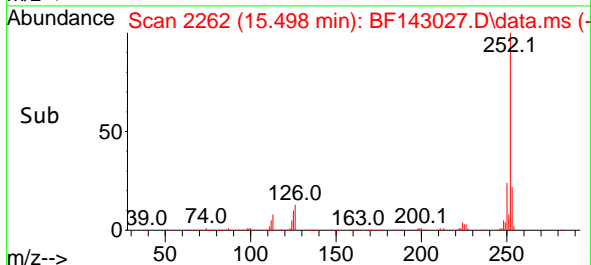
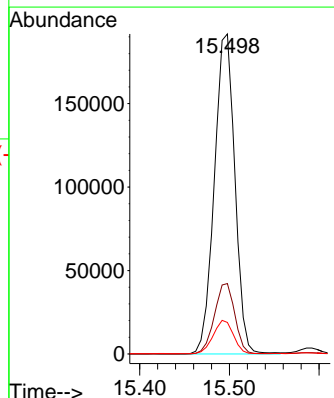
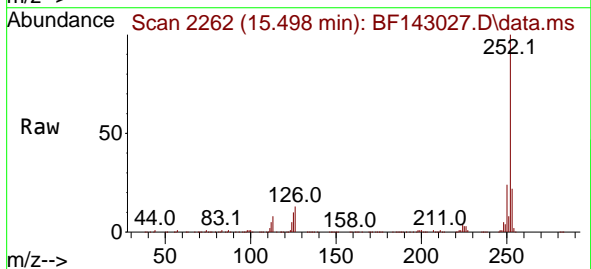
Instrument :
 BNA_F
 ClientSampleId :
 PB168716BS

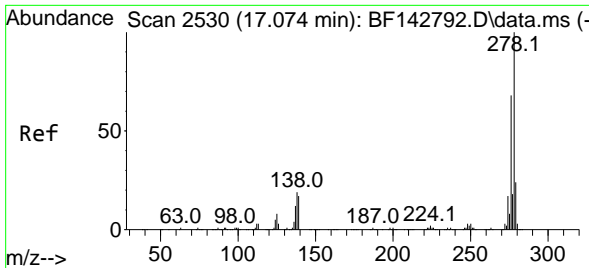
Tgt Ion:252 Resp: 270562
 Ion Ratio Lower Upper
 252 100
 253 21.7 17.2 25.8
 125 9.4 7.4 11.2



#90
 Benzo(a)pyrene
 Concen: 47.431 ng
 RT: 15.498 min Scan# 2262
 Delta R.T. 0.012 min
 Lab File: BF143027.D
 Acq: 08 Jul 2025 11:54

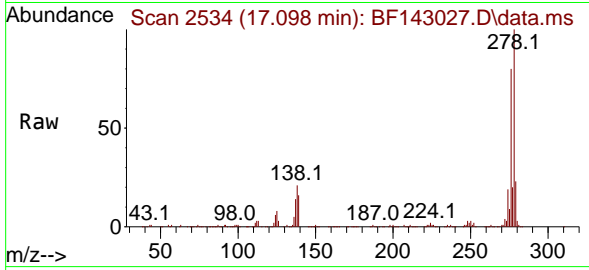
Tgt Ion:252 Resp: 304589
 Ion Ratio Lower Upper
 252 100
 253 22.0 17.5 26.3
 125 9.9 8.6 12.8



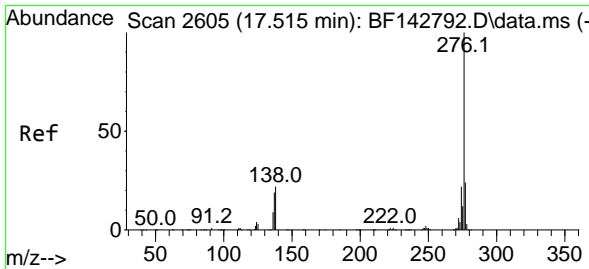
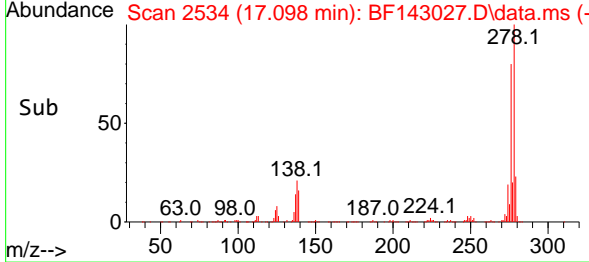
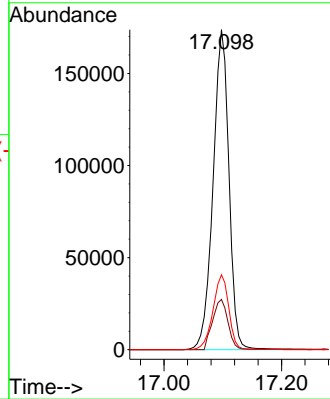


#91
 Dibenzo(a,h)anthracene
 Concen: 45.822 ng
 RT: 17.098 min Scan# 2611
 Delta R.T. 0.024 min
 Lab File: BF143027.D
 Acq: 08 Jul 2025 11:54

Instrument :
 BNA_F
 ClientSampleId :
 PB168716BS



Tgt Ion:278 Resp: 325775
 Ion Ratio Lower Upper
 278 100
 139 15.7 13.5 20.3
 279 23.4 18.8 28.2



#92
 Benzo(g,h,i)perylene
 Concen: 46.375 ng
 RT: 17.551 min Scan# 2611
 Delta R.T. 0.035 min
 Lab File: BF143027.D
 Acq: 08 Jul 2025 11:54

Tgt Ion:276 Resp: 328768
 Ion Ratio Lower Upper
 276 100
 277 23.5 18.8 28.2
 138 20.2 17.6 26.4

