

Data Path : Z:\svoasrv\HPCHEM1\BNA_F\Data\BF070825\
 Data File : BF143035.D
 Acq On : 08 Jul 2025 16:05
 Operator : RC/JU
 Sample : Q2514-09
 Misc :
 ALS Vial : 12 Sample Multiplier: 1

Instrument :
 BNA_F
 ClientSampleId :
 TP-81

Quant Time: Jul 08 17:00:02 2025
 Quant Method : Z:\svoasrv\HPCHEM1\BNA_F\Methods\8270-BF061925.M
 Quant Title : ASP BNA STANDARDS FOR 5 POINT CALIBRATION
 QLast Update : Tue Jun 24 05:28:21 2025
 Response via : Initial Calibration

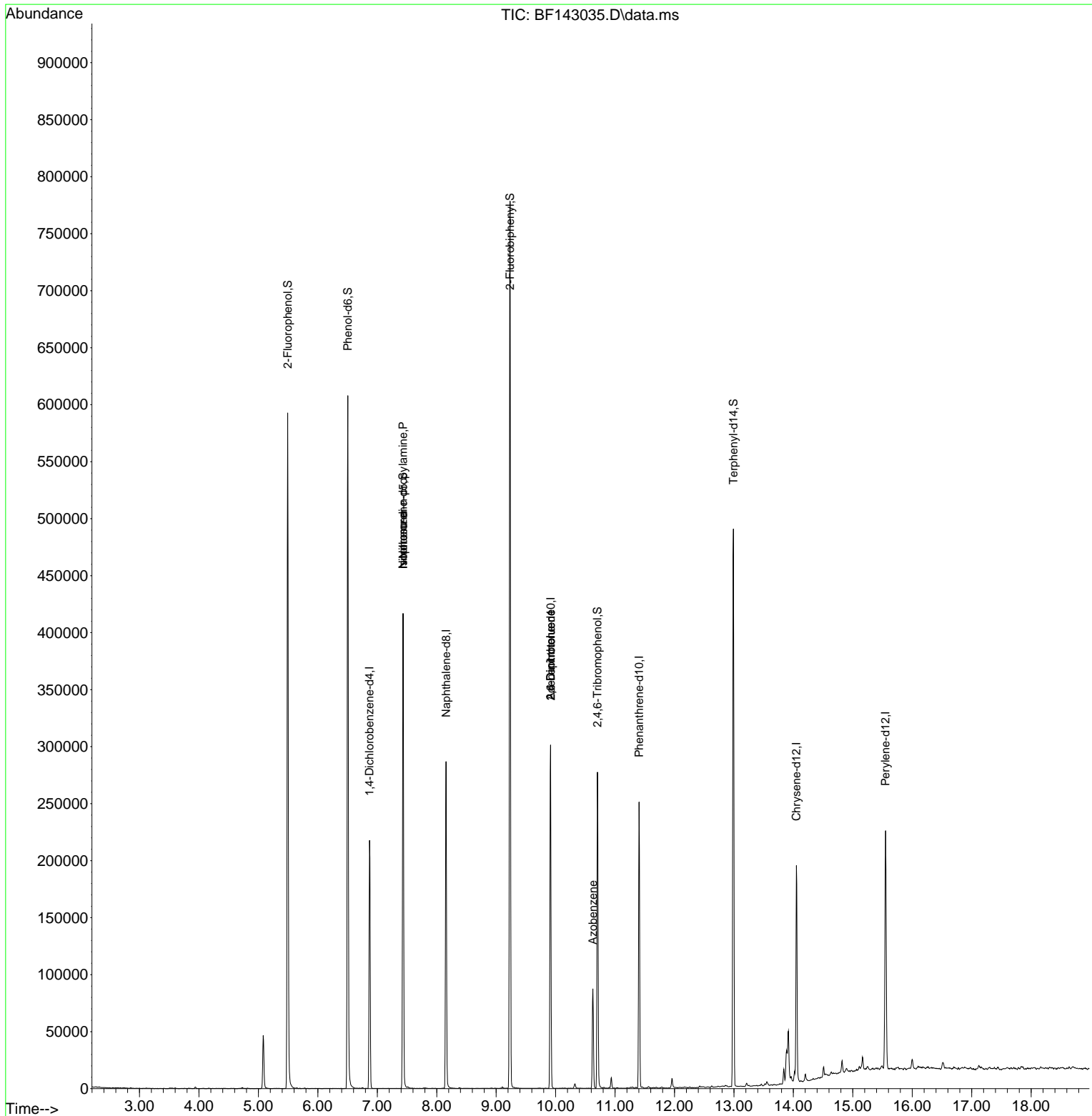
Compound	R.T.	QIon	Response	Conc	Units	Dev(Min)
Internal Standards						
1) 1,4-Dichlorobenzene-d4	6.869	152	49332	20.000	ng	-0.01
21) Naphthalene-d8	8.157	136	187293	20.000	ng	-0.01
39) Acenaphthene-d10	9.916	164	91194	20.000	ng	0.00
64) Phenanthrene-d10	11.404	188	135239	20.000	ng	0.00
76) Chrysene-d12	14.051	240	94806	20.000	ng	0.00
86) Perylene-d12	15.551	264	119948	20.000	ng	0.00
System Monitoring Compounds						
5) 2-Fluorophenol	5.493	112	233910	78.943	ng	0.00
7) Phenol-d6	6.504	99	277453	79.368	ng	0.00
23) Nitrobenzene-d5	7.434	82	175210	51.312	ng	-0.01
42) 2,4,6-Tribromophenol	10.704	330	48886	52.092	ng	-0.01
45) 2-Fluorobiphenyl	9.234	172	358484	51.641	ng	-0.01
79) Terphenyl-d14	12.992	244	243143	35.436	ng	0.00
Target Compounds						
19) n-Nitroso-di-n-propyla...	7.434	70	23387	11.503	ng	# 75
25) Isophorone	7.434	82	175208	31.987	ng	# 62
51) 2,6-Dinitrotoluene	9.916	165	11766	9.076	ng	# 26
57) 2,4-Dinitrotoluene	9.916	165	11766	6.833	ng	# 26
63) Azobenzene	10.628	77	19013	3.675	ng	# 1

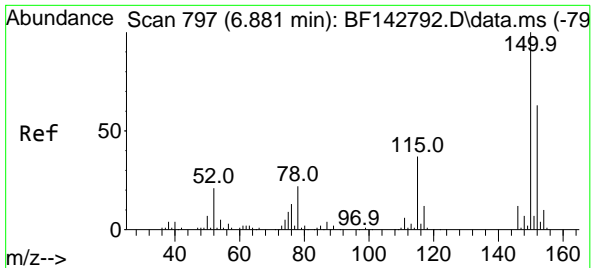
(#) = qualifier out of range (m) = manual integration (+) = signals summed

Data Path : Z:\svoasrv\HPCHEM1\BNA_F\Data\BF070825\
 Data File : BF143035.D
 Acq On : 08 Jul 2025 16:05
 Operator : RC/JU
 Sample : Q2514-09
 Misc :
 ALS Vial : 12 Sample Multiplier: 1

Instrument :
 BNA_F
 ClientSampleId :
 TP-81

Quant Time: Jul 08 17:00:02 2025
 Quant Method : Z:\svoasrv\HPCHEM1\BNA_F\Methods\8270-BF061925.M
 Quant Title : ASP BNA STANDARDS FOR 5 POINT CALIBRATION
 QLast Update : Tue Jun 24 05:28:21 2025
 Response via : Initial Calibration

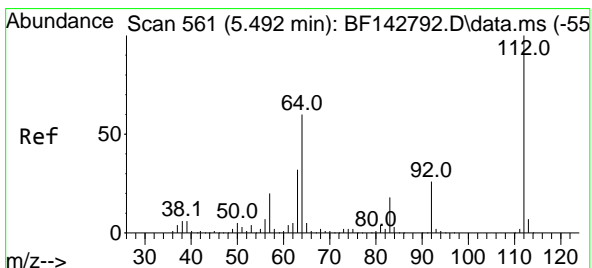
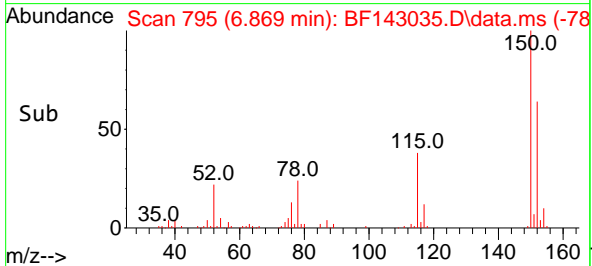
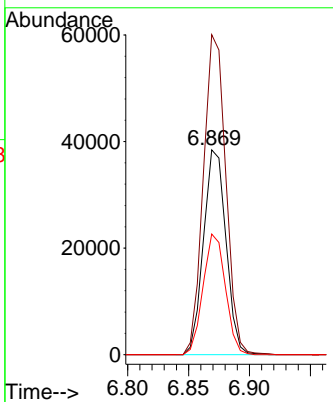
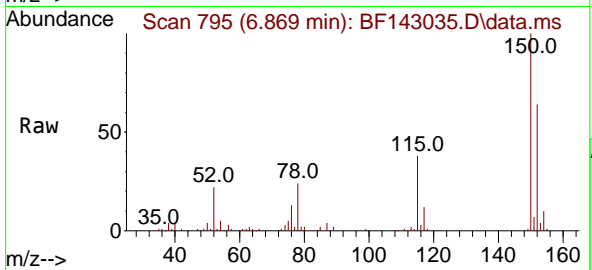




#1
 1,4-Dichlorobenzene-d4
 Concen: 20.000 ng
 RT: 6.869 min Scan# 795
 Delta R.T. -0.012 min
 Lab File: BF143035.D
 Acq: 08 Jul 2025 16:05

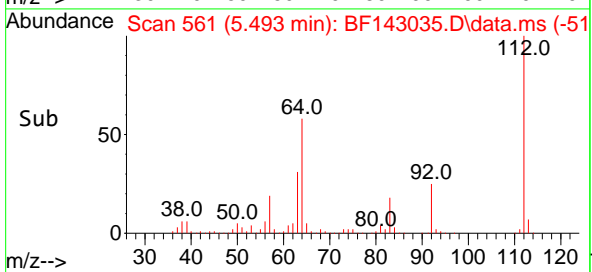
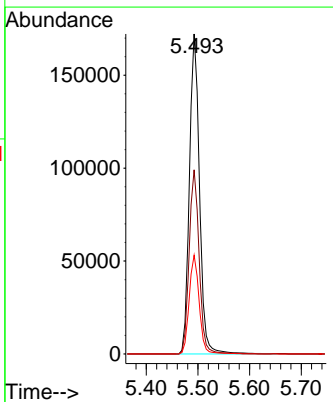
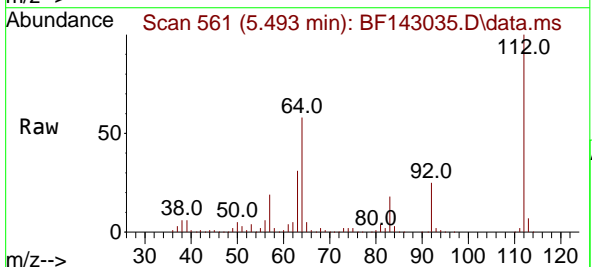
Instrument :
 BNA_F
 ClientSampleId :
 TP-81

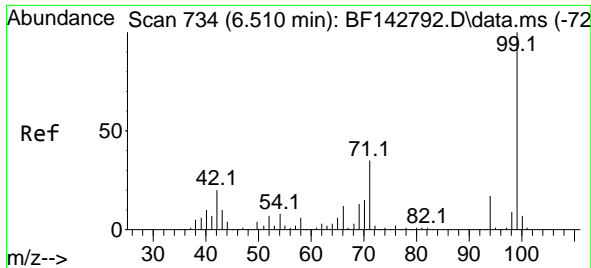
Tgt Ion:152 Resp: 49332
 Ion Ratio Lower Upper
 152 100
 150 156.2 127.2 190.8
 115 58.9 46.6 69.8



#5
 2-Fluorophenol
 Concen: 78.943 ng
 RT: 5.493 min Scan# 561
 Delta R.T. 0.001 min
 Lab File: BF143035.D
 Acq: 08 Jul 2025 16:05

Tgt Ion:112 Resp: 233910
 Ion Ratio Lower Upper
 112 100
 64 57.6 48.2 72.2
 63 30.9 25.7 38.5



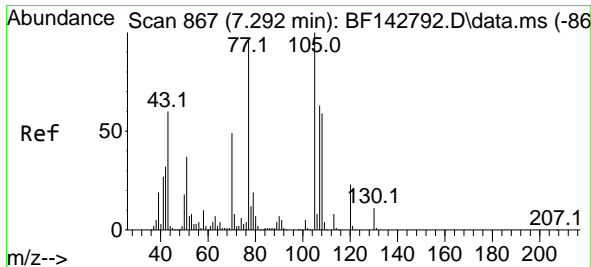
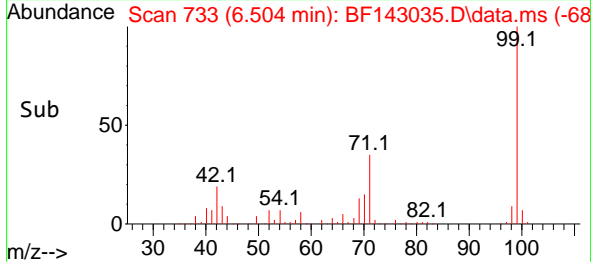
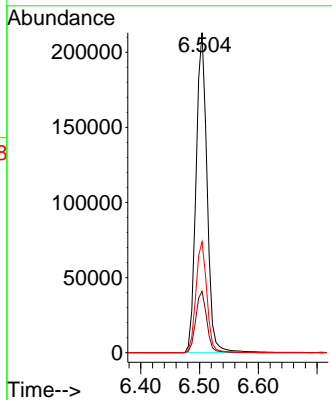
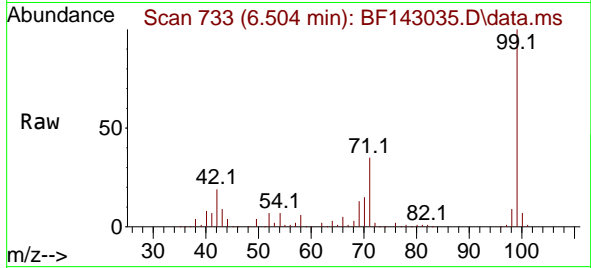


#7
 Phenol-d6
 Concen: 79.368 ng
 RT: 6.504 min Scan# 711
 Delta R.T. -0.006 min
 Lab File: BF143035.D
 Acq: 08 Jul 2025 16:05

Instrument : BNA_F
 ClientSampleId : TP-81

Tgt Ion: 99 Resp: 277453

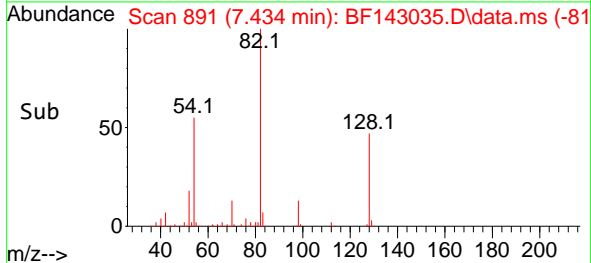
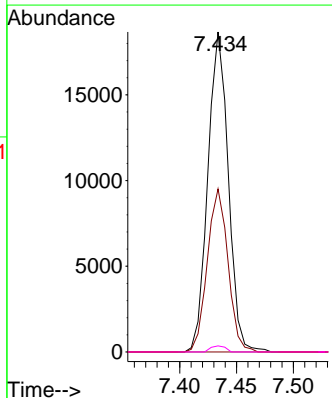
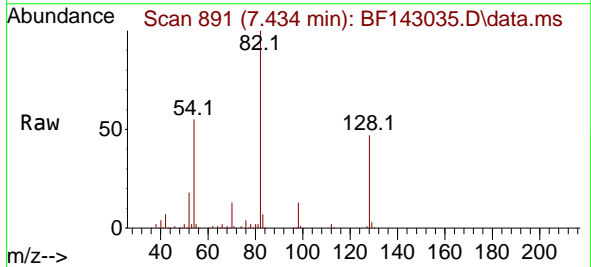
Ion	Ratio	Lower	Upper
99	100		
42	19.1	15.9	23.9
71	34.6	27.8	41.8

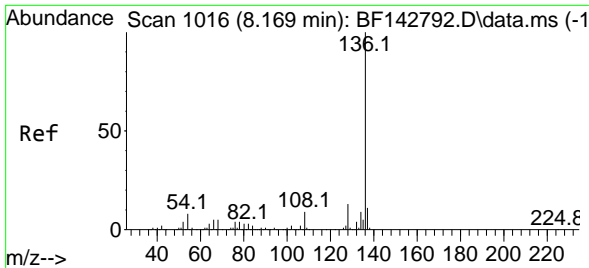


#19
 n-Nitroso-di-n-propylamine
 Concen: 11.503 ng
 RT: 7.434 min Scan# 891
 Delta R.T. 0.141 min
 Lab File: BF143035.D
 Acq: 08 Jul 2025 16:05

Tgt Ion: 70 Resp: 23387

Ion	Ratio	Lower	Upper
70	100		
42	51.0	52.1	78.1#
101	0.0	8.2	12.2#
130	1.9	18.2	27.2#



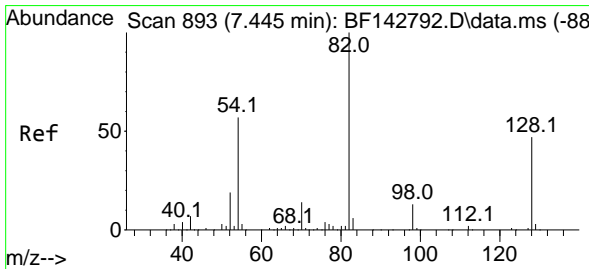
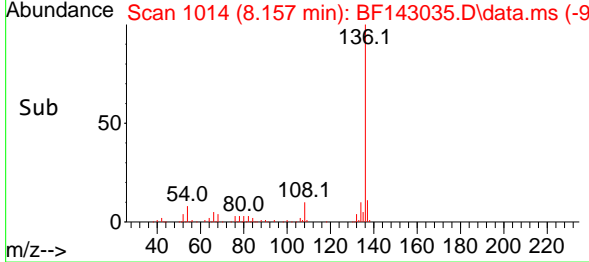
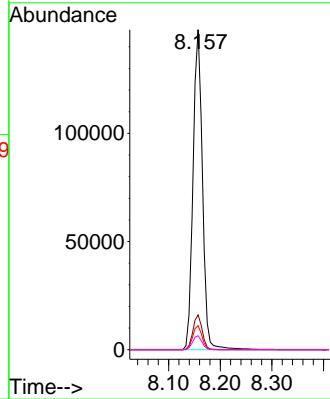
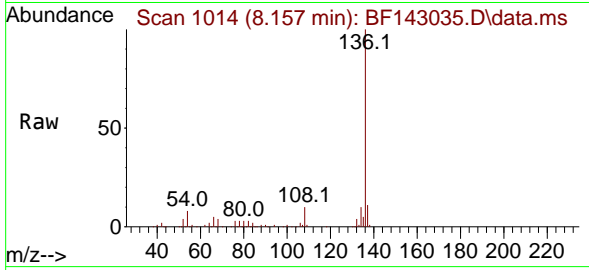


#21
 Naphthalene-d8
 Concen: 20.000 ng
 RT: 8.157 min Scan# 1014
 Delta R.T. -0.012 min
 Lab File: BF143035.D
 Acq: 08 Jul 2025 16:05

Instrument :
 BNA_F
 ClientSampleId :
 TP-81

Tgt Ion: 136 Resp: 187293

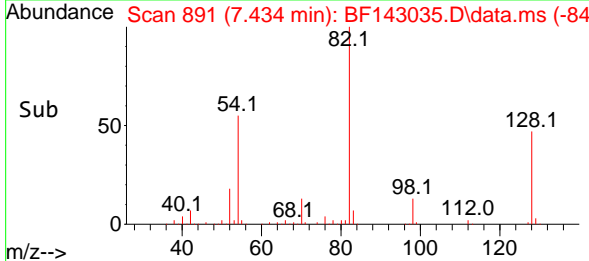
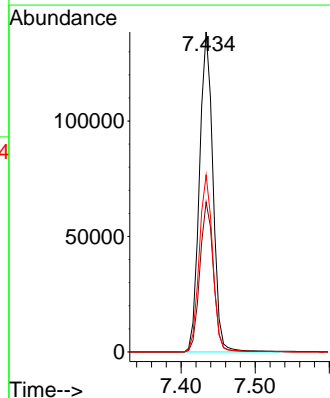
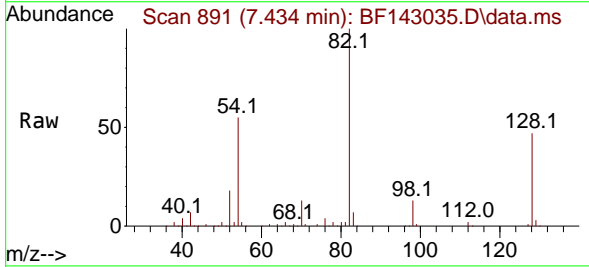
Ion	Ratio	Lower	Upper
136	100		
137	10.8	8.4	12.6
54	7.5	6.3	9.5
68	4.3	3.7	5.5

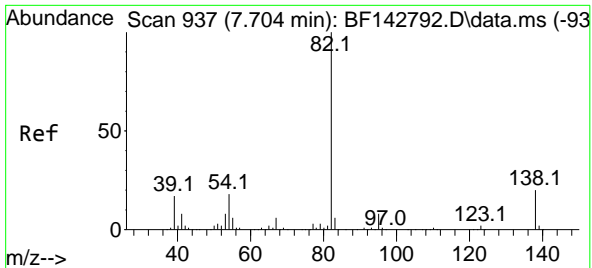


#23
 Nitrobenzene-d5
 Concen: 51.312 ng
 RT: 7.434 min Scan# 891
 Delta R.T. -0.011 min
 Lab File: BF143035.D
 Acq: 08 Jul 2025 16:05

Tgt Ion: 82 Resp: 175210

Ion	Ratio	Lower	Upper
82	100		
128	46.9	37.7	56.5
54	55.3	45.7	68.5

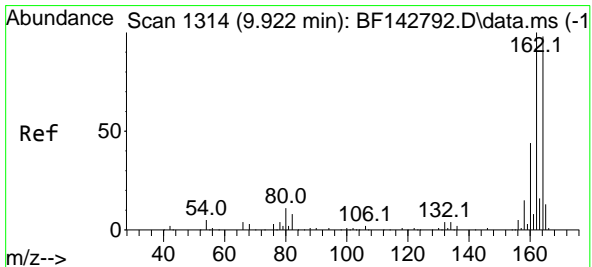
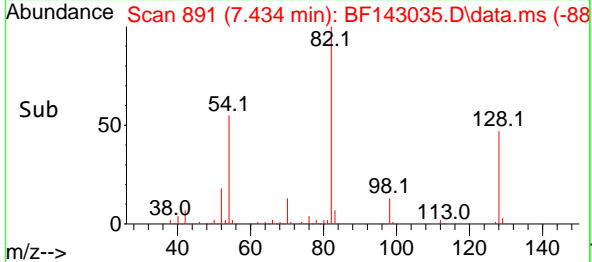
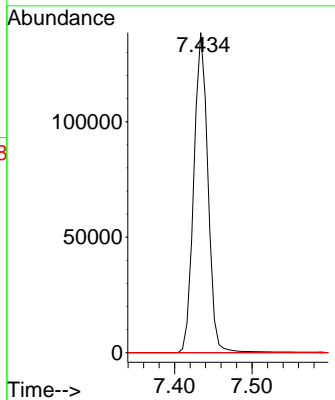
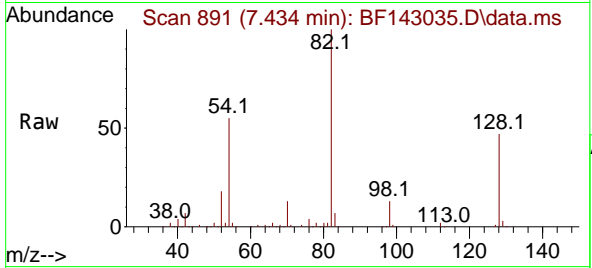




#25
 Isophorone
 Concen: 31.987 ng
 RT: 7.434 min Scan# 891
 Delta R.T. -0.270 min
 Lab File: BF143035.D
 Acq: 08 Jul 2025 16:05

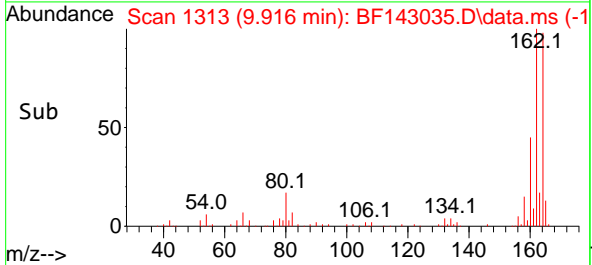
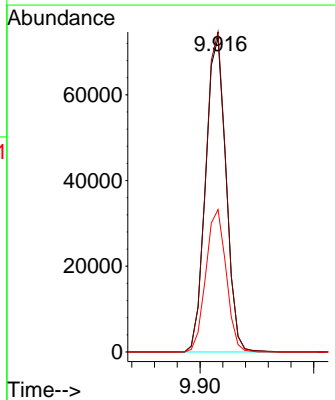
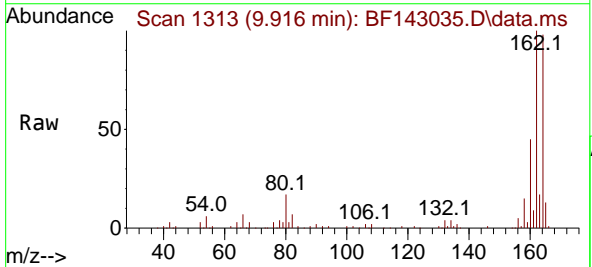
Instrument :
 BNA_F
 ClientSampleId :
 TP-81

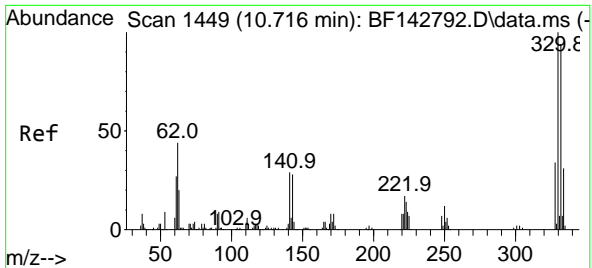
Tgt Ion: 82 Resp: 175208
 Ion Ratio Lower Upper
 82 100
 95 0.0 6.2 9.2#
 138 0.0 16.2 24.4#



#39
 Acenaphthene-d10
 Concen: 20.000 ng
 RT: 9.916 min Scan# 1313
 Delta R.T. -0.006 min
 Lab File: BF143035.D
 Acq: 08 Jul 2025 16:05

Tgt Ion:164 Resp: 91194
 Ion Ratio Lower Upper
 164 100
 162 101.8 81.8 122.8
 160 45.3 36.0 54.0



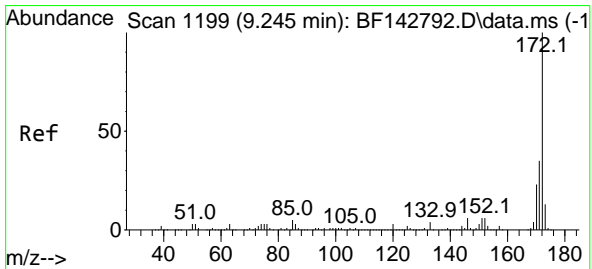
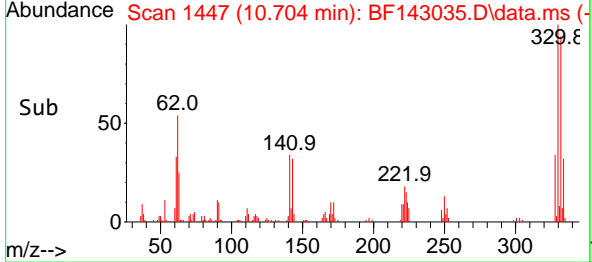
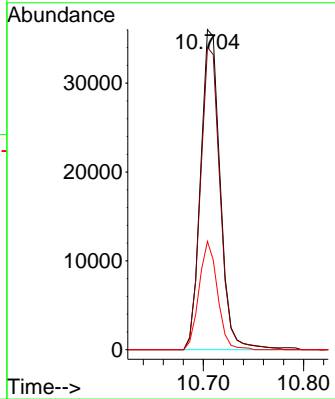
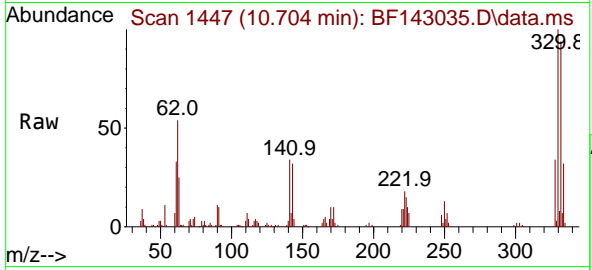


#42
 2,4,6-Tribromophenol
 Concen: 52.092 ng
 RT: 10.704 min Scan# 1447
 Delta R.T. -0.012 min
 Lab File: BF143035.D
 Acq: 08 Jul 2025 16:05

Instrument :
 BNA_F
 ClientSampleId :
 TP-81

Tgt Ion:330 Resp: 48886

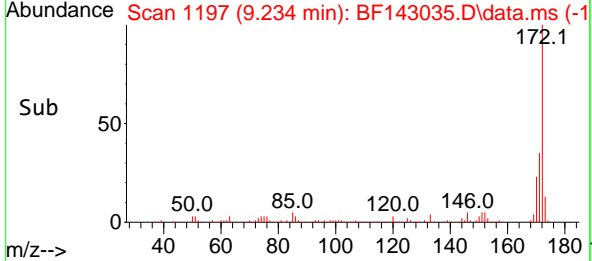
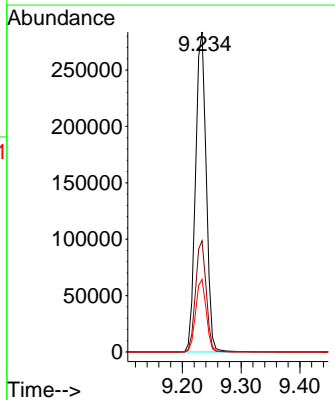
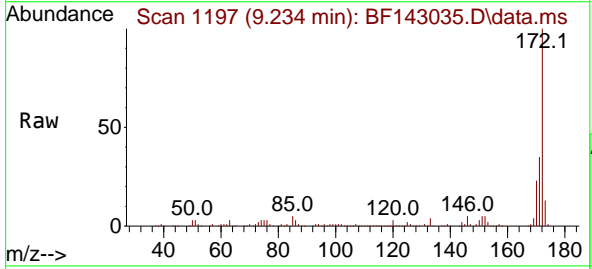
Ion	Ratio	Lower	Upper
330	100		
332	95.2	75.0	112.6
141	31.9	25.3	37.9

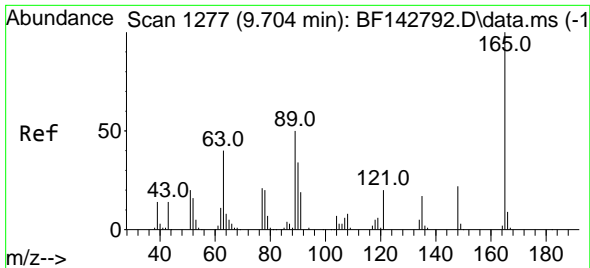


#45
 2-Fluorobiphenyl
 Concen: 51.641 ng
 RT: 9.234 min Scan# 1197
 Delta R.T. -0.011 min
 Lab File: BF143035.D
 Acq: 08 Jul 2025 16:05

Tgt Ion:172 Resp: 358484

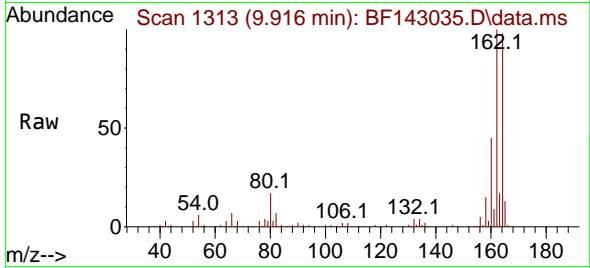
Ion	Ratio	Lower	Upper
172	100		
171	34.7	28.2	42.4
170	22.7	18.5	27.7





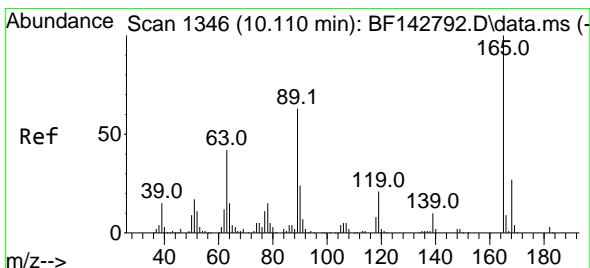
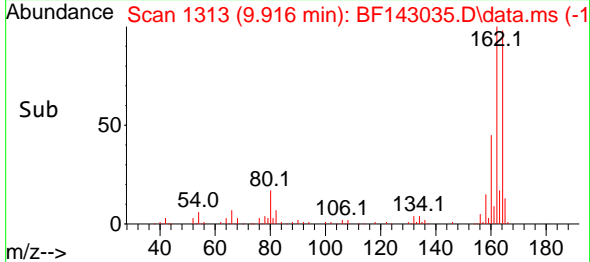
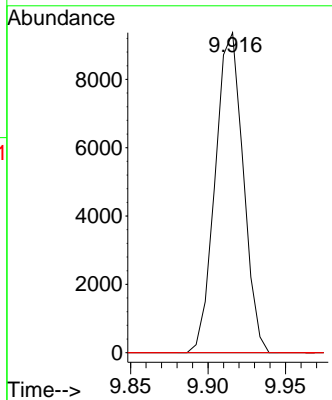
#51
 2,6-Dinitrotoluene
 Concen: 9.076 ng
 RT: 9.916 min Scan# 11
 Delta R.T. 0.212 min
 Lab File: BF143035.D
 Acq: 08 Jul 2025 16:05

Instrument :
 BNA_F
 ClientSampleId :
 TP-81



Tgt Ion:165 Resp: 11766
 Ion Ratio Lower Upper

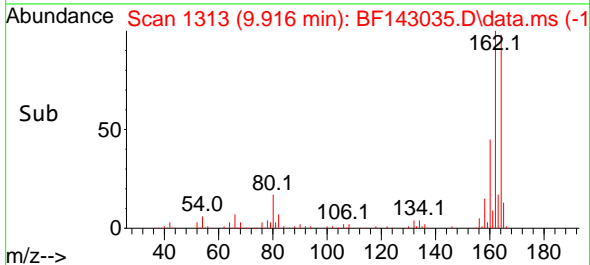
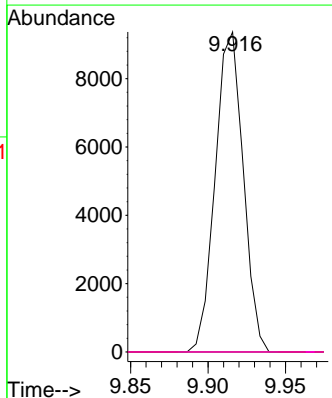
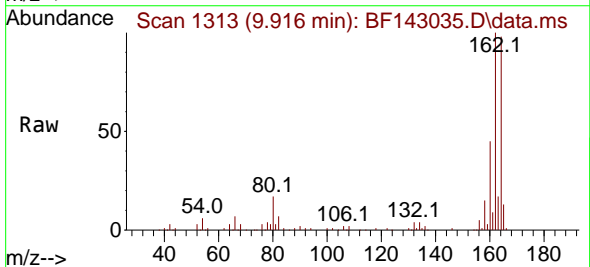
Ion	Ratio	Lower	Upper
165	100		
63	0.0	44.2	66.4#
89	0.0	39.8	59.8#

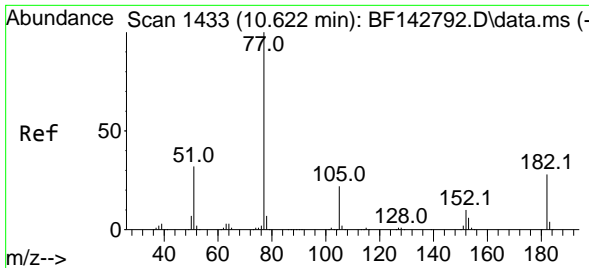


#57
 2,4-Dinitrotoluene
 Concen: 6.833 ng
 RT: 9.916 min Scan# 1313
 Delta R.T. -0.194 min
 Lab File: BF143035.D
 Acq: 08 Jul 2025 16:05

Tgt Ion:165 Resp: 11766
 Ion Ratio Lower Upper

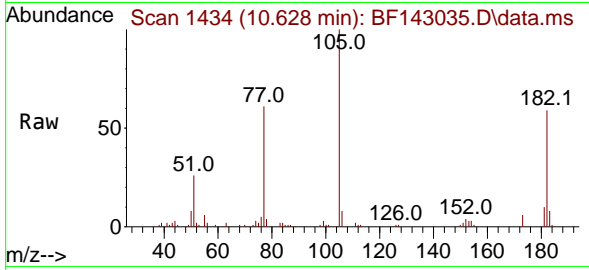
Ion	Ratio	Lower	Upper
165	100		
63	0.0	33.9	50.9#
89	0.0	50.6	75.8#
182	0.0	2.3	3.5#



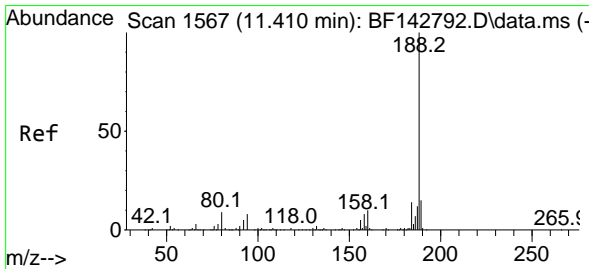
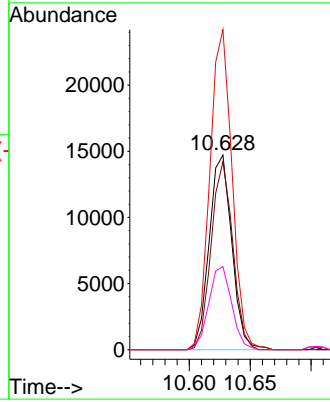
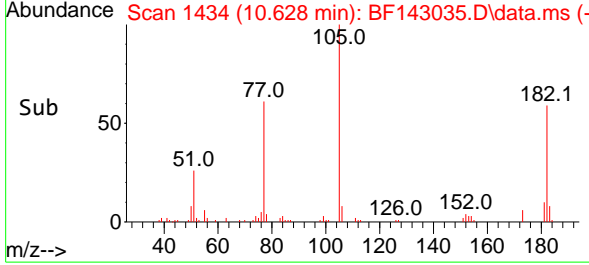


#63
 Azobenzene
 Concen: 3.675 ng
 RT: 10.628 min Scan# 1433
 Delta R.T. 0.006 min
 Lab File: BF143035.D
 Acq: 08 Jul 2025 16:05

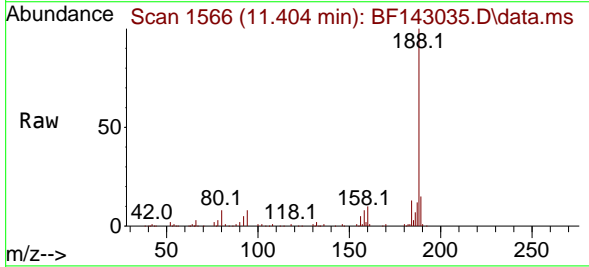
Instrument : BNA_F
 ClientSampleId : TP-81



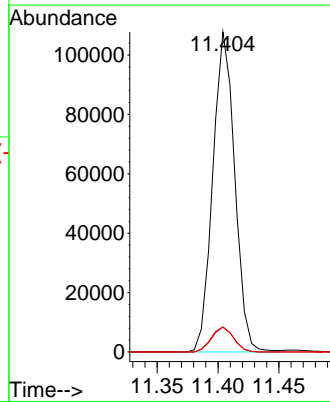
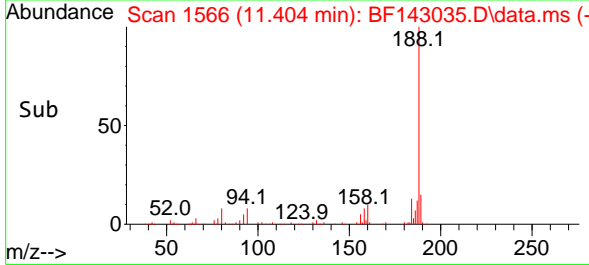
Tgt Ion: 77 Resp: 19013
 Ion Ratio Lower Upper
 77 100
 182 96.6 7.7 47.7#
 105 164.5 1.9 41.9#
 51 42.7 13.3 53.3

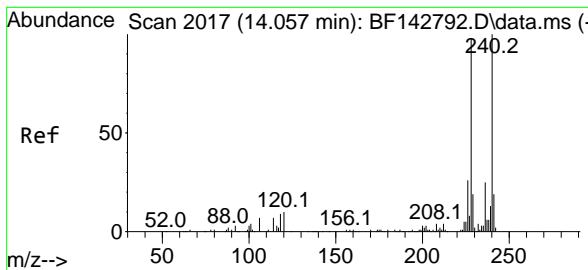


#64
 Phenanthrene-d10
 Concen: 20.000 ng
 RT: 11.404 min Scan# 1566
 Delta R.T. -0.006 min
 Lab File: BF143035.D
 Acq: 08 Jul 2025 16:05



Tgt Ion: 188 Resp: 135239
 Ion Ratio Lower Upper
 188 100
 94 7.7 6.7 10.1
 80 7.9 6.9 10.3



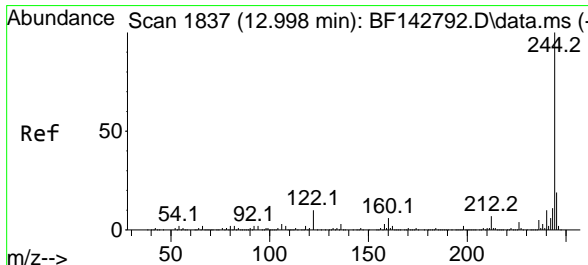
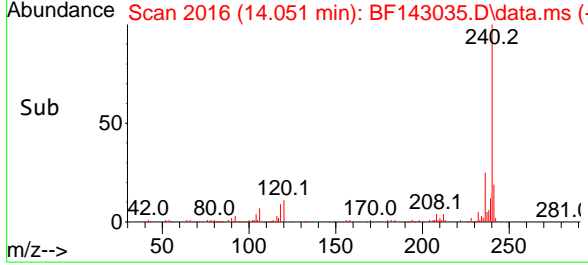
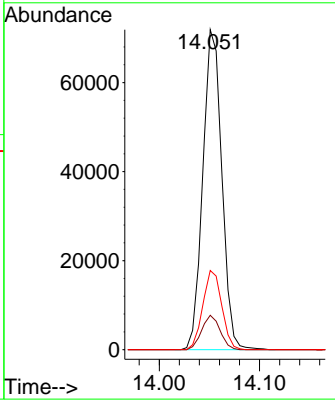
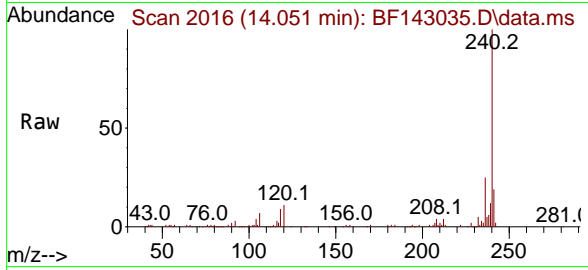


#76
 Chrysene-d12
 Concen: 20.000 ng
 RT: 14.051 min Scan# 20
 Delta R.T. -0.006 min
 Lab File: BF143035.D
 Acq: 08 Jul 2025 16:05

Instrument :
 BNA_F
 ClientSampleId :
 TP-81

Tgt Ion:240 Resp: 94806

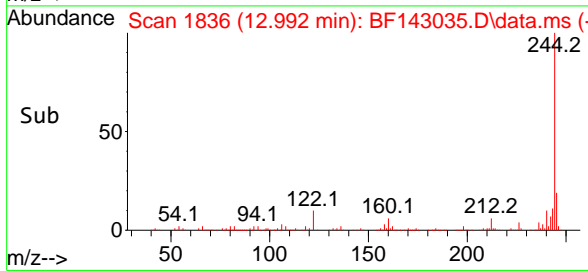
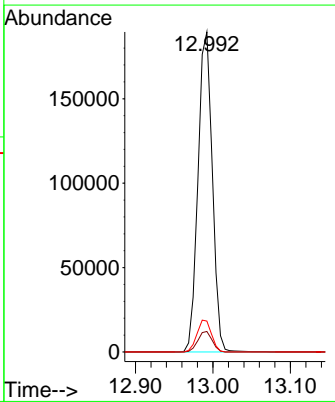
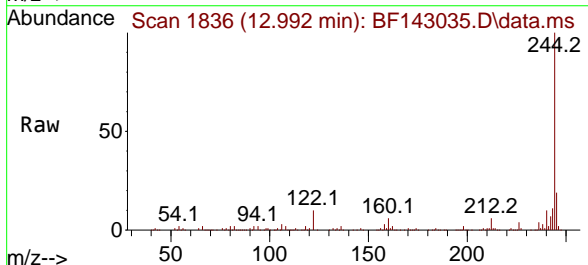
Ion	Ratio	Lower	Upper
240	100		
120	10.8	8.2	12.2
236	24.7	19.8	29.8

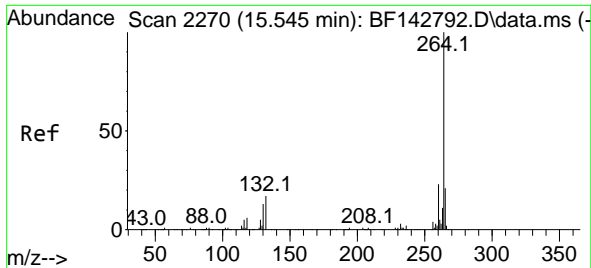


#79
 Terphenyl-d14
 Concen: 35.436 ng
 RT: 12.992 min Scan# 1836
 Delta R.T. -0.006 min
 Lab File: BF143035.D
 Acq: 08 Jul 2025 16:05

Tgt Ion:244 Resp: 243143

Ion	Ratio	Lower	Upper
244	100		
212	6.4	5.4	8.0
122	9.7	8.2	12.2





#86
 Perylene-d12
 Concen: 20.000 ng
 RT: 15.551 min Scan# 21
 Delta R.T. 0.006 min
 Lab File: BF143035.D
 Acq: 08 Jul 2025 16:05

Instrument :
 BNA_F
 ClientSampleId :
 TP-81

Tgt Ion:264 Resp: 119948

Ion	Ratio	Lower	Upper
264	100		
260	22.5	18.1	27.1
265	20.9	16.6	25.0

