

Data Path : Z:\svoasrv\HPCHEM1\BNA_F\Data\BF070825\
 Data File : BF143036.D
 Acq On : 08 Jul 2025 16:36
 Operator : RC/JU
 Sample : Q2514-03
 Misc :
 ALS Vial : 13 Sample Multiplier: 1

Instrument :
 BNA_F
 ClientSampleId :
 TP-94

Quant Time: Jul 08 17:01:46 2025
 Quant Method : Z:\svoasrv\HPCHEM1\BNA_F\Methods\8270-BF061925.M
 Quant Title : ASP BNA STANDARDS FOR 5 POINT CALIBRATION
 QLast Update : Tue Jun 24 05:28:21 2025
 Response via : Initial Calibration

Compound	R.T.	QIon	Response	Conc	Units	Dev(Min)

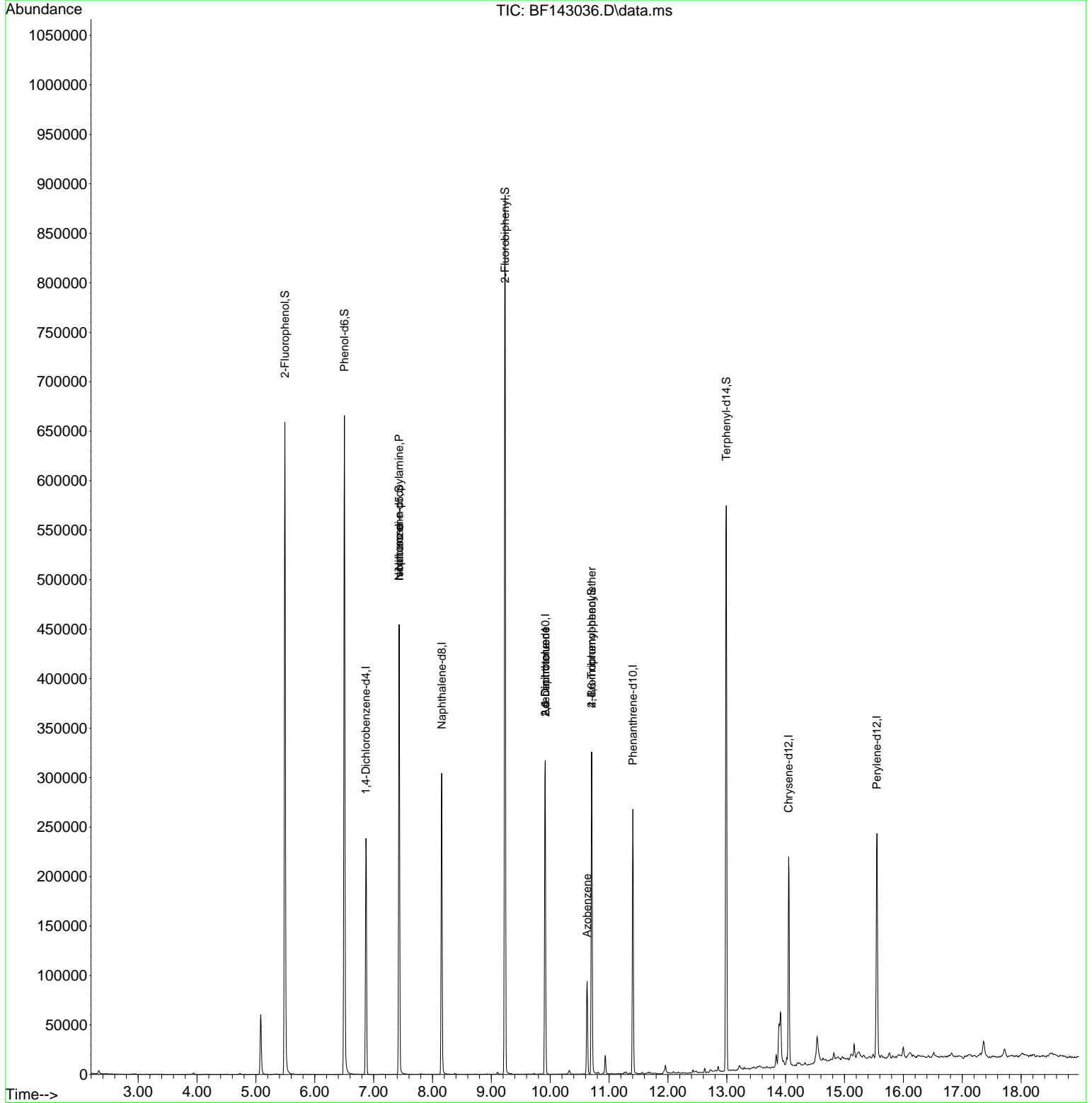
Internal Standards						
1) 1,4-Dichlorobenzene-d4	6.869	152	53325	20.000	ng	-0.01
21) Naphthalene-d8	8.157	136	200031	20.000	ng	-0.01
39) Acenaphthene-d10	9.916	164	97923	20.000	ng	0.00
64) Phenanthrene-d10	11.404	188	139376	20.000	ng	0.00
76) Chrysene-d12	14.051	240	103985	20.000	ng	0.00
86) Perylene-d12	15.551	264	130813	20.000	ng	0.00
System Monitoring Compounds						
5) 2-Fluorophenol	5.493	112	256700	80.147	ng	0.00
7) Phenol-d6	6.504	99	305035	80.724	ng	0.00
23) Nitrobenzene-d5	7.434	82	189345	51.921	ng	-0.01
42) 2,4,6-Tribromophenol	10.704	330	56884	56.450	ng	-0.01
45) 2-Fluorobiphenyl	9.234	172	410923	55.127	ng	-0.01
79) Terphenyl-d14	12.992	244	281903	37.458	ng	0.00
Target Compounds						
						Qvalue
19) n-Nitroso-di-n-propyla...	7.434	70	25590	11.644	ng	# 75
25) Isophorone	7.434	82	189344	32.366	ng	# 62
51) 2,6-Dinitrotoluene	9.916	165	12801	9.196	ng	# 26
57) 2,4-Dinitrotoluene	9.916	165	12801	6.923	ng	# 26
63) Azobenzene	10.628	77	20864	3.756	ng	# 1
67) 4-Bromophenyl-phenylether	10.704	248	3835	2.418	ng	# 1

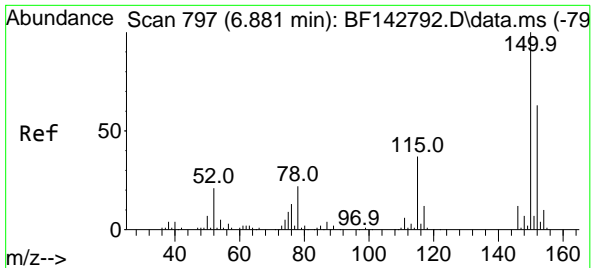
(#) = qualifier out of range (m) = manual integration (+) = signals summed

Data Path : Z:\svoasrv\HPCHEM1\BNA_F\Data\BF070825\
 Data File : BF143036.D
 Acq On : 08 Jul 2025 16:36
 Operator : RC/JU
 Sample : Q2514-03
 Misc :
 ALS Vial : 13 Sample Multiplier: 1

Instrument :
 BNA_F
 ClientSampleId :
 TP-94

Quant Time: Jul 08 17:01:46 2025
 Quant Method : Z:\svoasrv\HPCHEM1\BNA_F\Methods\8270-BF061925.M
 Quant Title : ASP BNA STANDARDS FOR 5 POINT CALIBRATION
 QLast Update : Tue Jun 24 05:28:21 2025
 Response via : Initial Calibration

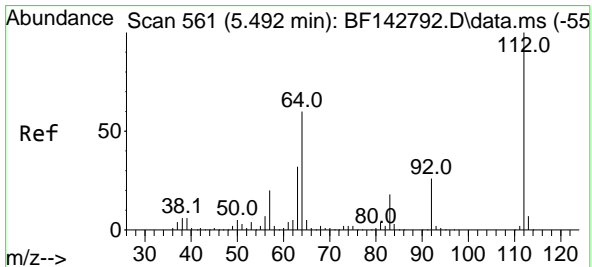
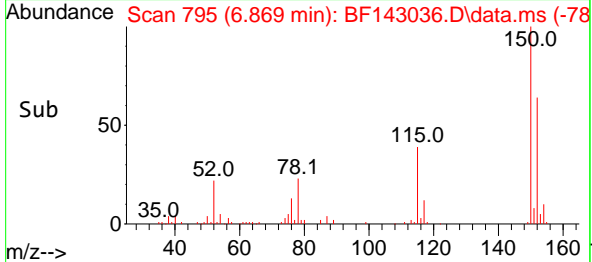
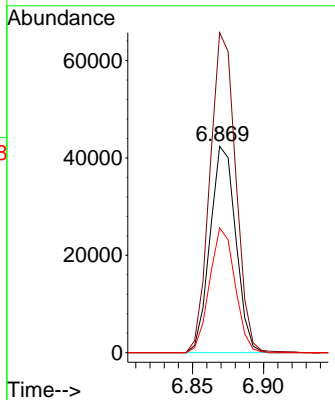
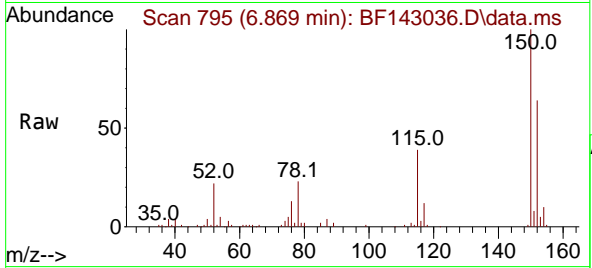




#1
 1,4-Dichlorobenzene-d4
 Concen: 20.000 ng
 RT: 6.869 min Scan# 795
 Delta R.T. -0.012 min
 Lab File: BF143036.D
 Acq: 08 Jul 2025 16:36

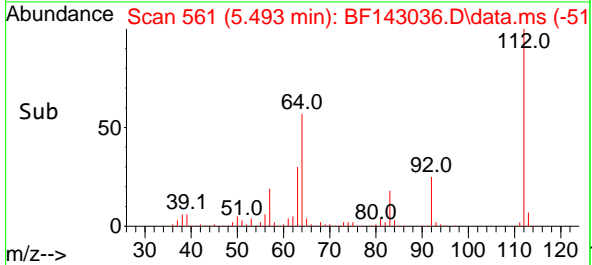
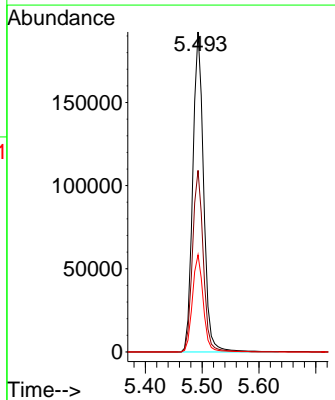
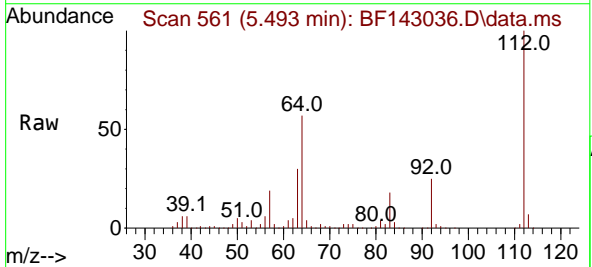
Instrument :
 BNA_F
 ClientSampleId :
 TP-94

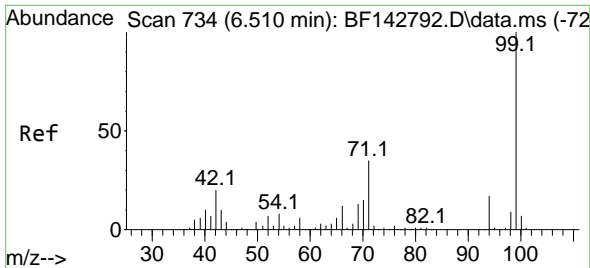
Tgt Ion:152 Resp: 53325
 Ion Ratio Lower Upper
 152 100
 150 155.1 127.2 190.8
 115 60.5 46.6 69.8



#5
 2-Fluorophenol
 Concen: 80.147 ng
 RT: 5.493 min Scan# 561
 Delta R.T. 0.001 min
 Lab File: BF143036.D
 Acq: 08 Jul 2025 16:36

Tgt Ion:112 Resp: 256700
 Ion Ratio Lower Upper
 112 100
 64 56.8 48.2 72.2
 63 30.4 25.7 38.5



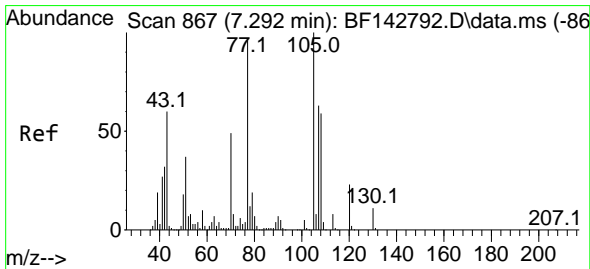
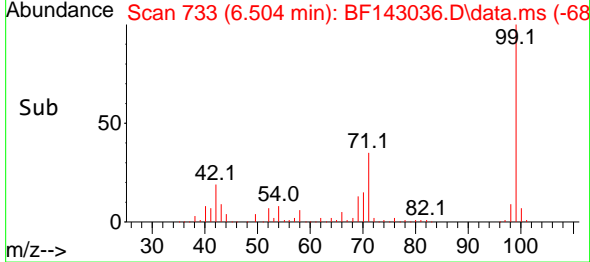
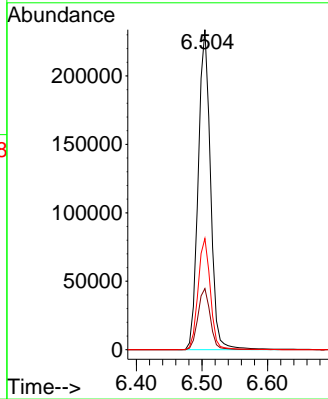
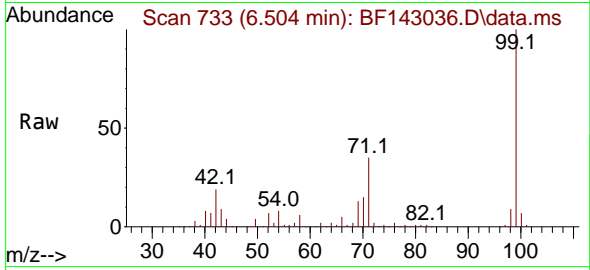


#7
 Phenol-d6
 Concen: 80.724 ng
 RT: 6.504 min Scan# 711
 Delta R.T. -0.006 min
 Lab File: BF143036.D
 Acq: 08 Jul 2025 16:36

Instrument :
 BNA_F
 ClientSampleId :
 TP-94

Tgt Ion: 99 Resp: 305035

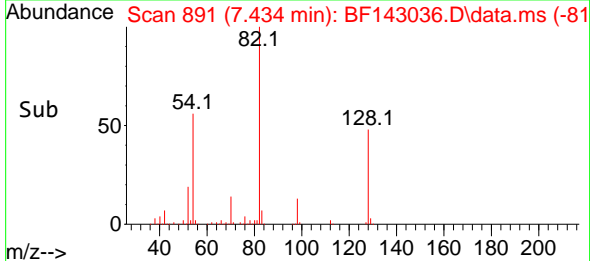
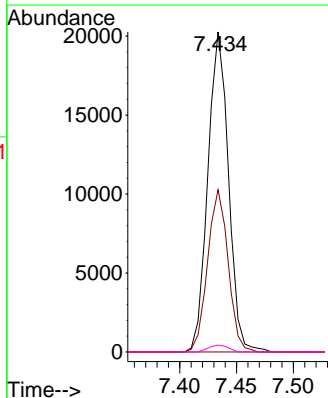
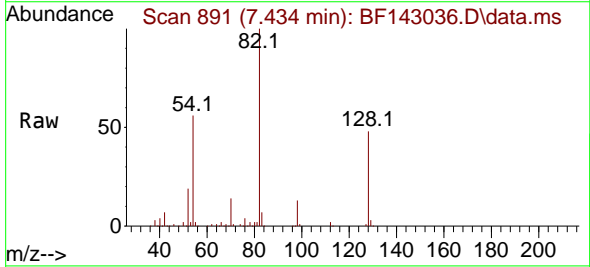
Ion	Ratio	Lower	Upper
99	100		
42	19.1	15.9	23.9
71	34.7	27.8	41.8

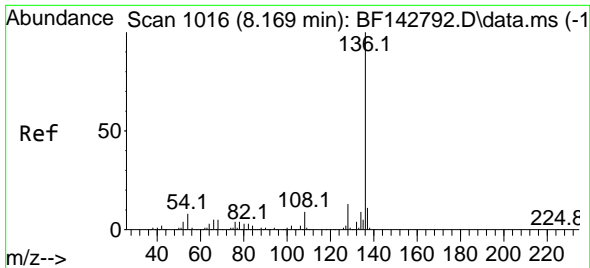


#19
 n-Nitroso-di-n-propylamine
 Concen: 11.644 ng
 RT: 7.434 min Scan# 891
 Delta R.T. 0.141 min
 Lab File: BF143036.D
 Acq: 08 Jul 2025 16:36

Tgt Ion: 70 Resp: 25590

Ion	Ratio	Lower	Upper
70	100		
42	50.7	52.1	78.1#
101	0.0	8.2	12.2#
130	2.2	18.2	27.2#



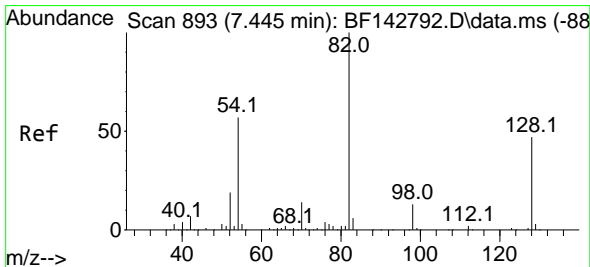
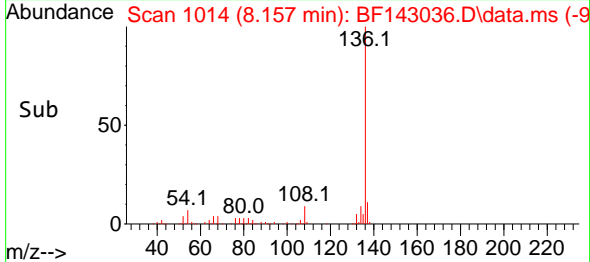
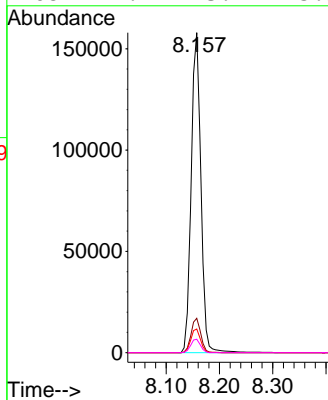
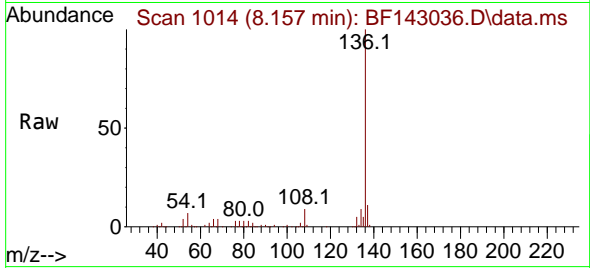


#21
 Naphthalene-d8
 Concen: 20.000 ng
 RT: 8.157 min Scan# 1014
 Delta R.T. -0.012 min
 Lab File: BF143036.D
 Acq: 08 Jul 2025 16:36

Instrument : BNA_F
 Client SampleId : TP-94

Tgt Ion: 136 Resp: 200031

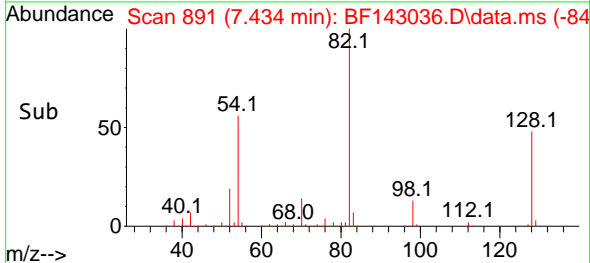
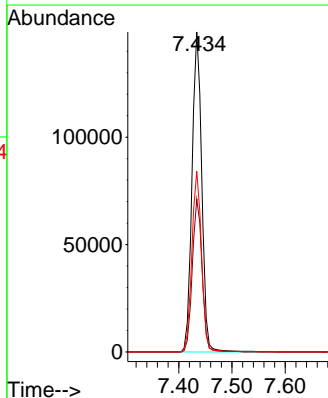
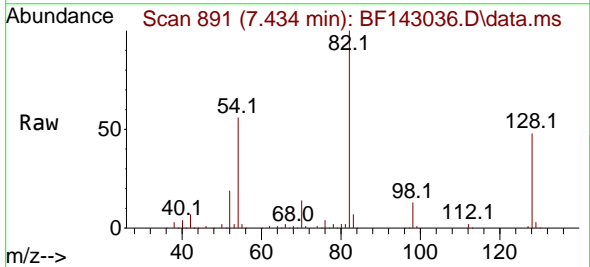
Ion	Ratio	Lower	Upper
136	100		
137	10.8	8.4	12.6
54	7.4	6.3	9.5
68	4.2	3.7	5.5

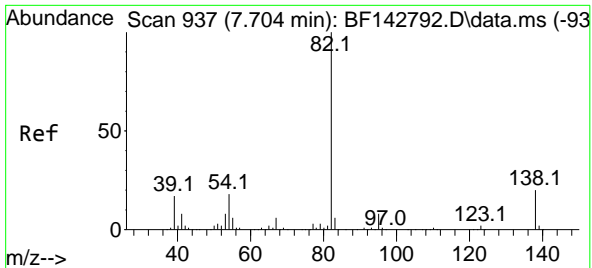


#23
 Nitrobenzene-d5
 Concen: 51.921 ng
 RT: 7.434 min Scan# 891
 Delta R.T. -0.011 min
 Lab File: BF143036.D
 Acq: 08 Jul 2025 16:36

Tgt Ion: 82 Resp: 189345

Ion	Ratio	Lower	Upper
82	100		
128	47.8	37.7	56.5
54	56.4	45.7	68.5

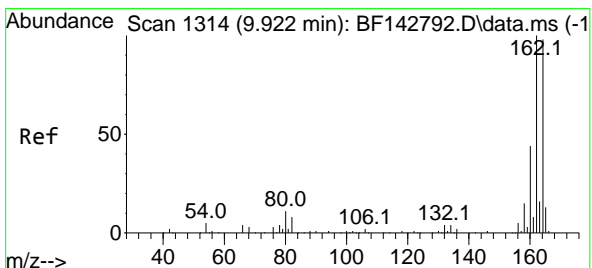
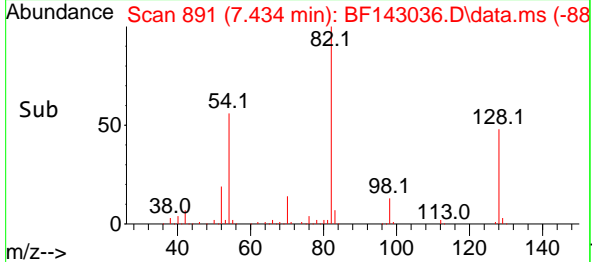
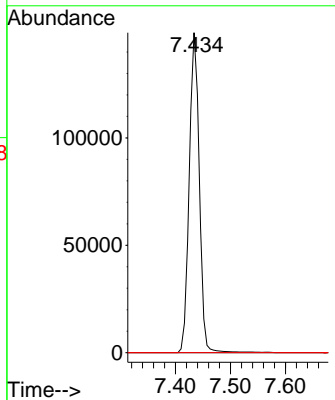
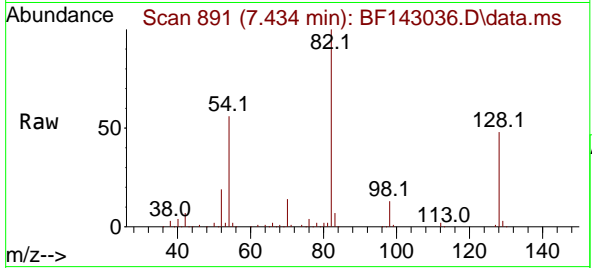




#25
 Isophorone
 Concen: 32.366 ng
 RT: 7.434 min Scan# 891
 Delta R.T. -0.270 min
 Lab File: BF143036.D
 Acq: 08 Jul 2025 16:36

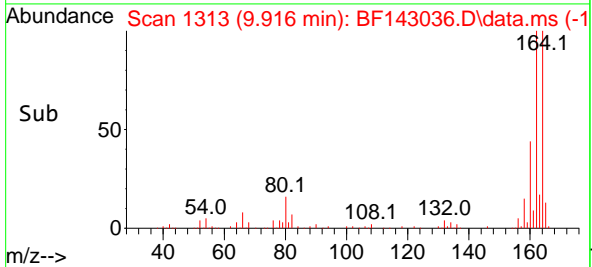
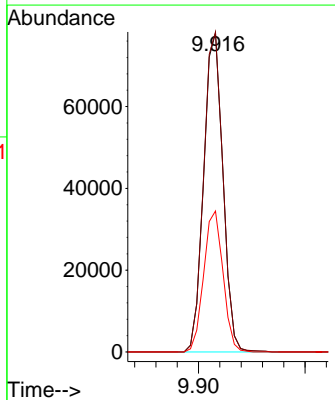
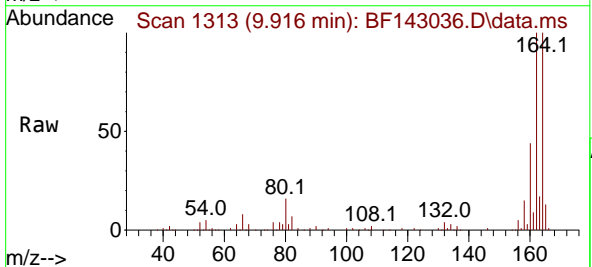
Instrument : BNA_F
 Client SampleId : TP-94

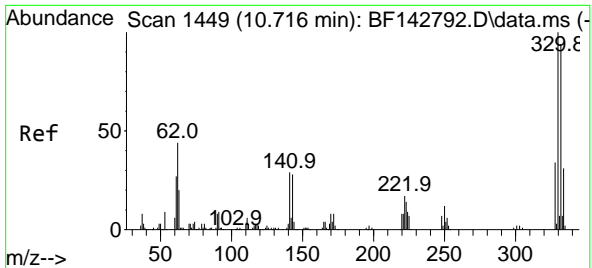
Tgt Ion: 82 Resp: 189344
 Ion Ratio Lower Upper
 82 100
 95 0.0 6.2 9.2#
 138 0.0 16.2 24.4#



#39
 Acenaphthene-d10
 Concen: 20.000 ng
 RT: 9.916 min Scan# 1313
 Delta R.T. -0.006 min
 Lab File: BF143036.D
 Acq: 08 Jul 2025 16:36

Tgt Ion:164 Resp: 97923
 Ion Ratio Lower Upper
 164 100
 162 100.3 81.8 122.8
 160 44.2 36.0 54.0



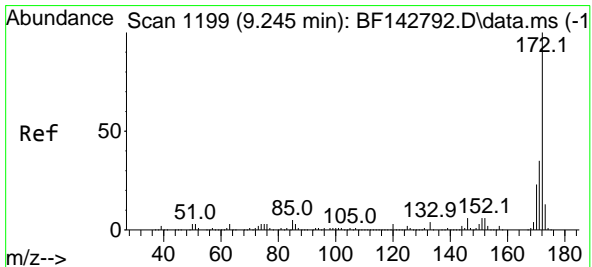
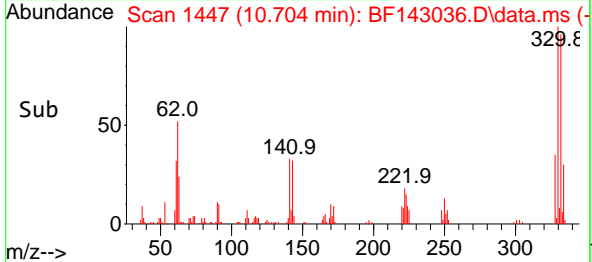
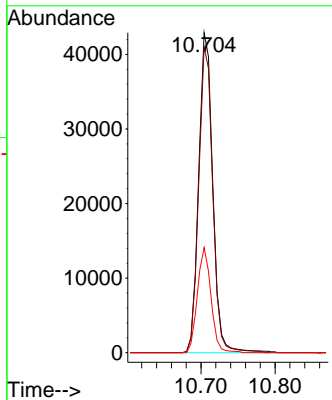
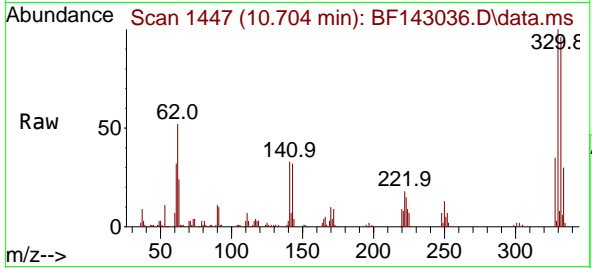


#42
 2,4,6-Tribromophenol
 Concen: 56.450 ng
 RT: 10.704 min Scan# 1447
 Delta R.T. -0.012 min
 Lab File: BF143036.D
 Acq: 08 Jul 2025 16:36

Instrument :
 BNA_F
 ClientSampleId :
 TP-94

Tgt Ion:330 Resp: 56884

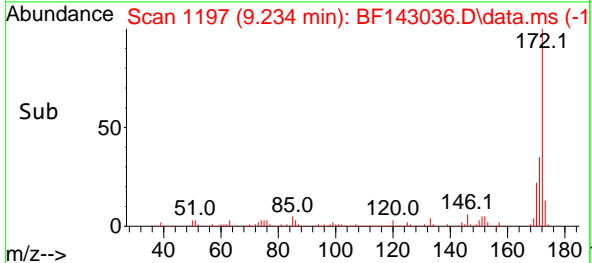
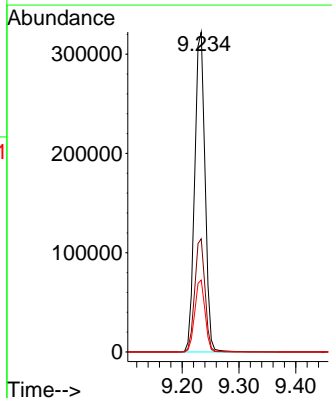
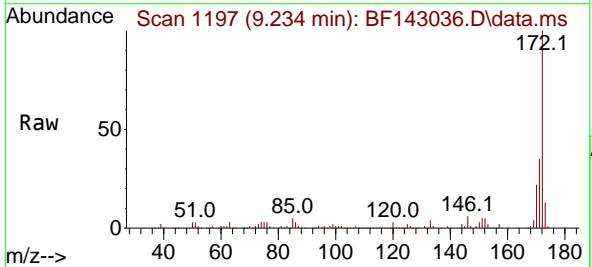
Ion	Ratio	Lower	Upper
330	100		
332	95.1	75.0	112.6
141	31.5	25.3	37.9

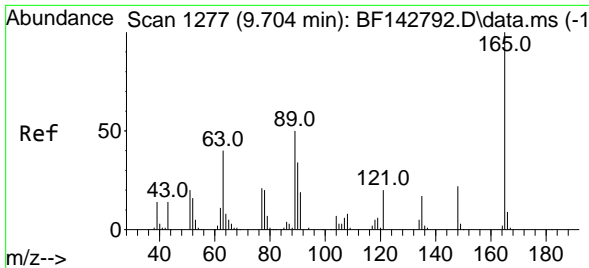


#45
 2-Fluorobiphenyl
 Concen: 55.127 ng
 RT: 9.234 min Scan# 1197
 Delta R.T. -0.011 min
 Lab File: BF143036.D
 Acq: 08 Jul 2025 16:36

Tgt Ion:172 Resp: 410923

Ion	Ratio	Lower	Upper
172	100		
171	35.3	28.2	42.4
170	22.5	18.5	27.7

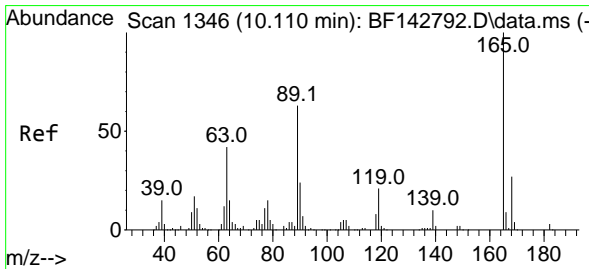
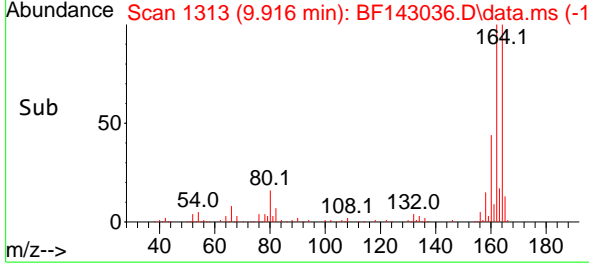
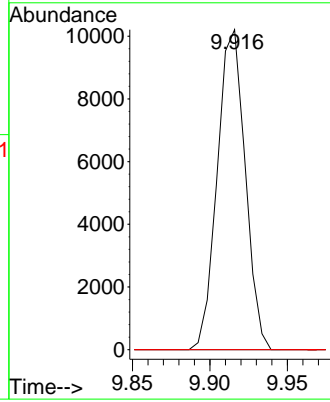
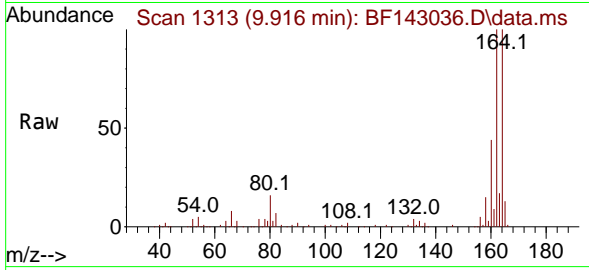




#51
 2,6-Dinitrotoluene
 Concen: 9.196 ng
 RT: 9.916 min Scan# 11
 Delta R.T. 0.212 min
 Lab File: BF143036.D
 Acq: 08 Jul 2025 16:36

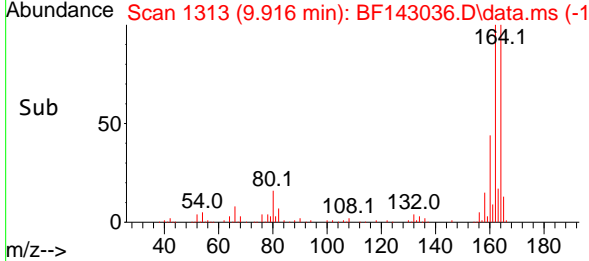
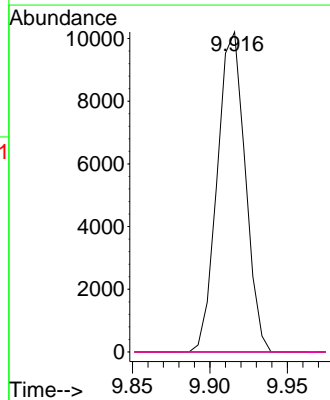
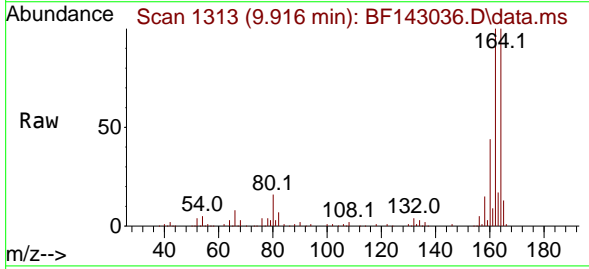
Instrument :
 BNA_F
 ClientSampleId :
 TP-94

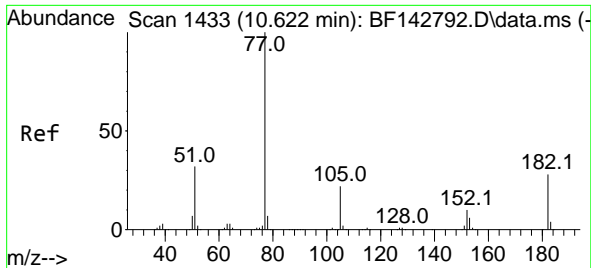
Tgt Ion:165 Resp: 12801
 Ion Ratio Lower Upper
 165 100
 63 0.0 44.2 66.4#
 89 0.0 39.8 59.8#



#57
 2,4-Dinitrotoluene
 Concen: 6.923 ng
 RT: 9.916 min Scan# 1313
 Delta R.T. -0.194 min
 Lab File: BF143036.D
 Acq: 08 Jul 2025 16:36

Tgt Ion:165 Resp: 12801
 Ion Ratio Lower Upper
 165 100
 63 0.0 33.9 50.9#
 89 0.0 50.6 75.8#
 182 0.0 2.3 3.5#

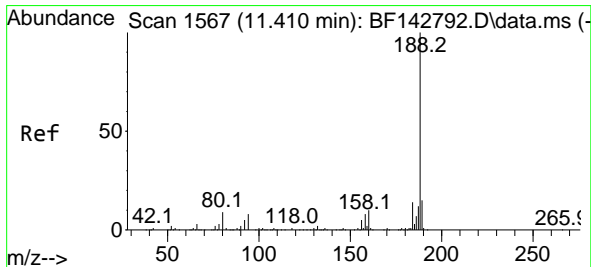
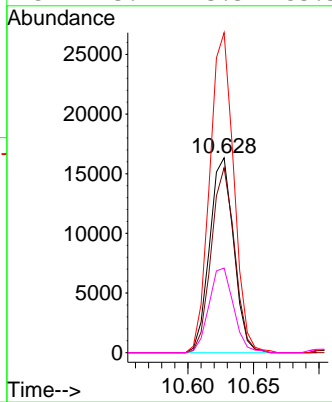
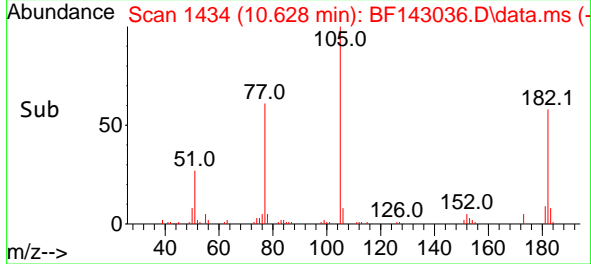
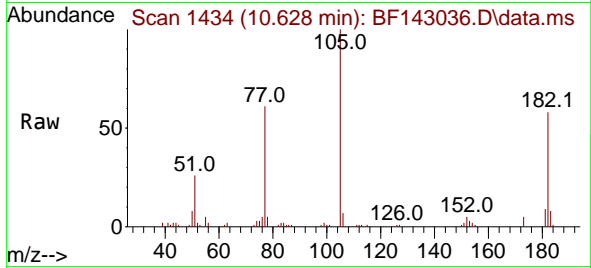




#63
 Azobenzene
 Concen: 3.756 ng
 RT: 10.628 min Scan# 14
 Delta R.T. 0.006 min
 Lab File: BF143036.D
 Acq: 08 Jul 2025 16:36

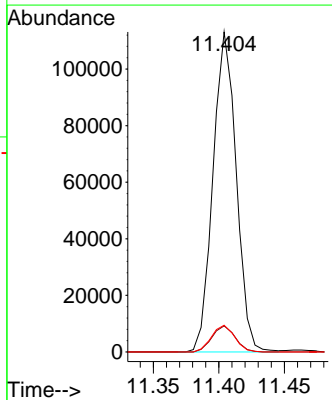
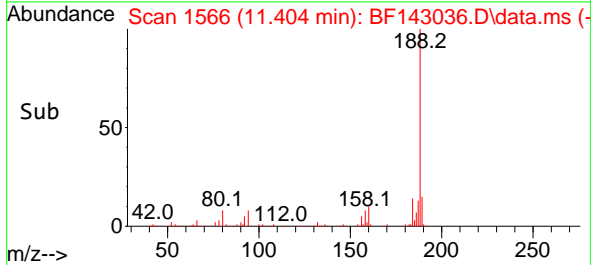
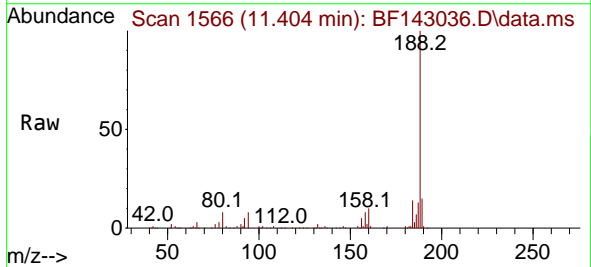
Instrument : BNA_F
 ClientSampleId : TP-94

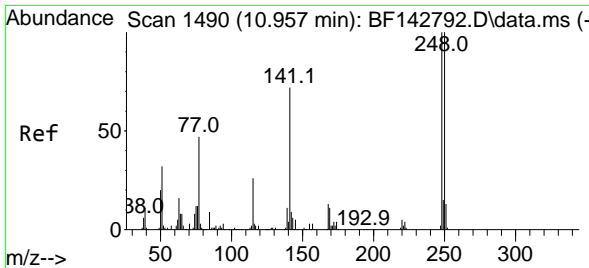
Tgt Ion	Resp	Lower	Upper
77	100		
182	94.9	7.7	47.7#
105	164.2	1.9	41.9#
51	43.4	13.3	53.3



#64
 Phenanthrene-d10
 Concen: 20.000 ng
 RT: 11.404 min Scan# 1566
 Delta R.T. -0.006 min
 Lab File: BF143036.D
 Acq: 08 Jul 2025 16:36

Tgt Ion	Resp	Lower	Upper
188	100		
94	8.2	6.7	10.1
80	8.3	6.9	10.3



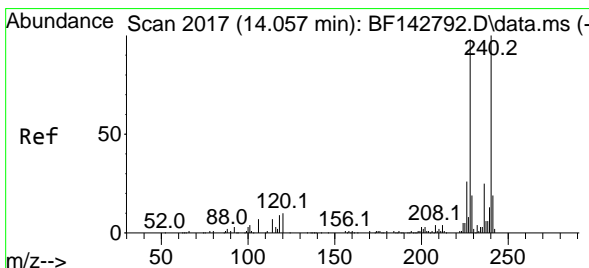
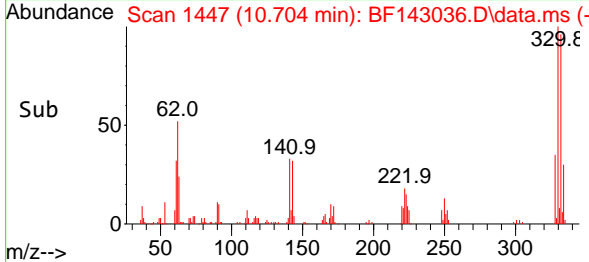
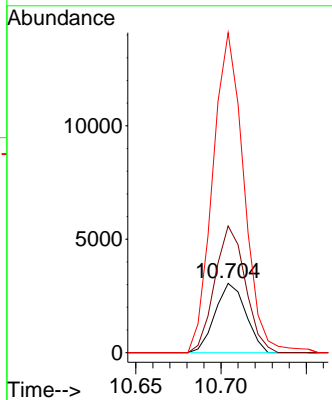
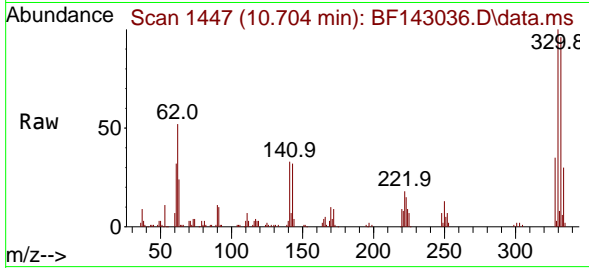


#67
 4-Bromophenyl-phenylether
 Concen: 2.418 ng
 RT: 10.704 min Scan# 14
 Delta R.T. -0.253 min
 Lab File: BF143036.D
 Acq: 08 Jul 2025 16:36

Instrument :
 BNA_F
 ClientSampleId :
 TP-94

Tgt Ion:248 Resp: 3835

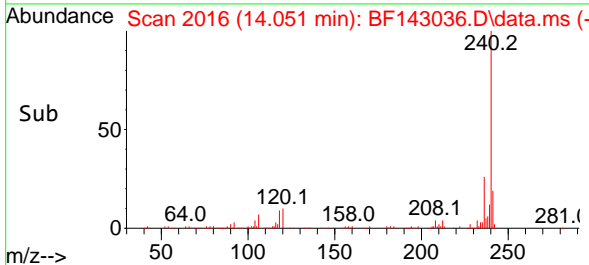
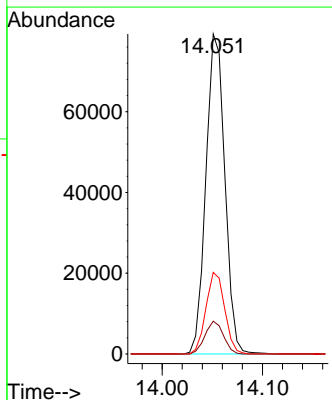
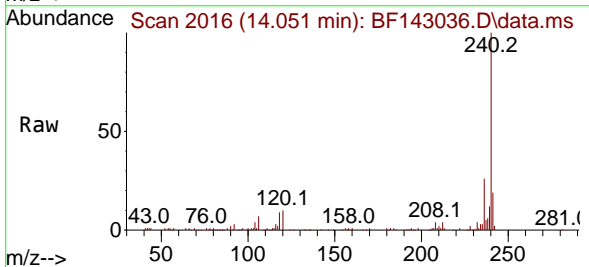
Ion	Ratio	Lower	Upper
248	100		
250	182.7	79.8	119.8#
141	461.7	57.8	86.6#

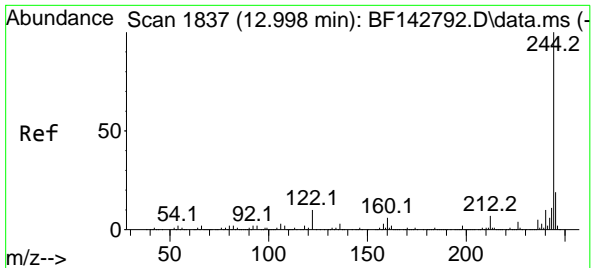


#76
 Chrysene-d12
 Concen: 20.000 ng
 RT: 14.051 min Scan# 2016
 Delta R.T. -0.006 min
 Lab File: BF143036.D
 Acq: 08 Jul 2025 16:36

Tgt Ion:240 Resp: 103985

Ion	Ratio	Lower	Upper
240	100		
120	10.2	8.2	12.2
236	25.5	19.8	29.8



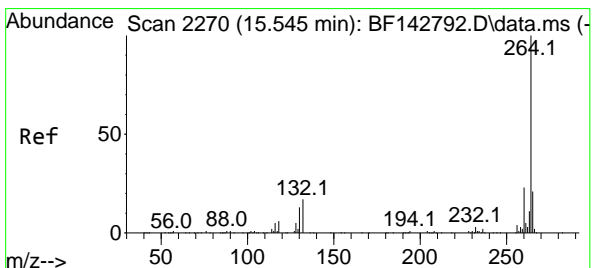
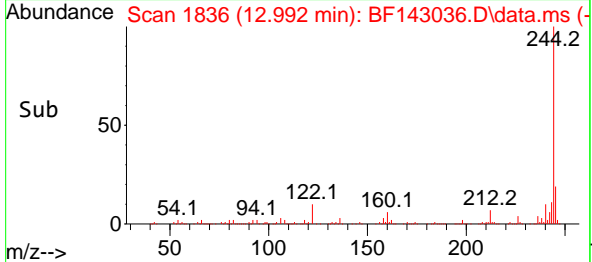
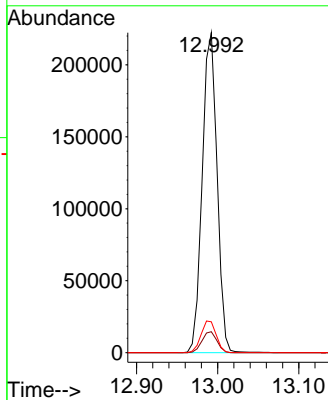
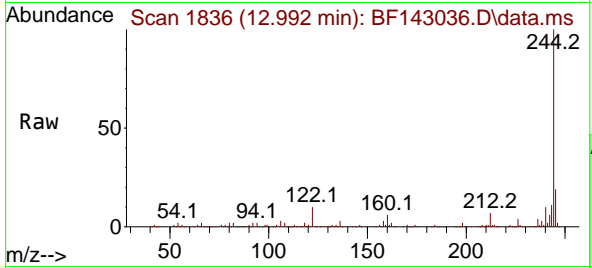


#79
 Terphenyl-d14
 Concen: 37.458 ng
 RT: 12.992 min Scan# 1836
 Delta R.T. -0.006 min
 Lab File: BF143036.D
 Acq: 08 Jul 2025 16:36

Instrument : BNA_F
 ClientSampleId : TP-94

Tgt Ion:244 Resp: 281903

Ion	Ratio	Lower	Upper
244	100		
212	6.6	5.4	8.0
122	9.7	8.2	12.2



#86
 Perylene-d12
 Concen: 20.000 ng
 RT: 15.551 min Scan# 2271
 Delta R.T. 0.006 min
 Lab File: BF143036.D
 Acq: 08 Jul 2025 16:36

Tgt Ion:264 Resp: 130813

Ion	Ratio	Lower	Upper
264	100		
260	22.6	18.1	27.1
265	21.8	16.6	25.0

