

Data Path : Z:\svoasrv\HPCHEM1\BNA\_F\Data\BF070825\  
 Data File : BF143043.D  
 Acq On : 08 Jul 2025 20:12  
 Operator : RC/JU  
 Sample : Q2473-01DL 20X  
 Misc :  
 ALS Vial : 20 Sample Multiplier: 1

Instrument :  
 BNA\_F  
 ClientSampleId :  
 PIT#1DL

Quant Time: Jul 09 01:41:52 2025  
 Quant Method : Z:\svoasrv\HPCHEM1\BNA\_F\Methods\8270-BF061925.M  
 Quant Title : ASP BNA STANDARDS FOR 5 POINT CALIBRATION  
 QLast Update : Tue Jun 24 05:28:21 2025  
 Response via : Initial Calibration

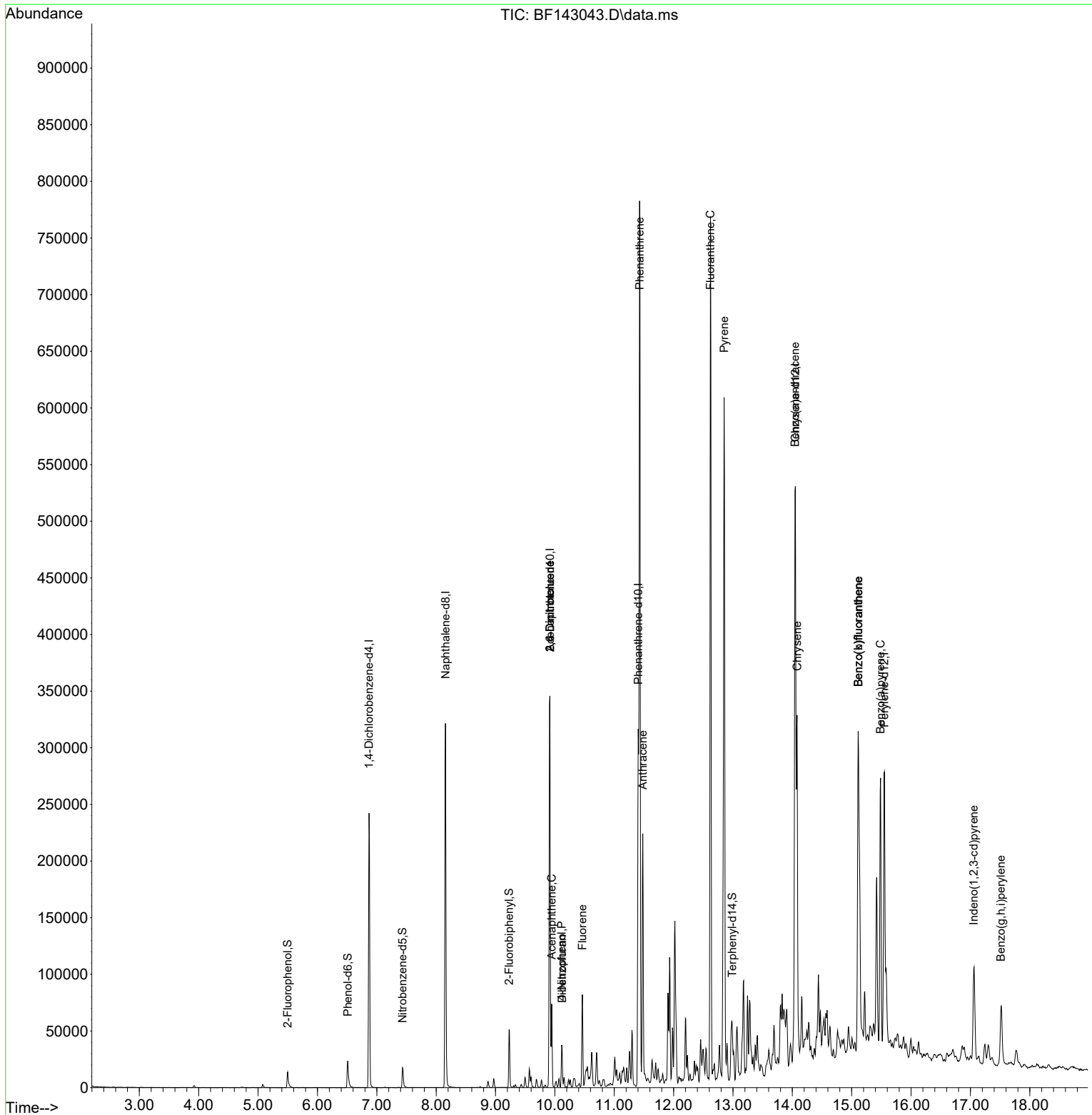
Compound	R.T.	QIon	Response	Conc	Units	Dev(Min)
Internal Standards						
1) 1,4-Dichlorobenzene-d4	6.869	152	55588	20.000	ng	-0.01
21) Naphthalene-d8	8.157	136	211740	20.000	ng	-0.01
39) Acenaphthene-d10	9.916	164	106126	20.000	ng	0.00
64) Phenanthrene-d10	11.404	188	159588	20.000	ng	0.00
76) Chrysene-d12	14.051	240	121712	20.000	ng	0.00
86) Perylene-d12	15.551	264	143355	20.000	ng	0.00
System Monitoring Compounds						
5) 2-Fluorophenol	5.498	112	8621	2.582	ng	0.00
7) Phenol-d6	6.510	99	16202	4.113	ng	0.00
23) Nitrobenzene-d5	7.434	82	10454	2.708	ng	-0.01
42) 2,4,6-Tribromophenol	10.716	330	608	0.557	ng	0.00
45) 2-Fluorobiphenyl	9.228	172	25939	3.211	ng	-0.02
79) Terphenyl-d14	12.986	244	19995	2.270	ng	-0.01
Target Compounds						
51) 2,6-Dinitrotoluene	9.916	165	13886	9.204	ng	# 26
52) Acenaphthene	9.945	154	22809	3.610	ng	99
55) Dibenzofuran	10.122	168	19346	2.135	ng	97
56) 4-Nitrophenol	10.116	139	7218	6.348	ng	# 10
57) 2,4-Dinitrotoluene	9.916	165	13886	6.929	ng	# 26
58) Fluorene	10.463	166	33004	4.664	ng	98
71) Phenanthrene	11.427	178	423185	48.952	ng	99
72) Anthracene	11.480	178	125946	14.205	ng	99
75) Fluoranthene	12.621	202	427897	52.154	ng	100
78) Pyrene	12.851	202	363047	31.822	ng	98
81) Benzo(a)anthracene	14.045	228	200504	24.420	ng	99
83) Chrysene	14.080	228	147420	20.121	ng	98
87) Indeno(1,2,3-cd)pyrene	17.057	276	58991	5.402	ng	95
88) Benzo(b)fluoranthene	15.110	252	250002	30.138	ng	97
89) Benzo(k)fluoranthene	15.110	252	250002	32.214	ng	96
90) Benzo(a)pyrene	15.486	252	147946	18.462	ng	99
92) Benzo(g,h,i)perylene	17.515	276	50403	5.697	ng	98

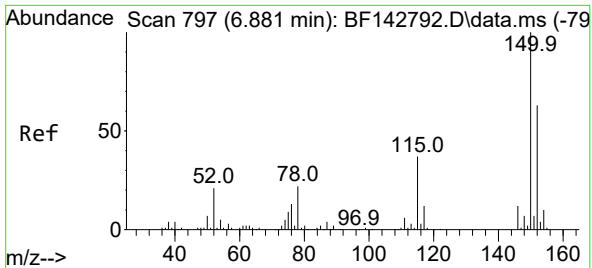
(#) = qualifier out of range (m) = manual integration (+) = signals summed

Data Path : Z:\svoasrv\HPCHEM1\BNA\_F\Data\BF070825\  
 Data File : BF143043.D  
 Acq On : 08 Jul 2025 20:12  
 Operator : RC/JU  
 Sample : Q2473-01DL 20X  
 Misc :  
 ALS Vial : 20 Sample Multiplier: 1

Instrument :  
 BNA\_F  
 ClientSampleId :  
 PIT#1DL

Quant Time: Jul 09 01:41:52 2025  
 Quant Method : Z:\svoasrv\HPCHEM1\BNA\_F\Methods\8270-BF061925.M  
 Quant Title : ASP BNA STANDARDS FOR 5 POINT CALIBRATION  
 QLast Update : Tue Jun 24 05:28:21 2025  
 Response via : Initial Calibration

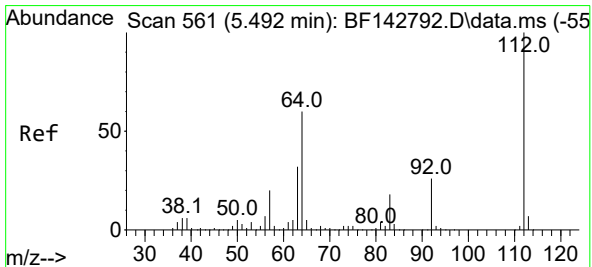
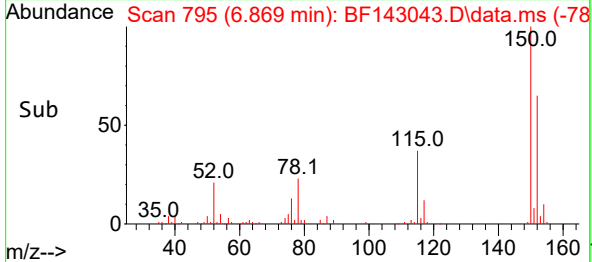
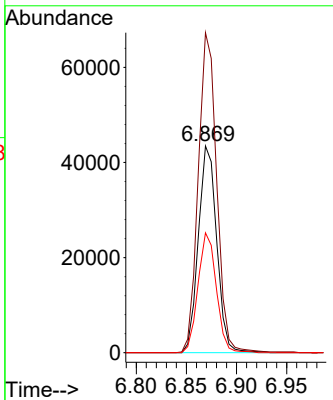
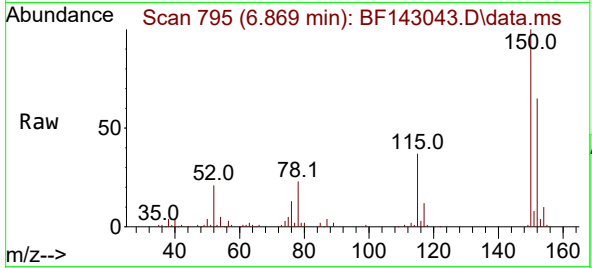




#1  
 1,4-Dichlorobenzene-d4  
 Concen: 20.000 ng  
 RT: 6.869 min Scan# 795  
 Delta R.T. -0.012 min  
 Lab File: BF143043.D  
 Acq: 08 Jul 2025 20:12

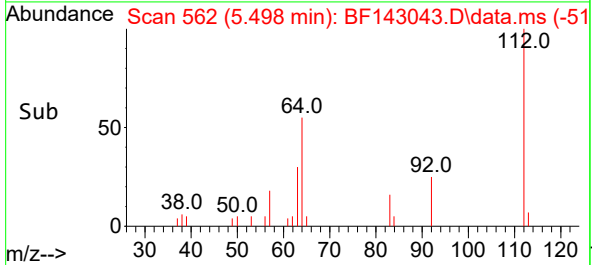
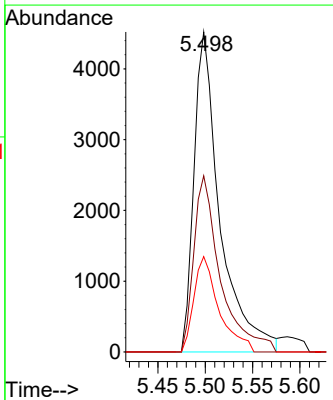
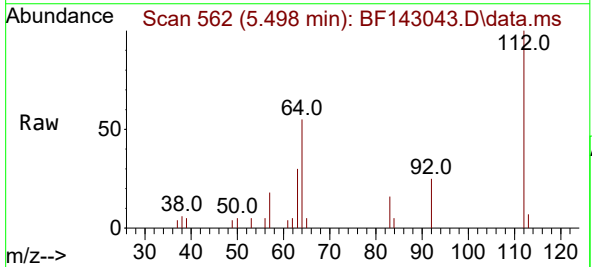
Instrument : BNA\_F  
 ClientSampleId : PIT#1DL

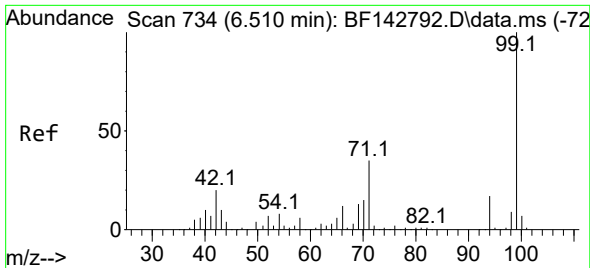
Tgt Ion:152 Resp: 55588  
 Ion Ratio Lower Upper  
 152 100  
 150 154.8 127.2 190.8  
 115 58.0 46.6 69.8



#5  
 2-Fluorophenol  
 Concen: 2.582 ng  
 RT: 5.498 min Scan# 562  
 Delta R.T. 0.006 min  
 Lab File: BF143043.D  
 Acq: 08 Jul 2025 20:12

Tgt Ion:112 Resp: 8621  
 Ion Ratio Lower Upper  
 112 100  
 64 55.0 48.2 72.2  
 63 29.8 25.7 38.5



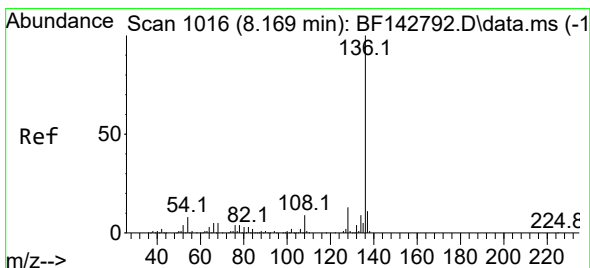
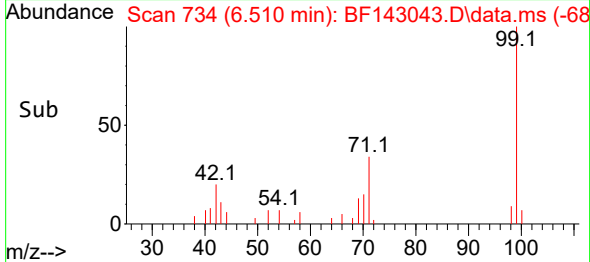
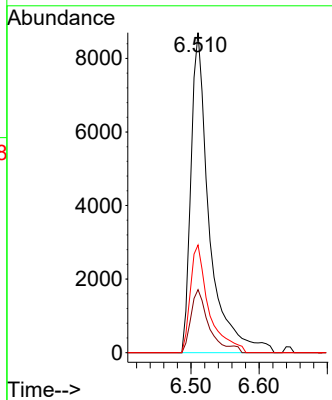
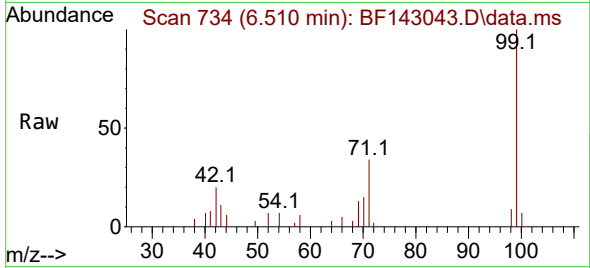


#7  
 Phenol-d6  
 Concen: 4.113 ng  
 RT: 6.510 min Scan# 71  
 Delta R.T. 0.000 min  
 Lab File: BF143043.D  
 Acq: 08 Jul 2025 20:12

Instrument :  
 BNA\_F  
 ClientSampleId :  
 PIT#1DL

Tgt Ion: 99 Resp: 16202

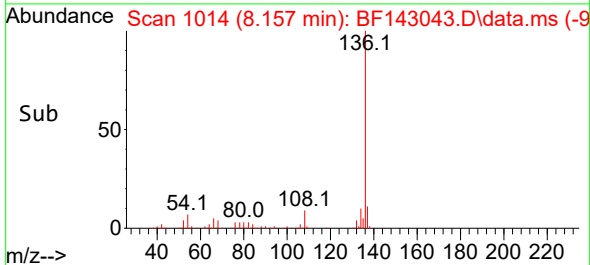
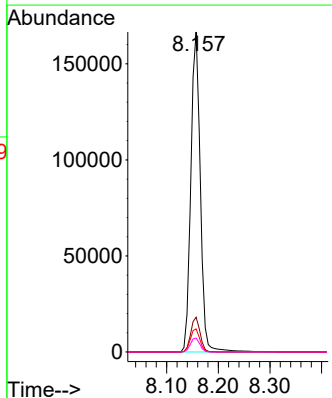
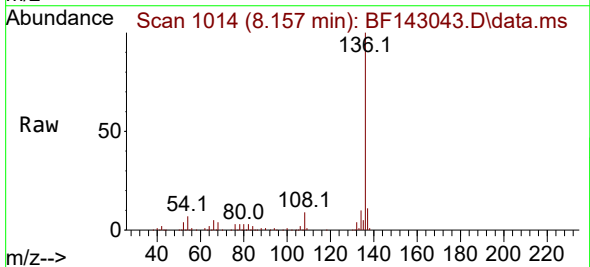
Ion	Ratio	Lower	Upper
99	100		
42	19.7	15.9	23.9
71	33.6	27.8	41.8

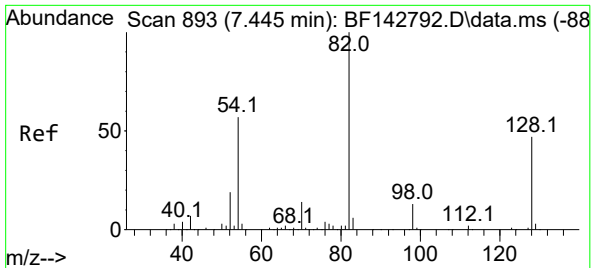


#21  
 Naphthalene-d8  
 Concen: 20.000 ng  
 RT: 8.157 min Scan# 1014  
 Delta R.T. -0.012 min  
 Lab File: BF143043.D  
 Acq: 08 Jul 2025 20:12

Tgt Ion: 136 Resp: 211740

Ion	Ratio	Lower	Upper
136	100		
137	10.9	8.4	12.6
54	7.2	6.3	9.5
68	4.4	3.7	5.5



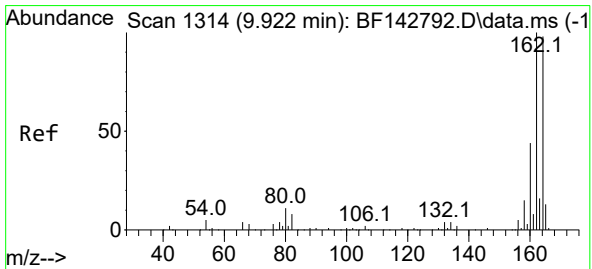
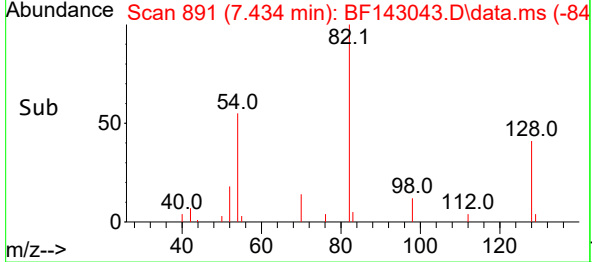
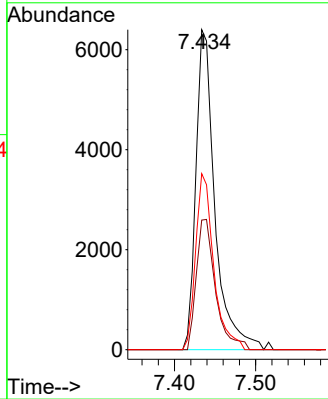
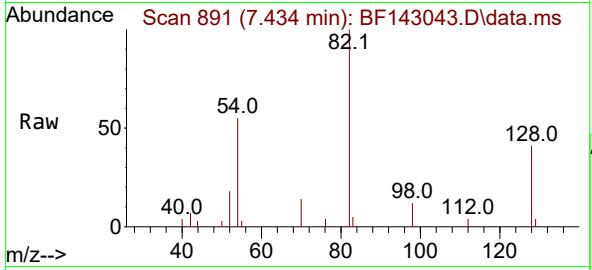


#23  
 Nitrobenzene-d5  
 Concen: 2.708 ng  
 RT: 7.434 min Scan# 891  
 Delta R.T. -0.011 min  
 Lab File: BF143043.D  
 Acq: 08 Jul 2025 20:12

Instrument : BNA\_F  
 ClientSampleId : PIT#1DL

Tgt Ion: 82 Resp: 10454

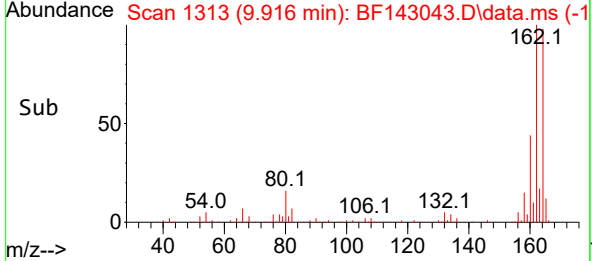
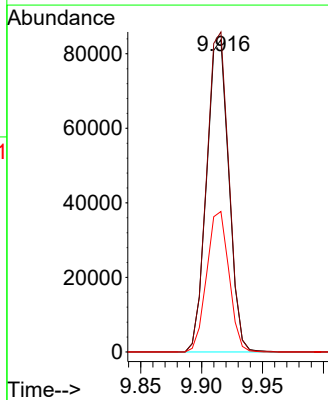
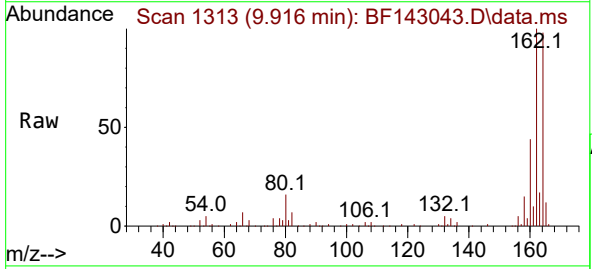
Ion	Ratio	Lower	Upper
82	100		
128	40.5	37.7	56.5
54	55.0	45.7	68.5

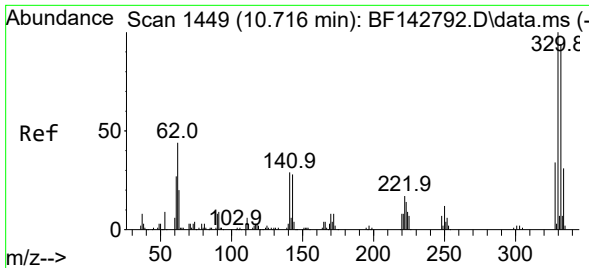


#39  
 Acenaphthene-d10  
 Concen: 20.000 ng  
 RT: 9.916 min Scan# 1313  
 Delta R.T. -0.006 min  
 Lab File: BF143043.D  
 Acq: 08 Jul 2025 20:12

Tgt Ion: 164 Resp: 106126

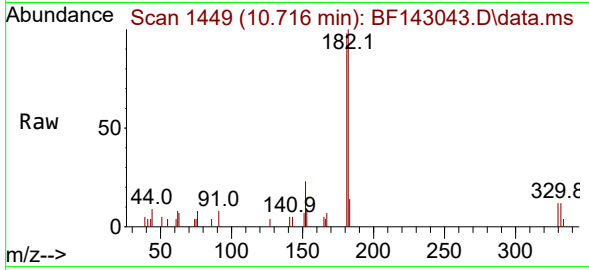
Ion	Ratio	Lower	Upper
164	100		
162	102.5	81.8	122.8
160	45.0	36.0	54.0



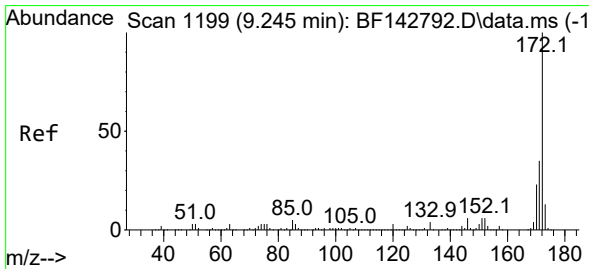
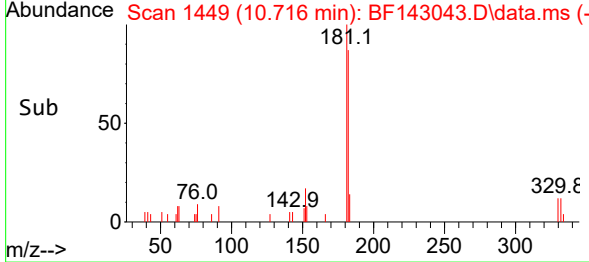
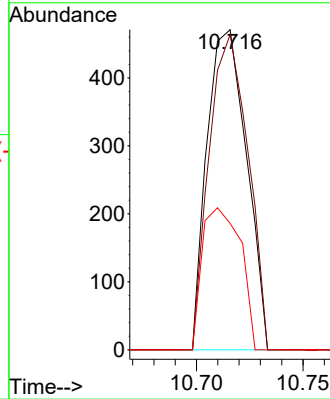


#42  
 2,4,6-Tribromophenol  
 Concen: 0.557 ng  
 RT: 10.716 min Scan# 1449  
 Delta R.T. -0.000 min  
 Lab File: BF143043.D  
 Acq: 08 Jul 2025 20:12

Instrument : BNA\_F  
 ClientSampleId : PIT#1DL

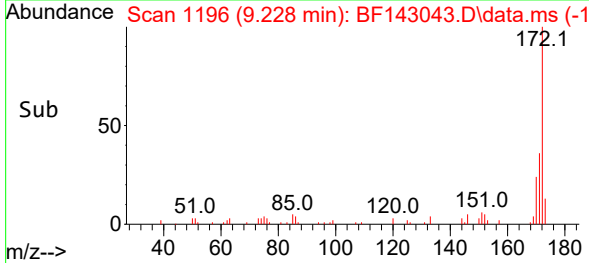
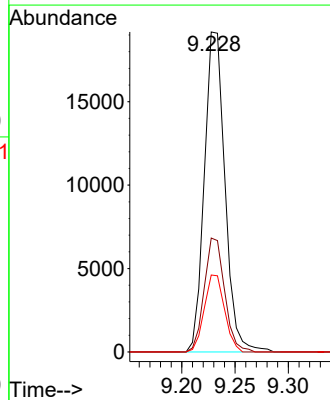
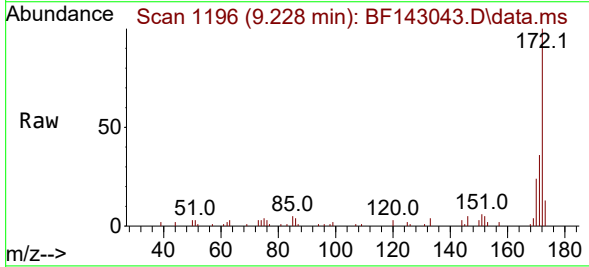


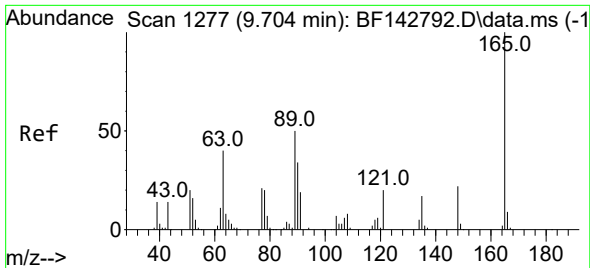
Tgt Ion:330 Resp: 608  
 Ion Ratio Lower Upper  
 330 100  
 332 96.7 75.0 112.6  
 141 43.1 25.3 37.9#



#45  
 2-Fluorobiphenyl  
 Concen: 3.211 ng  
 RT: 9.228 min Scan# 1196  
 Delta R.T. -0.017 min  
 Lab File: BF143043.D  
 Acq: 08 Jul 2025 20:12

Tgt Ion:172 Resp: 25939  
 Ion Ratio Lower Upper  
 172 100  
 171 35.6 28.2 42.4  
 170 24.1 18.5 27.7



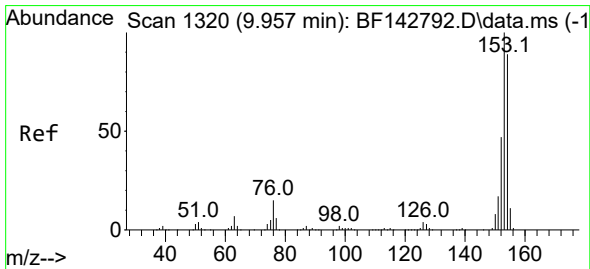
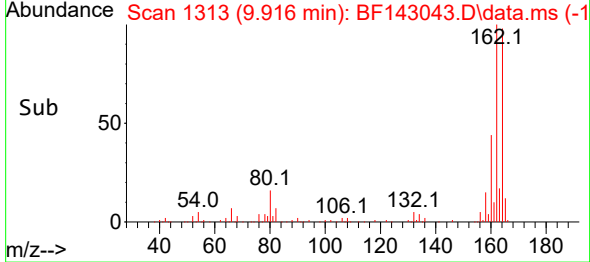
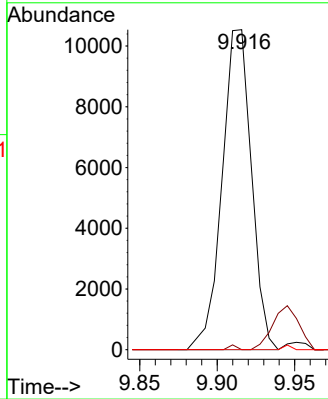
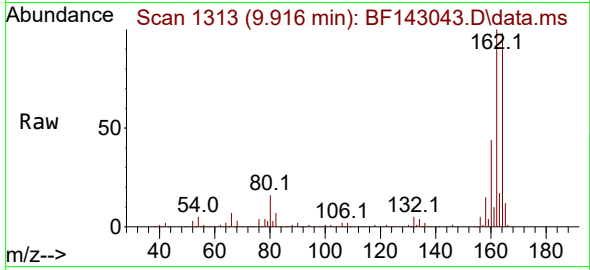


#51  
 2,6-Dinitrotoluene  
 Concen: 9.204 ng  
 RT: 9.916 min Scan# 11  
 Delta R.T. 0.212 min  
 Lab File: BF143043.D  
 Acq: 08 Jul 2025 20:12

Instrument :  
 BNA\_F  
 ClientSampleId :  
 PIT#1DL

Tgt Ion:165 Resp: 13886

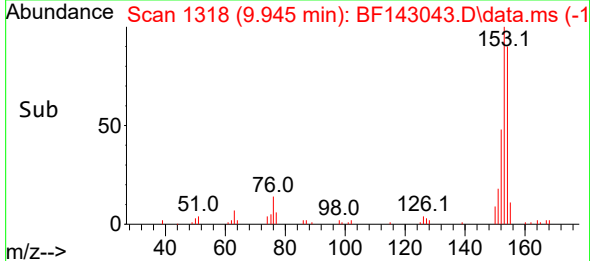
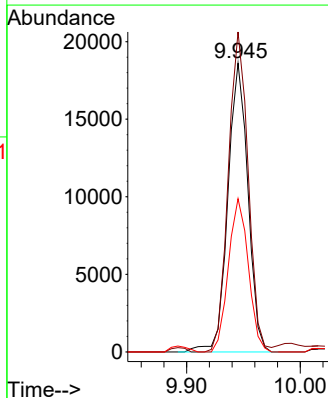
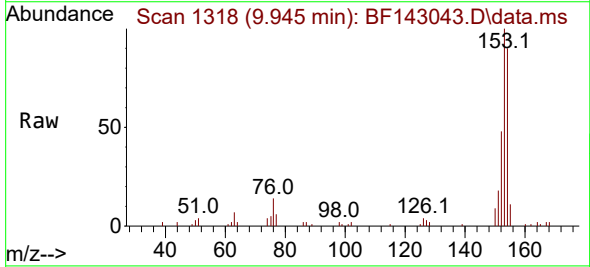
Ion	Ratio	Lower	Upper
165	100		
63	0.0	44.2	66.4#
89	0.0	39.8	59.8#

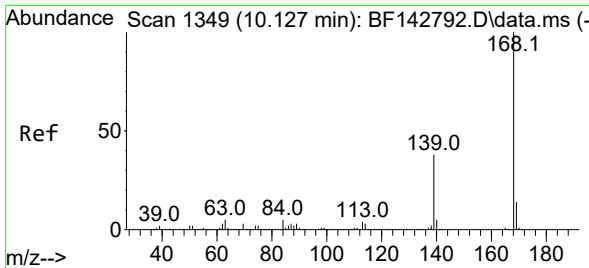


#52  
 Acenaphthene  
 Concen: 3.610 ng  
 RT: 9.945 min Scan# 1318  
 Delta R.T. -0.012 min  
 Lab File: BF143043.D  
 Acq: 08 Jul 2025 20:12

Tgt Ion:154 Resp: 22809

Ion	Ratio	Lower	Upper
154	100		
153	110.8	90.0	135.0
152	53.0	41.9	62.9

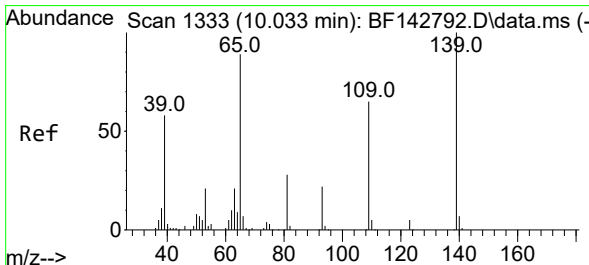
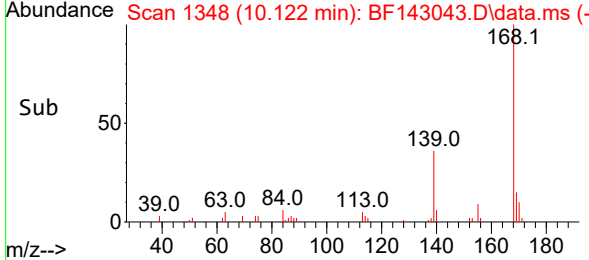
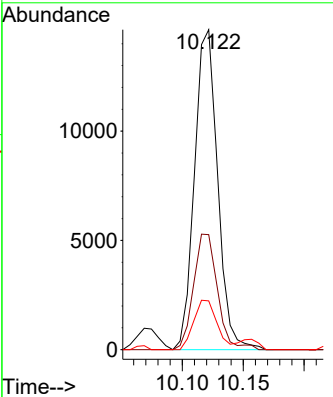
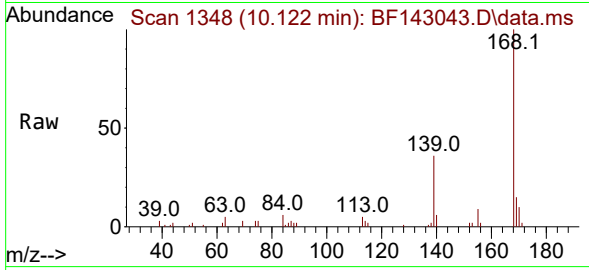




#55  
 Dibenzofuran  
 Concen: 2.135 ng  
 RT: 10.122 min Scan# 11  
 Delta R.T. -0.006 min  
 Lab File: BF143043.D  
 Acq: 08 Jul 2025 20:12

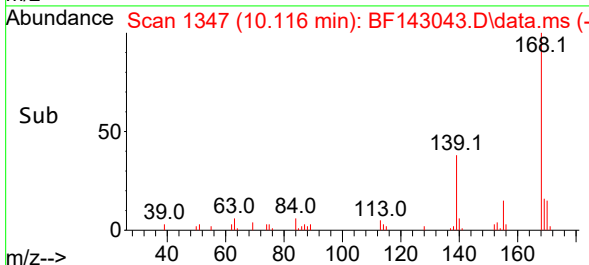
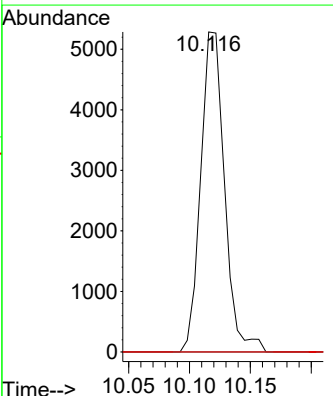
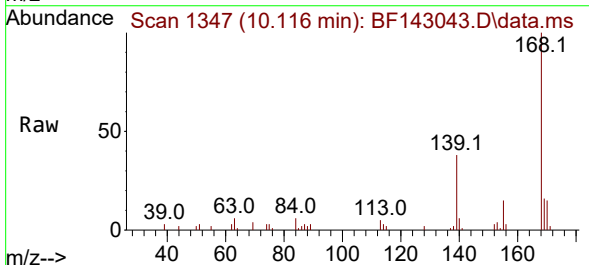
Instrument : BNA\_F  
 ClientSampleId : PIT#1DL

Tgt Ion	Resp	Lower	Upper
168	19346	100	
139	36.0	30.2	45.4
169	15.2	10.8	16.2

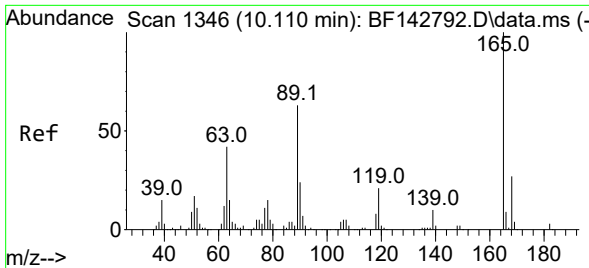


#56  
 4-Nitrophenol  
 Concen: 6.348 ng  
 RT: 10.116 min Scan# 1347  
 Delta R.T. 0.082 min  
 Lab File: BF143043.D  
 Acq: 08 Jul 2025 20:12

Tgt Ion	Resp	Lower	Upper
139	7218	100	
109	0.0	44.7	84.7#
65	0.0	69.8	109.8#

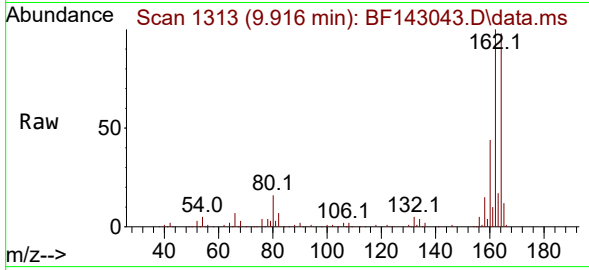




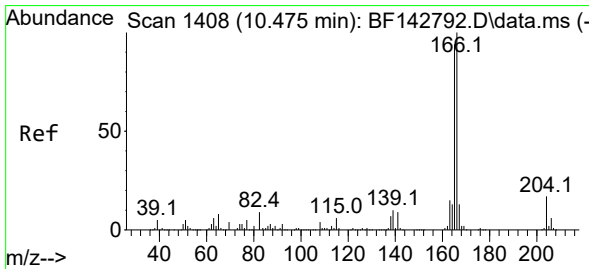
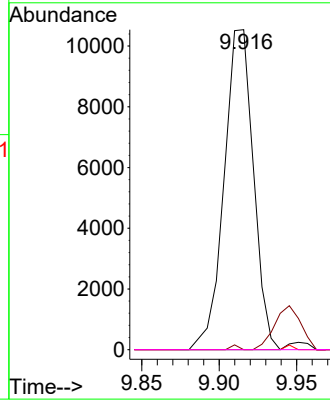
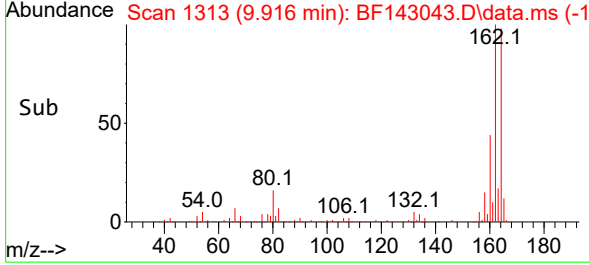


#57  
 2,4-Dinitrotoluene  
 Concen: 6.929 ng  
 RT: 9.916 min Scan# 11  
 Delta R.T. -0.194 min  
 Lab File: BF143043.D  
 Acq: 08 Jul 2025 20:12

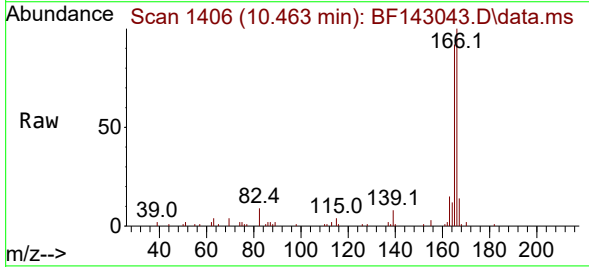
Instrument :  
 BNA\_F  
 ClientSampleId :  
 PIT#1DL



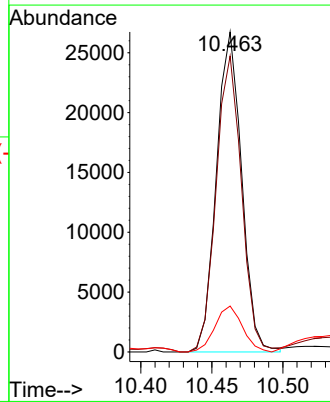
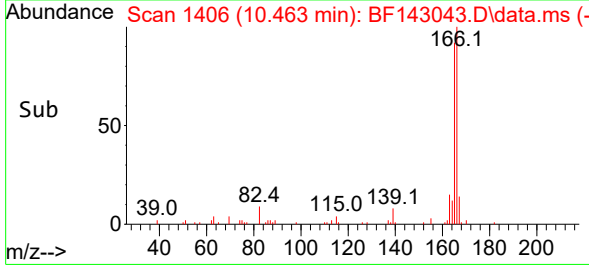
Tgt Ion:165 Resp: 13886  
 Ion Ratio Lower Upper  
 165 100  
 63 0.0 33.9 50.9#  
 89 0.0 50.6 75.8#  
 182 0.0 2.3 3.5#

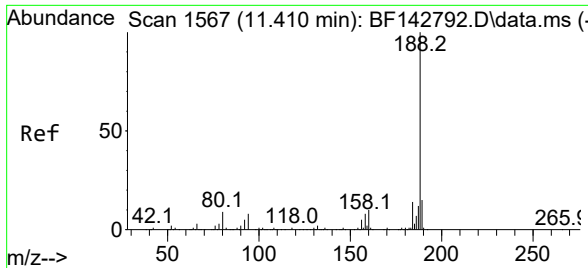


#58  
 Fluorene  
 Concen: 4.664 ng  
 RT: 10.463 min Scan# 1406  
 Delta R.T. -0.012 min  
 Lab File: BF143043.D  
 Acq: 08 Jul 2025 20:12



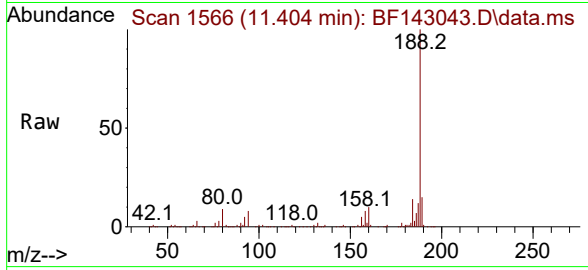
Tgt Ion:166 Resp: 33004  
 Ion Ratio Lower Upper  
 166 100  
 165 92.5 75.2 112.8  
 167 14.4 10.6 15.8



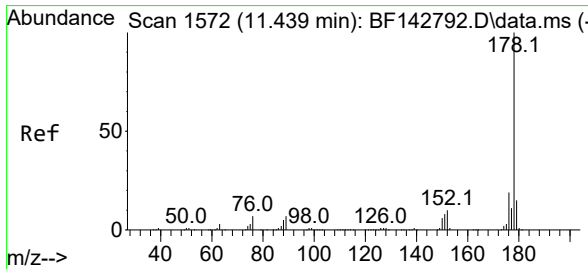
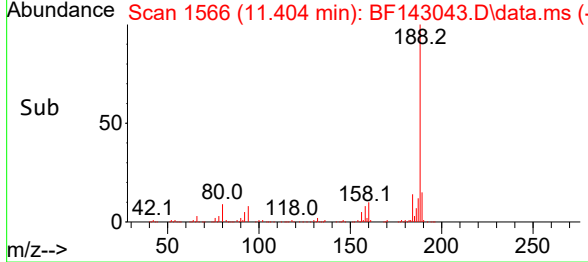
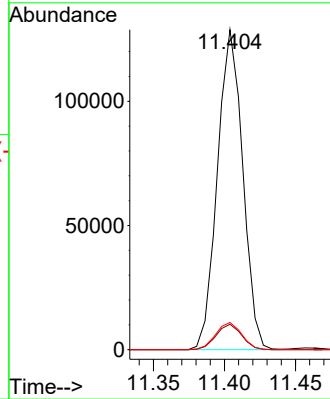


#64  
 Phenanthrene-d10  
 Concen: 20.000 ng  
 RT: 11.404 min Scan# 11  
 Delta R.T. -0.006 min  
 Lab File: BF143043.D  
 Acq: 08 Jul 2025 20:12

Instrument :  
 BNA\_F  
 ClientSampleId :  
 PIT#1DL

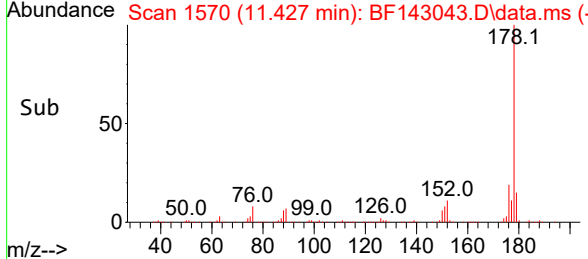
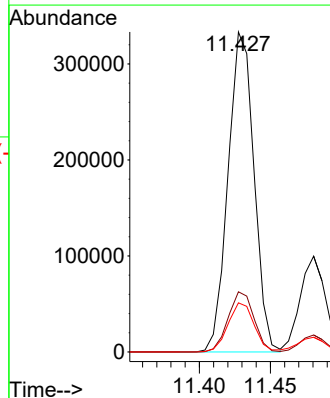
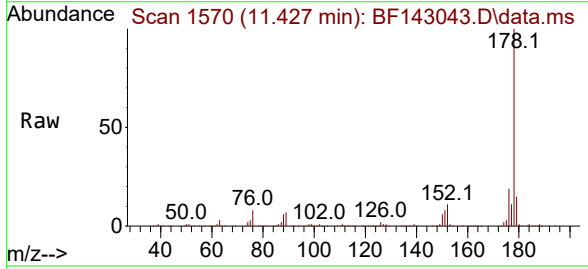


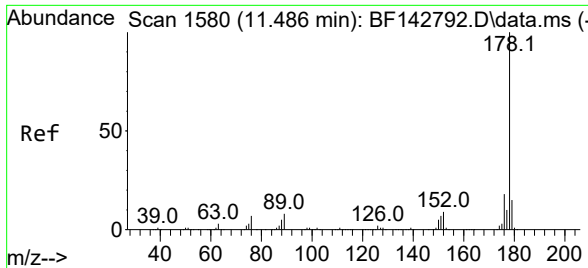
Tgt Ion:188 Resp: 159588  
 Ion Ratio Lower Upper  
 188 100  
 94 7.9 6.7 10.1  
 80 8.5 6.9 10.3



#71  
 Phenanthrene  
 Concen: 48.952 ng  
 RT: 11.427 min Scan# 1570  
 Delta R.T. -0.012 min  
 Lab File: BF143043.D  
 Acq: 08 Jul 2025 20:12

Tgt Ion:178 Resp: 423185  
 Ion Ratio Lower Upper  
 178 100  
 176 18.8 15.1 22.7  
 179 15.4 12.0 18.0



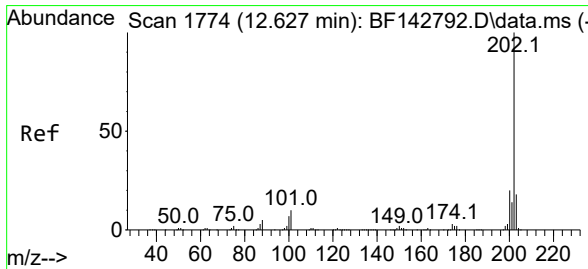
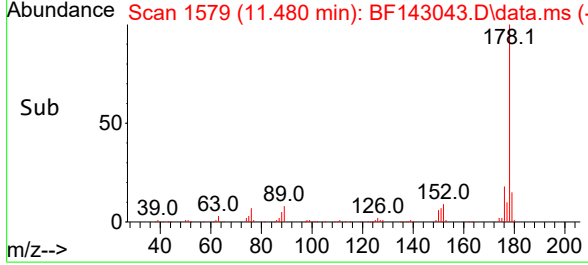
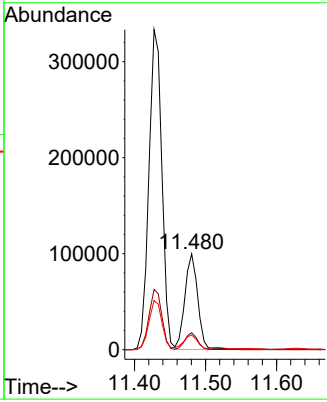
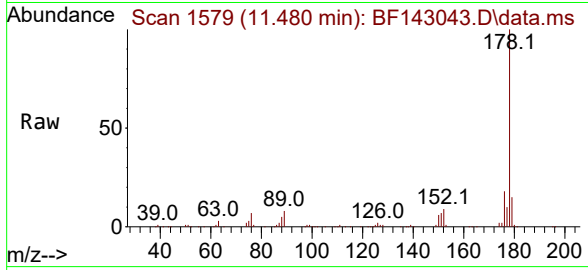


#72  
 Anthracene  
 Concen: 14.205 ng  
 RT: 11.480 min Scan# 11  
 Delta R.T. -0.006 min  
 Lab File: BF143043.D  
 Acq: 08 Jul 2025 20:12

Instrument : BNA\_F  
 Client Sample Id : PIT#1DL

Tgt Ion:178 Resp: 125946

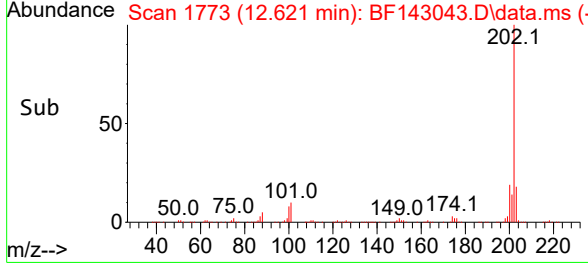
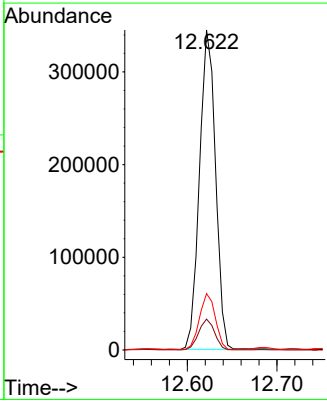
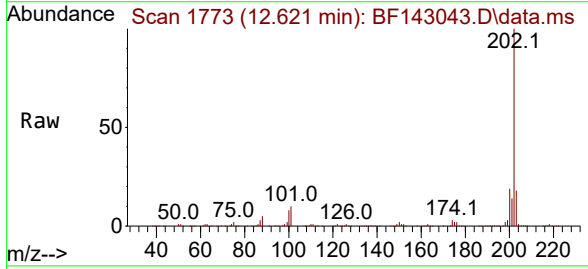
Ion	Ratio	Lower	Upper
178	100		
176	17.7	14.6	21.8
179	15.3	12.4	18.6

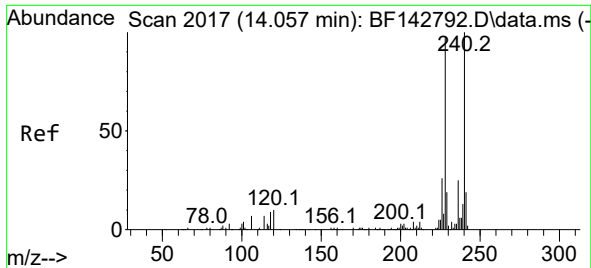


#75  
 Fluoranthene  
 Concen: 52.154 ng  
 RT: 12.621 min Scan# 1773  
 Delta R.T. -0.006 min  
 Lab File: BF143043.D  
 Acq: 08 Jul 2025 20:12

Tgt Ion:202 Resp: 427897

Ion	Ratio	Lower	Upper
202	100		
101	9.6	0.0	29.7
203	17.6	0.0	37.5

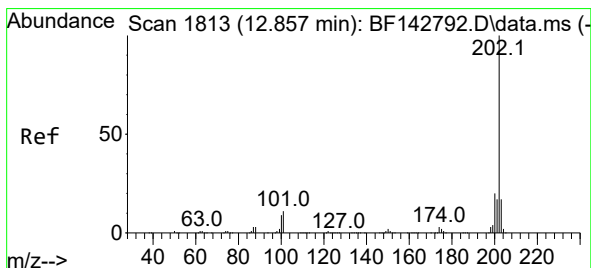
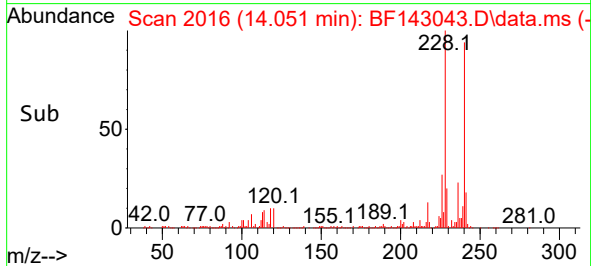
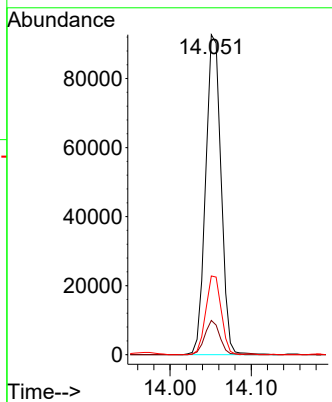
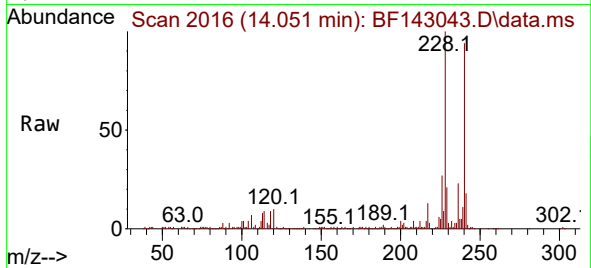




#76  
 Chrysene-d12  
 Concen: 20.000 ng  
 RT: 14.051 min Scan# 20  
 Delta R.T. -0.006 min  
 Lab File: BF143043.D  
 Acq: 08 Jul 2025 20:12

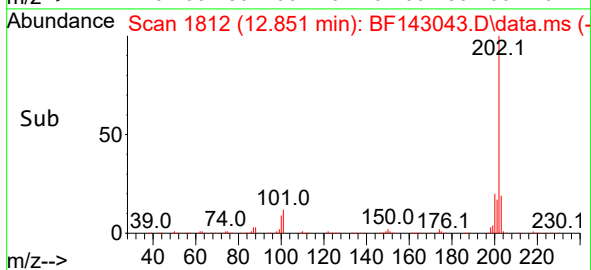
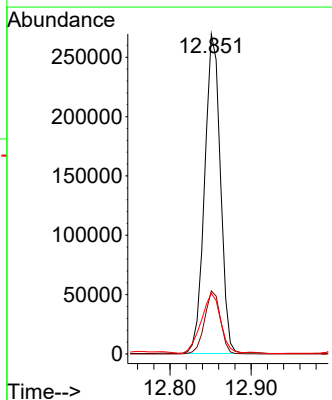
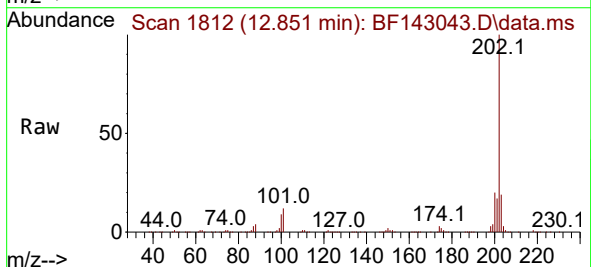
Instrument :  
 BNA\_F  
 ClientSampleId :  
 PIT#1DL

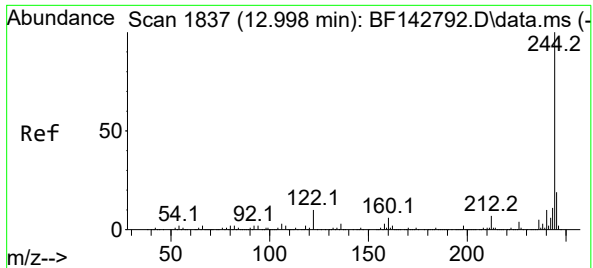
Tgt Ion:240 Resp: 121712  
 Ion Ratio Lower Upper  
 240 100  
 120 10.7 8.2 12.2  
 236 24.6 19.8 29.8



#78  
 Pyrene  
 Concen: 31.822 ng  
 RT: 12.851 min Scan# 1812  
 Delta R.T. -0.006 min  
 Lab File: BF143043.D  
 Acq: 08 Jul 2025 20:12

Tgt Ion:202 Resp: 363047  
 Ion Ratio Lower Upper  
 202 100  
 200 19.7 15.7 23.5  
 203 19.0 13.8 20.6



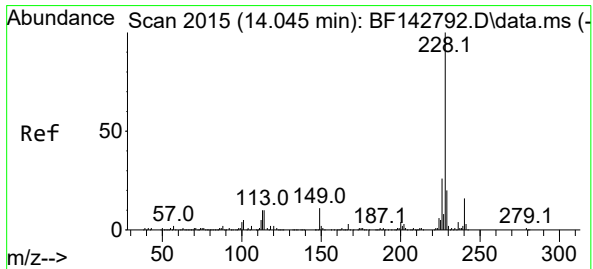
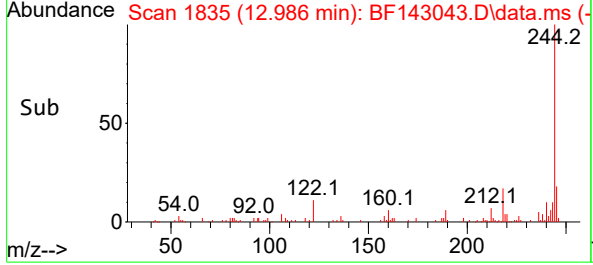
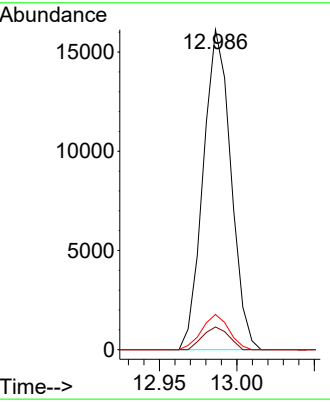
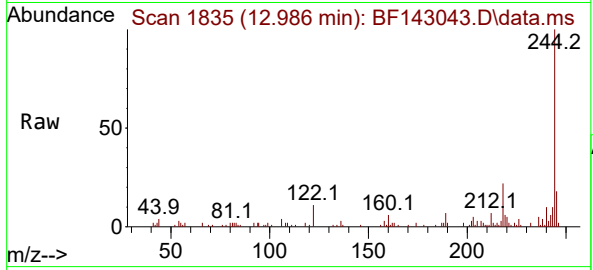


#79  
 Terphenyl-d14  
 Concen: 2.270 ng  
 RT: 12.986 min Scan# 1835  
 Delta R.T. -0.012 min  
 Lab File: BF143043.D  
 Acq: 08 Jul 2025 20:12

Instrument : BNA\_F  
 Client SampleID : PIT#1DL

Tgt Ion: 244 Resp: 19995

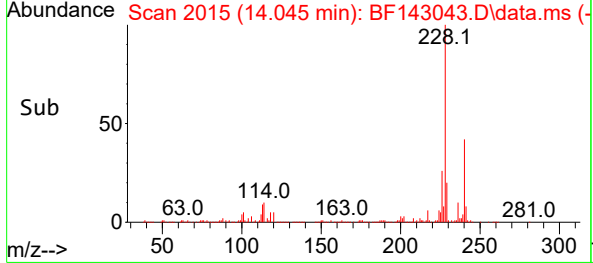
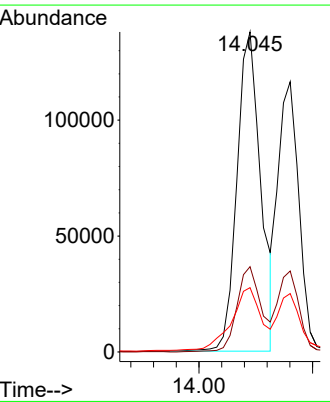
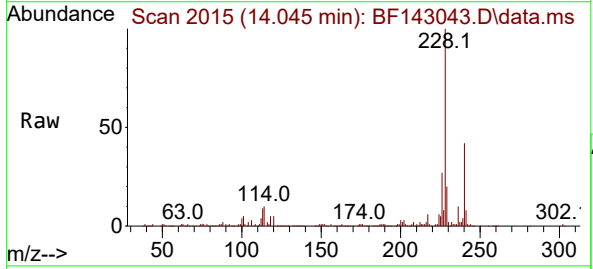
Ion	Ratio	Lower	Upper
244	100		
212	7.1	5.4	8.0
122	11.0	8.2	12.2

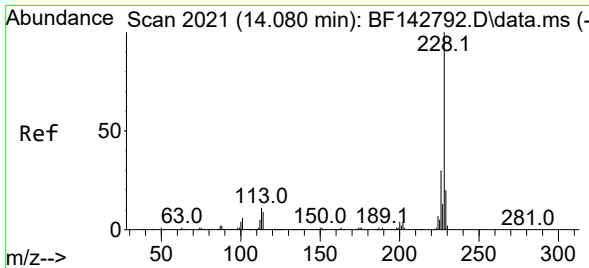


#81  
 Benzo(a)anthracene  
 Concen: 24.420 ng  
 RT: 14.045 min Scan# 2015  
 Delta R.T. 0.000 min  
 Lab File: BF143043.D  
 Acq: 08 Jul 2025 20:12

Tgt Ion: 228 Resp: 200504

Ion	Ratio	Lower	Upper
228	100		
226	26.7	21.2	31.8
229	20.1	15.6	23.4



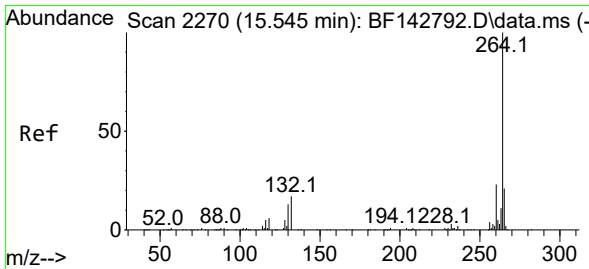
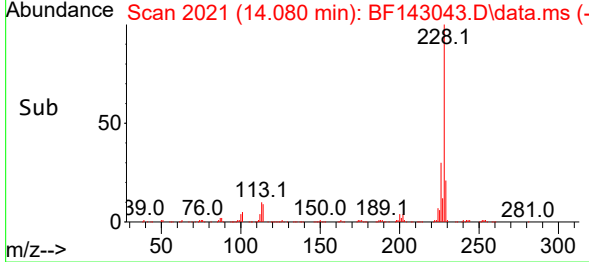
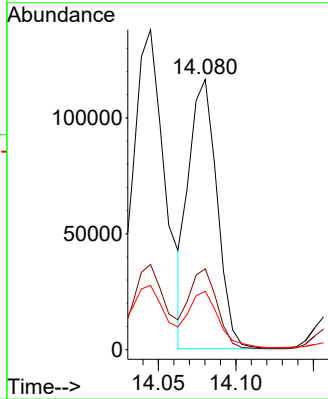
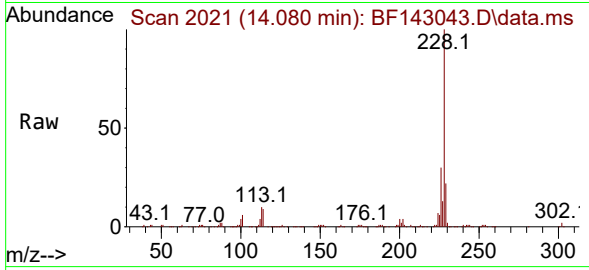


#83  
 Chrysene  
 Concen: 20.121 ng  
 RT: 14.080 min Scan# 2021  
 Delta R.T. 0.000 min  
 Lab File: BF143043.D  
 Acq: 08 Jul 2025 20:12

Instrument : BNA\_F  
 ClientSampleId : BF143043.D  
 PIT#1DL

Tgt Ion:228 Resp: 147420

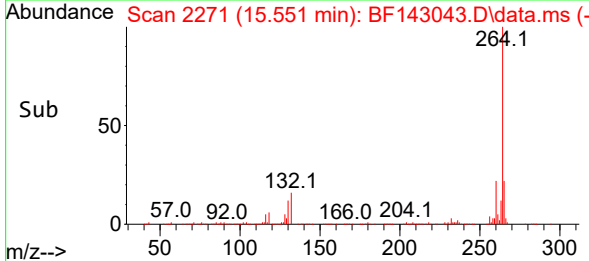
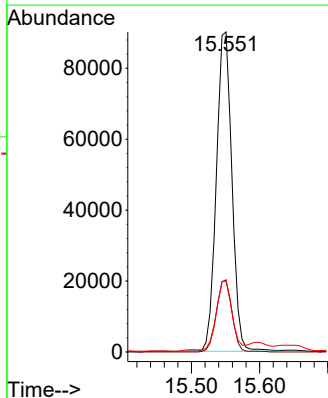
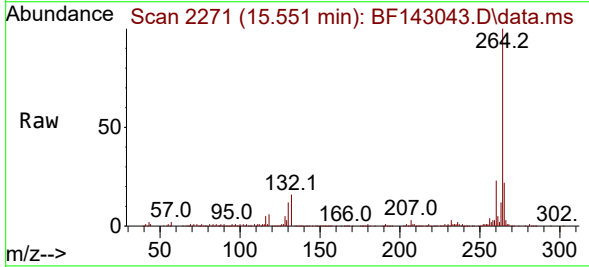
Ion	Ratio	Lower	Upper
228	100		
226	30.0	23.7	35.5
229	21.6	15.7	23.5

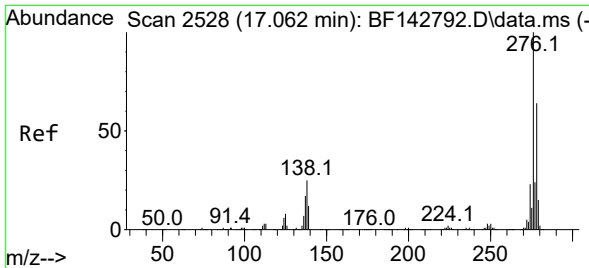


#86  
 Perylene-d12  
 Concen: 20.000 ng  
 RT: 15.551 min Scan# 2271  
 Delta R.T. 0.006 min  
 Lab File: BF143043.D  
 Acq: 08 Jul 2025 20:12

Tgt Ion:264 Resp: 143355

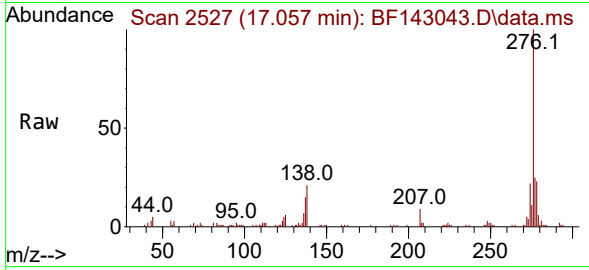
Ion	Ratio	Lower	Upper
264	100		
260	22.6	18.1	27.1
265	22.1	16.6	25.0



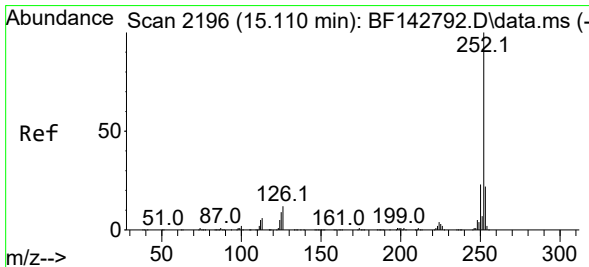
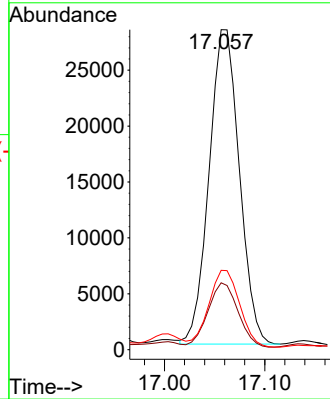
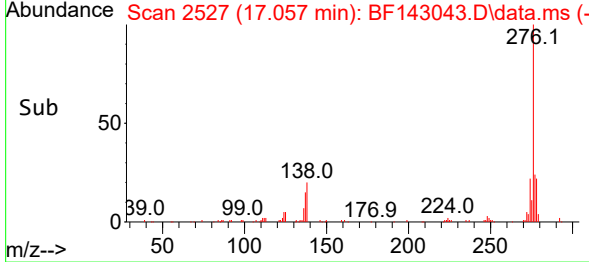


#87  
 Indeno(1,2,3-cd)pyrene  
 Concen: 5.402 ng  
 RT: 17.057 min Scan# 211  
 Delta R.T. -0.006 min  
 Lab File: BF143043.D  
 Acq: 08 Jul 2025 20:12

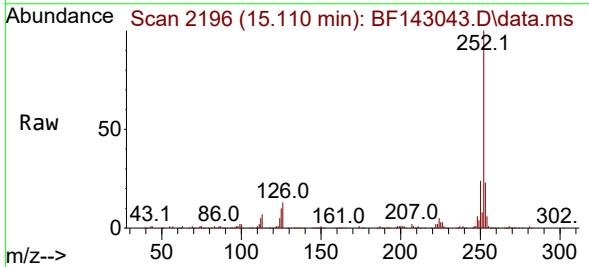
Instrument : BNA\_F  
 ClientSampleId :  
 PIT#1DL



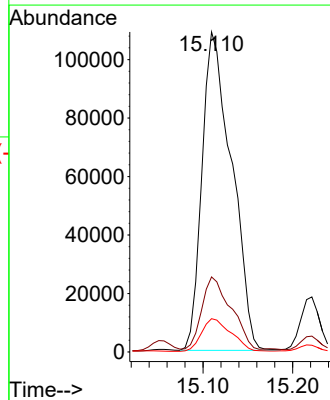
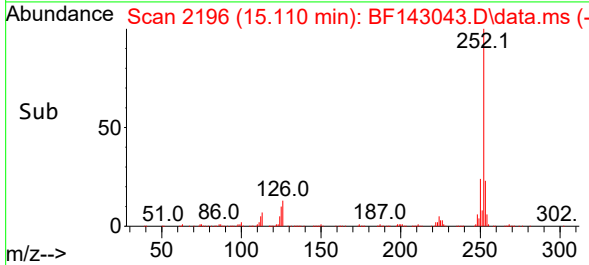
Tgt Ion:276 Resp: 58991  
 Ion Ratio Lower Upper  
 276 100  
 138 20.3 20.2 30.4  
 277 24.9 19.8 29.6

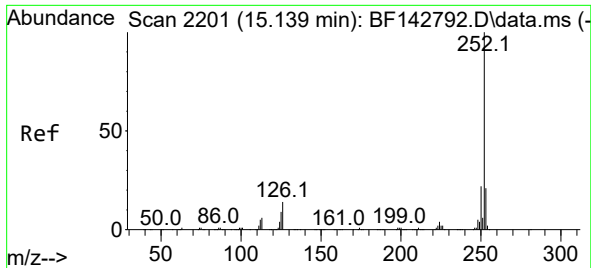


#88  
 Benzo(b)fluoranthene  
 Concen: 30.138 ng  
 RT: 15.110 min Scan# 2196  
 Delta R.T. 0.000 min  
 Lab File: BF143043.D  
 Acq: 08 Jul 2025 20:12



Tgt Ion:252 Resp: 250002  
 Ion Ratio Lower Upper  
 252 100  
 253 23.5 17.5 26.3  
 125 10.4 7.4 11.0

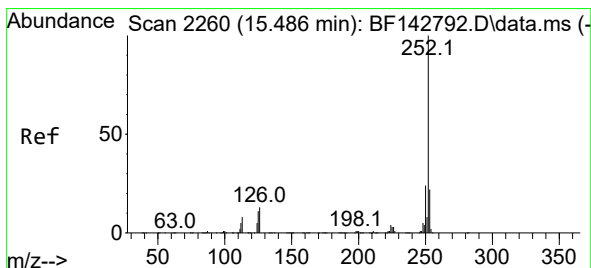
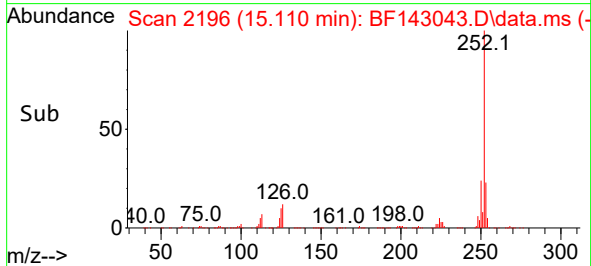
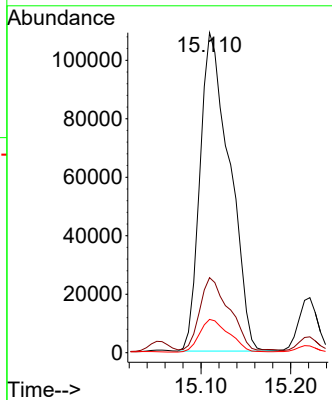
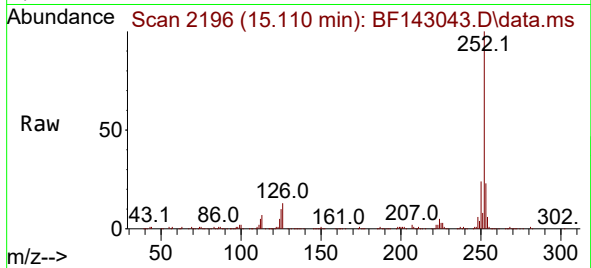




#89  
 Benzo(k)fluoranthene  
 Concen: 32.214 ng  
 RT: 15.110 min Scan# 2196  
 Delta R.T. -0.029 min  
 Lab File: BF143043.D  
 Acq: 08 Jul 2025 20:12

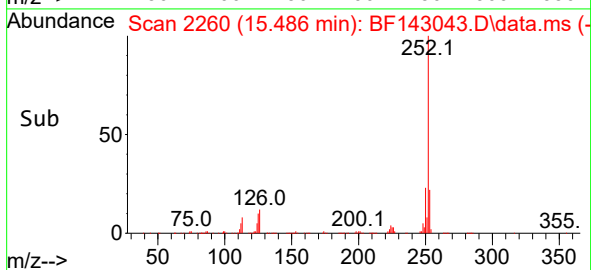
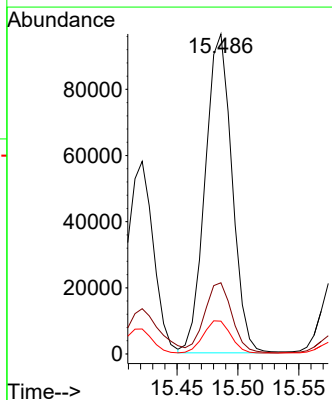
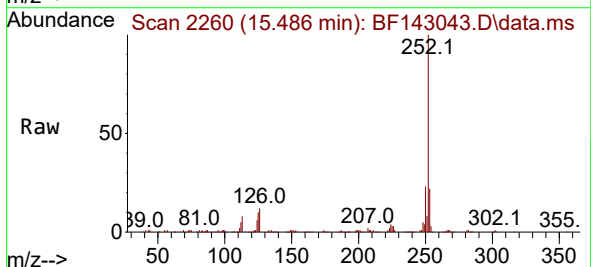
Instrument : BNA\_F  
 ClientSampleId : PIT#1DL

Tgt Ion:252 Resp: 250002  
 Ion Ratio Lower Upper  
 252 100  
 253 23.5 17.2 25.8  
 125 10.4 7.4 11.2

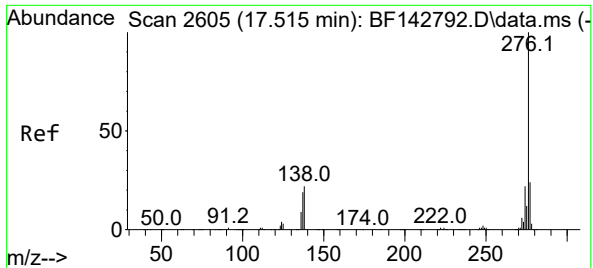


#90  
 Benzo(a)pyrene  
 Concen: 18.462 ng  
 RT: 15.486 min Scan# 2260  
 Delta R.T. 0.000 min  
 Lab File: BF143043.D  
 Acq: 08 Jul 2025 20:12

Tgt Ion:252 Resp: 147946  
 Ion Ratio Lower Upper  
 252 100  
 253 22.3 17.5 26.3  
 125 10.3 8.6 12.8

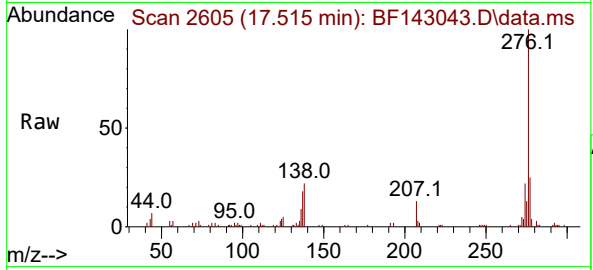






#92  
 Benzo(g,h,i)perylene  
 Concen: 5.697 ng  
 RT: 17.515 min Scan# 20  
 Delta R.T. 0.000 min  
 Lab File: BF143043.D  
 Acq: 08 Jul 2025 20:12

Instrument :  
 BNA\_F  
 ClientSampleId :  
 PIT#1DL



Tgt Ion: 276 Resp: 50403

Ion	Ratio	Lower	Upper
276	100		
277	24.7	18.8	28.2
138	21.5	17.6	26.4

