

Data Path : Z:\svoasrv\HPCHEM1\BNA\_F\Data\BF070825\  
 Data File : BF143044.D  
 Acq On : 08 Jul 2025 20:42  
 Operator : RC/JU  
 Sample : Q2514-06  
 Misc :  
 ALS Vial : 21 Sample Multiplier: 1

Instrument :  
 BNA\_F  
 ClientSampleId :  
 TP-103

Quant Time: Jul 09 01:42:10 2025  
 Quant Method : Z:\svoasrv\HPCHEM1\BNA\_F\Methods\8270-BF061925.M  
 Quant Title : ASP BNA STANDARDS FOR 5 POINT CALIBRATION  
 QLast Update : Tue Jun 24 05:28:21 2025  
 Response via : Initial Calibration

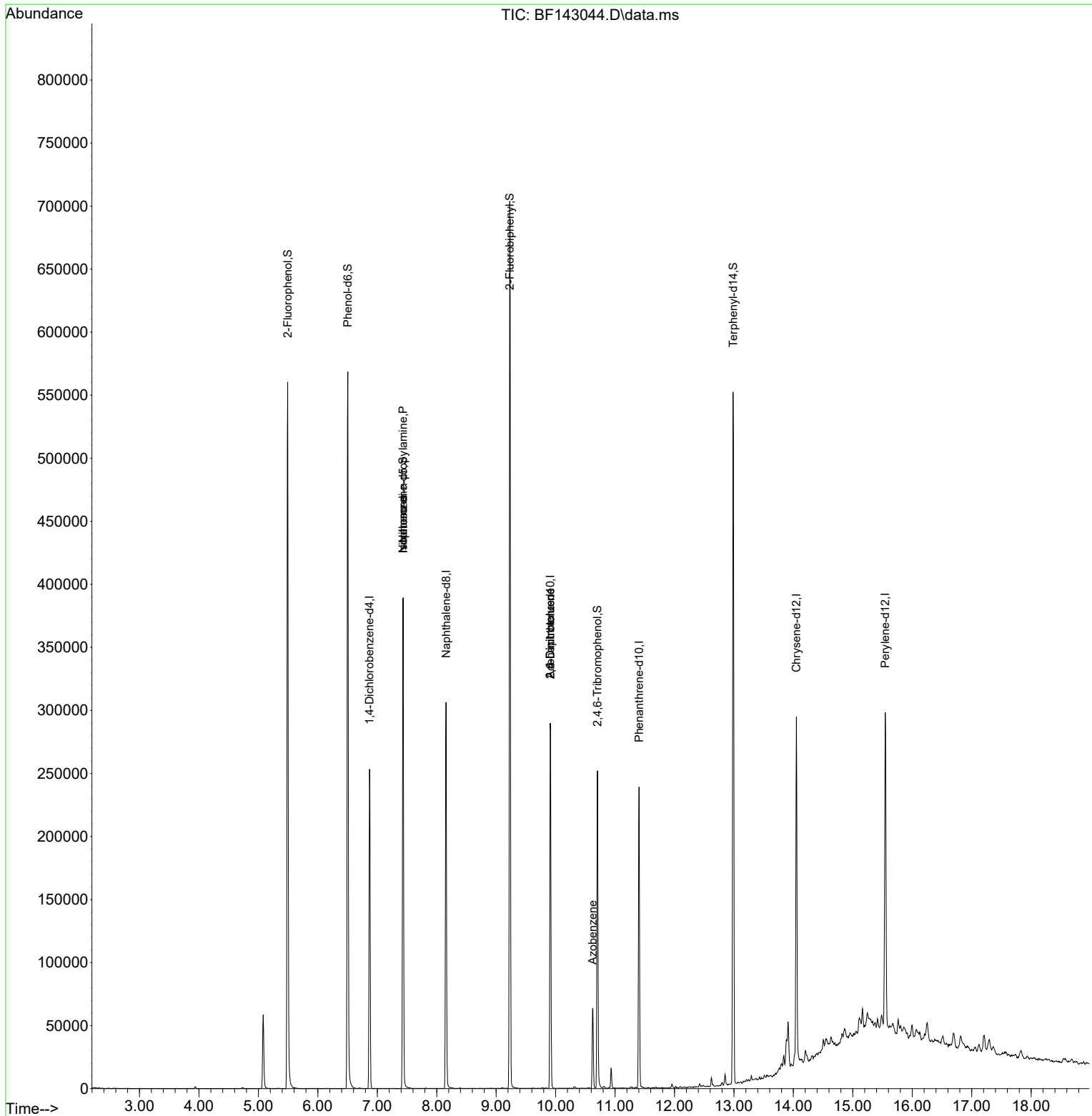
Compound	R.T.	QIon	Response	Conc	Units	Dev(Min)
Internal Standards						
1) 1,4-Dichlorobenzene-d4	6.869	152	56443	20.000	ng	-0.01
21) Naphthalene-d8	8.157	136	202963	20.000	ng	-0.01
39) Acenaphthene-d10	9.910	164	92048	20.000	ng	-0.01
64) Phenanthrene-d10	11.404	188	127469	20.000	ng	0.00
76) Chrysene-d12	14.051	240	129693	20.000	ng	0.00
86) Perylene-d12	15.545	264	142779	20.000	ng	0.00
System Monitoring Compounds						
5) 2-Fluorophenol	5.493	112	226334	66.763	ng	0.00
7) Phenol-d6	6.504	99	269543	67.391	ng	0.00
23) Nitrobenzene-d5	7.434	82	162801	43.997	ng	-0.01
42) 2,4,6-Tribromophenol	10.704	330	45263	47.784	ng	-0.01
45) 2-Fluorobiphenyl	9.228	172	325778	46.494	ng	-0.02
79) Terphenyl-d14	12.986	244	269123	28.671	ng	-0.01
Target Compounds						
19) n-Nitroso-di-n-propyla...	7.434	70	21478	9.233	ng	# 73
25) Isophorone	7.434	82	162799	27.427	ng	# 62
51) 2,6-Dinitrotoluene	9.910	165	11641	8.896	ng	# 26
57) 2,4-Dinitrotoluene	9.910	165	11641	6.698	ng	# 26
63) Azobenzene	10.622	77	16009	3.066	ng	# 1

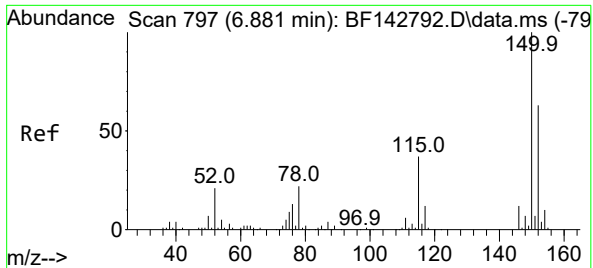
(#) = qualifier out of range (m) = manual integration (+) = signals summed

Data Path : Z:\svoasrv\HPCHEM1\BNA\_F\Data\BF070825\  
 Data File : BF143044.D  
 Acq On : 08 Jul 2025 20:42  
 Operator : RC/JU  
 Sample : Q2514-06  
 Misc :  
 ALS Vial : 21 Sample Multiplier: 1

Instrument :  
 BNA\_F  
 ClientSampleId :  
 TP-103

Quant Time: Jul 09 01:42:10 2025  
 Quant Method : Z:\svoasrv\HPCHEM1\BNA\_F\Methods\8270-BF061925.M  
 Quant Title : ASP BNA STANDARDS FOR 5 POINT CALIBRATION  
 QLast Update : Tue Jun 24 05:28:21 2025  
 Response via : Initial Calibration

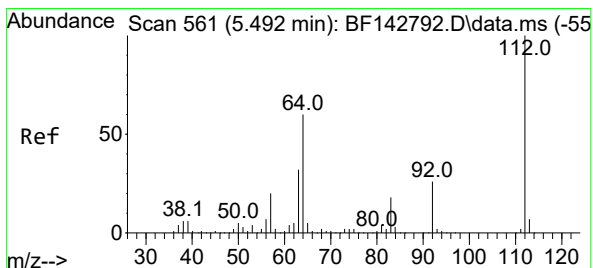
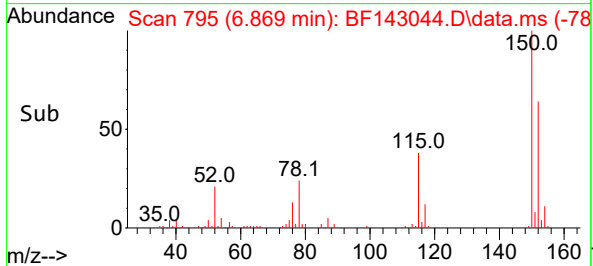
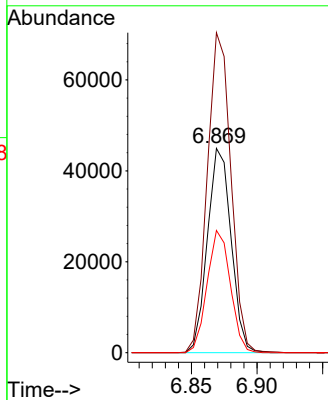
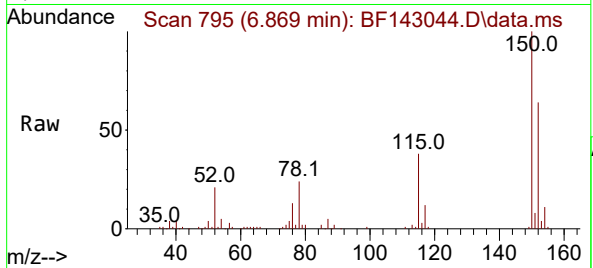




#1  
 1,4-Dichlorobenzene-d4  
 Concen: 20.000 ng  
 RT: 6.869 min Scan# 795  
 Delta R.T. -0.012 min  
 Lab File: BF143044.D  
 Acq: 08 Jul 2025 20:42

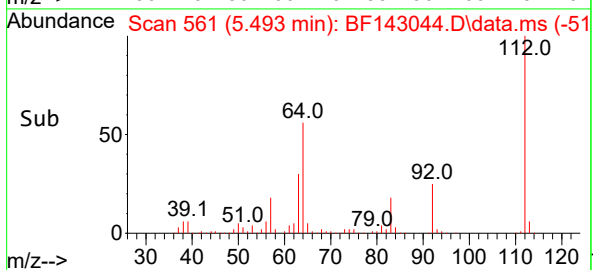
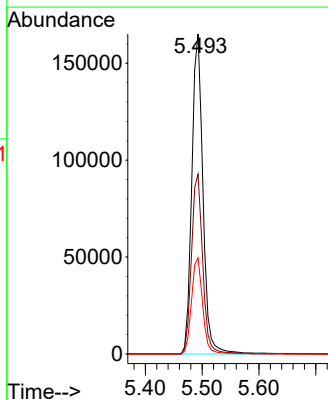
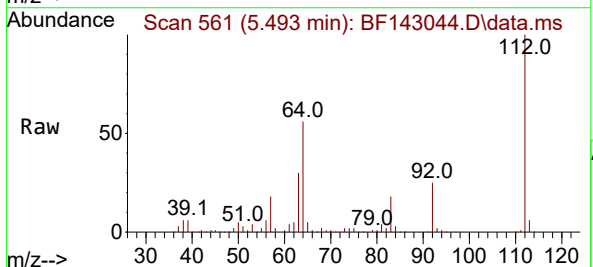
Instrument :  
 BNA\_F  
 ClientSampleId :  
 TP-103

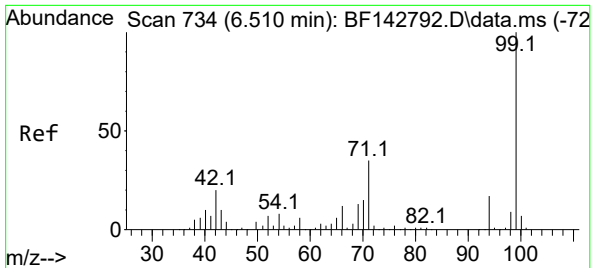
Tgt Ion:152 Resp: 56443  
 Ion Ratio Lower Upper  
 152 100  
 150 156.6 127.2 190.8  
 115 59.8 46.6 69.8



#5  
 2-Fluorophenol  
 Concen: 66.763 ng  
 RT: 5.493 min Scan# 561  
 Delta R.T. 0.001 min  
 Lab File: BF143044.D  
 Acq: 08 Jul 2025 20:42

Tgt Ion:112 Resp: 226334  
 Ion Ratio Lower Upper  
 112 100  
 64 56.2 48.2 72.2  
 63 30.1 25.7 38.5



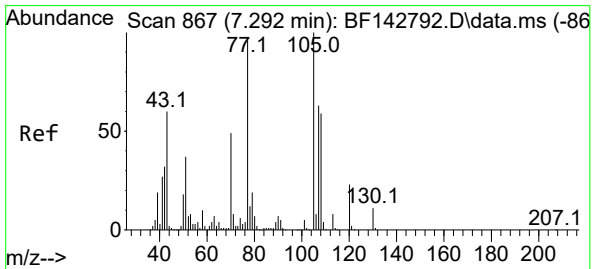
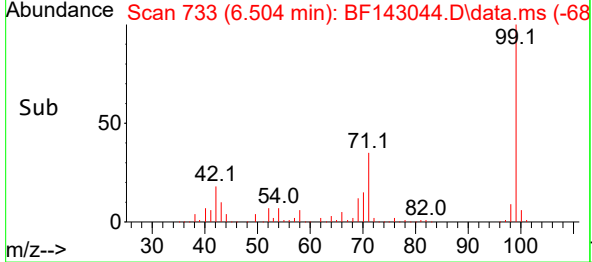
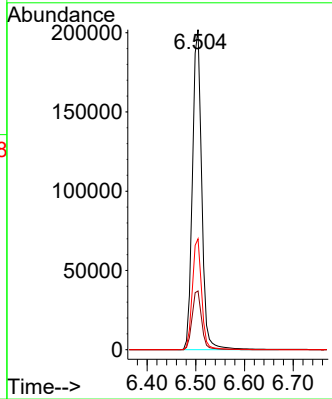
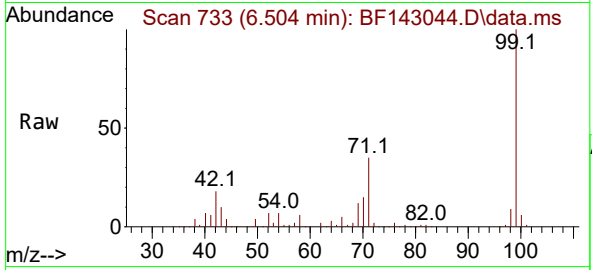


#7  
 Phenol-d6  
 Concen: 67.391 ng  
 RT: 6.504 min Scan# 71  
 Delta R.T. -0.006 min  
 Lab File: BF143044.D  
 Acq: 08 Jul 2025 20:42

Instrument :  
 BNA\_F  
 ClientSampleId :  
 TP-103

Tgt Ion: 99 Resp: 269543

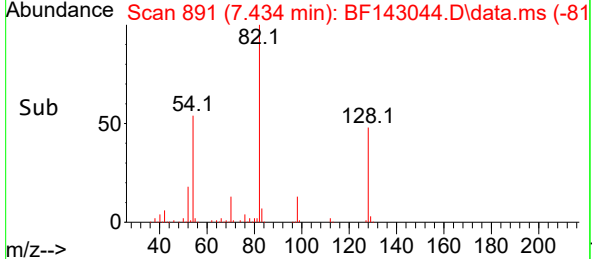
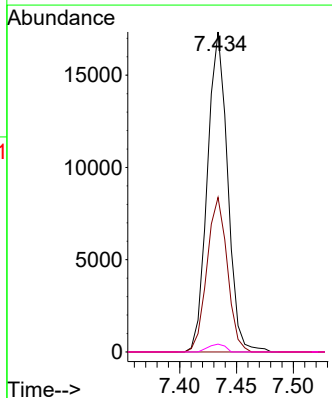
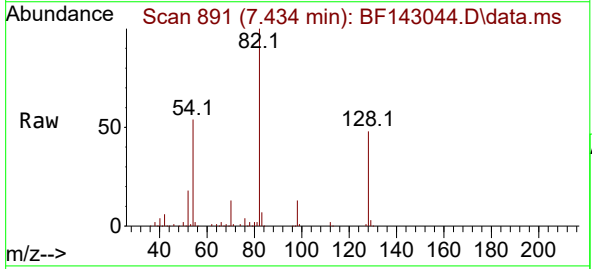
Ion	Ratio	Lower	Upper
99	100		
42	18.3	15.9	23.9
71	34.7	27.8	41.8

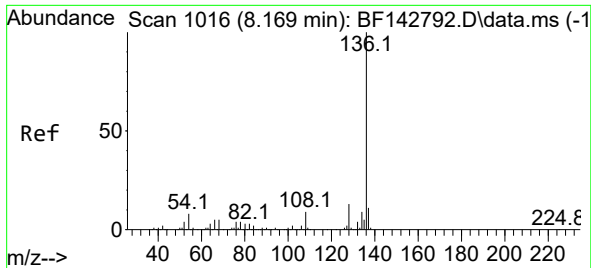


#19  
 n-Nitroso-di-n-propylamine  
 Concen: 9.233 ng  
 RT: 7.434 min Scan# 891  
 Delta R.T. 0.141 min  
 Lab File: BF143044.D  
 Acq: 08 Jul 2025 20:42

Tgt Ion: 70 Resp: 21478

Ion	Ratio	Lower	Upper
70	100		
42	48.3	52.1	78.1#
101	0.0	8.2	12.2#
130	2.5	18.2	27.2#



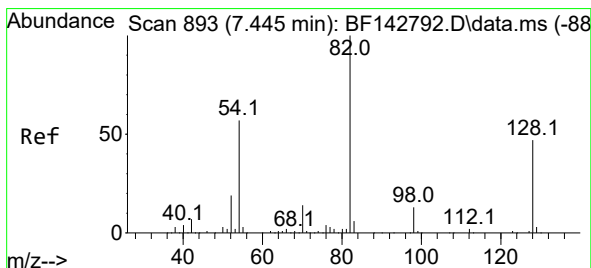
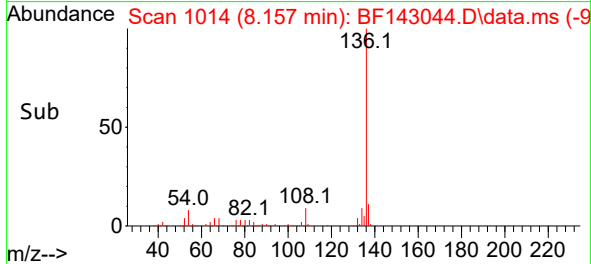
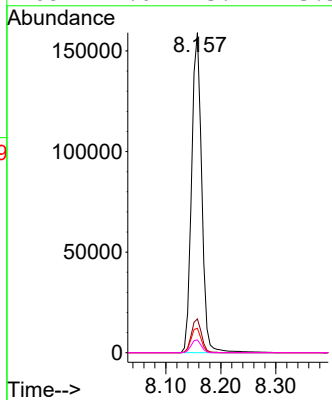
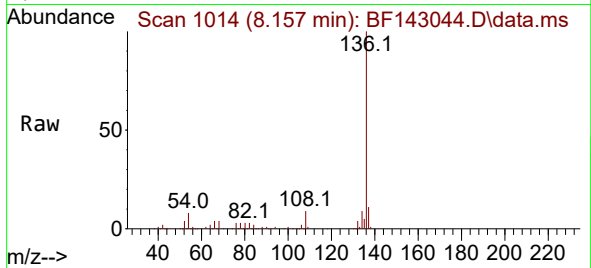


#21  
 Naphthalene-d8  
 Concen: 20.000 ng  
 RT: 8.157 min Scan# 1014  
 Delta R.T. -0.012 min  
 Lab File: BF143044.D  
 Acq: 08 Jul 2025 20:42

Instrument :  
 BNA\_F  
 ClientSampleId :  
 TP-103

Tgt Ion:136 Resp: 202963

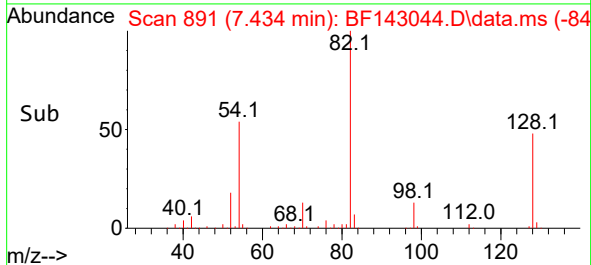
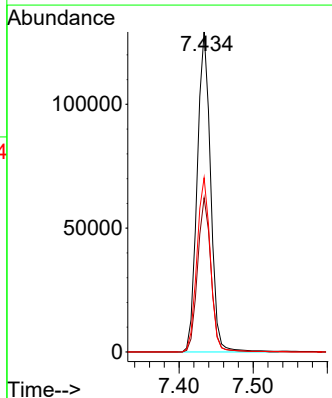
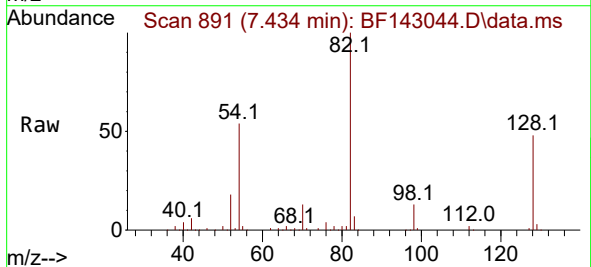
Ion	Ratio	Lower	Upper
136	100		
137	10.6	8.4	12.6
54	7.6	6.3	9.5
68	4.0	3.7	5.5

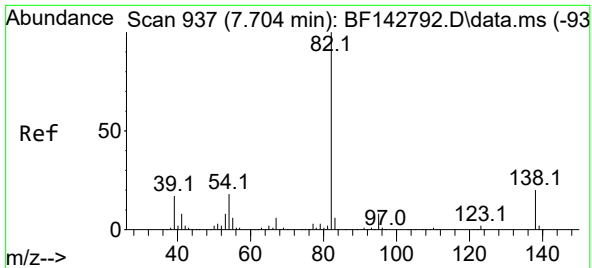


#23  
 Nitrobenzene-d5  
 Concen: 43.997 ng  
 RT: 7.434 min Scan# 891  
 Delta R.T. -0.011 min  
 Lab File: BF143044.D  
 Acq: 08 Jul 2025 20:42

Tgt Ion: 82 Resp: 162801

Ion	Ratio	Lower	Upper
82	100		
128	48.2	37.7	56.5
54	54.4	45.7	68.5



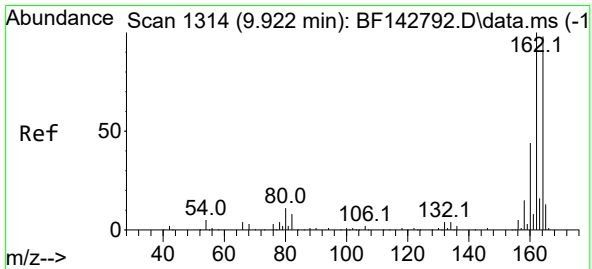
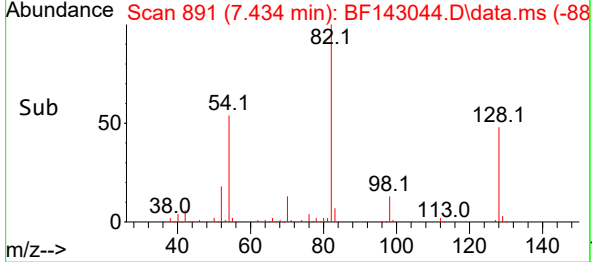
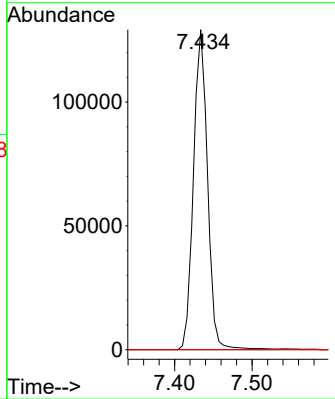
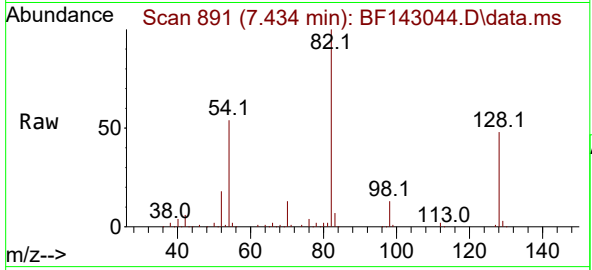


#25  
 Isophorone  
 Concen: 27.427 ng  
 RT: 7.434 min Scan# 891  
 Delta R.T. -0.270 min  
 Lab File: BF143044.D  
 Acq: 08 Jul 2025 20:42

Instrument : BNA\_F  
 ClientSampleId : TP-103

Tgt Ion: 82 Resp: 162799

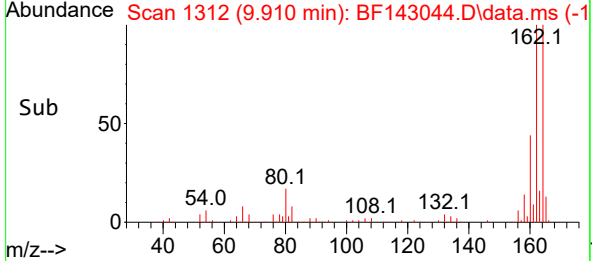
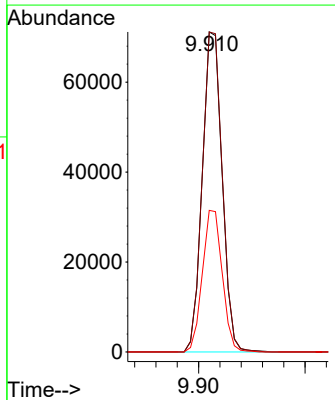
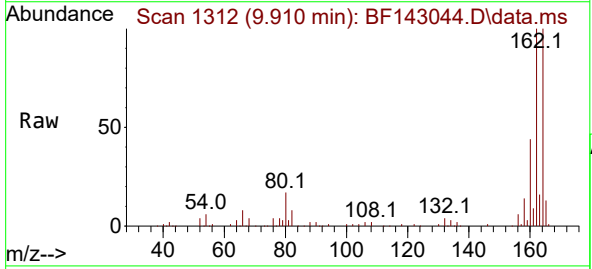
Ion	Ratio	Lower	Upper
82	100		
95	0.0	6.2	9.2#
138	0.0	16.2	24.4#

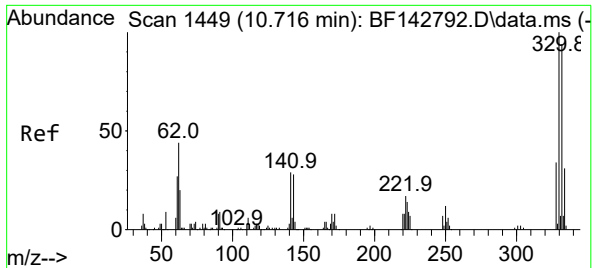


#39  
 Acenaphthene-d10  
 Concen: 20.000 ng  
 RT: 9.910 min Scan# 1312  
 Delta R.T. -0.012 min  
 Lab File: BF143044.D  
 Acq: 08 Jul 2025 20:42

Tgt Ion: 164 Resp: 92048

Ion	Ratio	Lower	Upper
164	100		
162	100.0	81.8	122.8
160	44.3	36.0	54.0



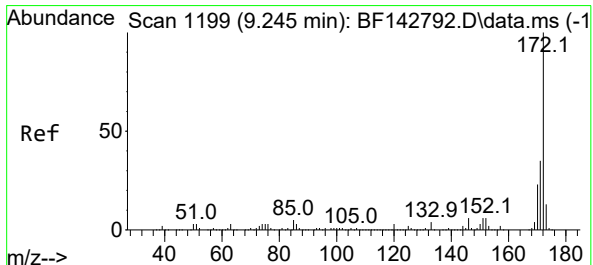
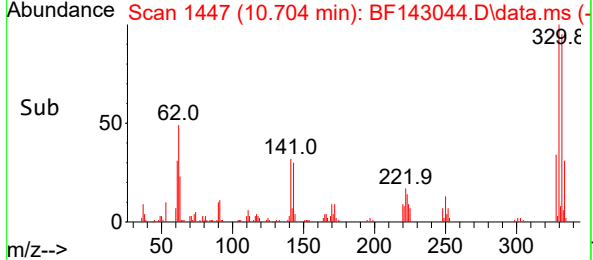
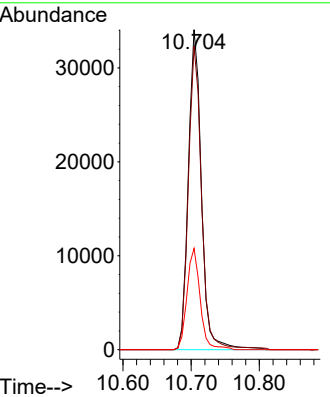
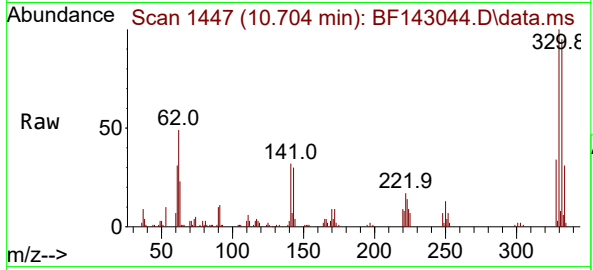


#42  
 2,4,6-Tribromophenol  
 Concen: 47.784 ng  
 RT: 10.704 min Scan# 1447  
 Delta R.T. -0.012 min  
 Lab File: BF143044.D  
 Acq: 08 Jul 2025 20:42

Instrument : BNA\_F  
 ClientSampleId : TP-103

Tgt Ion:330 Resp: 45263

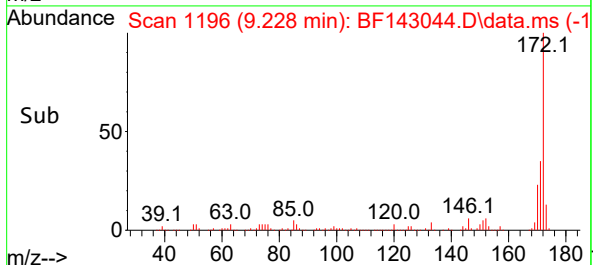
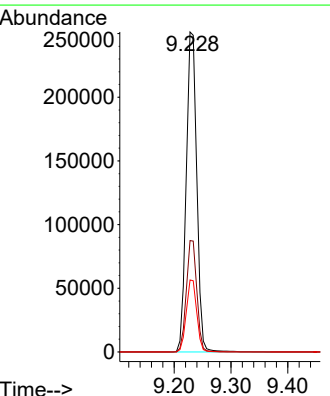
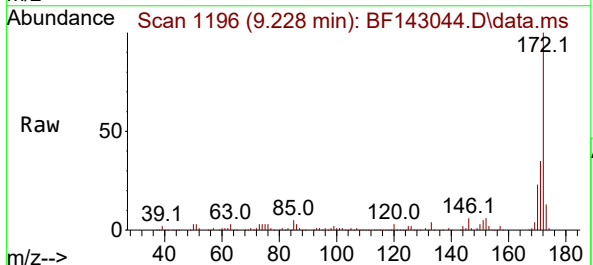
Ion	Ratio	Lower	Upper
330	100		
332	95.6	75.0	112.6
141	31.7	25.3	37.9

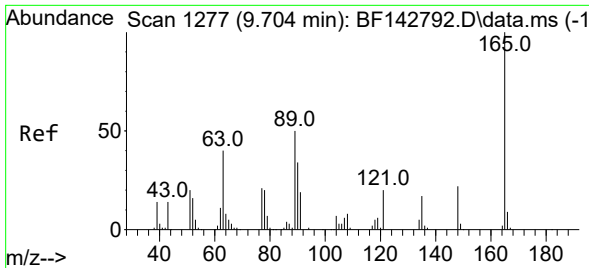


#45  
 2-Fluorobiphenyl  
 Concen: 46.494 ng  
 RT: 9.228 min Scan# 1196  
 Delta R.T. -0.017 min  
 Lab File: BF143044.D  
 Acq: 08 Jul 2025 20:42

Tgt Ion:172 Resp: 325778

Ion	Ratio	Lower	Upper
172	100		
171	34.8	28.2	42.4
170	22.5	18.5	27.7

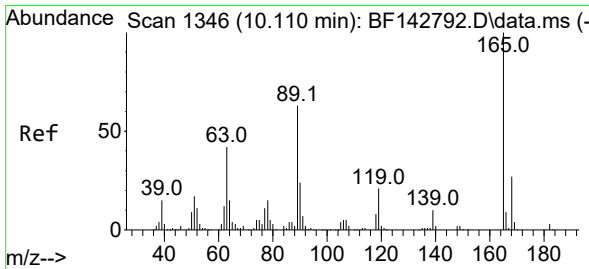
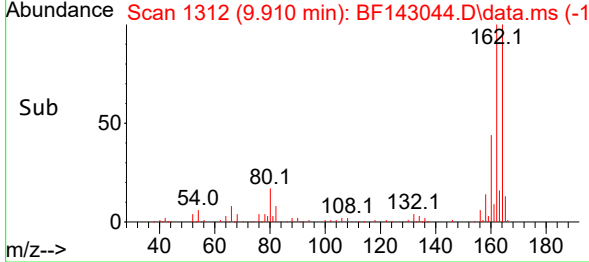
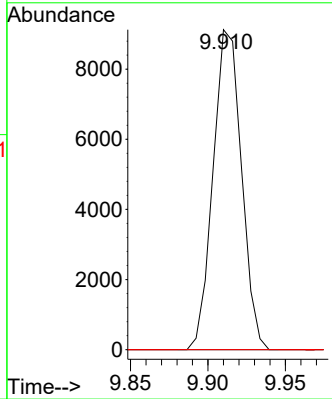
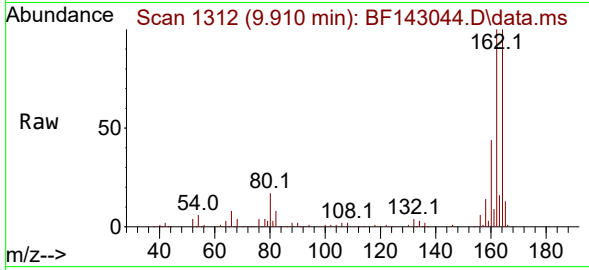




#51  
 2,6-Dinitrotoluene  
 Concen: 8.896 ng  
 RT: 9.910 min Scan# 11  
 Delta R.T. 0.206 min  
 Lab File: BF143044.D  
 Acq: 08 Jul 2025 20:42

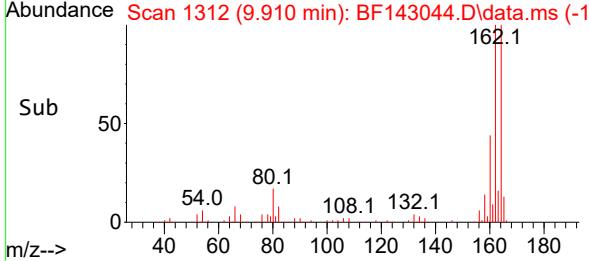
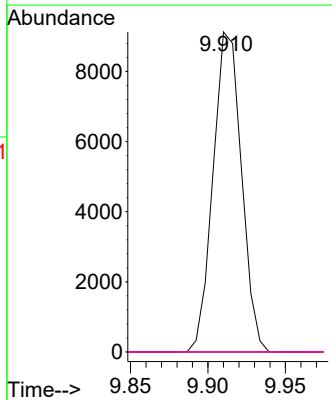
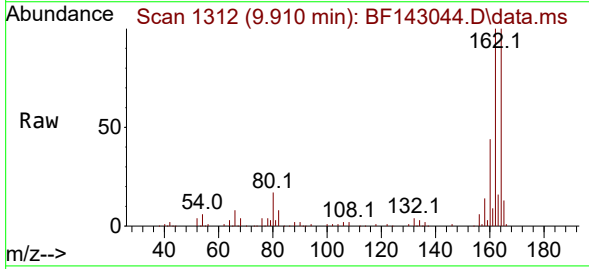
Instrument : BNA\_F  
 ClientSampleId : TP-103

Tgt Ion	Resp	Lower	Upper
165	100		
63	0.0	44.2	66.4#
89	0.0	39.8	59.8#

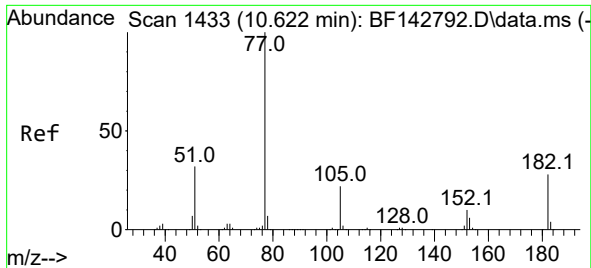


#57  
 2,4-Dinitrotoluene  
 Concen: 6.698 ng  
 RT: 9.910 min Scan# 1312  
 Delta R.T. -0.200 min  
 Lab File: BF143044.D  
 Acq: 08 Jul 2025 20:42

Tgt Ion	Resp	Lower	Upper
165	100		
63	0.0	33.9	50.9#
89	0.0	50.6	75.8#
182	0.0	2.3	3.5#

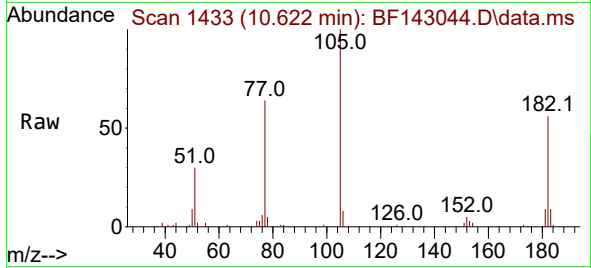




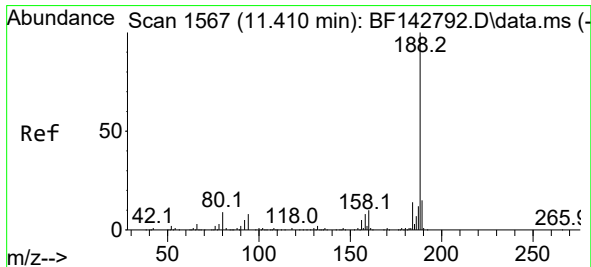
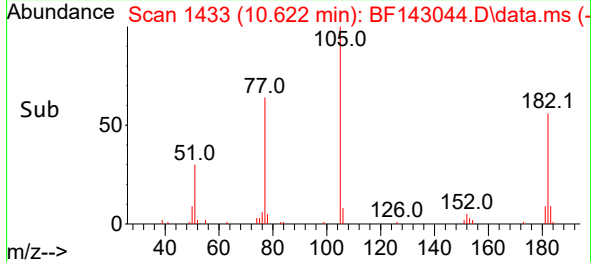
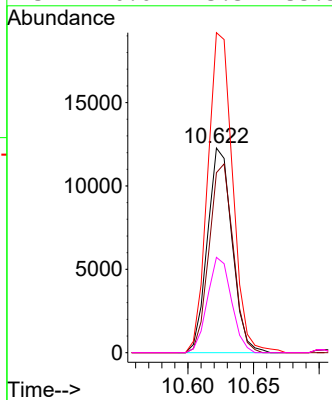


#63  
 Azobenzene  
 Concen: 3.066 ng  
 RT: 10.622 min Scan# 14  
 Delta R.T. 0.000 min  
 Lab File: BF143044.D  
 Acq: 08 Jul 2025 20:42

Instrument :  
 BNA\_F  
 ClientSampleId :  
 TP-103

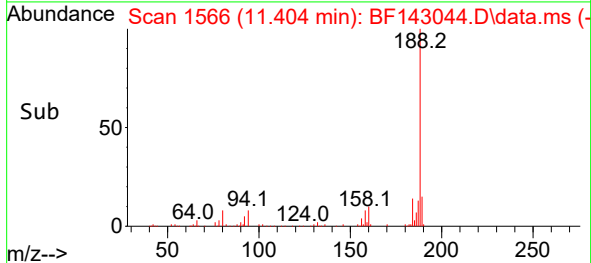
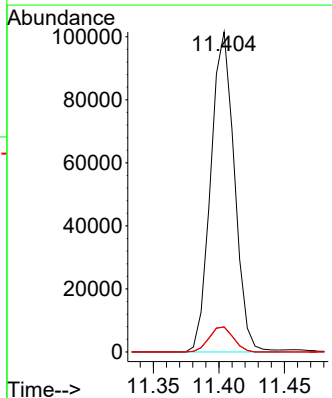
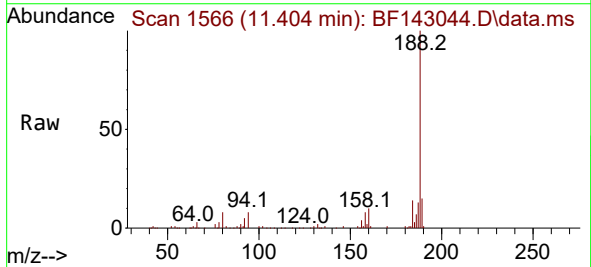


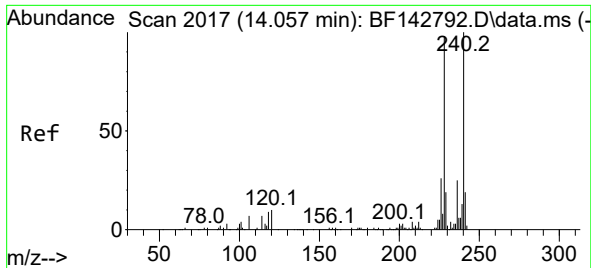
Tgt Ion: 77 Resp: 16009  
 Ion Ratio Lower Upper  
 77 100  
 182 88.0 7.7 47.7#  
 105 156.4 1.9 41.9#  
 51 46.6 13.3 53.3



#64  
 Phenanthrene-d10  
 Concen: 20.000 ng  
 RT: 11.404 min Scan# 1566  
 Delta R.T. -0.006 min  
 Lab File: BF143044.D  
 Acq: 08 Jul 2025 20:42

Tgt Ion: 188 Resp: 127469  
 Ion Ratio Lower Upper  
 188 100  
 94 7.8 6.7 10.1  
 80 7.9 6.9 10.3

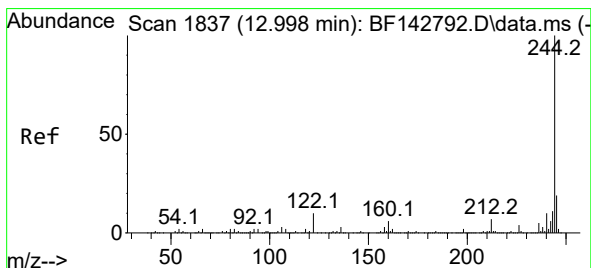
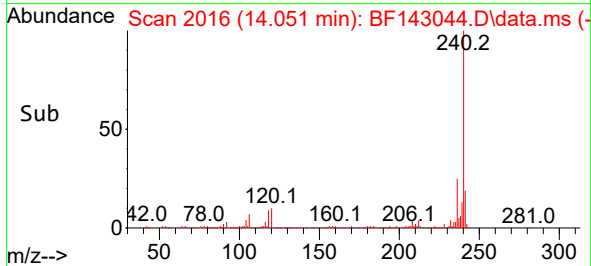
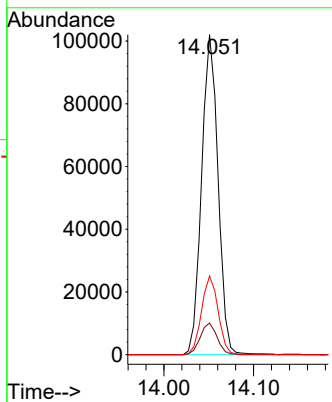
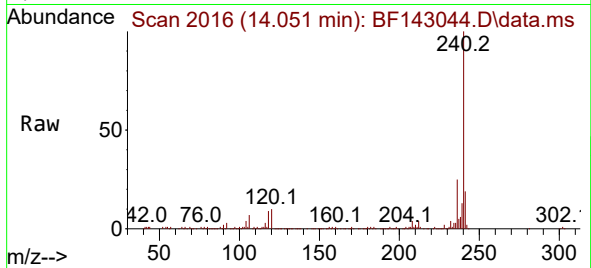




#76  
 Chrysene-d12  
 Concen: 20.000 ng  
 RT: 14.051 min Scan# 20  
 Delta R.T. -0.006 min  
 Lab File: BF143044.D  
 Acq: 08 Jul 2025 20:42

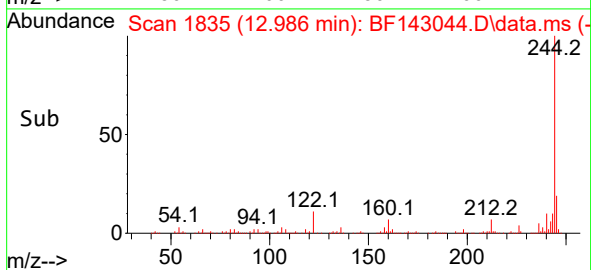
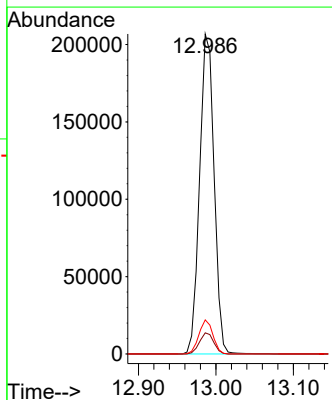
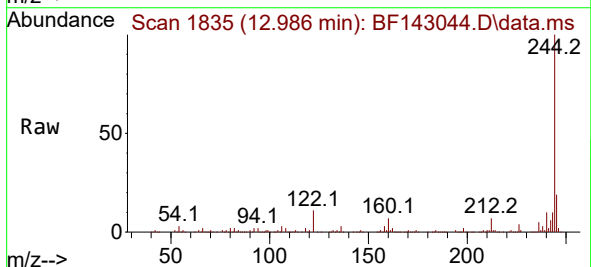
Instrument :  
 BNA\_F  
 ClientSampleId :  
 TP-103

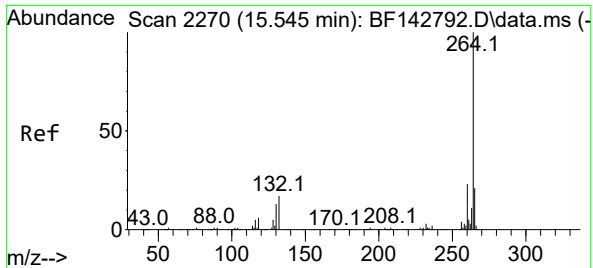
Tgt Ion:240 Resp: 129693  
 Ion Ratio Lower Upper  
 240 100  
 120 9.9 8.2 12.2  
 236 24.6 19.8 29.8



#79  
 Terphenyl-d14  
 Concen: 28.671 ng  
 RT: 12.986 min Scan# 1835  
 Delta R.T. -0.012 min  
 Lab File: BF143044.D  
 Acq: 08 Jul 2025 20:42

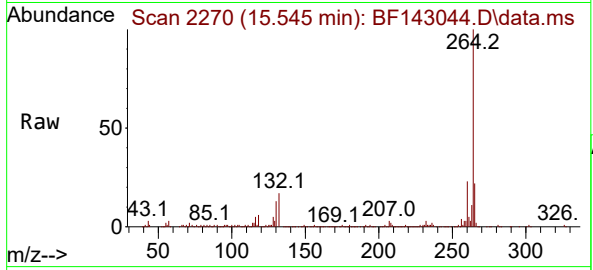
Tgt Ion:244 Resp: 269123  
 Ion Ratio Lower Upper  
 244 100  
 212 6.6 5.4 8.0  
 122 10.7 8.2 12.2





#86  
 Perylene-d12  
 Concen: 20.000 ng  
 RT: 15.545 min Scan# 21  
 Delta R.T. 0.000 min  
 Lab File: BF143044.D  
 Acq: 08 Jul 2025 20:42

Instrument :  
 BNA\_F  
 ClientSampleId :  
 TP-103



Tgt Ion:264 Resp: 142779

Ion	Ratio	Lower	Upper
264	100		
260	23.0	18.1	27.1
265	21.9	16.6	25.0

