

Data Path : Z:\svoasrv\HPCHEM1\BNA_F\Data\BF070925\
 Data File : BF143062.D
 Acq On : 09 Jul 2025 18:01
 Operator : RC/JU
 Sample : Q2529-07
 Misc :
 ALS Vial : 16 Sample Multiplier: 1

Instrument :
 BNA_F
 ClientSampleId :
 TP-101

Quant Time: Jul 09 18:57:47 2025
 Quant Method : Z:\svoasrv\HPCHEM1\BNA_F\Methods\8270-BF061925.M
 Quant Title : ASP BNA STANDARDS FOR 5 POINT CALIBRATION
 QLast Update : Tue Jun 24 05:28:21 2025
 Response via : Initial Calibration

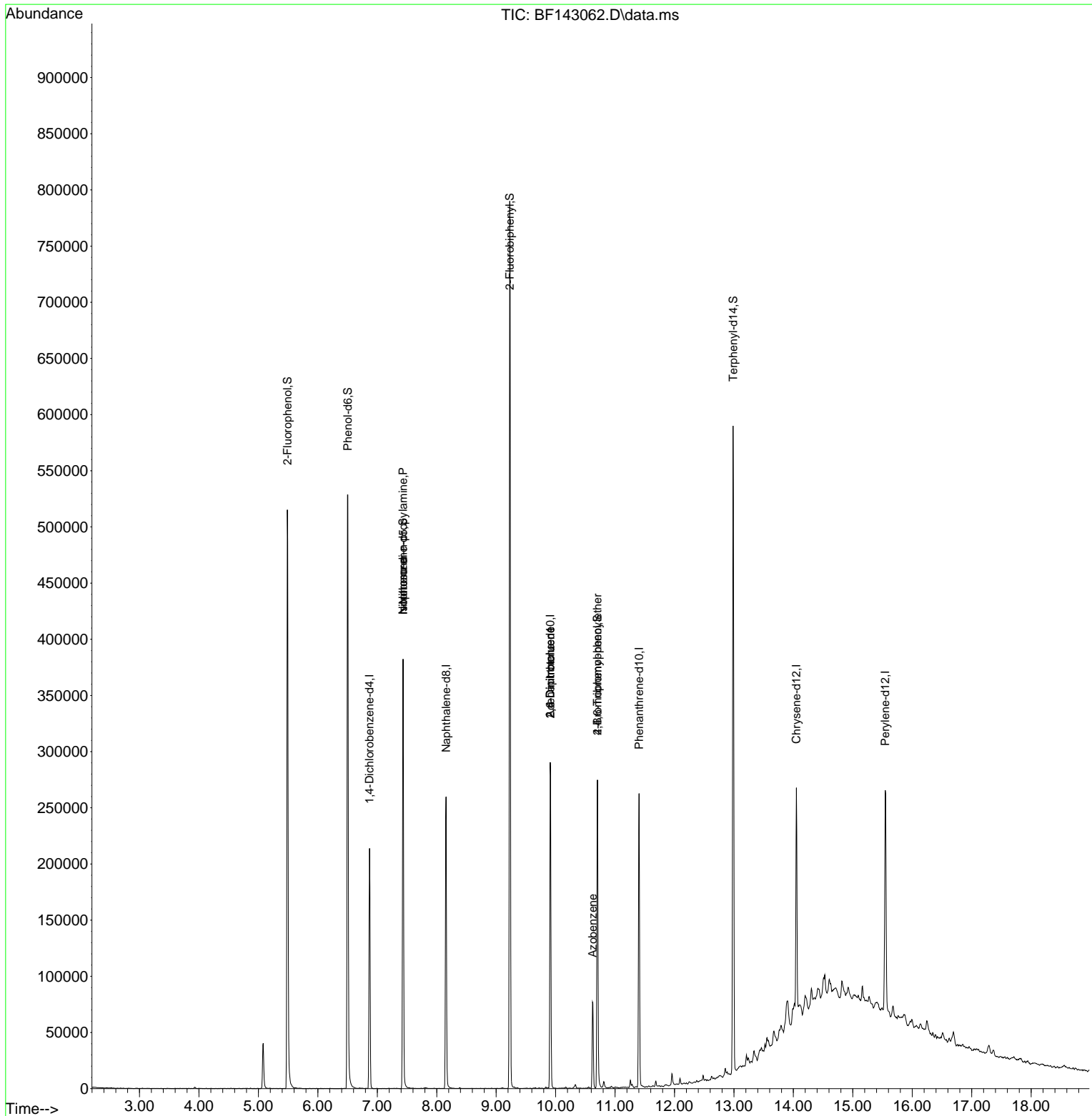
Compound	R.T.	QIon	Response	Conc	Units	Dev(Min)
Internal Standards						
1) 1,4-Dichlorobenzene-d4	6.869	152	47254	20.000	ng	-0.01
21) Naphthalene-d8	8.157	136	174308	20.000	ng	-0.01
39) Acenaphthene-d10	9.910	164	90374	20.000	ng	-0.01
64) Phenanthrene-d10	11.404	188	137992	20.000	ng	0.00
76) Chrysene-d12	14.051	240	101609	20.000	ng	0.00
86) Perylene-d12	15.545	264	114308	20.000	ng	0.00
System Monitoring Compounds						
5) 2-Fluorophenol	5.487	112	213697	75.293	ng	0.00
7) Phenol-d6	6.504	99	260363	77.754	ng	0.00
23) Nitrobenzene-d5	7.434	82	162220	51.047	ng	-0.01
42) 2,4,6-Tribromophenol	10.704	330	50160	53.935	ng	-0.01
45) 2-Fluorobiphenyl	9.228	172	361058	52.483	ng	-0.02
79) Terphenyl-d14	12.986	244	277886	37.788	ng	-0.01
Target Compounds						
19) n-Nitroso-di-n-propyla...	7.434	70	21706	11.145	ng	# 73
25) Isophorone	7.434	82	162219	31.821	ng	# 62
51) 2,6-Dinitrotoluene	9.910	165	11638	9.059	ng	# 26
57) 2,4-Dinitrotoluene	9.910	165	11638	6.820	ng	# 26
63) Azobenzene	10.622	77	19807	3.864	ng	# 1
67) 4-Bromophenyl-phenylether	10.704	248	3234	2.059	ng	# 1

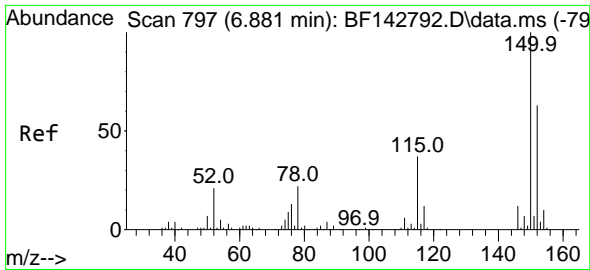
(#) = qualifier out of range (m) = manual integration (+) = signals summed

Data Path : Z:\svoasrv\HPCHEM1\BNA_F\Data\BF070925\
 Data File : BF143062.D
 Acq On : 09 Jul 2025 18:01
 Operator : RC/JU
 Sample : Q2529-07
 Misc :
 ALS Vial : 16 Sample Multiplier: 1

Instrument :
 BNA_F
 ClientSampleId :
 TP-101

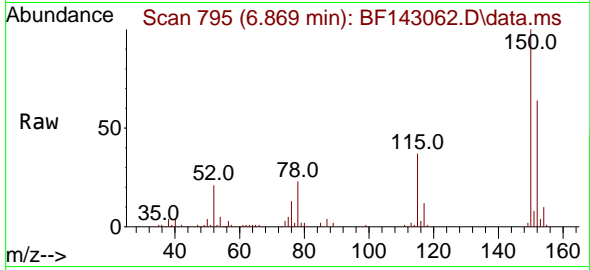
Quant Time: Jul 09 18:57:47 2025
 Quant Method : Z:\svoasrv\HPCHEM1\BNA_F\Methods\8270-BF061925.M
 Quant Title : ASP BNA STANDARDS FOR 5 POINT CALIBRATION
 QLast Update : Tue Jun 24 05:28:21 2025
 Response via : Initial Calibration



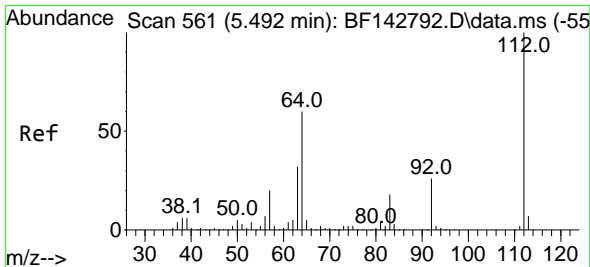
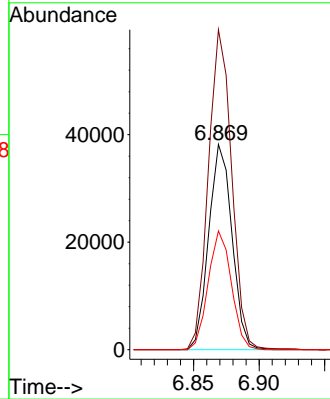
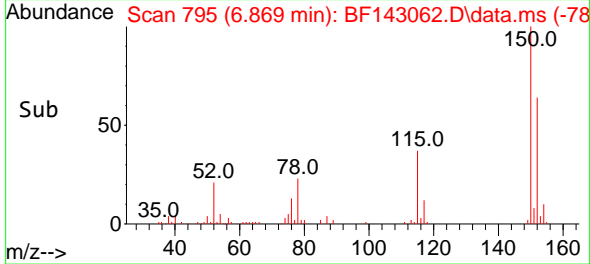


#1
 1,4-Dichlorobenzene-d4
 Concen: 20.000 ng
 RT: 6.869 min Scan# 795
 Delta R.T. -0.012 min
 Lab File: BF143062.D
 Acq: 09 Jul 2025 18:01

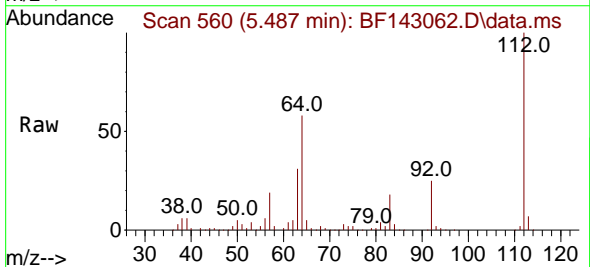
Instrument :
 BNA_F
 ClientSampleId :
 TP-101



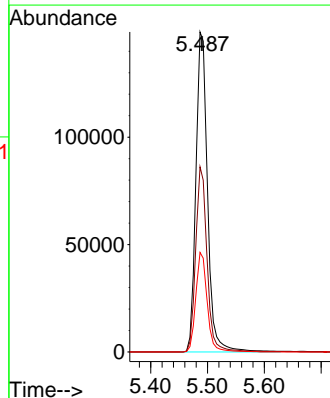
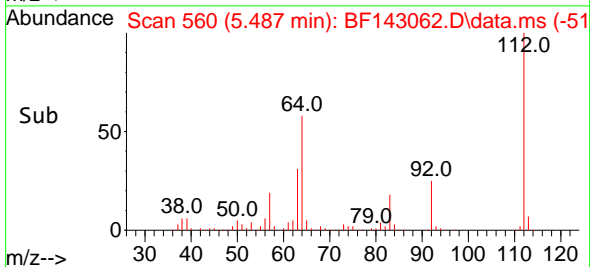
Tgt Ion:152 Resp: 47254
 Ion Ratio Lower Upper
 152 100
 150 155.9 127.2 190.8
 115 57.8 46.6 69.8

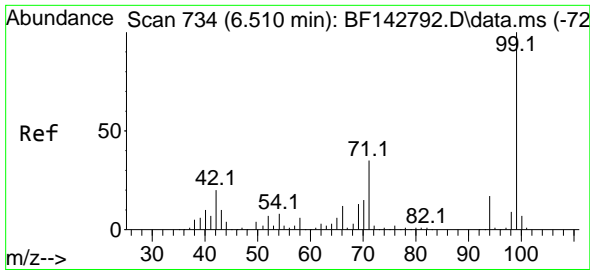


#5
 2-Fluorophenol
 Concen: 75.293 ng
 RT: 5.487 min Scan# 560
 Delta R.T. -0.005 min
 Lab File: BF143062.D
 Acq: 09 Jul 2025 18:01



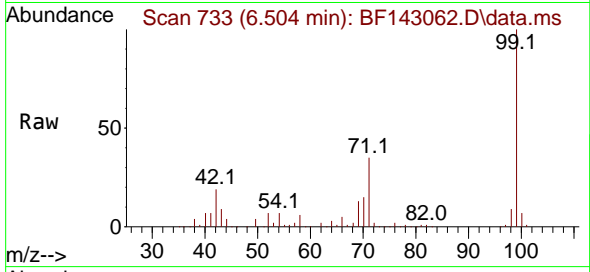
Tgt Ion:112 Resp: 213697
 Ion Ratio Lower Upper
 112 100
 64 57.9 48.2 72.2
 63 31.1 25.7 38.5



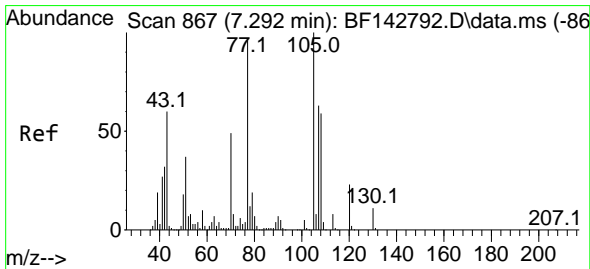
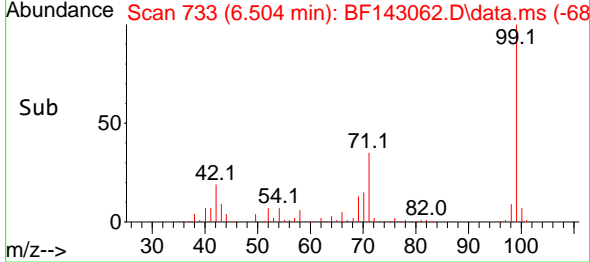
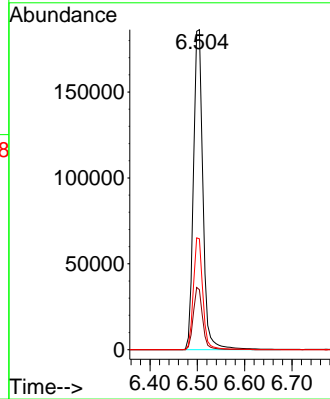


#7
 Phenol-d6
 Concen: 77.754 ng
 RT: 6.504 min Scan# 71
 Delta R.T. -0.006 min
 Lab File: BF143062.D
 Acq: 09 Jul 2025 18:01

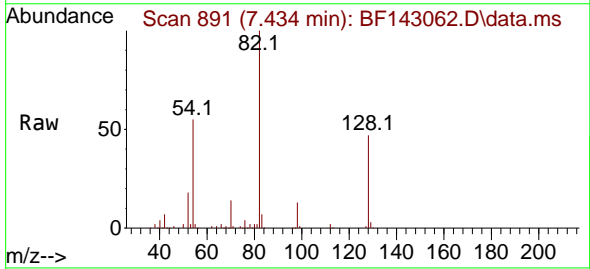
Instrument :
 BNA_F
 ClientSampleId :
 TP-101



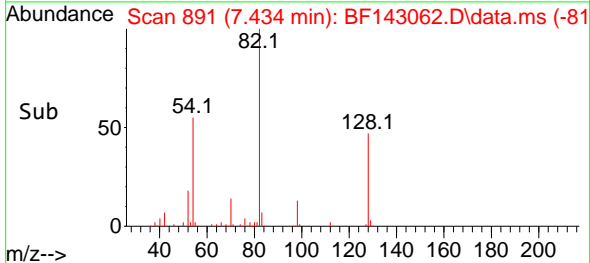
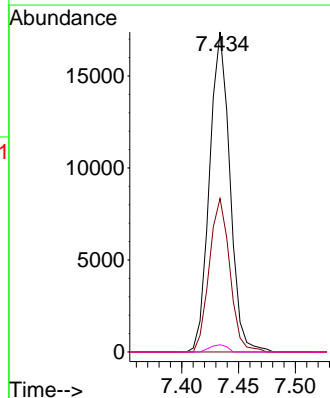
Tgt Ion: 99 Resp: 260363
 Ion Ratio Lower Upper
 99 100
 42 18.8 15.9 23.9
 71 34.7 27.8 41.8

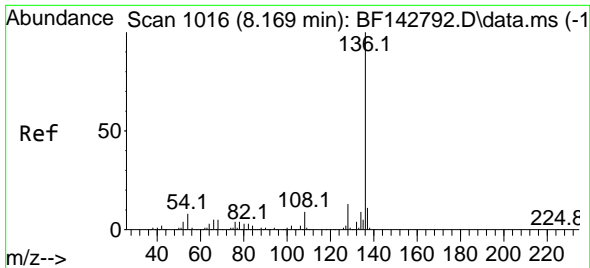


#19
 n-Nitroso-di-n-propylamine
 Concen: 11.145 ng
 RT: 7.434 min Scan# 891
 Delta R.T. 0.141 min
 Lab File: BF143062.D
 Acq: 09 Jul 2025 18:01



Tgt Ion: 70 Resp: 21706
 Ion Ratio Lower Upper
 70 100
 42 48.0 52.1 78.1#
 101 0.0 8.2 12.2#
 130 2.2 18.2 27.2#



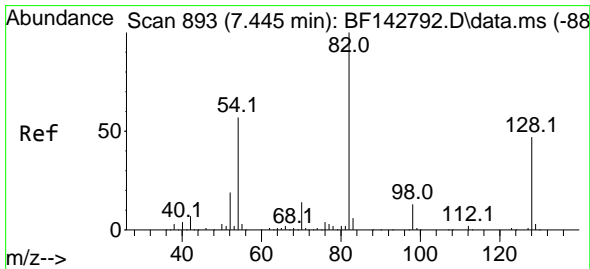
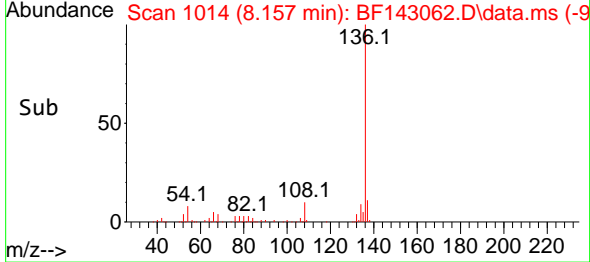
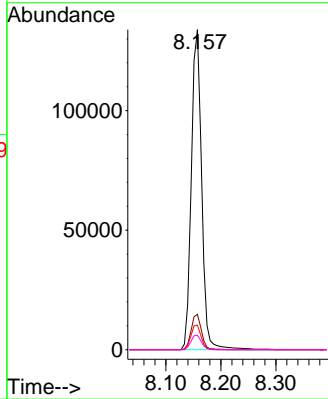
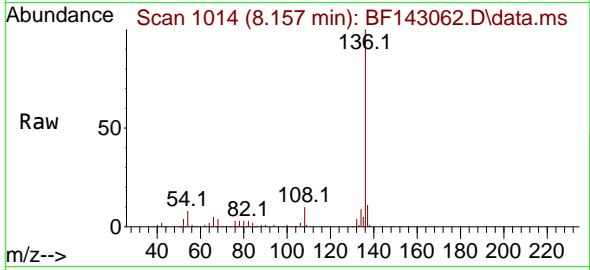


#21
 Naphthalene-d8
 Concen: 20.000 ng
 RT: 8.157 min Scan# 1014
 Delta R.T. -0.012 min
 Lab File: BF143062.D
 Acq: 09 Jul 2025 18:01

Instrument : BNA_F
 ClientSampleId : TP-101

Tgt Ion:136 Resp: 174308

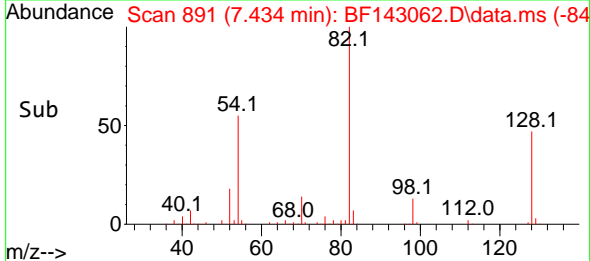
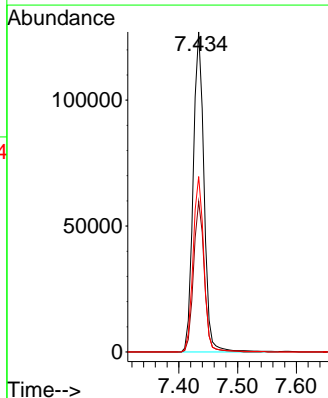
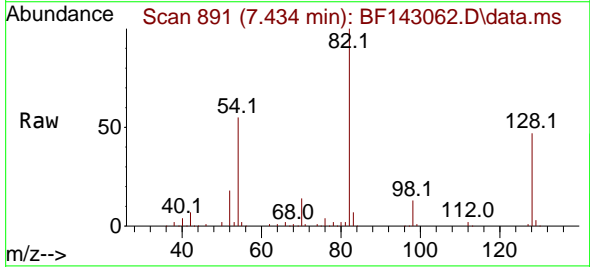
Ion	Ratio	Lower	Upper
136	100		
137	11.1	8.4	12.6
54	7.6	6.3	9.5
68	4.5	3.7	5.5

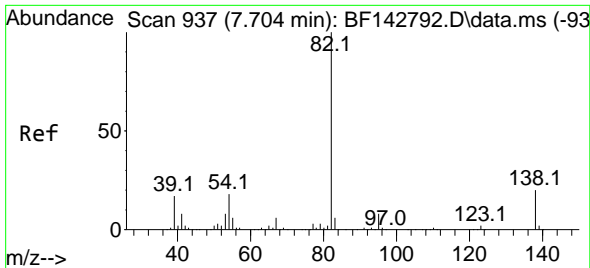


#23
 Nitrobenzene-d5
 Concen: 51.047 ng
 RT: 7.434 min Scan# 891
 Delta R.T. -0.011 min
 Lab File: BF143062.D
 Acq: 09 Jul 2025 18:01

Tgt Ion: 82 Resp: 162220

Ion	Ratio	Lower	Upper
82	100		
128	47.0	37.7	56.5
54	54.8	45.7	68.5

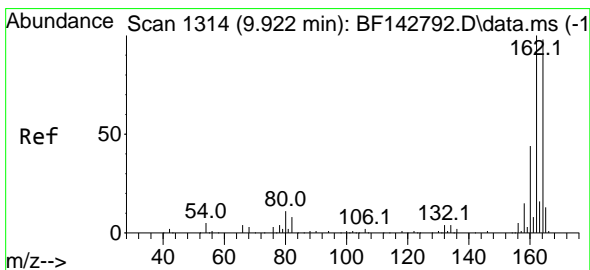
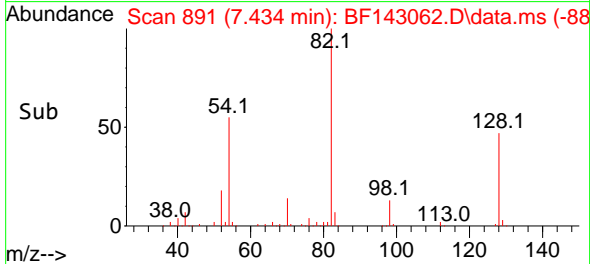
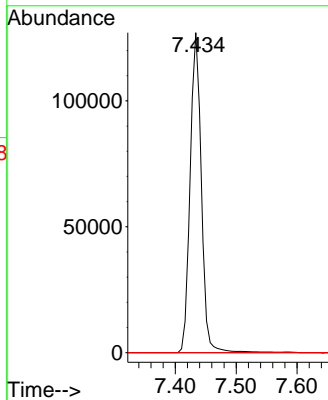
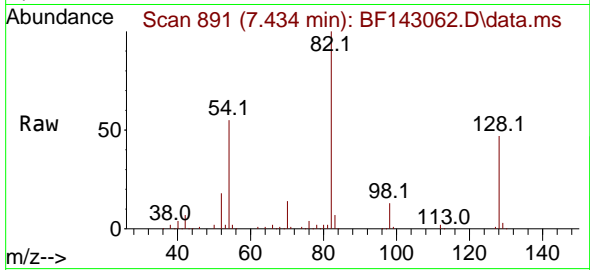




#25
 Isophorone
 Concen: 31.821 ng
 RT: 7.434 min Scan# 891
 Delta R.T. -0.270 min
 Lab File: BF143062.D
 Acq: 09 Jul 2025 18:01

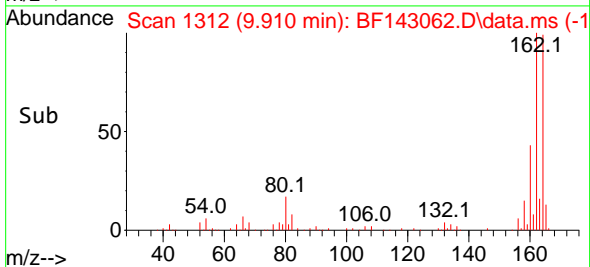
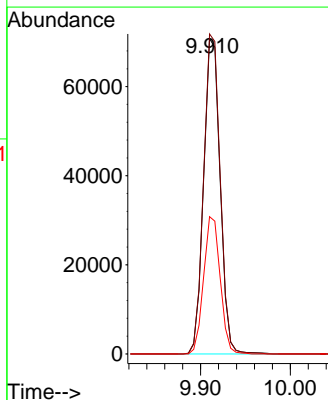
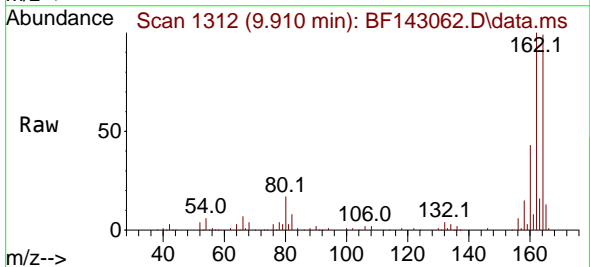
Instrument : BNA_F
 ClientSampleId : TP-101

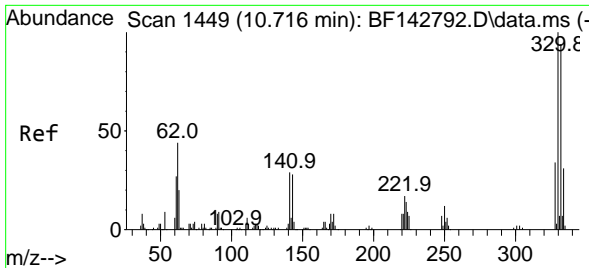
Tgt Ion: 82 Resp: 162219
 Ion Ratio Lower Upper
 82 100
 95 0.0 6.2 9.2#
 138 0.0 16.2 24.4#



#39
 Acenaphthene-d10
 Concen: 20.000 ng
 RT: 9.910 min Scan# 1312
 Delta R.T. -0.012 min
 Lab File: BF143062.D
 Acq: 09 Jul 2025 18:01

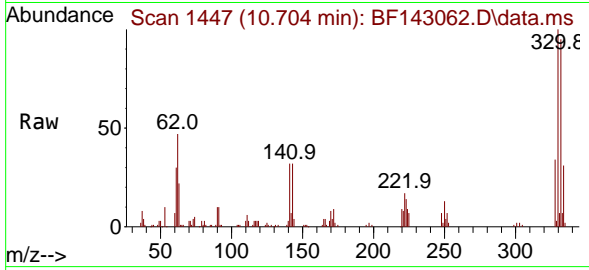
Tgt Ion:164 Resp: 90374
 Ion Ratio Lower Upper
 164 100
 162 101.5 81.8 122.8
 160 43.5 36.0 54.0



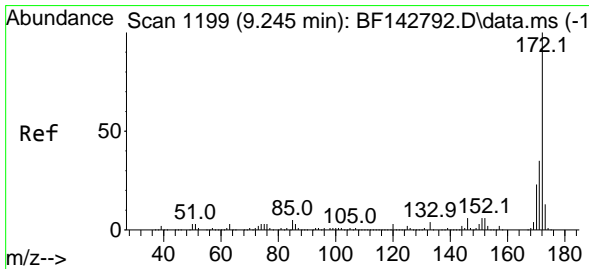
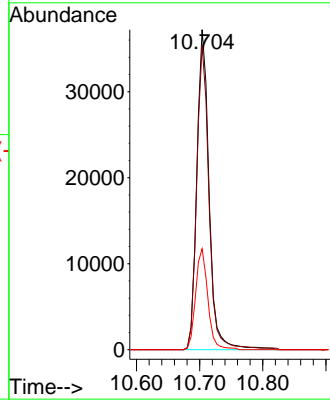
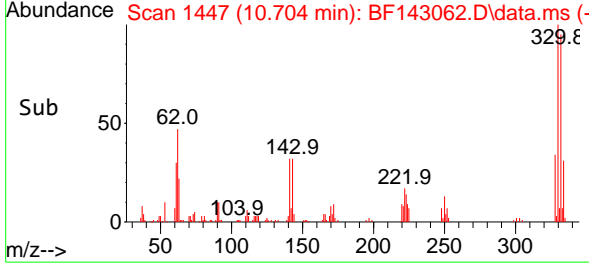


#42
 2,4,6-Tribromophenol
 Concen: 53.935 ng
 RT: 10.704 min Scan# 14
 Delta R.T. -0.012 min
 Lab File: BF143062.D
 Acq: 09 Jul 2025 18:01

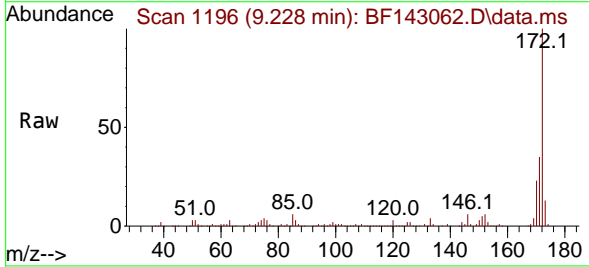
Instrument :
 BNA_F
 ClientSampleId :
 TP-101



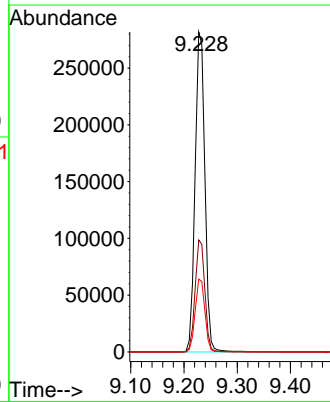
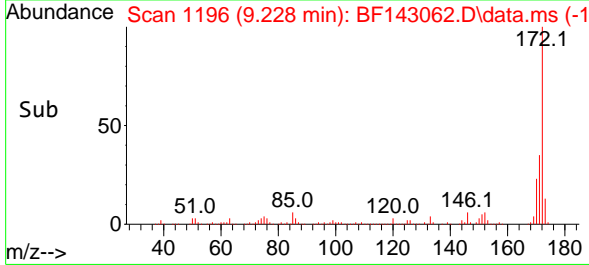
Tgt Ion:330 Resp: 50160
 Ion Ratio Lower Upper
 330 100
 332 94.7 75.0 112.6
 141 31.4 25.3 37.9

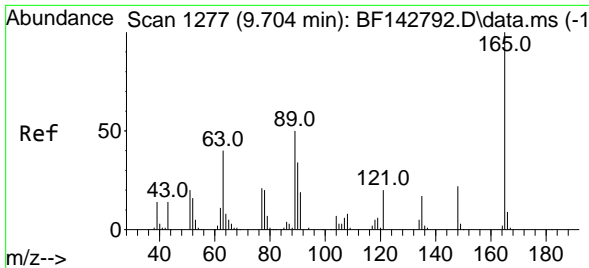


#45
 2-Fluorobiphenyl
 Concen: 52.483 ng
 RT: 9.228 min Scan# 1196
 Delta R.T. -0.017 min
 Lab File: BF143062.D
 Acq: 09 Jul 2025 18:01



Tgt Ion:172 Resp: 361058
 Ion Ratio Lower Upper
 172 100
 171 35.0 28.2 42.4
 170 22.8 18.5 27.7

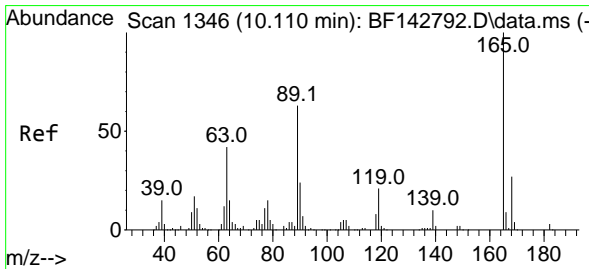
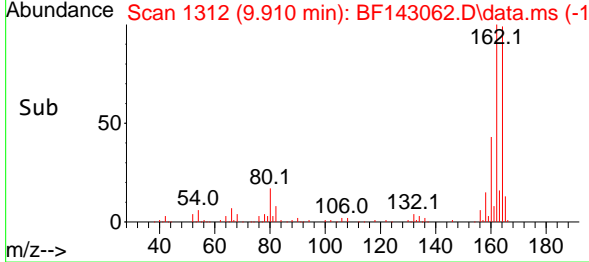
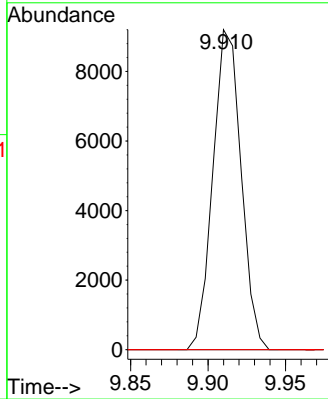
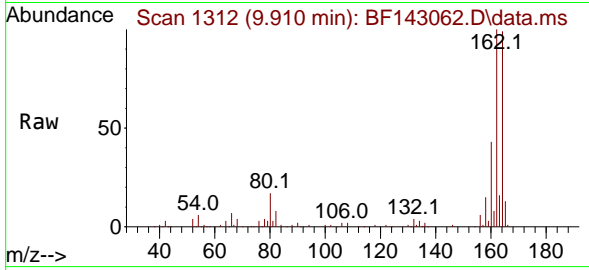




#51
 2,6-Dinitrotoluene
 Concen: 9.059 ng
 RT: 9.910 min Scan# 1111
 Delta R.T. 0.206 min
 Lab File: BF143062.D
 Acq: 09 Jul 2025 18:01

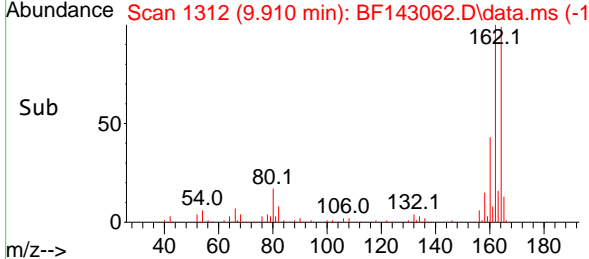
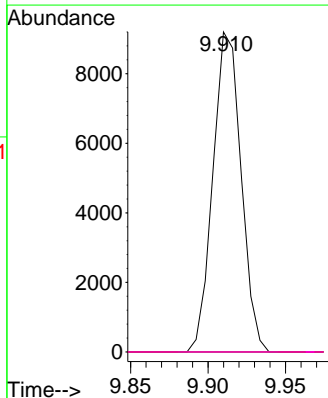
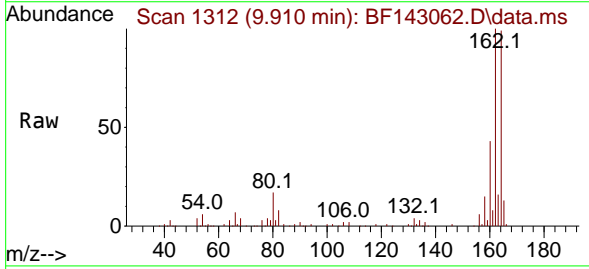
Instrument :
 BNA_F
 ClientSampleId :
 TP-101

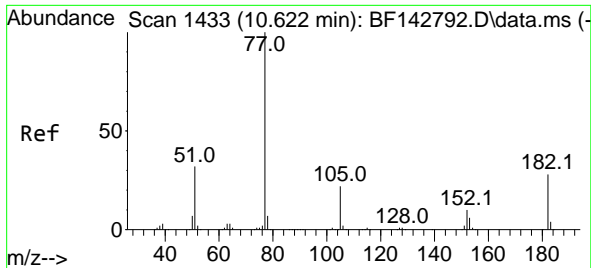
Tgt Ion	Resp	Lower	Upper
165	11638		
63	0.0	44.2	66.4#
89	0.0	39.8	59.8#



#57
 2,4-Dinitrotoluene
 Concen: 6.820 ng
 RT: 9.910 min Scan# 1312
 Delta R.T. -0.200 min
 Lab File: BF143062.D
 Acq: 09 Jul 2025 18:01

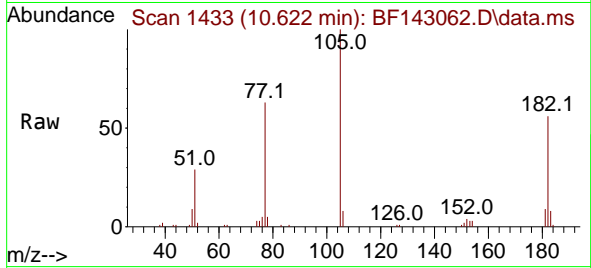
Tgt Ion	Resp	Lower	Upper
165	11638		
63	0.0	33.9	50.9#
89	0.0	50.6	75.8#
182	0.0	2.3	3.5#



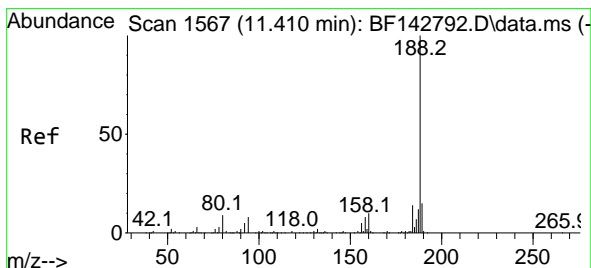
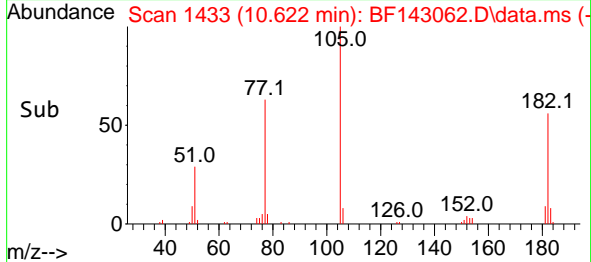
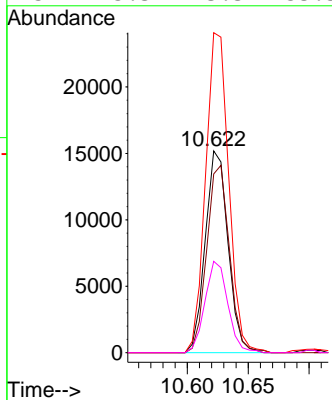


#63
 Azobenzene
 Concen: 3.864 ng
 RT: 10.622 min Scan# 14
 Delta R.T. 0.000 min
 Lab File: BF143062.D
 Acq: 09 Jul 2025 18:01

Instrument :
 BNA_F
 ClientSampleId :
 TP-101

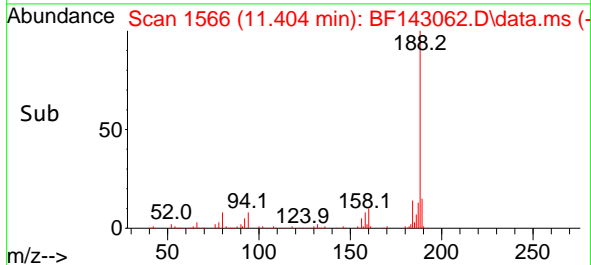
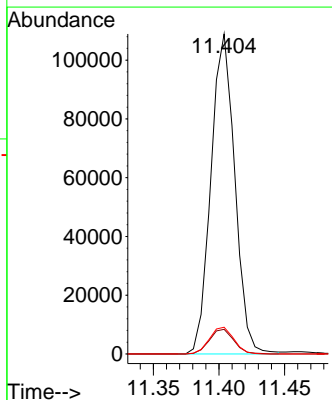
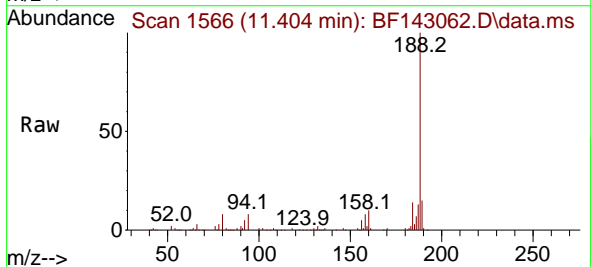


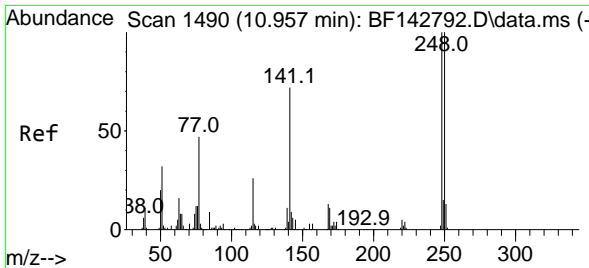
Tgt Ion: 77 Resp: 19807
 Ion Ratio Lower Upper
 77 100
 182 88.6 7.7 47.7#
 105 158.7 1.9 41.9#
 51 45.3 13.3 53.3



#64
 Phenanthrene-d10
 Concen: 20.000 ng
 RT: 11.404 min Scan# 1566
 Delta R.T. -0.006 min
 Lab File: BF143062.D
 Acq: 09 Jul 2025 18:01

Tgt Ion: 188 Resp: 137992
 Ion Ratio Lower Upper
 188 100
 94 7.7 6.7 10.1
 80 8.4 6.9 10.3

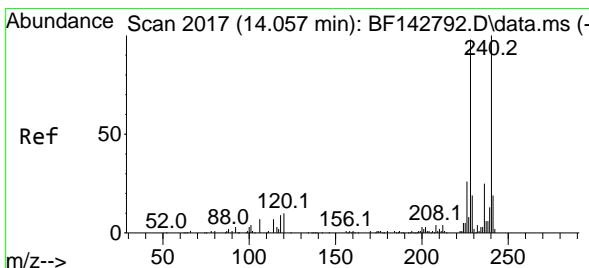
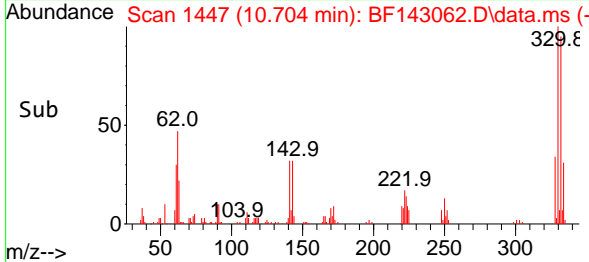
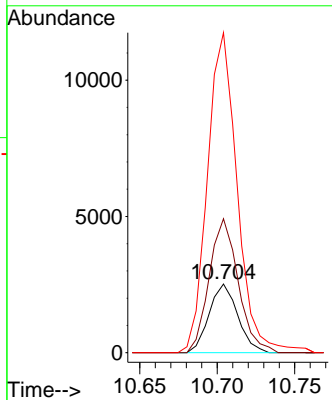
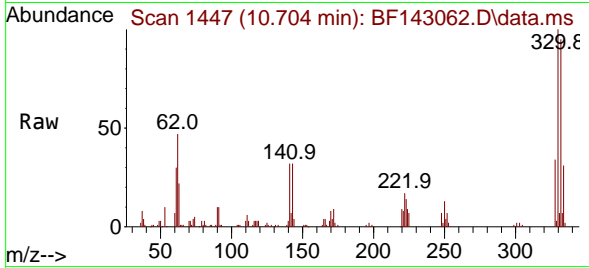




#67
 4-Bromophenyl-phenylether
 Concen: 2.059 ng
 RT: 10.704 min Scan# 14
 Delta R.T. -0.253 min
 Lab File: BF143062.D
 Acq: 09 Jul 2025 18:01

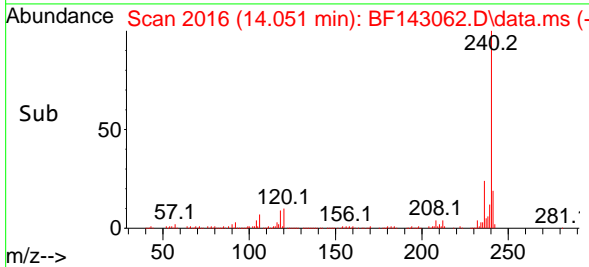
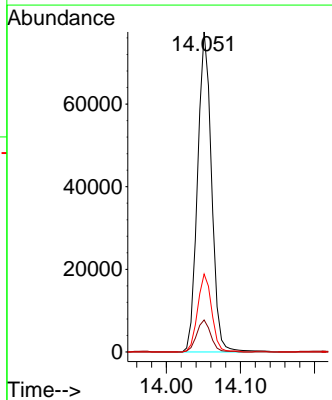
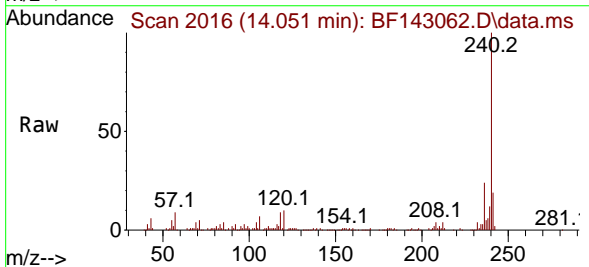
Instrument :
 BNA_F
 ClientSampleId :
 TP-101

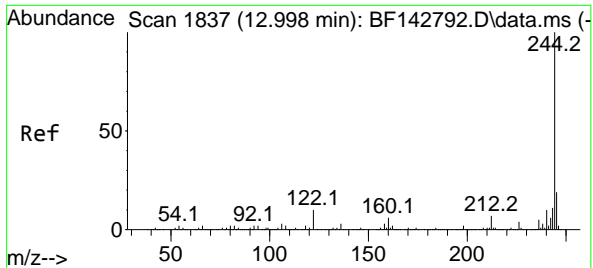
Tgt Ion:248 Resp: 3234
 Ion Ratio Lower Upper
 248 100
 250 195.0 79.8 119.8#
 141 465.9 57.8 86.6#



#76
 Chrysene-d12
 Concen: 20.000 ng
 RT: 14.051 min Scan# 2016
 Delta R.T. -0.006 min
 Lab File: BF143062.D
 Acq: 09 Jul 2025 18:01

Tgt Ion:240 Resp: 101609
 Ion Ratio Lower Upper
 240 100
 120 10.0 8.2 12.2
 236 24.4 19.8 29.8



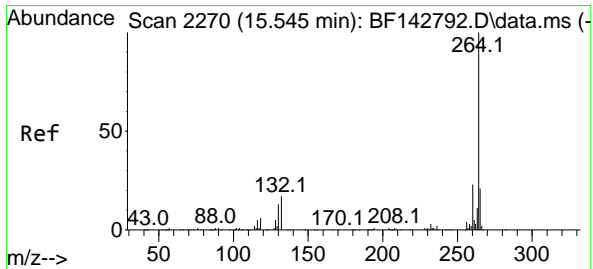
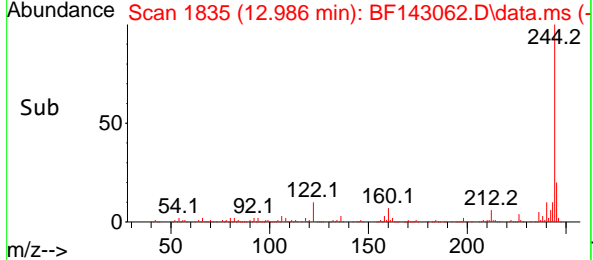
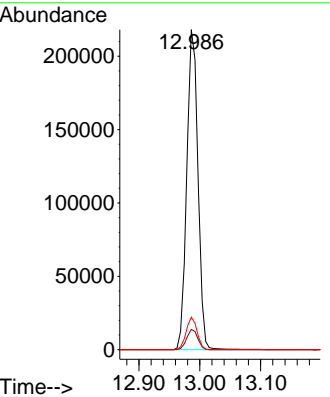
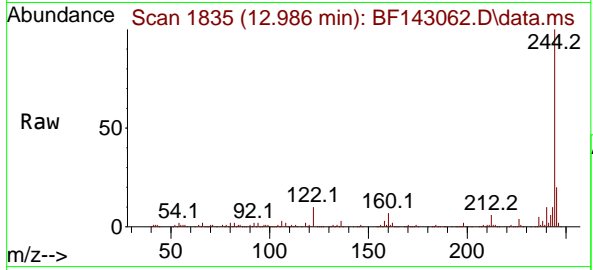


#79
 Terphenyl-d14
 Concen: 37.788 ng
 RT: 12.986 min Scan# 1835
 Delta R.T. -0.012 min
 Lab File: BF143062.D
 Acq: 09 Jul 2025 18:01

Instrument : BNA_F
 ClientSampleId : TP-101

Tgt Ion:244 Resp: 277886

Ion	Ratio	Lower	Upper
244	100		
212	6.3	5.4	8.0
122	10.2	8.2	12.2



#86
 Perylene-d12
 Concen: 20.000 ng
 RT: 15.545 min Scan# 2270
 Delta R.T. 0.000 min
 Lab File: BF143062.D
 Acq: 09 Jul 2025 18:01

Tgt Ion:264 Resp: 114308

Ion	Ratio	Lower	Upper
264	100		
260	23.4	18.1	27.1
265	21.4	16.6	25.0

