

Data Path : Z:\HPCHEM1\BNA F\DATA\BF071117\
 Data File : BF096662.D
 Acq On : 12 Jul 2017 00:30
 Operator : SJ/JU
 Sample : PB100552BL
 Misc :
 ALS Vial : 27 Sample Multiplier: 1

Instrument :
 BNA_F
 ClientSampleId :
 PB100552BL

Quant Time: Jul 12 01:16:24 2017
 Quant Method : Z:\HPCHEM1\BNA F\METHODS\8270-BF070117.M
 Quant Title : ASP BNA STANDARDS FOR 5 POINT CALIBRATION
 QLast Update : Fri Jul 07 13:02:33 2017
 Response via : Initial Calibration

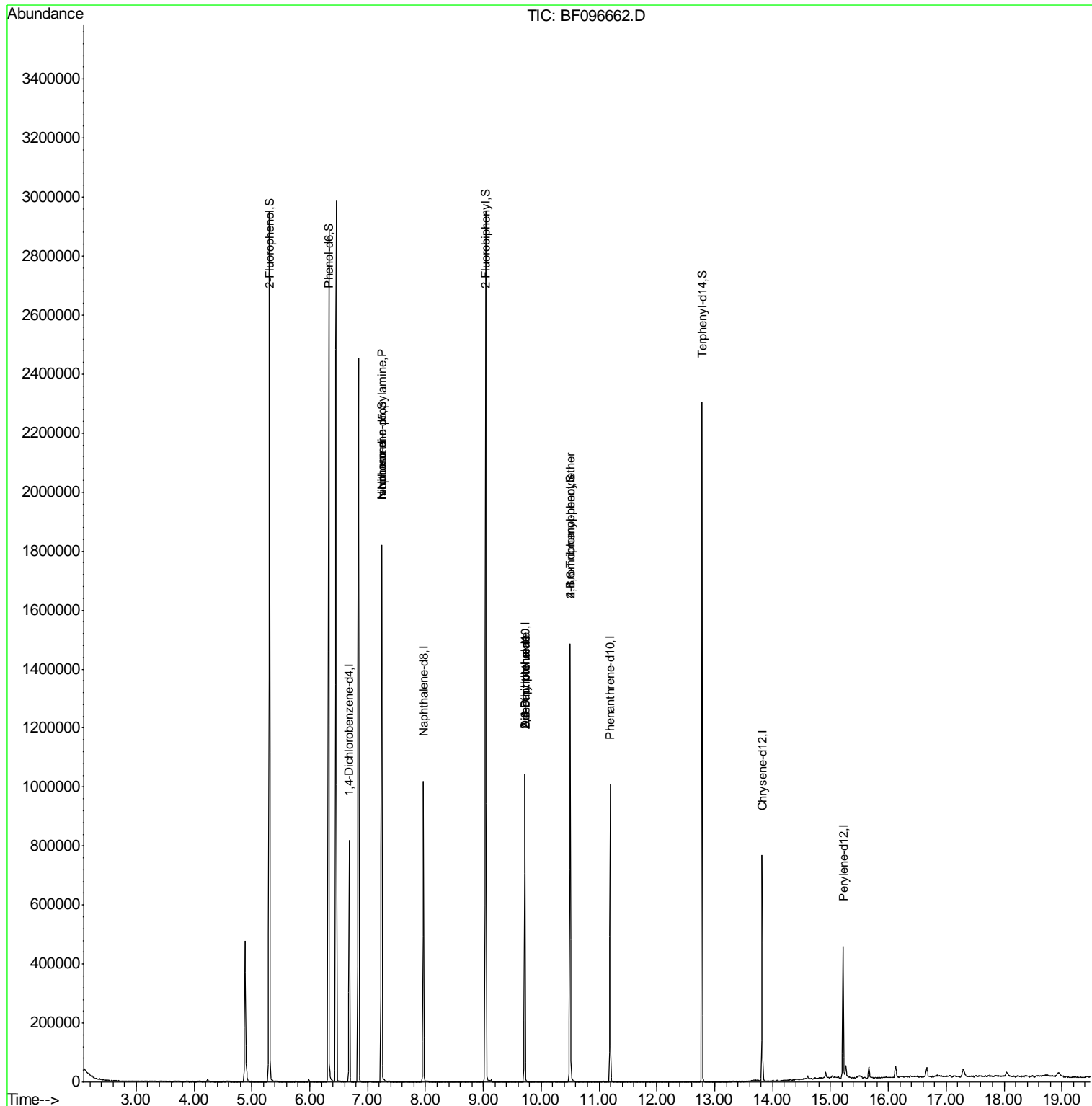
Internal Standards	R.T.	QIon	Response	Conc	Units	Dev(Min)
1) 1,4-Dichlorobenzene-d4	6.68	152	115324	20.00	ng	-0.02
21) Naphthalene-d8	7.96	136	480350	20.00	ng	-0.02
38) Acenaphthene-d10	9.72	164	198410	20.00	ng	-0.02
63) Phenanthrene-d10	11.19	188	347301	20.00	ng	-0.02
75) Chrysene-d12	13.82	240	258808	20.00	ng	-0.02
86) Perylene-d12	15.22	264	194425	20.00	ng	-0.02
System Monitoring Compounds						
5) 2-Fluorophenol	5.30	112	840823	107.61	ng	0.00
7) Phenol-d6	6.33	99	1054128	109.74	ng	-0.02
23) Nitrobenzene-d5	7.25	82	614203	76.84	ng	-0.02
41) 2,4,6-Tribromophenol	10.50	330	188169	121.41	ng	-0.02
44) 2-Fluorobiphenyl	9.05	172	1071303	92.32	ng	-0.02
78) Terphenyl-d14	12.78	244	777007	64.15	ng	-0.02
Target Compounds						
19) n-Nitroso-di-n-propylamine	7.25	70	80592	14.083	ng	# 85
25) Isophorone	7.25	82	610648	39.399	ng	# 67
49) Dimethylphthalate	9.72	163	58615	3.957	ng	# 1
50) 2,6-Dinitrotoluene	9.72	165	24349	7.434	ng	# 32
56) 2,4-Dinitrotoluene	9.72	165	24349	5.870	ng	# 32
66) 4-Bromophenyl-phenylether	10.50	248	11826	3.498	ng	# 1

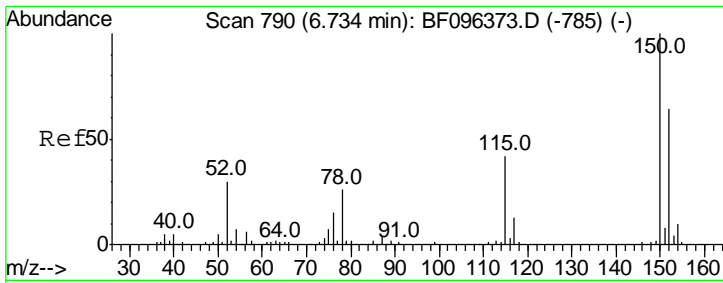
(#) = qualifier out of range (m) = manual integration (+) = signals summed

Data Path : Z:\HPCHEM1\BNA F\DATA\BF071117\
 Data File : BF096662.D
 Acq On : 12 Jul 2017 00:30
 Operator : SJ/JU
 Sample : PB100552BL
 Misc :
 ALS Vial : 27 Sample Multiplier: 1

Instrument :
 BNA_F
 ClientSampled :
 PB100552BL

Quant Time: Jul 12 01:16:24 2017
 Quant Method : Z:\HPCHEM1\BNA F\METHODS\8270-BF070117.M
 Quant Title : ASP BNA STANDARDS FOR 5 POINT CALIBRATION
 QLast Update : Fri Jul 07 13:02:33 2017
 Response via : Initial Calibration



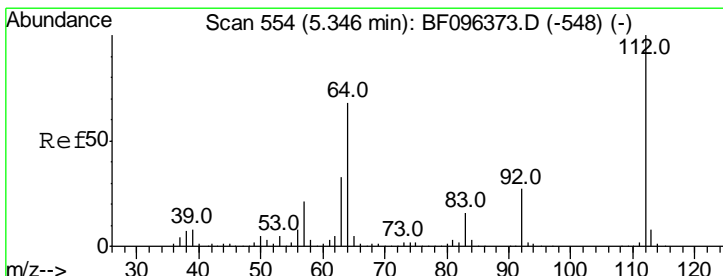
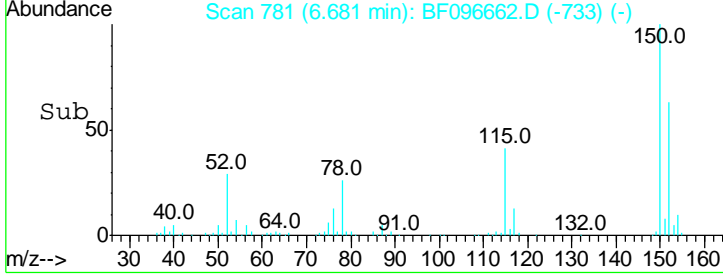
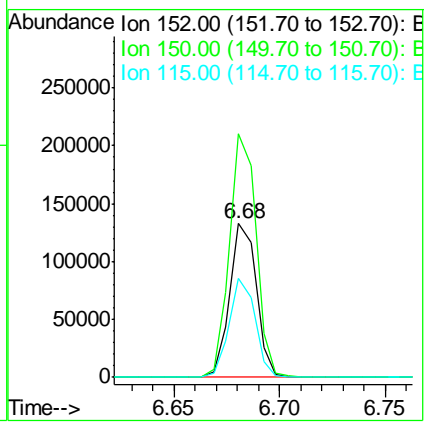
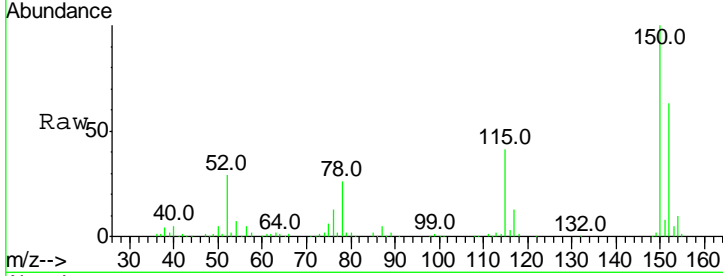


#1
 1,4-Dichlorobenzene-d4
 Concen: 20.000 ng
 RT: 6.68 min Scan# 781
 Delta R.T. -0.02 min
 Lab File: BF096662.D
 Acq: 12 Jul 2017 00:30

Instrument :
 BNA_F
ClientSampled :
 PB100552BL

Tgt Ion:152 Resp: 115324

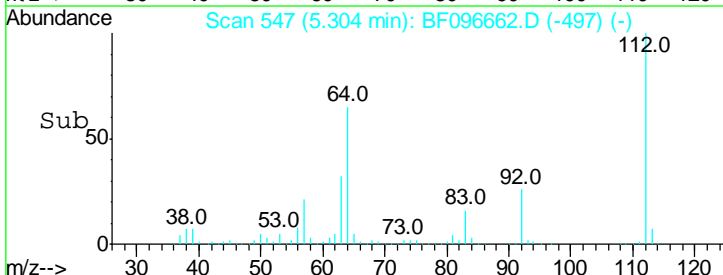
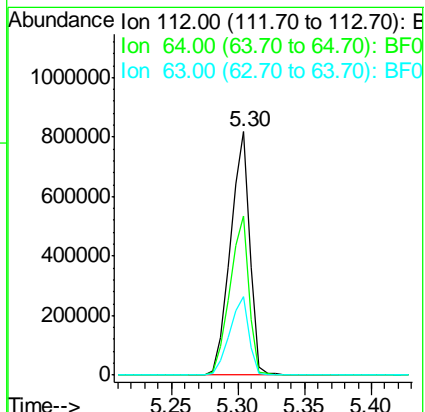
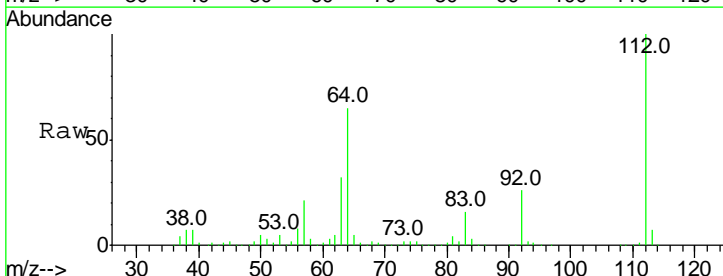
Ion	Ratio	Lower	Upper
152	100		
150	158.6	126.2	189.2
115	64.6	52.2	78.2

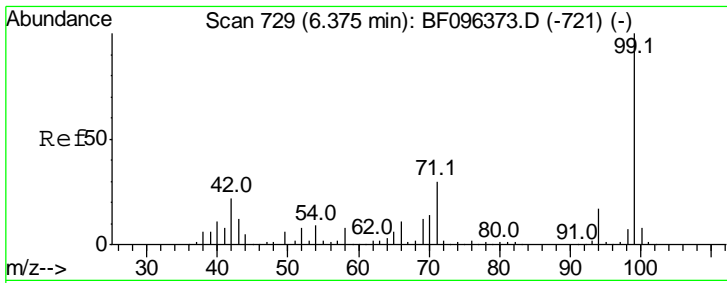


#5
 2-Fluorophenol
 Concen: 107.612 ng
 RT: 5.30 min Scan# 547
 Delta R.T. -0.01 min
 Lab File: BF096662.D
 Acq: 12 Jul 2017 00:30

Tgt Ion:112 Resp: 840823

Ion	Ratio	Lower	Upper
112	100		
64	65.4	46.0	69.0
63	32.5	23.4	35.0



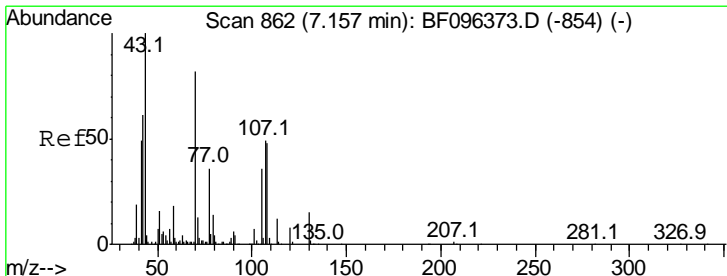
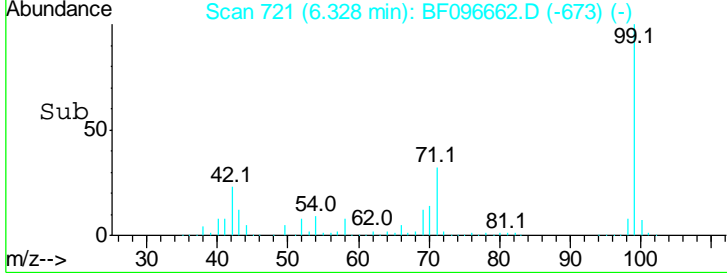
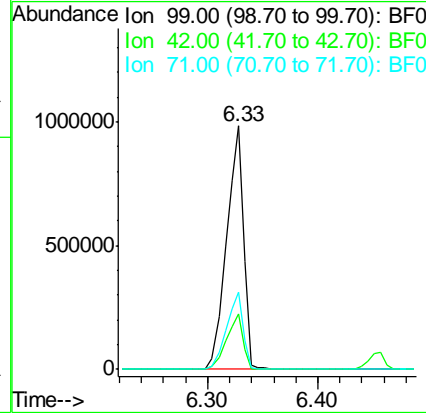
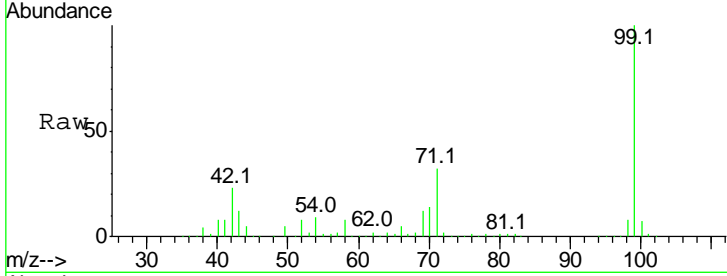


#7
 Phenol-d6
 Concen: 109.741 ng
 RT: 6.33 min Scan# 721
 Delta R.T. -0.02 min
 Lab File: BF096662.D
 Acq: 12 Jul 2017 00:30

Instrument :
 BNA_F
ClientSampled :
 PB100552BL

Tgt Ion: 99 Resp: 1054128

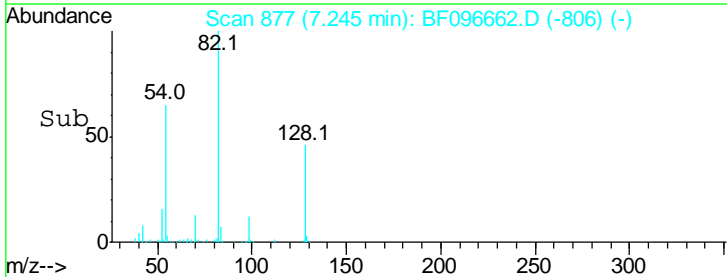
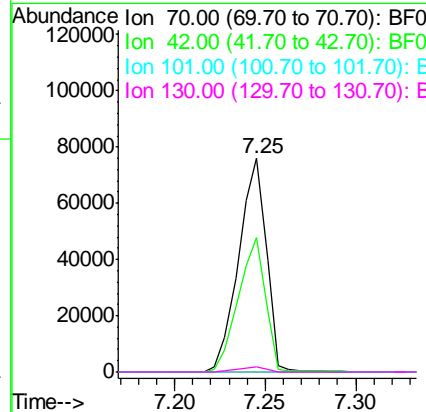
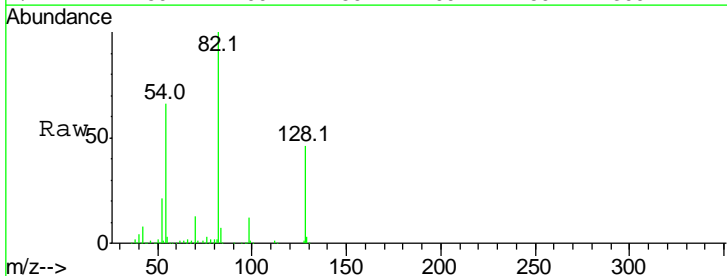
Ion	Ratio	Lower	Upper
99	100		
42	22.8	13.5	20.3#
71	31.8	24.5	36.7

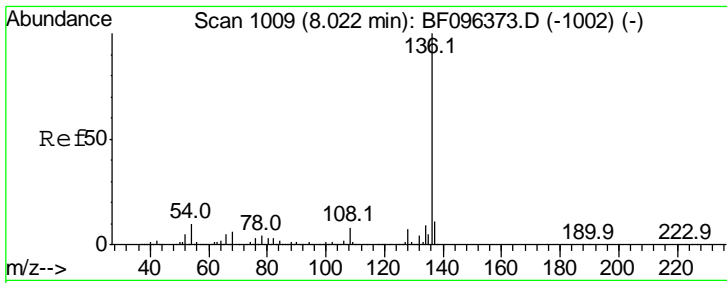


#19
 n-Nitroso-di-n-propylamine
 Concen: 14.083 ng
 RT: 7.25 min Scan# 877
 Delta R.T. 0.12 min
 Lab File: BF096662.D
 Acq: 12 Jul 2017 00:30

Tgt Ion: 70 Resp: 80592

Ion	Ratio	Lower	Upper
70	100		
42	63.0	47.2	70.8
101	0.0	7.2	10.8#
130	2.2	15.9	23.9#

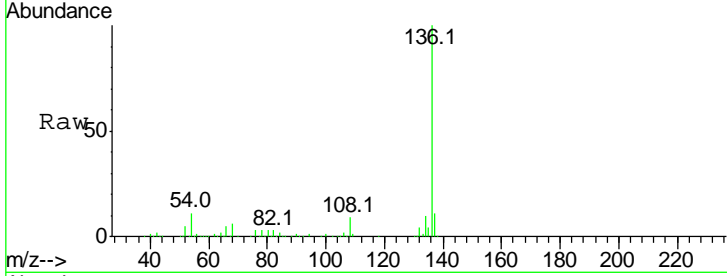




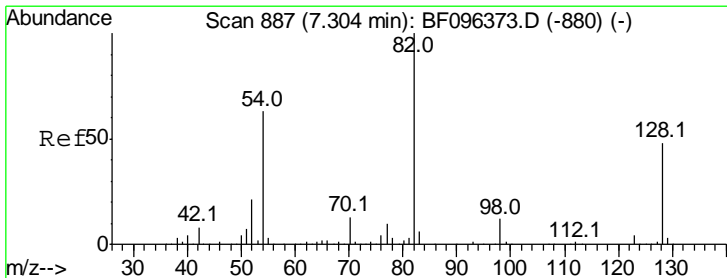
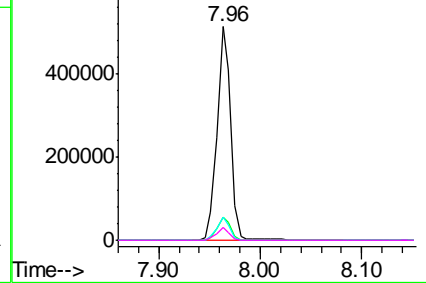
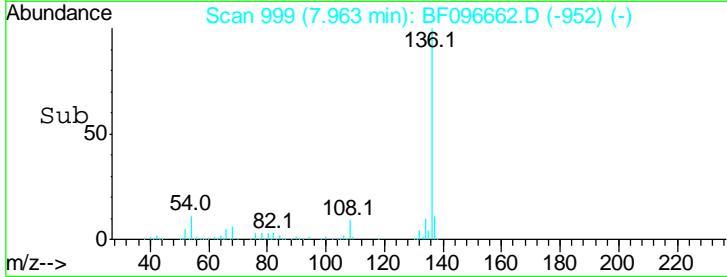
#21
 Naphthalene-d8
 Concen: 20.000 ng
 RT: 7.96 min Scan# 999
 Delta R.T. -0.02 min
 Lab File: BF096662.D
 Acq: 12 Jul 2017 00:30

Instrument :
 BNA_F
 ClientSampled :
 PB100552BL

Tgt Ion	Resp	Lower	Upper
136	100		
137	11.1	8.5	12.7
54	10.7	4.9	7.3#
68	5.7	4.1	6.1

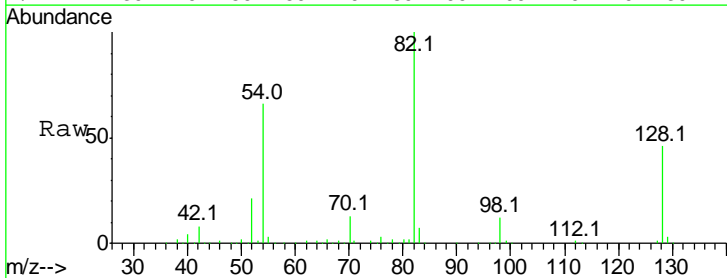


Abundance Ion 136.00 (135.70 to 136.70): E
 Ion 137.00 (136.70 to 137.70): E
 Ion 54.00 (53.70 to 54.70): BF0
 Ion 68.00 (67.70 to 68.70): BF0

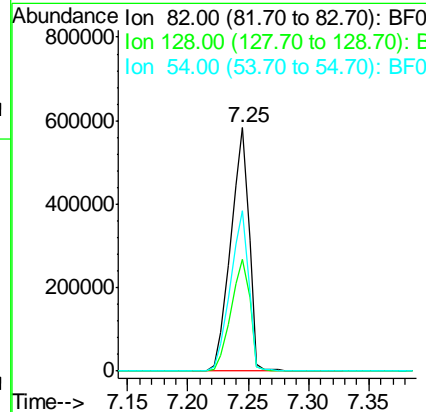
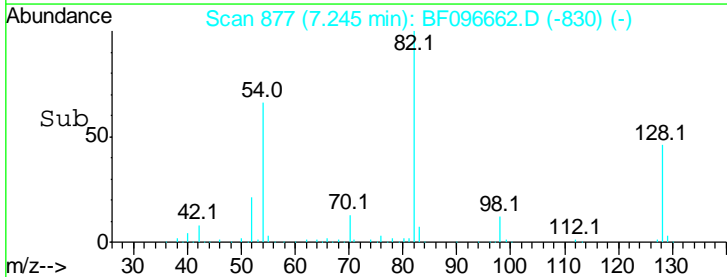


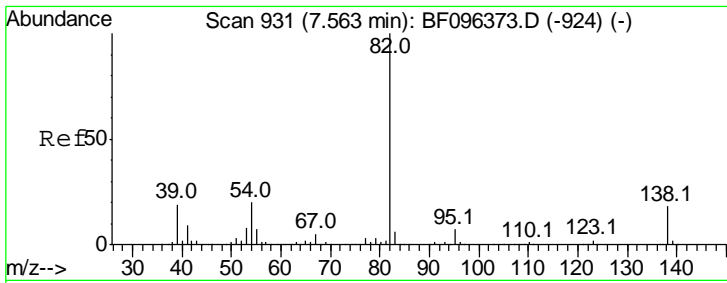
#23
 Nitrobenzene-d5
 Concen: 76.836 ng
 RT: 7.25 min Scan# 877
 Delta R.T. -0.02 min
 Lab File: BF096662.D
 Acq: 12 Jul 2017 00:30

Tgt Ion	Resp	Lower	Upper
82	100		
128	46.0	34.0	51.0
54	66.0	42.2	63.2#



Abundance Ion 82.00 (81.70 to 82.70): BF0
 Ion 128.00 (127.70 to 128.70): E
 Ion 54.00 (53.70 to 54.70): BF0

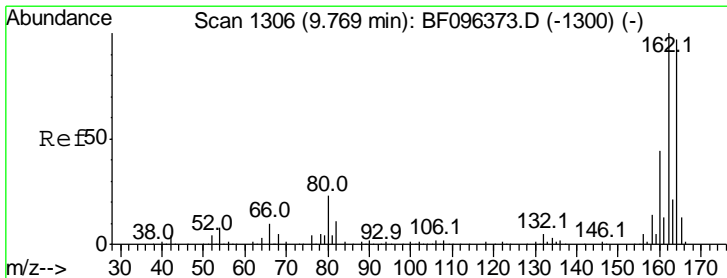
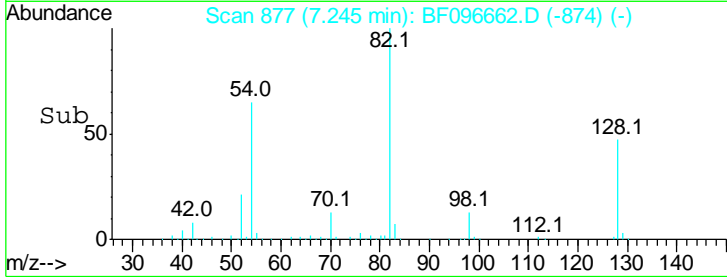
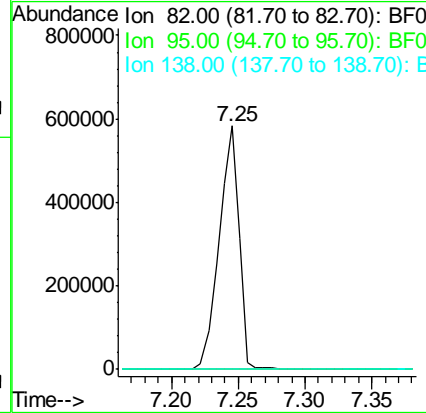
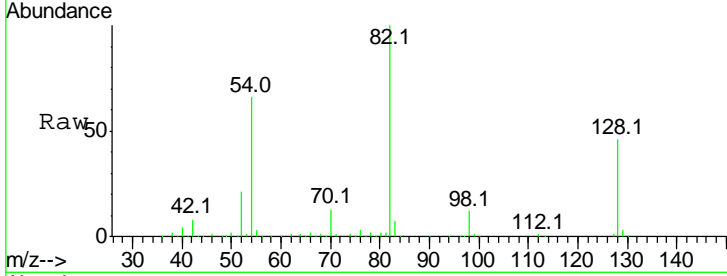




#25
 Isophorone
 Concen: 39.399 ng
 RT: 7.25 min Scan# 877
 Delta R.T. -0.28 min
 Lab File: BF096662.D
 Acq: 12 Jul 2017 00:30

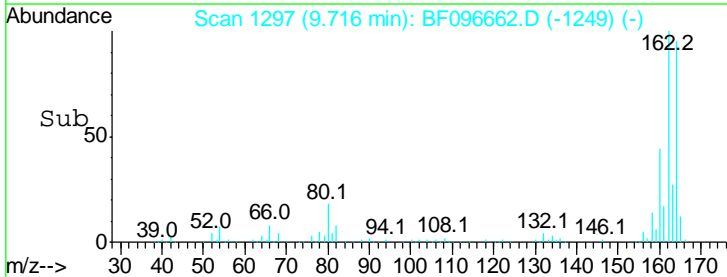
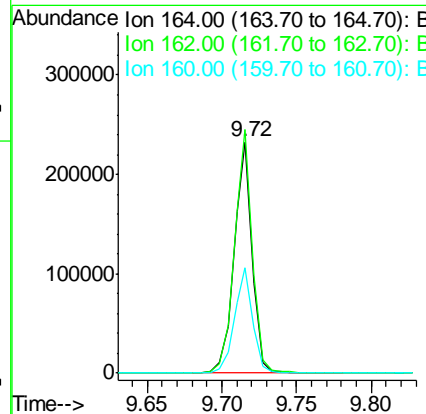
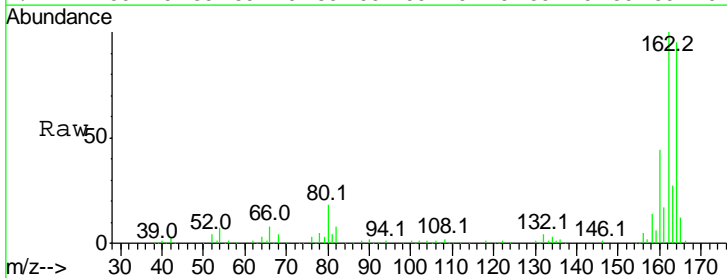
Instrument :
 BNA_F
 ClientSampled :
 PB100552BL

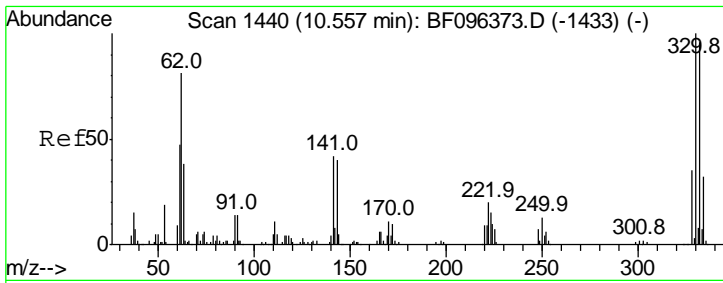
Tgt Ion	Resp	Lower	Upper
82	100		
95	0.0	5.3	7.9#
138	0.0	13.1	19.7#



#38
 Acenaphthene-d10
 Concen: 20.000 ng
 RT: 9.72 min Scan# 1297
 Delta R.T. -0.02 min
 Lab File: BF096662.D
 Acq: 12 Jul 2017 00:30

Tgt Ion	Resp	Lower	Upper
164	100		
162	105.4	82.6	123.8
160	45.9	36.2	54.2

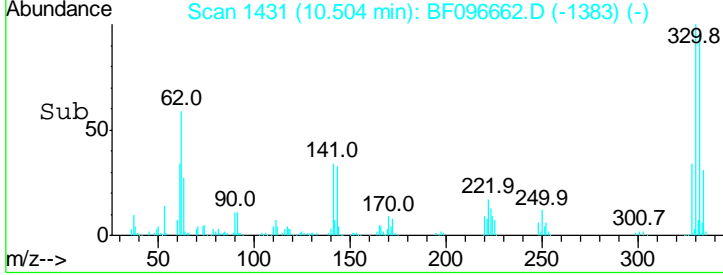
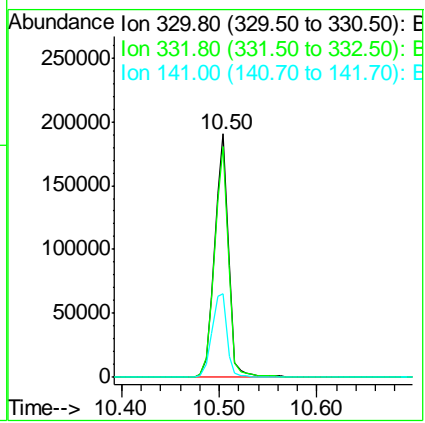
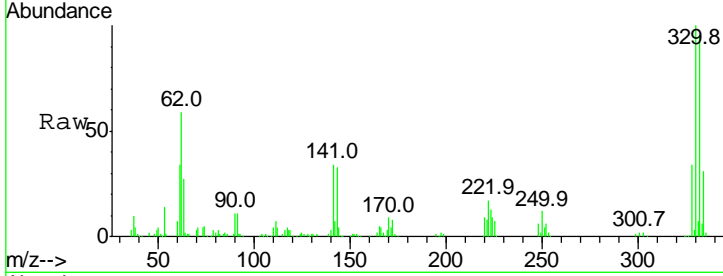




#41
 2,4,6-Tribromophenol
 Concen: 121.413 ng
 RT: 10.50 min Scan# 1431
 Delta R.T. -0.02 min
 Lab File: BF096662.D
 Acq: 12 Jul 2017 00:30

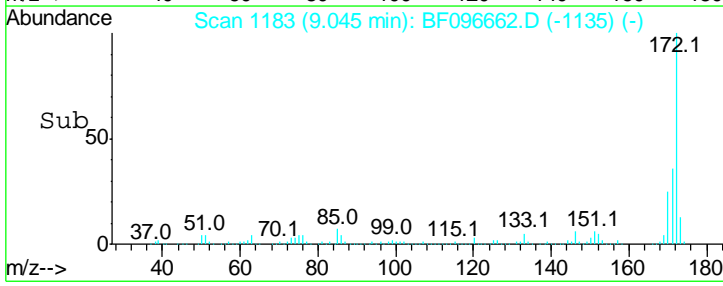
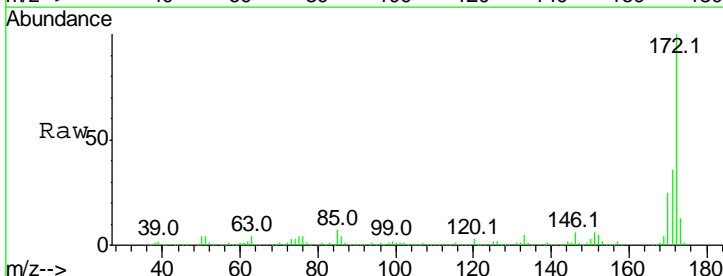
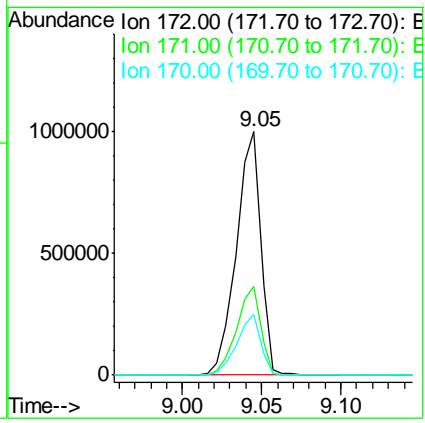
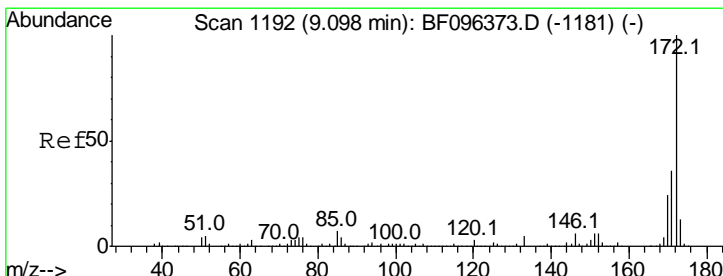
Instrument :
 BNA_F
 ClientSampled :
 PB100552BL

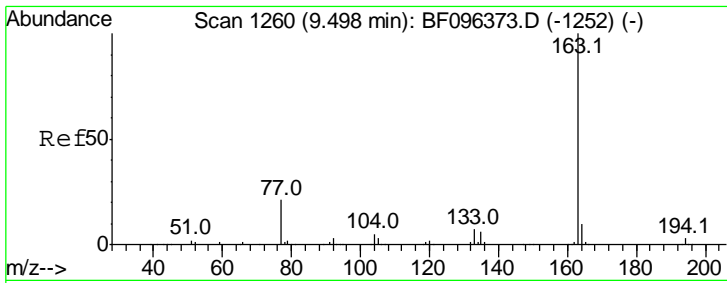
Tgt Ion	Resp	Lower	Upper
330	188169		
332	95.5	76.6	115.0
141	37.4	31.4	47.2



#44
 2-Fluorobiphenyl
 Concen: 92.318 ng
 RT: 9.05 min Scan# 1183
 Delta R.T. -0.02 min
 Lab File: BF096662.D
 Acq: 12 Jul 2017 00:30

Tgt Ion	Resp	Lower	Upper
172	1071303		
171	36.5	29.6	44.4
170	24.8	19.8	29.8

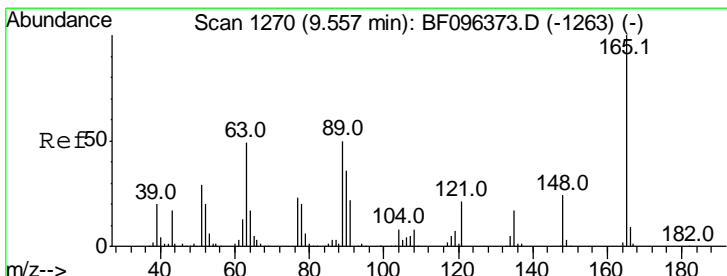
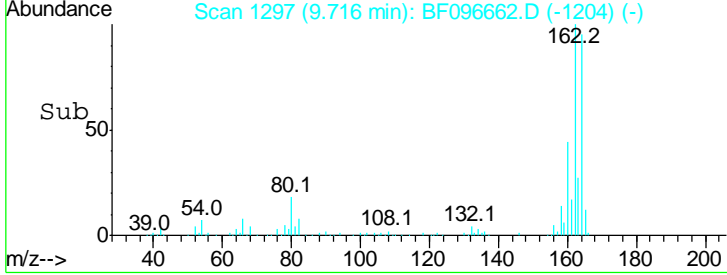
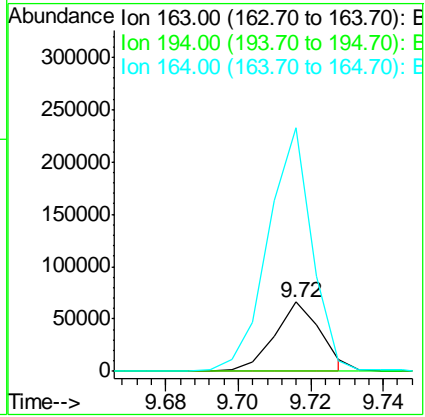
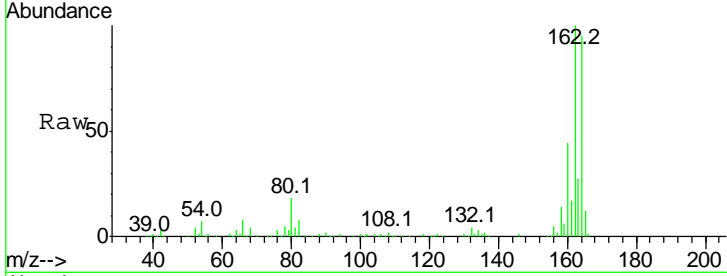




#49
 Dimethylphthalate
 Concen: 3.957 ng
 RT: 9.72 min Scan# 1297
 Delta R.T. 0.25 min
 Lab File: BF096662.D
 Acq: 12 Jul 2017 00:30

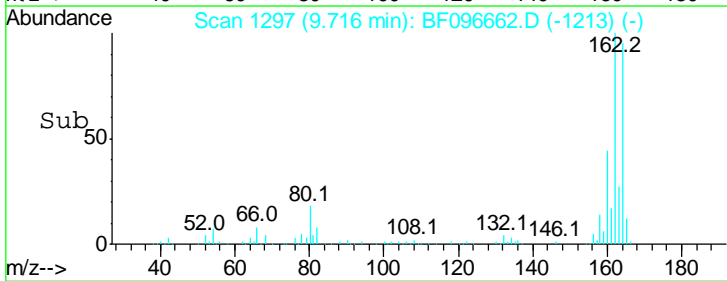
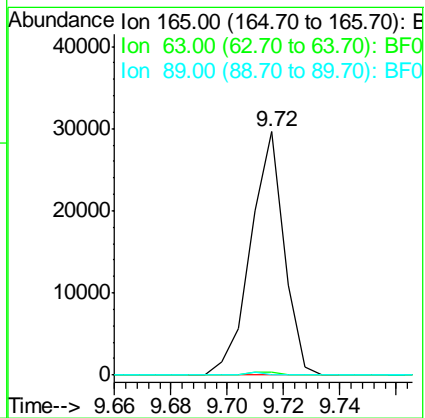
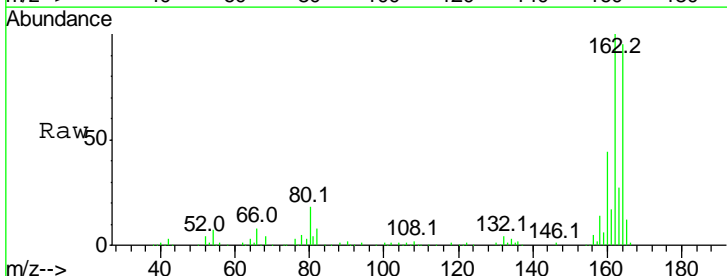
Instrument :
 BNA_F
ClientSampled :
 PB100552BL

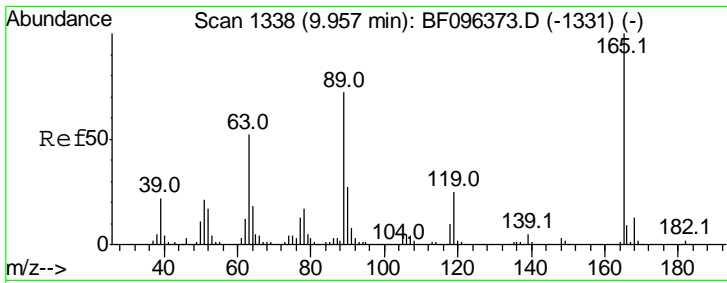
Tgt Ion	Resp	Lower	Upper
163	100		
194	0.0	2.6	4.0#
164	352.9	8.4	12.6#



#50
 2,6-Dinitrotoluene
 Concen: 7.434 ng
 RT: 9.72 min Scan# 1297
 Delta R.T. 0.19 min
 Lab File: BF096662.D
 Acq: 12 Jul 2017 00:30

Tgt Ion	Resp	Lower	Upper
165	100		
63	1.1	34.3	51.5#
89	0.0	37.1	55.7#

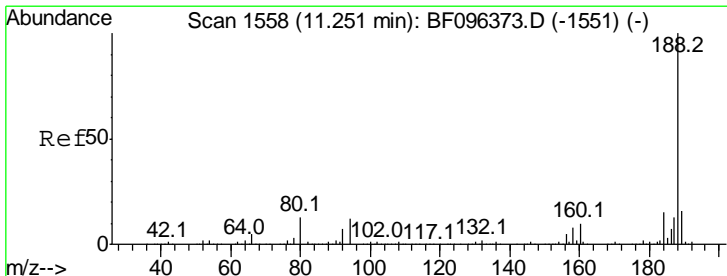
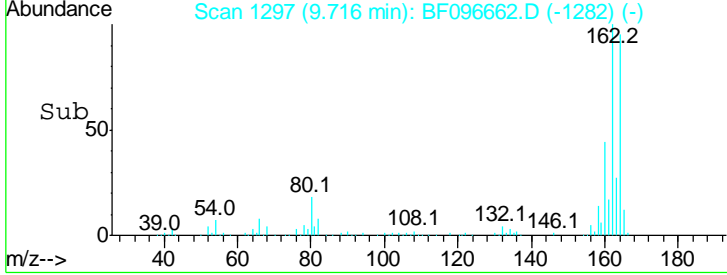
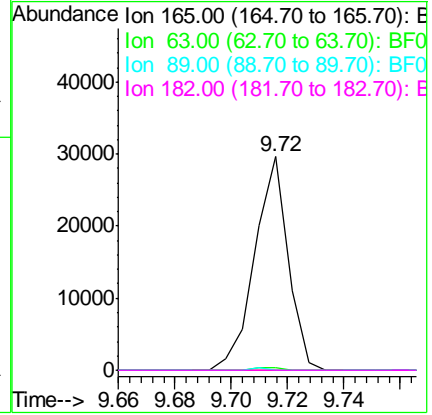
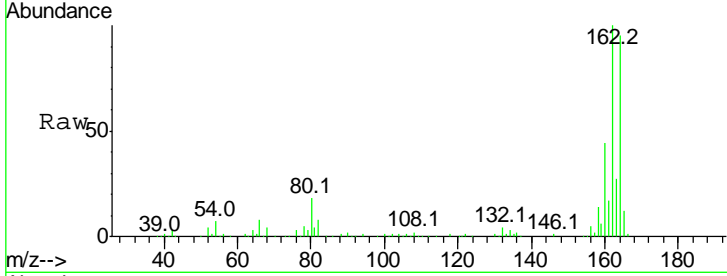




#56
 2,4-Dinitrotoluene
 Concen: 5.870 ng
 RT: 9.72 min Scan# 1297
 Delta R.T. -0.21 min
 Lab File: BF096662.D
 Acq: 12 Jul 2017 00:30

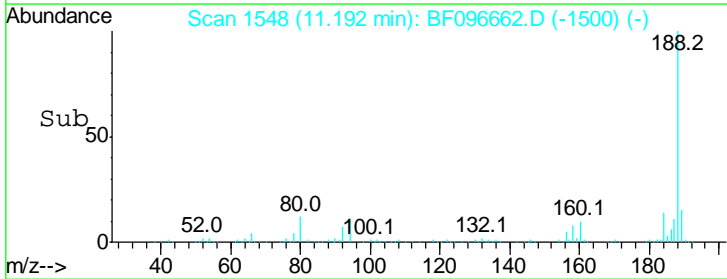
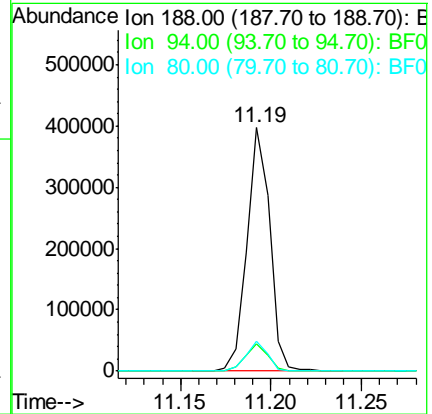
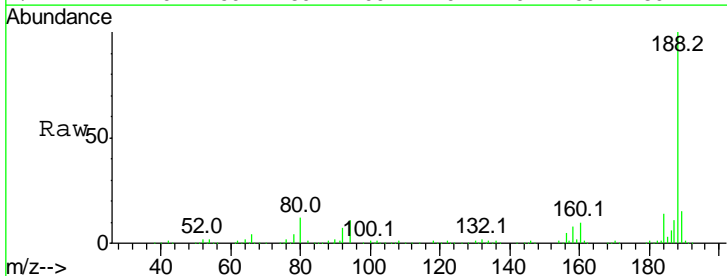
Instrument :
 BNA_F
ClientSampled :
 PB100552BL

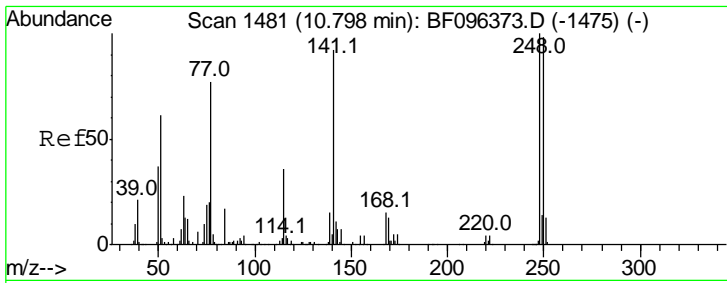
Tgt Ion	Resp	Lower	Upper
165	100		
63	1.1	25.4	38.0#
89	0.0	46.4	69.6#
182	0.0	1.8	2.6#



#63
 Phenanthrene-d10
 Concen: 20.000 ng
 RT: 11.19 min Scan# 1548
 Delta R.T. -0.02 min
 Lab File: BF096662.D
 Acq: 12 Jul 2017 00:30

Tgt Ion	Resp	Lower	Upper
188	100		
94	11.4	9.4	14.2
80	12.1	10.2	15.2

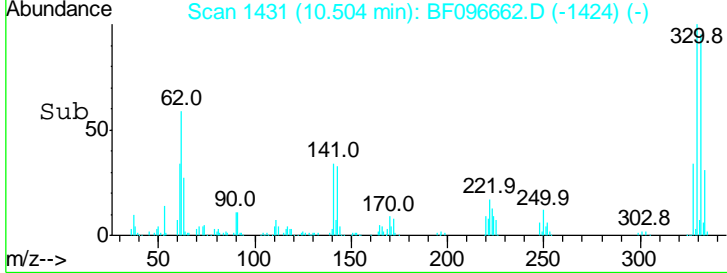
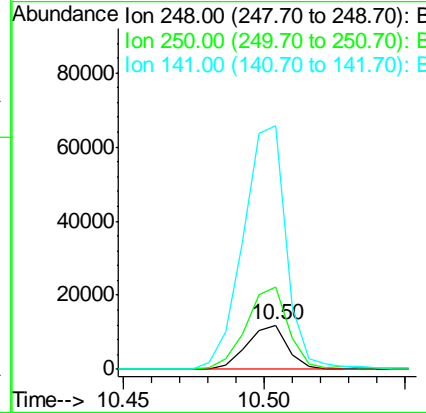
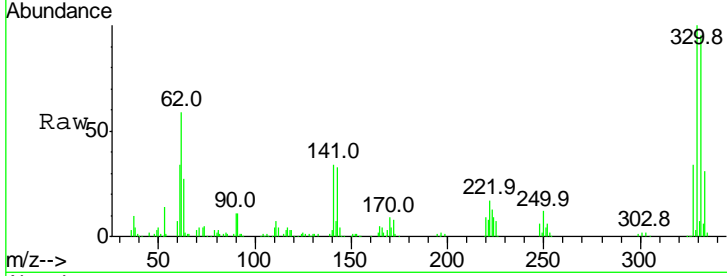




#66
 4-Bromophenyl-phenylether
 Concen: 3.498 ng
 RT: 10.50 min Scan# 1431
 Delta R.T. -0.26 min
 Lab File: BF096662.D
 Acq: 12 Jul 2017 00:30

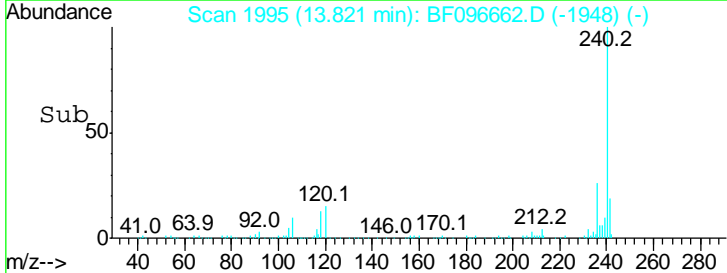
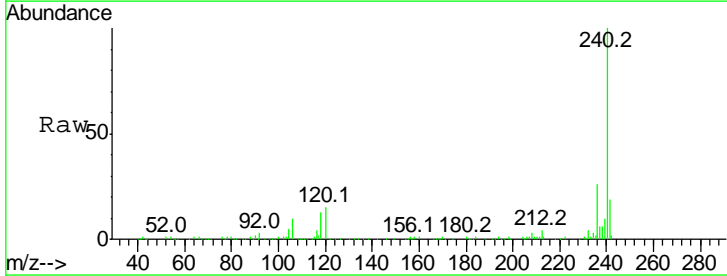
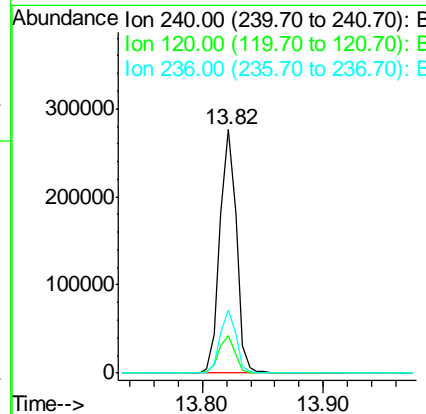
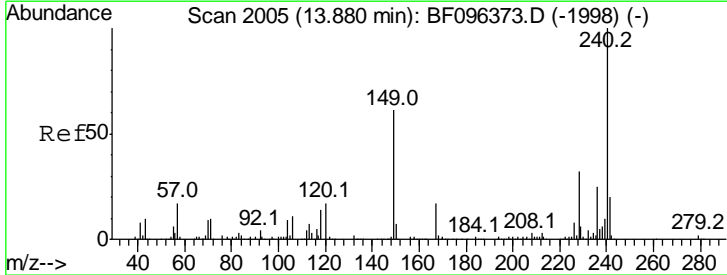
Instrument :
 BNA_F
 ClientSampled :
 PB100552BL

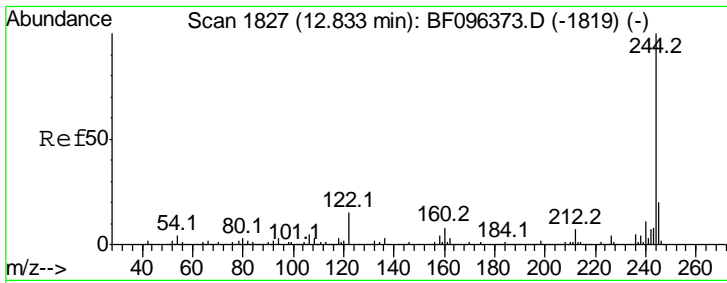
Tgt Ion	Resp	Lower	Upper
248	11826		
250	187.0	76.8	115.2#
141	554.0	68.6	103.0#



#75
 Chrysene-d12
 Concen: 20.000 ng
 RT: 13.82 min Scan# 1995
 Delta R.T. -0.02 min
 Lab File: BF096662.D
 Acq: 12 Jul 2017 00:30

Tgt Ion	Resp	Lower	Upper
240	258808		
120	15.2	5.8	8.8#
236	26.0	20.5	30.7



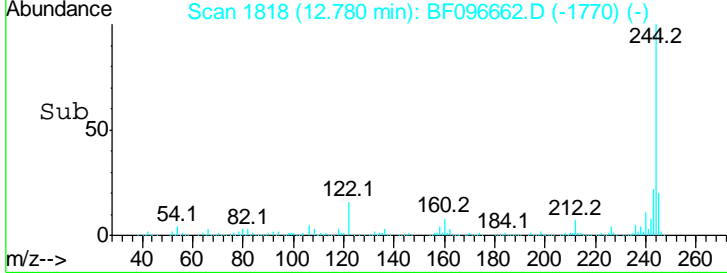
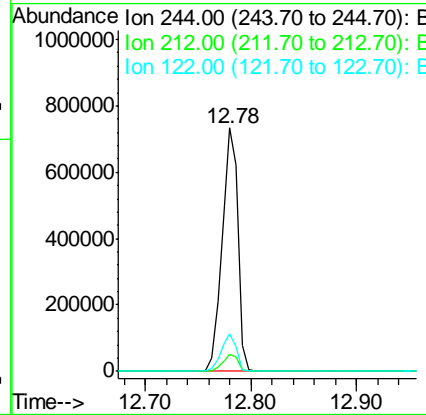
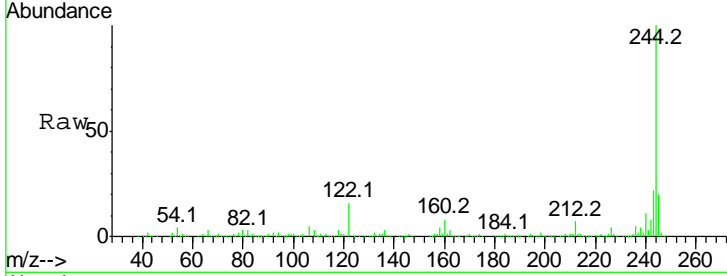


#78
 Terphenyl-d14
 Concen: 64.153 ng
 RT: 12.78 min Scan# 1818
 Delta R.T. -0.02 min
 Lab File: BF096662.D
 Acq: 12 Jul 2017 00:30

Instrument :
 BNA_F
Client Sampled :
 PB100552BL

Tgt Ion: 244 Resp: 777007

Ion	Ratio	Lower	Upper
244	100		
212	7.0	6.0	9.0
122	15.6	10.3	15.5#



#86
 Perylene-d12
 Concen: 20.000 ng
 RT: 15.22 min Scan# 2233
 Delta R.T. -0.02 min
 Lab File: BF096662.D
 Acq: 12 Jul 2017 00:30

Tgt Ion: 264 Resp: 194425

Ion	Ratio	Lower	Upper
264	100		
260	25.1	19.5	29.3
265	22.0	17.2	25.8

