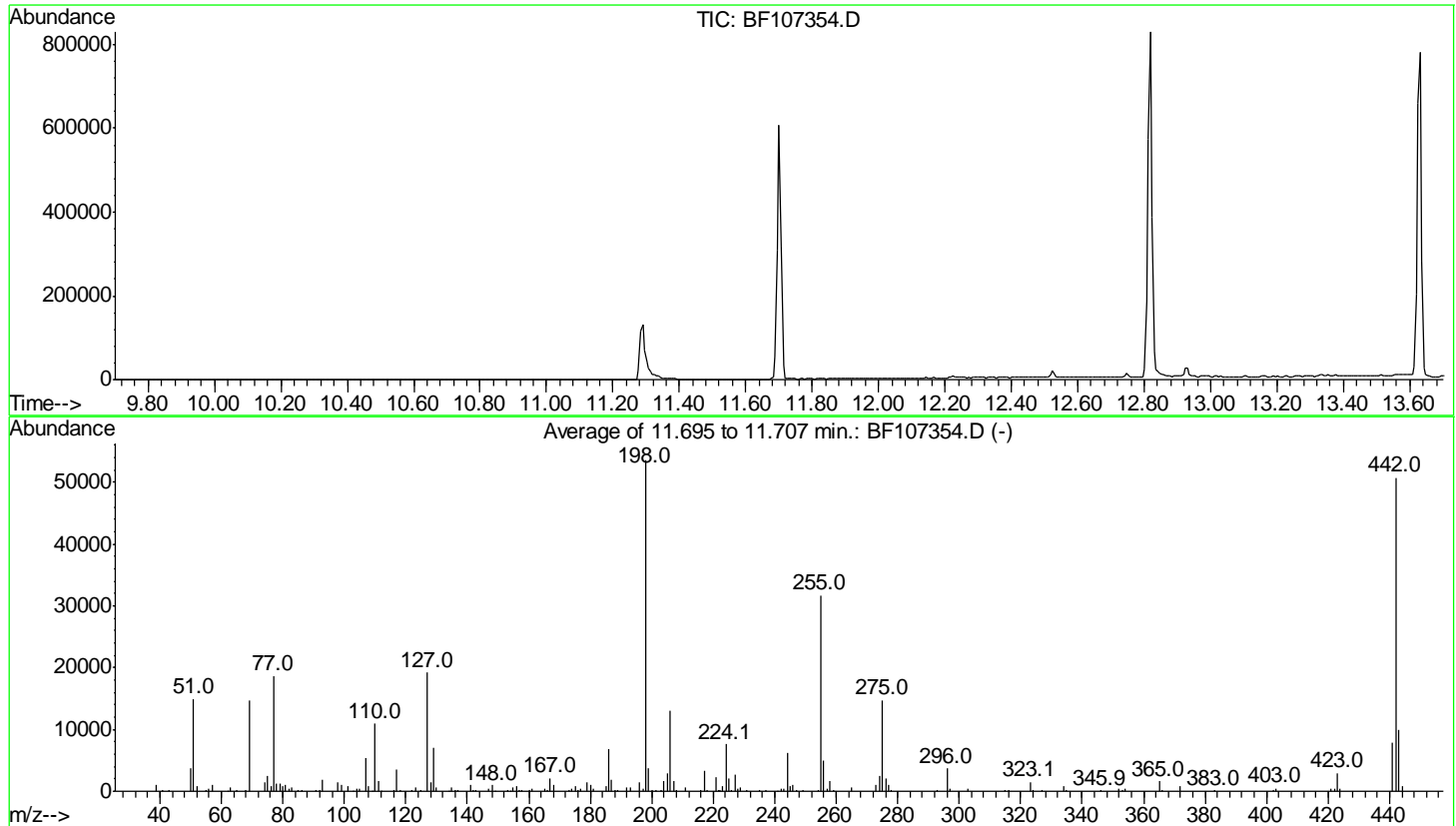


Data Path : Z:\svoasrv\HPCHEM1\BNA F\Data\BF071318\
 Data File : BF107354.D
 Acq On : 13 Jul 2018 8:05
 Operator : JU/SJ
 Sample : DFTPP
 Misc :
 ALS Vial : 1 Sample Multiplier: 1

Instrument :
 BNA_F
 ClientSampleId :
 DFTPP

Integration File: rteint.p

Method : Z:\SVOASRV\HPCHEM1\BNA_F\METHODS\8270-BF061918.M
 Title : ASP BNA STANDARDS FOR 5 POINT CALIBRATION
 Last Update : Fri Jul 13 11:54:53 2018



AutoFind: Scans 1591, 1592, 1593; Background Corrected with Scan 1586

| Target Mass | Rel. to Mass | Lower Limit% | Upper Limit% | Rel. Abn% | Raw Abn | Result Pass/Fail |
|-------------|--------------|--------------|--------------|-----------|---------|------------------|
| 51 | 198 | 10 | 80 | 28.0 | 15003 | PASS |
| 68 | 69 | 0.00 | 2 | 1.1 | 161 | PASS |
| 69 | 198 | 0.00 | 100 | 27.4 | 14705 | PASS |
| 70 | 69 | 0.00 | 2 | 0.0 | 0 | PASS |
| 127 | 198 | 10 | 80 | 35.8 | 19184 | PASS |
| 197 | 198 | 0.00 | 2 | 0.6 | 348 | PASS |
| 198 | 198 | 100 | 100 | 100.0 | 53594 | PASS |
| 199 | 198 | 5 | 9 | 6.9 | 3678 | PASS |
| 275 | 198 | 10 | 60 | 27.5 | 14713 | PASS |
| 365 | 198 | 1 | 100 | 2.9 | 1580 | PASS |
| 441 | 198 | 0.01 | 100 | 14.7 | 7852 | PASS |
| 442 | 198 | 50 | 100 | 94.7 | 50776 | PASS |
| 443 | 442 | 15 | 24 | 19.5 | 9890 | PASS |