

Data Path : Z:\svoasrv\HPCHEM1\BNA_F\Data\BF071825\
 Data File : BF143163.D
 Acq On : 18 Jul 2025 13:22
 Operator : RC/JU
 Sample : PB168904BSD
 Misc :
 ALS Vial : 6 Sample Multiplier: 1

Instrument :
 BNA_F
 ClientSampleId :
 PB168904BSD

Quant Time: Jul 18 13:45:00 2025
 Quant Method : Z:\svoasrv\HPCHEM1\BNA_F\Methods\8270-BF071725.M
 Quant Title : ASP BNA STANDARDS FOR 5 POINT CALIBRATION
 QLast Update : Thu Jul 17 15:14:05 2025
 Response via : Initial Calibration

Compound	R.T.	QIon	Response	Conc	Units	Dev(Min)	
Internal Standards							
1) 1,4-Dichlorobenzene-d4	6.963	152	134233	20.000	ng	0.00	
21) Naphthalene-d8	8.245	136	524933	20.000	ng	0.00	
39) Acenaphthene-d10	9.998	164	272308	20.000	ng	0.00	
64) Phenanthrene-d10	11.481	188	443930	20.000	ng	0.00	
76) Chrysene-d12	14.122	240	252328	20.000	ng	0.00	
86) Perylene-d12	15.621	264	280075	20.000	ng	0.00	
System Monitoring Compounds							
5) 2-Fluorophenol	5.593	112	689324	81.264	ng	0.00	
7) Phenol-d6	6.581	99	877854	82.220	ng	0.00	
23) Nitrobenzene-d5	7.516	82	849641	80.681	ng	0.00	
42) 2,4,6-Tribromophenol	10.786	330	234514	83.365	ng	0.00	
45) 2-Fluorobiphenyl	9.316	172	1490518	74.859	ng	0.00	
79) Terphenyl-d14	13.063	244	1322859	78.016	ng	0.00	
Target Compounds							
2) 1,4-Dioxane	2.905	88	148250	36.936	ng	100	Qvalue
3) Pyridine	3.652	79	404777	38.854	ng	98	
4) n-Nitrosodimethylamine	3.593	42	232460	43.218	ng	98	
6) Aniline	6.622	93	509293	34.226	ng	99	
8) 2-Chlorophenol	6.746	128	391235	44.001	ng	98	
9) Benzaldehyde	6.510	77	279137	34.866	ng	97	
10) Phenol	6.593	94	528453	45.434	ng	99	
11) bis(2-Chloroethyl)ether	6.693	93	390023	43.795	ng	98	
12) 1,3-Dichlorobenzene	6.904	146	405894	42.023	ng	99	
13) 1,4-Dichlorobenzene	6.981	146	412718	42.430	ng	99	
14) 1,2-Dichlorobenzene	7.134	146	399171	43.146	ng	99	
15) Benzyl Alcohol	7.098	79	358599	43.987	ng	99	
16) 2,2'-oxybis(1-Chloropr...	7.234	45	724154	43.834	ng	100	
17) 2-Methylphenol	7.204	107	329392	44.059	ng	98	
18) Hexachloroethane	7.481	117	148035	43.962	ng	98	
19) n-Nitroso-di-n-propyla...	7.369	70	295904	43.198	ng	99	
20) 3+4-Methylphenols	7.357	107	408476	45.033	ng	# 88	
22) Acetophenone	7.363	105	535066	43.054	ng	97	
24) Nitrobenzene	7.540	77	436819	44.491	ng	100	
25) Isophorone	7.775	82	817053	43.950	ng	100	
26) 2-Nitrophenol	7.857	139	203332	47.719	ng	99	
27) 2,4-Dimethylphenol	7.887	122	385257	44.356	ng	99	
28) bis(2-Chloroethoxy)met...	7.987	93	488053	43.786	ng	99	
29) 2,4-Dichlorophenol	8.092	162	323576	44.175	ng	98	
30) 1,2,4-Trichlorobenzene	8.181	180	336097	42.472	ng	99	
31) Naphthalene	8.263	128	1141709	44.163	ng	100	
32) Benzoic acid	7.993	122	221208	45.513	ng	100	
33) 4-Chloroaniline	8.304	127	205458	19.464	ng	99	
34) Hexachlorobutadiene	8.387	225	210749	43.596	ng	100	
35) Caprolactam	8.669	113	71233	32.182	ng	97	
36) 4-Chloro-3-methylphenol	8.781	107	358475	45.026	ng	100	
37) 2-Methylnaphthalene	8.957	142	682326	43.373	ng	100	
38) 1-Methylnaphthalene	9.057	142	711574	43.926	ng	99	
40) 1,2,4,5-Tetrachloroben...	9.122	216	331686	42.189	ng	99	
41) Hexachlorocyclopentadiene	9.116	237	447550	87.490	ng	100	
43) 2,4,6-Trichlorophenol	9.228	196	234546	43.107	ng	99	

Data Path : Z:\svoasrv\HPCHEM1\BNA_F\Data\BF071825\
 Data File : BF143163.D
 Acq On : 18 Jul 2025 13:22
 Operator : RC/JU
 Sample : PB168904BSD
 Misc :
 ALS Vial : 6 Sample Multiplier: 1

Instrument :
 BNA_F
 ClientSampleId :
 PB168904BSD

Quant Time: Jul 18 13:45:00 2025
 Quant Method : Z:\svoasrv\HPCHEM1\BNA_F\Methods\8270-BF071725.M
 Quant Title : ASP BNA STANDARDS FOR 5 POINT CALIBRATION
 QLast Update : Thu Jul 17 15:14:05 2025
 Response via : Initial Calibration

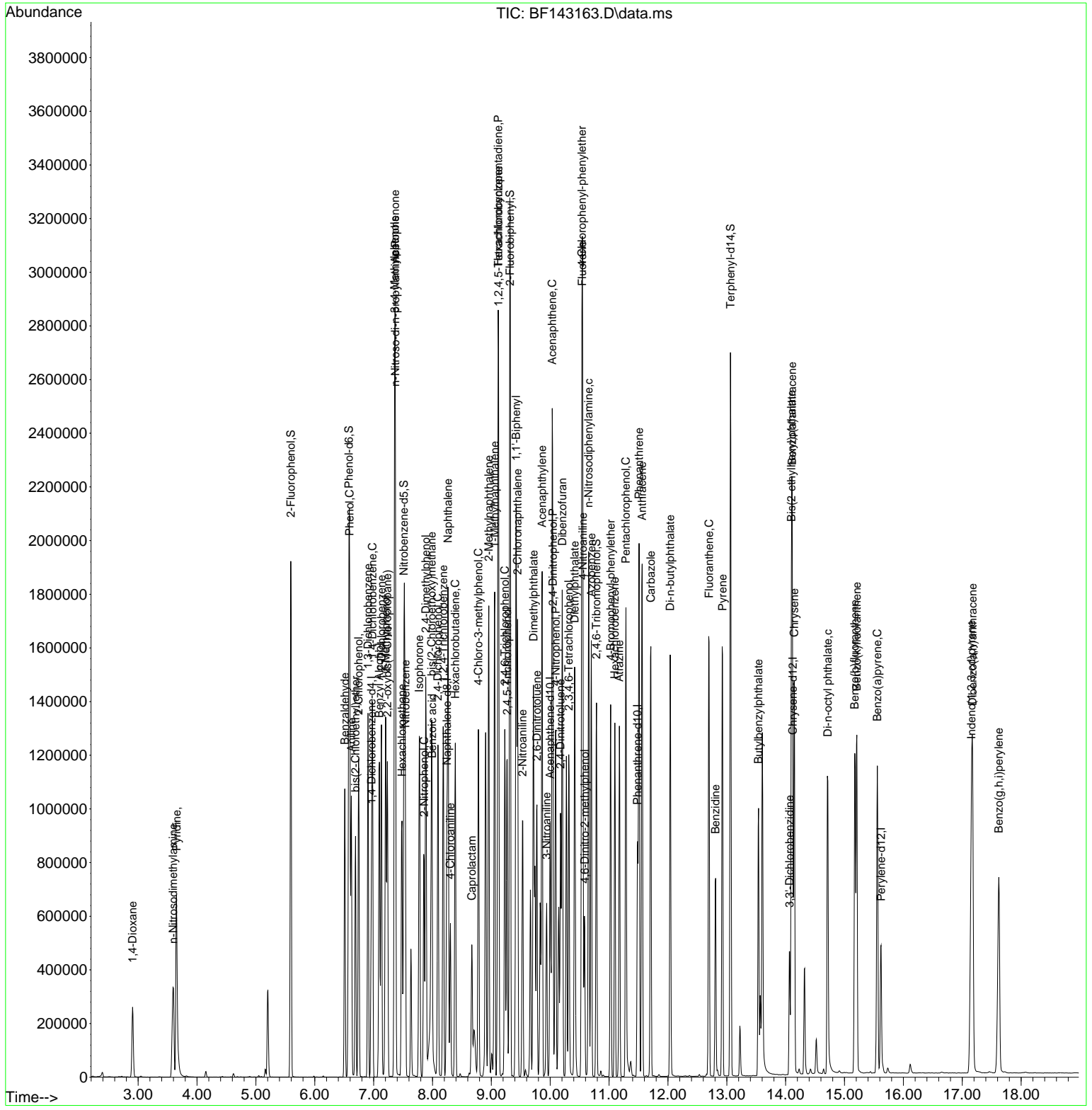
Compound	R.T.	QIon	Response	Conc	Units	Dev(Min)
44) 2,4,5-Trichlorophenol	9.269	196	250713	46.064	ng	99
46) 1,1'-Biphenyl	9.422	154	926298	43.600	ng	100
47) 2-Chloronaphthalene	9.445	162	673620	42.851	ng	100
48) 2-Nitroaniline	9.528	65	233503	47.366	ng	97
49) Acenaphthylene	9.863	152	1146165	43.507	ng	100
50) Dimethylphthalate	9.716	163	798798	45.003	ng	99
51) 2,6-Dinitrotoluene	9.775	165	175169	48.512	ng	99
52) Acenaphthene	10.034	154	731488	46.978	ng	98
53) 3-Nitroaniline	9.939	138	125947	29.821	ng	99
54) 2,4-Dinitrophenol	10.045	184	155426	93.727	ng	# 2
55) Dibenzofuran	10.204	168	1001067	43.303	ng	99
56) 4-Nitrophenol	10.092	139	292549	92.760	ng	98
57) 2,4-Dinitrotoluene	10.175	165	229791	50.725	ng	99
58) Fluorene	10.545	166	747135	43.062	ng	100
59) 2,3,4,6-Tetrachlorophenol	10.316	232	211171	46.838	ng	99
60) Diethylphthalate	10.416	149	799680	45.581	ng	100
61) 4-Chlorophenyl-phenyle...	10.539	204	377435	43.688	ng	99
62) 4-Nitroaniline	10.557	138	164448	45.431	ng	99
63) Azobenzene	10.698	77	823357	45.030	ng	100
65) 4,6-Dinitro-2-methylph...	10.586	198	102823	44.613	ng	97
66) n-Nitrosodiphenylamine	10.651	169	682448	43.657	ng	99
67) 4-Bromophenyl-phenylether	11.028	248	231921	43.838	ng	100
68) Hexachlorobenzene	11.098	284	246065	44.499	ng	99
69) Atrazine	11.175	200	202166	46.910	ng	99
70) Pentachlorophenol	11.286	266	291731	89.711	ng	99
71) Phenanthrene	11.510	178	1035532	43.932	ng	100
72) Anthracene	11.563	178	1037171	43.143	ng	99
73) Carbazole	11.710	167	926315	44.128	ng	100
74) Di-n-butylphthalate	12.039	149	1092806	46.009	ng	100
75) Fluoranthene	12.698	202	973043	44.975	ng	100
77) Benzidine	12.810	184	403621	41.518	ng	99
78) Pyrene	12.927	202	946188	43.938	ng	100
80) Butylbenzylphthalate	13.539	149	312264	47.354	ng	100
81) Benzo(a)anthracene	14.110	228	749253	44.352	ng	100
82) 3,3'-Dichlorobenzidine	14.069	252	140515	24.957	ng	99
83) Chrysene	14.145	228	699428	46.049	ng	100
84) Bis(2-ethylhexyl)phtha...	14.098	149	469258	47.015	ng	100
85) Di-n-octyl phthalate	14.716	149	827899	45.761	ng	100
87) Indeno(1,2,3-cd)pyrene	17.157	276	877169	44.416	ng	100
88) Benzo(b)fluoranthene	15.174	252	774966	45.293	ng	99
89) Benzo(k)fluoranthene	15.210	252	707707	46.352	ng	99
90) Benzo(a)pyrene	15.557	252	716468	45.449	ng	99
91) Dibenzo(a,h)anthracene	17.174	278	715895	44.536	ng	100
92) Benzo(g,h,i)perylene	17.621	276	692338	44.525	ng	99

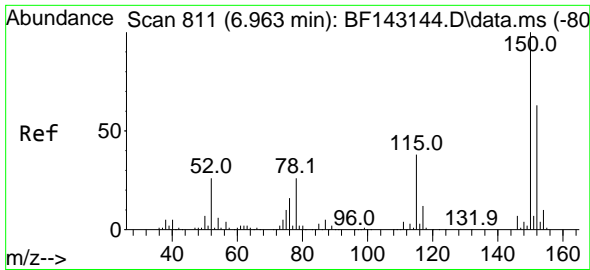
(#) = qualifier out of range (m) = manual integration (+) = signals summed

Data Path : Z:\svoasrv\HPCHEM1\BNA_F\Data\BF071825\
 Data File : BF143163.D
 Acq On : 18 Jul 2025 13:22
 Operator : RC/JU
 Sample : PB168904BSD
 Misc :
 ALS Vial : 6 Sample Multiplier: 1

Instrument :
 BNA_F
 ClientSampleId :
 PB168904BSD

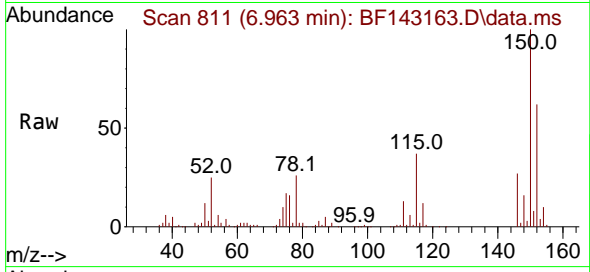
Quant Time: Jul 18 13:45:00 2025
 Quant Method : Z:\svoasrv\HPCHEM1\BNA_F\Methods\8270-BF071725.M
 Quant Title : ASP BNA STANDARDS FOR 5 POINT CALIBRATION
 QLast Update : Thu Jul 17 15:14:05 2025
 Response via : Initial Calibration



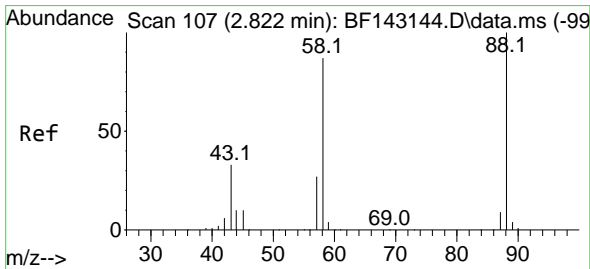
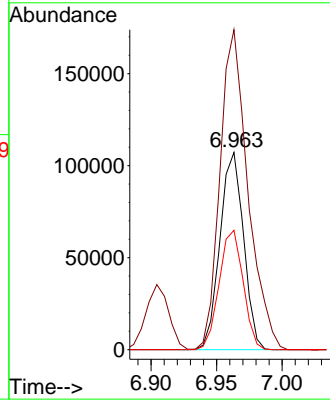
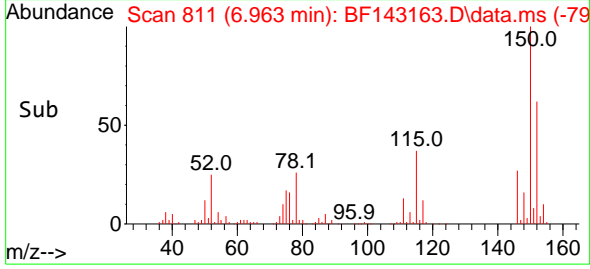


#1
 1,4-Dichlorobenzene-d4
 Concen: 20.000 ng
 RT: 6.963 min Scan# 81
 Delta R.T. 0.000 min
 Lab File: BF143163.D
 Acq: 18 Jul 2025 13:22

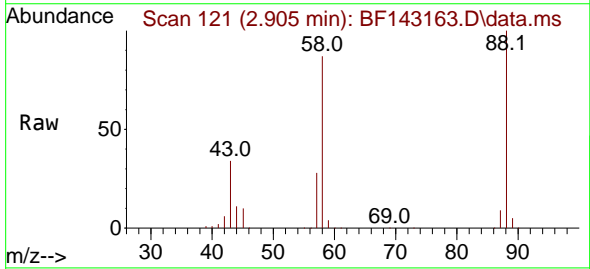
Instrument :
 BNA_F
 ClientSampleId :
 PB168904BSD



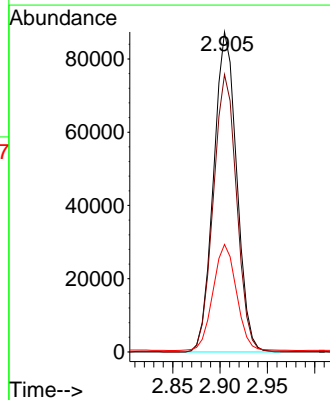
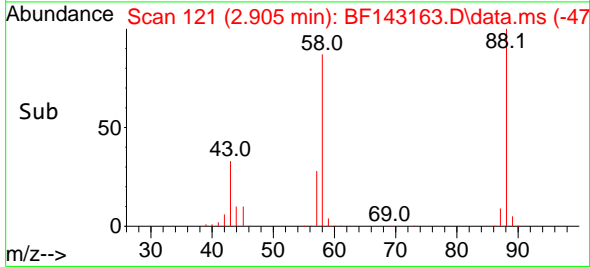
Tgt Ion:152 Resp: 134233
 Ion Ratio Lower Upper
 152 100
 150 162.1 128.2 192.4
 115 60.5 47.9 71.9

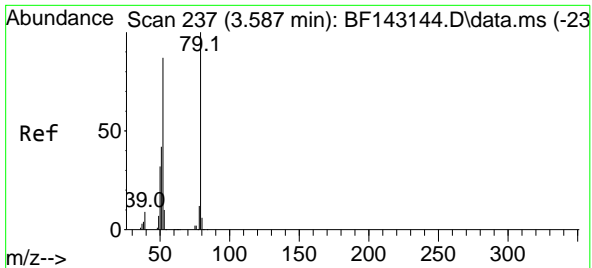


#2
 1,4-Dioxane
 Concen: 36.936 ng
 RT: 2.905 min Scan# 121
 Delta R.T. 0.083 min
 Lab File: BF143163.D
 Acq: 18 Jul 2025 13:22



Tgt Ion: 88 Resp: 148250
 Ion Ratio Lower Upper
 88 100
 58 87.7 70.2 105.2
 43 33.7 27.1 40.7



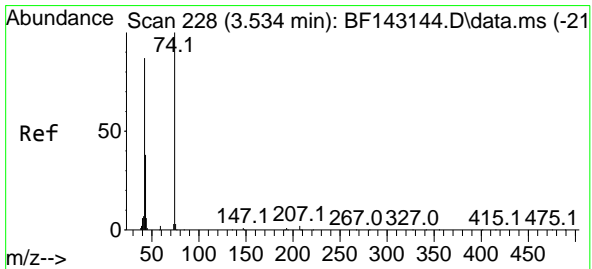
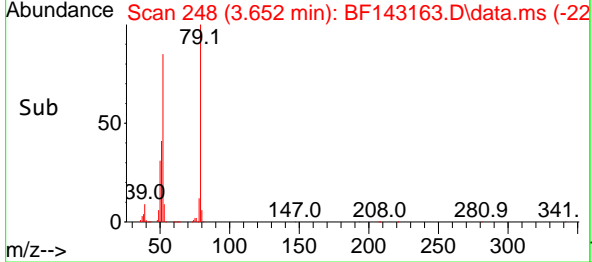
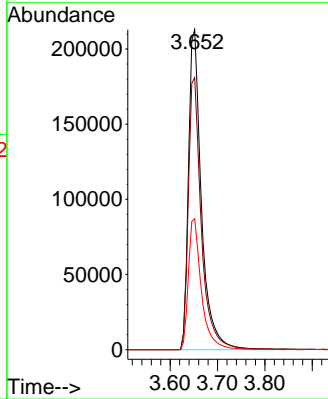
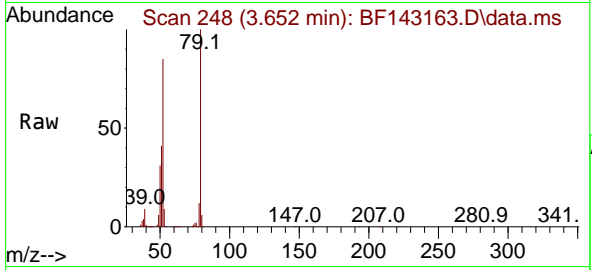


#3
 Pyridine
 Concen: 38.854 ng
 RT: 3.652 min Scan# 24
 Delta R.T. 0.065 min
 Lab File: BF143163.D
 Acq: 18 Jul 2025 13:22

Instrument :
 BNA_F
 ClientSampleId :
 PB168904BSD

Tgt Ion: 79 Resp: 404777

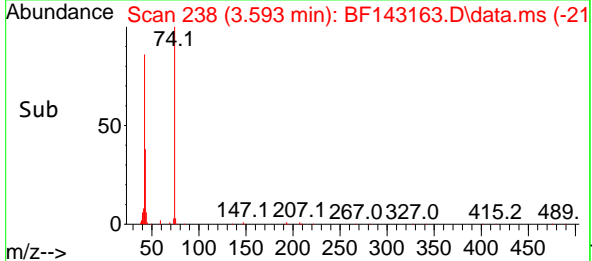
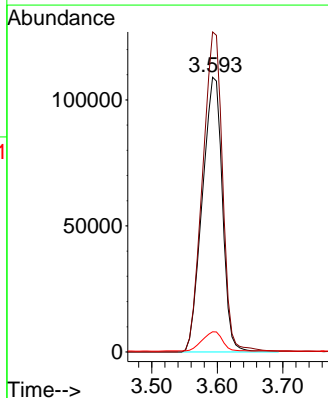
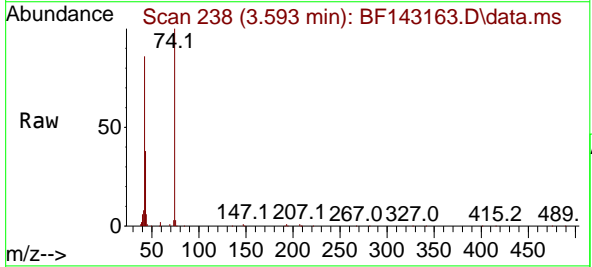
Ion	Ratio	Lower	Upper
79	100		
52	85.0	69.4	104.2
51	40.9	33.5	50.3

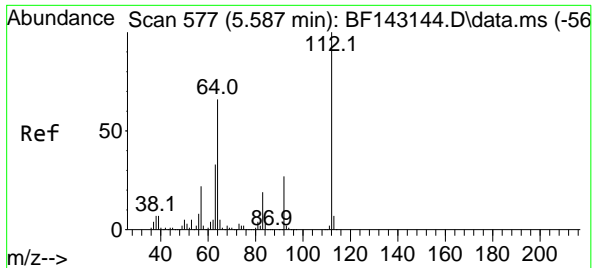


#4
 n-Nitrosodimethylamine
 Concen: 43.218 ng
 RT: 3.593 min Scan# 238
 Delta R.T. 0.059 min
 Lab File: BF143163.D
 Acq: 18 Jul 2025 13:22

Tgt Ion: 42 Resp: 232460

Ion	Ratio	Lower	Upper
42	100		
74	116.5	91.7	137.5
44	7.4	5.6	8.4



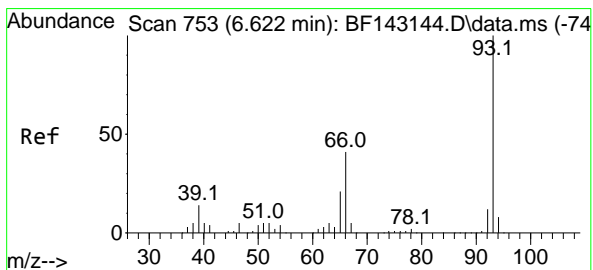
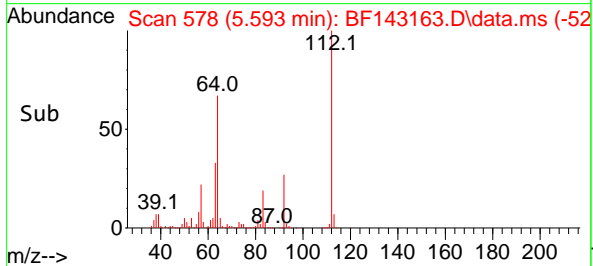
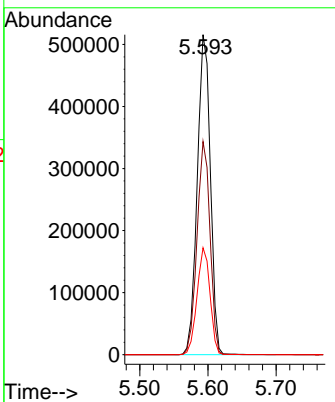
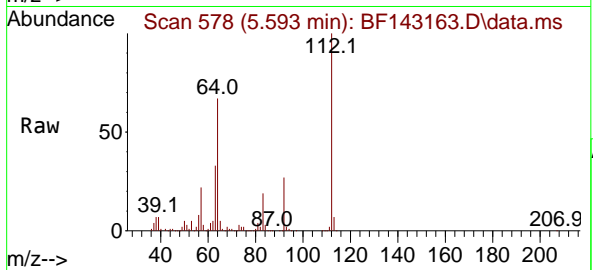


#5
 2-Fluorophenol
 Concen: 81.264 ng
 RT: 5.593 min Scan# 51
 Delta R.T. 0.006 min
 Lab File: BF143163.D
 Acq: 18 Jul 2025 13:22

Instrument : BNA_F
 ClientSampleId : PB168904BSD

Tgt Ion:112 Resp: 689324

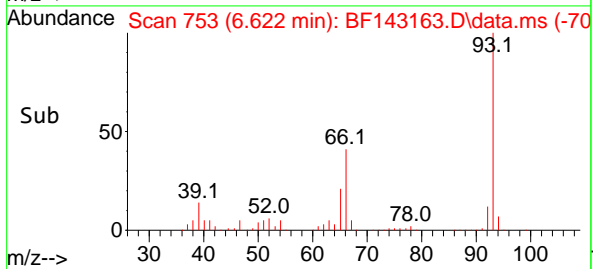
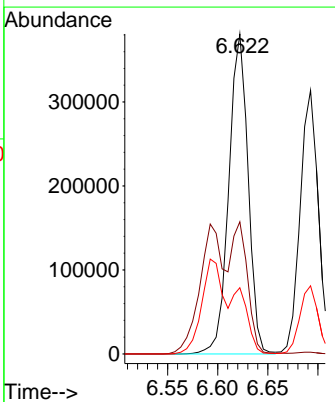
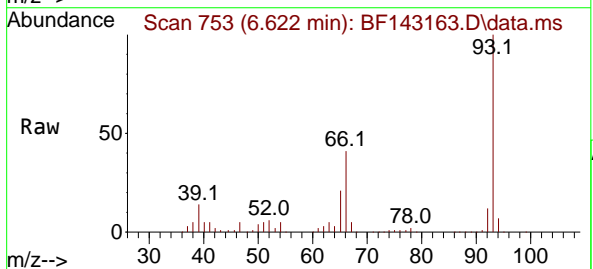
Ion	Ratio	Lower	Upper
112	100		
64	66.6	53.1	79.7
63	33.4	26.6	40.0

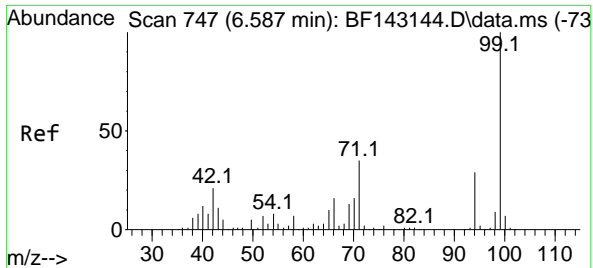


#6
 Aniline
 Concen: 34.226 ng
 RT: 6.622 min Scan# 753
 Delta R.T. 0.000 min
 Lab File: BF143163.D
 Acq: 18 Jul 2025 13:22

Tgt Ion: 93 Resp: 509293

Ion	Ratio	Lower	Upper
93	100		
66	41.3	33.2	49.8
65	20.7	16.9	25.3



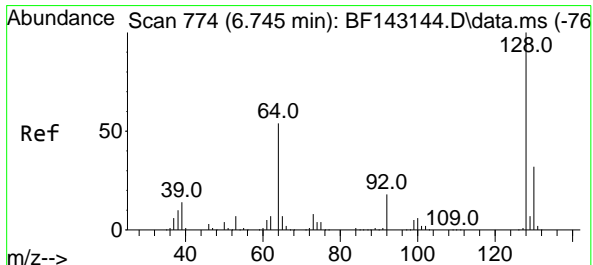
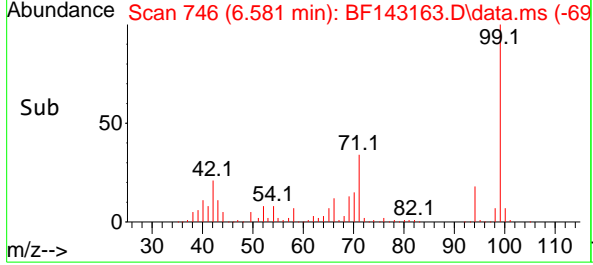
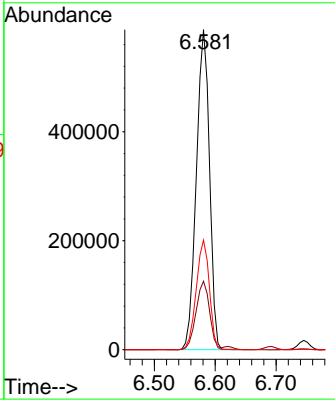
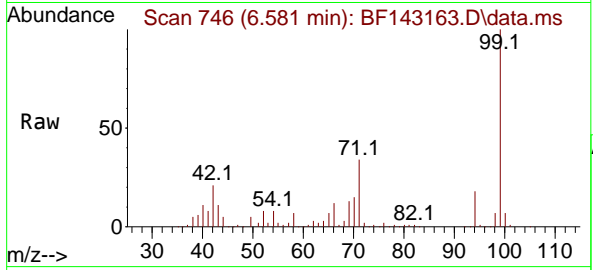


#7
 Phenol-d6
 Concen: 82.220 ng
 RT: 6.581 min Scan# 746
 Delta R.T. -0.006 min
 Lab File: BF143163.D
 Acq: 18 Jul 2025 13:22

Instrument : BNA_F
 ClientSampleId : PB168904BSD

Tgt Ion: 99 Resp: 877854

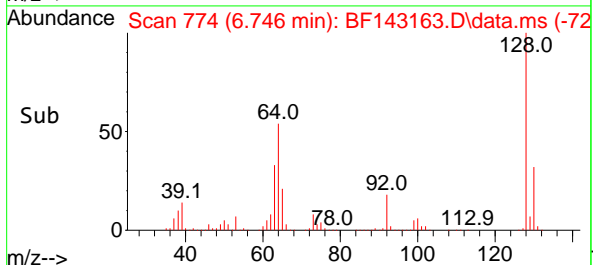
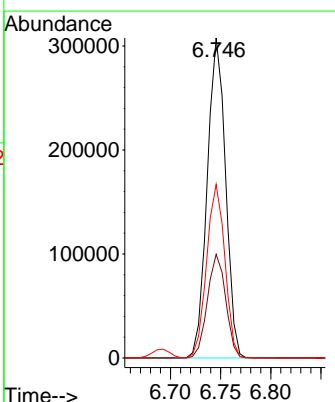
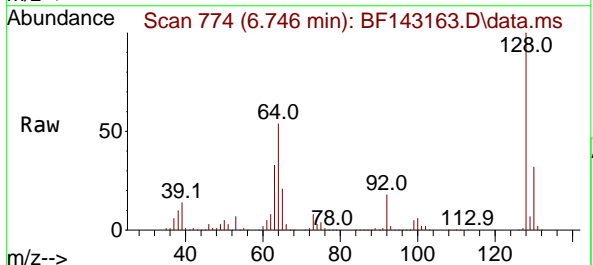
Ion	Ratio	Lower	Upper
99	100		
42	21.4	17.0	25.6
71	34.2	27.7	41.5

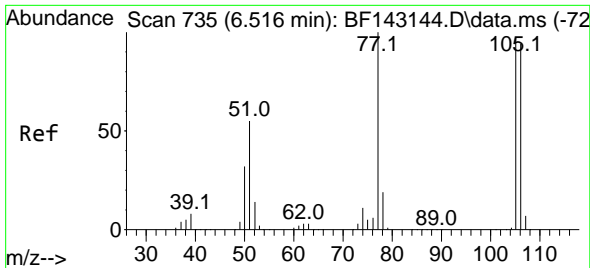


#8
 2-Chlorophenol
 Concen: 44.001 ng
 RT: 6.746 min Scan# 774
 Delta R.T. 0.000 min
 Lab File: BF143163.D
 Acq: 18 Jul 2025 13:22

Tgt Ion: 128 Resp: 391235

Ion	Ratio	Lower	Upper
128	100		
130	32.4	12.3	52.3
64	54.2	35.9	75.9



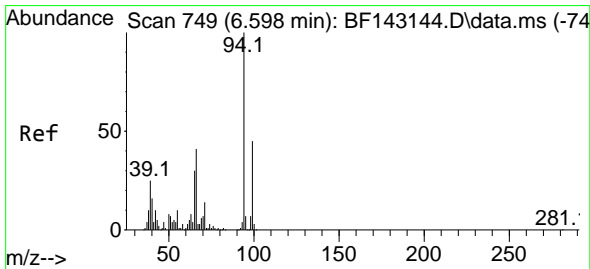
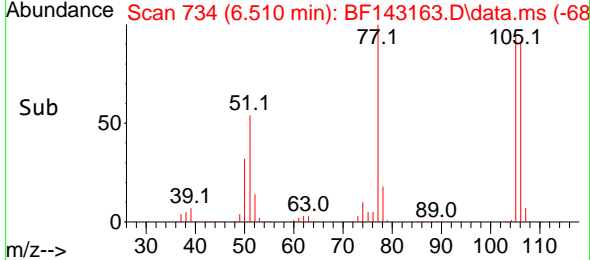
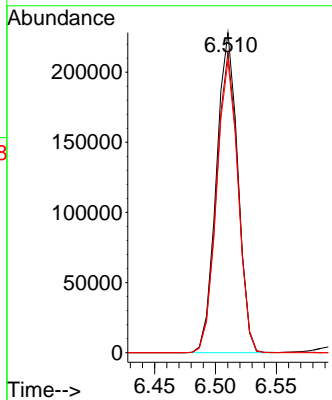
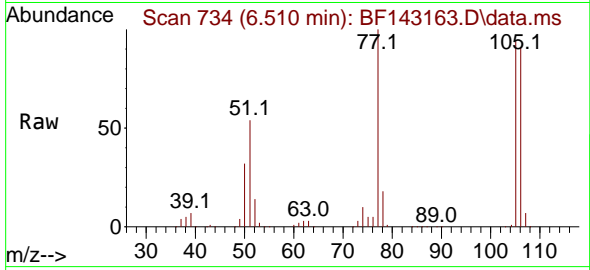


#9
 Benzaldehyde
 Concen: 34.866 ng
 RT: 6.510 min Scan# 71
 Delta R.T. -0.006 min
 Lab File: BF143163.D
 Acq: 18 Jul 2025 13:22

Instrument : BNA_F
 ClientSampleId : PB168904BSD

Tgt Ion: 77 Resp: 279137

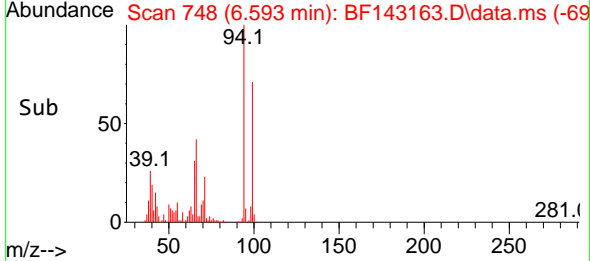
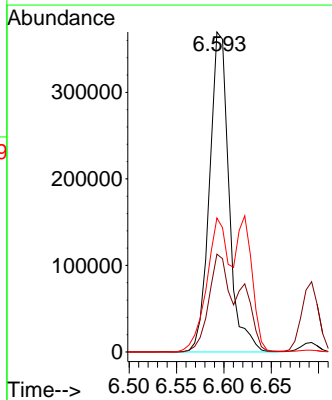
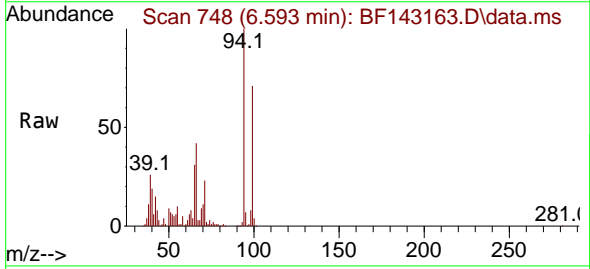
Ion	Ratio	Lower	Upper
77	100		
105	93.8	76.8	116.8
106	91.2	74.4	114.4

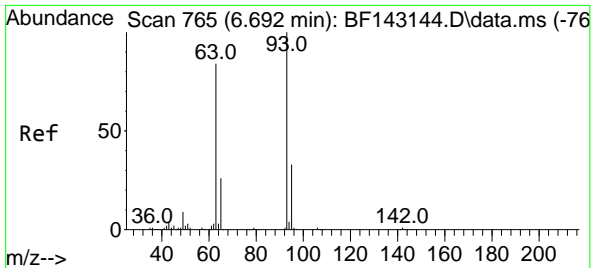


#10
 Phenol
 Concen: 45.434 ng
 RT: 6.593 min Scan# 748
 Delta R.T. -0.006 min
 Lab File: BF143163.D
 Acq: 18 Jul 2025 13:22

Tgt Ion: 94 Resp: 528453

Ion	Ratio	Lower	Upper
94	100		
65	30.5	10.0	50.0
66	41.8	20.8	60.8



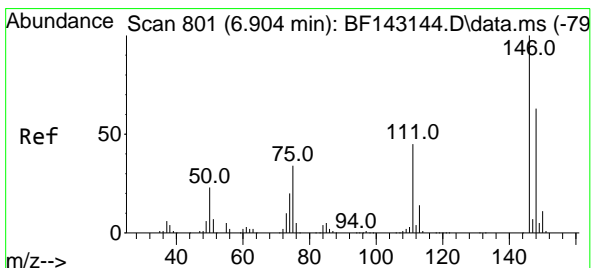
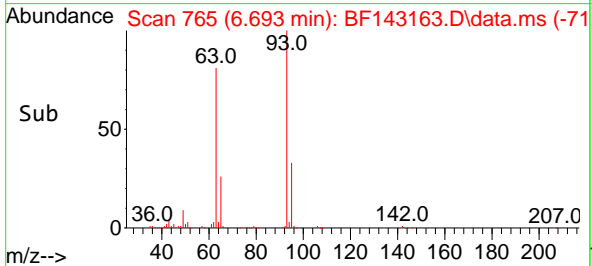
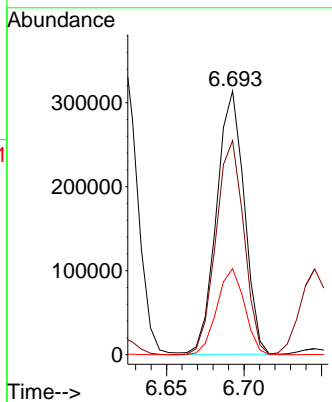
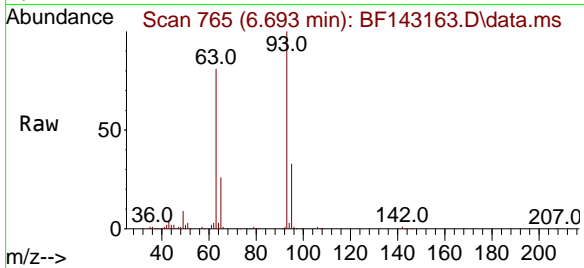


#11
 bis(2-Chloroethyl)ether
 Concen: 43.795 ng
 RT: 6.693 min Scan# 765
 Delta R.T. 0.000 min
 Lab File: BF143163.D
 Acq: 18 Jul 2025 13:22

Instrument : BNA_F
 ClientSampleId : PB168904BSD

Tgt Ion: 93 Resp: 390023

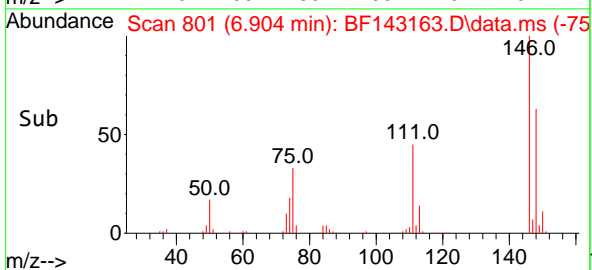
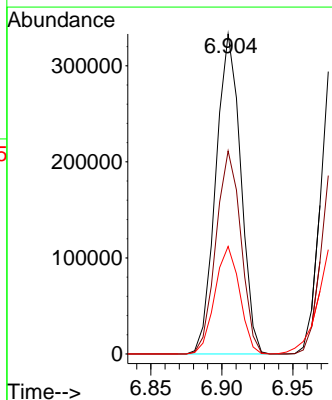
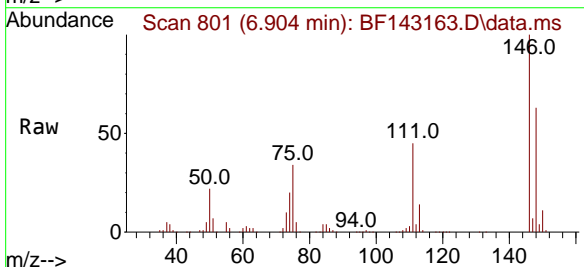
Ion	Ratio	Lower	Upper
93	100		
63	81.2	63.4	103.4
95	32.6	12.4	52.4

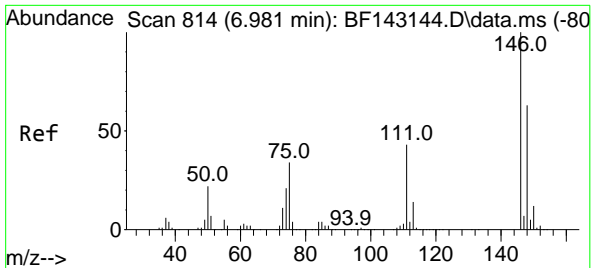


#12
 1,3-Dichlorobenzene
 Concen: 42.023 ng
 RT: 6.904 min Scan# 801
 Delta R.T. 0.000 min
 Lab File: BF143163.D
 Acq: 18 Jul 2025 13:22

Tgt Ion: 146 Resp: 405894

Ion	Ratio	Lower	Upper
146	100		
148	63.4	50.6	76.0
75	33.6	27.4	41.2

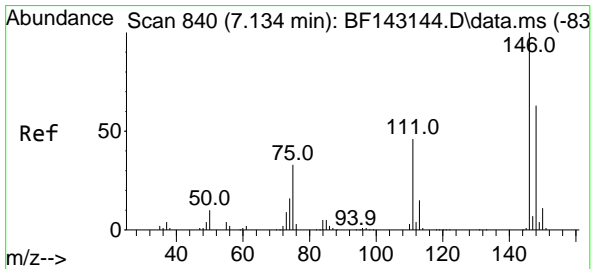
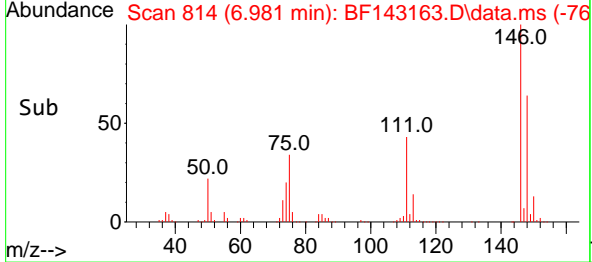
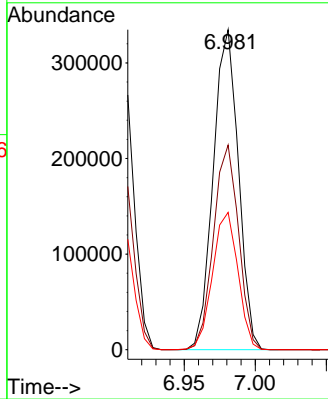
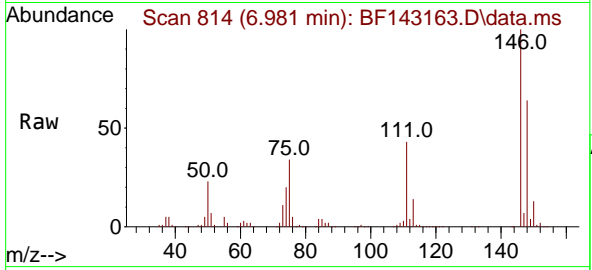




#13
 1,4-Dichlorobenzene
 Concen: 42.430 ng
 RT: 6.981 min Scan# 813
 Delta R.T. 0.000 min
 Lab File: BF143163.D
 Acq: 18 Jul 2025 13:22

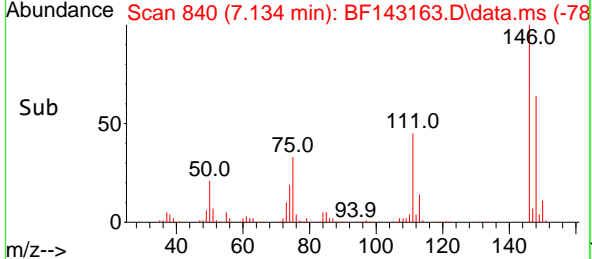
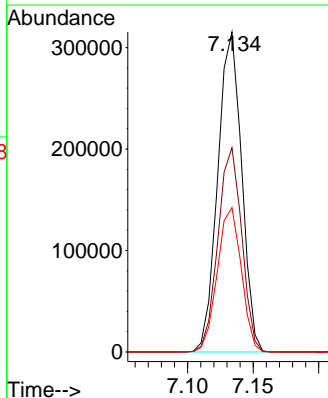
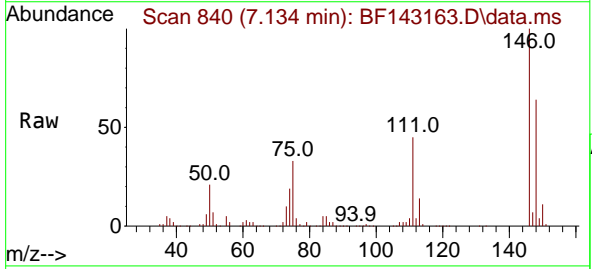
Instrument : BNA_F
 ClientSampleId : PB168904BSD

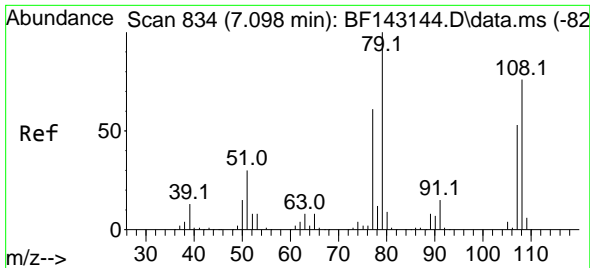
Tgt Ion:146 Resp: 412718
 Ion Ratio Lower Upper
 146 100
 148 63.9 50.3 75.5
 111 42.9 34.4 51.6



#14
 1,2-Dichlorobenzene
 Concen: 43.146 ng
 RT: 7.134 min Scan# 840
 Delta R.T. 0.000 min
 Lab File: BF143163.D
 Acq: 18 Jul 2025 13:22

Tgt Ion:146 Resp: 399171
 Ion Ratio Lower Upper
 146 100
 148 63.9 50.7 76.1
 111 45.1 36.6 54.8



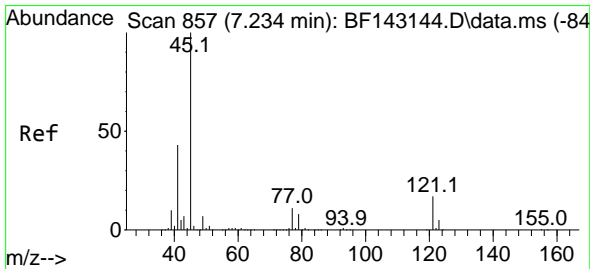
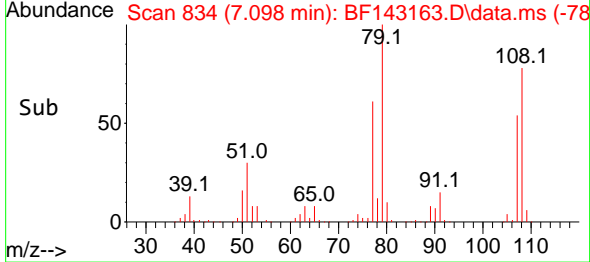
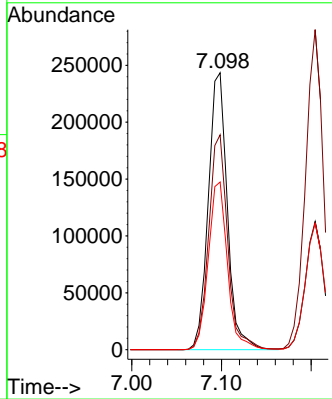
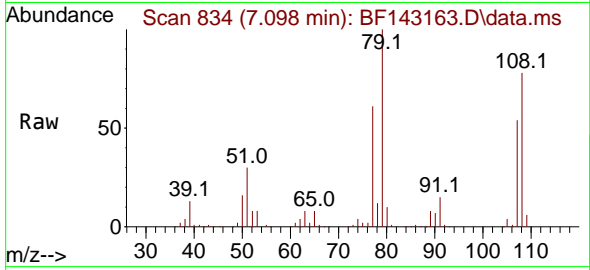


#15
 Benzyl Alcohol
 Concen: 43.987 ng
 RT: 7.098 min Scan# 811
 Delta R.T. 0.000 min
 Lab File: BF143163.D
 Acq: 18 Jul 2025 13:22

Instrument : BNA_F
 ClientSampleId : PB168904BSD

Tgt Ion: 79 Resp: 358599

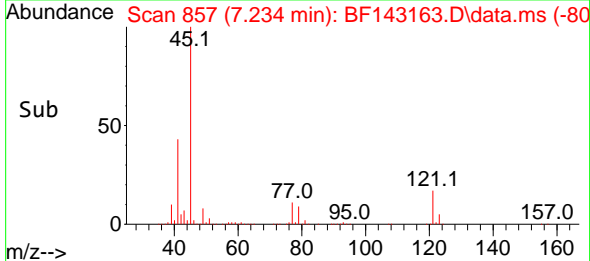
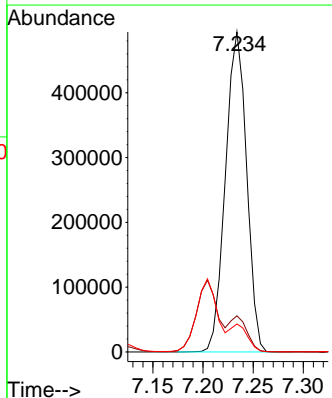
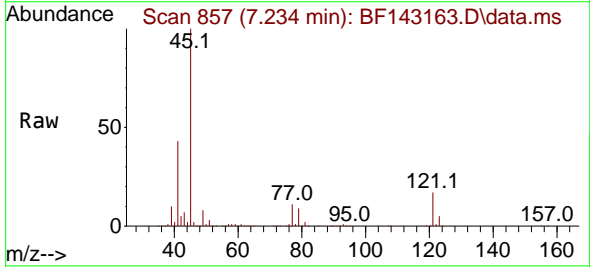
Ion	Ratio	Lower	Upper
79	100		
108	77.6	61.1	91.7
77	60.5	48.9	73.3

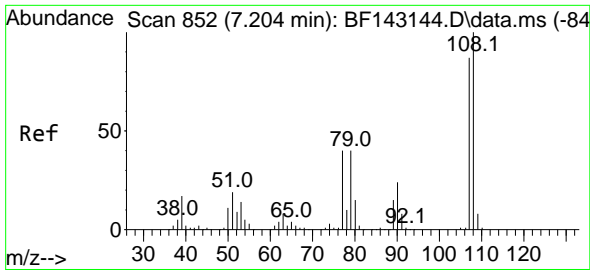


#16
 2,2'-oxybis(1-Chloropropane)
 Concen: 43.834 ng
 RT: 7.234 min Scan# 857
 Delta R.T. 0.000 min
 Lab File: BF143163.D
 Acq: 18 Jul 2025 13:22

Tgt Ion: 45 Resp: 724154

Ion	Ratio	Lower	Upper
45	100		
77	11.3	0.0	31.2
79	8.8	0.0	28.5

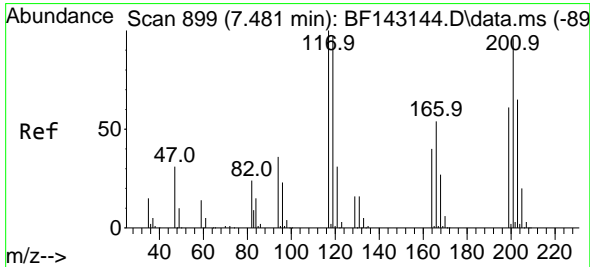
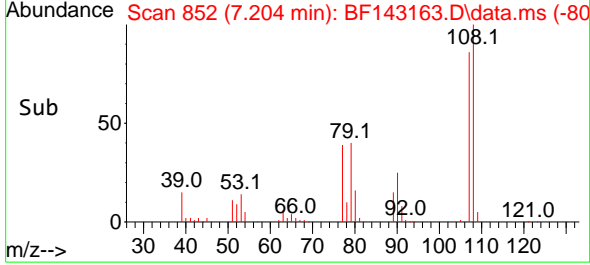
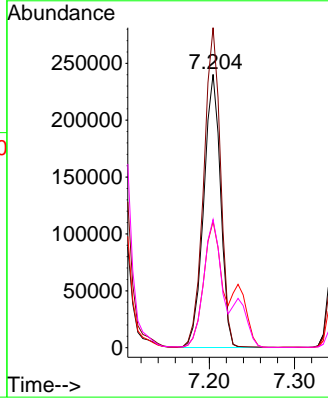
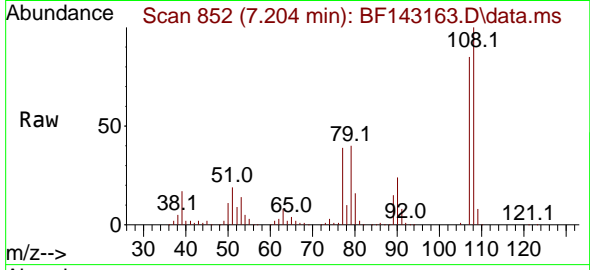




#17
 2-Methylphenol
 Concen: 44.059 ng
 RT: 7.204 min Scan# 811
 Delta R.T. 0.000 min
 Lab File: BF143163.D
 Acq: 18 Jul 2025 13:22

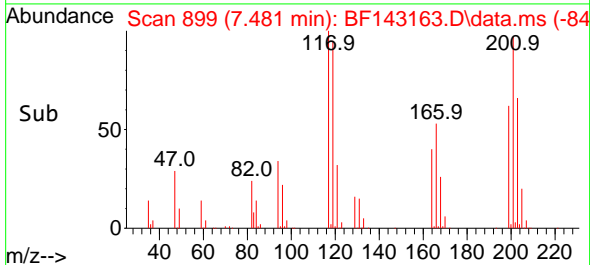
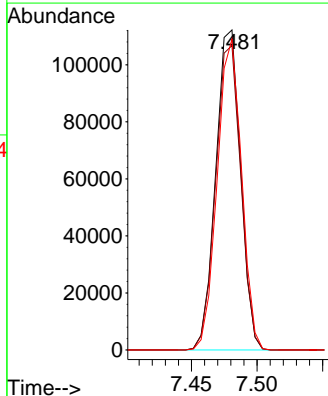
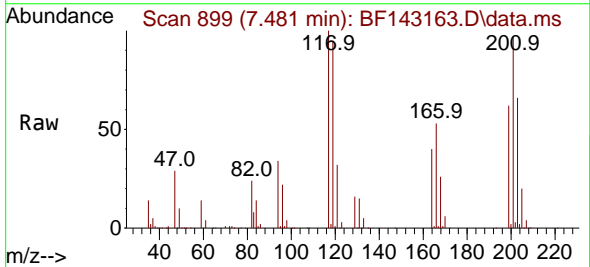
Instrument :
 BNA_F
 ClientSampleId :
 PB168904BSD

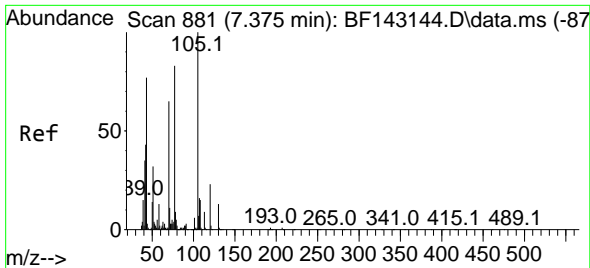
Tgt Ion	Resp	Lower	Upper
107	100		
108	117.1	91.8	137.6
77	46.2	37.0	55.6
79	46.9	36.9	55.3



#18
 Hexachloroethane
 Concen: 43.962 ng
 RT: 7.481 min Scan# 899
 Delta R.T. 0.000 min
 Lab File: BF143163.D
 Acq: 18 Jul 2025 13:22

Tgt Ion	Resp	Lower	Upper
117	100		
119	95.1	77.8	116.8
201	97.1	77.0	115.4



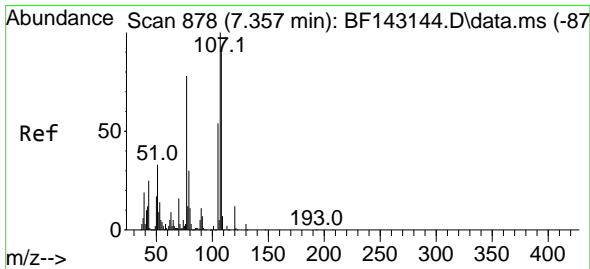
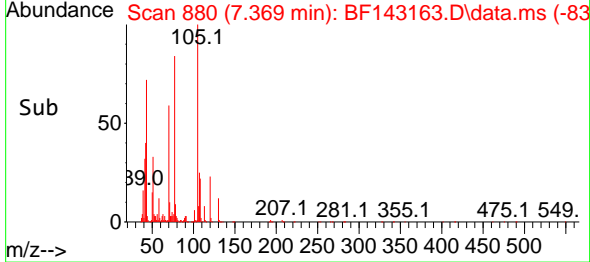
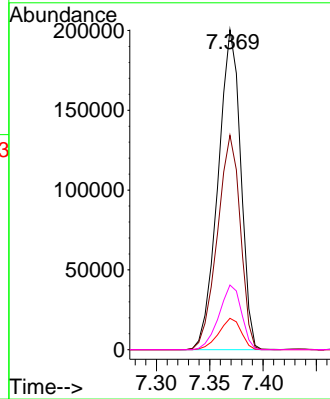
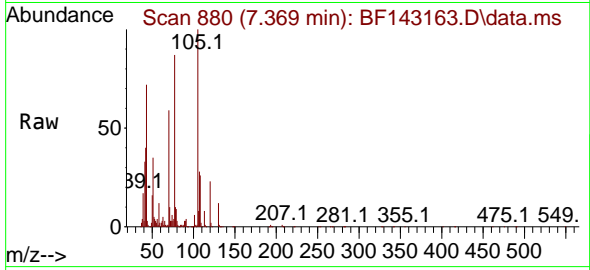


#19
 n-Nitroso-di-n-propylamine
 Concen: 43.198 ng
 RT: 7.369 min Scan# 881
 Delta R.T. -0.006 min
 Lab File: BF143163.D
 Acq: 18 Jul 2025 13:22

Instrument :
 BNA_F
 ClientSampleId :
 PB168904BSD

Tgt Ion: 70 Resp: 295904

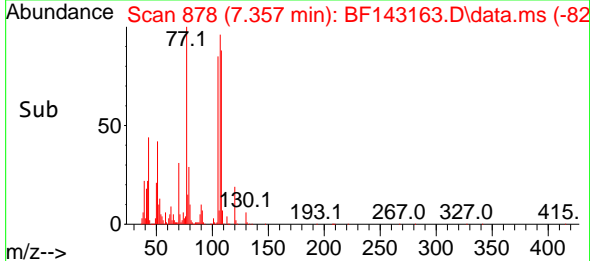
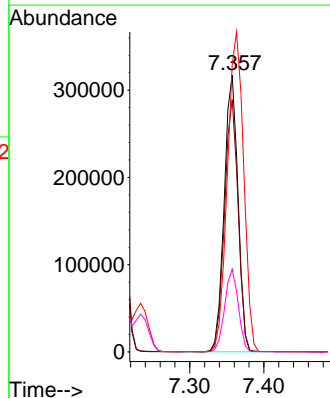
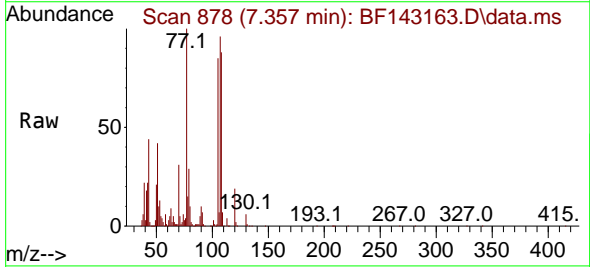
Ion	Ratio	Lower	Upper
70	100		
42	67.0	52.5	78.7
101	9.8	7.6	11.4
130	20.2	16.1	24.1

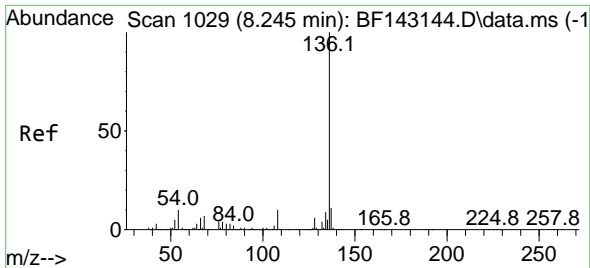


#20
 3+4-Methylphenols
 Concen: 45.033 ng
 RT: 7.357 min Scan# 878
 Delta R.T. 0.000 min
 Lab File: BF143163.D
 Acq: 18 Jul 2025 13:22

Tgt Ion: 107 Resp: 408476

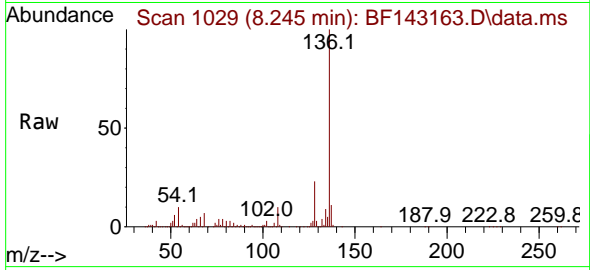
Ion	Ratio	Lower	Upper
107	100		
108	91.1	70.0	110.0
77	103.7	57.8	97.8
79	29.9	9.5	49.5





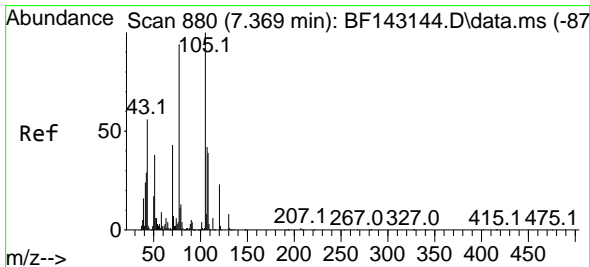
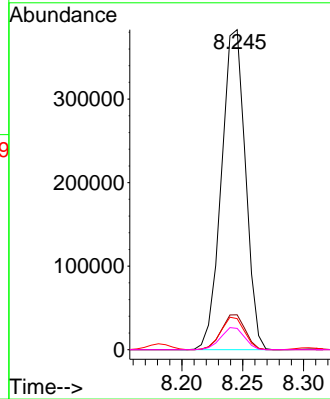
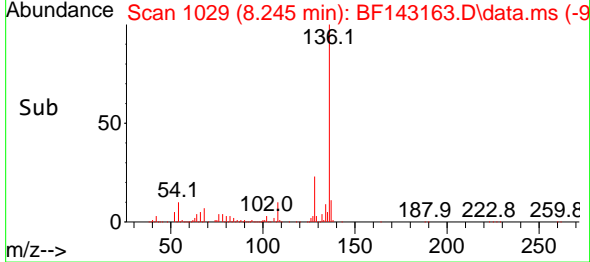
#21
 Naphthalene-d8
 Concen: 20.000 ng
 RT: 8.245 min Scan# 1029
 Delta R.T. 0.000 min
 Lab File: BF143163.D
 Acq: 18 Jul 2025 13:22

Instrument : BNA_F
 ClientSampleId : PB168904BSD

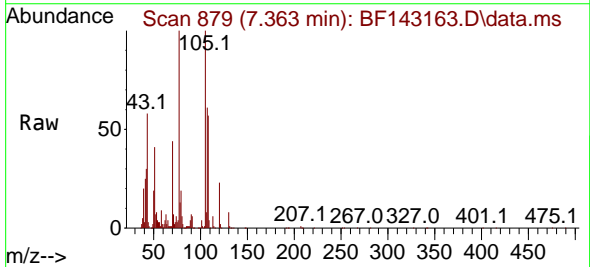


Tgt Ion:136 Resp: 524933

Ion	Ratio	Lower	Upper
136	100		
137	10.9	8.6	13.0
54	9.7	8.2	12.2
68	6.7	5.4	8.2

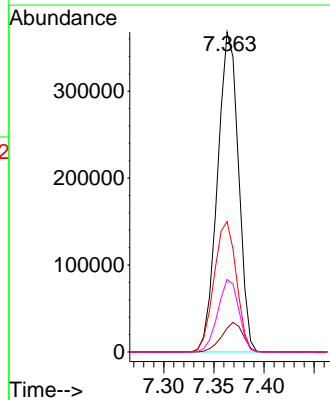
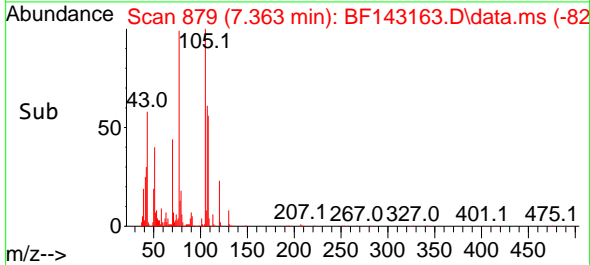


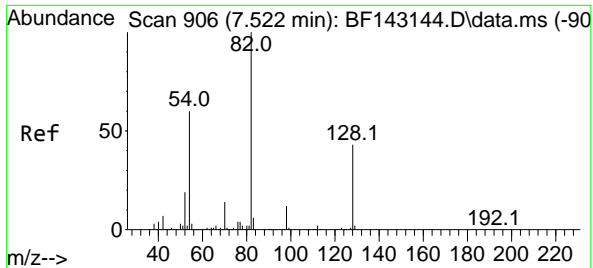
#22
 Acetophenone
 Concen: 43.054 ng
 RT: 7.363 min Scan# 879
 Delta R.T. -0.006 min
 Lab File: BF143163.D
 Acq: 18 Jul 2025 13:22



Tgt Ion:105 Resp: 535066

Ion	Ratio	Lower	Upper
105	100		
71	7.4	5.8	8.6
51	40.7	30.2	45.2
120	22.6	18.2	27.4



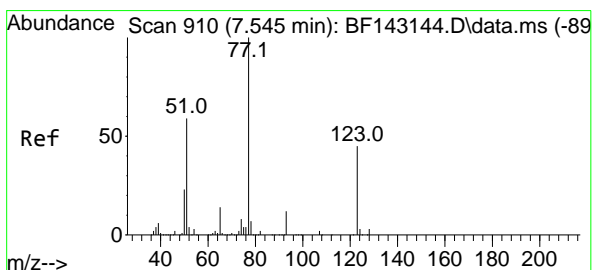
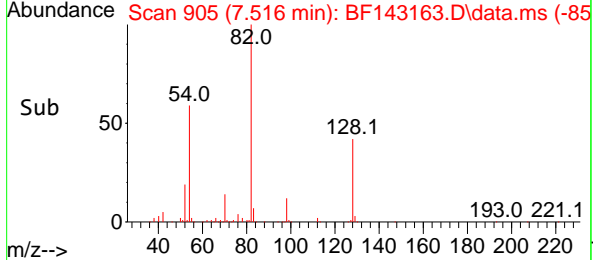
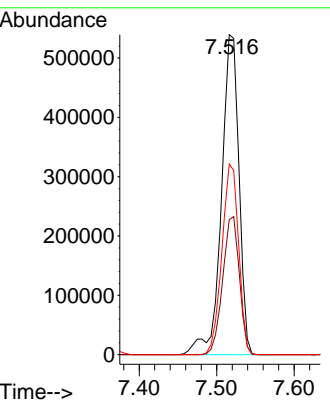
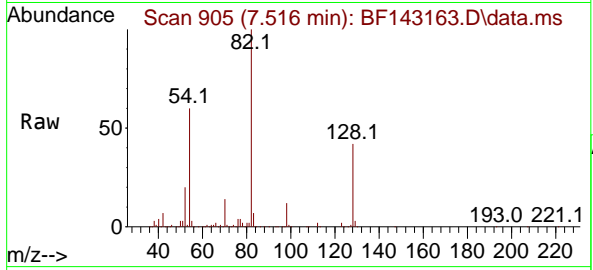


#23
 Nitrobenzene-d5
 Concen: 80.681 ng
 RT: 7.516 min Scan# 909
 Delta R.T. -0.006 min
 Lab File: BF143163.D
 Acq: 18 Jul 2025 13:22

Instrument : BNA_F
 ClientSampleId : PB168904BSD

Tgt Ion: 82 Resp: 849641

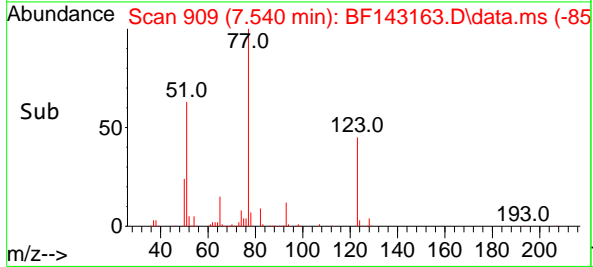
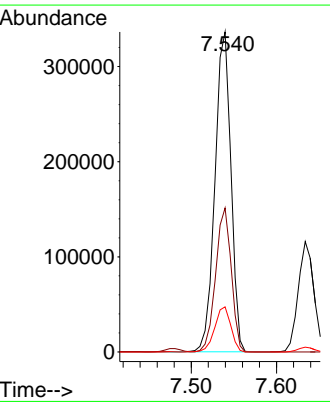
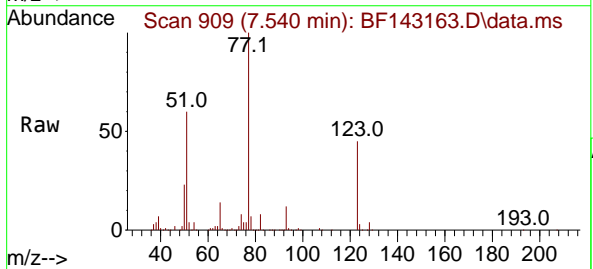
Ion	Ratio	Lower	Upper
82	100		
128	42.2	33.6	50.4
54	59.6	47.1	70.7

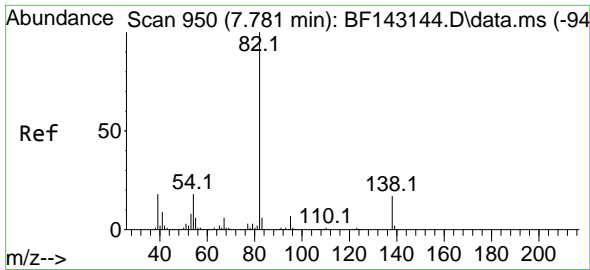


#24
 Nitrobenzene
 Concen: 44.491 ng
 RT: 7.540 min Scan# 909
 Delta R.T. -0.006 min
 Lab File: BF143163.D
 Acq: 18 Jul 2025 13:22

Tgt Ion: 77 Resp: 436819

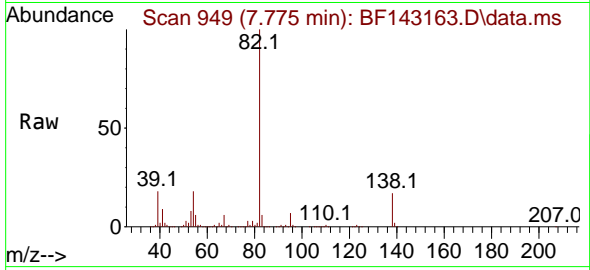
Ion	Ratio	Lower	Upper
77	100		
123	45.0	36.1	54.1
65	14.1	11.4	17.2



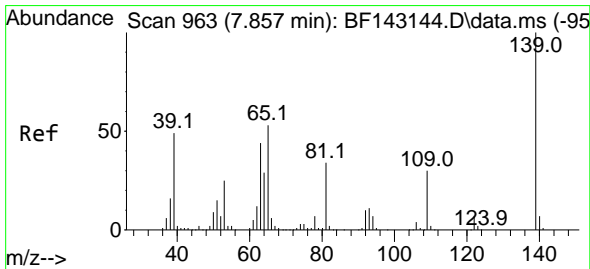
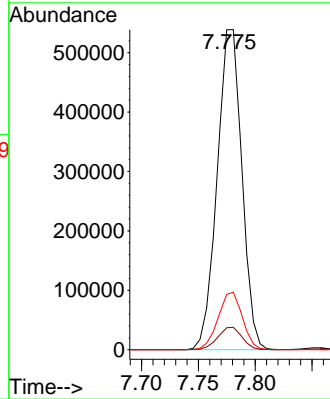
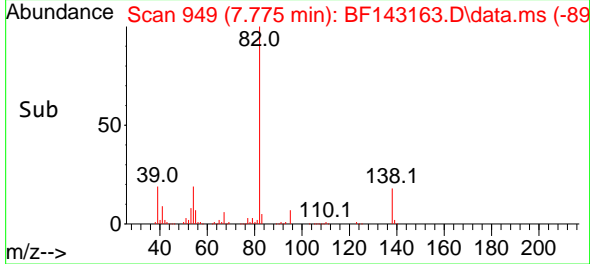


#25
 Isophorone
 Concen: 43.950 ng
 RT: 7.775 min Scan# 949
 Delta R.T. -0.006 min
 Lab File: BF143163.D
 Acq: 18 Jul 2025 13:22

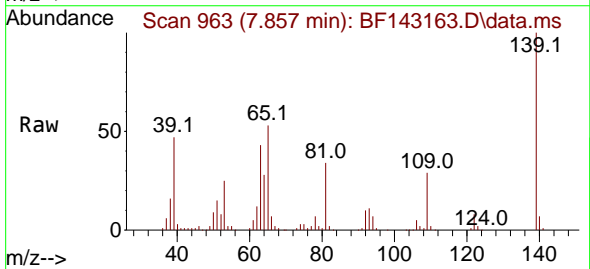
Instrument : BNA_F
 ClientSampleId : PB168904BSD



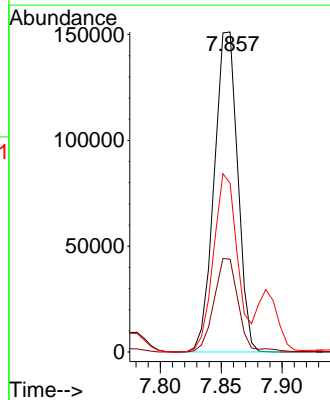
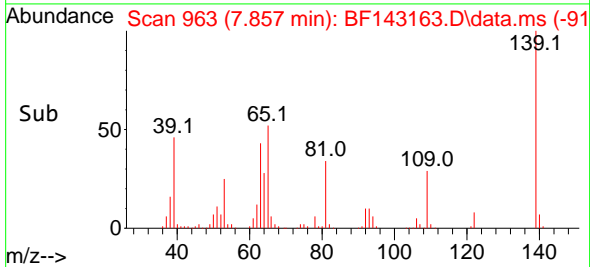
Tgt Ion: 82 Resp: 817053
 Ion Ratio Lower Upper
 82 100
 95 6.9 5.5 8.3
 138 17.3 13.8 20.8

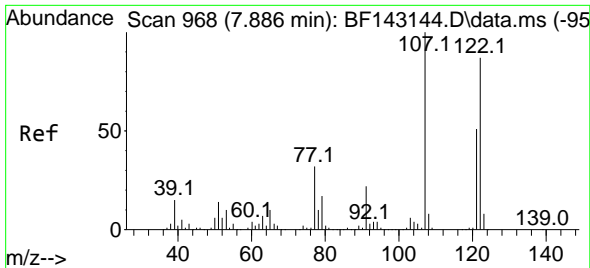


#26
 2-Nitrophenol
 Concen: 47.719 ng
 RT: 7.857 min Scan# 963
 Delta R.T. 0.000 min
 Lab File: BF143163.D
 Acq: 18 Jul 2025 13:22



Tgt Ion: 139 Resp: 203332
 Ion Ratio Lower Upper
 139 100
 109 29.0 23.6 35.4
 65 52.7 42.6 64.0



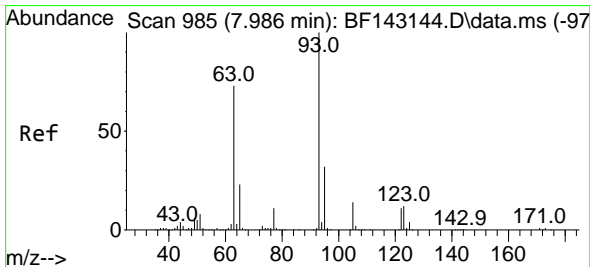
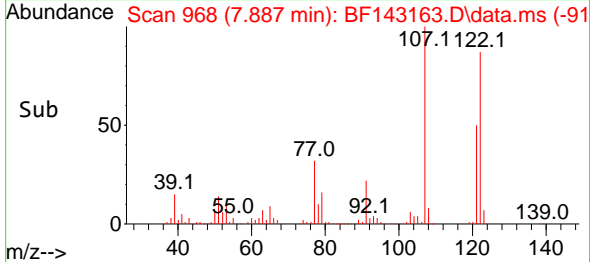
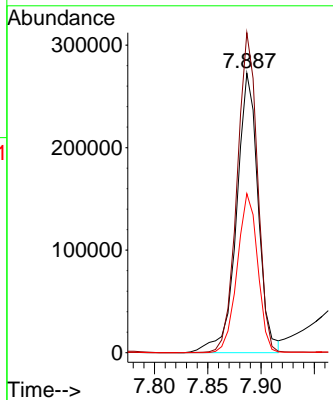
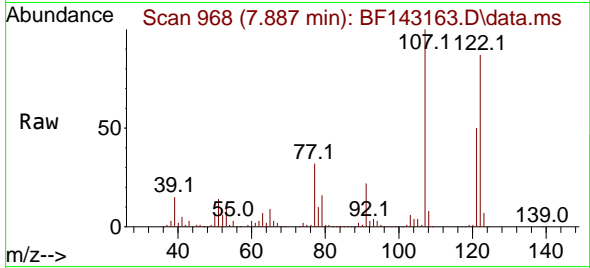


#27
 2,4-Dimethylphenol
 Concen: 44.356 ng
 RT: 7.887 min Scan# 90
 Delta R.T. 0.000 min
 Lab File: BF143163.D
 Acq: 18 Jul 2025 13:22

Instrument :
 BNA_F
 ClientSampleId :
 PB168904BSD

Tgt Ion:122 Resp: 385257

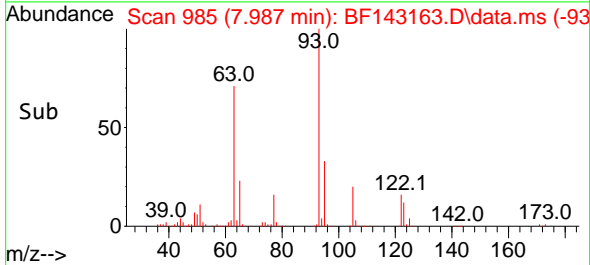
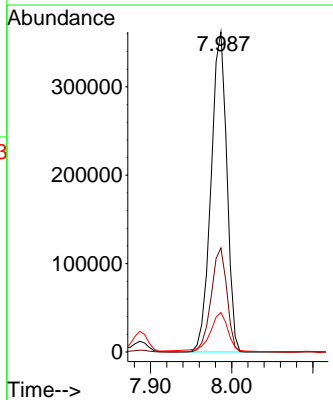
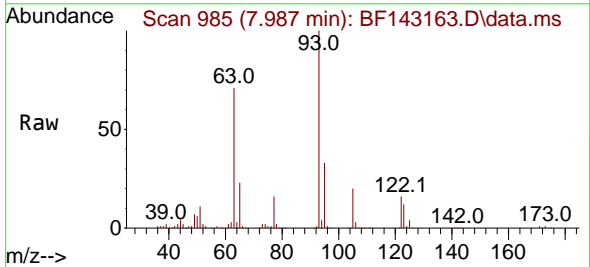
Ion	Ratio	Lower	Upper
122	100		
107	114.5	91.8	137.6
121	56.9	46.3	69.5

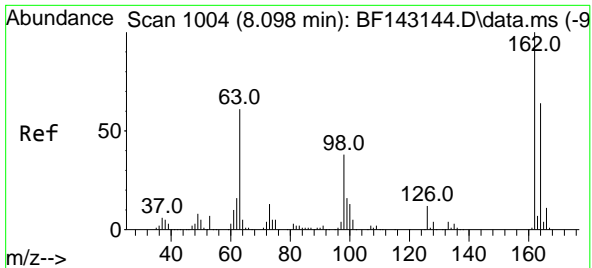


#28
 bis(2-Chloroethoxy)methane
 Concen: 43.786 ng
 RT: 7.987 min Scan# 985
 Delta R.T. 0.000 min
 Lab File: BF143163.D
 Acq: 18 Jul 2025 13:22

Tgt Ion: 93 Resp: 488053

Ion	Ratio	Lower	Upper
93	100		
95	32.5	25.8	38.6
123	12.3	9.7	14.5





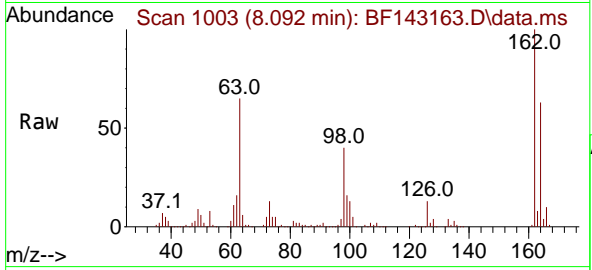
#29
 2,4-Dichlorophenol
 Concen: 44.175 ng
 RT: 8.092 min Scan# 1003
 Delta R.T. -0.006 min
 Lab File: BF143163.D
 Acq: 18 Jul 2025 13:22

Instrument :

BNA_F

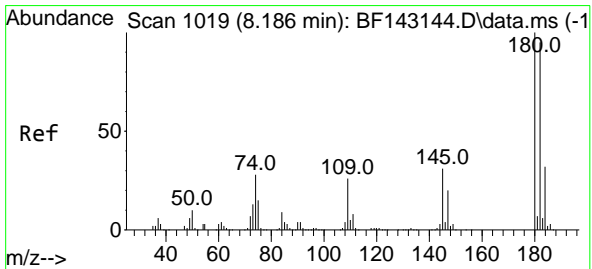
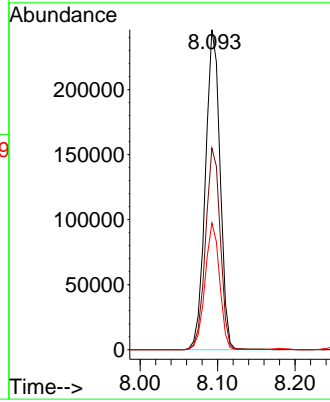
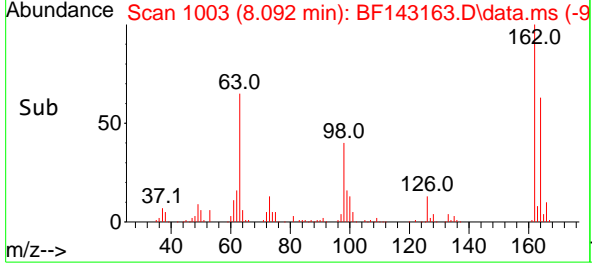
ClientSampleId :

PB168904BSD

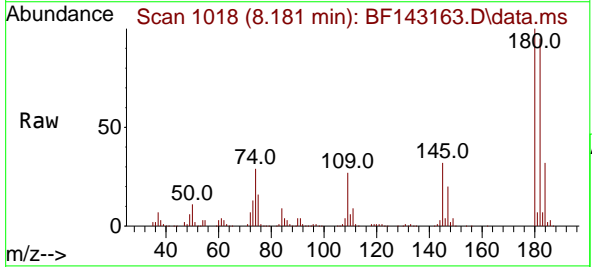


Tgt Ion:162 Resp: 323576

Ion	Ratio	Lower	Upper
162	100		
164	63.0	44.2	84.2
98	39.6	17.9	57.9

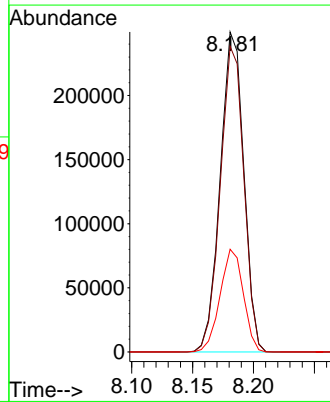
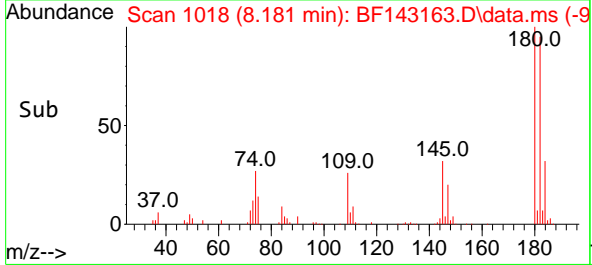


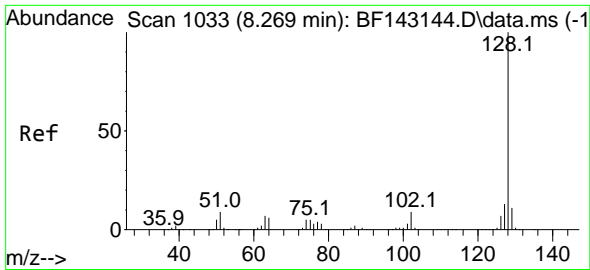
#30
 1,2,4-Trichlorobenzene
 Concen: 42.472 ng
 RT: 8.181 min Scan# 1018
 Delta R.T. -0.006 min
 Lab File: BF143163.D
 Acq: 18 Jul 2025 13:22



Tgt Ion:180 Resp: 336097

Ion	Ratio	Lower	Upper
180	100		
182	95.5	76.2	114.2
145	32.1	25.0	37.6

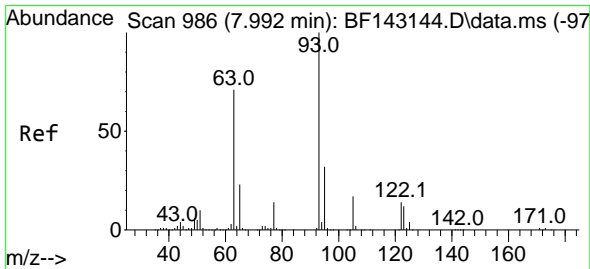
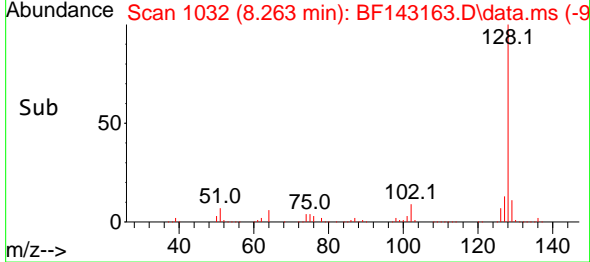
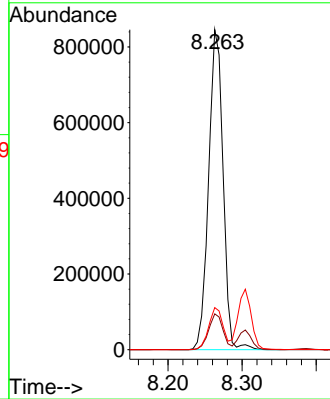
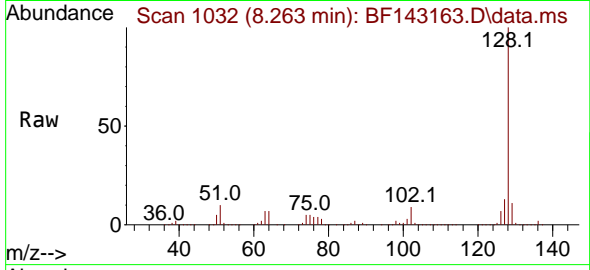




#31
 Naphthalene
 Concen: 44.163 ng
 RT: 8.263 min Scan# 10
 Delta R.T. -0.006 min
 Lab File: BF143163.D
 Acq: 18 Jul 2025 13:22

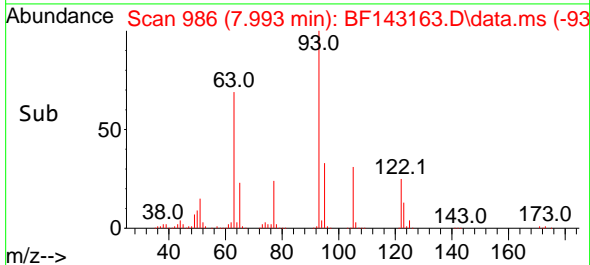
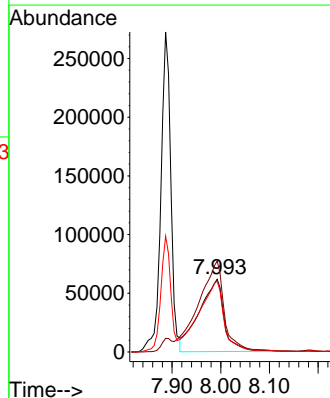
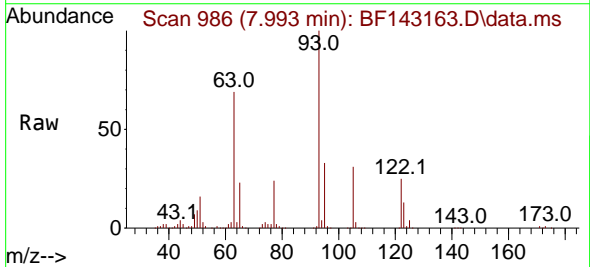
Instrument :
 BNA_F
 ClientSampleId :
 PB168904BSD

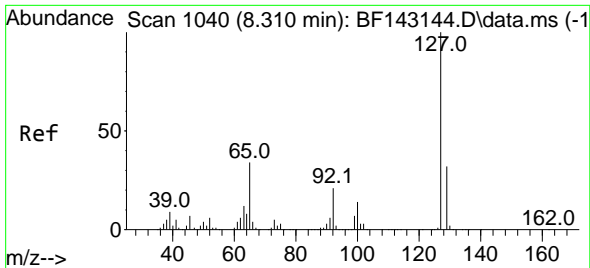
Tgt Ion:128 Resp: 1141709
 Ion Ratio Lower Upper
 128 100
 129 11.2 9.0 13.4
 127 13.2 10.6 16.0



#32
 Benzoic acid
 Concen: 45.513 ng
 RT: 7.993 min Scan# 986
 Delta R.T. 0.001 min
 Lab File: BF143163.D
 Acq: 18 Jul 2025 13:22

Tgt Ion:122 Resp: 221208
 Ion Ratio Lower Upper
 122 100
 105 125.0 104.8 144.8
 77 97.7 77.6 117.6



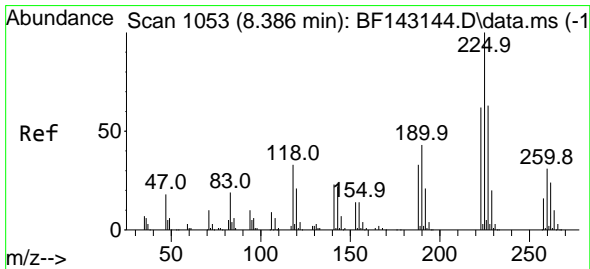
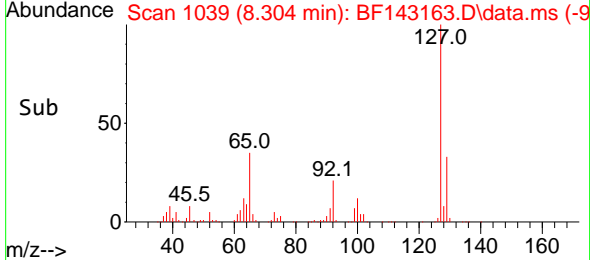
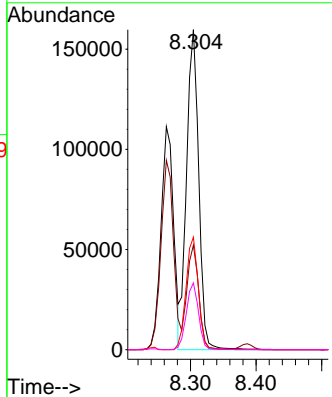
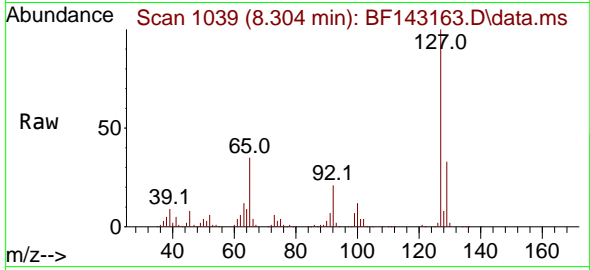


#33
 4-Chloroaniline
 Concen: 19.464 ng
 RT: 8.304 min Scan# 1039
 Delta R.T. -0.006 min
 Lab File: BF143163.D
 Acq: 18 Jul 2025 13:22

Instrument : BNA_F
 ClientSampleId : PB168904BSD

Tgt Ion:127 Resp: 205458

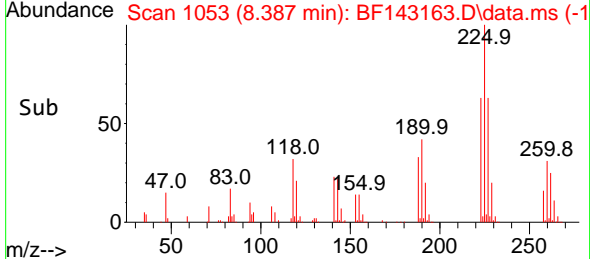
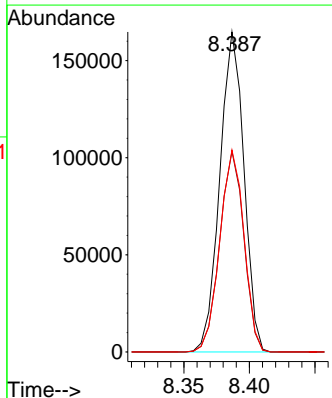
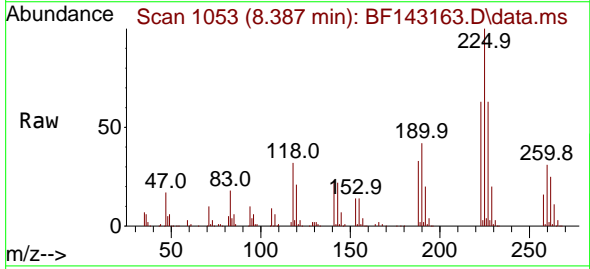
Ion	Ratio	Lower	Upper
127	100		
129	32.6	26.0	39.0
65	35.2	27.4	41.2
92	20.9	16.8	25.2

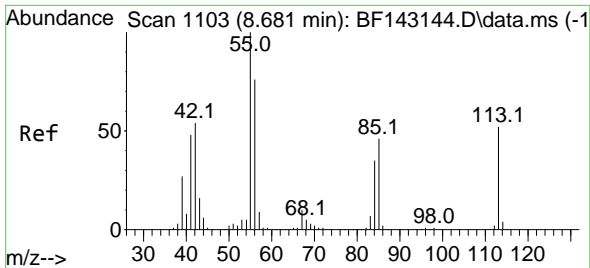


#34
 Hexachlorobutadiene
 Concen: 43.596 ng
 RT: 8.387 min Scan# 1053
 Delta R.T. 0.000 min
 Lab File: BF143163.D
 Acq: 18 Jul 2025 13:22

Tgt Ion:225 Resp: 210749

Ion	Ratio	Lower	Upper
225	100		
223	62.7	49.8	74.6
227	63.1	50.2	75.4



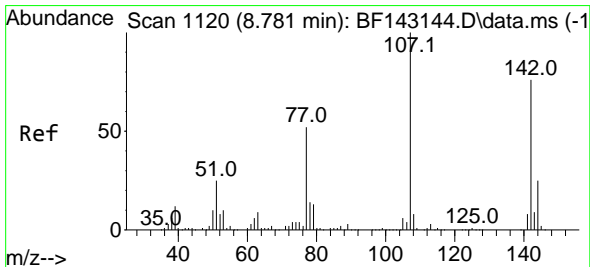
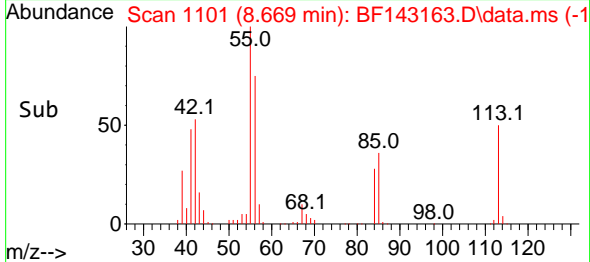
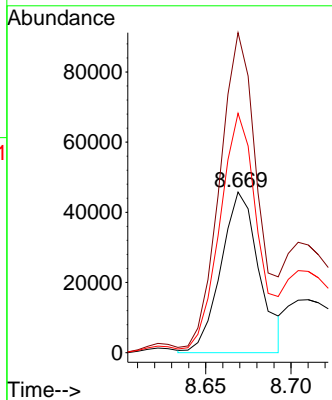
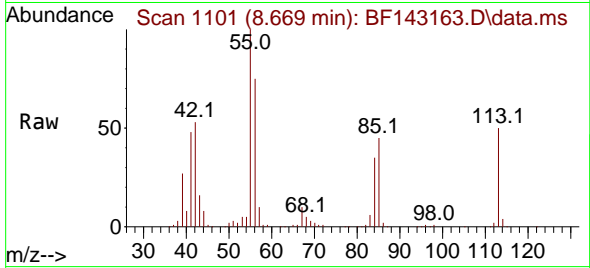


#35
 Caprolactam
 Concen: 32.182 ng
 RT: 8.669 min Scan# 1101
 Delta R.T. -0.012 min
 Lab File: BF143163.D
 Acq: 18 Jul 2025 13:22

Instrument : BNA_F
 ClientSampleId : PB168904BSD

Tgt Ion:113 Resp: 71233

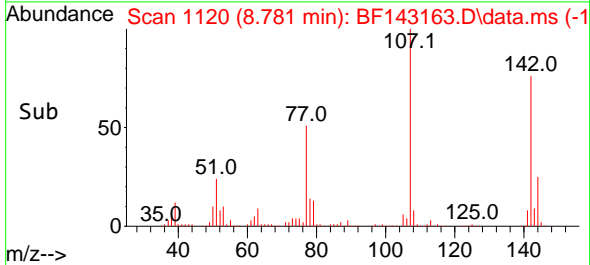
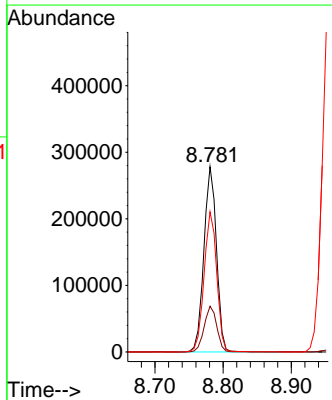
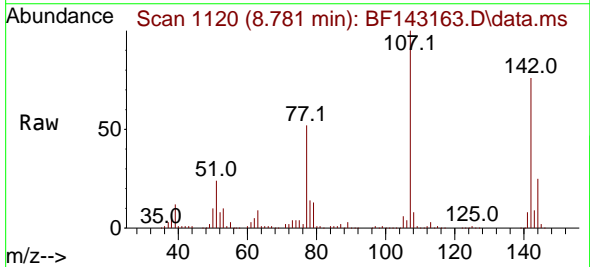
Ion	Ratio	Lower	Upper
113	100		
55	199.3	174.0	214.0
56	149.0	126.6	166.6

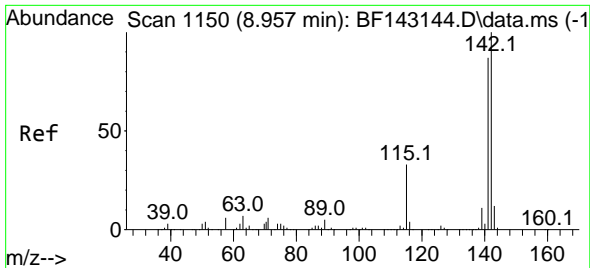


#36
 4-Chloro-3-methylphenol
 Concen: 45.026 ng
 RT: 8.781 min Scan# 1120
 Delta R.T. 0.000 min
 Lab File: BF143163.D
 Acq: 18 Jul 2025 13:22

Tgt Ion:107 Resp: 358475

Ion	Ratio	Lower	Upper
107	100		
144	24.7	19.8	29.6
142	75.7	60.6	90.8

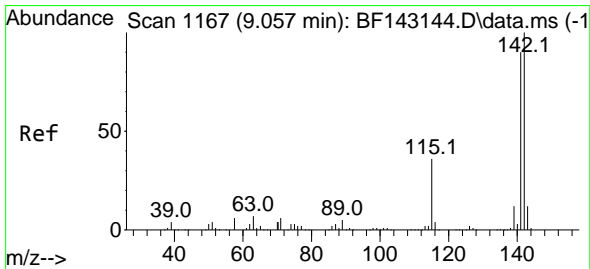
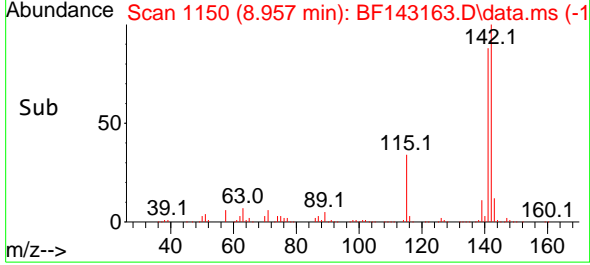
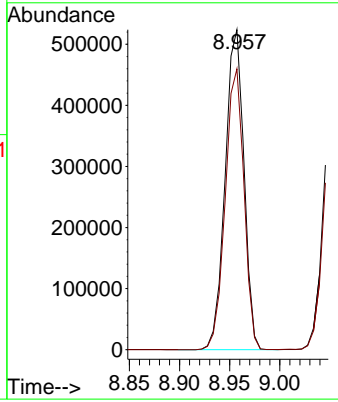
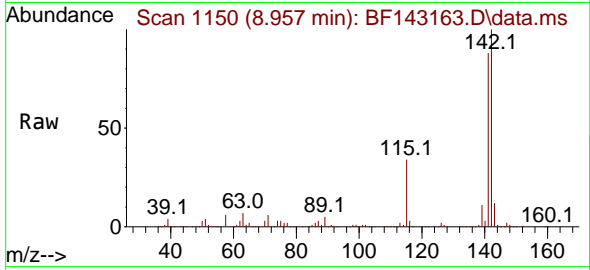




#37
 2-Methylnaphthalene
 Concen: 43.373 ng
 RT: 8.957 min Scan# 1150
 Delta R.T. 0.000 min
 Lab File: BF143163.D
 Acq: 18 Jul 2025 13:22

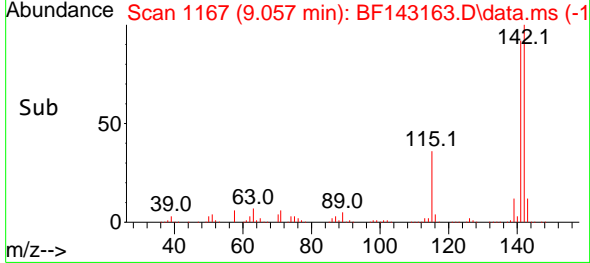
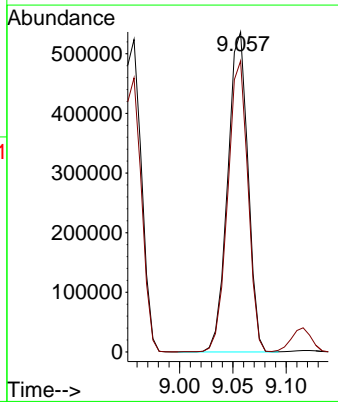
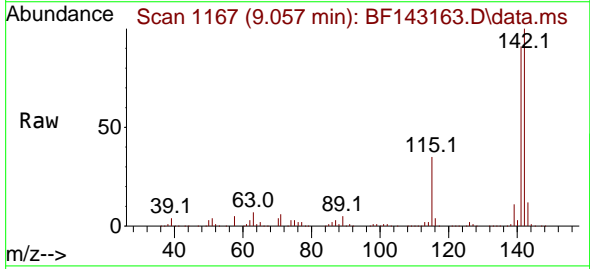
Instrument : BNA_F
 ClientSampleId : PB168904BSD

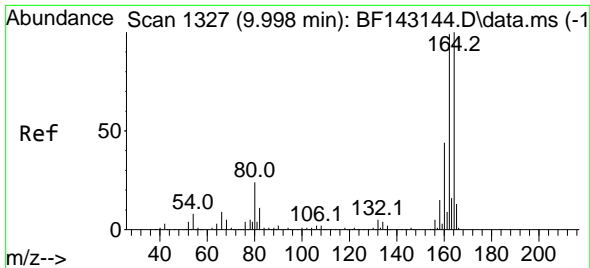
Tgt Ion:142 Resp: 682326
 Ion Ratio Lower Upper
 142 100
 141 87.7 69.9 104.9



#38
 1-Methylnaphthalene
 Concen: 43.926 ng
 RT: 9.057 min Scan# 1167
 Delta R.T. 0.000 min
 Lab File: BF143163.D
 Acq: 18 Jul 2025 13:22

Tgt Ion:142 Resp: 711574
 Ion Ratio Lower Upper
 142 100
 141 90.9 72.3 108.5



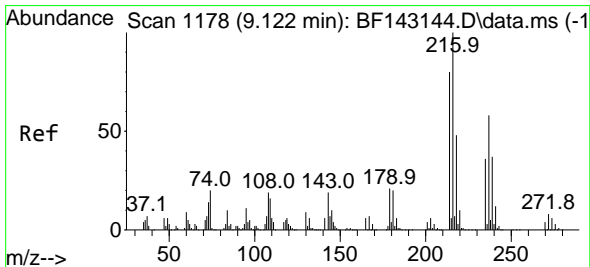
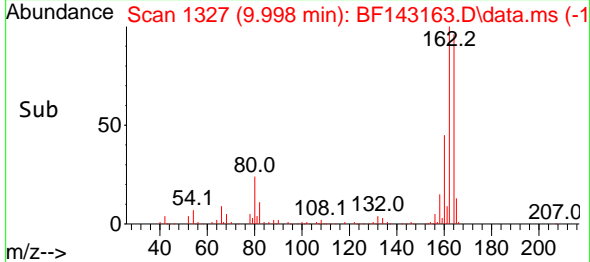
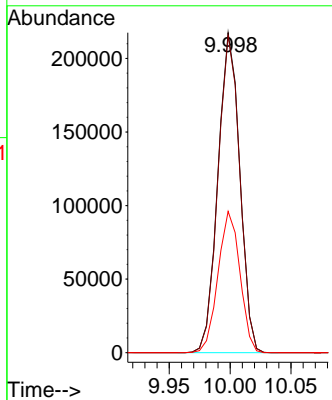
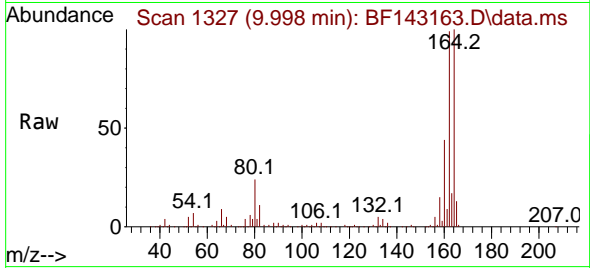


#39
 Acenaphthene-d10
 Concen: 20.000 ng
 RT: 9.998 min Scan# 111
 Delta R.T. 0.000 min
 Lab File: BF143163.D
 Acq: 18 Jul 2025 13:22

Instrument : BNA_F
 Client Sample Id : PB168904BSD

Tgt Ion:164 Resp: 272308

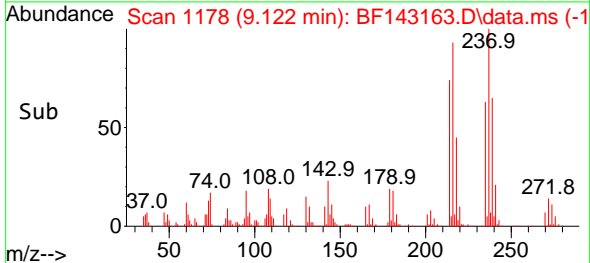
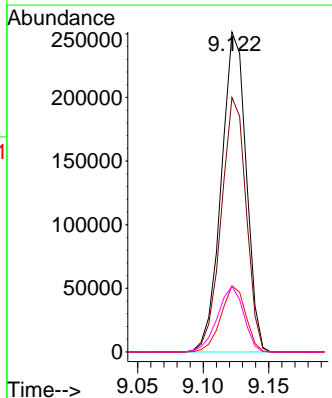
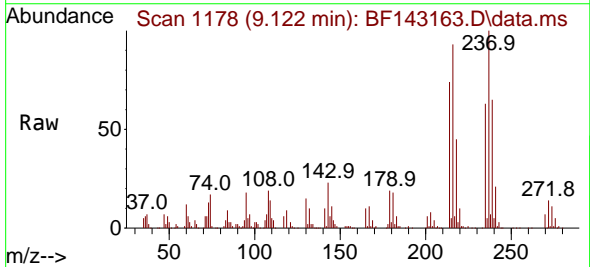
Ion	Ratio	Lower	Upper
164	100		
162	99.1	79.0	118.6
160	44.2	35.1	52.7

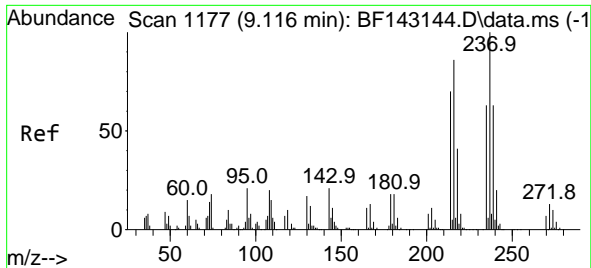


#40
 1,2,4,5-Tetrachlorobenzene
 Concen: 42.189 ng
 RT: 9.122 min Scan# 1178
 Delta R.T. 0.000 min
 Lab File: BF143163.D
 Acq: 18 Jul 2025 13:22

Tgt Ion:216 Resp: 331686

Ion	Ratio	Lower	Upper
216	100		
214	79.4	63.8	95.8
179	20.5	16.4	24.6
108	21.5	15.6	23.4

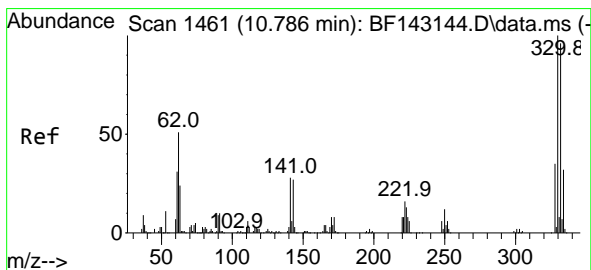
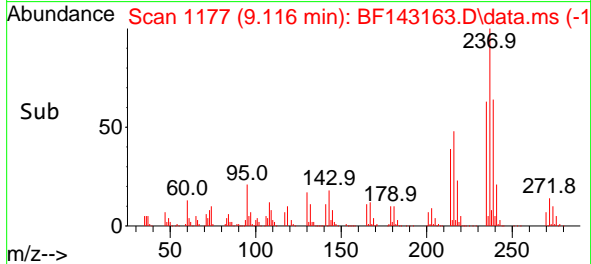
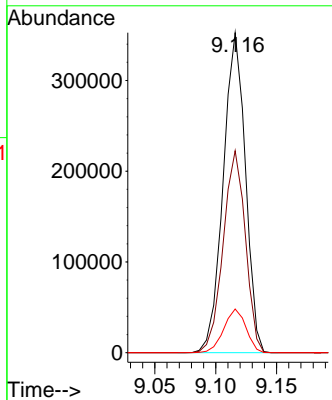
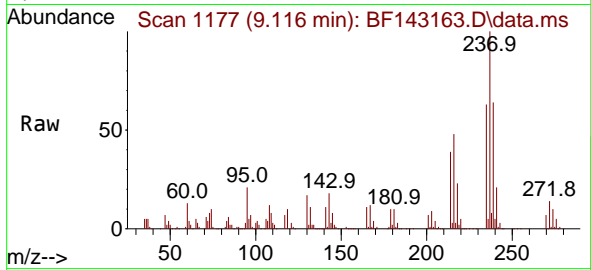




#41
 Hexachlorocyclopentadiene
 Concen: 87.490 ng
 RT: 9.116 min Scan# 1177
 Delta R.T. 0.000 min
 Lab File: BF143163.D
 Acq: 18 Jul 2025 13:22

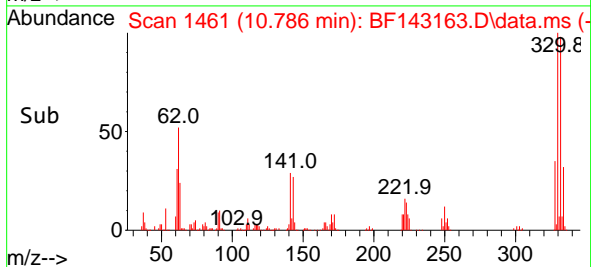
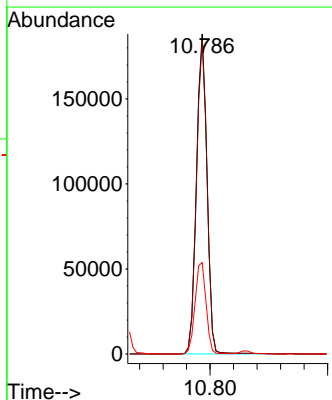
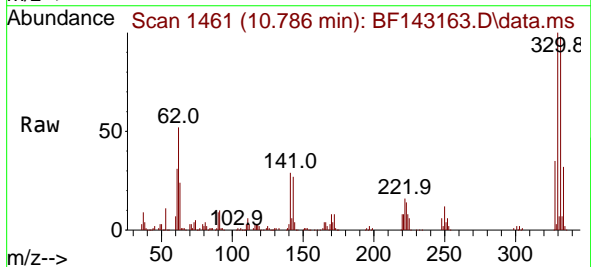
Instrument :
 BNA_F
 ClientSampleId :
 PB168904BSD

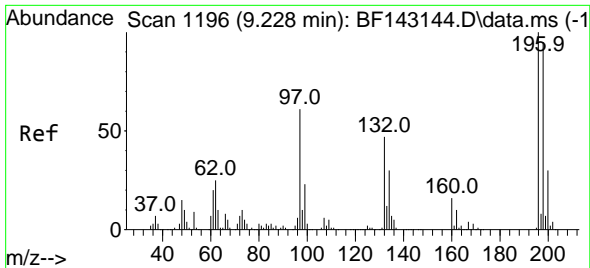
Tgt Ion:237 Resp: 447550
 Ion Ratio Lower Upper
 237 100
 235 63.1 43.0 83.0
 272 13.7 0.0 33.3



#42
 2,4,6-Tribromophenol
 Concen: 83.365 ng
 RT: 10.786 min Scan# 1461
 Delta R.T. 0.000 min
 Lab File: BF143163.D
 Acq: 18 Jul 2025 13:22

Tgt Ion:330 Resp: 234514
 Ion Ratio Lower Upper
 330 100
 332 97.7 76.7 115.1
 141 29.9 23.3 34.9



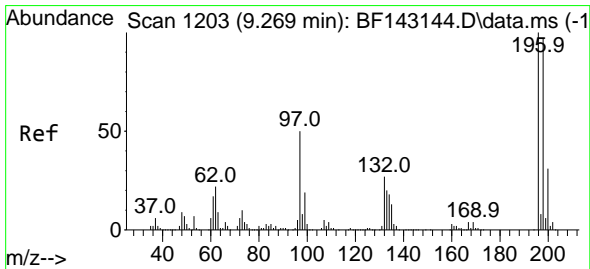
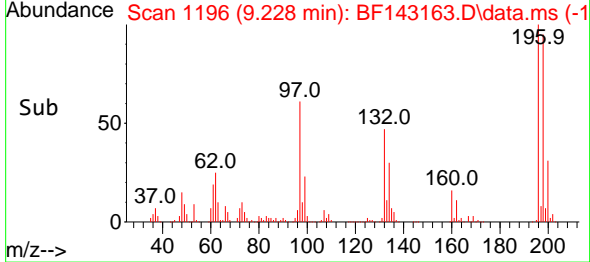
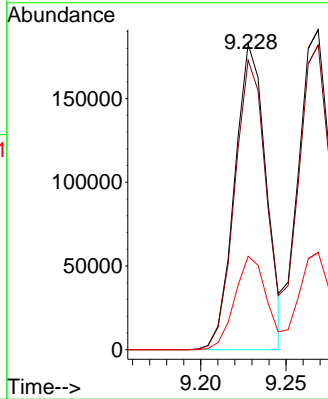
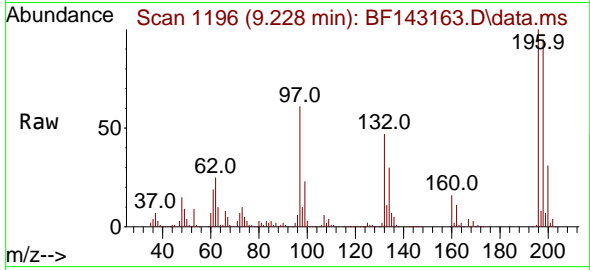


#43
 2,4,6-Trichlorophenol
 Concen: 43.107 ng
 RT: 9.228 min Scan# 1196
 Delta R.T. 0.000 min
 Lab File: BF143163.D
 Acq: 18 Jul 2025 13:22

Instrument : BNA_F
 ClientSampleId : PB168904BSD

Tgt Ion:196 Resp: 234546

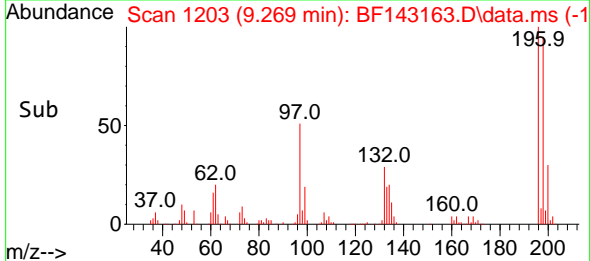
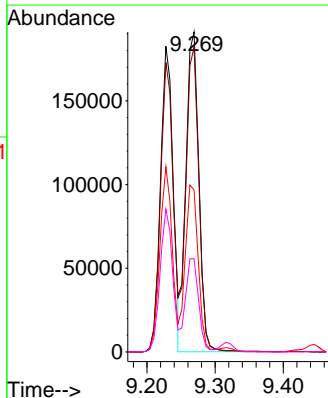
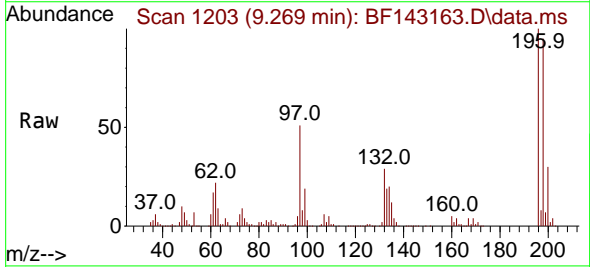
Ion	Ratio	Lower	Upper
196	100		
198	94.7	76.2	114.2
200	30.5	23.9	35.9

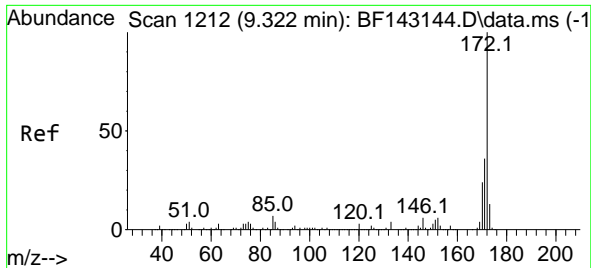


#44
 2,4,5-Trichlorophenol
 Concen: 46.064 ng
 RT: 9.269 min Scan# 1203
 Delta R.T. 0.000 min
 Lab File: BF143163.D
 Acq: 18 Jul 2025 13:22

Tgt Ion:196 Resp: 250713

Ion	Ratio	Lower	Upper
196	100		
198	95.2	77.3	115.9
97	50.7	40.3	60.5
132	29.2	23.1	34.7



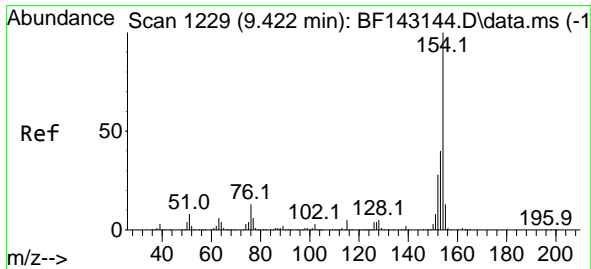
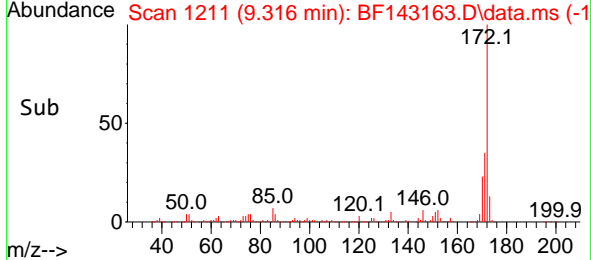
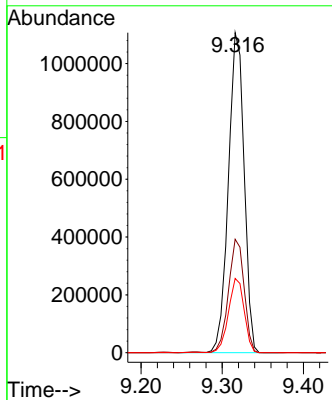
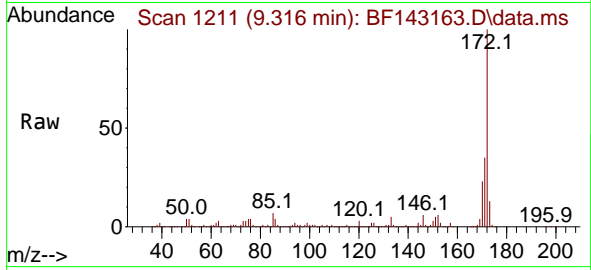


#45
 2-Fluorobiphenyl
 Concen: 74.859 ng
 RT: 9.316 min Scan# 11
 Delta R.T. -0.006 min
 Lab File: BF143163.D
 Acq: 18 Jul 2025 13:22

Instrument : BNA_F
 ClientSampleId : PB168904BSD

Tgt Ion:172 Resp: 1490518

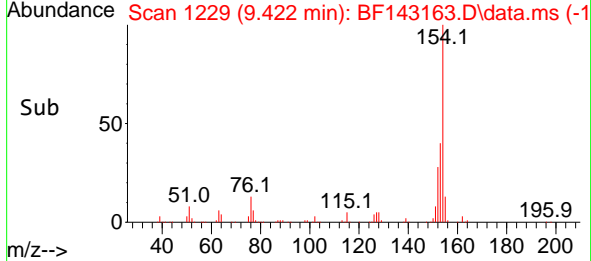
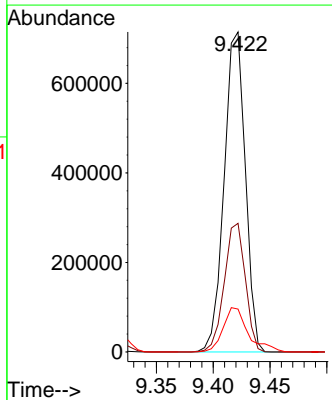
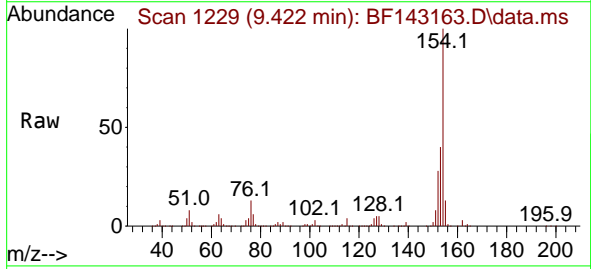
Ion	Ratio	Lower	Upper
172	100		
171	35.5	28.6	42.8
170	23.2	18.8	28.2

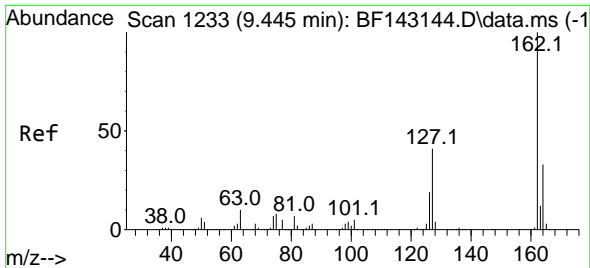


#46
 1,1'-Biphenyl
 Concen: 43.600 ng
 RT: 9.422 min Scan# 1229
 Delta R.T. 0.000 min
 Lab File: BF143163.D
 Acq: 18 Jul 2025 13:22

Tgt Ion:154 Resp: 926298

Ion	Ratio	Lower	Upper
154	100		
153	40.2	20.3	60.3
76	13.4	0.0	33.3

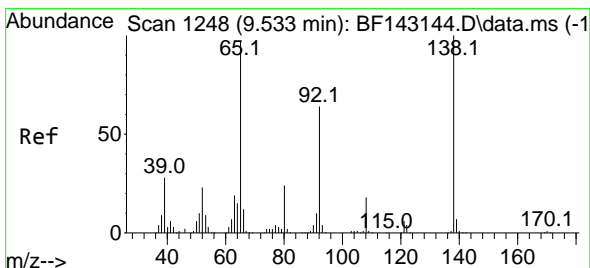
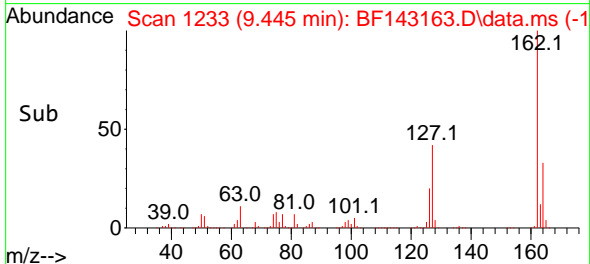
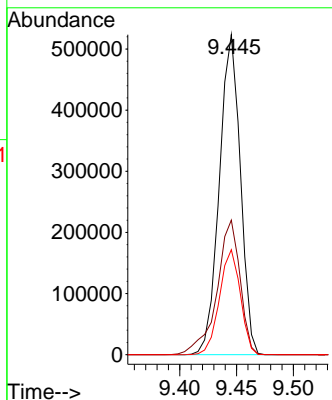
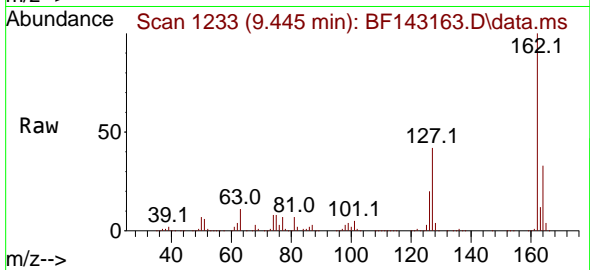




#47
 2-Chloronaphthalene
 Concen: 42.851 ng
 RT: 9.445 min Scan# 11
 Delta R.T. 0.000 min
 Lab File: BF143163.D
 Acq: 18 Jul 2025 13:22

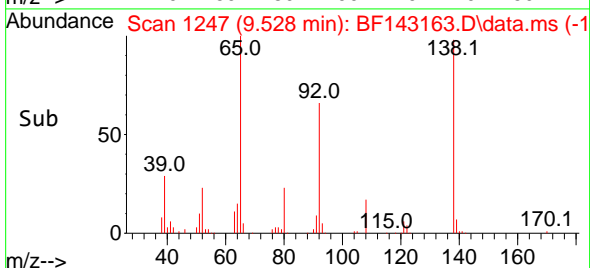
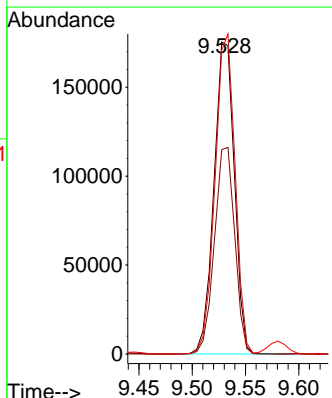
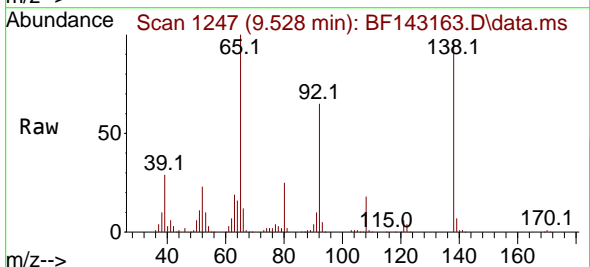
Instrument :
 BNA_F
 ClientSampleId :
 PB168904BSD

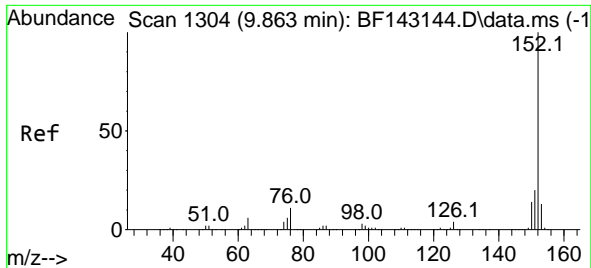
Tgt Ion:162 Resp: 673620
 Ion Ratio Lower Upper
 162 100
 127 42.0 33.4 50.2
 164 32.8 26.2 39.2



#48
 2-Nitroaniline
 Concen: 47.366 ng
 RT: 9.528 min Scan# 1247
 Delta R.T. -0.006 min
 Lab File: BF143163.D
 Acq: 18 Jul 2025 13:22

Tgt Ion: 65 Resp: 233503
 Ion Ratio Lower Upper
 65 100
 92 65.5 52.4 78.6
 138 97.3 82.3 123.5

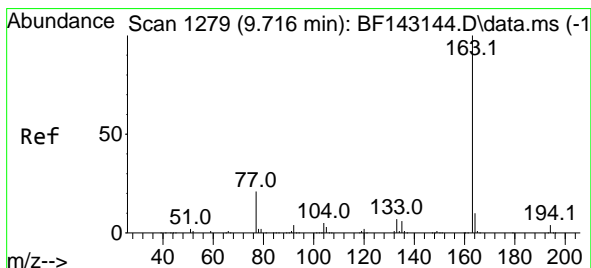
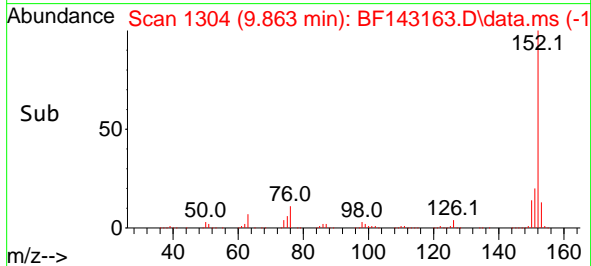
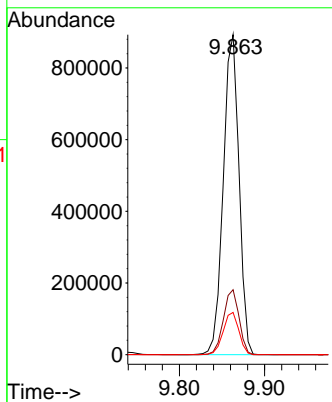
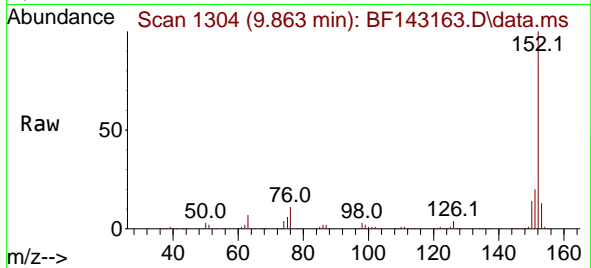




#49
 Acenaphthylene
 Concen: 43.507 ng
 RT: 9.863 min Scan# 11
 Delta R.T. 0.000 min
 Lab File: BF143163.D
 Acq: 18 Jul 2025 13:22

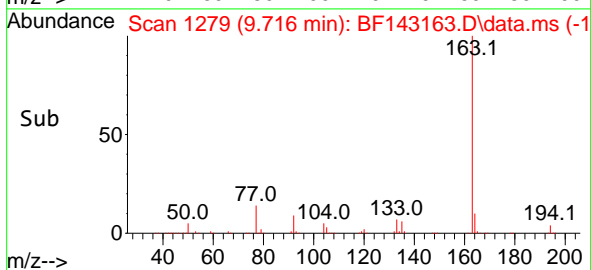
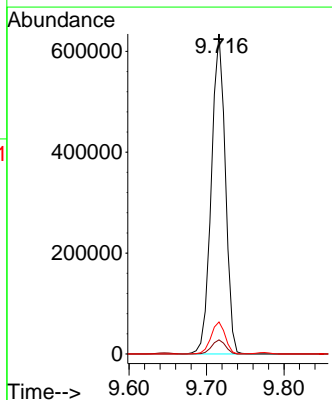
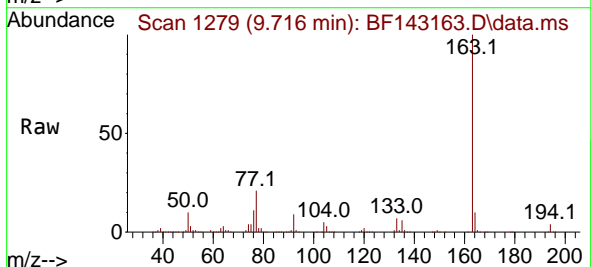
Instrument :
 BNA_F
 ClientSampleId :
 PB168904BSD

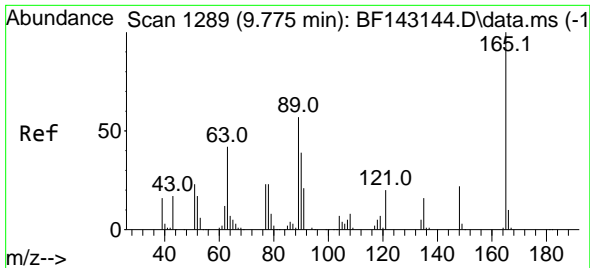
Tgt Ion:152 Resp: 1146165
 Ion Ratio Lower Upper
 152 100
 151 20.3 16.2 24.2
 153 13.2 10.6 16.0



#50
 Dimethylphthalate
 Concen: 45.003 ng
 RT: 9.716 min Scan# 1279
 Delta R.T. 0.000 min
 Lab File: BF143163.D
 Acq: 18 Jul 2025 13:22

Tgt Ion:163 Resp: 798798
 Ion Ratio Lower Upper
 163 100
 194 4.4 3.4 5.2
 164 10.0 8.3 12.5



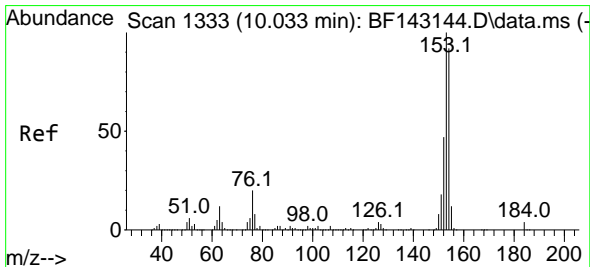
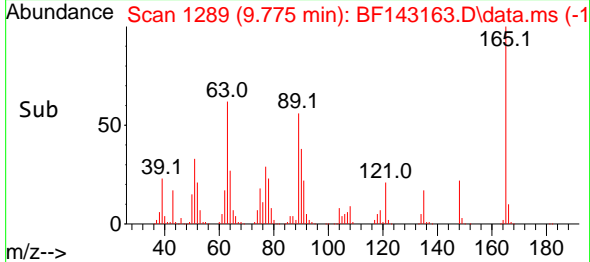
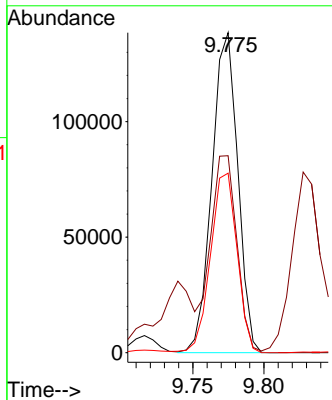
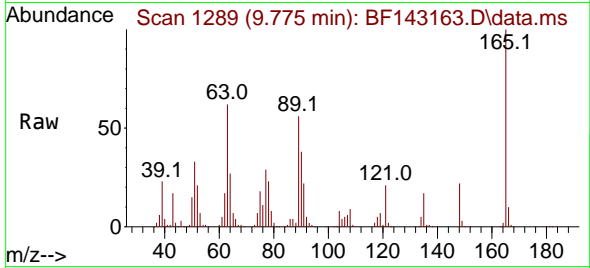


#51
 2,6-Dinitrotoluene
 Concen: 48.512 ng
 RT: 9.775 min Scan# 11
 Delta R.T. 0.000 min
 Lab File: BF143163.D
 Acq: 18 Jul 2025 13:22

Instrument : BNA_F
 ClientSampleId : PB168904BSD

Tgt Ion:165 Resp: 175169

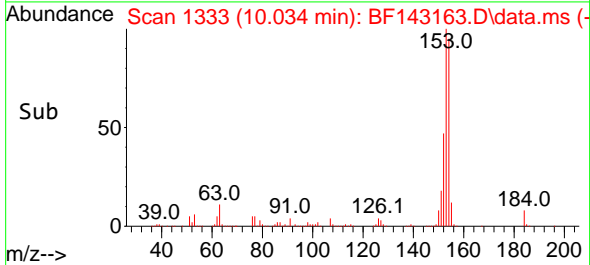
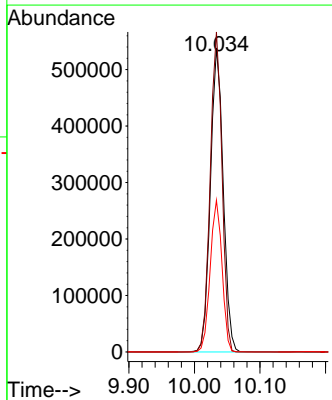
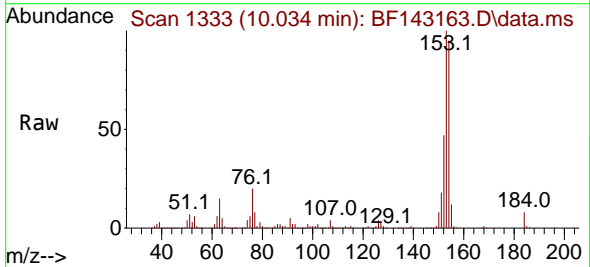
Ion	Ratio	Lower	Upper
165	100		
63	61.5	49.4	74.2
89	56.1	46.2	69.2

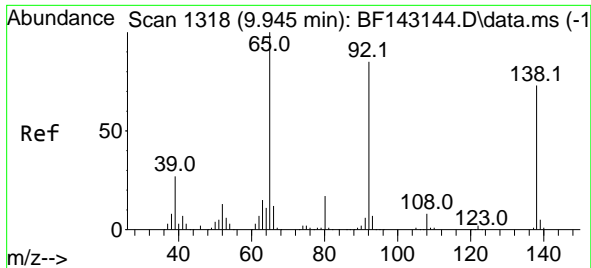


#52
 Acenaphthene
 Concen: 46.978 ng
 RT: 10.034 min Scan# 1333
 Delta R.T. 0.000 min
 Lab File: BF143163.D
 Acq: 18 Jul 2025 13:22

Tgt Ion:154 Resp: 731488

Ion	Ratio	Lower	Upper
154	100		
153	105.4	86.6	129.8
152	49.9	40.4	60.6



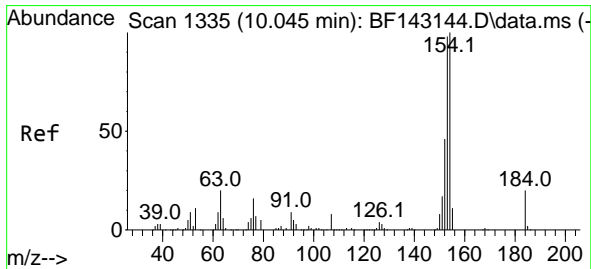
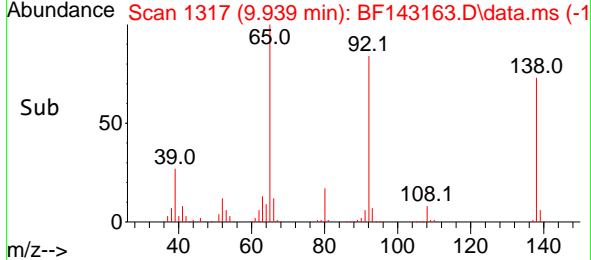
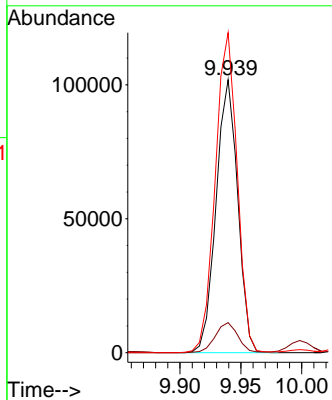
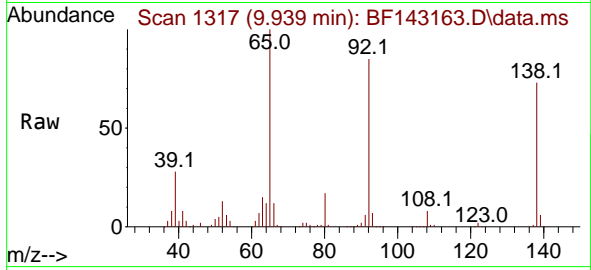


#53
 3-Nitroaniline
 Concen: 29.821 ng
 RT: 9.939 min Scan# 11
 Delta R.T. -0.006 min
 Lab File: BF143163.D
 Acq: 18 Jul 2025 13:22

Instrument : BNA_F
 ClientSampleId : PB168904BSD

Tgt Ion:138 Resp: 125947

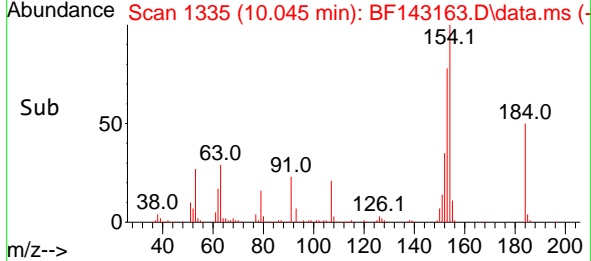
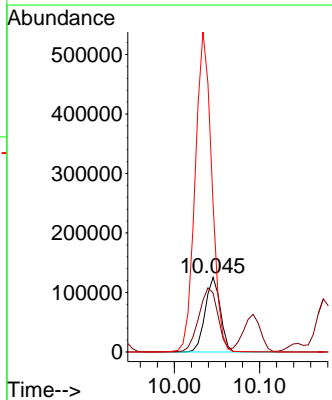
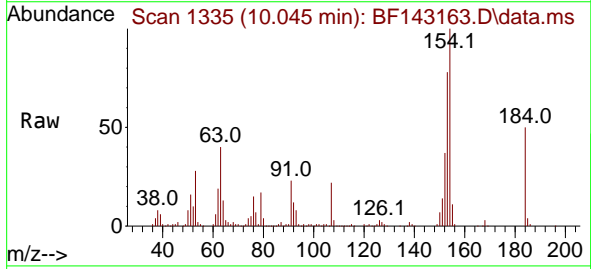
Ion	Ratio	Lower	Upper
138	100		
108	11.0	9.0	13.6
92	117.2	93.0	139.4

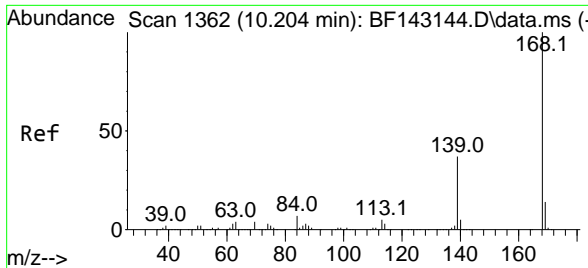


#54
 2,4-Dinitrophenol
 Concen: 93.727 ng
 RT: 10.045 min Scan# 1335
 Delta R.T. 0.000 min
 Lab File: BF143163.D
 Acq: 18 Jul 2025 13:22

Tgt Ion:184 Resp: 155426

Ion	Ratio	Lower	Upper
184	100		
63	79.0	81.8	122.6#
154	198.5	412.2	618.4#



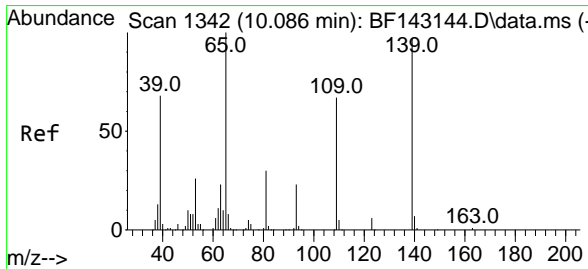
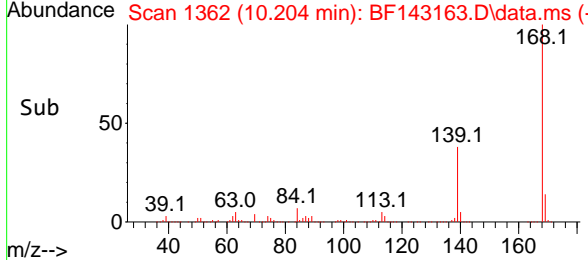
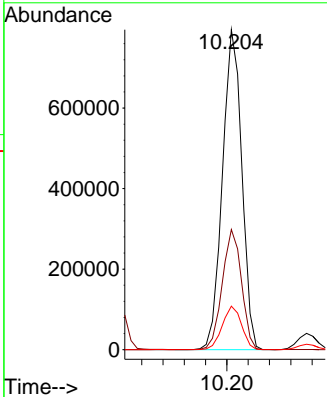
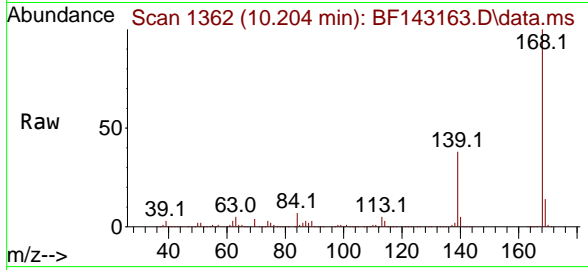


#55
 Dibenzofuran
 Concen: 43.303 ng
 RT: 10.204 min Scan# 11
 Delta R.T. 0.000 min
 Lab File: BF143163.D
 Acq: 18 Jul 2025 13:22

Instrument : BNA_F
 ClientSampleId : PB168904BSD

Tgt Ion:168 Resp: 1001067

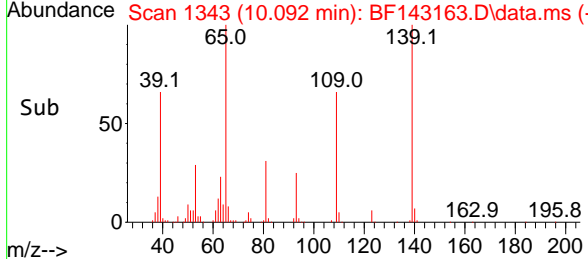
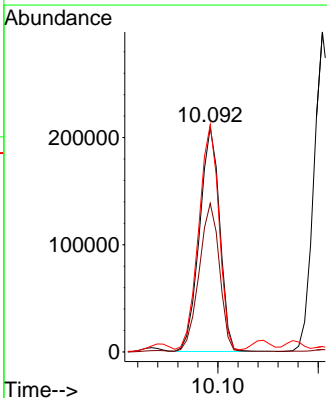
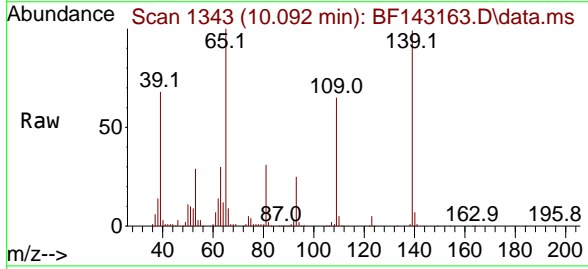
Ion	Ratio	Lower	Upper
168	100		
139	37.6	29.5	44.3
169	13.6	10.9	16.3

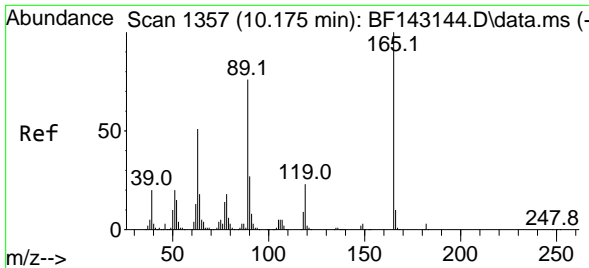


#56
 4-Nitrophenol
 Concen: 92.760 ng
 RT: 10.092 min Scan# 1343
 Delta R.T. 0.006 min
 Lab File: BF143163.D
 Acq: 18 Jul 2025 13:22

Tgt Ion:139 Resp: 292549

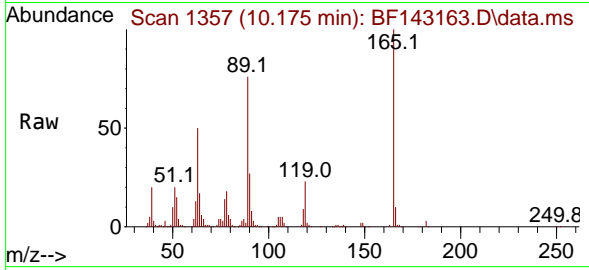
Ion	Ratio	Lower	Upper
139	100		
109	66.1	48.5	88.5
65	101.2	83.4	123.4





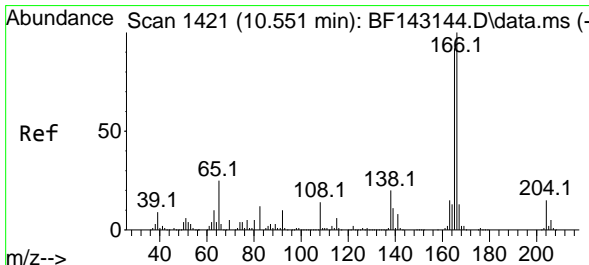
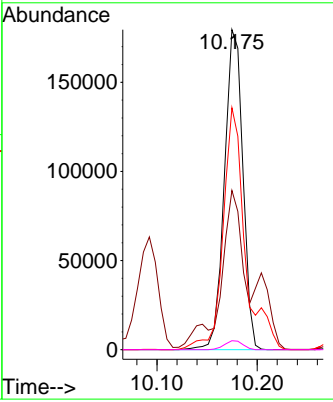
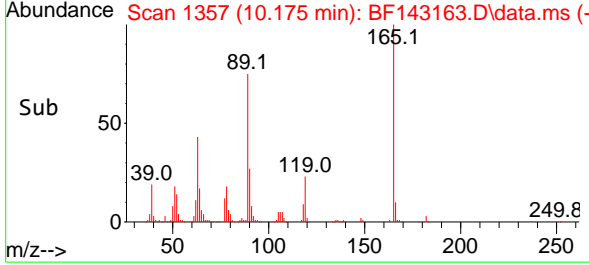
#57
 2,4-Dinitrotoluene
 Concen: 50.725 ng
 RT: 10.175 min Scan# 11
 Delta R.T. 0.000 min
 Lab File: BF143163.D
 Acq: 18 Jul 2025 13:22

Instrument : BNA_F
 ClientSampleId : PB168904BSD

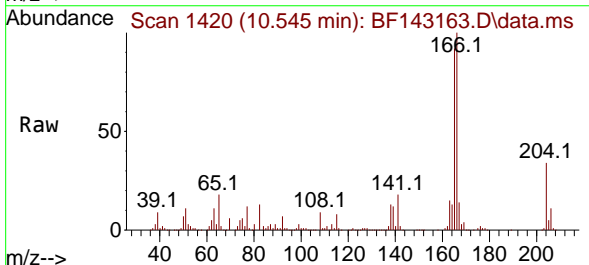


Tgt Ion:165 Resp: 229791

Ion	Ratio	Lower	Upper
165	100		
63	49.7	41.0	61.4
89	75.6	61.1	91.7
182	2.8	2.3	3.5

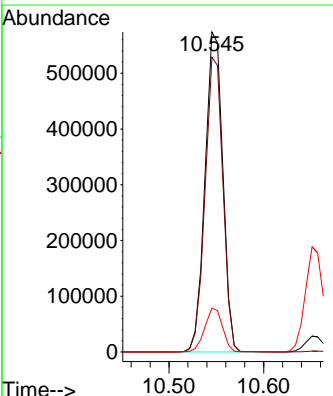
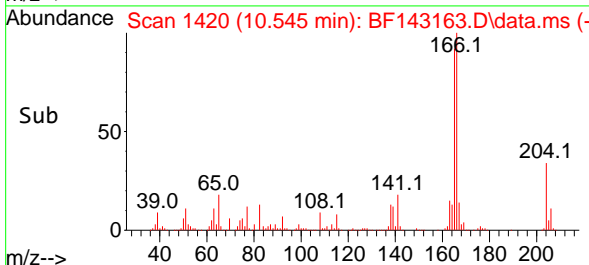


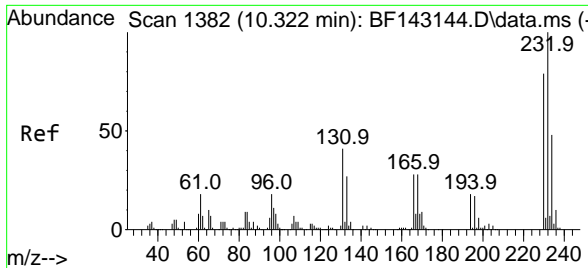
#58
 Fluorene
 Concen: 43.062 ng
 RT: 10.545 min Scan# 1420
 Delta R.T. -0.006 min
 Lab File: BF143163.D
 Acq: 18 Jul 2025 13:22



Tgt Ion:166 Resp: 747135

Ion	Ratio	Lower	Upper
166	100		
165	92.1	73.7	110.5
167	13.7	10.6	16.0

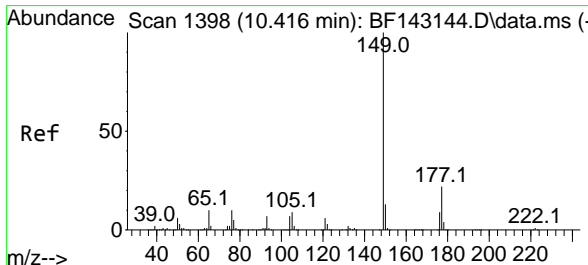
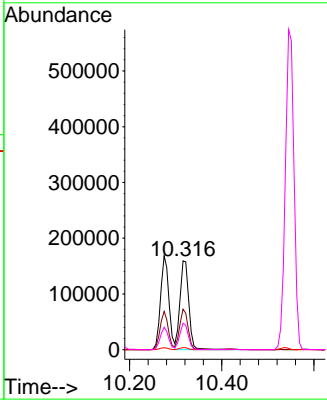
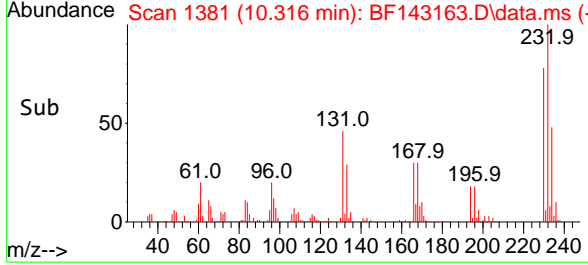
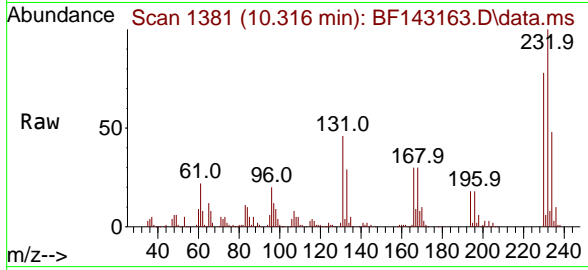




#59
 2,3,4,6-Tetrachlorophenol
 Concen: 46.838 ng
 RT: 10.316 min Scan# 1381
 Delta R.T. -0.006 min
 Lab File: BF143163.D
 Acq: 18 Jul 2025 13:22

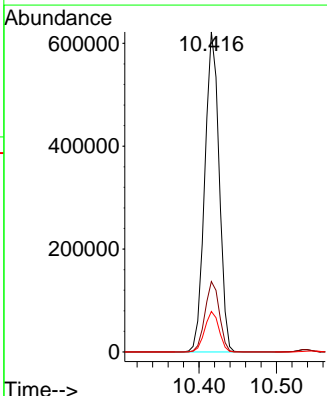
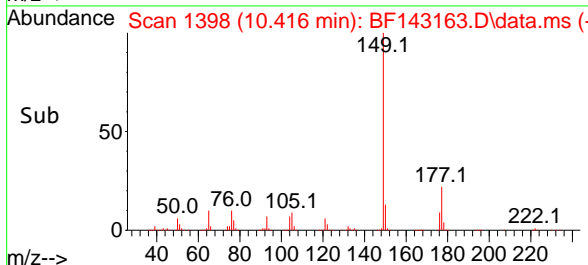
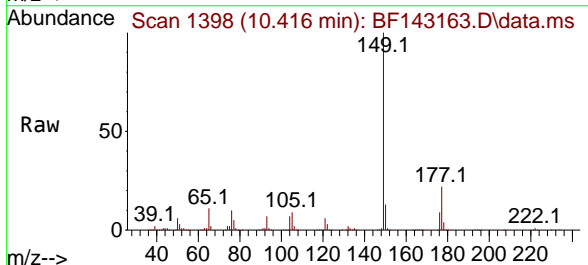
Instrument : BNA_F
 Client Sample Id : PB168904BSD

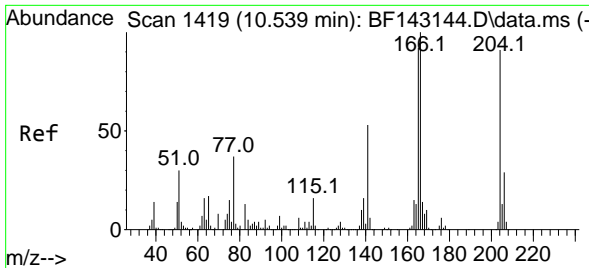
Tgt Ion	Resp	Lower	Upper
232	100		
131	43.5	35.3	52.9
130	2.2	1.7	2.5
166	28.0	23.4	35.2



#60
 Diethylphthalate
 Concen: 45.581 ng
 RT: 10.416 min Scan# 1398
 Delta R.T. 0.000 min
 Lab File: BF143163.D
 Acq: 18 Jul 2025 13:22

Tgt Ion	Resp	Lower	Upper
149	100		
177	22.0	17.5	26.3
150	12.6	10.2	15.2



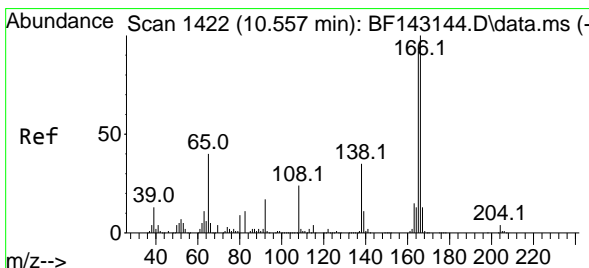
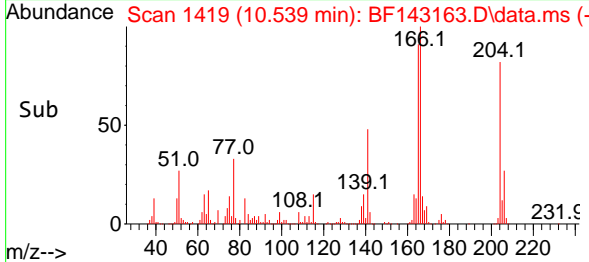
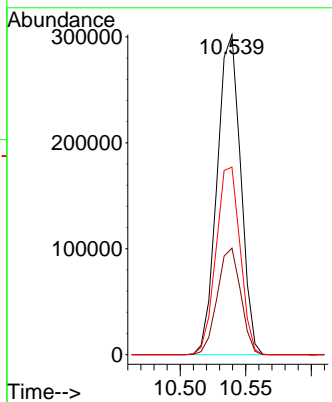
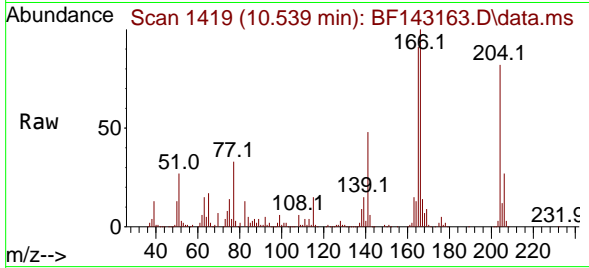


#61
 4-Chlorophenyl-phenylether
 Concen: 43.688 ng
 RT: 10.539 min Scan# 1419
 Delta R.T. 0.000 min
 Lab File: BF143163.D
 Acq: 18 Jul 2025 13:22

Instrument :
 BNA_F
 ClientSampleId :
 PB168904BSD

Tgt Ion:204 Resp: 377435

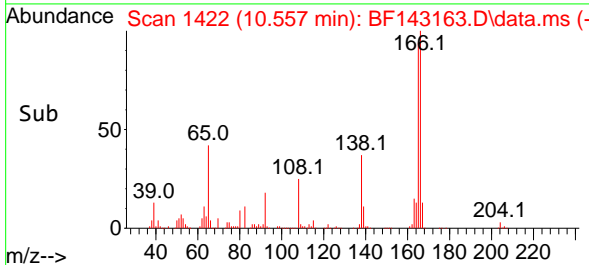
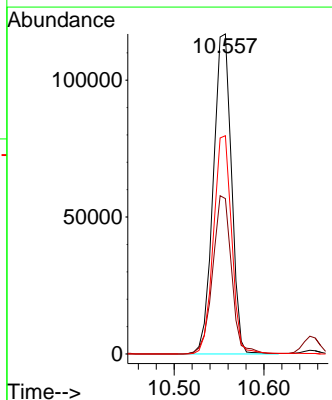
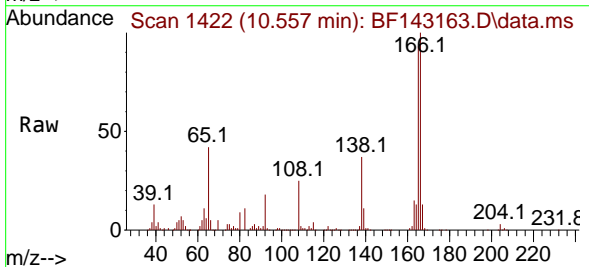
Ion	Ratio	Lower	Upper
204	100		
206	33.3	25.8	38.8
141	58.6	47.0	70.4

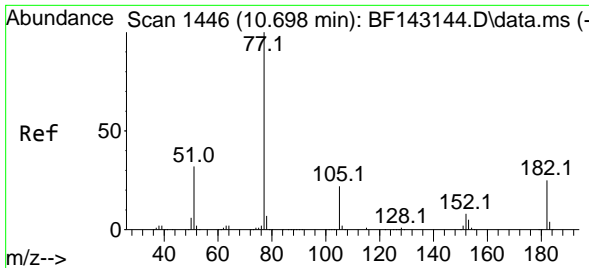


#62
 4-Nitroaniline
 Concen: 45.431 ng
 RT: 10.557 min Scan# 1422
 Delta R.T. 0.000 min
 Lab File: BF143163.D
 Acq: 18 Jul 2025 13:22

Tgt Ion:138 Resp: 164448

Ion	Ratio	Lower	Upper
138	100		
92	48.6	29.3	69.3
108	68.2	48.3	88.3



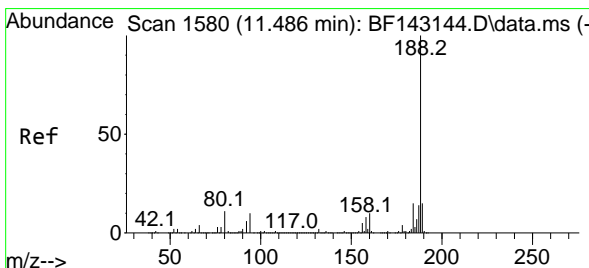
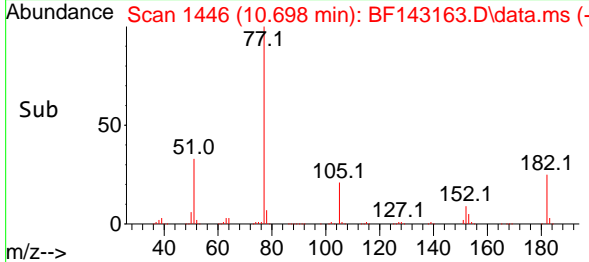
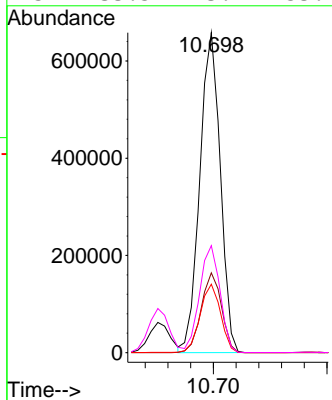
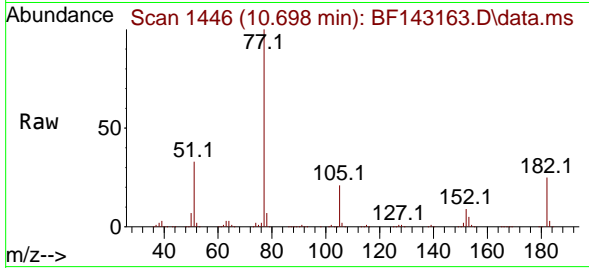


#63
 Azobenzene
 Concen: 45.030 ng
 RT: 10.698 min Scan# 14
 Delta R.T. 0.000 min
 Lab File: BF143163.D
 Acq: 18 Jul 2025 13:22

Instrument :
 BNA_F
ClientSampleId :
 PB168904BSD

Tgt Ion: 77 Resp: 823357

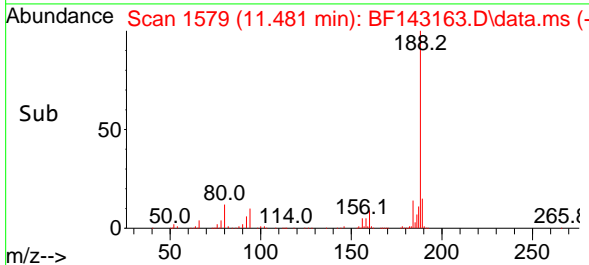
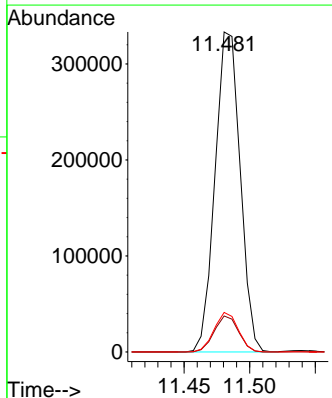
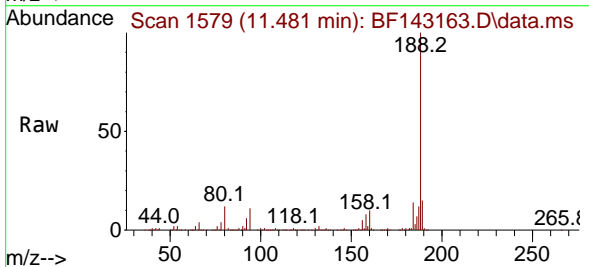
Ion	Ratio	Lower	Upper
77	100		
182	24.9	4.6	44.6
105	21.4	1.4	41.4
51	33.5	13.7	53.7

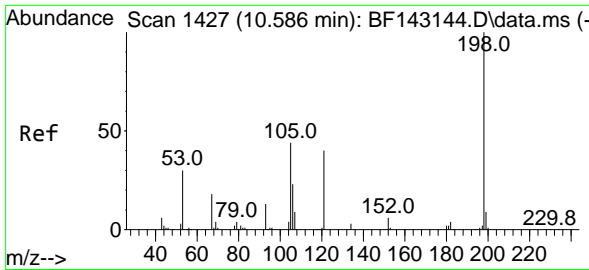


#64
 Phenanthrene-d10
 Concen: 20.000 ng
 RT: 11.481 min Scan# 1579
 Delta R.T. -0.006 min
 Lab File: BF143163.D
 Acq: 18 Jul 2025 13:22

Tgt Ion: 188 Resp: 443930

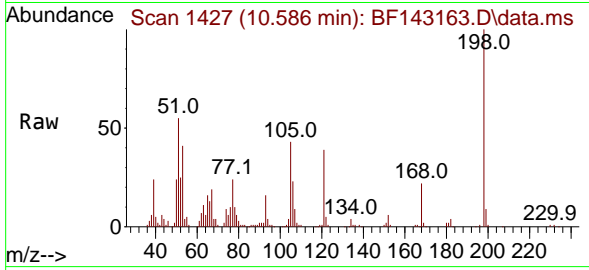
Ion	Ratio	Lower	Upper
188	100		
94	11.3	8.3	12.5
80	12.4	9.0	13.6



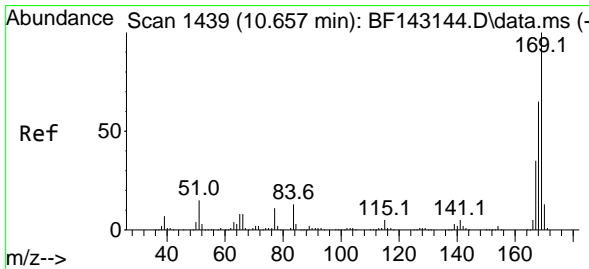
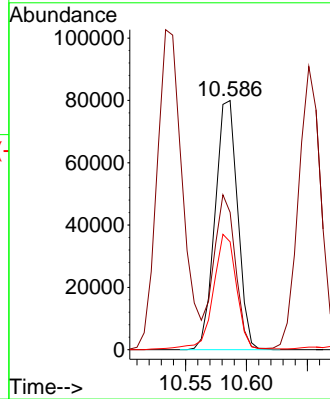
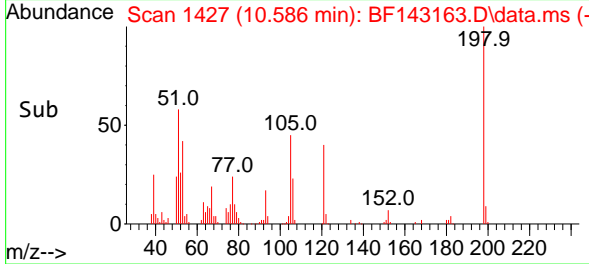


#65
 4,6-Dinitro-2-methylphenol
 Concen: 44.613 ng
 RT: 10.586 min Scan# 1427
 Delta R.T. 0.000 min
 Lab File: BF143163.D
 Acq: 18 Jul 2025 13:22

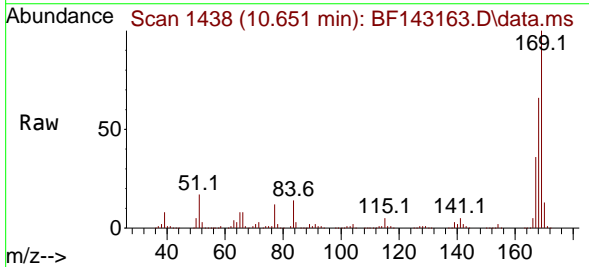
Instrument :
 BNA_F
 ClientSampleId :
 PB168904BSD



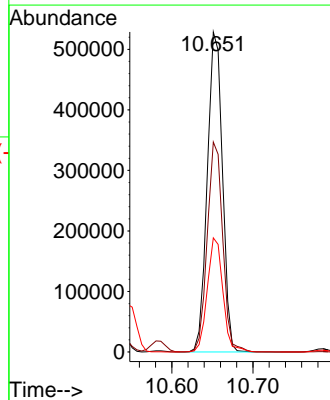
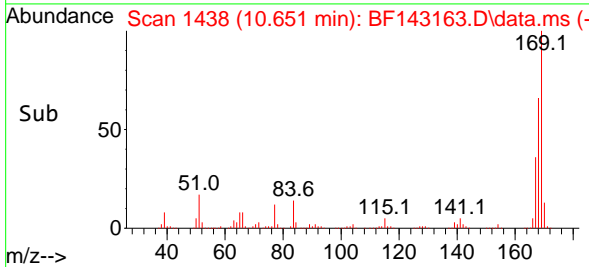
Tgt Ion:198 Resp: 102823
 Ion Ratio Lower Upper
 198 100
 51 55.1 37.2 77.2
 105 43.3 24.8 64.8

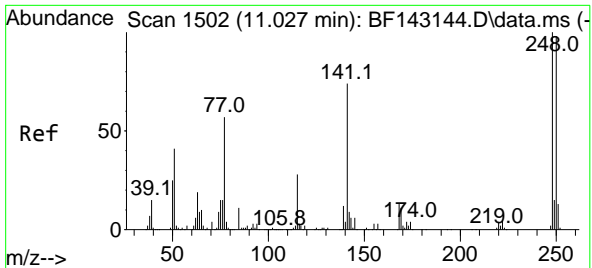


#66
 n-Nitrosodiphenylamine
 Concen: 43.657 ng
 RT: 10.651 min Scan# 1438
 Delta R.T. -0.006 min
 Lab File: BF143163.D
 Acq: 18 Jul 2025 13:22



Tgt Ion:169 Resp: 682448
 Ion Ratio Lower Upper
 169 100
 168 65.6 52.1 78.1
 167 35.7 28.2 42.2



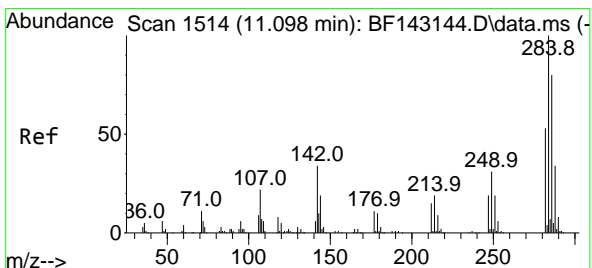
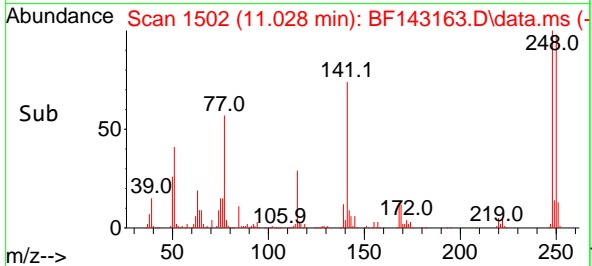
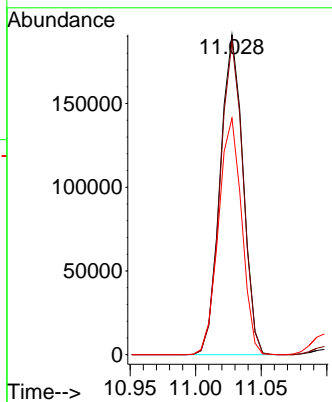
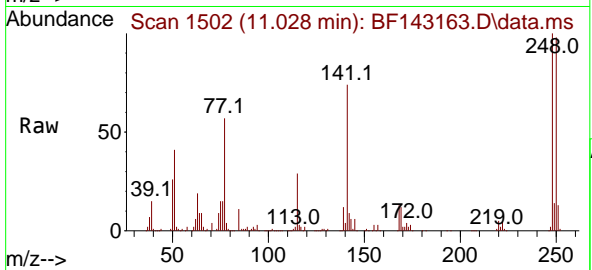


#67
 4-Bromophenyl-phenylether
 Concen: 43.838 ng
 RT: 11.028 min Scan# 11
 Delta R.T. 0.000 min
 Lab File: BF143163.D
 Acq: 18 Jul 2025 13:22

Instrument :
 BNA_F
 ClientSampleId :
 PB168904BSD

Tgt Ion:248 Resp: 231921

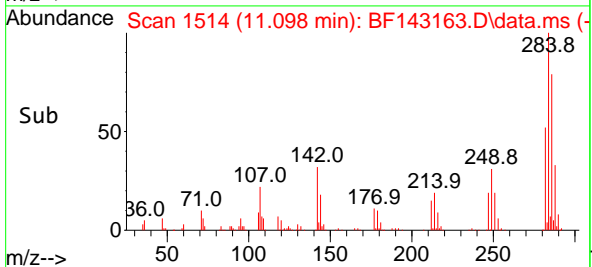
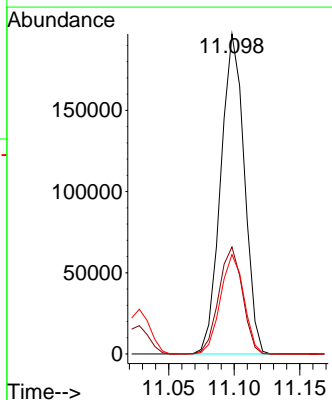
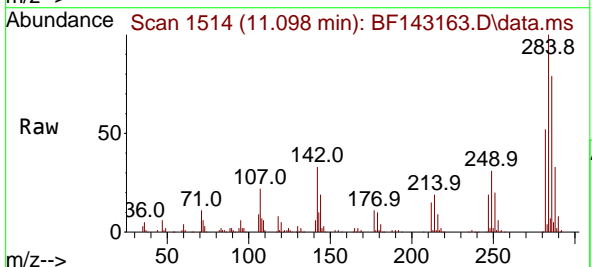
Ion	Ratio	Lower	Upper
248	100		
250	97.8	78.3	117.5
141	73.9	59.2	88.8

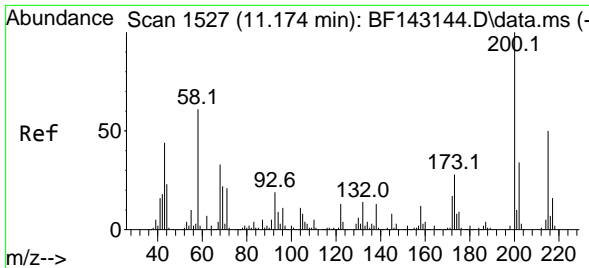


#68
 Hexachlorobenzene
 Concen: 44.499 ng
 RT: 11.098 min Scan# 1514
 Delta R.T. 0.000 min
 Lab File: BF143163.D
 Acq: 18 Jul 2025 13:22

Tgt Ion:284 Resp: 246065

Ion	Ratio	Lower	Upper
284	100		
142	33.4	27.0	40.6
249	31.1	25.0	37.6



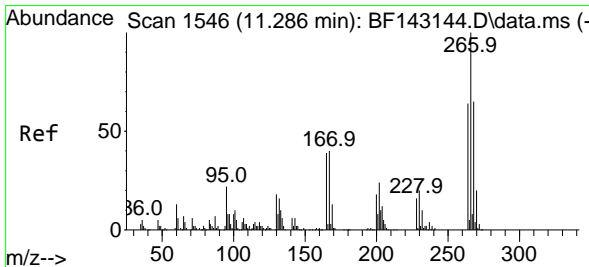
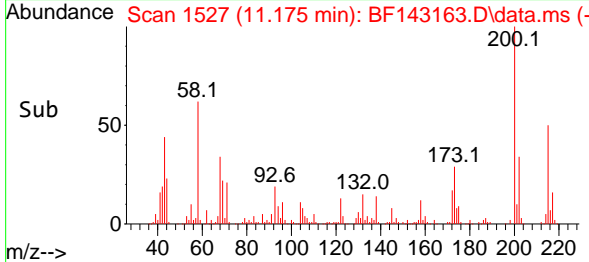
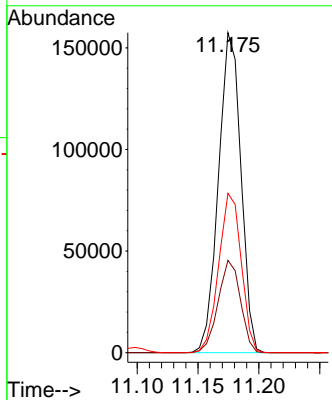
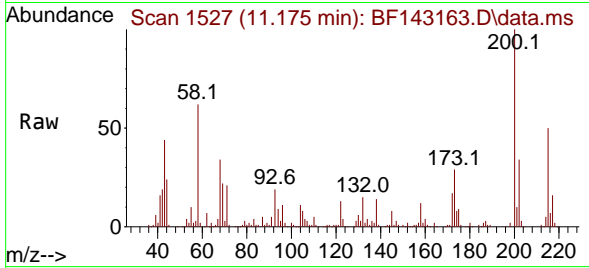


#69
 Atrazine
 Concen: 46.910 ng
 RT: 11.175 min Scan# 11
 Delta R.T. 0.000 min
 Lab File: BF143163.D
 Acq: 18 Jul 2025 13:22

Instrument :
 BNA_F
 ClientSampleId :
 PB168904BSD

Tgt Ion:200 Resp: 202166

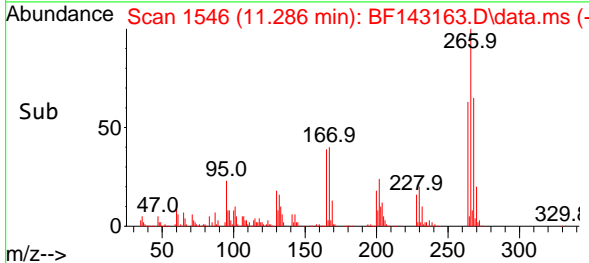
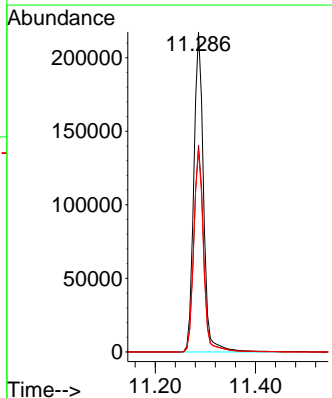
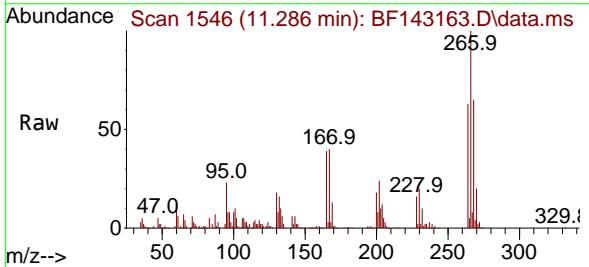
Ion	Ratio	Lower	Upper
200	100		
173	28.8	7.9	47.9
215	49.8	30.1	70.1

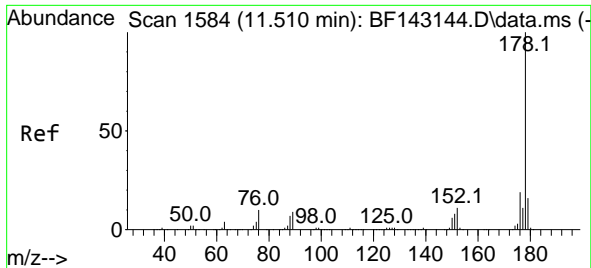


#70
 Pentachlorophenol
 Concen: 89.711 ng
 RT: 11.286 min Scan# 1546
 Delta R.T. 0.000 min
 Lab File: BF143163.D
 Acq: 18 Jul 2025 13:22

Tgt Ion:266 Resp: 291731

Ion	Ratio	Lower	Upper
266	100		
268	64.7	51.9	77.9
264	63.2	51.0	76.6





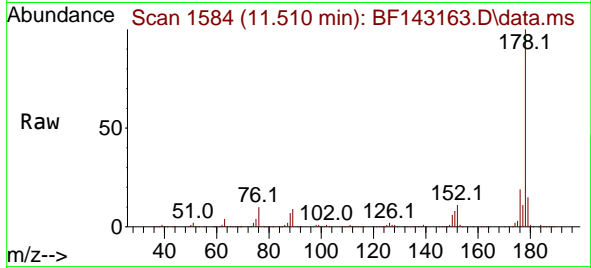
#71
 Phenanthrene
 Concen: 43.932 ng
 RT: 11.510 min Scan# 1153
 Delta R.T. 0.000 min
 Lab File: BF143163.D
 Acq: 18 Jul 2025 13:22

Instrument :

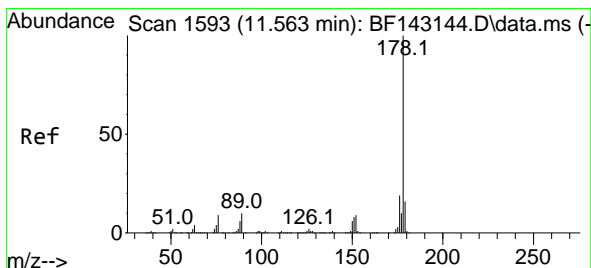
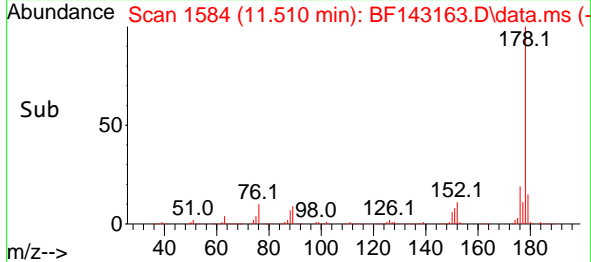
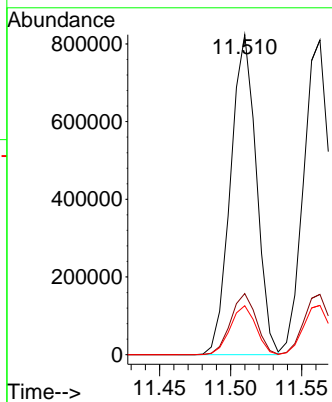
BNA_F

ClientSampleId :

PB168904BSD

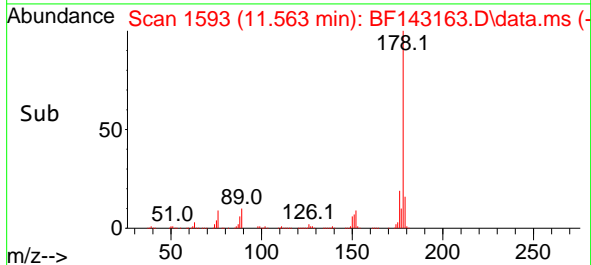
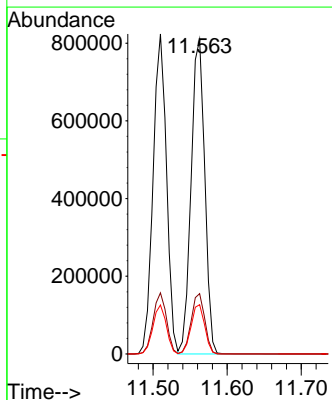
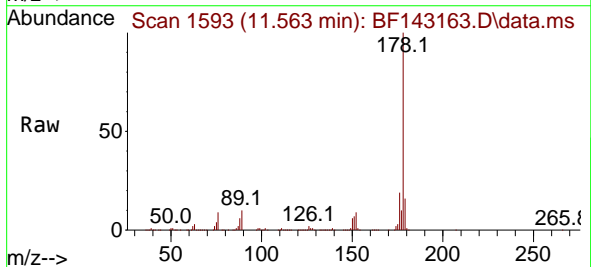


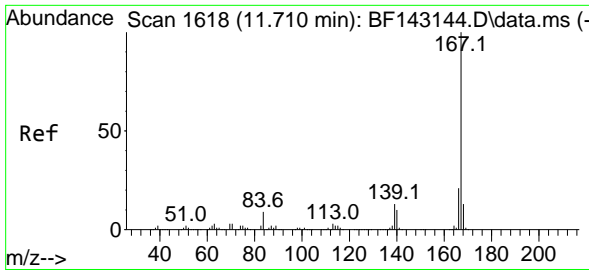
Tgt Ion:178 Resp: 1035532
 Ion Ratio Lower Upper
 178 100
 176 19.1 15.3 22.9
 179 15.3 12.5 18.7



#72
 Anthracene
 Concen: 43.143 ng
 RT: 11.563 min Scan# 1593
 Delta R.T. 0.000 min
 Lab File: BF143163.D
 Acq: 18 Jul 2025 13:22

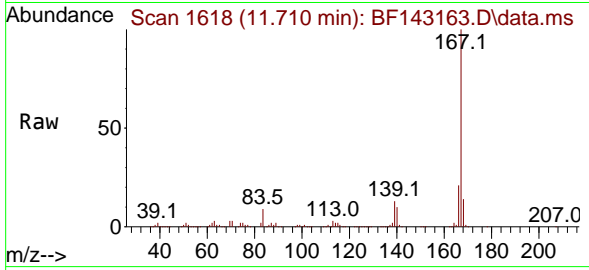
Tgt Ion:178 Resp: 1037171
 Ion Ratio Lower Upper
 178 100
 176 19.2 15.0 22.4
 179 15.7 12.5 18.7



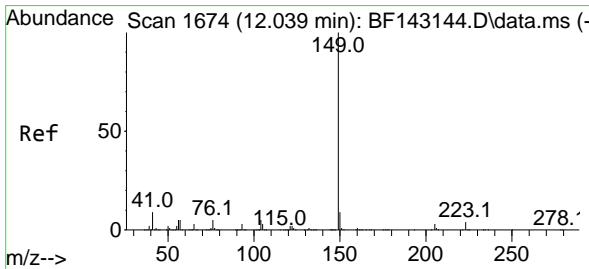
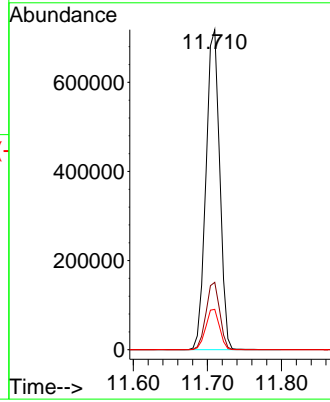
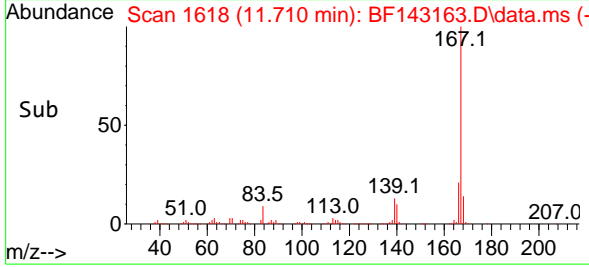


#73
 Carbazole
 Concen: 44.128 ng
 RT: 11.710 min Scan# 1618
 Delta R.T. 0.000 min
 Lab File: BF143163.D
 Acq: 18 Jul 2025 13:22

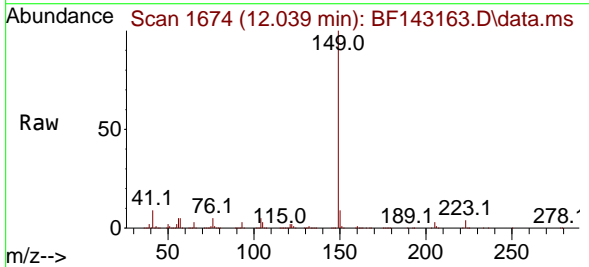
Instrument :
 BNA_F
 ClientSampleId :
 PB168904BSD



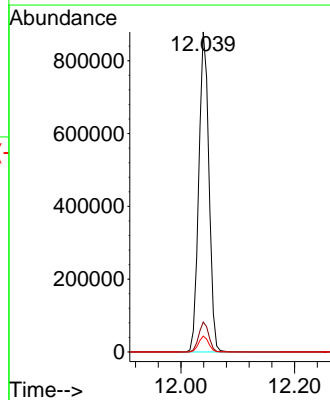
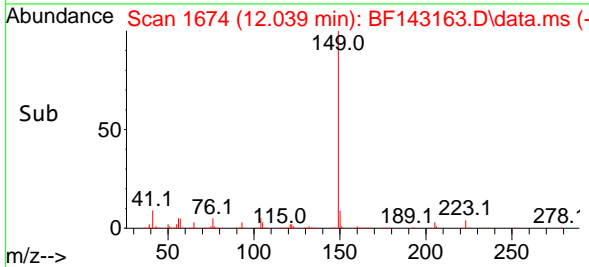
Tgt Ion:167 Resp: 926315
 Ion Ratio Lower Upper
 167 100
 166 21.1 17.0 25.6
 139 12.6 10.0 15.0

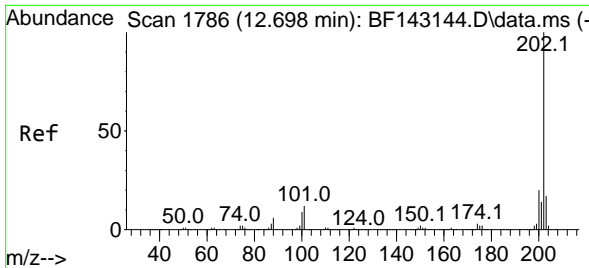


#74
 Di-n-butylphthalate
 Concen: 46.009 ng
 RT: 12.039 min Scan# 1674
 Delta R.T. 0.000 min
 Lab File: BF143163.D
 Acq: 18 Jul 2025 13:22



Tgt Ion:149 Resp: 1092806
 Ion Ratio Lower Upper
 149 100
 150 9.4 7.4 11.2
 104 4.9 3.8 5.8

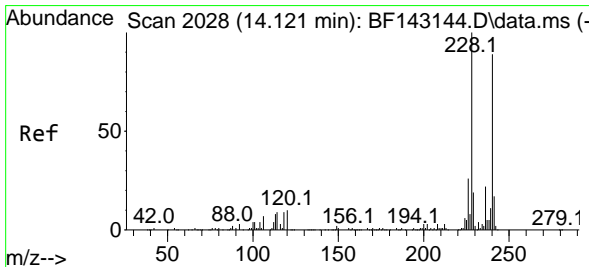
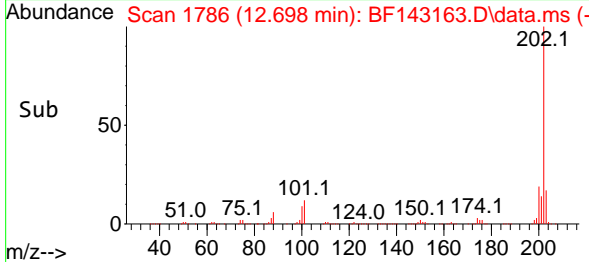
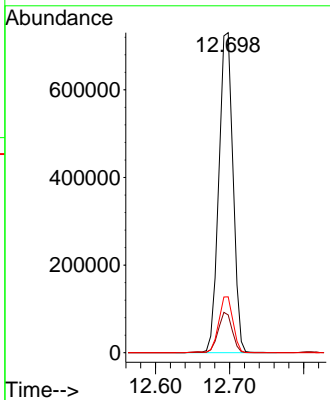
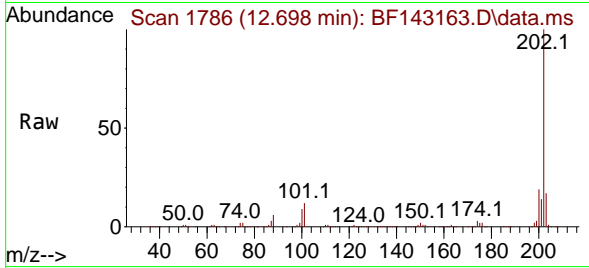




#75
 Fluoranthene
 Concen: 44.975 ng
 RT: 12.698 min Scan# 11
 Delta R.T. 0.000 min
 Lab File: BF143163.D
 Acq: 18 Jul 2025 13:22

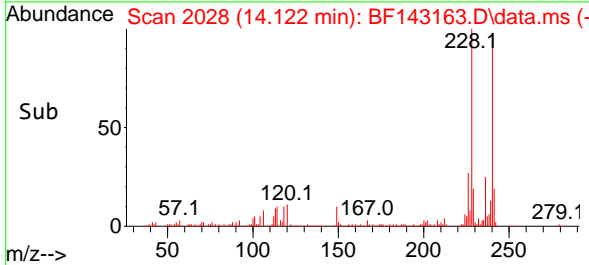
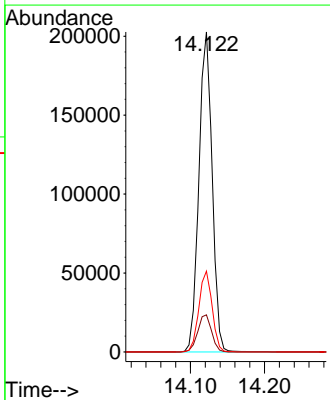
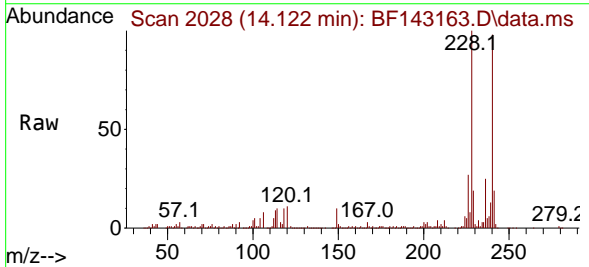
Instrument : BNA_F
 ClientSampleId : PB168904BSD

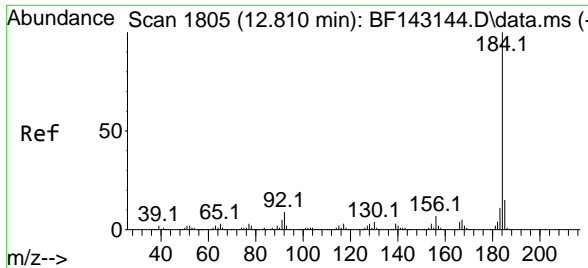
Tgt Ion	Resp	Lower	Upper
202	100		
101	11.8	0.0	31.7
203	17.4	0.0	37.4



#76
 Chrysene-d12
 Concen: 20.000 ng
 RT: 14.122 min Scan# 2028
 Delta R.T. 0.000 min
 Lab File: BF143163.D
 Acq: 18 Jul 2025 13:22

Tgt Ion	Resp	Lower	Upper
240	100		
120	11.6	9.4	14.2
236	25.2	20.2	30.4



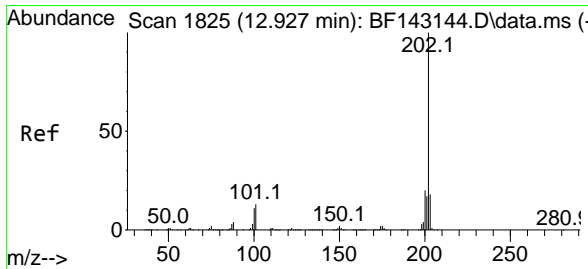
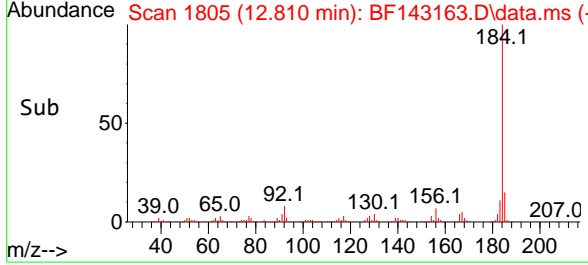
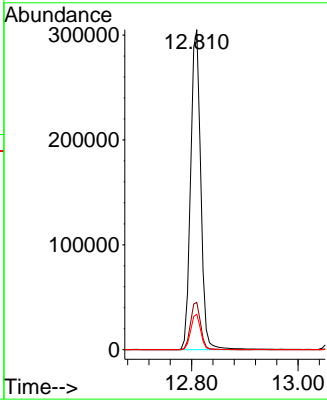
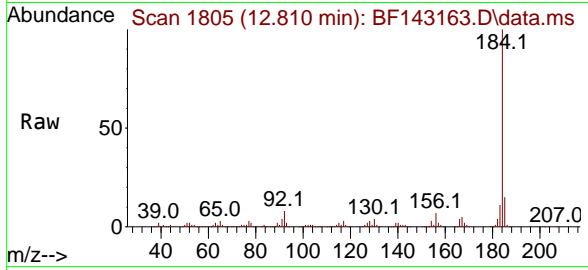


#77
 Benzidine
 Concen: 41.518 ng
 RT: 12.810 min Scan# 1805
 Delta R.T. -0.000 min
 Lab File: BF143163.D
 Acq: 18 Jul 2025 13:22

Instrument : BNA_F
 ClientSampleId : PB168904BSD

Tgt Ion:184 Resp: 403621

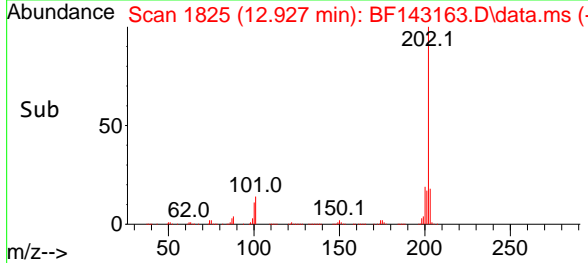
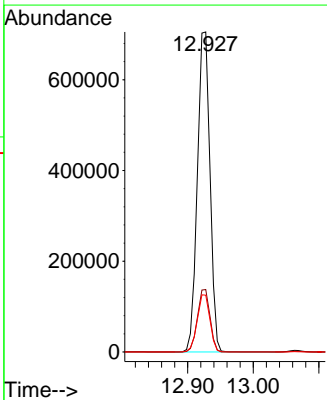
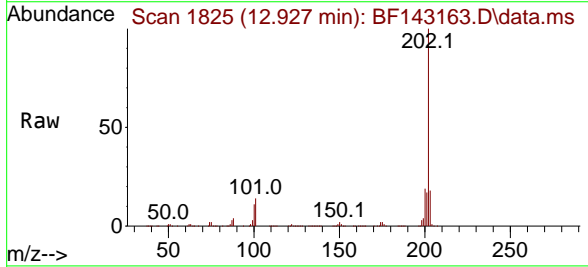
Ion	Ratio	Lower	Upper
184	100		
185	14.7	12.2	18.4
183	11.0	9.0	13.4

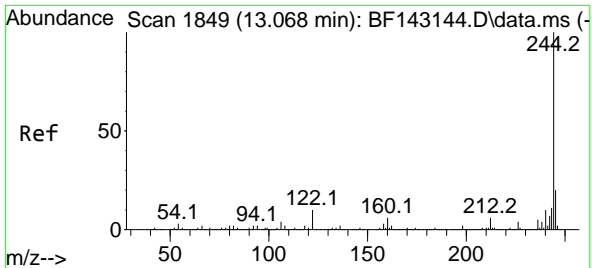


#78
 Pyrene
 Concen: 43.938 ng
 RT: 12.927 min Scan# 1825
 Delta R.T. 0.000 min
 Lab File: BF143163.D
 Acq: 18 Jul 2025 13:22

Tgt Ion:202 Resp: 946188

Ion	Ratio	Lower	Upper
202	100		
200	19.5	15.7	23.5
203	17.8	14.2	21.2



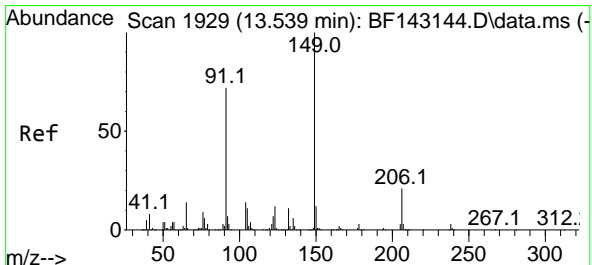
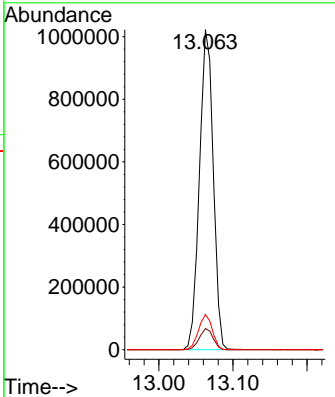
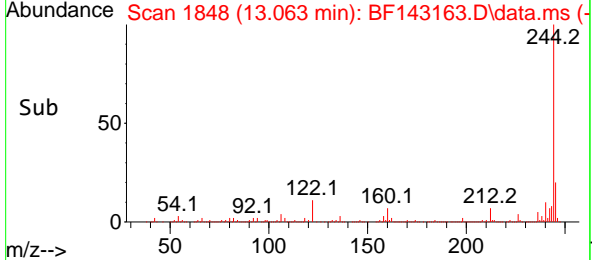
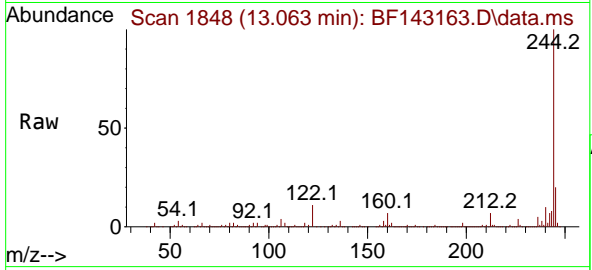


#79
 Terphenyl-d14
 Concen: 78.016 ng
 RT: 13.063 min Scan# 1848
 Delta R.T. -0.006 min
 Lab File: BF143163.D
 Acq: 18 Jul 2025 13:22

Instrument : BNA_F
 ClientSampleId : PB168904BSD

Tgt Ion:244 Resp: 1322859

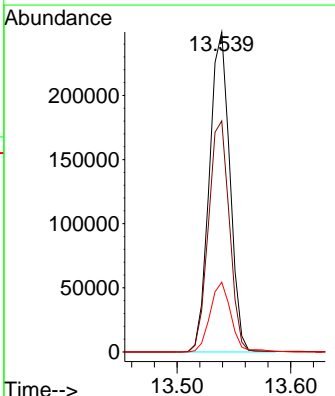
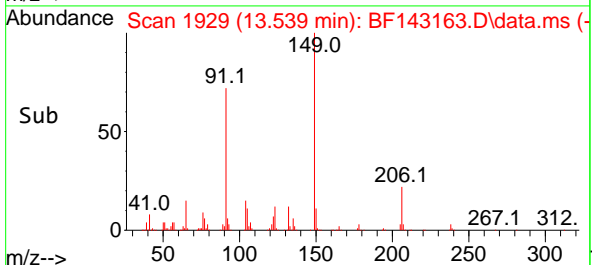
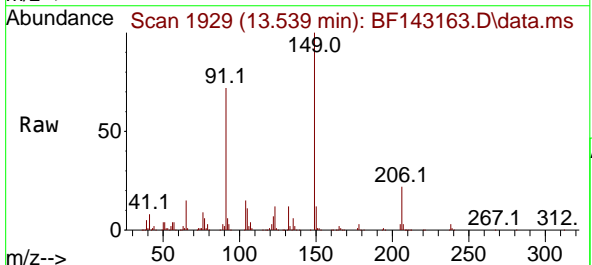
Ion	Ratio	Lower	Upper
244	100		
212	6.6	5.2	7.8
122	11.0	8.2	12.2

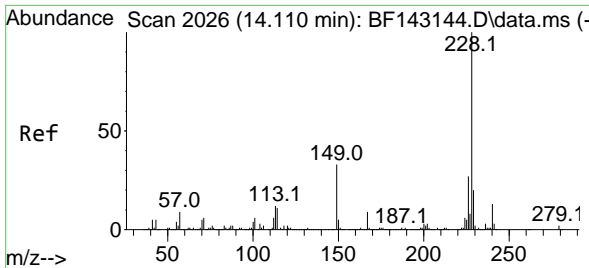


#80
 Butylbenzylphthalate
 Concen: 47.354 ng
 RT: 13.539 min Scan# 1929
 Delta R.T. 0.000 min
 Lab File: BF143163.D
 Acq: 18 Jul 2025 13:22

Tgt Ion:149 Resp: 312264

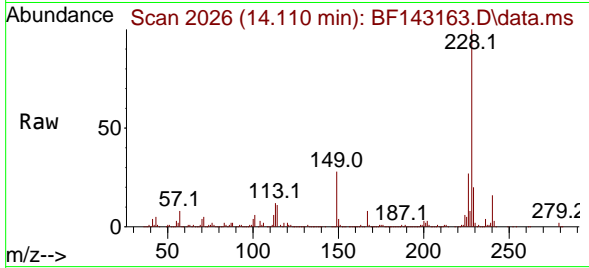
Ion	Ratio	Lower	Upper
149	100		
91	72.2	57.9	86.9
206	21.8	17.0	25.4



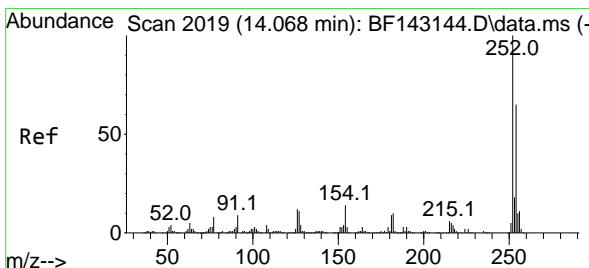
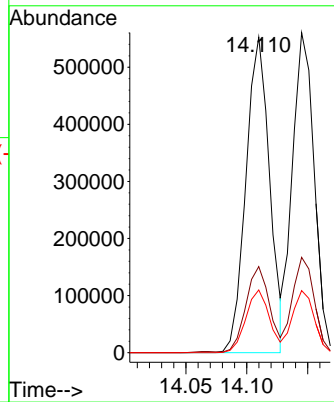
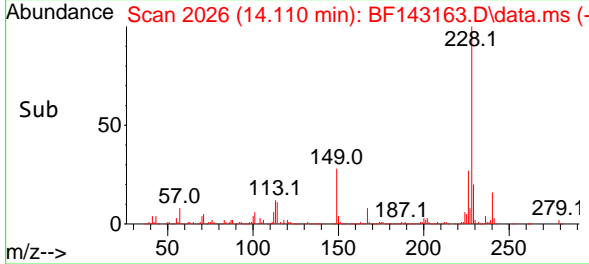


#81
 Benzo(a)anthracene
 Concen: 44.352 ng
 RT: 14.110 min Scan# 2026
 Delta R.T. 0.000 min
 Lab File: BF143163.D
 Acq: 18 Jul 2025 13:22

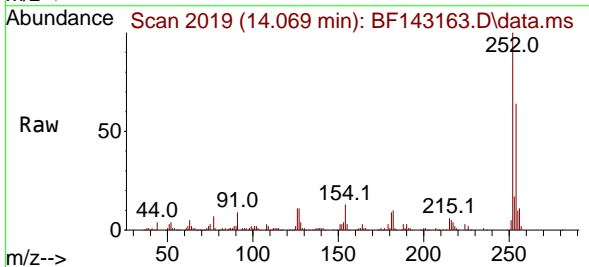
Instrument : BNA_F
 ClientSampleId : PB168904BSD



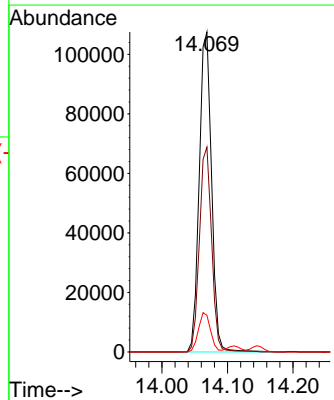
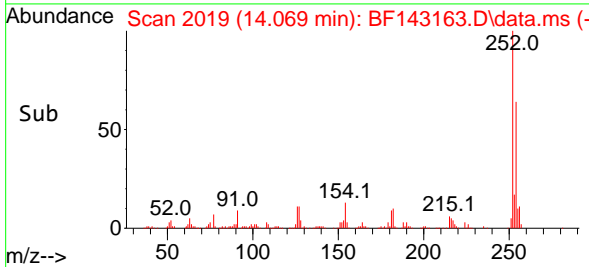
Tgt Ion:228 Resp: 749253
 Ion Ratio Lower Upper
 228 100
 226 27.3 21.7 32.5
 229 19.9 15.8 23.6

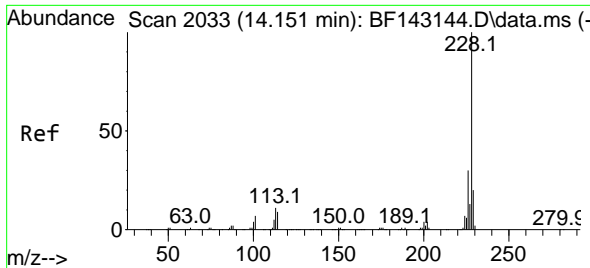


#82
 3,3'-Dichlorobenzidine
 Concen: 24.957 ng
 RT: 14.069 min Scan# 2019
 Delta R.T. 0.000 min
 Lab File: BF143163.D
 Acq: 18 Jul 2025 13:22



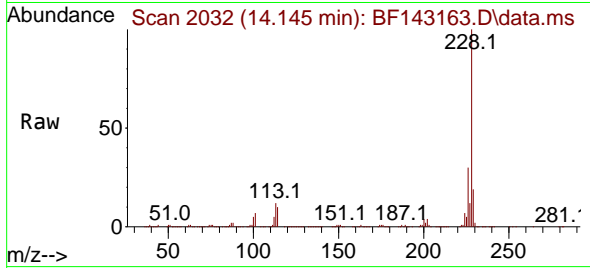
Tgt Ion:252 Resp: 140515
 Ion Ratio Lower Upper
 252 100
 254 64.0 51.7 77.5
 126 11.5 9.4 14.0



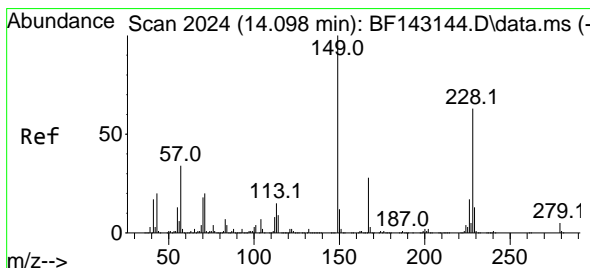
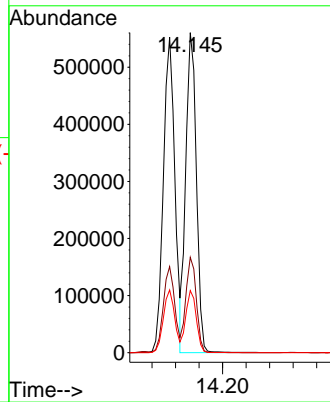
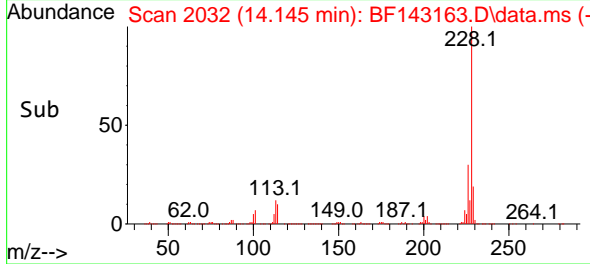


#83
 Chrysene
 Concen: 46.049 ng
 RT: 14.145 min Scan# 2032
 Delta R.T. -0.006 min
 Lab File: BF143163.D
 Acq: 18 Jul 2025 13:22

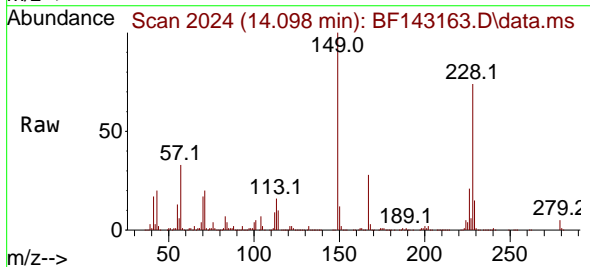
Instrument : BNA_F
 ClientSampleId : PB168904BSD



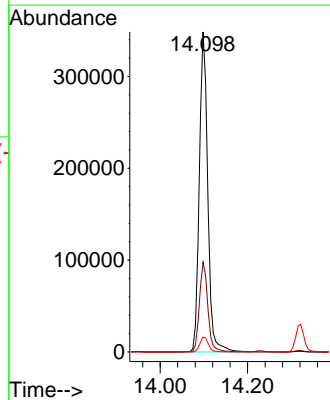
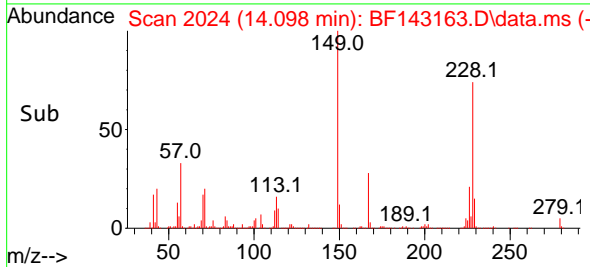
Tgt Ion:228 Resp: 699428
 Ion Ratio Lower Upper
 228 100
 226 29.8 23.8 35.8
 229 19.4 15.6 23.4

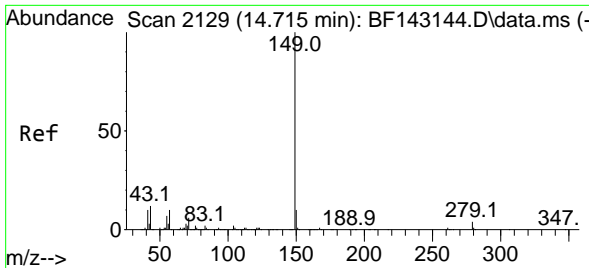


#84
 Bis(2-ethylhexyl)phthalate
 Concen: 47.015 ng
 RT: 14.098 min Scan# 2024
 Delta R.T. 0.000 min
 Lab File: BF143163.D
 Acq: 18 Jul 2025 13:22



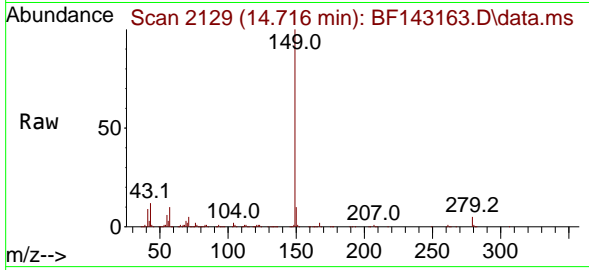
Tgt Ion:149 Resp: 469258
 Ion Ratio Lower Upper
 149 100
 167 28.0 22.3 33.5
 279 4.7 3.6 5.4



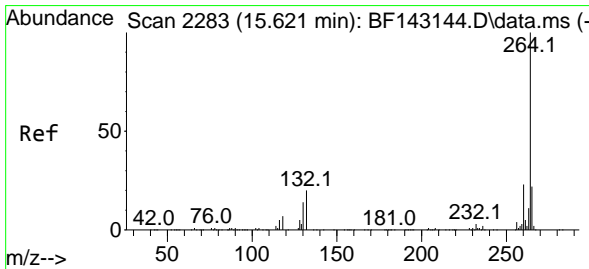
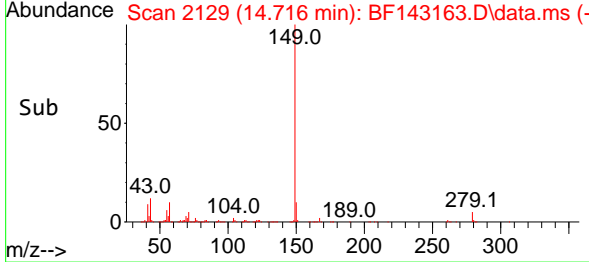
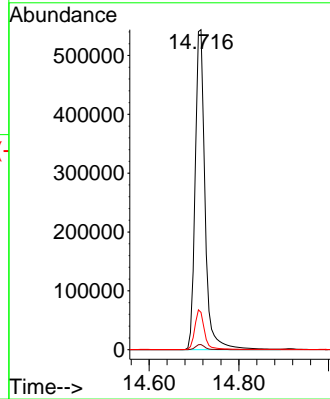


#85
 Di-n-octyl phthalate
 Concen: 45.761 ng
 RT: 14.716 min Scan# 2129
 Delta R.T. 0.000 min
 Lab File: BF143163.D
 Acq: 18 Jul 2025 13:22

Instrument : BNA_F
 ClientSampleId : PB168904BSD

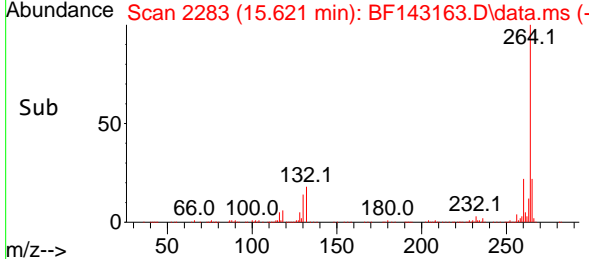
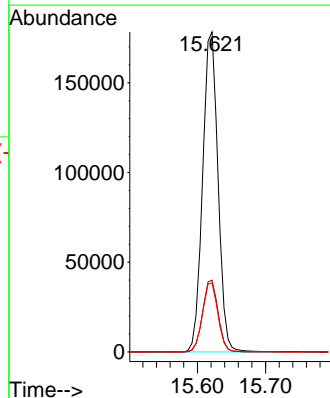
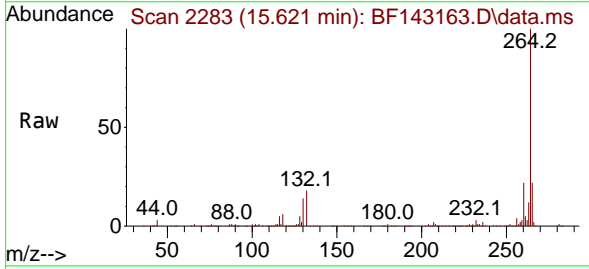


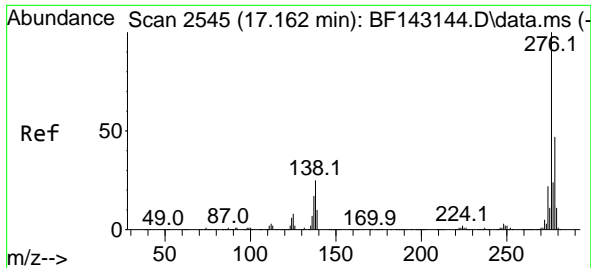
Tgt Ion:149 Resp: 827899
 Ion Ratio Lower Upper
 149 100
 167 1.6 1.1 1.7
 43 12.2 9.7 14.5



#86
 Perylene-d12
 Concen: 20.000 ng
 RT: 15.621 min Scan# 2283
 Delta R.T. 0.000 min
 Lab File: BF143163.D
 Acq: 18 Jul 2025 13:22

Tgt Ion:264 Resp: 280075
 Ion Ratio Lower Upper
 264 100
 260 22.5 18.5 27.7
 265 21.5 17.4 26.2





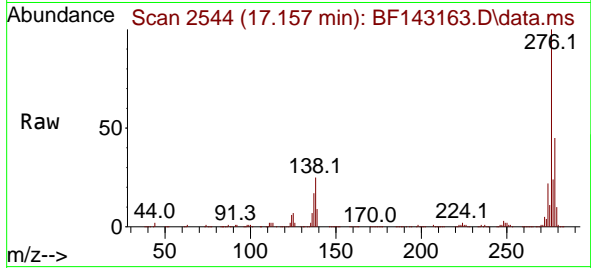
#87
 Indeno(1,2,3-cd)pyrene
 Concen: 44.416 ng
 RT: 17.157 min Scan# 21
 Delta R.T. -0.006 min
 Lab File: BF143163.D
 Acq: 18 Jul 2025 13:22

Instrument :

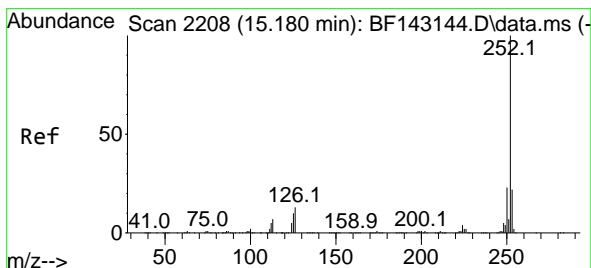
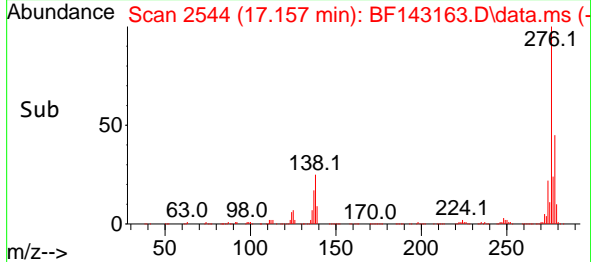
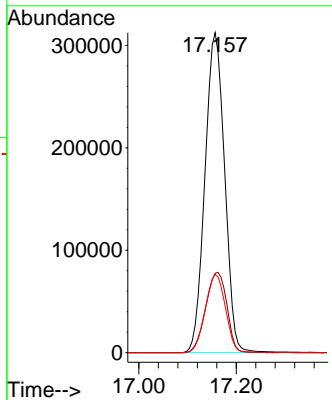
BNA_F

Client Sample Id :

PB168904BSD

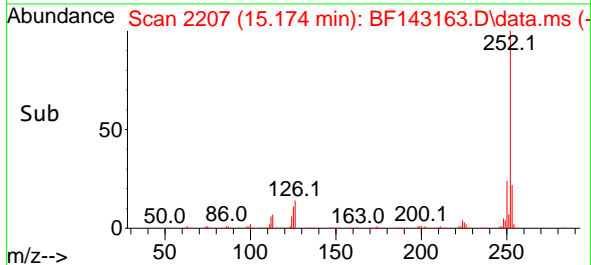
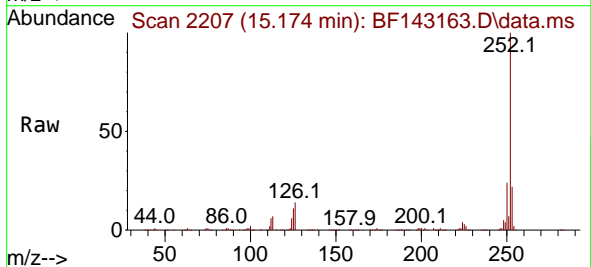
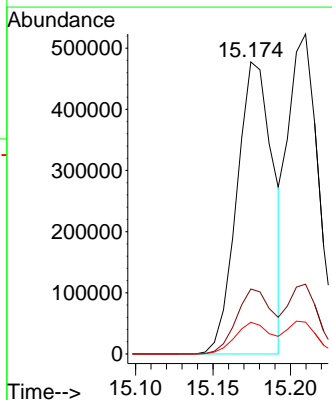


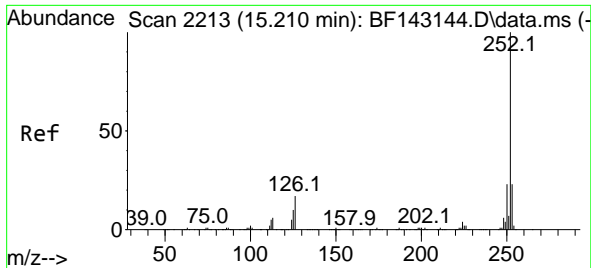
Tgt Ion: 276 Resp: 877169
 Ion Ratio Lower Upper
 276 100
 138 27.0 21.8 32.6
 277 25.0 20.0 30.0



#88
 Benzo(b)fluoranthene
 Concen: 45.293 ng
 RT: 15.174 min Scan# 2207
 Delta R.T. -0.006 min
 Lab File: BF143163.D
 Acq: 18 Jul 2025 13:22

Tgt Ion: 252 Resp: 774966
 Ion Ratio Lower Upper
 252 100
 253 22.2 17.5 26.3
 125 10.9 8.0 12.0

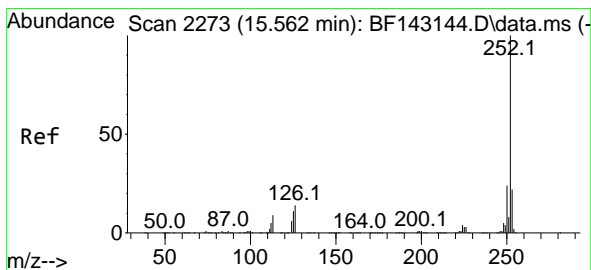
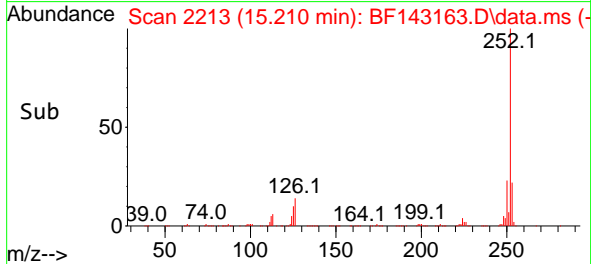
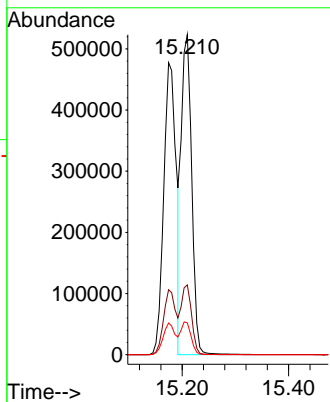
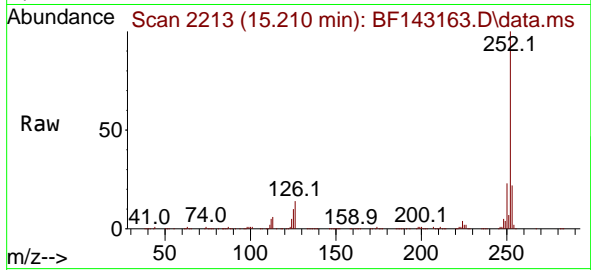




#89
 Benzo(k)fluoranthene
 Concen: 46.352 ng
 RT: 15.210 min Scan# 211
 Delta R.T. 0.000 min
 Lab File: BF143163.D
 Acq: 18 Jul 2025 13:22

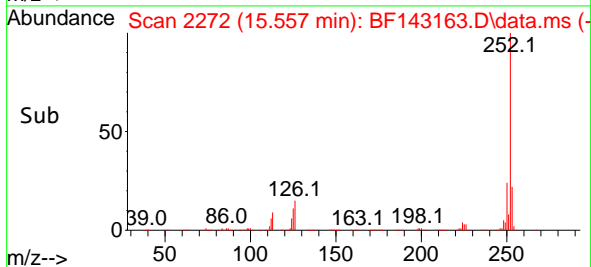
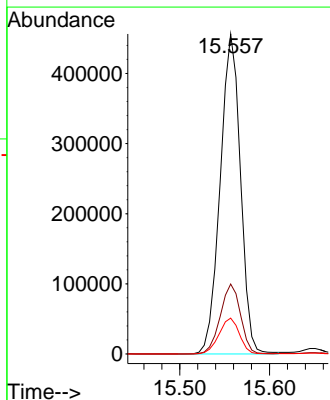
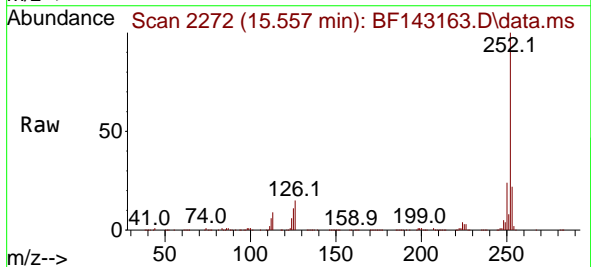
Instrument :
 BNA_F
 ClientSampleId :
 PB168904BSD

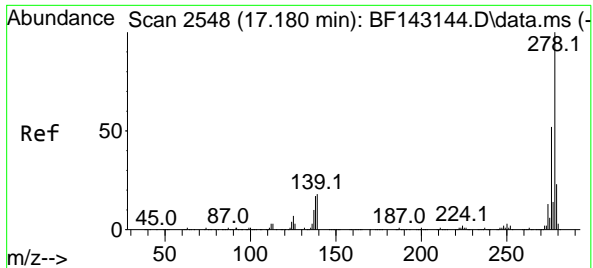
Tgt Ion:252 Resp: 707707
 Ion Ratio Lower Upper
 252 100
 253 21.8 17.8 26.6
 125 10.0 8.1 12.1



#90
 Benzo(a)pyrene
 Concen: 45.449 ng
 RT: 15.557 min Scan# 2272
 Delta R.T. -0.006 min
 Lab File: BF143163.D
 Acq: 18 Jul 2025 13:22

Tgt Ion:252 Resp: 716468
 Ion Ratio Lower Upper
 252 100
 253 21.8 17.3 25.9
 125 11.2 8.6 13.0



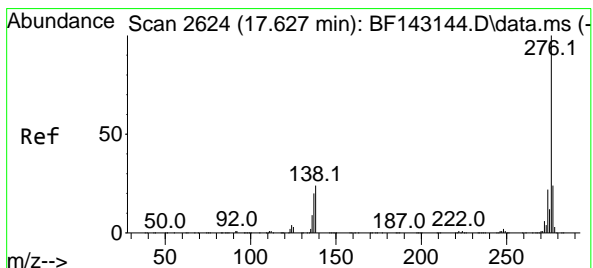
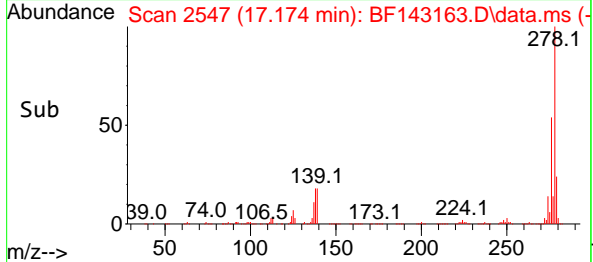
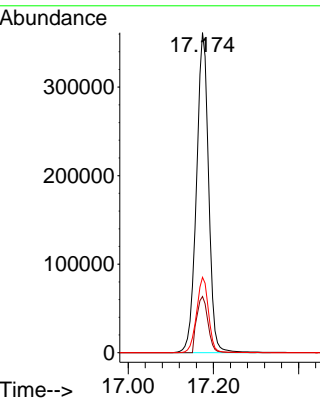
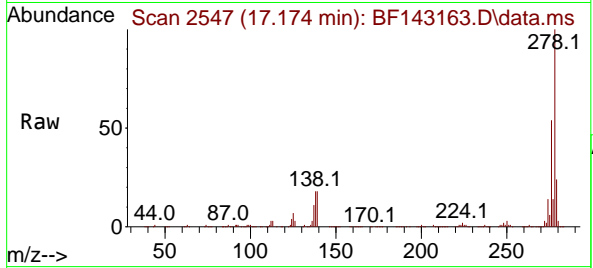


#91
 Dibenzo(a,h)anthracene
 Concen: 44.536 ng
 RT: 17.174 min Scan# 21
 Delta R.T. -0.006 min
 Lab File: BF143163.D
 Acq: 18 Jul 2025 13:22

Instrument : BNA_F
 ClientSampleId : PB168904BSD

Tgt Ion:278 Resp: 715895

Ion	Ratio	Lower	Upper
278	100		
139	17.6	14.1	21.1
279	23.6	18.6	28.0



#92
 Benzo(g,h,i)perylene
 Concen: 44.525 ng
 RT: 17.621 min Scan# 2623
 Delta R.T. -0.006 min
 Lab File: BF143163.D
 Acq: 18 Jul 2025 13:22

Tgt Ion:276 Resp: 692338

Ion	Ratio	Lower	Upper
276	100		
277	23.4	19.1	28.7
138	23.7	18.9	28.3

