

Data Path : Z:\svoasrv\HPCHEM1\BNA\_F\Data\BF071825\  
 Data File : BF143166.D  
 Acq On : 18 Jul 2025 14:54  
 Operator : RC/JU  
 Sample : Q2594-01  
 Misc :  
 ALS Vial : 9 Sample Multiplier: 1

Instrument :  
 BNA\_F  
 ClientSampleId :  
 CC-071325-RW

Quant Time: Jul 18 15:29:26 2025  
 Quant Method : Z:\svoasrv\HPCHEM1\BNA\_F\Methods\8270-BF071725.M  
 Quant Title : ASP BNA STANDARDS FOR 5 POINT CALIBRATION  
 QLast Update : Thu Jul 17 15:14:05 2025  
 Response via : Initial Calibration

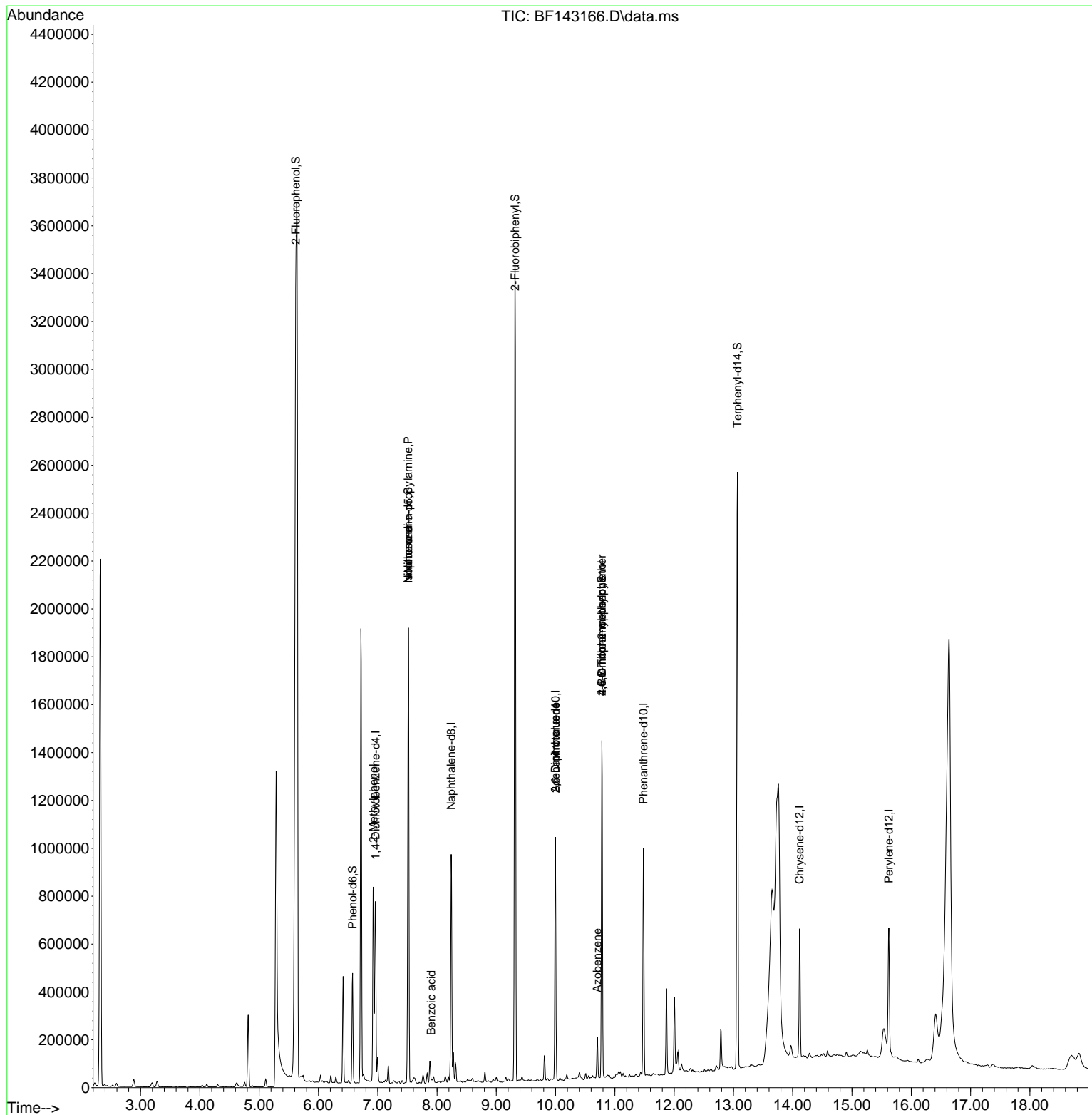
Compound	R.T.	QIon	Response	Conc	Units	Dev(Min)
Internal Standards						
1) 1,4-Dichlorobenzene-d4	6.963	152	148923	20.000	ng	0.00
21) Naphthalene-d8	8.239	136	563250	20.000	ng	0.00
39) Acenaphthene-d10	9.998	164	291129	20.000	ng	0.00
64) Phenanthrene-d10	11.480	188	471233	20.000	ng	0.00
76) Chrysene-d12	14.116	240	258976	20.000	ng	0.00
86) Perylene-d12	15.621	264	303472	20.000	ng	0.00
System Monitoring Compounds						
5) 2-Fluorophenol	5.616	112	201931	21.457	ng	0.03
7) Phenol-d6	6.575	99	191889	16.200	ng	-0.01
23) Nitrobenzene-d5	7.516	82	864066	76.469	ng	0.00
42) 2,4,6-Tribromophenol	10.780	330	241269	80.222	ng	0.00
45) 2-Fluorobiphenyl	9.316	172	1545436	72.599	ng	0.00
79) Terphenyl-d14	13.069	244	1248495	71.740	ng	0.00
Target Compounds						
17) 2-Methylphenol	6.928	107	53586	6.461	ng	# 20
19) n-Nitroso-di-n-propyla...	7.516	70	116441	15.322	ng	# 80
25) Isophorone	7.516	82	860891	43.158	ng	# 66
32) Benzoic acid	7.904	122	1206	5.383	ng	# 92
51) 2,6-Dinitrotoluene	9.998	165	37394	9.687	ng	# 23
57) 2,4-Dinitrotoluene	9.998	165	37394	7.721	ng	# 21
63) Azobenzene	10.704	77	39903	2.041	ng	# 1
65) 4,6-Dinitro-2-methylph...	10.780	198	376	5.547	ng	# 1
67) 4-Bromophenyl-phenylether	10.780	248	15004	2.672	ng	# 1

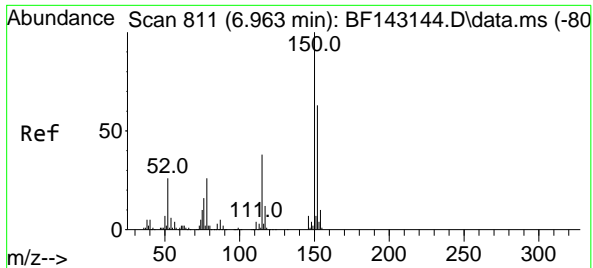
(#) = qualifier out of range (m) = manual integration (+) = signals summed

Data Path : Z:\svoasrv\HPCHEM1\BNA\_F\Data\BF071825\  
 Data File : BF143166.D  
 Acq On : 18 Jul 2025 14:54  
 Operator : RC/JU  
 Sample : Q2594-01  
 Misc :  
 ALS Vial : 9 Sample Multiplier: 1

Instrument :  
 BNA\_F  
 ClientSampleId :  
 CC-071325-RW

Quant Time: Jul 18 15:29:26 2025  
 Quant Method : Z:\svoasrv\HPCHEM1\BNA\_F\Methods\8270-BF071725.M  
 Quant Title : ASP BNA STANDARDS FOR 5 POINT CALIBRATION  
 QLast Update : Thu Jul 17 15:14:05 2025  
 Response via : Initial Calibration



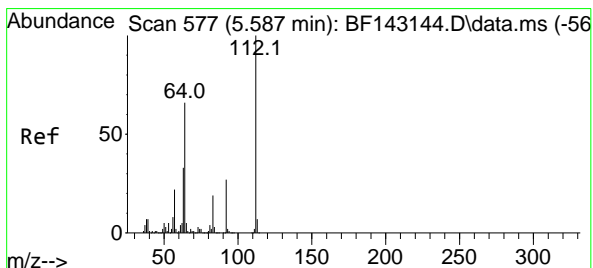
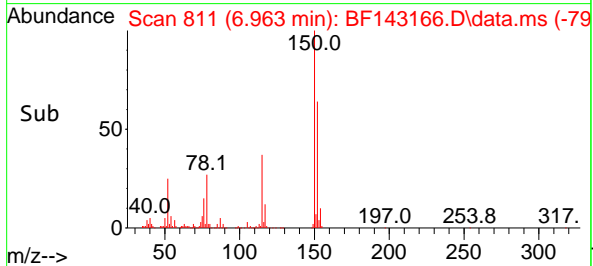
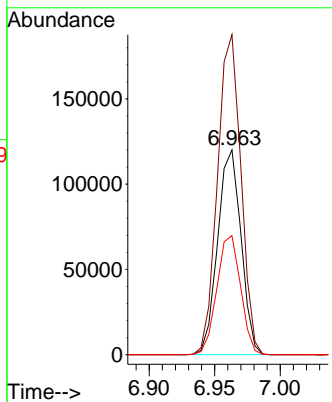
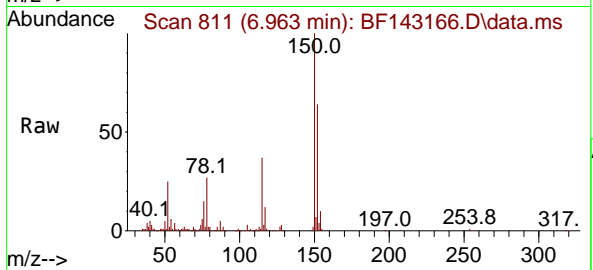


#1  
 1,4-Dichlorobenzene-d4  
 Concen: 20.000 ng  
 RT: 6.963 min Scan# 811  
 Delta R.T. 0.000 min  
 Lab File: BF143166.D  
 Acq: 18 Jul 2025 14:54

Instrument :  
 BNA\_F  
 ClientSampleId :  
 CC-071325-RW

Tgt Ion:152 Resp: 148923

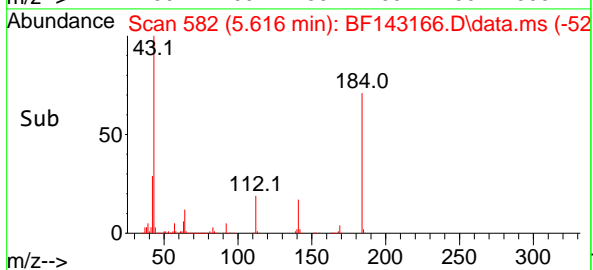
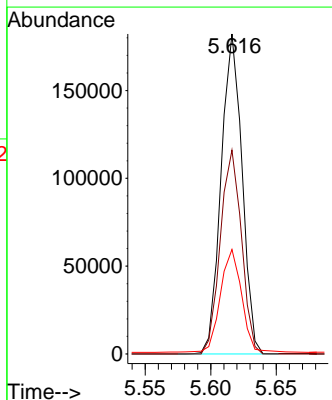
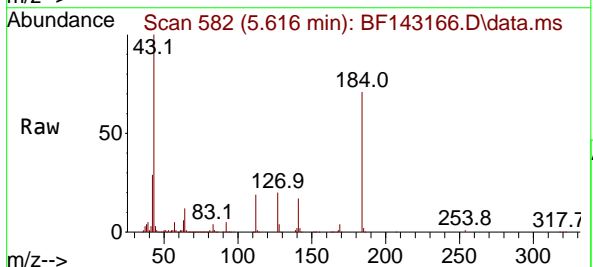
Ion	Ratio	Lower	Upper
152	100		
150	156.3	128.2	192.4
115	58.1	47.9	71.9

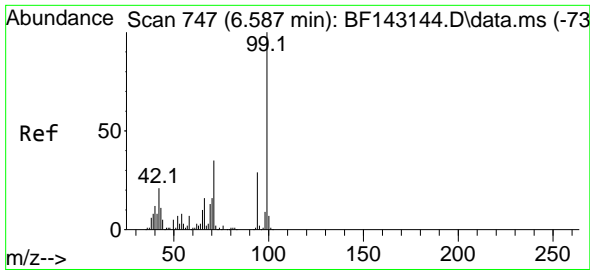


#5  
 2-Fluorophenol  
 Concen: 21.457 ng  
 RT: 5.616 min Scan# 582  
 Delta R.T. 0.029 min  
 Lab File: BF143166.D  
 Acq: 18 Jul 2025 14:54

Tgt Ion:112 Resp: 201931

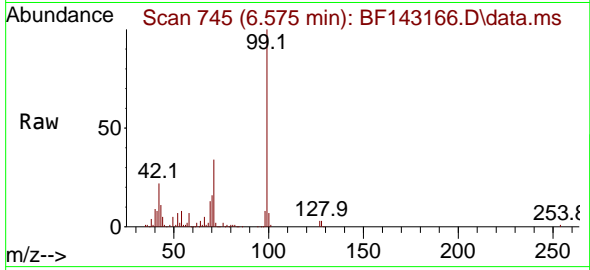
Ion	Ratio	Lower	Upper
112	100		
64	63.7	53.1	79.7
63	32.7	26.6	40.0



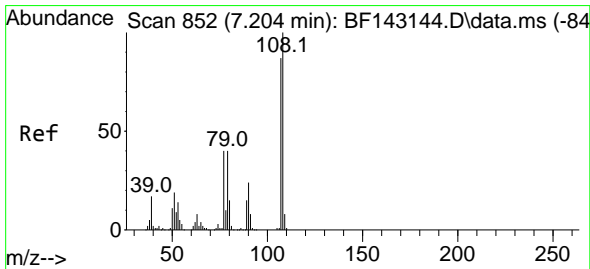
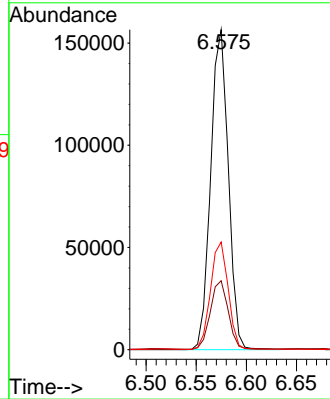
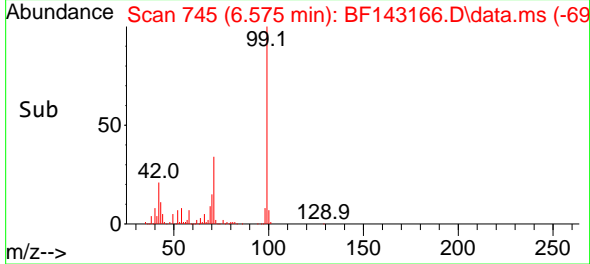


#7  
Phenol-d6  
Concen: 16.200 ng  
RT: 6.575 min Scan# 747  
Delta R.T. -0.012 min  
Lab File: BF143166.D  
Acq: 18 Jul 2025 14:54

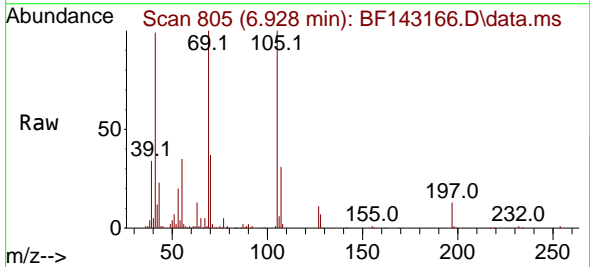
Instrument :  
BNA\_F  
ClientSampleId :  
CC-071325-RW



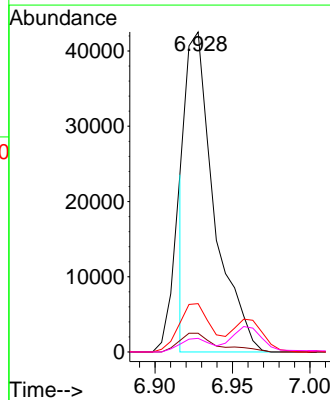
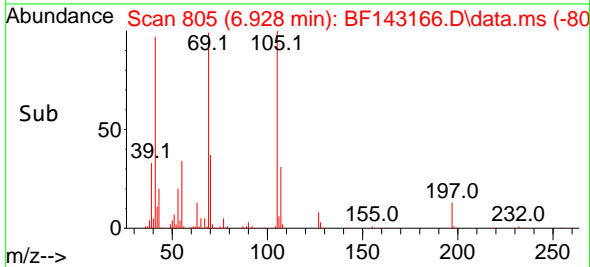
Tgt Ion: 99 Resp: 191889  
Ion Ratio Lower Upper  
99 100  
42 21.6 17.0 25.6  
71 33.6 27.7 41.5

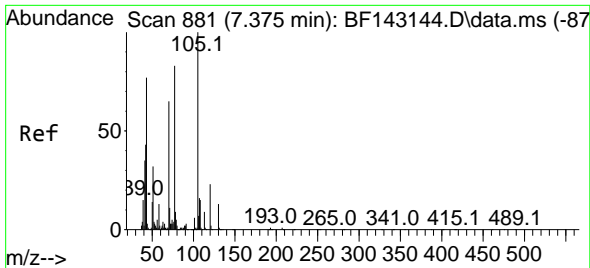


#17  
2-Methylphenol  
Concen: 6.461 ng  
RT: 6.928 min Scan# 805  
Delta R.T. -0.276 min  
Lab File: BF143166.D  
Acq: 18 Jul 2025 14:54



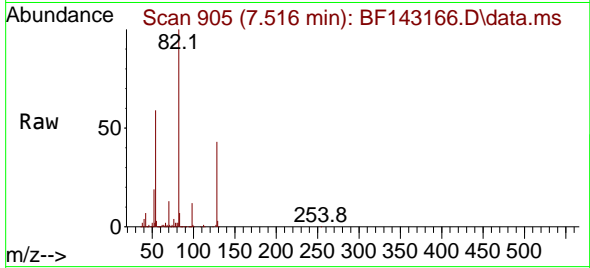
Tgt Ion: 107 Resp: 53586  
Ion Ratio Lower Upper  
107 100  
108 5.8 91.8 137.6#  
77 15.1 37.0 55.6#  
79 4.2 36.9 55.3#





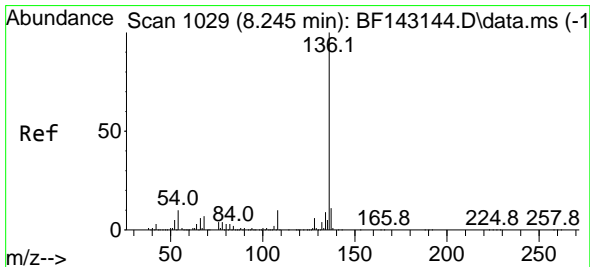
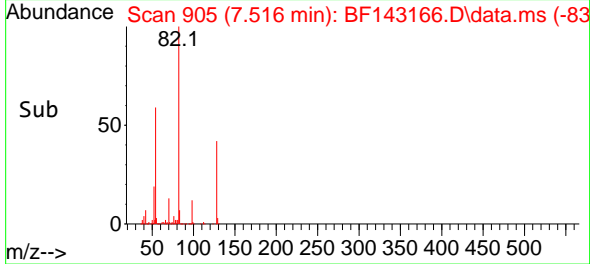
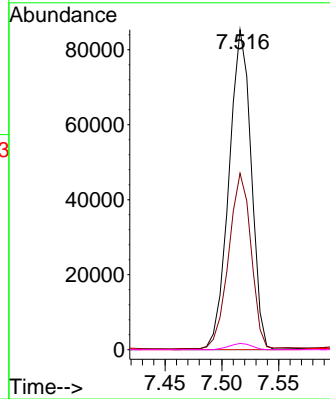
#19  
 n-Nitroso-di-n-propylamine  
 Concen: 15.322 ng  
 RT: 7.516 min Scan# 90  
 Delta R.T. 0.141 min  
 Lab File: BF143166.D  
 Acq: 18 Jul 2025 14:54

Instrument :  
 BNA\_F  
 ClientSampleId :  
 CC-071325-RW

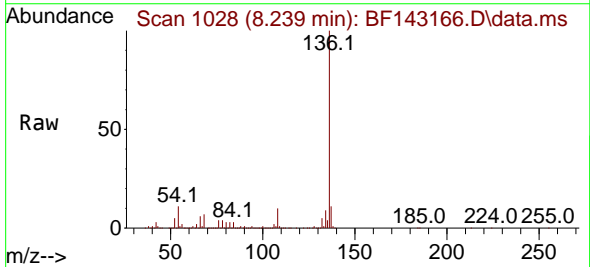


Tgt Ion: 70 Resp: 116441

Ion	Ratio	Lower	Upper
70	100		
42	55.1	52.5	78.7
101	0.0	7.6	11.4#
130	2.0	16.1	24.1#

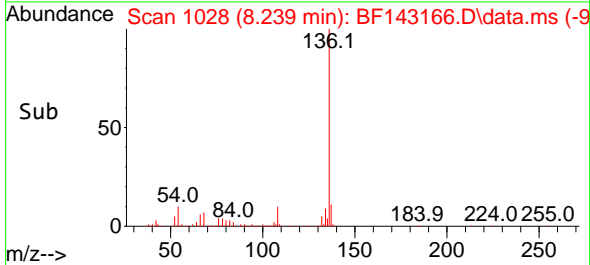
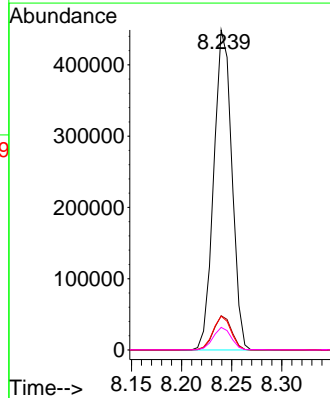


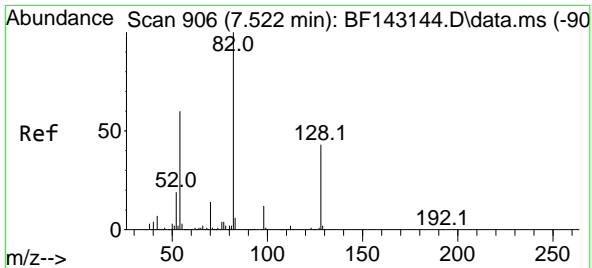
#21  
 Naphthalene-d8  
 Concen: 20.000 ng  
 RT: 8.239 min Scan# 1028  
 Delta R.T. -0.006 min  
 Lab File: BF143166.D  
 Acq: 18 Jul 2025 14:54



Tgt Ion: 136 Resp: 563250

Ion	Ratio	Lower	Upper
136	100		
137	10.7	8.6	13.0
54	10.5	8.2	12.2
68	7.1	5.4	8.2

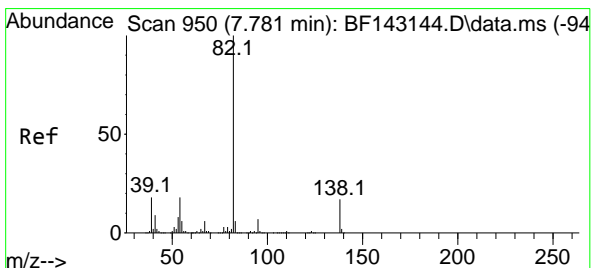
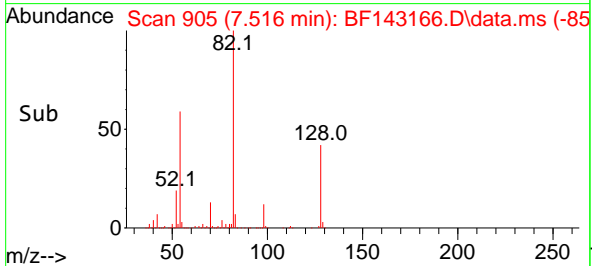
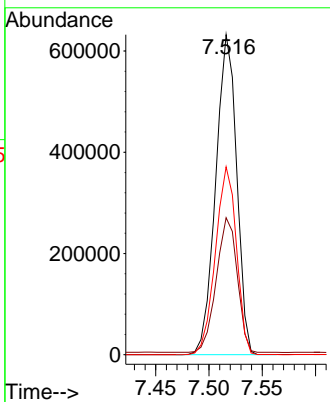
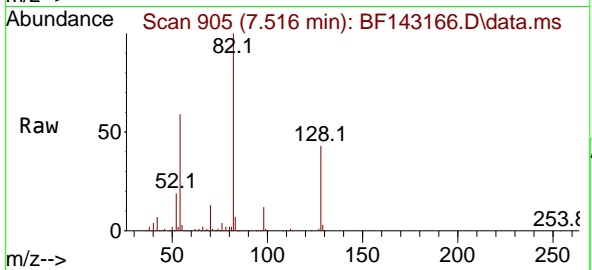




#23  
 Nitrobenzene-d5  
 Concen: 76.469 ng  
 RT: 7.516 min Scan# 905  
 Delta R.T. -0.006 min  
 Lab File: BF143166.D  
 Acq: 18 Jul 2025 14:54

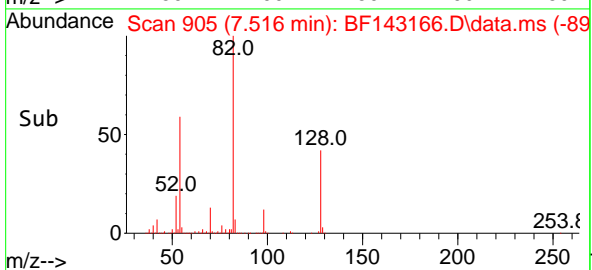
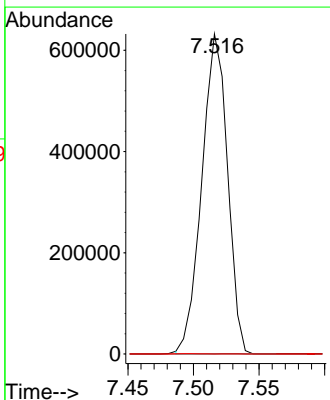
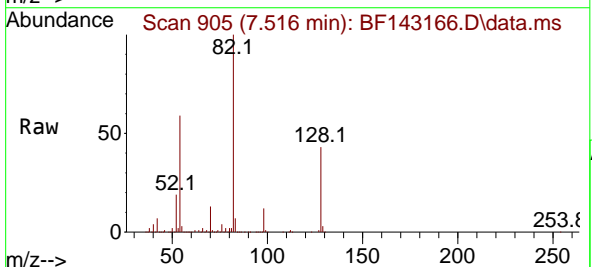
Instrument :  
 BNA\_F  
 ClientSampleId :  
 CC-071325-RW

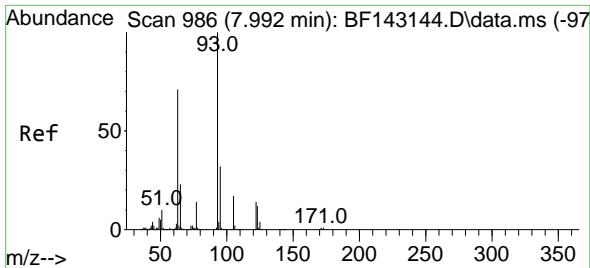
Tgt Ion:	82	Resp:	864066
Ion Ratio	Lower	Upper	
82	100		
128	42.8	33.6	50.4
54	58.7	47.1	70.7



#25  
 Isophorone  
 Concen: 43.158 ng  
 RT: 7.516 min Scan# 905  
 Delta R.T. -0.265 min  
 Lab File: BF143166.D  
 Acq: 18 Jul 2025 14:54

Tgt Ion:	82	Resp:	860891
Ion Ratio	Lower	Upper	
82	100		
95	0.0	5.5	8.3#
138	0.0	13.8	20.8#



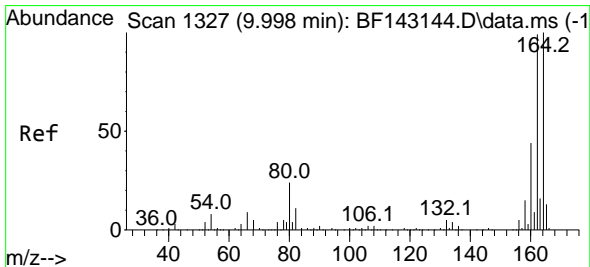
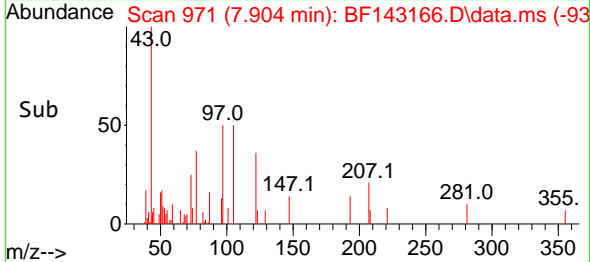
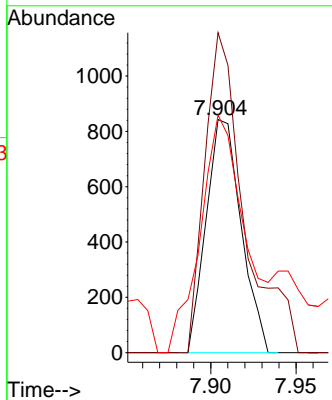
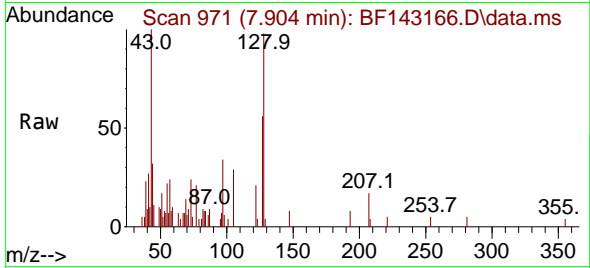


#32  
 Benzoic acid  
 Concen: 5.383 ng  
 RT: 7.904 min Scan# 91  
 Delta R.T. -0.088 min  
 Lab File: BF143166.D  
 Acq: 18 Jul 2025 14:54

Instrument :  
 BNA\_F  
 ClientSampleId :  
 CC-071325-RW

Tgt Ion:122 Resp: 1206

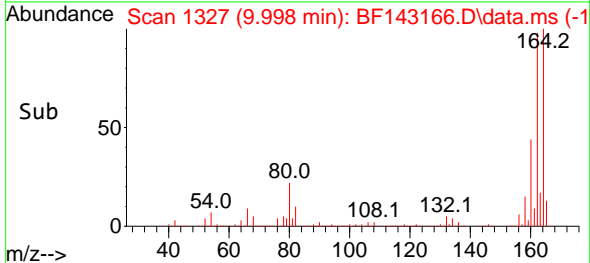
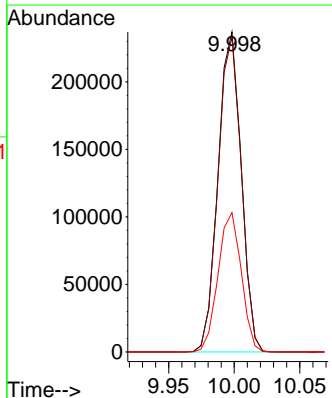
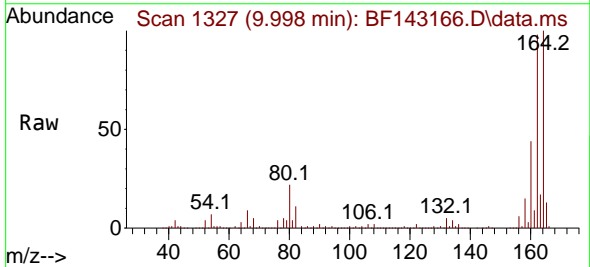
Ion	Ratio	Lower	Upper
122	100		
105	137.2	104.8	144.8
77	101.9	77.6	117.6

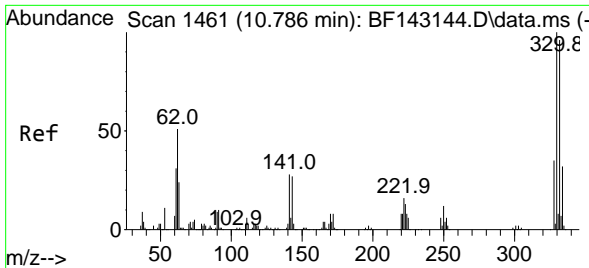


#39  
 Acenaphthene-d10  
 Concen: 20.000 ng  
 RT: 9.998 min Scan# 1327  
 Delta R.T. 0.000 min  
 Lab File: BF143166.D  
 Acq: 18 Jul 2025 14:54

Tgt Ion:164 Resp: 291129

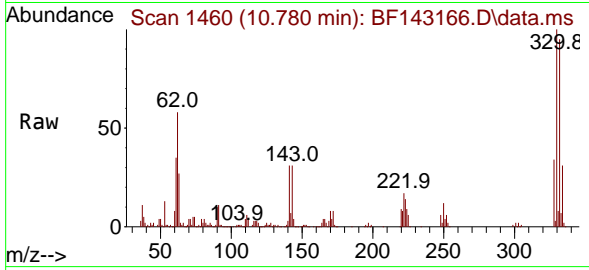
Ion	Ratio	Lower	Upper
164	100		
162	98.5	79.0	118.6
160	43.5	35.1	52.7



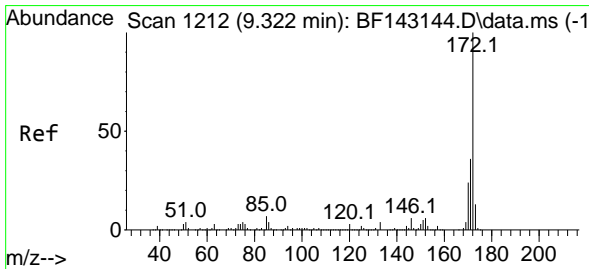
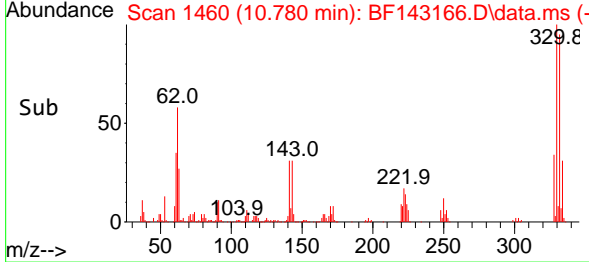
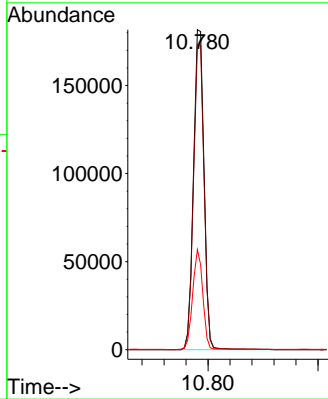


#42  
 2,4,6-Tribromophenol  
 Concen: 80.222 ng  
 RT: 10.780 min Scan# 1460  
 Delta R.T. -0.006 min  
 Lab File: BF143166.D  
 Acq: 18 Jul 2025 14:54

Instrument :  
 BNA\_F  
 ClientSampleId :  
 CC-071325-RW

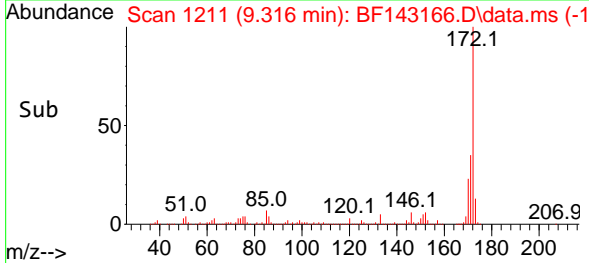
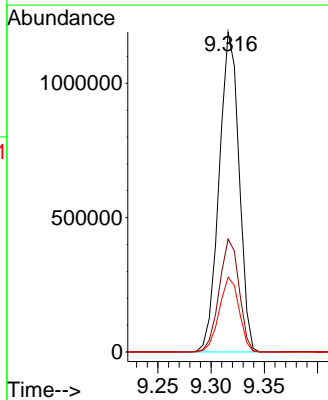
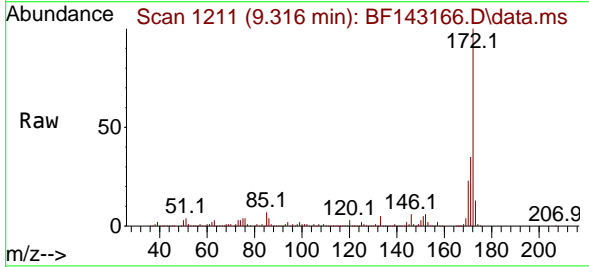


Tgt Ion:330 Resp: 241269  
 Ion Ratio Lower Upper  
 330 100  
 332 95.6 76.7 115.1  
 141 30.2 23.3 34.9

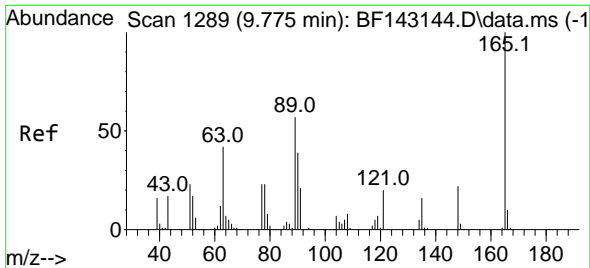


#45  
 2-Fluorobiphenyl  
 Concen: 72.599 ng  
 RT: 9.316 min Scan# 1211  
 Delta R.T. -0.006 min  
 Lab File: BF143166.D  
 Acq: 18 Jul 2025 14:54

Tgt Ion:172 Resp: 1545436  
 Ion Ratio Lower Upper  
 172 100  
 171 35.3 28.6 42.8  
 170 23.3 18.8 28.2





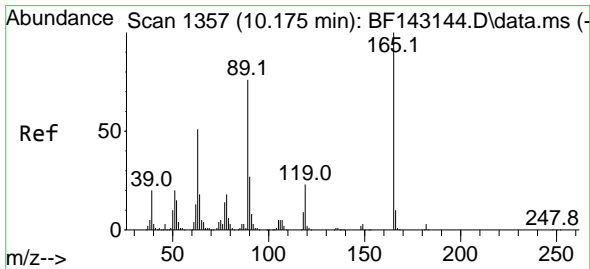
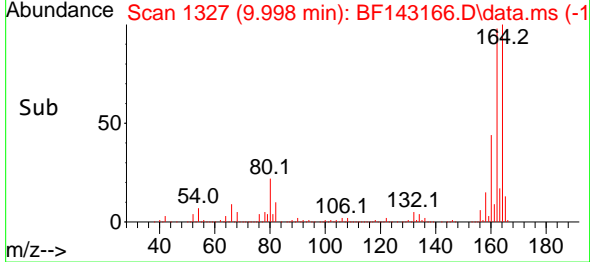
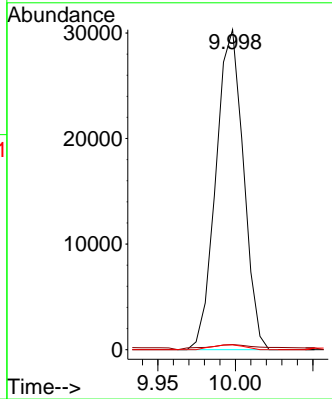
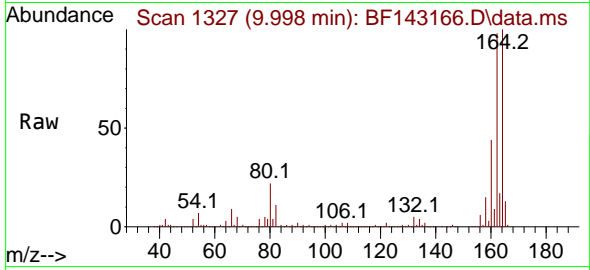


#51  
 2,6-Dinitrotoluene  
 Concen: 9.687 ng  
 RT: 9.998 min Scan# 1327  
 Delta R.T. 0.224 min  
 Lab File: BF143166.D  
 Acq: 18 Jul 2025 14:54

Instrument : BNA\_F  
 ClientSampleId : CC-071325-RW

Tgt Ion:165 Resp: 37394

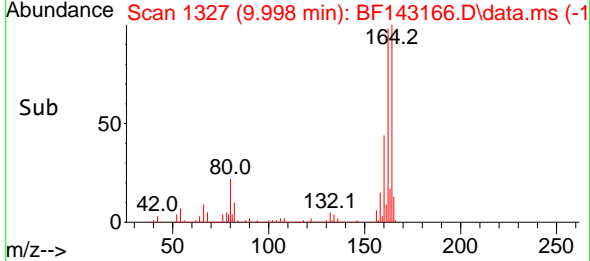
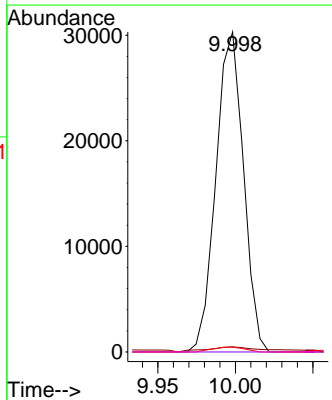
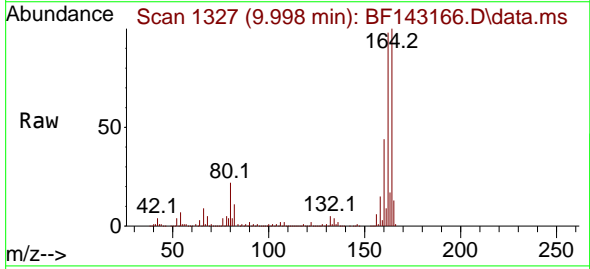
Ion	Ratio	Lower	Upper
165	100		
63	1.6	49.4	74.2#
89	1.5	46.2	69.2#

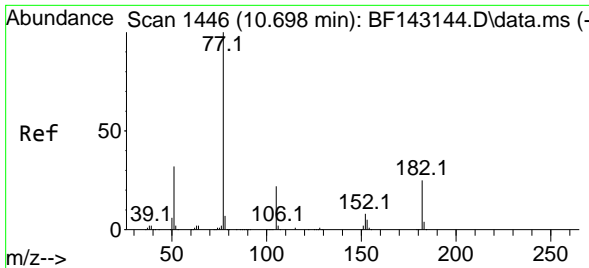


#57  
 2,4-Dinitrotoluene  
 Concen: 7.721 ng  
 RT: 9.998 min Scan# 1327  
 Delta R.T. -0.176 min  
 Lab File: BF143166.D  
 Acq: 18 Jul 2025 14:54

Tgt Ion:165 Resp: 37394

Ion	Ratio	Lower	Upper
165	100		
63	1.6	41.0	61.4#
89	1.5	61.1	91.7#
182	0.0	2.3	3.5#



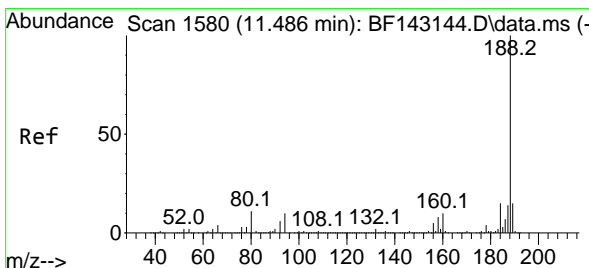
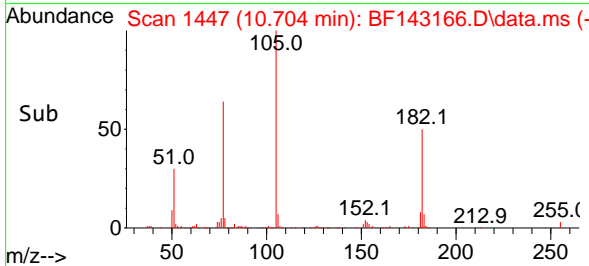
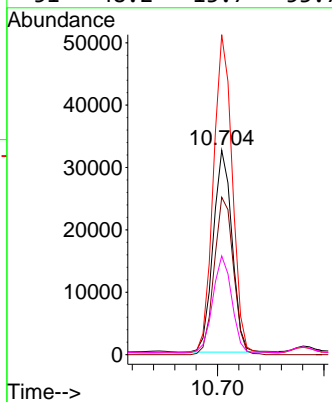
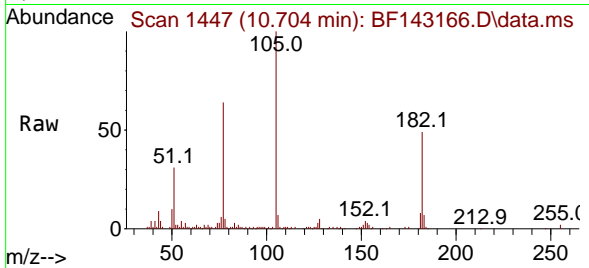


#63  
 Azobenzene  
 Concen: 2.041 ng  
 RT: 10.704 min Scan# 1447  
 Delta R.T. 0.006 min  
 Lab File: BF143166.D  
 Acq: 18 Jul 2025 14:54

Instrument :  
 BNA\_F  
 ClientSampleId :  
 CC-071325-RW

Tgt Ion: 77 Resp: 39903

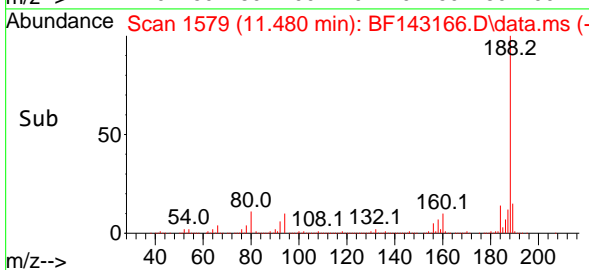
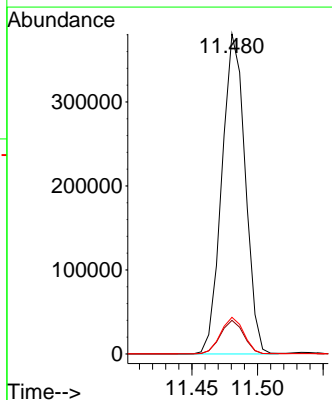
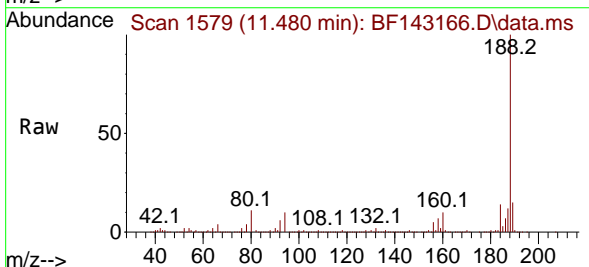
Ion	Ratio	Lower	Upper
77	100		
182	76.9	4.6	44.6#
105	156.4	1.4	41.4#
51	48.2	13.7	53.7

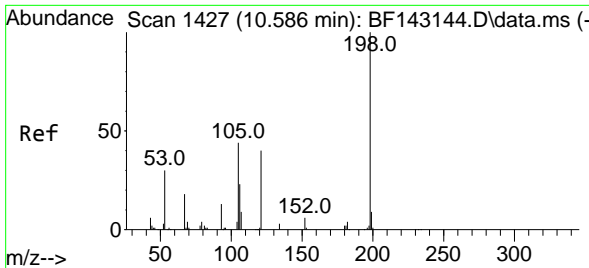


#64  
 Phenanthrene-d10  
 Concen: 20.000 ng  
 RT: 11.480 min Scan# 1579  
 Delta R.T. -0.006 min  
 Lab File: BF143166.D  
 Acq: 18 Jul 2025 14:54

Tgt Ion: 188 Resp: 471233

Ion	Ratio	Lower	Upper
188	100		
94	10.5	8.3	12.5
80	11.5	9.0	13.6



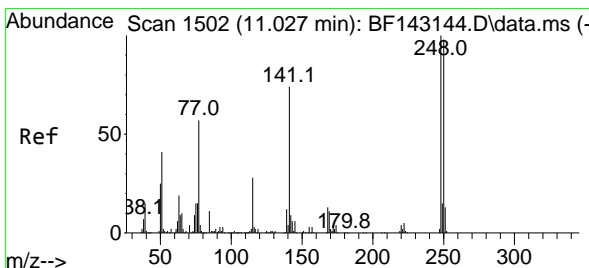
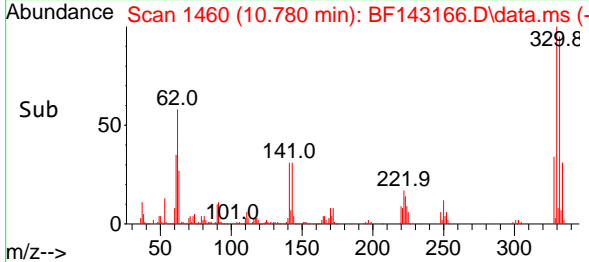
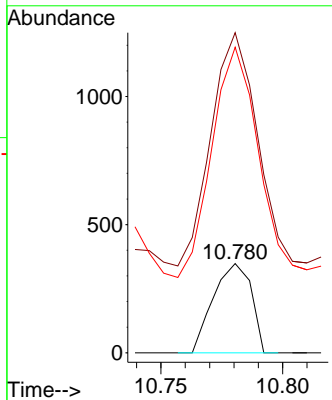
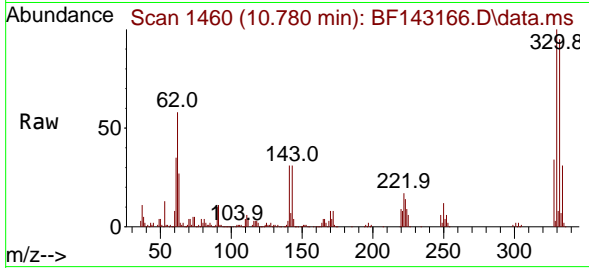


#65  
 4,6-Dinitro-2-methylphenol  
 Concen: 5.547 ng  
 RT: 10.780 min Scan# 1460  
 Delta R.T. 0.194 min  
 Lab File: BF143166.D  
 Acq: 18 Jul 2025 14:54

Instrument : BNA\_F  
 ClientSampleId : CC-071325-RW

Tgt Ion:198 Resp: 376

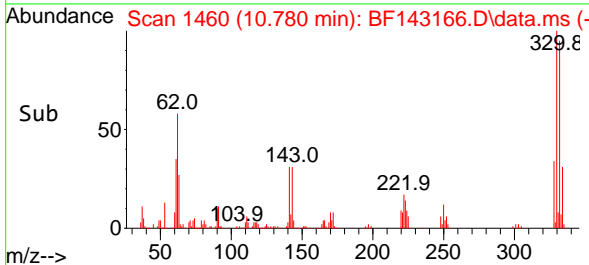
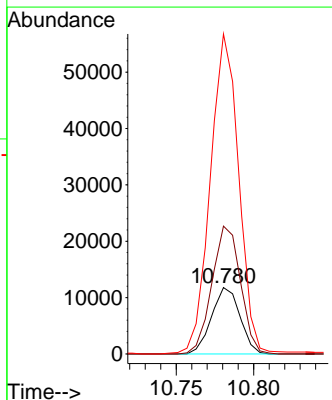
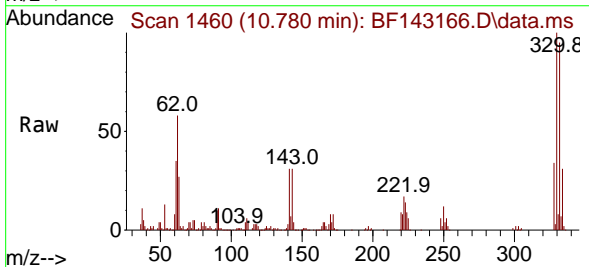
Ion	Ratio	Lower	Upper
198	100		
51	358.9	37.2	77.2#
105	342.5	24.8	64.8#

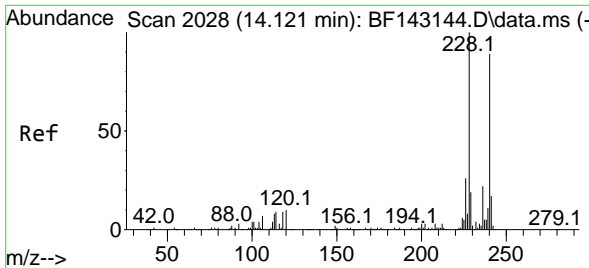


#67  
 4-Bromophenyl-phenylether  
 Concen: 2.672 ng  
 RT: 10.780 min Scan# 1460  
 Delta R.T. -0.247 min  
 Lab File: BF143166.D  
 Acq: 18 Jul 2025 14:54

Tgt Ion:248 Resp: 15004

Ion	Ratio	Lower	Upper
248	100		
250	192.3	78.3	117.5#
141	481.5	59.2	88.8#





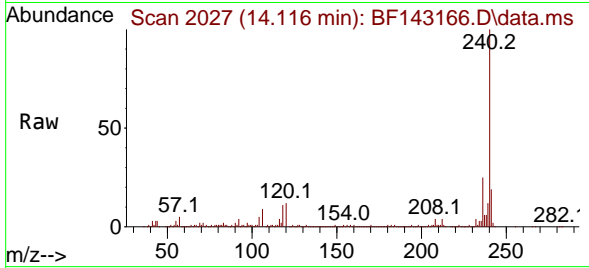
#76  
 Chrysene-d12  
 Concen: 20.000 ng  
 RT: 14.116 min Scan# 20  
 Delta R.T. -0.006 min  
 Lab File: BF143166.D  
 Acq: 18 Jul 2025 14:54

Instrument :

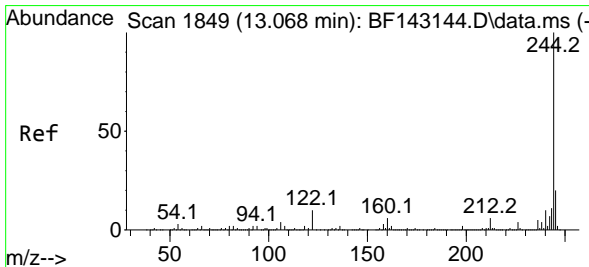
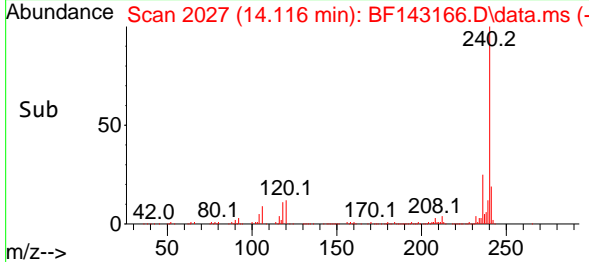
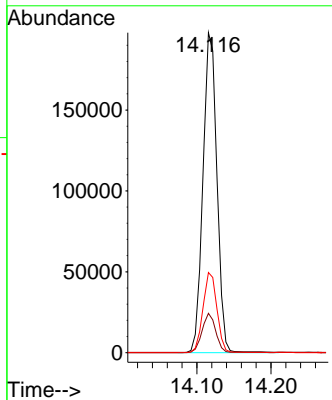
BNA\_F

ClientSampleId :

CC-071325-RW

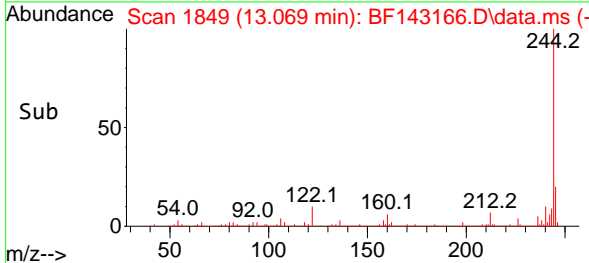
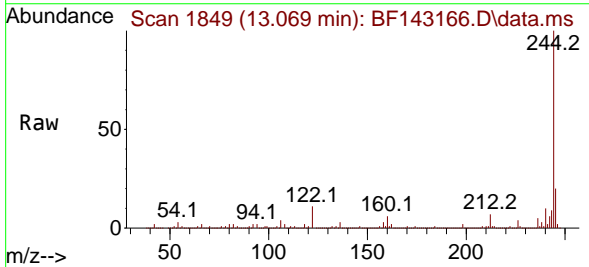
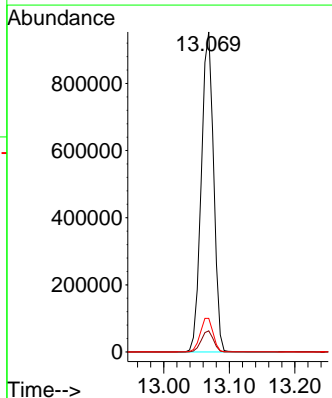


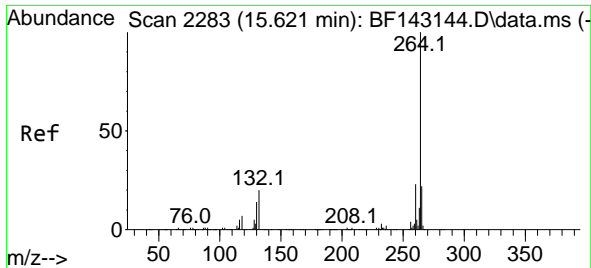
Tgt Ion:240 Resp: 258976  
 Ion Ratio Lower Upper  
 240 100  
 120 12.3 9.4 14.2  
 236 25.1 20.2 30.4



#79  
 Terphenyl-d14  
 Concen: 71.740 ng  
 RT: 13.069 min Scan# 1849  
 Delta R.T. 0.000 min  
 Lab File: BF143166.D  
 Acq: 18 Jul 2025 14:54

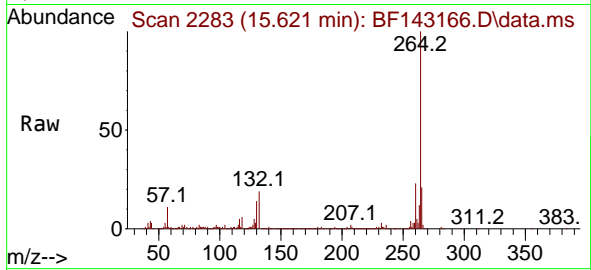
Tgt Ion:244 Resp: 1248495  
 Ion Ratio Lower Upper  
 244 100  
 212 6.6 5.2 7.8  
 122 10.5 8.2 12.2





#86  
 Perylene-d12  
 Concen: 20.000 ng  
 RT: 15.621 min Scan# 21  
 Delta R.T. 0.000 min  
 Lab File: BF143166.D  
 Acq: 18 Jul 2025 14:54

Instrument :  
 BNA\_F  
 ClientSampleId :  
 CC-071325-RW



Tgt Ion:264 Resp: 303472

Ion	Ratio	Lower	Upper
264	100		
260	23.3	18.5	27.7
265	21.4	17.4	26.2

