

Data Path : Z:\HPCHEM1\BNA F\DATA\BF071917\
 Data File : BF096886.D
 Acq On : 19 Jul 2017 22:48
 Operator : SJ/JU
 Sample : I4276-01
 Misc :
 ALS Vial : 19 Sample Multiplier: 1

Instrument :
 BNA_F
ClientSampled :
 TP-2-COMP-(0-8)

Manual Integrations
APPROVED
 Sohil
 7/20/2017 5:09:18 PM

Quant Time: Jul 20 16:24:05 2017
 Quant Method : Z:\HPCHEM1\BNA F\METHODS\8270-BF071317.M
 Quant Title : ASP BNA STANDARDS FOR 5 POINT CALIBRATION
 QLast Update : Tue Jul 18 13:33:22 2017
 Response via : Initial Calibration

Internal Standards	R.T.	QIon	Response	Conc	Units	Dev(Min)
1) 1,4-Dichlorobenzene-d4	6.59	152	101384	20.00	ng	-0.01
21) Naphthalene-d8	7.87	136	449731	20.00	ng	-0.02
38) Acenaphthene-d10	9.62	164	163583	20.00	ng	-0.01
63) Phenanthrene-d10	11.10	188	251241	20.00	ng	0.00
75) Chrysene-d12	13.73	240	177120	20.00	ng	0.00
86) Perylene-d12	15.11	264	149532	20.00	ng	0.00

System Monitoring Compounds

5) 2-Fluorophenol	5.20	112	614405	91.12	ng	0.00
7) Phenol-d6	6.24	99	815754	100.82	ng	-0.01
23) Nitrobenzene-d5	7.15	82	477690	65.79	ng	-0.02
41) 2,4,6-Tribromophenol	10.40	330	125945	90.20	ng	-0.02
44) 2-Fluorobiphenyl	8.95	172	649817	62.76	ng	-0.01
78) Terphenyl-d14	12.69	244	393082	38.49	ng	0.00

Target Compounds

	R.T.	QIon	Response	Conc	Units	Qvalue
10) Phenol	6.25	94	44233	4.836	ng	94
31) Naphthalene	7.89	128	560575	26.312	ng	99
37) 2-Methylnaphthalene	8.58	142	94836	6.982	ng	98
45) 1,1'-Biphenyl	9.05	154	30931	2.205	ng	99
48) Acenaphthylene	9.48	152	47166	2.865	ng	97
49) Dimethylphthalate	9.35	163	107639	8.739	ng	99
51) Acenaphthene	9.65	154	208014	21.392	ng	99
54) Dibenzofuran	9.82	168	208106	15.273	ng	99
57) Fluorene	10.16	166	194734	19.340	ng	96
70) Phenanthrene	11.13	178	1570873	114.991	ng	99
71) Anthracene	11.17	178	475096	34.397	ng	99
72) Carbazole	11.33	167	321149	24.010	ng	100
74) Fluoranthene	12.32	202	1668786	127.624	ng	99
77) Pyrene	12.55	202	1325386	82.452	ng	99
80) Benzo(a)anthracene	13.73	228	671475	60.844	ng	99
82) Chrysene	13.76	228	577979	53.199	ng	97
85) Indeno(1,2,3-cd)pyrene	16.39	276	245805	26.071	ng	94
87) Benzo(b)fluoranthene	14.73	252	679283m	75.321	ng	
88) Benzo(k)fluoranthene	14.76	252	172126m	20.155	ng	
89) Benzo(a)pyrene	15.06	252	443211	53.583	ng	97
90) Dibenzo(a,h)anthracene	16.40	278	63641	8.362	ng	# 76
91) Benzo(g,h,i)perylene	16.78	276	218568	26.817	ng	95

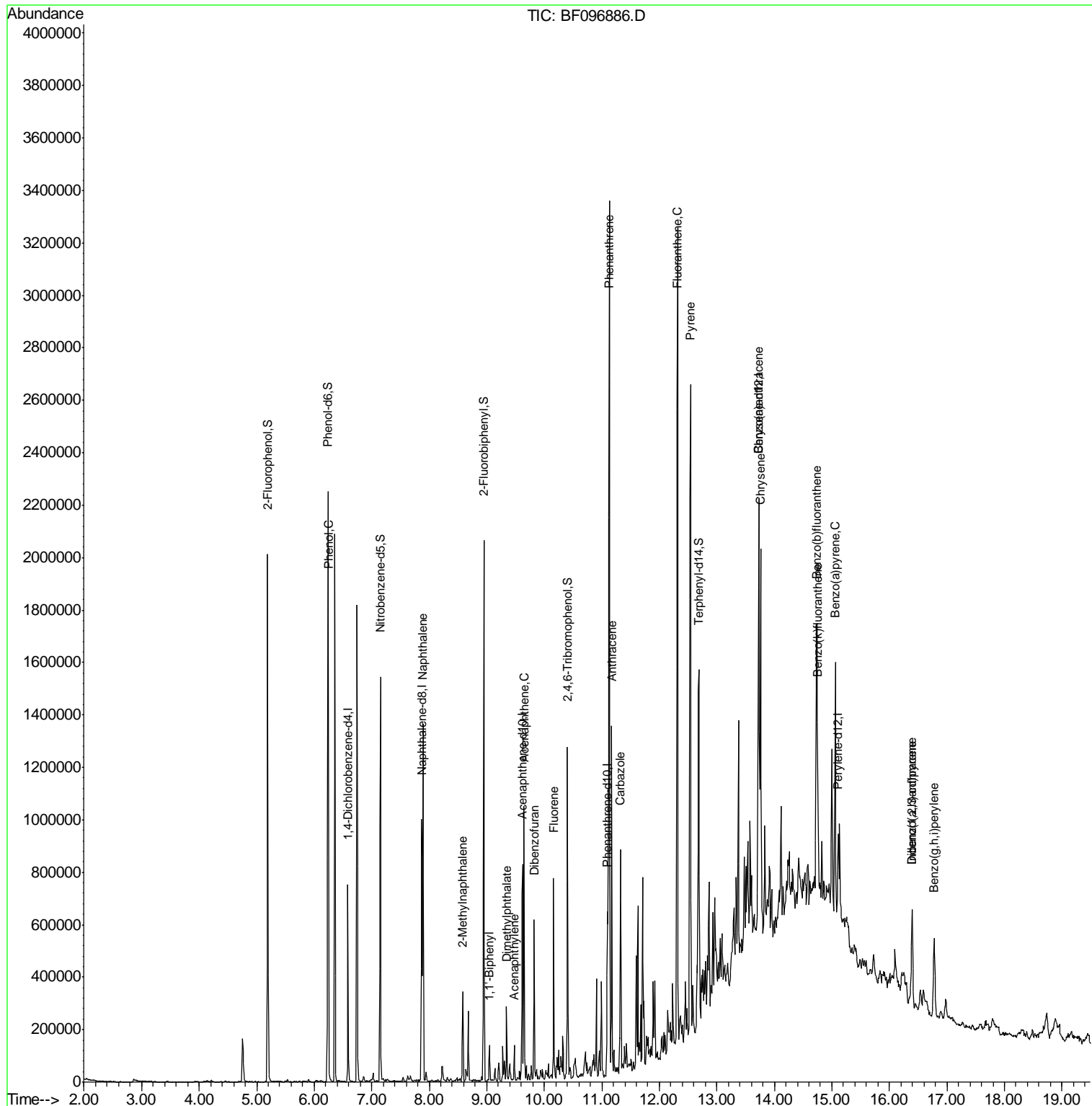
(#) = qualifier out of range (m) = manual integration (+) = signals summed

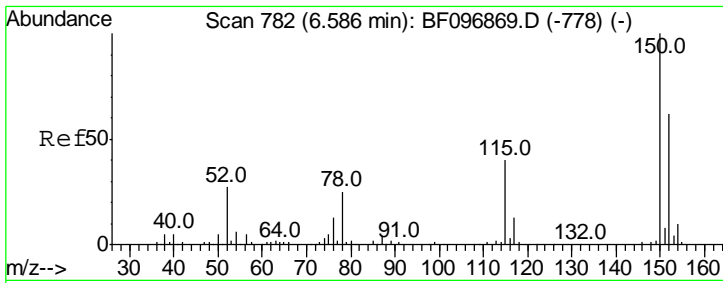
Data Path : Z:\HPCHEM1\BNA F\DATA\BF071917\
 Data File : BF096886.D
 Acq On : 19 Jul 2017 22:48
 Operator : SJ/JU
 Sample : I4276-01
 Misc :
 ALS Vial : 19 Sample Multiplier: 1

Instrument :
 BNA_F
 Client Sampled :
 TP-2-COMP-(0-8)

Manual Integrations
APPROVED
 Sohil
 7/20/2017 5:09:18 PM

Quant Time: Jul 20 16:24:05 2017
 Quant Method : Z:\HPCHEM1\BNA F\METHODS\8270-BF071317.M
 Quant Title : ASP BNA STANDARDS FOR 5 POINT CALIBRATION
 QLast Update : Tue Jul 18 13:33:22 2017
 Response via : Initial Calibration



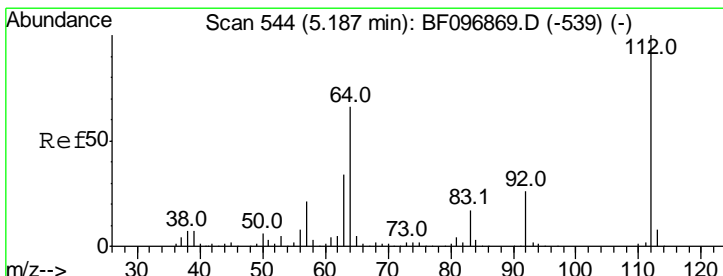
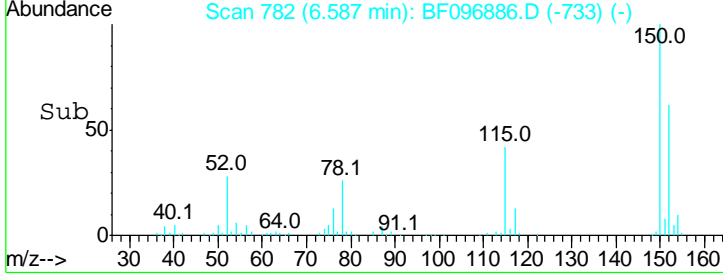
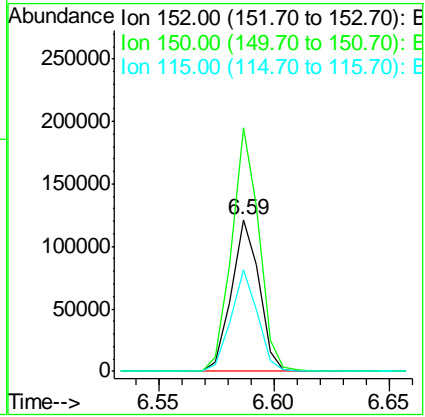
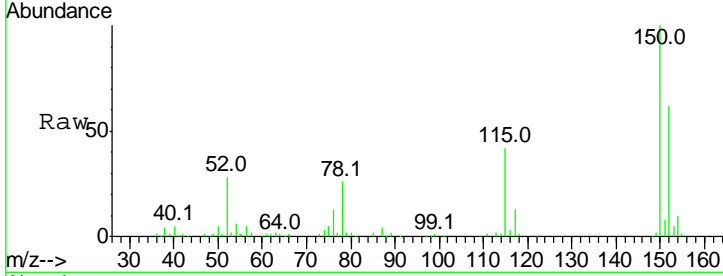


#1
 1,4-Dichlorobenzene-d4
 Concen: 20.000 ng
 RT: 6.59 min Scan# 782
 Delta R.T. -0.01 min
 Lab File: BF096886.D
 Acq: 19 Jul 2017 22:48

Instrument :
 BNA_F
ClientSampled :
 TP-2-COMP-(0-8)

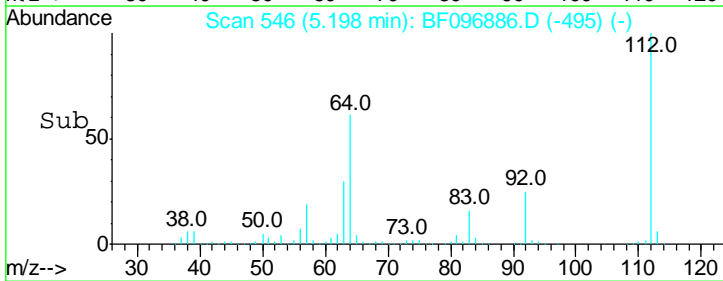
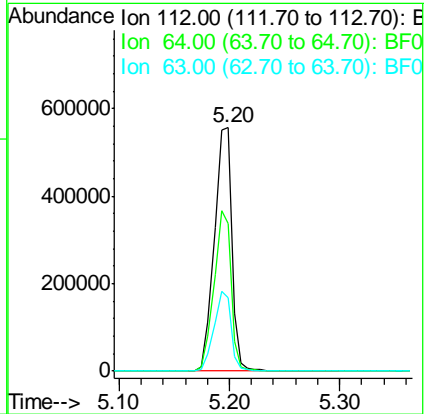
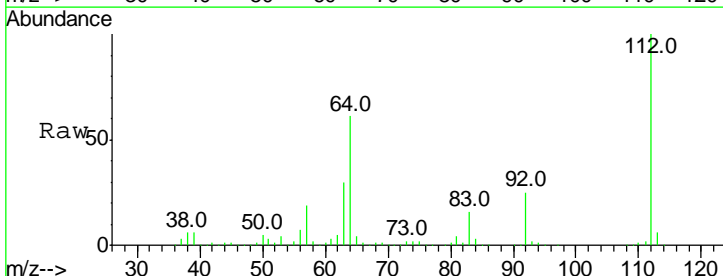
Tgt Ion	Resp	Lower	Upper
152	101384		
152	100		
150	160.1	126.2	189.2
115	67.1	52.2	78.2

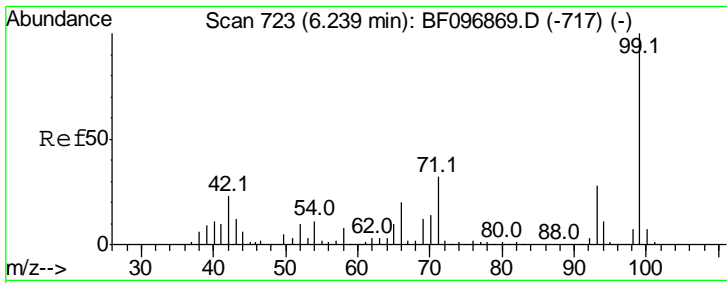
Manual Integrations
APPROVED
 Sohil
 7/20/2017 5:09:18 PM



#5
 2-Fluorophenol
 Concen: 91.120 ng
 RT: 5.20 min Scan# 546
 Delta R.T. 0.00 min
 Lab File: BF096886.D
 Acq: 19 Jul 2017 22:48

Tgt Ion	Resp	Lower	Upper
112	614405		
112	100		
64	60.5	46.0	69.0
63	30.2	23.4	35.0





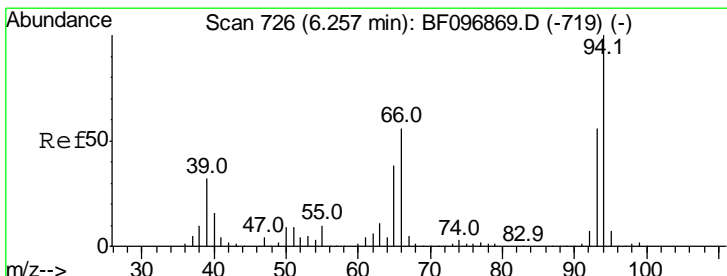
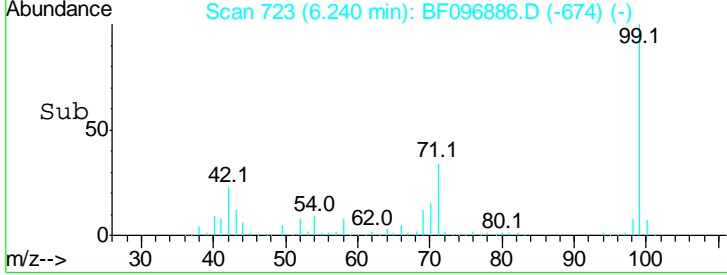
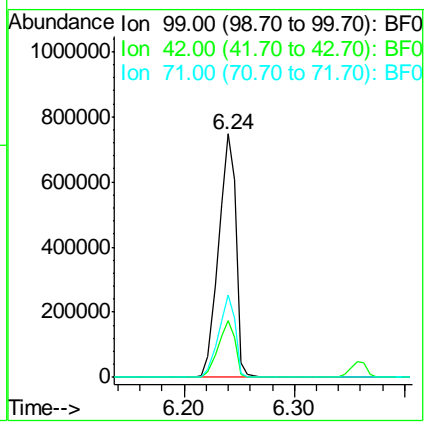
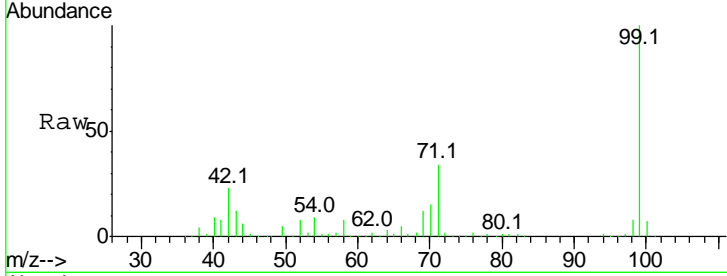
#7
 Phenol-d6
 Concen: 100.815 ng
 RT: 6.24 min Scan# 723
 Delta R.T. -0.01 min
 Lab File: BF096886.D
 Acq: 19 Jul 2017 22:48

Instrument :
 BNA_F
ClientSampled :
 TP-2-COMP-(0-8)

Tgt Ion: 99 Resp: 815754

Ion	Ratio	Lower	Upper
99	100		
42	23.1	13.5	20.3#
71	33.6	24.5	36.7

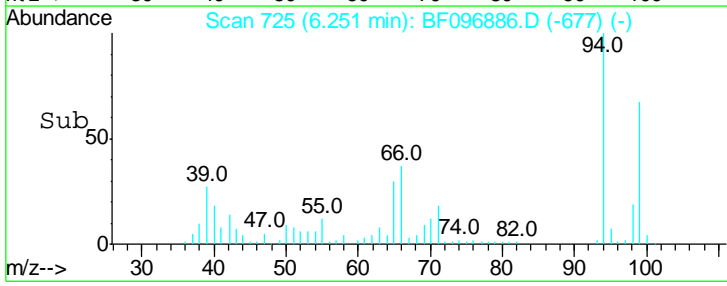
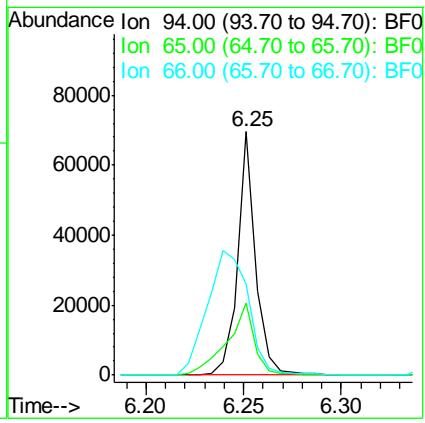
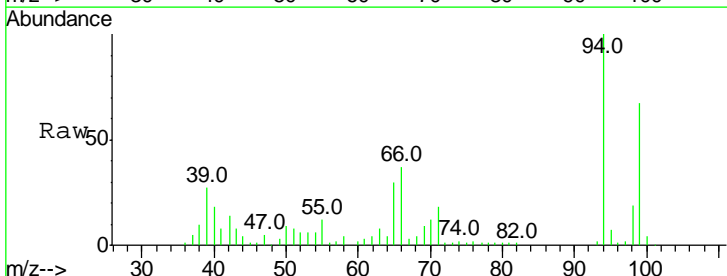
Manual Integrations
APPROVED
 Sohil
 7/20/2017 5:09:18 PM

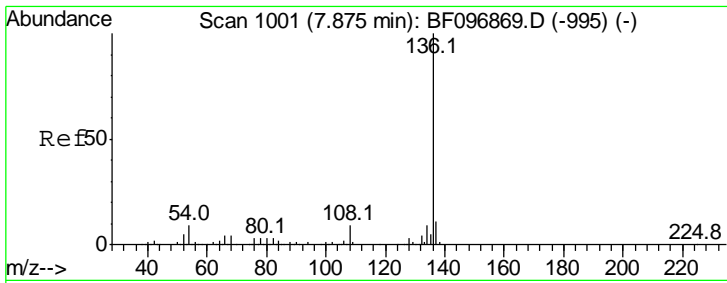


#10
 Phenol
 Concen: 4.836 ng
 RT: 6.25 min Scan# 725
 Delta R.T. -0.02 min
 Lab File: BF096886.D
 Acq: 19 Jul 2017 22:48

Tgt Ion: 94 Resp: 44233

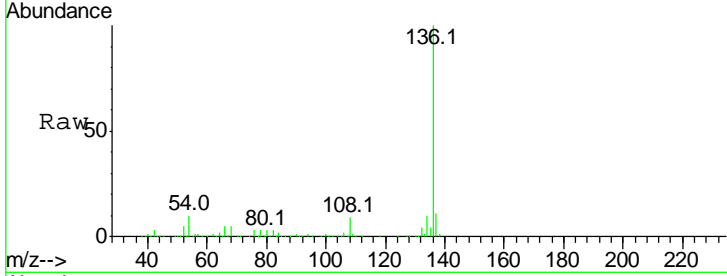
Ion	Ratio	Lower	Upper
94	100		
65	29.6	9.9	49.9
66	37.3	23.1	63.1





#21
 Naphthalene-d8
 Concen: 20.000 ng
 RT: 7.87 min Scan# 1000
 Delta R.T. -0.02 min
 Lab File: BF096886.D
 Acq: 19 Jul 2017 22:48

Instrument :
 BNA_F
ClientSampled :
 TP-2-COMP-(0-8)

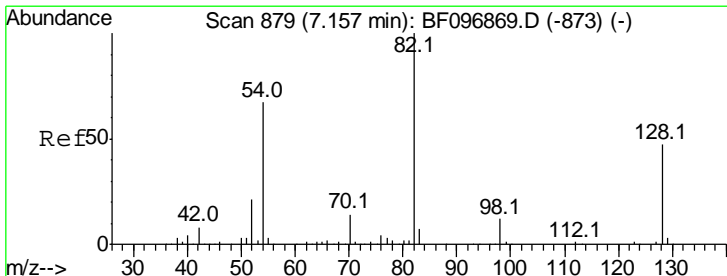
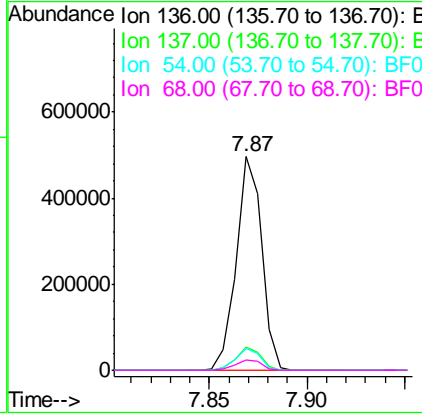
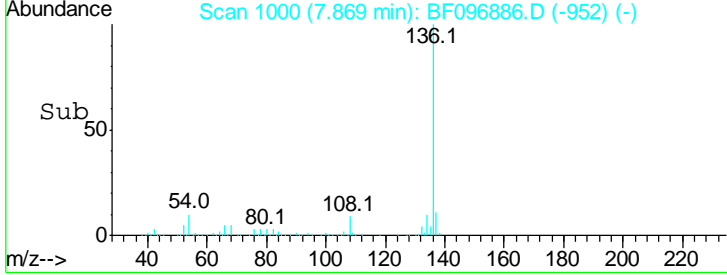


Tgt Ion: 136 Resp: 449731

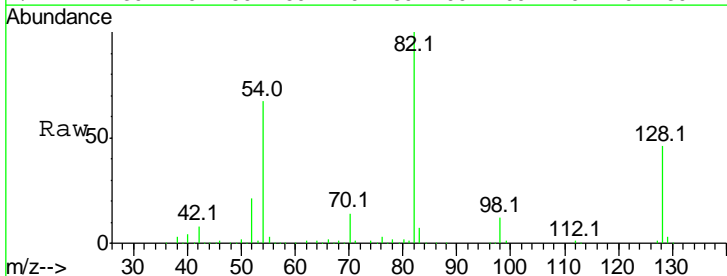
Ion	Ratio	Lower	Upper
136	100		
137	11.0	8.5	12.7
54	10.5	4.9	7.3#
68	4.7	4.1	6.1

Manual Integrations
APPROVED

Sohil
 7/20/2017 5:09:18 PM

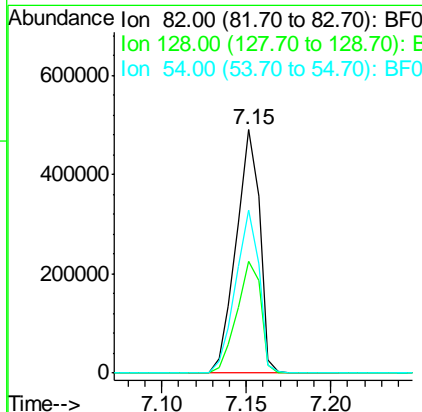
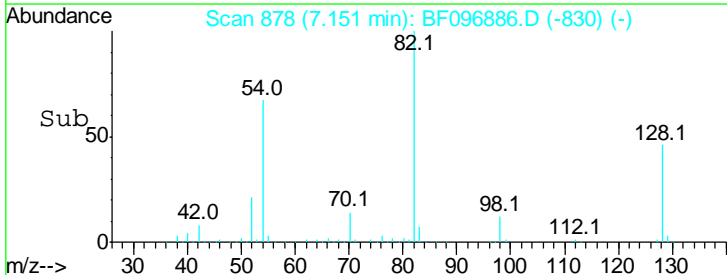


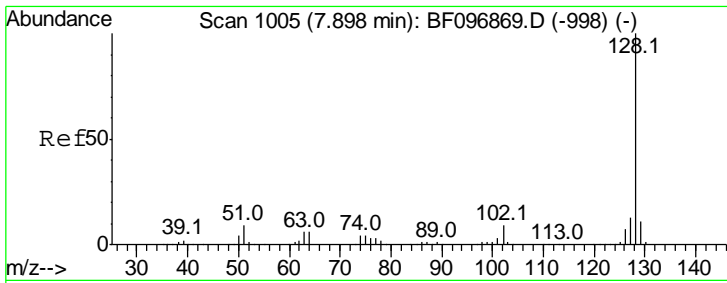
#23
 Nitrobenzene-d5
 Concen: 65.792 ng
 RT: 7.15 min Scan# 878
 Delta R.T. -0.02 min
 Lab File: BF096886.D
 Acq: 19 Jul 2017 22:48



Tgt Ion: 82 Resp: 477690

Ion	Ratio	Lower	Upper
82	100		
128	45.8	34.0	51.0
54	67.1	42.2	63.2#





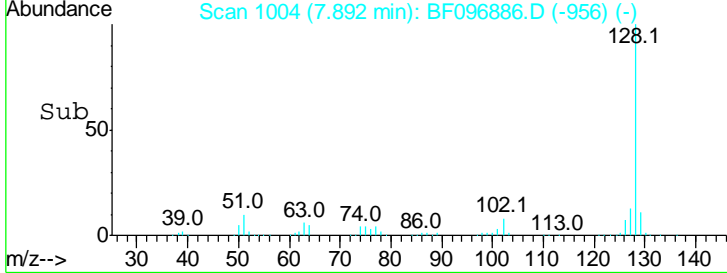
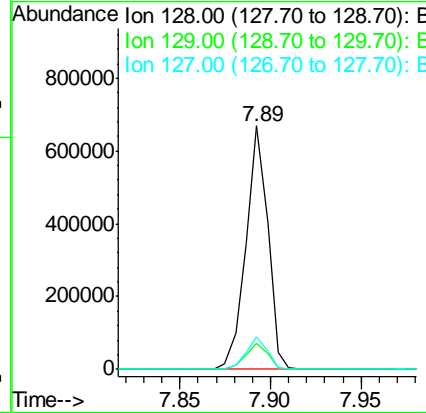
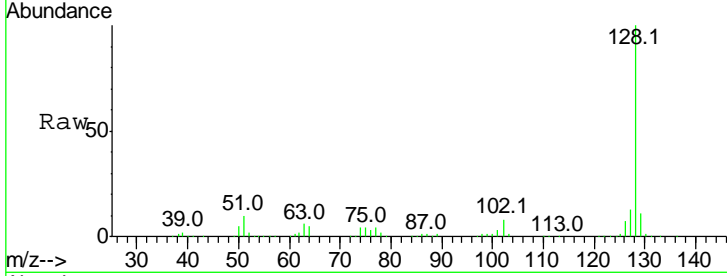
#31
 Naphthalene
 Concen: 26.312 ng
 RT: 7.89 min Scan# 1004
 Delta R.T. -0.02 min
 Lab File: BF096886.D
 Acq: 19 Jul 2017 22:48

Instrument :
 BNA_F
 ClientSampled :
 TP-2-COMP-(0-8)

Tgt Ion	Resp	Lower	Upper
128	100		
129	10.8	9.0	13.6
127	13.2	10.8	16.2

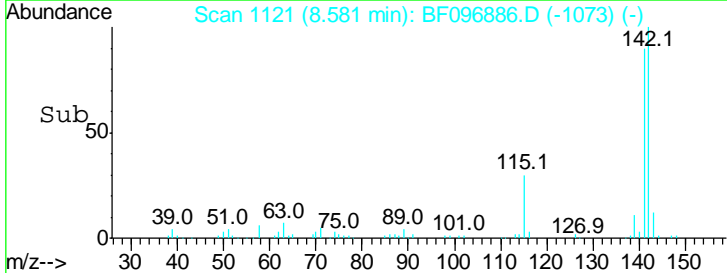
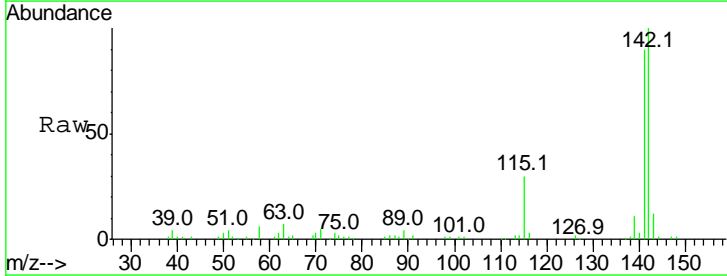
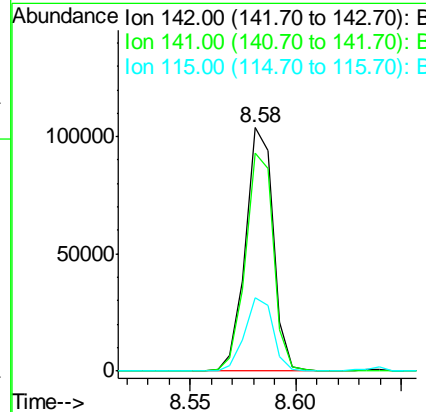
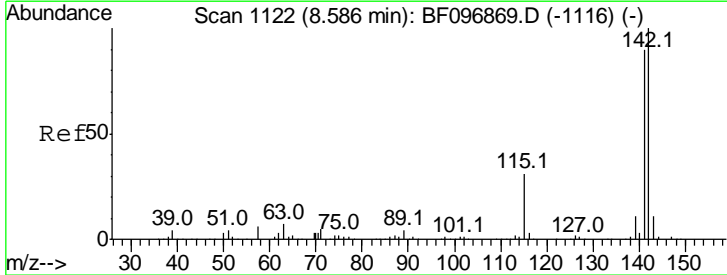
Manual Integrations
 APPROVED

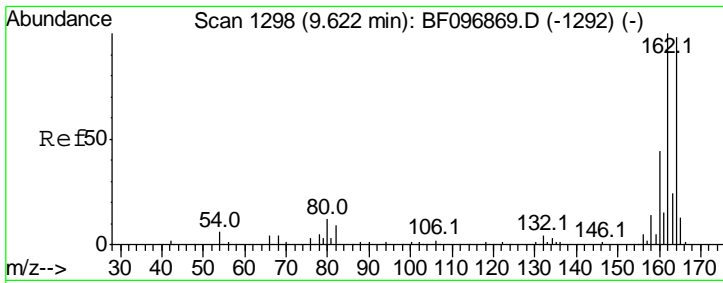
Sohil
 7/20/2017 5:09:18 PM



#37
 2-Methylnaphthalene
 Concen: 6.982 ng
 RT: 8.58 min Scan# 1121
 Delta R.T. -0.02 min
 Lab File: BF096886.D
 Acq: 19 Jul 2017 22:48

Tgt Ion	Resp	Lower	Upper
142	100		
141	89.8	71.3	106.9
115	30.4	27.1	40.7





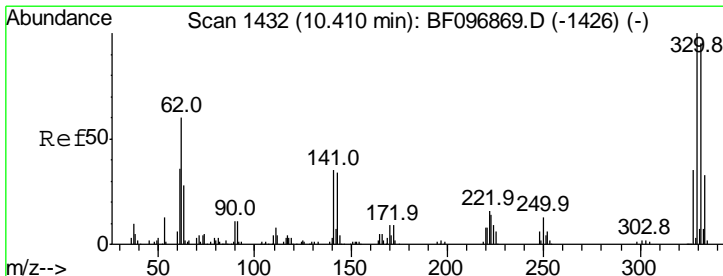
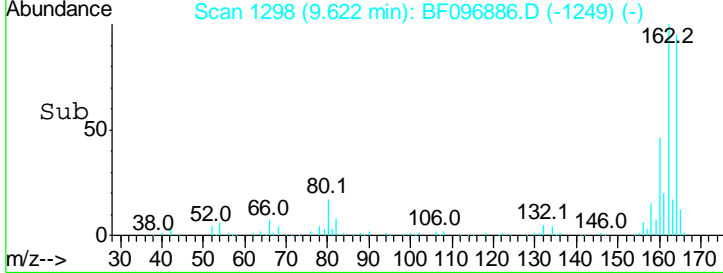
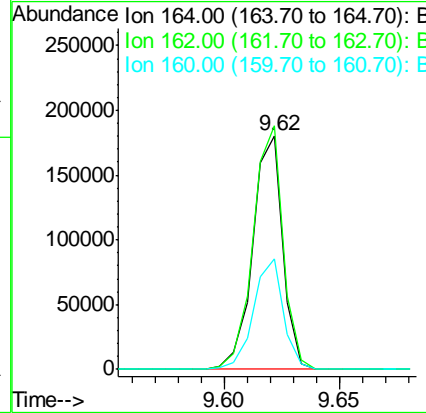
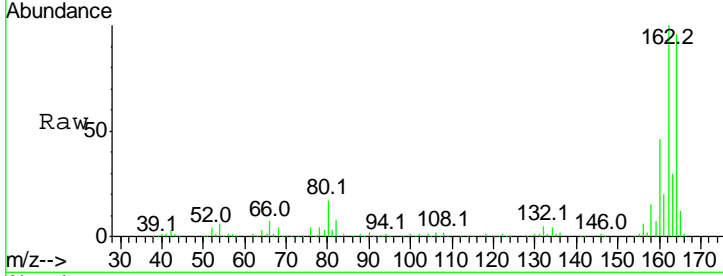
#38
 Acenaphthene-d10
 Concen: 20.000 ng
 RT: 9.62 min Scan# 1298
 Delta R.T. -0.01 min
 Lab File: BF096886.D
 Acq: 19 Jul 2017 22:48

Instrument :
 BNA_F
 ClientSampled :
 TP-2-COMP-(0-8)

Tgt Ion	Resp	Lower	Upper
164	100		
162	104.2	82.6	123.8
160	47.5	36.2	54.2

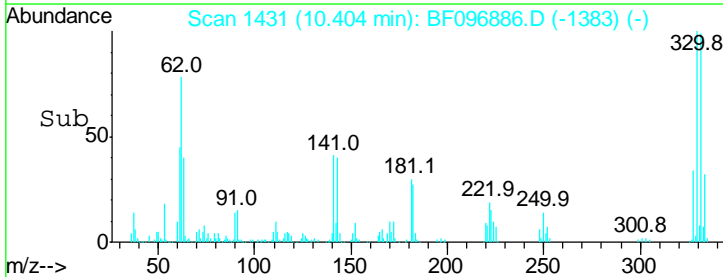
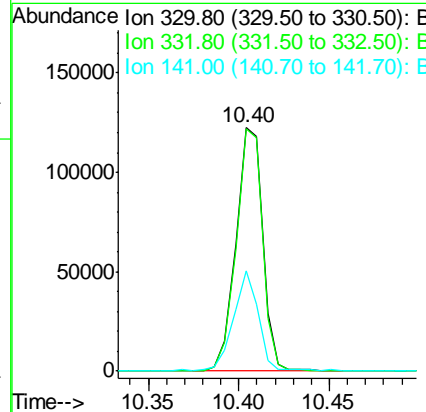
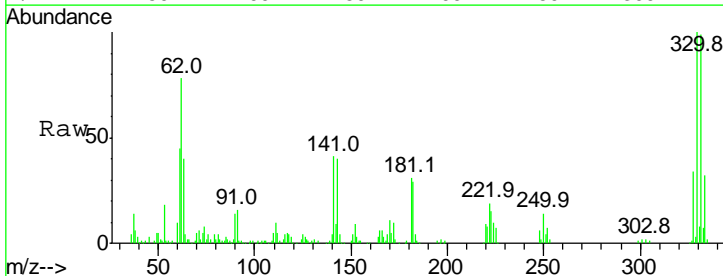
Manual Integrations
 APPROVED

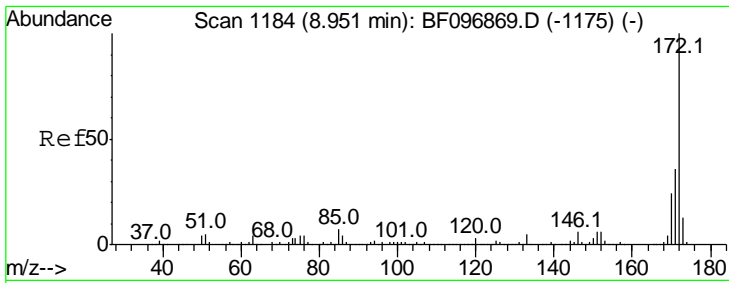
Sohil
 7/20/2017 5:09:18 PM



#41
 2,4,6-Tribromophenol
 Concen: 90.198 ng
 RT: 10.40 min Scan# 1431
 Delta R.T. -0.02 min
 Lab File: BF096886.D
 Acq: 19 Jul 2017 22:48

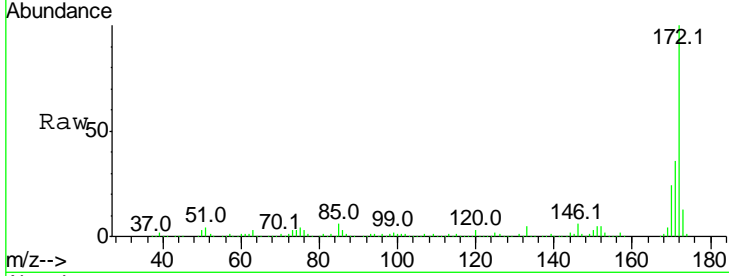
Tgt Ion	Resp	Lower	Upper
330	100		
332	98.3	76.6	115.0
141	39.1	31.4	47.2





#44
 2-Fluorobiphenyl
 Concen: 62.761 ng
 RT: 8.95 min Scan# 1184
 Delta R.T. -0.01 min
 Lab File: BF096886.D
 Acq: 19 Jul 2017 22:48

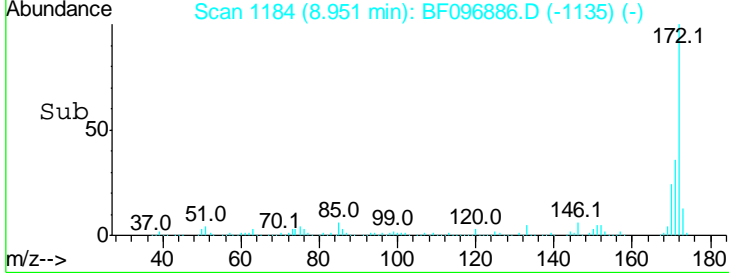
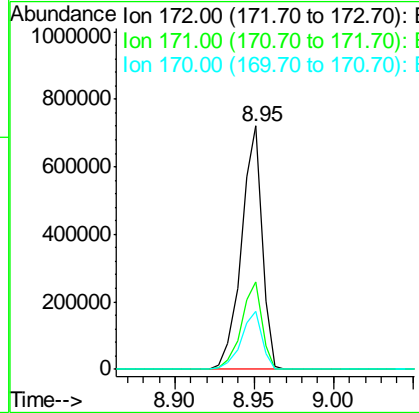
Instrument :
 BNA_F
ClientSampled :
 TP-2-COMP-(0-8)



Tgt Ion: 172 Resp: 649817

Ion	Ratio	Lower	Upper
172	100		
171	35.9	29.6	44.4
170	23.9	19.8	29.8

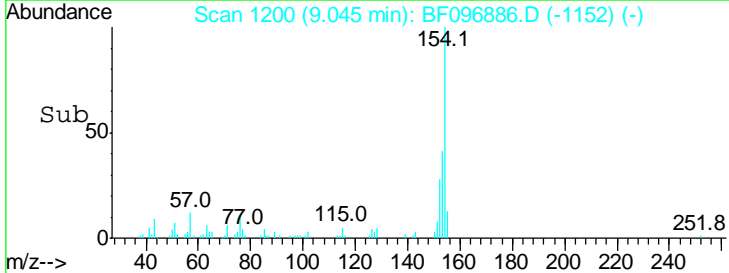
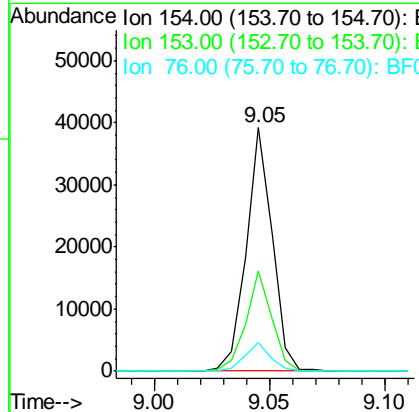
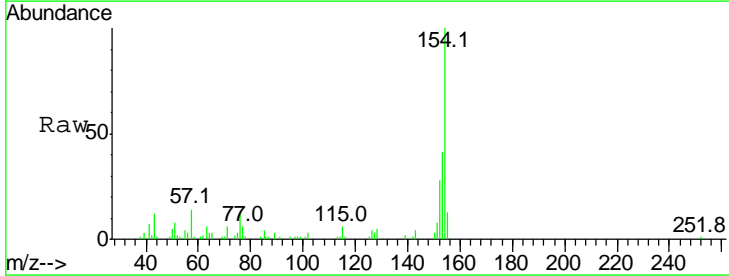
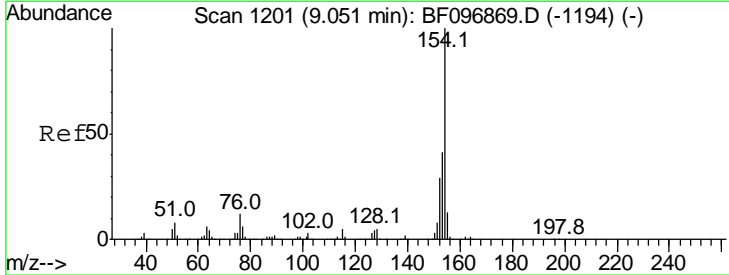
Manual Integrations
APPROVED
 Sohil
 7/20/2017 5:09:18 PM

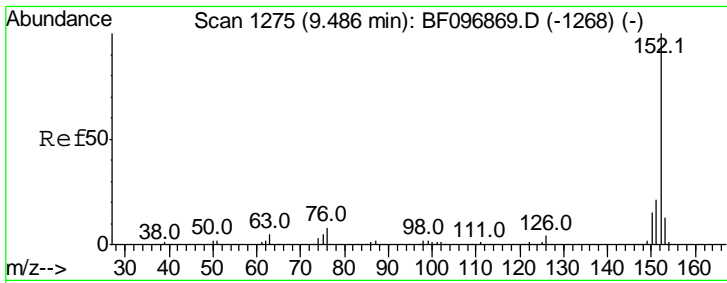


#45
 1,1'-Biphenyl
 Concen: 2.205 ng
 RT: 9.05 min Scan# 1200
 Delta R.T. -0.02 min
 Lab File: BF096886.D
 Acq: 19 Jul 2017 22:48

Tgt Ion: 154 Resp: 30931

Ion	Ratio	Lower	Upper
154	100		
153	41.0	21.2	61.2
76	11.9	0.0	29.9





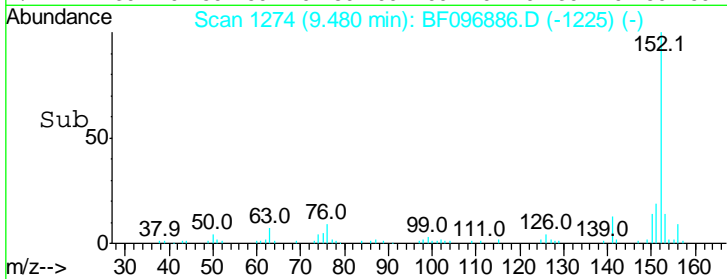
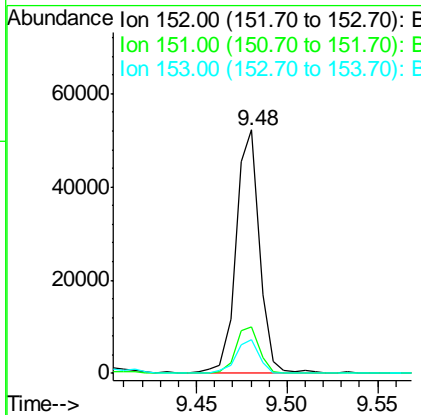
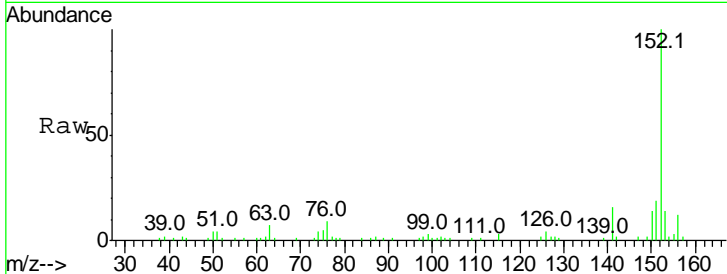
#48
 Acenaphthylene
 Concen: 2.865 ng
 RT: 9.48 min Scan# 1274
 Delta R.T. -0.01 min
 Lab File: BF096886.D
 Acq: 19 Jul 2017 22:48

Instrument :
 BNA_F
ClientSampled :
 TP-2-COMP-(0-8)

Tgt Ion	Resp	Lower	Upper
152	100		
151	19.0	16.8	25.2
153	14.1	10.8	16.2

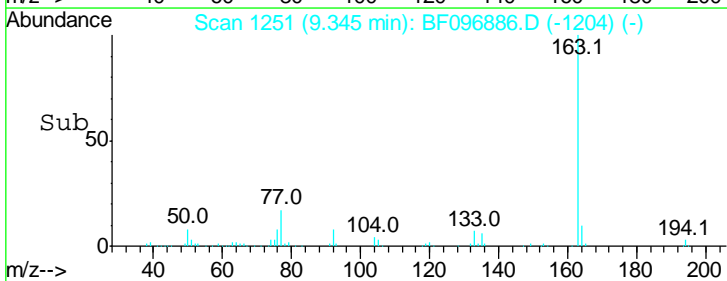
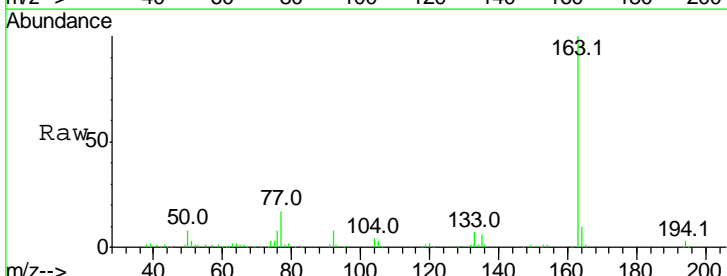
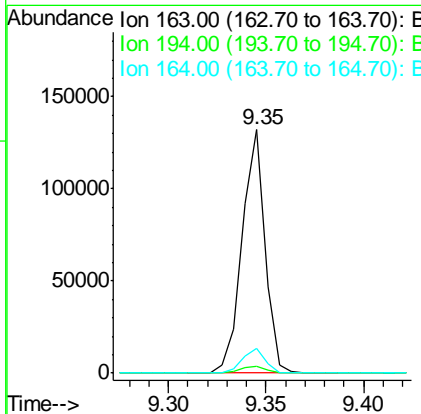
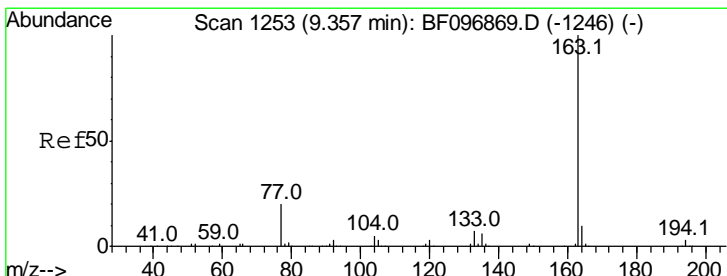
Manual Integrations
APPROVED

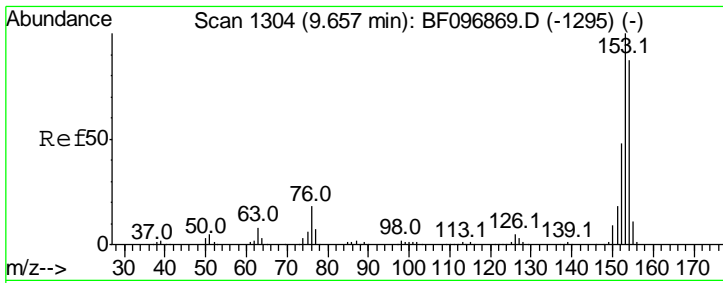
Sohil
 7/20/2017 5:09:18 PM



#49
 Dimethylphthalate
 Concen: 8.739 ng
 RT: 9.35 min Scan# 1251
 Delta R.T. -0.02 min
 Lab File: BF096886.D
 Acq: 19 Jul 2017 22:48

Tgt Ion	Resp	Lower	Upper
163	100		
194	2.8	2.6	4.0
164	10.1	8.4	12.6





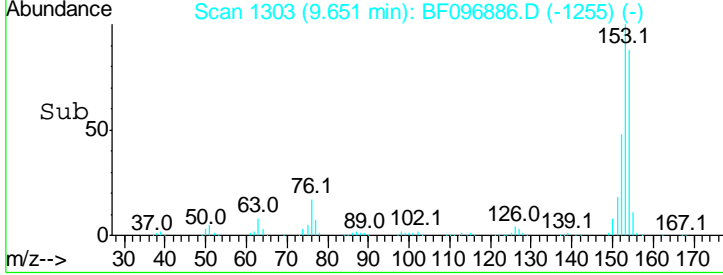
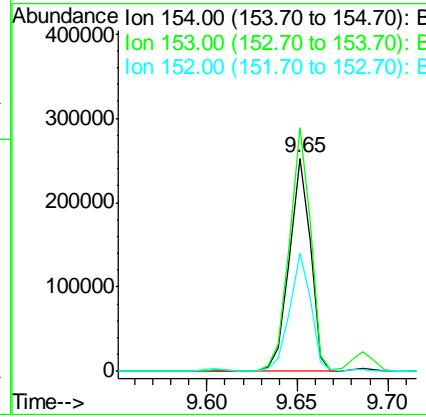
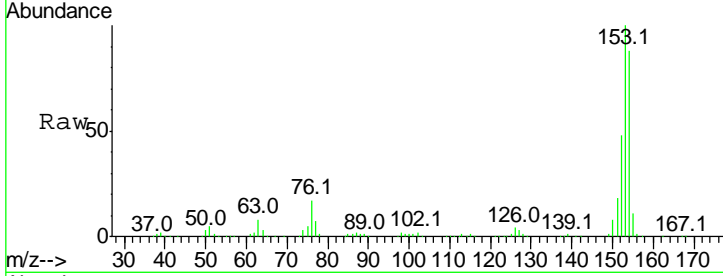
#51
 Acenaphthene
 Concen: 21.392 ng
 RT: 9.65 min Scan# 1303
 Delta R.T. -0.02 min
 Lab File: BF096886.D
 Acq: 19 Jul 2017 22:48

Instrument :
 BNA_F
 ClientSampled :
 TP-2-COMP-(0-8)

Tgt Ion	Resp	Lower	Upper
154	100		
153	114.2	90.5	135.7
152	55.2	43.6	65.4

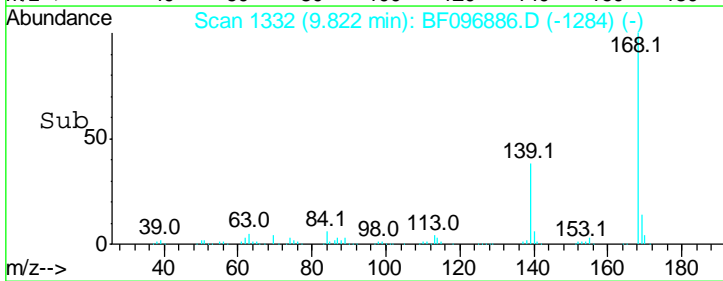
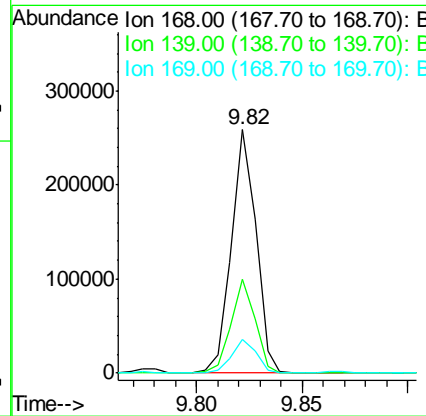
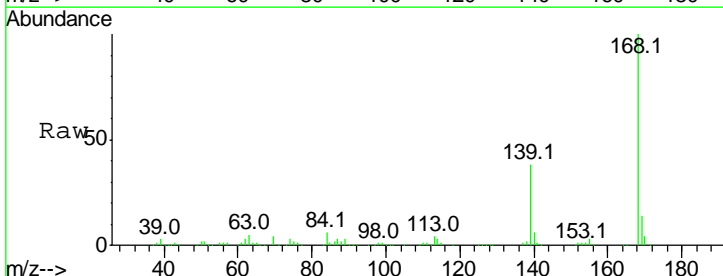
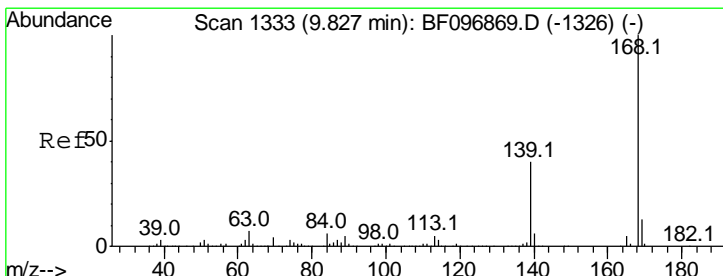
Manual Integrations
 APPROVED

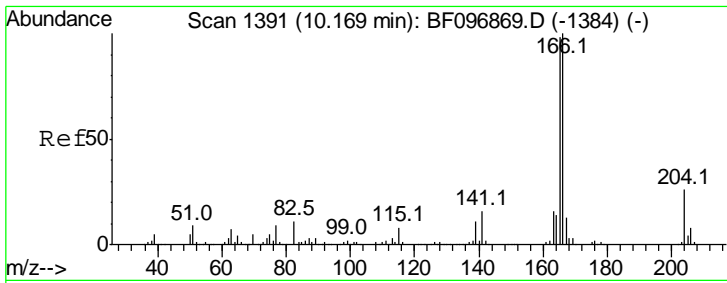
Sohil
 7/20/2017 5:09:18 PM



#54
 Dibenzofuran
 Concen: 15.273 ng
 RT: 9.82 min Scan# 1332
 Delta R.T. -0.02 min
 Lab File: BF096886.D
 Acq: 19 Jul 2017 22:48

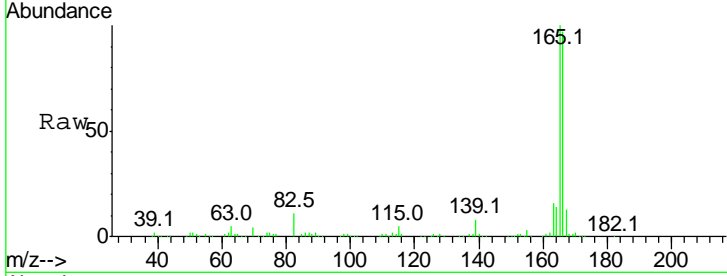
Tgt Ion	Resp	Lower	Upper
168	100		
168	38.4	30.6	45.8
169	14.1	10.8	16.2





#57
 Fluorene
 Concen: 19.340 ng
 RT: 10.16 min Scan# 1390
 Delta R.T. -0.02 min
 Lab File: BF096886.D
 Acq: 19 Jul 2017 22:48

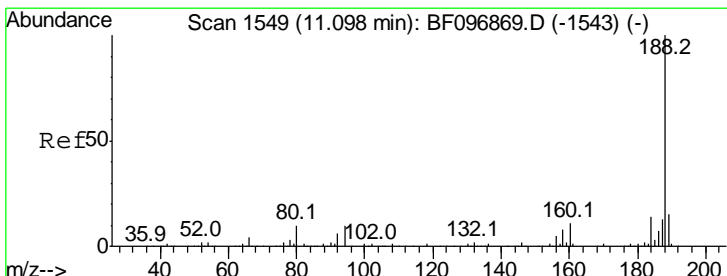
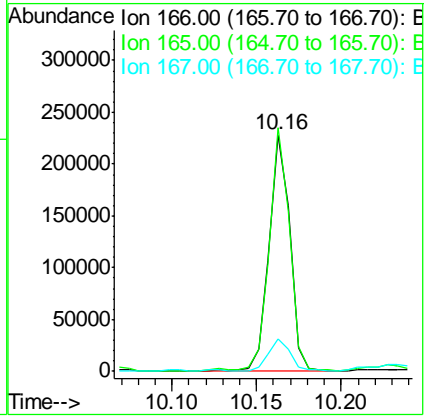
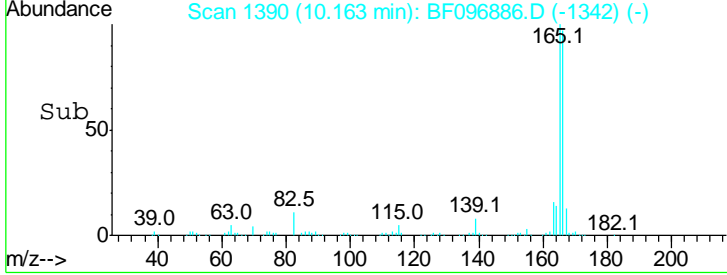
Instrument :
 BNA_F
Client Sampled :
 TP-2-COMP-(0-8)



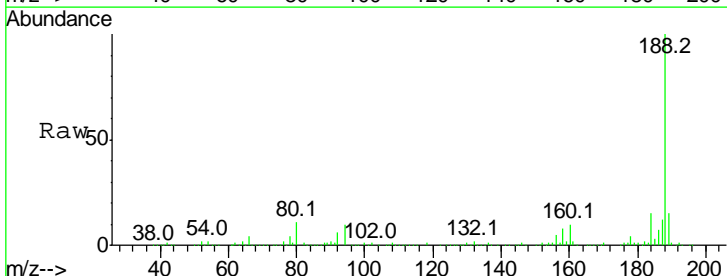
Tgt Ion: 166 Resp: 194734

Ion	Ratio	Lower	Upper
166	100		
165	103.0	78.8	118.2
167	13.8	10.6	16.0

Manual Integrations
APPROVED
 Sohil
 7/20/2017 5:09:18 PM

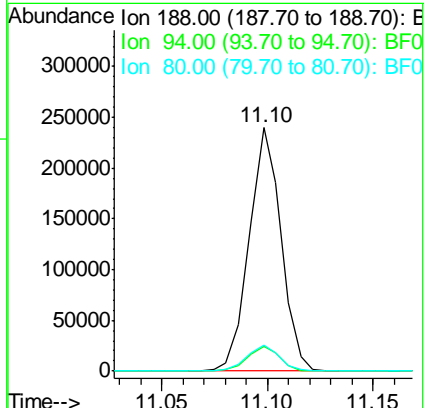
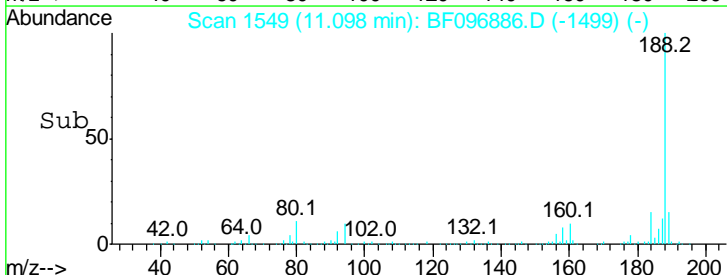


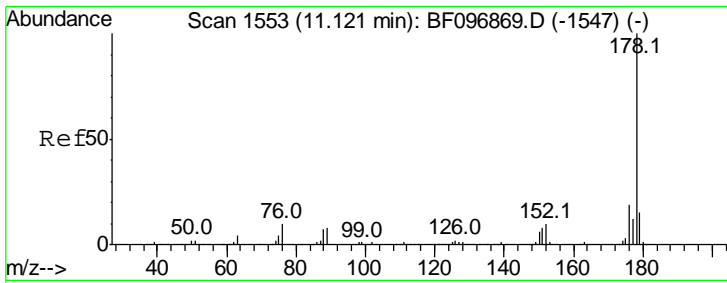
#63
 Phenanthrene-d10
 Concen: 20.000 ng
 RT: 11.10 min Scan# 1549
 Delta R.T. -0.01 min
 Lab File: BF096886.D
 Acq: 19 Jul 2017 22:48



Tgt Ion: 188 Resp: 251241

Ion	Ratio	Lower	Upper
188	100		
94	10.0	9.4	14.2
80	10.6	10.2	15.2





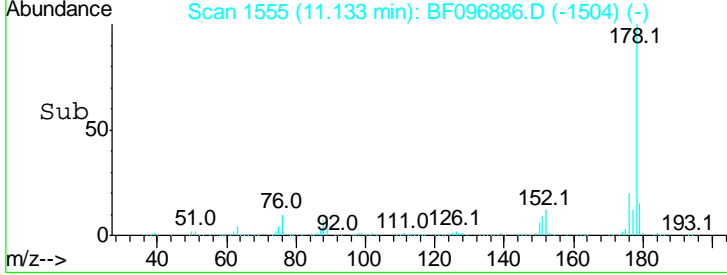
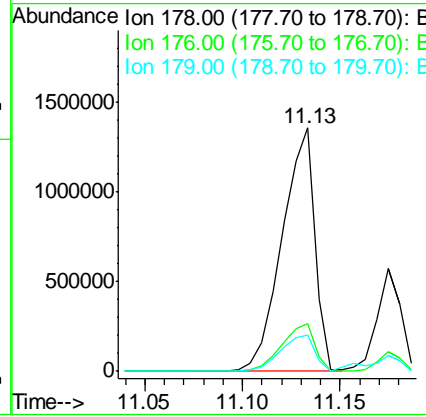
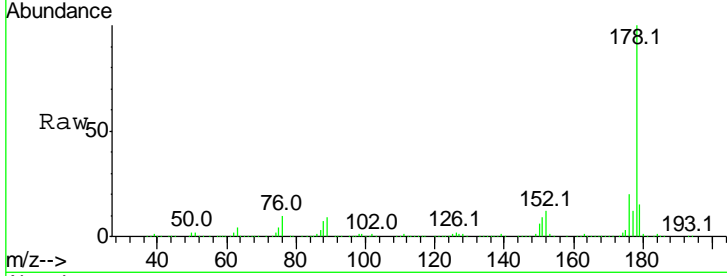
#70
 Phenanthrene
 Concen: 114.991 ng
 RT: 11.13 min Scan# 1555
 Delta R.T. 0.00 min
 Lab File: BF096886.D
 Acq: 19 Jul 2017 22:48

Instrument :
 BNA_F
Client Sampled :
 TP-2-COMP-(0-8)

Tgt Ion:178 Resp: 1570873

Ion	Ratio	Lower	Upper
178	100		
176	19.9	16.2	24.4
179	15.0	12.6	19.0

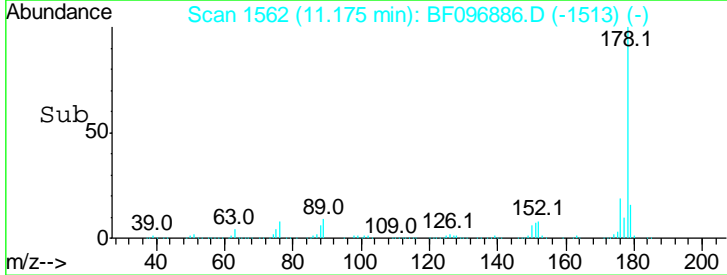
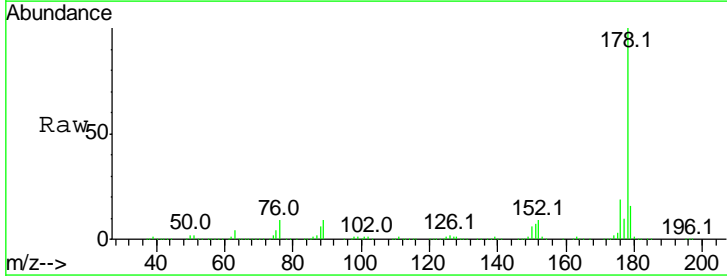
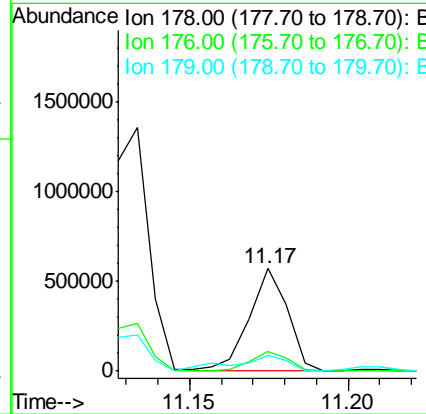
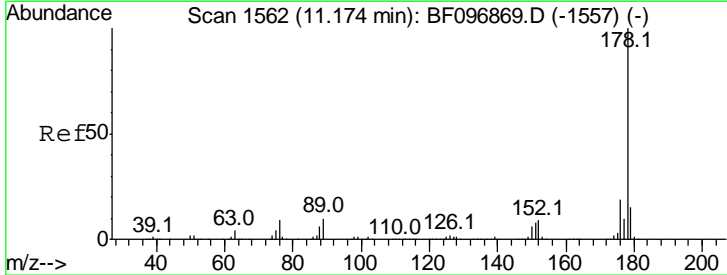
Manual Integrations
APPROVED
 Sohil
 7/20/2017 5:09:18 PM

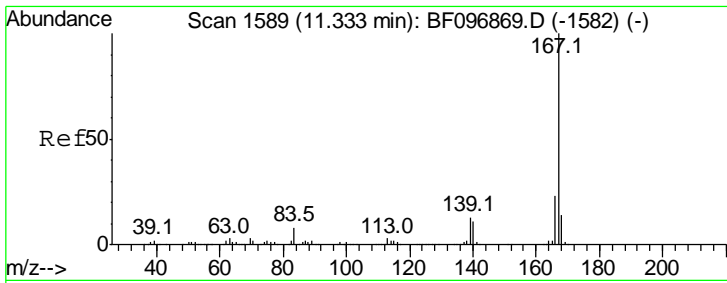


#71
 Anthracene
 Concen: 34.397 ng
 RT: 11.17 min Scan# 1562
 Delta R.T. -0.01 min
 Lab File: BF096886.D
 Acq: 19 Jul 2017 22:48

Tgt Ion:178 Resp: 475096

Ion	Ratio	Lower	Upper
178	100		
176	19.0	15.8	23.8
179	16.0	12.7	19.1





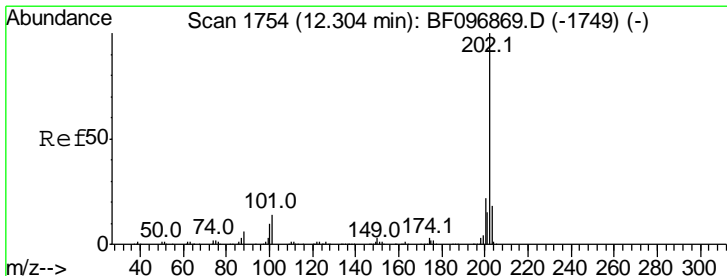
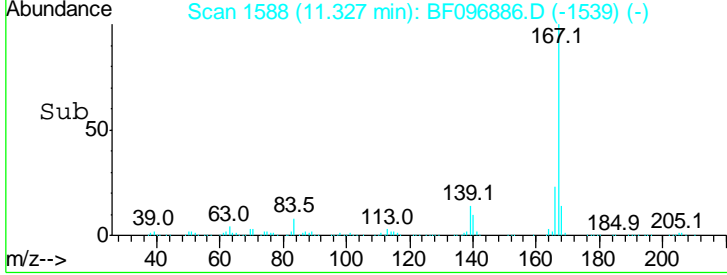
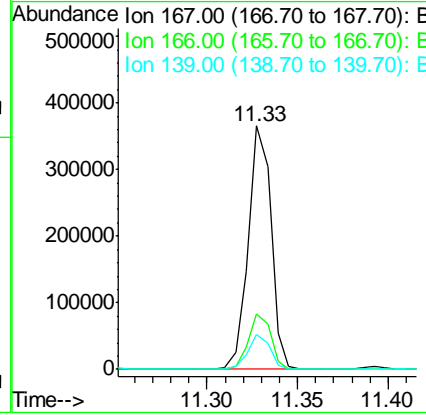
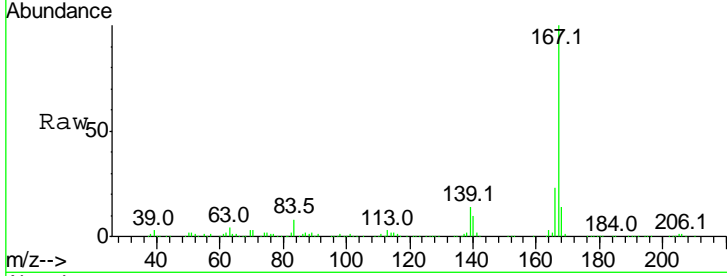
#72
 Carbazole
 Concen: 24.010 ng
 RT: 11.33 min Scan# 1588
 Delta R.T. -0.01 min
 Lab File: BF096886.D
 Acq: 19 Jul 2017 22:48

Instrument :
 BNA_F
ClientSampled :
 TP-2-COMP-(0-8)

Tgt Ion	Resp	Lower	Upper
167	100		
166	22.8	18.1	27.1
139	14.4	11.7	17.5

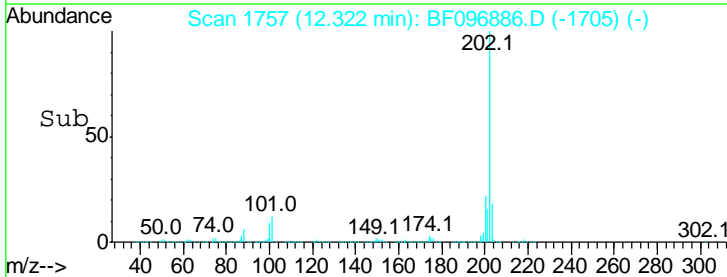
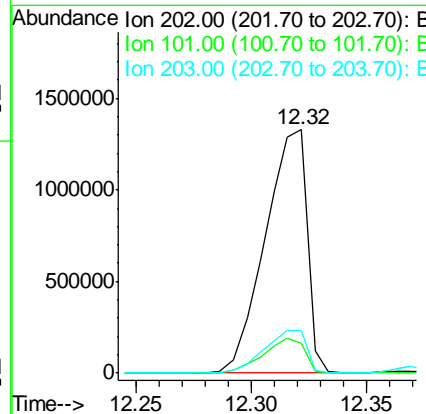
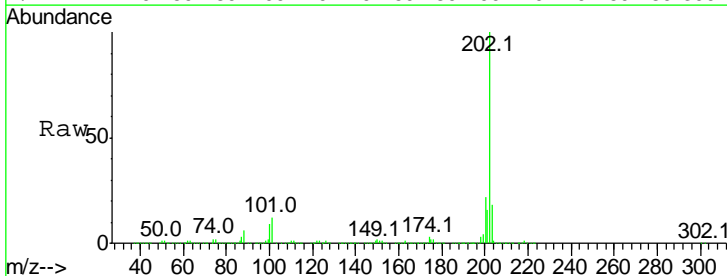
Manual Integrations
APPROVED

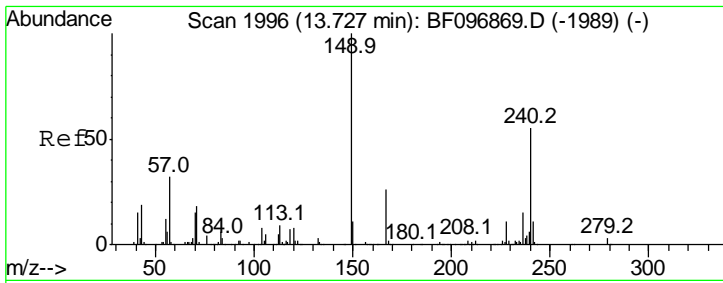
Sohil
 7/20/2017 5:09:18 PM



#74
 Fluoranthene
 Concen: 127.624 ng
 RT: 12.32 min Scan# 1757
 Delta R.T. 0.01 min
 Lab File: BF096886.D
 Acq: 19 Jul 2017 22:48

Tgt Ion	Resp	Lower	Upper
202	100		
101	12.4	0.0	33.2
203	17.7	0.0	38.1



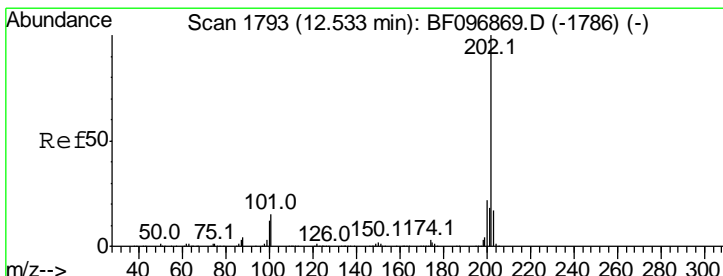
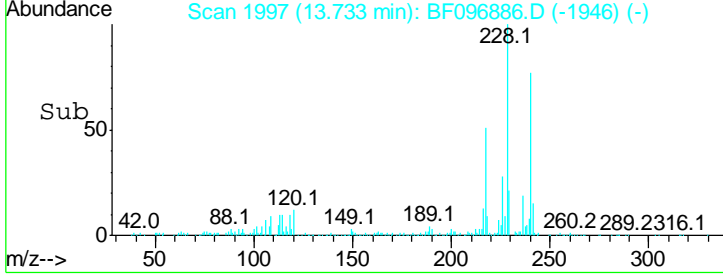
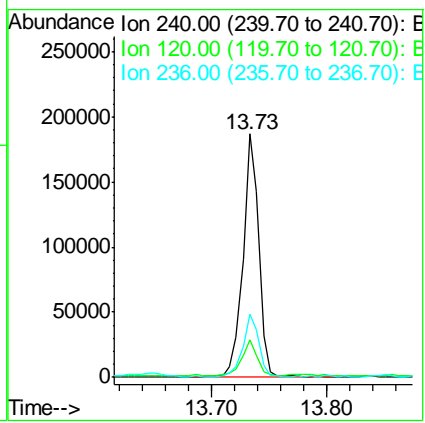
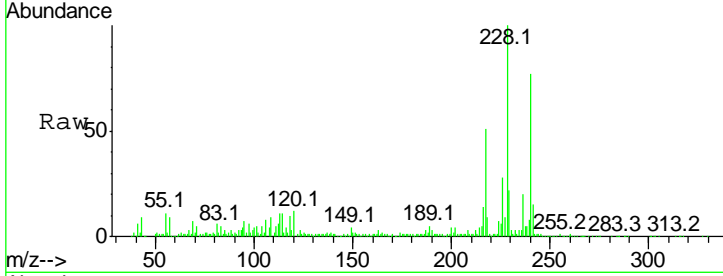


#75
 Chrysene-d12
 Concen: 20.000 ng
 RT: 13.73 min Scan# 1997
 Delta R.T. 0.00 min
 Lab File: BF096886.D
 Acq: 19 Jul 2017 22:48

Instrument :
 BNA_F
Client Sampled :
 TP-2-COMP-(0-8)

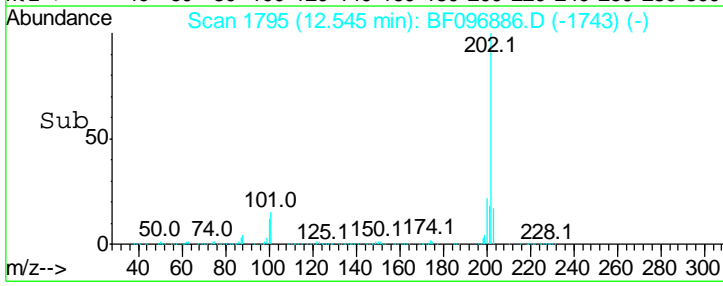
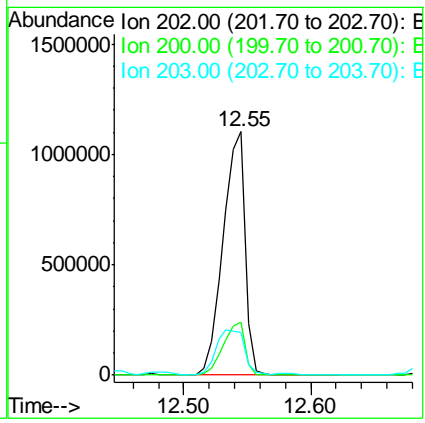
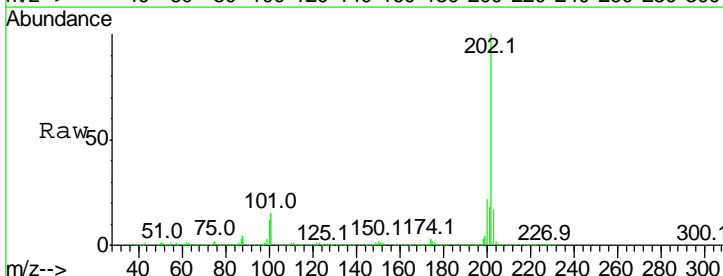
Tgt Ion	Ratio	Lower	Upper
240	100		
120	15.6	5.8	8.8#
236	25.7	20.5	30.7

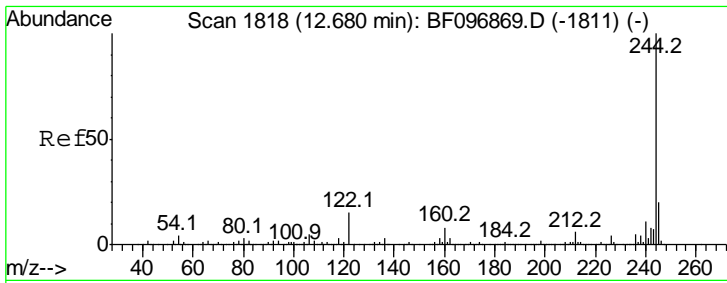
Manual Integrations
APPROVED
 Sohil
 7/20/2017 5:09:18 PM



#77
 Pyrene
 Concen: 82.452 ng
 RT: 12.55 min Scan# 1795
 Delta R.T. 0.01 min
 Lab File: BF096886.D
 Acq: 19 Jul 2017 22:48

Tgt Ion	Ratio	Lower	Upper
202	100		
200	22.0	17.6	26.4
203	17.3	14.4	21.6





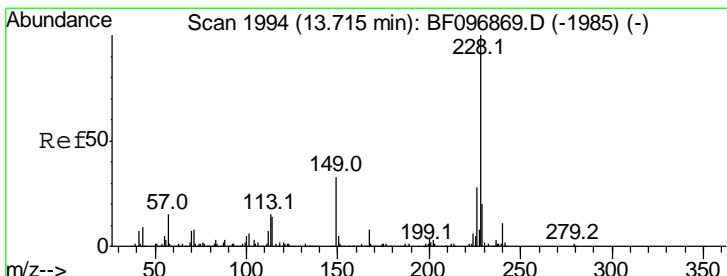
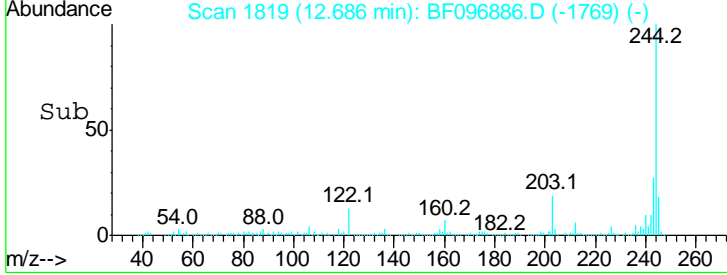
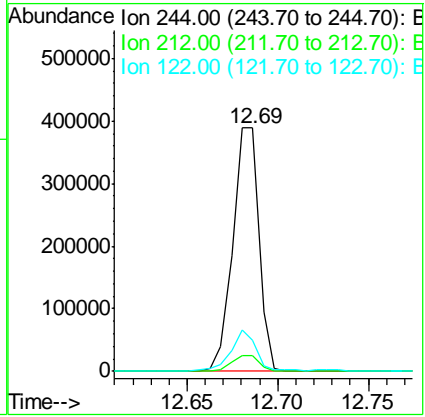
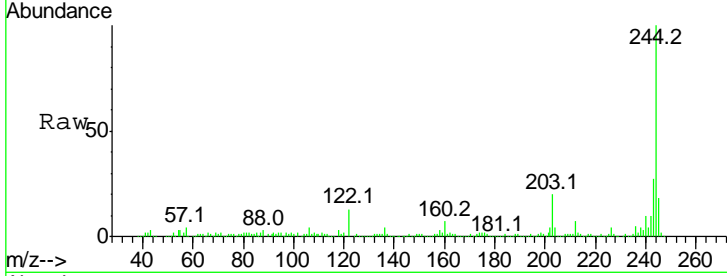
#78
 Terphenyl-d14
 Concen: 38.488 ng
 RT: 12.69 min Scan# 1819
 Delta R.T. -0.01 min
 Lab File: BF096886.D
 Acq: 19 Jul 2017 22:48

Instrument :
 BNA_F
 ClientSampled :
 TP-2-COMP-(0-8)

Tgt Ion	Ratio	Lower	Upper
244	100		
212	6.5	6.0	9.0
122	12.8	10.3	15.5

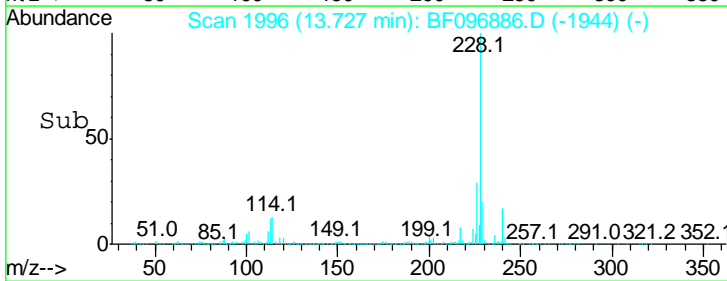
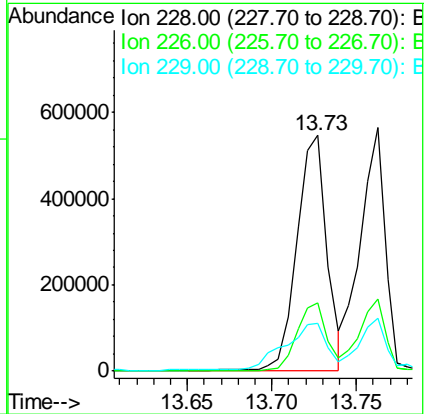
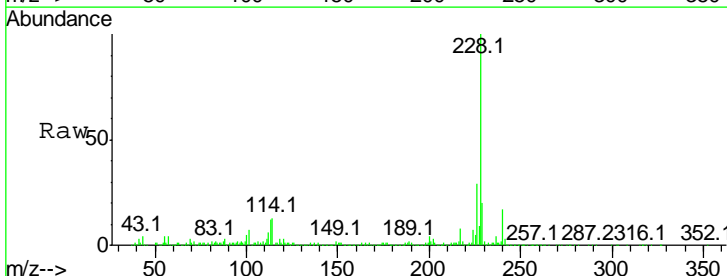
Manual Integrations
 APPROVED

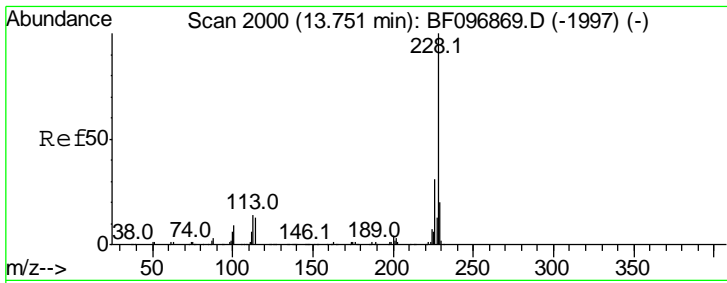
Sohil
 7/20/2017 5:09:18 PM



#80
 Benzo(a)anthracene
 Concen: 60.844 ng
 RT: 13.73 min Scan# 1996
 Delta R.T. 0.01 min
 Lab File: BF096886.D
 Acq: 19 Jul 2017 22:48

Tgt Ion	Ratio	Lower	Upper
228	100		
226	29.0	22.6	33.8
229	20.3	16.3	24.5



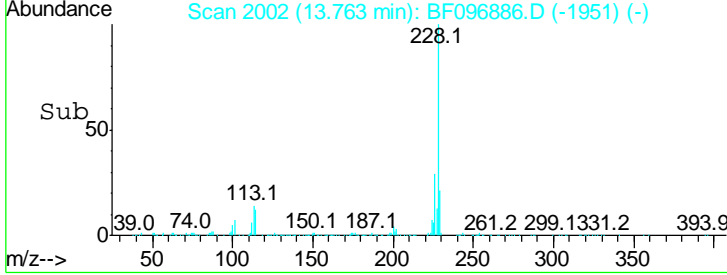
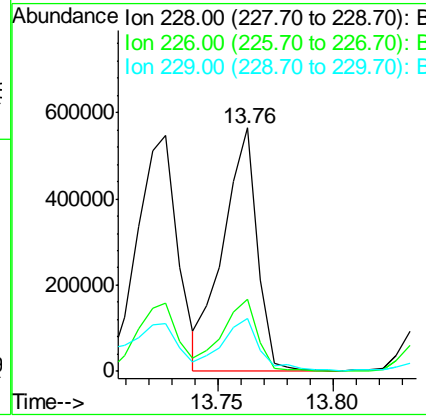
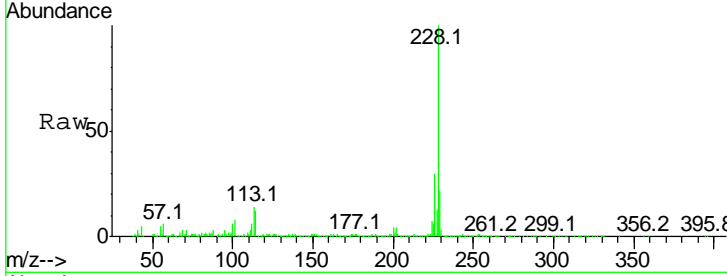


#82
 Chrysene
 Concen: 53.199 ng
 RT: 13.76 min Scan# 2002
 Delta R.T. 0.00 min
 Lab File: BF096886.D
 Acq: 19 Jul 2017 22:48

Instrument :
 BNA_F
 ClientSampled :
 TP-2-COMP-(0-8)

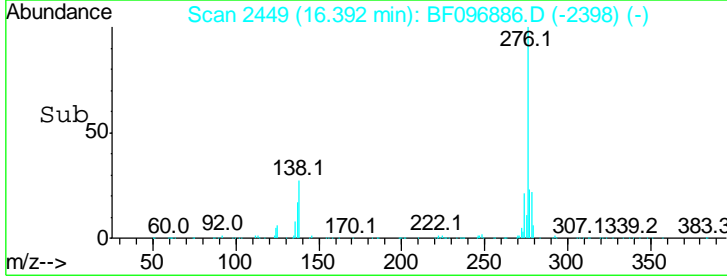
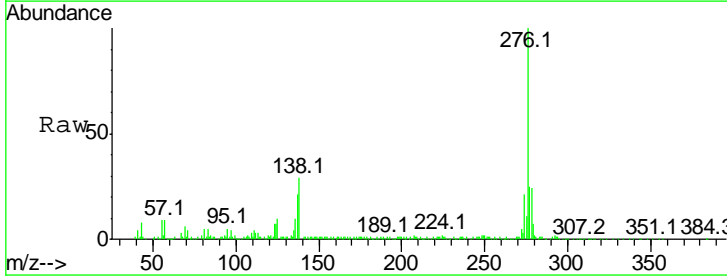
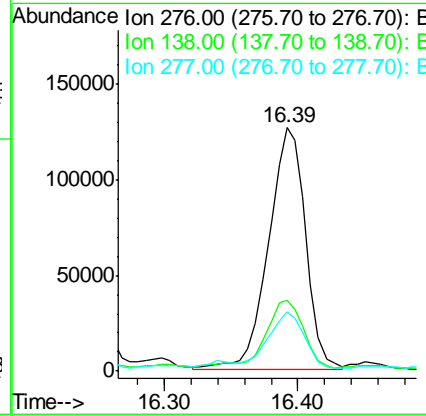
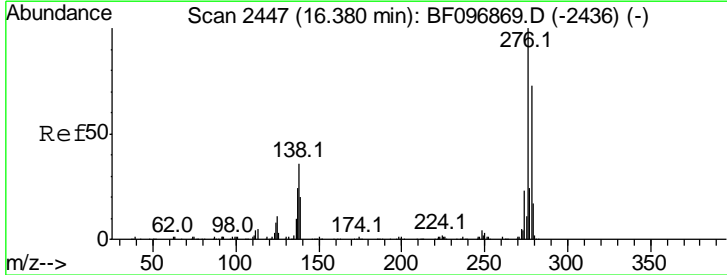
Tgt Ion	Resp	Lower	Upper
228	100		
226	29.7	24.9	37.3
229	21.9	15.8	23.6

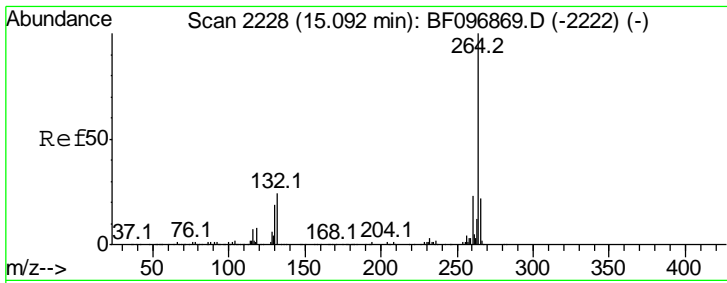
Manual Integrations
APPROVED
 Sohil
 7/20/2017 5:09:18 PM



#85
 Indeno(1,2,3-cd)pyrene
 Concen: 26.071 ng
 RT: 16.39 min Scan# 2449
 Delta R.T. 0.00 min
 Lab File: BF096886.D
 Acq: 19 Jul 2017 22:48

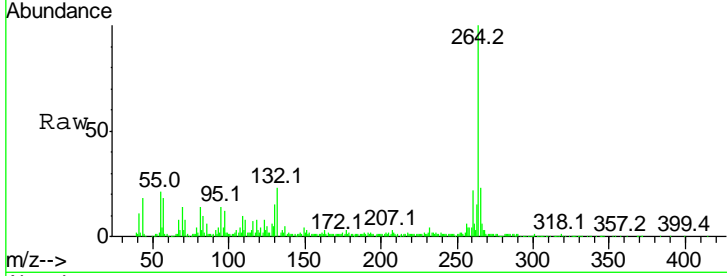
Tgt Ion	Resp	Lower	Upper
276	100		
138	30.3	27.8	41.6
277	23.0	20.2	30.4





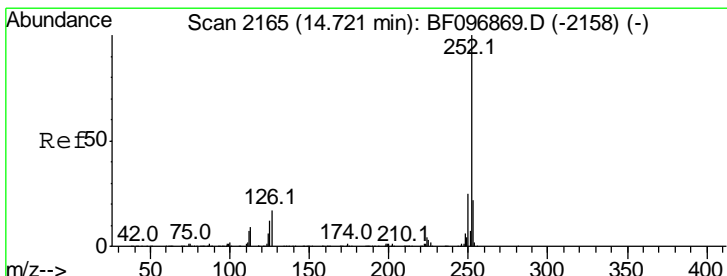
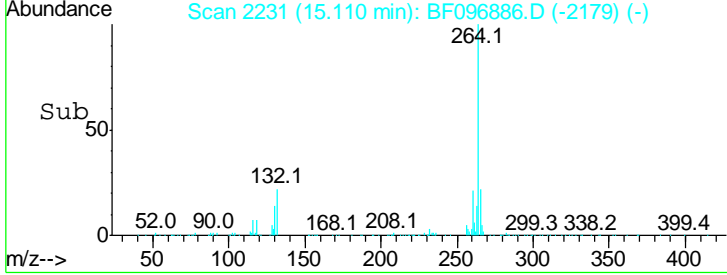
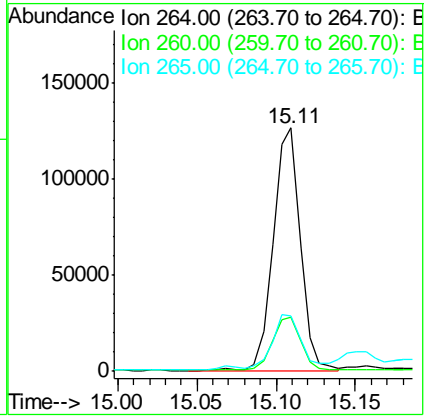
#86
 Perylene-d12
 Concen: 20.000 ng
 RT: 15.11 min Scan# 2231
 Delta R.T. 0.01 min
 Lab File: BF096886.D
 Acq: 19 Jul 2017 22:48

Instrument :
 BNA_F
Client Sampled :
 TP-2-COMP-(0-8)



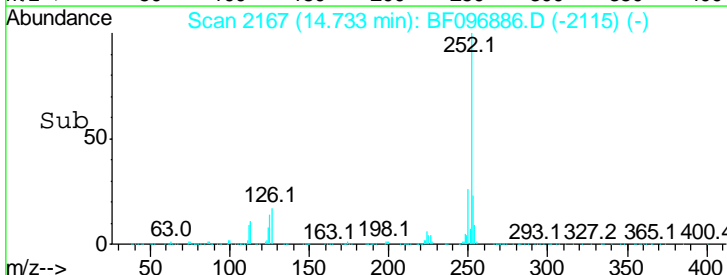
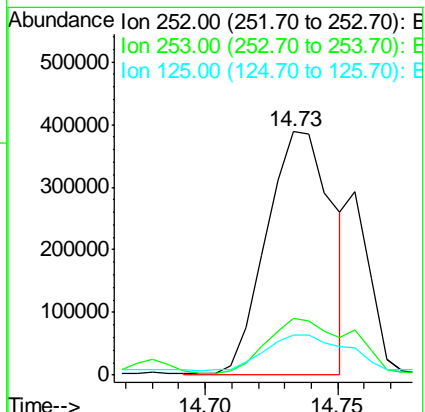
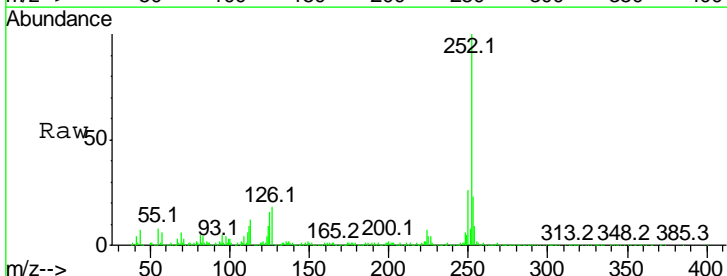
Tgt Ion	Resp	Lower	Upper
264	100		
260	22.2	19.5	29.3
265	22.9	17.2	25.8

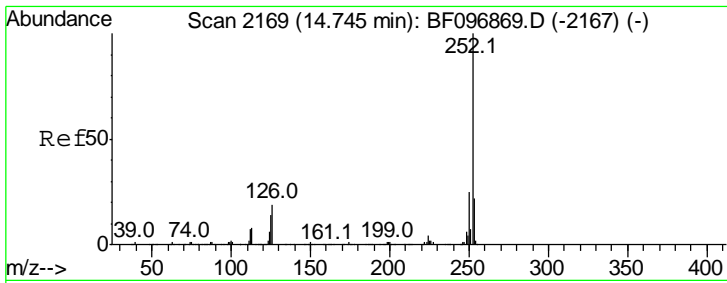
Manual Integrations
APPROVED
 Sohil
 7/20/2017 5:09:18 PM



#87
 Benzo(b)fluoranthene
 Concen: 75.321 ng m
 RT: 14.73 min Scan# 2167
 Delta R.T. 0.01 min
 Lab File: BF096886.D
 Acq: 19 Jul 2017 22:48

Tgt Ion	Resp	Lower	Upper
252	100		
253	23.2	18.1	27.1
125	16.4	9.8	14.8#





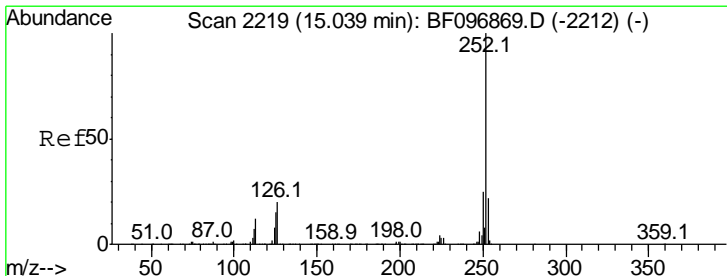
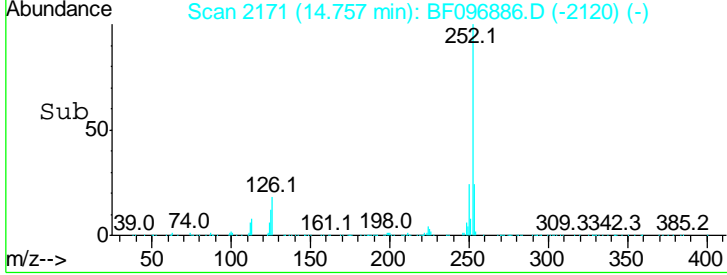
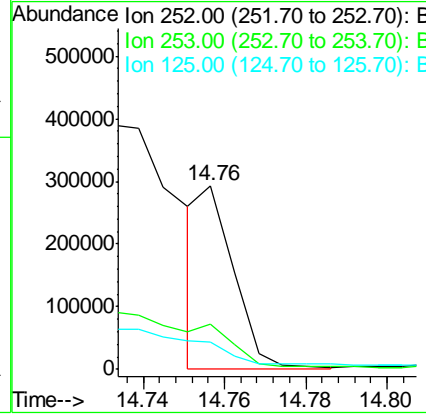
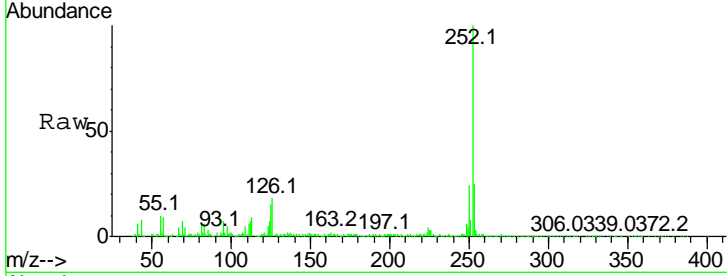
#88
 Benzo(k)fluoranthene
 Concen: 20.155 ng m
 RT: 14.76 min Scan# 2171
 Delta R.T. 0.00 min
 Lab File: BF096886.D
 Acq: 19 Jul 2017 22:48

Instrument :
 BNA_F
Client Sampled :
 TP-2-COMP-(0-8)

Tgt Ion	Resp	Lower	Upper
252	100		
253	24.7	18.4	27.6
125	14.8	13.1	19.7

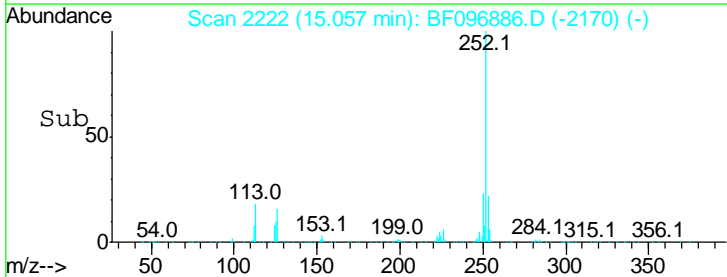
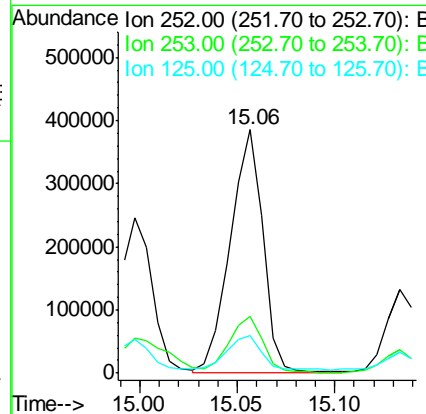
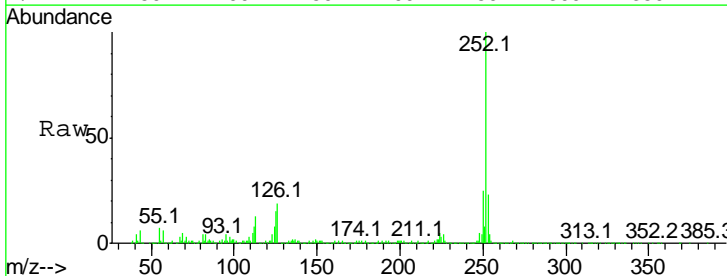
Manual Integrations
APPROVED

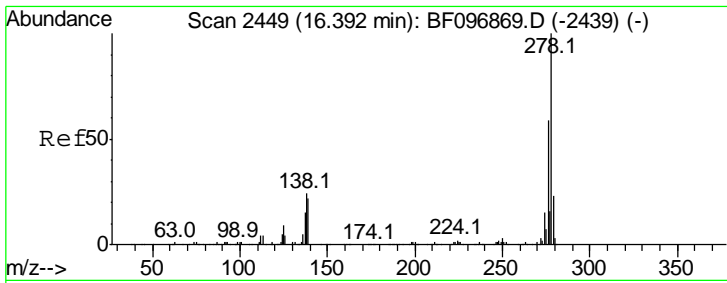
Sohil
 7/20/2017 5:09:18 PM



#89
 Benzo(a)pyrene
 Concen: 53.583 ng
 RT: 15.06 min Scan# 2222
 Delta R.T. 0.01 min
 Lab File: BF096886.D
 Acq: 19 Jul 2017 22:48

Tgt Ion	Resp	Lower	Upper
252	100		
253	23.1	17.5	26.3
125	15.3	11.0	16.4





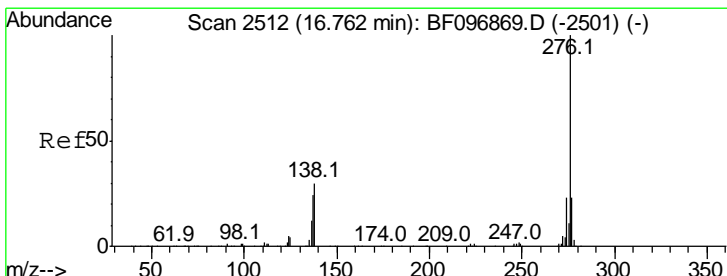
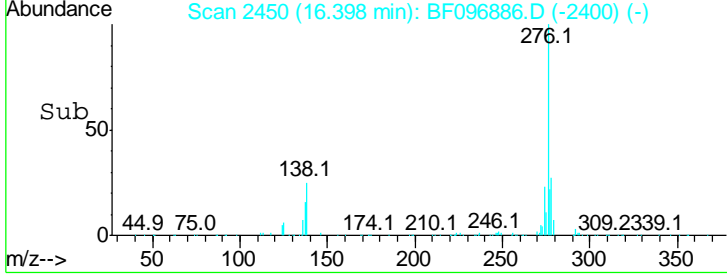
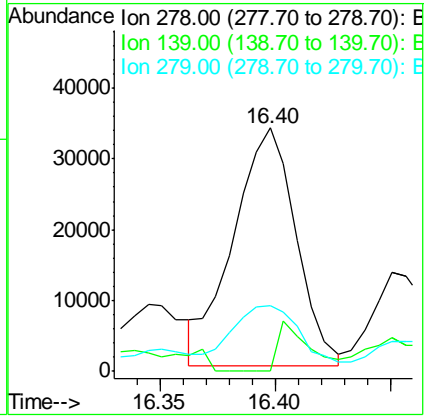
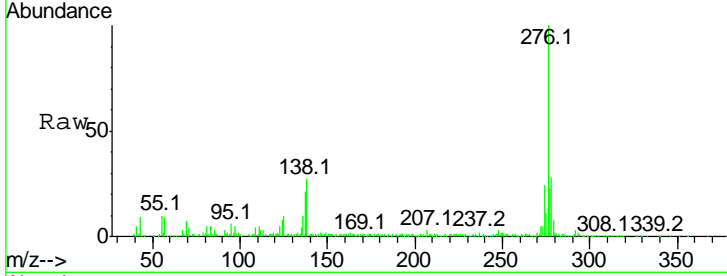
#90
 Dibenzo(a,h)anthracene
 Concen: 8.362 ng
 RT: 16.40 min Scan# 2450
 Delta R.T. -0.01 min
 Lab File: BF096886.D
 Acq: 19 Jul 2017 22:48

Instrument :
 BNA_F
 ClientSampled :
 TP-2-COMP-(0-8)

Tgt Ion	Ratio	Lower	Upper
278	100		
139	0.0	16.6	24.8#
279	27.1	19.3	28.9

Manual Integrations
 APPROVED

Sohil
 7/20/2017 5:09:18 PM



#91
 Benzo(g,h,i)perylene
 Concen: 26.817 ng
 RT: 16.78 min Scan# 2515
 Delta R.T. 0.00 min
 Lab File: BF096886.D
 Acq: 19 Jul 2017 22:48

Tgt Ion	Ratio	Lower	Upper
276	100		
277	24.5	18.6	28.0
138	27.8	25.4	38.0

