

Data Path : Z:\HPCHEM1\BNA F\DATA\BF072116\  
 Data File : BF089172.D  
 Acq On : 21 Jul 2016 11:14  
 Operator : UM/SJ  
 Sample : H4112-01  
 Misc :  
 ALS Vial : 8 Sample Multiplier: 1

Instrument :  
 BNA\_F  
 ClientSampleId :  
 KSB-01-0.2-2.0

Integration Parameters: rteint.p  
 Integrator: RTE  
 Smoothing : ON  
 Sampling : 1  
 Start Thrs: 0.2  
 Stop Thrs : 0

Filtering: 5  
 Min Area: 3 % of largest Peak  
 Max Peaks: 100  
 Peak Location: TOP

If leading or trailing edge < 100 prefer < Baseline drop else tangent >  
 Peak separation: 5

Method : Z:\HPCHEM1\BNA F\METHODS\8270-BF072016.M  
 Title : ASP BNA STANDARDS FOR 5 POINT CALIBRATION

Signal : TIC

peak #	R.T. min	first scan	max scan	last scan	PK TY	peak height	corr. area	corr. % max.	% of total
1	1.724	10	12	52	rVB	1179877	2330554	100.00%	11.507%
2	4.730	274	275	285	rVB	28504	48443	2.08%	0.239%
3	5.130	307	310	313	rBV	11766	25265	1.08%	0.125%
4	5.187	313	315	326	rBV	751585	981024	42.09%	4.844%
5	5.404	332	334	339	rVB	20537	32206	1.38%	0.159%
6	6.250	406	408	416	rBV	613547	1079897	46.34%	5.332%
7	6.364	416	418	422	rVV	932891	1088402	46.70%	5.374%
8	6.422	422	423	432	rVB2	48374	80800	3.47%	0.399%
9	6.593	437	438	442	rBV	207477	317458	13.62%	1.567%
10	6.662	442	444	448	rVB	12933	28083	1.20%	0.139%
11	6.753	449	452	460	rVV	906781	884424	37.95%	4.367%
12	7.164	486	488	495	rBV	490668	650542	27.91%	3.212%
13	7.885	548	551	557	rBV2	434378	525422	22.54%	2.594%
14	8.490	602	604	606	rBV	28007	25946	1.11%	0.128%
15	8.593	611	613	619	rBV	101069	105791	4.54%	0.522%
16	8.696	619	622	624	rBV	58398	72416	3.11%	0.358%
17	8.959	643	645	648	rVV	1143733	1221110	52.40%	6.029%
18	9.050	651	653	656	rVB2	30484	41348	1.77%	0.204%
19	9.222	666	668	671	rBV	37913	54080	2.32%	0.267%
20	9.290	672	674	675	rVV	66019	64204	2.75%	0.317%
21	9.313	675	676	678	rVV	36500	52917	2.27%	0.261%
22	9.359	678	680	683	rVV	222361	231693	9.94%	1.144%
23	9.405	683	684	689	rVB	33247	48905	2.10%	0.241%
24	9.485	689	691	694	rVB	19938	29211	1.25%	0.144%
25	9.576	697	699	701	rBV	31155	36748	1.58%	0.181%
26	9.622	701	703	705	rBV	309758	460629	19.76%	2.274%
27	9.656	705	706	711	rVB2	50906	61816	2.65%	0.305%
28	9.736	711	713	715	rBV	19446	26386	1.13%	0.130%
29	9.839	719	722	723	rVV	35372	50494	2.17%	0.249%
30	9.942	729	731	733	rBV2	22518	27991	1.20%	0.138%
31	10.033	737	739	742	rBV2	28672	60334	2.59%	0.298%
32	10.079	742	743	745	rVB	60065	42837	1.84%	0.212%
33	10.170	749	751	753	rBV	64217	73926	3.17%	0.365%
34	10.239	755	757	760	rVV3	15582	30087	1.29%	0.149%

Data Path : Z:\HPCHEM1\BNA F\DATA\BF072116\  
 Data File : BF089172.D  
 Acq On : 21 Jul 2016 11:14  
 Operator : UM/SJ  
 Sample : H4112-01  
 Misc :  
 ALS Vial : 8 Sample Multiplier: 1

Instrument :  
 BNA\_F  
 ClientSampleID :  
 KSB-01-0.2-2.0

Integration Parameters: rteint.p  
 Integrator: RTE  
 Smoothing : ON  
 Sampling : 1  
 Start Thrs: 0.2  
 Stop Thrs : 0

Filtering: 5  
 Min Area: 3 % of largest Peak  
 Max Peaks: 100  
 Peak Location: TOP

If leading or trailing edge < 100 prefer < Baseline drop else tangent >  
 Peak separation: 5

Method : Z:\HPCHEM1\BNA F\METHODS\8270-BF072016.M  
 Title : ASP BNA STANDARDS FOR 5 POINT CALIBRATION

35	10.296	760	762	763	rVV2	36469	46758	2.01%	0.231%
36	10.331	763	765	768	rVB2	29674	44116	1.89%	0.218%
37	10.411	770	772	775	rVV	527257	591582	25.38%	2.921%
38	10.548	781	784	788	rBV2	94104	161244	6.92%	0.796%
39	10.719	796	799	800	rBV	24322	37458	1.61%	0.185%
40	10.742	800	801	803	rVV2	26647	33116	1.42%	0.164%
41	10.845	808	810	815	rBV5	28494	76681	3.29%	0.379%
42	10.959	818	820	821	rBV	29288	30843	1.32%	0.152%
43	10.993	821	823	824	rVV	84729	76894	3.30%	0.380%
44	11.016	824	825	828	rVB	35087	42900	1.84%	0.212%
45	11.096	830	832	834	rBV	291755	591129	25.36%	2.919%
46	11.176	837	839	841	rVB	107350	98927	4.24%	0.488%
47	11.416	858	860	866	rVB3	71254	111569	4.79%	0.551%
48	11.599	874	876	877	rBV	107024	110261	4.73%	0.544%
49	11.634	877	879	880	rVV	89383	109263	4.69%	0.539%
50	11.679	880	883	884	rVB2	46361	75229	3.23%	0.371%
51	11.714	884	886	891	rVB	134377	288958	12.40%	1.427%
52	11.816	894	895	899	rVB2	35061	55930	2.40%	0.276%
53	11.896	899	902	903	rBV	65136	72279	3.10%	0.357%
54	11.976	907	909	912	rVB3	13199	29448	1.26%	0.145%
55	12.045	912	915	916	rBV2	49633	66842	2.87%	0.330%
56	12.148	921	924	926	rBV	113038	145835	6.26%	0.720%
57	12.182	926	927	928	rVV	37792	26993	1.16%	0.133%
58	12.205	928	929	930	rVB	54663	37471	1.61%	0.185%
59	12.239	930	932	936	rVB2	46519	67574	2.90%	0.334%
60	12.308	936	938	940	rBV	485799	533081	22.87%	2.632%
61	12.365	941	943	947	rVB5	23425	52114	2.24%	0.257%
62	12.445	947	950	953	rBV4	76167	140075	6.01%	0.692%
63	12.525	955	957	960	rBV	447220	587780	25.22%	2.902%
64	12.651	965	968	969	rBV	37711	49159	2.11%	0.243%
65	12.685	969	971	973	rVV	1022164	1021573	43.83%	5.044%
66	12.754	974	977	981	rBV4	58946	97422	4.18%	0.481%
67	12.856	981	986	988	rVB2	96935	178693	7.67%	0.882%
68	12.925	990	992	994	rVV	94681	111074	4.77%	0.548%
69	12.959	994	995	999	rVV	94248	114470	4.91%	0.565%
70	13.051	1001	1003	1004	rVV	55434	48619	2.09%	0.240%
71	13.085	1004	1006	1008	rVB	47836	51359	2.20%	0.254%

Data Path : Z:\HPCHEM1\BNA F\DATA\BF072116\  
 Data File : BF089172.D  
 Acq On : 21 Jul 2016 11:14  
 Operator : UM/SJ  
 Sample : H4112-01  
 Misc :  
 ALS Vial : 8 Sample Multiplier: 1

Instrument :  
 BNA\_F  
 ClientSampleId :  
 KSB-01-0.2-2.0

Integration Parameters: rteint.p  
 Integrator: RTE  
 Smoothing : ON Filtering: 5  
 Sampling : 1 Min Area: 3 % of largest Peak  
 Start Thrs: 0.2 Max Peaks: 100  
 Stop Thrs : 0 Peak Location: TOP

If leading or trailing edge < 100 prefer < Baseline drop else tangent >  
 Peak separation: 5

Method : Z:\HPCHEM1\BNA F\METHODS\8270-BF072016.M  
 Title : ASP BNA STANDARDS FOR 5 POINT CALIBRATION

72	13.268	1016	1022	1027	rBV5	35067	129054	5.54%	0.637%
73	13.359	1027	1030	1034	rBV2	34886	82681	3.55%	0.408%
74	13.474	1037	1040	1041	rBV	49039	75254	3.23%	0.372%
75	13.577	1047	1049	1050	rVB	21414	24611	1.06%	0.122%
76	13.634	1052	1054	1058	rVB3	27048	61930	2.66%	0.306%
77	13.714	1058	1061	1068	rBV2	398388	929803	39.90%	4.591%
78	13.817	1068	1070	1072	rBV2	29884	47623	2.04%	0.235%
79	14.068	1091	1092	1093	rBV	27312	25631	1.10%	0.127%
80	14.102	1093	1095	1097	rVV	61422	79402	3.41%	0.392%
81	14.137	1097	1098	1100	rVB	36143	34052	1.46%	0.168%
82	14.194	1100	1103	1104	rBV2	28344	46910	2.01%	0.232%
83	14.228	1104	1106	1111	rVB5	25582	64945	2.79%	0.321%
84	14.411	1120	1122	1123	rBV	20175	28976	1.24%	0.143%
85	14.514	1129	1131	1133	rVB2	21282	28884	1.24%	0.143%
86	14.571	1134	1136	1139	rVV2	29254	38608	1.66%	0.191%
87	14.628	1139	1141	1143	rVB2	36146	38499	1.65%	0.190%
88	14.708	1146	1148	1153	rBV	204550	354432	15.21%	1.750%
89	14.800	1153	1156	1158	rVB	54576	62348	2.68%	0.308%
90	14.868	1158	1162	1163	rBV4	16894	50048	2.15%	0.247%
91	14.960	1168	1170	1173	rVV	120922	143433	6.15%	0.708%
92	15.017	1173	1175	1177	rVV	160577	204195	8.76%	1.008%
93	15.062	1177	1179	1186	rVB2	182516	369547	15.86%	1.825%
94	15.474	1213	1215	1217	rBV	22162	32853	1.41%	0.162%
95	16.000	1259	1261	1269	rVB6	16815	54699	2.35%	0.270%
96	16.125	1269	1272	1280	rBV5	15086	62567	2.68%	0.309%
97	16.285	1284	1286	1290	rVV	54710	110449	4.74%	0.545%
98	16.651	1315	1318	1324	rBV	44887	98711	4.24%	0.487%
99	16.857	1334	1336	1341	rVB	11656	30339	1.30%	0.150%
100	18.514	1477	1481	1487	rBV3	10521	36795	1.58%	0.182%

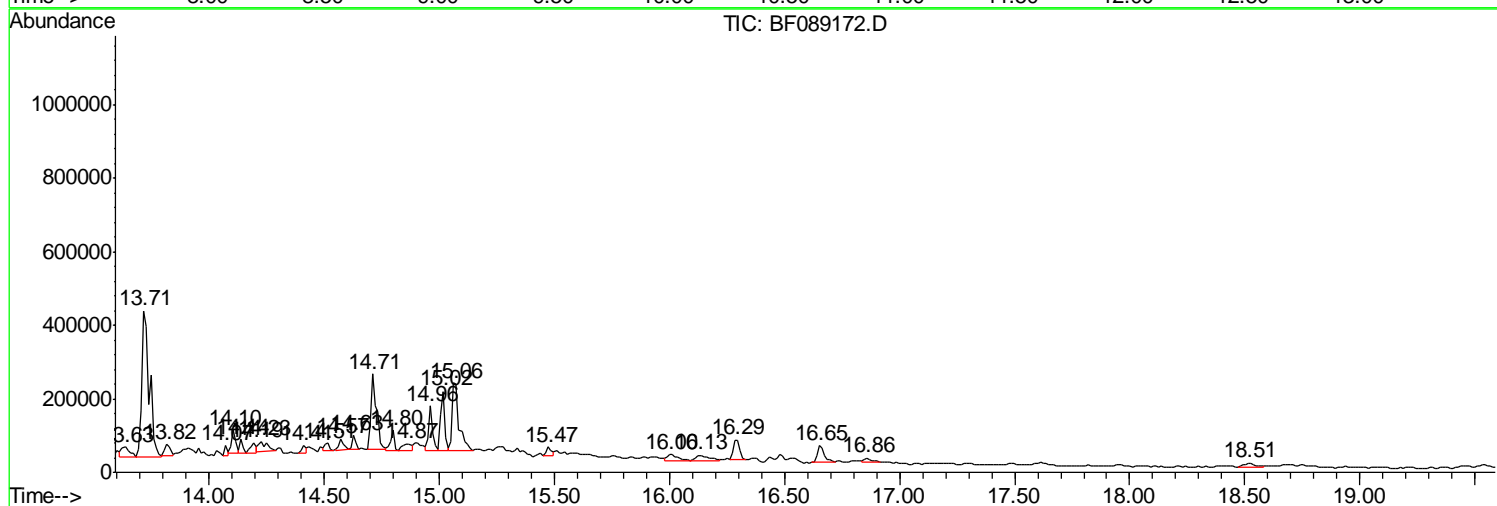
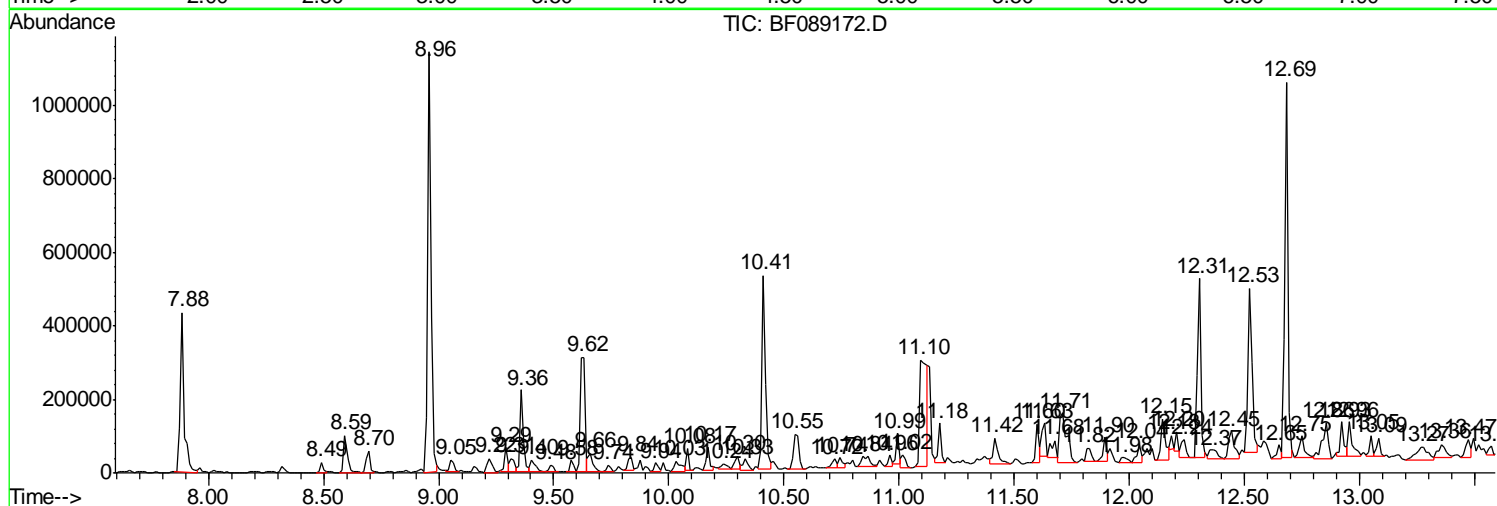
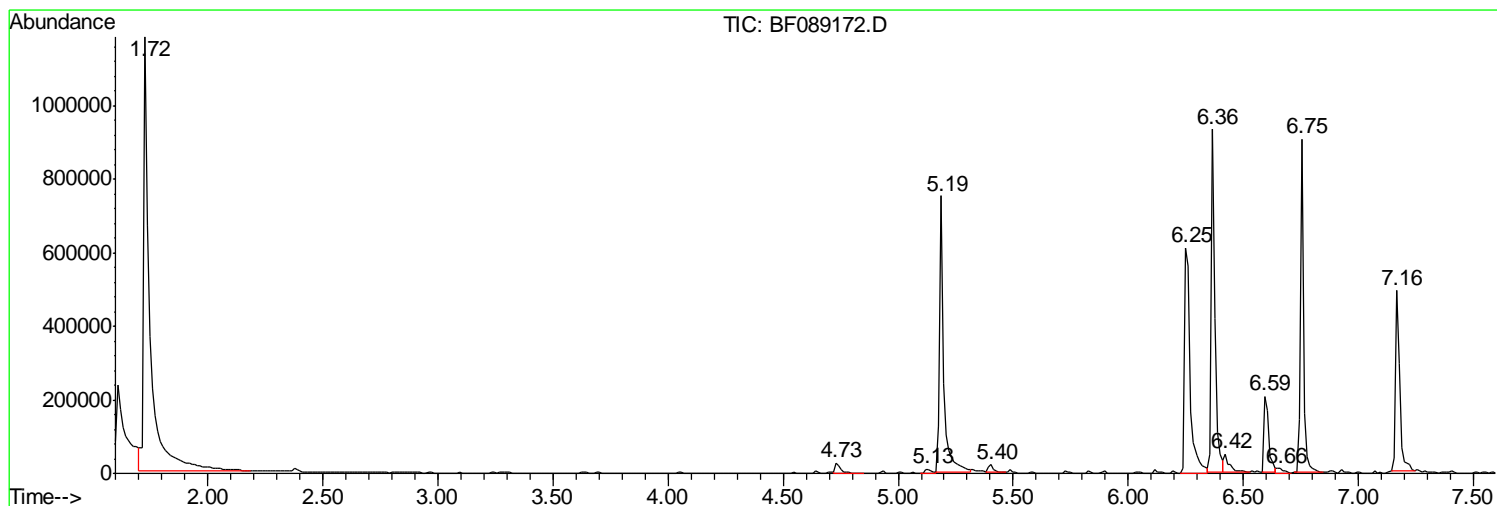
Sum of corrected areas: 20253387

Data Path : Z:\HPCHEM1\BNA F\DATA\BF072116\  
 Data File : BF089172.D  
 Acq On : 21 Jul 2016 11:14  
 Operator : UM/SJ  
 Sample : H4112-01  
 Misc :  
 ALS Vial : 8 Sample Multiplier: 1

Instrument :  
 BNA\_F  
 ClientSampled :  
 KSB-01-0.2-2.0

Quant Method : Z:\HPCHEM1\BNA F\METHODS\8270-BF072016.M  
 Quant Title : ASP BNA STANDARDS FOR 5 POINT CALIBRATION

TIC Library : C:\Database\NIST11.L  
 TIC Integration Parameters: LSCINT.P



Data Path : Z:\HPCHEM1\BNA F\DATA\BF072116\  
 Data File : BF089172.D  
 Acq On : 21 Jul 2016 11:14  
 Operator : UM/SJ  
 Sample : H4112-01  
 Misc :  
 ALS Vial : 8 Sample Multiplier: 1

Instrument :  
 BNA\_F  
 ClientSampled :  
 KSB-01-0.2-2.0

Quant Method : Z:\HPCHEM1\BNA F\METHODS\8270-BF072016.M  
 Quant Title : ASP BNA STANDARDS FOR 5 POINT CALIBRATION

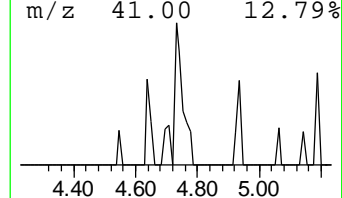
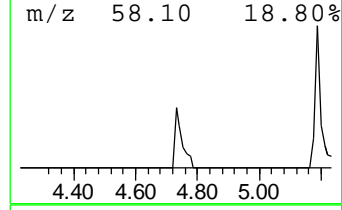
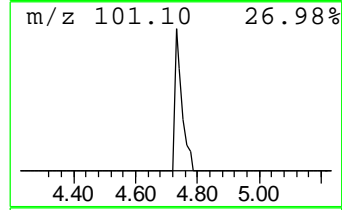
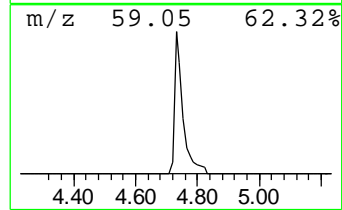
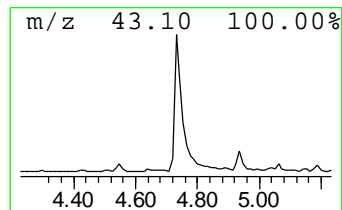
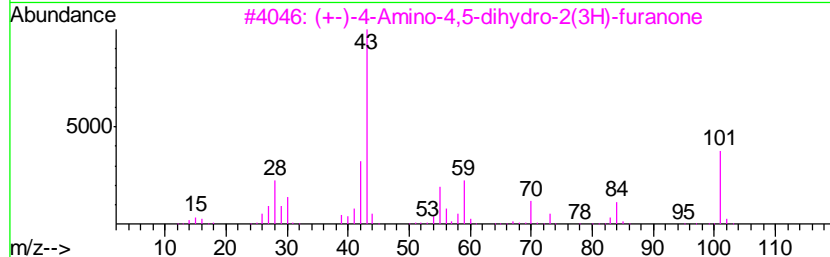
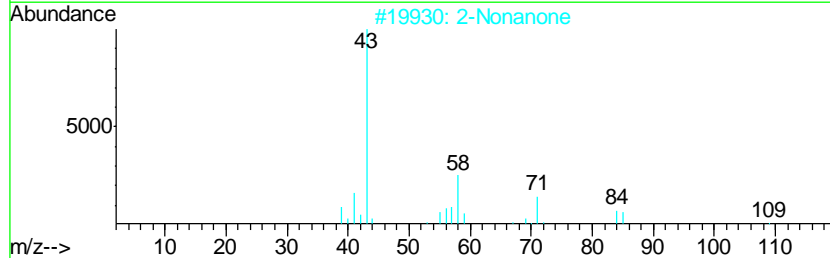
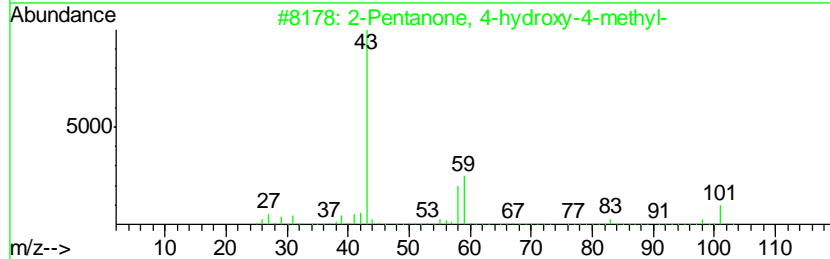
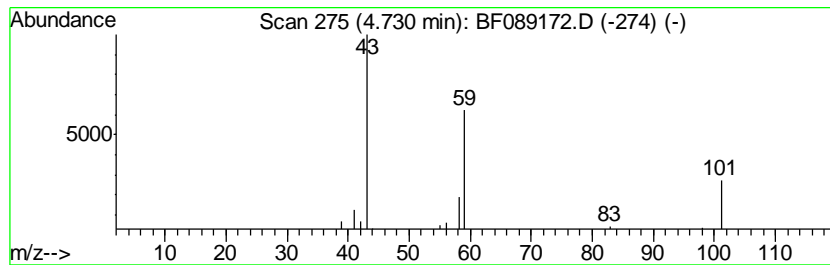
TIC Library : C:\Database\NIST11.L  
 TIC Integration Parameters: LSCINT.P

\*\*\*\*\*  
 Peak Number 2 unknown4.73 Concentration Rank 16

R.T.	EstConc	Area	Relative to ISTD	R.T.
4.73	3.05 ng	48443	1,4-Dichlorobenzene-d4	6.60

Hit#	of	Tentative ID	MW	MolForm	CAS#	Qual
1	5	2-Pentanone, 4-hydroxy-4-methyl-	116	C6H12O2	000123-42-2	39
2		2-Nonanone	142	C9H18O	000821-55-6	12
3		(+)-4-Amino-4,5-dihydro-2(3H)-f...	101	C4H7NO2	016504-58-8	9
4		5-Hexen-2-one	98	C6H10O	000109-49-9	9
5		Acetone	58	C3H6O	000067-64-1	9



Data Path : Z:\HPCHEM1\BNA F\DATA\BF072116\  
 Data File : BF089172.D  
 Acq On : 21 Jul 2016 11:14  
 Operator : UM/SJ  
 Sample : H4112-01  
 Misc :  
 ALS Vial : 8 Sample Multiplier: 1

Instrument :  
 BNA\_F  
 ClientSampleID :  
 KSB-01-0.2-2.0

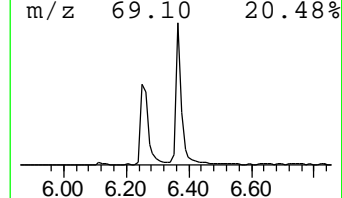
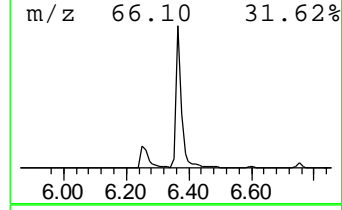
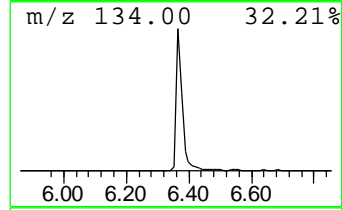
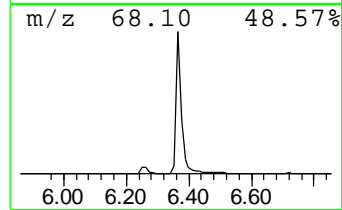
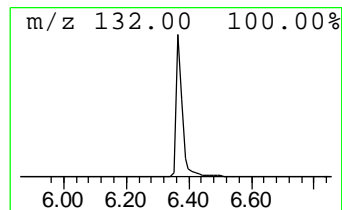
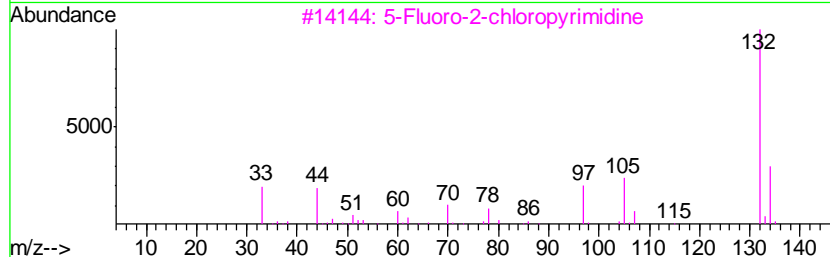
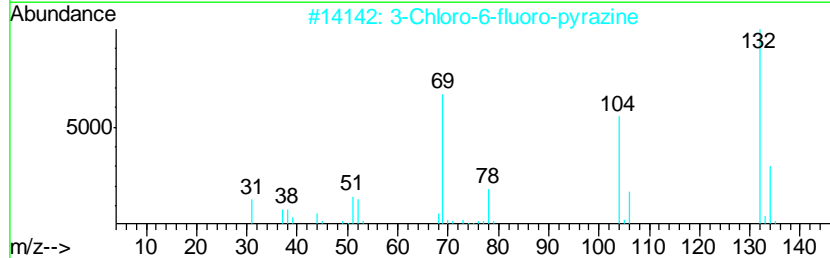
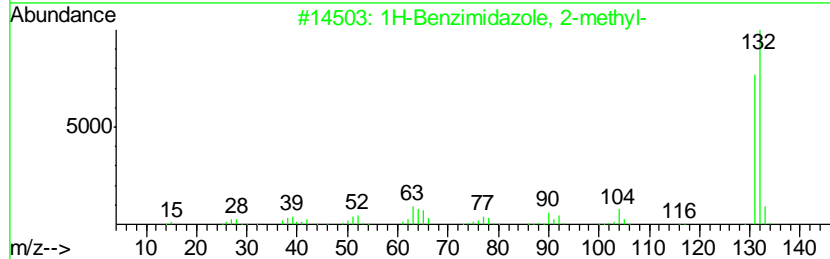
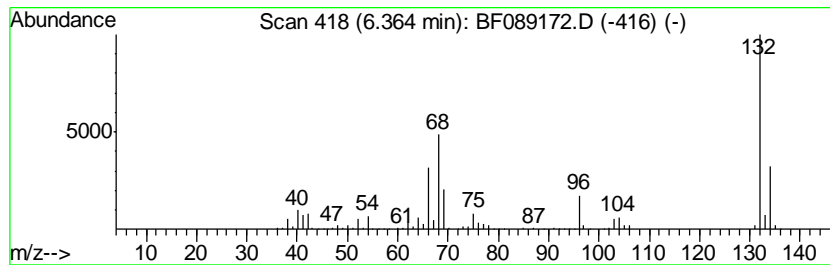
Quant Method : Z:\HPCHEM1\BNA F\METHODS\8270-BF072016.M  
 Quant Title : ASP BNA STANDARDS FOR 5 POINT CALIBRATION

TIC Library : C:\Database\NIST11.L  
 TIC Integration Parameters: LSCINT.P

\*\*\*\*\*  
 Peak Number 3 unknown6.36 Concentration Rank 2

R.T.	EstConc	Area	Relative to ISTD	R.T.
6.36	68.57 ng	1088400	1,4-Dichlorobenzene-d4	6.60

Hit#	of	Tentative ID	MW	MolForm	CAS#	Qual
1	5	1H-Benzimidazole, 2-methyl-	132	C8H8N2	000615-15-6	22
2		3-Chloro-6-fluoro-pyrazine	132	C4H2ClFN2	1000146-10-7	16
3		5-Fluoro-2-chloropyrimidine	132	C4H2ClFN2	062802-42-0	12
4		(5-Methyl-2-pyridyl)acetonitrile	132	C8H8N2	1000241-93-9	10
5		Cyclopropanamine, 1-phenyl-	133	C9H11N	1000351-26-2	10



Data Path : Z:\HPCHEM1\BNA F\DATA\BF072116\  
 Data File : BF089172.D  
 Acq On : 21 Jul 2016 11:14  
 Operator : UM/SJ  
 Sample : H4112-01  
 Misc :  
 ALS Vial : 8 Sample Multiplier: 1

Instrument :  
 BNA\_F  
 ClientSampleID :  
 KSB-01-0.2-2.0

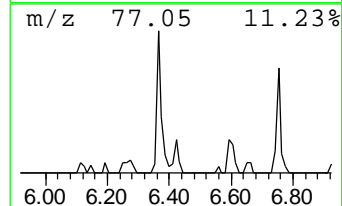
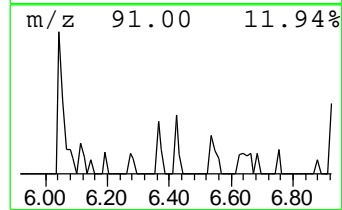
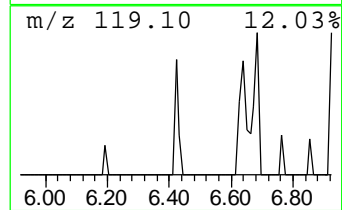
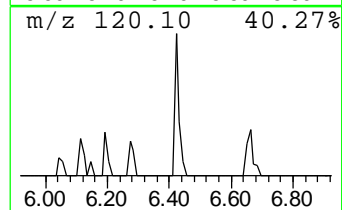
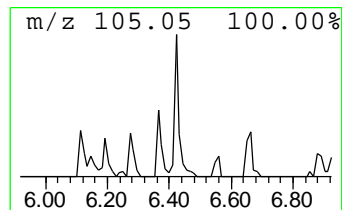
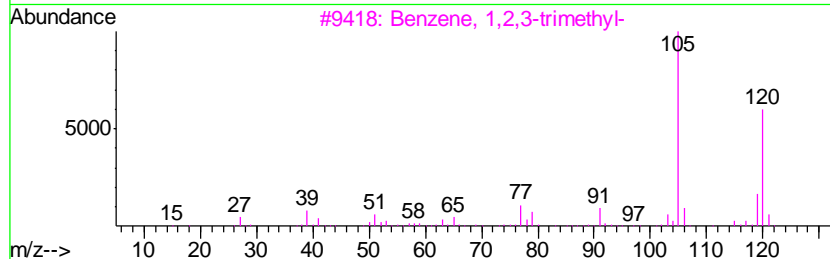
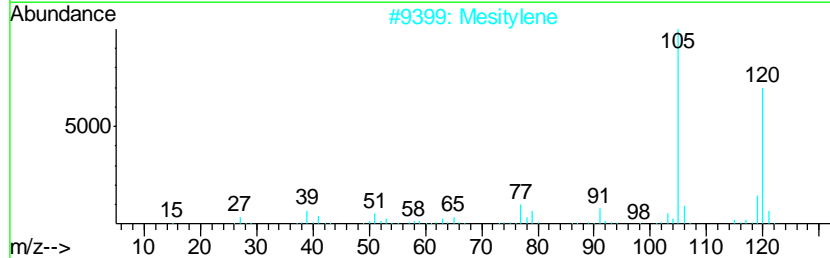
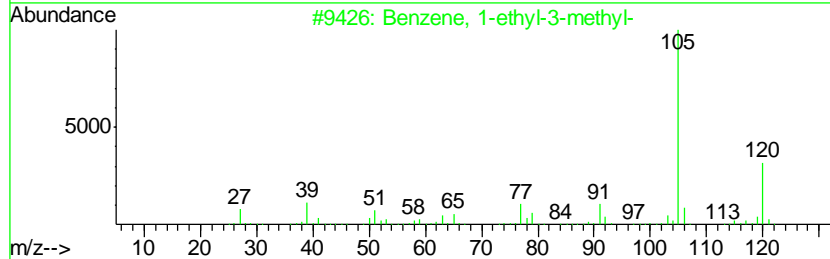
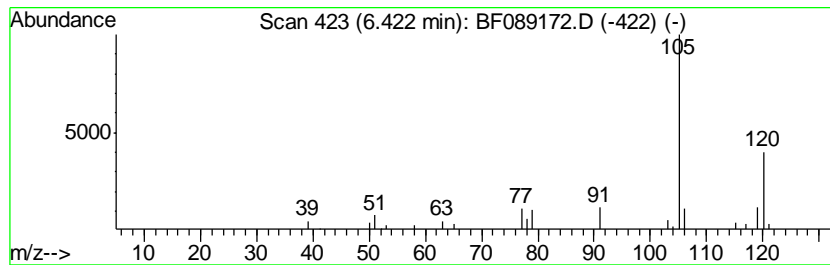
Quant Method : Z:\HPCHEM1\BNA F\METHODS\8270-BF072016.M  
 Quant Title : ASP BNA STANDARDS FOR 5 POINT CALIBRATION

TIC Library : C:\Database\NIST11.L  
 TIC Integration Parameters: LSCINT.P

\*\*\*\*\*  
 Peak Number 4 Benzene, 1-ethyl-3-methyl- Concentration Rank 7

R.T.	EstConc	Area	Relative to ISTD	R.T.
6.42	5.09 ng	80800	1,4-Dichlorobenzene-d4	6.60

Hit#	of	Tentative ID	MW	MolForm	CAS#	Qual
1	5	Benzene, 1-ethyl-3-methyl-	120	C9H12	000620-14-4	91
2		Mesitylene	120	C9H12	000108-67-8	91
3		Benzene, 1,2,3-trimethyl-	120	C9H12	000526-73-8	91
4		Benzene, 1,2,4-trimethyl-	120	C9H12	000095-63-6	91
5		Benzene, 1-ethyl-4-methyl-	120	C9H12	000622-96-8	91



Data Path : Z:\HPCHEM1\BNA F\DATA\BF072116\  
 Data File : BF089172.D  
 Acq On : 21 Jul 2016 11:14  
 Operator : UM/SJ  
 Sample : H4112-01  
 Misc :  
 ALS Vial : 8 Sample Multiplier: 1

Instrument :  
 BNA\_F  
 ClientSampled :  
 KSB-01-0.2-2.0

Quant Method : Z:\HPCHEM1\BNA F\METHODS\8270-BF072016.M  
 Quant Title : ASP BNA STANDARDS FOR 5 POINT CALIBRATION

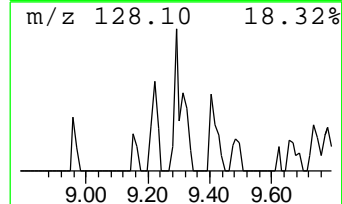
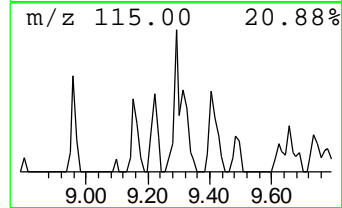
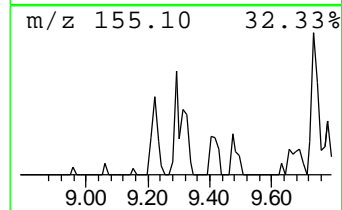
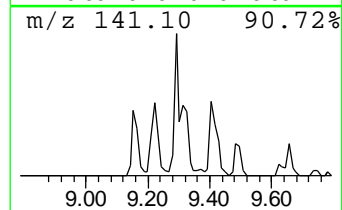
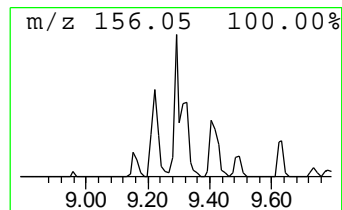
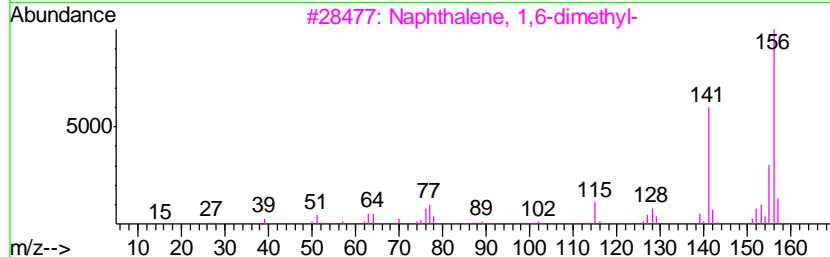
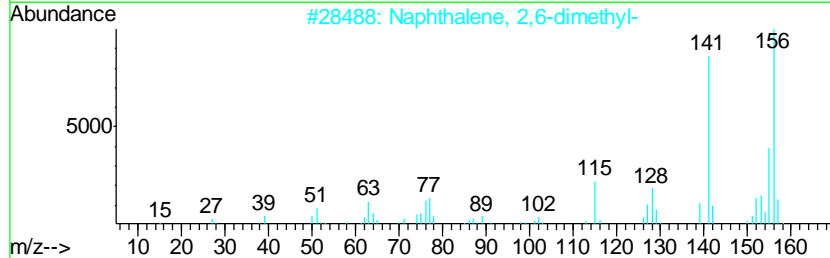
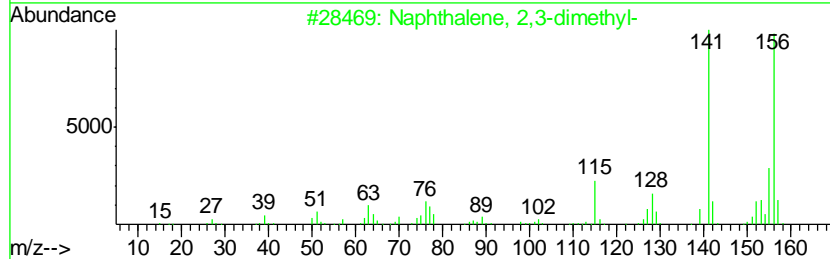
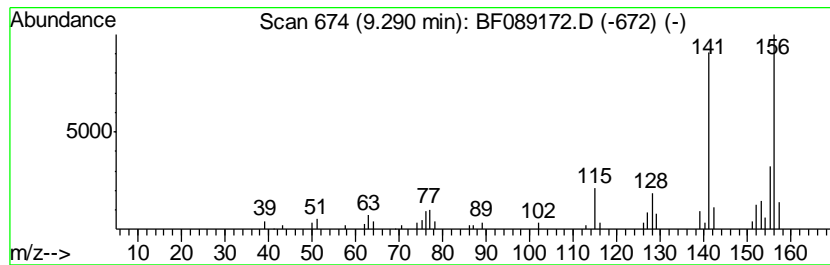
TIC Library : C:\Database\NIST11.L  
 TIC Integration Parameters: LSCINT.P

\*\*\*\*\*  
 Peak Number 6 Naphthalene, 2,3-dimethyl- Concentration Rank 19

R.T.	EstConc	Area	Relative to ISTD	R.T.
9.29	2.79 ng	64204	Acenaphthene-d10	9.63

Hit#	of	Tentative ID	MW	MolForm	CAS#	Qual
1	5	Naphthalene, 2,3-dimethyl-	156	C12H12	000581-40-8	98
2		Naphthalene, 2,6-dimethyl-	156	C12H12	000581-42-0	98
3		Naphthalene, 1,6-dimethyl-	156	C12H12	000575-43-9	97
4		Naphthalene, 1,3-dimethyl-	156	C12H12	000575-41-7	97
5		Naphthalene, 1,7-dimethyl-	156	C12H12	000575-37-1	97





Data Path : Z:\HPCHEM1\BNA F\DATA\BF072116\  
 Data File : BF089172.D  
 Acq On : 21 Jul 2016 11:14  
 Operator : UM/SJ  
 Sample : H4112-01  
 Misc :  
 ALS Vial : 8 Sample Multiplier: 1

Instrument :  
 BNA\_F  
 ClientSampleID :  
 KSB-01-0.2-2.0

Quant Method : Z:\HPCHEM1\BNA F\METHODS\8270-BF072016.M  
 Quant Title : ASP BNA STANDARDS FOR 5 POINT CALIBRATION

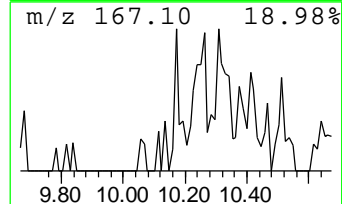
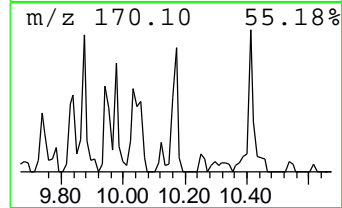
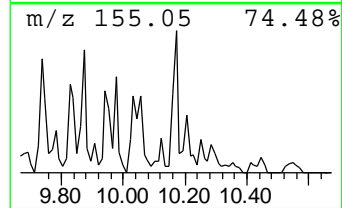
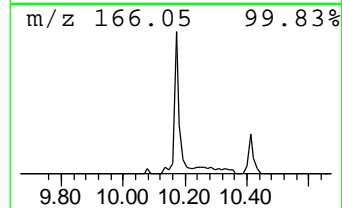
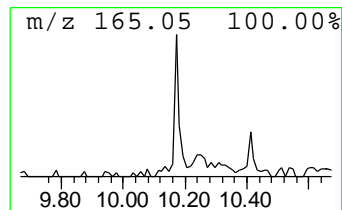
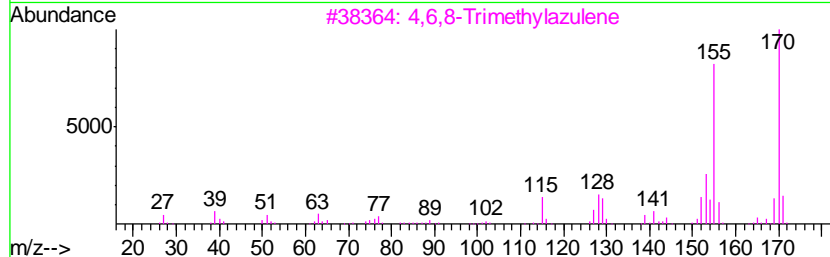
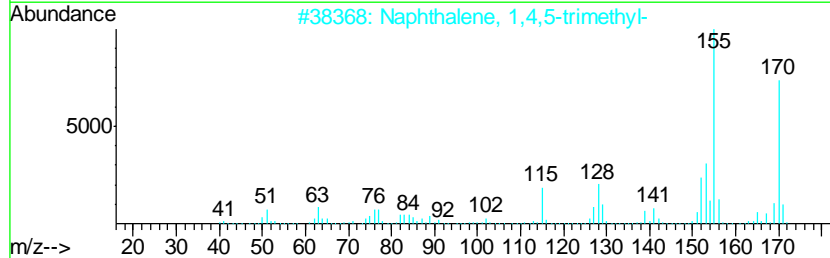
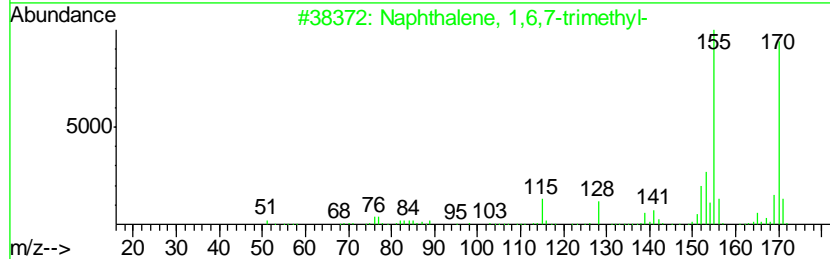
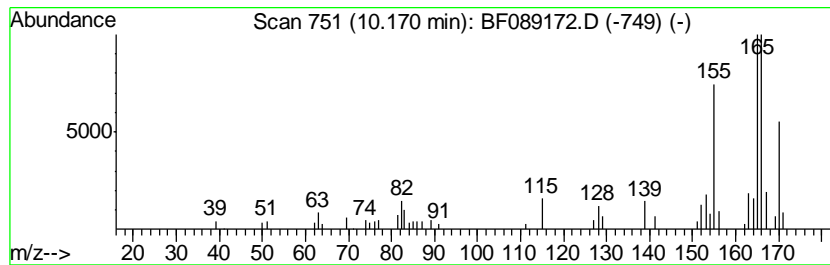
TIC Library : C:\Database\NIST11.L  
 TIC Integration Parameters: LSCINT.P

\*\*\*\*\*  
 Peak Number 7 Naphthalene, 1,6,7-trimethyl- Concentration Rank 15

R.T.	EstConc	Area	Relative to ISTD	R.T.
10.17	3.21 ng	73926	Acenaphthene-d10	9.63

Hit#	of	Tentative ID	MW	MolForm	CAS#	Qual
1	5	Naphthalene, 1,6,7-trimethyl-	170	C13H14	002245-38-7	89
2		Naphthalene, 1,4,5-trimethyl-	170	C13H14	002131-41-1	86
3		4,6,8-Trimethylazulene	170	C13H14	000941-81-1	64
4		Naphthalene, 2,3,6-trimethyl-	170	C13H14	000829-26-5	60
5		Fluorene	166	C13H10	000086-73-7	55



Data Path : Z:\HPCHEM1\BNA F\DATA\BF072116\  
 Data File : BF089172.D  
 Acq On : 21 Jul 2016 11:14  
 Operator : UM/SJ  
 Sample : H4112-01  
 Misc :  
 ALS Vial : 8 Sample Multiplier: 1

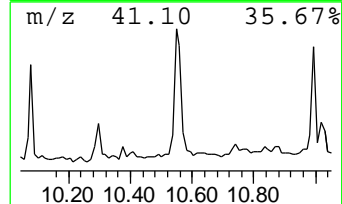
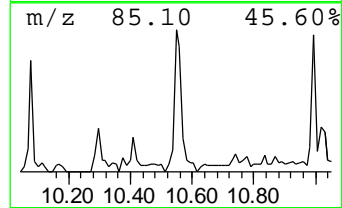
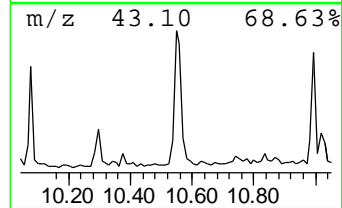
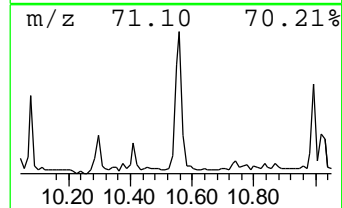
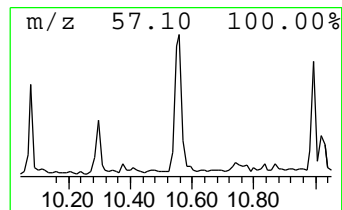
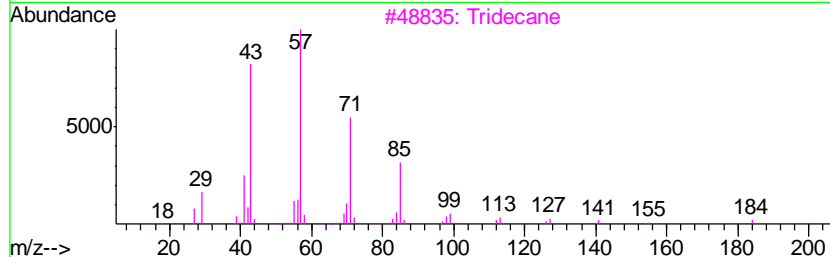
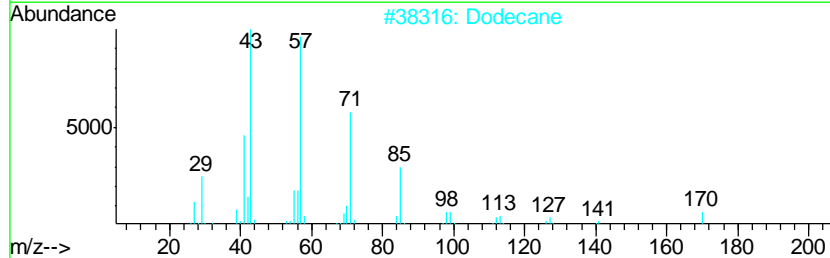
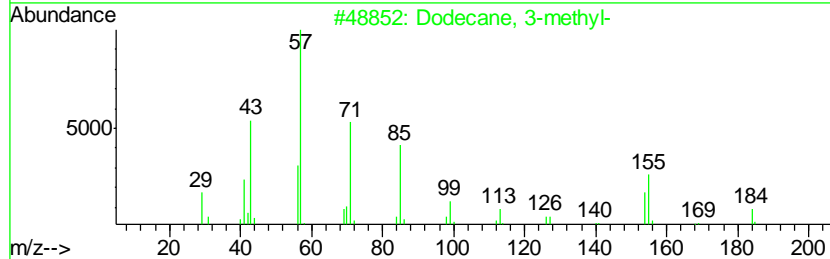
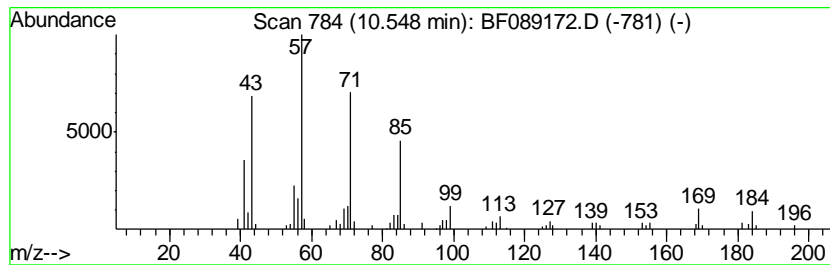
Instrument :  
 BNA\_F  
 ClientSampled :  
 KSB-01-0.2-2.0

Quant Method : Z:\HPCHEM1\BNA F\METHODS\8270-BF072016.M  
 Quant Title : ASP BNA STANDARDS FOR 5 POINT CALIBRATION

TIC Library : C:\Database\NIST11.L  
 TIC Integration Parameters: LSCINT.P

\*\*\*\*\*  
 Peak Number 8 Dodecane, 3-methyl- Concentration Rank 6

R.T.	EstConc	Area	Relative to ISTD	R.T.	
10.55	5.46 ng	161244	Phenanthrene-d10	11.11	
Hit# of	5	Tentative ID	MW MolForm	CAS#	Qual
1		Dodecane, 3-methyl-	184 C13H28	017312-57-1	81
2		Dodecane	170 C12H26	000112-40-3	76
3		Tridecane	184 C13H28	000629-50-5	74
4		Heptacosane	380 C27H56	000593-49-7	74
5		Dodecane, 1-iodo-	296 C12H25I	004292-19-7	72



Data Path : Z:\HPCHEM1\BNA F\DATA\BF072116\  
 Data File : BF089172.D  
 Acq On : 21 Jul 2016 11:14  
 Operator : UM/SJ  
 Sample : H4112-01  
 Misc :  
 ALS Vial : 8 Sample Multiplier: 1

Instrument :  
 BNA\_F  
 ClientSampleID :  
 KSB-01-0.2-2.0

Quant Method : Z:\HPCHEM1\BNA F\METHODS\8270-BF072016.M  
 Quant Title : ASP BNA STANDARDS FOR 5 POINT CALIBRATION

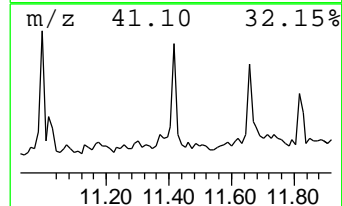
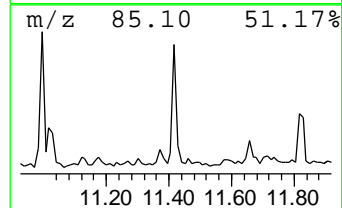
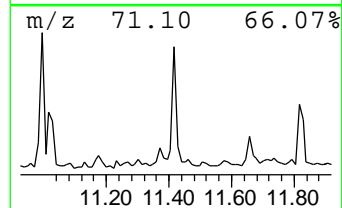
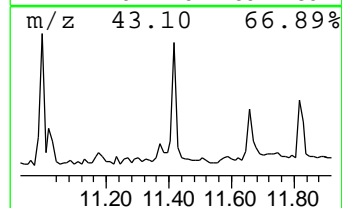
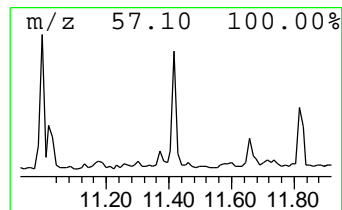
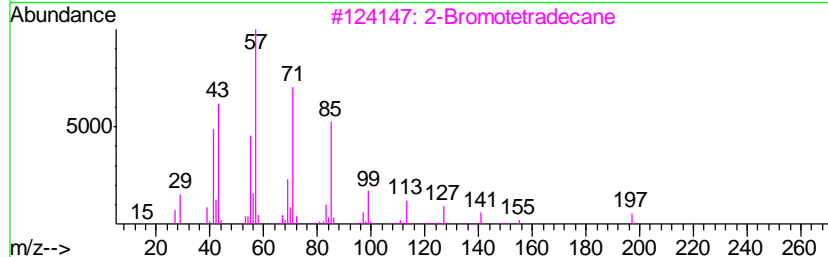
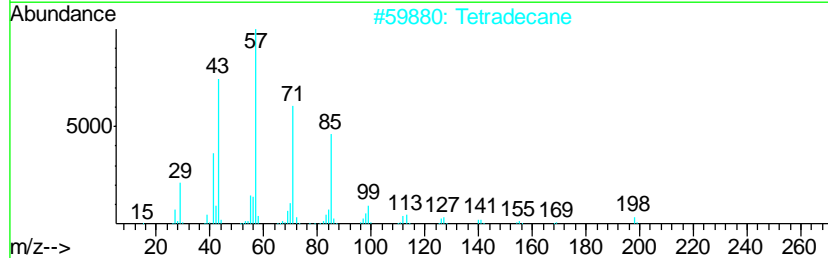
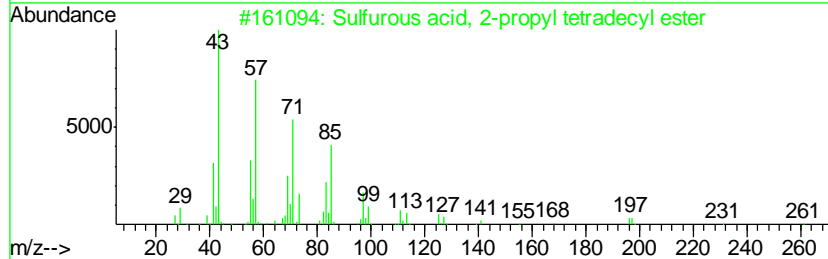
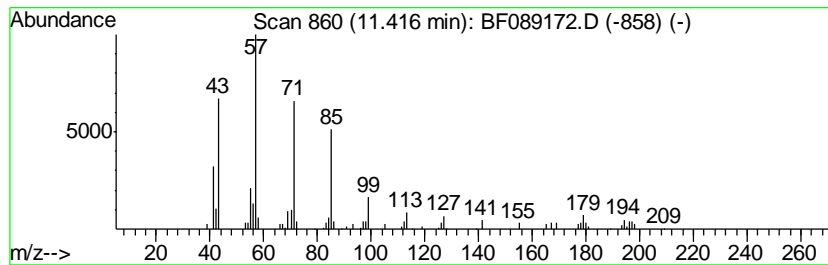
TIC Library : C:\Database\NIST11.L  
 TIC Integration Parameters: LSCINT.P

\*\*\*\*\*  
 Peak Number 9 Sulfurous acid, 2-propyl te... Concentration Rank 10

R.T.	EstConc	Area	Relative to ISTD	R.T.
11.42	3.77 ng	111569	Phenanthrene-d10	11.11

Hit#	of	Tentative ID	MW	MolForm	CAS#	Qual
1	5	Sulfurous acid, 2-propyl tetrade...	320	C17H36O3S	1000309-12-5	80
2		Tetradecane	198	C14H30	000629-59-4	76
3		2-Bromotetradecane	276	C14H29Br	074036-95-6	74
4		Pentadecane	212	C15H32	000629-62-9	72
5		2-Bromo dodecane	248	C12H25Br	013187-99-0	72



Data Path : Z:\HPCHEM1\BNA F\DATA\BF072116\  
 Data File : BF089172.D  
 Acq On : 21 Jul 2016 11:14  
 Operator : UM/SJ  
 Sample : H4112-01  
 Misc :  
 ALS Vial : 8 Sample Multiplier: 1

Instrument :  
 BNA\_F  
 ClientSampleID :  
 KSB-01-0.2-2.0

Quant Method : Z:\HPCHEM1\BNA F\METHODS\8270-BF072016.M  
 Quant Title : ASP BNA STANDARDS FOR 5 POINT CALIBRATION

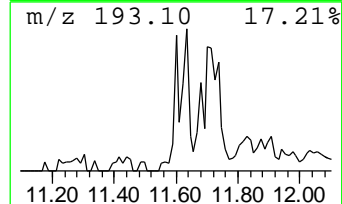
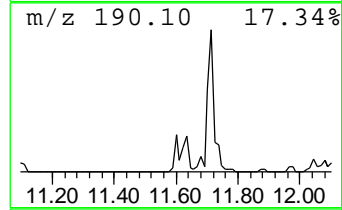
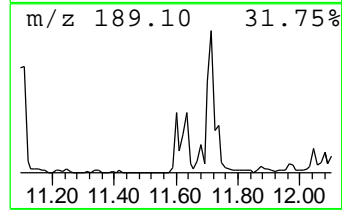
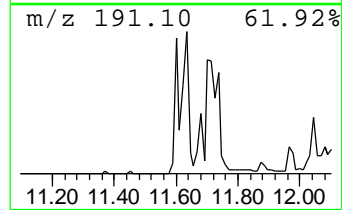
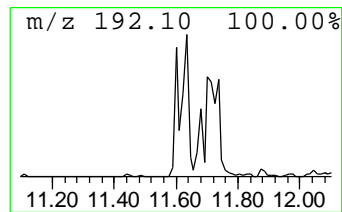
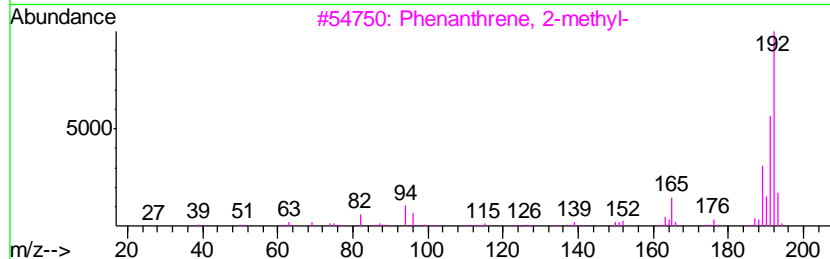
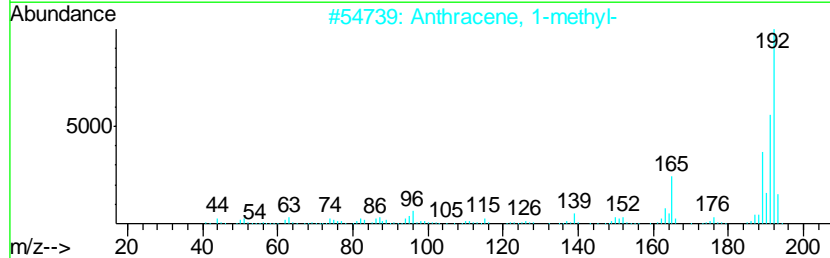
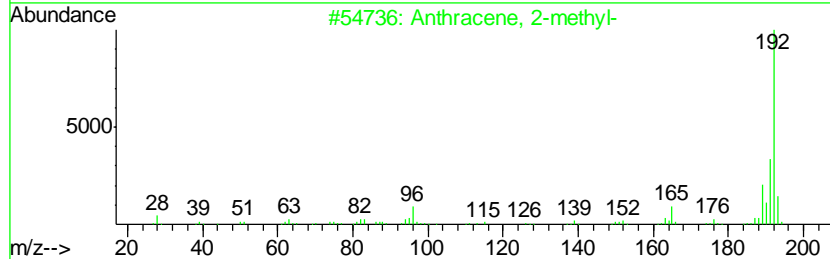
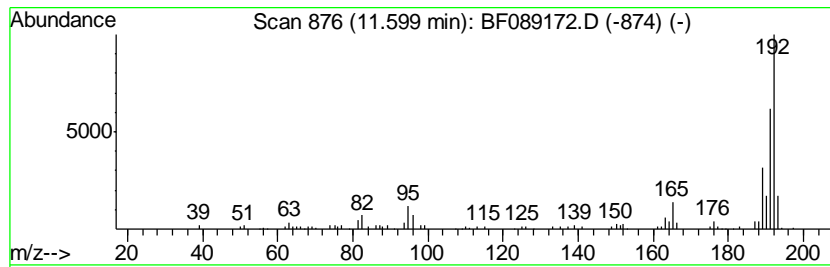
TIC Library : C:\Database\NIST11.L  
 TIC Integration Parameters: LSCINT.P

\*\*\*\*\*  
 Peak Number 10 Anthracene, 2-methyl- Concentration Rank 11

R.T.	EstConc	Area	Relative to ISTD	R.T.
11.60	3.73 ng	110261	Phenanthrene-d10	11.11

Hit#	of	Tentative ID	MW	MolForm	CAS#	Qual
1	5	Anthracene, 2-methyl-	192	C15H12	000613-12-7	94
2		Anthracene, 1-methyl-	192	C15H12	000610-48-0	93
3		Phenanthrene, 2-methyl-	192	C15H12	002531-84-2	93
4		Phenanthrene, 1-methyl-	192	C15H12	000832-69-9	93
5		Anthracene, 9-methyl-	192	C15H12	000779-02-2	93



Data Path : Z:\HPCHEM1\BNA F\DATA\BF072116\  
 Data File : BF089172.D  
 Acq On : 21 Jul 2016 11:14  
 Operator : UM/SJ  
 Sample : H4112-01  
 Misc :  
 ALS Vial : 8 Sample Multiplier: 1

Instrument :  
 BNA\_F  
 ClientSampleID :  
 KSB-01-0.2-2.0

Quant Method : Z:\HPCHEM1\BNA F\METHODS\8270-BF072016.M  
 Quant Title : ASP BNA STANDARDS FOR 5 POINT CALIBRATION

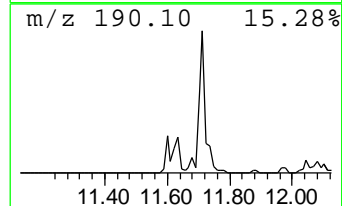
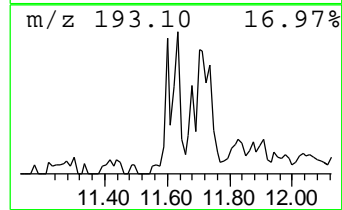
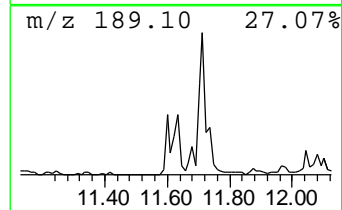
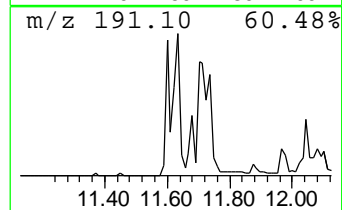
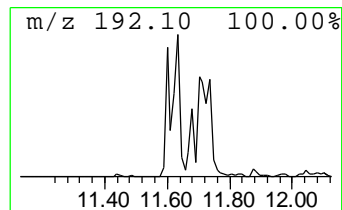
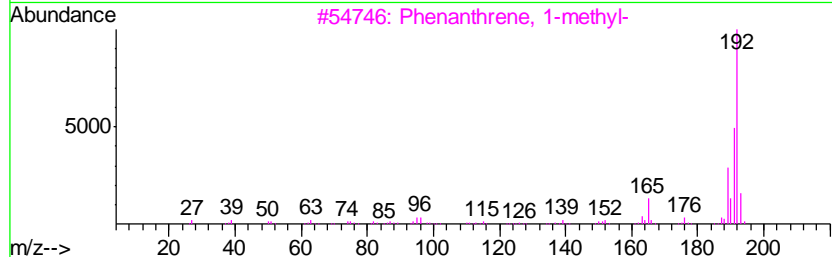
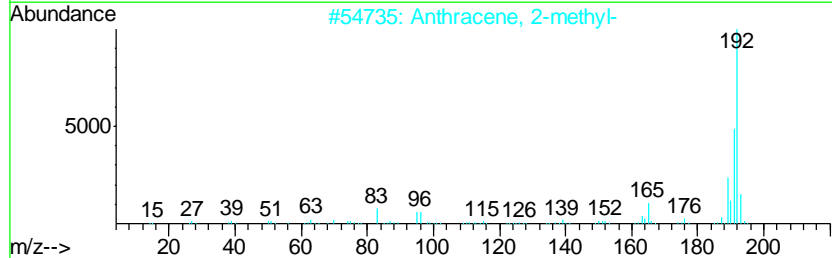
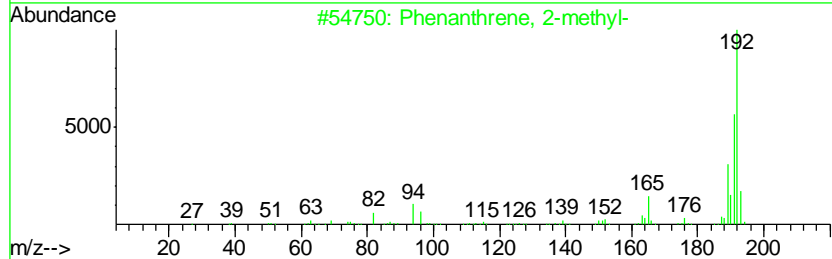
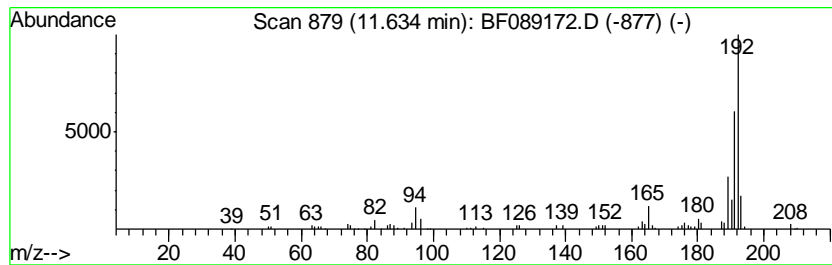
TIC Library : C:\Database\NIST11.L  
 TIC Integration Parameters: LSCINT.P

\*\*\*\*\*  
 Peak Number 11 Phenanthrene, 2-methyl- Concentration Rank 12

R.T.	EstConc	Area	Relative to ISTD	R.T.
11.63	3.70 ng	109263	Phenanthrene-d10	11.11

Hit#	of	Tentative ID	MW	MolForm	CAS#	Qual
1	5	Phenanthrene, 2-methyl-	192	C15H12	002531-84-2	98
2		Anthracene, 2-methyl-	192	C15H12	000613-12-7	96
3		Phenanthrene, 1-methyl-	192	C15H12	000832-69-9	96
4		1H-Cyclopropa[1]phenanthrene, 1a, ...	192	C15H12	000949-41-7	95
5		1H-Indene, 2-phenyl-	192	C15H12	004505-48-0	94



Data Path : Z:\HPCHEM1\BNA F\DATA\BF072116\  
 Data File : BF089172.D  
 Acq On : 21 Jul 2016 11:14  
 Operator : UM/SJ  
 Sample : H4112-01  
 Misc :  
 ALS Vial : 8 Sample Multiplier: 1

Instrument :  
 BNA\_F  
 ClientSampleId :  
 KSB-01-0.2-2.0

Quant Method : Z:\HPCHEM1\BNA F\METHODS\8270-BF072016.M  
 Quant Title : ASP BNA STANDARDS FOR 5 POINT CALIBRATION

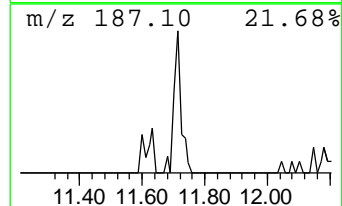
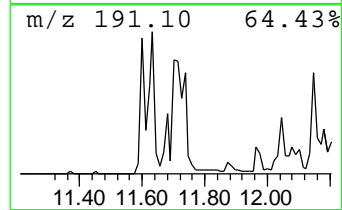
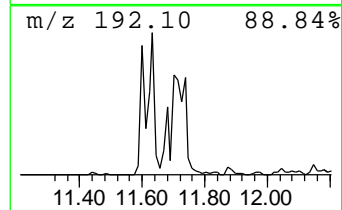
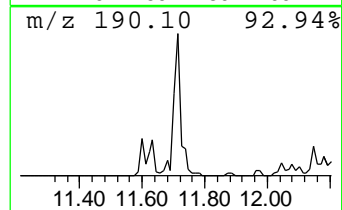
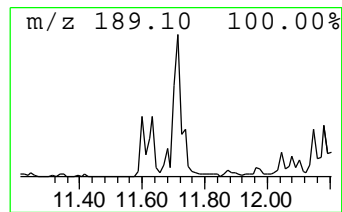
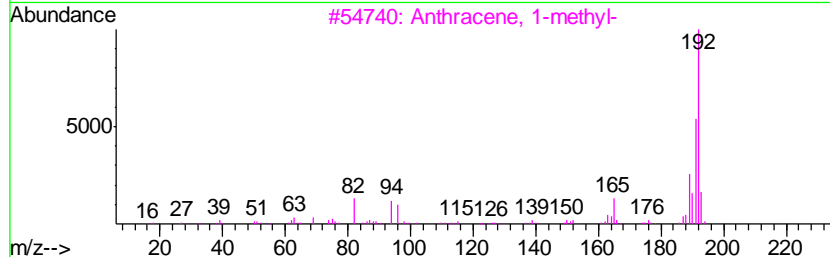
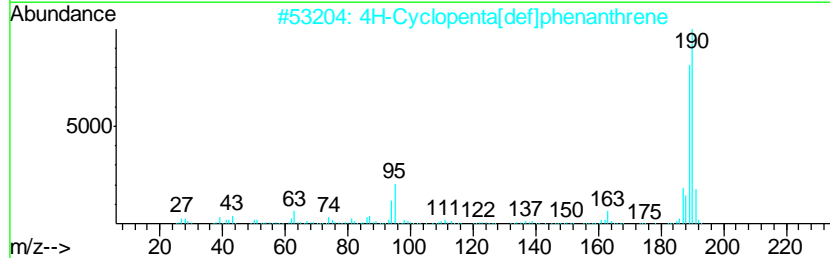
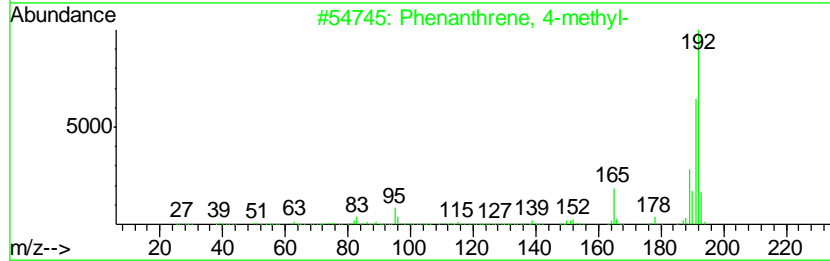
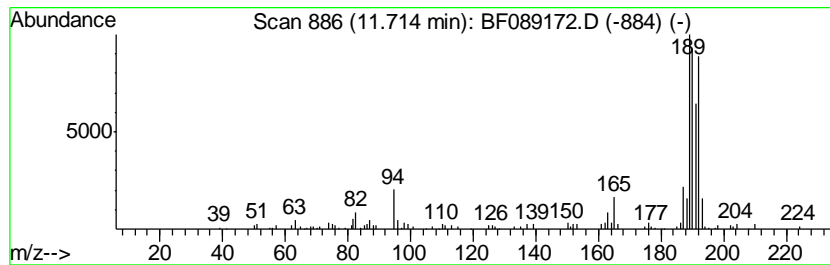
TIC Library : C:\Database\NIST11.L  
 TIC Integration Parameters: LSCINT.P

\*\*\*\*\*  
 Peak Number 12 Phenanthrene, 4-methyl- Concentration Rank 4

R.T.	EstConc	Area	Relative to ISTD	R.T.
11.71	9.78 ng	288958	Phenanthrene-d10	11.11

Hit#	of	Tentative ID	MW	MolForm	CAS#	Qual
1	5	Phenanthrene, 4-methyl-	192	C15H12	000832-64-4	55
2		4H-Cyclopenta[def]phenanthrene	190	C15H10	000203-64-5	55
3		Anthracene, 1-methyl-	192	C15H12	000610-48-0	46
4		Phenanthrene, 1-methyl-	192	C15H12	000832-69-9	42
5		5H-Dibenzo[a,d]cycloheptene	192	C15H12	000256-81-5	42



Data Path : Z:\HPCHEM1\BNA F\DATA\BF072116\  
 Data File : BF089172.D  
 Acq On : 21 Jul 2016 11:14  
 Operator : UM/SJ  
 Sample : H4112-01  
 Misc :  
 ALS Vial : 8 Sample Multiplier: 1

Instrument :  
 BNA\_F  
 ClientSampled :  
 KSB-01-0.2-2.0

Quant Method : Z:\HPCHEM1\BNA F\METHODS\8270-BF072016.M  
 Quant Title : ASP BNA STANDARDS FOR 5 POINT CALIBRATION

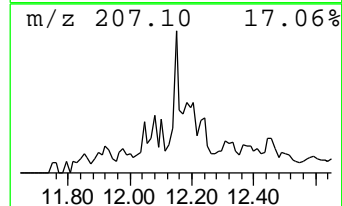
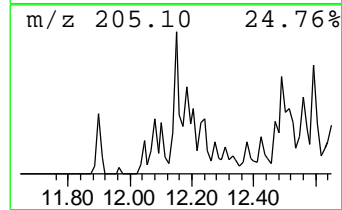
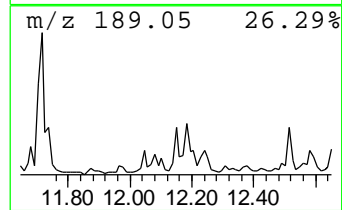
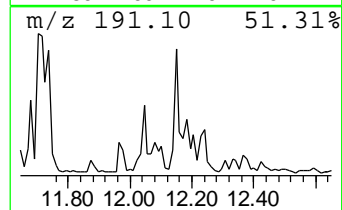
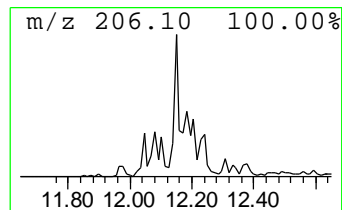
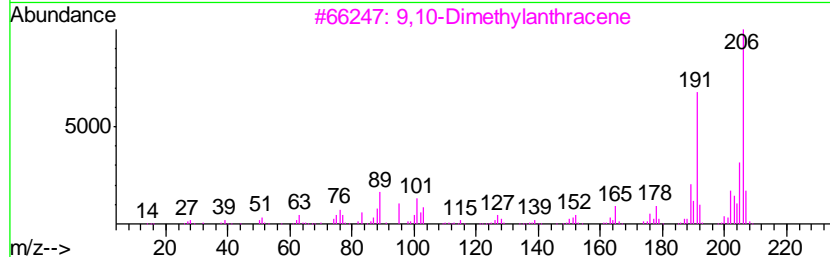
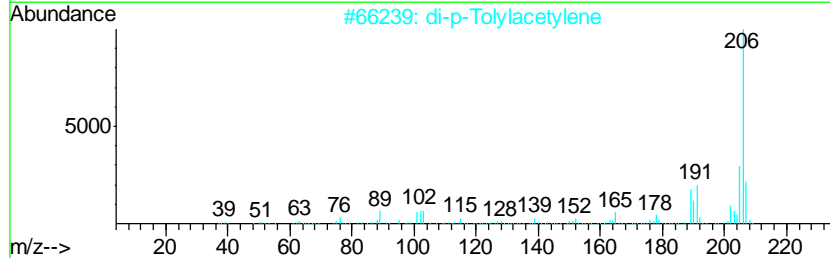
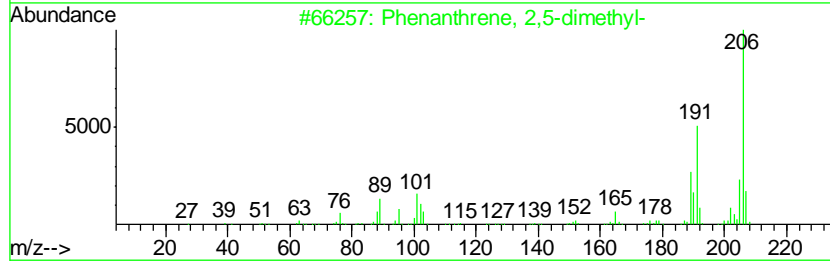
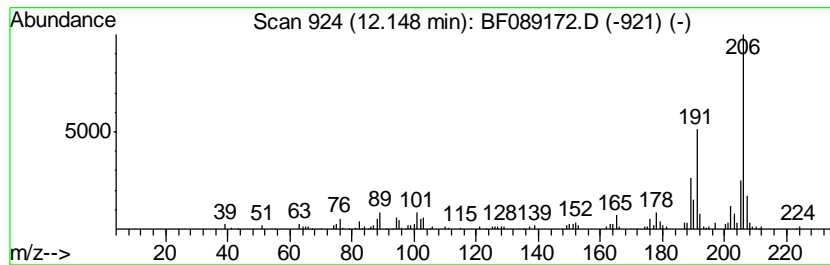
TIC Library : C:\Database\NIST11.L  
 TIC Integration Parameters: LSCINT.P

\*\*\*\*\*  
 Peak Number 13 Phenanthrene, 2,5-dimethyl- Concentration Rank 8

R.T.	EstConc	Area	Relative to ISTD	R.T.
12.15	4.93 ng	145835	Phenanthrene-d10	11.11

Hit#	of	Tentative ID	MW	MolForm	CAS#	Qual
1	5	Phenanthrene, 2,5-dimethyl-	206	C16H14	003674-66-6	96
2		di-p-Tolylacetylene	206	C16H14	002789-88-0	92
3		9,10-Dimethylantracene	206	C16H14	000781-43-1	91
4		Phenanthrene, 2,7-dimethyl-	206	C16H14	001576-69-8	90
5		Phenanthrene, 1,7-dimethyl-	206	C16H14	000483-87-4	90



Data Path : Z:\HPCHEM1\BNA F\DATA\BF072116\  
 Data File : BF089172.D  
 Acq On : 21 Jul 2016 11:14  
 Operator : UM/SJ  
 Sample : H4112-01  
 Misc :  
 ALS Vial : 8 Sample Multiplier: 1

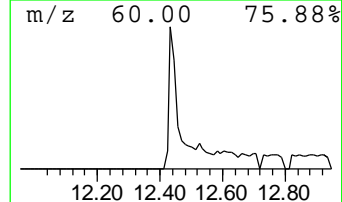
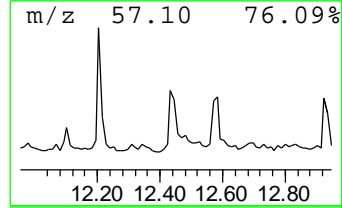
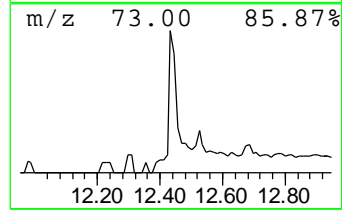
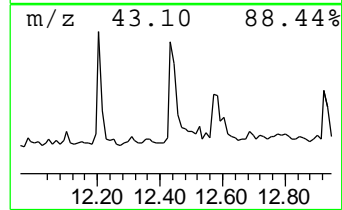
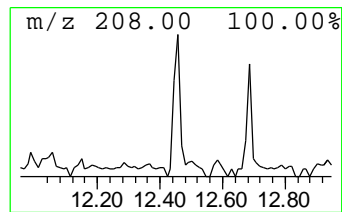
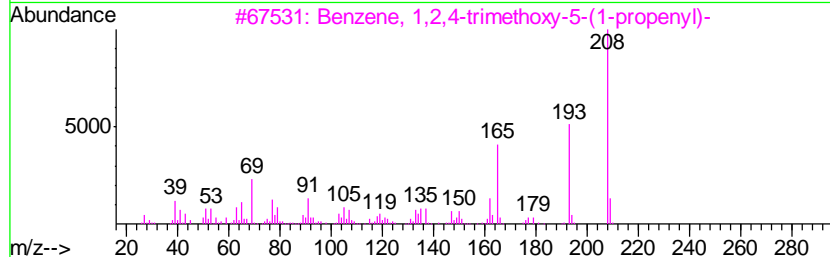
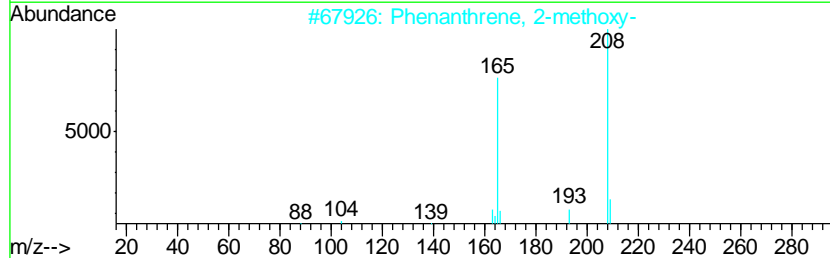
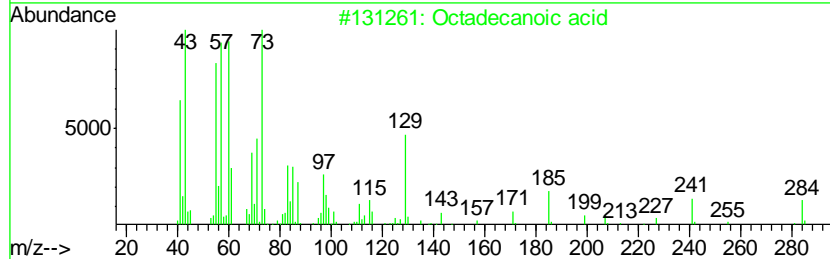
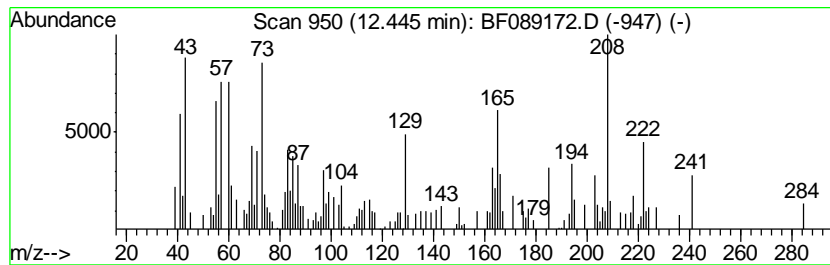
Instrument :  
 BNA\_F  
 ClientSampleID :  
 KSB-01-0.2-2.0

Quant Method : Z:\HPCHEM1\BNA F\METHODS\8270-BF072016.M  
 Quant Title : ASP BNA STANDARDS FOR 5 POINT CALIBRATION

TIC Library : C:\Database\NIST11.L  
 TIC Integration Parameters: LSCINT.P

\*\*\*\*\*  
 Peak Number 14 Octadecanoic acid Concentration Rank 17

R.T.	EstConc	Area	Relative to ISTD	R.T.
12.45	3.01 ng	140075	Chrysene-d12	13.73
Hit# of	5	Tentative ID	MW MolForm	CAS# Qual
1		Octadecanoic acid	284 C18H36O2	000057-11-4 93
2		Phenanthrene, 2-methoxy-	208 C15H12O	013837-48-4 35
3		Benzene, 1,2,4-trimethoxy-5-(1-p...	208 C12H16O3	000494-40-6 25
4		.beta.-Asarone	208 C12H16O3	005273-86-9 25
5		n-Decanoic acid	172 C10H20O2	000334-48-5 22





Data Path : Z:\HPCHEM1\BNA F\DATA\BF072116\  
 Data File : BF089172.D  
 Acq On : 21 Jul 2016 11:14  
 Operator : UM/SJ  
 Sample : H4112-01  
 Misc :  
 ALS Vial : 8 Sample Multiplier: 1

Instrument :  
 BNA\_F  
 ClientSampleID :  
 KSB-01-0.2-2.0

Quant Method : Z:\HPCHEM1\BNA F\METHODS\8270-BF072016.M  
 Quant Title : ASP BNA STANDARDS FOR 5 POINT CALIBRATION

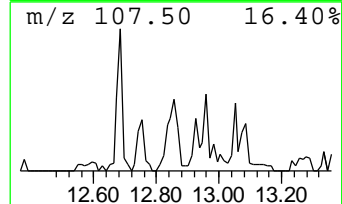
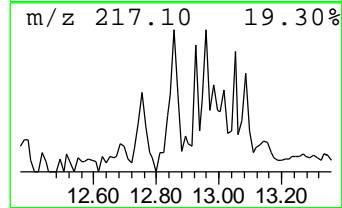
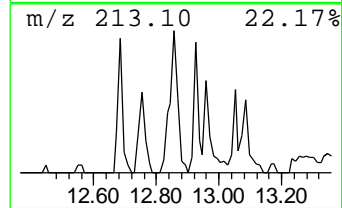
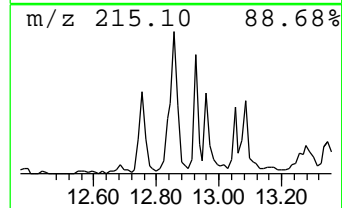
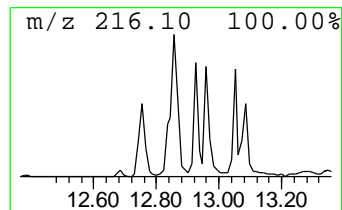
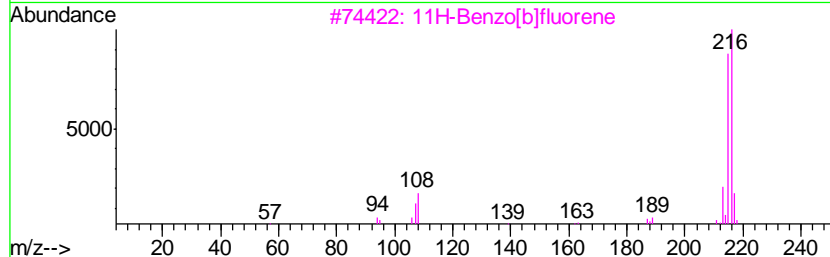
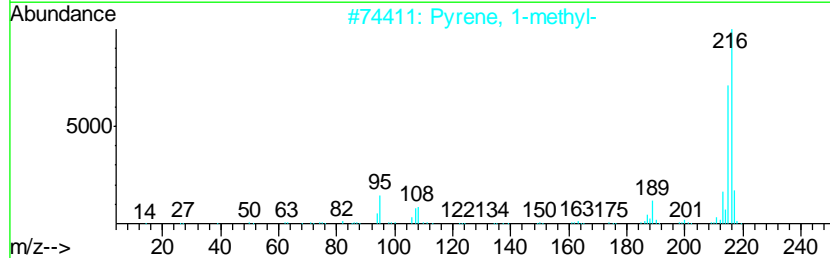
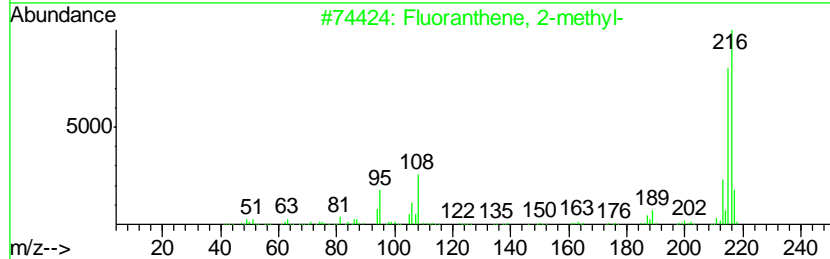
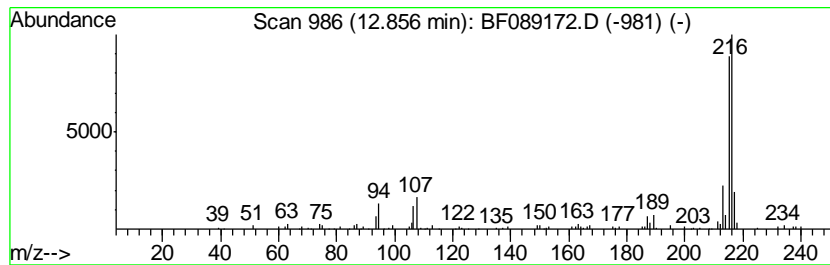
TIC Library : C:\Database\NIST11.L  
 TIC Integration Parameters: LSCINT.P

\*\*\*\*\*  
 Peak Number 15 Fluoranthene, 2-methyl- Concentration Rank 9

R.T.	EstConc	Area	Relative to ISTD	R.T.
12.86	3.84 ng	178693	Chrysene-d12	13.73

Hit#	of	Tentative ID	MW	MolForm	CAS#	Qual
1	5	Fluoranthene, 2-methyl-	216	C17H12	033543-31-6	94
2		Pyrene, 1-methyl-	216	C17H12	002381-21-7	94
3		11H-Benzo[b]fluorene	216	C17H12	000243-17-4	91
4		7H-Benzo[c]fluorene	216	C17H12	000205-12-9	87
5		11H-Benzo[a]fluorene	216	C17H12	000238-84-6	87



Data Path : Z:\HPCHEM1\BNA F\DATA\BF072116\  
 Data File : BF089172.D  
 Acq On : 21 Jul 2016 11:14  
 Operator : UM/SJ  
 Sample : H4112-01  
 Misc :  
 ALS Vial : 8 Sample Multiplier: 1

Instrument :  
 BNA\_F  
 ClientSampleId :  
 KSB-01-0.2-2.0

Quant Method : Z:\HPCHEM1\BNA F\METHODS\8270-BF072016.M  
 Quant Title : ASP BNA STANDARDS FOR 5 POINT CALIBRATION

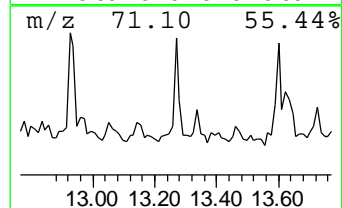
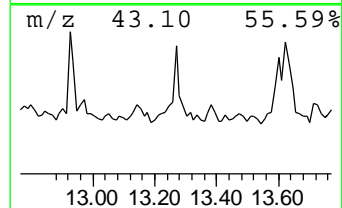
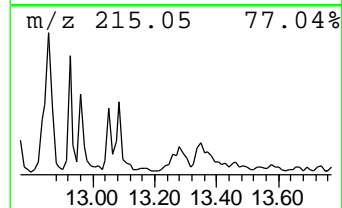
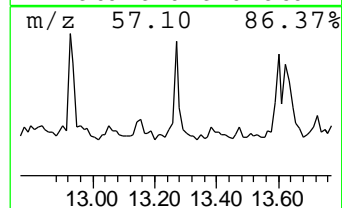
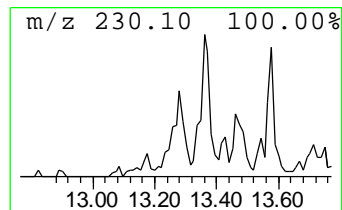
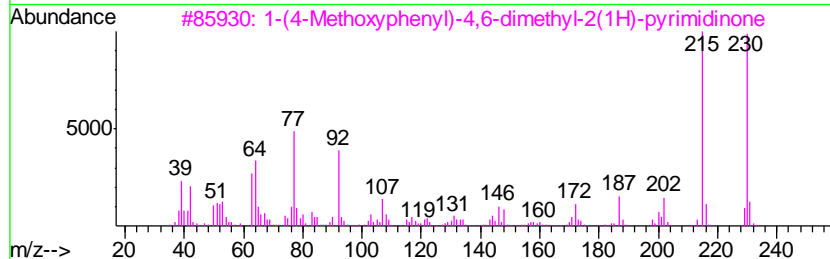
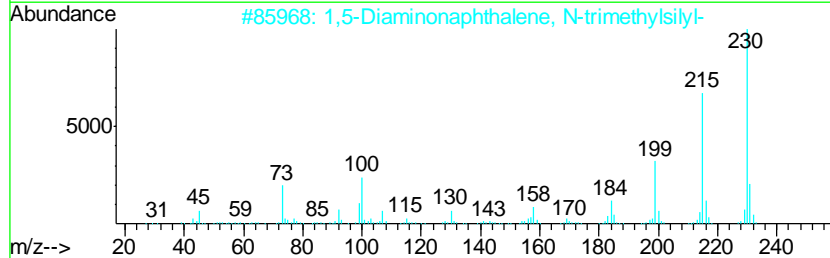
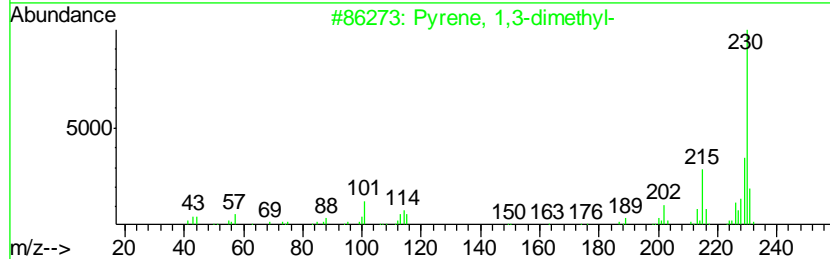
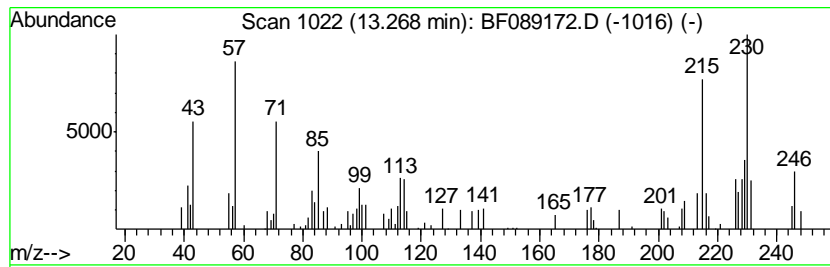
TIC Library : C:\Database\NIST11.L  
 TIC Integration Parameters: LSCINT.P

\*\*\*\*\*  
 Peak Number 16 Pyrene, 1,3-dimethyl- Concentration Rank 20

R.T.	EstConc	Area	Relative to ISTD	R.T.
13.27	2.78 ng	129054	Chrysene-d12	13.73

Hit#	of	Tentative ID	MW	MolForm	CAS#	Qual
1	5	Pyrene, 1,3-dimethyl-	230	C18H14	064401-21-4	52
2		1,5-Diaminonaphthalene, N-trimet...	230	C13H18N2Si	1000364-96-3	46
3		1-(4-Methoxyphenyl)-4,6-dimethyl...	230	C13H14N2O2	074360-11-5	43
4		Benzene, 1-phenyl-4-(2,2-dicyano...	230	C16H10N2	026089-09-8	38
5		Benzo[a]phenazine, 12-oxide	246	C16H10N2O	018636-87-8	35



Data Path : Z:\HPCHEM1\BNA F\DATA\BF072116\  
 Data File : BF089172.D  
 Acq On : 21 Jul 2016 11:14  
 Operator : UM/SJ  
 Sample : H4112-01  
 Misc :  
 ALS Vial : 8 Sample Multiplier: 1

Instrument :  
 BNA\_F  
 ClientSampleID :  
 KSB-01-0.2-2.0

Quant Method : Z:\HPCHEM1\BNA F\METHODS\8270-BF072016.M  
 Quant Title : ASP BNA STANDARDS FOR 5 POINT CALIBRATION

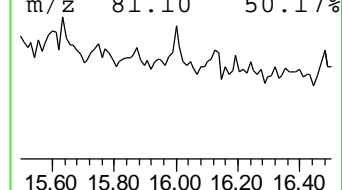
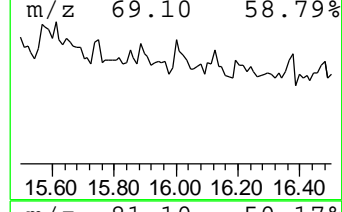
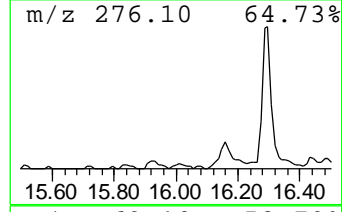
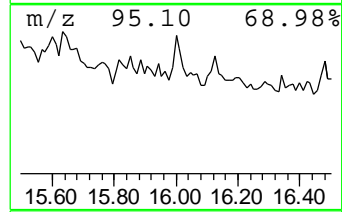
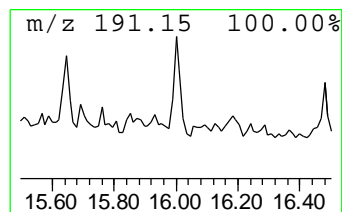
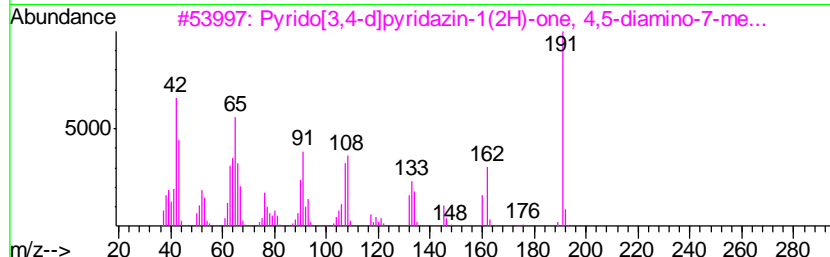
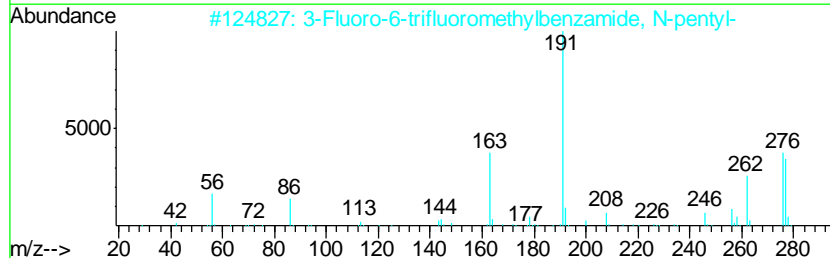
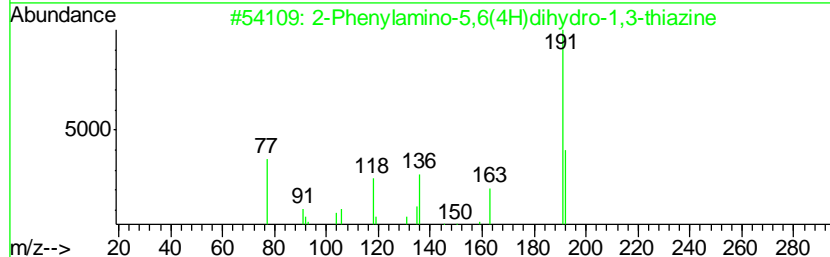
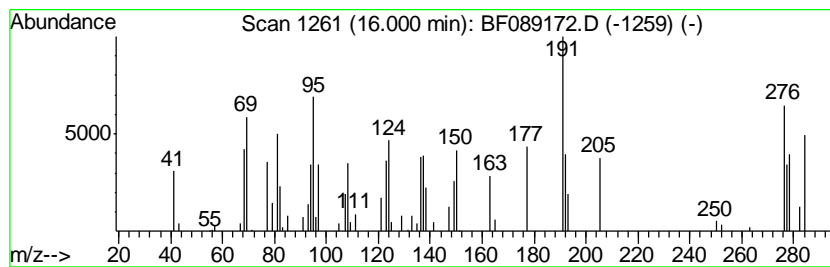
TIC Library : C:\Database\NIST11.L  
 TIC Integration Parameters: LSCINT.P

\*\*\*\*\*  
 Peak Number 19 unknown16.00 Concentration Rank 18

R.T.	EstConc	Area	Relative to ISTD	R.T.
16.00	2.96 ng	54699	Perylene-d12	15.07

Hit#	of	Tentative ID	MW	MolForm	CAS#	Qual
1	5	2-Phenylamino-5,6(4H)dihydro-1,3...	192	C10H12N2S	1000147-35-4	22
2		3-Fluoro-6-trifluoromethylbenzam...	277	C13H15F4NO	1000358-07-5	14
3		Pyrido[3,4-d]pyridazin-1(2H)-one...	191	C8H9N5O	1000263-69-7	10
4		4H-Pyran-2-carboxylic acid, 6-[p...	278	C14H11ClO4	076781-74-3	10
5		5-Fluoro-2-trifluoromethylbenzoi...	460	C26H40F4O2	1000338-75-4	10



Data Path : Z:\HPCHEM1\BNA F\DATA\BF072116\  
 Data File : BF089172.D  
 Acq On : 21 Jul 2016 11:14  
 Operator : UM/SJ  
 Sample : H4112-01  
 Misc :  
 ALS Vial : 8 Sample Multiplier: 1

Instrument :  
 BNA\_F  
 ClientSampleID :  
 KSB-01-0.2-2.0

Quant Method : Z:\HPCHEM1\BNA F\METHODS\8270-BF072016.M  
 Quant Title : ASP BNA STANDARDS FOR 5 POINT CALIBRATION

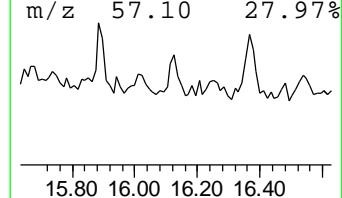
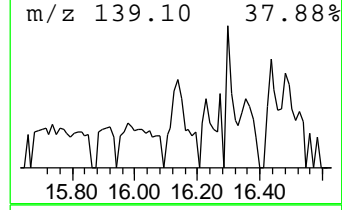
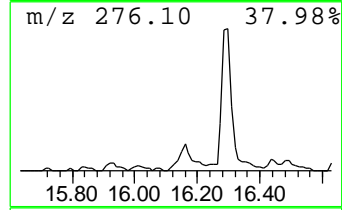
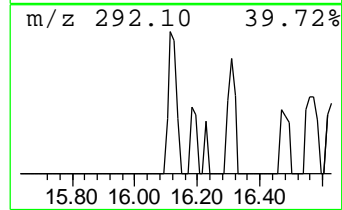
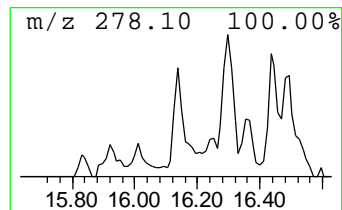
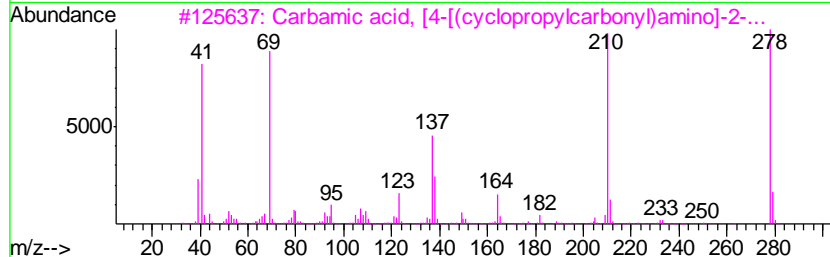
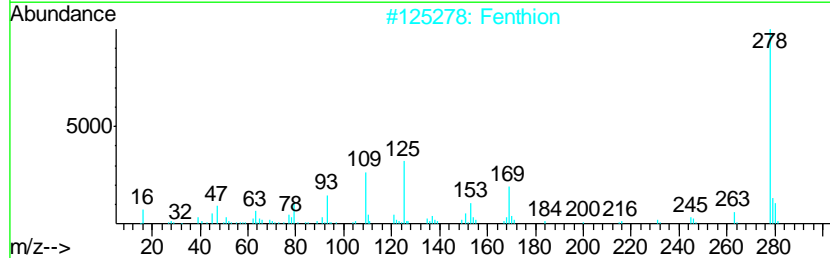
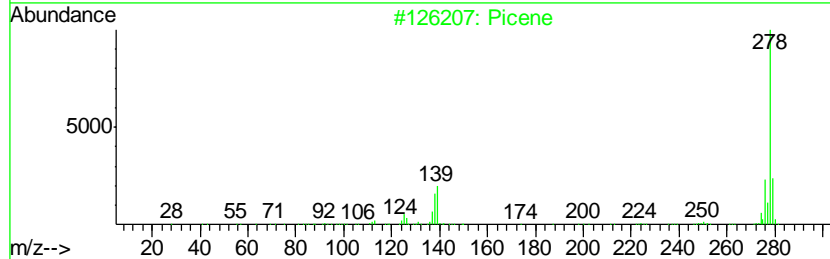
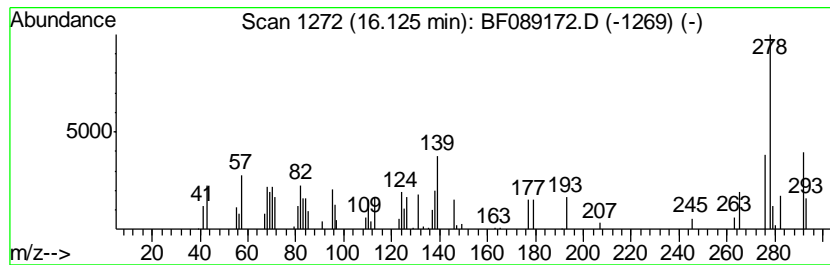
TIC Library : C:\Database\NIST11.L  
 TIC Integration Parameters: LSCINT.P

\*\*\*\*\*  
 Peak Number 20 unknown16.13 Concentration Rank 13

R.T.	EstConc	Area	Relative to ISTD	R.T.
16.13	3.39 ng	62567	Perylene-d12	15.07

Hit#	of	Tentative ID	MW	MolForm	CAS#	Qual
1	5	Picene	278	C22H14	000213-46-7	27
2		Fenthion	278	C10H15O3PS2	000055-38-9	25
3		Carbamic acid, [4-[(cyclopropylc...	278	C14H18N2O4	1000337-41-0	25
4		Benzo[bltriphenylene	278	C22H14	000215-58-7	25
5		Cyclohexan-1,3-dione, 5-[2,3,4-t...	278	C15H18O5	119101-24-5	22



Data Path : Z:\HPCHEM1\BNA\_F\DATA\BF072116\  
 Data File : BF089172.D  
 Acq On : 21 Jul 2016 11:14  
 Operator : UM/SJ  
 Sample : H4112-01  
 Misc :  
 ALS Vial : 8 Sample Multiplier: 1

Instrument :  
 BNA\_F  
 ClientSampleId :  
 KSB-01-0.2-2.0

Quant Method : Z:\HPCHEM1\BNA\_F\METHODS\8270-BF072016.M  
 Quant Title : ASP BNA STANDARDS FOR 5 POINT CALIBRATION

TIC Library : C:\Database\NIST11.L  
 TIC Integration Parameters: LSCINT.P

TIC Top Hit name	RT	EstConc	Units	Response	--Internal Standard--			
					#	RT	Resp	Conc
unknown4.73	4.73	3.0	ng	48443	1	6.60	317458	20.0
unknown6.36	6.36	68.6	ng	1088400	1	6.60	317458	20.0
Benzene, 1-ethyl-...	6.42	5.1	ng	80800	1	6.60	317458	20.0
Naphthalene, 2,3-...	9.29	2.8	ng	64204	3	9.63	460629	20.0
Naphthalene, 1,6,...	10.17	3.2	ng	73926	3	9.63	460629	20.0
Dodecane, 3-methyl-	10.55	5.5	ng	161244	4	11.11	591129	20.0
Sulfurous acid, 2...	11.42	3.8	ng	111569	4	11.11	591129	20.0
Anthracene, 2-met...	11.60	3.7	ng	110261	4	11.11	591129	20.0
Phenanthrene, 2-m...	11.63	3.7	ng	109263	4	11.11	591129	20.0
Phenanthrene, 4-m...	11.71	9.8	ng	288958	4	11.11	591129	20.0
Phenanthrene, 2,5...	12.15	4.9	ng	145835	4	11.11	591129	20.0
Octadecanoic acid	12.45	3.0	ng	140075	5	13.73	929803	20.0
Fluoranthene, 2-m...	12.86	3.8	ng	178693	5	13.73	929803	20.0
Pyrene, 1,3-dimet...	13.27	2.8	ng	129054	5	13.73	929803	20.0
unknown16.00	16.00	3.0	ng	54699	6	15.07	369547	20.0
unknown16.13	16.13	3.4	ng	62567	6	15.07	369547	20.0