

Data Path : Z:\HPCHEM1\BNA\_F\DATA\BF072315\  
 Data File : BF080606.D  
 Acq On : 23 Jul 2015 22:39  
 Operator : TP/UM  
 Sample : G3028-01  
 Misc :  
 ALS Vial : 15 Sample Multiplier: 1

Instrument :  
 BNA\_F  
 ClientSampleId :  
 MW33D

Quant Time: Jul 24 01:05:08 2015  
 Quant Method : Z:\HPCHEM1\BNA\_F\METHODS\8270-BF072315.M  
 Quant Title : ASP BNA STANDARDS FOR 5 POINT CALIBRATION  
 QLast Update : Fri Jul 24 01:01:51 2015  
 Response via : Initial Calibration

Internal Standards	R.T.	QIon	Response	Conc	Units	Dev(Min)
1) 1,4-Dichlorobenzene-d4	6.94	152	49384	20.00	ng	0.00
21) Naphthalene-d8	8.24	136	187394	20.00	ng	0.00
38) Acenaphthene-d10	10.00	164	79027	20.00	ng	0.00
63) Phenanthrene-d10	11.48	188	149835	20.00	ng	0.00
75) Chrysene-d12	14.27	240	116510	20.00	ng	0.09
86) Perylene-d12	15.93	264	89184	20.00	ng	0.18
System Monitoring Compounds						
5) 2-Fluorophenol	5.52	112	120636	42.19	ng	0.00
7) Phenol-d6	6.56	99	89368	25.57	ng	0.00
23) Nitrobenzene-d5	7.50	82	234901	71.02	ng	0.00
41) 2,4,6-Tribromophenol	10.78	330	72783	116.23	ng	0.01
44) 2-Fluorobiphenyl	9.31	172	397143	72.91	ng	0.00
78) Terphenyl-d14	13.09	244	366931	65.90	ng	0.02

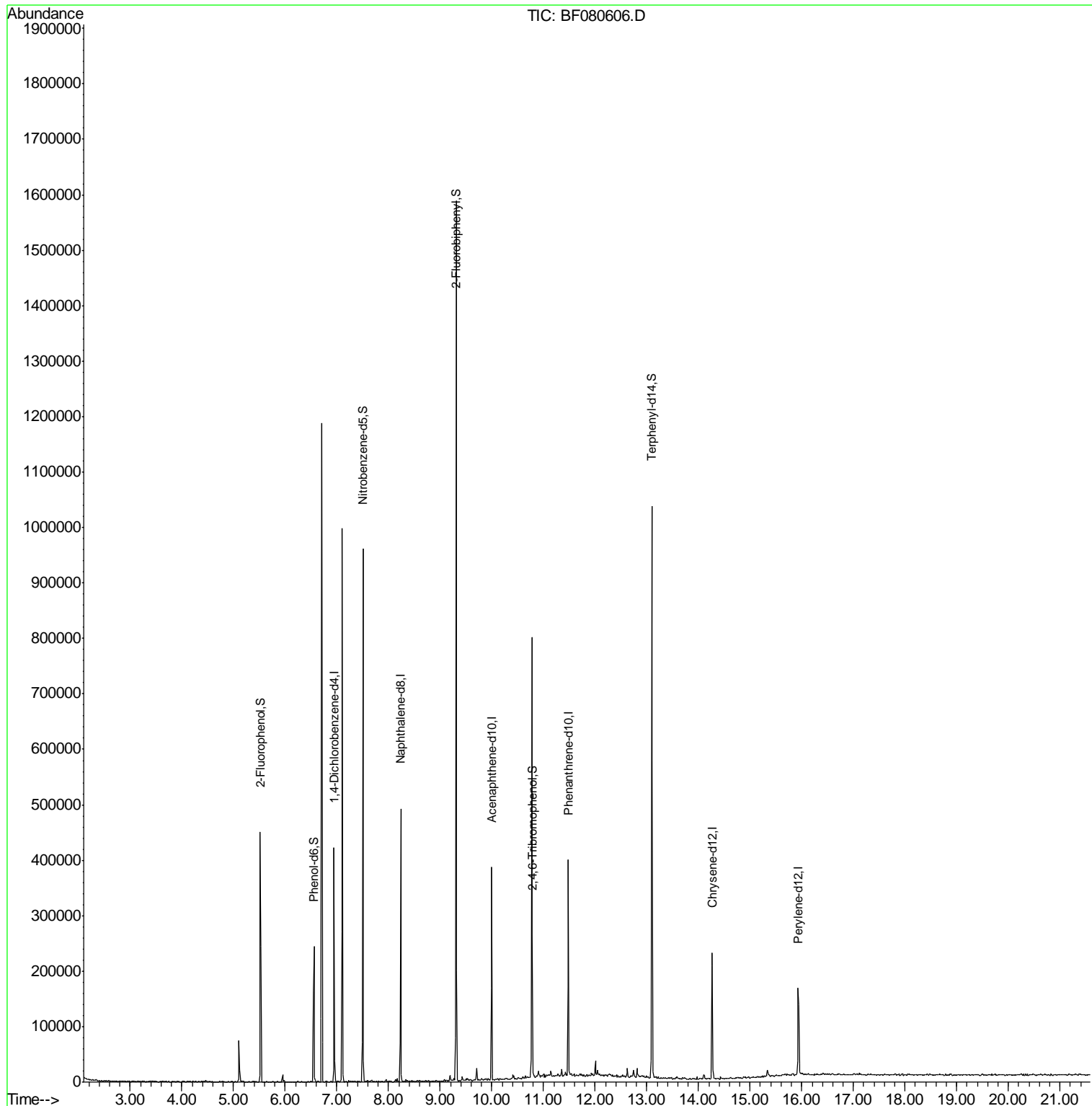
Target Compounds Qvalue

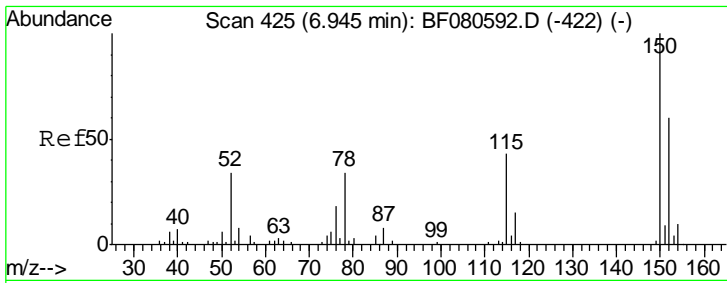
(#) = qualifier out of range (m) = manual integration (+) = signals summed

Data Path : Z:\HPCHEM1\BNA\_F\DATA\BF072315\  
 Data File : BF080606.D  
 Acq On : 23 Jul 2015 22:39  
 Operator : TP/UM  
 Sample : G3028-01  
 Misc :  
 ALS Vial : 15 Sample Multiplier: 1

Instrument :  
 BNA\_F  
 ClientSampleId :  
 MW33D

Quant Time: Jul 24 01:05:08 2015  
 Quant Method : Z:\HPCHEM1\BNA\_F\METHODS\8270-BF072315.M  
 Quant Title : ASP BNA STANDARDS FOR 5 POINT CALIBRATION  
 QLast Update : Fri Jul 24 01:01:51 2015  
 Response via : Initial Calibration

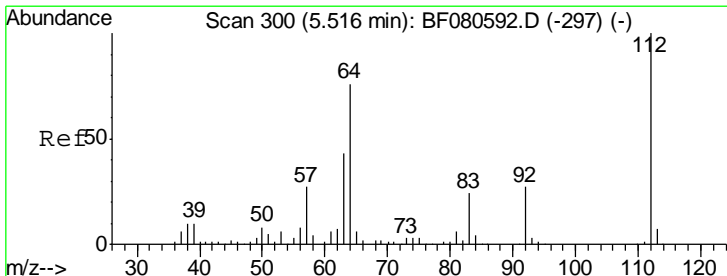
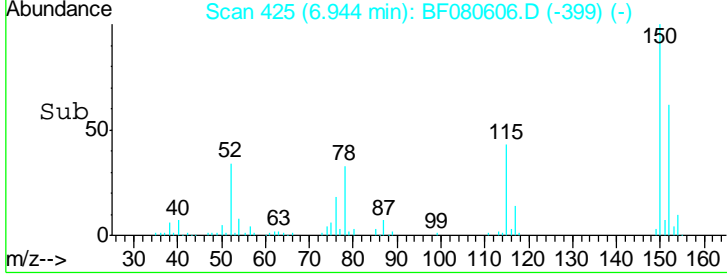
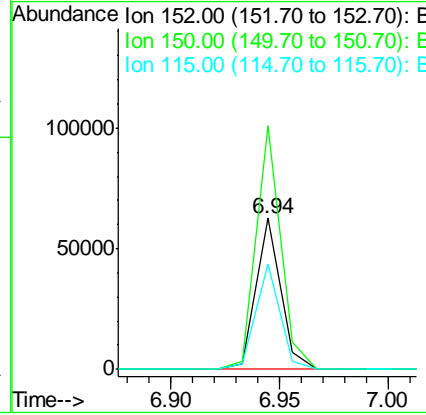
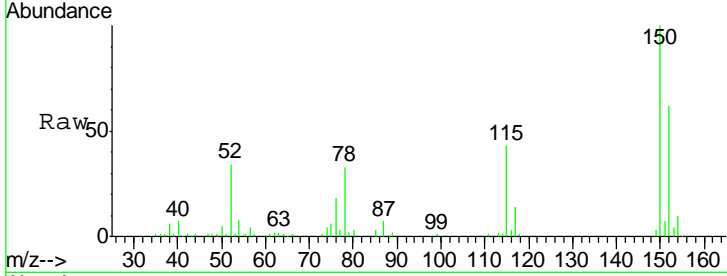




#1  
 1,4-Dichlorobenzene-d4  
 Concen: 20.00 ng  
 RT: 6.94 min Scan# 425  
 Delta R.T. 0.00 min  
 Lab File: BF080606.D  
 Acq: 23 Jul 2015 22:39

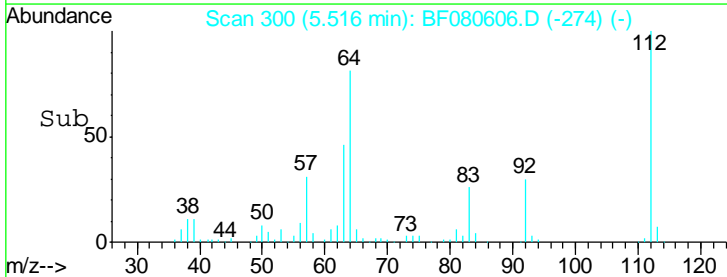
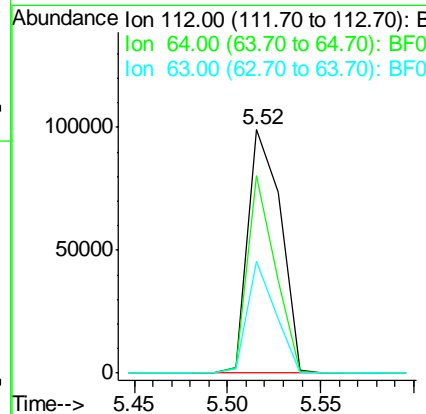
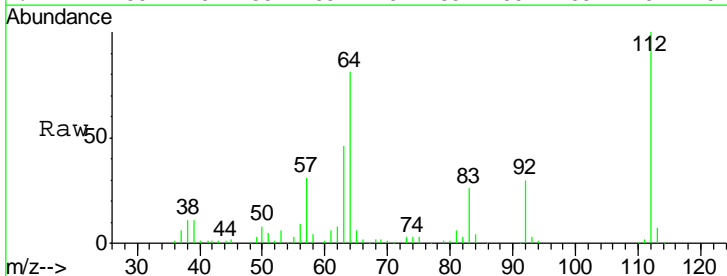
Instrument :  
 BNA\_F  
 ClientSampled :  
 MW33D

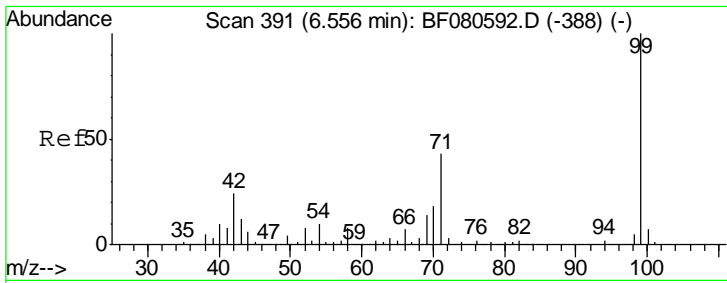
Tgt Ion	Resp	Lower	Upper
152	49384		
150	161.2	128.7	193.1
115	70.0	56.8	85.2



#5  
 2-Fluorophenol  
 Concen: 42.19 ng  
 RT: 5.52 min Scan# 300  
 Delta R.T. 0.00 min  
 Lab File: BF080606.D  
 Acq: 23 Jul 2015 22:39

Tgt Ion	Resp	Lower	Upper
112	120636		
64	81.0	60.2	90.2
63	45.7	34.8	52.2

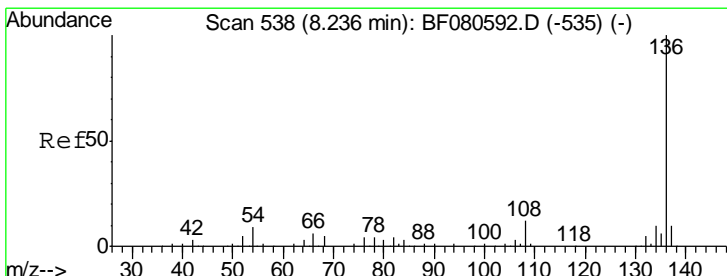
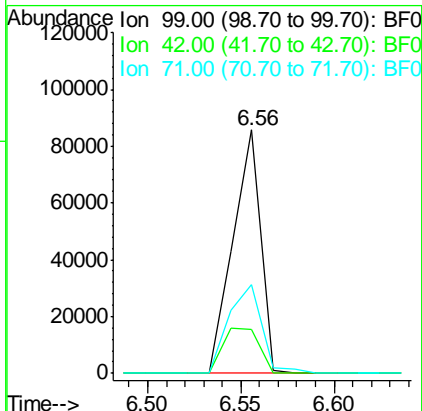
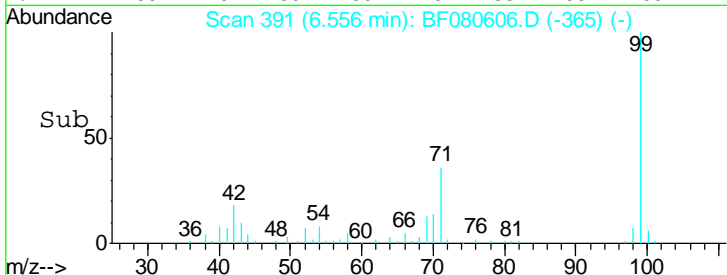
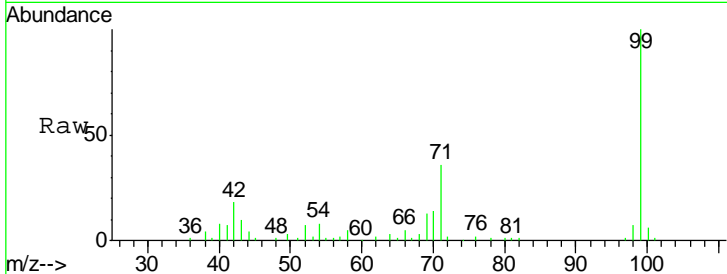




#7  
 Phenol-d6  
 Concen: 25.57 ng  
 RT: 6.56 min Scan# 391  
 Delta R.T. 0.00 min  
 Lab File: BF080606.D  
 Acq: 23 Jul 2015 22:39

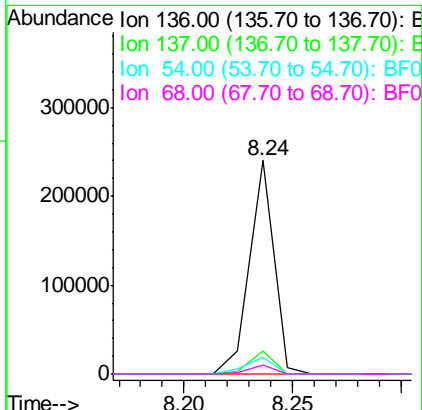
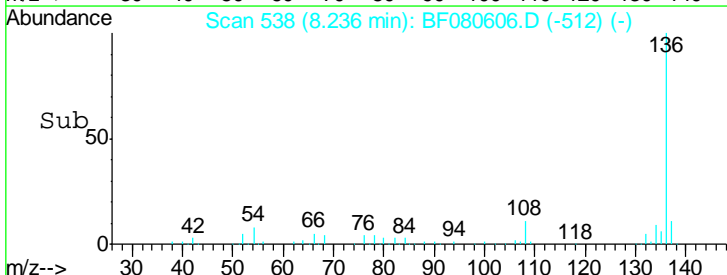
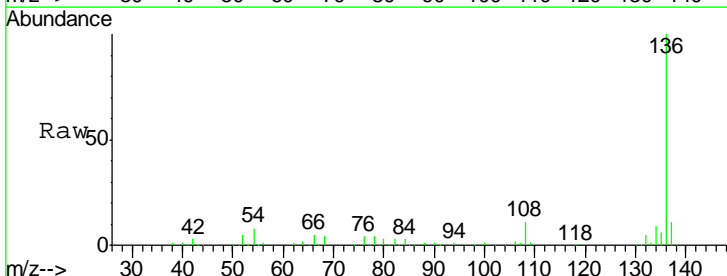
Instrument :  
 BNA\_F  
 ClientSampled :  
 MW33D

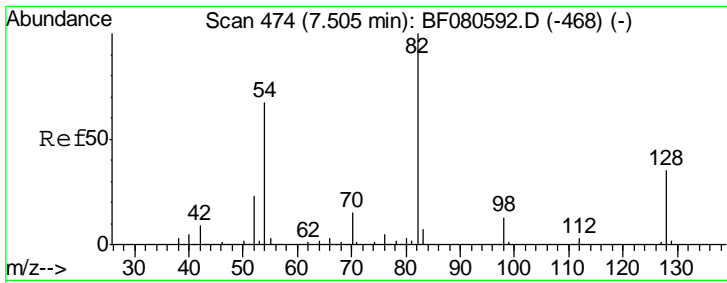
Tgt Ion	Resp	Lower	Upper
99	89368		
42	18.3	17.4	26.2
71	36.2	29.0	43.6



#21  
 Naphthalene-d8  
 Concen: 20.00 ng  
 RT: 8.24 min Scan# 538  
 Delta R.T. 0.00 min  
 Lab File: BF080606.D  
 Acq: 23 Jul 2015 22:39

Tgt Ion	Resp	Lower	Upper
136	187394		
137	11.0	7.8	11.8
54	8.1	7.2	10.8
68	3.9	3.8	5.6

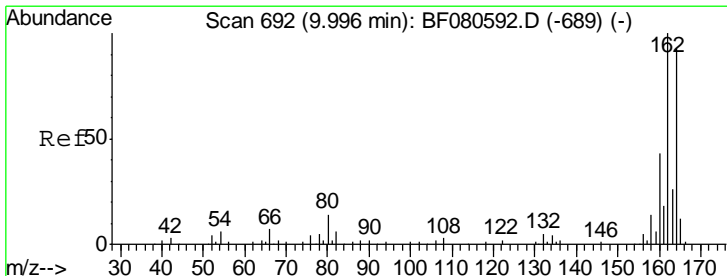
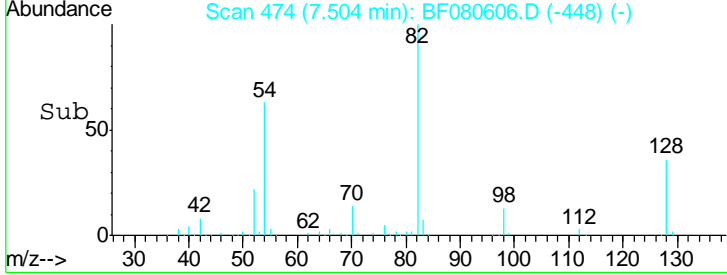
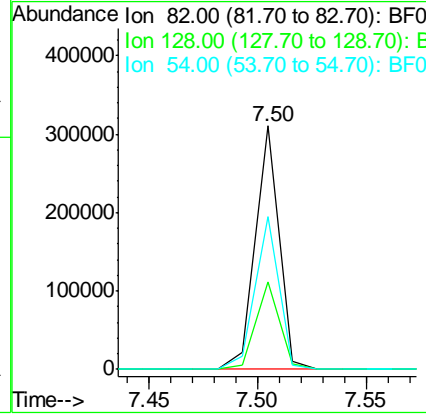
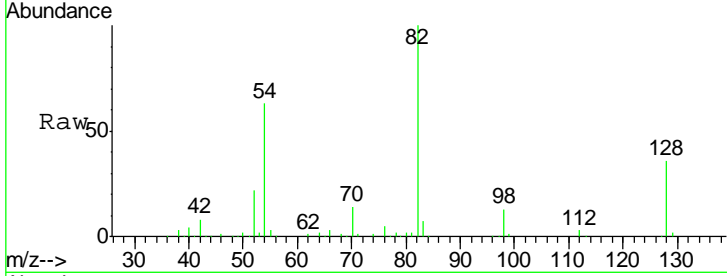




#23  
 Nitrobenzene-d5  
 Concen: 71.02 ng  
 RT: 7.50 min Scan# 474  
 Delta R.T. 0.00 min  
 Lab File: BF080606.D  
 Acq: 23 Jul 2015 22:39

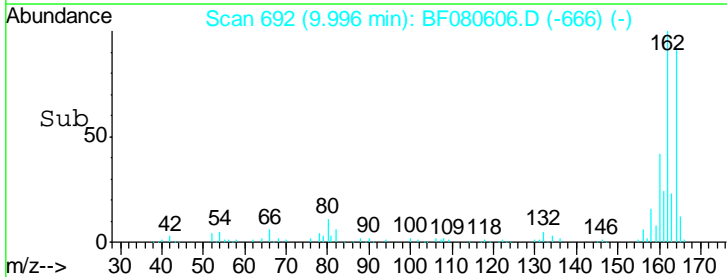
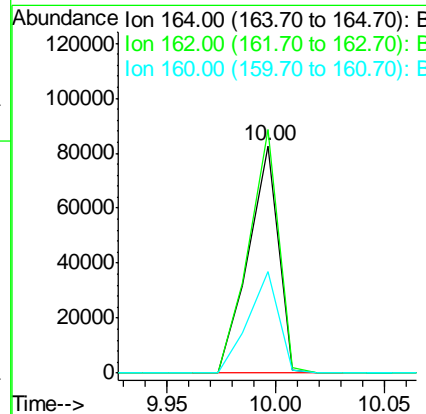
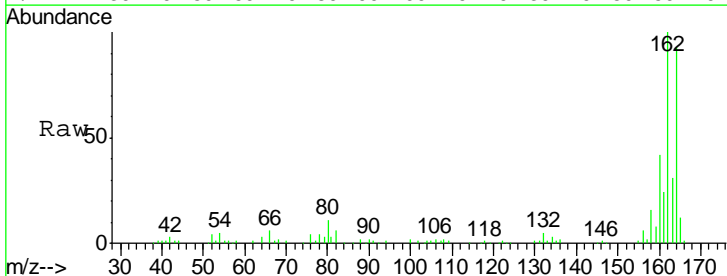
Instrument :  
 BNA\_F  
 ClientSampled :  
 MW33D

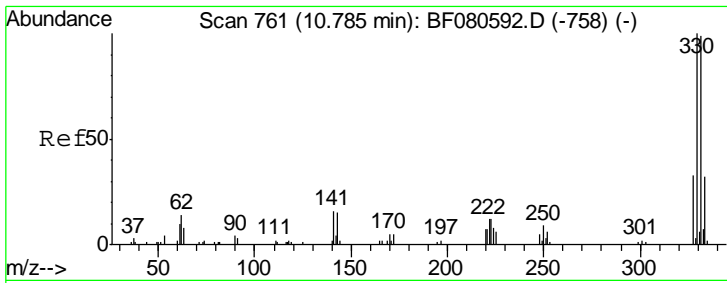
Tgt Ion	Resp	Lower	Upper
82	100		
128	35.8	28.9	43.3
54	62.9	54.5	81.7



#38  
 Acenaphthene-d10  
 Concen: 20.00 ng  
 RT: 10.00 min Scan# 692  
 Delta R.T. 0.00 min  
 Lab File: BF080606.D  
 Acq: 23 Jul 2015 22:39

Tgt Ion	Resp	Lower	Upper
164	100		
162	107.1	82.2	123.4
160	44.7	36.1	54.1

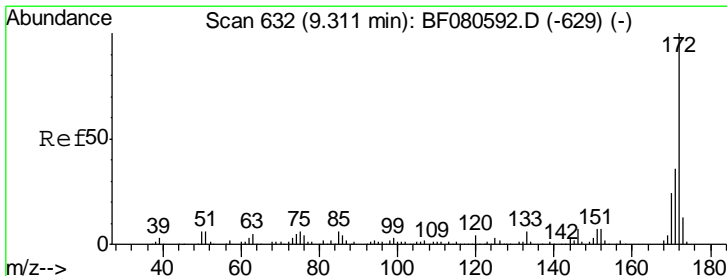
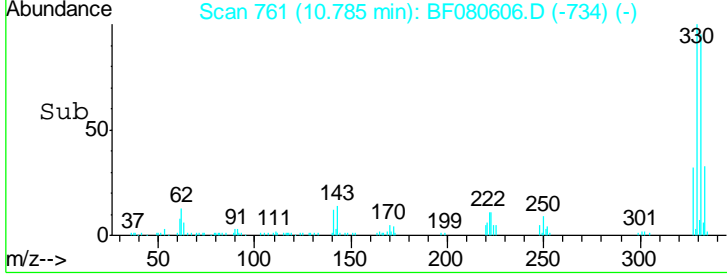
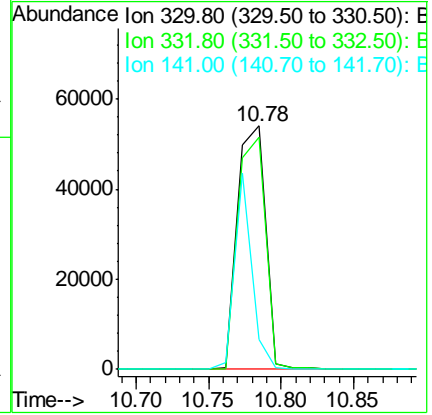
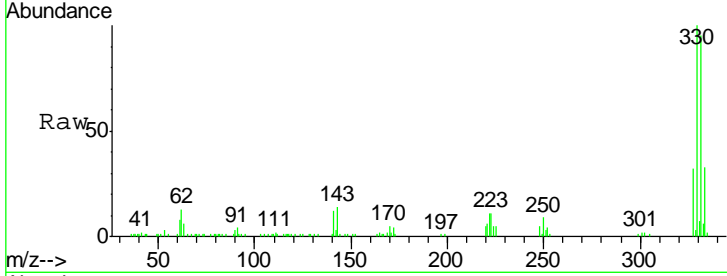




#41  
 2,4,6-Tribromophenol  
 Concen: 116.23 ng  
 RT: 10.78 min Scan# 761  
 Delta R.T. 0.01 min  
 Lab File: BF080606.D  
 Acq: 23 Jul 2015 22:39

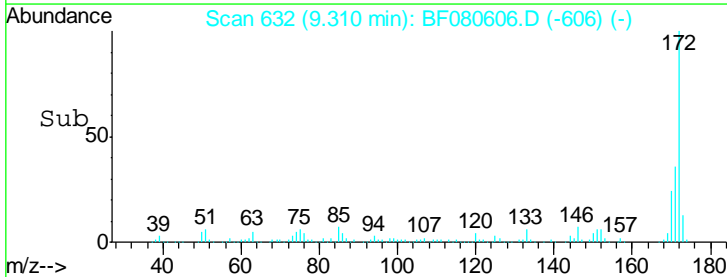
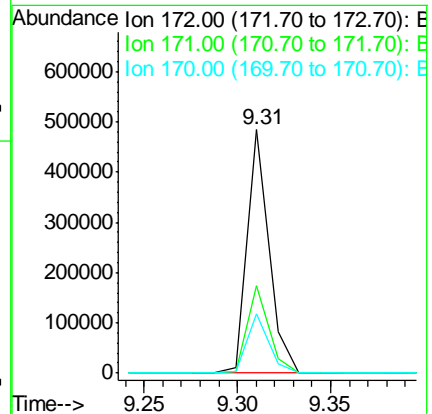
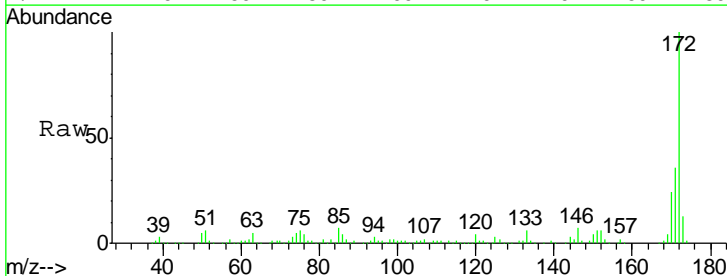
Instrument :  
 BNA\_F  
 ClientSampled :  
 MW33D

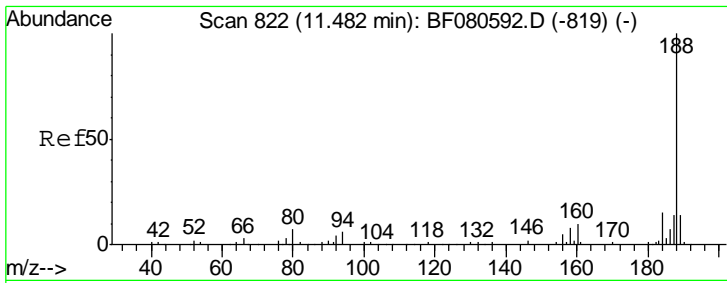
Tgt Ion	Resp	Lower	Upper
330	100		
332	94.6	78.3	117.5
141	49.3	37.9	56.9



#44  
 2-Fluorobiphenyl  
 Concen: 72.91 ng  
 RT: 9.31 min Scan# 632  
 Delta R.T. 0.00 min  
 Lab File: BF080606.D  
 Acq: 23 Jul 2015 22:39

Tgt Ion	Resp	Lower	Upper
172	100		
171	36.0	27.7	41.5
170	24.3	19.1	28.7

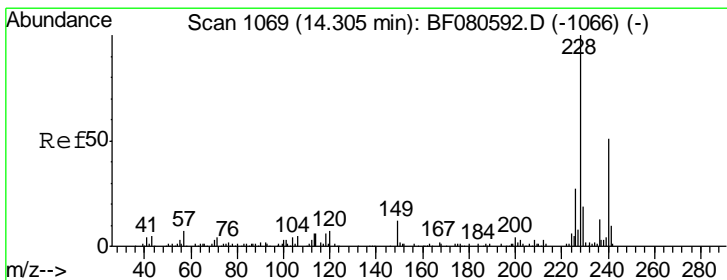
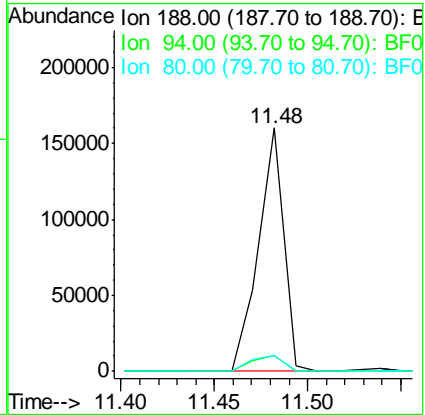
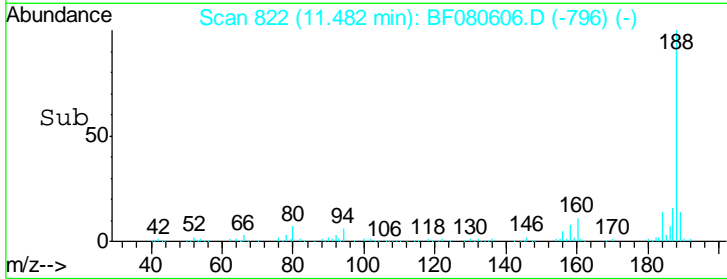
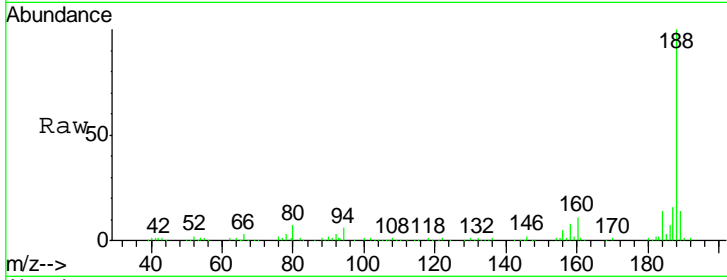




#63  
 Phenanthrene-d10  
 Concen: 20.00 ng  
 RT: 11.48 min Scan# 822  
 Delta R.T. 0.00 min  
 Lab File: BF080606.D  
 Acq: 23 Jul 2015 22:39

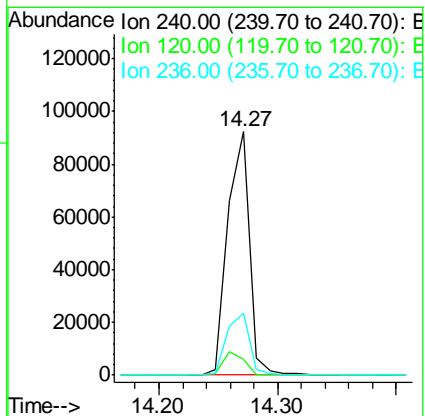
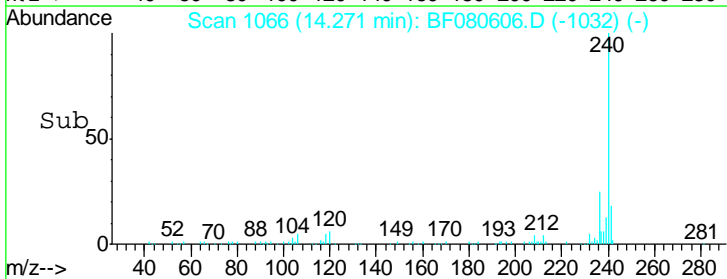
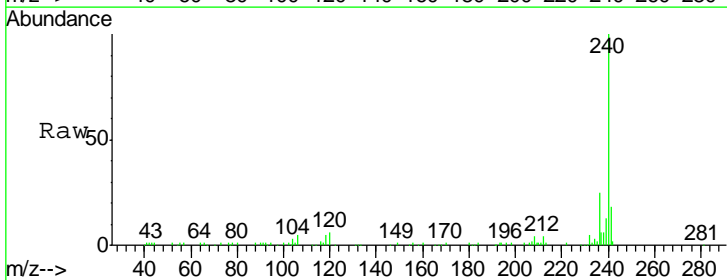
Instrument :  
 BNA\_F  
 ClientSampled :  
 MW33D

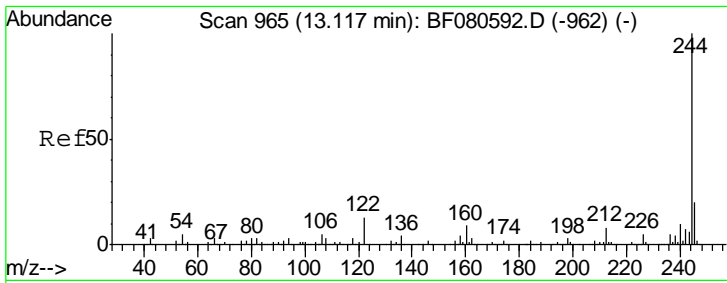
Tgt Ion	Resp	Lower	Upper
188	149835		
94	6.5	6.1	9.1
80	6.6	7.0	10.6#



#75  
 Chrysene-d12  
 Concen: 20.00 ng  
 RT: 14.27 min Scan# 1066  
 Delta R.T. 0.09 min  
 Lab File: BF080606.D  
 Acq: 23 Jul 2015 22:39

Tgt Ion	Resp	Lower	Upper
240	116510		
120	6.3	9.9	14.9#
236	25.2	19.1	28.7

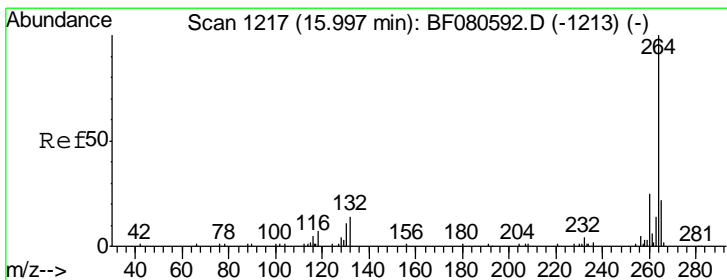
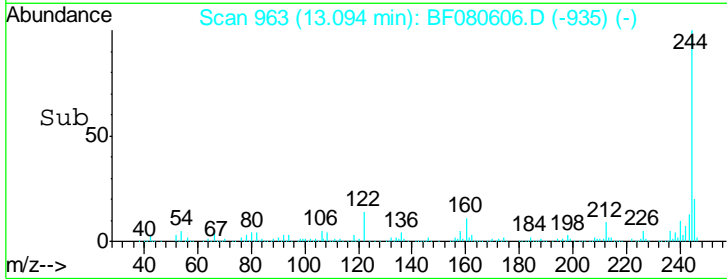
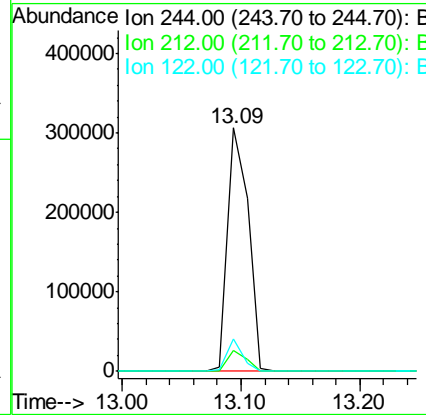
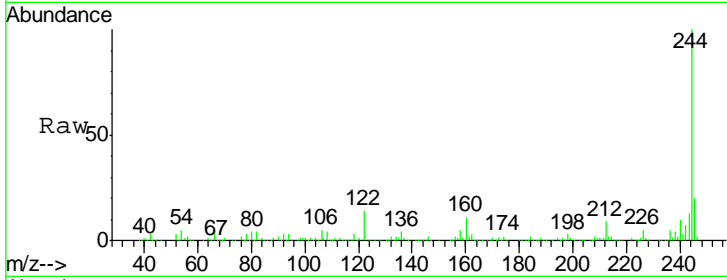




#78  
 Terphenyl-d14  
 Concen: 65.90 ng  
 RT: 13.09 min Scan# 963  
 Delta R.T. 0.02 min  
 Lab File: BF080606.D  
 Acq: 23 Jul 2015 22:39

Instrument :  
 BNA\_F  
 ClientSampled :  
 MW33D

Tgt Ion	Resp	Lower	Upper
244	100		
212	8.8	6.0	9.0
122	13.5	8.2	12.2#



#86  
 Perylene-d12  
 Concen: 20.00 ng  
 RT: 15.93 min Scan# 1211  
 Delta R.T. 0.18 min  
 Lab File: BF080606.D  
 Acq: 23 Jul 2015 22:39

Tgt Ion	Resp	Lower	Upper
264	100		
260	24.9	17.8	26.8
265	21.0	15.6	23.4

