

Data Path : Z:\HPCHEM1\BNA_F\DATA\BF072415\
 Data File : BF080640.D
 Acq On : 24 Jul 2015 22:18
 Operator : TP/UM
 Sample : G3087-01
 Misc :
 ALS Vial : 14 Sample Multiplier: 1

Instrument :
 BNA_F
 ClientSampleId :
 BOTTOM-EAST3-072315

Quant Time: Jul 25 05:39:22 2015
 Quant Method : Z:\HPCHEM1\BNA_F\METHODS\8270-BF072415.M
 Quant Title : ASP BNA STANDARDS FOR 5 POINT CALIBRATION
 QLast Update : Sat Jul 25 04:28:42 2015
 Response via : Initial Calibration

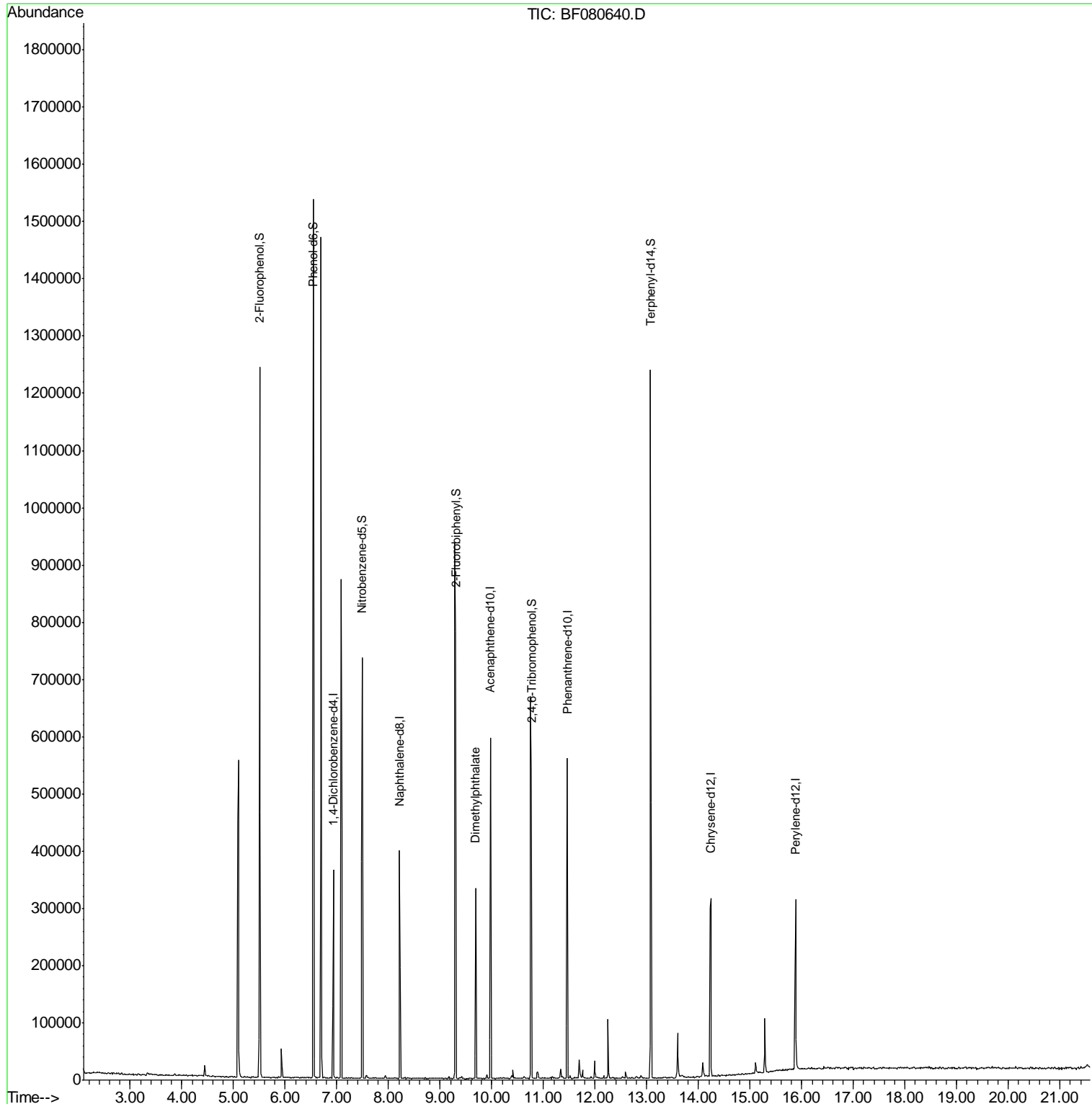
Internal Standards	R.T.	QIon	Response	Conc	Units	Dev(Min)
1) 1,4-Dichlorobenzene-d4	6.93	152	52178	20.00	ng	0.00
21) Naphthalene-d8	8.21	136	188382	20.00	ng	0.00
38) Acenaphthene-d10	9.97	164	105861	20.00	ng	0.00
63) Phenanthrene-d10	11.46	188	188889	20.00	ng	0.00
75) Chrysene-d12	14.24	240	166342	20.00	ng	0.08
86) Perylene-d12	15.88	264	143496	20.00	ng	0.15
System Monitoring Compounds						
5) 2-Fluorophenol	5.50	112	317240	102.38	ng	0.00
7) Phenol-d6	6.54	99	452781	122.33	ng	0.00
23) Nitrobenzene-d5	7.49	82	247763	66.05	ng	0.00
41) 2,4,6-Tribromophenol	10.76	330	91128	95.81	ng	0.00
44) 2-Fluorobiphenyl	9.30	172	389065	56.71	ng	0.00
78) Terphenyl-d14	13.07	244	416038	53.85	ng	0.01
Target Compounds						Qvalue
49) Dimethylphthalate	9.69	163	118463	15.65	ng	99

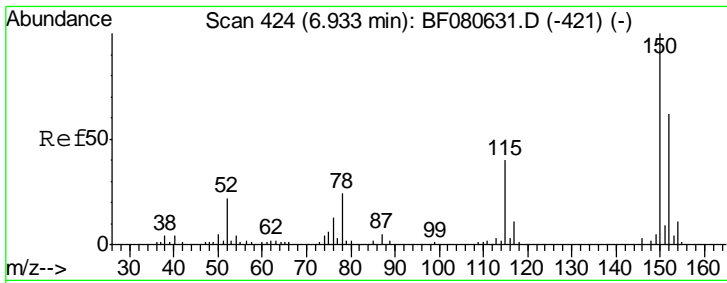
(#) = qualifier out of range (m) = manual integration (+) = signals summed

Data Path : Z:\HPCHEM1\BNA_F\DATA\BF072415\
 Data File : BF080640.D
 Acq On : 24 Jul 2015 22:18
 Operator : TP/UM
 Sample : G3087-01
 Misc :
 ALS Vial : 14 Sample Multiplier: 1

Instrument :
 BNA_F
ClientSampleId :
 BOTTOM-EAST3-072315

Quant Time: Jul 25 05:39:22 2015
 Quant Method : Z:\HPCHEM1\BNA_F\METHODS\8270-BF072415.M
 Quant Title : ASP BNA STANDARDS FOR 5 POINT CALIBRATION
 QLast Update : Sat Jul 25 04:28:42 2015
 Response via : Initial Calibration

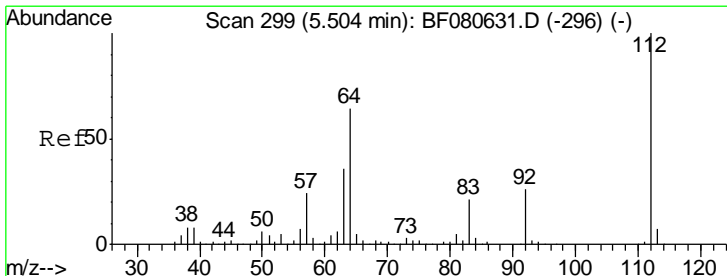
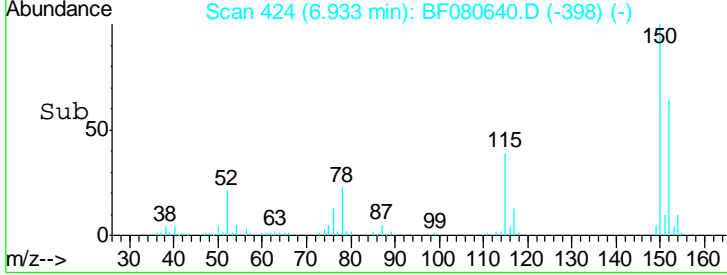
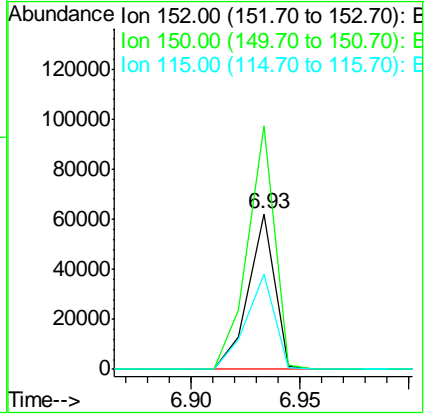
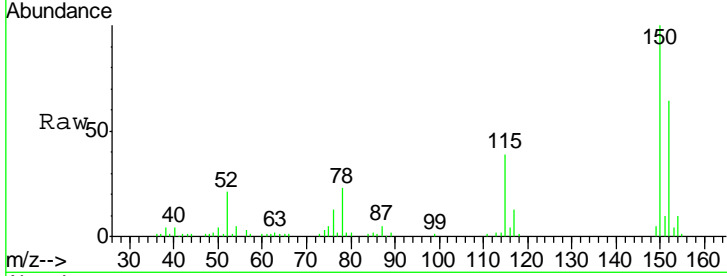




#1
 1,4-Dichlorobenzene-d4
 Concen: 20.00 ng
 RT: 6.93 min Scan# 424
 Delta R.T. 0.00 min
 Lab File: BF080640.D
 Acq: 24 Jul 2015 22:18

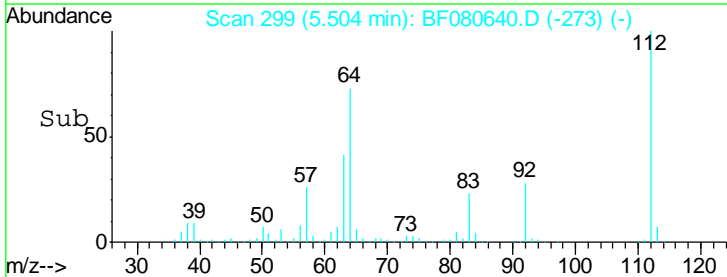
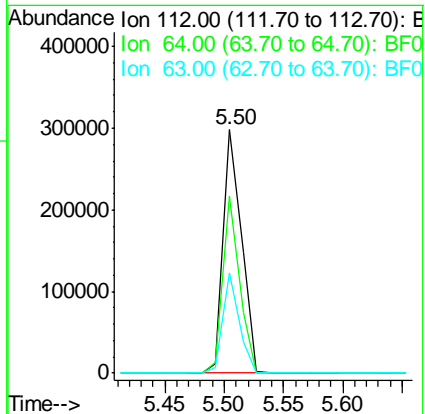
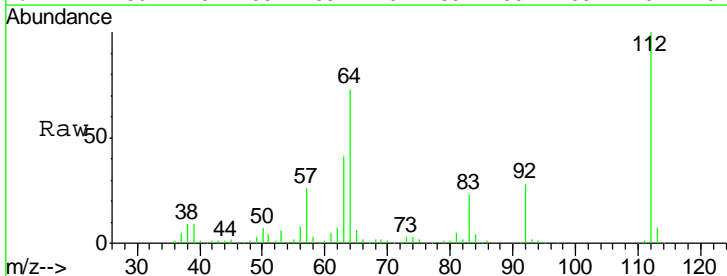
Instrument :
 BNA_F
ClientSampleId :
 BOTTOM-EAST3-072315

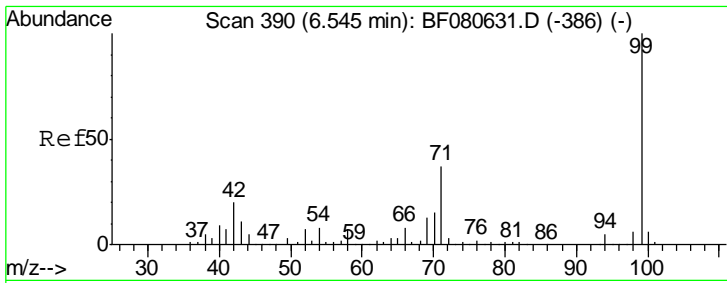
Tgt Ion	Resp	Lower	Upper
152	52178		
150	156.6	128.9	193.3
115	61.5	51.0	76.6



#5
 2-Fluorophenol
 Concen: 102.38 ng
 RT: 5.50 min Scan# 299
 Delta R.T. 0.00 min
 Lab File: BF080640.D
 Acq: 24 Jul 2015 22:18

Tgt Ion	Resp	Lower	Upper
112	317240		
64	72.6	51.2	76.8
63	41.4	29.0	43.6

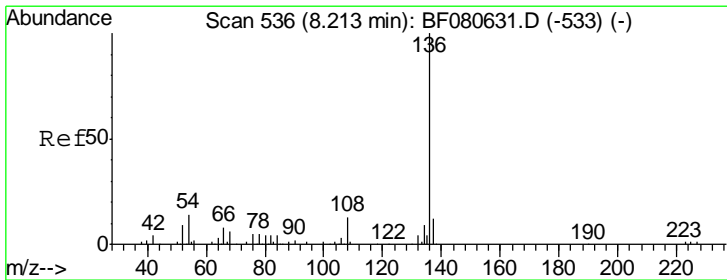
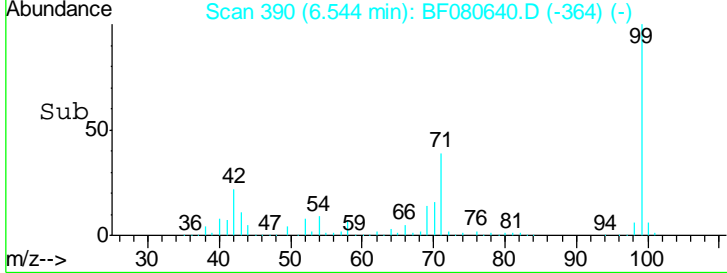
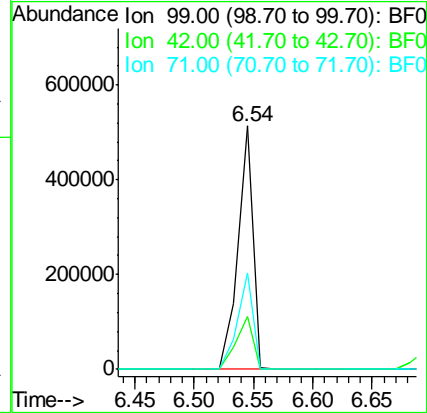
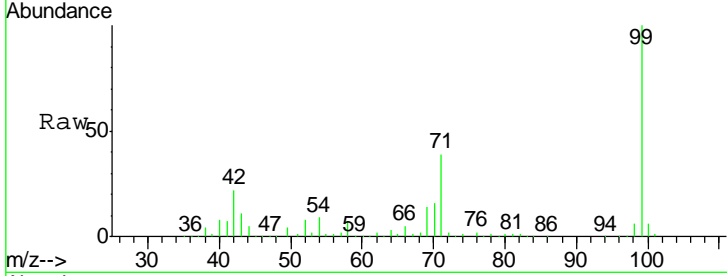




#7
 Phenol-d6
 Concen: 122.33 ng
 RT: 6.54 min Scan# 390
 Delta R.T. -0.00 min
 Lab File: BF080640.D
 Acq: 24 Jul 2015 22:18

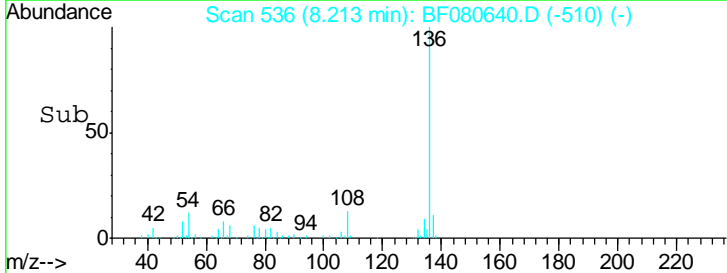
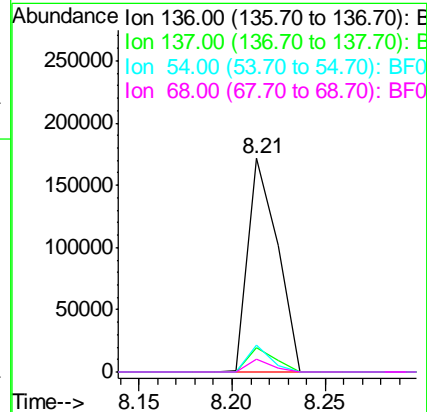
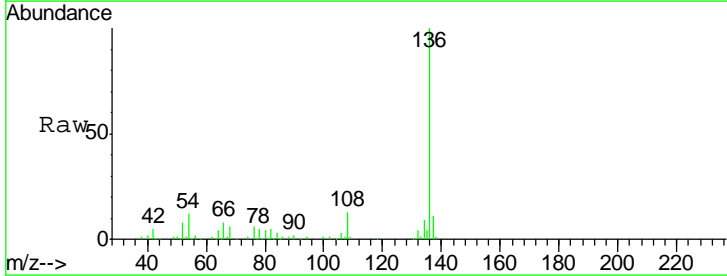
Instrument :
 BNA_F
 ClientSampled :
 BOTTOM-EAST3-072315

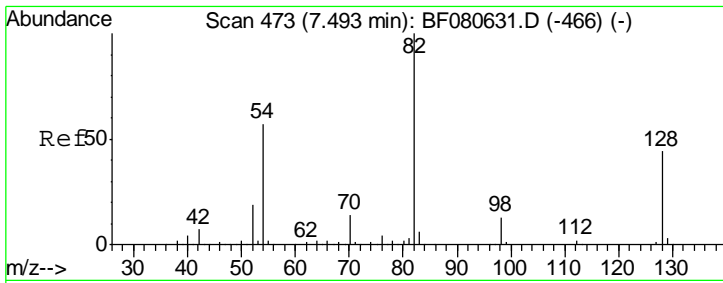
Tgt Ion	Resp	Lower	Upper
99	452781		
99	100		
42	21.5	16.3	24.5
71	39.4	29.7	44.5



#21
 Naphthalene-d8
 Concen: 20.00 ng
 RT: 8.21 min Scan# 536
 Delta R.T. 0.00 min
 Lab File: BF080640.D
 Acq: 24 Jul 2015 22:18

Tgt Ion	Resp	Lower	Upper
136	188382		
136	100		
137	11.3	9.3	13.9
54	12.4	11.6	17.4
68	5.8	5.0	7.4

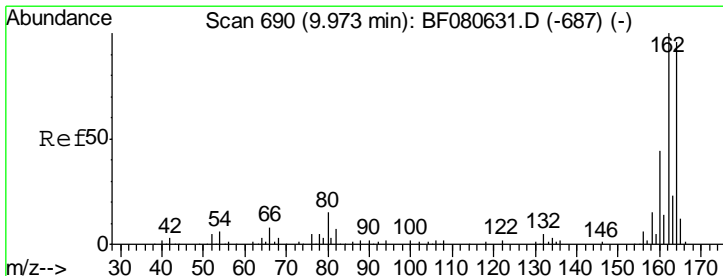
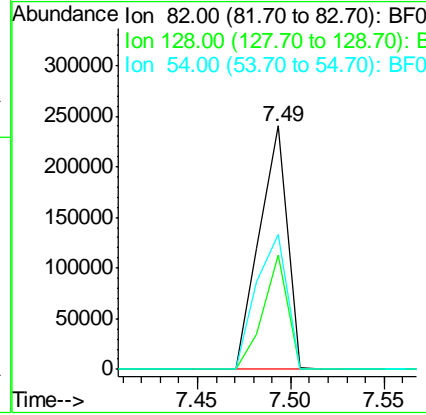
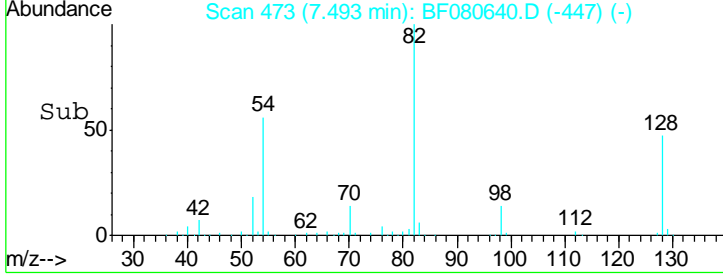
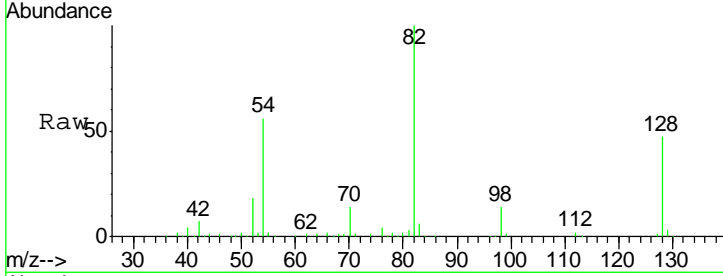




#23
 Nitrobenzene-d5
 Concen: 66.05 ng
 RT: 7.49 min Scan# 473
 Delta R.T. -0.00 min
 Lab File: BF080640.D
 Acq: 24 Jul 2015 22:18

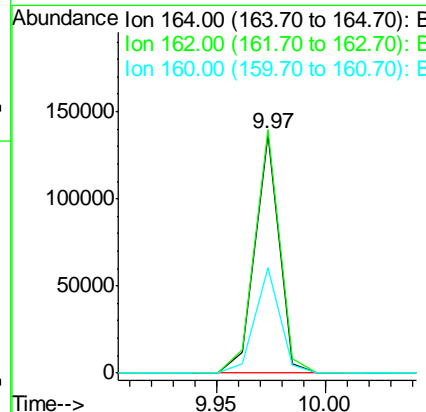
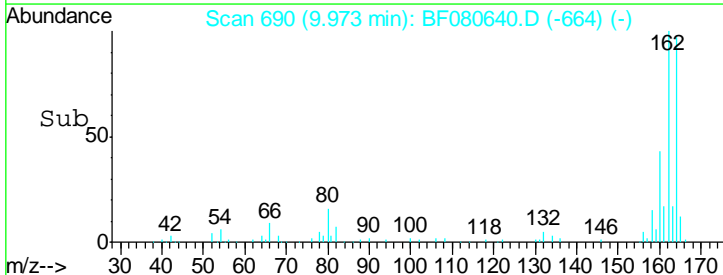
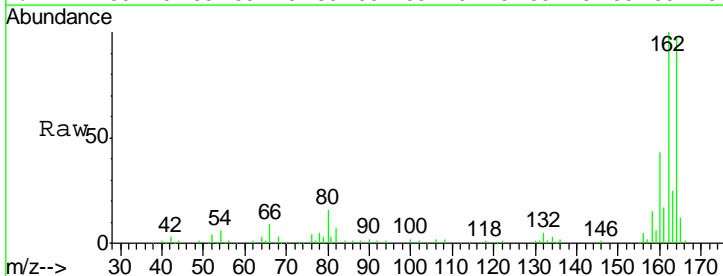
Instrument :
 BNA_F
ClientSampleId :
 BOTTOM-EAST3-072315

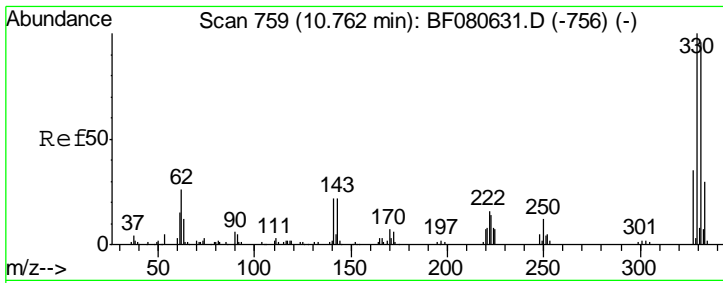
Tgt Ion	Resp	Ion Ratio	Lower	Upper
82	247763	100		
128	47.1	47.1	34.8	52.2
54	55.6	55.6	45.4	68.0



#38
 Acenaphthene-d10
 Concen: 20.00 ng
 RT: 9.97 min Scan# 690
 Delta R.T. 0.00 min
 Lab File: BF080640.D
 Acq: 24 Jul 2015 22:18

Tgt Ion	Resp	Ion Ratio	Lower	Upper
164	105861	100		
162	101.9	101.9	83.3	124.9
160	44.1	44.1	36.9	55.3

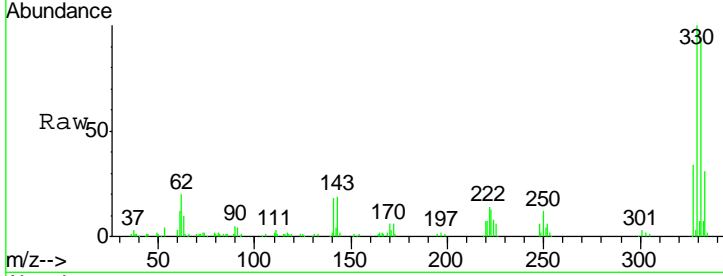




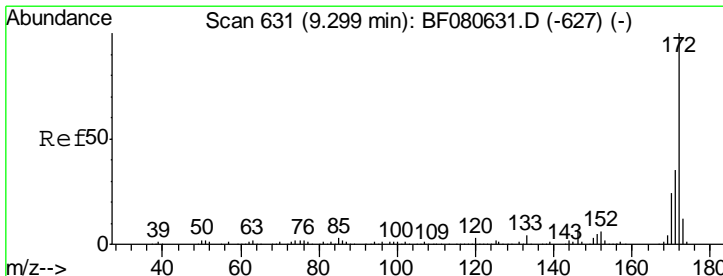
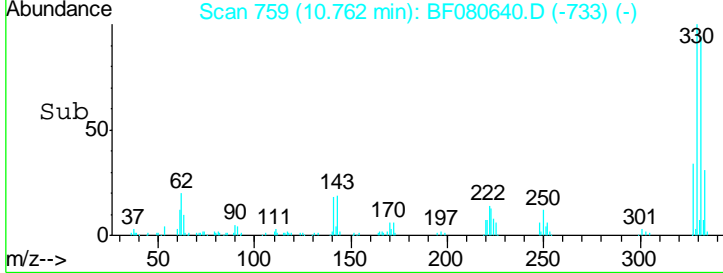
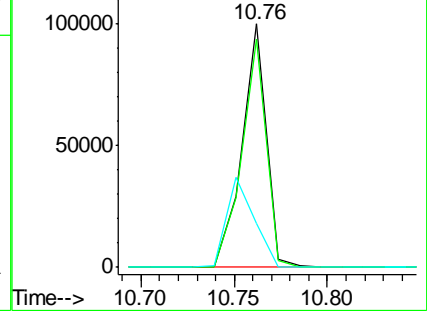
#41
 2,4,6-Tribromophenol
 Concen: 95.81 ng
 RT: 10.76 min Scan# 759
 Delta R.T. 0.00 min
 Lab File: BF080640.D
 Acq: 24 Jul 2015 22:18

Instrument :
 BNA_F
 ClientSampleId :
 BOTTOM-EAST3-072315

Tgt Ion	Resp	Lower	Upper
330	91128		
332	100	76.7	115.1
141	42.4	32.7	49.1

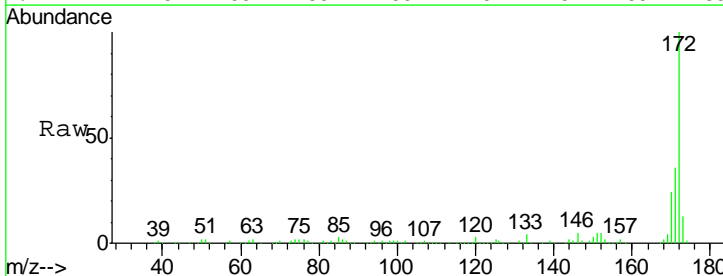


Abundance Ion 329.80 (329.50 to 330.50): E
 Ion 331.80 (331.50 to 332.50): E
 Ion 141.00 (140.70 to 141.70): E

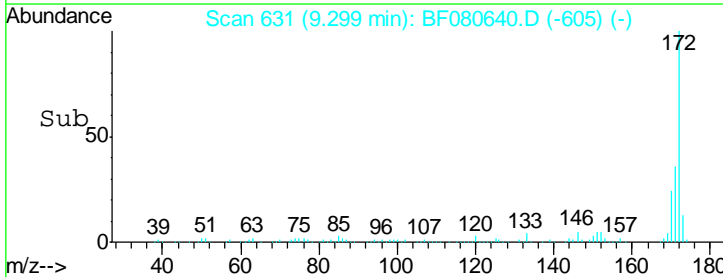
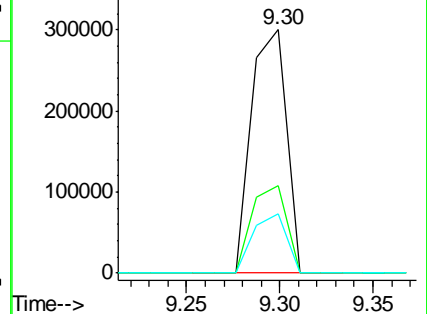


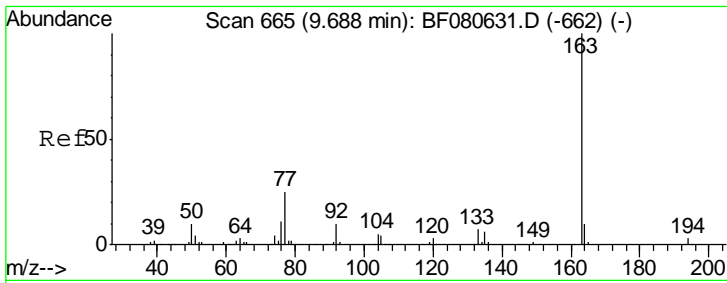
#44
 2-Fluorobiphenyl
 Concen: 56.71 ng
 RT: 9.30 min Scan# 631
 Delta R.T. 0.00 min
 Lab File: BF080640.D
 Acq: 24 Jul 2015 22:18

Tgt Ion	Resp	Lower	Upper
172	389065		
171	100	27.7	41.5
170	35.7	19.0	28.4



Abundance Ion 172.00 (171.70 to 172.70): E
 Ion 171.00 (170.70 to 171.70): E
 Ion 170.00 (169.70 to 170.70): E

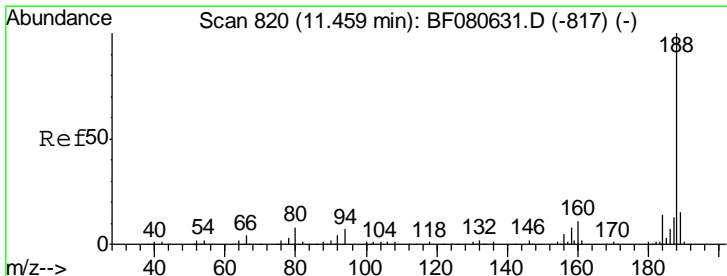
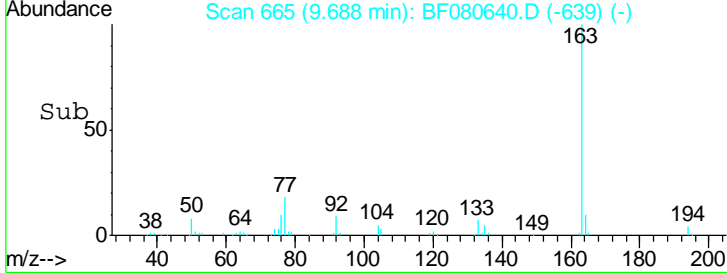
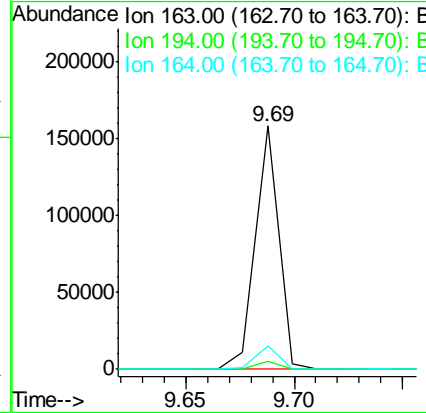
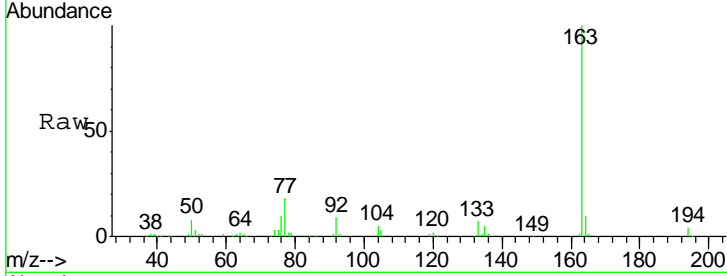




#49
 Dimethylphthalate
 Concen: 15.65 ng
 RT: 9.69 min Scan# 665
 Delta R.T. 0.00 min
 Lab File: BF080640.D
 Acq: 24 Jul 2015 22:18

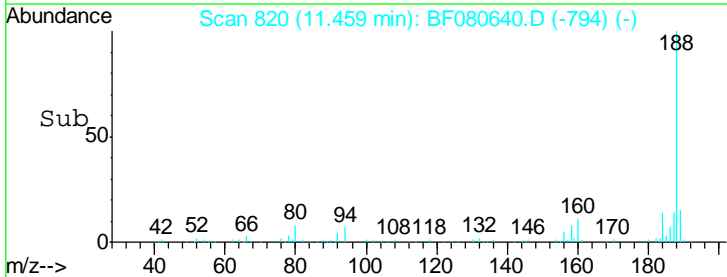
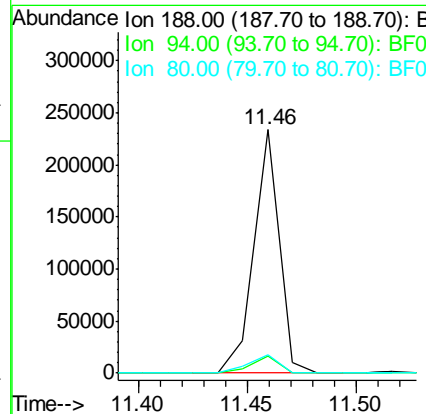
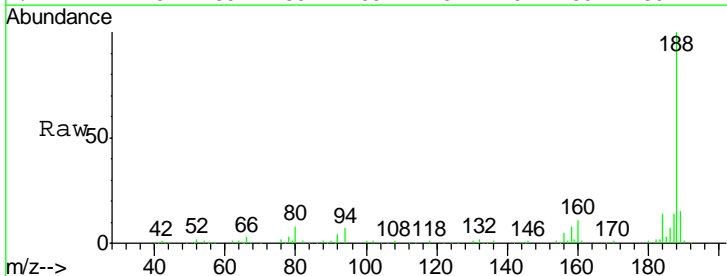
Instrument :
 BNA_F
 ClientSampleId :
 BOTTOM-EAST3-072315

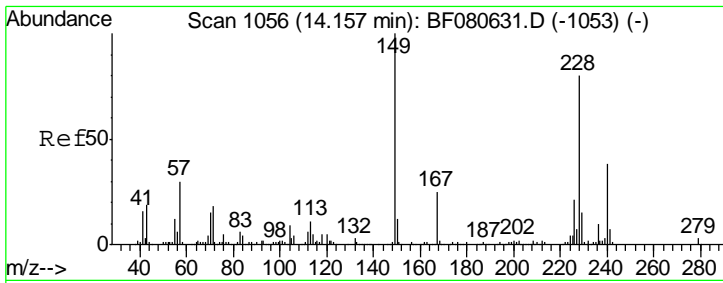
Tgt Ion	Resp	Lower	Upper
163	118463		
194	3.5	2.5	3.7
164	9.5	8.0	12.0



#63
 Phenanthrene-d10
 Concen: 20.00 ng
 RT: 11.46 min Scan# 820
 Delta R.T. 0.00 min
 Lab File: BF080640.D
 Acq: 24 Jul 2015 22:18

Tgt Ion	Resp	Lower	Upper
188	188889		
94	6.8	5.6	8.4
80	7.5	6.1	9.1

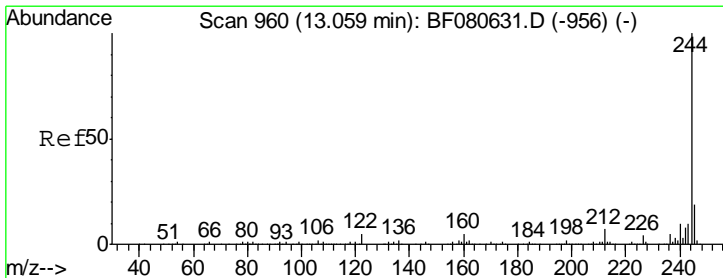
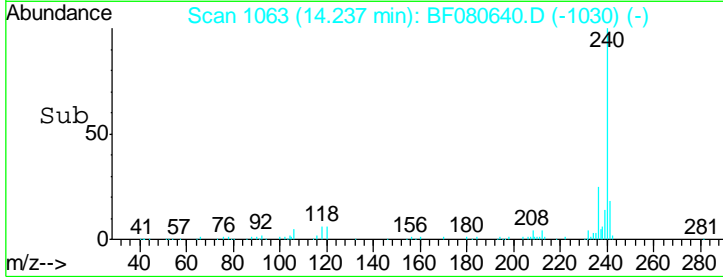
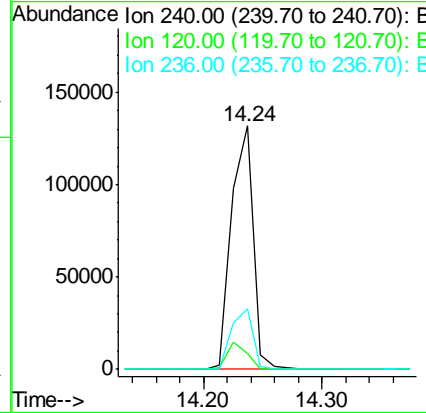
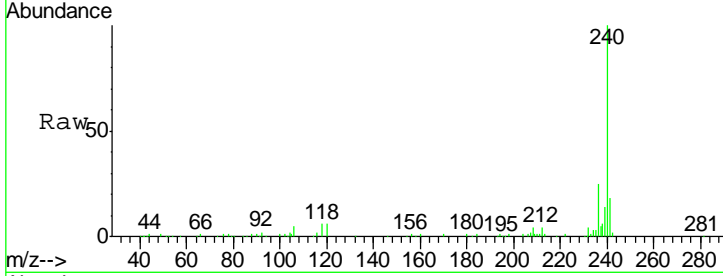




#75
 Chrysene-d12
 Concen: 20.00 ng
 RT: 14.24 min Scan# 1063
 Delta R.T. 0.08 min
 Lab File: BF080640.D
 Acq: 24 Jul 2015 22:18

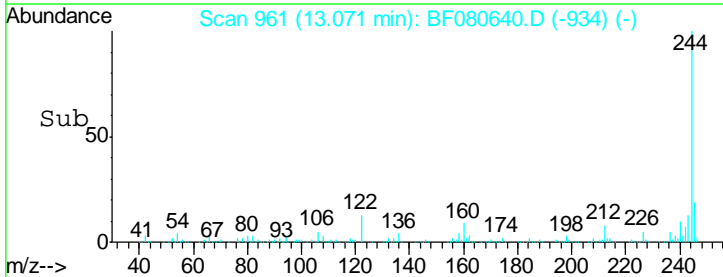
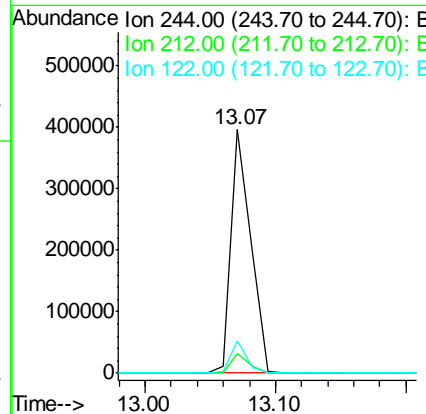
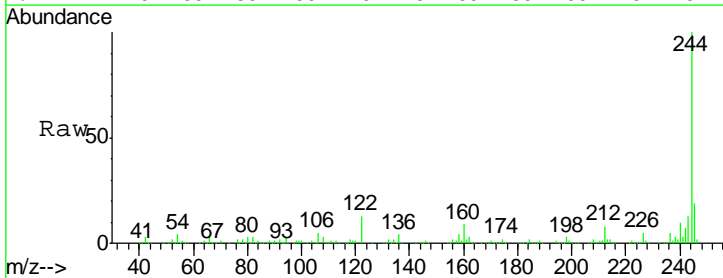
Instrument :
 BNA_F
 ClientSampleId :
 BOTTOM-EAST3-072315

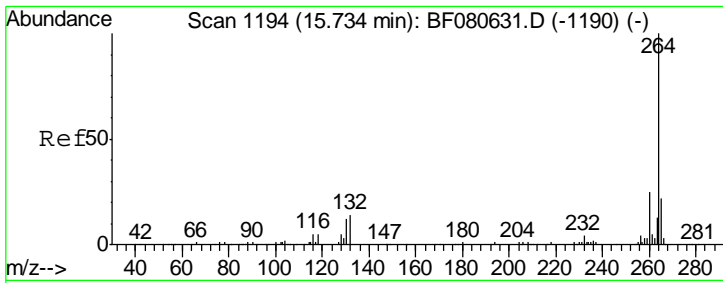
Tgt Ion	Resp	Lower	Upper
240	100		
120	6.4	10.8	16.2#
236	24.8	20.3	30.5



#78
 Terphenyl-d14
 Concen: 53.85 ng
 RT: 13.07 min Scan# 961
 Delta R.T. 0.01 min
 Lab File: BF080640.D
 Acq: 24 Jul 2015 22:18

Tgt Ion	Resp	Lower	Upper
244	100		
212	8.1	5.2	7.8#
122	13.2	4.1	6.1#





#86
 Perylene-d12
 Concen: 20.00 ng
 RT: 15.88 min Scan# 1207
 Delta R.T. 0.15 min
 Lab File: BF080640.D
 Acq: 24 Jul 2015 22:18

Instrument :
 BNA_F
ClientSampled :
 BOTTOM-EAST3-072315

Tgt Ion	Resp	Lower	Upper
264	143496		
260	23.2	20.1	30.1
265	20.8	17.4	26.0

