

Data Path : Z:\SVOASRV\HPCHEM1\BNA F\DATA\BF072418\
 Data File : BF107621.D
 Acq On : 24 Jul 2018 16:17
 Operator : JU/SJ
 Sample : J4096-06 2X
 Misc :
 ALS Vial : 10 Sample Multiplier: 1

Instrument :
 BNA_F
 ClientSampleId :
 DW-8

Integration Parameters: rteint.p
 Integrator: RTE
 Smoothing : ON Filtering: 5
 Sampling : 1 Min Area: 3 % of largest Peak
 Start Thrs: 0.2 Max Peaks: 100
 Stop Thrs : 0 Peak Location: TOP

If leading or trailing edge < 100 prefer < Baseline drop else tangent >
 Peak separation: 5

Method : Z:\SVOASRV\HPCHEM1\BNA F\METHODS\8270-BF072018.M
 Title : ASP BNA STANDARDS FOR 5 POINT CALIBRATION

Signal : TIC

peak #	R.T. min	first scan	max scan	last scan	PK TY	peak height	corr. area	corr. % max.	% of total
1	5.190	482	485	494	rBV	257236	315190	8.38%	0.481%
2	5.560	545	548	551	rBV	94633	109516	2.91%	0.167%
3	5.596	551	554	577	rVB	1227740	1900465	50.55%	2.903%
4	5.819	588	592	597	rBV	70716	74807	1.99%	0.114%
5	6.601	721	725	741	rBV	1375243	2134897	56.78%	3.261%
6	6.737	745	748	754	rVV	1908191	2169876	57.71%	3.314%
7	6.784	754	756	764	rVB	127955	168146	4.47%	0.257%
8	6.966	783	787	797	rBV	1246995	1444421	38.42%	2.206%
9	7.119	810	813	827	rVB	1514713	1587428	42.22%	2.425%
10	7.495	872	877	879	rBV3	45444	61152	1.63%	0.093%
11	7.531	879	883	890	rBV	1006143	1284042	34.15%	1.961%
12	7.766	919	923	930	rVB4	40803	71230	1.89%	0.109%
13	8.184	990	994	996	rBV4	65466	81740	2.17%	0.125%
14	8.213	996	999	1001	rVV	110165	104683	2.78%	0.160%
15	8.248	1002	1005	1010	rVV	1812716	1846341	49.11%	2.820%
16	8.289	1010	1012	1015	rVV	241274	215571	5.73%	0.329%
17	8.325	1015	1018	1024	rVB5	60220	97314	2.59%	0.149%
18	8.531	1049	1053	1057	rBV4	136107	172674	4.59%	0.264%
19	8.572	1057	1060	1064	rBV4	65455	83378	2.22%	0.127%
20	8.648	1071	1073	1076	rBV	254445	208065	5.53%	0.318%
21	8.748	1086	1090	1092	rBV2	103001	108398	2.88%	0.166%
22	8.813	1097	1101	1107	rVV5	79262	181681	4.83%	0.277%
23	8.872	1107	1111	1113	rVV4	56811	99532	2.65%	0.152%
24	8.919	1116	1119	1122	rVB2	86910	105526	2.81%	0.161%
25	9.019	1133	1136	1139	rBV3	63391	94213	2.51%	0.144%
26	9.066	1141	1144	1146	rVV2	182398	164801	4.38%	0.252%
27	9.101	1149	1150	1152	rVV2	107024	93496	2.49%	0.143%
28	9.148	1155	1158	1161	rVB3	132918	162304	4.32%	0.248%
29	9.184	1161	1164	1167	rBV4	107994	125299	3.33%	0.191%
30	9.254	1173	1176	1179	rBV	403926	283157	7.53%	0.432%
31	9.319	1184	1187	1196	rBV	2294299	2262766	60.18%	3.456%
32	9.395	1196	1200	1203	rVV2	201752	233969	6.22%	0.357%
33	9.431	1204	1206	1210	rVV4	119065	137483	3.66%	0.210%
34	9.466	1210	1212	1215	rVV2	130810	126429	3.36%	0.193%

Data Path : Z:\SVOASRV\HPCHEM1\BNA F\DATA\BF072418\
 Data File : BF107621.D
 Acq On : 24 Jul 2018 16:17
 Operator : JU/SJ
 Sample : J4096-06 2X
 Misc :
 ALS Vial : 10 Sample Multiplier: 1

Instrument :
 BNA_F
 ClientSampleId :
 DW-8

Integration Parameters: rteint.p
 Integrator: RTE
 Smoothing : ON
 Sampling : 1
 Start Thrs: 0.2
 Stop Thrs : 0

Filtering: 5
 Min Area: 3 % of largest Peak
 Max Peaks: 100
 Peak Location: TOP

If leading or trailing edge < 100 prefer < Baseline drop else tangent >
 Peak separation: 5

Method : Z:\SVOASRV\HPCHEM1\BNA F\METHODS\8270-BF072018.M
 Title : ASP BNA STANDARDS FOR 5 POINT CALIBRATION

35	9.501	1216	1218	1222	rVV5	56203	60911	1.62%	0.093%
36	9.578	1229	1231	1233	rBV2	99219	125527	3.34%	0.192%
37	9.666	1237	1246	1248	rBV7	227564	465138	12.37%	0.710%
38	9.707	1250	1253	1257	rVB3	903668	889102	23.65%	1.358%
39	9.778	1262	1265	1267	rBV4	79944	120797	3.21%	0.184%
40	9.866	1277	1280	1282	rBV4	160076	146480	3.90%	0.224%
41	9.960	1293	1296	1298	rBV3	139049	160585	4.27%	0.245%
42	9.983	1298	1300	1301	rBV	141103	115918	3.08%	0.177%
43	10.007	1301	1304	1309	rVB	1748561	1644019	43.73%	2.511%
44	10.101	1317	1320	1325	rBV3	118391	194435	5.17%	0.297%
45	10.154	1326	1329	1331	rVV4	107140	137518	3.66%	0.210%
46	10.178	1331	1333	1335	rVV2	256017	206719	5.50%	0.316%
47	10.207	1335	1338	1341	rVB2	225557	211927	5.64%	0.324%
48	10.242	1341	1344	1349	rBV5	326993	435821	11.59%	0.666%
49	10.319	1354	1357	1360	rBV4	214658	286627	7.62%	0.438%
50	10.354	1361	1363	1368	rVB4	182666	282235	7.51%	0.431%
51	10.413	1369	1373	1375	rBV3	214467	250616	6.67%	0.383%
52	10.448	1377	1379	1382	rVB2	147110	134462	3.58%	0.205%
53	10.478	1382	1384	1387	rBV3	108334	109336	2.91%	0.167%
54	10.519	1389	1391	1394	rBV	106253	107594	2.86%	0.164%
55	10.554	1395	1397	1399	rBV2	138771	146170	3.89%	0.223%
56	10.642	1407	1412	1414	rBV	1176170	1274475	33.90%	1.947%
57	10.666	1414	1416	1418	rVV3	148190	125802	3.35%	0.192%
58	10.695	1419	1421	1424	rVB3	121723	99279	2.64%	0.152%
59	10.760	1429	1432	1436	rVB3	228896	305549	8.13%	0.467%
60	10.801	1436	1439	1442	rBV	1170312	1158837	30.82%	1.770%
61	10.907	1453	1457	1465	rBV2	2483792	3168475	84.27%	4.839%
62	10.972	1465	1468	1471	rBV	1571113	1496254	39.80%	2.285%
63	11.007	1471	1474	1477	rVV2	1232884	1575883	41.91%	2.407%
64	11.036	1477	1479	1482	rVV	1405505	1389538	36.96%	2.122%
65	11.066	1482	1484	1486	rVV	937433	745164	19.82%	1.138%
66	11.089	1486	1488	1489	rVV2	477977	403001	10.72%	0.616%
67	11.107	1489	1491	1495	rVV2	700321	1021844	27.18%	1.561%
68	11.154	1495	1499	1502	rVV3	1161700	1394196	37.08%	2.129%
69	11.189	1502	1505	1507	rVV	1526222	1288588	34.27%	1.968%
70	11.213	1507	1509	1510	rVV	402719	355916	9.47%	0.544%
71	11.230	1510	1512	1516	rVB3	895608	828856	22.05%	1.266%

Data Path : Z:\SVOASRV\HPCHEM1\BNA F\DATA\BF072418\
 Data File : BF107621.D
 Acq On : 24 Jul 2018 16:17
 Operator : JU/SJ
 Sample : J4096-06 2X
 Misc :
 ALS Vial : 10 Sample Multiplier: 1

Instrument :
 BNA_F
 ClientSampleId :
 DW-8

Integration Parameters: rteint.p
 Integrator: RTE
 Smoothing : ON Filtering: 5
 Sampling : 1 Min Area: 3 % of largest Peak
 Start Thrs: 0.2 Max Peaks: 100
 Stop Thrs : 0 Peak Location: TOP

If leading or trailing edge < 100 prefer < Baseline drop else tangent >
 Peak separation: 5

Method : Z:\SVOASRV\HPCHEM1\BNA F\METHODS\8270-BF072018.M
 Title : ASP BNA STANDARDS FOR 5 POINT CALIBRATION

72	11.372	1533	1536	1539	rBV	1727517	1729185	45.99%	2.641%
73	11.507	1553	1559	1561	rBV	1677949	1951819	51.91%	2.981%
74	11.530	1561	1563	1567	rVB	2267525	1846364	49.11%	2.820%
75	11.613	1575	1577	1581	rBV3	226519	222232	5.91%	0.339%
76	11.654	1581	1584	1588	rVB	411880	352510	9.38%	0.538%
77	11.725	1593	1596	1602	rBV3	618797	825375	21.95%	1.261%
78	12.007	1641	1644	1647	rBV2	461357	577667	15.36%	0.882%
79	12.036	1647	1649	1652	rVB	368530	352668	9.38%	0.539%
80	12.125	1661	1664	1666	rBV2	429843	410936	10.93%	0.628%
81	12.330	1697	1699	1702	rBV2	299088	260902	6.94%	0.398%
82	12.730	1763	1767	1769	rBV	3712607	3759831	100.00%	5.742%
83	12.754	1769	1771	1774	rVB2	1273373	1089487	28.98%	1.664%
84	12.960	1803	1806	1811	rVB	2869099	2866600	76.24%	4.378%
85	13.060	1820	1823	1825	rBV	770395	873668	23.24%	1.334%
86	13.089	1825	1828	1831	rVB	1373905	1313458	34.93%	2.006%
87	14.113	2000	2002	2006	rBV	1992753	1967133	52.32%	3.004%
88	14.160	2007	2010	2013	rVV2	1387205	2273044	60.46%	3.472%
89	14.189	2013	2015	2019	rVB	1621008	1627506	43.29%	2.486%

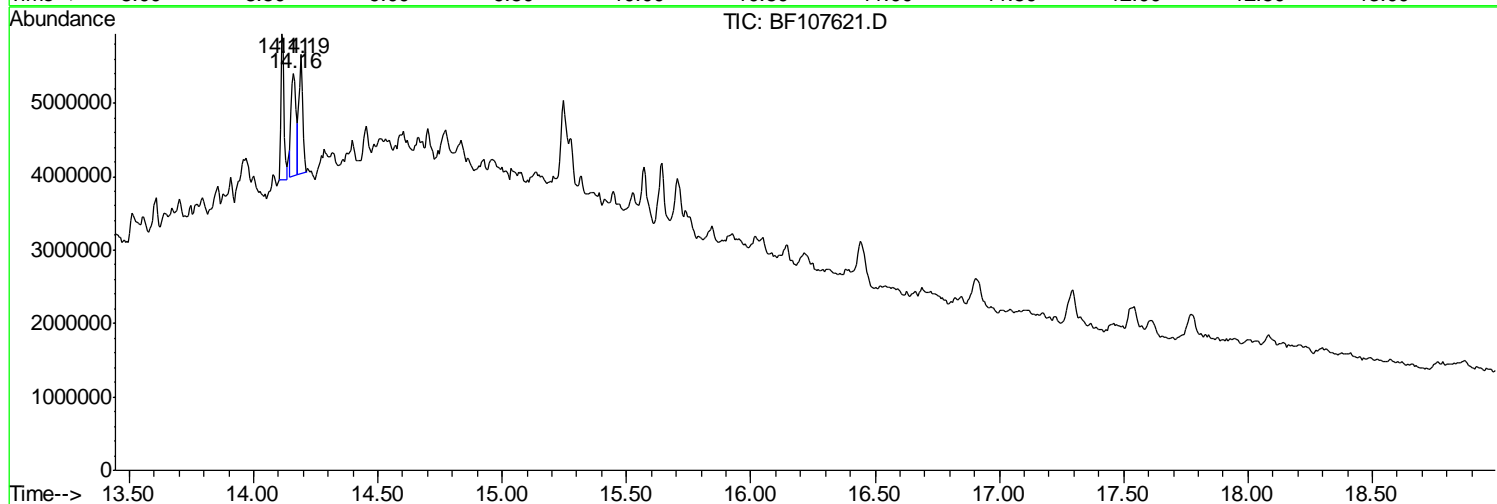
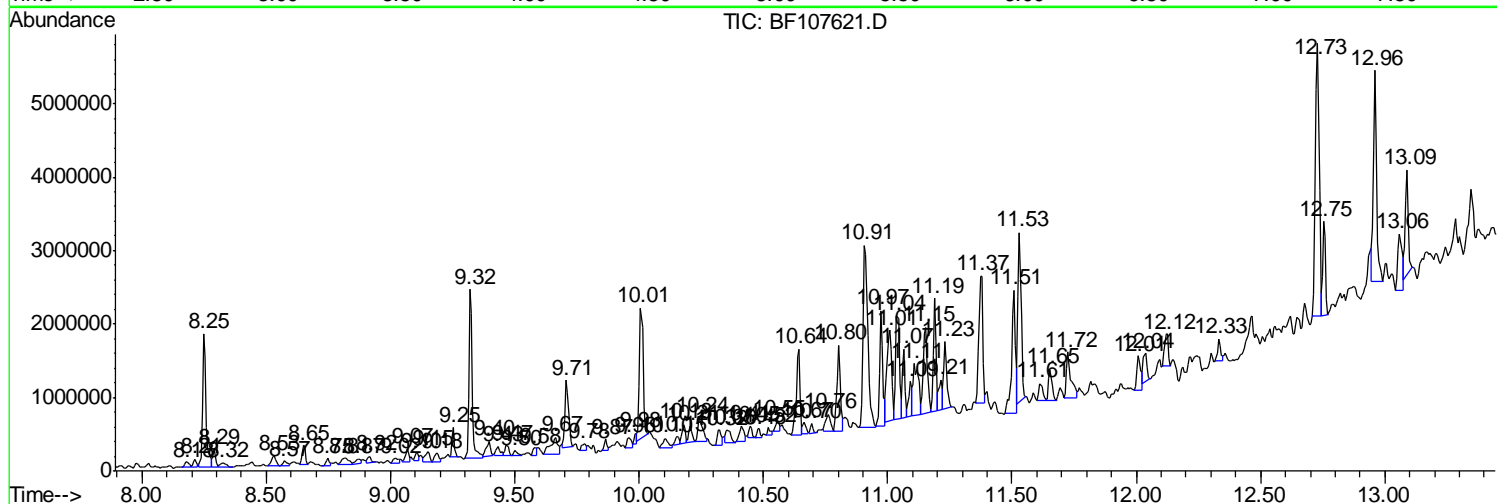
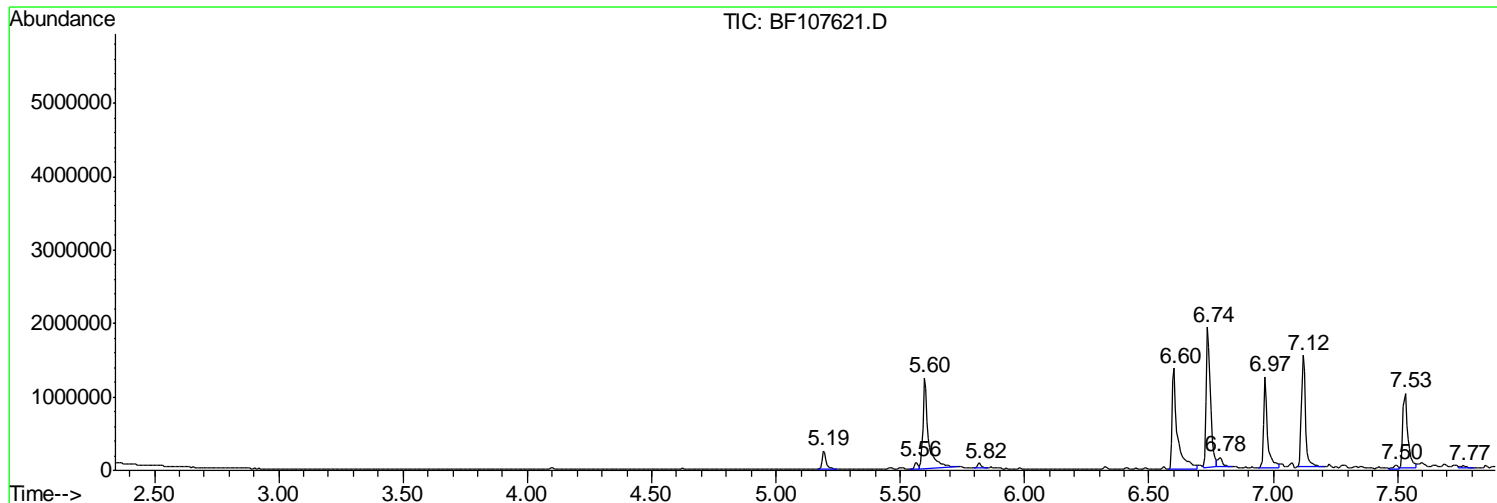
Sum of corrected areas: 65473969

Data Path : Z:\SVOASRV\HPCHEM1\BNA F\DATA\BF072418\
 Data File : BF107621.D
 Acq On : 24 Jul 2018 16:17
 Operator : JU/SJ
 Sample : J4096-06 2X
 Misc :
 ALS Vial : 10 Sample Multiplier: 1

Instrument :
 BNA_F
 ClientSampleId :
 DW-8

Quant Method : Z:\SVOASRV\HPCHEM1\BNA F\METHODS\8270-BF072018.M
 Quant Title : ASP BNA STANDARDS FOR 5 POINT CALIBRATION

TIC Library : C:\DATABASE\NIST02.L
 TIC Integration Parameters: LSCINT.P



Data Path : Z:\SVOASRV\HPCHEM1\BNA F\DATA\BF072418\
 Data File : BF107621.D
 Acq On : 24 Jul 2018 16:17
 Operator : JU/SJ
 Sample : J4096-06 2X
 Misc :
 ALS Vial : 10 Sample Multiplier: 1

Instrument :
 BNA_F
 ClientSampled :
 DW-8

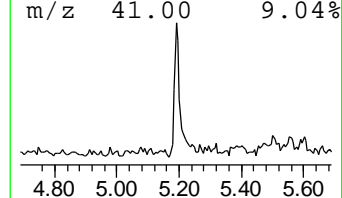
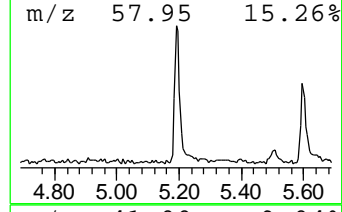
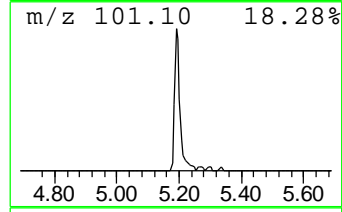
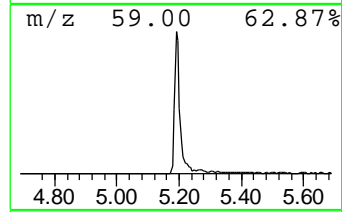
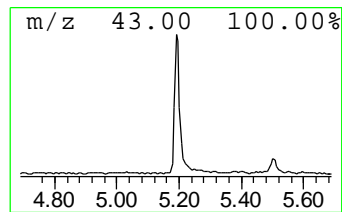
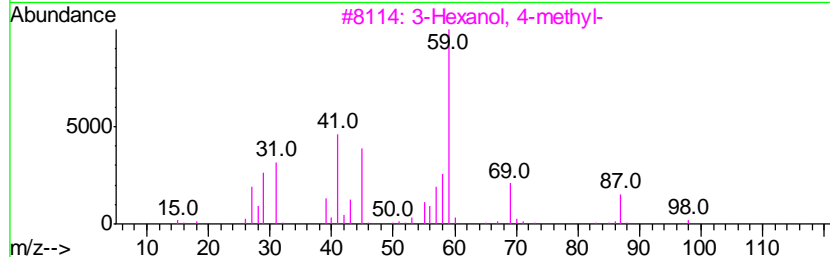
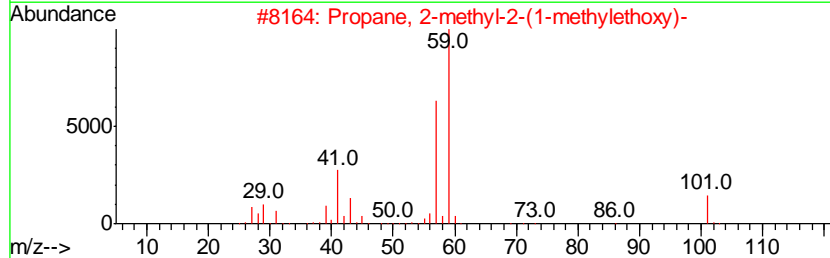
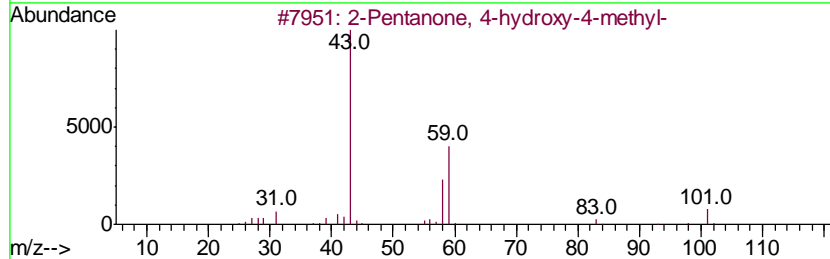
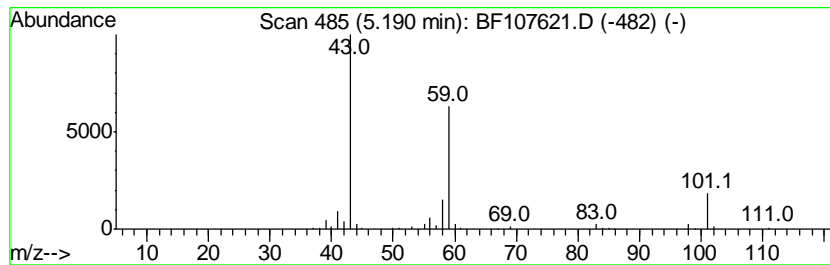
Quant Method : Z:\SVOASRV\HPCHEM1\BNA F\METHODS\8270-BF072018.M
 Quant Title : ASP BNA STANDARDS FOR 5 POINT CALIBRATION

TIC Library : C:\DATABASE\NIST02.L
 TIC Integration Parameters: LSCINT.P

 Peak Number 1 2-Pentanone, 4-hydroxy-4-me... Concentration Rank 6

R.T.	EstConc	Area	Relative to ISTD	R.T.
5.19	4.36 ng	315190	1,4-Dichlorobenzene-d4	6.97

Hit#	of	Tentative ID	MW	MolForm	CAS#	Qual
1	5	2-Pentanone, 4-hydroxy-4-methyl-	116	C6H12O2	000123-42-2	64
2		Propane, 2-methyl-2-(1-methyleth...	116	C7H16O	017348-59-3	53
3		3-Hexanol, 4-methyl-	116	C7H16O	000615-29-2	33
4		2-Hexanol, 2-methyl-	116	C7H16O	000625-23-0	28
5		Acetic acid, cyano-, 1,1-dimethy...	141	C7H11NO2	001116-98-9	25



Data Path : Z:\SVOASRV\HPCHEM1\BNA F\DATA\BF072418\
 Data File : BF107621.D
 Acq On : 24 Jul 2018 16:17
 Operator : JU/SJ
 Sample : J4096-06 2X
 Misc :
 ALS Vial : 10 Sample Multiplier: 1

Instrument :
 BNA_F
 ClientSampleId :
 DW-8

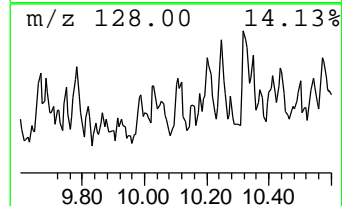
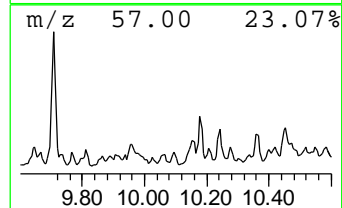
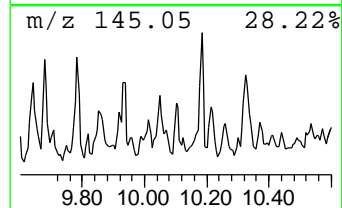
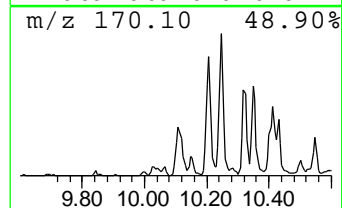
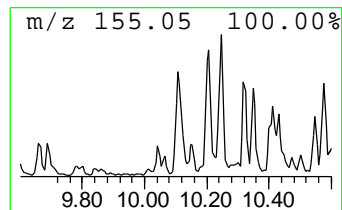
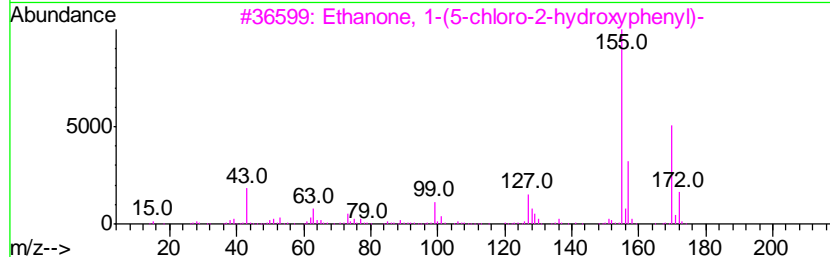
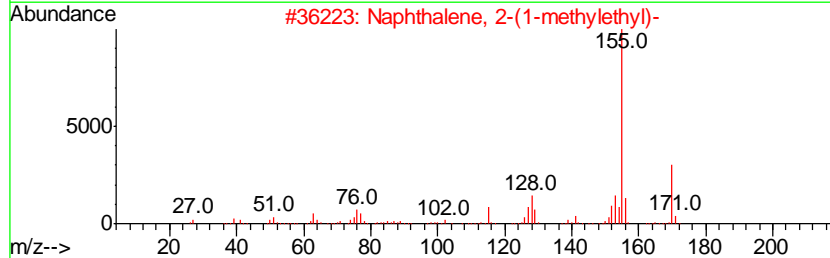
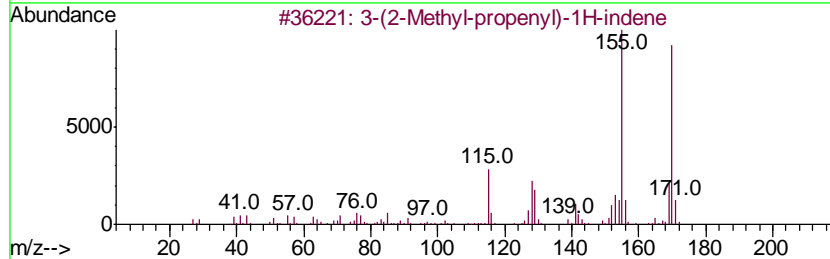
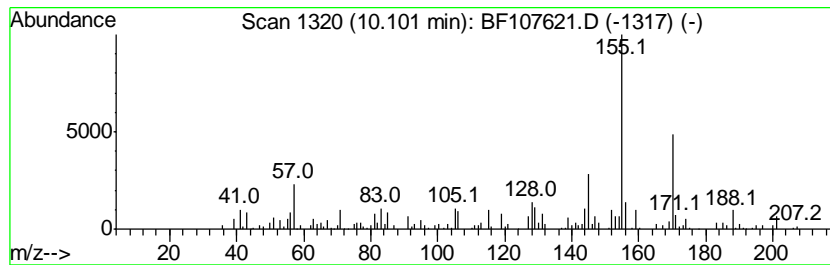
Quant Method : Z:\SVOASRV\HPCHEM1\BNA F\METHODS\8270-BF072018.M
 Quant Title : ASP BNA STANDARDS FOR 5 POINT CALIBRATION

TIC Library : C:\DATABASE\NIST02.L
 TIC Integration Parameters: LSCINT.P

 Peak Number 2 3-(2-Methyl-propenyl)-1H-in... Concentration Rank 12

R.T.	EstConc	Area	Relative to ISTD	R.T.
10.10	2.37 ng	194435	Acenaphthene-d10	10.01

Hit#	of	Tentative ID	MW	MolForm	CAS#	Qual
1	5	3-(2-Methyl-propenyl)-1H-indene	170	C13H14	1000187-78-5	76
2		Naphthalene, 2-(1-methylethyl)-	170	C13H14	002027-17-0	58
3		Ethanone, 1-(5-chloro-2-hydroxyp...	170	C8H7ClO2	001450-74-4	58
4		5-Methyl-1-phenylhexa-1,3,4-triene	170	C13H14	103240-79-5	53
5		2-Naphthyl methyl ketone	170	C12H10O	000093-08-3	52



Data Path : Z:\SVOASRV\HPCHEM1\BNA F\DATA\BF072418\
 Data File : BF107621.D
 Acq On : 24 Jul 2018 16:17
 Operator : JU/SJ
 Sample : J4096-06 2X
 Misc :
 ALS Vial : 10 Sample Multiplier: 1

Instrument :
 BNA_F
 ClientSampleID :
 DW-8

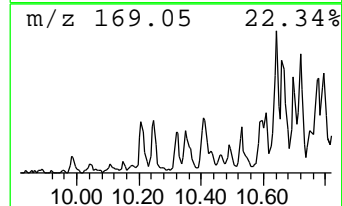
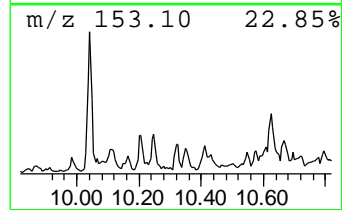
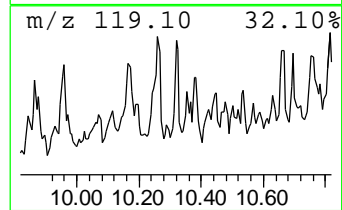
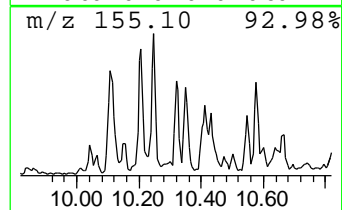
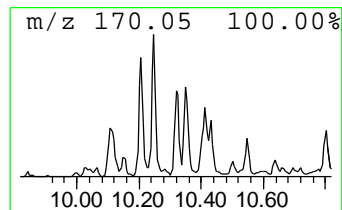
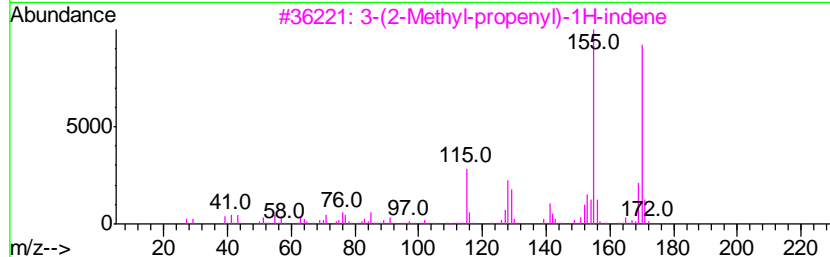
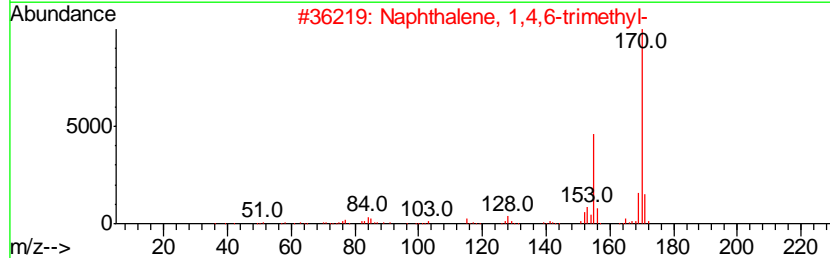
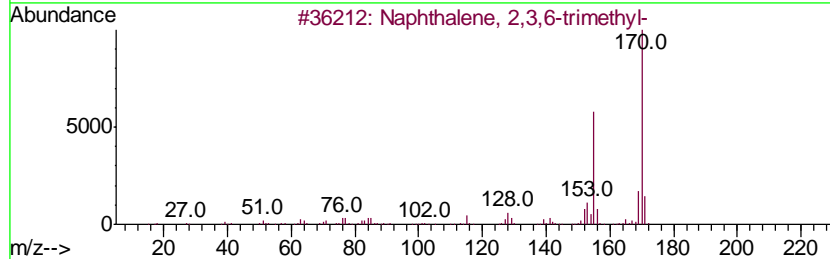
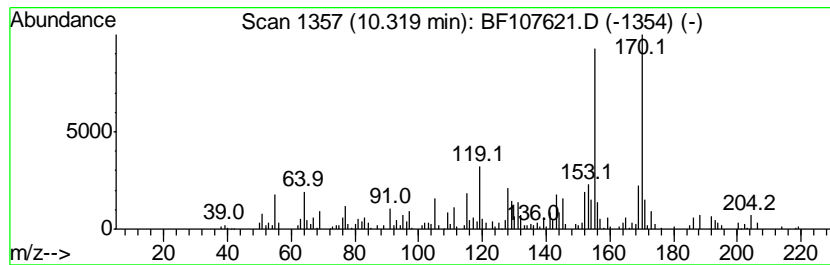
Quant Method : Z:\SVOASRV\HPCHEM1\BNA F\METHODS\8270-BF072018.M
 Quant Title : ASP BNA STANDARDS FOR 5 POINT CALIBRATION

TIC Library : C:\DATABASE\NIST02.L
 TIC Integration Parameters: LSCINT.P

 Peak Number 3 Naphthalene, 2,3,6-trimethyl- Concentration Rank 10

R.T.	EstConc	Area	Relative to ISTD	R.T.
10.32	3.49 ng	286627	Acenaphthene-d10	10.01

Hit#	of	Tentative ID	MW	MolForm	CAS#	Qual
1	5	Naphthalene, 2,3,6-trimethyl-	170	C13H14	000829-26-5	96
2		Naphthalene, 1,4,6-trimethyl-	170	C13H14	002131-42-2	96
3		3-(2-Methyl-propenyl)-1H-indene	170	C13H14	1000187-78-5	96
4		Naphthalene, 1,6,7-trimethyl-	170	C13H14	002245-38-7	95
5		Azulene, 4,6,8-trimethyl-	170	C13H14	000941-81-1	89



Data Path : Z:\SVOASRV\HPCHEM1\BNA F\DATA\BF072418\
 Data File : BF107621.D
 Acq On : 24 Jul 2018 16:17
 Operator : JU/SJ
 Sample : J4096-06 2X
 Misc :
 ALS Vial : 10 Sample Multiplier: 1

Instrument :
 BNA_F
 ClientSampleID :
 DW-8

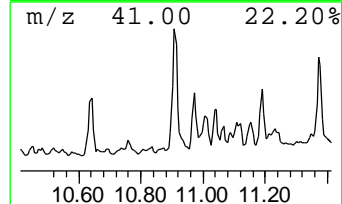
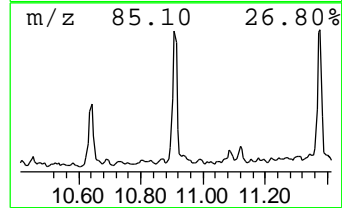
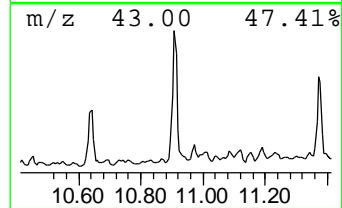
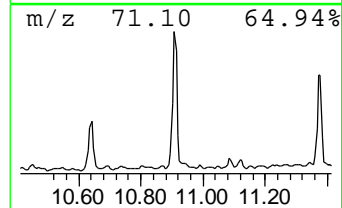
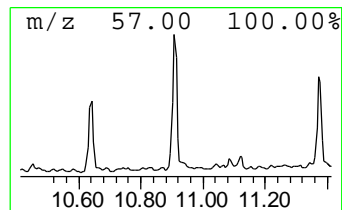
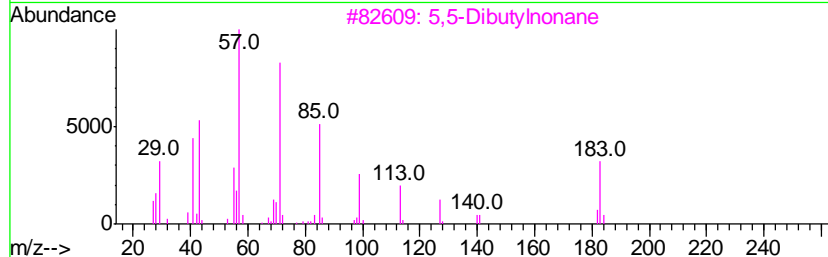
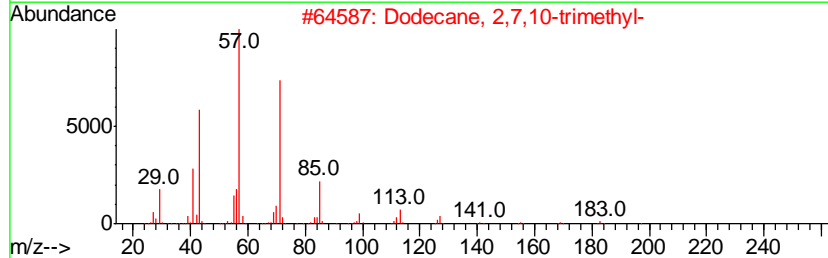
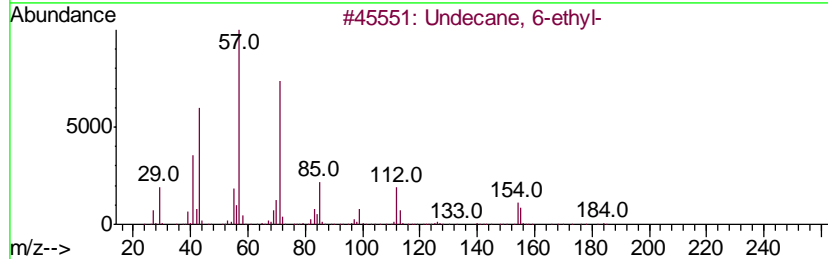
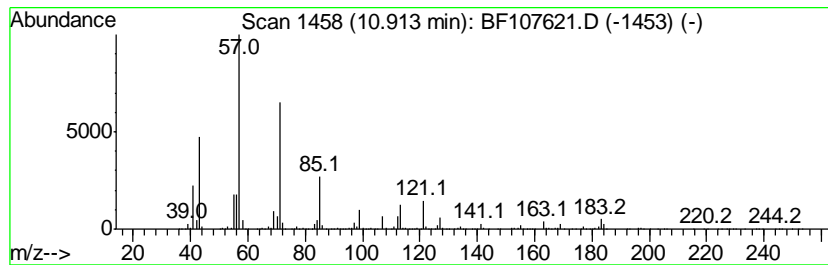
Quant Method : Z:\SVOASRV\HPCHEM1\BNA F\METHODS\8270-BF072018.M
 Quant Title : ASP BNA STANDARDS FOR 5 POINT CALIBRATION

TIC Library : C:\DATABASE\NIST02.L
 TIC Integration Parameters: LSCINT.P

 Peak Number 4 Undecane, 6-ethyl- Concentration Rank 1

R.T.	EstConc	Area	Relative to ISTD	R.T.
10.91	32.47 ng	3168480	Phenanthrene-d10	11.51

Hit#	of	Tentative ID	MW	MolForm	CAS#	Qual
1	5	Undecane, 6-ethyl-	184	C13H28	017312-60-6	87
2		Dodecane, 2,7,10-trimethyl-	212	C15H32	074645-98-0	80
3		5,5-Dibutylnonane	240	C17H36	006008-17-9	78
4		Undecane, 3,6-dimethyl-	184	C13H28	017301-28-9	72
5		Undecane, 2,6-dimethyl-	184	C13H28	017301-23-4	64



Data Path : Z:\SVOASRV\HPCHEM1\BNA F\DATA\BF072418\
 Data File : BF107621.D
 Acq On : 24 Jul 2018 16:17
 Operator : JU/SJ
 Sample : J4096-06 2X
 Misc :
 ALS Vial : 10 Sample Multiplier: 1

Instrument :
 BNA_F
 ClientSampleID :
 DW-8

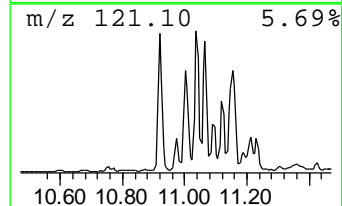
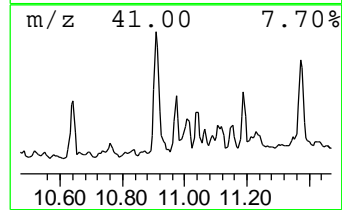
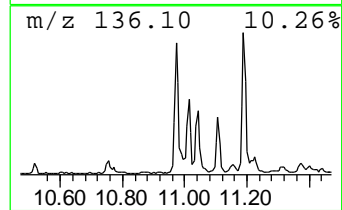
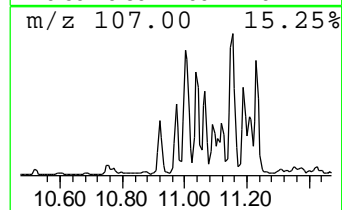
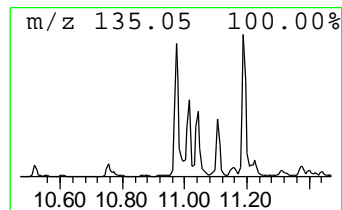
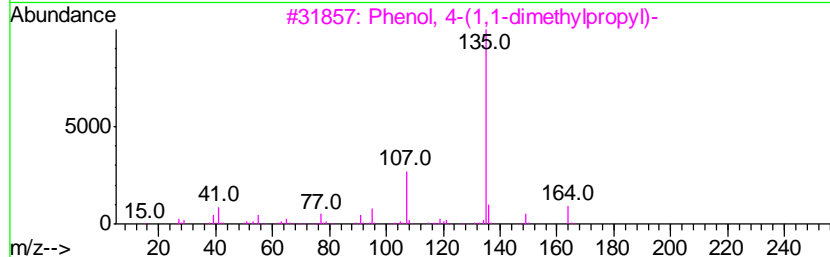
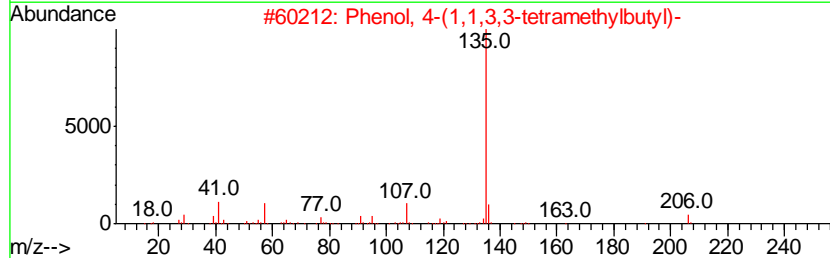
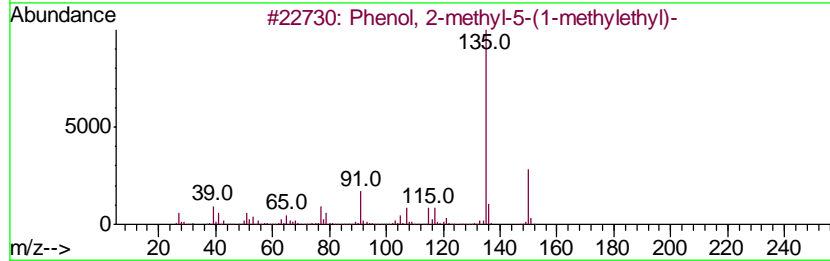
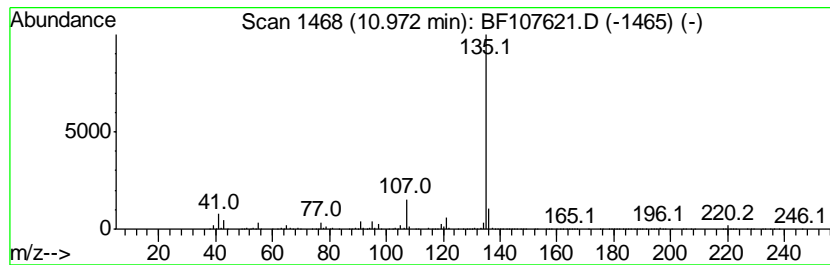
Quant Method : Z:\SVOASRV\HPCHEM1\BNA F\METHODS\8270-BF072018.M
 Quant Title : ASP BNA STANDARDS FOR 5 POINT CALIBRATION

TIC Library : C:\DATABASE\NIST02.L
 TIC Integration Parameters: LSCINT.P

 Peak Number 5 Phenol, 2-methyl-5-(1-methyl... Concentration Rank 3

R.T.	EstConc	Area	Relative to ISTD	R.T.
10.97	15.33 ng	1496250	Phenanthrene-d10	11.51

Hit#	of	Tentative ID	MW	MolForm	CAS#	Qual
1	5	Phenol, 2-methyl-5-(1-methylethyl)-	150	C10H14O	000499-75-2	78
2		Phenol, 4-(1,1,3,3-tetramethylbu...	206	C14H22O	000140-66-9	78
3		Phenol, 4-(1,1-dimethylpropyl)-	164	C11H16O	000080-46-6	64
4		Pentanoic acid, 5-hydroxy-, p-t-...	250	C15H22O3	166273-37-6	64
5		1-n-Hexyladamantane	220	C16H28	022458-75-9	64



Data Path : Z:\SVOASRV\HPCHEM1\BNA F\DATA\BF072418\
 Data File : BF107621.D
 Acq On : 24 Jul 2018 16:17
 Operator : JU/SJ
 Sample : J4096-06 2X
 Misc :
 ALS Vial : 10 Sample Multiplier: 1

Instrument :
 BNA_F
 ClientSampleID :
 DW-8

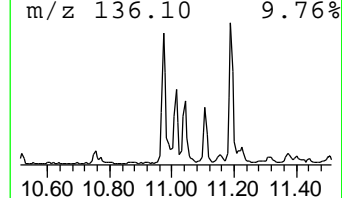
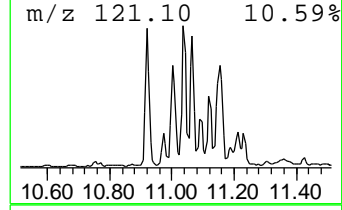
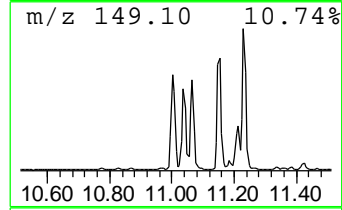
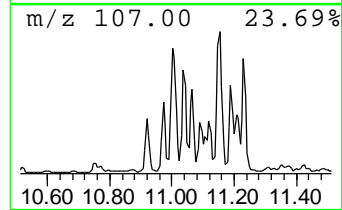
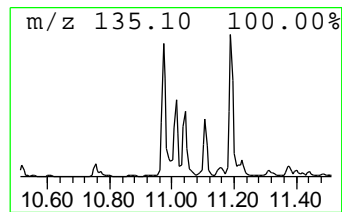
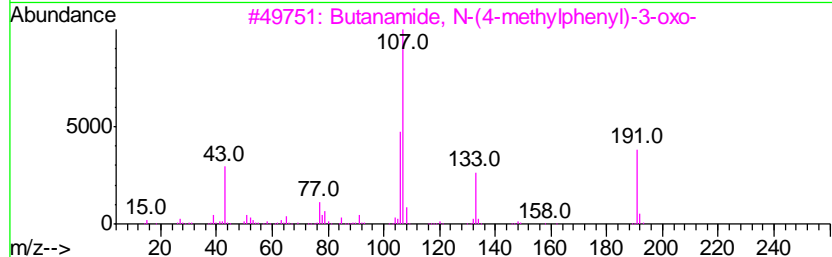
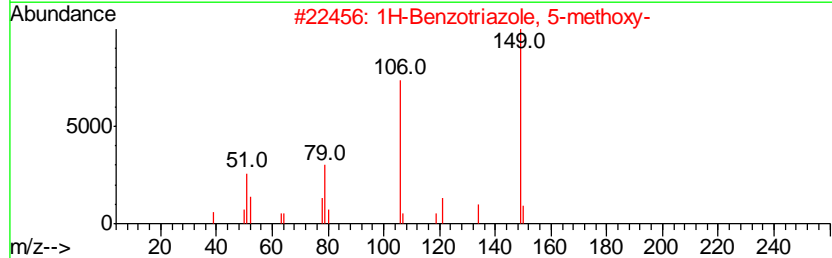
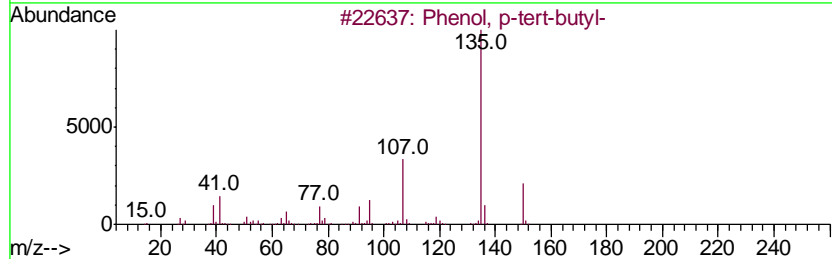
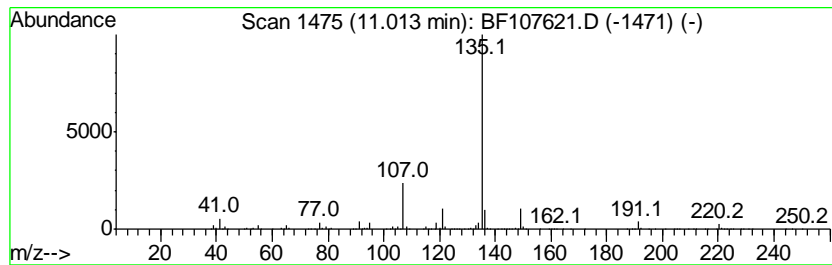
Quant Method : Z:\SVOASRV\HPCHEM1\BNA F\METHODS\8270-BF072018.M
 Quant Title : ASP BNA STANDARDS FOR 5 POINT CALIBRATION

TIC Library : C:\DATABASE\NIST02.L
 TIC Integration Parameters: LSCINT.P

 Peak Number 6 unknown11.01 Concentration Rank 2

R.T.	EstConc	Area	Relative to ISTD	R.T.
11.01	16.15 ng	1575880	Phenanthrene-d10	11.51

Hit#	of	Tentative ID	MW	MolForm	CAS#	Qual
1	5	Phenol, p-tert-butyl-	150	C10H14O	000098-54-4	30
2		1H-Benzotriazole, 5-methoxy-	149	C7H7N3O	027799-91-3	22
3		Butanamide, N-(4-methylphenyl)-3...	191	C11H13NO2	002415-85-2	22
4		Thiazolidin-2,4-dione, 3-methyl-...	220	C10H8N2O2S	1000263-71-0	22
5		Phenol, 2-methyl-4-(1,1,3,3-tetr...	220	C15H24O	002219-84-3	18



Data Path : Z:\SVOASRV\HPCHEM1\BNA F\DATA\BF072418\
 Data File : BF107621.D
 Acq On : 24 Jul 2018 16:17
 Operator : JU/SJ
 Sample : J4096-06 2X
 Misc :
 ALS Vial : 10 Sample Multiplier: 1

Instrument :
 BNA_F
 ClientSampleID :
 DW-8

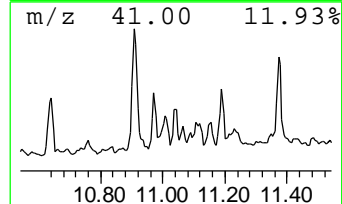
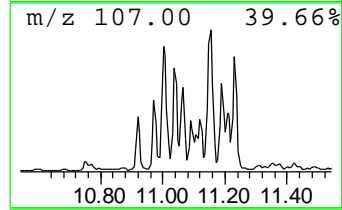
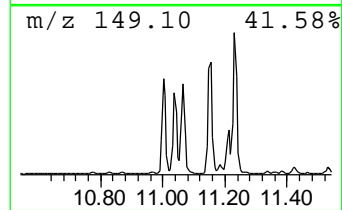
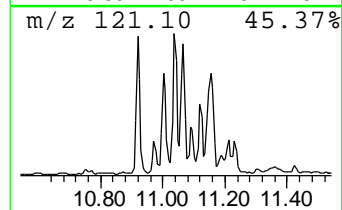
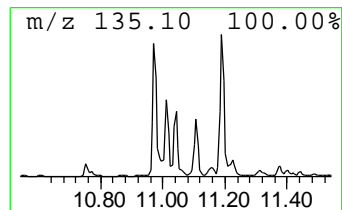
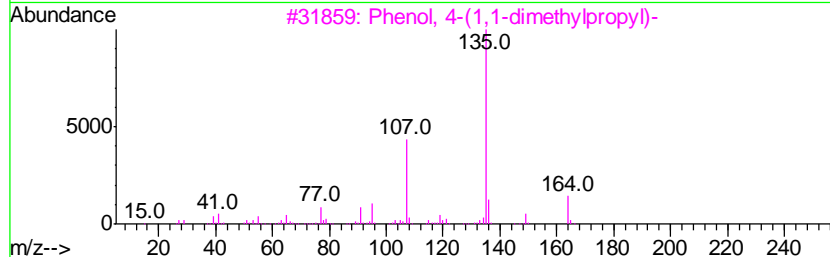
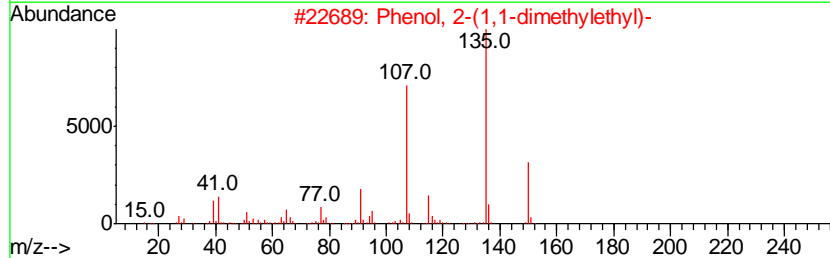
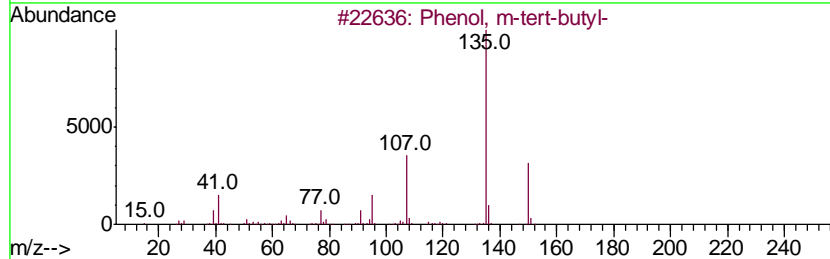
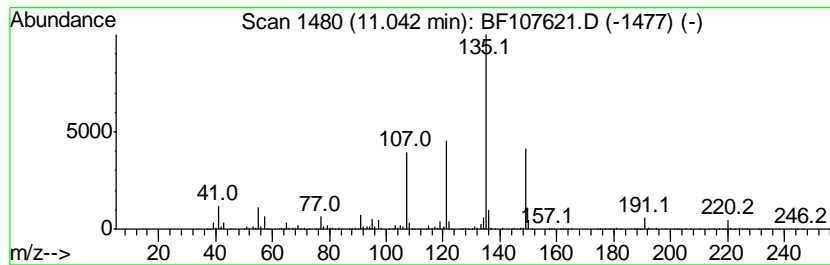
Quant Method : Z:\SVOASRV\HPCHEM1\BNA F\METHODS\8270-BF072018.M
 Quant Title : ASP BNA STANDARDS FOR 5 POINT CALIBRATION

TIC Library : C:\DATABASE\NIST02.L
 TIC Integration Parameters: LSCINT.P

 Peak Number 7 unknown11.04 Concentration Rank 4

R.T.	EstConc	Area	Relative to ISTD	R.T.
11.04	14.24 ng	1389540	Phenanthrene-d10	11.51

Hit#	of	Tentative ID	MW	MolForm	CAS#	Qual
1	5	Phenol, m-tert-butyl-	150	C10H14O	000585-34-2	30
2		Phenol, 2-(1,1-dimethylethyl)-	150	C10H14O	000088-18-6	30
3		Phenol, 4-(1,1-dimethylpropyl)-	164	C11H16O	000080-46-6	27
4		Phenol, p-tert-butyl-	150	C10H14O	000098-54-4	27
5		5H-PYRROLO(3,2-D)PYRIMIDINE-2,4-...	149	C6H7N5	1000244-21-4	27



Data Path : Z:\SVOASRV\HPCHEM1\BNA F\DATA\BF072418\
 Data File : BF107621.D
 Acq On : 24 Jul 2018 16:17
 Operator : JU/SJ
 Sample : J4096-06 2X
 Misc :
 ALS Vial : 10 Sample Multiplier: 1

Instrument :
 BNA_F
 ClientSampled :
 DW-8

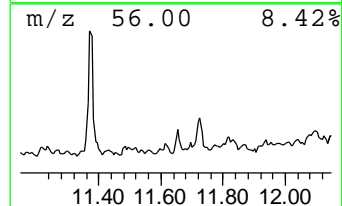
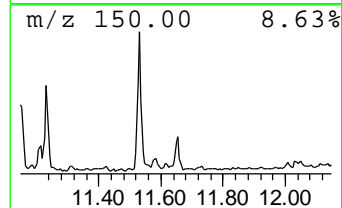
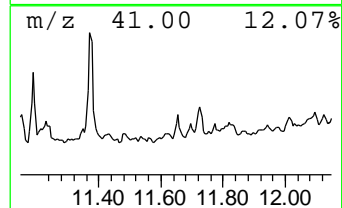
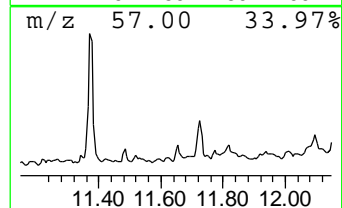
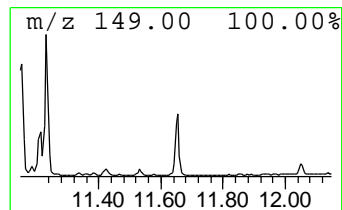
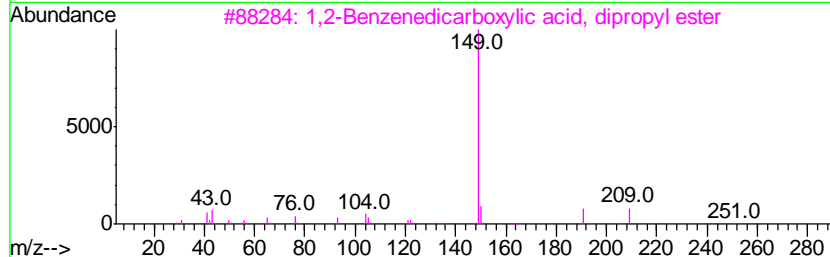
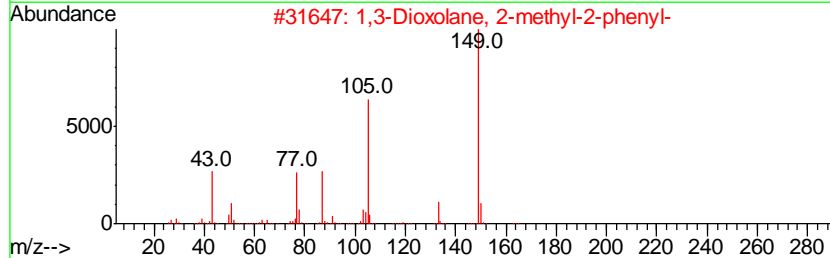
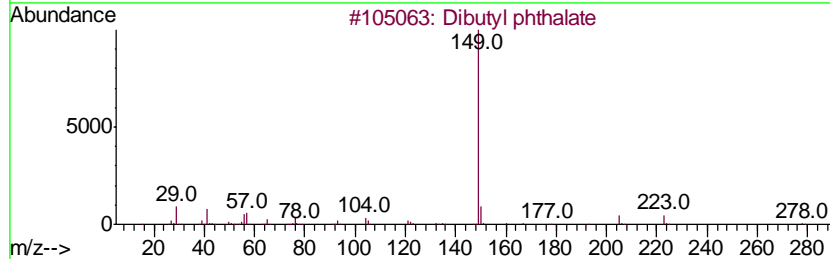
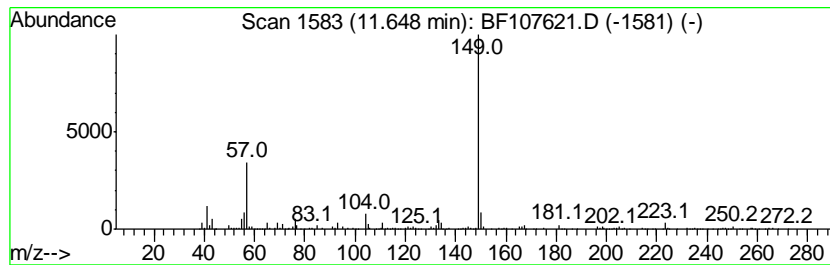
Quant Method : Z:\SVOASRV\HPCHEM1\BNA F\METHODS\8270-BF072018.M
 Quant Title : ASP BNA STANDARDS FOR 5 POINT CALIBRATION

TIC Library : C:\DATABASE\NIST02.L
 TIC Integration Parameters: LSCINT.P

 Peak Number 8 Dibutyl phthalate Concentration Rank 9

R.T.	EstConc	Area	Relative to ISTD	R.T.
11.65	3.61 ng	352510	Phenanthrene-d10	11.51

Hit#	of	Tentative ID	MW	MolForm	CAS#	Qual
1	5	Dibutyl phthalate	278	C16H22O4	000084-74-2	64
2		1,3-Dioxolane, 2-methyl-2-phenyl-	164	C10H12O2	003674-77-9	59
3		1,2-Benzenedicarboxylic acid, di...	250	C14H18O4	000131-16-8	59
4		1,2-Benzenedicarboxylic acid, di...	362	C22H34O4	003648-21-3	59
5		1,2-Benzenedicarboxylic acid, bu...	334	C20H30O4	000084-78-6	50



Data Path : Z:\SVOASRV\HPCHEM1\BNA F\DATA\BF072418\
 Data File : BF107621.D
 Acq On : 24 Jul 2018 16:17
 Operator : JU/SJ
 Sample : J4096-06 2X
 Misc :
 ALS Vial : 10 Sample Multiplier: 1

Instrument :
 BNA_F
 ClientSampled :
 DW-8

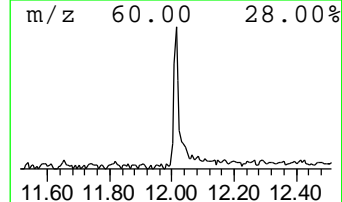
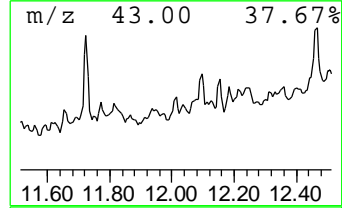
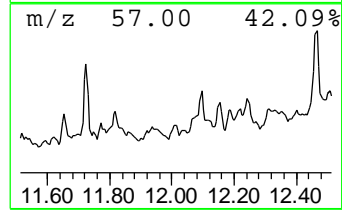
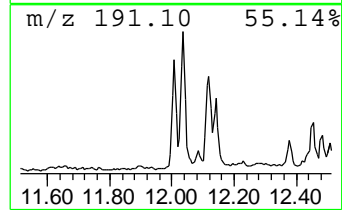
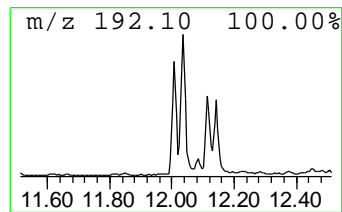
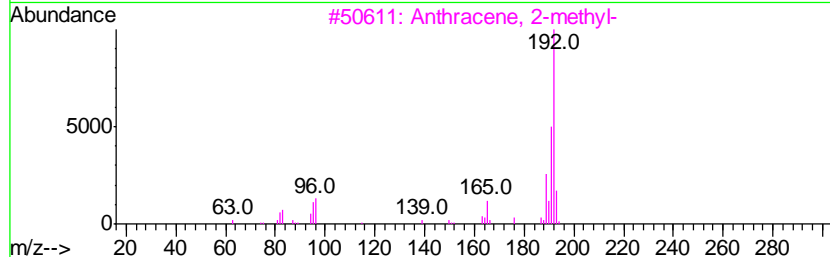
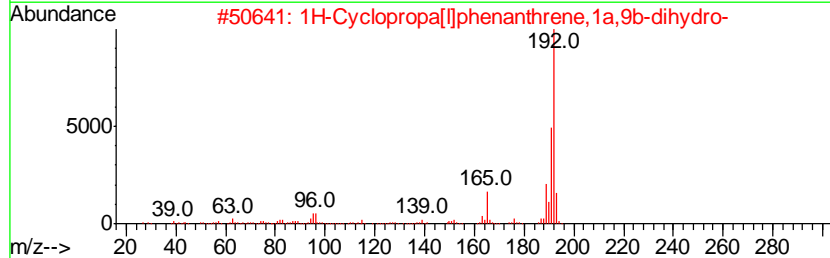
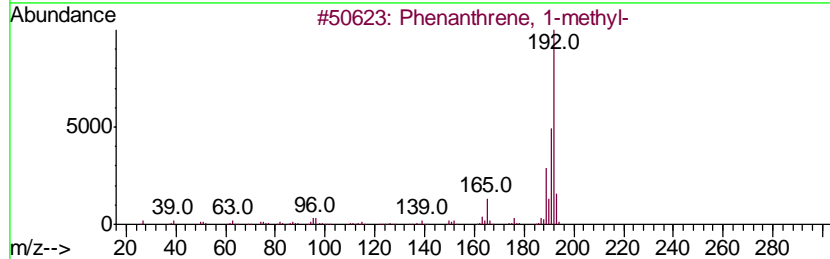
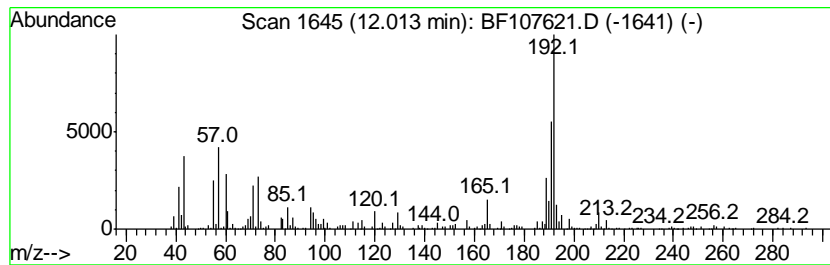
Quant Method : Z:\SVOASRV\HPCHEM1\BNA F\METHODS\8270-BF072018.M
 Quant Title : ASP BNA STANDARDS FOR 5 POINT CALIBRATION

TIC Library : C:\DATABASE\NIST02.L
 TIC Integration Parameters: LSCINT.P

 Peak Number 9 Phenanthrene, 1-methyl- Concentration Rank 5

R.T.	EstConc	Area	Relative to ISTD	R.T.
12.01	5.92 ng	577667	Phenanthrene-d10	11.51

Hit#	of	Tentative ID	MW	MolForm	CAS#	Qual
1	5	Phenanthrene, 1-methyl-	192	C15H12	000832-69-9	96
2		1H-Cyclopropa[1]phenanthrene,1a,...	192	C15H12	000949-41-7	95
3		Anthracene, 2-methyl-	192	C15H12	000613-12-7	94
4		Anthracene, 1-methyl-	192	C15H12	000610-48-0	93
5		Phenanthrene, 2-methyl-	192	C15H12	002531-84-2	92



Data Path : Z:\SVOASRV\HPCHEM1\BNA F\DATA\BF072418\
 Data File : BF107621.D
 Acq On : 24 Jul 2018 16:17
 Operator : JU/SJ
 Sample : J4096-06 2X
 Misc :
 ALS Vial : 10 Sample Multiplier: 1

Instrument :
 BNA_F
 ClientSampled :
 DW-8

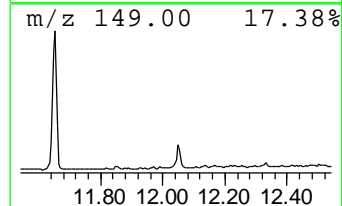
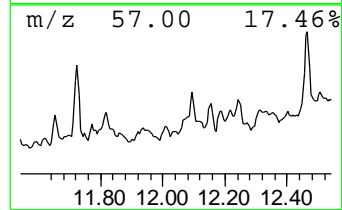
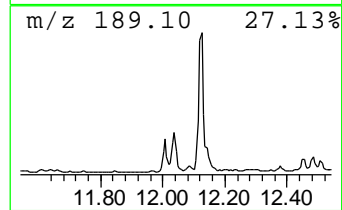
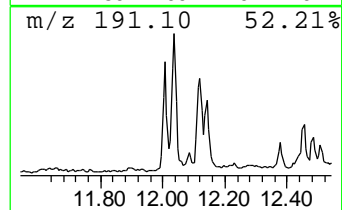
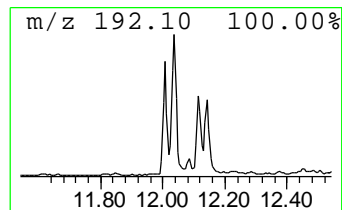
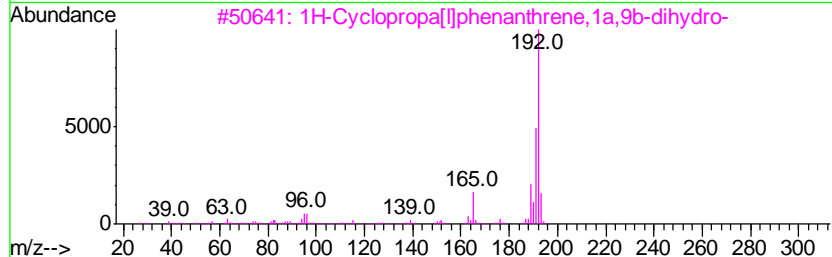
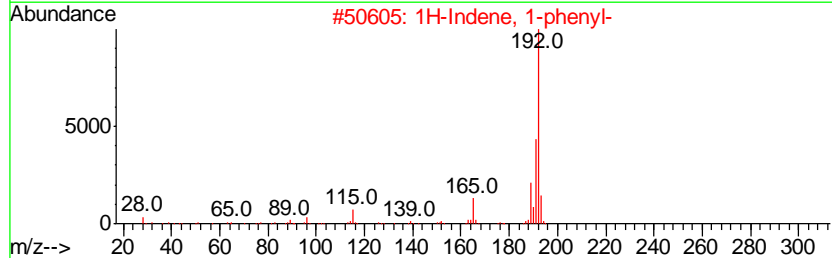
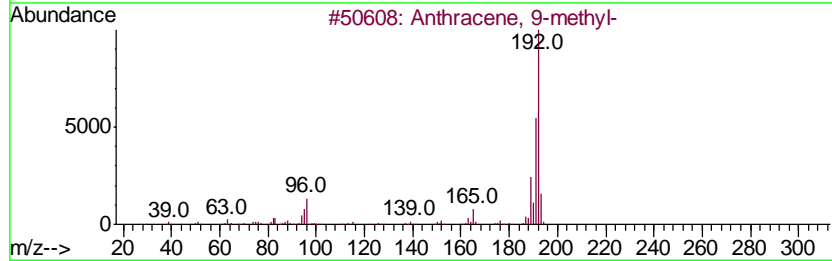
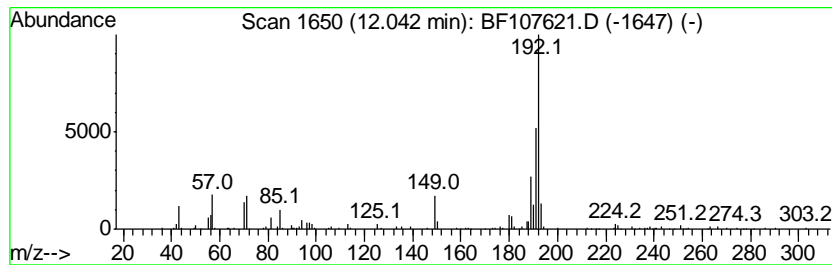
Quant Method : Z:\SVOASRV\HPCHEM1\BNA F\METHODS\8270-BF072018.M
 Quant Title : ASP BNA STANDARDS FOR 5 POINT CALIBRATION

TIC Library : C:\DATABASE\NIST02.L
 TIC Integration Parameters: LSCINT.P

 Peak Number 10 Anthracene, 9-methyl- Concentration Rank 8

R.T.	EstConc	Area	Relative to ISTD	R.T.
12.04	3.61 ng	352668	Phenanthrene-d10	11.51

Hit#	of	Tentative ID	MW	MolForm	CAS#	Qual
1	5	Anthracene, 9-methyl-	192	C15H12	000779-02-2	87
2		1H-Indene, 1-phenyl-	192	C15H12	001961-96-2	87
3		1H-Cyclopropa[1]phenanthrene,1a,...	192	C15H12	000949-41-7	87
4		1H-Indene, 2-phenyl-	192	C15H12	004505-48-0	87
5		1H-Indene, 3-phenyl-	192	C15H12	001961-97-3	87



Data Path : Z:\SVOASRV\HPCHEM1\BNA F\DATA\BF072418\
 Data File : BF107621.D
 Acq On : 24 Jul 2018 16:17
 Operator : JU/SJ
 Sample : J4096-06 2X
 Misc :
 ALS Vial : 10 Sample Multiplier: 1

Instrument :
 BNA_F
 ClientSampled :
 DW-8

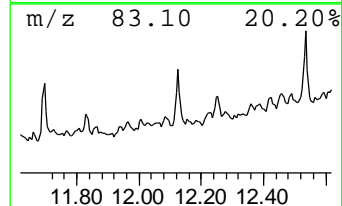
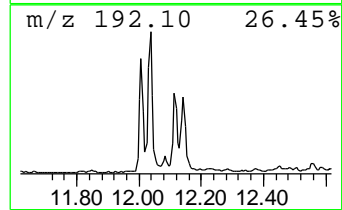
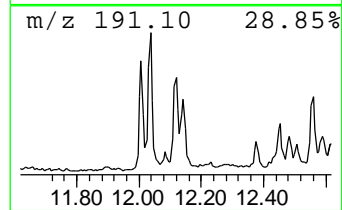
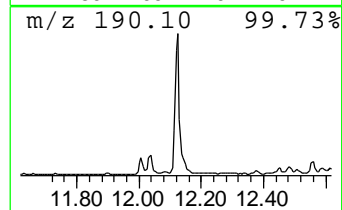
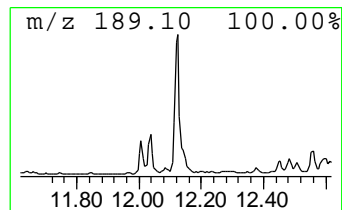
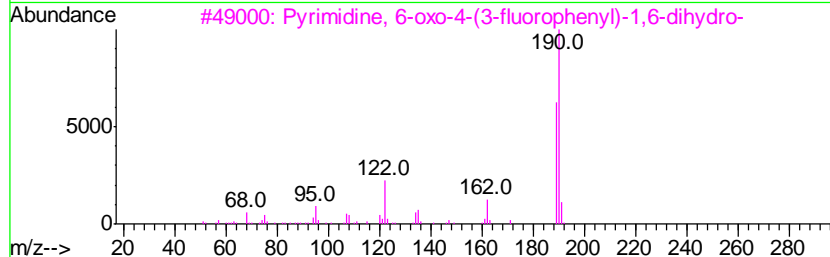
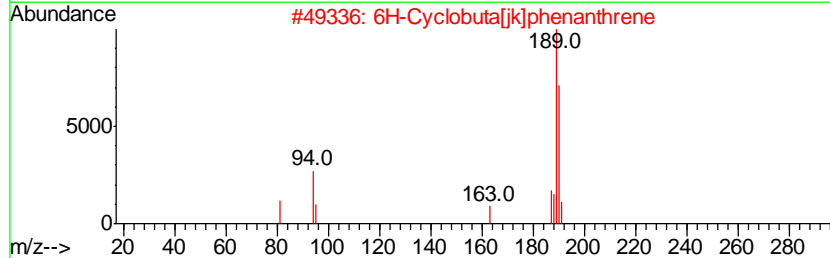
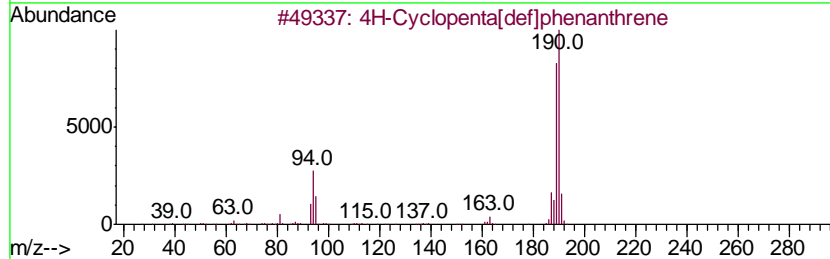
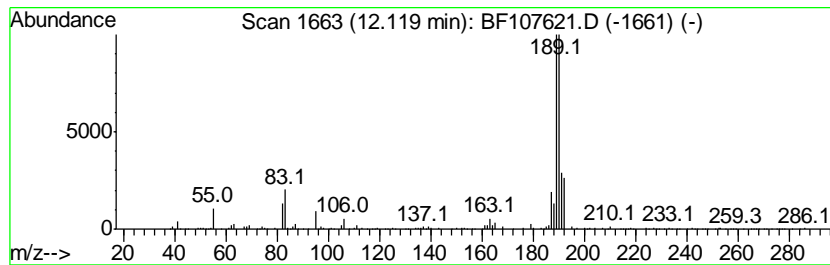
Quant Method : Z:\SVOASRV\HPCHEM1\BNA F\METHODS\8270-BF072018.M
 Quant Title : ASP BNA STANDARDS FOR 5 POINT CALIBRATION

TIC Library : C:\DATABASE\NIST02.L
 TIC Integration Parameters: LSCINT.P

 Peak Number 11 4H-Cyclopenta[def]phenanthrene Concentration Rank 7

R.T.	EstConc	Area	Relative to ISTD	R.T.
12.12	4.21 ng	410936	Phenanthrene-d10	11.51

Hit#	of	Tentative ID	MW	MolForm	CAS#	Qual
1	5	4H-Cyclopenta[def]phenanthrene	190	C15H10	000203-64-5	64
2		6H-Cyclobuta[jk]phenanthrene	190	C15H10	083469-43-6	59
3		Pyrimidine, 6-oxo-4-(3-fluorophe...	190	C10H7FN2O	085979-55-1	53
4		2,3,5,6-Tetramethylterephthalald...	190	C12H14O2	007072-01-7	47
5		Pyrazole-4-carboxaldehyde, 3-(4-...	190	C10H7FN2O	306936-57-2	42



Data Path : Z:\SVOASRV\HPCHEM1\BNA F\DATA\BF072418\
 Data File : BF107621.D
 Acq On : 24 Jul 2018 16:17
 Operator : JU/SJ
 Sample : J4096-06 2X
 Misc :
 ALS Vial : 10 Sample Multiplier: 1

Instrument :
 BNA_F
 ClientSampled :
 DW-8

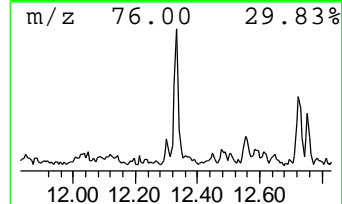
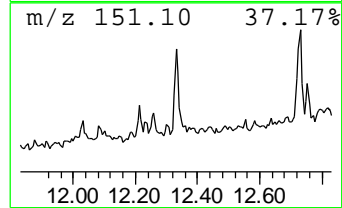
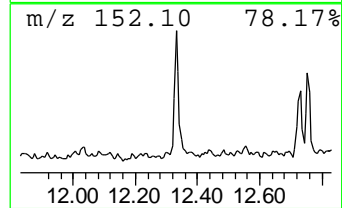
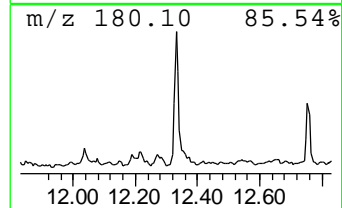
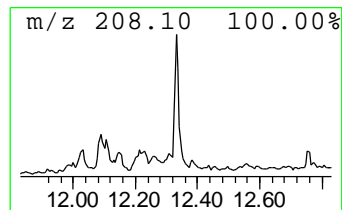
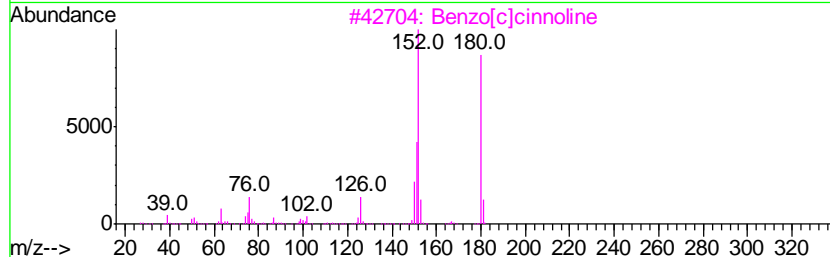
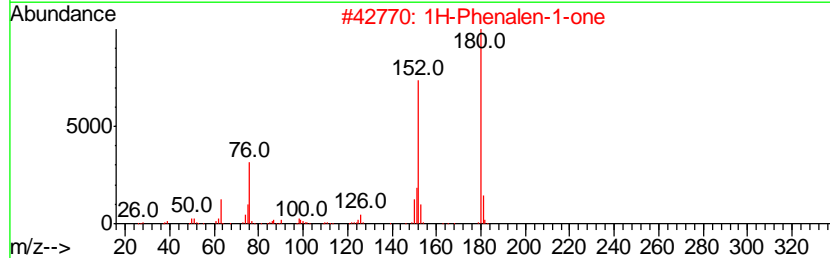
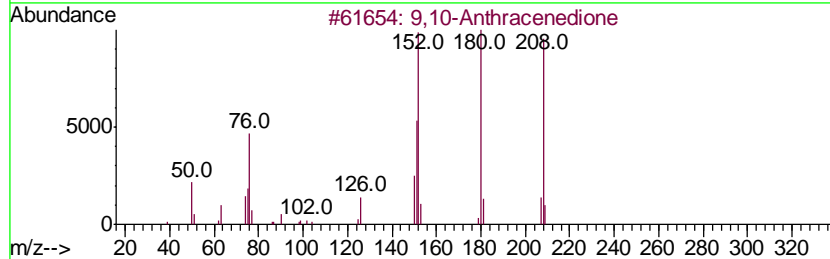
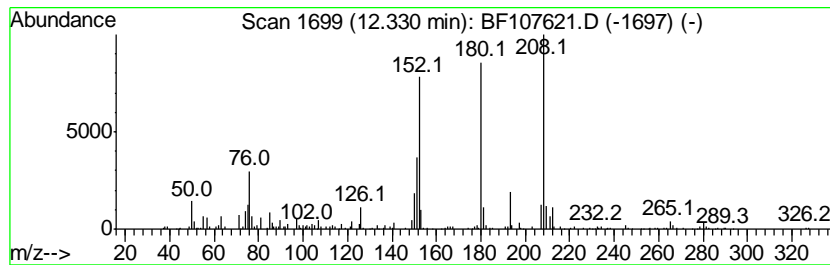
Quant Method : Z:\SVOASRV\HPCHEM1\BNA F\METHODS\8270-BF072018.M
 Quant Title : ASP BNA STANDARDS FOR 5 POINT CALIBRATION

TIC Library : C:\DATABASE\NIST02.L
 TIC Integration Parameters: LSCINT.P

 Peak Number 12 9,10-Anthracenedione Concentration Rank 11

R.T.	EstConc	Area	Relative to ISTD	R.T.
12.33	2.67 ng	260902	Phenanthrene-d10	11.51

Hit#	of	Tentative ID	MW	MolForm	CAS#	Qual
1	5	9,10-Anthracenedione	208	C14H8O2	000084-65-1	98
2		1H-Phenalen-1-one	180	C13H8O	000548-39-0	55
3		Benzo[c]cinnoline	180	C12H8N2	000230-17-1	55
4		Benzo[h]cinnoline	180	C12H8N2	000230-31-9	46
5		2,4,7-Pteridinetriol, 6-ethyl-	208	C8H8N4O3	031053-47-1	25



Data Path : Z:\SVOASRV\HPCHEM1\BNA_F\DATA\BF072418\
 Data File : BF107621.D
 Acq On : 24 Jul 2018 16:17
 Operator : JU/SJ
 Sample : J4096-06 2X
 Misc :
 ALS Vial : 10 Sample Multiplier: 1

Instrument :
 BNA_F
 ClientSampleId :
 DW-8

Quant Method : Z:\SVOASRV\HPCHEM1\BNA_F\METHODS\8270-BF072018.M
 Quant Title : ASP BNA STANDARDS FOR 5 POINT CALIBRATION

TIC Library : C:\DATABASE\NIST02.L
 TIC Integration Parameters: LSCINT.P

TIC Top Hit name	RT	EstConc	Units	Response	--Internal Standard--			
					#	RT	Resp	Conc
2-Pentanone, 4-hy...	5.19	4.4	ng	315190	1	6.97	1444420	20.0
3-(2-Methyl-prope...	10.10	2.4	ng	194435	3	10.01	1644020	20.0
Naphthalene, 2,3,...	10.32	3.5	ng	286627	3	10.01	1644020	20.0
Undecane, 6-ethyl-	10.91	32.5	ng	3168480	4	11.51	1951820	20.0
Phenol, 2-methyl-...	10.97	15.3	ng	1496250	4	11.51	1951820	20.0
unknown11.01	11.01	16.1	ng	1575880	4	11.51	1951820	20.0
unknown11.04	11.04	14.2	ng	1389540	4	11.51	1951820	20.0
Dibutyl phthalate	11.65	3.6	ng	352510	4	11.51	1951820	20.0
Phenanthrene, 1-m...	12.01	5.9	ng	577667	4	11.51	1951820	20.0
Anthracene, 9-met...	12.04	3.6	ng	352668	4	11.51	1951820	20.0
4H-Cyclopenta[def...	12.12	4.2	ng	410936	4	11.51	1951820	20.0
9,10-Anthracenedione	12.33	2.7	ng	260902	4	11.51	1951820	20.0