

Data Path : Z:\svoasrv\HPCHEM1\BNA\_F\Data\BF072822\  
 Data File : BF129430.D  
 Acq On : 29 Jul 2022 02:53  
 Operator : CG\JU  
 Sample : N3923-01 5X  
 Misc :  
 ALS Vial : 22 Sample Multiplier: 1

Instrument :  
 BNA\_F  
 ClientSampleId :  
 OK-03-072722

Quant Time: Jul 29 03:34:53 2022  
 Quant Method : Z:\svoasrv\HPCHEM1\BNA\_F\Methods\8270-BF072522.M  
 Quant Title : ASP BNA STANDARDS FOR 5 POINT CALIBRATION  
 QLast Update : Mon Jul 25 17:24:17 2022  
 Response via : Initial Calibration

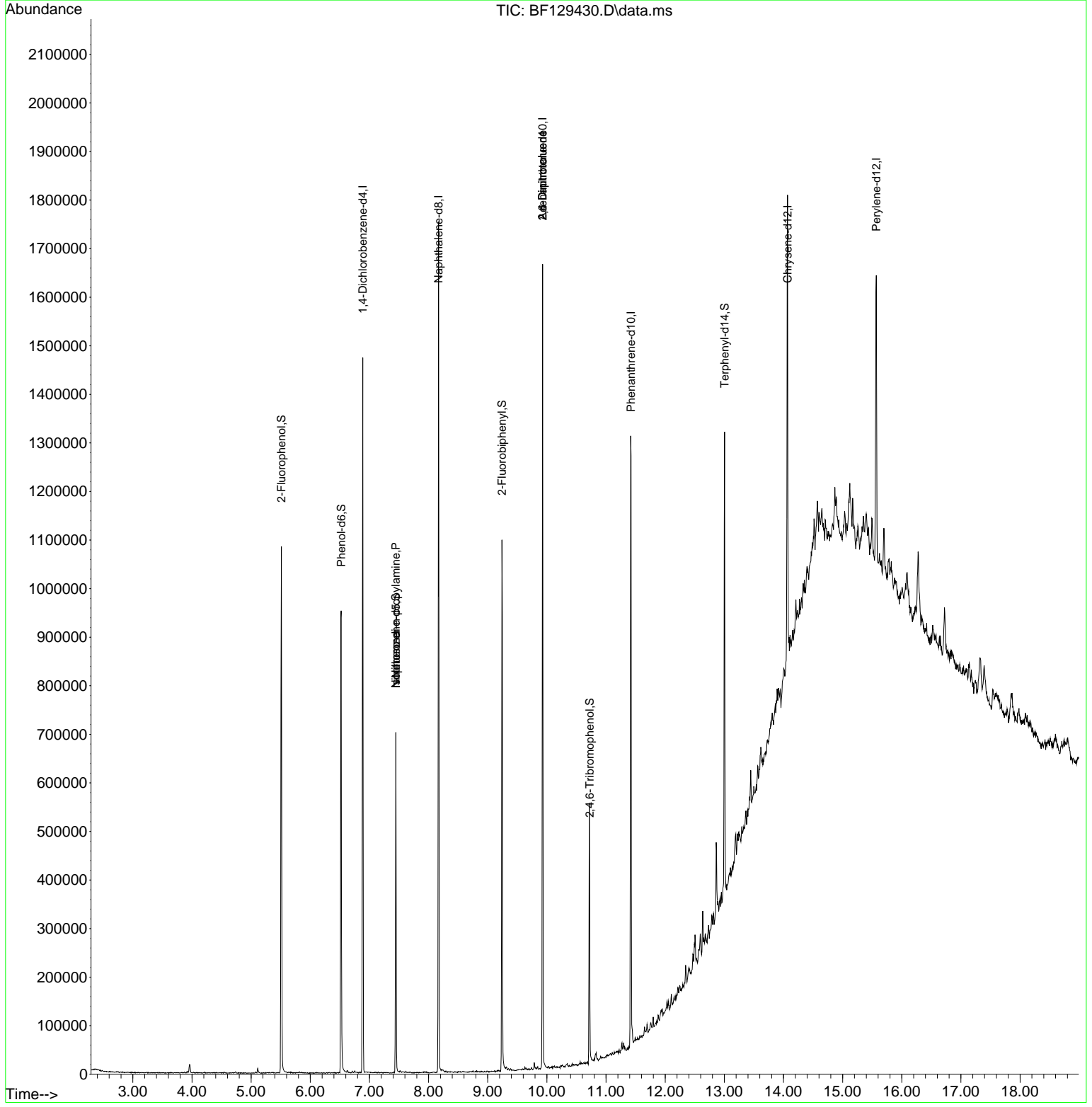
Compound	R.T.	QIon	Response	Conc	Units	Dev(Min)
Internal Standards						
1) 1,4-Dichlorobenzene-d4	6.887	152	192188	20.000	ng	0.00
21) Naphthalene-d8	8.169	136	673003	20.000	ng	0.00
39) Acenaphthene-d10	9.928	164	294809	20.000	ng	0.00
64) Phenanthrene-d10	11.422	188	473000	20.000	ng	0.00
76) Chrysene-d12	14.069	240	333545	20.000	ng	0.00
86) Perylene-d12	15.568	264	255463	20.000	ng	0.02
System Monitoring Compounds						
5) 2-Fluorophenol	5.510	112	275182	23.325	ng	0.01
7) Phenol-d6	6.522	99	325024	21.918	ng	0.00
23) Nitrobenzene-d5	7.445	82	183116	14.853	ng	0.00
42) 2,4,6-Tribromophenol	10.722	330	56342	19.878	ng	0.00
45) 2-Fluorobiphenyl	9.239	172	329126	17.270	ng	0.00
79) Terphenyl-d14	13.004	244	307022	17.366	ng	0.00
Target Compounds						
19) n-Nitroso-di-n-propyla...	7.445	70	24050	2.679	ng	# 76
25) Isophorone	7.445	82	181954	8.234	ng	# 65
51) 2,6-Dinitrotoluene	9.928	165	40371	8.863	ng	# 26
57) 2,4-Dinitrotoluene	9.928	165	40371	6.784	ng	# 22

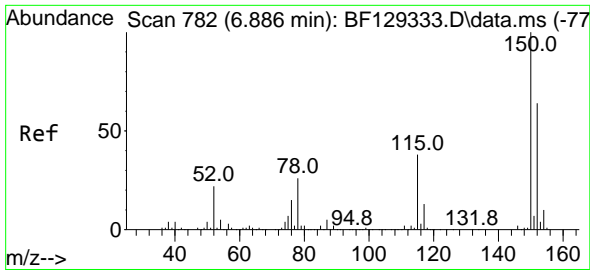
(#) = qualifier out of range (m) = manual integration (+) = signals summed

Data Path : Z:\svoasrv\HPCHEM1\BNA\_F\Data\BF072822\  
Data File : BF129430.D  
Acq On : 29 Jul 2022 02:53  
Operator : CG\JU  
Sample : N3923-01 5X  
Misc :  
ALS Vial : 22 Sample Multiplier: 1

Instrument :  
BNA\_F  
ClientSampleId :  
OK-03-072722

Quant Time: Jul 29 03:34:53 2022  
Quant Method : Z:\svoasrv\HPCHEM1\BNA\_F\Methods\8270-BF072522.M  
Quant Title : ASP BNA STANDARDS FOR 5 POINT CALIBRATION  
QLast Update : Mon Jul 25 17:24:17 2022  
Response via : Initial Calibration

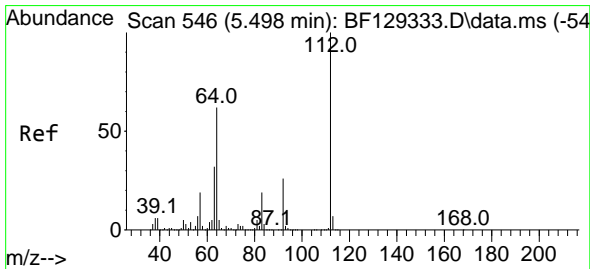
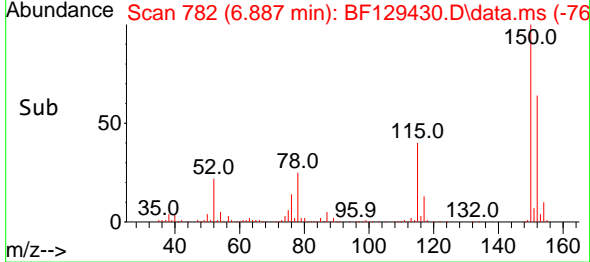
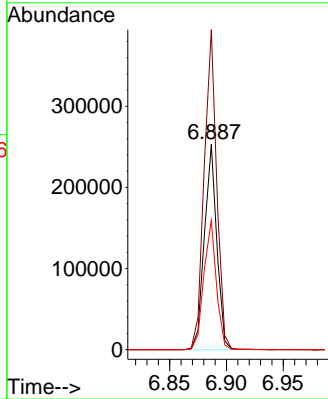
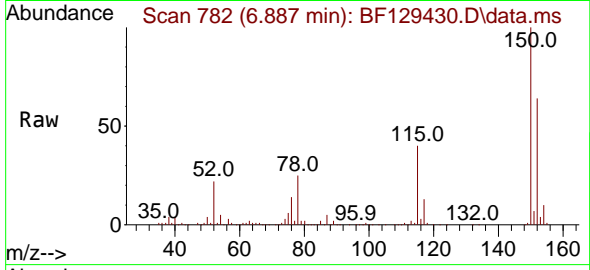




#1  
 1,4-Dichlorobenzene-d4  
 Concen: 20.000 ng  
 RT: 6.887 min Scan# 71  
 Delta R.T. 0.001 min  
 Lab File: BF129430.D  
 Acq: 29 Jul 2022 02:53

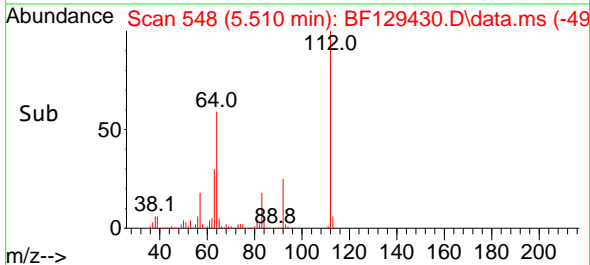
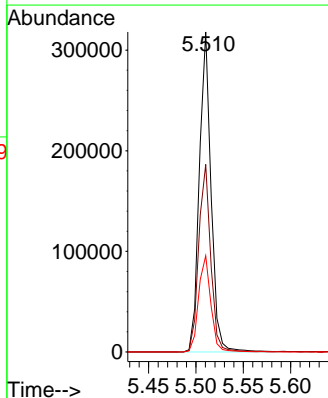
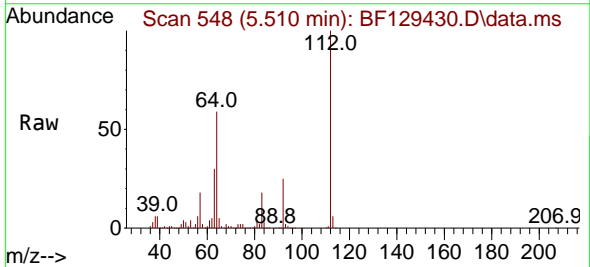
Instrument :  
 BNA\_F  
 ClientSampleId :  
 OK-03-072722

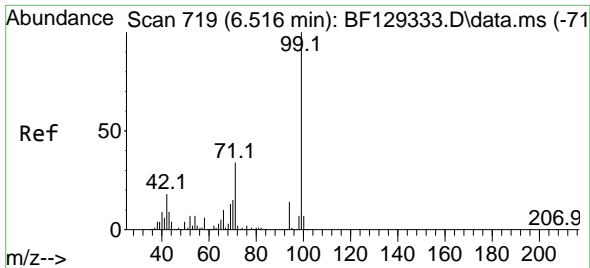
Tgt Ion:152 Resp: 192188  
 Ion Ratio Lower Upper  
 152 100  
 150 155.8 123.7 185.5  
 115 62.9 49.9 74.9



#5  
 2-Fluorophenol  
 Concen: 23.325 ng  
 RT: 5.510 min Scan# 548  
 Delta R.T. 0.012 min  
 Lab File: BF129430.D  
 Acq: 29 Jul 2022 02:53

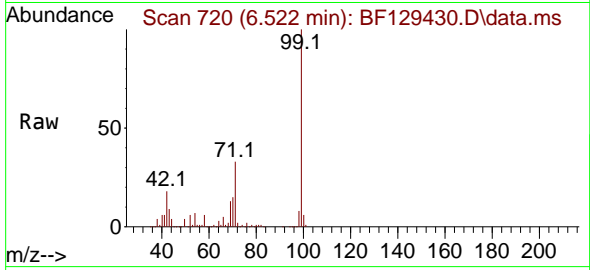
Tgt Ion:112 Resp: 275182  
 Ion Ratio Lower Upper  
 112 100  
 64 58.6 53.3 79.9  
 63 30.1 28.0 42.0





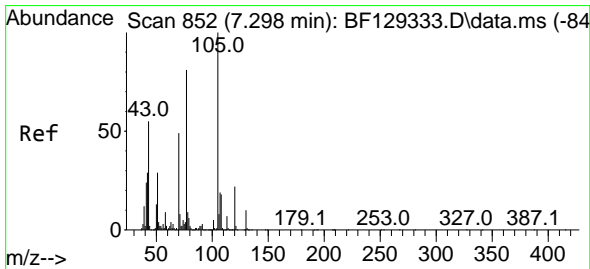
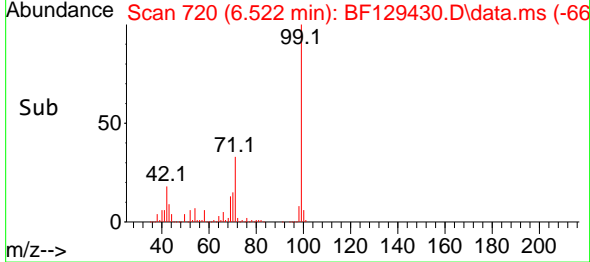
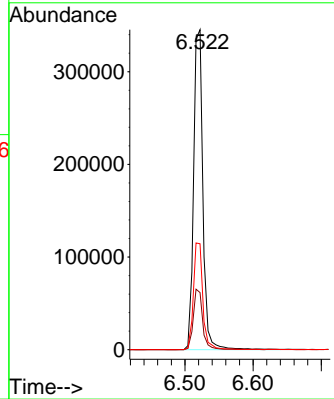
#7  
 Phenol-d6  
 Concen: 21.918 ng  
 RT: 6.522 min Scan# 719  
 Delta R.T. 0.006 min  
 Lab File: BF129430.D  
 Acq: 29 Jul 2022 02:53

Instrument : BNA\_F  
 ClientSampleId : OK-03-072722



Tgt Ion: 99 Resp: 325024

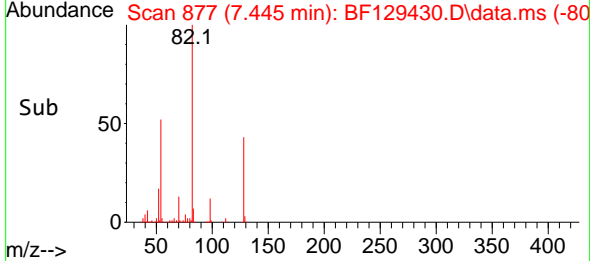
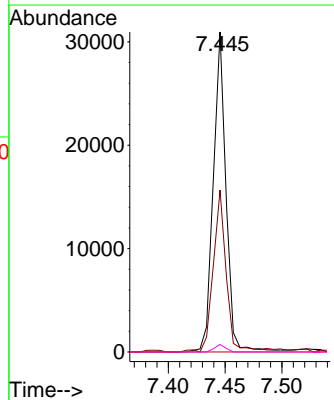
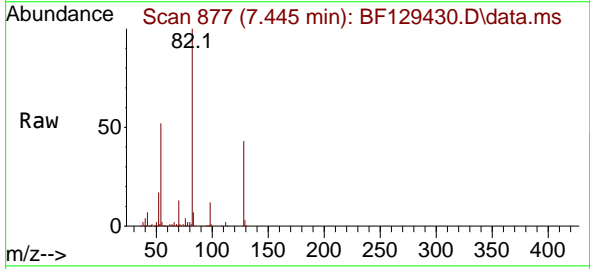
Ion	Ratio	Lower	Upper
99	100		
42	17.8	17.3	25.9
71	33.1	28.9	43.3

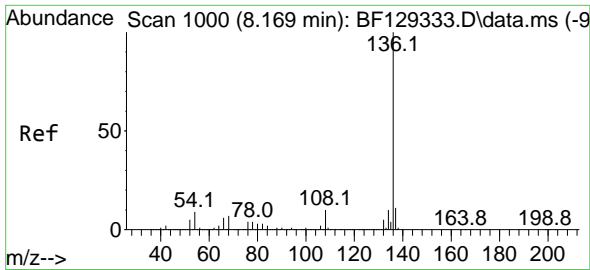


#19  
 n-Nitroso-di-n-propylamine  
 Concen: 2.679 ng  
 RT: 7.445 min Scan# 877  
 Delta R.T. 0.147 min  
 Lab File: BF129430.D  
 Acq: 29 Jul 2022 02:53

Tgt Ion: 70 Resp: 24050

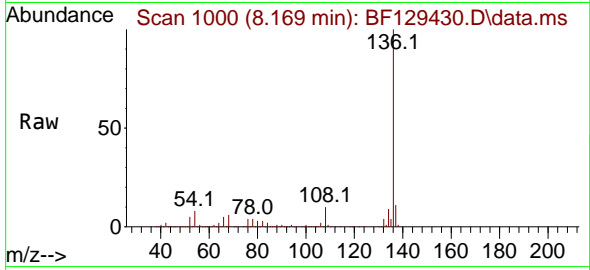
Ion	Ratio	Lower	Upper
70	100		
42	50.6	52.3	78.5#
101	0.0	7.5	11.3#
130	2.4	16.1	24.1#



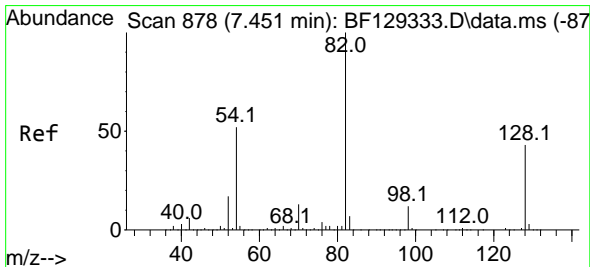
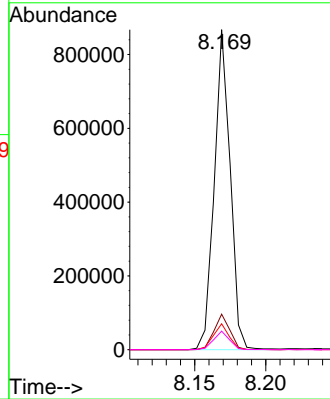
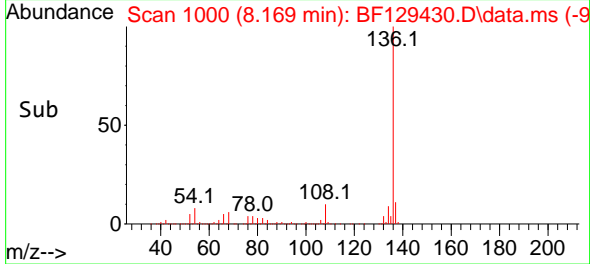


#21  
 Naphthalene-d8  
 Concen: 20.000 ng  
 RT: 8.169 min Scan# 10  
 Delta R.T. 0.000 min  
 Lab File: BF129430.D  
 Acq: 29 Jul 2022 02:53

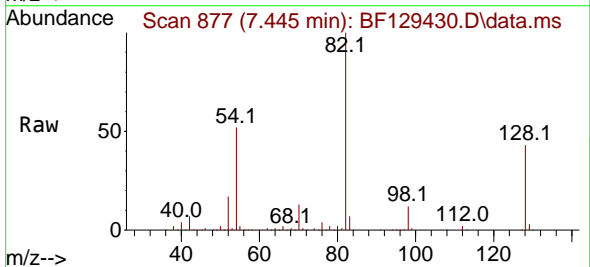
Instrument :  
 BNA\_F  
 ClientSampleId :  
 OK-03-072722



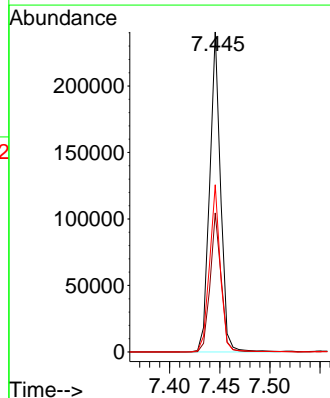
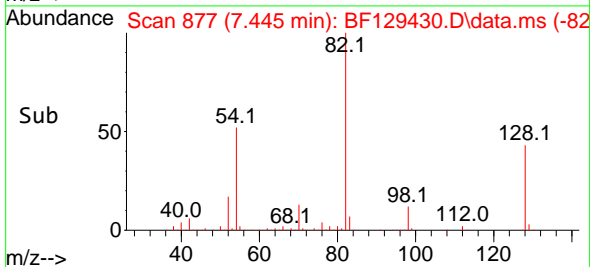
Tgt Ion:136 Resp: 673003  
 Ion Ratio Lower Upper  
 136 100  
 137 11.1 8.8 13.2  
 54 8.1 7.5 11.3  
 68 5.8 4.7 7.1

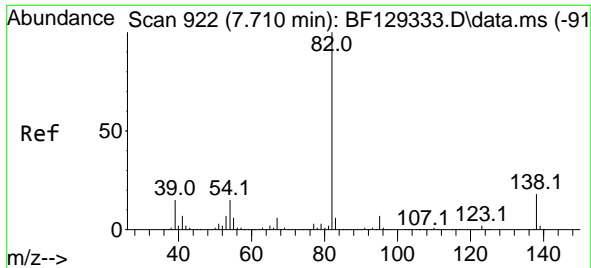


#23  
 Nitrobenzene-d5  
 Concen: 14.853 ng  
 RT: 7.445 min Scan# 877  
 Delta R.T. -0.006 min  
 Lab File: BF129430.D  
 Acq: 29 Jul 2022 02:53



Tgt Ion: 82 Resp: 183116  
 Ion Ratio Lower Upper  
 82 100  
 128 43.4 34.0 51.0  
 54 52.3 46.9 70.3



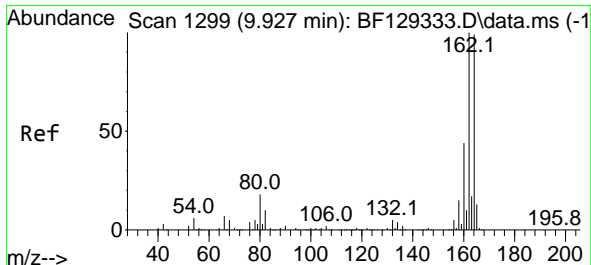
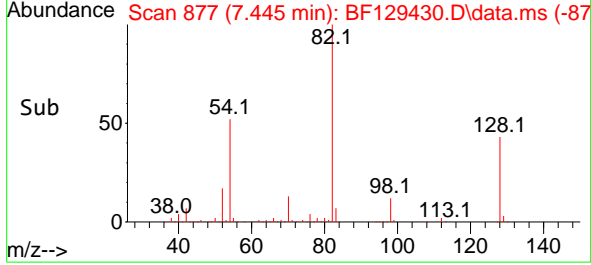
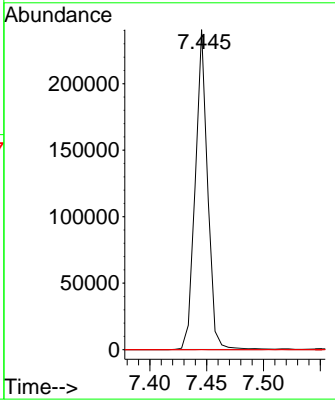
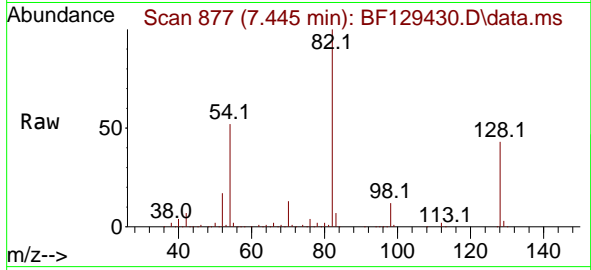


#25  
 Isophorone  
 Concen: 8.234 ng  
 RT: 7.445 min Scan# 81  
 Delta R.T. -0.264 min  
 Lab File: BF129430.D  
 Acq: 29 Jul 2022 02:53

Instrument : BNA\_F  
 ClientSampleId : OK-03-072722

Tgt Ion: 82 Resp: 181954

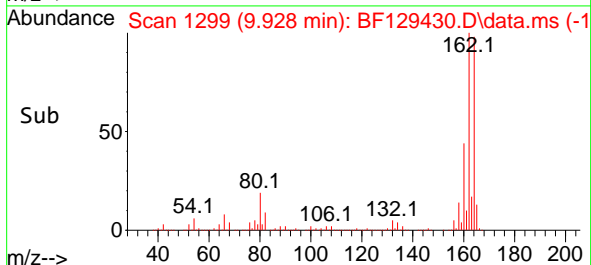
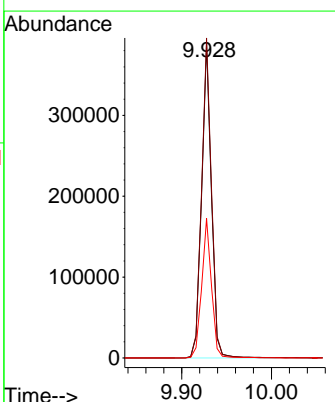
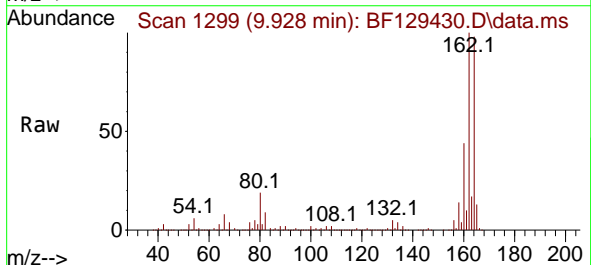
Ion	Ratio	Lower	Upper
82	100		
95	0.1	5.7	8.5#
138	0.0	14.2	21.2#

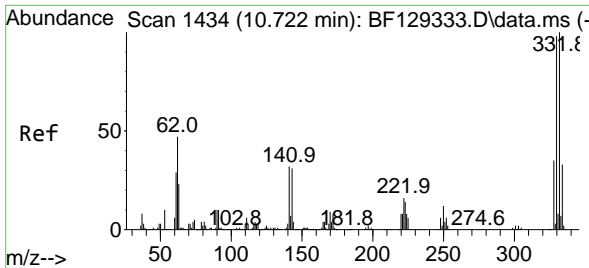


#39  
 Acenaphthene-d10  
 Concen: 20.000 ng  
 RT: 9.928 min Scan# 1299  
 Delta R.T. 0.000 min  
 Lab File: BF129430.D  
 Acq: 29 Jul 2022 02:53

Tgt Ion: 164 Resp: 294809

Ion	Ratio	Lower	Upper
164	100		
162	101.9	79.5	119.3
160	44.4	34.2	51.4

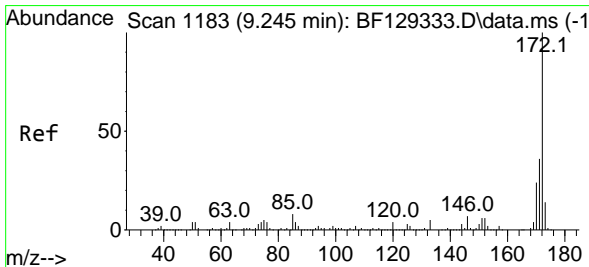
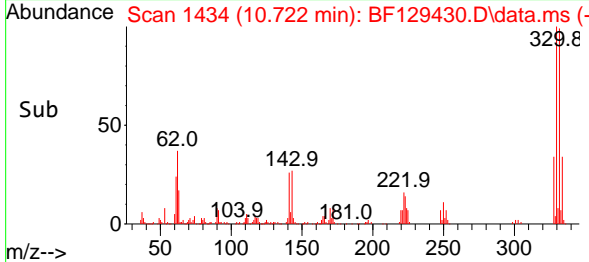
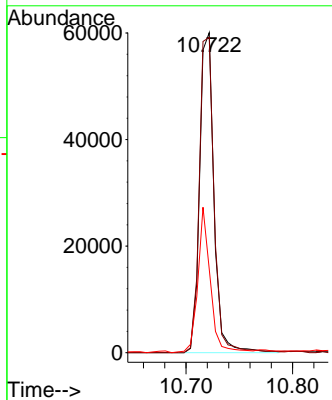
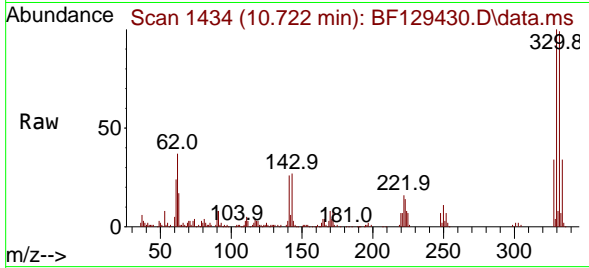




#42  
 2,4,6-Tribromophenol  
 Concen: 19.878 ng  
 RT: 10.722 min Scan# 14  
 Delta R.T. 0.000 min  
 Lab File: BF129430.D  
 Acq: 29 Jul 2022 02:53

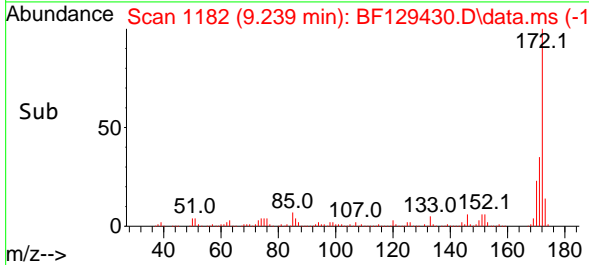
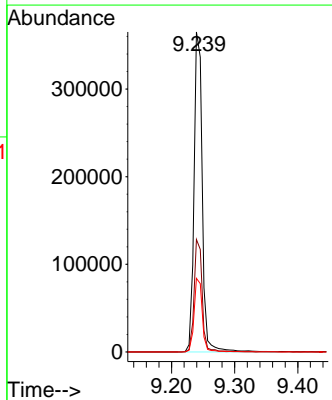
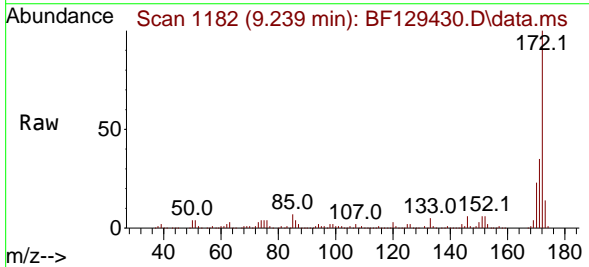
Instrument : BNA\_F  
 ClientSampleId : OK-03-072722

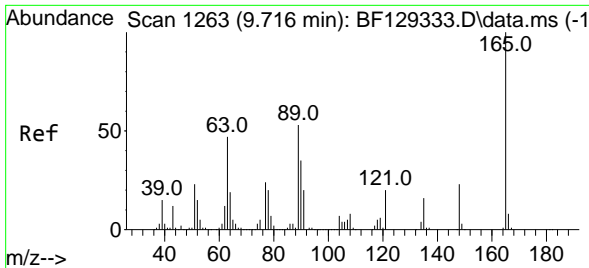
Tgt Ion	Resp	Lower	Upper
330	100		
332	101.4	76.8	115.2
141	39.6	28.0	42.0



#45  
 2-Fluorobiphenyl  
 Concen: 17.270 ng  
 RT: 9.239 min Scan# 1182  
 Delta R.T. -0.006 min  
 Lab File: BF129430.D  
 Acq: 29 Jul 2022 02:53

Tgt Ion	Resp	Lower	Upper
172	100		
171	35.2	28.8	43.2
170	23.0	19.8	29.8



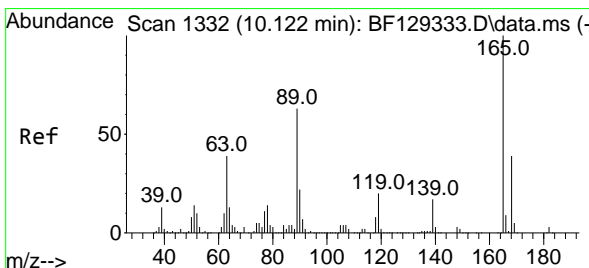
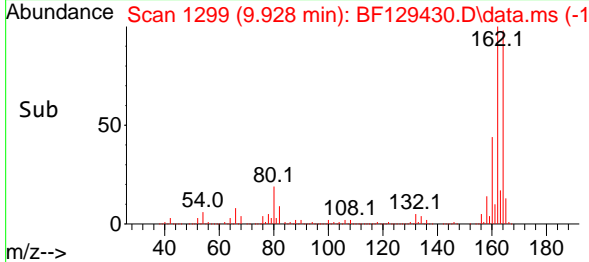
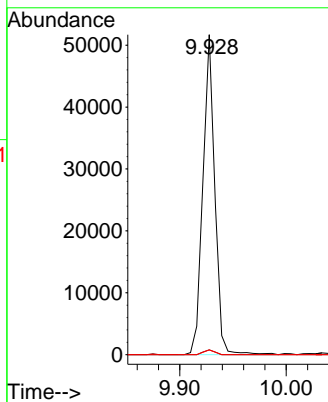
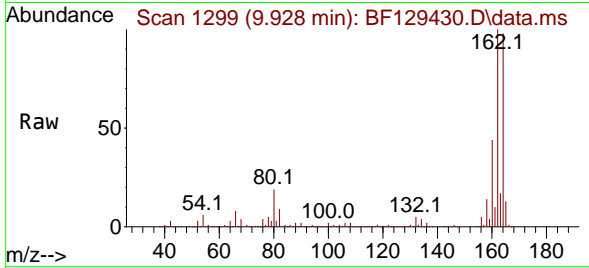


#51  
 2,6-Dinitrotoluene  
 Concen: 8.863 ng  
 RT: 9.928 min Scan# 1299  
 Delta R.T. 0.212 min  
 Lab File: BF129430.D  
 Acq: 29 Jul 2022 02:53

Instrument : BNA\_F  
 ClientSampleId : OK-03-072722

Tgt Ion:165 Resp: 40371

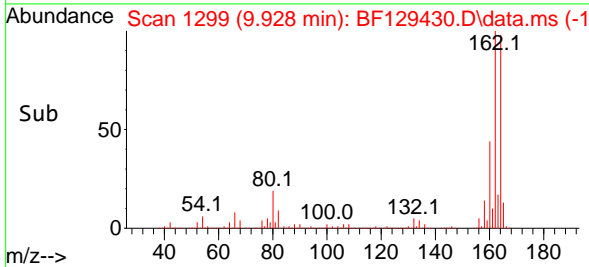
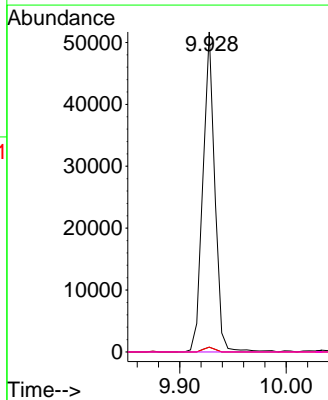
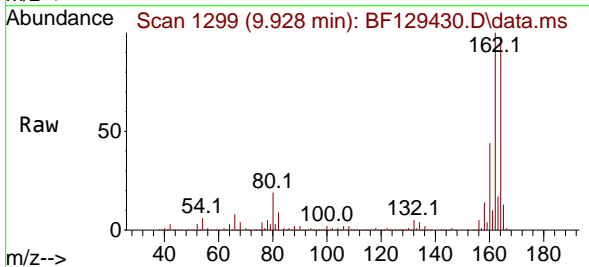
Ion	Ratio	Lower	Upper
165	100		
63	1.5	44.9	67.3#
89	1.5	43.6	65.4#



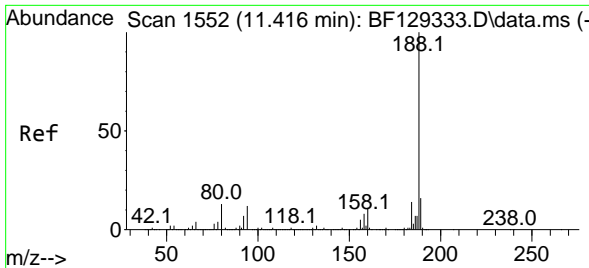
#57  
 2,4-Dinitrotoluene  
 Concen: 6.784 ng  
 RT: 9.928 min Scan# 1299  
 Delta R.T. -0.194 min  
 Lab File: BF129430.D  
 Acq: 29 Jul 2022 02:53

Tgt Ion:165 Resp: 40371

Ion	Ratio	Lower	Upper
165	100		
63	1.5	39.8	59.6#
89	1.5	60.2	90.2#
182	0.0	2.2	3.2#





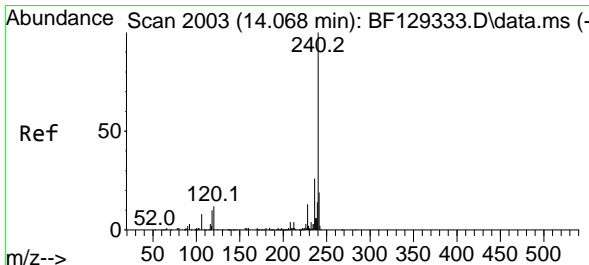
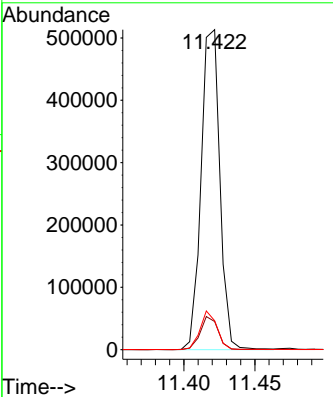
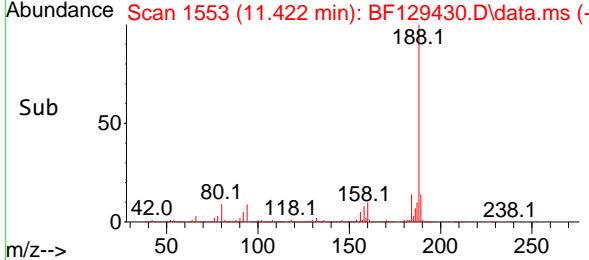
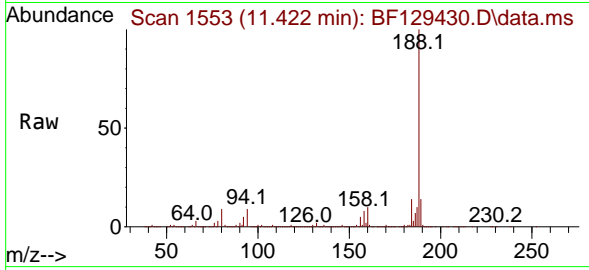


#64  
 Phenanthrene-d10  
 Concen: 20.000 ng  
 RT: 11.422 min Scan# 11  
 Delta R.T. 0.006 min  
 Lab File: BF129430.D  
 Acq: 29 Jul 2022 02:53

Instrument : BNA\_F  
 ClientSampleId : OK-03-072722

Tgt Ion:188 Resp: 473000

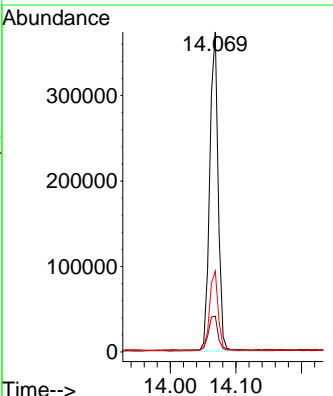
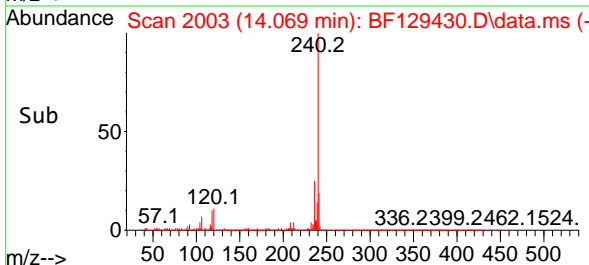
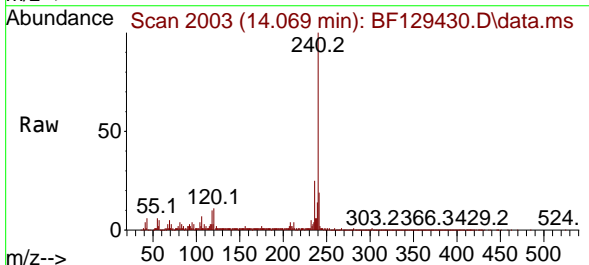
Ion	Ratio	Lower	Upper
188	100		
94	8.8	7.0	10.6
80	9.0	7.6	11.4

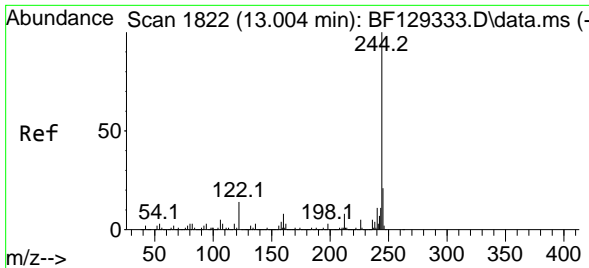


#76  
 Chrysene-d12  
 Concen: 20.000 ng  
 RT: 14.069 min Scan# 2003  
 Delta R.T. 0.000 min  
 Lab File: BF129430.D  
 Acq: 29 Jul 2022 02:53

Tgt Ion:240 Resp: 333545

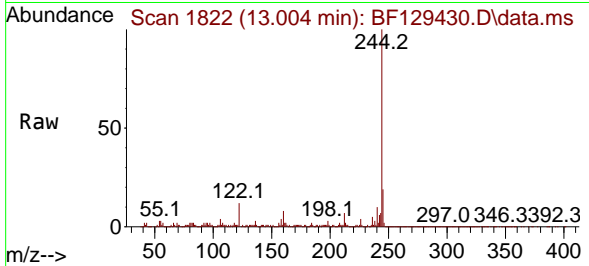
Ion	Ratio	Lower	Upper
240	100		
120	11.2	8.9	13.3
236	25.3	20.8	31.2



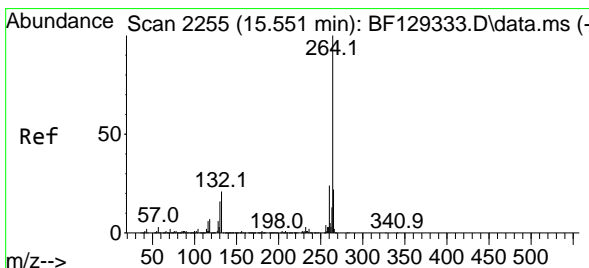
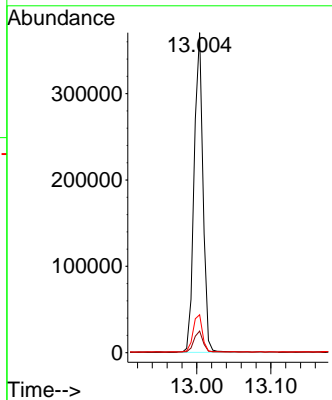
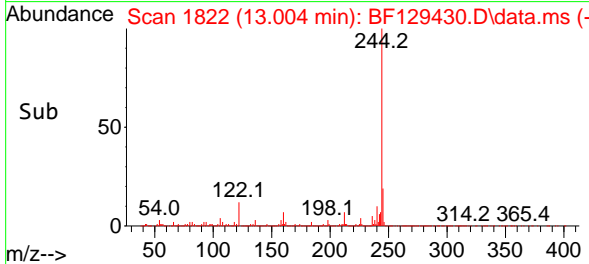


#79  
 Terphenyl-d14  
 Concen: 17.366 ng  
 RT: 13.004 min Scan# 1822  
 Delta R.T. 0.000 min  
 Lab File: BF129430.D  
 Acq: 29 Jul 2022 02:53

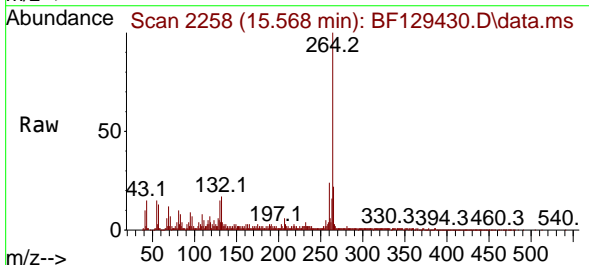
Instrument :  
 BNA\_F  
 ClientSampleId :  
 OK-03-072722



Tgt Ion:244 Resp: 307022  
 Ion Ratio Lower Upper  
 244 100  
 212 6.8 6.1 9.1  
 122 11.8 8.8 13.2



#86  
 Perylene-d12  
 Concen: 20.000 ng  
 RT: 15.568 min Scan# 2258  
 Delta R.T. 0.018 min  
 Lab File: BF129430.D  
 Acq: 29 Jul 2022 02:53



Tgt Ion:264 Resp: 255463  
 Ion Ratio Lower Upper  
 264 100  
 260 23.8 18.4 27.6  
 265 21.9 17.2 25.8

