

Data Path : Z:\HPCHEM1\BNA\_F\DATA\BF073115\  
 Data File : BF080752.D  
 Acq On : 1 Aug 2015 00:31  
 Operator : TP/UM  
 Sample : G3127-01  
 Misc :  
 ALS Vial : 44 Sample Multiplier: 1

Instrument :  
 BNA\_F  
 ClientSampleId :  
 COFF-3RD-4(0-2)

Quant Time: Aug 01 03:28:40 2015  
 Quant Method : Z:\HPCHEM1\BNA\_F\METHODS\8270-BF073015.M  
 Quant Title : ASP BNA STANDARDS FOR 5 POINT CALIBRATION  
 QLast Update : Fri Jul 31 01:45:22 2015  
 Response via : Initial Calibration

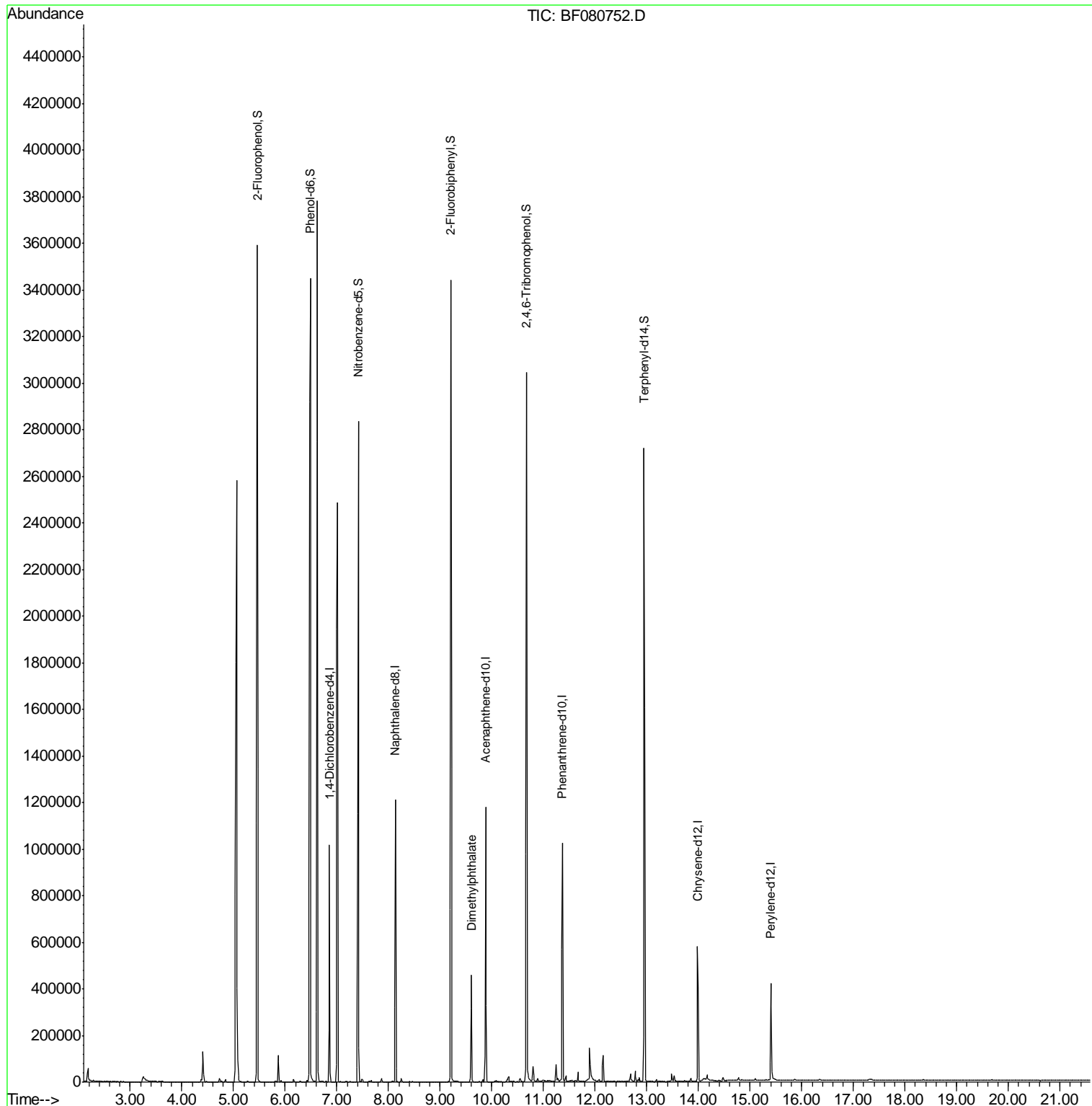
Internal Standards	R.T.	QIon	Response	Conc	Units	Dev(Min)
1) 1,4-Dichlorobenzene-d4	6.85	152	136016	20.00	ng	0.00
21) Naphthalene-d8	8.13	136	493178	20.00	ng	-0.01
38) Acenaphthene-d10	9.88	164	227755	20.00	ng	-0.01
63) Phenanthrene-d10	11.37	188	444529	20.00	ng	0.00
75) Chrysene-d12	13.99	240	262824	20.00	ng	-0.01
86) Perylene-d12	15.40	264	231628	20.00	ng	-0.01
System Monitoring Compounds						
5) 2-Fluorophenol	5.46	112	1029129	129.80	ng	0.01
7) Phenol-d6	6.49	99	1615976	149.71	ng	0.00
23) Nitrobenzene-d5	7.41	82	931560	91.47	ng	-0.01
41) 2,4,6-Tribromophenol	10.67	330	337733	142.91	ng	-0.01
44) 2-Fluorobiphenyl	9.21	172	1255835	82.26	ng	-0.01
78) Terphenyl-d14	12.95	244	1042794	75.04	ng	-0.01
Target Compounds						Qvalue
49) Dimethylphthalate	9.61	163	240050	14.96	ng	98

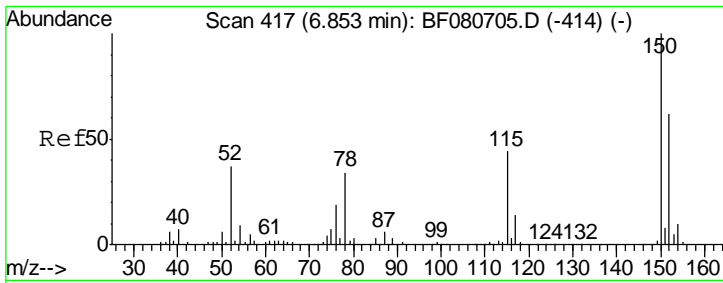
(#) = qualifier out of range (m) = manual integration (+) = signals summed

Data Path : Z:\HPCHEM1\BNA\_F\DATA\BF073115\  
 Data File : BF080752.D  
 Acq On : 1 Aug 2015 00:31  
 Operator : TP/UM  
 Sample : G3127-01  
 Misc :  
 ALS Vial : 44 Sample Multiplier: 1

Instrument :  
 BNA\_F  
 ClientSampleId :  
 COFF-3RD-4(0-2)

Quant Time: Aug 01 03:28:40 2015  
 Quant Method : Z:\HPCHEM1\BNA\_F\METHODS\8270-BF073015.M  
 Quant Title : ASP BNA STANDARDS FOR 5 POINT CALIBRATION  
 QLast Update : Fri Jul 31 01:45:22 2015  
 Response via : Initial Calibration



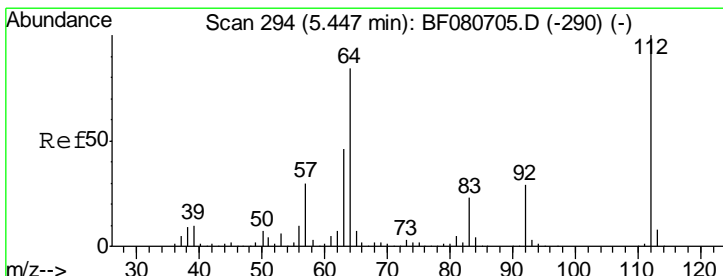
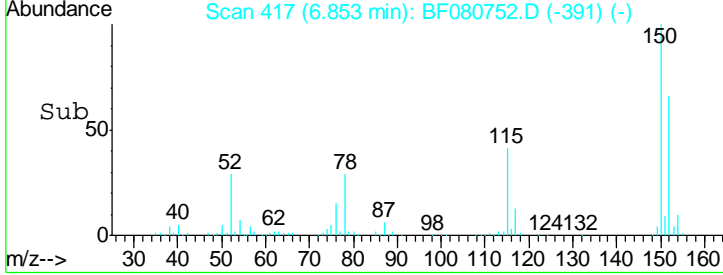
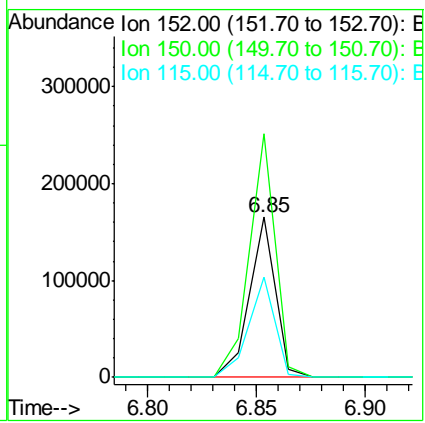
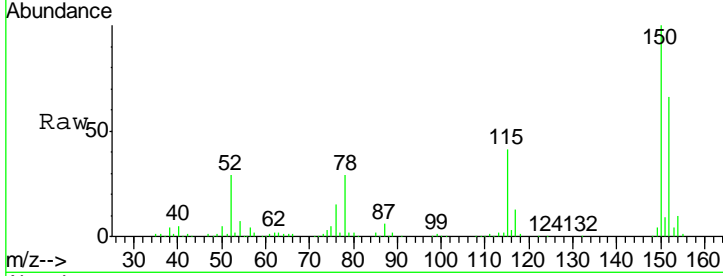


#1  
 1,4-Dichlorobenzene-d4  
 Concen: 20.00 ng  
 RT: 6.85 min Scan# 417  
 Delta R.T. -0.00 min  
 Lab File: BF080752.D  
 Acq: 1 Aug 2015 00:31

**Instrument :**  
 BNA\_F  
**ClientSampleId :**  
 COFF-3RD-4(0-2)

Tgt Ion:152 Resp: 136016

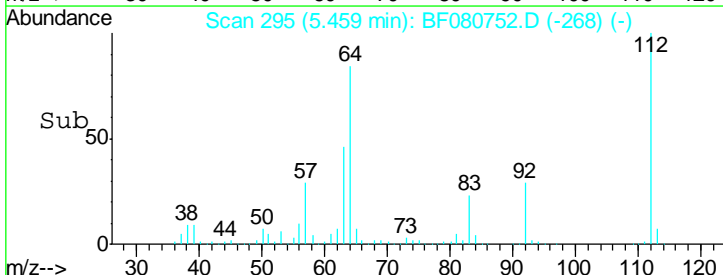
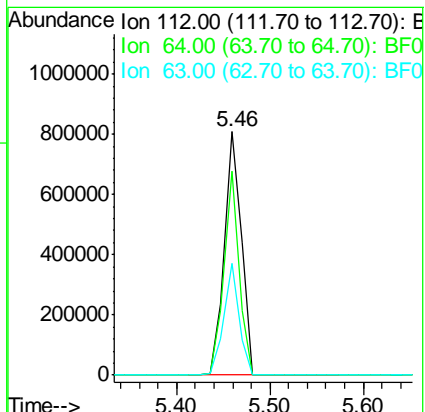
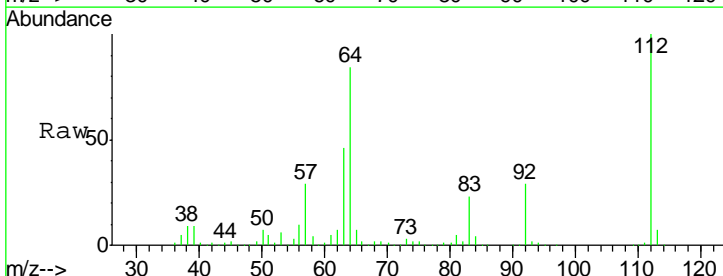
Ion	Ratio	Lower	Upper
152	100		
150	152.2	129.6	194.4
115	62.7	56.6	85.0

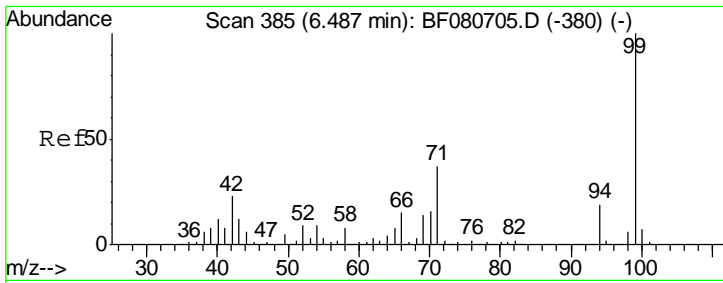


#5  
 2-Fluorophenol  
 Concen: 129.80 ng  
 RT: 5.46 min Scan# 295  
 Delta R.T. 0.01 min  
 Lab File: BF080752.D  
 Acq: 1 Aug 2015 00:31

Tgt Ion:112 Resp: 1029129

Ion	Ratio	Lower	Upper
112	100		
64	83.8	66.8	100.2
63	46.0	36.7	55.1



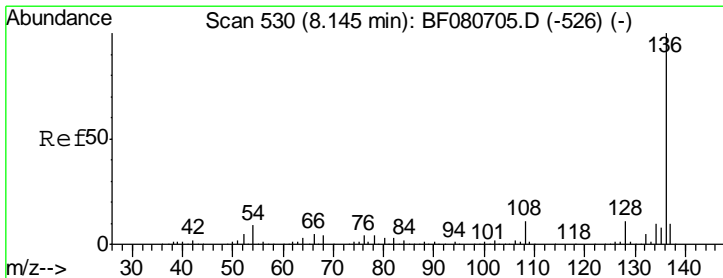
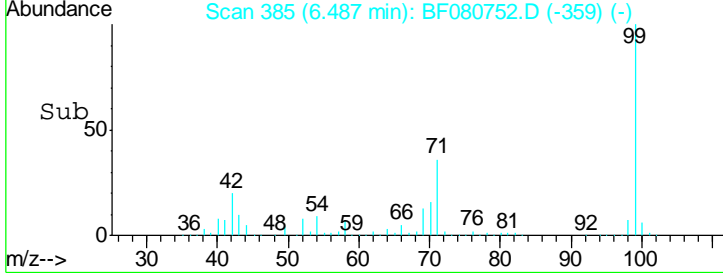
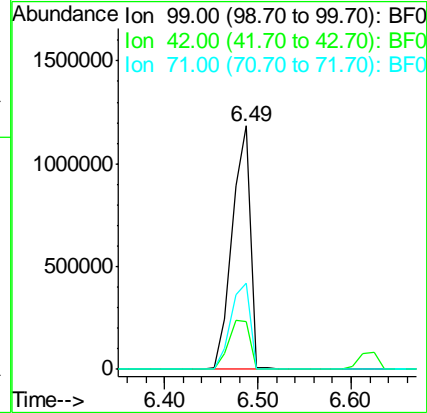
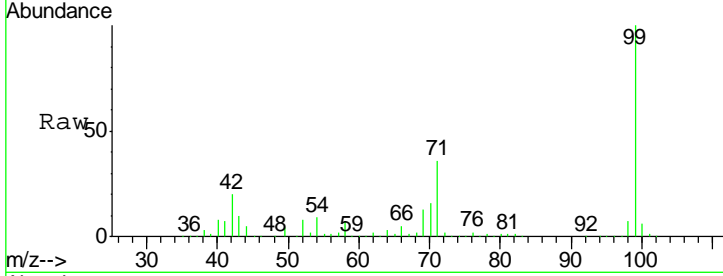


#7  
 Phenol-d6  
 Concen: 149.71 ng  
 RT: 6.49 min Scan# 385  
 Delta R.T. -0.00 min  
 Lab File: BF080752.D  
 Acq: 1 Aug 2015 00:31

Instrument :  
 BNA\_F  
 ClientSampled :  
 COFF-3RD-4(0-2)

Tgt Ion: 99 Resp: 1615976

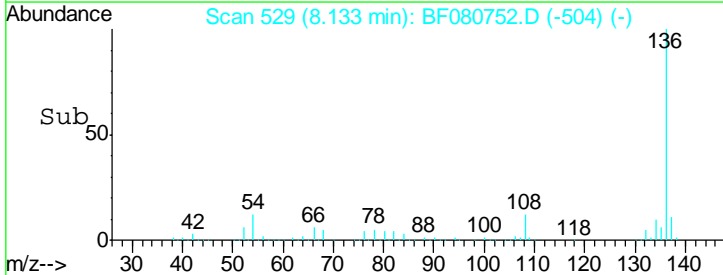
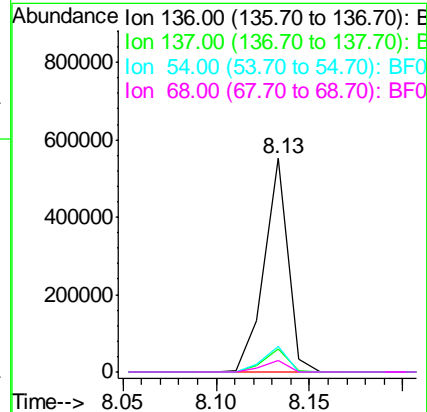
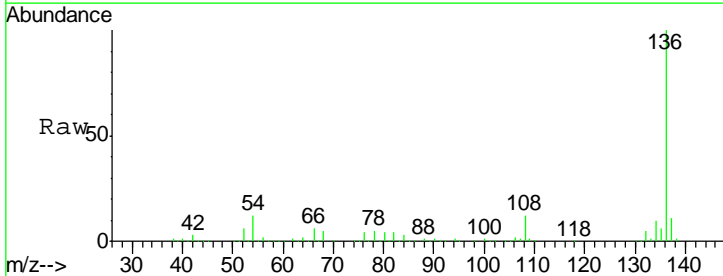
Ion	Ratio	Lower	Upper
99	100		
42	19.6	18.2	27.2
71	35.6	29.5	44.3

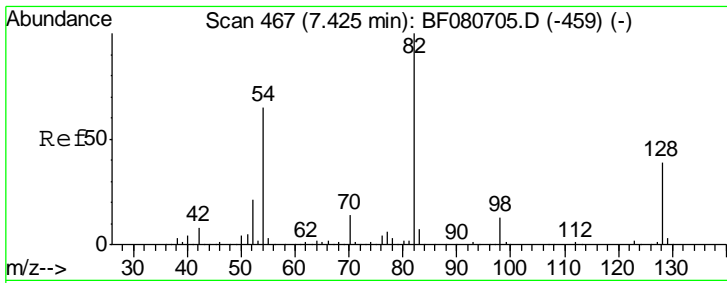


#21  
 Naphthalene-d8  
 Concen: 20.00 ng  
 RT: 8.13 min Scan# 529  
 Delta R.T. -0.01 min  
 Lab File: BF080752.D  
 Acq: 1 Aug 2015 00:31

Tgt Ion: 136 Resp: 493178

Ion	Ratio	Lower	Upper
136	100		
137	10.9	8.4	12.6
54	11.9	6.9	10.3#
68	5.3	3.5	5.3#

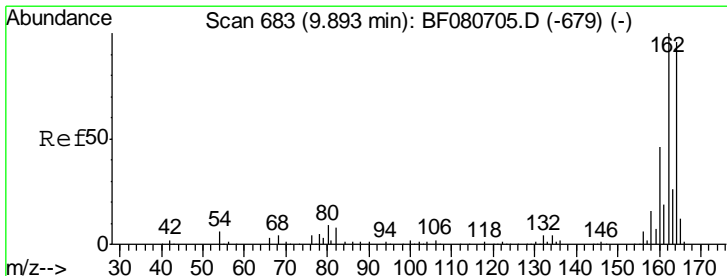
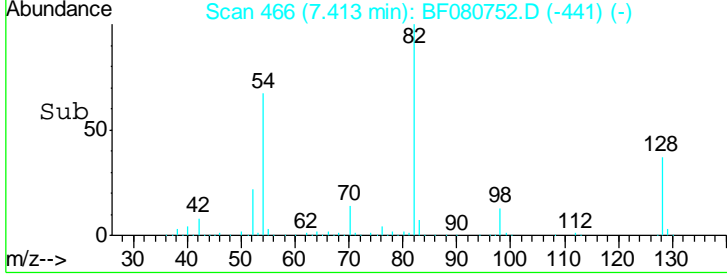
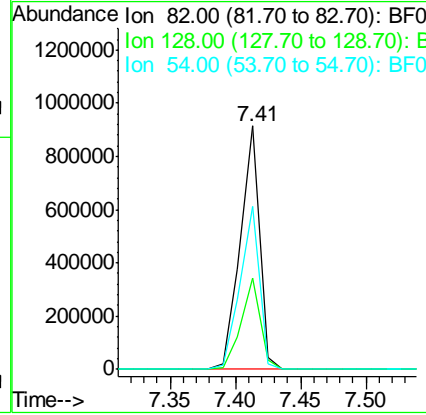
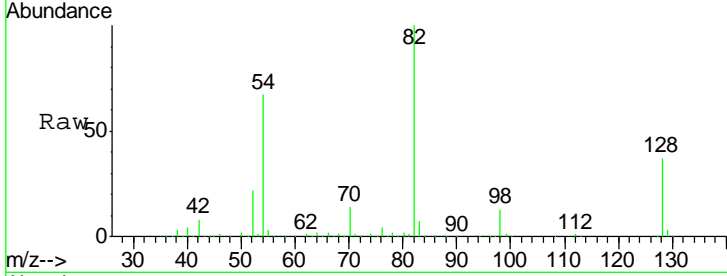




#23  
 Nitrobenzene-d5  
 Concen: 91.47 ng  
 RT: 7.41 min Scan# 466  
 Delta R.T. -0.01 min  
 Lab File: BF080752.D  
 Acq: 1 Aug 2015 00:31

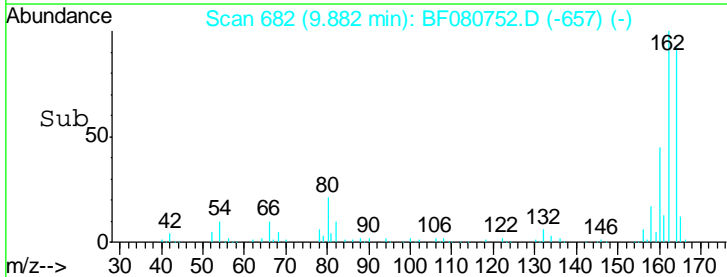
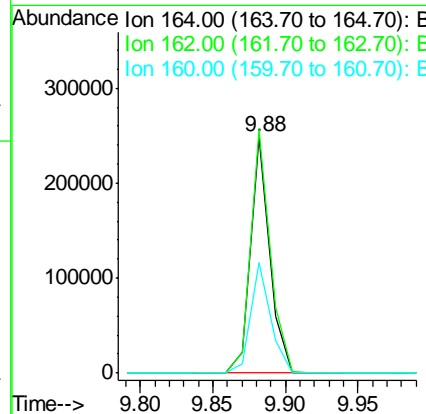
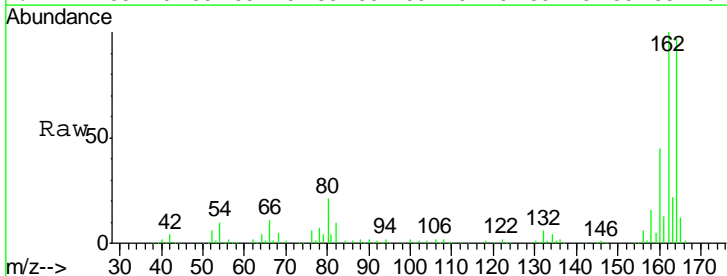
Instrument :  
 BNA\_F  
 ClientSampleId :  
 COFF-3RD-4(0-2)

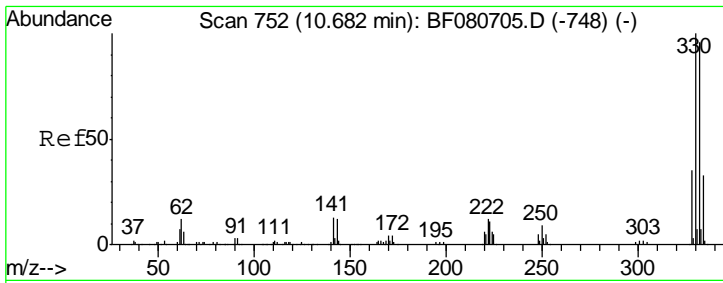
Tgt Ion	Resp	Lower	Upper
82	931560		
128	37.4	31.5	47.3
54	67.1	51.8	77.8



#38  
 Acenaphthene-d10  
 Concen: 20.00 ng  
 RT: 9.88 min Scan# 682  
 Delta R.T. -0.01 min  
 Lab File: BF080752.D  
 Acq: 1 Aug 2015 00:31

Tgt Ion	Resp	Lower	Upper
164	227755		
162	102.9	83.4	125.0
160	46.6	38.0	57.0

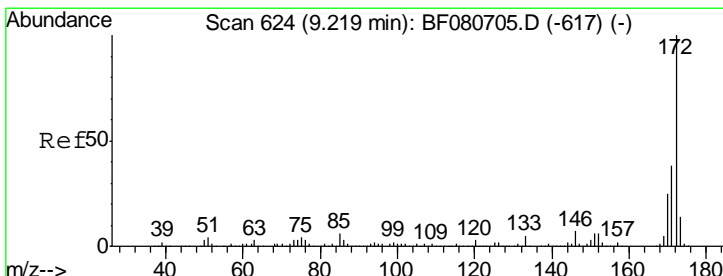
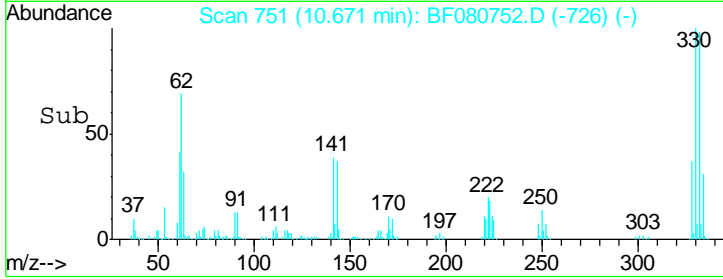
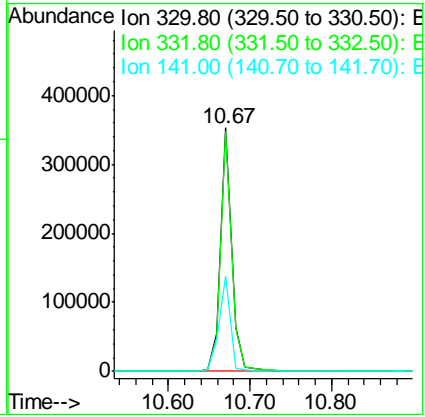
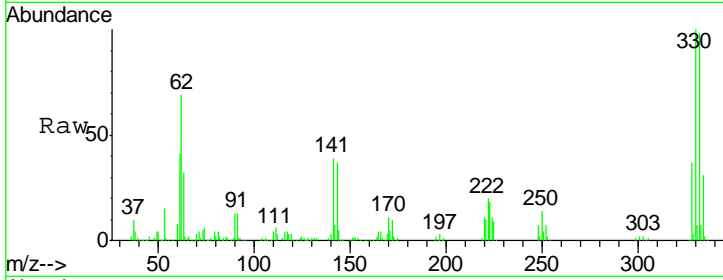




#41  
 2,4,6-Tribromophenol  
 Concen: 142.91 ng  
 RT: 10.67 min Scan# 751  
 Delta R.T. -0.01 min  
 Lab File: BF080752.D  
 Acq: 1 Aug 2015 00:31

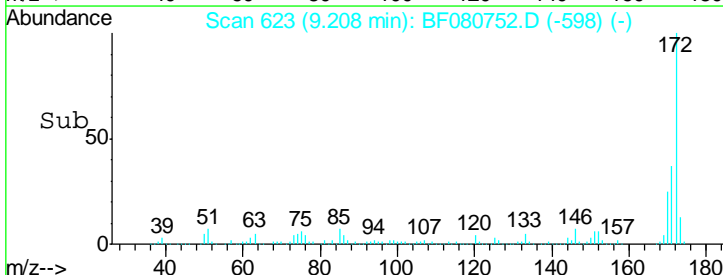
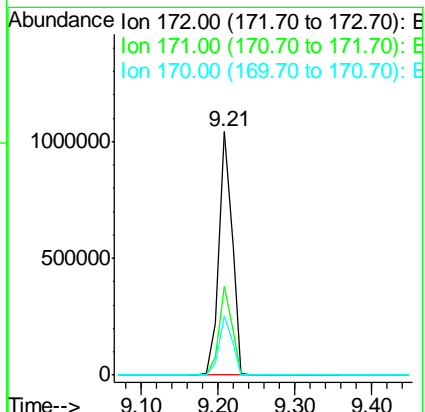
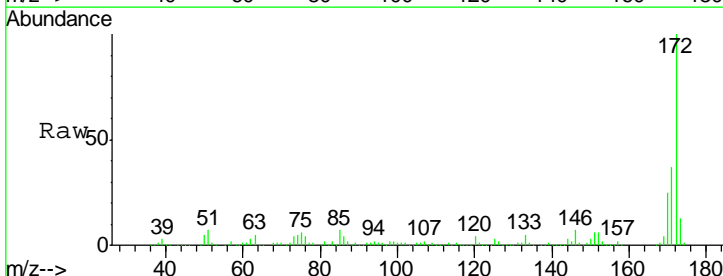
**Instrument :**  
 BNA\_F  
**ClientSampleId :**  
 COFF-3RD-4(0-2)

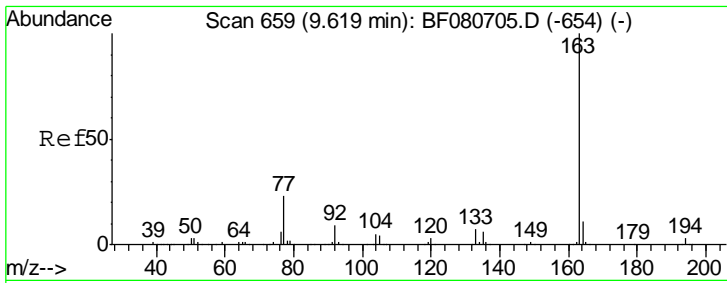
Tgt Ion	Resp	Lower	Upper
330	100		
332	97.1	76.6	114.8
141	40.1	26.0	39.0#



#44  
 2-Fluorobiphenyl  
 Concen: 82.26 ng  
 RT: 9.21 min Scan# 623  
 Delta R.T. -0.01 min  
 Lab File: BF080752.D  
 Acq: 1 Aug 2015 00:31

Tgt Ion	Resp	Lower	Upper
172	100		
171	36.6	30.2	45.4
170	24.5	20.2	30.2

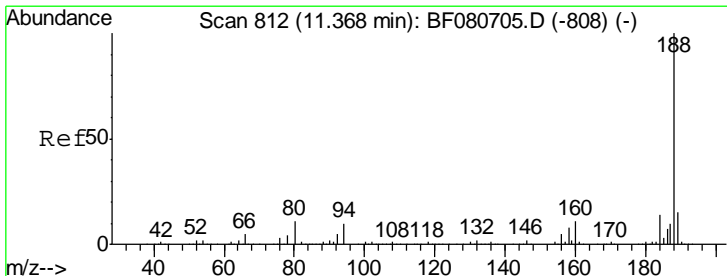
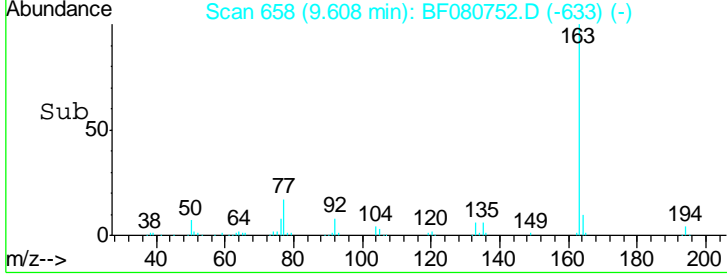
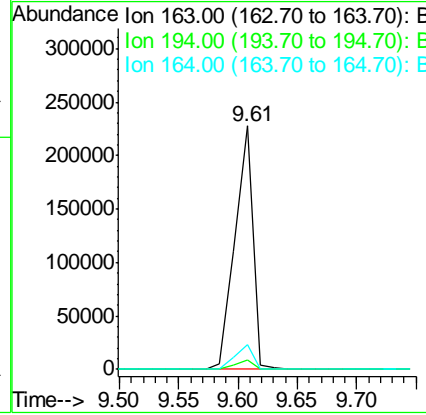
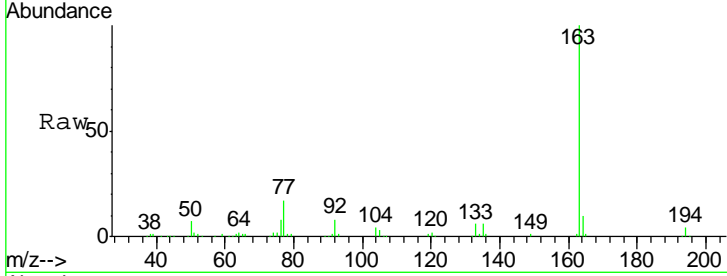




#49  
 Dimethylphthalate  
 Concen: 14.96 ng  
 RT: 9.61 min Scan# 658  
 Delta R.T. -0.01 min  
 Lab File: BF080752.D  
 Acq: 1 Aug 2015 00:31

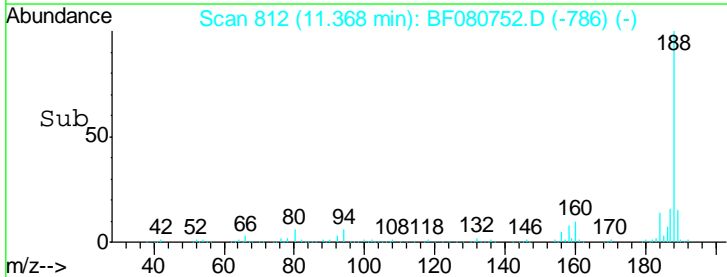
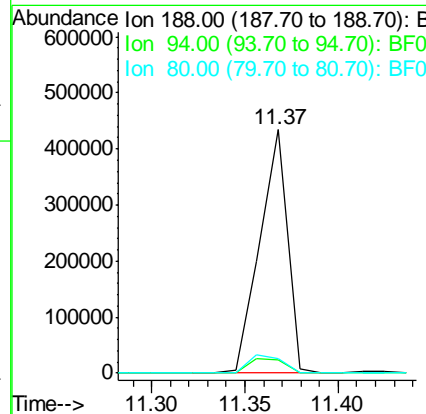
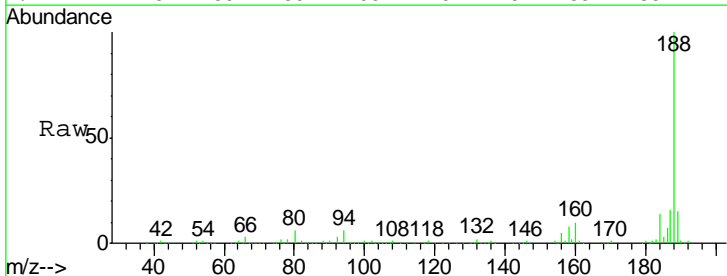
**Instrument :**  
 BNA\_F  
**ClientSampleId :**  
 COFF-3RD-4(0-2)

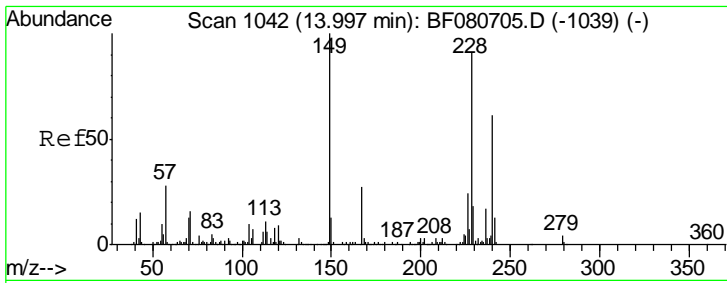
Tgt Ion	Resp	Lower	Upper
163	100		
194	3.9	2.7	4.1
164	10.0	8.7	13.1



#63  
 Phenanthrene-d10  
 Concen: 20.00 ng  
 RT: 11.37 min Scan# 812  
 Delta R.T. -0.00 min  
 Lab File: BF080752.D  
 Acq: 1 Aug 2015 00:31

Tgt Ion	Resp	Lower	Upper
188	100		
94	5.6	8.1	12.1#
80	6.2	9.1	13.7#

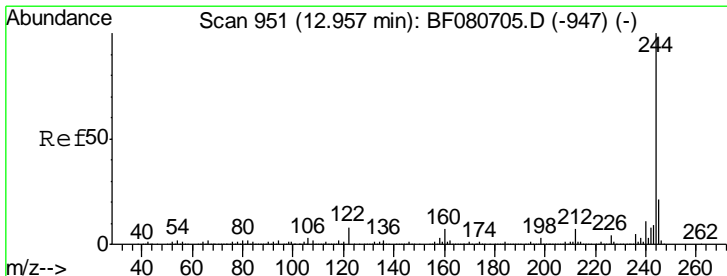
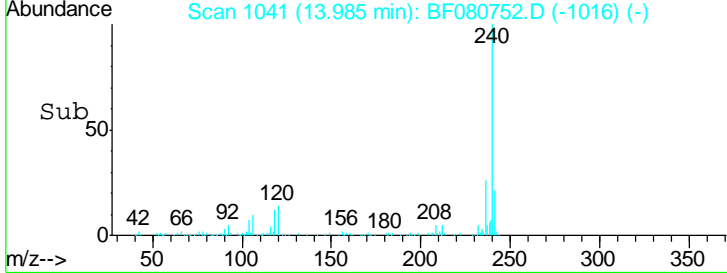
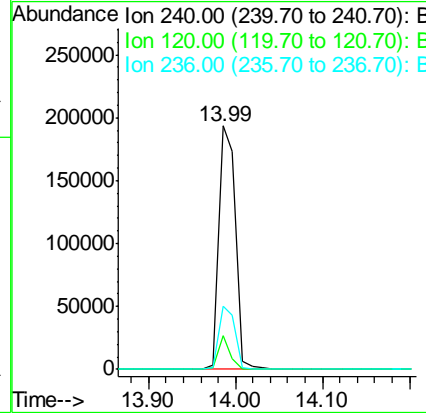
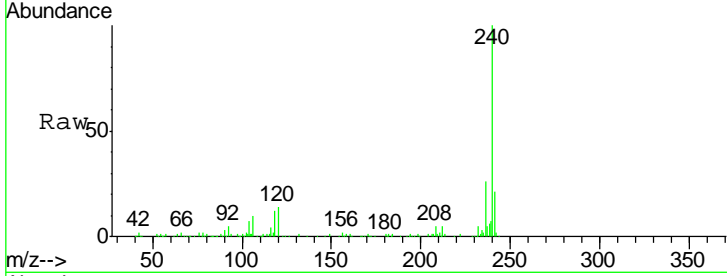




#75  
 Chrysene-d12  
 Concen: 20.00 ng  
 RT: 13.99 min Scan# 1041  
 Delta R.T. -0.01 min  
 Lab File: BF080752.D  
 Acq: 1 Aug 2015 00:31

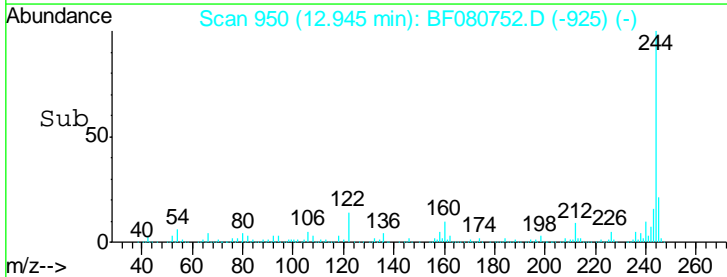
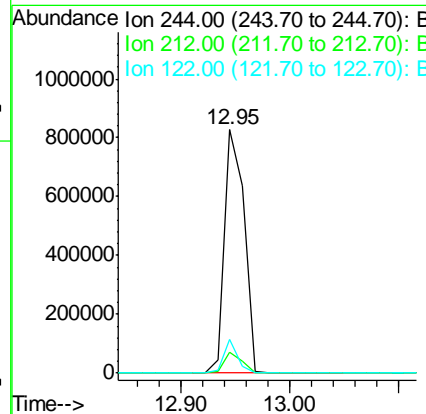
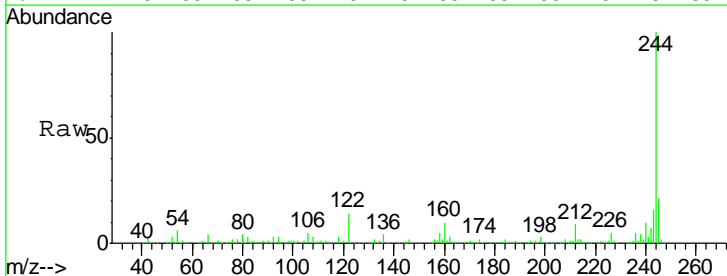
**Instrument :**  
 BNA\_F  
**ClientSampled :**  
 COFF-3RD-4(0-2)

Tgt Ion	Resp	Lower	Upper
240	262824		
120	14.0	11.8	17.8
236	26.0	21.8	32.8

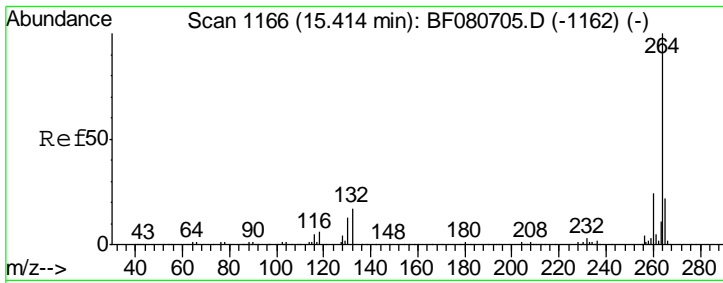


#78  
 Terphenyl-d14  
 Concen: 75.04 ng  
 RT: 12.95 min Scan# 950  
 Delta R.T. -0.01 min  
 Lab File: BF080752.D  
 Acq: 1 Aug 2015 00:31

Tgt Ion	Resp	Lower	Upper
244	1042794		
212	8.6	5.9	8.9
122	13.7	6.6	9.8#







#86  
 Perylene-d12  
 Concen: 20.00 ng  
 RT: 15.40 min Scan# 1165  
 Delta R.T. -0.01 min  
 Lab File: BF080752.D  
 Acq: 1 Aug 2015 00:31

**Instrument :**  
 BNA\_F  
**ClientSampleId :**  
 COFF-3RD-4(0-2)

Tgt Ion	Resp	Lower	Upper
264	100		
260	23.3	19.4	29.0
265	22.3	17.3	25.9

