

Data Path : Z:\HPCHEM1\BNA F\DATA\BF073116\
 Data File : BF089457.D
 Acq On : 30 Jul 2016 17:15
 Operator : UM/SJ
 Sample : H4284-07
 Misc :
 ALS Vial : 10 Sample Multiplier: 1

Instrument :
 BNA_F
 ClientSampleId :

Quant Time: Aug 01 01:09:56 2016
 Quant Method : Z:\HPCHEM1\BNA F\METHODS\8270-BF072716.M
 Quant Title : ASP BNA STANDARDS FOR 5 POINT CALIBRATION
 QLast Update : Thu Jul 28 16:02:32 2016
 Response via : Initial Calibration

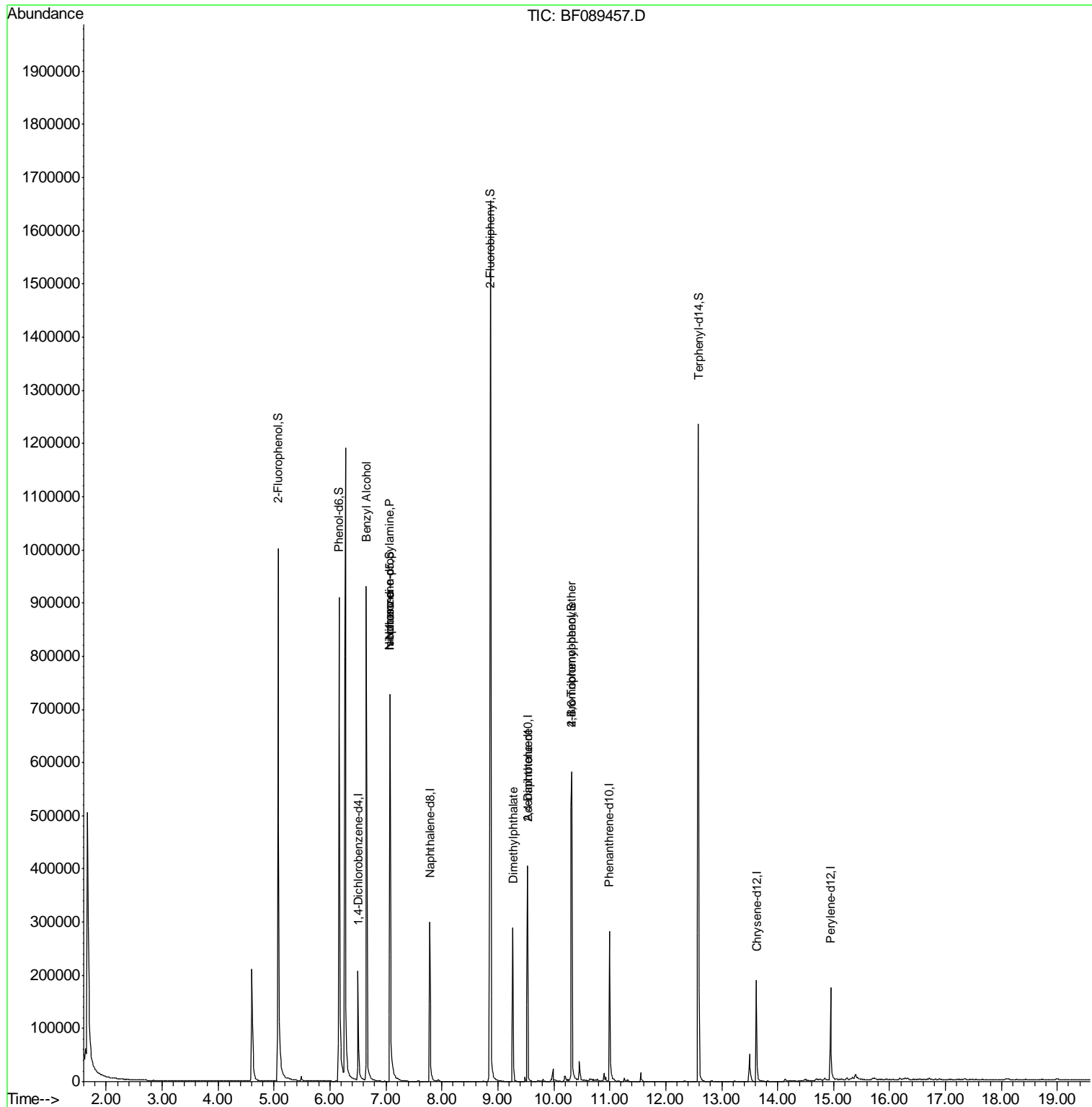
Internal Standards	R.T.	QIon	Response	Conc	Units	Dev(Min)
1) 1,4-Dichlorobenzene-d4	6.50	152	43421	20.00	ng	-0.05
21) Naphthalene-d8	7.78	136	186215	20.00	ng	-0.05
38) Acenaphthene-d10	9.53	164	90463	20.00	ng	-0.05
63) Phenanthrene-d10	10.99	188	171765	20.00	ng	-0.06
75) Chrysene-d12	13.62	240	102110	20.00	ng	-0.05
86) Perylene-d12	14.95	264	80388	20.00	ng	-0.06
System Monitoring Compounds						
5) 2-Fluorophenol	5.07	112	388091	142.71	ng	-0.03
7) Phenol-d6	6.16	99	521530	145.12	ng	-0.05
23) Nitrobenzene-d5	7.07	82	331697	105.14	ng	-0.05
41) 2,4,6-Tribromophenol	10.32	330	97826	130.57	ng	-0.05
44) 2-Fluorobiphenyl	8.87	172	560932	91.00	ng	-0.05
78) Terphenyl-d14	12.58	244	390927	89.60	ng	-0.05
Target Compounds						
15) Benzyl Alcohol	6.65	79	4801	2.15	ng	# 53
19) n-Nitroso-di-n-propylamine	7.07	70	43620	20.13	ng	# 81
25) Isophorone	7.07	82	299638	47.15	ng	# 67
49) Dimethylphthalate	9.27	163	122435	17.78	ng	100
56) 2,4-Dinitrotoluene	9.53	165	10859	5.83	ng	# 7
66) 4-Bromophenyl-phenylether	10.32	248	6798	4.15	ng	# 1

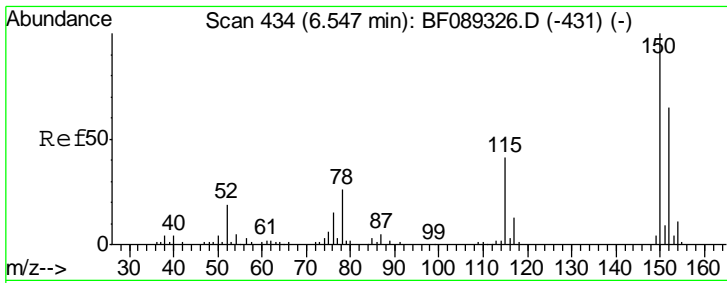
(#) = qualifier out of range (m) = manual integration (+) = signals summed

Data Path : Z:\HPCHEM1\BNA F\DATA\BF073116\
 Data File : BF089457.D
 Acq On : 30 Jul 2016 17:15
 Operator : UM/SJ
 Sample : H4284-07
 Misc :
 ALS Vial : 10 Sample Multiplier: 1

Instrument :
 BNA_F
 ClientSampled :

Quant Time: Aug 01 01:09:56 2016
 Quant Method : Z:\HPCHEM1\BNA F\METHODS\8270-BF072716.M
 Quant Title : ASP BNA STANDARDS FOR 5 POINT CALIBRATION
 QLast Update : Thu Jul 28 16:02:32 2016
 Response via : Initial Calibration

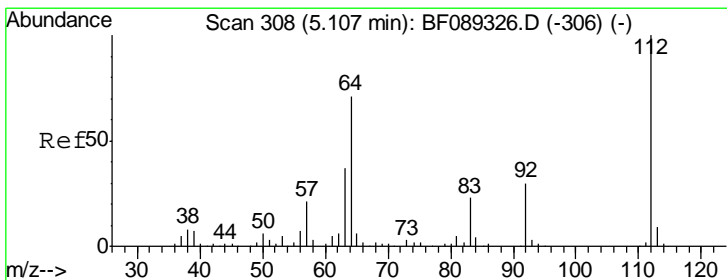
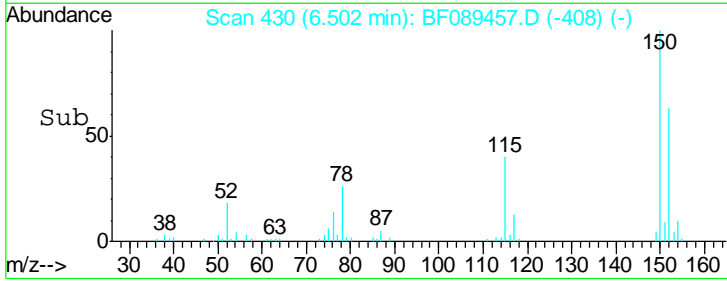
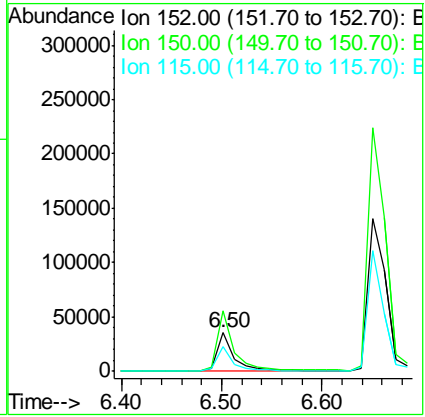
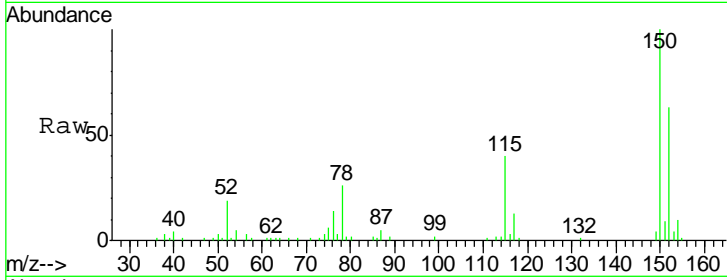




#1
 1,4-Dichlorobenzene-d4
 Concen: 20.00 ng
 RT: 6.50 min Scan# 430
 Delta R.T. -0.05 min
 Lab File: BF089457.D
 Acq: 30 Jul 2016 17:15

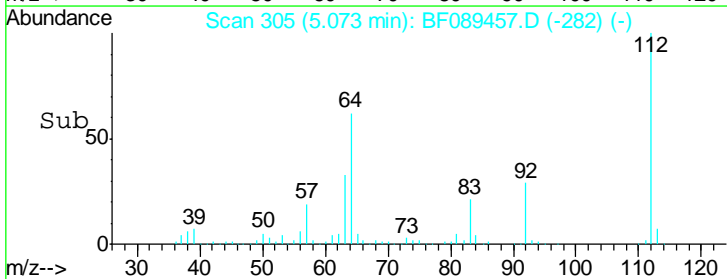
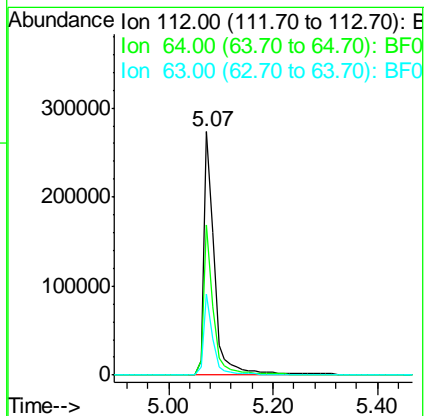
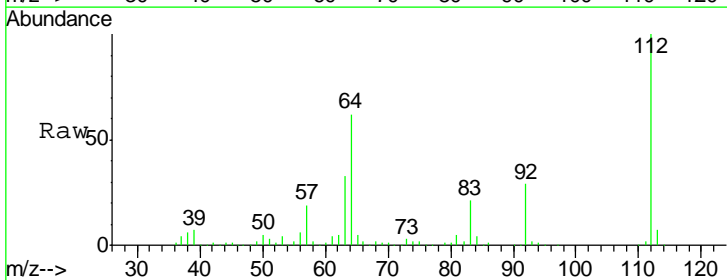
Instrument :
 BNA_F
 ClientSampled :

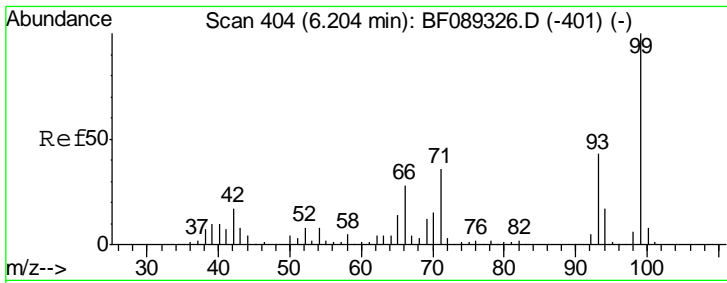
Tgt Ion	Resp	Lower	Upper
152	43421		
150	158.3	129.5	194.3
115	63.7	51.4	77.2



#5
 2-Fluorophenol
 Concen: 142.71 ng
 RT: 5.07 min Scan# 305
 Delta R.T. -0.03 min
 Lab File: BF089457.D
 Acq: 30 Jul 2016 17:15

Tgt Ion	Resp	Lower	Upper
112	388091		
64	61.8	55.0	82.6
63	33.3	29.4	44.2

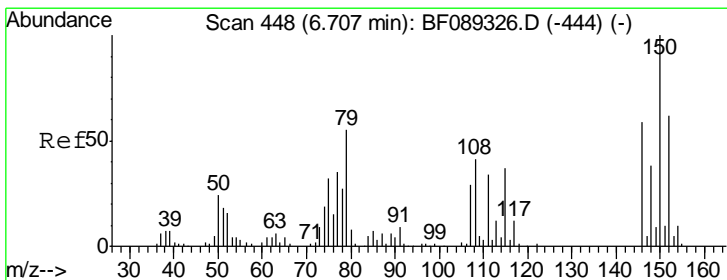
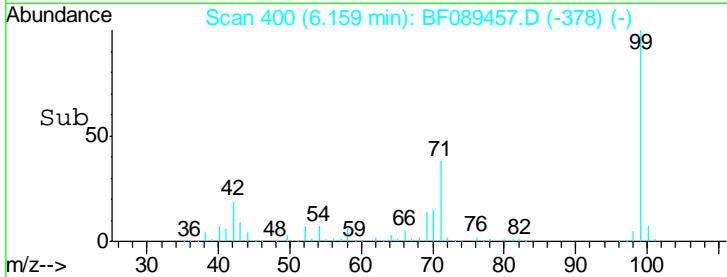
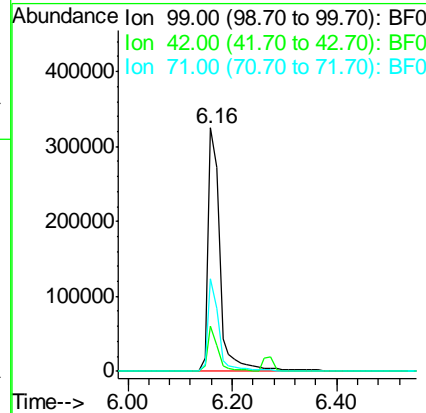
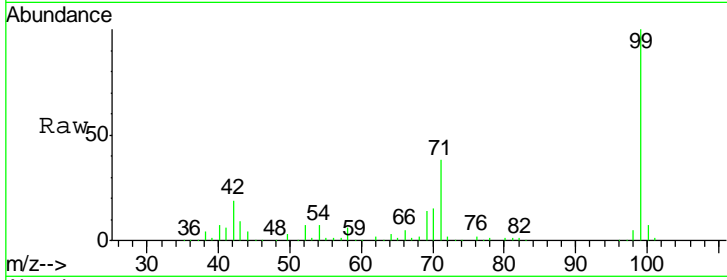




#7
 Phenol-d6
 Concen: 145.12 ng
 RT: 6.16 min Scan# 400
 Delta R.T. -0.05 min
 Lab File: BF089457.D
 Acq: 30 Jul 2016 17:15

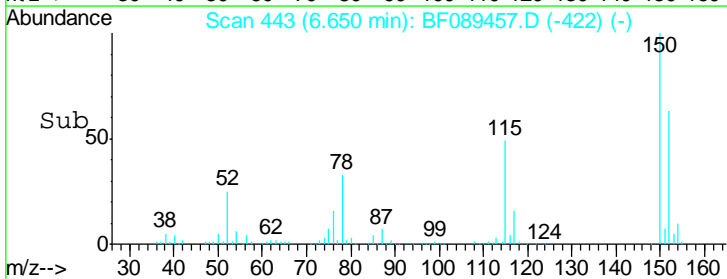
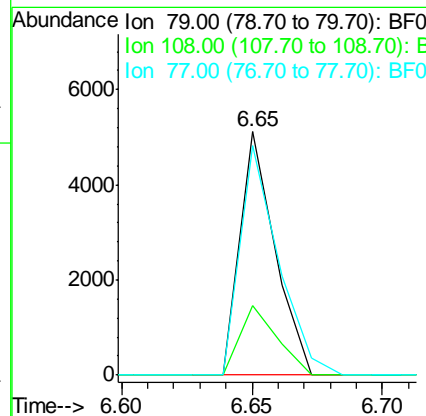
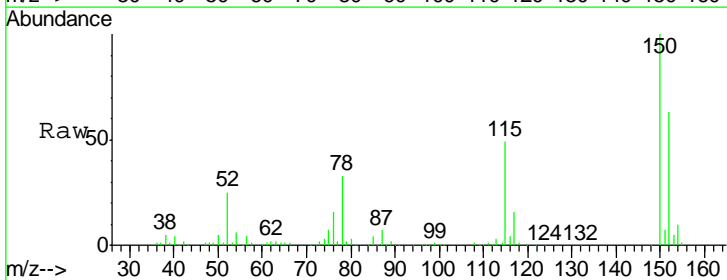
Instrument :
 BNA_F
 ClientSampled :

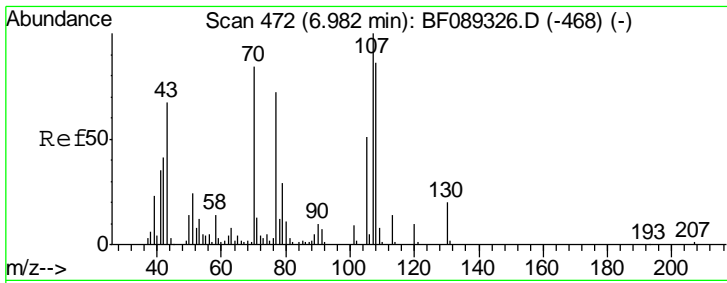
Tgt Ion	Resp	Lower	Upper
99	521530		
42	18.8	13.6	20.4
71	37.8	29.4	44.2



#15
 Benzyl Alcohol
 Concen: 2.15 ng
 RT: 6.65 min Scan# 443
 Delta R.T. -0.06 min
 Lab File: BF089457.D
 Acq: 30 Jul 2016 17:15

Tgt Ion	Resp	Lower	Upper
79	4801		
108	28.4	59.8	89.6#
77	94.5	51.7	77.5#

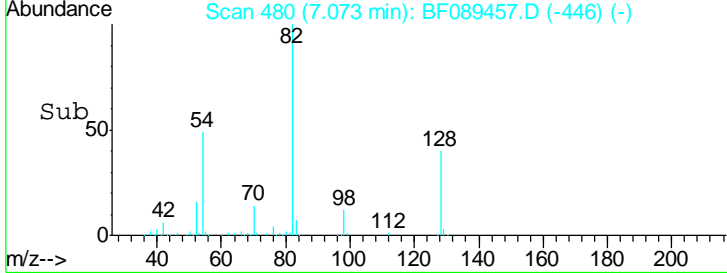
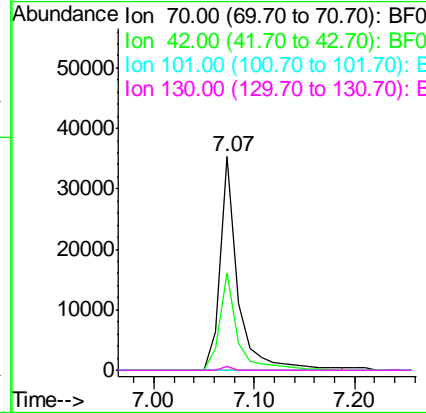
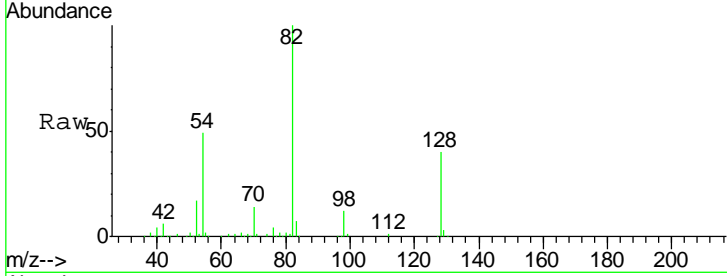




#19
 n-Nitroso-di-n-propylamine
 Concen: 20.13 ng
 RT: 7.07 min Scan# 480
 Delta R.T. 0.09 min
 Lab File: BF089457.D
 Acq: 30 Jul 2016 17:15

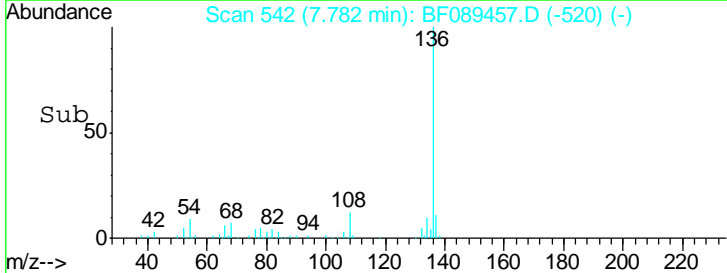
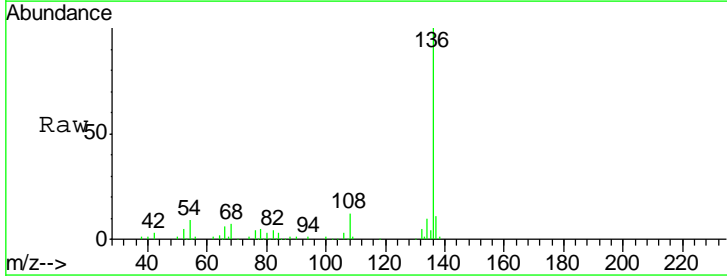
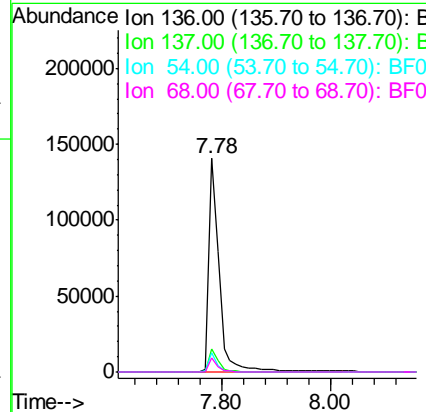
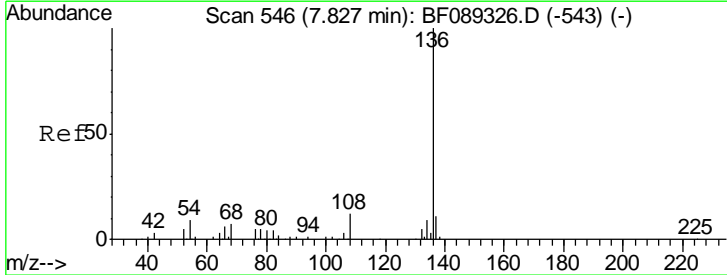
Instrument :
 BNA_F
 ClientSampled :

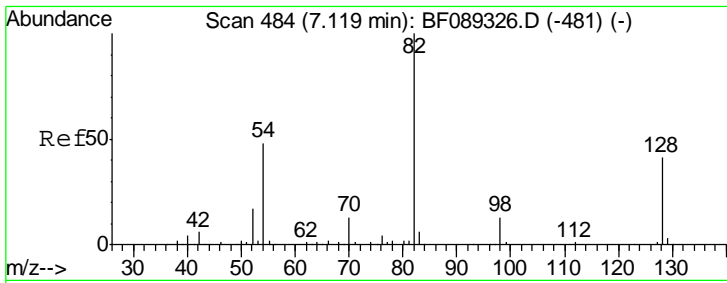
Tgt Ion	Resp	Lower	Upper
70	100		
42	45.3	38.6	57.8
101	0.0	8.3	12.5#
130	2.1	19.0	28.4#



#21
 Naphthalene-d8
 Concen: 20.00 ng
 RT: 7.78 min Scan# 542
 Delta R.T. -0.05 min
 Lab File: BF089457.D
 Acq: 30 Jul 2016 17:15

Tgt Ion	Resp	Lower	Upper
136	100		
137	11.0	8.6	13.0
54	8.9	7.0	10.4
68	6.8	4.9	7.3

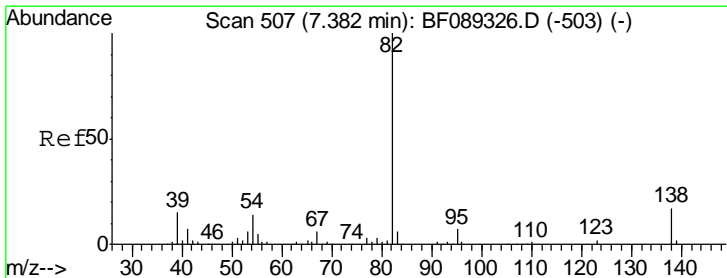
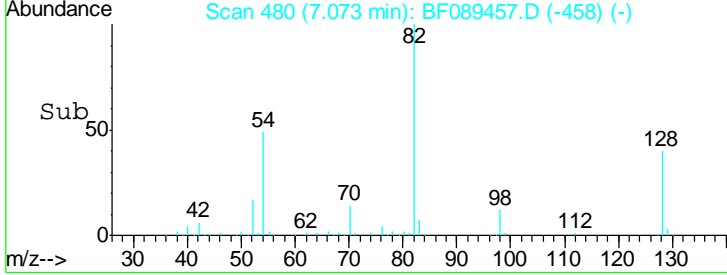
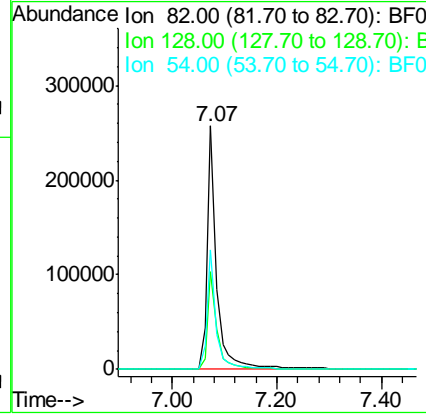
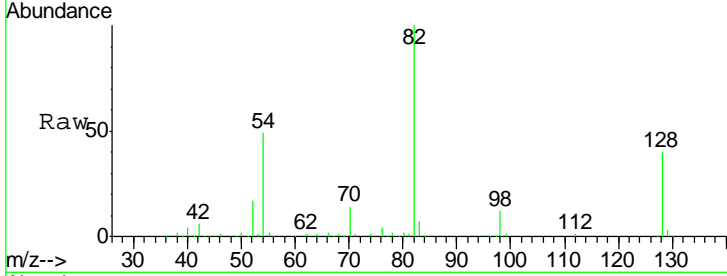




#23
 Nitrobenzene-d5
 Concen: 105.14 ng
 RT: 7.07 min Scan# 480
 Delta R.T. -0.05 min
 Lab File: BF089457.D
 Acq: 30 Jul 2016 17:15

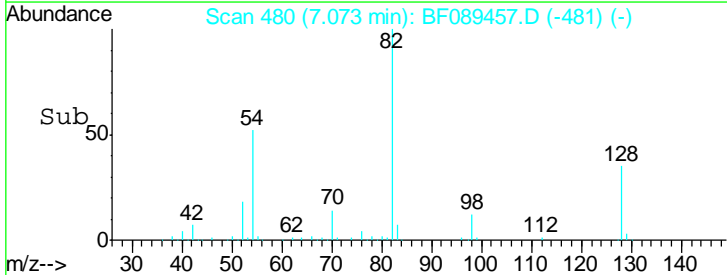
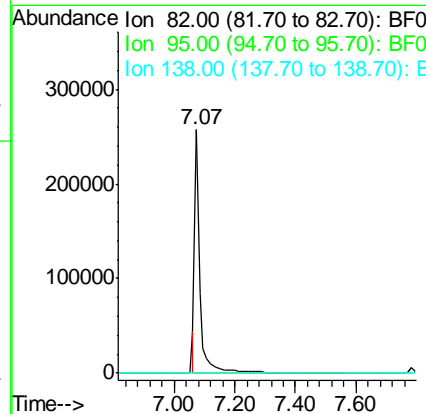
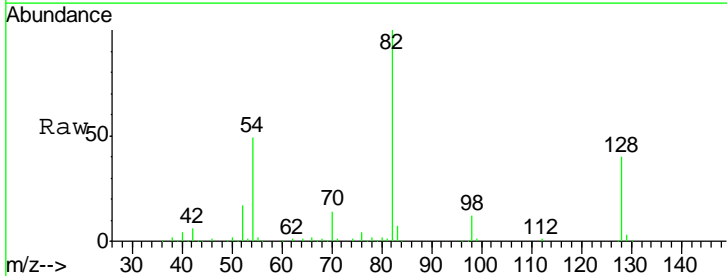
Instrument :
 BNA_F
 ClientSampled :

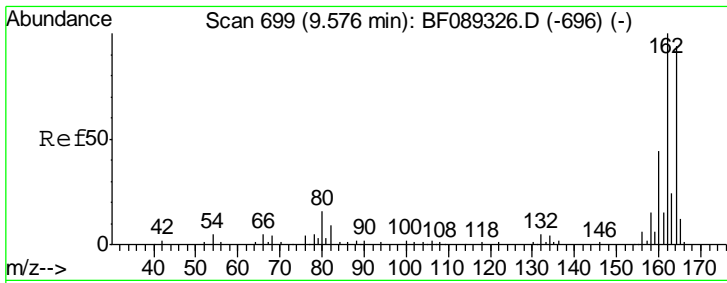
Tgt Ion	Resp	Lower	Upper
82	100		
128	40.2	32.5	48.7
54	48.9	38.8	58.2



#25
 Isophorone
 Concen: 47.15 ng
 RT: 7.07 min Scan# 480
 Delta R.T. -0.31 min
 Lab File: BF089457.D
 Acq: 30 Jul 2016 17:15

Tgt Ion	Resp	Lower	Upper
82	100		
95	0.0	6.0	9.0#
138	0.0	13.3	19.9#

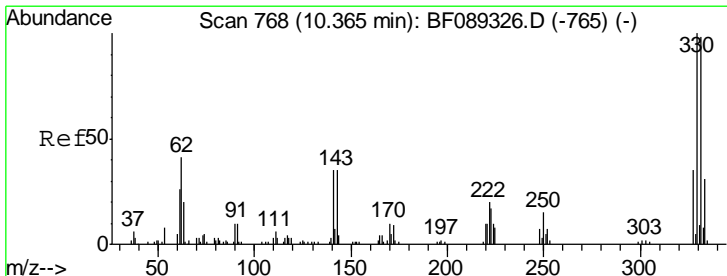
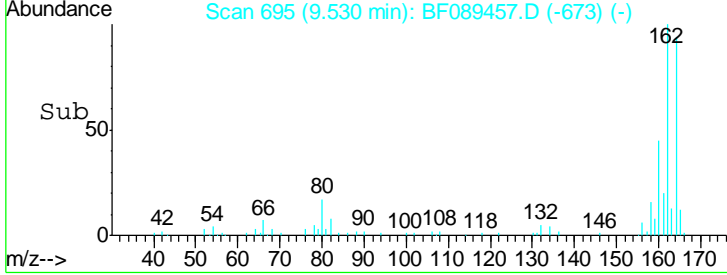
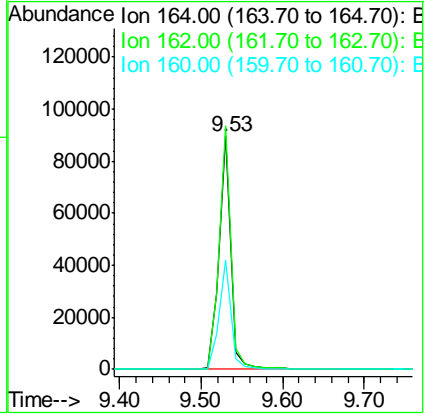
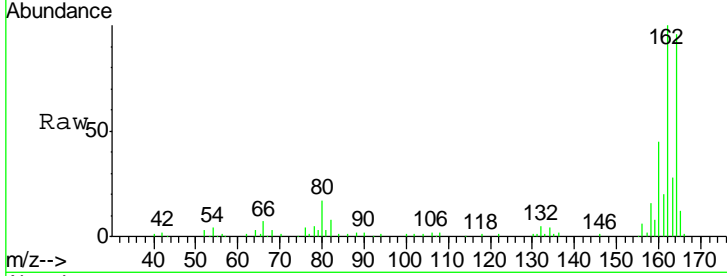




#38
 Acenaphthene-d10
 Concen: 20.00 ng
 RT: 9.53 min Scan# 695
 Delta R.T. -0.05 min
 Lab File: BF089457.D
 Acq: 30 Jul 2016 17:15

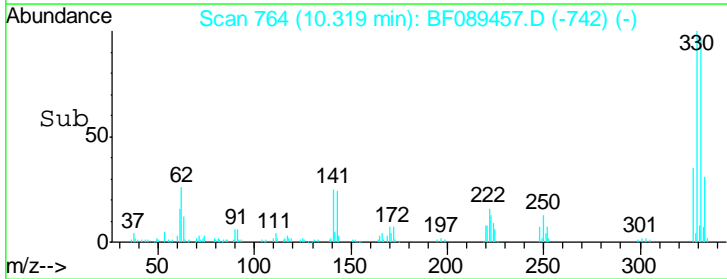
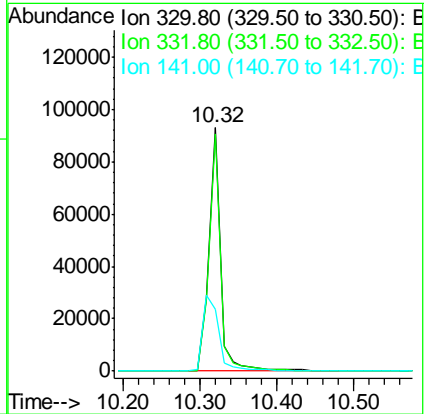
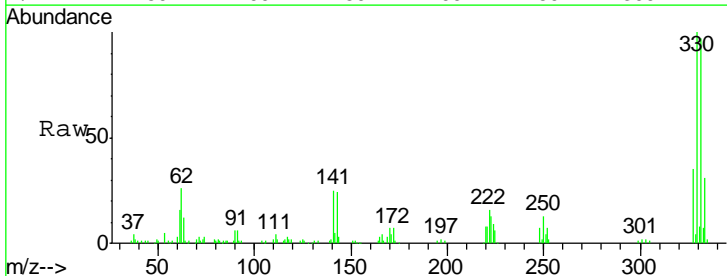
Instrument :
 BNA_F
 ClientSampled :

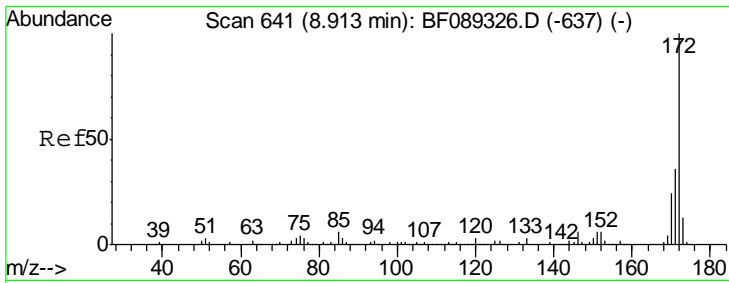
Tgt Ion	Resp	Lower	Upper
164	100		
162	104.4	83.7	125.5
160	46.8	37.8	56.6



#41
 2,4,6-Tribromophenol
 Concen: 130.57 ng
 RT: 10.32 min Scan# 764
 Delta R.T. -0.05 min
 Lab File: BF089457.D
 Acq: 30 Jul 2016 17:15

Tgt Ion	Resp	Lower	Upper
330	100		
332	96.9	76.8	115.2
141	42.5	37.3	55.9



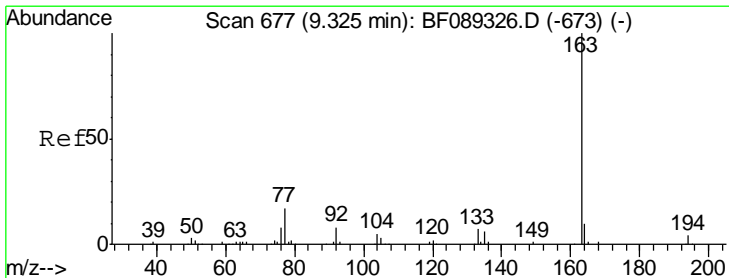
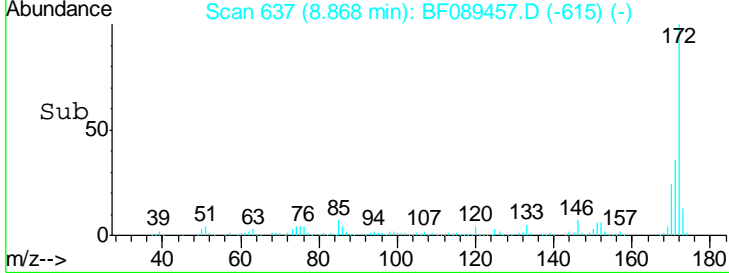
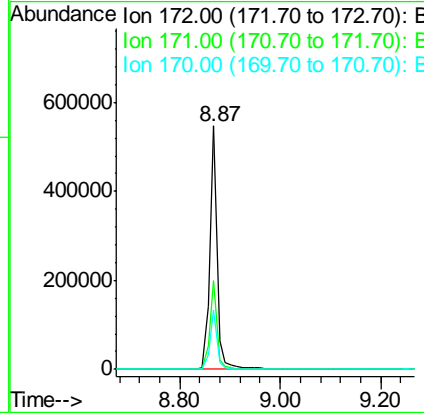
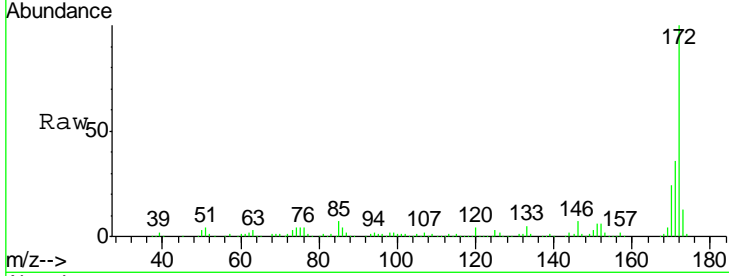


#44
 2-Fluorobiphenyl
 Concen: 91.00 ng
 RT: 8.87 min Scan# 637
 Delta R.T. -0.05 min
 Lab File: BF089457.D
 Acq: 30 Jul 2016 17:15

Instrument :
 BNA_F
 ClientSampled :

Tgt Ion: 172 Resp: 560932

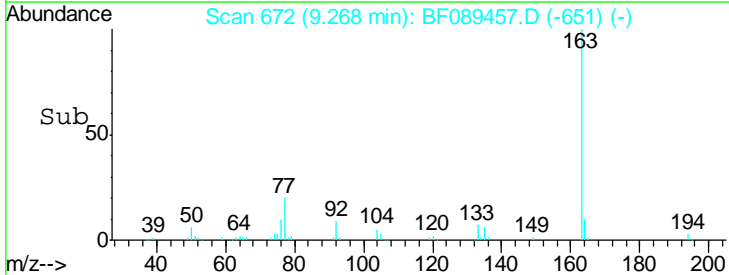
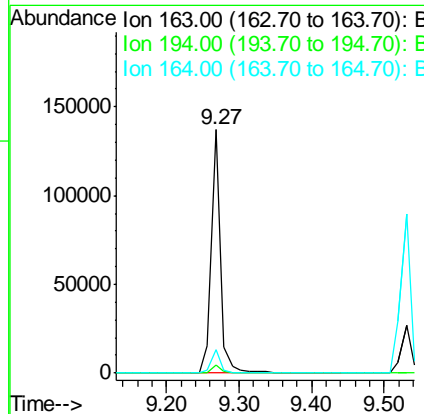
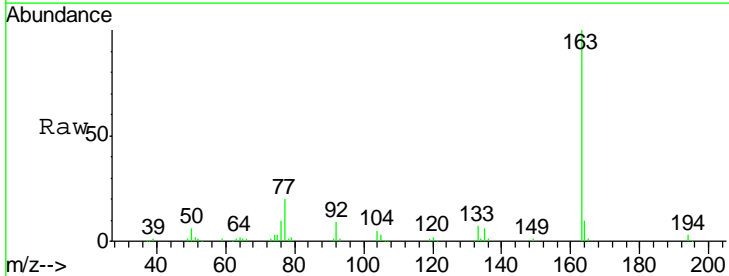
Ion	Ratio	Lower	Upper
172	100		
171	36.3	29.2	43.8
170	24.2	19.2	28.8

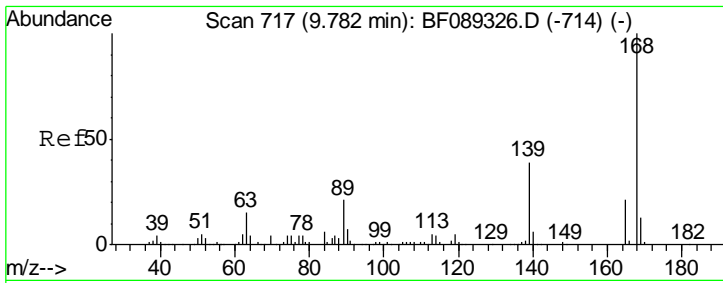


#49
 Dimethylphthalate
 Concen: 17.78 ng
 RT: 9.27 min Scan# 672
 Delta R.T. -0.06 min
 Lab File: BF089457.D
 Acq: 30 Jul 2016 17:15

Tgt Ion: 163 Resp: 122435

Ion	Ratio	Lower	Upper
163	100		
194	3.4	2.8	4.2
164	9.9	7.8	11.8

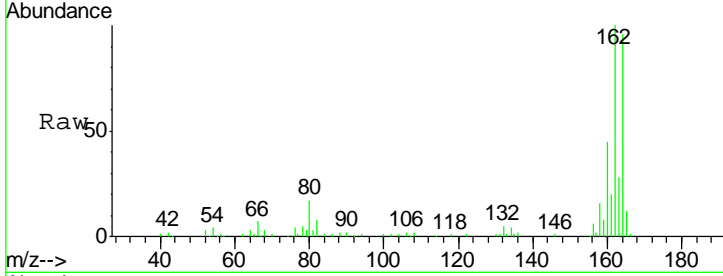




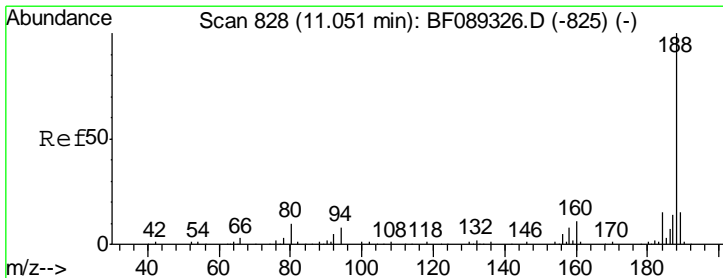
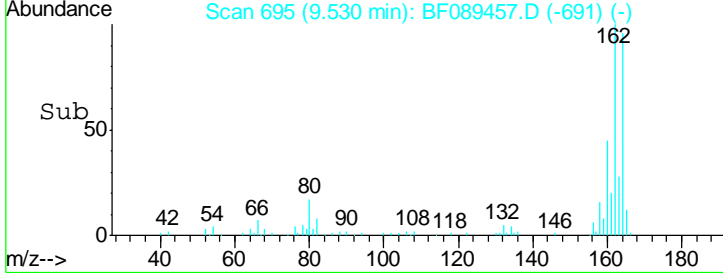
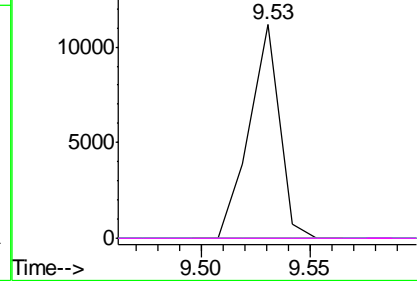
#56
 2,4-Dinitrotoluene
 Concen: 5.83 ng
 RT: 9.53 min Scan# 695
 Delta R.T. -0.25 min
 Lab File: BF089457.D
 Acq: 30 Jul 2016 17:15

Instrument :
 BNA_F
 ClientSampled :

Tgt Ion	Resp	Lower	Upper
165	10859		
63	0.0	58.2	87.2#
89	0.0	79.1	118.7#
182	0.0	1.8	2.8#

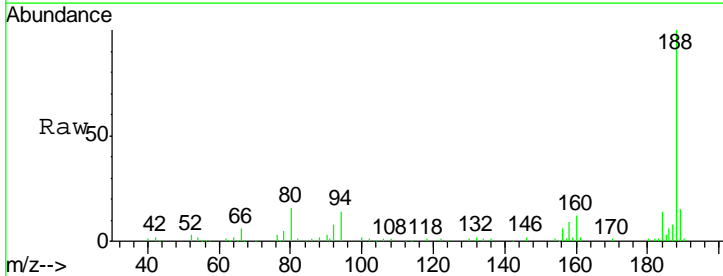


Abundance Ion 165.00 (164.70 to 165.70): E
 Ion 63.00 (62.70 to 63.70): BF0
 Ion 89.00 (88.70 to 89.70): BF0
 Ion 182.00 (181.70 to 182.70): E

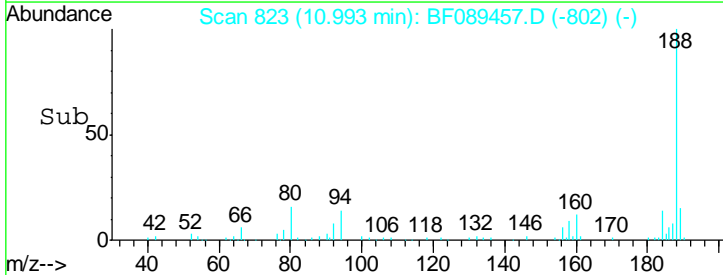
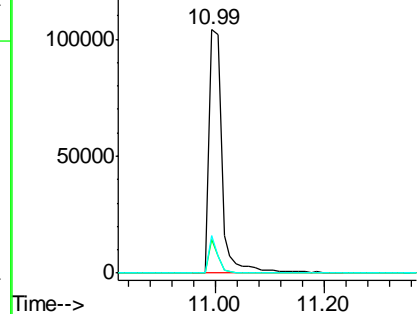


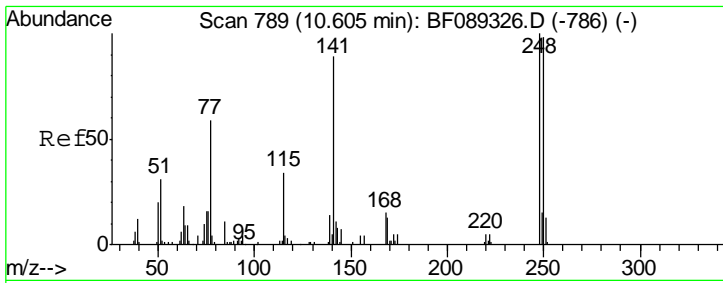
#63
 Phenanthrene-d10
 Concen: 20.00 ng
 RT: 10.99 min Scan# 823
 Delta R.T. -0.06 min
 Lab File: BF089457.D
 Acq: 30 Jul 2016 17:15

Tgt Ion	Resp	Lower	Upper
188	171765		
94	13.8	6.5	9.7#
80	15.6	7.2	10.8#



Abundance Ion 188.00 (187.70 to 188.70): E
 Ion 94.00 (93.70 to 94.70): BF0
 Ion 80.00 (79.70 to 80.70): BF0

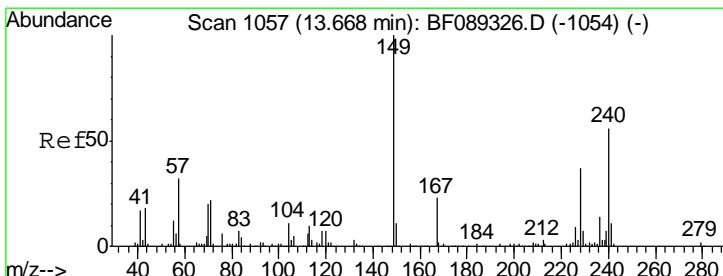
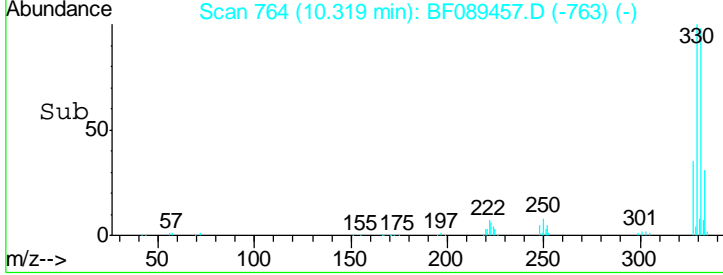
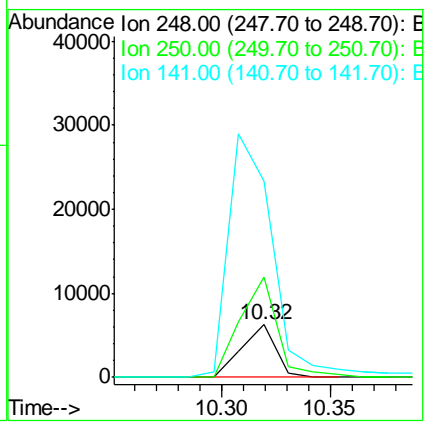
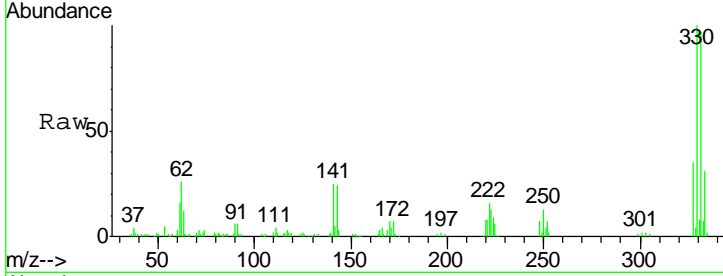




#66
 4-Bromophenyl-phenylether
 Concen: 4.15 ng
 RT: 10.32 min Scan# 764
 Delta R.T. -0.29 min
 Lab File: BF089457.D
 Acq: 30 Jul 2016 17:15

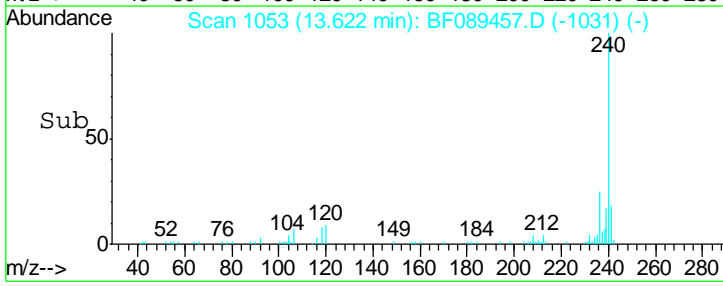
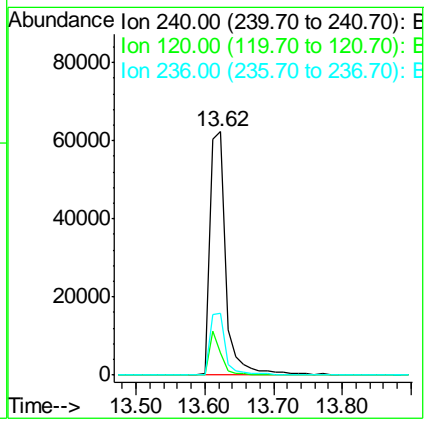
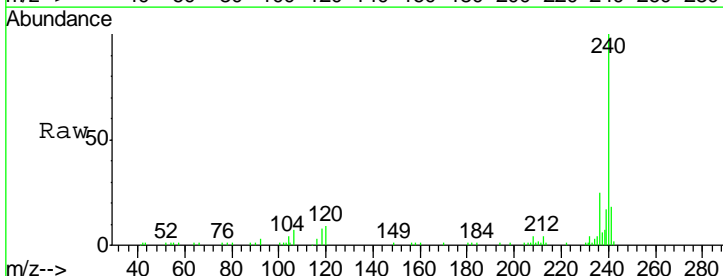
Instrument :
 BNA_F
 ClientSampled :

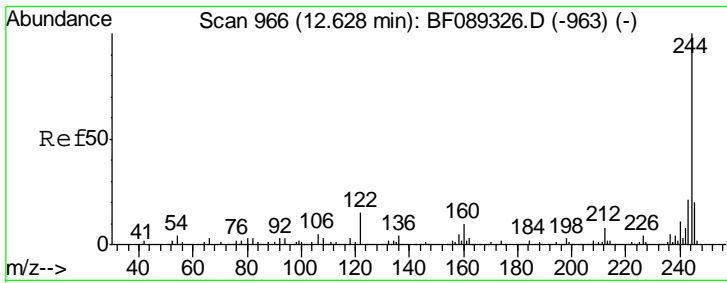
Tgt Ion	Resp	Lower	Upper
248	6798		
248	100		
250	189.4	78.2	117.2#
141	374.3	62.0	93.0#



#75
 Chrysene-d12
 Concen: 20.00 ng
 RT: 13.62 min Scan# 1053
 Delta R.T. -0.05 min
 Lab File: BF089457.D
 Acq: 30 Jul 2016 17:15

Tgt Ion	Resp	Lower	Upper
240	102110		
240	100		
120	8.9	9.1	13.7#
236	25.3	20.6	30.8

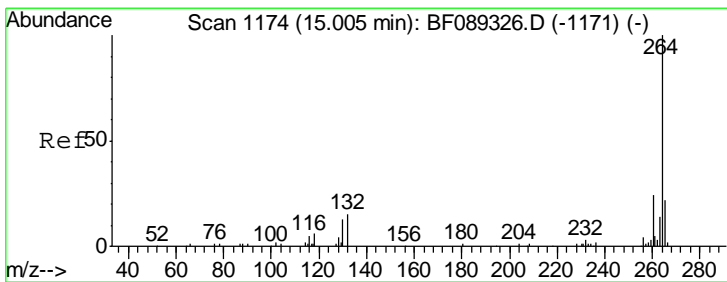
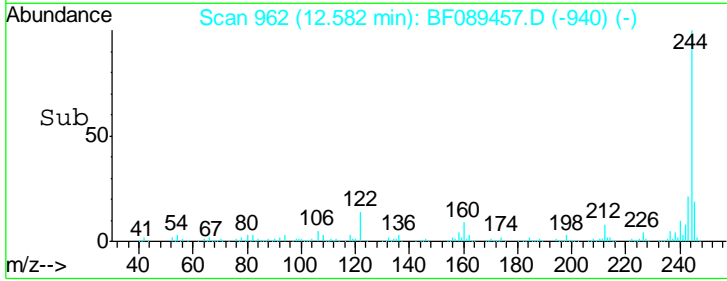
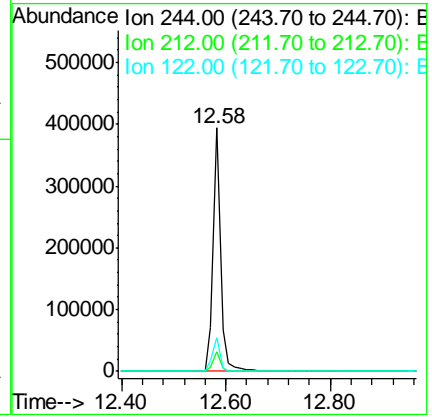
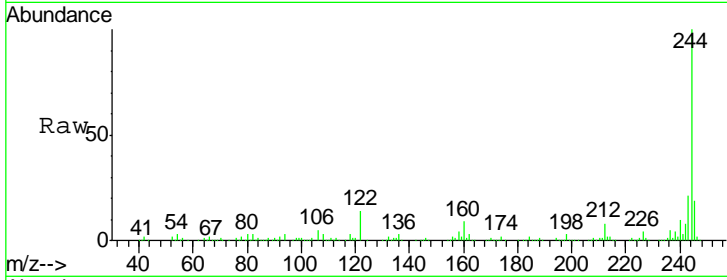




#78
 Terphenyl-d14
 Concen: 89.60 ng
 RT: 12.58 min Scan# 962
 Delta R.T. -0.05 min
 Lab File: BF089457.D
 Acq: 30 Jul 2016 17:15

Instrument :
 BNA_F
 ClientSampled :

Tgt Ion	Resp	Lower	Upper
244	100		
212	8.0	6.5	9.7
122	13.9	11.4	17.0



#86
 Perylene-d12
 Concen: 20.00 ng
 RT: 14.95 min Scan# 1169
 Delta R.T. -0.06 min
 Lab File: BF089457.D
 Acq: 30 Jul 2016 17:15

Tgt Ion	Resp	Lower	Upper
264	100		
260	23.1	19.0	28.4
265	20.8	17.5	26.3

