

Data Path : Z:\HPCHEM1\BNA\_F\DATA\BF080115\  
 Data File : BF080763.D  
 Acq On : 1 Aug 2015 6:09  
 Operator : TP/UM  
 Sample : G3121-06  
 Misc :  
 ALS Vial : 52 Sample Multiplier: 1

Instrument :  
 BNA\_F  
 ClientSampleId :  
 FB-7-28-15

Quant Time: Aug 03 01:00:24 2015  
 Quant Method : Z:\HPCHEM1\BNA\_F\METHODS\8270-BF073015.M  
 Quant Title : ASP BNA STANDARDS FOR 5 POINT CALIBRATION  
 QLast Update : Fri Jul 31 01:45:22 2015  
 Response via : Initial Calibration

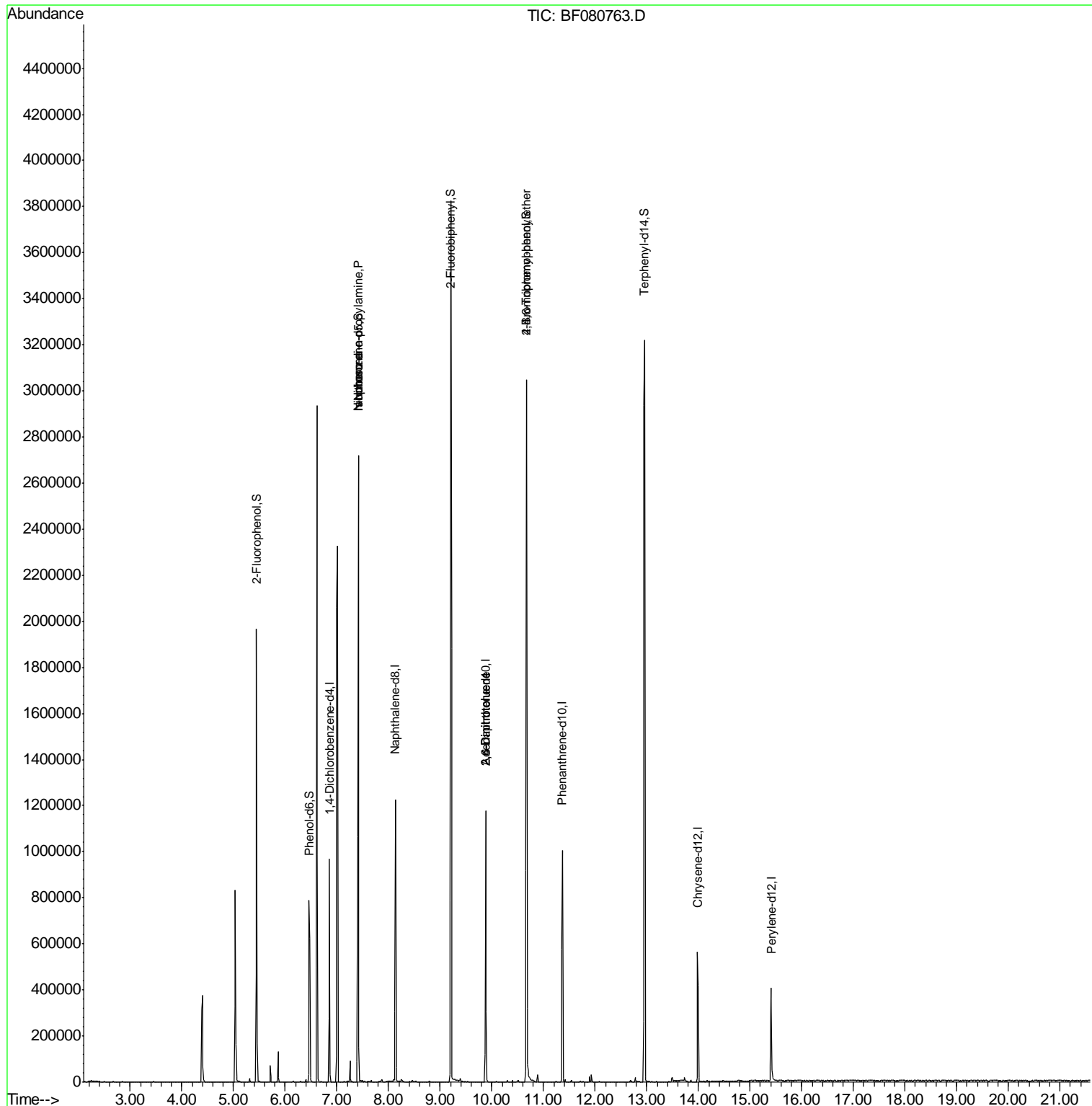
Internal Standards	R.T.	QIon	Response	Conc	Units	Dev(Min)
1) 1,4-Dichlorobenzene-d4	6.85	152	132188	20.00	ng	0.00
21) Naphthalene-d8	8.13	136	494540	20.00	ng	-0.01
38) Acenaphthene-d10	9.88	164	227706	20.00	ng	-0.01
63) Phenanthrene-d10	11.37	188	441752	20.00	ng	0.00
75) Chrysene-d12	13.99	240	258617	20.00	ng	-0.01
86) Perylene-d12	15.41	264	249380	20.00	ng	0.00
System Monitoring Compounds						
5) 2-Fluorophenol	5.45	112	421411	54.69	ng	0.00
7) Phenol-d6	6.46	99	338463	32.26	ng	-0.02
23) Nitrobenzene-d5	7.41	82	884883	86.65	ng	-0.01
41) 2,4,6-Tribromophenol	10.67	330	343913	145.55	ng	-0.01
44) 2-Fluorobiphenyl	9.21	172	1495255	97.97	ng	-0.01
78) Terphenyl-d14	12.96	244	1516726	110.92	ng	0.00
Target Compounds						
9) Benzaldehyde	6.40	77	1791	Below Cal		98
19) n-Nitroso-di-n-propylamine	7.41	70	124723	17.66	ng	# 75
25) Isophorone	7.41	82	864247	47.59	ng	# 71
50) 2,6-Dinitrotoluene	9.88	165	28117	8.26	ng	# 15
56) 2,4-Dinitrotoluene	9.88	165	28118	6.30	ng	# 16
66) 4-Bromophenyl-phenylether	10.67	248	23487	5.15	ng	# 1

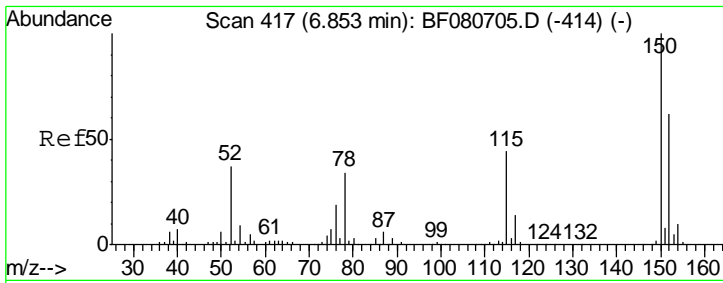
(#) = qualifier out of range (m) = manual integration (+) = signals summed

Data Path : Z:\HPCHEM1\BNA\_F\DATA\BF080115\  
 Data File : BF080763.D  
 Acq On : 1 Aug 2015 6:09  
 Operator : TP/UM  
 Sample : G3121-06  
 Misc :  
 ALS Vial : 52 Sample Multiplier: 1

Instrument :  
 BNA\_F  
 ClientSampleId :  
 FB-7-28-15

Quant Time: Aug 03 01:00:24 2015  
 Quant Method : Z:\HPCHEM1\BNA\_F\METHODS\8270-BF073015.M  
 Quant Title : ASP BNA STANDARDS FOR 5 POINT CALIBRATION  
 QLast Update : Fri Jul 31 01:45:22 2015  
 Response via : Initial Calibration

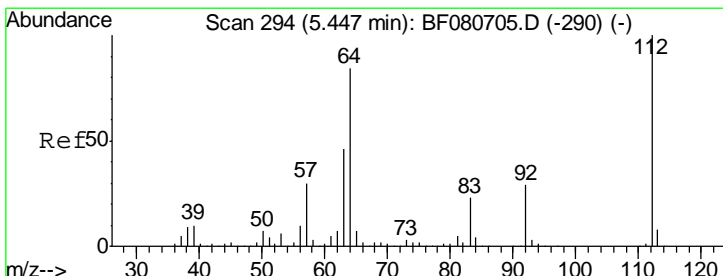
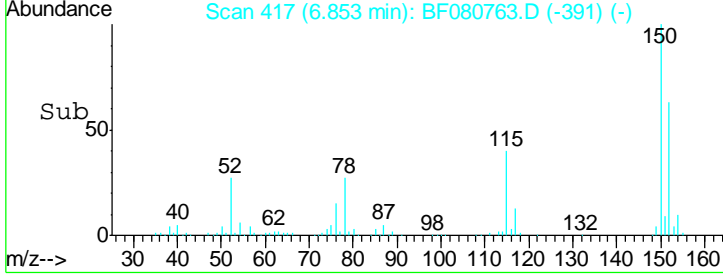
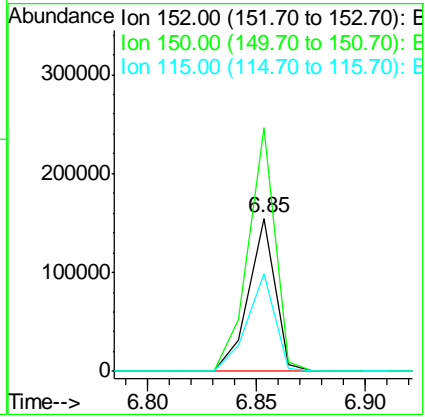
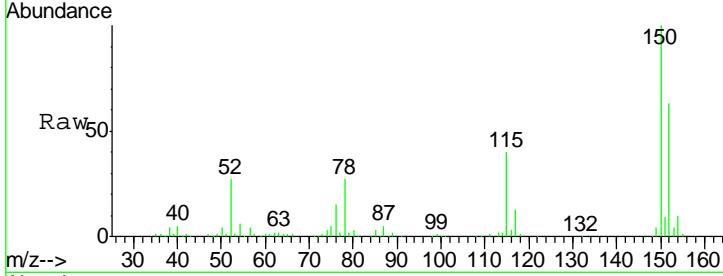




#1  
 1,4-Dichlorobenzene-d4  
 Concen: 20.00 ng  
 RT: 6.85 min Scan# 417  
 Delta R.T. 0.00 min  
 Lab File: BF080763.D  
 Acq: 1 Aug 2015 6:09

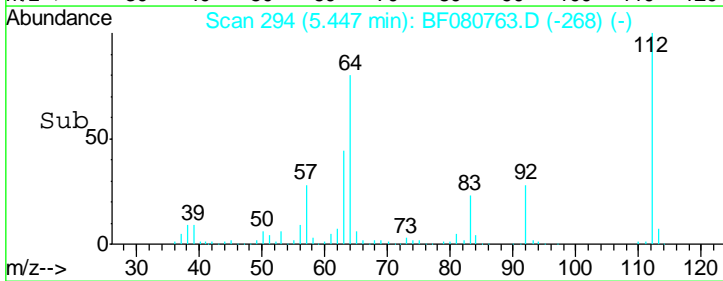
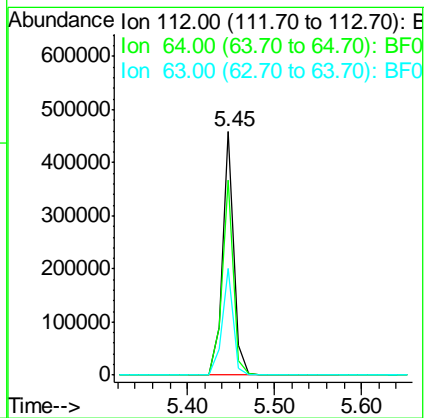
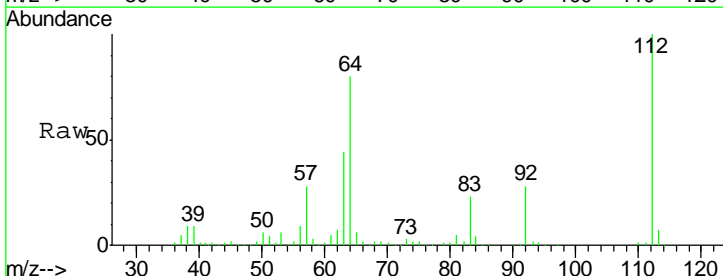
**Instrument :**  
 BNA\_F  
**ClientSampled :**  
 FB-7-28-15

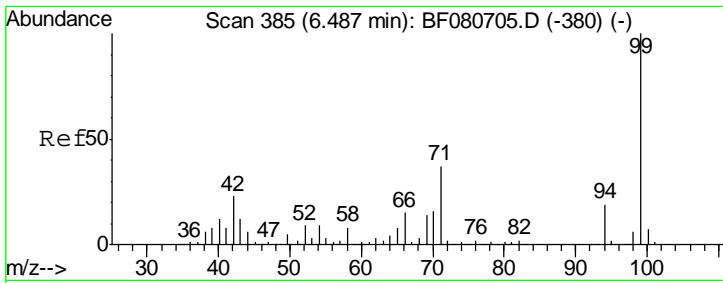
Tgt Ion	Resp	Lower	Upper
152	132188		
150	158.9	129.6	194.4
115	63.7	56.6	85.0



#5  
 2-Fluorophenol  
 Concen: 54.69 ng  
 RT: 5.45 min Scan# 294  
 Delta R.T. 0.00 min  
 Lab File: BF080763.D  
 Acq: 1 Aug 2015 6:09

Tgt Ion	Resp	Lower	Upper
112	421411		
64	80.3	66.8	100.2
63	43.6	36.7	55.1

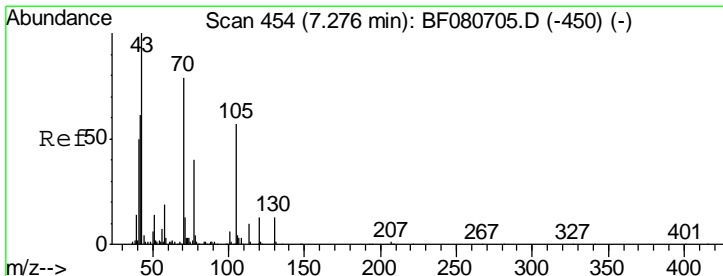
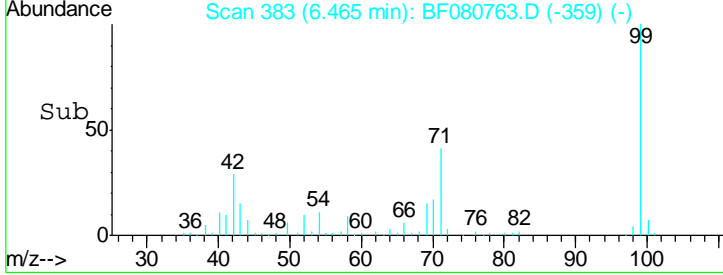
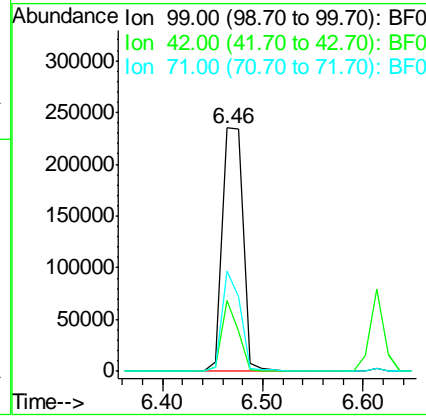
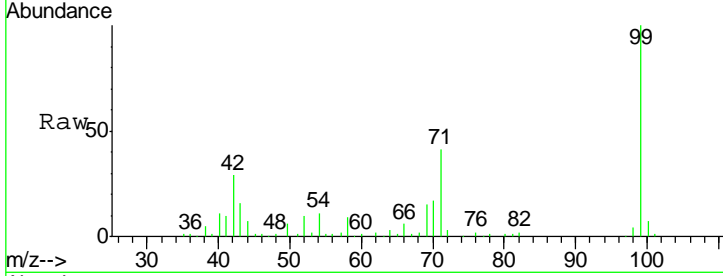




#7  
 Phenol-d6  
 Concen: 32.26 ng  
 RT: 6.46 min Scan# 383  
 Delta R.T. -0.02 min  
 Lab File: BF080763.D  
 Acq: 1 Aug 2015 6:09

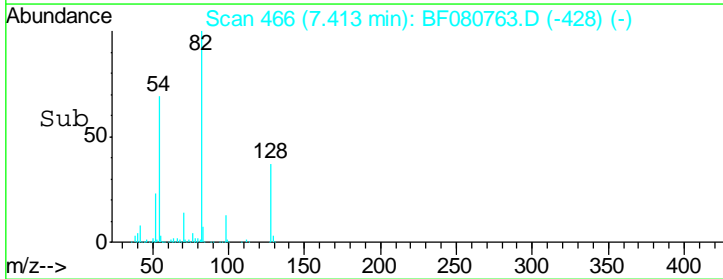
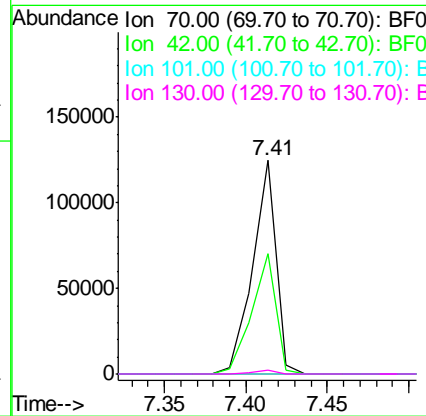
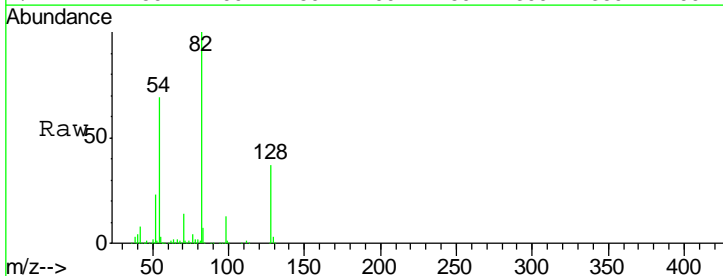
Instrument :  
 BNA\_F  
 ClientSampled :  
 FB-7-28-15

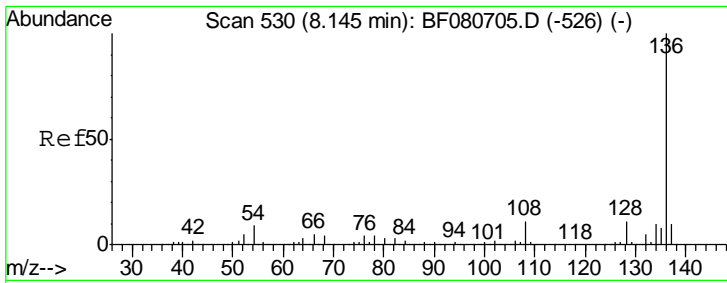
Tgt Ion	Resp	Lower	Upper
99	338463		
42	28.9	18.2	27.2#
71	41.3	29.5	44.3



#19  
 n-Nitroso-di-n-propylamine  
 Concen: 17.66 ng  
 RT: 7.41 min Scan# 466  
 Delta R.T. 0.14 min  
 Lab File: BF080763.D  
 Acq: 1 Aug 2015 6:09

Tgt Ion	Resp	Lower	Upper
70	124723		
42	56.3	61.8	92.6#
101	0.0	6.1	9.1#
130	1.9	12.9	19.3#



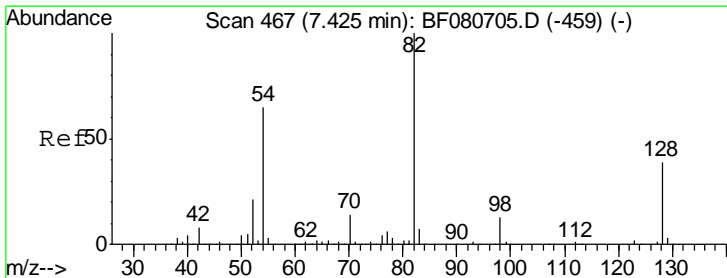
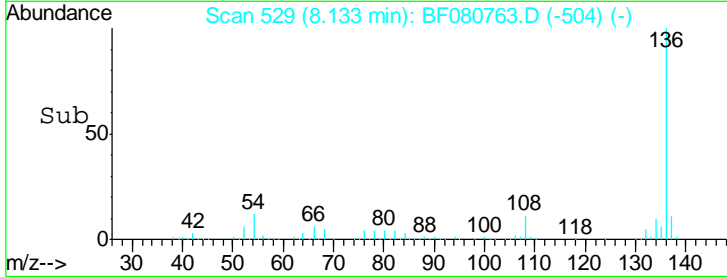
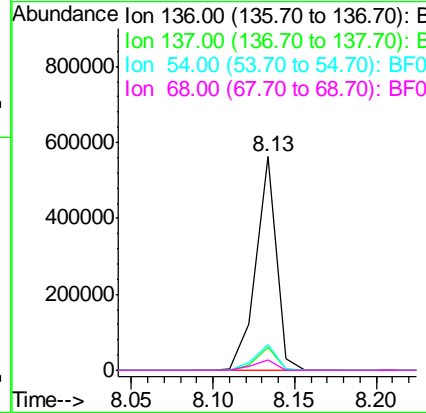
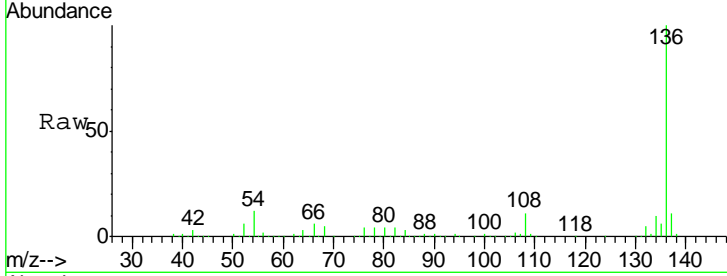


#21  
 Naphthalene-d8  
 Concen: 20.00 ng  
 RT: 8.13 min Scan# 529  
 Delta R.T. -0.01 min  
 Lab File: BF080763.D  
 Acq: 1 Aug 2015 6:09

Instrument :  
 BNA\_F  
 ClientSampled :  
 FB-7-28-15

Tgt Ion: 136 Resp: 494540

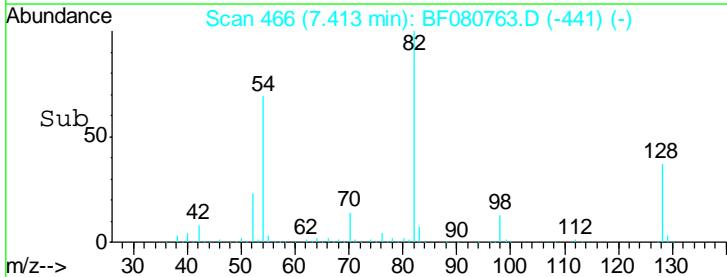
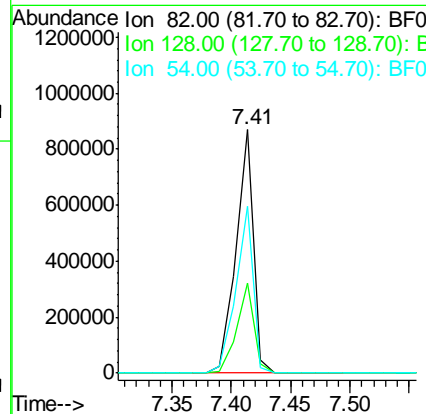
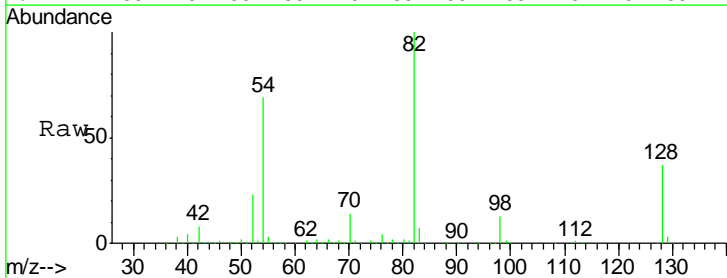
Ion	Ratio	Lower	Upper
136	100		
137	10.9	8.4	12.6
54	11.9	6.9	10.3#
68	5.0	3.5	5.3

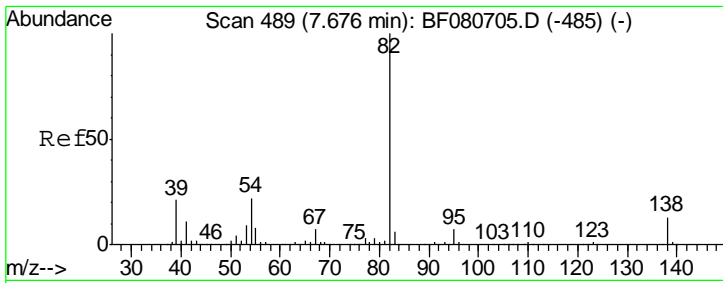


#23  
 Nitrobenzene-d5  
 Concen: 86.65 ng  
 RT: 7.41 min Scan# 466  
 Delta R.T. -0.01 min  
 Lab File: BF080763.D  
 Acq: 1 Aug 2015 6:09

Tgt Ion: 82 Resp: 884883

Ion	Ratio	Lower	Upper
82	100		
128	37.1	31.5	47.3
54	68.7	51.8	77.8

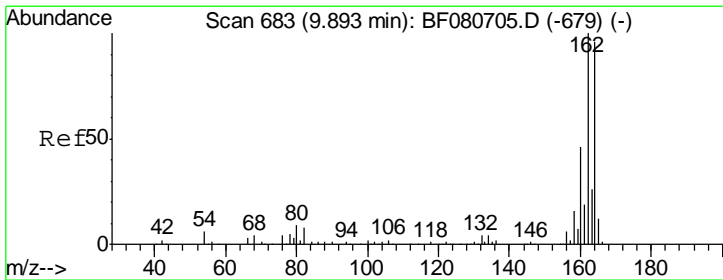
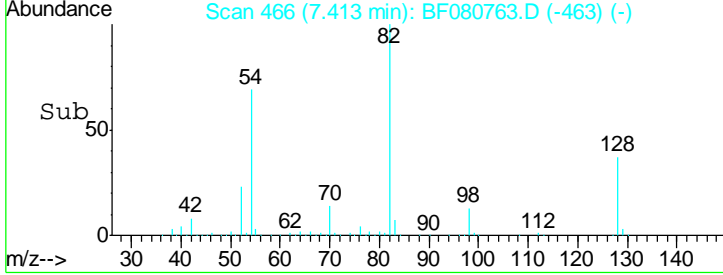
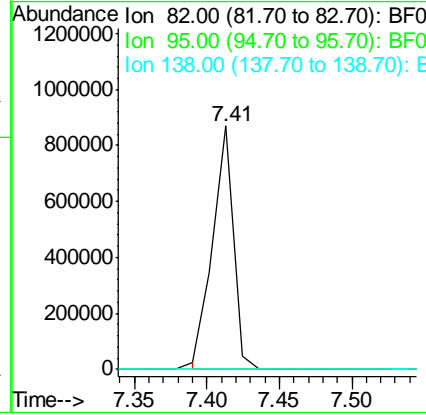
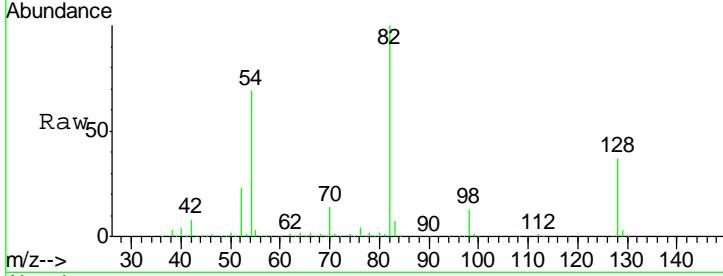




#25  
 Isophorone  
 Concen: 47.59 ng  
 RT: 7.41 min Scan# 466  
 Delta R.T. -0.26 min  
 Lab File: BF080763.D  
 Acq: 1 Aug 2015 6:09

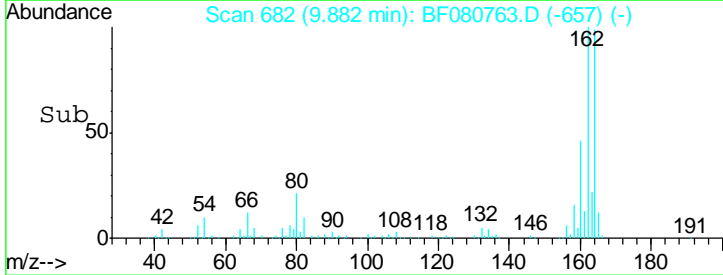
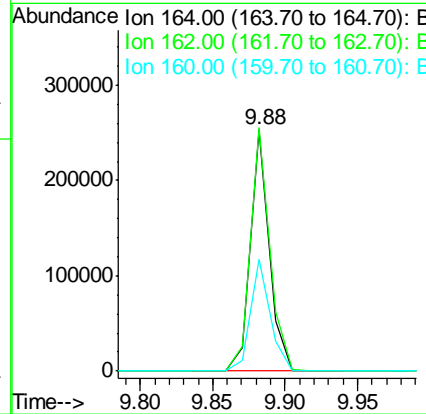
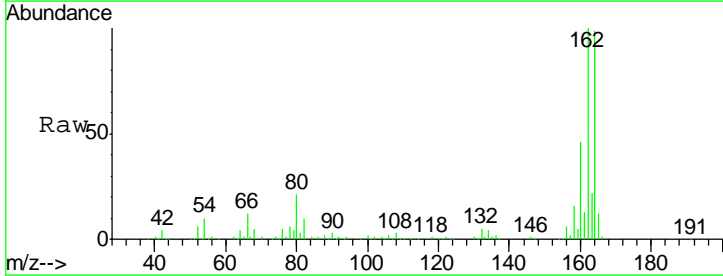
Instrument :  
 BNA\_F  
 ClientSampled :  
 FB-7-28-15

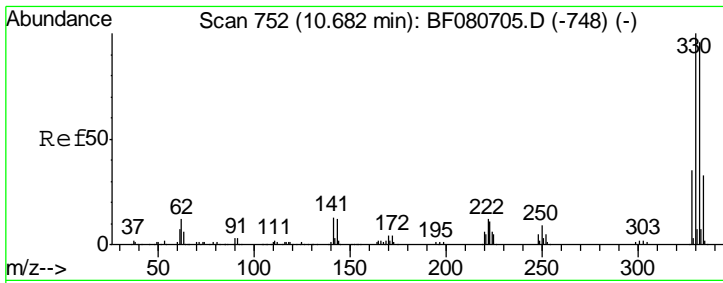
Tgt Ion	Resp	Lower	Upper
82	100		
95	0.0	5.8	8.6#
138	0.0	10.7	16.1#



#38  
 Acenaphthene-d10  
 Concen: 20.00 ng  
 RT: 9.88 min Scan# 682  
 Delta R.T. -0.01 min  
 Lab File: BF080763.D  
 Acq: 1 Aug 2015 6:09

Tgt Ion	Resp	Lower	Upper
164	100		
162	101.0	83.4	125.0
160	46.5	38.0	57.0

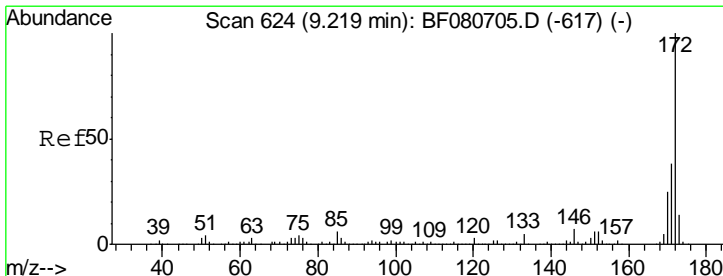
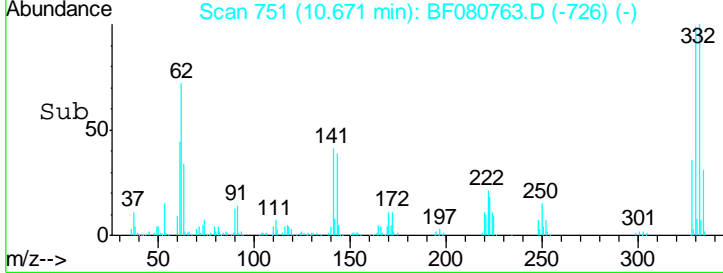
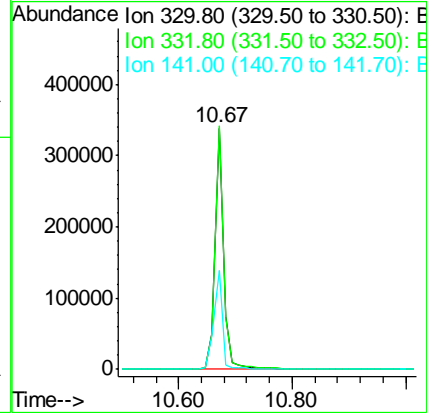
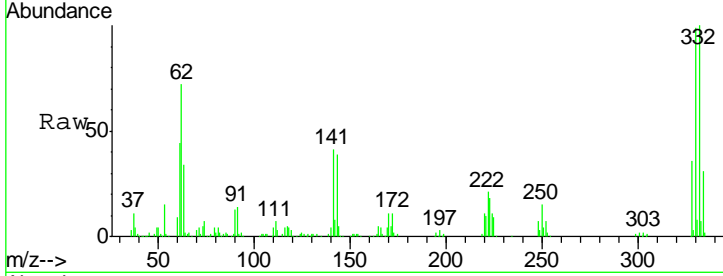




#41  
 2,4,6-Tribromophenol  
 Concen: 145.55 ng  
 RT: 10.67 min Scan# 751  
 Delta R.T. -0.01 min  
 Lab File: BF080763.D  
 Acq: 1 Aug 2015 6:09

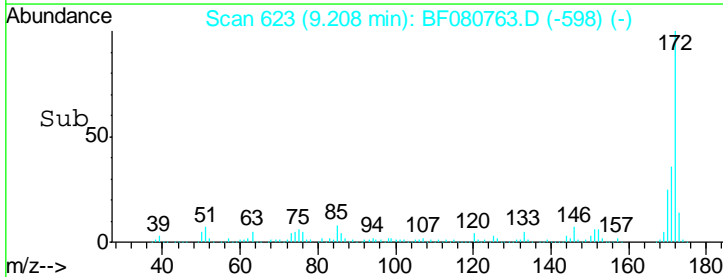
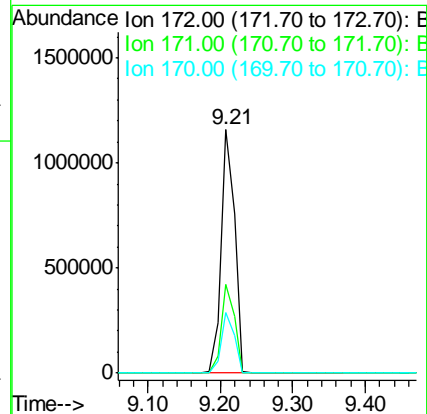
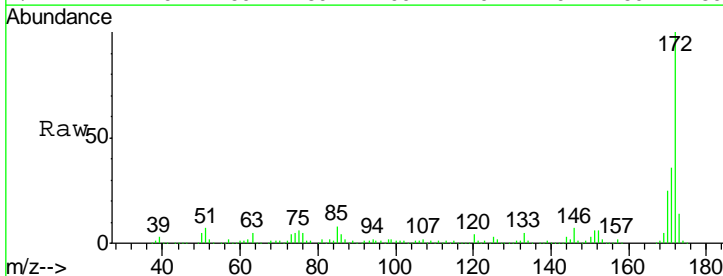
Instrument :  
 BNA\_F  
 ClientSampled :  
 FB-7-28-15

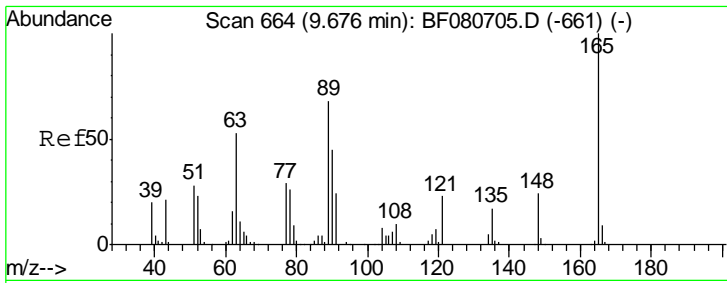
Tgt Ion	Resp	Lower	Upper
330	100		
332	99.7	76.6	114.8
141	40.9	26.0	39.0#



#44  
 2-Fluorobiphenyl  
 Concen: 97.97 ng  
 RT: 9.21 min Scan# 623  
 Delta R.T. -0.01 min  
 Lab File: BF080763.D  
 Acq: 1 Aug 2015 6:09

Tgt Ion	Resp	Lower	Upper
172	100		
171	36.4	30.2	45.4
170	25.1	20.2	30.2

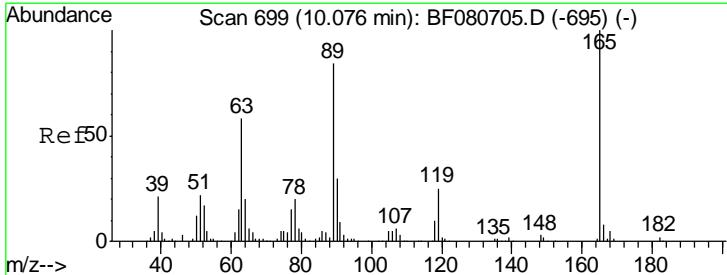
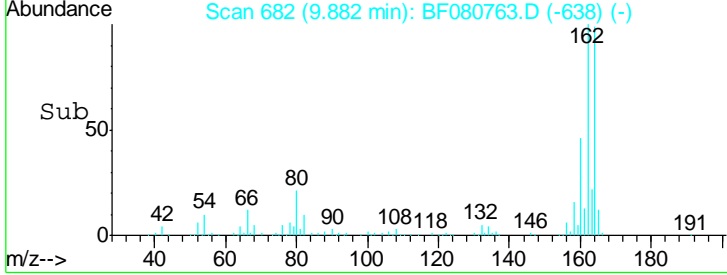
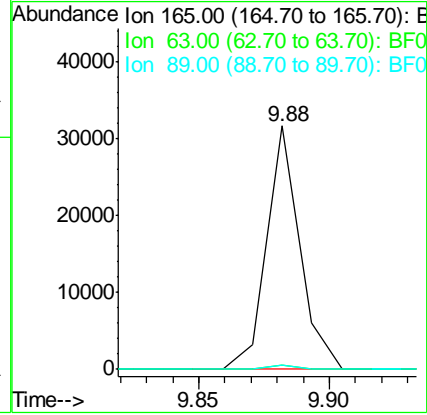
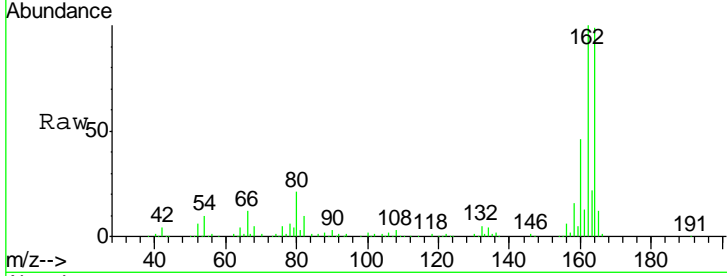




#50  
 2,6-Dinitrotoluene  
 Concen: 8.26 ng  
 RT: 9.88 min Scan# 682  
 Delta R.T. 0.21 min  
 Lab File: BF080763.D  
 Acq: 1 Aug 2015 6:09

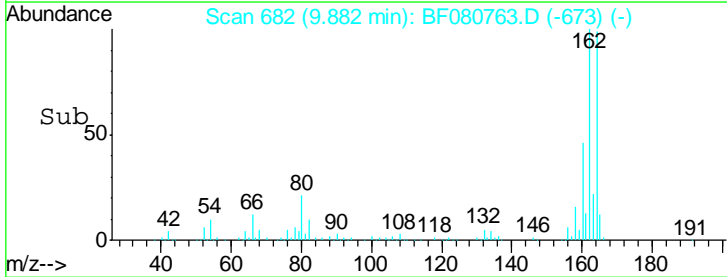
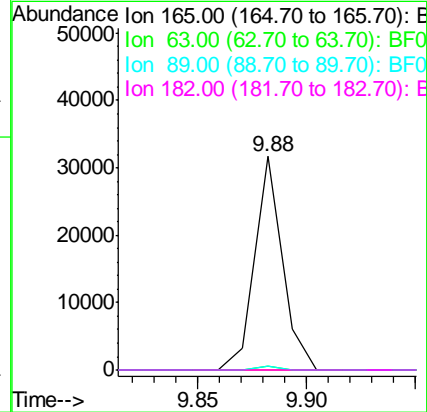
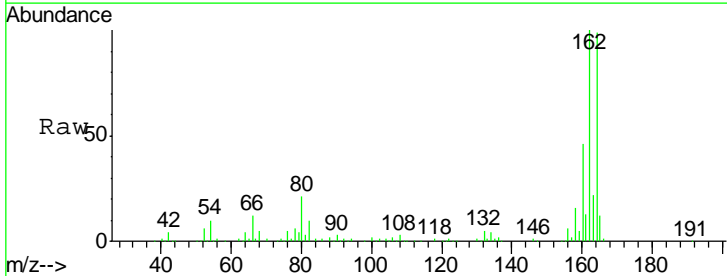
**Instrument :**  
 BNA\_F  
**ClientSampled :**  
 FB-7-28-15

Tgt Ion	Resp	Lower	Upper
165	100		
63	1.5	62.3	93.5#
89	1.7	54.8	82.2#

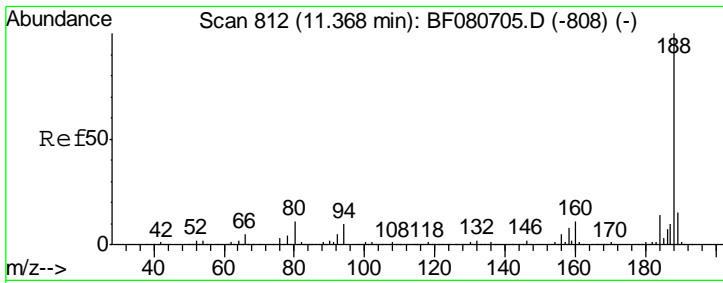


#56  
 2,4-Dinitrotoluene  
 Concen: 6.30 ng  
 RT: 9.88 min Scan# 682  
 Delta R.T. -0.19 min  
 Lab File: BF080763.D  
 Acq: 1 Aug 2015 6:09

Tgt Ion	Resp	Lower	Upper
165	100		
63	1.5	46.7	70.1#
89	1.7	67.4	101.2#
182	0.0	1.8	2.6#



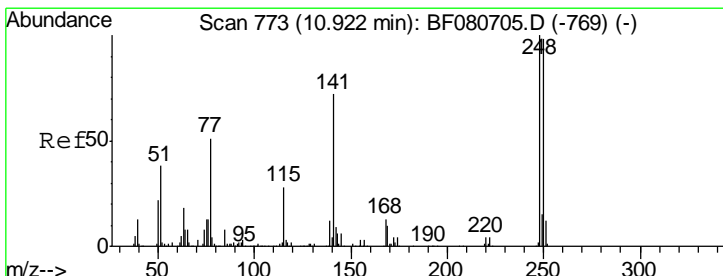
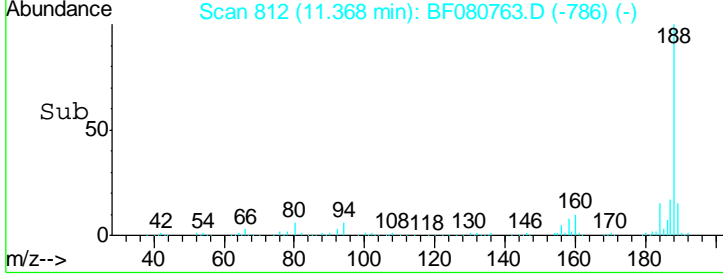
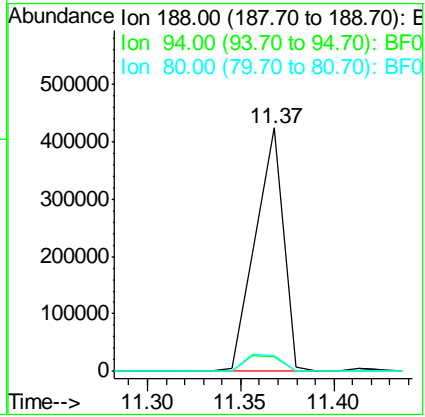
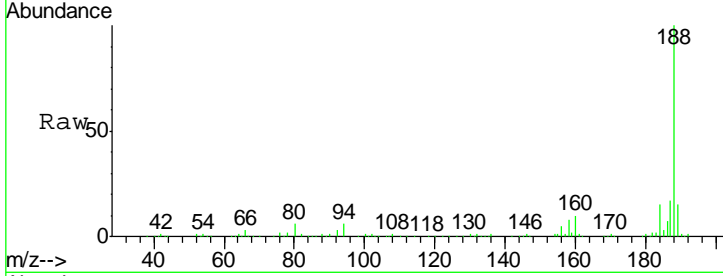




#63  
 Phenanthrene-d10  
 Concen: 20.00 ng  
 RT: 11.37 min Scan# 812  
 Delta R.T. 0.00 min  
 Lab File: BF080763.D  
 Acq: 1 Aug 2015 6:09

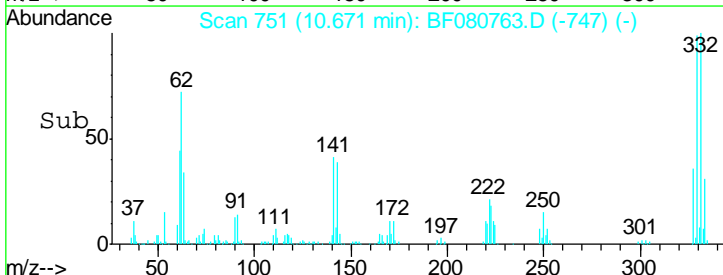
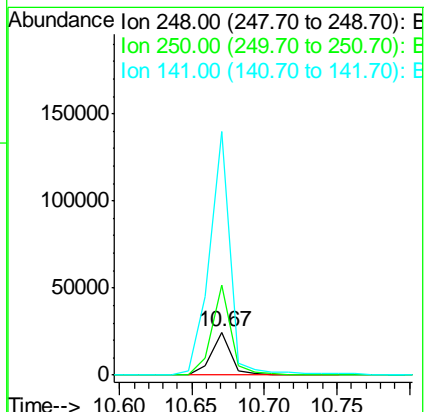
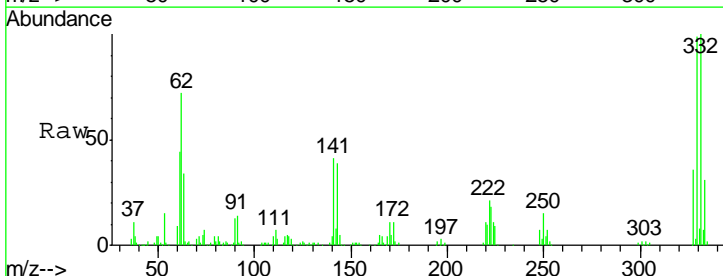
Instrument :  
 BNA\_F  
 ClientSampled :  
 FB-7-28-15

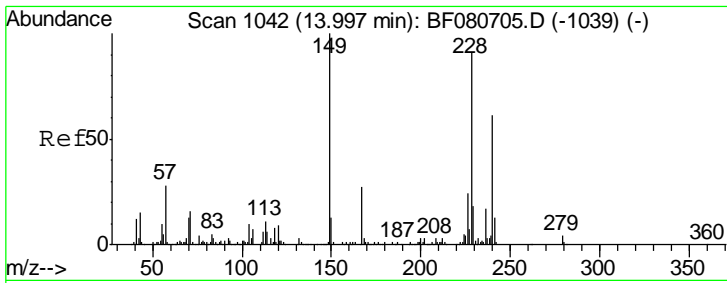
Tgt Ion	Resp	Lower	Upper
188	100		
94	6.1	8.1	12.1#
80	6.4	9.1	13.7#



#66  
 4-Bromophenyl-phenylether  
 Concen: 5.15 ng  
 RT: 10.67 min Scan# 751  
 Delta R.T. -0.25 min  
 Lab File: BF080763.D  
 Acq: 1 Aug 2015 6:09

Tgt Ion	Resp	Lower	Upper
248	100		
250	209.0	78.4	117.6#
141	566.2	57.5	86.3#

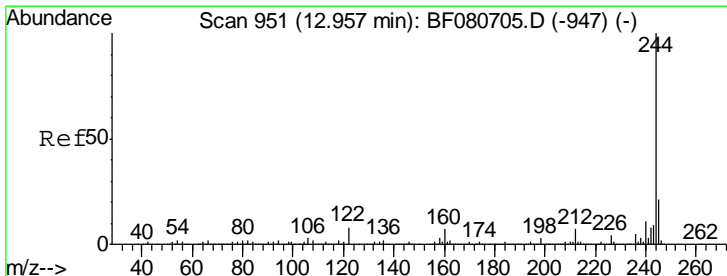
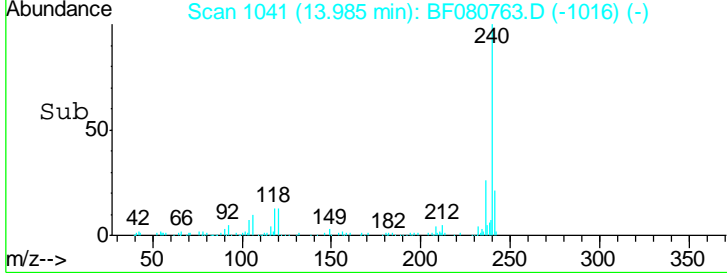
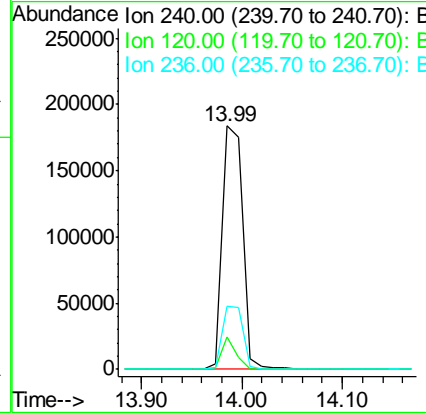
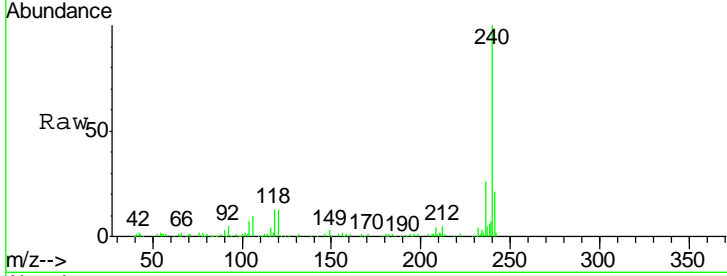




#75  
 Chrysene-d12  
 Concen: 20.00 ng  
 RT: 13.99 min Scan# 1041  
 Delta R.T. -0.01 min  
 Lab File: BF080763.D  
 Acq: 1 Aug 2015 6:09

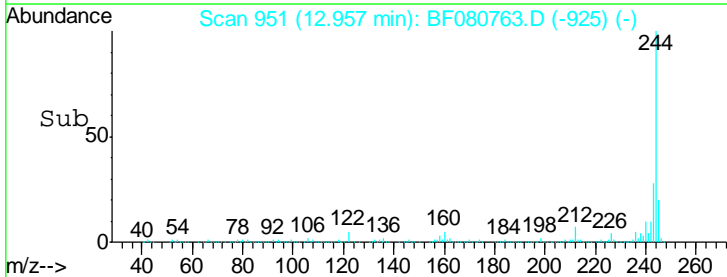
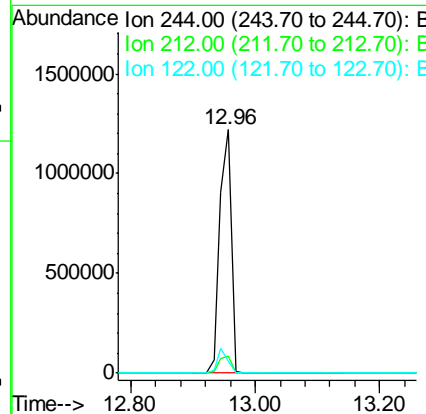
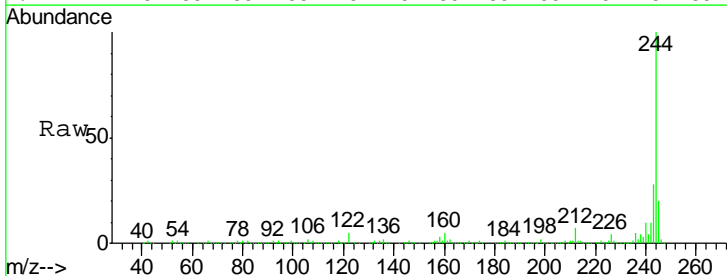
**Instrument :**  
 BNA\_F  
**Client Sampled :**  
 FB-7-28-15

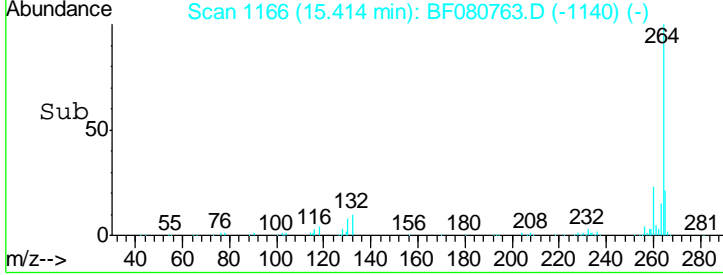
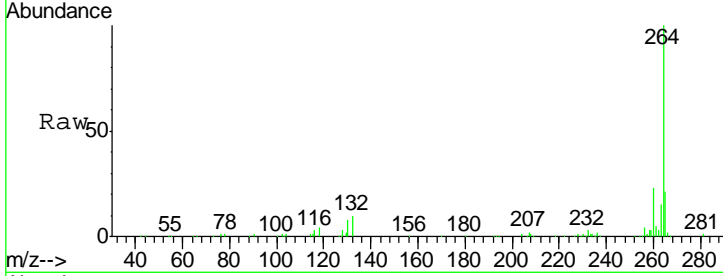
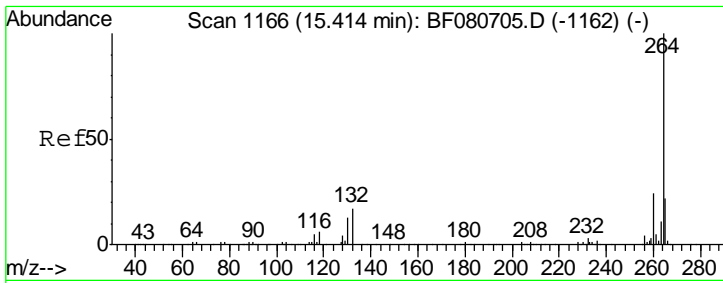
Tgt Ion	Resp	Lower	Upper
240	258617		
120	13.3	11.8	17.8
236	25.9	21.8	32.8



#78  
 Terphenyl-d14  
 Concen: 110.92 ng  
 RT: 12.96 min Scan# 951  
 Delta R.T. 0.00 min  
 Lab File: BF080763.D  
 Acq: 1 Aug 2015 6:09

Tgt Ion	Resp	Lower	Upper
244	1516726		
212	7.0	5.9	8.9
122	5.0	6.6	9.8#





#86  
 Perylene-d12  
 Concen: 20.00 ng  
 RT: 15.41 min Scan# 1166  
 Delta R.T. 0.00 min  
 Lab File: BF080763.D  
 Acq: 1 Aug 2015 6:09

Instrument :  
 BNA\_F  
 ClientSampled :  
 FB-7-28-15

Tgt Ion: 264 Resp: 249380

Ion	Ratio	Lower	Upper
264	100		
260	23.0	19.4	29.0
265	21.2	17.3	25.9

