

Data Path : Z:\HPCHEM1\BNA_F\DATA\BF080115\
 Data File : BF080774.D
 Acq On : 1 Aug 2015 11:47
 Operator : TP/UM
 Sample : G3140-03
 Misc :
 ALS Vial : 63 Sample Multiplier: 1

Instrument :
 BNA_F
 ClientSampleId :
 SB-3

Quant Time: Aug 03 01:04:46 2015
 Quant Method : Z:\HPCHEM1\BNA_F\METHODS\8270-BF073015.M
 Quant Title : ASP BNA STANDARDS FOR 5 POINT CALIBRATION
 QLast Update : Fri Jul 31 01:45:22 2015
 Response via : Initial Calibration

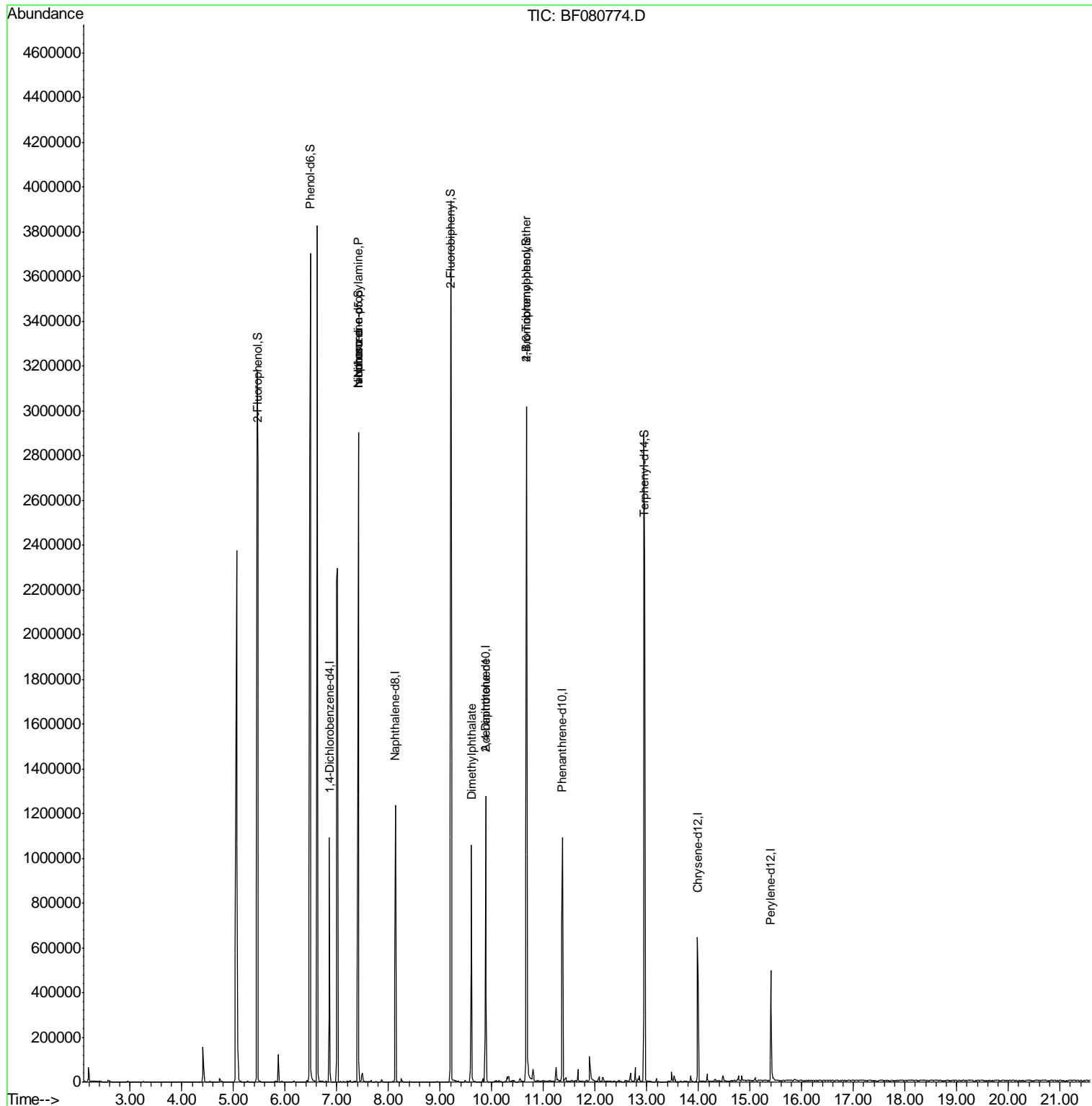
Internal Standards	R.T.	QIon	Response	Conc	Units	Dev(Min)
1) 1,4-Dichlorobenzene-d4	6.85	152	145965	20.00	ng	0.00
21) Naphthalene-d8	8.13	136	544982	20.00	ng	-0.01
38) Acenaphthene-d10	9.88	164	262905	20.00	ng	-0.01
63) Phenanthrene-d10	11.37	188	503297	20.00	ng	0.00
75) Chrysene-d12	13.99	240	297647	20.00	ng	-0.01
86) Perylene-d12	15.40	264	266655	20.00	ng	-0.01
System Monitoring Compounds						
5) 2-Fluorophenol	5.47	112	1160770	136.42	ng	0.02
7) Phenol-d6	6.49	99	1634027	141.06	ng	0.00
23) Nitrobenzene-d5	7.41	82	958041	85.13	ng	-0.01
41) 2,4,6-Tribromophenol	10.67	330	357961	131.22	ng	-0.01
44) 2-Fluorobiphenyl	9.21	172	1486198	84.34	ng	-0.01
78) Terphenyl-d14	12.96	244	1304708	82.90	ng	0.00
Target Compounds						
9) Benzaldehyde	6.49	77	2701	Below Cal	#	1
19) n-Nitroso-di-n-propylamine	7.41	70	138146	17.71	ng	# 76
25) Isophorone	7.41	82	935524	46.74	ng	# 71
49) Dimethylphthalate	9.61	163	504766	27.25	ng	98
56) 2,4-Dinitrotoluene	9.88	165	33011	6.40	ng	# 17
66) 4-Bromophenyl-phenylether	10.67	248	23759	4.57	ng	# 1

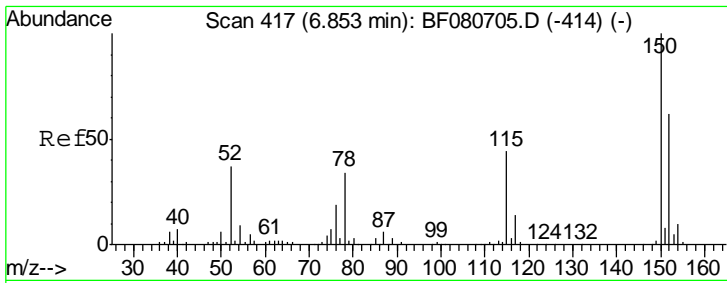
(#) = qualifier out of range (m) = manual integration (+) = signals summed

Data Path : Z:\HPCHEM1\BNA_F\DATA\BF080115\
 Data File : BF080774.D
 Acq On : 1 Aug 2015 11:47
 Operator : TP/UM
 Sample : G3140-03
 Misc :
 ALS Vial : 63 Sample Multiplier: 1

Instrument :
 BNA_F
 ClientSampled :
 SB-3

Quant Time: Aug 03 01:04:46 2015
 Quant Method : Z:\HPCHEM1\BNA_F\METHODS\8270-BF073015.M
 Quant Title : ASP BNA STANDARDS FOR 5 POINT CALIBRATION
 QLast Update : Fri Jul 31 01:45:22 2015
 Response via : Initial Calibration

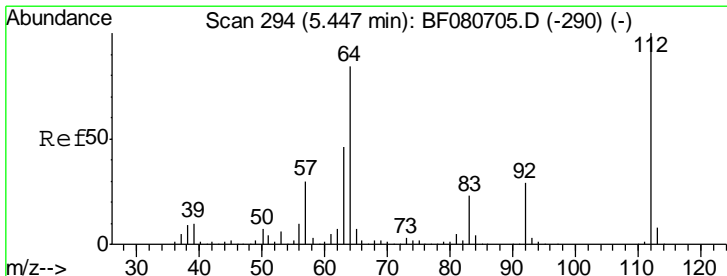
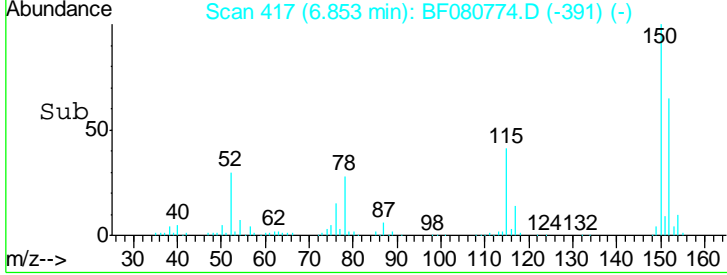
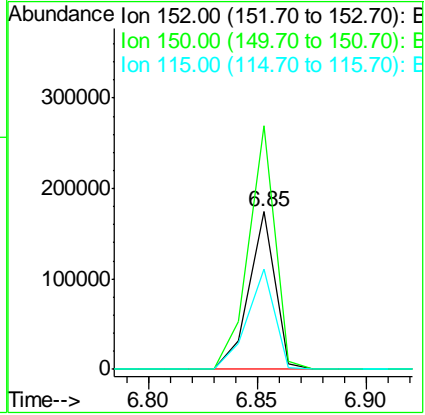
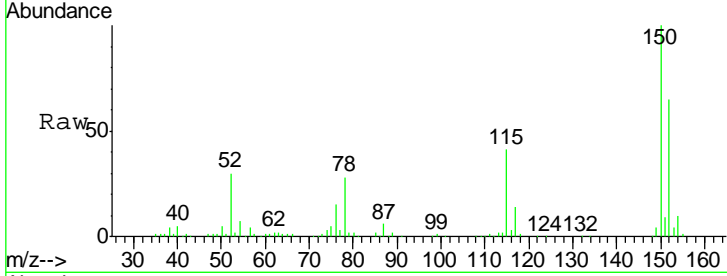




#1
 1,4-Dichlorobenzene-d4
 Concen: 20.00 ng
 RT: 6.85 min Scan# 417
 Delta R.T. -0.00 min
 Lab File: BF080774.D
 Acq: 1 Aug 2015 11:47

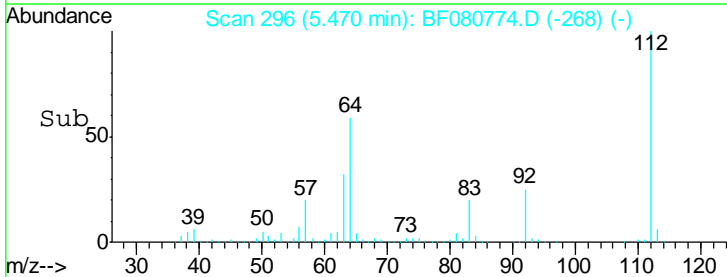
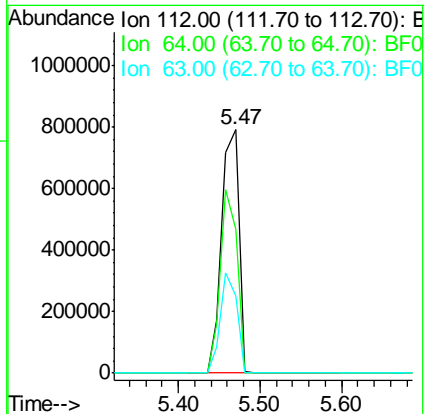
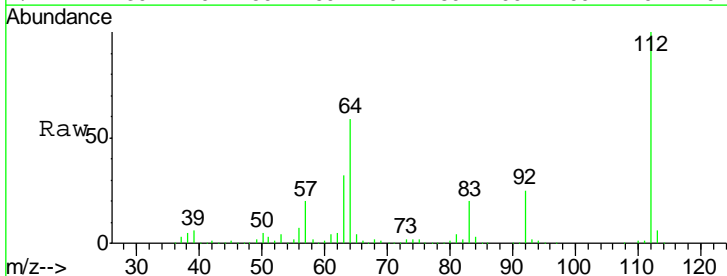
Instrument :
 BNA_F
 ClientSampled :
 SB-3

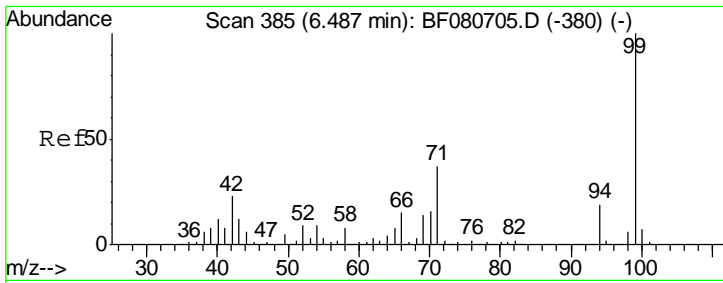
Tgt Ion	Resp	Lower	Upper
152	145965		
150	154.7	129.6	194.4
115	63.7	56.6	85.0



#5
 2-Fluorophenol
 Concen: 136.42 ng
 RT: 5.47 min Scan# 296
 Delta R.T. 0.02 min
 Lab File: BF080774.D
 Acq: 1 Aug 2015 11:47

Tgt Ion	Resp	Lower	Upper
112	1160770		
64	58.9	66.8	100.2#
63	31.9	36.7	55.1#



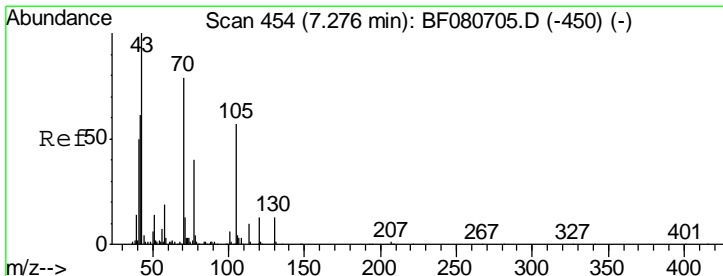
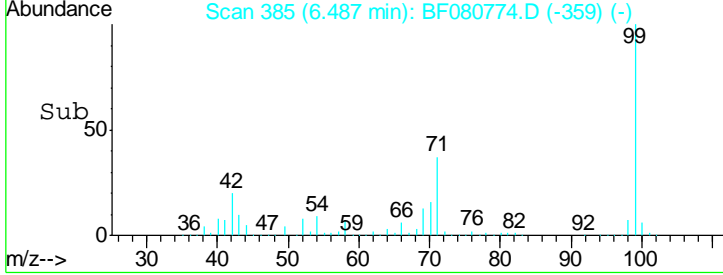
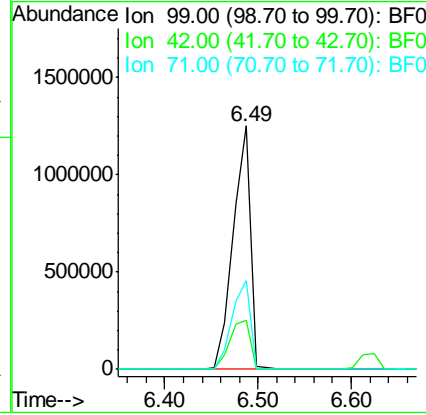
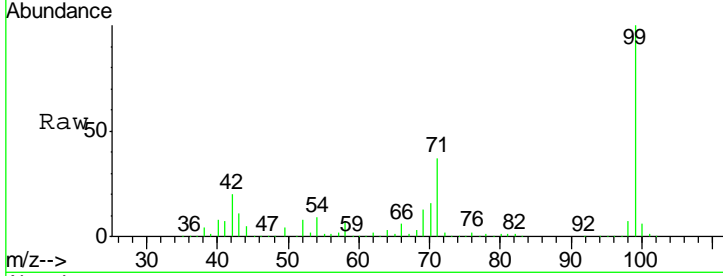


#7
 Phenol-d6
 Concen: 141.06 ng
 RT: 6.49 min Scan# 385
 Delta R.T. -0.00 min
 Lab File: BF080774.D
 Acq: 1 Aug 2015 11:47

Instrument :
 BNA_F
 ClientSampled :
 SB-3

Tgt Ion: 99 Resp: 1634027

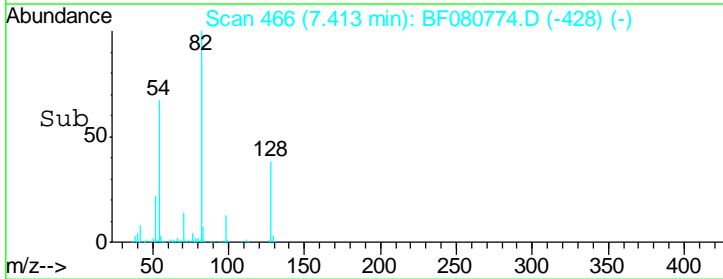
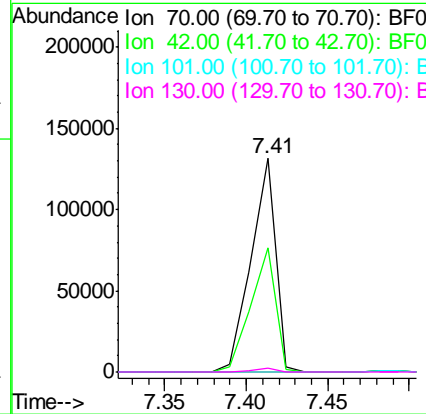
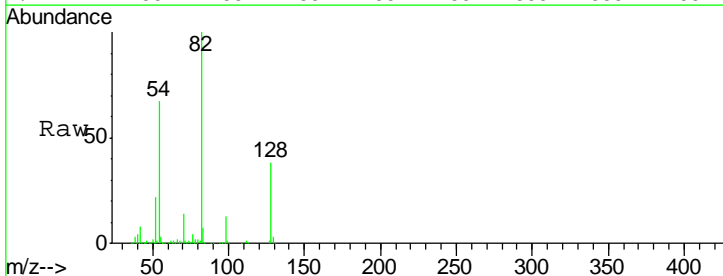
Ion	Ratio	Lower	Upper
99	100		
42	19.9	18.2	27.2
71	36.6	29.5	44.3

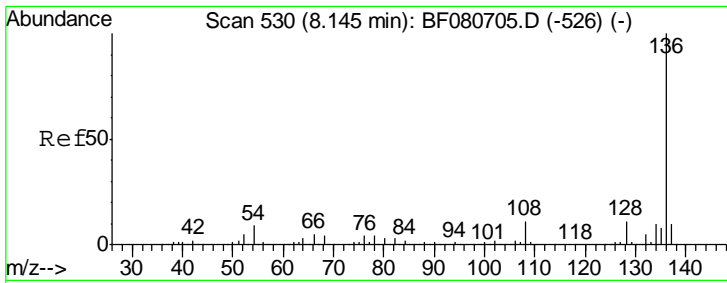


#19
 n-Nitroso-di-n-propylamine
 Concen: 17.71 ng
 RT: 7.41 min Scan# 466
 Delta R.T. 0.14 min
 Lab File: BF080774.D
 Acq: 1 Aug 2015 11:47

Tgt Ion: 70 Resp: 138146

Ion	Ratio	Lower	Upper
70	100		
42	58.0	61.8	92.6#
101	0.0	6.1	9.1#
130	1.7	12.9	19.3#



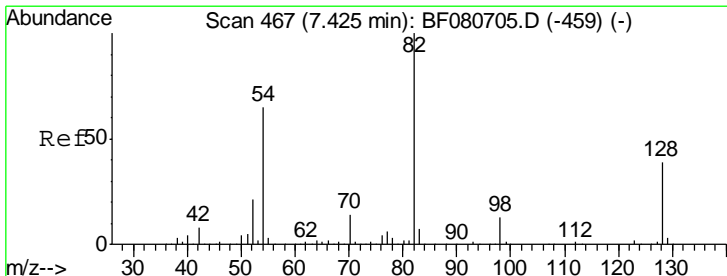
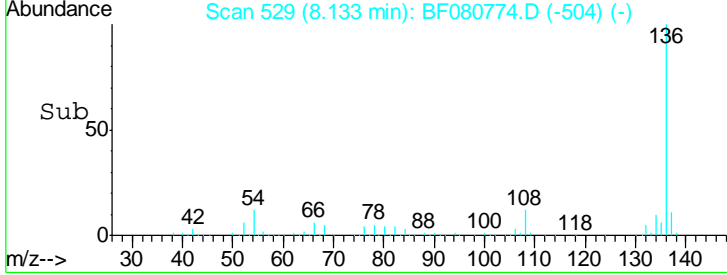
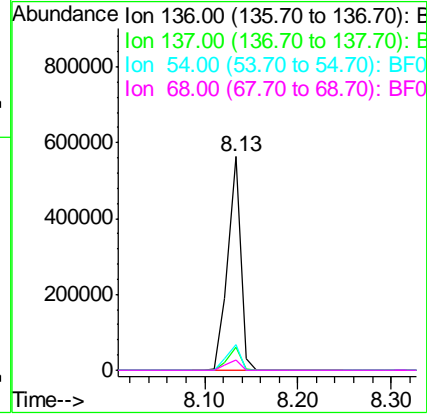
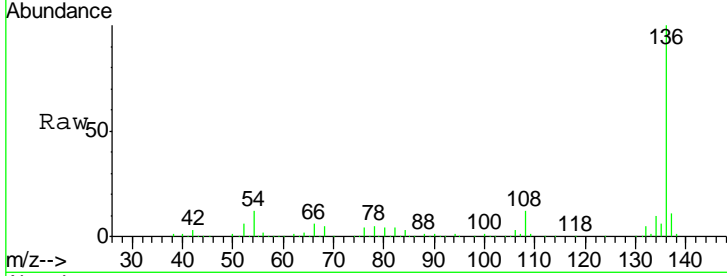


#21
 Naphthalene-d8
 Concen: 20.00 ng
 RT: 8.13 min Scan# 529
 Delta R.T. -0.01 min
 Lab File: BF080774.D
 Acq: 1 Aug 2015 11:47

Instrument :
 BNA_F
 ClientSampled :
 SB-3

Tgt Ion: 136 Resp: 544982

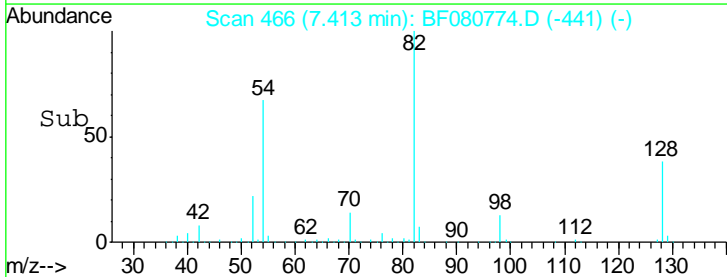
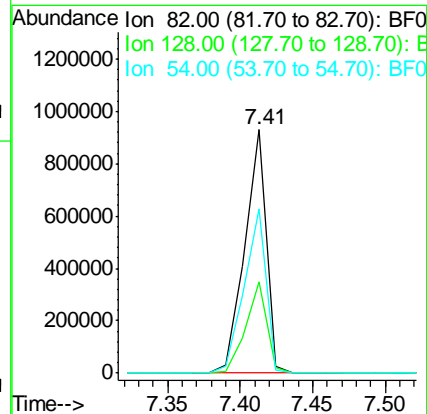
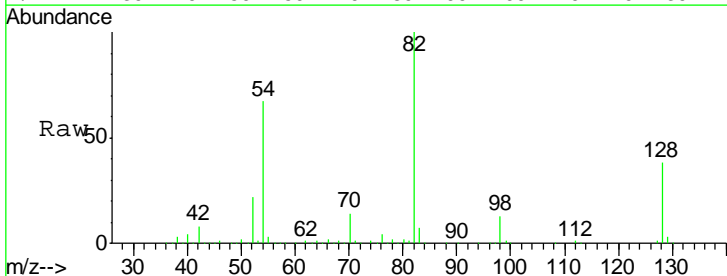
Ion	Ratio	Lower	Upper
136	100		
137	10.8	8.4	12.6
54	11.8	6.9	10.3#
68	5.1	3.5	5.3

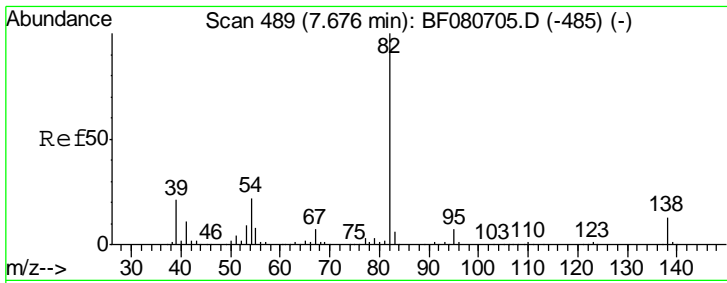


#23
 Nitrobenzene-d5
 Concen: 85.13 ng
 RT: 7.41 min Scan# 466
 Delta R.T. -0.01 min
 Lab File: BF080774.D
 Acq: 1 Aug 2015 11:47

Tgt Ion: 82 Resp: 958041

Ion	Ratio	Lower	Upper
82	100		
128	37.8	31.5	47.3
54	67.4	51.8	77.8

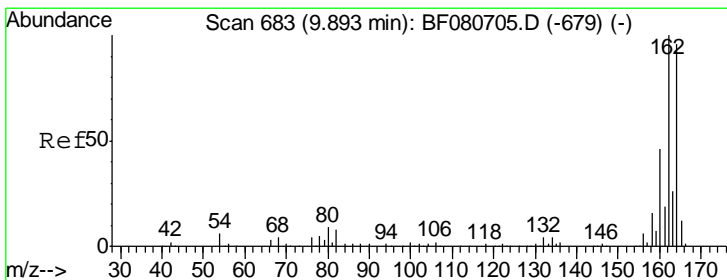
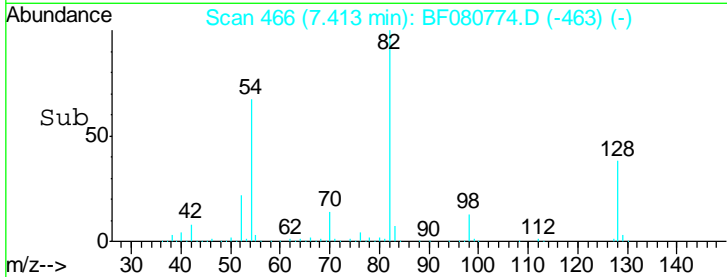
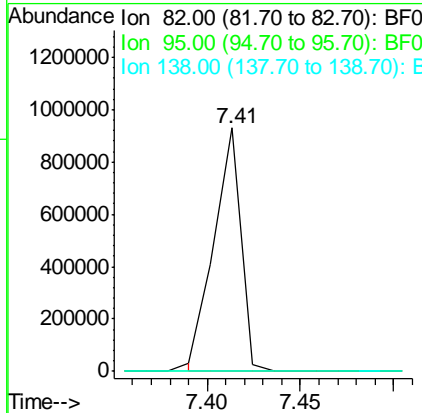
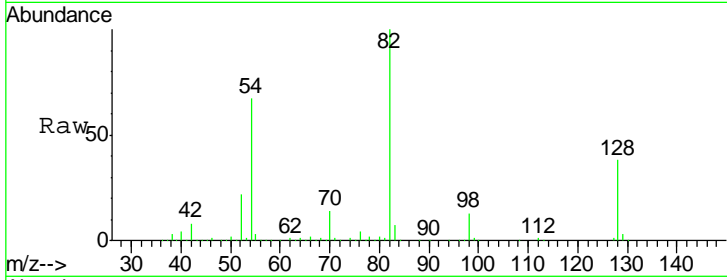




#25
 Isophorone
 Concen: 46.74 ng
 RT: 7.41 min Scan# 466
 Delta R.T. -0.26 min
 Lab File: BF080774.D
 Acq: 1 Aug 2015 11:47

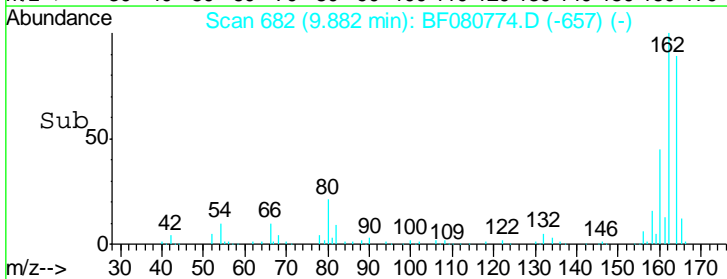
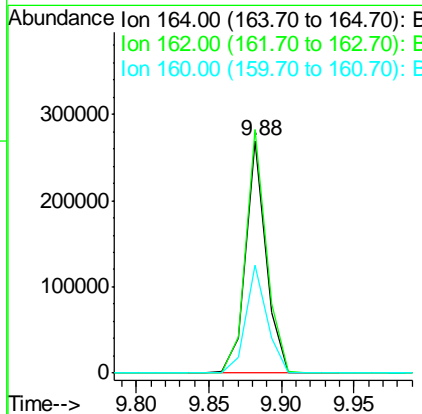
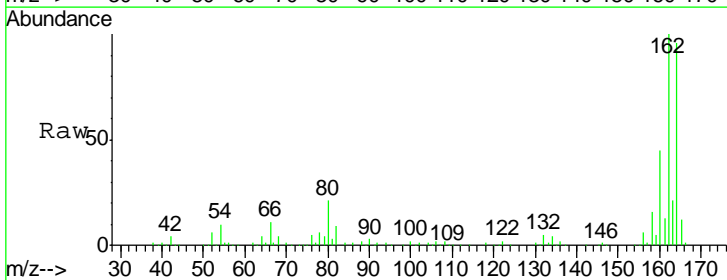
Instrument :
 BNA_F
 ClientSampleID :
 SB-3

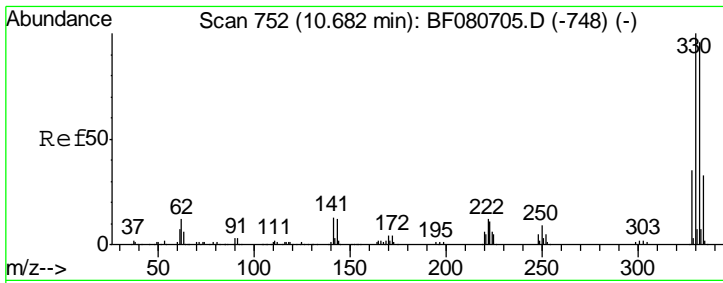
Tgt Ion	Resp	Lower	Upper
82	100		
95	0.0	5.8	8.6#
138	0.0	10.7	16.1#



#38
 Acenaphthene-d10
 Concen: 20.00 ng
 RT: 9.88 min Scan# 682
 Delta R.T. -0.01 min
 Lab File: BF080774.D
 Acq: 1 Aug 2015 11:47

Tgt Ion	Resp	Lower	Upper
164	100		
162	104.7	83.4	125.0
160	46.7	38.0	57.0

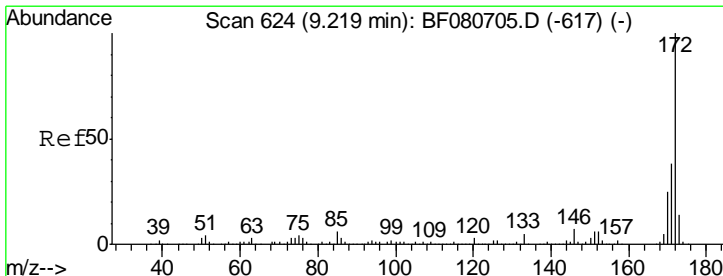
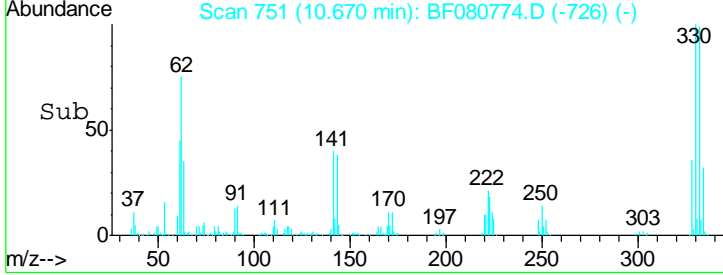
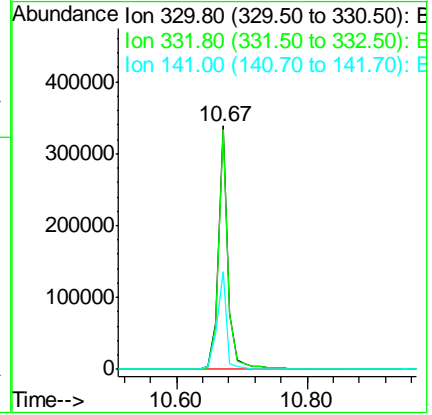
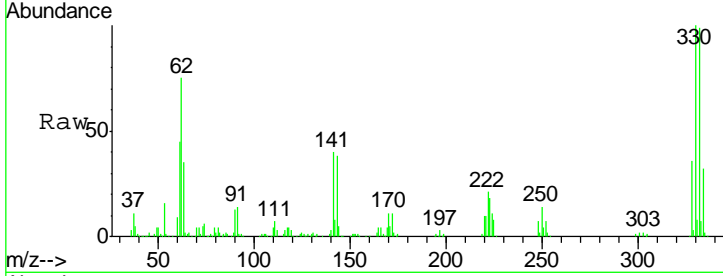




#41
 2,4,6-Tribromophenol
 Concen: 131.22 ng
 RT: 10.67 min Scan# 751
 Delta R.T. -0.01 min
 Lab File: BF080774.D
 Acq: 1 Aug 2015 11:47

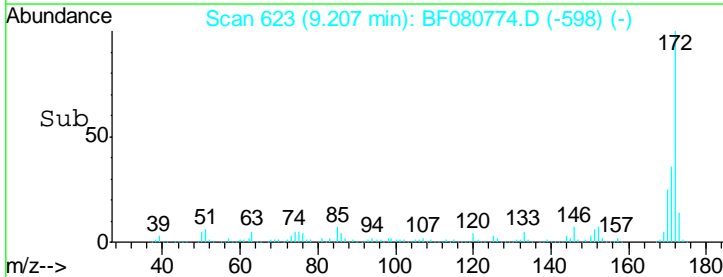
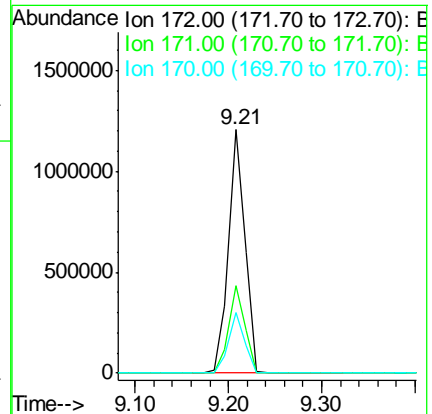
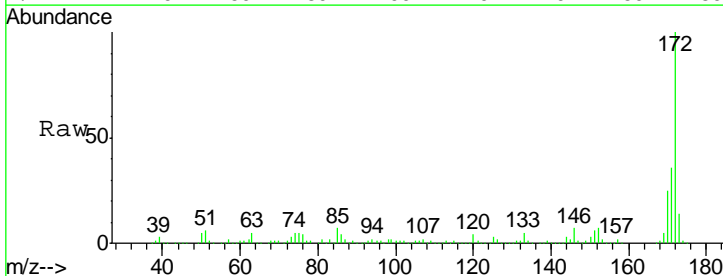
Instrument :
 BNA_F
 ClientSampled :
 SB-3

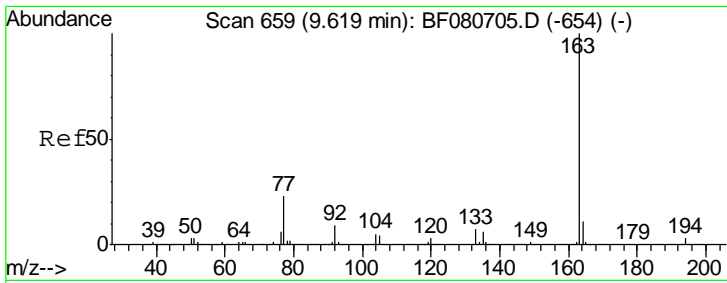
Tgt Ion	Resp	Lower	Upper
330	100		
332	97.7	76.6	114.8
141	39.8	26.0	39.0#



#44
 2-Fluorobiphenyl
 Concen: 84.34 ng
 RT: 9.21 min Scan# 623
 Delta R.T. -0.01 min
 Lab File: BF080774.D
 Acq: 1 Aug 2015 11:47

Tgt Ion	Resp	Lower	Upper
172	100		
171	36.1	30.2	45.4
170	24.8	20.2	30.2

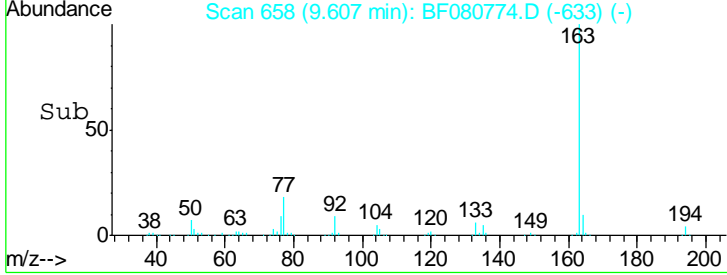
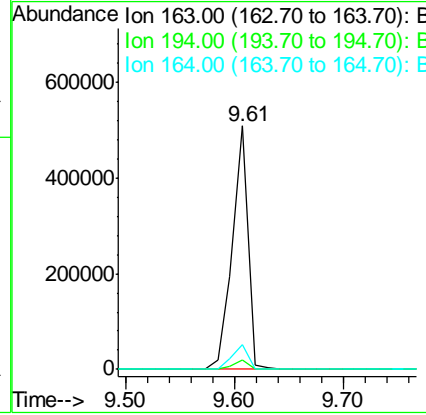
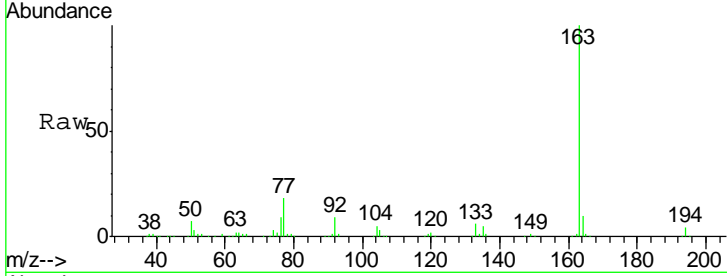




#49
 Dimethylphthalate
 Concen: 27.25 ng
 RT: 9.61 min Scan# 658
 Delta R.T. -0.01 min
 Lab File: BF080774.D
 Acq: 1 Aug 2015 11:47

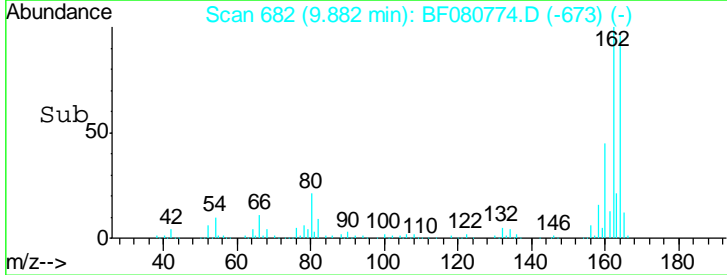
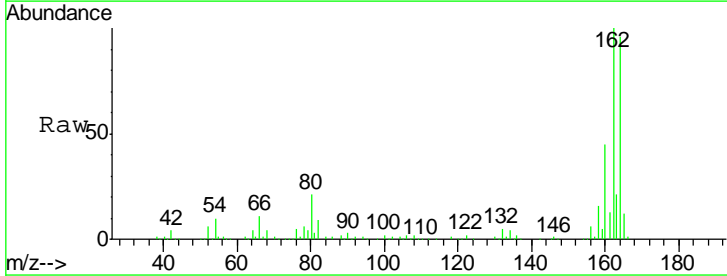
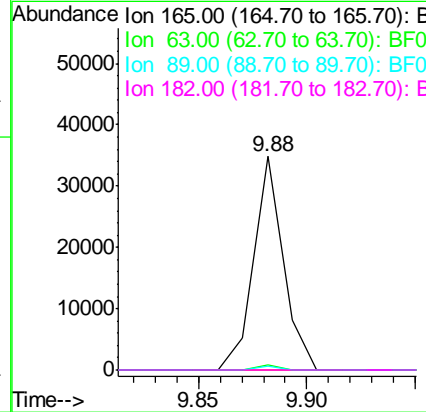
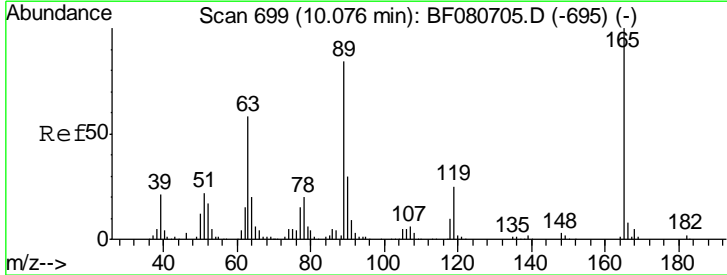
Instrument :
 BNA_F
 ClientSampled :
 SB-3

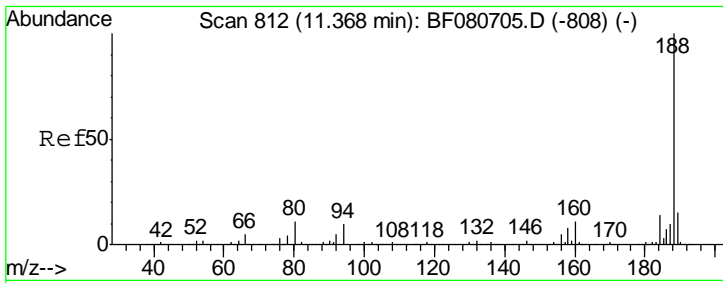
Tgt Ion	Resp	Lower	Upper
163	100		
194	3.7	2.7	4.1
164	9.9	8.7	13.1



#56
 2,4-Dinitrotoluene
 Concen: 6.40 ng
 RT: 9.88 min Scan# 682
 Delta R.T. -0.19 min
 Lab File: BF080774.D
 Acq: 1 Aug 2015 11:47

Tgt Ion	Resp	Lower	Upper
165	100		
63	2.1	46.7	70.1#
89	1.7	67.4	101.2#
182	0.0	1.8	2.6#

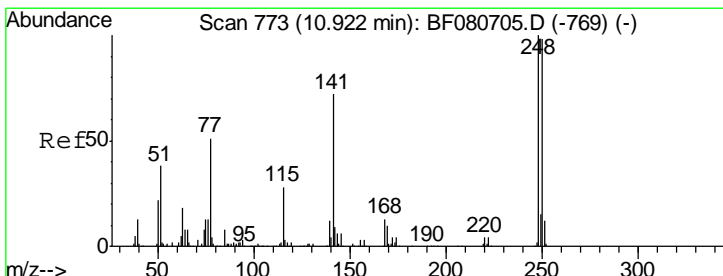
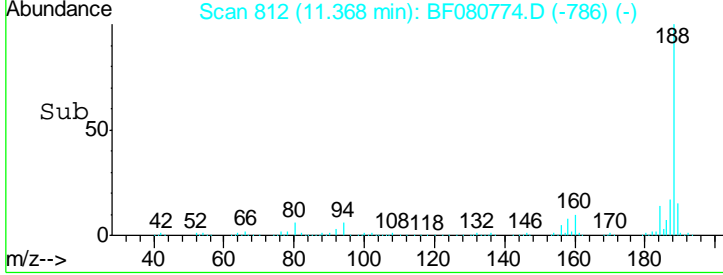
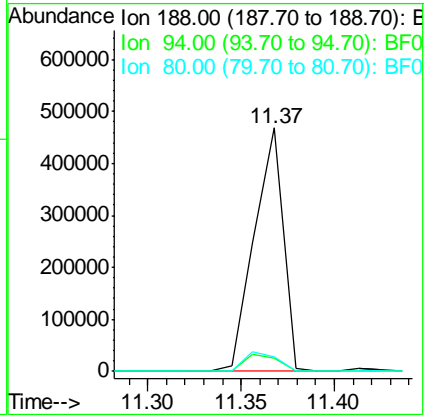
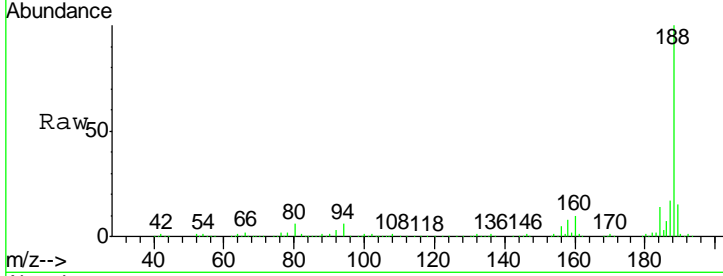




#63
 Phenanthrene-d10
 Concen: 20.00 ng
 RT: 11.37 min Scan# 812
 Delta R.T. -0.00 min
 Lab File: BF080774.D
 Acq: 1 Aug 2015 11:47

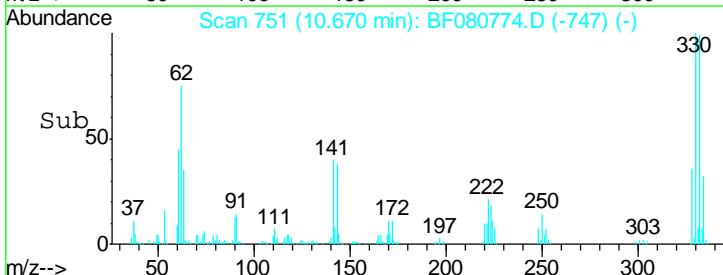
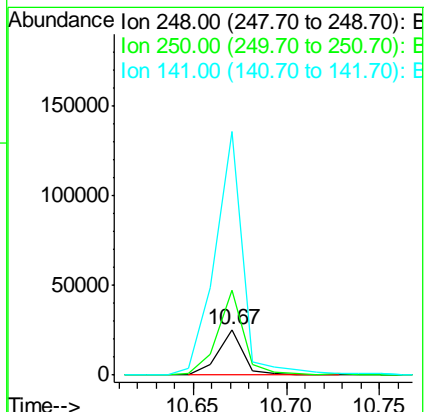
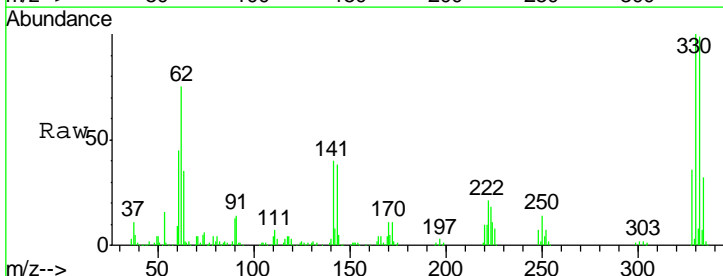
Instrument :
 BNA_F
 ClientSampled :
 SB-3

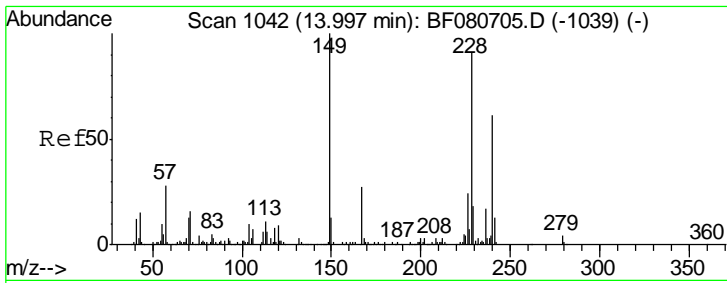
Tgt Ion	Resp	Lower	Upper
188	100		
94	5.7	8.1	12.1#
80	5.7	9.1	13.7#



#66
 4-Bromophenyl-phenylether
 Concen: 4.57 ng
 RT: 10.67 min Scan# 751
 Delta R.T. -0.25 min
 Lab File: BF080774.D
 Acq: 1 Aug 2015 11:47

Tgt Ion	Resp	Lower	Upper
248	100		
250	185.9	78.4	117.6#
141	537.1	57.5	86.3#

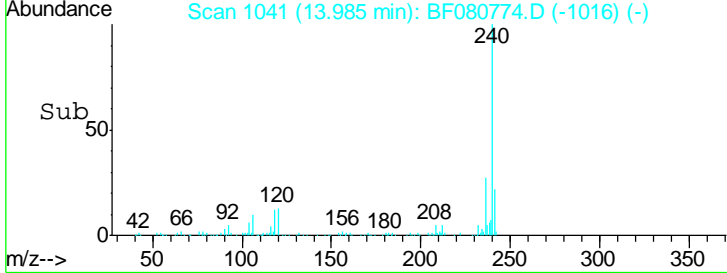
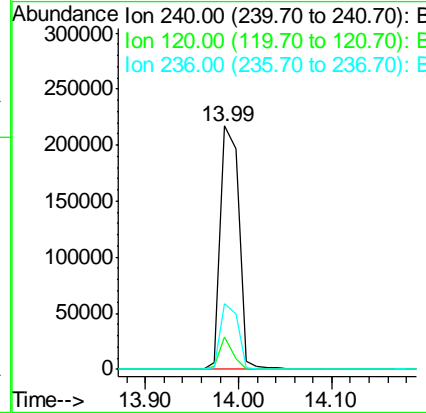
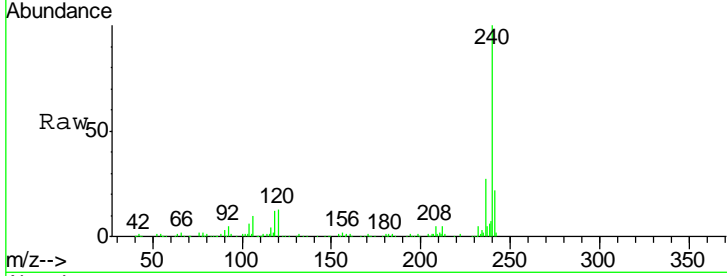




#75
 Chrysene-d12
 Concen: 20.00 ng
 RT: 13.99 min Scan# 1041
 Delta R.T. -0.01 min
 Lab File: BF080774.D
 Acq: 1 Aug 2015 11:47

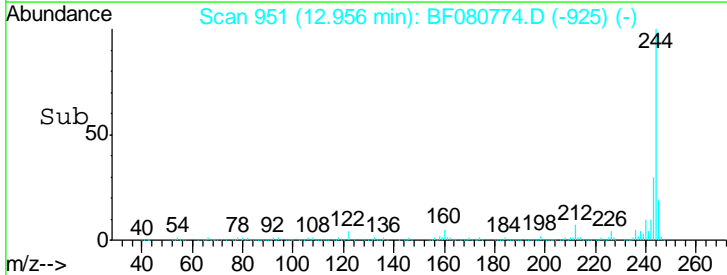
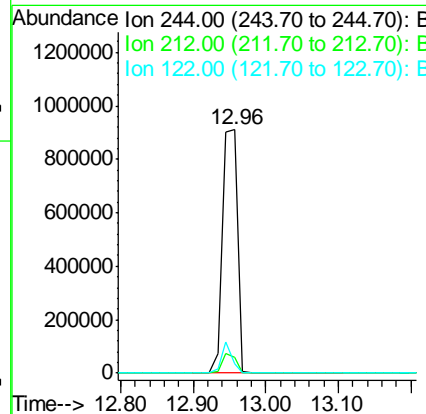
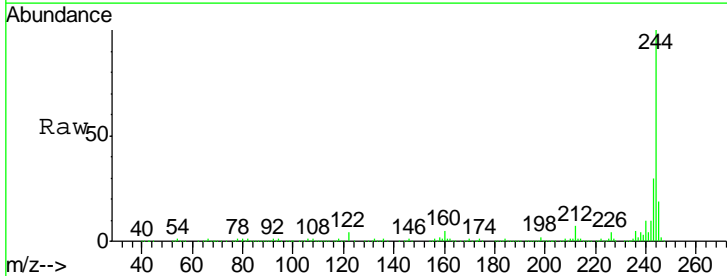
Instrument :
 BNA_F
 ClientSampled :
 SB-3

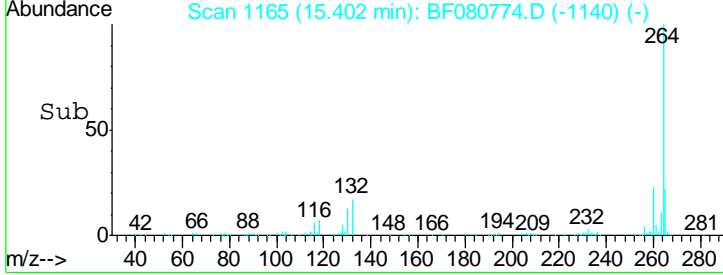
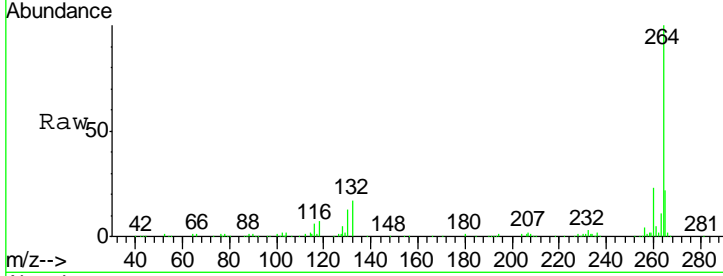
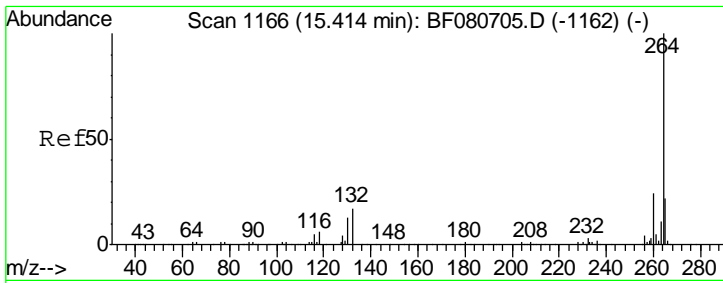
Tgt Ion	Resp	Lower	Upper
240	297647		
120	13.3	11.8	17.8
236	26.8	21.8	32.8



#78
 Terphenyl-d14
 Concen: 82.90 ng
 RT: 12.96 min Scan# 951
 Delta R.T. -0.00 min
 Lab File: BF080774.D
 Acq: 1 Aug 2015 11:47

Tgt Ion	Resp	Lower	Upper
244	1304708		
212	6.7	5.9	8.9
122	3.9	6.6	9.8#





#86
 Perylene-d12
 Concen: 20.00 ng
 RT: 15.40 min Scan# 1165
 Delta R.T. -0.01 min
 Lab File: BF080774.D
 Acq: 1 Aug 2015 11:47

Instrument :
 BNA_F
 ClientSampled :
 SB-3

Tgt Ion	Resp	Lower	Upper
264	100		
260	22.7	19.4	29.0
265	22.2	17.3	25.9

