

Data Path : Z:\svoasrv\HPCHEM1\BNA\_F\Data\BF080124\  
 Data File : BF138715.D  
 Acq On : 01 Aug 2024 10:14 am  
 Operator : RC/JU  
 Sample : PB162312BL  
 Misc :  
 ALS Vial : 3 Sample Multiplier: 1

Instrument :  
 BNA\_F  
 ClientSampleId :  
 PB162312BL

Integration Parameters: autoint1.e  
 Integrator: ChemStation

Method : Z:\pestpcbsrv\HPCHEM1\ECD\_D\Method\PD060724CLP.M  
 Title : GC Extractables

Signal : TIC: BF138715.D\data.ms

peak #	R.T. min	first scan	max scan	last scan	PK TY	peak height	corr. area	corr. % max.	% of total
1	2.228	9	23	32	rVB	73879	132186	3.57%	0.593%
2	3.963	310	318	328	rVB	114764	179148	4.84%	0.804%
3	5.098	505	511	522	rVB	115749	210036	5.67%	0.943%
4	5.487	570	577	582	rBV	2103240	2899409	78.29%	13.014%
5	6.487	740	747	752	rBV	2047059	3037507	82.02%	13.634%
6	6.845	802	808	813	rBV	430879	545540	14.73%	2.449%
7	7.410	896	904	909	rBV	1338134	1995831	53.89%	8.959%
8	8.122	1019	1025	1031	rBV	545564	747024	20.17%	3.353%
9	9.198	1200	1208	1214	rBV	2385672	3521519	95.09%	15.807%
10	9.880	1312	1324	1329	rBV	676499	891677	24.08%	4.002%
11	10.674	1451	1459	1485	rBV	1541052	2174584	58.72%	9.761%
12	11.369	1570	1577	1584	rBV	726942	949406	25.64%	4.262%
13	12.957	1840	1847	1852	rBV	2639841	3703539	100.00%	16.624%
14	14.004	2020	2025	2034	rVB	544206	716497	19.35%	3.216%
15	15.468	2268	2274	2286	rBV	299370	466570	12.60%	2.094%
16	16.951	2519	2526	2541	rVB5	25961	107832	2.91%	0.484%

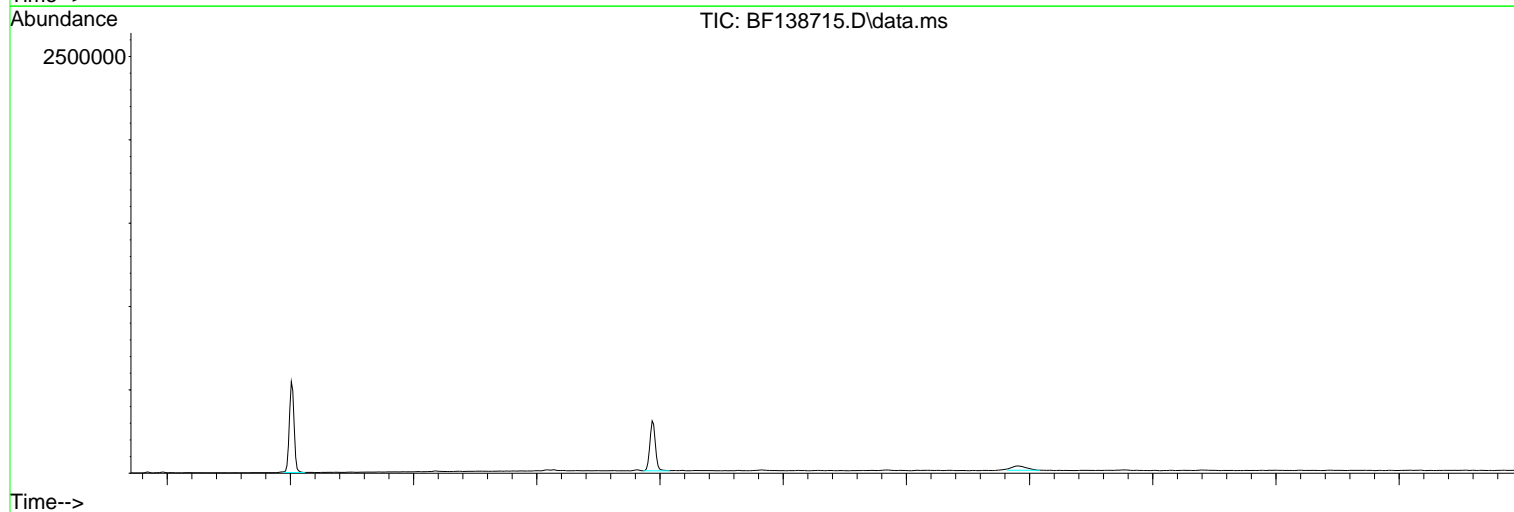
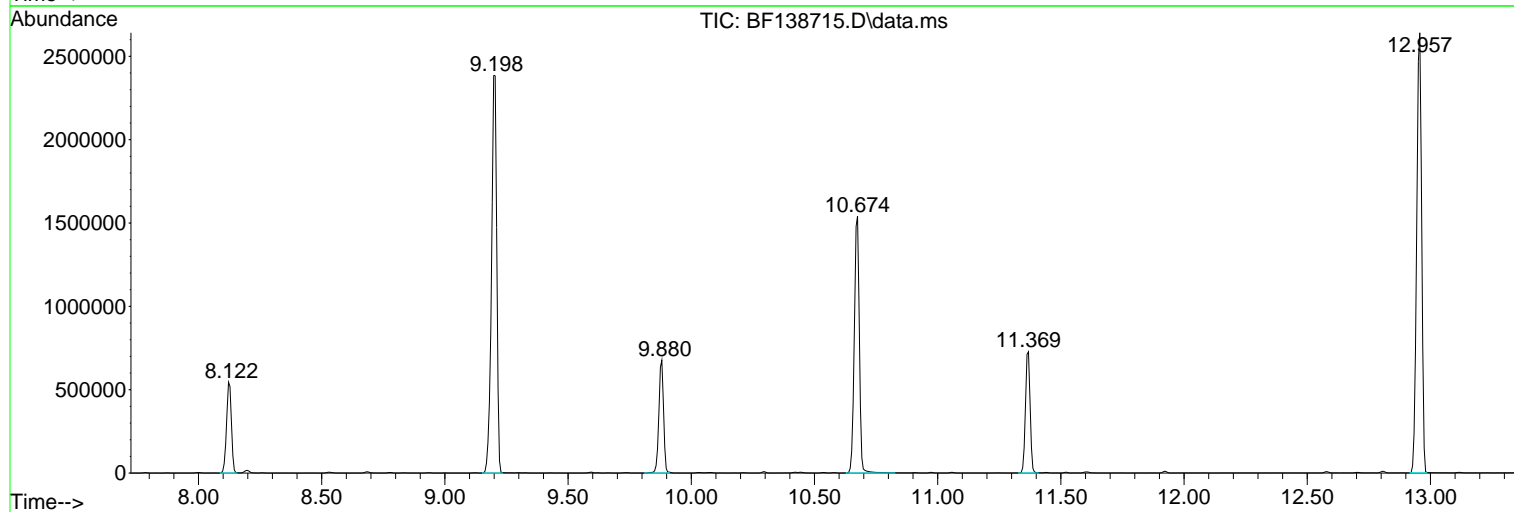
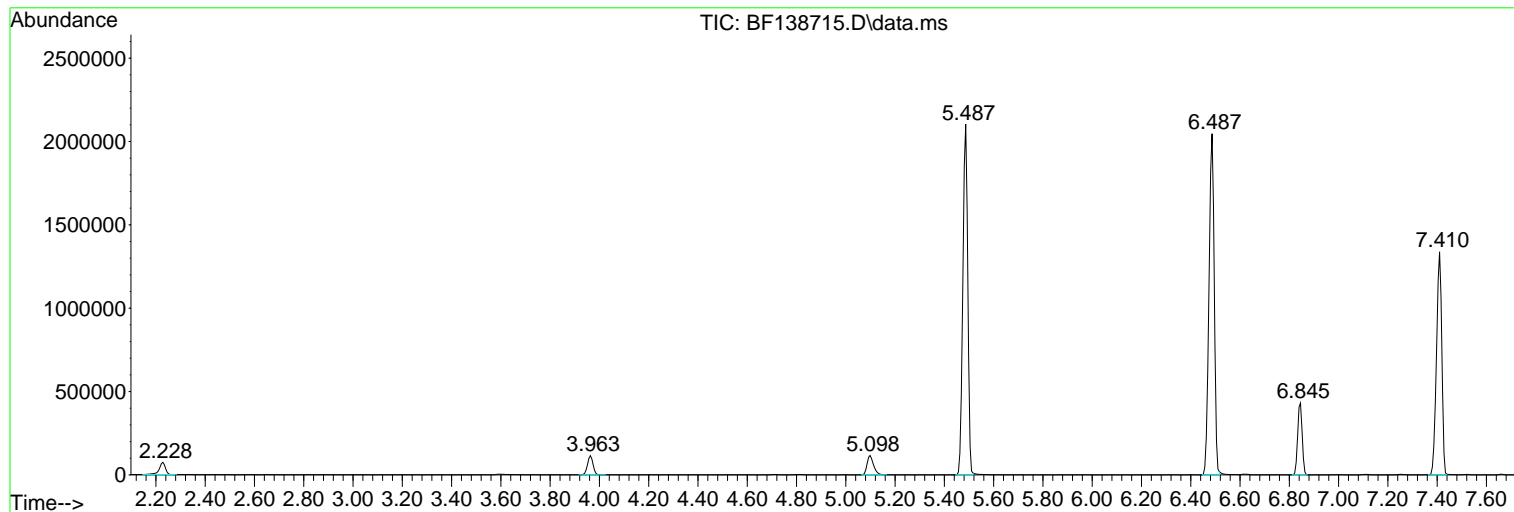
Sum of corrected areas: 22278305

Data Path : Z:\svoasrv\HPCHEM1\BNA\_F\Data\BF080124\  
Data File : BF138715.D  
Acq On : 01 Aug 2024 10:14 am  
Operator : RC/JU  
Sample : PB162312BL  
Misc :  
ALS Vial : 3 Sample Multiplier: 1

Instrument :  
BNA\_F  
ClientSampleId :  
PB162312BL

Quant Method : Z:\svoasrv\HPCHEM1\BNA\_F\Methods\8270-BF073024.M  
Quant Title : ASP BNA STANDARDS FOR 5 POINT CALIBRATION

TIC Library : C:\Database\NIST20.L  
TIC Integration Parameters: LSCINT.P



Data Path : Z:\svoasrv\HPCHEM1\BNA\_F\Data\BF080124\  
Data File : BF138715.D  
Acq On : 01 Aug 2024 10:14 am  
Operator : RC/JU  
Sample : PB162312BL  
Misc :  
ALS Vial : 3 Sample Multiplier: 1

**Instrument :**  
BNA\_F  
**ClientSampleId :**  
PB162312BL

Quant Method : Z:\svoasrv\HPCHEM1\BNA\_F\Methods\8270-BF073024.M  
Quant Title : ASP BNA STANDARDS FOR 5 POINT CALIBRATION

TIC Library : C:\Database\NIST20.L  
TIC Integration Parameters: LSCINT.P

No Library Search Compounds Detected

\*\*\*\*\*

Data Path : Z:\svoasrv\HPCHEM1\BNA\_F\Data\BF080124\  
Data File : BF138715.D  
Acq On : 01 Aug 2024 10:14 am  
Operator : RC/JU  
Sample : PB162312BL  
Misc :  
ALS Vial : 3 Sample Multiplier: 1

Instrument :  
BNA\_F  
ClientSampleId :  
PB162312BL

Quant Method : Z:\svoasrv\HPCHEM1\BNA\_F\Methods\8270-BF073024.M  
Quant Title : ASP BNA STANDARDS FOR 5 POINT CALIBRATION

TIC Library : C:\Database\NIST20.L  
TIC Integration Parameters: LSCINT.P

TIC Top Hit name	RT	EstConc	Units	Response	#	RT	Resp	Conc
------------------	----	---------	-------	----------	---	----	------	------

-----|