

Data Path : Z:\SVOASRV\HPCHEM1\BNA F\DATA\BF080320\
 Data File : BF121182.D
 Acq On : 3 Aug 2020 18:11
 Operator : JU/CG
 Sample : L3521-03
 Misc :
 ALS Vial : 12 Sample Multiplier: 1

Instrument :
 BNA_F
 ClientSampleId :
 COMP-AB

Quant Time: Aug 03 18:38:09 2020
 Quant Method : Z:\SVOASRV\HPCHEM1\BNA F\METHODS\8270-BF071620.M
 Quant Title : ASP BNA STANDARDS FOR 5 POINT CALIBRATION
 QLast Update : Wed Jul 29 14:55:43 2020
 Response via : Initial Calibration

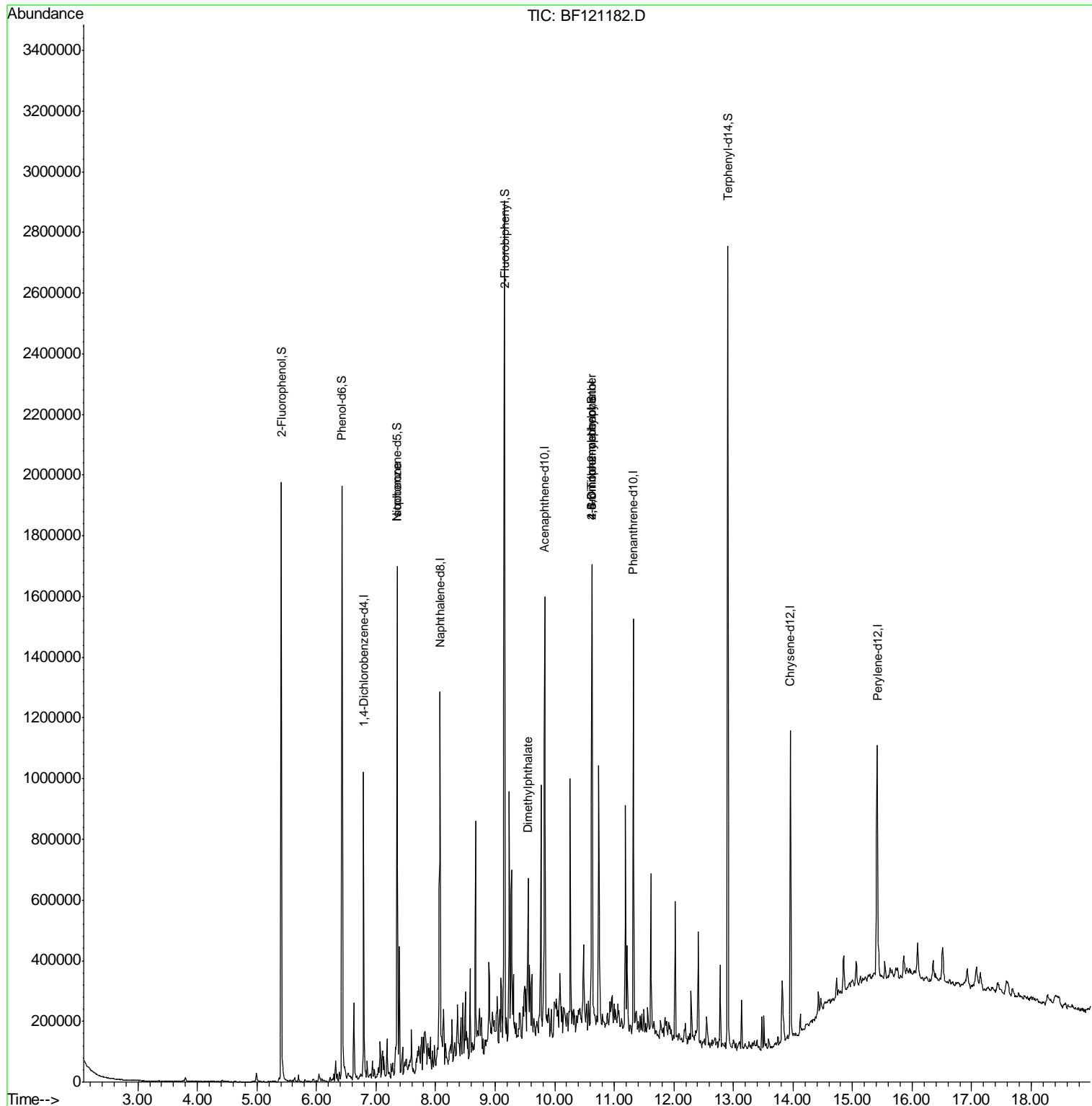
Internal Standards	R.T.	QIon	Response	Conc	Units	Dev(Min)
1) 1,4-Dichlorobenzene-d4	6.79	152	141664	20.00	ng	-0.01
21) Naphthalene-d8	8.07	136	541138	20.00	ng	-0.01
39) Acenaphthene-d10	9.83	164	280140	20.00	ng	0.00
64) Phenanthrene-d10	11.32	188	516950	20.00	ng	0.00
76) Chrysene-d12	13.96	240	369269	20.00	ng	0.00
86) Perylene-d12	15.42	264	388249	20.00	ng	0.01
System Monitoring Compounds						
5) 2-Fluorophenol	5.41	112	645610	74.71	ng	0.00
7) Phenol-d6	6.43	99	811644	72.71	ng	-0.01
23) Nitrobenzene-d5	7.36	82	513067	54.86	ng	-0.02
42) 2,4,6-Tribromophenol	10.63	330	242622	79.12	ng	0.00
45) 2-Fluorobiphenyl	9.16	172	966046	51.49	ng	0.00
79) Terphenyl-d14	12.91	244	919618	54.14	ng	0.00
Target Compounds						
9) Benzaldehyde	6.35	77	1016	Below Cal		# 1
25) Isophorone	7.36	82	502755	26.936	ng	# 62
50) Dimethylphthalate	9.55	163	129907	6.428	ng	98
65) 4,6-Dinitro-2-methylphenol	10.62	198	407	3.968	ng	# 1
67) 4-Bromophenyl-phenylether	10.63	248	14157	2.456	ng	# 1

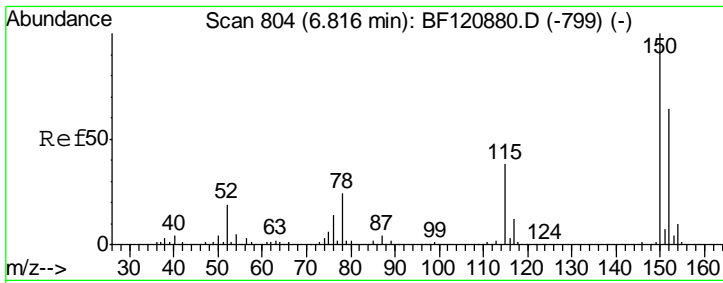
(#) = qualifier out of range (m) = manual integration (+) = signals summed

Data Path : Z:\SVOASRV\HPCHEM1\BNA F\DATA\BF080320\
 Data File : BF121182.D
 Acq On : 3 Aug 2020 18:11
 Operator : JU/CG
 Sample : L3521-03
 Misc :
 ALS Vial : 12 Sample Multiplier: 1

Instrument :
 BNA_F
 Client Sampled :
 COMP-AB

Quant Time: Aug 03 18:38:09 2020
 Quant Method : Z:\SVOASRV\HPCHEM1\BNA F\METHODS\8270-BF071620.M
 Quant Title : ASP BNA STANDARDS FOR 5 POINT CALIBRATION
 QLast Update : Wed Jul 29 14:55:43 2020
 Response via : Initial Calibration



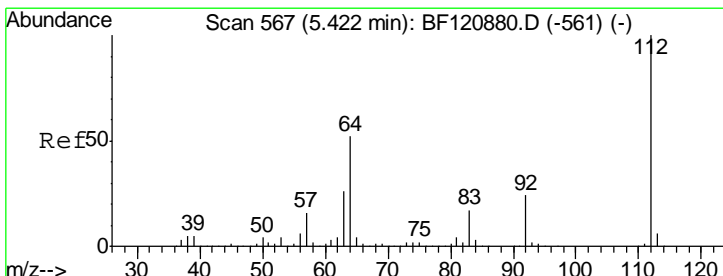
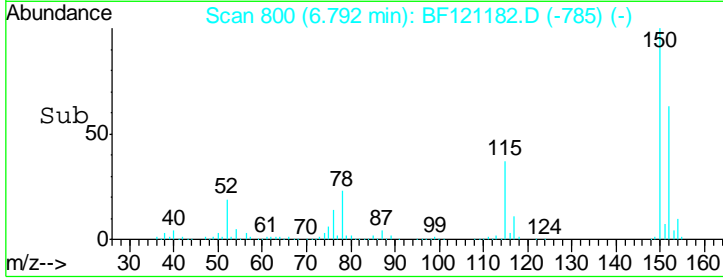
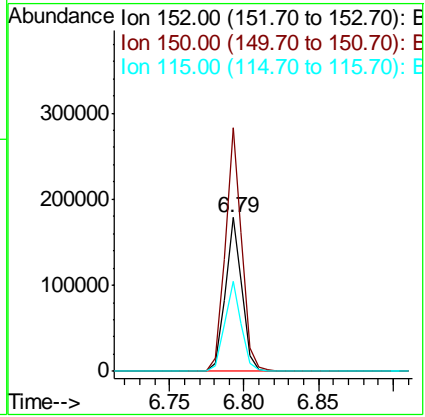
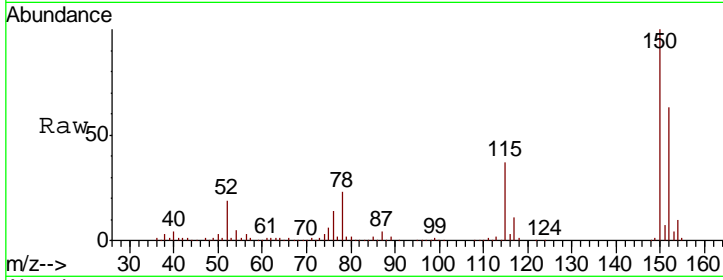


#1
 1,4-Dichlorobenzene-d4
 Concen: 20.000 ng
 RT: 6.79 min Scan# 800
 Delta R.T. -0.01 min
 Lab File: BF121182.D
 Acq: 3 Aug 2020 18:11

Instrument :
 BNA_F
ClientSampled :
 COMP-AB

Tot Ion:152 Resp: 141664

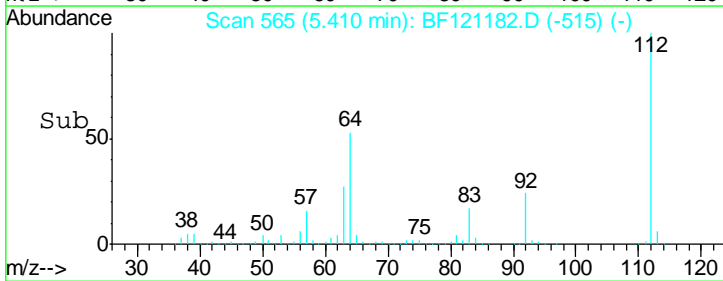
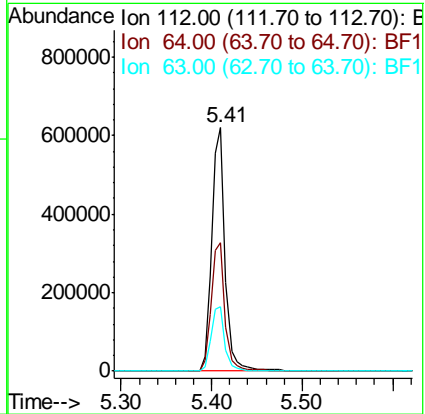
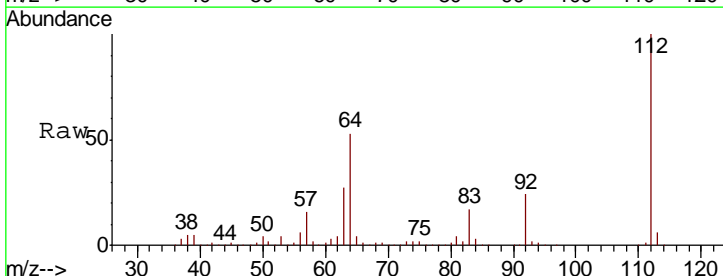
Ion	Ratio	Lower	Upper
152	100		
150	158.2	125.6	188.4
115	58.8	46.2	69.2

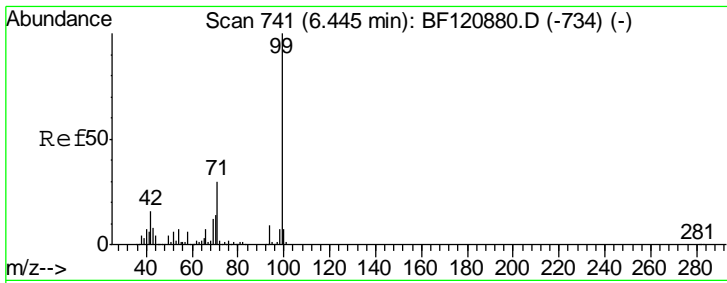


#5
 2-Fluorophenol
 Concen: 74.711 ng
 RT: 5.41 min Scan# 565
 Delta R.T. -0.01 min
 Lab File: BF121182.D
 Acq: 3 Aug 2020 18:11

Tgt Ion:112 Resp: 645610

Ion	Ratio	Lower	Upper
112	100		
64	52.6	43.9	65.9
63	26.6	22.7	34.1

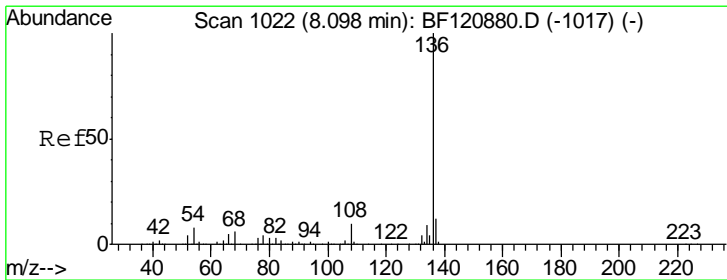
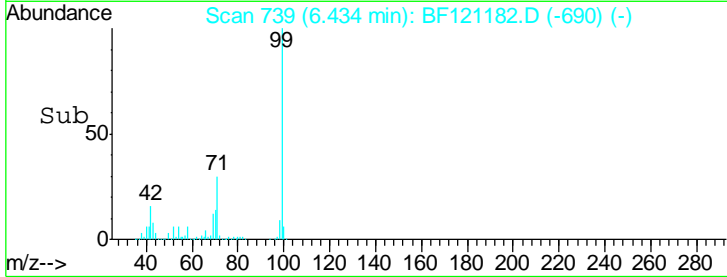
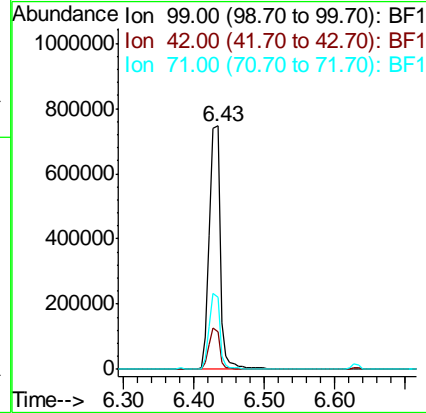
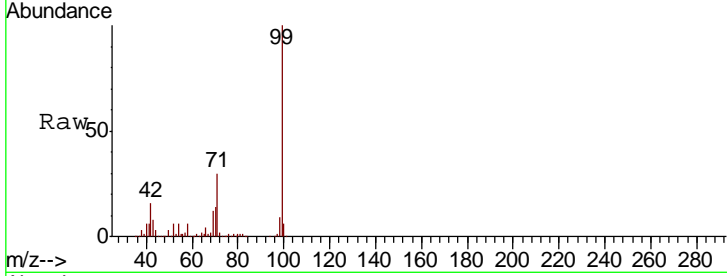




#7
 Phenol-d6
 Concen: 72.711 ng
 RT: 6.43 min Scan# 739
 Delta R.T. -0.01 min
 Lab File: BF121182.D
 Acq: 3 Aug 2020 18:11

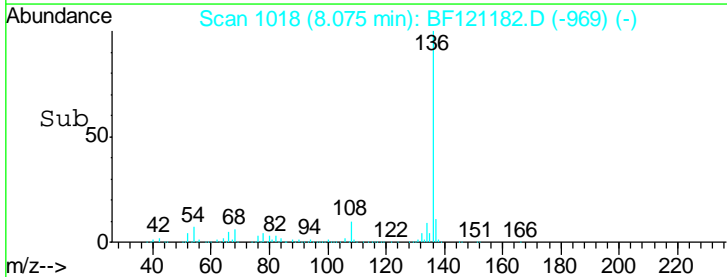
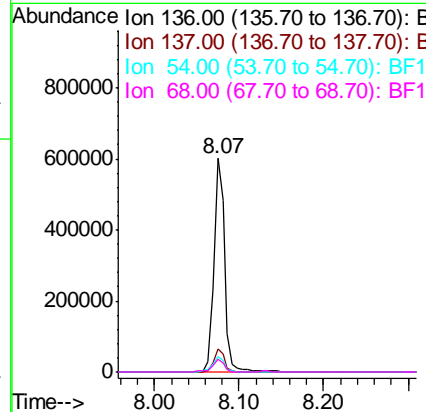
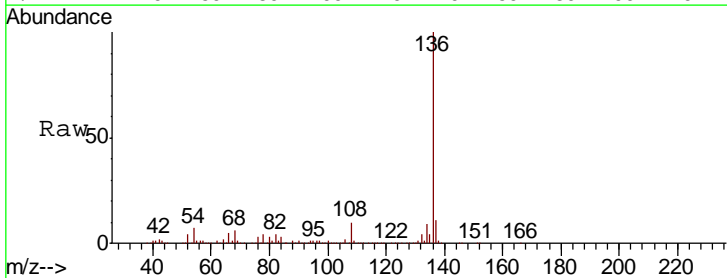
Instrument :
 BNA_F
 ClientSampled :
 COMP-AB

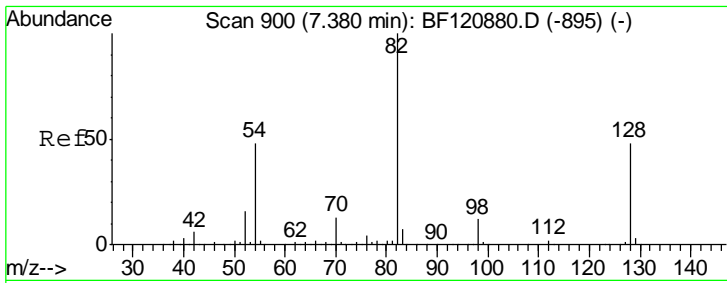
Tgt Ion	Resp	Lower	Upper
99	100		
42	15.6	13.5	20.3
71	29.7	25.0	37.4



#21
 Naphthalene-d8
 Concen: 20.000 ng
 RT: 8.07 min Scan# 1018
 Delta R.T. -0.01 min
 Lab File: BF121182.D
 Acq: 3 Aug 2020 18:11

Tgt Ion	Resp	Lower	Upper
136	100		
137	11.0	9.0	13.4
54	7.5	6.1	9.1
68	6.2	5.0	7.6

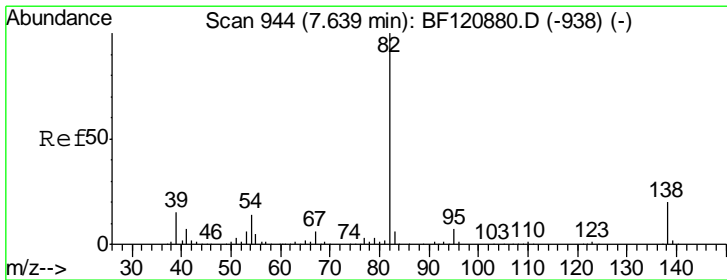
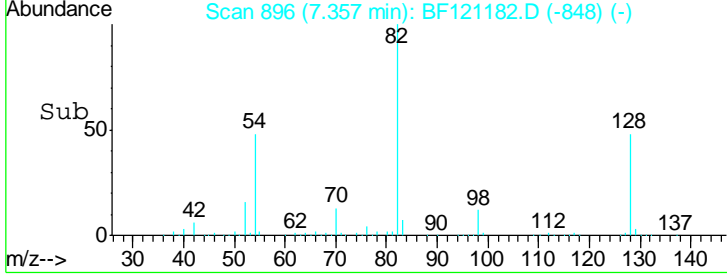
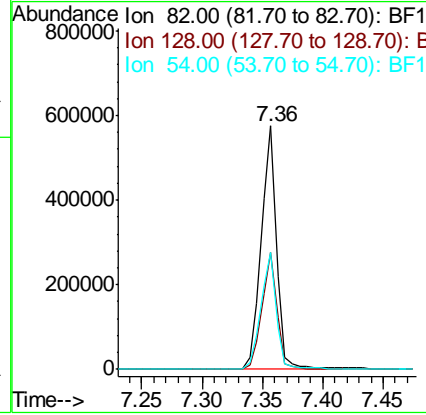
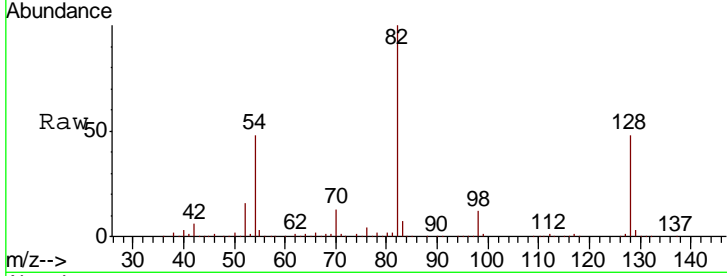




#23
 Nitrobenzene-d5
 Concen: 54.861 ng
 RT: 7.36 min Scan# 896
 Delta R.T. -0.02 min
 Lab File: BF121182.D
 Acq: 3 Aug 2020 18:11

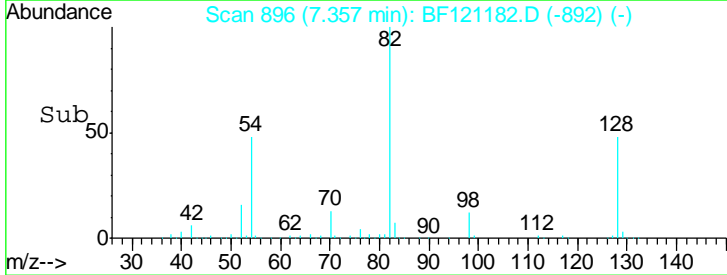
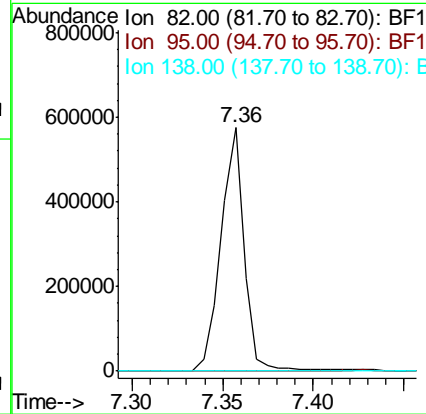
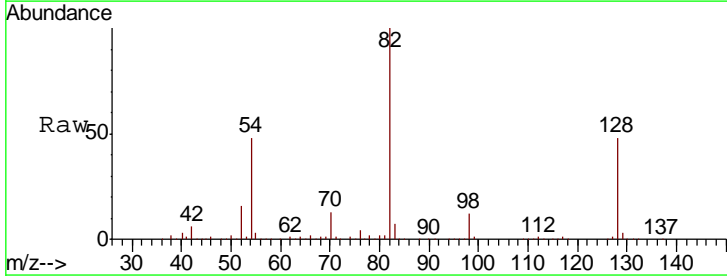
Instrument :
 BNA_F
 ClientSampleID :
 COMP-AB

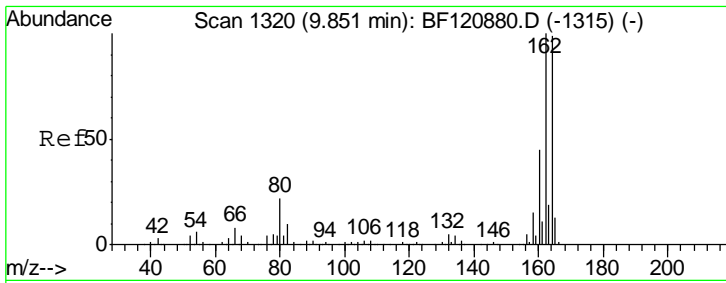
Tgt Ion	Resp	Lower	Upper
82	100		
128	48.3	39.2	58.8
54	47.8	37.8	56.8



#25
 Isophorone
 Concen: 26.936 ng
 RT: 7.36 min Scan# 896
 Delta R.T. -0.28 min
 Lab File: BF121182.D
 Acq: 3 Aug 2020 18:11

Tgt Ion	Resp	Lower	Upper
82	100		
95	0.2	5.5	8.3#
138	0.0	16.2	24.2#

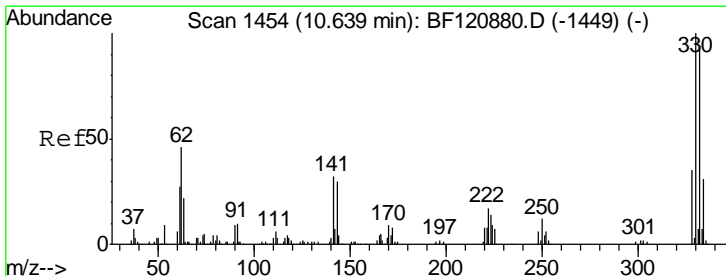
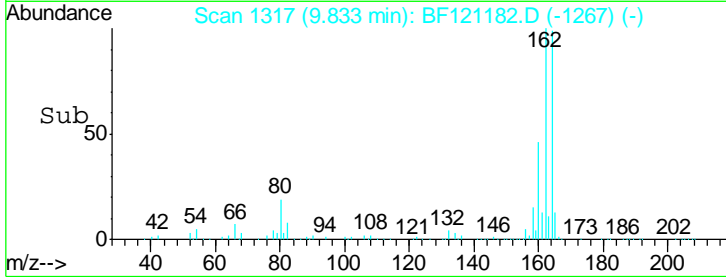
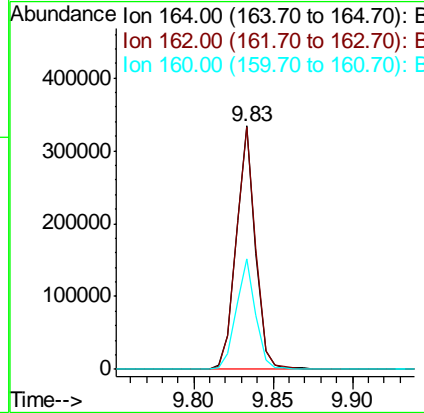
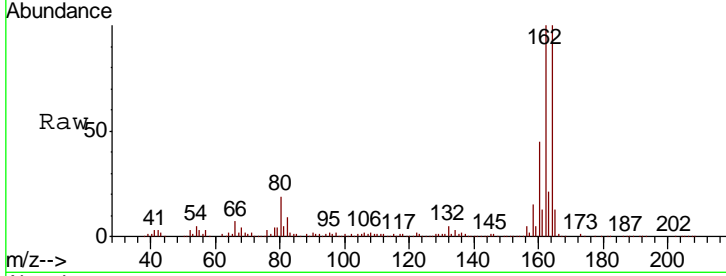




#39
 Acenaphthene-d10
 Concen: 20.000 ng
 RT: 9.83 min Scan# 1317
 Delta R.T. -0.01 min
 Lab File: BF121182.D
 Acq: 3 Aug 2020 18:11

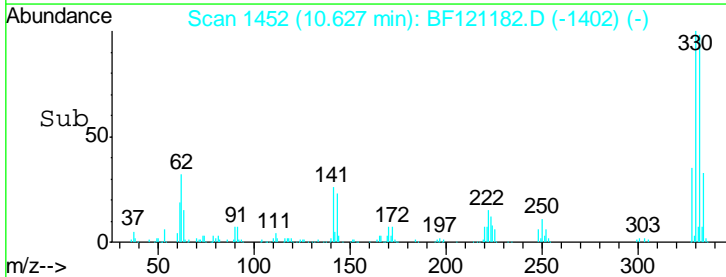
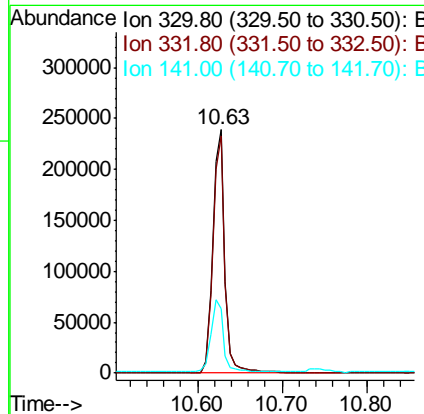
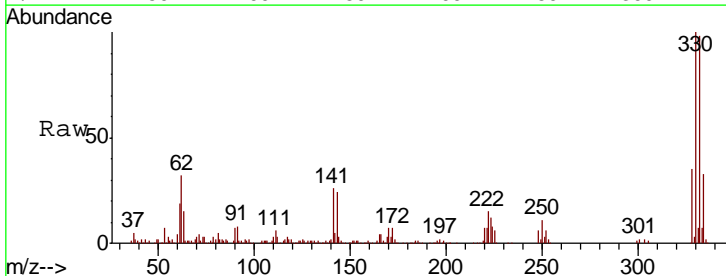
Instrument :
 BNA_F
ClientSampled :
 COMP-AB

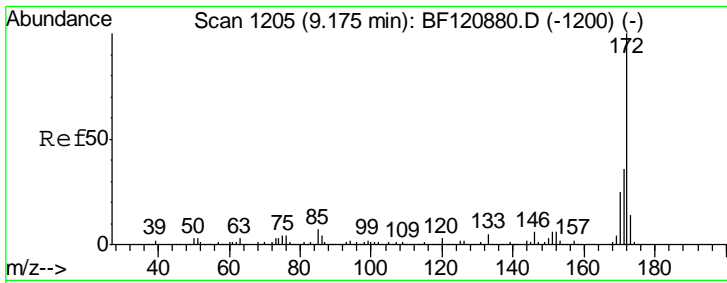
Tgt Ion	Resp	Lower	Upper
164	100		
162	99.8	82.2	123.2
160	45.5	37.2	55.8



#42
 2,4,6-Tribromophenol
 Concen: 79.123 ng
 RT: 10.63 min Scan# 1452
 Delta R.T. -0.01 min
 Lab File: BF121182.D
 Acq: 3 Aug 2020 18:11

Tgt Ion	Resp	Lower	Upper
330	100		
332	96.6	76.1	114.1
141	30.0	24.1	36.1

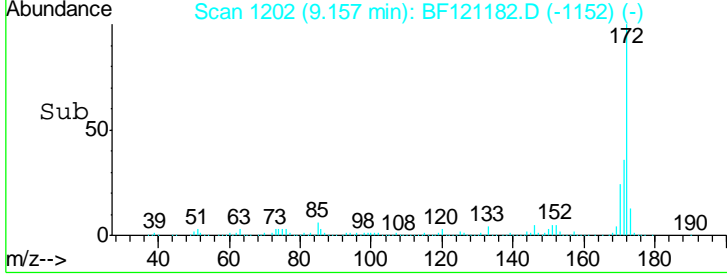
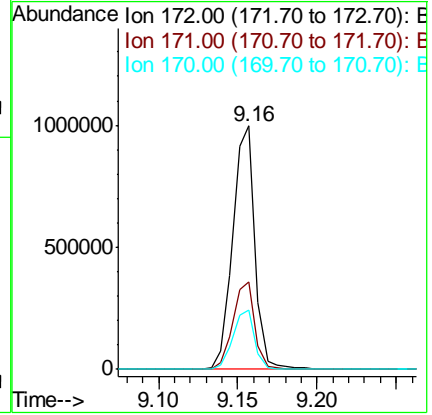
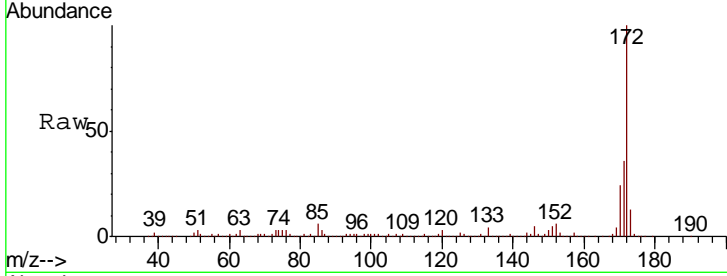




#45
 2-Fluorobiphenyl
 Concen: 51.487 ng
 RT: 9.16 min Scan# 1202
 Delta R.T. -0.01 min
 Lab File: BF121182.D
 Acq: 3 Aug 2020 18:11

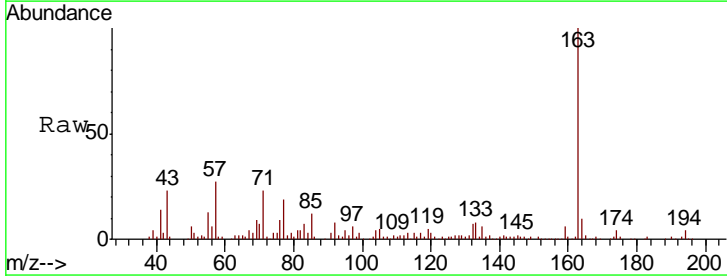
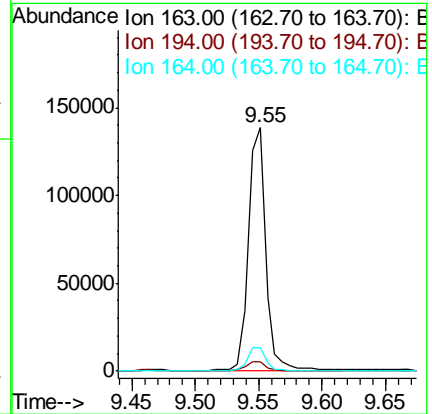
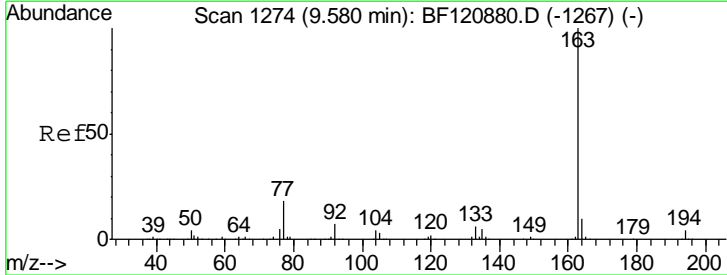
Instrument :
 BNA_F
 ClientSampleId :
 COMP-AB

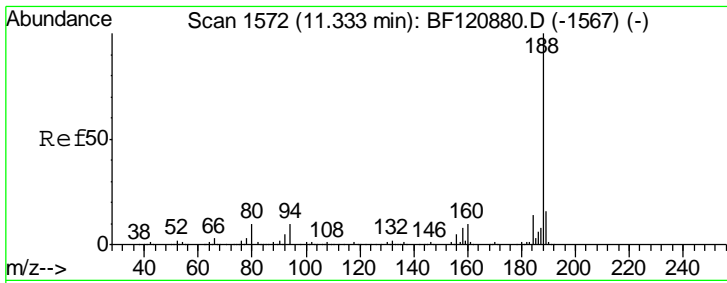
Tgt Ion	Resp	Lower	Upper
172	100		
171	35.9	29.0	43.4
170	24.1	19.6	29.4



#50
 Dimethylphthalate
 Concen: 6.428 ng
 RT: 9.55 min Scan# 1269
 Delta R.T. -0.02 min
 Lab File: BF121182.D
 Acq: 3 Aug 2020 18:11

Tgt Ion	Resp	Lower	Upper
163	100		
194	4.1	3.0	4.4
164	9.7	8.4	12.6

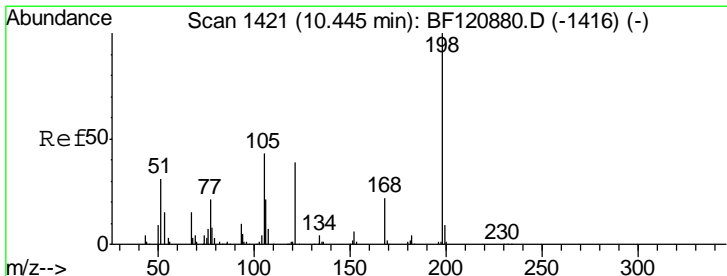
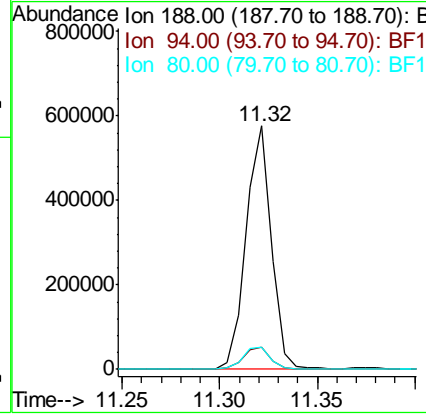
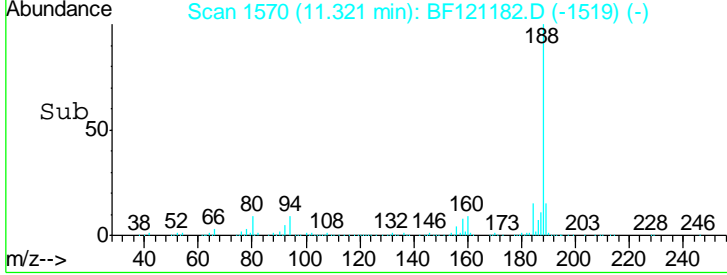
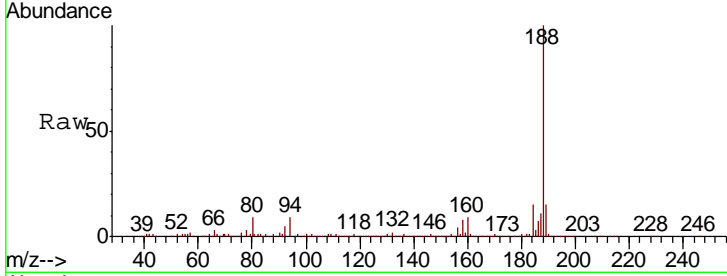




#64
 Phenanthrene-d10
 Concen: 20.000 ng
 RT: 11.32 min Scan# 1570
 Delta R.T. -0.00 min
 Lab File: BF121182.D
 Acq: 3 Aug 2020 18:11

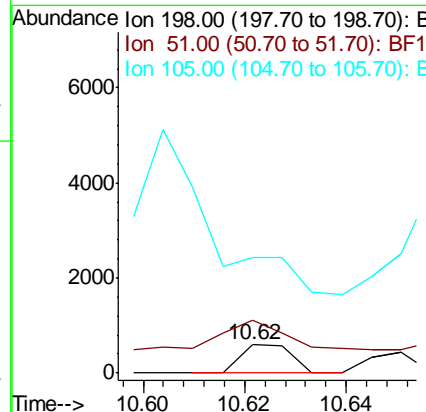
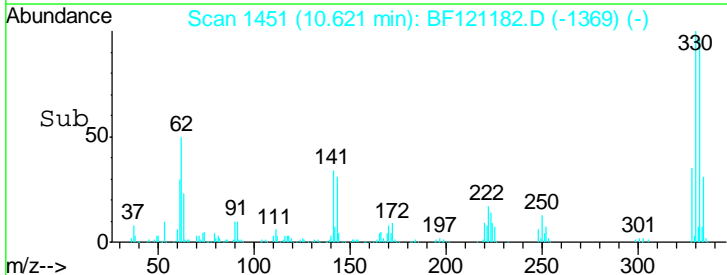
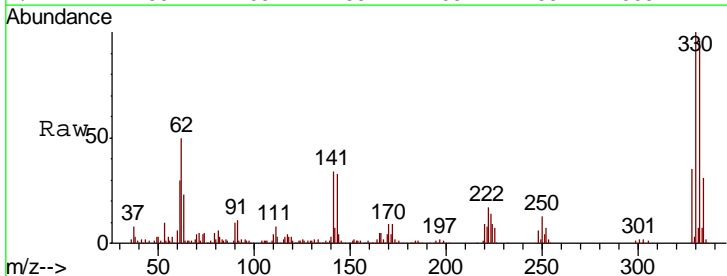
Instrument :
 BNA_F
 ClientSampled :
 COMP-AB

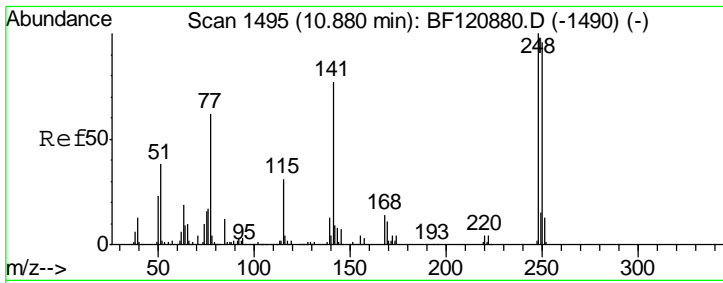
Tgt Ion	Resp	Lower	Upper
188	100		
94	9.1	8.0	12.0
80	9.3	8.3	12.5



#65
 4,6-Dinitro-2-methylphenol
 Concen: 3.968 ng
 RT: 10.62 min Scan# 1451
 Delta R.T. 0.18 min
 Lab File: BF121182.D
 Acq: 3 Aug 2020 18:11

Tgt Ion	Resp	Lower	Upper
198	100		
51	189.2	23.4	63.4#
105	412.2	23.7	63.7#

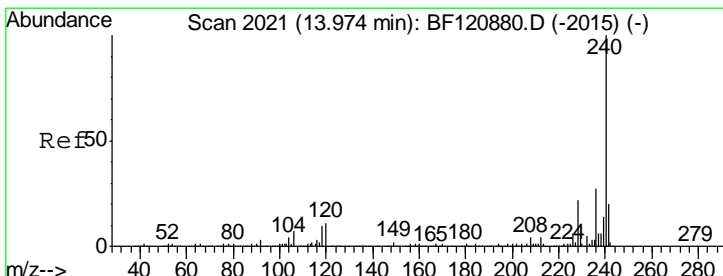
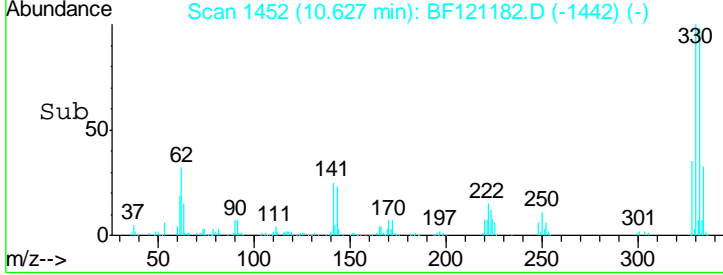
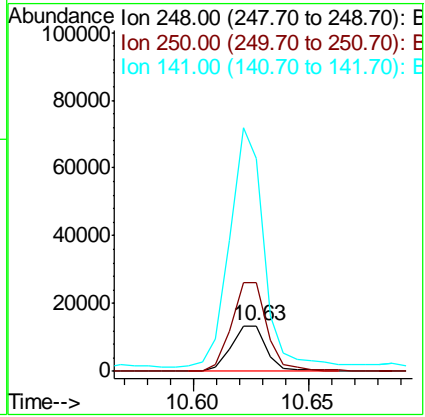
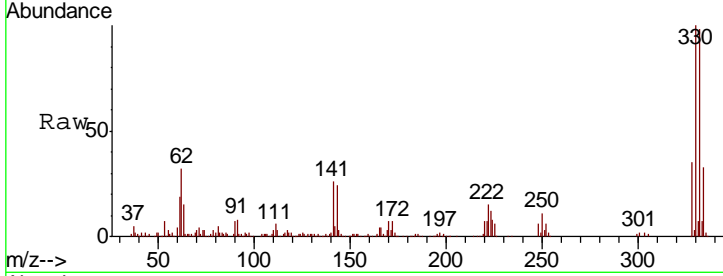




#67
 4-Bromophenyl-phenylether
 Concen: 2.456 ng
 RT: 10.63 min Scan# 1452
 Delta R.T. -0.24 min
 Lab File: BF121182.D
 Acq: 3 Aug 2020 18:11

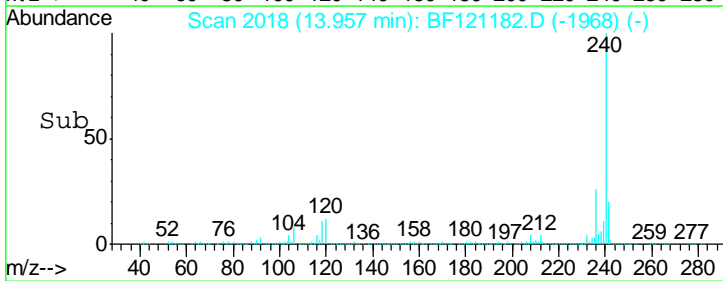
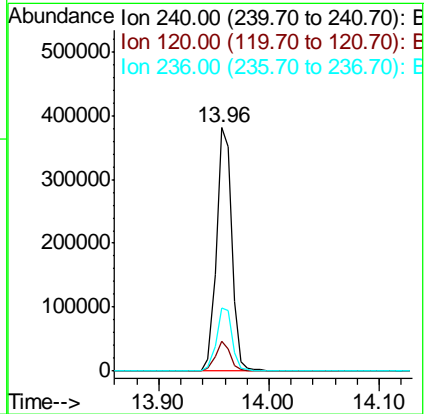
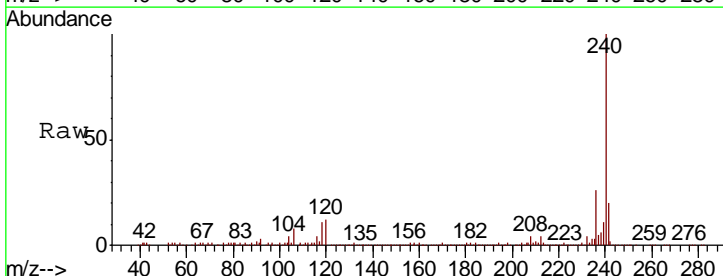
Instrument :
 BNA_F
ClientSampled :
 COMP-AB

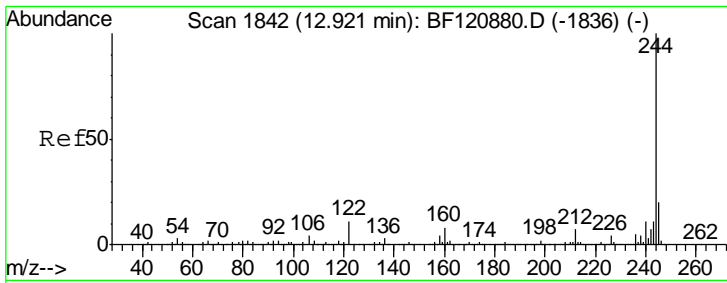
Tgt Ion	Resp	Lower	Upper
248	14157		
250	194.9	77.0	115.6#
141	470.2	56.6	85.0#



#76
 Chrysene-d12
 Concen: 20.000 ng
 RT: 13.96 min Scan# 2018
 Delta R.T. -0.01 min
 Lab File: BF121182.D
 Acq: 3 Aug 2020 18:11

Tgt Ion	Resp	Lower	Upper
240	369269		
240	100		
120	12.1	9.3	13.9
236	26.0	21.1	31.7

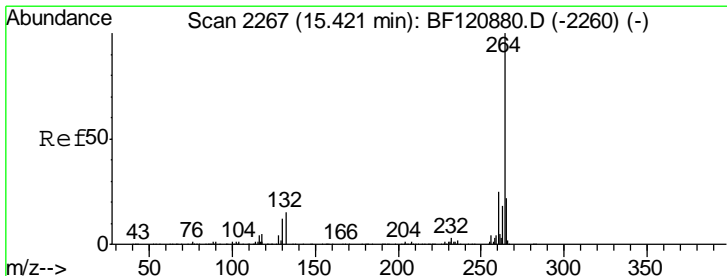
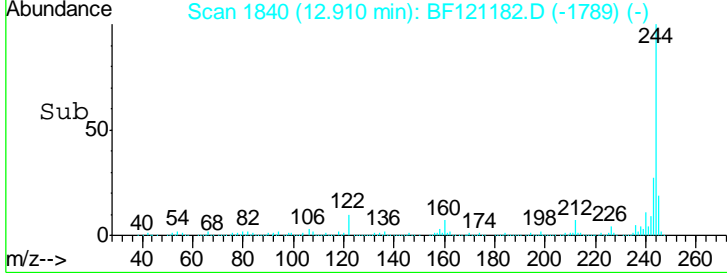
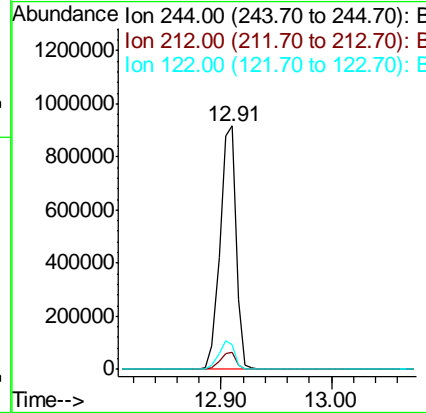
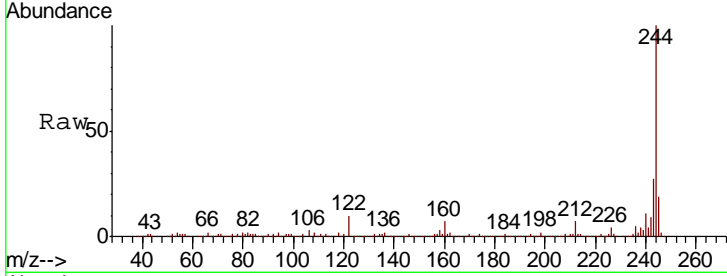




#79
 Terphenyl-d14
 Concen: 54.135 ng
 RT: 12.91 min Scan# 1840
 Delta R.T. -0.00 min
 Lab File: BF121182.D
 Acq: 3 Aug 2020 18:11

Instrument :
 BNA_F
ClientSampled :
 COMP-AB

Tgt Ion	Resp	Lower	Upper
244	100		
212	6.9	5.7	8.5
122	10.3	8.3	12.5



#86
 Perylene-d12
 Concen: 20.000 ng
 RT: 15.42 min Scan# 2266
 Delta R.T. 0.01 min
 Lab File: BF121182.D
 Acq: 3 Aug 2020 18:11

Tgt Ion	Resp	Lower	Upper
264	100		
260	25.1	19.9	29.9
265	22.0	17.8	26.8

