

Data Path : Z:\HPCHEM1\BNA F\DATA\BF080417\
 Data File : BF097374.D
 Acq On : 4 Aug 2017 23:52
 Operator : SJ/JU
 Sample : I4591-01
 Misc :
 ALS Vial : 24 Sample Multiplier: 1

Instrument :
 BNA_F
 ClientSampleId :
 DRUM-1-2-COMP

Quant Time: Aug 05 01:47:52 2017
 Quant Method : Z:\HPCHEM1\BNA F\METHODS\8270-BF072517.M
 Quant Title : ASP BNA STANDARDS FOR 5 POINT CALIBRATION
 QLast Update : Fri Aug 04 01:17:22 2017
 Response via : Initial Calibration

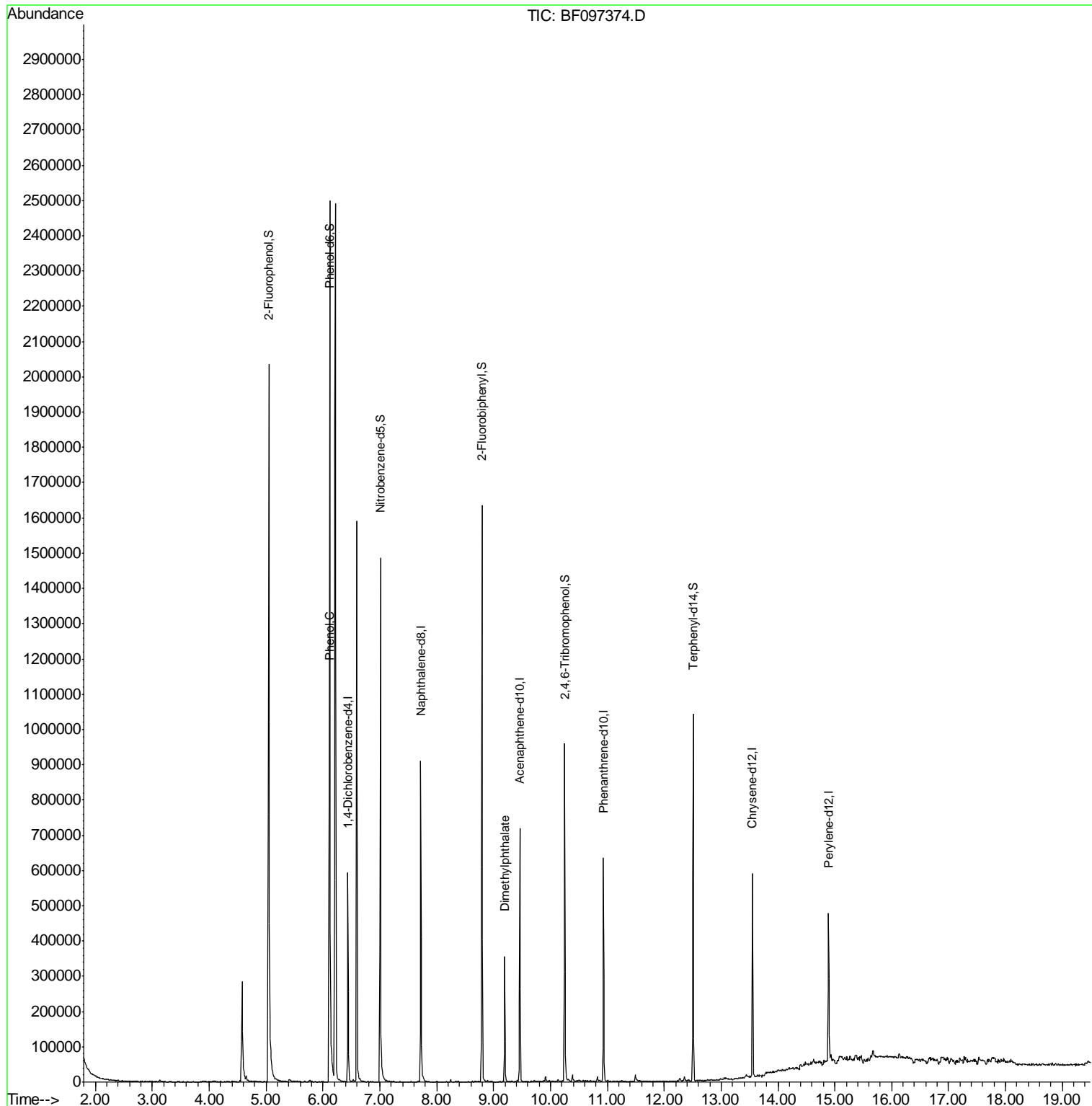
Internal Standards	R.T.	QIon	Response	Conc	Units	Dev(Min)
1) 1,4-Dichlorobenzene-d4	6.44	152	89996	20.00	ng	-0.06
21) Naphthalene-d8	7.72	136	412780	20.00	ng	-0.06
38) Acenaphthene-d10	9.46	164	147262	20.00	ng	-0.07
63) Phenanthrene-d10	10.93	188	216335	20.00	ng	-0.07
75) Chrysene-d12	13.55	240	195215	20.00	ng	-0.08
86) Perylene-d12	14.89	264	165631	20.00	ng	-0.08
System Monitoring Compounds						
5) 2-Fluorophenol	5.05	112	691548	115.84	ng	-0.05
7) Phenol-d6	6.12	99	861881	126.46	ng	-0.05
23) Nitrobenzene-d5	7.01	82	444817	63.22	ng	-0.06
41) 2,4,6-Tribromophenol	10.25	330	107521	92.41	ng	-0.07
44) 2-Fluorobiphenyl	8.80	172	530503	61.14	ng	-0.07
78) Terphenyl-d14	12.51	244	296038	30.92	ng	-0.08
Target Compounds						
10) Phenol	6.13	94	45342	5.609	ng	98
49) Dimethylphthalate	9.20	163	149081	13.331	ng	98

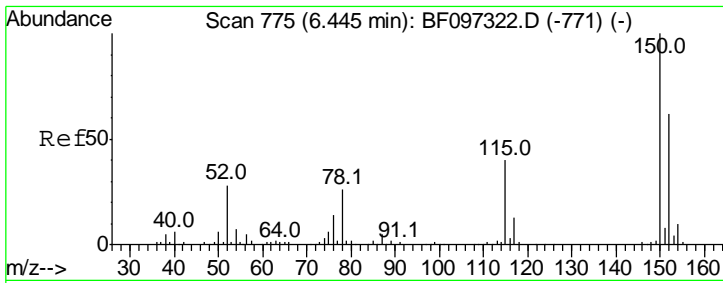
(#) = qualifier out of range (m) = manual integration (+) = signals summed

Data Path : Z:\HPCHEM1\BNA F\DATA\BF080417\
 Data File : BF097374.D
 Acq On : 4 Aug 2017 23:52
 Operator : SJ/JU
 Sample : I4591-01
 Misc :
 ALS Vial : 24 Sample Multiplier: 1

Instrument :
 BNA_F
 ClientSampled :
 DRUM-1-2-COMP

Quant Time: Aug 05 01:47:52 2017
 Quant Method : Z:\HPCHEM1\BNA F\METHODS\8270-BF072517.M
 Quant Title : ASP BNA STANDARDS FOR 5 POINT CALIBRATION
 QLast Update : Fri Aug 04 01:17:22 2017
 Response via : Initial Calibration



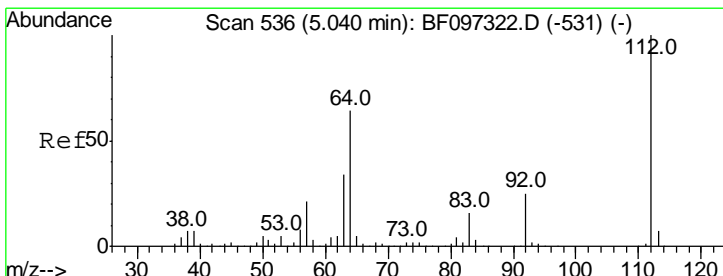
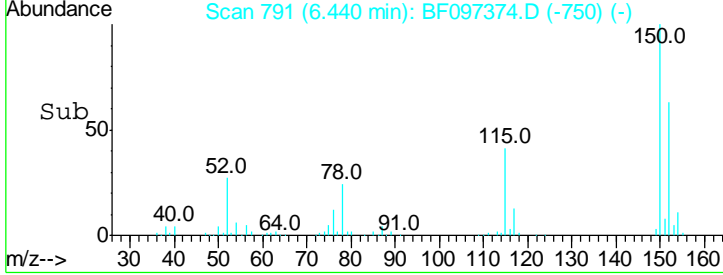
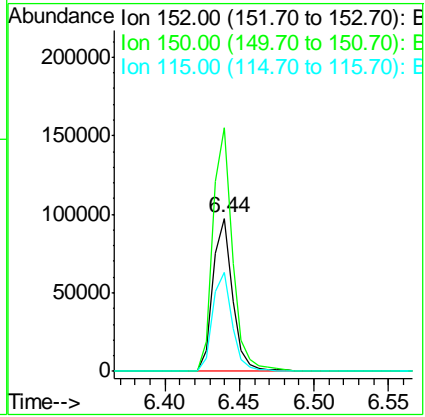
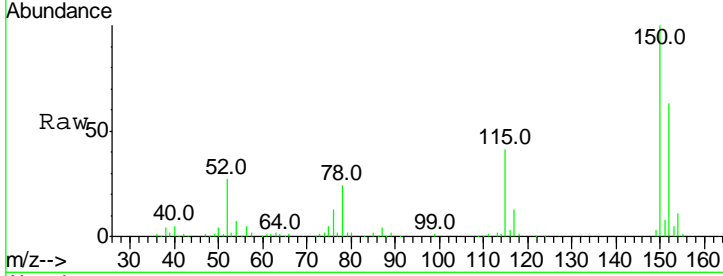


#1
 1,4-Dichlorobenzene-d4
 Concen: 20.000 ng
 RT: 6.44 min Scan# 791
 Delta R.T. -0.06 min
 Lab File: BF097374.D
 Acq: 4 Aug 2017 23:52

Instrument :
 BNA_F
ClientSampleId :
 DRUM-1-2-COMP

Tgt Ion:152 Resp: 89996

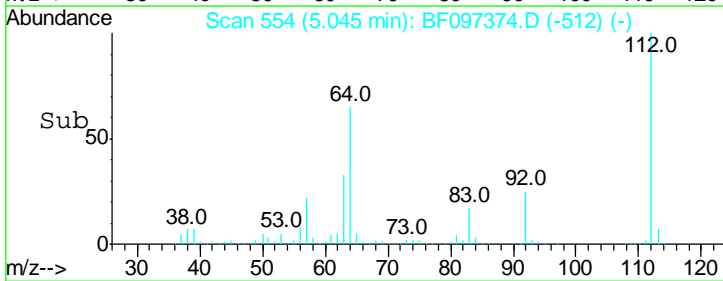
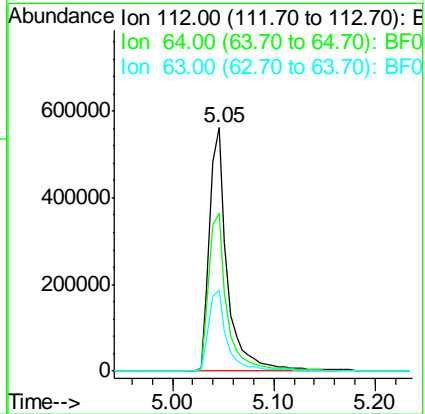
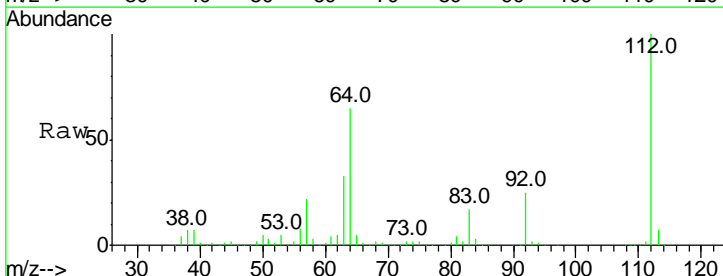
Ion	Ratio	Lower	Upper
152	100		
150	159.1	126.2	189.2
115	64.8	52.2	78.2

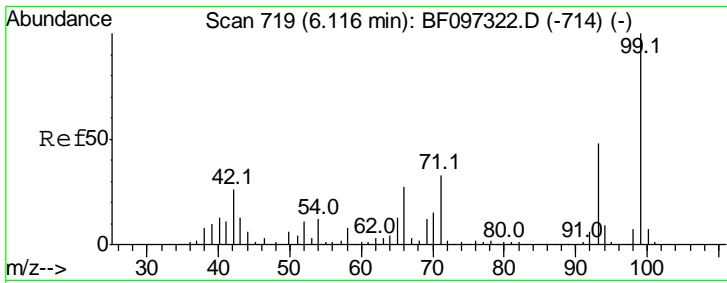


#5
 2-Fluorophenol
 Concen: 115.839 ng
 RT: 5.05 min Scan# 554
 Delta R.T. -0.05 min
 Lab File: BF097374.D
 Acq: 4 Aug 2017 23:52

Tgt Ion:112 Resp: 691548

Ion	Ratio	Lower	Upper
112	100		
64	65.0	46.0	69.0
63	33.1	23.4	35.0

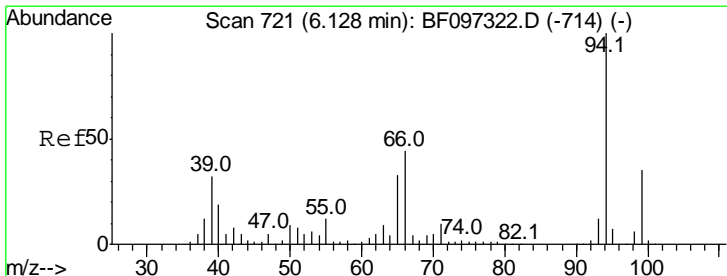
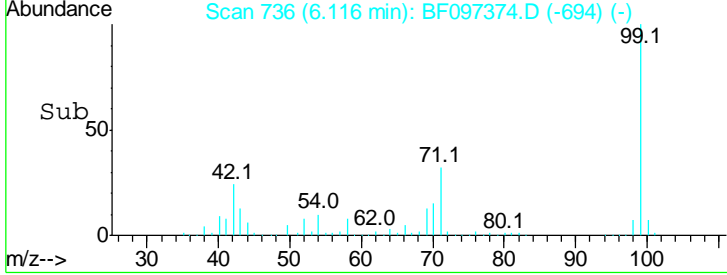
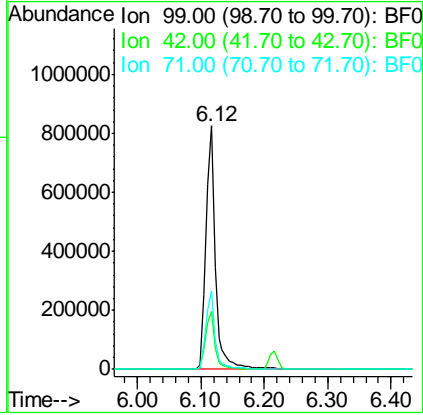
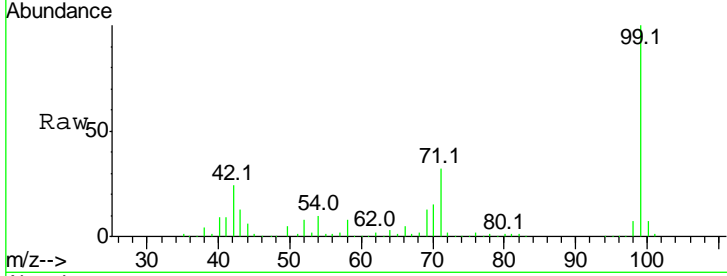




#7
 Phenol-d6
 Concen: 126.461 ng
 RT: 6.12 min Scan# 736
 Delta R.T. -0.05 min
 Lab File: BF097374.D
 Acq: 4 Aug 2017 23:52

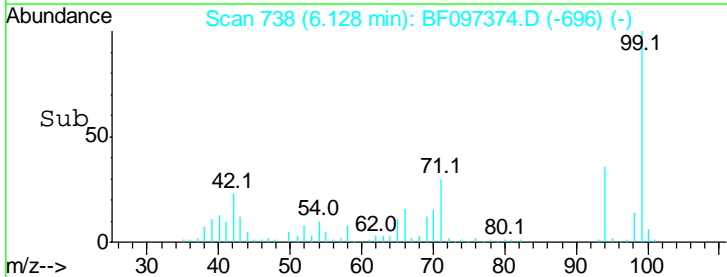
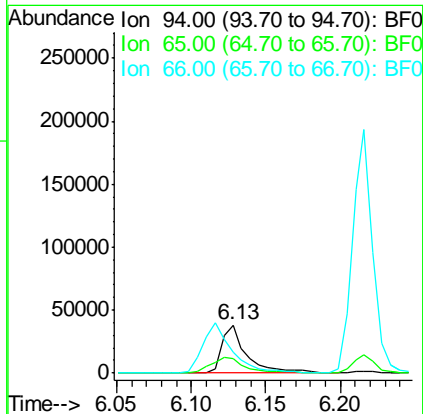
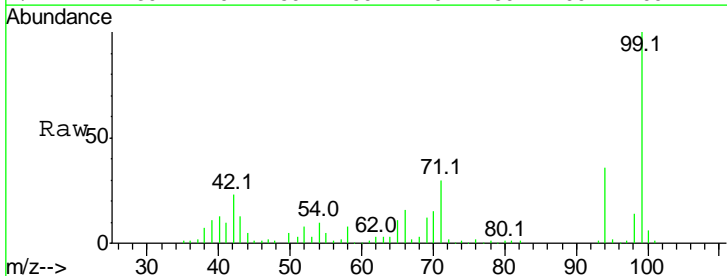
Instrument :
 BNA_F
ClientSampled :
 DRUM-1-2-COMP

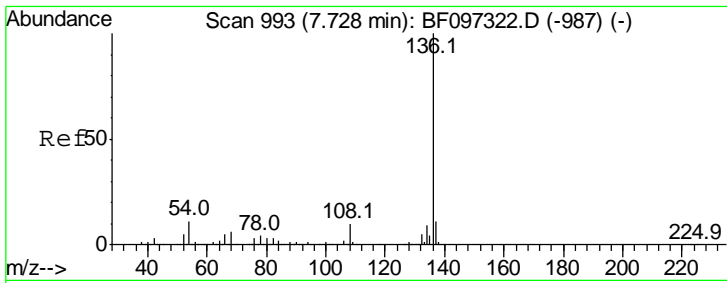
Tgt Ion	Resp	Lower	Upper
99	100		
42	23.8	13.5	20.3#
71	32.4	24.5	36.7



#10
 Phenol
 Concen: 5.609 ng
 RT: 6.13 min Scan# 738
 Delta R.T. -0.05 min
 Lab File: BF097374.D
 Acq: 4 Aug 2017 23:52

Tgt Ion	Resp	Lower	Upper
94	100		
65	31.1	9.9	49.9
66	44.3	23.1	63.1

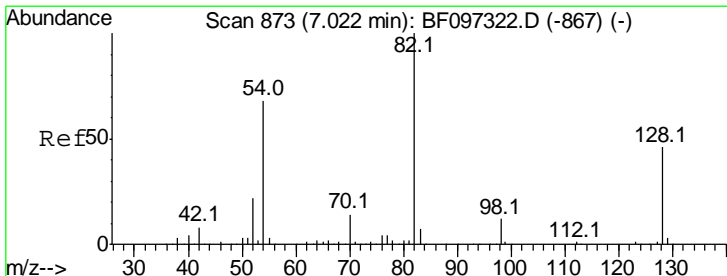
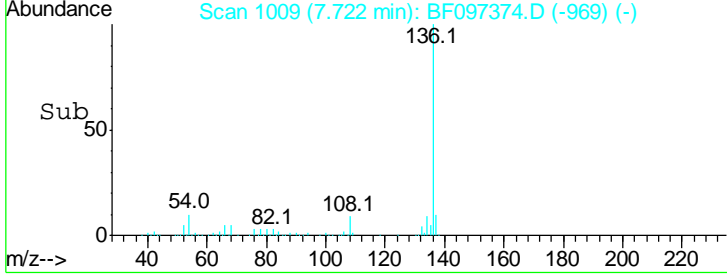
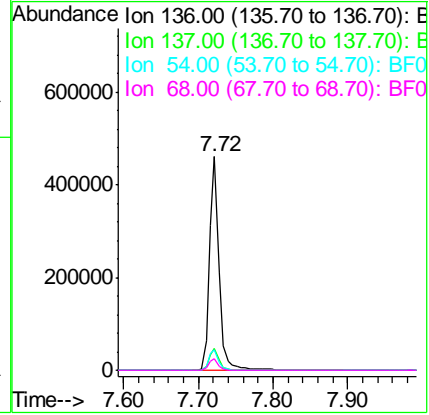
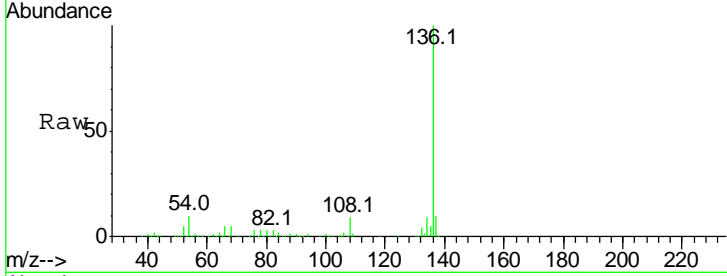




#21
 Naphthalene-d8
 Concen: 20.000 ng
 RT: 7.72 min Scan# 1009
 Delta R.T. -0.06 min
 Lab File: BF097374.D
 Acq: 4 Aug 2017 23:52

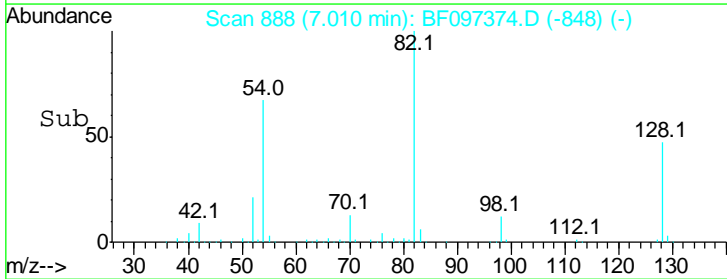
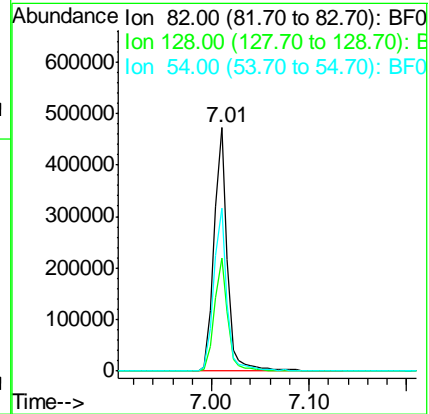
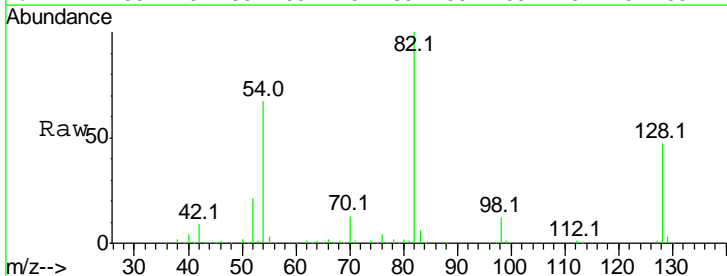
Instrument :
 BNA_F
ClientSampleId :
 DRUM-1-2-COMP

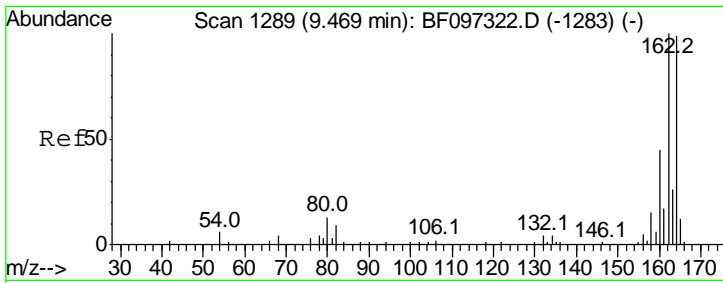
Tgt Ion	Resp	Lower	Upper
136	100		
137	10.2	8.5	12.7
54	9.9	4.9	7.3#
68	5.4	4.1	6.1



#23
 Nitrobenzene-d5
 Concen: 63.217 ng
 RT: 7.01 min Scan# 888
 Delta R.T. -0.06 min
 Lab File: BF097374.D
 Acq: 4 Aug 2017 23:52

Tgt Ion	Resp	Lower	Upper
82	100		
128	46.7	34.0	51.0
54	67.1	42.2	63.2#

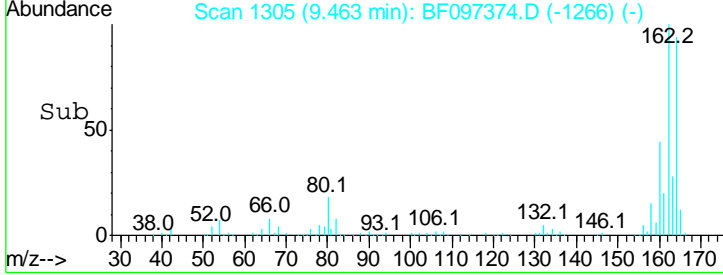
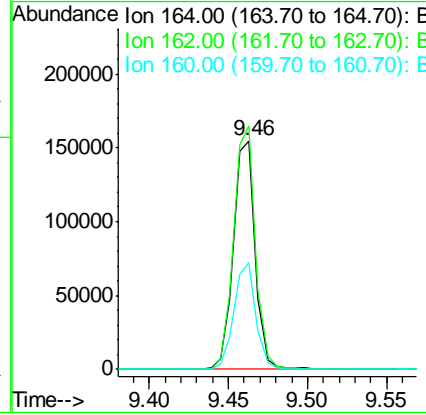
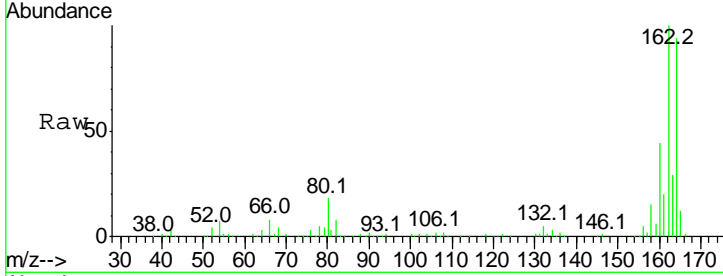




#38
 Acenaphthene-d10
 Concen: 20.000 ng
 RT: 9.46 min Scan# 1305
 Delta R.T. -0.07 min
 Lab File: BF097374.D
 Acq: 4 Aug 2017 23:52

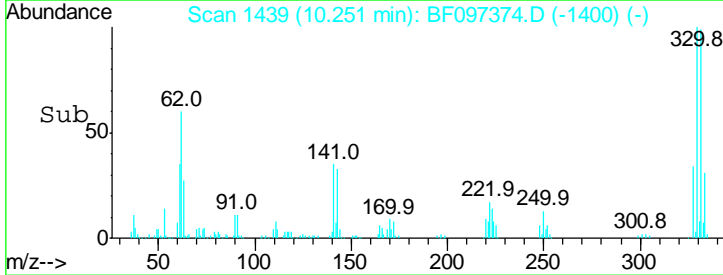
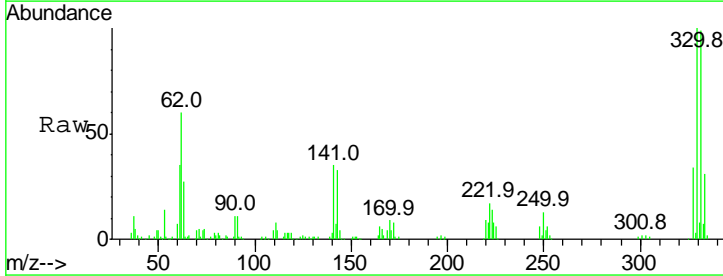
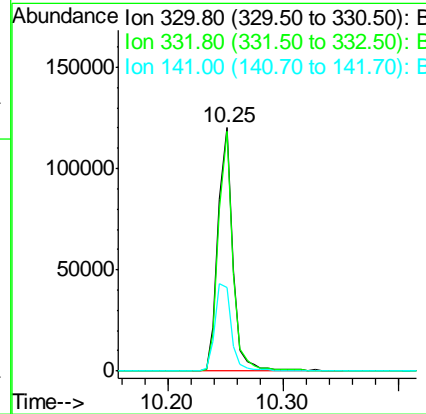
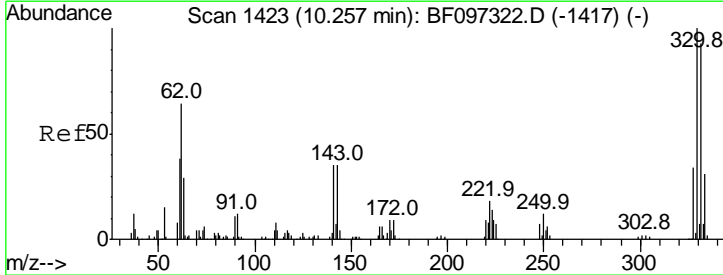
Instrument :
 BNA_F
 ClientSampleId :
 DRUM-1-2-COMP

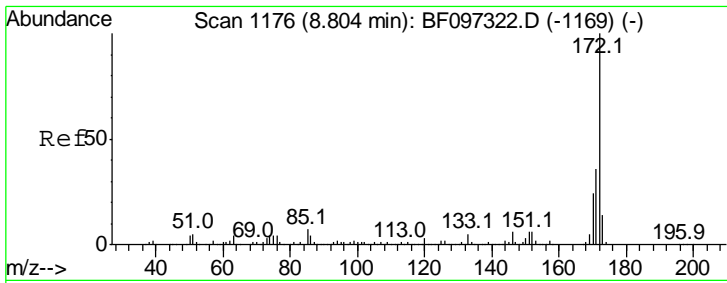
Tgt Ion	Resp	Lower	Upper
164	100		
162	106.6	82.6	123.8
160	46.9	36.2	54.2



#41
 2,4,6-Tribromophenol
 Concen: 92.411 ng
 RT: 10.25 min Scan# 1439
 Delta R.T. -0.07 min
 Lab File: BF097374.D
 Acq: 4 Aug 2017 23:52

Tgt Ion	Resp	Lower	Upper
330	100		
332	96.0	76.6	115.0
141	39.6	31.4	47.2

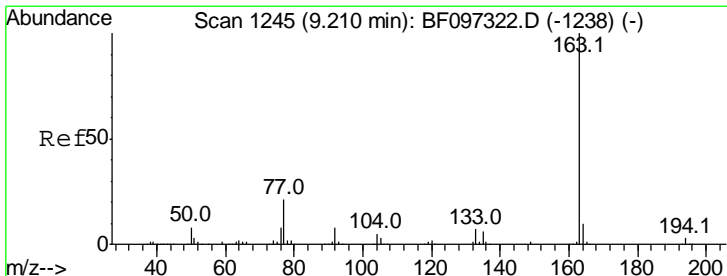
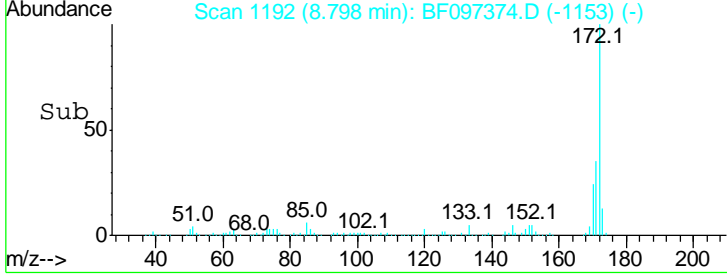
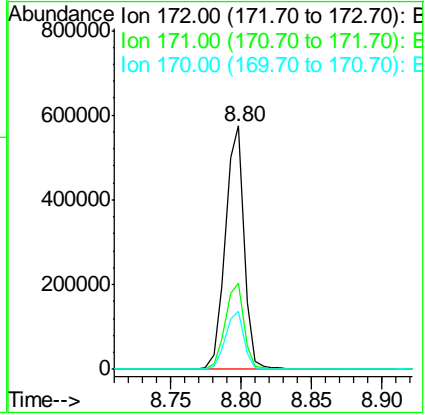
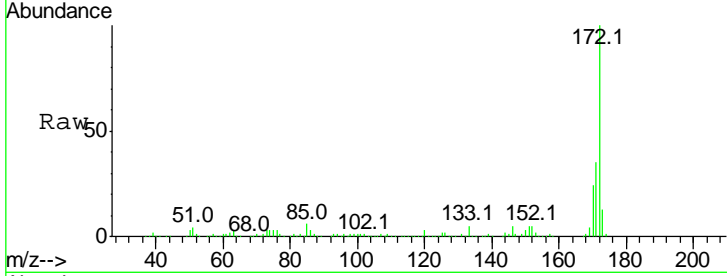




#44
 2-Fluorobiphenyl
 Concen: 61.137 ng
 RT: 8.80 min Scan# 1192
 Delta R.T. -0.07 min
 Lab File: BF097374.D
 Acq: 4 Aug 2017 23:52

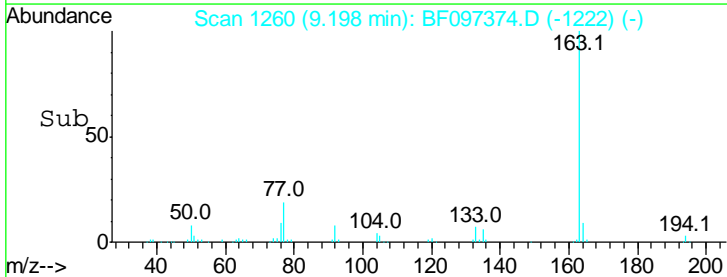
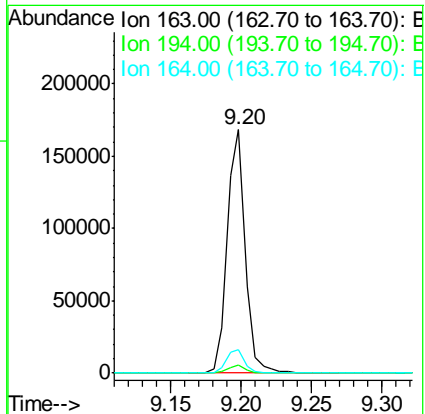
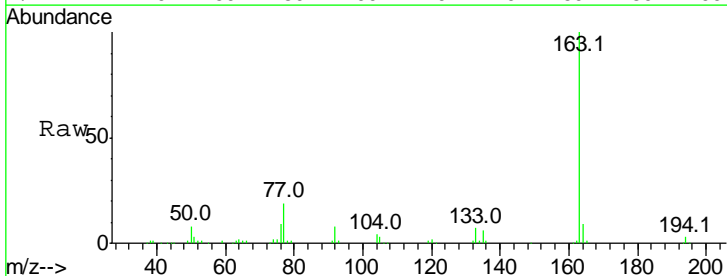
Instrument :
 BNA_F
ClientSampleId :
 DRUM-1-2-COMP

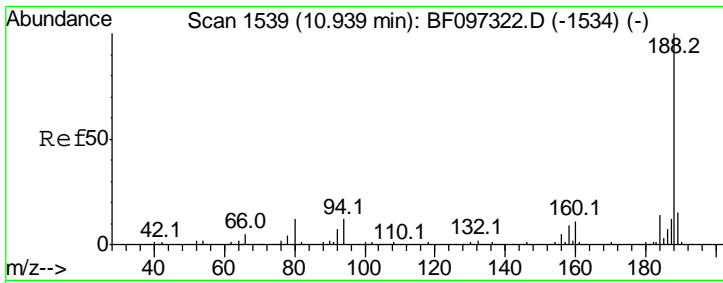
Tgt Ion	Resp	Lower	Upper
172	100		
171	35.4	29.6	44.4
170	23.7	19.8	29.8



#49
 Dimethylphthalate
 Concen: 13.331 ng
 RT: 9.20 min Scan# 1260
 Delta R.T. -0.08 min
 Lab File: BF097374.D
 Acq: 4 Aug 2017 23:52

Tgt Ion	Resp	Lower	Upper
163	100		
194	3.4	2.6	4.0
164	9.4	8.4	12.6

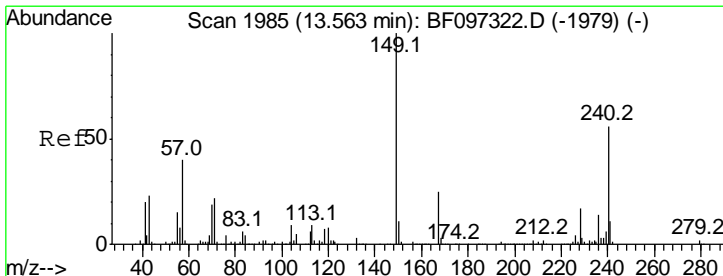
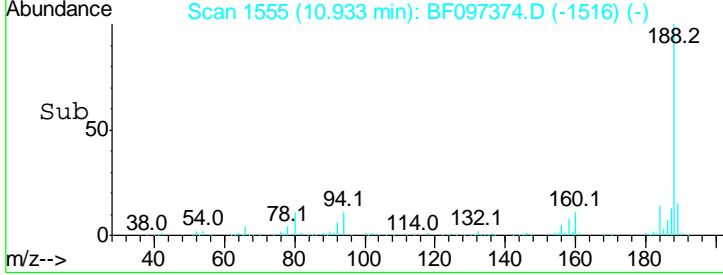
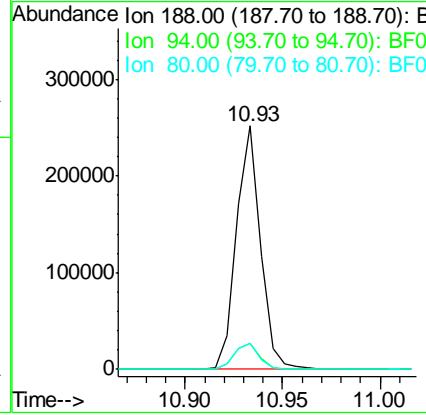
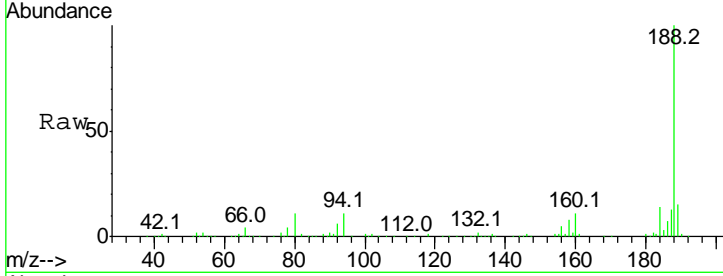




#63
 Phenanthrene-d10
 Concen: 20.000 ng
 RT: 10.93 min Scan# 1555
 Delta R.T. -0.07 min
 Lab File: BF097374.D
 Acq: 4 Aug 2017 23:52

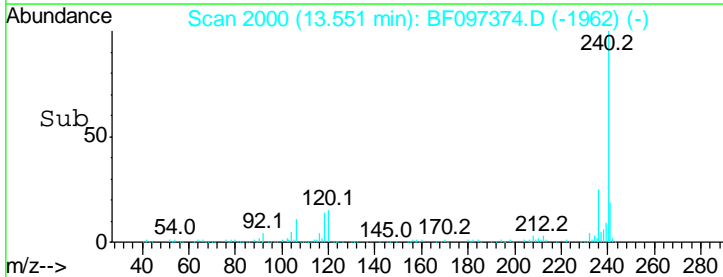
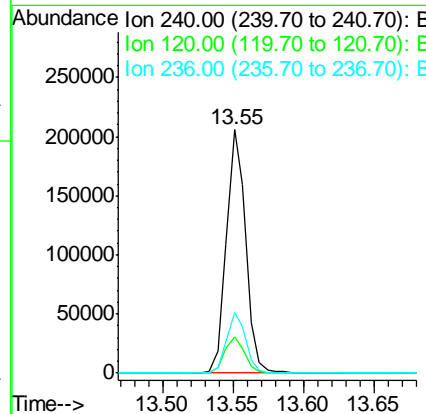
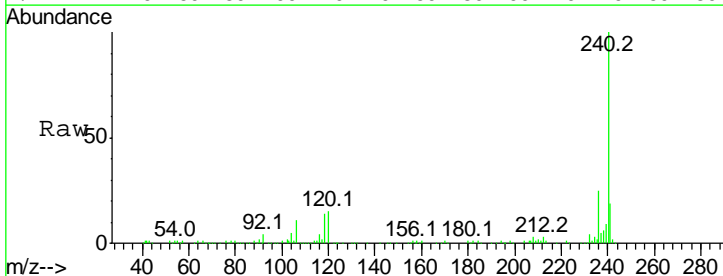
Instrument :
 BNA_F
 ClientSampleId :
 DRUM-1-2-COMP

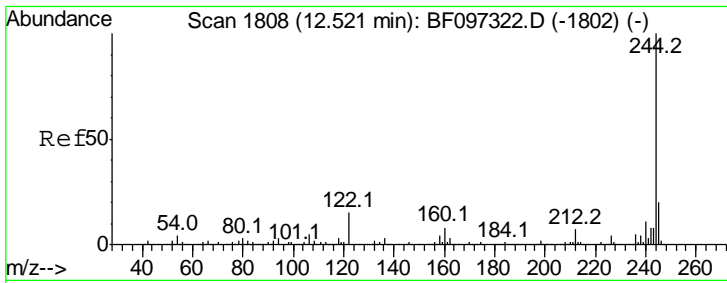
Tgt Ion	Resp	Lower	Upper
188	100		
94	10.9	9.4	14.2
80	10.7	10.2	15.2



#75
 Chrysene-d12
 Concen: 20.000 ng
 RT: 13.55 min Scan# 2000
 Delta R.T. -0.08 min
 Lab File: BF097374.D
 Acq: 4 Aug 2017 23:52

Tgt Ion	Resp	Lower	Upper
240	100		
120	15.0	5.8	8.8#
236	25.1	20.5	30.7



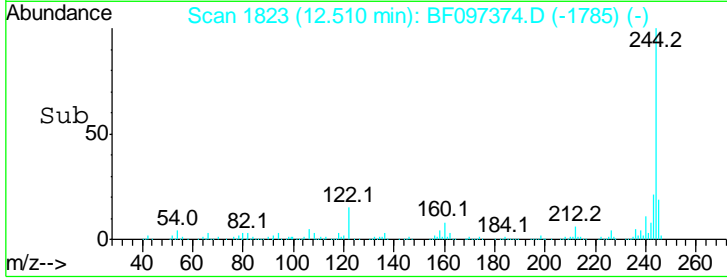
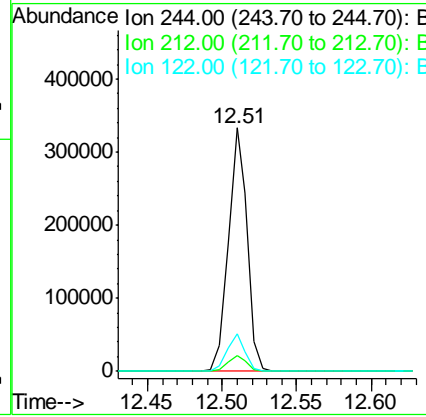
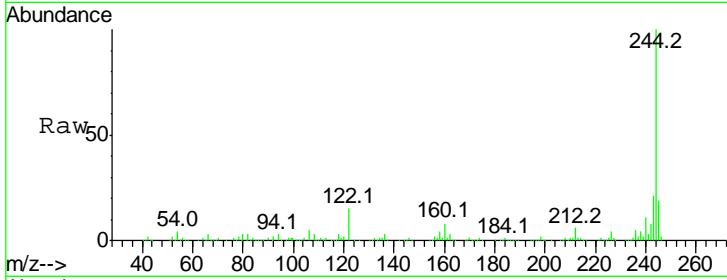


#78
 Terphenyl-d14
 Concen: 30.919 ng
 RT: 12.51 min Scan# 1823
 Delta R.T. -0.08 min
 Lab File: BF097374.D
 Acq: 4 Aug 2017 23:52

Instrument :
 BNA_F
ClientSampled :
 DRUM-1-2-COMP

Tot Ion: 244 Resp: 296038

Ion	Ratio	Lower	Upper
244	100		
212	6.3	6.0	9.0
122	15.2	10.3	15.5



#86
 Perylene-d12
 Concen: 20.000 ng
 RT: 14.89 min Scan# 2228
 Delta R.T. -0.08 min
 Lab File: BF097374.D
 Acq: 4 Aug 2017 23:52

Tgt Ion: 264 Resp: 165631

Ion	Ratio	Lower	Upper
264	100		
260	24.5	19.5	29.3
265	21.0	17.2	25.8

