

Data Path : Z:\svoasrv\HPCHEM1\BNA_F\Data\BF080425\
 Data File : BF143290.D
 Acq On : 04 Aug 2025 12:04
 Operator : RC/JU
 Sample : SSTDCCC040
 Misc :
 ALS Vial : 2 Sample Multiplier: 1

Instrument :
 BNA_F
 ClientSampleId :
 SSTDCCC040

Quant Time: Aug 04 12:25:03 2025
 Quant Method : Z:\svoasrv\HPCHEM1\BNA_F\Methods\8270-BF071725.M
 Quant Title : ASP BNA STANDARDS FOR 5 POINT CALIBRATION
 QLast Update : Thu Jul 17 15:14:05 2025
 Response via : Initial Calibration

Compound	R.T.	QIon	Response	Conc	Units	Dev(Min)	
Internal Standards							
1) 1,4-Dichlorobenzene-d4	6.963	152	116257	20.000	ng	0.00	
21) Naphthalene-d8	8.245	136	448345	20.000	ng	0.00	
39) Acenaphthene-d10	9.998	164	222822	20.000	ng	0.00	
64) Phenanthrene-d10	11.486	188	357497	20.000	ng	0.00	
76) Chrysene-d12	14.127	240	221589	20.000	ng	0.00	
86) Perylene-d12	15.633	264	245090	20.000	ng	0.01	
System Monitoring Compounds							
5) 2-Fluorophenol	5.587	112	606503	82.556	ng	0.00	
7) Phenol-d6	6.587	99	764925	82.721	ng	0.00	
23) Nitrobenzene-d5	7.522	82	745017	82.831	ng	0.00	
42) 2,4,6-Tribromophenol	10.786	330	191595	83.234	ng	0.00	
45) 2-Fluorobiphenyl	9.316	172	1325210	81.338	ng	0.00	
79) Terphenyl-d14	13.068	244	1181891	79.371	ng	0.00	
Target Compounds							
2) 1,4-Dioxane	2.793	88	147643	42.472	ng		Qvalue 99
3) Pyridine	3.569	79	375753	41.645	ng		97
4) n-Nitrosodimethylamine	3.510	42	192450	41.312	ng		99
6) Aniline	6.622	93	527707	40.947	ng		100
8) 2-Chlorophenol	6.745	128	316735	41.131	ng		99
9) Benzaldehyde	6.510	77	305065	43.996	ng		97
10) Phenol	6.598	94	442980	43.974	ng		99
11) bis(2-Chloroethyl)ether	6.692	93	323310	41.917	ng		99
12) 1,3-Dichlorobenzene	6.904	146	347320	41.518	ng		99
13) 1,4-Dichlorobenzene	6.981	146	347438	41.242	ng		99
14) 1,2-Dichlorobenzene	7.134	146	329962	41.180	ng		99
15) Benzyl Alcohol	7.098	79	284252	40.259	ng		100
16) 2,2'-oxybis(1-Chloropr...	7.234	45	595292	41.605	ng		99
17) 2-Methylphenol	7.210	107	264309	40.820	ng		99
18) Hexachloroethane	7.481	117	122948	42.157	ng		98
19) n-Nitroso-di-n-propyla...	7.369	70	235859	39.756	ng		100
20) 3+4-Methylphenols	7.357	107	320435	40.790	ng	#	90
22) Acetophenone	7.363	105	424779	40.018	ng		95
24) Nitrobenzene	7.539	77	350897	41.845	ng		99
25) Isophorone	7.781	82	645466	40.651	ng		98
26) 2-Nitrophenol	7.857	139	161300	44.321	ng		97
27) 2,4-Dimethylphenol	7.886	122	297292	40.075	ng		99
28) bis(2-Chloroethoxy)met...	7.986	93	390552	41.024	ng		99
29) 2,4-Dichlorophenol	8.098	162	257136	41.101	ng		99
30) 1,2,4-Trichlorobenzene	8.186	180	274523	40.617	ng		100
31) Naphthalene	8.263	128	904301	40.955	ng		100
32) Benzoic acid	7.986	122	144452	36.017	ng		99
33) 4-Chloroaniline	8.304	127	370622	41.108	ng		99
34) Hexachlorobutadiene	8.386	225	167090	40.469	ng		100
35) Caprolactam	8.669	113	78675	41.616	ng		95
36) 4-Chloro-3-methylphenol	8.786	107	273287	40.190	ng		98
37) 2-Methylnaphthalene	8.957	142	546815	40.697	ng		100
38) 1-Methylnaphthalene	9.057	142	563707	40.742	ng		100
40) 1,2,4,5-Tetrachloroben...	9.122	216	271962	42.275	ng		99
41) Hexachlorocyclopentadiene	9.116	237	158600	37.890	ng		97
43) 2,4,6-Trichlorophenol	9.227	196	176234	39.583	ng		99

Data Path : Z:\svoasrv\HPCHEM1\BNA_F\Data\BF080425\
 Data File : BF143290.D
 Acq On : 04 Aug 2025 12:04
 Operator : RC/JU
 Sample : SSTDCCC040
 Misc :
 ALS Vial : 2 Sample Multiplier: 1

Instrument :
 BNA_F
 ClientSampleId :
 SSTDCCC040

Quant Time: Aug 04 12:25:03 2025
 Quant Method : Z:\svoasrv\HPCHEM1\BNA_F\Methods\8270-BF071725.M
 Quant Title : ASP BNA STANDARDS FOR 5 POINT CALIBRATION
 QLast Update : Thu Jul 17 15:14:05 2025
 Response via : Initial Calibration

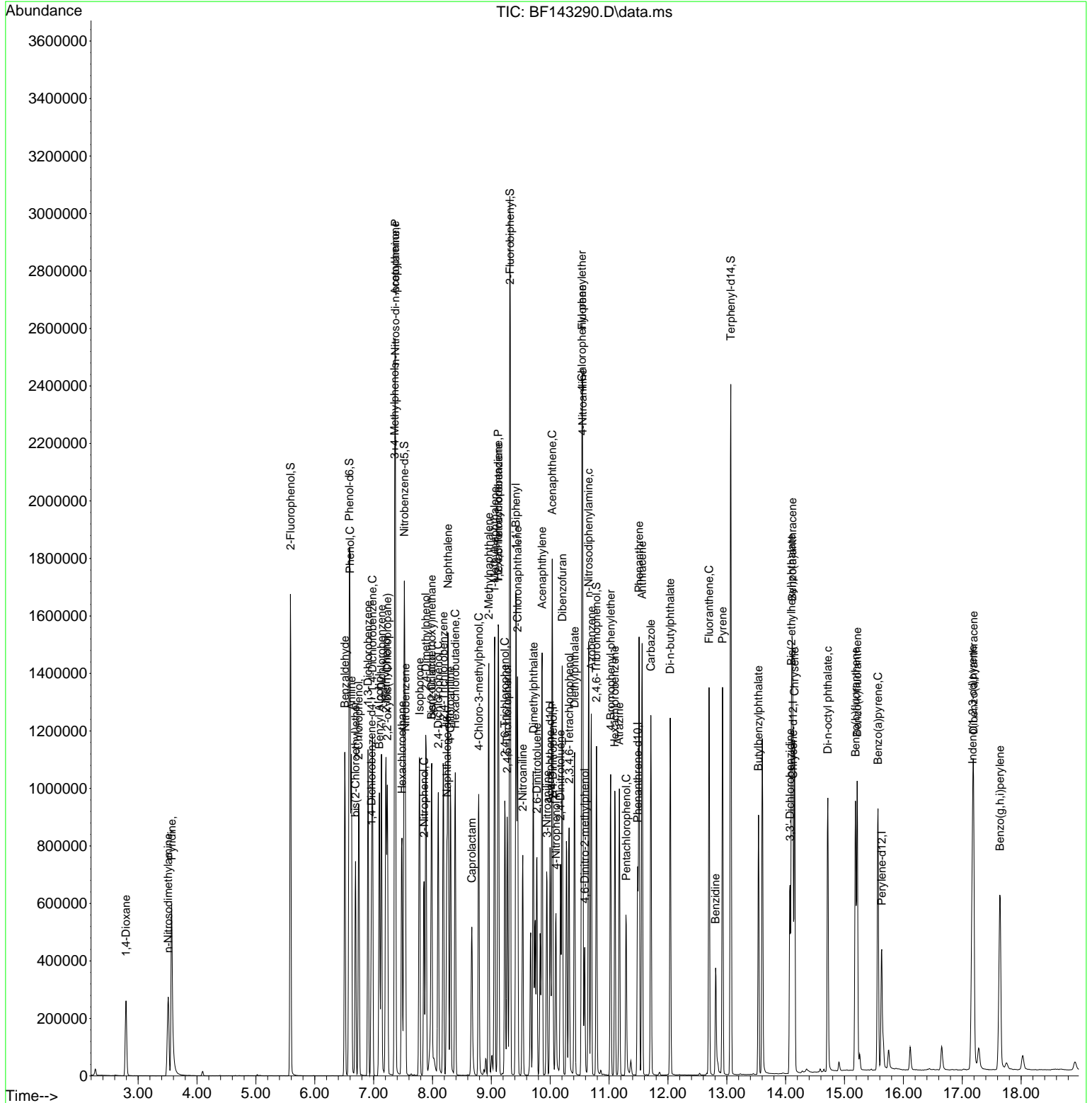
Compound	R.T.	QIon	Response	Conc	Units	Dev(Min)
44) 2,4,5-Trichlorophenol	9.269	196	183545	41.213	ng	97
46) 1,1'-Biphenyl	9.416	154	726719	41.803	ng	99
47) 2-Chloronaphthalene	9.445	162	530420	41.235	ng	99
48) 2-Nitroaniline	9.533	65	177897	44.101	ng	99
49) Acenaphthylene	9.863	152	891599	41.360	ng	100
50) Dimethylphthalate	9.716	163	605845	41.713	ng	99
51) 2,6-Dinitrotoluene	9.775	165	126462	42.801	ng	99
52) Acenaphthene	10.033	154	529473	41.556	ng	98
53) 3-Nitroaniline	9.945	138	144603	41.842	ng	98
54) 2,4-Dinitrophenol	10.045	184	46369	38.406	ng	76
55) Dibenzofuran	10.204	168	773380	40.884	ng	100
56) 4-Nitrophenol	10.098	139	122759	47.568	ng	97
57) 2,4-Dinitrotoluene	10.175	165	161921	43.681	ng	99
58) Fluorene	10.545	166	588068	41.421	ng	99
59) 2,3,4,6-Tetrachlorophenol	10.322	232	152351	41.297	ng	99
60) Diethylphthalate	10.416	149	596065	41.521	ng	99
61) 4-Chlorophenyl-phenyle...	10.539	204	295698	41.828	ng	98
62) 4-Nitroaniline	10.551	138	126976	42.869	ng	98
63) Azobenzene	10.698	77	632496	42.274	ng	99
65) 4,6-Dinitro-2-methylph...	10.586	198	72398	39.687	ng	96
66) n-Nitrosodiphenylamine	10.651	169	516157	41.002	ng	99
67) 4-Bromophenyl-phenylether	11.027	248	176671	41.468	ng	98
68) Hexachlorobenzene	11.098	284	179341	40.274	ng	99
69) Atrazine	11.174	200	151122	43.544	ng	99
70) Pentachlorophenol	11.292	266	96122	36.705	ng	99
71) Phenanthrene	11.510	178	776124	40.887	ng	100
72) Anthracene	11.563	178	802840	41.470	ng	100
73) Carbazole	11.710	167	699813	41.398	ng	100
74) Di-n-butylphthalate	12.039	149	853617	44.628	ng	100
75) Fluoranthene	12.698	202	756625	43.427	ng	99
77) Benzidine	12.810	184	240333	28.151	ng	99
78) Pyrene	12.927	202	759147	40.142	ng	100
80) Butylbenzylphthalate	13.539	149	274051	47.324	ng	99
81) Benzo(a)anthracene	14.115	228	601085	40.517	ng	100
82) 3,3'-Dichlorobenzidine	14.074	252	204827	41.425	ng	99
83) Chrysene	14.151	228	553189	41.473	ng	100
84) Bis(2-ethylhexyl)phtha...	14.098	149	389680	44.458	ng	100
85) Di-n-octyl phthalate	14.715	149	632706	39.823	ng	100
87) Indeno(1,2,3-cd)pyrene	17.174	276	722978	41.834	ng	98
88) Benzo(b)fluoranthene	15.186	252	638824	42.666	ng	99
89) Benzo(k)fluoranthene	15.215	252	507658	37.996	ng	99
90) Benzo(a)pyrene	15.568	252	569469	41.280	ng	99
91) Dibenzo(a,h)anthracene	17.192	278	593146	42.167	ng	99
92) Benzo(g,h,i)perylene	17.639	276	591017	43.435	ng	99

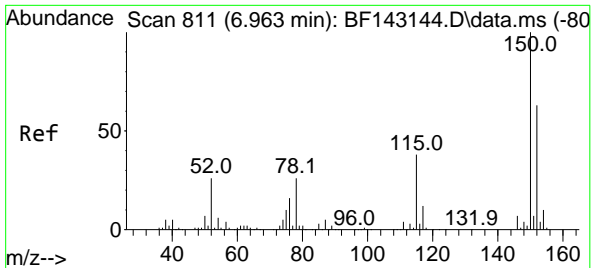
(#) = qualifier out of range (m) = manual integration (+) = signals summed

Data Path : Z:\svoasrv\HPCHEM1\BNA_F\Data\BF080425\
 Data File : BF143290.D
 Acq On : 04 Aug 2025 12:04
 Operator : RC/JU
 Sample : SSTDCCC040
 Misc :
 ALS Vial : 2 Sample Multiplier: 1

Instrument :
 BNA_F
 ClientSampleId :
 SSTDCCC040

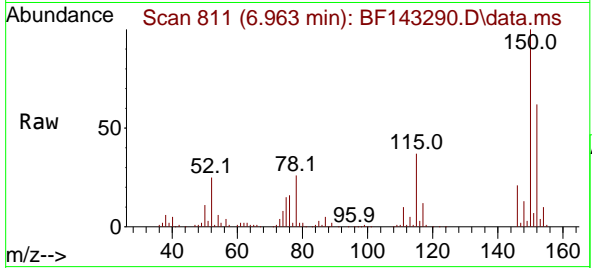
Quant Time: Aug 04 12:25:03 2025
 Quant Method : Z:\svoasrv\HPCHEM1\BNA_F\Methods\8270-BF071725.M
 Quant Title : ASP BNA STANDARDS FOR 5 POINT CALIBRATION
 QLast Update : Thu Jul 17 15:14:05 2025
 Response via : Initial Calibration



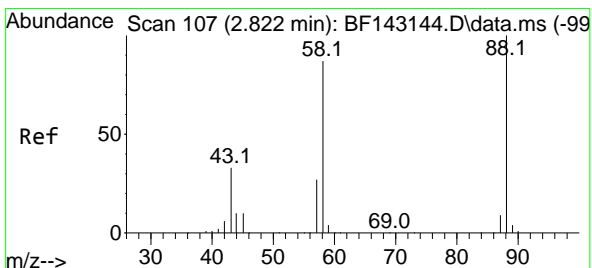
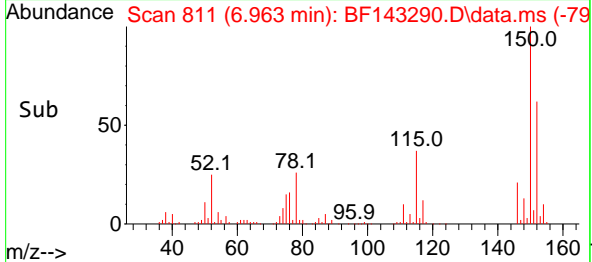
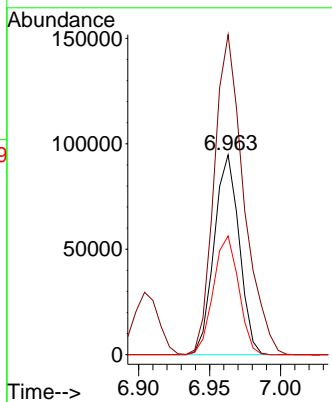


#1
 1,4-Dichlorobenzene-d4
 Concen: 20.000 ng
 RT: 6.963 min Scan# 81
 Delta R.T. -0.000 min
 Lab File: BF143290.D
 Acq: 04 Aug 2025 12:04

Instrument :
 BNA_F
 ClientSampleId :
 SSTDCCC040

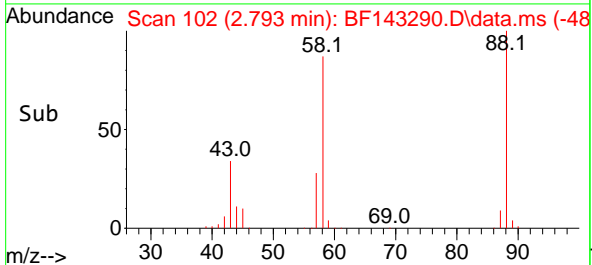
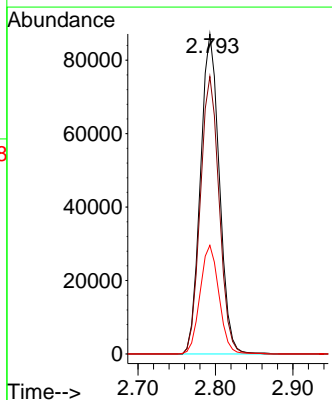
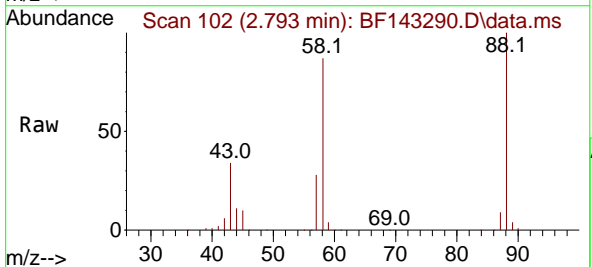


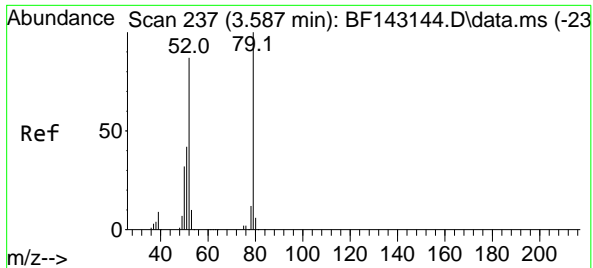
Tgt Ion:152 Resp: 116257
 Ion Ratio Lower Upper
 152 100
 150 160.1 128.2 192.4
 115 59.4 47.9 71.9



#2
 1,4-Dioxane
 Concen: 42.472 ng
 RT: 2.793 min Scan# 102
 Delta R.T. -0.029 min
 Lab File: BF143290.D
 Acq: 04 Aug 2025 12:04

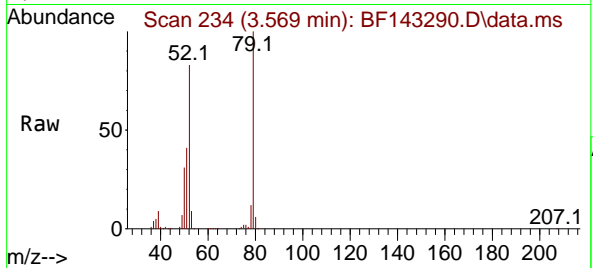
Tgt Ion: 88 Resp: 147643
 Ion Ratio Lower Upper
 88 100
 58 86.4 70.2 105.2
 43 34.1 27.1 40.7



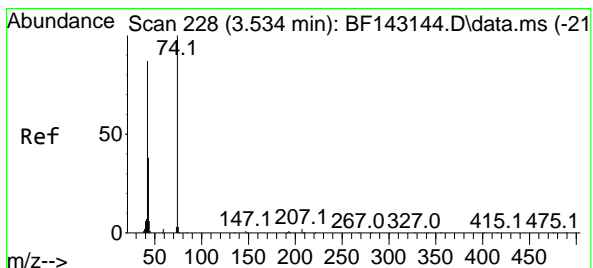
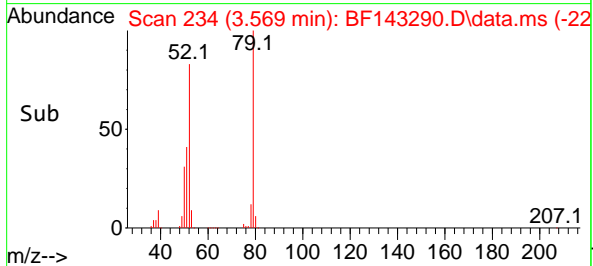
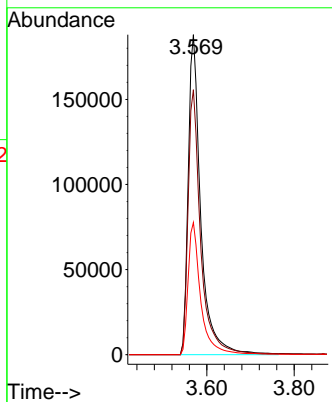


#3
 Pyridine
 Concen: 41.645 ng
 RT: 3.569 min Scan# 21
 Delta R.T. -0.018 min
 Lab File: BF143290.D
 Acq: 04 Aug 2025 12:04

Instrument :
 BNA_F
 ClientSampleId :
 SSTDCCC040

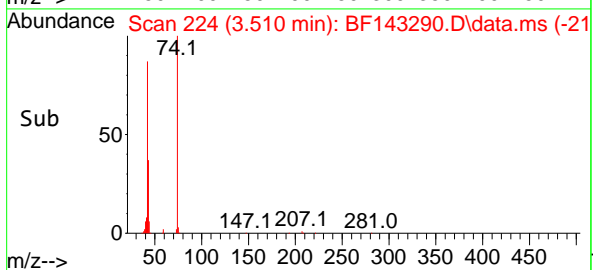
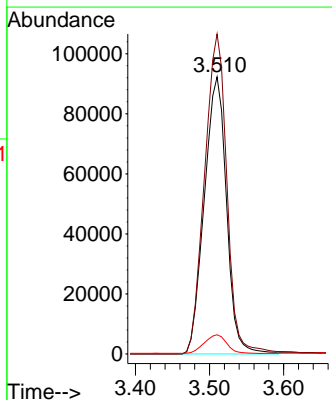
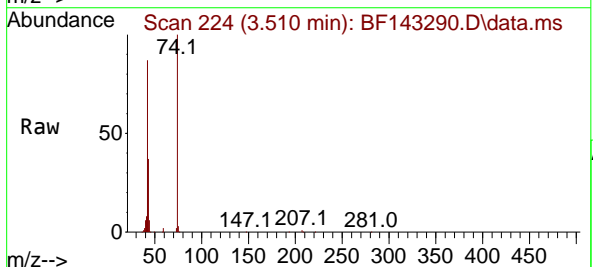


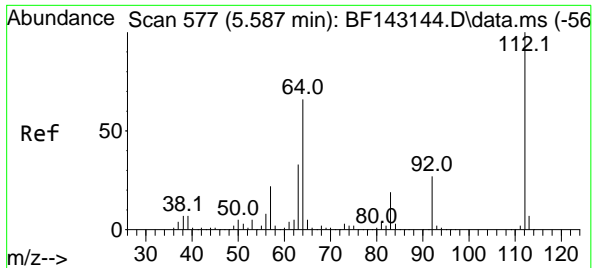
Tgt Ion: 79 Resp: 375753
 Ion Ratio Lower Upper
 79 100
 52 82.8 69.4 104.2
 51 41.3 33.5 50.3



#4
 n-Nitrosodimethylamine
 Concen: 41.312 ng
 RT: 3.510 min Scan# 224
 Delta R.T. -0.024 min
 Lab File: BF143290.D
 Acq: 04 Aug 2025 12:04

Tgt Ion: 42 Resp: 192450
 Ion Ratio Lower Upper
 42 100
 74 115.5 91.7 137.5
 44 7.0 5.6 8.4



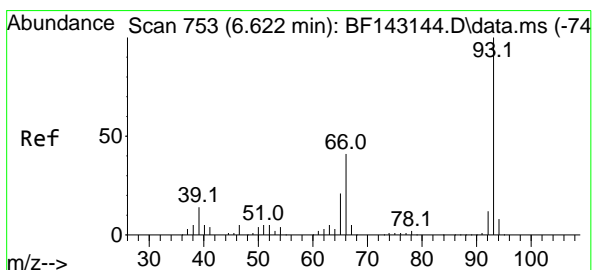
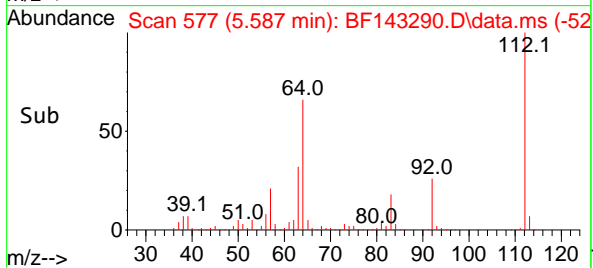
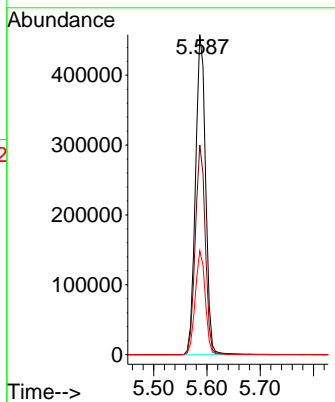
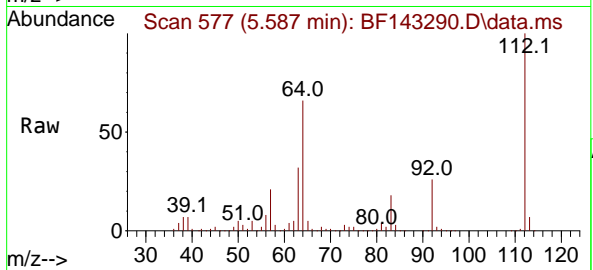


#5
 2-Fluorophenol
 Concen: 82.556 ng
 RT: 5.587 min Scan# 51
 Delta R.T. -0.000 min
 Lab File: BF143290.D
 Acq: 04 Aug 2025 12:04

Instrument : BNA_F
 ClientSampleId : SSTDCCC040

Tgt Ion: 112 Resp: 606503

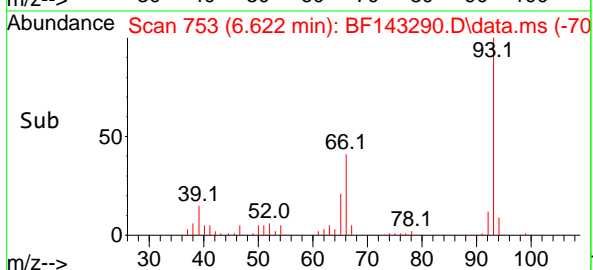
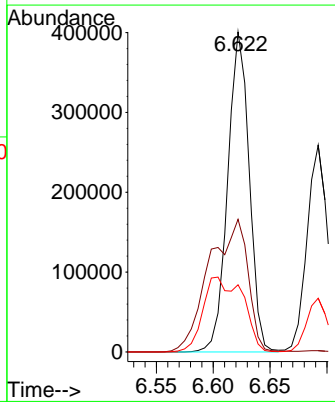
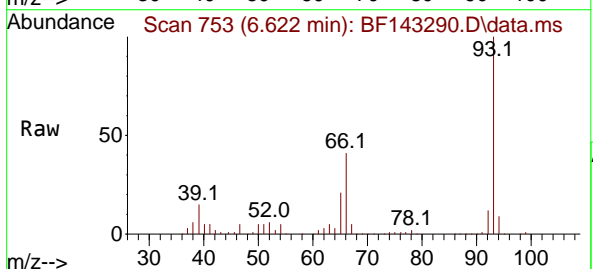
Ion	Ratio	Lower	Upper
112	100		
64	65.5	53.1	79.7
63	32.5	26.6	40.0

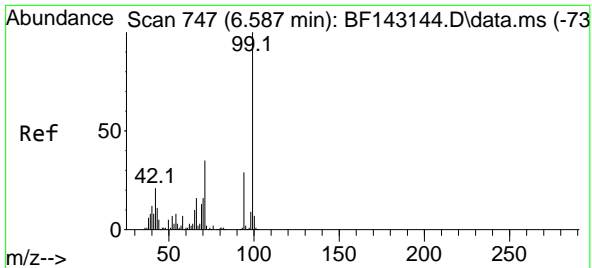


#6
 Aniline
 Concen: 40.947 ng
 RT: 6.622 min Scan# 753
 Delta R.T. -0.000 min
 Lab File: BF143290.D
 Acq: 04 Aug 2025 12:04

Tgt Ion: 93 Resp: 527707

Ion	Ratio	Lower	Upper
93	100		
66	41.5	33.2	49.8
65	21.0	16.9	25.3



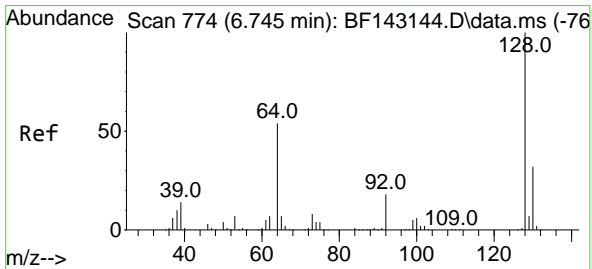
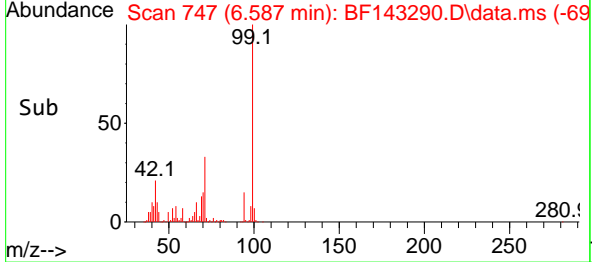
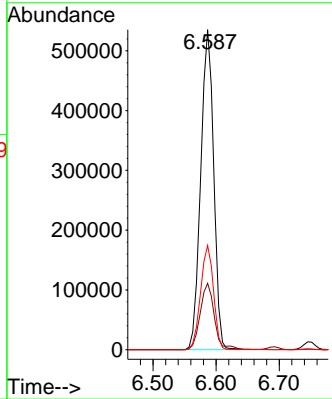
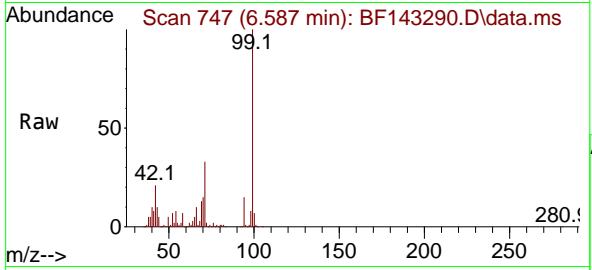


#7
 Phenol-d6
 Concen: 82.721 ng
 RT: 6.587 min Scan# 747
 Delta R.T. -0.000 min
 Lab File: BF143290.D
 Acq: 04 Aug 2025 12:04

Instrument : BNA_F
 ClientSampleId : SSTDCCC040

Tgt Ion: 99 Resp: 764925

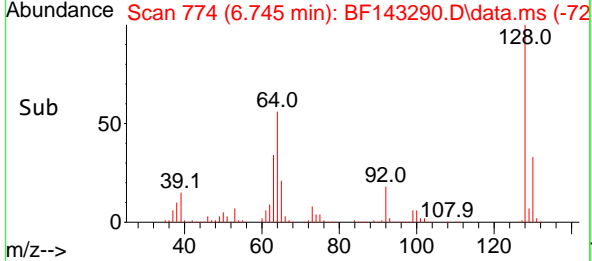
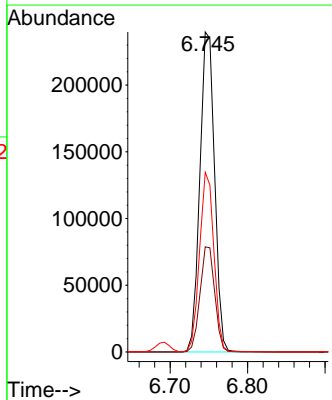
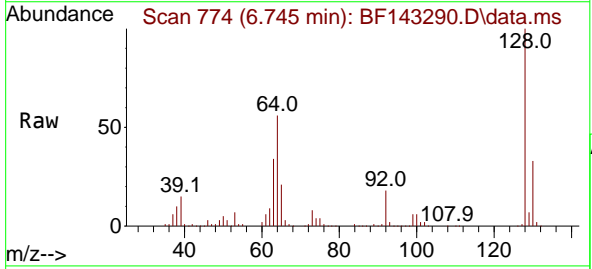
Ion	Ratio	Lower	Upper
99	100		
42	20.8	17.0	25.6
71	32.5	27.7	41.5

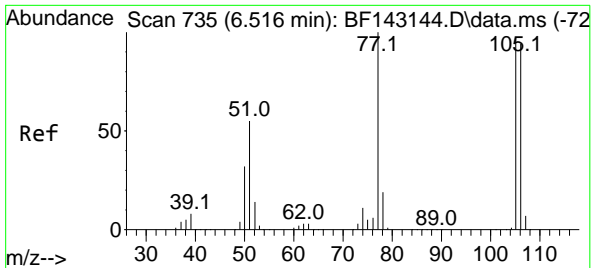


#8
 2-Chlorophenol
 Concen: 41.131 ng
 RT: 6.745 min Scan# 774
 Delta R.T. -0.000 min
 Lab File: BF143290.D
 Acq: 04 Aug 2025 12:04

Tgt Ion: 128 Resp: 316735

Ion	Ratio	Lower	Upper
128	100		
130	32.8	12.3	52.3
64	56.2	35.9	75.9



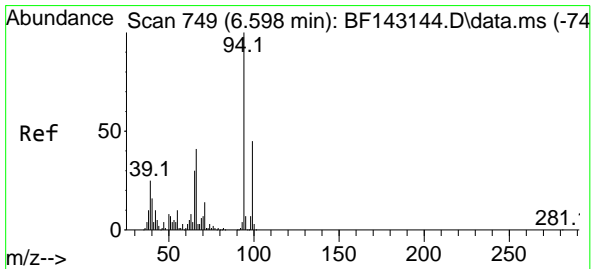
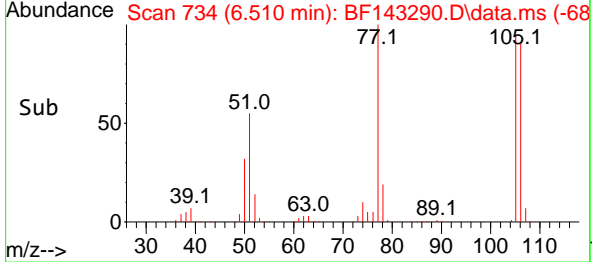
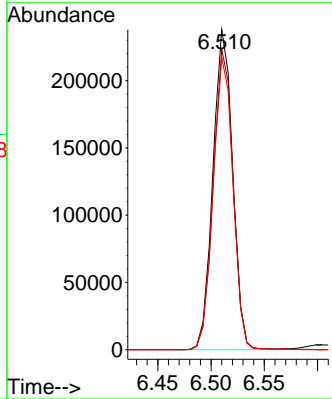
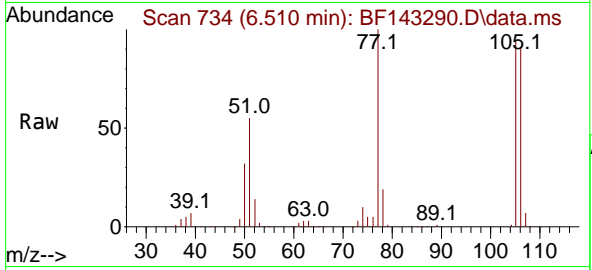


#9
 Benzaldehyde
 Concen: 43.996 ng
 RT: 6.510 min Scan# 710
 Delta R.T. -0.006 min
 Lab File: BF143290.D
 Acq: 04 Aug 2025 12:04

Instrument : BNA_F
 ClientSampleId : SSTDCCC040

Tgt Ion: 77 Resp: 305065

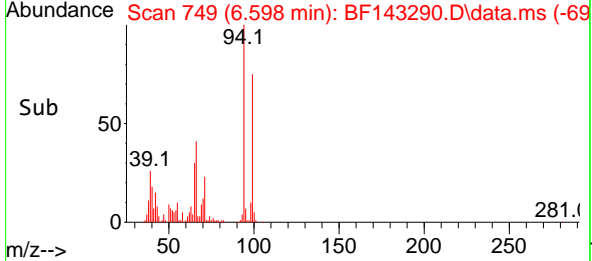
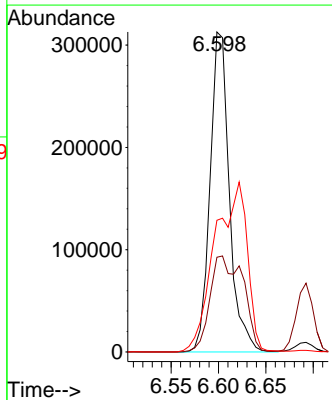
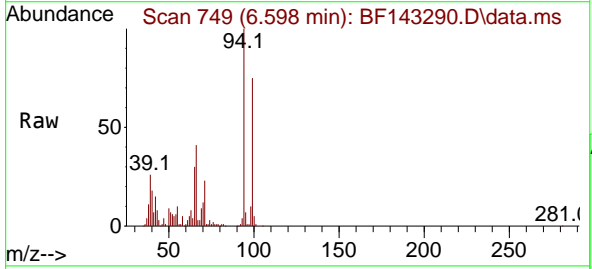
Ion	Ratio	Lower	Upper
77	100		
105	93.8	76.8	116.8
106	91.2	74.4	114.4

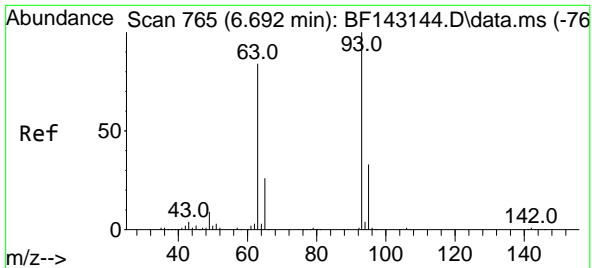


#10
 Phenol
 Concen: 43.974 ng
 RT: 6.598 min Scan# 749
 Delta R.T. -0.000 min
 Lab File: BF143290.D
 Acq: 04 Aug 2025 12:04

Tgt Ion: 94 Resp: 442980

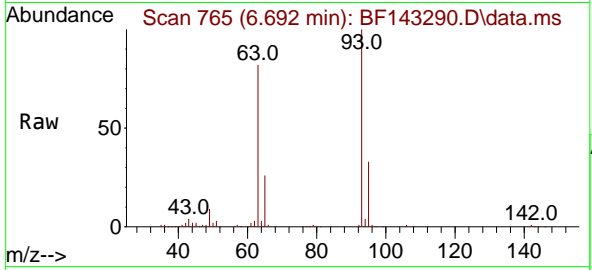
Ion	Ratio	Lower	Upper
94	100		
65	29.6	10.0	50.0
66	41.2	20.8	60.8





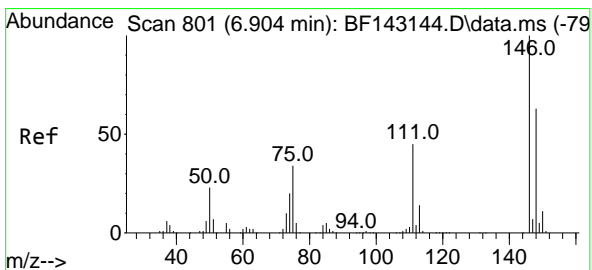
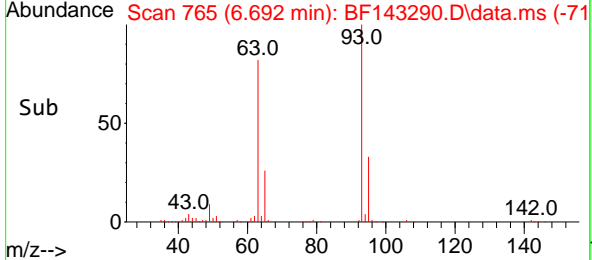
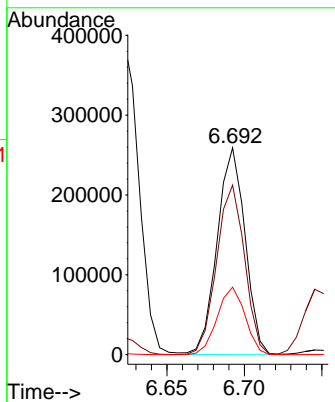
#11
 bis(2-Chloroethyl)ether
 Concen: 41.917 ng
 RT: 6.692 min Scan# 765
 Delta R.T. -0.000 min
 Lab File: BF143290.D
 Acq: 04 Aug 2025 12:04

Instrument :
 BNA_F
 ClientSampleId :
 SSTDCCC040



Tgt Ion: 93 Resp: 323310

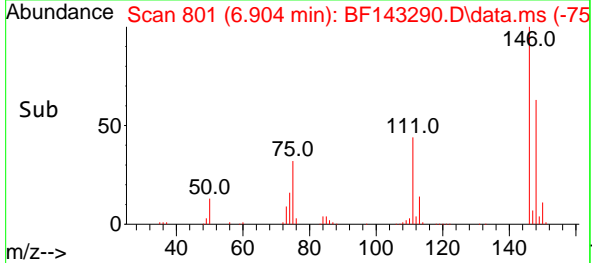
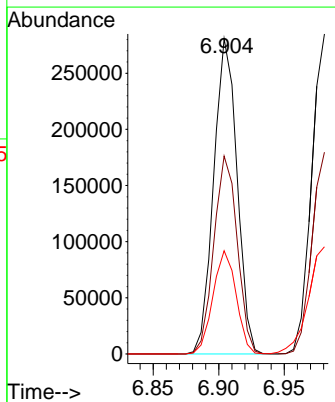
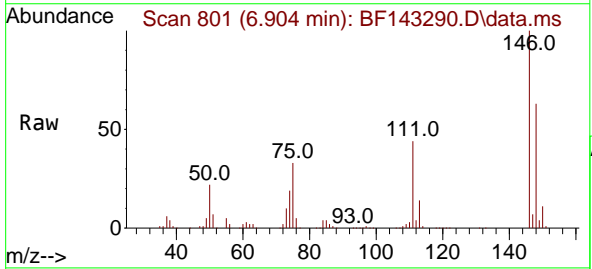
Ion	Ratio	Lower	Upper
93	100		
63	82.0	63.4	103.4
95	32.7	12.4	52.4

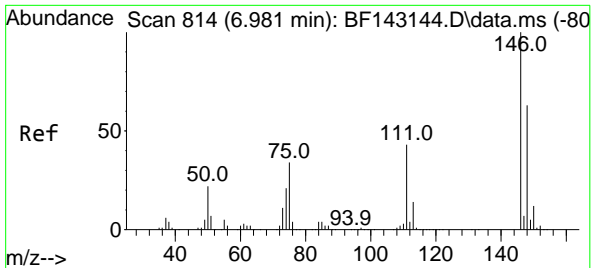


#12
 1,3-Dichlorobenzene
 Concen: 41.518 ng
 RT: 6.904 min Scan# 801
 Delta R.T. -0.000 min
 Lab File: BF143290.D
 Acq: 04 Aug 2025 12:04

Tgt Ion: 146 Resp: 347320

Ion	Ratio	Lower	Upper
146	100		
148	62.7	50.6	76.0
75	32.7	27.4	41.2

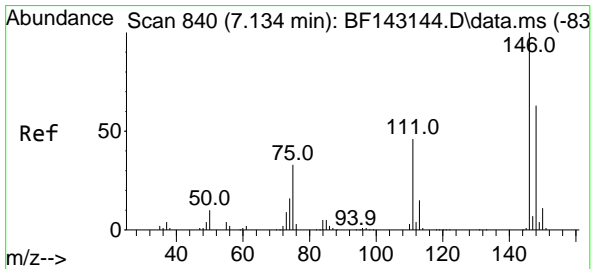
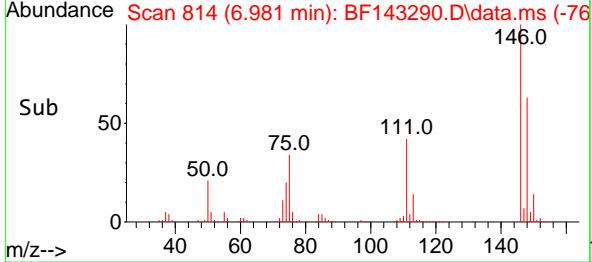
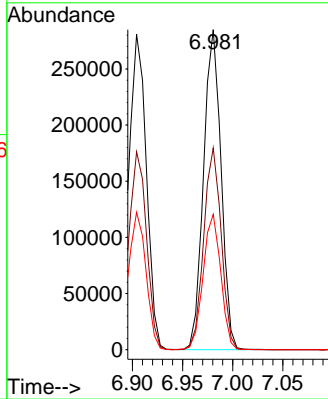
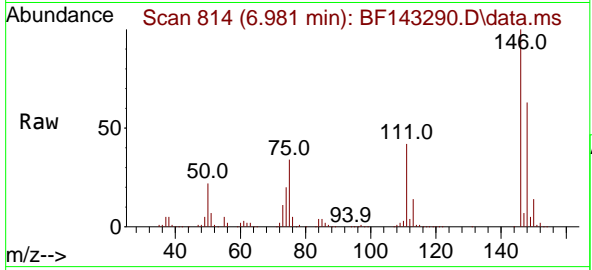




#13
 1,4-Dichlorobenzene
 Concen: 41.242 ng
 RT: 6.981 min Scan# 813
 Delta R.T. -0.000 min
 Lab File: BF143290.D
 Acq: 04 Aug 2025 12:04

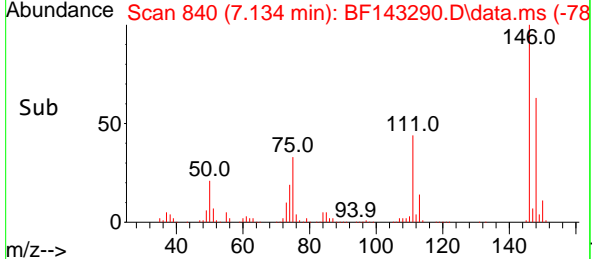
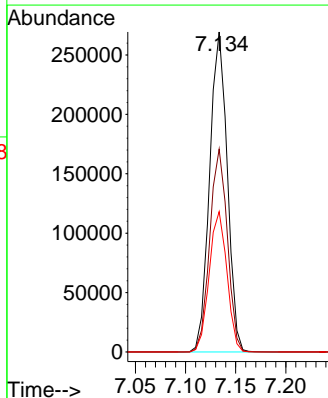
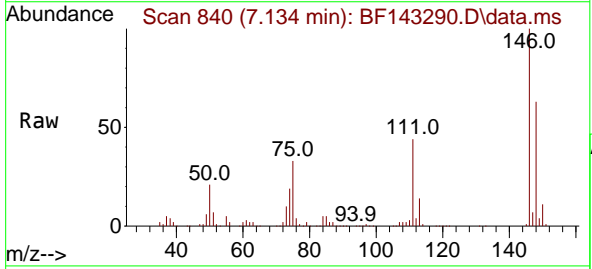
Instrument :
 BNA_F
 ClientSampleId :
 SSTDCCC040

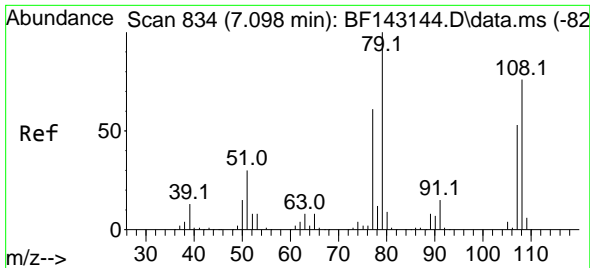
Tgt Ion:146 Resp: 347438
 Ion Ratio Lower Upper
 146 100
 148 63.1 50.3 75.5
 111 42.3 34.4 51.6



#14
 1,2-Dichlorobenzene
 Concen: 41.180 ng
 RT: 7.134 min Scan# 840
 Delta R.T. -0.000 min
 Lab File: BF143290.D
 Acq: 04 Aug 2025 12:04

Tgt Ion:146 Resp: 329962
 Ion Ratio Lower Upper
 146 100
 148 63.4 50.7 76.1
 111 43.9 36.6 54.8



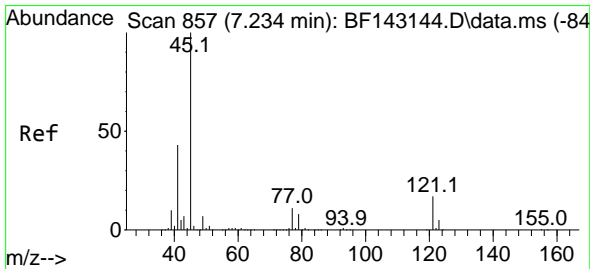
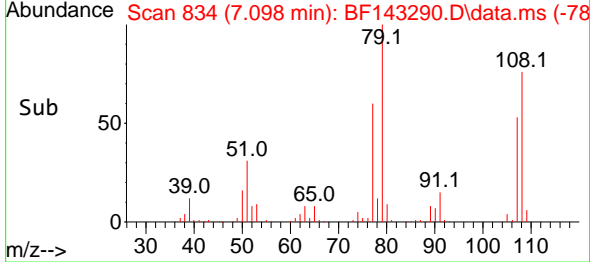
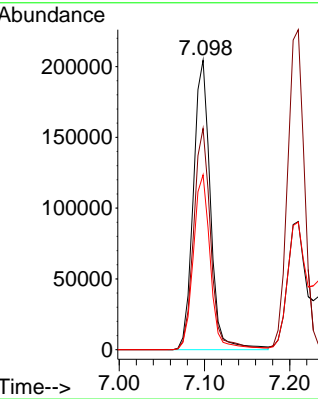
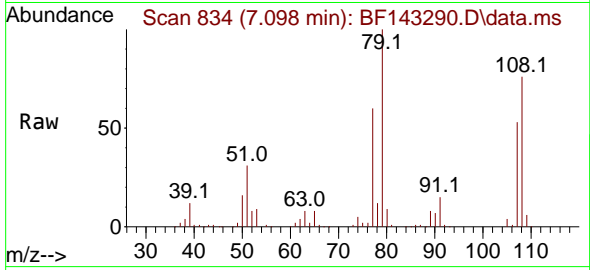


#15
 Benzyl Alcohol
 Concen: 40.259 ng
 RT: 7.098 min Scan# 811
 Delta R.T. -0.000 min
 Lab File: BF143290.D
 Acq: 04 Aug 2025 12:04

Instrument :
 BNA_F
 ClientSampleId :
 SSTDCCC040

Tgt Ion: 79 Resp: 284252

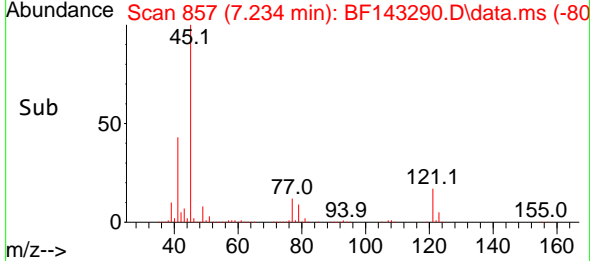
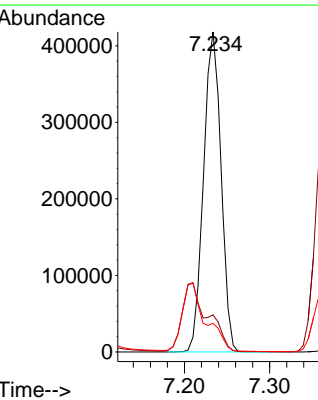
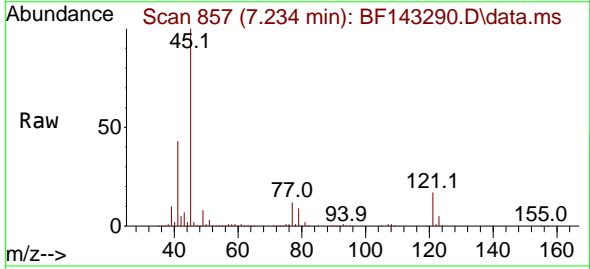
Ion	Ratio	Lower	Upper
79	100		
108	76.5	61.1	91.7
77	60.4	48.9	73.3

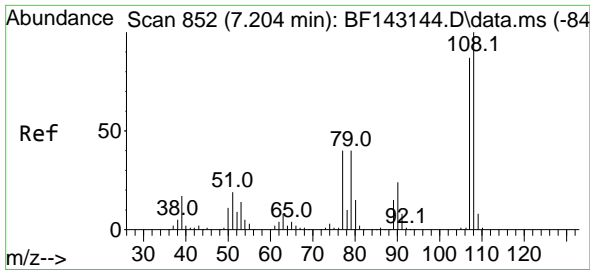


#16
 2,2'-oxybis(1-Chloropropane)
 Concen: 41.605 ng
 RT: 7.234 min Scan# 857
 Delta R.T. -0.000 min
 Lab File: BF143290.D
 Acq: 04 Aug 2025 12:04

Tgt Ion: 45 Resp: 595292

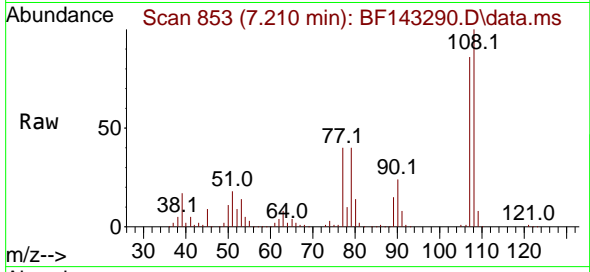
Ion	Ratio	Lower	Upper
45	100		
77	11.6	0.0	31.2
79	8.9	0.0	28.5



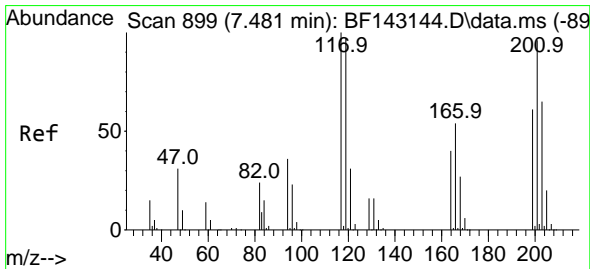
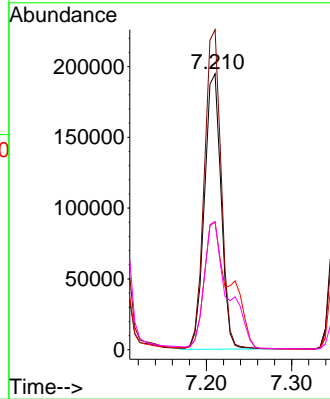
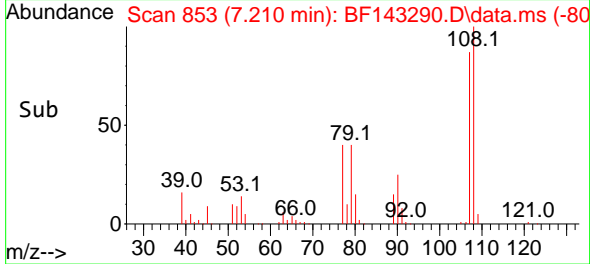


#17
 2-Methylphenol
 Concen: 40.820 ng
 RT: 7.210 min Scan# 810
 Delta R.T. 0.006 min
 Lab File: BF143290.D
 Acq: 04 Aug 2025 12:04

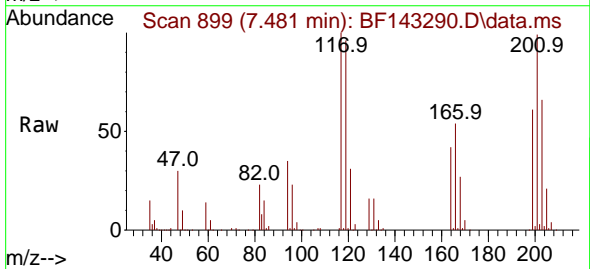
Instrument :
 BNA_F
 ClientSampleId :
 SSTDCCC040



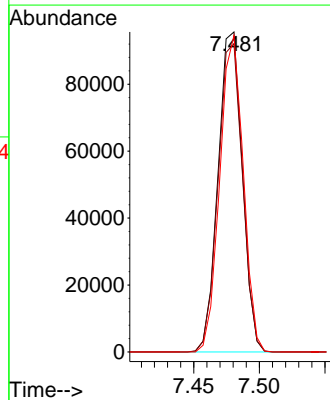
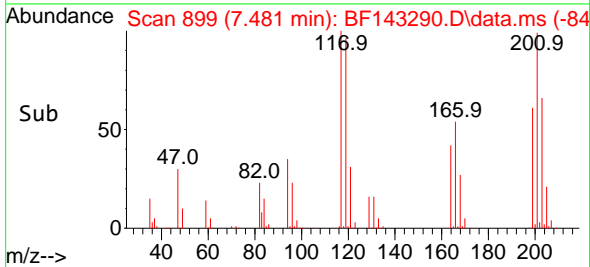
Tgt Ion:107 Resp: 264309
 Ion Ratio Lower Upper
 107 100
 108 116.0 91.8 137.6
 77 46.2 37.0 55.6
 79 46.4 36.9 55.3

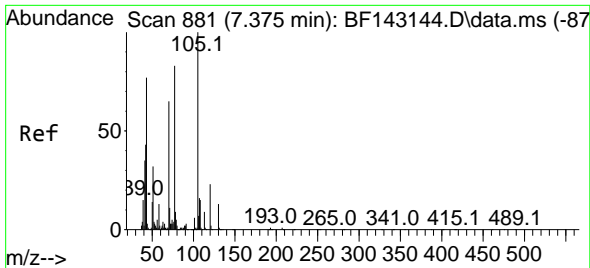


#18
 Hexachloroethane
 Concen: 42.157 ng
 RT: 7.481 min Scan# 899
 Delta R.T. -0.000 min
 Lab File: BF143290.D
 Acq: 04 Aug 2025 12:04



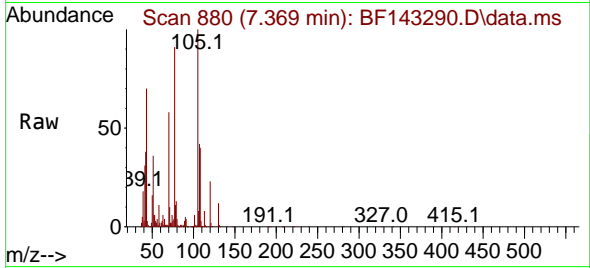
Tgt Ion:117 Resp: 122948
 Ion Ratio Lower Upper
 117 100
 119 96.3 77.8 116.8
 201 98.9 77.0 115.4





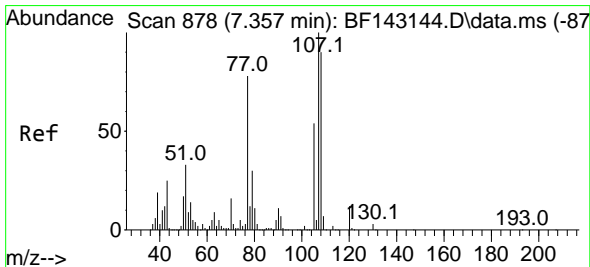
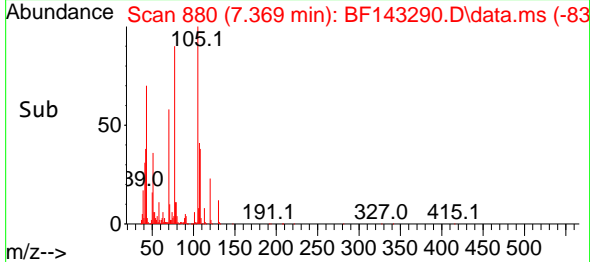
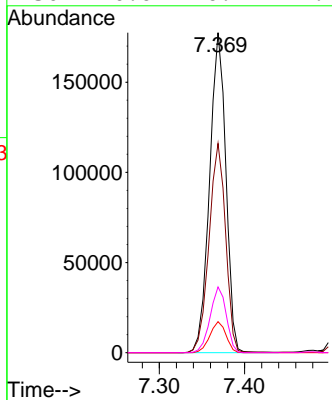
#19
 n-Nitroso-di-n-propylamine
 Concen: 39.756 ng
 RT: 7.369 min Scan# 881
 Delta R.T. -0.006 min
 Lab File: BF143290.D
 Acq: 04 Aug 2025 12:04

Instrument :
 BNA_F
 ClientSampleId :
 SSTDCCC040

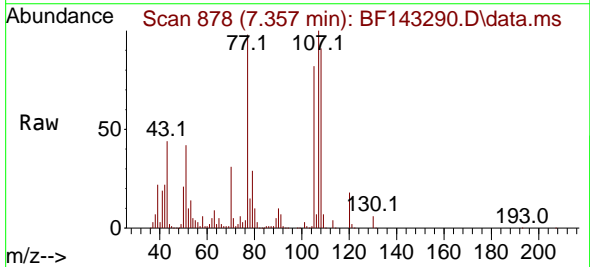


Tgt Ion: 70 Resp: 235859

Ion	Ratio	Lower	Upper
70	100		
42	65.4	52.5	78.7
101	9.7	7.6	11.4
130	20.6	16.1	24.1

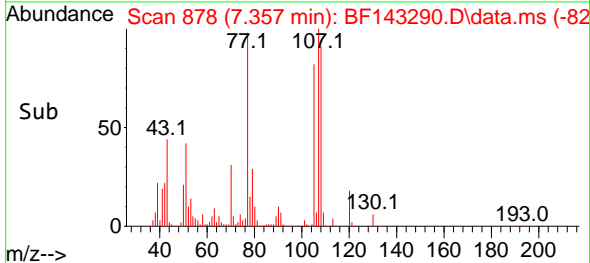
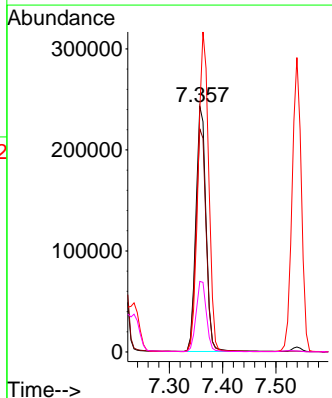


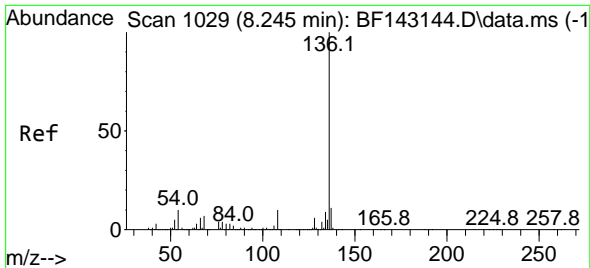
#20
 3+4-Methylphenols
 Concen: 40.790 ng
 RT: 7.357 min Scan# 878
 Delta R.T. -0.000 min
 Lab File: BF143290.D
 Acq: 04 Aug 2025 12:04



Tgt Ion: 107 Resp: 320435

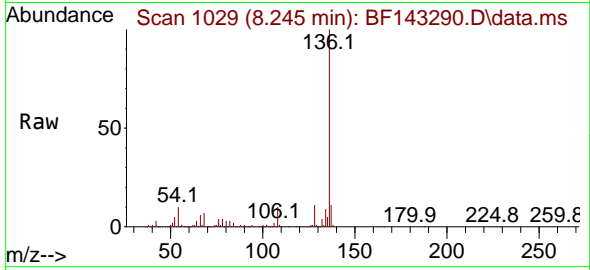
Ion	Ratio	Lower	Upper
107	100		
108	90.8	70.0	110.0
77	98.3	57.8	97.8#
79	28.8	9.5	49.5





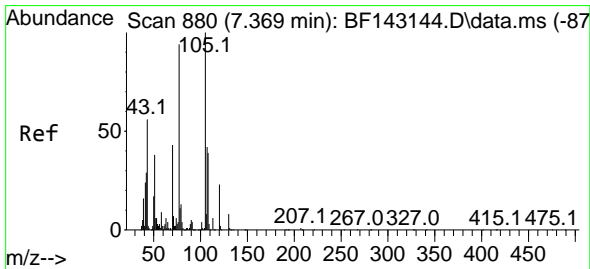
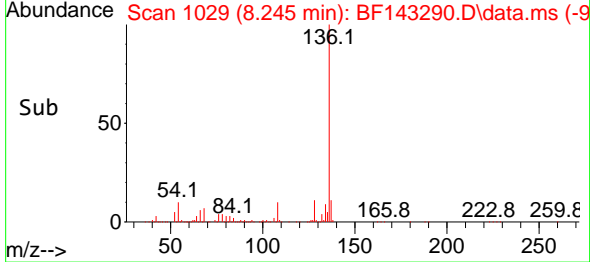
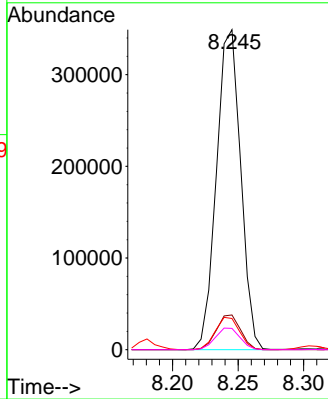
#21
 Naphthalene-d8
 Concen: 20.000 ng
 RT: 8.245 min Scan# 1029
 Delta R.T. 0.000 min
 Lab File: BF143290.D
 Acq: 04 Aug 2025 12:04

Instrument : BNA_F
 ClientSampleId : SSTDCCC040

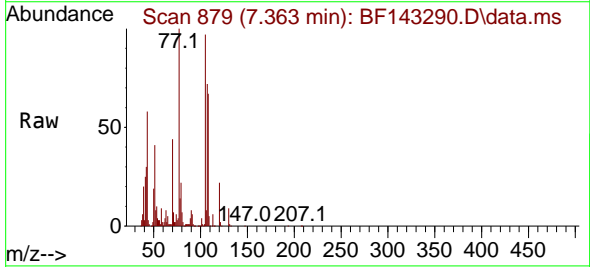


Tgt Ion:136 Resp: 448345

Ion	Ratio	Lower	Upper
136	100		
137	10.9	8.6	13.0
54	9.8	8.2	12.2
68	6.6	5.4	8.2

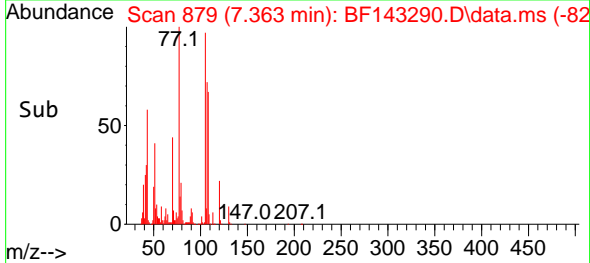
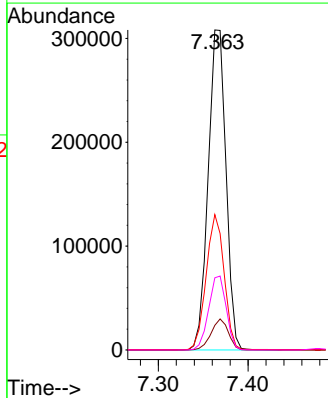


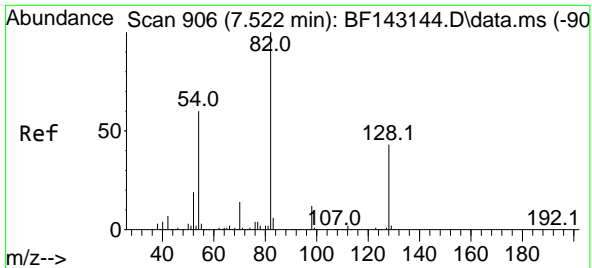
#22
 Acetophenone
 Concen: 40.018 ng
 RT: 7.363 min Scan# 879
 Delta R.T. -0.006 min
 Lab File: BF143290.D
 Acq: 04 Aug 2025 12:04



Tgt Ion:105 Resp: 424779

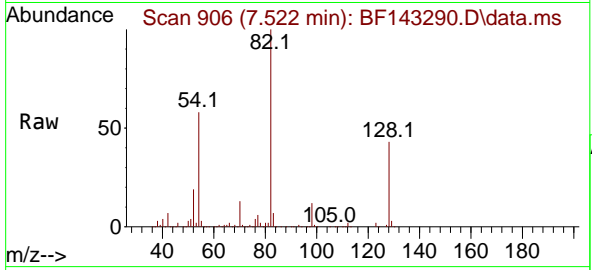
Ion	Ratio	Lower	Upper
105	100		
71	7.7	5.8	8.6
51	42.3	30.2	45.2
120	22.6	18.2	27.4





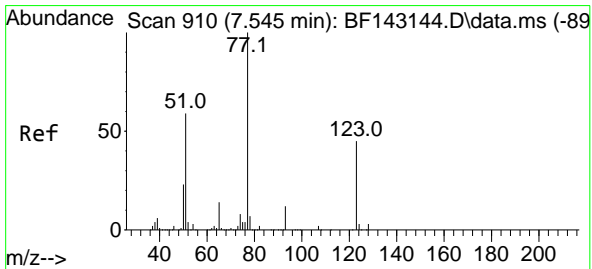
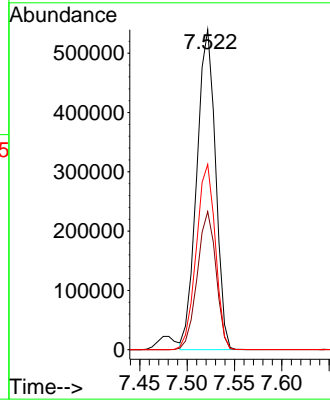
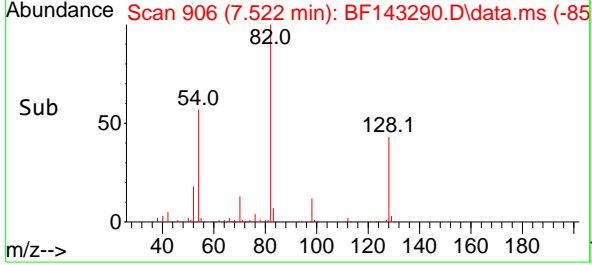
#23
 Nitrobenzene-d5
 Concen: 82.831 ng
 RT: 7.522 min Scan# 909
 Delta R.T. -0.000 min
 Lab File: BF143290.D
 Acq: 04 Aug 2025 12:04

Instrument :
 BNA_F
 ClientSampleId :
 SSTDCCC040

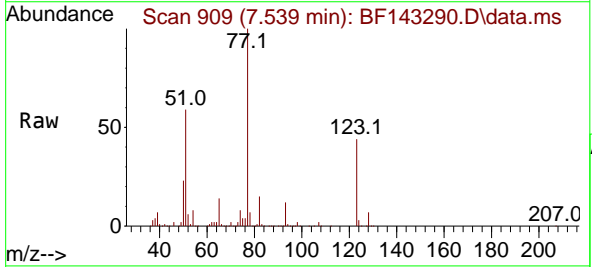


Tgt Ion: 82 Resp: 745017

Ion	Ratio	Lower	Upper
82	100		
128	43.2	33.6	50.4
54	57.9	47.1	70.7

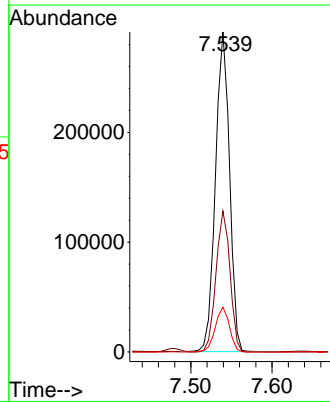
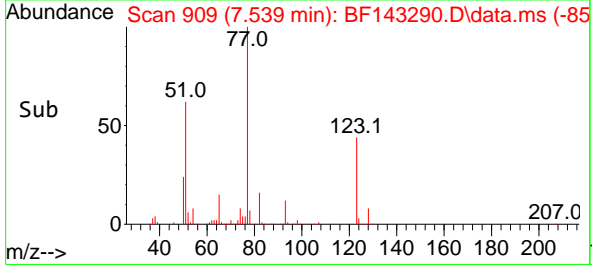


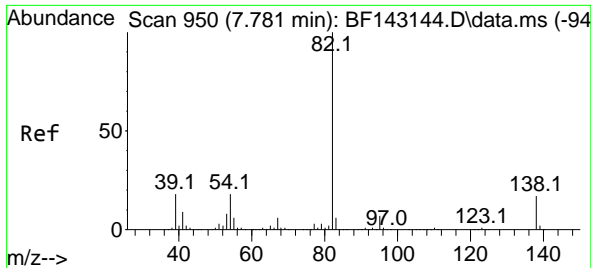
#24
 Nitrobenzene
 Concen: 41.845 ng
 RT: 7.539 min Scan# 909
 Delta R.T. -0.006 min
 Lab File: BF143290.D
 Acq: 04 Aug 2025 12:04



Tgt Ion: 77 Resp: 350897

Ion	Ratio	Lower	Upper
77	100		
123	44.0	36.1	54.1
65	14.0	11.4	17.2



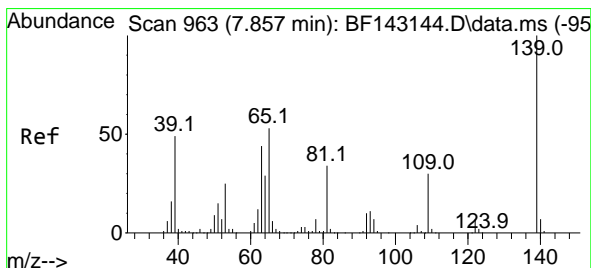
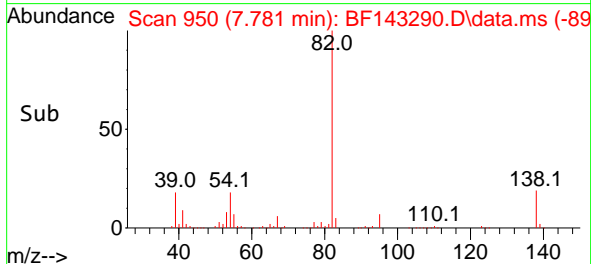
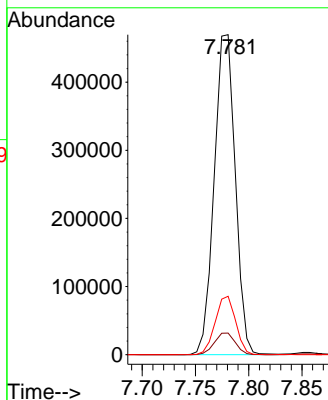
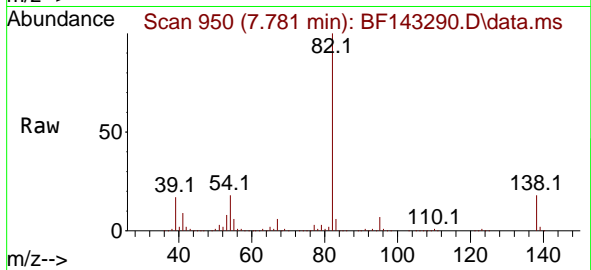


#25
 Isophorone
 Concen: 40.651 ng
 RT: 7.781 min Scan# 911
 Delta R.T. -0.000 min
 Lab File: BF143290.D
 Acq: 04 Aug 2025 12:04

Instrument : BNA_F
 ClientSampleId : SSTDCCC040

Tgt Ion: 82 Resp: 645466

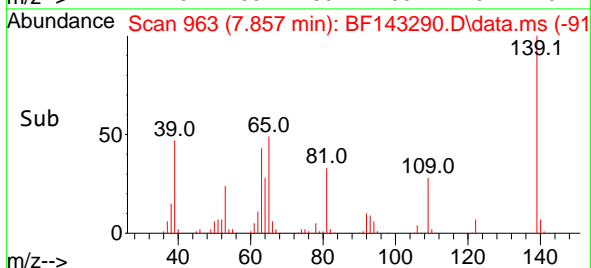
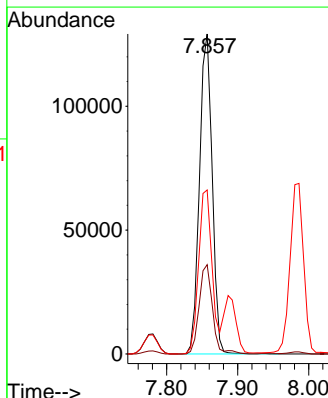
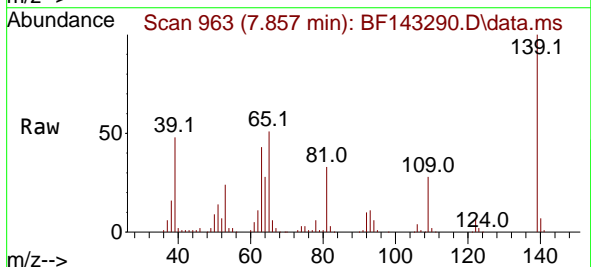
Ion	Ratio	Lower	Upper
82	100		
95	6.8	5.5	8.3
138	18.2	13.8	20.8

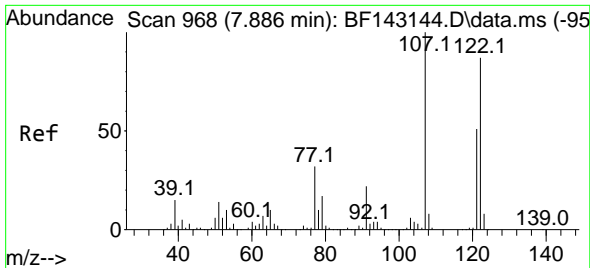


#26
 2-Nitrophenol
 Concen: 44.321 ng
 RT: 7.857 min Scan# 963
 Delta R.T. -0.000 min
 Lab File: BF143290.D
 Acq: 04 Aug 2025 12:04

Tgt Ion: 139 Resp: 161300

Ion	Ratio	Lower	Upper
139	100		
109	27.9	23.6	35.4
65	51.3	42.6	64.0





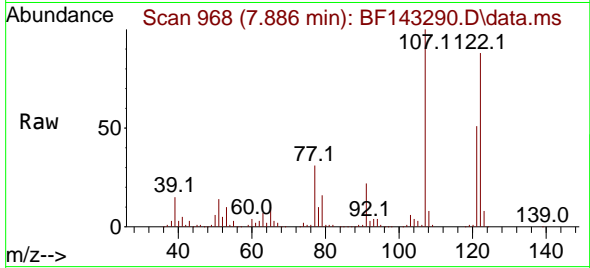
#27
 2,4-Dimethylphenol
 Concen: 40.075 ng
 RT: 7.886 min Scan# 90
 Delta R.T. -0.000 min
 Lab File: BF143290.D
 Acq: 04 Aug 2025 12:04

Instrument :

BNA_F

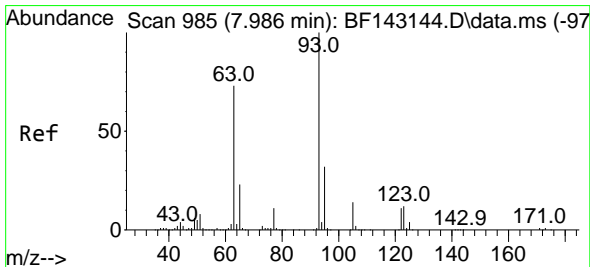
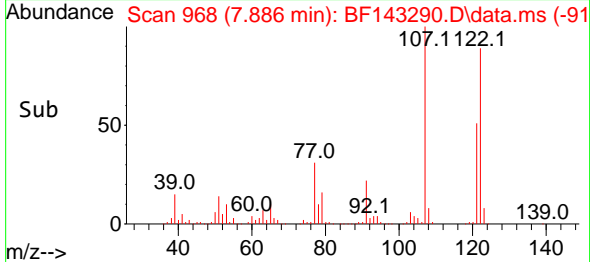
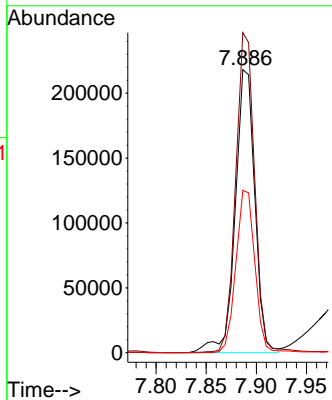
ClientSampleId :

SSTDCCC040



Tgt Ion:122 Resp: 297292

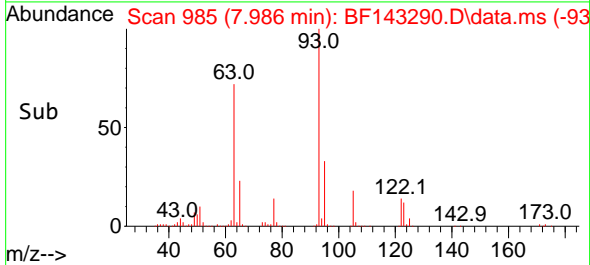
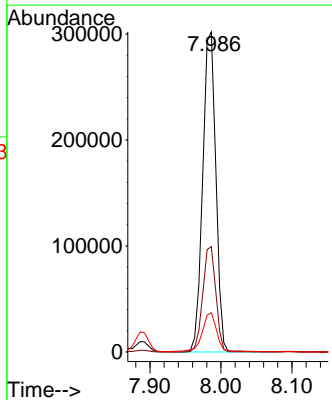
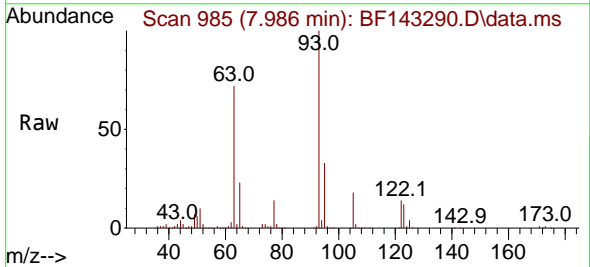
Ion	Ratio	Lower	Upper
122	100		
107	113.1	91.8	137.6
121	57.4	46.3	69.5

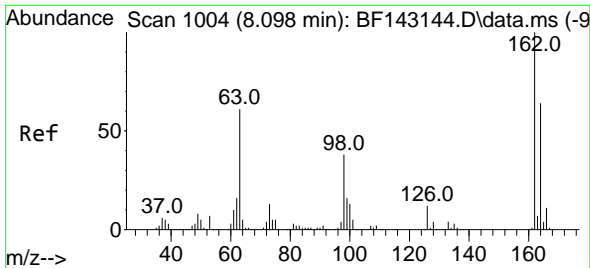


#28
 bis(2-Chloroethoxy)methane
 Concen: 41.024 ng
 RT: 7.986 min Scan# 985
 Delta R.T. -0.000 min
 Lab File: BF143290.D
 Acq: 04 Aug 2025 12:04

Tgt Ion: 93 Resp: 390552

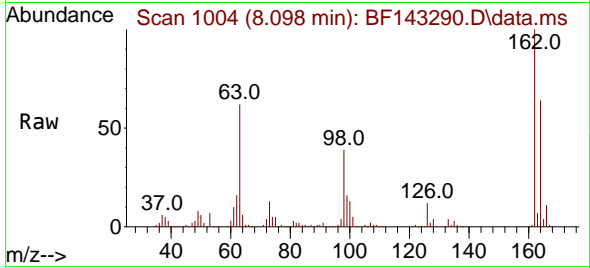
Ion	Ratio	Lower	Upper
93	100		
95	32.9	25.8	38.6
123	12.3	9.7	14.5



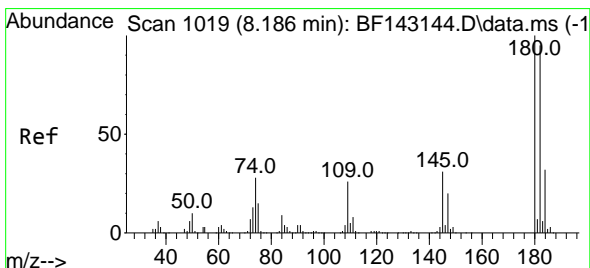
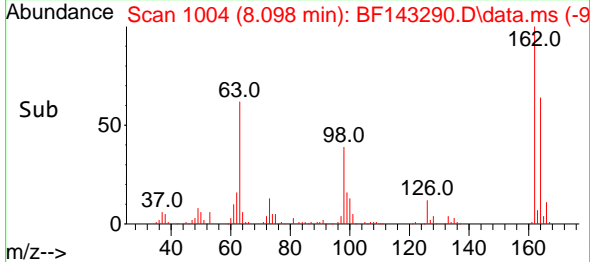
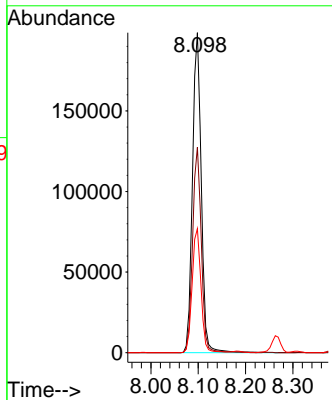


#29
 2,4-Dichlorophenol
 Concen: 41.101 ng
 RT: 8.098 min Scan# 1004
 Delta R.T. -0.000 min
 Lab File: BF143290.D
 Acq: 04 Aug 2025 12:04

Instrument : BNA_F
 ClientSampleId : SSTDCCC040

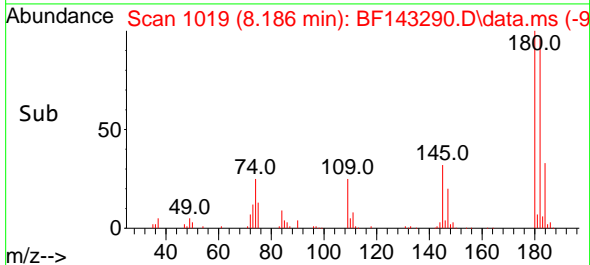
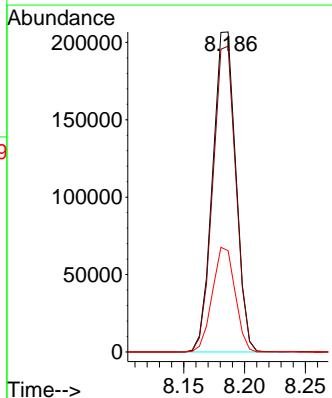
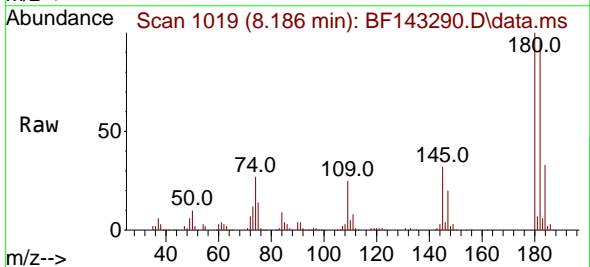


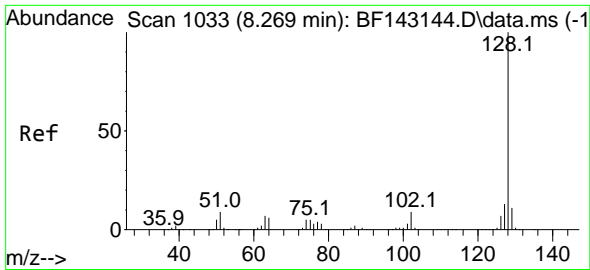
Tgt Ion:162 Resp: 257136
 Ion Ratio Lower Upper
 162 100
 164 64.2 44.2 84.2
 98 38.7 17.9 57.9



#30
 1,2,4-Trichlorobenzene
 Concen: 40.617 ng
 RT: 8.186 min Scan# 1019
 Delta R.T. -0.000 min
 Lab File: BF143290.D
 Acq: 04 Aug 2025 12:04

Tgt Ion:180 Resp: 274523
 Ion Ratio Lower Upper
 180 100
 182 95.5 76.2 114.2
 145 31.7 25.0 37.6

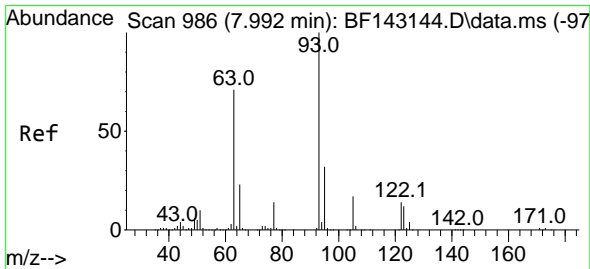
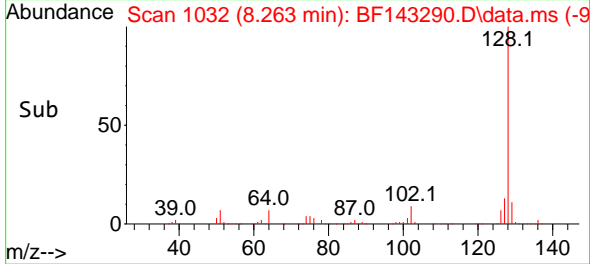
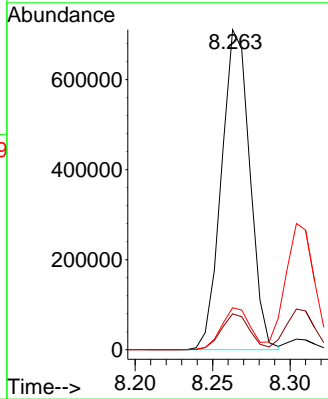
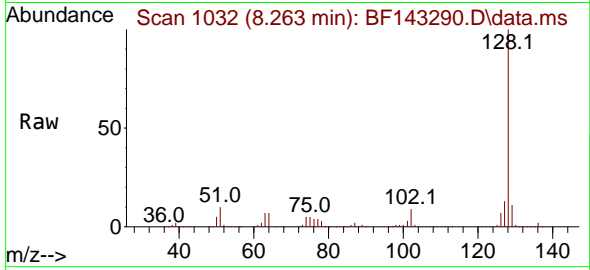




#31
 Naphthalene
 Concen: 40.955 ng
 RT: 8.263 min Scan# 1032
 Delta R.T. -0.006 min
 Lab File: BF143290.D
 Acq: 04 Aug 2025 12:04

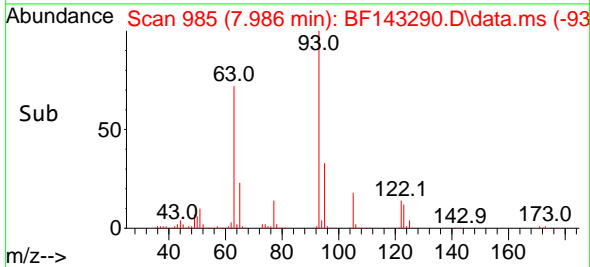
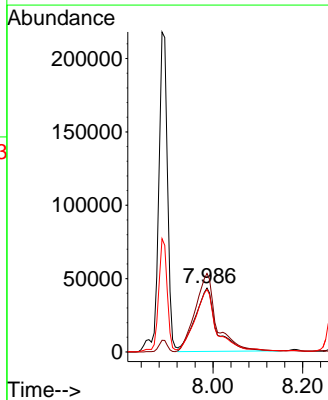
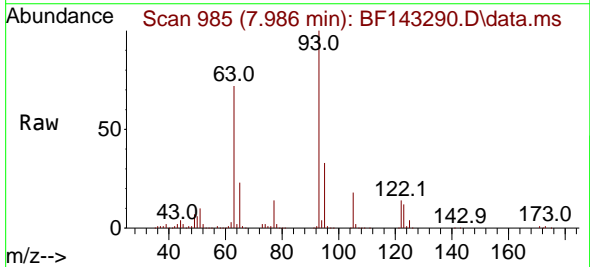
Instrument : BNA_F
 ClientSampleId : SSTDCCC040

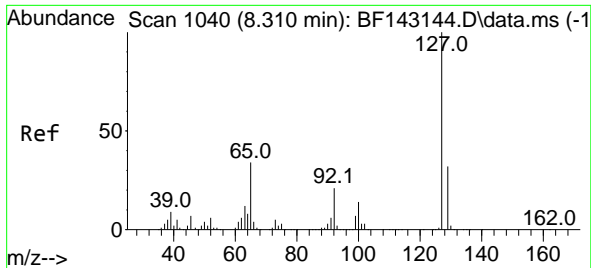
Tgt Ion:128 Resp: 904301
 Ion Ratio Lower Upper
 128 100
 129 11.2 9.0 13.4
 127 13.1 10.6 16.0



#32
 Benzoic acid
 Concen: 36.017 ng
 RT: 7.986 min Scan# 985
 Delta R.T. -0.006 min
 Lab File: BF143290.D
 Acq: 04 Aug 2025 12:04

Tgt Ion:122 Resp: 144452
 Ion Ratio Lower Upper
 122 100
 105 123.0 104.8 144.8
 77 97.9 77.6 117.6



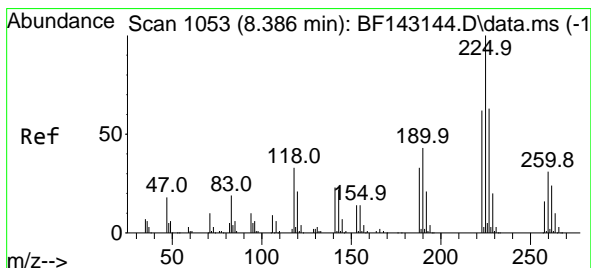
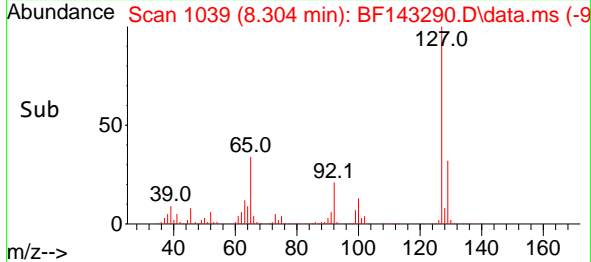
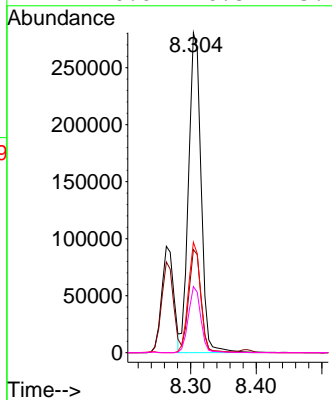
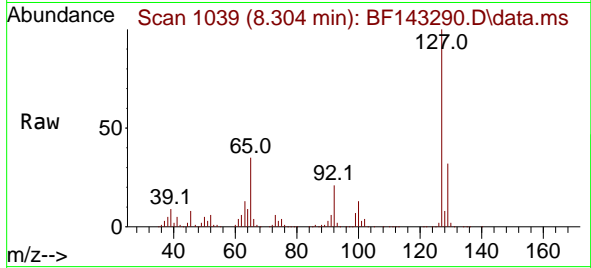


#33
 4-Chloroaniline
 Concen: 41.108 ng
 RT: 8.304 min Scan# 1039
 Delta R.T. -0.006 min
 Lab File: BF143290.D
 Acq: 04 Aug 2025 12:04

Instrument : BNA_F
 ClientSampleId : SSTDCCC040

Tgt Ion:127 Resp: 370622

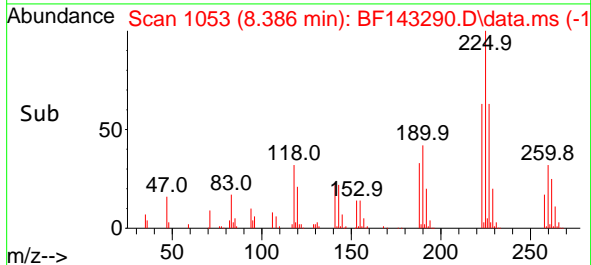
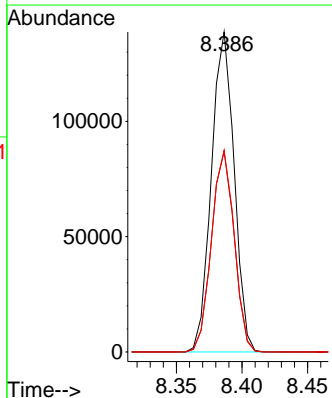
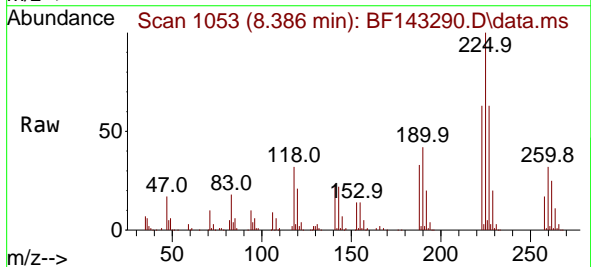
Ion	Ratio	Lower	Upper
127	100		
129	32.2	26.0	39.0
65	34.5	27.4	41.2
92	20.6	16.8	25.2

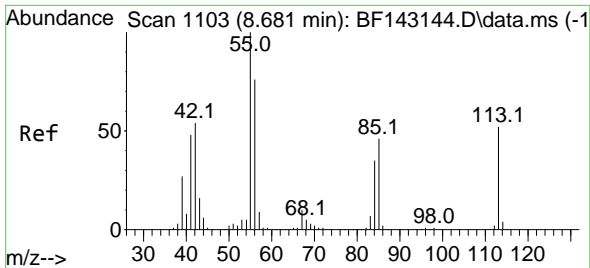


#34
 Hexachlorobutadiene
 Concen: 40.469 ng
 RT: 8.386 min Scan# 1053
 Delta R.T. -0.000 min
 Lab File: BF143290.D
 Acq: 04 Aug 2025 12:04

Tgt Ion:225 Resp: 167090

Ion	Ratio	Lower	Upper
225	100		
223	62.6	49.8	74.6
227	63.0	50.2	75.4

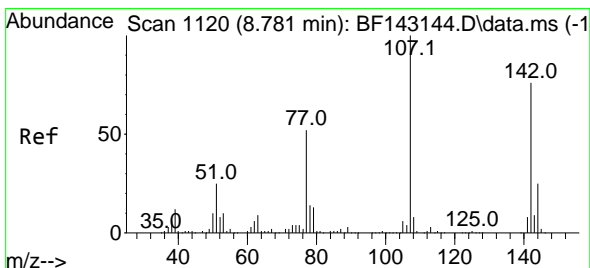
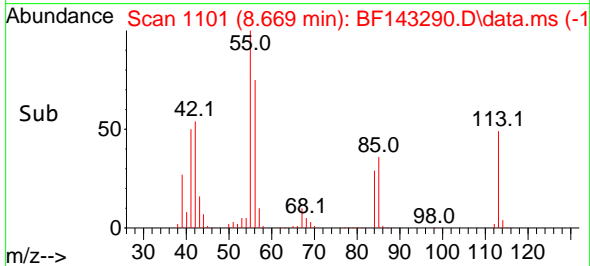
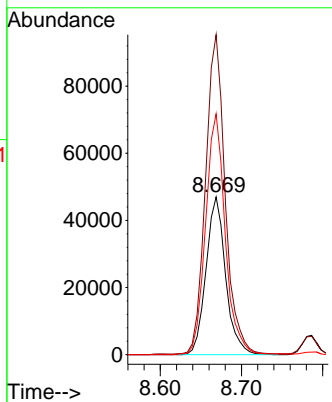
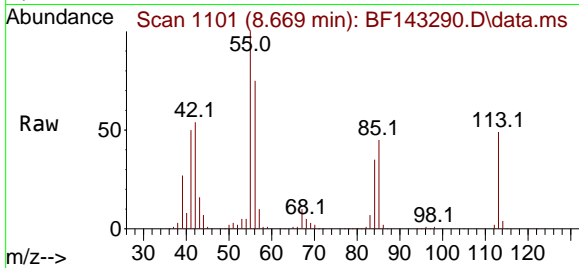




#35
 Caprolactam
 Concen: 41.616 ng
 RT: 8.669 min Scan# 1101
 Delta R.T. -0.012 min
 Lab File: BF143290.D
 Acq: 04 Aug 2025 12:04

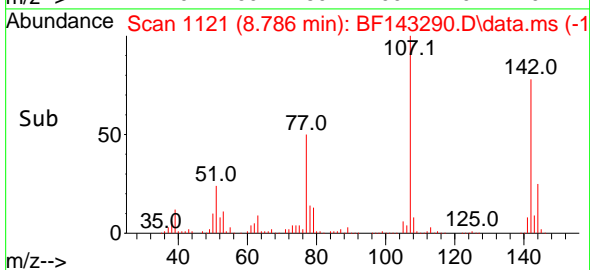
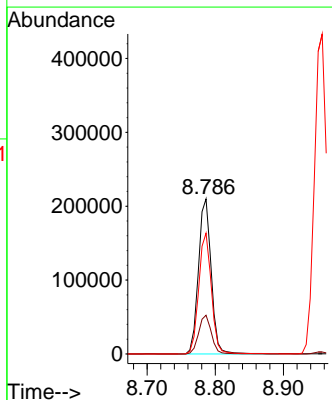
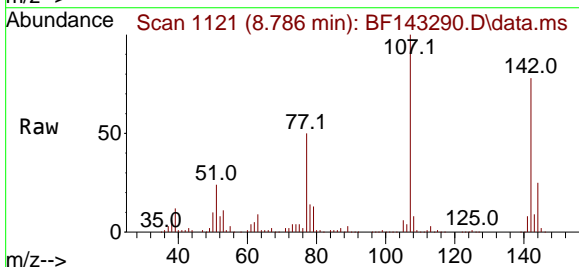
Instrument :
 BNA_F
 ClientSampleId :
 SSTDCCC040

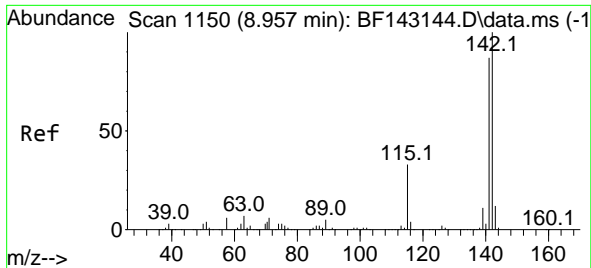
Tgt Ion:113 Resp: 78675
 Ion Ratio Lower Upper
 113 100
 55 202.9 174.0 214.0
 56 152.6 126.6 166.6



#36
 4-Chloro-3-methylphenol
 Concen: 40.190 ng
 RT: 8.786 min Scan# 1121
 Delta R.T. 0.006 min
 Lab File: BF143290.D
 Acq: 04 Aug 2025 12:04

Tgt Ion:107 Resp: 273287
 Ion Ratio Lower Upper
 107 100
 144 25.0 19.8 29.6
 142 77.9 60.6 90.8

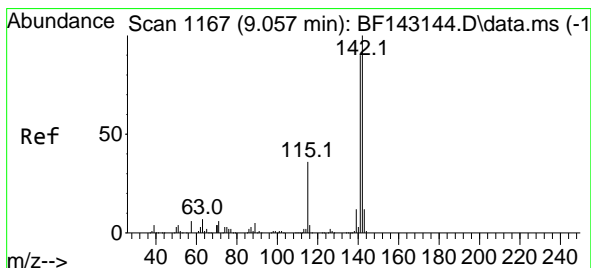
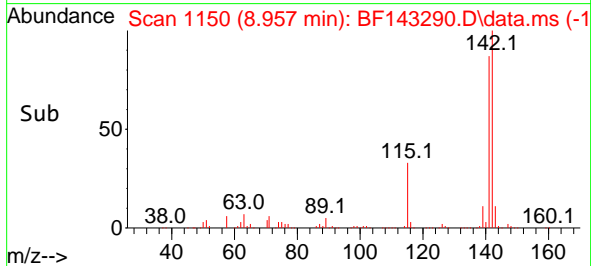
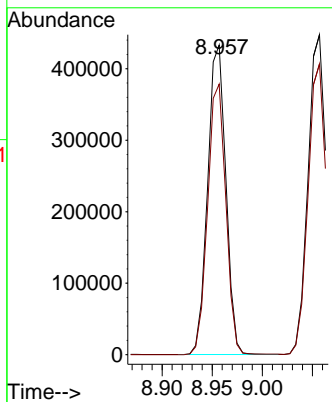
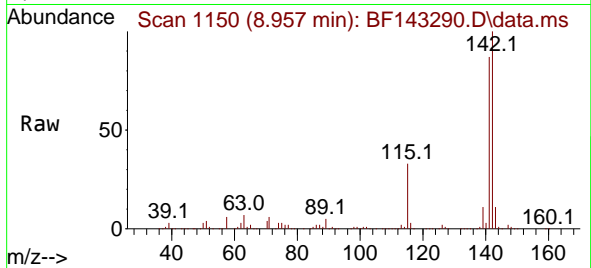




#37
 2-Methylnaphthalene
 Concen: 40.697 ng
 RT: 8.957 min Scan# 1150
 Delta R.T. -0.000 min
 Lab File: BF143290.D
 Acq: 04 Aug 2025 12:04

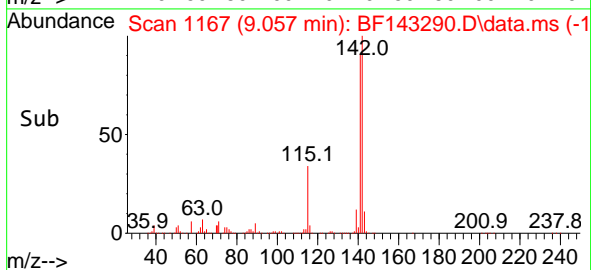
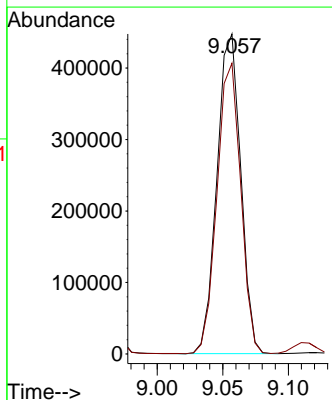
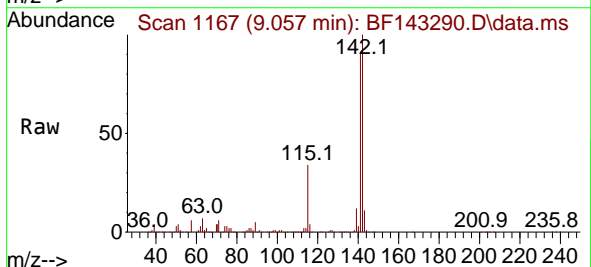
Instrument :
 BNA_F
 ClientSampleId :
 SSTDCCC040

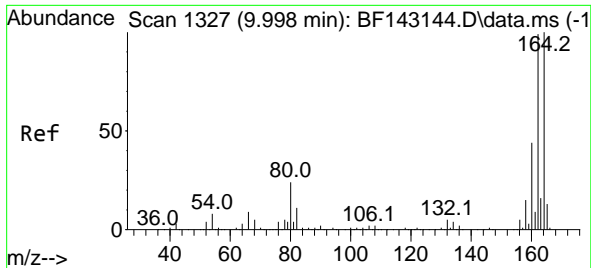
Tgt Ion:142 Resp: 546815
 Ion Ratio Lower Upper
 142 100
 141 87.4 69.9 104.9



#38
 1-Methylnaphthalene
 Concen: 40.742 ng
 RT: 9.057 min Scan# 1167
 Delta R.T. -0.000 min
 Lab File: BF143290.D
 Acq: 04 Aug 2025 12:04

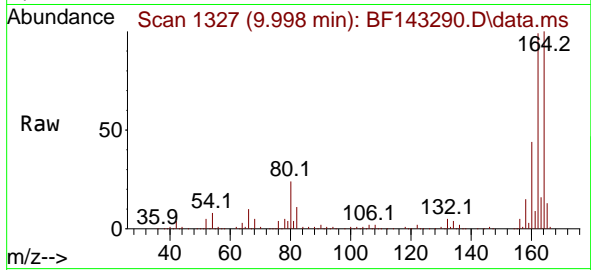
Tgt Ion:142 Resp: 563707
 Ion Ratio Lower Upper
 142 100
 141 90.9 72.3 108.5



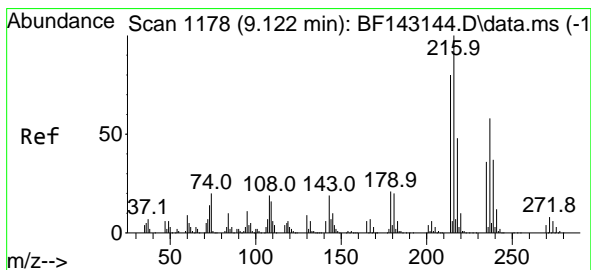
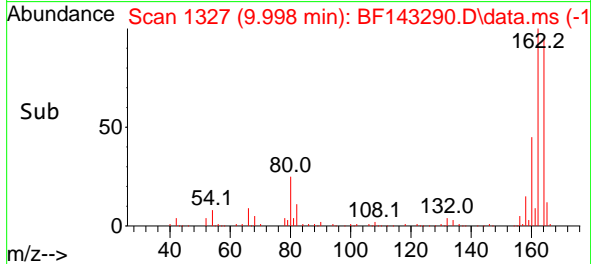
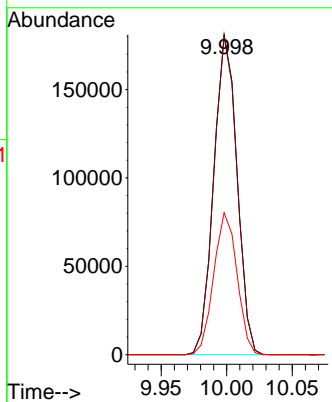


#39
 Acenaphthene-d10
 Concen: 20.000 ng
 RT: 9.998 min Scan# 11
 Delta R.T. 0.000 min
 Lab File: BF143290.D
 Acq: 04 Aug 2025 12:04

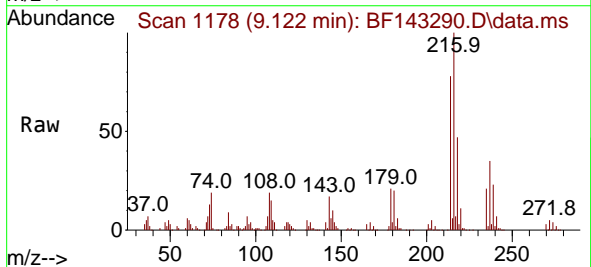
Instrument :
 BNA_F
 ClientSampleId :
 SSTDCCC040



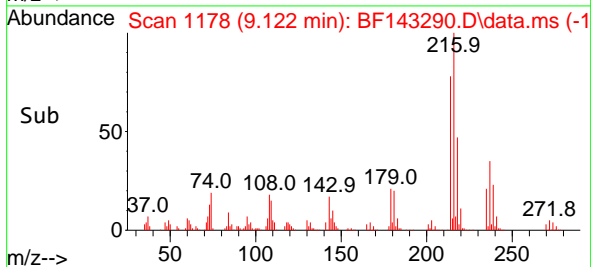
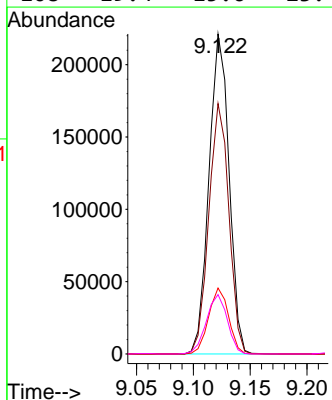
Tgt Ion:164 Resp: 222822
 Ion Ratio Lower Upper
 164 100
 162 99.4 79.0 118.6
 160 44.3 35.1 52.7

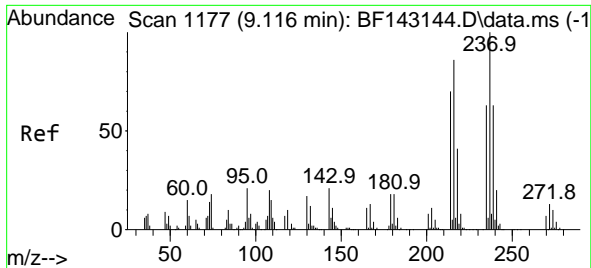


#40
 1,2,4,5-Tetrachlorobenzene
 Concen: 42.275 ng
 RT: 9.122 min Scan# 1178
 Delta R.T. -0.000 min
 Lab File: BF143290.D
 Acq: 04 Aug 2025 12:04



Tgt Ion:216 Resp: 271962
 Ion Ratio Lower Upper
 216 100
 214 78.2 63.8 95.8
 179 20.5 16.4 24.6
 108 19.4 15.6 23.4

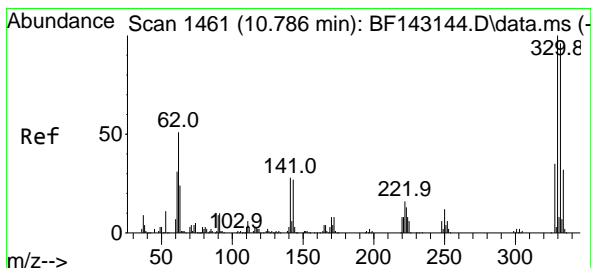
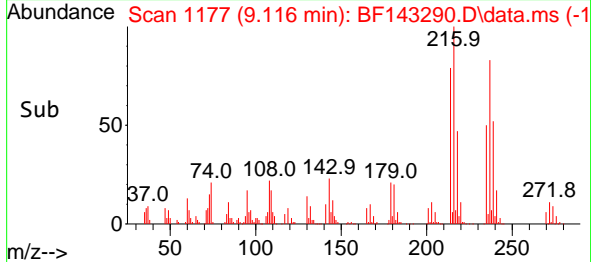
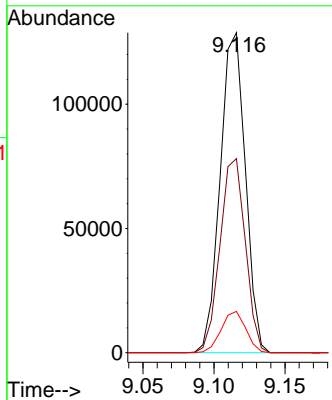
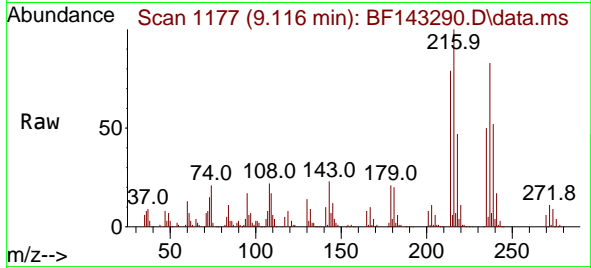




#41
 Hexachlorocyclopentadiene
 Concen: 37.890 ng
 RT: 9.116 min Scan# 1177
 Delta R.T. -0.000 min
 Lab File: BF143290.D
 Acq: 04 Aug 2025 12:04

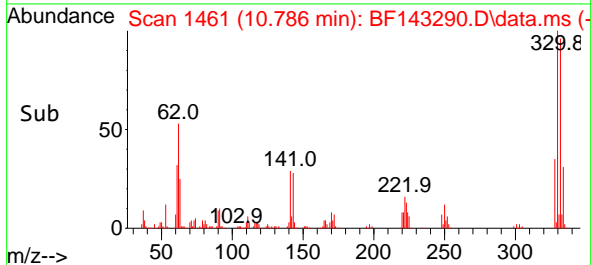
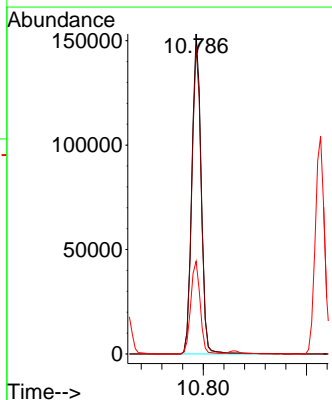
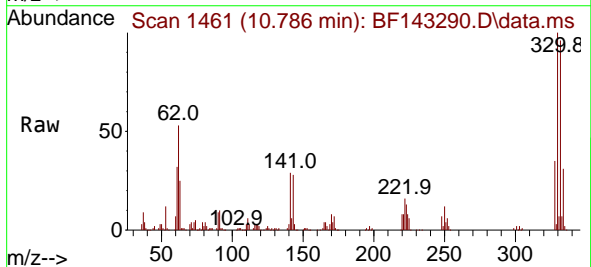
Instrument : BNA_F
 Client Sample Id : SSTDCCC040

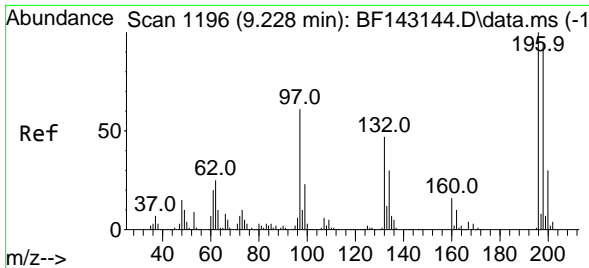
Tgt Ion: 237 Resp: 158600
 Ion Ratio Lower Upper
 237 100
 235 60.7 43.0 83.0
 272 12.9 0.0 33.3



#42
 2,4,6-Tribromophenol
 Concen: 83.234 ng
 RT: 10.786 min Scan# 1461
 Delta R.T. -0.000 min
 Lab File: BF143290.D
 Acq: 04 Aug 2025 12:04

Tgt Ion: 330 Resp: 191595
 Ion Ratio Lower Upper
 330 100
 332 95.9 76.7 115.1
 141 29.3 23.3 34.9



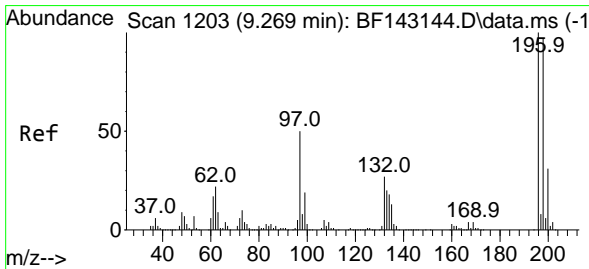
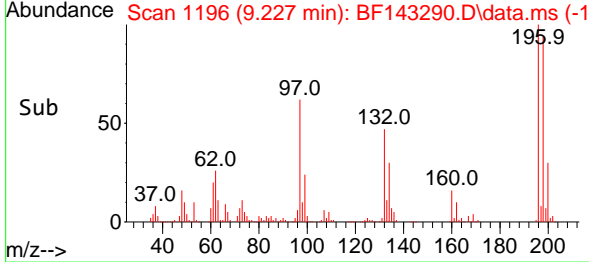
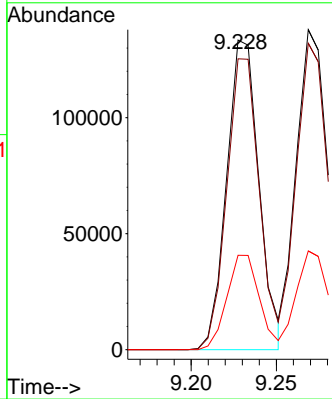
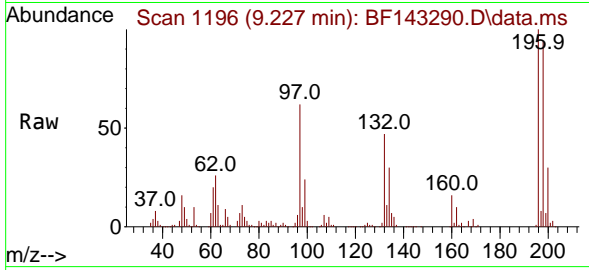


#43
 2,4,6-Trichlorophenol
 Concen: 39.583 ng
 RT: 9.227 min Scan# 1196
 Delta R.T. -0.000 min
 Lab File: BF143290.D
 Acq: 04 Aug 2025 12:04

Instrument : BNA_F
 ClientSampleId : SSTDCCC040

Tgt Ion:196 Resp: 176234

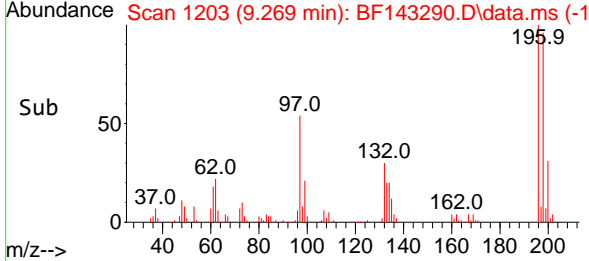
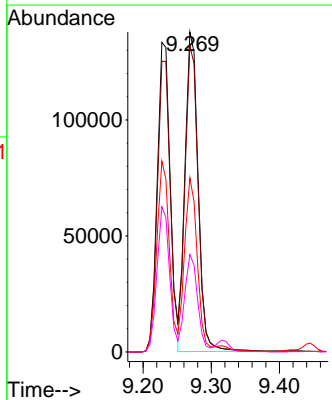
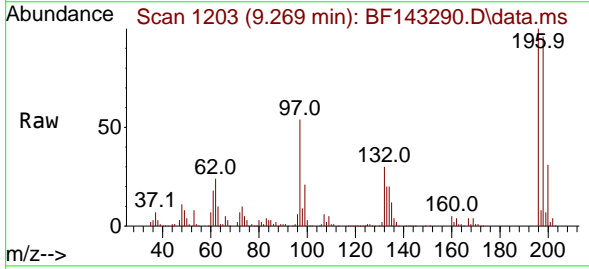
Ion	Ratio	Lower	Upper
196	100		
198	94.0	76.2	114.2
200	30.5	23.9	35.9

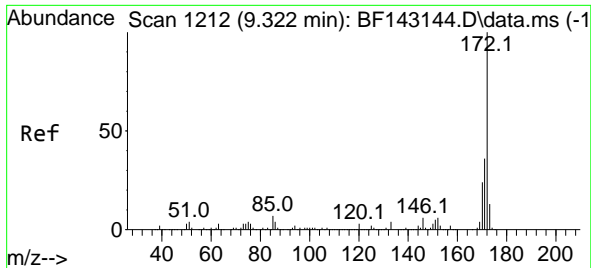


#44
 2,4,5-Trichlorophenol
 Concen: 41.213 ng
 RT: 9.269 min Scan# 1203
 Delta R.T. -0.000 min
 Lab File: BF143290.D
 Acq: 04 Aug 2025 12:04

Tgt Ion:196 Resp: 183545

Ion	Ratio	Lower	Upper
196	100		
198	95.7	77.3	115.9
97	54.4	40.3	60.5
132	30.5	23.1	34.7

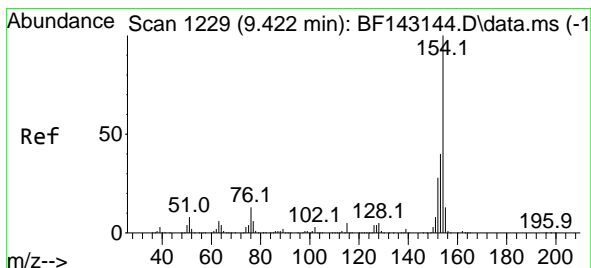
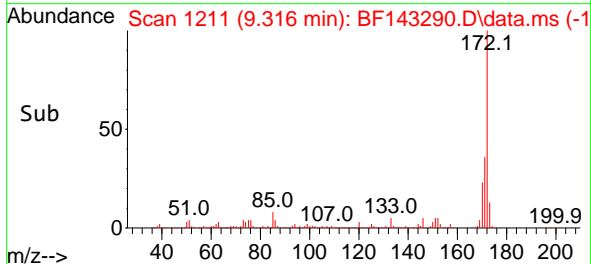
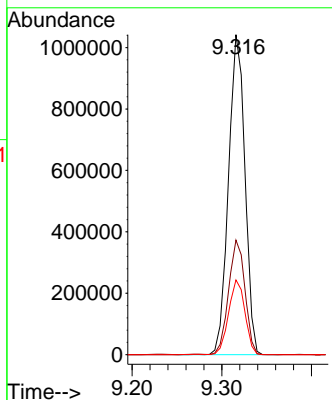
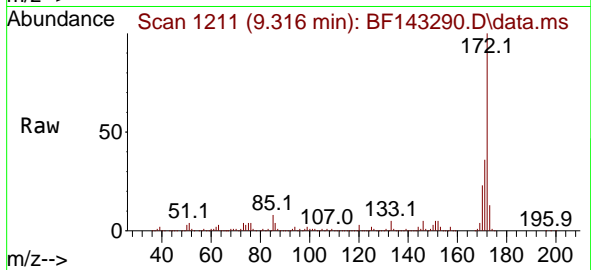




#45
 2-Fluorobiphenyl
 Concen: 81.338 ng
 RT: 9.316 min Scan# 11
 Delta R.T. -0.006 min
 Lab File: BF143290.D
 Acq: 04 Aug 2025 12:04

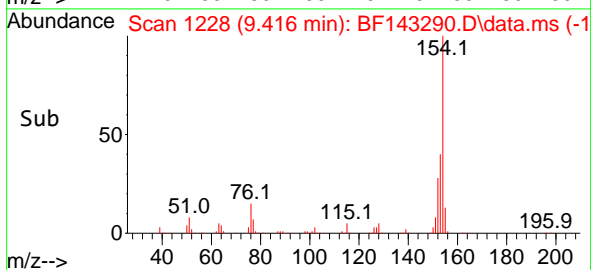
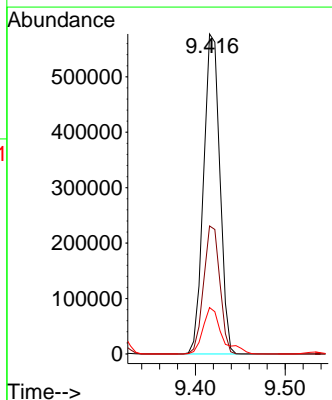
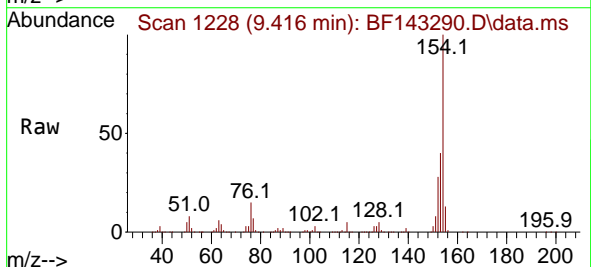
Instrument :
 BNA_F
 ClientSampleId :
 SSTDCCC040

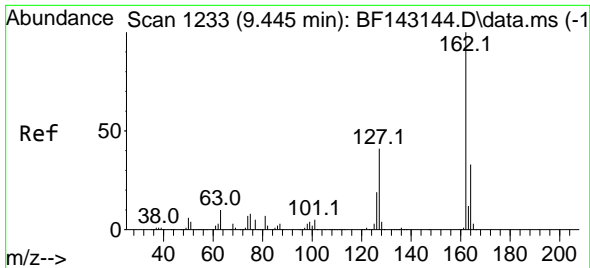
Tgt Ion:172 Resp: 1325210
 Ion Ratio Lower Upper
 172 100
 171 35.8 28.6 42.8
 170 23.4 18.8 28.2



#46
 1,1'-Biphenyl
 Concen: 41.803 ng
 RT: 9.416 min Scan# 1228
 Delta R.T. -0.006 min
 Lab File: BF143290.D
 Acq: 04 Aug 2025 12:04

Tgt Ion:154 Resp: 726719
 Ion Ratio Lower Upper
 154 100
 153 40.0 20.3 60.3
 76 14.5 0.0 33.3





#47
 2-Chloronaphthalene
 Concen: 41.235 ng
 RT: 9.445 min Scan# 11
 Delta R.T. -0.000 min
 Lab File: BF143290.D
 Acq: 04 Aug 2025 12:04

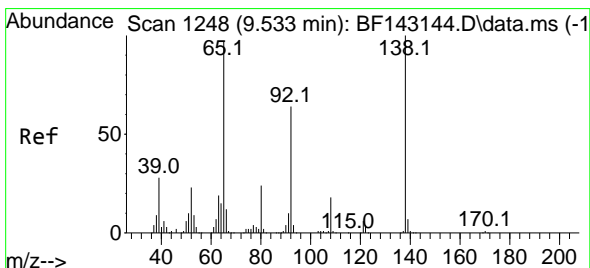
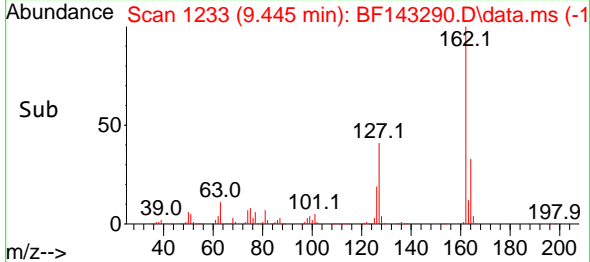
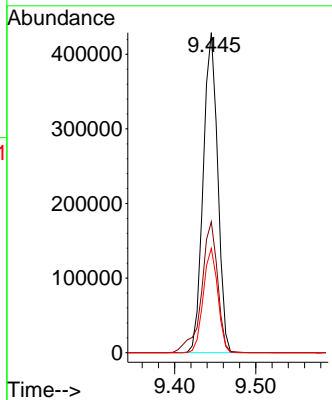
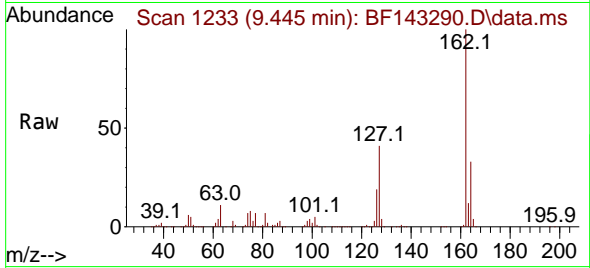
Instrument :

BNA_F

ClientSampleId :

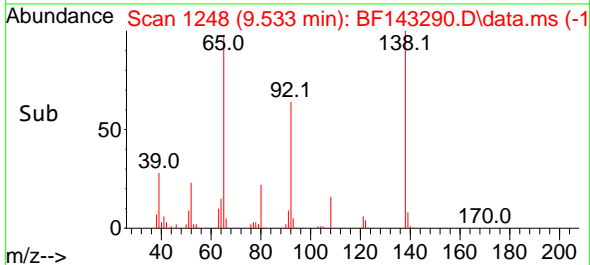
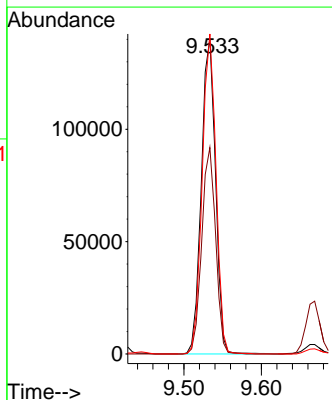
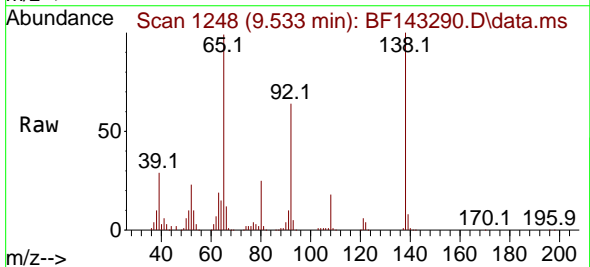
SSTDCCC040

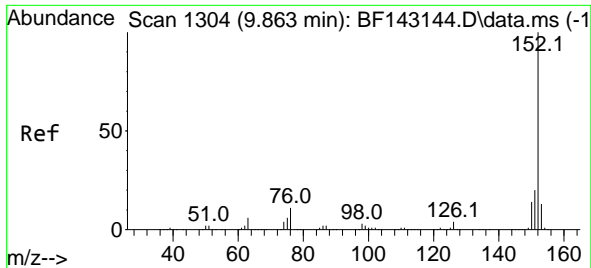
Tgt Ion:162 Resp: 530420
 Ion Ratio Lower Upper
 162 100
 127 40.9 33.4 50.2
 164 32.6 26.2 39.2



#48
 2-Nitroaniline
 Concen: 44.101 ng
 RT: 9.533 min Scan# 1248
 Delta R.T. -0.000 min
 Lab File: BF143290.D
 Acq: 04 Aug 2025 12:04

Tgt Ion: 65 Resp: 177897
 Ion Ratio Lower Upper
 65 100
 92 65.4 52.4 78.6
 138 101.4 82.3 123.5

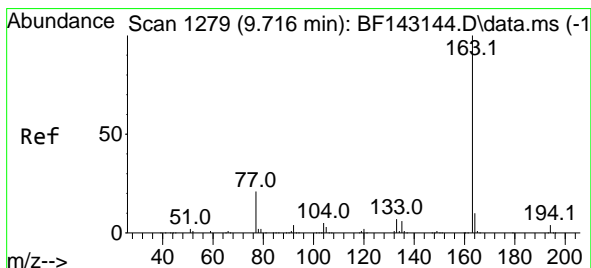
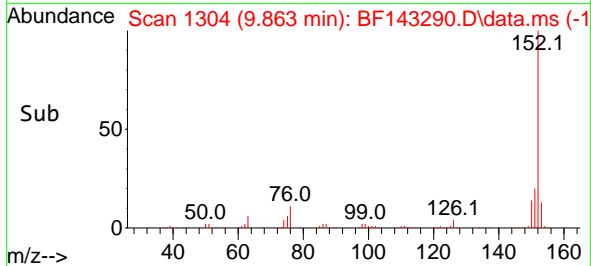
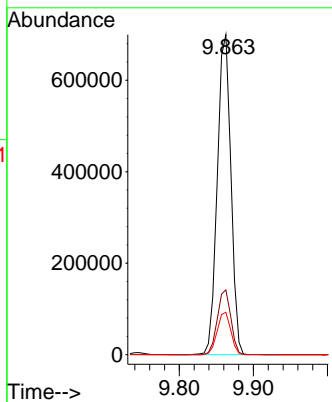
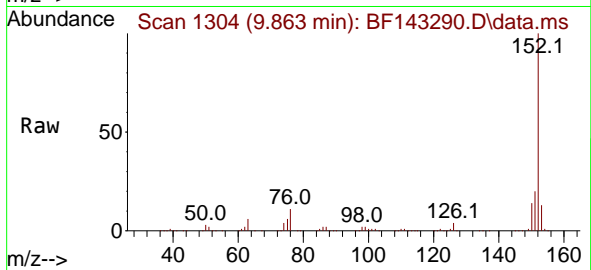




#49
 Acenaphthylene
 Concen: 41.360 ng
 RT: 9.863 min Scan# 11
 Delta R.T. -0.000 min
 Lab File: BF143290.D
 Acq: 04 Aug 2025 12:04

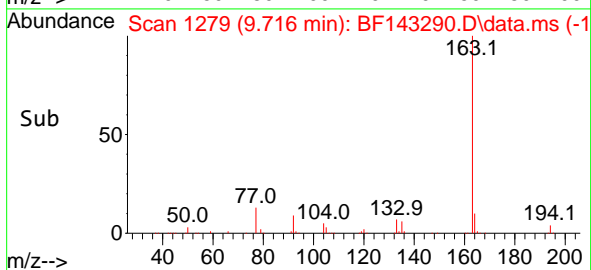
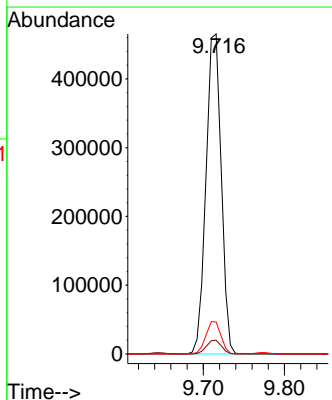
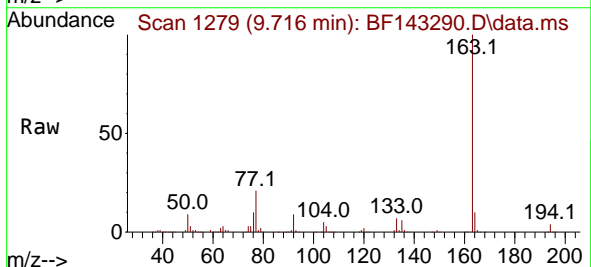
Instrument :
 BNA_F
 ClientSampleId :
 SSTDCCC040

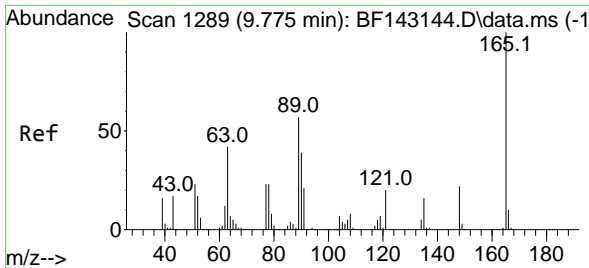
Tgt Ion:152 Resp: 891599
 Ion Ratio Lower Upper
 152 100
 151 20.2 16.2 24.2
 153 13.2 10.6 16.0



#50
 Dimethylphthalate
 Concen: 41.713 ng
 RT: 9.716 min Scan# 1279
 Delta R.T. -0.000 min
 Lab File: BF143290.D
 Acq: 04 Aug 2025 12:04

Tgt Ion:163 Resp: 605845
 Ion Ratio Lower Upper
 163 100
 194 4.3 3.4 5.2
 164 10.0 8.3 12.5





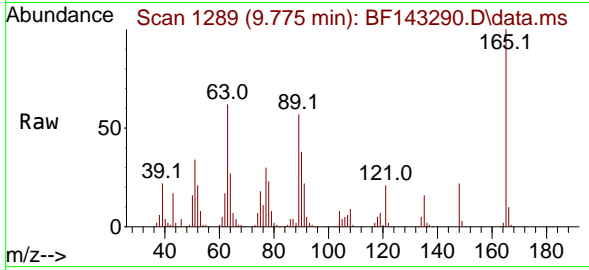
#51
 2,6-Dinitrotoluene
 Concen: 42.801 ng
 RT: 9.775 min Scan# 11
 Delta R.T. -0.000 min
 Lab File: BF143290.D
 Acq: 04 Aug 2025 12:04

Instrument :

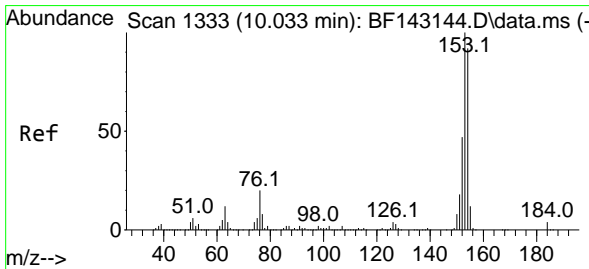
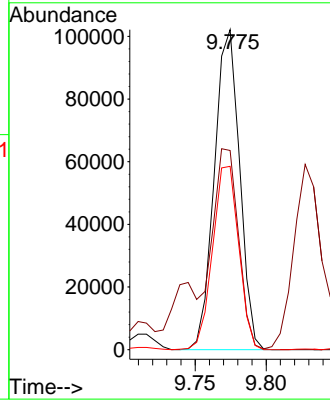
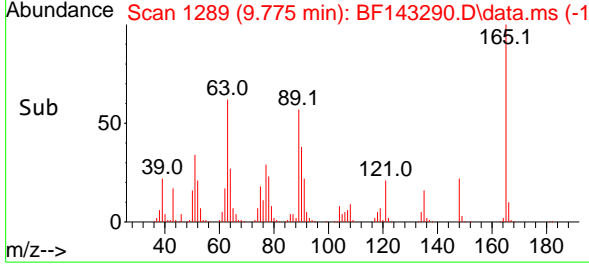
BNA_F

ClientSampleId :

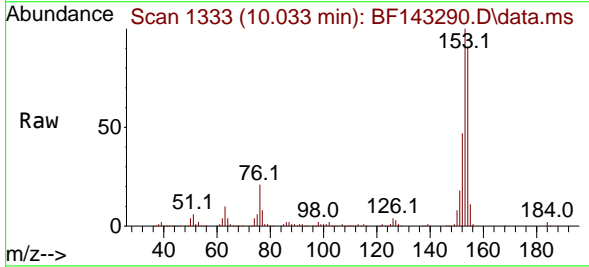
SSTDCCC040



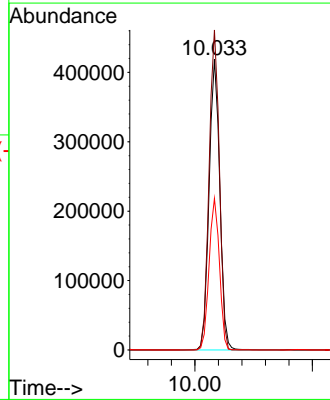
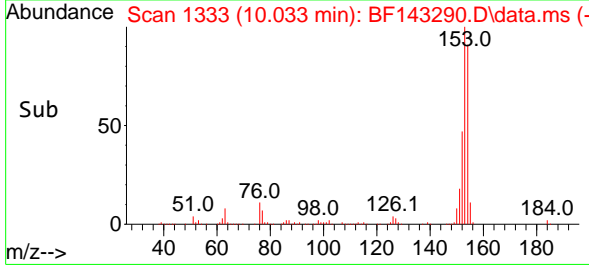
Tgt Ion:165 Resp: 126462
 Ion Ratio Lower Upper
 165 100
 63 62.3 49.4 74.2
 89 57.3 46.2 69.2

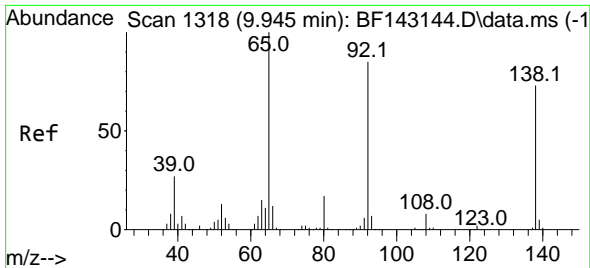


#52
 Acenaphthene
 Concen: 41.556 ng
 RT: 10.033 min Scan# 1333
 Delta R.T. -0.000 min
 Lab File: BF143290.D
 Acq: 04 Aug 2025 12:04



Tgt Ion:154 Resp: 529473
 Ion Ratio Lower Upper
 154 100
 153 110.2 86.6 129.8
 152 52.2 40.4 60.6





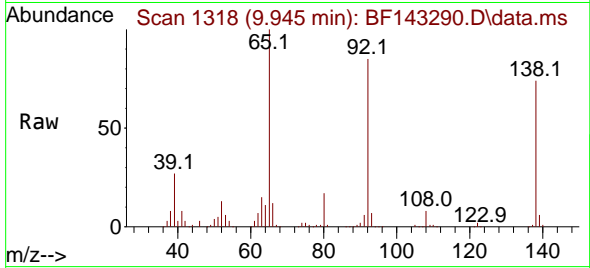
#53
 3-Nitroaniline
 Concen: 41.842 ng
 RT: 9.945 min Scan# 11
 Delta R.T. -0.000 min
 Lab File: BF143290.D
 Acq: 04 Aug 2025 12:04

Instrument :

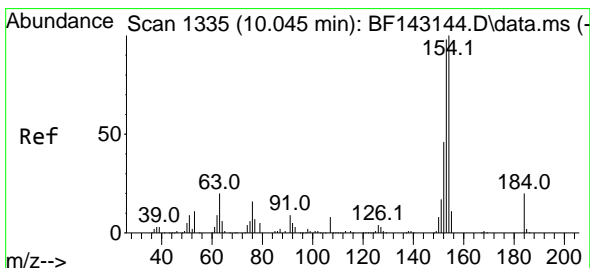
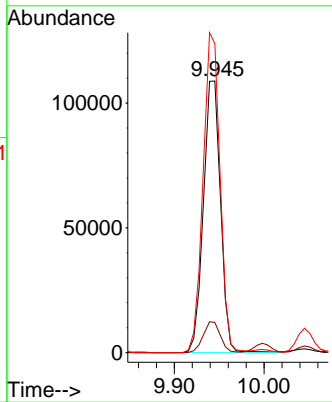
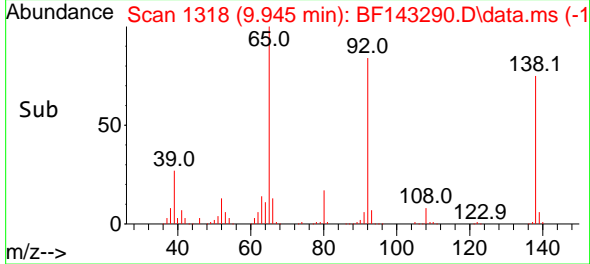
BNA_F

ClientSampleId :

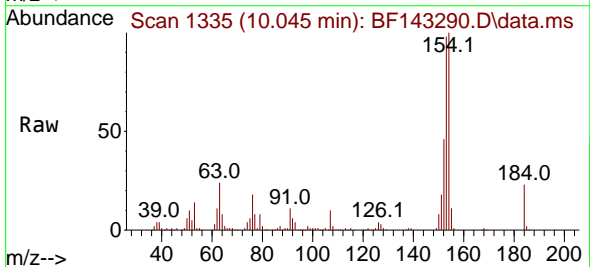
SSTDCCC040



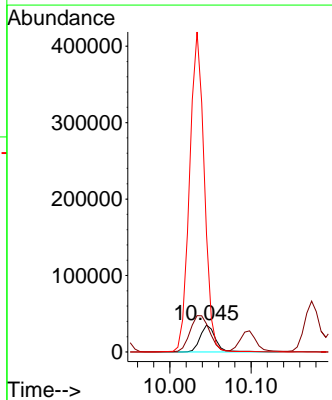
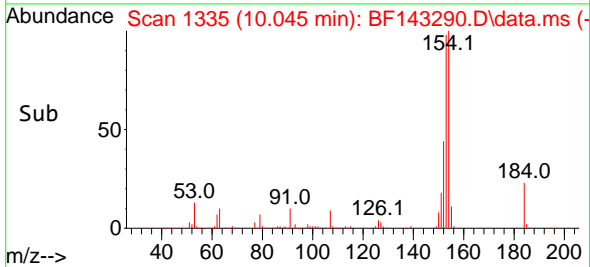
Tgt Ion:138 Resp: 144603
 Ion Ratio Lower Upper
 138 100
 108 11.1 9.0 13.6
 92 113.8 93.0 139.4

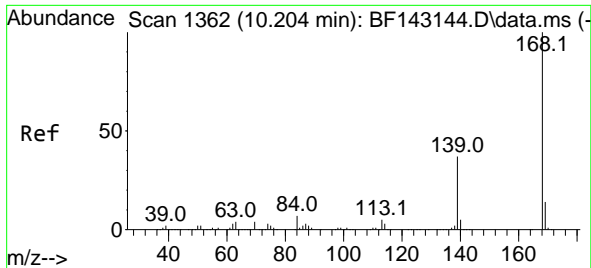


#54
 2,4-Dinitrophenol
 Concen: 38.406 ng
 RT: 10.045 min Scan# 1335
 Delta R.T. 0.000 min
 Lab File: BF143290.D
 Acq: 04 Aug 2025 12:04



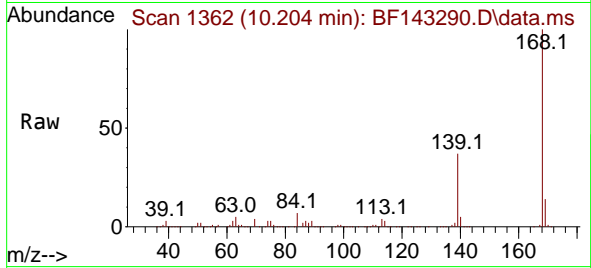
Tgt Ion:184 Resp: 46369
 Ion Ratio Lower Upper
 184 100
 63 104.0 81.8 122.6
 154 436.4 412.2 618.4



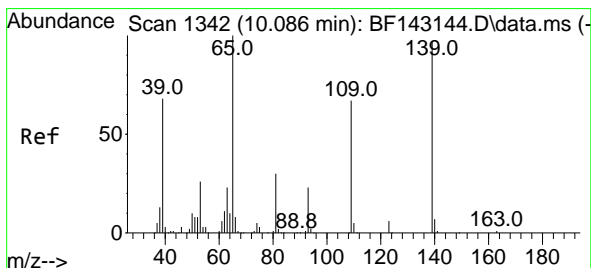
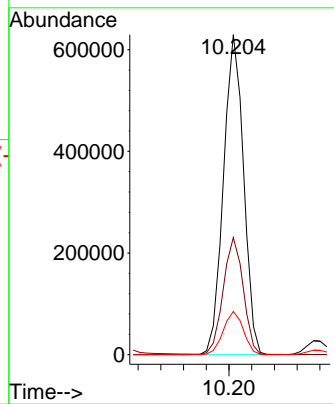
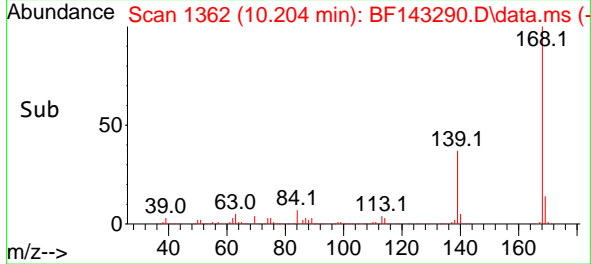


#55
 Dibenzofuran
 Concen: 40.884 ng
 RT: 10.204 min Scan# 11
 Delta R.T. -0.000 min
 Lab File: BF143290.D
 Acq: 04 Aug 2025 12:04

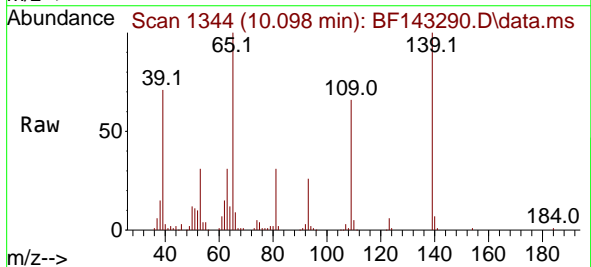
Instrument :
 BNA_F
 ClientSampleId :
 SSTDCCC040



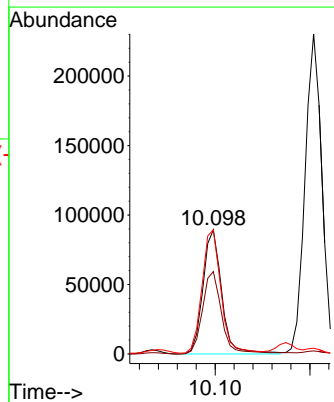
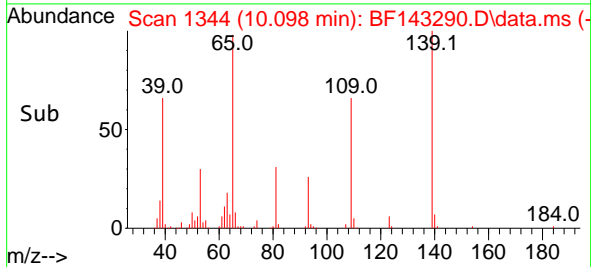
Tgt Ion:168 Resp: 773380
 Ion Ratio Lower Upper
 168 100
 139 36.6 29.5 44.3
 169 13.5 10.9 16.3

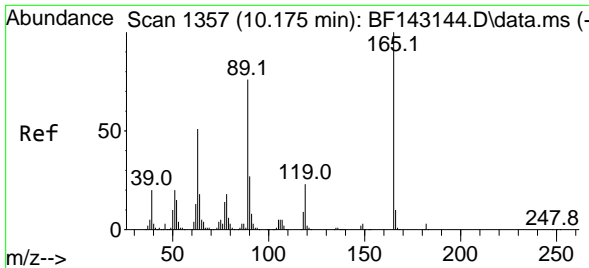


#56
 4-Nitrophenol
 Concen: 47.568 ng
 RT: 10.098 min Scan# 1344
 Delta R.T. 0.012 min
 Lab File: BF143290.D
 Acq: 04 Aug 2025 12:04



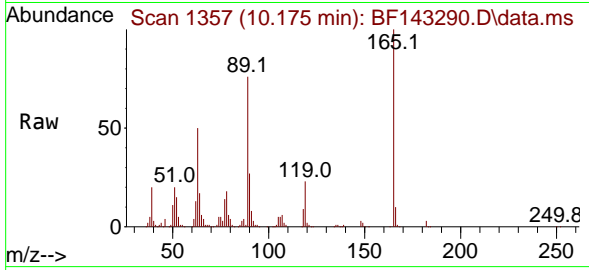
Tgt Ion:139 Resp: 122759
 Ion Ratio Lower Upper
 139 100
 109 66.4 48.5 88.5
 65 100.1 83.4 123.4





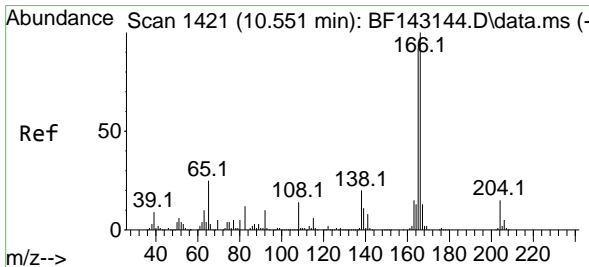
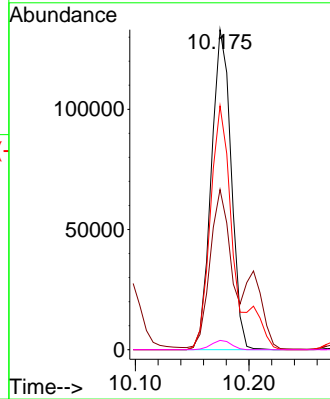
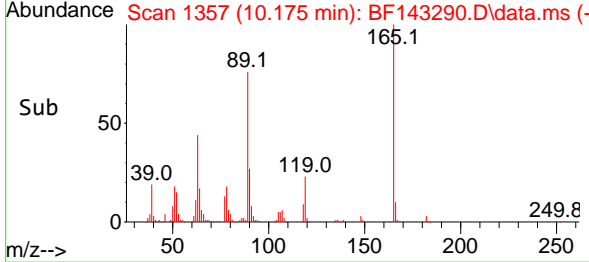
#57
 2,4-Dinitrotoluene
 Concen: 43.681 ng
 RT: 10.175 min Scan# 11
 Delta R.T. -0.000 min
 Lab File: BF143290.D
 Acq: 04 Aug 2025 12:04

Instrument :
 BNA_F
 ClientSampleId :
 SSTDCCC040

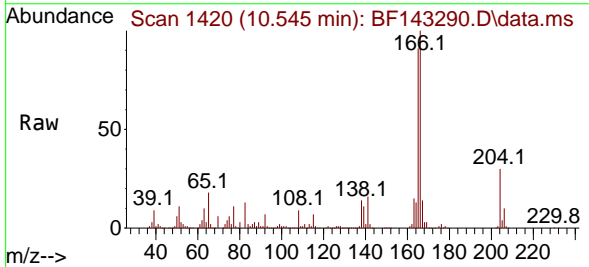


Tgt Ion:165 Resp: 161921

Ion	Ratio	Lower	Upper
165	100		
63	50.0	41.0	61.4
89	76.2	61.1	91.7
182	2.9	2.3	3.5

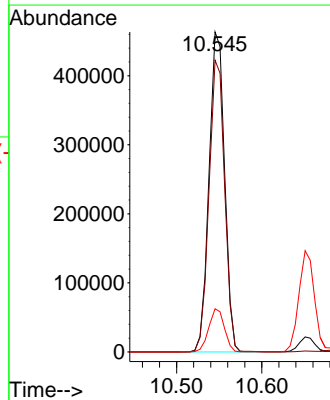
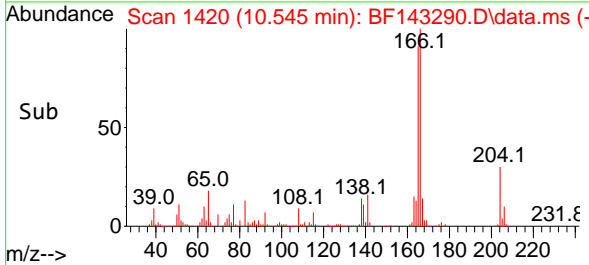


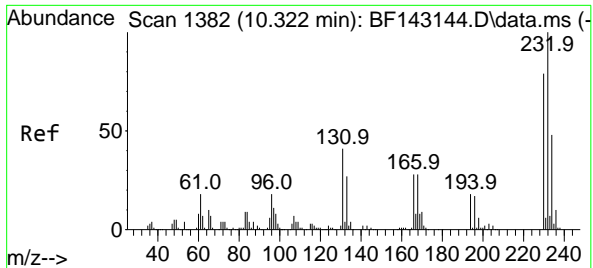
#58
 Fluorene
 Concen: 41.421 ng
 RT: 10.545 min Scan# 1420
 Delta R.T. -0.006 min
 Lab File: BF143290.D
 Acq: 04 Aug 2025 12:04



Tgt Ion:166 Resp: 588068

Ion	Ratio	Lower	Upper
166	100		
165	91.2	73.7	110.5
167	13.5	10.6	16.0



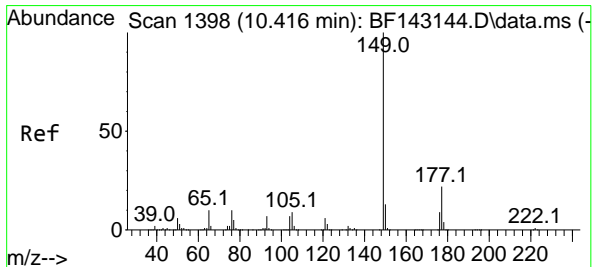
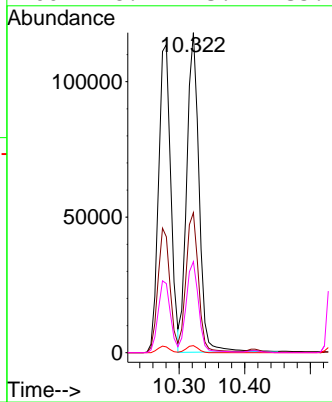
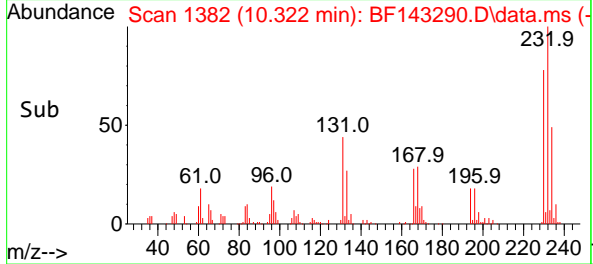
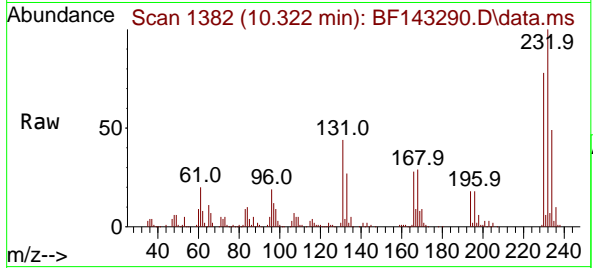


#59
 2,3,4,6-Tetrachlorophenol
 Concen: 41.297 ng
 RT: 10.322 min Scan# 1382
 Delta R.T. -0.000 min
 Lab File: BF143290.D
 Acq: 04 Aug 2025 12:04

Instrument : BNA_F
 ClientSampleId : SSTDCCC040

Tgt Ion: 232 Resp: 152351

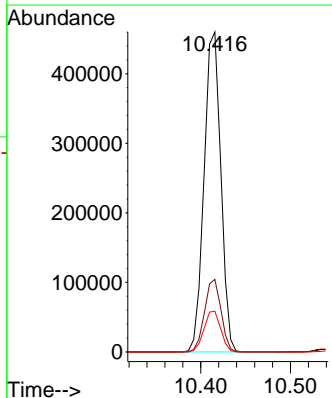
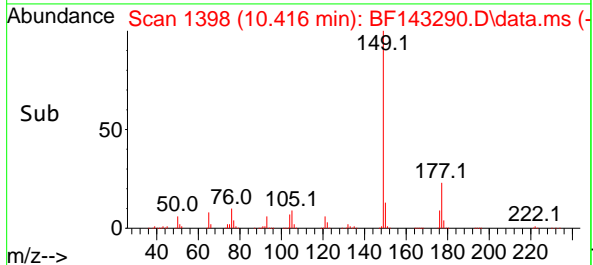
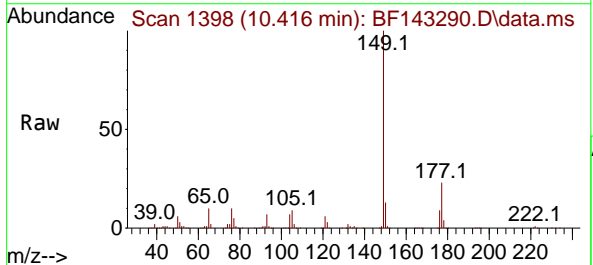
Ion	Ratio	Lower	Upper
232	100		
131	44.5	35.3	52.9
130	2.2	1.7	2.5
166	28.2	23.4	35.2

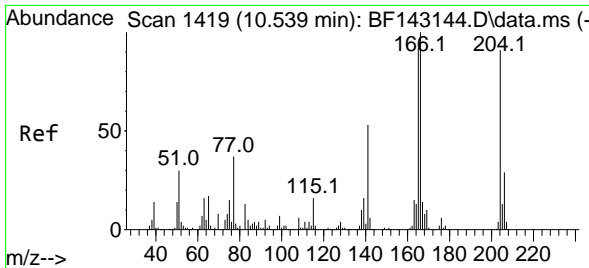


#60
 Diethylphthalate
 Concen: 41.521 ng
 RT: 10.416 min Scan# 1398
 Delta R.T. -0.000 min
 Lab File: BF143290.D
 Acq: 04 Aug 2025 12:04

Tgt Ion: 149 Resp: 596065

Ion	Ratio	Lower	Upper
149	100		
177	22.7	17.5	26.3
150	12.7	10.2	15.2

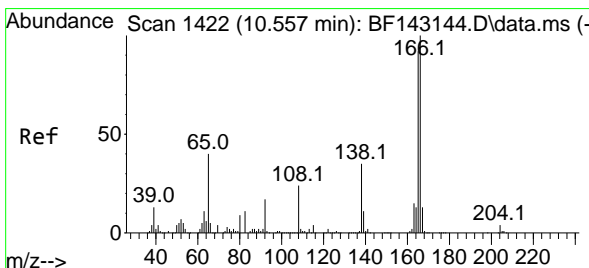
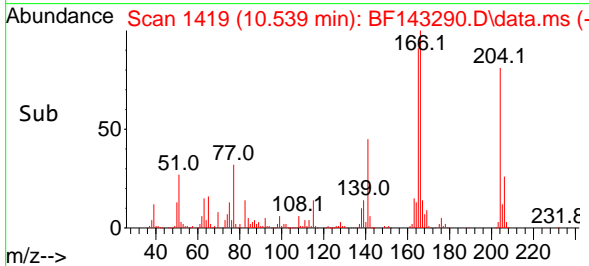
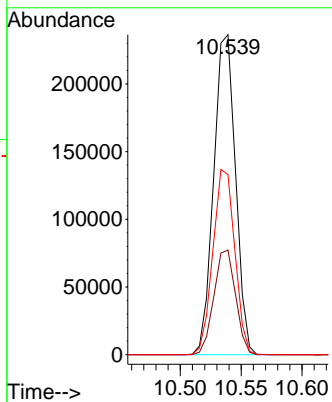
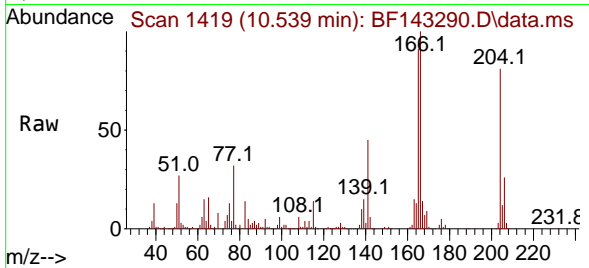




#61
 4-Chlorophenyl-phenylether
 Concen: 41.828 ng
 RT: 10.539 min Scan# 1419
 Delta R.T. -0.000 min
 Lab File: BF143290.D
 Acq: 04 Aug 2025 12:04

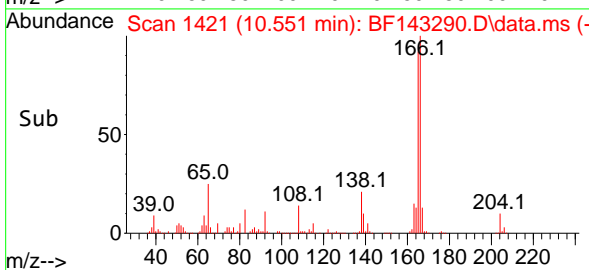
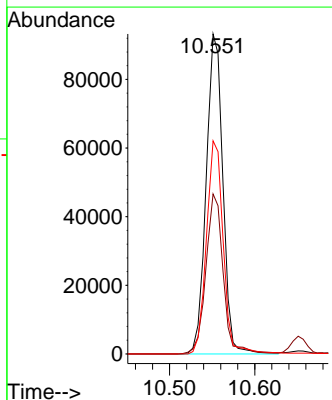
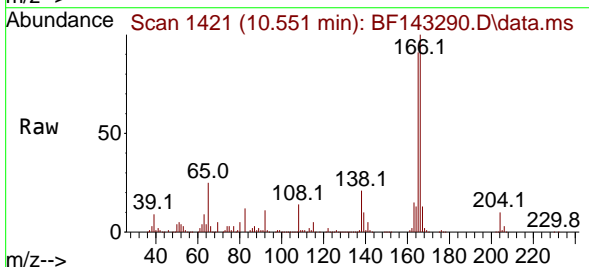
Instrument :
 BNA_F
 ClientSampleId :
 SSTDCCC040

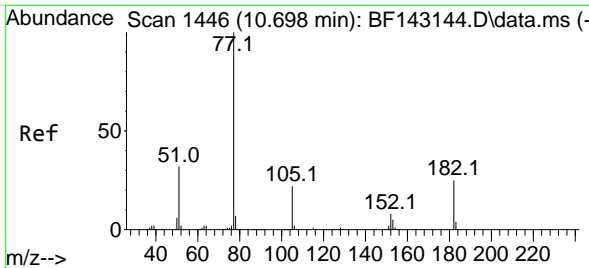
Tgt Ion	Resp	Lower	Upper
204	100		
206	32.7	25.8	38.8
141	56.3	47.0	70.4



#62
 4-Nitroaniline
 Concen: 42.869 ng
 RT: 10.551 min Scan# 1421
 Delta R.T. -0.006 min
 Lab File: BF143290.D
 Acq: 04 Aug 2025 12:04

Tgt Ion	Resp	Lower	Upper
138	100		
92	50.0	29.3	69.3
108	66.6	48.3	88.3

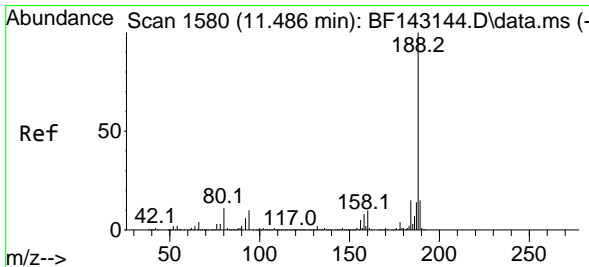
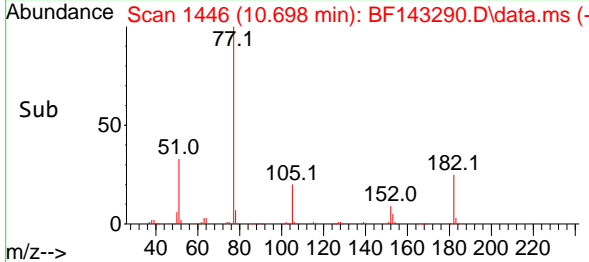
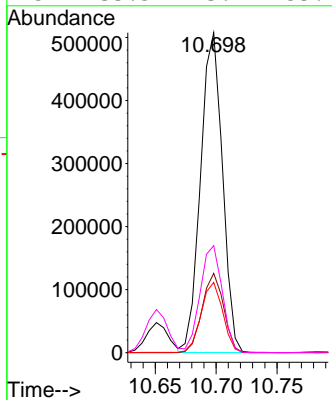
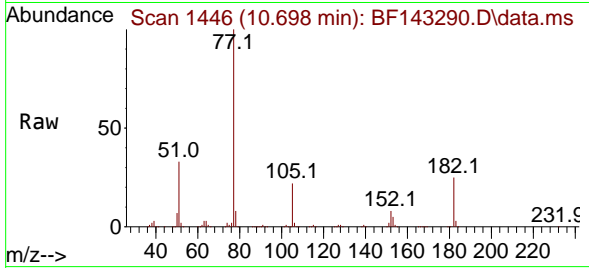




#63
 Azobenzene
 Concen: 42.274 ng
 RT: 10.698 min Scan# 1446
 Delta R.T. -0.000 min
 Lab File: BF143290.D
 Acq: 04 Aug 2025 12:04

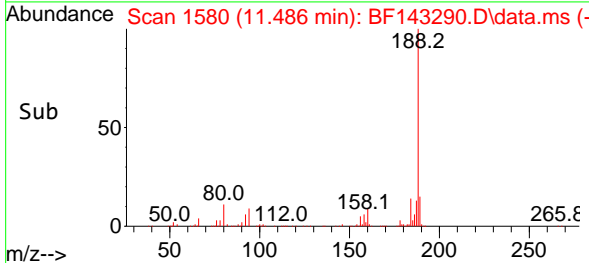
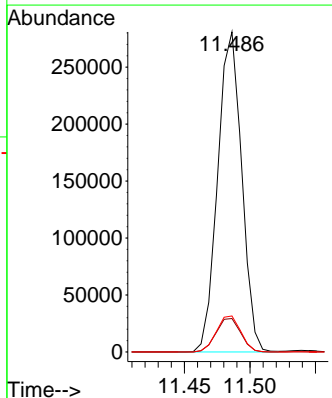
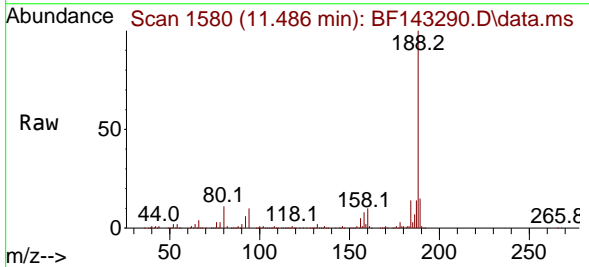
Instrument : BNA_F
 ClientSampleId : SSTDCCC040

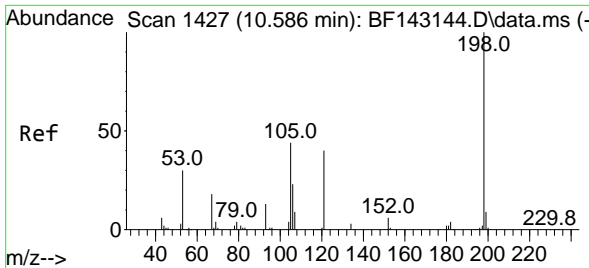
Tgt Ion	Resp	Lower	Upper
77	100		
182	24.8	4.6	44.6
105	22.0	1.4	41.4
51	33.5	13.7	53.7



#64
 Phenanthrene-d10
 Concen: 20.000 ng
 RT: 11.486 min Scan# 1580
 Delta R.T. -0.000 min
 Lab File: BF143290.D
 Acq: 04 Aug 2025 12:04

Tgt Ion	Resp	Lower	Upper
188	100		
94	10.4	8.3	12.5
80	11.2	9.0	13.6

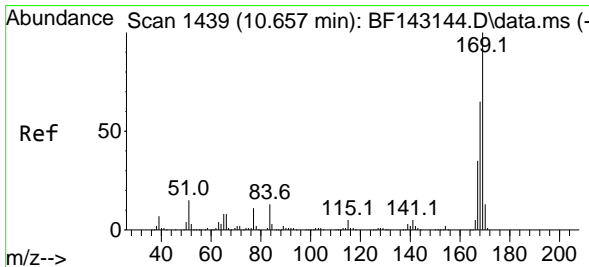
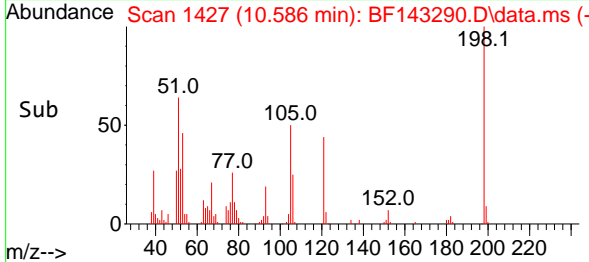
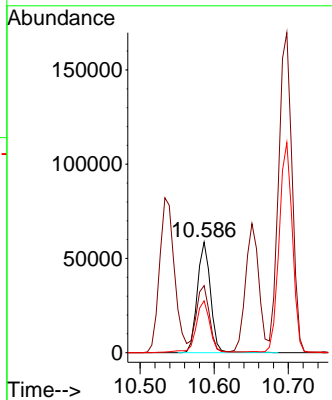
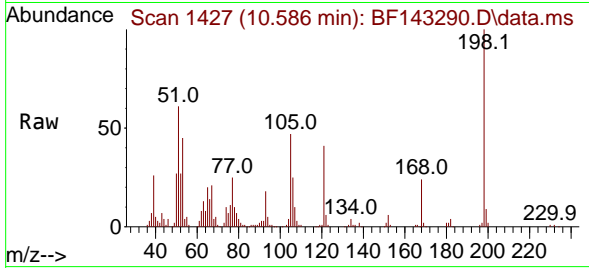




#65
 4,6-Dinitro-2-methylphenol
 Concen: 39.687 ng
 RT: 10.586 min Scan# 1427
 Delta R.T. 0.000 min
 Lab File: BF143290.D
 Acq: 04 Aug 2025 12:04

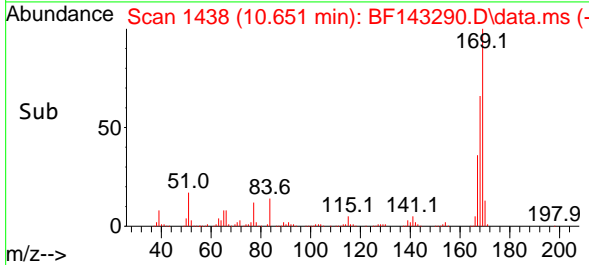
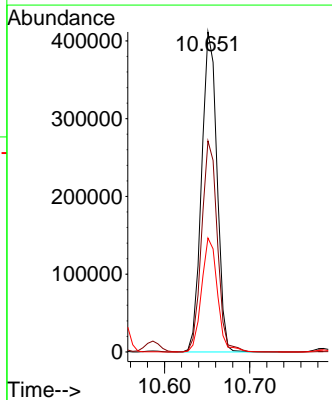
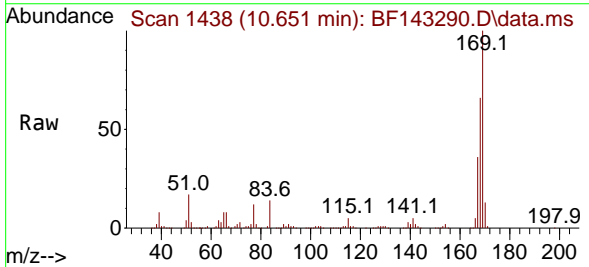
Instrument :
 BNA_F
 ClientSampleId :
 SSTDCCC040

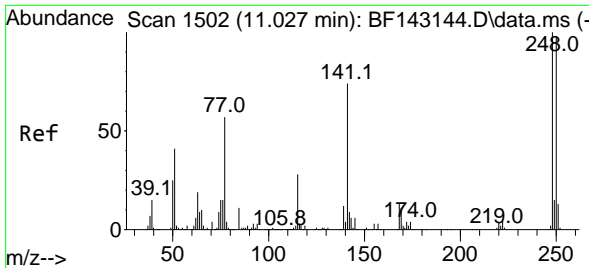
Tgt Ion:198 Resp: 72398
 Ion Ratio Lower Upper
 198 100
 51 60.7 37.2 77.2
 105 46.9 24.8 64.8



#66
 n-Nitrosodiphenylamine
 Concen: 41.002 ng
 RT: 10.651 min Scan# 1438
 Delta R.T. -0.006 min
 Lab File: BF143290.D
 Acq: 04 Aug 2025 12:04

Tgt Ion:169 Resp: 516157
 Ion Ratio Lower Upper
 169 100
 168 66.0 52.1 78.1
 167 35.6 28.2 42.2



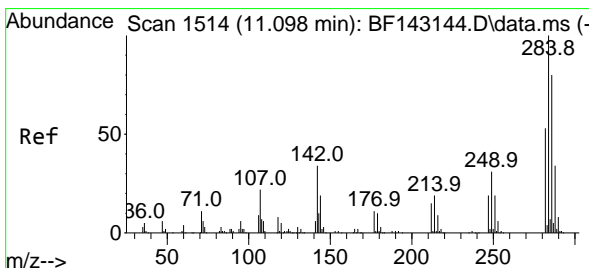
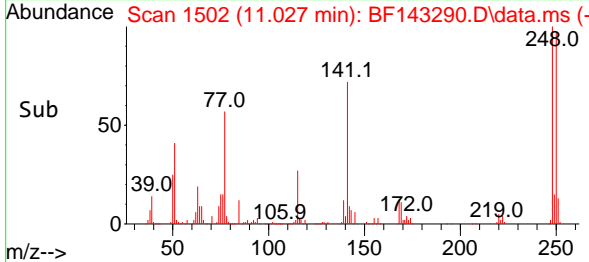
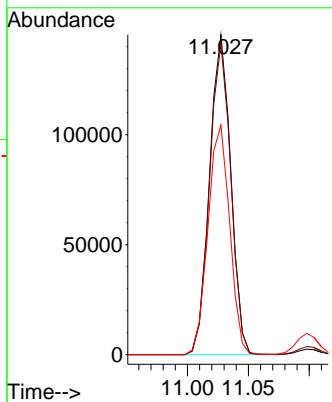
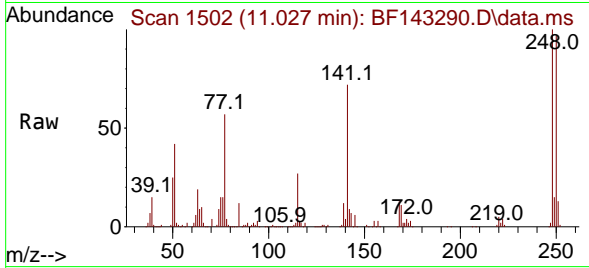


#67
 4-Bromophenyl-phenylether
 Concen: 41.468 ng
 RT: 11.027 min Scan# 1502
 Delta R.T. -0.000 min
 Lab File: BF143290.D
 Acq: 04 Aug 2025 12:04

Instrument :
 BNA_F
 ClientSampleId :
 SSTDCCC040

Tgt Ion:248 Resp: 176671

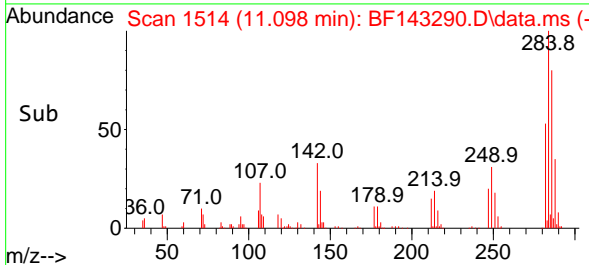
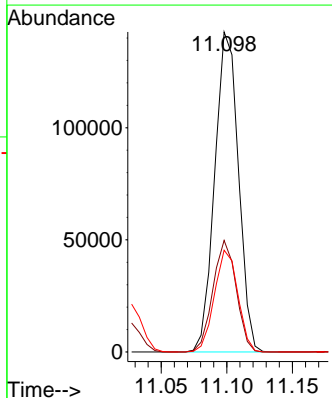
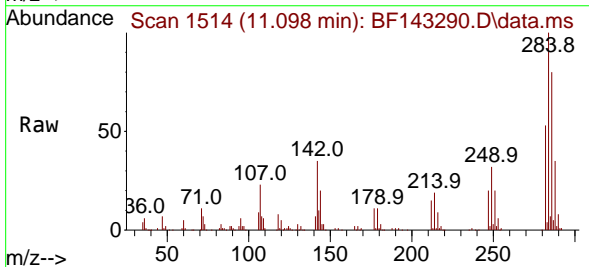
Ion	Ratio	Lower	Upper
248	100		
250	97.2	78.3	117.5
141	71.7	59.2	88.8

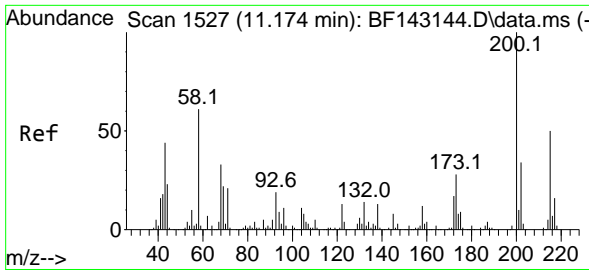


#68
 Hexachlorobenzene
 Concen: 40.274 ng
 RT: 11.098 min Scan# 1514
 Delta R.T. -0.000 min
 Lab File: BF143290.D
 Acq: 04 Aug 2025 12:04

Tgt Ion:284 Resp: 179341

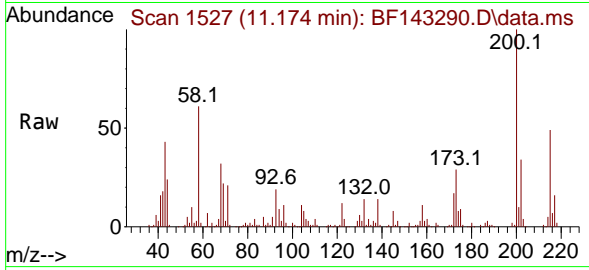
Ion	Ratio	Lower	Upper
284	100		
142	34.8	27.0	40.6
249	31.8	25.0	37.6



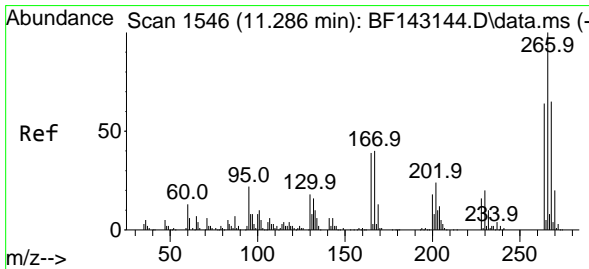
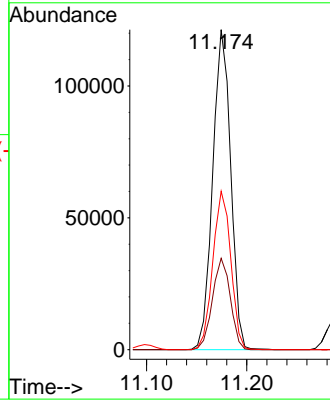
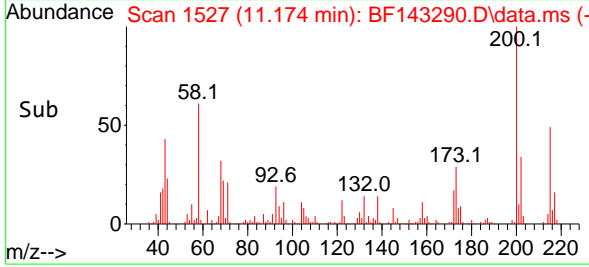


#69
 Atrazine
 Concen: 43.544 ng
 RT: 11.174 min Scan# 11
 Delta R.T. -0.000 min
 Lab File: BF143290.D
 Acq: 04 Aug 2025 12:04

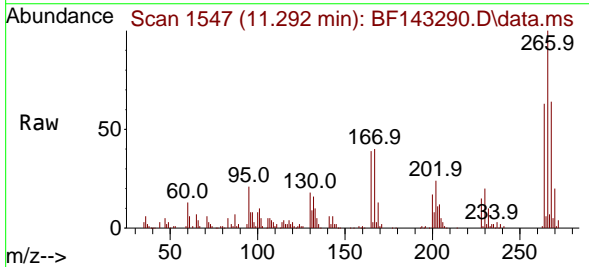
Instrument :
 BNA_F
 ClientSampleId :
 SSTDCCC040



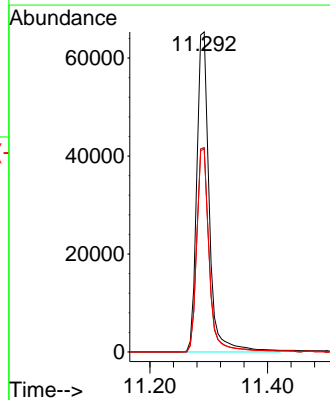
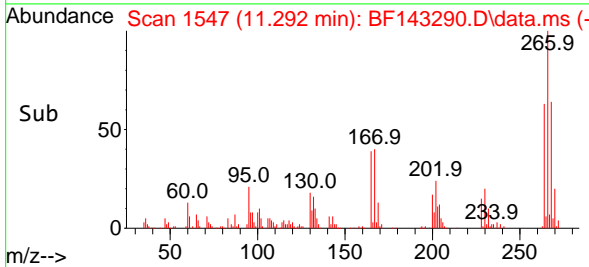
Tgt Ion:200 Resp: 151122
 Ion Ratio Lower Upper
 200 100
 173 28.5 7.9 47.9
 215 49.5 30.1 70.1

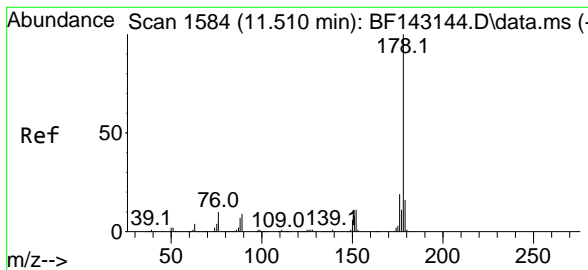


#70
 Pentachlorophenol
 Concen: 36.705 ng
 RT: 11.292 min Scan# 1547
 Delta R.T. 0.006 min
 Lab File: BF143290.D
 Acq: 04 Aug 2025 12:04



Tgt Ion:266 Resp: 96122
 Ion Ratio Lower Upper
 266 100
 268 63.8 51.9 77.9
 264 63.4 51.0 76.6



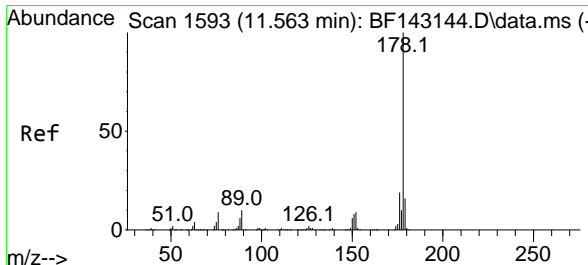
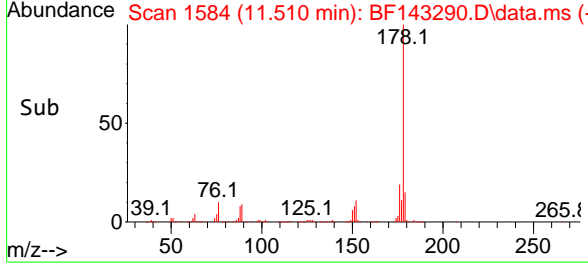
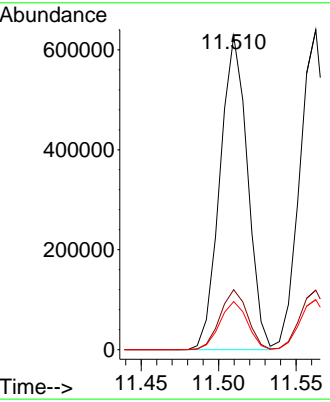
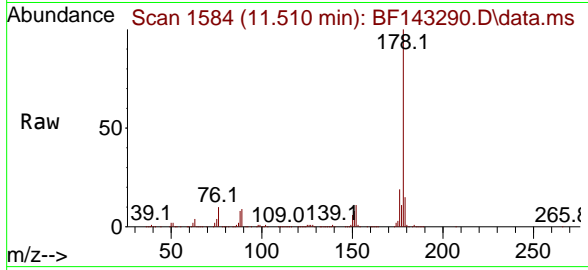


#71
 Phenanthrene
 Concen: 40.887 ng
 RT: 11.510 min Scan# 11
 Delta R.T. -0.000 min
 Lab File: BF143290.D
 Acq: 04 Aug 2025 12:04

Instrument : BNA_F
 ClientSampleId : SSTDCCC040

Tgt Ion:178 Resp: 776124

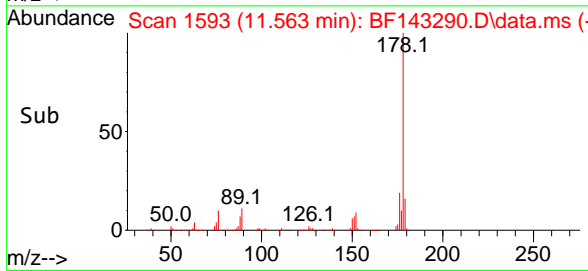
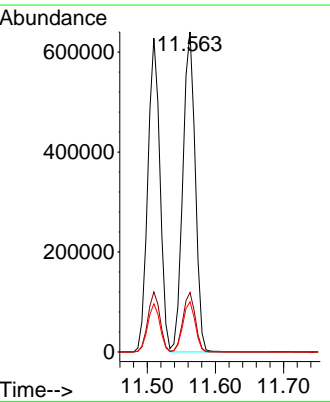
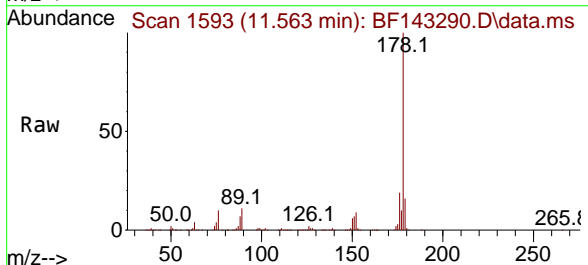
Ion	Ratio	Lower	Upper
178	100		
176	19.1	15.3	22.9
179	15.4	12.5	18.7

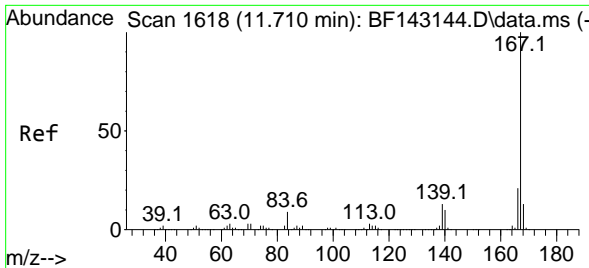


#72
 Anthracene
 Concen: 41.470 ng
 RT: 11.563 min Scan# 1593
 Delta R.T. -0.000 min
 Lab File: BF143290.D
 Acq: 04 Aug 2025 12:04

Tgt Ion:178 Resp: 802840

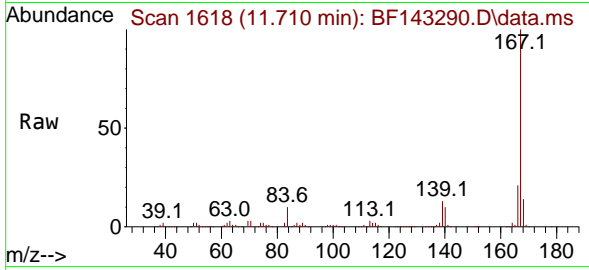
Ion	Ratio	Lower	Upper
178	100		
176	18.6	15.0	22.4
179	15.6	12.5	18.7



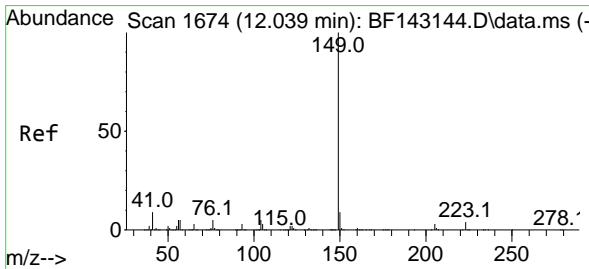
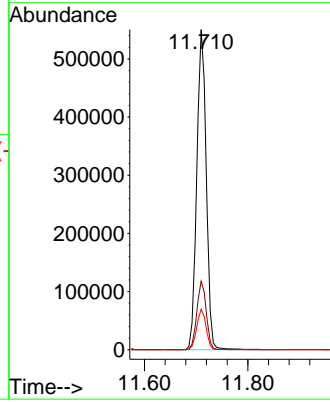
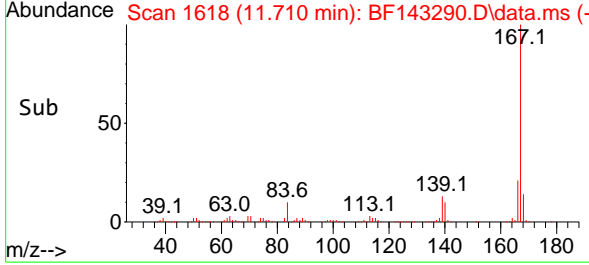


#73
 Carbazole
 Concen: 41.398 ng
 RT: 11.710 min Scan# 1618
 Delta R.T. -0.000 min
 Lab File: BF143290.D
 Acq: 04 Aug 2025 12:04

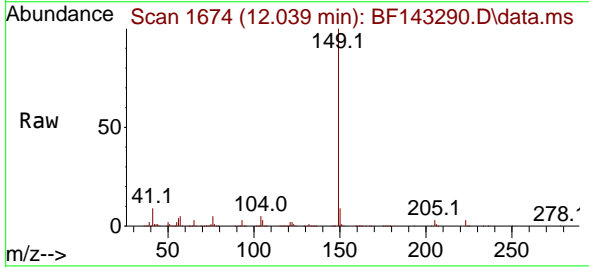
Instrument : BNA_F
 Client Sample Id : SSTDCCC040



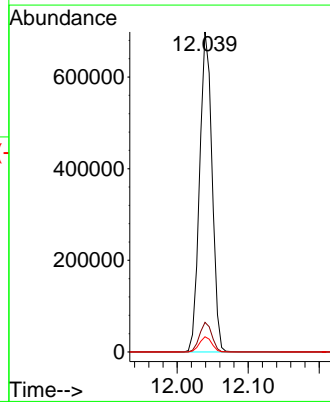
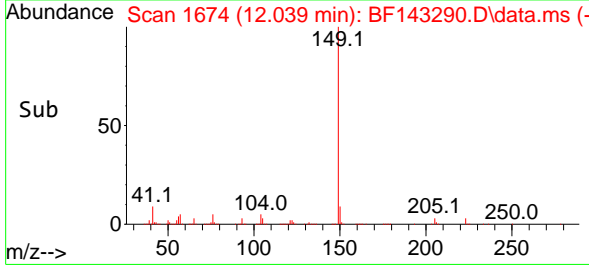
Tgt Ion:167 Resp: 699813
 Ion Ratio Lower Upper
 167 100
 166 21.4 17.0 25.6
 139 12.6 10.0 15.0

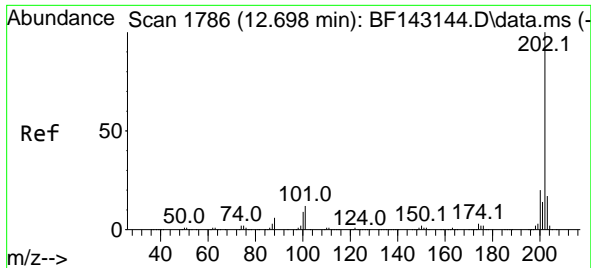


#74
 Di-n-butylphthalate
 Concen: 44.628 ng
 RT: 12.039 min Scan# 1674
 Delta R.T. -0.000 min
 Lab File: BF143290.D
 Acq: 04 Aug 2025 12:04



Tgt Ion:149 Resp: 853617
 Ion Ratio Lower Upper
 149 100
 150 9.3 7.4 11.2
 104 4.8 3.8 5.8





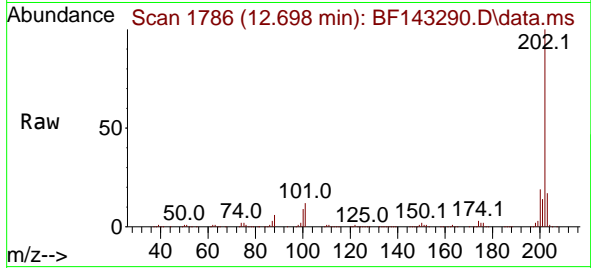
#75
 Fluoranthene
 Concen: 43.427 ng
 RT: 12.698 min Scan# 1786
 Delta R.T. -0.000 min
 Lab File: BF143290.D
 Acq: 04 Aug 2025 12:04

Instrument :

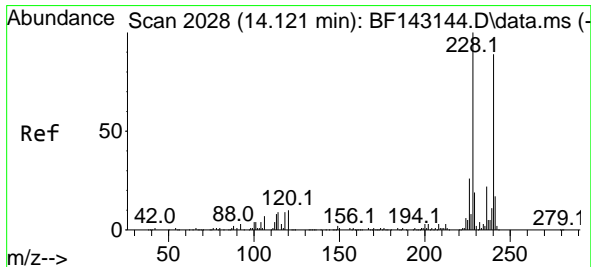
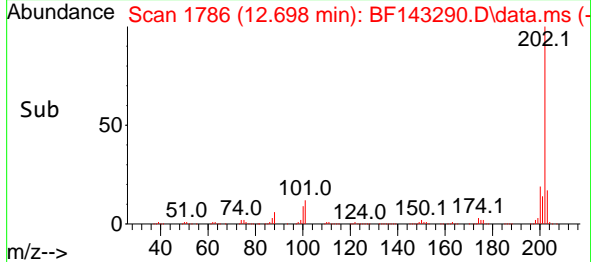
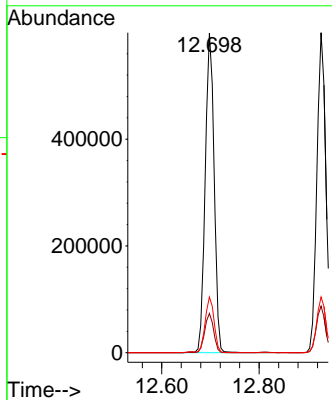
BNA_F

ClientSampleId :

SSTDCCC040

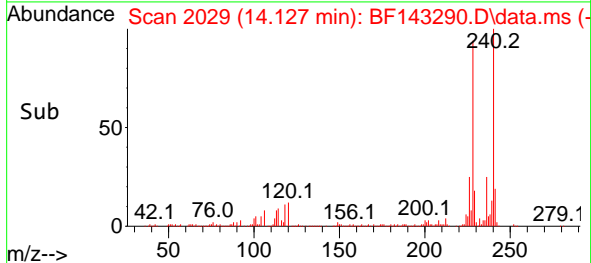
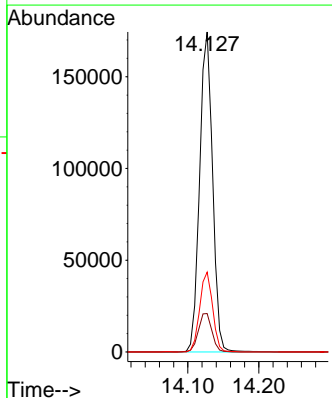
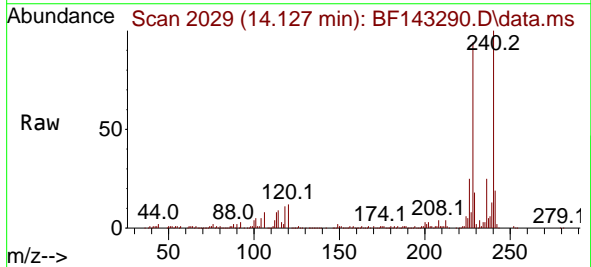


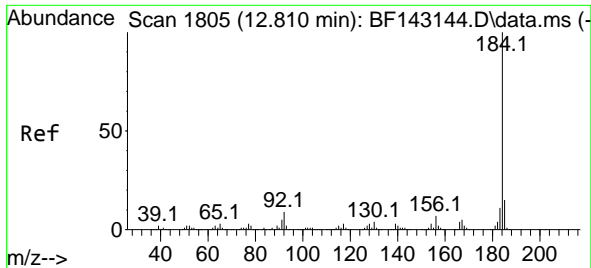
Tgt Ion:202 Resp: 756625
 Ion Ratio Lower Upper
 202 100
 101 12.3 0.0 31.7
 203 17.4 0.0 37.4



#76
 Chrysene-d12
 Concen: 20.000 ng
 RT: 14.127 min Scan# 2029
 Delta R.T. 0.006 min
 Lab File: BF143290.D
 Acq: 04 Aug 2025 12:04

Tgt Ion:240 Resp: 221589
 Ion Ratio Lower Upper
 240 100
 120 12.0 9.4 14.2
 236 25.0 20.2 30.4





#77
 Benzidine
 Concen: 28.151 ng
 RT: 12.810 min Scan# 1805
 Delta R.T. -0.000 min
 Lab File: BF143290.D
 Acq: 04 Aug 2025 12:04

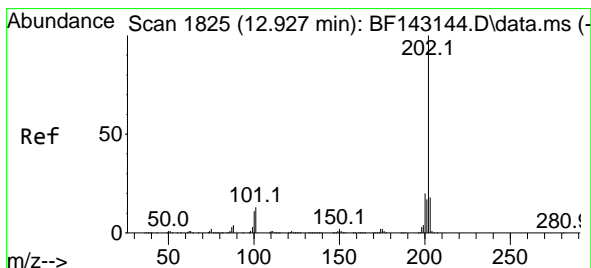
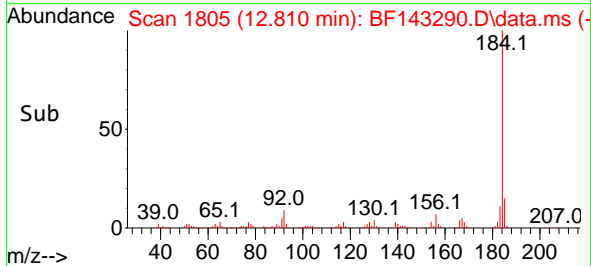
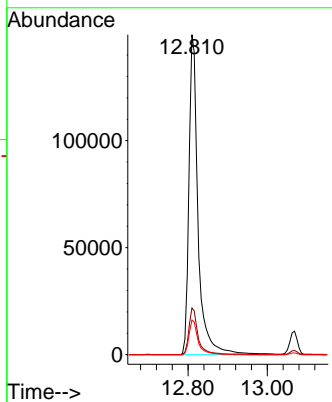
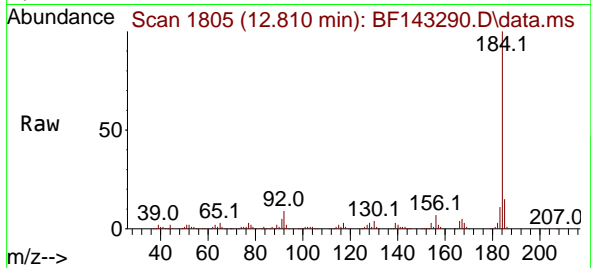
Instrument :

BNA_F

Client Sample Id :

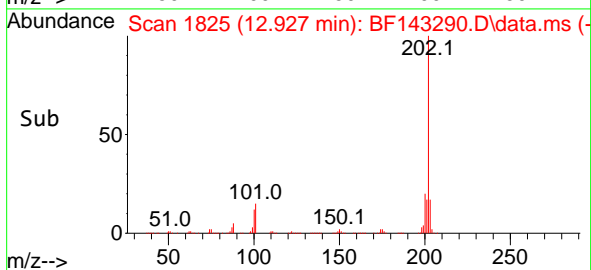
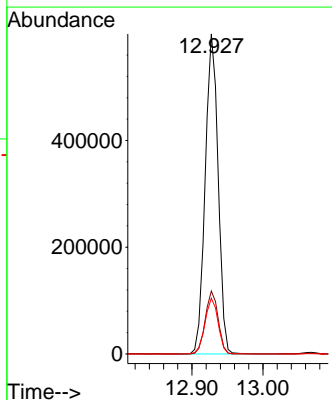
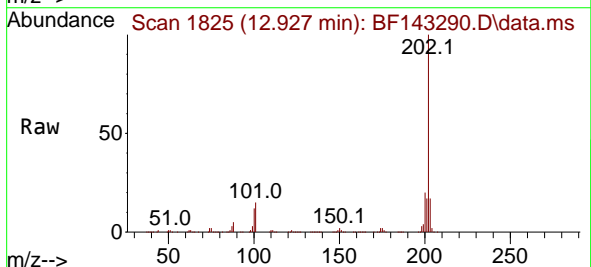
SSTDCCC040

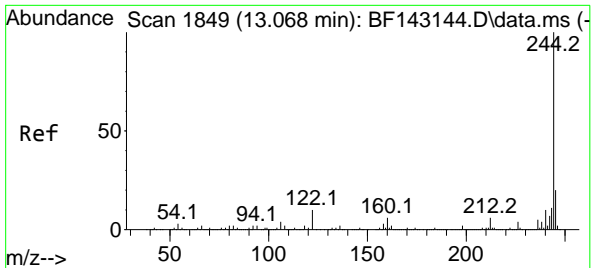
Tgt Ion:184 Resp: 240333
 Ion Ratio Lower Upper
 184 100
 185 14.6 12.2 18.4
 183 10.8 9.0 13.4



#78
 Pyrene
 Concen: 40.142 ng
 RT: 12.927 min Scan# 1825
 Delta R.T. -0.000 min
 Lab File: BF143290.D
 Acq: 04 Aug 2025 12:04

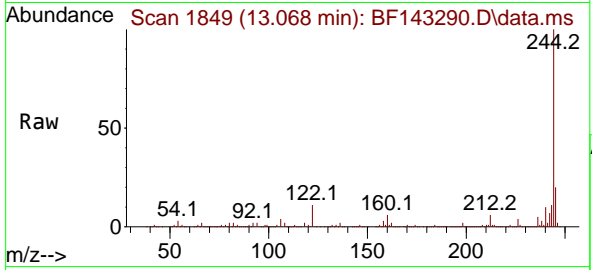
Tgt Ion:202 Resp: 759147
 Ion Ratio Lower Upper
 202 100
 200 19.7 15.7 23.5
 203 17.4 14.2 21.2



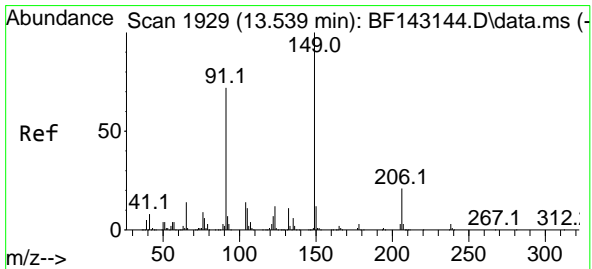
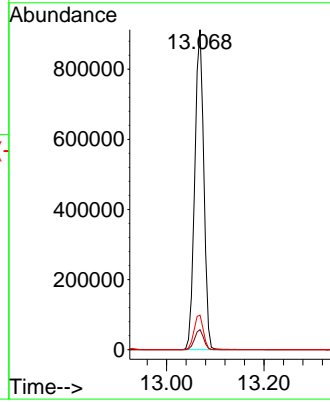
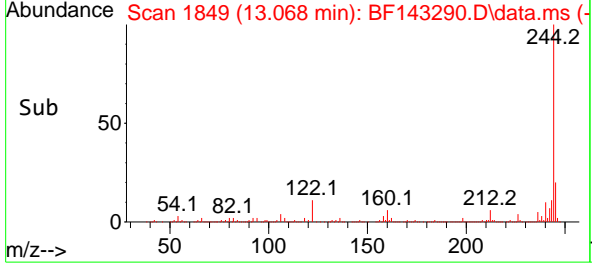


#79
 Terphenyl-d14
 Concen: 79.371 ng
 RT: 13.068 min Scan# 1181891
 Delta R.T. -0.000 min
 Lab File: BF143290.D
 Acq: 04 Aug 2025 12:04

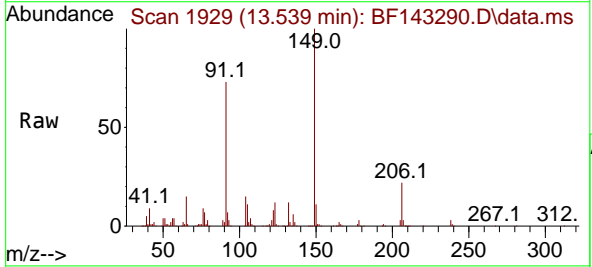
Instrument : BNA_F
 ClientSampleId : SSTDCCC040



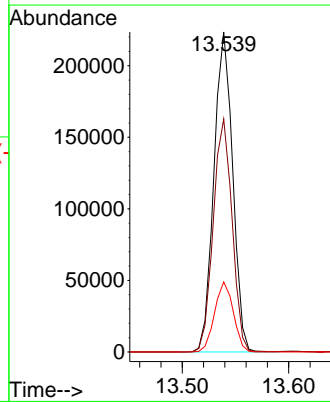
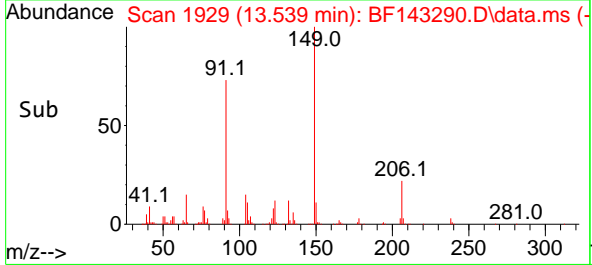
Tgt Ion:244 Resp: 1181891
 Ion Ratio Lower Upper
 244 100
 212 6.2 5.2 7.8
 122 10.8 8.2 12.2

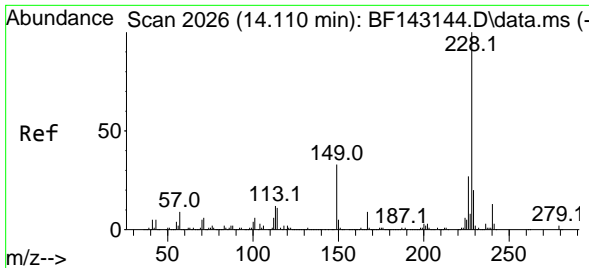


#80
 Butylbenzylphthalate
 Concen: 47.324 ng
 RT: 13.539 min Scan# 1929
 Delta R.T. -0.000 min
 Lab File: BF143290.D
 Acq: 04 Aug 2025 12:04



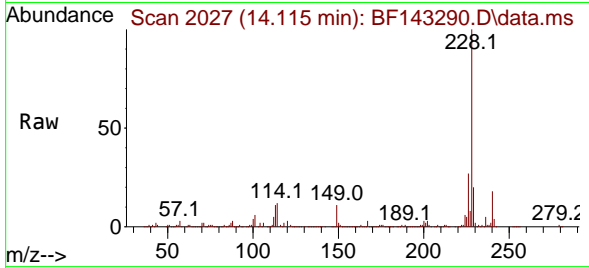
Tgt Ion:149 Resp: 274051
 Ion Ratio Lower Upper
 149 100
 91 72.8 57.9 86.9
 206 21.9 17.0 25.4



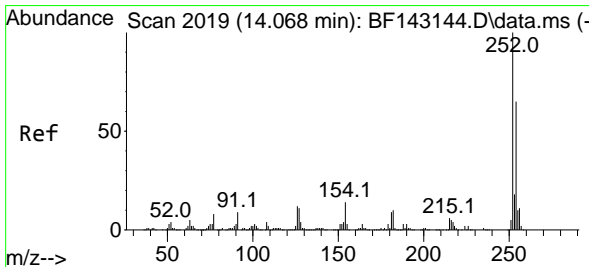
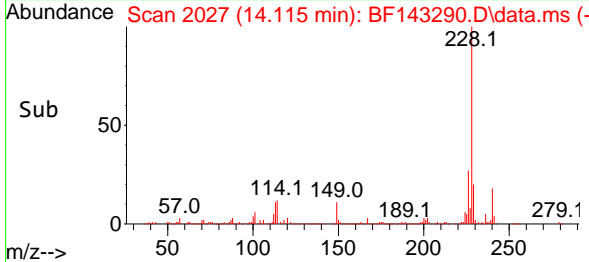
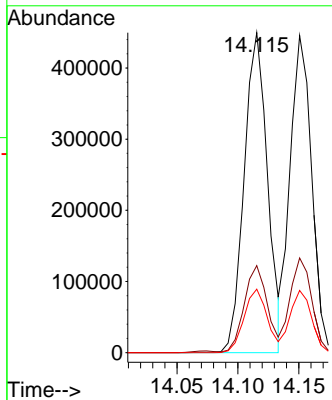


#81
 Benzo(a)anthracene
 Concen: 40.517 ng
 RT: 14.115 min Scan# 2026
 Delta R.T. 0.006 min
 Lab File: BF143290.D
 Acq: 04 Aug 2025 12:04

Instrument : BNA_F
 ClientSampleId : SSTDCCC040

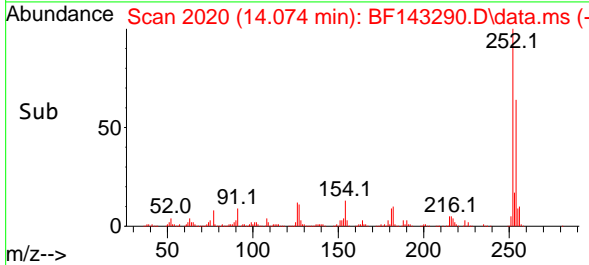
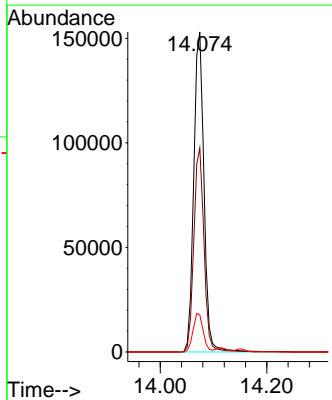
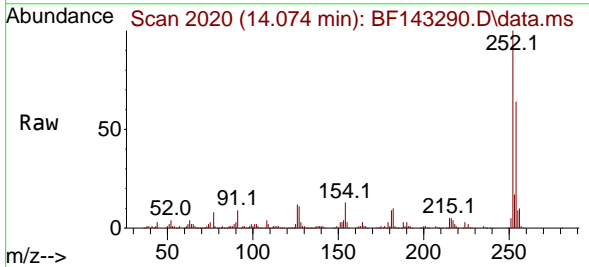


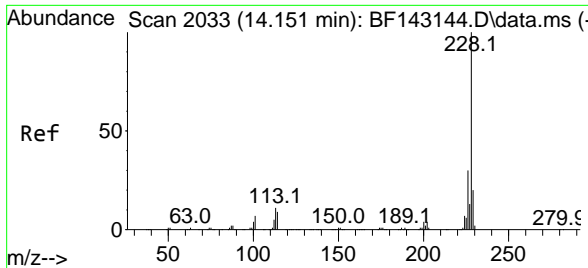
Tgt Ion:228 Resp: 601085
 Ion Ratio Lower Upper
 228 100
 226 27.2 21.7 32.5
 229 19.9 15.8 23.6



#82
 3,3'-Dichlorobenzidine
 Concen: 41.425 ng
 RT: 14.074 min Scan# 2020
 Delta R.T. 0.006 min
 Lab File: BF143290.D
 Acq: 04 Aug 2025 12:04

Tgt Ion:252 Resp: 204827
 Ion Ratio Lower Upper
 252 100
 254 63.8 51.7 77.5
 126 11.6 9.4 14.0



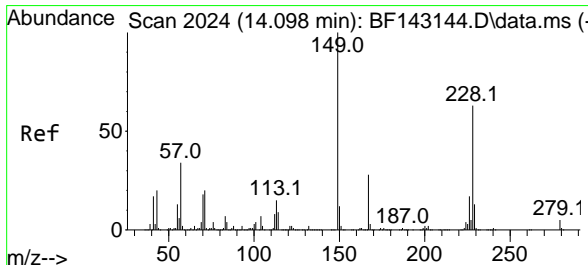
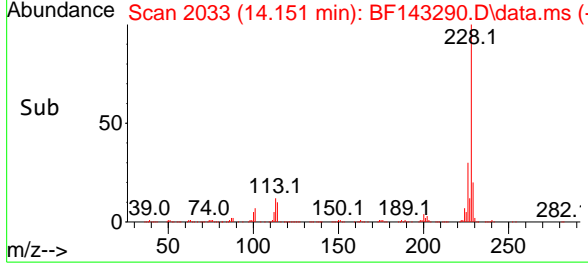
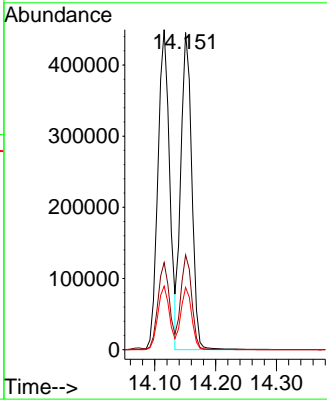
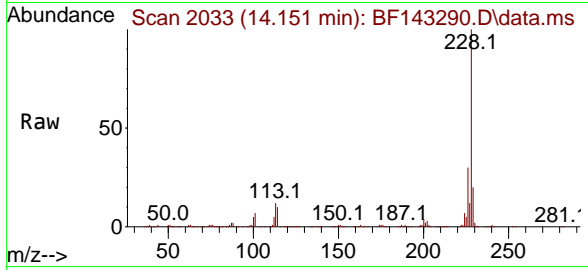


#83
 Chrysene
 Concen: 41.473 ng
 RT: 14.151 min Scan# 2033
 Delta R.T. -0.000 min
 Lab File: BF143290.D
 Acq: 04 Aug 2025 12:04

Instrument : BNA_F
 ClientSampleId : SSTDCCC040

Tgt Ion: 228 Resp: 553189

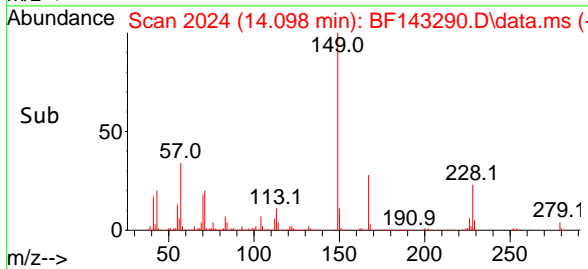
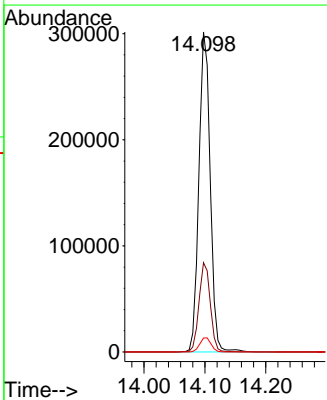
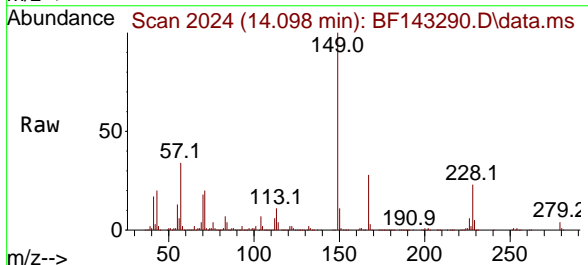
Ion	Ratio	Lower	Upper
228	100		
226	29.9	23.8	35.8
229	19.6	15.6	23.4

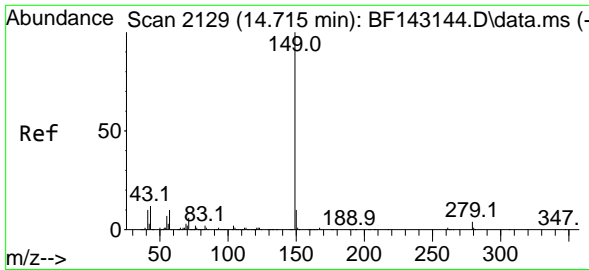


#84
 Bis(2-ethylhexyl)phthalate
 Concen: 44.458 ng
 RT: 14.098 min Scan# 2024
 Delta R.T. -0.000 min
 Lab File: BF143290.D
 Acq: 04 Aug 2025 12:04

Tgt Ion: 149 Resp: 389680

Ion	Ratio	Lower	Upper
149	100		
167	27.9	22.3	33.5
279	4.3	3.6	5.4

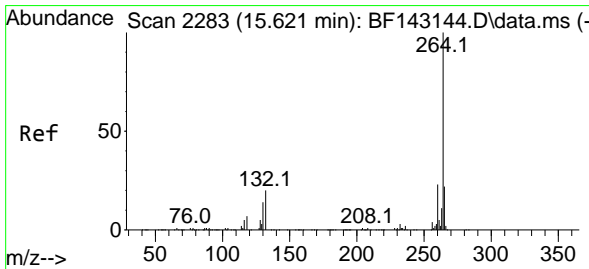
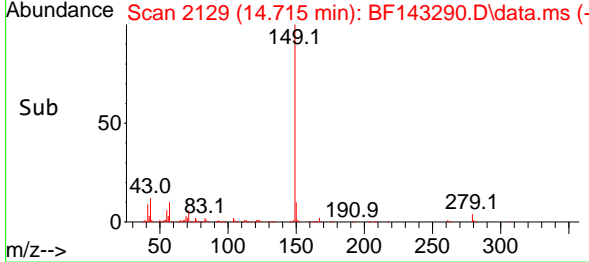
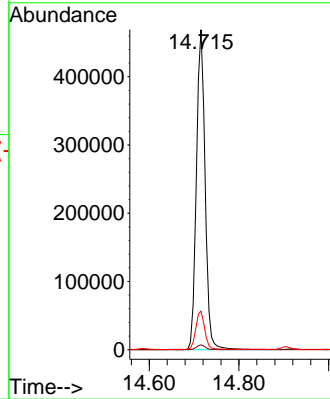
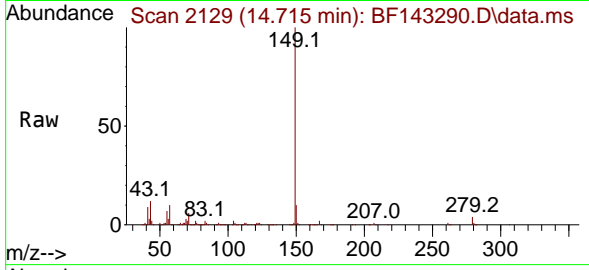




#85
 Di-n-octyl phthalate
 Concen: 39.823 ng
 RT: 14.715 min Scan# 2129
 Delta R.T. -0.000 min
 Lab File: BF143290.D
 Acq: 04 Aug 2025 12:04

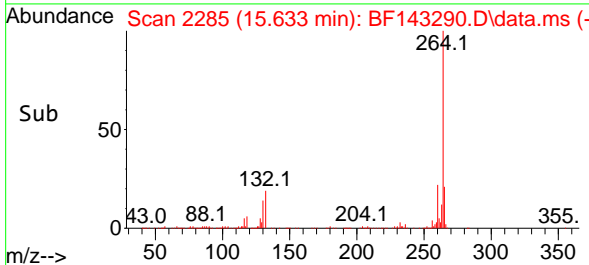
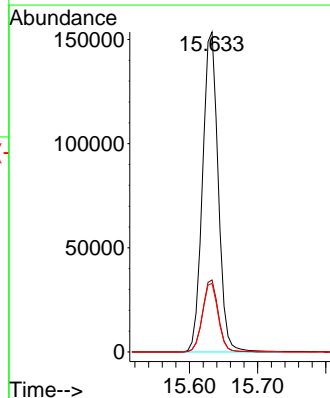
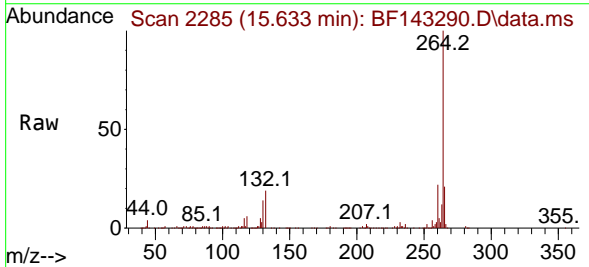
Instrument :
 BNA_F
 ClientSampleId :
 SSTDCCC040

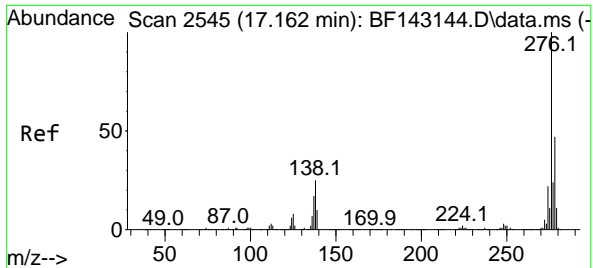
Tgt Ion:149 Resp: 632706
 Ion Ratio Lower Upper
 149 100
 167 1.5 1.1 1.7
 43 12.3 9.7 14.5



#86
 Perylene-d12
 Concen: 20.000 ng
 RT: 15.633 min Scan# 2285
 Delta R.T. 0.012 min
 Lab File: BF143290.D
 Acq: 04 Aug 2025 12:04

Tgt Ion:264 Resp: 245090
 Ion Ratio Lower Upper
 264 100
 260 22.5 18.5 27.7
 265 21.4 17.4 26.2



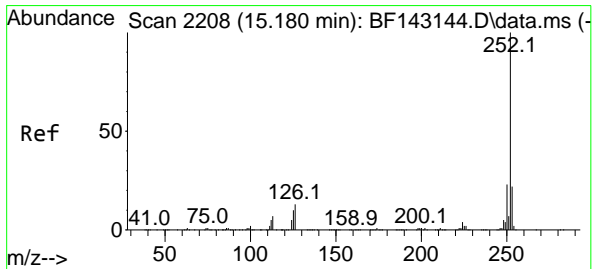
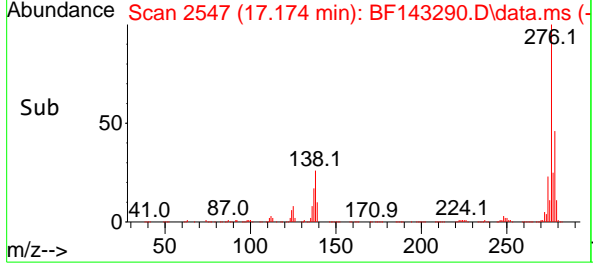
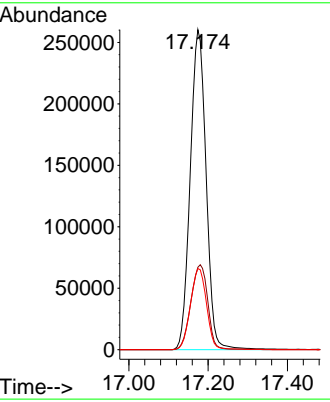
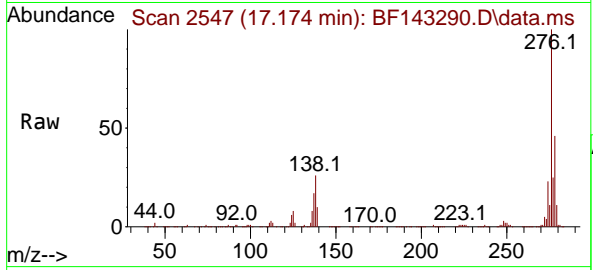


#87
 Indeno(1,2,3-cd)pyrene
 Concen: 41.834 ng
 RT: 17.174 min Scan# 21
 Delta R.T. 0.012 min
 Lab File: BF143290.D
 Acq: 04 Aug 2025 12:04

Instrument : BNA_F
 ClientSampleId : SSTDCCC040

Tgt Ion: 276 Resp: 722978

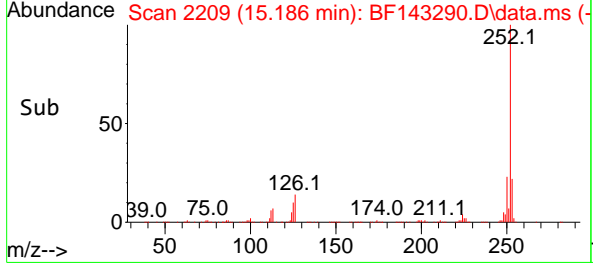
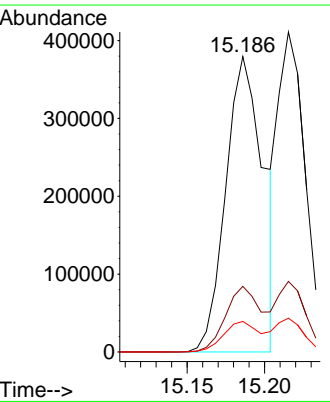
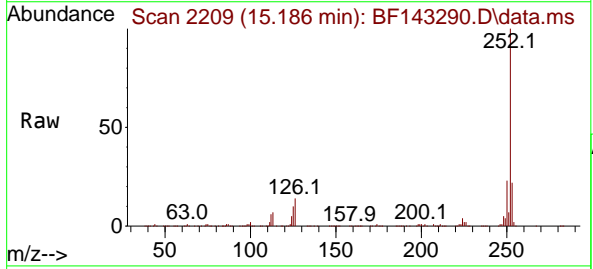
Ion	Ratio	Lower	Upper
276	100		
138	28.4	21.8	32.6
277	25.8	20.0	30.0

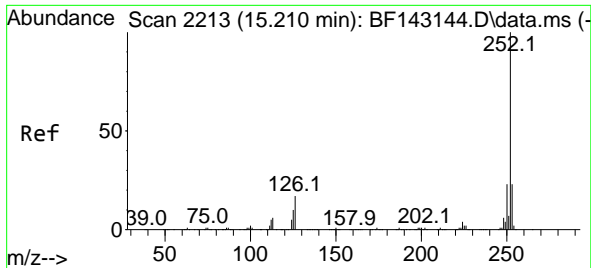


#88
 Benzo(b)fluoranthene
 Concen: 42.666 ng
 RT: 15.186 min Scan# 2209
 Delta R.T. 0.006 min
 Lab File: BF143290.D
 Acq: 04 Aug 2025 12:04

Tgt Ion: 252 Resp: 638824

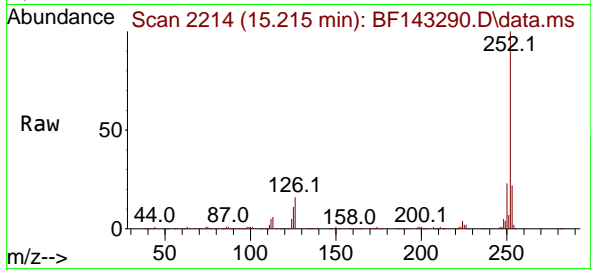
Ion	Ratio	Lower	Upper
252	100		
253	22.2	17.5	26.3
125	10.3	8.0	12.0



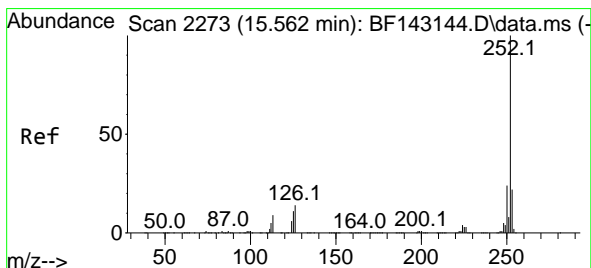
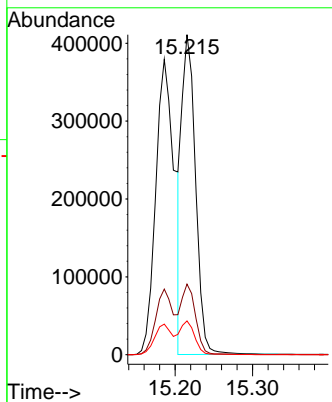
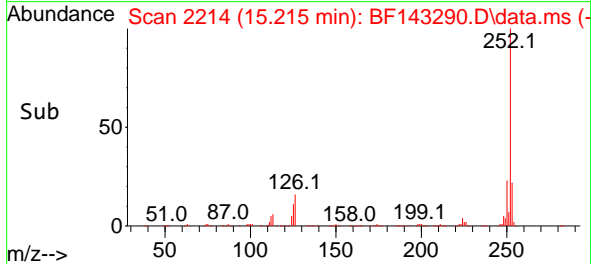


#89
 Benzo(k)fluoranthene
 Concen: 37.996 ng
 RT: 15.215 min Scan# 211
 Delta R.T. 0.006 min
 Lab File: BF143290.D
 Acq: 04 Aug 2025 12:04

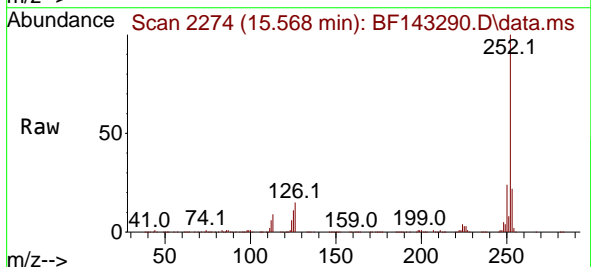
Instrument :
 BNA_F
 ClientSampleId :
 SSTDCCC040



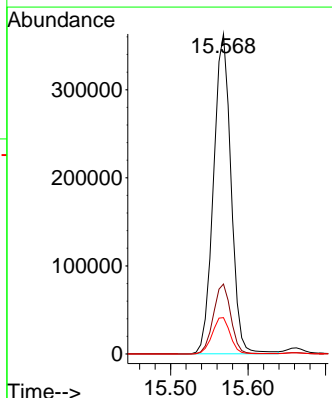
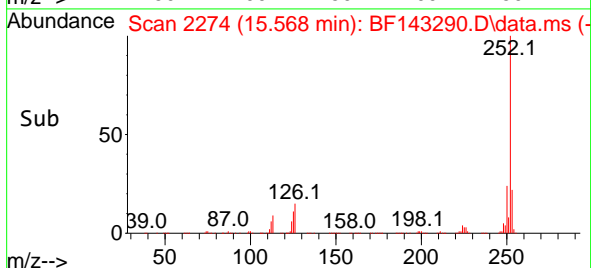
Tgt Ion:252 Resp: 507658
 Ion Ratio Lower Upper
 252 100
 253 22.0 17.8 26.6
 125 10.5 8.1 12.1

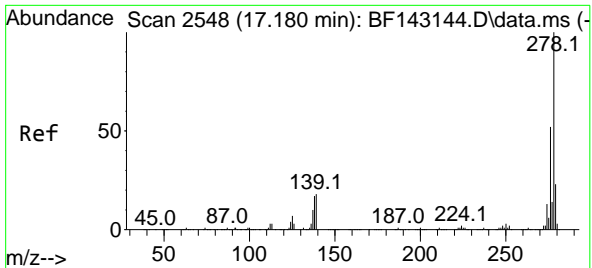


#90
 Benzo(a)pyrene
 Concen: 41.280 ng
 RT: 15.568 min Scan# 2274
 Delta R.T. 0.006 min
 Lab File: BF143290.D
 Acq: 04 Aug 2025 12:04



Tgt Ion:252 Resp: 569469
 Ion Ratio Lower Upper
 252 100
 253 21.9 17.3 25.9
 125 11.4 8.6 13.0

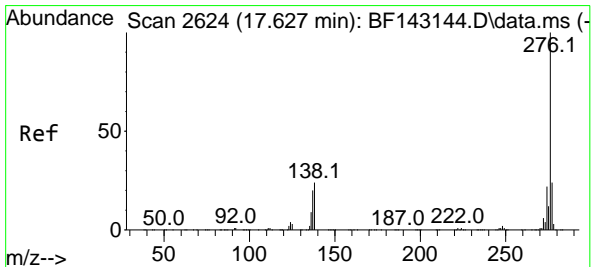
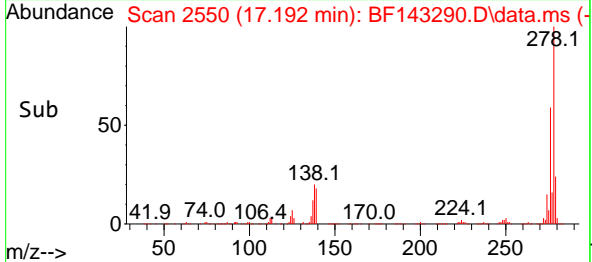
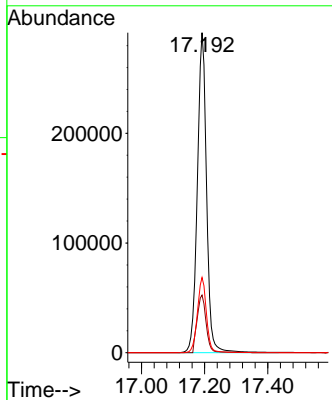
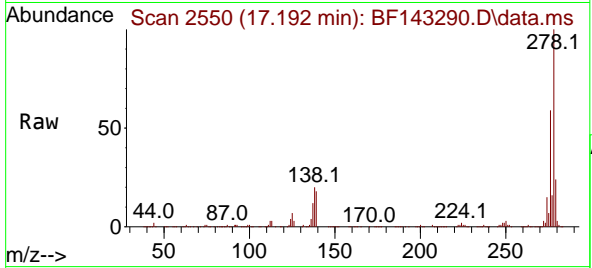




#91
 Dibenzo(a,h)anthracene
 Concen: 42.167 ng
 RT: 17.192 min Scan# 21
 Delta R.T. 0.012 min
 Lab File: BF143290.D
 Acq: 04 Aug 2025 12:04

Instrument :
 BNA_F
 ClientSampleId :
 SSTDCCC040

Tgt Ion:278 Resp: 593146
 Ion Ratio Lower Upper
 278 100
 139 18.0 14.1 21.1
 279 23.5 18.6 28.0



#92
 Benzo(g,h,i)perylene
 Concen: 43.435 ng
 RT: 17.639 min Scan# 2626
 Delta R.T. 0.012 min
 Lab File: BF143290.D
 Acq: 04 Aug 2025 12:04

Tgt Ion:276 Resp: 591017
 Ion Ratio Lower Upper
 276 100
 277 23.4 19.1 28.7
 138 23.6 18.9 28.3

