

Data Path : Z:\HPCHEM1\BNA\_F\DATA\BF080516\  
 Data File : BF089641.D  
 Acq On : 5 Aug 2016 21:07  
 Operator : UM/SJ  
 Sample : H4346-04  
 Misc :  
 ALS Vial : 46 Sample Multiplier: 1

Instrument :  
 BNA\_F  
 ClientSampleId :  
 LOCATION-46D-9-11

Integration Parameters: rteint.p  
 Integrator: RTE  
 Smoothing : ON Filtering: 5  
 Sampling : 1 Min Area: 3 % of largest Peak  
 Start Thrs: 0.2 Max Peaks: 100  
 Stop Thrs : 0 Peak Location: TOP

If leading or trailing edge < 100 prefer < Baseline drop else tangent >  
 Peak separation: 5

Method : Z:\HPCHEM1\BNA\_F\METHODS\8270-BF080416.M  
 Title : ASP BNA STANDARDS FOR 5 POINT CALIBRATION

Signal : TIC

peak #	R.T. min	first scan	max scan	last scan	PK TY	peak height	corr. area	corr. % max.	% of total
1	4.661	266	269	282	rBV	132368	316834	23.17%	3.100%
2	5.347	326	329	354	rBV	648887	1212016	88.65%	11.860%
3	6.982	469	472	479	rBV	629605	1209769	88.48%	11.838%
4	7.096	479	482	505	rVB	962176	1367246	100.00%	13.379%
5	7.439	510	512	524	rVV	129745	222831	16.30%	2.181%
6	7.679	530	533	548	rVB	757374	976456	71.42%	9.555%
7	8.353	589	592	618	rBV	482223	765408	55.98%	7.490%
8	9.473	687	690	708	rBV	203103	301710	22.07%	2.952%
9	11.256	842	846	848	rBV	898645	1233617	90.23%	12.072%
10	11.942	903	906	916	rBV	159461	216853	15.86%	2.122%
11	12.297	934	937	940	rBV	226468	307619	22.50%	3.010%
12	13.154	1009	1012	1014	rBB	15964	17976	1.31%	0.176%
13	13.588	1047	1050	1058	rBV	355505	582213	42.58%	5.697%
14	13.920	1077	1079	1086	rBV	16985	30558	2.24%	0.299%
15	14.685	1144	1146	1154	rVB	172158	223400	16.34%	2.186%
16	15.691	1232	1234	1238	rBB	11107	13917	1.02%	0.136%
17	17.051	1350	1353	1356	rBV	685186	750865	54.92%	7.348%
18	18.309	1461	1463	1468	rBV	30681	46275	3.38%	0.453%
19	18.389	1468	1470	1474	rVV	163366	215251	15.74%	2.106%
20	18.469	1474	1477	1480	rVB	12218	16881	1.23%	0.165%
21	20.046	1612	1615	1622	rBV	161549	191340	13.99%	1.872%

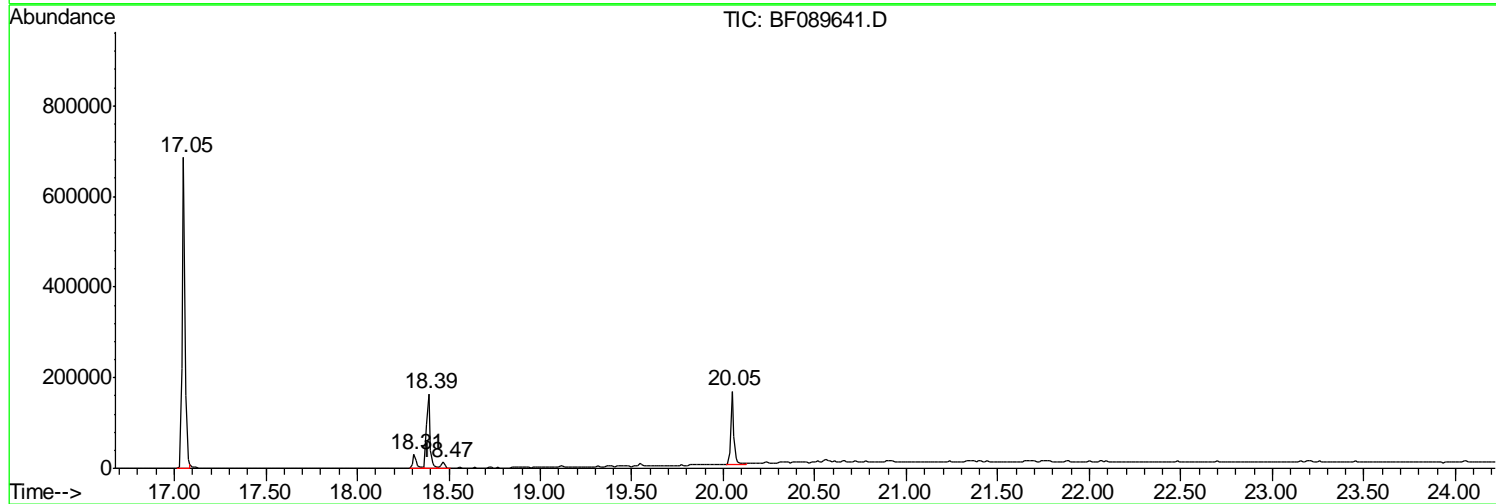
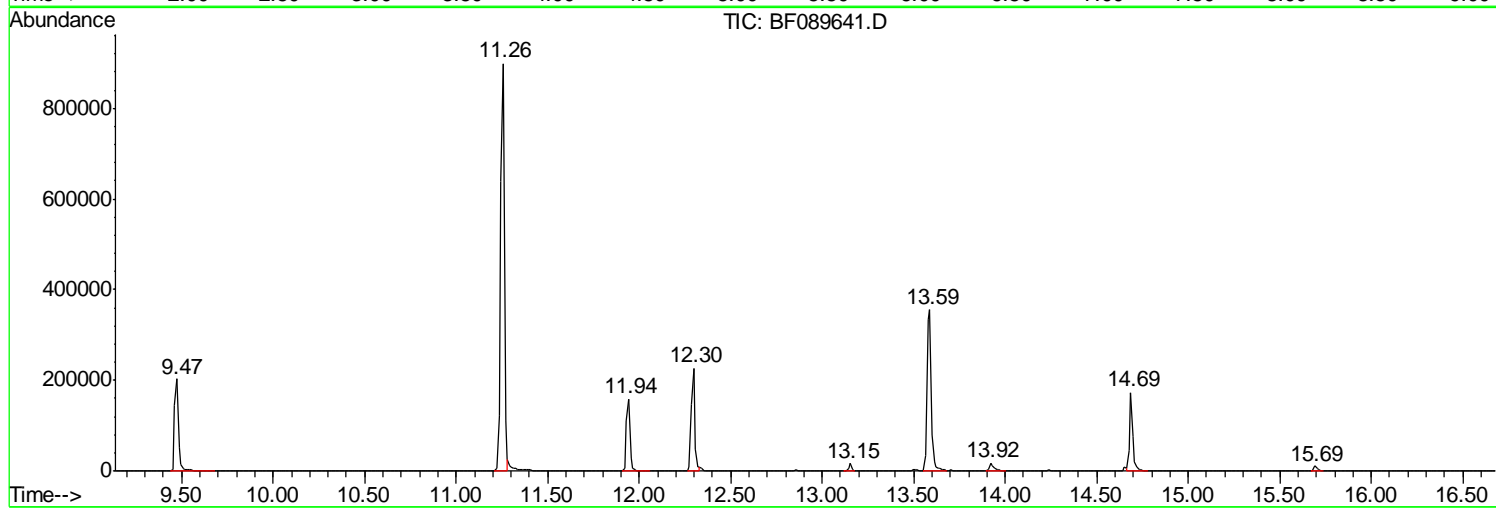
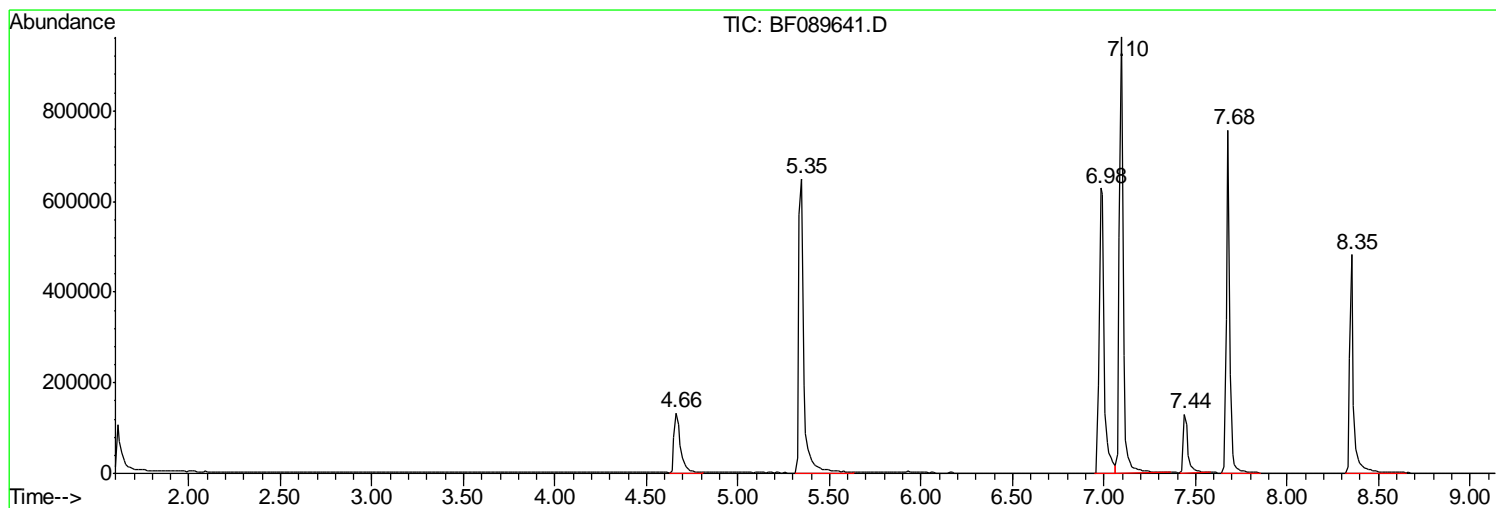
Sum of corrected areas: 10219035

Data Path : Z:\HPCHEM1\BNA\_F\DATA\BF080516\  
Data File : BF089641.D  
Acq On : 5 Aug 2016 21:07  
Operator : UM/SJ  
Sample : H4346-04  
Misc :  
ALS Vial : 46 Sample Multiplier: 1

Instrument :  
BNA\_F  
ClientSampled :  
LOCATION-46D-9-11

Quant Method : Z:\HPCHEM1\BNA\_F\METHODS\8270-BF080416.M  
Quant Title : ASP BNA STANDARDS FOR 5 POINT CALIBRATION

TIC Library : C:\Database\NIST11.L  
TIC Integration Parameters: LSCINT.P



Data Path : Z:\HPCHEM1\BNA\_F\DATA\BF080516\  
 Data File : BF089641.D  
 Acq On : 5 Aug 2016 21:07  
 Operator : UM/SJ  
 Sample : H4346-04  
 Misc :  
 ALS Vial : 46 Sample Multiplier: 1

Instrument :  
 BNA\_F  
 ClientSampled :  
 LOCATION-46D-9-11

Quant Method : Z:\HPCHEM1\BNA\_F\METHODS\8270-BF080416.M  
 Quant Title : ASP BNA STANDARDS FOR 5 POINT CALIBRATION

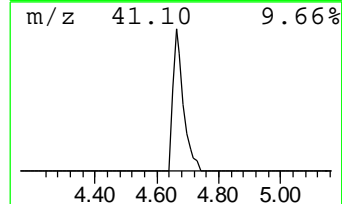
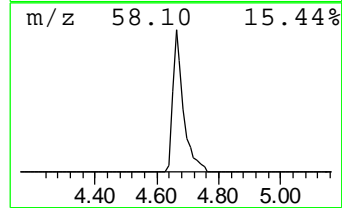
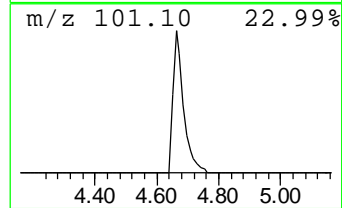
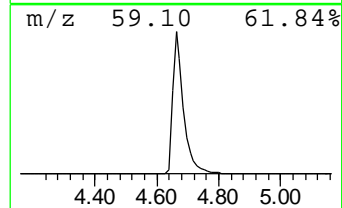
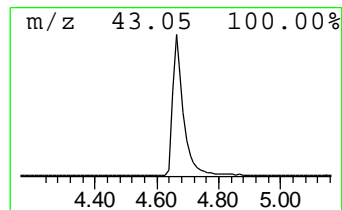
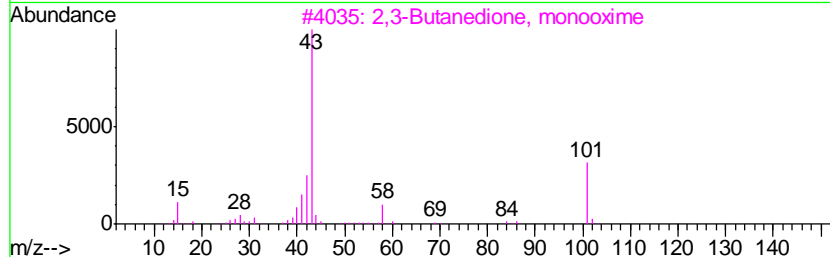
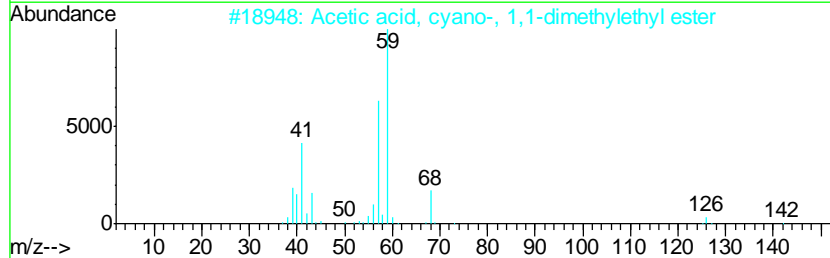
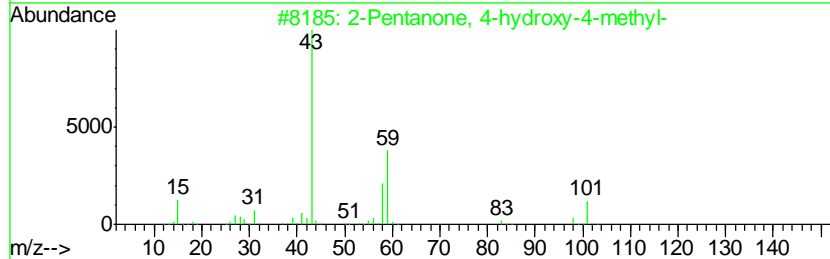
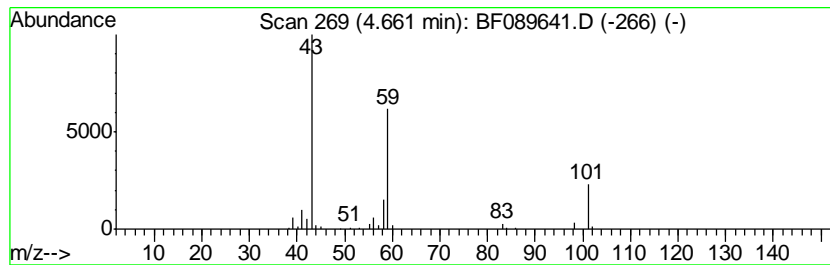
TIC Library : C:\Database\NIST11.L  
 TIC Integration Parameters: LSCINT.P

\*\*\*\*\*  
 Peak Number 1 2-Pentanone, 4-hydroxy-4-me... Concentration Rank 3

R.T.	EstConc	Area	Relative to ISTD	R.T.
4.66	28.44 ng	316834	1,4-Dichlorobenzene-d4	7.44

Hit#	of	Tentative ID	MW	MolForm	CAS#	Qual
1	5	2-Pentanone, 4-hydroxy-4-methyl-	116	C6H12O2	000123-42-2	72
2		Acetic acid, cyano-, 1,1-dimethyl...	141	C7H11NO2	001116-98-9	17
3		2,3-Butanedione, monooxime	101	C4H7NO2	000057-71-6	17
4		5-Hexen-2-one	98	C6H10O	000109-49-9	9
5		Morpholine, 4-methyl-	101	C5H11NO	000109-02-4	9



Data Path : Z:\HPCHEM1\BNA\_F\DATA\BF080516\  
 Data File : BF089641.D  
 Acq On : 5 Aug 2016 21:07  
 Operator : UM/SJ  
 Sample : H4346-04  
 Misc :  
 ALS Vial : 46 Sample Multiplier: 1

Instrument :  
 BNA\_F  
 ClientSampled :  
 LOCATION-46D-9-11

Quant Method : Z:\HPCHEM1\BNA\_F\METHODS\8270-BF080416.M  
 Quant Title : ASP BNA STANDARDS FOR 5 POINT CALIBRATION

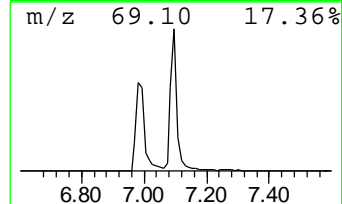
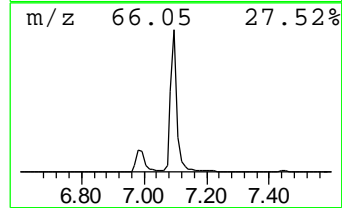
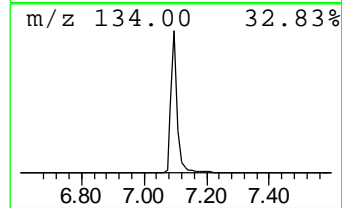
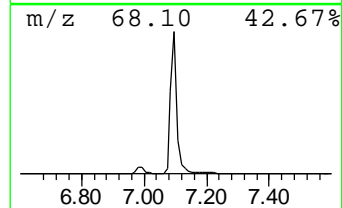
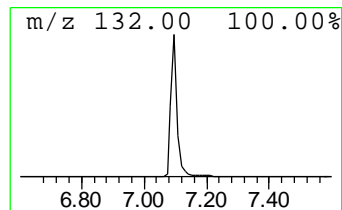
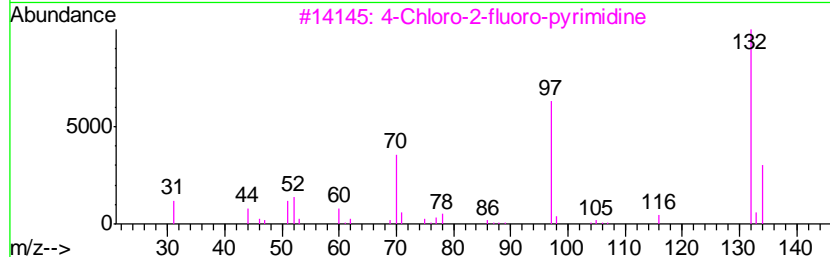
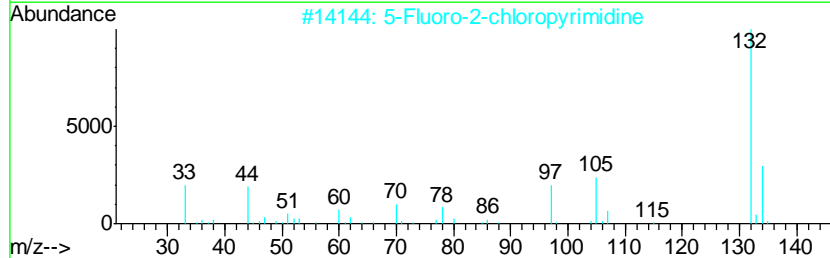
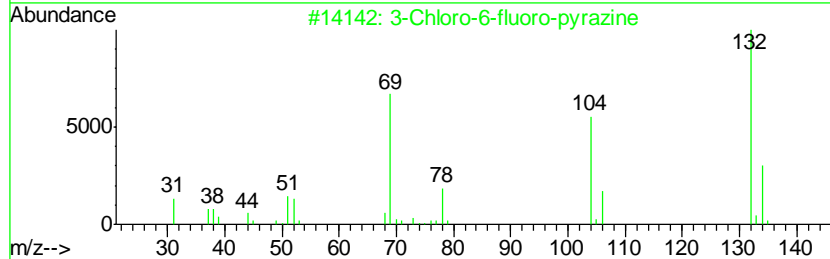
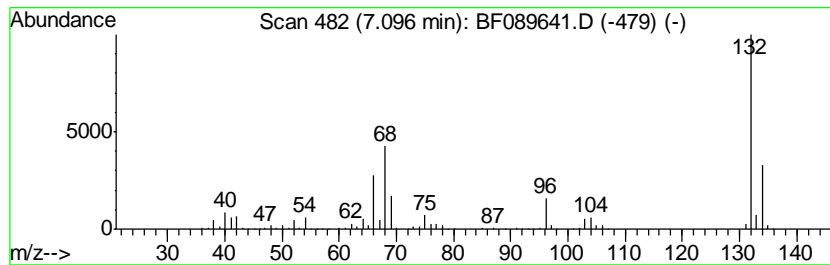
TIC Library : C:\Database\NIST11.L  
 TIC Integration Parameters: LSCINT.P

\*\*\*\*\*  
 Peak Number 2 unknown7.10 Concentration Rank 1

R.T.	EstConc	Area	Relative to ISTD	R.T.
7.10	122.72 ng	1367250	1,4-Dichlorobenzene-d4	7.44

Hit#	of	Tentative ID	MW	MolForm	CAS#	Qual
1	5	3-Chloro-6-fluoro-pyrazine	132	C4H2ClFN2	1000146-10-7	27
2		5-Fluoro-2-chloropyrimidine	132	C4H2ClFN2	062802-42-0	12
3		4-Chloro-2-fluoro-pyrimidine	132	C4H2ClFN2	051422-00-5	9
4		(E)-3-Chloro-2-methyl-2-pentenal	132	C6H9ClO	031357-76-3	9
5		1,2,4-Trifluorobenzene	132	C6H3F3	000367-23-7	9



Data Path : Z:\HPCHEM1\BNA\_F\DATA\BF080516\  
 Data File : BF089641.D  
 Acq On : 5 Aug 2016 21:07  
 Operator : UM/SJ  
 Sample : H4346-04  
 Misc :  
 ALS Vial : 46 Sample Multiplier: 1

Instrument :  
 BNA\_F  
 ClientSampleID :  
 LOCATION-46D-9-11

Quant Method : Z:\HPCHEM1\BNA\_F\METHODS\8270-BF080416.M  
 Quant Title : ASP BNA STANDARDS FOR 5 POINT CALIBRATION

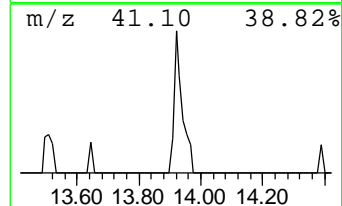
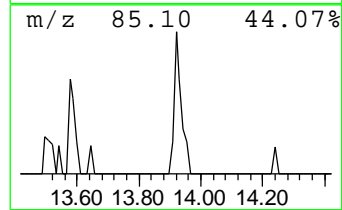
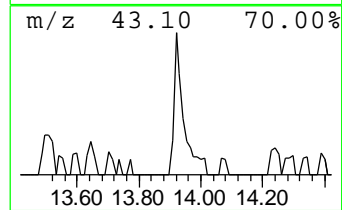
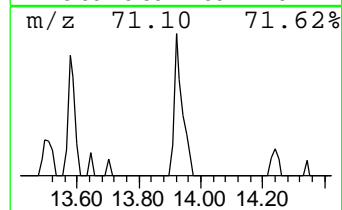
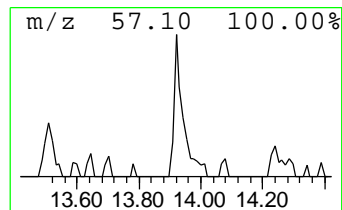
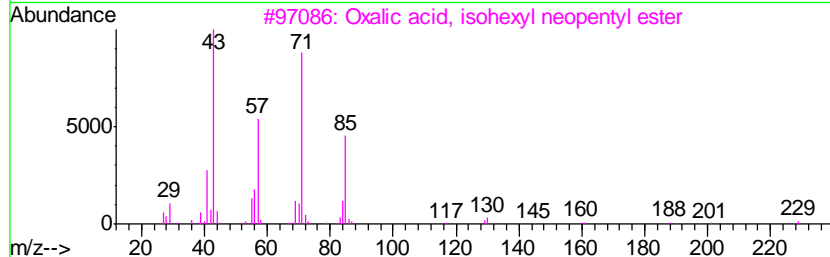
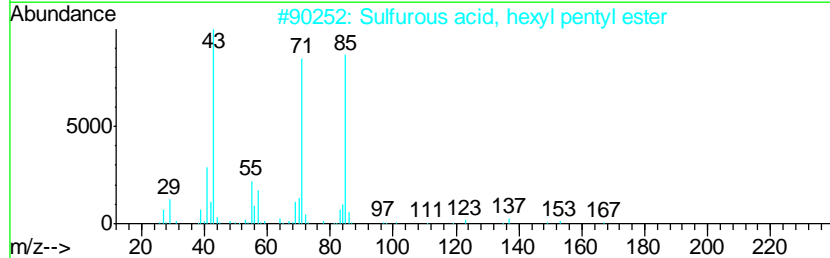
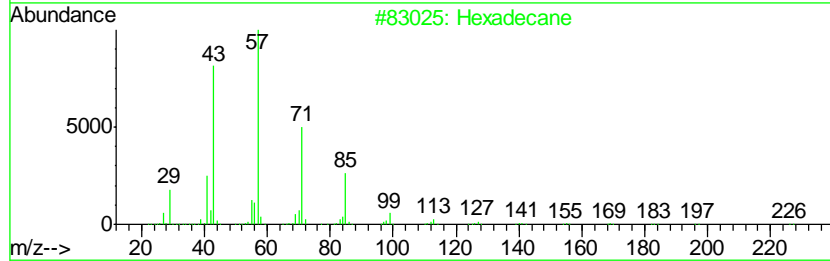
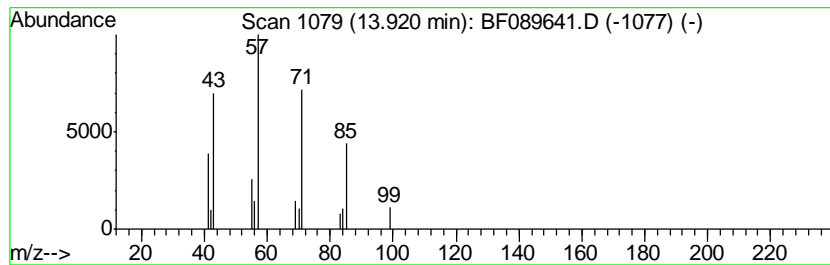
TIC Library : C:\Database\NIST11.L  
 TIC Integration Parameters: LSCINT.P

\*\*\*\*\*  
 Peak Number 4 Hexadecane Concentration Rank 5

R.T.	EstConc	Area	Relative to ISTD	R.T.
13.92	2.74 ng	30558	Phenanthrene-d10	14.69

Hit#	of	Tentative ID	MW	MolForm	CAS#	Qual
1	5	Hexadecane	226	C16H34	000544-76-3	83
2		Sulfurous acid, hexyl pentyl ester	236	C11H24O3S	1000309-14-1	64
3		Oxalic acid, isohexyl neopentyl ...	244	C13H24O4	1000309-73-0	64
4		Sulfurous acid, hexyl heptyl ester	264	C13H28O3S	1000309-12-9	53
5		Decane, 2,2,6-trimethyl-	184	C13H28	062237-97-2	50



Data Path : Z:\HPCHEM1\BNA\_F\DATA\BF080516\  
 Data File : BF089641.D  
 Acq On : 5 Aug 2016 21:07  
 Operator : UM/SJ  
 Sample : H4346-04  
 Misc :  
 ALS Vial : 46 Sample Multiplier: 1

Instrument :  
 BNA\_F  
 ClientSampleId :  
 LOCATION-46D-9-11

Quant Method : Z:\HPCHEM1\BNA\_F\METHODS\8270-BF080416.M  
 Quant Title : ASP BNA STANDARDS FOR 5 POINT CALIBRATION

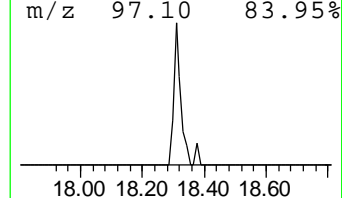
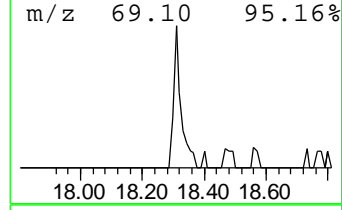
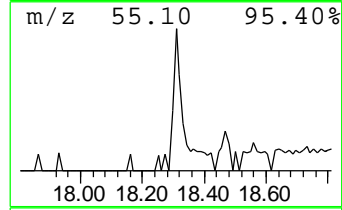
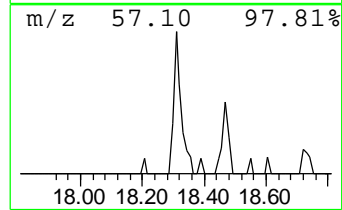
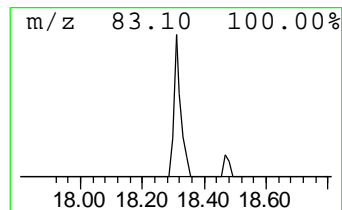
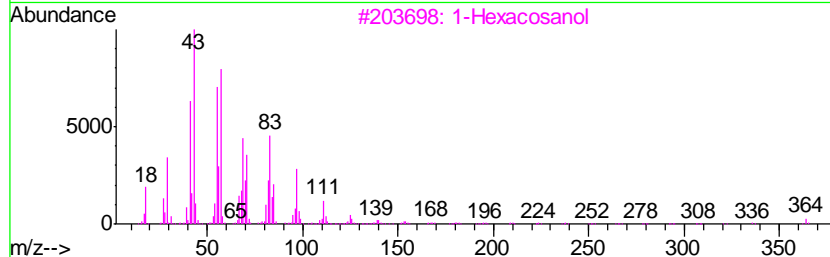
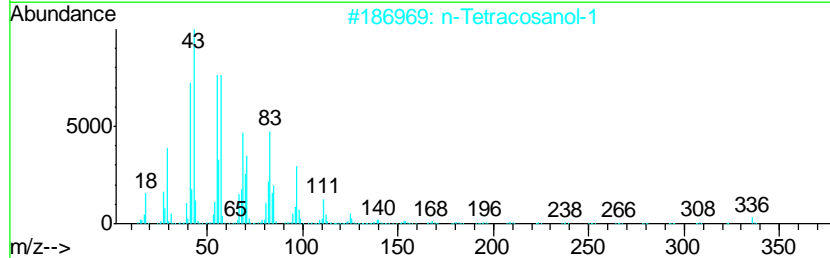
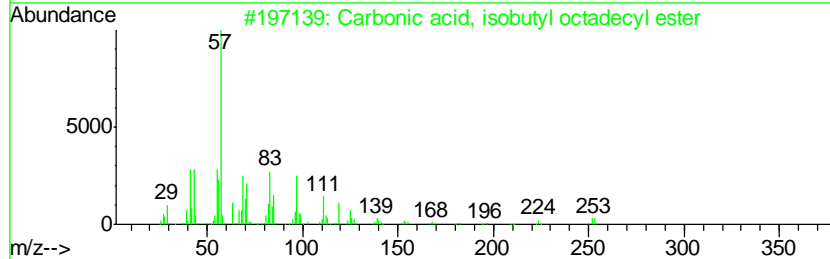
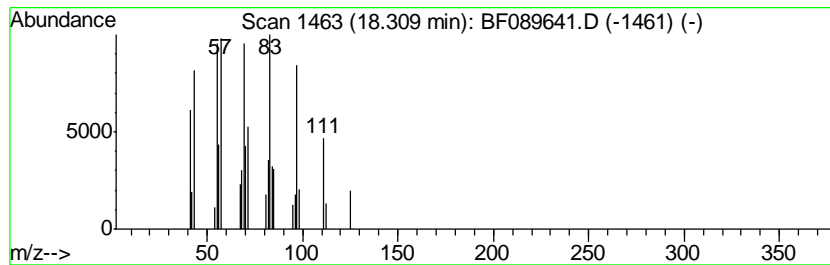
TIC Library : C:\Database\NIST11.L  
 TIC Integration Parameters: LSCINT.P

\*\*\*\*\*  
 Peak Number 5 Carbonic acid, isobutyl oct... Concentration Rank 4

R.T.	EstConc	Area	Relative to ISTD	R.T.
18.31	4.30 ng	46275	Chrysene-d12	18.39

Hit#	of	Tentative ID	MW	MolForm	CAS#	Qual
1	5	Carbonic acid, isobutyl octadecy...	370	C23H46O3	1000314-61-5	59
2		n-Tetracosanol-1	354	C24H50O	000506-51-4	58
3		1-Hexacosanol	382	C26H54O	000506-52-5	53
4		Cyclopentane, 1,1,3-trimethyl-	112	C8H16	004516-69-2	52
5		2-Cyclohexen-1-ol, 1-methyl-	112	C7H12O	023758-27-2	43



Data Path : Z:\HPCHEM1\BNA\_F\DATA\BF080516\  
Data File : BF089641.D  
Acq On : 5 Aug 2016 21:07  
Operator : UM/SJ  
Sample : H4346-04  
Misc :  
ALS Vial : 46 Sample Multiplier: 1

Instrument :  
BNA\_F  
ClientSampleId :  
LOCATION-46D-9-11

Quant Method : Z:\HPCHEM1\BNA\_F\METHODS\8270-BF080416.M  
Quant Title : ASP BNA STANDARDS FOR 5 POINT CALIBRATION

TIC Library : C:\Database\NIST11.L  
TIC Integration Parameters: LSCINT.P

TIC Top Hit name	RT	EstConc	Units	Response	--Internal Standard--			
					#	RT	Resp	Conc
2-Pentanone, 4-hy...	4.66	28.4	ng	316834	1	7.44	222831	20.0
unknown7.10	7.10	122.7	ng	1367250	1	7.44	222831	20.0
Hexadecane	13.92	2.7	ng	30558	4	14.69	223400	20.0
Carbonic acid, is...	18.31	4.3	ng	46275	5	18.39	215251	20.0