

Data Path : Z:\svoasrv\HPCHEM1\BNA_F\Data\BF080824\
 Data File : BF138857.D
 Acq On : 08 Aug 2024 10:49
 Operator : RC/JU
 Sample : PB162396BL
 Misc :
 ALS Vial : 3 Sample Multiplier: 1

Instrument :
 BNA_F
 ClientSampleId :
 PB162396BL

Quant Time: Aug 08 11:24:13 2024
 Quant Method : Z:\svoasrv\HPCHEM1\BNA_F\Methods\8270-BF073024.M
 Quant Title : ASP BNA STANDARDS FOR 5 POINT CALIBRATION
 QLast Update : Tue Jul 30 17:50:01 2024
 Response via : Initial Calibration

Compound	R.T.	QIon	Response	Conc	Units	Dev(Min)
Internal Standards						
1) 1,4-Dichlorobenzene-d4	6.840	152	42217	20.000	ng	0.00
21) Naphthalene-d8	8.122	136	178455	20.000	ng	0.00
39) Acenaphthene-d10	9.875	164	106067	20.000	ng	0.00
64) Phenanthrene-d10	11.357	188	200709	20.000	ng	-0.01
76) Chrysene-d12	13.998	240	125540	20.000	ng	# 0.00
86) Perylene-d12	15.457	264	84599	20.000	ng	-0.01
System Monitoring Compounds						
5) 2-Fluorophenol	5.481	112	365000	133.461	ng	0.01
7) Phenol-d6	6.487	99	478138	130.217	ng	0.00
23) Nitrobenzene-d5	7.404	82	314986	86.297	ng	0.00
42) 2,4,6-Tribromophenol	10.669	330	120195	138.341	ng	0.00
45) 2-Fluorobiphenyl	9.192	172	610165	86.433	ng	-0.01
79) Terphenyl-d14	12.945	244	718714	95.852	ng	0.00

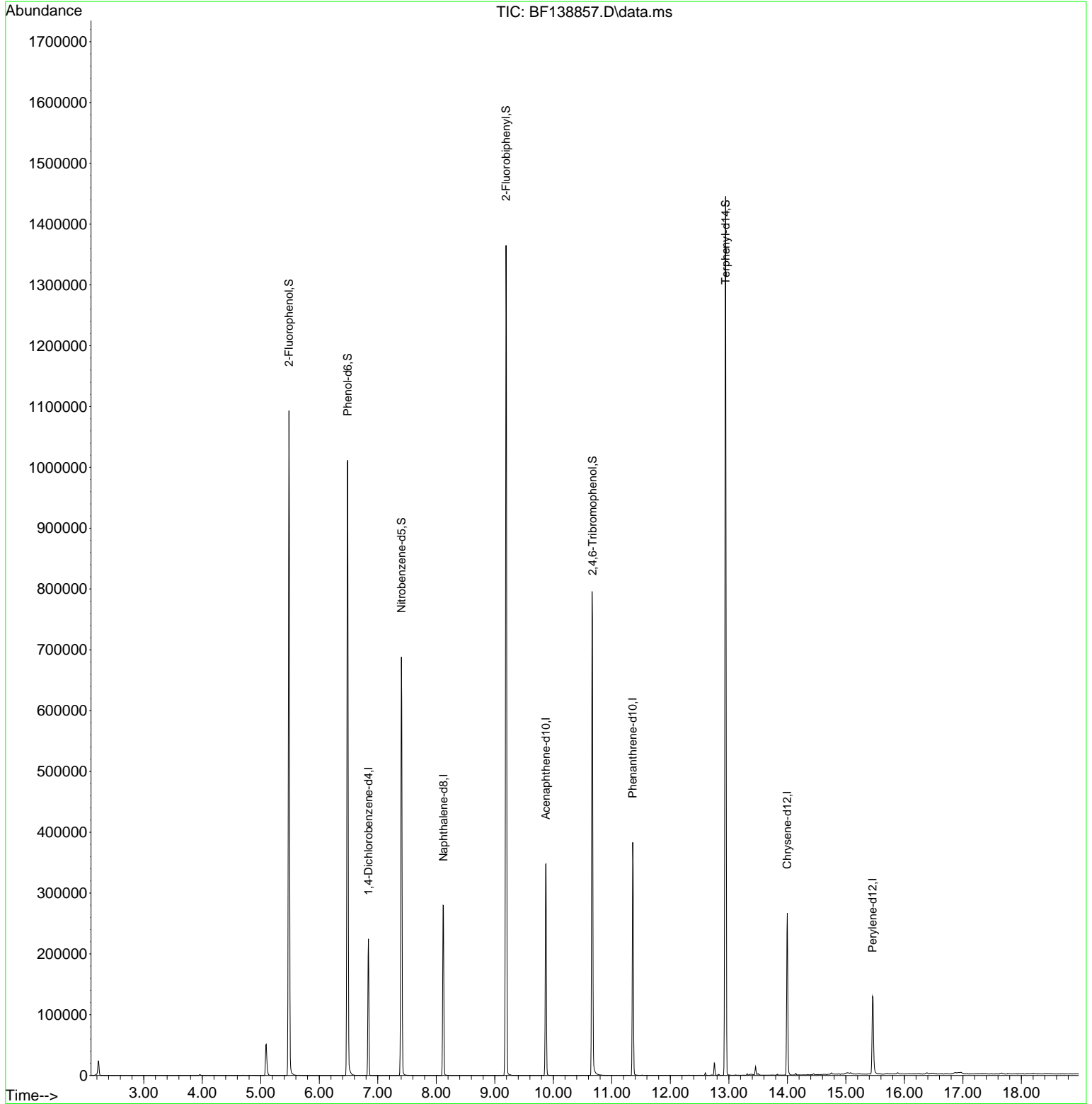
Target Compounds Qvalue

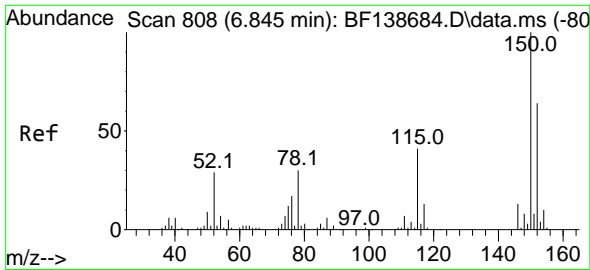
(#) = qualifier out of range (m) = manual integration (+) = signals summed

Data Path : Z:\svoasrv\HPCHEM1\BNA_F\Data\BF080824\
 Data File : BF138857.D
 Acq On : 08 Aug 2024 10:49
 Operator : RC/JU
 Sample : PB162396BL
 Misc :
 ALS Vial : 3 Sample Multiplier: 1

Instrument :
 BNA_F
 ClientSampleId :
 PB162396BL

Quant Time: Aug 08 11:24:13 2024
 Quant Method : Z:\svoasrv\HPCHEM1\BNA_F\Methods\8270-BF073024.M
 Quant Title : ASP BNA STANDARDS FOR 5 POINT CALIBRATION
 QLast Update : Tue Jul 30 17:50:01 2024
 Response via : Initial Calibration

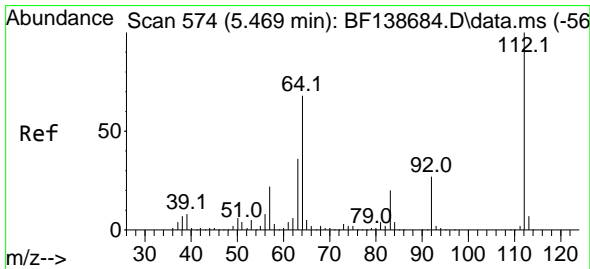
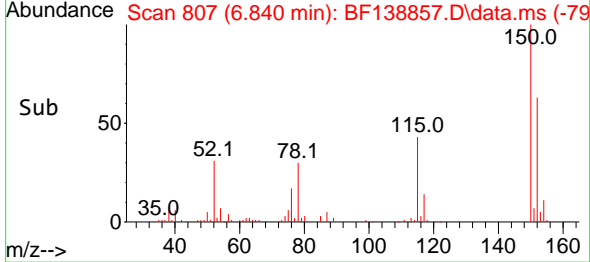
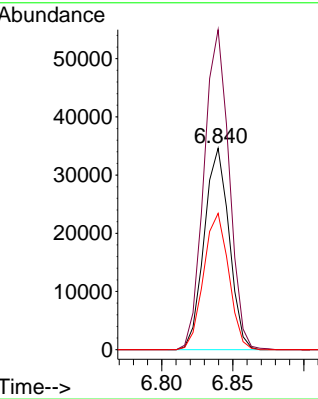
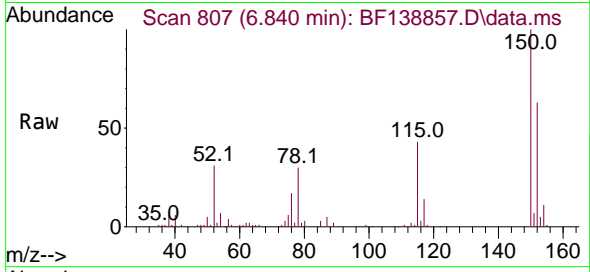




#1
 1,4-Dichlorobenzene-d4
 Concen: 20.000 ng
 RT: 6.840 min Scan# 80
 Delta R.T. -0.005 min
 Lab File: BF138857.D
 Acq: 08 Aug 2024 10:49

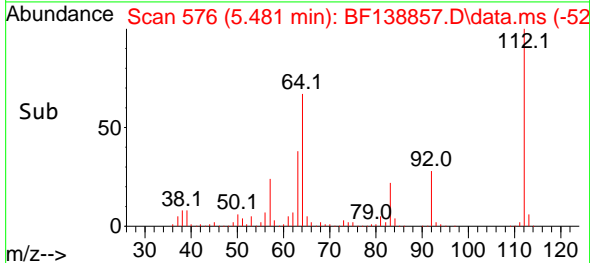
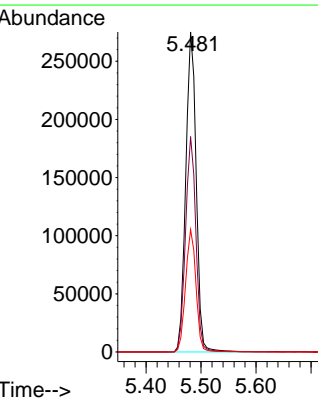
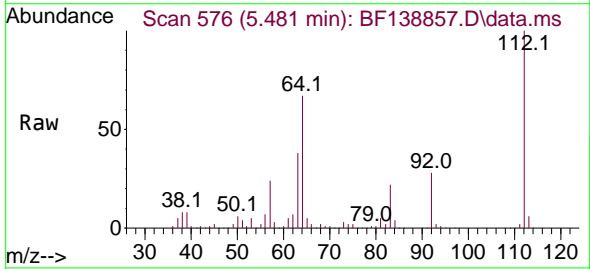
Instrument :
 BNA_F
 ClientSampleId :
 PB162396BL

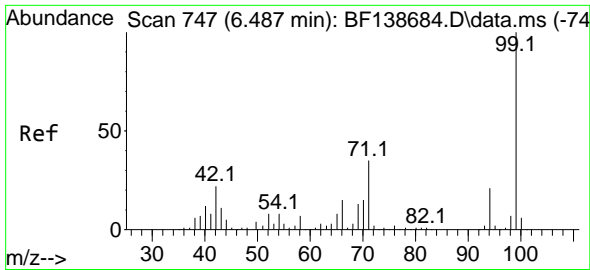
Tgt Ion:152 Resp: 42217
 Ion Ratio Lower Upper
 152 100
 150 158.9 126.0 189.0
 115 67.7 51.7 77.5



#5
 2-Fluorophenol
 Concen: 133.461 ng
 RT: 5.481 min Scan# 576
 Delta R.T. 0.012 min
 Lab File: BF138857.D
 Acq: 08 Aug 2024 10:49

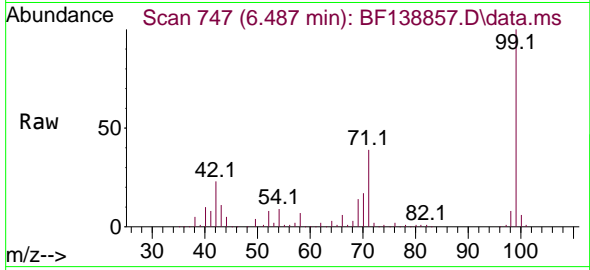
Tgt Ion:112 Resp: 365000
 Ion Ratio Lower Upper
 112 100
 64 67.3 54.2 81.4
 63 38.2 28.7 43.1





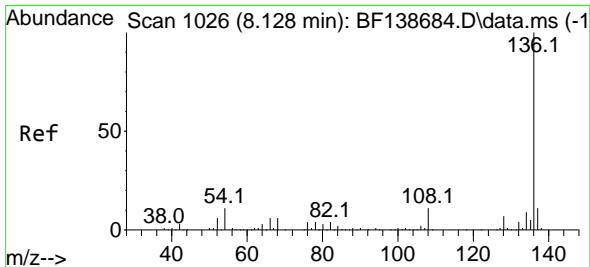
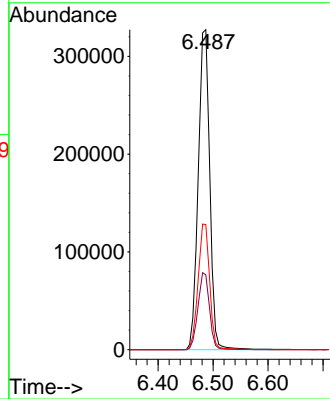
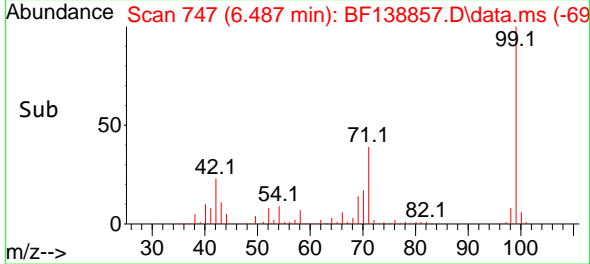
#7
 Phenol-d6
 Concen: 130.217 ng
 RT: 6.487 min Scan# 74
 Delta R.T. 0.000 min
 Lab File: BF138857.D
 Acq: 08 Aug 2024 10:49

Instrument :
 BNA_F
 ClientSampleId :
 PB162396BL

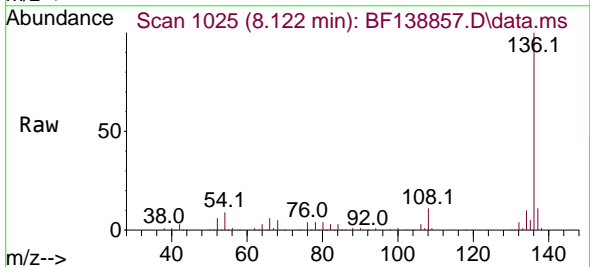


Tgt Ion: 99 Resp: 478138

Ion	Ratio	Lower	Upper
99	100		
42	23.4	17.4	26.0
71	39.1	28.1	42.1

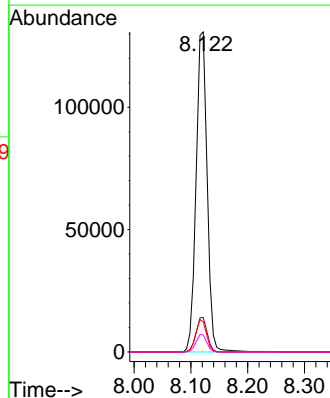
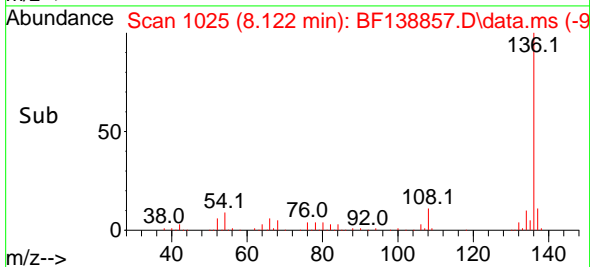


#21
 Naphthalene-d8
 Concen: 20.000 ng
 RT: 8.122 min Scan# 1025
 Delta R.T. -0.006 min
 Lab File: BF138857.D
 Acq: 08 Aug 2024 10:49



Tgt Ion: 136 Resp: 178455

Ion	Ratio	Lower	Upper
136	100		
137	10.8	8.9	13.3
54	9.4	8.6	12.8
68	5.3	4.8	7.2





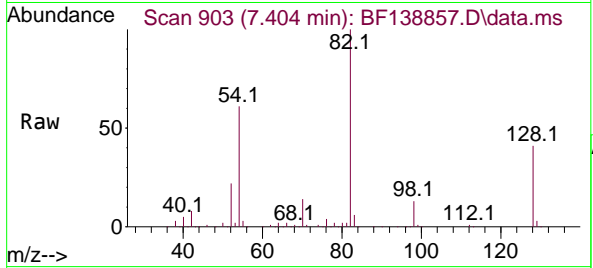
#23
 Nitrobenzene-d5
 Concen: 86.297 ng
 RT: 7.404 min Scan# 904
 Delta R.T. -0.006 min
 Lab File: BF138857.D
 Acq: 08 Aug 2024 10:49

Instrument :

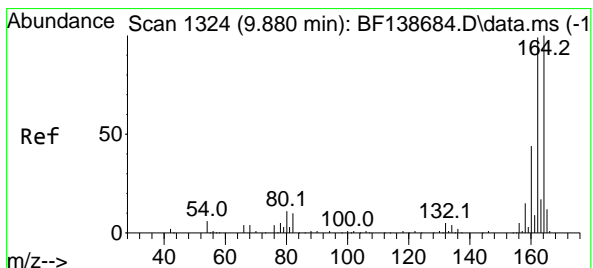
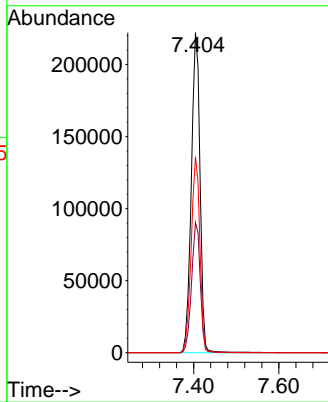
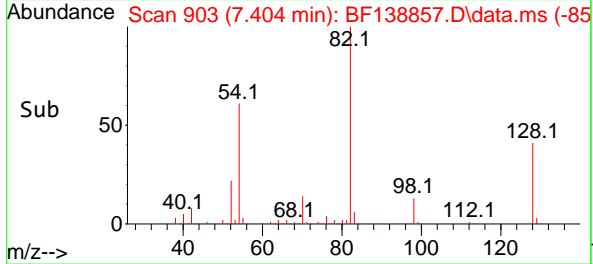
BNA_F

Client Sample Id :

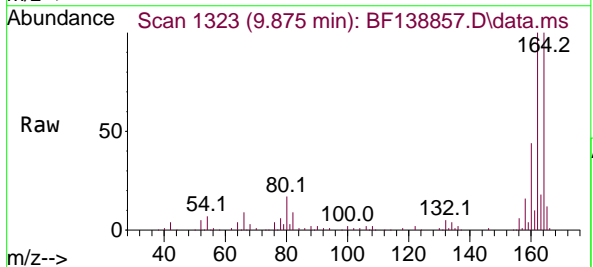
PB162396BL



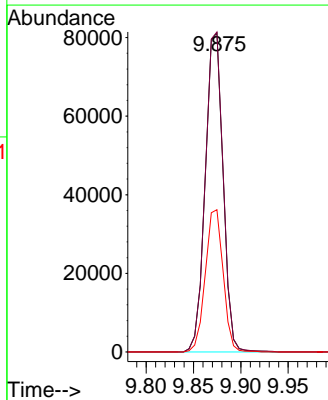
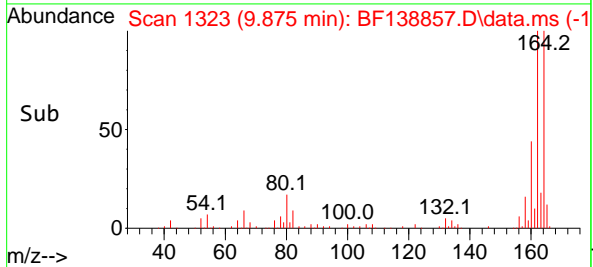
Tgt Ion: 82 Resp: 314986
 Ion Ratio Lower Upper
 82 100
 128 40.7 32.8 49.2
 54 61.2 48.3 72.5

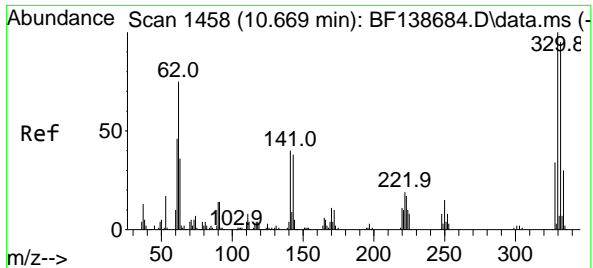


#39
 Acenaphthene-d10
 Concen: 20.000 ng
 RT: 9.875 min Scan# 1323
 Delta R.T. -0.005 min
 Lab File: BF138857.D
 Acq: 08 Aug 2024 10:49



Tgt Ion: 164 Resp: 106067
 Ion Ratio Lower Upper
 164 100
 162 100.4 79.4 119.0
 160 44.6 35.1 52.7

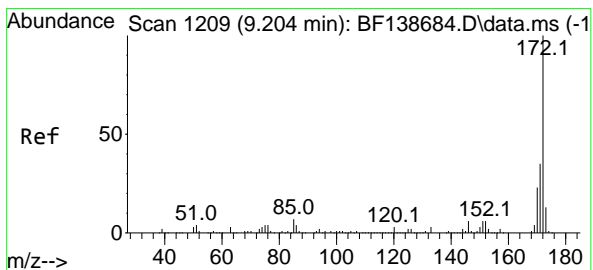
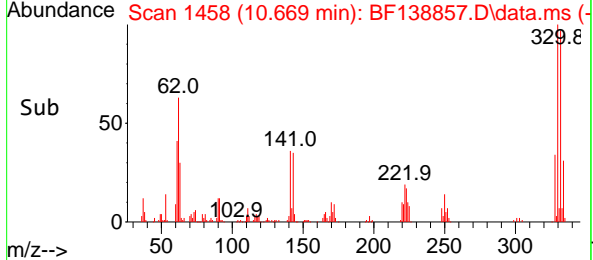
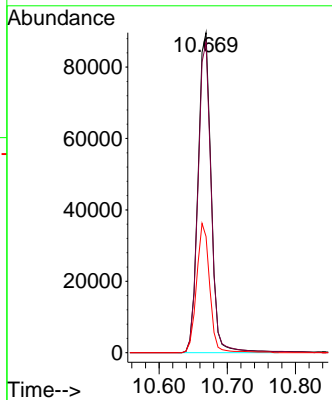
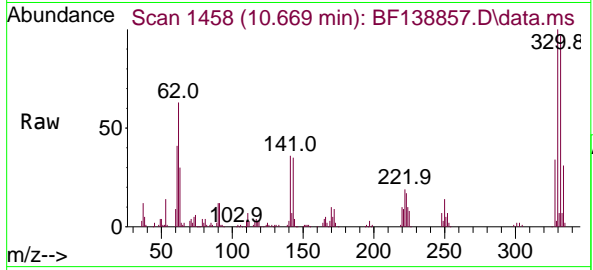




#42
 2,4,6-Tribromophenol
 Concen: 138.341 ng
 RT: 10.669 min Scan# 1458
 Delta R.T. 0.000 min
 Lab File: BF138857.D
 Acq: 08 Aug 2024 10:49

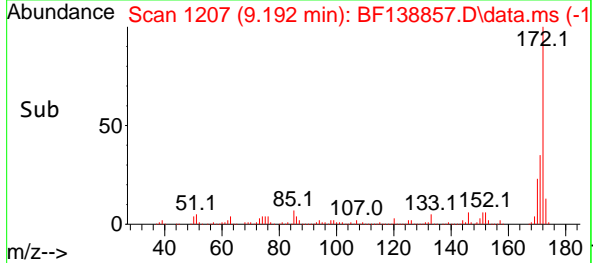
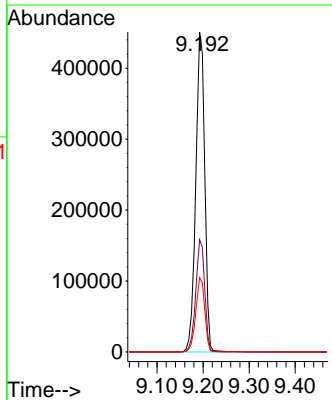
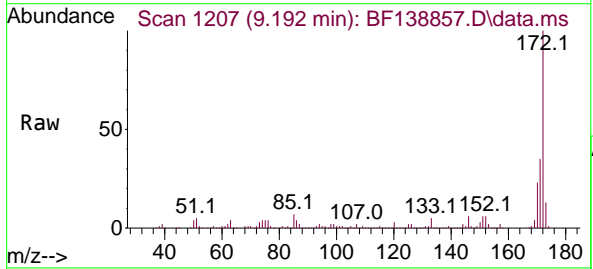
Instrument : BNA_F
 ClientSampleId : PB162396BL

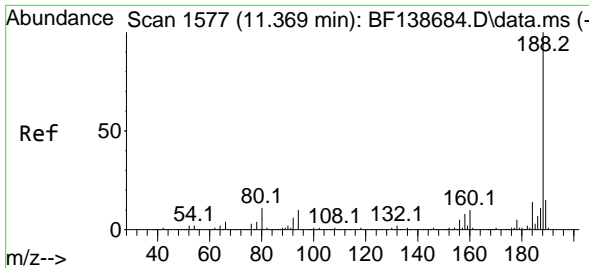
Tgt Ion	Resp	Lower	Upper
330	100		
332	98.0	76.4	114.6
141	40.3	31.1	46.7



#45
 2-Fluorobiphenyl
 Concen: 86.433 ng
 RT: 9.192 min Scan# 1207
 Delta R.T. -0.012 min
 Lab File: BF138857.D
 Acq: 08 Aug 2024 10:49

Tgt Ion	Resp	Lower	Upper
172	100		
171	35.1	28.3	42.5
170	23.2	18.8	28.2



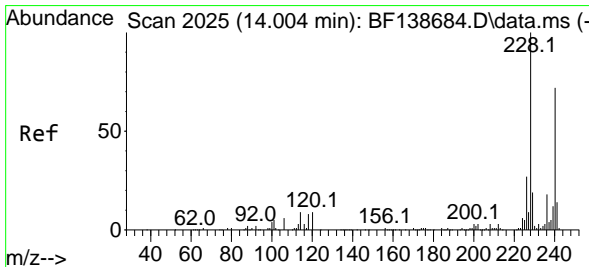
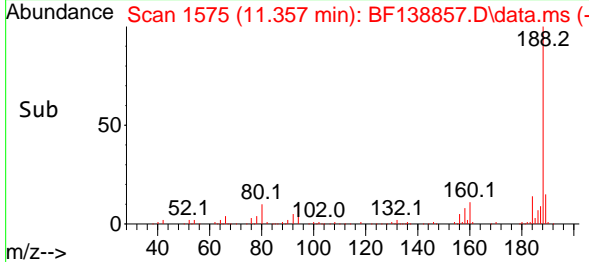
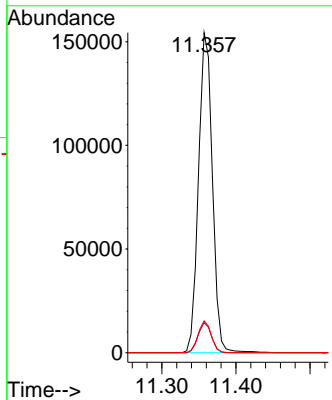
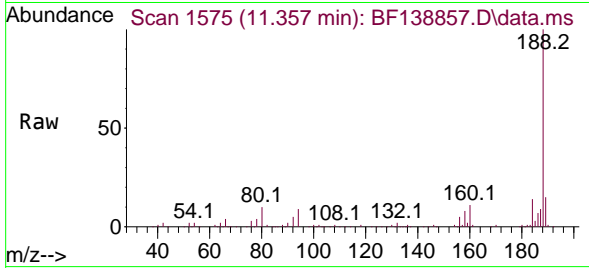


#64
 Phenanthrene-d10
 Concen: 20.000 ng
 RT: 11.357 min Scan# 11
 Delta R.T. -0.012 min
 Lab File: BF138857.D
 Acq: 08 Aug 2024 10:49

Instrument : BNA_F
 Client Sample Id : PB162396BL

Tgt Ion:188 Resp: 200709

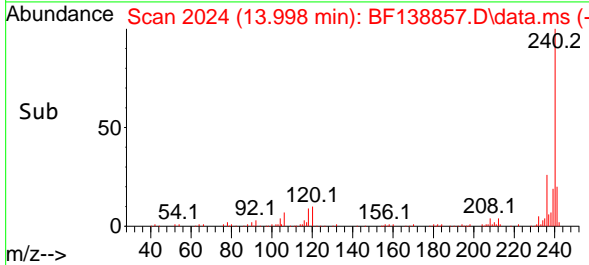
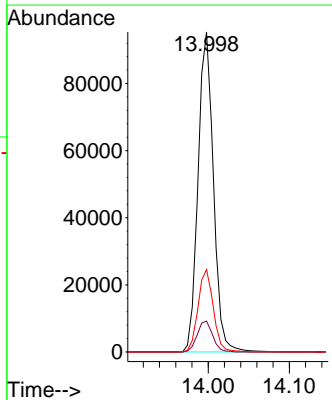
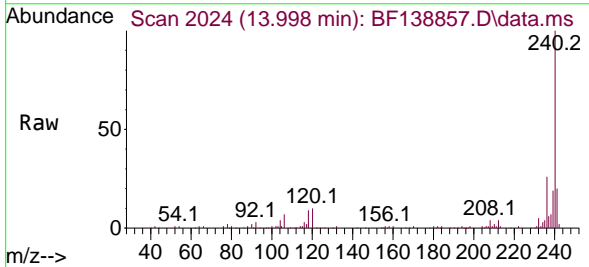
Ion	Ratio	Lower	Upper
188	100		
94	9.4	7.6	11.4
80	10.0	8.6	12.8

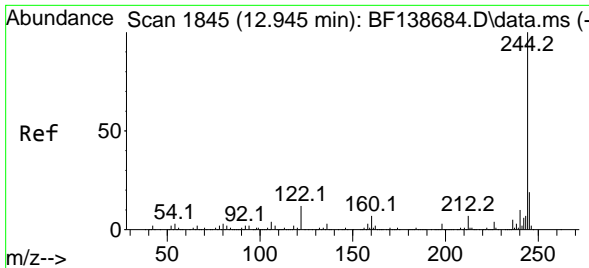


#76
 Chrysene-d12
 Concen: 20.000 ng
 RT: 13.998 min Scan# 2024
 Delta R.T. -0.006 min
 Lab File: BF138857.D
 Acq: 08 Aug 2024 10:49

Tgt Ion:240 Resp: 125540

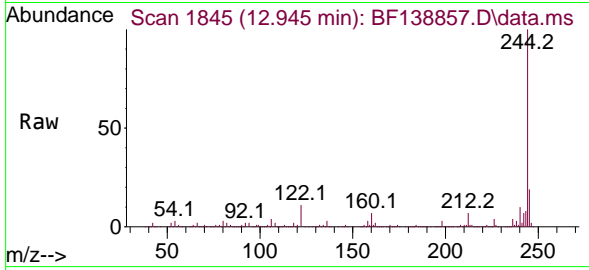
Ion	Ratio	Lower	Upper
240	100		
120	9.6	10.2	15.4#
236	25.7	19.8	29.8



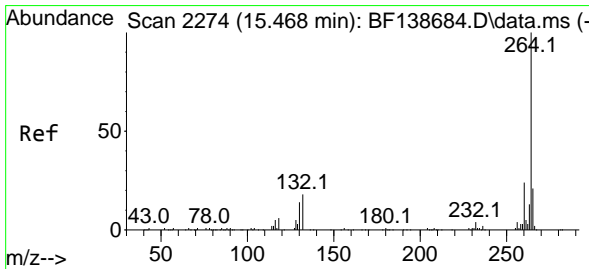
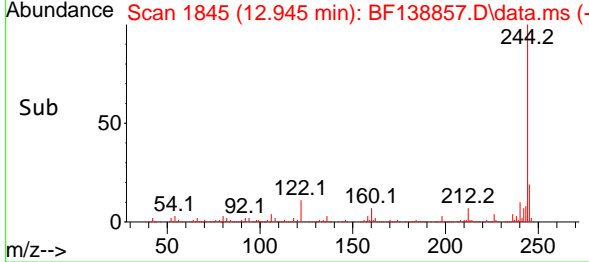
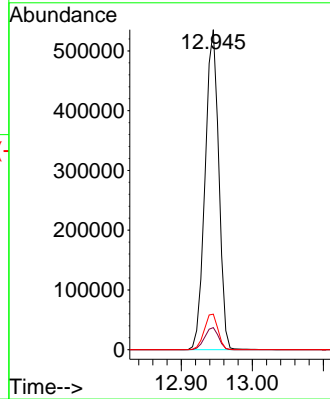


#79
 Terphenyl-d14
 Concen: 95.852 ng
 RT: 12.945 min Scan# 11
 Delta R.T. 0.000 min
 Lab File: BF138857.D
 Acq: 08 Aug 2024 10:49

Instrument :
 BNA_F
 ClientSampleId :
 PB162396BL



Tgt Ion:244 Resp: 718714
 Ion Ratio Lower Upper
 244 100
 212 6.9 5.4 8.2
 122 11.1 9.6 14.4



#86
 Perylene-d12
 Concen: 20.000 ng
 RT: 15.457 min Scan# 2272
 Delta R.T. -0.012 min
 Lab File: BF138857.D
 Acq: 08 Aug 2024 10:49

Tgt Ion:264 Resp: 84599
 Ion Ratio Lower Upper
 264 100
 260 23.0 19.0 28.6
 265 21.0 17.0 25.6

