

Data Path : Z:\svoasrv\HPCHEM1\BNA\_F\Data\BF080824\  
 Data File : BF138860.D  
 Acq On : 08 Aug 2024 12:21  
 Operator : RC/JU  
 Sample : PB162342BL  
 Misc :  
 ALS Vial : 6 Sample Multiplier: 1

Instrument :  
 BNA\_F  
 ClientSampleId :  
 PB162342BL

Integration Parameters: rteint.p  
 Integrator: RTE  
 Smoothing : ON Filtering: 5  
 Sampling : 1 Min Area: 3 % of largest Peak  
 Start Thrs: 0.2 Max Peaks: 100  
 Stop Thrs : 0 Peak Location: TOP

If leading or trailing edge < 100 prefer < Baseline drop else tangent >  
 Peak separation: 5

Method : Z:\svoasrv\HPCHEM1\BNA\_F\Methods\8270-BF073024.M  
 Title : ASP BNA STANDARDS FOR 5 POINT CALIBRATION

Signal : TIC: BF138860.D\data.ms

peak #	R.T. min	first scan	max scan	last scan	PK TY	peak height	corr. area	corr. % max.	% of total
1	2.228	11	23	33	rVB	25435	44471	2.29%	0.395%
2	5.093	504	510	524	rBV	53515	92852	4.79%	0.826%
3	5.481	570	576	594	rBV	1118606	1482479	76.44%	13.183%
4	6.481	740	746	777	rBB	1061567	1533867	79.09%	13.640%
5	6.840	802	807	812	rBV	223223	279803	14.43%	2.488%
6	7.404	896	903	908	rBV	719477	1000033	51.57%	8.893%
7	8.116	1019	1024	1039	rBV	298190	390351	20.13%	3.471%
8	9.192	1200	1207	1212	rBV	1423615	1876435	96.76%	16.686%
9	9.869	1316	1322	1334	rBB	365833	465519	24.00%	4.140%
10	10.663	1451	1457	1472	rBV	819987	1082251	55.81%	9.624%
11	11.357	1570	1575	1591	rBV	412021	501592	25.86%	4.460%
12	12.751	1808	1812	1816	rVB	21526	23947	1.23%	0.213%
13	12.939	1838	1844	1849	rBV	1457505	1939304	100.00%	17.245%
14	13.992	2018	2023	2032	rBV	236720	319515	16.48%	2.841%
15	15.457	2266	2272	2284	rBV	127547	213055	10.99%	1.895%

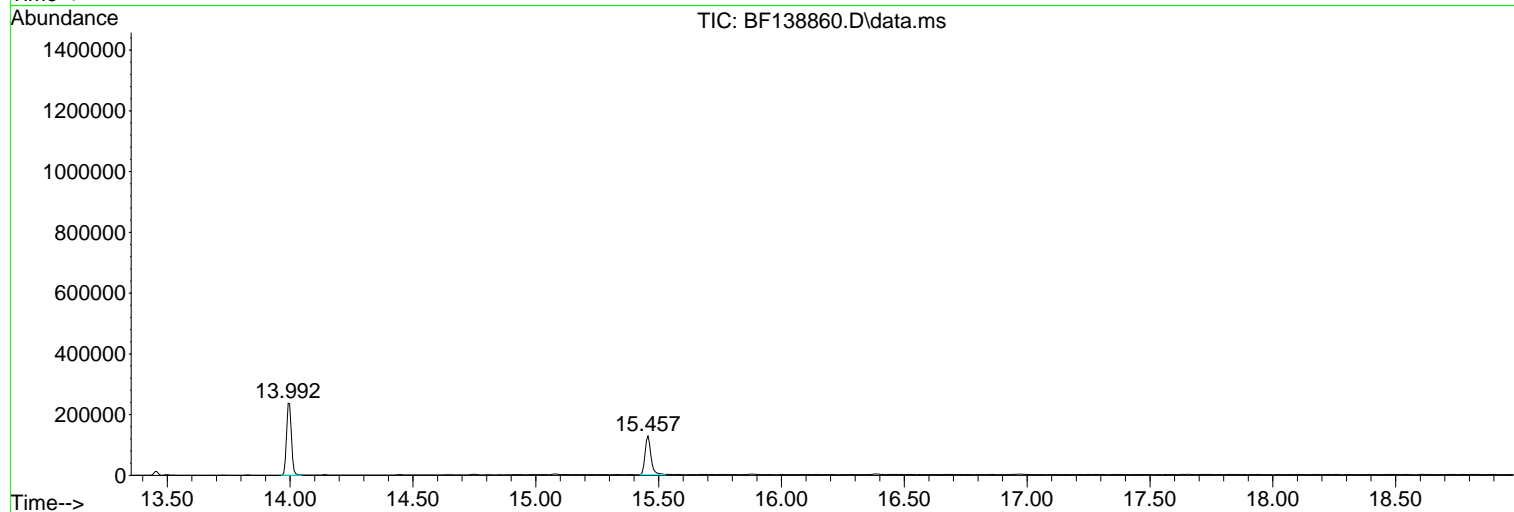
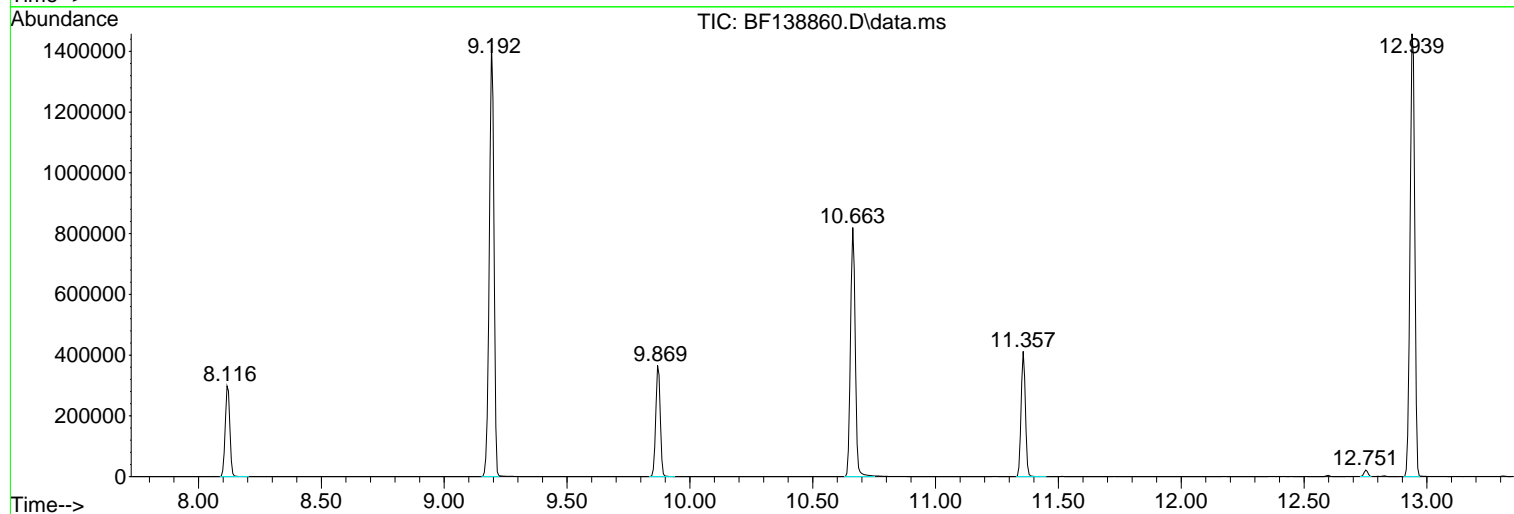
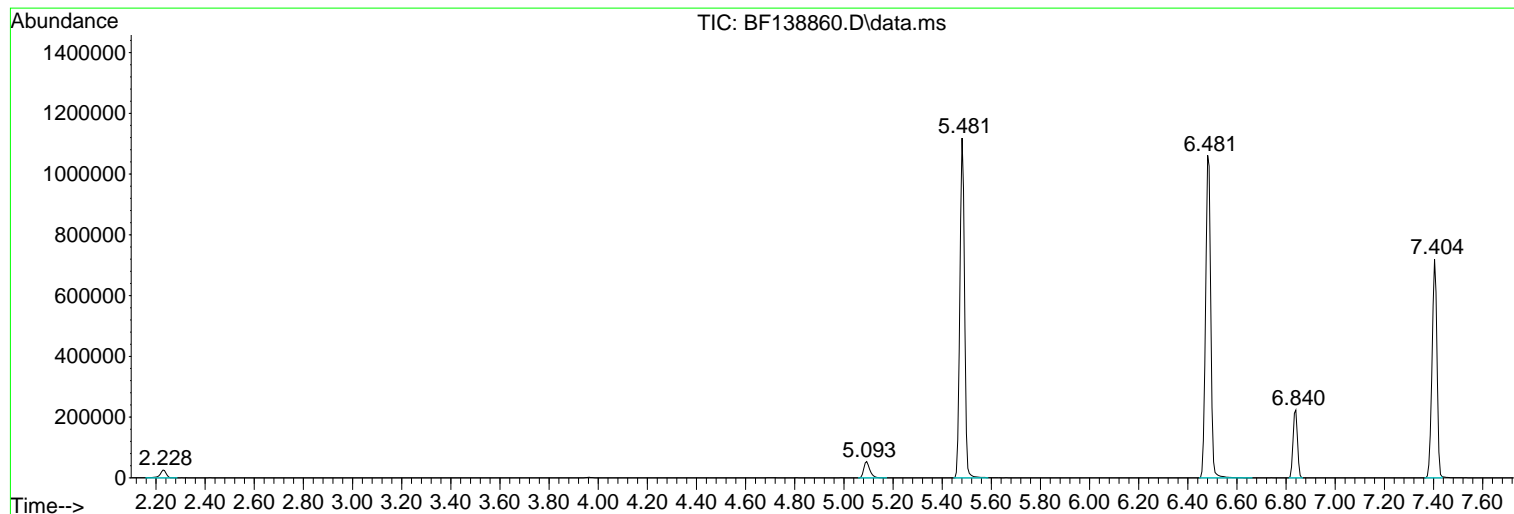
Sum of corrected areas: 11245474

Data Path : Z:\svoasrv\HPCHEM1\BNA\_F\Data\BF080824\  
Data File : BF138860.D  
Acq On : 08 Aug 2024 12:21  
Operator : RC/JU  
Sample : PB162342BL  
Misc :  
ALS Vial : 6 Sample Multiplier: 1

Instrument :  
BNA\_F  
ClientSampleId :  
PB162342BL

Quant Method : Z:\svoasrv\HPCHEM1\BNA\_F\Methods\8270-BF073024.M  
Quant Title : ASP BNA STANDARDS FOR 5 POINT CALIBRATION

TIC Library : C:\Database\NIST20.L  
TIC Integration Parameters: LSCINT.P



Data Path : Z:\svoasrv\HPCHEM1\BNA\_F\Data\BF080824\  
 Data File : BF138860.D  
 Acq On : 08 Aug 2024 12:21  
 Operator : RC/JU  
 Sample : PB162342BL  
 Misc :  
 ALS Vial : 6 Sample Multiplier: 1

Instrument :  
 BNA\_F  
 ClientSampleId :  
 PB162342BL

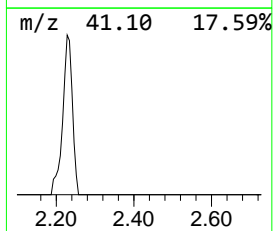
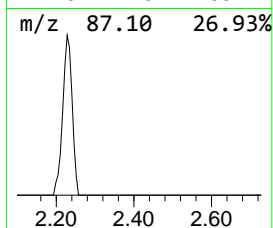
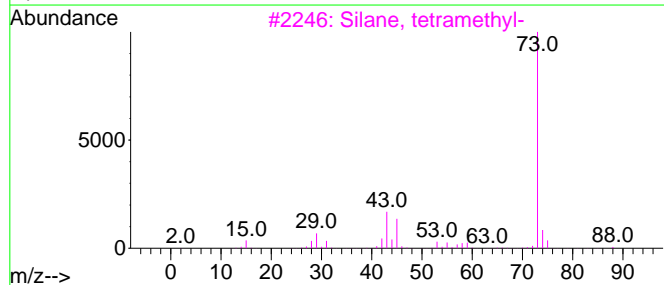
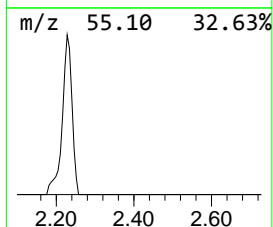
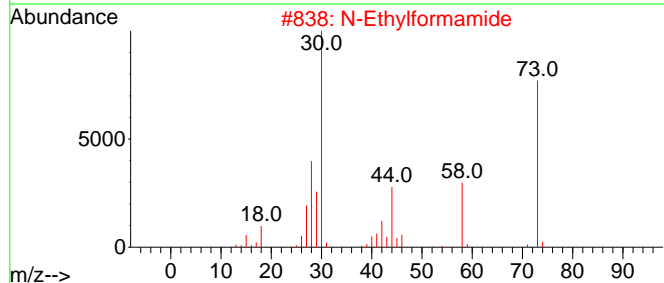
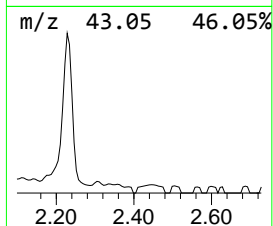
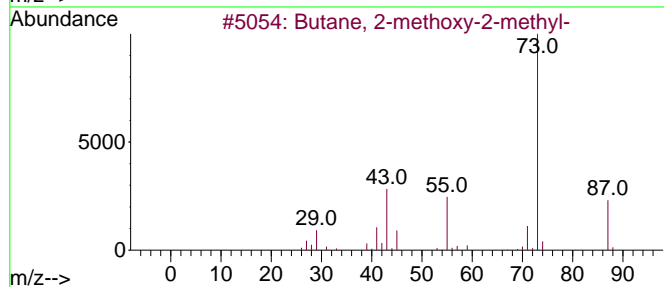
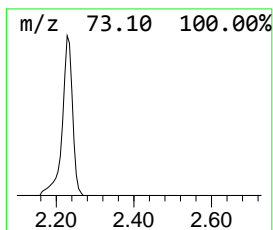
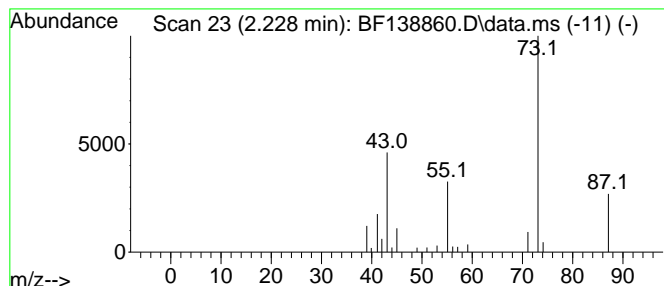
Quant Method : Z:\svoasrv\HPCHEM1\BNA\_F\Methods\8270-BF073024.M  
 Quant Title : ASP BNA STANDARDS FOR 5 POINT CALIBRATION

TIC Library : C:\Database\NIST20.L  
 TIC Integration Parameters: LSCINT.P

\*\*\*\*\*  
 Peak Number 1 Butane, 2-methoxy-2-methyl- Concentration Rank 2

R.T.	EstConc	Area	Relative to ISTD	R.T.
2.228	3.18 ng	44471	1,4-Dichlorobenzene-d4	6.840

Hit#	of 5	Tentative ID	MW	MolForm	CAS#	Qual
1		Butane, 2-methoxy-2-methyl-	102	C6H14O	000994-05-8	78
2		N-Ethylformamide	73	C3H7NO	000627-45-2	9
3		Silane, tetramethyl-	88	C4H12Si	000075-76-3	9
4		2-Methyl-5-hexen-3-ol	114	C7H14O	032815-70-6	9
5		2-Butanone, 3-methoxy-3-methyl-	116	C6H12O2	036687-98-6	9



Data Path : Z:\svoasrv\HPCHEM1\BNA\_F\Data\BF080824\  
 Data File : BF138860.D  
 Acq On : 08 Aug 2024 12:21  
 Operator : RC/JU  
 Sample : PB162342BL  
 Misc :  
 ALS Vial : 6 Sample Multiplier: 1

Instrument :  
 BNA\_F  
 ClientSampleId :  
 PB162342BL

Quant Method : Z:\svoasrv\HPCHEM1\BNA\_F\Methods\8270-BF073024.M  
 Quant Title : ASP BNA STANDARDS FOR 5 POINT CALIBRATION

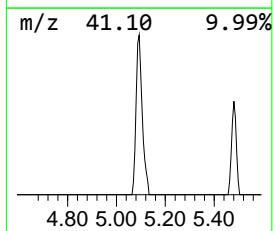
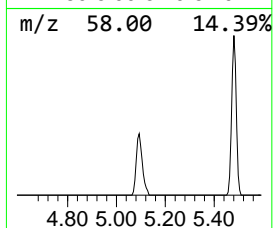
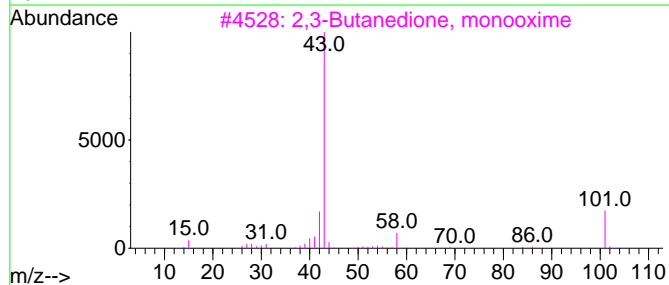
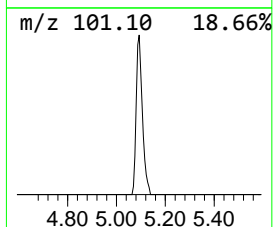
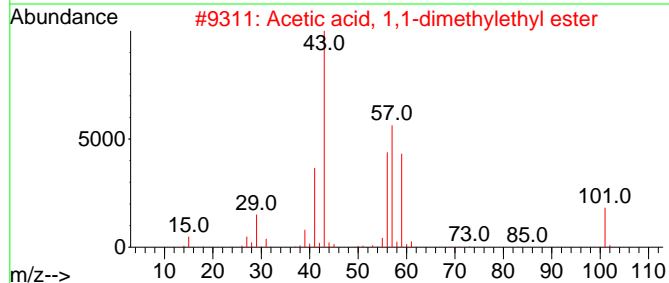
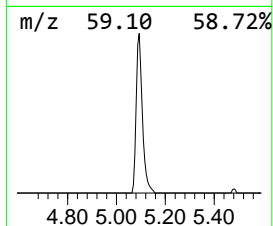
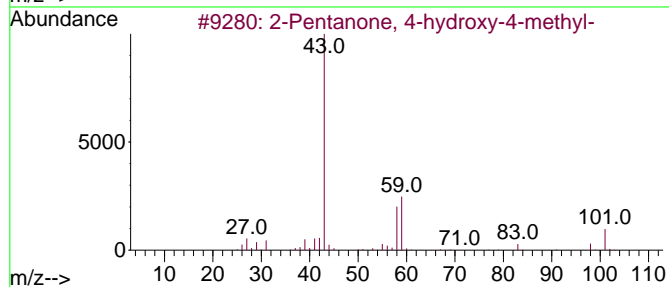
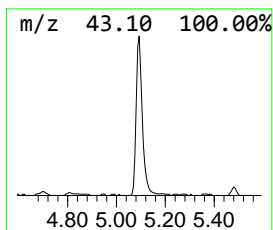
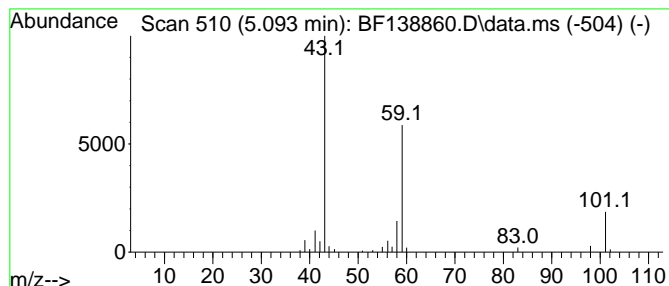
TIC Library : C:\Database\NIST20.L  
 TIC Integration Parameters: LSCINT.P

\*\*\*\*\*  
 Peak Number 2 2-Pentanone, 4-hydroxy-4-me... Concentration Rank 1

R.T.	EstConc	Area	Relative to ISTD	R.T.
5.093	6.64 ng	92852	1,4-Dichlorobenzene-d4	6.840

Hit#	of 5	Tentative ID	MW	MolForm	CAS#	Qual
1		2-Pentanone, 4-hydroxy-4-methyl-	116	C6H12O2	000123-42-2	50
2		Acetic acid, 1,1-dimethylethyl e...	116	C6H12O2	000540-88-5	38
3		2,3-Butanedione, monooxime	101	C4H7NO2	000057-71-6	27
4		Acetic acid, cyano-, 1,1-dimethy...	141	C7H11NO2	001116-98-9	23
5		1-Propen-2-ol, acetate	100	C5H8O2	000108-22-5	12



Data Path : Z:\svoasrv\HPCHEM1\BNA\_F\Data\BF080824\  
Data File : BF138860.D  
Acq On : 08 Aug 2024 12:21  
Operator : RC/JU  
Sample : PB162342BL  
Misc :  
ALS Vial : 6 Sample Multiplier: 1

Instrument :  
BNA\_F  
ClientSampleId :  
PB162342BL

Quant Method : Z:\svoasrv\HPCHEM1\BNA\_F\Methods\8270-BF073024.M  
Quant Title : ASP BNA STANDARDS FOR 5 POINT CALIBRATION

TIC Library : C:\Database\NIST20.L  
TIC Integration Parameters: LSCINT.P

TIC Top Hit name	RT	EstConc	Units	Response	--Internal Standard--			
					#	RT	Resp	Conc
Butane, 2-metho...	2.228	3.2	ng	44471	1	6.840	279803	20.0
2-Pentanone, 4-...	5.093	6.6	ng	92852	1	6.840	279803	20.0