

Data Path : Z:\svoasrv\HPCHEM1\BNA_F\Data\BF081325\
 Data File : BF143366.D
 Acq On : 13 Aug 2025 10:30
 Operator : RC/JU
 Sample : PB169210BL
 Misc :
 ALS Vial : 3 Sample Multiplier: 1

Instrument :
 BNA_F
ClientSampleId :
 PB169210BL

Quant Time: Aug 13 11:49:05 2025
 Quant Method : Z:\svoasrv\HPCHEM1\BNA_F\Methods\8270-BF081225.M
 Quant Title : ASP BNA STANDARDS FOR 5 POINT CALIBRATION
 QLast Update : Tue Aug 12 13:25:39 2025
 Response via : Initial Calibration

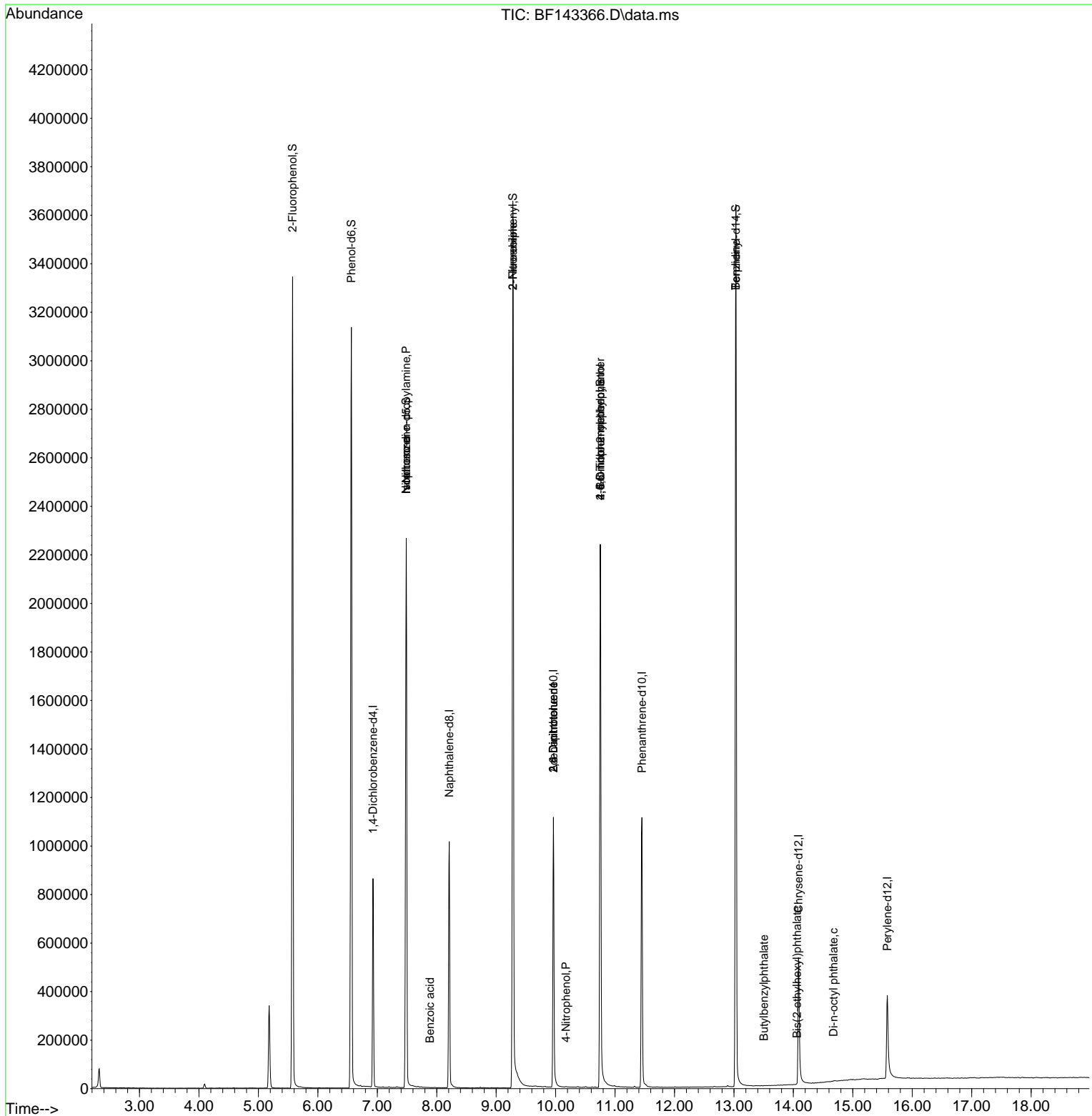
Compound	R.T.	QIon	Response	Conc	Units	Dev(Min)
Internal Standards						
1) 1,4-Dichlorobenzene-d4	6.928	152	176496	20.000	ng	0.00
21) Naphthalene-d8	8.210	136	674917	20.000	ng	0.00
39) Acenaphthene-d10	9.963	164	354793	20.000	ng	0.00
64) Phenanthrene-d10	11.451	188	604678	20.000	ng	0.00
76) Chrysene-d12	14.086	240	338429	20.000	ng	0.00
86) Perylene-d12	15.580	264	291238	20.000	ng	0.00
System Monitoring Compounds						
5) 2-Fluorophenol	5.575	112	1258691	123.323	ng	0.01
7) Phenol-d6	6.563	99	1573005	120.182	ng	0.00
23) Nitrobenzene-d5	7.487	82	1057171	97.544	ng	0.00
42) 2,4,6-Tribromophenol	10.751	330	429333	165.580	ng	0.00
45) 2-Fluorobiphenyl	9.281	172	1887149	90.197	ng	0.00
79) Terphenyl-d14	13.033	244	1911940	100.862	ng	0.00
Target Compounds						
19) n-Nitroso-di-n-propyla...	7.487	70	143014	17.684	ng	# 80
25) Isophorone	7.487	82	1020146	46.108	ng	# 65
32) Benzoic acid	7.887	122	53	3.473	ng	# 1
48) 2-Nitroaniline	9.281	65	2906	3.246	ng	# 1
51) 2,6-Dinitrotoluene	9.963	165	45002	13.726	ng	# 21
56) 4-Nitrophenol	10.175	139	403	5.587	ng	# 5
57) 2,4-Dinitrotoluene	9.963	165	45769	11.254	ng	# 20
65) 4,6-Dinitro-2-methylph...	10.751	198	876	7.565	ng	# 1
67) 4-Bromophenyl-phenylether	10.751	248	28868	4.174	ng	# 1
77) Benzidine	13.033	184	21831	2.360	ng	# 97
80) Butylbenzylphthalate	13.504	149	402	3.417	ng	# 71
84) Bis(2-ethylhexyl)phtha...	14.063	149	963	4.097	ng	# 82
85) Di-n-octyl phthalate	14.674	149	1731	6.117	ng	# 40

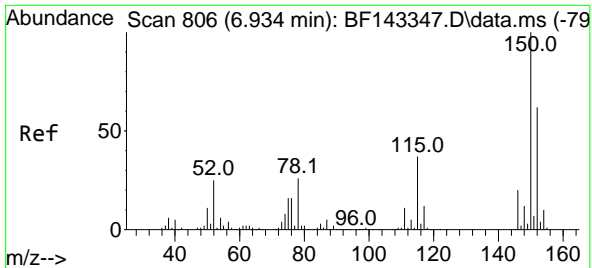
(#) = qualifier out of range (m) = manual integration (+) = signals summed

Data Path : Z:\svoasrv\HPCHEM1\BNA_F\Data\BF081325\
 Data File : BF143366.D
 Acq On : 13 Aug 2025 10:30
 Operator : RC/JU
 Sample : PB169210BL
 Misc :
 ALS Vial : 3 Sample Multiplier: 1

Instrument :
 BNA_F
 ClientSampleId :
 PB169210BL

Quant Time: Aug 13 11:49:05 2025
 Quant Method : Z:\svoasrv\HPCHEM1\BNA_F\Methods\8270-BF081225.M
 Quant Title : ASP BNA STANDARDS FOR 5 POINT CALIBRATION
 QLast Update : Tue Aug 12 13:25:39 2025
 Response via : Initial Calibration

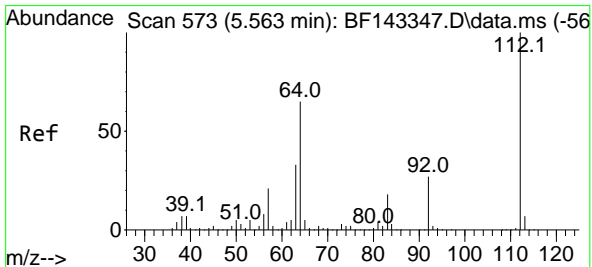
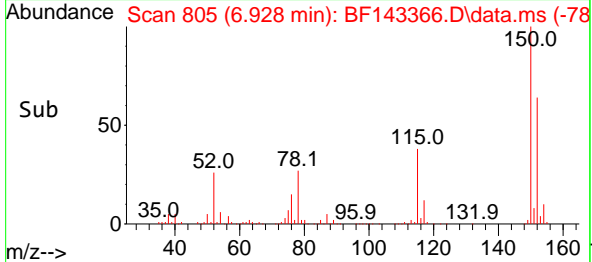
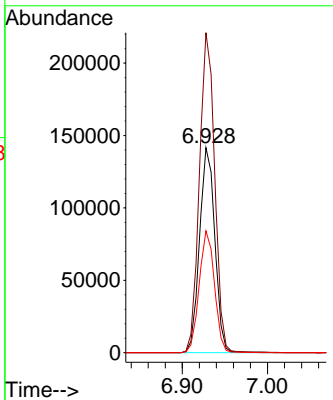
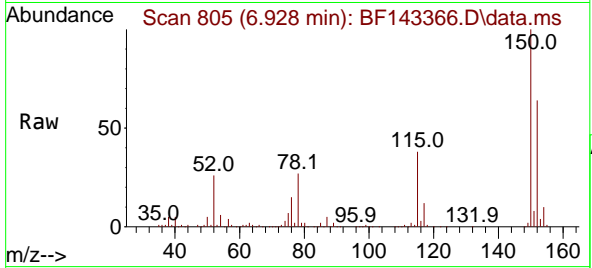




#1
 1,4-Dichlorobenzene-d4
 Concen: 20.000 ng
 RT: 6.928 min Scan# 805
 Delta R.T. -0.006 min
 Lab File: BF143366.D
 Acq: 13 Aug 2025 10:30

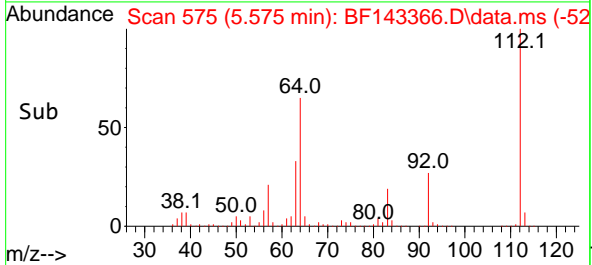
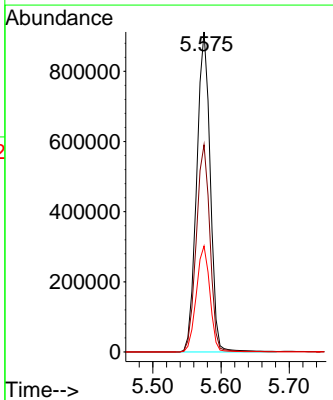
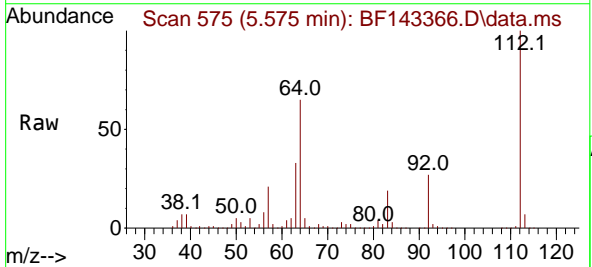
Instrument : BNA_F
 ClientSampleId : PB169210BL

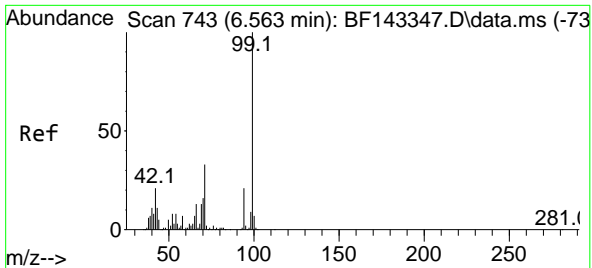
Tgt Ion:152 Resp: 176496
 Ion Ratio Lower Upper
 152 100
 150 156.2 129.8 194.8
 115 59.4 47.8 71.8



#5
 2-Fluorophenol
 Concen: 123.323 ng
 RT: 5.575 min Scan# 575
 Delta R.T. 0.012 min
 Lab File: BF143366.D
 Acq: 13 Aug 2025 10:30

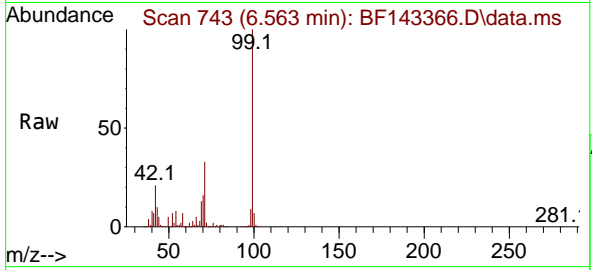
Tgt Ion:112 Resp: 1258691
 Ion Ratio Lower Upper
 112 100
 64 64.8 52.1 78.1
 63 33.1 26.6 39.8





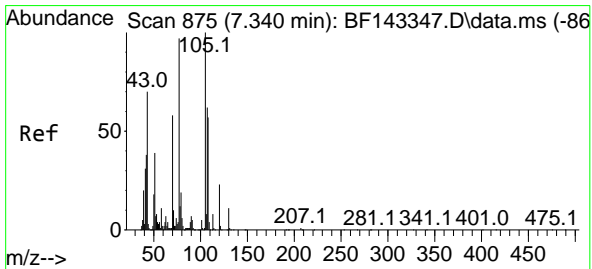
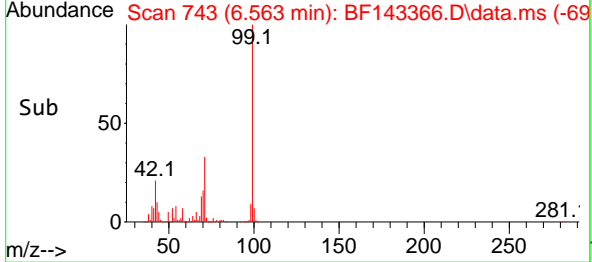
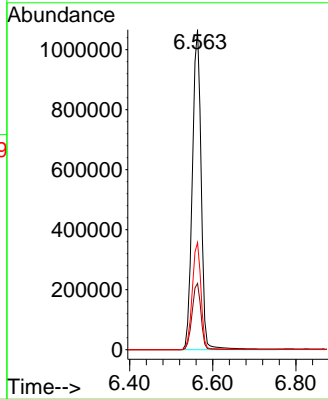
#7
 Phenol-d6
 Concen: 120.182 ng
 RT: 6.563 min Scan# 74
 Delta R.T. -0.000 min
 Lab File: BF143366.D
 Acq: 13 Aug 2025 10:30

Instrument :
 BNA_F
 ClientSampleId :
 PB169210BL

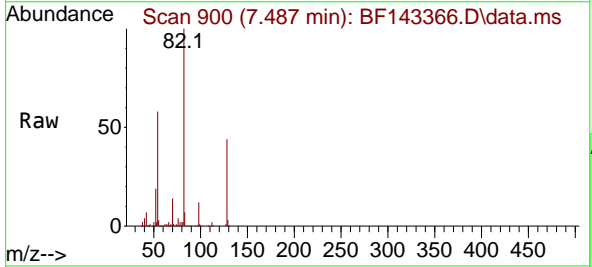


Tgt Ion: 99 Resp: 1573005

Ion	Ratio	Lower	Upper
99	100		
42	20.7	16.6	25.0
71	33.5	26.2	39.2

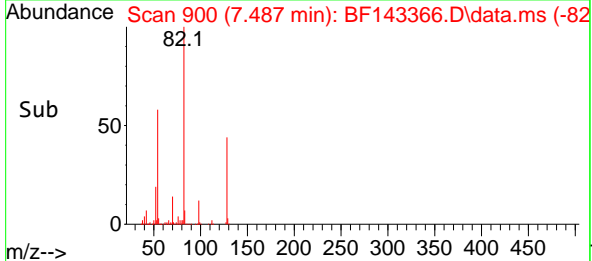
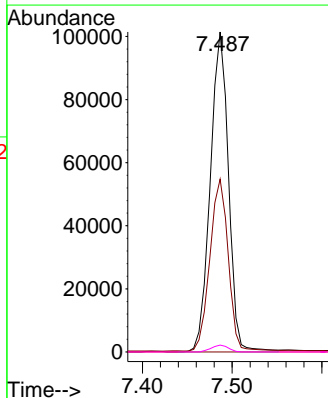


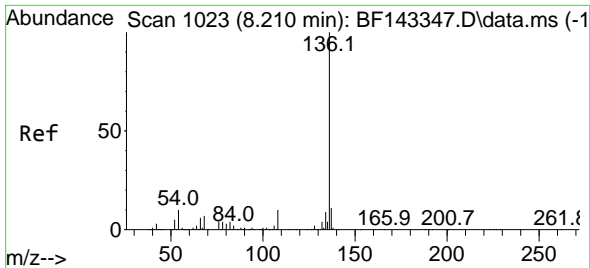
#19
 n-Nitroso-di-n-propylamine
 Concen: 17.684 ng
 RT: 7.487 min Scan# 900
 Delta R.T. 0.147 min
 Lab File: BF143366.D
 Acq: 13 Aug 2025 10:30



Tgt Ion: 70 Resp: 143014

Ion	Ratio	Lower	Upper
70	100		
42	54.0	51.6	77.4
101	0.0	7.5	11.3#
130	2.2	15.8	23.6#



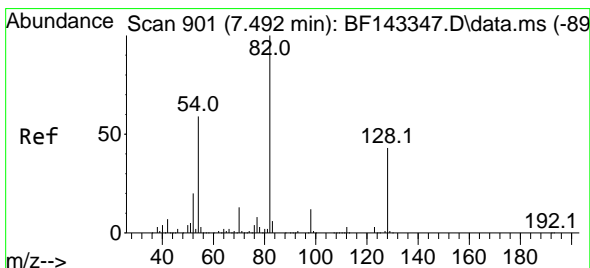
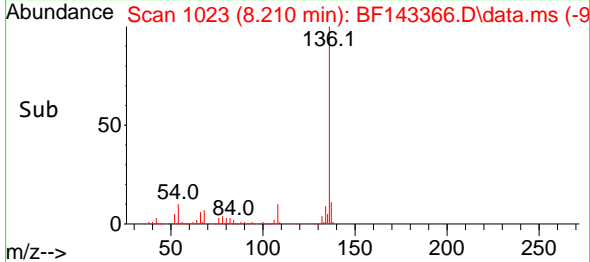
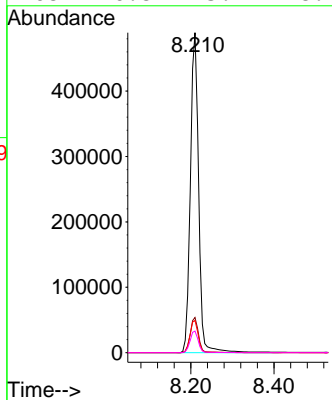
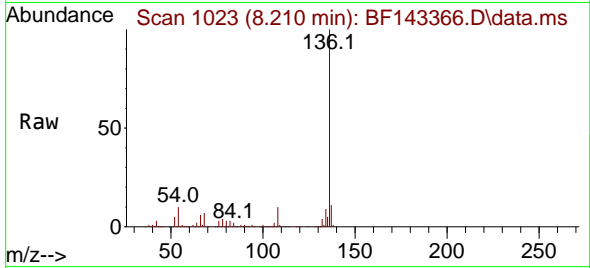


#21
 Naphthalene-d8
 Concen: 20.000 ng
 RT: 8.210 min Scan# 10
 Delta R.T. 0.000 min
 Lab File: BF143366.D
 Acq: 13 Aug 2025 10:30

Instrument :
 BNA_F
 ClientSampleId :
 PB169210BL

Tgt Ion:136 Resp: 674917

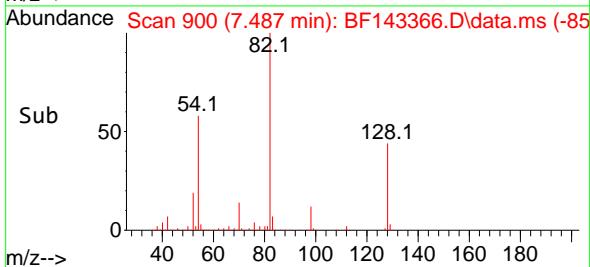
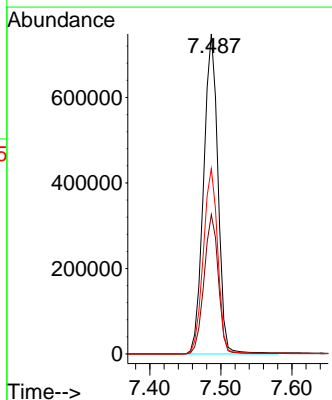
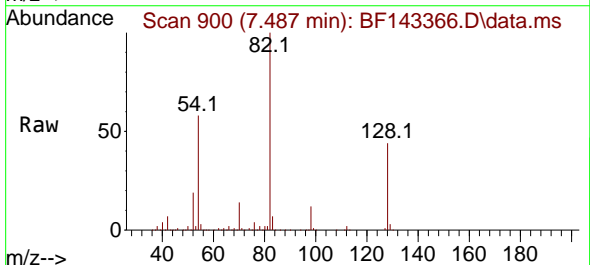
Ion	Ratio	Lower	Upper
136	100		
137	11.0	8.6	13.0
54	10.0	8.4	12.6
68	6.8	5.9	8.9

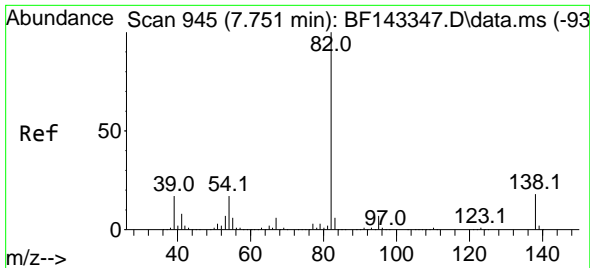


#23
 Nitrobenzene-d5
 Concen: 97.544 ng
 RT: 7.487 min Scan# 900
 Delta R.T. -0.006 min
 Lab File: BF143366.D
 Acq: 13 Aug 2025 10:30

Tgt Ion: 82 Resp: 1057171

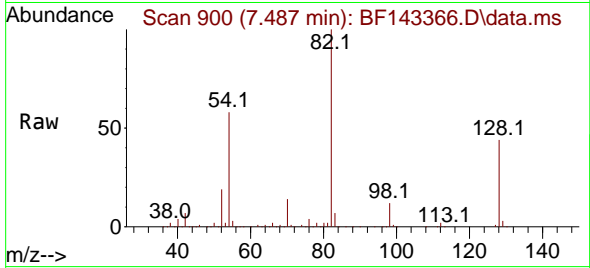
Ion	Ratio	Lower	Upper
82	100		
128	43.6	33.5	50.3
54	57.9	46.7	70.1



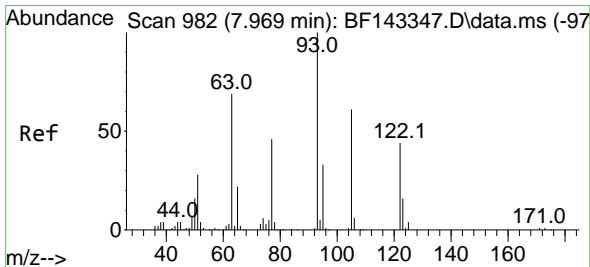
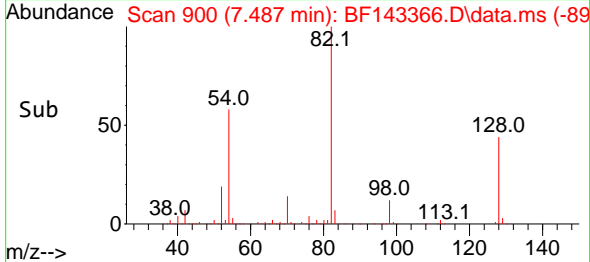
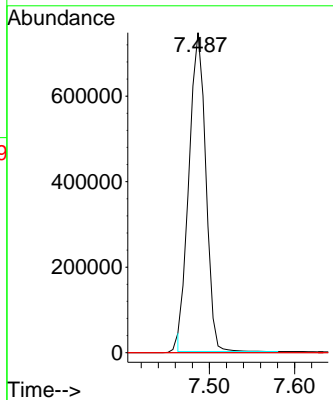


#25
 Isophorone
 Concen: 46.108 ng
 RT: 7.487 min Scan# 900
 Delta R.T. -0.265 min
 Lab File: BF143366.D
 Acq: 13 Aug 2025 10:30

Instrument :
 BNA_F
 ClientSampleId :
 PB169210BL

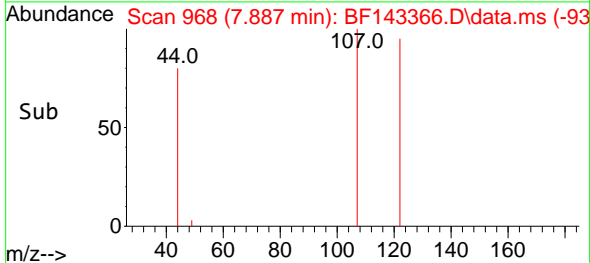
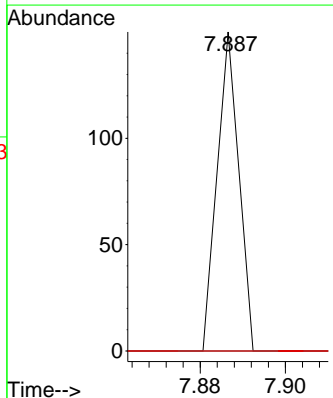
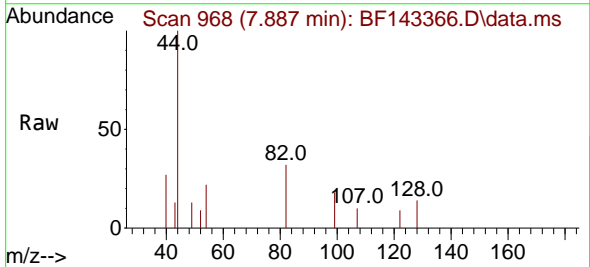


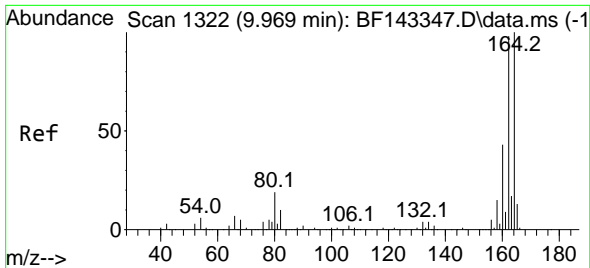
Tgt Ion: 82 Resp: 1020146
 Ion Ratio Lower Upper
 82 100
 95 0.0 5.5 8.3#
 138 0.0 14.6 21.8#



#32
 Benzoic acid
 Concen: 3.473 ng
 RT: 7.887 min Scan# 968
 Delta R.T. -0.082 min
 Lab File: BF143366.D
 Acq: 13 Aug 2025 10:30

Tgt Ion: 122 Resp: 53
 Ion Ratio Lower Upper
 122 100
 105 0.0 106.4 146.4#
 77 0.0 79.2 119.2#

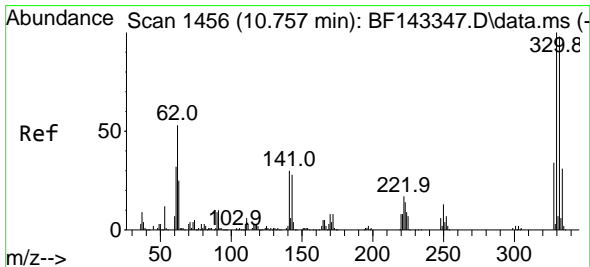
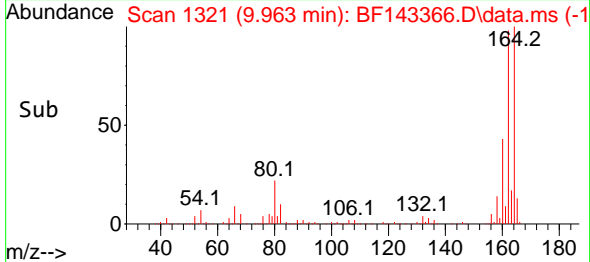
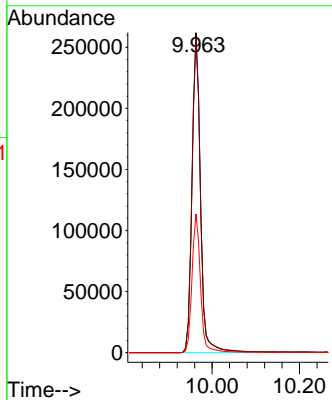
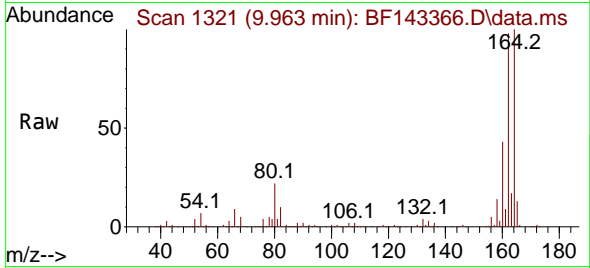




#39
 Acenaphthene-d10
 Concen: 20.000 ng
 RT: 9.963 min Scan# 11
 Delta R.T. -0.006 min
 Lab File: BF143366.D
 Acq: 13 Aug 2025 10:30

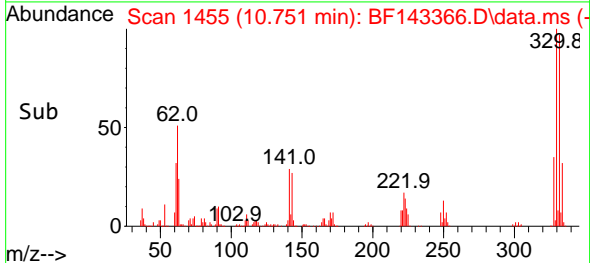
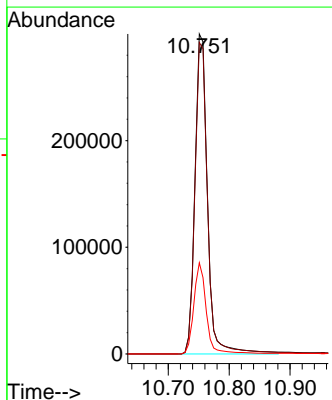
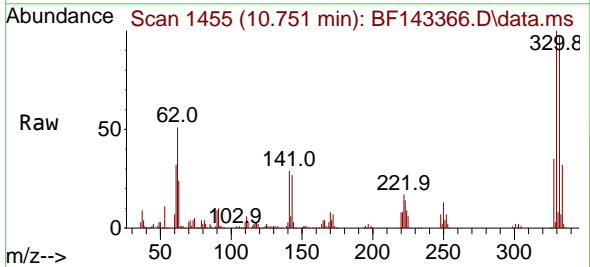
Instrument :
 BNA_F
 ClientSampleId :
 PB169210BL

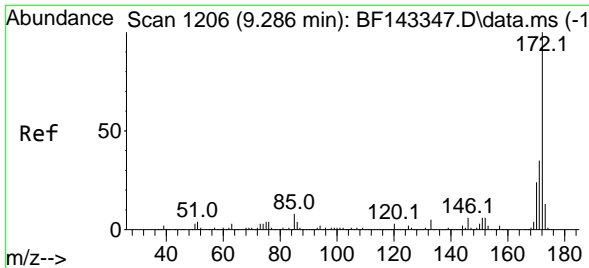
Tgt Ion:164 Resp: 354793
 Ion Ratio Lower Upper
 164 100
 162 98.3 78.6 118.0
 160 43.3 34.4 51.6



#42
 2,4,6-Tribromophenol
 Concen: 165.580 ng
 RT: 10.751 min Scan# 1455
 Delta R.T. -0.006 min
 Lab File: BF143366.D
 Acq: 13 Aug 2025 10:30

Tgt Ion:330 Resp: 429333
 Ion Ratio Lower Upper
 330 100
 332 98.6 78.1 117.1
 141 28.6 25.4 38.0



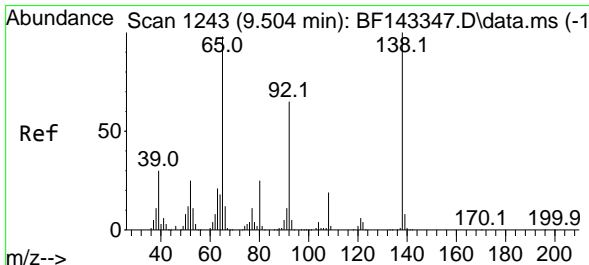
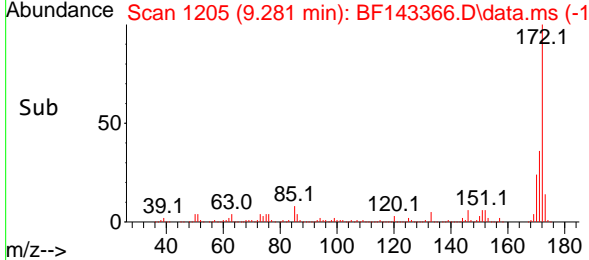
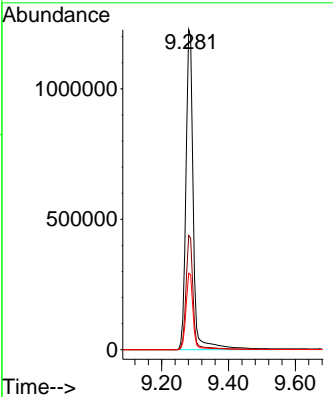
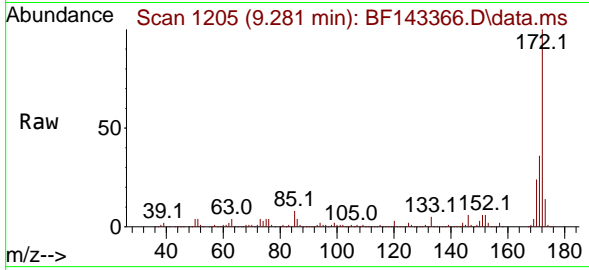


#45
 2-Fluorobiphenyl
 Concen: 90.197 ng
 RT: 9.281 min Scan# 11
 Delta R.T. -0.006 min
 Lab File: BF143366.D
 Acq: 13 Aug 2025 10:30

Instrument : BNA_F
 ClientSampleId : PB169210BL

Tgt Ion:172 Resp: 1887149

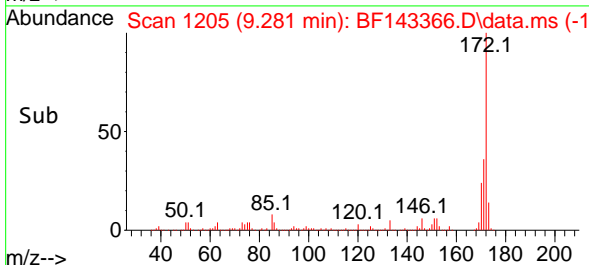
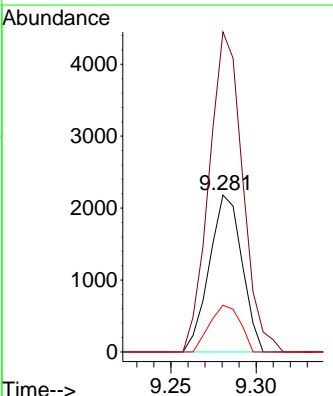
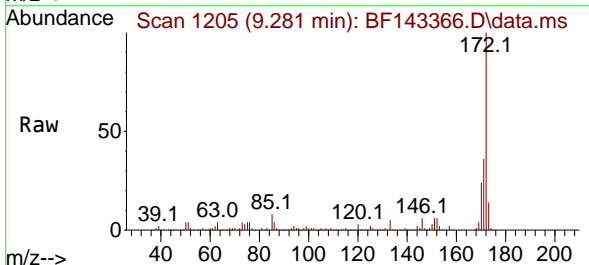
Ion	Ratio	Lower	Upper
172	100		
171	35.7	28.4	42.6
170	23.8	19.1	28.7

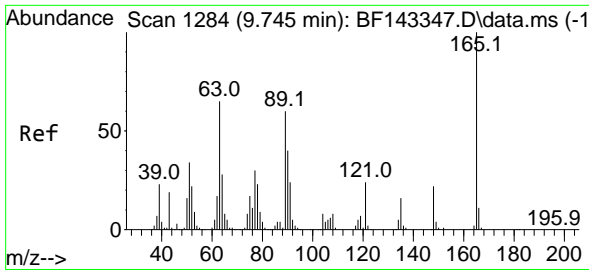


#48
 2-Nitroaniline
 Concen: 3.246 ng
 RT: 9.281 min Scan# 1205
 Delta R.T. -0.223 min
 Lab File: BF143366.D
 Acq: 13 Aug 2025 10:30

Tgt Ion: 65 Resp: 2906

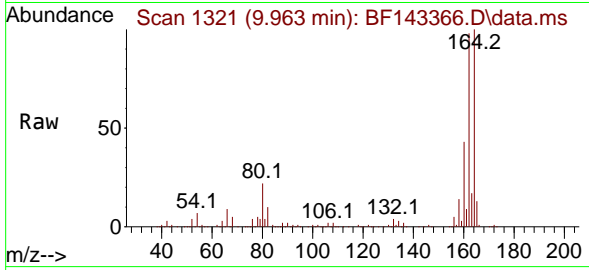
Ion	Ratio	Lower	Upper
65	100		
92	203.9	53.1	79.7#
138	29.7	81.4	122.0#



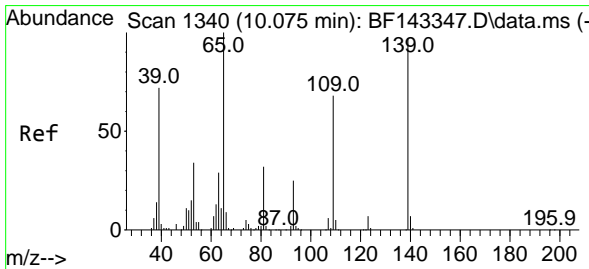
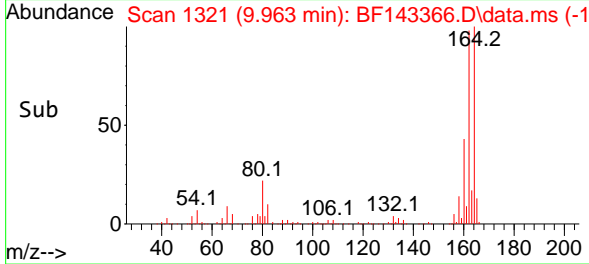
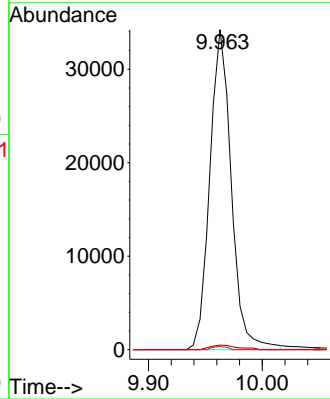


#51
 2,6-Dinitrotoluene
 Concen: 13.726 ng
 RT: 9.963 min Scan# 11
 Delta R.T. 0.218 min
 Lab File: BF143366.D
 Acq: 13 Aug 2025 10:30

Instrument :
 BNA_F
 ClientSampleId :
 PB169210BL

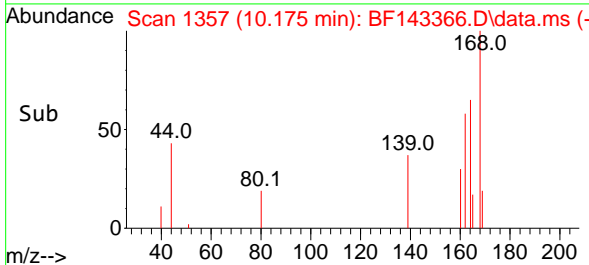
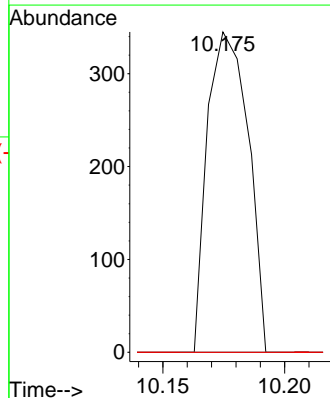
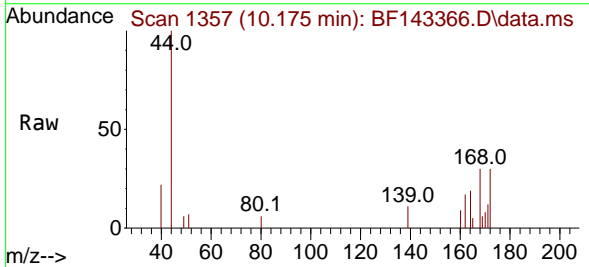


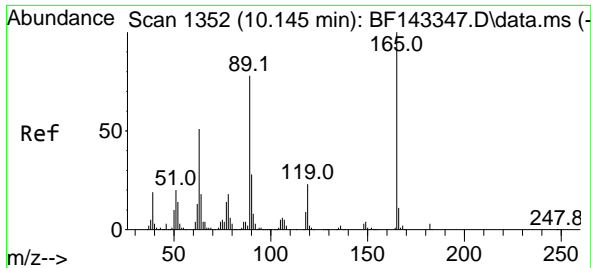
Tgt Ion:165 Resp: 45002
 Ion Ratio Lower Upper
 165 100
 63 1.4 51.6 77.4#
 89 1.0 47.7 71.5#



#56
 4-Nitrophenol
 Concen: 5.587 ng
 RT: 10.175 min Scan# 1357
 Delta R.T. 0.100 min
 Lab File: BF143366.D
 Acq: 13 Aug 2025 10:30

Tgt Ion:139 Resp: 403
 Ion Ratio Lower Upper
 139 100
 109 0.0 49.4 89.4#
 65 0.0 83.7 123.7#

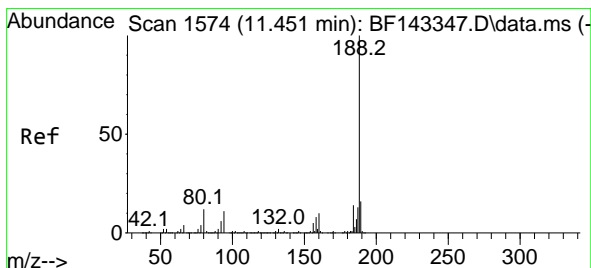
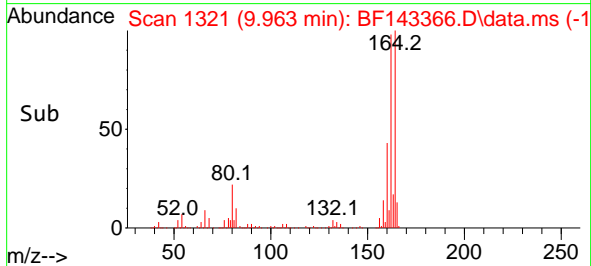
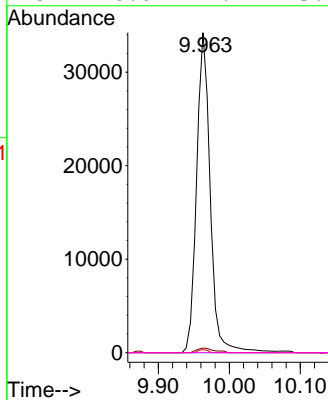
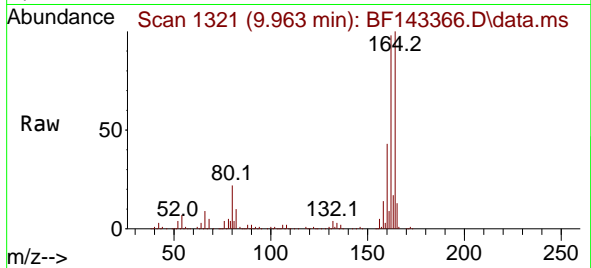




#57
 2,4-Dinitrotoluene
 Concen: 11.254 ng
 RT: 9.963 min Scan# 11
 Delta R.T. -0.182 min
 Lab File: BF143366.D
 Acq: 13 Aug 2025 10:30

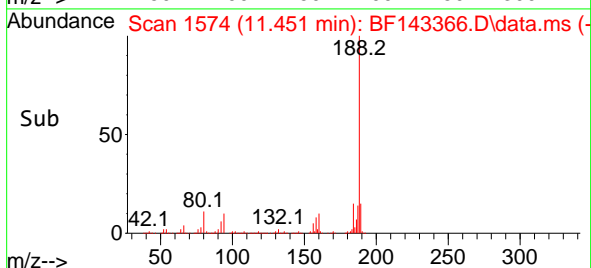
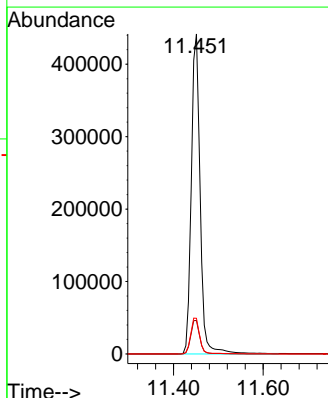
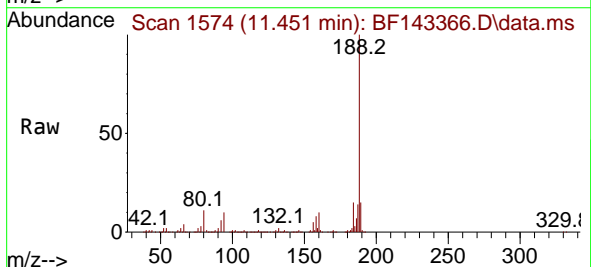
Instrument :
 BNA_F
 ClientSampleId :
 PB169210BL

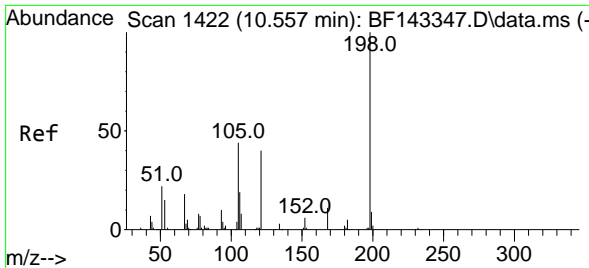
Tgt Ion:165 Resp: 45769
 Ion Ratio Lower Upper
 165 100
 63 1.4 41.8 62.8#
 89 1.0 62.4 93.6#
 182 0.0 2.2 3.2#



#64
 Phenanthrene-d10
 Concen: 20.000 ng
 RT: 11.451 min Scan# 1574
 Delta R.T. 0.000 min
 Lab File: BF143366.D
 Acq: 13 Aug 2025 10:30

Tgt Ion:188 Resp: 604678
 Ion Ratio Lower Upper
 188 100
 94 10.4 8.8 13.2
 80 11.1 9.7 14.5

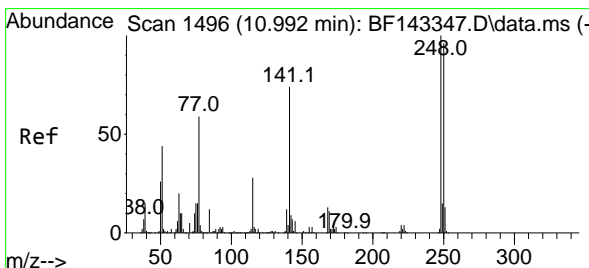
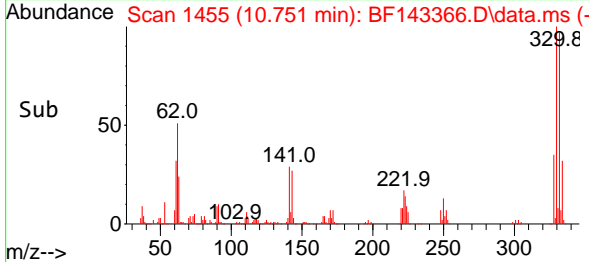
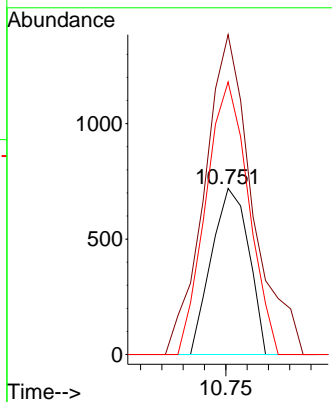
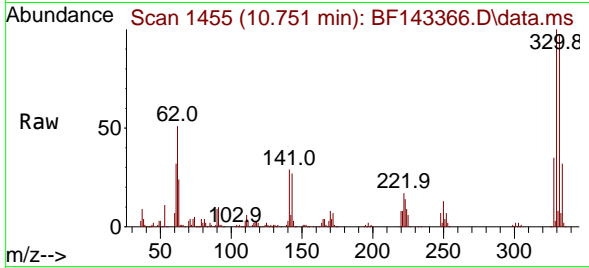




#65
 4,6-Dinitro-2-methylphenol
 Concen: 7.565 ng
 RT: 10.751 min Scan# 1455
 Delta R.T. 0.194 min
 Lab File: BF143366.D
 Acq: 13 Aug 2025 10:30

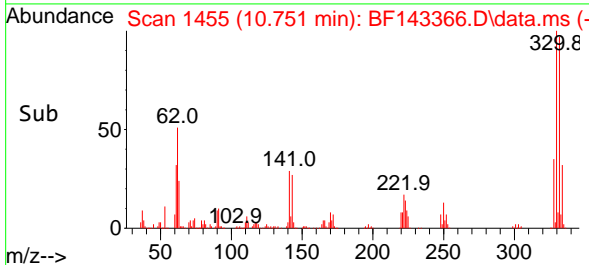
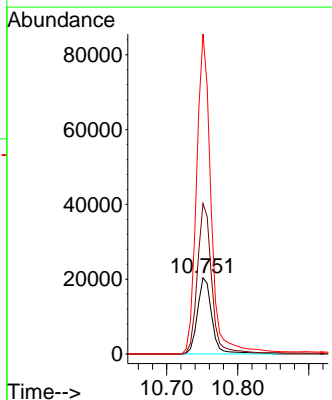
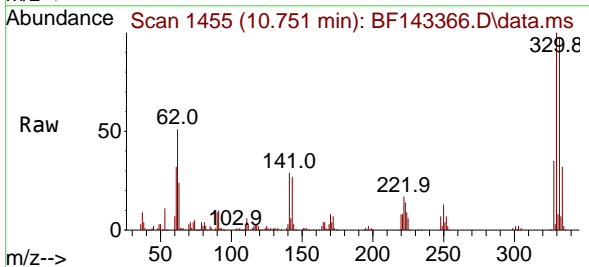
Instrument :
 BNA_F
 ClientSampleId :
 PB169210BL

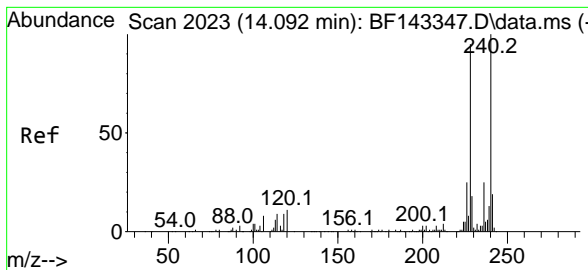
Tgt Ion	Resp	Lower	Upper
198	100		
51	192.6	41.7	81.7#
105	164.1	26.8	66.8#



#67
 4-Bromophenyl-phenylether
 Concen: 4.174 ng
 RT: 10.751 min Scan# 1455
 Delta R.T. -0.241 min
 Lab File: BF143366.D
 Acq: 13 Aug 2025 10:30

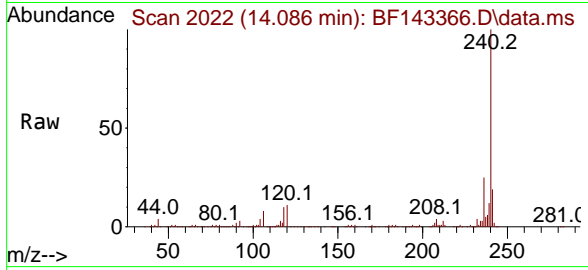
Tgt Ion	Resp	Lower	Upper
248	100		
250	197.5	77.1	115.7#
141	420.1	59.1	88.7#



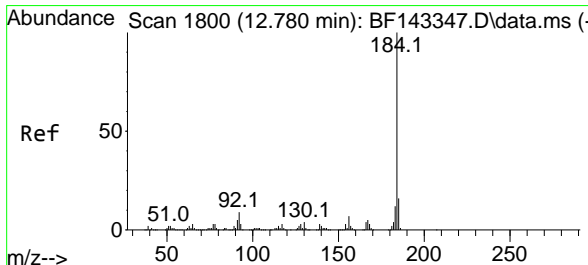
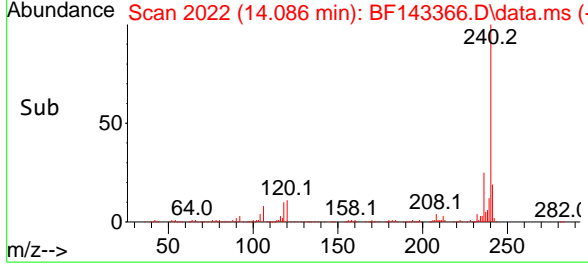
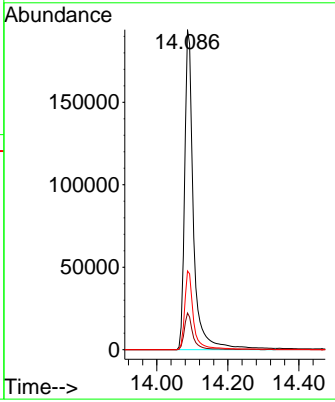


#76
 Chrysene-d12
 Concen: 20.000 ng
 RT: 14.086 min Scan# 20
 Delta R.T. -0.006 min
 Lab File: BF143366.D
 Acq: 13 Aug 2025 10:30

Instrument :
 BNA_F
 ClientSampleId :
 PB169210BL

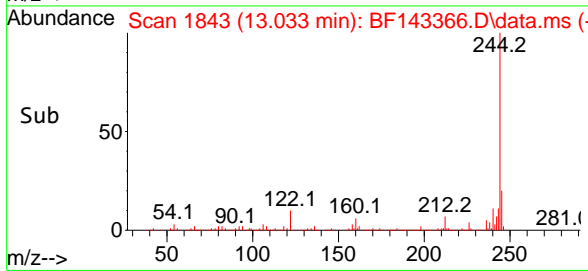
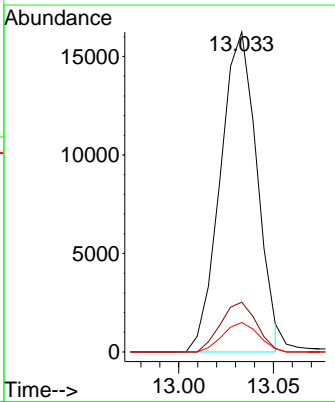
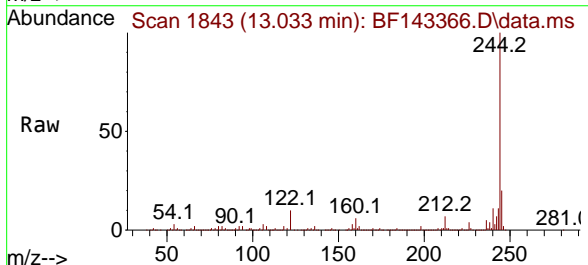


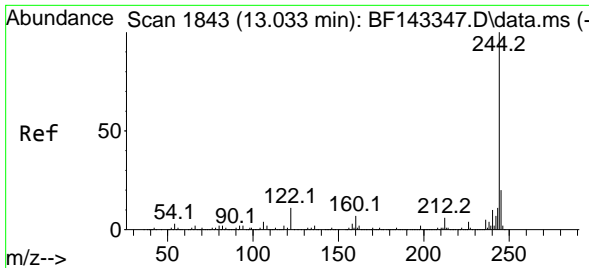
Tgt Ion:240 Resp: 338429
 Ion Ratio Lower Upper
 240 100
 120 11.5 9.0 13.6
 236 24.6 19.9 29.9



#77
 Benzidine
 Concen: 2.360 ng
 RT: 13.033 min Scan# 1843
 Delta R.T. 0.253 min
 Lab File: BF143366.D
 Acq: 13 Aug 2025 10:30

Tgt Ion:184 Resp: 21831
 Ion Ratio Lower Upper
 184 100
 185 15.6 12.8 19.2
 183 9.2 9.3 13.9#





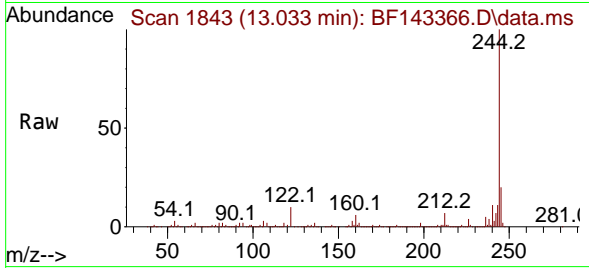
#79
 Terphenyl-d14
 Concen: 100.862 ng
 RT: 13.033 min Scan# 11
 Delta R.T. -0.000 min
 Lab File: BF143366.D
 Acq: 13 Aug 2025 10:30

Instrument :

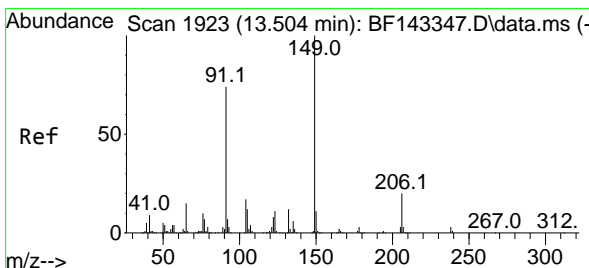
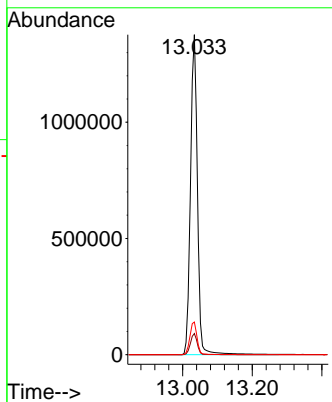
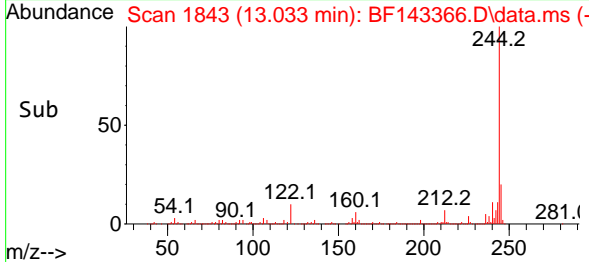
BNA_F

ClientSampleId :

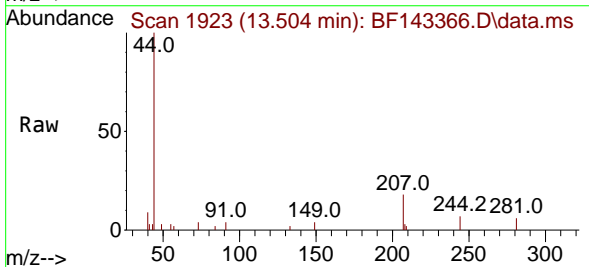
PB169210BL



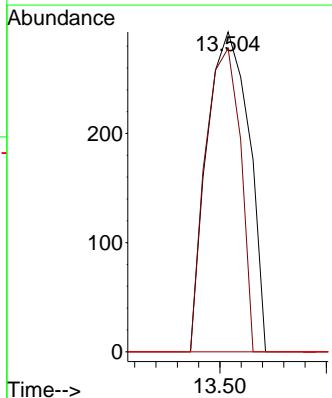
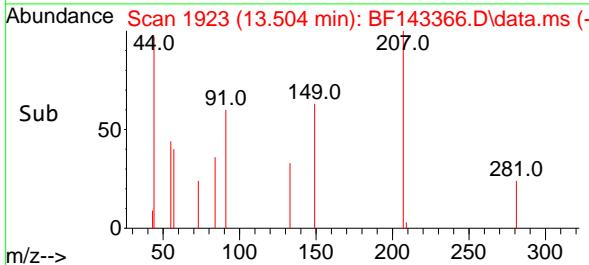
Tgt Ion:244 Resp: 1911940
 Ion Ratio Lower Upper
 244 100
 212 6.6 5.1 7.7
 122 10.2 8.9 13.3

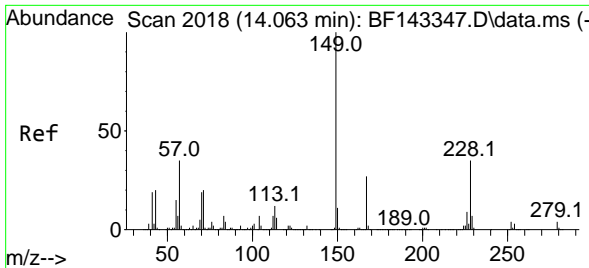


#80
 Butylbenzylphthalate
 Concen: 3.417 ng
 RT: 13.504 min Scan# 1923
 Delta R.T. -0.000 min
 Lab File: BF143366.D
 Acq: 13 Aug 2025 10:30



Tgt Ion:149 Resp: 402
 Ion Ratio Lower Upper
 149 100
 91 94.9 58.8 88.2#
 206 0.0 16.4 24.6#

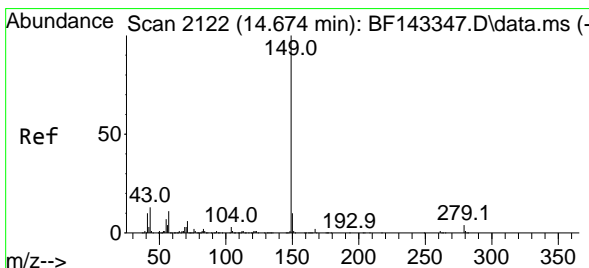
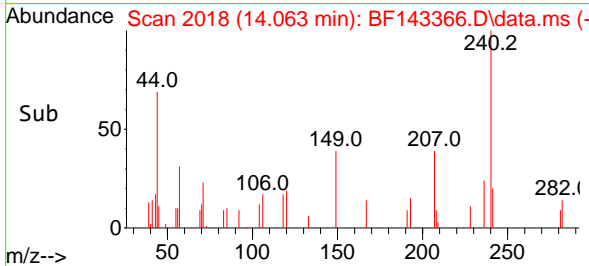
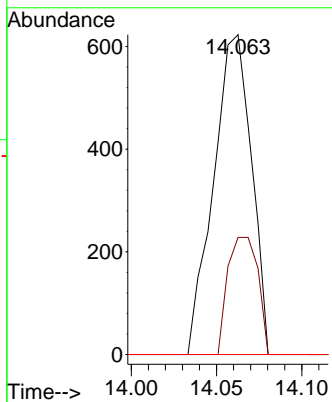
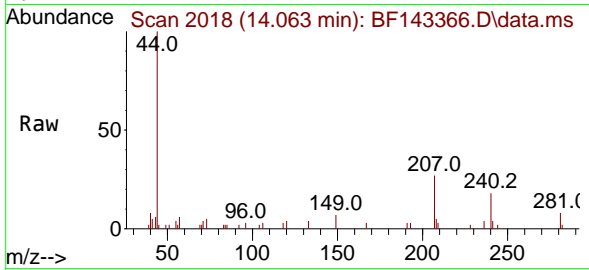




#84
 Bis(2-ethylhexyl)phthalate
 Concen: 4.097 ng
 RT: 14.063 min Scan# 20
 Delta R.T. -0.000 min
 Lab File: BF143366.D
 Acq: 13 Aug 2025 10:30

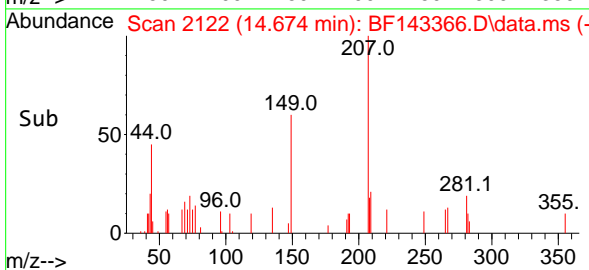
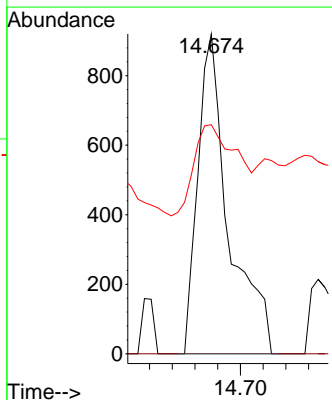
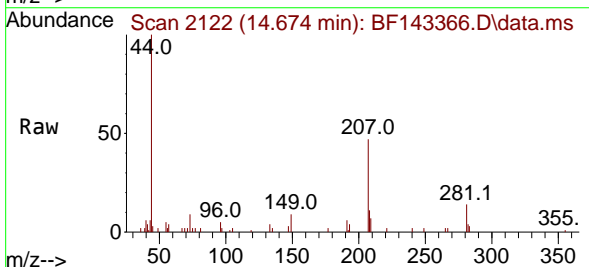
Instrument :
 BNA_F
 ClientSampleId :
 PB169210BL

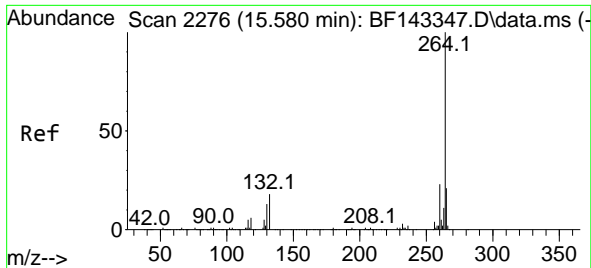
Tgt Ion	Resp	Lower	Upper
149	100		
167	36.6	21.4	32.0#
279	0.0	3.2	4.8#



#85
 Di-n-octyl phthalate
 Concen: 6.117 ng
 RT: 14.674 min Scan# 2122
 Delta R.T. 0.000 min
 Lab File: BF143366.D
 Acq: 13 Aug 2025 10:30

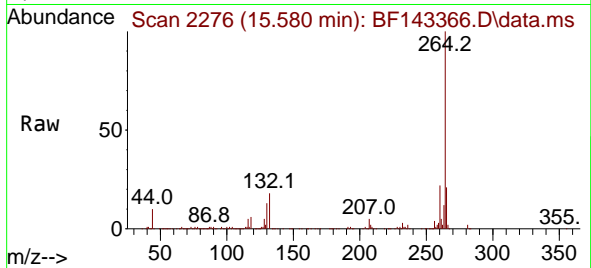
Tgt Ion	Resp	Lower	Upper
149	100		
167	0.0	1.3	1.9#
43	40.2	10.8	16.2#





#86
 Perylene-d12
 Concen: 20.000 ng
 RT: 15.580 min Scan# 21
 Delta R.T. -0.000 min
 Lab File: BF143366.D
 Acq: 13 Aug 2025 10:30

Instrument :
 BNA_F
 ClientSampleId :
 PB169210BL



Tgt Ion:264 Resp: 291238
 Ion Ratio Lower Upper
 264 100
 260 22.2 18.7 28.1
 265 20.9 17.2 25.8

