

Data Path : Z:\HPCHEM1\BNA F\DATA\BF081917\
 Data File : BF097873.D
 Acq On : 19 Aug 2017 12:39
 Operator : SJ/JU
 Sample : PB101621BL
 Misc :
 ALS Vial : 3 Sample Multiplier: 1

Instrument :
 BNA_F
 ClientSampleId :
 PB101621BL

Quant Time: Aug 21 04:02:41 2017
 Quant Method : Z:\HPCHEM1\BNA F\METHODS\8270-BF081517.M
 Quant Title : ASP BNA STANDARDS FOR 5 POINT CALIBRATION
 QLast Update : Tue Aug 15 13:25:08 2017
 Response via : Initial Calibration

| Internal Standards | R.T. | QIon | Response | Conc | Units | Dev(Min) |
|-----------------------------|-------|------|----------|--------|-------|----------|
| 1) 1,4-Dichlorobenzene-d4 | 6.76 | 152 | 145843 | 20.00 | ng | -0.02 |
| 21) Naphthalene-d8 | 8.05 | 136 | 595499 | 20.00 | ng | -0.02 |
| 38) Acenaphthene-d10 | 9.79 | 164 | 283392 | 20.00 | ng | -0.03 |
| 63) Phenanthrene-d10 | 11.27 | 188 | 601308 | 20.00 | ng | -0.03 |
| 75) Chrysene-d12 | 13.90 | 240 | 501523 | 20.00 | ng | -0.04 |
| 86) Perylene-d12 | 15.33 | 264 | 314446 | 20.00 | ng | -0.04 |
| System Monitoring Compounds | | | | | | |
| 5) 2-Fluorophenol | 5.39 | 112 | 1200714 | 125.23 | ng | 0.00 |
| 7) Phenol-d6 | 6.40 | 99 | 1607104 | 123.36 | ng | 0.00 |
| 23) Nitrobenzene-d5 | 7.33 | 82 | 1047675 | 95.57 | ng | -0.02 |
| 41) 2,4,6-Tribromophenol | 10.59 | 330 | 351438 | 142.93 | ng | -0.02 |
| 44) 2-Fluorobiphenyl | 9.12 | 172 | 1552494 | 80.49 | ng | -0.02 |
| 78) Terphenyl-d14 | 12.87 | 244 | 1578091 | 65.62 | ng | -0.02 |

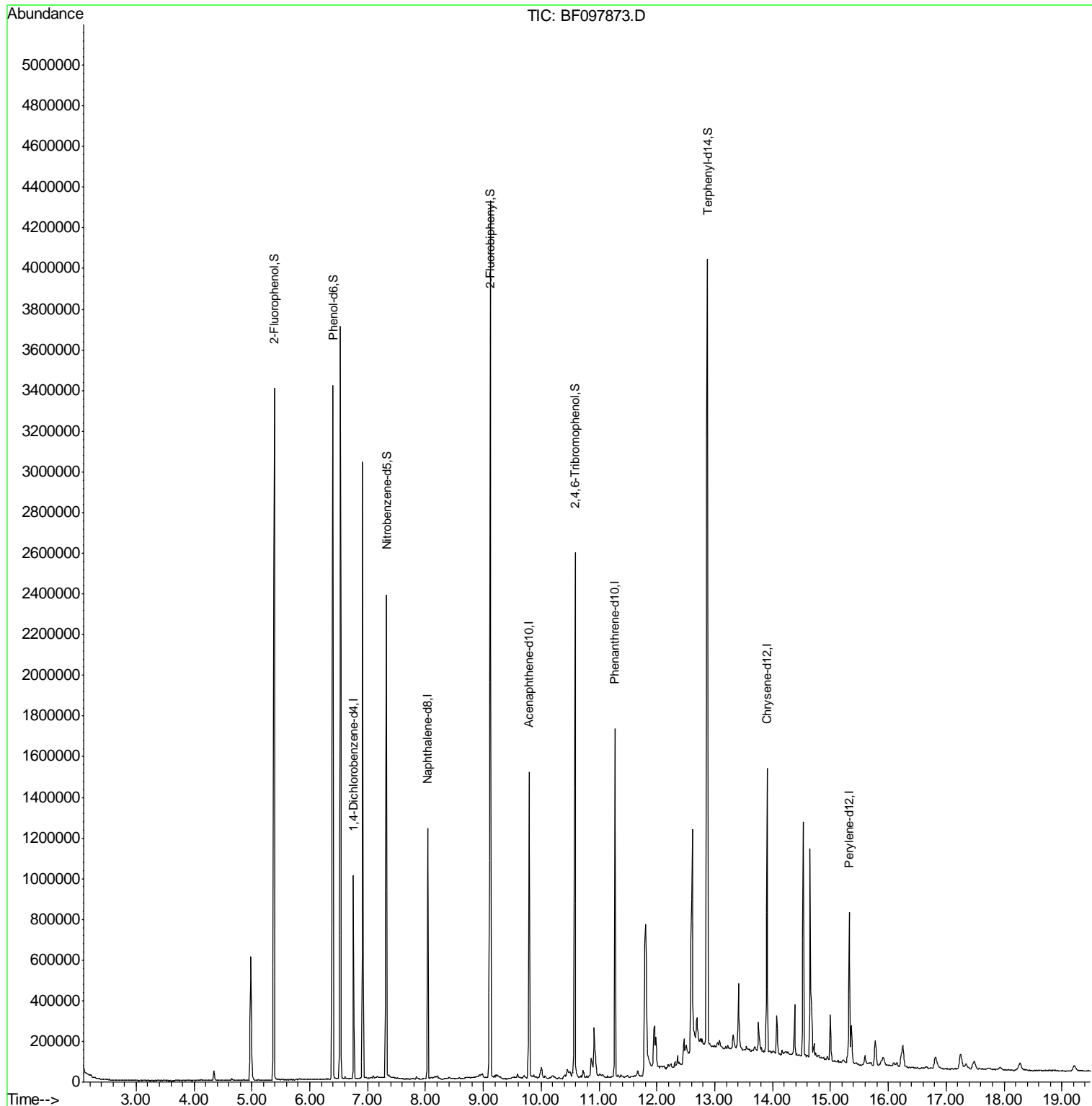
Target Compounds Qvalue

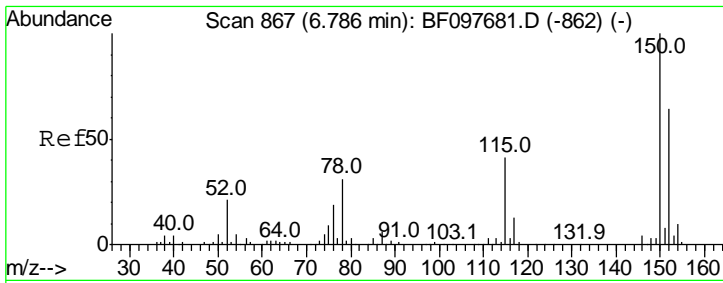
(#) = qualifier out of range (m) = manual integration (+) = signals summed

Data Path : Z:\HPCHEM1\BNA F\DATA\BF081917\
 Data File : BF097873.D
 Acq On : 19 Aug 2017 12:39
 Operator : SJ/JU
 Sample : PB101621BL
 Misc :
 ALS Vial : 3 Sample Multiplier: 1

Instrument :
 BNA_F
ClientSampled :
 PB101621BL

Quant Time: Aug 21 04:02:41 2017
 Quant Method : Z:\HPCHEM1\BNA F\METHODS\8270-BF081517.M
 Quant Title : ASP BNA STANDARDS FOR 5 POINT CALIBRATION
 QLast Update : Tue Aug 15 13:25:08 2017
 Response via : Initial Calibration



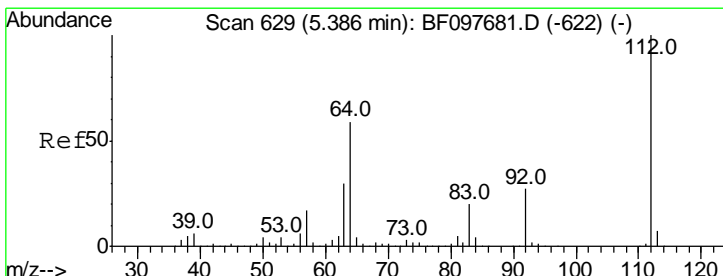
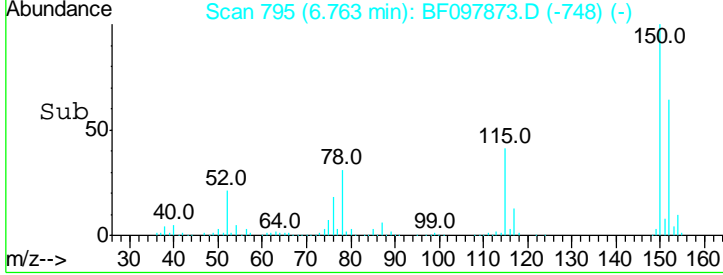
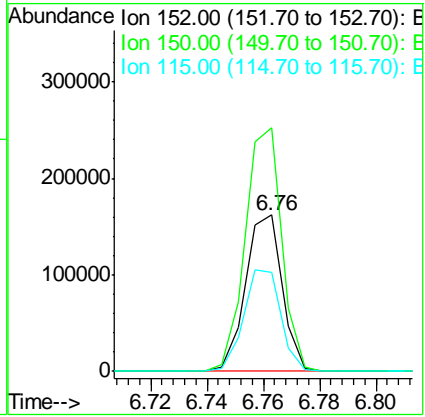
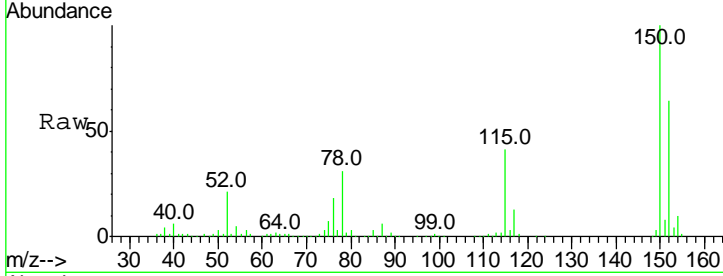


#1
 1,4-Dichlorobenzene-d4
 Concen: 20.000 ng
 RT: 6.76 min Scan# 795
 Delta R.T. -0.02 min
 Lab File: BF097873.D
 Acq: 19 Aug 2017 12:39

Instrument :
 BNA_F
ClientSampled :
 PB101621BL

Tot Ion:152 Resp: 145843

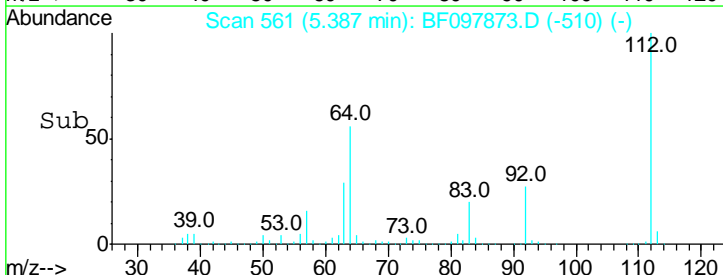
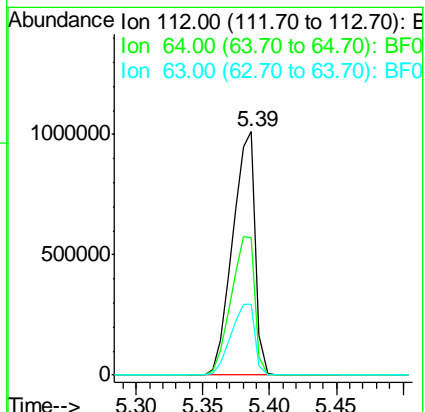
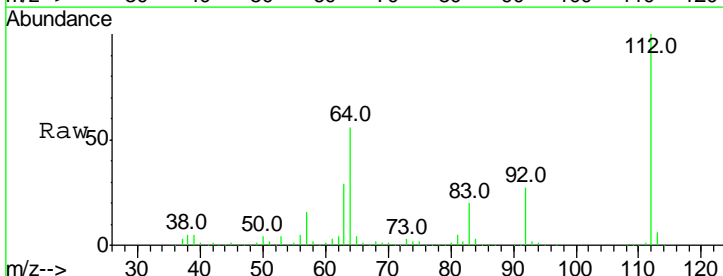
| Ion | Ratio | Lower | Upper |
|-----|-------|-------|-------|
| 152 | 100 | | |
| 150 | 156.1 | 126.2 | 189.2 |
| 115 | 63.4 | 52.2 | 78.2 |

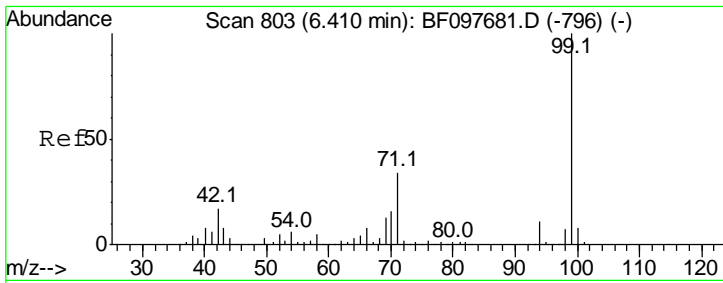


#5
 2-Fluorophenol
 Concen: 125.229 ng
 RT: 5.39 min Scan# 561
 Delta R.T. 0.00 min
 Lab File: BF097873.D
 Acq: 19 Aug 2017 12:39

Tgt Ion:112 Resp: 1200714

| Ion | Ratio | Lower | Upper |
|-----|-------|-------|-------|
| 112 | 100 | | |
| 64 | 56.4 | 46.0 | 69.0 |
| 63 | 29.2 | 23.4 | 35.0 |



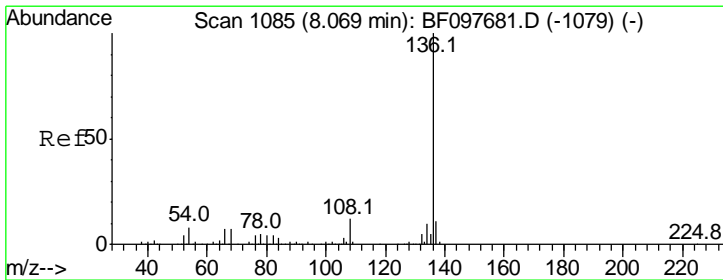
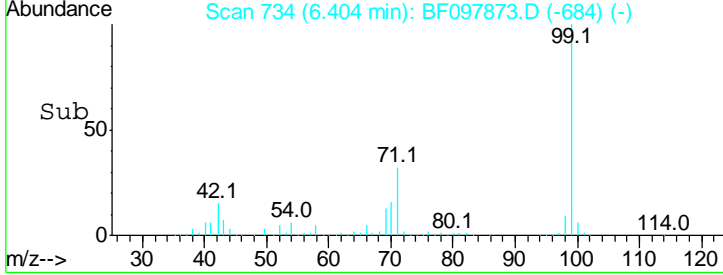
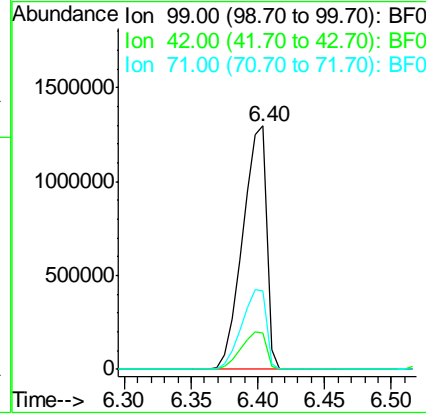
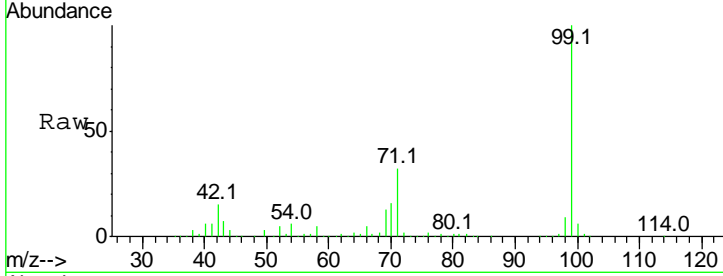


#7
 Phenol-d6
 Concen: 123.362 ng
 RT: 6.40 min Scan# 734
 Delta R.T. -0.01 min
 Lab File: BF097873.D
 Acq: 19 Aug 2017 12:39

Instrument :
 BNA_F
ClientSampled :
 PB101621BL

Tgt Ion: 99 Resp: 1607104

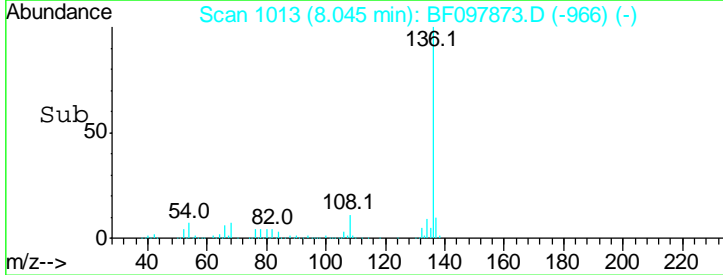
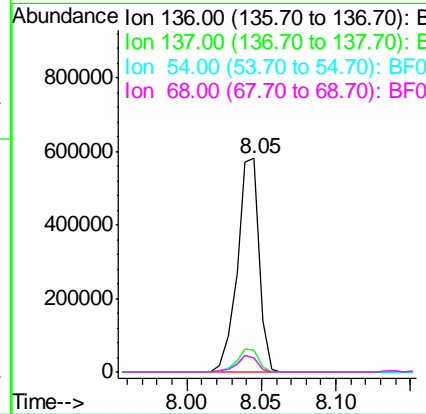
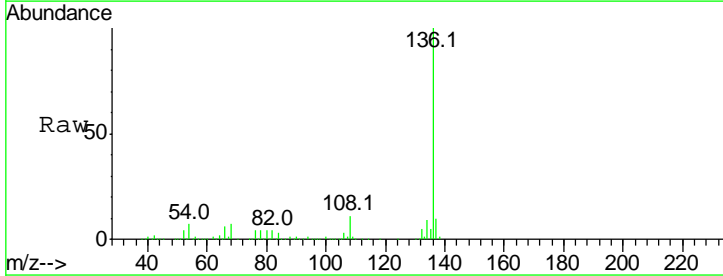
| Ion | Ratio | Lower | Upper |
|-----|-------|-------|-------|
| 99 | 100 | | |
| 42 | 15.1 | 13.5 | 20.3 |
| 71 | 32.0 | 24.5 | 36.7 |

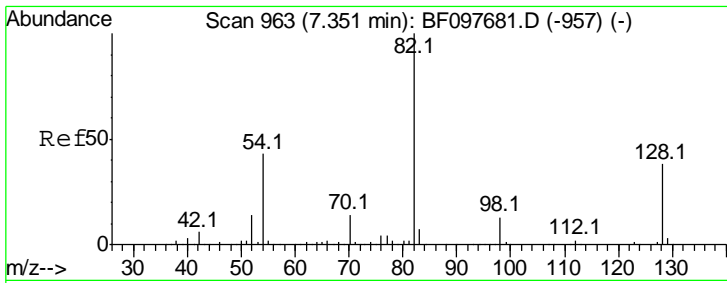


#21
 Naphthalene-d8
 Concen: 20.000 ng
 RT: 8.05 min Scan# 1013
 Delta R.T. -0.02 min
 Lab File: BF097873.D
 Acq: 19 Aug 2017 12:39

Tgt Ion: 136 Resp: 595499

| Ion | Ratio | Lower | Upper |
|-----|-------|-------|-------|
| 136 | 100 | | |
| 137 | 10.5 | 8.5 | 12.7 |
| 54 | 6.9 | 4.9 | 7.3 |
| 68 | 6.6 | 4.1 | 6.1# |

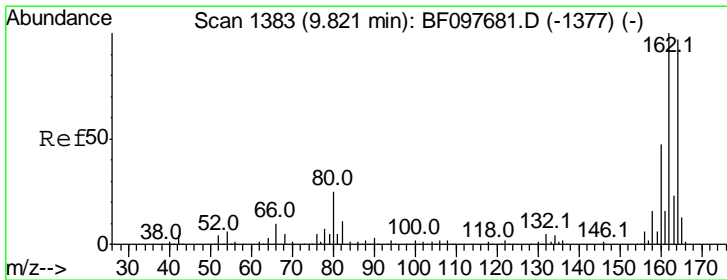
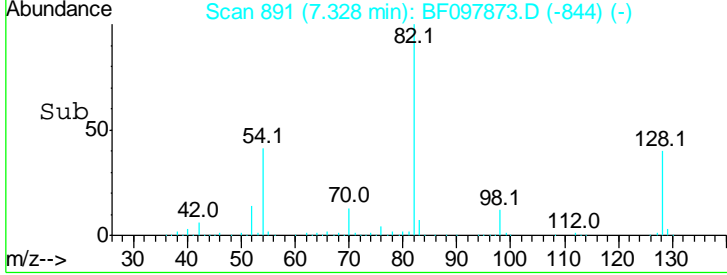
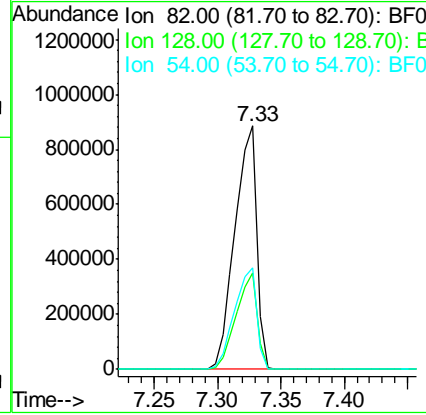
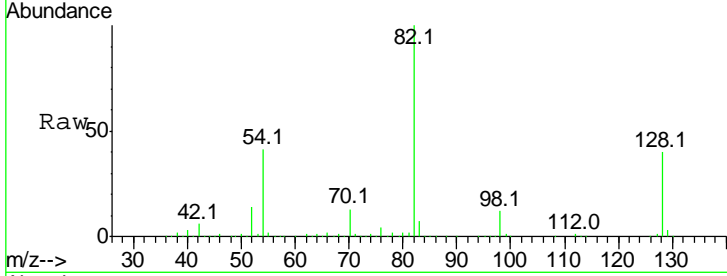




#23
 Nitrobenzene-d5
 Concen: 95.574 ng
 RT: 7.33 min Scan# 891
 Delta R.T. -0.02 min
 Lab File: BF097873.D
 Acq: 19 Aug 2017 12:39

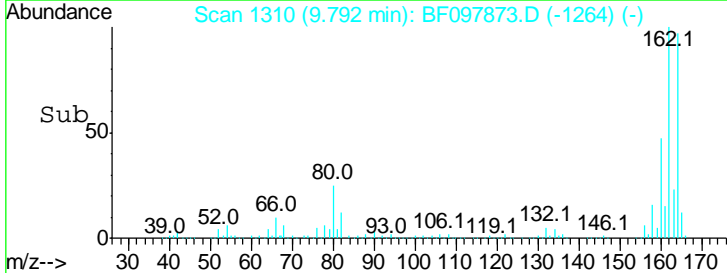
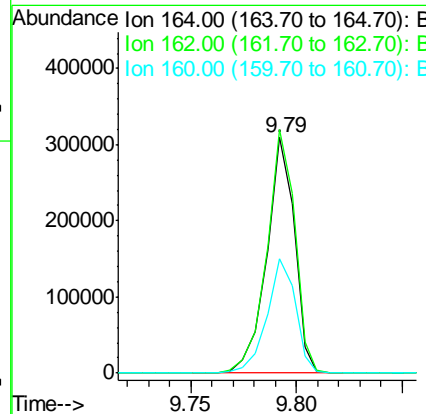
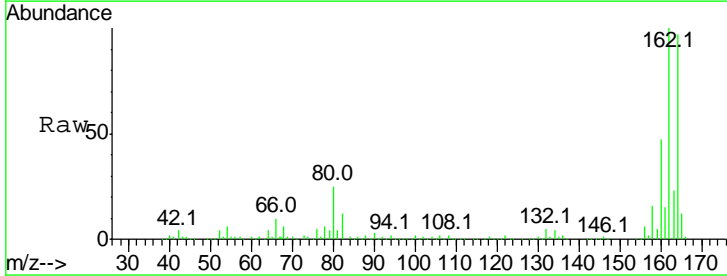
Instrument :
 BNA_F
 ClientSampleId :
 PB101621BL

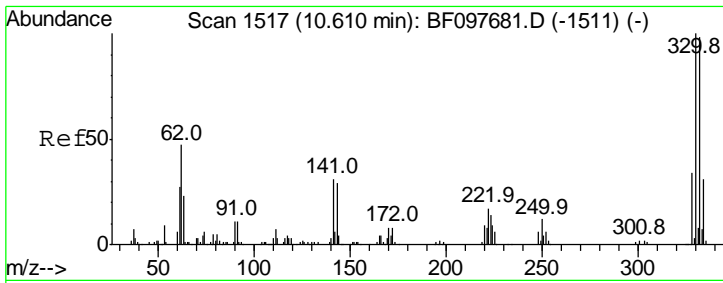
| Tgt Ion | Resp | Lower | Upper |
|---------|---------|-------|-------|
| 82 | 1047675 | | |
| 128 | 39.8 | 34.0 | 51.0 |
| 54 | 41.4 | 42.2 | 63.2# |



#38
 Acenaphthene-d10
 Concen: 20.000 ng
 RT: 9.79 min Scan# 1310
 Delta R.T. -0.03 min
 Lab File: BF097873.D
 Acq: 19 Aug 2017 12:39

| Tgt Ion | Resp | Lower | Upper |
|---------|--------|-------|-------|
| 164 | 283392 | | |
| 162 | 103.4 | 82.6 | 123.8 |
| 160 | 48.5 | 36.2 | 54.2 |

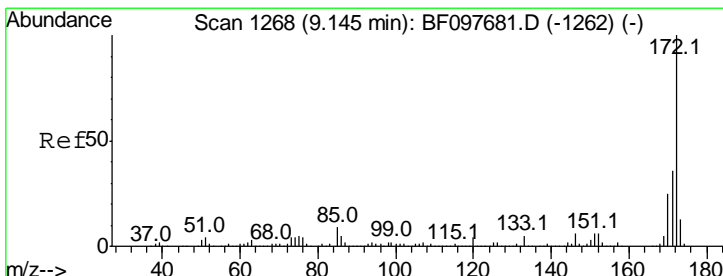
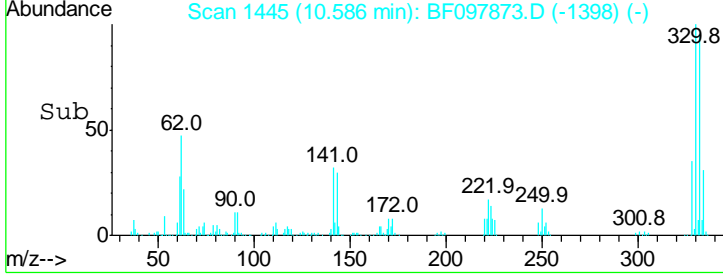
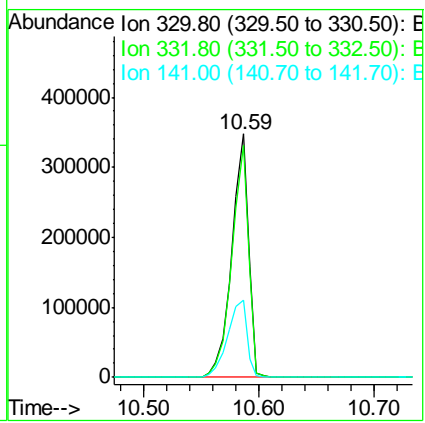
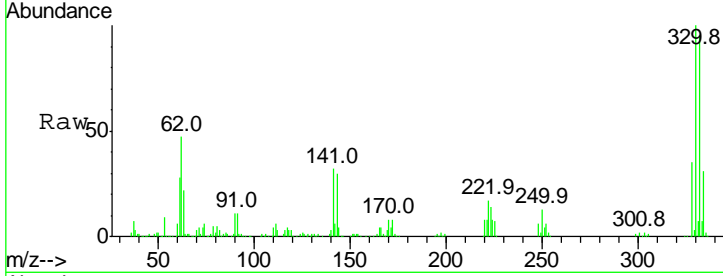




#41
 2,4,6-Tribromophenol
 Concen: 142.926 ng
 RT: 10.59 min Scan# 1445
 Delta R.T. -0.02 min
 Lab File: BF097873.D
 Acq: 19 Aug 2017 12:39

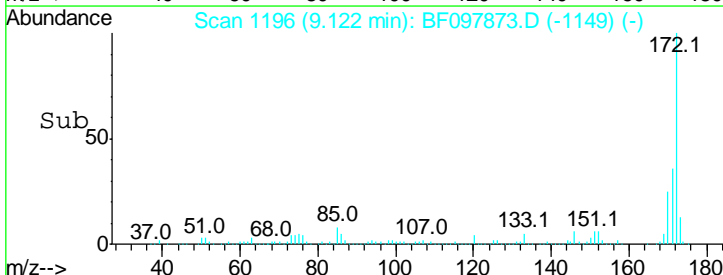
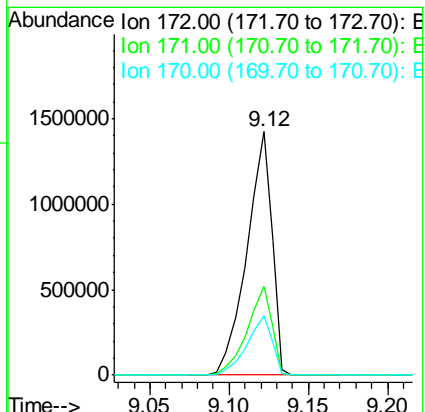
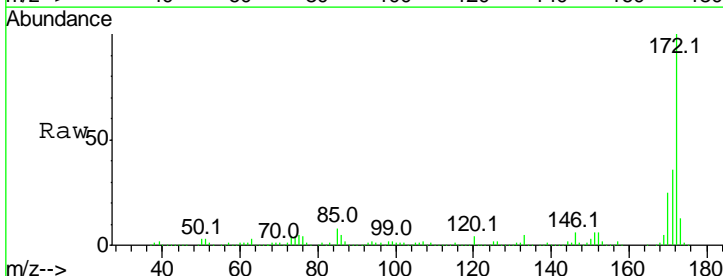
Instrument :
 BNA_F
 ClientSampleId :
 PB101621BL

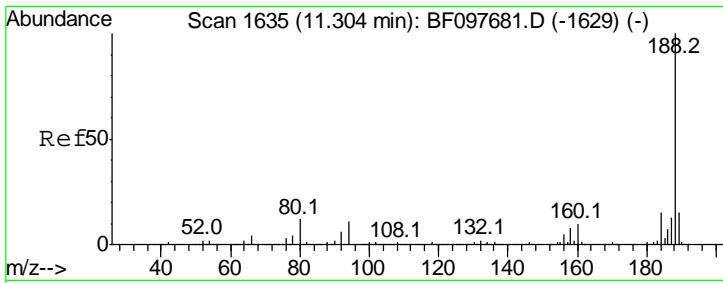
| Tgt Ion | Resp | Lower | Upper |
|---------|------|-------|-------|
| 330 | 100 | | |
| 332 | 95.1 | 76.6 | 115.0 |
| 141 | 36.4 | 31.4 | 47.2 |



#44
 2-Fluorobiphenyl
 Concen: 80.487 ng
 RT: 9.12 min Scan# 1196
 Delta R.T. -0.02 min
 Lab File: BF097873.D
 Acq: 19 Aug 2017 12:39

| Tgt Ion | Resp | Lower | Upper |
|---------|------|-------|-------|
| 172 | 100 | | |
| 171 | 36.5 | 29.6 | 44.4 |
| 170 | 24.6 | 19.8 | 29.8 |

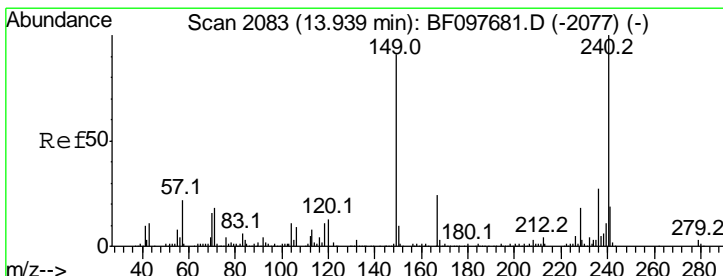
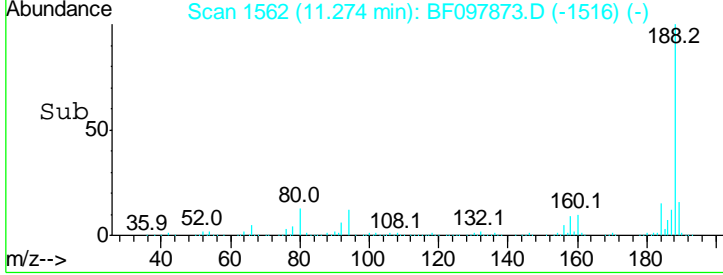
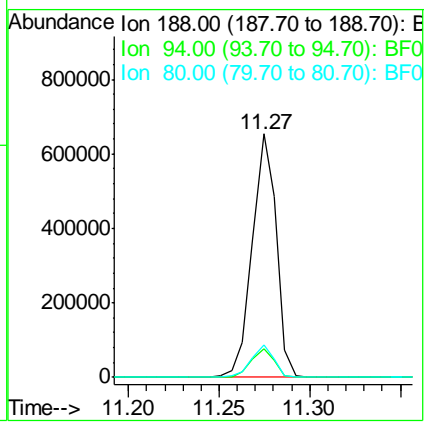
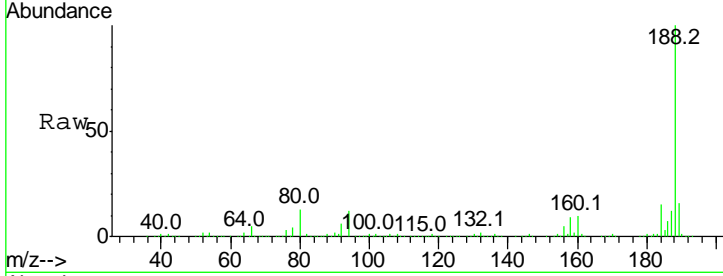




#63
 Phenanthrene-d10
 Concen: 20.000 ng
 RT: 11.27 min Scan# 1562
 Delta R.T. -0.03 min
 Lab File: BF097873.D
 Acq: 19 Aug 2017 12:39

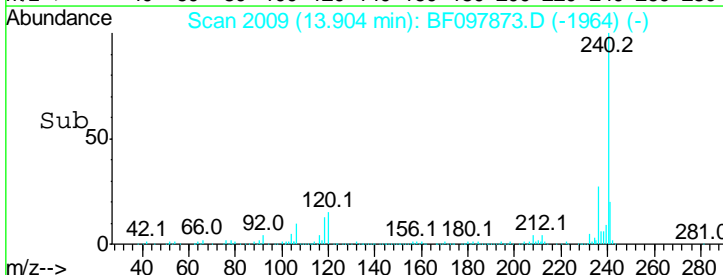
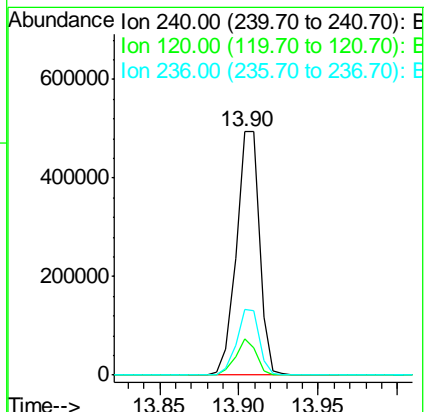
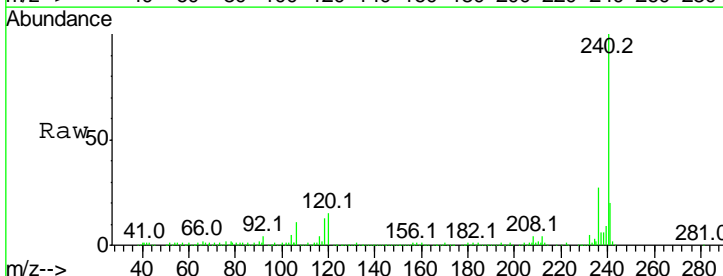
Instrument :
 BNA_F
 ClientSampled :
 PB101621BL

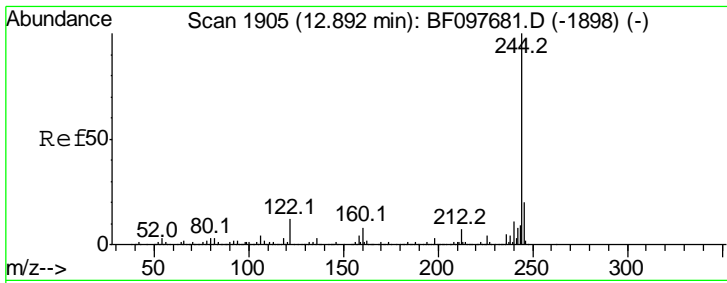
| Tgt Ion | Resp | Lower | Upper |
|---------|------|-------|-------|
| 188 | 100 | | |
| 94 | 12.0 | 9.4 | 14.2 |
| 80 | 13.1 | 10.2 | 15.2 |



#75
 Chrysene-d12
 Concen: 20.000 ng
 RT: 13.90 min Scan# 2009
 Delta R.T. -0.04 min
 Lab File: BF097873.D
 Acq: 19 Aug 2017 12:39

| Tgt Ion | Resp | Lower | Upper |
|---------|------|-------|-------|
| 240 | 100 | | |
| 120 | 14.6 | 5.8 | 8.8# |
| 236 | 27.0 | 20.5 | 30.7 |



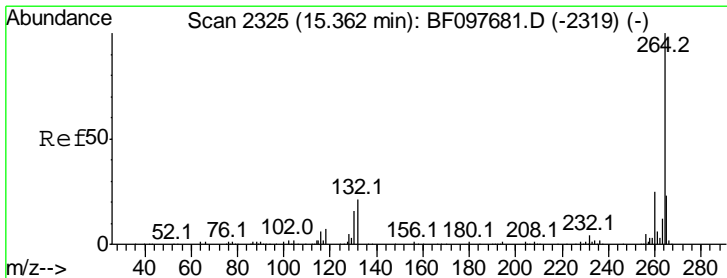
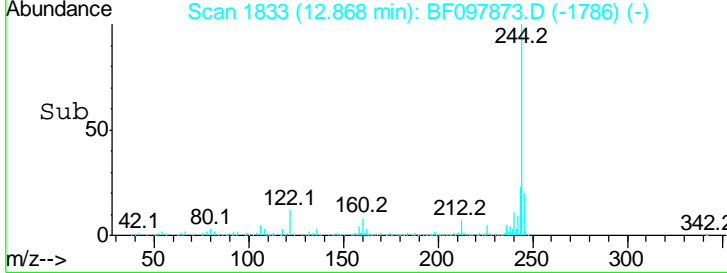
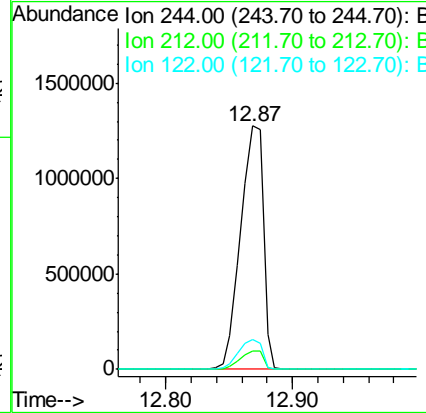
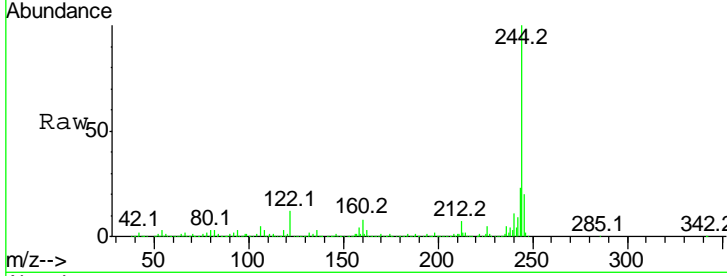


#78
 Terphenyl-d14
 Concen: 65.617 ng
 RT: 12.87 min Scan# 1833
 Delta R.T. -0.02 min
 Lab File: BF097873.D
 Acq: 19 Aug 2017 12:39

Instrument :
 BNA_F
 ClientSampled :
 PB101621BL

Tgt Ion: 244 Resp: 1578091

| Ion | Ratio | Lower | Upper |
|-----|-------|-------|-------|
| 244 | 100 | | |
| 212 | 7.4 | 6.0 | 9.0 |
| 122 | 12.5 | 10.3 | 15.5 |



#86
 Perylene-d12
 Concen: 20.000 ng
 RT: 15.33 min Scan# 2251
 Delta R.T. -0.04 min
 Lab File: BF097873.D
 Acq: 19 Aug 2017 12:39

Tgt Ion: 264 Resp: 314446

| Ion | Ratio | Lower | Upper |
|-----|-------|-------|-------|
| 264 | 100 | | |
| 260 | 24.5 | 19.5 | 29.3 |
| 265 | 21.7 | 17.2 | 25.8 |

