

Data Path : Z:\svoasrv\HPCHEM1\BNA_F\Data\BF081925\
 Data File : BF143467.D
 Acq On : 19 Aug 2025 21:21
 Operator : RC/JU
 Sample : SSTDCCC040
 Misc :
 ALS Vial : 2 Sample Multiplier: 1

Instrument :
 BNA_F
 ClientSampleId :
 SSTDCCC040

Quant Time: Aug 20 01:13:48 2025
 Quant Method : Z:\svoasrv\HPCHEM1\BNA_F\Methods\8270-BF081525.M
 Quant Title : ASP BNA STANDARDS FOR 5 POINT CALIBRATION
 QLast Update : Mon Aug 18 04:40:19 2025
 Response via : Initial Calibration

Compound	R.T.	QIon	Response	Conc	Units	Dev(Min)	
Internal Standards							
1) 1,4-Dichlorobenzene-d4	6.928	152	147001	20.000	ng	0.00	
21) Naphthalene-d8	8.210	136	568353	20.000	ng	0.00	
39) Acenaphthene-d10	9.963	164	319216	20.000	ng	0.00	
64) Phenanthrene-d10	11.451	188	497766	20.000	ng	0.00	
76) Chrysene-d12	14.086	240	250755	20.000	ng	0.00	
86) Perylene-d12	15.580	264	322483	20.000	ng	0.00	
System Monitoring Compounds							
5) 2-Fluorophenol	5.563	112	651681	77.063	ng	0.00	
7) Phenol-d6	6.569	99	810659	76.067	ng	0.01	
23) Nitrobenzene-d5	7.492	82	751102	78.419	ng	0.00	
42) 2,4,6-Tribromophenol	10.757	330	234186	82.423	ng	0.00	
45) 2-Fluorobiphenyl	9.280	172	1412061	74.403	ng	0.00	
79) Terphenyl-d14	13.027	244	1202328	80.546	ng	0.00	
Target Compounds							
2) 1,4-Dioxane	2.728	88	146822	36.069	ng		Qvalue 99
3) Pyridine	3.510	79	401952	37.650	ng		99
4) n-Nitrosodimethylamine	3.451	42	183414	36.962	ng		99
6) Aniline	6.592	93	541211	37.408	ng	#	84
8) 2-Chlorophenol	6.722	128	359959	38.556	ng		98
9) Benzaldehyde	6.481	77	206309	36.390	ng		99
10) Phenol	6.581	94	467675	37.606	ng		88
11) bis(2-Chloroethyl)ether	6.657	93	350118	37.981	ng		99
12) 1,3-Dichlorobenzene	6.869	146	399618	38.211	ng		100
13) 1,4-Dichlorobenzene	6.945	146	397909	38.110	ng		99
14) 1,2-Dichlorobenzene	7.098	146	380227	38.127	ng		100
15) Benzyl Alcohol	7.069	79	316640	40.289	ng		99
16) 2,2'-oxybis(1-Chloropr...	7.198	45	566171	35.926	ng		87
17) 2-Methylphenol	7.186	107	297985	39.119	ng		96
18) Hexachloroethane	7.439	117	137124	38.584	ng		99
19) n-Nitroso-di-n-propyla...	7.339	70	251413	38.106	ng		98
20) 3+4-Methylphenols	7.333	107	355314	39.019	ng		98
22) Acetophenone	7.333	105	468552	38.343	ng		99
24) Nitrobenzene	7.510	77	388970	38.856	ng		98
25) Isophorone	7.751	82	709013	38.677	ng		98
26) 2-Nitrophenol	7.828	139	198785	42.835	ng		97
27) 2,4-Dimethylphenol	7.863	122	297656	37.936	ng		99
28) bis(2-Chloroethoxy)met...	7.951	93	428630	38.041	ng		100
29) 2,4-Dichlorophenol	8.075	162	319341	39.925	ng		98
30) 1,2,4-Trichlorobenzene	8.151	180	319896	39.033	ng		99
31) Naphthalene	8.233	128	1040844	38.574	ng		100
32) Benzoic acid	7.981	122	166490	40.799	ng		98
33) 4-Chloroaniline	8.281	127	378466	38.858	ng		99
34) Hexachlorobutadiene	8.351	225	206983	39.606	ng		99
35) Caprolactam	8.651	113	94525	41.047	ng		92
36) 4-Chloro-3-methylphenol	8.763	107	328624	39.893	ng		99
37) 2-Methylnaphthalene	8.922	142	699809	38.477	ng		99
38) 1-Methylnaphthalene	9.022	142	676261	38.808	ng		99
40) 1,2,4,5-Tetrachloroben...	9.092	216	342606	38.484	ng		99
41) Hexachlorocyclopentadiene	9.080	237	114131	38.850	ng		99
43) 2,4,6-Trichlorophenol	9.204	196	226922	40.862	ng		99

Data Path : Z:\svoasrv\HPCHEM1\BNA_F\Data\BF081925\
 Data File : BF143467.D
 Acq On : 19 Aug 2025 21:21
 Operator : RC/JU
 Sample : SSTDCCC040
 Misc :
 ALS Vial : 2 Sample Multiplier: 1

Instrument :
 BNA_F
 ClientSampleId :
 SSTDCCC040

Quant Time: Aug 20 01:13:48 2025
 Quant Method : Z:\svoasrv\HPCHEM1\BNA_F\Methods\8270-BF081525.M
 Quant Title : ASP BNA STANDARDS FOR 5 POINT CALIBRATION
 QLast Update : Mon Aug 18 04:40:19 2025
 Response via : Initial Calibration

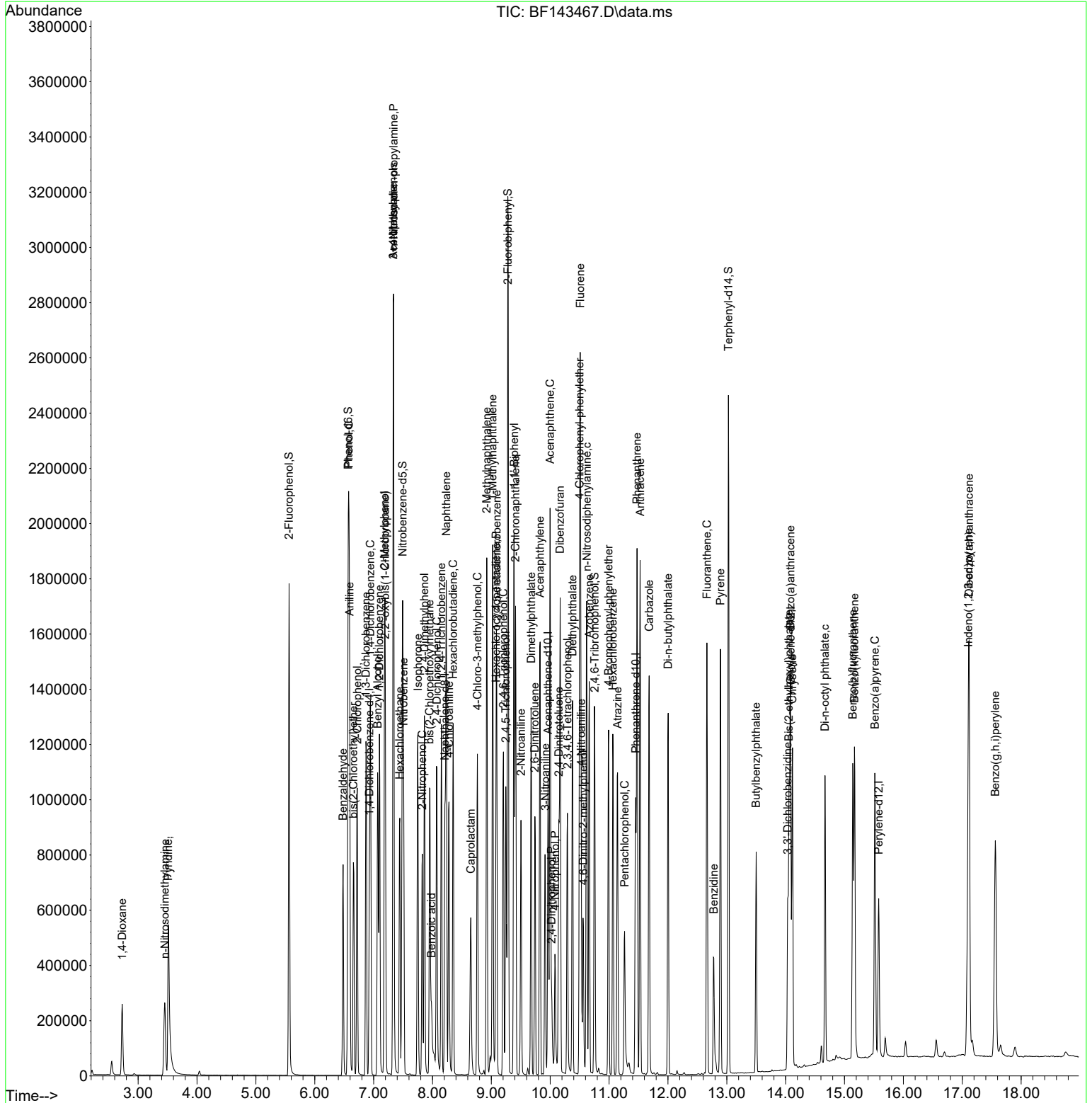
Compound	R.T.	QIon	Response	Conc	Units	Dev(Min)
44) 2,4,5-Trichlorophenol	9.245	196	235557	39.571	ng	98
46) 1,1'-Biphenyl	9.386	154	853833	38.069	ng	99
47) 2-Chloronaphthalene	9.410	162	670409	37.867	ng	99
48) 2-Nitroaniline	9.504	65	213574	40.537	ng	97
49) Acenaphthylene	9.827	152	978991	38.299	ng	99
50) Dimethylphthalate	9.675	163	769511	38.666	ng	100
51) 2,6-Dinitrotoluene	9.739	165	166212	42.366	ng	99
52) Acenaphthene	9.998	154	658924	38.327	ng	99
53) 3-Nitroaniline	9.916	138	178983	40.955	ng	96
54) 2,4-Dinitrophenol	10.022	184	72536	42.672	ng	93
55) Dibenzofuran	10.169	168	941473	37.961	ng	99
56) 4-Nitrophenol	10.080	139	102638	37.356	ng	96
57) 2,4-Dinitrotoluene	10.145	165	225523	43.116	ng	96
58) Fluorene	10.510	166	721738	37.880	ng	99
59) 2,3,4,6-Tetrachlorophenol	10.292	232	183627	40.750	ng	98
60) Diethylphthalate	10.380	149	716042	38.934	ng	99
61) 4-Chlorophenyl-phenyle...	10.498	204	366985	38.958	ng	99
62) 4-Nitroaniline	10.527	138	164919	40.352	ng	99
63) Azobenzene	10.663	77	705357	37.947	ng	99
65) 4,6-Dinitro-2-methylph...	10.563	198	114424	44.552	ng	94
66) n-Nitrosodiphenylamine	10.622	169	608957	37.625	ng	99
67) 4-Bromophenyl-phenylether	10.992	248	232201	39.504	ng	99
68) Hexachlorobenzene	11.063	284	241278	38.612	ng	99
69) Atrazine	11.145	200	193269	40.826	ng	99
70) Pentachlorophenol	11.263	266	116712	42.471	ng	98
71) Phenanthrene	11.474	178	998054	37.027	ng	100
72) Anthracene	11.527	178	1027828	37.753	ng	100
73) Carbazole	11.680	167	848303	36.841	ng	100
74) Di-n-butylphthalate	12.004	149	924708	40.328	ng	99
75) Fluoranthene	12.663	202	881991	36.825	ng	99
77) Benzidine	12.780	184	280211	37.421	ng	98
78) Pyrene	12.892	202	870801	39.954	ng	100
80) Butylbenzylphthalate	13.498	149	249150	46.153	ng	98
81) Benzo(a)anthracene	14.080	228	634849	39.766	ng	100
82) 3,3'-Dichlorobenzidine	14.033	252	196817	42.107	ng	99
83) Chrysene	14.115	228	560755	37.995	ng	99
84) Bis(2-ethylhexyl)phtha...	14.057	149	340290	44.387	ng	99
85) Di-n-octyl phthalate	14.668	149	676789	43.525	ng	98
87) Indeno(1,2,3-cd)pyrene	17.103	276	942193	38.961	ng	99
88) Benzo(b)fluoranthene	15.139	252	714218	41.323	ng	99
89) Benzo(k)fluoranthene	15.168	252	610255	35.798	ng	99
90) Benzo(a)pyrene	15.515	252	650616	39.522	ng	100
91) Dibenzo(a,h)anthracene	17.115	278	756337	38.946	ng	100
92) Benzo(g,h,i)perylene	17.562	276	743617	38.330	ng	99

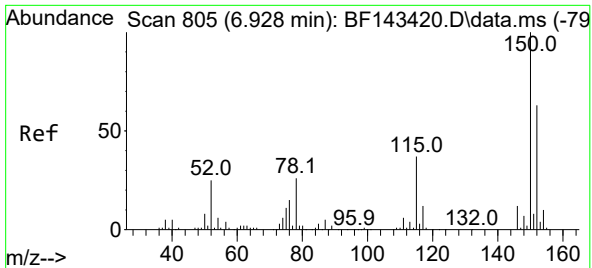
(#) = qualifier out of range (m) = manual integration (+) = signals summed

Data Path : Z:\svoasrv\HPCHEM1\BNA_F\Data\BF081925\
 Data File : BF143467.D
 Acq On : 19 Aug 2025 21:21
 Operator : RC/JU
 Sample : SSTDCCC040
 Misc :
 ALS Vial : 2 Sample Multiplier: 1

Instrument :
 BNA_F
 ClientSampleId :
 SSTDCCC040

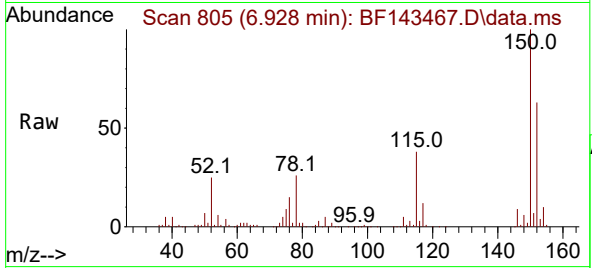
Quant Time: Aug 20 01:13:48 2025
 Quant Method : Z:\svoasrv\HPCHEM1\BNA_F\Methods\8270-BF081525.M
 Quant Title : ASP BNA STANDARDS FOR 5 POINT CALIBRATION
 QLast Update : Mon Aug 18 04:40:19 2025
 Response via : Initial Calibration



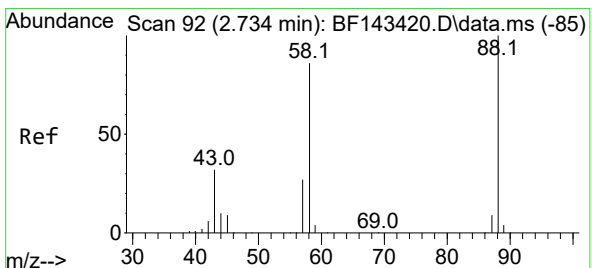
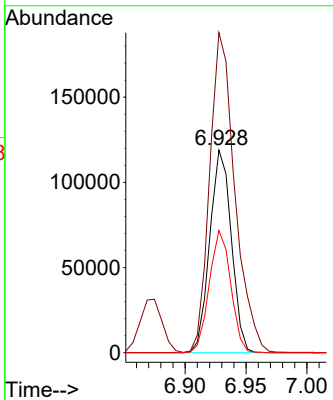
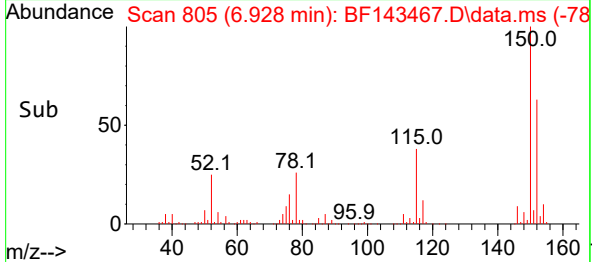


#1
 1,4-Dichlorobenzene-d4
 Concen: 20.000 ng
 RT: 6.928 min Scan# 80
 Delta R.T. -0.000 min
 Lab File: BF143467.D
 Acq: 19 Aug 2025 21:21

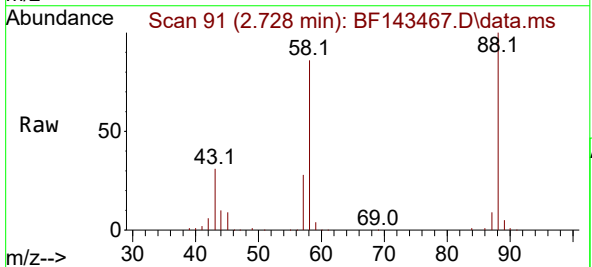
Instrument :
 BNA_F
 ClientSampleId :
 SSTDCCC040



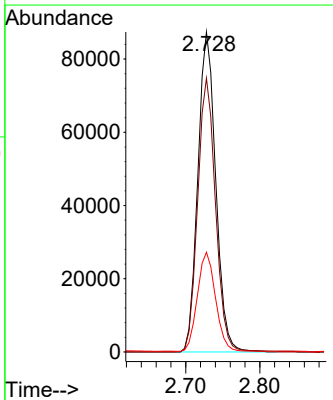
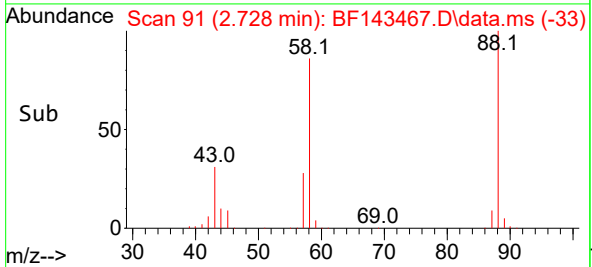
Tgt Ion:152 Resp: 147001
 Ion Ratio Lower Upper
 152 100
 150 157.9 127.4 191.2
 115 60.2 47.5 71.3

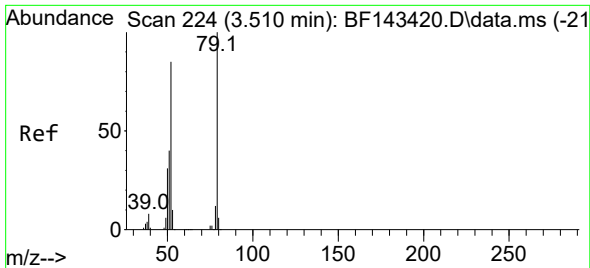


#2
 1,4-Dioxane
 Concen: 36.069 ng
 RT: 2.728 min Scan# 91
 Delta R.T. -0.006 min
 Lab File: BF143467.D
 Acq: 19 Aug 2025 21:21



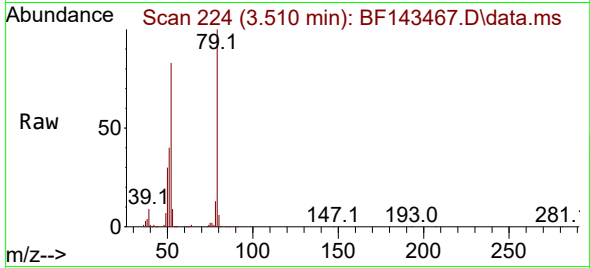
Tgt Ion: 88 Resp: 146822
 Ion Ratio Lower Upper
 88 100
 58 85.2 68.7 103.1
 43 31.4 26.1 39.1





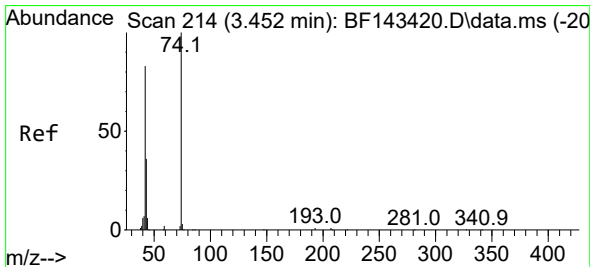
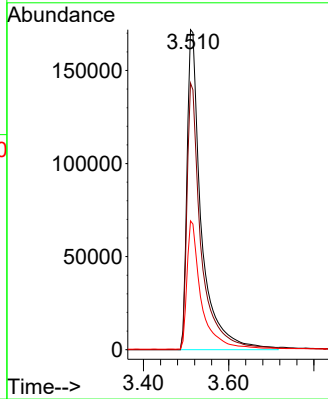
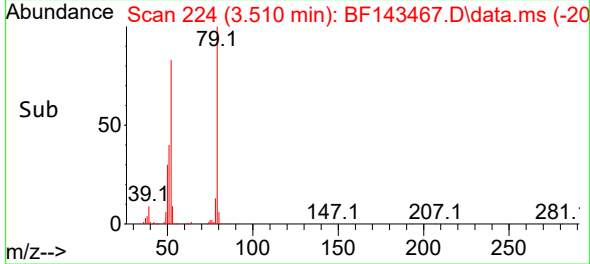
#3
 Pyridine
 Concen: 37.650 ng
 RT: 3.510 min Scan# 21
 Delta R.T. -0.000 min
 Lab File: BF143467.D
 Acq: 19 Aug 2025 21:21

Instrument :
 BNA_F
 ClientSampleId :
 SSTDCCC040

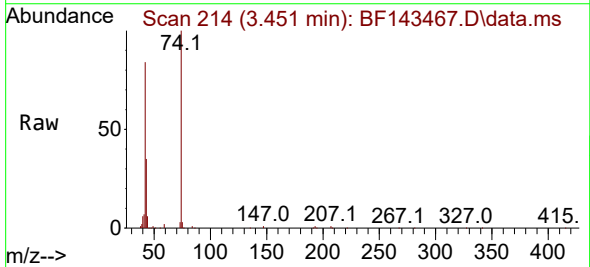


Tgt Ion: 79 Resp: 401952

Ion	Ratio	Lower	Upper
79	100		
52	83.3	67.7	101.5
51	40.3	32.3	48.5

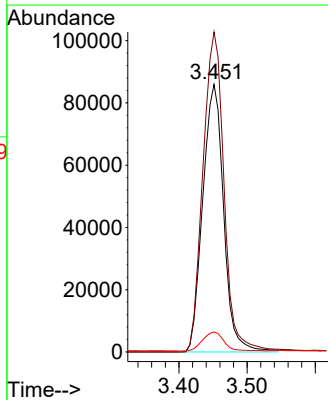
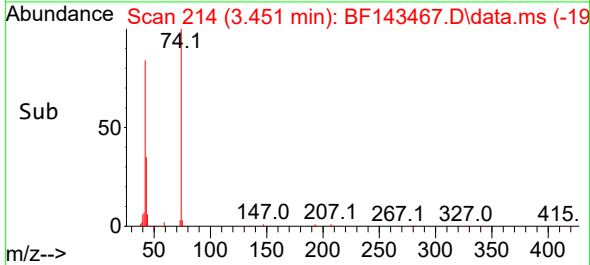


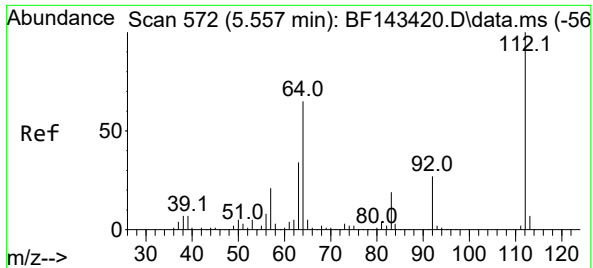
#4
 n-Nitrosodimethylamine
 Concen: 36.962 ng
 RT: 3.451 min Scan# 214
 Delta R.T. -0.000 min
 Lab File: BF143467.D
 Acq: 19 Aug 2025 21:21



Tgt Ion: 42 Resp: 183414

Ion	Ratio	Lower	Upper
42	100		
74	119.6	96.2	144.4
44	7.5	5.9	8.9



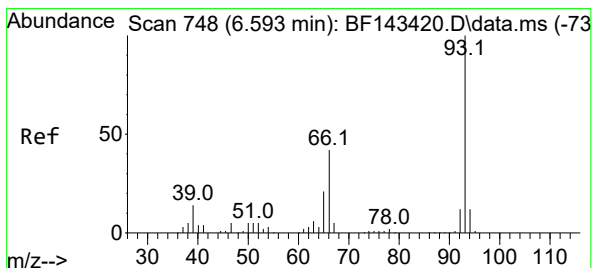
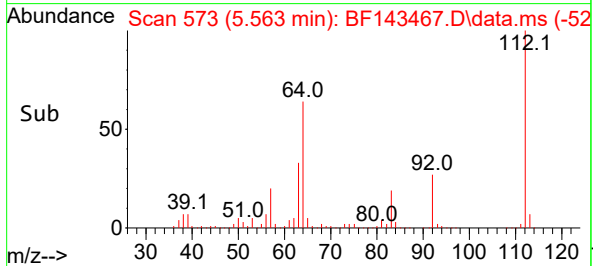
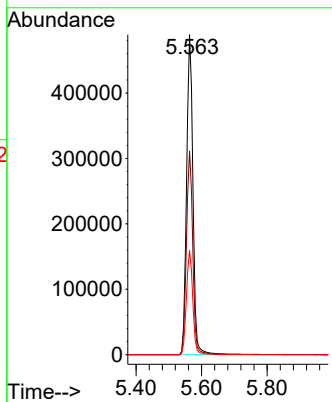
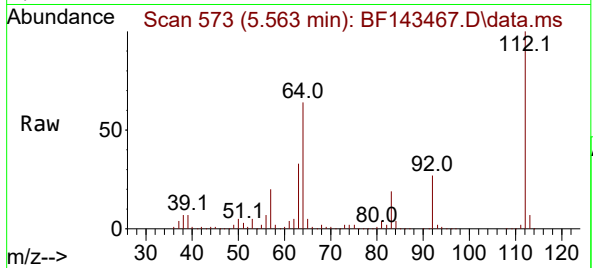


#5
 2-Fluorophenol
 Concen: 77.063 ng
 RT: 5.563 min Scan# 51
 Delta R.T. 0.006 min
 Lab File: BF143467.D
 Acq: 19 Aug 2025 21:21

Instrument :
 BNA_F
 ClientSampleId :
 SSTDCCC040

Tgt Ion:112 Resp: 651681

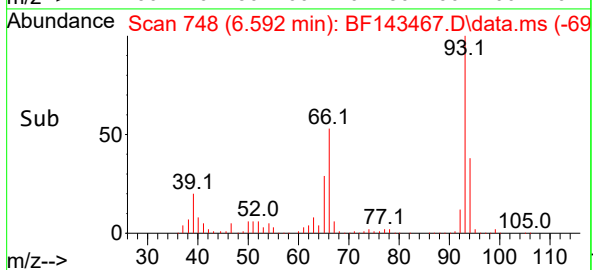
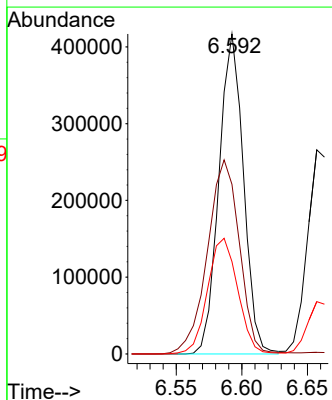
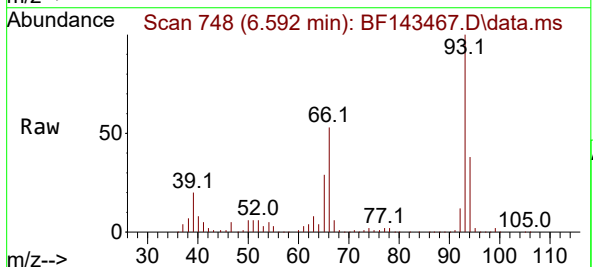
Ion	Ratio	Lower	Upper
112	100		
64	63.7	52.2	78.2
63	32.7	27.0	40.6

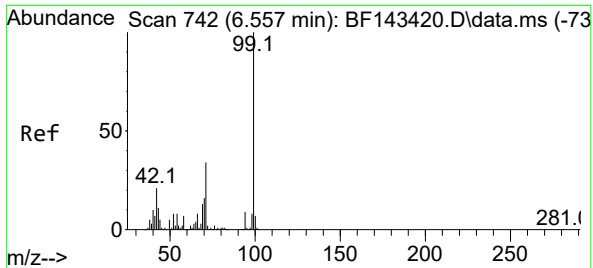


#6
 Aniline
 Concen: 37.408 ng
 RT: 6.592 min Scan# 748
 Delta R.T. -0.000 min
 Lab File: BF143467.D
 Acq: 19 Aug 2025 21:21

Tgt Ion: 93 Resp: 541211

Ion	Ratio	Lower	Upper
93	100		
66	53.0	33.8	50.8#
65	28.9	17.2	25.8#

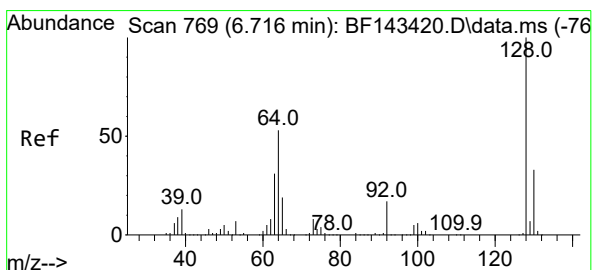
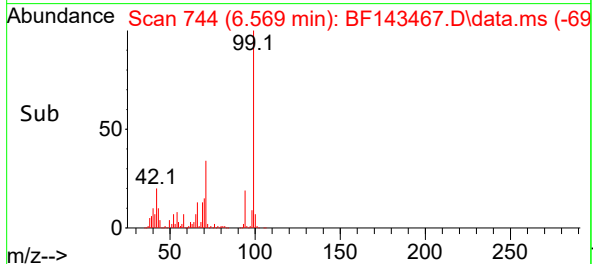
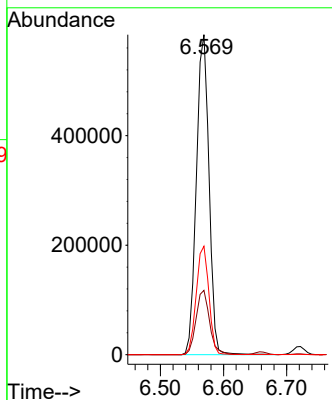
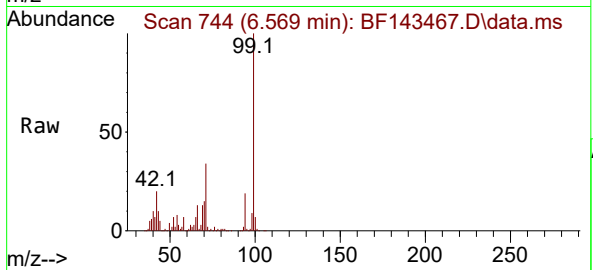




#7
 Phenol-d6
 Concen: 76.067 ng
 RT: 6.569 min Scan# 74
 Delta R.T. 0.012 min
 Lab File: BF143467.D
 Acq: 19 Aug 2025 21:21

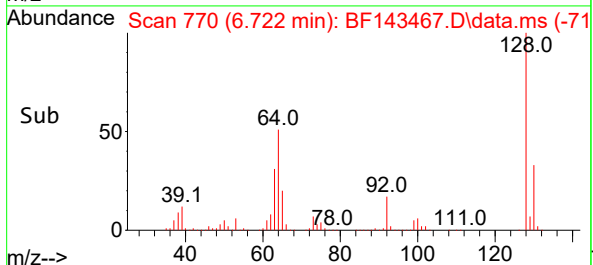
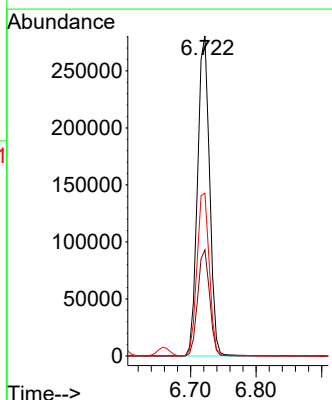
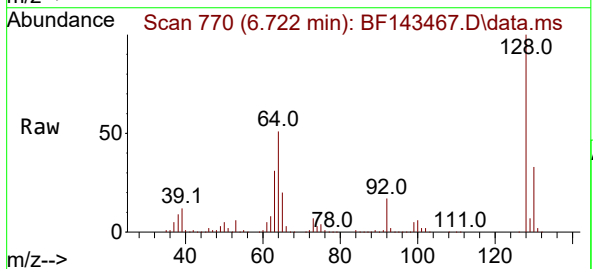
Instrument :
 BNA_F
 ClientSampleId :
 SSTDCCC040

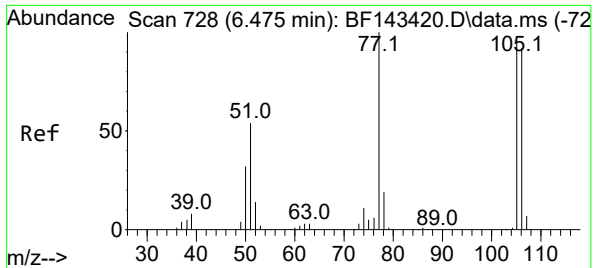
Tgt Ion: 99 Resp: 810659
 Ion Ratio Lower Upper
 99 100
 42 20.1 17.0 25.6
 71 33.9 27.4 41.2



#8
 2-Chlorophenol
 Concen: 38.556 ng
 RT: 6.722 min Scan# 770
 Delta R.T. 0.006 min
 Lab File: BF143467.D
 Acq: 19 Aug 2025 21:21

Tgt Ion:128 Resp: 359959
 Ion Ratio Lower Upper
 128 100
 130 33.2 12.9 52.9
 64 50.9 33.1 73.1

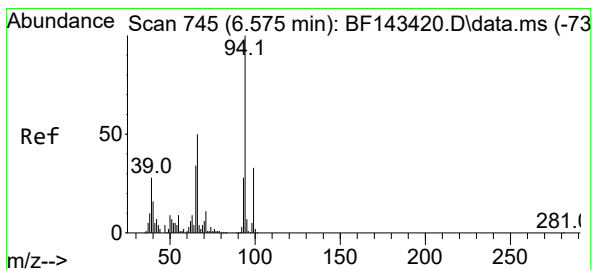
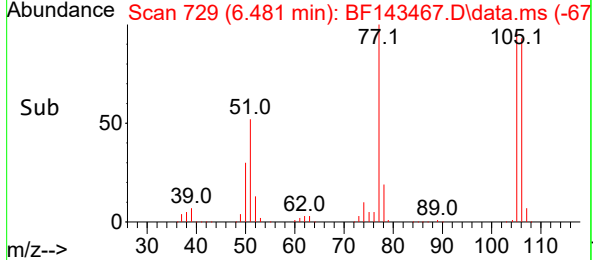
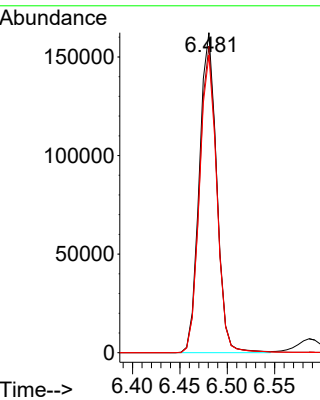
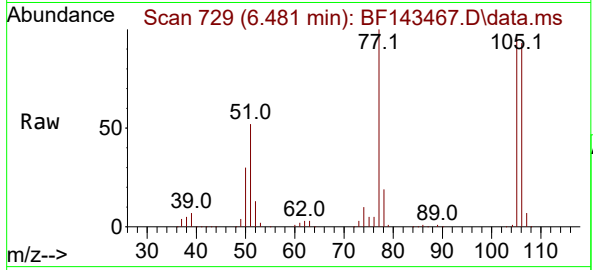




#9
 Benzaldehyde
 Concen: 36.390 ng
 RT: 6.481 min Scan# 714
 Delta R.T. 0.006 min
 Lab File: BF143467.D
 Acq: 19 Aug 2025 21:21

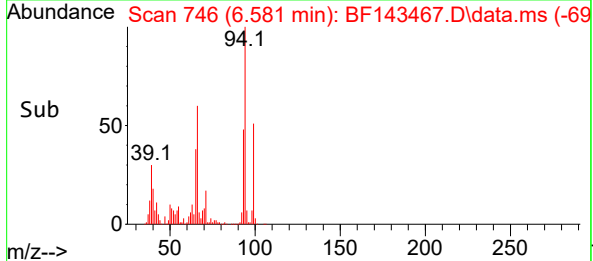
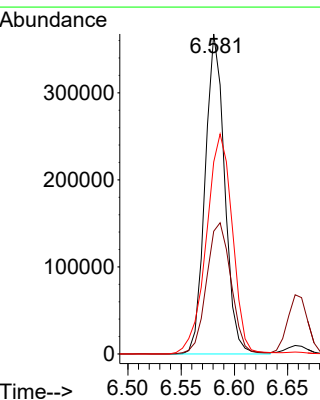
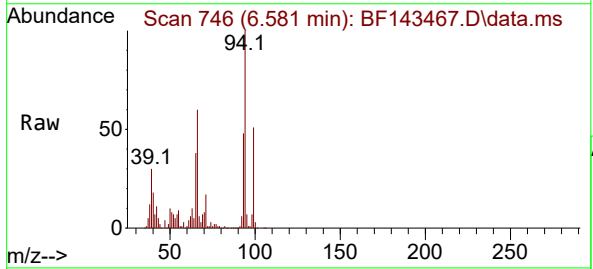
Instrument : BNA_F
 ClientSampleId : SSTDCCC040

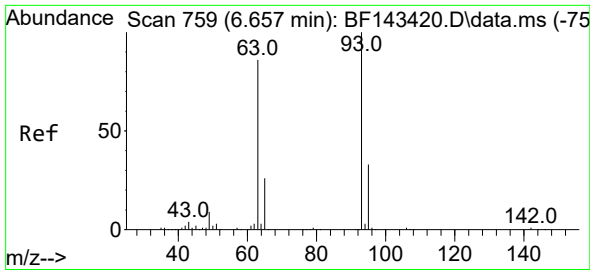
Tgt Ion	Resp	Lower	Upper
77	100		
105	95.8	75.5	115.5
106	93.0	72.0	112.0



#10
 Phenol
 Concen: 37.606 ng
 RT: 6.581 min Scan# 746
 Delta R.T. 0.006 min
 Lab File: BF143467.D
 Acq: 19 Aug 2025 21:21

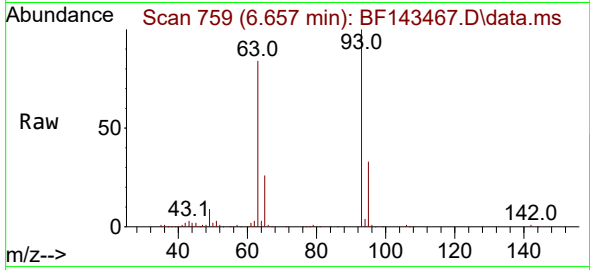
Tgt Ion	Resp	Lower	Upper
94	100		
65	38.4	13.7	53.7
66	60.0	30.3	70.3



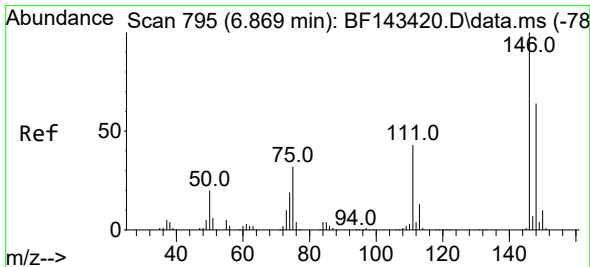
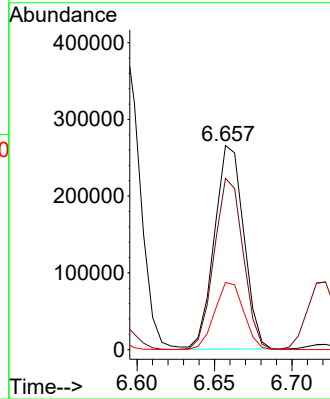
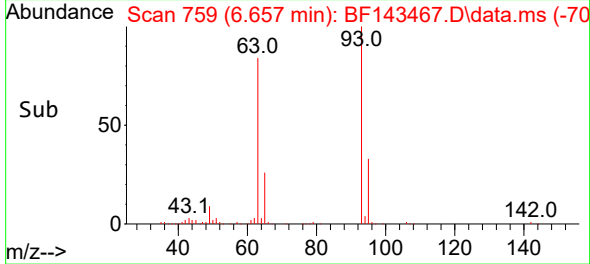


#11
 bis(2-Chloroethyl)ether
 Concen: 37.981 ng
 RT: 6.657 min Scan# 711
 Delta R.T. -0.000 min
 Lab File: BF143467.D
 Acq: 19 Aug 2025 21:21

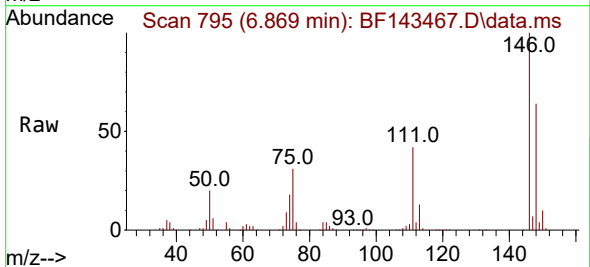
Instrument : BNA_F
 ClientSampleId : SSTDCCC040



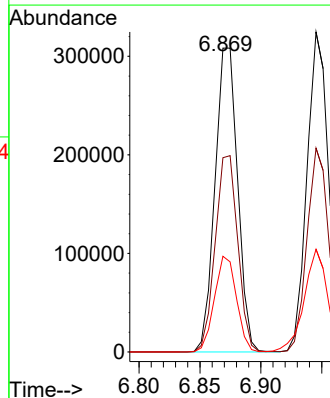
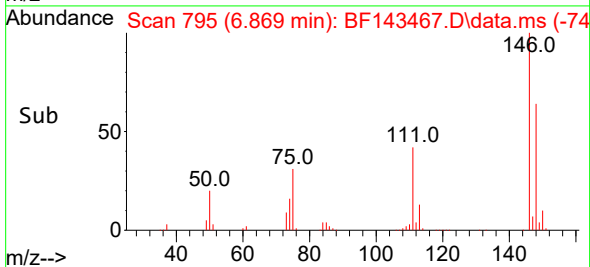
Tgt Ion: 93 Resp: 350118
 Ion Ratio Lower Upper
 93 100
 63 83.9 65.4 105.4
 95 32.9 12.8 52.8

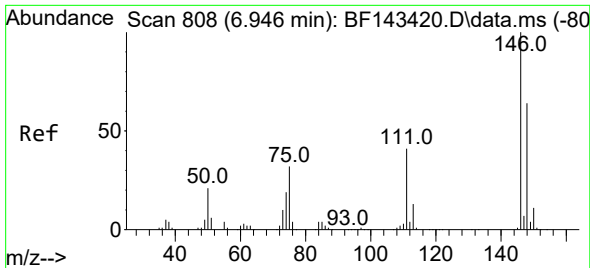


#12
 1,3-Dichlorobenzene
 Concen: 38.211 ng
 RT: 6.869 min Scan# 795
 Delta R.T. -0.000 min
 Lab File: BF143467.D
 Acq: 19 Aug 2025 21:21



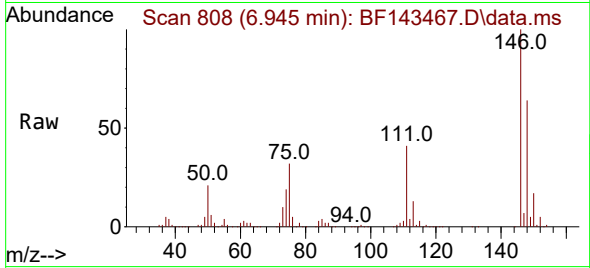
Tgt Ion: 146 Resp: 399618
 Ion Ratio Lower Upper
 146 100
 148 63.9 51.0 76.4
 75 31.5 25.3 37.9



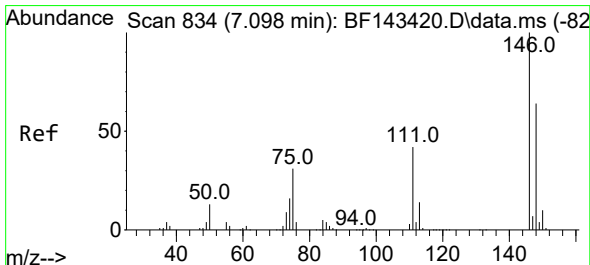
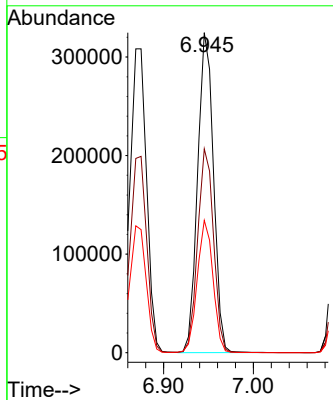
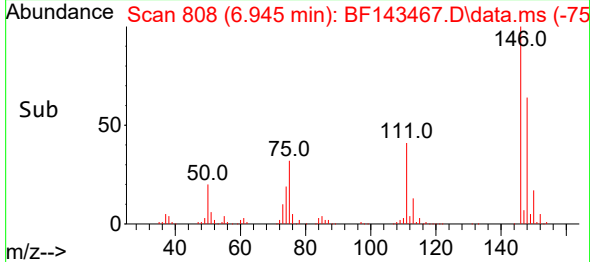


#13
 1,4-Dichlorobenzene
 Concen: 38.110 ng
 RT: 6.945 min Scan# 808
 Delta R.T. -0.000 min
 Lab File: BF143467.D
 Acq: 19 Aug 2025 21:21

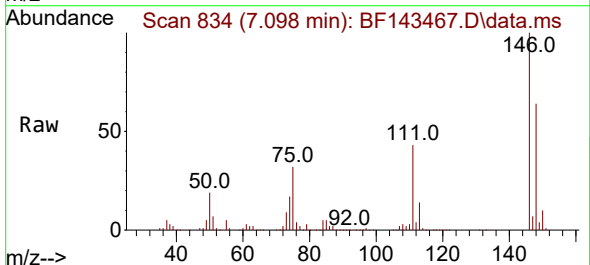
Instrument :
 BNA_F
 ClientSampleId :
 SSTDCCC040



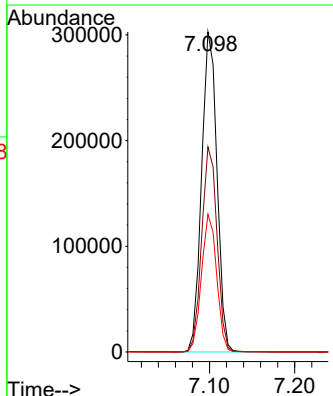
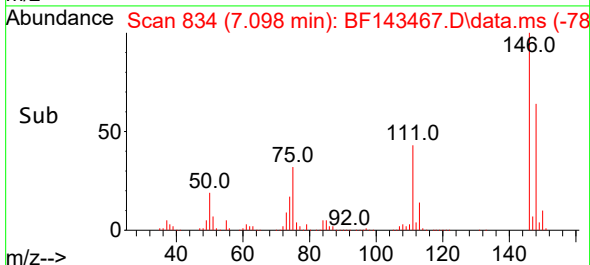
Tgt Ion:146 Resp: 397909
 Ion Ratio Lower Upper
 146 100
 148 63.7 51.1 76.7
 111 41.4 32.5 48.7

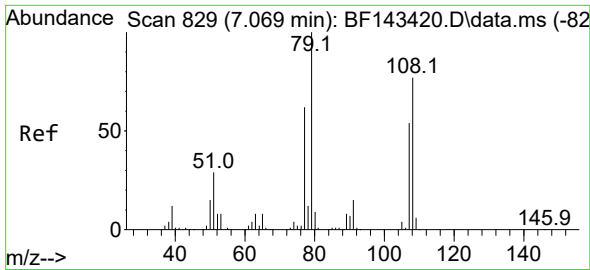


#14
 1,2-Dichlorobenzene
 Concen: 38.127 ng
 RT: 7.098 min Scan# 834
 Delta R.T. -0.000 min
 Lab File: BF143467.D
 Acq: 19 Aug 2025 21:21



Tgt Ion:146 Resp: 380227
 Ion Ratio Lower Upper
 146 100
 148 64.1 51.4 77.0
 111 43.0 33.9 50.9

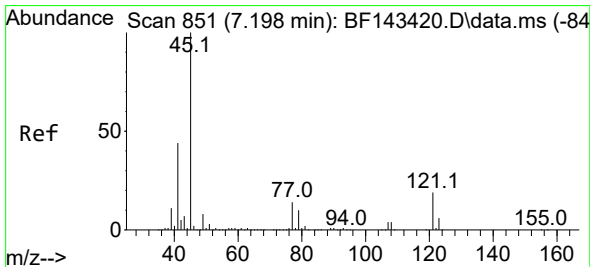
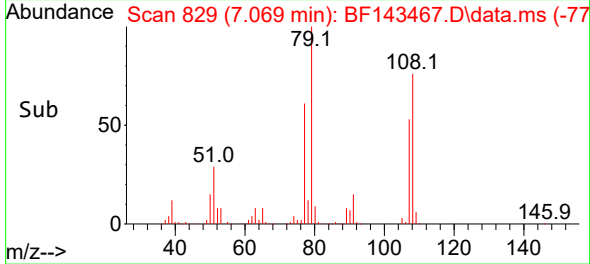
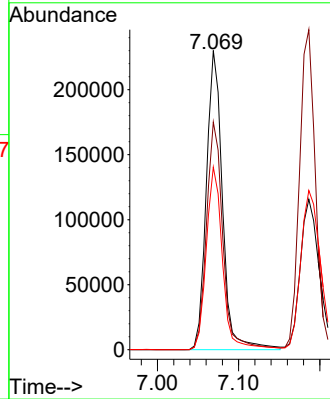
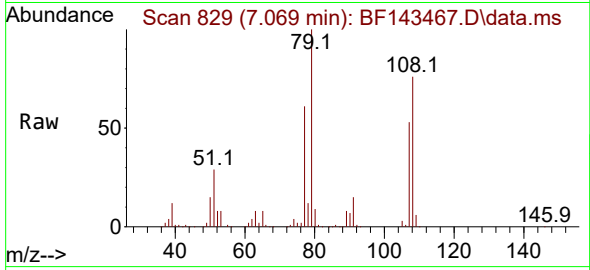




#15
 Benzyl Alcohol
 Concen: 40.289 ng
 RT: 7.069 min Scan# 811
 Delta R.T. -0.000 min
 Lab File: BF143467.D
 Acq: 19 Aug 2025 21:21

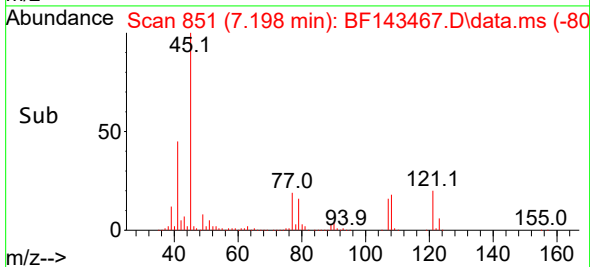
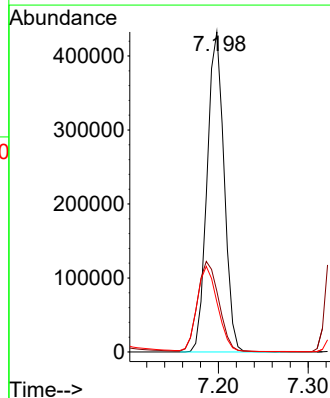
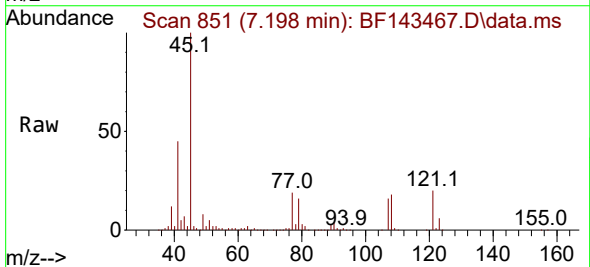
Instrument : BNA_F
 ClientSampleId : SSTDCCC040

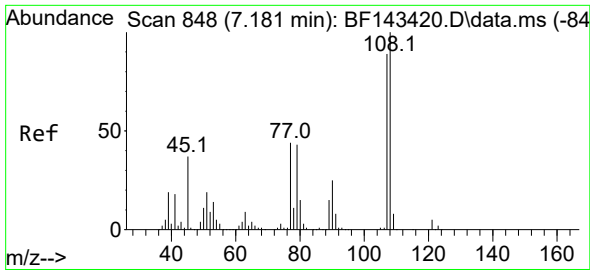
Tgt Ion: 79 Resp: 316640
 Ion Ratio Lower Upper
 79 100
 108 76.1 61.9 92.9
 77 61.0 49.2 73.8



#16
 2,2'-oxybis(1-Chloropropane)
 Concen: 35.926 ng
 RT: 7.198 min Scan# 851
 Delta R.T. -0.000 min
 Lab File: BF143467.D
 Acq: 19 Aug 2025 21:21

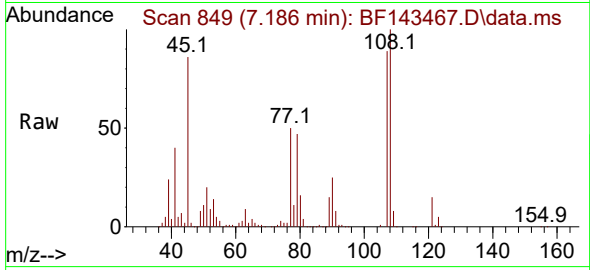
Tgt Ion: 45 Resp: 566171
 Ion Ratio Lower Upper
 45 100
 77 19.0 0.0 33.9
 79 15.7 0.0 30.7



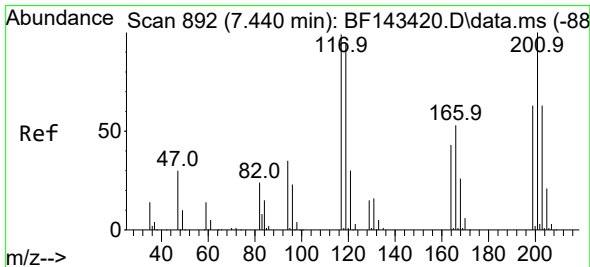
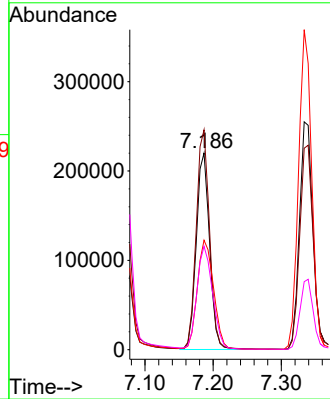
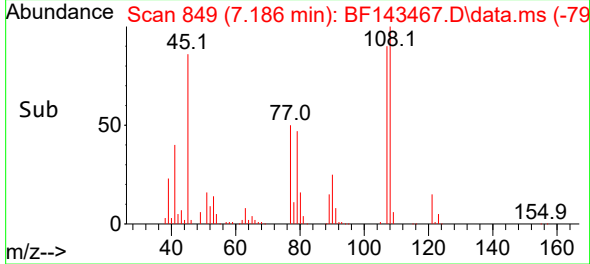


#17
 2-Methylphenol
 Concen: 39.119 ng
 RT: 7.186 min Scan# 849
 Delta R.T. 0.006 min
 Lab File: BF143467.D
 Acq: 19 Aug 2025 21:21

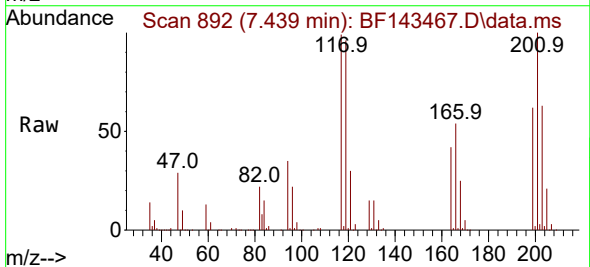
Instrument : BNA_F
 ClientSampleId : SSTDCCC040



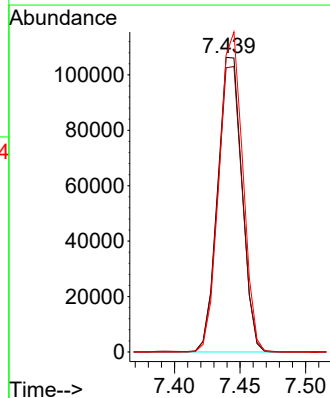
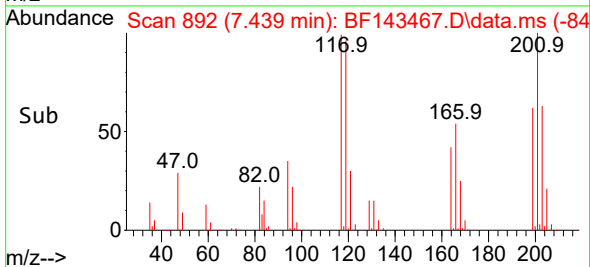
Tgt Ion:107 Resp: 297985
 Ion Ratio Lower Upper
 107 100
 108 111.8 90.1 135.1
 77 55.6 39.9 59.9
 79 52.5 39.1 58.7

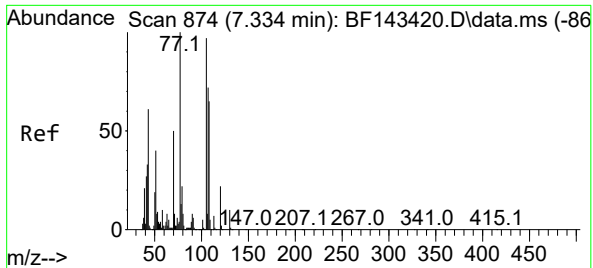


#18
 Hexachloroethane
 Concen: 38.584 ng
 RT: 7.439 min Scan# 892
 Delta R.T. -0.000 min
 Lab File: BF143467.D
 Acq: 19 Aug 2025 21:21



Tgt Ion:117 Resp: 137124
 Ion Ratio Lower Upper
 117 100
 119 96.5 76.6 114.8
 201 100.8 81.0 121.4



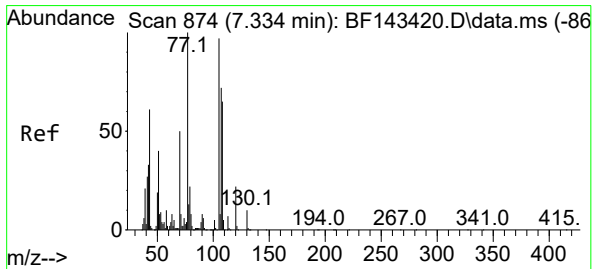
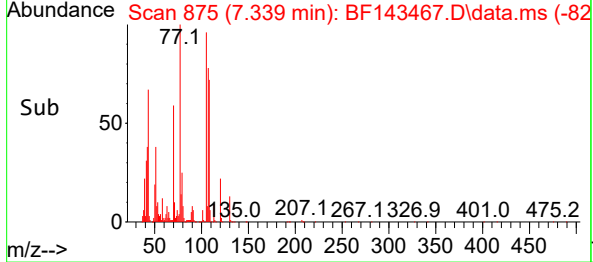
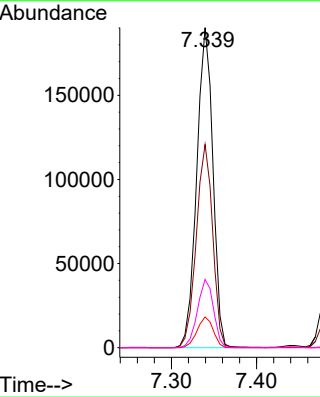
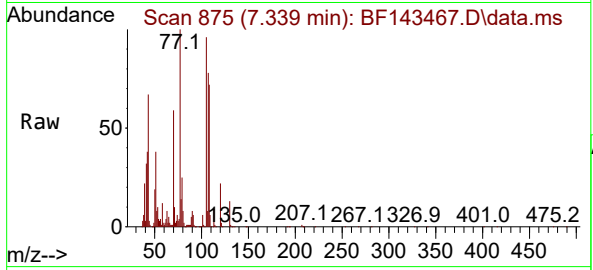


#19
 n-Nitroso-di-n-propylamine
 Concen: 38.106 ng
 RT: 7.339 min Scan# 81
 Delta R.T. 0.006 min
 Lab File: BF143467.D
 Acq: 19 Aug 2025 21:21

Instrument :
 BNA_F
 ClientSampleId :
 SSTDCCC040

Tgt Ion: 70 Resp: 251413

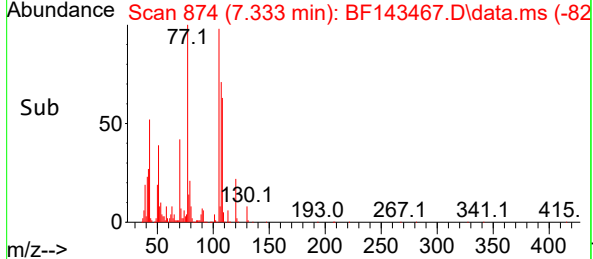
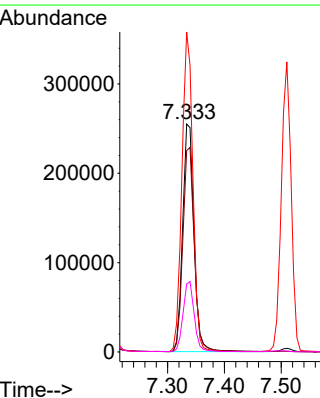
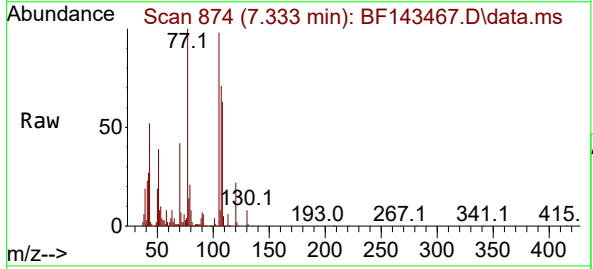
Ion	Ratio	Lower	Upper
70	100		
42	63.5	52.5	78.7
101	9.6	7.9	11.9
130	21.3	16.0	24.0

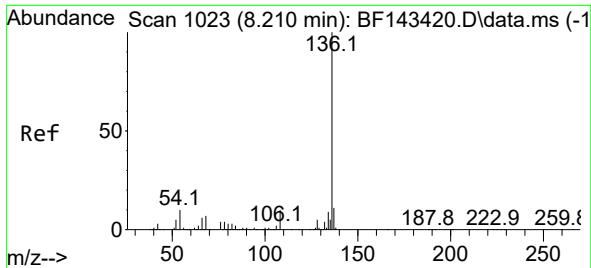


#20
 3+4-Methylphenols
 Concen: 39.019 ng
 RT: 7.333 min Scan# 874
 Delta R.T. -0.000 min
 Lab File: BF143467.D
 Acq: 19 Aug 2025 21:21

Tgt Ion: 107 Resp: 355314

Ion	Ratio	Lower	Upper
107	100		
108	88.4	70.8	110.8
77	140.4	119.1	159.1
79	29.8	11.2	51.2





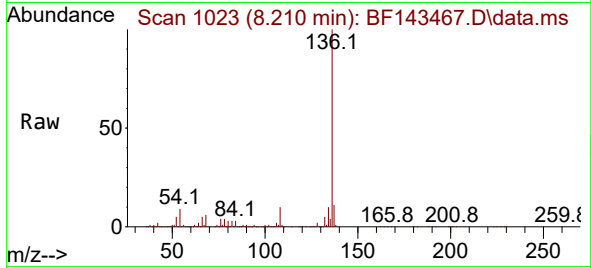
#21
 Naphthalene-d8
 Concen: 20.000 ng
 RT: 8.210 min Scan# 10
 Delta R.T. -0.000 min
 Lab File: BF143467.D
 Acq: 19 Aug 2025 21:21

Instrument :

BNA_F

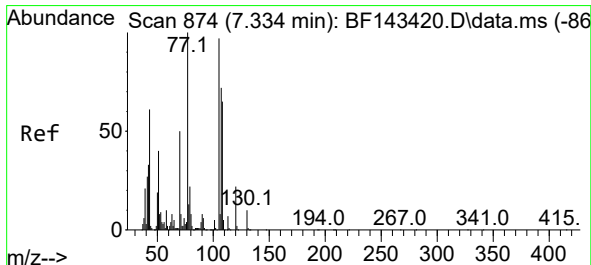
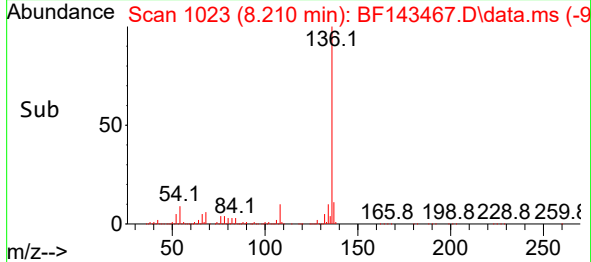
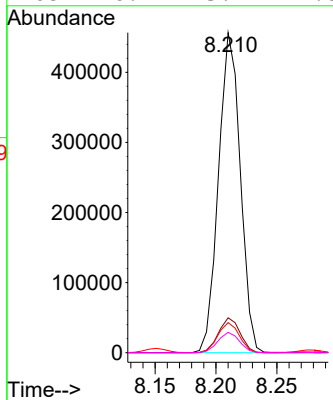
ClientSampleId :

SSTDCCC040

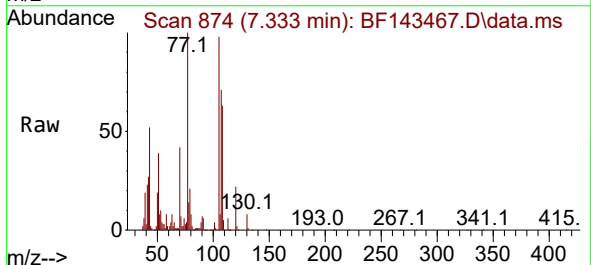


Tgt Ion:136 Resp: 568353

Ion	Ratio	Lower	Upper
136	100		
137	10.9	8.8	13.2
54	9.4	7.8	11.8
68	6.4	5.2	7.8

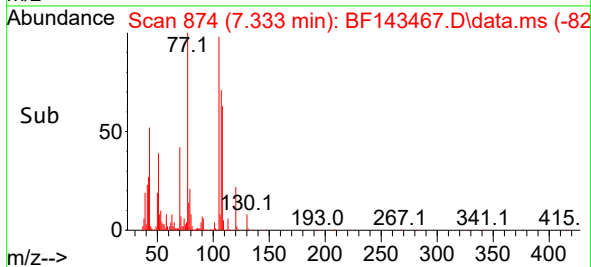
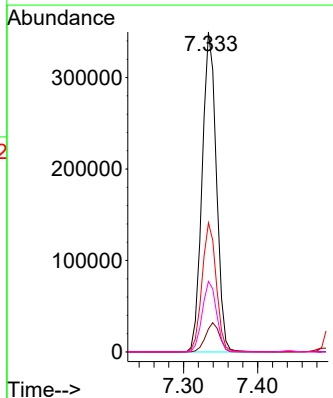


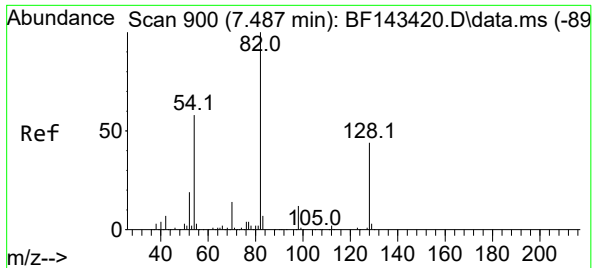
#22
 Acetophenone
 Concen: 38.343 ng
 RT: 7.333 min Scan# 874
 Delta R.T. -0.000 min
 Lab File: BF143467.D
 Acq: 19 Aug 2025 21:21



Tgt Ion:105 Resp: 468552

Ion	Ratio	Lower	Upper
105	100		
71	7.2	7.0	10.4
51	40.4	32.7	49.1
120	22.1	17.8	26.8



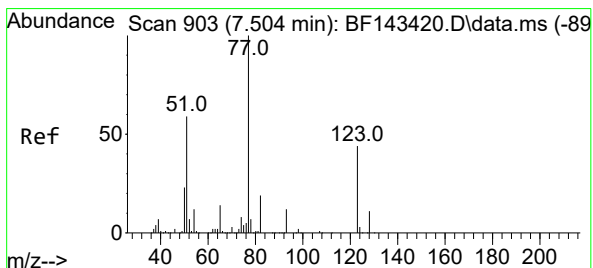
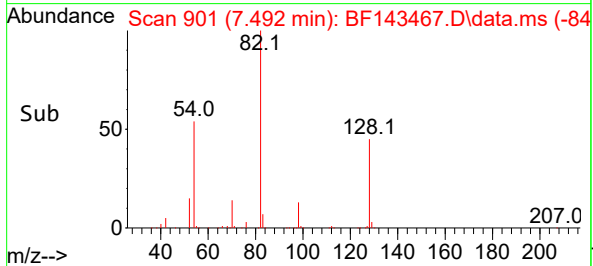
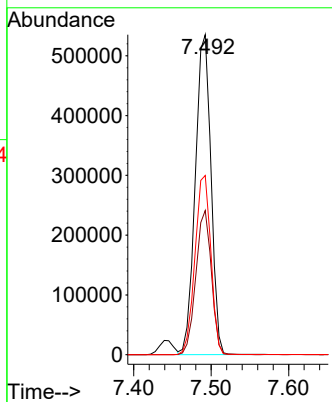
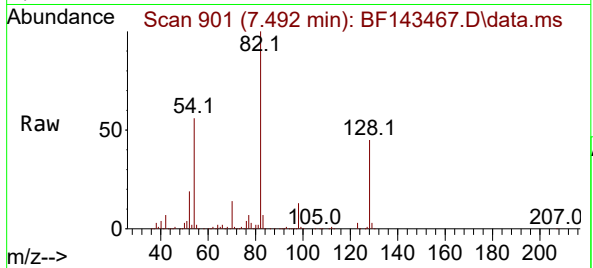


#23
 Nitrobenzene-d5
 Concen: 78.419 ng
 RT: 7.492 min Scan# 901
 Delta R.T. 0.006 min
 Lab File: BF143467.D
 Acq: 19 Aug 2025 21:21

Instrument :
 BNA_F
 ClientSampleId :
 SSTDCCC040

Tgt Ion: 82 Resp: 751102

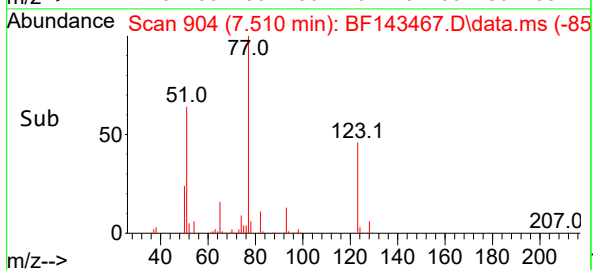
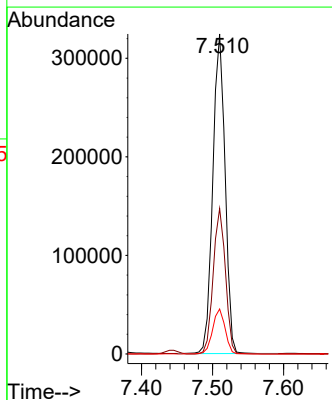
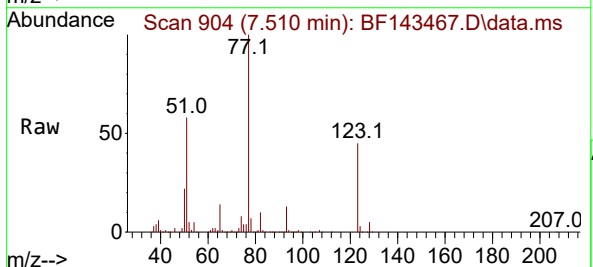
Ion	Ratio	Lower	Upper
82	100		
128	45.1	34.6	52.0
54	56.0	46.0	69.0

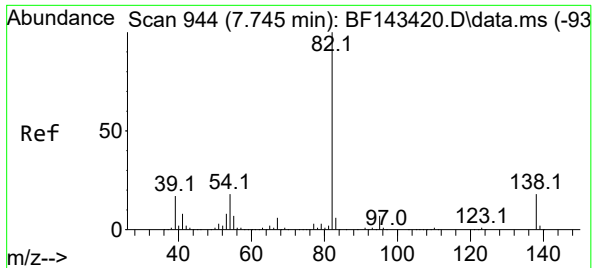


#24
 Nitrobenzene
 Concen: 38.856 ng
 RT: 7.510 min Scan# 904
 Delta R.T. 0.006 min
 Lab File: BF143467.D
 Acq: 19 Aug 2025 21:21

Tgt Ion: 77 Resp: 388970

Ion	Ratio	Lower	Upper
77	100		
123	45.5	35.4	53.0
65	14.1	11.2	16.8

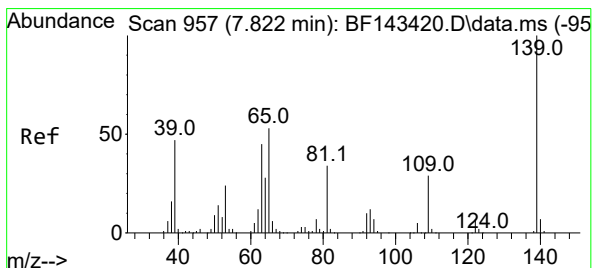
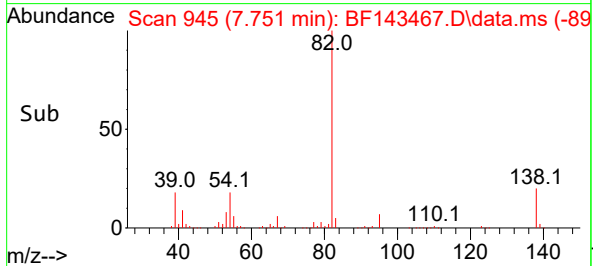
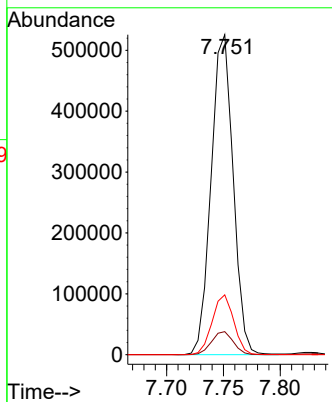
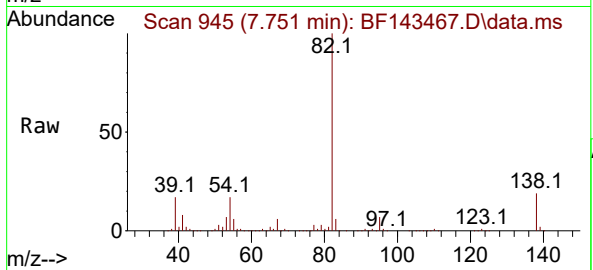




#25
 Isophorone
 Concen: 38.677 ng
 RT: 7.751 min Scan# 945
 Delta R.T. 0.006 min
 Lab File: BF143467.D
 Acq: 19 Aug 2025 21:21

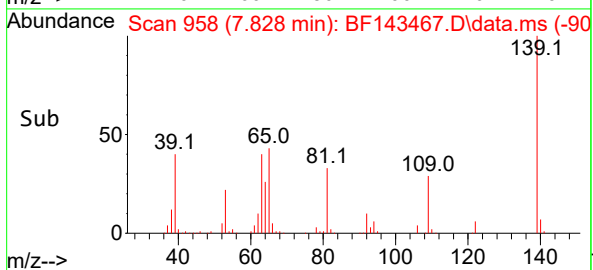
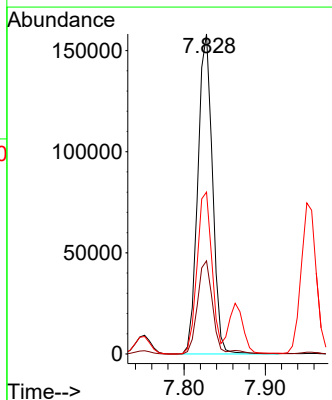
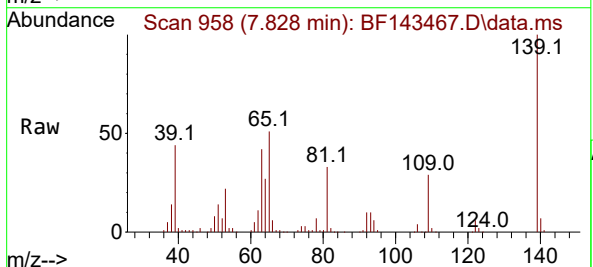
Instrument : BNA_F
 ClientSampleId : SSTDCCC040

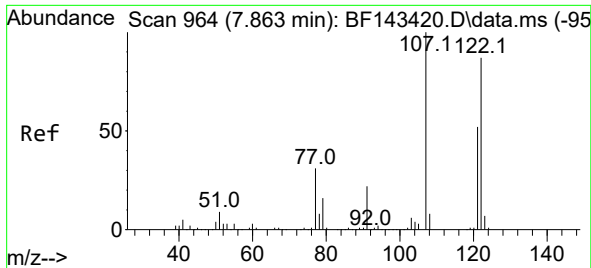
Tgt Ion: 82 Resp: 709013
 Ion Ratio Lower Upper
 82 100
 95 7.2 5.6 8.4
 138 18.7 14.3 21.5



#26
 2-Nitrophenol
 Concen: 42.835 ng
 RT: 7.828 min Scan# 958
 Delta R.T. 0.006 min
 Lab File: BF143467.D
 Acq: 19 Aug 2025 21:21

Tgt Ion: 139 Resp: 198785
 Ion Ratio Lower Upper
 139 100
 109 29.1 23.0 34.4
 65 50.6 42.5 63.7





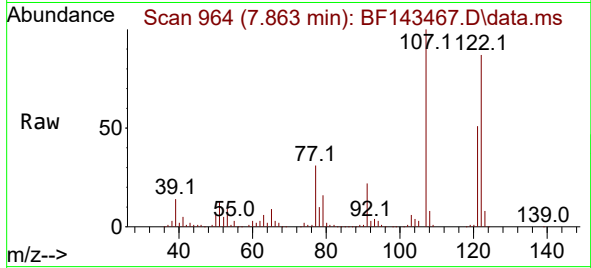
#27
 2,4-Dimethylphenol
 Concen: 37.936 ng
 RT: 7.863 min Scan# 90
 Delta R.T. -0.000 min
 Lab File: BF143467.D
 Acq: 19 Aug 2025 21:21

Instrument :

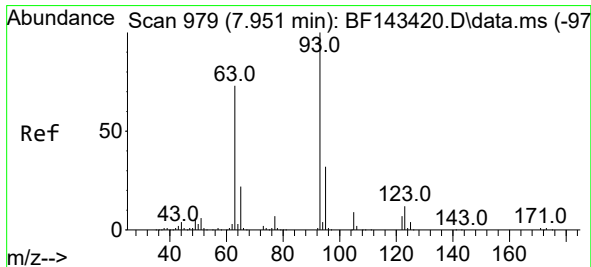
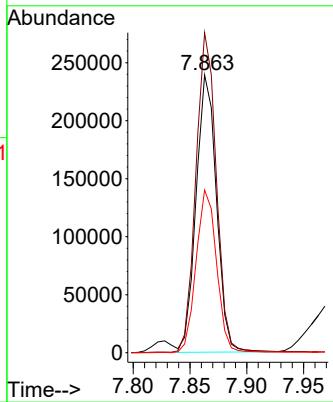
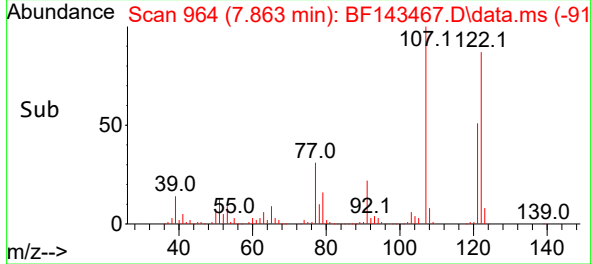
BNA_F

Client SampleId :

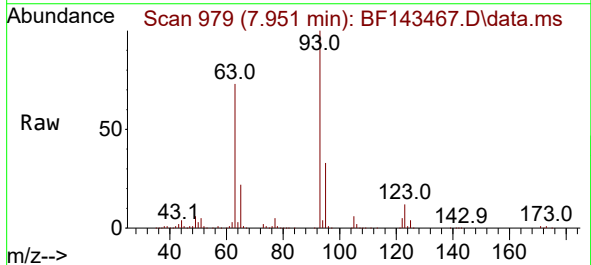
SSTDCCC040



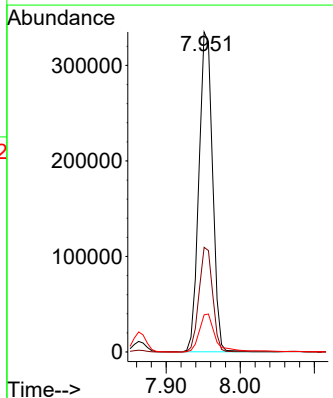
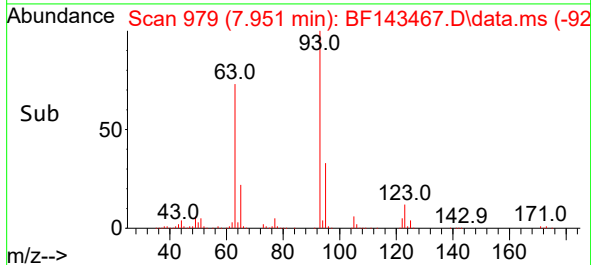
Tgt Ion:122 Resp: 297656
 Ion Ratio Lower Upper
 122 100
 107 115.2 90.4 135.6
 121 58.6 46.7 70.1

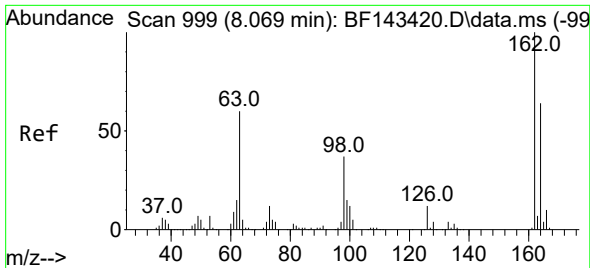


#28
 bis(2-Chloroethoxy)methane
 Concen: 38.041 ng
 RT: 7.951 min Scan# 979
 Delta R.T. -0.000 min
 Lab File: BF143467.D
 Acq: 19 Aug 2025 21:21



Tgt Ion: 93 Resp: 428630
 Ion Ratio Lower Upper
 93 100
 95 32.7 26.0 39.0
 123 11.6 9.5 14.3



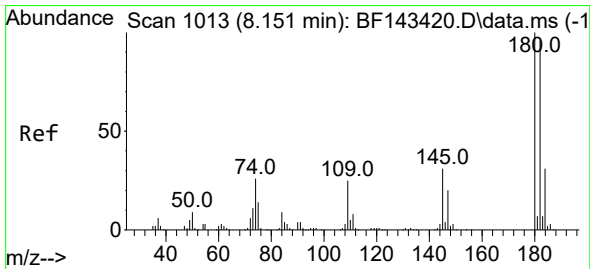
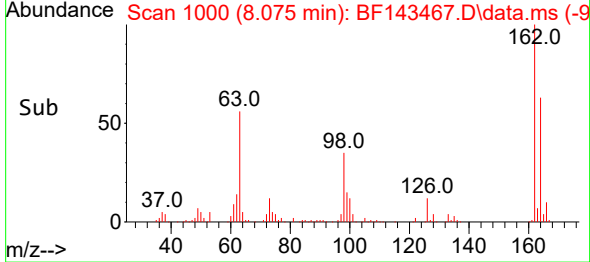
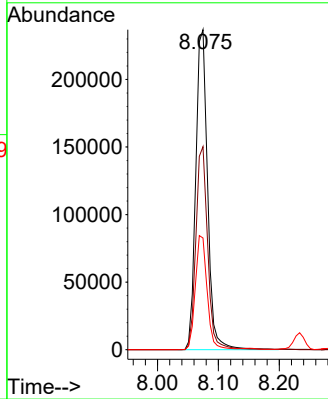
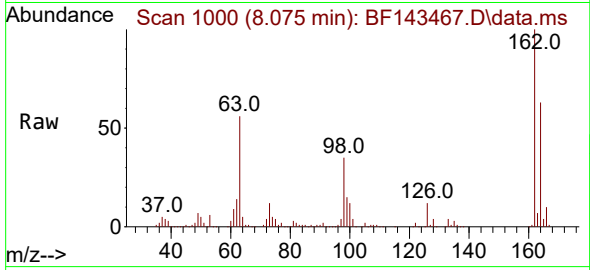


#29
 2,4-Dichlorophenol
 Concen: 39.925 ng
 RT: 8.075 min Scan# 1000
 Delta R.T. 0.006 min
 Lab File: BF143467.D
 Acq: 19 Aug 2025 21:21

Instrument : BNA_F
 Client Sample Id : SSTDCCC040

Tgt Ion:162 Resp: 319341

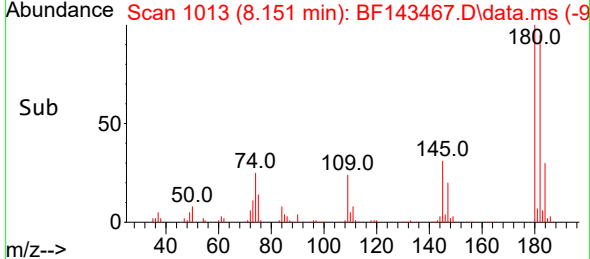
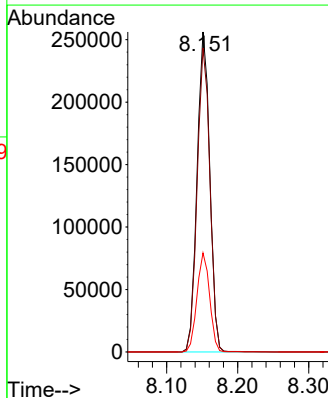
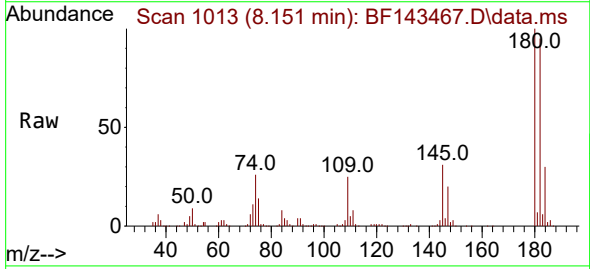
Ion	Ratio	Lower	Upper
162	100		
164	63.5	44.3	84.3
98	34.9	16.9	56.9

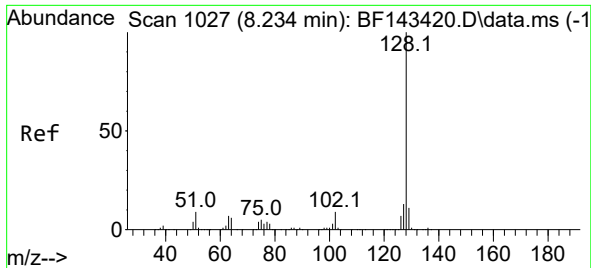


#30
 1,2,4-Trichlorobenzene
 Concen: 39.033 ng
 RT: 8.151 min Scan# 1013
 Delta R.T. -0.000 min
 Lab File: BF143467.D
 Acq: 19 Aug 2025 21:21

Tgt Ion:180 Resp: 319896

Ion	Ratio	Lower	Upper
180	100		
182	95.0	76.7	115.1
145	31.0	24.5	36.7

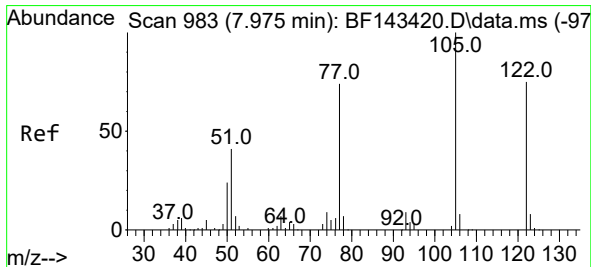
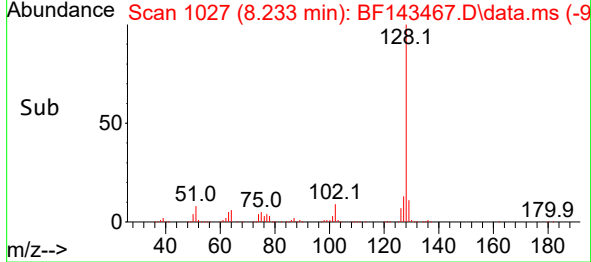
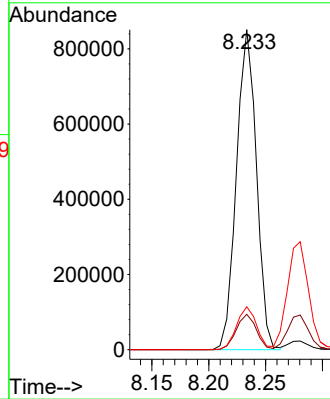
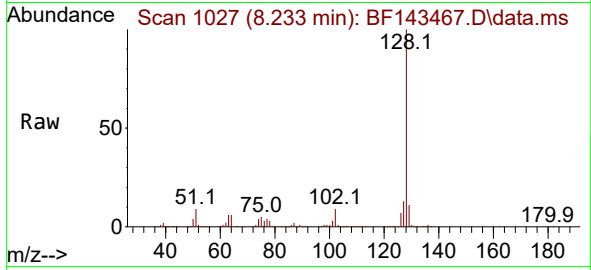




#31
 Naphthalene
 Concen: 38.574 ng
 RT: 8.233 min Scan# 1027
 Delta R.T. -0.000 min
 Lab File: BF143467.D
 Acq: 19 Aug 2025 21:21

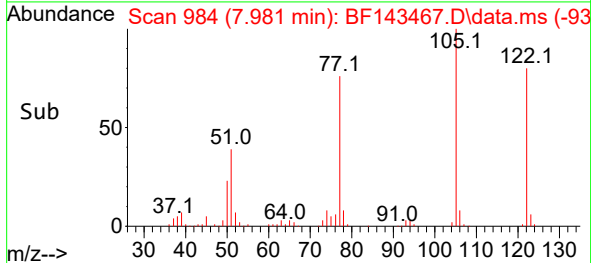
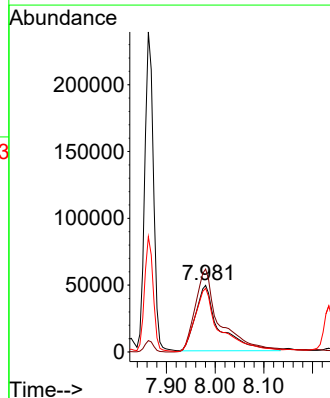
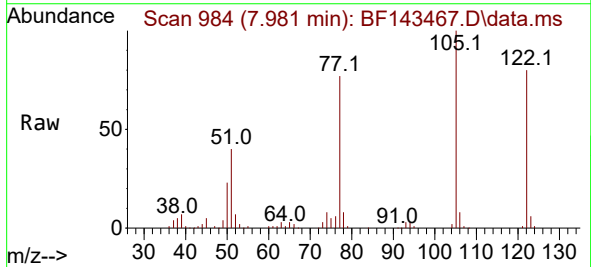
Instrument : BNA_F
 ClientSampleId : SSTDCCC040

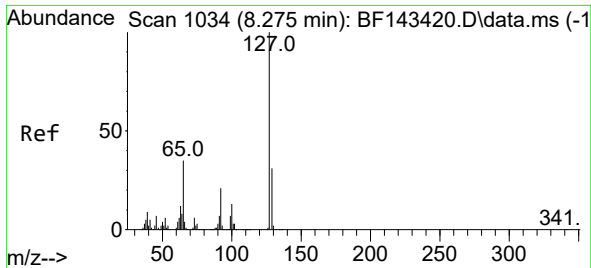
Tgt Ion:128 Resp: 1040844
 Ion Ratio Lower Upper
 128 100
 129 11.1 8.9 13.3
 127 13.4 10.6 16.0



#32
 Benzoic acid
 Concen: 40.799 ng
 RT: 7.981 min Scan# 984
 Delta R.T. 0.006 min
 Lab File: BF143467.D
 Acq: 19 Aug 2025 21:21

Tgt Ion:122 Resp: 166490
 Ion Ratio Lower Upper
 122 100
 105 124.4 108.4 148.4
 77 95.6 75.9 115.9





#33
 4-Chloroaniline
 Concen: 38.858 ng
 RT: 8.281 min Scan# 1035
 Delta R.T. 0.006 min
 Lab File: BF143467.D
 Acq: 19 Aug 2025 21:21

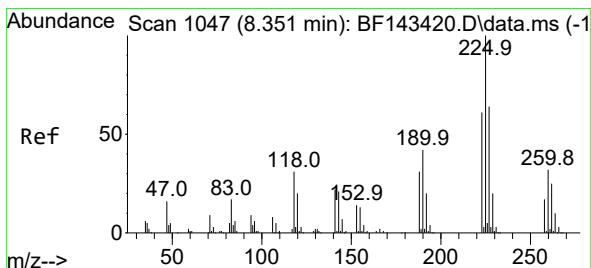
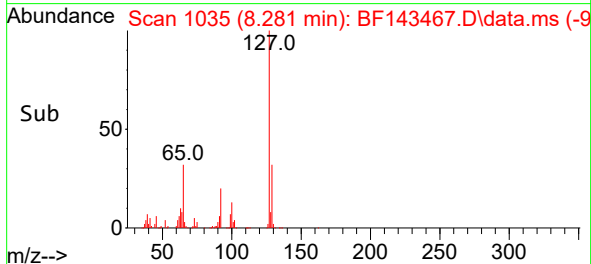
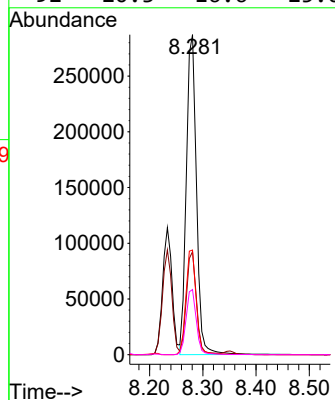
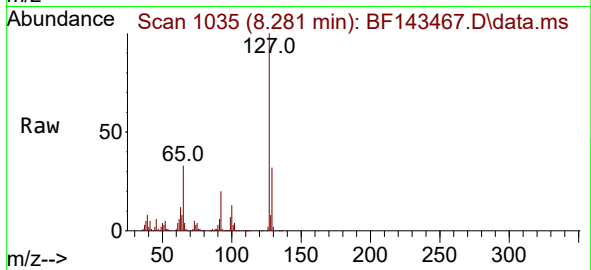
Instrument :

BNA_F

ClientSampleId :

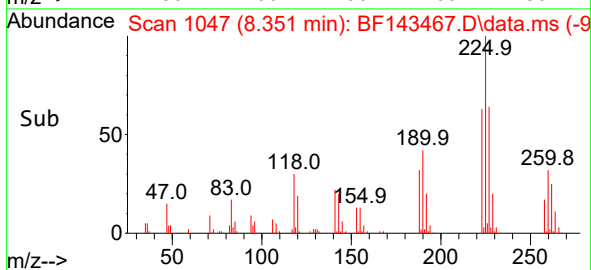
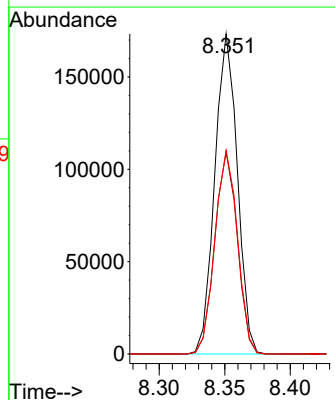
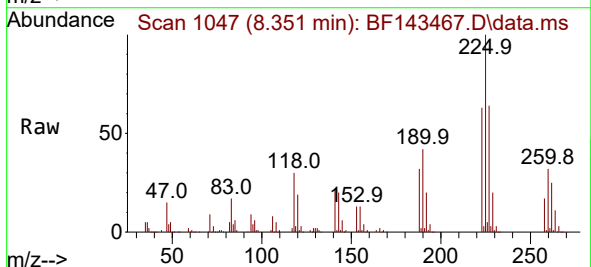
SSTDCCC040

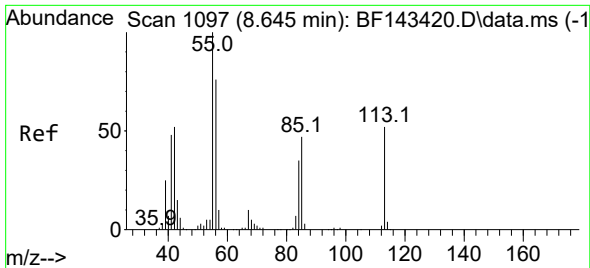
Tgt Ion:127 Resp: 378466
 Ion Ratio Lower Upper
 127 100
 129 32.2 25.8 38.8
 65 32.7 27.2 40.8
 92 20.3 16.6 25.0



#34
 Hexachlorobutadiene
 Concen: 39.606 ng
 RT: 8.351 min Scan# 1047
 Delta R.T. -0.000 min
 Lab File: BF143467.D
 Acq: 19 Aug 2025 21:21

Tgt Ion:225 Resp: 206983
 Ion Ratio Lower Upper
 225 100
 223 63.0 49.0 73.6
 227 63.6 51.1 76.7

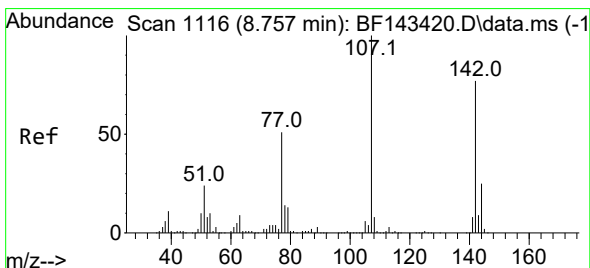
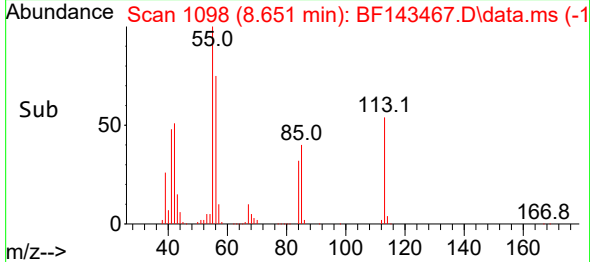
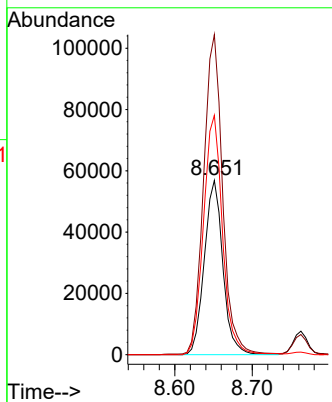
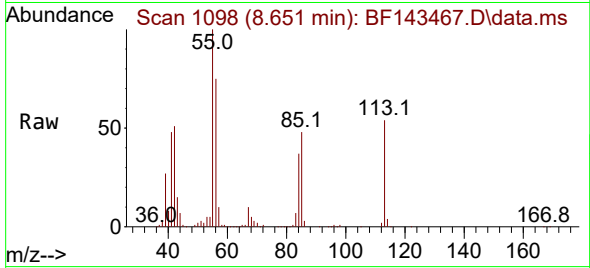




#35
 Caprolactam
 Concen: 41.047 ng
 RT: 8.651 min Scan# 1098
 Delta R.T. 0.006 min
 Lab File: BF143467.D
 Acq: 19 Aug 2025 21:21

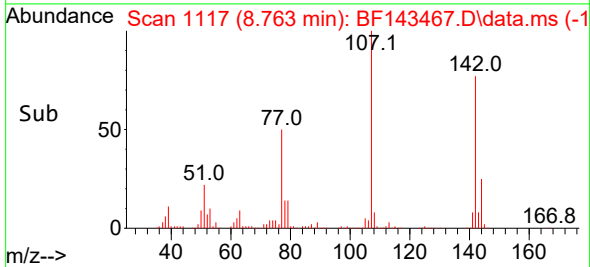
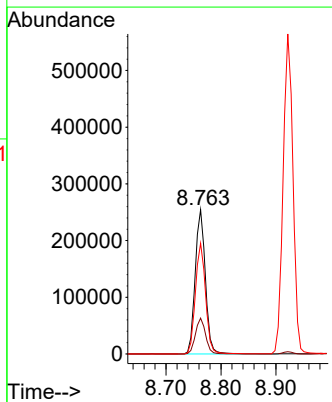
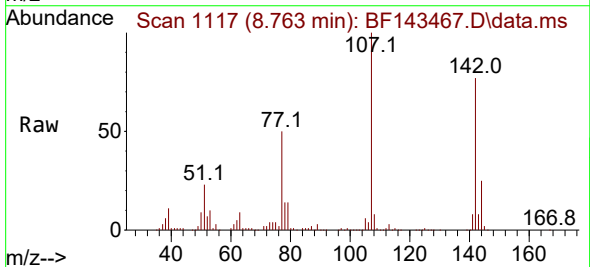
Instrument :
 BNA_F
 ClientSampleId :
 SSTDCCC040

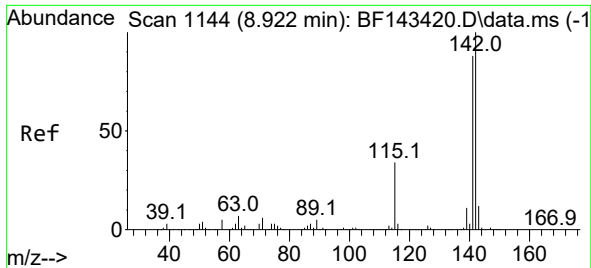
Tgt Ion:113 Resp: 94525
 Ion Ratio Lower Upper
 113 100
 55 183.6 174.7 214.7
 56 137.4 127.0 167.0



#36
 4-Chloro-3-methylphenol
 Concen: 39.893 ng
 RT: 8.763 min Scan# 1117
 Delta R.T. 0.006 min
 Lab File: BF143467.D
 Acq: 19 Aug 2025 21:21

Tgt Ion:107 Resp: 328624
 Ion Ratio Lower Upper
 107 100
 144 24.8 20.2 30.2
 142 76.8 62.0 93.0

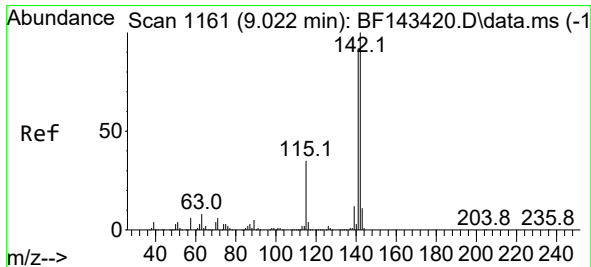
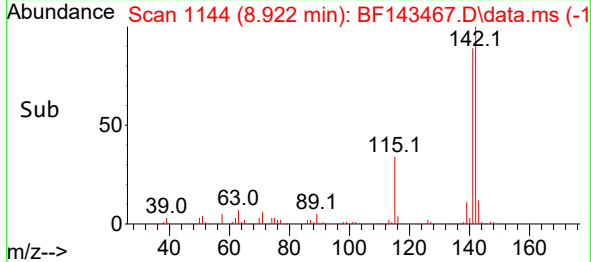
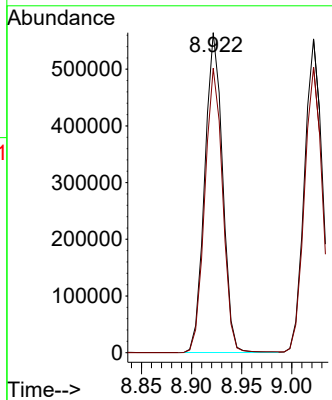
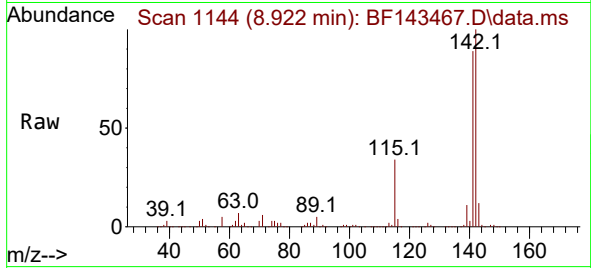




#37
 2-Methylnaphthalene
 Concen: 38.477 ng
 RT: 8.922 min Scan# 1144
 Delta R.T. -0.000 min
 Lab File: BF143467.D
 Acq: 19 Aug 2025 21:21

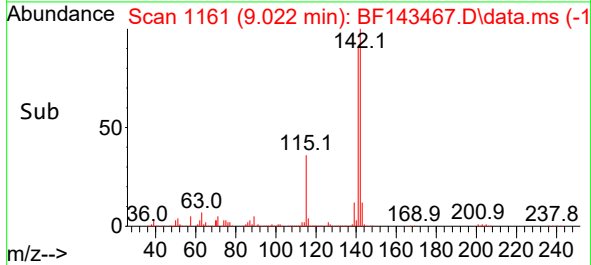
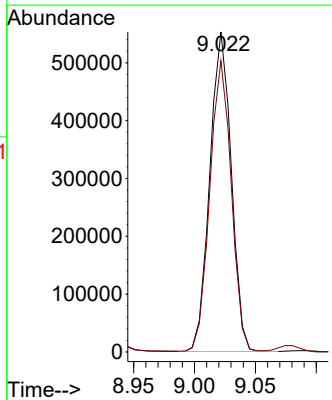
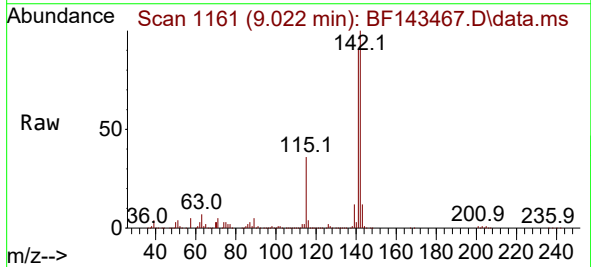
Instrument :
 BNA_F
 ClientSampleId :
 SSTDCCC040

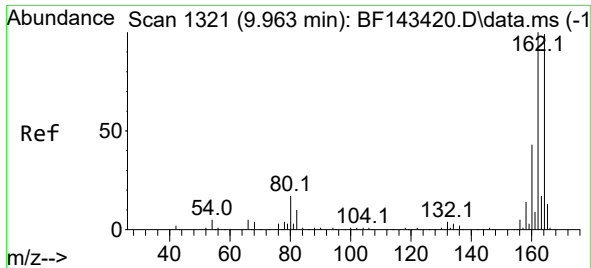
Tgt Ion:142 Resp: 699809
 Ion Ratio Lower Upper
 142 100
 141 88.9 70.3 105.5



#38
 1-Methylnaphthalene
 Concen: 38.808 ng
 RT: 9.022 min Scan# 1161
 Delta R.T. -0.000 min
 Lab File: BF143467.D
 Acq: 19 Aug 2025 21:21

Tgt Ion:142 Resp: 676261
 Ion Ratio Lower Upper
 142 100
 141 91.0 73.8 110.6





#39
 Acenaphthene-d10
 Concen: 20.000 ng
 RT: 9.963 min Scan# 111
 Delta R.T. -0.000 min
 Lab File: BF143467.D
 Acq: 19 Aug 2025 21:21

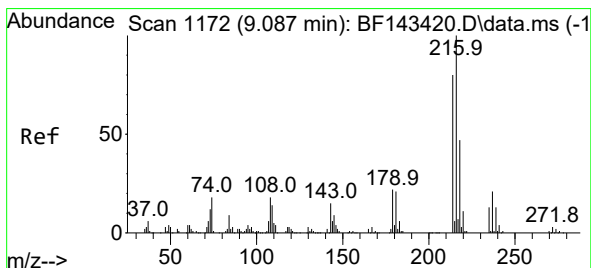
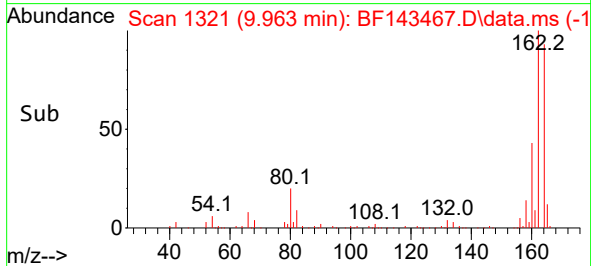
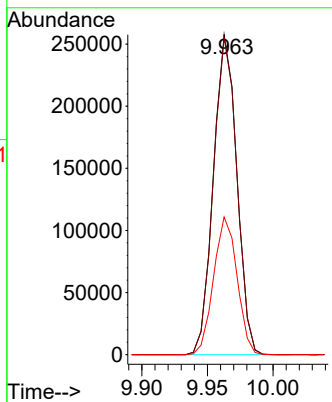
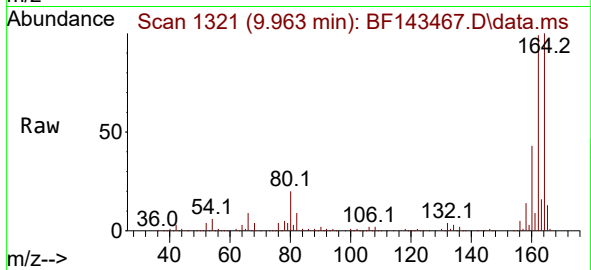
Instrument :

BNA_F

Client SampleId :

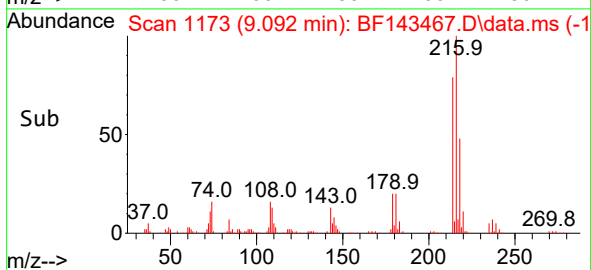
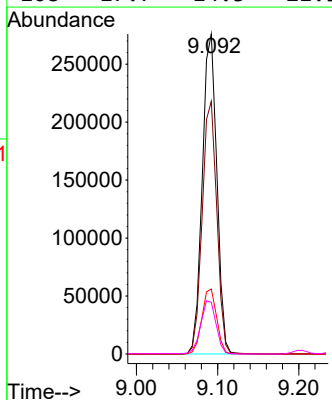
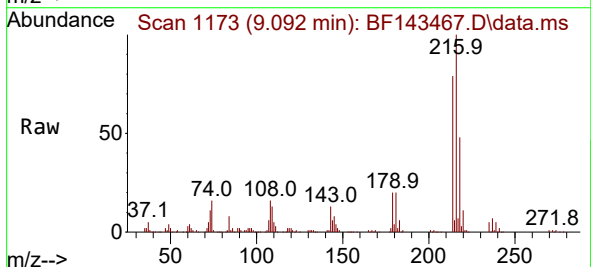
SSTDCCC040

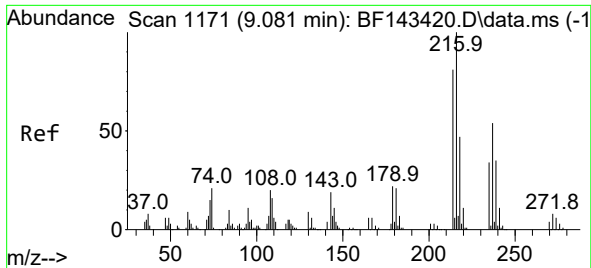
Tgt Ion:164 Resp: 319216
 Ion Ratio Lower Upper
 164 100
 162 99.1 80.6 121.0
 160 43.0 34.6 51.8



#40
 1,2,4,5-Tetrachlorobenzene
 Concen: 38.484 ng
 RT: 9.092 min Scan# 1173
 Delta R.T. 0.006 min
 Lab File: BF143467.D
 Acq: 19 Aug 2025 21:21

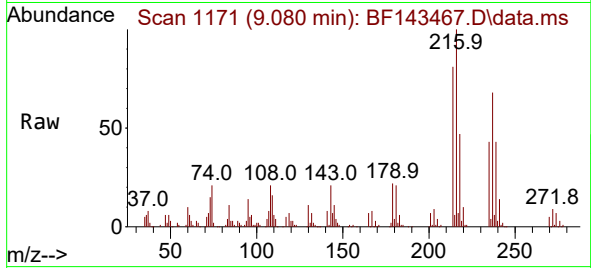
Tgt Ion:216 Resp: 342606
 Ion Ratio Lower Upper
 216 100
 214 79.2 63.7 95.5
 179 20.6 17.0 25.4
 108 17.7 14.3 21.5



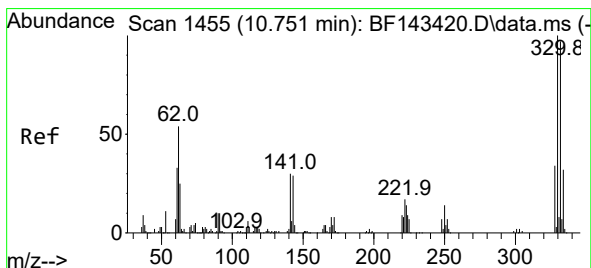
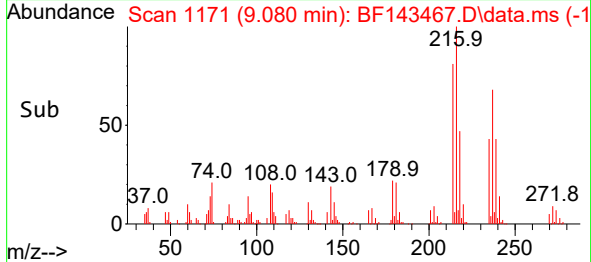
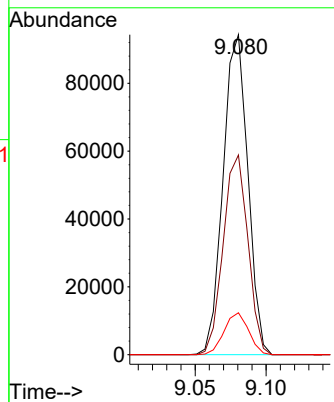


#41
 Hexachlorocyclopentadiene
 Concen: 38.850 ng
 RT: 9.080 min Scan# 1171
 Delta R.T. -0.001 min
 Lab File: BF143467.D
 Acq: 19 Aug 2025 21:21

Instrument : BNA_F
 ClientSampleId : SSTDCCC040

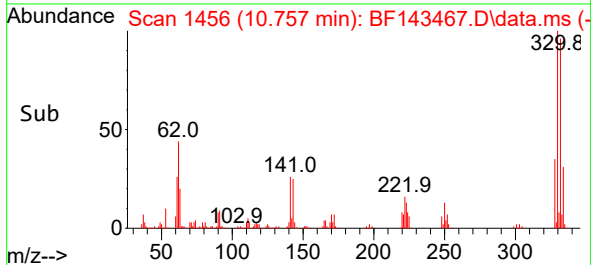
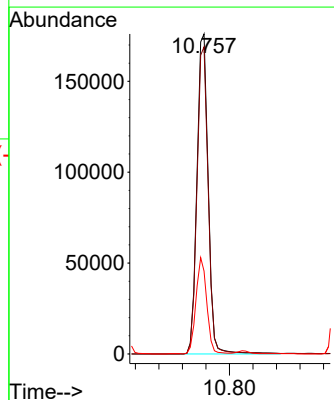
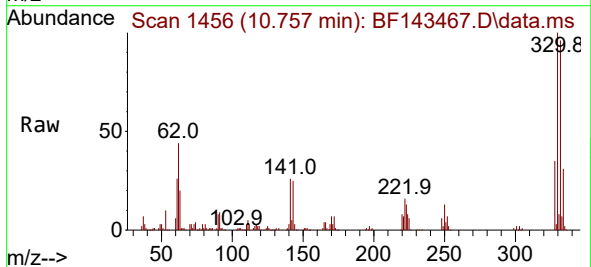


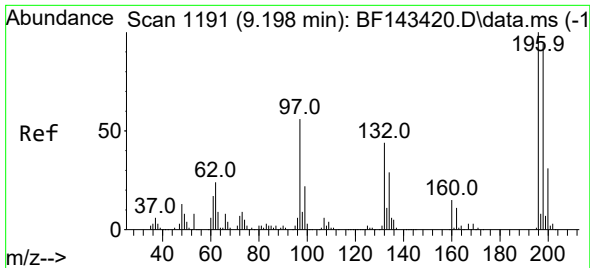
Tgt Ion:237 Resp: 114131
 Ion Ratio Lower Upper
 237 100
 235 62.4 41.6 81.6
 272 13.1 0.0 33.8



#42
 2,4,6-Tribromophenol
 Concen: 82.423 ng
 RT: 10.757 min Scan# 1456
 Delta R.T. 0.006 min
 Lab File: BF143467.D
 Acq: 19 Aug 2025 21:21

Tgt Ion:330 Resp: 234186
 Ion Ratio Lower Upper
 330 100
 332 95.8 77.4 116.2
 141 28.9 24.1 36.1

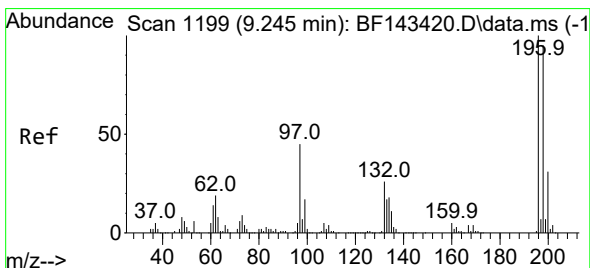
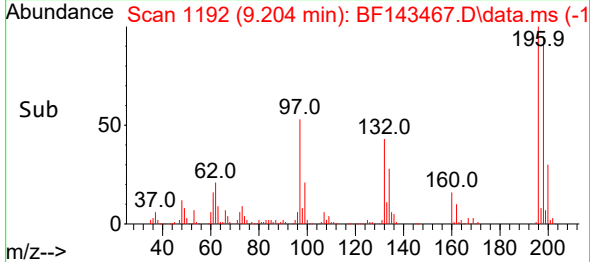
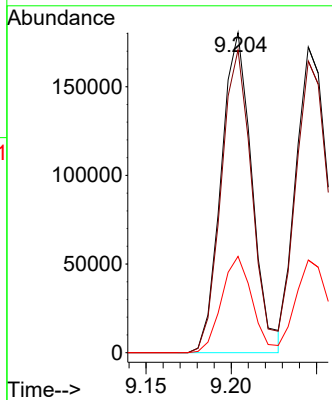
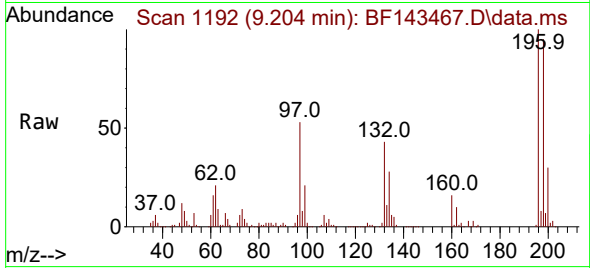




#43
 2,4,6-Trichlorophenol
 Concen: 40.862 ng
 RT: 9.204 min Scan# 1192
 Delta R.T. 0.006 min
 Lab File: BF143467.D
 Acq: 19 Aug 2025 21:21

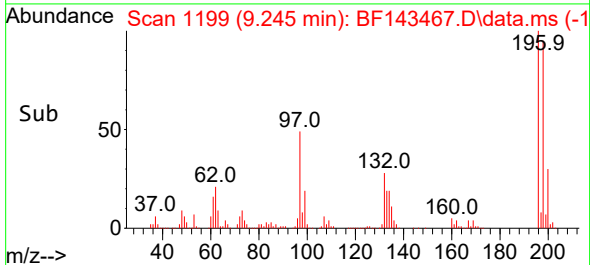
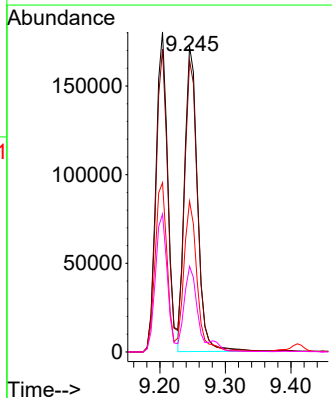
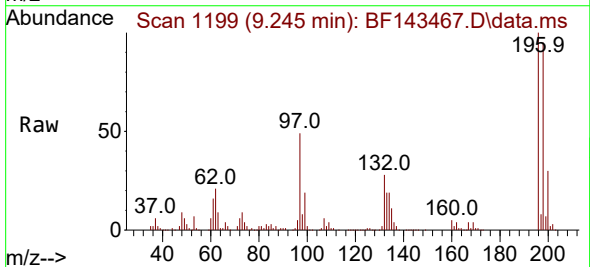
Instrument :
 BNA_F
 ClientSampleId :
 SSTDCCC040

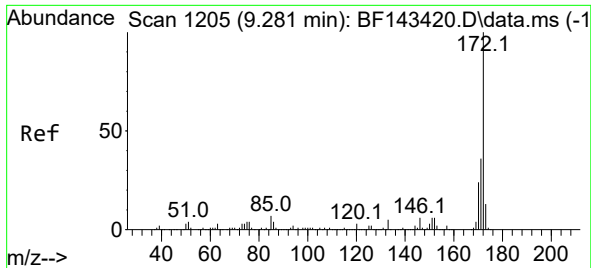
Tgt Ion:196 Resp: 226922
 Ion Ratio Lower Upper
 196 100
 198 94.6 75.4 113.2
 200 30.1 24.7 37.1



#44
 2,4,5-Trichlorophenol
 Concen: 39.571 ng
 RT: 9.245 min Scan# 1199
 Delta R.T. -0.000 min
 Lab File: BF143467.D
 Acq: 19 Aug 2025 21:21

Tgt Ion:196 Resp: 235557
 Ion Ratio Lower Upper
 196 100
 198 95.4 76.2 114.4
 97 49.3 36.6 55.0
 132 28.0 21.5 32.3





#45
 2-Fluorobiphenyl
 Concen: 74.403 ng
 RT: 9.280 min Scan# 11
 Delta R.T. -0.000 min
 Lab File: BF143467.D
 Acq: 19 Aug 2025 21:21

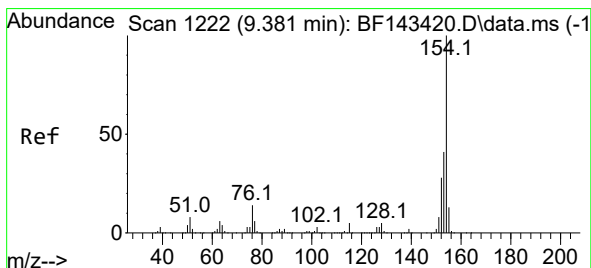
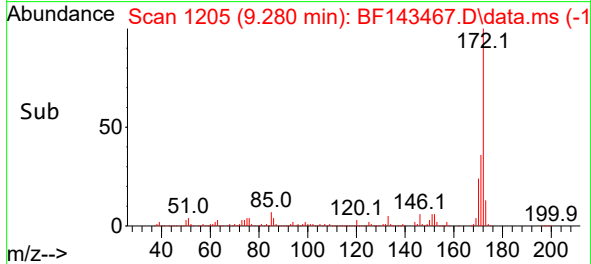
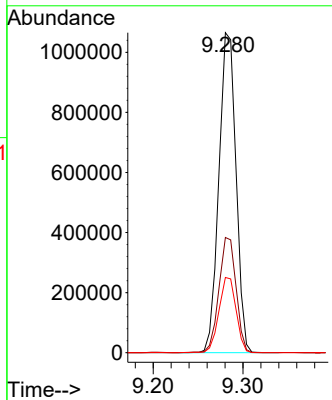
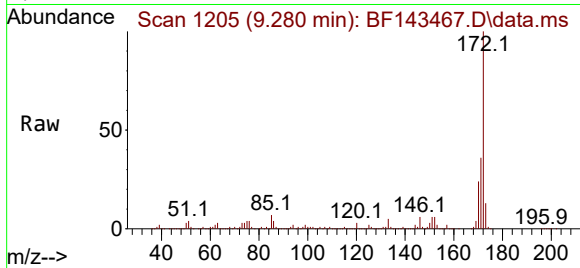
Instrument :

BNA_F

ClientSampleId :

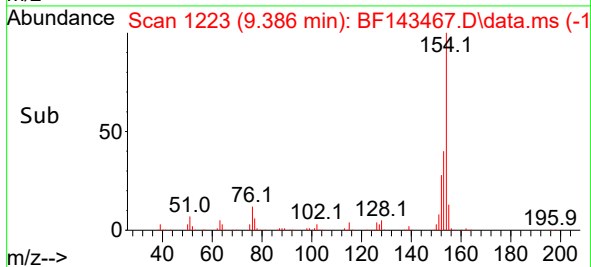
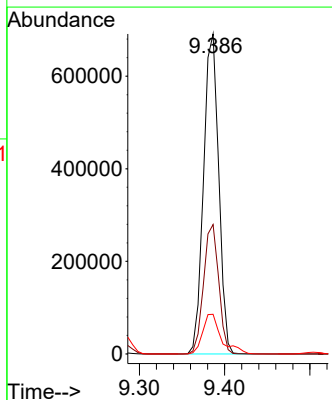
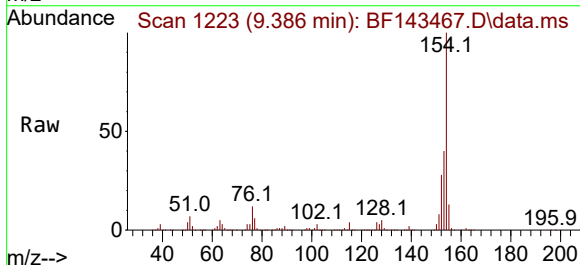
SSTDCCC040

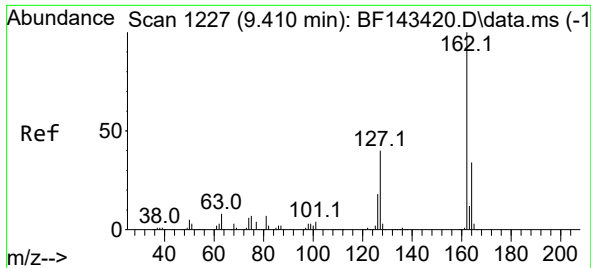
Tgt Ion:172 Resp: 1412061
 Ion Ratio Lower Upper
 172 100
 171 36.0 28.7 43.1
 170 23.5 19.0 28.6



#46
 1,1'-Biphenyl
 Concen: 38.069 ng
 RT: 9.386 min Scan# 1223
 Delta R.T. 0.006 min
 Lab File: BF143467.D
 Acq: 19 Aug 2025 21:21

Tgt Ion:154 Resp: 853833
 Ion Ratio Lower Upper
 154 100
 153 40.5 20.6 60.6
 76 12.4 0.0 33.8





#47
 2-Chloronaphthalene
 Concen: 37.867 ng
 RT: 9.410 min Scan# 11
 Delta R.T. -0.000 min
 Lab File: BF143467.D
 Acq: 19 Aug 2025 21:21

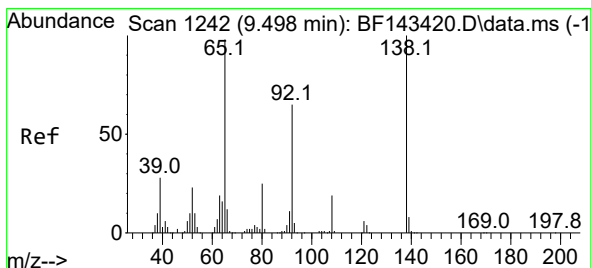
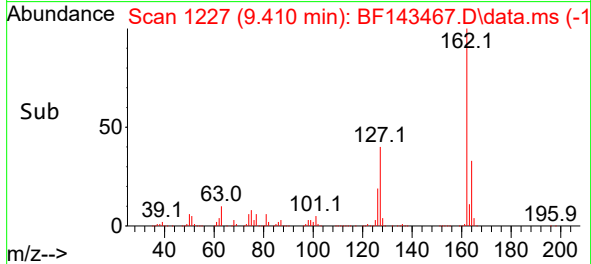
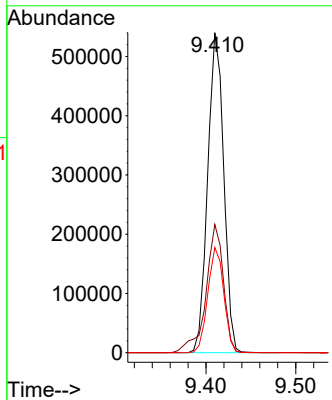
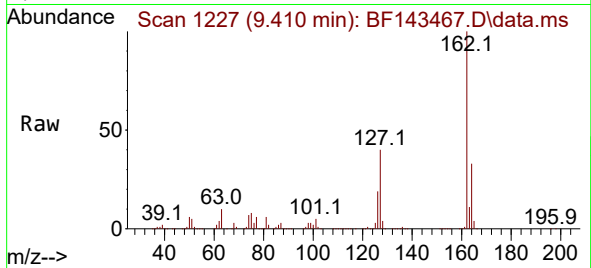
Instrument :

BNA_F

ClientSampleId :

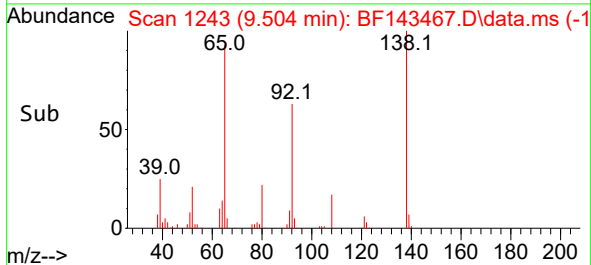
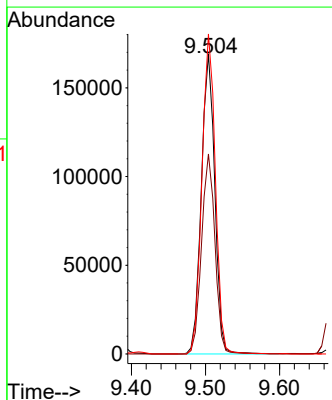
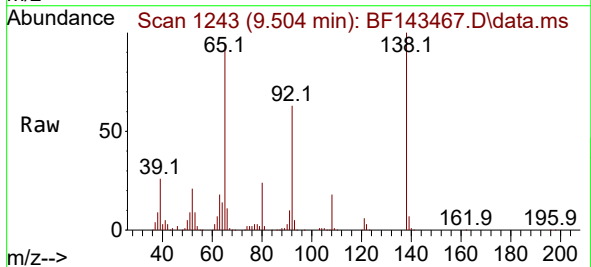
SSTDCCC040

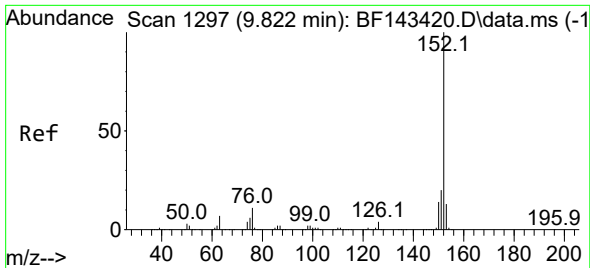
Tgt Ion:162 Resp: 670409
 Ion Ratio Lower Upper
 162 100
 127 40.0 32.3 48.5
 164 32.9 26.9 40.3



#48
 2-Nitroaniline
 Concen: 40.537 ng
 RT: 9.504 min Scan# 1243
 Delta R.T. 0.006 min
 Lab File: BF143467.D
 Acq: 19 Aug 2025 21:21

Tgt Ion: 65 Resp: 213574
 Ion Ratio Lower Upper
 65 100
 92 66.6 52.9 79.3
 138 106.6 81.3 121.9



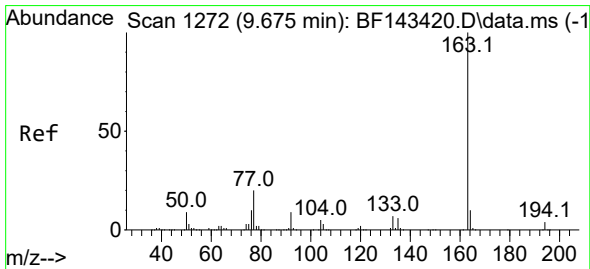
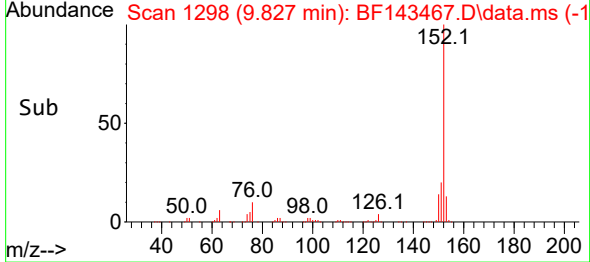
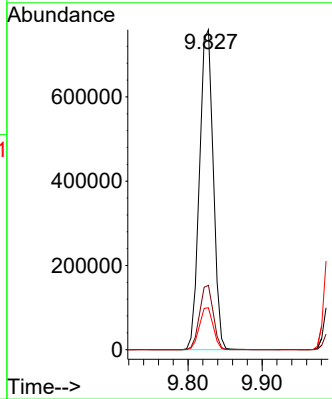
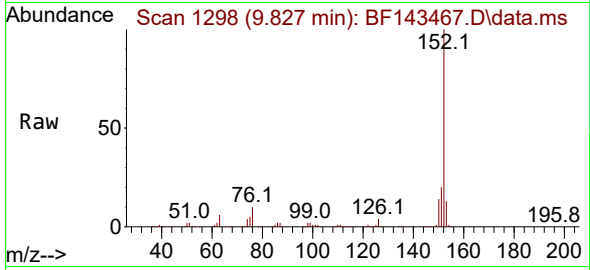


#49
 Acenaphthylene
 Concen: 38.299 ng
 RT: 9.827 min Scan# 1298
 Delta R.T. 0.006 min
 Lab File: BF143467.D
 Acq: 19 Aug 2025 21:21

Instrument : BNA_F
 ClientSampleId : SSTDCCC040

Tgt Ion:152 Resp: 978991

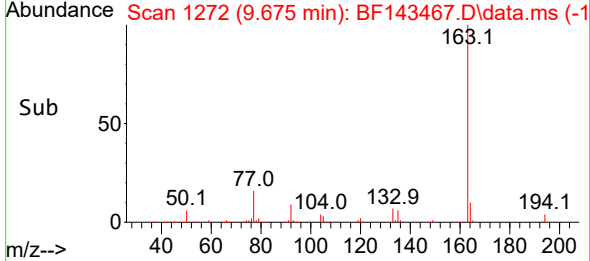
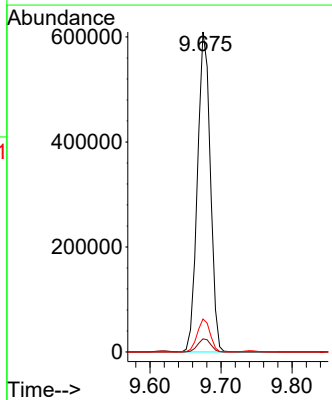
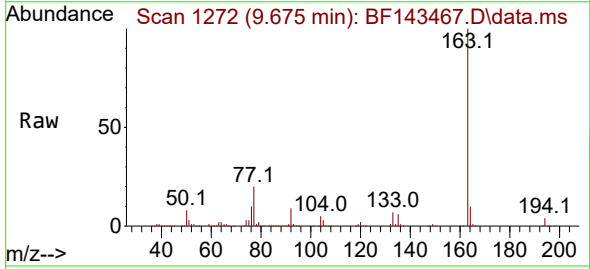
Ion	Ratio	Lower	Upper
152	100		
151	20.1	16.0	24.0
153	13.1	10.8	16.2

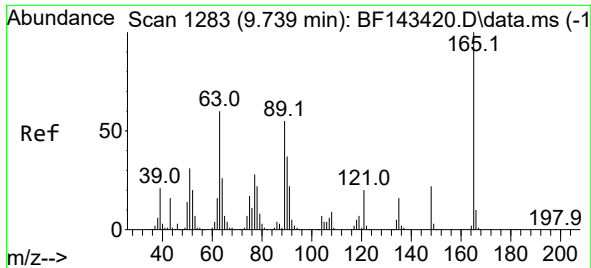


#50
 Dimethylphthalate
 Concen: 38.666 ng
 RT: 9.675 min Scan# 1272
 Delta R.T. -0.000 min
 Lab File: BF143467.D
 Acq: 19 Aug 2025 21:21

Tgt Ion:163 Resp: 769511

Ion	Ratio	Lower	Upper
163	100		
194	4.1	3.4	5.0
164	10.3	8.2	12.4



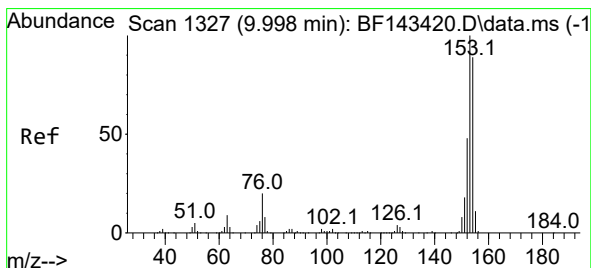
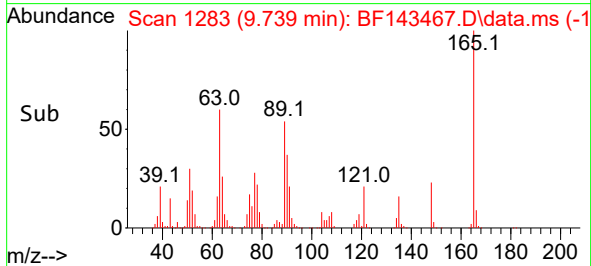
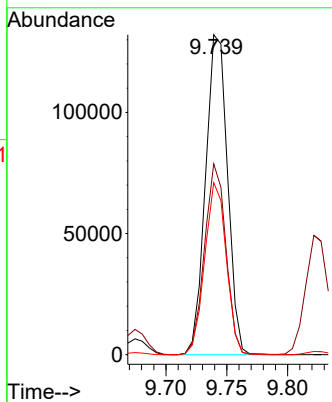
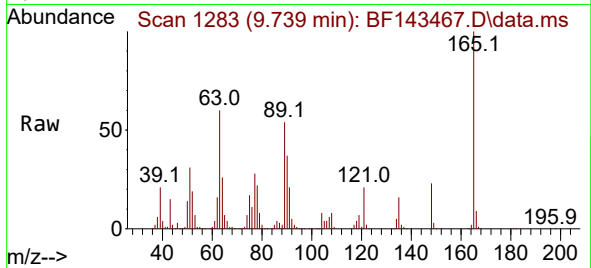


#51
 2,6-Dinitrotoluene
 Concen: 42.366 ng
 RT: 9.739 min Scan# 11
 Delta R.T. -0.000 min
 Lab File: BF143467.D
 Acq: 19 Aug 2025 21:21

Instrument :
 BNA_F
 ClientSampleId :
 SSTDCCC040

Tgt Ion:165 Resp: 166212

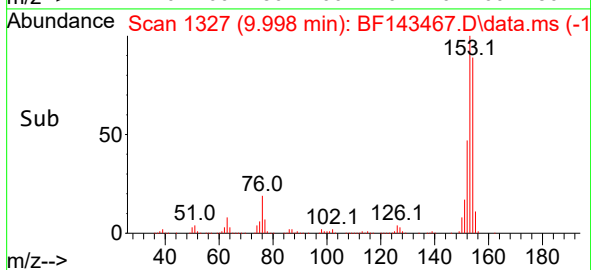
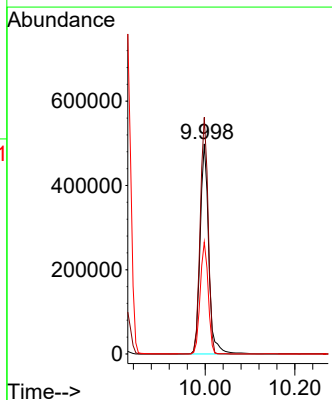
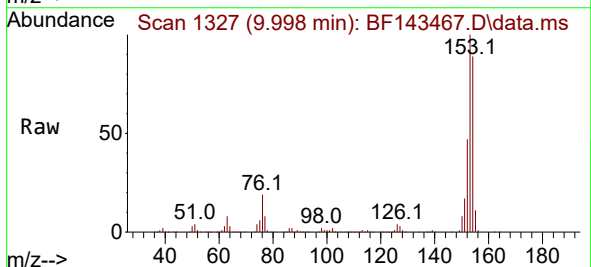
Ion	Ratio	Lower	Upper
165	100		
63	59.6	48.2	72.2
89	53.7	44.2	66.2

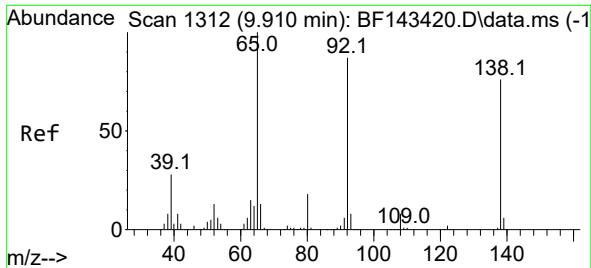


#52
 Acenaphthene
 Concen: 38.327 ng
 RT: 9.998 min Scan# 1327
 Delta R.T. -0.000 min
 Lab File: BF143467.D
 Acq: 19 Aug 2025 21:21

Tgt Ion:154 Resp: 658924

Ion	Ratio	Lower	Upper
154	100		
153	112.7	89.5	134.3
152	53.2	42.6	64.0

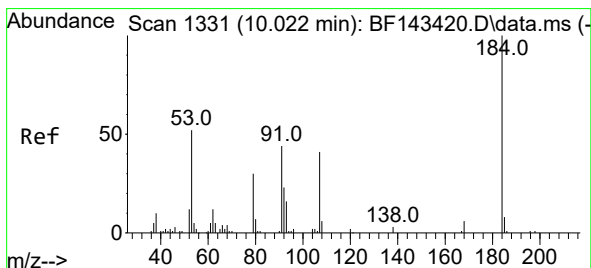
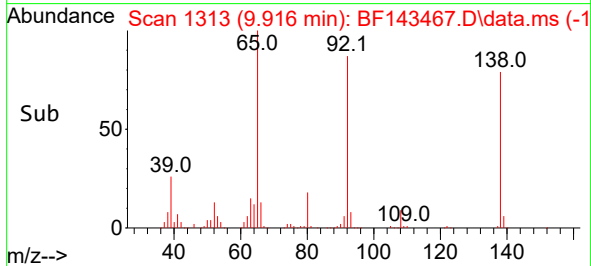
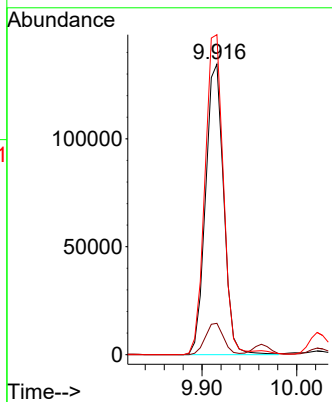
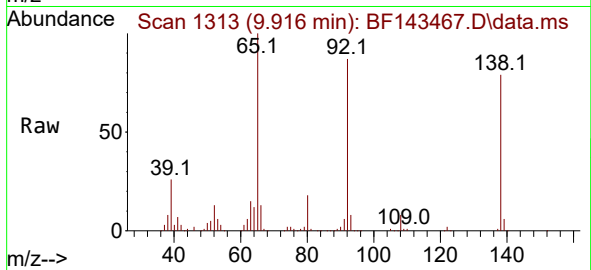




#53
 3-Nitroaniline
 Concen: 40.955 ng
 RT: 9.916 min Scan# 11
 Delta R.T. 0.006 min
 Lab File: BF143467.D
 Acq: 19 Aug 2025 21:21

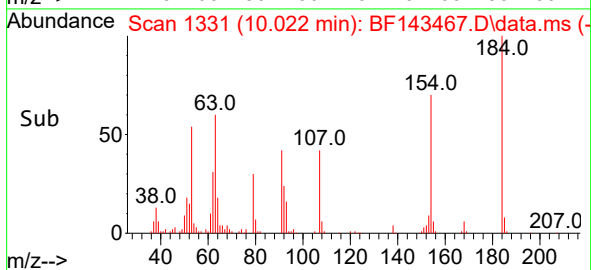
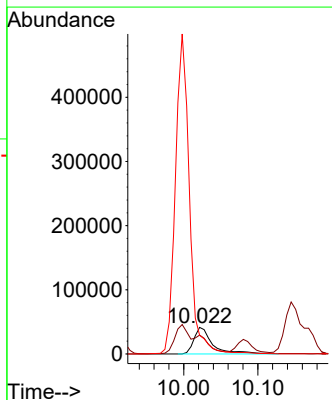
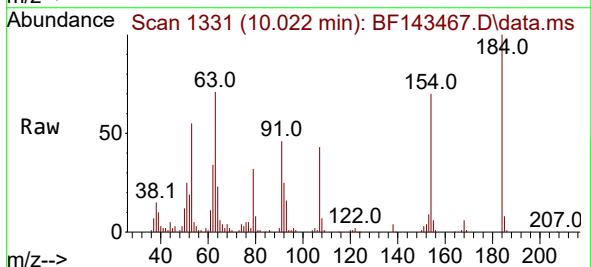
Instrument :
 BNA_F
 ClientSampleId :
 SSTDCCC040

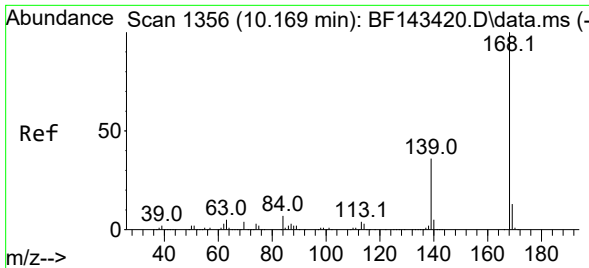
Tgt Ion:138 Resp: 178983
 Ion Ratio Lower Upper
 138 100
 108 10.8 8.7 13.1
 92 110.1 91.4 137.2



#54
 2,4-Dinitrophenol
 Concen: 42.672 ng
 RT: 10.022 min Scan# 1331
 Delta R.T. -0.000 min
 Lab File: BF143467.D
 Acq: 19 Aug 2025 21:21

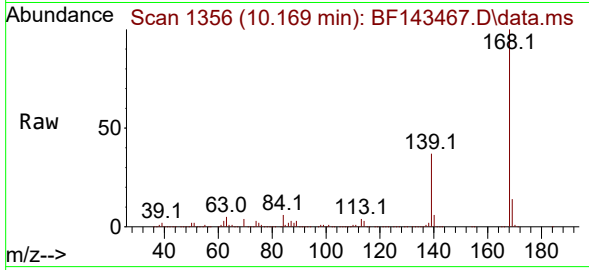
Tgt Ion:184 Resp: 72536
 Ion Ratio Lower Upper
 184 100
 63 71.2 53.2 79.8
 154 70.1 51.3 76.9



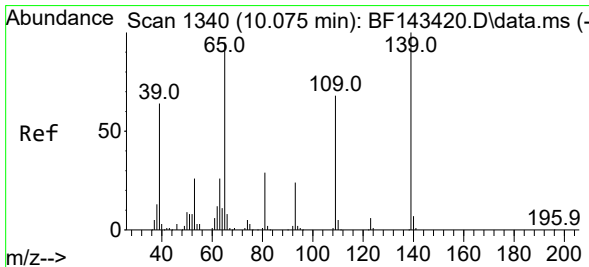
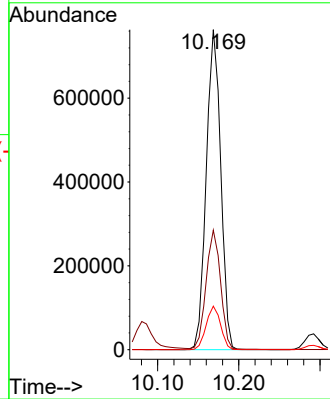
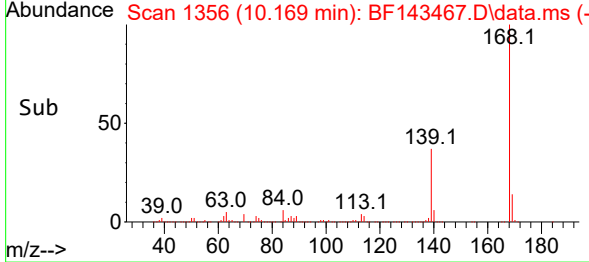


#55
 Dibenzenofuran
 Concen: 37.961 ng
 RT: 10.169 min Scan# 11
 Delta R.T. -0.000 min
 Lab File: BF143467.D
 Acq: 19 Aug 2025 21:21

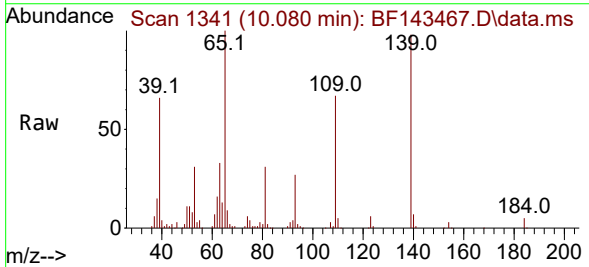
Instrument :
 BNA_F
 ClientSampleId :
 SSTDCCC040



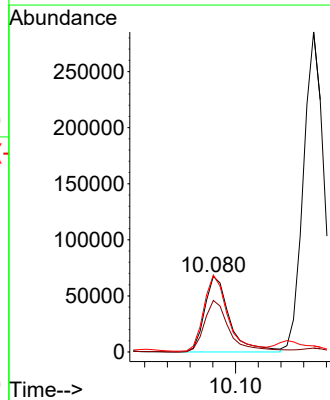
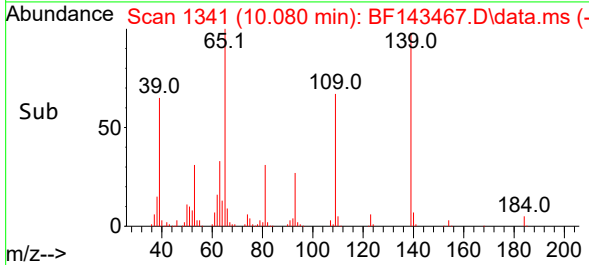
Tgt Ion:168 Resp: 941473
 Ion Ratio Lower Upper
 168 100
 139 37.4 29.3 43.9
 169 13.6 10.8 16.2

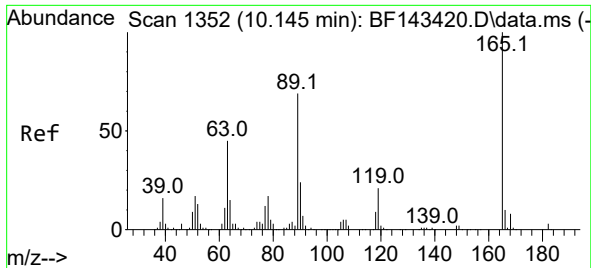


#56
 4-Nitrophenol
 Concen: 37.356 ng
 RT: 10.080 min Scan# 1341
 Delta R.T. 0.006 min
 Lab File: BF143467.D
 Acq: 19 Aug 2025 21:21



Tgt Ion:139 Resp: 102638
 Ion Ratio Lower Upper
 139 100
 109 68.2 47.7 87.7
 65 102.1 76.4 116.4



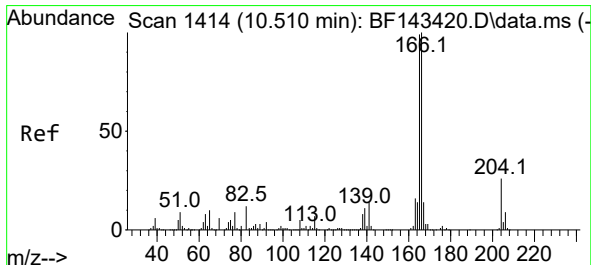
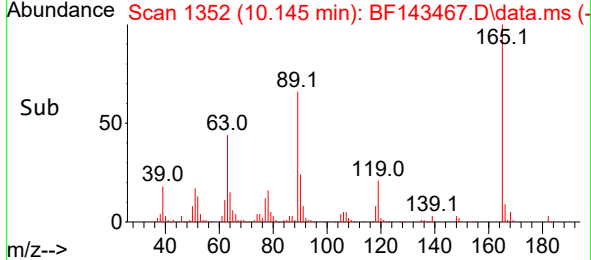
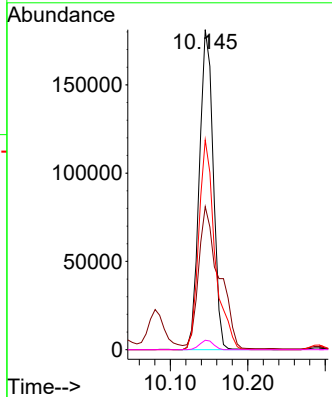
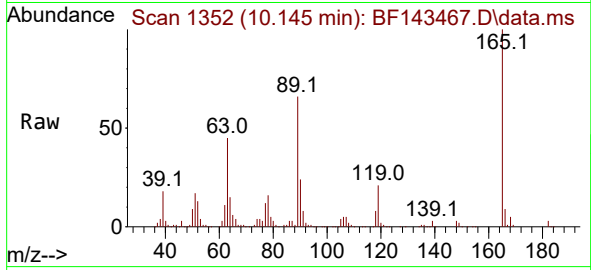


#57
 2,4-Dinitrotoluene
 Concen: 43.116 ng
 RT: 10.145 min Scan# 11
 Delta R.T. 0.000 min
 Lab File: BF143467.D
 Acq: 19 Aug 2025 21:21

Instrument : BNA_F
 ClientSampleId : SSTDCCC040

Tgt Ion:165 Resp: 225523

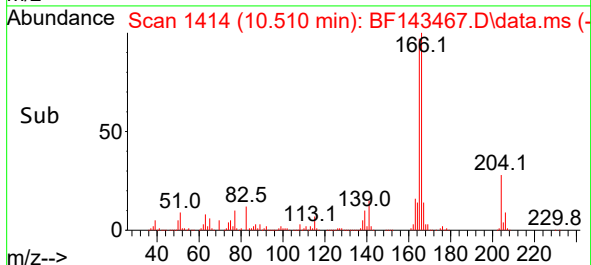
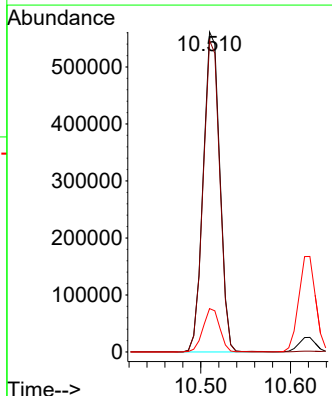
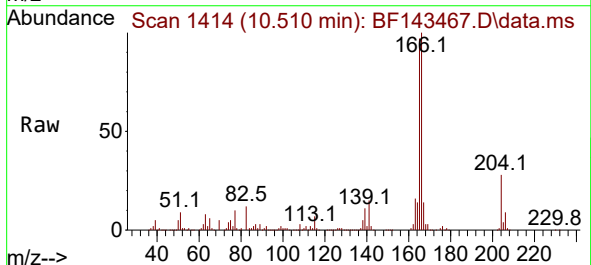
Ion	Ratio	Lower	Upper
165	100		
63	44.7	37.0	55.6
89	65.6	55.4	83.0
182	3.0	2.3	3.5

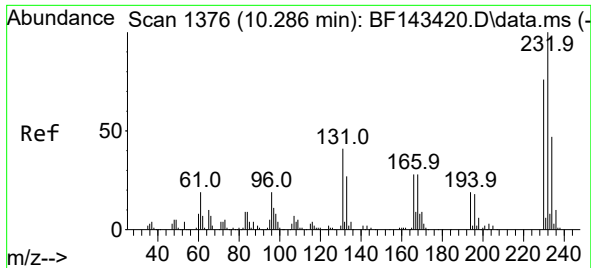


#58
 Fluorene
 Concen: 37.880 ng
 RT: 10.510 min Scan# 1414
 Delta R.T. -0.000 min
 Lab File: BF143467.D
 Acq: 19 Aug 2025 21:21

Tgt Ion:166 Resp: 721738

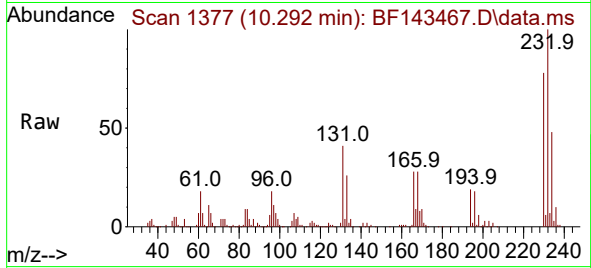
Ion	Ratio	Lower	Upper
166	100		
165	97.4	79.0	118.6
167	13.6	10.9	16.3



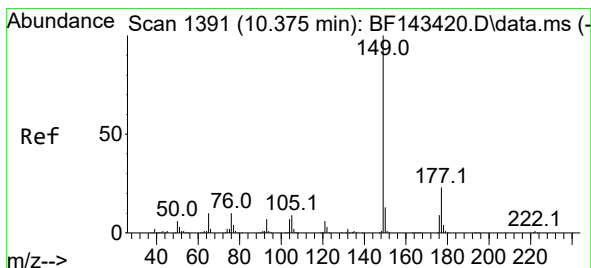
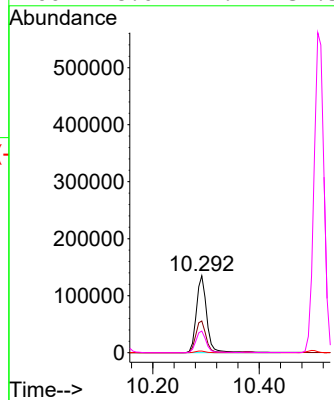
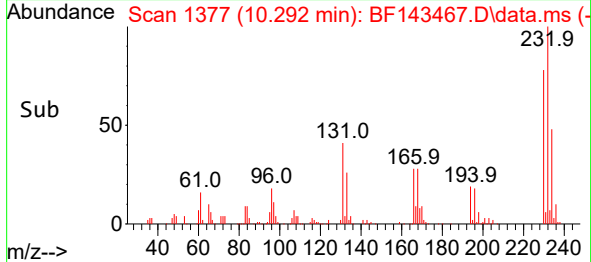


#59
 2,3,4,6-Tetrachlorophenol
 Concen: 40.750 ng
 RT: 10.292 min Scan# 1377
 Delta R.T. 0.006 min
 Lab File: BF143467.D
 Acq: 19 Aug 2025 21:21

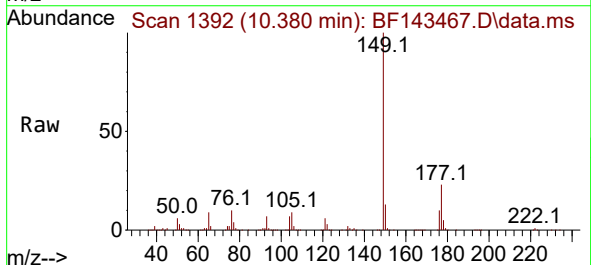
Instrument : BNA_F
 ClientSampleId : SSTDCCC040



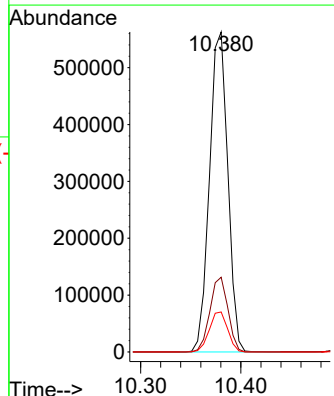
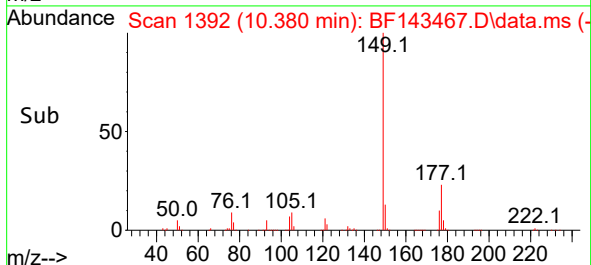
Tgt Ion:232 Resp: 183627
 Ion Ratio Lower Upper
 232 100
 131 41.2 32.0 48.0
 130 2.0 1.7 2.5
 166 28.0 21.7 32.5

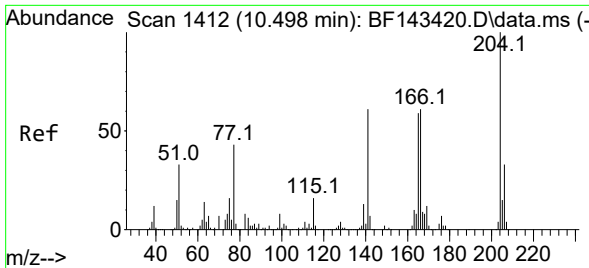


#60
 Diethylphthalate
 Concen: 38.934 ng
 RT: 10.380 min Scan# 1392
 Delta R.T. 0.006 min
 Lab File: BF143467.D
 Acq: 19 Aug 2025 21:21



Tgt Ion:149 Resp: 716042
 Ion Ratio Lower Upper
 149 100
 177 23.4 18.2 27.4
 150 12.5 10.1 15.1

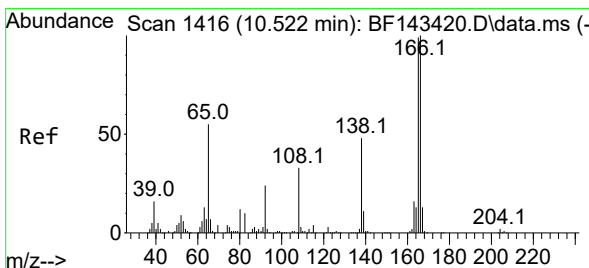
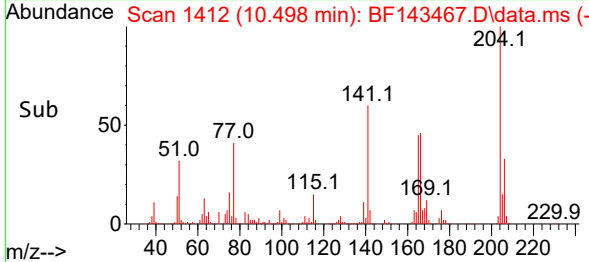
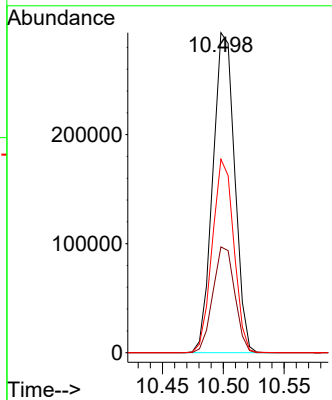
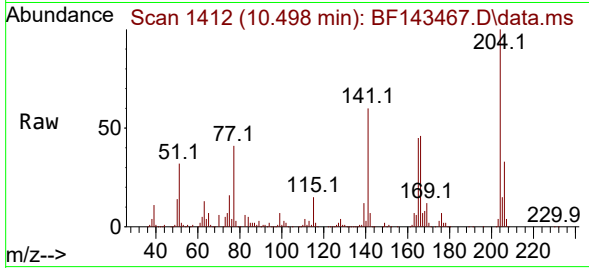




#61
 4-Chlorophenyl-phenylether
 Concen: 38.958 ng
 RT: 10.498 min Scan# 1412
 Delta R.T. -0.000 min
 Lab File: BF143467.D
 Acq: 19 Aug 2025 21:21

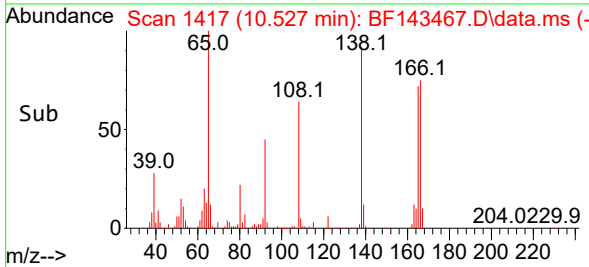
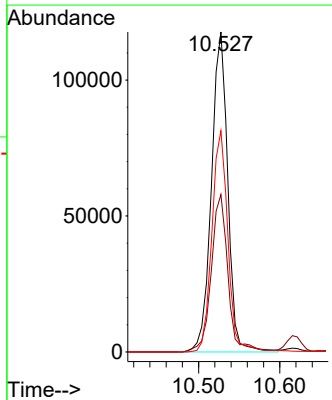
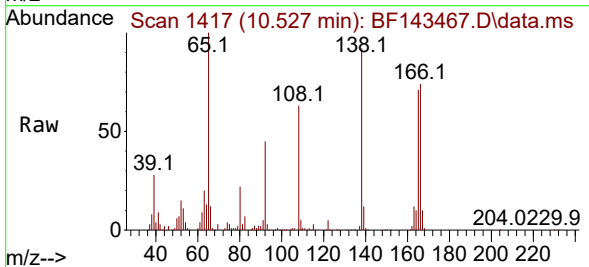
Instrument : BNA_F
 ClientSampleId : SSTDCCC040

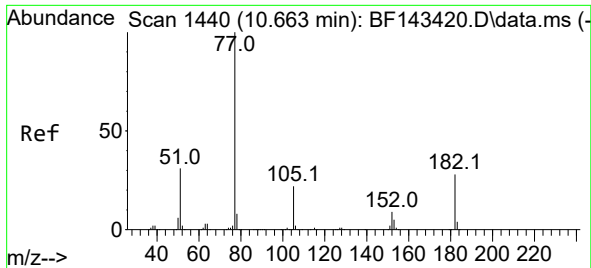
Tgt Ion	Resp	Lower	Upper
204	366985	100	100
206	33.1	26.5	39.7
141	60.4	49.0	73.4



#62
 4-Nitroaniline
 Concen: 40.352 ng
 RT: 10.527 min Scan# 1417
 Delta R.T. 0.006 min
 Lab File: BF143467.D
 Acq: 19 Aug 2025 21:21

Tgt Ion	Resp	Lower	Upper
138	164919	100	100
92	49.2	29.4	69.4
108	69.1	48.6	88.6





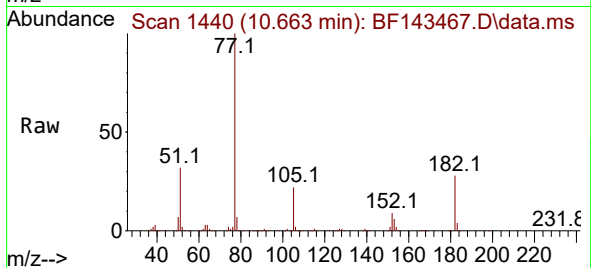
#63
 Azobenzene
 Concen: 37.947 ng
 RT: 10.663 min Scan# 1440
 Delta R.T. -0.000 min
 Lab File: BF143467.D
 Acq: 19 Aug 2025 21:21

Instrument :

BNA_F

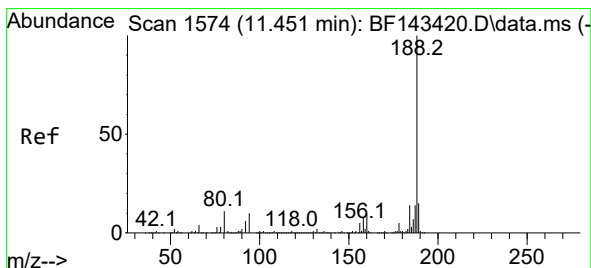
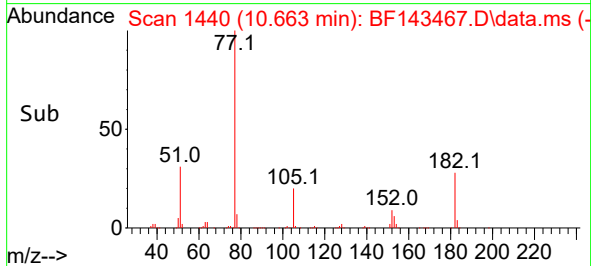
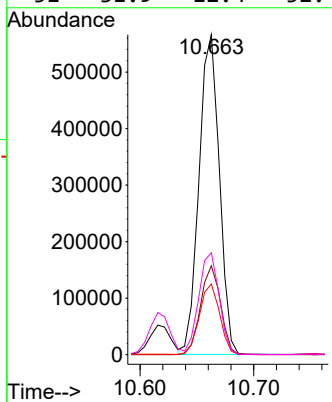
ClientSampleId :

SSTDCCC040



Tgt Ion: 77 Resp: 705357

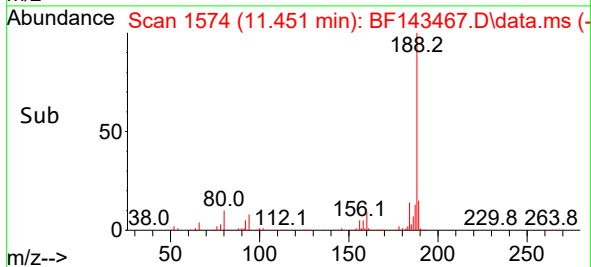
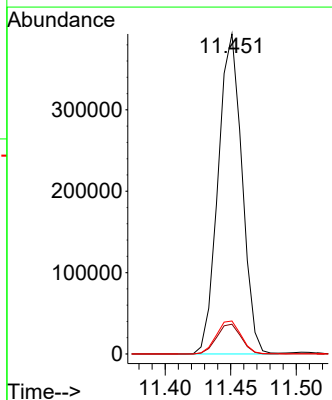
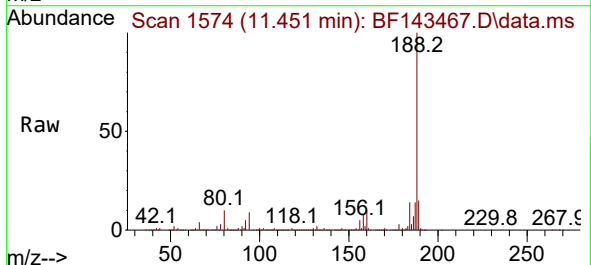
Ion	Ratio	Lower	Upper
77	100		
182	27.8	7.4	47.4
105	22.1	1.7	41.7
51	31.9	12.4	52.4

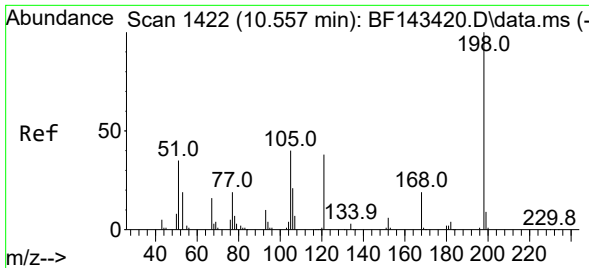


#64
 Phenanthrene-d10
 Concen: 20.000 ng
 RT: 11.451 min Scan# 1574
 Delta R.T. -0.000 min
 Lab File: BF143467.D
 Acq: 19 Aug 2025 21:21

Tgt Ion: 188 Resp: 497766

Ion	Ratio	Lower	Upper
188	100		
94	9.3	8.0	12.0
80	10.3	8.6	12.8



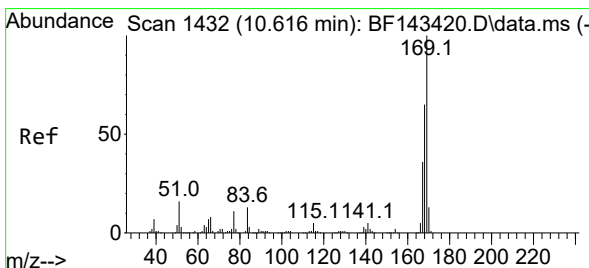
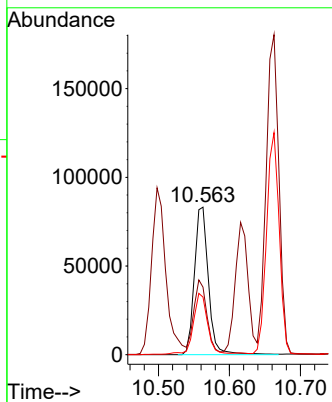
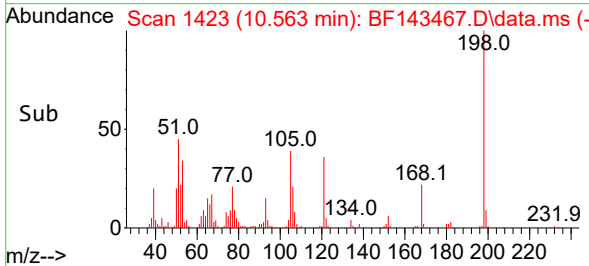
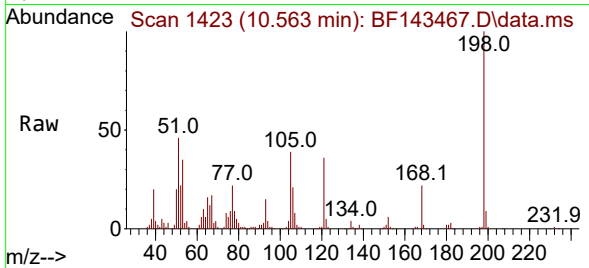


#65
 4,6-Dinitro-2-methylphenol
 Concen: 44.552 ng
 RT: 10.563 min Scan# 1422
 Delta R.T. 0.006 min
 Lab File: BF143467.D
 Acq: 19 Aug 2025 21:21

Instrument : BNA_F
 ClientSampleId : SSTDCCC040

Tgt Ion:198 Resp: 114424

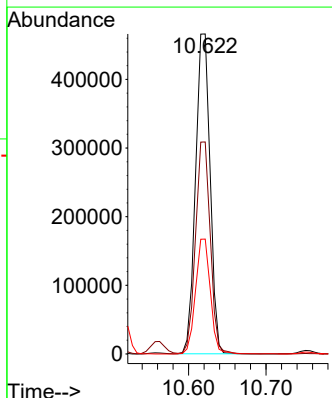
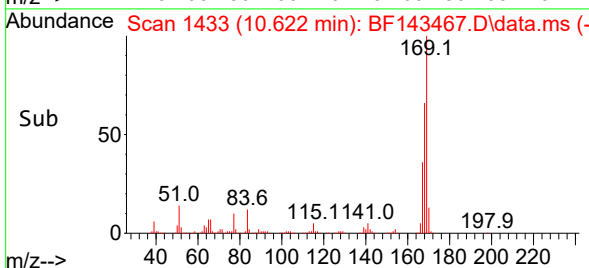
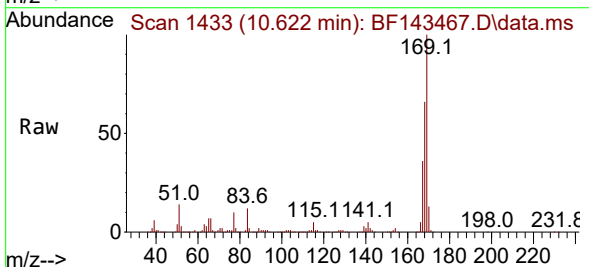
Ion	Ratio	Lower	Upper
198	100		
51	45.8	31.2	71.2
105	39.1	21.7	61.7

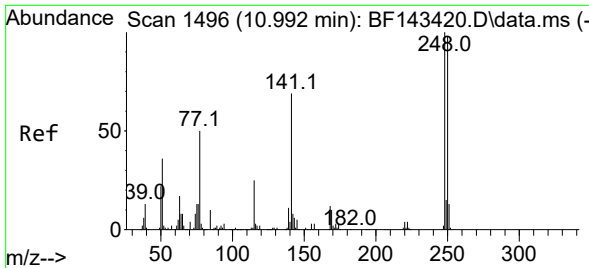


#66
 n-Nitrosodiphenylamine
 Concen: 37.625 ng
 RT: 10.622 min Scan# 1433
 Delta R.T. 0.006 min
 Lab File: BF143467.D
 Acq: 19 Aug 2025 21:21

Tgt Ion:169 Resp: 608957

Ion	Ratio	Lower	Upper
169	100		
168	66.3	52.5	78.7
167	35.9	28.6	42.8



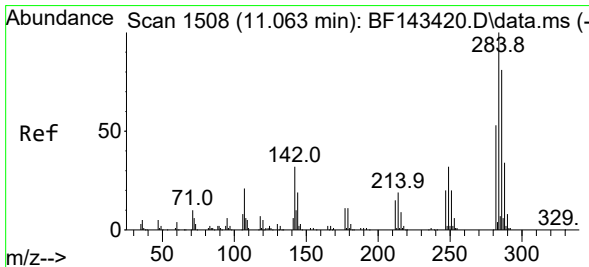
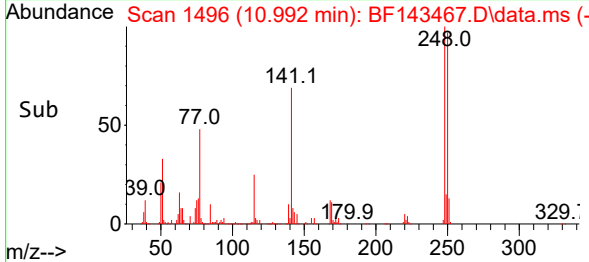
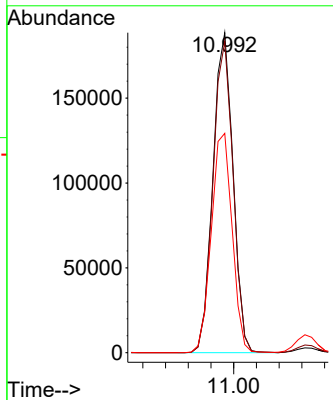
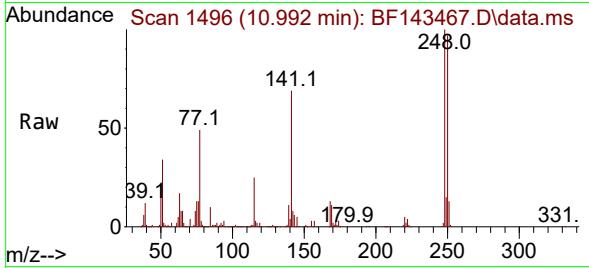


#67
 4-Bromophenyl-phenylether
 Concen: 39.504 ng
 RT: 10.992 min Scan# 1496
 Delta R.T. -0.000 min
 Lab File: BF143467.D
 Acq: 19 Aug 2025 21:21

Instrument :
 BNA_F
 ClientSampleId :
 SSTDCCC040

Tgt Ion:248 Resp: 232201

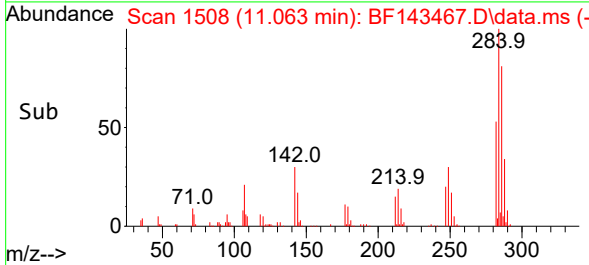
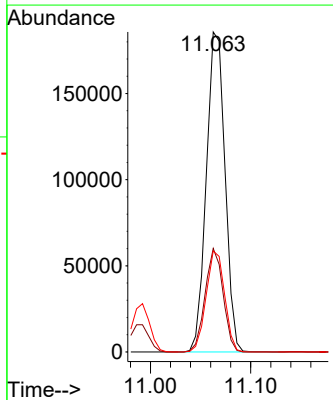
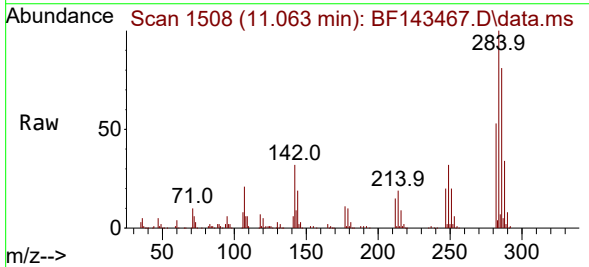
Ion	Ratio	Lower	Upper
248	100		
250	97.3	78.6	118.0
141	68.6	54.9	82.3

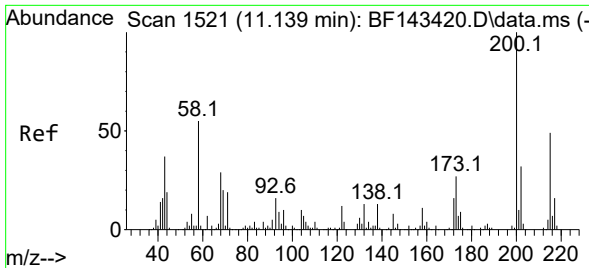


#68
 Hexachlorobenzene
 Concen: 38.612 ng
 RT: 11.063 min Scan# 1508
 Delta R.T. -0.000 min
 Lab File: BF143467.D
 Acq: 19 Aug 2025 21:21

Tgt Ion:284 Resp: 241278

Ion	Ratio	Lower	Upper
284	100		
142	32.4	25.4	38.2
249	31.6	25.4	38.0

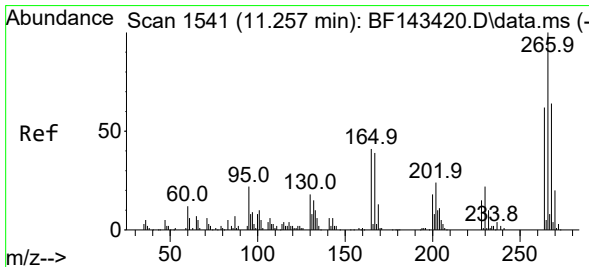
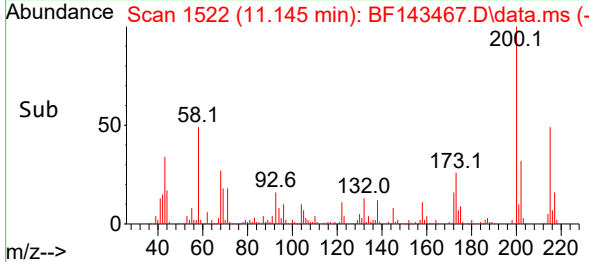
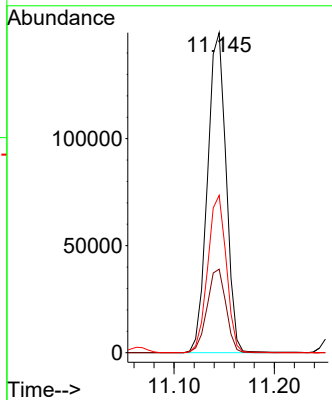
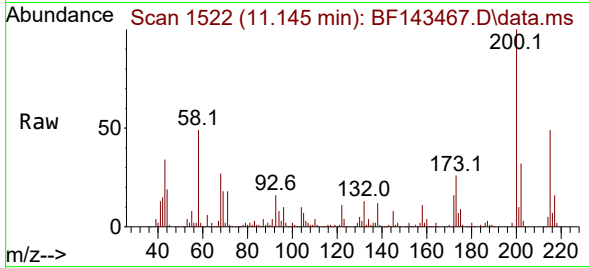




#69
 Atrazine
 Concen: 40.826 ng
 RT: 11.145 min Scan# 11
 Delta R.T. 0.006 min
 Lab File: BF143467.D
 Acq: 19 Aug 2025 21:21

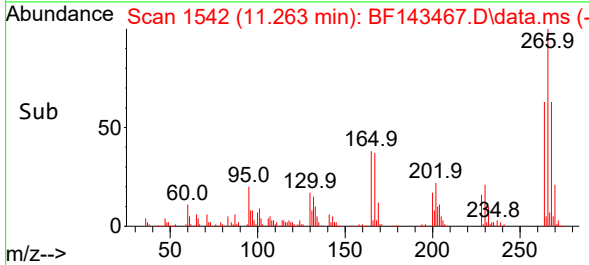
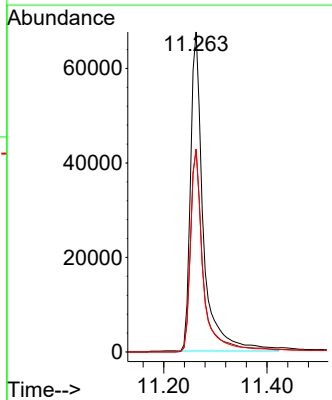
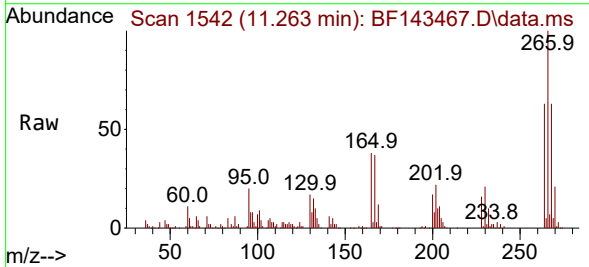
Instrument :
 BNA_F
 ClientSampleId :
 SSTDCCC040

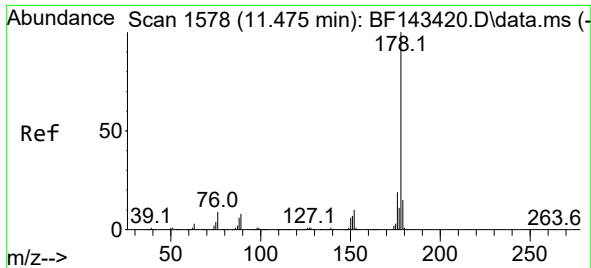
Tgt Ion:200 Resp: 193269
 Ion Ratio Lower Upper
 200 100
 173 26.1 6.6 46.6
 215 49.2 29.5 69.5



#70
 Pentachlorophenol
 Concen: 42.471 ng
 RT: 11.263 min Scan# 1542
 Delta R.T. 0.006 min
 Lab File: BF143467.D
 Acq: 19 Aug 2025 21:21

Tgt Ion:266 Resp: 116712
 Ion Ratio Lower Upper
 266 100
 268 63.2 51.0 76.6
 264 63.5 49.3 73.9

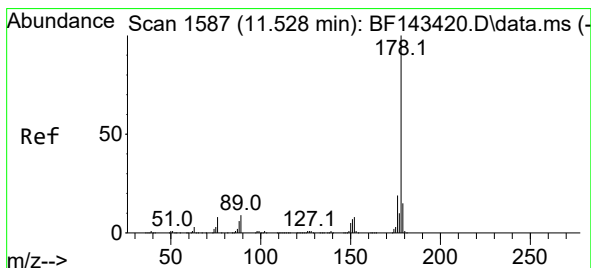
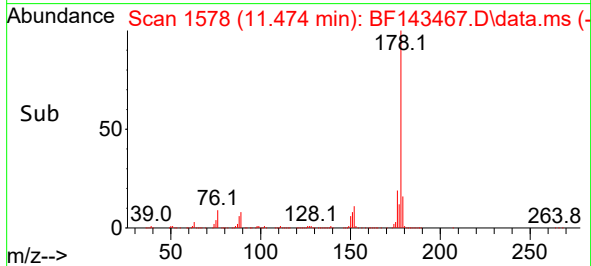
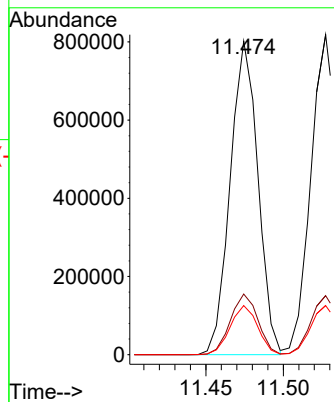
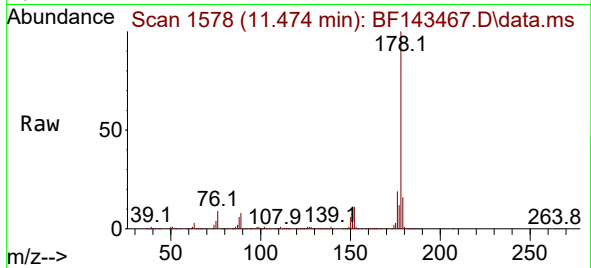




#71
 Phenanthrene
 Concen: 37.027 ng
 RT: 11.474 min Scan# 1147
 Delta R.T. -0.000 min
 Lab File: BF143467.D
 Acq: 19 Aug 2025 21:21

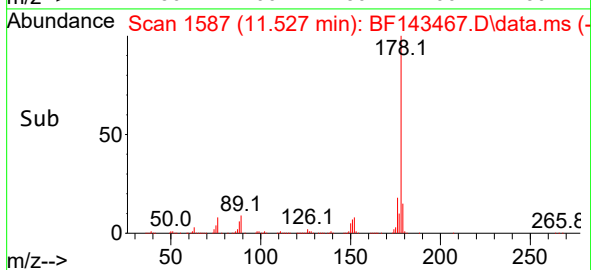
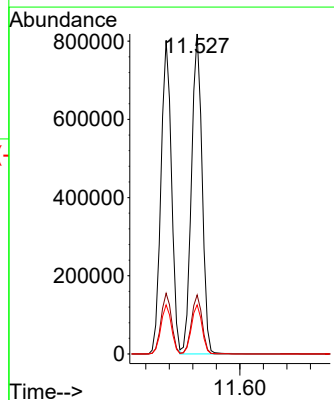
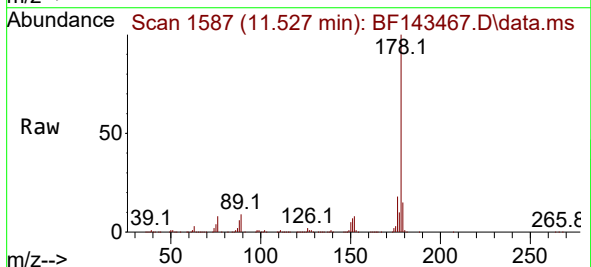
Instrument : BNA_F
 ClientSampleId : SSTDCCC040

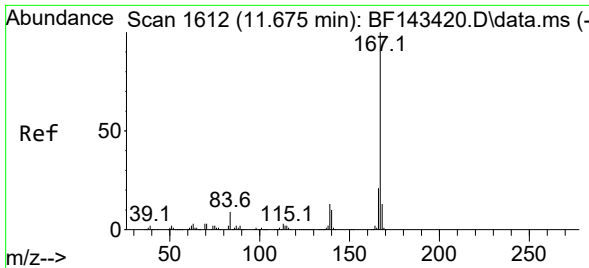
Tgt Ion:178 Resp: 998054
 Ion Ratio Lower Upper
 178 100
 176 19.3 15.4 23.0
 179 15.6 12.3 18.5



#72
 Anthracene
 Concen: 37.753 ng
 RT: 11.527 min Scan# 1587
 Delta R.T. -0.000 min
 Lab File: BF143467.D
 Acq: 19 Aug 2025 21:21

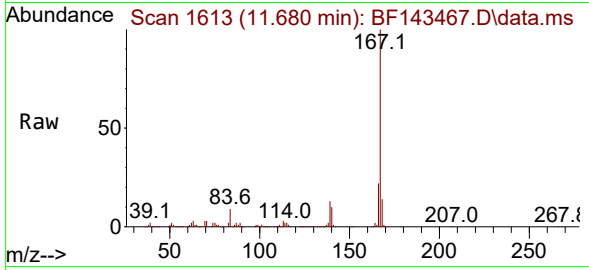
Tgt Ion:178 Resp: 1027828
 Ion Ratio Lower Upper
 178 100
 176 18.5 14.8 22.2
 179 15.4 12.2 18.4



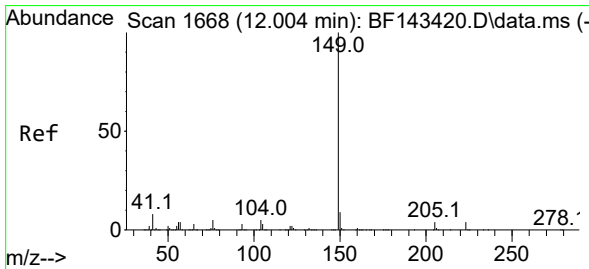
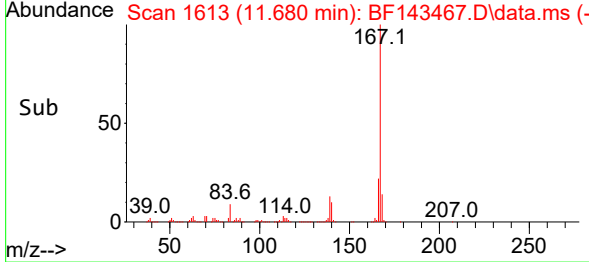
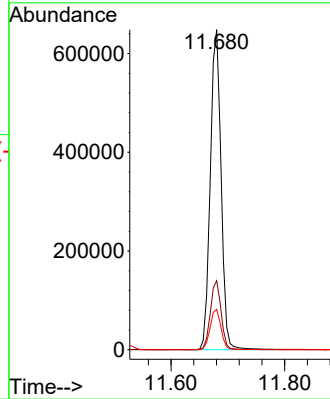


#73
 Carbazole
 Concen: 36.841 ng
 RT: 11.680 min Scan# 1613
 Delta R.T. 0.006 min
 Lab File: BF143467.D
 Acq: 19 Aug 2025 21:21

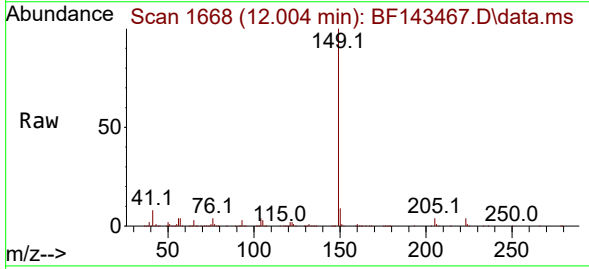
Instrument : BNA_F
 ClientSampleId : SSTDCCC040



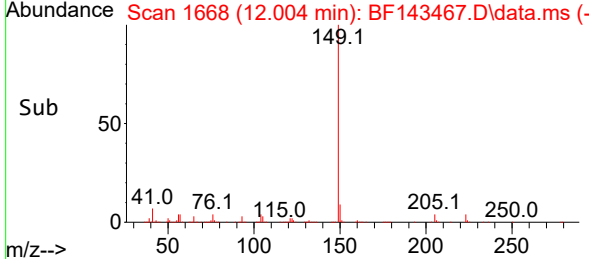
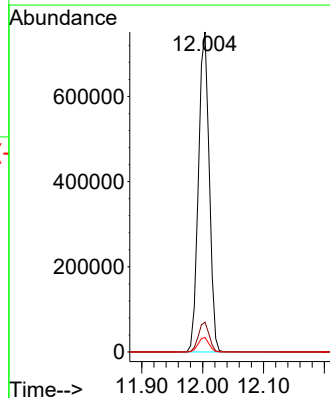
Tgt Ion:167 Resp: 848303
 Ion Ratio Lower Upper
 167 100
 166 21.6 17.2 25.8
 139 12.6 10.1 15.1

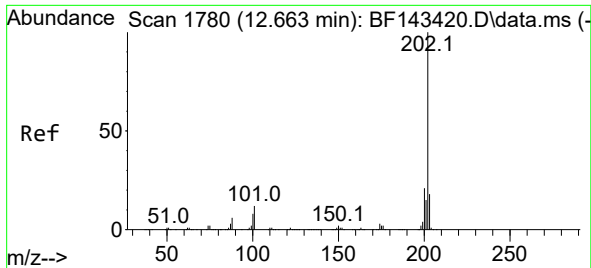


#74
 Di-n-butylphthalate
 Concen: 40.328 ng
 RT: 12.004 min Scan# 1668
 Delta R.T. -0.000 min
 Lab File: BF143467.D
 Acq: 19 Aug 2025 21:21



Tgt Ion:149 Resp: 924708
 Ion Ratio Lower Upper
 149 100
 150 9.3 7.3 10.9
 104 4.5 3.8 5.6

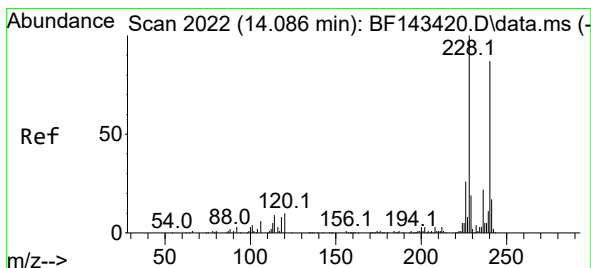
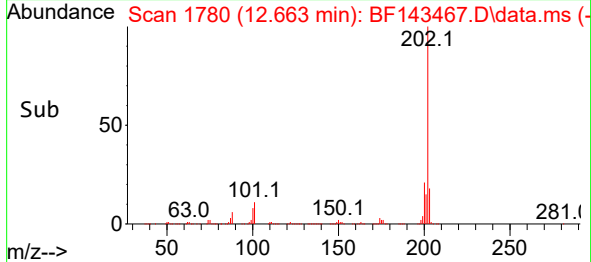
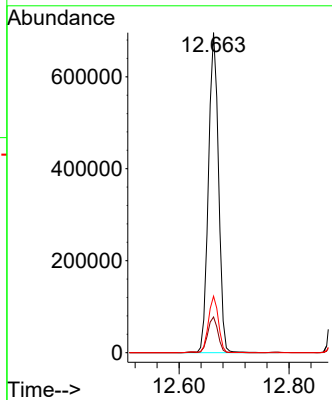
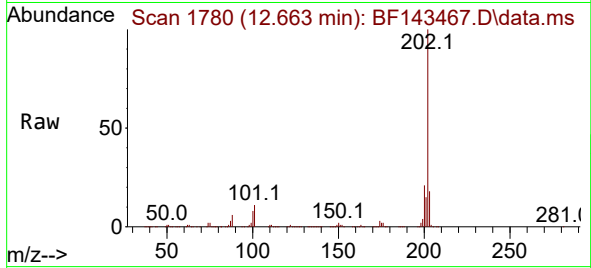




#75
 Fluoranthene
 Concen: 36.825 ng
 RT: 12.663 min Scan# 11
 Delta R.T. -0.000 min
 Lab File: BF143467.D
 Acq: 19 Aug 2025 21:21

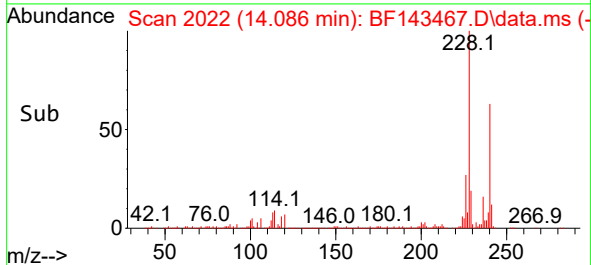
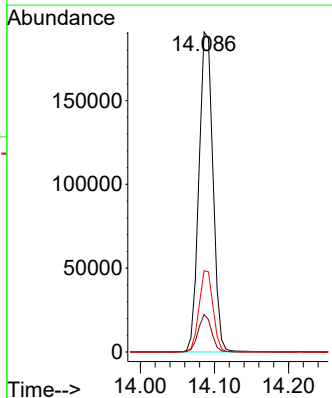
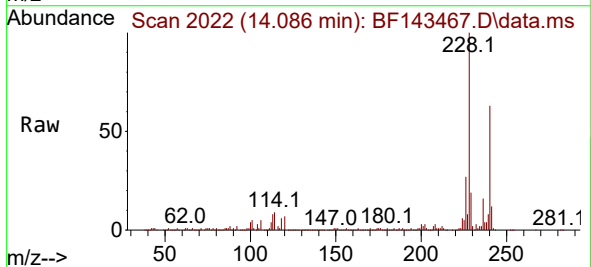
Instrument :
 BNA_F
 ClientSampleId :
 SSTDCCC040

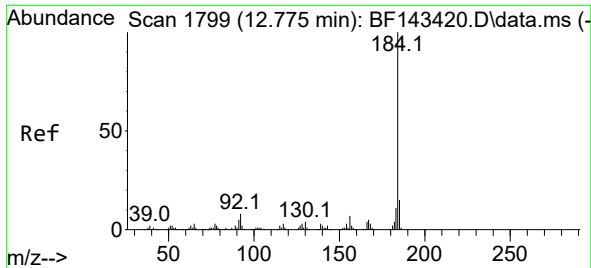
Tgt Ion	Resp	Lower	Upper
202	100		
101	11.2	0.0	31.5
203	17.6	0.0	37.5



#76
 Chrysene-d12
 Concen: 20.000 ng
 RT: 14.086 min Scan# 2022
 Delta R.T. -0.000 min
 Lab File: BF143467.D
 Acq: 19 Aug 2025 21:21

Tgt Ion	Resp	Lower	Upper
240	100		
120	11.7	9.0	13.4
236	25.4	20.2	30.2

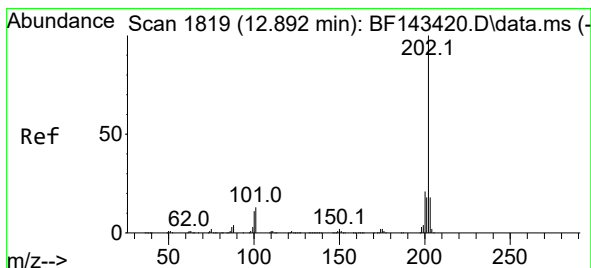
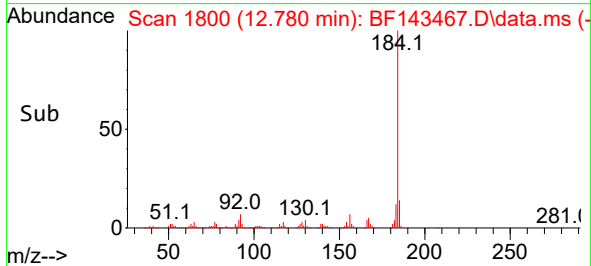
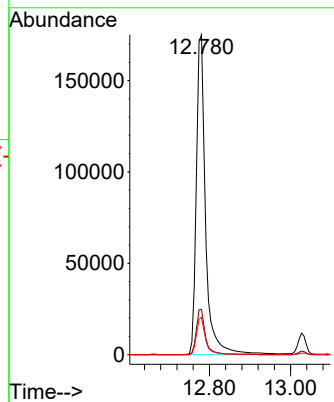
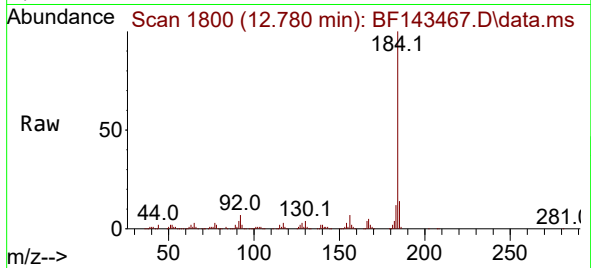




#77
 Benzidine
 Concen: 37.421 ng
 RT: 12.780 min Scan# 1800
 Delta R.T. 0.005 min
 Lab File: BF143467.D
 Acq: 19 Aug 2025 21:21

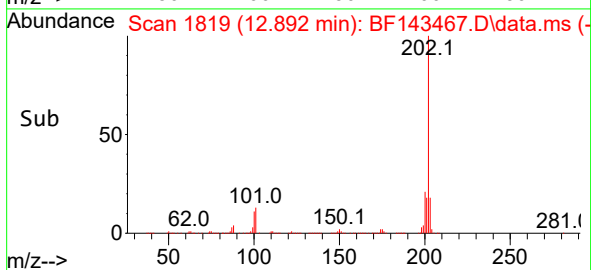
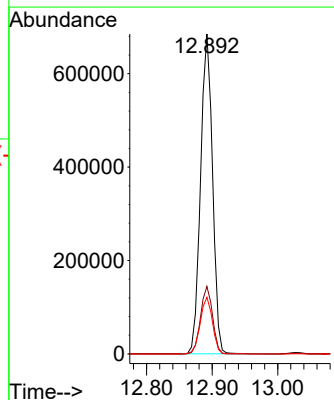
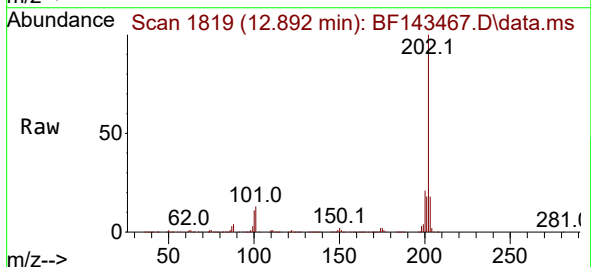
Instrument :
 BNA_F
 ClientSampleId :
 SSTDCCC040

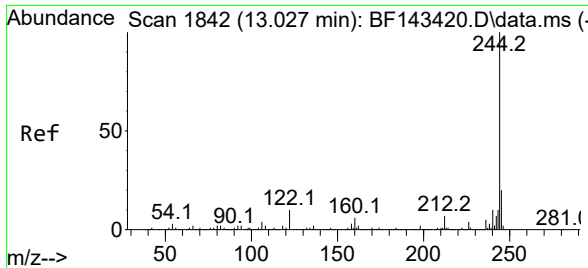
Tgt Ion:184 Resp: 280211
 Ion Ratio Lower Upper
 184 100
 185 14.2 12.2 18.2
 183 11.6 9.2 13.8



#78
 Pyrene
 Concen: 39.954 ng
 RT: 12.892 min Scan# 1819
 Delta R.T. -0.000 min
 Lab File: BF143467.D
 Acq: 19 Aug 2025 21:21

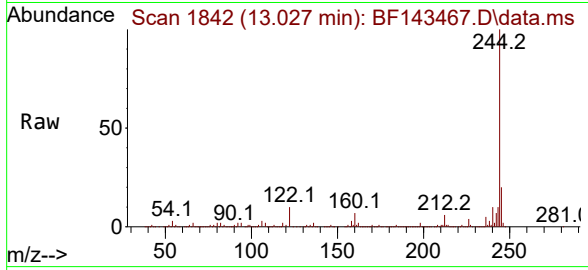
Tgt Ion:202 Resp: 870801
 Ion Ratio Lower Upper
 202 100
 200 21.1 17.1 25.7
 203 17.7 14.2 21.2





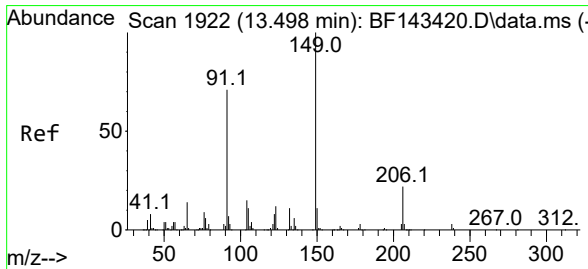
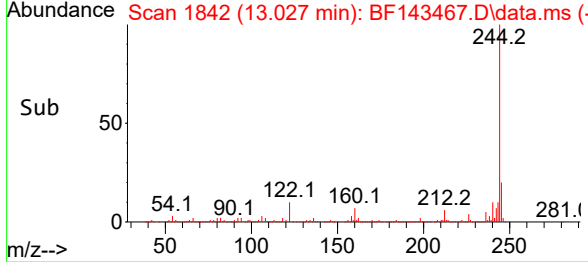
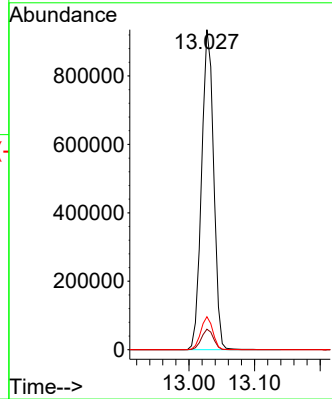
#79
 Terphenyl-d14
 Concen: 80.546 ng
 RT: 13.027 min Scan# 111
 Delta R.T. -0.000 min
 Lab File: BF143467.D
 Acq: 19 Aug 2025 21:21

Instrument : BNA_F
 ClientSampleId : SSTDCCC040



Tgt Ion:244 Resp: 1202328

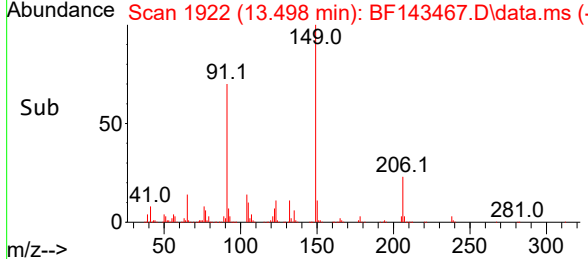
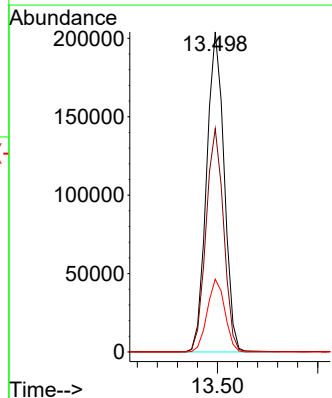
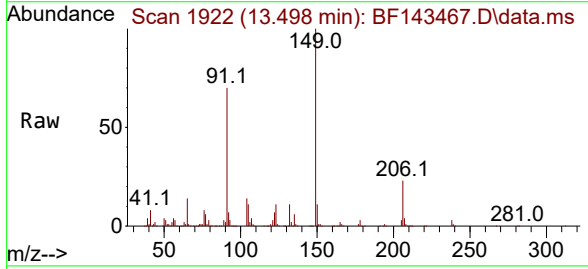
Ion	Ratio	Lower	Upper
244	100		
212	6.4	5.2	7.8
122	10.3	8.3	12.5

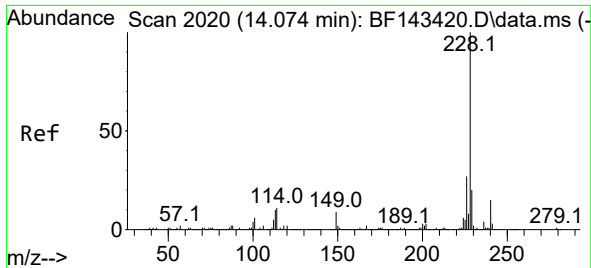


#80
 Butylbenzylphthalate
 Concen: 46.153 ng
 RT: 13.498 min Scan# 1922
 Delta R.T. -0.000 min
 Lab File: BF143467.D
 Acq: 19 Aug 2025 21:21

Tgt Ion:149 Resp: 249150

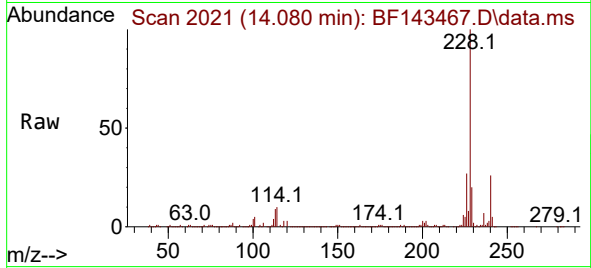
Ion	Ratio	Lower	Upper
149	100		
91	69.8	57.0	85.4
206	22.7	17.6	26.4



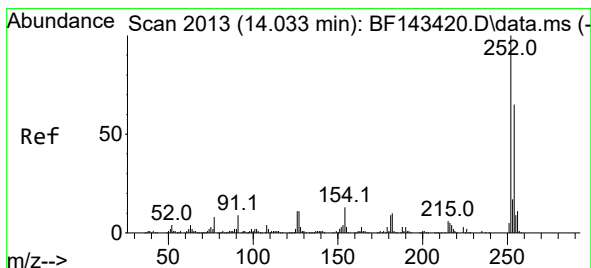
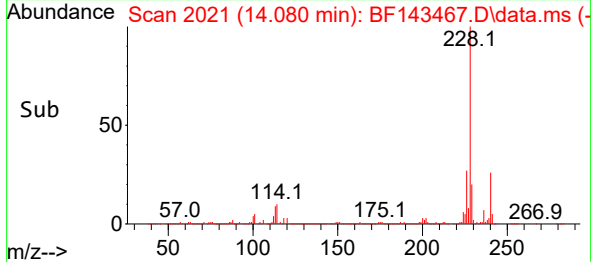
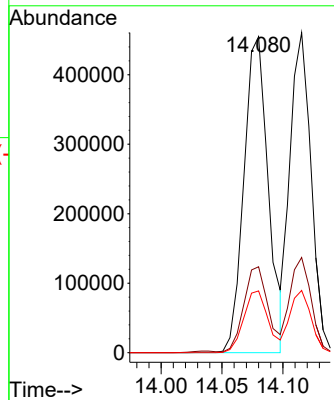


#81
 Benzo(a)anthracene
 Concen: 39.766 ng
 RT: 14.080 min Scan# 2021
 Delta R.T. 0.006 min
 Lab File: BF143467.D
 Acq: 19 Aug 2025 21:21

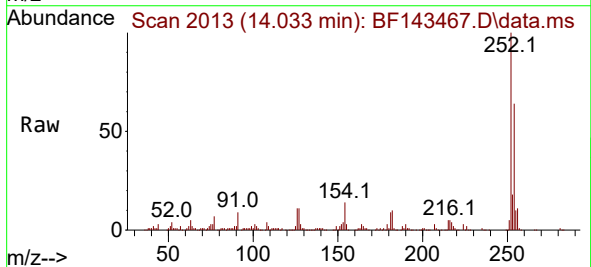
Instrument :
 BNA_F
 ClientSampleId :
 SSTDCCC040



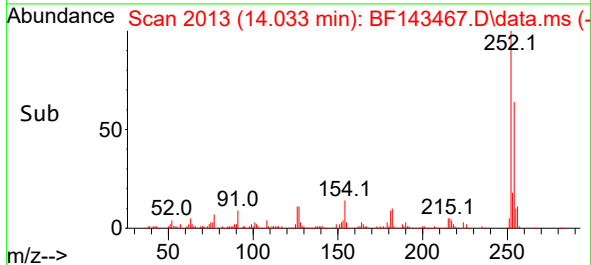
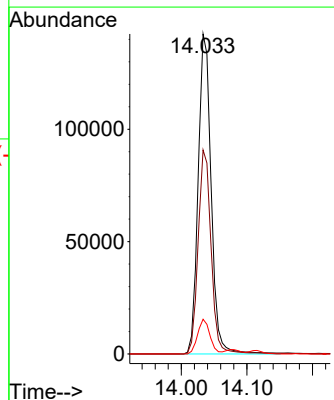
Tgt Ion:228 Resp: 634849
 Ion Ratio Lower Upper
 228 100
 226 27.2 21.5 32.3
 229 19.5 15.7 23.5

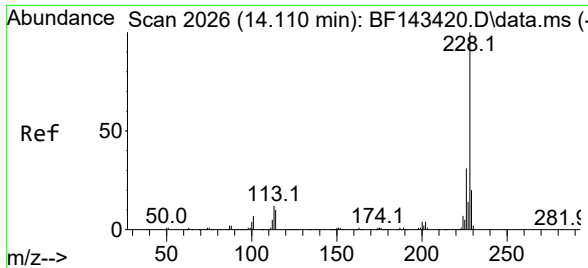


#82
 3,3'-Dichlorobenzidine
 Concen: 42.107 ng
 RT: 14.033 min Scan# 2013
 Delta R.T. -0.000 min
 Lab File: BF143467.D
 Acq: 19 Aug 2025 21:21



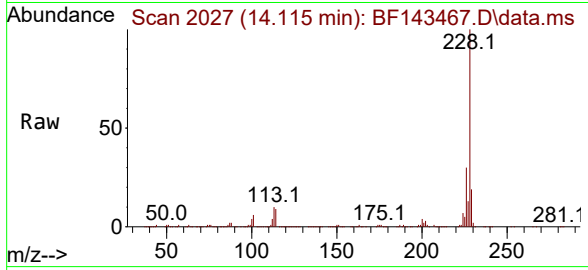
Tgt Ion:252 Resp: 196817
 Ion Ratio Lower Upper
 252 100
 254 63.8 51.6 77.4
 126 10.9 8.8 13.2



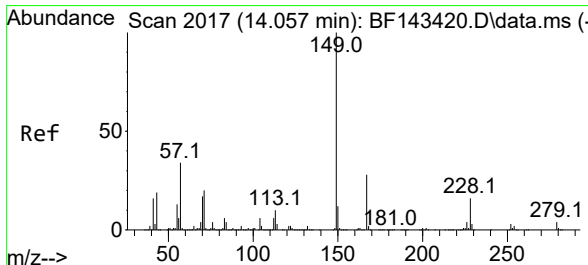
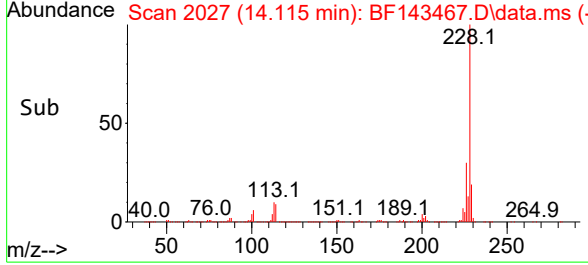
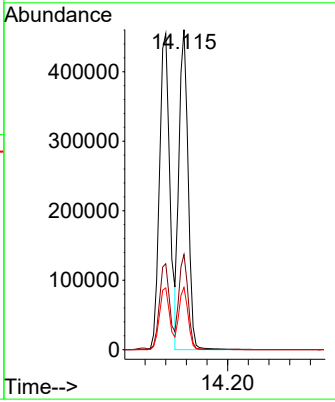


#83
 Chrysene
 Concen: 37.995 ng
 RT: 14.115 min Scan# 2026
 Delta R.T. 0.006 min
 Lab File: BF143467.D
 Acq: 19 Aug 2025 21:21

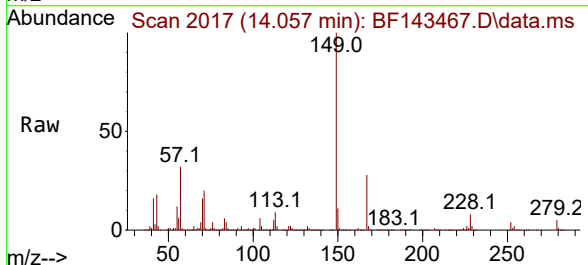
Instrument : BNA_F
 Client Sample Id : SSTDCCC040



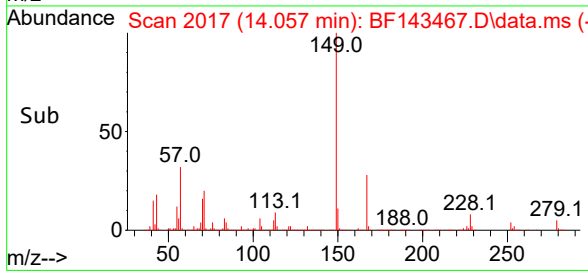
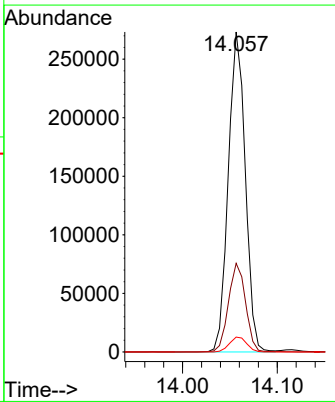
Tgt Ion:228 Resp: 560755
 Ion Ratio Lower Upper
 228 100
 226 29.8 24.3 36.5
 229 19.4 16.1 24.1

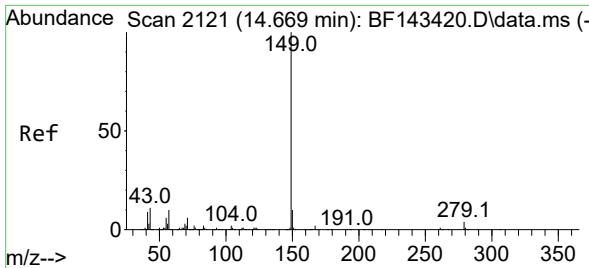


#84
 Bis(2-ethylhexyl)phthalate
 Concen: 44.387 ng
 RT: 14.057 min Scan# 2017
 Delta R.T. -0.000 min
 Lab File: BF143467.D
 Acq: 19 Aug 2025 21:21



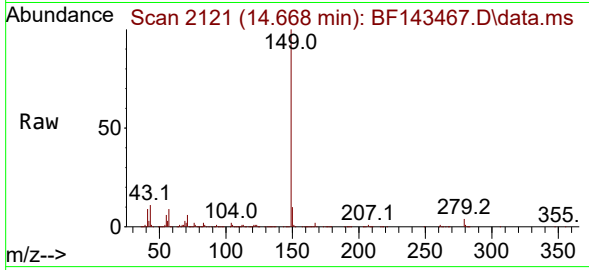
Tgt Ion:149 Resp: 340290
 Ion Ratio Lower Upper
 149 100
 167 27.7 22.6 33.8
 279 4.6 3.5 5.3



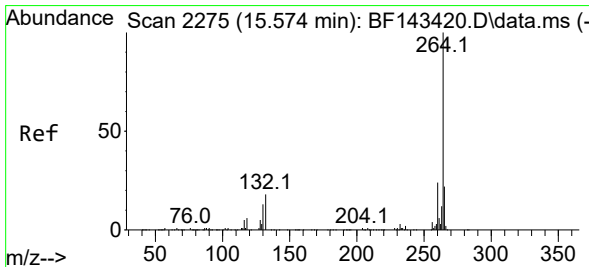
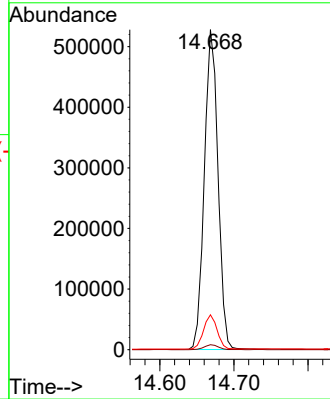
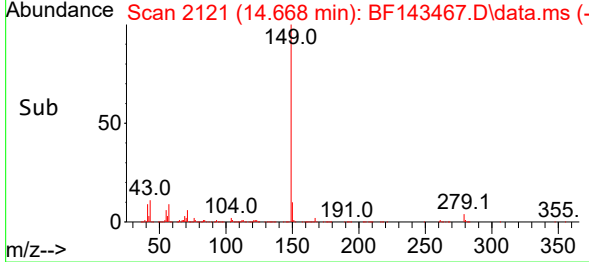


#85
 Di-n-octyl phthalate
 Concen: 43.525 ng
 RT: 14.668 min Scan# 2121
 Delta R.T. -0.000 min
 Lab File: BF143467.D
 Acq: 19 Aug 2025 21:21

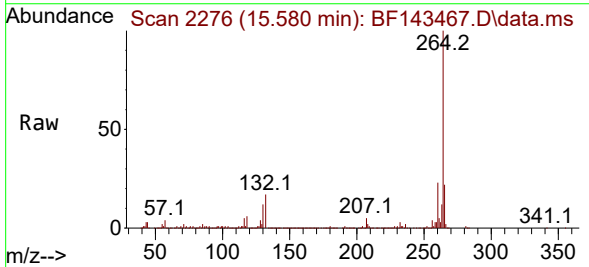
Instrument : BNA_F
 ClientSampleId : SSTDCCC040



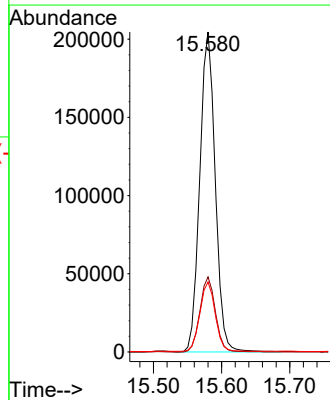
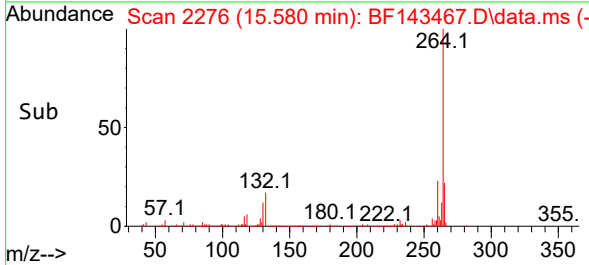
Tgt Ion:149 Resp: 676789
 Ion Ratio Lower Upper
 149 100
 167 1.6 1.2 1.8
 43 10.6 9.0 13.6

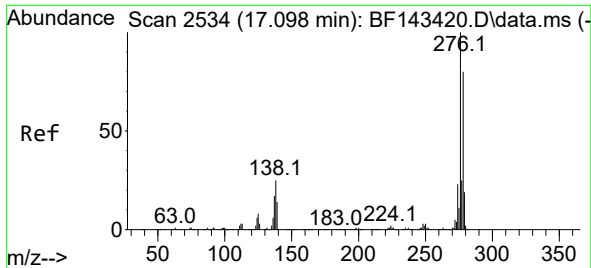


#86
 Perylene-d12
 Concen: 20.000 ng
 RT: 15.580 min Scan# 2276
 Delta R.T. 0.006 min
 Lab File: BF143467.D
 Acq: 19 Aug 2025 21:21



Tgt Ion:264 Resp: 322483
 Ion Ratio Lower Upper
 264 100
 260 23.4 18.8 28.2
 265 21.9 17.4 26.0





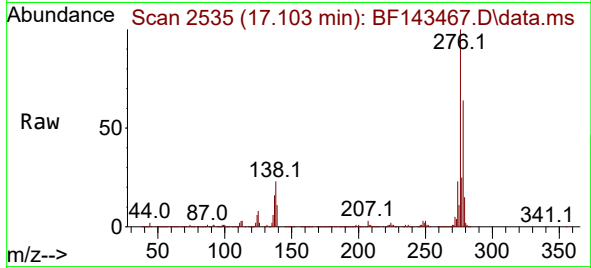
#87
 Indeno(1,2,3-cd)pyrene
 Concen: 38.961 ng
 RT: 17.103 min Scan# 21
 Delta R.T. 0.006 min
 Lab File: BF143467.D
 Acq: 19 Aug 2025 21:21

Instrument :

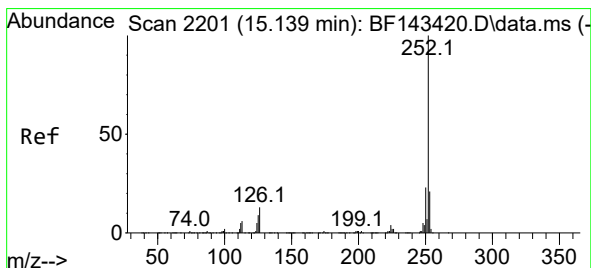
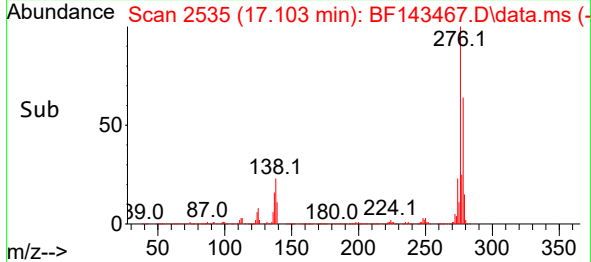
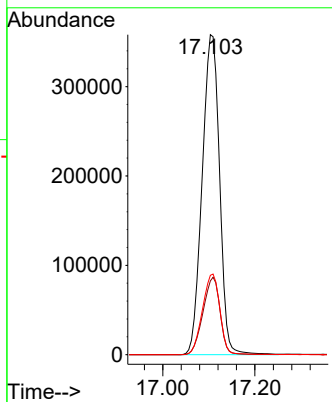
BNA_F

ClientSampleId :

SSTDCCC040

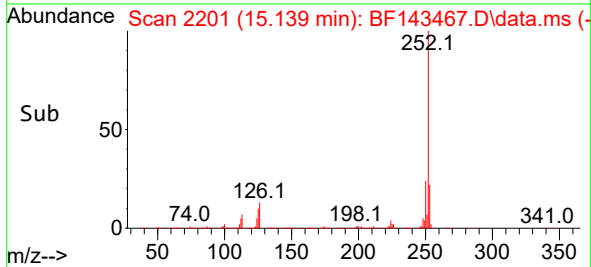
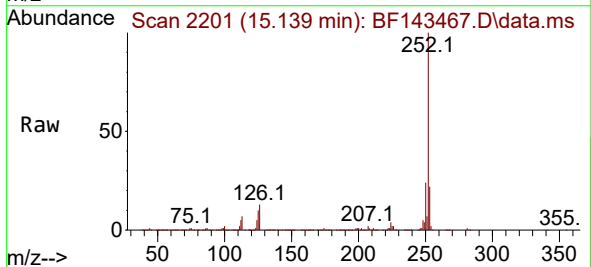
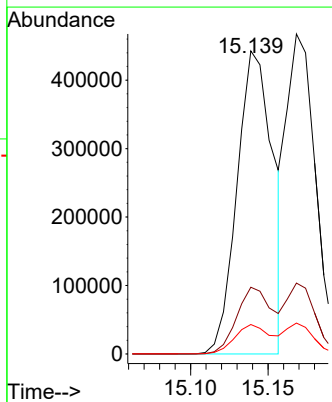


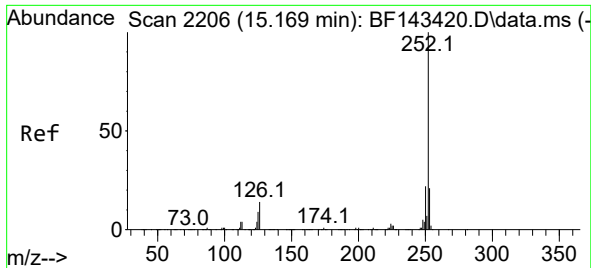
Tgt Ion:276 Resp: 942193
 Ion Ratio Lower Upper
 276 100
 138 23.8 20.2 30.4
 277 25.2 20.2 30.2



#88
 Benzo(b)fluoranthene
 Concen: 41.323 ng
 RT: 15.139 min Scan# 2201
 Delta R.T. -0.000 min
 Lab File: BF143467.D
 Acq: 19 Aug 2025 21:21

Tgt Ion:252 Resp: 714218
 Ion Ratio Lower Upper
 252 100
 253 22.0 17.1 25.7
 125 9.7 7.5 11.3



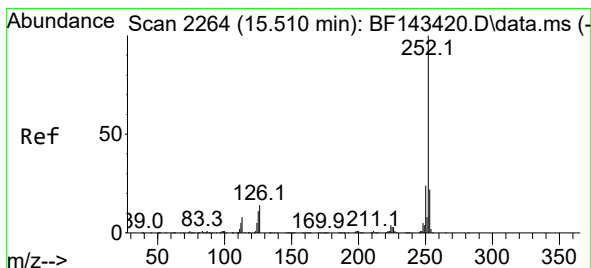
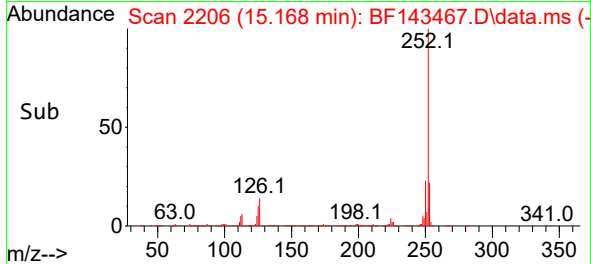
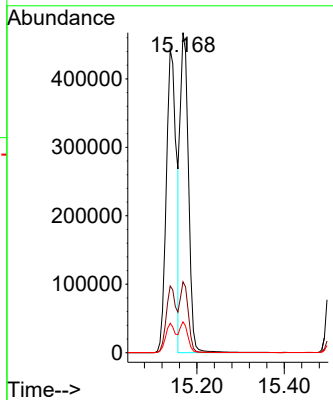
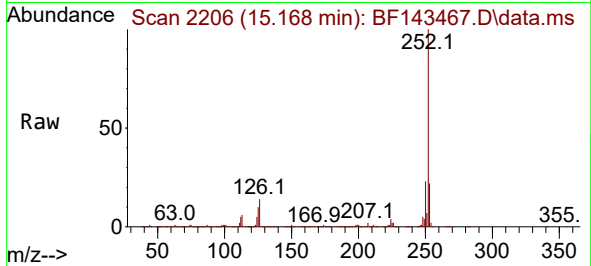


#89
 Benzo(k)fluoranthene
 Concen: 35.798 ng
 RT: 15.168 min Scan# 21
 Delta R.T. -0.000 min
 Lab File: BF143467.D
 Acq: 19 Aug 2025 21:21

Instrument :
 BNA_F
 ClientSampleId :
 SSTDCCC040

Tgt Ion:252 Resp: 610255

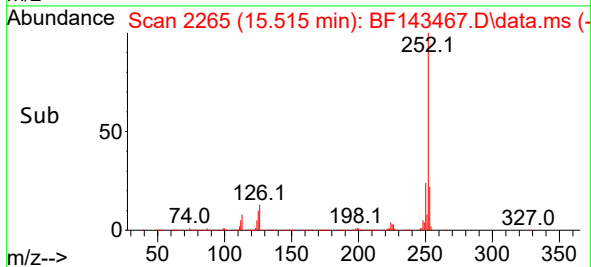
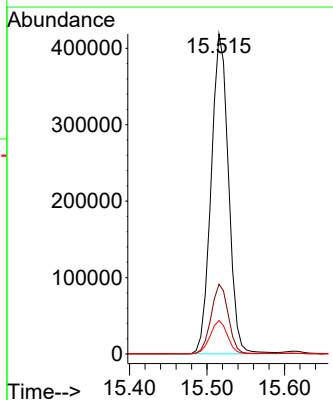
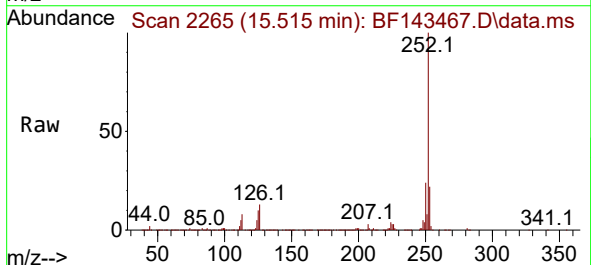
Ion	Ratio	Lower	Upper
252	100		
253	22.2	17.2	25.8
125	9.6	7.4	11.2

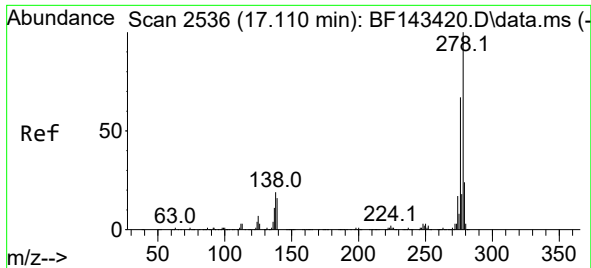


#90
 Benzo(a)pyrene
 Concen: 39.522 ng
 RT: 15.515 min Scan# 2265
 Delta R.T. 0.006 min
 Lab File: BF143467.D
 Acq: 19 Aug 2025 21:21

Tgt Ion:252 Resp: 650616

Ion	Ratio	Lower	Upper
252	100		
253	21.8	17.4	26.2
125	10.4	8.6	12.8

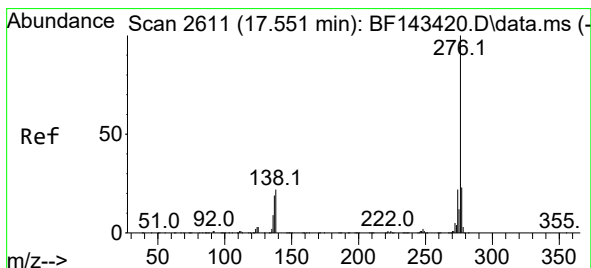
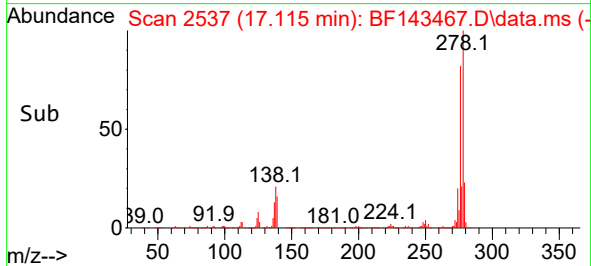
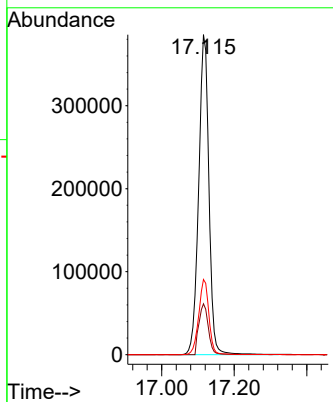
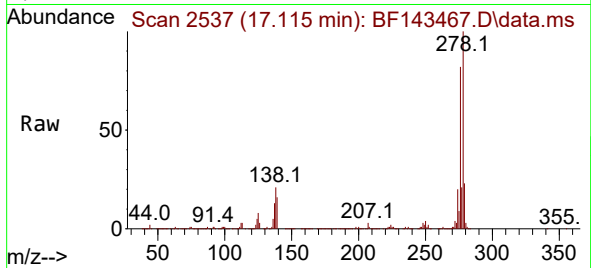




#91
 Dibenzo(a,h)anthracene
 Concen: 38.946 ng
 RT: 17.115 min Scan# 21
 Delta R.T. 0.006 min
 Lab File: BF143467.D
 Acq: 19 Aug 2025 21:21

Instrument :
 BNA_F
 ClientSampleId :
 SSTDCCC040

Tgt Ion:278 Resp: 756337
 Ion Ratio Lower Upper
 278 100
 139 15.9 12.9 19.3
 279 23.5 19.0 28.4



#92
 Benzo(g,h,i)perylene
 Concen: 38.330 ng
 RT: 17.562 min Scan# 2613
 Delta R.T. 0.012 min
 Lab File: BF143467.D
 Acq: 19 Aug 2025 21:21

Tgt Ion:276 Resp: 743617
 Ion Ratio Lower Upper
 276 100
 277 23.8 18.7 28.1
 138 21.3 17.5 26.3

