

Data Path : Z:\svoasrv\HPCHEM1\BNA_F\Data\BF081925\
 Data File : BF143470.D
 Acq On : 19 Aug 2025 22:48
 Operator : RC/JU
 Sample : PB169291TB
 Misc :
 ALS Vial : 25 Sample Multiplier: 1

Instrument :
 BNA_F
 ClientSampleId :
 PB169291TB

Quant Time: Aug 20 01:15:26 2025
 Quant Method : Z:\svoasrv\HPCHEM1\BNA_F\Methods\8270-BF081525.M
 Quant Title : ASP BNA STANDARDS FOR 5 POINT CALIBRATION
 QLast Update : Mon Aug 18 04:40:19 2025
 Response via : Initial Calibration

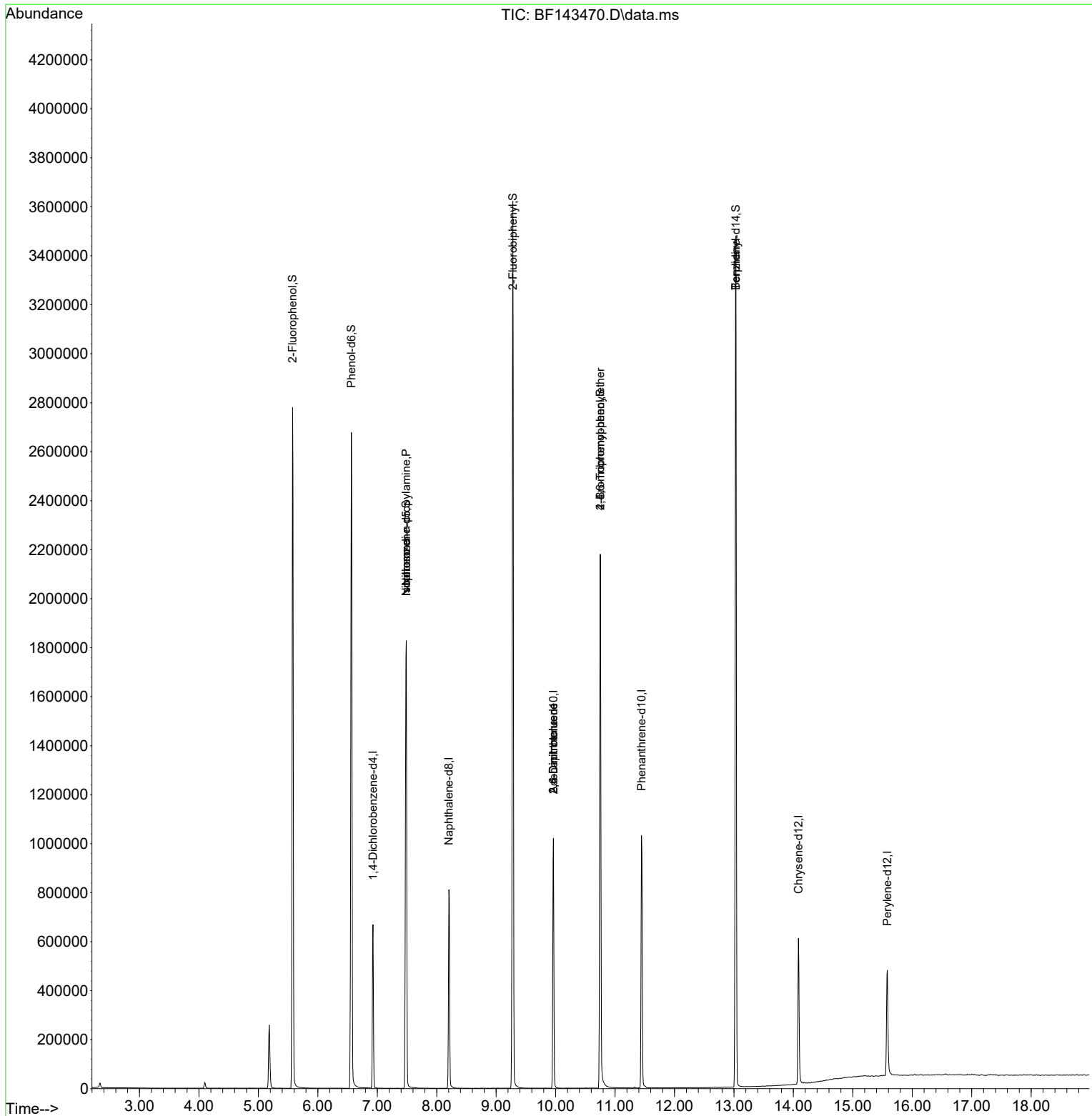
Compound	R.T.	QIon	Response	Conc	Units	Dev(Min)
Internal Standards						
1) 1,4-Dichlorobenzene-d4	6.928	152	139420	20.000	ng	0.00
21) Naphthalene-d8	8.204	136	546209	20.000	ng	0.00
39) Acenaphthene-d10	9.963	164	317168	20.000	ng	0.00
64) Phenanthrene-d10	11.445	188	553751	20.000	ng	0.00
76) Chrysene-d12	14.086	240	313579	20.000	ng	0.00
86) Perylene-d12	15.580	264	292011	20.000	ng	0.00
System Monitoring Compounds						
5) 2-Fluorophenol	5.575	112	1040624	129.748	ng	0.02
7) Phenol-d6	6.563	99	1317035	130.303	ng	0.00
23) Nitrobenzene-d5	7.486	82	891151	96.813	ng	0.00
42) 2,4,6-Tribromophenol	10.751	330	417860	148.018	ng	0.00
45) 2-Fluorobiphenyl	9.280	172	1686227	89.423	ng	0.00
79) Terphenyl-d14	13.033	244	1822119	97.612	ng	0.00
Target Compounds						
19) n-Nitroso-di-n-propyla...	7.486	70	120639	19.279	ng	# 76
25) Isophorone	7.486	82	885378	50.256	ng	# 65
51) 2,6-Dinitrotoluene	9.963	165	41730	10.705	ng	# 23
57) 2,4-Dinitrotoluene	9.963	165	41731	8.030	ng	# 24
67) 4-Bromophenyl-phenylether	10.751	248	27677	4.233	ng	# 1
77) Benzidine	13.033	184	21109	2.254	ng	97

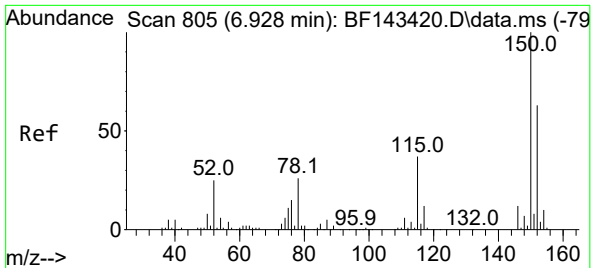
(#) = qualifier out of range (m) = manual integration (+) = signals summed

Data Path : Z:\svoasrv\HPCHEM1\BNA_F\Data\BF081925\
 Data File : BF143470.D
 Acq On : 19 Aug 2025 22:48
 Operator : RC/JU
 Sample : PB169291TB
 Misc :
 ALS Vial : 25 Sample Multiplier: 1

Instrument :
 BNA_F
 ClientSampleId :
 PB169291TB

Quant Time: Aug 20 01:15:26 2025
 Quant Method : Z:\svoasrv\HPCHEM1\BNA_F\Methods\8270-BF081525.M
 Quant Title : ASP BNA STANDARDS FOR 5 POINT CALIBRATION
 QLast Update : Mon Aug 18 04:40:19 2025
 Response via : Initial Calibration

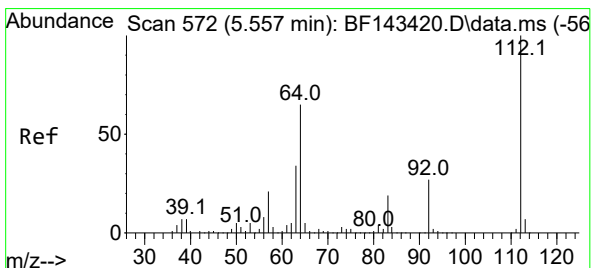
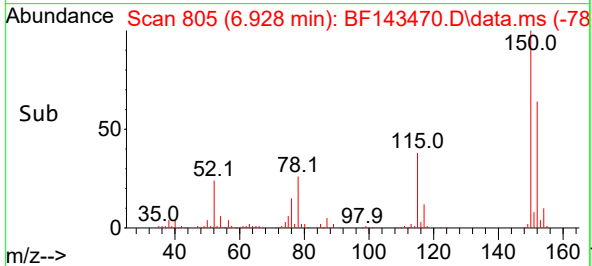
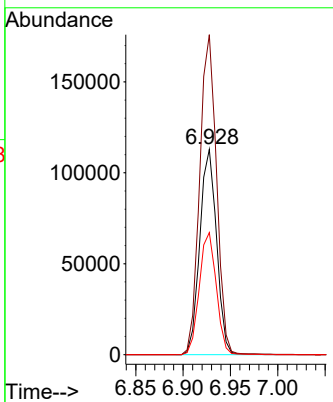
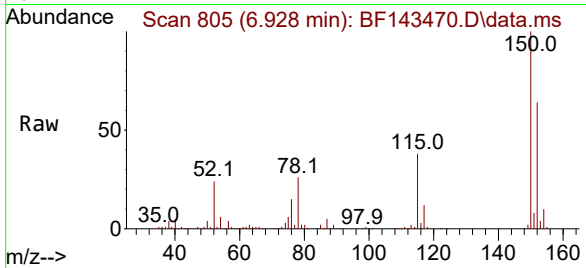




#1
 1,4-Dichlorobenzene-d4
 Concen: 20.000 ng
 RT: 6.928 min Scan# 805
 Delta R.T. -0.000 min
 Lab File: BF143470.D
 Acq: 19 Aug 2025 22:48

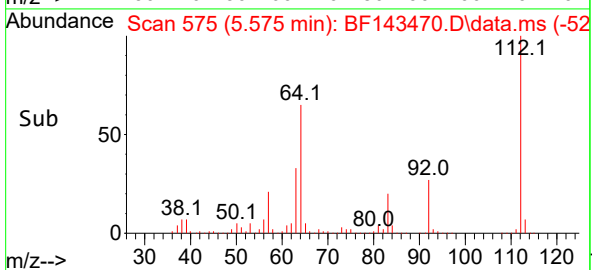
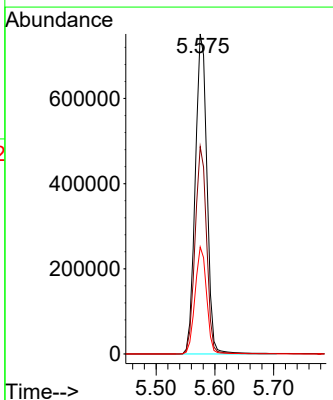
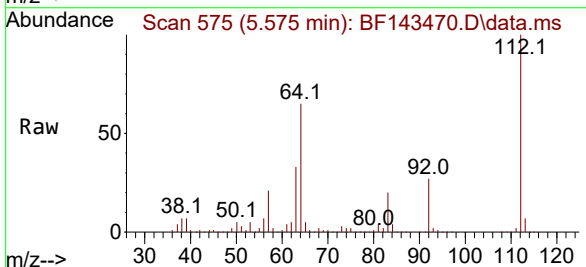
Instrument :
 BNA_F
 ClientSampleId :
 PB169291TB

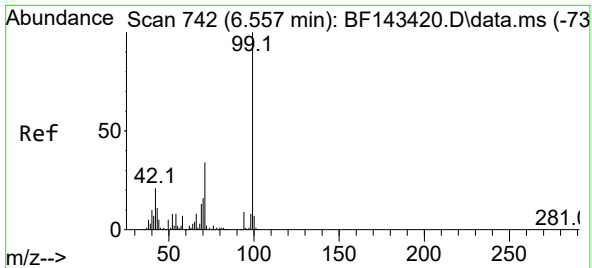
Tgt Ion:152 Resp: 139420
 Ion Ratio Lower Upper
 152 100
 150 155.9 127.4 191.2
 115 59.5 47.5 71.3



#5
 2-Fluorophenol
 Concen: 129.748 ng
 RT: 5.575 min Scan# 575
 Delta R.T. 0.017 min
 Lab File: BF143470.D
 Acq: 19 Aug 2025 22:48

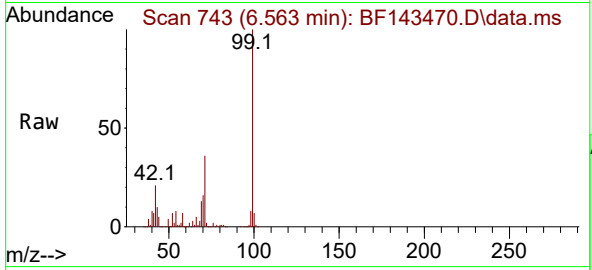
Tgt Ion:112 Resp: 1040624
 Ion Ratio Lower Upper
 112 100
 64 64.8 52.2 78.2
 63 33.5 27.0 40.6



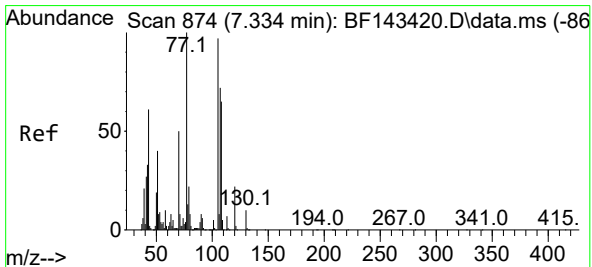
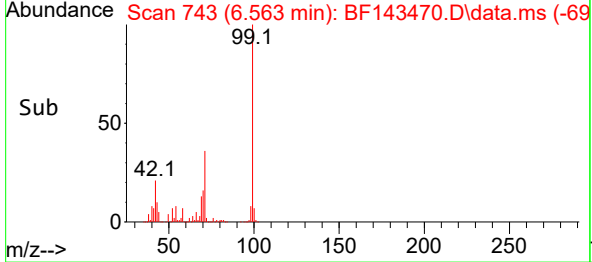
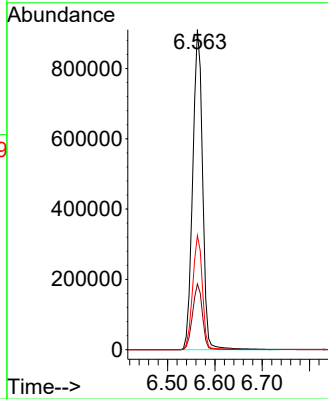


#7
 Phenol-d6
 Concen: 130.303 ng
 RT: 6.563 min Scan# 74
 Delta R.T. 0.006 min
 Lab File: BF143470.D
 Acq: 19 Aug 2025 22:48

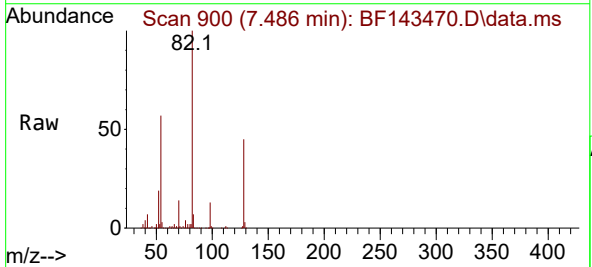
Instrument :
 BNA_F
 ClientSampleId :
 PB169291TB



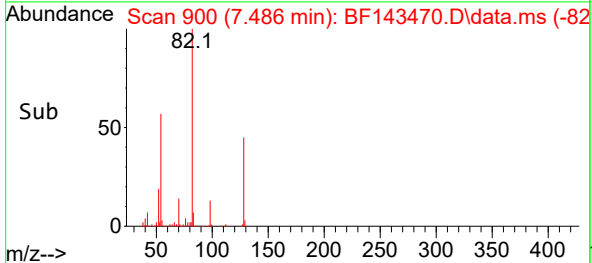
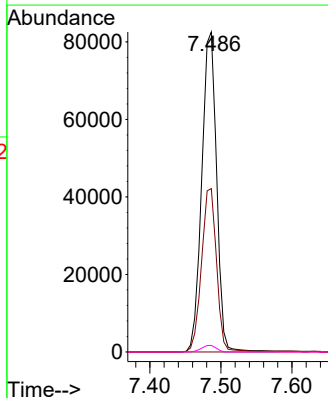
Tgt Ion: 99 Resp: 1317035
 Ion Ratio Lower Upper
 99 100
 42 20.5 17.0 25.6
 71 35.7 27.4 41.2

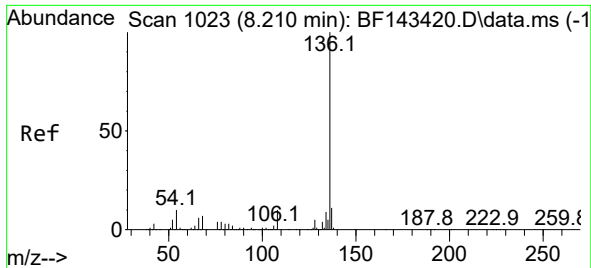


#19
 n-Nitroso-di-n-propylamine
 Concen: 19.279 ng
 RT: 7.486 min Scan# 900
 Delta R.T. 0.153 min
 Lab File: BF143470.D
 Acq: 19 Aug 2025 22:48



Tgt Ion: 70 Resp: 120639
 Ion Ratio Lower Upper
 70 100
 42 51.1 52.5 78.7#
 101 0.0 7.9 11.9#
 130 2.0 16.0 24.0#





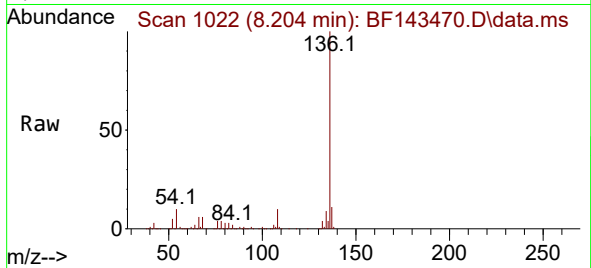
#21
 Naphthalene-d8
 Concen: 20.000 ng
 RT: 8.204 min Scan# 1022
 Delta R.T. -0.006 min
 Lab File: BF143470.D
 Acq: 19 Aug 2025 22:48

Instrument :

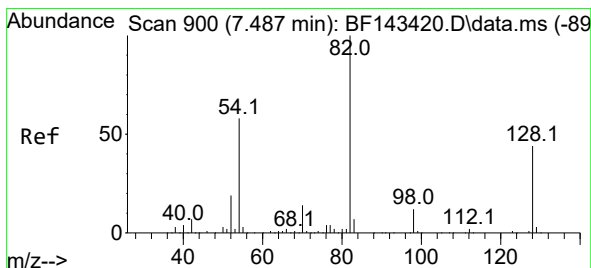
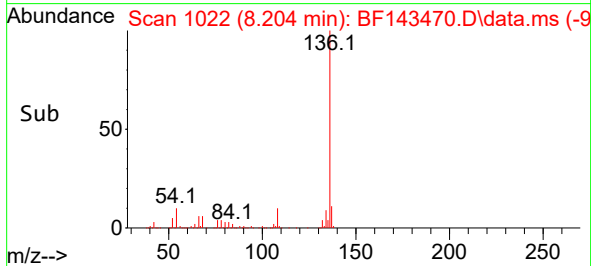
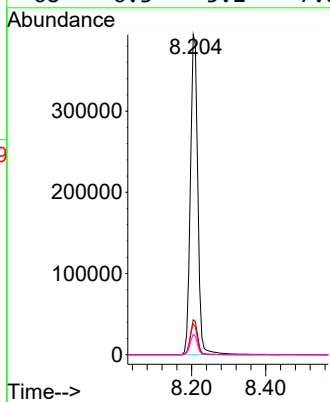
BNA_F

ClientSampleId :

PB169291TB

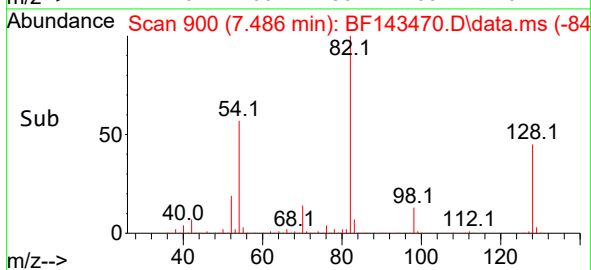
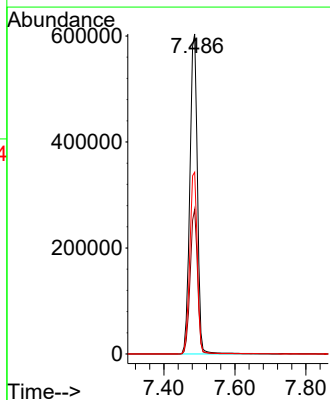
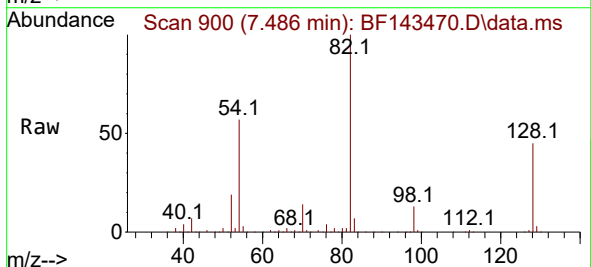


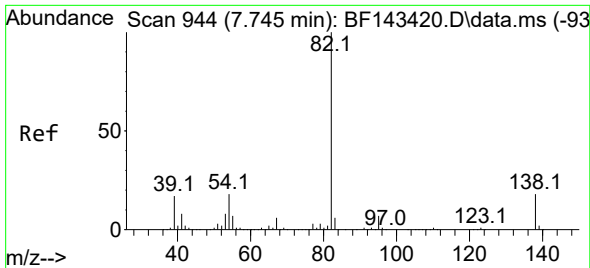
Tgt Ion:136 Resp: 546209
 Ion Ratio Lower Upper
 136 100
 137 10.9 8.8 13.2
 54 9.7 7.8 11.8
 68 6.3 5.2 7.8



#23
 Nitrobenzene-d5
 Concen: 96.813 ng
 RT: 7.486 min Scan# 900
 Delta R.T. -0.000 min
 Lab File: BF143470.D
 Acq: 19 Aug 2025 22:48

Tgt Ion: 82 Resp: 891151
 Ion Ratio Lower Upper
 82 100
 128 45.1 34.6 52.0
 54 56.8 46.0 69.0

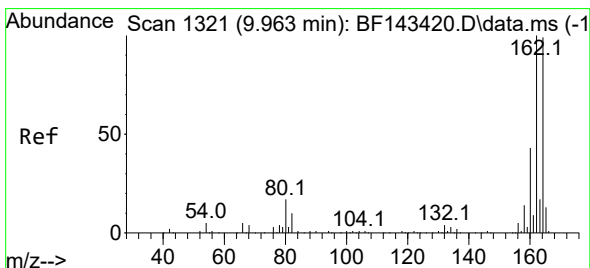
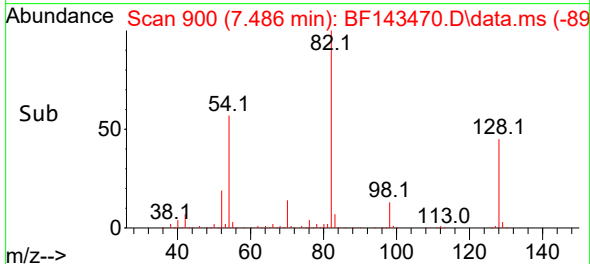
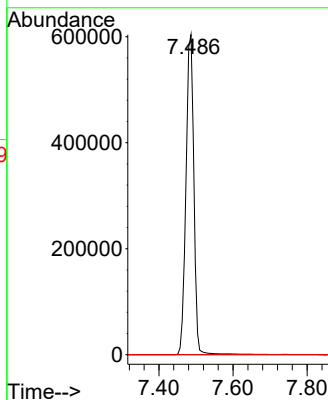
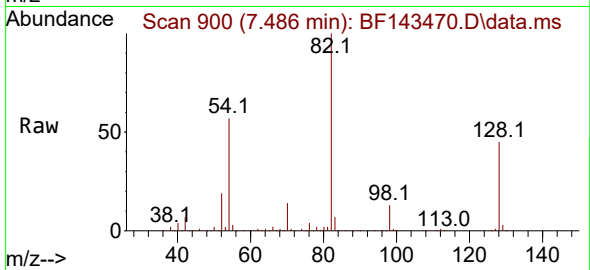




#25
 Isophorone
 Concen: 50.256 ng
 RT: 7.486 min Scan# 900
 Delta R.T. -0.259 min
 Lab File: BF143470.D
 Acq: 19 Aug 2025 22:48

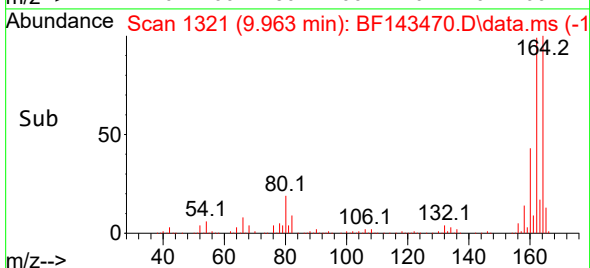
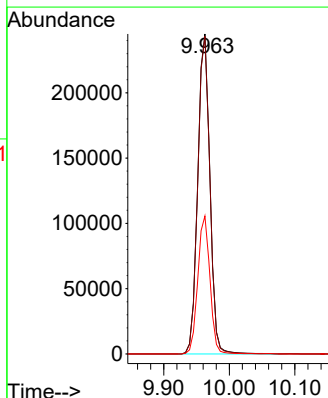
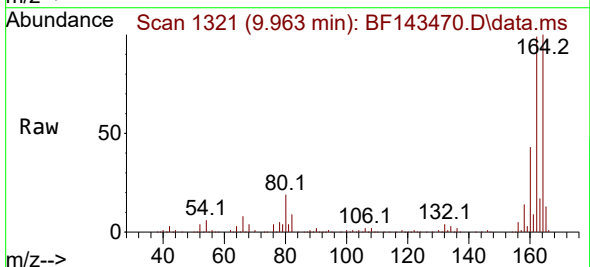
Instrument : BNA_F
 ClientSampleId : PB169291TB

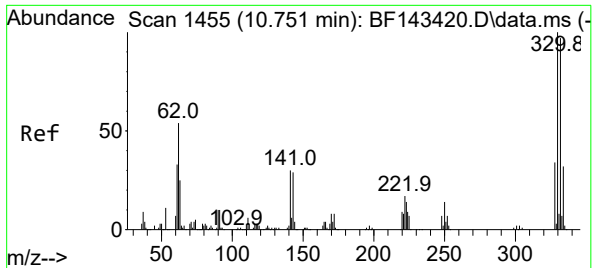
Tgt Ion: 82 Resp: 885378
 Ion Ratio Lower Upper
 82 100
 95 0.0 5.6 8.4#
 138 0.0 14.3 21.5#



#39
 Acenaphthene-d10
 Concen: 20.000 ng
 RT: 9.963 min Scan# 1321
 Delta R.T. -0.000 min
 Lab File: BF143470.D
 Acq: 19 Aug 2025 22:48

Tgt Ion:164 Resp: 317168
 Ion Ratio Lower Upper
 164 100
 162 99.3 80.6 121.0
 160 43.1 34.6 51.8



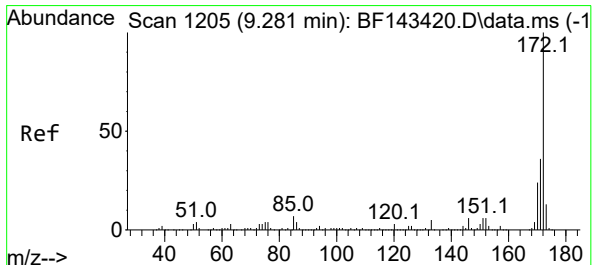
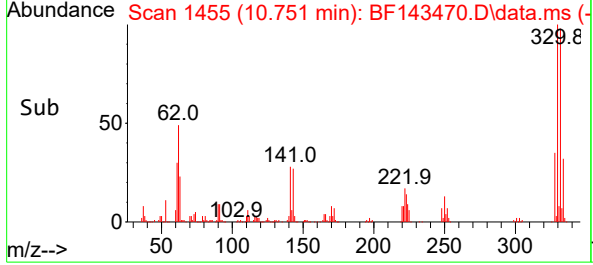
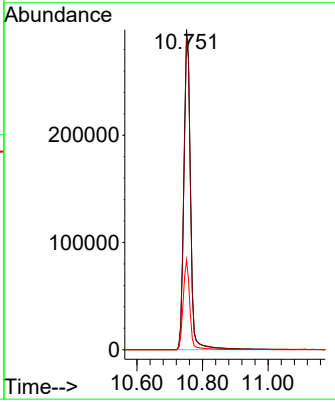
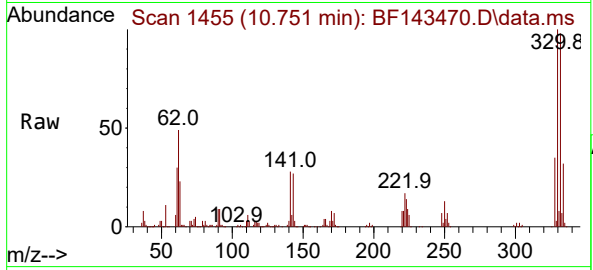


#42
 2,4,6-Tribromophenol
 Concen: 148.018 ng
 RT: 10.751 min Scan# 1455
 Delta R.T. -0.000 min
 Lab File: BF143470.D
 Acq: 19 Aug 2025 22:48

Instrument : BNA_F
 ClientSampleId : PB169291TB

Tgt Ion: 330 Resp: 417860

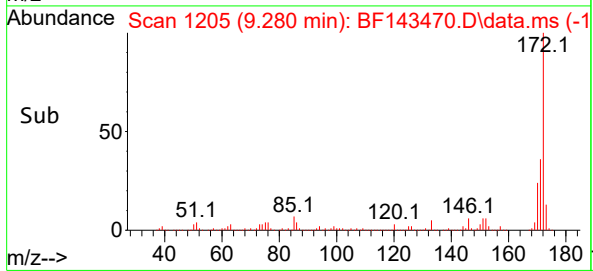
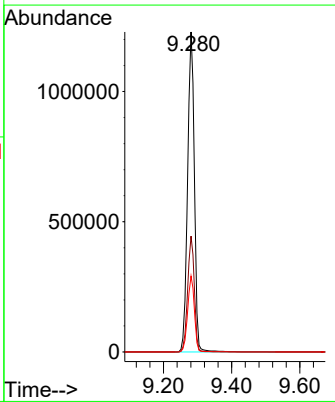
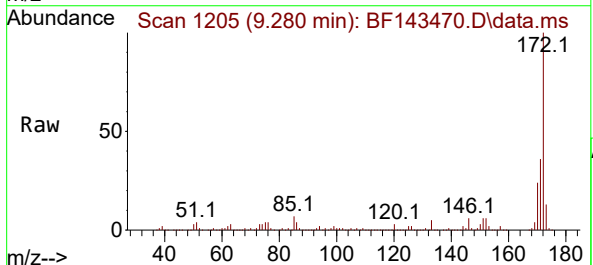
Ion	Ratio	Lower	Upper
330	100		
332	97.0	77.4	116.2
141	28.1	24.1	36.1

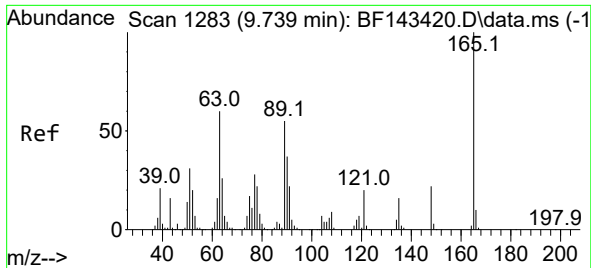


#45
 2-Fluorobiphenyl
 Concen: 89.423 ng
 RT: 9.280 min Scan# 1205
 Delta R.T. -0.000 min
 Lab File: BF143470.D
 Acq: 19 Aug 2025 22:48

Tgt Ion: 172 Resp: 1686227

Ion	Ratio	Lower	Upper
172	100		
171	36.2	28.7	43.1
170	23.7	19.0	28.6

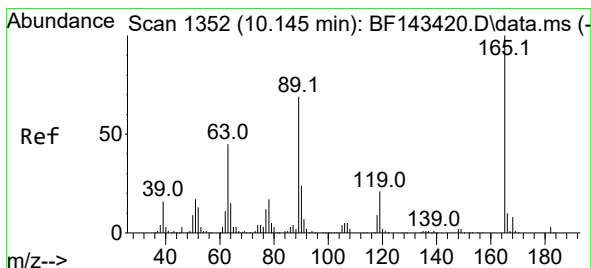
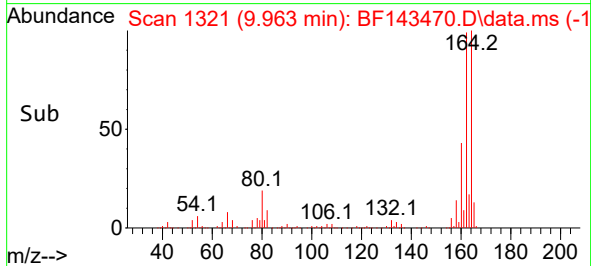
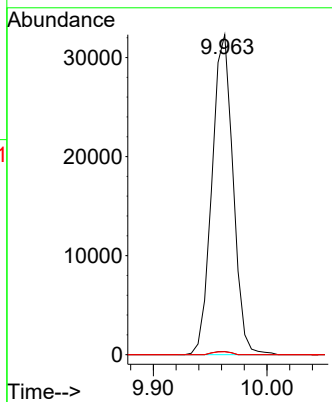
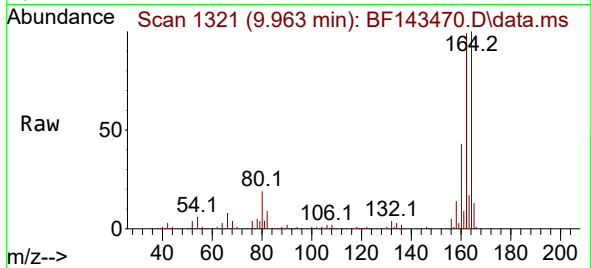




#51
 2,6-Dinitrotoluene
 Concen: 10.705 ng
 RT: 9.963 min Scan# 11
 Delta R.T. 0.223 min
 Lab File: BF143470.D
 Acq: 19 Aug 2025 22:48

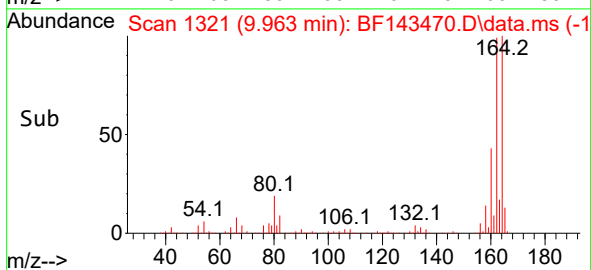
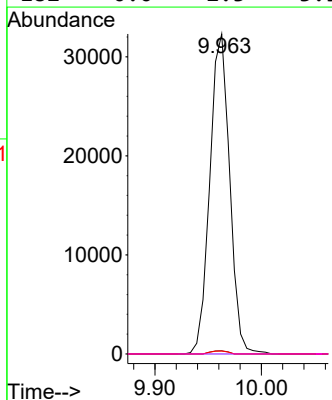
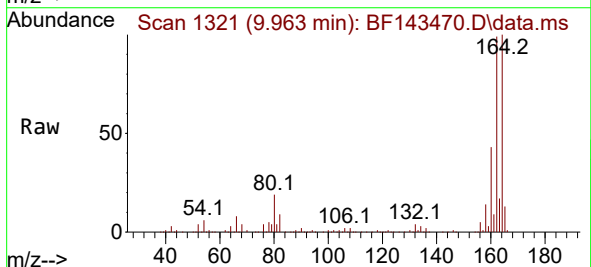
Instrument :
 BNA_F
 ClientSampleId :
 PB169291TB

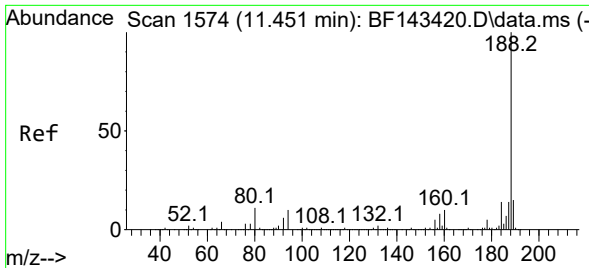
Tgt Ion:165 Resp: 41730
 Ion Ratio Lower Upper
 165 100
 63 1.0 48.2 72.2#
 89 0.9 44.2 66.2#



#57
 2,4-Dinitrotoluene
 Concen: 8.030 ng
 RT: 9.963 min Scan# 1321
 Delta R.T. -0.182 min
 Lab File: BF143470.D
 Acq: 19 Aug 2025 22:48

Tgt Ion:165 Resp: 41731
 Ion Ratio Lower Upper
 165 100
 63 1.0 37.0 55.6#
 89 0.9 55.4 83.0#
 182 0.0 2.3 3.5#



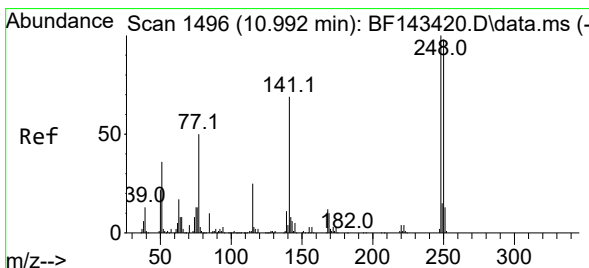
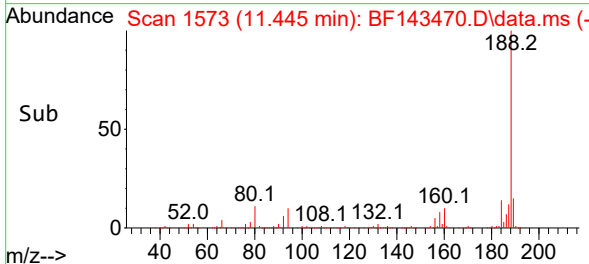
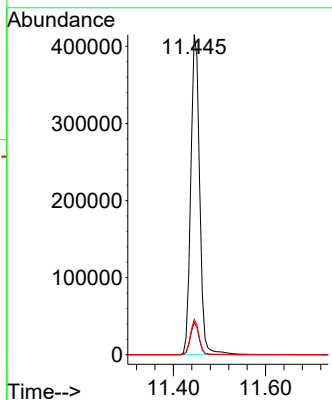
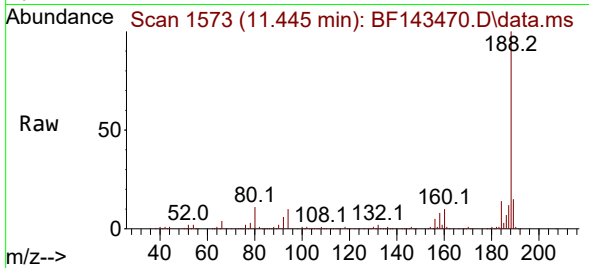


#64
 Phenanthrene-d10
 Concen: 20.000 ng
 RT: 11.445 min Scan# 11
 Delta R.T. -0.006 min
 Lab File: BF143470.D
 Acq: 19 Aug 2025 22:48

Instrument :
 BNA_F
 ClientSampleId :
 PB169291TB

Tgt Ion:188 Resp: 553751

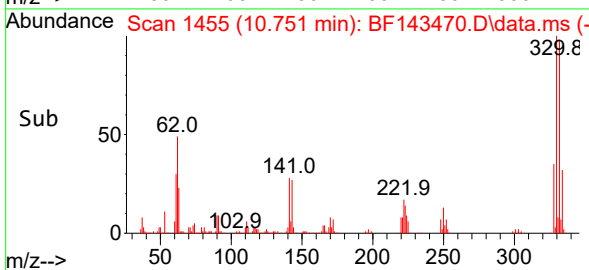
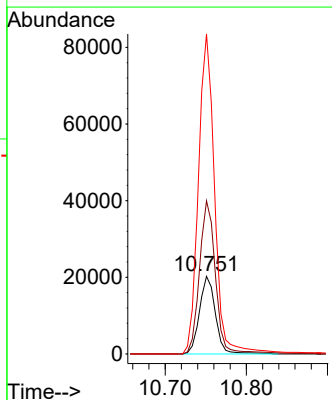
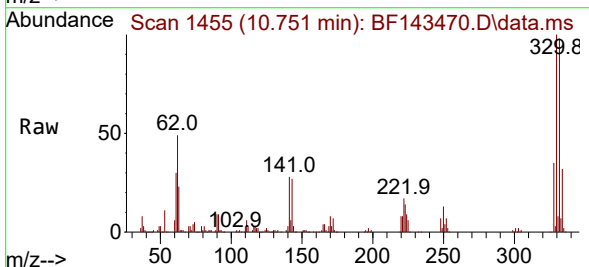
Ion	Ratio	Lower	Upper
188	100		
94	10.1	8.0	12.0
80	11.1	8.6	12.8

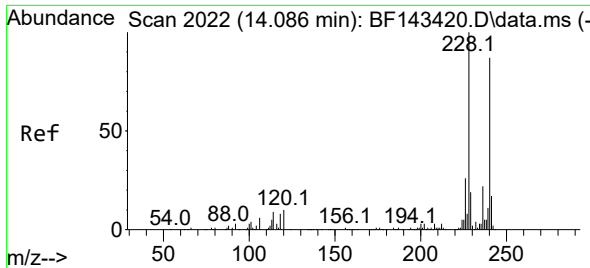


#67
 4-Bromophenyl-phenylether
 Concen: 4.233 ng
 RT: 10.751 min Scan# 1455
 Delta R.T. -0.241 min
 Lab File: BF143470.D
 Acq: 19 Aug 2025 22:48

Tgt Ion:248 Resp: 27677

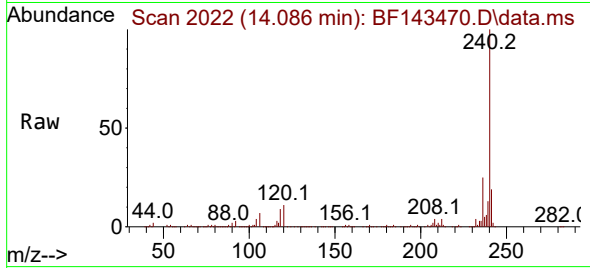
Ion	Ratio	Lower	Upper
248	100		
250	197.3	78.6	118.0#
141	412.2	54.9	82.3#



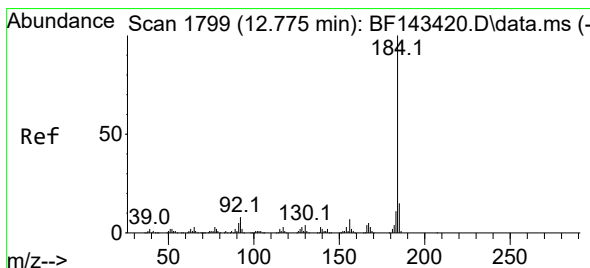
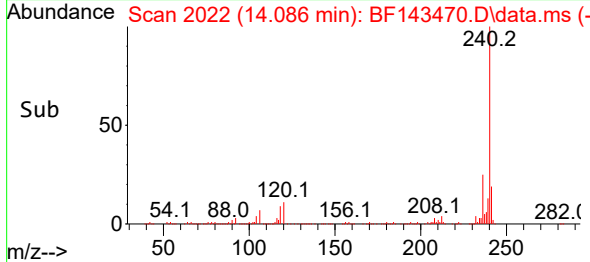
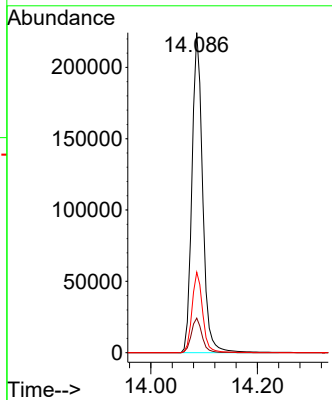


#76
 Chrysene-d12
 Concen: 20.000 ng
 RT: 14.086 min Scan# 2022
 Delta R.T. -0.000 min
 Lab File: BF143470.D
 Acq: 19 Aug 2025 22:48

Instrument : BNA_F
 Client Sample ID : PB169291TB

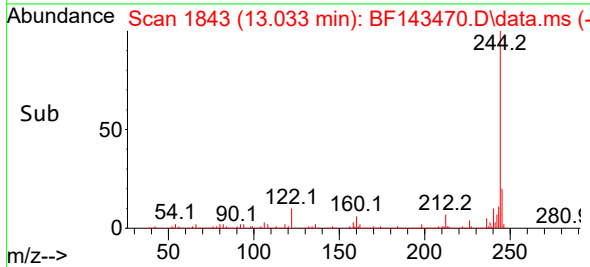
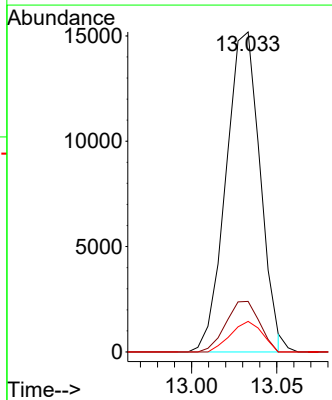
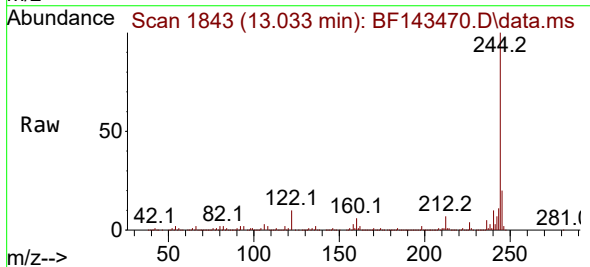


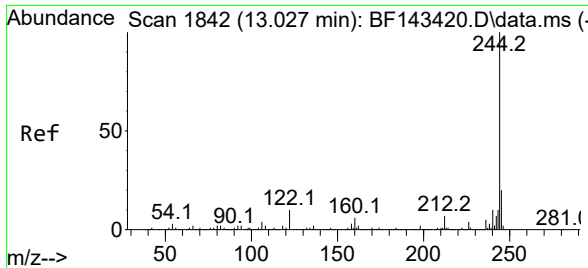
Tgt Ion: 240 Resp: 313579
 Ion Ratio Lower Upper
 240 100
 120 10.8 9.0 13.4
 236 25.2 20.2 30.2



#77
 Benzidine
 Concen: 2.254 ng
 RT: 13.033 min Scan# 1843
 Delta R.T. 0.258 min
 Lab File: BF143470.D
 Acq: 19 Aug 2025 22:48

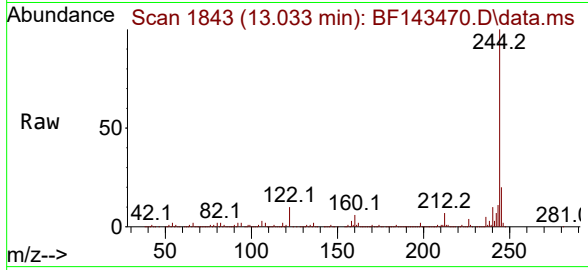
Tgt Ion: 184 Resp: 21109
 Ion Ratio Lower Upper
 184 100
 185 15.8 12.2 18.2
 183 9.5 9.2 13.8





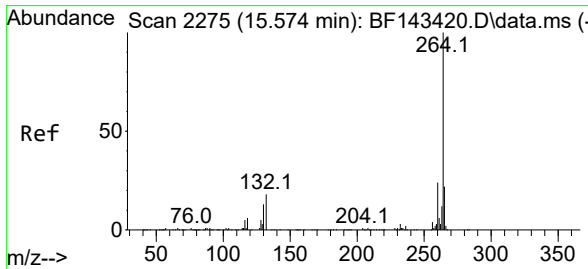
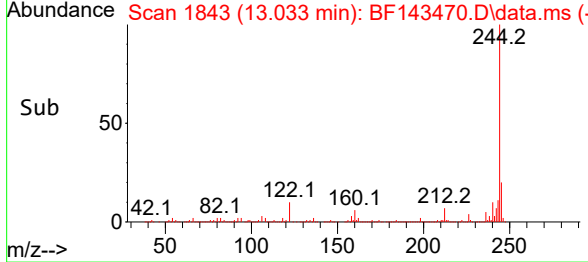
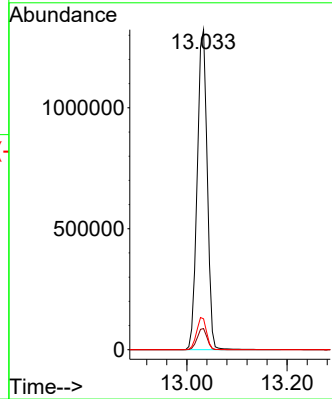
#79
 Terphenyl-d14
 Concen: 97.612 ng
 RT: 13.033 min Scan# 1843
 Delta R.T. 0.006 min
 Lab File: BF143470.D
 Acq: 19 Aug 2025 22:48

Instrument : BNA_F
 ClientSampleId : PB169291TB



Tgt Ion:244 Resp: 1822119

Ion	Ratio	Lower	Upper
244	100		
212	6.6	5.2	7.8
122	9.6	8.3	12.5



#86
 Perylene-d12
 Concen: 20.000 ng
 RT: 15.580 min Scan# 2276
 Delta R.T. 0.006 min
 Lab File: BF143470.D
 Acq: 19 Aug 2025 22:48

Tgt Ion:264 Resp: 292011

Ion	Ratio	Lower	Upper
264	100		
260	23.7	18.8	28.2
265	21.2	17.4	26.0

