

Data Path : Z:\svoasrv\HPCHEM1\BNA_F\Data\BF082021\
 Data File : BF125129.D
 Acq On : 20 Aug 2021 12:03
 Operator : JU/CG
 Sample : M3449-19
 Misc :
 ALS Vial : 5 Sample Multiplier: 1

Instrument :
 BNA_F
 ClientSampleId :
 CON-1

Quant Time: Aug 20 13:05:20 2021
 Quant Method : Z:\SVOASRV\HPCHEM1\BNA_F\METHODS\8270-BF081821.M
 Quant Title : ASP BNA STANDARDS FOR 5 POINT CALIBRATION
 QLast Update : Wed Aug 18 17:03:50 2021
 Response via : Initial Calibration

Compound	R.T.	QIon	Response	Conc	Units	Dev(Min)
Internal Standards						
1) 1,4-Dichlorobenzene-d4	6.916	152	157502	20.000	ng	0.00
21) Naphthalene-d8	8.198	136	612700	20.000	ng	# 0.00
39) Acenaphthene-d10	9.957	164	343038	20.000	ng	0.00
64) Phenanthrene-d10	11.445	188	679871	20.000	ng	0.00
76) Chrysene-d12	14.086	240	576894	20.000	ng	# 0.00
86) Perylene-d12	15.580	264	472881	20.000	ng	0.00
System Monitoring Compounds						
5) 2-Fluorophenol	5.528	112	160269	15.402	ng	0.00
7) Phenol-d6	6.534	99	688003	51.122	ng	0.00
23) Nitrobenzene-d5	7.481	82	787433	64.701	ng	0.00
42) 2,4,6-Tribromophenol	10.739	330	6439	1.880	ng	-0.01
45) 2-Fluorobiphenyl	9.280	172	1439308	58.478	ng	0.00
79) Terphenyl-d14	13.033	244	2005871	55.392	ng	0.00

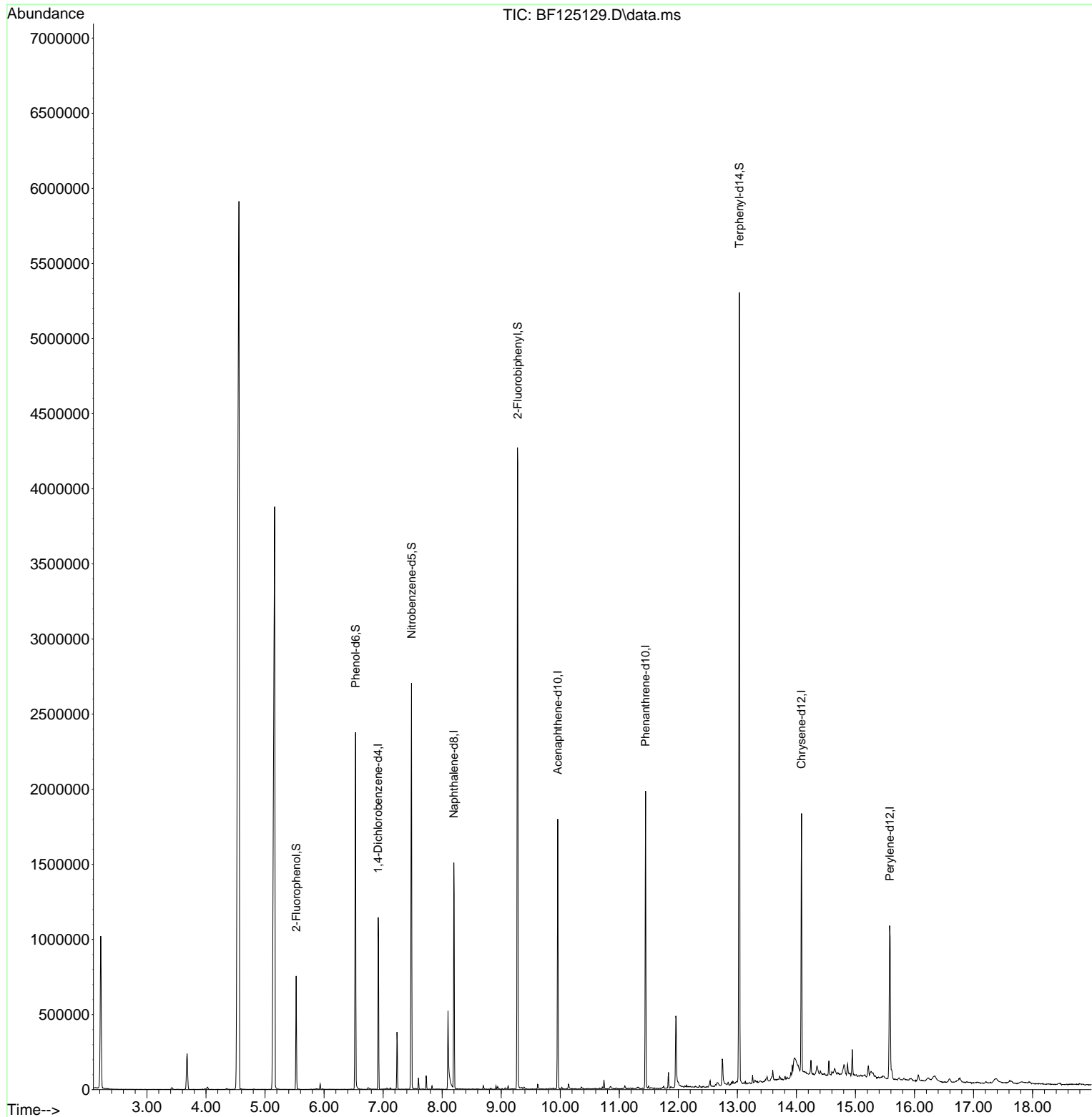
Target Compounds Qvalue

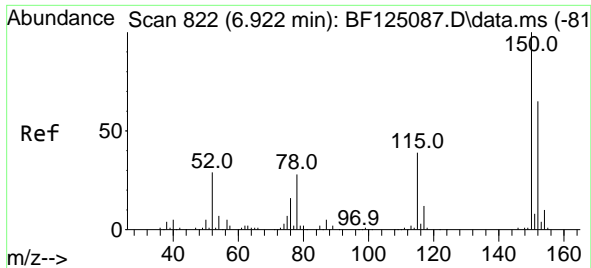
(#) = qualifier out of range (m) = manual integration (+) = signals summed

Data Path : Z:\svoasrv\HPCHEM1\BNA_F\Data\BF082021\
Data File : BF125129.D
Acq On : 20 Aug 2021 12:03
Operator : JU/CG
Sample : M3449-19
Misc :
ALS Vial : 5 Sample Multiplier: 1

Instrument :
BNA_F
ClientSampled :
CON-1

Quant Time: Aug 20 13:05:20 2021
Quant Method : Z:\SVOASRV\HPCHEM1\BNA_F\METHODS\8270-BF081821.M
Quant Title : ASP BNA STANDARDS FOR 5 POINT CALIBRATION
QLast Update : Wed Aug 18 17:03:50 2021
Response via : Initial Calibration

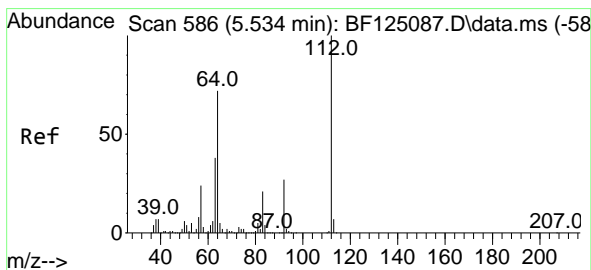
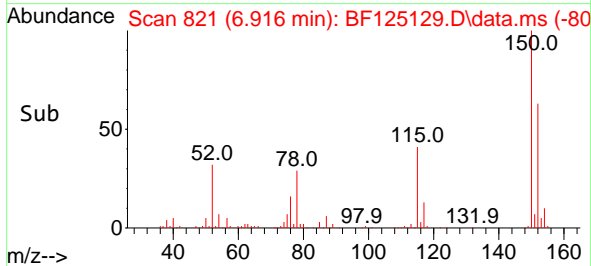
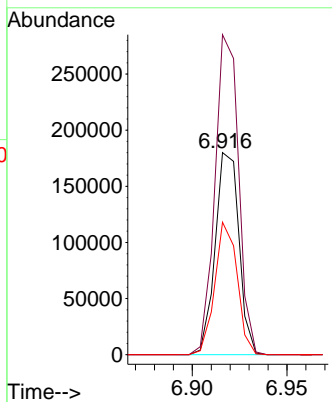
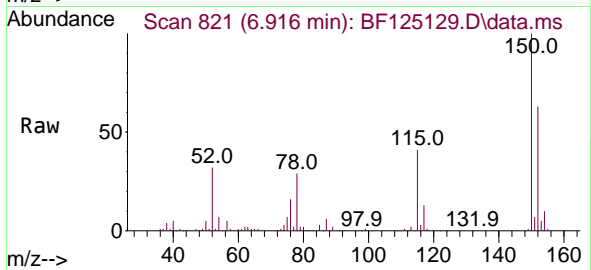




#1
 1,4-Dichlorobenzene-d4
 Concen: 20.000 ng
 RT: 6.916 min Scan# 821
 Delta R.T. -0.006 min
 Lab File: BF125129.D
 Acq: 20 Aug 2021 12:03

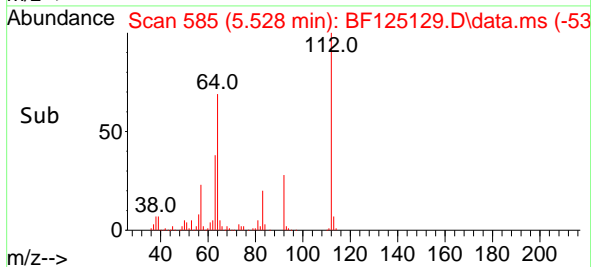
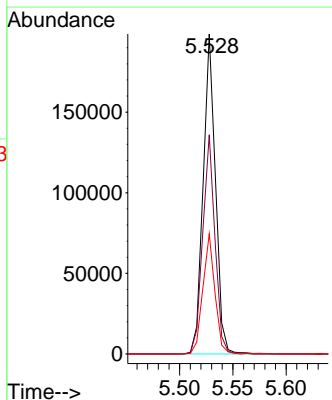
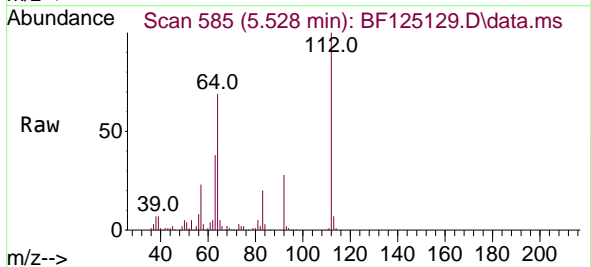
Instrument :
 BNA_F
 ClientSampled :
 CON-1

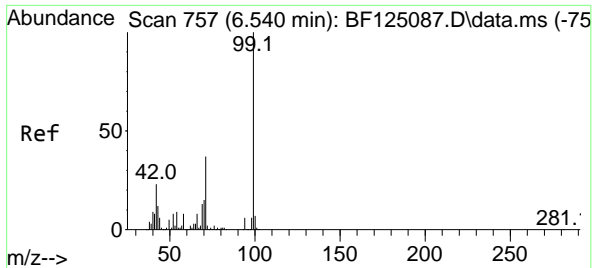
Tgt Ion:152 Resp: 157502
 Ion Ratio Lower Upper
 152 100
 150 158.4 117.6 176.4
 115 65.6 47.1 70.7



#5
 2-Fluorophenol
 Concen: 15.402 ng
 RT: 5.528 min Scan# 585
 Delta R.T. -0.006 min
 Lab File: BF125129.D
 Acq: 20 Aug 2021 12:03

Tgt Ion:112 Resp: 160269
 Ion Ratio Lower Upper
 112 100
 64 68.5 44.2 66.2#
 63 37.6 26.2 39.2



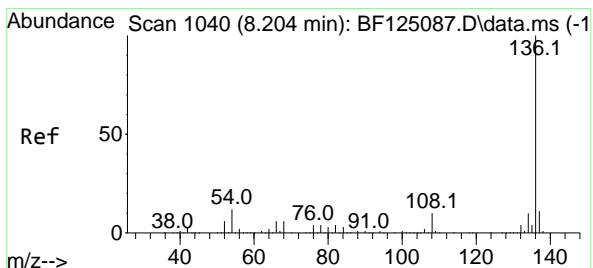
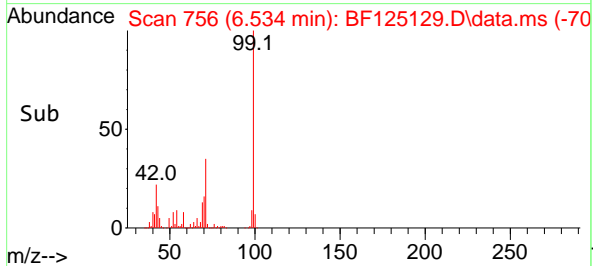
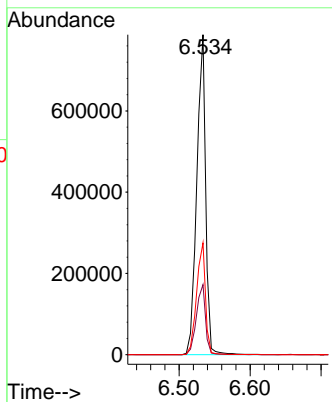
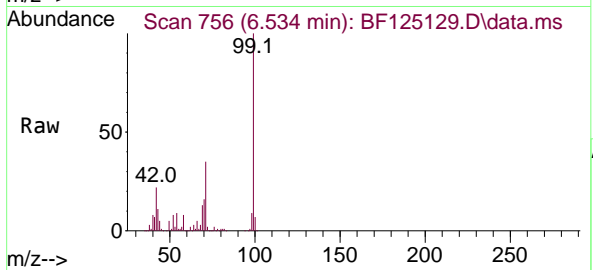


#7
 Phenol-d6
 Concen: 51.122 ng
 RT: 6.534 min Scan# 756
 Delta R.T. -0.006 min
 Lab File: BF125129.D
 Acq: 20 Aug 2021 12:03

Instrument :
 BNA_F
 ClientSampled :
 CON-1

Tgt Ion: 99 Resp: 688003

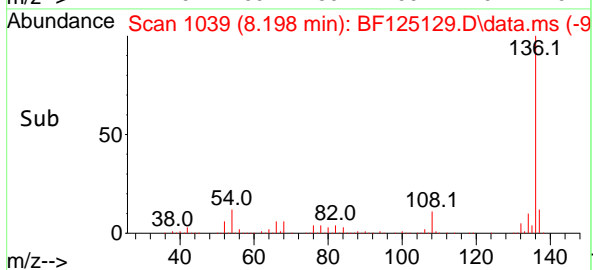
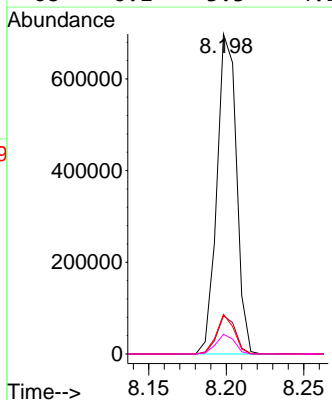
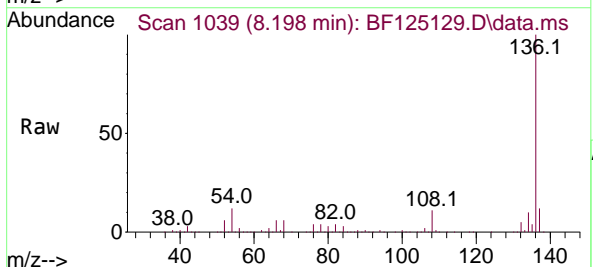
Ion	Ratio	Lower	Upper
99	100		
42	21.9	23.5	35.3#
71	35.0	25.6	38.4

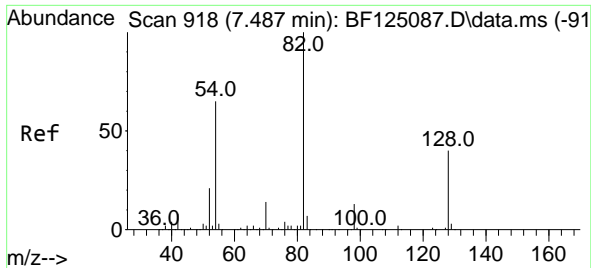


#21
 Naphthalene-d8
 Concen: 20.000 ng
 RT: 8.198 min Scan# 1039
 Delta R.T. -0.006 min
 Lab File: BF125129.D
 Acq: 20 Aug 2021 12:03

Tgt Ion: 136 Resp: 612700

Ion	Ratio	Lower	Upper
136	100		
137	11.9	9.8	14.6
54	12.4	6.4	9.6#
68	6.1	3.3	4.9#



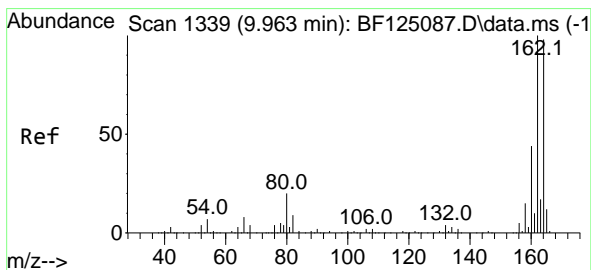
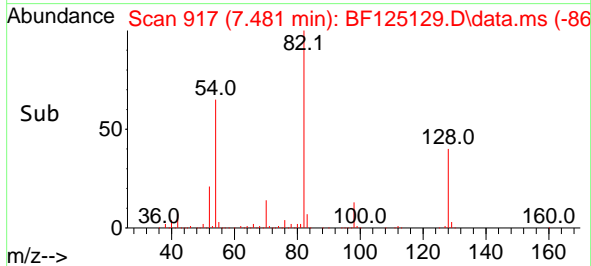
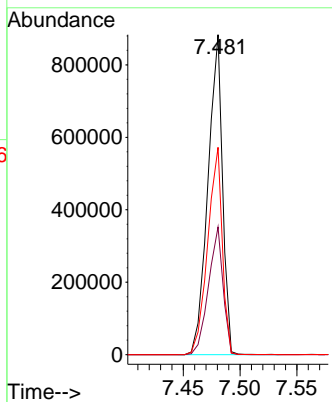
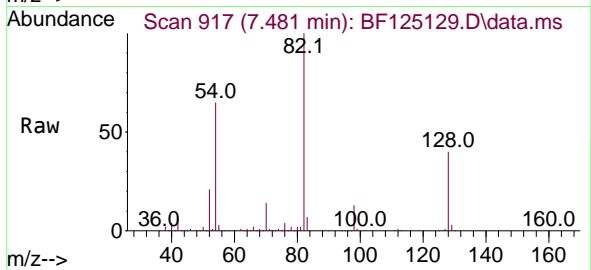


#23
 Nitrobenzene-d5
 Concen: 64.701 ng
 RT: 7.481 min Scan# 917
 Delta R.T. -0.006 min
 Lab File: BF125129.D
 Acq: 20 Aug 2021 12:03

Instrument :
 BNA_F
 ClientSampled :
 CON-1

Tgt Ion: 82 Resp: 787433

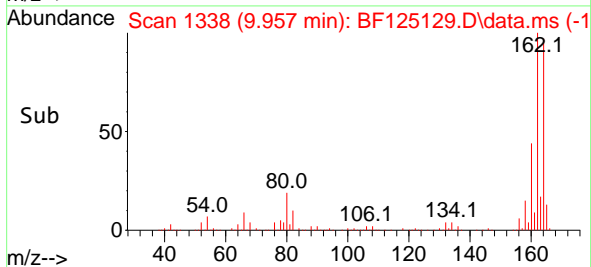
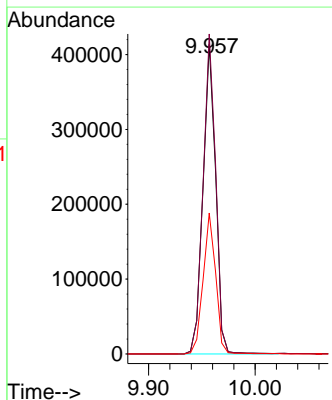
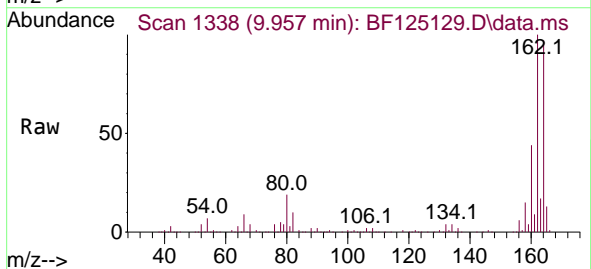
Ion	Ratio	Lower	Upper
82	100		
128	39.9	40.6	60.8#
54	64.8	49.6	74.4

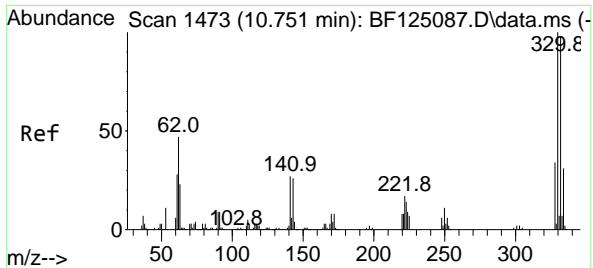


#39
 Acenaphthene-d10
 Concen: 20.000 ng
 RT: 9.957 min Scan# 1338
 Delta R.T. -0.006 min
 Lab File: BF125129.D
 Acq: 20 Aug 2021 12:03

Tgt Ion: 164 Resp: 343038

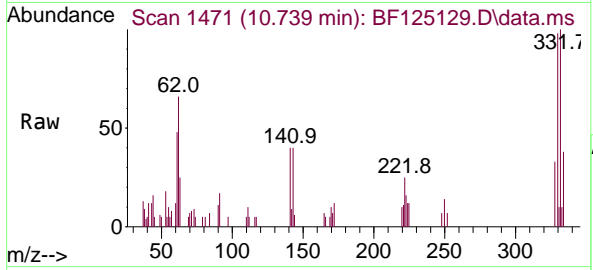
Ion	Ratio	Lower	Upper
164	100		
162	103.4	81.3	121.9
160	45.5	38.0	57.0



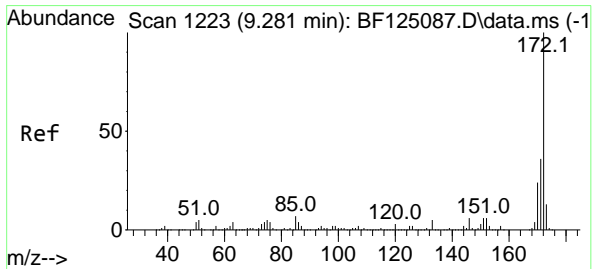
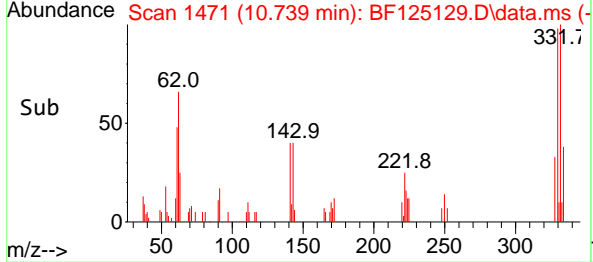
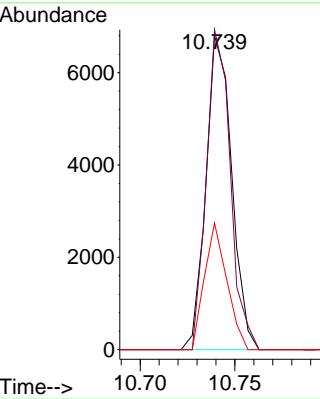


#42
 2,4,6-Tribromophenol
 Concen: 1.880 ng
 RT: 10.739 min Scan# 1471
 Delta R.T. -0.012 min
 Lab File: BF125129.D
 Acq: 20 Aug 2021 12:03

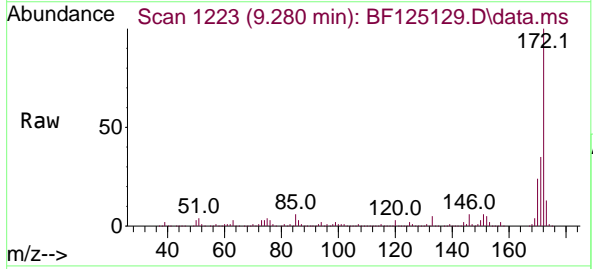
Instrument :
 BNA_F
 ClientSampled :
 CON-1



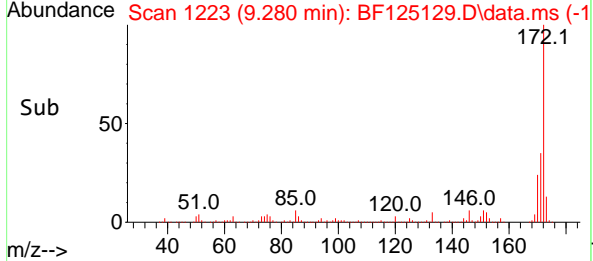
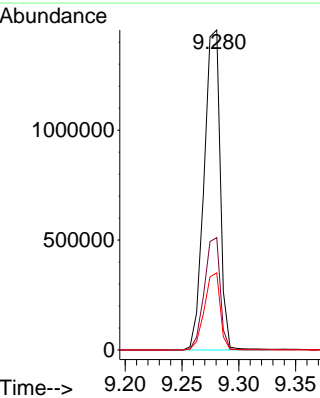
Tgt Ion:330 Resp: 6439
 Ion Ratio Lower Upper
 330 100
 332 94.6 76.2 114.4
 141 35.0 44.6 66.8#

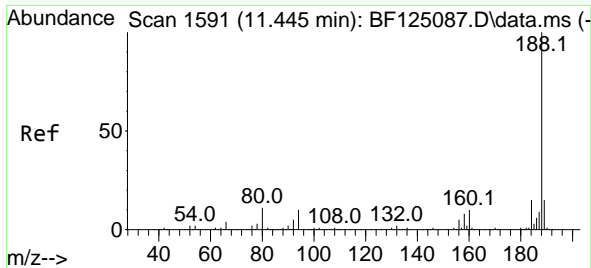


#45
 2-Fluorobiphenyl
 Concen: 58.478 ng
 RT: 9.280 min Scan# 1223
 Delta R.T. -0.000 min
 Lab File: BF125129.D
 Acq: 20 Aug 2021 12:03



Tgt Ion:172 Resp: 1439308
 Ion Ratio Lower Upper
 172 100
 171 35.1 26.5 39.7
 170 24.1 18.8 28.2



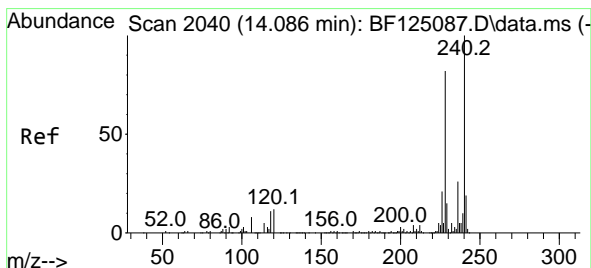
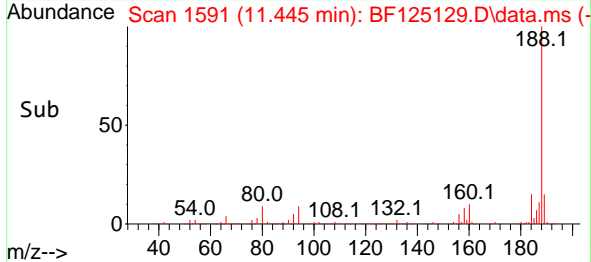
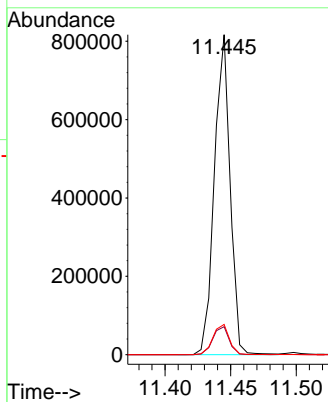
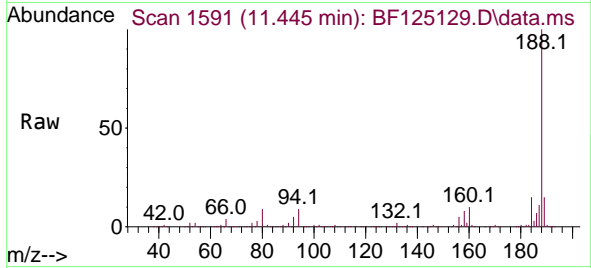


#64
 Phenanthrene-d10
 Concen: 20.000 ng
 RT: 11.445 min Scan# 1591
 Delta R.T. 0.000 min
 Lab File: BF125129.D
 Acq: 20 Aug 2021 12:03

Instrument :
 BNA_F
 ClientSampled :
 CON-1

Tgt Ion:188 Resp: 679871

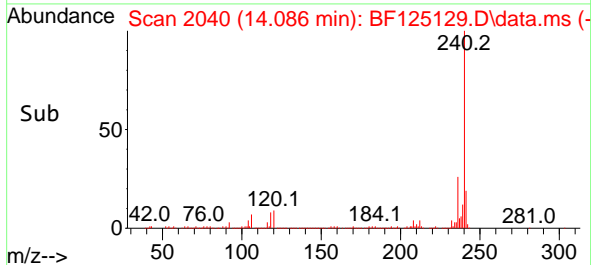
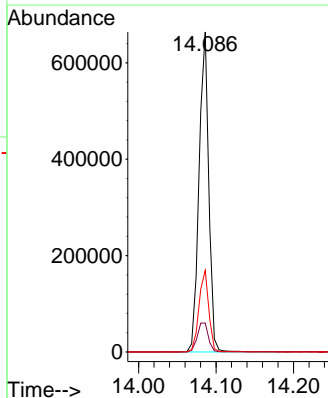
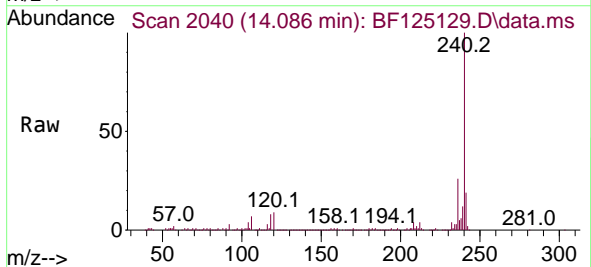
Ion	Ratio	Lower	Upper
188	100		
94	8.7	6.7	10.1
80	9.5	7.5	11.3

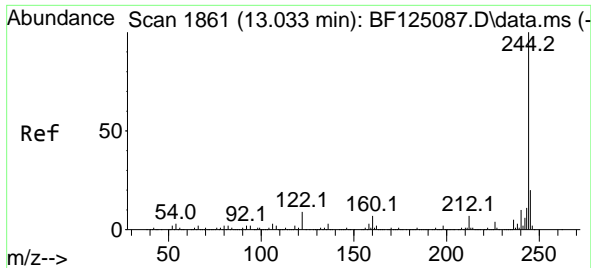


#76
 Chrysene-d12
 Concen: 20.000 ng
 RT: 14.086 min Scan# 2040
 Delta R.T. -0.000 min
 Lab File: BF125129.D
 Acq: 20 Aug 2021 12:03

Tgt Ion:240 Resp: 576894

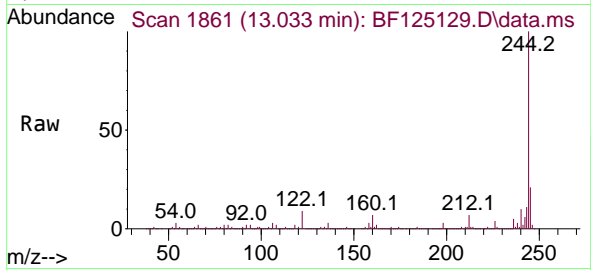
Ion	Ratio	Lower	Upper
240	100		
120	9.0	10.8	16.2#
236	25.5	21.6	32.4



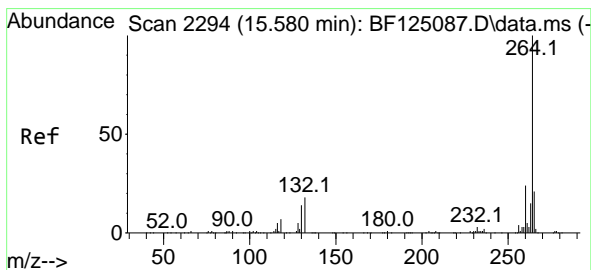
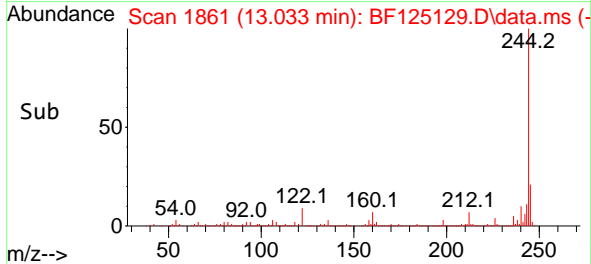
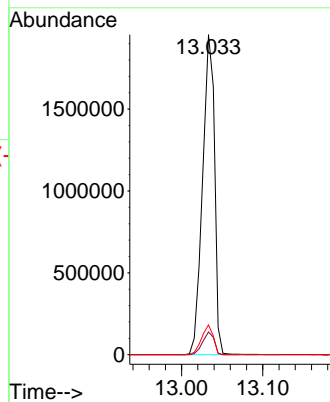


#79
 Terphenyl-d14
 Concen: 55.392 ng
 RT: 13.033 min Scan# 1861
 Delta R.T. -0.000 min
 Lab File: BF125129.D
 Acq: 20 Aug 2021 12:03

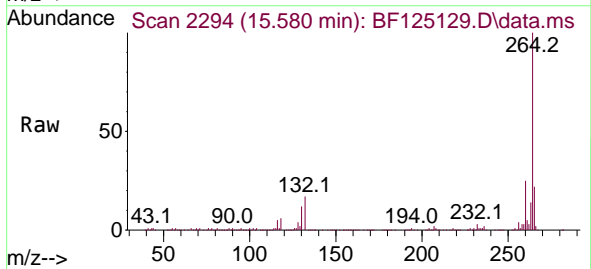
Instrument :
 BNA_F
 ClientSampled :
 CON-1



Tgt Ion:244 Resp: 2005871
 Ion Ratio Lower Upper
 244 100
 212 7.1 5.9 8.9
 122 9.3 9.0 13.4



#86
 Perylene-d12
 Concen: 20.000 ng
 RT: 15.580 min Scan# 2294
 Delta R.T. -0.000 min
 Lab File: BF125129.D
 Acq: 20 Aug 2021 12:03



Tgt Ion:264 Resp: 472881
 Ion Ratio Lower Upper
 264 100
 260 24.7 19.6 29.4
 265 21.8 17.2 25.8

