

Data Path : Z:\svoasrv\HPCHEM1\BNA_F\Data\BF082025\
 Data File : BF143504.D
 Acq On : 21 Aug 2025 00:58
 Operator : RC/JU
 Sample : Q2819-20
 Misc :
 ALS Vial : 28 Sample Multiplier: 1

Instrument :
 BNA_F
 ClientSampleId :
 82H-E

Quant Time: Aug 21 02:09:13 2025
 Quant Method : Z:\svoasrv\HPCHEM1\BNA_F\Methods\8270-BF082025.M
 Quant Title : ASP BNA STANDARDS FOR 5 POINT CALIBRATION
 QLast Update : Wed Aug 20 15:07:46 2025
 Response via : Initial Calibration

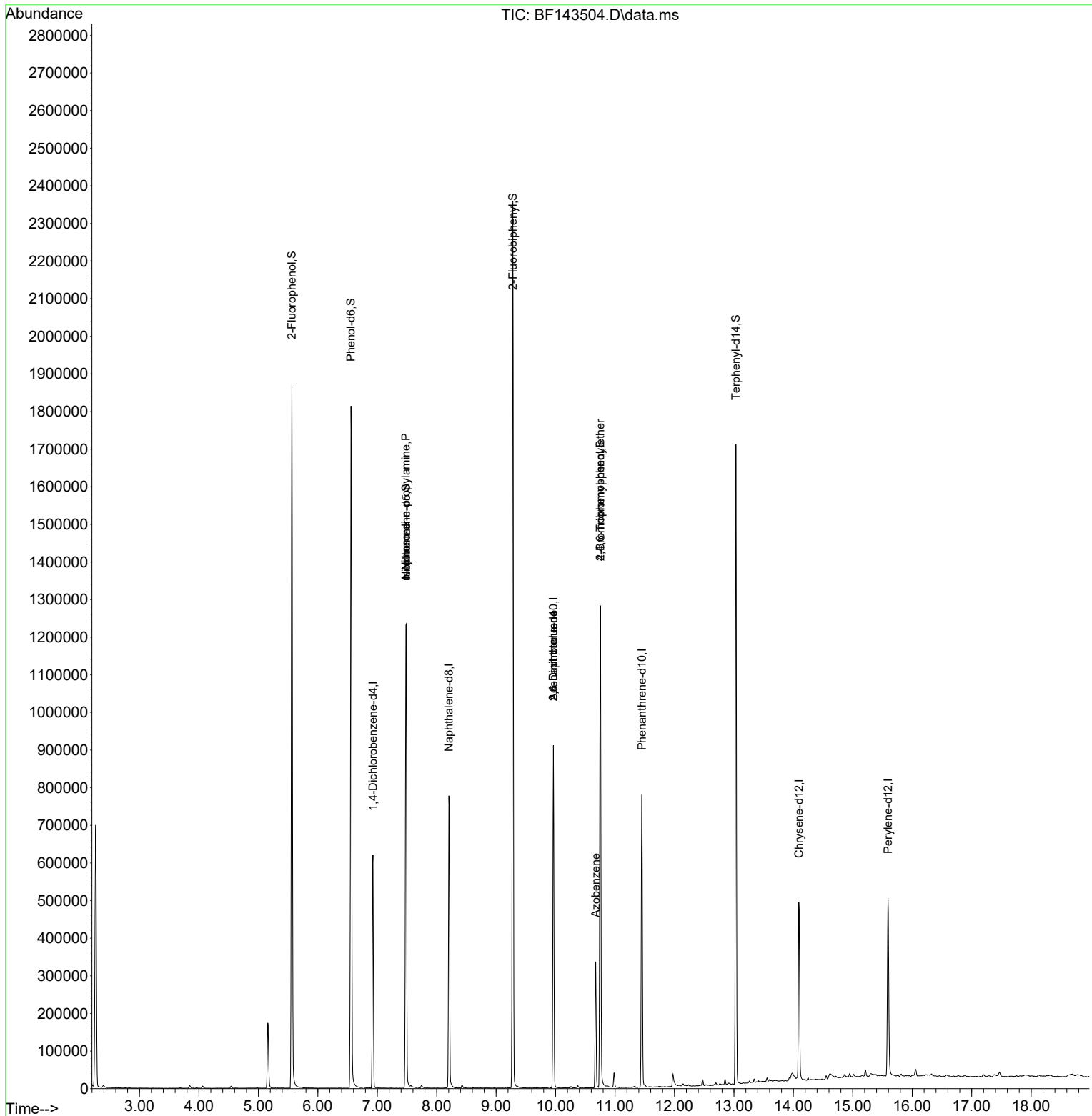
Compound	R.T.	QIon	Response	Conc	Units	Dev(Min)
Internal Standards						
1) 1,4-Dichlorobenzene-d4	6.928	152	132245	20.000	ng	0.00
21) Naphthalene-d8	8.204	136	508439	20.000	ng	0.00
39) Acenaphthene-d10	9.963	164	271455	20.000	ng	0.00
64) Phenanthrene-d10	11.451	188	403457	20.000	ng	0.00
76) Chrysene-d12	14.092	240	245211	20.000	ng	-0.01
86) Perylene-d12	15.592	264	294419	20.000	ng	0.00
System Monitoring Compounds						
5) 2-Fluorophenol	5.563	112	683090	90.195	ng	0.00
7) Phenol-d6	6.557	99	860932	92.088	ng	-0.02
23) Nitrobenzene-d5	7.486	82	569222	65.331	ng	-0.01
42) 2,4,6-Tribromophenol	10.751	330	228925	90.597	ng	-0.01
45) 2-Fluorobiphenyl	9.280	172	1025389	62.428	ng	0.00
79) Terphenyl-d14	13.033	244	822926	58.563	ng	0.00
Target Compounds						
19) n-Nitroso-di-n-propyla...	7.481	70	76778	13.436	ng	# 80
25) Isophorone	7.486	82	549900	34.430	ng	# 65
51) 2,6-Dinitrotoluene	9.963	165	34308	10.125	ng	# 26
57) 2,4-Dinitrotoluene	9.963	165	34308	7.583	ng	# 26
63) Azobenzene	10.674	77	85450	5.622	ng	# 1
67) 4-Bromophenyl-phenylether	10.751	248	15004	3.117	ng	# 1

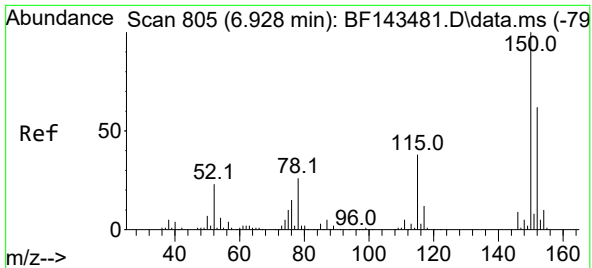
(#) = qualifier out of range (m) = manual integration (+) = signals summed

Data Path : Z:\svoasrv\HPCHEM1\BNA_F\Data\BF082025\
 Data File : BF143504.D
 Acq On : 21 Aug 2025 00:58
 Operator : RC/JU
 Sample : Q2819-20
 Misc :
 ALS Vial : 28 Sample Multiplier: 1

Instrument :
 BNA_F
 ClientSampleId :
 82H-E

Quant Time: Aug 21 02:09:13 2025
 Quant Method : Z:\svoasrv\HPCHEM1\BNA_F\Methods\8270-BF082025.M
 Quant Title : ASP BNA STANDARDS FOR 5 POINT CALIBRATION
 QLast Update : Wed Aug 20 15:07:46 2025
 Response via : Initial Calibration

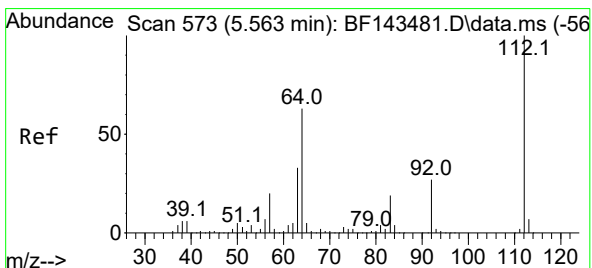
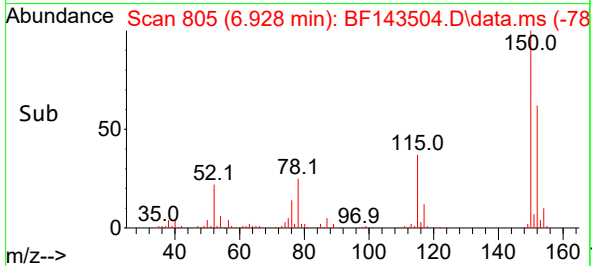
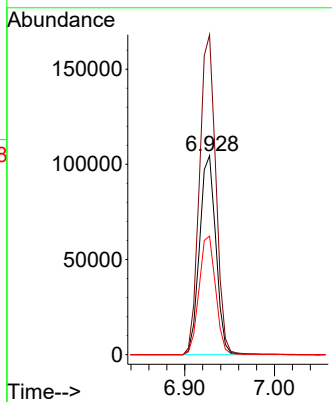
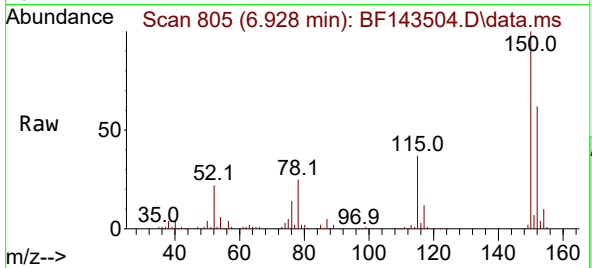




#1
 1,4-Dichlorobenzene-d4
 Concen: 20.000 ng
 RT: 6.928 min Scan# 805
 Delta R.T. -0.000 min
 Lab File: BF143504.D
 Acq: 21 Aug 2025 00:58

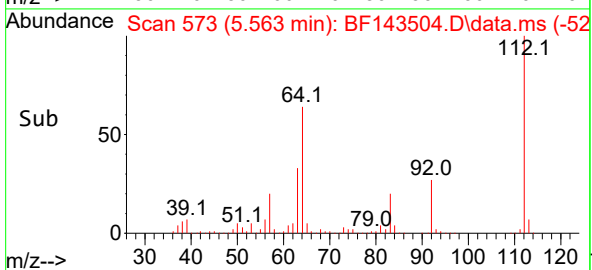
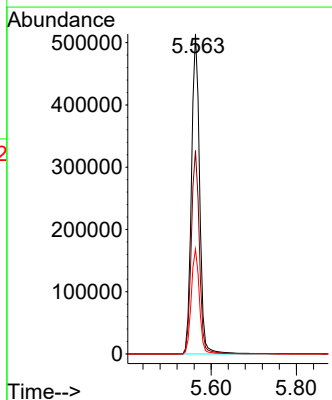
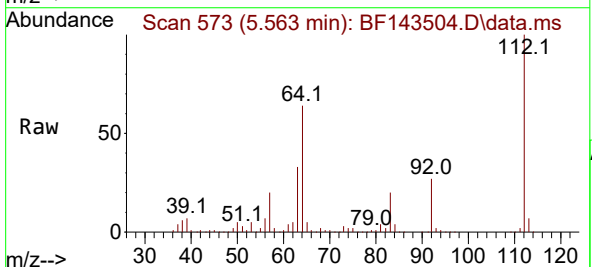
Instrument :
 BNA_F
 ClientSampleId :
 82H-E

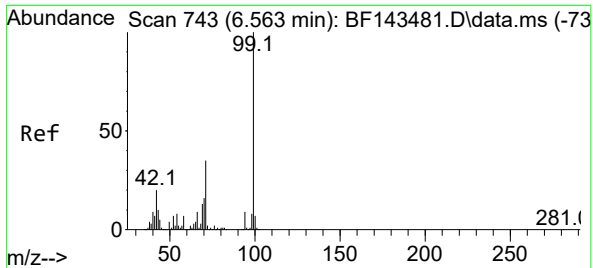
Tgt Ion:152 Resp: 132245
 Ion Ratio Lower Upper
 152 100
 150 160.8 128.9 193.3
 115 59.6 49.2 73.8



#5
 2-Fluorophenol
 Concen: 90.195 ng
 RT: 5.563 min Scan# 573
 Delta R.T. -0.000 min
 Lab File: BF143504.D
 Acq: 21 Aug 2025 00:58

Tgt Ion:112 Resp: 683090
 Ion Ratio Lower Upper
 112 100
 64 63.6 50.4 75.6
 63 32.8 26.4 39.6



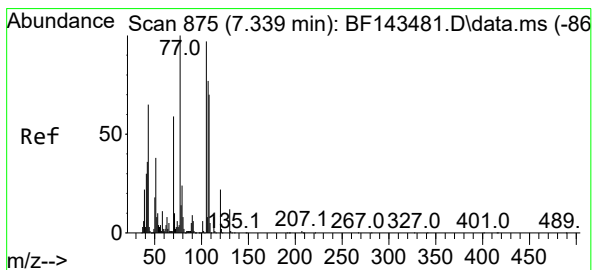
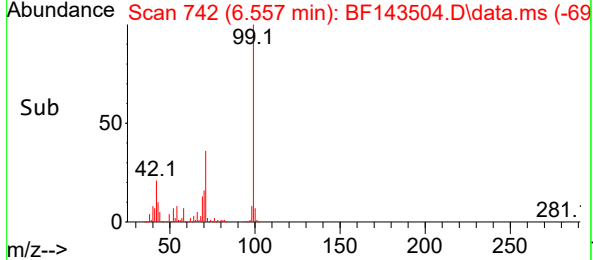
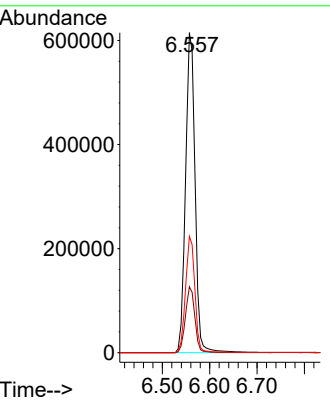
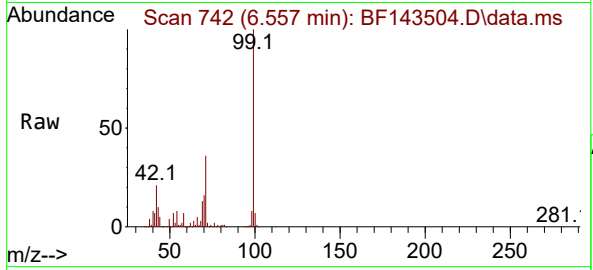


#7
Phenol-d6
Concen: 92.088 ng
RT: 6.557 min Scan# 743
Delta R.T. -0.018 min
Lab File: BF143504.D
Acq: 21 Aug 2025 00:58

Instrument : BNA_F
Client Sample Id : 82H-E

Tgt Ion: 99 Resp: 860932

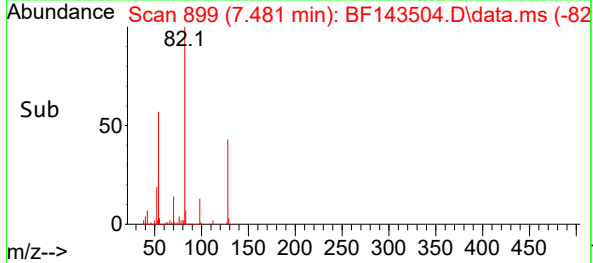
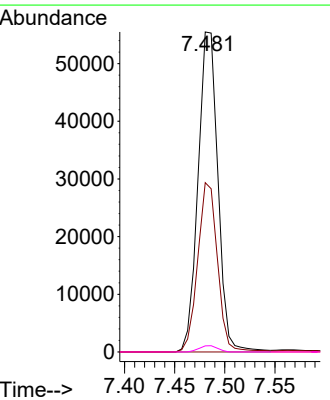
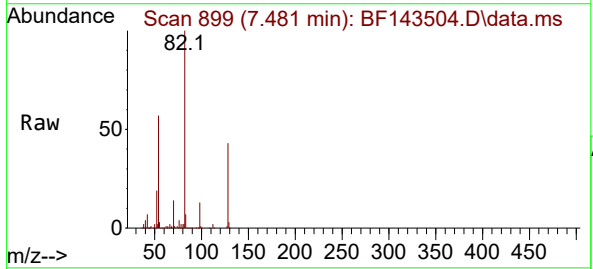
Ion	Ratio	Lower	Upper
99	100		
42	20.6	16.3	24.5
71	36.3	28.2	42.2

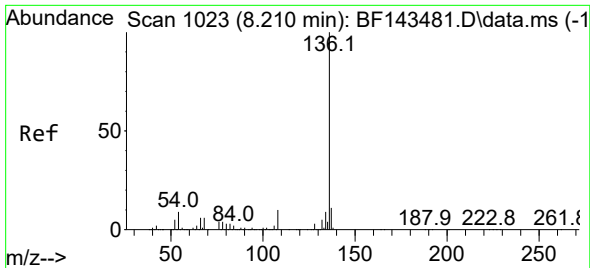


#19
n-Nitroso-di-n-propylamine
Concen: 13.436 ng
RT: 7.481 min Scan# 899
Delta R.T. 0.129 min
Lab File: BF143504.D
Acq: 21 Aug 2025 00:58

Tgt Ion: 70 Resp: 76778

Ion	Ratio	Lower	Upper
70	100		
42	52.9	49.3	73.9
101	0.0	7.8	11.8#
130	1.9	16.6	25.0#



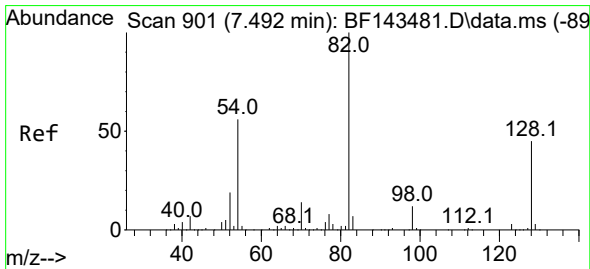
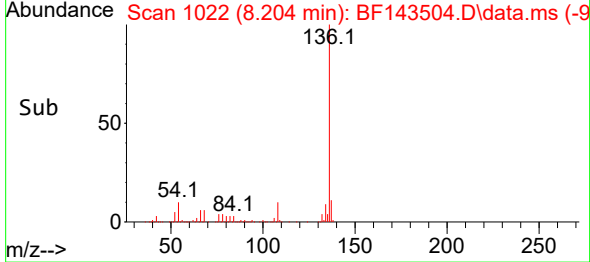
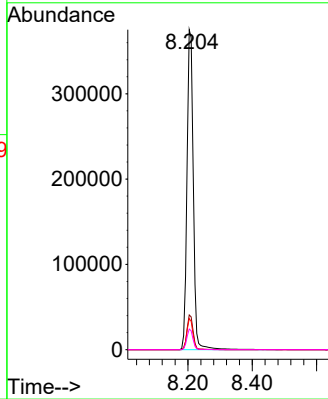
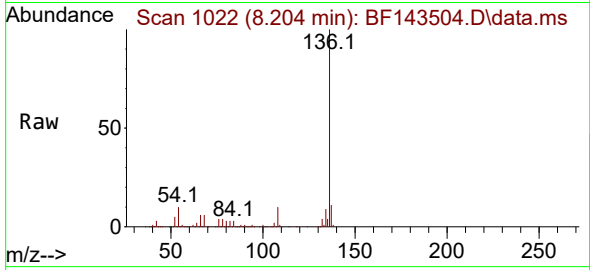


#21
 Naphthalene-d8
 Concen: 20.000 ng
 RT: 8.204 min Scan# 10
 Delta R.T. -0.006 min
 Lab File: BF143504.D
 Acq: 21 Aug 2025 00:58

Instrument :
 BNA_F
 ClientSampleId :
 82H-E

Tgt Ion:136 Resp: 508439

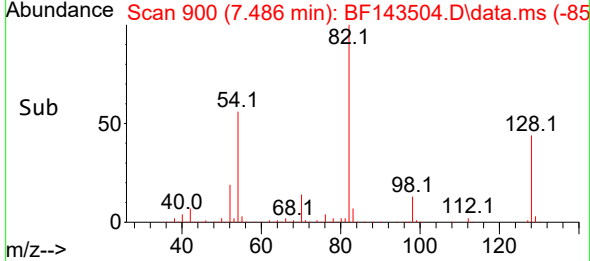
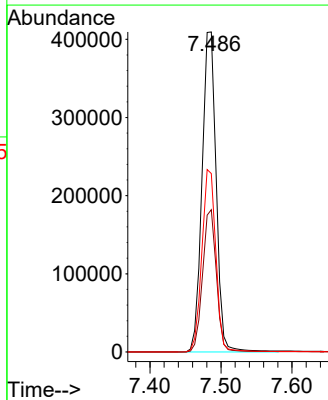
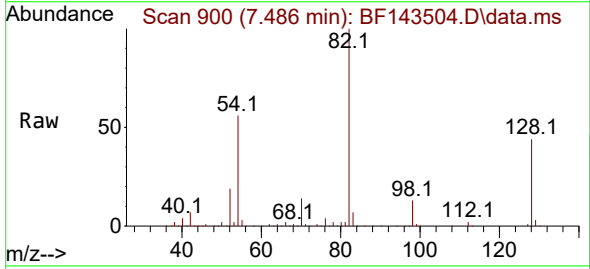
Ion	Ratio	Lower	Upper
136	100		
137	10.8	9.0	13.4
54	9.7	7.4	11.2
68	6.5	5.0	7.4

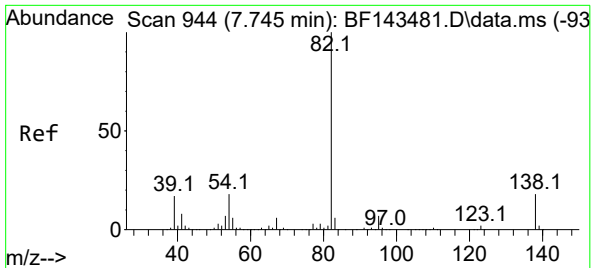


#23
 Nitrobenzene-d5
 Concen: 65.331 ng
 RT: 7.486 min Scan# 900
 Delta R.T. -0.012 min
 Lab File: BF143504.D
 Acq: 21 Aug 2025 00:58

Tgt Ion: 82 Resp: 569222

Ion	Ratio	Lower	Upper
82	100		
128	44.5	35.5	53.3
54	55.8	44.3	66.5

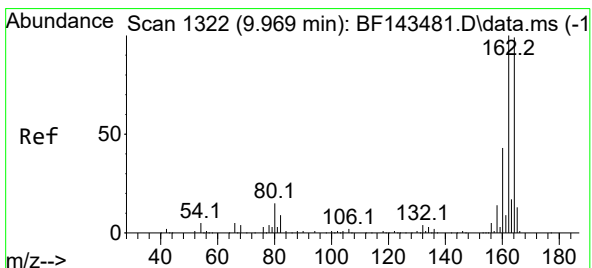
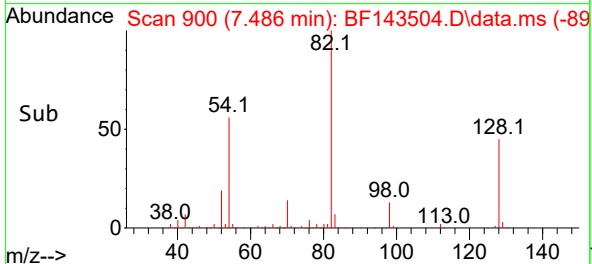
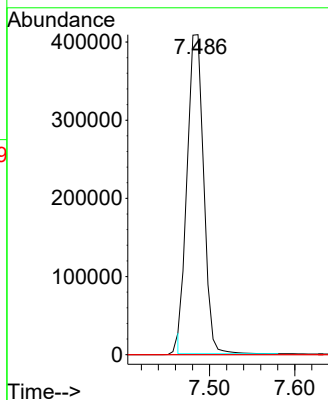
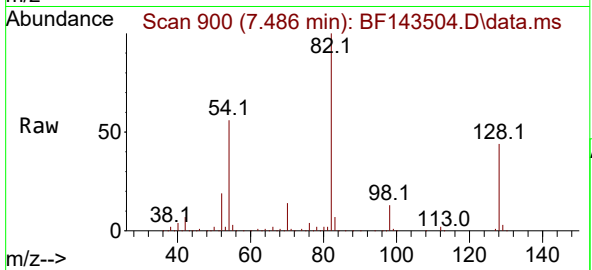




#25
 Isophorone
 Concen: 34.430 ng
 RT: 7.486 min Scan# 90
 Delta R.T. -0.271 min
 Lab File: BF143504.D
 Acq: 21 Aug 2025 00:58

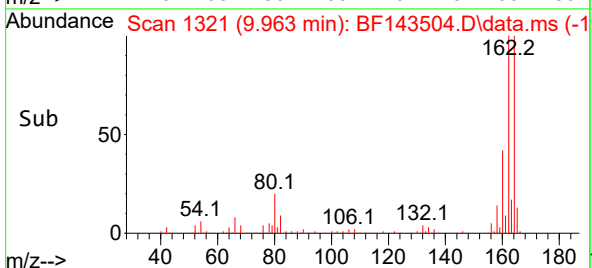
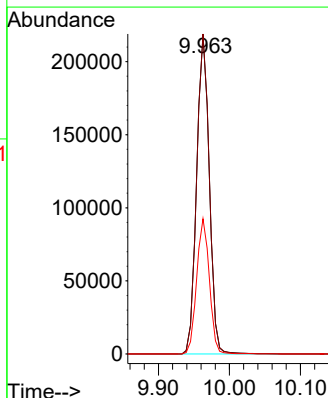
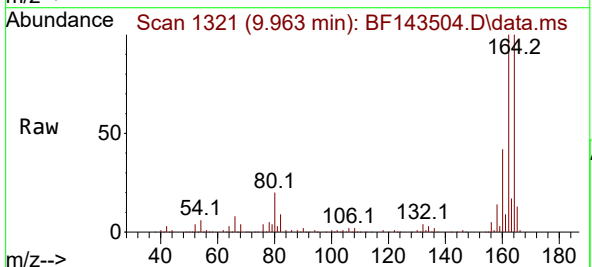
Instrument :
 BNA_F
 ClientSampleId :
 82H-E

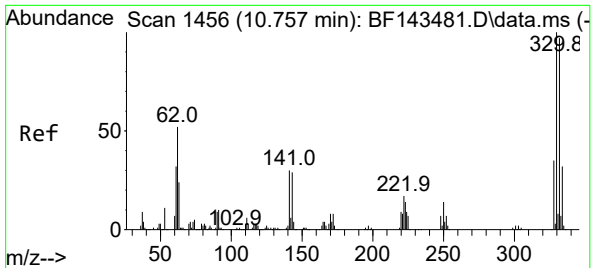
Tgt Ion: 82 Resp: 549900
 Ion Ratio Lower Upper
 82 100
 95 0.0 5.8 8.8#
 138 0.0 14.2 21.4#



#39
 Acenaphthene-d10
 Concen: 20.000 ng
 RT: 9.963 min Scan# 1321
 Delta R.T. -0.006 min
 Lab File: BF143504.D
 Acq: 21 Aug 2025 00:58

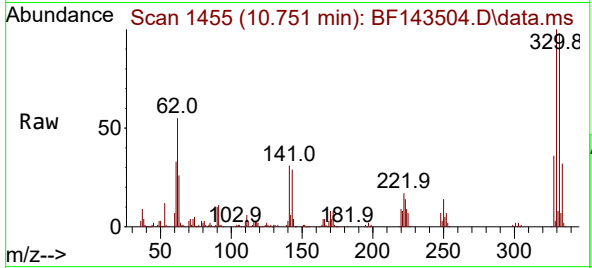
Tgt Ion:164 Resp: 271455
 Ion Ratio Lower Upper
 164 100
 162 100.3 80.5 120.7
 160 42.4 34.3 51.5



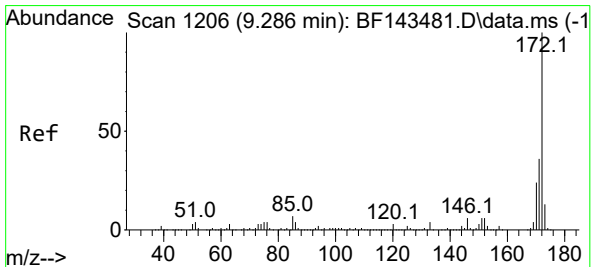
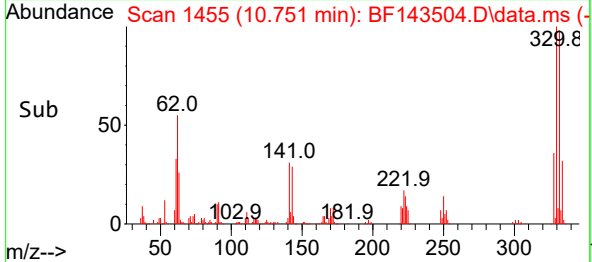
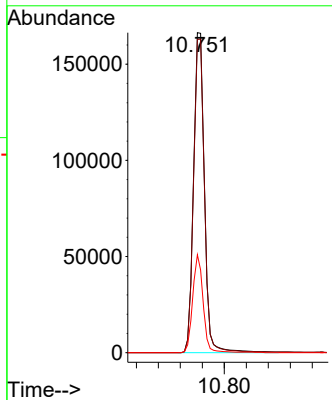


#42
 2,4,6-Tribromophenol
 Concen: 90.597 ng
 RT: 10.751 min Scan# 14
 Delta R.T. -0.012 min
 Lab File: BF143504.D
 Acq: 21 Aug 2025 00:58

Instrument :
 BNA_F
 ClientSampleId :
 82H-E

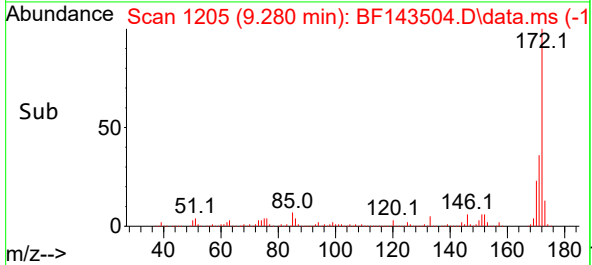
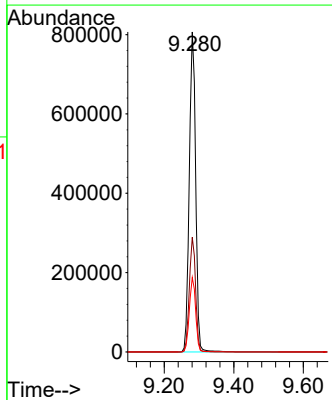
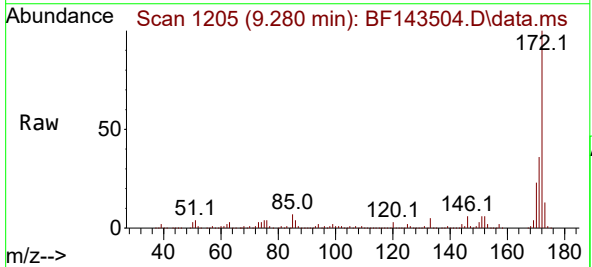


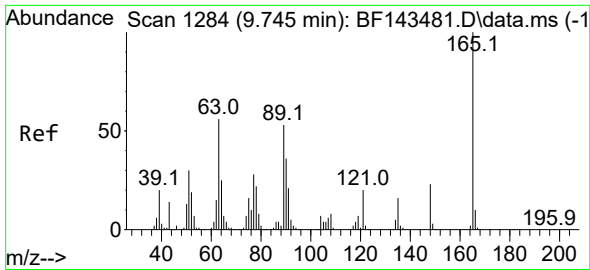
Tgt Ion:330 Resp: 228925
 Ion Ratio Lower Upper
 330 100
 332 98.2 78.0 117.0
 141 29.4 23.7 35.5



#45
 2-Fluorobiphenyl
 Concen: 62.428 ng
 RT: 9.280 min Scan# 1205
 Delta R.T. -0.006 min
 Lab File: BF143504.D
 Acq: 21 Aug 2025 00:58

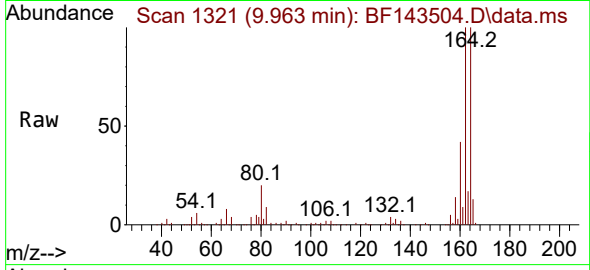
Tgt Ion:172 Resp: 1025389
 Ion Ratio Lower Upper
 172 100
 171 35.8 28.8 43.2
 170 23.3 18.8 28.2



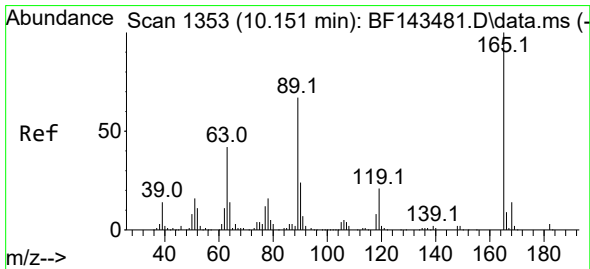
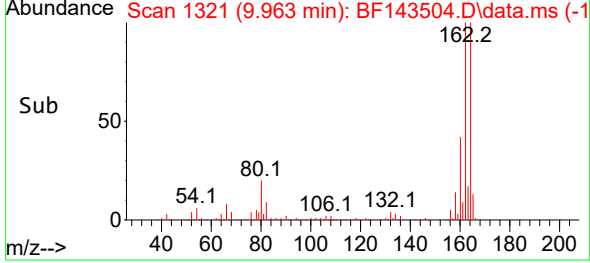
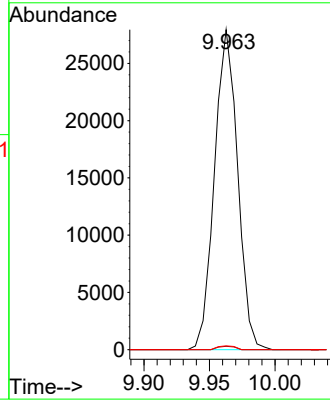


#51
 2,6-Dinitrotoluene
 Concen: 10.125 ng
 RT: 9.963 min Scan# 1321
 Delta R.T. 0.212 min
 Lab File: BF143504.D
 Acq: 21 Aug 2025 00:58

Instrument :
 BNA_F
 ClientSampleId :
 82H-E

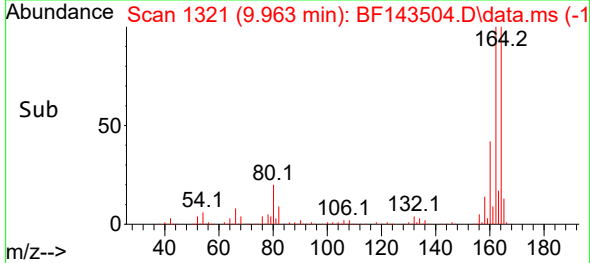
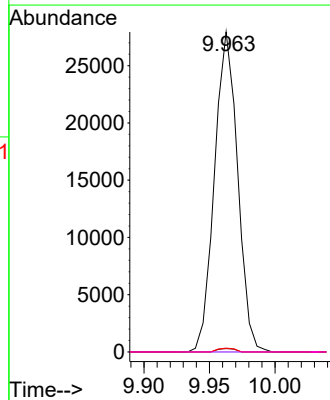
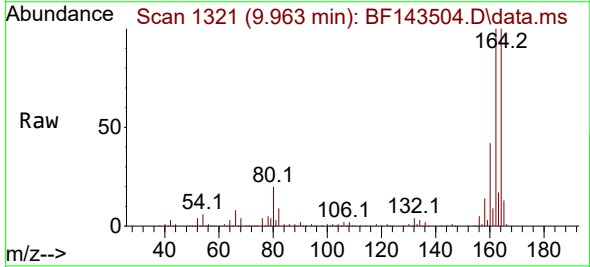


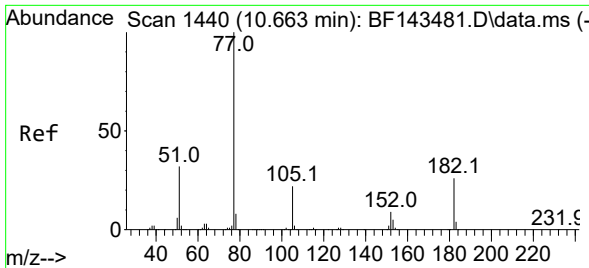
Tgt Ion:165 Resp: 34308
 Ion Ratio Lower Upper
 165 100
 63 1.1 45.0 67.6#
 89 1.2 42.5 63.7#



#57
 2,4-Dinitrotoluene
 Concen: 7.583 ng
 RT: 9.963 min Scan# 1321
 Delta R.T. -0.194 min
 Lab File: BF143504.D
 Acq: 21 Aug 2025 00:58

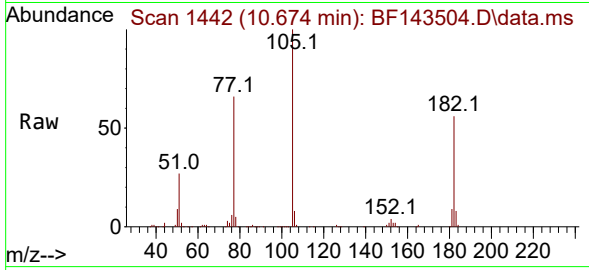
Tgt Ion:165 Resp: 34308
 Ion Ratio Lower Upper
 165 100
 63 1.1 34.9 52.3#
 89 1.2 53.3 79.9#
 182 0.0 2.3 3.5#





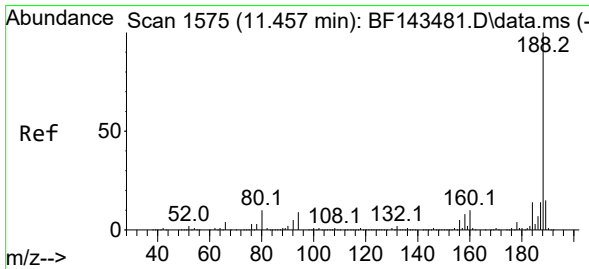
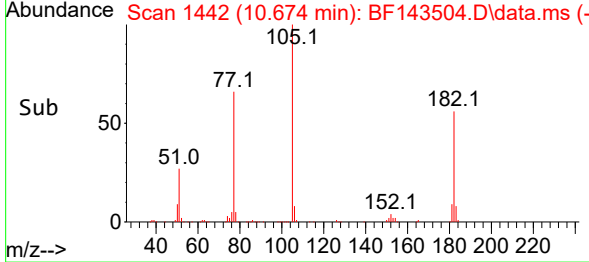
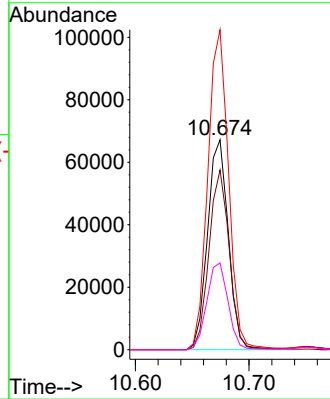
#63
 Azobenzene
 Concen: 5.622 ng
 RT: 10.674 min Scan# 14
 Delta R.T. 0.006 min
 Lab File: BF143504.D
 Acq: 21 Aug 2025 00:58

Instrument :
 BNA_F
 ClientSampleId :
 82H-E



Tgt Ion: 77 Resp: 85450

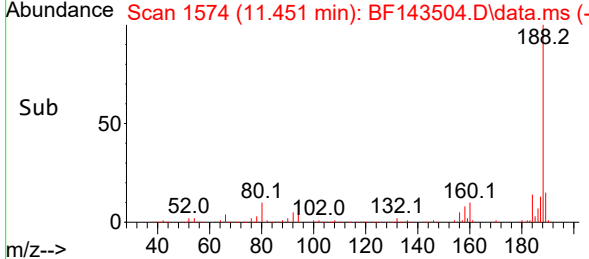
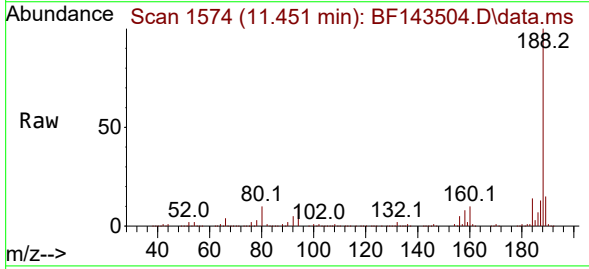
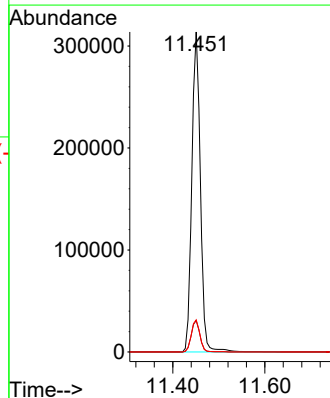
Ion	Ratio	Lower	Upper
77	100		
182	85.6	6.2	46.2#
105	152.4	2.2	42.2#
51	41.3	12.4	52.4

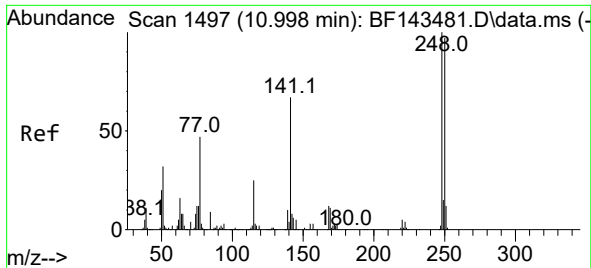


#64
 Phenanthrene-d10
 Concen: 20.000 ng
 RT: 11.451 min Scan# 1574
 Delta R.T. -0.006 min
 Lab File: BF143504.D
 Acq: 21 Aug 2025 00:58

Tgt Ion: 188 Resp: 403457

Ion	Ratio	Lower	Upper
188	100		
94	9.8	7.4	11.2
80	10.1	8.2	12.4

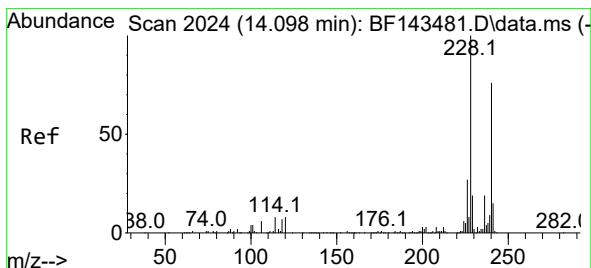
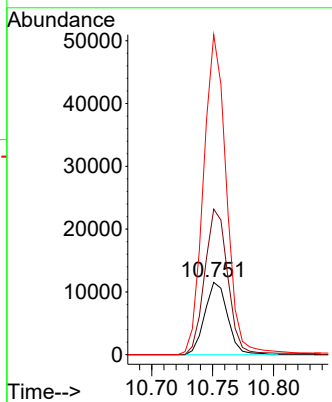
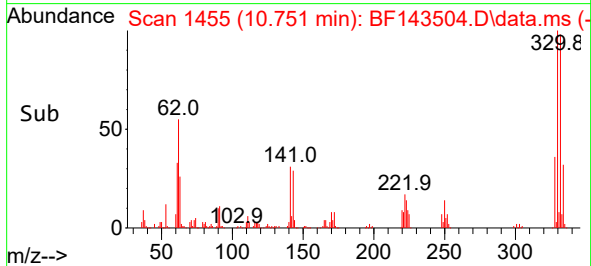
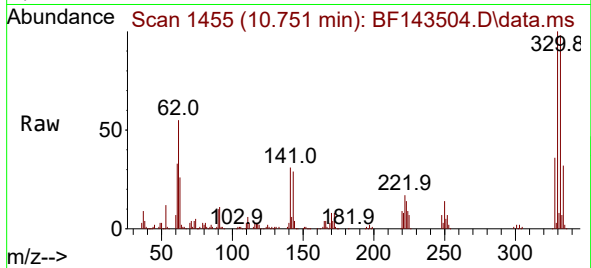




#67
 4-Bromophenyl-phenylether
 Concen: 3.117 ng
 RT: 10.751 min Scan# 14
 Delta R.T. -0.247 min
 Lab File: BF143504.D
 Acq: 21 Aug 2025 00:58

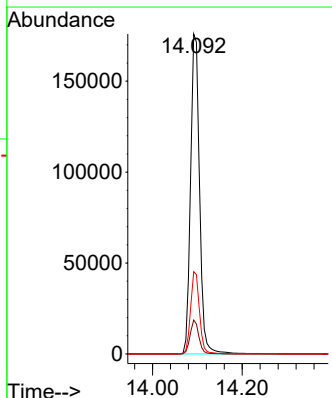
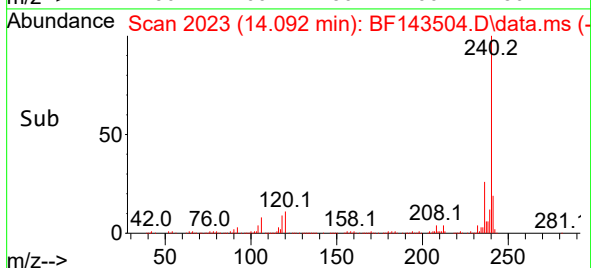
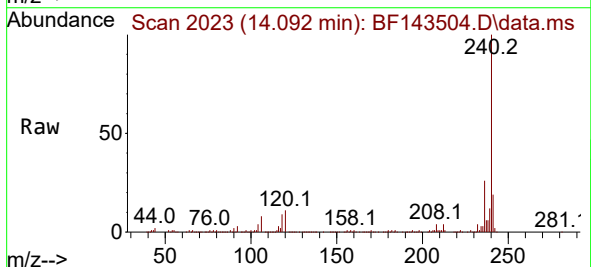
Instrument :
 BNA_F
 ClientSampleId :
 82H-E

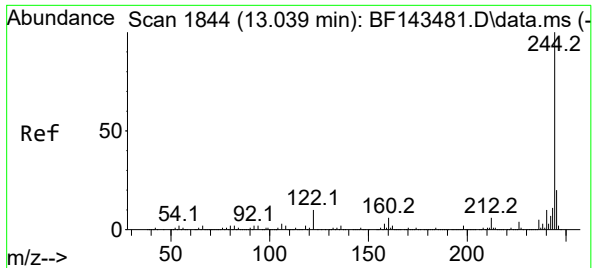
Tgt Ion:248 Resp: 15004
 Ion Ratio Lower Upper
 248 100
 250 201.4 77.8 116.8#
 141 442.5 54.0 81.0#



#76
 Chrysene-d12
 Concen: 20.000 ng
 RT: 14.092 min Scan# 2023
 Delta R.T. -0.012 min
 Lab File: BF143504.D
 Acq: 21 Aug 2025 00:58

Tgt Ion:240 Resp: 245211
 Ion Ratio Lower Upper
 240 100
 120 10.6 8.6 12.8
 236 25.7 20.4 30.6



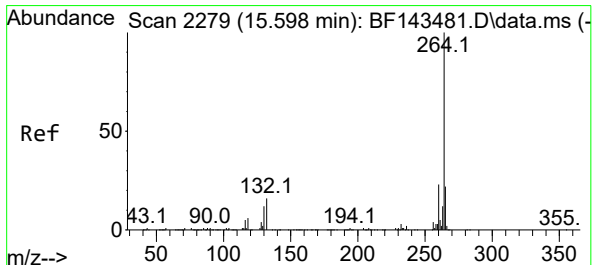
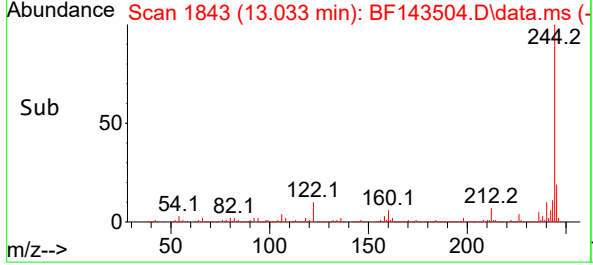
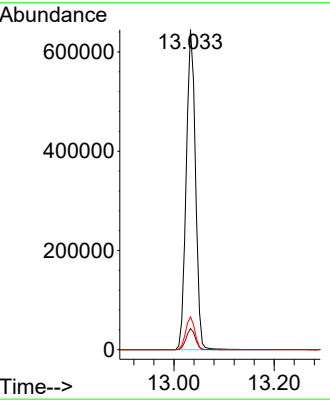
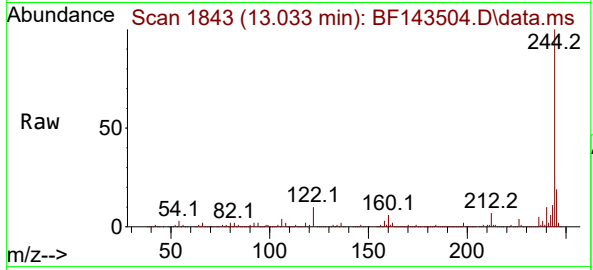


#79
 Terphenyl-d14
 Concen: 58.563 ng
 RT: 13.033 min Scan# 11
 Delta R.T. -0.006 min
 Lab File: BF143504.D
 Acq: 21 Aug 2025 00:58

Instrument : BNA_F
 ClientSampleId : 82H-E

Tgt Ion:244 Resp: 822926

Ion	Ratio	Lower	Upper
244	100		
212	6.6	5.2	7.8
122	10.3	7.9	11.9



#86
 Perylene-d12
 Concen: 20.000 ng
 RT: 15.592 min Scan# 2278
 Delta R.T. -0.006 min
 Lab File: BF143504.D
 Acq: 21 Aug 2025 00:58

Tgt Ion:264 Resp: 294419

Ion	Ratio	Lower	Upper
264	100		
260	23.2	18.7	28.1
265	21.6	17.6	26.4

