

Data Path : Z:\svoasrv\HPCHEM1\BNA_F\Data\BF082025\
 Data File : BF143505.D
 Acq On : 21 Aug 2025 01:27
 Operator : RC/JU
 Sample : Q2819-14
 Misc :
 ALS Vial : 29 Sample Multiplier: 1

Instrument :
 BNA_F
 ClientSampleId :
 17M-W

Quant Time: Aug 21 02:09:26 2025
 Quant Method : Z:\svoasrv\HPCHEM1\BNA_F\Methods\8270-BF082025.M
 Quant Title : ASP BNA STANDARDS FOR 5 POINT CALIBRATION
 QLast Update : Wed Aug 20 15:07:46 2025
 Response via : Initial Calibration

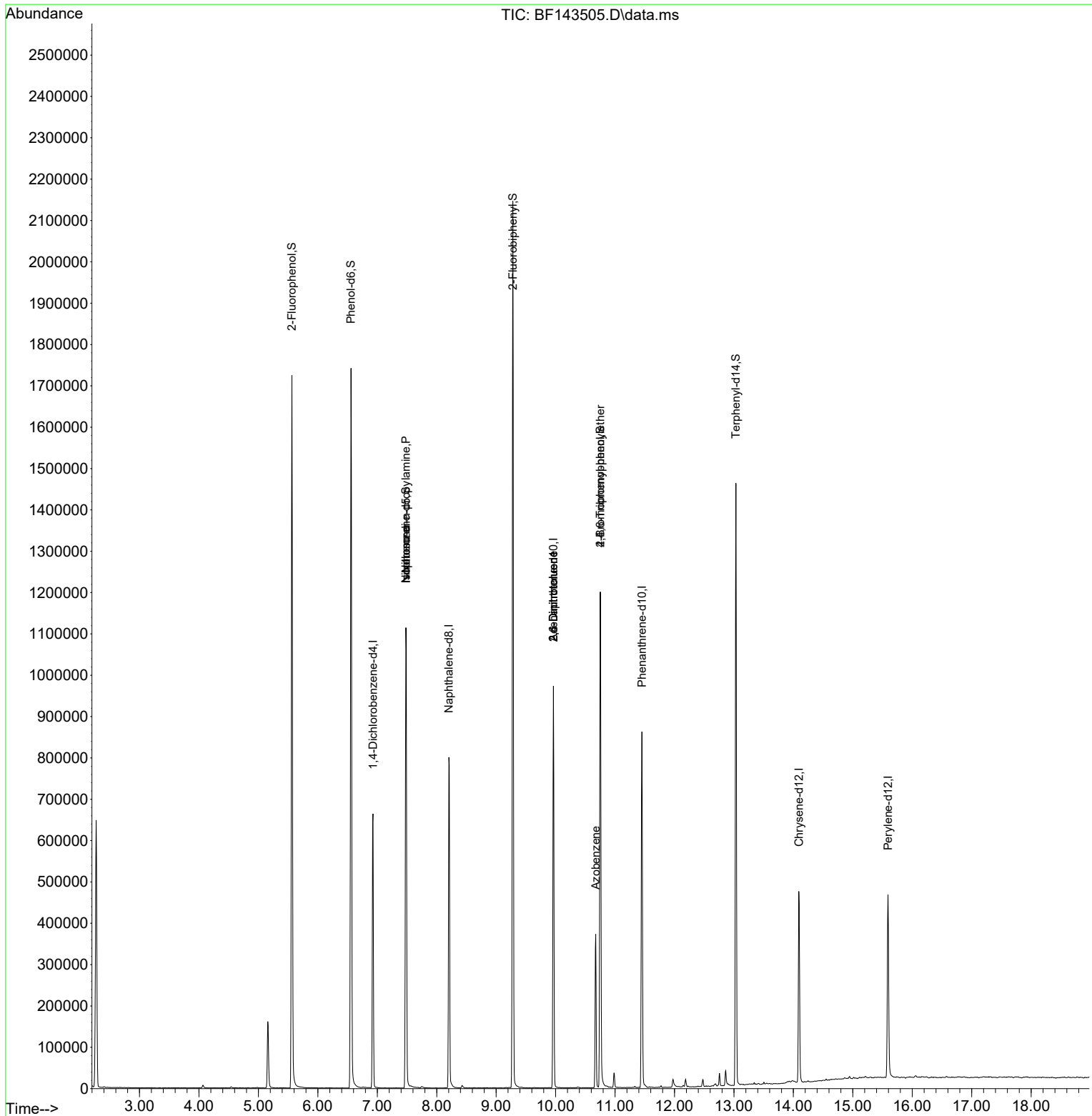
Compound	R.T.	QIon	Response	Conc	Units	Dev(Min)
Internal Standards						
1) 1,4-Dichlorobenzene-d4	6.928	152	142193	20.000	ng	0.00
21) Naphthalene-d8	8.204	136	527282	20.000	ng	0.00
39) Acenaphthene-d10	9.963	164	285511	20.000	ng	0.00
64) Phenanthrene-d10	11.451	188	446327	20.000	ng	0.00
76) Chrysene-d12	14.092	240	240120	20.000	ng	-0.01
86) Perylene-d12	15.592	264	275939	20.000	ng	0.00
System Monitoring Compounds						
5) 2-Fluorophenol	5.563	112	628153	77.139	ng	0.00
7) Phenol-d6	6.557	99	798950	79.479	ng	-0.02
23) Nitrobenzene-d5	7.481	82	509751	56.415	ng	-0.02
42) 2,4,6-Tribromophenol	10.751	330	211995	79.767	ng	-0.01
45) 2-Fluorobiphenyl	9.280	172	939057	54.357	ng	0.00
79) Terphenyl-d14	13.033	244	700158	50.883	ng	0.00
Target Compounds						
19) n-Nitroso-di-n-propyla...	7.481	70	68346	11.124	ng	# 80
25) Isophorone	7.481	82	490665	29.623	ng	# 65
51) 2,6-Dinitrotoluene	9.963	165	36637	10.280	ng	# 26
57) 2,4-Dinitrotoluene	9.963	165	36637	7.699	ng	# 26
63) Azobenzene	10.675	77	95092	5.949	ng	# 1
67) 4-Bromophenyl-phenylether	10.751	248	14089	2.646	ng	# 1

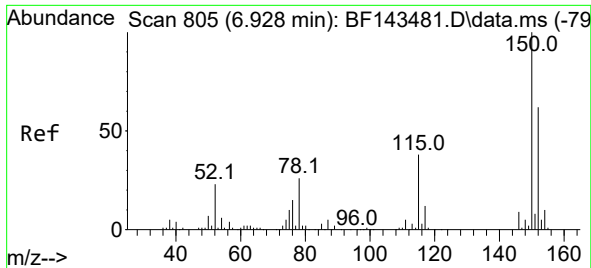
(#) = qualifier out of range (m) = manual integration (+) = signals summed

Data Path : Z:\svoasrv\HPCHEM1\BNA_F\Data\BF082025\
 Data File : BF143505.D
 Acq On : 21 Aug 2025 01:27
 Operator : RC/JU
 Sample : Q2819-14
 Misc :
 ALS Vial : 29 Sample Multiplier: 1

Instrument :
 BNA_F
 ClientSampleId :
 17M-W

Quant Time: Aug 21 02:09:26 2025
 Quant Method : Z:\svoasrv\HPCHEM1\BNA_F\Methods\8270-BF082025.M
 Quant Title : ASP BNA STANDARDS FOR 5 POINT CALIBRATION
 QLast Update : Wed Aug 20 15:07:46 2025
 Response via : Initial Calibration

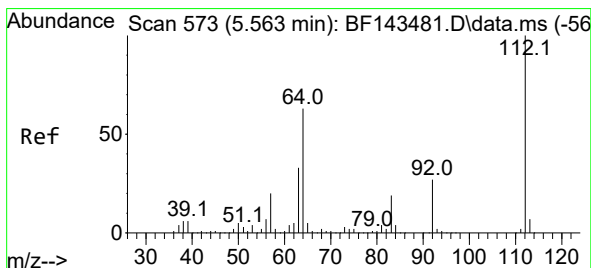
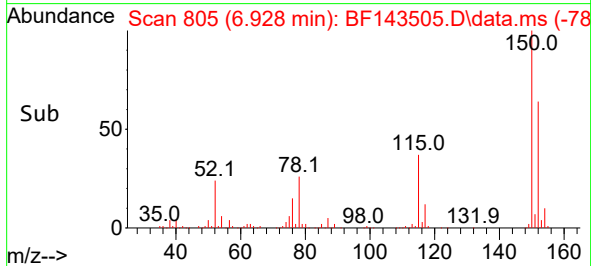
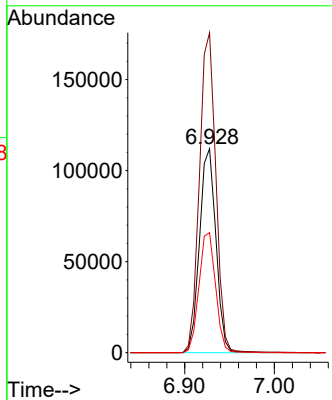
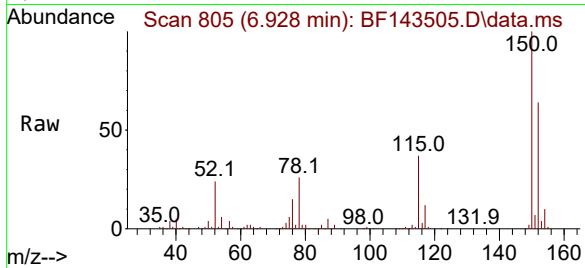




#1
 1,4-Dichlorobenzene-d4
 Concen: 20.000 ng
 RT: 6.928 min Scan# 805
 Delta R.T. -0.000 min
 Lab File: BF143505.D
 Acq: 21 Aug 2025 01:27

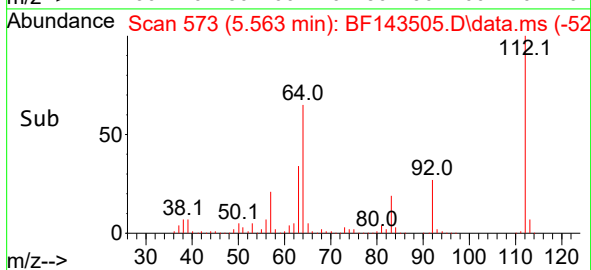
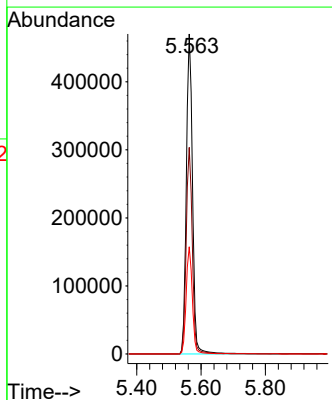
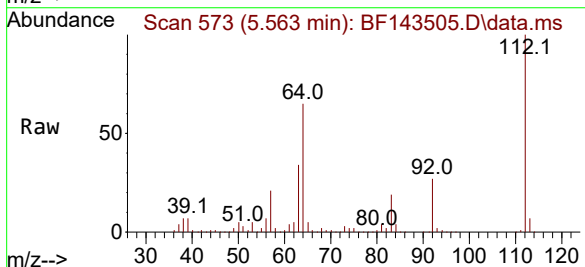
Instrument :
 BNA_F
 ClientSampleId :
 17M-W

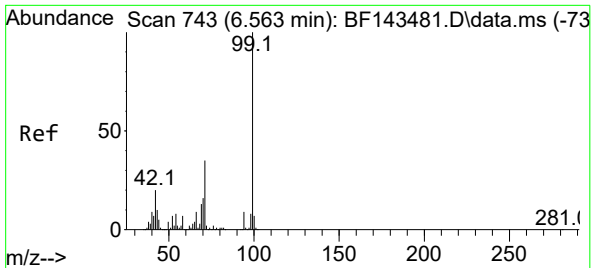
Tgt Ion:152 Resp: 142193
 Ion Ratio Lower Upper
 152 100
 150 156.9 128.9 193.3
 115 58.8 49.2 73.8



#5
 2-Fluorophenol
 Concen: 77.139 ng
 RT: 5.563 min Scan# 573
 Delta R.T. -0.000 min
 Lab File: BF143505.D
 Acq: 21 Aug 2025 01:27

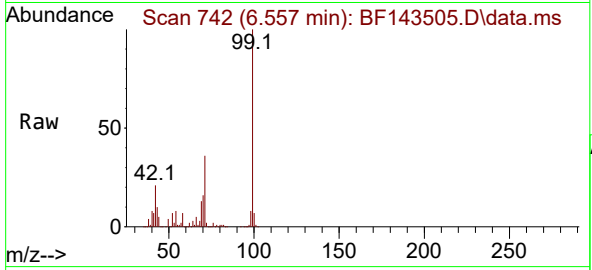
Tgt Ion:112 Resp: 628153
 Ion Ratio Lower Upper
 112 100
 64 64.6 50.4 75.6
 63 33.5 26.4 39.6





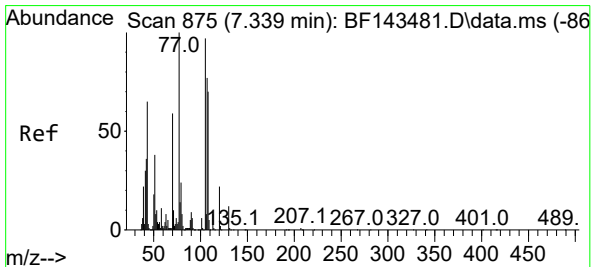
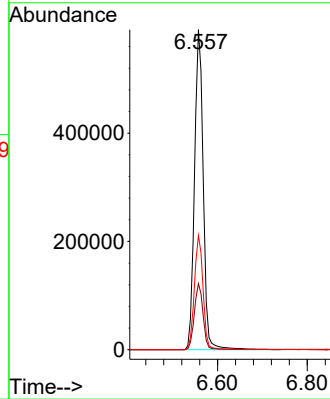
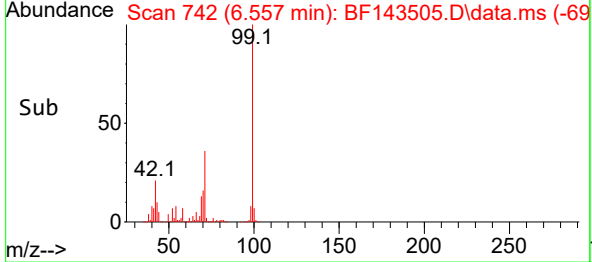
#7
 Phenol-d6
 Concen: 79.479 ng
 RT: 6.557 min Scan# 743
 Delta R.T. -0.018 min
 Lab File: BF143505.D
 Acq: 21 Aug 2025 01:27

Instrument :
 BNA_F
 ClientSampleId :
 17M-W

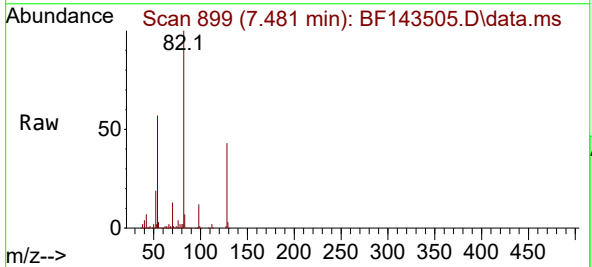


Tgt Ion: 99 Resp: 798950

Ion	Ratio	Lower	Upper
99	100		
42	20.6	16.3	24.5
71	35.8	28.2	42.2

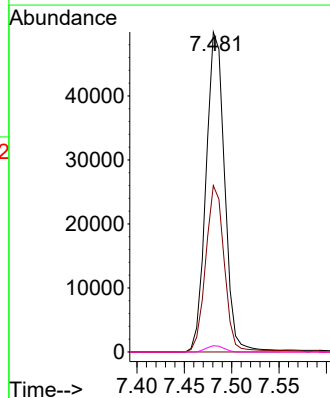
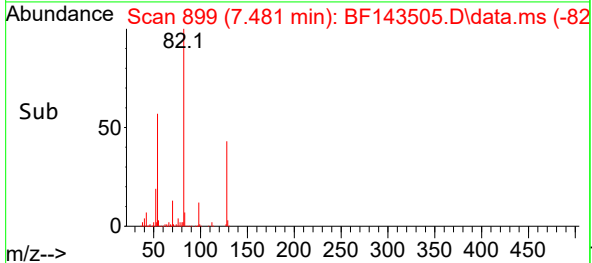


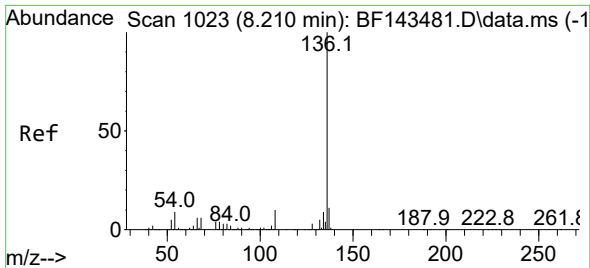
#19
 n-Nitroso-di-n-propylamine
 Concen: 11.124 ng
 RT: 7.481 min Scan# 899
 Delta R.T. 0.129 min
 Lab File: BF143505.D
 Acq: 21 Aug 2025 01:27



Tgt Ion: 70 Resp: 68346

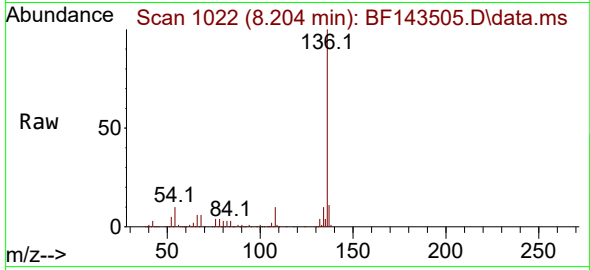
Ion	Ratio	Lower	Upper
70	100		
42	52.0	49.3	73.9
101	0.0	7.8	11.8#
130	1.9	16.6	25.0#



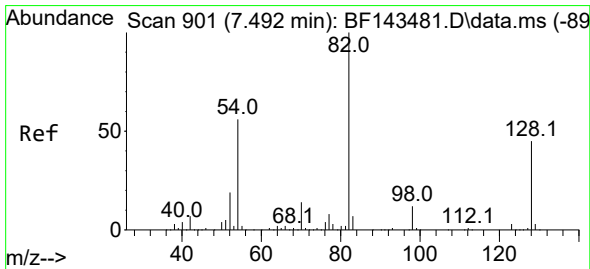
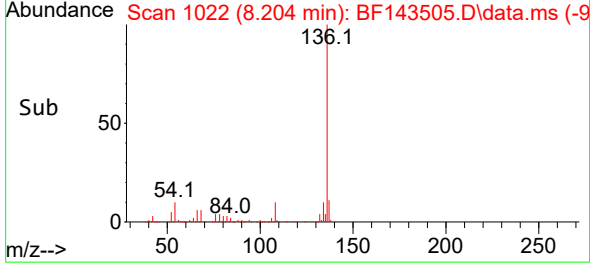
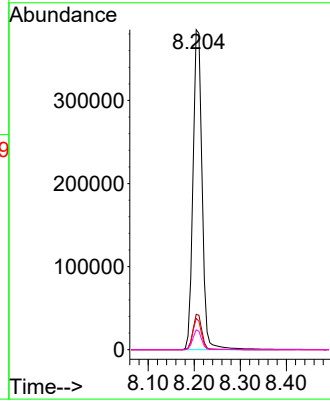


#21
 Naphthalene-d8
 Concen: 20.000 ng
 RT: 8.204 min Scan# 1022
 Delta R.T. -0.006 min
 Lab File: BF143505.D
 Acq: 21 Aug 2025 01:27

Instrument : BNA_F
 ClientSampleId : 17M-W

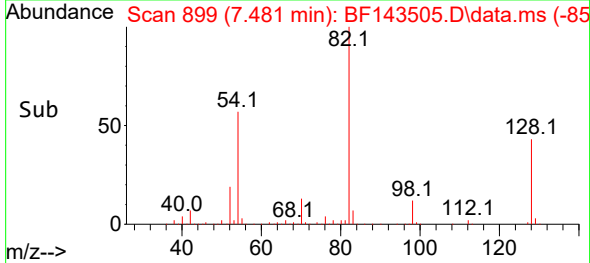
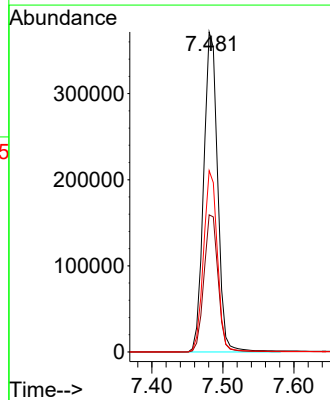
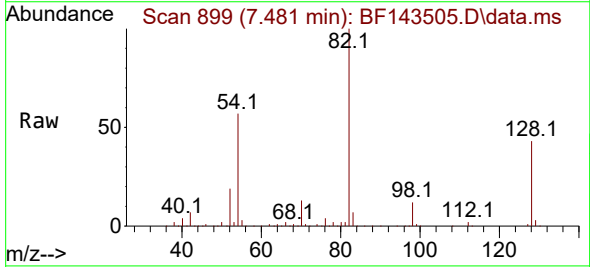


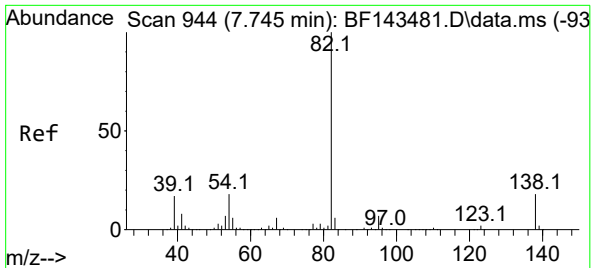
Tgt Ion:136 Resp: 527282
 Ion Ratio Lower Upper
 136 100
 137 11.1 9.0 13.4
 54 9.8 7.4 11.2
 68 6.2 5.0 7.4



#23
 Nitrobenzene-d5
 Concen: 56.415 ng
 RT: 7.481 min Scan# 899
 Delta R.T. -0.018 min
 Lab File: BF143505.D
 Acq: 21 Aug 2025 01:27

Tgt Ion: 82 Resp: 509751
 Ion Ratio Lower Upper
 82 100
 128 42.9 35.5 53.3
 54 56.7 44.3 66.5

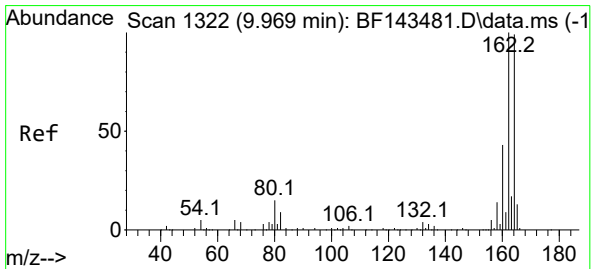
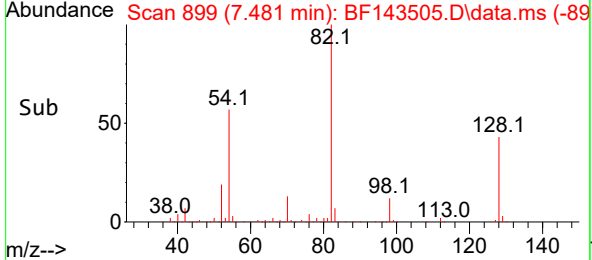
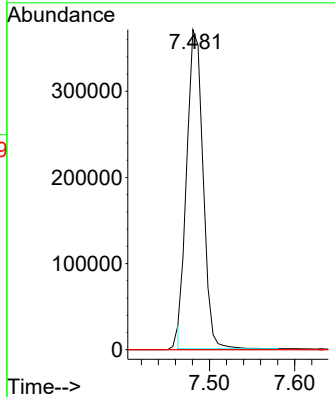
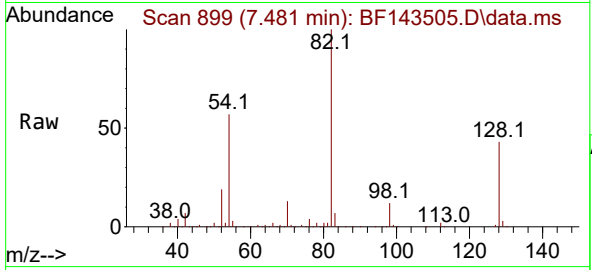




#25
 Isophorone
 Concen: 29.623 ng
 RT: 7.481 min Scan# 899
 Delta R.T. -0.277 min
 Lab File: BF143505.D
 Acq: 21 Aug 2025 01:27

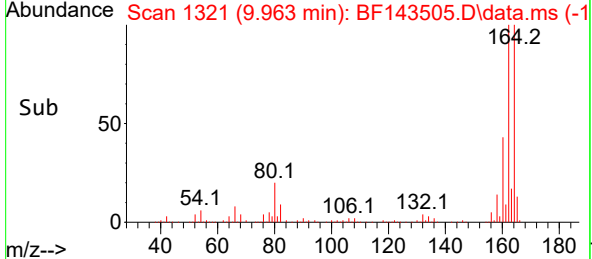
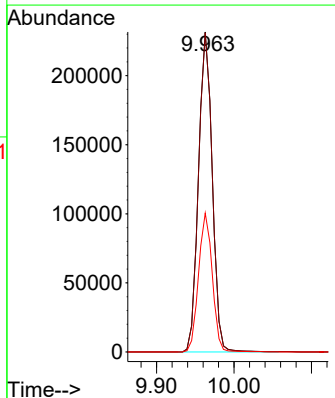
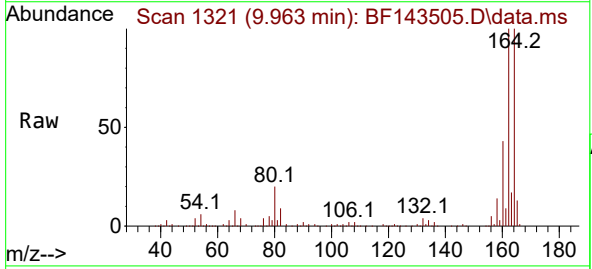
Instrument : BNA_F
 ClientSampleId : 17M-W

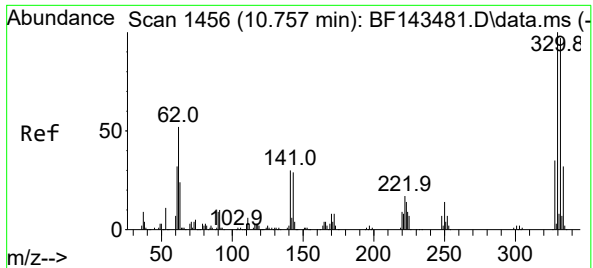
Tgt Ion: 82 Resp: 490665
 Ion Ratio Lower Upper
 82 100
 95 0.0 5.8 8.8#
 138 0.0 14.2 21.4#



#39
 Acenaphthene-d10
 Concen: 20.000 ng
 RT: 9.963 min Scan# 1321
 Delta R.T. -0.006 min
 Lab File: BF143505.D
 Acq: 21 Aug 2025 01:27

Tgt Ion:164 Resp: 285511
 Ion Ratio Lower Upper
 164 100
 162 99.8 80.5 120.7
 160 43.4 34.3 51.5



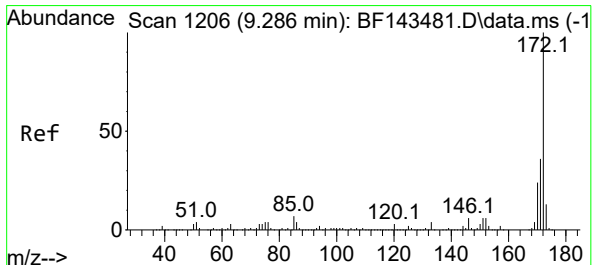
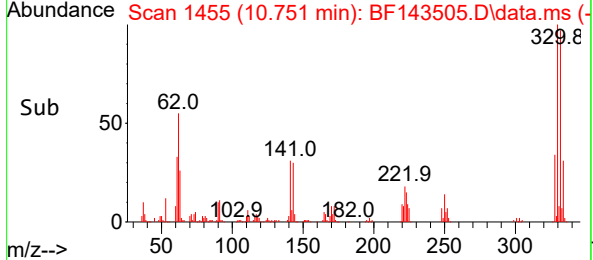
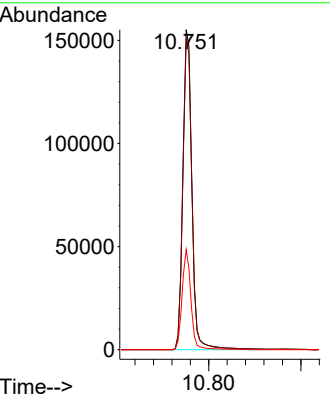
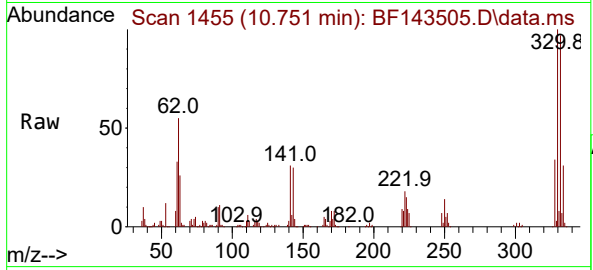


#42
 2,4,6-Tribromophenol
 Concen: 79.767 ng
 RT: 10.751 min Scan# 1455
 Delta R.T. -0.012 min
 Lab File: BF143505.D
 Acq: 21 Aug 2025 01:27

Instrument : BNA_F
 ClientSampleId : 17M-W

Tgt Ion:330 Resp: 211995

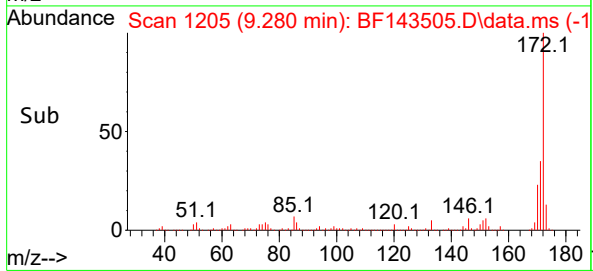
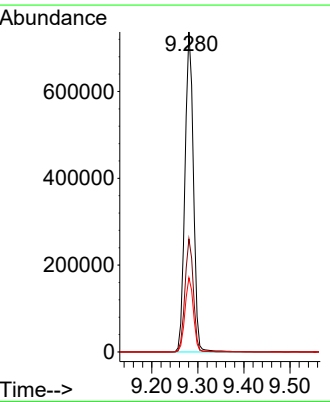
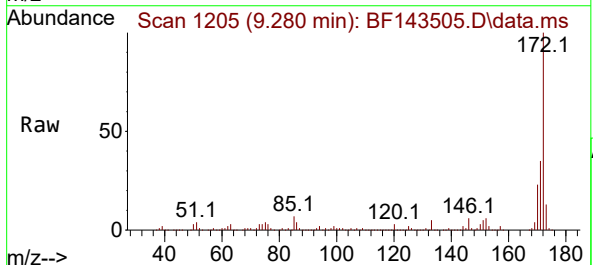
Ion	Ratio	Lower	Upper
330	100		
332	97.1	78.0	117.0
141	30.4	23.7	35.5

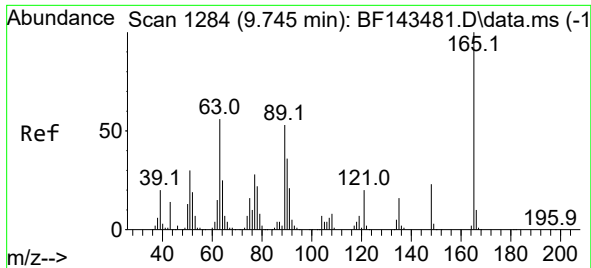


#45
 2-Fluorobiphenyl
 Concen: 54.357 ng
 RT: 9.280 min Scan# 1205
 Delta R.T. -0.006 min
 Lab File: BF143505.D
 Acq: 21 Aug 2025 01:27

Tgt Ion:172 Resp: 939057

Ion	Ratio	Lower	Upper
172	100		
171	35.4	28.8	43.2
170	23.2	18.8	28.2



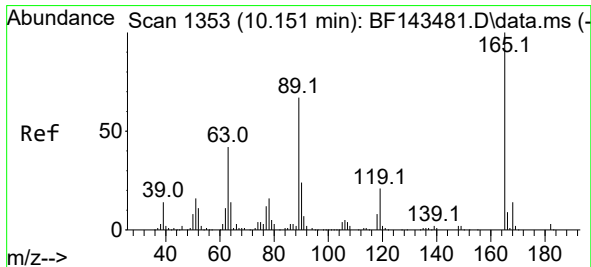
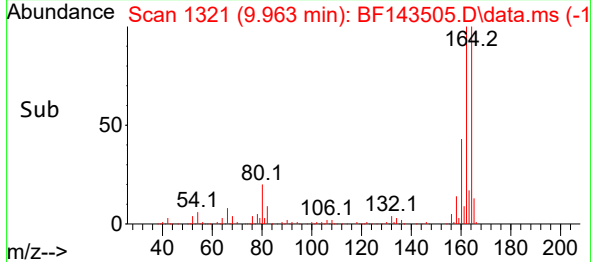
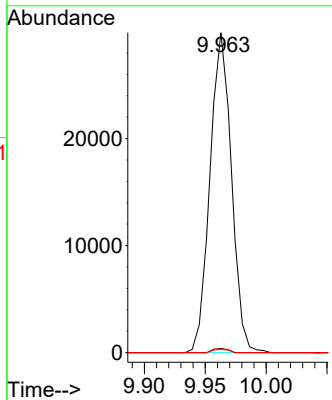
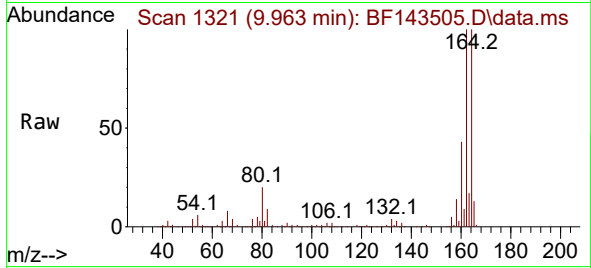


#51
 2,6-Dinitrotoluene
 Concen: 10.280 ng
 RT: 9.963 min Scan# 1321
 Delta R.T. 0.212 min
 Lab File: BF143505.D
 Acq: 21 Aug 2025 01:27

Instrument :
 BNA_F
 ClientSampleId :
 17M-W

Tgt Ion:165 Resp: 36637

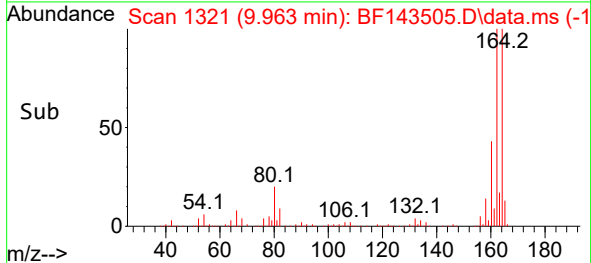
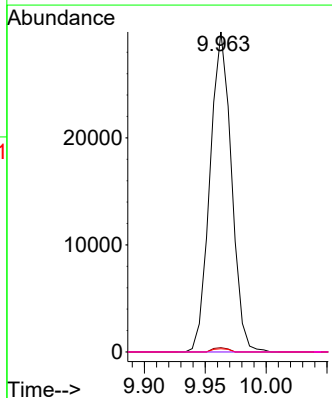
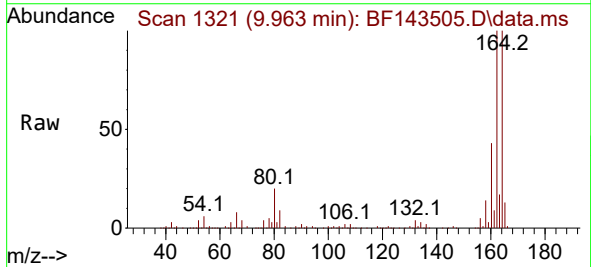
Ion	Ratio	Lower	Upper
165	100		
63	1.4	45.0	67.6#
89	1.0	42.5	63.7#

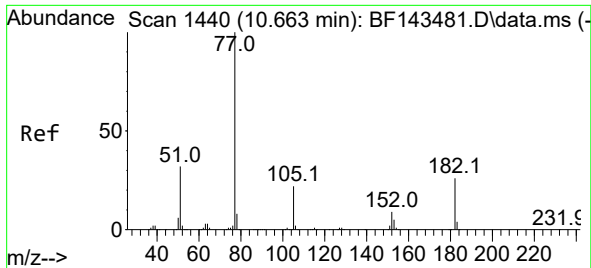


#57
 2,4-Dinitrotoluene
 Concen: 7.699 ng
 RT: 9.963 min Scan# 1321
 Delta R.T. -0.194 min
 Lab File: BF143505.D
 Acq: 21 Aug 2025 01:27

Tgt Ion:165 Resp: 36637

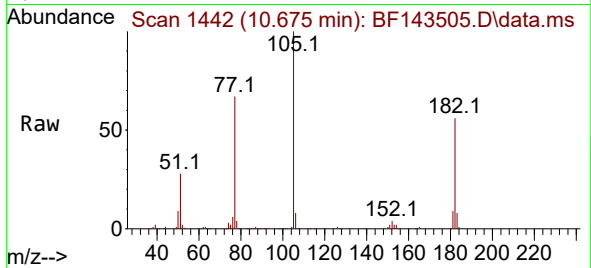
Ion	Ratio	Lower	Upper
165	100		
63	1.4	34.9	52.3#
89	1.0	53.3	79.9#
182	0.0	2.3	3.5#



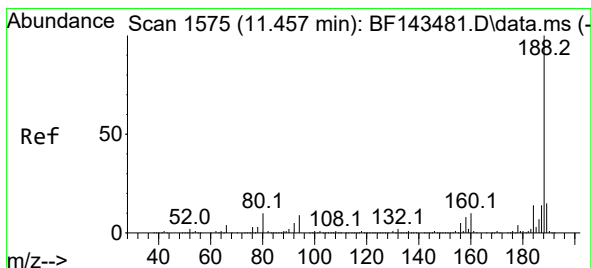
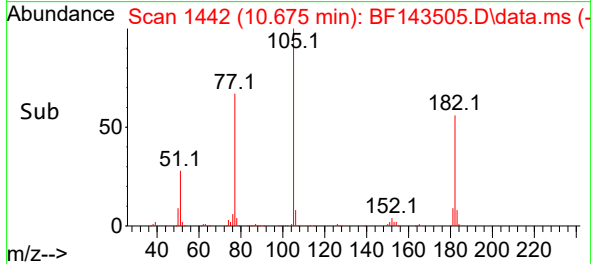
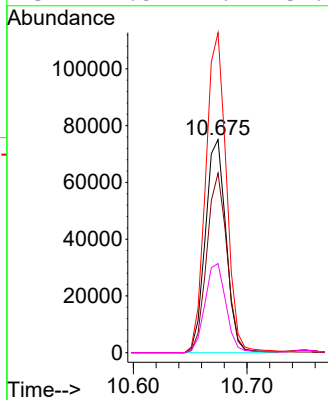


#63
 Azobenzene
 Concen: 5.949 ng
 RT: 10.675 min Scan# 14
 Delta R.T. 0.006 min
 Lab File: BF143505.D
 Acq: 21 Aug 2025 01:27

Instrument :
 BNA_F
 ClientSampleId :
 17M-W

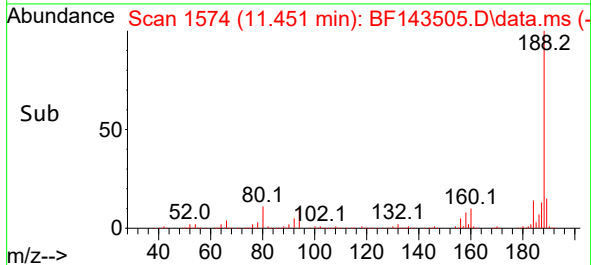
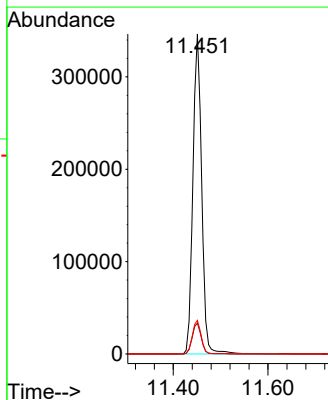
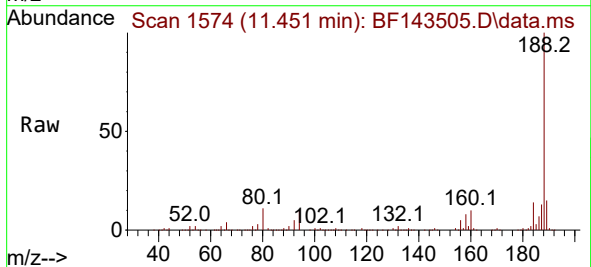


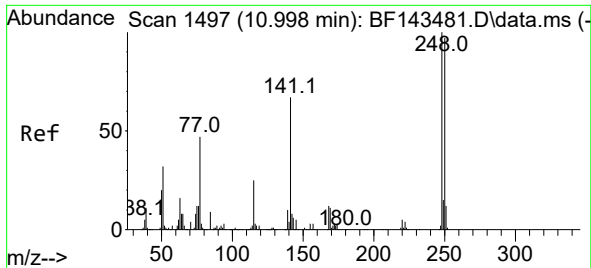
Tgt Ion: 77 Resp: 95092
 Ion Ratio Lower Upper
 77 100
 182 84.2 6.2 46.2#
 105 150.1 2.2 42.2#
 51 41.8 12.4 52.4



#64
 Phenanthrene-d10
 Concen: 20.000 ng
 RT: 11.451 min Scan# 1574
 Delta R.T. -0.006 min
 Lab File: BF143505.D
 Acq: 21 Aug 2025 01:27

Tgt Ion: 188 Resp: 446327
 Ion Ratio Lower Upper
 188 100
 94 9.7 7.4 11.2
 80 10.5 8.2 12.4

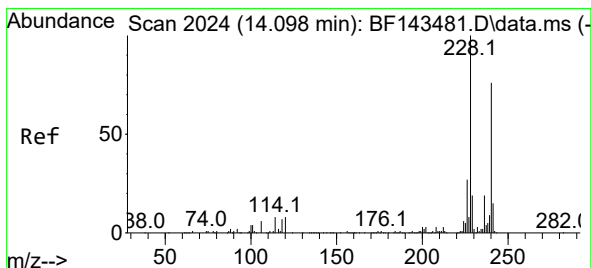
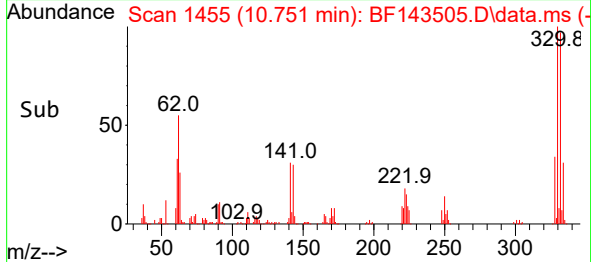
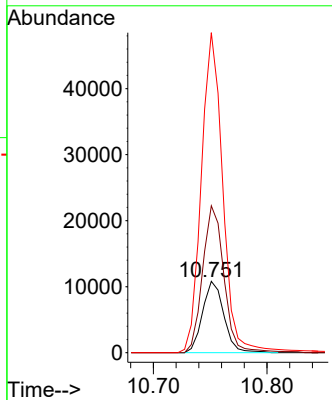
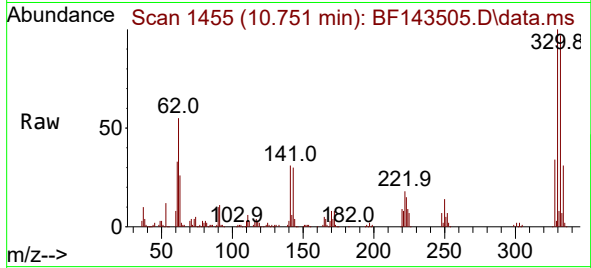




#67
 4-Bromophenyl-phenylether
 Concen: 2.646 ng
 RT: 10.751 min Scan# 14
 Delta R.T. -0.247 min
 Lab File: BF143505.D
 Acq: 21 Aug 2025 01:27

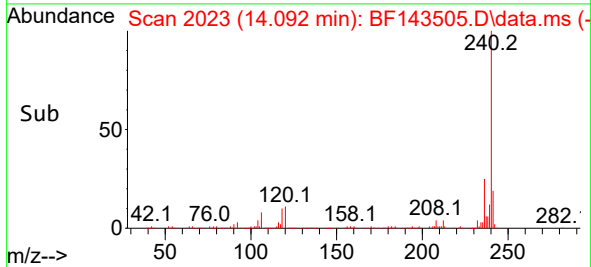
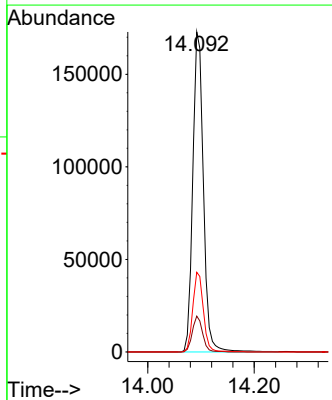
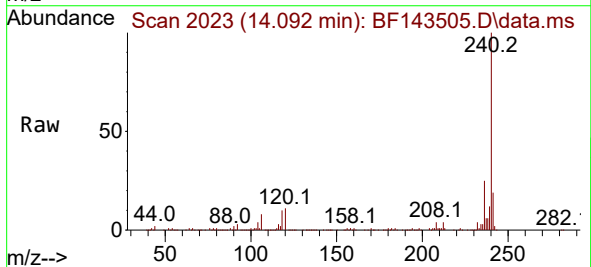
Instrument :
 BNA_F
 ClientSampleId :
 17M-W

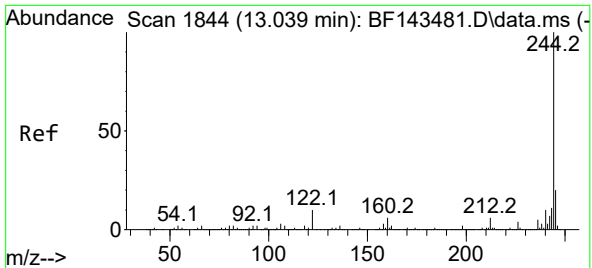
Tgt Ion:248 Resp: 14089
 Ion Ratio Lower Upper
 248 100
 250 205.9 77.8 116.8#
 141 448.7 54.0 81.0#



#76
 Chrysene-d12
 Concen: 20.000 ng
 RT: 14.092 min Scan# 2023
 Delta R.T. -0.012 min
 Lab File: BF143505.D
 Acq: 21 Aug 2025 01:27

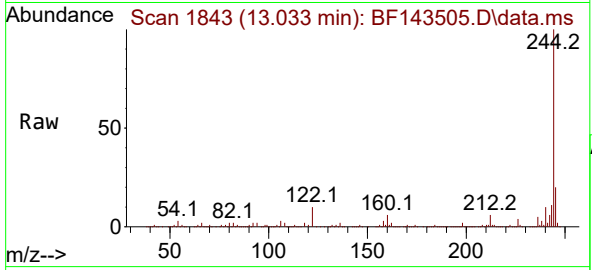
Tgt Ion:240 Resp: 240120
 Ion Ratio Lower Upper
 240 100
 120 11.2 8.6 12.8
 236 24.9 20.4 30.6



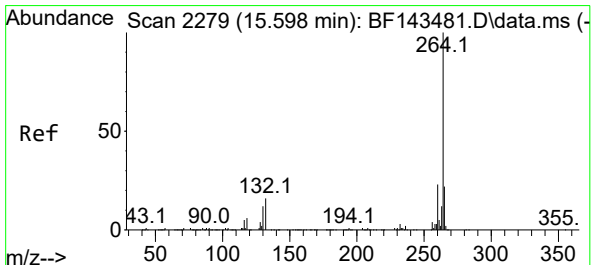
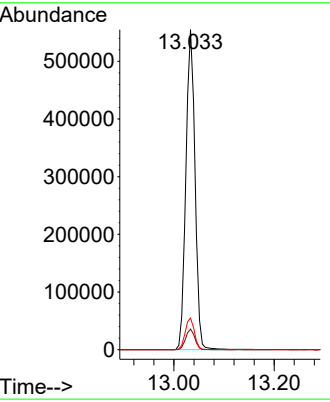
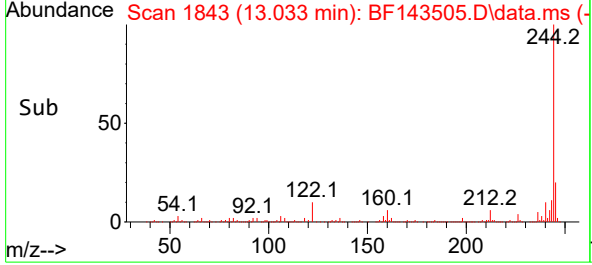


#79
 Terphenyl-d14
 Concen: 50.883 ng
 RT: 13.033 min Scan# 1844
 Delta R.T. -0.006 min
 Lab File: BF143505.D
 Acq: 21 Aug 2025 01:27

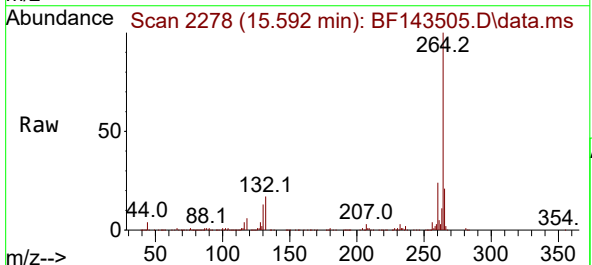
Instrument : BNA_F
 ClientSampleId : 17M-W



Tgt Ion:244 Resp: 700158
 Ion Ratio Lower Upper
 244 100
 212 6.5 5.2 7.8
 122 9.9 7.9 11.9



#86
 Perylene-d12
 Concen: 20.000 ng
 RT: 15.592 min Scan# 2278
 Delta R.T. -0.006 min
 Lab File: BF143505.D
 Acq: 21 Aug 2025 01:27



Tgt Ion:264 Resp: 275939
 Ion Ratio Lower Upper
 264 100
 260 23.8 18.7 28.1
 265 21.3 17.6 26.4

