

Data Path : Z:\svoasrv\HPCHEM1\BNA_F\Data\BF082222\
 Data File : BF129936.D
 Acq On : 22 Aug 2022 12:20
 Operator : CG\JU
 Sample : SSTDCCC040
 Misc :
 ALS Vial : 2 Sample Multiplier: 1

Instrument :
 BNA_F
 ClientSampleId :
 SSTDCCC040

Quant Time: Aug 23 04:44:05 2022
 Quant Method : Z:\svoasrv\HPCHEM1\BNA_F\Methods\8270-BF081422.M
 Quant Title : ASP BNA STANDARDS FOR 5 POINT CALIBRATION
 QLast Update : Tue Aug 23 04:41:40 2022
 Response via : Initial Calibration

Compound	R.T.	QIon	Response	Conc	Units	Dev(Min)	
Internal Standards							
1) 1,4-Dichlorobenzene-d4	6.775	152	125722	20.000	ng	0.00	
21) Naphthalene-d8	8.057	136	491661	20.000	ng	0.00	
39) Acenaphthene-d10	9.816	164	263230	20.000	ng	0.00	
64) Phenanthrene-d10	11.304	188	449327	20.000	ng	0.00	
76) Chrysene-d12	13.951	240	297923	20.000	ng	0.00	
86) Perylene-d12	15.398	264	241132	20.000	ng	0.00	
System Monitoring Compounds							
5) 2-Fluorophenol	5.410	112	615139	81.011	ng	0.00	
7) Phenol-d6	6.434	99	776276	81.637	ng	0.00	
23) Nitrobenzene-d5	7.351	82	769212	83.751	ng	0.00	
42) 2,4,6-Tribromophenol	10.610	330	209175	79.176	ng	0.00	
45) 2-Fluorobiphenyl	9.133	172	1393073	80.379	ng	0.00	
79) Terphenyl-d14	12.886	244	1461730	81.639	ng	0.00	
Target Compounds							
2) 1,4-Dioxane	2.481	88	129679	41.395	ng		Qvalue 95
3) Pyridine	3.246	79	324698	39.606	ng		96
4) n-Nitrosodimethylamine	3.204	42	177461	46.970	ng		89
6) Aniline	6.445	93	435363	40.171	ng		90
8) 2-Chlorophenol	6.575	128	336843	39.848	ng		97
9) Benzaldehyde	6.334	77	227310	45.580	ng		95
10) Phenol	6.451	94	431588	41.377	ng		93
11) bis(2-Chloroethyl)ether	6.516	93	317946	40.141	ng		94
12) 1,3-Dichlorobenzene	6.716	146	364780	39.973	ng		99
13) 1,4-Dichlorobenzene	6.792	146	368910	39.564	ng		98
14) 1,2-Dichlorobenzene	6.945	146	347897	40.172	ng		98
15) Benzyl Alcohol	6.934	79	302579	42.150	ng		99
16) 2,2'-oxybis(1-Chloropr...	7.051	45	461068	43.442	ng		95
17) 2-Methylphenol	7.051	107	275685	40.617	ng		99
18) Hexachloroethane	7.281	117	144287	41.206	ng		97
19) n-Nitroso-di-n-propyla...	7.198	70	255831	42.564	ng		100
20) 3+4-Methylphenols	7.204	107	375820	41.249	ng	#	89
22) Acetophenone	7.192	105	495044	41.318	ng		98
24) Nitrobenzene	7.369	77	387098	41.798	ng		94
25) Isophorone	7.604	82	646625	40.905	ng		97
26) 2-Nitrophenol	7.681	139	175599	38.547	ng		91
27) 2,4-Dimethylphenol	7.728	122	258751	39.607	ng		98
28) bis(2-Chloroethoxy)met...	7.810	93	372570	40.366	ng		99
29) 2,4-Dichlorophenol	7.933	162	279806	39.169	ng		97
30) 1,2,4-Trichlorobenzene	8.004	180	294997	39.144	ng		99
31) Naphthalene	8.081	128	1030791	40.098	ng		100
32) Benzoic acid	7.881	122	117805	41.972	ng		89
33) 4-Chloroaniline	8.145	127	376100	37.204	ng		99
34) Hexachlorobutadiene	8.192	225	181811	39.620	ng		99
35) Caprolactam	8.528	113	69851	31.444	ng		89
36) 4-Chloro-3-methylphenol	8.633	107	316112	41.018	ng		97
37) 2-Methylnaphthalene	8.775	142	665897	39.467	ng		99
38) 1-Methylnaphthalene	8.869	142	651326	39.721	ng		100
40) 1,2,4,5-Tetrachloroben...	8.939	216	287003	39.201	ng		99
41) Hexachlorocyclopentadiene	8.916	237	83173	47.718	ng		96
43) 2,4,6-Trichlorophenol	9.063	196	185720	39.043	ng		97

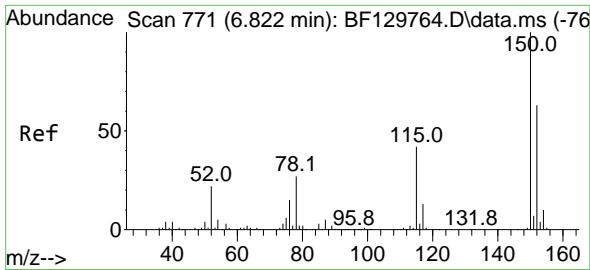
Data Path : Z:\svoasrv\HPCHEM1\BNA_F\Data\BF082222\
 Data File : BF129936.D
 Acq On : 22 Aug 2022 12:20
 Operator : CG\JU
 Sample : SSTDCCC040
 Misc :
 ALS Vial : 2 Sample Multiplier: 1

Instrument :
 BNA_F
ClientSampleId :
 SSTDCCC040

Quant Time: Aug 23 04:44:05 2022
 Quant Method : Z:\svoasrv\HPCHEM1\BNA_F\Methods\8270-BF081422.M
 Quant Title : ASP BNA STANDARDS FOR 5 POINT CALIBRATION
 QLast Update : Tue Aug 23 04:41:40 2022
 Response via : Initial Calibration

Compound	R.T.	QIon	Response	Conc	Units	Dev(Min)
44) 2,4,5-Trichlorophenol	9.110	196	203668	39.797	ng	99
46) 1,1'-Biphenyl	9.233	154	795784	39.794	ng	99
47) 2-Chloronaphthalene	9.263	162	621606	39.286	ng	98
48) 2-Nitroaniline	9.369	65	217606	43.519	ng	94
49) Acenaphthylene	9.680	152	954294	39.773	ng	99
50) Dimethylphthalate	9.539	163	738389	39.130	ng	100
51) 2,6-Dinitrotoluene	9.616	165	163899	40.040	ng	91
52) Acenaphthene	9.851	154	579429	39.804	ng	99
53) 3-Nitroaniline	9.786	138	175406	38.748	ng	89
54) 2,4-Dinitrophenol	9.904	184	67624	39.513	ng	96
55) Dibenzofuran	10.022	168	869658	39.766	ng	97
56) 4-Nitrophenol	9.975	139	72959	36.228	ng	89
57) 2,4-Dinitrotoluene	10.022	165	210555	39.625	ng	86
58) Fluorene	10.363	166	721134	39.492	ng	99
59) 2,3,4,6-Tetrachlorophenol	10.151	232	151490	40.336	ng #	75
60) Diethylphthalate	10.239	149	752554	39.997	ng	98
61) 4-Chlorophenyl-phenylether	10.351	204	320203	39.075	ng	91
62) 4-Nitroaniline	10.404	138	164939	36.117	ng	90
63) Azobenzene	10.516	77	752816	41.859	ng	98
65) 4,6-Dinitro-2-methylphthalate	10.439	198	106754	40.471	ng	98
66) n-Nitrosodiphenylamine	10.480	169	601266	39.646	ng	100
67) 4-Bromophenyl-phenylether	10.845	248	208307	39.581	ng	95
68) Hexachlorobenzene	10.916	284	228455	40.074	ng	93
69) Atrazine	11.010	200	183065	39.329	ng	97
70) Pentachlorophenol	11.122	266	67852	42.316	ng	97
71) Phenanthrene	11.327	178	1015317	40.459	ng	100
72) Anthracene	11.380	178	1001542	40.133	ng	100
73) Carbazole	11.545	167	917594	40.505	ng	99
74) Di-n-butylphthalate	11.857	149	1181778	40.534	ng	100
75) Fluoranthene	12.521	202	1037299	40.395	ng	99
77) Benzidine	12.645	184	284440	39.073	ng	99
78) Pyrene	12.751	202	1028434	39.724	ng	99
80) Butylbenzylphthalate	13.357	149	427060	38.983	ng	96
81) Benzo(a)anthracene	13.939	228	784260	38.267	ng	99
82) 3,3'-Dichlorobenzidine	13.898	252	238838	37.629	ng	99
83) Chrysene	13.980	228	754326	39.320	ng	99
84) Bis(2-ethylhexyl)phthalate	13.910	149	488116	37.556	ng	99
85) Di-n-octyl phthalate	14.521	149	701216	39.083	ng	98
87) Indeno(1,2,3-cd)pyrene	16.856	276	714840	43.182	ng	99
88) Benzo(b)fluoranthene	14.980	252	599173	36.288	ng	100
89) Benzo(k)fluoranthene	15.009	252	626599	39.571	ng	99
90) Benzo(a)pyrene	15.339	252	497804	38.284	ng	99
91) Dibenzo(a,h)anthracene	16.856	278	589248	43.140	ng	98
92) Benzo(g,h,i)perylene	17.292	276	594481	43.625	ng	99

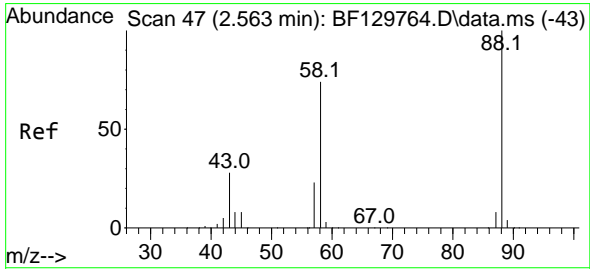
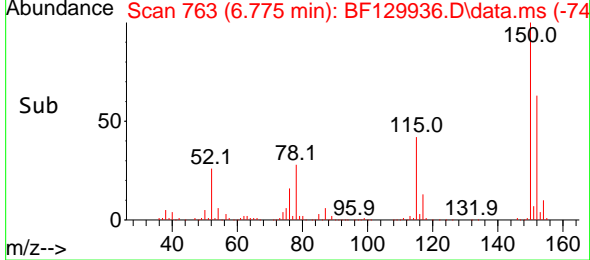
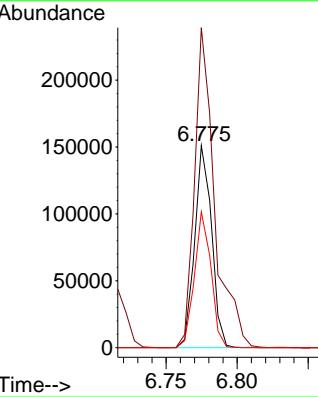
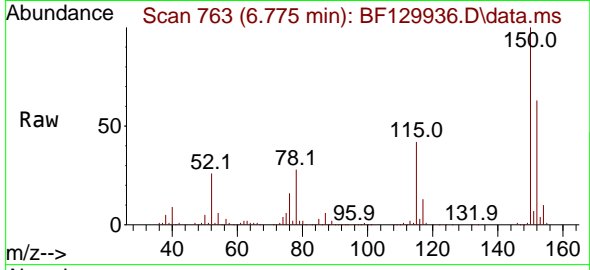
(#) = qualifier out of range (m) = manual integration (+) = signals summed



#1
 1,4-Dichlorobenzene-d4
 Concen: 20.000 ng
 RT: 6.775 min Scan# 70
 Delta R.T. -0.000 min
 Lab File: BF129936.D
 Acq: 22 Aug 2022 12:20

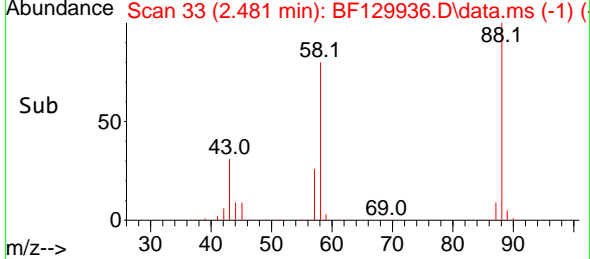
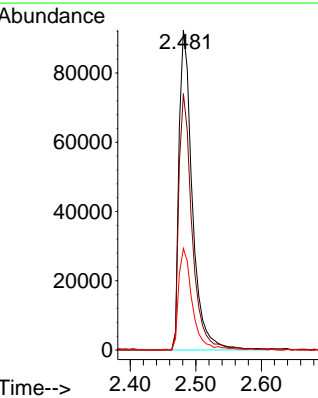
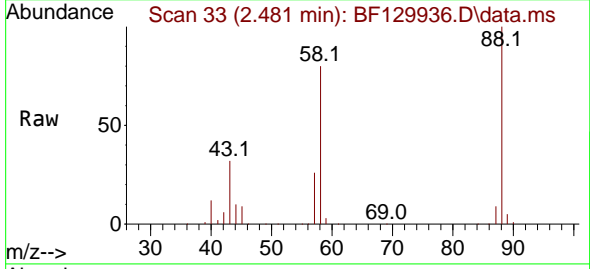
Instrument :
 BNA_F
 ClientSampleId :
 SSTDCCC040

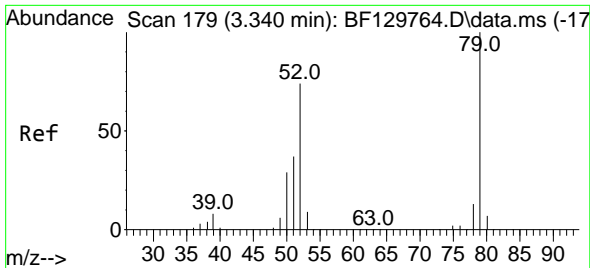
Tgt Ion:152 Resp: 125722
 Ion Ratio Lower Upper
 152 100
 150 158.3 126.9 190.3
 115 67.2 53.4 80.0



#2
 1,4-Dioxane
 Concen: 41.395 ng
 RT: 2.481 min Scan# 33
 Delta R.T. 0.000 min
 Lab File: BF129936.D
 Acq: 22 Aug 2022 12:20

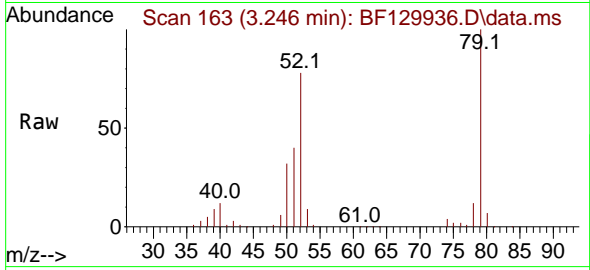
Tgt Ion: 88 Resp: 129679
 Ion Ratio Lower Upper
 88 100
 58 79.9 60.9 91.3
 43 33.0 23.6 35.4





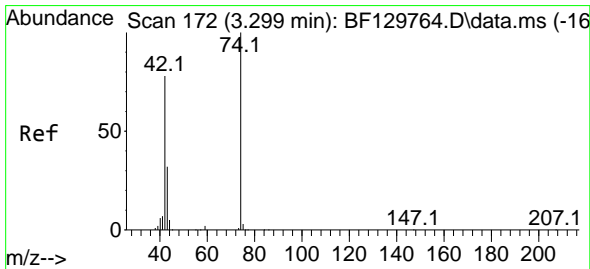
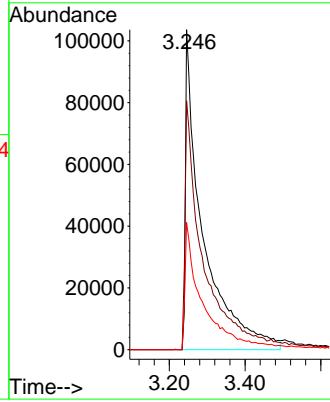
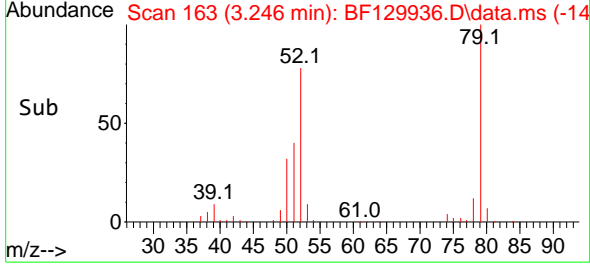
#3
 Pyridine
 Concen: 39.606 ng
 RT: 3.246 min Scan# 11
 Delta R.T. 0.000 min
 Lab File: BF129936.D
 Acq: 22 Aug 2022 12:20

Instrument :
 BNA_F
 ClientSampleId :
 SSTDCCC040

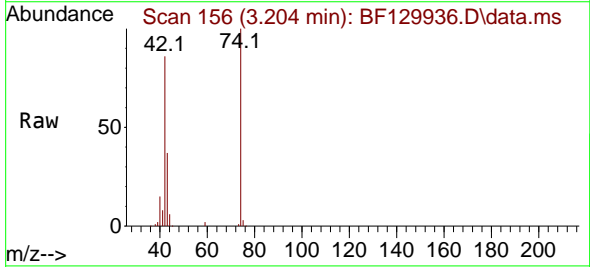


Tgt Ion: 79 Resp: 324698

Ion	Ratio	Lower	Upper
79	100		
52	77.8	59.4	89.2
51	39.8	29.5	44.3

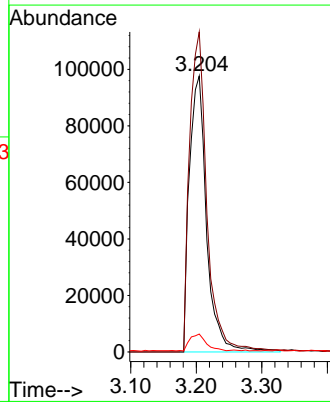
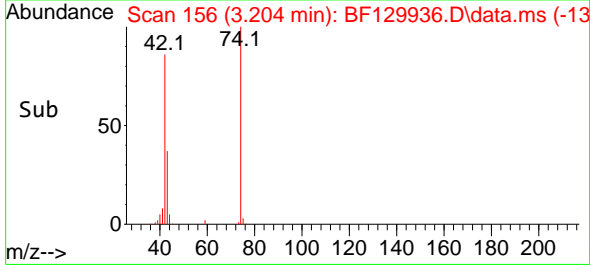


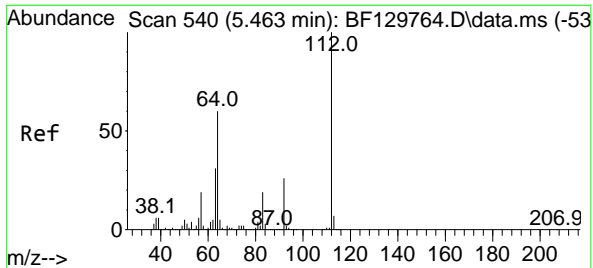
#4
 n-Nitrosodimethylamine
 Concen: 46.970 ng
 RT: 3.204 min Scan# 156
 Delta R.T. 0.000 min
 Lab File: BF129936.D
 Acq: 22 Aug 2022 12:20



Tgt Ion: 42 Resp: 177461

Ion	Ratio	Lower	Upper
42	100		
74	116.0	103.1	154.7
44	6.5	5.4	8.2



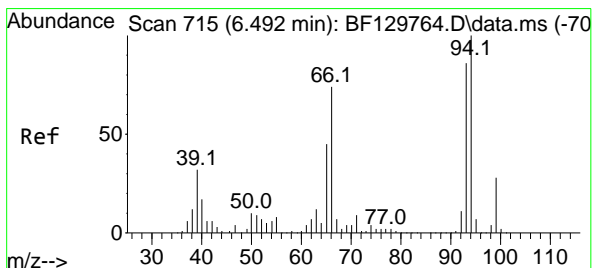
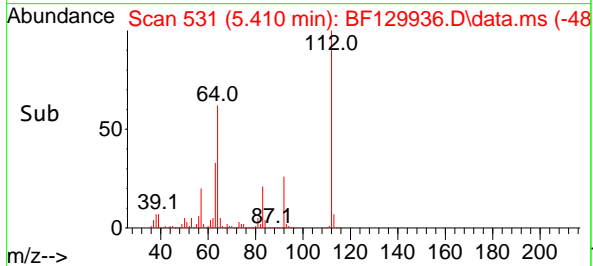
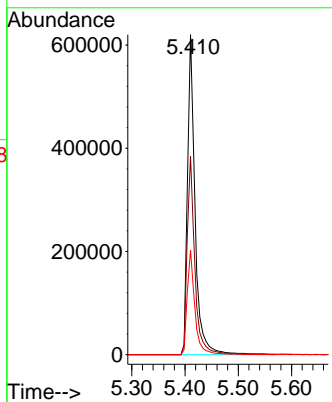
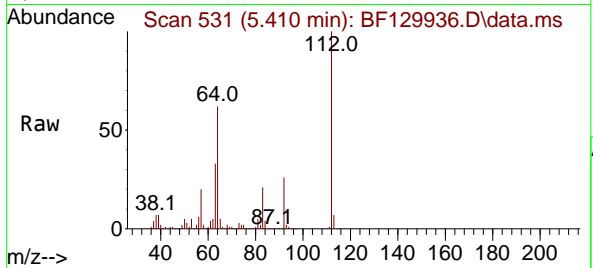


#5
 2-Fluorophenol
 Concen: 81.011 ng
 RT: 5.410 min Scan# 51
 Delta R.T. 0.000 min
 Lab File: BF129936.D
 Acq: 22 Aug 2022 12:20

Instrument :
 BNA_F
 ClientSampleId :
 SSTDCCC040

Tgt Ion:112 Resp: 615139

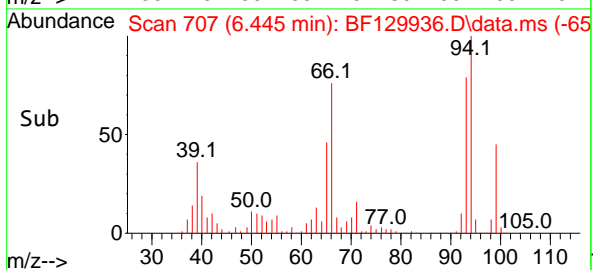
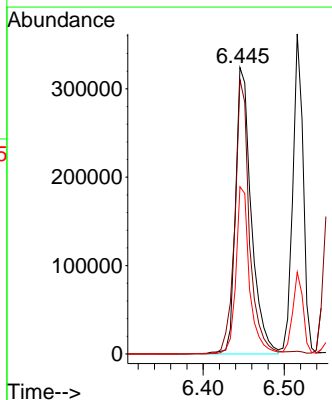
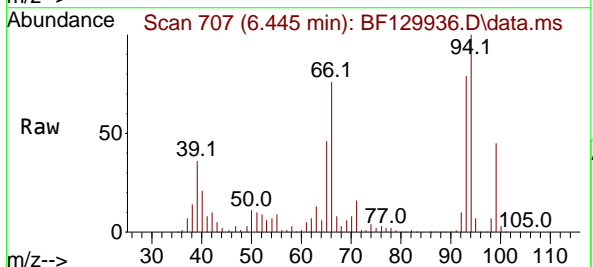
Ion	Ratio	Lower	Upper
112	100		
64	62.1	47.6	71.4
63	32.7	24.6	37.0

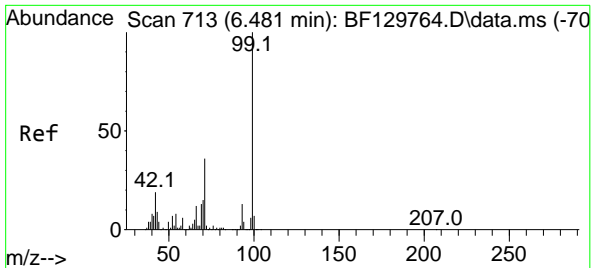


#6
 Aniline
 Concen: 40.171 ng
 RT: 6.445 min Scan# 707
 Delta R.T. 0.000 min
 Lab File: BF129936.D
 Acq: 22 Aug 2022 12:20

Tgt Ion: 93 Resp: 435363

Ion	Ratio	Lower	Upper
93	100		
66	95.8	68.7	103.1
65	58.4	41.6	62.4



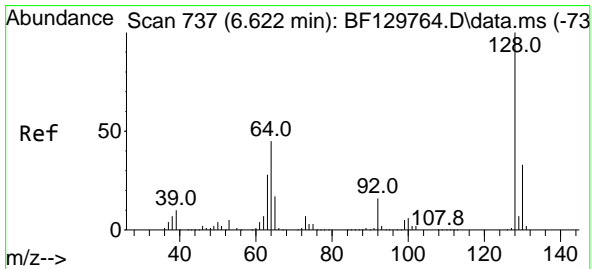
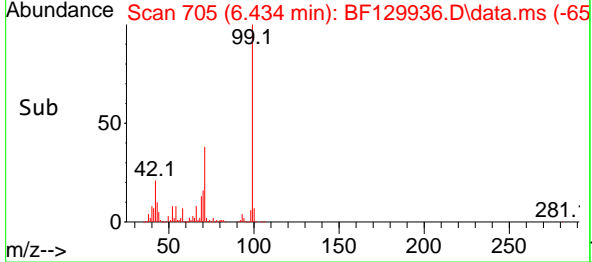
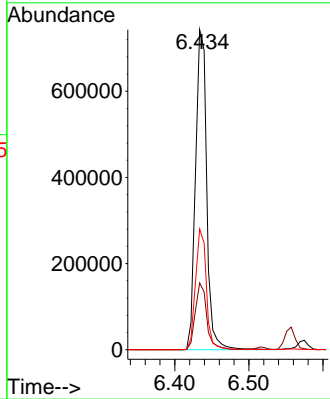
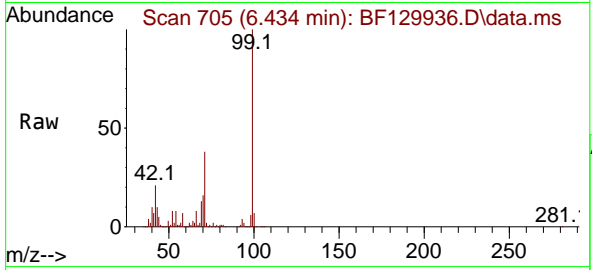


#7
 Phenol-d6
 Concen: 81.637 ng
 RT: 6.434 min Scan# 705
 Delta R.T. 0.000 min
 Lab File: BF129936.D
 Acq: 22 Aug 2022 12:20

Instrument : BNA_F
 ClientSampleId : SSTDCCC040

Tgt Ion: 99 Resp: 776276

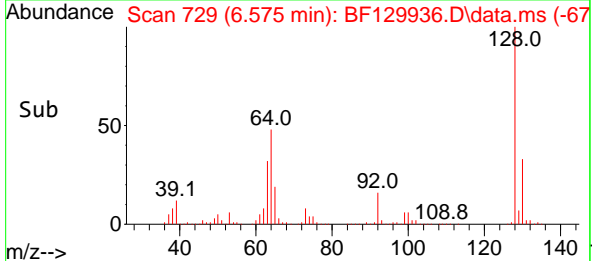
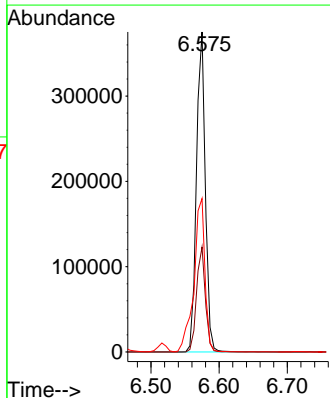
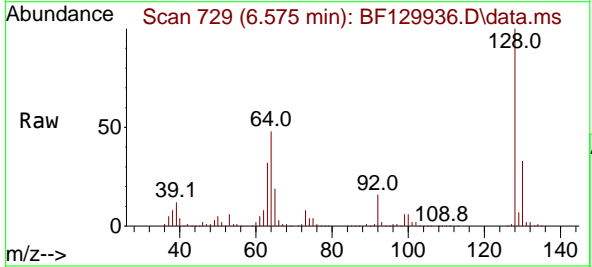
Ion	Ratio	Lower	Upper
99	100		
42	20.9	15.0	22.4
71	37.7	28.8	43.2

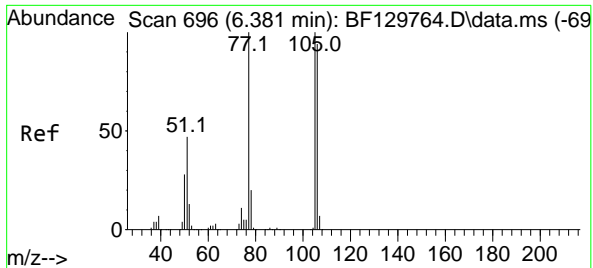


#8
 2-Chlorophenol
 Concen: 39.848 ng
 RT: 6.575 min Scan# 729
 Delta R.T. 0.000 min
 Lab File: BF129936.D
 Acq: 22 Aug 2022 12:20

Tgt Ion: 128 Resp: 336843

Ion	Ratio	Lower	Upper
128	100		
130	32.8	12.5	52.5
64	48.0	24.9	64.9

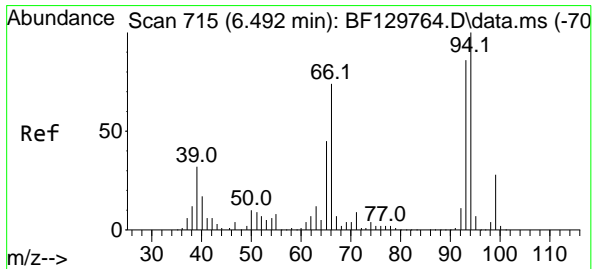
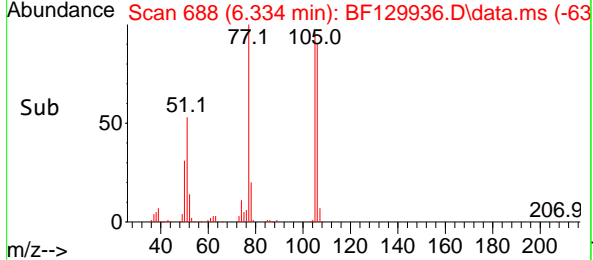
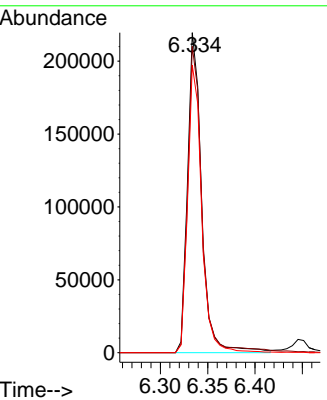
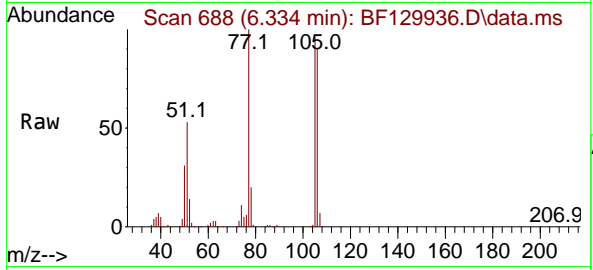




#9
Benzaldehyde
Concen: 45.580 ng
RT: 6.334 min Scan# 61
Delta R.T. 0.000 min
Lab File: BF129936.D
Acq: 22 Aug 2022 12:20

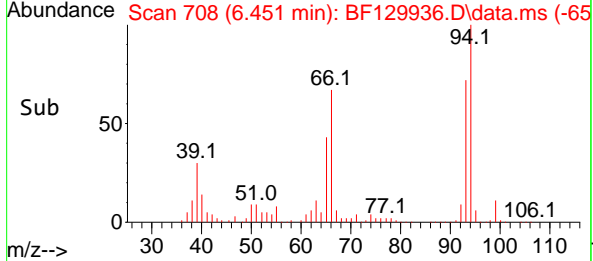
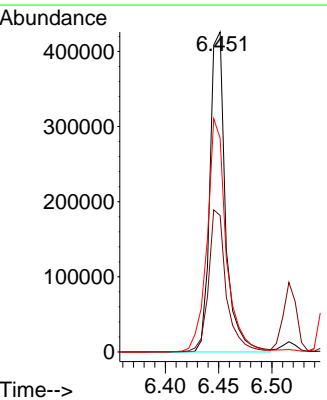
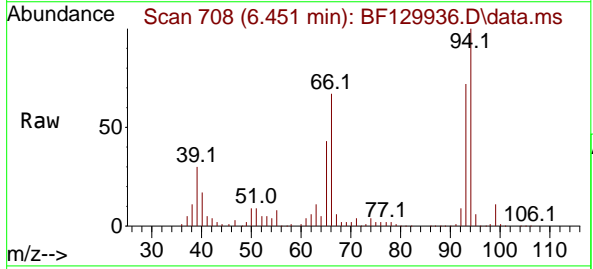
Instrument : BNA_F
Client Sample Id : SSTDCCC040

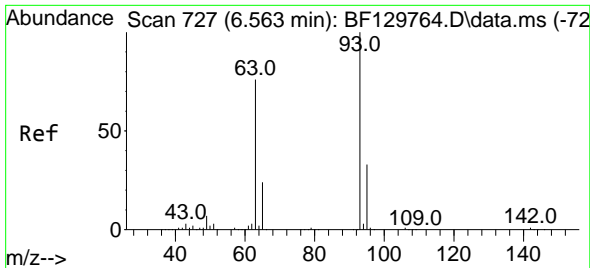
Tgt Ion: 77 Resp: 227310
Ion Ratio Lower Upper
77 100
105 95.7 80.3 120.3
106 89.9 74.3 114.3



#10
Phenol
Concen: 41.377 ng
RT: 6.451 min Scan# 708
Delta R.T. 0.000 min
Lab File: BF129936.D
Acq: 22 Aug 2022 12:20

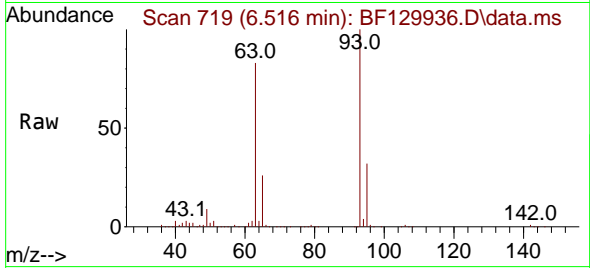
Tgt Ion: 94 Resp: 431588
Ion Ratio Lower Upper
94 100
65 42.6 24.9 64.9
66 66.8 54.2 94.2





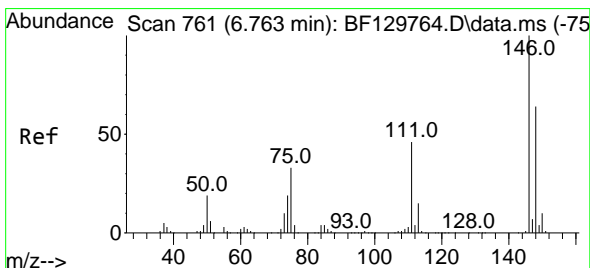
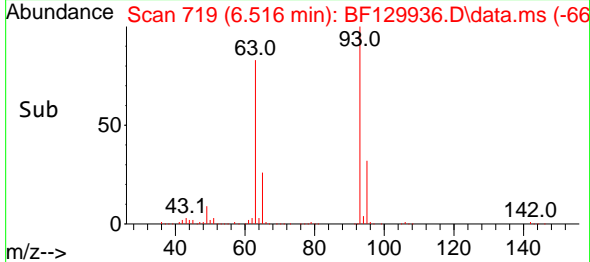
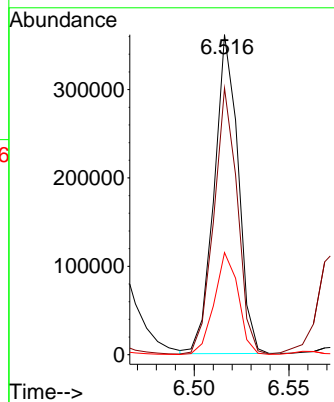
#11
 bis(2-Chloroethyl)ether
 Concen: 40.141 ng
 RT: 6.516 min Scan# 719
 Delta R.T. 0.000 min
 Lab File: BF129936.D
 Acq: 22 Aug 2022 12:20

Instrument : BNA_F
 ClientSampleId : SSTDCCC040



Tgt Ion: 93 Resp: 317946

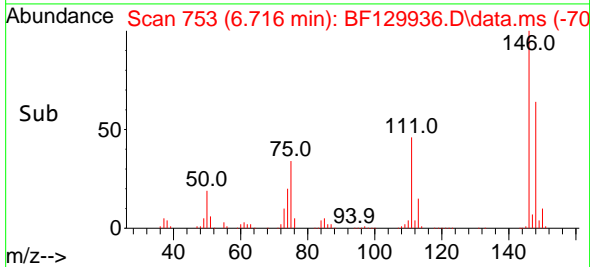
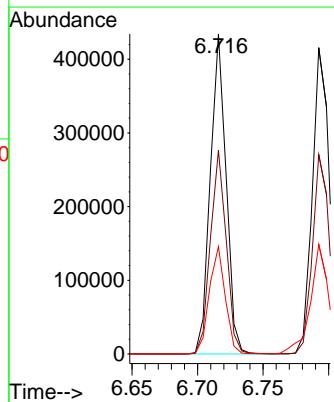
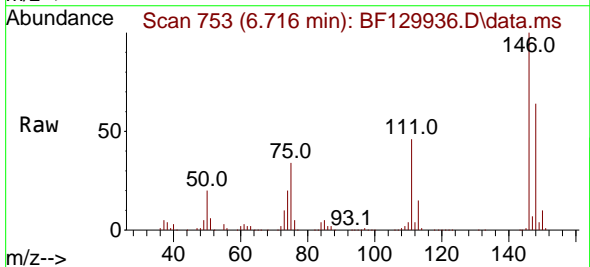
Ion	Ratio	Lower	Upper
93	100		
63	83.3	55.9	95.9
95	31.9	12.3	52.3

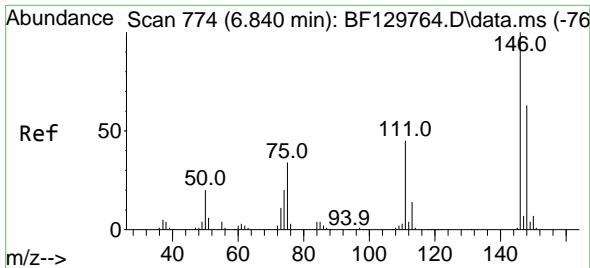


#12
 1,3-Dichlorobenzene
 Concen: 39.973 ng
 RT: 6.716 min Scan# 753
 Delta R.T. 0.000 min
 Lab File: BF129936.D
 Acq: 22 Aug 2022 12:20

Tgt Ion: 146 Resp: 364780

Ion	Ratio	Lower	Upper
146	100		
148	63.7	51.2	76.8
75	33.6	26.5	39.7

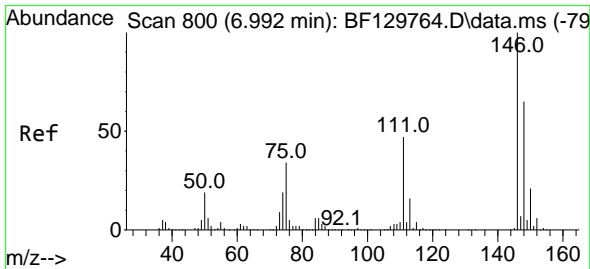
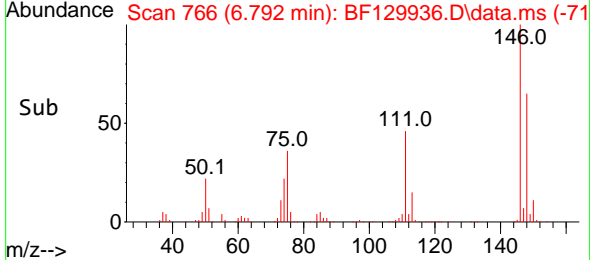
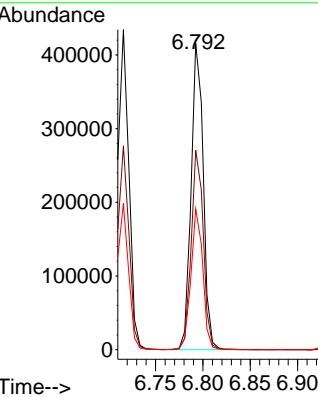
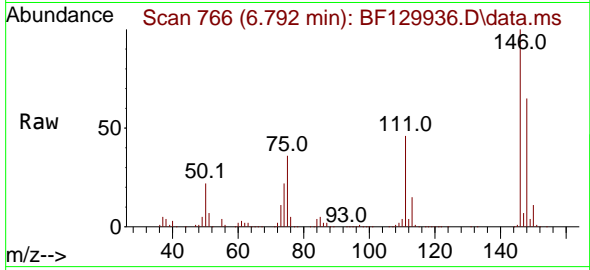




#13
 1,4-Dichlorobenzene
 Concen: 39.564 ng
 RT: 6.792 min Scan# 709
 Delta R.T. 0.000 min
 Lab File: BF129936.D
 Acq: 22 Aug 2022 12:20

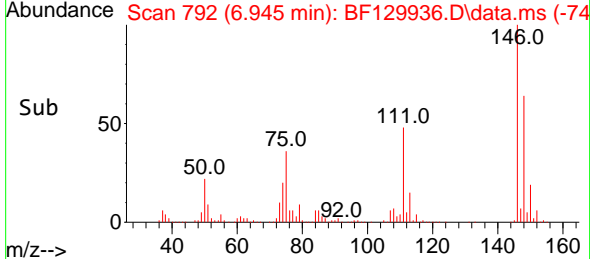
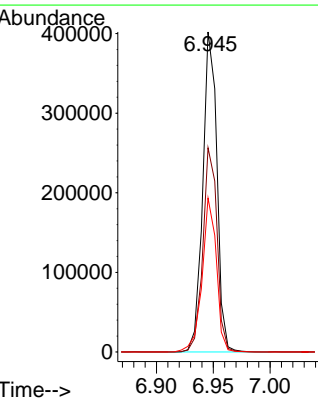
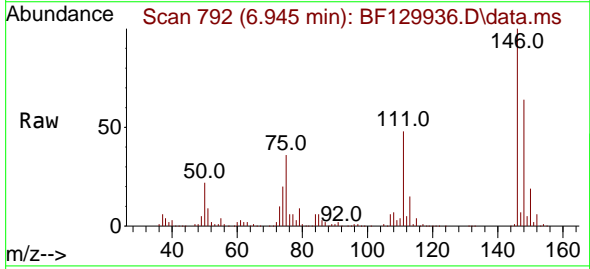
Instrument :
 BNA_F
 ClientSampleId :
 SSTDCCC040

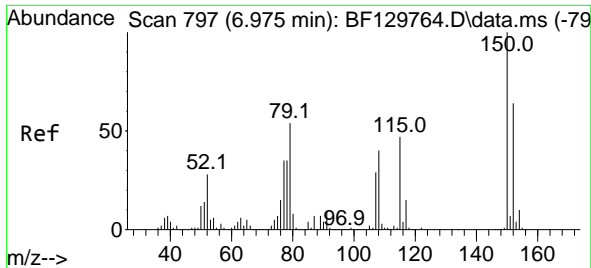
Tgt Ion:146 Resp: 368910
 Ion Ratio Lower Upper
 146 100
 148 65.1 50.6 75.8
 111 46.0 36.2 54.4



#14
 1,2-Dichlorobenzene
 Concen: 40.172 ng
 RT: 6.945 min Scan# 792
 Delta R.T. 0.000 min
 Lab File: BF129936.D
 Acq: 22 Aug 2022 12:20

Tgt Ion:146 Resp: 347897
 Ion Ratio Lower Upper
 146 100
 148 63.8 51.8 77.6
 111 48.1 37.2 55.8

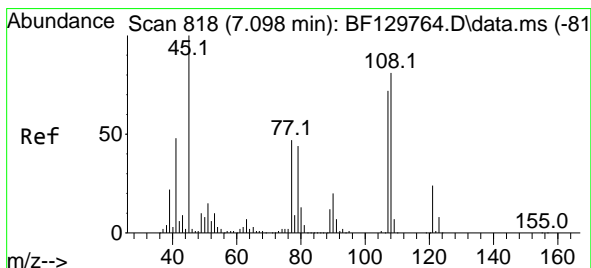
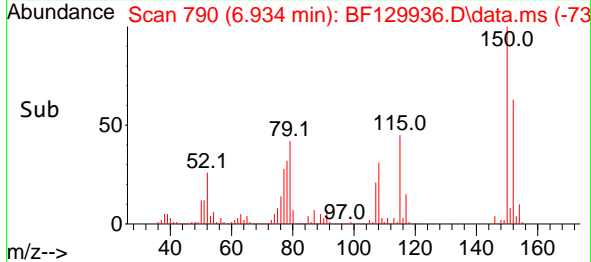
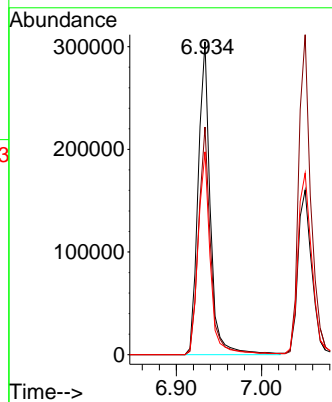
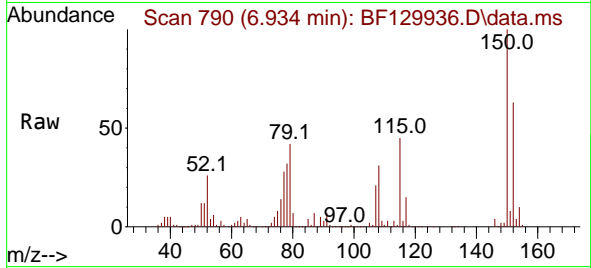




#15
 Benzyl Alcohol
 Concen: 42.150 ng
 RT: 6.934 min Scan# 79
 Delta R.T. 0.000 min
 Lab File: BF129936.D
 Acq: 22 Aug 2022 12:20

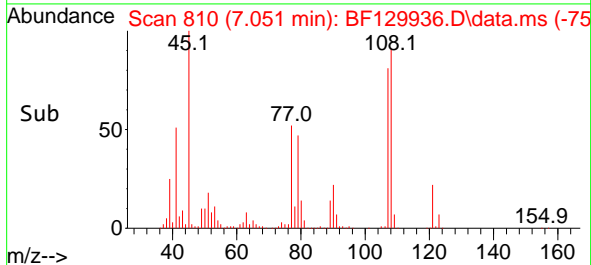
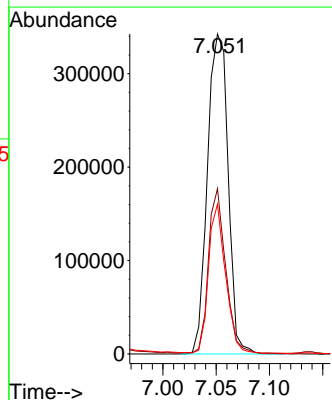
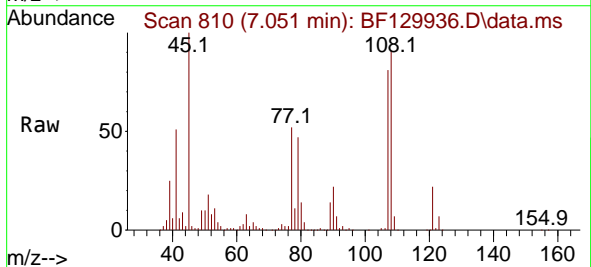
Instrument :
 BNA_F
 ClientSampleId :
 SSTDCCC040

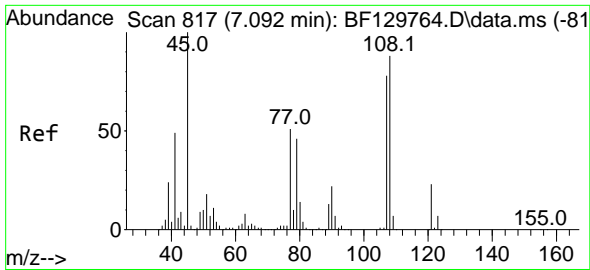
Tgt Ion: 79 Resp: 302579
 Ion Ratio Lower Upper
 79 100
 108 72.7 59.2 88.8
 77 64.8 51.9 77.9



#16
 2,2'-oxybis(1-Chloropropane)
 Concen: 43.442 ng
 RT: 7.051 min Scan# 810
 Delta R.T. 0.000 min
 Lab File: BF129936.D
 Acq: 22 Aug 2022 12:20

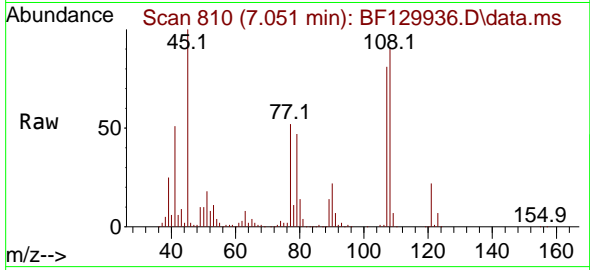
Tgt Ion: 45 Resp: 461068
 Ion Ratio Lower Upper
 45 100
 77 51.7 27.4 67.4
 79 46.8 24.4 64.4



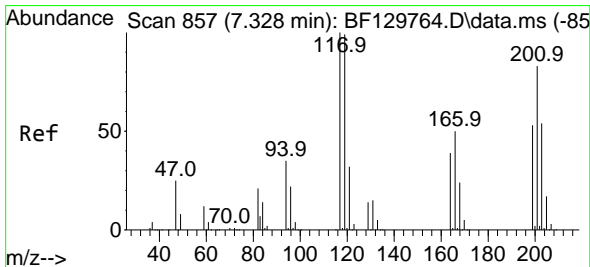
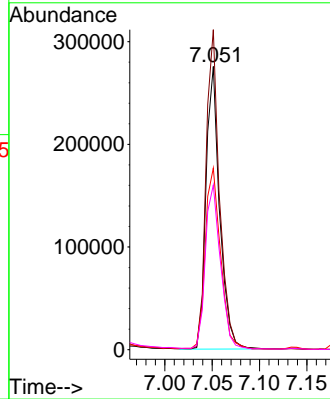
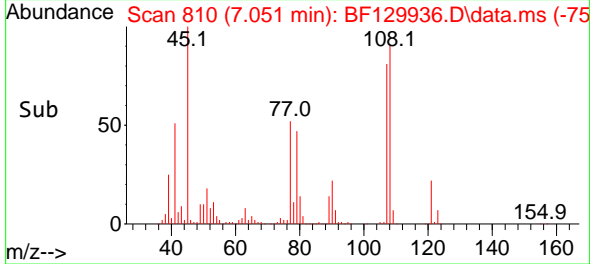


#17
 2-Methylphenol
 Concen: 40.617 ng
 RT: 7.051 min Scan# 810
 Delta R.T. 0.000 min
 Lab File: BF129936.D
 Acq: 22 Aug 2022 12:20

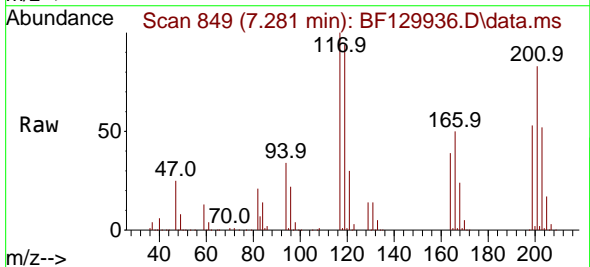
Instrument :
 BNA_F
 ClientSampleId :
 SSTDCCC040



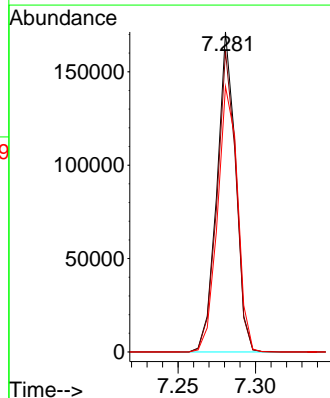
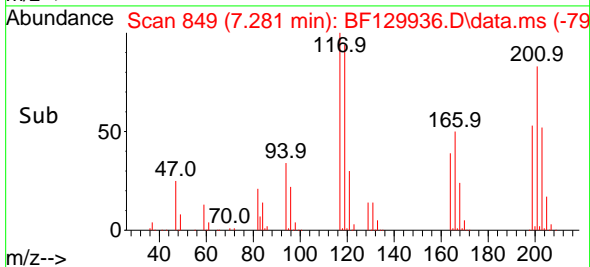
Tgt Ion:107 Resp: 275685
 Ion Ratio Lower Upper
 107 100
 108 113.0 90.2 135.2
 77 64.1 51.8 77.8
 79 58.1 47.4 71.2

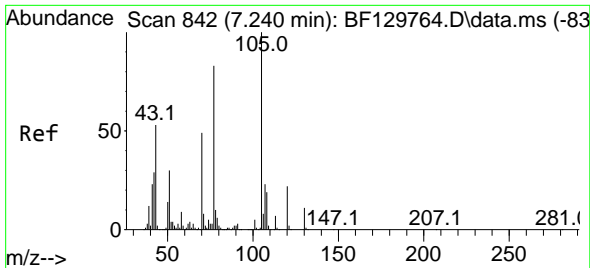


#18
 Hexachloroethane
 Concen: 41.206 ng
 RT: 7.281 min Scan# 849
 Delta R.T. 0.000 min
 Lab File: BF129936.D
 Acq: 22 Aug 2022 12:20



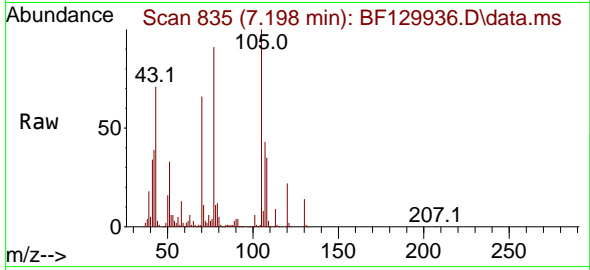
Tgt Ion:117 Resp: 144287
 Ion Ratio Lower Upper
 117 100
 119 94.0 79.1 118.7
 201 82.9 66.6 100.0





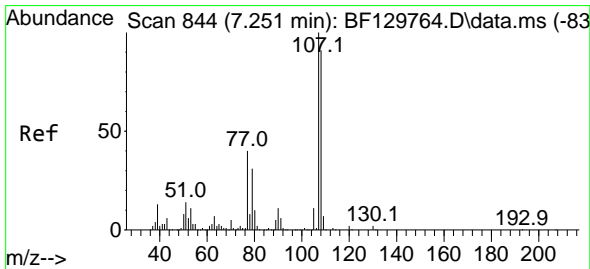
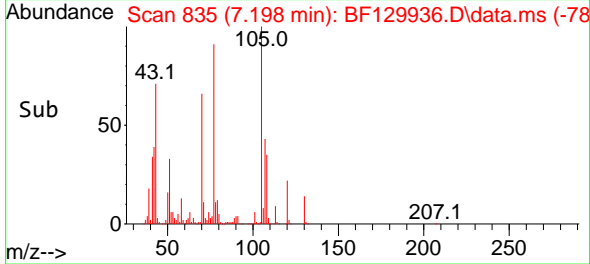
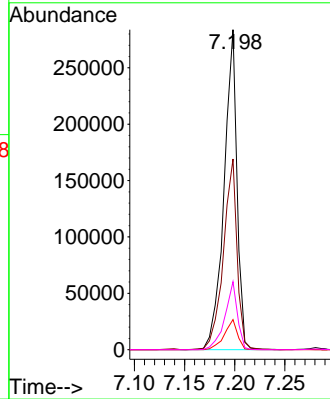
#19
 n-Nitroso-di-n-propylamine
 Concen: 42.564 ng
 RT: 7.198 min Scan# 81
 Delta R.T. 0.000 min
 Lab File: BF129936.D
 Acq: 22 Aug 2022 12:20

Instrument :
 BNA_F
 ClientSampleId :
 SSTDCCC040

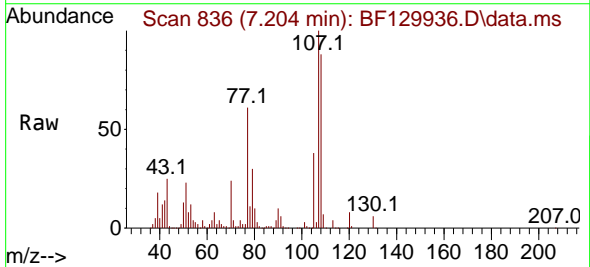


Tgt Ion: 70 Resp: 255831

Ion	Ratio	Lower	Upper
70	100		
42	59.6	47.6	71.4
101	9.4	8.1	12.1
130	21.2	17.2	25.8

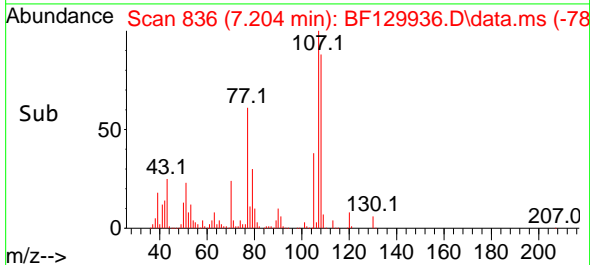
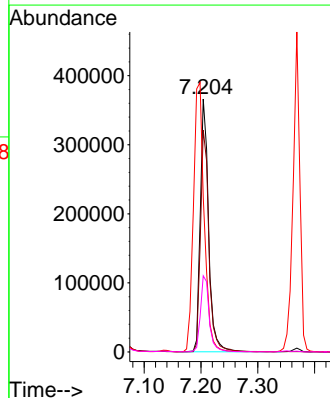


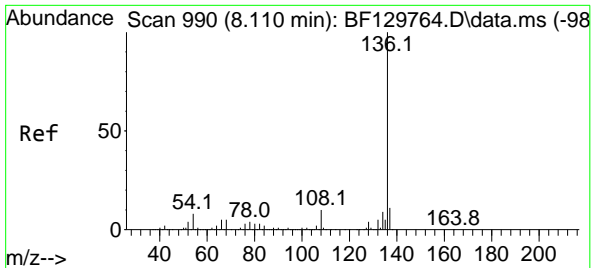
#20
 3+4-Methylphenols
 Concen: 41.249 ng
 RT: 7.204 min Scan# 836
 Delta R.T. 0.000 min
 Lab File: BF129936.D
 Acq: 22 Aug 2022 12:20



Tgt Ion: 107 Resp: 375820

Ion	Ratio	Lower	Upper
107	100		
108	87.7	71.3	111.3
77	61.3	20.4	60.4#
79	30.1	11.1	51.1



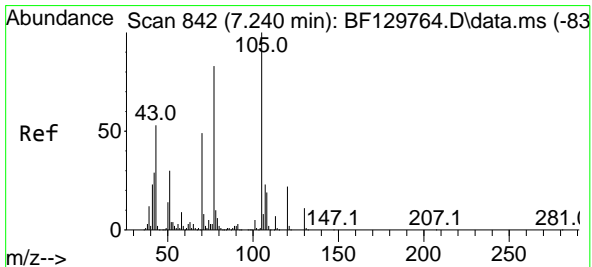
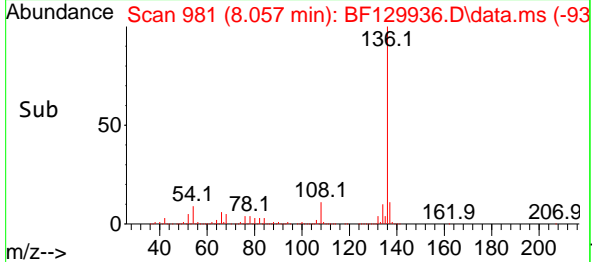
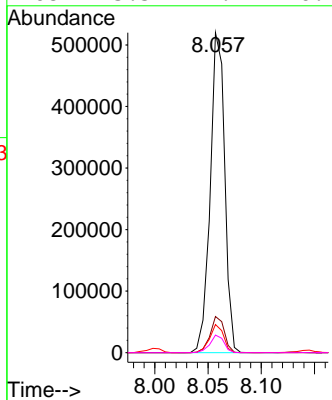
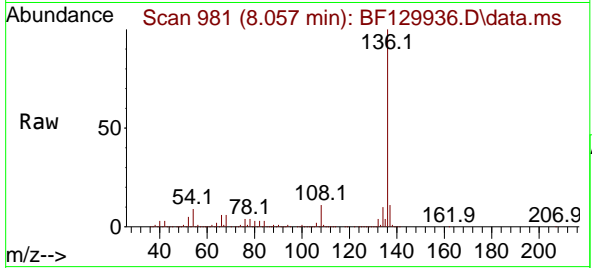


#21
 Naphthalene-d8
 Concen: 20.000 ng
 RT: 8.057 min Scan# 91
 Delta R.T. 0.000 min
 Lab File: BF129936.D
 Acq: 22 Aug 2022 12:20

Instrument :
 BNA_F
 ClientSampleId :
 SSTDCCC040

Tgt Ion:136 Resp: 491661

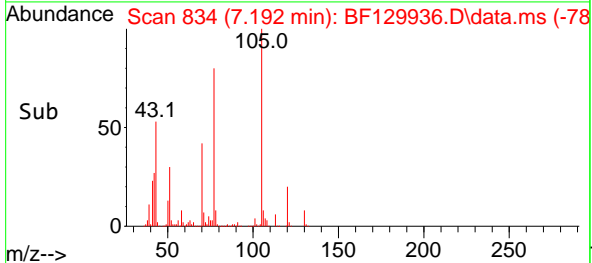
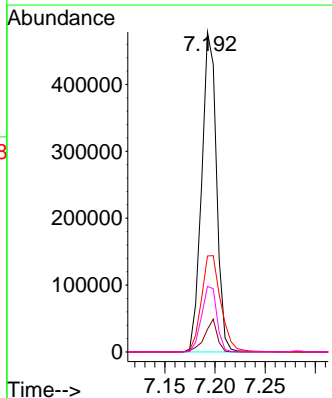
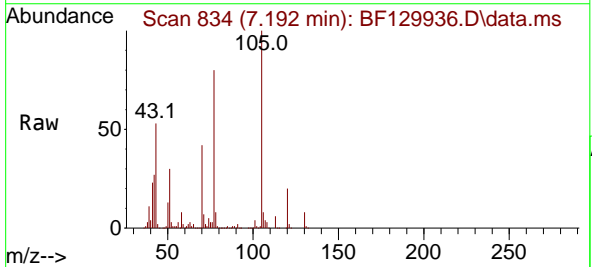
Ion	Ratio	Lower	Upper
136	100		
137	11.3	8.4	12.6
54	8.8	6.2	9.2
68	5.5	4.2	6.4

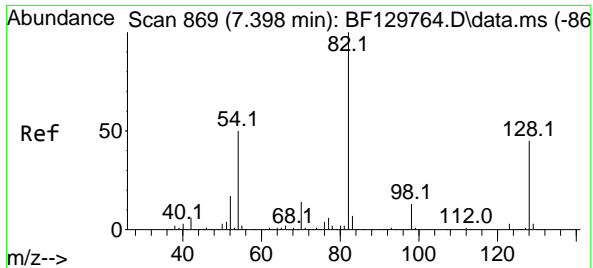


#22
 Acetophenone
 Concen: 41.318 ng
 RT: 7.192 min Scan# 834
 Delta R.T. 0.000 min
 Lab File: BF129936.D
 Acq: 22 Aug 2022 12:20

Tgt Ion:105 Resp: 495044

Ion	Ratio	Lower	Upper
105	100		
71	7.1	6.6	9.8
51	30.0	23.8	35.8
120	20.5	17.9	26.9





#23
 Nitrobenzene-d5
 Concen: 83.751 ng
 RT: 7.351 min Scan# 80
 Delta R.T. 0.000 min
 Lab File: BF129936.D
 Acq: 22 Aug 2022 12:20

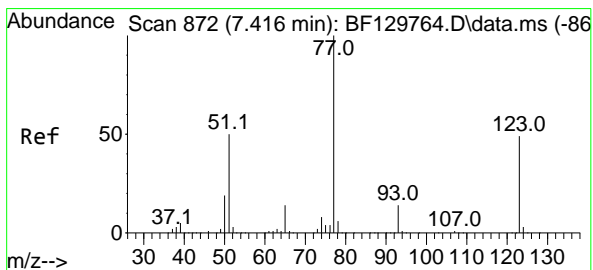
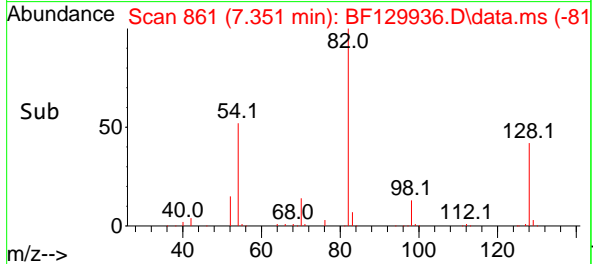
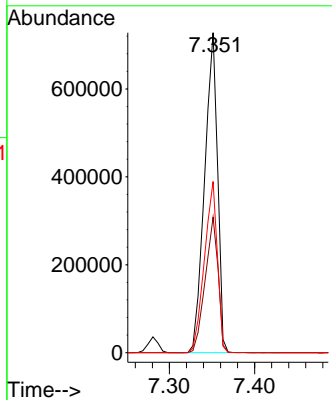
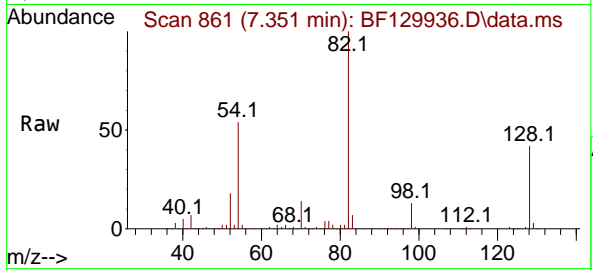
Instrument :

BNA_F

ClientSampleId :

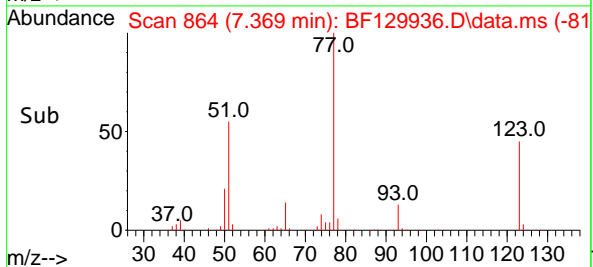
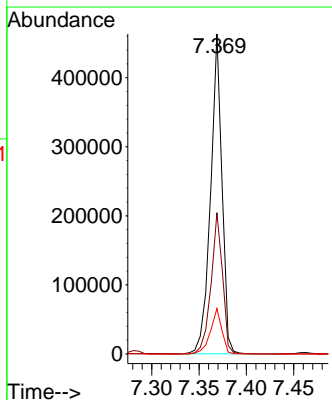
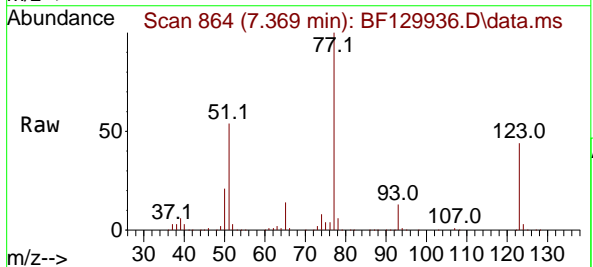
SSTDCCC040

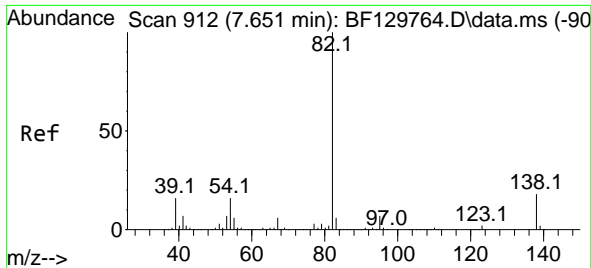
Tgt Ion: 82 Resp: 769212
 Ion Ratio Lower Upper
 82 100
 128 42.3 36.1 54.1
 54 53.5 40.0 60.0



#24
 Nitrobenzene
 Concen: 41.798 ng
 RT: 7.369 min Scan# 864
 Delta R.T. 0.000 min
 Lab File: BF129936.D
 Acq: 22 Aug 2022 12:20

Tgt Ion: 77 Resp: 387098
 Ion Ratio Lower Upper
 77 100
 123 44.1 39.2 58.8
 65 14.2 11.1 16.7



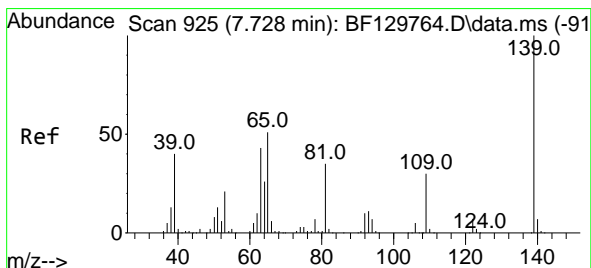
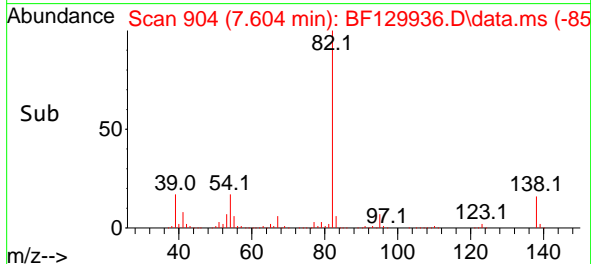
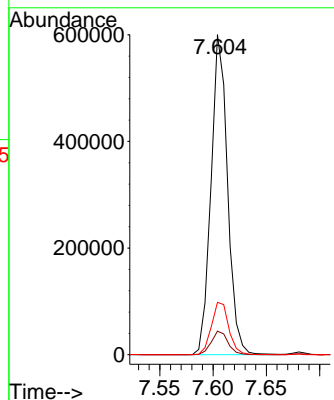
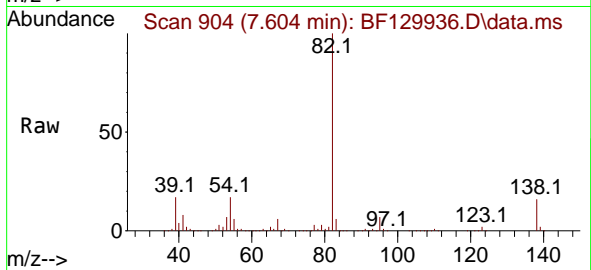


#25
 Isophorone
 Concen: 40.905 ng
 RT: 7.604 min Scan# 904
 Delta R.T. 0.000 min
 Lab File: BF129936.D
 Acq: 22 Aug 2022 12:20

Instrument : BNA_F
 ClientSampleId : SSTDCCC040

Tgt Ion: 82 Resp: 646625

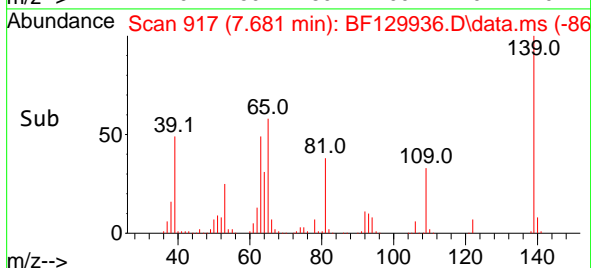
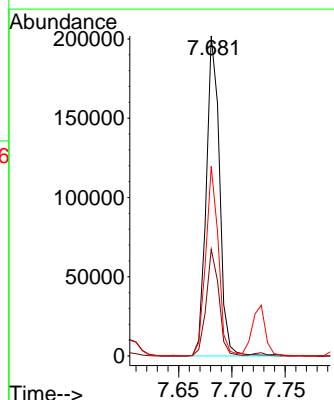
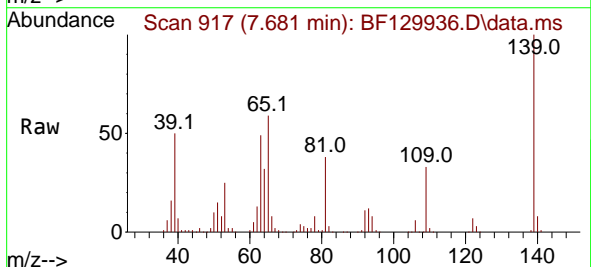
Ion	Ratio	Lower	Upper
82	100		
95	7.4	5.9	8.9
138	16.4	14.6	21.8

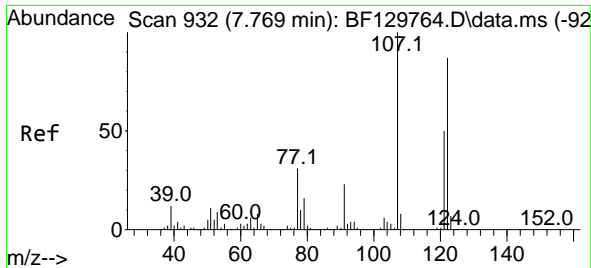


#26
 2-Nitrophenol
 Concen: 38.547 ng
 RT: 7.681 min Scan# 917
 Delta R.T. 0.000 min
 Lab File: BF129936.D
 Acq: 22 Aug 2022 12:20

Tgt Ion: 139 Resp: 175599

Ion	Ratio	Lower	Upper
139	100		
109	33.4	24.4	36.6
65	59.3	40.9	61.3



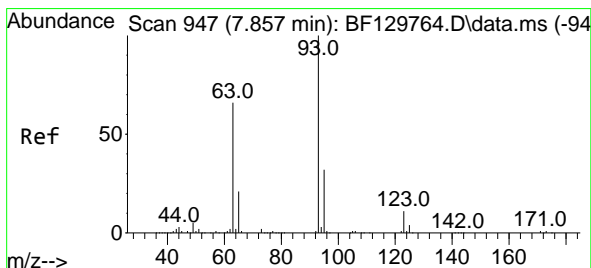
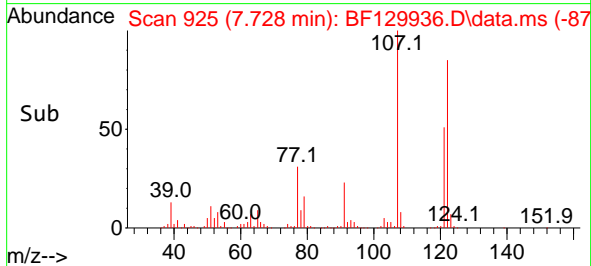
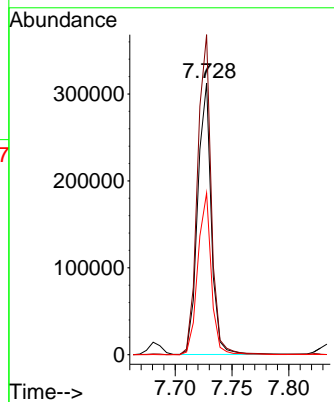
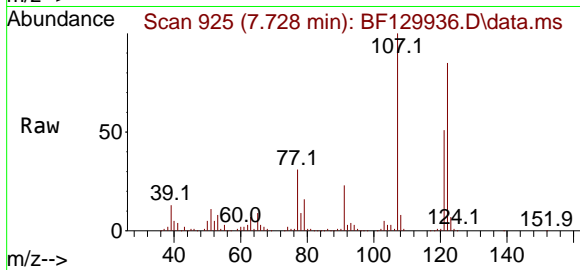


#27
 2,4-Dimethylphenol
 Concen: 39.607 ng
 RT: 7.728 min Scan# 911
 Delta R.T. 0.000 min
 Lab File: BF129936.D
 Acq: 22 Aug 2022 12:20

Instrument :
 BNA_F
 ClientSampleId :
 SSTDCCC040

Tgt Ion:122 Resp: 258751

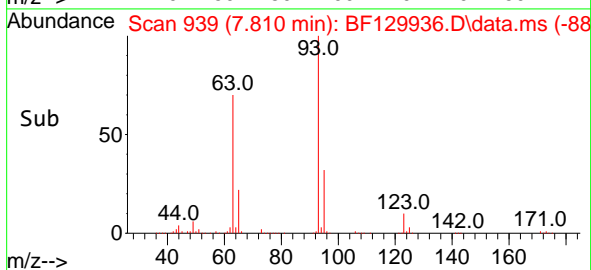
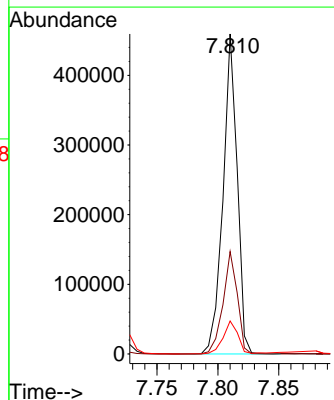
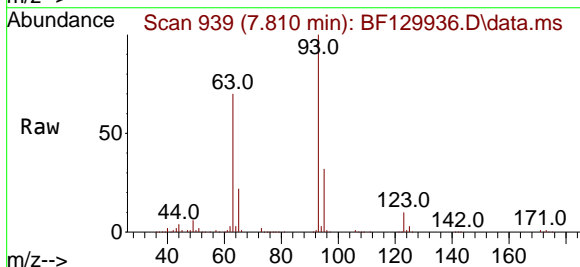
Ion	Ratio	Lower	Upper
122	100		
107	117.8	92.2	138.4
121	59.5	46.1	69.1

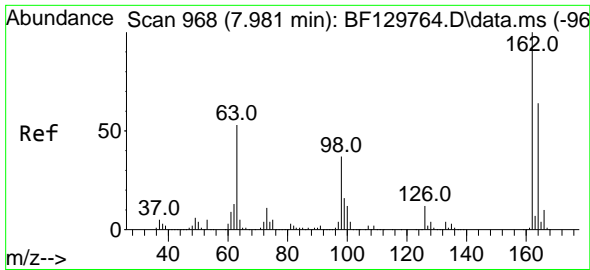


#28
 bis(2-Chloroethoxy)methane
 Concen: 40.366 ng
 RT: 7.810 min Scan# 939
 Delta R.T. 0.000 min
 Lab File: BF129936.D
 Acq: 22 Aug 2022 12:20

Tgt Ion: 93 Resp: 372570

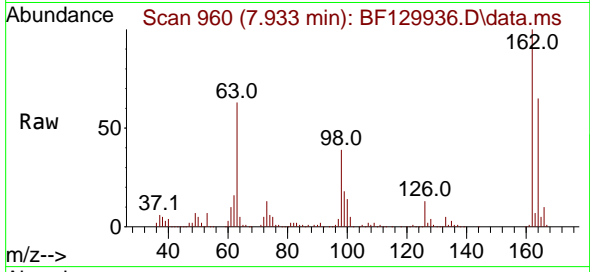
Ion	Ratio	Lower	Upper
93	100		
95	32.0	25.6	38.4
123	10.3	9.0	13.4



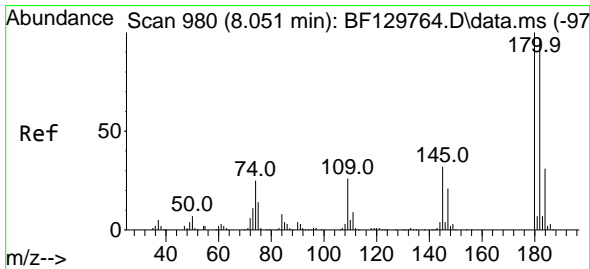
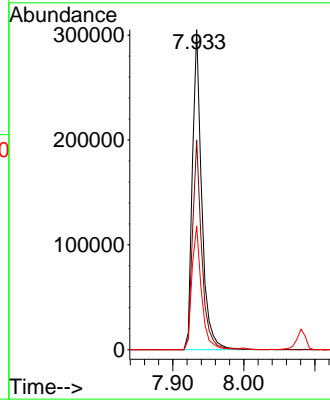
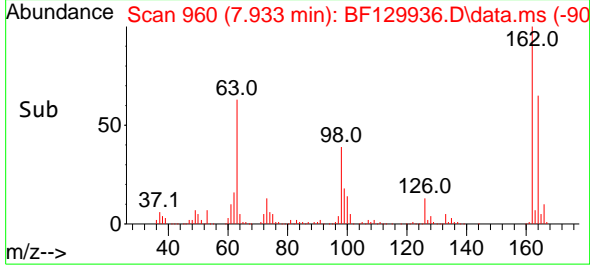


#29
 2,4-Dichlorophenol
 Concen: 39.169 ng
 RT: 7.933 min Scan# 90
 Delta R.T. 0.000 min
 Lab File: BF129936.D
 Acq: 22 Aug 2022 12:20

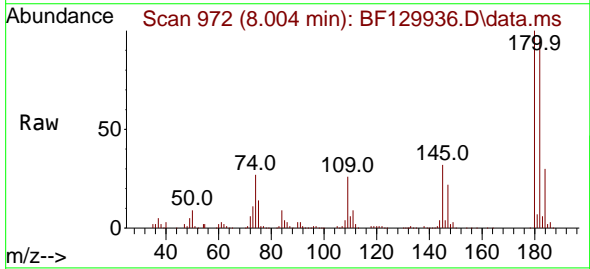
Instrument :
 BNA_F
 ClientSampleId :
 SSTDCCC040



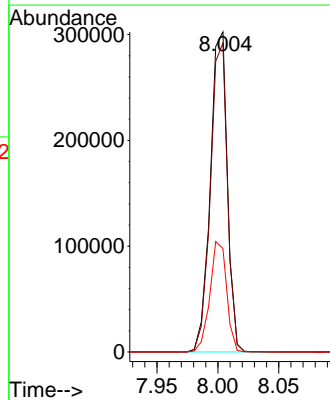
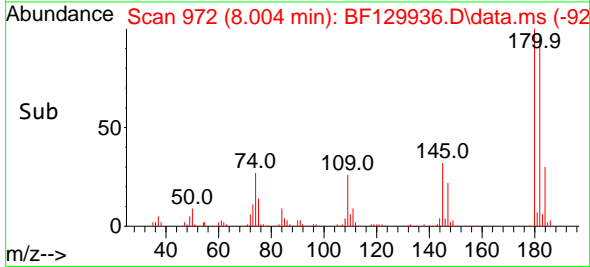
Tgt Ion:162 Resp: 279806
 Ion Ratio Lower Upper
 162 100
 164 65.5 43.7 83.7
 98 38.7 16.5 56.5

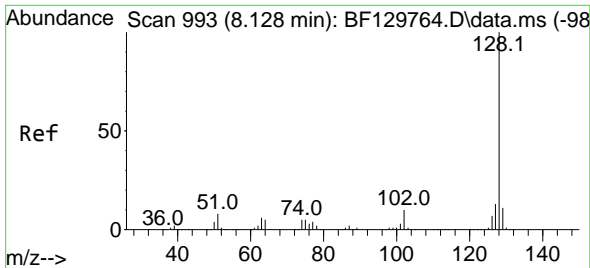


#30
 1,2,4-Trichlorobenzene
 Concen: 39.144 ng
 RT: 8.004 min Scan# 972
 Delta R.T. 0.000 min
 Lab File: BF129936.D
 Acq: 22 Aug 2022 12:20



Tgt Ion:180 Resp: 294997
 Ion Ratio Lower Upper
 180 100
 182 96.5 77.6 116.4
 145 32.4 25.6 38.4





#31
 Naphthalene
 Concen: 40.098 ng
 RT: 8.081 min Scan# 91
 Delta R.T. 0.000 min
 Lab File: BF129936.D
 Acq: 22 Aug 2022 12:20

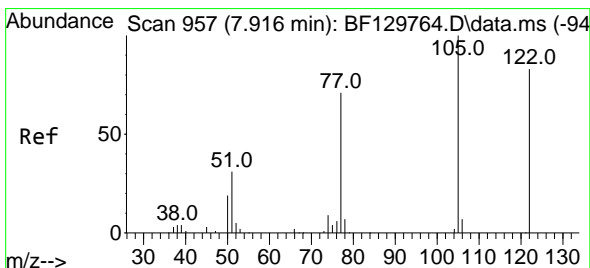
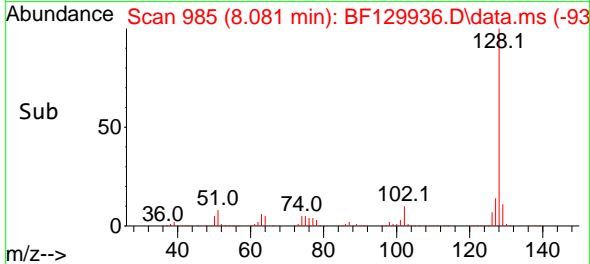
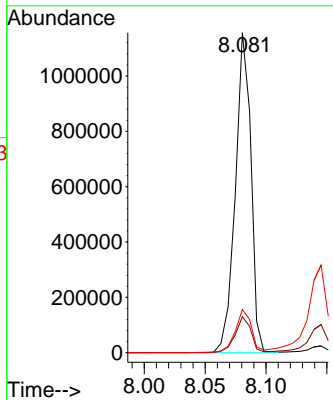
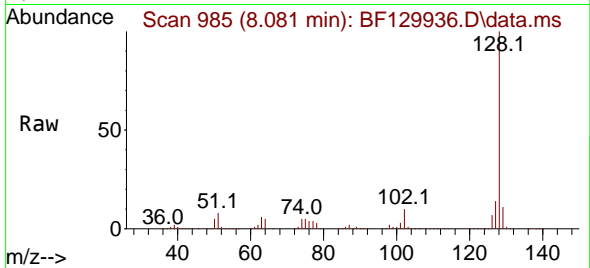
Instrument :

BNA_F

ClientSampleId :

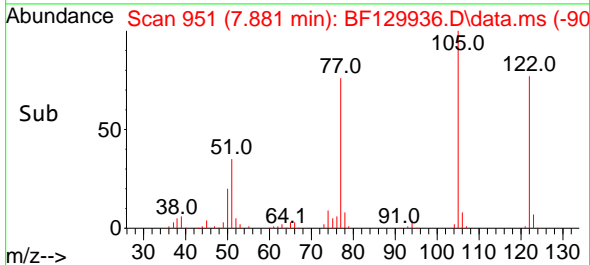
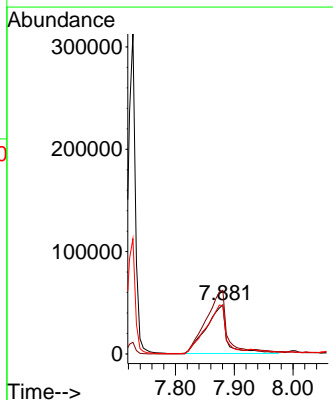
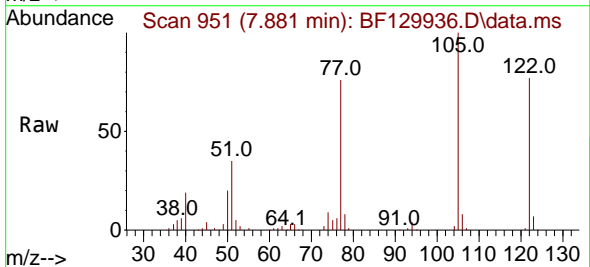
SSTDCCC040

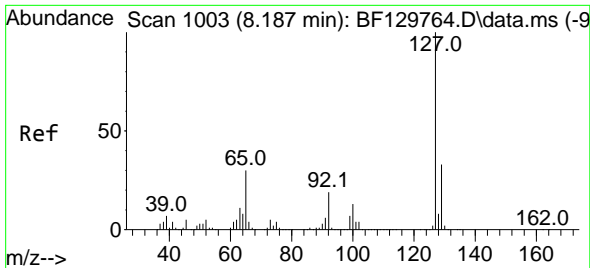
Tgt Ion:128 Resp: 1030791
 Ion Ratio Lower Upper
 128 100
 129 11.3 8.9 13.3
 127 13.5 10.7 16.1



#32
 Benzoic acid
 Concen: 41.972 ng
 RT: 7.881 min Scan# 951
 Delta R.T. 0.000 min
 Lab File: BF129936.D
 Acq: 22 Aug 2022 12:20

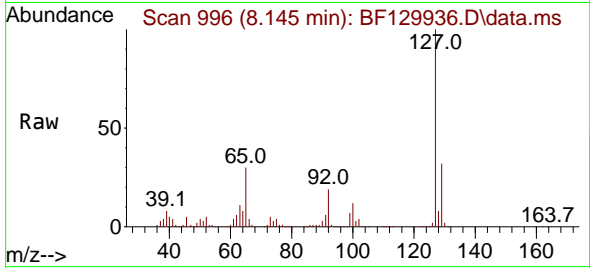
Tgt Ion:122 Resp: 117805
 Ion Ratio Lower Upper
 122 100
 105 129.3 99.9 139.9
 77 98.7 65.9 105.9



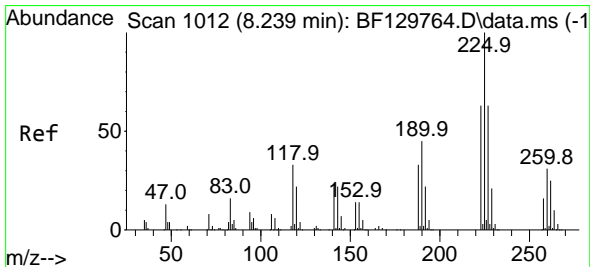
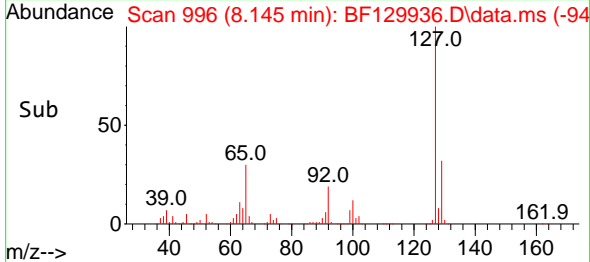
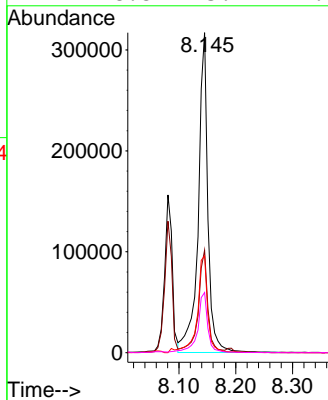


#33
 4-Chloroaniline
 Concen: 37.204 ng
 RT: 8.145 min Scan# 91
 Delta R.T. 0.000 min
 Lab File: BF129936.D
 Acq: 22 Aug 2022 12:20

Instrument :
 BNA_F
 ClientSampleId :
 SSTDCCC040

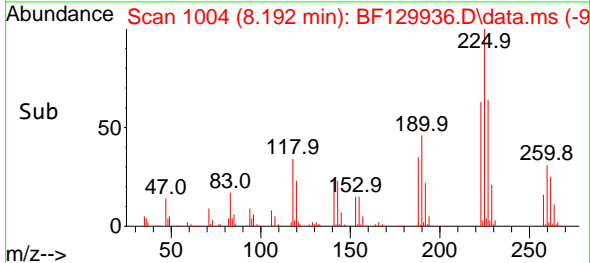
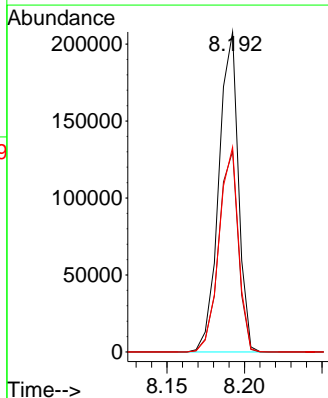
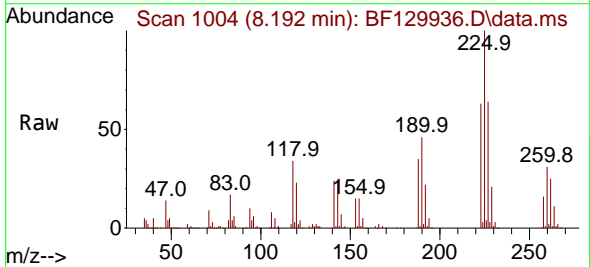


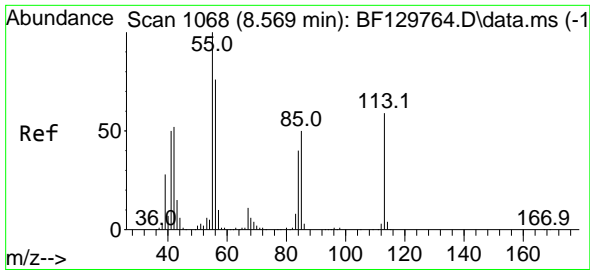
Tgt Ion:127 Resp: 376100
 Ion Ratio Lower Upper
 127 100
 129 32.1 26.7 40.1
 65 30.3 24.2 36.2
 92 18.8 15.2 22.8



#34
 Hexachlorobutadiene
 Concen: 39.620 ng
 RT: 8.192 min Scan# 1004
 Delta R.T. 0.000 min
 Lab File: BF129936.D
 Acq: 22 Aug 2022 12:20

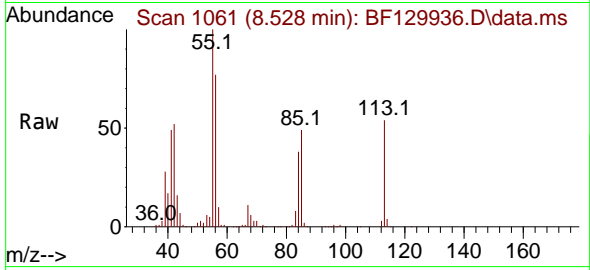
Tgt Ion:225 Resp: 181811
 Ion Ratio Lower Upper
 225 100
 223 62.7 50.2 75.2
 227 64.0 50.6 75.8



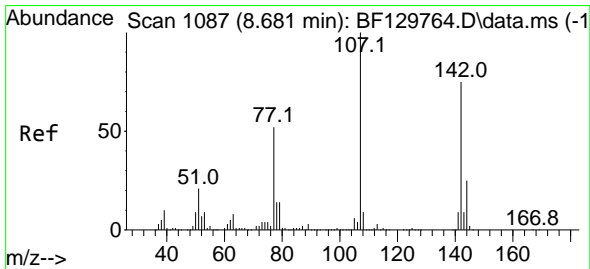
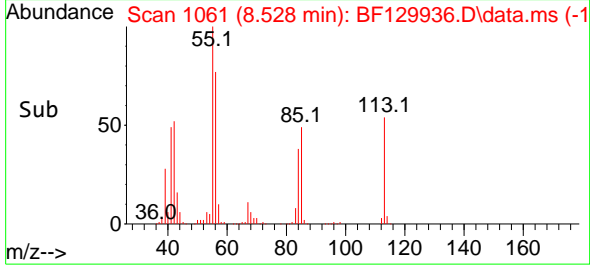
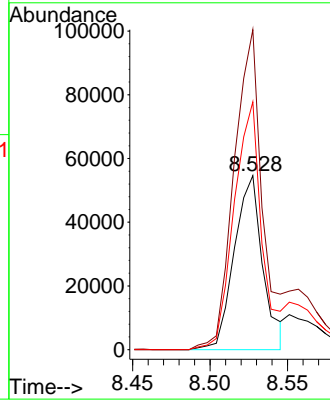


#35
 Caprolactam
 Concen: 31.444 ng
 RT: 8.528 min Scan# 1061
 Delta R.T. 0.000 min
 Lab File: BF129936.D
 Acq: 22 Aug 2022 12:20

Instrument :
 BNA_F
 ClientSampleId :
 SSTDCCC040

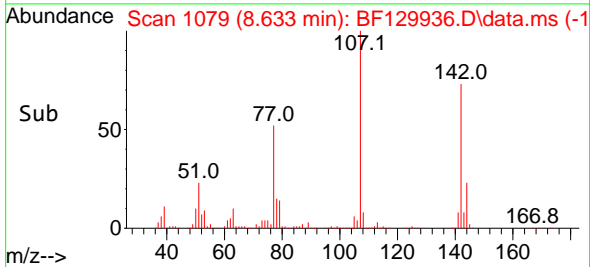
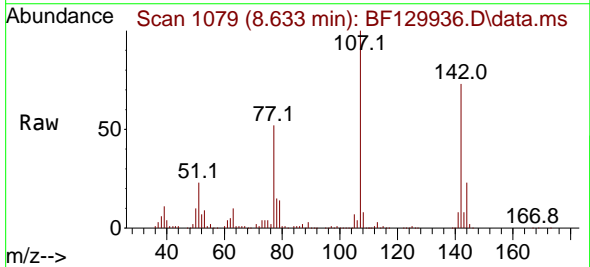
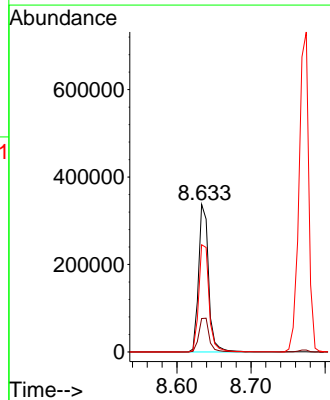


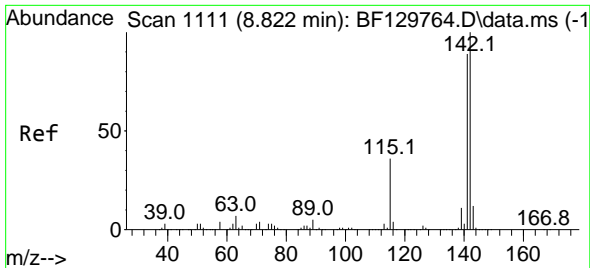
Tgt Ion:113 Resp: 69851
 Ion Ratio Lower Upper
 113 100
 55 183.8 148.8 188.8
 56 142.3 109.1 149.1



#36
 4-Chloro-3-methylphenol
 Concen: 41.018 ng
 RT: 8.633 min Scan# 1079
 Delta R.T. 0.000 min
 Lab File: BF129936.D
 Acq: 22 Aug 2022 12:20

Tgt Ion:107 Resp: 316112
 Ion Ratio Lower Upper
 107 100
 144 22.7 19.9 29.9
 142 72.7 60.2 90.4

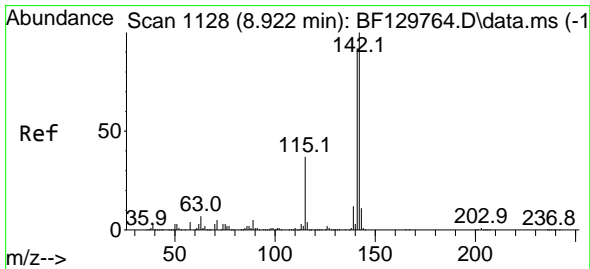
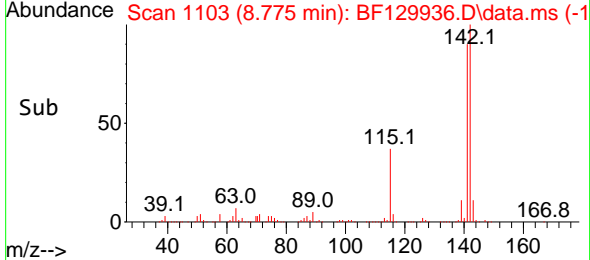
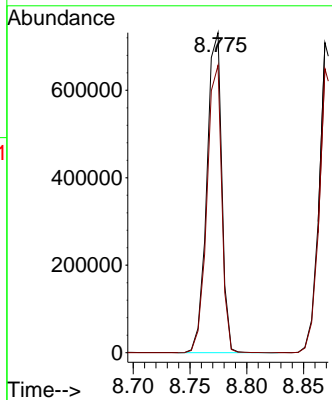
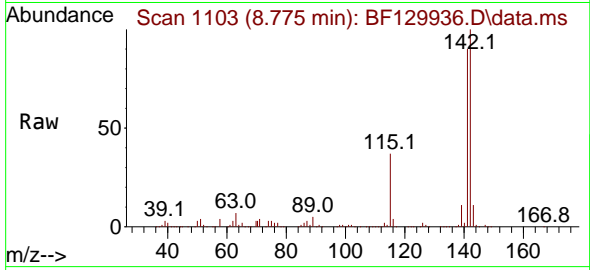




#37
 2-Methylnaphthalene
 Concen: 39.467 ng
 RT: 8.775 min Scan# 1119
 Delta R.T. 0.000 min
 Lab File: BF129936.D
 Acq: 22 Aug 2022 12:20

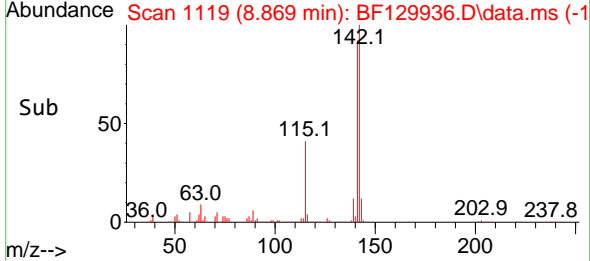
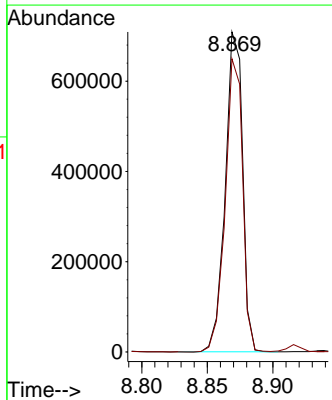
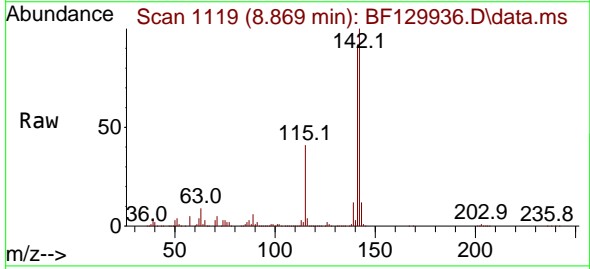
Instrument : BNA_F
 ClientSampleId : SSTDCCC040

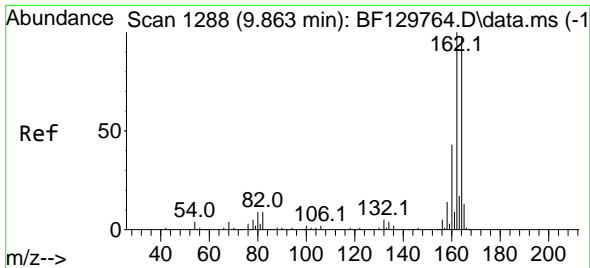
Tgt Ion:142 Resp: 665897
 Ion Ratio Lower Upper
 142 100
 141 89.8 70.9 106.3



#38
 1-Methylnaphthalene
 Concen: 39.721 ng
 RT: 8.869 min Scan# 1119
 Delta R.T. 0.000 min
 Lab File: BF129936.D
 Acq: 22 Aug 2022 12:20

Tgt Ion:142 Resp: 651326
 Ion Ratio Lower Upper
 142 100
 141 91.6 73.5 110.3



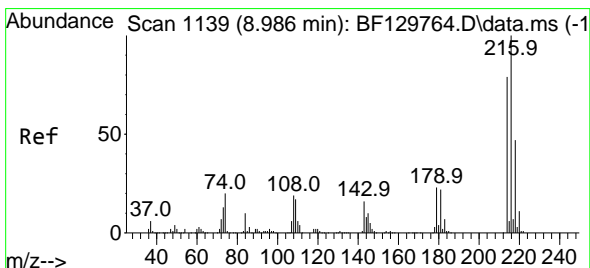
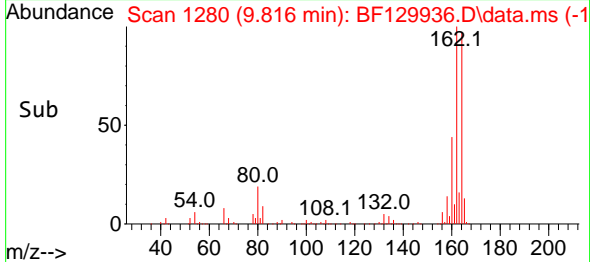
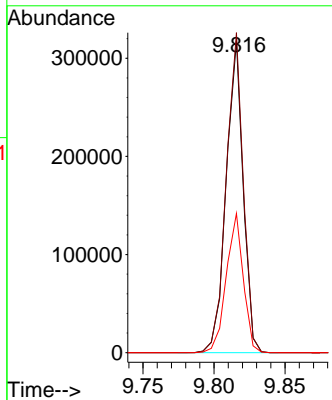
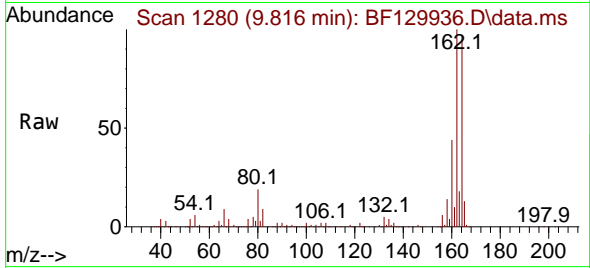


#39
 Acenaphthene-d10
 Concen: 20.000 ng
 RT: 9.816 min Scan# 111
 Delta R.T. 0.000 min
 Lab File: BF129936.D
 Acq: 22 Aug 2022 12:20

Instrument :
 BNA_F
 ClientSampleId :
 SSTDCCC040

Tgt Ion:164 Resp: 263230

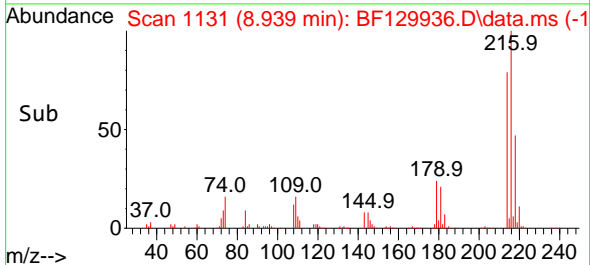
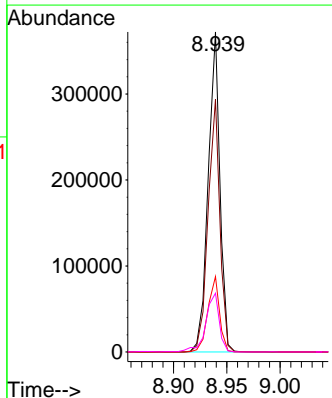
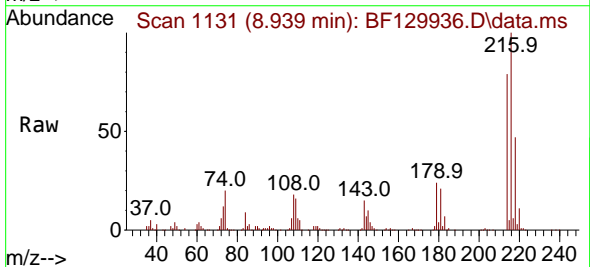
Ion	Ratio	Lower	Upper
164	100		
162	102.7	82.0	123.0
160	44.7	35.4	53.0

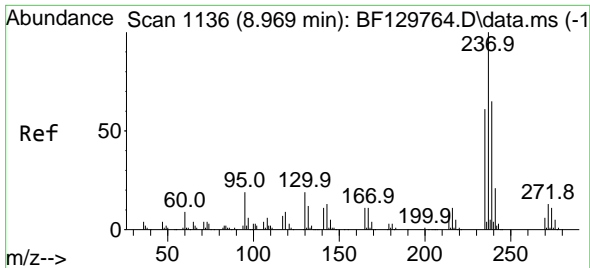


#40
 1,2,4,5-Tetrachlorobenzene
 Concen: 39.201 ng
 RT: 8.939 min Scan# 1131
 Delta R.T. 0.000 min
 Lab File: BF129936.D
 Acq: 22 Aug 2022 12:20

Tgt Ion:216 Resp: 287003

Ion	Ratio	Lower	Upper
216	100		
214	79.1	63.1	94.7
179	23.3	18.1	27.1
108	21.0	15.9	23.9



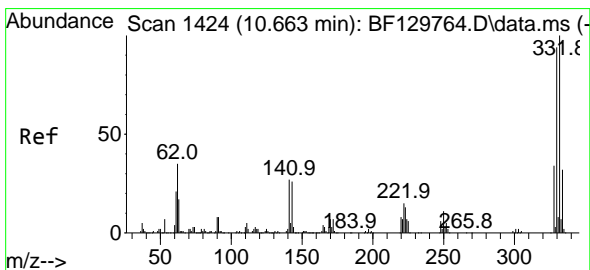
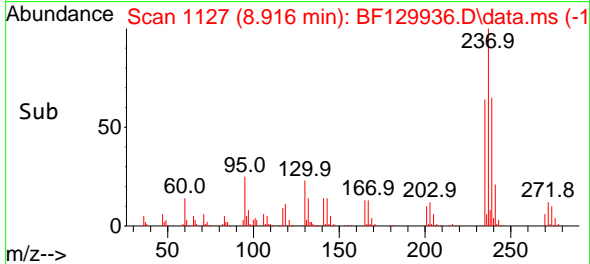
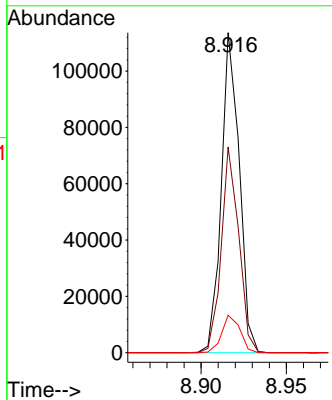
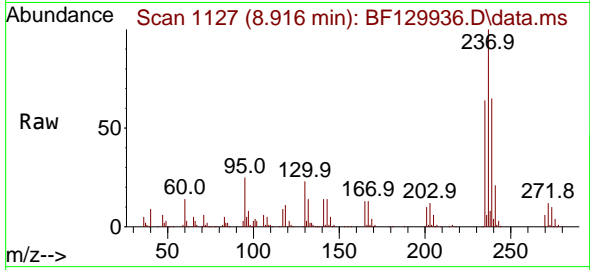


#41
 Hexachlorocyclopentadiene
 Concen: 47.718 ng
 RT: 8.916 min Scan# 1115
 Delta R.T. 0.000 min
 Lab File: BF129936.D
 Acq: 22 Aug 2022 12:20

Instrument :
 BNA_F
 ClientSampleId :
 SSTDCCC040

Tgt Ion:237 Resp: 83173

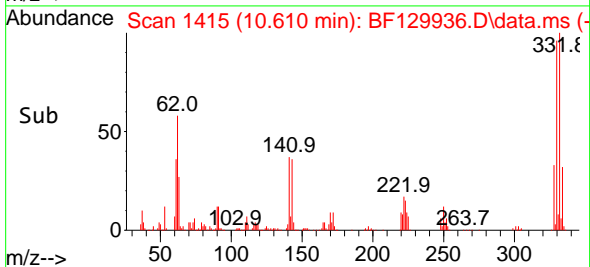
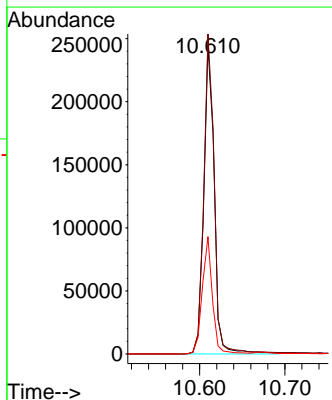
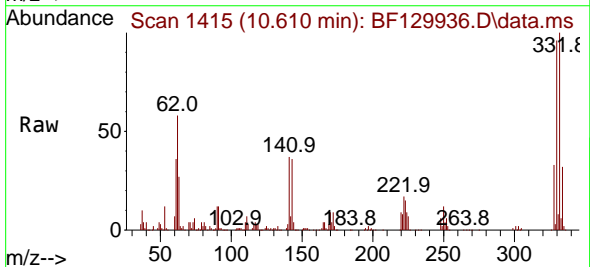
Ion	Ratio	Lower	Upper
237	100		
235	64.3	41.5	81.5
272	11.7	0.0	33.3

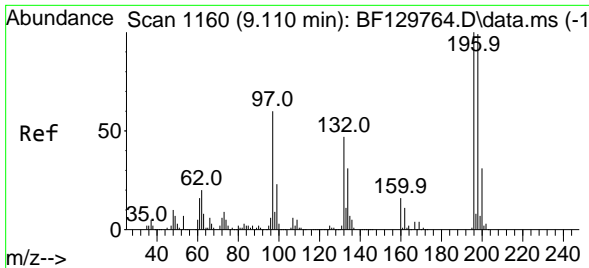


#42
 2,4,6-Tribromophenol
 Concen: 79.176 ng
 RT: 10.610 min Scan# 1415
 Delta R.T. 0.000 min
 Lab File: BF129936.D
 Acq: 22 Aug 2022 12:20

Tgt Ion:330 Resp: 209175

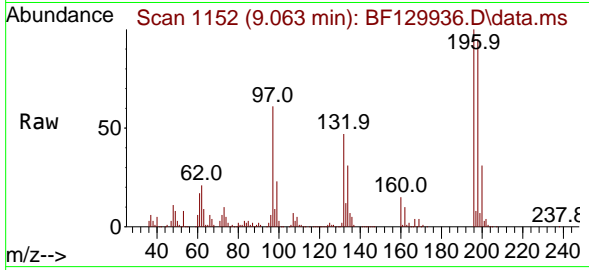
Ion	Ratio	Lower	Upper
330	100		
332	105.0	82.6	124.0
141	36.8	27.6	41.4



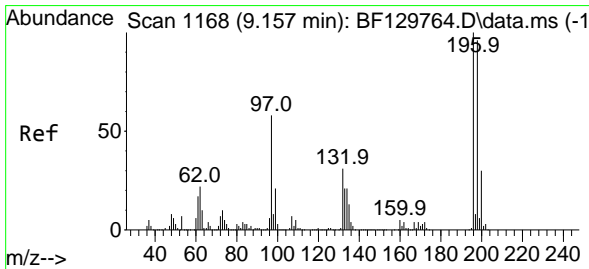
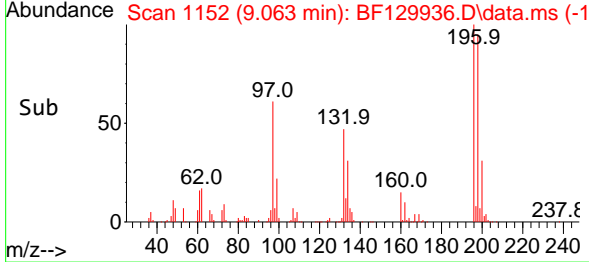
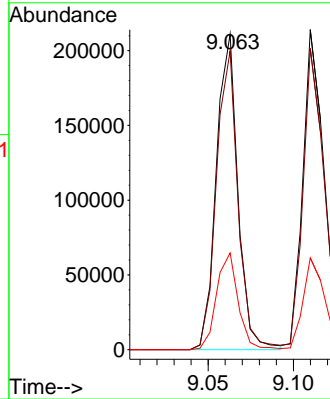


#43
 2,4,6-Trichlorophenol
 Concen: 39.043 ng
 RT: 9.063 min Scan# 1160
 Delta R.T. 0.000 min
 Lab File: BF129936.D
 Acq: 22 Aug 2022 12:20

Instrument :
 BNA_F
 ClientSampleId :
 SSTDCCC040

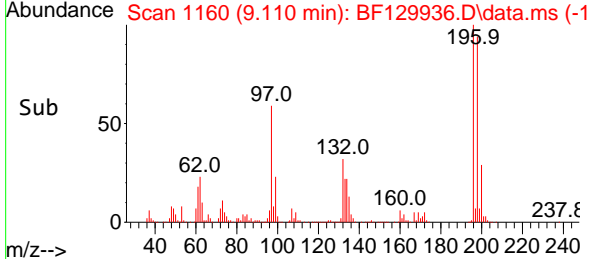
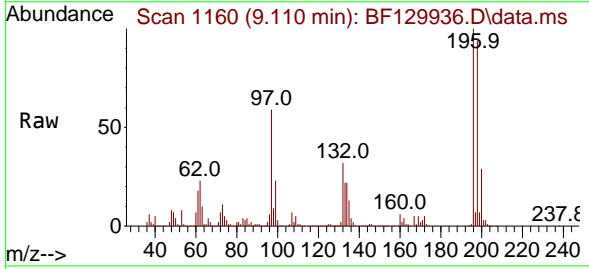
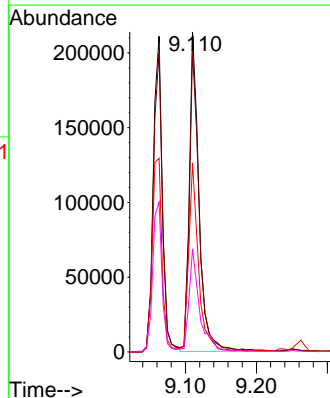


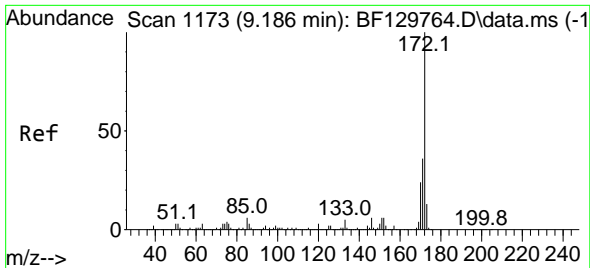
Tgt Ion:196 Resp: 185720
 Ion Ratio Lower Upper
 196 100
 198 94.7 79.0 118.4
 200 30.6 25.1 37.7



#44
 2,4,5-Trichlorophenol
 Concen: 39.797 ng
 RT: 9.110 min Scan# 1160
 Delta R.T. 0.000 min
 Lab File: BF129936.D
 Acq: 22 Aug 2022 12:20

Tgt Ion:196 Resp: 203668
 Ion Ratio Lower Upper
 196 100
 198 94.1 76.4 114.6
 97 59.1 46.5 69.7
 132 32.2 25.2 37.8





#45
 2-Fluorobiphenyl
 Concen: 80.379 ng
 RT: 9.133 min Scan# 1114
 Delta R.T. 0.000 min
 Lab File: BF129936.D
 Acq: 22 Aug 2022 12:20

Instrument :

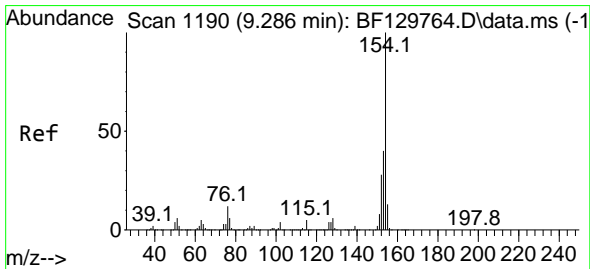
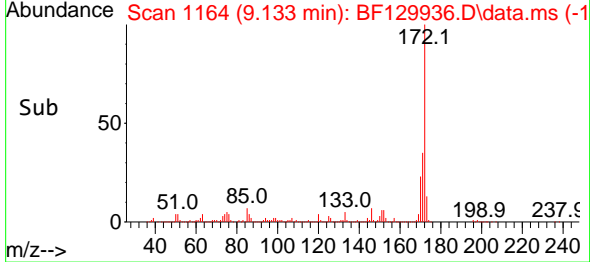
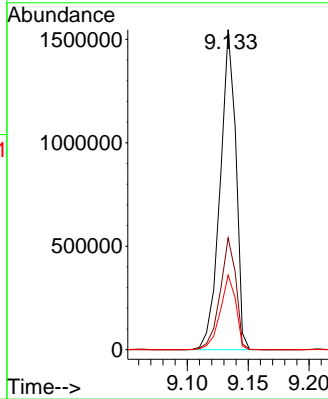
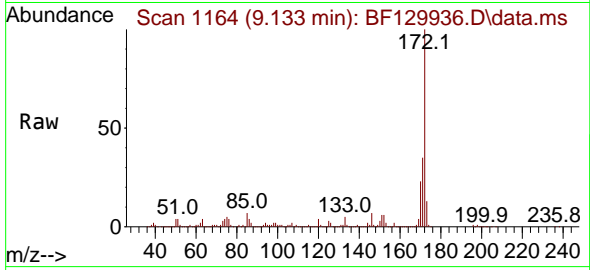
BNA_F

ClientSampleId :

SSTDCCC040

Tgt Ion:172 Resp: 1393073

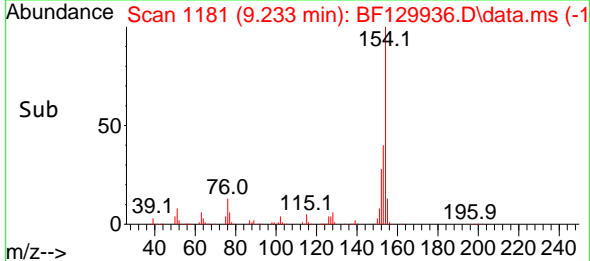
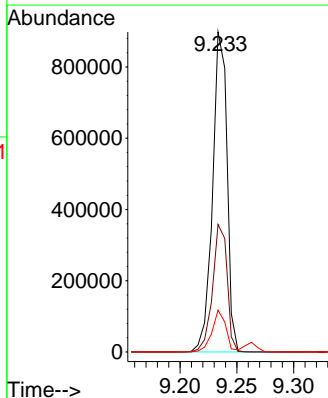
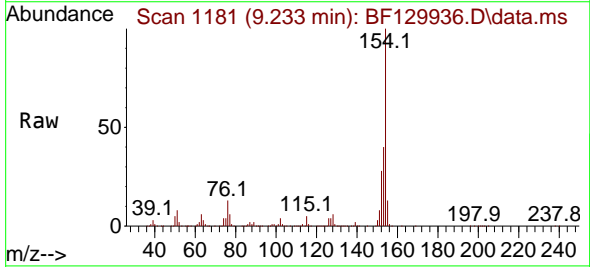
Ion	Ratio	Lower	Upper
172	100		
171	35.0	28.4	42.6
170	23.3	19.1	28.7

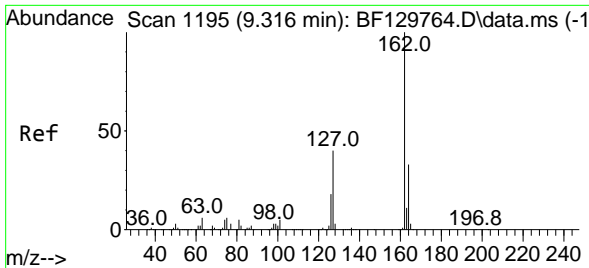


#46
 1,1'-Biphenyl
 Concen: 39.794 ng
 RT: 9.233 min Scan# 1181
 Delta R.T. 0.000 min
 Lab File: BF129936.D
 Acq: 22 Aug 2022 12:20

Tgt Ion:154 Resp: 795784

Ion	Ratio	Lower	Upper
154	100		
153	39.9	20.2	60.2
76	13.0	0.0	32.1



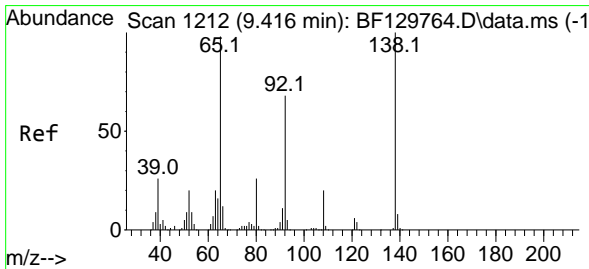
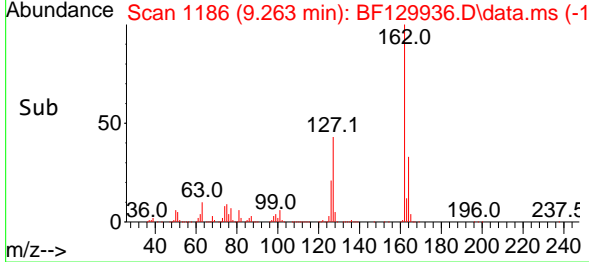
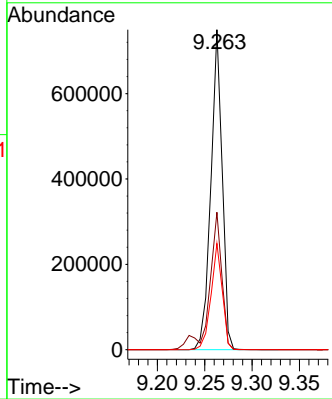
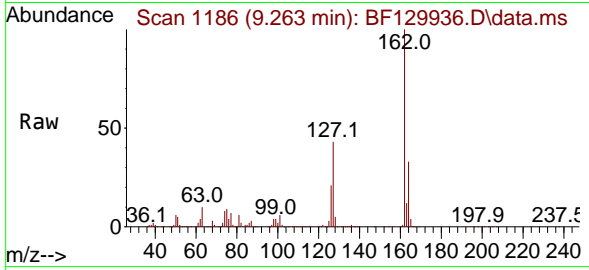


#47
 2-Chloronaphthalene
 Concen: 39.286 ng
 RT: 9.263 min Scan# 1186
 Delta R.T. 0.000 min
 Lab File: BF129936.D
 Acq: 22 Aug 2022 12:20

Instrument : BNA_F
 Client Sample Id : SSTDCCC040

Tgt Ion: 162 Resp: 621606

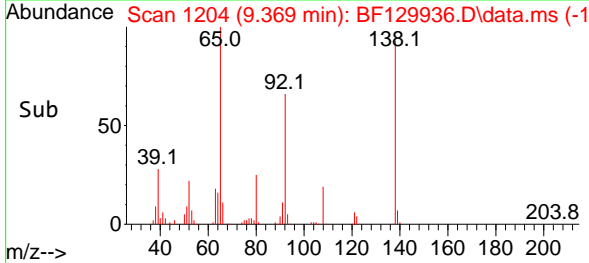
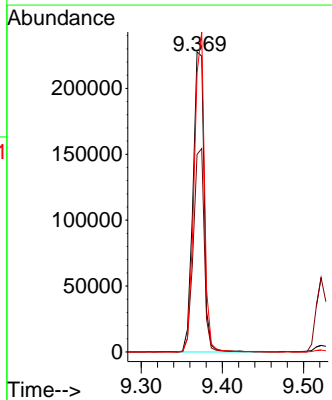
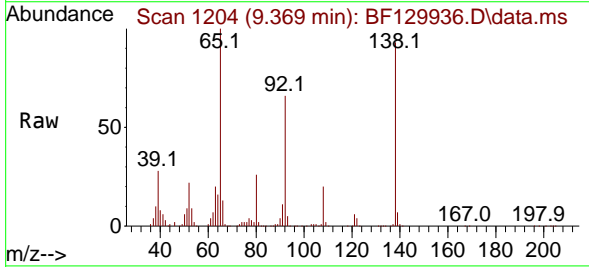
Ion	Ratio	Lower	Upper
162	100		
127	43.0	33.1	49.7
164	33.2	26.7	40.1

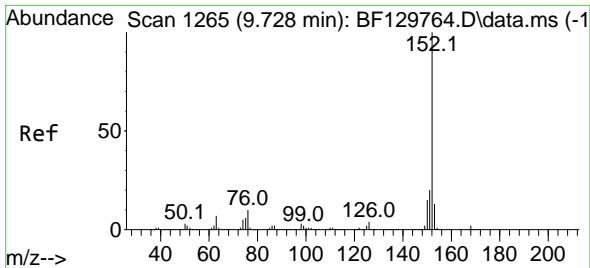


#48
 2-Nitroaniline
 Concen: 43.519 ng
 RT: 9.369 min Scan# 1204
 Delta R.T. 0.000 min
 Lab File: BF129936.D
 Acq: 22 Aug 2022 12:20

Tgt Ion: 65 Resp: 217606

Ion	Ratio	Lower	Upper
65	100		
92	65.9	55.0	82.4
138	93.1	81.3	121.9





#49
 Acenaphthylene
 Concen: 39.773 ng
 RT: 9.680 min Scan# 11
 Delta R.T. 0.000 min
 Lab File: BF129936.D
 Acq: 22 Aug 2022 12:20

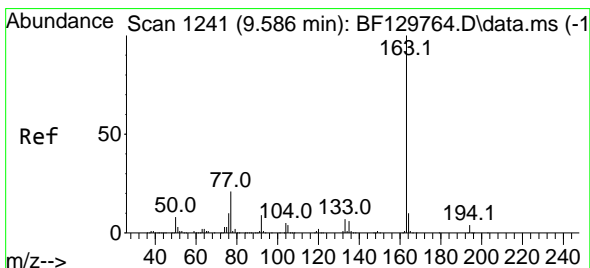
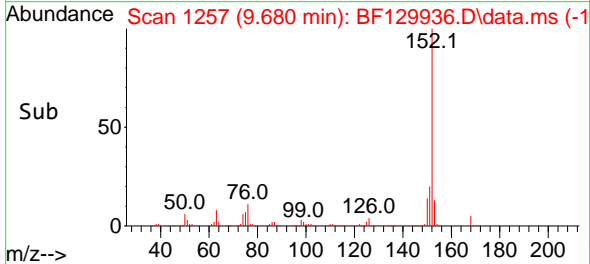
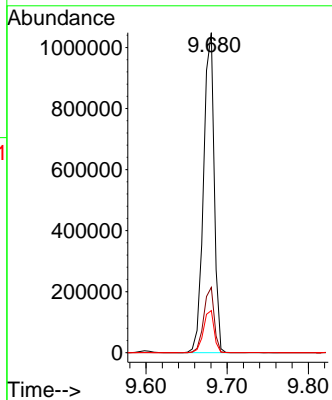
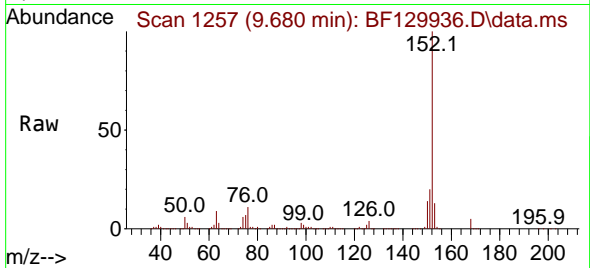
Instrument :

BNA_F

ClientSampleId :

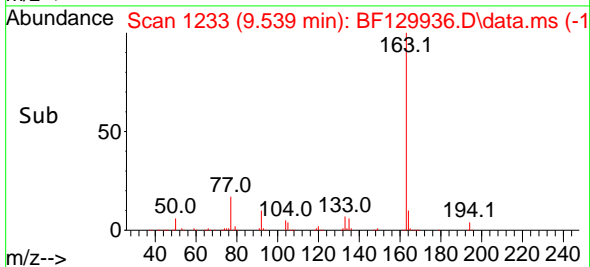
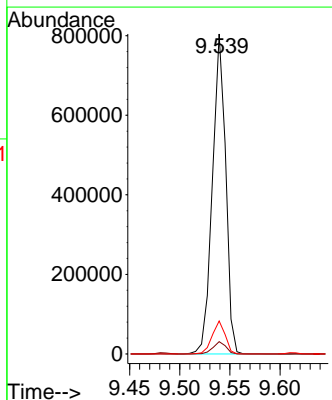
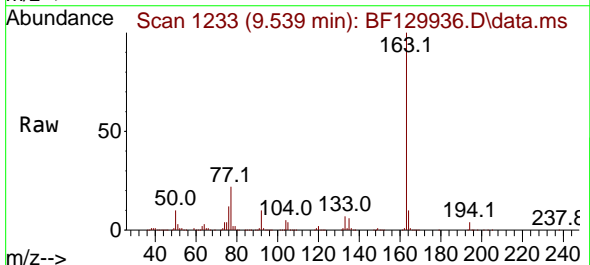
SSTDCCC040

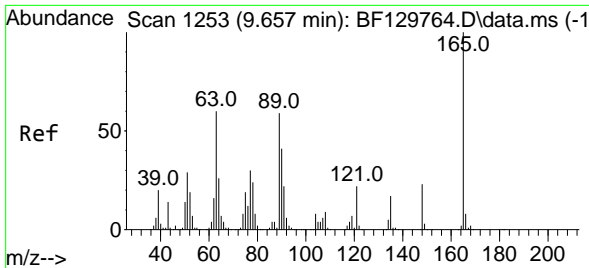
Tgt Ion:152 Resp: 954294
 Ion Ratio Lower Upper
 152 100
 151 20.4 16.1 24.1
 153 13.1 10.6 16.0



#50
 Dimethylphthalate
 Concen: 39.130 ng
 RT: 9.539 min Scan# 1233
 Delta R.T. 0.000 min
 Lab File: BF129936.D
 Acq: 22 Aug 2022 12:20

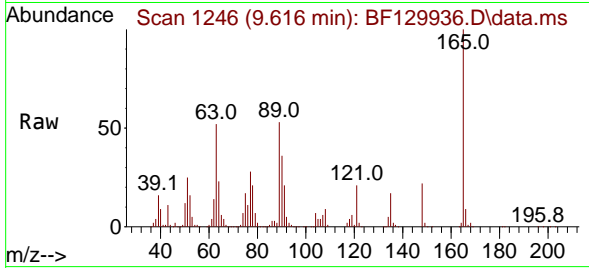
Tgt Ion:163 Resp: 738389
 Ion Ratio Lower Upper
 163 100
 194 3.9 3.3 4.9
 164 10.3 8.2 12.2



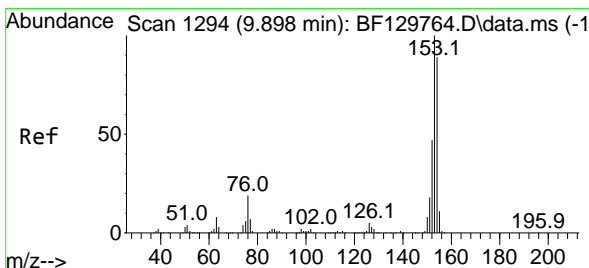
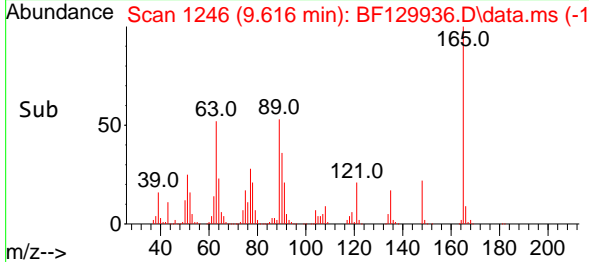
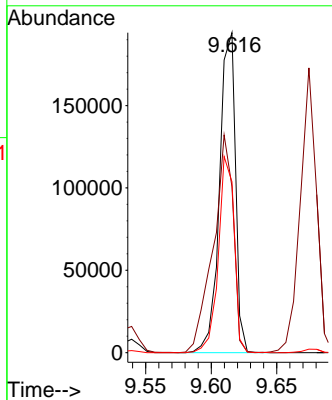


#51
 2,6-Dinitrotoluene
 Concen: 40.040 ng
 RT: 9.616 min Scan# 11
 Delta R.T. 0.000 min
 Lab File: BF129936.D
 Acq: 22 Aug 2022 12:20

Instrument :
 BNA_F
 ClientSampleId :
 SSTDCCC040

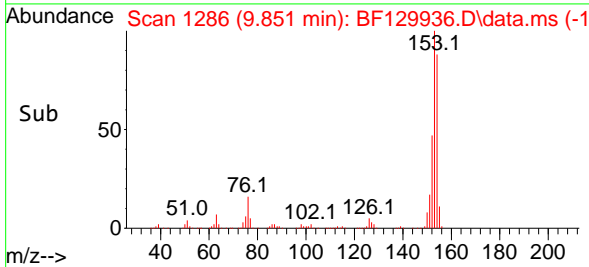
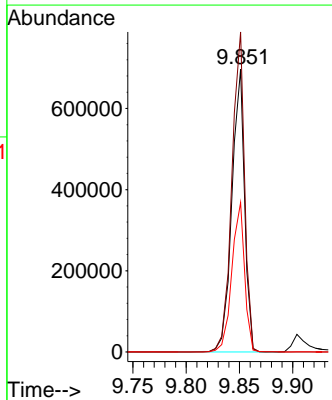
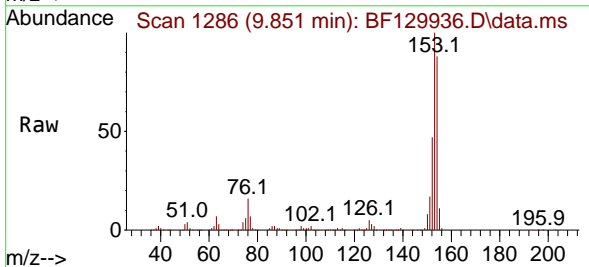


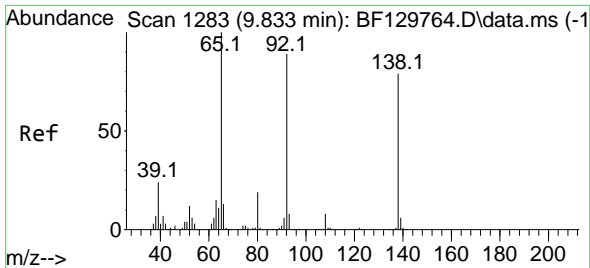
Tgt Ion:165 Resp: 163899
 Ion Ratio Lower Upper
 165 100
 63 51.9 47.8 71.8
 89 53.4 47.2 70.8



#52
 Acenaphthene
 Concen: 39.804 ng
 RT: 9.851 min Scan# 1286
 Delta R.T. 0.000 min
 Lab File: BF129936.D
 Acq: 22 Aug 2022 12:20

Tgt Ion:154 Resp: 579429
 Ion Ratio Lower Upper
 154 100
 153 113.2 89.8 134.6
 152 52.9 42.1 63.1

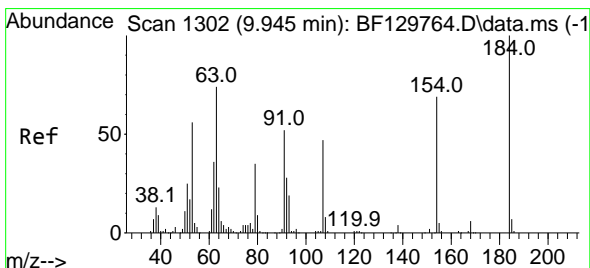
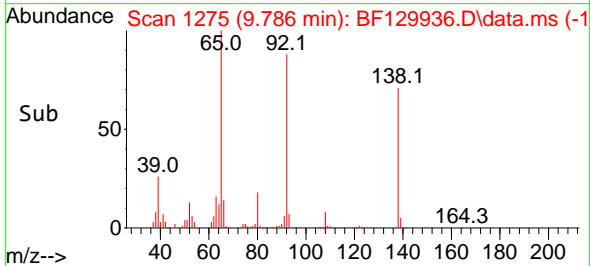
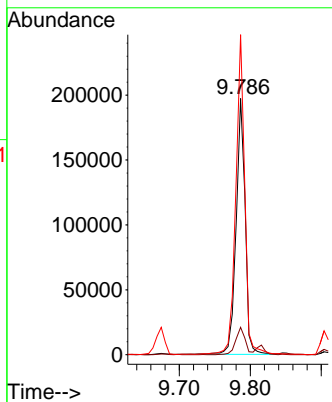
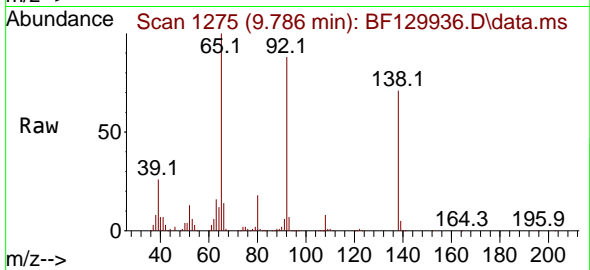




#53
 3-Nitroaniline
 Concen: 38.748 ng
 RT: 9.786 min Scan# 11
 Delta R.T. 0.000 min
 Lab File: BF129936.D
 Acq: 22 Aug 2022 12:20

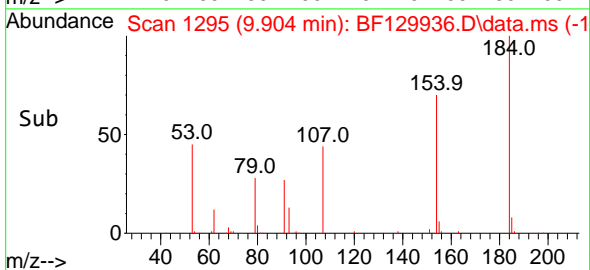
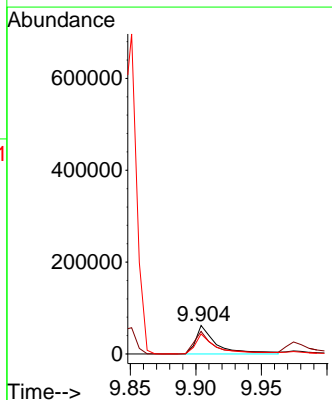
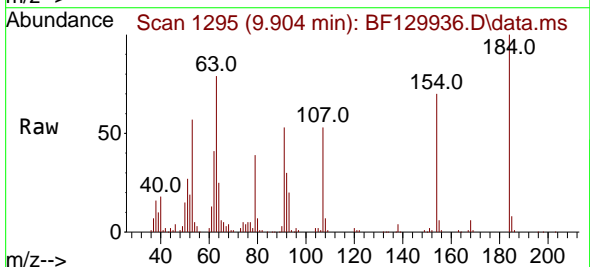
Instrument :
 BNA_F
 ClientSampleId :
 SSTDCCC040

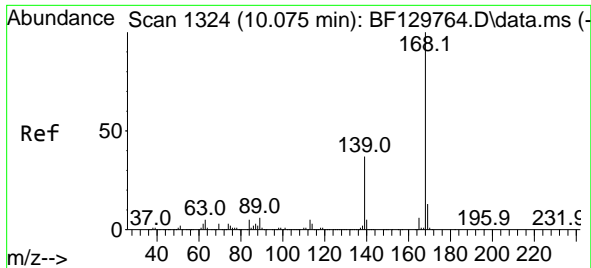
Tgt Ion:138 Resp: 175406
 Ion Ratio Lower Upper
 138 100
 108 10.7 8.4 12.6
 92 124.9 89.8 134.8



#54
 2,4-Dinitrophenol
 Concen: 39.513 ng
 RT: 9.904 min Scan# 1295
 Delta R.T. 0.000 min
 Lab File: BF129936.D
 Acq: 22 Aug 2022 12:20

Tgt Ion:184 Resp: 67624
 Ion Ratio Lower Upper
 184 100
 63 79.5 59.6 89.4
 154 70.3 55.3 82.9

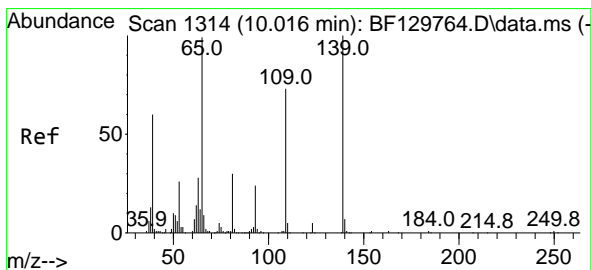
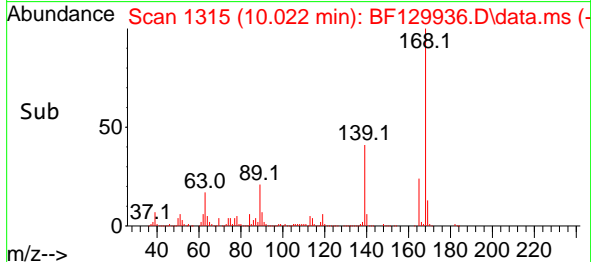
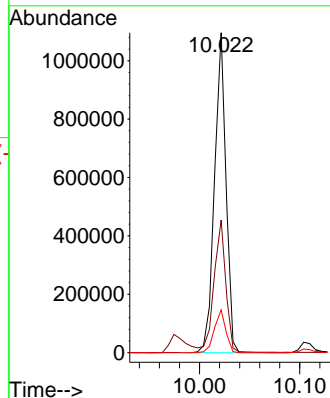
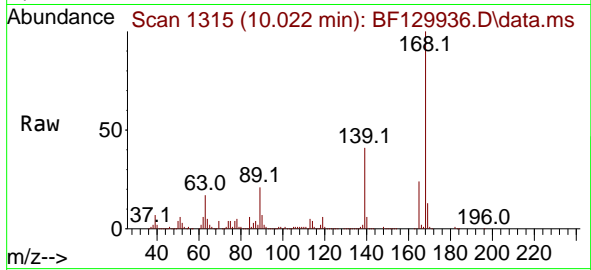




#55
 Dibenzofuran
 Concen: 39.766 ng
 RT: 10.022 min Scan# 11
 Delta R.T. 0.000 min
 Lab File: BF129936.D
 Acq: 22 Aug 2022 12:20

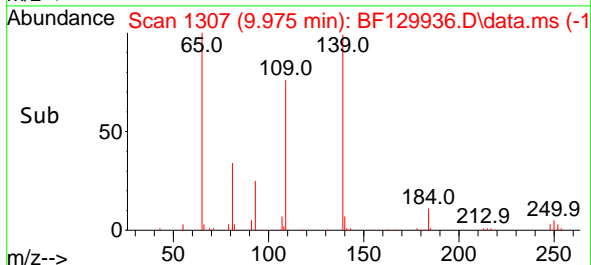
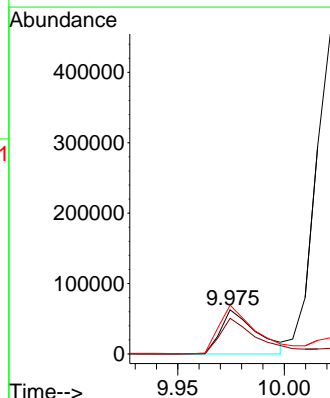
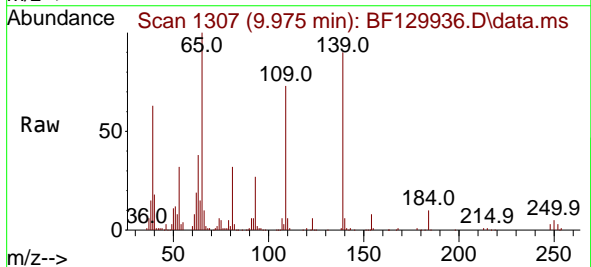
Instrument : BNA_F
 ClientSampleId : SSTDCCC040

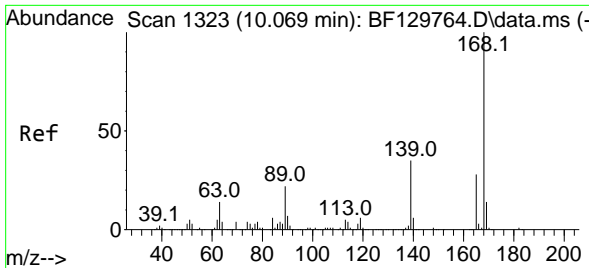
Tgt Ion:168 Resp: 869658
 Ion Ratio Lower Upper
 168 100
 139 41.5 31.3 46.9
 169 13.4 10.7 16.1



#56
 4-Nitrophenol
 Concen: 36.228 ng
 RT: 9.975 min Scan# 1307
 Delta R.T. 0.000 min
 Lab File: BF129936.D
 Acq: 22 Aug 2022 12:20

Tgt Ion:139 Resp: 72959
 Ion Ratio Lower Upper
 139 100
 109 81.1 52.9 92.9
 65 110.6 79.5 119.5



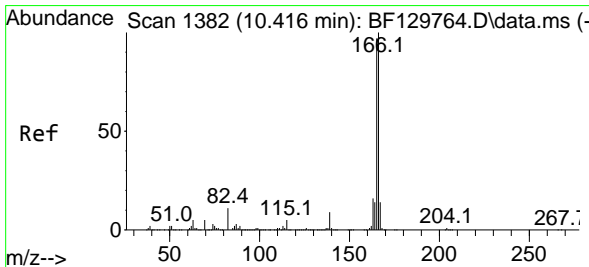
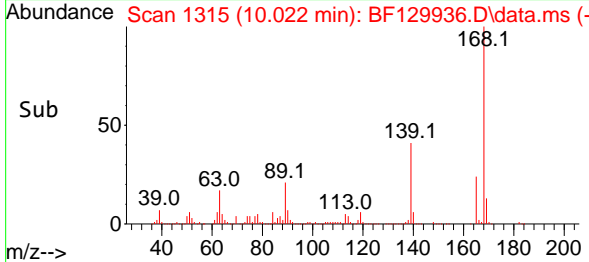
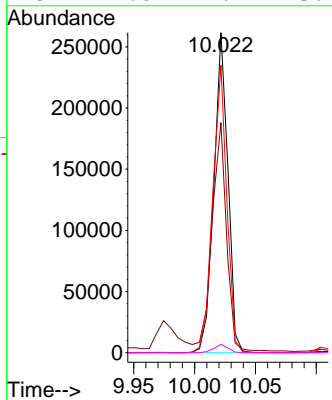
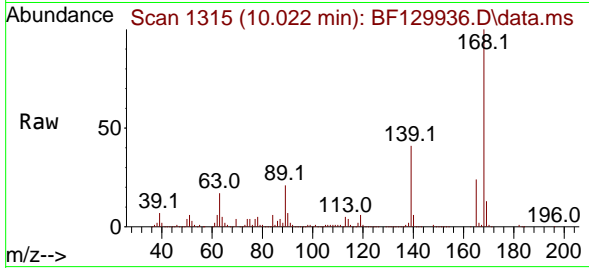


#57
 2,4-Dinitrotoluene
 Concen: 39.625 ng
 RT: 10.022 min Scan# 11
 Delta R.T. 0.000 min
 Lab File: BF129936.D
 Acq: 22 Aug 2022 12:20

Instrument :
 BNA_F
 ClientSampleId :
 SSTDCCC040

Tgt Ion:165 Resp: 210555

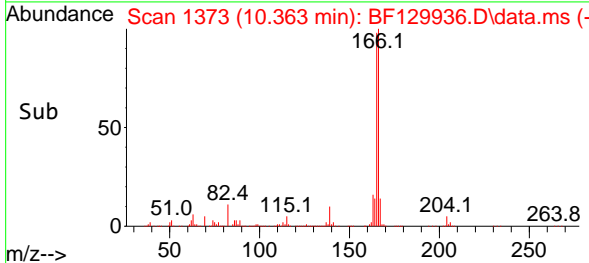
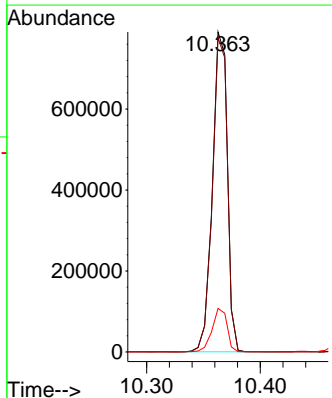
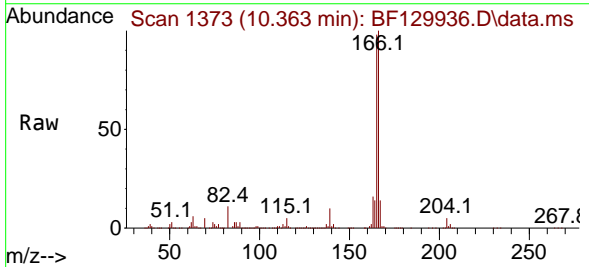
Ion	Ratio	Lower	Upper
165	100		
63	71.9	48.4	72.6
89	89.8	62.3	93.5
182	2.6	2.1	3.1

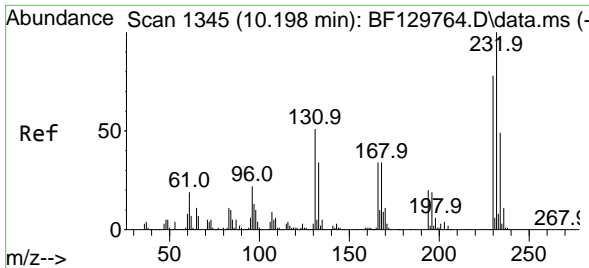


#58
 Fluorene
 Concen: 39.492 ng
 RT: 10.363 min Scan# 1373
 Delta R.T. 0.000 min
 Lab File: BF129936.D
 Acq: 22 Aug 2022 12:20

Tgt Ion:166 Resp: 721134

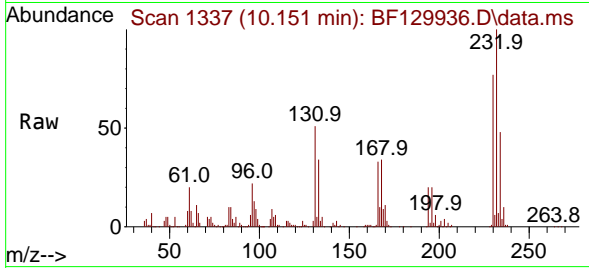
Ion	Ratio	Lower	Upper
166	100		
165	98.2	77.9	116.9
167	13.6	11.0	16.4



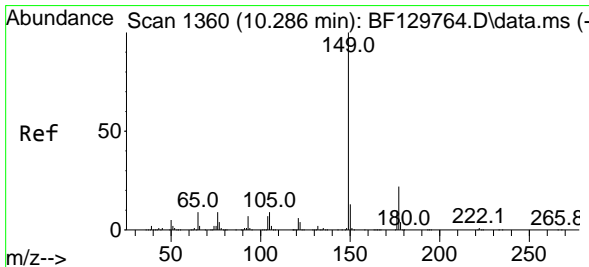
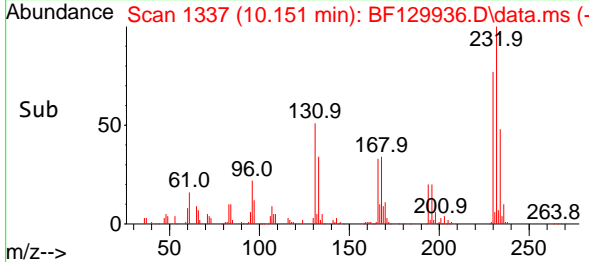
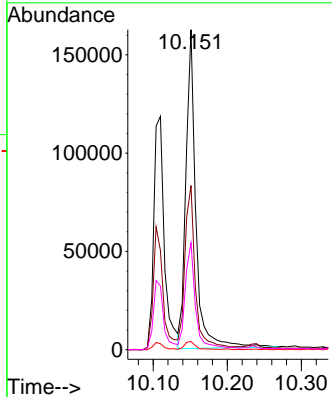


#59
 2,3,4,6-Tetrachlorophenol
 Concen: 40.336 ng
 RT: 10.151 min Scan# 111
 Delta R.T. 0.000 min
 Lab File: BF129936.D
 Acq: 22 Aug 2022 12:20

Instrument :
 BNA_F
 ClientSampleId :
 SSTDCCC040

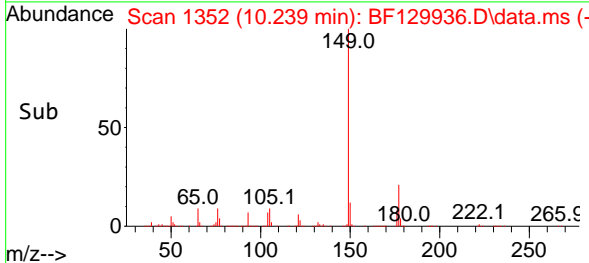
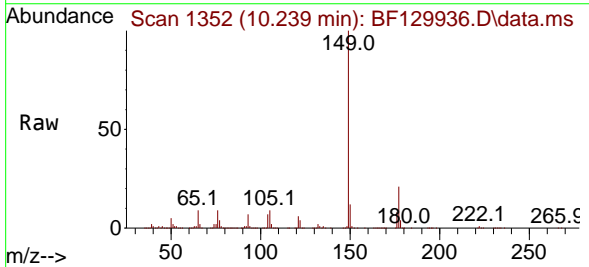
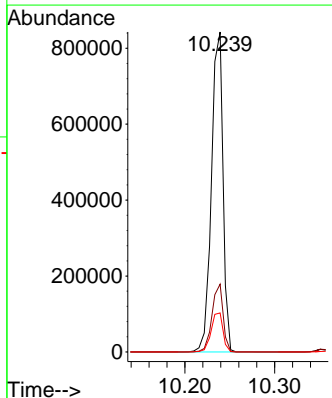


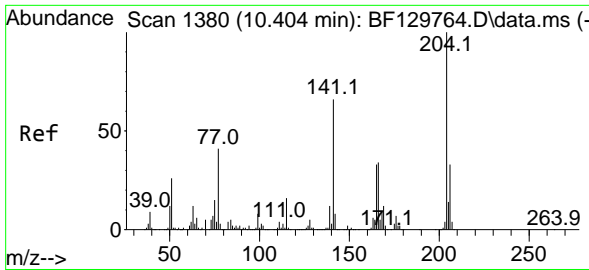
Tgt Ion:232 Resp: 151490
 Ion Ratio Lower Upper
 232 100
 131 53.5 29.9 44.9#
 130 2.8 1.5 2.3#
 166 33.4 17.8 26.8#



#60
 Diethylphthalate
 Concen: 39.997 ng
 RT: 10.239 min Scan# 1352
 Delta R.T. 0.000 min
 Lab File: BF129936.D
 Acq: 22 Aug 2022 12:20

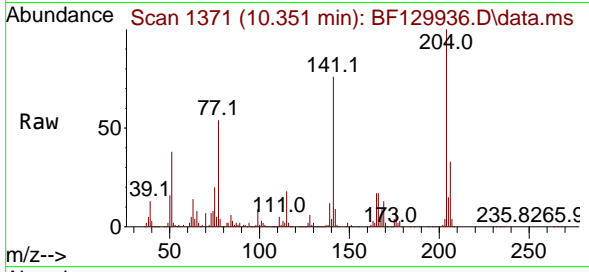
Tgt Ion:149 Resp: 752554
 Ion Ratio Lower Upper
 149 100
 177 21.2 17.7 26.5
 150 12.2 10.1 15.1



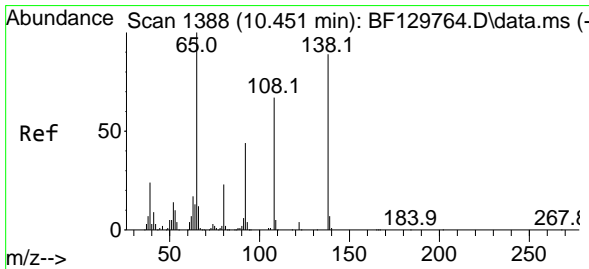
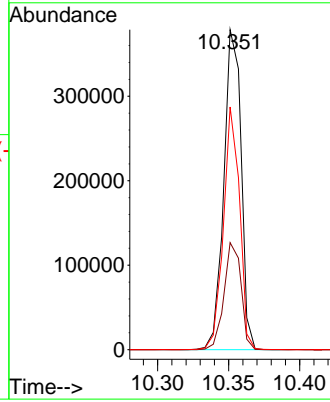
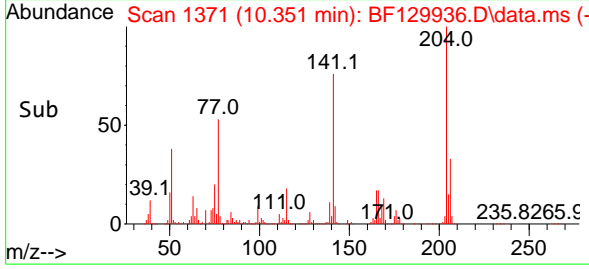


#61
 4-Chlorophenyl-phenylether
 Concen: 39.075 ng
 RT: 10.351 min Scan# 1371
 Delta R.T. 0.000 min
 Lab File: BF129936.D
 Acq: 22 Aug 2022 12:20

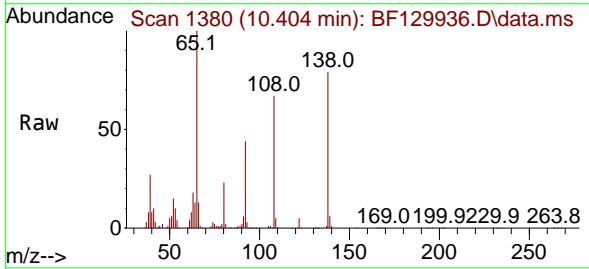
Instrument :
 BNA_F
 ClientSampleId :
 SSTDCCC040



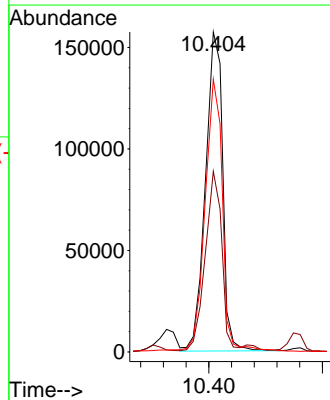
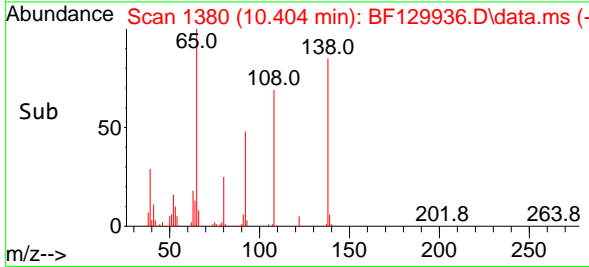
Tgt Ion:204 Resp: 320203
 Ion Ratio Lower Upper
 204 100
 206 33.4 26.5 39.7
 141 75.8 52.6 79.0

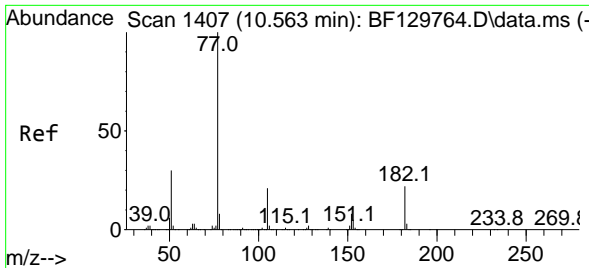


#62
 4-Nitroaniline
 Concen: 36.117 ng
 RT: 10.404 min Scan# 1380
 Delta R.T. 0.000 min
 Lab File: BF129936.D
 Acq: 22 Aug 2022 12:20



Tgt Ion:138 Resp: 164939
 Ion Ratio Lower Upper
 138 100
 92 56.4 30.3 70.3
 108 85.2 55.7 95.7



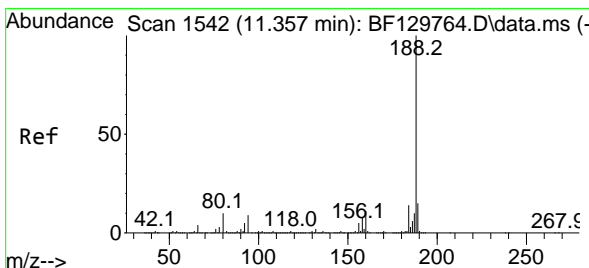
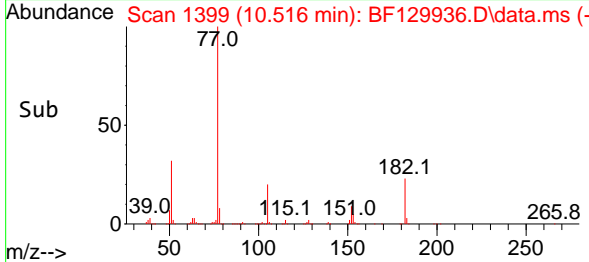
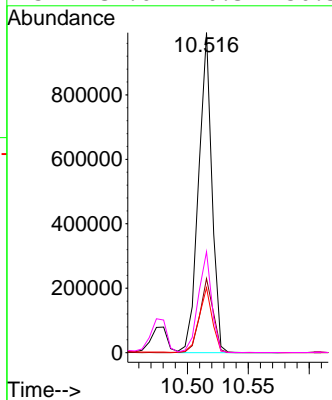
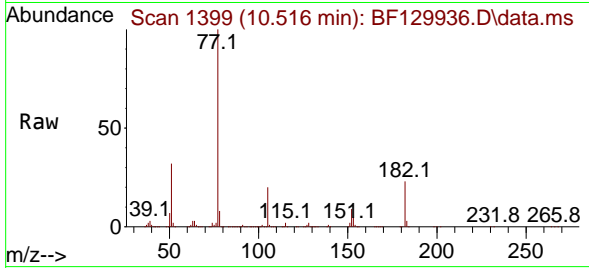


#63
 Azobenzene
 Concen: 41.859 ng
 RT: 10.516 min Scan# 11
 Delta R.T. 0.000 min
 Lab File: BF129936.D
 Acq: 22 Aug 2022 12:20

Instrument :
 BNA_F
 ClientSampleId :
 SSTDCCC040

Tgt Ion: 77 Resp: 752816

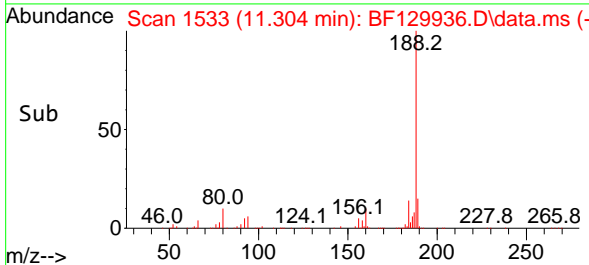
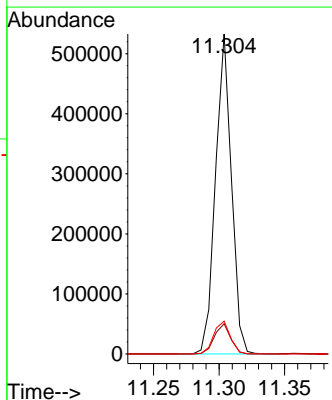
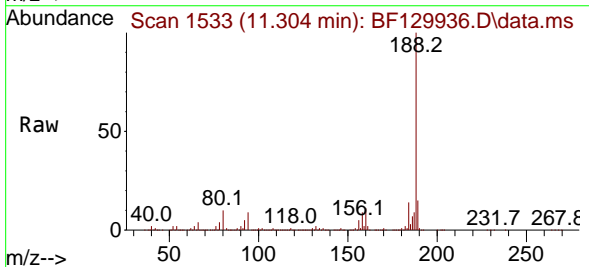
Ion	Ratio	Lower	Upper
77	100		
182	23.2	2.2	42.2
105	20.3	0.8	40.8
51	31.6	10.3	50.3

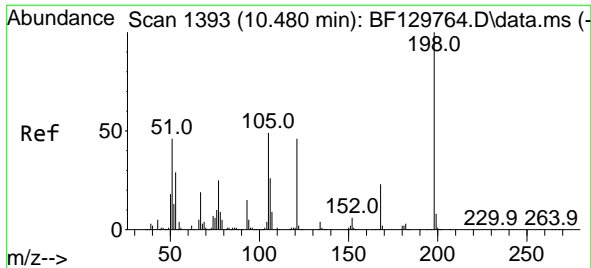


#64
 Phenanthrene-d10
 Concen: 20.000 ng
 RT: 11.304 min Scan# 1533
 Delta R.T. 0.000 min
 Lab File: BF129936.D
 Acq: 22 Aug 2022 12:20

Tgt Ion: 188 Resp: 449327

Ion	Ratio	Lower	Upper
188	100		
94	9.5	7.4	11.2
80	10.3	7.9	11.9



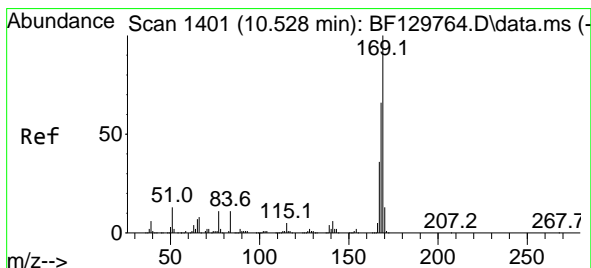
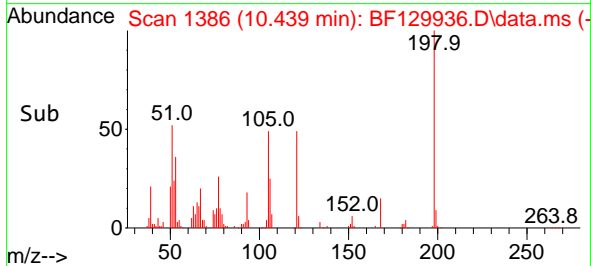
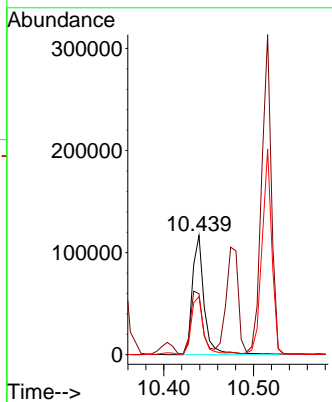
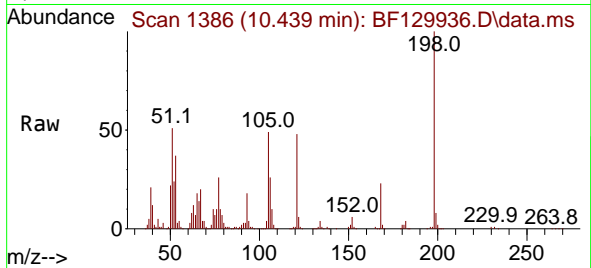


#65
 4,6-Dinitro-2-methylphenol
 Concen: 40.471 ng
 RT: 10.439 min Scan# 1386
 Delta R.T. 0.000 min
 Lab File: BF129936.D
 Acq: 22 Aug 2022 12:20

Instrument :
 BNA_F
 ClientSampleId :
 SSTDCCC040

Tgt Ion:198 Resp: 106754

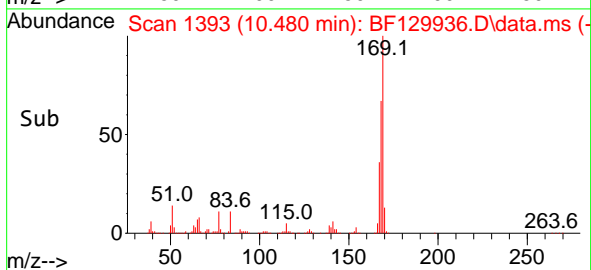
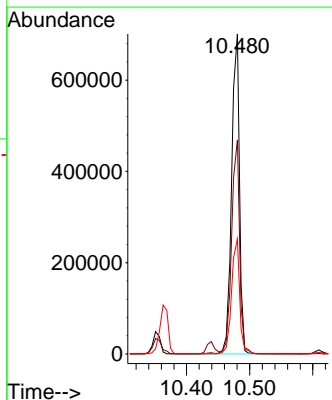
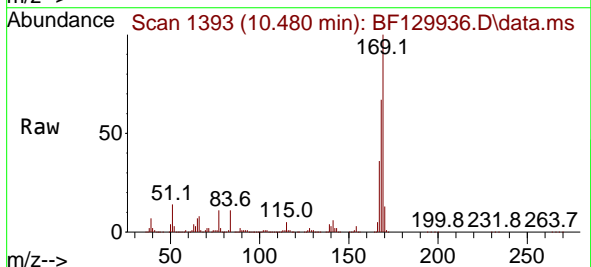
Ion	Ratio	Lower	Upper
198	100		
51	51.1	29.4	69.4
105	48.5	29.2	69.2

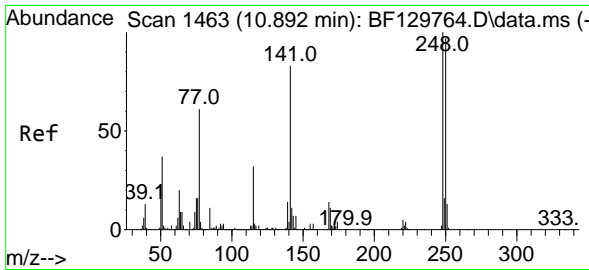


#66
 n-Nitrosodiphenylamine
 Concen: 39.646 ng
 RT: 10.480 min Scan# 1393
 Delta R.T. 0.000 min
 Lab File: BF129936.D
 Acq: 22 Aug 2022 12:20

Tgt Ion:169 Resp: 601266

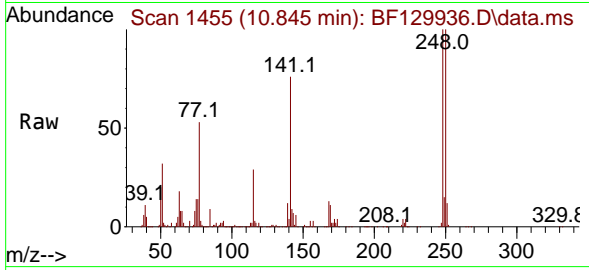
Ion	Ratio	Lower	Upper
169	100		
168	66.9	53.4	80.2
167	35.9	29.1	43.7



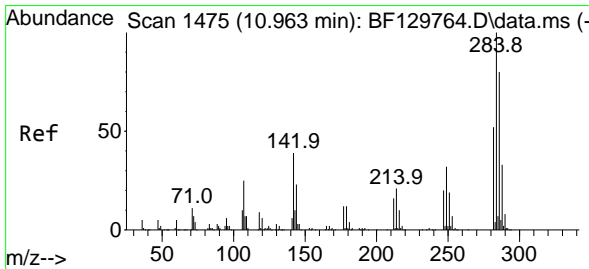
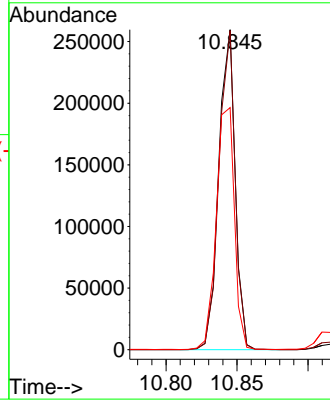
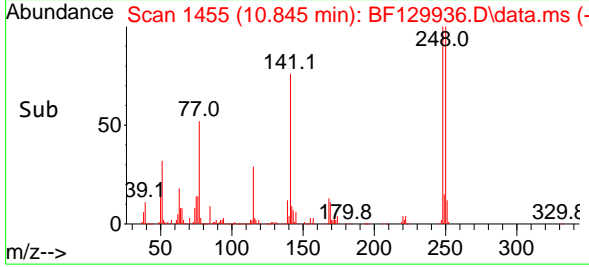


#67
 4-Bromophenyl-phenylether
 Concen: 39.581 ng
 RT: 10.845 min Scan# 1465
 Delta R.T. 0.000 min
 Lab File: BF129936.D
 Acq: 22 Aug 2022 12:20

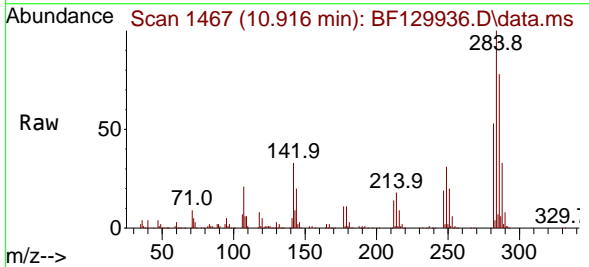
Instrument :
 BNA_F
 ClientSampleId :
 SSTDCCC040



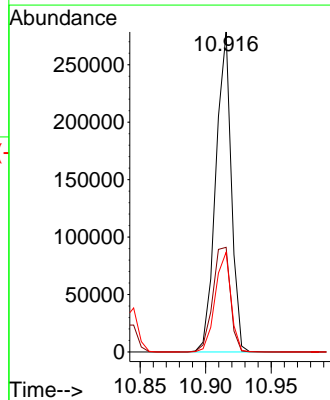
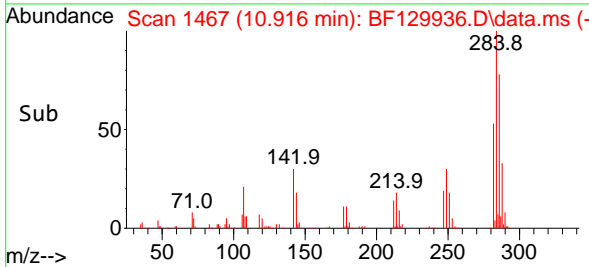
Tgt Ion:248 Resp: 208307
 Ion Ratio Lower Upper
 248 100
 250 99.8 77.8 116.6
 141 75.7 66.2 99.2

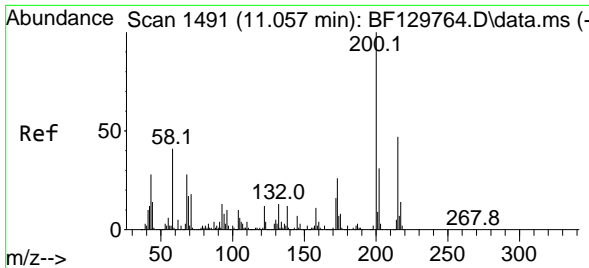


#68
 Hexachlorobenzene
 Concen: 40.074 ng
 RT: 10.916 min Scan# 1467
 Delta R.T. 0.000 min
 Lab File: BF129936.D
 Acq: 22 Aug 2022 12:20



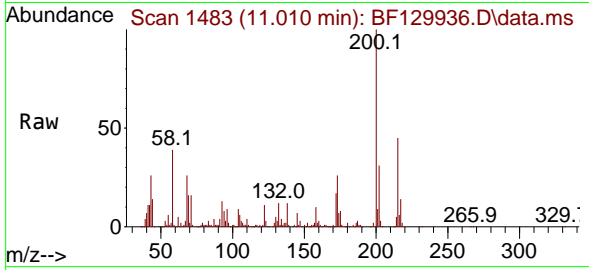
Tgt Ion:284 Resp: 228455
 Ion Ratio Lower Upper
 284 100
 142 32.7 31.4 47.0
 249 31.2 25.7 38.5



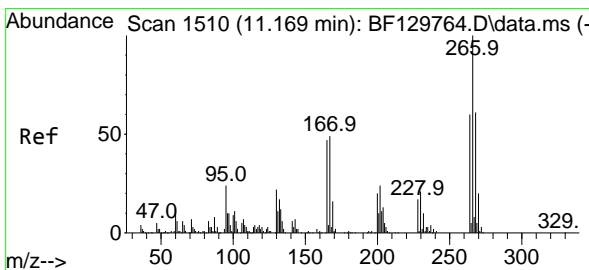
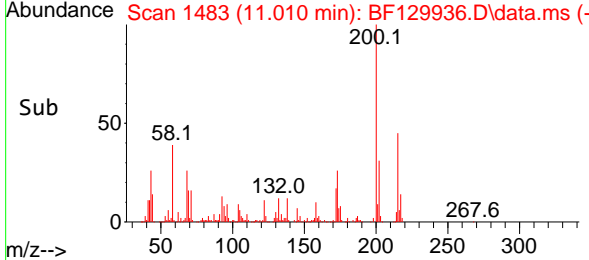
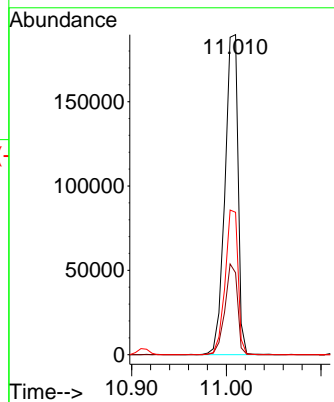


#69
 Atrazine
 Concen: 39.329 ng
 RT: 11.010 min Scan# 14
 Delta R.T. 0.000 min
 Lab File: BF129936.D
 Acq: 22 Aug 2022 12:20

Instrument :
 BNA_F
 ClientSampleId :
 SSTDCCC040

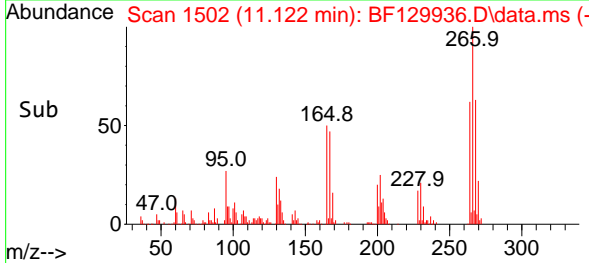
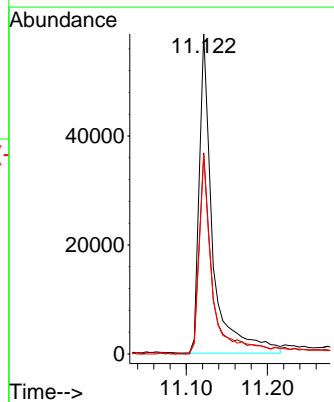
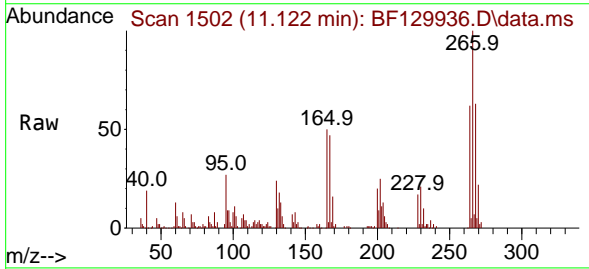


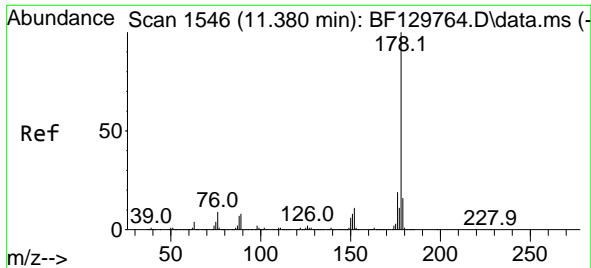
Tgt Ion:200 Resp: 183065
 Ion Ratio Lower Upper
 200 100
 173 25.6 6.4 46.4
 215 44.5 27.1 67.1



#70
 Pentachlorophenol
 Concen: 42.316 ng
 RT: 11.122 min Scan# 1502
 Delta R.T. 0.000 min
 Lab File: BF129936.D
 Acq: 22 Aug 2022 12:20

Tgt Ion:266 Resp: 67852
 Ion Ratio Lower Upper
 266 100
 268 62.9 49.0 73.4
 264 62.1 47.9 71.9





#71
 Phenanthrene
 Concen: 40.459 ng
 RT: 11.327 min Scan# 1537
 Delta R.T. 0.000 min
 Lab File: BF129936.D
 Acq: 22 Aug 2022 12:20

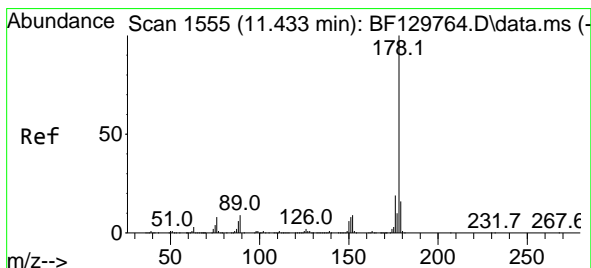
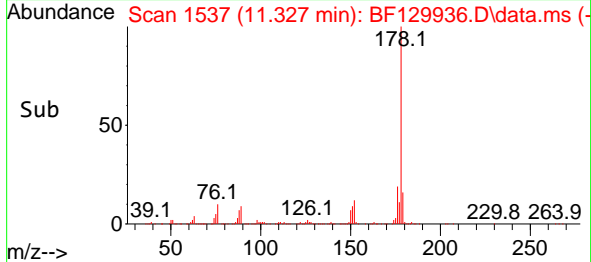
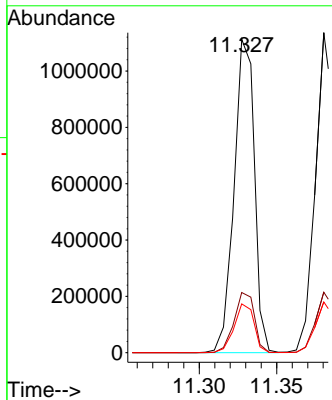
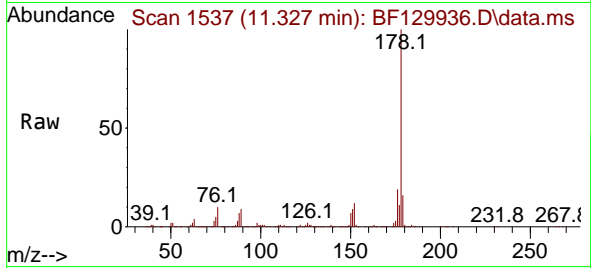
Instrument :

BNA_F

ClientSampleId :

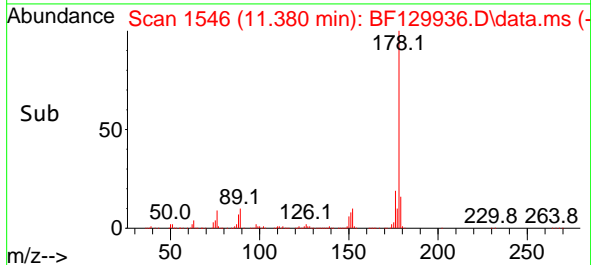
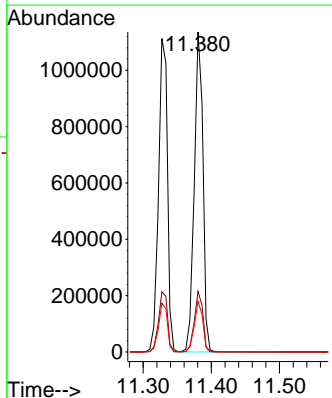
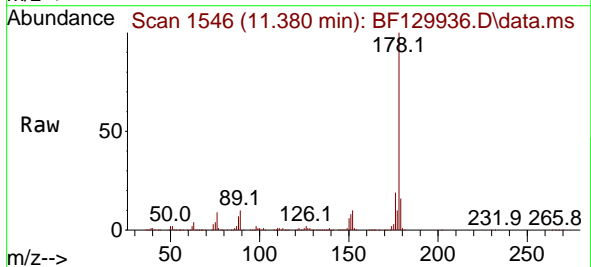
SSTDCCC040

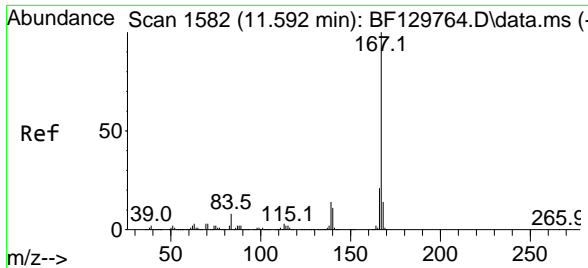
Tgt Ion:178 Resp: 1015317
 Ion Ratio Lower Upper
 178 100
 176 19.2 15.5 23.3
 179 15.6 12.5 18.7



#72
 Anthracene
 Concen: 40.133 ng
 RT: 11.380 min Scan# 1546
 Delta R.T. 0.000 min
 Lab File: BF129936.D
 Acq: 22 Aug 2022 12:20

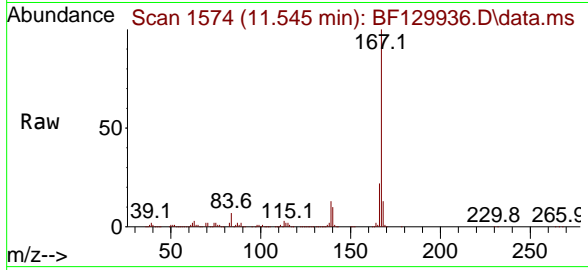
Tgt Ion:178 Resp: 1001542
 Ion Ratio Lower Upper
 178 100
 176 18.9 15.1 22.7
 179 15.9 12.6 18.8





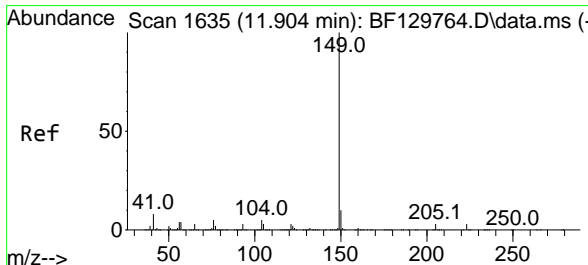
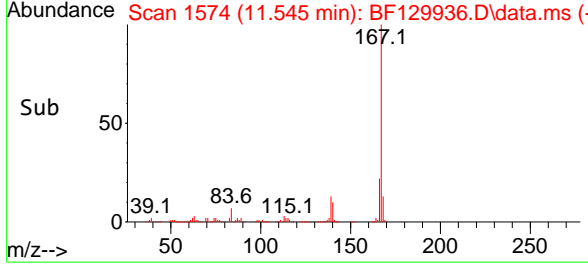
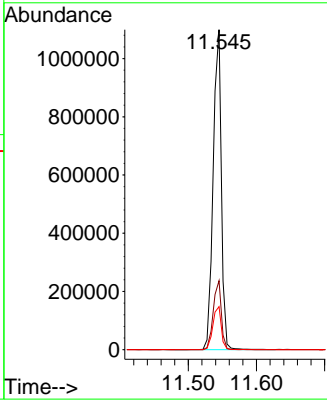
#73
 Carbazole
 Concen: 40.505 ng
 RT: 11.545 min Scan# 11
 Delta R.T. 0.000 min
 Lab File: BF129936.D
 Acq: 22 Aug 2022 12:20

Instrument : BNA_F
 Client Sample Id : SSTDCCC040



Tgt Ion:167 Resp: 917594

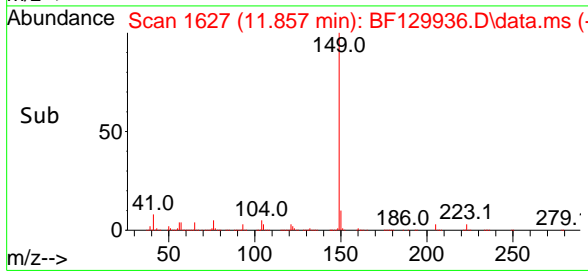
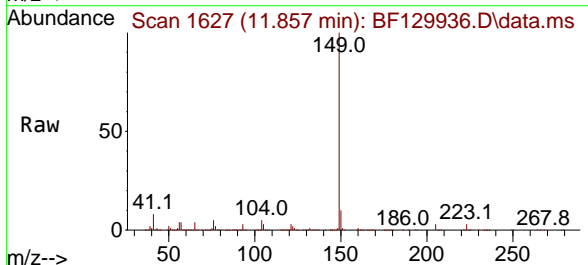
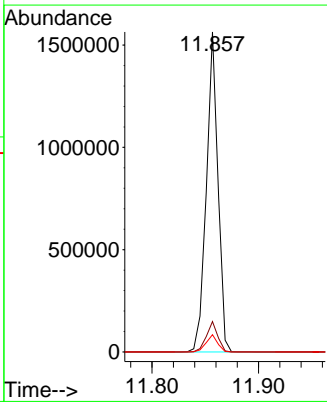
Ion	Ratio	Lower	Upper
167	100		
166	21.6	17.1	25.7
139	13.5	11.0	16.6

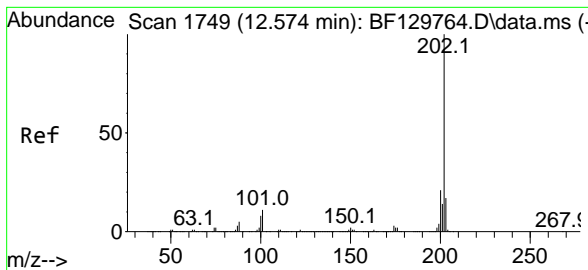


#74
 Di-n-butylphthalate
 Concen: 40.534 ng
 RT: 11.857 min Scan# 1627
 Delta R.T. 0.000 min
 Lab File: BF129936.D
 Acq: 22 Aug 2022 12:20

Tgt Ion:149 Resp: 1181778

Ion	Ratio	Lower	Upper
149	100		
150	9.5	7.8	11.6
104	5.4	4.2	6.4



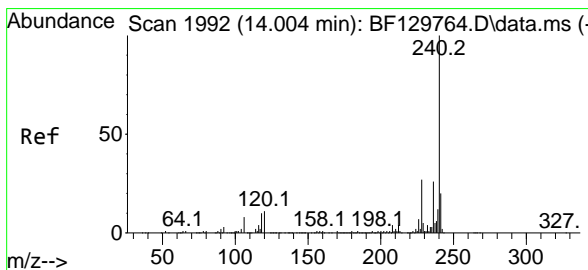
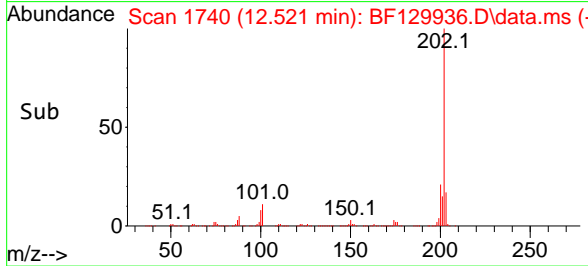
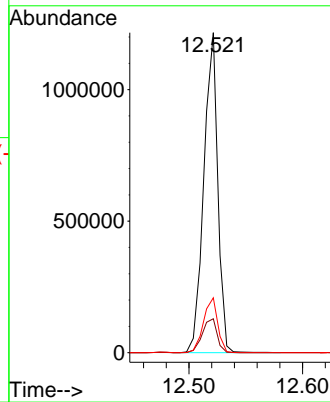
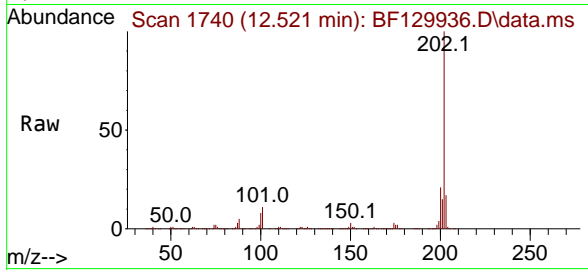


#75
 Fluoranthene
 Concen: 40.395 ng
 RT: 12.521 min Scan# 11
 Delta R.T. 0.000 min
 Lab File: BF129936.D
 Acq: 22 Aug 2022 12:20

Instrument : BNA_F
 ClientSampleId : SSTDCCC040

Tgt Ion:202 Resp: 1037299

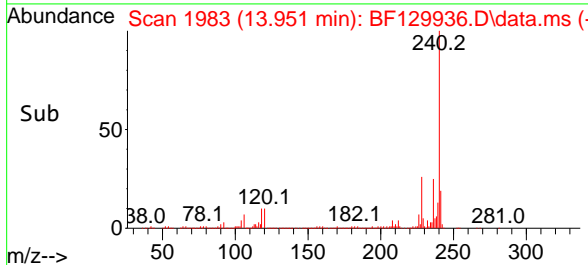
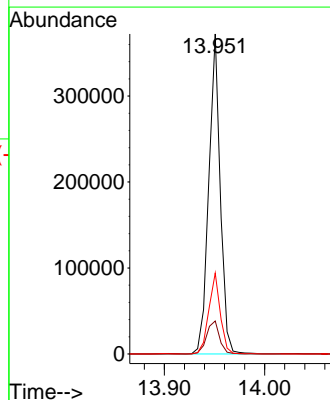
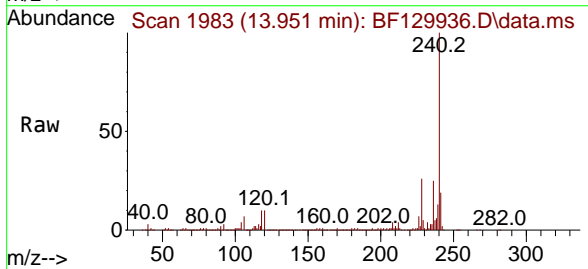
Ion	Ratio	Lower	Upper
202	100		
101	10.6	0.0	30.7
203	17.1	0.0	37.5

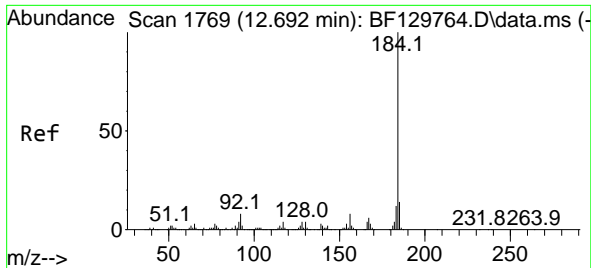


#76
 Chrysene-d12
 Concen: 20.000 ng
 RT: 13.951 min Scan# 1983
 Delta R.T. 0.000 min
 Lab File: BF129936.D
 Acq: 22 Aug 2022 12:20

Tgt Ion:240 Resp: 297923

Ion	Ratio	Lower	Upper
240	100		
120	10.3	9.2	13.8
236	25.3	20.7	31.1

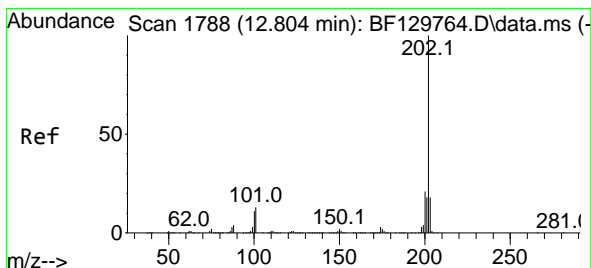
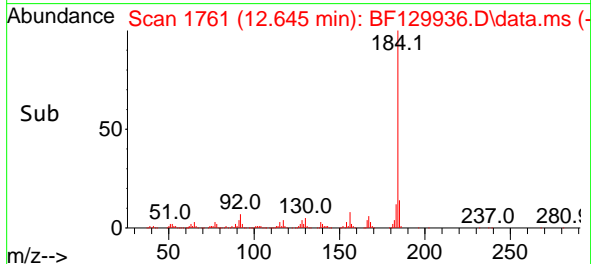
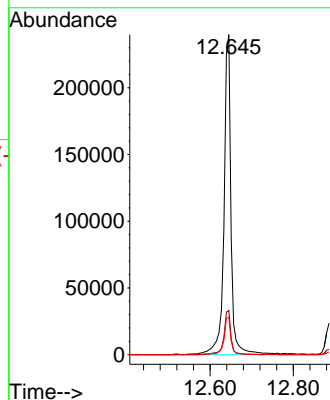
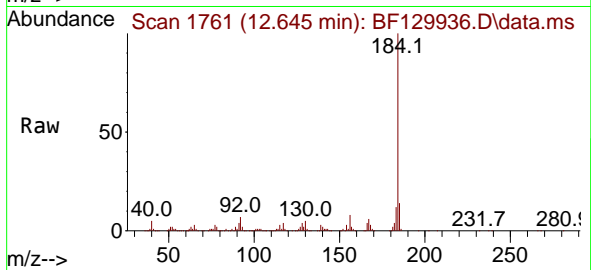




#77
 Benzidine
 Concen: 39.073 ng
 RT: 12.645 min Scan# 1761
 Delta R.T. 0.000 min
 Lab File: BF129936.D
 Acq: 22 Aug 2022 12:20

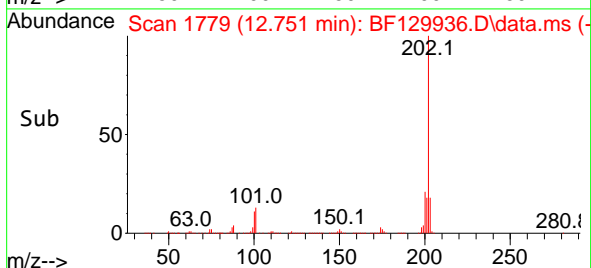
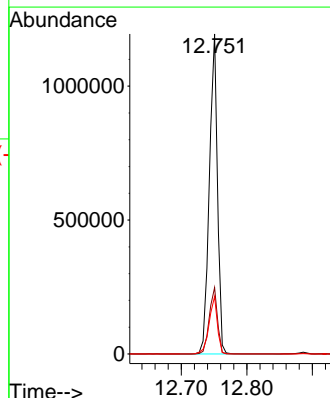
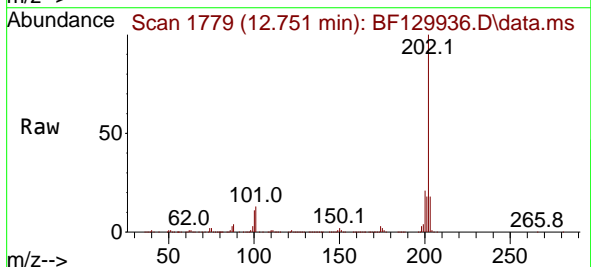
Instrument :
 BNA_F
 ClientSampleId :
 SSTDCCC040

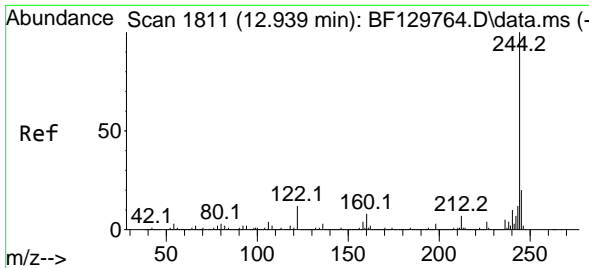
Tgt Ion:184 Resp: 284440
 Ion Ratio Lower Upper
 184 100
 185 13.8 11.4 17.2
 183 11.7 9.4 14.2



#78
 Pyrene
 Concen: 39.724 ng
 RT: 12.751 min Scan# 1779
 Delta R.T. 0.000 min
 Lab File: BF129936.D
 Acq: 22 Aug 2022 12:20

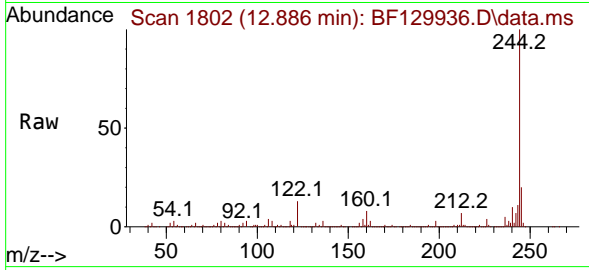
Tgt Ion:202 Resp: 1028434
 Ion Ratio Lower Upper
 202 100
 200 20.8 17.0 25.6
 203 17.9 14.1 21.1



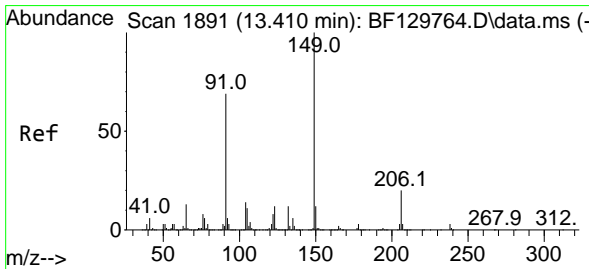
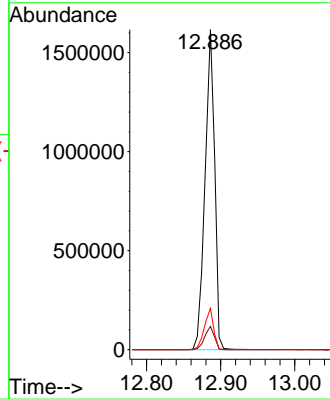
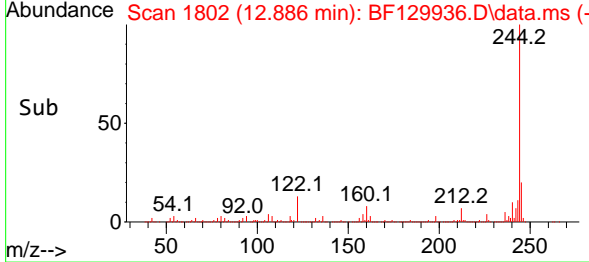


#79
 Terphenyl-d14
 Concen: 81.639 ng
 RT: 12.886 min Scan# 1811
 Delta R.T. 0.000 min
 Lab File: BF129936.D
 Acq: 22 Aug 2022 12:20

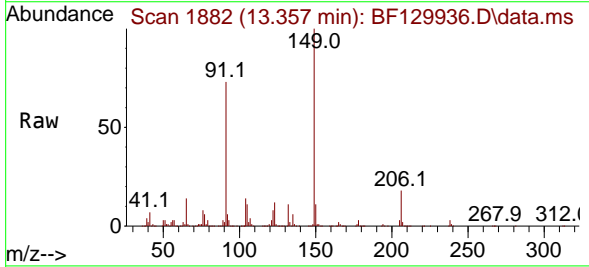
Instrument : BNA_F
 ClientSampleId : SSTDCCC040



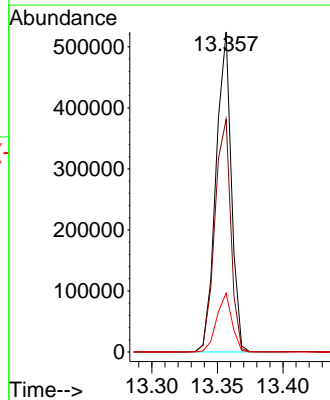
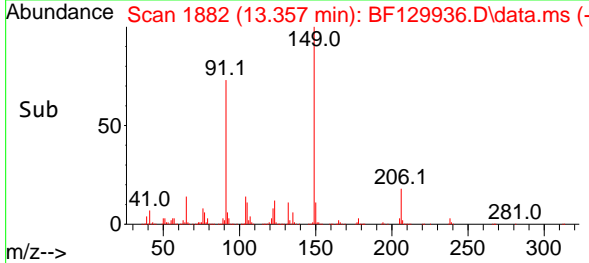
Tgt Ion:244 Resp: 1461730
 Ion Ratio Lower Upper
 244 100
 212 7.3 5.9 8.9
 122 12.9 9.9 14.9

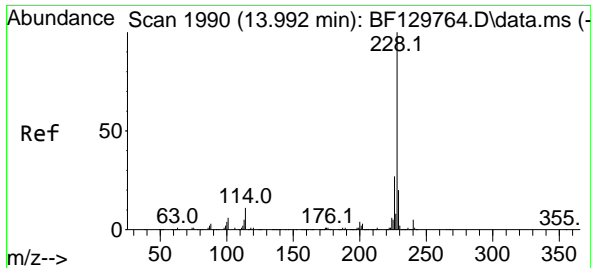


#80
 Butylbenzylphthalate
 Concen: 38.983 ng
 RT: 13.357 min Scan# 1882
 Delta R.T. 0.000 min
 Lab File: BF129936.D
 Acq: 22 Aug 2022 12:20



Tgt Ion:149 Resp: 427060
 Ion Ratio Lower Upper
 149 100
 91 72.7 55.4 83.0
 206 18.4 15.8 23.6





#81
 Benzo(a)anthracene
 Concen: 38.267 ng
 RT: 13.939 min Scan# 1974
 Delta R.T. 0.000 min
 Lab File: BF129936.D
 Acq: 22 Aug 2022 12:20

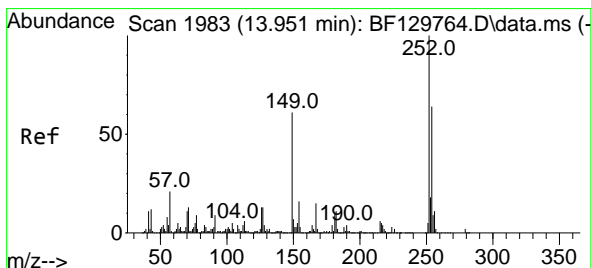
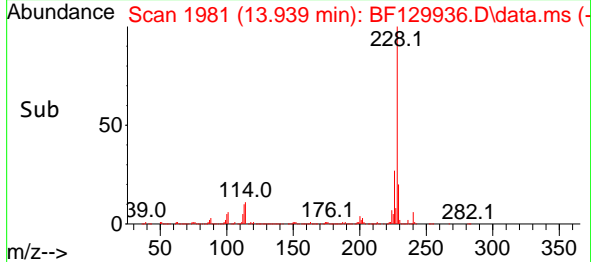
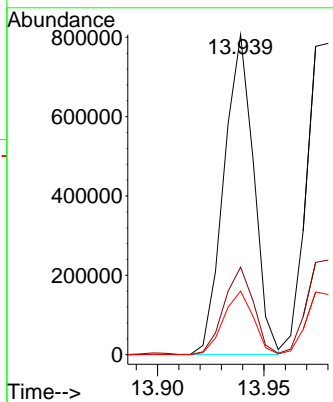
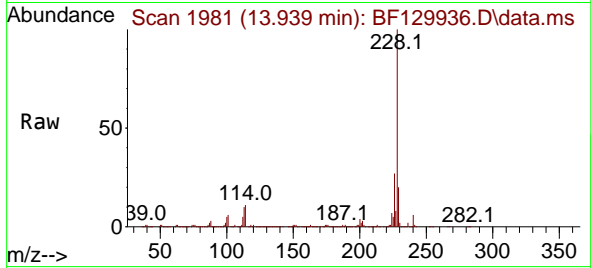
Instrument :

BNA_F

ClientSampleId :

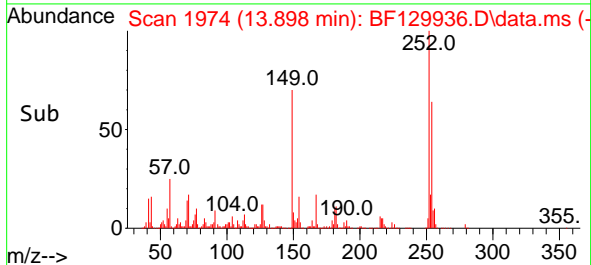
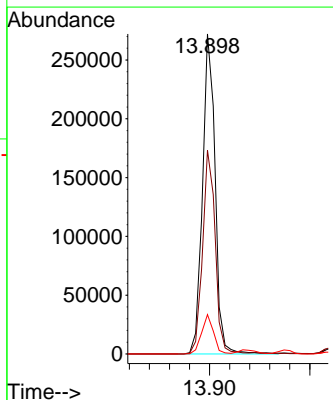
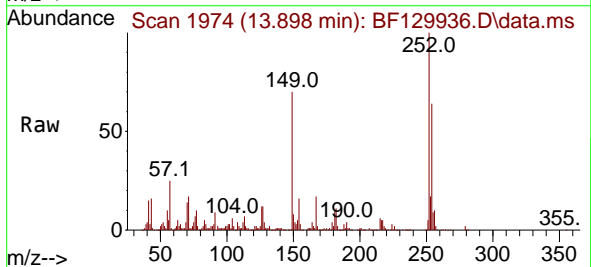
SSTDCCC040

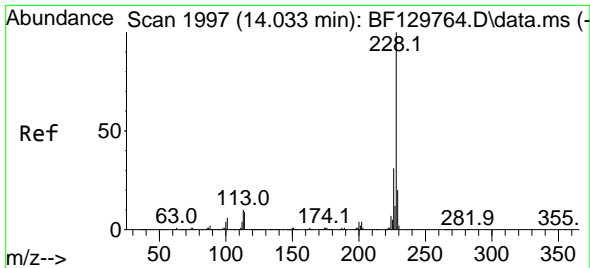
Tgt Ion:228 Resp: 784260
 Ion Ratio Lower Upper
 228 100
 226 27.3 21.4 32.0
 229 19.9 16.1 24.1



#82
 3,3'-Dichlorobenzidine
 Concen: 37.629 ng
 RT: 13.898 min Scan# 1974
 Delta R.T. 0.000 min
 Lab File: BF129936.D
 Acq: 22 Aug 2022 12:20

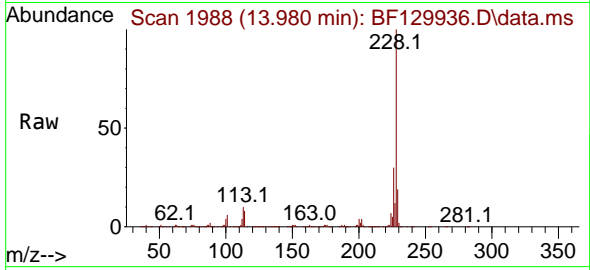
Tgt Ion:252 Resp: 238838
 Ion Ratio Lower Upper
 252 100
 254 63.7 51.4 77.2
 126 12.3 10.2 15.4





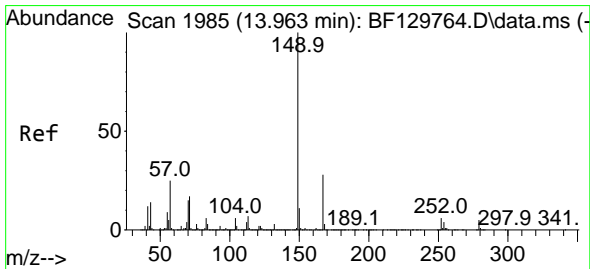
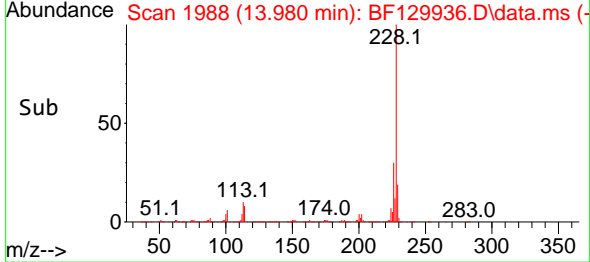
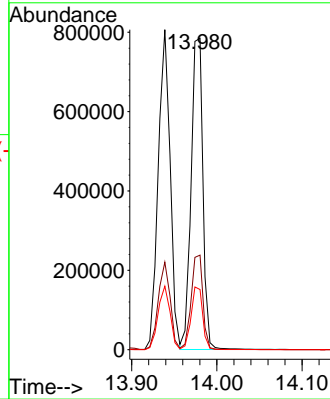
#83
 Chrysene
 Concen: 39.320 ng
 RT: 13.980 min Scan# 1997
 Delta R.T. 0.000 min
 Lab File: BF129936.D
 Acq: 22 Aug 2022 12:20

Instrument : BNA_F
 ClientSampleId : SSTDCCC040



Tgt Ion: 228 Resp: 754326

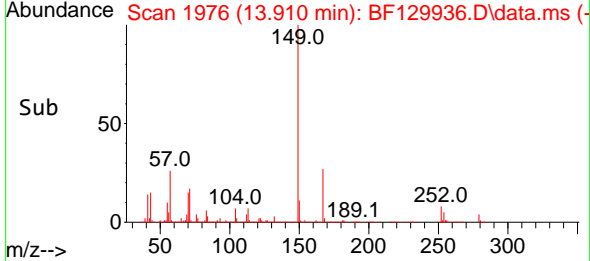
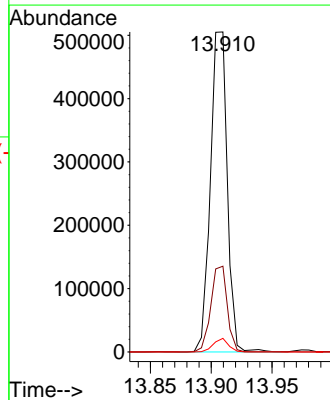
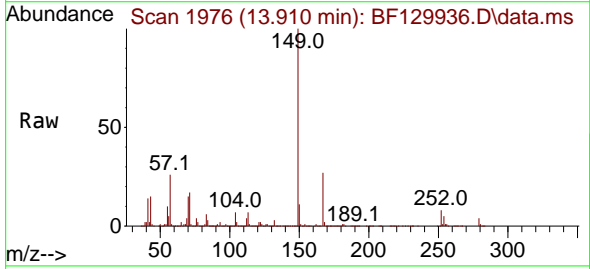
Ion	Ratio	Lower	Upper
228	100		
226	30.3	24.4	36.6
229	19.3	15.9	23.9

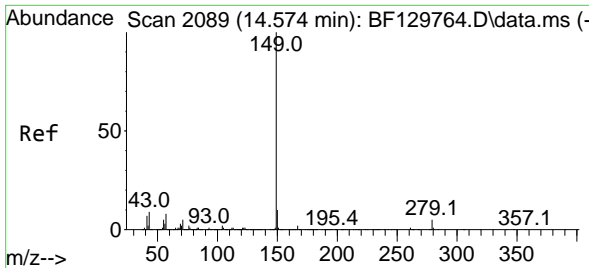


#84
 Bis(2-ethylhexyl)phthalate
 Concen: 37.556 ng
 RT: 13.910 min Scan# 1976
 Delta R.T. 0.000 min
 Lab File: BF129936.D
 Acq: 22 Aug 2022 12:20

Tgt Ion: 149 Resp: 488116

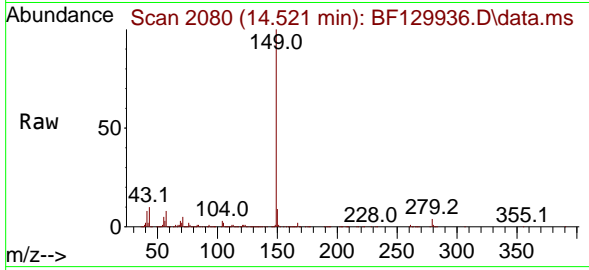
Ion	Ratio	Lower	Upper
149	100		
167	26.8	22.0	33.0
279	4.2	3.6	5.4





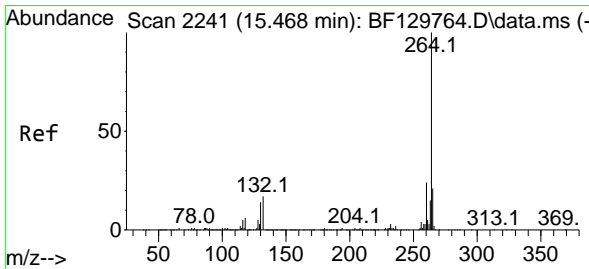
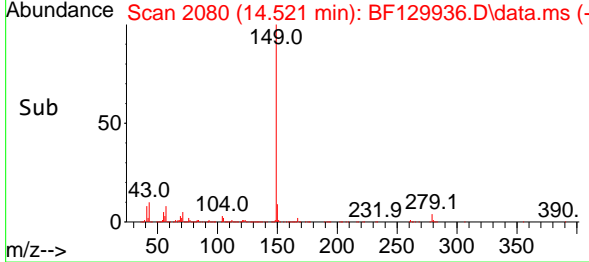
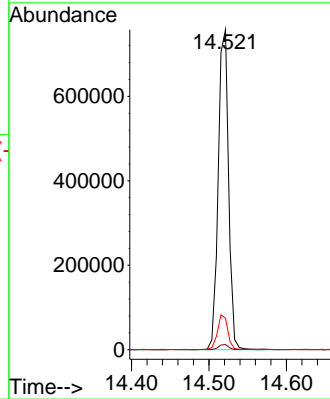
#85
 Di-n-octyl phthalate
 Concen: 39.083 ng
 RT: 14.521 min Scan# 2080
 Delta R.T. 0.000 min
 Lab File: BF129936.D
 Acq: 22 Aug 2022 12:20

Instrument : BNA_F
 ClientSampleId : SSTDCCC040

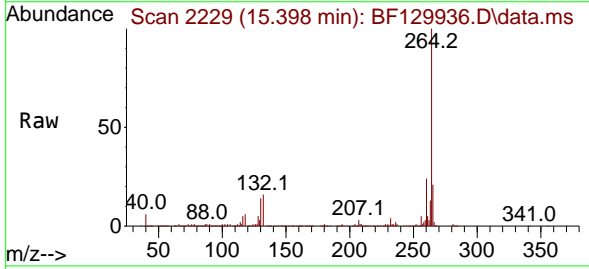


Tgt Ion:149 Resp: 701216

Ion	Ratio	Lower	Upper
149	100		
167	1.6	1.3	1.9
43	10.7	7.8	11.6

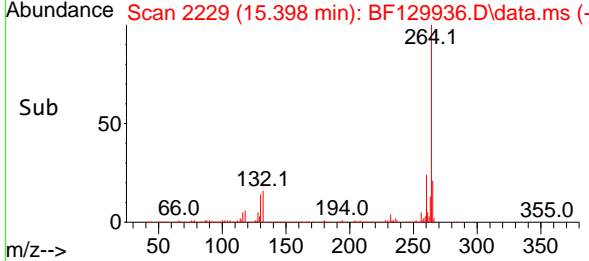
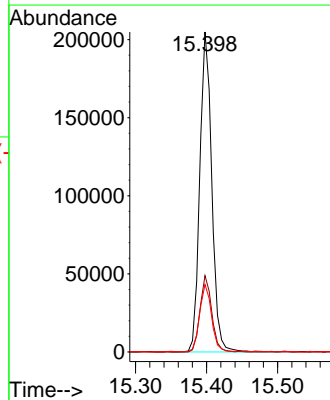


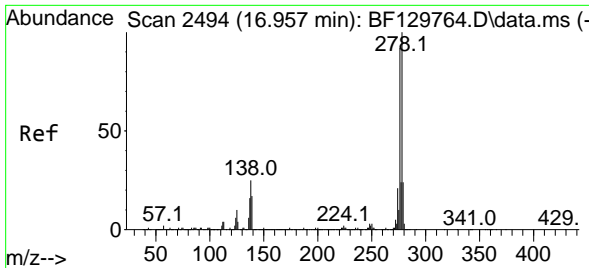
#86
 Perylene-d12
 Concen: 20.000 ng
 RT: 15.398 min Scan# 2229
 Delta R.T. 0.000 min
 Lab File: BF129936.D
 Acq: 22 Aug 2022 12:20



Tgt Ion:264 Resp: 241132

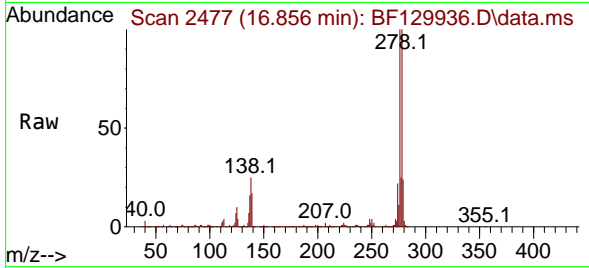
Ion	Ratio	Lower	Upper
264	100		
260	23.9	19.1	28.7
265	21.1	16.7	25.1



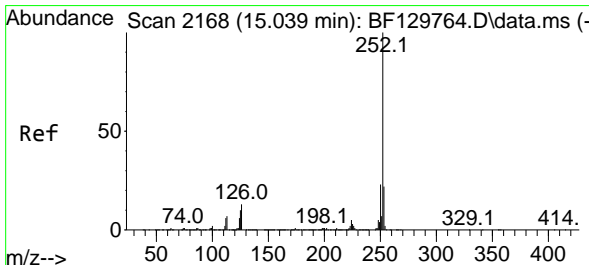
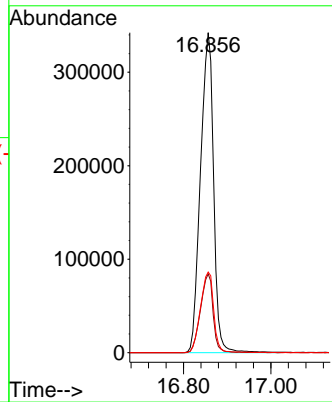
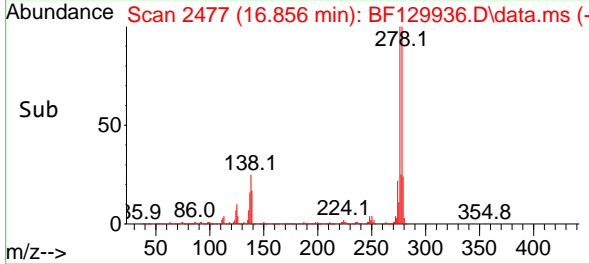


#87
 Indeno(1,2,3-cd)pyrene
 Concen: 43.182 ng
 RT: 16.856 min Scan# 2494
 Delta R.T. 0.000 min
 Lab File: BF129936.D
 Acq: 22 Aug 2022 12:20

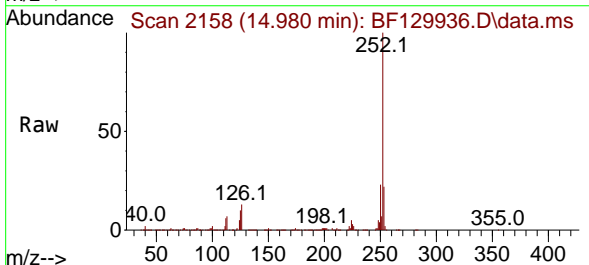
Instrument :
 BNA_F
 ClientSampleId :
 SSTDCCC040



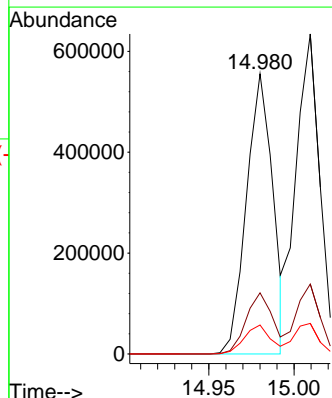
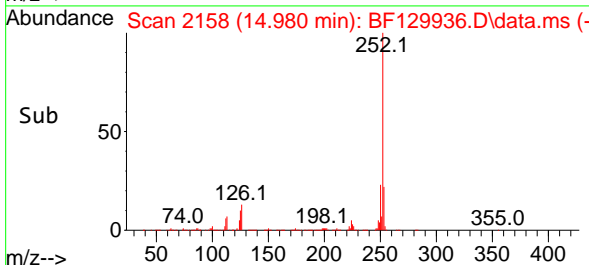
Tgt Ion:276 Resp: 714840
 Ion Ratio Lower Upper
 276 100
 138 23.6 19.8 29.8
 277 25.4 20.4 30.6

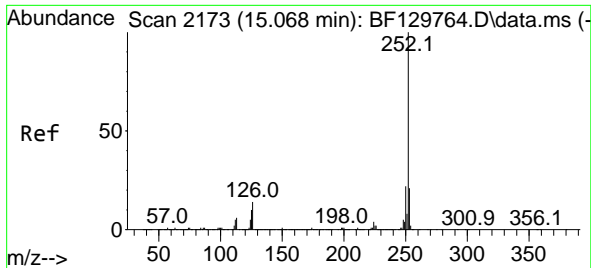


#88
 Benzo(b)fluoranthene
 Concen: 36.288 ng
 RT: 14.980 min Scan# 2158
 Delta R.T. 0.000 min
 Lab File: BF129936.D
 Acq: 22 Aug 2022 12:20



Tgt Ion:252 Resp: 599173
 Ion Ratio Lower Upper
 252 100
 253 21.8 17.5 26.3
 125 10.3 8.3 12.5

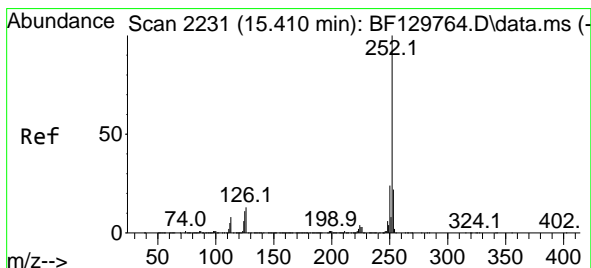
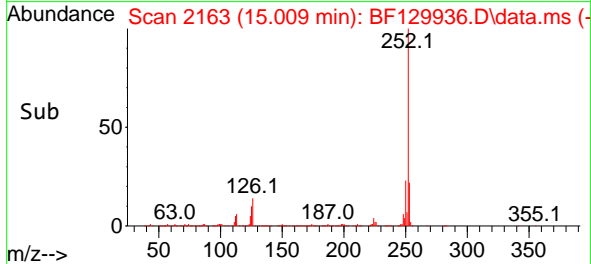
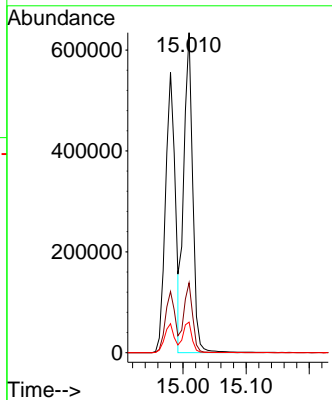
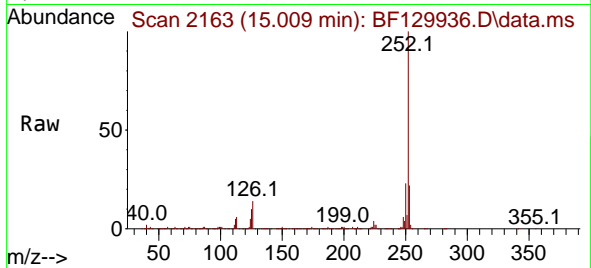




#89
 Benzo(k)fluoranthene
 Concen: 39.571 ng
 RT: 15.009 min Scan# 2119
 Delta R.T. 0.000 min
 Lab File: BF129936.D
 Acq: 22 Aug 2022 12:20

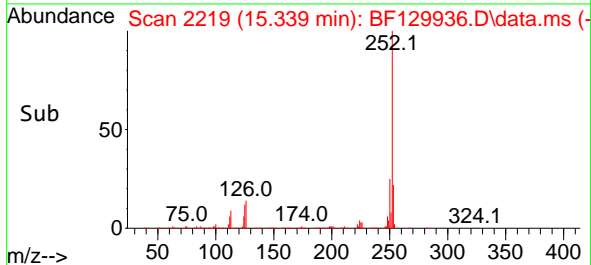
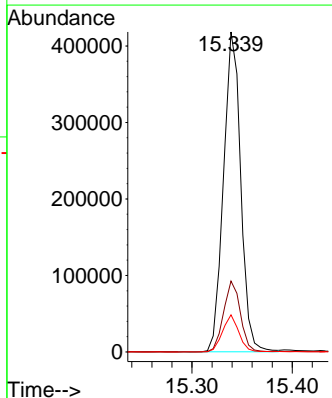
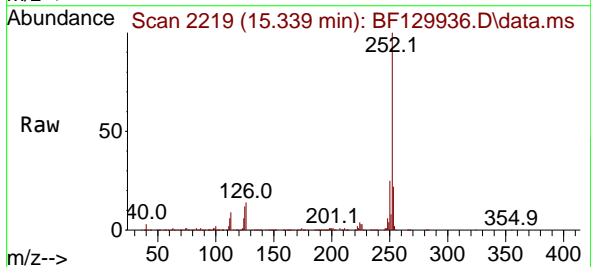
Instrument :
 BNA_F
 ClientSampleId :
 SSTDCCC040

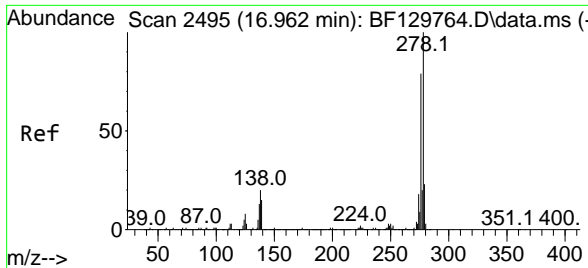
Tgt Ion:252 Resp: 626599
 Ion Ratio Lower Upper
 252 100
 253 21.8 17.1 25.7
 125 9.6 8.3 12.5



#90
 Benzo(a)pyrene
 Concen: 38.284 ng
 RT: 15.339 min Scan# 2219
 Delta R.T. 0.000 min
 Lab File: BF129936.D
 Acq: 22 Aug 2022 12:20

Tgt Ion:252 Resp: 497804
 Ion Ratio Lower Upper
 252 100
 253 22.2 17.2 25.8
 125 11.6 8.8 13.2



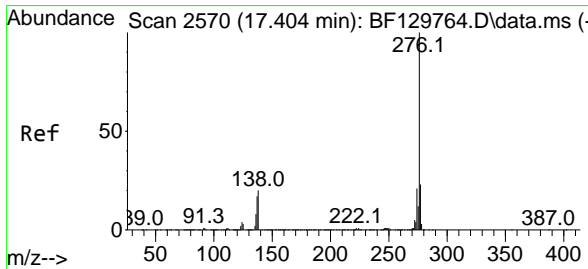
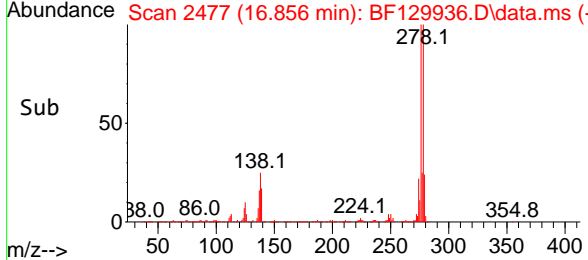
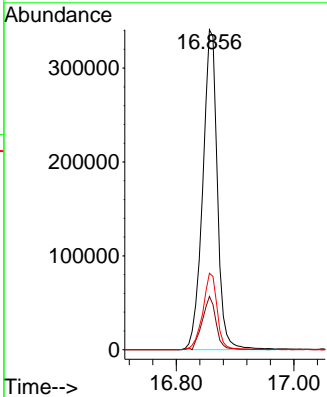
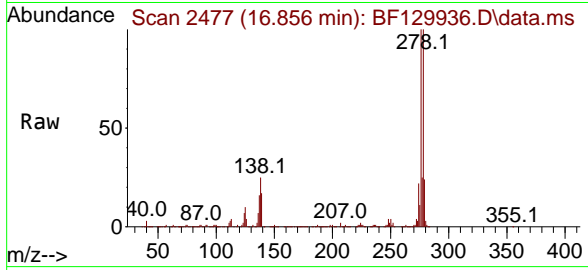


#91
 Dibenzo(a,h)anthracene
 Concen: 43.140 ng
 RT: 16.856 min Scan# 24
 Delta R.T. 0.000 min
 Lab File: BF129936.D
 Acq: 22 Aug 2022 12:20

Instrument : BNA_F
 ClientSampleId : SSTDCCC040

Tgt Ion: 278 Resp: 589248

Ion	Ratio	Lower	Upper
278	100		
139	16.7	12.2	18.4
279	23.9	18.7	28.1



#92
 Benzo(g,h,i)perylene
 Concen: 43.625 ng
 RT: 17.292 min Scan# 2551
 Delta R.T. 0.000 min
 Lab File: BF129936.D
 Acq: 22 Aug 2022 12:20

Tgt Ion: 276 Resp: 594481

Ion	Ratio	Lower	Upper
276	100		
277	23.0	18.2	27.4
138	20.4	15.8	23.8

