

Data Path : Z:\HPCHEM1\BNA F\DATA\BF082416\
 Data File : BF089889.D
 Acq On : 24 Aug 2016 21:46
 Operator : UM/SJ
 Sample : H4576-02
 Misc :
 ALS Vial : 26 Sample Multiplier: 1

Instrument :
 BNA_F
 ClientSampleId :
 SB-15A-(18-20)MS

Integration Parameters: rteint.p
 Integrator: RTE
 Smoothing : ON Filtering: 5
 Sampling : 1 Min Area: 3 % of largest Peak
 Start Thrs: 0.2 Max Peaks: 100
 Stop Thrs : 0 Peak Location: TOP

If leading or trailing edge < 100 prefer < Baseline drop else tangent >
 Peak separation: 5

Method : Z:\HPCHEM1\BNA F\METHODS\8270-BF081916.M
 Title : ASP BNA STANDARDS FOR 5 POINT CALIBRATION

Signal : TIC

peak #	R.T. min	first scan	max scan	last scan	PK TY	peak height	corr. area	corr. % max.	% of total
1	1.655	4	6	14	rBV	966327	1706232	10.65%	1.572%
2	1.770	14	16	59	rVB	6897736	16027485	100.00%	14.764%
3	4.798	278	281	292	rVB	1295201	2177413	13.59%	2.006%
4	5.244	317	320	323	rBV	7645744	8614451	53.75%	7.935%
5	6.307	410	413	415	rBV	8130255	8793417	54.86%	8.100%
6	6.433	421	424	426	rBV	9482049	9269521	57.84%	8.539%
7	6.662	442	444	447	rBV	2056840	2269780	14.16%	2.091%
8	6.822	456	458	461	rBV	8289315	7133631	44.51%	6.571%
9	7.233	491	494	496	rBV	6141413	5894133	36.78%	5.429%
10	7.953	554	557	559	rBV	4033161	3393391	21.17%	3.126%
11	9.039	649	652	654	rBV	11023748	11595999	72.35%	10.682%
12	9.428	684	686	689	rBV	2019424	2255056	14.07%	2.077%
13	9.702	708	710	713	rBV	4116119	3640963	22.72%	3.354%
14	10.159	748	750	752	rVB	242039	184738	1.15%	0.170%
15	10.490	776	779	781	rBV	6227310	6274483	39.15%	5.780%
16	10.628	789	791	798	rVB	311811	375374	2.34%	0.346%
17	11.176	837	839	842	rBV	3661900	3516690	21.94%	3.239%
18	12.776	976	979	981	rBV	7740680	10022844	62.54%	9.233%
19	13.702	1057	1060	1068	rBV	158898	289050	1.80%	0.266%
20	13.828	1068	1071	1073	rBV	2094577	2924604	18.25%	2.694%
21	15.268	1194	1197	1200	rBV	1850606	2198920	13.72%	2.026%

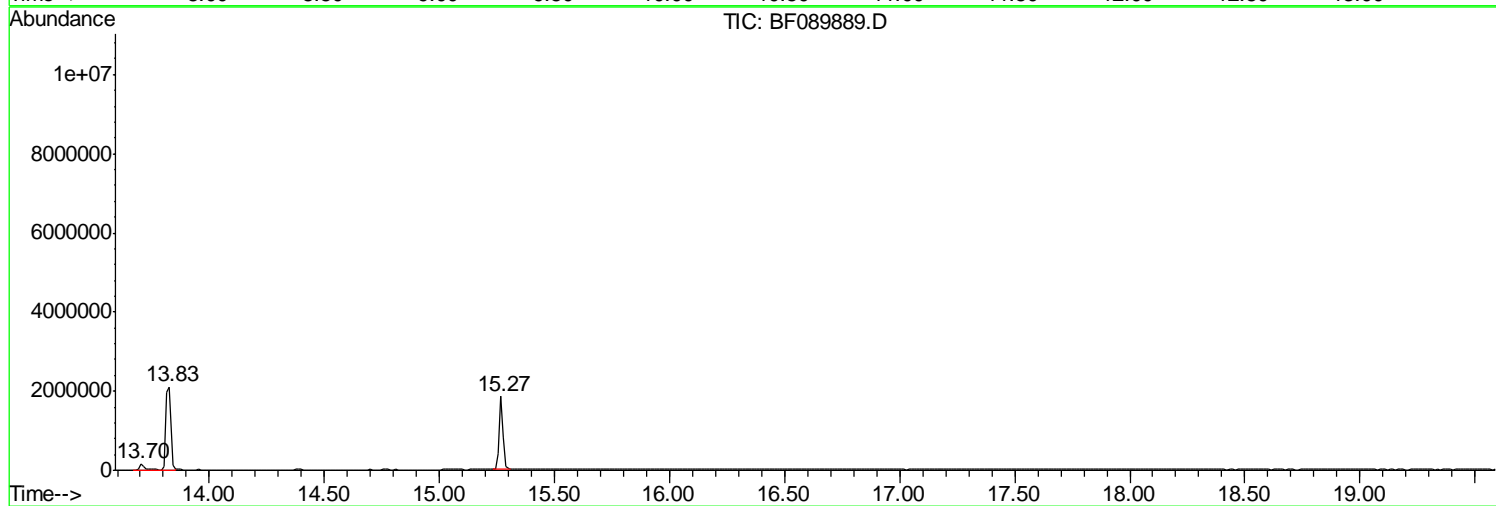
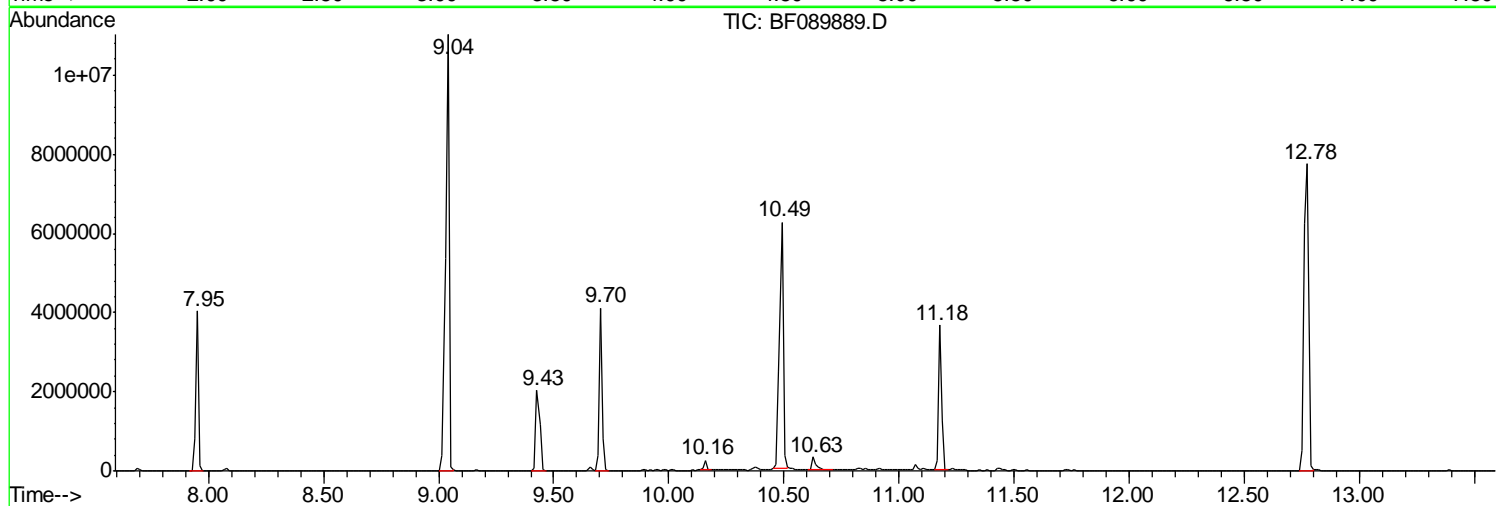
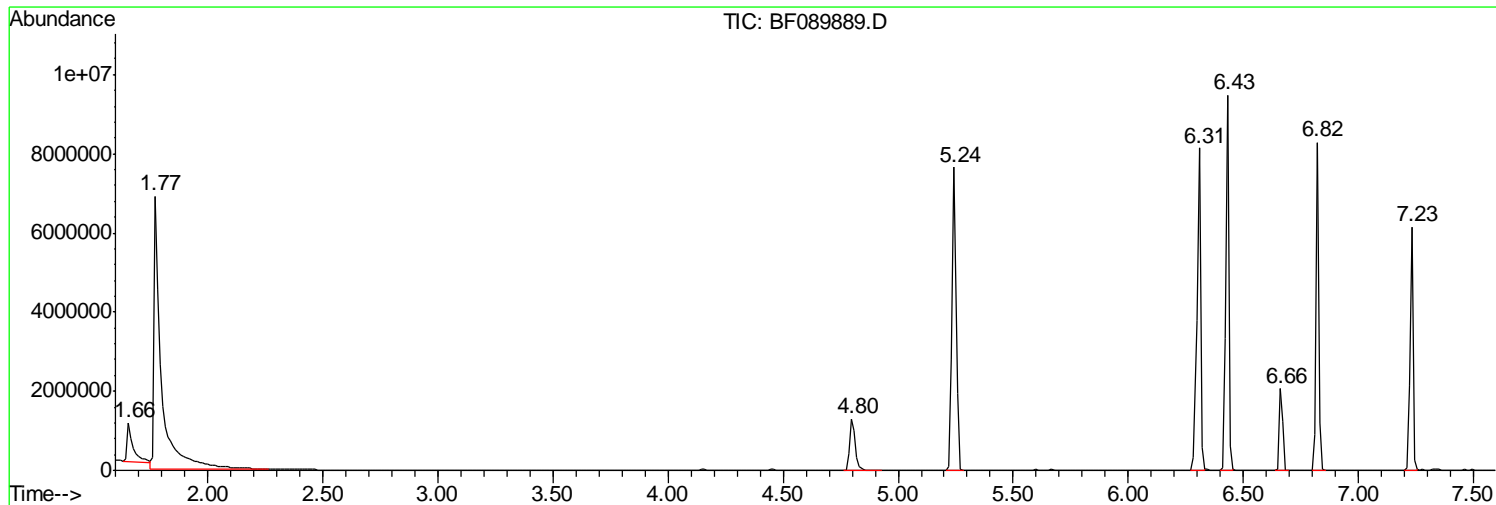
Sum of corrected areas: 108558175

Data Path : Z:\HPCHEM1\BNA F\DATA\BF082416\
Data File : BF089889.D
Acq On : 24 Aug 2016 21:46
Operator : UM/SJ
Sample : H4576-02
Misc :
ALS Vial : 26 Sample Multiplier: 1

Instrument :
BNA_F
ClientSampleId :
SB-15A-(18-20)MS

Quant Method : Z:\HPCHEM1\BNA F\METHODS\8270-BF081916.M
Quant Title : ASP BNA STANDARDS FOR 5 POINT CALIBRATION

TIC Library : C:\Database\NIST11.L
TIC Integration Parameters: LSCINT.P



Data Path : Z:\HPCHEM1\BNA F\DATA\BF082416\
 Data File : BF089889.D
 Acq On : 24 Aug 2016 21:46
 Operator : UM/SJ
 Sample : H4576-02
 Misc :
 ALS Vial : 26 Sample Multiplier: 1

Instrument :
 BNA_F
 ClientSampleId :
 SB-15A-(18-20)MS

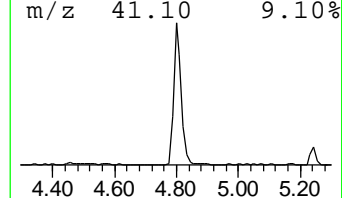
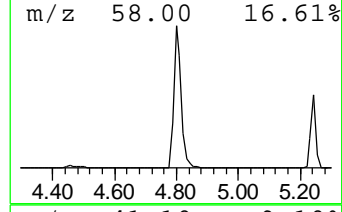
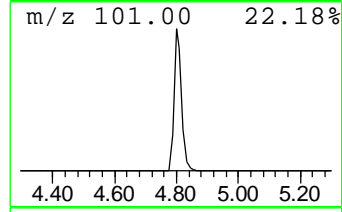
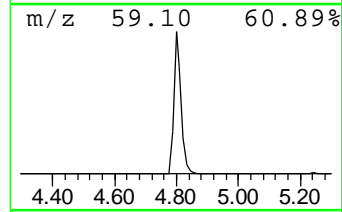
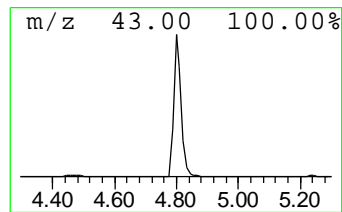
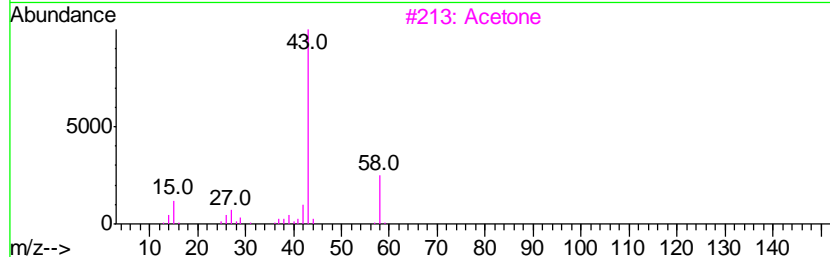
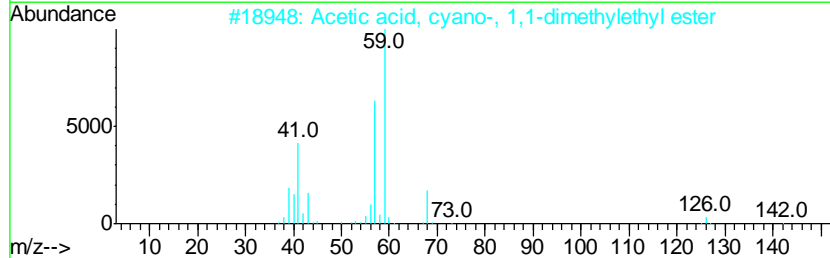
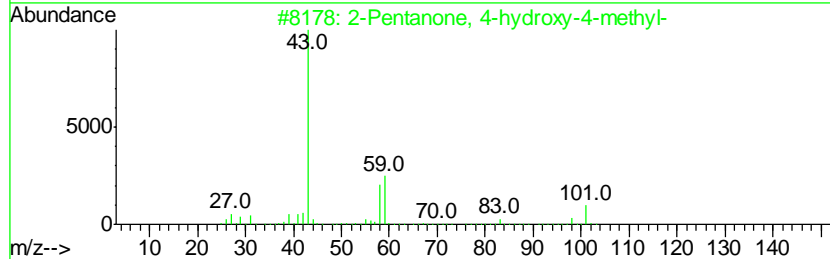
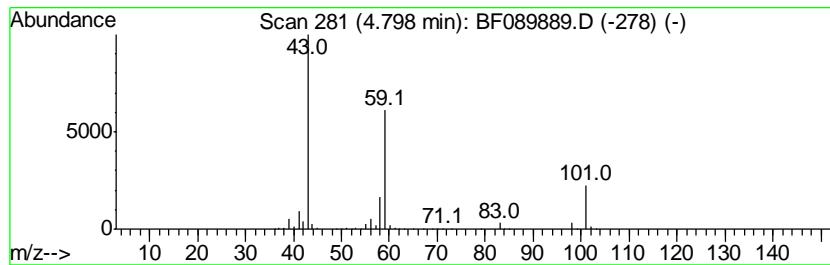
Quant Method : Z:\HPCHEM1\BNA F\METHODS\8270-BF081916.M
 Quant Title : ASP BNA STANDARDS FOR 5 POINT CALIBRATION

TIC Library : C:\Database\NIST11.L
 TIC Integration Parameters: LSCINT.P

 Peak Number 3 2-Pentanone, 4-hydroxy-4-me... Concentration Rank 4

R.T.	EstConc	Area	Relative to ISTD	R.T.
4.80	19.19 ng	2177410	1,4-Dichlorobenzene-d4	6.66

Hit#	of	Tentative ID	MW	MolForm	CAS#	Qual
1	5	2-Pentanone, 4-hydroxy-4-methyl-	116	C6H12O2	000123-42-2	64
2		Acetic acid, cyano-, 1,1-dimethy...	141	C7H11NO2	001116-98-9	25
3		Acetone	58	C3H6O	000067-64-1	9
4		5-Hexen-2-one	98	C6H10O	000109-49-9	9
5		Butane, 1-ethoxy-	102	C6H14O	000628-81-9	9



Data Path : Z:\HPCHEM1\BNA F\DATA\BF082416\
 Data File : BF089889.D
 Acq On : 24 Aug 2016 21:46
 Operator : UM/SJ
 Sample : H4576-02
 Misc :
 ALS Vial : 26 Sample Multiplier: 1

Instrument :
 BNA_F
 ClientSampleId :
 SB-15A-(18-20)MS

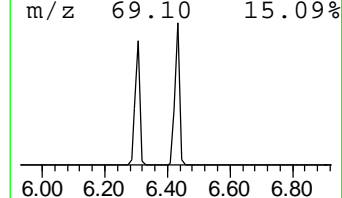
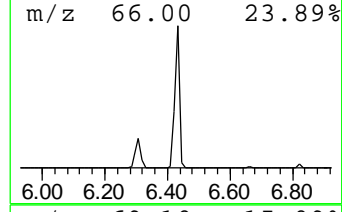
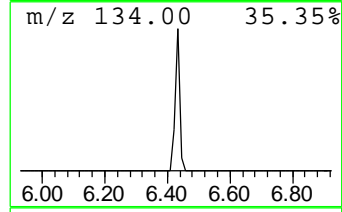
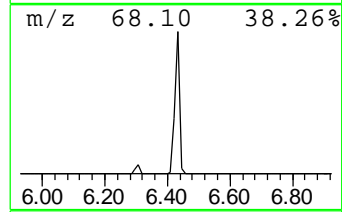
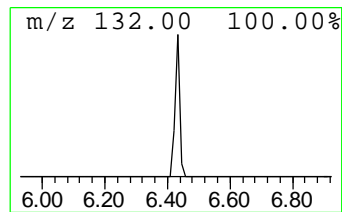
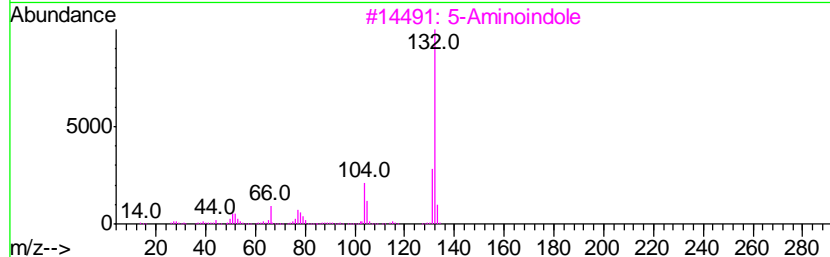
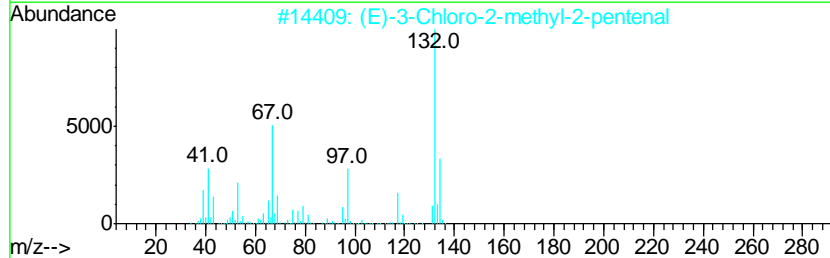
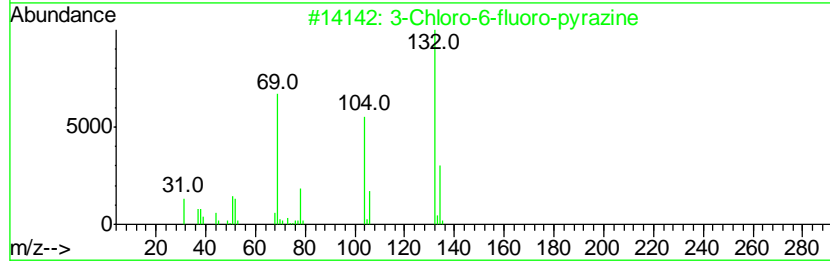
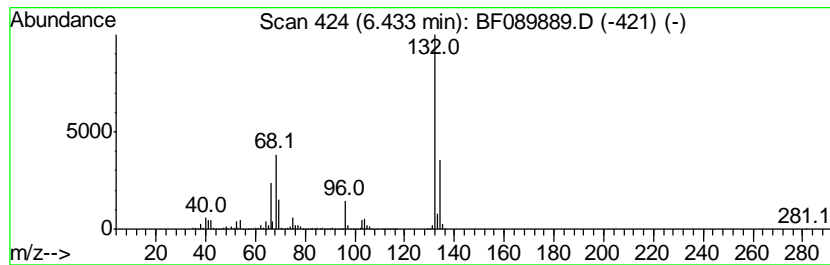
Quant Method : Z:\HPCHEM1\BNA F\METHODS\8270-BF081916.M
 Quant Title : ASP BNA STANDARDS FOR 5 POINT CALIBRATION

TIC Library : C:\Database\NIST11.L
 TIC Integration Parameters: LSCINT.P

 Peak Number 4 unknown6.43 Concentration Rank 2

R.T.	EstConc	Area	Relative to ISTD	R.T.
6.43	81.68 ng	9269520	1,4-Dichlorobenzene-d4	6.66

Hit#	of	Tentative ID	MW	MolForm	CAS#	Qual
1	5	3-Chloro-6-fluoro-pyrazine	132	C4H2ClFN2	1000146-10-7	27
2		(E)-3-Chloro-2-methyl-2-pentenal	132	C6H9ClO	031357-76-3	27
3		5-Aminoindole	132	C8H8N2	005192-03-0	12
4		Tranylcypromine-propionyl	189	C12H15NO	1000123-86-3	10
5		Amphetaminil	250	C17H18N2	017590-01-1	10



Data Path : Z:\HPCHEM1\BNA F\DATA\BF082416\
 Data File : BF089889.D
 Acq On : 24 Aug 2016 21:46
 Operator : UM/SJ
 Sample : H4576-02
 Misc :
 ALS Vial : 26 Sample Multiplier: 1

Instrument :
 BNA_F
 ClientSampleId :
 SB-15A-(18-20)MS

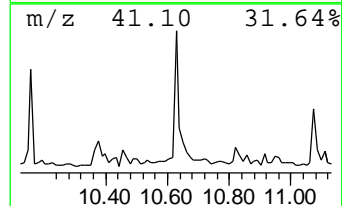
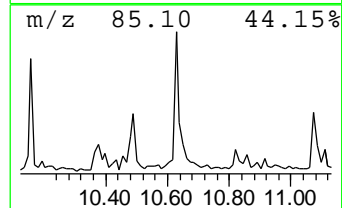
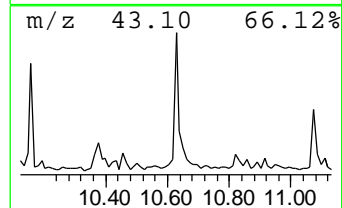
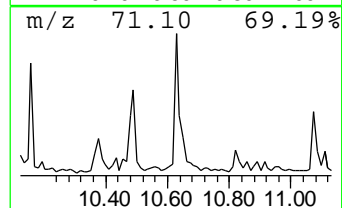
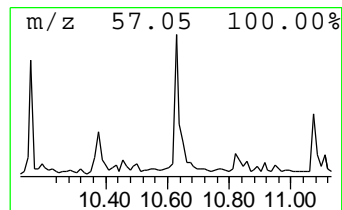
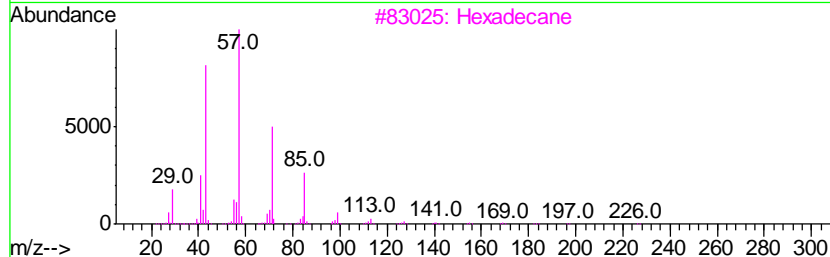
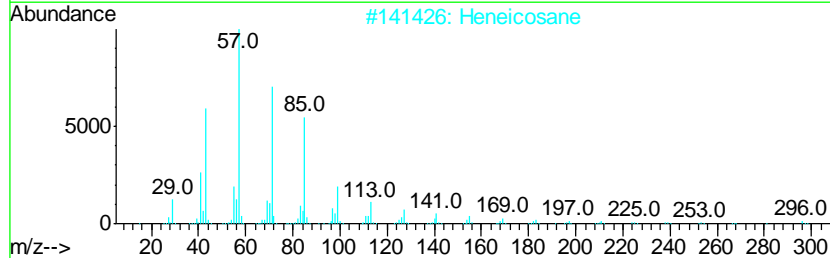
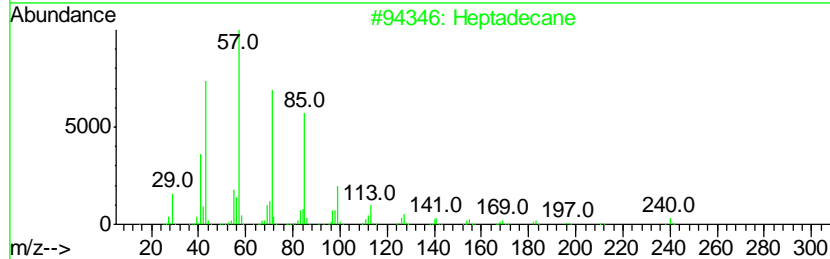
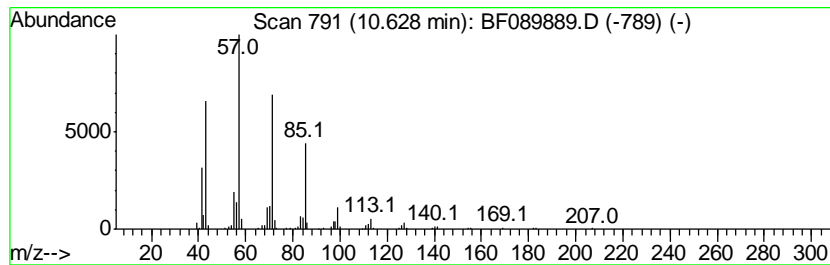
Quant Method : Z:\HPCHEM1\BNA F\METHODS\8270-BF081916.M
 Quant Title : ASP BNA STANDARDS FOR 5 POINT CALIBRATION

TIC Library : C:\Database\NIST11.L
 TIC Integration Parameters: LSCINT.P

 Peak Number 6 Heptadecane Concentration Rank 6

R.T.	EstConc	Area	Relative to ISTD	R.T.
10.63	2.13 ng	375374	Phenanthrene-d10	11.18

Hit#	of	Tentative ID	MW	MolForm	CAS#	Qual
1	5	Heptadecane	240	C17H36	000629-78-7	91
2		Heneicosane	296	C21H44	000629-94-7	90
3		Hexadecane	226	C16H34	000544-76-3	90
4		Pentadecane	212	C15H32	000629-62-9	90
5		9-methylheptadecane	254	C18H38	026741-18-4	86



Data Path : Z:\HPCHEM1\BNA_F\DATA\BF082416\
Data File : BF089889.D
Acq On : 24 Aug 2016 21:46
Operator : UM/SJ
Sample : H4576-02
Misc :
ALS Vial : 26 Sample Multiplier: 1

Instrument :
BNA_F
ClientSampleId :
SB-15A-(18-20)MS

Quant Method : Z:\HPCHEM1\BNA_F\METHODS\8270-BF081916.M
Quant Title : ASP BNA STANDARDS FOR 5 POINT CALIBRATION

TIC Library : C:\Database\NIST11.L
TIC Integration Parameters: LSCINT.P

TIC Top Hit name	RT	EstConc	Units	Response	--Internal Standard--			
					#	RT	Resp	Conc
2-Pentanone, 4-hy...	4.80	19.2	ng	2177410	1	6.66	2269780	20.0
unknown6.43	6.43	81.7	ng	9269520	1	6.66	2269780	20.0
Heptadecane	10.63	2.1	ng	375374	4	11.18	3516690	20.0