

Data Path : Z:\HPCHEM1\BNA F\DATA\BF082417\
 Data File : BF098005.D
 Acq On : 24 Aug 2017 16:45
 Operator : SJ/JU
 Sample : I4774-04 10X
 Misc :
 ALS Vial : 6 Sample Multiplier: 1

Instrument :
 BNA_F
 ClientSampled :
 HY-SB440

Integration Parameters: rteint.p
 Integrator: RTE
 Smoothing : ON Filtering: 5
 Sampling : 1 Min Area: 3 % of largest Peak
 Start Thrs: 0.2 Max Peaks: 100
 Stop Thrs : 0 Peak Location: TOP

If leading or trailing edge < 100 prefer < Baseline drop else tangent >
 Peak separation: 5

Method : Z:\HPCHEM1\BNA F\METHODS\8270-BF081517.M
 Title : ASP BNA STANDARDS FOR 5 POINT CALIBRATION

Signal : TIC

peak #	R.T. min	first scan	max scan	last scan	PK TY	peak height	corr. area	corr. % max.	% of total
1	3.704	267	275	280	rBV	40252	56549	5.03%	0.342%
2	4.910	478	480	489	rVB	29401	30723	2.73%	0.186%
3	5.328	548	551	558	rVB	261115	239884	21.32%	1.449%
4	6.357	723	726	733	rBV	311197	265985	23.64%	1.607%
5	6.498	746	750	758	rVB	336473	273783	24.33%	1.654%
6	6.734	786	790	794	rBV	834654	740999	65.85%	4.477%
7	6.892	813	817	820	rBV	221322	198645	17.65%	1.200%
8	7.133	853	858	861	rBV3	10049	13621	1.21%	0.082%
9	7.292	882	885	889	rBV	166108	143873	12.78%	0.869%
10	7.386	896	901	904	rVB5	11704	16362	1.45%	0.099%
11	7.657	946	947	952	rVB4	15220	14982	1.33%	0.091%
12	8.022	1004	1009	1011	rBV	1100844	975434	86.68%	5.894%
13	8.039	1011	1012	1016	rVB	69318	45592	4.05%	0.275%
14	8.310	1054	1058	1061	rVB5	9601	14290	1.27%	0.086%
15	8.451	1077	1082	1086	rBV2	19032	28404	2.52%	0.172%
16	8.733	1124	1130	1133	rVB	77032	68061	6.05%	0.411%
17	8.792	1136	1140	1143	rVV5	16116	18993	1.69%	0.115%
18	8.828	1143	1146	1152	rVB	68472	64154	5.70%	0.388%
19	9.045	1180	1183	1187	rVB2	29659	26672	2.37%	0.161%
20	9.092	1187	1191	1196	rBV	323428	271648	24.14%	1.641%
21	9.175	1202	1205	1207	rBV2	18071	24277	2.16%	0.147%
22	9.292	1222	1225	1229	rBV3	15183	19170	1.70%	0.116%
23	9.357	1232	1236	1240	rVV2	36356	53225	4.73%	0.322%
24	9.433	1244	1249	1251	rVV	61924	65995	5.86%	0.399%
25	9.457	1251	1253	1255	rVV	43976	41518	3.69%	0.251%
26	9.486	1255	1258	1263	rVV3	59311	101305	9.00%	0.612%
27	9.545	1265	1268	1273	rVB	26315	31963	2.84%	0.193%
28	9.633	1280	1283	1287	rBV	36800	36912	3.28%	0.223%
29	9.686	1289	1292	1294	rVB2	26328	23836	2.12%	0.144%
30	9.710	1294	1296	1300	rBV3	12823	14429	1.28%	0.087%
31	9.774	1300	1307	1310	rBV	1079592	1050029	93.31%	6.344%
32	9.804	1310	1312	1316	rVB	159917	124699	11.08%	0.753%
33	9.880	1321	1325	1329	rVB2	22174	29322	2.61%	0.177%
34	9.927	1329	1333	1335	rBV4	12007	18758	1.67%	0.113%

Data Path : Z:\HPCHEM1\BNA F\DATA\BF082417\
 Data File : BF098005.D
 Acq On : 24 Aug 2017 16:45
 Operator : SJ/JU
 Sample : I4774-04 10X
 Misc :
 ALS Vial : 6 Sample Multiplier: 1

Instrument :
 BNA_F
 ClientSampleId :
 HY-SB440

Integration Parameters: rteint.p
 Integrator: RTE
 Smoothing : ON
 Sampling : 1
 Start Thrs: 0.2
 Stop Thrs : 0

Filtering: 5
 Min Area: 3 % of largest Peak
 Max Peaks: 100
 Peak Location: TOP

If leading or trailing edge < 100 prefer < Baseline drop else tangent >
 Peak separation: 5

Method : Z:\HPCHEM1\BNA F\METHODS\8270-BF081517.M
 Title : ASP BNA STANDARDS FOR 5 POINT CALIBRATION

35	9.974	1337	1341	1344	rVB	137806	114109	10.14%	0.689%
36	10.086	1358	1360	1363	rBV	23138	25392	2.26%	0.153%
37	10.116	1363	1365	1367	rVB	21914	17315	1.54%	0.105%
38	10.180	1372	1376	1380	rBV4	34603	49705	4.42%	0.300%
39	10.269	1386	1391	1393	rBV6	10975	15535	1.38%	0.094%
40	10.316	1396	1399	1406	rVV2	261782	234278	20.82%	1.416%
41	10.380	1406	1410	1412	rVV	36736	43666	3.88%	0.264%
42	10.404	1412	1414	1416	rVV2	38414	33301	2.96%	0.201%
43	10.427	1416	1418	1421	rVV	58828	61866	5.50%	0.374%
44	10.474	1424	1426	1430	rVB	56010	48297	4.29%	0.292%
45	10.551	1436	1439	1444	rBV	212015	207554	18.44%	1.254%
46	10.598	1444	1447	1452	rVB5	16101	26617	2.37%	0.161%
47	10.692	1459	1463	1467	rBV2	93573	116993	10.40%	0.707%
48	10.863	1488	1492	1495	rBV2	45553	51539	4.58%	0.311%
49	10.892	1495	1497	1501	rVV3	34311	31100	2.76%	0.188%
50	10.945	1503	1506	1509	rVB4	23969	26254	2.33%	0.159%
51	10.992	1509	1514	1515	rBV2	24025	32892	2.92%	0.199%
52	11.057	1523	1525	1529	rVB3	31443	24799	2.20%	0.150%
53	11.104	1530	1533	1535	rBV3	27806	30253	2.69%	0.183%
54	11.151	1538	1541	1550	rVB2	108651	145629	12.94%	0.880%
55	11.251	1554	1558	1560	rBV	1106949	1047843	93.11%	6.331%
56	11.274	1560	1562	1566	rVV	1186988	1068722	94.97%	6.457%
57	11.327	1566	1571	1574	rVB	350547	305873	27.18%	1.848%
58	11.363	1574	1577	1580	rBV2	32864	39928	3.55%	0.241%
59	11.480	1594	1597	1600	rBV	94118	81484	7.24%	0.492%
60	11.510	1600	1602	1605	rVB3	26563	20125	1.79%	0.122%
61	11.551	1607	1609	1612	rBV3	29013	26375	2.34%	0.159%
62	11.580	1612	1614	1617	rVV3	19182	16560	1.47%	0.100%
63	11.663	1626	1628	1631	rVB	18597	18292	1.63%	0.111%
64	11.751	1640	1643	1646	rBV	113222	111169	9.88%	0.672%
65	11.780	1646	1648	1652	rVB	184030	143998	12.80%	0.870%
66	11.827	1653	1656	1658	rBV	78637	68032	6.05%	0.411%
67	11.863	1658	1662	1665	rVV	241867	255622	22.72%	1.544%
68	11.886	1665	1666	1671	rVB	92384	60076	5.34%	0.363%
69	11.933	1671	1674	1676	rBV4	20191	25794	2.29%	0.156%
70	11.963	1676	1679	1681	rBV3	19882	21512	1.91%	0.130%
71	12.051	1691	1694	1696	rBV	85493	70527	6.27%	0.426%

Data Path : Z:\HPCHEM1\BNA F\DATA\BF082417\
 Data File : BF098005.D
 Acq On : 24 Aug 2017 16:45
 Operator : SJ/JU
 Sample : I4774-04 10X
 Misc :
 ALS Vial : 6 Sample Multiplier: 1

Instrument :
 BNA_F
 ClientSampleId :
 HY-SB440

Integration Parameters: rteint.p
 Integrator: RTE
 Smoothing : ON Filtering: 5
 Sampling : 1 Min Area: 3 % of largest Peak
 Start Thrs: 0.2 Max Peaks: 100
 Stop Thrs : 0 Peak Location: TOP

If leading or trailing edge < 100 prefer < Baseline drop else tangent >
 Peak separation: 5

Method : Z:\HPCHEM1\BNA F\METHODS\8270-BF081517.M
 Title : ASP BNA STANDARDS FOR 5 POINT CALIBRATION

72	12.198	1717	1719	1721	rVB2	34403	26206	2.33%	0.158%
73	12.227	1722	1724	1726	rBV	33762	35633	3.17%	0.215%
74	12.304	1734	1737	1740	rVB2	60816	54849	4.87%	0.331%
75	12.339	1741	1743	1748	rVB4	42343	59542	5.29%	0.360%
76	12.386	1748	1751	1755	rBV3	31147	47641	4.23%	0.288%
77	12.463	1760	1764	1768	rBV	1237724	1031839	91.69%	6.234%
78	12.510	1769	1772	1777	rVB2	111558	116858	10.38%	0.706%
79	12.692	1797	1803	1805	rBV	863133	955648	84.92%	5.774%
80	12.715	1805	1807	1810	rVB3	63141	62023	5.51%	0.375%
81	12.810	1820	1823	1824	rBV	56158	52008	4.62%	0.314%
82	12.833	1824	1827	1834	rVB	313178	304856	27.09%	1.842%
83	13.015	1855	1858	1861	rVB	170639	166982	14.84%	1.009%
84	13.080	1867	1869	1872	rVB	148714	133063	11.82%	0.804%
85	13.121	1872	1876	1879	rBV	101449	132051	11.73%	0.798%
86	13.239	1894	1896	1900	rBV2	52032	46126	4.10%	0.279%
87	13.662	1966	1968	1970	rBV	53572	37905	3.37%	0.229%
88	13.886	2001	2006	2008	rBV2	931012	1125337	100.00%	6.799%
89	13.910	2008	2010	2013	rVB	325307	238297	21.18%	1.440%
90	13.986	2021	2023	2027	rVB	75010	66809	5.94%	0.404%
91	14.268	2069	2071	2074	rVB	70470	56013	4.98%	0.338%
92	14.898	2174	2178	2186	rVB	246824	477429	42.43%	2.885%
93	15.180	2223	2226	2232	rVB	128959	145596	12.94%	0.880%
94	15.239	2233	2236	2242	rVB	200434	237209	21.08%	1.433%
95	15.304	2242	2247	2250	rBV	515772	618723	54.98%	3.738%
96	15.968	2357	2360	2373	rVB8	63265	140001	12.44%	0.846%
97	16.668	2474	2479	2487	rVB2	98574	183622	16.32%	1.109%
98	17.074	2543	2548	2556	rVB	68261	135176	12.01%	0.817%

Sum of corrected areas: 16550560

Data Path : Z:\HPCHEM1\BNA F\DATA\BF082417\
 Data File : BF098005.D
 Acq On : 24 Aug 2017 16:45
 Operator : SJ/JU
 Sample : I4774-04 10X
 Misc :
 ALS Vial : 6 Sample Multiplier: 1

Instrument :
 BNA_F
 ClientSampleID :
 HY-SB440

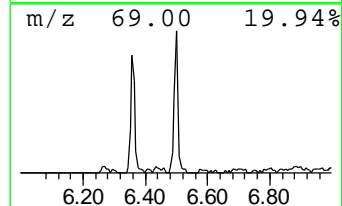
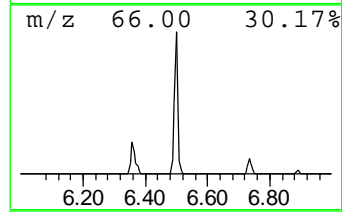
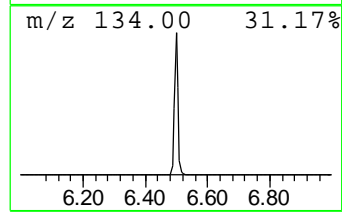
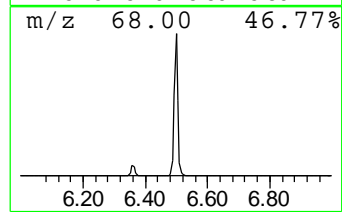
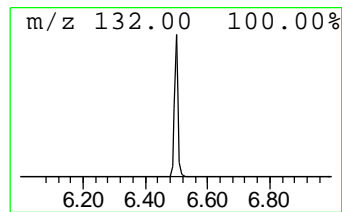
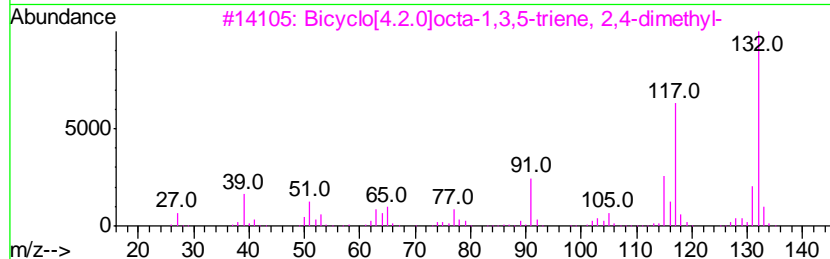
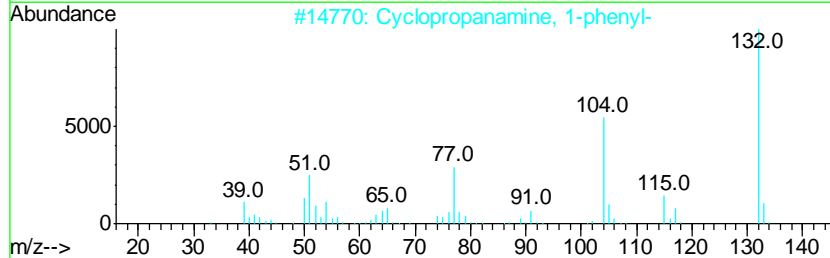
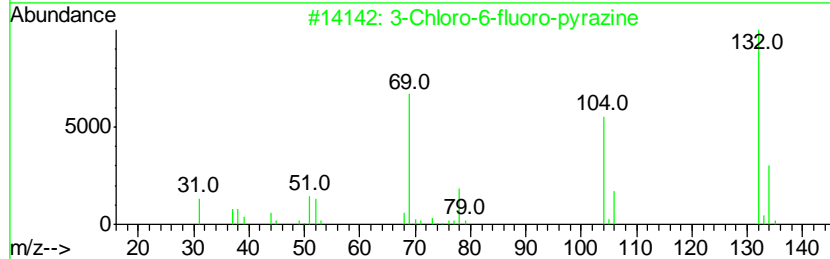
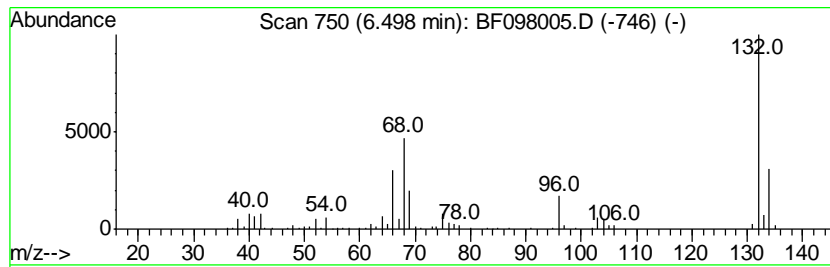
Quant Method : Z:\HPCHEM1\BNA F\METHODS\8270-BF081517.M
 Quant Title : ASP BNA STANDARDS FOR 5 POINT CALIBRATION

TIC Library : C:\DATABASE\NIST11.L
 TIC Integration Parameters: LSCINT.P

 Peak Number 1 unknown6.50 Concentration Rank 1

R.T.	EstConc	Area	Relative to ISTD	R.T.
6.50	7.39 ng	273783	1,4-Dichlorobenzene-d4	6.73

Hit#	of	Tentative ID	MW	MolForm	CAS#	Qual
1	5	3-Chloro-6-fluoro-pyrazine	132	C4H2ClFN2	1000146-10-7	16
2		Cyclopropanamine, 1-phenyl-	133	C9H11N	1000351-26-2	10
3		Bicyclo[4.2.0]octa-1,3,5-triene,...	132	C10H12	028749-81-7	9
4		Xenon	132	Xe	007440-63-3	9
5		(E)-3-Chloro-2-methyl-2-pentenal	132	C6H9ClO	031357-76-3	9



Data Path : Z:\HPCHEM1\BNA F\DATA\BF082417\
 Data File : BF098005.D
 Acq On : 24 Aug 2017 16:45
 Operator : SJ/JU
 Sample : I4774-04 10X
 Misc :
 ALS Vial : 6 Sample Multiplier: 1

Instrument :
 BNA_F
 ClientSampleID :
 HY-SB440

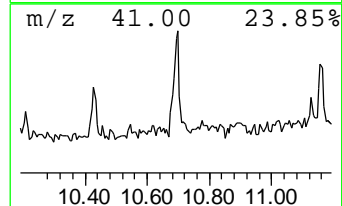
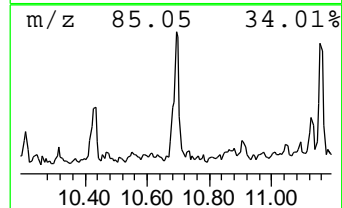
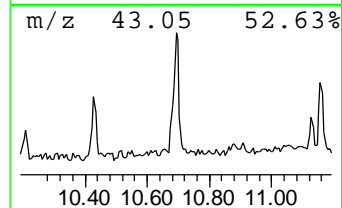
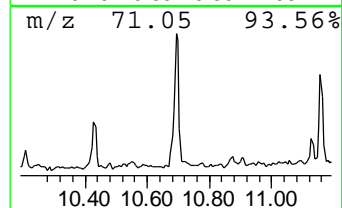
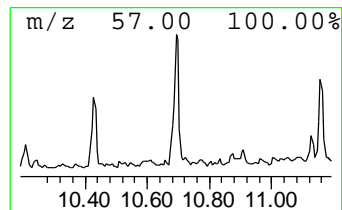
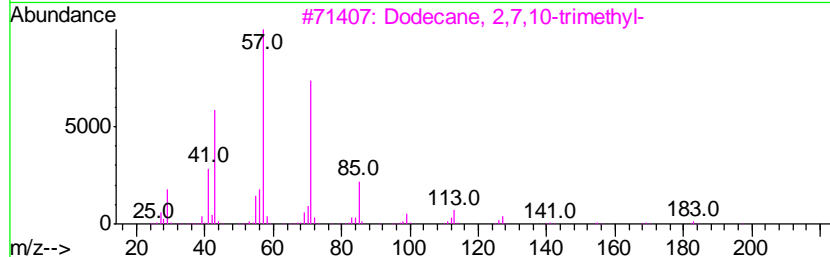
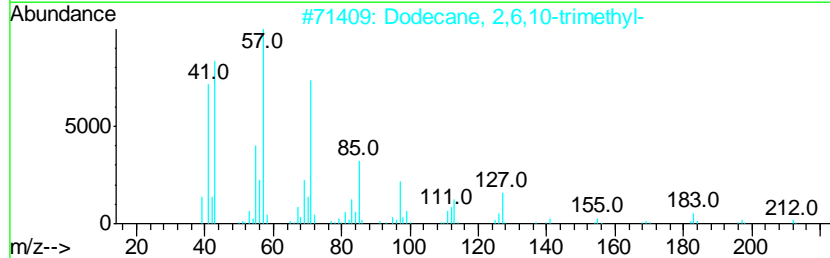
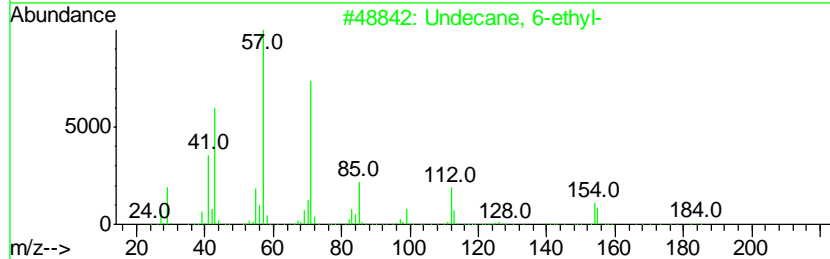
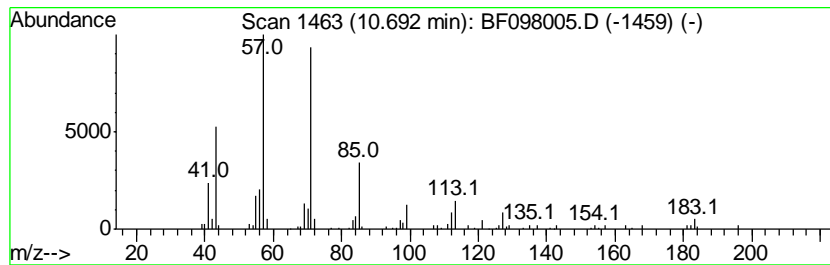
Quant Method : Z:\HPCHEM1\BNA F\METHODS\8270-BF081517.M
 Quant Title : ASP BNA STANDARDS FOR 5 POINT CALIBRATION

TIC Library : C:\DATABASE\NIST11.L
 TIC Integration Parameters: LSCINT.P

 Peak Number 3 Undecane, 6-ethyl- Concentration Rank 11

R.T.	EstConc	Area	Relative to ISTD	R.T.
10.69	2.23 ng	116993	Phenanthrene-d10	11.25

Hit#	of	Tentative ID	MW	MolForm	CAS#	Qual
1	5	Undecane, 6-ethyl-	184	C13H28	017312-60-6	83
2		Dodecane, 2,6,10-trimethyl-	212	C15H32	003891-98-3	83
3		Dodecane, 2,7,10-trimethyl-	212	C15H32	074645-98-0	78
4		Hexadecane, 2,6,10,14-tetramethyl-	282	C20H42	000638-36-8	64
5		Sulfurous acid, 2-ethylhexyl non...	320	C17H36O3S	1000309-19-2	64



Data Path : Z:\HPCHEM1\BNA F\DATA\BF082417\
 Data File : BF098005.D
 Acq On : 24 Aug 2017 16:45
 Operator : SJ/JU
 Sample : I4774-04 10X
 Misc :
 ALS Vial : 6 Sample Multiplier: 1

Instrument :
 BNA_F
 ClientSampleId :
 HY-SB440

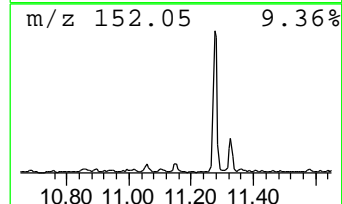
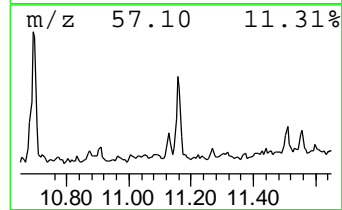
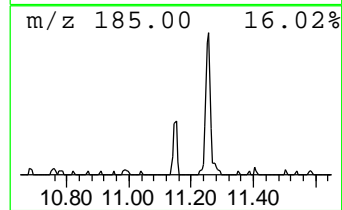
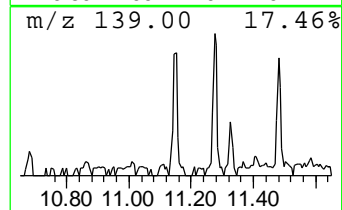
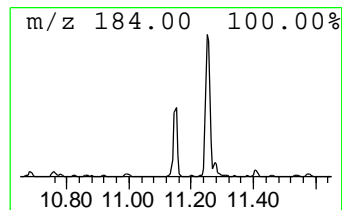
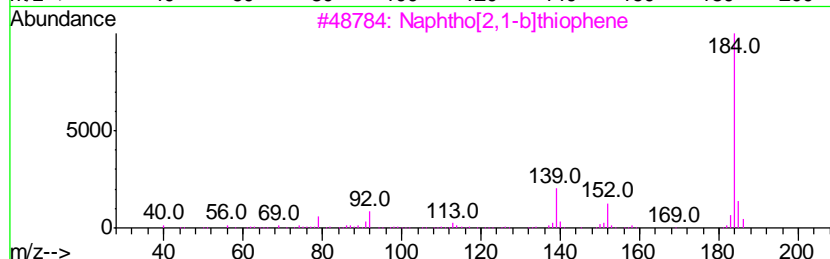
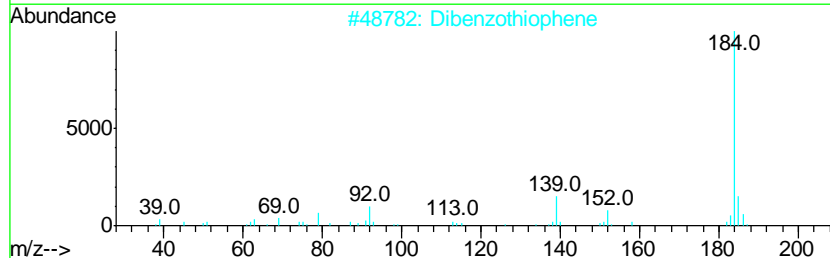
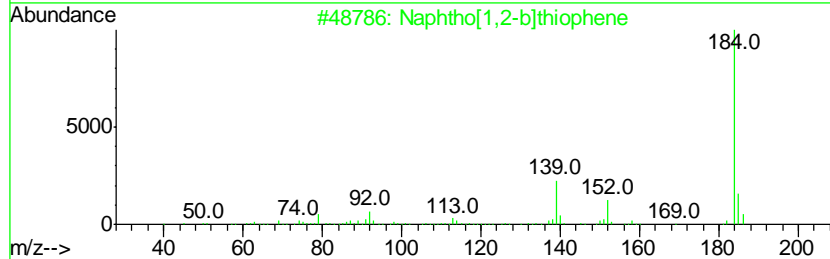
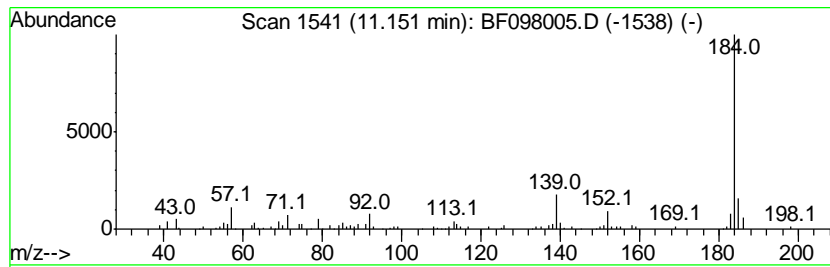
Quant Method : Z:\HPCHEM1\BNA F\METHODS\8270-BF081517.M
 Quant Title : ASP BNA STANDARDS FOR 5 POINT CALIBRATION

TIC Library : C:\DATABASE\NIST11.L
 TIC Integration Parameters: LSCINT.P

 Peak Number 4 Naphtho[1,2-b]thiophene Concentration Rank 7

R.T.	EstConc	Area	Relative to ISTD	R.T.
11.15	2.78 ng	145629	Phenanthrene-d10	11.25

Hit#	of	Tentative ID	MW	MolForm	CAS#	Qual
1	5	Naphtho[1,2-b]thiophene	184	C12H8S	000234-41-3	95
2		Dibenzothiophene	184	C12H8S	000132-65-0	95
3		Naphtho[2,1-b]thiophene	184	C12H8S	000233-02-3	93
4		Naphtho[2,3-b]thiophene	184	C12H8S	000268-77-9	93
5		Azuleno(2,1-b)thiophene	184	C12H8S	000248-13-5	91



Data Path : Z:\HPCHEM1\BNA F\DATA\BF082417\
 Data File : BF098005.D
 Acq On : 24 Aug 2017 16:45
 Operator : SJ/JU
 Sample : I4774-04 10X
 Misc :
 ALS Vial : 6 Sample Multiplier: 1

Instrument :
 BNA_F
 ClientSampleID :
 HY-SB440

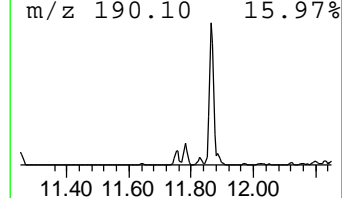
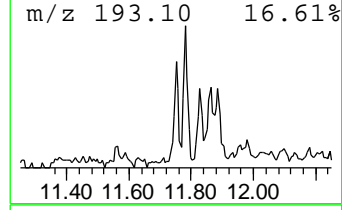
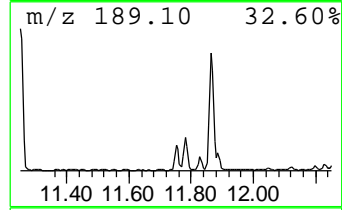
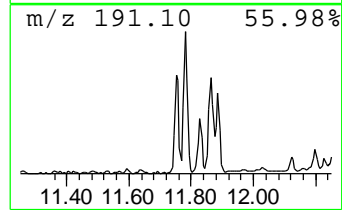
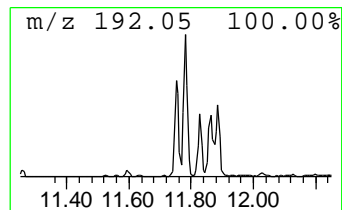
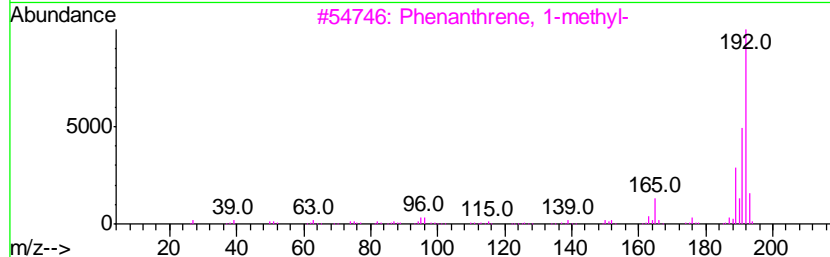
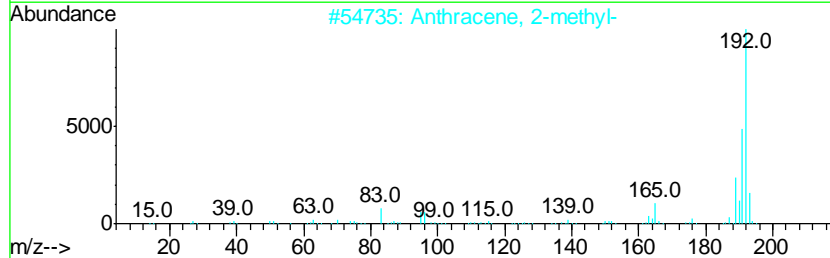
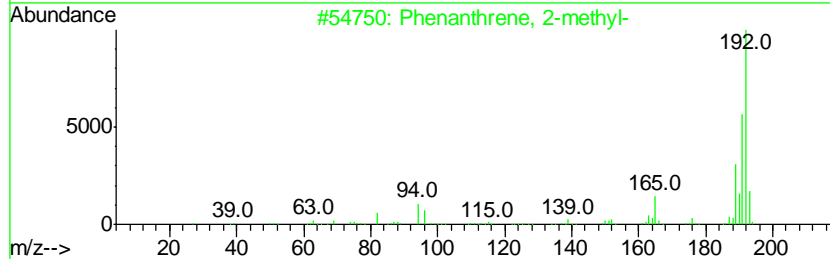
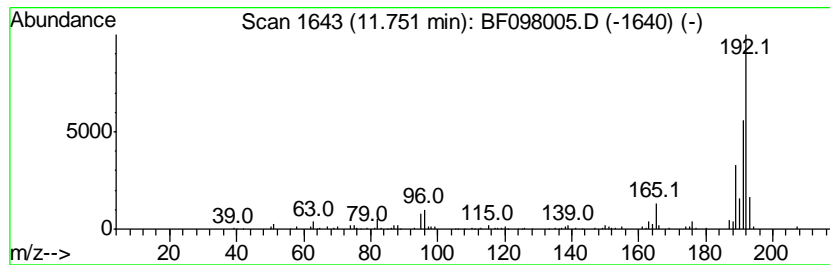
Quant Method : Z:\HPCHEM1\BNA F\METHODS\8270-BF081517.M
 Quant Title : ASP BNA STANDARDS FOR 5 POINT CALIBRATION

TIC Library : C:\DATABASE\NIST11.L
 TIC Integration Parameters: LSCINT.P

 Peak Number 5 Phenanthrene, 2-methyl- Concentration Rank 12

R.T.	EstConc	Area	Relative to ISTD	R.T.
11.75	2.12 ng	111169	Phenanthrene-d10	11.25

Hit#	of	Tentative ID	MW	MolForm	CAS#	Qual
1	5	Phenanthrene, 2-methyl-	192	C15H12	002531-84-2	96
2		Anthracene, 2-methyl-	192	C15H12	000613-12-7	96
3		Phenanthrene, 1-methyl-	192	C15H12	000832-69-9	96
4		1H-Cyclopropa[1]phenanthrene, 1a, ...	192	C15H12	000949-41-7	96
5		Anthracene, 9-methyl-	192	C15H12	000779-02-2	95



Data Path : Z:\HPCHEM1\BNA F\DATA\BF082417\
 Data File : BF098005.D
 Acq On : 24 Aug 2017 16:45
 Operator : SJ/JU
 Sample : I4774-04 10X
 Misc :
 ALS Vial : 6 Sample Multiplier: 1

Instrument :
 BNA_F
 ClientSampleID :
 HY-SB440

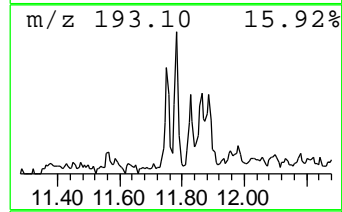
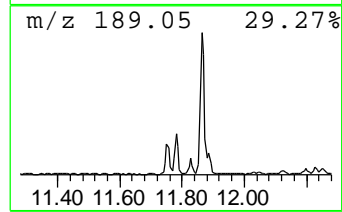
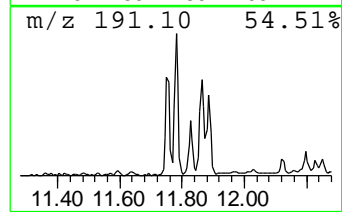
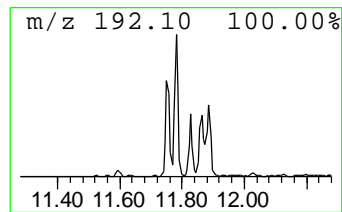
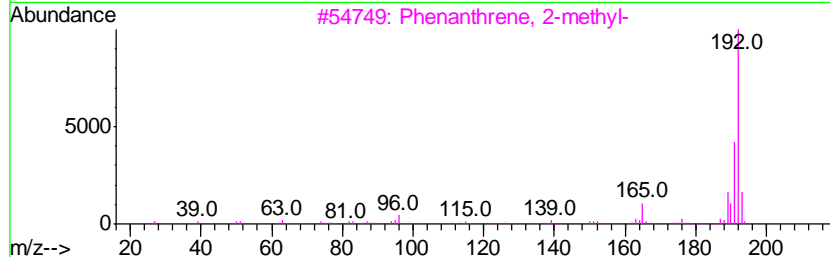
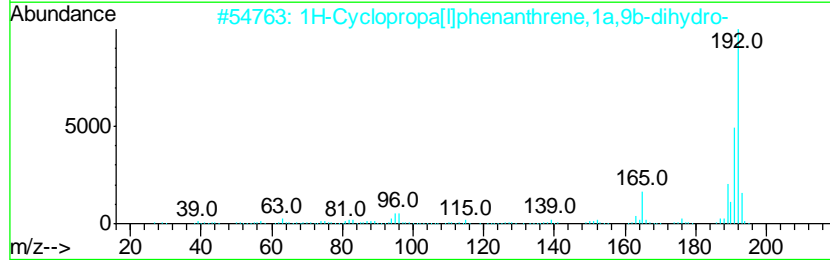
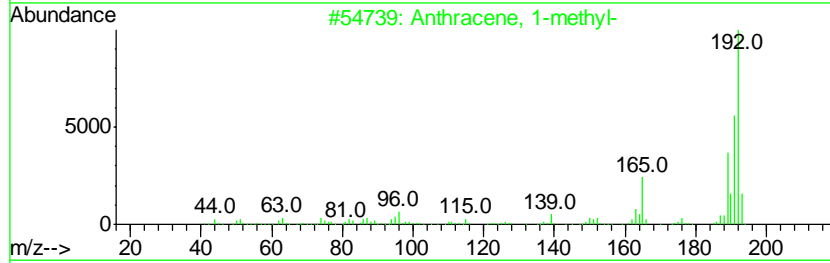
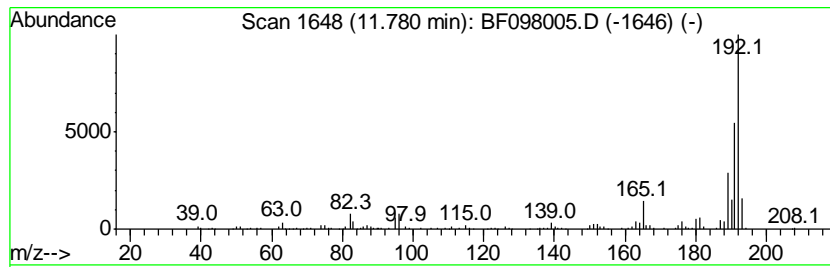
Quant Method : Z:\HPCHEM1\BNA F\METHODS\8270-BF081517.M
 Quant Title : ASP BNA STANDARDS FOR 5 POINT CALIBRATION

TIC Library : C:\DATABASE\NIST11.L
 TIC Integration Parameters: LSCINT.P

 Peak Number 6 Anthracene, 1-methyl- Concentration Rank 8

R.T.	EstConc	Area	Relative to ISTD	R.T.
11.78	2.75 ng	143998	Phenanthrene-d10	11.25

Hit#	of	Tentative ID	MW	MolForm	CAS#	Qual
1	5	Anthracene, 1-methyl-	192	C15H12	000610-48-0	93
2		1H-Cyclopropa[1]phenanthrene,1a,...	192	C15H12	000949-41-7	93
3		Phenanthrene, 2-methyl-	192	C15H12	002531-84-2	93
4		Anthracene, 2-methyl-	192	C15H12	000613-12-7	93
5		Phenanthrene, 1-methyl-	192	C15H12	000832-69-9	91



Data Path : Z:\HPCHEM1\BNA F\DATA\BF082417\
 Data File : BF098005.D
 Acq On : 24 Aug 2017 16:45
 Operator : SJ/JU
 Sample : I4774-04 10X
 Misc :
 ALS Vial : 6 Sample Multiplier: 1

Instrument :
 BNA_F
 ClientSampleID :
 HY-SB440

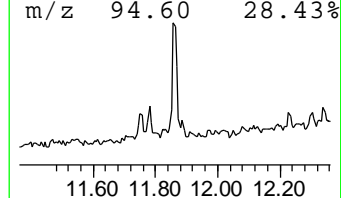
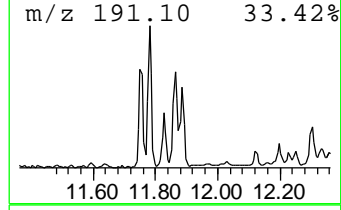
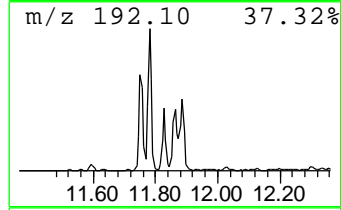
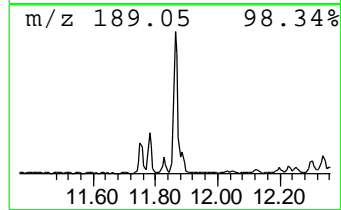
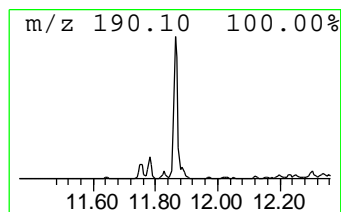
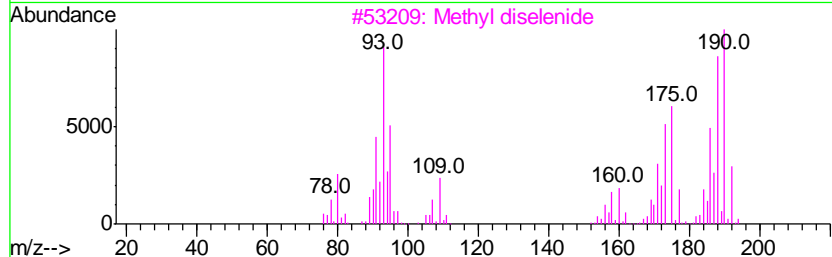
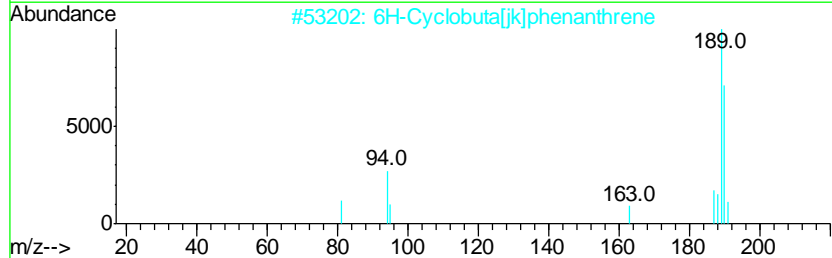
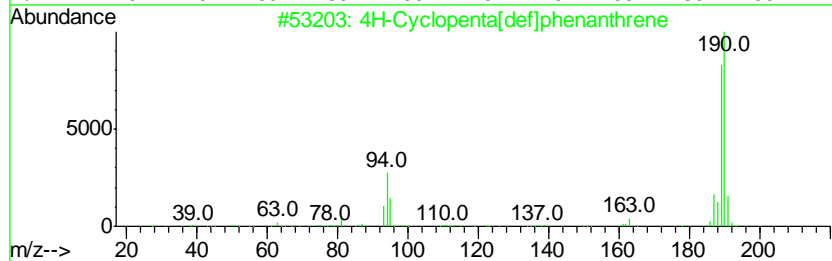
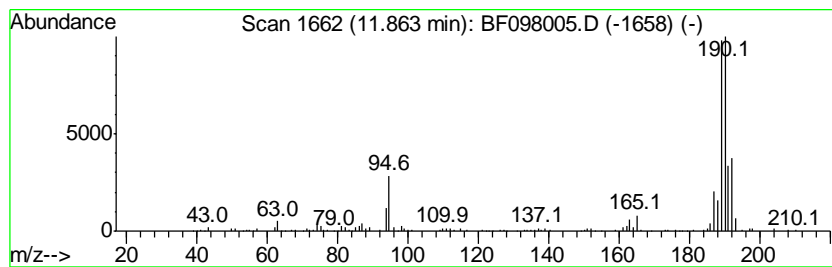
Quant Method : Z:\HPCHEM1\BNA F\METHODS\8270-BF081517.M
 Quant Title : ASP BNA STANDARDS FOR 5 POINT CALIBRATION

TIC Library : C:\DATABASE\NIST11.L
 TIC Integration Parameters: LSCINT.P

 Peak Number 7 4H-Cyclopenta[def]phenanthrene Concentration Rank 3

R.T.	EstConc	Area	Relative to ISTD	R.T.
11.86	4.88 ng	255622	Phenanthrene-d10	11.25

Hit#	of	Tentative ID	MW	MolForm	CAS#	Qual
1	5	4H-Cyclopenta[def]phenanthrene	190	C15H10	000203-64-5	87
2		6H-Cyclobuta[jk]phenanthrene	190	C15H10	083469-43-6	59
3		Methyl diselenide	190	C2H6Se2	007101-31-7	43
4		2,2'-Bis(4,5-dimethylimidazole)	190	C10H14N4	069286-06-2	38
5		1-Aminocyclopentanecarboxylic ac...	347	C17H30ClNO4	1000329-16-9	12



Data Path : Z:\HPCHEM1\BNA F\DATA\BF082417\
 Data File : BF098005.D
 Acq On : 24 Aug 2017 16:45
 Operator : SJ/JU
 Sample : I4774-04 10X
 Misc :
 ALS Vial : 6 Sample Multiplier: 1

Instrument :
 BNA_F
 ClientSampleID :
 HY-SB440

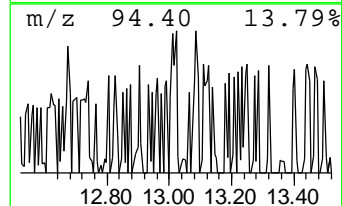
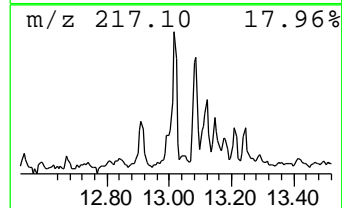
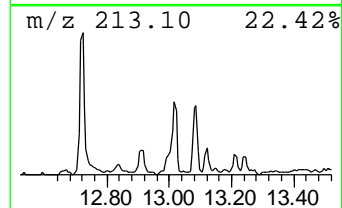
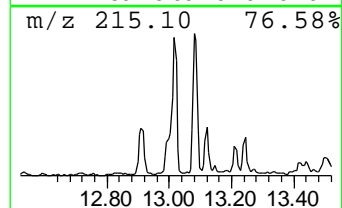
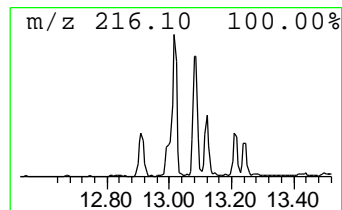
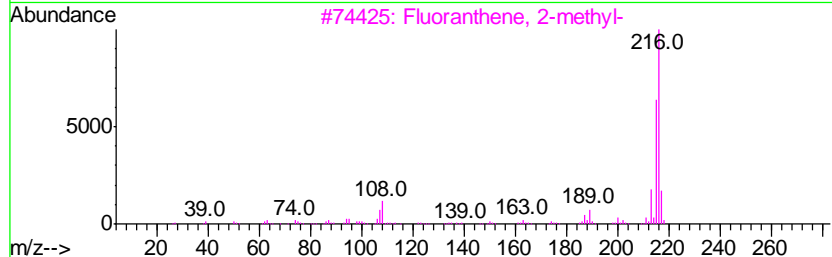
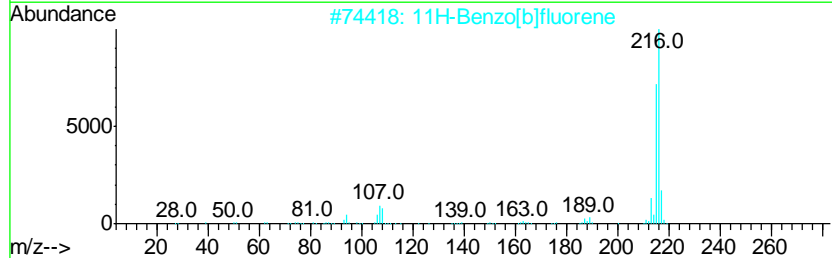
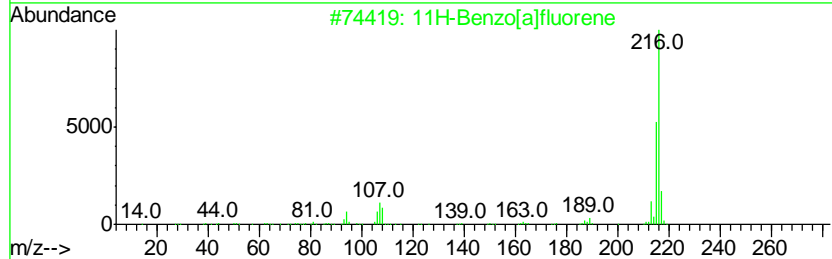
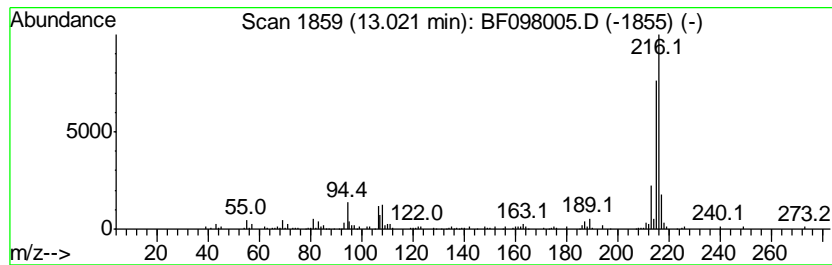
Quant Method : Z:\HPCHEM1\BNA F\METHODS\8270-BF081517.M
 Quant Title : ASP BNA STANDARDS FOR 5 POINT CALIBRATION

TIC Library : C:\DATABASE\NIST11.L
 TIC Integration Parameters: LSCINT.P

 Peak Number 8 11H-Benzo[a]fluorene Concentration Rank 6

R.T.	EstConc	Area	Relative to ISTD	R.T.
13.02	2.97 ng	166982	Chrysene-d12	13.89

Hit#	of	Tentative ID	MW	MolForm	CAS#	Qual
1	5	11H-Benzo[a]fluorene	216	C17H12	000238-84-6	93
2		11H-Benzo[b]fluorene	216	C17H12	000243-17-4	93
3		Fluoranthene, 2-methyl-	216	C17H12	033543-31-6	90
4		Pyrene, 2-methyl-	216	C17H12	003442-78-2	90
5		Pyrene, 1-methyl-	216	C17H12	002381-21-7	83



Data Path : Z:\HPCHEM1\BNA F\DATA\BF082417\
 Data File : BF098005.D
 Acq On : 24 Aug 2017 16:45
 Operator : SJ/JU
 Sample : I4774-04 10X
 Misc :
 ALS Vial : 6 Sample Multiplier: 1

Instrument :
 BNA_F
 ClientSampleID :
 HY-SB440

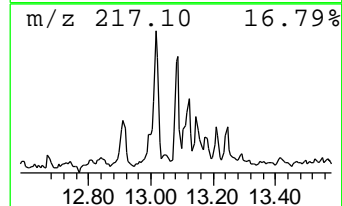
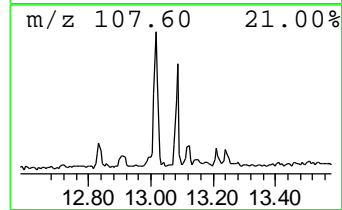
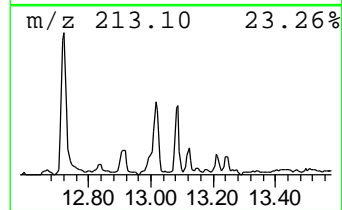
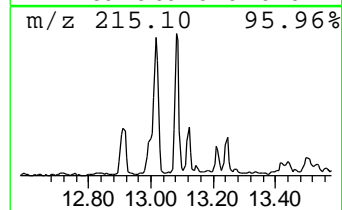
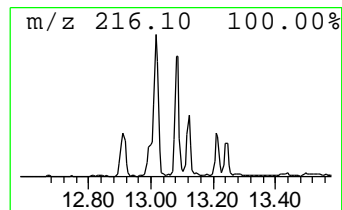
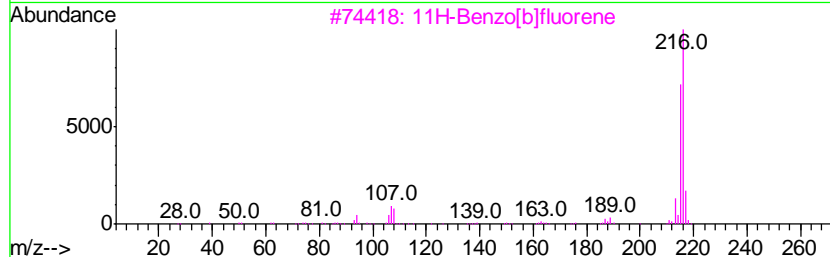
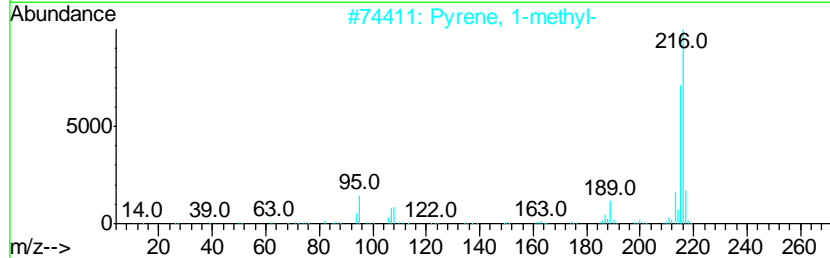
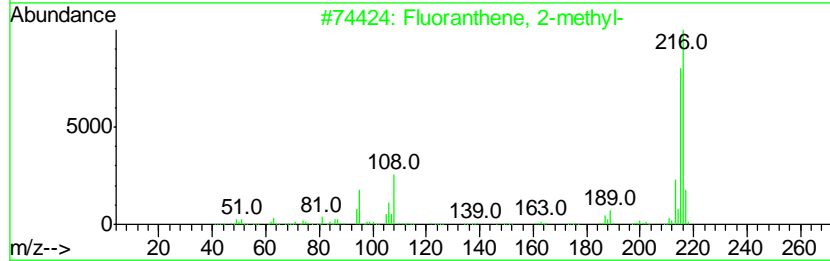
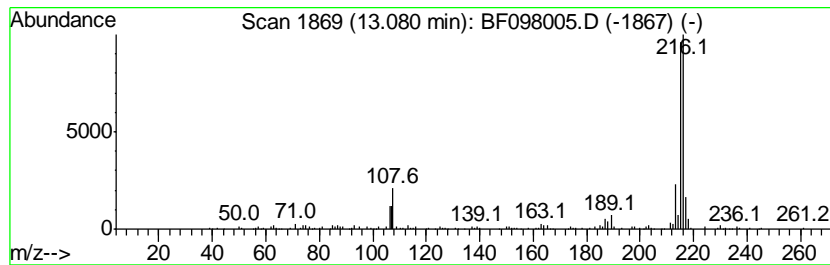
Quant Method : Z:\HPCHEM1\BNA F\METHODS\8270-BF081517.M
 Quant Title : ASP BNA STANDARDS FOR 5 POINT CALIBRATION

TIC Library : C:\DATABASE\NIST11.L
 TIC Integration Parameters: LSCINT.P

 Peak Number 9 Fluoranthene, 2-methyl- Concentration Rank 9

R.T.	EstConc	Area	Relative to ISTD	R.T.
13.08	2.36 ng	133063	Chrysene-d12	13.89

Hit#	of	Tentative ID	MW	MolForm	CAS#	Qual
1	5	Fluoranthene, 2-methyl-	216	C17H12	033543-31-6	94
2		Pyrene, 1-methyl-	216	C17H12	002381-21-7	90
3		11H-Benzo[b]fluorene	216	C17H12	000243-17-4	86
4		Pyrene, 2-methyl-	216	C17H12	003442-78-2	68
5		7H-Benzo[c]fluorene	216	C17H12	000205-12-9	64



Data Path : Z:\HPCHEM1\BNA F\DATA\BF082417\
 Data File : BF098005.D
 Acq On : 24 Aug 2017 16:45
 Operator : SJ/JU
 Sample : I4774-04 10X
 Misc :
 ALS Vial : 6 Sample Multiplier: 1

Instrument :
 BNA_F
 ClientSampleID :
 HY-SB440

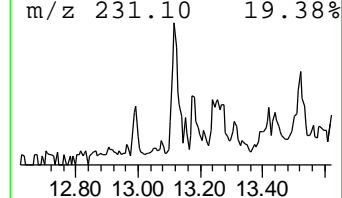
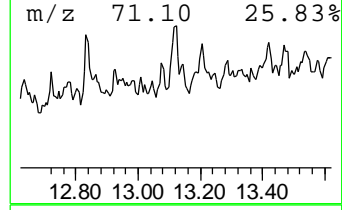
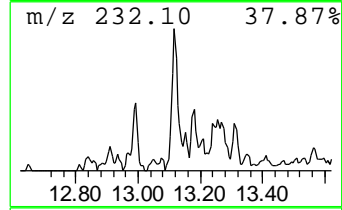
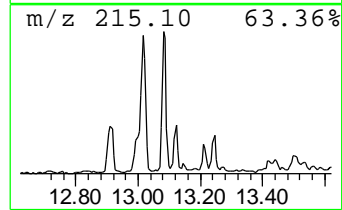
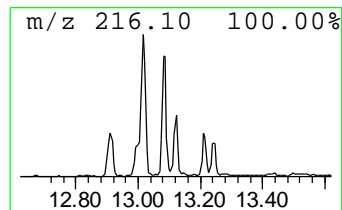
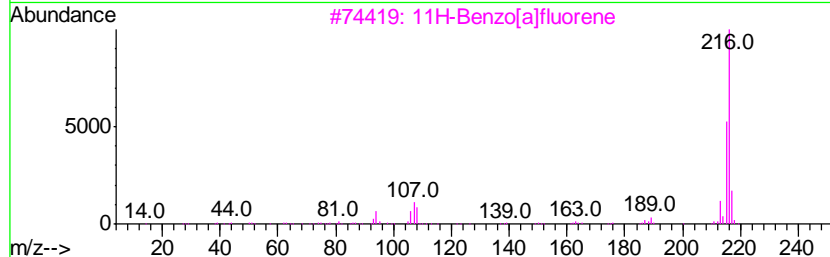
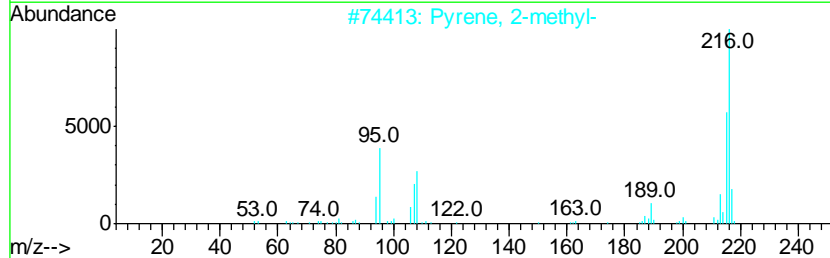
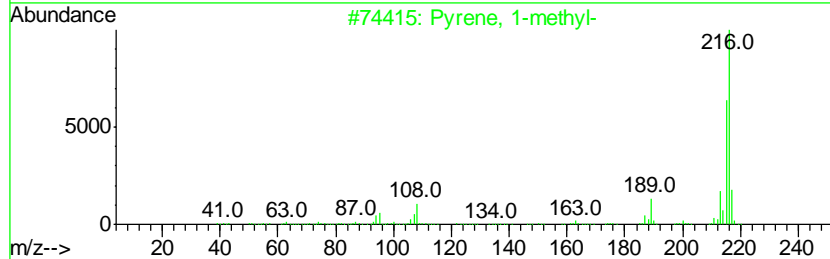
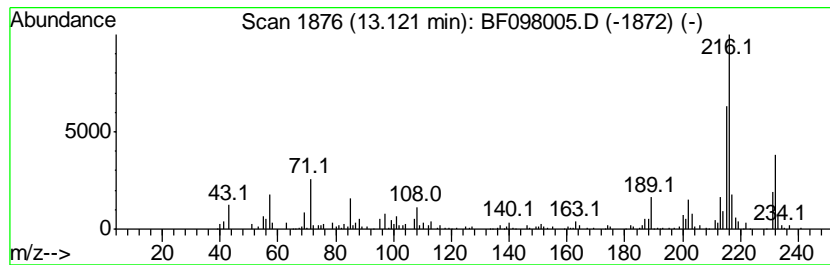
Quant Method : Z:\HPCHEM1\BNA F\METHODS\8270-BF081517.M
 Quant Title : ASP BNA STANDARDS FOR 5 POINT CALIBRATION

TIC Library : C:\DATABASE\NIST11.L
 TIC Integration Parameters: LSCINT.P

 Peak Number 10 Pyrene, 1-methyl- Concentration Rank 10

R.T.	EstConc	Area	Relative to ISTD	R.T.
13.12	2.35 ng	132051	Chrysene-d12	13.89

Hit#	of	Tentative ID	MW	MolForm	CAS#	Qual
1	5	Pyrene, 1-methyl-	216	C17H12	002381-21-7	95
2		Pyrene, 2-methyl-	216	C17H12	003442-78-2	86
3		11H-Benzo[a]fluorene	216	C17H12	000238-84-6	70
4		Fluoranthene, 2-methyl-	216	C17H12	033543-31-6	64
5		6H-Thiazolo[5,4-e]indole, 2,7,8-...	216	C12H12N2S	1000338-32-0	58



Data Path : Z:\HPCHEM1\BNA F\DATA\BF082417\
 Data File : BF098005.D
 Acq On : 24 Aug 2017 16:45
 Operator : SJ/JU
 Sample : I4774-04 10X
 Misc :
 ALS Vial : 6 Sample Multiplier: 1

Instrument :
 BNA_F
 ClientSampleID :
 HY-SB440

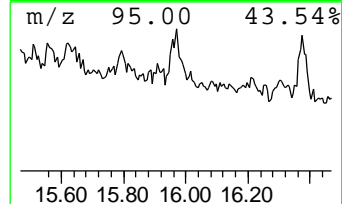
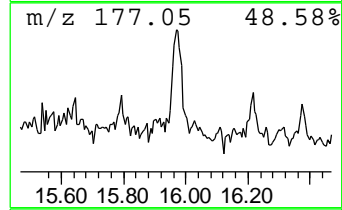
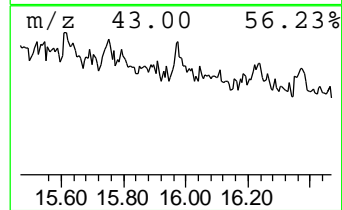
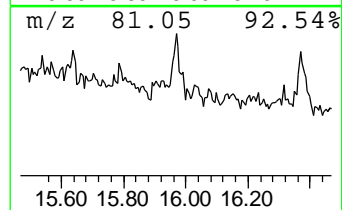
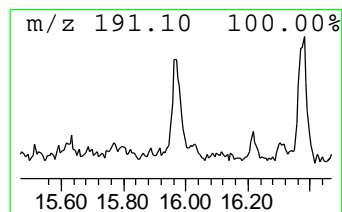
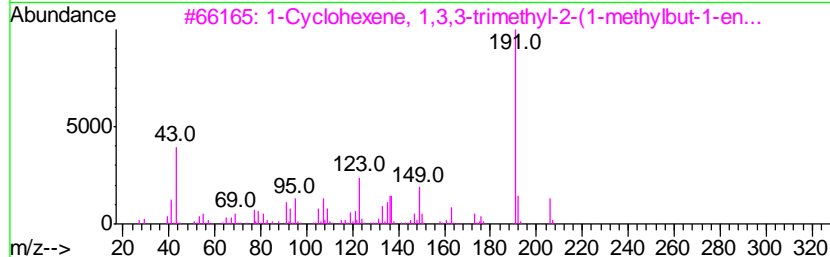
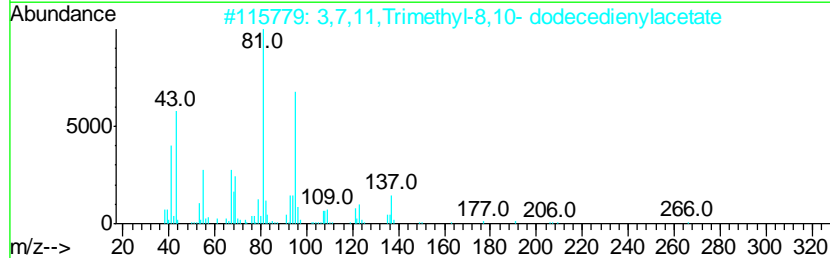
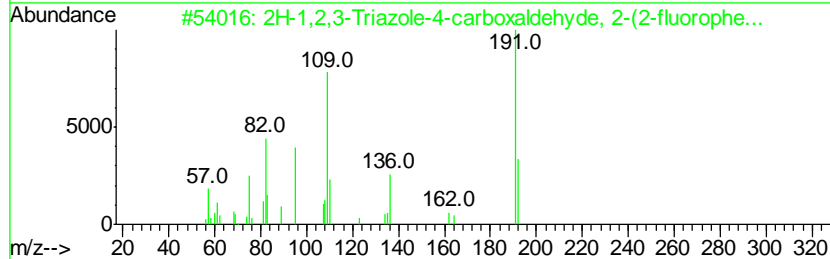
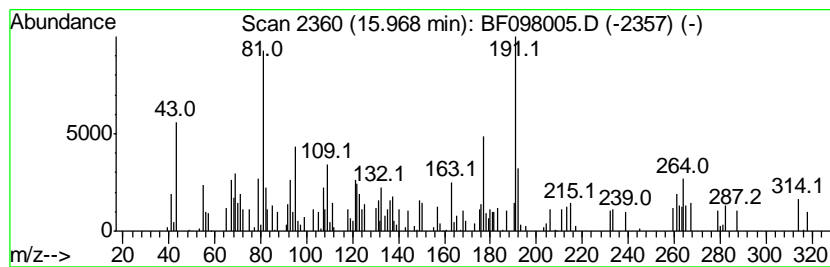
Quant Method : Z:\HPCHEM1\BNA F\METHODS\8270-BF081517.M
 Quant Title : ASP BNA STANDARDS FOR 5 POINT CALIBRATION

TIC Library : C:\DATABASE\NIST11.L
 TIC Integration Parameters: LSCINT.P

 Peak Number 12 unknown15.97 Concentration Rank 5

R.T.	EstConc	Area	Relative to ISTD	R.T.
15.97	4.53 ng	140001	Perylene-d12	15.30

Hit#	of	Tentative ID	MW	MolForm	CAS#	Qual
1	5	2H-1,2,3-Triazole-4-carboxaldehy...	191	C9H6FN3O	051306-43-5	25
2		3,7,11,Trimethyl-8,10- dodecedie...	266	C17H30O2	1000374-10-3	22
3		1-Cyclohexene, 1,3,3-trimethyl-2...	206	C14H22O	1000197-08-4	18
4		3-Fluoro-5-trifluoromethylbenzoi...	318	C14H7ClF4O2	1000357-95-8	18
5		N-(3,4,5,6-Tetrahydro-1,3-thiazi...	192	C10H12N2S	003420-40-4	18



Data Path : Z:\HPCHEM1\BNA_F\DATA\BF082417\
 Data File : BF098005.D
 Acq On : 24 Aug 2017 16:45
 Operator : SJ/JU
 Sample : I4774-04 10X
 Misc :
 ALS Vial : 6 Sample Multiplier: 1

Instrument :
 BNA_F
 ClientSampleId :
 HY-SB440

Quant Method : Z:\HPCHEM1\BNA_F\METHODS\8270-BF081517.M
 Quant Title : ASP BNA STANDARDS FOR 5 POINT CALIBRATION

TIC Library : C:\DATABASE\NIST11.L
 TIC Integration Parameters: LSCINT.P

TIC Top Hit name	RT	EstConc	Units	Response	--Internal Standard--			
					#	RT	Resp	Conc
unknown6.50	6.50	7.4	ng	273783	1	6.73	740999	20.0
Undecane, 6-ethyl-	10.69	2.2	ng	116993	4	11.25	1047840	20.0
Naphtho[1,2-b]thi...	11.15	2.8	ng	145629	4	11.25	1047840	20.0
Phenanthrene, 2-m...	11.75	2.1	ng	111169	4	11.25	1047840	20.0
Anthracene, 1-met...	11.78	2.8	ng	143998	4	11.25	1047840	20.0
4H-Cyclopenta[def...	11.86	4.9	ng	255622	4	11.25	1047840	20.0
11H-Benzo[a]fluorene	13.02	3.0	ng	166982	5	13.89	1125340	20.0
Fluoranthene, 2-m...	13.08	2.4	ng	133063	5	13.89	1125340	20.0
Pyrene, 1-methyl-	13.12	2.4	ng	132051	5	13.89	1125340	20.0
unknown15.97	15.97	4.5	ng	140001	6	15.30	618723	20.0