

Data Path : Z:\HPCHEM1\BNA F\DATA\BF082917\  
 Data File : BF098128.D  
 Acq On : 29 Aug 2017 23:22  
 Operator : SJ/JU  
 Sample : I4992-03  
 Misc :  
 ALS Vial : 22 Sample Multiplier: 1

Instrument :  
 BNA\_F  
 ClientSampleId :  
 SECTION-2-STONES

Integration Parameters: rteint.p  
 Integrator: RTE  
 Smoothing : ON Filtering: 5  
 Sampling : 1 Min Area: 3 % of largest Peak  
 Start Thrs: 0.2 Max Peaks: 100  
 Stop Thrs : 0 Peak Location: TOP

If leading or trailing edge < 100 prefer < Baseline drop else tangent >  
 Peak separation: 5

Method : Z:\HPCHEM1\BNA F\METHODS\8270-BF081517.M  
 Title : ASP BNA STANDARDS FOR 5 POINT CALIBRATION

Signal : TIC

peak #	R.T. min	first scan	max scan	last scan	PK TY	peak height	corr. area	corr. % max.	% of total
1	4.945	481	486	496	rBV	218550	356423	9.47%	1.196%
2	5.351	549	555	558	rBV	3160175	3573035	94.97%	11.993%
3	6.375	723	729	732	rBV	3034975	3762173	100.00%	12.628%
4	6.504	746	751	754	rBV	3256761	3556353	94.53%	11.937%
5	6.734	786	790	793	rBV	1038682	823121	21.88%	2.763%
6	6.892	812	817	820	rBV	3001802	2768542	73.59%	9.293%
7	7.304	881	887	890	rBV	2183845	2304756	61.26%	7.736%
8	8.016	1004	1008	1014	rBV	1164401	1027846	27.32%	3.450%
9	9.098	1186	1192	1195	rBV	3799156	3618322	96.18%	12.145%
10	9.486	1255	1258	1267	rVB	310998	251631	6.69%	0.845%
11	9.769	1302	1306	1315	rVB2	1120934	959088	25.49%	3.219%
12	10.557	1436	1440	1448	rBV	1702542	1664403	44.24%	5.587%
13	10.674	1458	1460	1465	rBV	59584	69466	1.85%	0.233%
14	11.157	1539	1542	1545	rVB	43652	38970	1.04%	0.131%
15	11.251	1555	1558	1563	rBV	910711	769689	20.46%	2.584%
16	11.504	1599	1601	1604	rBV4	39922	46044	1.22%	0.155%
17	11.939	1672	1675	1678	rBV2	116388	139297	3.70%	0.468%
18	12.304	1734	1737	1743	rVB	505013	497319	13.22%	1.669%
19	12.845	1824	1829	1832	rBV	2111544	2218541	58.97%	7.447%
20	13.892	2003	2007	2016	rVB	707762	823503	21.89%	2.764%
21	15.309	2243	2248	2251	rBV	441430	523420	13.91%	1.757%

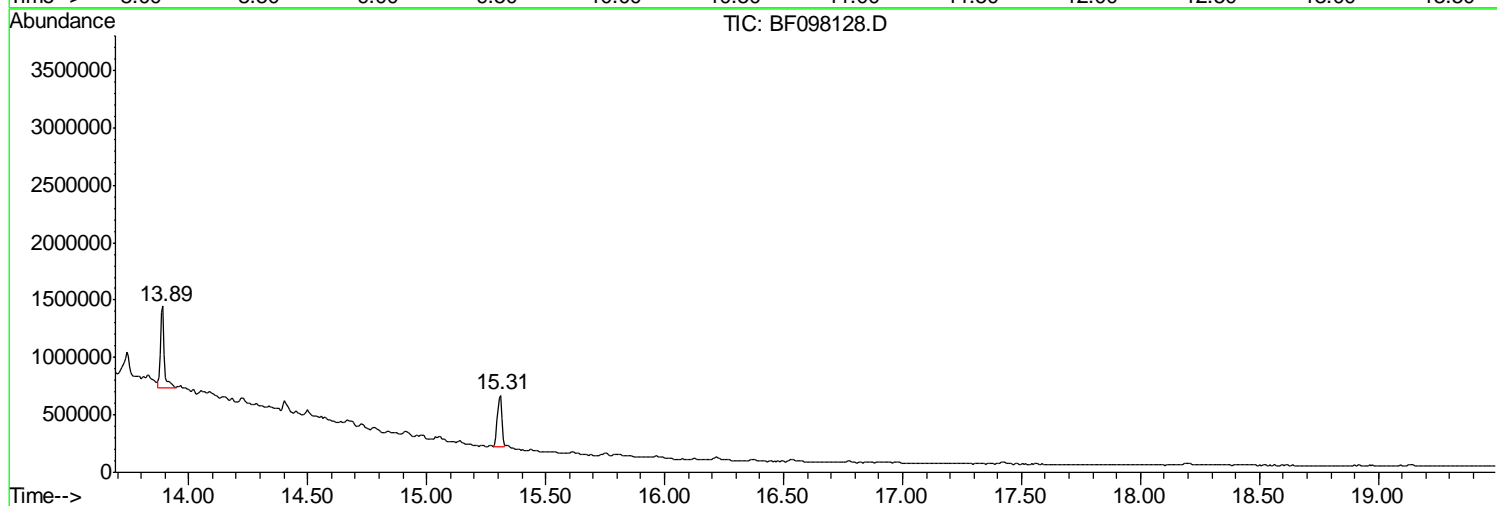
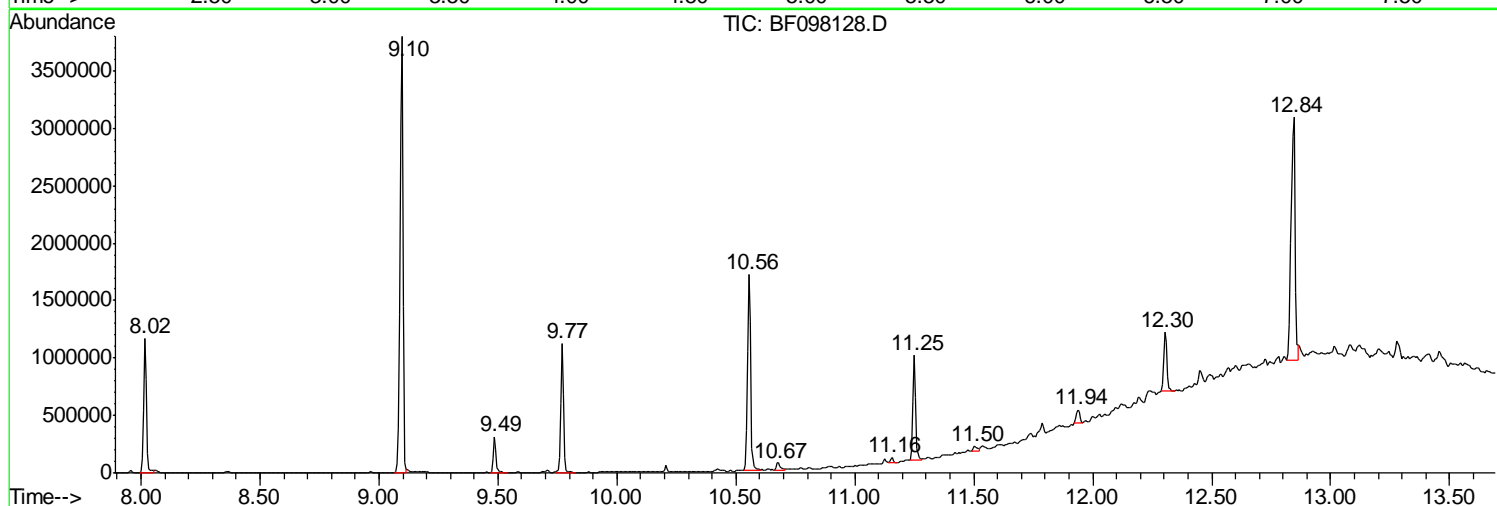
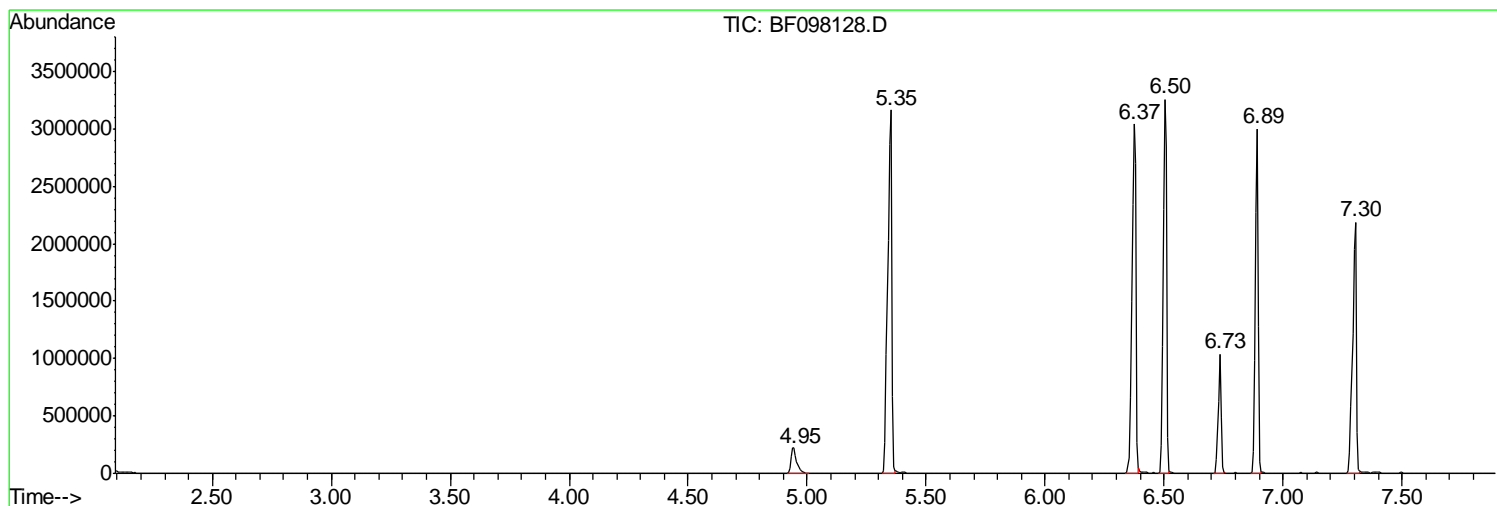
Sum of corrected areas: 29791942

Data Path : Z:\HPCHEM1\BNA F\DATA\BF082917\  
 Data File : BF098128.D  
 Acq On : 29 Aug 2017 23:22  
 Operator : SJ/JU  
 Sample : I4992-03  
 Misc :  
 ALS Vial : 22 Sample Multiplier: 1

**Instrument :**  
 BNA\_F  
**ClientSampleID :**  
 SECTION-2-STONES

Quant Method : Z:\HPCHEM1\BNA F\METHODS\8270-BF081517.M  
 Quant Title : ASP BNA STANDARDS FOR 5 POINT CALIBRATION

TIC Library : C:\DATABASE\NIST11.L  
 TIC Integration Parameters: LSCINT.P



Data Path : Z:\HPCHEM1\BNA F\DATA\BF082917\  
 Data File : BF098128.D  
 Acq On : 29 Aug 2017 23:22  
 Operator : SJ/JU  
 Sample : I4992-03  
 Misc :  
 ALS Vial : 22 Sample Multiplier: 1

Instrument :  
 BNA\_F  
 ClientSampleID :  
 SECTION-2-STONES

Quant Method : Z:\HPCHEM1\BNA F\METHODS\8270-BF081517.M  
 Quant Title : ASP BNA STANDARDS FOR 5 POINT CALIBRATION

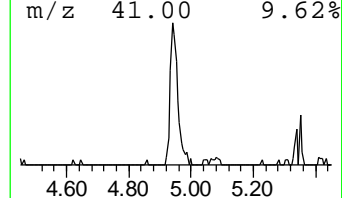
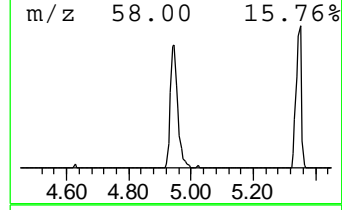
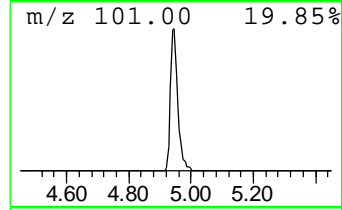
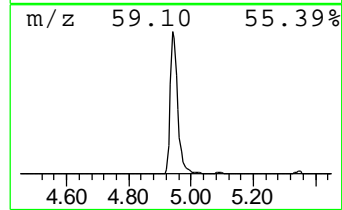
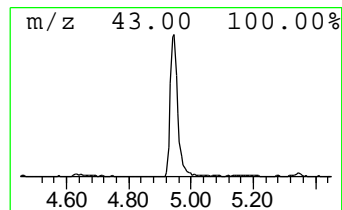
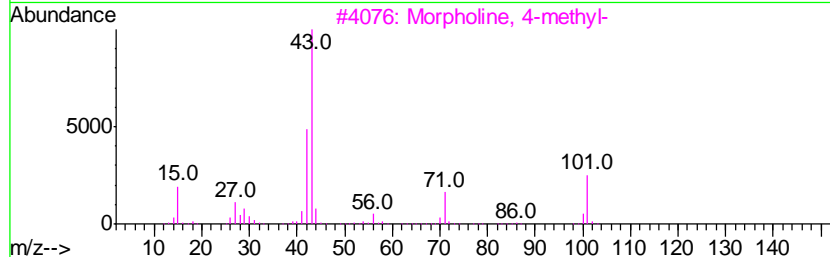
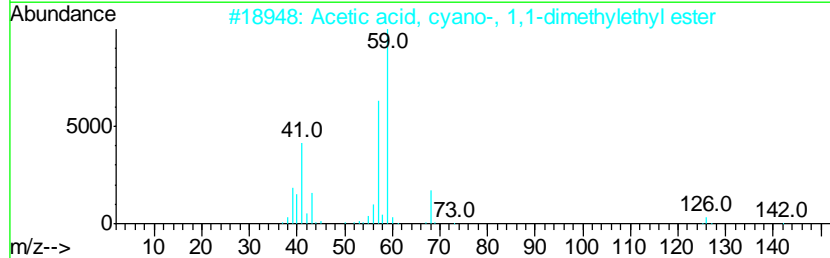
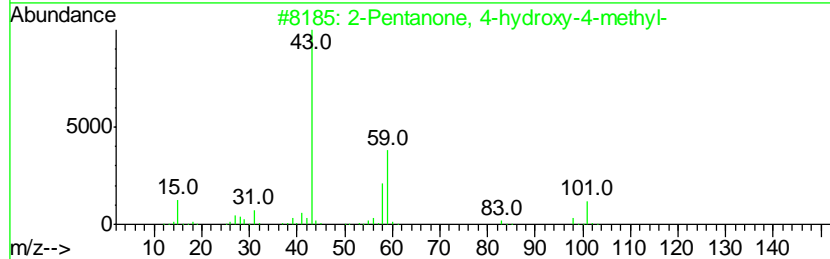
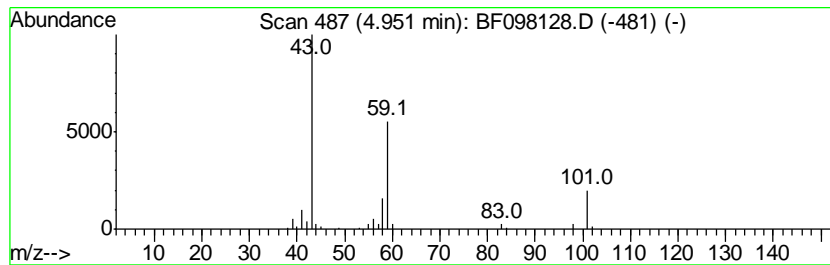
TIC Library : C:\DATABASE\NIST11.L  
 TIC Integration Parameters: LSCINT.P

\*\*\*\*\*  
 Peak Number 1 2-Pentanone, 4-hydroxy-4-me... Concentration Rank 4

R.T.	EstConc	Area	Relative to ISTD	R.T.
4.95	8.66 ng	356423	1,4-Dichlorobenzene-d4	6.73

Hit#	of	Tentative ID	MW	MolForm	CAS#	Qual
1	5	2-Pentanone, 4-hydroxy-4-methyl-	116	C6H12O2	000123-42-2	50
2		Acetic acid, cyano-, 1,1-dimethyl...	141	C7H11NO2	001116-98-9	17
3		Morpholine, 4-methyl-	101	C5H11NO	000109-02-4	9
4		Butanamide, 2-hydroxy-2,N-dimethyl-	117	C5H11NO2	039961-72-3	9
5		3-Hexanol, 4-methyl-	116	C7H16O	000615-29-2	9



Data Path : Z:\HPCHEM1\BNA F\DATA\BF082917\  
 Data File : BF098128.D  
 Acq On : 29 Aug 2017 23:22  
 Operator : SJ/JU  
 Sample : I4992-03  
 Misc :  
 ALS Vial : 22 Sample Multiplier: 1

Instrument :  
 BNA\_F  
 ClientSampleID :  
 SECTION-2-STONES

Quant Method : Z:\HPCHEM1\BNA F\METHODS\8270-BF081517.M  
 Quant Title : ASP BNA STANDARDS FOR 5 POINT CALIBRATION

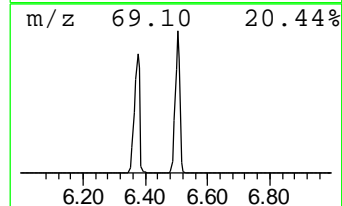
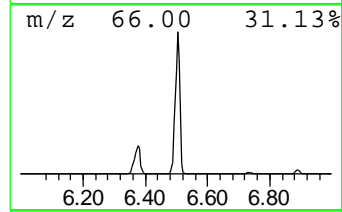
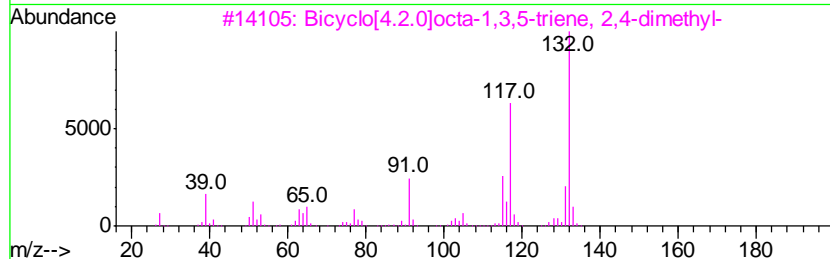
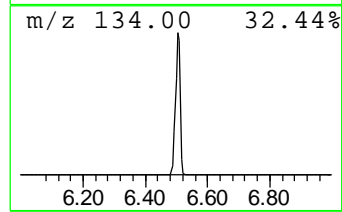
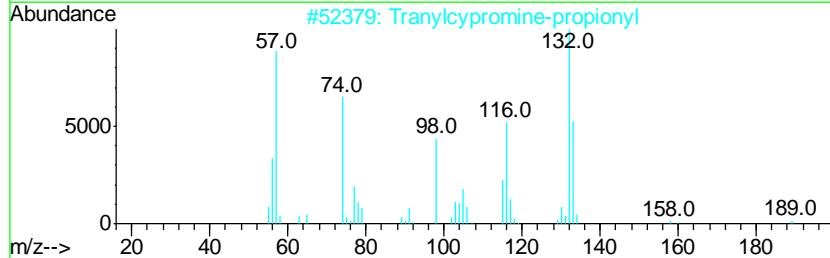
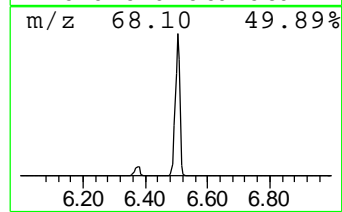
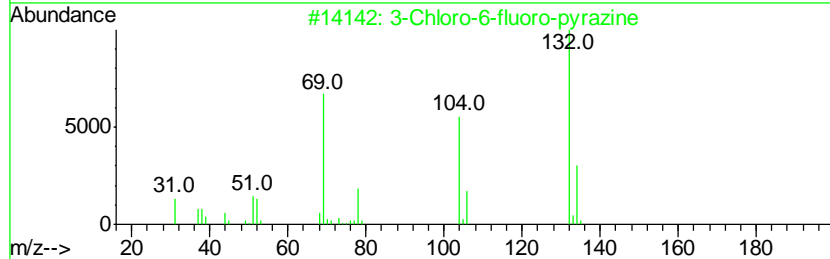
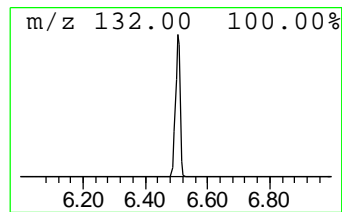
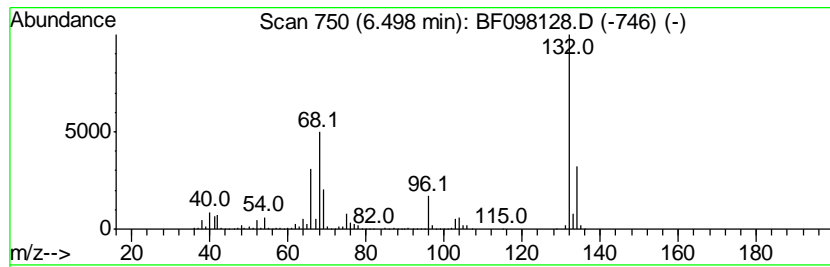
TIC Library : C:\DATABASE\NIST11.L  
 TIC Integration Parameters: LSCINT.P

\*\*\*\*\*  
 Peak Number 2 unknown6.50 Concentration Rank 1

R.T.	EstConc	Area	Relative to ISTD	R.T.
6.50	86.41 ng	3556350	1,4-Dichlorobenzene-d4	6.73

Hit#	of	Tentative ID	MW	MolForm	CAS#	Qual
1	5	3-Chloro-6-fluoro-pyrazine	132	C4H2ClFN2	1000146-10-7	27
2		Tranlycypromine-propionyl	189	C12H15NO	1000123-86-3	10
3		Bicyclo[4.2.0]octa-1,3,5-triene,...	132	C10H12	028749-81-7	9
4		1-Methylpyrrolo[1,2-a]pyrazine	132	C8H8N2	064608-59-9	9
5		(E)-3-Chloro-2-methyl-2-pentenal	132	C6H9ClO	031357-76-3	9



Data Path : Z:\HPCHEM1\BNA F\DATA\BF082917\  
 Data File : BF098128.D  
 Acq On : 29 Aug 2017 23:22  
 Operator : SJ/JU  
 Sample : I4992-03  
 Misc :  
 ALS Vial : 22 Sample Multiplier: 1

Instrument :  
 BNA\_F  
 ClientSampleID :  
 SECTION-2-STONES

Quant Method : Z:\HPCHEM1\BNA F\METHODS\8270-BF081517.M  
 Quant Title : ASP BNA STANDARDS FOR 5 POINT CALIBRATION

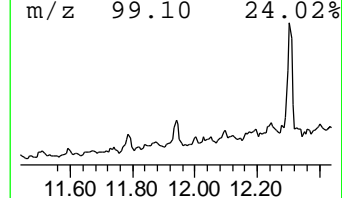
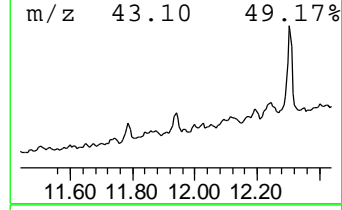
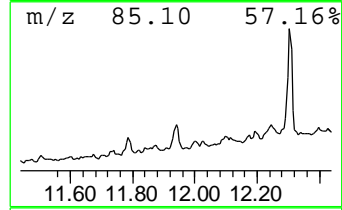
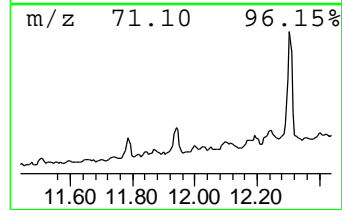
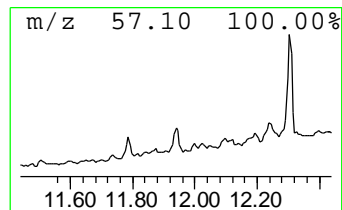
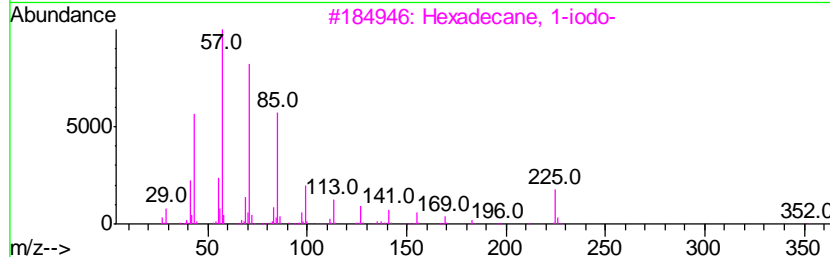
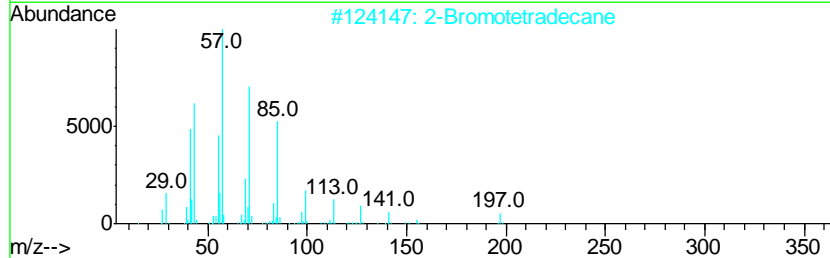
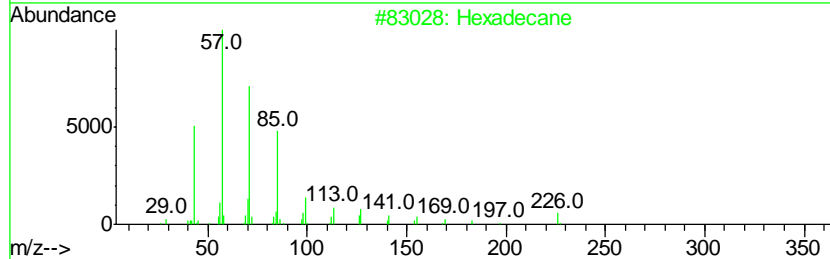
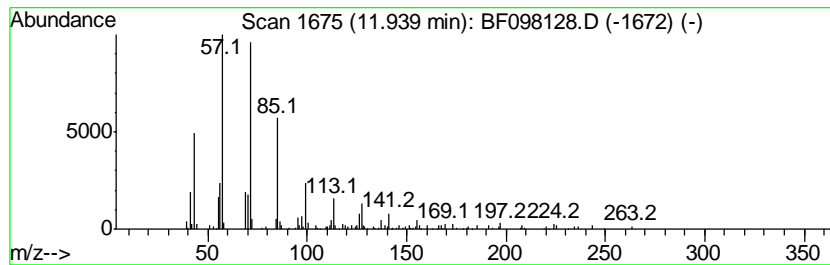
TIC Library : C:\DATABASE\NIST11.L  
 TIC Integration Parameters: LSCINT.P

\*\*\*\*\*  
 Peak Number 4 Hexadecane Concentration Rank 5

R.T.	EstConc	Area	Relative to ISTD	R.T.
11.94	3.62 ng	139297	Phenanthrene-d10	11.25

Hit#	of	Tentative ID	MW	MolForm	CAS#	Qual
1	5	Hexadecane	226	C16H34	000544-76-3	80
2		2-Bromotetradecane	276	C14H29Br	074036-95-6	80
3		Hexadecane, 1-iodo-	352	C16H33I	000544-77-4	80
4		Pentacosane	352	C25H52	000629-99-2	78
5		Heptadecane, 2,6,10,15-tetramethyl-	296	C21H44	054833-48-6	78



Data Path : Z:\HPCHEM1\BNA F\DATA\BF082917\  
 Data File : BF098128.D  
 Acq On : 29 Aug 2017 23:22  
 Operator : SJ/JU  
 Sample : I4992-03  
 Misc :  
 ALS Vial : 22 Sample Multiplier: 1

Instrument :  
 BNA\_F  
 ClientSampleId :  
 SECTION-2-STONES

Quant Method : Z:\HPCHEM1\BNA F\METHODS\8270-BF081517.M  
 Quant Title : ASP BNA STANDARDS FOR 5 POINT CALIBRATION

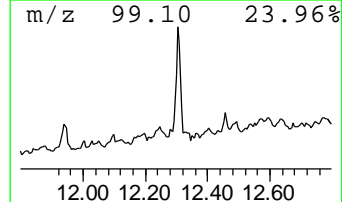
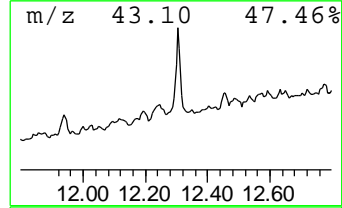
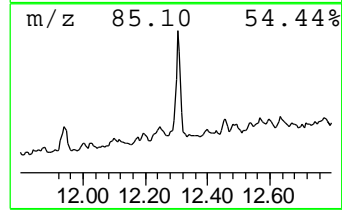
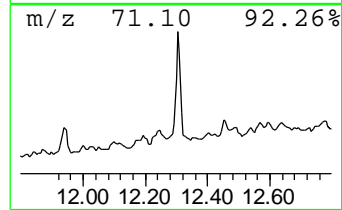
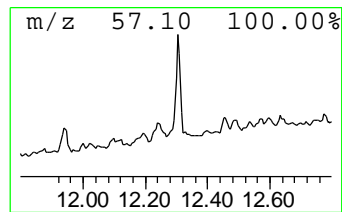
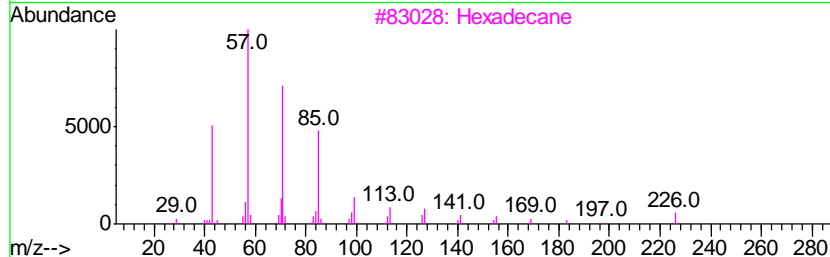
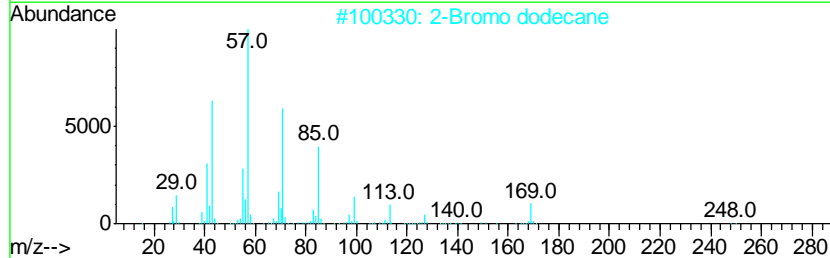
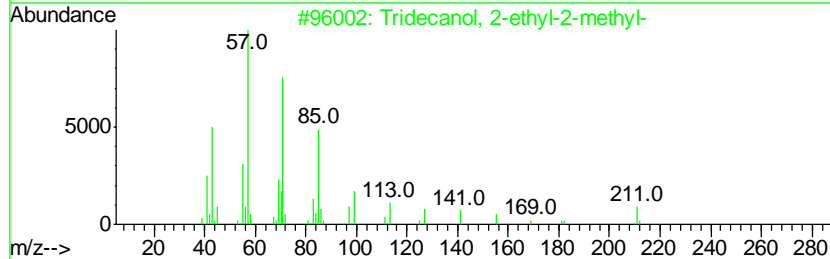
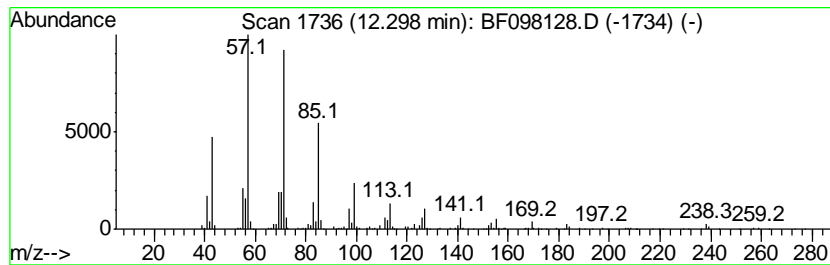
TIC Library : C:\DATABASE\NIST11.L  
 TIC Integration Parameters: LSCINT.P

\*\*\*\*\*  
 Peak Number 5 Tridecanol, 2-ethyl-2-methyl- Concentration Rank 3

R.T.	EstConc	Area	Relative to ISTD	R.T.
12.30	12.92 ng	497319	Phenanthrene-d10	11.25

Hit#	of	Tentative ID	MW	MolForm	CAS#	Qual
1	5	Tridecanol, 2-ethyl-2-methyl-	242	C16H34O	1000115-66-1	90
2		2-Bromo dodecane	248	C12H25Br	013187-99-0	89
3		Hexadecane	226	C16H34	000544-76-3	86
4		Heneicosane	296	C21H44	000629-94-7	86
5		2-Bromotetradecane	276	C14H29Br	074036-95-6	83



Data Path : Z:\HPCHEM1\BNA\_F\DATA\BF082917\  
Data File : BF098128.D  
Acq On : 29 Aug 2017 23:22  
Operator : SJ/JU  
Sample : I4992-03  
Misc :  
ALS Vial : 22 Sample Multiplier: 1

Instrument :  
BNA\_F  
ClientSampleId :  
SECTION-2-STONES

Quant Method : Z:\HPCHEM1\BNA\_F\METHODS\8270-BF081517.M  
Quant Title : ASP BNA STANDARDS FOR 5 POINT CALIBRATION

TIC Library : C:\DATABASE\NIST11.L  
TIC Integration Parameters: LSCINT.P

TIC Top Hit name	RT	EstConc	Units	Response	--Internal Standard--			
					#	RT	Resp	Conc
2-Pentanone, 4-hy...	4.95	8.7	ng	356423	1	6.73	823121	20.0
unknown6.50	6.50	86.4	ng	3556350	1	6.73	823121	20.0
Hexadecane	11.94	3.6	ng	139297	4	11.25	769689	20.0
Tridecanol, 2-eth...	12.30	12.9	ng	497319	4	11.25	769689	20.0